

THE CHELTENHAM CHRONICLE AND GLO'SHIRE GRAPHIC

With Which is Incorporated the "Cheltenham Looker-On."

SATURDAY, JUNE 4, 1938

GRATIS SUPPLEMENT

No. 1,953.

THE OPERA HOUSE

NEXT WEEK:—Grand Holiday Attraction! 6.30 TWICE NIGHTLY 8.40, REG. A. MADDUX presents—

"HIGH SPEED VARIETY"

with another brilliant cast of well-known Variety Artistes. Usual Popular Prices. Be Advised—Book Now. Tel. 5144-5.

PALACE

HEAR Phone 2553. HERE 2.0 Continuous 10.30

Monday, June 6th, and Week:—SIMONE SIMON, BenBernie and Walter Winchell in

"LOVE AND HISSES" (U)

(At 3.30, 6.25, 9.20 Daily)

— Also —

Claire Trevor and Donald Woods in

"BIG TOWN GIRL" (A)

Coming Soon: "ROSALIE"

THE DAFFODIL

Phone CHELTENHAM 3360
2.15 Continuous 10.30

MON., JUNE 6th, For One Week: Glorious Whitsuntide Attractions

JACK HULBERT in the Grandest Lump of Fun You've Seen

"PARADISE FOR TWO"

with Patricia Ellis

3.40 : 6.20 : and 9.10

"THE LAW COMMANDS"

Starring Lorraine Hayes and Carol Stockdale

2.15 : 5.0 : 7.45

Cheltenham's Finest Holiday Show



SOUTH CERNEY AIR DISPLAY

Group Captain D. Iron, O.B.E., Officer Commanding the camp, and Squadron-Leader W. E. Staton, M.C., D.F.C., second in command, who were in charge of the fine Empire Air Day display on Saturday.

COLISEUM

Week: 6th JUNE. From 2.15 p.m. GRAND HOLIDAY PROGRAMME

SHIRLEY TEMPLE in

"HEIDI"

with Jean Hersholt and Arthur Treacher (3.30: 6.15: 9.0)

— Also —

"DANGEROUSLY YOURS"

Featuring Cesaro Romero and Phyllis Brooks

(2.15 : 5.0 : 7.45)

Movietone News (3.20: 6.5: 8.45)



MONEY — RIDE A

RALEIGH

Roadsters, Tourists, Sports, and Safety Models. Junior Models £4/16/6, Lady's or Gent's Models from £5/10/-, or on easy terms. See our windows and Remember Our Service After Sales is the Best in the County.

Authorised Agent:—

A. H. HAMLEN

The Cycle Specialist

200-1 High St., Cheltenham



Be prepared for all weathers — it's not very nice sitting in a room waiting for the rain to stop, without a fire

— Phone 3605 and order FIVE CWTs. OF

DERBY BRIGHTS

only 11/3 delivered.

A. RICHES & CO.,

REGENT ST., CHELTENHAM.



THE 'SPA' BICYCLE

Unequalled Value

Cent's Roadster £3-7-6
Lady's Model £3-14-6
Juvenile Models from 35'6
or 2 WEEKLY.

CHELTENHAM CYCLE CO.,

82 STRAND



BEAUTIFUL MEMORIALS

E. A. EMMS

HALES ROAD CHELTENHAM

Tel. 2391. Est. over 50 years.

DALE, FORTY and Co. L^{TD} for the BEST PIANOS



GREYHOUND GRAND NATIONAL OF THE WEST AT CHELTENHAM AND GLOUCESTER STADIUM
 All attendance and tote records were broken at the above track on Saturday night, and Lenin's Ring, the winner of the Grand National, also broke the time record for the course.

1.--Runners for a race being brought up to starting box.
 2. No. 1 is Lenin's Ring, the winner of the Grand National -value 50 guineas, with a silver trophy and two magnums of champagne.
 3.—Captain E. A. V. Stanley, a director, with Major J. Y. Baldwin.
 4.— Mr. J. H. Edge, managing director of Stadium.
 5.—Mr. D. H. Adams, Miss West, Mr. Jack King, Mr. Ted Jones (owners).
 6, 7 and 8.—Sections of the spectators.

"Cheltenham Chronicle" Photographs. Copies 6 1/2 in. x 4 1/2 in. 1/-; 8 1/2 in. x 6 1/2 in. 1/9 each.

HOW TO SPEND WHIT-MONDAY

GO GREYHOUND RACING

at the

GLOUCESTER and CHELTENHAM STADIUM

(Main Cheltenham to Gloucester Road)

TWO MEETINGS at 11 a.m. and 7.30 p.m.

YOU WILL ENJOY THE THRILLS EVEN IF YOU DO NOT BET

There are also meetings each Tuesday, Thursday and Saturday at 7.30 p.m. except Whit-Tuesday, June 7th.



ST. JAMES' CHURCH LADS' BRIGADE GARDEN PARTY

The annual garden party of this brigade was held on Saturday at St. Luke's Hall, Cheltenham, and was opened by the Bishop of Tewkesbury.

1.—Distinguished visitors. Standing: Lt.-Col. C. W. Biggs, Mr. D. G. A. Lowe, Capt. J. V. Fry, Mr. H. E. C. Townley, Brig.-General H. C. Potter, C.B., C.M.G., D.S.O. Seated: Mrs. D. L. Lipson, the Bishop of Tewkesbury, Rev. A. O.

Lukyn-Williams (vicar), and Mr. D. L. Lipson, M.P.

2.—The Boys' Brigade.

"Cheltenham Chronicle" Photographs. Copies 6½ x 4½ 1/-; 8½ x 6½ 1'9 each.



Cycling becomes more popular every day, especially as many people are now cycling as a means to 'keep fit.' The above newly completed premises of A. Williams and Co., 8 Portland-street, Cheltenham, show the fine windows devoted to the needs of the cyclist. An invitation is extended to everyone to walk round the spacious showrooms, which contain a wide and varied selection of cycles and accessories, cyclists' clothing, camping equipment, etc., that must now be one of the largest in the West of England. A new department has been opened and large stocks of baby carriages, folders, nursery furniture, etc., are displayed. This complete modern imposing building, with a 70ft. frontage, and equipped with the latest fittings, was designed and built by W. H. Bowd, Builder and Contractor, Pittville, Cheltenham.



23,000 PEOPLE SEE SOUTH CERNEY AIR DISPLAY

Empire Air Day celebrations at the No. 3 Flying Training School (R.A.F.), South Cerney, on Saturday attracted a crowd of 23,000 people. All shops in Cirencester were shut for the afternoon. The display was admirably staged, and no effort was spared by the members of the R.A.F. to give their guests a most interesting and memorable day.

- | | | |
|-----------------------------------------------------------------------------------------------------------------------------------------------------------------------------------------------------------------------------------------------|---------------------------------------------------------------------------------------------------------------------------------------------------------------------------------------------------------------------------|-----------------------------------------------------------------------------------------------------------------------------------------------------------------------------------------------------------------------------|
| <p>1.—Visitors in enclosure, Mr. W. G. A. Copeman, Mrs. Goddard, Major Goddard, Lady Cripps and Sir Frederick Cripps.</p> <p>2.—Mr. and Mrs. Wilkinson (formerly of Cheltenham). Mr. Wilkinson is in charge of the education at the camp.</p> | <p>3.—Guests in private enclosure.</p> <p>4.—Flight-Lieut. H. J. L. Hawkins, Flight-Lieut. R. G. E. Catt, Squadron-Leader C. E. Barraclough.</p> <p>5.—A view of part of the immense crowd, and inset two aeroplanes.</p> | <p>6 and 7.—Boys from a Cirencester preparatory school.</p> <p>8.—The guard of honour on duty.</p> <p>9 and 10.—Watching the air display.</p> <p>11.—A section of the crowd: Cheltonians were present in large numbers.</p> |
|-----------------------------------------------------------------------------------------------------------------------------------------------------------------------------------------------------------------------------------------------|---------------------------------------------------------------------------------------------------------------------------------------------------------------------------------------------------------------------------|-----------------------------------------------------------------------------------------------------------------------------------------------------------------------------------------------------------------------------|



ANNUAL 5th BATTALION GLOUCESTERSHIRE REGT. SHOOT AT SNEEDHAM'S GREEN

Rain during the greater part of the day made conditions very bad for the annual Battalion shoot on Sunday. Some of the officers—from left are Major J. A. Kitching, Capt. L. Chamberlayne, Capt. A. A. Scott, Lieut. Collett, and on extreme right Lieut.-Col. G. A. H. Buxton, in command of battalion.

2. — Old Cheltenham members, Messrs. F. J. Clifton, Tim Finch and W. G. Tibbles.

3. At the firing station, in the wet.

4. Messrs. F. J. Wilce and P. G. Tolley (Cheltenham).

5. Making a picnic of it, despite the rain.

6 and 7. Sergeants, with their wives and daughters, who were guests for the afternoon.

"Cheltenham Chronicle" Photographs. Copies 6 1/2 in. x 4 1/2 in. 1/-; 8 1/2 in. x 6 1/2 in. 1/9 each.

WHITSUN

WHITSUNDAY
 7 to 8 p.m. and 8 to 9.30 p.m. Band of 2nd Bn. GLOUCESTERSHIRE REGIMENT, Winter Garden. 6d. & 3d.

WHIT-MONDAY
 11 a.m. to 12.30 p.m. CROWNING OF CARNIVAL QUEEN in Winter Garden. Dancing by Queen's Dancers; David Graves, Entertainer; Les Ferrantis, equilibrists and staircase aerobats. 6d. & 3d. (Town Hall if wet)

2 to 11 p.m. Hill's Fun Fair at Pittville Gardens Annexe. Admission Free.

3 to 5 p.m. Band of 2nd Bn. GLOUCESTERSHIRE REGIMENT, Winter Garden. 6d. & 3d.

7.30 to 9.30 p.m. Spa Light Orchestra, with Entertainer; Winter Garden. 6d. & 3d.

8 p.m. to Midnight. Dance in the Pittville Pump Room. 1/-.

9 p.m. to 2 a.m. WHITSUN CARNIVAL BALL, at Town Hall. Carnival Novelties, Buffet Bar. Tickets: 2 G.

Inclusive Admission to Pittville Gardens Annexe for all the following events—6d.

Band of 2nd Bn. Gloucestershire Regiment, Les Ferrantis, the Continental Wonders; Dancing Display by Carnival Queen's Dancers; Variety Items, including the Two Melody Boys; Grand Fireworks Display by Brocks.

Montpellier Gardens,
 CHELTENHAM

MONDAY, June 13th

TENNIS

SENORITA ANITA LIZANA
 FRU SPERLING; PAT HUGHES
 H. HENKEL; KHO SIN KIE
 C. E. MALFROY

will appear in EXHIBITION TENNIS MATCHES, commencing at 2.45 p.m.
 Res. Seats 3 6 and 2 6; Unres. 1 -
 Book now at the Town Hall (Tel. 2200)



DRESSING THE WELLS AT BISLEY

A large crowd of local residents and visitors at Bisley on Ascension Day watched with interest the very ancient ceremony of dressing and blessing the wells.

- 1. Dressing the wells with floral emblems.
- 2.—Choirboys carrying emblem in procession.
- 3.—Children in the procession.
- 4.—The vicar of Bisley (Rev. G. A. Piper) blessing wells.
- 5.—The head of procession of children, choristers, band, and congregation passing from the church service to the wells.

"Cheltenham Chronicle" Photographs. Copies 6 1/2 in. x 4 1/2 in. 1/-; 8 1/2 in. x 6 1/2 in. 1/9 each.

LADIES' INTERNATIONAL FOOTBALL MATCH

ENGLAND v. WALES

WHIT MONDAY, JUNE 6th

ATHLETIC GROUND, ALBION STREET, CHELTENHAM

KICK-OFF 3 p.m

ADMISSION TO GROUND 1 - and 6d. 1 - Tickets 9d. if purchased before June 6th.

RESERVED SEATS, MAIN STAND, including Ground Admission, 2 - and 1 6

ALL PRICES INCLUDE TAX CHILDREN HALF-PRICE TO ALL PARTS.

Seats may be Booked at FRISKNEYS, Sports Depot, Pittville St., Cheltenham.

Shakespeare

MEMORIAL THEATRE

STRATFORD-UPON-AVON

SHAKESPEARE FESTIVAL

April 11th to September 24th, 1938

Performances by

The Stratford-upon-Avon Festival Co.

Director: B. Iden Payne.

Nightly at 8, Mats., Wed. & Sat. 2.30

Reserved Seats: 2s. 6d. to 8s. 6d.

(Change of Play each Performance.)

Apply: Box Office, Memorial Theatre

Phone: Stratford-upon-Avon 2271 & 2272



DISTRIBUTION OF CALVES TO CHELTENHAM YOUNG FARMERS' CLUB

Lots were drawn by the Young Farmers themselves for 31 calves at the second annual distribution on Tuesday at Mr. F. H. Cocks' Prestbury Park Farm. There were 51 applicants and a further 20 calves will be obtained. Top: Some of the young farmers taking their calves. Below: Mr. K. M. Fearman, County Agricultural Instructor, giving directions to applicants for calves.

THE CAR YOU WANT IS HERE!

REGENT MOTORS

offer:—

- 1938 Vauxhall 10 h.p. De Luxe Saloon. Demonstration model. Mileage under 500. Bargain **£165**
- 1937 Ford V.8 30 h.p. four-door Touring Saloon De Luxe Well kept. One owner. **£130**
- 1937 Talbot 20.9 h.p. 105 Standard Saloon De Luxe, dark green. Fitted extras. Small mileage. Immaculate. **£290**

REGENT MOTORS
CHELTENHAM SPA
'Phone 2041
G. Readings, Ltd.

DRIVE A 'SAFETY-TESTED' CAR

"SAFETY-TESTED" by REED AND PATTERSON, Ltd., is your guarantee that the car you buy from us is roadworthy in every respect.

- 1937 FIAT 500 Convertible Coupe: smart and economical; 50 m.p.g., **£75**
- 1937 TRIUMPH 14/60 Vitesse Saloon; blue; one owner; spotless condition; new tyres **£220**
- 1937 FORD 8 h.p. Tudor Saloon; black; carefully used; clean condition ... **£75**
- 1936 ROVER 14 Sports Saloon; dual grey; special tuned engine; 80 m.p.h. car **£200**
- 1936 RILEY 1½ Litre Kestrel Six-light Saloon; exceptionally smart car, **£200**
- 1936 CROSSLEY 12 h.p. Regis Saloon, self-change gears; superb condition, **£175**
- 1936 HILLMAN 20 Sports Saloon; very roomy and comfortable; many extras; **£145**

REED & PATTERSON LTD.,
Distributor of Daimler, Lanchester, Triumph and Fiat Cars.
BATH ROAD, CHELTENHAM
Tel. 2023

CHINN BROS GARAGES, LTD.

BATH PARADE CHELTENHAM PHONE 2031

ESTATE UTILITY CAR

IDEAL FOR
SHOOTING
STATION WORK
MARKETS
MOUNTED ON

AUSTIN 10/4 CHASSIS

TAX £7/10/0 35 M.P.G.
SEATING SIX PASSENGERS
OR CARRY 8-10 CWTs.
FLUSH FLOOR
DUNLOP TYRES

£90

OPEN TO ANY EXAMINATION

THE CHELTENHAM CHRONICLE AND GLO'SHIRE GRAPHIC

With Which is Incorporated the "Cheltenham Looker-On."
SATURDAY, JUNE 11, 1938.

GRATIS SUPPLEMENT
No. 1,954.

THE OPERA HOUSE

Next Week:—Continuous performance from 2.15. The Screen's Big Cast in the Year's Big Picture! Katharine Hepburn, Ginger Rogers, Adolphe Menjou in "STAGE DOOR," a magnificent and true to life drama; also Wylie Watson in "WHY PICK ON ME," a comedy of errors. Full Supporting Programme.

PALACE

HEAR Phone 2553. HERE
2.0 Continuous 10.30
MON., 13th JUNE and Week:—
JUDY CARLAND & MICKEY
ROONEY in

"THOROUGHBREDS DON'T CRY" (U)

with Sophie Tucker, C. Aubrey
Smith and Ronald Sinclair
(M 3.30 : 6.22 : 9.14 Daily)

— Also —
Bruce Cabot in

"LOVE TAKES FLIGHT" (U)

20th and Week: Eleanor Powell
and Nelson Eddy in "Rosalie."

THE DAFFODIL

Phone CHELTENHAM 3360
2.15 Continuous 10.30

MON., JUNE 13th, For One Week
"THE LAST GANGSTER"

with ED. G. ROBINSON, ROSE
STRADNER, JAMES STEWART

It's Different. Sensational.
Startling. It's Strong Meat, and
not for the Squeamish. It's a
Great Film.

3.35 : 6.15 : and 9.10

TOM KEENE

A Stirring Drama of Conflict

"TREASON"

2.15 : 5.0 : 7.45
Pathe Gazette



THE PRESENT PRINCIPAL AND PRINCIPAL-ELECT OF ST. MARY'S HALL.

Miss A. E. Monk (left), the first lady principal of St. Mary's
Hall, who is retiring after 17 years in that position, and Miss
E. W. Jones, the principal-elect, who will take control
next term.

"Cheltenham Chronicle" Photograph.

COLISEUM

Week: 13th JUNE.
From 2.15 p.m.

Most Suspenseful Spy Story
Ever Screened!

"LANGER SPY"

With a Brilliant Cast, including
DOLORES DEL RIO
George Sanders, Joseph
Schildkraut

PETER LORRE
(3.30 : 6.15 : 9.0)

Also —

"JENNIFER HALE"

Featuring Rene Ray and John
Longdon (2.15, 5.0, 7.45)
Movietone News (3.15, 6.0, 8.50)



MONEY — RIDE A

RALEIGH

Roadsters, Tourists, Sports,
and Safety Models. Junior
Models £4/16/6, Lady's or
Gent's Models from £5/10/-,
or on easy terms. See our
windows and Remember Our
Service After Sales is the
Best in the County.

Authorised Agent:—

A. H. HAMLEN

The Cycle Specialist

200-1 High St., Cheltenham



YOU CAN'T
ALWAYS
DEPEND
UPON THE
SUN

But you can depend upon

RYDER-REX
SCREENED COBBLES

to come to the rescue.
Phone 3605 and order five cwt.
Only 12/6 delivered.

A. RICHES & CO.,
REGENT ST. CHELTENHAM.



THE 'SPA' BICYCLE

Unequalled Value

Gent's Roadster £3-7-6
Lady's Model £3-14-6
Juvenile Models from ... 35'6
or 2/- WEEKLY.

CHELTENHAM CYCLE CO.,

82 STRAND



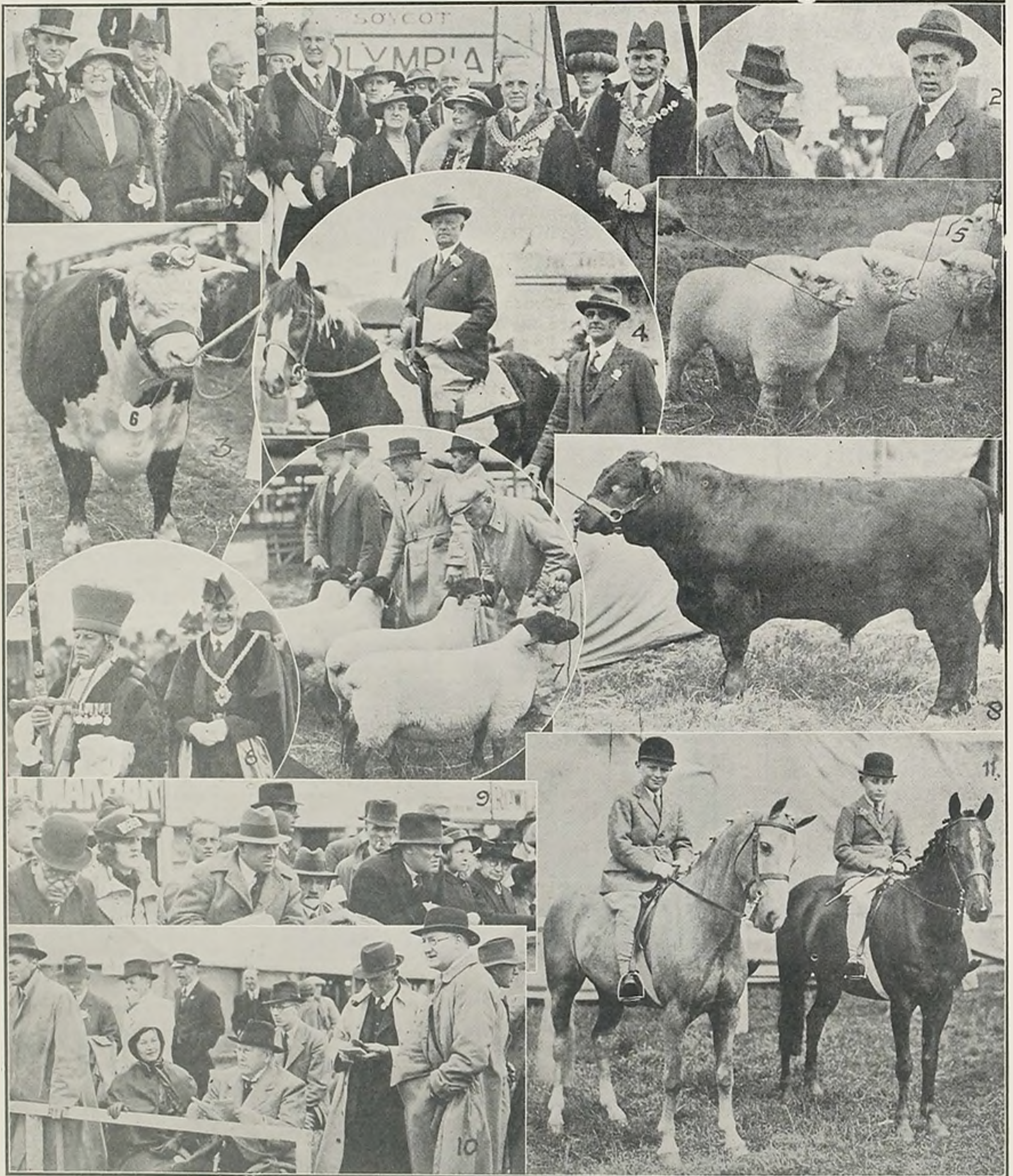
BEAUTIFUL
MEMORIALS

E. A. EMMS

HALES ROAD
CHELTENHAM

Tel. 2391. Est. over 50 years.

DALE, FORTY and CO. LTD For the BEST PIANOS



THE THREE COUNTIES AGRICULTURAL SHOW AT GLOUCESTER

- This famous show was held on the Oxleaze at Gloucester on Tuesday, Wednesday and Thursday, in very fine weather
- 1.—Five Mayors took part in the opening ceremony on Tuesday. From left they are: The Mayors of Cheltenham, Tewkesbury, Worcester, Gloucester and Hereford.
 - 2.—Mr. W. H. T. Hearle (manager of West Midland Farmers' Association) and Mr. M. P. Price, M.P.
 - 3.—The Champion Hereford bull.
 - 4.—Mr. T. H. Edwards (secretary) on his piebald pony, and Mr. J. P. Terry (director of yard).
 - 5.—Mr. H. Wyllie's champion pen of Southdown lambs.
 - 6.—The Worcester sword-bearer.
 - 7.—The first four Suffolk rams.
 - 8.—Champion Shorthorn of the show: Mr. W. Garne's Aldsworth Pope.
 - 9 and 10.—Spectators. In No. 10 seated is Mr. G. H. Willis (Birdlip), who won first and second for Dairy Shorthorn bull.
 - 11.—Two beautiful ponies.



INTERESTING WEDDING AT SALEM CHURCH

The wedding took place on Whit-Monday morning of Mr. Robert H. W. Baily, son of the late Mr and Mrs C. W. Baily, of Cheltenham, to Miss Frieda May Batstone, daughter of Mr. and Mrs. Ernest Batstone, of 15 Great Norwood-street, Cheltenham. The bridal party outside the church.

"Cheltenham Chronicle" Photograph. Copies 6 1/2 in. x 4 1/2 in. 1/- each; 8 1/2 in. x 6 1/2 in. 1/9 each.

FORDS put up the "BEST SHOW" EVERYWHERE!

A combination of Economy, Reliability and Performance have made Ford Cars universally popular. Ford's unique production methods give a BETTER car at a LOWER price. A full range of models is always available at our showrooms.

Models

- "EIGHT" Saloon. £120. Saloon de luxe £130.
 - "TEN" Saloon £145, Double Entrance Saloon £157 10s.
 - "V.8.22" Saloon de Luxe, £240.
 - "V.8.30" Double Entrance Saloon £280.
- (all prices ex works)

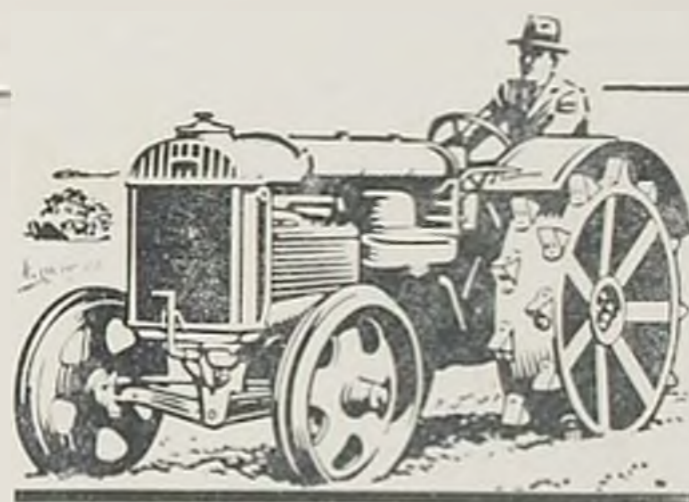


Main
Ford
Dealers

Farmers! Defy bad weather with a

FORDSON TRACTOR

- With Cleats £145
- With Spadelugs £150
- Land Utility Tractor £190



For Economical Transport Fordson Vans and Trucks have no equal. There is a Fordson vehicle specially designed for every class of business, each one doing the job properly at a minimum of expenditure. May we demonstrate over your own roads with your own loads?

- 3 ton Truck with extra long body (14ft. 4ins.) £300.
- 2 and 3 ton short wheelbase Truck from £246.
- 3 ton 157in., £290.
- 25 cwt. Truck £200. 25 cwt. Van £210.
- 10 cwt. Van £168. 5 cwt. Van £115.
- Two or Three Ton Trucks are available with a 4 cyl. or 8 cyl. engine at the SAME PRICE.

VICTORY MOTOR CO., LTD.

WINCHCOMBE STREET, CHELTENHAM.

'Phone 5105/6



ST. MARY'S HALL WHITSUNTIDE BIENNIAL REUNION OF OLD STUDENTS.

Over 400 old students revisited their Alma Mater for the Biennial Reunion this Whitsun. At the Reunion breakfast on Monday morning, details of a big extension scheme costing over £70,000, that will place St. Mary's in the forefront of educational establishments in the country, were given.

1 and 2.- Old students.

4. Visitors at the garden party on Saturday.

3. Some of the present second year students.

"Cheltenham Chronicle" Photographs. Copies 6½in. x 4½in. 1/- each; 8½in. x 6½in., 1/9; 12in. x 5in. 2/- each.



SECOND ANNUAL CONFERENCE OF THE BUILDING SOCIETIES ASSOCIATION IN CHELTENHAM.

Five hundred delegates and friends from all parts of the country attended the above conference held this week.

- 1.—The Council: Back row: Messrs. G. E. Jackson, S. J. Walker, W. S. Allison, C. F. Bland, R. B. Wycherley, W. Morrison, W. McKinnell, B. Dutton Briant, G. E. Jefferies. Second row: Messrs. C. H. Nelson, G. E. Franey, C. W. Hodgson, D. W. Smith, W. S. Heatley, W. N. Rule, A. Sanders, L. H. Pratt, A. Stewart. Seated: Mr. C. G. Garratt-Holden (secretary), Sir Harold Bellman, Mr. T. R. Chandler (deputy chairman), Mr. Walter Harvey (chairman), Sir Enoch Hill, Mr. Arthur Webb, Mr. H. J. Lewis.
- 3.—Mr. Millican (Cheltenham), who won the singles at golf, and Mr. G. E. Jackson.
- 12.—Messrs. Robertson, Leslie Bayley, Dean and Smith-Bailey, competitors at golf.
- 2 to 11. Various groups of delegates entering the hall.



GLOUCESTER DIOCESAN CRICKETERS WIN THEIR FIRST MATCH AGAINST DEAN CLOSE TEAM

—Clerics.—Standing: Revs. J. H. Kemmis, A. D. Walmsley, R. H. Cheales, G. W. H. Moule, P. McConnell, H. M. Hughes, W. Evans. Seated: Revs. N. Hope, R. H. Moss, E. C. Hanson, F. M. Hare, R. V. Butler. 2.—The Dean Close team. 3.—The Bishop of Gloucester and Mr. Hugh Elder, M.A., the new headmaster of Dean Close School, watching the play.

JUNE'S GREATEST ATTRACTION!

CHELTENHAM SPA GREAT ANNUAL FLORAL FETE

(PROMOTED BY THE CHAMBER OF COMMERCE).

30,000 SQUARE FEET
of concentrated
COLOUR and BEAUTY
GORGEOUS SHOW
of
SWEET PEAS,
ALPINE PLANTS,
ROCK GARDENS.

**MONTPELLIER
GARDENS**
WEDNESDAY
AND
THURSDAY
JUNE 22nd and 23rd
EACH DAY from 10 to 10

SPECIAL ENGAGEMENT OF
**R. A. LISTER'S
MILITARY BAND**
EDWARDS'
Great Fun 'Fair
SIDE SHOWS &
AMUSEMENTS

Despite the drought, AMATEURS will show more than ever — entries received up to June 15th — alongside displays by BRITAIN'S LEADING HORTICULTURISTS, in largest tents ever seen in Cheltenham.

OFFICIAL OPENING BY MARK FENWICK, Esq. M.V.H., at 10.45 a.m., on Wednesday, June 22nd, supported by the Mayor and Mayoress of Cheltenham and members of the Corporation.

CHEAP ADMISSION TICKETS (including free Bicycle Competition) and Entry Forms from Secretary, Town Hall Bureau.

LUNCHEONS and TEAS at popular prices.

SPECIAL CAR PARKS arranged by the A.A.

Prices of Admission:—First Day: 10 a.m.—4 p.m., 2/-; 4 p.m.—8 p.m., 1/-; after 8 p.m., 6d.
Second Day: 10 a.m.—1 p.m., 2/-; 1 p.m.—5 p.m., 1/-; after 5 p.m., 6d.



OPENING NEW CHILDREN'S BATHING POOL AT SANDFORD PARK

A new bathing pool for children, adjoining the large pool, has been constructed in Sandford Park, and was officially opened by the Mayor last week. Its depth varies from eighteen inches to 2ft. 9ins., and the water is heated and sterilised.

1.—Visitors in the rain, at the opening ceremony.
 2.—The new bath—the children on side are about to give a display.

3.—Coun. T. W. Waite (chairman of Town Spa and Improvement Committee) and the Mayor of Cheltenham shelter under a big umbrella during the downpour.

4. Naunton Park Junior School children, who gave a display under Mr. F. G. Moss (at back), the Education Committee's swimming instructor.

"Cheltenham Chronicle" Photographs. Copies 6½in. x 4½in. 1/-; 8½in. x 6½in. 1/9 each.

TENNIS

EXHIBITION MATCHES BY

Senorita ANITA LIZANA
 FRU SPERLING

PAT HUGHES, H. HENKEL

KHO SIN KIE

C. E. Malfroy

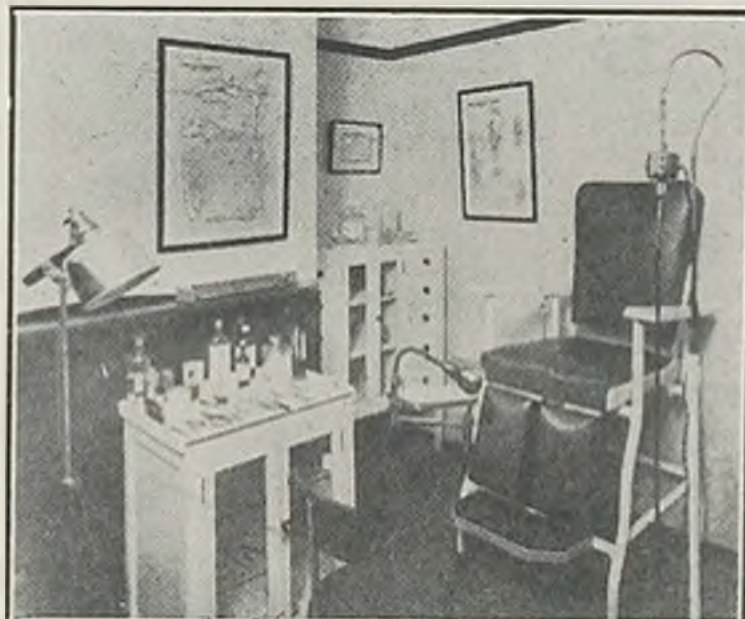
commencing 2.45
 p.m.



MONDAY
 JUNE 13
 at
 Montpellier
 Gardens

Reserved Seats
3/6 2/6
 Unress. 1/-
 Tickets from the
TOWN HALL
 Tel. 2200

NATIONAL FOOT HEALTH WEEK



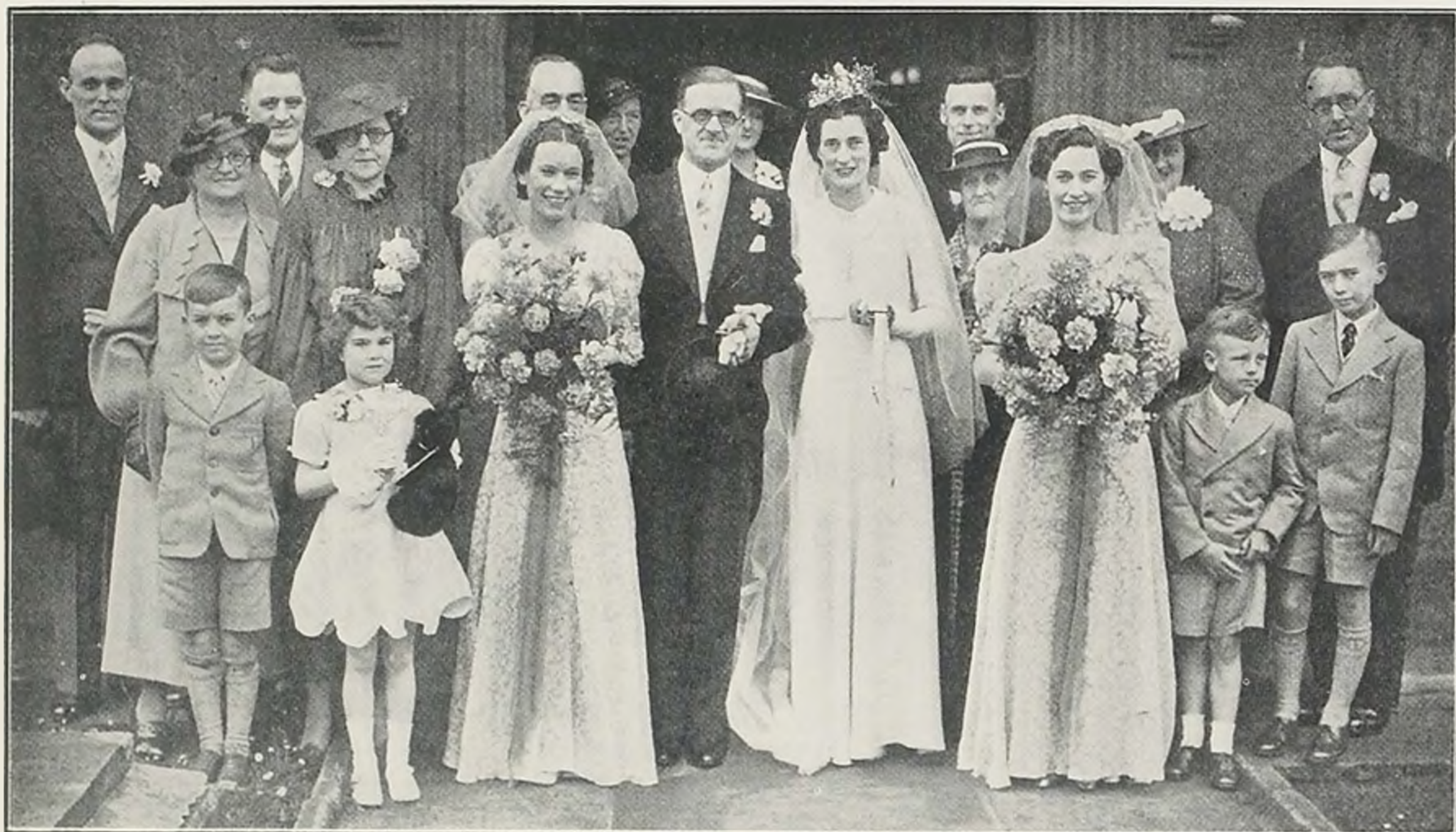
As general fitness depends so much upon foot fitness, it is the aim of MELVILLE'S to give a COMPLETE FOOT COMFORT SERVICE.

To everyone is made available the facilities of Dr. Scholl's appliances, the famous Church's "Arch Moulded" and the Sir Herbert Barker Shoes for men and women, as well as the qualified Chiropody services, with free advice upon all foot troubles, of

W.C. Mallett Melville

M.C.Ch.A. (London) at
 408 STRAND, HIGH ST., Tel. 2751

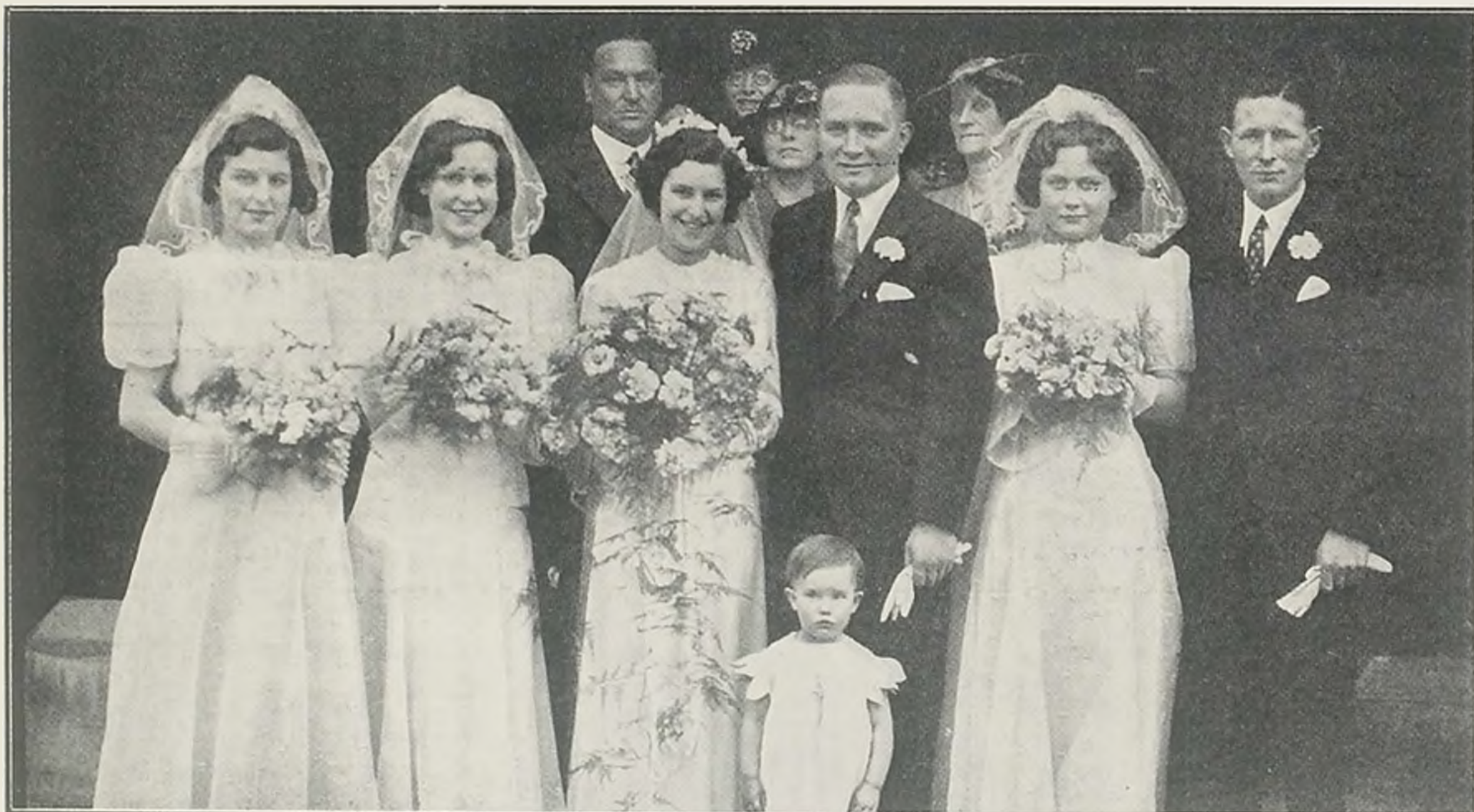
Send the "Chronicle" to Your Friends Abroad.



CHARMING CHELTENHAM WEDDING

The wedding took place at Cheltenham Parish Church of Mr. John H. Copley, son of the late Mr. Jos. Copley and of Mrs. Copley, of Sheffield, to Miss Ethel M. Clifford, daughter of the late Mr. James Clifford and of Mrs. Clifford, of 29 Victoria-street, Cheltenham. The couple are well-known in amateur acting circles, having taken part in productions of the Cheltenham Dramatic Society. The bridal party leaving the church.

"Cheltenham Chronicle" Photograph. Copies 6½in. x 4½in. 1/-; 8½in. x 6½in. 1/9 each.



A PRETTY BRIDE IN CHELTENHAM

A pretty wedding took place at Cheltenham Parish Church last week when Miss Mollie Cooper, daughter of Mr. and Mrs. J. Cooper, of The Star Hotel, Cheltenham, was married to Mr. John T. C. Denley, son of Mr. and Mrs. J. Denley, of Bottomley Farm, Cleeve Hill. The bridegroom is a sergeant in the Palestine police stationed at Haifa. The bridal party.

"Cheltenham Chronicle" Photograph. Copies 6½in. x 4½in. 1/-; 8½in. x 6½in. 1/9 each.



WESTWOOD'S GRAMMAR SCHOOL, NORTHLEACH, ANNUAL SPEECH DAY

A large number of parents and friends attended the annual Speech Day last week, held under the presidency of Colonel W. E. Longfield. Mr. R. R. Dobson, formerly headmaster of Cheltenham Grammar School, was the principal guest and distributed the prizes.

- 1, 2, 3 and 9.—Some of the boy pupils.
- 4.—Parents and friends watching the dancing.
- 5.—Some of the girl pupils.
- 6 and 10.—The twelve prefects of the school, six boys and six girls.
- 7.—The platform party. Second from right is Mr. R. R. Dobson and fourth from right Mr. W. P. Bassett (headmaster). Mrs. R. R. Dobson is on extreme left.
- 8.—Sixteen of the girls gave a pretty series of dances in the playing field.

THE
CHELTENHAM AND GLOUCESTERSHIRE
BENEFIT BUILDING SOCIETY,

ESTABLISHED UNDER THE 6TH AND 7TH WILLIAM THE FOURTH, CAP. 71

*For the purpose of enabling the Members to become their own Landlords, and as a Savings
Fund for the Provident and Industrious.*

FIRST ANNUAL REPORT.

THE Directors have great pleasure in presenting to the Shareholders this, the first, Annual Report of the proceedings and operation of the Society; and it is to them a matter of great satisfaction to find that the new principle adopted has been the means of inducing so many to avail themselves of its advantages.

The Society, although only having just completed its first year, consists of 119 Members, holding between them 310½ Shares; out of which number, 151½ Shares have been anticipated by paying the sum of £7362 10s., as the value of that number, for the purpose of enabling the Members to acquire the means of becoming their own Landlords.

It will be seen that the expenses attending the formation of the Society amount to the small sum of £42 12s. 6d.; and that the expense of management amounts to the sum of £29 7s. 4d.; making together a total of £70 19s. 10d. The greater part of this sum has been met by the sums received for entrance fees, rules, and other similar sources of profit, amounting to £37 16s. 9d., leaving a deficiency of £13 3s. 1d. Against this sum the Society has in stock, copies of rules, &c. of the value of upwards of £20., and they therefore propose to let this small balance of £13 3s. 1d. gradually discharge itself by means of this accidental source of income, so that the capital fund of the Society may be kept in its integrity.

The expense of management, it is confidently calculated, will not exceed £30. per annum, and this sum may be readily met by entrance fees, fines, &c., without trenching upon the capital.

Pursuing this system of strict economy, the Directors feel sanguine that, if only ordinary caution be adopted in the advances to the Shareholders, a very large "Reserve Fund" will eventually be created, to meet, without disturbing the capital, any unforeseen contingency.

The favorable position of the Society's affairs, at so early a period of its formation, gives the Directors every confidence as to its ultimate progress and success.

In concluding this Report, the Directors indulge the hope that the account of their stewardship will be received with the same degree of satisfaction as that which they experience in rendering it; and they desire the Members will bear in mind that, in joining this Association, they have, by so doing, pledged themselves to frugal and provident habits; and trust they will have pleasure in reflecting, that, while benefiting themselves, they have, by their united efforts, in the short space of one year, through their savings, assisted 30 of their number with advances to the extent of £7362 10s., and enabled them thereby, in the majority of cases, to purchase and become proprietors of eligible properties, of which they were merely tenants, and so convert their *savings* into a source of accumulation for provision in future years.

The Directors therefore hope that the Members will, one and all, continue to combine for the truly honorable and useful purposes for which they have associated, and that they will heartily co-operate in promoting the extension and prosperity of the Society, bearing in mind that the addition of every new Shareholder is the means of decreasing the working expenses of the Association.

The Directors propose to issue Deposit Notes, bearing interest at 4. per cent. per annum, for any sum of money from £5. upwards.

JAMES DOWNING, President.

20th August, 1931.

☞ The next Night of Meeting will take place at the Belle Vue Hotel, on Wednesday, the 3rd day of September next, at Seven o'clock in the evening

"WHEN WE WERE
VERY YOUNG"

This photographic copy of the first report issued by our local building society will be of special interest to the readers of the "Graphic." A comparison with the Report and Balance Sheet issued in February of this year should prove a very useful object lesson. A full copy of both these will be willingly supplied upon application at the Head Office or any of the branches.

For eighty-eight years this Society has been the principal financial institution of its kind in this district and has afforded inestimable benefits both to Investors and House Purchasers. It has provided a very dependable reservoir for the capital of the small investor, either as a shareholder or a depositor, and has also been the means of enabling the house purchaser of small means to own his own home on terms little if any more burdensome than the rent he would have to pay as a tenant. The Society's reputation for soundness, stability and steady progress is a byword in the West. Many times since it was started at the end of the "Hungry Forties" there have been trade slumps and national crises, but every year has shown a steady increase in the Society's turnover and assets, until to-day its receipts in the normal way of business are about six times as much as those of the Town Council, even including the latter's trading departments. In fact, it is the biggest business in the County of Gloucester, and one of the biggest (and in respect of its reserve funds certainly one of the soundest) of the kind in the country.

Right from its inception the business of the Society has been wisely handled, and the policy of the directors is one that invites and invariably secures public confidence, and makes for uninterrupted progress.

The Cheltenham and Gloucester Building Society is controlled by local directors for local shareholders, and for the benefit mostly of local mortgagors and investors, so that the whole of the management expenses can be comfortably met out of the interest on the reserve funds. In fact the position is so secure that no crisis would ever find the directors unable to meet every liability.

ASSETS
£6,744,044

CHELTENHAM
GLOUCESTER
BUILDING SOCIETY

RESERVES
£744,912

H. J. LEWIS, SEC.

CLARENCE STREET, CHELTENHAM
AND AT TUDOR HOUSE, WESTGATE STREET, GLOUCESTER
125 ST. OWEN STREET, HEREFORD
9 KING EDWARD STREET, OXFORD



CHELTENHAM COLLEGE JUNIOR SCHOOL SPORTS

The Junior School Sports were held on the school playground on Friday afternoon before a large crowd of parents and friends. The weather was delightful.

- 1.—Mr. P. Fletcher (left), acting headmaster of Senior College, distributed the prizes; Mr. W. D. Johnston, headmaster Junior School, and J. M. R. Brierley, winner of championship cup.
- 2.—The 70 yards hurdle race (under 12½).
- 3.—Some of the future Cheltonians and their sisters. There was a race for boys and girls.
- 4.—Some of the competitors.
- 5.—Mr. J. Slingsby, with some of his pupils.
- 6.—A group of guests.
- 7.—Sheila Macpherson, winner of sisters' race (under 10).
- 8.—Start of open 100 yards race.

HAULAGE CONTRACTORS

We can convey anything at any time. No load too large nor too small.

ROAD MAKERS

We can make your drives and paths look more attractive, for crazy paving and asphaltting is one of our specialities.

PUBLIC WORKS CONTRACTORS

MARK WILLIAMS & Co., Ltd.

99 PROMENADE, CHELTENHAM
(Near the Fountain)
TELEPHONE 3779

SANITARY ENGINEERS

Our experience is at your disposal on all sanitary problems. Consult us when you are in any difficulty.

SUPPLIERS of

COAL, ANTHRACITE, COKE, FIREWOOD.

LOAM, TURF, LIME, CEMENT, SAND, PIPES, SULPHATES, all of best quality



CHELTENHAM CARNIVAL QUEEN CROWNED

The ceremony of crowning the Carnival Queen at the Town Hall took place on Whit-Monday morning. Miss Mollie Pumfrey, daughter of Mr. and Mrs. Harry Pumfrey, was the Queen, and the Mayoress (Mrs. J. H. Trye) placed the crown on her head. She is here seen with some of her attendants.



CHELTENHAM GOLDEN WEDDING
Mr. and Mrs. John Jackson, of 6 Union-street, Cheltenham, who celebrated their golden wedding May 26.

**Shakespeare
MEMORIAL THEATRE
STRATFORD-UPON-AVON
SHAKESPEARE FESTIVAL**

April 11th to September 24th, 1938
Performances by

The Stratford-upon-Avon Festival Co.
Director: B. Iden Payne.

Nightly at 8, Mats., Wed. & Sat. 2.30
Reserved Seats: 2s. 6d. to 8s. 6d.
(Change of Play each Performance.)
Apply: Box Office, Memorial Theatre
Phone: Stratford-upon-Avon 2271 & 2272

THE CAR YOU WANT IS HERE!

GOOD CARS!

Wolseley, 1937, "Saloon de Ville" 14 h.p.	£195
Standard, 1937, "Flying Twelve" saloon	£148
Standard, 1937, "Flying Nine" saloon	£115
Riley, 1937 Nine "Monaco" saloon	£198
Austin, 1937, "Seven" de luxe saloon	£85
Austin, 1936, "Ten" de luxe saloon	£98
Morris, 1936, "Eight" de luxe fourdoor saloon	£85
Ford, 1936, "Eight" saloon	£55
Ford, 1935, "Ten" saloon	£65
Standard, 1936, "Nine" de luxe saloon	£85
Wolseley, 1934, "Twelve" de luxe saloon (freewheel)	£56
Morris, 1935, "Twelve" de luxe saloon	£75
Morris, 1931, "Major" sun saloon	£18

Also many others. Exchanges and easy payments with pleasure.

NORTH ST., MOTORS
LTD.
CHELTENHAM Phone 4933



YOUR'E SURE TO
LAND A GOOD
BARGAIN

HAROLD AVERY'S
OVER 70 USED CAR
BARGAINS ALWAYS AVAILABLE

—Examples

1938 Standard Flying 14 Saloon de luxe almost new (4,000 miles); taxed year	£200
1938 Morris Eight open tourer, 750 miles only; taxed year, immaculate	£115
1936 and 1934 Ford Eight Saloons, four-door and two-door models, from	£40
1936, 1935, 1934, 1933 Austin Sevens and Morris Eights—Saloons and Tourers, from	£35

WINCHCOMBE STREET,
CHELTENHAM — Phone 4256

IMPOSING DISPLAY

of USED CARS!

FROM WHICH THE FOLLOWING ARE
SELECTED

1936 Rover Twelve Sports saloon. Grey, very smart; taxed	£185
1937 Morris Ten Saloon de luxe; built-in jacking system, finished black; taxed	£135
1937 Morris Eight Saloon de luxe, finished black, crimson upholstery; taxed	£80
1936 Vauxhall Fourteen Saloon de luxe, finished grey, blue leather	£115
1937 Fiat 7 h.p Convertible Coupe, finished grey, crimson upholstery; taxed	£85
1935 Rover Fourteen 6 light Saloon de luxe; blue; taxed	£145

STEELS
GARAGES, LTD.

SPECIAL MOTOR SHOWROOMS
BATH ROAD, CHELTENHAM
TEL. 3035

THE CHELTENHAM CHRONICLE AND GLO' SHIRE GRAPHIC

With Which is Incorporated the "Cheltenham Looker-On."
SATURDAY, JUNE 18, 1938.

GRATIS SUPPLEMENT
No. 1,955.

THE OPERA HOUSE

Next Week:—Continuous performance from 2.15. **TWO GREAT STARS:**
Anton Wa brook, Ruth Chatterton in "THE RAT," a vivid drama of the underworld; also Gracie Fields in "LOOKING ON THE BRIGHT SIDE," England's greatest entertainer in her finest picture. Full Supporting programme.

PALACE

HEAR 'Phone 2553 HERE
2.0 Continuous 10.30
MON., 20th JUNE and Week:—
ELEANOR POWELL and
NELSON EDDY in
"ROSALIE" (U)

with Reginald Owen and
Edna May Oliver
(At: 2.45 : 5.40 : 8.37 Daily)

— Also —
Murgatroyd and Winterbottom
(R. Frankau) in T. Handley

"TWO MEN IN A BOX" (A)
27th and week: " Beg. Borrow or
Steal."

THE DAFFODIL

'Phone CHELTENHAM 3360
2.15 Continuous 10.30
MON., JUNE 20th, For One Week
SANDY POWELL

in His New Laugh Riot
"LEAVE IT TO ME"
with Iris Marsh, Franklyn Dyal,
Corry Marsh and Davy Burnaby
3.45 : 6.20 : and 9.10

Bernard Nedell and Jean Cillie
in Glorious Comedy-Drama

"THE LIVE WIRE"

2.30 : 5.15 : 8.0
Superb British Programme



CRICKETERS GUARD OF HONOUR

After the wedding of Mr. George E. Arthurs to Miss Beryl H. Organ, at Weston-sub-Edge on Saturday a guard of honour of cricketers and hockey players formed an arch of bats and hockey sticks as the pair came out of church. "Cheltenham Chronicle" Photograph.

COLISEUM

Week: 20 JUNE. From 2.15 p.m.

HERBERT MARSHALL and
BARBARA STANWYCK in
The Gay Comedy Romance

"BREAKFAST FOR TWO"

(3.45 : 6.30 : 9.15)

— Also —

The Great Laugh Film

"FORTY NAUGHTY GIRLS"

with Zasu Pitts and James
Cleonson (2.30 : 5.15 : 8.0)

Movietone News (3.30 : 6.15 : 9.0)



MONEY—RIDE A

RALEIGH

Roadsters, Tourists, Sports,
and Safety Models. Junior
Models £4/16/6, Lady's or
Gent's Models from £5/10/-,
or on easy terms. See our
windows and Remember Our
Service After Sales is the
Best in the County.

Authorised Agent:—

A. H. HAMLIN

The Cycle Specialist
200-1 High St., Cheltenham

SUMMER PRICES!

Take advantage of the low
prices for cellar-filling.
'Phone 3605 and let us
quote you for all classes of
coals and fuels.

A. RICHES & CO.,
REGENT ST. CHELTENHAM.



THE 'SPA' BICYCLE

Unequaled Value

Gent's Roadster £3-7-6
Lady's Model £3-14-6
Juvenile Models from 35/6
or 2- WEEKLY

CHELTENHAM CYCLE CO.,

82 STRAND



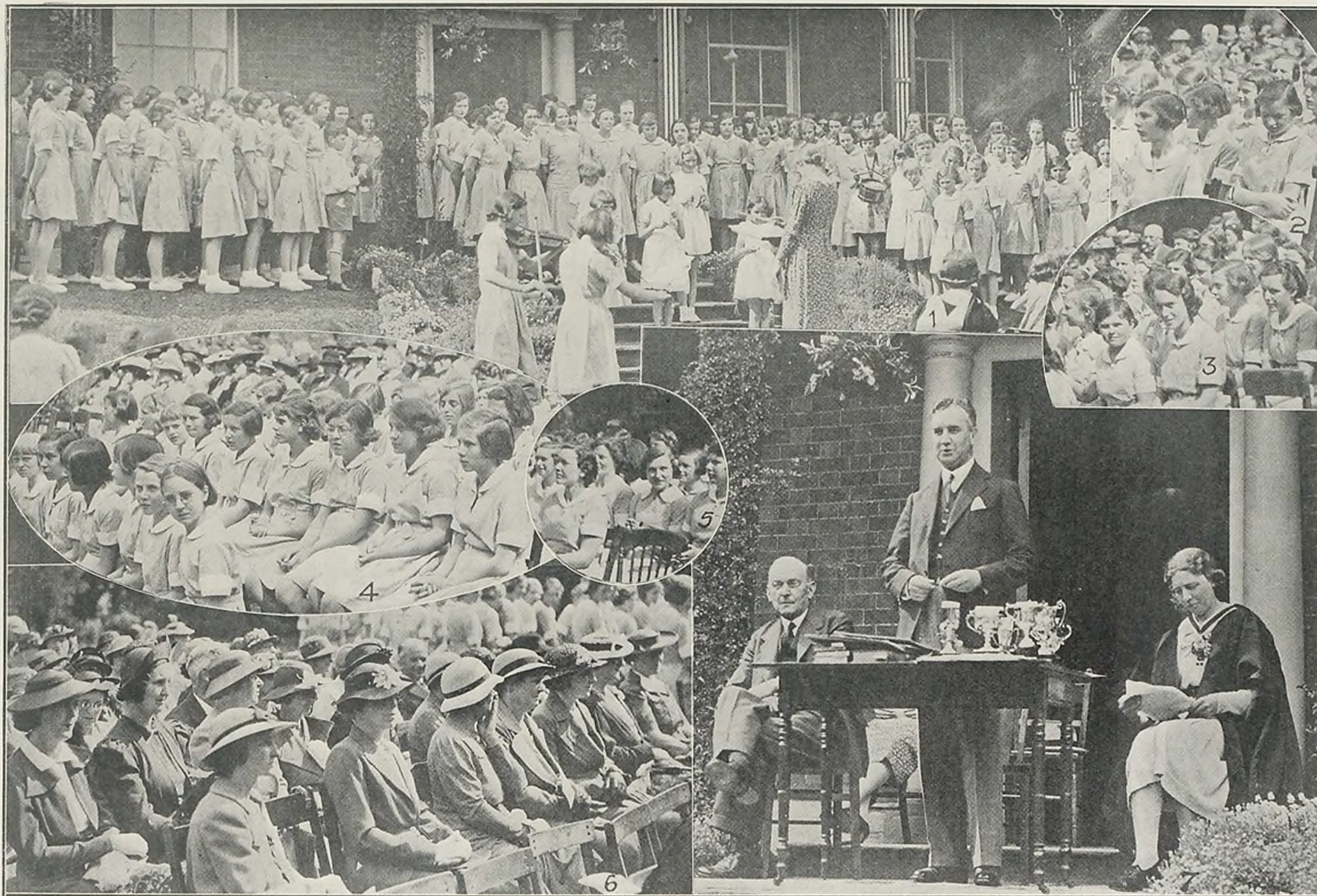
BEAUTIFUL
MEMORIALS

E. A. EMMS

HALES ROAD
CHELTENHAM

Tel. 2391. Est. over 50 years.

DALE, FORTY and Co. L^{TD} For the BEST PIANOS



TEWKESBURY HIGH SCHOOL SPEECH DAY

Speech Day at the High School was held last week-end when the presentation of prizes and certificates was made by Mr. E. T. Campagnac, M.A., Professor of Education, Liverpool University. The gathering took place on the lawn and was presided over by Mr. G. L. Hone, J.P., C.C., Chairman of Governors.

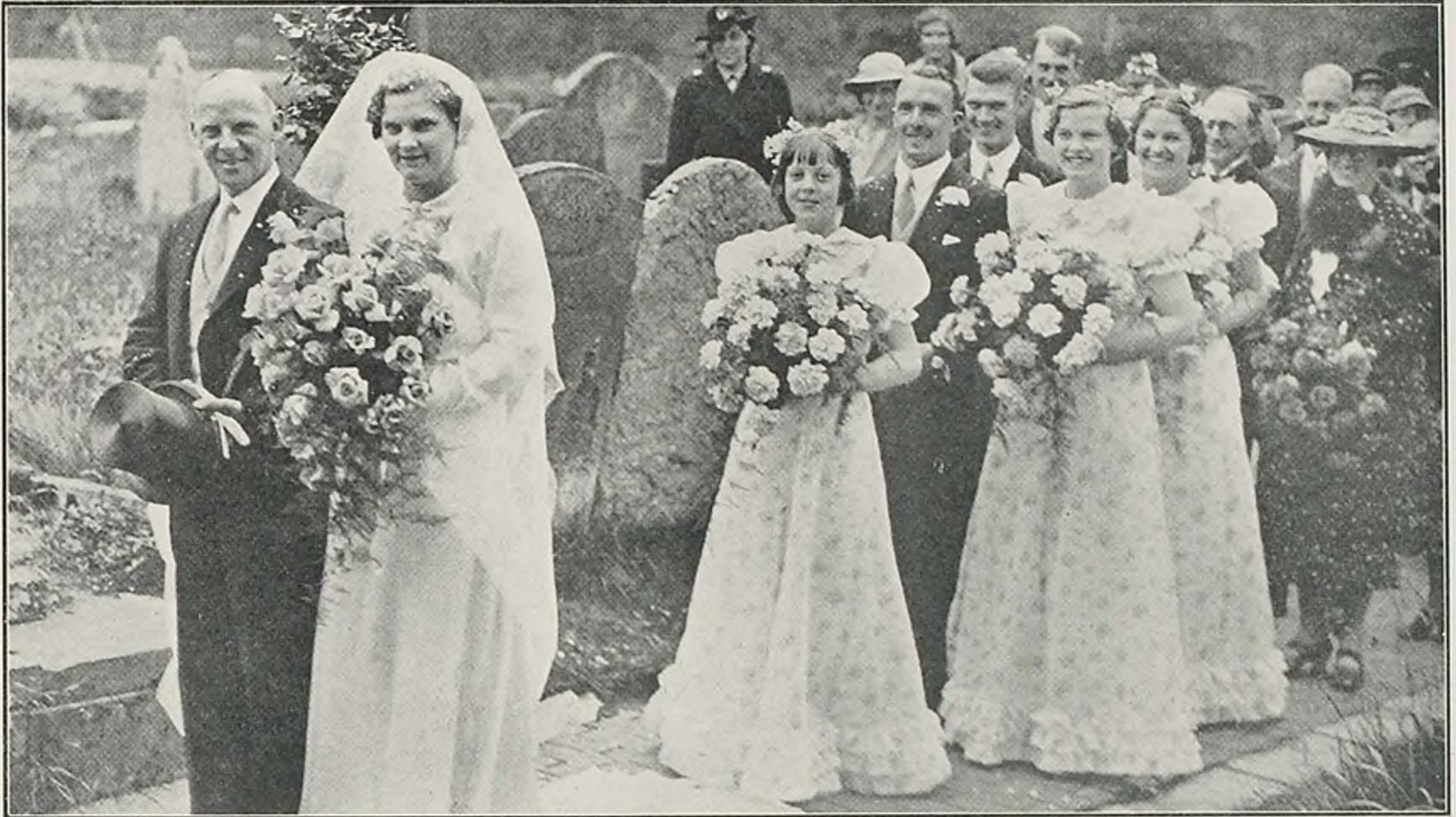
1. A song by the school opened the proceedings.

2, 3, 4 and 5. Various sections of the scholars.

6. A part of the audience.

7.—Mr. E. T. Campagnac, Mr. G. L. Hone (speaking) and Miss O. M. Bond, M.A. (headmistress).

“Cheltenham Chronicle” Photographs. Copies 6½ x 4½ 1/- each; 8½ x 6½ 1/9 each.



INTERESTING WEDDING AT WESTON-SUB-EDGE

The wedding took place on Saturday of Mr. George E. Arthurs, of Briarwood, Winchcombe, to Miss Beryl H. Organ, of Aston-sub-Edge. The bridegroom is captain of the Gloucestershire Minor Counties XI, and also plays hockey and tennis for Winchcombe, and the bride is the daughter of Mr. and Mrs. Howard Organ, of the Manor House, Aston-sub-Edge.

"Cheltenham Chronicle" Photograph. Copies 6 $\frac{1}{2}$ in. x 4 $\frac{1}{2}$ in. 1/-; 8 $\frac{1}{2}$ in. x 6 $\frac{1}{2}$ in. 1/9 each.



NEW SHOWROOM FOR MESSRS. R. F. BEARD, LTD., CHELTENHAM

This attractive and original Showroom has just been completed for Messrs. R. F. Beard, Ltd., the Promenade Jewellers, Cheltenham. Constructed in sycamore and walnut, with concealed canopy lighting, this room makes a very fine addition to their premises, and has been specially planned to give customers an opportunity of selecting their purchases in an atmosphere of quiet and privacy. Messrs. Beard are exhibiting a unique collection of Bronze Figures, Masks and Table Lamps which is well worth a visit.

"Cheltenham Chronicle" Photograph.



WEDDING OF MISS DIANA HOLMAN AT PRESTBURY CHURCH

Mr. Herbert Charles Denton Nicholson, the popular steeplechase jockey, was married on Saturday at Prestbury Church to Miss Diana Holman, daughter of Mr. and Mrs. W. F. Holman, of Lake House, Prestbury.

- | | | |
|----------------------------------------------------------------------------------|---------------------------------------------------------|----------------------------------------------------------------------------------|
| 1.—The bride and her father arriving at the church. | 3.—The bride and bridegroom. | 7.— Mr. and Mrs. R. H. Nicholson, of Cambridge, father and mother of bridegroom. |
| 2.—Many popular jockeys and trainers are included in this snap at the reception. | 4.—Mr. T. F. Carey, National Hunt jockey, was best man. | 8.—Mrs. W. F. Holman (mother of bride) with the two bridesmaids and page. |
| | 5.—Guests on the lawn. | |
| | 6.—Guests arriving at reception. | |

"Cheltenham Chronicle" Photographs. Copies 6½in. x 4½in. 1/-; 8½in. x 6½in. 1/9 each.



FOUNDER'S DAY AT RENDCOMB COLLEGE

Founder's Day was observed at Rendcomb College on Saturday when the guest of honour was the Dean of Bristol, the Very Rev. H. W. Blackburne. A feature of the proceedings was the presentation of a fantasy, "The Romany Road," in the Woodland Theatre by some of the pupils.

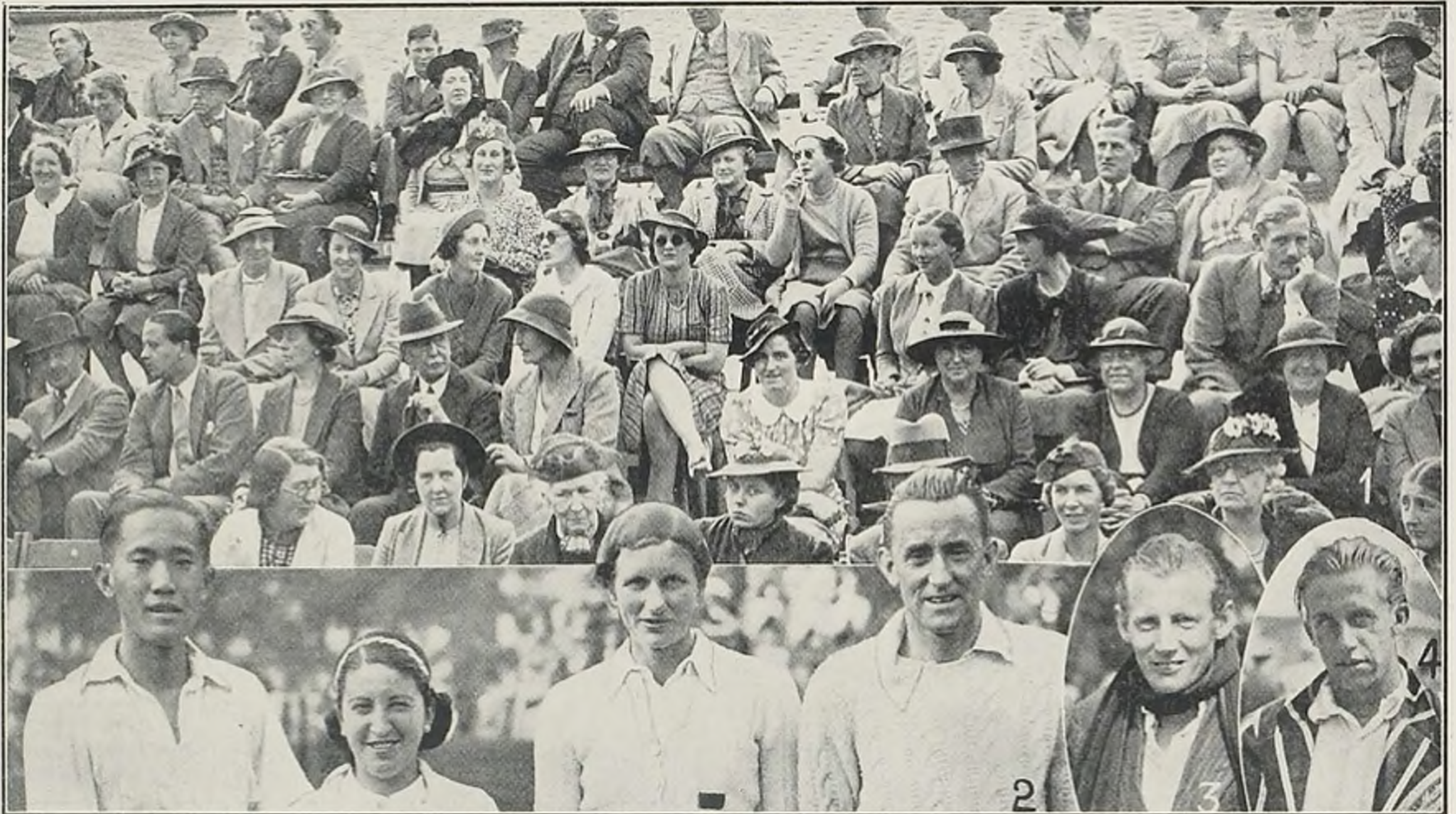
- 1.—Mr. John Gascoyne, the Dean of Bristol, Mr. D. Lee Browne (the headmaster), Sir Russell J. Kerr.
 2. Four of the pupils.
 3.—Mr. J. D. Crewdson.
 4 & 5.—Some of the old boys.
 6. The cast in the play "The Romany Road," so cleverly produced.



OAKLEY HALL SCHOOL, CIRENCESTER, CEREMONY

Dr. Sir Cyril Norwood, President of St. John's College, Oxford, and former headmaster of Harrow School, performed the opening ceremony at the new buildings at the above school on Saturday.

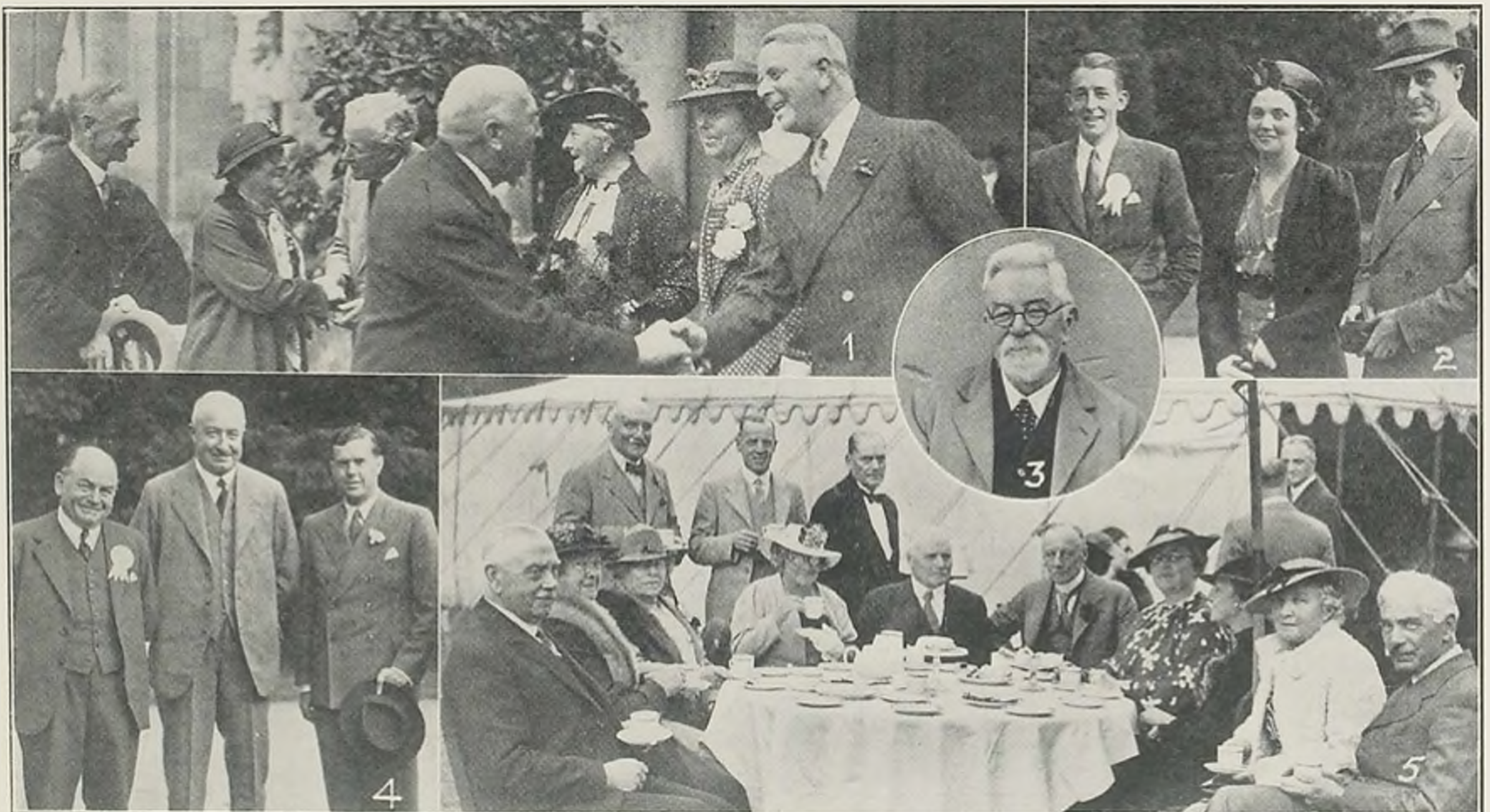
- 1.—Lady Norwood, Rev. H. V. Hodson (chaplain), Major E. F. C. Letts (headmaster), Dr. Sir Cyril Norwood.
 2.—Mrs. E. F. C. Letts.
 3 and 4.—Parents and friends at the ceremony.



INTERNATIONAL TENNIS PLAYERS IN CHELTENHAM

Exhibition tennis matches were played by six of the world's greatest players at Montpellier Gardens on Monday.

- 1. Part of the huge crowd present.
- 2. From left, Kho Sin Kie (China), Senorita Anita Lizana (Chile), Fru Hilde Sperling (Denmark), and Pat Hughes
- 3.—C. E. Malfroy (Old Cambridge Blue and New Zealand Davis Cup player).
- 4.—Henkel (Germany).



BUILDING SOCIETY GARDEN PARTY AT PITTVILLE GARDENS

The Directors of the Cheltenham and Gloucester Building Society gave a delightful garden party last week at Pittville Gardens to delegates of the Building Society Conference and local friends.

- 1.—The President (Mr. E. L. Ward), Mrs. Ward, Mrs. H. J. Lewis and Mr. H. J. Lewis (secretary) receiving their guests.
- 2.—Mr. J. R. Millican (assistant secretary), Mrs. J. D. Lane and Mr. J. D. Lane.
- 3.—Mr. David Lewis, J.P.
- 4.—Mr. S. Rayner, Mr. S. T. Walford and Mr. C. Jessop.
- 5.—A Cheltonian party at a tea table.



PRETTY WEDDING AT BADGEWORTH

The wedding took place at Badgeworth Church on Saturday of Mr. Ronald G. Perry, son of ex-P.C. A. Perry, of Hazlehurst, North-road, The Reddings, to Miss Ida Bickerstaffe, younger daughter of Mrs. R. Bickerstaffe, of 4 Selkirk-street, Cheltenham.

"Cheltenham Chronicle" Photograph. Copies 6 1/2 in. x 4 1/2 in. 1/-; 8 1/2 in. x 6 1/2 in. 1/9 each.

JUNE'S GREATEST ATTRACTION!

CHELTENHAM SPA GREAT ANNUAL FLORAL FETE

(PROMOTED BY THE CHAMBER OF COMMERCE).

30,000 SQUARE FEET
of concentrated
COLOUR and BEAUTY
GORGEOUS SHOW
of
SWEET PEAS,
ALPINE PLANTS,
ROCK GARDENS.

**MONTPELLIER
GARDENS**
WEDNESDAY
AND
THURSDAY
JUNE 22nd and 23rd
EACH DAY from 10 to 10

SPECIAL ENGAGEMENT OF
**R. A. LISTER'S
MILITARY BAND**
EDWARDS'
Great Fun Fair
SIDE SHOWS &
AMUSEMENTS

Despite the drought, AMATEURS will show more than ever — alongside displays by BRITAIN'S LEADING HORTICULTURISTS, in largest tents ever seen in Cheltenham.

OFFICIAL OPENING BY MARK FENWICK, Esq., M.V.H., at 10.45 a.m., on Wednesday, June 22nd, supported by the Mayor and Mayoress of Cheltenham and members of the Corporation.

CHEAP ADMISSION TICKETS (including free Bicycle Competition) and Entry Forms from Secretary, Town Hall Bureau.

LUNCHEONS and TEAS at popular prices.

SPECIAL CAR PARKS arranged by the A.A.

Prices of Admission:—First Day: 10 a.m.—4 p.m., 2/-; 4 p.m.—8 p.m., 1/-; after 8 p.m., 6d.
Second Day: 10 a.m.—1 p.m., 2/-; 1 p.m.—5 p.m., 1/-; after 5 p.m., 6d.

CHANELLE

LTD.

Annual Summer

SALE

COMMENCES ON

MONDAY, 20th JUNE

Chanelle's Sale is Genuine

No stock is kept over from one season to another. Therefore, everything is this season's and must be cleared. Every garment will be marked down to LESS THAN COST PRICE. Wonderful Bargains are to be obtained in Day and Evening Gowns, Coats, Costumes, Two-, Three- and Four-Piece Ensembles, Jumpers, Millinery, Sportswear, Coats trimmed with real Silver Fox, Dyed Fox, Persian Lamb, Sable-Dyed Squirrel, Beaver, and all the Latest Furs.

COME AS EARLY AS POSSIBLE

DOORS OPEN at 9 a.m.

60/62 The Promenade, Cheltenham



MR. T. W. MOORE
of Battledown, Tewkesbury, who died on Tuesday in his 83rd year. He was the head of Messrs. Moore and Sons, auctioneers, of Tewkesbury. He was twice Mayor, an honorary freeman of the borough, a J.P., and for more than 40 years vicar's warden at the Abbey.



REV. F. J. NEWTH
curate-in-charge of St. Peter's, Leckhampton, who has been appointed vicar of Wotton St. Mary Without, Longlevens, Gloucester.

**Shakespeare
MEMORIAL THEATRE
STRATFORD-UPON-AVON
SHAKESPEARE FESTIVAL**
April 11th to September 24th, 1938
Performances by

The Stratford-upon-Avon Festival Co.
Director: B. Iden Payne.
Nightly at 8, Mats., Wed. & Sat. 2.30.
Reserved Seats: 2s. 6d. to 8s. 6d.
(Change of Play each Performance.)
Apply: Box Office, Memorial Theatre.
Phone: Stratford-upon-Avon 2271 & 2272

Printed and Published as a Gratis Supplement by the Cheltenham Newspaper Company, Ltd.

THE CHELTENHAM CHRONICLE AND GLO'SHIRE GRAPHIC

With Which is Incorporated the "Cheltenham Looker-On"
SATURDAY, JUNE 25, 1938.

GRATIS SUPPLEMENT
No. 1,956.

THE OPERA HOUSE

Next Week:—Continuous performance from 2.15 2 Outstanding Programmes!
Monday, Tuesday, Wednesday—Ann Southern in "There Goes The Groom,"
a laugh-a-minute love affair; also Wheeler and Woolsey in "High Flyers."
Thursday, Friday, Saturday, Clark Gable, Carole Lombard in "No Man of
Her Own," a picture that will appeal to everyone; also Edward Everett
Horton in "Wild Money."

PALACE

HEAR 'Phone 2553 HERE
2.0 Continuous 10.30
MON., 27th JUNE and Week:—
FRANK MORCAN in
'BEG, BORROW OR STEAL'
(U)
with John Beal & Florence Rice
(At: 3.45 : 6.24 : 9.22 Daily)
— Also —
Frank Leighton & Judy Kelly in
'THE LAST CHANCE'
(A)

THE DAFFODIL

Phone CHELTENHAM 3360
2.15 Continuous 10.30
MON., JUNE 27th, For One Week
Brilliant Entertainment
'MAN PROOF'
with
MYRNA LOY
FRANCHOT TONE
Rosalind Russell and Walter
Pidgeon
Charming Romance, Delightful
Humour (3.40 : 6.15 : and 9.0)
A Mystery Thriller
'DEATH CROONS THE
BLUES'
with Hugh Wakefield and
Antoinette Collier (2.15, 5.0, 7.45)
Pathé Super Gazette

for Quick Service
PHONE

3605

and let us quote you
for your REMOVAL.
You will find our prices
reasonable and service excellent.

A. RICHES & CO.,
RECENT ST. CHELTENHAM.



CHELTENHAM DOCTOR'S WEDDING

Mr. Robert Harvey, M.B., F.R.C.S., of Cheltenham, and his
bride, Miss Nancy Fieldhouse, of Shipton Manor, leaving the
little church of Shipton Sollars, after their wedding on
Saturday.

"Cheltenham Chronicle" Photograph.



THE 'SPA' BICYCLE

Unequaled Value

Cent's Roadster £3-7-6
Lady's Model £3-14-6
Juvenile Models from 35 6
or 2 WEEKLY

CHELTENHAM CYCLE CO.,

■ 82 STRAND ■

COLISEUM

Week: 27th JUNE
From 2.15 p.m.

BING CROSBY

in the Big Music 'Song' and
Comedy Film

'DOUBLE OR NOTHING'

with Mary Carlisle and Martha
Raye (3.25 : 6.10 : 9.0)

— Also —

Zane Grey's Glorious Story of
the West

'THUNDER TRAIL'

with Charles Bickford and
Marsha Hunt (2.20 : 5.5 : 7.50)

Movietone News (3.10 : 6.0 : 8.45)

Save!

MONEY—RIDE A

RALEIGH

Roadsters, Tourists, Sports,
and Safety Models. Junior
Models £4/16/6, Lady's or
Gent's Models from £5/10/-,
or on easy terms. See our
windows and Remember Our
Service After Sales is the
Best in the County.

Authorised Agent:—

A. H. HAMLEN

The Cycle Specialist

200-1 High St., Cheltenham



BEAUTIFUL
MEMORIALS

E. A. EMMS

HALES ROAD
CHELTENHAM

Tel. 2391. Est. over 50 years.

DALE FORTY and Co. L^{TD} For the **BEST PIANOS**



MEDICAL & TOILET PRODUCTS

are manufactured at Cheltenham. They represent First-class Products guaranteed by over 6,500 Qualified Chemists.

Here is a selection of the Hundreds that UCAL Manufacture



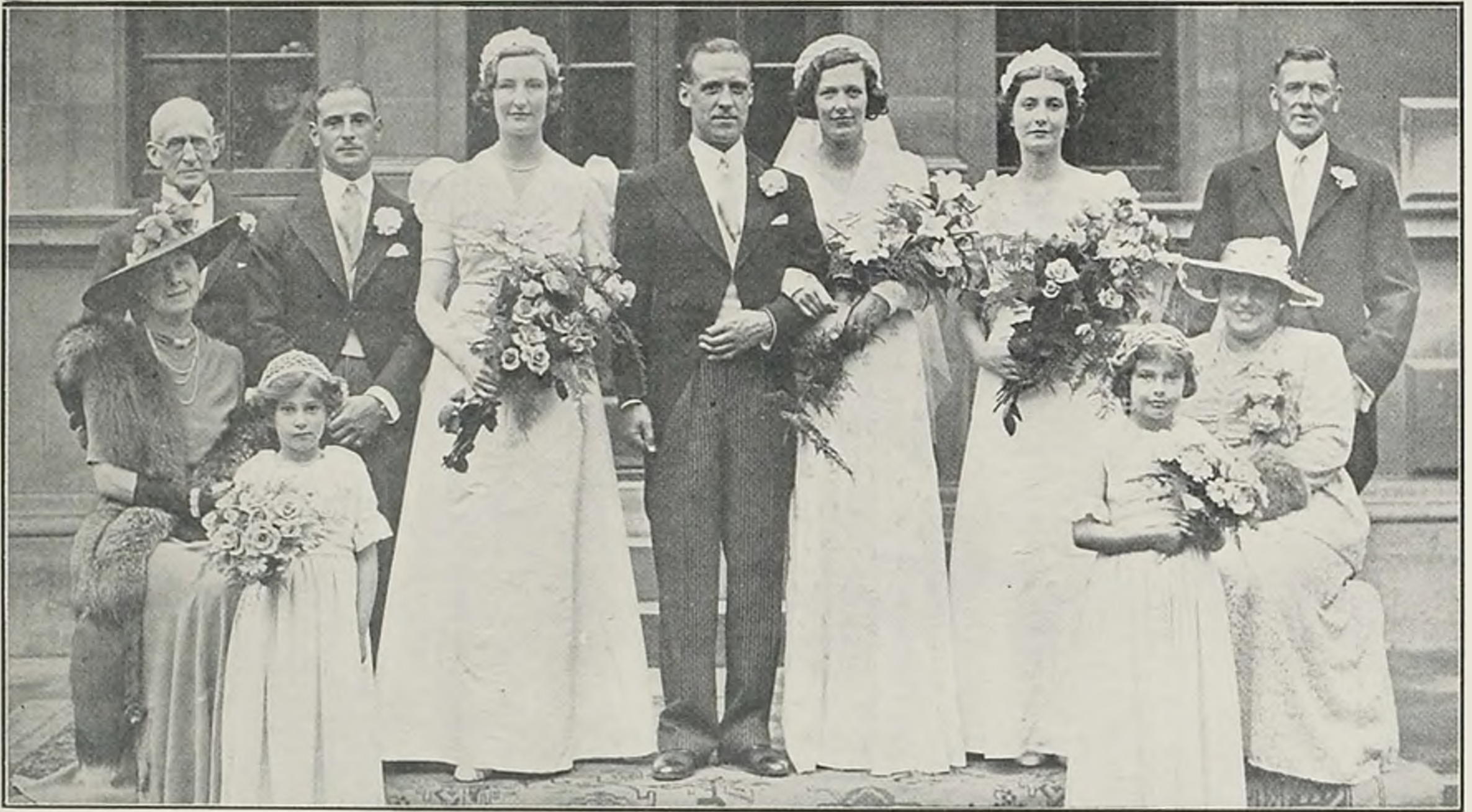


U.C.A.L. ATHLETIC SPORTS DAY.

The annual athletic sports meeting of the employees of the United Chemists Association, Ltd., was held on their beautiful sports field, Battledown Approach, on Saturday afternoon. The field was splendidly laid out, and the sports excellently managed and carried through.

- | | | |
|------------------------------------------|----------------------------------------------------------------------------------------------------------------|--------------------------------------------------------------------------------------|
| 1.—Competitors in ladies' darts. | J. Stephens, H. Sellick and L. Coltman. | 7. Girls' obstacle race. |
| 2 and 3.—Starters in ladies' relay race. | Seated: J. Hansen, J. Wakefield, P. J. Radford (chairman), J. Bentley (hon. sec.), R. Ashman, A. E. Errington. | 8.—Mr. and Mrs. Harold Miller with their two children, and Mrs. and Mr. G. W. Evans. |
| 4.—Competitors in men's mile race. | | 9.—Boys try the motor tyres. |
| 5.—Start of veterans' race. | | |
| 6.—Sports committee. — At back: A. | | |

"Cheltenham Chronicle" Photographs. Copies 6½in. x 4½in. 1/-; 8½in. x 6½in. 1/9 each.



PRETTY WEDDING AT ST. GREGORY'S CHURCH.

A pretty wedding took place at St. Gregory's (R.C.) Church on Saturday, when Mr. Ronald Carey, elder son of Mr. and Mrs. H. L. Carey, of 37 Barkston Gardens, London, was married to Miss Jean Evans, only daughter of Mr. and Mrs. E. B. Evans, of St. Hugh's, Old Bath-road, Cheltenham. There were four bridesmaids and the best man was Mr. H. H. Carey, brother of bridegroom.



LEAGUE OF MERCY FETE AT HENDRE, OVERTON PARK ROAD.

In aid of the League of Mercy, a small fete was held on the lawn at Mr. and Mrs. H. J. Lewis' residence on Saturday.

1.—Mr. R. H. Thornbury, of Cheltenham, giving a conjuring performance.
 2.—A section of the audience.
 3.—Mrs. Carlisle.
 4.—Miss M. Legge.
 5.—Mr. and Mrs. H. J. Lewis with Mrs. Sleeman and Col. J. L. Sleeman (president of the League of Mercy) (Glo'shire and Hereford).
 6.—Children watching the conjuror.

"Cheltenham Chronicle" Photographs. Copies 6 1/2 in. x 4 1/2 in. 1/- each.



FOUR HUNDREDTH ANNIVERSARY OF INTRODUCTION OF BIBLE TO ENGLISH CHURCHES

A united thanksgiving service for various denominations was held at St. Matthew's Church last week to celebrate the above anniversary. A procession of choirs and clergy walked from St. Mary's to St. Matthew's Church.

- 1.—Clergy in procession.
- 2.—Canon T. Guy Rogers, Rector of Birmingham, in centre.
- 3.—Members of Parish Church and St. Matthew's choirs.
- 4.— Mr. J. L. L. Goss, Sacristan, heads procession.
- 5.—Dr. Scott Lidgett (who gave an address), the Rector of Cheltenham and Canon T. Guy Rogers (who also gave an address).
- 6.—Revs. H. Clarkson, J. P. Lear, Canon P. M. C. Johnstone, Rev. G. G. Pinder.

"Cheltenham Chronicle" Photograph. Copies 6½in. x 4½in. 1/-; 8½in. x 6½in. 1/9 each.



MOTOR AGENTS' ASSOCIATION CONFERENCE IN CHELTENHAM

At the Mayoral reception held on Thursday last week Councillor E. L. Ward (Deputy Mayor) and Mrs. Ward received the guests on behalf of the Mayor and Mayoress, who are abroad. Local delegates, wives and friends at the reception.



CHELTENHAM PARISH CHURCH PICNIC

A delightful motor picnic, organised by the Rector of Cheltenham for members of the congregation was held one evening last week to Climperwell. Afterwards the party drove to Elkstone, where the Rector conducted a short service in the beautiful old Norman Church.

1, 2 and 3. -Some members of the party at Climperwell. The Rector and Mr. E. W. Ride, churchwarden (without hats) can be seen in No. 2 (standing).

"Cheltenham Chronicle" Photographs. Copies 6½in. x 4½in. 1/-; 8in. x 6½in. 1/9 each.



PRACTISING SENIOR BOYS' SCHOOL, CHELTENHAM, ANNUAL SCHOOL JOURNEY

A party of happy schoolboys left Cheltenham on Friday morning for ten days at Lyme Regis. There they will live, play, work and travel—all as part of their school routine. They will study botany, geology, sketching and other subjects, and prizes will be given for the best work.



PATE'S GRAMMAR SCHOOL FOR GIRLS' SUCCESSFUL FETE

Glorious weather with bright and ingenious entertainment combined to make the annual garden fete a real success.

- 1.—This pretty grey pony earned a lot of money during the afternoon.
 2.—Washing up at the refreshment stall.
 3.—Seniors, who gave German national dances in costume.
 4 and 5.—Some of the girls looking after their Aunt Sally.
 6.—A toy train competition for prizes was largely patronised.

"Cheltenham Chronicle" Photographs. Copies 6½in. x 4½in. 1/-; 8½in. x 6½in. 1/9 each.

LOTUS, DELTA, ETC.

12/9	Reduced To	9/8
17/11	..	13/8
21/9	..	16/8
26/9	..	18/8

Sizes 2-8: Various Fittings.

SALE

SUMMER SHOES

CHURCH'S ARCH-MOULDED

32/6	Reduced To	21/8
35/9	..	24/8
39/6	..	29/8
45/-	..	32/8

Sizes 2-9: All Fittings.

TO-DAY!

whilst stocks last!

W. J. MELVILLE, LTD., 408 STRAND, HIGH ST. Tel. Chelt. 2715

PRESCOTT SPEED



HILL CLIMB

ADMISSION **2/6** NEAR CHELTENHAM, GLOS.

SUNDAY JULY 3rd

FOR SPORTS AND RACING CARS

2 P.M.

ORGANIZED BY THE BUGATTI OWNERS CLUB LIMITED
2, QUEEN STREET, LONDON W.1

PRESCOTT HILL CLIMB

OFFICIAL BREAKDOWN SERVICE



WEDDING, Etc., PHOTOGRAPHS

If you require the attendance of the "Chronicle and 'Graphic" photographer at a wedding or any similar event, please give ample notice.



FETE AT PATE'S SCHOOL FOR GIRLS

Snaps at the successful fete held on the school playing field last week. 1 and 2.—Visitors having a cup of tea. 3 and 4.—Some of the girls who worked hard to make the fete a success.



SOCIETY WEDDING AT SHIPTON SOLLARS.

A very interesting wedding took place at Shipton Sollars Church on Saturday, when Mr. Robert Harvey, M.B., F.R.C.S., of Cheltenham, son of Dr. and Mrs. John Harvey, of Dumbarton, Scotland, was married to Miss Nancy Fieldhouse, elder daughter of Mr. and Mrs. Ernest Fieldhouse, of Shipton Sollars Manor. The bridegroom is hon. surgeon to the radium department at Cheltenham General Hospital. There were over 200 guests at the reception held on the lawns at Shipton Sollars Manor.

- 1, 2 and 4.—Guests at reception. 5.—Rev. E. C. Hanson, who conducted the service. 7.—Cotswoldians at reception. From left are: Messrs. Hobbs, Handy, and W. B. Fletcher. 8 and 9.—Guests at reception.
- 3.—The bridal and family group. Dr. John Wingate was best man, and Miss Lucy Fieldhouse, bridesmaid. 6.—Guests on the lawn watching bridal party.



CIRENCESTER HOSPITAL CARNIVAL.

Several thousand people were attracted to Cirencester on Saturday for the annual Hospital Carnival. The procession proved one of the brightest events of its kind ever staged by the town.

1. The Carnival Queen, Miss Heather Curtis, with her maids of honour and pages.
 2 and 3.—Helpers and members of various dances in the evening.
 4.—The Sunshine Kiddies, who gave 5. Bowls, one of the many games organised by the committee.
 "Cheltenham Chronicle" Photographs. Copies 6½in. x 4½in. 1/- each; 8½in. x 6½in. 1/9 each.



ANNUAL MEETING OF TEWKESBURY GROUP OF WOMEN'S INSTITUTES AT OVERBURY

This meeting was held at Overbury Court on Tuesday, when 500 members from the seven branches were present.

- 1.—Some of the members at tea on the lawn.
 2.—Members of Kemerton branch and other ladies who provided and served tea for the party.

"Cheltenham Chronicle" Photographs. Copies 6½in. x 4½in. 1/-; 8½in. x 6½in. 1/9 each.



ST. MATTHEW'S CHURCH, CHELTENHAM, WEDDING

Many friends witnessed the wedding on Saturday of Mr. M. Leopold Carter, son of Mr. and Mrs. Matthew Carter, of Watford, Herts., to Miss Barbara E. J. Hailing, daughter of Mr. and Mrs. A. George W. Hailing, of Bradwell Lodge, Cheltenham. The bridal and family party.

"Cheltenham Chronicle" Photograph. Copies 6½ in. x 4½ in. 1/-; 8½ in. x 6½ in. 1/9 each.



A BEAUTIFUL GARDEN DESIGN

The formal garden at the entrance to the recent Three Counties Show at Gloucester, which attracted much admiring attention. It was constructed by Messrs. W. Hopwood and Son, of Cheltenham, at the request of the Show Committee and was awarded a large gold medal. Messrs. Hopwood and Son specialise in every kind of garden construction, and many delightful examples of their work have been illustrated in the "Graphic" at various times. All work of this nature is under the personal supervision of the proprietor. Their exhibits at this week's Cheltenham Floral Fete were also much admired.



INTERESTING HOLY APOSTLES' WEDDING

The wedding took place at Holy Apostles' Church, Cheltenham, of Mr. Eric Walker, only son of Mr. and Mrs. Thomas Walker, of Glen Lea, Cirencester-road, Cheltenham, to Miss Mary Maylam, daughter of Mr. and Mrs. George Maylam, of West Dean, Cirencester-road, Cheltenham. The bride was for some years a mistress at the Gloucester-road Junior School. The bridal party.

"Cheltenham Chronicle" Photograph.
Copies 6in. x 4in. 1/- each; 8in. x 6in. 1/9 each.



REV. OSWALD D. PARKER.
LL.D., B.Sc., AND F.R.G.S.

who has been ordained and appointed curate at Holy Trinity, Cheltenham.

**Shakespeare
MEMORIAL THEATRE
STRATFORD-UPON-AVON
SHAKESPEARE FESTIVAL**

April 11th to September 24th, 1938

Performances by

The Stratford-upon-Avon Festival Co.

Director: B. Iden Payne.

Nightly at 8, Mats., Wed. & Sat. 2.30.

Reserved Seats: 2s. 6d. to 8s. 6d.

(Change of Play each Performance.)

Apply: Box Office, Memorial Theatre.

Phone: Stratford-upon-Avon 2271 & 2272

Send the "Chronicle" to Your Friends Abroad.

THE CAR YOU WANT IS HERE!

**THESE ARE
'SAFETY-TESTED'
CARS**

"SAFETY-TESTED" by REED AND PATTERSON, Ltd., is your guarantee that the car you buy from us is roadworthy in every respect.

- 1936 AUSTIN 7 Saloon de Luxe; very clean; one owner £69
- 1937 TRIUMPH 14/60 Vitesse Saloon; blue; one owner; spotless condition; new tyres £220
- 1937 FORD 8 h.p. Tudor Saloon; black; carefully used; clean condition ... £75
- 1935 STANDARD 10/12 Speedline Saloon; in very good order £85
- 1934 MORRIS 12/4 Saloon de Luxe; black; carefully used £60
- 1934 LANCHESTER 10 Sports Saloon; blue; fluid flywheel £97/10/-
- 1932 DAIMLER 16/20 Sports Saloon; new Dunlop Fort Tyres £90

**REED & PATTERSON
LTD.**

Distributors of Daimler, Lanchester, Triumph and Fiat Cars.

BATH ROAD, CHELTENHAM

Tel. 2023



FORD 'V8' BARGAINS

- 1937 Ford V.8 30 h.p. Convertible Coupe, leather upholstery. One owner. Super condition £115
- 1937 Ford V.8 22 h.p. Touring Saloon De Luxe, leather upholstery £120
- 1937 Ford V.8 four-door Touring Saloon De Luxe. Well kept £135

REGENT MOTORS

Regent St.

Cheltenham

Tel. 2041

G. Readings, Ltd.

**CHINNS
SELECTED**

Car Bargains

- 1937 late model Austin 10/4 "Cambridge" Saloon de luxe. Finished dark blue with leather upholstery to match, very small mileage £135
- 1936 Austin 12/4 "Ascot" Sunshine Saloon de luxe, Cellulosed black with brown hide upholstery; nominal mileage in one careful owner's hands. First class order throughout. £105 Taxed.
- 1937 Morris "8" Series I. Saloon. Finished black and red, with red upholstery. Beautifully maintained and in spotless condition; tyres as new £89

These cars are open to any examination or trial

Exchanges and deferred payments arranged with pleasure.

PHONE 2031

BATH PARADE, CHELTENHAM