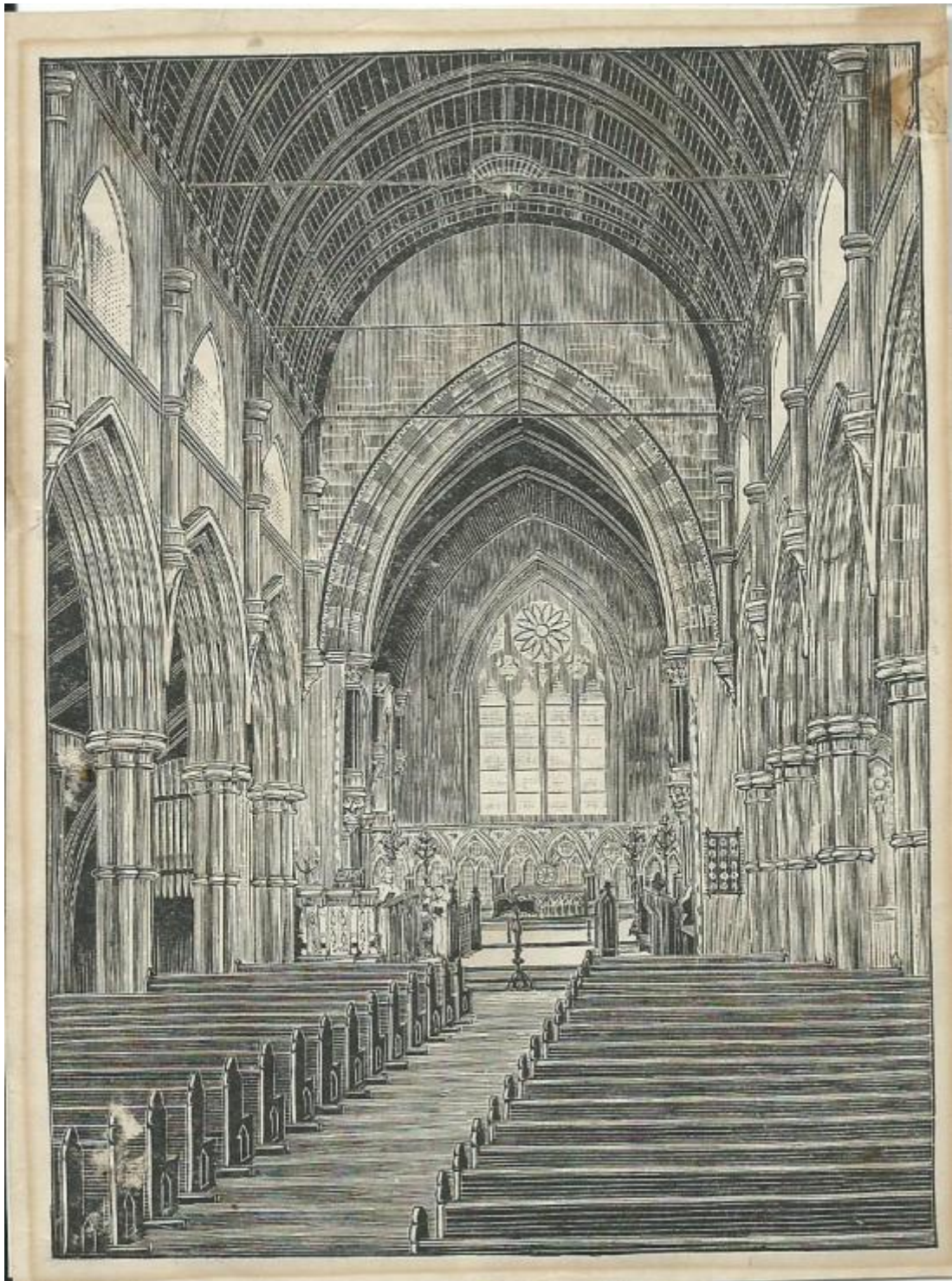

St Stephen's Tivoli – a gallery of historic images

'This Church was designed by John Middleton and built in stages: chancel 1873-4, transept 1876, tall nave with lean-to aisles 1881-3, N and S porches 1885-6 and transept 1888' (Alan Brooks). The Lady Chapel was designed by L. W. Barnard as a War Memorial.



This Picture was taken sometime between Easter and Harvest 1885



1885 circa



1911



1927



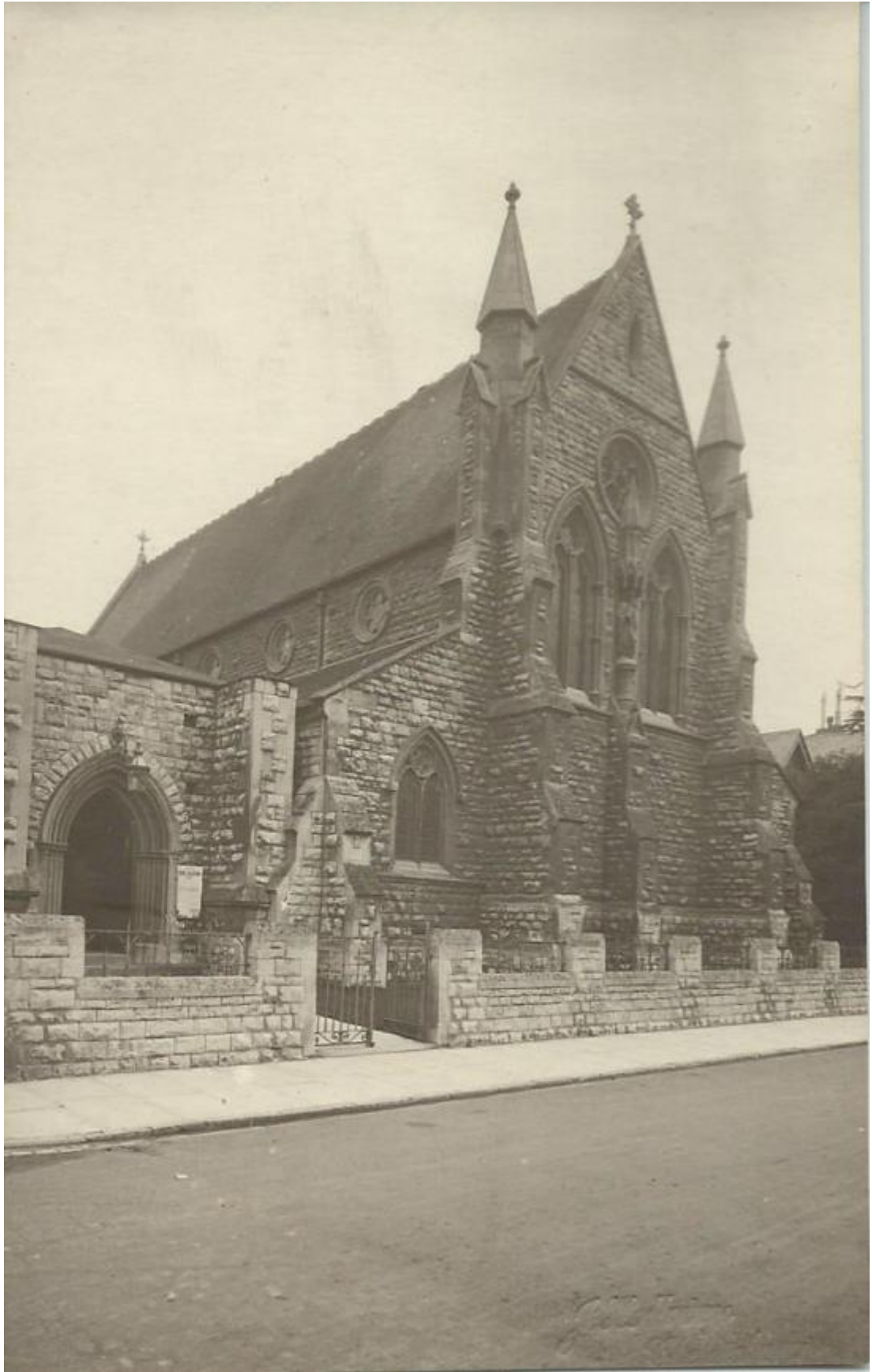
1906

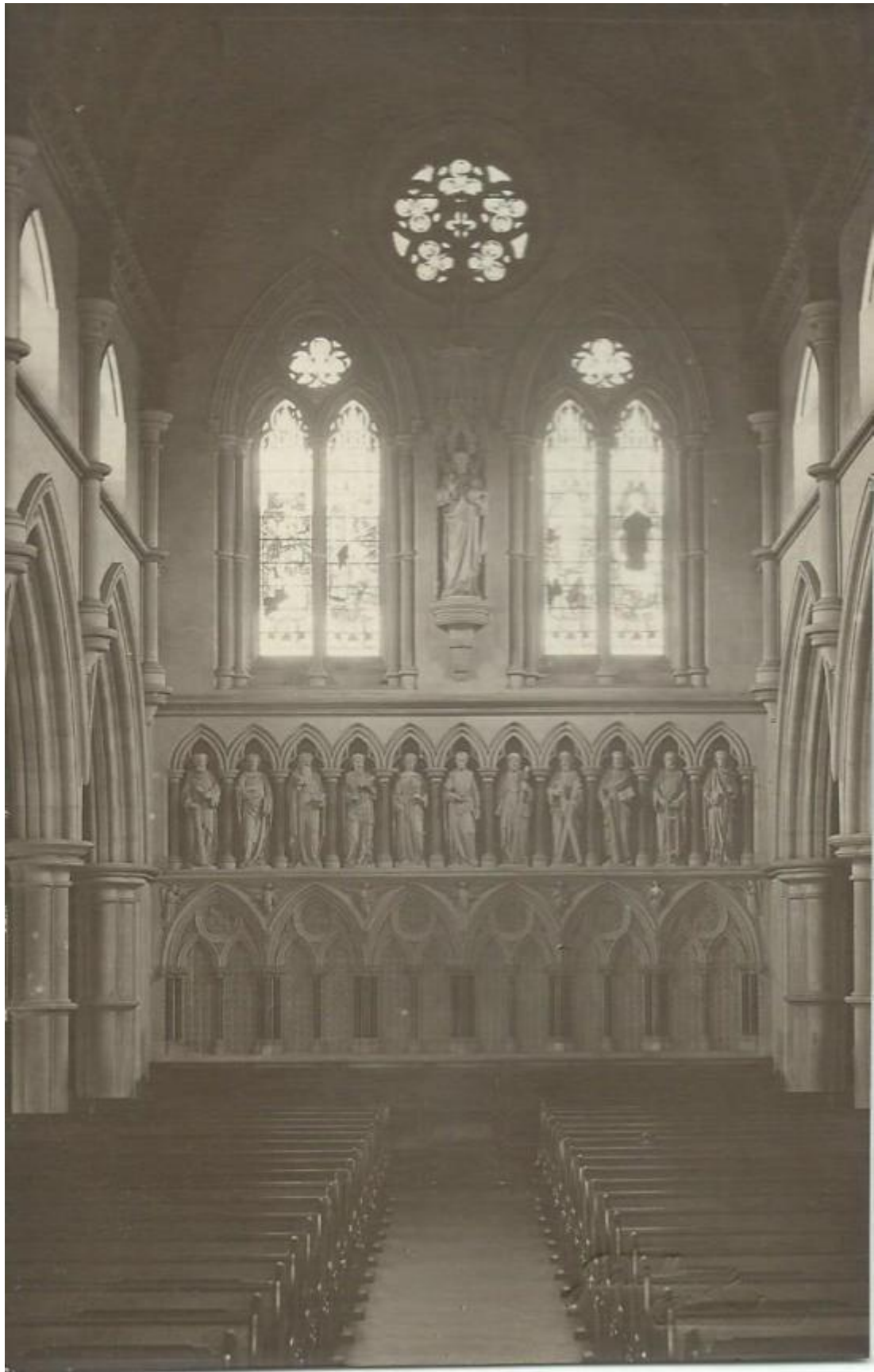


1910

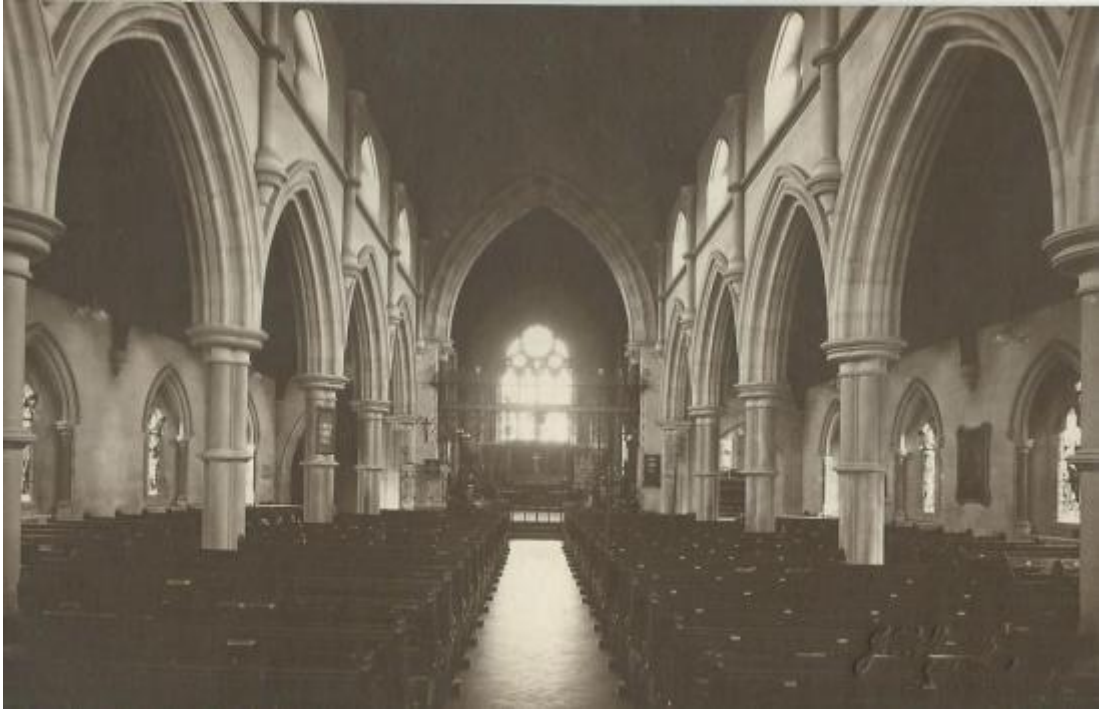
Set of 12 Photographs dated 12th January 1922



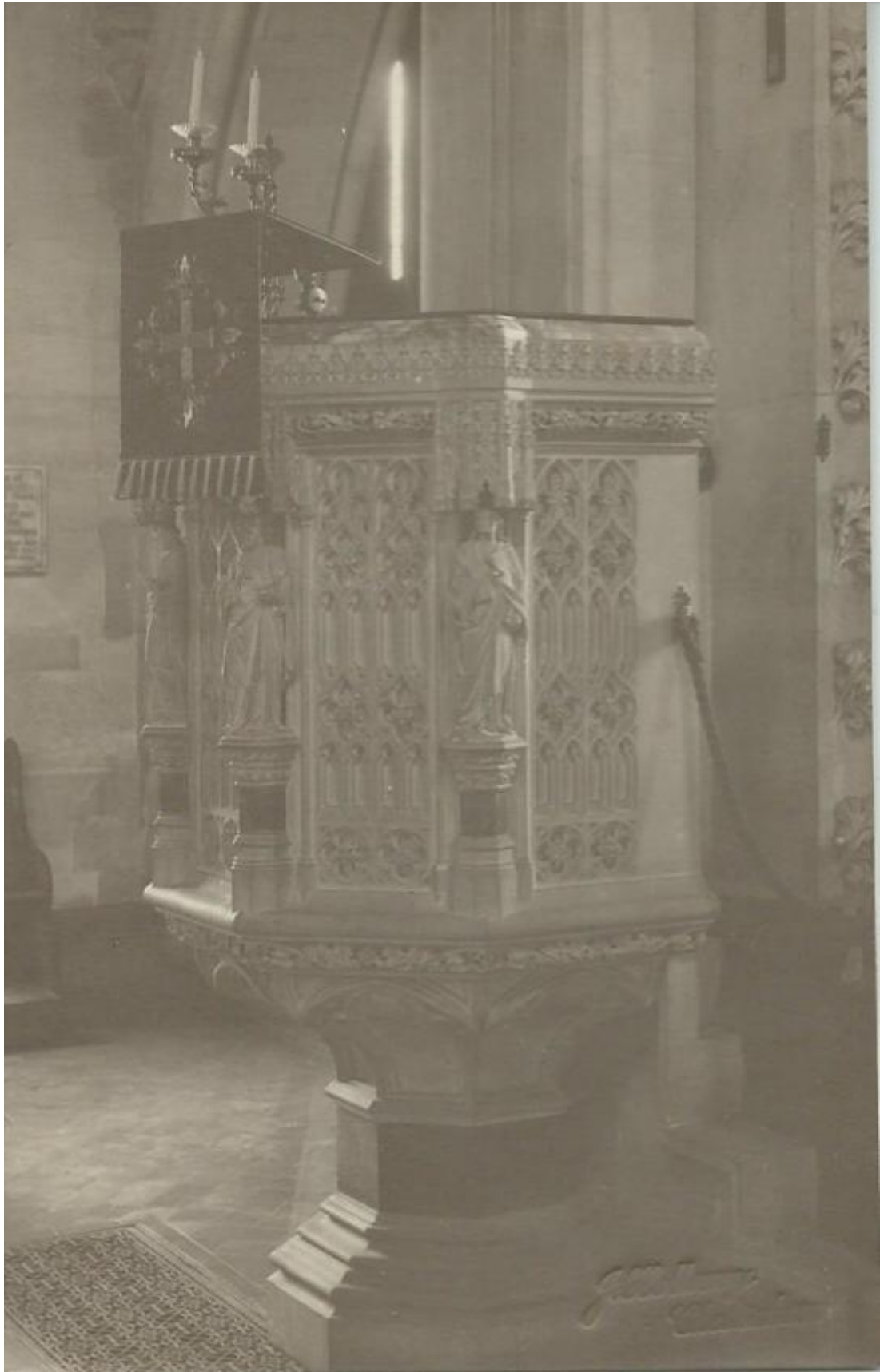


















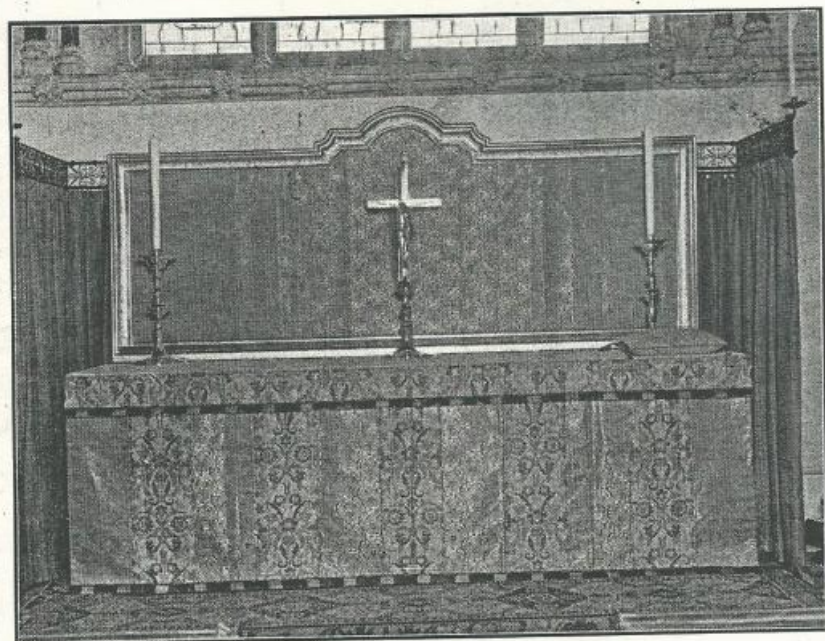
1933 Golden Jubilee



1933 Golden Jubilee



Choir and Orchestra 1911



IMPROVEMENTS AT ST. STEPHEN'S CHURCH

Alterations have just been completed at St. Stephen's Church, Cheltenham. The high altar has been lengthened, a new dorsal with riddel curtains and frontal has been provided—the dorsal frame being decorated with "Jesso" and burnished gold. A silver-plated cross, with the figure of Our Lord, and two silver-plated candlesticks are placed on the mensa. The work was designed by Mr. W. E. Ellery Anderson, L.R.I.B.A., and carried out by R. L. Boulton and Sons.

"Cheltenham Chronicle" Photograph, Copies 1/- and 1/9.

1939.

Our Lady and Child by Ulrica Lloyd (1955)

