

# THE CHELTENHAM CHRONICLE AND GLO' SHIRE GRAPHIC

With Which is Incorporated the "Cheltenham Looker-On."  
SATURDAY, DECEMBER 5, 1936.

GRATIS SUPPLEMENT  
No. 1875.

## THE OPERA HOUSE

NEXT WEEK:—Continuous performances 2.15 till 10.30. **Monday, Tuesday, Wednesday:—LIONEL BARRYMORE, MAUREEN O'SULLIVAN** in "THE VOICE OF BUGLE ANN." A Drama of Simple people, also James Gleason in "MURDER ON A BRIDLE PATH." **Thursday, Friday, Saturday:—ALINE MACMAHON, BASIL RATHBONE** in "KIND LADY." An Amazing Detective story, also John Arledge in "TWO IN REVOLT."

## PALACE

'Phone 2553. 2.0 Con. 10.30  
HEAR. HERE

Mon., 7th Dec., and Week  
Robert Montgomery and  
Rosaling Russell

in  
Robert Louis Stevenson's  
"THE SUICIDE CLUB" (A)  
with Frank Morgan and  
Reginald Owen  
(At 3.36, 6.38, 9.30 Daily)

Also Melvyn Douglas in  
"The Lone Wolf Returns" (A)  
14th Dec. and Week:—  
Gordon Harker and Ned Sparks  
in "TWO'S COMPANY"

## THE DAFFODIL

'Phone CHELTENHAM 3360  
2.15 Continuous 10.30  
Mon., Dec. 7, for One Week  
"FURY"

The kind of picture you get once  
a year! That is the general ver-  
dict of the Press.

Sylvia Sydney, Spencer Tracy  
in the Greatest Picture of 1936.  
Also Reginald Denny in thrills  
and spills

"MIDNIGHT PHANTOM"  
Cheltenham's Finest Exclusive  
Show



### A CHELTENHAM SILVER WEDDING

Mr. Reginald J. Winterbotham and the Hon. Mrs. Winterbotham, of Coney Gree, Up Hatherley, who celebrated their silver wedding on Monday. Hon. Mrs. Winterbotham is the eldest daughter of the late Lord and Lady Kingsale. Their wedding took place at St. Paul's Church, Cheltenham, on November 30, 1911.



Don't spoil  
your Xmas  
by running  
short of coal — order Now.  
5 cwt. of RYDER-REX  
SCREENED COBBLES will cost  
only 12/6 delivered. Phone 3605

A. RICHES & Co.  
REGENT ST., CHELTENHAM.



### The SPA Bicycle UNEQUALLED VALUE

Gent's Roadster ..... £2 - 19 - 6  
Lady's Model ..... £3 - 5 - 0  
Juvenile Model ..... £2 - 19 - 6  
or 2/- weekly.

CHELTENHAM CYCLE CO.,  
82 STRAND

## COLISEUM

Week 7th Dec. From 2.15 p.m.

An Exceptional Programme  
Boris Karloff and Bela Lugosi  
in the Wierdest Drama ever  
presented

"THE INVISIBLE RAY"  
(Times 3.30, 6.15, 9.0)

Also Britain's great All-Star  
Musical

"SUNSHINE AHEAD"

with Jack Payne and his Band  
and numerous Broadcasting  
Stars

(Times 2.15, 5.0, 7.40)

## WINTER GARDEN

### THEATRE

CHELTENHAM.

Monday, December 7th

Every Evening at 8 o'clock  
Matinees Thurs. and Sat. at  
2.30 p.m.

The Cheltenham Repertory  
Company, Limited, present  
under the direction of  
Ellen Compton,

### "FULL HOUSE"

By Ivor Novello

Prices 1/3, 2/6, 3/6. All seats  
may be booked in advance.

Box Office open 10 a.m. to  
8 p.m. 'Phone 2058.

Join the Cheltenham Repertory  
Association.

Monday, Dec. 14th—

"I LEAVE IT TO YOU"

by Noel Coward



### BEAUTIFUL MEMORIALS

E. A. EMMS

HALES ROAD  
CHELTENHAM

Tel. 2391. Est. over 50 years.

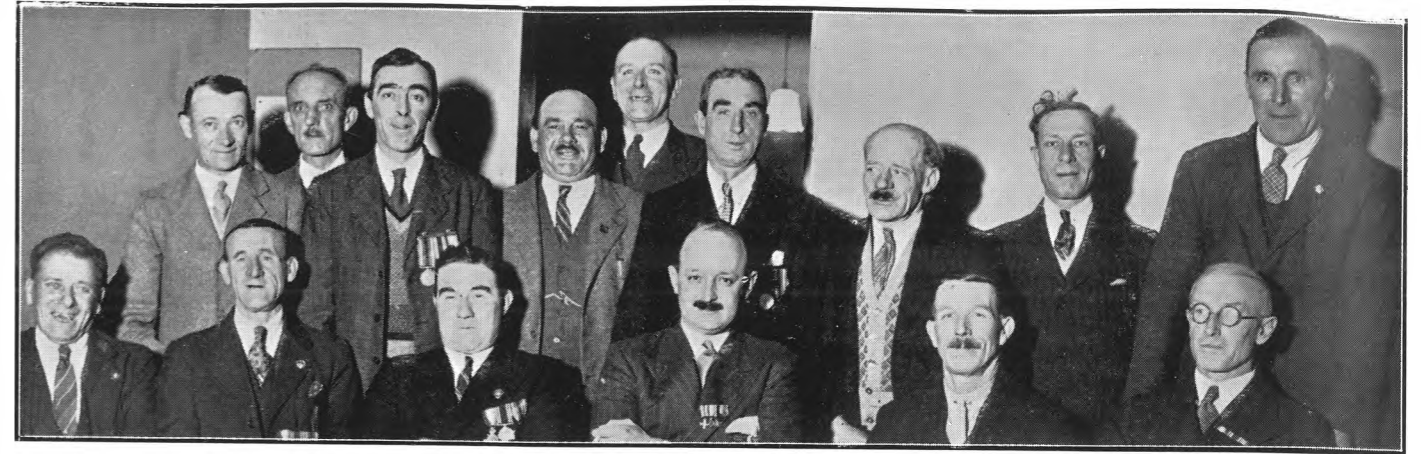
# DALE, FORTY and Co. Ltd for the BEST PIANOS



**FIRST RE-UNION DINNER OF THE 9th Bn. GLOUCESTERSHIRE REGIMENT**

Members of the 9th Gloucesters, which was largely recruited in 1914 from Cheltenham and district, and was quartered in the town for part of that winter, met again for the first time since the war on Saturday night at the Empire Hall, Cheltenham. The occasion was the first re-union dinner, and over 280 ex-members were present. It was a great evening and is to be repeated annually.

1, 4 and 6.—Some of the Cheltenham ex-members present. 2.—A snap of the hall during the dinner. 3.—Birmingham ex-members of the regiment. 5.—Some others at the dinner.



Cheltenham members of the 9th Gloucesters at the first reunion dinner at the Empire Hall, Cheltenham, on Saturday.

"Cheltenham Chronicle" Photograph. Copies 1s. and 1s. 9d.



**HIS ROYAL HIGHNESS THE DUKE OF KENT'S NEW 37.8 H.P. CANADIAN BUICK LIMOUSINE**

His Royal Highness the Duke of Kent has just taken delivery of a Canadian-built Buick seven passenger Limousine which the British Concessionaires, Messrs. Lendrum and Hartman, had the honour of supplying. The car is finished in black with fawn cloth interior and is fitted with special reading lamps which are concealed when not in use. The car is fitted with the new Buick double stabilisers at front and rear, giving very smooth riding when cornering. Messrs. Haines and Strange, 99 High Street, Cheltenham, are the Distributors of Buick cars for the County of Gloucester.

# GLOUCESTER CONSERVATIVE BENEFIT SOCIETY NEW OFFICES



Consequent upon the Society's surplus funds on the fourth actuarial valuation of the Society, the following additional benefits are included in the State Section for men

## NATIONAL HEALTH INSURANCE

FOURTH (1932) VALUATION

### ADDITIONAL BENEFITS

The Committee of Management is pleased to be able to inform the members that a surplus has been found on the fourth actuarial valuation of the Society, and that as a consequence the following additional benefits have been included in the Society's sanctioned Scheme.

**Increases in CASH BENEFITS enabling the following rates to be paid:—**

	£	s.	d.	
Sickness Benefit .....	1	0	0	a week
Disablement Benefit	10	0	0	a week
Maternity Benefits ...	2	10	0	

**Other Additional NON-CASH Benefits:** Dental Treatment including Dentures; Convalescent Home Treatment and Railway Fares; Surgical Appliances; Ophthalmic Treatment, including the provision of glasses; Grants to Members in Distress; Infection Benefit; Hospital Treatment; The Provision for Nursing Services.

Additional benefits are also available to members of the Women's State Section as follows:—

**Increases in CASH BENEFITS enabling the following rates to be paid:—**

Sickness Benefit	14s.	Single Women,
	12s.	Married Women a week;
Disablement Benefit	7s.	Single Women,
	6s.	Married Women a week;
Maternity Benefit	£2 4s. 0d.	

**Other Additional NON-CASH Benefits:** Dental Treatment Including Dentures; Convalescent Home Treatment and Railway Fares; Surgical Appliances; Ophthalmic Treatment, including the provision of Glasses; Grants to Members in Distress; Hospital Treatment.

An advantage of dual membership is that in case of illness only one medical certificate is necessary to claim benefit from both voluntary and State sections.

With the opening of Holloway House, Barton Street, the fine new building illustrated above, the Gloucester Conservative Benefit Society mark another epoch in their record of continuous progress. Of dignified design, there are three storeys, the offices being situated on the ground floor, board and committee rooms on the first floor and caretaker's quarters above. Visitors will notice particularly the provision of exit and entrance doorways to the public rooms, and the incorporation of fittings for the efficient working of a filing system which makes for great expedition in the transaction of business. The lighting and ventilation have also received much attention. Mr. Cyril V. Dancey was the architect.

At the official opening and public luncheon, illustrated on another page, great tribute was paid to the immense value the Society had been to its members since its establishment in 1880. At December 31, 1935, the membership stood at 13,781. The juvenile section had 1,604 members, and the Women's Society 5,173. The last balance sheet shows a very strong financial position, and prospects for the future are very encouraging. As an instance of the benefits of joining this Society, it may be mentioned that a boy becoming a one-share member at the age of 16 and continuing until his retirement at the age of 65 would have paid in contributions £92. Assuming the dividend is being continued on the same basis as at present, he would draw out £240, and in addition to this would have been covered for 10/- per week Sickness Benefit during the whole of that time. Five shares may be taken up, and many business men use the Society as an insurance against sickness and also to accumulate a nice little nest egg. A great part of the Society's accumulated funds is available for mortgages, and very favourable terms are obtainable by members in order that they may be encouraged to purchase their own houses.

There are over fifty branch lodges throughout the district.

Make a New Year resolution and join one of the above societies, which, in addition to greatly increased benefits, have the advantage of local offices and a local committee, whose knowledge and advice is of great value to members.



**OPENING OF NEW OFFICES OF THE GLOUCESTER CONSERVATIVE BENEFIT SOCIETY**  
Mrs. W. S. Morrison, wife of the Minister of Agriculture, formally opened the new offices of the Gloucester Conservative Benefit Society in Barton-street, Gloucester, on Friday, before a large crowd of members of the society. She was deputising for her husband, who, at the last moment, had to attend an important Cabinet meeting.

1.—The Grand Master of the Society (Mr. J. H. Roberts) wearing chain (C.), with the Mayor of Gloucester (A.), the High Sheriff of Gloucester (B.), members of Committee and others.

2.—Some of the many members present, on extreme left is the Mayor of Tewkesbury (D.).

3.—The Grand Master (Mr. J. H. Roberts), Mrs. W. S. Morrison and the Lord Bishop of Gloucester.

4.—Ald. C. H. Margrett, C.B.E., of Cheltenham.

5.—Some Cheltenham members present.

6.—The Ladies' Committee with Mrs. Morrison.

"Cheltenham Chronicle" Photographs. Copies 1s. and 1s. 9d.



**CHELTENHAM PARISH CHURCH SALE IN AID OF C.M.S.**

At this sale, held in the Parish Room, St. James' Square, over £275 was raised for the Church Missionary Society. Some of the stall-holders, who worked very strenuously. "Cheltenham Chronicle" Photograph. Copies 1s. and 1s. 9d.



**OPENING OF CHELTENHAM PARISH CHURCH SALE OF WORK**

The sale of work in aid of the C.M.S. was opened by Miss Threlfall, in the absence of Lady Preston (who was unable to reach Cheltenham owing to fog). From left are Rev. J. A. Barber (curate in charge of Parish Church), Miss Threlfall, Mr. F. H. Bourton, churchwarden, Rev. P. A. Nash. In front, Bridget Bush, who presented bouquet to Miss Threlfall. "Cheltenham Chronicle" Photograph. Copies 1s. and 1s. 9d.



**MR. W. J. WILLEY.**

of 41 Clarence-square, Cheltenham, who died, November 25, aged 57 years. He was a professional musician, being an admirable double-bass player in various well-known orchestras in London and the provinces, and for some years in the Cheltenham Municipal and Theatre Orchestras. He was a brother of the late Mr. S. M. Willey, the well-known Cheltenham violinist.

**FURS** **JACOBS & SMITH**  
 WE OFFER YOU THE BEST  
 AT A PRICE YOU CAN AFFORD  
 104 HIGH STREET (Opposite Lloyds Bank) CHELTENHAM



**OPENING OF NEW WING AT THE ROYAL AGRICULTURAL COLLEGE, CIRENCESTER**

The new King George V. wing of the Royal Agricultural College, Cirencester, was formally opened by Mr. Herwald Ramsbotham, O.B.E., M.C., M.P., Minister of Pensions, and dedicated by the Bishop of Gloucester before a large crowd of pupils of the College, county agriculturalists and friends of the College.

- 1.—A group of students of the College.
  - 2.—The Bishop of Gloucester dedicating the building at the opening ceremony. On left are Rev. C. E. Brown (Bursar of College) and Mr. Herwald Ramsbotham (wearing monocle), on right are Earl Bathurst and Mr. R. Boutflour, Principal of College.
  - 3.—Four students.
  - 4.—Members of College staff in procession.
  - 5.—The new wing.
  - 6, 7, 8, and 9.—Students and spectators.
- "Cheltenham Chronicle" Photographs. Copies 1s. and 1s. 9d.



**SWISS BRIDE AT WHITTINGTON WEDDING**

The wedding took place at Whittington Church on November 25th of Mr. Stanley John Clifford, son of Mr. J. H. Clifford, of Whalley Farm, Andoversford, to Miss Clare Genhart, daughter of Mrs. B. Genhart, of Lucerne, Switzerland. The bridegroom is farming at East Leaze Farm, Shaw, near Swindon. The bridal and family party outside the church.

*Christmas* 1936  
will be incomplete  
without—



How does the rest of the world celebrate Christmas? You will find wonderful fascination in listening to the programmes from U.S.A., S. America, Japan, Australia, and from every other quarter of the globe if you possess an ALL WAVE receiver. Hear one now (priced from 9½ GNS.) at **WOODWARDS**—or in your own home—and remember the **SERVICE AFTER SALES** is second to none at—

**"HIS MASTER'S VOICE"  
Radio**

**WOODWARDS**

Estab. 1812. The Musical Centre. Tel. 2512  
77 HIGH ST., STRAND, CHELTHENHAM

"HIS MASTER'S VOICE," MARCONI, BUSH, McMICHAEL RADIO MODELS IN STOCK



**GLOUCESTERSHIRE NORTH OF ENGLAND SOCIETY ANNUAL DINNER IN CHELTHENHAM**

More than 120 members of the above society and friends attended the second annual dinner of the society, which was held at the Queen's Hotel, Cheltenham, on Friday. Mr. R. R. Dobson, M.A., headmaster of Cheltenham Grammar School, president of the society, presided, and the guests included Sir John Birchall, M.P., and Lady Birchall and the Mayors and Mayoresses of Cheltenham and Gloucester.

1.—A section of the top table,—from left are Mr. R. R. Dobson, the Mayoress of Cheltenham, Sir John Birchall,

M.P., Mrs. R. R. Dobson, the Mayor of Gloucester (Mr. H. Harmer). 2, 3, 4, 5 and 6.—Other sections of the tables snapped during the dinner.

"Cheltenham Chronicle" Photographs. Copies 1s. and 1s. 9d.



**GIFTS in LEATHER are of LASTING VALUE**

The newest novelties in **HANDBAGS, BRUSH SETS, DRESSING CASES** and all quality leather goods at

**STEPHENS & SON** 83 Winchcombe Street  
Tel. CHELTHENHAM 4936



## Whether it be Mansion, Villa or Bungalow,

We can build it for you as it ought to be built. The proof of our work is the confidence placed in us by people who have bought houses on the many estates we have developed locally, and are constantly recommending their friends to follow their example. Above we illustrate a detached bungalow just erected on our Grove Estate, Hale's Road. This costs £1,250 and was built for a client for whom we have already built two houses. Any type of house can be built to your own requirements and we have many delightful plans available for your assistance. In every one of these, however, the chief feature is ease of running, combined with outside and inside charm of appearance, so that you have a home which looks good and is good. Our manager of the estate (telephone 4529) is always glad to see enquirers and answer any questions. For the building of houses on your own land, or any other work of this description, including repairs and decorations, we have recently opened a Cheltenham depot under the charge of Mr. Frank Griffiths, and are always at your service (telephone 4194). Just now we have a particularly attractive lot of grates and surrounds on view in our showrooms.

## WHEELER & MANSELL, Ltd.

Painswick Road, Cheltenham  
Head Office, Evesham (Phone 6096)



### of PARAGON GARAGE Bath Road, CHELTENHAM

*gives complete & personal service  
to motorists & particular care  
& attention TO BEGINNERS*

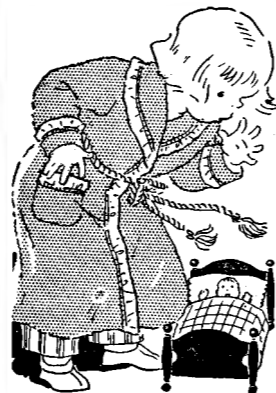
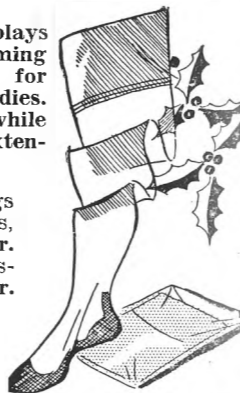


**MISS F. ROUTLEDGE,**  
headmistress of Naunton Park junior mixed school, who is retiring at the end of the year. She was appointed headmistress of the girls' school on September 1, 1907, and on the re-organisation of the school in 1930, head of the junior mixed school.

## INEXPENSIVE GIFTS

Our Christmas displays are featuring charming and useful gifts for Ladies and Kiddies. Choose them now while the selection is extensive.

**WOLSEY** Stockings in fancy Gift Boxes, Aimee ... 3/11½ pr. Deylong, with Las-tex tops ... 4/11 pr.



All - Wool Dressing Gowns, all sizes, all colours, from ..... 7/11

## Mrs. OWEN JAMES

409 STRAND  
HIGH ST., CHELTENHAM



### VALE OF EVESHAM COURSING CLUB'S MEETING AT WASHBOURNE.

Fog interfered considerably with this meeting at Great Washbourne on Friday, and the card was only gone through once.  
1.—The slipper (marked X) with friends and beaters. 3.—Mr. E. G. Pelly. 5.—Mr. S. F. Gladwin, Mrs. Tom Smith, and Miss J. Humphries watching a course.  
2.—Mrs. E. G. Pelly, Miss M. Canning, and Capt. Haynes Rudge. 4.—Mr. H. Burton (hon. secretary) on left with two friends.

"Cheltenham Chronicle" Photographs. Copies 1s. and 1s. 9d.

## Distinctive!

Every house has its own individual charm, yet each one has the same spacious rooms . . . modern labour saving conveniences . . . wonderful outlook. Well-built with the best of materials, they are remarkably reasonable at prices from £595 freehold (Low deposit and Low repayments arranged). We invite your critical inspection . . . come and see them being built . . . the estate is open weekdays and Sundays.

### BROOKLYN GARDEN ESTATE ARLE ROAD, CHELTENHAM



WESTERN ESTATES (Lawes Cherry) LTD. — 'Phone 4956

## IDEAL GIFTS

A more acceptable gift than these beautifully made and specially choice gloves cannot be imagined . . . All popular furs are included in our large selection — DARK AND GOLD BEAVER, CHINCHILLA, SQUIRREL, OCELOT, and BLACK SEAL CONEY. Lined throughout with fur to tone.



## LADIES' FUR GLOVES

21/9 In Nutria, Beech & Grey Lamb, 18/9  
In colours ..... 25/6  
ALSO IN MANY FURS SUITABLE FOR GENTLEMEN from 8/6 to 45/-

## THORNTON & CO.

380 HIGH ST., CHELTENHAM Tel. 2694

FOR  
DEPENDABLE WATERPROOFS and RAINCOATS

# CHANELLE

Ltd.

60/62 The Promenade  
CHELTENHAM

wish to announce that their

# SALE

will commence on

## MONDAY NEXT

(DEC. 7th) at 9 a.m.

THERE WILL BE TREMENDOUS  
BARGAINS... EVERY GARMENT  
MUCH BELOW COST PRICE

LOVELY TWO-PIECES  
trimmed real Fox and  
other real Furs

COATS, SUITS, DAY  
& EVENING GOWNS,  
MILLINERY, JUMPERS  
also large sizes

Our Sale is Genuine—all this Season's goods  
Come Early—and secure a Real Bargain



**MR. WILLIAM WILKS**  
of 246 Gloucester-road, Cheltenham, who died, following a long illness, on Friday, aged 76 years. He was in business with his brother Fred for many years as a fishmonger at 372 High-street, and afterwards both were with Messrs. Barnett and Son, of High-street. He was one of the founder-members of the old Cheltenham Athletic Society.



**MANY HAPPY RETURNS**  
of the day to two of Uncle Charlie's Nephews who celebrate their birthdays this week.  
1.—Gerald Organ, Lilleybrook-lawn, Charlton Kings.  
2.—Peter Williams, 24 Whaddon-avenue.  
"Cheltenham Chronicle" Photographs. Copies 6d. and 1s.

### SHAKESPEARE MEMORIAL THEATRE

Monday, December 7th, for one week  
Nightly at 8.0. Matinees Wed. & Sat. at 2.30

### THE MARKOVA DOLIN BALLET

with MARKOVA and ANTON DOLIN  
Full Symphony Orchestra under Leighton Lucas

PRICES OF ADMISSION 6/- to 1/3 (including tax)  
Box Office Tel.: 2271 and 2272

BOXING DAY & DAILY FOR FOLLOWING WEEK  
Matinees daily at 2.30. Evenings at 8.0

The epic Christmas play  
"PETER PAN"  
Admission: 7/6 to 1/6

GOOD SERVICES OF TRAINS BY G.W.R.  
You can lunch or dine in the theatre by giving previous notice. Fully licensed for Theatre Patrons.

Printed and Published as a Gratis Supplement by the Cheltenham Newspaper, Co., Ltd.

# THE CHELTENHAM CHRONICLE AND GLOUCESTERSHIRE GRAPHIC

With Which is Incorporated the "Cheltenham Looker-On."  
SATURDAY, DECEMBER 12, 1936.

GRATIS SUPPLEMENT  
No. 1876.

## THE OPERA HOUSE

Next Week:—Continuous performance 2.15 till 10.30. Wheeler and Woolsey in "SILLY BILLES," with Dorothy Lee, a comedy of the Pioneering West; also Patric Knowles, Beatrix Thomson in "CROWN v. STEVENS," an amazing and thrilling mystery drama; "Zealand the Hidden Paradise," an interesting coloured film, and the Latest News.

## PALACE

Mon., Dec. 14th, and Week  
GORDON HARKER & NED SPARKS in

### "TWO'S COMPANY" (U)

with Mary Brian, Gib McLaughlin, Morton Sellen

At 3.38, 6.31, 9.24 Daily  
Also CHARLIE CHASE and PATSY KELLY in

### "KELLY THE SECOND" (U)

21st Dec. and Week:  
Melvyn Douglas & Mary Astor

### "AND SO THEY WERE MARRIED" (U)

## THE DAFFODIL

Phone CHELTENHAM 3360  
2.15 Continuous 10.30

Mon., Dec. 14th, Tues. & Wed.  
ANNE SHIRLEY in a charming human story

### "CHATTERBOX"

Also Walter Able in "TWO IN THE DARK" Thurs., Fri., and Sat.

### "THE HOUSE OF FATE"

with Preston Foster and Margaret Callahan

Also Gene Raymond and Wendy Barrie in "LOVE ON A BET"

## THANK GODNESS FOR A WARM FIRE!

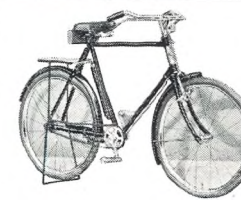


Phone 3605  
NOW and be sure of one

A. RICHES & Co.  
REGENT ST., CHELTENHAM.



**MISS FENWICK MARRIED IN LONDON**  
The wedding took place at St. Mary's Church, Bryans-tone-square, London, on Saturday, of Miss Constantia Pamela Fenwick, daughter of Mr. Mark Fenwick, of Abbotswood, Stow-on-the-Wold, and Mr. Ralph Arnold, son of Mr. and Mrs. N. A. Arnold, of Meopham Court, Meopham, Kent. The bridal pair leaving the church.



## The SPA Bicycle

UNEQUALLED VALUE

Gent's Roadster ..... £2-19-6  
Lady's Model ..... £3- 5-0  
Juvenile Model ..... £2-15-0  
or 2/- weekly.

CHELTENHAM CYCLE CO.,  
82 STRAND

## COLISEUM

CHELTENHAM.  
Week 14th Dec. From 2.15.

### DRAMA! COMEDY! ROMANCE! "A MESSAGE TO GARCIA"

A fine picture with a great cast.  
WALLACE BEERY  
BARBARA STANWYCK  
JOHN BOLES

(Times: 3.30, 6.15, 9.0)  
Also

### "Here Comes Trouble"

Unlimited laughter and thrills  
with Paul Kelly & Arline Judge  
(Times: 2.15, 5.0, 7.40)  
Movietone News (Times: 3.15  
6.0 8.40).

## WINTER GARDEN

### THEATRE

CHELTENHAM.

Monday, December 14th  
Every Evening at 8 o'clock

Matinees Thurs. and Sat. at 2.30 p.m.

The Cheltenham Repertory Company, Limited, present under the direction of

Ellen Compton,  
"I LEAVE IT TO YOU"

By Noel Coward  
Prices 1/3, 2/6, 3/6. All seats may be booked in advance.

Box Office open 10 a.m. to 8 p.m. Phone 2058.

Join the Cheltenham Repertory Association.

Monday, Dec. 21st—  
"AMBROSE APPLEJOHN'S ADVENTURE"

by Walter Hackett

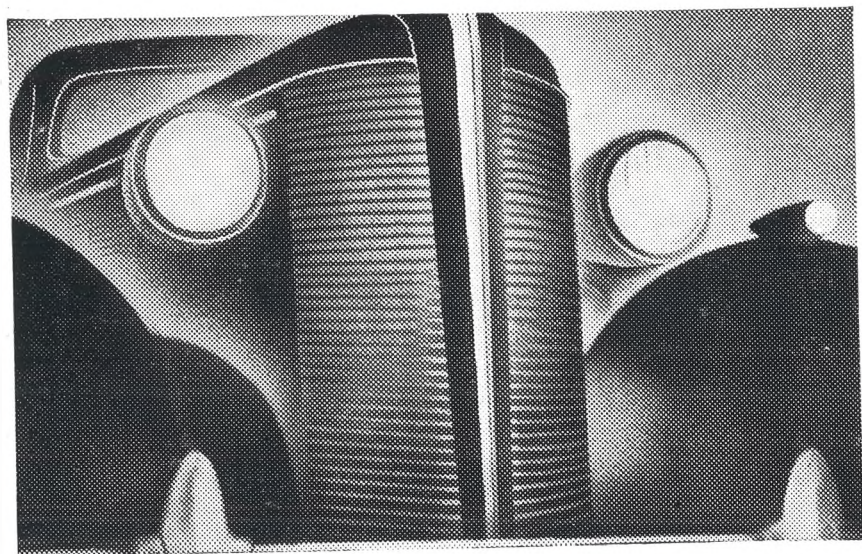
BEAUTIFUL MEMORIALS  
E. A. EMMS  
HALES ROAD CHELTENHAM  
Tel. 2391. Est. over 50 years.

# DALE, FORTY and Co. Ltd. for the BEST PIANOS



**BUILDING COMMITTEE OF NEW EMMANUEL CHURCH, CHELTENHAM.**—Rev. H. D. Peel, Mr. H. Newman, Mr. W. L. Mellersh, Ven. F. W. Sears, Miss Bowers, Mr. B. C. Cypher, Rev. E. C. Hanson.

WHEN BETTER CARS ARE BUILT BUICK WILL BUILD THEM



**the new Buicks** are the logical

development of the first car Buick ever built—a car

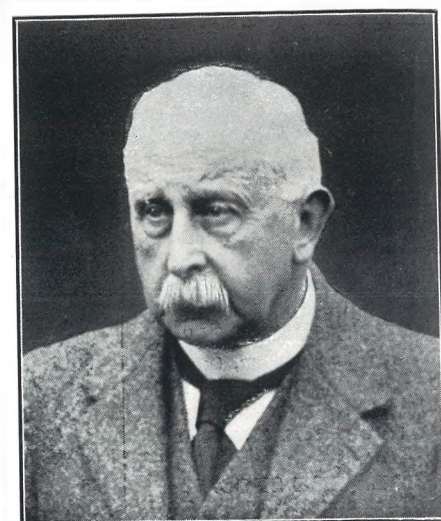
which we are still proud of to-day, for it embodied

the essential qualities which have made the name

Buick famous. Since then countless improvements have

been made, but one thing could not be improved...

one thing cannot be copied...the fact that it is a BUICK.



**MR. CHARLES J. TINSON**

of The Cleavelands, Cheltenham, who died on Sunday, aged 86 years. He was for 25 years the treasurer of the local Primrose League, and for many years chairman of Prestbury Parish Council. He also served on many other local bodies. His wife predeceased him in July, 1935.



**MISS GERTRUDE A. SAWYER,** daughter of Ald. W. Sawyer, of Cheltenham, who died in St. Bartholomew's Hospital, London, from blood poisoning. For the past 25 years she had been on the staff of Messrs. Gosling and Son, George-street, Richmond.

A REGAL CAR **BUICK** OF CANADA

**Distributors:**  
**HAINES & STRANGE, 99 HIGH STREET, CHELTENHAM**



**TRAINING COLLEGE PRACTISING SCHOOL OLD BOYS' ASSOCIATION ANNUAL DINNER**  
Over 200 Old Boys of the above association sat down to dinner at Boots Cafe under the presidency of Mr. C. M. Gwilliam, the president of the association. Chief guests of the evening were the Mayor of Cheltenham (Councillor D. L. Lipson), Councillor P. P. Davis, Mr. W. Turner Long (education secretary), and the Practising School managers.  
Top.—Some of the members present. Bottom.—Members and guests at the top table.

**MARTIN & CO., LTD.**

The County Jewellers

**DIAMOND**

**WRISTLET**

**WATCHES**

from £10 to £150

Promenade

::

Cheltenham

Established 1806

Telephone 2821





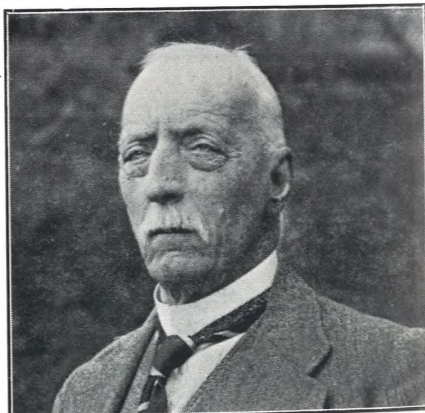
**GLOUCESTERSHIRE BOWLS TEAM.—WINNERS OF THE MIDDLETON CUP AND ENGLISH CHAMPIONS.**  
Scenes of great enthusiasm were witnessed at the Holborn Restaurant, London, on Saturday evening, when the successful Gloucestershire team was presented with the Middleton Cup and medals at the annual dinner of the E.B.A. This is the first time the county have ever won the cup. The team and officials.



**CHELTENHAM CONSERVATIVE CLUB ANNUAL DINNER**  
A section of the Empire Hall on Friday night, when it was packed for the annual dinner. Some well-known faces.



**CAVENDISH HOUSE STAFF DANCE. THE COMMITTEE**  
A most successful dance was held on Friday evening at the New Catholic School Rooms. Standing: Messrs. P. Barnett, H. J. Alden, E. G. Smith. Seated: S. G. Brooks, Mrs. A. C. Hopkins, Mr. A. Bayston (managing director), Mrs. A. Bayston, Mr. A. C. Hopkins (assistant manager).



**COL. G. E. B. BEALE-BROWNE, J.P.** of The Court, Withington, who died on Monday, in his 87th year. He entered the Army in 1871, and served in Ashanti in 1873-4. He was believed to be the last survivor of that expedition.

**Christmas Gifts in Solid and Fancy Leather**  
DRESSING ROLLS, SEAT STICKS, HUNTING CROPS, SUIT AND ATTACHE CASES, HANDBAGS, BLOUSE AND MUSIC CASES, FOLIOS, WALLETS, PURSES, GLOVES, BRUSH SETS, SHAVING BRUSHES, RAZOR STROPS, etc.  
**STEPHENS & SON** 83 Winchcombe Street  
Tel. CHELTENHAM 4936



**CIRENCESTER CHRISTMAS FAT STOCK SHOW AND SALE**

There was a large number of entries for the annual fat stock show and sale at Cirencester Christmas Market on Monday, and the quality of exhibits was exceptionally high.

- 1.—Mr. C. Allen selling the champion beast (Mr. E. G. Clifford's Short-horn steer).
- 2.—Mr. Jack King, cattle judge, is second from right.
- 3.—Mr. J. Goodworth and Major T. H. Robinson.
- 4.—Mr. Redman, Mr. W. T. Bowles, and Mr. F. T. King.
- 5.—Mr. W. T. Jones.
- 6.—Mr. D. Keylock.
- 7.—Messrs. J. Pearce, C. Allen and G. W. White.
- 8.—Messrs. D. Clarke, F. Stacey and F. Hill.
- 9.—Mr. E. G. Clifford, who again bred and showed the champion beast. He won last year.
- 10.—The champion beast, Mr. E. G. Clifford's steer.

"Cheltenham Chronicle" Photographs. Copies 1s. and 1s. 9d.

**FURS** **JACOBS & SMITH**  
THE HOUSE FOR FUR WEAR  
THAT IS ALWAYS RELIABLE  
104 HIGH STREET (Opposite Lloyds Bank) CHELTENHAM



**PRETTY WEDDING AT OXENTON**

The wedding took place at Oxenton Parish Church of Mr. Norman George Davis, eldest son of Mr. and Mrs. George Davis, of Greystones, Kemerton, to Miss Joyce Violet Holder, fourth daughter of Mr. and Mrs. Holder, of the Lower Farm, Oxenton. The bridal party. The two bridesmaids are sisters of the bride, and the best man was Mr. F. Taylor. "Cheltenham Chronicle" Photograph. Copies 1s. and 1s. 9d.



**TEWKESBURY HIGH SCHOOL BAZAAR**

A successful bazaar, organised by the headmistress (Miss O. M. Bond, M.A.) and staff, in aid of the school memorial to the late headmistress, was held at the school. It was opened by Mrs. P. Wigan. 1.—Miss S. S. Holmes purchases a pot of jam. 2 and 3.—Some of the scholars who worked for the sale. 4.—Juniors who performed the play "Goblin Market." 5.—Miss Bond (headmistress), left, with Mrs. Wigan who opened the sale. In centre is H. Griffin, who presented a bouquet to Mrs. Wigan.



*Gifts* **HE'LL LIKE**

You Can't go wrong if you make your Christmas gifts "smokes." You will find a very large selection of pipes and all smokers' requisites at--

**ROBERTSON'S**

The Promenade Tobacconists,  
10 THE PROMENADE, TEL. 4285

We shall be pleased to post off for you the special gift packing of popular brands of cigarettes and cigars. Just call in now and arrange it.



**IDEAL GIFTS**

A more acceptable gift than these beautifully made and specially choice gloves cannot be imagined... All popular furs are included in our large selection — DARK AND GOLD BEAVER, CHINCHILLA, SQUIRREL, OCELOT, and BLACK SEAL CONEY. Lined throughout with fur to tone.



**LADIES' FUR GLOVES**

21/9 In Nutria, Beech & Grey Lamb, 18/9  
In colours ..... 25/6

ALSO IN MANY FURS SUITABLE FOR GENTLEMEN from 8/6 to 45/-

**THORNTON & CO.**

380 HIGH ST., CHELTENHAM Tel. 2694

FOR **DEPENDABLE WATERPROOFS and RAINCOATS**

**AS HISTORY REPEATS — SO DO CUSTOMS**

Once again 'ROAST BEEF OF ENGLAND' is the popular choice for the Old Fashioned Christmas Dinner

HOLLIDAY and PAGE, Ltd., are now holding their fine display of well chosen BEEF, MUTTON, PORK and VEAL, for this festive occasion, and you cannot do better than place your orders with this old established firm, who have been supplying Christmas Dinners for over 120 years. Please write, 'phone or call as early as possible, whereby giving us the maximum of time to carefully select your joint. Deliveries will made to all parts of the town and district.

**HOLLIDAY & PAGE, LTD.,**

11 Pittville Street and 348 High St., Phone 3433 High Class English Butchers 4 Queen's Circus, Montpellier Phone 3432



TRAINING COLLEGE PRACTISING SCHOOL OLD BOYS' ASSOCIATION ANNUAL DINNER. Some of those attending.

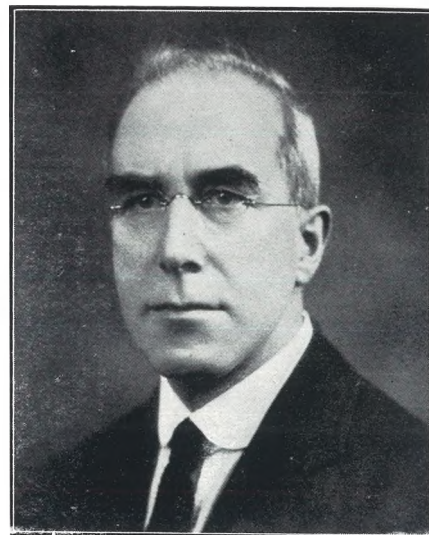


## Whether it be Mansion, Villa or Bungalow,

We can build it for you as it ought to be built. The proof of our work is the confidence placed in us by people who have bought houses on the many estates we have developed locally, and are constantly recommending their friends to follow their example. Above we illustrate a detached bungalow just erected on our Grove Estate, Hale's Road. This costs £1,250 and was built for a client for whom we have already built two houses. Any type of house can be built to your own requirements and we have many delightful plans available for your assistance. In every one of these, however, the chief feature is ease of running, combined with outside and inside charm of appearance, so that you have a home which looks good and is good. Our manager of the estate (telephone 4529) is always glad to see enquirers and answer any questions. For the building of houses on your own land, or any other work of this description, including repairs and decorations, we have recently opened a Cheltenham depot under the charge of Mr. Frank Griffiths, and are always at your service (telephone 4194). Just now we have a particularly attractive lot of grates and surrounds on view in our showrooms.

### WHEELER & MANSELL, Ltd.

Painswick Road, Cheltenham  
Head Office, Evesham (Phone 6096)



MR. WILLIAM J. BROWN

of Dovedale House, St. Luke's, Cheltenham, who died in the General Hospital, Cheltenham, aged 62 years. He was a much esteemed member of the choir of All Saints' Church for 46 years, and one of the Lyric Glee Singers for some years. He was employed for many years as an ecclesiastical worker with Messrs. R. L. Boulton and Sons, sculptors, Cheltenham.

### SHAKESPEARE MEMORIAL THEATRE

#### CHRISTMAS

BOXING DAY at 2.30 and 8.0  
Mon. to Sat. following at 2.30 & 8.0  
*The Epic Christmas Attraction*

### PETER PAN

DINAH SHERIDAN ..... Peter Pan  
GEORGE HAYES ..... Capt Hook and Mr. Darling

DIANA SINCLAIR-HILL ..... Wendy  
A replica of the London Palladium Production.

Prices of Admission 7/6 to 1/6. Tel. 2271  
GOOD SERVICES OF TRAINS BY G.W.R.  
You can lunch or dine in the theatre by giving previous notice. Fully licensed for Theatre Patrons.

Printed and Published as a Gratis Supplement by the Cheltenham Newspaper, Co., Ltd.

# THE CHELTENHAM CHRONICLE AND GLO' SHIRE GRAPHIC

With Which is Incorporated the "Cheltenham Looker-On"  
SATURDAY, DECEMBER 19, 1936.

GRATIS SUPPLEMENT  
No. 1877.

## THE OPERA HOUSE

Next Week:—THEATRE CLOSED, RE-OPENING on Boxing Day, December 26th. 2.30 TWICE DAILY 7.30—GRAND XMAS PANTOMIME "JACK AND JILL." Magnificent Scenery, Gorgeous Dresses, Novel Specialities. Box Office Open Daily 10 a.m. till 9.30 p.m. Tel. 5144-5.

## PALACE

HEAR. "Phone 2553. HERE  
2.0 Continuous 10.30  
Mon., 21st Dec., and Week.  
(Not Xmas. Day)  
Melvyn Douglas and Mary Astor in  
"AND SO THEY WERE MARRIED" (U)  
with Edith Fellows and Jackie Moran  
(At 3.35, 6.35, 9.31 Daily)  
Also Will Fyffe in  
"DEBT OF HONOUR" (A)  
Special Children's Performance on Boxing Morning at 10.30.  
Prices: Hall Floor 4d. (adult 6d.)  
Balcony (all 9d.)  
Mon., 28th, for 5 days  
"SMALL TOWN GIRL"  
Thurs., 31st  
"LITTLE LORD FAUNTLEROY"

## THE DAFFODIL

'Phone CHELTENHAM 3360  
2.15 Continuous 10.30  
Mon., Dec. 21st, for One Week.  
Leslie Howard and Kay Francis  
in one of the Screen's most powerful stories,  
"BRITISH AGENT"  
Also Robert Young and Betty Furness  
in a great story of confidence tricksters,  
"THREE WISE GUYS"  
Week Dec. 28th—  
Ronald Colman & Jack Hulbert

## DON'T FORGET

You'll need a Good Fire at Xmas!



'Phone 3605 and order Now. 5 cwts. of RYDER REX Screened Cobbles will cost you only 12/6 delivered—cash discount.

A. RICHES & Co.  
REGENT ST., CHELTENHAM.



### HIS MAJESTY KING GEORGE VI.

who was proclaimed on Saturday, the ceremony taking place in Cheltenham, Gloucester, Cirencester and Tewkesbury on Monday.



### The SPA Bicycle UNEQUALLED VALUE

Gent's Roadster ..... £2-19-6  
Lady's Model ..... £3- 5-0  
Juvenile Model ..... £2-15-0  
or 2/- weekly.

CHELTENHAM CYCLE CO.,  
82 STRAND

## COLISEUM

Dec. 21st and week (closed Xmas Day). From 2.15 p.m.  
Boxing Day from 1 p.m.  
Music! Song! Dance!

### "COLLEEN"

Superb Entertainment  
with Dick Powell, Jack Oakie, Joan Blondell, Ruby Keeler, Hugh Herbert, Louise Fazenda.  
(Times 3.20, 6.5, 8.50)  
Also Dick Foran,  
the Singing Cowboy, in  
"TREACHERY RIDES THE RANGE"  
(Times 2.15, 5.0, 7.35)

## WINTER GARDEN THEATRE CHELTENHAM.

Mon., Dec. 21st, for two weeks

Every Evening at 8 o'clock  
Matinees Thurs. and Sat. at 2.30 p.m.

The Cheltenham Repertory Company, Limited, present under the direction of

Ellen Compton,

### "AMBROSE APPLEJOHN'S ADVENTURE"

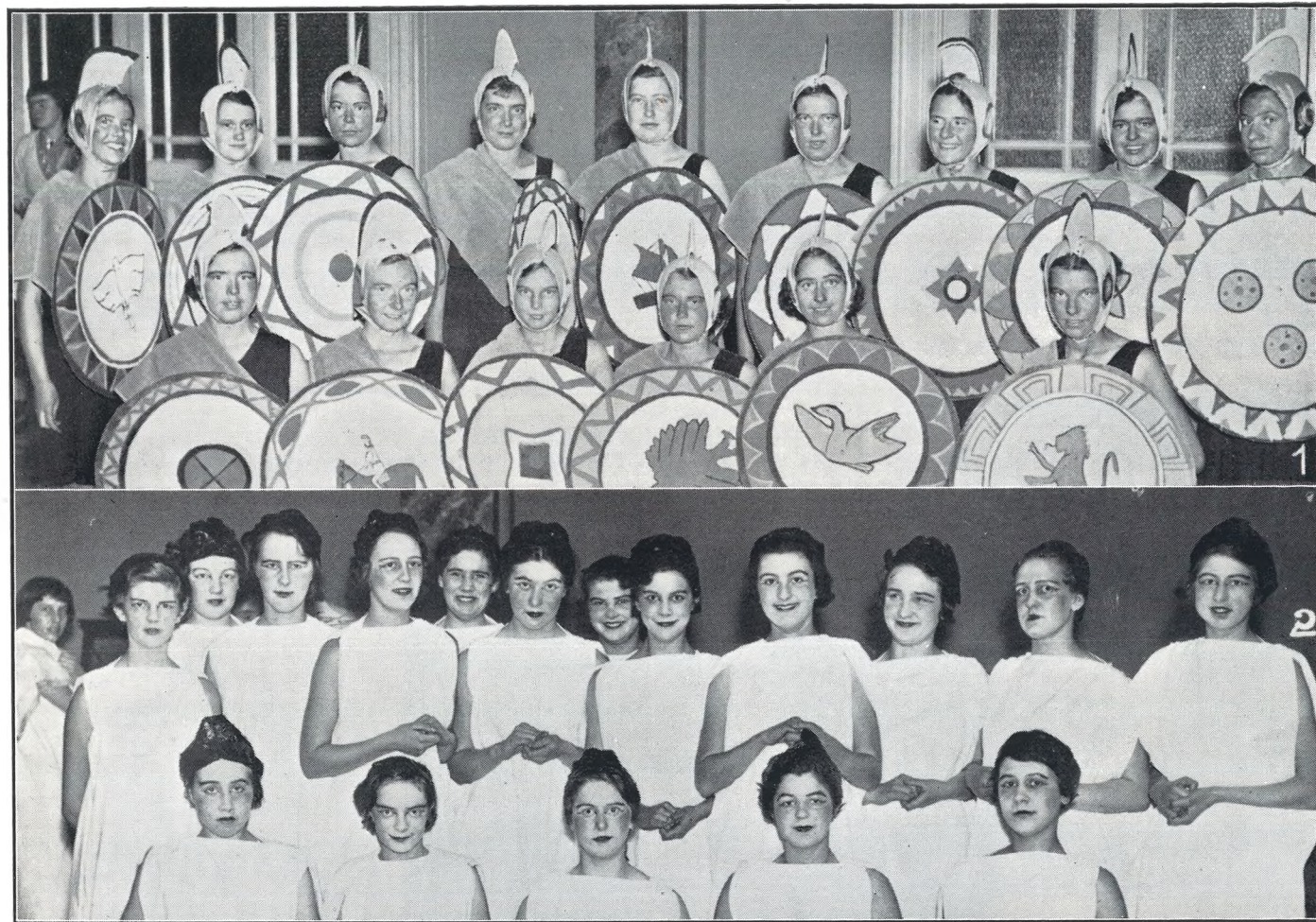
by Walter Hackett

Prices 1/3, 2/6, 3/6. All seats may be booked in advance.  
Box Office open 10 a.m. to 8 p.m. 'Phone 2058.

Join the Cheltenham Repertory Association.

BEAUTIFUL MEMORIALS  
E. A. EMMS  
HALES ROAD CHELTENHAM  
Tel. 2391. Est. over 60 years.

# DALE, FORTY and Co. LTD for the BEST PIANOS



**PATE'S GRAMMAR SCHOOL FOR GIRLS PUPILS IN A COMIC OPERA.**

A feature of the Speech Day proceedings was the performance of a comic opera, "The Queen of Carthage," by the pupils.

- 1.—Members of chorus—"Trojans." 2.—Priestesses in chorus.  
 "Cheltenham Chronicle" Photographs. Copies 1s. and 1s. 9d.

**MARTIN & CO., LTD.**

The County Jewellers

IDEAL CHRISTMAS PRESENTS

High grade

**WATCHES**

by

LONGINES — ZENITH — ROLEX

Promenade

::

Cheltenham

Established 1806

Telephone 2821



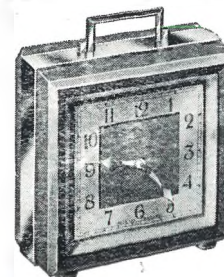
**TEWKESBURY CHRISTMAS FAT STOCK MARKET.**

- A large number of farmers and buyers attended the annual Christmas Market at Tewkesbury.
- 1.—Judging the sheep. The judges of sheep and calves were Councillor Ben James and Councillor S. Rogers, of Cheltenham. 2.—Messrs. Geo. Travess, J. Morris and Gil Smith.
- 3.—Messrs. C. Waltham and W. G. Jackson. 4.—Mr. J. H. Jackson with his champion beast, a polled Angus steer. 5.—Mr. G. L. Hone, the auctioneer, and Mr. H. Byrd, cattle judge.
- 6.—Messrs. R. A. Horlick and D. Davies (stewards). 7.—Mr. T. Elkerton. 8.—Mr. A. Warner. 9.—Mr. E. Ward. 10.—Messrs. E. Walker and P. Nind.



**"JULIUS CAESAR" BY TEWKESBURY GRAMMAR SCHOOL PUPILS.**

Some 50 scholars of above school gave four very capable performances of Shakespeare's "Julius Caesar" at the Watson Memorial Hall, on Thursday, Friday and Saturday. The performers grouped on the stage.



There's a wonderful selection of  
**USEFUL ELECTRICAL GIFTS**

in our Showrooms:

**R. E. & C. MARSHALL, Ltd.** 5 CLARENCE ST. TEL. CHELTENHAM 2351



**PROCLAMATION OF KING GEORGE VI. IN CIRENCESTER MARKET PLACE.**

The scene in the Market Place at Cirencester on Monday at the Proclamation, read by the Deputy High Steward (Mr. H. St. G. Rawlings).

- 1.—The council members and officials. Earl Bathurst is on extreme right. 2.—Some of the schoolboys in the crowd. 3 and 4.—Councillors and officials.

"Cheltenham Chronicle" Photographs. Copies 1s. and 1s. 9d.



**PROCLAMATION OF THE KING IN TEWKESBURY.**

The Mayor of Tewkesbury, Councillor S. C. J. Moulder, reading the Proclamation at the Town Hall. Mr. H. A. Badham (Town Clerk) wearing wig on left; and Alderman A. Baker is between them.

"Cheltenham Chronicle" Photograph. Copies 1s. and 1s. 9d.

**Christmas Gifts in Solid and Fancy Leather**

DRESSING ROLLS, SEAT STICKS, HUNTING CROPS, SUIT AND ATTACHE CASES, HANDBAGS, BLOUSE AND MUSIC CASES, FOLIOS, WALLETS, PURSES, GLOVES, BRUSH SETS, SHAVING BRUSHES, RAZOR STROPS, etc.

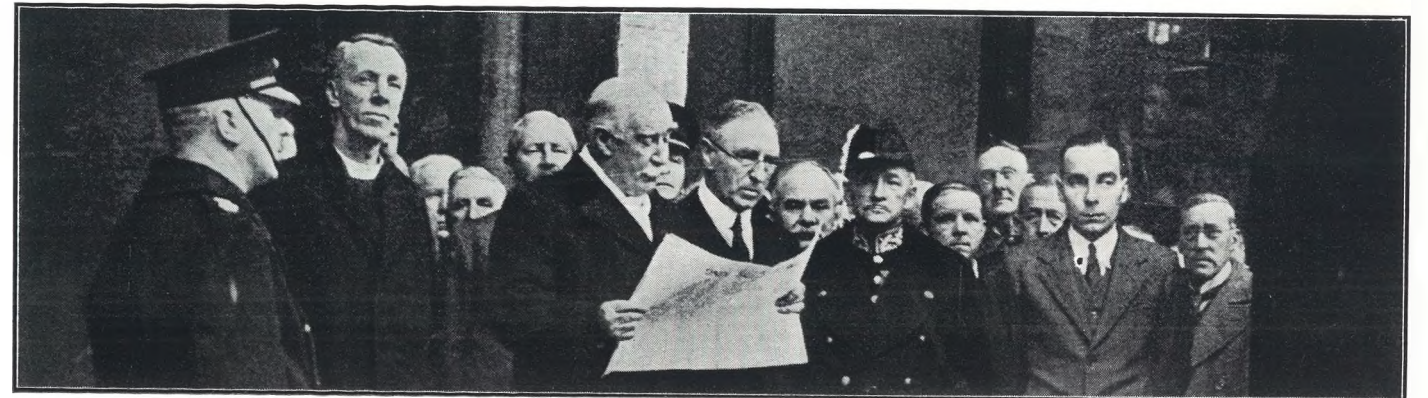
**STEPHENS & SON** 83 Winchcombe Street  
The Saddlers CHELTHENHAM



**PROCLAMATION OF KING GEORGE VI IN CHELTHENHAM.**

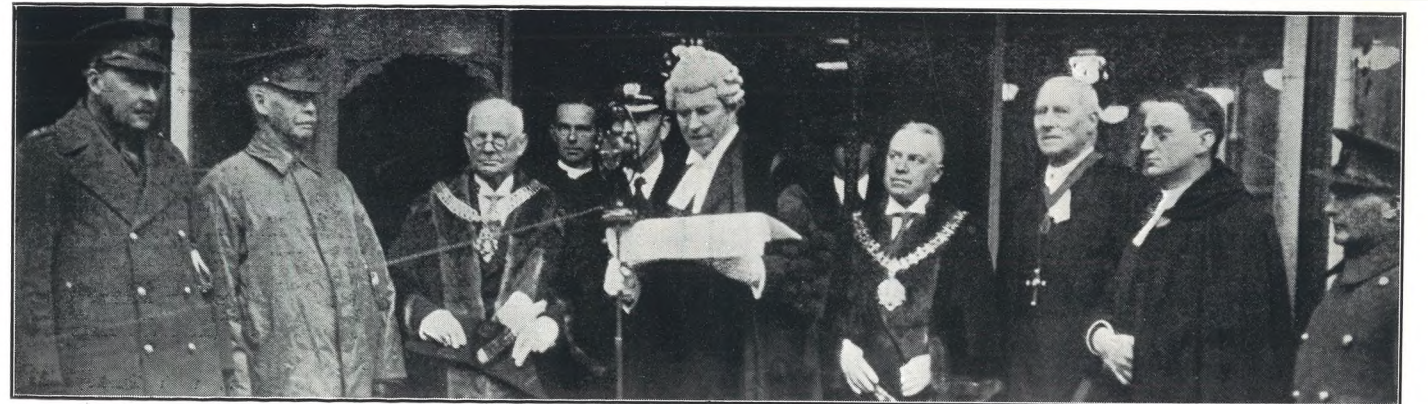
Owing to the severity of the weather, the Proclamation of the King in Cheltenham was held inside the Town Hall, about 400 spectators being present. The Mayor (Councillor D. L. Lipson), who read the Proclamation, with the Town Clerk and members of the Council on the platform.

"Cheltenham Chronicle" Photograph.



**THE COUNTY PROCLAMATION OF THE KING**

Mr. S. S. Marling (County High Sheriff) reading the proclamation from the Shire Hall steps, Gloucester, on Monday.



**PROCLAMATION OF THE KING IN GLOUCESTER**

The Town Clerk of Gloucester reading the proclamation in Southgate-street. From left are Col. F. L. Pardoe, Col. F. K. S. Metford, The Mayor (Ald. H. Harmer), The Town Clerk (Mr. L. O. Need), City High Sheriff (Mr. G. Trevor Wellington), The Bishop of Gloucester, Rev. P. Usher.

Special Engagement of  
DANCE BAND of the 3rd  
**THE KING'S  
OWN HUSSARS**

CHELTHENHAM  
**HOSPITALS' BALL**  
TOWN HALL. Thursday, Dec. 31st. 1936. 9 to 3

Tickets 15/- each  
(including Supper & Buffet)  
from: Mrs. Weech, Green-  
fields, The Park, Cheltenham,  
Tel. 3116, or Town  
Hall Bureau, Cheltenham,  
Tel. 2878.



**CHEL TENHAM BRANCH OF BRITISH LEGION ANNUAL DINNER**

Major-General Sir Frederick Maurice, K.C.M.G., C.B., was the principal speaker at above dinner.  
 1 and 2.—Sections of the tables at dinner. Major-General Sir F. Maurice, K.C.B. (chairman); behind  
 3.—Mr. I. D. Yeaman. Major F. L. Stanley-Clarke, Major H. S. L. Wolley.  
 4.—The top table, from left.— Admiral O.B.E., The Mayor of Cheltenham, Maj.-Gen. Sir Henry Thuillier, and Major S. E. Baker.  
 5.—Mr. J. C. Gurney, Mr. L. Sharpe, and Major S. E. Baker.



*Gifts* **HE'LL LIKE**

You Can't go wrong if you make your Christmas gifts "smokes." You will find a very large selection of pipes and all smokers' requisites at—

**ROBERTSON'S**

The Promenade Tobacconists,

10 THE PROMENADE,

TEL. 4285

We shall be pleased to post off for you the special gift packing of popular brands of cigarettes and cigars. Just call in now and arrange it.



**SPEND A HAPPY CHRISTMAS**

**IN CHELTENHAM**

**SATURDAY, DEC. 19**

Children's Fancy Dress Tea Dance. Valuable Prizes for children up to and including 8 years of age. Special Cabaret for children provided by the Dancing School of Miss Joan Stephens. 5 to 6 p.m. 2/6 (including tea). Spectators' Balcony 1/-  
 Municipal Dance. Buffet and Grill Suppers. 8 p.m. to Midnight. 2/6 (evening dress).

**SUNDAY, DEC. 20**

Spa Orchestra at 8 p.m., directed by Arthur Cole, with Ronald Gourley, the well-known Broadcasting Entertainer. 1/-, 9d. and 6d. (Reserved seats 2/-)

**WEDNESDAY, DEC. 23**

Turkey Dance, 8 p.m. to 2 a.m., with Turkeys as Spot Prizes, etc. Bar and Buffet. 2/6

**SATURDAY, DEC. 26 (BOXING DAY)**

Meet of the Cotswold Hounds in the Promenade, followed at the Town Hall by a

Boxing Day Morning Concert, with Orchestra and Percy Owens, Entertainer. 11 a.m. to 12.30 p.m. Admission 6d. to all parts. Coffee and Light Refreshments available during the Concert.

Tea Dance and Cabaret, 3 to 6 p.m. 2/6 (including tea). Spectators' Balcony 1/-

Boxing Day Carnival Ball, with a special variety or cabaret act. Carnival Novelties. Bar, Buffet, and Grill Suppers. 7 p.m. to midnight. 5/-

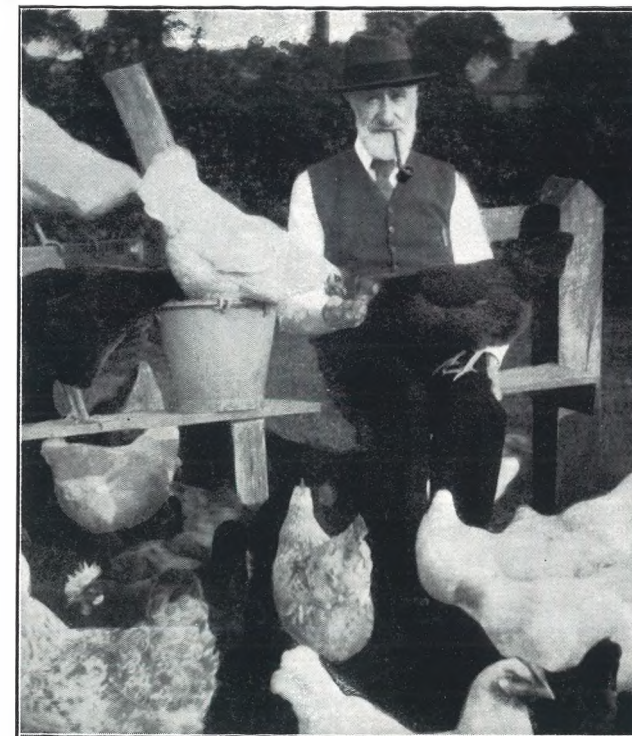
**SUNDAY, DEC. 27**

Spa Orchestra at 8 p.m., directed by Arthur Cole, with John Lewis, the well-known Covent Garden Tenor, who has also recorded with Richard Tauber in his new film "Pagliacci." 1/-, 9d. and 6d. (Reserved seats 2/-). **TOWN HALL**



**PRETTY WEDDING AT SHURDINGTON.**

The wedding took place at Shurdington Church on Saturday afternoon of Mr. Harry Pockett, son of the late Mr. George Pockett and of Mrs. Pockett, of 57 Moored-road, Leckhampton, to Miss Gladys May Morgan, daughter of Mr. Thomas Morgan, of Hiriwain, Cromwell-road, Cheltenham. The bridal party at the reception.

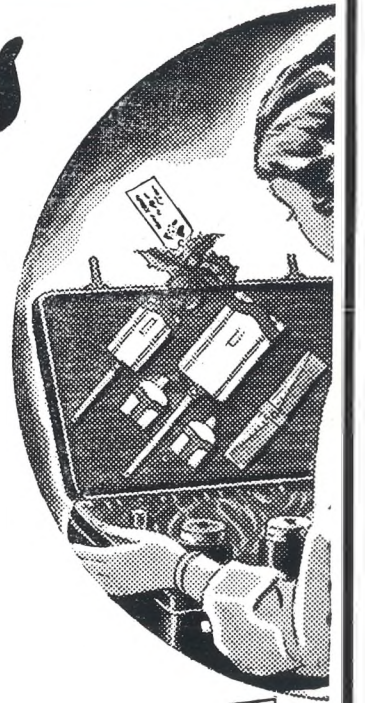


**MR. WILLIAM BLAKE,**

of The Portland Stores, Pittville, who died at the age of 83 years. He was very fond of his fowls, and had tamed them to eat out of his hand. This photograph was taken during the past summer. He was a member of Salem Church for many years and had been in business as a grocer for more than 50 years.

*Gifts*

There is something distinctive about a gift from Bick Bros. — a pleasant individuality you seem to get nowhere else . . . and yet it need not be expensive. Won't you come and look round . . . choose your gifts at your leisure . . . our show-rooms and windows are full of ideas in **FANCY LEATHER GOODS.**



**BICK BROS.**

MONTPELLIER WALK CHELTENHAM

**FURS**

**JACOBS & SMITH**

KNOW THE PLEASURE OF A GOOD FITTING FUR COAT—WE SELL IT!

104 HIGH STREET (Opposite Lloyds Bank) CHELTENHAM



## TALK IT OVER AT CHRISTMAS!

The question of buying a house is one which may very well be discussed at Christmas time, for the New Year provides such an excellent opportunity to make a start. There are so many people who are concerned in matters of this nature. Father and Mother, perhaps—all the family have flown, and Mother, although she says nothing, would find it such a relief to be in a really up-to-date, labour-saving house—a Wheeler and Mansell built one for choice. Father will be retiring in a year or two and would take such a pride in keeping up the garden, for the Wheeler and Mansell estates are so delightfully laid out that everyone seems to vie with each other in keeping things spick and span. Wheeler and Mansell houses look good, and are good, you know.

And you, young lady and gentleman, looking forward to being married next year, make up your mind to have a Wheeler and Mansell house. Those being erected on the Grove Estate, Hale's-road, for instance, have every modern convenience, and are in a nice district within easy access to town. You want to start right, so take a look round the Eldon Road Estate which this firm has just completed, and get an idea what your house can be like. Yes, and ask the people who live there what they think of Wheeler and Mansell houses. Don't make the mistake of paying rent—it's so much better to buy your own house, and Building Society terms are so easy. Our Estate Manager is always glad to see enquirers and answer questions (phone 4529).

For the building of houses on your own land, or any other work of this description, including repairs and decorations, we have recently opened a Cheltenham depot under the charge of Mr. Frank Griffiths, and are always at your service (Telephone 4194). Just now we have a particularly attractive lot of grates and surrounds on view in our showrooms.

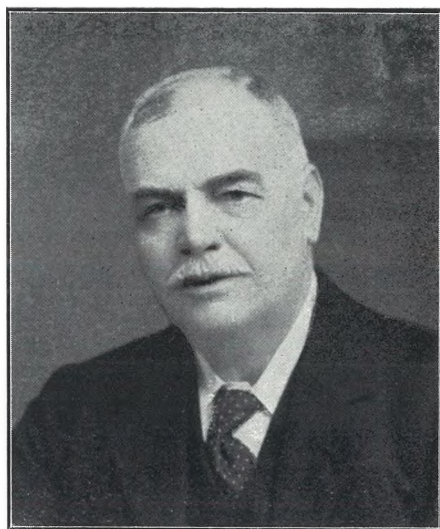
# WHEELER & MANSELL, Ltd.

Painswick Road, Cheltenham



**of PARAGON GARAGE**  
Bath Road, CHELTENHAM

*gives complete & personal service to motorists & particular care & attention TO BEGINNERS*



**MR. GEO. WM. BRACE**  
of 15 Park-place, Cheltenham, who died suddenly on Friday night, after listening to the ex-King's broadcast. He was 82 years of age and was very well-known in Cheltenham and Gloucester. He was a director of the Gloucester Shirt Company, but had retired for seven years.



**MR. A. J. HYATT**  
of 2 Portland-terrace, Cheltenham, who died at his home aged 72 years. He was a builder and decorator, and was for many years people's warden of Trinity Church.

### SHAKESPEARE MEMORIAL THEATRE

**CHRISTMAS BOXING DAY AND DAILY UNTIL JAN. 2.**  
EVERY DAY at 2.30 and 8.0.

## PETER PAN

**Dinah Sheridan George Hayes**  
Diana Sinclair-Hill. Prices 7/6 to 1/6  
Telephone 2271-2272.

**Jan. 11th for ONE WEEK.**  
Prices 6/- to 1/3.

*The Greatest Farical Comedy*  
**CHARLEY'S AUNT**

GOOD SERVICES OF TRAINS BY G.W.R.  
You can lunch or dine in the theatre by giving previous notice. Fully licensed for Theatre Patrons.

Printed and Published as a Gratis Supplement by the Cheltenham Newspaper, Co., Ltd.

# THE CHELTENHAM CHRONICLE AND GLOUCESTERSHIRE GRAPHIC

With Which is Incorporated the "Cheltenham Looker-On." SATURDAY, DECEMBER 26, 1936. GRATIS SUPPLEMENT No. 1878.

## THE OPERA HOUSE

Commencing Boxing Day, Dec. 26th, for a Short Season. 2.30 TWICE DAILY 7.30. GRAND XMAS PANTOMIME, "JACK AND JILL." The Biggest and Finest Pantomime ever Staged in Cheltenham. The Greatest Event of the Year.

Box Office open Daily 10 a.m. till 9.30 p.m. Telephone 5144-5.

## PALACE

Phone 2555 HERE  
1.30 Continuous 10.30  
Mon. 28th Dec., for 3 days  
**JANET CAYNOR and ROBERT TAYLOR** in  
"SMALL TOWN GIRL" (A)  
(At 2.51, 5.56, 9.4 Daily)  
Also **Ralph Bellamy and Fay Wray** in  
"ROAMING LADY" (A)  
Thurs., 31st Dec., for 9 days  
**FREDDIE BARTHOLOMEW** in  
"Little Lord Fauntleroy" (U)  
(At 3.5, 6.2, 9.2 Daily)  
Also **Tom Tyler** in "Rio Rattler"  
(u)  
Special Children's Performance on Saturday morning (2nd) at 10.15 a.m. Doors at 9.45 a.m.  
Prices: Hall Floor 4d. (adult 6d.) Balcony ALL 9d.

## THE DAFFODIL

Phone CHELTENHAM 3360  
2.0 Continuous 11 p.m.  
Mon., Dec. 28th, for One Week  
**Gigantic Holiday Show**  
**RONALD COLMAN and LORETTA YOUNG** in  
"CLIVE OF INDIA"  
and **Jack Hulbert** with  
**Robertson Hare** in  
"JACK OF ALL TRADES"  
3 Hours of Glorious Entertainment for all.



*A Merry Christmas*

We would like to take this opportunity of wishing you all a very MERRY CHRISTMAS.  
**A. RICHES & Co.**  
"The Coal People."  
REGENT ST., CHELTENHAM.



**WINNERS AT CHILDREN'S TEA-DANCE**  
The first prize girl and first prize boy at the Municipal Fancy Dress Tea Dance at the Cheltenham Town Hall on Saturday. **Avril Brasher** as Little Bo-peep, and **Ian George Barnett** as a Pirate.  
"Cheltenham Chronicle" Photograph. Copies 1s. and 1s. 9d.



**The SPA Bicycle**  
UNEQUALLED VALUE  
Cent's Roadster ..... £2-19-6  
Lady's Model ..... £3- 5-0  
Juvenile Model ..... £2-15-0  
or 2/- weekly.  
**CHELTENHAM CYCLE CO.,**  
82 STRAND

## COLISEUM

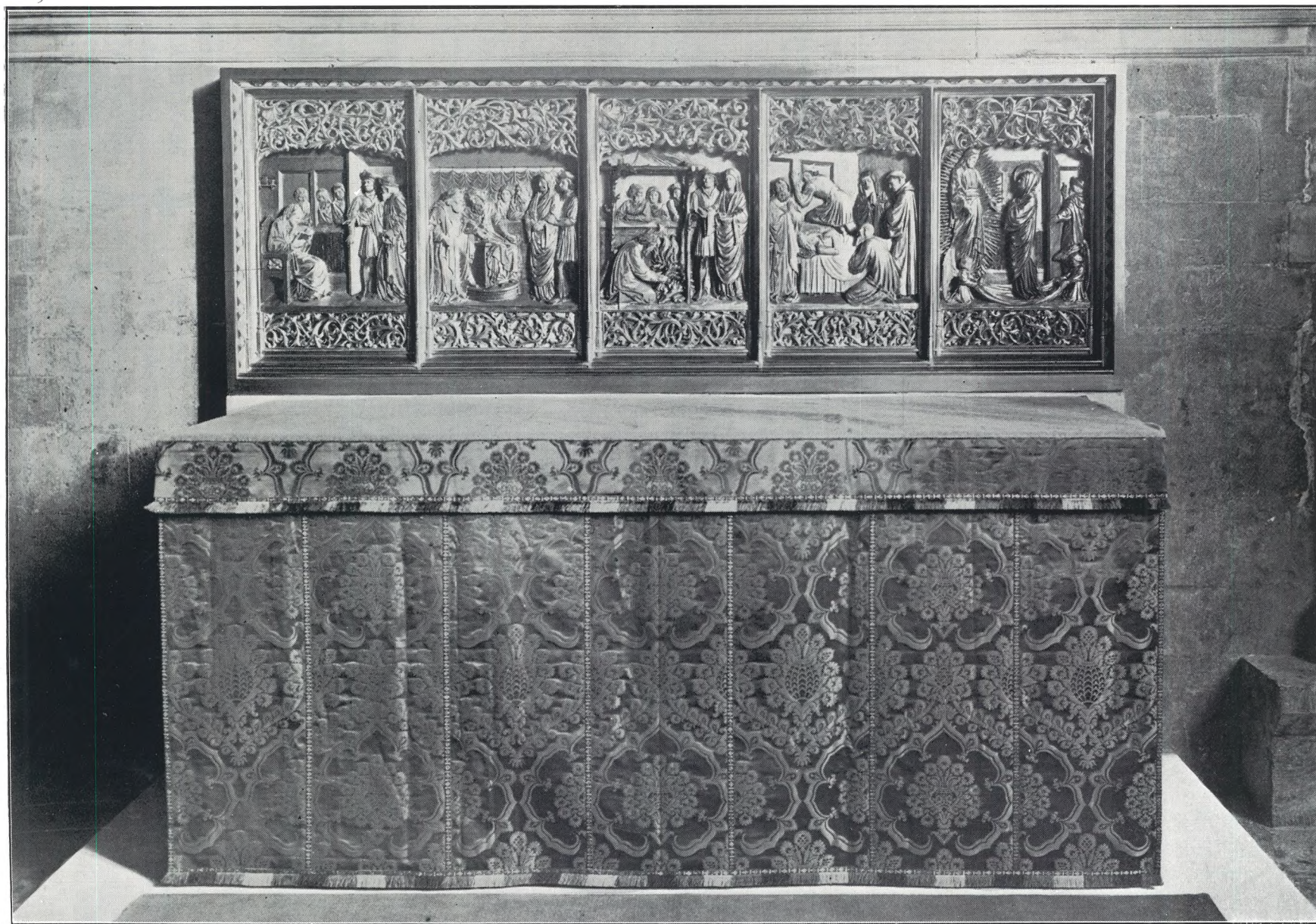
Dec. 28th and Week From 2.15 Daily  
**Grand Christmas Programme**  
**AL JOLSON** in  
this year's Biggest Musical Show  
"THE SINGING KID"  
with **Sybil Jason** and **Ed. Ev. Horton**  
(Times 3.20, 6.10, 9.0)  
Also the Fastest, Funniest Farce of the Season  
"HIS BEST MAN"  
featuring **Warren William, June Travis, Kathleen Lockhart.**  
(Times 2.15, 5.0, 7.40)  
**Movietone News**  
(Times 3.15, 6.0, 8.40)

## WINTER GARDEN THEATRE

**CHELTENHAM.**  
Mon., Dec. 28th.  
Every Evening at 8 o'clock  
Matinee on Wednesday at 5 o'clock. Prices 6d., 1/-, 2/-.  
Also on Thurs. and Sat. at 3.0. Usual Prices.  
**The Cheltenham Repertory Company, Limited,** present under the direction of **Ellen Compton,**  
"AMBROSE APPLEJOHN'S ADVENTURE"  
by **Walter Hackett**  
Prices 1/3, 2/6, 3/6. All seats may be booked in advance.  
Box Office open 10 a.m. to 8 p.m. Phone 2058  
Joint the Cheltenham Repertory Association.  
Monday, Jan. 4th,  
"TONS OF MONEY," by **Will Evans and Valentine.**

**BEAUTIFUL MEMORIALS**  
**E. A. EMMS**  
HALES ROAD CHELTENHAM  
Tel. 2391. Est. over 50 years.

# DALE, FORTY and Co. Ltd. for the BEST PIANOS



**THE NEW ALTAR MEMORIAL TO MISS D. M. S. HOLMES IN THE CHAPEL OF ST. FAITH, TEWKESBURY ABBEY**

The memorial to Miss Dorothea Mary Studdart Holmes, headmistress of the Tewkesbury High School, was dedicated by the Bishop of Gloucester last week. It consists of an altar of Bath stone, surmounted by a white-wood reredos 7 ft. wide and 2 ft. 9 ins. in height, the figures in the panels being of pear wood, and the whole being covered with pure gold leaf and colour. The reredos depicts five scenes in the life of St. Faith, and the design by Mr. W. E. Ellery Anderson, L.R.I.B.A., has been beautifully carried out in the Cheltenham studios of Messrs. R. L. Boulton and Sons.





**40 YEARS' MEMBERSHIP**

At a supper and smoking concert of the Cheltenham branch of the National Union of General and Municipal workers, certificates for 40 years' membership of the branch were presented to the five above members. Standing: Mr. E. Stevens, Mr. A. H. Bird. Seated: Mr. H. E. Collier, Mr. A. Cummings, Mr. W. H. Tanner. Insets (left): Councillor J. C. Mason, district secretary; (right), Mr. G. F. Tawney, Cheltenham secretary.



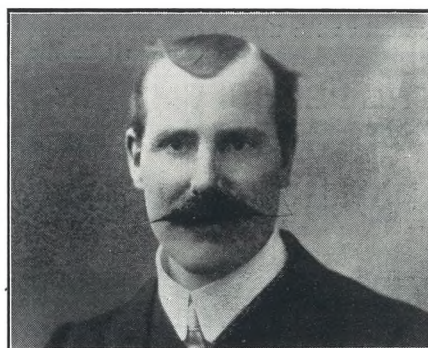
**CHELTHENHAM FARMER WINS NATIONAL COMPETITION**

Mr. F. H. Cock, of Prestbury Park Farm, Cheltenham, with some of his herd, who won the first prize (£100) in the British Oil and Cake Mills National Milk Yield Competition for the British Isles.



**MR. A. D. LANSLEY,**

of Oxstalls-lane, Gloucester, who died on Friday from injuries received in a motor accident at Highnam on the previous Friday, aged 64 years. He was a past president of the English and County Bowling Association and a prominent Gloucester business man. He made over 100 appearances for the county bowling team; he was also a prominent Freemason.



**MR. J. MAYNARD,**

of Tewkesbury, who retired on Christmas Eve after 50 years' service with Gloucester Co-operative Society, forty of which were as manager of the Tewkesbury branch. His wife has been licensee of the Albion Inn, Oldbury-road, for some years. They are retiring to live in Cotswold-road, Tewkesbury.



**MR. FRANK H. PATES,** of 16 Cambray, Cheltenham, who died on December 16, aged 49 years. He was well-known as a prominent and popular member of the Cheltenham Operatic Society. He had a fine baritone voice, pleasing stage presence, and was a capable actor.

Cheltenham Women's Conservative and Unionist Association.

**TWELFTH NIGHT FESTIVAL**

Wednesday, January 6.

**BALL and WHIST DRIVE**

Town Hall Cheltenham  
DOORS OPEN 7 p.m. WHIST 7.30.  
DANCING 8.30 to 2.

**USUAL SPLENDID PRIZES**

Tickets 2/6 from Conservative Office, Conservative Club, Town Hall.  
REFRESHMENTS by GEORGES LTD.

**SHAKESPEARE MEMORIAL THEATRE** STRATFORD-UPON-AVON

**CHRISTMAS**

BOXING DAY AND DAILY UNTIL JAN. 2. EVERY DAY at 2.30 and 8.0.

**PETER PAN**

Dinah Sheridan George Hayes  
Diana Sinclair-Hill.  
Prices 7/6 to 1/6. Telephone 2271-2272

Jan. 11th for ONE WEEK.  
The Greatest Farcical Comedy

**CHARLEY'S AUNT**  
Prices 6/- to 1/3.

GOOD SERVICES OF TRAINS BY G.W.E. You can lunch or dine in the theatre by giving previous notice. Fully licensed for Theatre Patrons.



**DISTRIBUTION OF CALVES TO MEMBERS OF CHELTENHAM YOUNG FARMERS' CLUB**

At the farm of Mr. E. Hanks, the Hunting Butts, Cheltenham, 24 members of the Cheltenham and District Young Farmers' Club were each allotted a heifer calf, which they have to feed and care for during the next 15 months. The heifers will then be judged. The members with their calves, Messrs. C. Comely and K. M. Pearson (County Agricultural Organisers), Mr. Marcus Drew (Western Organiser of Young Farmers' Clubs) and other interested farmers were present. "Cheltenham Chronicle" Photograph. Copies 1s. and 1s. 9d.



**CHRISTMAS TREE AND PARTY AT CHILDREN'S HOSPITAL, BATTLEDOWN**

Some of the little patients with three of their nurses at the party on Friday. "Cheltenham Chronicle" Photograph. Copies 1s. and 1s. 9d.

ONCE AGAIN the SWING of THE PENDULUM BRINGS ROUND at MELVILLES' the

**GREATEST SHOE SALE**

in Cheltenham or the West

commencing

**MONDAY, DECEMBER 28**

Come early to avoid disappointment. Such phenomenal bargains in LOTUS, DELTA, CLARK'S and CHURCH'S ARCH-MOULDED SHOES are soon snapped up by the eagerly awaiting public.

**LOTUS and DELTA etc.**

14/9	REDUCED TO	10/8
17/11	" "	13/8
21/-	" "	15/8
26/9	" "	18/8
Etc.		

Representative examples from outstanding Bargain Groups for Men and Women.

**CHURCH'S ARCH-MOULDED**

30/-	REDUCED TO	18/8
35/9	" "	24/8
39/6	" "	26/8
45/-	" "	29/8
Etc.		

Remaining Slippers and Evening Shoes are also reduced to clear.

**W. J. MELVILLE** FOOT FITTERS BY X-RAY  
408 STRAND, High St., CHELTENHAM



**CHILDREN'S FANCY DRESS TEA DANCE AT CHELTENHAM TOWN HALL**

The first of the three municipal fancy dress tea dances for children held at the Town Hall during the Christmas holidays, took place on Saturday.

- 1.—Margaret Leopard.
- 2.—Becky Hayward.
- 3.—Miss Lloyd's party.
- 4.—Sheila May, Michael Harling, and Gerald Moir.
- 5.—Miss Joan Stephens' party,
- 6.—Michael Hopkins, as Pied Piper (third prize) boys.
- 7.—Foy Piper (snowman) second prize costume, and Yvonne Piper as a Jester.
- 8.—Michael Hacker and Roxana Wilkinson as Jack and Jill.
- 9.—Josephine Ann Wilson, third prize
- 10.—Helen Densham-Smith, Bridget Haddon, Eleana Fraser, and Pamela Haddon.



**CHELTENHAM CHRISTMAS POULTRY MARKET**

Turkeys and other poultry fetched high prices at Cheltenham Market last week.  
 1.—Some Cotswold farmers. 3.—Mr. H. Workman with the first goose.  
 2.—Mrs. W. Church (Apperley) with the first turkey sold. 4.—Mr. "Bob" Castle, the auctioneer.  
 "Cheltenham Chronicle" Photographs. Copies 1s. and 1s. 9d.



**PRESTBURY DIAMOND WEDDING**

Mr. and Mrs. Henry Parker, Woodbine Cottage, Mill-lane, Prestbury, who celebrated their diamond wedding on December 16th. Mr. Parker was a former valet to Fred Archer, the famous jockey.



**PRETTY WEDDING AT ST. MARK'S, GLOUCESTER**

The wedding took place on Saturday at St. Mark's Church, Gloucester, of Mr. John W. Counsell, son of Mr. E. W. Counsell, of Middle Farm, Pamington, Ashchurch, to Miss Ida Rose Wixey, eldest daughter of Mrs. Wellington, of Leonville, 72 Worcester-street, Gloucester, and the late Mr. Fred T. Wixey, a former Cheltenham Rugby footballer. The bridal group.

**— OUR GREATEST —**

**WINTER**

**SALE**

**Commences THURS. Dec. 31st**  
**SHIRERS & LANCES LTD**  
FORMERLY SHIRER & HADDON LTD & JOHN LANCE & CO. LTD.

Promenade and Clarence Street, Cheltenham

**COATS**

Coats in new season's Tweeds. Beautifully tailored in smart styles. Many attractive mixtures. S.W., W. and W.X. Usually 55/9 and 39/6. SALE PRICE ..... **30/-**

**GOWNS**

Day and Evening Gowns offered in newest styles and materials including Taffeta, Ring Velvet and Marocain. Usually 4 gns. and 4½ gns. SALE PRICE ..... **3 GNS.**

**KNITWEAR**

Sample Jumpers and Cardigans in attractive styles and colours of Petrol Blue, Burgundy, Coral, etc. Usually 8/11 and 6/11. SALE PRICE ..... **5/-**

**MEN'S WEAR**

Wonderful Pyjama Offer. Five dozen only in Ceylon flannel. Fully cut and medium weight garments. Regular stock. Usually 12/6. SALE PRICE ... **8/6**

**CARPETS**

Modern Seamless Axminster Carpets in latest designs and colourings. Three sizes. Example: 9ft. x 7ft. 6ins. Usually sold at £5 15s. SALE PRICE **£4-15**

**FURNISHINGS**

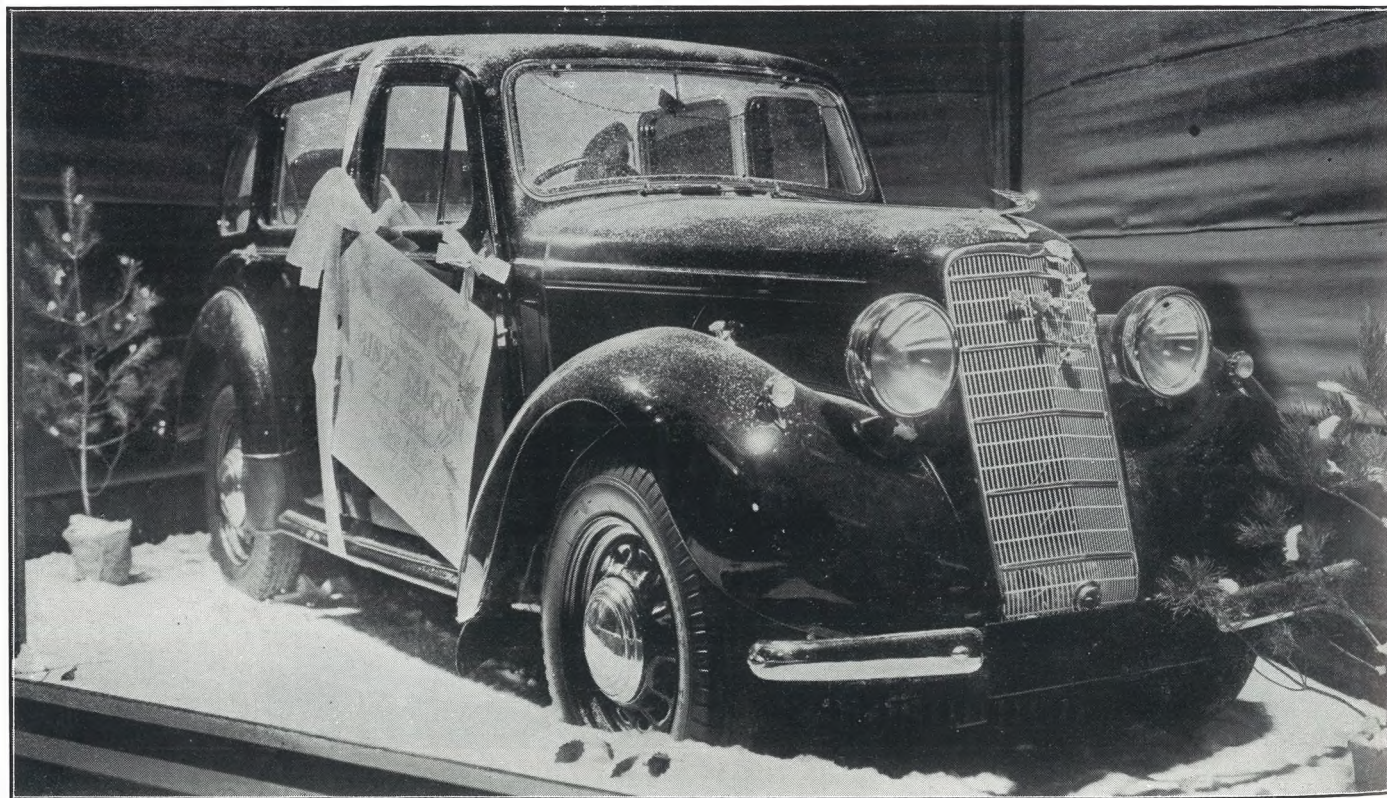
Cotton Velvet Velour 48ins. wide, in a variety of shades including Blue, Green, Rose, Brown, Gold, Rust and Beige. Usually 3/3 per yd. SALE PRICE ..... **2/6**

**LINENS**

Dorma Sheets. Plain hemmed cotton sheets of standard quality and renowned for hard wear. Every sheet fully guaranteed. Single bed size 2 x 3 yds. Usually 10/6 per pair. SALE PRICE per pr. **8/6**

**FURNITURE**

Six only, 3ft. Oak Bedsteads fitted with coil spring mattresses. Usually 37/6. SALE PRICE each ... **30/-**



**A "MAGNIFICENT" CHRISTMAS GIFT**

In a seasonable setting of snow and Christmas trees, this 1937 Hillman Minx Magnificent, with its gay red ribbon and large label bearing the inscription "A MAGNIFICENT Christmas Gift," stands in the showrooms of the Queen's Garage, Cheltenham, where a very novel display has been achieved by Messrs. H. E. Steel (Himself), Main Dealers and County Distributors of Hillman cars to draw attention to this economical light car which has all a big car's features of appearance, performance, comfort and safety. The Safety Saloon is priced at £163 and the Saloon de luxe at £175.



**THE G. A. M. HALL, LTD., SPORTS CLUB ANNUAL DINNER**

The G. A. M. Hall, Ltd., Sports Club held their annual dinner at the Cadena Corner House. The party present, with Mr. G. A. M. Hall, president, seated in centre (wearing glasses).  
"Cheltenham Chronicle" Photograph. Copies 1s. and 1s. 9d.

## A VERY ATTRACTIVE ESTATE DEVELOPMENT

## G. A. M. HALL LTD.

are about to commence the  
erection of various type houses on

## CLEEVE MOUNT ESTATE

(between Prestbury Road and New Barn Lane—part of  
the well-known Cakebridge Farm)

This Estate will be charmingly laid out, the houses will be architecturally designed and incorporate all modern conveniences, together with good gardens, garage spaces, etc.

There will be four types—"A" £675; "B" £595; "C" £550; "D" £450. All may be purchased for a small deposit and the balance as rent. There will be no road charges or legal charges to be paid by the purchaser. Further particulars may be obtained at the office on the estate, where enquirers will be welcomed, or the Colonnade House and Estate Agency, County Court Road, Cheltenham.

# TOWN HALL

### SAT., DEC. 26 (BOXING DAY)

Meet of the Cotswold Hounds in the Promenade, followed at the Town Hall by a

**Boxing Day Morning Concert**, with Orchestra and Percy Owens, Entertainer. 11 a.m. to 12.30 p.m. Admission 6d. to all parts. Coffee and Light Refreshments available during the Concert.

**Tea Dance and Cabaret**, 3 to 6 p.m. 2/6 (including tea). Spectators' Balcony 1/-

**BOXING DAY CARNIVAL BALL**, with London special cabaret, "Marcel and Minka." Carnival Novelties. Bar, Buffet, and Grill Suppers. 7 p.m. to midnight 5/-

### SUN., DEC. 27

**Spa Orchestra** at 8 p.m., with John Lewis, the well-known Covent Garden Tenor, who has also recorded with Richard Tauber in his new film "Pagliacci." 1/-, 9d. and 6d. (Reserved seats 2/-).

### FRI., JAN. 1

**Tea Dance and Cabaret**, 3 to 6 p.m. 1/6 (including tea). Spectators' Balcony 6d.

**New Year Carnival Ball**, with special variety or cabaret act (to be engaged). Carnival Novelties. Bar. Buffet, and Grill Suppers. 8.30 p.m. to 2 a.m. 3/6.

### SAT., JAN. 2

**Children's Fancy Dress Tea Dance**. Prizes for children between the ages of 9 and 12 (both ages inclusive). Cabaret Dances arranged by Madame Penman. 3 to 6 p.m. 2/6 including tea. Spectators' Balcony 1/-

**Municipal Dance**, 8 p.m. to midnight. Buffet and Grills. 2/6 (evening dress).