

# THE CHELTENHAM CHRONICLE AND GLO'SHIRE GRAPHIC

With Which is Incorporated the "Cheltenham Looker-on" GRATIS SUPPLEMENT  
 SATURDAY, MARCH 5, 1932 No. 1,627

THE OPERA HOUSE,  
CHELTENHAM

TODAY: Constance Bennett in "BOUGHT." Also Lew Ayres in "A HANDFUL OF CLOUDS."  
 NEXT WEEK: England's Greatest Comedienne, Gracie Fields in "SALLY IN OUR ALLEY." An English Picture in an English Setting. Also "LET'S TALK TURKEY," an interesting travel film; "IRISH STEW," a Funny Cartoon; "EVERYTHING'S ROSIE," featuring Robert Woolsey, and Paramount Sound News.

**PALACE**  
 HIGH STREET, CHELTENHAM  
 Phone 2553. Continuous 2.30-10.30.  
 HEAR. HERE.  
 Monday, March 7th, and ENTIRE WEEK.  
 Marlene Dietrich and Victor McLaglen in  
**"DISHONOURED"**  
 with Warner Oland and Lew Cody.  
 (Showing at (approx.) 3.15, 5.15, 7.15, 9.15).  
 Also Dorothy Boyd in  
**"Too Many Crooks"**  
 Full Supporting Programme

**THE DAFFODIL**  
 Phone CHELTENHAM, 3260.  
 FOR ONE WEEK.  
 Commencing Monday, March 7th,  
 Will Rogers with Fig O'Orsay,  
 in a Joyous Show of Life and Laughter,  
**"YOUNG AS YOU FEEL"**  
 —Also—  
 Spencer Tracy in  
**"Six Cylinder Love"**  
 A Thrill A Minute A Laugh A Minute.  
 British Moviefone News.  
 (Exclusive).

LOW in initial cost  
 LOW in upkeep —  
 THE 2.98 H.P. DRY SUMP  
**RALEIGH**  
 £33 or on very Easy Terms  
 See it at the Sole Distributors  
**CHELTENHAM**  
**CYCLE & MOTOR Co.,**  
 88 Strand, Cheltenham



**THE PRINCE OF WALES AT CHELTENHAM RACES**  
 The Prince of Wales came to Cheltenham Races on Wednesday to see the National Hunt Race, in which his private secretary, Mr. R. Hobbs, rode Col. H. E. Joicey's Belhector. The Prince is leaning on the rails of the weighing room talking to Mr. R. Hobbs. Mr. Hobbs rode the winner of Foxhunters' Challenge Cup (Chadds Ford), on Thursday.

**WOODWARD'S**  
 Estab. 1810 : The Musical Centre : Phone 2512  
 for Marconiphone, Pye, His Master's Voice, and Columbia Radio  
 77 HIGH ST., CHELTENHAM

**"COLISEUM"**  
 CHELTENHAM. Phone 3715.  
 2.15 to 10.30 p.m.  
 Another ALL-BRITISH Success.  
 Sir Arthur Conan Doyle's  
**"THE HOUND OF THE BASKERVILLES"**  
 featuring John Stuart and Heather Angel.  
 —Also—  
**"The Sky Raiders"**  
 with Marceline Day & Lloyd Hughes.  
 Pathe British Gazette.  
 All Seats 7d. before 3 p.m.

ALL NEXT WEEK  
**REGENT MOTOR SHOW**  
 The Biggest Display of NEW and RE-CONDITIONED CARS ever held in Cheltenham.  
**REGENT GARAGE**  
 Regent St., Phone Chelt. 2481

MAISON ANNETTE,  
 Corsetiere, Lingerie  
 Ladies own pattern Corsets copied. No figure too difficult to fit. All fittings are conducted by a specially trained staff.  
 SATISFACTION GUARANTEED  
 Estimates on Application  
**PROMENADE, CHELTENHAM**  
 Telephone 2122.

**DALE. FORTY and Co. LTD** For the Best **PIANOS**



**CHELTENHAM NATIONAL STEEPLECHASE MEETING**

The March race meeting in Cheltenham on Tuesday, Wednesday and Thursday was a magnificent success, the weather being dry, the visibility perfect, and the going ideal. The visit of the Prince of Wales on Wednesday added to the interest and pleasure of the very large crowd present.

1.—General view of course and the lawns on Tuesday. A race is in progress.

2.—Taking a jump in the race for the Cheltenham Gold Cup. Golden Miller (the winner) is just jumping fence on the left. T. Leader riding; Inverse (No. 3) is leading, Aruntius is in centre, Kingsford just behind him and Grakle is last.

3.—Braziers in the paddock were very welcome on Tuesday; the wind was very cutting.

4.—Jack Drummer (left), Insurance (centre) and Song of Essex in Champion Hurdle Cup, won by Insurance.

"Cheltenham Chronicle" Photographs. Copies 1s. 9d. and 2s. 6d. each.



**CHELTENHAM NATIONAL STEEPLECHASE MEETING**

On Wednesday, when the National Hunt Steeplechase was run, the club enclosure, Tattersall's, and the paddock were crowded with a very fashionable crowd—practically everybody prominent in the steeplechase world being present. The weather was delightful, sunny and warm, on that day, and the racing particularly interesting. There were probably more cars in the various car parks than ever before.

5.—The first fence in National Hunt Race on Wednesday. There was one fall here.

6.—Miss Elwes (centre), Mr. Elwes and a friend.

7.—From right are Sir John Grey, Mrs. Aldridge, Mrs. Barthropp and Mr. Dutton.

8.—Lady Sybil Phipps, Capt. Traill, M.C., and Miss Ewing.

9.—Mr. F. R. Thackray (left) comes a purler at the second fence on Gib, in the Gold Cup Race.

10.—The three ladies in centre are, from left, Lady Belper, Mrs. Chas. Hambro, and Miss Budd.

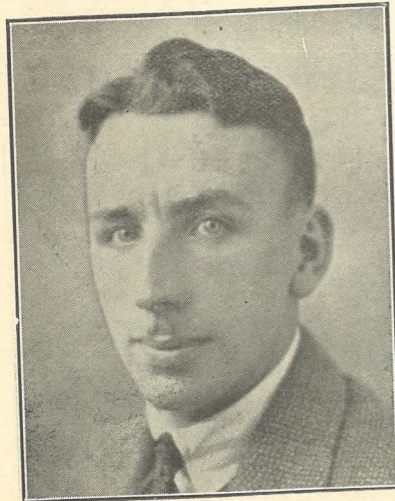
11.—The last fence in National Hunt Race. Dusty Foot (leading) was beaten in the run in by Robin-a-Tiptoe—ten lengths behind at this fence.

12.—Some of the horses in National Hunt parade.



**GLOUCESTERSHIRE V. WORCESTERSHIRE LADIES' HOCKEY**

Teams representing the above counties met on the East Gloucestershire ground on Wednesday afternoon last. Gloucestershire won a fast and exciting game by 7 goals to 6.  
 1.—Gloucestershire, from left: Misses King, Britton, Price, Greenway, Hemming, Valentine Brown, Boulton, Bull, Vaughan, Bland, R. Brown.  
 2.—Miss Brown and Miss Shelmerdine hopelessly beat the Worcestershire keeper.  
 3.—Gloucestershire's inside-right coming through with the ball.  
 "Cheltenham Chronicle" Photographs. Copies 1s. and 2s. 6d. each.



MR. FRANK YARNALL.

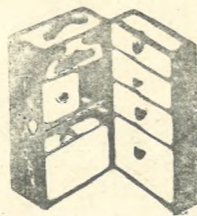
Second assistant in the office of the Town Clerk of Cheltenham, who died at his home at West Bromwich, aged 26 years. He had been ill for six months, and was granted leave of absence in October last for reasons of health. He came to Cheltenham in 1928, and was honorary secretary to Cheltenham Municipal Officers' Guild.

**HARTMANN AND INNOVATION**  
Wardrobe Trunks and Suit Cases

**BICK Bros.**

Montpellier Walk,  
CHELTENHAM.

Phone 3880.



Actual makers of every description of Travel Goods. Repairs a speciality.

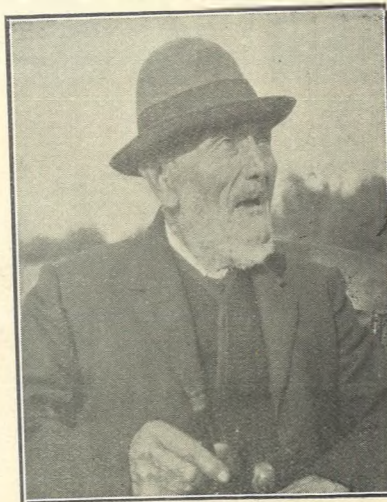
**9 out of 10 People**  
who have once worn

**CHURCH'S ARCH-MOULDED SHOES**

never again tolerate ordinary shoes! Fitted by X-RAY, their delightful EXTRA comfort is immediately apparent.

**MELVILLE'S,**  
Scientific Shoe Fitters.

408 STRAND, HIGH ST, CHELTENHAM



MR. GEORGE A. MABSON,

of Marion Cottage, Alstone, Cheltenham, who died at his home in his 91st year. He was a well-known market gardener for many years and a strong Conservative, voting for Sir Walter Preston at the last election.

**"PICTURESQUE GLOUCESTERSHIRE"**  
the book that appeals to all who love our county.

PRICE 21/-

At "Echo" Office, Cheltenham.



**FAREWELL PRESENTATION TO MR. H. J. McCORMICK**

On Sunday morning last, practically the whole of the staff of Cheltenham and District Traction Company met at their depot to say farewell to Mr. H. J. McCormick and to make presentations to him and Mrs. McCormick. Mr. McCormick has relinquished the post of manager of the company after over 30 years' service. He is in centre of picture marked X. Mrs. McCormick is seated next him.

"Cheltenham Chronicle" Photograph. Copies 1s. 9d. and 2s. 6d. each.



**"SHE STOOPS TO CONQUER," BY THE STAFF OF CHELTENHAM LADIES' COLLEGE**

Two capital performances of Goldsmith's comedy were given in the Princess Hall of the Ladies' College on Friday and Saturday last. Only pupils of the college were present on Friday—on Saturday it was given to the public in aid of St. Monica's Home. The performers on the stage.

Flashlight photograph by "Cheltenham Chronicle." Copies 1s. 9d. and 2s. 6d.



**GLOUCESTERSHIRE SCHOOLS AND SCHOLARS.—NO. 4: NAUNTON PARK, CHELTENHAM, SENIOR SCHOOL**  
 Top picture.—Third year boys. Bottom picture.—Third year girls. Further photographs of this school will appear in a future issue  
 "Cheltenham Chronicle" Photographs. Copies 6d., 1s, and 1s, 6d,



**PICTURESQUE GLOUCESTERSHIRE.—BUCKLAND AND LAVERTON**

Buckland Vicarage, although not a very large house, is intensely interesting to archaeologists. It is stated that it was built by William Grafton in 1520, and a beautiful stained glass window with his name, and a rebus picturing a graft growing out of a tun, is in the hall. The hall, which extends from floor to roof, is really of 15th century period. The church of St. Michael is also full of interest.

- 5.—Some wonderful old 17th century oak seating in the church, with canopies and hat pegs.
- 6.—The fifteenth century dining hall in the Vicarage—one of the oldest domestic buildings in the county. It has a very fine hammer-beam roof, with carved angels holding shields, and some sixteenth century stained glass windows.

- 7.—An interesting old house known as Totters Farm, Laverton.
- 8.—The fine old vicarage at Buckland (exterior).
- 9.—The front of Buckland Manor.

“Cheltenham Chronicle” Photographs. Copies 1s. 9d. each.



1



2



3



4



5

**A LOCAL DERBY—GLOUCESTER V. CHELTENHAM AT RUGBY FOOTBALL**

Time was when Gloucester looked on Cheltenham as small fry in the football world; but up till Saturday Cheltenham had not been beaten by Gloucester for two seasons. This fact had the effect of drawing a big crowd to witness a capital match, many hundreds of Cheltonians travelling with their team. Gloucester just managed to win by nine points to eight.

1.—Roy James (Gloucester) breaking through from a scrum in mid-field—Tomlinson is stooping round to tackle him, while Castle is coming round to cut him off.

2.—The County Selection Committee was present. From left, Mr. A. J. Ostler, Mr. J. H. Tratt, Mr. A. T. Voyce, Mr. H. C. Browning (county president), Mr. G. S. Castle (county treasurer), Mr. Ralph Roberts (county secretary) and Mr. T. Millington.

3.—A section of the big crowd present. Seated in front are, from left: Mr. R. N. Loveridge, Mr. Mann, Mr. J. T. Brookes, Mr. Balchin (all of Gloucester), Mr. A. Goddard and Mr. H. Pike (Cheltenham).

4.—Holtham (Cheltenham) makes a big jump for the ball in a line-out.

5.—Sheppard (Gloucester) coming down the touch-line with the ball. Tomlinson is tackling him.

"Cheltenham Chronicle" Photographs. Copies 1s., 1s. 9d. and 2s. 6d. each.



**DEAN CLOSE SCHOOL PLAY CHELTENHAM TOWN AT HOCKEY**

Dean Close School beat Cheltenham Town by one goal to nil on Saturday on the school ground in a very good game.

Top.—The school team, from left: T. E. Aston, A. M. Freeman, P. E. Head, T. B. Seymour-Smith, M. H. Foster, A. G. Watts, W. H. Warner, G. B. Helps, C. E. Walwyn, P. L. Trevorrow, J. M. Cash (captain).

Bottom.—A hot attack on the Cheltenham goal. A. V. Gregory (Cheltenham) in centre trying to save.



**MANY HAPPY RETURNS OF THE DAY TO UNCLE CHARLIE'S NEPHEWS AND NIECES**

1.—Connie Weaver, of Holmlea, East End-road, Charlton Kings.

2.—Neville Carter, Chosen Villa, Swindon-road, Cheltenham

3.—Margaret Rowe, 25 Russell-street, St. Peter's, Cheltenham.

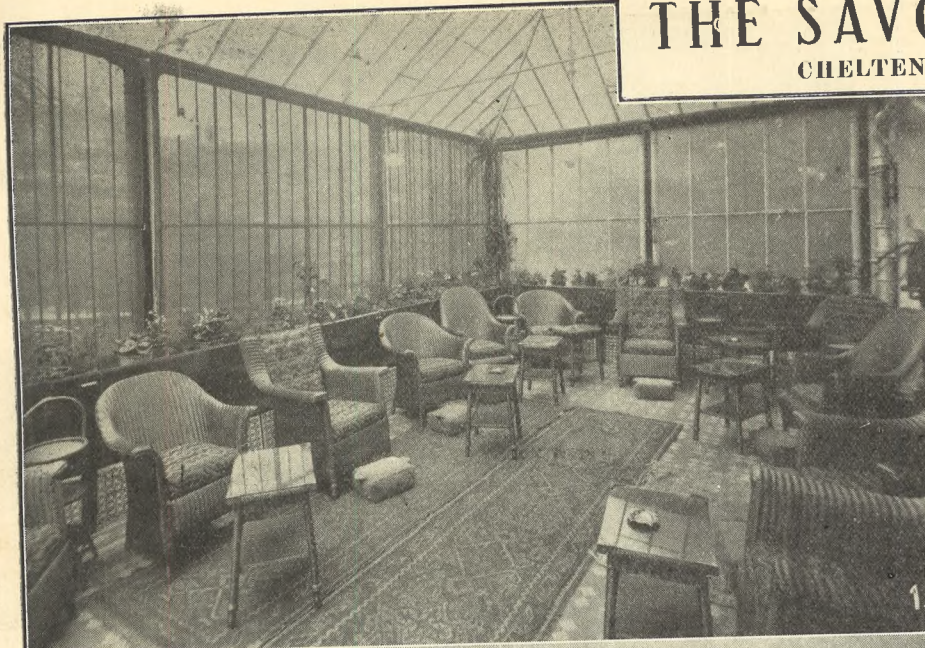
4.—Jimmy Jester, 10 Stanley-street, Normanton, Yorks.

5.—Nellie Stroud, 6 Hereford-place, Swindon-road, Cheltenham

"Cheltenham Chronicle" Photographs. Copies 6d., 1s. and 1s. 9d.

# THE SAVOY HOTEL

CHELTENHAM SPA



CHELTENHAM CHRONICLE AND GLOUCESTERSHIRE GRAPHIC, SATURDAY, MARCH 5, 1932.

## OPENING OF A NEW WING

Additional accommodation has been provided recently at the "Savoy Hotel" by the opening of a new wing in which the atmosphere of luxury is well maintained. Illustrated above are: (1) The delightful conservatory lounge, so popular with residents; (2) The dining-room, in which private parties can be entertained; (3) One of the numerous well-appointed bedrooms with its bay-window and sunny aspect; (4) The Lounge. Every room in this residential hotel is centrally heated.



#### VISIT OF DUCHESS OF BEAUFORT TO CHELTENHAM

The Duchess of Beaufort opened an exhibition of work by village craftsmen of Gloucestershire, at Cavendish House, Cheltenham, on Monday. It is promoted by Rural Industries Bureau, and work is shown from many parts of the county. Among those in the party at opening ceremony are Sir Nicholas Gratton-Doyle, M.P., Lady Tubbs, The Dowager Duchess of Beaufort, Mr. J. R. J. Brooke (behind), Col. Russell Kerr (who presided), The Duchess of Beaufort, Sir Stanley Tubbs.

## GLOUCESTERSHIRE RURAL COMMUNITY COUNCIL

A hearty invitation is extended to an

# EXHIBITION of RURAL INDUSTRIES AT CAVENDISH HOUSE CHELTENHAM

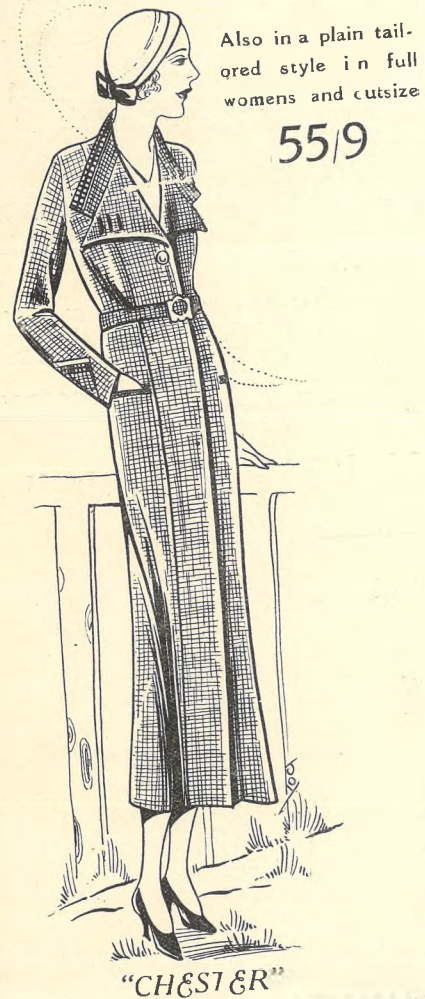
(REGENT STREET NEW BUILDING)

Next Week's Demonstration — HAND LOOM WEAVING



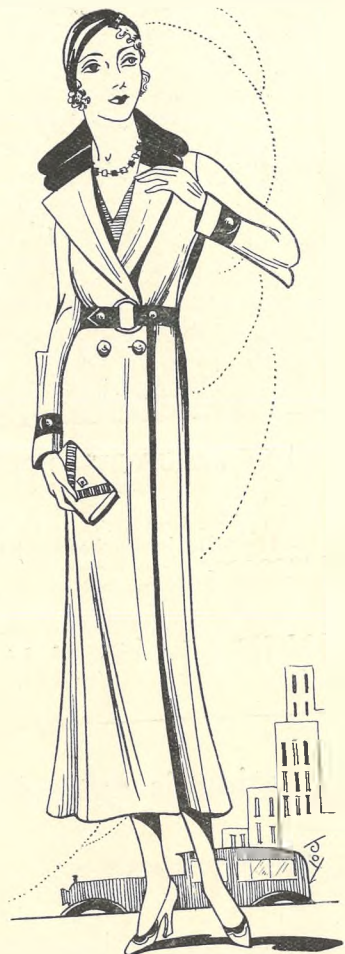
# LANCE'S EARLY SPRING SHOW OF INEXPENSIVE MODERN COATS

**"CHESTER."**  
West of England suiting featuring  
the new reverses. In Fawn, Brown,  
Blue and Green. **49/6**



Also in a plain tail-  
ored style in full  
womens and outsize

**55/9**



**"CLEAVE"**  
An exceptional value coat in well-  
cut tweed indispensable for early  
spring wear in Fawn, Brown and  
Green. **25/6**



**"CAMBRIDGE"**  
A youthful spring coat in fine wool  
material with contrasting colour on  
collar, cuffs and belt. In all the new  
shades. **49/6**

**"CLEAVE"**

## JOHN LANCE & Co., Ltd.

CHELTENHAM 'Phone 3570

'Phone 3570

**"GET IT AT LANCE'S AND SAVE THE DIFFERENCE"**

PRINTED AND PUBLISHED AS A GRATIS SUPPLEMENT BY THE CHELTENHAM NEWSPAPER COMPANY, LIMITED.

# THE CHELTENHAM CHRONICLE AND GLO'SHIRE GRAPHIC

With Which is Incorporated the "Cheltenham Looker on"

SATURDAY, MARCH 12, 1932

GRATIS SUPPLEMENT

No. 1,628

THE OPERA HOUSE,  
CHELTENHAM

TO-DAY: Gracie Fields in "SALLY IN OUR ALLEY." Also Robert Woolsey in "EVERYTHING'S ROSIE."  
NEXT WEEK: Wallace Beery, Lewis Stone, Clark Gable in "THE SECRET SIX," a Sensational Drama of the Underworld. "NECK AND NECK," a thrilling comedy of the sport of kings. Also Laurel and Hardy in "CHICKENS COME HOME," the Screen's Greatest Comedians at their Funniest, and Paramount Sound News.

### PALACE

HIGH STREET, CHELTENHAM  
HEAR HERE  
Phone 2553. Continuous 2.30-10.30  
Monday, March 14, 3 Days Only  
Richard Arlen and Fay Wray  
in

**"THE CONQUERING HORDE"**

Also Clara Bow in  
**"Kick In"**

Thursday, March 17,  
for Three Days Only.  
Seymour Hicks and  
Ethaline Terriss in

**"GLAMOUR"**

Also Harry Edwards in  
**"The Girl in the Night"**

### THE DAFFODIL

Phone CHELTENHAM. 3360

Monday, March 14th,

FOR SIX DAYS.

GIGANTIC 3-FEATURE  
SHOW

Franklyn Dyall in

**"ALIBI"**

A British Screen Triumph.

**"Monsters of the Deep"**

Astounding, Thrilling, Authentic

**"Another Fine Mess"**

The Latest Mirth Yell from that

Priceless Pair,

Laurel and Hardy.

British Movietone News  
completes this Gigantic Show.

You can obtain your  
**WOOLS and  
TAPESTRIES**

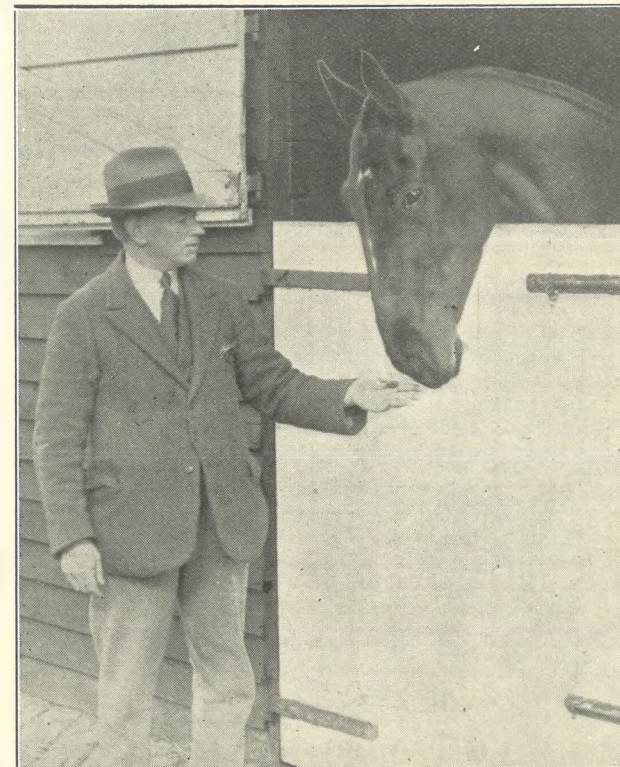
with accessories and  
EXPERT ADVICE  
from

**PRITCHARD'S**

Art Needlework Studio,

18 Promenade,

CHELTENHAM.



### CHELTENHAM CANDIDATE FOR THE GRAND NATIONAL

"Quite Calm," a horse owned by Mr. R. E. Morel, of Cardiff, is being trained at Prestbury for the Grand National Steeplechase by Mr. Ben Roberts, who is here shown with him at the stable door. He won a thousand pounds steeplechase over four miles at Cheltenham last week, and is quietly fancied by his connections.

### WOODWARD'S

Estab. 1810 : The Musical Centre : 'Phone 2512

for Marconiphone, Pye, His Master's Voice, and Columbia Radio

77 HIGH ST., CHELTENHAM

### "COLISEUM"

CHELTENHAM. Phone 3715.

2.15 p.m. to 10.30 p.m.

Seamark's Great Drama—

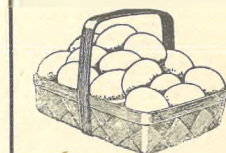
**"THE MAN**

**THEY COULDN'T ARREST."**

A fine All-British Picture, featuring Hugh Wakefield, Gordon Harker, and Renee Clama. Also **"EXCELSIOR."** A wonderful film record of the expedition to climb the Himalayan Mount "Kangchenjunga." (The second highest in the world). Descriptive accompanying lecture by The Rt. Hon. L. S. Amery, M.P. A picture of great beauty and thrills.

Pathe British Gazette.

All Seats 7d. before 3 p.m.



### EGG DAY

at Cheltenham General and Eye Hospitals on Thursday next, March 17. Both places will gratefully receive supplies, which may also be left at Gloucestershire Dairy shops, Promenade, 15 Suffolk Parade and 2 High Street.

### FOICE'S,

Promenade, Cheltenham

The House for Distinctive  
HAIRDRESSING AND  
ARTISTRY IN HAIRWORK  
Telephone 3490.

Telephone 2580.

**W. Scott Cooper**

Diamond Merchant, Jeweller,  
Goldsmith and Silversmith.  
The Promenade, Cheltenham  
LICENSED VALUER

## DALE, FORTY and CO. LTD. For the Best PIANOS



**COTSWOLD HOUNDS MEET AT WINCHCOMBE**

On Wednesday morning, in beautiful weather, the Cotswold Hounds met in Winchcombe. There was a good attendance of mounted followers, and a large crowd watched them assemble round the war memorial in Abbey-terrace. They afterwards moved off to Sudeley. Left.—The hunt assembled at the war memorial. Right.—Two keen members; Miss E. Brierley and Miss P. Chellingworth.



**MANY HAPPY RETURNS OF THE DAY TO UNCLE CHARLIE'S NEPHEWS AND NIECES**

- |  |  |  |
|--|--|--|
| 1.—Ivor Precc, The Bungalow, Colesborne.         | 4.—Raymond Hannis, Lansdown Crescent-lane, Cheltenham. | 7.—Ronald Daffurn, 33 Portland-square, Cheltenham. |
| 2.—James Bassett, 30 Winstonian-road Cheltenham. | 5.—Phyllis Griffin, 10 Swindon-road, Cheltenham.       | 8.—Charlie Ralph, 23 Naunton-crescent, Cheltenham. |
| 3.—Sydney Barrow, 14 Croft-road, Charlton Kings. | 6.—Phyllis Bond, 7 Buckle's-row, Charlton Kings.       | 9.—Beryl Milton, Moorend Street, Cheltenham.       |



The Exhibition of Royal Doulton Pottery at Cavendish House has aroused keen admiration. Remember! exquisite genuine Doulton Ware costs no more than mediocre pottery, but is so much more decorative and pleasing to live with. We illustrate the new "EDEN" design in black and gold on fine bone china. Early morning or occasional Tea Service in fine China 20/- Other patterns from 11/9 the set. Hundreds of lovely designs to choose from. See for yourself. Call at **CAVENDISH HOUSE, Promenade, CHELTENHAM**

*Royal Doulton* ©



**OFFICIALS OF THE SAVOY HOTEL, CHELTENHAM**

Residents and guests of the Savoy Hotel, Cheltenham, constantly testify to the efficiency of the staff (photographed above) of this high-class hotel, who ensure their comfort,



**GLoucestershire Schools, Scholars and Staffs. No. 4—NAUNTON PARK, CHELTENHAM, SENIOR SCHOOL**

1.—The staff.—Standing: Mr. H. G. Poulton, Mr. G. H. Hayward, Mr. R. M. Armstrong, Mr. W. H. Knee Seated: Miss M. Sisterton, Miss E. M. Williams, Mr. A. G. Dye (headmaster), Miss G. M. Harvey, Miss E. Brown, Miss W. Short.

3.—Domestic science room, where girls are taught cooking, washing and ironing.  
4.—Boys' woodwork department. These special departments at Naunton Park are very efficient, and splendid work is turned out by boys and girls.

"Cheltenham Chronicle" Photographs. Copies 1s. 6d. each.



**GLOUCESTER BEAT CHELTENHAM IN SEMI-FINAL FOR THE CUP**

In the semi-final match for the Gloucestershire Northern Senior Amateur Cup, played at Tewkesbury on Saturday, Gloucester City knocked out Cheltenham Town by 2 goals to 1 in a level and exciting game.

- 1.—Gloucester City Team, from left: W. Rea (trainer), W. Cawson, A. Murdock (capt), E. Drew, A. Brinkworth, C. Dowle, H. Jones, C. Hartshorne, W. Whitney, S. Hamer, W. Meek, L. Beddis (treasurer), G. Applin, W. Hurcum, M. S. Hukin (hon. secretary).
- 2.—R. Smith, Cheltenham centre-forward, bursting through with the ball.
- 3.—Gloucester followers cheering the second and winning goal.
- 4 and 6.—Sections of the Cheltenham followers.
- 5.—The Gloucester goal-keeper (on ground) saves from Hill, Cheltenham's outside-left.
- 7.—Cheltenham Town team and supporters, from left: N. V. Mander, A. Sellick, F. C. Smith, R. Grove, R. Hill, E. Smith, W. Evans, A. Meadows, J. Smith, C. Collier, W. Peberdy, P. O'Brien, R. Smith, J. Watts (capt.), A. Sherbourne, Jelfs, A. Leigh.

"Cheltenham Chronicle" Photographs. Copies 1s. and 1s. 9d. each.



**LADIES' HOCKEY MATCH IN CHELTENHAM**

St. Paul's, Cheltenham, ladies' hockey team played Cirencester ladies in Cheltenham on Saturday. The teams:—  
 Top.—St. Paul's, from left: Misses G. Griffiths, P. Bowd, Mrs. Hobbs, Miss M. Hacker, Mrs. A. Riches, Misses V. Devereux, P. Brooks, J. Holliday, D. Hill, E. Pyart, M. Pyart, W. Hill, Rev. D. Hallett (umpire).  
 Bottom.—Cirencester: Misses J. Kilminster, E. Greenland, P. Hope, Pearce, R. Tranter, D. Horman (capt.), Maloney, Campbell, J. Thorne, M. Trinder, M. Jackson.

"Cheltenham Chronicle" Photographs. Copies 1s. and 1s. 9d. each.

*Next week is the last opportunity of viewing*

The Gloucestershire Rural Community Council

EXHIBITS of

**RURAL INDUSTRIES**

AT

**CAVENDISH HOUSE**

(REGENT STREET NEW BUILDING)

**CHELTENHAM**

*All are cordially invited*

Demonstration of LEATHER WORKING by local craftsmen



**START OF CHELTENHAM HARRIERS' CUP RACE**

The Cheltenham and County Harriers' annual cup race, over 4½ miles, took place on Saturday. It was won by W. Hall, in 24 mins. 59 secs.; and A. Claridge, who finished third, won the handicap prize. The start in Shurdington-road.

"Cheltenham Chronicle" Photographs. Copies 1s. and 1s. 9d. each.

**ATTRACTIVE  
 EASTER MILLINERY  
 AT  
 LANCE'S**

The latest  
 Beret  
 Capette  
 in Angora  
 Wool with  
 Feather  
 mount



In all the  
 latest  
 shades

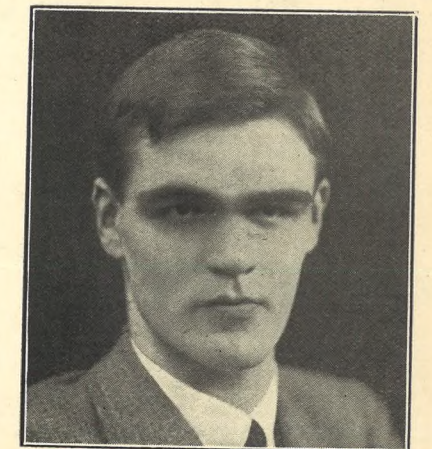
**12/9**  
 EACH

**JOHN LANCE AND CO., LTD.**  
**CHELTENHAM**  
 'Phone 3570

**GET IT AT LANCE'S AND SAVE THE DIFFERENCE**



MRS. FRANCES BERYL MORGAN, Wife of Mr. G. A. Morgan, butcher, 44 Tewkesbury-road, Cheltenham, who died on March 2, aged 42 years. She was well-known as a pianist in Cheltenham.



MR. GEORGE S. CUSS, Son of Mr. and Mrs. Henry Cuss, of Wyndcliffe, Hewlett-road, Cheltenham, who died after an operation, aged 20.

**"MAYFAIR"**

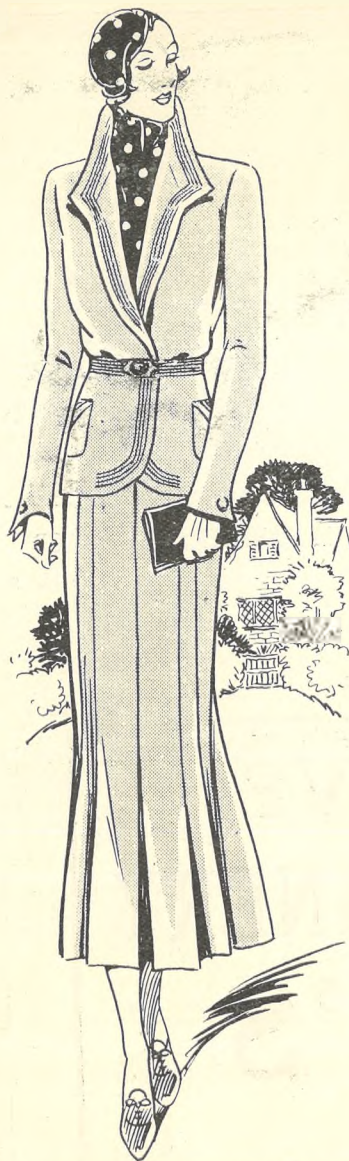
Delightful Model Coat, beautifully tailored from a fine Brown Cloth. Has long slimming lines with new shaped sleeve, the collar being of the fashionable Ocelot Fur. Price ..... **7½ GNS.**

**"BELGRAVE"**

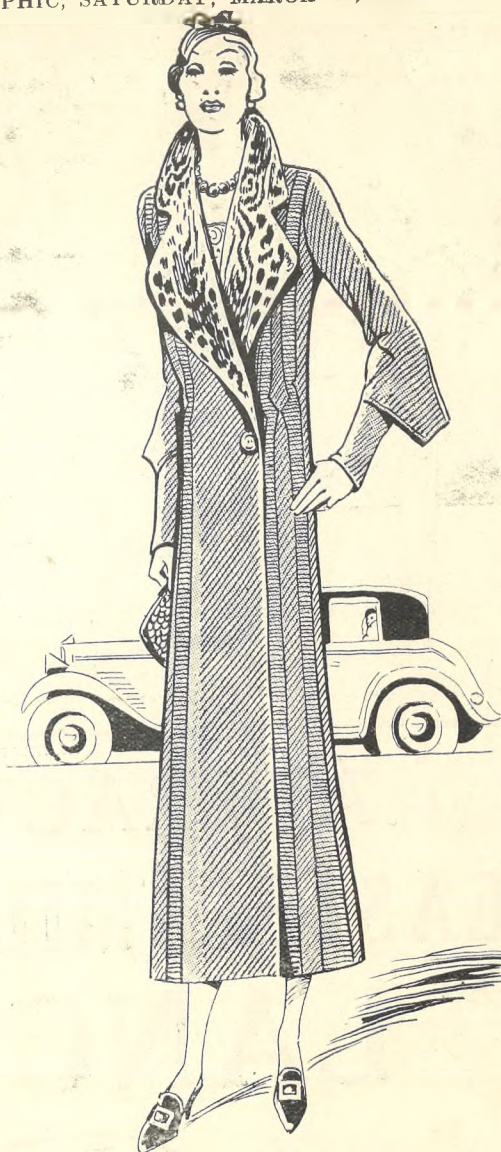
Soft quality speckled Tweed Cloth Cardigan Suit. Shaped Coat with stand-up Collar, finished with stitched edges and belt. Nicely fitting skirt with Box Pleated front. An ideal Suit for Town or Country. Price ..... **3 GNS**  
Flame, Green, Brown and Blue in fact, all colours and sizes.

**"COTSWOLD"**

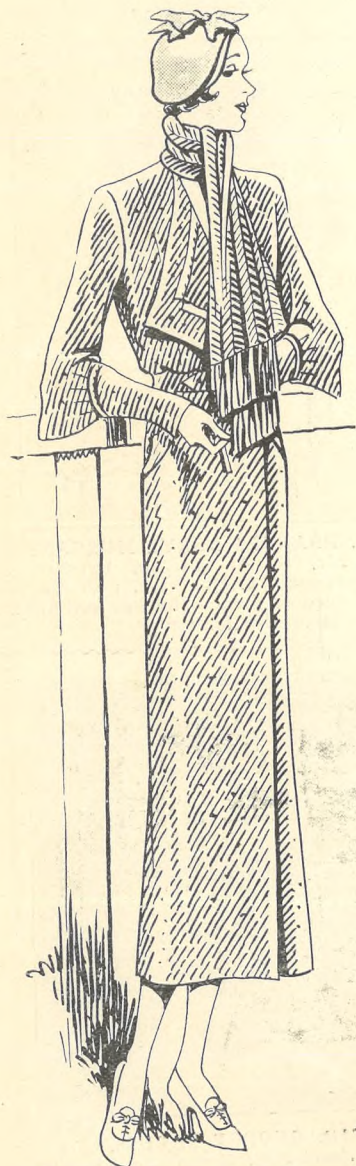
Cumberland Tweed Coat with Scarf to match. A most attractive practical Coat. Model sketched is in Brown, with orange fleck. The new sleeve and collar are most becoming. This is one of the many tweed styles available in all the new colours. Price **4 GNS**  
Other models from 39/6.



"Belgrave." 3 GNS.



"Mayfair." 7½ GNS.



"Cotswold." 4 GNS.

# SPRING STYLES

None of the good taste and excellent workmanship associated always with Vanderplank Fashions has been sacrificed in the production of the fine Spring collection.

The value offered moreover, is characteristic of Vanderplank determination to provide without sacrifice of either style or quality for the needs of those with limited incomes.

## VANDERPLANK

381, HIGH STREET from HARRODS  
FASHIONS AND FURS  
381 HIGH ST. CHELTENHAM

# THE CHELTENHAM CHRONICLE AND GLO'SHIRE GRAPHIC

With Which is Incorporated the "Cheltenham Looker-on"

GRATIS SUPPLEMENT

SATURDAY, MARCH 19, 1932

No. 1,629.

## THE OPERA HOUSE, CHELTENHAM

TO-DAY: Wallace Beery in "THE SECRET SIX."

NEXT WEEK. Adolphe Menjou in "THE GREAT LOVER," with Irene Dunne, Neil Hamilton. The Romance of the Year! Also Myrna Loy, Pat O'Brien in "MARRIED IN HASTE," marriage amongst the ultra-modern. Another Mickey Mouse Cartoon and Paramount Sound News.

## PALACE

HIGH STREET, CHELTENHAM  
Phone 2553. Continuous 2.30-10.30.  
HEAR HERE

Monday, March 21st. for  
THREE DAYS ONLY  
Ramon Novarro and  
Helen Chandler in  
"DAYBREAK"

Also Norma Talmadge and  
Gerard Nazel in  
"DU BARRY"

Thursday, March 24th.  
FOR THREE DAYS  
Gary Cooper and Sylvia Sydney in  
"CITY STREETS"

Also Charles Ruggles and  
Sue Conroy in  
"GIRL HABIT"

## THE DAFFODIL

Phone CHELTENHAM. 3360.

NEXT WEEK  
The Outstanding Production.  
"ALWAYS GOOD-BYE"

With

Elissa La di & Lewis Stone,  
direct from its London premiere;

Also a Riot of Fun,

"THREE GIRLS LOST"  
Loretta Young and Lew Cody.

With

British Movietone News.  
(Exclusive).

MAISON  $\in$

## ANNETTE, Corsetiere, Lingerie

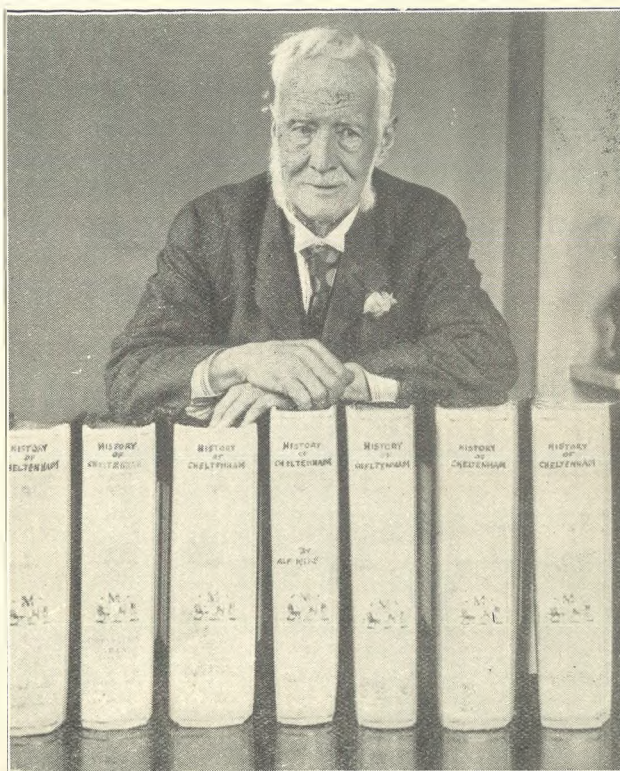
Ladies own pattern Corsets  
copied. No figure too difficult to  
fit. All fittings are conducted  
by a specially trained staff.

SATISFACTION GUARANTEED

Estimates on Application

PROMENADE, CHELTENHAM

Telephone 2122.



### DEATH OF CHELTENHAM'S HISTORIAN

Mr. Alfred Miles, C.C., of St. Anne's, Cheltenham, who died suddenly on Monday morning, aged 79 years. He had devoted the latter years of his life to the compilation of a history of Cheltenham and district. He had filled ten large volumes with manuscripts and pictures. He is here seen with his history. The books are to be given to the town.

## WOODWARD'S

Estab. 1810 : The Musical Centre : 'Phone 2512  
for Marconiphone, Pye, His Master's Voice, and Columbia Radio  
77 HIGH ST., CHELTENHAM

## "COLISEUM"

CHELTENHAM. 'Phone 3715.  
2.15 p.m. to 10.30 p.m.  
(Closed Good Friday).

Dorothy Sebastian and  
Warner Oland in  
"THE BIG GAMBLE"

With Bill Boyd,  
James Gleason, Zasu Pitts;  
Also

"SUNDOWN TRAIL"  
featuring Marion Shilling and  
Nick Stuart.

"The Grand National," the only  
official and authentic picture of  
this great race will be shown  
THURSDAY and SATURDAY.  
(Two Days Only).  
All Seats 7d. before 3 p.m. Daily.

## SPECIAL EASTER OFFER - CAMERAS

Here is your chance to  
obtain a first-rate Camera  
at a GREATLY  
REDUCED PRICE.

Really Wonderful Value

Call and Examine the  
Numerous Special Bar-  
gains. Get in First and  
have your choice.

SHOP-SOILED CAMERAS  
AT  
HALF-PRICE

See our Window Display

WILL. R. ROSE  
25 PROMENADE,  
CHELTENHAM

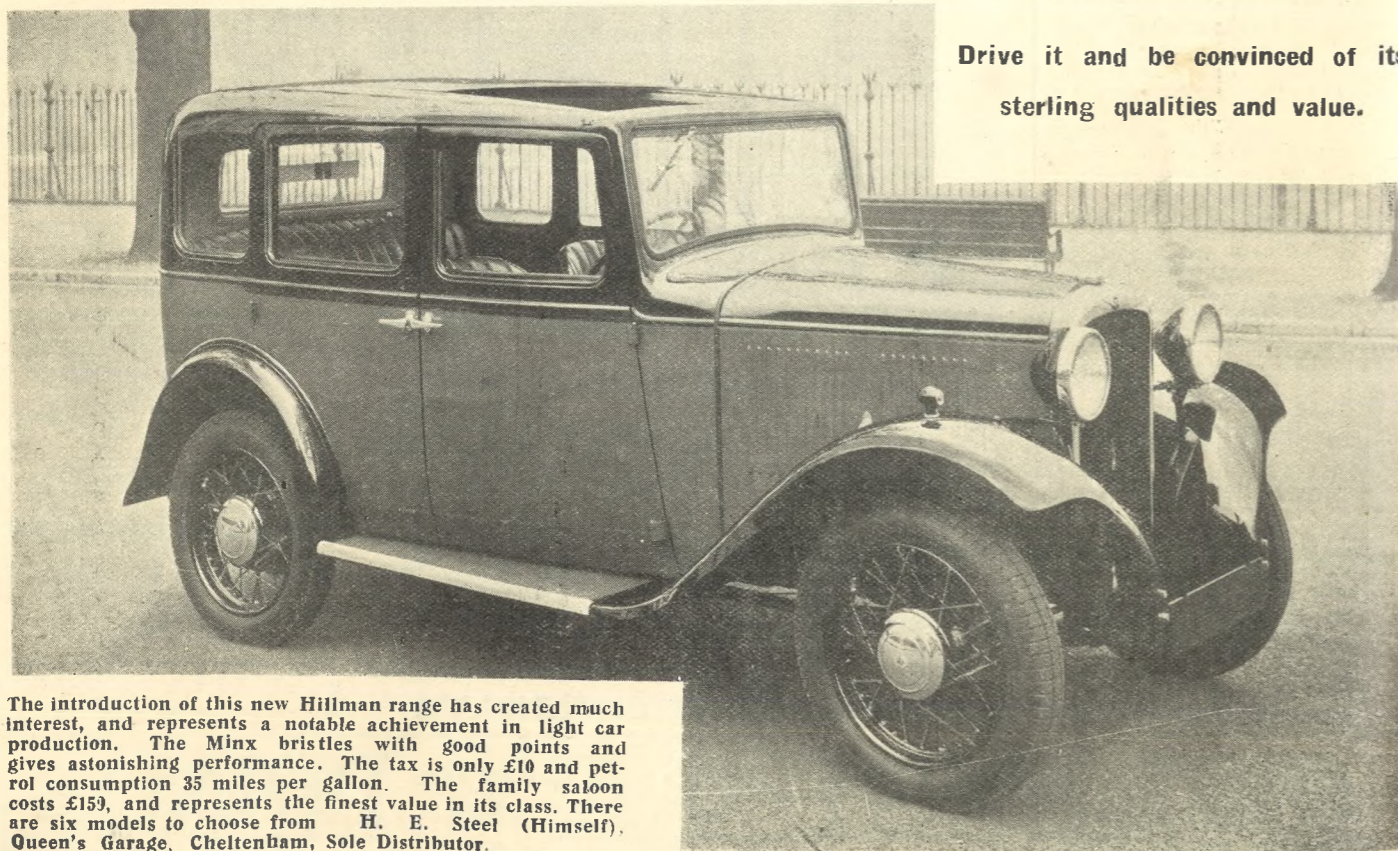
DALE. FORTY and C. LTD For the Best PIANOS



**MANY HAPPY RETURNS OF THE DAY TO UNCLE CHARLIE'S NEPHEWS AND NIECES**

- |  |   |  |
|--|---|--|
| 1.—Neville A. Brown, 2 Prestbury-road. | 6.—Marjorie Scrivens, 5 News-cottages, Alstone. | 9.—Norman Davies, The Nest, Cleeve-rd.                   |
| 2.—John Nash, 12 Sherborne-street.     | 7.—Nella Denley, 2 St. Luke's-place.            | 10.—Dinah Sheppard, 38a York-street.                     |
| 3.—Irene Lea, 36 Keynsham-street.      | 8.—Muriel Empleton, 4 Jersey-place.             | 11.—Irene Martin, 37 Moorend-street.                     |
| 4.—John Lawrence, 46 Waterloo-street.  |   | 12.—John Pearson, 17 Sandford-street, all of Cheltenham. |
| 5.—Ralph Collins, 256 High-street.     |   |  |

**A BEAUTIFUL AND STURDY LITTLE CAR**



Drive it and be convinced of its sterling qualities and value.

The introduction of this new Hillman range has created much interest, and represents a notable achievement in light car production. The Minx bristles with good points and gives astonishing performance. The tax is only £10 and petrol consumption 35 miles per gallon. The family saloon costs £159, and represents the finest value in its class. There are six models to choose from H. E. Steel (Himself), Queen's Garage, Cheltenham, Sole Distributor.

**EASTER FASHION OFFERS**

Just two examples of the excellent value obtainable at Ward's.



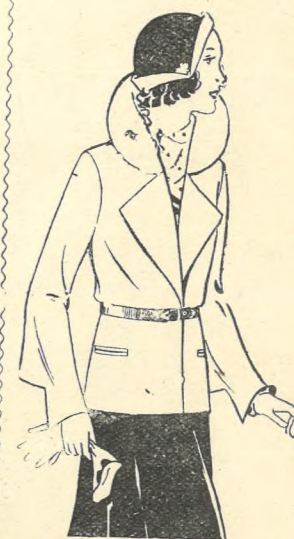
This Coat is particularly suitable for small sizes, in a variety of the latest Tweeds, contrasted with a darker shade at

**59/11**

Also at prices from **21/6**

**THE STYLISH HIP-LENGTH COATEE**

SHORT COATS are the season's novelty. We have delightful range in a variety of new shades and materials from 18/11 to 29/11. In all new colours: Emerald, Rust, Rose and Black.



**SKIRTS**

in larger variety, new flair and gored shapes, 8/11 upwards.

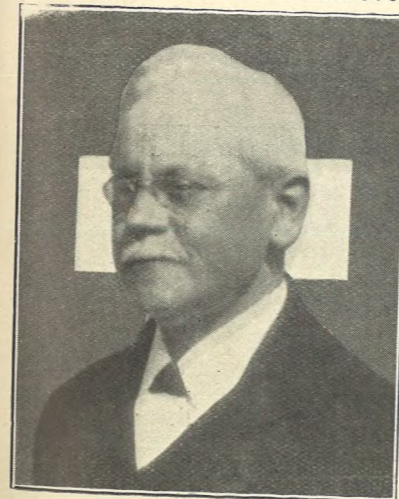
**VELOUR COATS**

in Militaire style, 35/-. In Green, Rust, Fawn and Cherry.



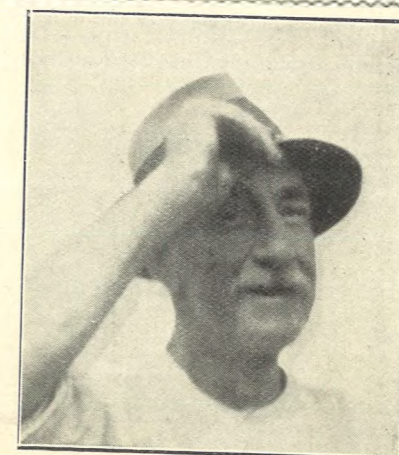
**A CHELTENHAM WEDDING**

The marriage took place at Cheltenham Parish Church on March 10th of Mr. F. C. Wilks, of 52 St. James's-street, Cheltenham, to Miss Daisy Mabel Williams, of 3 Ambrose-place, Cheltenham. The bridal party. Photograph by E. M. Bailey, High-street, Cheltenham.



**MR HENRY H. BOWDEN**

of Elnathan, Naunton-lane, Cheltenham, who died at his home after an illness of two months. He had been in charge of the Naunton-lane Mission Hall for the past five years, and was 67 years of age. He leaves a widow.



**MR. JESSE RATCLIFFE,**

Of Stow-on-the-Wold, who died recently. He was a particularly well-known figure in the Cotswold markets, having been porter for Messrs. Tayler and Fletcher for about 30 years.

Photo by W. J. Butt, Bourton-on-the-Water.

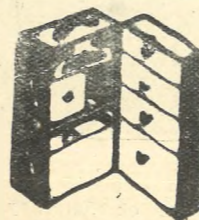
**"Picturesque Gloucestershire"**

The book which no lover of our beautiful county should miss. Edition nearly exhausted. A few copies still available at the published price of ONE GUINEA. "Echo" Office, Cheltenham.

**HARTMANN AND INNOVATION**  
Wardrobe Trunks and Suit Cases

**BICK Bros.**

Montpellier Walk  
CHELTENHAM.  
Phone 3880.



Actual makers of every description of Travel Goods. Repairs a speciality.

**E. L. WARD Ltd.,**  
High St. & North St.,  
CHELTENHAM

Phone 3781





**THE COTSWOLD CUP MOTOR TRIAL**

The Western Centre's Open Cotswold Cup Trial took place on Saturday over the hills and tracks of the Cotswold country. Mill-lane, Prestbury, and Sandy-lane, Cheltenham, being two of the principal hills traverse d.

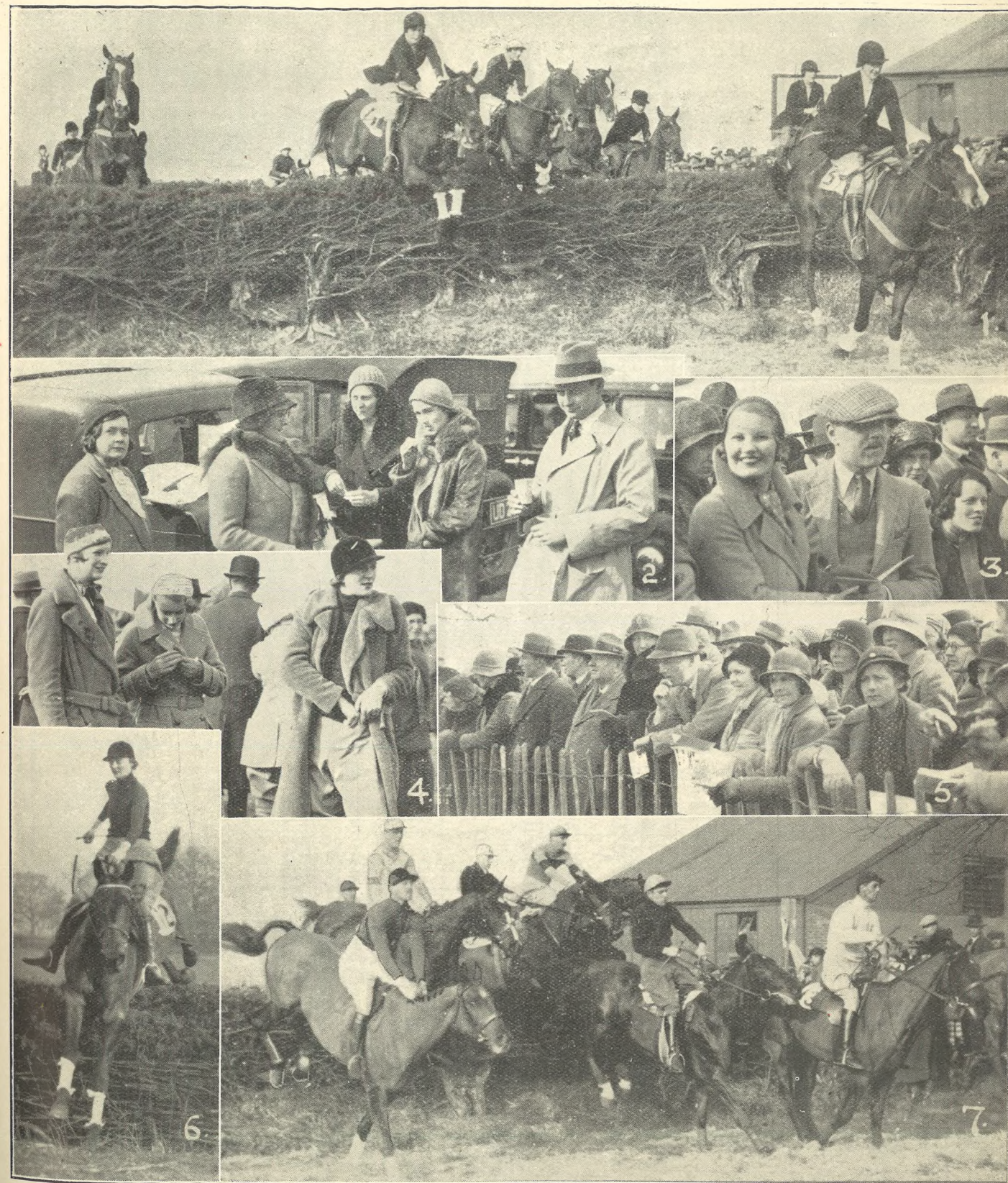
1.—Mr. Geo. Stannard (Cheltenham) taking the boulders of Sandy-lane on his 498 Triumph and sidecar. 2.—Miss B. Lermite, on her 349 Rudge, does a good ascent of Sandy-lane (second class award). 3.—Mr. Jack Williams (Cheltenham), on his 249 Rudge, who won the William Box trophy.



**CHEL TENHAM HOSPITAL CUP SEMI-FINAL**

Woodmancote and Naunton Park United met in the semi-final for the above cup at Bishop's Cleeve on Saturday. The game resulted in a draw of two goals each.

1.—Lady supporters in merry mood. 2.—A section of the spectators. 3.—The Woodmancote team.—Standing: R. C. Draper, W. Large, R. Humphreys, T. Rowles, R. Draper, J. Large. Seated: C. Pitman, F. James. 4.—Well saved! Carter, the Naunton goalkeeper, makes a brilliant save from Woodmancote forwards. L. White, E. Greenslade, M. Brunnell.



**COTSWOLD HUNT POINT-TO-POINT RACES AT BROCKWORTH**

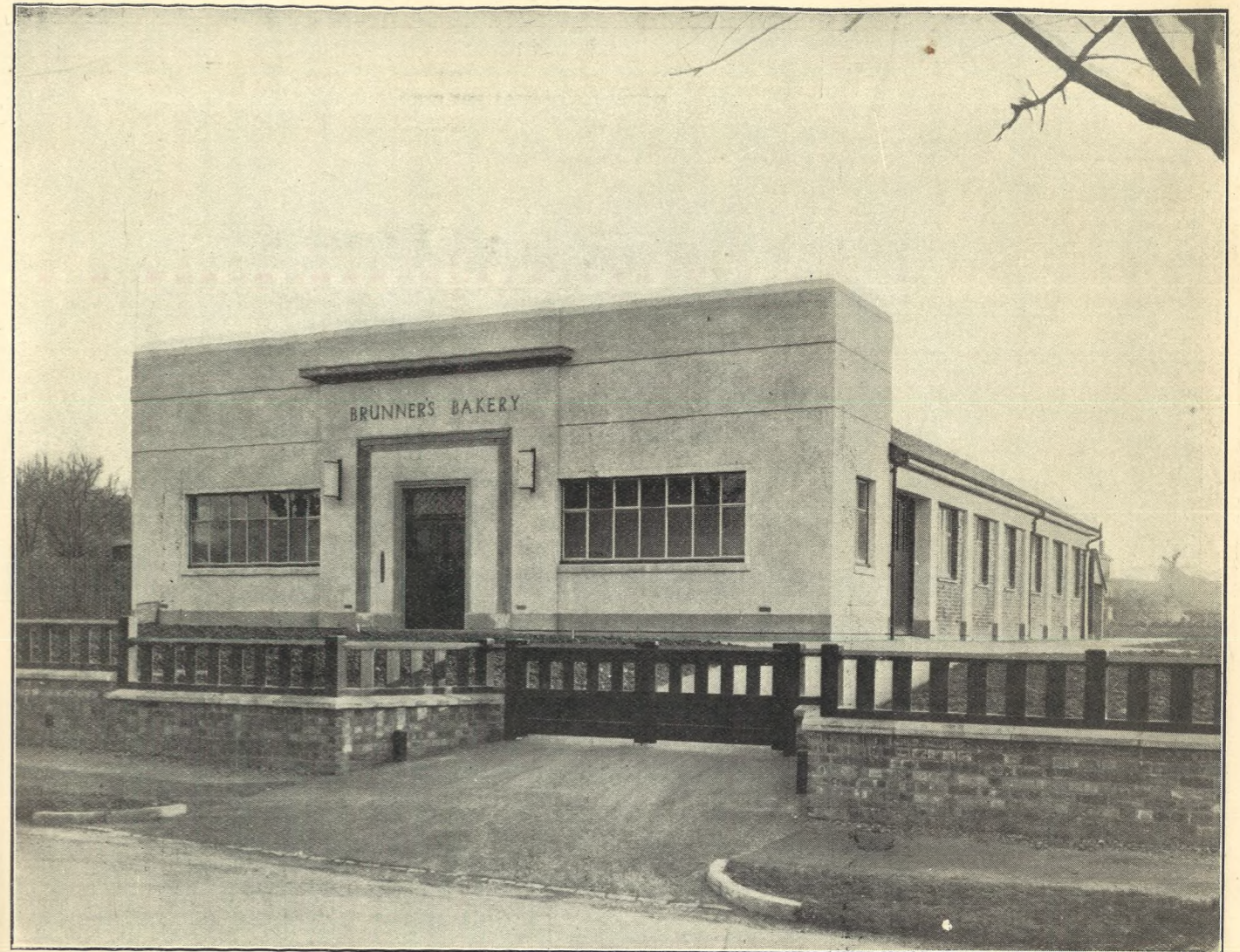
The annual Cotswold Point-to-Point meeting attracted an immense crowd to Brockworth, the same venue as last year. The weather was delightful and the going firm and dry.

1.—Taking a fence in the Ladies' Open Nomination Race—the best race of the day; won by Miss Stella Pierce on her own horse, Crown Glass. 4.—Lady Sybil Lygon, Mrs. Wm. Seeley, and Lady Ursula Filmer-Sanke y. 7.—Taking a fence in Adjacent Hunts' Race. The horse on left was Mr. O. T. Surman's Garron Tower II., the winner; the horse leading (on right) was Mr. Ben Barton's Listening Wave. It broke its back at last fence but one and was killed.

2.—Mrs. Mead's (Compton Abdale) party having an al fresco luncheon. 5.—A few faces round the paddock rails interested in the saddling of the horses. 6.—Lady Filmer-Sanke y on Stoughton II., finishing first in ladies' race. She was disqualified for riding outside a flag. 3.—Hon. Diana Coventry (on left), with friends.



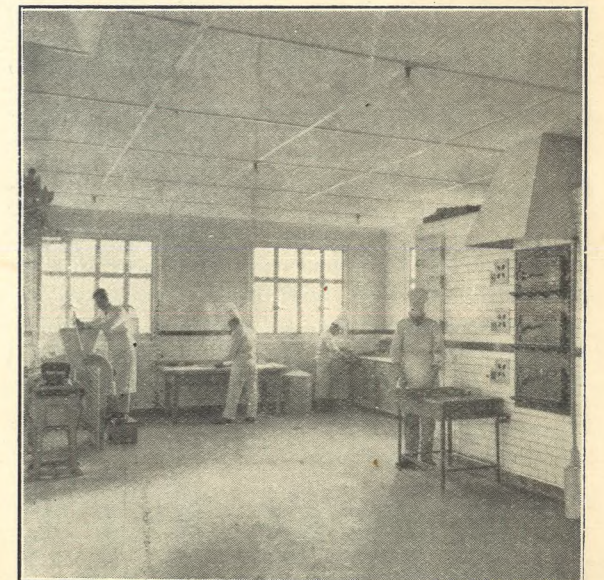
GLOUCESTERSHIRE SCHOOLS AND SCHOLARS. NO. 4: NAUNTON PARK SENIOR SCHOOL, CHELTENHAM  
Scholars in Form Ia. At this school boys and girls are taught together.  
"Cheltenham Chronicle" Photographs. Copies 6d., 1s. and 1s. 9d.



BRUNNER'S BAKERY. EXTERIOR OF BUILDING



THE BAKEHOUSE. WORK IN PROGRESS



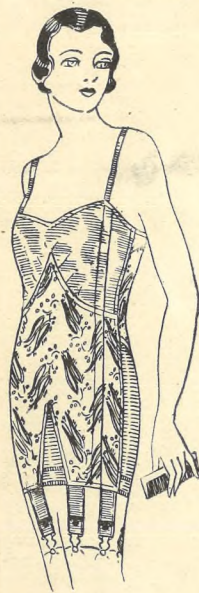
BAKEHOUSE. MIXING DEPARTMENT

**"BRUNNER'S BAKERY"**  
This new building, just erected in Hewlett-road, is an example of how it is possible to combine premises which are architecturally beautiful and at the same time laid out for ideal working conditions. The bakery stands in an open area of several acres, and has been erected to cope with the ever-growing demand for the confectionery, chocolates, etc., made by Brunner's, of Clarence-street, Cheltenham. Electrically-driven mixers, kneaders and refiners are employed, and the whole arrangements are considered with one end in view—the provision of a hygienically perfect bakery. Messrs. L. W. Barnard and Partners were the architects, and A. C. Billings and Sons, Ltd., the builders.

SPECIAL WINDOW DISPLAY OF

*Royal Acta*  
REGD. TRADE MARK

ALL BRITISH  
HIGH-GRADE  
INEXPENSIVE CORSETRY



Model C.83.  
A combination garment giving the fashionable silhouette. In pink Brocade 27/6



Model FL11.  
A front-lacing Corset of delightful design which has a distinctly reducing effect on the stout figure. In Pink Broche 26/9



ROYAL ACTA  
SLENDER BELT.  
Ideal for all sports and for controlling the figure. Imparts unrestrained movement and youthful poise. Model W.24. Plain 19/11  
Model W.24A. Fancy Brocade. 26/11



Model W.95.  
Pink Brocade hook-side garment with diaphragm control, and elastic panels to mould the hips. 25/9  
Model C.94. Ditto, backless, with lace Brassiere top. 29/6



Model LB12.  
A Lace-back model for the full figure. Firmly boned and fitted special elastic section in the skirt front, which moulds the figure into more graceful lines. 29/11



Model W.96.  
A wrapround Corset specially suitable for the fuller figure, keeping the natural curves and lines, but defying any suggestion of un-gainliness. 21/-

Free Gift Corsetry

See our Windows  
**MAISON ANNETTE** Kensington House, Promenade, CHELTENHAM Phone 2122

Wholesale — THE ACTA CORSET COMPANY, LTD., 8 WELL STREET, LONDON E.C.1



COTSWOLD HILLS GOLF CLUB DANCE AT THE BELLE VUE HOTEL (THE 20TH HOLE)

# THE CHELTENHAM CHRONICLE AND GLOUCESTERSHIRE GRAPHIC

With Which is Incorporated the "Cheltenham Looker-on" GRATIS SUPPLEMENT  
SATURDAY, MARCH 26, 1932 No. 1,630.

## THE OPERA HOUSE, CHELTENHAM

TO DAY: Adolphe Menjou in "THE GREAT LOVER." Also Irene Dunne in "MARRIED IN HASTE."  
NEXT WEEK: Grand Holiday Attraction. Marie Dressler, Polly Moran in "POLITICS." It's the laugh of the season, but a mighty fine drama besides. Also Sally Blane, Lew Cody in "X MARKS THE SPOT," a Thrilling Newspaper Mystery, and Full Supporting Programme.

## PALACE

HIGH STREET, CHELTENHAM  
HEAR Phone 2553. HERE ENTIRE EASTER WEEK  
The Great Attraction of the Year.  
Janet Gaynor and Charles Farrell in "MERELY MARY ANN"  
Showing at (approx.) 2.40, 4.50, 7.5, 9.20.  
Also Jerry Verno and Robert Holmes in "My Friend the King"  
Paramount Sound News and Full Supporting Programme.

## THE DAFFODIL

Phone CHELTENHAM. 3360.  
2.15 Continuous Daily 10.30.  
GREAT SPECIAL EASTER SHOW  
Jeanette McDonald and Victor McLaglen in "ANNABELLE'S AFFAIRS"  
A Masterpiece of Mirth!  
Also "Quick Millions"  
Spencer Tracey again in a Load of Fun.  
British Movietone News. (Exclusive).

## FOICE'S,

Promenade, Cheltenham  
The House for Distinctive HAIRDRESSING AND ARTISTRY IN HAIRWORK  
Telephone 3490.

Telephone 2580.  
W. Scott Cooper  
Diamond Merchant, Jeweller, Goldsmith and Silversmith.  
The Promenade, Cheltenham  
LICENSED VALUER



## THE GRAND NATIONAL WINNER

Three Cheltenham steeplechase jockeys — all high in their profession — who rode in the Grand National this year. "Tim" Hamey, who won on "Forbra," is in centre, "Billy" Stott, the champion jockey, who rode Annandale, falling at the last fence, when third, is on right, and "Billy" Speck, who rode Dusty Foot, is on left.

## WOODWARD'S

Estab. 1810 : The Musical Centre : 'Phone 2512  
for Marconiphone, Pye, His Master's Voice, and Columbia Radio  
77 HIGH ST., CHELTENHAM

## "COLISEUM"

2.15 to 10.30 p.m.  
CHELTENHAM. Phone 3715.  
BIG DOUBLE-FEATURE HOLIDAY PROGRAMME  
CONSTANCE BENNETT, with Joel McCrea, in "THE COMMON LAW"  
Also "Freighters of Destiny"  
featuring Barbara Kent and Tom Keene. Pathe British Gazette.

## SHOP-SOILED CAMERAS

AT HALF-PRICE  
See our Window Display  
REAL BARGAINS—GET YOURS TO-DAY  
WILL. R. ROSE  
25 PROMENADE, CHELTENHAM

You can obtain your WOOLS and TAPESTRIES with accessories and EXPERT ADVICE from PRITCHARD'S Art Needlework Studio, 18 Promenade, CHELTENHAM.

## A FEW EXAMPLES OF LANCE'S KEEN VALUES

### SHOES

Real Bengal Lizard 1 bar shoes, welted, medium toes and leather military heels.  
Black, Brown and Fawn  
17/9 PER PAIR

### SILKS

NATURAL SHANTUNG A direct shipment offer of this popular and useful Chinese silk in a selected quality. Evenly woven, strong and hard wearing for innumerable purposes.  
Natural shade only.  
33 inches wide.  
2/6 Per yard

### "WEARCLEAN" GLOVES

Correct for ladies Spring ensembles, in Fawns, Browns and Greys. Elastic wrist.  
For hard wear.  
5/6 Per pair

### HOSE

Fine gauge, plated art silk, pointed heels, reinforced feet and suspender tops.  
All sizes; 1/9 various useful shades PER PAIR

### SUEDE CREPE

A charming dull finished material in a range of 20 delightful colours.  
36 ins. wide.  
2/11 1/2 PER YD.

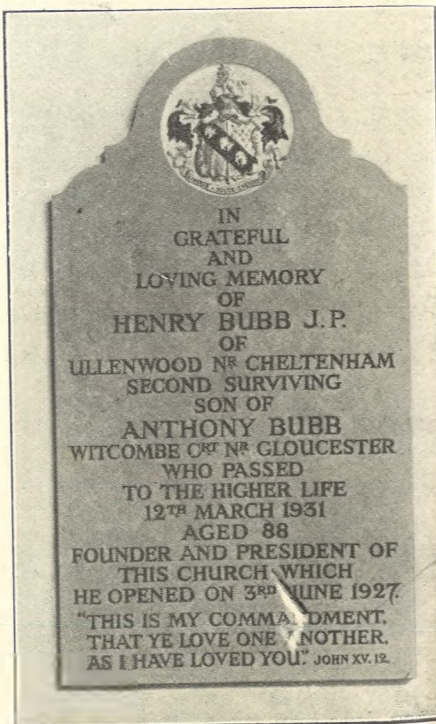
### UMBRELLAS

Fancy striped, of good wearing Art Silk, suitable for sun or rain. Crook handle, colours Blue, Brown and Black.  
5/6 each

## JOHN LANCE AND CO., LTD.

CHELTENHAM 'Phone 3570

GET IT AT LANCE'S AND SAVE THE DIFFERENCE

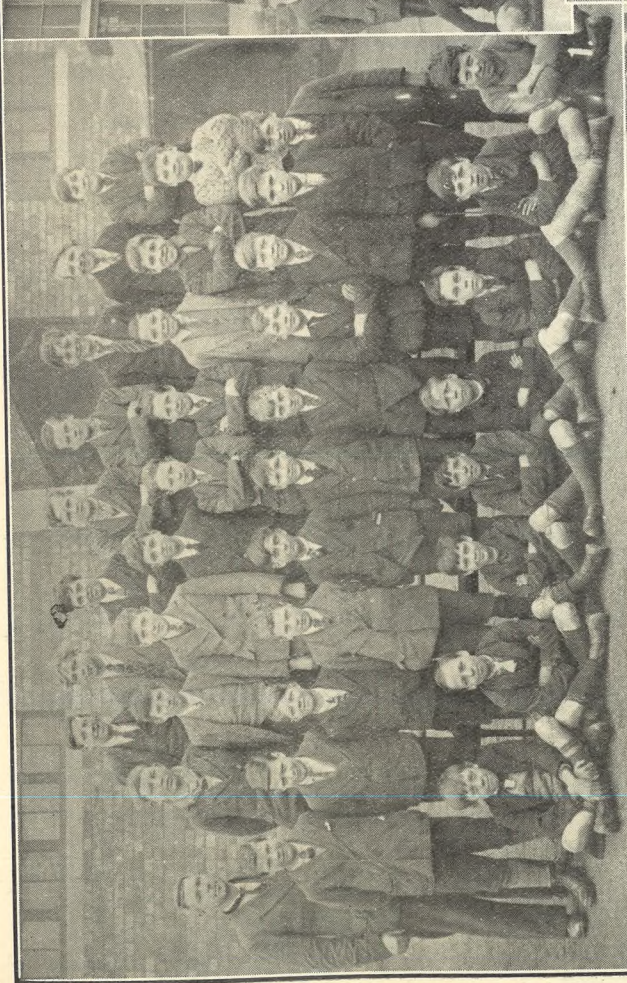
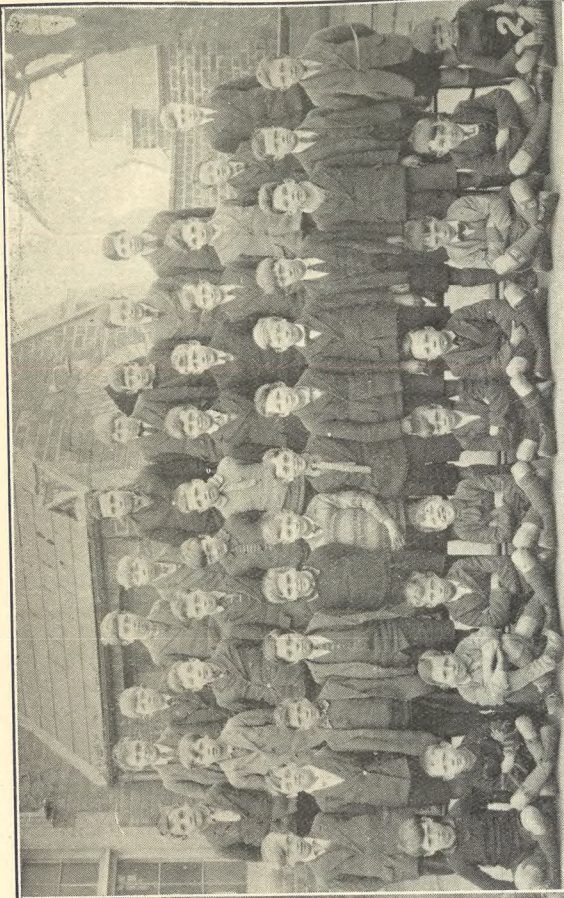


## HENRY BUBB MEMORIAL

A memorial tablet to the late Mr. Henry Bubb, subscribed for by the members of the congregation of the Spiritualist Church, Cheltenham, has been fixed in the church, and was unveiled on March 11th. The work was carried out by Messrs. R. L. Boulton and Sons, sculptors, Bath-road, Cheltenham.

Printed and Published as a gratis supplement by the Cheltenham Newspaper Co. Ltd.

## DALE, FORTY and Co. LTD. For the Best PIANOS



**GLOUCESTERSHIRE SCHOOLS, SCHOLARS, AND STAFFS. NO. 5: CHELTENHAM PARISH CHURCH BOYS' SCHOOL**

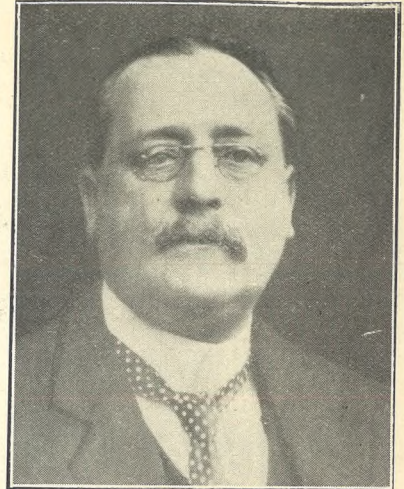
This school is one of the oldest elementary Church Schools in the country. It was founded in 1713, and was at one period in its history conducted in the chamber over the north porch of the Parish Church. It is now situated in Devonshire-street.

1.—Standards 6 and 7, with Mr. E. C. Chivers, the teacher of ironwork.  
 2.—Standards 3 and 4.  
 3.—Standard 5.  
 4.—The staff. Standing: Mr. T. R. Parker, Mr. C. J. Butler, Mrs. Whittle, Mr. G. Thomas. Seated: Mr. E. A. Goode, Mr. T. H. Crisp (headmaster), and Mr. J. E. Morris.  
 Photographs. Copies 1s. and 1s. 9d. each.

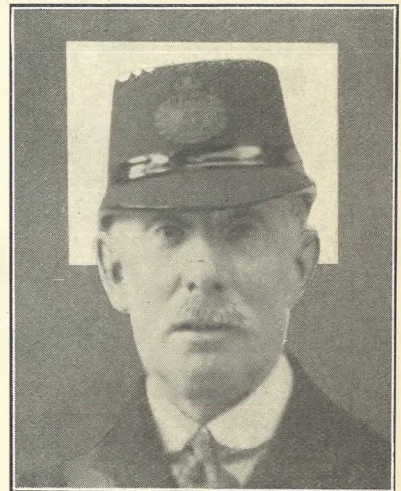


**ST. JAMES'S PLAY CENTRE, CHELTHENHAM**

Children from this centre gave a performance on Monday to parents and friends.  
 1.—The Sleeping Beauty.  
 2.—Sailors' Hornpipe.  
 3.—Irish Jig.



**MR. DAVID DUFF**, of 9 Victoria-terrace, Cheltenham, who died at his home, aged 72 years. He served 47 years on the Great Western Railway, retiring eleven years ago as goods agent in Cheltenham. He came here in 1907.



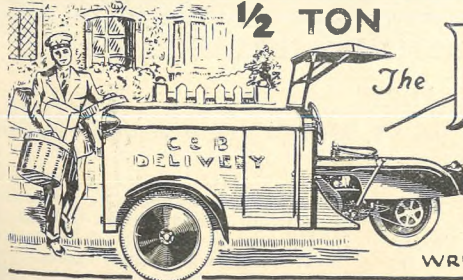
**MR. J. E. WILLIAMS**, of 1 Melville-terrace, Swindon-road, Cheltenham, who retired from the P.O. service on Monday last under the age limit. He had put in 46 years' service in the town, first as a telegraph messenger and afterwards as postman.



**CHELTHENHAM CHAMPIONS**

Miss E. Thody, of Battledown, Cheltenham, and Mr. E. Walker, of Jireh House, Charlton Kings, who won the Amateur Dancing Championship of the West of England at Bristol, organised by the Bristol "Evening World." They were first in waltz, foxtrot, and quickstep.

**THE CHEAPEST WAY TO CARRY 1/2 TON**



The **Fleet** DELIVERY VAN

PRICE £87-10-0  
 £4 TAX £3 INSURANCE

HIRE PURCHASE TERMS ARRANGED  
 WRITE TO-DAY FOR DETAILS

**CHELTHENHAM MOTOR & CYCLE CO.**  
 82, THE STRAND, CHELTHENHAM.



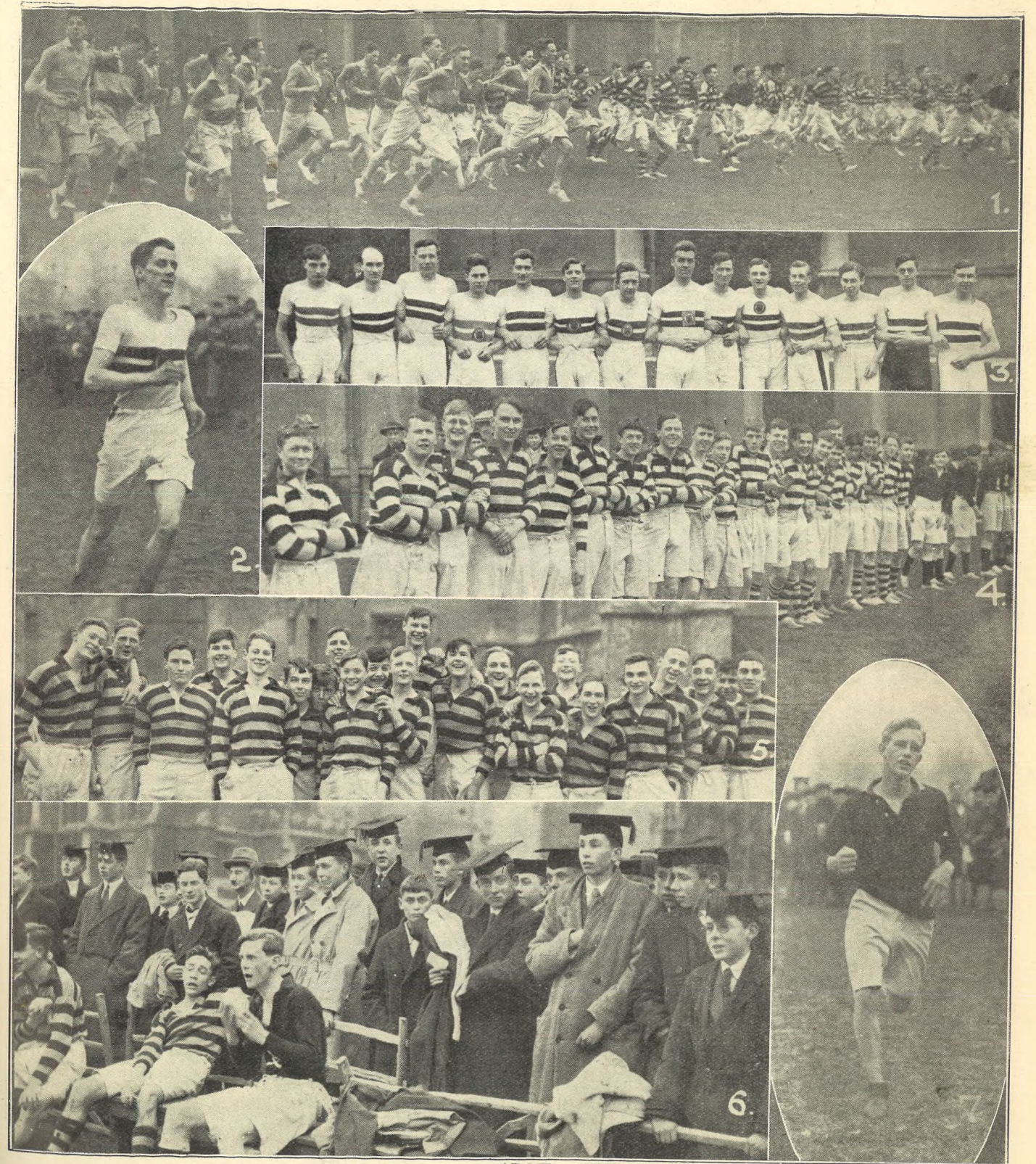
**CHELTENHAM GRAMMAR SCHOOL SPORTS**

The annual sports were held on Saturday last on the school playing field at St. Mark's, before a capital crowd of parents and friends.

- 1.—Young winning the high jump. He broke the school record, clearing the bar at 5ft. 2ins.
- 2.—The start of the mile.
- 3.—Spectators watch a closely-contested race.
- 4.—March winning the 220 yds. open.
- 5.—Jones winning the 100 yards (under 15).
- 6.—Mrs. P. James presenting the Vassar-Smith Challenge Cup to March.
- 7.—K. Jones, winning the mile (open). His time was 5mins. 8secs.

the highest number of points gained in open competition. Mr. R. H. Dobson, headmaster, behind.

“Cheltenham Chronicle” Photographs. Copies 1s. and 1s. 9d. each.



**CHELTENHAM COLLEGE CROSS-COUNTRY RUN AND MATCH AGAINST CHELTENHAM HARRIERS**

Cheltenham and County Harriers easily won the match against the College over the usual cross-country course on Saturday last, finishing 1st, 2nd, 3rd, 4th, 6th and 7th. The College first man came in 5th.

- 1.—The field breaking away at the start.
- 2.—M. Gooch (Harriers), who came in first a long way in front of all competitors, in 33mins. 3secs.
- 3.—The fourteen Harriers who competed,
- 4.—Boyne House competitors.
- 5.—Newick House boys.
- 6.—Watching the competitors finish, some of them exhausted.
- 7.—H. J. Home coming in first for the College in 35mins. 42secs. He was actually 5th in the race.

“Cheltenham Chronicle” Photographs. Copies 1s. and 1s. 9d. each.



**MANY HAPPY RETURNS OF THE DAY TO UNCLE CHARLIE'S NEPHEWS AND NIECES**

- |   |   |   |
|---|---|---|
| 1.—Aubrey Holtham, Meera, Whaddon-road, Cheltenham.       | 5.—Cyril Parker, 4 Prestbury-road, Prestbury.     | 9.—Betty Manson, 22 Grosvenor-street, Cheltenham.                         |
| 2.—John Haug, "Hope Orchard," Staverton, near Cheltenham. | 6.—Ivor Tracey, 19 Mitre-street, Cheltenham.      | 10.—Doris Drinkwater, Ravenhurst Cottage, White Cross-square, Cheltenham. |
| 3.—Maureen Williams, 13 Glebe-road, Prestbury.            | 7.—Kenneth Bond, 6 Sherborne-street, Cheltenham.  | 11.—Kathleen Lennard, 15 Ewyn-terrace, Leckhampton, Cheltenham.           |
| 4.—Denys Carter, Chosenville, Swindon-road, Cheltenham.   | 8.—Cyril Iddles, 57 Sherborne-street, Cheltenham. | 12.—Toby Price, 2 St. Anne's-villas, Cheltenham.                          |

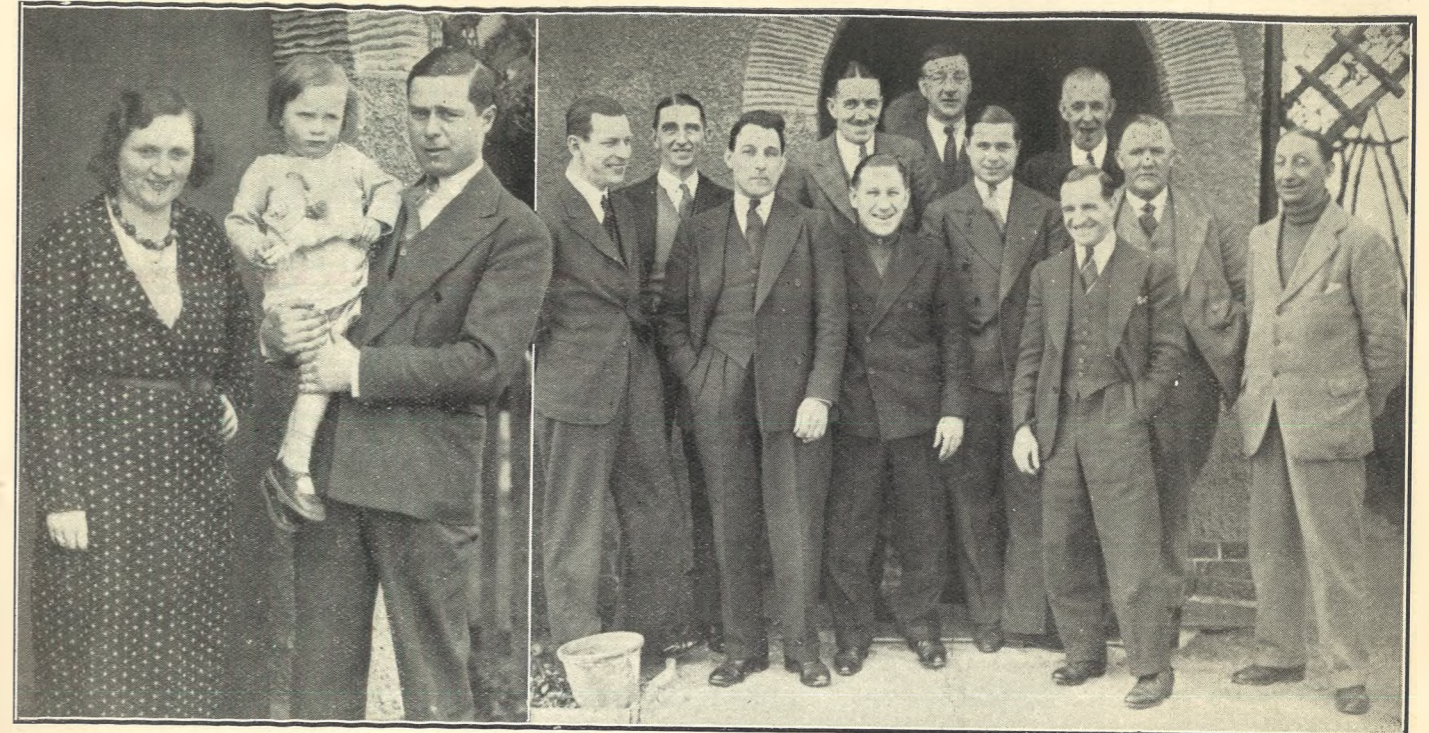
"Cheltenham Chronicle" Photographs. Copies 6d., 1s. and 1s. 9d.



**IRVING ACADEMY CONCERT TO PARENTS AND FRIENDS**

On Friday last the pupils of the above academy gave a capital end-of-term concert in the Little Theatre. A number of juniors in a cabaret dance.

"Cheltenham Chronicle" Photographs. Copies 1s. and 1s. 9d. each.



**WELCOME TO THE GRAND NATIONAL WINNER**

"Tim" Hamey, who rode Forbra to victory in the Grand National Steeplechase last Friday, was welcomed at his home at Bishop's Cleeve on Sunday morning by many friends, who rejoiced with him in his success. Forbra started at 50 to 1 against. 1.—Mrs. Hamey and her husband with their little son. 2.—"Tim," with some of his friends at his house on Sunday morning. From left: Mr. A. E. Davis, Mr. Bert Woodford (owner), Mr. A. L. Lefebvre, Mr. MacMillan (at back), Mr. W. Speck, Mr. "Rich" Burroughs, Mr. "Tim" Hamey, Mr. "Ted" Arnold (at back), Mr. W. Stott, Mr. E. Baker (owner), Mr. G. Wilson (trainer).

"Cheltenham Chronicle" Photographs. Copies 1s. and 1s. 9d. each.



**SOME OF MESSRS. HAINES & STRANGE EASTER CAR DELIVERIES**

Above are shown some of the new cars delivered to purchasers this week-end by Messrs. Haines and Strange, the well-known Vauxhall, Sunbeam, Standard, Austin, and Morris dealers. In the picture are part of a fleet of new cars being delivered to the Cheseborough Manufacturing Co. (Cons.), Ltd., the makers of "Vaseline" preparations. In the background can be seen the chassis for the Ambulance Headquarters' new ambulance. In the foreground are just a few of the new Standards which are being delivered this Easter. It is expected that new Standards registered in Gloucestershire during March will again exceed all other makes together.



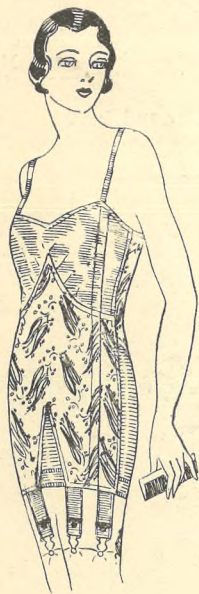
**DANCERS AT ST. PATRICK'S DAY BALL**

A number of pupils from St. Gregory's (R.C.) School gave exhibition dances in Irish costume at the ball at Boots on St. Patrick's Day.

**SPECIAL WINDOW DISPLAY OF**

*Royal Acta*

REGD. ALL BRITISH  
HIGH-GRADE  
INEXPENSIVE CORSETRY



**Model C.83.**  
A combination garment giving the fashionable silhouette. In Brocade **27/6**



**Model FL11.**  
A front-lacing Corset of delightful design which has a distinctly reducing effect on the stout figure. In Pink Broche **26/9**

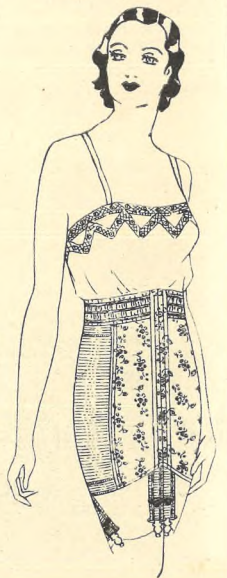


**ROYAL ACTA SLENDER BELT.**  
Ideal for all sports and for controlling the figure. Imparts unrestrained movement and youthful poise. Model W24. Plain **19/11** Coutil. **26/11**  
Model W.24A. Fancy Brocade. **26/11**

**Model W.95.**  
Pink Brocade hook-side garment with diaphragm control, and elastic panels to mould the hips. **25/9**  
**Model C.94.**  
Ditto, backless, with lace top. **29/6**



**Model LB12.**  
A Laced-back model for the full figure. Firmly boned and fitted special elastic section in the skirt front, which moulds the figure into more graceful lines **29/11**



**Model W.96.**  
A wraparound Corset specially suitable for the fuller figure, keeping the natural curves and lines but defying any suggestion of unattractiveness **21/-**

See our Windows

Free Gift Corsetry

**MAISON ANNETTE** Kensington House, Promenade, CHELTENHAM 'Phone 2122

Wholesale — THE ACTA CORSET COMPANY, LTD., 8 WELL STREET, LONDON E.C.1