

# THE CHELTENHAM CHRONICLE AND GLO'SHIRE GRAPHIC

With Which is Incorporated the "Cheltenham Looker-on."  
SATURDAY, JULY 4, 1931

GRATIS SUPPLEMENT  
No. 1,592.

## OPERA HOUSE, CHELTENHAM

TO DAY: CLIFFORD MOLLISON and DODO WATTS in "ALMOST A HONEY-MOON."

NEXT WEEK: MARION DAVIES in "THE BACHELOR FATHER" with C. AUBREY SMITH and RALPH FORBES, from the famous stage success. Paramount Sound News. Also BEBE DANIELS in "LOVE FINDS A WAY," a Romantic Crook Drama.

## PALACE

HIGH STREET, CHELTENHAM  
Monday, July 6, for SIX DAYS.

Harry Richman  
(Broadway's Greatest Star),  
and Joan Bennett in  
"PUTTIN' ON THE  
RITZ"

also  
Lupe Velez  
and Jean Hersholt in  
"HELL HARBOR"  
A Super Show

## THE DAFFODIL

'Phone CHELTENHAM 3360  
Monday, July 6th, for 6 DAYS  
Another Gigantic All-British  
Show

Jameson Thomas and  
Muriel Angelus in  
"NIGHT BIRDS"

also  
Lilian Harvey in  
"The Temporary Widow"

Two Charming Pictures that are  
All-Dialogue and make a First-  
Class Entertainment.

## MARTIN & Co., LTD.,

The County Jewellers,  
Established Over 125 Years.

## WEDDING PRESENTS

PROMENADE,  
CHELTENHAM SPA.  
Tel. 2821.



### MISS DOROTHEA BEALE

The Cheltenham Ladies' College are celebrating this week-end the centenary of the late Miss Beale's birth, which occurred on March 21, 1931. Pictures of the celebration were taken by our photographers and will appear in next Saturday's "Cheltenham Chronicle and Graphic."

[Photograph by G. H. Martyn and Sons, Cambray Spa.]

## A. WHITCOMBE & Co. Ltd.,

Experts in the

Restoration of Paintings, Drawings & Engravings.

PRINT SELLERS & FRAME MAKERS.

16 Promenade & 24 Clarence Street, Cheltenham

ESTABLISHED 1846.

TELEPHONE 2422

## "COLISEUM"

(Coolest Theatre in Town)  
2.15 p.m. to 10.30 p.m.

### "THE FOURTH ALARM"

A Thrilling Fire Drama, with  
Ralph Lewis and Tom Santschi.  
The

### "SECOND HONEYMOON"

by Ruby M. Ayers.  
Starring  
Josephine Dunn and  
Edward Earle.

British Movietone News, etc.  
All Seats 6d. before 3 p.m.

Bottler  
of  
Ales,  
Cider,  
and  
Table  
Waters.

**BARTHOLOMEW**  
WINE MERCHANT  
Tel. 3590  
419/20  
The Strand  
High St.,  
CHELTENHAM

## FOICE'S,

Promenade, Cheltenham

The House for Distinctive

HAIRDRESSING AND  
ARTISTRY IN HAIRWORK

Telephone 3490.

Telephone 2580.

## W. Scott Cooper,

Diamond Merchant, Jeweller,  
Goldsmith and Silversmith.

The Promenade, Cheltenham

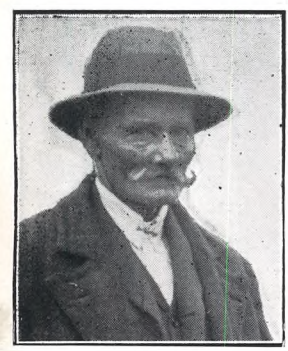
LICENSED VALUER

**DALE, FORTY and Co. Ltd.** For the Best **PIANOS**





**GENERAL SIR CHAS. HARINGTON (O.C.) INSPECTS CHELTENHAM COLLEGE O.T.C.**  
 The General (in mufti) in centre, at tea with the officers of the corps on the headmaster's lawn.



**MR. JAMES TOWNSEND,**  
 of Brizen House Farm, Leckhampton, who was found dead on Saturday last. He was aged 73 years, and was well known as a farmer and a Tariff Reform lecturer. He leaves a widow, five sons and a daughter.



**MR. A. H. J. COLLETT,**  
 of Norcote Cottages, near Cirencester, who died in Cheltenham General Hospital on Tuesday, aged 18 years, from injuries sustained by being run over by a farm wagon a week before.



**MR. FRANK GARDNER,**  
 managing clerk for Messrs. Rylands and Co., estate agents, Dyer-street, Cirencester, who died suddenly at his home, The Avenue, Cirencester, aged 62 years. He was playing bowls the evening of his death.



The Singer Junior at £150 complete is ever increasing in popularity. Apart from its reliability, the following outstanding features account for this:—The car will carry four adults in comfort, and the engine still has plenty of reserve power. Four wide doors; Safety petrol tank at rear holding six gallons; Four-speed gear box; Sliding roof. Messrs. Reed and Patterson (Cheltenham) Ltd., Bath-road, Cheltenham, are the County Distributors for Singer Cars, and will be pleased to arrange for a demonstration.

**" PICTURESQUE GLOUCESTERSHIRE."**

The only book which does pictorial justice to our lovely county.  
 Price 21/- at "Echo" Office.





**GLOUCESTERSHIRE RURAL COMMUNITY COUNCIL FETE AT PITTVILLE PARK**

An exhibition of specimens of crafts practised in the rural districts of Gloucestershire, as well as illustrations of the educational, dramatic, musical, health and other work being done was successfully carried through in Pittville Park on Saturday afternoon in beautiful weather.

- 1.—Releasing gas-filled balloons for competition.
- 2.—19th Cheltenham (Salem) Girl Guides, who gave a demonstration of first-aid.
- 3.—Members of the British Red Cross Ambulance Brigade in attendance.
- 4.—Mr. J. K. Nicholson (on left), who presented Mr. J. Maddox-Yorke (right) with a cheque in recognition of his services as general secretary.
- 5.—“Four at a time” at the cokenut shies.
- 6.—Bowling for a live pig.
- 7.—Hempsted Village Children, whose dancing display was well received.

“Cheltenham Chronicle” Photographs. Copies 1s. and 1s. 9d. each. Postage 2d. extra.





**GREAT CONSERVATIVE RALLY AT BATSFORD PARK**

People thronged in thousands on Saturday afternoon last to Batsford Park, near Moreton-in-Marsh, to a great Conservative demonstration, over which the Rt. Hon. Lord Dulverton (who owns Batsford) presided, and at which Sir Robert Horne, M.P., ex-Chancellor of the Exchequer, was principal speaker. It was a beautiful day, and the occasion was a memorable one.

1.—General scene of the meeting, showing the mansion in the background.  
 2.—Part of the crowd, which stretched as far in the other direction, listening to Sir Robert Horne's speech.

3.—The Platform Party. From left: Sir Philip Stott, Bt., Mr. W. S. Morrison, M.P., Lord Dulverton, Sir Robert Horne, K.C., M.P., Mr. Gil-

bert McIlquham, Mrs. Flowerdew-Lowson, Mrs. W. S. Morrison, Mr. Ralph Homan (Conservative Agent).



# THE BON MARCHE (GLOUCESTER) LTD.

On Friday Next, July 10. Doors open at 9 a.m.

**SALE  
BARGAINS**  
ON  
**EVERY FLOOR**

(including)

**NEW DEPARTMENTS:**

**FOOTWEAR,  
MEN'S & BOY'S  
CLOTHING,  
FURNISHINGS  
GARDEN FURNITURE,**



*SPEND  
THE DAY*  
at  
**GLOUCESTER'S  
MODERN STORE**

LIFTS to  
RESTAURANT  
and  
LOUNGE  
on TOP FLOOR

THE **BON MARCHE** (GLOUCESTER) **SALE** COMMENCES  
FRIDAY (Next)  
JULY 10th.





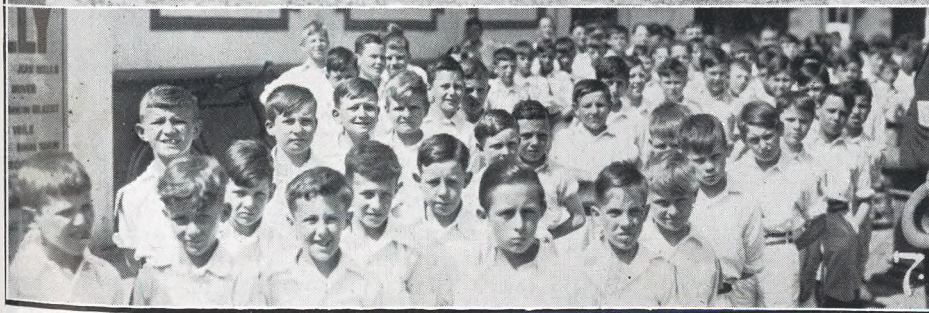
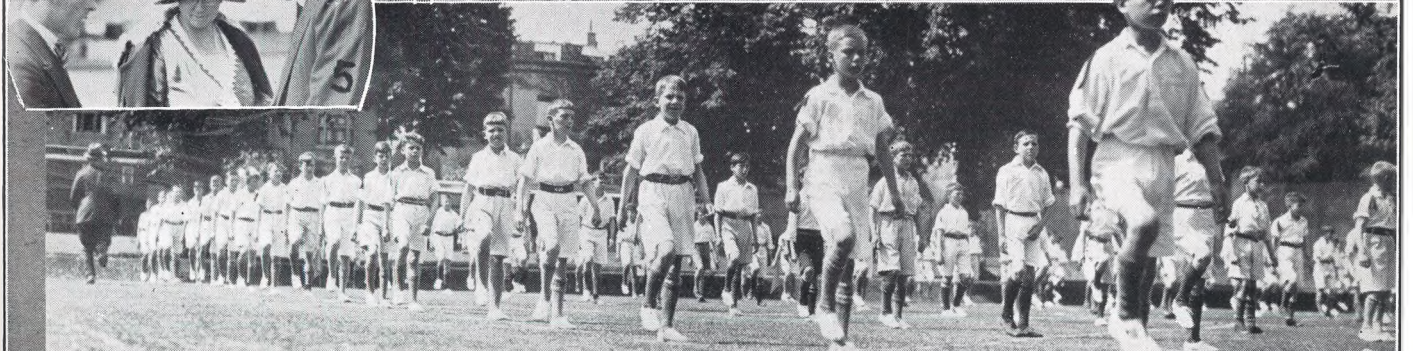
**MISS BEALE CENTENARY AT CHELTENHAM LADIES' COLLEGE**

To-day members of the staff are giving a series of scenes in the Princess Hall from life in the School during Miss Beale's regime. Many of them are wearing beautiful old dresses of the period that have been carefully preserved. The performances are strictly private to past and present pupils.

1.—Scene from the period of the "Fifties." 2.—The "Seventies" scene. 3.—A hockey team of early 20th Century (1902). 4.—A scene from the "Eighties."

"Cheltenham Chronicle" Photographs. Copies 1s. 9d. and 2s. 6d. each.





**CHELTENHAM FLORAL FETE**

The opening day (Wednesday) of Cheltenham's great Floral Fete was favoured with delightful weather. There were more general amusements than in other years, the pupils from the elementary schools of the town giving a splendid display of country dancing and drill, while Boy Scouts and Girl Guides also gave capital displays.

- 1.—The platform at the opening ceremony at the bandstand. In front, from left, are: The Mayor of Cheltenham, Alderman P. P. Taylor, Lady Helena Gibbs (who opened the show), Mrs. J. Howell, Lady Preston and the Mayoress.
- 2.—Swindon Road School girls, who formed a section of the combined country dancing display, with Miss Long, who directed the dancing.
- 3.—Lady Helena Gibbs being shown round by Mr. Leuchars.
- 4.—Children dressed as pirates in Miss Courtney's dancing display.
- 5.—Sir Walter Preston, M.P. (right) and Lady Preston consult a horticulturist.
- 6.—Elementary school boys marching on.
- 7.—The boys waiting to start.
- 8.—Col. Griffith with a friend.

A further series of pictures of the dancers will appear in next week's "Graphic"



# CAVENDISH HOUSE SALE

OFFERS

## EXCEPTIONAL BARGAINS IN MEN'S WEAR



### BLAZERS

Well cut and tailored Men's Navy Sports Blazers in good quality flannel

SALE PRICE **15/9**

### FLANNEL TROUSERS

Best quality all wool flannel in cream or 3 shades of grey.

SALE PRICE **19/9**

.....  
• Oddments in  
• Men's Hats  
• and Shoes  
• almost  
• **HALF PRICE.**  
• .....

### SILK PYJAMAS— at HALF PRICE

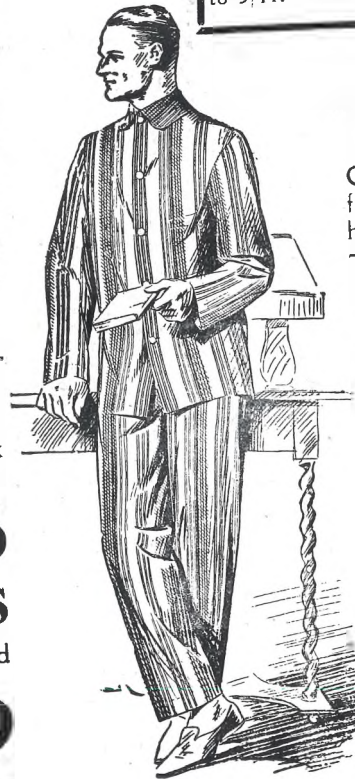
Men's Pyjamas in the well known all silk JAPSHAN. Sizes 38 and 40 ins. Usually 45/-.

SALE PRICE **22/6**

### POPLIN PYJAMAS

Men's Poplin Pyjamas in attractive striped designs of soft pastel shades. Usually 21/9.

SALE PRICE **14/9**



### —SHIRTS—

Plain or striped "Zephyr" Shirts in the fashionable fawn shade. Complete with two collars. SALE PRICE **5/11**

"Zephyr" Tunic Shirt of several designs, complete with two collars to match. Usually 10/9. SALE PRICE **7/11**

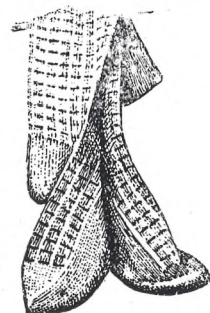
Better quality reduced from 12/9 to 9/11.



### FANCY HALF HOSE

Our remaining stock of fancy Cashmere half hose usually 3/6 and 2/11

TO CLEAR **2/3**



### All our well-known FOULARD SILK TIES

Reduced to clear at **2/-**

### RAINCOATS

A few Raincoats of fine Egyptian cotton in three useful shades and lined check to tone. Shoulders lined batiste.

SALE PRICE **30/-**

**CAVENDISH HOUSE, CHELTENHAM**



### CHELTENHAM COLLEGE SPEECH DAY

The College Speech Day was held on Saturday afternoon in glorious weather; and there was a fine display of modern fashions at the garden party in the College playing field, after the speeches were over. Lord Dawson of Penn gave the prizes away and made a most interesting speech.

- 1.—Mrs. Hugh Reeves, Mr. Hugh Reeves (a great benefactor to the College), and Dr. Curtis Webb.
- 2.—Boys promenading with their people at the cricket match.
- 3.—Mr. H. H. Hardy (the headmaster), Mrs. Hardy, Lord Dawson of Penn, Lady Dawson of Penn, and Lord Lee of Fareham.
- 4.—Some of the prizewinners.
- 5.—The O.C. cricket team, who just failed to win a very sporting game. From left: C. J. King-Turner, Brig.-Gen. F. S. Piggott, R. O. D. Wodehouse, R. A. Graham Smith, T. D. Mitchell, T. G. O'Dwyer, T. A. Higson (capt.), S. M. Ekin, E. P. Arrowsmith, Capt. Hancock, J. M. Bryce-Smith, P. Higson.
- 6.—An attractive hat at the garden party.
- 7.—Miss Marie Hall (in centre, in dark hat) with ladies, all wearing long, pretty, and now fashionable dresses.
- 8.—E. H. Lloyd, the College wicket-keeper, being lionised and much to be envied. One of the ladies was carrying a muff, despite the heat.

"Cheltenham Chronicle" Photographs. Copies 1s. and 1s. 9d. each. Postage 2d. extra.





PRESTBURY CONSERVATIVES' OUTING

Nearly a hundred members of the Prestbury branch of the divisional Conservative Association (including both men's and women's section) held their annual outing on Saturday, visiting Stow-on-the-Wold, Moreton-in-Marsh (where tea was held), and afterwards Batsford Park, where they attended the big Conservative demonstration. It was ideal weather, and the drive was much enjoyed. Mr. H. Walker was Men's Organiser and Mrs. C. M. Martin the Women's.

Three sections of the party, and inset Mr. C. M. Martin (chairman of men's branch) with a lady member.

"Cheltenham Chronicle" Photographs. Copies 1s. & 1s. 9d. each. Postage 2d. extra.

# LANCE'S SUMMER SALE HOLIDAY BARGAINS

REMEMBER  
OUR QUALITIES ARE  
ALWAYS SATISFACTORY

SPECIAL OFFER IN  
TAILORED TWEED COATS  
in a large variety of styles, etc.;  
All Sizes (including O.S.).  
Worth 35/6 to 49/6  
SALE PRICE 25/6

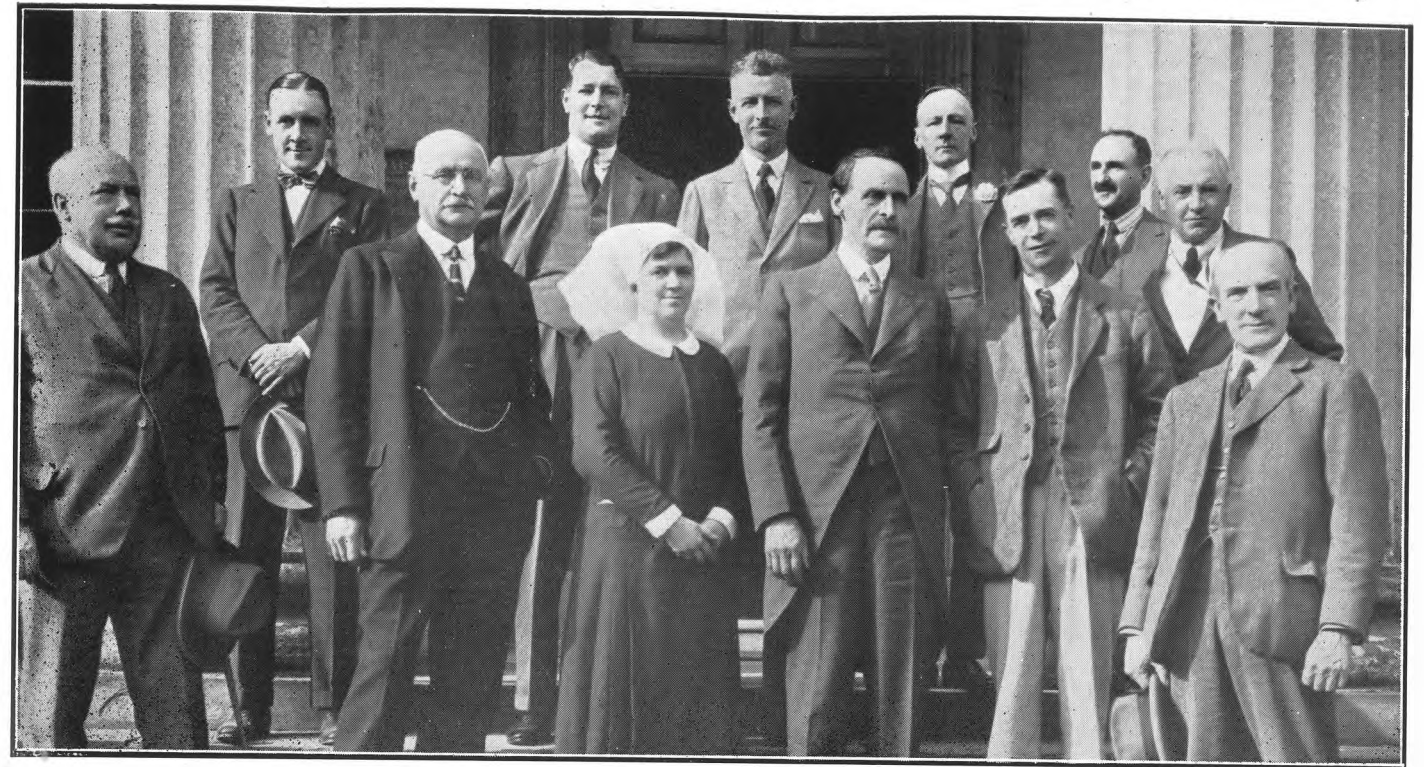
FLORAL CREPE-DE-CHINE GOWNS,  
in a variety of styles and  
colourings.  
Usual Price 45/6  
SALE PRICE 31/6

OUR ENTIRE STOCK  
of FUR COATS, SMALL FURS,  
COATS, GOWNS, KNIT-WEAR,  
ETC., ARE MARKED AT PRICES  
TO ENSURE A CLEARANCE.

EARLY BUYING  
ADVISED

WATCH OUR WINDOWS  
AND  
VISIT OUR SALONS

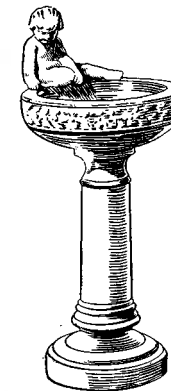
**JOHN LANCE**  
AND CO., LTD.,  
CHELTENHAM



**LORD DAWSON OF PENN AT CHELTENHAM GENERAL HOSPITAL**  
Lord Dawson of Penn, who was the principal speaker at Cheltenham College Speech Day on Saturday last, took the opportunity of inspecting Cheltenham General Hospital, and the visitors' book records a very appreciative note as to the good work he saw. The above group was taken on the Hospital steps.  
Back row: Dr. Basil Taylor, M.B., Mr. O. E. J. McOustra, M.R.C.S., L.R.C.P., F.R.C.S., Mr. J. S. Robinson, M.B., B.A., B.Sc., F.R.C.S., Rev. R. H. M. Bouth, J.P. (Chairman of the Board), Dr. J. B. Davey, M.B., M.R.C.S., L.R.C.P., Dr. J. F. Johns, L.R.C.P.  
Front row: Lt.-Col. G. A. Peake, Dr. J. Curtis Webb, M.B., M.R.C.S., The Matron (Miss Fox Davies), Lord Dawson of Penn, Dr. J. R. Collins, M.A., F.R.C.P., Mr. J. Howell, C.B.E., M.B., F.R.C.S., L.R.C.P.

## "CHELTON" GARDEN ORNAMENTS

We have the largest  
stock of : : :  
Garden Ornaments in  
the district to choose  
from, by Artists who  
have exhibited at the  
Royal Academy



AGENTS:-

**BOWELL &  
SKARRATT**  
Hardy Plant  
Nurseries,  
Cemetery Road,  
CHELTENHAM.

(Illustrated Leaflet Free)

## IN THE DAYS OF MISS BEALE

A study of her work and influence  
BY

**F. CECILY STEADMAN**

(For 42 years a member of Cheltenham  
Ladies' College).

A picture of Miss Beale, the founder  
of Cheltenham Ladies' College and  
pioneer of women's education, whose  
centenary is celebrated this year, as  
she was seen from within the College  
she created against a background  
of the times in which she lived

216 Pages, Crown Quarto, Full Cloth,  
nearly 100 illustrations including  
coloured frontispiece, 29 half-tone  
plates, many unique photographs,  
numerous line drawings and 2 plans

12/6 net. Postage 9d.

Of all Booksellers:  
**ED. J. BURROW & CO. LTD.**  
Publishers,  
**IMPERIAL HOUSE, CHELTENHAM**  
& 43, 45, 47 Kingsway, London

## Let MOUSELLS move you



Estimates for Removal and Storing Free.

Offices:  
**AMBROSE STREET, CHELTENHAM.**

'Phone 2212.

Send your Films

to **C. & P. JAMES, Ltd.**  
Chemists (next G.P.O.)  
CHELTENHAM

and get a **FREE POSTCARD**

IT PAYS TO ADVERTISE IN  
THE "GRAPHIC"

MISS BEALE CENTENARY

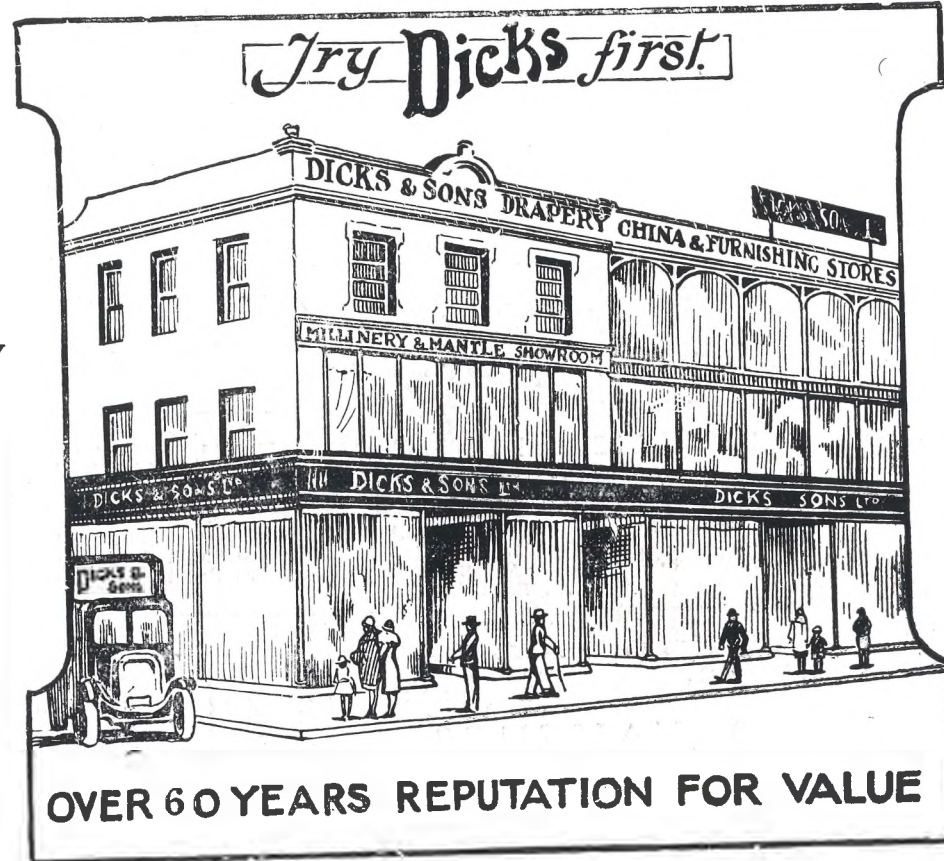
Next week's "Graphic" will illus-  
trate exclusively many of the events  
in connection with the centenary.



1871

1931

# SPECIAL DIAMOND JUBILEE SALE



Begins  
THURSDAY  
JULY 9th  
Doors open  
9 o'clock

Begins  
THURSDAY  
JULY 9th  
Doors open  
9 o'clock

To make this Diamond Jubilee Sale a memorable one, we have laid aside a large sum for Special Bargains in addition to usual season's reductions, and are out to do record business.

YOU SHOULD NOT MISS THIS OPPORTUNITY

# Dicks & Sons Ltd

172, 173 HIGH STREET  
Cheltenham Spa  
TEL. 2507 60 YEARS REPUTATION FOR VALUE

# THE CHELTENHAM CHRONICLE AND GLO' SHIRE GRAPHIC

With Which is Incorporated the "Cheltenham Looker-on."  
SATURDAY, JULY 11, 1931.

GRATIS SUPPLEMENT  
No. 1,593.

## OPERA HOUSE, CHELTENHAM

TO-DAY:—MARION DAVIES in "THE BACHELOR FATHER"; also BEBE DANIELS in "LOVE FINDS A WAY."

NEXT WEEK—Stupendous Attraction. REGINALD DENNY and KAY JOHNSON in "MADAM SATAN." The last word in exotic thrills. Also FRANCIS X. BUSHMAN & LINA BASQUETTE in "THE FEMININE TOUCH," an Out-of-Door Romance; and Paramount Sound News.

## PALACE

HIGH STREET, CHELTENHAM  
Monday, July 13, for SIX DAYS

A Jolly British Mirthquake.  
Jane Baxter and Richard Cooper  
in  
"BED AND BREAKFAST"  
also June Collyer and  
Jameson Thomas in  
"Extravagance"

## THE DAFFODIL

Phone CHELTENHAM 3360  
Monday, July 13, for 6 DAYS

We present  
Ann Harding in  
"THE GIRL OF THE  
GOLDEN WEST"  
A different kind of picture.  
Yes! You'll like it. Also  
Loretta Young in  
"The Truth About Youth"  
with David Manners and  
Conway Tearle.  
Comedy and Super British  
Sound News.

## MARTIN & Co., LTD.,

The County Jewellers,  
Established Over 125 Years.

### WEDDING PRESENTS

PROMENADE,  
CHELTENHAM SPA.  
Tel. 2821.



SOCIETY WEDDING AT BISLEY  
Mr. William Laurence Grant (son of Mr. A. J. Grant, of Mill Hill) and Miss Ruby Gwyneth Chetwynd Clay (daughter of the vicar of Bisley and Mrs. Clay) were married at Bisley Church last Saturday.



WIND JAMMERS or Coats.  
Very Sporting Wear for Holidays  
21/- to 55/-

"THE FAMOUS," Clothiers,  
CHELTENHAM

## "COLISEUM"

(Coolest Theatre in Town)  
2.15 p.m. to 10.30 p.m.  
Hobart Bosworth in  
The Terrific Sea Drama  
"HURRICANE"  
Also Ian Keith and  
Dorothy Revier starring in  
"Light Fingers"  
British Movietone News.  
All Seats 6d. before 3 p.m.

Bottler  
of  
Ales,  
Cider,  
and  
Table  
Waters.  
**BARTHOLOMEW**  
WINE MERCHANT  
Tel. 3590  
419/20  
The Strand  
High St.,  
CHELTENHAM

MAISON  
ANNETTE  
SUNDER SALE  
of  
CORSETS &  
LINGERIE

Kensington House,  
PROMENADE, Cheltenham.  
Phone 2122

# DALE FORTY and Co. Ltd For the Best PIANOS





**PATE'S GRAMMAR SCHOOL OLD GIRLS' REUNION**

The annual reunion of the Old Girls' Association was held on Saturday, with the customary social and sports programme.

- 1.—A jolly crowd of girls leaving the field after a game of baseball.
- 2.—The Present School tennis team (at back) which beat the Old Girls (in front) by 59pts. to 40.
- 3.—Miss Price, M.A., Miss Miles (Headmistress), and Mrs. P. James (Secretary of Old Girls' Association).
- 4.—Some of the girls watching the cricket.
- 5.—The Old Girls' cricket team (in front), which beat the Present (at back) by 55 to 29.
- 6.—Watching the tennis.
- 7.—Some of the School grandchildren, at the playing field.

"Cheltenham Chronicle" Photographs. Copies 1s. and 1s. 9d. each. Postage 2d. extra.



**CHELTHENHAM FLORAL FETE**

A great feature of the Floral Fete this year was the charming entertainments given by children on the lawns at the Montpellier Gardens. Over 800 children in costume performed at the various shows

- 1.—Miss Hicks and Miss Morris in a Victorian dance given by pupils of Miss Courtney.
- 2.—Girls from the United Services Girl Guides (under Miss Burton), who gave some charming period dances.
- 3.—St. Gregory's School girls, who performed in country dances.
- 4.—Christ Church Girls' School party, who performed in country dances.
- 5.—Another of Miss Courtney's pupils.
- 6.—All Saints' girls in country dance.
- 7.—The wedding cake scene, a charming ballet by tiny pupils of Miss Courtney.
- 8.— Cirencester Church Lads' Brigade give an athletic display.

Photographs of all the country dancing groups were taken and can be obtained from "Echo" and "Chronicle" Office. Prices 1s. and 1s. 9d. each.





**MISS BEALE CENTENARY CELEBRATIONS AT CHELTENHAM LADIES' COLLEGE**

Close on 2,000 old pupils visited the College during the week-end. Everything passed off splendidly, except that the garden party and sports on Saturday afternoon were washed out by rain.

- 1.—Platform party at the Princess Hall meeting. Standing (from left): Mr. R. B. Mowat, Miss Tinson, Sir F. Colchester-Wemyss, Mrs. Barlow, Miss D. M. Beale, Miss F. C. Ker, Mr. W. Fitzherbert, the Dean of Hereford, Mrs. Temperley, Mr. L. S. Wood, Brig.-Gen. E. C. Peebles, Lt.-Col. J. F. Tarrant (secretary). Seated: Mrs. M. Tanner, Mr. F. B. de Saumarez, Miss E. C. Higgins, Sir Henry Hadow, Miss B. M. Sparks (Principal), Lord Askwith (Chairman), Miss L. M. Faithfull, Miss M. Wolseley-Lewis, Lady Hadow, Lady Sillem. Webb-Peploe, Archdeacon Ridsdale, and Rev. L. G. M. Sheldon.
- 2.—Present Girls filing out of Cathedral.
- 3.—Miss Bannister.
- 4.—Clergy leaving Cathedral: Rev. F. H. Webb-Peploe, Archdeacon Ridsdale, and Rev. L. G. M. Sheldon.
- 5.—Miss Gwyn Jeffreys, Miss Faithfull, and Miss Edith Thompson, C.B.E., leaving Cathedral.
- 6.—Where Miss Beale's ashes lie in Lady Chapel. A wreath in College colours and with College ribbons was placed above it.





### CHELTHENHAM LADIES' COLLEGE CELEBRATE CENTENARY OF MISS DOROTHEA BEALE

Hundreds of old students came to the Cheltenham Ladies' College during the week-end for the Miss Beale Centenary Celebrations. A memorial service was held on Friday afternoon in Gloucester Cathedral, when the ancient edifice was packed from end to end with past and present pupils of the College, and on Saturday, the Princess Hall was the scene of a wonderful meeting when eulogies of Miss Beale were delivered by Sir Henry Hadow and other notable speakers. The scene in the Princess Hall at the close of Saturday's meeting. "Cheltenham Chronicle" Photograph. Copies 1s. 9d., 2s. 6d. and 3s. 6d.





CHARLTON KINGS SISTERHOOD OUTING TO THE WYE VALLEY ON WEDNESDAY LAST



BAYSHILL UNITARIAN CHURCH GARDEN FETE AT CLIFF HOUSE, LECKHAMPTON ON SATURDAY LAST  
Some of the principal workers, from left:—Mr. F. Short, Mr. W. Organ, Rev. Barbara Thomas, Mrs. Organ, Alderman Geoffrey New, Mr. F. R. Starling, Mr. W. A. Finch.



WILLIAM FRANK (BILLY) BARRETT, who died July 2, aged 13. He was the only son of Mr. and Mrs. W. H. Barrett, Kenleigh, Fairfield-avenue, Cheltenham, and was a member of SS. Philip and James' Church Choir. He was also a member of Naunton Park School football and cricket first elevens, and of the school choir.



MR. JOHN ALBERT INGRAM,

of Thistledown, Cromwell-road, who died on Monday at the General Hospital, aged 64. He was a retired postman, and when he left the Post Office in 1927 after 44 years' service he was awarded the Imperial Service Medal by the King for his unblemished record.

Send your Films to C. & P. JAMES, Ltd. Chemists (next G.P.O.) CHELTENHAM and get a FREE POSTCARD

"PICTURESQUE GLOUCESTERSHIRE" A beautiful book dealing with a beautiful county. Inspect a copy at "Echo" Office, Cheltenham, Price 21s. Also may be obtained at Minchin and Gibbs,

It is generally known that the old established business of William Herbert & Sons will shortly be closing down, and on this account I have received much correspondence from my customers referring to this fact, and my decision, after much consideration, to retire into private life:

It is with great personal regret that I have come to this conclusion and take this opportunity of thanking my friends for their great courtesy and kindness.

*John Ernest Herbert,*

## HERBERT & SONS

Retiring from Business

### CLOSING DOWN SALE

COMMENCING FRIDAY, JULY 10th.

FURTHER TICKET PRICE REDUCTIONS 2/- in the £ DISCOUNT To Every Customer

We beg to announce that we have decided to continue our Clearance Sale and give customers the benefit of bargain prices rather than sell our valuable stock by tender.

In consequence further substantial reductions in Ticket Prices have been made, and in addition a discount of 2/- in the £ will be allowed.

NORTHGATE STREET : GLOUCESTER

# FILL YOUR HOLIDAY WANTS AT LANCE'S SUMMER SALE

COATS, GOWNS, HATS, and ALL THE ACCESSORIES OF LADIES' AND GENT'S WEAR, ALSO FURNITURE etc; SPECIAL OFFER OF BOX PLEATED SKIRTS IN GOOD QUALITY WOOL CREPE, IN SHADES OF NAVY, LIDO, BROWN, GREEN, RED, BEIGE AND BLACK.

WELL WORTH 15/9 SALE PRICE 10/6

SEE OUR WINDOWS AND VISIT OUR SHOWROOMS

## JOHN LANCE AND CO., LTD

CHELTENHAM

### "CHELTON" GARDEN ORNAMENTS

We have the largest stock of Garden Ornaments in the district to choose from, by Artists who have exhibited at the Royal Academy



WENDY" (Height 3ft. 1in. 8 gns. Base £1/11/6 extra.

Guaranteed against Frost

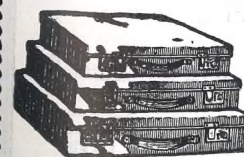
AGENTS:— BOWELL & SKARRATT

Hardy Plant Nurseries, Cemetery Road, CHELTENHAM.

(Illustrated Leaflet Free)

## BICK BROS.

Hold a Large Stock of



ATTACHE CASES Week-End and Dressing Cases. "Revelation" Expanding Cases.

And TRAVEL GOODS of every description. 19 MONTELLIER WALK, CHELTENHAM. Phone 3880.

Let MOUSELLS move you



Estimates for Removal and Storing Free. Offices:

AMBROSE STREET, CHELTENHAM. Phone 2212.



A DAINY DANCER Little Miss Burroughs, a grand-daughter of the late Mr. Frank Burroughs, of Kayte Farm, in a ballet at the Floral Fete.—"Cheltenham Chronicle" Photograph.

IT PAYS TO ADVERTISE IN THE "GRAPHIC"



# CAVENDISH HOUSE SALE

## GENUINE HAND-MADE PERSIAN CARPETS

FAR BELOW HALF LAST YEAR'S PRICES

11ft. 3in. x 7ft. 11in. ....	£11-5-0	11ft. 4in. x 7ft. 5in. ....	£14-17-6
1930 Price £31/10/0		1930 Price £42/17/6	
11ft. x 8ft. 8in. ....	£11-17-6	12ft. 2in. x 10ft. 3in. ....	£15-19-6
1930 Price £35/10/0		1930 Price £45/10/0	
11ft. x 8ft. 5in. ....	£12-9-6	13ft. 2in. x 9ft. 10in. ....	£16-5-0
1930 Price £36/10/0		1930 Price £47/15/0	
12ft. 5in. x 8ft. 7in. ....	£13-3-6	13ft. 3in. x 9ft. 7in. ....	£17-11-9
1930 Price £37/19/6		1930 Price £49/10/0	

## PERSIAN RUGS

5ft. 1in. x 3ft. 8in. ....	42/6	5ft. 8in. x 3ft. 6in. ....	59/6
1930 Price 94/6		1930 Price £6/2/6	
4ft. 10in. x 3ft. 8in. ....	45/6	7ft. 1in. x 3ft. 10in. ....	62/6
1930 Price 98/6		1930 Price £6/7/6	
6ft. x 3ft. 9in. ....	52/6	6ft. 2in. x 4ft. 2in. ....	68/6
1930 Price £5/10/0		1930 Price £6/12/6	

## ENGLISH CARPETS

EXCEPTIONAL BARGAINS IN SQUARES

### WILTON

Fine quality Wilton Square, 9ft. x 6ft. 9in., with all-over Persian design of blue and deep rose shade on drab ground. Usually £8/10/0.

SALE PRICE

5 GNS

### STAIR CARPET

English AXMINSTER Stair Carpet, 22½ins. wide. SPECIALLY REDUCED per yard 27ins. wide 4/11.

4/9

### AXMINSTER

Standard grade Axminster, 12ft. x 9ft., of small all-over design of brown and blue on fawn ground. Usually 10gns.

£7-15

SALE PRICE

### AXMINSTER

Standard quality Axminster, 10ft. 6in. x 9ft. Fawn, Rose and Blue designs on Brown ground.

SALE PRICE £5-15

### WILTON

Extra fine Wilton, 12ft. x 11ft. 3in., all-over Persian style design in brown on blue ground. Usually £22/10/0.

16

SALE PRICE GNS

CAVENDISH HOUSE, CHELTENHAM

PRINTED AND PUBLISHED AS A GRATIS SUPPLEMENT BY THE CHELTENHAM NEWSPAPER COMPANY, LIMITED.

# THE CHELTENHAM CHRONICLE AND GLOUCESTERSHIRE GRAPHIC

With Which is Incorporated the "Cheltenham Looker-on." SATURDAY, JULY 18, 1931

GRATIS SUPPLEMENT No. 1,594.

## OPERA HOUSE, CHELTENHAM

TO-DAY: REGINALD DENNY and KAY JOHNSON in "MADAM SATAN," Also LINA BASQUETTE in "THE FEMININE TOUCH."

NEXT WEEK: LEWIS STONE and KAY FRANCIS in "PASSION FLOWER," a Sensational Drama of Modern Marriage. Also WILLIAM HAINES and POLLY MORAN in "REMOTE CONTROL," a Hilarious Melodrama of the Microphone, and FULL SUPPORTING PROGRAMME.

## PALACE

HIGH STREET, CHELTENHAM

Monday, July 20, and All the Week:-

RICHARD CROMWELL and NOAH BEERY in "TOL'ABLE DAVID"

Also An Outstanding All-British Picture, "THE WINDJAMMER"

Another PALACE Super Show!

## THE DAFFODIL

Phone: Cheltenham 3360.

Week Commencing Monday, July 20:-

CLOSED FOR THE WHOLE WEEK

FOR RE-DECORATION AND RE-CARPETING

OPEN MONDAY, JULY 27, With a High Speed, Double-Feature Show.

## MARTIN & Co., LTD.,

The County Jewellers.

SOLID SILVER TEASET £3/15/0

PROMENADE, CHELTENHAM.

Established 1806. Tel. 2821.



## TEWKESBURY PAGEANT

REV. EDGAR NEALE

Vicar of Charlton Kings, who takes the part of Richard Rick, Esq., in Episode IV. of the Tewkesbury Pageant.

Can a SIX-ROOMED HOUSE be completely furnished for £100?

If you visit DRAKE'S MODEL HOME you will be delighted and convinced that the £100 Furnishing Scheme is practical. Open Daily 2.30-4. Fri. & Sat., 6-7 p.m., also.

"NORTONBURY," Hewlett St.

## "COLISEUM"

The Theatre Built for Sound 2.15 p.m. to 10.30 p.m.

AMOS 'N' ANDY

The Famous Broadcasting Comedians, in their First Talking Picture

"CHECK AND DOUBLE CHECK"

Also "PRESENT ARMS,"

A Riot of Laughs, with Louise Fazenda, Lilyan Tashman and 60 Tiller Girls. British Movietone News etc. All Seats 6d. before 3 p.m.

Bottler of Ales, Cider, and Table Waters.

**BARTHOLOMEW**  
WINE MERCHANT  
419/20 The Strand High St., CHELTENHAM  
Tel. 3590

## FOICE'S,

Promenade, Cheltenham

The House for Distinctive HAIRDRESSING AND ARTISTRY IN HAIRWORK Telephone 3490.

Telephone 2580.

W. Scott Cooper,

Diamond Merchant, Jeweller, Goldsmith and Silversmith.

The Promenade, Cheltenham LICENSED VALUER

DALE, FORTY and Co. LTD. For the Best PIANOS





**COLLECTORS FOR THE CHELTENHAM GENERAL HOSPITAL**

A party of district collectors under the Workers' Hospital Contribution Scheme, who inspected the institution on Saturday last. Back Row: Mrs. and Mr. Pillinger (Weston-sub-Edge), Mr. J. Bridges (Bourton), Mrs. and Mr. Ash (Bourton-on-the-Water). Fifth Row: Mr. White (Winchcombe), Mr. Chamberlain (G.W. Railway), Ensign Swain, Mrs. Rowley (St. Peter's District), Mrs. Becking-sale (Bishop's Cleeve), Mrs. W. Shipway (Woodmancote), Miss Nock (Elkstone), Miss B. Roberts (St. Paul's). Fourth Row: Mrs. Brown (Didbrook), Mrs. Roberts (Stanway), Mrs. Jackson (Wormington), Miss Welch (Shurdington), Mrs. Fry (Charlton Kings), Mrs. White (Great Rissington), Mrs. Harris (Lower Guiting), Mrs. Gibb (Little Rissington), Miss Pitts (Hatherley). Third Row: Mrs. Greenhalf (Winchcombe), Mrs. Cook (Grosvenor Street Sisterhood), Mrs. Lawson (Andoversford), Mrs. Peart (Dowdeswell), Mrs. Wilkes, Mrs. Major (Notgrove), Mrs. Petrie (Sherborne). Second Row: Miss Nicholas (Gretton), Mrs. Scott (Colesbourne), Mrs. Fellows (Tewkesbury), Mrs. and Miss Carter (Boddington), Mrs. Shute (Teddington), Mrs. Mitchell (Fairfield District), Mrs. Blacklock (Compton Abdale), Mrs. Hooper (Sherborne). Front Row: Mr. Dunning Smith (Secretary), Miss Fox-Davies (Matron), Rev. R. H. M. Beuth (Chairman), Miss A. S. Cowie (Organiser).



**FOUR GENERATIONS AT ALDERTON**  
Mrs. E. Cook, with her daughter, Mrs. F. Parker, her grandson Mr. A. Parker, and her great-grandson Dennis Parker. Mrs. Cook had 17 children, of whom 13 are alive, and has 40 grandchildren and three great-grandchildren.



**WEDDING AT AMBERLEY**

The wedding took place on Saturday last of Dr. Robert Charles Little, of Edinburgh, to Miss Elizabeth Howard Smith, daughter of Mr. S. H. Smith, of Beech Cottage, Downham, near Stroud. The bride is a well-known Gloucestershire tennis player.

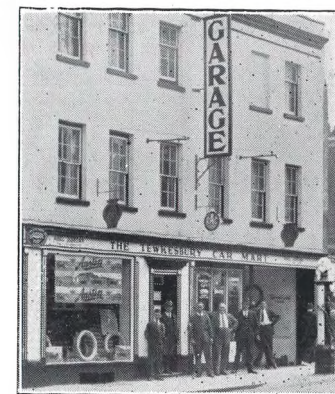
**TEWKESBURY** *the town of wonderful history.*

FOR

Distinctive  
MILLINERY  
GOWNS ..  
BLOUSES  
KNITWEAR  
HOSIERY ..  
GLOVES ..  
and  
UNDERWEAR

Shop at—

**SELINA'S**  
128 High St., Tewkesbury



Tewkesbury's Leading Garage for the supply of new and reconditioned cars, accessories, oils, etc.  
**THE TEWKESBURY CAR MART,**  
101 High St. 'Phone 52, Prop. A. Jordan

Leave your —  
**WIRELESS WORRIES**

with the Radio People—  
**HAYWARD & SONS**  
125 High Street,  
TEWKESBURY

'Phone \_\_\_\_\_ 39  
and Upton-on-Severn.

We specialise in the supply of  
IRONMONGERY,  
CUTLERY, GLASSWARE,  
& CHINA, CYCLES &  
ACCESSORIES, ELECTRICAL  
GOODS, etc., etc.,

A visit to  
**TEWKESBURY**  
is hardly complete  
without a call at—

**C. E. HOPKINS**

*The Leading Draper  
and Milliner*

— whose —

**GREAT PAGEANT SALE**

is now proceeding.

HIGH ST. TEWKESBURY

'Phone 105

**T. B. MILNER & CO.**

*Furnishers  
& General Ironmongers.*

**BEDDING  
BEDSTEADS  
HEARTH SUITES**

High Street, Tewkesbury



**TEWKESBURY PAGEANT**  
Above: The Beggar Woman and her boy.  
Below: Mr. O. A. Hesketh Williams as  
Abbot Parker, in Episode II.

Royal Warrants 1838, 1885,  
1901, 1911

**JOHN DOBELL & CO., LTD.**  
Wine and Spirit Merchants

Agents for  
**WHITEWAYS, BULMERS, CARRS  
AND HENLEY'S CIDERS**

12 and 13 HIGH STREET,  
'Phone TEWKESBURY 33

Also at  
Cheltenham, Gloucester,  
Upton-on-Severn and Newport

The **SPOT**  
for **VALUE**—

It is to your advantage  
to buy your **HATS**—  
**SUMMER WEAR**—  
**HOUSEHOLD LINENS,**  
etc., etc. where utmost  
value for money is  
given—

**W. W. BAKER,**  
144 and 145 High Street,  
TEWKESBURY





**CHELTONIANS IN TEWKESBURY PAGEANT**

History of Tewkesbury through 800 years was enacted by a cast of nearly 2,000 players in the Pageant produced by Miss Gwen Lally at Tewkesbury this week. The proceeds are in aid of the Tewkesbury Hospital Building Fund.

- 1.—Cheltenham ladies as Nuns in Episode IV. 2, 3, 5, 7 and 8.—Cheltonians who took part in the Dissolution of the Monastery. 4.—Children of the Duke of Gloucester. 6.—Mrs. Surman (Uckington) with two friends (Episode IV.)

[“Cheltenham Chronicle” Photos. Copies 1s. each.]



**TEWKESBURY PAGEANT**

Held in a field near the Abbey, the old Norman tower made an imposing background to the arena, and the spectacle was colourful in the extreme.

- 9.—Rev. and Mrs. Berens Dowdeswell, representing Richard Dowdeswell and his lady of the period (1698), with their sedan chair and carriers. 10.—Mr. W. H. Nutt as Mr. Pickwick. 11.—Mrs. V. Seeley as a Cavalier. 12.—Ladies in procession with Richard Dowdeswell and his company. 13. Miss Stella Harrison as Richard Beauchamp and Miss June Pelham as Isabelle-Despenser, his bride, in Episode II. 14.—The advance guard of the White Army in the Battle of Tewkesbury.

[“Cheltenham Chronicle” Photos. Copies 1s. each.]



WEDNESDAY AND THURSDAY NEXT  
**BASEMENT BARGAINS**  
 of Wearing Apparel, Remnants and Oddments at  
**HALF PRICE**  
 OR LESS  
**CAVENDISH HOUSE**  
 CHELTENHAM



MISS DORIS ROBERTS, only daughter of Mr. and Mrs. S. Roberts, of 6 Tivoli-terrace, Cheltenham, who died on July 8, aged 19 years.

Send your  
**Films**  
 to  
**C. & P. JAMES,**  
 Ltd.,  
 Chemists (next G.P.O.)  
 CHELTENHAM  
 and get a  
**FREE POSTCARD**



**"BEATING THE BOUNDS"**  
 A snap in Episode VI. of the Tewkesbury Pageant.



**GLOUCESTERSHIRE CHURCHES, CLERGY AND CHOIRS. NO. 23: SS. PHILIP AND JAMES', CHELTENHAM**  
 Back row: Mr. Ford, Mr. Fletcher.  
 Second row: Mr. Turner, Mr. Bendall (churchwarden), Mr. Rooke, Mr. Wallace (verger).  
 Third row: Mr. O. Hawkins, Mr. Avery, Mr. Cripps, Mr. Acock.  
 Fourth row: Choristers Morgan, Mourton, G. Dodridge, Matty, H. Dodridge, Beadnell, Cripps.  
 Fifth row: Mr. Robinson, Mr. Townshend, Mr. Rogers (organist), Rev. J. M. Ballard (vicar), Rev. A. C. Wrenn (curate), Mr. Saunders, Mr. Clift.  
 In front: Choristers Jones, Green, Fielding, Holtam, Hoare, Barrett, Puddle.

**"CHELTON"**  
 GARDEN ORNAMENTS

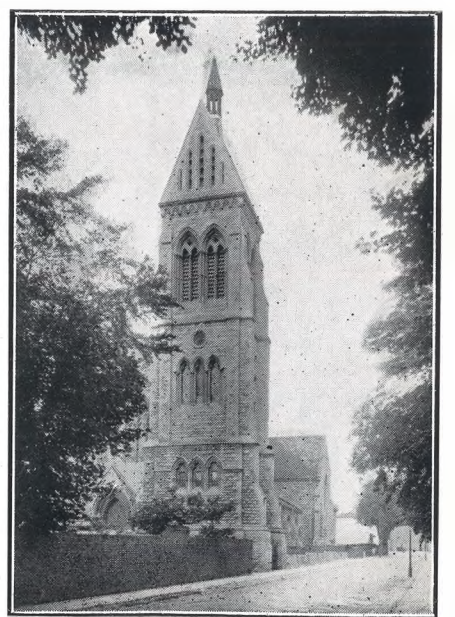
We have the largest stock of : : : Garden Ornaments in the district to choose from, by Artists who have exhibited at the Royal Academy



**"PETER PAN"**  
 (Height 32 inches),  
 £7/17/6.

AGENTS:-  
**BOWELL & SKARRATT**  
 Hardy Plant Nurseries,  
 Cemetery Road,  
 CHELTENHAM.

(Illustrated Leaflet Free)



**"PICTURESQUE GLOUCESTERSHIRE."**  
 The only book which does pictorial justice to our lovely county.  
 Price 21/- at "Echo" Office.

**GLOUCESTERSHIRE CHURCHES, No. 23, S.S. PHILIP AND JAMES, CHELTENHAM**  
 An article on this church appears on page 5 of main sheet of to-day's "Chronicle."  
 ["Cheltenham Chronicle" Photograph.  
 Copies 1s. 9d. and 2s. 6d.



SPECIAL SHOPPING EVENT at

LANCE'S

GREAT ODDMENT

AND

REMNANT DAY

THURSDAY NEXT

DOORS OPEN 9 a.m.

JOHN LANCE & CO., LTD.

CHELTENHAM



With Which is Incorporated the "Cheltenham Looker-on." SATURDAY, JULY 25, 1931

GRATIS SUPPLEMENT No. 1,595.

OPERA HOUSE, CHELTENHAM

TO-DAY: LEWIS STONE and KAY FRANCIS in "PASSION FLOWER." Also WILLIAM HAINES in "REMOTE CONTROL."

NEXT WEEK: A Great British Triumph. ARTHUR WONTNER in "THE SLEEPING CARDINAL," by the late Sir Arthur Conan Doyle. Also WINNIER LIGHTER in "THE LIFE OF THE PARTY," Funnier and Faster than "The Gold Diggers of Broadway," and PARAMOUNT SOUND NEWS.

PALACE

HIGH STREET, CHELTENHAM Monday, July 27th, Tuesday and Wednesday.—

CLARA BOW

in "TRUE TO THE NAVY" Richard Arlen and Mary Brian

in "LIGHT OF WESTERN STARS" Thursday to Saturday.—

Jeanette MacDonald

in "LET'S GO NATIVE" Carole Lombard

in "FAST AND LOOSE"

THE DAFFODIL

Phone CHELTENHAM 3300. Monday, July 27th, Tuesday and Wednesday.—

Grand Re-Opening Performance

JOE E. BROWN

in the motor racing special, "TOP SPEED" and

Billie Dove in "ONE NIGHT AT SUSIE'S." Thursday, Friday and Saturday.—

Reginald Denny and Fifi Dorsay in

"THOSE FRENCH GIRLS" and

Robert Montgomery in "LOVE IN THE ROUGH."

MARTIN & Co., LTD.,

The County Jewellers.

SOLID SILVER TEASET £3/15/0

PROMENADE, CHELTENHAM.

Established 1806. Tel. 2821.



WEDDING AT PRESTBURY.

The wedding took place on Saturday at Prestbury Church, of Mr. Arthur Nathaniel Price, of Cheltenham, to Miss Phyllis Ruby Pamela Boulton, only daughter of Mr. and Mrs. R. W. Boulton, of Marie Hill Court, Prestbury. The bride's father is a partner in the firm of R. L. Boulton and Sons, ecclesiastical sculptors, of Cheltenham.

PAGE 8 WILL INTEREST YOU  
TURN TO IT NOW!

"COLISEUM"

The Theatre Built for Sound. 2.15 p.m. to 10.30 p.m.

A Brilliant All-British Picture.

"BIRDS OF PREY"

Adapted by Basil Dean from A. A. Milne's Stage Play

"The Fourth Wall." Cast includes

Robert Loraine, C. Aubrey Smith and Dorothy Boyd.

—Also— Lowell Sherman in

"THE LOSING GAME" with

Hugh Trevor and Marion Nixon.

British Movietone News, etc.

Bottler of Ales, Cider, and Table Waters.

BARTHOLOMEW WINE MERCHANT Tel. 3590  
419/20 The Strand High St., CHELTENHAM

MAISON ANNETTE

SUMMER SALE

of CORSETS & LINGERIE

Kensington House, PROMENADE, Cheltenham. Phone 2122

DALE FORTY & CO. LTD. For the Best PIANOS





**REOPENING OF CIRENCESTER HOSPITAL**

The Cirencester Memorial Hospital was officially reopened after alterations and extensions on Wednesday by Major Lord Apsley, D.S.O., M.C., before a large and distinguished company.

1.—Mr. Dowglass (architect).  
 2.—A front view of the hospital.  
 3.—Lord Apsley receiving a silver key from the architect.  
 4.—Professor E. Blundell with some of the nurses.  
 5.—A group at the opening, from left: Mr. E. Newcombe, Mr. F. W. Taylor, Rev. A. Gabe Jones, Miss Hadow, Mr. T. "Cheltenham Chronicle" Photographs. Copies 1s. and 1s. 9d. each. Postage 2d. extra.

(Hon. Architect), Mr. H. St. Geo. Rawlins (Hon. Secretary), Dr. H. E. Graham, Mr. W. S. Harmer, Mr. H. R. Harraway (Hon. Treasurer).  
 Seated: Miss N. C. Chinnery-Brown (Matron of the Hospital), Lord Apsley, D.S.O., Canon E. H. Ball, Hon. C. Biddulph, Dr. L. E. Hughes, Canon L. Westmacott (Vicar of Cirencester).



**COTSWOLD AGRICULTURAL SHOW**

The annual Cotswold Show was held on Wednesday at Stow-on-the-Wold in ideal weather. The exhibits were of a higher standard than usual, and the show was a huge success.

1.—Miss M. Cockburn leads her mount from its travelling quarters in readiness for entering the ring.  
 2.—Two of the judges: Mr. Crombie and Mr. W. H. Hitch.  
 3.—Miss Stella Pearce on her black mare "Girlee" (tied for first place in open jumping).  
 4.—From left: Mr. Crombie, Mr. W. Garne, Hon. T. H. R. Ashton (president of the society), and Mr. W. Cox Howman (chairman local committee).  
 5.—Two first prize cows, owned by Messrs. Mitchell Bros., Moreton-in-the-Marsh.  
 6.—Mr. A. R. Bosley's third prize mare and foal.  
 7.—Mrs. Robinson with her first prize cow.  
 8.—Lady Wright who was third in open jumping on her horse "Shanghai."

"Cheltenham Chronicle" Photographs. Copies 1s. each.





**SUNNINGEND SPORTS**

The Sunningend Sports Club's fifth annual sports meeting and flower show was held on Saturday last, and attracted a large attendance.

- 1.—N. N. Powell (C.C.H.) winning the inter-club 220 yards flat handicap.
- 2.—A. T. Claridge on left winning the youths' 100 yards handicap from G. R. White, a close second. E. Price (third) makes a gallant effort on the right.
- 3.—Smiling ladies after pulling in the Cheltenham v. London staff tug-of-war.
- 4.—St. Gregory's team, winners of the youths' mile relay (county championship), from left:—R. H. Hains, worth, V. J. Merrett, V. Olivant, and E. Price.
- 5.—Competitors taking the most formidable obstacle in the obstacle race.
- 6.—Mr. H. P. Folland bowling in one of the competitions.

"Cheltenham Chronicle" Photographs. Copies 1s. each.

**H. H. MARTYN & CO., Ltd.,  
SUNNINGEND WORKS, CHELTENHAM**

specialise in Architectural Work of every description, and are the only firm in Great Britain executing the entire range of decorative work in their own factory. The studios at Cheltenham cover five acres of working floor space, in which the following is carried out under expert supervision:—

JOINERY  
WOODCARVING  
FURNITURE

FIBROUS PLASTERWORK  
MODELLING  
STONE CARVING  
MARBLE CARVING

SCULPTURE  
WROUGHT METALWORK  
CAST METALWORK



**BURROW'S SPORTS**

The second annual sports meeting of the above sports club took place on Saturday last on the sports field at Leckhampton. A large crowd attended.

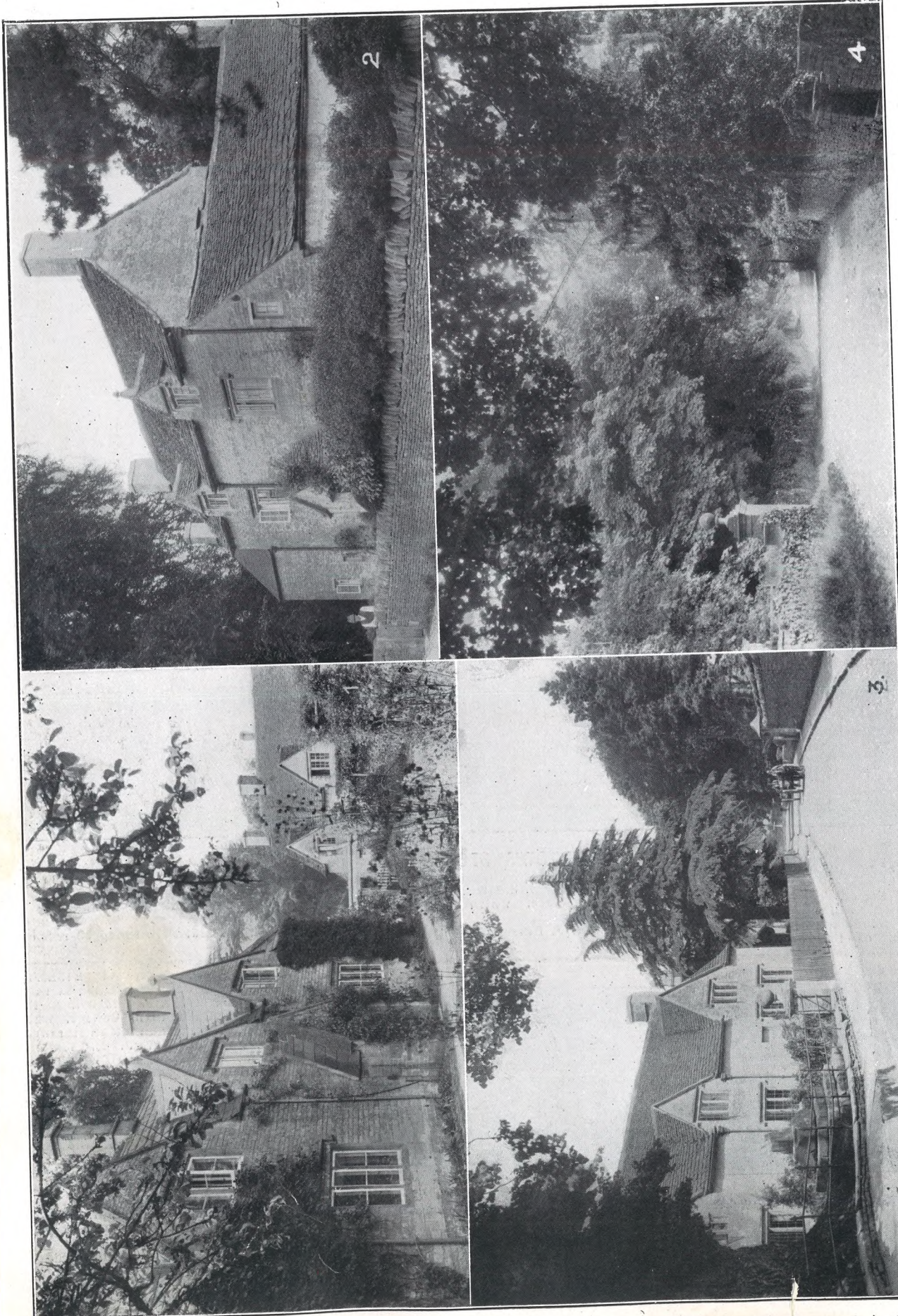
- 1.—Group of the officials.
- 2.—W. Pitman winning the 100 yards veterans' handicap.
- 3.—The start of the quarter-mile back-wards race, which caused much amusement.
- 4.—Mr. E. J. Burrow filming one of the races.
- 5.—V. Brewster winning the ladies' 80 yards handicap.
- 6.—Start of the ladies' three-legged race.



GLOUCESTERSHIRE MEN AT BISLEY Gloucestershire was well represented at this year's Bisley meeting. No. 1 is Col. R. F. Pearson, late of Cheltenham College, who held the important position of chief range officer. No. 2 is Sub-Lt. S. R. Trotter, R.N.V.R., hon. secretary of the Cheltenham Rifle Club, who shot in the R.N.V.R. twenty for the third year in succession, and also got into the second stage for the King's prize. No. 3 is Ex-Sergeant H. S. Grist, who for the 31st time shot for the King's prize. On ten occasions he has reached the final 100, and this year acted as adjutant of the English twenty in the National Challenge Trophy. Next him is his son, H. S. Grist, who reached the second stage of the King's prize, this being his first attempt. No. 5 is Major J. G. N. Clift, president of the Cheltenham Rifle Club, who coached the England team for their shoulder to shoulder match versus America, and also acted as captain for some of the other events. Photographs by Mr. J. J. Gardner.

\*\*\*\*\*  
IT PAYS TO ADVERTISE IN THE "GRAPHIC"  
\*\*\*\*\*





**PICTURESQUE GLOUCESTERSHIRE—HATHEROP**  
 Hatherop is another of the beautiful little villages on the Cotswolds. It is three miles north of Fairford. Hatherop Castle, the seat of Mrs. Cadogan, is a very fine house, and is believed to have been erected in the reign of Henry VII. It has beautiful grounds. It was formerly the residence of the Blomer family. Rudder in 1779 says Sir John Webb then owned it, but "neglected it, the offices and garden falling to ruin." The church is modern. The village cross (on left) and the main street of village. The old village cross (on left) and the main street of village. The benefice is being amalgamated with Cotswold, St. Aldwyn. A lovely walk at Eastleach Martin, rear church. Eastleach adjoins Hatherop.

**PICTURESQUE GLOUCESTERSHIRE—HATHEROP**  
 Hatherop is another of the beautiful little villages on the Cotswolds. It is three miles north of Fairford. Hatherop Castle, the seat of Mrs. Cadogan, is a very fine house, and is believed to have been erected in the reign of Henry VII. It has beautiful grounds. It was formerly the residence of the Blomer family. Rudder in 1779 says Sir John Webb then owned it, but "neglected it, the offices and garden falling to ruin." The church is modern. The village cross (on left) and the main street of village. The benefice is being amalgamated with Cotswold, St. Aldwyn. A lovely walk at Eastleach Martin, rear church. Eastleach adjoins Hatherop.



**BISHOP'S CLEEVE FLOWER SHOW**

held on Wednesday last in fine weather. The exhibits were of a high standard, and there was a good sports programme.  
 1.—Some of the younger competitors see the funny side of things during an interval.  
 2.—Marjorie Jones winning 80 yards girls' handicap (under 16).

3.—"The Desperado." John Hamey, second prize children's fancy dress.  
 4.—Mr. G. Cresswell leaves the "young uns" behind in the 100 yards race for men.

5.—Ruby and Jimmy Ansell, two shy entrants for the children's beauty competition.  
 6.—Messrs. P. Harris, H. T. May, and Stephen Sharpe, who judged the floral exhibits.

**A Bargain in SILK**  
 YOU should not miss.  
 1,000 yds. only  
 — of —  
**Natural Jap PONGEE**  
 33 inches wide 1/11  
 per yard . . . 22/6 per dozen yards  
**JOHN LANCE**  
 — & CO. LTD., —  
**CHEL TENHAM**



**VICTIM OF ACCIDENT**  
 Little Frank Robins (on right) who was killed on Sunday last by a swerving car, which knocked down and injured five people on the Tewkesbury-Coombe Hill-road. He was walking home with friends after attending morning service at the chapel. This is a recent snap of him with his sister (who was not involved in the accident).

**BICK BROS.**

Hold a Large Stock of  
**ATTACHE CASES**  
 Week-End and Dressing Cases.  
 "Revelation" Expanding Cases.  
 And TRAVEL GOODS of every description.  
**19 MONTELLIER WALK, CHEL TENHAM. Phone 3880.**

Send your Films  
 to **C. & P. JAMES, Ltd.**  
 Chemists (next G.P.O.)  
**CHEL TENHAM**  
 and get a **FREE POSTCARD**

**"PICTURESQUE GLOUCESTERSHIRE"**  
 A beautiful book dealing with a beautiful county.  
 Inspect a copy at "Echo" Office, Cheltenham  
**Price 21/-**  
 Also may be obtained at  
**Minchin and Gibbs, Gloucester.**



# WARD'S GREAT OFFER

— of —

## HOLIDAY WEAR

— at —

### Special Holiday Prices



#### SPORTS WEAR

Jumpers.—A wonderfully attractive collection in silk and silk/wool, lace knit, etc., at 5/- and 10/-. Worth 16/11 to 18/11.

All-wool Jumpers and 3-Piece Suits in a variety of colours and styles, ideal for holiday wear, from 10/11.

Blouses.—We hold a large selection of all the latest styles and fabrics. Special offer in crepe suede, reliable make, 12/9.

Frocks.—The entire stock of summer styles in voile, etc., to clear from 5/-. Model frocks half price.



#### UMBRELLAS

Chubby Umbrellas, reliable covers and frames, in navy, black, green, *etc.*, 9/-. The new walking length, good covers, from 5/11.



#### BATHING WEAR

Windsor Water Woollies, large selection in this celebrated make, at greatly reduced prices. Ladies' and Children's Bathing Shoes to clear, all one price, 1/6 per pair.



#### BRIGHT MILLINERY

New Fur Felt Hats in the latest shapes, and obtainable in all colours. Special Price, 8/11. The new new heather mixture lightweight Felts, all shades and sizes. Special Price, 4/11.



#### SUITS and ENSEMBLES

Two- and Three-Piece Suits in fine wool suitings and fleck tweeds. Usually 5½ to 6gns. Special prices 2½ and 3½gns.

Tailor-made Costumes in suitings and tweeds in all fittings from 2gns.

Cardigan Suits in Cheviot suitings and tweeds. Special price 30/-.

#### COATS AND MACINTOSHES

Coats for holiday wear in fine suiting, Baratheia, etc., at clearing prices, from 20/- to 4½gns. Also Fleck suitings.

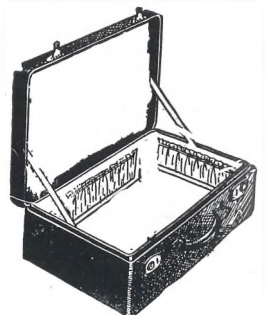
West of England Tweeds, fully proofed, in all fittings, from 42/-

Matrons' Coats in silk, wool Georgette, etc., at special prices.

Ladies' Mackintosh, in putty shade, trimmed various colour pipings and guaranteed 2gns. Holiday Price 10/11

'Telemacs'—Always a full range in stock, prices from 21/-

Large selection of rubberless Coats in "Zambrene" and various well-known makes at popular prices.



#### TRAVEL GOODS

Ladies' 24 inch fluted fibre Suit Cases, brown, fawn, red, grey, etc., 4/11.

Lined Blouse Cases, various colours, 6/6.

Very lightweight "Nightie" Case, blue, tan, black, 8/11, 9/11.

Hat Boxes to match, 5/6, 6/11.

Attache Cases in all sizes and prices.

Cabin Trunks from 19/11.

# E. L. WARD

LIMITED

HIGH ST. & NORTH ST.

'Phone — CHELTENHAM — 3781