

THE CHELTENHAM CHRONICLE AND GLO'SHIRE GRAPHIC

GRATIS SUPPLEMENT.

With Which is Incorporated the "Cheltenham Looker-On."
Saturday, December 7th, 1929.

No. 1,510.

CHELTENHAM THEATRE AND OPERA HOUSE.

This afternoon (2.30) and evening (7.45) "THE GONDOLIERS."

Next Week:—Continuous performance from 2.0 to 10.30 p.m.

"KING — OF THE KHYBER RIFLES."

THE PALACE, HIGH STREET, Cheltenham.

Director: Shakspeare Shenton.
Monday, Tuesday & Wednesday.

MILTON SILLS,
THELMA TODD in The
CRASH.

The Great Railroad Drama of
Suspense and Thrills.

Screened at 3.0, 5.0, 7.0, 9.0.
RUSSELL O'FARRELL in The

AIR DERBY.

A Wonderful Flying Picture.

Thursday, Friday & Saturday
WILLIAM POWELL,
LOUISE BROOKS in The

CANARY MURDER CASE.

THE MOST FASCINATING
THRILLER OF THEM ALL.

Screened at 3.0, 5.0, 7.0, 9.0.
Albert Parker and his Orchestra.

THE DAFFODIL

Cheltenham's Premier Cinema.

MONDAY, DECEMBER 9th,
FOR SIX DAYS.

SHIRAZ.

Simplicity and Grandeur,
Jealousy and Cruelty in a Beau-
tiful Story of India's famous

TAJ MAHAL.

"Shiraz" was produced in India.
Every Scene in this famous pic-
ture is authentic.

Also on

Monday, Tuesday & Wednesday.
COL. TIM MCCOY in

BEYOND THE SIERRAS.

and on

Thursday, Friday & Saturday
HONEYMOON,

with "Flash" the Canine Wonder

MARTIN & Co.,

LTD.,

The County Jewellers.

CHRISTMAS PRESENTS.

PROMENADE,
CHELTENHAM SPA.

Tel. 2821. Established 1806.



MARRIED 54 YEARS AND STILL SMILING.

Mr. and Mrs. Thomas Morris of 10 Christ Church-terrace, Cheltenham, who, on Wednesday last, Dec. 4th, celebrated the 54th anniversary of their wedding day. Mr. Morris is 76 years of age and Mrs. Morris is 79.

["Cheltenham Chronicle" Photo. Copies 1s. each.

YOU WILL SOON BE THINKING OF CHRISTMAS PRESENTS. One of the best would be a copy of "Picturesque Gloucestershire," that beautiful Volume of lovely photographs of the old-world towns, villages, country houses, and churches in this county. The price is One Guinea; call and see a copy at the "Echo" Offices. Foreign orders should be sent in at once.

Winter Garden,

NEW KINEMA,
PROMENADE, CHELTENHAM.
Director: Shakspeare Shenton.

FOR SIX DAYS.

Continuous 2.30 to 10.15.
Tremendous Undersea syn-
chronised and sound dramal

JACK HOLT.

DOROTHY REVIER,
RALPH GRAVES in

SUBMARINE.

Screened at 2.45., 4.45., 6.45, 8.45.
The Greatest and most Spec-
tacular of all Sea Pictures.
IT WILL THRILL YOU EVERY
MOMENT!

Winter Garden Orchestra and
Silent Pictures.

FREE CAR PARK.

Popular Prices 1/3, 1/4, and 9d.

COLISEUM

THEATRE Phone 3715
6.40 p.m. and 8.40 p.m.

NIGHT BIRDS,

Musical Comedy Revue.

Clean! Clever! Funny!

Strong cast of Chosen Artists.

North Street.

PICTURE HOUSE, Cheltenham.

From 2.30 p.m. Continuous
Monday, Tuesday & Wednesday.

SACRIFICE,

ALL-STAR CAST.

Thursday, Friday & Saturday.

LIFE'S MOCKERY.

also

HIGH STAKES,

"Distinction with Economy."

Get your "SODEN" WARM
Now.

Sole Agents in Gloucestershire.

SENSIER,

388b High St, Cheltenham.

Telephone 2580.

W. Scott Cooper,

Diamond Merchant, Jeweller,
Goldsmith and Silversmith,

The Promenade, Cheltenham

LICENSED VALUER.

DALE, FORTY and Co., LTD For the Best PIANOS



SIR WALTER PRESTON'S CHALLENGE CUP.

The first of the annual Cross-country Handicap Races for the above Cup for Novices took place on Saturday last over a heavy course of about three miles.

1.—The competitors starting off from Folley Lane; note condition of same. 2.—First three home, from left: L. B. Chugg 1, A. E. Davis 2, J. Wright 3. 3.—Lady spectators. 4.—The 26 competitors lined up to start. ["Cheltenham Chronicle" Photos. Copies 1s. and 1s. 9d. each, post 2d.]



GLOUCESTERSHIRE COUNTY FANCIERS' SHOW, DRILL HALL, CHELTENHAM, NOVEMBER 28.

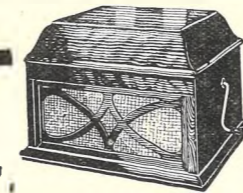
Judges and officials, from left: Messrs. Jones Robin (Poultry Judge), Hugh Green (Show Manager), Dr. Peables (Pigeon Judge), F. Vick (Chairman). —. Cake (Steward). S. Hicks (Poultry Judge), N. Harris (Steward), —. Tarbox (Rabbit Judge), E. King (Joint Secretary).

"Cheltenham Chronicle" Photos. Copies 1s. and 1s. 9d. each, post 2d.



COTSWOLD HOUNDS ON THE HILLS.

The Cotswold Hounds met at the Air Balloon Inn on Tuesday last (a fine day) and there was a very large field out. Some of the field galloping from Birdlip Wood when a fox broke away. ["Cheltenham Chronicle" Photo. Copies 1s. and 1s. 9d. each, post 2d.]



THE GRAMOPHONE YOU WANT

"His Master's Voice" NEW MODEL "104".

This model features the exponential tone chamber hitherto associated only with the larger and more expensive cabinet models of "His Master's Voice."

MAKES A REALLY HANDSOME CHRISTMAS GIFT.

A never-ending source of keen enjoyment for your home circle.

Price £7. 10. 0

Do not delay—ask for a demonstration of this New Exponential Model.

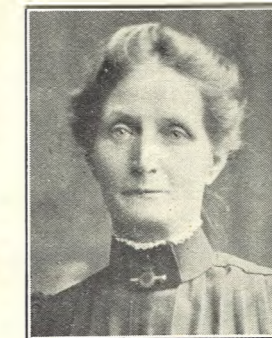
Accredited Agents:

Crichton's

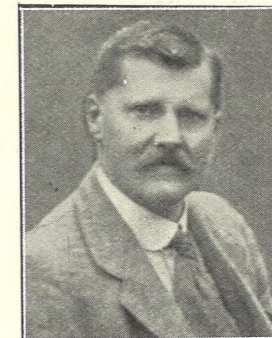
(Ernest Crichton, Ltd.),

394 Strand, Cheltenham.

'Phone 2 378.



MISS DINAH LOCKE, of Aubrey, Greville-terrace, Cheltenham, who died on Monday, November 25th, age 75 years. She was a well-known Salvation Army worker for over 40 years, and a special funeral service was held at Cheltenham Cemetery and the Citadel on Wednesday, November 27th.

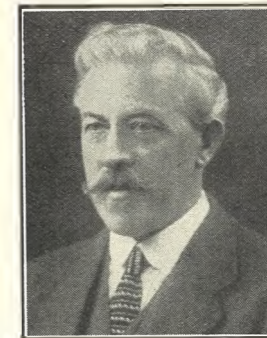


MR. ARTHUR L. ATTWOOD, Grocer, of Church-street, Charlton Kings who died rather suddenly on November 27th, aged 60 years. He was very much respected in Charlton, and leaves a widow, one son (in Japan) and one daughter.



MISS G. D. (DODIE) FREEMAN, elder daughter of Mr. and Mrs. F. E. Freeman, of 119 Tennyson-road, Cheltenham, who died on November 29th, after an operation, aged 25 years. She had been for eight years in the office of Messrs. W. H. Cole and Co., "Zona" Works, Cheltenham.

GIFTS FOR LADIES.



MR. JAMES H. CONIBEAR,

of 3 Dovedale-villas, St. Luke's, Cheltenham, who died on December 2nd, aged 60 years. He had been for many years foreman in the Cabinet department of Messrs. R. L. Boulton and Sons, Bath-road, Cheltenham, and was greatly respected.



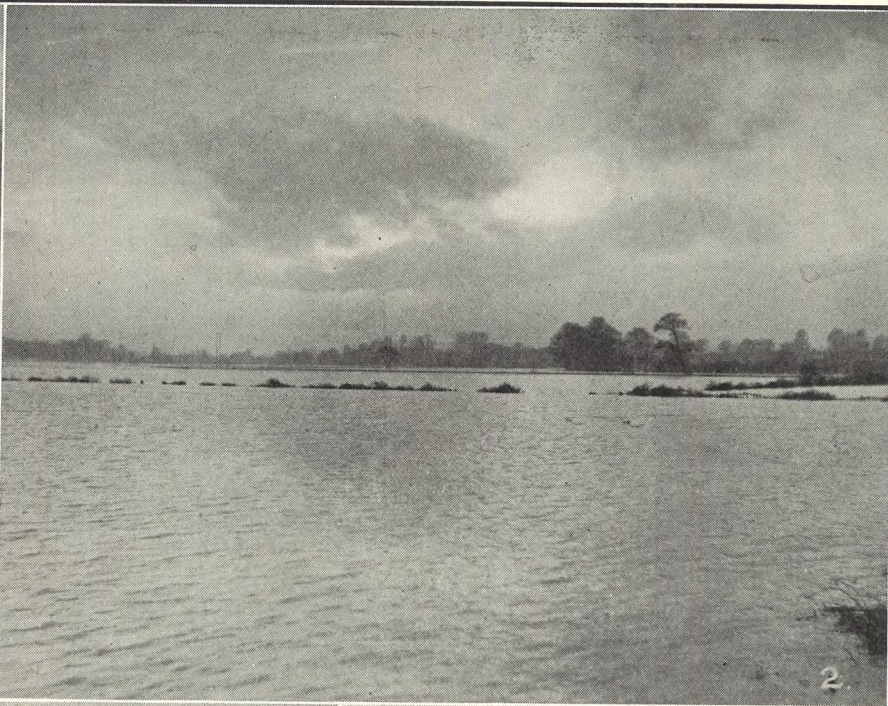
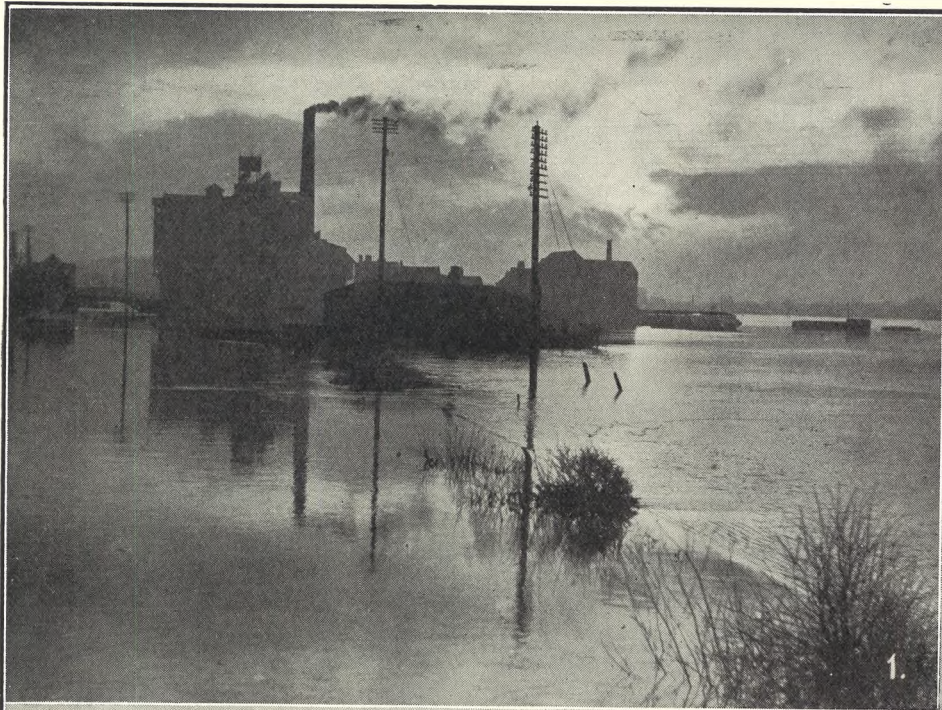
Fancy Handkerchiefs in lawn and silk. Fast colours. All prices. Fine selection. Also Cloves, Scarves and Dainty Underwear.

MRS. OWEN JAMES, 409 The Strand, High-street, CHELTENHAM.

R. G. STEPHENS & SON, THE SADDLERS.

Trunks, Suit, Blouse, Writing, Music, Attache, and Fitted Cases. School Bags. Wallets, Note Cases, Purses, Mirrors. Collar and Hat Boxes. Hand Bags. Ladies' and Gents' Hair Brushes, Seat Sticks, Hunting Crops, etc.

CORNER HOUSE, WINCHCOMB STREET AND ALBION STREET, CHELTENHAM.



FLOODS AT TEWKESBURY.

The excessive November rainfall has caused the Severn and Avon to flood, and Tewkesbury has been surrounded by water for some days, and the sight is desolate but picturesque i. the extreme. The water was not so high as it has been on other notable occasions, such as the June floods of 1924, but it has covered the Mythe Road slightly.

1.—Sunset over Healing's Mill, which was surrounded by water.

2.—A desolate scene viewed from the Ledbury Road, looking towards Lower Lode.

3.—Tewkesbury from the Mythe Bridge.

4.—The Lower Lode Hotel was completely out off, except by boats.

["Cheltenham Chronicle" Photos. Copies 1s. and 1s. 9d. each, post 2d.



CHELTENHAM COLLEGE V. MARLBOROUGH COLLEGE AT RUGBY FOOTBALL.

The College played one of their important matches on Saturday last on the Lake House ground, and in a comparatively even match were beaten by a heavier team by two goals (10 points) to a dropped goal (4 points). Although beaten in the scrums, the College forwards were better in the loose, and Marlborough scored one lucky try.

- 1.—The College XV. From left: R. M. Wilkinson, G. A. Knowles, T. K. Windeatt, J. B. Bowers, J. S. Meikle, T. A. Higson, R. H. Leigh, D. A. G. Page, T. G. O'Dwyer, E. A. Lloyd, F. W. Neate, A. D. Wigan, J. S. Kenworthy, T. N. Brettell, J. H. Cooper.
- 2.—Mr. T. Vile, the famous Newport and Welsh international, who refereed with his acknowledged ability.
- 3.—D. C. Page (on right) picks up and clears from a Marlborough rush. Page dropped the goal and just missed two others, once hitting the bar.
- 4.—A Marlborough tackle of a College three-quarter.
- 5.—The "whips" with some Old Cheltonians.
- 6.—Marlborough getting the ball from the squash. They did this three times out of four.

["Cheltenham Chronicle" Photos. Copies 1s., 1s. 9d., and 2s. 6d. each.



FLOODS AT GLOUCESTER.

The phenomenal rain of last month has caused the Severn to overflow, and during the past week-end the lower parts of Gloucester have been flooded. These pictures were taken on Monday last, when a gale was blowing across the flooded meadows, accompanied by sheets of driving rain, making the scene a desolate one in the extreme.

- 1.—Looking from Quay Street, the River Severn is in the near foreground; the new electricity standards standing out well from the waste of waters.
- 2.—Another view of Oxleaze from the Quay. This is the site of the Three Counties Show.
- 3.—Swan Lane is well under water. Some of the inhabitants on their plank walk.
- 4.—View from Westgate Bridge, looking North. The railway is isolated in a sea of water.

["Cheltenham Chronicle" Photos. Copies 1s. and 1s. 9d. each, post 2d.



GLOUCESTERSHIRE COUNTY COUNCIL.

The Highway, Works, and General Purposes Committee in session at the Shire Hall, Gloucester, on Monday last. The Chairman, Major F. W. B. Cripps, is seen standing at his desk, beneath the clock; on left of him, standing, is the Vice-Chairman, Mr. W. A. Rixon; and standing to left of him is Mr. Alfred Miles, of Cheltenham.

["Cheltenham Chronicle" Photo. Copies 1s. 9d. and 2s. 6d. each.

OUR XMAS BOX TO YOU.

During December from the 2nd to 24th we shall give to all our **CASH** Customers 1/8 in the £ discount, one penny off every shilling—every shilling counts.

DRESSING GOWNS.

Ripple Cloth, Pretty Shades. 5/11, 8/11, 10/11, 18/11.

DAINTY UNDERWEAR.

Knickers, Art. Silk, Non ladder, 3/11½.

Slip to match, 4/11½.

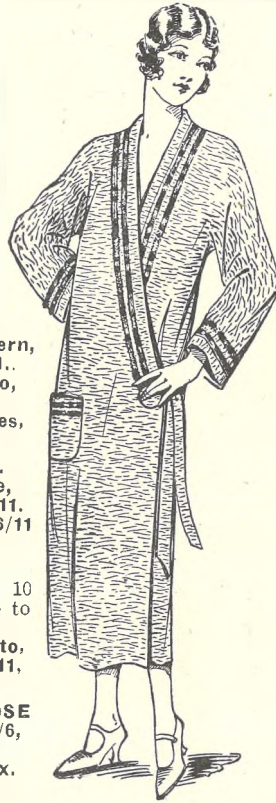
Out-Size Milanese Slips, 4/11½, 6/11½, 18/11.

Knickers to match, 8/11, 10/11.

MAIDS' SETS.

Beige or White Organdi Sets, 4/11½, 6/11½, 7/6.

Tea Aprons, Beige or White, 1/6½ to 3/11½.



JUMPERS.

New Lace Pattern, 5/11½ to 10/11.

Out-Size Ditto, 6/11, 10/11.

Children's Sizes, 5/11.

CARDIGANS.

Special Value, 2/11½, 3/11½, 5/11.

Out-Size from 6/11

ART. SILK HOSIERY.

stocked in 8½ to 10 inch. From 1/6½ to 3/11½.

Wool lined Ditto, 1/11½, 2/11, 3/11, 5/11.

PURE SILK HOSE

3/11½, 4/11½, 7/6, 8/11, 10/11.

New Lace Glox.

SYNTHETIC HOSE.

4/11, 6/6, 7/11. Lace Glox and Plain.



GLOVES.

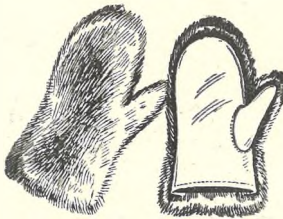
Ladies' Fur Backed, 3/11½ to 18/11.

Children's Ditto, 1/9½ to 8/11.

HANDKERCHIEFS.

Boiling Silk, 1/-, 1/6, 2/6, 2/11½.

White and Coloured, in Fancy Boxes, 1/0½ to 10/11.



FANCY LINENS.

Special Down Quilts, 29/11.

Pyjama Cases, 2/11 to 7/11.

Tea Cosies, 1/0½ to 8/11.

Duchesse Sets, 1/0½ to 6/11.

Tea Cloths, with Serviettes to match, 3/11½ to 12/11.

R. T. ADAMS, 75, 76 THE STRAND, CHELTENHAM.
—OPPOSITE BATH ROAD—

Don't Take Risks!

BUY EARLY.

For **STORMGARD COATS**

Ladies' or Gents' Leather Coats, OVERALLS, HELMETS, GLOVES,

ASK FOR

PHONE 2887.

Leslie Paynter

WHO ALSO SELLS LAMPS, HORNS, GOGGLES, SILENCERS, LEG SHIELDS, PILLION SEATS, SPEEDOMETERS.

Cheltenham's Best Selection of Useful Presents for Motorists.
BATH STREET, CHELTENHAM.



HUNDREDS OF CHRISTMAS GIFT SOLUTIONS AT FLETCHER'S CHINA AND GLASS STORES.

COFFEE SETS. Many attractive patterns from 9/11

WATER SETS. White or Coloured Glass from 2/11

FRUIT SETS. Unique shapes and designs from...3/6

SANDWICH SETS. Novel shapes and colourings from 3/11

EARLY MORNING TEA SETS. Hand-painted from 4/11

COCKTAIL SETS. Six glasses, shaker and tray. Hand-painted Cock decoration 21/-

LARGE STOCK OF ENGLISH HAND-CUT GLASS.

The Very Latest Carlton Fireproof Ovenware.

FLETCHER'S of Pittville Street, Cheltenham.



ROUND THE TOWN IN CHELTENHAM. SNAPS TAKEN THIS WEEK.

THE PLOUGH
CHELTENHAM SPA'S LEADING HOTEL.
BALL ROOM for Christmas Dances, Parties, Banquets, etc.
Large or Small Parties Catered for WEST END CUISINE.
Apply Manager for Tariff. 'Phone 2690.

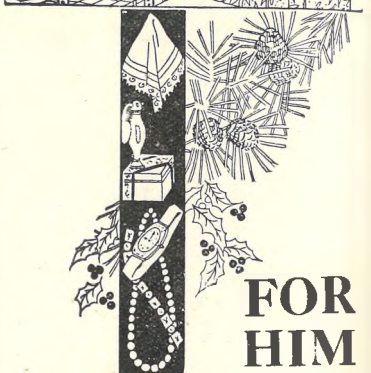
VISIT THE ONLY **SILVER - GRILL ROOM**
(Open from Noon Daily),
AND THE ONLY **AMERICAN COCKTAIL BAR**
IN CHELTENHAM.



FOR EVERYONE.

LANCE'S

Have planned and prepared skilfully selected Stocks of Gifts in the true sense of the word articles of real worth, whether they be decorative, useful, or, as is often the case, both.



FOR HER

COTY or YARDLEY Gift Caskets of Perfumes, Powders, etc. Prices 2/9 to 27/-.

EVENING SHAWLS in heavy Silks with 18in. Shaded Fringe. Price 29/11.

EMBROIDERED SHAWLS up to 9 Gns.

For Baby

Soft Cuddly TOY in Coloured Plush, may be had in Prices ranging from 1/11 to 25/9.

CREPE-DE-CHENE BOOTEES, Embroidered Pink, Blue, and White. Price 2/6. WOOL MATINEE COATS from 4/11 to 14/6.

For Mother

LADIES' LEATHER HANDBAG in Brown or Navy, fitted Mirror and Centre Pocket. Price 10/6 to 3 Gns. An Ideal Christmas Gift is a FUR COAT. Special Offer in Seal Coney, trimmed Skunk, Price 15 Gns. Musquash Coney FUR COAT, in good reliable skins, price 10 Gns. Natural Musquash, Mole Skin, Black Musquash, Mink Marmot. Prices 18 Gns. to 57 Gns.

For the Children

One of the Games from our varied range is a Whirlette. Price 3/6. Other Games from 1/- to 7/6. PARTY FROCKS in Silk Taffeta, Georgette, and Organdie. Prices ranging according to size 19/11 to 5 Gns. Children's Woollies in all Colours and sizes from 12/11 to 37/6. OTTERBURN RUGS with fringe, shades Blue, Fawn, Cream, Green, Brown, and Grey. Price 10/9.

For Dad

GENTS' DRESSING GOWNS in large variety of All-Wool and Artificial Silk; Plain and Fancy Designs. Prices 27/6 to 69/6. Fancy Pullover or Cardigans in range of colours and size. Prices 12/6 to 25/6. GENTS' SILK HANDKERCHIEFS and SCARVES in various Fancy Designs. Handkerchiefs from 2/6 to 7/6. Scarves from 6/11 to 37/6.

For the Home

Fire Side ARM CHAIR in oak, with loose Cushion. Price 21/-. Plain and Fancy Silk Cushions in various shapes and sizes. Prices 6/11 to 21/-. CAKE STAND, well finished in Dark Brown Oak. Price 15/6. Superior Quality OAK TRAYS, 20in. Price 5/6, 22in. 5/11. 3 feet OAK CABINET by 4 feet high, two adjustable shelves, two drawers, and two baize doors. Price 6 Guineas.

FOR HIM

Jaeger Travelling Fringed RUG in Camel Shade. Special Xmas Offer 27/6.

Gent's TROUSER PRESS in Five Ply, Base with cap screw. Price 21/-.

For a Friend

Fancy Gift Box of HANDKERCHIEFS in White or Colour. Prices 1/4½ to 16/11 per Box.

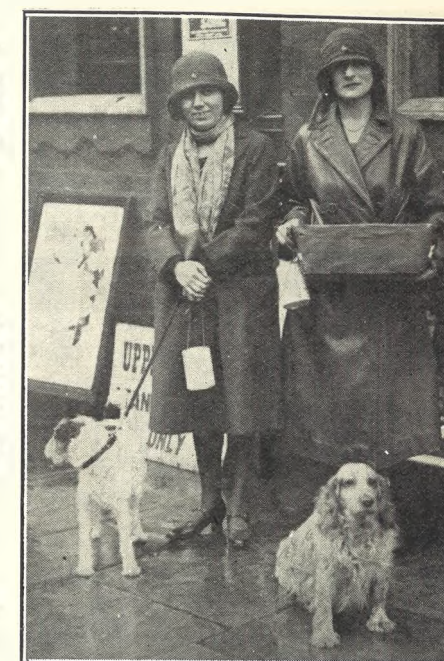
Ladies' or Gents' UMBRELLAS. Fox's Frames; good durable Covers. Ladies' from 8/11 to 42/-. Gents' from 10/6 to 35/-.

JOHN LANCE & Co., Ltd.,
Cheltenham's Gift Headquarters.

GIFTS



C.M.S. SALE OF WORK.
A Sale of Work in aid of the Church Missionary Society was held in the Parish Room, St. James's Square, Cheltenham, on Wednesday, Dec. 4th. The opening ceremony was performed by Countess Beauchamp. From left: Rev. W. W. Chapman, Rev. L. G. M. Sheldon (Rector), Countess Beauchamp, Mrs. Sheldon, and a friend of Countess Beauchamp.



MRS. FIELD AND MRS. SIMPSON, with their dogs, outside the Theatre, working for Dog Week in Cheltenham.

CHILDREN SIMPLY LOVE Charlie Chaplin & "Felix the Cat"

YOU can have them at YOUR Party by arrangement with our Cinematograph Hire Department. Great variety of subjects to choose from. All films guaranteed non-inflammable. Experienced operators provided. Hire Charges and full particulars for Entertainments of any desired duration from:

WILL R. ROSE, PHOTOGRAPHIC AND CINE. SPECIALISTS,
3 THE PROMENADE (Phone 3721), CHELTENHAM.

THE **"SPOT"**

TO CHOOSE PRESENTS FOR YOUR MENFOLK.

F.H. EDWARDS,

Gentlemen's Outfitter,
116a HIGH STREET,
CHELTENHAM SPA.



LADIES' and CHILDREN'S HAIRDRESSING. PERMANENT WAVING. TINTING. FACE MASSAGE. MANICURE. MODERATE CHARGES.

MARCELLE,
23 THE PROMENADE,
Cheltenham. Phone 4228

STRATFORD HOUSE HOTEL,
SUFFOLK SQUARE, CHELTENHAM.

Unlicensed.

FIRST-CLASS RESIDENTIAL.
Terms on Application. Phone 2236

HAND-SEWN MAKING from 30/-
REPAIRS SAME DAY.
JOINT and ARCH SPECIALISTS AND BUNION CURERS.
London City Honours.

PROGRESS BOOT WORKS,
21 MONTPELLIER STREET, CHELTENHAM
(Opposite P.O.)
AND AT 10 GROSVENOR STREET.

LEATHER WEAR.

FULL LEATHER COATS 75/-, 90/-
Lined fleece.
LEATHER WAISTCOAT 25/-

WOOLLEN WEAR.

KNITTED VESTS from 8/11 to 21/-
" PULLOVERS .. 5/11 .. 35/-
" CARDIGANS .. 5/11 .. 30/-

"THE FAMOUS"

Prop. A. N. Cole. Tel. 4242.
Men's and Boys' Complete Outfitters.

350/1 HIGH STREET,
CHELTENHAM.

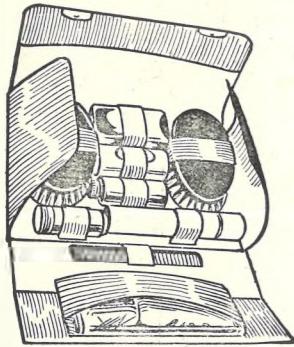
Let **MOUSELLS** move you



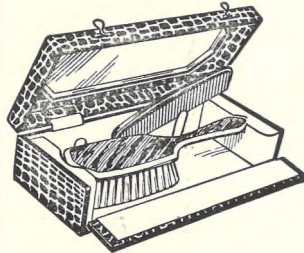
Estimates for Removals and Storing Free.
PHONE 2112.
Offices: **CHELTENHAM.** AMBROSE STREET.

BOOTS GIFT CORNER

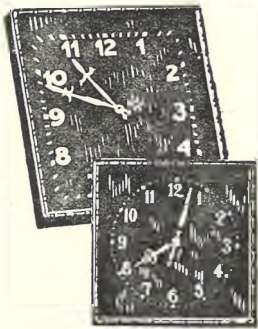
Postage paid in Great Britain on all orders for goods value 20/- and over, not exceeding 11lbs. in weight.



F.256. Gent's Dressing Roll in good quality hide. Fitted with two Ebony Brushes, Gillette Razor in nickel case, Shaving Brush, Tooth Brush, Comb and Toilet Wallet. **25/6**
Exceptional value.



Erinoid Brush and Comb in case, with bevelled mirror in lid. Available in an excellent range of colours. **10/6**

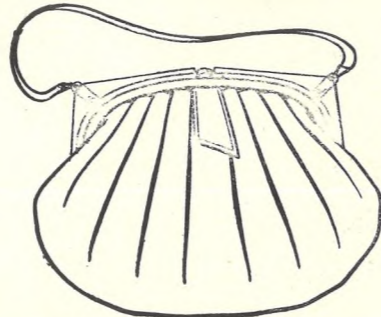


Polished Brass Clocks with tortoiseshell or mother-of-pearl dial. Available in two sizes—
XT.66 - 5/11
XT.67 - 7/6

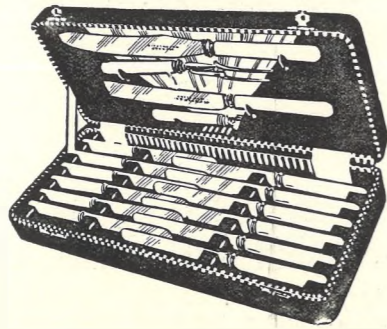
**BOOTS
BOOK-LOVERS'
LIBRARY**

Have you thought of the wonderful novelty and whole year's continuance of a Boots Book-lovers' Library Subscription as a gift?

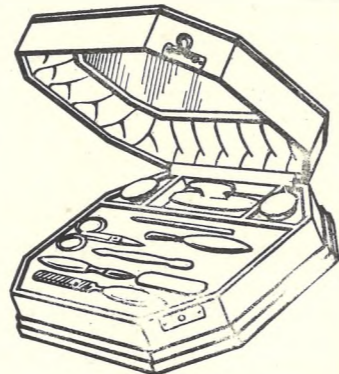
Postage paid in Great Britain on all orders for goods value 20/- and over, not exceeding 11lbs. in weight.



IR.156. Mayfair Bag in best quality morocco, with artificial silk lining. Fitted with mirror and inside purse division, lined white kid. Strong, roomy and serviceable bag. **15/6**



344. Case of Cutlery, containing 1/2-dozen Table Knives, 1/2-dozen Dessert Knives, Carver and Fork, Bread Knife and Stainless Knife Sharpener. All knives made from Firth's Stainless Steel. **42/-**



324. Leather Manicure Set with ten fittings and mirror in lid. Available in an excellent range of colours. **21/-**



1651. Electro-plated Chedlet Cheese Stand on feet, with handle and fork. **5/11**

Make **BOOTS CAFE** your rendezvous for Morning Coffee, Luncheons, and Dainty Teas.

GIFT SUGGESTIONS

SHAVING COMPANIONS
HAIR BRUSHES
PUFFS
MANICURES
POWDER BOWLS
PERFUME SPRAYS
BRUSH SETS
BISCUIT BARRELS
CAKE BASKETS
CALENDARS
TABLE WARE
GIFT STATIONERY
GREETING CARDS
PICTURES
TOYS & GAMES
GIFT BOOKS
CHILDREN'S ANNUALS
CAMERAS
FLASH LAMPS
ALBUMS



**Boots Corner,
CHELTENHAM SPA.**
Tel. 2084.
**31 Northgate Street,
GLOUCESTER.**
Tel. 2491.

XA.291B

Boots Pure Drug Co. Ltd.

PRINTED AND PUBLISHED AS A GRATIS SUPPLEMENT BY THE CHELTENHAM NEWSPAPER COMPANY, LIMITED.

THE CHELTENHAM CHRONICLE AND GLO' SHIRE GRAPHIC

GRATIS SUPPLEMENT.

With Which is Incorporated the "Cheltenham Looker-On."
Saturday, December 14th, 1929.

No. 1,511.

CHELTENHAM THEATRE AND OPERA HOUSE.

To-day:—Continuous performance from 2.0 to 10.30, "King — of the Khyber Rifles"
NEXT WEEK:—"BEHIND THAT CURTAIN"
A love-mystery drama of Scotland Yard.

**THE PALACE,
HIGH-STREET, Cheltenham.**
Director: Shakspeare Shenton.
**REPERTOIRE WEEK of
SUPER PRODUCTIONS.**
Monday and Tuesday:
William Boyd, Mary Astor in
TWO ARABIAN KNIGHTS.

Wednesday:
Douglas Fairbanks in **The
THIEF OF BAGDAD.**

Thursday:
Dolores Del Rio, Rod la Rocque
in
RESURRECTION.

Friday and Saturday:—
Edna Purviance, Adolphe
Menjou in
WOMAN OF PARIS.

By Charlie Chaplin.
Albert Parker and His Orchestra

THE DAFFODIL
Cheltenham's Premier Cinema.

Monday, Tuesday, Wednesday:—
SHOW PEOPLE.

Starring **MARION DAVIES** and
WILLIAM HAINES.
In the Most Gorgeous Satire
Ever Screened.

Thursday, Friday, Saturday:—
THE CROWD.

Starring **ELEANOR BOARDMAN**
and **JAMES MURRAY.**

King Vidor's Powerful and Fascinating Drama of a man and a woman's fight to rise above the throng.

The Daffodil Orchestra at All Performances.

**MARTIN & Co.,
LTD.,**
The County Jewellers.

**CHRISTMAS
PRESENTS.**

**PROMENADE,
CHELTENHAM SPA.**

Tel. 2821. Established 1806.



CHELTENHAM SOCIETY WEDDING.

The bride with her uncle, Mr. W. A. Rixon, who gave her away, entering the church on Saturday last at the wedding of Mr. Alfred B. Dandy, F.R.C.S., of Birmingham, to Miss Victoria Arkell, daughter of Mrs. James Arkell, Oak Hill, Charlton Kings, Cheltenham.

["Cheltenham Chronicle" Photo. Copies can be obtained.

**Winter Garden,
NEW KINEMA,
PROMENADE, CHELTENHAM.**
Director: Shakspeare Shenton.
FOR SIX DAYS.

Continuous 2.30 till 10.15.
**THREE HOURS' TALKIE and
SILENT PROGRAMME.**

**JEAN HERSHOLT,
RICARDO CORTÉZ** in the
YOUNGER GENERATION.

From the Stage Play "It's a
Laugh," by Fannie Hurst.

Two Silent Pictures and the
Winter Garden Orchestra.
FREE CAR PARK.

**COLISEUM
THEATRE** Phone 3715
6.40 p.m. and 8.40 p.m.
**ALL-STAR
VARIETY ARTISTES.**

**North Street,
PICTURE HOUSE, Cheltenham**
From 2.30 p.m. Continuous.
Monday, Tuesday, Wednesday:—
THE DEVIL'S SKIPPER.

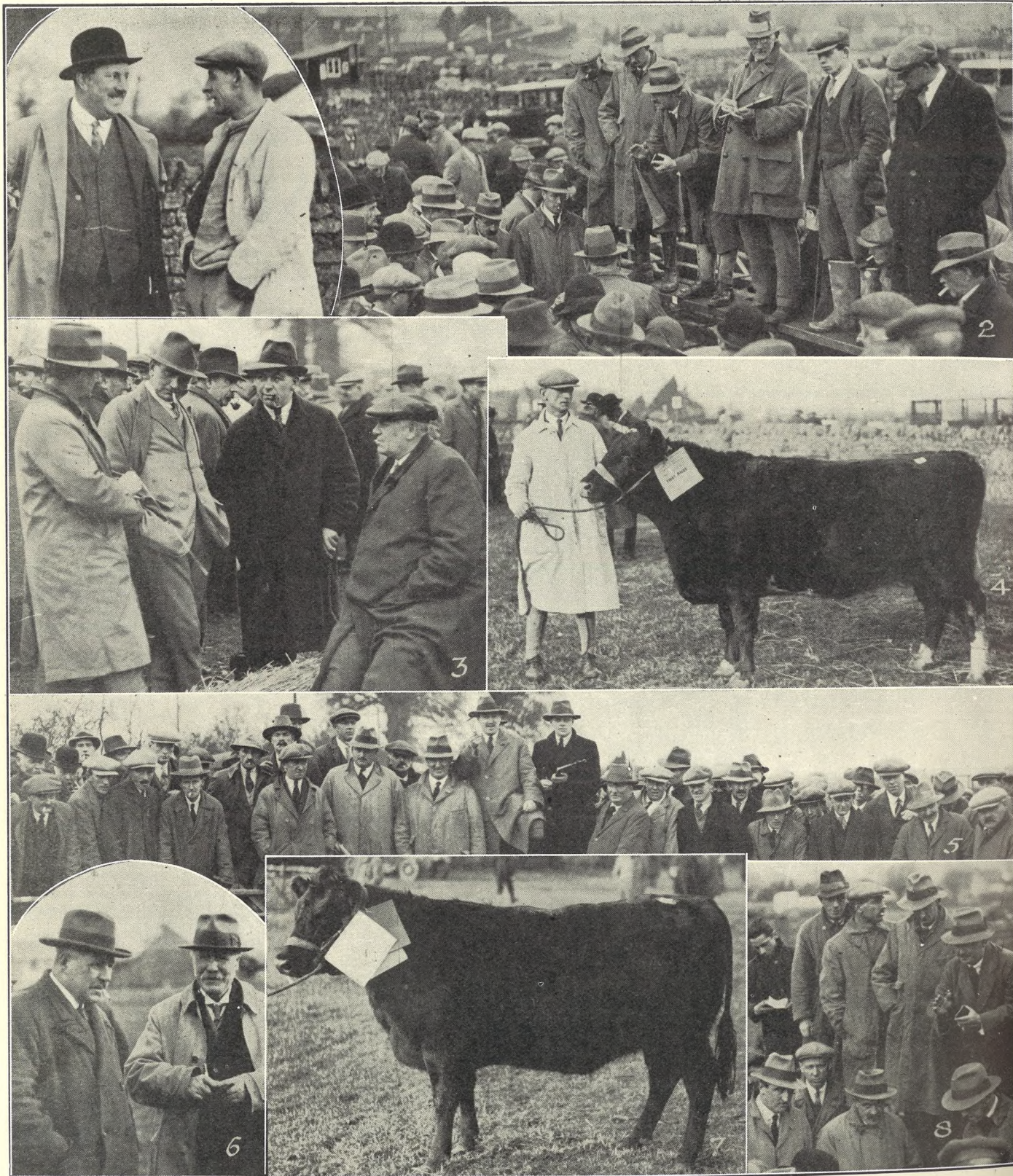
With **BELLE BENNETT** and
MONTAGUE LOVE.
Thursday, Friday, Saturday:—
CHARLIE MURRAY

DO YOUR DUTY.
Also
ESTELLE TAYLOR in
THE WHIP WOMAN.

**MAISON
ANNETTE,
Specialists in Exclusive
CORSETS &
LINGERIE.**

**Kensington House,
PROMENADE,
CHELTENHAM.**
Phone 2122.

DALE, FORTY and Co. Ltd For the **BEST PIANOS**



BOURTON-ON-THE-WATER CHRISTMAS MARKET.

The Christmas Market at Bourton-on-the-Water was held on Friday, Dec. 6th, but was not so large or well attended as usual. The stock was of very good quality.

- 1.—Mr. W. B. Fletcher (Auctioneer) and Mr. T. Bartlett (Maugersbury).
- 2.—Mr. F. Taylor selling pigs.
- 3.—Messrs. R. Comley, Young. R. Neems, and W. F. Ing.
- 4.—Mr. S. Weaver's (Evenlode) 1st prize Fat Cow.
- 5.—Mr. E. Tippetts selling sheep.
- 6.—Messrs. C. Jackson (Uckington) and F. J. Blake (Sherborne).
- 7.—Mr. A. Castle's (Donnington) 1st prize heifer, winner of 1st prize for baby beef and of Challenge Cup for best beast in Show.
- 8.—Another Market scene.

["Cheltenham Chronicle" Photos. Copies 1s. and 1s. 9d. each, post 2d.

CHRISTMAS HEADQUARTERS
LANCE'S



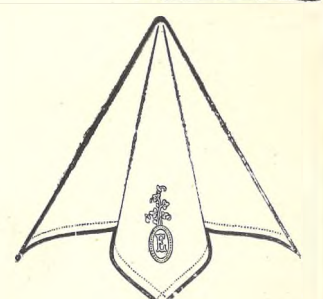
Ladies' **HANDKERCHIEFS** in White Lawn or Linen, with Lace Borders. **4/3d.** 7 1/2d., 9 1/2d., 1/3, to 3/11. Real Lace Borders, 1/11 1/2 to 2/1/-.



Special Xmas Offer in **LADIES' OVER BLOUSES**, made in Good Quality Art. Silk. Shades: Pink, Blue, Green, Cham., Fawn, and Mauve. Usual Price 15/11. Special Price **8/11**



Ladies' **WOOL JUMPERS**, in fancy designs. Shades: Brown, Grey, Green, Blue, Red, Fawn, and Helio. Price **12/9** An Ideal Xmas Gift.

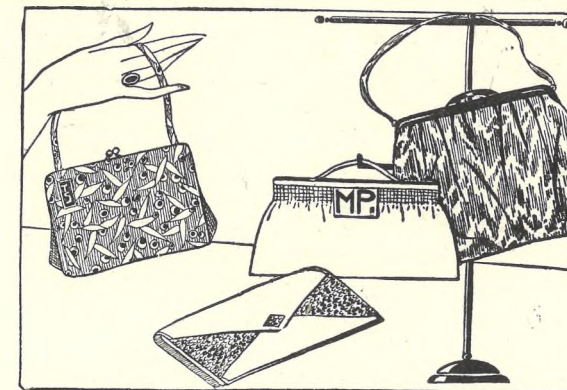


Ladies' **INITIAL HANDKERCHIEFS**, in White Linen, **7 1/2d.**, 10 1/2d., 1/3 1/2. Coloured Opal Cloth, with Bas relief initial **7 1/2d.**



Cross-over Sleeveless OVERALL, in Black or Light Grounds, Fancy designs. Prices **3/11 4/6** Long Sleeves ... **5/11**

Bring the Kiddies to our BAZAAR.
 The Latest Novelties in Toys and Games are here in wonderful Variety, and at Moderate Prices.



EVENING BAGS and POCHETTES are always an acceptable gift. We have a delightful range in Gold, Silver, and Coloured Brocades. Prices ranging from **2/11** to 42/-.



A Wonderful Selection of **MAIDS' AFTER-NOON APRONS**, in White and Coffee. Prices from **1/9 1/2** to 4/11.

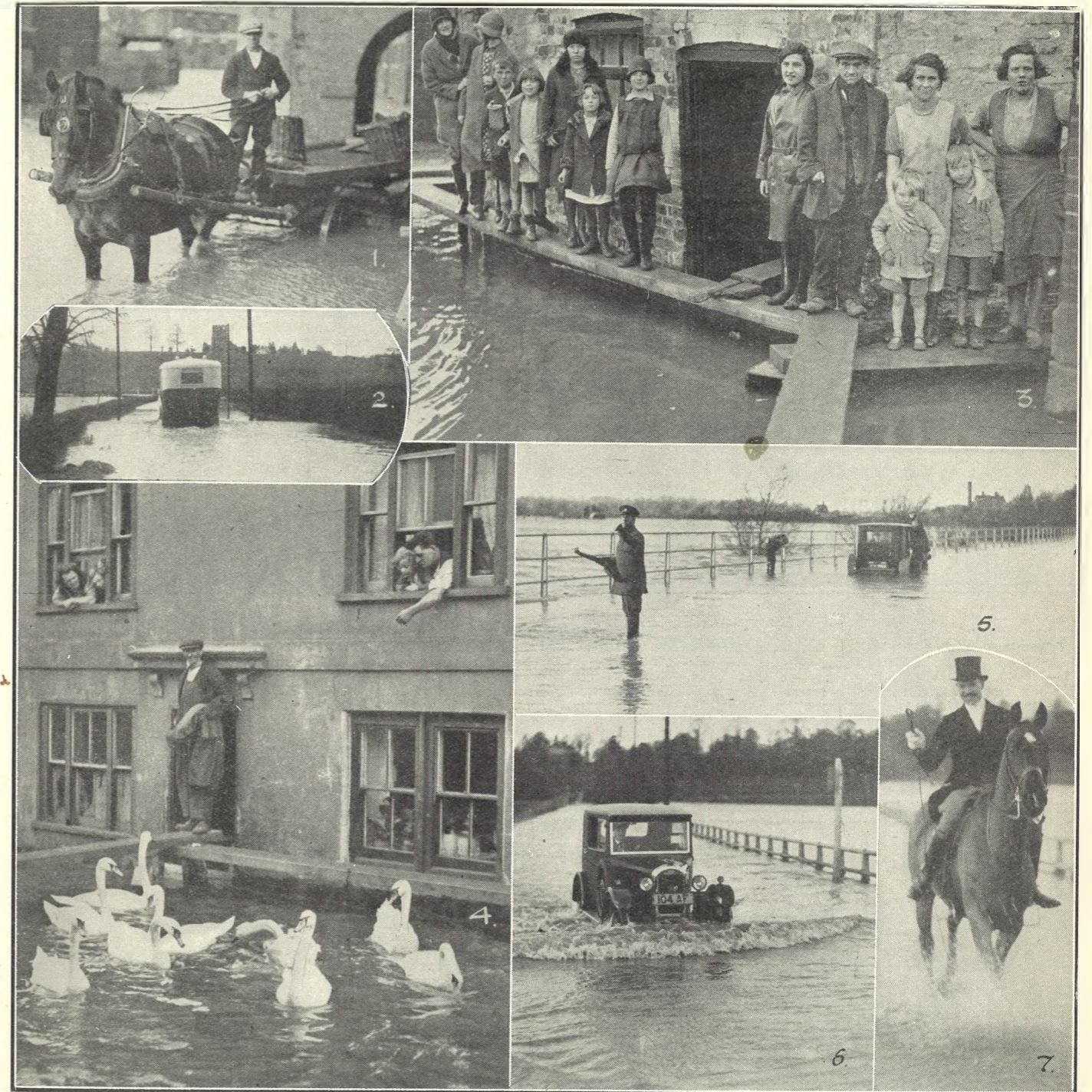
JOHN LANCE & Co., Ltd.,
 CHELTENHAM'S SHOPPING CENTRE.



GLOUCESTER CHRISTMAS MARKET.

The Christmas Market for Fat Stock was held in terrible weather on Monday last. The country is in such a flooded condition that great difficulty was found in getting the animals to market from many places, but a magnificent lot of stock was seen, and most of it fetched satisfactory prices.

- 1.—The crowd interested in a patent knife for cutting everything from cabbage to carrots.
- 2.—Mr. J. H. Wood (Haselton) and Mr. J. H. Roberts (Twigworth).
- 3.—Messrs. Strickland, Hopton (Churchdown), and Hopton (Upton St. Leonards).
- 4.—Mr. J. N. Kendall's (Brimpsfield) Red Poll cow, best fat cow in market, beating Mr. Cridland's Aberdeen-Angus.
- 5.—Mr. Peters (of Bruton, Knowles, and Co.), on right, selling prize sheep.
- 6.—Champion Fat Beast in Market, winner of Cridland Cup, sent by Lord Dulverton, Batsford Park.
- 7.—Bruton, Knowles, and Co.'s guests. Coffee, beer, and sandwiches to all helpers.
- 8.—Hon. S. Vestey's Champion for baby beef.



THE GLOUCESTERSHIRE FLOODS.

The floods at Gloucester, Tewkesbury, and everywhere in the Severn and Avon valleys are now a most impressive sight. The water at Gloucester was on Wednesday as high as at the great June, 1924, flood, and only six inches short of that at Tewkesbury.

- 1.—Horse-drawn coal lorry in Quay-street, Gloucester, shows depth of water.
- 2.—A Bristol 'bus gets through at Norton, on the main Gloucester-Tewkesbury road. It was impassable for smaller cars.
- 3.—Some of the inhabitants of Swan-lane, Gloucester, on their plank walk. The water is in their ground floor rooms up to the piano keyboard.
- 4.—Swans in Quay-street being fed from the bedroom windows.
- 5.—A mishap on the Mythe-road, Tewkesbury. "A.A." men going to rescue a stranded motor-car.
- 6.—A car coming through the Mythe-road (main road Tewkesbury to Worcester) on Tuesday. It was much deeper on Wednesday.
- 7.—Mr. Devereux returning from an abandoned meet of the Croome Hounds, owing to flooded country.

R. G. STEPHENS & SON, for XMAS GIFTS.

Trunks, Suit, Blouse, Writing, Music, Attache, and Fitted Cases. School Bags. Wallets, Note Cases, Purses, Mirrors. Collar and Hat Boxes. Hand Bags. Ladies' and Gents' Hair Brushes, Seat Sticks, Hunting Crops, etc.

CORNER HOUSE, WINCHCOMB STREET AND ALBION STREET, CHELTENHAM.



TEWKESBURY CHRISTMAS MARKET.

Tewkesbury Christmas Market was held on Wednesday last. Owing to the enormous floods surrounding Tewkesbury, a great deal of the stock destined for the market could not be brought.

- 1.—Messrs. H. Davies and Chamberlayne judging stock in Mr. G. Hone's market.
- 2.—Mr. G. L. Hone, the Auctioneer, and Mr. Fred Loveridge, of Strensham.
- 3.—Ladies interested—Misses Dugdale, Tysoe, and Morris.
- 4.—Messrs. John Burrows, R. Neems, H. Vines, and Frank Vines.
- 5.—Messrs. Sexty, J. R. Staight, and C. W. Jones.
- 6.—Messrs. Nind, T. Young, C. H. Chatham, C. K. Nicklin, C. E. Chatham, and T. Choules.
- 7.—Mr. Badham (Town Clerk of Tewkesbury) and his wife inspecting the floods.
- 8.—Messrs. Milton and Griffiths (Worcester).
- 9.—On extreme right is Mr. Hawkins.

[“Cheltenham Chronicle” Photos.]



FUNERAL OF THE LATE SIR ASHTON LISTER.

The funeral of the late Sir Ashton Lister took place at Dursley on Monday last, Dec. 9th, amidst every manifestation of regret from the inhabitants and a very large circle of friends.

- 1.—The coffin, borne on a horse-drawn lorry and covered with floral tributes.
- 2 and 3.—Employees of the firm of Lister and Co. with wreaths.
- 4.—Two motor-lorries, laden with flowers, head the cortege, passing along the street lined with employees and other mourners.



ELECTRIC POWER AND MODERN MACHINERY.

A part of the extensive Printing Works of Cheltenham Press, Limited, one of the three Presses associated with Ed. J. Burrow and Company, Limited, Imperial House, Cheltenham, and Kingsway, London. This is a fine example of the development of a Cheltenham Industry, which has now acquired a national reputation for high-grade work, especially the printing of magazines.



CHELTENHAM SCHOOL OF ART PUPILS WITH THEIR MASTERS PREPARING FOR THE ART SCHOOL BALL.

Phone 4385

ROBERTSON & Co.

(T. R. PRITCHARD, Proprietor),

CIGAR and CIGARETTE

... **IMPORTERS,** ...

8 Colonnade, CHELTENHAM.

Specialities.

Robertson's Edinburgh Smoking Mixture.	Robertson's Home-Made Virginia Cigarettes.	Robertson's Celebrated "Croesus" Cigars.
4/6 per 1/4 lb.	100 .. 6/8 50 .. 3/4 25 .. 1/8	50 .. 30/- 25 .. 16/-

Noted House for PIPES in all the Best Makes.

AGENTS for Barling, Loewe, Dunhill,
and B.B.B. Celebrated Briars.

A Large Variety of Cigarette Cabinets, Petrol
Lighters, "Y.Z." Novelties, etc.

CHRISTMAS GIFTS.

: A Choice Selection of :
Finished and Unfinished

NEEDLEWORK.

Traced Linens & Tapestries.
WOOLS and SILKS

in All Shades

PRITCHARD'S Art Needlework Studio,

: 14 Colonnade, :
CHELTENHAM.

CHRISTMAS NOVELTIES

In Fancy Goods, Cosies, Sachets, Pincushions,
Necklets, etc.

Let **MOUSELLS** move you



Estimates for Removals and Storing Free.
PHONE 2112.

Offices:
CHELTENHAM. AMBROSE STREET.

H. E. RANDALL, Ltd.,
60 PROMENADE, CHELTENHAM.

ARE NOW SHOWING a Large Selection of
Slippers, Evening Shoes & Hose.

SUITABLE FOR CHRISTMAS GIFTS.
Agents for "CANTILEVER" Shoes.

HAND-SEWN MAKING from 30/-
REPAIRS SAME DAY.

JOINT AND ARCH SPECIALISTS AND
BUNION CURERS.

London City Honours.
PROGRESS BOOT WORKS,
24 MONTPELLIER STREET, CHELTENHAM

(Opposite P.O.)
AND AT 10 GROSVENOR STREET.

STRATFORD HOUSE HOTEL,
SUFFOLK SQUARE, CHELTENHAM.

Unlicensed.

FIRST-CLASS RESIDENTIAL.

Terms on Application. Phone 2236

Gloucestershire People

who are far away from home, and to
whom news and pictures of their own
beloved county are ever welcome,
would greatly appreciate your kind-
ness in sending them the "Chronicle
and Graphic" regularly. The real
county paper.



ROUND THE TOWN IN CHELTENHAM.

Snaps taken in the Promenade on Tuesday. The gentleman on left in No. 9 is Mr. Ernest Buchanan.

["Cheltenham Chronicle" Photos. Copies 1s. and 1s. 9d. each, post 2d.

JACOBS & SMITH, The Popular Farriers,

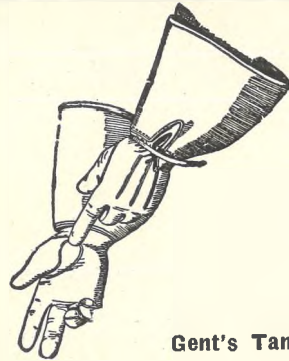
104 HIGH STREET (opposite Lloyds Bank), CHELTENHAM.

We offer you the Best in all Fur Wear at the Right Price.

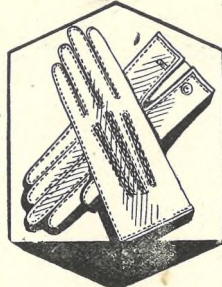


SOCIETY WEDDING IN CHELTHENHAM.
Dr. A. B. Danby and his bride (nee Miss Victoria Arkell) leaving Holy Apostles' Church

GLOVES are
Useful, Seasonable,
Reliable and always
Acceptable for
Xmas Gifts.



Gent's Tan, lined Wool, 6/11, 8/6, 10/6.
" " " Fur, 8/11, 9/6, 12/6.
" " " Chamois, 10/6.
Gents' Wool Gloves 1/- to 3/6.
Fur Back Gauntlets, 10/6 to 45/-.
Tan Leather Gauntlets, 8/11 to 30/-



"THE FAMOUS"
Tel. 4242. Prop. A. N. Cole.
Glovers, etc.,
CHELTHENHAM.

Boys' Gloves
In Wool
1/-, 1/6, 1/11½
In lined Tan,
6/11, 7/11

CHILDREN SIMPLY LOVE
Charlie Chaplin & "Felix the Cat"

YOU can have them at **YOUR** Party by arrangement with our Cinematograph Hire Department. Great variety of subjects to choose from. All films guaranteed non-inflammable. Experienced operators provided. Hire Charges and full particulars for Entertainments of any desired duration from:

WILL R. ROSE, PHOTOGRAPHIC AND CINE. SPECIALISTS,
3 THE PROMENADE ('Phone 3712), CHELTENHAM.

LET
Mrs. OWEN JAMES

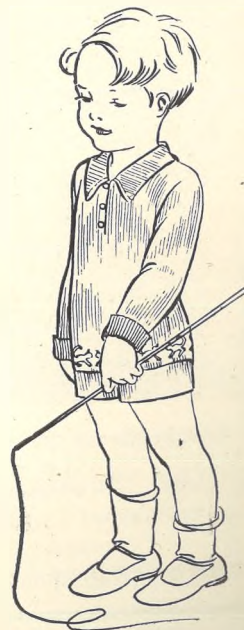
Help you to solve the
problem of your
XMAS GIFTS
Below, are a few suggestions
AT REASONABLE PRICES.
FOR LADIES.



HANDKERCHIEFS.
GLOVES, Fur Back, from 7/11.
HOSIERY, all the Noted Makes.
JUMPERS, CARDIGANS,
RUBBER APRONS, and
DAINTY SILK UNDERWEAR.

FOR THE KIDDIES.

JERSEY SUITS,
CARDIGANS,
WOOLLEN DRESSES,
COLOURED PINAFORES,
ROMPERS,
BREECHETTE SETS,
All Sizes and Prices.
A Large Selection of Soft Hygienic TOYS.



Note the Address:—
409 THE STRAND.
HIGH STREET, CHELTHENHAM
Agent for CHILPRUFE.



CORPL. TOM CHILD,
of Marle Hill-road, Cheltenham, with his assistant native cooks in a military station in India.



PICTURESQUE BRIDAL ATTENDANTS.
The three bridesmaids and two pages at the wedding of Dr. A. B. Danby and Miss V. Arkell.

BICK BROS.
FANCY LEATHER GOODS
make most acceptable
CHRISTMAS GIFTS.

A large and varied stock
worthy of early inspection.
19 MONTPELLIER WALK,
CHELTHENHAM. : 'Phone 3880.

Est. 1804. Telephone 2470

CHAS. H. RAINGER,
BUILDER AND DECORATOR,
Bath Place, Cheltenham.

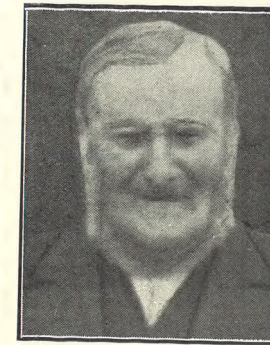
Schemes and Estimates submitted for every description of Building Work, Decorations, Electric Lighting, Heating, Sanitary Work and Plumbing.

Place your Christmas
orders for **MEAT** with
S. ROGERS,

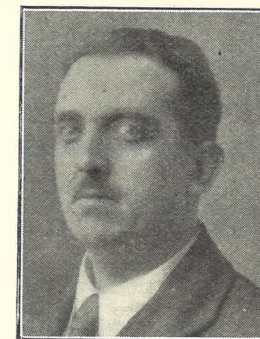
Montpellier Street, 'Phone 2381,
Winchcombe St., 'Phone 2590.

Where special arrangements have been made to purvey the selected stocks of the county Yuletide markets.

Read the "Echo" Daily.



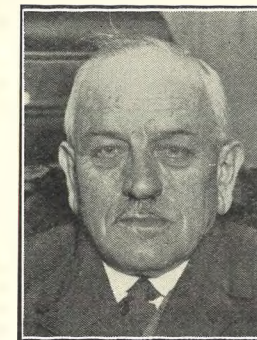
MR. JOHN HITCHMAN, of Bledington, who died recently, aged 79 years. He was one of the founders of the old morris dances, for which the village is noted. He was a retired G.W.R. platelayer and was very highly respected.



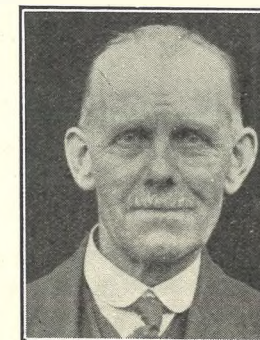
MR. G. W. BLAKEMAN, who has taken up his duties as the new Postmaster of Tewkesbury. He came from Alcester. He served throughout the War, concluding as Reg. Quarter-Master-Sergeant with the Q.O. Oxfordshire Hussars.



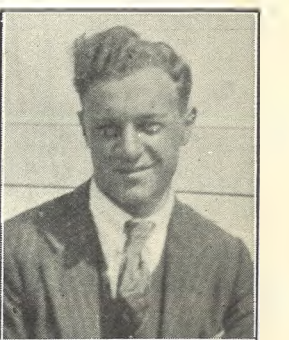
MRS. MARY ANN BOWERS of 26 Moored-street, Cheltenham, who died suddenly on Dec. 6th whilst at tea, aged 58. She was the wife of Mr. Frederick Bowers, an employee of Messrs. J. Dobell and Co., Ltd.



MR. A. J. HALL, Master of Cirencester Poor Law Institution for over 24 years, who, owing to ill-health is retiring in March next. He has been Poor Law official for 39 years.



MR. JOHN WADE, of Cirencester, who, in consequence of ill-health, will in March be retiring from the position of Relieving Officer and Registrar of Births, Marriages, and Deaths after 36 years' service.



MR. RAYMOND C. WAGER son of Mr. and Mrs. Wager, of Kemble Post Office, who died on Dec. 5th after a few days' illness, aged 21 years. He was a clerk at Cirencester Post Office.



THE FLOODS IN CIRENCESTER.

Cirencester is suffering from floods worse than any in living memory. Many families have been driven from their homes and schools have been closed. Two feet of water lies in some streets and several shops have had to suspend business.

1.—A vast "inland sea" formed on the Cheltenham side of the town.
 2.—A free "ferry" service was put into operation in one part of the town,

where streets were impassible for pedestrians and shops and houses were flooded. Picture shows a "ferry load" in Duke-street.

3.—The top of a wall was the only way to negotiate one of the flooded roads.

"Cheltenham Chronicle" Photos. Copies 1s. and 1s. 9d. each. Post 2d.

THE PLOUGH
 CHELTENHAM SPA'S LEADING HOTEL.
BALL ROOM for Christmas Dances, Parties, Banquets, etc.
 Large or Small Parties Catered for; WEST END CUISINE.
 Apply Manager for Tariff. 'Phone 2690.

VISIT THE ONLY
SILVER - GRILL ROOM
 (Open from Noon Daily),
 AND THE ONLY
AMERICAN COCKTAIL BAR
 IN CHELTENHAM.



CHELTENHAM AMATEUR OPERATIC SOCIETY IN "THE GONDOLIERS."
 The Annual "Week" of the above Society was held at the Opera House last week and was a great success, artistically and financially, as over £50 was taken more than last year. Members of the Chorus.

1.—H. E. James and G. C. Cobb. In front: Miss D. A. Gazzard, Mrs. A. P. Stephens, Miss O. Thorley.
 2.—Mr. W. O. Skinner (Hon. Secretary) and Miss L. Basevi.
 3.—At back: A. V. Mills, A. G. Walker. In front: G. C. Cobb, W. G. Leishman, H. L. Whiteham.
 4.—Mrs. M. Lane, Miss E. Waite, Miss E. L. Weatherhead.
 5.—Mr. A. B. Martin and Miss B. Lowndes.
 6.—W. James, A. Chandler, and L. E. Lindsay.
 7.—H. E. James.
 8.—At back: A. G. Walker, Miss D. Panter, A. V. Mills. In front: Miss M. Perkins, A. Chandler, Miss M. N. Willett.
 9.—Miss E. Fry (Casilda) and Miss I. M. Rowley (Duchess).
 10.—At back: F. H. Taylor, J. Mann, A. G. Walker. Standing: The Misses D. H. Pearce, M. Perkins, H. Juler, Mrs. M. Millington, Mrs. E. B. Ponting. In front: Miss M. E. Hooper, Mrs. M. B. Lindsey.



Postage paid in Great Britain on all orders for goods value 20/- and over, not exceeding 11 lbs. in weight.

White Heather Eau de Cologne. Prices: Watch Shaped Bottles—9½d. to 4/2 As illustrated, 2/3 to 15/-

BOOTS GIFT CORNER

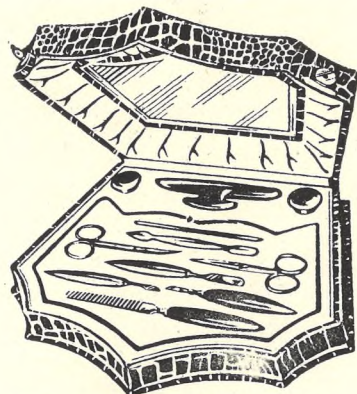
Postage paid in Great Britain on all orders for goods value 20/- and over, not exceeding 11 lbs. in weight.



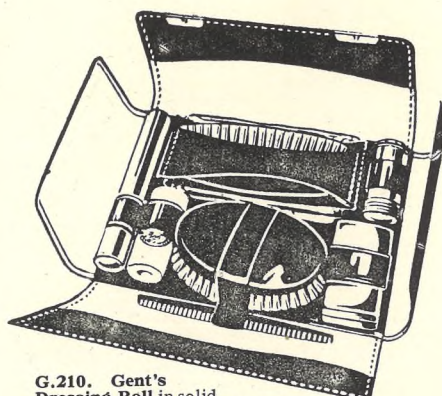
Old English Lavender Water. Prices from 9½d. to 15/- As illustrated, 3/6 and 6/3



N.126. Real Morocco Mayfair Bag. pleated, lined with doe-skin. Fitted with inside purse division, lined white kid. 12/6



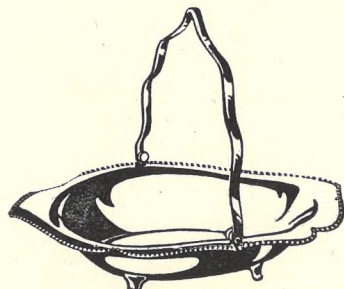
T.576. Manicure Set in attractive case, with eleven fittings, and mirror in lid. Available in an excellent range of colours. 18/6



G.210. Gent's Dressing Roll in solid hide. Fitted with Ebony Hair Brush, Comb, Safety Razor in nickel case, Shaving Brush, nickel Tooth Brush tube, Boots Old English Lavender Shaving Stick, and Toilet Wallet. Special value. 21/-

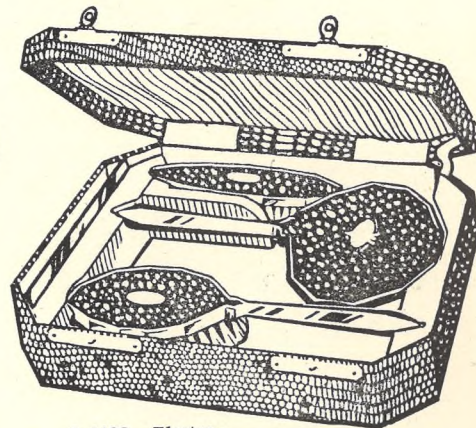


"Water Babies." Special edition, illustrated in colour by Jessie Wilcox Smith. Originally published at 18/- Boots exclusive price—5/11

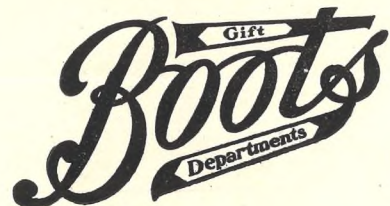


1678. Electro-plated Cake Basket. Plain design with bead-pattern edge. 10/6

Also Perfumes, Bath Crystals, Face Powders, Compacts, Cameras, Torches, Clocks, Games, Toys, etc., from



J.1132. Electro-plate and Imitation Shagreen Brush Set. Four pieces in presentation case. Available in blue and green. 63/-



Boots Corner, CHELTENHAM SPA. Tel. 2084. 31 Northgate Street, GLOUCESTER. Tel. 2491.

Make **BOOTS CAFÉ** your rendezvous for Morning Coffee, Luncheons, and Dainty Teas.

Boots Pure Drug Co. Ltd.



ADVERTISING DOG-WEEK IN CHELTENHAM. To advertise the ball and other social functions in Cheltenham last week, a number of dog-lovers paraded the Promenade and High-street with a fine lot of Great Danes. The photograph was taken in heavy rain.



"PRIMOSE BUDS" FAIRY PLAY. On Saturday last at the Empire Hall, Cheltenham, the local Primrose Buds gave a Fairy Play entitled "The Magic Fan." They were trained by Madame Horton.

TIES 2/6 to 4/6
SOCKS 2/6 to 4/6
GOLF HOSE 7/6 to 12/6
PULLOVERS 6/6 to 25/-
SHIRTS 7/6 to 14/6
WHITE HANDKERCHIEFS 3/3 to 7/6 ½ doz. Etc., Etc.

FOR A LARGE SELECTION OF GIFTS MEN LIKE

VISIT **F. H. EDWARDS,** GENTLEMEN'S OUTFITTER. 116a HIGH STREET., CHELTENHAM SPA.

HATS 7/6 to 17/6
GLOVES 5/6 to 21/-
DRESSING GOWNS 21/- to 42/-
CARDIGANS 7/6 to 25/-
PYJAMAS 7/6 to 90/-
SILK HANDKERCHIEFS 3/6 to 8/6 Etc., Etc.

Everything's Ready
for Xmas Shopping
at



WARD'S

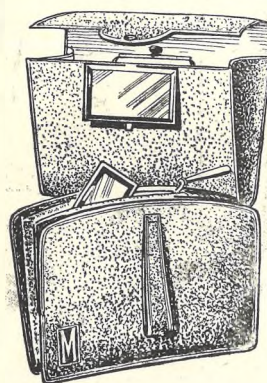
Every window and every department is showing a host of goods that are ideal for gift-giving. Come and make your choice under the best conditions before that last-minute rush that is frequently "uncomfortable and unsatisfactory."

AN ENORMOUS SELECTION OF PRESENTS SUITABLE FOR ALL. SEE THE WINDOW DISPLAYS!

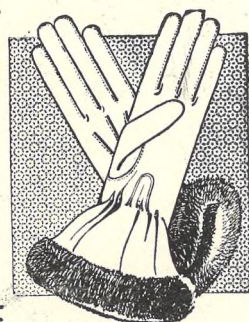
GRAND XMAS TOY FAIR

SEE THE ENCHANTED FOREST

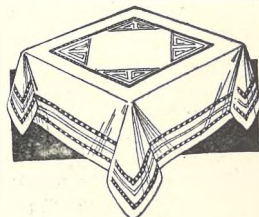
With the real Waterfall. Admission to the Forest 6d. each, but all visitors, adults and children, receive a present, with AN EXTRA PRESENT IN EVERY 30th PARCEL ISSUED TO ADULTS BY FATHER CHRISTMAS, ENTITLING the HOLDER TO AN ADDITIONAL GIFT VALUE 5/.



HANDBAGS,
STATIONERY,
LEATHER GOODS,
FANCY GOODS,
POWDER
BOWLS,
etc.



GLOVES,
STOCKINGS,
SCARVES,
HANKIES,
SATCHETS,
COSIES,
FANCY
LINENS, etc.



Brush Sets and Manicure Cases 1/- to 21/-.

Hankie Sachets from 1/0½.

Nightdress Sachets from 3/11½.

Chubby Umbrellas in every shade from 5/-.

Cardigans and Jumpers make an ideal Gift. Price from 6/11½ to 29/11.

Wonderful selection of Handkerchiefs in dainty Gift Boxes, from 1/-.

Large selection of Fur Ties and Coats at special prices.

Ladies' Fur Back Gloves, leather palm. Special value 7/11.

Nappa Kid Gloves, 2 Dome, lined. 4/11½.

Ladies' Pure Silk Hose, lisle tops and feet. 3/11½.

5 O'clock Tea Cloths, always acceptable, 1/11½ to 25/6.

Shamrock Linen Tea Sets, all colours. 9/11 and 12/11 the Set.

Tapestry Cushion Cases, Runners, etc., from 1/6½.

Tea Cosies from 1/0½ to 6/11.

All Leather Hand Bags from 3/11½ to 39/6.

Work Boxes and Baskets 1/11½ to 25/9.

Stationery Cabinets from 1/-.

FOR QUALITY **E. L. WARD, LTD.** FOR VALUE.

GIFT HEADQUARTERS, HIGH STREET, CHELTENHAM.

THE CHELTENHAM CHRONICLE AND GLOUCESTERSHIRE GRAPHIC

GRATIS SUPPLEMENT.

With Which is Incorporated the "Cheltenham Looker-On." Saturday, December 21st, 1929.

No. 1,512.

CHELTENHAM THEATRE AND OPERA HOUSE.

To-day:—Continuous performance from 6.0 to 10.30, "Behind that Curtain."
Next Week: Commencing Boxing Day (evening 7.30, Matinee 2.30) "LITTLE MISS MUFFET"
Pantomime.

THE PALACE,

HIGH STREET, Cheltenham.
Director: Shakspeare Shenton.
Programmes de Luxe for the Christmas Holidays.
Monday and Tuesday:—
Two-Feature Programme!
Chester Conklin, Thelma Todd
in The
HAUNTED HOUSE.
A Thrilling Mystery Comedy
Drama. Also
Monte Blue, May McAvoy in
NO DEFENCE.

East is East and West is West?
Thursday, Friday, Saturday:—
Holmes Herbert and
Margaret Livingston in
THE CHARLATAN.
A Gripping, Suspense-Holding
Mystery
Wisecracker Comedy:
"SHY KNEES."
Albert Parker and His Orchestra

THE DAFFODIL

Cheltenham's Dramatic Cinema.
Monday and Tuesday:—
BABY CYCLONE.
Starring LEW CODY and
AILEEN PRINGLE.
The story of the havoc wrought in the lives of four people by the little Pekinese puppy with the appropriate name, of "Baby Cyclone."
Thursday (Boxing Day), Friday, and Saturday:—
Great Two-Feature Show!
RAMON NOVARRO in
FORBIDDEN HOURS.
And
The Great Circus Picture,
LOOPING THE LOOJ.

MARTIN & Co.,

LTD.,
The County Jewellers.

CHRISTMAS PRESENTS.

PROMENADE,
CHELTENHAM SPA.

Tel. 2821. Established 1806.



Christmas and New Year
GREETINGS
To ALL OUR READERS.

CHRISTMAS PRESENTS.

One of the best would be a copy of "Picturesque Gloucestershire," that beautiful Volume of lovely photographs of the old-world towns, villages, country houses, and churches in this county. The price is One Guinea; call and see a copy at the "Echo" Offices. Foreign orders should be sent in at once.

Winter Garden, NEW KINEMA,

PROMENADE, CHELTENHAM
Director: Shakspeare Shenton.
FOR FIVE DAYS!
Continuous, 2.30 to 10.15.
SEE AND HEAR
Jean Hersholt, Charles Rogers,
Nancy Carroll in
ABIE'S IRISH ROSE.
The Record Breaker of the Stage.
Now a Tremendously Big Movie.
Screened at 2.30, 4.30, 6.30, 8.30.
FREE CAR PARK.
Winter Garden Orchestra and
Silent Pictures.

COLISEUM

CHELTENHAM 'Phone 3715
6.40 TWICE 8.40
p.m. NIGHTLY p.m.
SARAH ANN HOLDS FAST.
A Delightful English Comedy by
Armitage Owen.
Full of Clean Humour and Wit.

North Street.

PICTURE HOUSE, Cheltenham
From 2.30 p.m. Continuous.
Monday and Tuesday
The Big Spectacular Film
SECRETS OF THE EAST.
with All-Star Cast.
Thursday, Friday, and Saturday,
also
THE WINGED HORSEMAN
with HOOT GIBSON.

'Distinction with Economy.'
Get your "SODEN" WARM
Now.

Sole Agents in Gloucestershire.
SENSIER,
388b High St., Cheltenham.

Telephone 2580.

W. Scott Cooper,
Diamond Merchant, Jeweller,
Goldsmith and Silversmith,
The Promenade, Cheltenham
LICENSED VALUER.

DALE, FORTY and Co. LTD For the Best PIANOS



CHELTENHAM CENTRAL WARD MUNICIPAL BY-ELECTION.

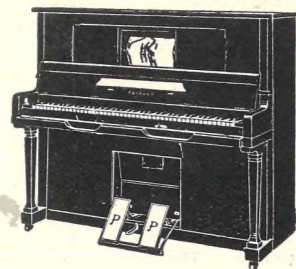
At the Bye-Election on Tuesday last to fill the vacancy caused by the death of the late Councillor W. Welstead, Mr. Wilfred Waite was returned by a majority of 125 over Col. Browne-Mason. Mrs. C. Marshall was a third candidate.

- 1.—Councillor and Mrs. Wilfred Waite.
- 2.—Col. Browne-Mason's workers: Col. G. M. Cockshott, Miss Browne-Mason, Col. Fitz G Bourn, Mrs. Wilkins and Mr. Hewitt.
- 3.—Mr. Waite's workers, from left:—Mr. Pitcher, Mr. Shepherd, Miss Waite, Mr. Ayres, Councillor Pates, and Mr. Williams.
- 4.—Colonel Browne-Mason and his daughter.

"Cheltenham Chronicle" Photos.

Suggestions for Christmas Presents.

A New "His Master's Voice" Gramophone, Viva-Tonal Columbia, or a Decca, Latest Records, Albums, Needle Outfits, Nursery Rhymes and Tiny Tot Records, Violins, Mandolines, Strings and Fittings.



Latest Designs in PIANOS and PIANOLA PIANOS, Cabinets and Stools, Music Cases, Bound Volumes, Songs and Dance Music in Great Variety, Orchestras, Conjurors, and Entertainers Supplied.

Crichton's 394 THE STRAND, Cheltenham. 'Phone 2378.

(Ernest Crichton, Ltd.)



MRS. G. F. BICK,

wife of Mr. George Bick, of South Court, Leckhampton, who died on December 14th, aged 74 years. She was a daughter of the late Samuel Marchant, of Tivoli, and had lived in Cheltenham all her life, formerly carrying on two big drapery shops. She leaves a husband, one son and two daughters.



CHELTENHAM AND COUNTY HARRIERS.

Cheltenham and County Harriers' Team, who beat Dean Close School last Saturday. From left: A. Stoaite, J. Hooper, R. Weston, H. Homer, R. Perry, J. Wright, F. Tibbles, P. Brown, M. Gooch, H. Slade, J. E. Wood, T. Webley.

"Cheltenham Chronicle" Photo. Copies 1s. each, post 2d. extra.



DEAN CLOSE SCHOOL CROSS COUNTRY TEAM.

From left: J. Milton, K. J. Leaver, W. G. Allison, D. A. Pringle, A. E. Booty, J. E. T. Morris, R. T. Burkitt, P. H. Gibbings, J. D. Jenkins.

"Cheltenham Chronicle" Photo. Copies 1s. each, postage 2d. extra.

STRATFORD HOUSE HOTEL,
SUFFOLK SQUARE, CHELTENHAM.

Unlicensed.

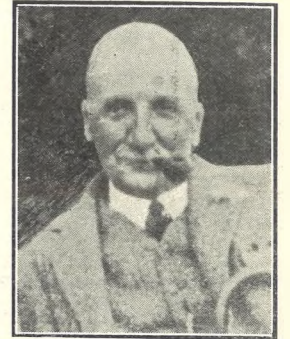
FIRST-CLASS RESIDENTIAL.

Terms on Application.

'Phone 2236

HAND-SEWN MAKING from 30/-
REPAIRS SAME DAY.
JOINT AND ARCH SPECIALISTS AND
BUNION CURERS.
London City Honours.

PROGRESS BOOT WORKS,
24 MONTELLIER STREET, CHELTENHAM
(Opposite P.O.)
AND AT 10 GROSVENOR STREET.



MR. C. H. BASTOW,
of Roadside, Cleeve Hill, who dropped dead on Sunday morning last near his home, aged 69 years. He had started to play a round of golf, but feeling unwell, was returning to his home when he fell. He was a director of the Cheltenham Original Brewery since 1919, and formerly lived at Ledbury, where he then was a partner in the firm of Lane and Bastow, brewers. His wife and only son pre-deceased him.



LADIES' and CHILDREN'S HAIRDRESSING
PERMANENT WAVING
TINTING.
FACE MASSAGE.
MANICURE.
MODERATE CHARGES.

MARCELLE.
23 THE PROMENADE,
Cheltenham. 'Phone 4228

Let MOUSELLS move you



Estimates for Removals and Storing Free.
'PHONE 2112.

Offices: **CHELTENHAM.** AMBROSE STREET.

LADIES!

Don't let your Gift to
"THAT MAN"
Cause you anxiety.

F.H.EDWARDS,

The Men's Outfitter,
116a HIGH STREET,
CHELTENHAM SPA.

Can help YOU to please HIM.



No. 7 is Miss M. Heynes, and No. 11 is Mr. "Barry" Mortimer and his daughter. ["Cheltenham Chronicle" Photos.]

THE PLOUGH, Cheltenham Spa's Leading Hotel.

SPECIAL CHRISTMAS ATTRACTIONS — open to non-residents.

CHRISTMAS EVE: Supper Dance, 9.30 till 12. **CHRISTMAS DAY:** Concert, 8.30 till 11.
BOXING DAY: Children's Party, 3 till 5.30. The Dansant, Whist, Bridge, 4 till 6.
BOXING NIGHT: Dinner Dance and Cabaret, 8.30 till 1.0.
 Full programme of Christmas and New Year Festivities on application to Manager or 'Phone 2890.



PRACTISING SCHOOL OLD BOYS' DINNER.
 The Annual Dinner of the Old Boys of the Cheltenham Training College Practising School was held at the Cadena Café, High Street, on Wednesday, Dec. 11th. A record number of 134 were present.
 ["Cheltenham Chronicle" Photo. Copies 1s. and 1s. 9d. each, post 2d.]

'Phone 4285
ROBERTSON & Co.
 (T. R. PRITCHARD, Proprietor),
CIGAR and CIGARETTE
 :: IMPORTERS, ::
 8 Colonnade, CHELTENHAM.

<i>Specialities.</i>		
Robertson's Edinburgh Smoking Mixture.	Robertson's Home-Made Virginia Cigarettes.	Robertson's Celebrated "Croesus" Cigars.
4 6 per 1/4 lb.	100 .. 6 8 50 .. 3 4 25 .. 1/8	50 .. 30/- 25 .. 16/-

Noted House for PIPFS in all the Best Makes.
 AGENTS for Barling, Loewe, Dunhill,
 :: and B.B.B. Celebrated Briars. ::
 A Large Variety of Cigarette Cabinets, Petrol
 Lighters, "Y.Z." Novelties, etc.

CHRISTMAS GIFTS.

: A Choice Selection of :
 Finished and Unfinished
NEEDLEWORK.
 Traced Linens & Tapestries.
WOOLS and SILKS
 in All Shades

PRITCHARD'S
Art Needlework Studio,

: 14 Colonnade, :
CHELTENHAM.

CHRISTMAS NOVELTIES
 In Fancy Goods, Cosies, Sachets, Pincushions,
 Necklets, etc.



ROUND THE CITY IN GLOUCESTER.
Snaps in the neighbourhood of The Cross on Monday morning last.

R. G. STEPHENS & SON, for XMAS GIFTS.

Trunks, Suit, Blouse, Writing, Music, Attache, and Fitted Cases. School Bags. Wallets, Note Cases, Purses, Mirrors. Collar and Hat Boxes. Hand Bags. Ladies' and Gents' Hair Brushes, Seat Sticks, Hunting Crocs, etc.

CORNER HOUSE, WINCHCOMB STREET AND ALBION STREET, CHELTENHAM.



CHELTENHAM COLLEGE V. OLD CHELTONIANS.

A splendid match was seen on Saturday last on the Lake House ground between two level sides, and the result was in doubt up to the last minute. The College showed capital form, with plenty of dash, and were rather unlucky to be beaten.

- 1.—The Old Cheltonians team, from left:—Young, Bryce-Smith, Ridout, Macdonald, Patterson, O'Dwyer, Maby, Reeves, Denmuth, Ekin, Woollett, Lloyd-Browne, Tanner, Forbes, Robertson.
- 2.—College team coming through in a loose rush. Lee (on extreme right) showed dash on the left wing, and was twice robbed of a try in the corner through Tanner's fine defence.
- 3.—Spectators.
- 4 and 5.—Rev. H. E. Hubbard on left of No. 5 with three Old Cheltonians.
- 6.—Some Collegians.
- 7.—Four Old Cheltonians.
- 8.—A good line-out.

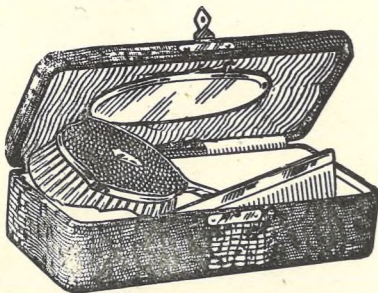
["Cheltenham Chronicle" Photos. Copies 1s. and 1s. 9d. each, post 2d.]

BOOTS GIFT CORNER

Postage paid in Great Britain on all orders for goods value 20/- and over, not exceeding 11 lbs. in weight.



XS.20 Clock with silvered dial, available in assorted colours. Special value. **4/11**



J.1133. Electro-plate and Imitation Shagreen Brush and Comb in presentation case with mirror in lid. Available in blue and green. Excellent value. **16/6**



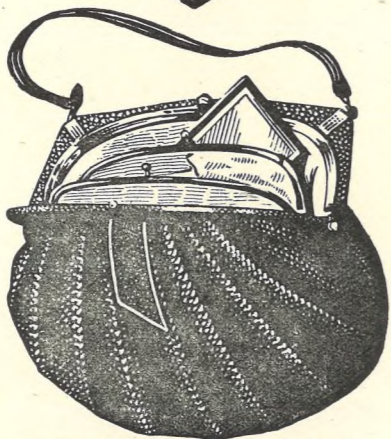
Regaid Hot Water Bottle. Finest quality red rubber, moulded, seamless, reinforced with canvas.
10 x 8 in., 7/6
12 x 8 in., 8/6
12 x 10 in., 9/6
Available in Pastel shades.



R.711. Real Morocco Mayfair Bag with triple frame. Fitted with inside purse division, and extra pocket. **7/11**

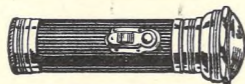
BOOTS BOOK-LOVERS' LIBRARY

Have you thought of the wonderful novelty and whole year's continuance of a Boots Book-lovers' Library Subscription as a gift?



IR.156. Mayfair Bag in best quality morocco, with artificial silk lining. Fitted with mirror and inside purse division, lined white kid. Strong, roomy and serviceable bag. **15/6**

Boots sell gifts at reasonable prices to suit all people, young or old. Inspect the selection in our Gift Departments and note the variety available.

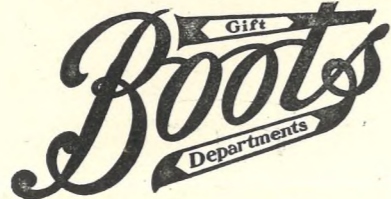


Electric Torch, covered fibre, with large lens, complete with bulb and Ever-Ready Battery. **3/9**

Extensive selection of Flash Lamps, Table Lamps, etc., always available.



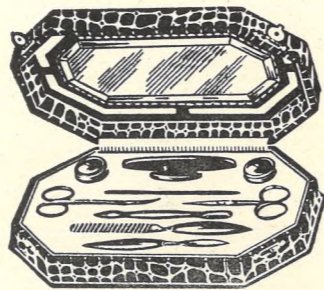
9924. Electro-plated Breakfast Cruet, pierced design—Salt, Pepper, and Mustard with glass linings—on tray. **12/6**



**Boots Corner,
CHELTENHAM SPA.**
Tel. 2084.
**31 Northgate Street,
GLOUCESTER.**
Tel. 2491.

Postage paid in Great Britain on all orders for goods value 20/- and over, not exceeding 11 lbs. in weight.

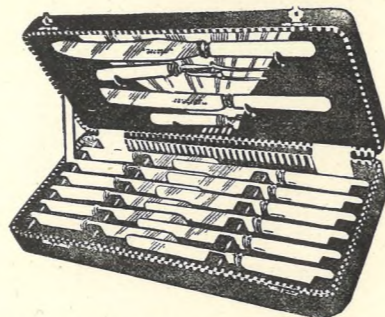
5263/2. Cut Glass Perfume Spray with gilt and enamel mount. Popular shape. **8/11**



T.568. Manicure Set in leatherette covered case, with nine fittings, and bevelled mirror in lid. Available in an excellent range of colours. **10/6**



M.511. Letter Case in good quality morocco. Fitted with pockets for treasury notes and season ticket, and deep pocket at back. **5/11**



344. Case of Cutlery, containing 1/2 dozen Table Knives, 1/2 dozen Dessert Knives, Carver and Fork, Bread Knife, and Stainless Knife Sharpener. All knives made from Firth's Stainless Steel. **42/-**

Make
BOOTS CAFÉ
your rendezvous for
Morning Coffee,
Luncheons, and
Dainty Teas.

Boots Pure Drug Co. Ltd.



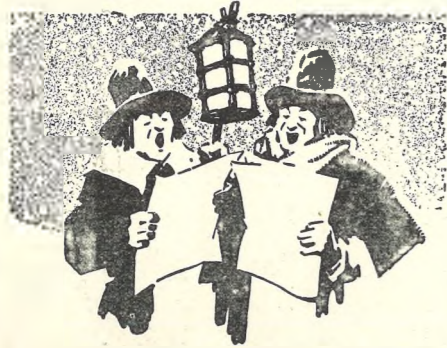
COURSING MEETING AT DUMBLETON.

The Vale of Evesham Coursing Club held a postponed meeting on Tuesday last, over the estate of the Right Hon. Sir B. M. Eyres Monsell, at Dumbleton, in beautiful weather. Hares were plentiful and very strong, and during the morning courses, every hare got away.

- 1.—Mr. Chetland's "Might Do" beat Mrs. Chapman's "Wryley."
- 2.—Master Staigt, son of the Slip Steward, enjoys his coursing mounted.
- 3.—Mrs. Hollins with two of her dogs.
- 4.—The Judge, Capt. R. R. Smart, and Hon. Secretary, Mr. Harry Burton.
- 5.—Messrs. N. Loveridge, Field, Ted. Arnold, J. Knight, and Wilkes.
- 6.—Spectators. On right is Master Preston Jones.
- 7.—Spectators. On right is Mr. Clements.
- 8.—Rewarding a dog with liquid refreshment after winning.
- 9.—Mrs. Lucas chatting to a friend.

DALE, FORTY & Co., Ltd.

for
**Something Musical
This Christmas!**



SONGS OF JOY

Christmas! Make it merry, make it music, make it "His Master's Voice."

A selection of records and one of "His Master's Voice" gramophones and you have the right ingredients for a Merry Christmas.

There are many records that are ideal as an accompaniment for the rollicking chorus. Hear them played on one of

"His Master's Voice" GRAMOPHONES

Record
Albums,
Cases,
Carriers, etc.

RECORD
CABINETS

from
3 Gns.

PIANO
STOOLS

from 21/
MUSIC

CABINETS
from 4 Gns.

Bound
Albums

of Music,
All the

Latest
Dance Music.

Violins,
Saxophones,

etc.

Also "Columbia" and "Decca"

Complete stocks always maintained.

PORTABLE WIRELESS SETS

Halcyon, Burndept, Marconiphone, Columbia, Gecophone, Decca, Pye, etc.

NO DEPOSIT, EASY TERMS
ARRANGED. A SMALL SUM
SECURES IMMEDIATE DELIVERY.

New Pianos from 25 Guineas.

We invite you to call and inspect the Extensive Stock in our recently opened New Showrooms.

DALE, FORTY & Co., Ltd.

The County Music Centre,

Promenade, CHELTENHAM,
STROUD, CIRENCESTER.

London, Birmingham, Cardiff, etc.



PRESTBURY (midway between Cheltenham and Cleeve Hill). For sale, a uniquely interesting residential property in hunting, polo, and racing centre. The delightfully situated residence (partly XVI. century), containing well appointed accommodation some (20 rooms), stands in picturesque grounds about three acres, and includes kitchen and pleasure gardens, orchard and lawns, superior cottage, lodge, stabling for six, garages for four, etc. The property is particularly suitable for a private hotel, for which there is such a demand in this favoured district, and is in good condition, has electric light, town water, main drainage, sandy soil, and will be offered, with possession, as a whole (or may be divided to suit a purchaser) at an attractive price.—Apply Mark Williams and Co., 1 Promenade-terrace, Cheltenham.

THE MOTOR

Cycle Specialist,
Bath Street,
CHELTENHAM

Extends

to
you

Leslie Paynter

A
heartly
welcome

to inspect
his large
selection of
most acceptable
Christmas Gifts

FOR MOTORISTS

The Legend of the Three Sisters WHO LIVED UPON CLEEVE HILL.

If you would care to know how they were turned into trees by the Fairies, read the exclusive verses which appear on page 5 of to-day's "Cheltenham Chronicle."



TEA AND ENTERTAINMENT TO CHELTENHAM CHILDREN.

On Monday last Councillor J. Allen entertained 1,700 poor children from various districts of Cheltenham at the Town Hall to a tea and entertainment. Flashlight snap of the party at the Concert.

["Cheltenham Chronicle" Photo. Copies 1s. and 1s. 9d. each, post 2d.]



CHRISTMAS PANTOMIME AT PRESTBURY.
Infants of Prestbury School who performed "Little Red Riding Hood" in the Church House, Prestbury, on December 13th.

Photo by Fox, Leckhampton.



MR. H. N. CONWAY DAVIES,
who for some years has held the appointment of Juvenile Employment Officer under the Cheltenham Education Committee, and who is now leaving the town to take up similar duties in Brighouse, Yorks. Mr. Davies has identified himself with various social movements in Cheltenham, and made himself very popular.

Read the "Echo" Daily.

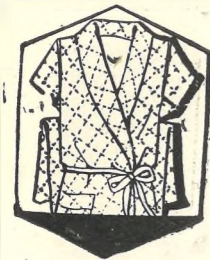


CIRENCESTER CHRISTMAS MARKET.

The Cirencester Christmas Stock Market was revived again after a lapse of many years, and the large entry of fine stock on Monday last justified the venture fully.

- 1.—Mr. C. Allen selling Prize Cattle.
- 2.—Mr. E. G. Clifford (Quenington) (behind) with his Champion Beast of the Market. He won three challenge cups of £10 10s. each and a tankard value six guineas. The beast sold for £46.
- 3.—Critics examining a beast.
- 4.—Major C. A. Branfill on left.
- 5.—A family come to see the "gentleman who pays the rent" sold. They had a winning pig.
- 6.—Messrs. R. C. Butt, Will Garne, and John Phillips.
- 7.—Capt. C. G. Herbert and Hon. C. Biddulph.
- 8.—Mr. J. N. Kendall with his winning heifer.

DRESSING GOWNS for XMAS.



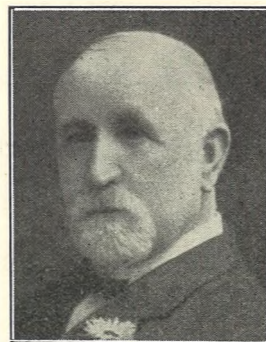
Best heavy all wool. Fancy and self shades. Unapproachable value. All sizes.

21/-

"THE FAMOUS," From A. N. Cole. Tel. 4242.

THE GENT'S OUTFITTERS,

350/4 HIGH STREET, CHELTENHAM.



MR. EDWIN BECKINGSALE, of 3 Berkeley place, Cheltenham, who died on Dec. 17th at an advanced age. He was the seventh son and youngest and last surviving of ten children of a well-known Cheltenham family. He spent all his life in Cheltenham, and was formerly an ironmonger at 149 High-street. He was a director of the Cheltenham Building Society since 1900. He leaves a widow and one son.

H. E. RANDALL, Ltd., 50 PROMENADE, CHELTENHAM, ARE NOW SHOWING a Large Selection of **Slippers, Evening Shoes & Hose,** SUITABLE FOR CHRISTMAS GIFTS. Agents for "CANTILEVER" Shoes.

Printed and Published as a Gratis Supplement by the Cheltenham Newspaper Company, Ltd.

THE CHELTENHAM CHRONICLE AND GLO' SHIRE GRAPHIC

GRATIS SUPPLEMENT.

With Which is Incorporated the "Cheltenham Looker-On." Saturday, December 28th, 1929.

No. 1,513.

CHELTENHAM THEATRE AND OPERA HOUSE.

NEXT WEEK:—Daily at 2.30 and 7.30. THE XMAS PANTOMIME "LITTLE MISS MUFFET"

THE PALACE, HIGH STREET, Cheltenham.

Director: Shakspeare Shenton.

Monday to Wednesday:

CHINATOWN NIGHTS.

Where Stage Romance and Revelry Reign.

Thursday to Saturday: **MARY ASTOR, LLOYD HUGHES,** in

HEART TO HEART.

A Delightful Comedy Romance of an American Princess. Also **DICK TURPIN** and **Bonnie Black Bess,** in

OUTLAWED.

Albert Parker and his Orchestra.

THE DAFFODIL

Cheltenham's Premier Cinema.

Monday Next, December 30th.

FOR SIX DAYS!

This Theatre Presents ITS FIRST GREAT TALKIE on the Famous Western Electric System.

GLORIA SWANSON in

THE TRESPASSER.

Her First Singing and Talking Special.

ALSO SILENT FILMS.

With the Daffodil Orchestra. You will See and Hear It Best at

THE DAFFODIL.

NO INCREASE OF PRICES.

MARTIN & Co., LTD.,

The County Jewellers.

ENGAGEMENT RINGS.

PROMENADE, CHELTENHAM SPA.

Tel. 2821. Established 1806.



CHELTENHAM ART SCHOOL FANCY DRESS BALL.

A group of dancers at the Annual Fancy Dress Ball of the Students of the Cheltenham Art School, at the Town Hall, on Friday, Dec. 20th. It was a greater success than ever. The students decorated the hall with representations of beasts and trees from cannibal islands, and a number of them were dressed as cannibals.

["Cheltenham Chronicle" Photo. Copies 1s. 9d. each.

Winter Garden,

NEW KINEMA, PROMENADE, Cheltenham.

Director: Shakspeare Shenton.

Continuous 2.30 to 10.15.

SEE AND HEAR Sound and Musical Synchronisation.

DOUGLAS FAIRBANKS, in

IRON MASK.

The Further Adventures of the "Three Musketeers."

Screened at 2.45, 4.45, 6.45, 8.45.

MICKEY THE MOUSE, in

"A BARN YARD BATTLE."

Free Car Park.

Popular Prices (including tax):

1/3, 1/- and 9d.

COLISEUM

CHELTENHAM. Tel. 3715.

6.40 p.m. and 8.40 p.m.

Matinees Thursday and Saturday

at 2.30 p.m.

THE ROYAL EMPIRE CIRCUS

First Visit to Cheltenham.

North Street.

PICTURE HOUSE, Cheltenham.

From 2.30 p.m. Continuous.

Monday, Tuesday, Wednesday:—

"WHAT A NIGHT!"

Featuring Bebe Daniels.

Thursday, Friday, Saturday:—

"FLYING ROMEO'S,"

with Charlie Murray and George Sydney;

Also

"THE GLORIOUS TRAIL,"

With Ken Maynard.

MAISON ANNETTE,

Specialists in Exclusive

CORSETS & LINGERIE.

Kensington House,

PROMENADE,

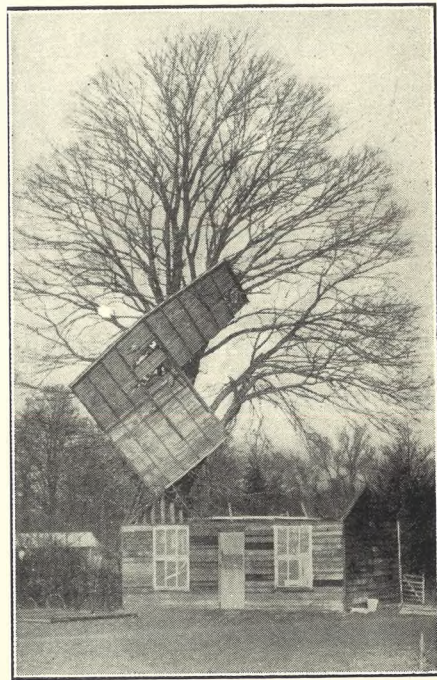
CHELTENHAM.

'Phone 2122.

DALE, FORTY and Co. Ltd. For the Best PIANOS



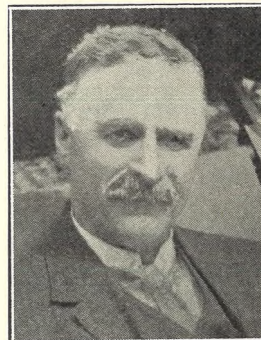
ENGLISH RUGBY TRIAL MATCH AT GLOUCESTER.
 Probables defeated Possibles by 2 goals 2 tries (16 pts.) to 2 goals (1d.) 1 try (12 pts.).
THE TEAMS.
 Probables.—Left to right: Back row.—Referee: T. J. Bradburn (Lancashire), J. McD. Hodgson, F. W. Malir, H. C. S. Jones, G. S. Seward, B. D. Butler, E. C. P. Whiteley, W. H. Sobey, R. S. Spong. Front row.—A. L. Novis, W. E. Tucker, J. S. Tucker, W. W. Wakefield, J. C. Gibbs, H. Rew, B. H. Black.



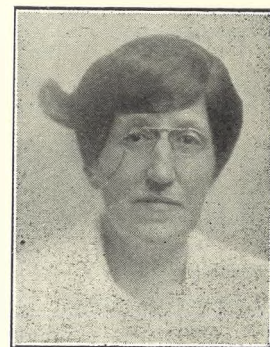
A FREAK OF THE GALE,
 The roof of the Cricket Pavilion in the Corinth House playing field, situate near the well-known Woodlands walk to Shurdington, was caught by the wind on Friday night, Dec. 20th, and hurled into the big tree adjoining, where it remained.—[“Cheltenham Chronicle” Photo. Copies 1s. each.]



Possibles: Left to Right. Back Row.—A. H. Bateson, G. Townsend, P. D. Howard, D. W. Burland, R. G. Turnbull, J. G. Askew. Middle row.—A. W. Lillcrap, N. W. Matthews, R. Jennings, D. Turquand-Young, J. W. Forrest, D. J. Norman, A. G. Cridlan. Sitting on ground: J. R. Cole, A. Key.



MR. WILLIAM H. DAVIS,
 of 7 Priory-terrace, Cheltenham, who died on December 22nd, aged 78 years. He was for 53 years a member of the staff of the Cheltenham County Court, retiring in 1924 as chief clerk. He leaves two sons.



MRS. EDITH A. JACKSON,
 wife of Mr. John T. Jackson, of 61 Tennyson-road, Cheltenham, who died suddenly on Dec. 16th, aged 61 years. Mr. Jackson is the General Manager of the Gloucester Co-operative Society.—[Photo by Debenhams, Gloucester.]

WARM RUGS!! Ideal for Motoring.



Special I.O.M. Manufacture.

12/11, 15/11, 21/-

Grand Variety of Original Patterns.

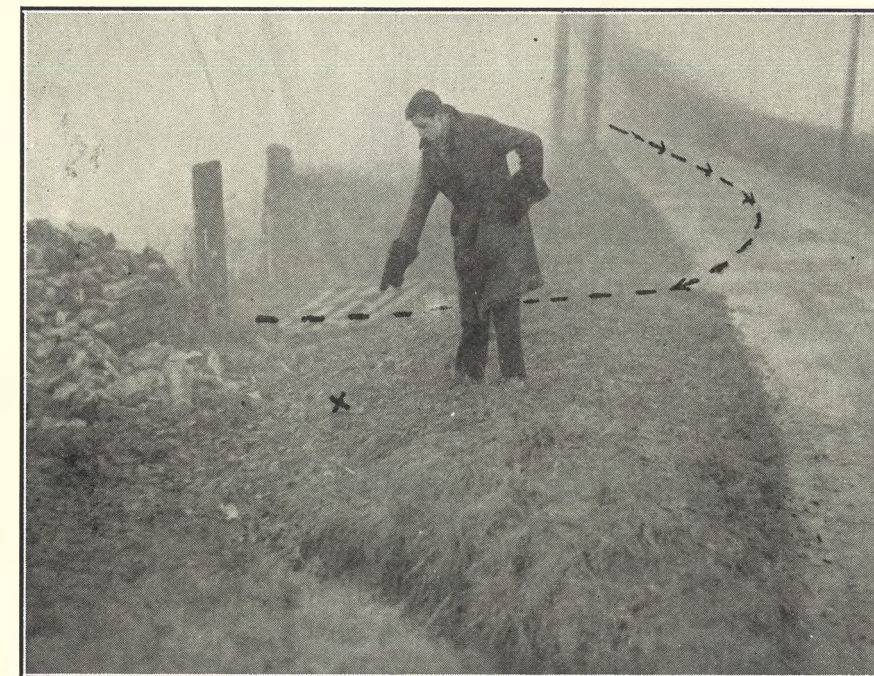
“THE FAMOUS,” Prop. A. N. Cole. Tel. 4242.

350/1 HIGH STREET,

CHELTENHAM.



CHELTENHAM “CANNIBALS” IN CANOES.
 A feature of the Cheltenham Art School Ball was a number of the students dressed as cannibals, who paddled two canoes into the hall and sang and danced, and afterwards acted as a second orchestra for dancing.



SCENE OF FATAL MOTOR ACCIDENT NEAR CHATCOMBE PITCH.

The scene on the Gloucester-Oxford road, between Chatcombe Pitch and Kilkenny, where Police-Sergeant Gasside was killed on Saturday last. The lines show where the car skidded, hit the grass verge, then the gate-post, turning a complete somersault and landed upright with back wheels on the wall. The cross marks where the sergeants' head lay in a pool of blood, with feet towards the wall.

It Pays to Advertise in the “Echo.”

If you desire to purchase the **Highest Class of Meats**

from the specially selected herds and flocks from the **HOME COUNTY,**

then place your orders with **S. ROGERS,** Montpellier Street, 'Phone 2381, 95 Winchcombe St., 'Phone 2590. and 4 Tivoli Place, Cheltenham

BICK BROS.
FANCY LEATHER GOODS

make most acceptable **NEW YEAR GIFTS.**

A large and varied stock worthy of early inspection. **19 MONTPELLIER WALK, CHELTENHAM. : 'Phone 3880.**

H. E. RANDALL, Ltd., 6c PROMENADE, CHELTENHAM, **ANNUAL SALE**

NOW PROCEEDING. Bargains in all Styles of Footwear. Agents for “CANTILEVER” Shoes.

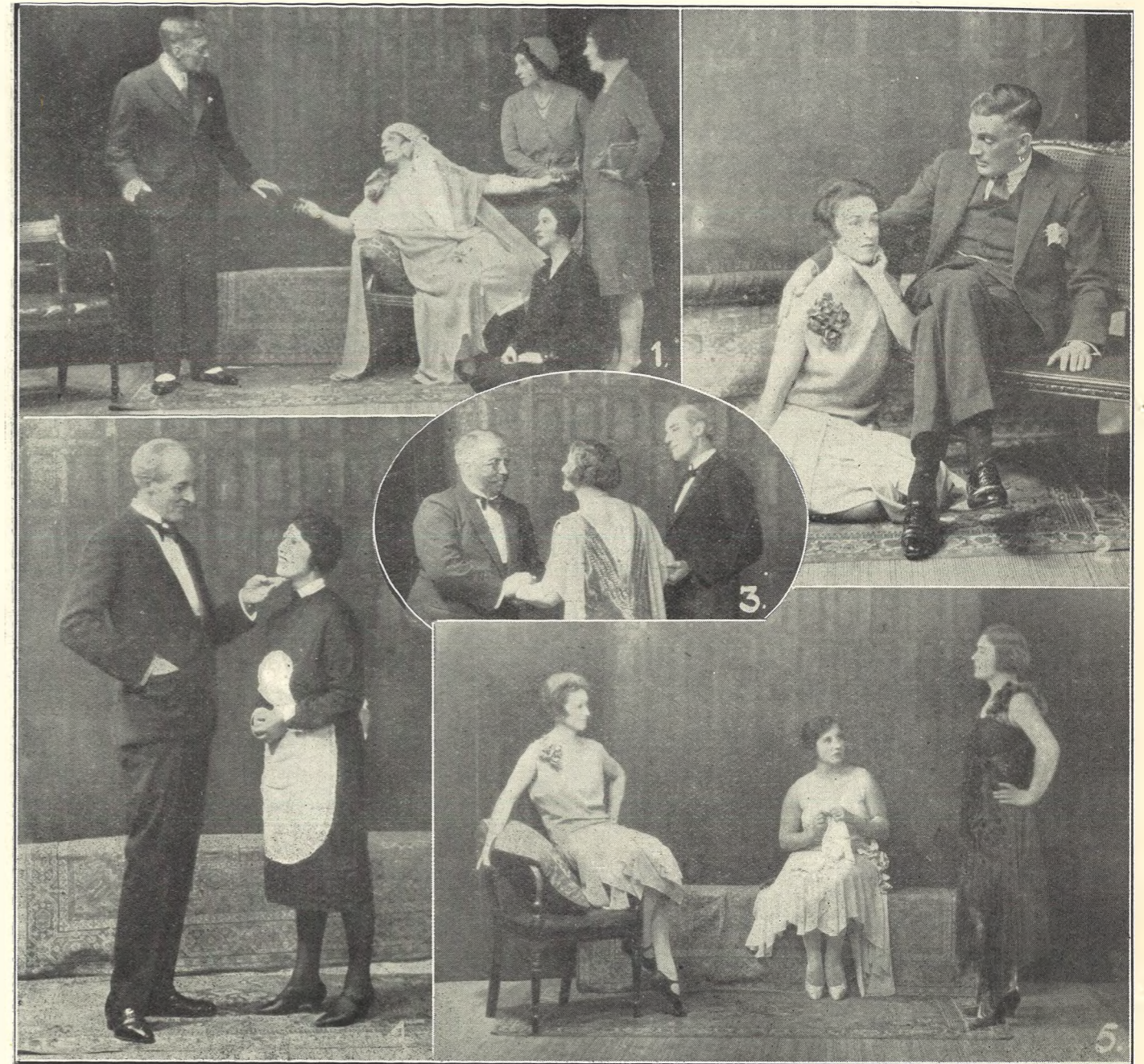


CHELTENHAM ART SCHOOL FANCY DRESS BALL.

The Art School Fancy Dress Ball held on Friday, December 20th, was a greater success than ever. There were over 500 dancers, practically all in fancy dress, and the dresses in beauty and originality were better than ever.

- 1.—The Headmaster (wearing glasses in centre) and students of the Art School.
- 2.—Miss Winterbotham's party.
- 3.—Mr. Varnish's party.
- 4.—Prize winners for costumes. The lady in centre, with fan, took first prize for ladies.
- 5.—Girls in Cabaret Party, two couples won prizes for costumes.
- 6.—Mrs. Hooper's party.

"Cheltenham Chronicle" Photos. Copies 1s and 1s. 9d. each, post 2d.



MRS. SEELEY'S NEW PLAY—"HER HUSBANDS."
 Mrs. Seeley, of Boddington Manor, has recently produced another play, written by herself, entitled "Her Husbands." It has been performed five times within a week by a capable caste of local amateurs in aid of various charities in Stow-on-the-Wold, Tewkesbury, Cheltenham, etc., and will afterwards be produced professionally.

- 1.—Stella calls her daughters and her doctor to her aid. (From left: Sir Richard Dixton (Mr. Guy Pemberton), Stella Davening (Mrs. Seeley), Faith (Miss Weech), Hope (Miss Healing), and Charity (Miss Milford))
- 2.—Mr. Guy Pemberton and Miss Milford.
- 3.—Jaspar (Mr Weech), Stella (Mrs. Seeley), Archie (Mr. C. G. Irving).
- 4.—Mr. C. G. Irving and Miss Diana Buckle ("Jougat.")
- 5.—Stella's daughters—Miss Milford, Miss Weech and Miss Healing.

Photos by Debenhams, Longman, and Co., Promenade, Cheltenham.

Let MOUSELLS move you



Estimates for Removals and Storing Free.
 'PHONE 2112.

Offices:
CHELTENHAM. AMBROSE STREET.

STRATFORD HOUSE HOTEL,
 SUFFOLK SQUARE, CHELTENHAM.

Unlicensed.
FIRST-CLASS RESIDENTIAL.
 Terms on Application. 'Phone 2236

HAND-SEWN MAKING from 30/-
 REPAIRS SAME DAY.
 JOINT AND ARCH SPECIALISTS AND
 BUNION CURERS.
 London City Honours.

PROGRESS BOOT WORKS,
 24 MONTELLIER STREET, CHELTENHAM
 (Opposite P.O.).
 AND AT 10 GROSVENOR STREET.

THE SALE FOR MEN

THURSDAY, JAN. 2nd.,

at
 The Men's Outfitter,
F.H. EDWARDS,
 116a High Street, Cheltenham Spa.
 Clearance of the Season's Oddments.



FUNERAL OF THE LATE MRS. J. T. JACKSON.

The funeral of the late Mrs. Edith Alice Jackson, wife of Mr. John Thomas Jackson, of 61 Tennyson-road, Cheltenham, the general manager of the Gloucester Co-operative Society for many years, took place at Swindon Village Church on Thursday, December 19th. 1 and 4.—Mourners following the procession. 3.—Mourners leaving the Church. 5.—The service at graveside. 2.—Funeral cortege entering churchyard.

"Cheltenham Chronicle" Photos. Copies 1s. and 1s. 9d. each, post 2d.



BABIES IN A CHRISTMAS PLAY.

On Wednesday afternoon, December 18th, the two baby classes at Holy Apostles' Church Day School gave a delightful little show to parents and friends at the Church Room.



ROUND THE CITY IN GLOUCESTER.
Shopping pictures taken in the vicinity of the Cross during Christmastide.

JACOBS & SMITH, The Popular Furriers,
104 HIGH STREET (opposite Lloyds Bank), CHELTENHAM.
SEE WINDOW FOR CLEARANCE BARGAINS IN FURS.

LANCE'S WINTER SALE

BEGINS on Monday Next, Dec. 30.

Now for the big shopping event of the Season.



50 Only: **LADIES' VELVETEEN GOWNS**, Style as Sketch. Shades Blue, Rose, Fawn, Grey, and Biege. Usual Price 42/- Bargain Price **15/-**

100 **LADIES' CLOTH COATS**, Styles similar to Sketch. Usual Prices 4 Gns. to 8 Gns. Sale Price **30/- to 3 1/2 GNS.** All trimmed good quality Fur.

A **HUGE STOCK OF FUR COATS**, in Mole, Seal Coney, Nutria, Lamb, Musquash, etc., will be Cleared at **3 1/2 GNS. to 20 GNS.**

Coat Bargains.

70 Ladies' **WOOL SHOWER-PROOF TWEED COATS**, Brown Shades. Usual Price 39/6. Sale Price **21/-**

Skirt Bargains.

300 **TWEED SKIRTS**, Wonderful Value **5/-** Usual Price 10/6.

Fur Bargains.

30 Only, **REAL MINK MARMOT FUR TIES**, Two Skins' Head and Tails. Usual Price 69/6. Bargain Price **39/6**

Evening Gowns.

MODEL GOWNS in Black, Pink, Blue, Ivy. To be Cleared at **30/-** Usual Prices 6 1/2 Gns. to 8 1/2 Gns.

JOHN LANCE & Co., Ltd.,

CHEL TENHAM'S SHOPPING CENTRE.



ENGLISH RUGBY FOOTBALL TRIAL AT GLOUCESTER.

On Saturday last the Gloucester Club and ground were honoured by the English Rugby Union in staging the second trial game of the season. The result was most satisfactory, as between £700 and £800 was taken at all the gates, and the R.U. officials were highly pleased with the enclosure, accommodation, and arrangements made. Above all, it was a delightful football afternoon.

- 1.—W. H. Sobey (No. 9) throwing out a perfect pass to R. S. Apong from a loose rush. These two enhanced their reputation, and are now picked for England v. The Rest.
- 2.—Lillierap (5) tackles E. C. P. Whiteley (full-back).
- 3.—A line-out. Probables are in white.
- 4.—West Country players—N. W. Matthews (Bridgwater), A. W. Lillierap, and D. W. Burland (Bristol).
- 5.—Sobey falling on half in a rush.
- 6.—Sobey again in evidence with a kick.
- 7.—D. Burland smothered in a fine tackle.
- 8.—Burland (on ground) passes to Jennings (left).
- 9.—Matthews and Turquand-Young on right.
- 10.—"Sam" Tucker (captain of Probables) with Mr. Walter Pearce, President of Rugby Union.

CAVENDISH HOUSE

CHELTENHAM

WINTER SALE

Begins Monday, Dec. 30th.

TOWELS

At HALF PRICE.

Very strong Irish Hemstitched Linen Huckaback TOWELS; size lins. x 32ins. Usually 2s. 6d. each. **SALE PRICE 1/3**

Ladies' HANDBAGS.

GREATLY REDUCED.



A collection of leather and silk Handbags at a considerable discount, thus affording the opportunity of securing a high class bag at a moderate cost. Examples of the saving.

Usually 10/6, 15/9, 24/6. **Sale Price 6/11, 10/6, 16/9**

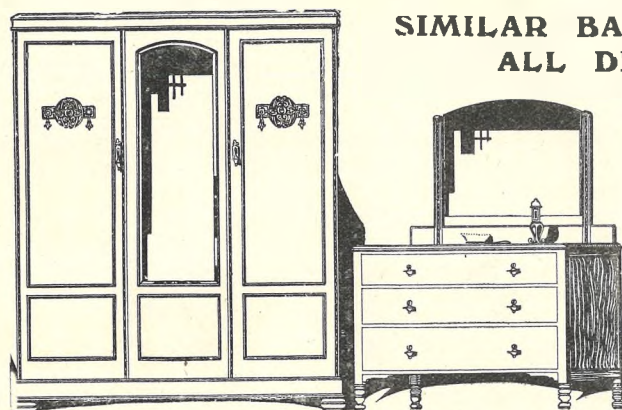
All-Wool KNICKERS

Winter weight, warm and reliable quality; elastic tops and knees. In various colours. Reduced from 9/11 to **5/11**

Lighter weight reduced to **3/11**

MEN'S HALF-HOSE

40 dozen "Viyella" Cashmere Half-hose in a large assortment of colours in the latest designs. Sizes 10, 10½, 11 and 11½. Reduced from 3/6 and 2/11 to **2/-**



SIMILAR BARGAIN VALUES IN ALL DEPARTMENTS

OAK BEDROOM SUITE.

5ft. Wardrobe, 1-3 fitted with sliding trays and shelves, 2-3 as hanging space with shelf above for hats. 3ft. 6ins. Dressing Chest, with three long drawers and large landscape mirror. 2ft. 9ins. Low Chest, fitted with three long drawers.

The Suite **SALE PRICE £23-18-6**

CARPET BARGAINS

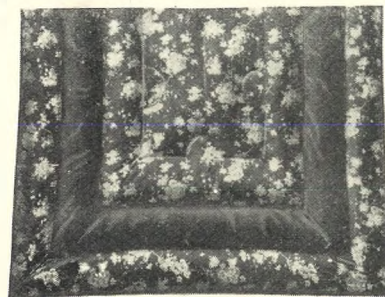
— 4/- in the £ —

Hand Woven Indian Carpets at a saving of at least 4/- in the £. Designs on cream, rose, blue, or red grounds. **£8-5-0**

DOWN QUILT

VALUE!

Down Quilts covered in handsome Printed Cambric, with panel of plain Sateen; double bed size. Usually 38/6 **SALE PRICE 23/6**



SPECIAL CLEARANCE.

MEN'S DRESSING GOWNS

In a warm wool-fleece in self shades with coloured collar and cuffs to tone. In fawn/dark brown, grey/blue, or blue/grey. Usually 25/6. **18/9**

Also in Youths' sizes. 36ins. to 42ins. long. **14/9**
44 ins. to 52 ins. long **16/9**

GREAT SAVING ON SHOES



Smart Dress Shoes in black, brown, or red morocain in court or one-bar style, Louis heel. All sizes and half-sizes. 3's to 8's. Reduced from 18/8 to ... **12/6**

SABLE FOX STOLE

Rich Sable Colour and well-mounted head and brush. These foxes were originally 4 gns. **42/6**

BLANKETS

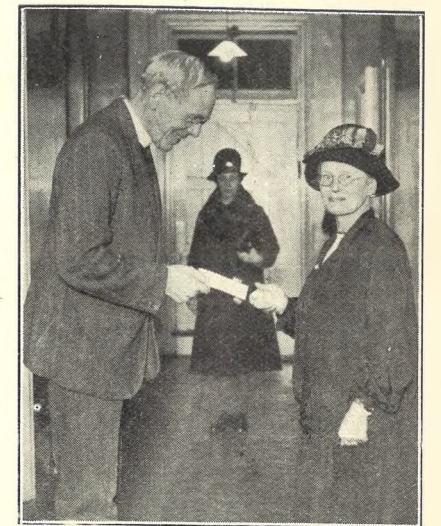
AT 6/8 IN THE £ OFF.

Best quality all-wool Witney Blankets, very slightly imperfect or soiled. Full single bed size. Usually 45/6 per Pair. **SALE PRICE ... 29/6**

AN EARLY VISIT IS ADVISED TO MAKE SURE OF SECURING THESE BARGAINS.



A MODERN HOLD-UP IN ANCIENT GUISE. A young lady dressed as Dick Turpin, riding a pony, and holding a pistol, has been holding up Black and White Coaches at Piesdown and giving Christmas Cards to the passengers.



SISTER WHITING, of Cheltenham Children's Hospital, who was presented with a cheque for £91 as an appreciative gift, by Rev. A. H. Rhodes (Rural Dean) on behalf of supporters of the Hospital, on Dec. 19th. She has retired after 40 years service at the Hospital.

It Pays to Advertise In the "Echo."

SPECIAL ATTRACTION

COLISEUM THEATRE

(Phone 3715.) CHELTENHAM (Phone 3715.)
ALL NEXT WEEK.
6.40 p.m. TWICE NIGHTLY 8.40 p.m.
MATINEES:—
THURSDAY and SATURDAY 2.30 p.m.

THE ROYAL EMPIRE CIRCUS

FIRST VISIT TO CHELTENHAM.
A REAL CIRCUS ON THE STAGE, WITH BAREBACK RIDERS, BEAUTIFUL HORSES, ACROBATS, GYMNASTS, CLOWNS, ETC.

A CLEAN, CLEVER, WHOLESOME AMUSEMENT, SUITABLE FOR ALL AGES.
PRICES (including tax):

Orch. Stalls	Dress Circle	Pitt Staff	Pit	Boxes (for 4)
1/9	1/3	9d.	6d.	10/6

There is no extra charge for Booking.

THE PLOUGH, Cheltenham Spa's Leading Hotel.

GRAND NEW NEW YEAR'S EVE DANCE AND CABARET.

Special Cabaret Engagement of Mrs. Ray Clifton and Party.
Dinner Dance, 8 p.m. till 1 a.m. 9/6. Supper Dance 5/-. Dance only 2/6.
MAX SELTZER'S DANCE ORCHESTRA.

NORLING'S Winter Sale

Commences on **Monday Next,** December 30th.
Norling's are noted for Value at all times.

Norling's Winter Sale means exceptional value, and really genuine reductions in Gowns, Coats, Overblouses, Jumper Suits & Outer Knitwear

Wedgwood House (opposite Queen's Hotel), Cheltenham. Phone 3947.

VANDERPLANK

(FROM HARRODS)

WINTER SALE

COMMENCES

THURSDAY NEXT, JAN. 2nd, at 9 a.m.

AND CONTINUES THROUGHOUT JANUARY.

THE necessity of clearing our Stocks brings offerings that will be long remembered for value. Everything in our January Sale is our regular stock and represents the very best merchandise — only the prices are reduced. There is no sacrifice of quality whatever.

Every Suit, Coat, Dress, Hat, Fur or Fur Coat is reduced in price, in some cases to less than half original price.

TYPICAL EXAMPLES.

TAILORED SUITS (as sketch)

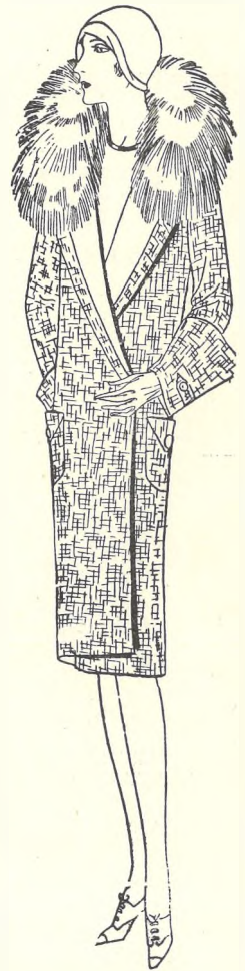
that are perfect fitting, cut on the newest lines that will be the Vogue for the Spring, 1930. Suits for which this House is far famed. Navy Suitings, Grey and Brown Suitings, Tweeds, etc. A number Reduced to **3** GNS.

Many Half-Price.

COATS.

The remaining Collection of Coats, both Fur-trimmed and Plain, in Velour, Face Cloth, and Tweeds. This season's Coats in this season's Colours. All sizes, and many Half-price or less.

SALE PRICE **1** to **10** GNS.



PAY AN EARLY VISIT TO

381 HIGH STREET, CHELTENHAM SPA.