

# THE CHELTENHAM CHRONICLE AND GLO' SHIRE GRAPHIC

GRATIS SUPPLEMENT.

With which is incorporated the "Cheltenham Looker-On."

Saturday, December 1, 1928.

No. 1,457.

## CHELTENHAM THEATRE AND OPERA HOUSE.

This Afternoon (2.30) and Evening (7.45): "THE MAN WHO CHANGED HIS NAME."

NEXT WEEK: The Cheltenham Operatic Society presents:  
"Miss Hook of Holland."

### THE PALACE, HIGH STREET, CHELTENHAM

Director: Shakspeare Shenton.

FOR SIX DAYS!

3 Hours' Entertainment de Luxe.  
From The Plaza, London.

#### JAMESON THOMAS in POPIES OF FLANDERS.

By "Sapper."

Not a War Story, a Gripping  
Drama of a man who found  
himself. "A Great British  
Film, Brilliant Acting." ("Daily  
Mail"). Also

Charlie Murray, George Sidney,  
and Natalie Kingston in  
**LOST AT THE FRONT.**

Field Marshals of Fur, Bombard  
the Blues with Bombshells of  
Laughter.

Stanley Frankel's Orchestra.

### THE DAFFODIL

Cheltenham's Only Real Cinema.

Continuons Daily, 2.30 to 10.15.  
Monday, Tuesday, Wednesday:—  
Programmes Extraordinary!

**NORMAN KERRY** in

#### BODY AND SOUL.

A Story with a twist you'll  
never imagine. And

**MARY BROUGH** in

#### A SISTER TO ASSIST

HER.

Thursday, Friday, and Saturday:

#### THE ARCADIAN.

The Famous Musical Comedy.

With **REN BLUE**

Also **TOM MIX** and **TONY** in

#### THE ARIZONA WILD CAT

Christmas, 1928.

### MARTIN & CO., LTD.

DIAMOND WRIST WATCHES

from £10 10s.

GOLD WRIST WATCHES

from £3 10s.

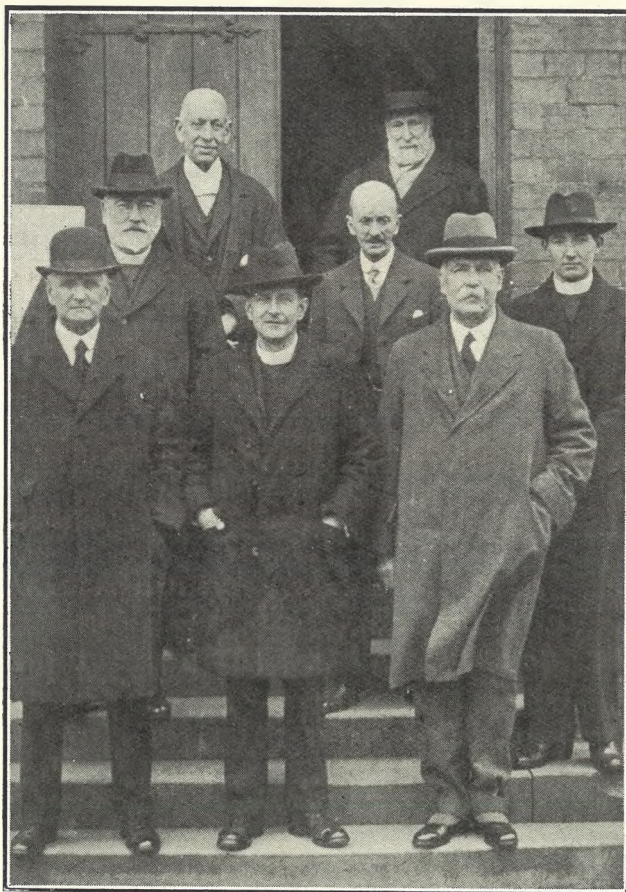
SILVER WRIST WATCHES

from £1 5s.

PROMENADE,

Cheltenham.

'Phone 2821. Established 1806.



#### ST. PAUL'S CHURCH SALE OF WORK.

The Annual Two-days' Sale of Work in connection with St. Paul's Church, Cheltenham, was held on Tuesday and Wednesday, Nov. 27th and 28th. The opening ceremony was performed on Tuesday by Major T. E. Rickerby, T.D., and on Wednesday by Lady Preston

Group at Tuesday's ceremony..

At Back: Rev. Madan Pratt, Rev. Grillitz.  
Second Row: Rev. Geo. F. Irwin (Vicar), Mr. Bowd (Churchwarden), Rev. Wyre (Training College).

In Front: Mr. W. Vale, The Rector (Canon H. A. Wilson), and Major T. E. Rickerby.

["Cheltenham Chronicle" Photo. Copies 1s. and 1s. 9d. each.

### Winter Garden

NEW KINEMA,  
PROMENADE, CHELTENHAM  
Director: Shakspeare Shenton.

FOR SIX DAYS!

As Presented at New Gallery,  
London.

**BUSTER KEATON**

and  
**ERNEST TORRENCE** in  
**STEAMBOAT BILL, JUN.**

Hold On, Everybody!  
It's a Hurricane of Laughs!

Screened at 2.45, 4.45, 6.45, 8.45.  
Maurice Malvern and Orchestra.  
**FREE CAR PARK.**

### COLISEUM

CHELTENHAM. 'Phone 3715.

6.40 p.m. and 8.40 p.m.

Children's Matinee Saturday,

Dec. 8th, 2.30 p.m.

#### THE ROAD SHOW.

A Combination of  
**VARIETY CIRCUS REVUE.**  
Book Your Seats. No Booking  
Fees.

### North Street

PICTURE HOUSE, Cheltenham.

From 2.30 p.m. Continuous.

Monday, Tuesday, Wednesday:—

**MONTY BANKS**, the Great

Screen Comedian, in

**A PERFECT GENTLEMAN.**

Thursday, Friday, and Saturday:

**ZANE GREY'S**

**OPEN RANGE.**

Starring **BETTY BRONSON**

and **LANE CHANDLER**

MAISON

### ANNETTE,

Specialists in Exclusive

### CORSETS &

### LINGERIE.

Kensington House,

PROMENADE,

CHELTENHAM.

'Phone 2122.

# DALE, FORTY and Co., Ltd For The Best PIANOS





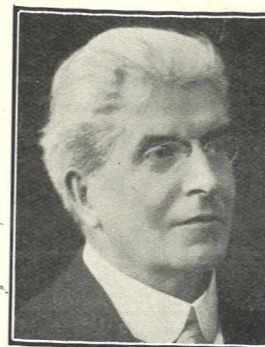
**"RAINBOW FAIR" AT TOWN HALL.**

The attractive two-days' "Rainbow Fair" in aid of the Waifs and Strays' Society was held in the Cheltenham Town Hall on Wednesday and Thursday, Nov. 28th and 29th. The opening ceremony was performed on Wednesday by the Rector (Canon Wilson). Group at opening. Standing: Mr. How, Mr. Louis Sharpe, Col. R. F. Pearson, Rev. C. Hereford-Simmons, Mr. L. W. Barnard. Seated: Ven. Archdeacon Cornwall (Archdeacon of Cheltenham), Mrs. Blathwayt, Rev. Canon H. A. Wilson (Rector of Cheltenham), Mrs. A. Drake, Alderman G. H. Margrett (Mayor of Cheltenham), Mrs. L. Wood, Col. A. M. Addison. ["Cheltenham Chronicle" Photo. Copies may be obtained on application.

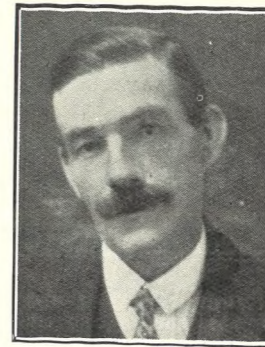


**DO YOU REMEMBER ?**

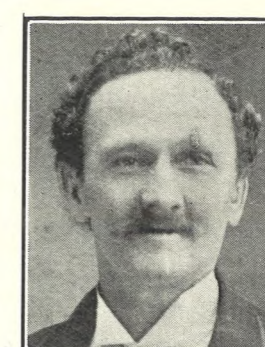
Opening of the Victoria Cricket Ground, Cheltenham, June 21st, 1897 (the Diamond Jubilee Year of Queen Victoria). Standing: Arthur Workman, H. W. Bennett, M. Thornton, E. Gridley, W. Bailey, Arthur Whitcombe, S. B. Varder, E. S. Hall, W. A. Woolf (Umpire), F. S. Gale, Bertie Manners, T. E. Whitaker, Major Abbott, Colonel Rd. Rogers, O. Jessop, H. Jessop, F. H. Harris, G. Kettle, W. Stephens, C. J. Tailyour, W. Boroughs, A. H. Grace, A. F. Halling, F. Wilks, Fred Wright, —, Dawes, H. Wrathall (Umpire), F. C. Randall, W. G. Eaton, and P. B. Loveridge. Sitting.—Top row: Dr. E. M. Grace, Captain A. Roberts, C. L. Townsend, H. L. Hardwick. Bottom row: Dr. R. Davies, A. J. Dearlove, Dr. A. A. Dighton, Dr. W. G. Grace, N. B. Foster, Captain W. P. Bannerman.



**SIR DANIEL THOMAS TUDOR, K.C.**, of Rose View, Queen's-road, Cheltenham, who died suddenly on Nov. 23rd, aged 62 years. He was formerly Chief Justice of Gibraltar, from which he retired in 1926. He was a brother of Mr. Jeremy Thomas, of Cheltenham.



**MR. F. B. LANSDOWN**, who died at Sherwood, St. Stephen's-road, Cheltenham, on Nov. 13th, aged 46 years. He was a decorator by trade, and served in the 3rd Worcester Regiment during the War, being gassed and taken prisoner. He leaves a widow.



**EX-SERGEANT JOHN ARNOLD**, of Short-street, Lockhampton, who died on Nov. 25th, aged 77 years, after a long illness. Formerly in the 70th Foot, he served in the Afghanistan War, and was for 10 years Swimming Instructor at Cheltenham College.

FROM HER TO HIM. A TRIBUTE TO HER GOOD TASTE. A STROKE OF FORTUNE FOR HIM.

**THE VERY IDEA! I'LL GIVE HIM A NICE WARM DRESSING GOWN.**

NOW WHERE SHALL I BE SURE OF SEEING A GOOD SELECTION ?

I KNOW! I'LL TRY

**F. H. EDWARDS,**

116a HIGH STREET (opposite Regent Street), CHELTENHAM SPA.

RIGHT FIRST TIME! We also have a LARGE SELECTION OF OTHER

**"GIFTS MEN LIKE."**

PAY US A VISIT. YOU WILL BE UNDER NO OBLIGATION TO PURCHASE.

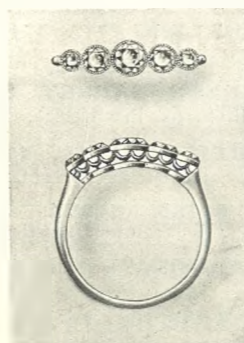
**"Safety First"**

is the chief consideration when buying a ring set with stones. A close examination of the settings of our Diamond Rings reveals a picture of beauty combined with durability.

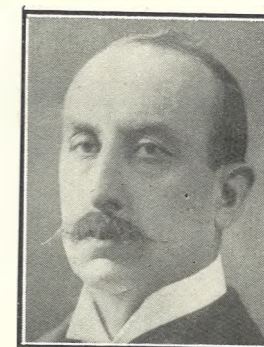
We offer you a selection of Rings suited for the Engagement token which it will well repay you to see.

Ask for our new free Booklet, "Rings of Refinement." R

**Waite & Son, Jewellers,**  
349 High St., Cheltenham.



**THE NEW SAFE SETTING.**



**MR. W. F. W. WELLS, I.C.S.**, of Denham Lodge, Lansdown-road, Cheltenham, who died on Nov. 24th, aged 74 years. He was one of the last survivors of the Siege of Lucknow, he being then a little boy of three.

**Let MOUSSELLS Move You**



Estimates for Removals and Storing Free. 'PHONE 2112.

**CHELTENHAM.** Offices: AMBROSE STREET.

**LANCE'S**

ARE

**Offering Beautiful**



AT

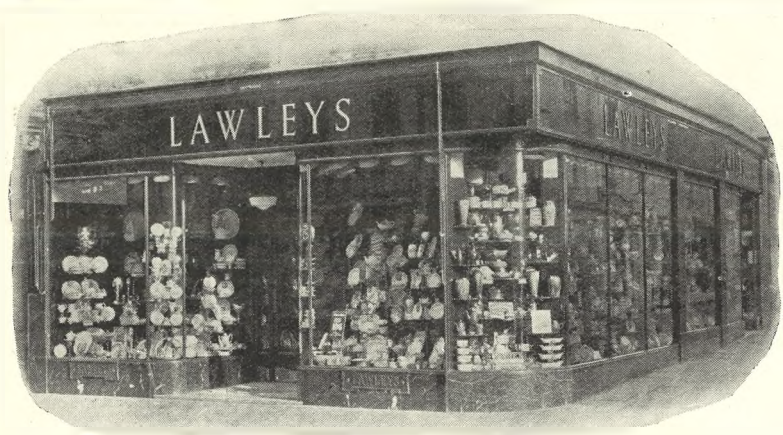
**Special Prices.**

**See Windows and Visit Showrooms.**

**JOHN LANCE & Co., LTD.**

**CHELTENHAM SHOPPING CENTRE.**





# Lawleys' China and Glass.

## Artistic and Useful Christmas Gifts

Will be found in abundance at Lawleys at prices suitable to any expenditure. No Presents will give more pleasure—to the proud recipients or to you who choose them from our comprehensive stock. Your visit of inspection is invited.

**LAWLEYS (1921) Ltd.,** Specialists in Glass & China, **109 High St., Cheltenham.**  
*(Removed from the Promenade).*



ST. PAUL'S CHURCH SALE OF WORK.—The Vicar (Rev. G. F. Irwin) (second from left) with Stallholders and Helpers at Tuesday's opening ceremony of the Sale at St. Paul's Parish Hall. ["Cheltenham Chronicle" Photo. Copies 1s. and 1s. 9d. each, post extra.]

**Mr. Alfred J. Ventris-Field**  
Surgeon-Chiropodist,  
Orthopædist and  
Electro-Therapist

Hospital Trained (London). Highest Qualifications, 30 Years' Practical Experience; Author "The Treatment of Talipes Valgus," "Pedic Surgery," "Poisonous Animals and Vegetables of the Countryside," "Orthopædic Principles of Foot Manipulation," etc. Consultant H.M. Forces.

Surgery: **6 RODNEY PLACE, CHELTENHAM.**

**PROGRESS BOOT WORKS,**  
REPAIRS SAME DAY.  
JOINT AND ARCH SPECIALISTS AND  
BUNION CURERS.  
London City Honours.  
**HAND-SEWN MAKING from 30/-**  
21 MONTPELLIER STREET, CHELTENHAM  
(Opposite P.O.)

**FOR PRESENTS GIVE PICTURES.**  
**WALLACE RODWAY,**  
Picture Framer and Gilder,  
13 PORTLAND STREET, CHELTENHAM  
Has an Up-to-date Selection of  
Framed and Unframed Pictures  
Suitable for Christmas Gifts.

### EVENING WEAR.

**DINNER JACKET SUITS**  
(All Sizes in Stock), £5 5s.

**DRESS SHIRTS, 10s. 6d.**  
Soft or Stiff Fronts.

**TIES, SOCKS, GLOVES, SCARVES,**  
In Various Qualities.

**WAISTCOATS from 10s. 6d.**

**RAYMOND JAMES,**  
78 WINCHCOMBE ST., Cheltenham.  
Phone 2648.



### CHELTENHAM OPERATIC SOCIETY IN "MISS HOOK OF HOLLAND,"

which is being produced at the Cheltenham Opera House each night of next week and a matinee on Saturday. The production is now going with a capital swing, the principals are exceedingly good, the chorus is large and well trained, and the show should be quite up to professional standard. The producer is Mr. Quinton Goulder, and Mr. Arthur D. Cole is the Musical Director.

1.—Fred Gabriel ("Simon Slinks," a loafer at Arndyk), and Walter Johnstone (An ordinary Dutchman). 2.—Rex Watson ("Bandmaster Van Vuyt") and Violet Leach ("Sally,"—"Miss Hook of Holland"). 3.—Mildred Morgan and Ena Fry (Orphans), with E. Rowley Lewis ("Captain Paap"). 4.—Paul R. Clauss ("Mr. Hook"), and Nigel S. Arnold ("Ludwig Schnapps"). 5.—Nigel S. Arnold ("Ludwig Schnapps"), and Lyn Rainger ("Policeman"). 6.—Violet Leach ("Sally"). 7.—Paul R. Clauss ("Mr. Hook") and Doris Retnap ("Market Woman"). 8.—Violet Leach ("Sally"), E. Rowley Lewis ("Capt. Paap"), John D. Lane ("Lieut. de Goop"), and Rex Watson ("Bandmaster Van Vuyt"). 9.—Doris Panter ("Gretchen") and Fred Gabriel ("Simon Slinks"). 10.—Doris Panter ("Gretchen"), Nigel S. Arnold ("Ludwig Schnapps"), and Doris Brooke ("Mina"). 11.—Doris Brooke ("Mina"). 12.—Violet Leach ("Sally") and Paul R. Clauss ("Mr. Hook").





**ROUND THE TOWN IN CHELTENHAM.**

Snaps in the Promenade on Saturday morning last. It was fine, and there were the usual fashionable crowds in the streets.

- 1.—Messrs. W. Barker (Headmaster of Christ Church Boys' School) and P. Hawker (Headmaster of Holy Trinity School).
- 2.—Miss Powell (centre), with Mrs. W. Hemmings and her children.
- 3.—Rev. Herbert Wylie and friend.
- 4.—Talking to the postman.
- 5.—Mrs. and Mr. Hubert Lane (on right).

**JACOBS & SMITH,**  
The Popular FURRIERS.

**CHOICE FURS**  
In Fox, Skunk, Marten, &c.  
Every Skin Truly Described.  
BETTER VALUE IMPOSSIBLE.

**104 High Street,**  
**:: CHELTENHAM ::**  
(FACING LLOYDS BANK).



**ROUND THE CITY IN GLOUCESTER.**

Snaps around the Cross on Monday morning last.

- 1.—Mr. J. R. Pope, J.P., with a friend.
- 2.—Mrs. Bland.
- 3.—Dr. H. E. Waddy.
- 4.—Mr. H. E. Dewhurst, manager of Messrs. Boots, Ltd.
- 5.—Messrs. F. B. de Sausmarez (Cheltenham) and J. S. Sargeant, J.P. (of Tewkesbury Park).
- 6.—Mr. Francis Hole.

**R. G. STEPHENS & SON,**  
THE SADDLERS.

FOR SOLID & FANCY LEATHER GOODS, Etc., of All Descriptions.  
Highest Quality. Lowest Prices.

**CORNER HOUSE,**  
WINCHCOMB STREET,  
AND ALBION STREET,  
**CHELTENHAM.**





**WESTERN DIVISIONAL UNION OF Y.M.C.A.'s COUNCIL & MEMBERSHIP CONVENTION IN CHELTENHAM.**  
The 49th Annual Meeting and Conference of above took place in Cheltenham on Saturday last, Nov. 24th, and were continued on Sunday, The President, Secretary, Chairman, and Delegates.

## Here is a Xmas Box for You!

From Dec. 3rd to 24th we shall present to All Our Customers **ONE PENNY** in the **SHILLING DISCOUNT** OF ALL CASH PURCHASES, making a **GIFT** to appreciate, as Our Value is admittedly the **BEST** and Our Prices Speak for Themselves.

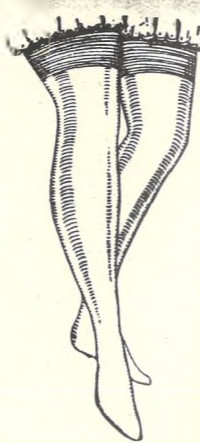
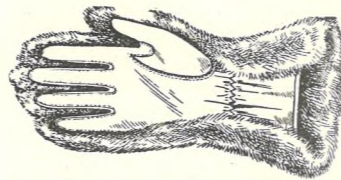
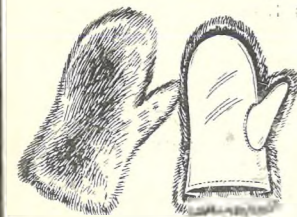


**PURE SILK HOSE**, 3/11½, 4/11½, 5/11½, 7/6, 10/6.  
**ART. SILK and Wool Lined**, 1/6½, 1/11½, 2/11½, 3/11½, 5/11½.  
**Ladies' and Girls' CARDIGANS and JUMPERS**, 2/11½ to 25/11.  
**FUR-BACKED GLOVES**, 3/11½ to 25/11.  
**CHILDREN'S MITTS** from 1/9½ (as sketch).  
**FUR TIES** from 10/11 to 7½ Guineas.  
**FUR COATS**, Wear Guaranteed, £5/19/6 to 35 Gns.  
**EVENING FROCKS and DRESSES** from 12/11 to 5 Gns.  
**Ladies' and Girls' COATS**, 29/6 to 6½ Gns.  
**OUT SIZES**:—Coats, Dresses, Underwear, Etc.  
**DOWN QUILTS & BLANKETS** from 18/11 to 63/-

All the above are subject to the Xmas Discount.

**R. T. ADAMS**, "Out-Size Specialist,"

75, 76 The Strand, CHELTENHAM  
(OPPOSITE BATH ROAD).



### MEET OF THE COTSWOLD HOUNDS AT BISHOP'S CLEEVE.

- The Hounds met outside The Royal Oak, Bishop's Cleeve, on Tuesday morning last. There was quite a good field out.
- 1.—The Pack, with the Master (Rear-Admiral F. A. Marten (in centre), outside the old-fashioned inn.
  - 2.—Mrs. Leschellas, with the Misses Diana and Margaret Steel (Bishop's Cleeve).
  - 3.—Admiring the hounds.
  - 4.—Three lady followers.
  - 5.—Sturmev, the huntsman, with a sub scribe.
  - 6.—Some of the footfolk present.

["Cheltenham Chronicle" Photos. Copies 1s., 1s. 9d., and 2s. each.

**Wool** JACKETS, WAISTCOATS, PULLOVERS

IN GREAT VARIETY.

JACKETS IN STOCK UP TO 48in. CHEST.

**A. BECKINGSALE,**  
111 High Street, CHELTENHAM.

### A Beautiful Christmas Gift.

How often one is in doubt as to what to give to one's friend when Christmas comes round. The difficulty can this year be easily overcome—send him (or her) a Copy of

"Picturesque Gloucestershire."

It is a lovely Volume of Views of Gloucestershire Towns, Villages, Churches, Old-world Country Houses, etc., etc., is beautifully bound, and is priced at One Guinea. Place your order at once at the "Echo" and "Chronicle" Offices. For friends abroad, the book should be posted early in order to reach them for Christmas and the New Year. We will see to that for you if you will call at our offices.



# WARD'S GRAND XMAS BAZAAR

and

## ALADDIN'S CAVE

OPENS Saturday, December 1st.



From the above date until Christmas Eve, Ward's will be the Centre of Interest for All, particularly for the Kiddies. OUR SCENIC BAZAAR, in which we have reproduced "ALADDIN'S CAVE," is the first taste of Christmas Joys, something that Cannot be Seen Anywhere Else. ADMISSION TO "ALADDIN'S CAVE" 6d. EACH. PRESENTS FOR ALL, ADULTS AS WELL AS CHILDREN, with AN EXTRA PRESENT in EVERY 25th PARCEL Issued to Adults by "Aladdin," entitling the Holder to an ADDITIONAL GIFT VALUE 5s.

### E. L. WARD

LIMITED. Phone 3781.

134, 135, 136, 137, 138 HIGH STREET

AND 1 & 2 NORTH STREET,

CHELTENHAM,

### SHOP EARLY

The early shopper has a wider selection and avoids disappointment

### Some Gift Suggestions for Grown-ups

- Gloves,
- Hosiery,
- Handkerchiefs,
- Jumpers,
- Scarves,
- Cushions,
- Tea Cosies,
- Down Quilts,
- Handbags,
- Umbrellas,
- Cardigans,
- Pullovers,
- Pouffes,
- Pouchettes,
- Manicure Sets,
- etc., etc.



### THE CHURCHDOWN UNITED SERVICES DRAMATIC SOCIETY IN "THE CASSILIS ENGAGEMENT," BY ST. JOHN HANKIN.

The Play was successfully produced by Harold Sydney at Churchdown, Charlton Kings, and Prestbury recently.

Back Row (left to right): Miss Violet Peach, Mr. A. H. French, Miss Winifred Downes, Mr. Stanley Taylor, Miss Madeline Ballinger, Mr. Harold Sydney.

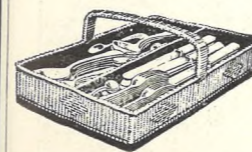
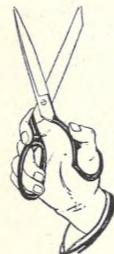
Front Row (left to right): Mrs. Cecilia Baker, Mrs. Anita Watkins, Mrs. Dorothy Cooper, Mr. Frank Merrett, Miss Enid McElligott, Mrs. Alys Bingham.

### "VALET" Auto Strip Safety Razor



We invite your inspection of our large assorted stock of Useful Gifts.

**WILLIAMS**  
THE CUTLERS,  
19 WINCHCOMB ST.,  
CHELTENHAM.



Don't Take Risks!

BUY EARLY.

### STORMGARD COATS.

Leather Coats for Ladies or Gents.

OVERALLS.  
HELMETS.  
GLOVES.

ASK FOR

HORNS.  
LAMPS.  
GOGGLES.  
SILENCERS.  
LEG SHIELDS.  
PILLION SEATS.  
SPEEDOMETERS.

*Leslie Paynter*

FOR Best selection of useful presents for Motorists.

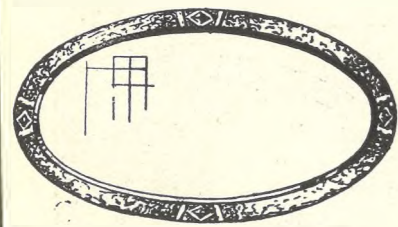
BATH STREET,  
CHELTENHAM.

PHONE 2587.



Try Dicks first

# GET YOUR GIFTS EARLY!



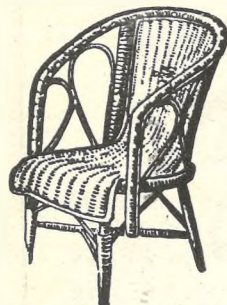
Bevelled Plate-Glass MIRROR, in Oxidised Copper Frame, 27/6



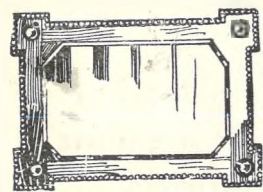
Service TEA WAGON, in Solid Oak, on small rubber wheels. 27/6



Pouffe HASSOCKS, covered Cretonne, in attractive colourings. 10/11



Split Cane Tub EASY CHAIR, in White with Coloured Trimmings. 12/9



Bevelled Heavy Plate-Glass MIRROR, in Solid Oak Frame, finished in Jacobean Colour. 23/6

The useful Gift will be more acceptable than ever this Xmas.

Here are a few examples of the many thousands of gifts to be found in our

20 DEPTS. BRIMFULL of

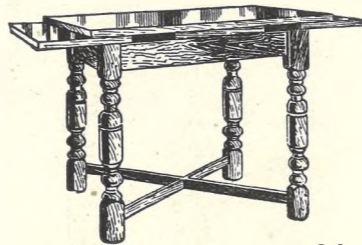
Suitable Articles selected with Taste and Discrimination as

## GIFTS for XMAS.

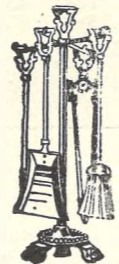
### TOY BAZAAR

NOW OPEN.

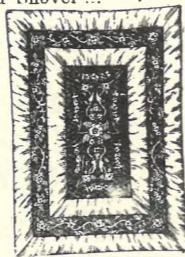
Here you will find a wonderful collection of Toys, Dolls, Motors, etc., to charm the Kiddies, and the Prices are remarkably low.



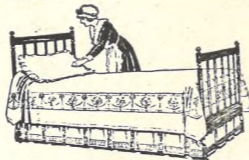
PULL-OUT TABLE in Solid Oak, Highly Polished in Rich Antique Colour. Size: 5ft. x 3ft. £4/19/6



Companion HEARTH SETS, in Oxidised Copper Colour, comprising Brush, Tongs, Poker, 3/11 1/2 and Shovel



DOWN QUILTS, with wide French panels in Plain Coloured Satin, with centre of fine quality Down-proof Gambia, in handsome designs, and Full Double-Bed 29/6 Size. Single Bed Size, 21s. Cd.



BEDSPREADS, Coloured Art. Silk Fabric, trimmed Applique Embroidery, a very attractive Spread, in delightful Colourings. 18/11



Early Morning TEA SET, decorated with an attractive Floral Design, complete with Polished Oak Tray. 8/11

Handsome Three-Piece CHESTERFIELD SUITE, of Luxurious Size, well Upholstered and Fully Sprung, Covered in Rich Damask, 25 GNS. with Five Feather Down Cushions

## Dicks & Sons Ltd.

172 & 173 HIGH STREET  
Cheltenham Spa  
TEL. 2507 OVER 50 YEARS REPUTATION FOR VALUE

# THE CHELTENHAM CHRONICLE AND GLOUCESTERSHIRE GRAPHIC

GRATIS SUPPLEMENT.

With which is incorporated the "Cheltenham Looker-On." Saturday, December 8, 1928.

No. 1,458.

## CHELTENHAM THEATRE AND OPERA HOUSE.

This Afternoon (2.30) and Evening (7.45): "MISS HOOK OF HOLLAND."  
NEXT WEEK: Gerald Lawrence and Madge Compton in "Beau Brummel."

### THE PALACE,

HIGH STREET, Cheltenham.  
Director: Shakspeare Shenton.

3 Hours' 100 p.c. Entertainment Without Equal!

Monday, Tuesday, Wednesday:—  
BEBE DANIELS in  
FEEL MY PULSE.

60 Minutes of Laughs and Thrills! For Six Days! Fine British Quota Film, as presented to H.R.H. the Prince of Wales. Carlyle Blackwell, Eve Gray, and WALTER RUTLER in  
ONE OF THE BEST.

Thursday, Friday, Saturday:—  
RINTIN-TIN in

A DOG OF THE REGIMENT  
Based on the Dog Star's Own Life.

Stanley Frankel's Orchestra.

### THE DAFFODIL

Cheltenham's Only Real Cinema.

Continuous Daily, 2.30 to 10.15.

Monday, Dec. 10th.  
Special Feature Presentation FOR ONE WEEK:

LON CHANEY,  
As Burke of Scotland Yard, in

LONDON AFTER MIDNIGHT.

The Greatest Mystery Drama of All Time, with The Man of a Thousand Faces in His Greatest Role.

Approximate Times: 3, 5, 7, 9.

Presentation by the DAFFODIL ORCHESTRA.

### Christmas, 1928.

## MARTIN & CO., LTD.

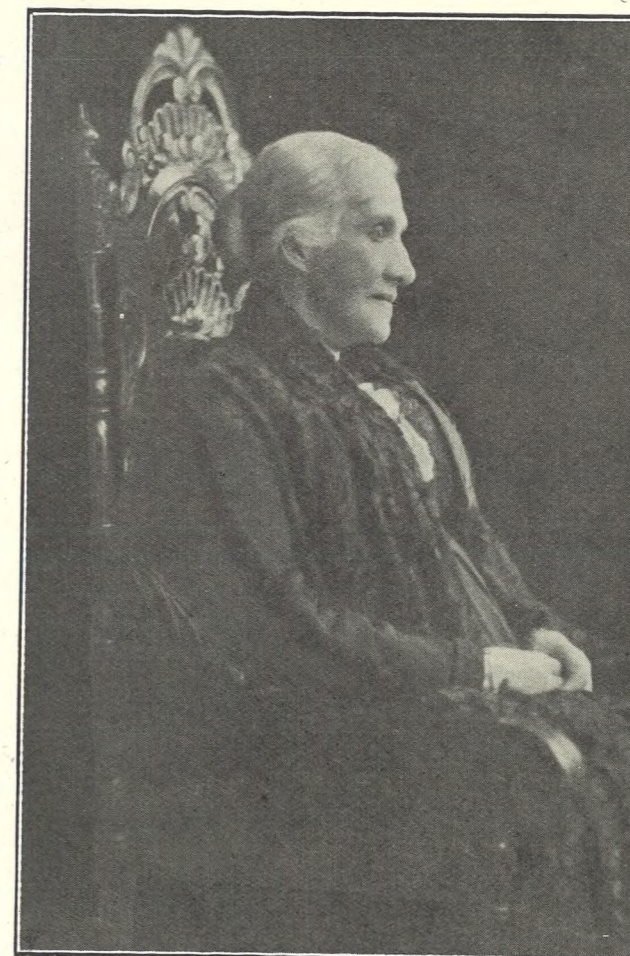
GOLD CIGARETTE CASES from 16 10s.

SILVER CIGARETTE CASES, from 15s.

SILVER CIGARETTE BOXES from 25s.

PROMENADE,  
Cheltenham.

'Phone 2821. Established 1806.



MRS. MARY ISABEL HOLBOROW,

Founder and head of the Gloucestershire Dairy, Promenade, who died at her residence, Whaddon Farm, Cemetery-road, Cheltenham, on Dec. 2nd., aged 73 years. She came to Cheltenham about fifty years ago with her husband, Mr. J. P. Holborow (who predeceased her by 27 years), and 48 years ago opened the present business. It has now so grown that over one hundred hands are employed at shops and farms. She leaves five sons and four daughters. Three sons are engaged in the business.

### Winter Garden

NEW KINEMA,  
PROMENADE, CHELTENHAM.  
Director: Shakspeare Shenton.

FOR SIX DAYS!  
Big Two-Feature Programme of Three Hours' Duration.

Monday, Tuesday, Wednesday:—  
The Great Adventure Picture!  
UNDER ARCTIC SKIES.

With ART YOUNG.  
Greater Than Chang! Also Great British Quota Film:

PAT AHEARNE, EVE GRAY in  
THE SILVER LINING.

From the Original Story by Bai David.

Maurice Malvern and Orchestra,  
South Pavilion: Roller Skating,  
Centre Pavilion: Covered Tennis Court.

### COLISEUM

CHELTENHAM. 'Phone 3715.

6.40 p.m. and 8.40 p.m.

HARRY DUBORG Presents

SHOW A LEG.

A Merry Musical Production.

### North Street

PICTURE HOUSE,

From 2.30 p.m. Continuous.

Monday, Tuesday, Wednesday:—

MARY ASTOR and GILBERT ROLAND in

ROSE OF THE GOLDEN WEST.

Thursday, Friday, Saturday:—

THE SLAVER.

By James Oliver Curwood,

Starring BET ASTOR, JIMMY and

CORRINE GERAGHTY.

You can't Look Smarter.

You can't Feel Cosier than in

the Famous SODEN WARM.

### Sensier,

3886 HIGH STREET,  
CHELTENHAM.

Telephone 2588.

W. Scott Cooper,

Diamond Merchant, Jeweller,  
Goldsmith and Silversmith,

The Promenade, Cheltenham.

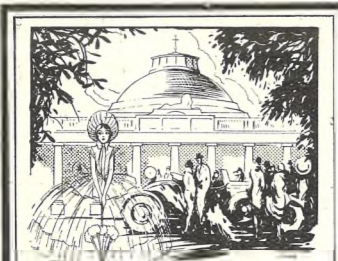
LICENSED VALUER.

# DALE, FORTY and Co. Ltd For The Best PIANOS



# SPREADING THE FAME of CHELTENHAM SPA.

## BY PRESS AND POSTER.



### CHELTENHAM SPA

Still maintains the National Tradition for Fashion and Gaiety gained during the Georgian period  
**A TOWN OF UNUSUAL BEAUTY**  
 famed for its wonderful shopping facilities—"The Bond Street of the West," its Concerts, Theatres, and Hotels, its unequalled Sunshine record, and the fascinating Country-side at its doors.  
 Send to H. Allan-Burns, Spa Manager, FOR HANDSOME FREE GUIDE.  
 Hotel Information, etc., E. H. Bisset, Central Spa Bureau. z.j.b.

Here are shown two examples of the different kinds of publicity by which the attractions of our town are becoming increasingly better known throughout the country.

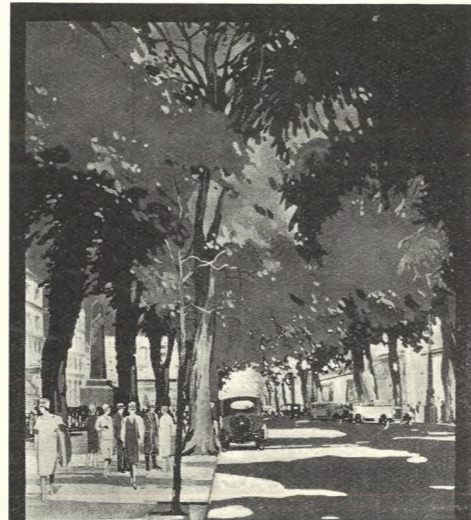
On the left is reproduced an advertisement appearing in such important journals as the "TIMES," and other leading London dailies, and also in various high-class weeklies such as the "QUEEN," "SKETCH," "SPHERE," etc., at certain seasons of the year.

The beautiful poster shown on the right will be known to a large number of travelling Cheltonians, to whom it has become a familiar sight at all the important Railway Stations of the Country, particularly those of the G.W.R., who have made Cheltenham the starting point of "the fastest train in Britain."

As comment recently has been made upon the need for more advertising, these examples will be of timely interest to readers as showing that, with the limited sum available for this purpose, the most progressive plans are being followed.

Both in the Spa Manager's Department and the Chamber of Commerce Information Bureau, the increasingly large number of enquiries directly traceable to the scheme of advertising embracing these two examples, are now being dealt with.

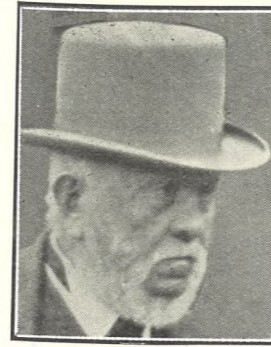
E.J.B.



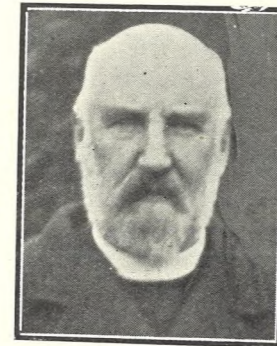
## COME TO CHELTENHAM

MOST CONTINENTAL OF BRITISH SPAS FOR HEALTH & PLEASURE  
 MODERN HOTELS, ENDLESS AMUSEMENTS  
 MAGNIFICENT MOTOR CENTRE FOR WYE VALLEY,  
 COTSWOLD HILLS & SHAKESPEARELAND

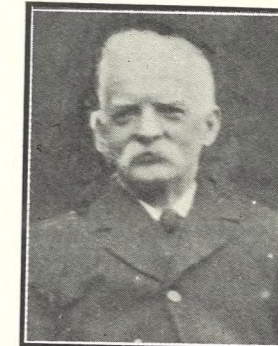
GUIDE FREE FROM T. ALLAN BURNS, SPA MANAGER. HOTEL INFORMATION FROM E. H. BISSET, CENTRAL SPA BUREAU.



MR. SIDNEY JOHN HARVEY, of Ley Court, Churoham, near Gloucester, who died on Nov. 30th, aged 78 years. He was the eldest son of the late Mr. "Fred" Harvey, horse dealer, and was a well-known member of the firm of heavy horse dealers. He had resided at Ley Court for about 60 years. He leaves two sons and a daughter.



REV. CANON E. H. HAWKINS, of Holy Trinity Church, Stroud, who preached his farewell sermon on Sunday night last, after 50 years' service as Vicar. He preached his first sermon there on Christmas Day, 1878, and holds a record in the fact that he has officiated at fifty successive Christmas Day celebrations at the Church.



MR. MARTIN JOHN BIRT, of Vicarage-street, Painswick, who died at his home on Nov. 30 from injuries sustained by being knocked down by a motor-cycle five days before, aged 65 years. He was delivering the "Gloucestershire Echo," for which he was agent in Painswick. He leaves a widow and fourteen children—eight sons and six daughters.

# LANCE'S

## Xmas

## Offer

A SPECIAL DISCOUNT

of 10 Per Cent.

WILL BE GIVEN ON ALL

# FURS AND FUR COATS

DURING THE MONTH OF DECEMBER.

JOHN LANCE & Co., LTD.  
 CHELTENHAM SHOPPING CENTRE.

## GIFT for GIFT.

THE MORE YOU SPEND, THE MORE YOU SAVE!

During December R. T. ADAMS will GIVE TO ALL CASH CUSTOMERS a DISCOUNT of ONE PENNY in EVERY SHILLING.

A GIFT TO APPRECIATE, as Our Value is Admittedly THE BEST.

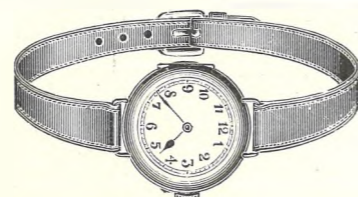
Our Prices Speak for Themselves. SPECIAL VALUE:  
 FUR COATS, Wear Guaranteed, 5 to 35 Gns.  
 FUR TIES, 10s. 11d. to 7½ Guineas.  
 FUR GLOVES, 3s. 11½d. to 18s. 11d.

DOWN QUILTS, BLANKETS, TEA COBLES, and FANCY LINENS, SILK HOSE, HANDKERCHIEFS, and JUMPER S, All at

1/8 in the £ DISCOUNT, EVERY SHILLING COUNTS!

R. T. ADAMS, 75, 76 THE STRAND (Opposite Bath Rd.) CHELTENHAM

## CHRISTMAS, 1928.



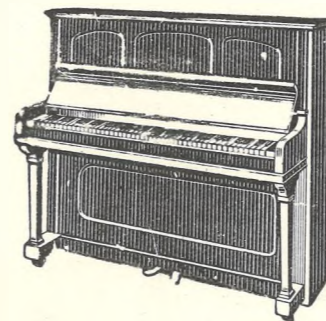
GEM SET WATCHES, for Evening Wear, from £10/10/0  
 LADIES' GOLD WRIST WATCHES from £3/10/0  
 GENTLEMEN'S SILVER STRAP WATCHES from £2/10/0  
 SPECIAL WRIST WATCHES FOR SCHOOL WEAR, 22/6

Every Watch has a Lever Movement :: and is Fully Guaranteed. ::

MARTIN & Co., Ltd., The County Jewellers, Pearl & Diamond Merchants, PROMENADE, : CHELTENHAM  
 Established 1806. 'Phone 2821.

## The HOPKINSON PIANO

Of Rare Charm and Quality.



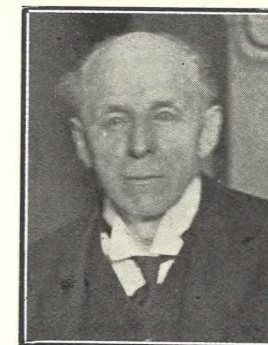
This Famous Piano was produced to meet the ever-growing demand for a good overstrung piano at a moderate cost. No finer value in Quality Pianos is obtainable.

Cash Price 60 Guineas. Or by Small, Convenient Monthly Payments.

Local Agents:—

Crichton's (Ernest Crichton, Ltd.), STRAND, CHELTENHAM. 'PHONE 2378.

Read the "Echo" Daily.



THE RT. HON. VISCOUNT CECIL OF CHELWOOD, K.G., who addressed a Mass Meeting at Cheltenham Town Hall on Monday last, Dec. 4th, organised by the Cheltenham and county branches of the League of Nations Union, on "The Kellogg Pact.—["Cheltenham Chronicle" Photo.

## Let MOUSSELLS Move You



Estimates for Removals and Storing Free. 'PHONE 2112.

Offices: CHELTENHAM, AMBROSE STREET.

HAND-SEWN MAKING from 30/- REPAIRS SAME DAY. JOINT AND ARCH SPECIALISTS AND BUNION CURERS. London City Honours.

PROGRESS BOOT WORKS, 21 MONTPELLIER STREET, CHELTENHAM (Opposite P.O.).





**PICTURESQUE GLOUCESTERSHIRE.—WOODCHESTER.**

The famous Gloucestershire family of Ducie formerly owned Woodchester, and Earl Ducie accompanied King George III. and Queen Charlotte when they visited Woodchester Cloth Mills in 1788. It is stated that Frederick, Prince of Wales, visited Southfield House in 1750 (to borrow money from the Paul family). Generations of this family lie buried under enormous tombs in the old churchyard adjoining the Roman pavement.

- 5.—The old Churchyard, with all that is left of the old church. To the left lies buried the famous Roman pavement. The Priory is behind.
- 6.—Woodchester Railway Station. Rod-borough in the distance.
- 7.—The gates of Southfield, with the Allen crest, which replaces the Paul family crest, now perished.
- 8.—Southfield garden, showing an old stone garden drinking table. It is inscribed "E.I.G. 1661." The little stream of flowing water in foreground is quaint.

["Cheltenham Chronicle" Photos. Copies 1s. 9d. each, postage extra.

**A Musical Christmas Means a Merry Christmas.**

**PIANOS from 25 Gns.  
GRAMOPHONES**

"His Master's Voice," "Columbia," "Decca," "Academy," "Dulcetia," etc.

Prices from £2/15/0.  
Terms from 10/- monthly.

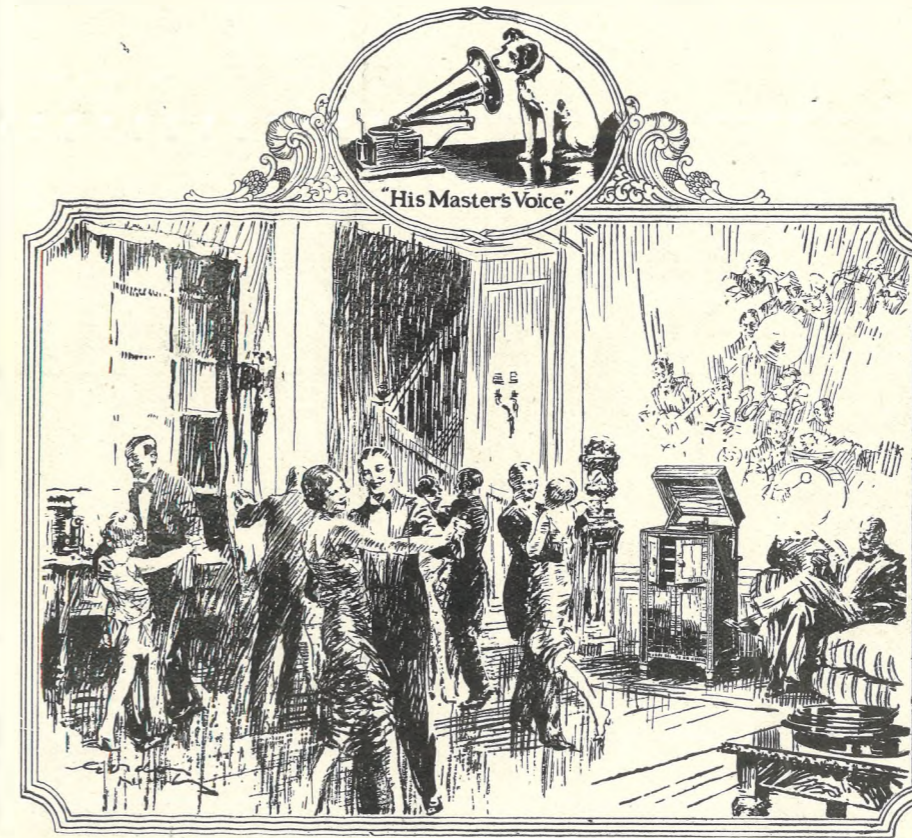
- RECORD CABINETS from 3 Gns.
- MUSIC CABINETS ... from £2/17/6.
- ROLL CABINETS ... from £7/7/0.
- PIANO STOOLS ..... from £1/1/0.
- MUSIC CASES ..... from 2/6.
- RECORD CARRIERS from 4/6.
- VIOLINS ..... from £1/1/0.
- BANJULELES ..... from £1/5/0.
- UKULELES ..... from 6/-.

Musical Toys for the Xmas Tree and Party in Great Variety.

For Everything in the World of Music

**DALE, FORTY and Co**

LTD.,  
The County Music Centre,  
Promenade, CHELTENHAM.  
Phone 3092.



\*\*\*\*\*



**MORMON CONFERENCE IN CHELTENHAM.**  
(For Names see next Column).

The Bristol District Conference of the Church of Jesus Christ of Latter-day Saints was held on Sunday last at Idmiston Hall, High-street. Many American missionaries were present, including Dr. John A. Widtsoe, Ph.D., LL.D., one of the twelve Apostles of the Church, and his wife, who is a grand-daughter of Brigham Young, the founder of the faith.

Back row: Messrs. Spencer A. Harris, Willford N. Hemmert, Lamont H. Beutler, Elmont H. Crawford, Weston R. Clark, Jos. H. CHeckettts.  
Front row: Frank C. Crazun, Mrs. Leah D. Widtsoe, Dr. John A. Widtsoe, Messrs. Alma C. Tranter, De Lamar Holt.

Inset: Mr. and Mrs. Albert Brain (Mr. Brain was formerly of Cheltenham).

["Cheltenham Chronicle" Photo. Copies 1s. and 1s. 9d. each, postage extra.

\*\*\*\*\*

**( JACKETS,  
WOOL WAISTCOATS,  
PULLOVERS**

IN GREAT VARIETY.

JACKETS IN STOCK UP TO 48in. CHEST.

**A. BECKINGSALE,**  
111 High Street, CHELTENHAM.



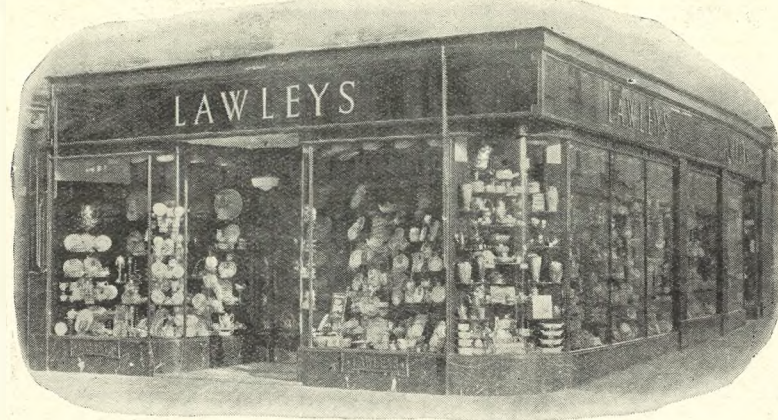


**ROUND THE TOWN IN CHELTENHAM.**

Snaps taken in the Promenade on Monday morning last. The proximity of Christmas is making the streets of the "Shopping Centre of the West" very animated.

["Cheltenham Chronicle" Photos. Copies 1s. and 1s. 9d. each, post extra.

\*\*\*\*\*  
**A HANDSOME CHRISTMAS PRESENT: A COPY OF "PICTURESQUE GLOUCESTERSHIRE."**



**Lawleys' China and Glass.**

**Artistic and Useful Christmas Gifts**

Will be found in abundance at Lawleys at prices suitable to any expenditure. No Presents will give more pleasure—to the proud recipients or to you who choose them from our comprehensive stock. Your visit of inspection is invited.

**LAWLEYS (1921) Ltd.,** Specialists in Glass & China, **109 High St., Cheltenham.**  
*(Removed from the Promenade).*



**CHEDWORTH DRAMATIC SOCIETY,**

Who gave a capital performance in aid of the Children's Christmas Treat at The Hut, Chedworth, on Friday last, Dec. 7th. The President is Mrs. Milford.

- 1.—The Wasps. At back: Messrs. Milford, Carman, and Owen. In front: Mrs. Robins, Miss Milford. Seated: Miss Slatter.
- 2.—Miss Slatter in Victorian Song.
- 3.—Mr. Carman and Miss Milford in a Burglar Scene.
- 4.—Mrs. Robins and Miss Milford in a Dance Duet.
- 5.—Mrs. Robins, Mr. Carman and Miss Milford in Dutch Scene.

["Cheltenham Chronicle" Photos. Copies 1s. and 1s. 9d. each, post extra.





**CHELTHENHAM OPERATIC SOCIETY IN "MISS HOOK OF HOLLAND."**

The above Society has been giving a series of capital performances of the Musical Comedy "Miss Hook of Holland" at the Opera House this week. Last week we published pictures of the principals, to-day we give a series of the members of Chorus.

- 1.—Messrs. T. J. Craig, W. O. Skinner, and H. G. Mason as Loafers.
- 2.—Mr. and Mrs. R. V. Copeland in Tub scene.
- 3.—Four Tub "Boys," Misses R. M. Power, N. Hawkins, Mrs. Copeland, and (in front) Miss D. H. Pearoe.
- 4.—Messrs. W. T. Hosey, W. H. Leishman, and O. Williams (Loafers).
- 5.—Mrs. K. A. Craig, Mrs. M. Watson, and Mrs. O. Goring.
- 6.—Messrs. J. N. Sidaway, A. H. Green, and D. W. Creedy.
- 7.—Mr. H. J. Burke, Miss M. R. Knight, Mr. W. H. Horton, Mr. C. A. Richards, Miss N. V. Rice (seated).
- 8.—Mrs. E. A. Gardner.
- 9.—Group of Orphans. Standing: Misses R. M. Power, V. A. Whittaker, D. Panter, N. Hawkins. Seated: Misses Ena Fry and Mildred Morgan.

["Cheltenham Chronicle" Photos. Copies 1s. and 1s. 9d. each, post extra.



**CHELTHENHAM OPERATIC SOCIETY IN "MISS HOOK OF HOLLAND."**

The last two performances take place to-day (Saturday). The Company have been trained by Mr. Quintin Golder, who produces the play, and Mr. Arthur D. Cole is Musical Conductor.

- 10.—Messrs. Geo. Romans, Miss E. M. Dunn (seated), and Miss L. Bell Haworth.
- 11.—Mrs. B. Edmonds.
- 12.—Miss D. H. Pearoe, Miss M. Perkins, and Mr. H. Davey.
- 13.—Mr. J. Mann and Miss Nelson Stythe.
- 14.—Messrs. F. H. Taylor, W. James, and R. V. Copeland (three Loafers).
- 15.—Mrs. M. Watson and Mr. Rex Watson (Van Vuyt).
- 16.—Messrs. R. G. Elliott and F. Bradley-Martin.
- 17.—Miss M. B. Clarke, Mr. C. F. Leahy, and Miss H. G. Clift.
- 18.—Mrs. M. Millington and Miss R. M. Power.

["Cheltenham Chronicle" Photos. Copies 1s. and 1s. 9d. each, post extra.



# HAINES & STRANGE

GIVE BELOW PARTICULARS OF THEIR AGENCIES FOR THE COMING SEASON

**PURCHASE YOUR CAR FROM US AND PERMANENT SATISFACTION WILL FOLLOW.**

## SERVICE.

Have you ever given the above much-abused word your consideration and analysed what it means as applied to the motor engineering trade? It does not mean a lot of free repairs for a long time, and we have never conveyed to our clients that it did. Our construction of the word means that before you purchase a car we give you practical advice based on our practical experience of over 20 odd years. After purchase, we see that you get the full benefit of the makers' guarantee, and we sometimes use our considerable influence to see that you are treated properly, even after the makers' guarantee has expired. Then during the whole time you have a car we give you advice on maintaining it in the most economical way possible. Your troubles are our troubles, and we are always out to help.

## HIRE PURCHASE and PART EXCHANGES.

It is not always convenient to find all the purchase price of a car at once. This is where we can help anyone situated thus. Our cardinal rule with hire purchase is ABSOLUTE SECRECY, and not a soul, outside the principal members of the firm, can obtain a single item of information respecting a hire purchase transaction. When you have stated what you wish to pay, and when, the car is yours to drive away immediately, and this is quite an important point—if you have an insurance on your old car we arrange the transfer. With us you are not bound to pay for a new insurance policy. Part exchanges we welcome; we are doing them every day, and we can honestly allow you full value for your present car. Come to us, and you will get personal attention which we know will satisfy you.

**HAINES & STRANGE**  
17/19 Albion Street,  
CHELTENHAM.

**SUNBEAM.** Is there any need for us to press the sterling worth of a Sunbeam for those buyers who will have quality. Every Sunbeam shows breed without ostentation.

16 h.p. Touring .....	£550
16 h.p. Saloon .....	£650
20 h.p. Limousine .....	£950

**FIAT.** The 9 h.p. model of the Fiat range has now taken its rightful place as the outstanding small car. No other car taxed at £8 can offer road performance equal to the 9 h.p. Fiat. The 17/50 can also show a clean pair of heels to most other medium powered sixes. Try it and see!

6 h.p. Two-Seater (£8 Tax) .....	£190
9 h.p. Saloon (£8 Tax) .....	£240
17/50 h.p. Saloon .....	£425

**BUICK** For 1929, Buick has produced something which is at least 25 per cent. better than anything before produced by this factory. Buick has always said "When better cars are built Buick will build them," and for 1929 this is indeed a fact. Leckhampton Hill can be taken on top gear at 35/40 m.p.h. How's that?

Dominion Saloon .....	£425
Empire Saloon .....	£475
30/90 h.p. Limousine .....	£695

**AUSTIN.** Here is the most popular range of low priced cars on the British market. For 1929 we are stocking a full range, and what is vastly more important, we are carrying a full supply of spares, and can offer you full Austin service. If it's Austin, see Haines and Strange.

7 h.p. Chummy .....	£125
12 h.p. Touring .....	£255
16 h.p. Six-Cylinder Saloon .....	£365

**CITROEN.** Did you go to the Olympia Show? Did you see the crowds which surged round the new Citroen Six? Selling at £295 it is, without qualification, the very finest value on to-day's market. A silent six engine, beautiful Westinghouse brakes, wire wheels, and the new untarnishable chromium plating.

13/30 h.p. Saloon .....	£255
2½ Litre Saloon .....	£295
12/24 h.p. Saloon .....	£225



**OPENING OF WINCHCOMBE'S NEW HOSPITAL.**  
Winchcombe's handsome new Hospital was formally opened on Friday last, Nov. 30th, in the presence of a large crowd of subscribers and others interested, by the Countess of Wemyss.

1.—Countess Wemyss (marked X), Committee, Staff, etc., at opening ceremony. 2 and 6.—Subscribers at opening ceremony. 3.—Members of medical profession listening to the speeches. 4.—Part of the large crowd present. 5.—At the opening. View of the crowd from first-floor window.

[“Cheltenham Chronicle” Photos. Copies 1s. and 1s. 9d. each, post extra.]

**R. G. STEPHENS & SON, THE SADDLERS.**  
Trunks, Suit, Blouse, Writing, Music Attache, and Fitted Cases. School Bags. Wallets, Note Cases, Purses, Mirrors. Collar and Hat Boxes. Hand Bags. Ladies' and Gents' Hair Brushes, Seat Sticks, Hunting Crops, etc.  
**CORNER HOUSE, WINCHCOMB STREET AND ALBION STREET, CHELTENHAM.**





**OPENING OF WINCHCOMBE'S NEW HOSPITAL.**

Mr. H. Dent Brocklehurst was Chairman at the opening service, the religious part of which was conducted by Rev. F. M. Wickham (Vicar of Winchcombe), Rev. J. H. Parsons (Wesleyan), and Rev. A. Julian (Congregationalist) being also present. The building, originally designed as a private house by Mr. Prothero, has been adapted by Mr. L. W. Barnard and Partners.

7.—Part of audience, taken from Hospital window. 8.—Doctors Cox, J. Howell, and Hugh Powell. 9.—Doctors Robinson and Allman Powell. 10 and 11.—Sections of the audience. 12.—Winchcombe Choral Society, who led the singing at opening service. Mr. W. Haslam (Conductor) seated in centre.

["Cheltenham Chronicle" Photos. Copies 1s. and 1s. 9d. each, post extra.

BEST QUALITY  
**CIDERS**  
IN BOTTLE.—Sparkling and Still.  
**BARTHOLOMEW,**  
419, 420 HIGH STREET,  
CHELTENHAM.

Wines, Spirits, Ales, Table Waters, & Grocery.  
Tel. 3500.

**GIFTS MEN LIKE.**

PULLOVERS. TIE SETS. CARDIGANS.  
TIES. SHIRTS. GLOVES. HATS.  
DRESSING GOWNS. SOCKS. SILK HANDKERCHIEFS.

MAY BE SEEN IN LARGE VARIETY AT  
**F. H. EDWARDS,**  
116a HIGH STREET (opposite Regent Street), CHELTENHAM SPA.  
PAY US A VISIT. YOU WILL BE UNDER NO OBLIGATION TO PURCHASE.



**FUNERAL OF THE LATE COL. FAIRFAX RHODES AT CHARLTON ABBOTTS.**

The Funeral of the late Squire of Brockhampton, whose much-lamented death took place suddenly last Sunday, was held at Charlton Abbots Churchyard on Wednesday last. He was buried in the same vaulted grave as his first wife and their only son (killed in the S. African War). A very large congregation attended, showing the universal sympathy of the neighbourhood.

1.—The cortege approaching the church. The coffin was borne on a draped lorry drawn by two estate horses, and was enfolded with a Union Jack. 2.—Capt. Reynolds, Mr. Frank Humphries, and Mr. Edward Adlard, J.P. 3.—Mourners round grave. 4.—Mr. H. G. Norton. 5.—Family mourners and local friends. 6.—Mr. W. B. Fletcher. 7.—Local mourners.

["Cheltenham Chronicle" Photos. Copies 1s. and 1s. 9d. each, post extra.

**CHILDREN SIMPLY LOVE Charlie Chaplin and "Felix the Cat."**

**Y**OU can have them at YOUR Party by arrangement with our Cine-matograph Hire Department. Great variety of subjects to choose from. All films guaranteed non-inflammable. Experienced operators provided.

Hire Charges and full particulars for Entertainments of any desired duration from :

**WILL R. ROSE,** PHOTOGRAPHIC AND CINE. SPECIALISTS,  
3 THE PROMENADE ... (Phone 3712), ... CHELTENHAM.



Phone 2887.

## SPECIAL XMAS GIFT LINES.

*Leslie Paynter*

STORMGARD COATS, 55/- and 62/6.  
 LEATHER COATS, Ladies' and Gent's, 72/6 to 150/-.  
 LEG OVERALLS, from 6/-.  
 GOGGLES, 1/- to 21/-.  
 GLOVES, 6d. to 35/-.  
 HELMETS, 4/- to 17/6.

HORNS, 4/9 to 13/6.  
 LAMP SETS, from 19/6.  
 WINDSCREENS, 10/6 to 75/-.  
 SPEEDOMETERS, 39/6 to 75/-.  
 PILLION SEATS, 4/- to 28/6.

THE MOTOR-CYCLE SPECIALIST,  
 BATH STREET, CHELTENHAM.

FOR BEST VALUE.

For Variety, Taste, and Economy  
 Buy Your XMAS GIFTS from  
**FLETCHER'S.**

THE LARGEST STOCKS OF CHINA and GLASS IN THE COUNTY.

Early Morning Tea Sets, Thin China, Richly Decorated, from 5/11



Sandwich Sets, in pleasing styles, from 3/11  
 Lemonade Sets, in Pretty Coloured Glass ... 6/6 and 7/6  
 Fruit Sets, Fine Designs, from 2/11

Large Stock of English Hand-Cut Crystal Glass.  
 PYREX FIREPROOF GLASS WARE.

INSPECTION INVITED AT  
**FLETCHER'S China & Glass Stores,**  
 Pittville Street, CHELTENHAM.



**CHELTENHAM PARISH CHURCH SALE OF WORK.**

Stall-holders and members of platform at opening ceremony (from left): Rev. W. W. Chapman, Mrs. Fletcher Rose, Mrs. Richards, Mrs. Wilcox, Miss Lukin, the Rector (Canon H. A. Wilson), Lady Dixon Hartland (who opened the Sale), Mrs. H. A. Wilson, Mrs. Newman, Mrs. Blathwayt, Mr. W. Ayris, Sister Levers, Rev. R. C. C. Hargreaves, Rev. A. A. Headley.

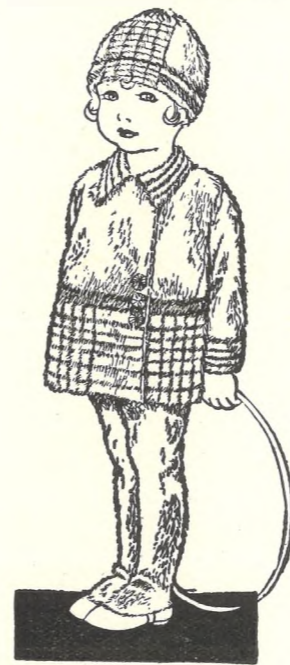
["Cheltenham Chronicle" Photo. Copies 1s. 9d. each, postage 2d. extra.]

**JACOBS & SMITH,**  
 The Popular FURRIERS.

Seasonable Presents!  
 FUR CHOKERS or SCARVES.  
 RELIABLE SKINS.  
 Lowest Prices.

104 High Street,  
 :: CHELTENHAM ::  
 (FACING LLOYDS BANK).

**MRS. OWEN JAMES**  
 For Acceptable  
**XMAS GIFTS**  
 AT REASONABLE PRICES



BREECHETTE SETS (as sketch) from 11/9

BOY'S JERSEY SUITS for All Ages, from 6/11.

GIRLS' WOOLEN DRESSES, JUMPERS, and CARDIGANS.

COLOURED PINAFORES & ROMPERS.

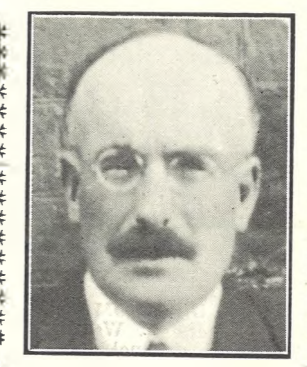
A LARGE SELECTION OF PARTY FROCKS, 22in. to 30in., from 11/9

For Ladies:—

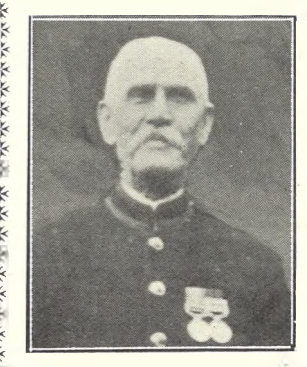
- DAINTY SILK UNDIES.
- SHETLAND DRESSING JACKETS.
- HANDKERCHIEFS,
- GLOVES,
- HOSIERY,
- JUMPERS,
- RUBBER APRONS.
- Etc.



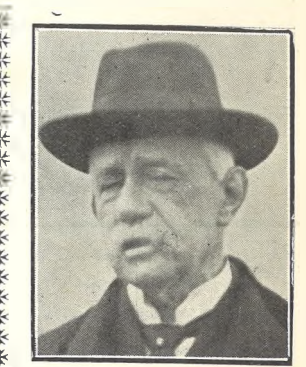
Note the Address—  
**409 THE STRAND,**  
 High Street, Cheltenham  
 Agent for "CHILPRUFE."



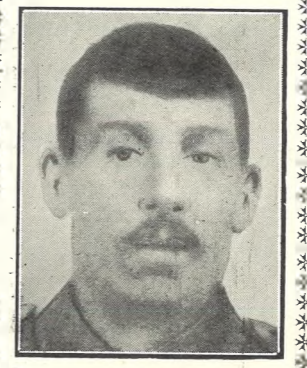
**CAPTAIN BURT,** of 53 St. Paul's-road, Gloucester, who safely escaped from his ketch Leader, which foundered off Milford Haven during last week-end, about eight miles from land. He and his crew were in an open boat for five and a half hours in a hard row against adverse currents.



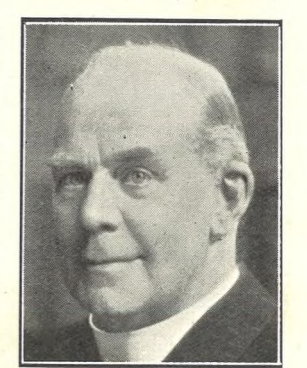
**MR. WILLIAM J. HOARE,** of 15 Linden-road, Gloucester, who died suddenly on Dec. 1st, aged 69 years. He was ex-Colour Sergeant S.W. Borderers, and had been for 26 years a commissioner at Gloucester Wagon Works. He was a life worker for the Conservative cause, and was one of the gallant survivors at Rorke's Drift in 1879.



**COL. FAIRFAX RHODES,** of Brockhampton Park, near Cheltenham, who died suddenly on Sunday, Dec. 2nd, aged 82 years. He came to Brockhampton in 1900, and was the "beau ideal" of a village squire. His love for his fellow men tinged all his actions, and he will be greatly missed in the district.



**MR. WILLIAM J. MASTERS,** of 9 Union-street, Gloucester, who was accidentally killed by falling from a chimney stack at the Twyver Works, which he and his son were dismantling. He first warned his son of the danger, and then took his son's place.



**CHRIST CHURCH VICAR'S WEDDING.**  
 Rev. F. H. Webb-Peploe, M.A., Vicar of Christ Church, Cheltenham, and Miss Hilda Mary Long, daughter of the late Ven. Robert Long (formerly Archdeacon of Bishop Auckland) and Mrs. Long, of 39 Pemberley-avenue, Bedford, who were married at St. Andrew's Church, Bedford, on Wednesday last, Dec. 5th.

[Photo of Bridegroom by Messrs. Debenhams, Longman & Co., Promenade, Cheltenham.]



A "DORWARD" PLUS-FOUR SUIT

Will Convince You that You CAN be Fitted from Stock.  
**REAL HARRIS or HOMESPUNS, FIVE GUINEAS.**  
 Tailored in Scotland.  
 ALL SIZES IN STOCK.

**RAYMOND JAMES,**  
 78 WINCHCOMBE ST., Cheltenham.  
 'Phone 2648.

**CHRISTMAS, 1928.**  
 An Interesting Stock of Small ANTIQUES, also MODERN JEWELLERY, Suitable for GIFTS. Low Prices and Good Value.  
**HARRY O. BOX,**  
 339 HIGH STREET, CHELTENHAM  
 (Nearly Opposite the Grammar School).  
 Established Over 75 Years.

**FOR PRESENTS GIVE PICTURES.**  
**WALLACE RODWAY,**  
 Picture Framer and Gilder,  
 13 PORTLAND STREET, CHELTENHAM  
 Has an Up-to-date Selection of Framed and Unframed Pictures Suitable for Christmas Gifts.

SEND THE "CHRONICLE AND GRAPHIC" TO YOUR FRIENDS AT HOME AND ABROAD EVERY WEEK.



# SECOND-HAND FURNITURE

Of Highest Quality. If you are looking for something really good, and would like to buy it at less than half what it would cost to produce, you should Visit the

## SECOND-HAND FURNITURE Department at Dicks and Sons, Ltd.,

They desire to call attention to the items quoted below as examples of Really Good Quality Furniture they now have on offer. At the same time they have in stock a multitude of other lines equally cheap at a lower grade and lower in price.

A VERY HANDSOME DRAWING ROOM SUITE, comprising Chesterfield and two Easy Chairs, in Carved Mahogany Frames of finest quality, and Upholstered in Rich Pink Silk Damask, with Loose Cushions. This Suite is a very fine specimen of best materials and workmanship, and over £100 was paid for it quite recently. We are able to offer it for **49 GNS.**

DRAWING ROOM SET of smaller size, in good quality Silk Tapestry, comprising Settee and two Easy Chairs. This Set is shop-soiled, and Reduced from 25 Gns. to **15 GNS.**

SET OF FOUR DINING ROOM CHAIRS, in Extra Quality Spanish Mahogany Frames, in Old Style, with broad back. Just Re-Upholstered in Good Quality Rexine, and as good as New. The Set would cost New 15 Guineas, and is now Offered for **£6/10/0**

SET OF SIX DINING ROOM CHAIRS, in Extra Quality Frames of good style and shaped back, Re-Upholstered in Good Quality Rexine. Spring Seats and Re-Polished. The Set would be worth New £20, and Now Offered at **£10/10/0**

LARGE SIZE THREE-PILLOW SETTEE, in Good Quality Tapestry, Stuffed Hair with Down Cushions. Second-hand, but as good as New, when it would be worth £18 18s. Now Offered at **£12/12/0**

A FINE MAHOGANY DINING TABLE, with Oval Ends, Extending to 12 feet, and 4ft. 6in. wide, with Four Extra Leaves. As Good as New, and Exceptionally Fine Quality. Would cost new 30 Guineas. Now Offered at **15 GNS.**

A BEAUTIFUL KNEE-HOLE WRITING TABLE in SATINWOOD, of Highest Quality. Inlaid. Would cost new £20. For **£10/10/0**

5 FEET ANTIQUE SIDBOARD, in BLACK OAK, with Three Deep Drawers and Under-frame, with Antique Brass Drop Handles. Originally 20 Guineas. Now Offered at **£12/12/0**

SET OF FOUR DRAWING-ROOM CHAIRS, of Highest Quality Walnut Frames. Unique Shape, and Upholstered in Handsome Silk Tapestry and Velvet. Also Fitted with Loose Covers. Would cost new 15 Guineas. The Set of Four for **£6/10/0**

MASSIVE SIDBOARD, suitable for Hotel, in Highly Polished Light Oak. 7ft. 6in. wide, with Large Mirror back, having Finely Carved Frame and Columns to Doors. Fitted with Three Drawers, Cellarette, & Baize-lined Drawer for Silver. Would cost New quite £80, and now Offered at **29 GNS.**

HANDSOME WARDROBE, in Polished Walnut. 6ft. 6in. Beautifully Inlaid, and Fitted with Hanging Space, Nest of Drawers, & Sliding Trays, with Wide Full-length Mirror. Would cost to make quite £60, and now offered for **18 GNS.**

A FINE SIDBOARD in Mahogany. 6ft. wide, having Three Bevelled Mirrors, Fitted with Shelves and Turned Columns, Two Drawers Lined Baize, and Three Cupboards. This is a handsome piece. It would cost to make £35, and now Offered for **15 GNS.**

BEDROOM SUITE in Solid Walnut, Excellent Quality, having 4ft. Wardrobe, with Extra Large Bevelled Mirror, Carved Panel Front, and Deep Drawer, Dressing Chest with Five Drawers and Two Cupboards, Two Jewel Drawers, and Swing Mirror. Washstand Fitted with Three Drawers and Two Cupboards; Marble Top and Mirror Back; Towel Rail and Two Chairs. This Suite would cost quite £70 to make, and is Offered at **27 GNS.**

GRAND PIANO by Broadwood, in Handsome Rosewood Case. Thoroughly Overhauled, and in Perfect Condition. Sweet Tone. This Instrument would cost new quite £150, and is Offered at **39 GNS.**

VERY HANDSOME BLACK OAK BOOKCASE, 4ft. wide, Elaborately Hand Carved. Top part fitted with Adjustable Shelves, enclosed by Two Glass Doors; Two Drawers and Cupboards beneath. This piece would cost to make £25, and is now Offered at **25 GNS.**

HANDSOME 6ft. SIDBOARD, in Solid Mahogany, Georgian Period, with Frieze Front. Finely Carved. Three Drawers, one being Baize-lined for Cutlery; Two Cupboards, having Sliding Trays and Cellarette. This is a fine piece of very best manufacture, and would cost to make quite £20, Now Offered at **12 GNS.**

WARDROBE, 3ft. wide, in Black Oak, of Antique Design and Carved Front. Full Hanging Space and Shelf, for **£6/10/0**

INDIAN TABLE, Beautifully Carved. Circular Top. Elaborately made **£2/10/0**

CARD TABLE, Black Ebonised Frame, with Inlaid Satinwood Banding and Baize, Folding Top. In Perfect Condition. Worth £10 new, and now Offered at **£4/10/0**

SIDE CARVING TABLE, having Two Tiers, 6ft. long, and beautifully made in finely figured Burr Walnut. This piece would cost £15 to make, and is offered at **£5/10/0**

LARGE CHEST OF DRAWERS, in Spanish Mahogany, Old Style, but of Very Best Quality. Just Re-Polished, and as Good as New **£8/15/0**

A Smaller CHEST, in Spanish Mahogany, of Equally Good Quality **£5/19/6**

PAIR of TOILET TABLES, in Good Quality Mahogany, and Just Re-Polished as New. Dressing Table Fitted with Eight Drawers and Swing Mirrors, Washstand having Marble Top and Back. Fitted with Drawer. **£8/10/0**

WRITING TABLE in Solid Oak, 4ft. wide. Fitted with four Drawers, Pigeon Holes, and Adjustable Writing Bed. Inlaid Leather Top. Splendidly made, for **£7/15/0**

OVERMANTEL, in Black Oak, Handsomely Carved, with Large Oval Bevelled Mirror, 3ft. 6in. wide, and 2ft. 9in. high. This is a Special Bargain for **£2/19/6**

A FINE OVERMANTEL, in Chippendale Mahogany, of Handsome Design and Extra Quality, Bevelled Mirror, Oval Shape, 2ft. 6in. by 3ft. 6in. This is a handsome piece, and would cost new £12, but now Offered for **£4/10/0**

OVERMANTEL, in Black Oak, with Large Bevelled Mirror and Dog's Tooth Cornice, Originally £8 10s. Now **£2/10/0**

Any of the above goods can be supplied on deferred terms of payment if desired. Delivery Free in our own Motor Vans.

**Dicks & Sons Ltd.**  
172 & 173 HIGH STREET  
Cheltenham Spa  
TEL. 50 YEARS REPUTATION FOR VALUE

# THE CHELTENHAM CHRONICLE AND GLO' SHIRE GRAPHIC

GRATIS SUPPLEMENT.

With which is incorporated the "Cheltenham Looker-On."

Saturday, December 15, 1928.

No. 1,459.

## CHELTENHAM THEATRE AND OPERA HOUSE.

This afternoon (2.30) and Evening (7.45): "BEAU BRUMMEL."  
NEXT WEEK: Theatre closed. Re-opening Boxing Day with the Grand Christmas Pantomime "CINDERELLA."

### THE PALACE, HIGH STREET, CHELTENHAM

Director: Shakspeare Shenton.  
FOR SIX DAYS!  
Owing to the Enormous Success of this Picture at the last presentation, and so many being unable to gain admission, we are Screening this Wonderful Picture for a Further Six Days.

H. B. WARNER, ALICE JOYCE, ANNA O. NILSSON, and NILS ASTHER in **SORRELL AND SON.**

From the Famous Novel by Warwick Deeping. The Outstanding Picture of the Season. Screened at 2.45, 4.45, 6.45, 8.45. **Palace Popular Orchestra.**

### THE DAFFODIL

Cheltenham's Only Real Cinema.  
Continuous Daily, 2.30 to 10.15. Monday, Dec. 17, FOR 6 DAYS, The Mightiest of All Naval Films.

WHEN FLEET MEETS FLEET.  
A Romance of the Battle of Jutland.

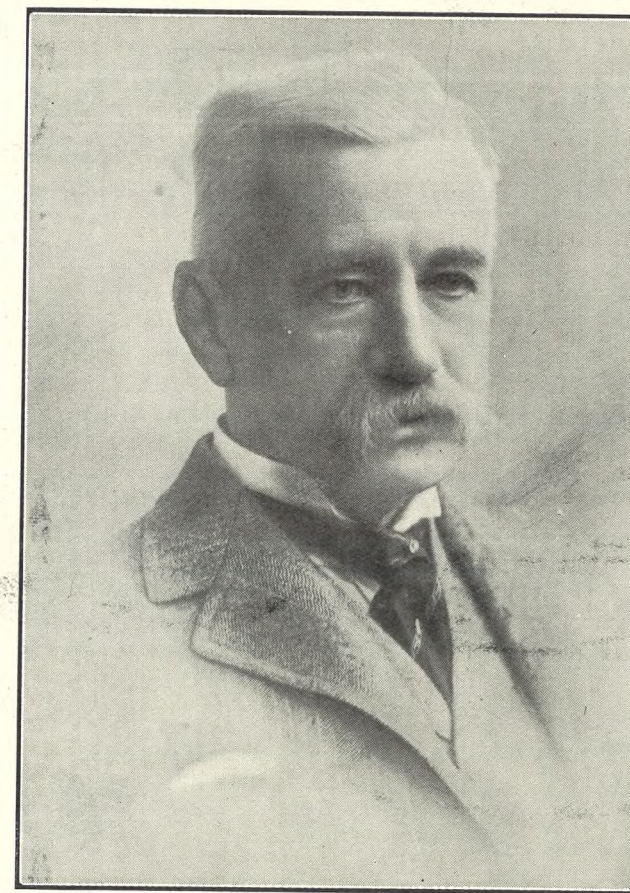
The Greatest Clash of Floating Armoury the World has Ever Known.

The Picture with the Seal of Authenticity from Admiral Lord Jellicoe, the Man in Charge at the Battle of Jutland. Approximate Times of Showing: 2.45, 4.45, 6.45, and 8.45. Accompaniment by the **DAFFODIL ORCHESTRA.**

Christmas, 1928.  
**MARTIN & CO., LTD.**

ORIENTAL PEARL NECKLETS.

PROMENADE, Cheltenham.  
Phone 2821. Established 1866.



LT.-COLONEL FAIRFAX RHODES, BROCKHAMPTON PARK.  
Died on December 2nd, 1928, Aged 82.

\*\*\*\*\*

Advertise in the "Echo."

### Winter Garden

NEW KINEMA, PROMENADE, CHELTENHAM  
Director: Shakspeare Shenton.

Monday, Tuesday, Wednesday:—Tom Wilson, Heine Conklin, and Myrna Loy in **HAM AND EGGS AT THE FRONT.**

Thursday, Friday, Saturday:—Personal Appearance of Mr. E. Richard and his Famous Alsatian "Robert of St. John."

Direct from the Capitol, London, in a Special Prologue to **A RACE FOR LIFE.**

Featuring RIN-TIN-TIN. Screened at 2.30, 4.30, 6.30, 8.30. **Maurice Malvern and Orchestra.** FREE CAR PARK

South Pavilion: Roller Skating. Centre Pavilion: Covered Tennis Court.

**COLISEUM CHELTENHAM.** Phone 3715. 6.40 p.m. and 8.40 p.m. Exclusive Film of the **PRINCE OF WALES' TOUR** And the Musical Revue: "ONE OF THE BEST."

### North Street

PICTURE HOUSE, Cheltenham  
From 2.30 p.m. Continuous.

Monday Tuesday, Wednesday:—**SPORTING GOODS.** Featuring RICHARD DIX and FORD STERLING.  
Thursday, Friday, Saturday:—**SHOOTING IRONS.** Featuring JACK LUDEN.

### MAISON ANNETTE,

Specialists in Exclusive **CORSETS & LINGERIE.**

Kensington House, PROMENADE, CHELTENHAM.  
Phone 2122.

# DALE, FORTY and Co. Ltd For The Best PIANOS





**Tewkesbury Christmas Market Fat Stock Show and Sale, Wednesday, December 12th.**

- A splendid lot of Cattle, Pigs, Sheep, etc., were shown and passed through the Sale Rings at both Mr. Geo. Hone's and Messrs. Moore & Sons' Market.
- 1.—Armfuls of pork being loaded at Moore's Market.
  - 2.—Mr. Lane's (Ripple) 1st prize fat Bevis (Mr. Geo. Hone's Class).
  - 3.—The Judges and Officials in Mr. G. Hone's Market: Messrs. J. H. Goodson, E. Dugdale (both of Bredon), David Davies (Bredon's Norton), Stewards; F. J. Chamberlayne (Gloucester), and H. Potter (Birmingham), Cattle Judges.
  - 4.—Messrs. E. Guilding, of Bushley (Steward), and R. H. Harris, of Upton-on-Severn.
  - 5.—Mr. G. H. Jackson's (Deerhurst) two fat Heifers, 1st prize (Mr. Geo. Hone's Class).
  - 6.—Mr. Moore selling Poultry.
  - 7.—Farmers inspecting the Prize Cattle.
  - 8.—Mr. Tom Richardson and his son, of Dumbleton, with their Champion Beast of Show at G. Hone's Market.

**NEW YEAR'S EVE. TOWN HALL, CHELTENHAM.**

**Hospitals' Ball, Clifford Essex Band.**

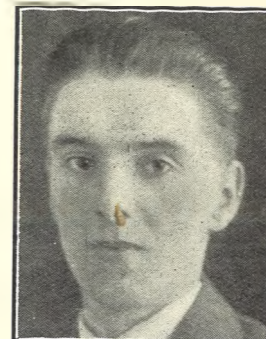
**MONDAY, 31st DECEMBER.**

SPECIAL ENGAGEMENT OF  
DANCING from 9 p.m. to 2 a.m.

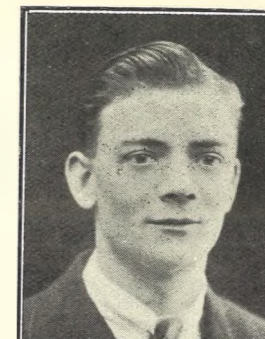
TICKETS 15s. Each (including Supper and Buffet), to be obtained from the Joint Hon. Secs.: Capt. Scott-Langley, 7 Rotunda-terrace, Tel. 8164; Mrs. Richard Davies, Glendower, Tel. 2920; The Spa Bureau, Town Hall, Cheltenham, Tel. 2878; or any Member of the Committee.



**MR. FRANK HOLTOM**, who died at the Cheltenham General Hospital, on Nov. 26, as the result of an accident. He was the son of the late Mr. Geo. Hale Holtom, a well-known Cotswold farmer, and had been a chief petty officer in the Royal Navy (retired), and served right through the Great War. He leaves a widow, but no children.



**MR. ALFRED J. T. R. CLEMENTS**, of 197 High-street, Cheltenham, who died on Nov. 29, aged 19 years. He was the eldest son of Mr. and Mrs. A. Clements, and had been ill for the last nine months.



**MR. GEO. HENRY MASTERS**, of 9 Union-street, Gloucester, who had a narrow escape from being killed while working with his father, Mr. Wm. J. Masters, in demolishing a chimney at the Twyver Works in Millbrook-street, Gloucester. His father fell and was killed, and the son stated at the inquest that his father saved his life.

Ready on the 17th December.

*A timely Christmas Gift.*

Messrs. Ed. J. Burrow & Co., Ltd., have decided to issue a POPULAR Edition of

**SOME PARLIAMENTARY RECOLLECTIONS**

The Life of the late Sir James Agg-Gardner, P.C., M.P.,

At **4/6**

Net.

No better Christmas Gift can be imagined than this book for the many who knew "Sir James" and would wish to possess his own record of his life.

Order from your Bookseller to-day

Copies of the original Library Edition at 10/6 and the SIGNED Edition de Luxe in Blue Calf at One Guinea may still be had.

**ED. J. BURROW & CO., LTD.**  
Cheltenham & London.

Read the "Echo" Daily.



**MR. AND MRS. CHAS. H. RAINGER**, of Sibbersfield, London-road, Cheltenham, who on Wednesday last, Dec. 12th, celebrated their golden wedding. They were married at St. Mary de Lode Church, Gloucester, in 1878, Mrs. Rainger being the daughter of the late Mr. William Arkell, of Gloucester. They have lived all their married life in Cheltenham, in which town Mr. Rainger has carried on the business of a builder, decorator, and sanitary engineer, as did his father and grandfather before him. They have two sons, Mr. Lyn Rainger, who is in the business with his father, and Mr. Herbert T. Rainger, A.R.I.B.A., who some time ago took over the architect's practice of Messrs. Chatters, Smithson and Rainger. Both sons have long been connected with the Cheltenham Amateur Operatic and Dramatic Society. — ["Cheltenham Chronicle" Photo. Copies may be obtained.

**LANCE'S Xmas Offer**

A **SPECIAL DISCOUNT**

of **10 Per Cent.**

WILL BE GIVEN ON ALL

**FURS AND FUR COATS**

DURING THE MONTH OF DECEMBER.

**JOHN LANCE & Co., LTD.**  
CHELTENHAM SHOPPING CENTRE.





**Cheltenham's Success in Police Ambulance Competition.**  
 In the Gloucestershire Constabulary Ambulance Competition, held at Naunton Park Schools, Cheltenham, on Saturday, Dec. 8th, when nine teams competed, Cheltenham (E Division) headed the result list, and hold the Challenge Cup for the year. They will now represent the County against Devon Police. The team consists of one sergeant and four constables. Standing.—P.C.'s B. J. Keane, N. E. Baker, E. H. Evans (reserve), J. S. Clarke, and D. M. Wagstaff.  
 Seated.—Dr. Hugh Powell (Police Surgeon), The Chief Constable (Major Stanley Clarke), Sergeant C. H. Harding, Superintendent J. W. P. Goulder, Mr. Tandy (St. John Ambulance) (Instructor).

["Cheltenham Chronicle" Photo. Copies 1s. and 1s. 9d. each, post extra.



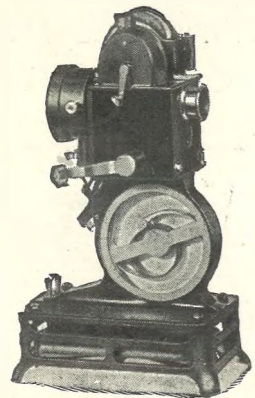
**MR. WM. J. BARTLETT,**  
 of Maugersbury, who has been unanimously elected Chairman of Stow-on-the-Wold Branch of the National Farmers' Union for the third year in succession. Starting in quite a small way 35 years ago, he has gained the reputation of being one of the most successful Cotswold farmers. He is a noted breeder of Oxford Down sheep, cross-bred Hereford cattle, and Shire horses.

**Visitors to Charming Cheltenham:**  
 IF YOU WANT THE DAY'S NEWS (LOCAL and GENERAL) Get the "Echo."

**YOU CAN BE SURE**  
 OF FINDING A GOOD SELECTION OF THE **Better Qualities** IN **MEN'S WEAR** AT **RAYMOND JAMES',** 78 WINCHCOMBE STREET. Phone 2648.

**CHRISTMAS, 1928.**  
 An interesting Stock of Small ANTIQUES, also MODERN JEWELLERY, Suitable for GIFTS. Low Prices and Good Value.  
**HARRY O. BOX,**  
 339 HIGH STREET, CHELTENHAM (Nearly Opposite the Grammar School). Established Over 75 Years.  
**FOR PRESENTS GIVE PICTURES.**  
**WALLACE RODWAY,**  
 Picture Framer and Gilder, 13 PORTLAND STREET, CHELTENHAM Has an Up-to-date Selection of Framed and Unframed Pictures Suitable for Christmas Gifts.

**GIFTS APPRECIATED By Men-Folk.**  
 LINED GLOVES, HANDKERCHIEF and TIE, WOOL JACKET, Or DRESSING GOWN, PULLOVER, TROUSER PRESS. A FINE SELECTION OF EACH. Phone 2706.  
**A. BECKINGSALE,**  
 111 High Street, CHELTENHAM



Home Cinematographs from £6

**GIVE A "KODAK"**

and give pleasure all the year round.

"BROWNIES" for the Children.

Films and Full Stock of all Accessories for: **Cinematography.**

**WILL R. ROSE,** Photographic and Cine. Specialists, 3 THE PROMENADE (Phone 3712), CHELTENHAM

**Children Simply Love**

**Charlie Chaplin and "Felix, the Cat."**

You can have them at YOUR Party by arrangement with Our Cinematograph Hire Department. Great Variety of Subjects to Choose From. All Films Guaranteed Non-inflammable. Experienced Operators Provided. Hire Charges and Full Particulars for Entertainments of any desired duration from:—



**BOURTON-ON-WATER CHRISTMAS FAT STOCK SHOW AND SALE.**

The Christmas Fat Stock Show and Sale was held at Bourton-on-the-Water on Friday, Dec. 7, when a splendid lot of Cattle, Sheep, and Pigs were exhibited and sold. A large number of well-known buyers were present.

- 1.—Mr. Tippetts (on left), of Bloss and Co., selling Sheep.
- 2.—Messrs. T. M. Stayt and W. Craft.
- 3.—A view of the crowd round the Pig pens during the Sale.
- 4.—Miss E. Lane and Mr. C. Keylock, of Clapton.
- 5.—Lord Sherborne's first prize winner in Baby Beef Class.
- 6.—Messrs. Tayler and Son (in centre), of Tayler and Fletcher's, selling pigs.
- 7.—Lord Sherborne's first prize Maiden Heifer.

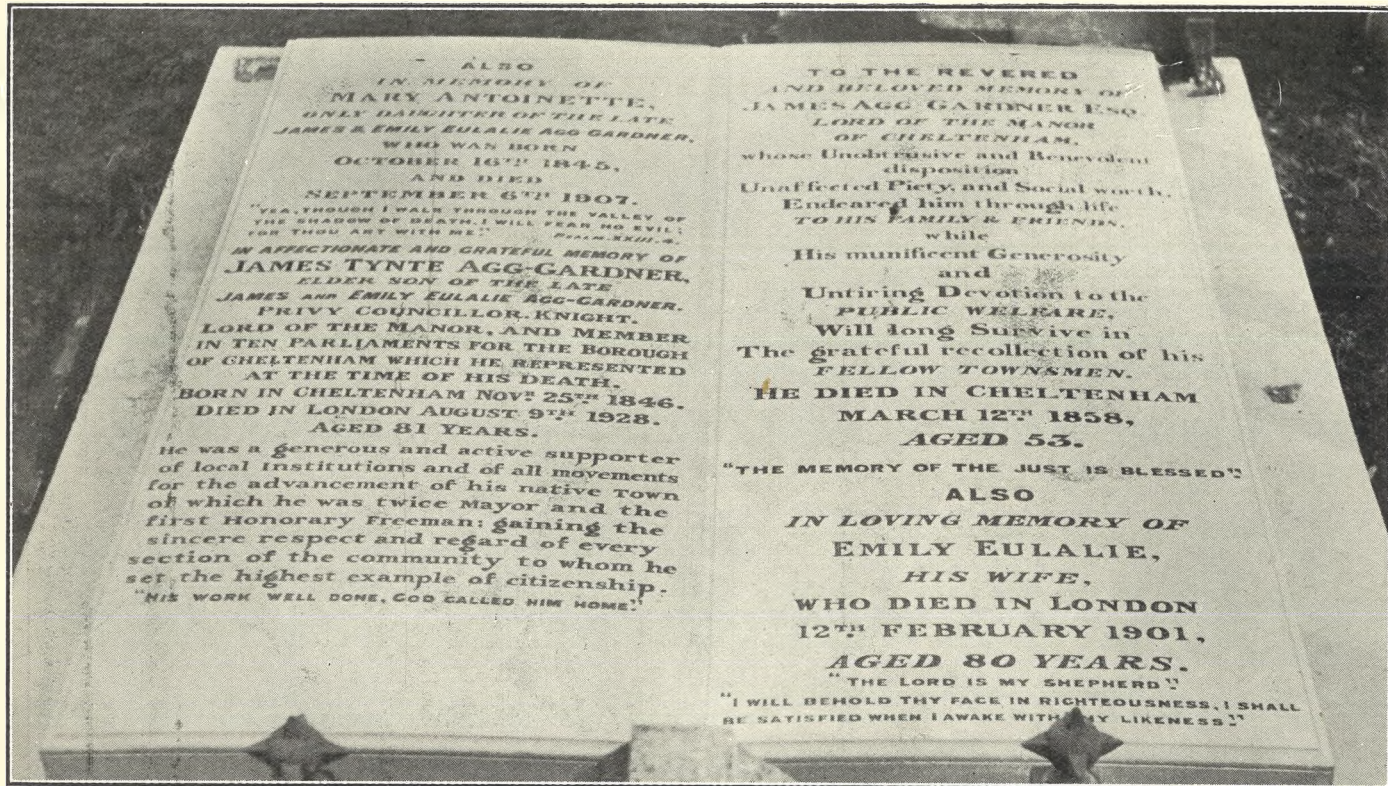
["Cheltenham Chronicle" Photos. Copies 1s. and 1s. 9d. each, post extra.

**JACOBS & SMITH,**  
 The Popular FURRIERS.

**WHY PAY MORE? WE STOCK IT.**  
 There is no better than the BEST, and

**104 High Street, CHELTENHAM**  
 (FACING LLOYDS BANK).





**THE TOMB-STONE OF THE LATE RT. HON. SIR JAMES T. AGG-GARDNER, P.C., M.P.**  
 The inscription to the memory of the late Rt. Hon. St. James T. Agg-Gardner on the stone over the family grave, in which he is buried with his father, mother, and sister, has been completed this week in Prestbury Churchyard, and we give above a photograph of same. It is remarkable how closely the inscription to the father would have applied to the son.

## Here is a Xmas Box for You!



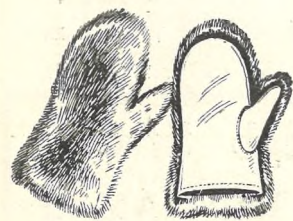
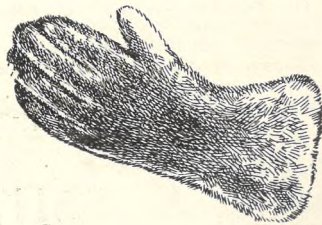
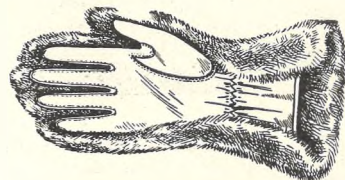
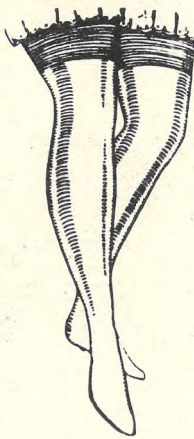
From Dec. 3rd to 24th we are presenting to All Our Customers ONE PENNY in the SHILLING DISCOUNT OFF ALL CASH PURCHASES, making a GIFT to appreciate, as Our Value is admittedly the BEST and Our Prices Speak for Themselves.

- PURE SILK HOSE, 3/11½, 4/11½, 5/11½, 7/6, 10/6.
- ART. SILK and Wool Lined, 1/6½, 2/11½, 2/11½, 3/11½, 5/11½.
- Ladies' and Girls' CARDIGANS and JUMPERS, 2/11½ to 25/11.
- FUR-BACKED GLOVES, 3/11½ to 25/11.
- CHILDREN'S MITTS from 1/9½ (as sketch).
- FUR TIES from 10/11 to 7½ Guineas.
- FUR COATS, Wear Guaranteed, Five to 35 Gns.
- EVENING FROCKS and DRESSES from 12/11 to 5 Gns.
- Ladies' and Girls' COATS, 29/6 to 6½ Gns.
- OUT SIZES:—Coats, Dresses, Underwear, Etc.
- DOWN QUILTS & BLANKETS from 18/11 to 63/-.

All the above are subject to the Xmas Discount.

**R. T. ADAMS, "Out-Size Specialist,"**

75, 76 The Strand, CHELTENHAM.  
 (OPPOSITE BATH ROAD).



### SPEECH DAY AT KING'S SCHOOL, GLOUCESTER.

Speech Day proceedings took place on Saturday last in the Chapter House of the Cathedral, tea being afterwards held at the Paddock. The Archdeacon of Stow, Ven. E. M. Blackie (Diocese of Lincoln), distributed the prizes.

- 1.—Some of the boys off to prize-giving.
- 2.—Pupils with their home-folk.
- 3.—Mrs. Gillespy, Archdeacon of Stow (an assistant master at the school 37 years ago), and Rev. F. R. Gillespy (Head-master).
- 4.—Mrs. Graham, the Mayor and Mayoress, and Dr. Graham.
- 5.—Five Juniors.
- 6.—Performers in a "Shepherds' Play," from a 15th Century Miracle Play. ["Cheltenham Chronicle"]

Photos. Copies 1s. and 1s. 9d. each, post extra.

### Let MOUSELLS Move You



Estimates for Removals and Storing Free.  
 'PHONE 2112.

Offices:  
 CHELTENHAM. AMBROSE STREET.

## OH! THAT MAN,

WHAT CAN I GIVE HIM?

This Question Can Soon be Settled to Your Liking by Paying a Visit to—  
**F. H. EDWARDS,**

118a HIGH STREET (opposite Regent Street), CHELTENHAM SPA.

And Inspecting His Large Stock of

PULLOVERS, CARDIGANS, SHIRTS, GLOVES, HATS, TIES, SOCKS, DRESSING GOWNS, TIE SETS, HANDKERCHIEFS, etc.





**ROUND THE TOWN IN CHELTENHAM.**

Snaps in the Promenade on Saturday morning last. The streets were crowded, and the shopkeepers were very busy indeed.  
 1.—Mrs. Weech (left) and a friend. 2.—Mr. J. J. Penny, B.A. 3.—Mrs. Morgan Davies (right) and a friend.  
 4.—Mr. R. D. Barton (now of Kew), Miss Waite (centre), and a friend.  
 5.—Mr. J. J. Penny, B.A. 6.—Mr. R. D. Barton (now of Kew), Miss Waite (centre), and a friend.  
 7.—Mrs. Morgan Davies (right) and a friend. 8.—Mr. J. J. Penny, B.A. 9.—Mr. R. D. Barton (now of Kew), Miss Waite (centre), and a friend.  
 10.—Mr. J. J. Penny, B.A. 11.—Mr. R. D. Barton (now of Kew), Miss Waite (centre), and a friend.

["Cheltenham Chronicle" Photos. Copies 1s. and 1s. 9d. each, postage extra.

**A HANDSOME CHRISTMAS PRESENT: A COPY OF "PICTURESQUE GLOUCESTERSHIRE."**



**CHRISTMAS MARKET SHOW AND SALE AT GLOUCESTER.**

Handsome Prizes were given by Messrs. Bruton, Knowles, and Co. and Messrs. J. Pearce Pope and Co. for fat stock.  
 1.—Mr. E. Cloke (Upleadon) and his little son, with his Champion Beast, winner of Cridlan Challenge Cup for best Aberdeen Angus, and also Champion Beast in Show (Messrs. Bruton's classes). Mr. Cloke had a wonderful day, winning six first prizes, six seconds, and some thirds. In one class he was placed 1, 2, 3, 4, and 5.  
 2.—Messrs. Bruton's stewards and judges of cattle—Messrs. Frank Ellis, James Peter  
 3.—Messrs. Pearce Pope and Sons' judges and stewards—Messrs. Fred Moore (Judge), W. Austin Panes (white coat), Ernest Bellamy, Shepherd (Judge), Churchill (Judge), Ernest Jenner.  
 4.—A crowd at Messrs. Bruton's van, where refreshments were provided for drivers and assistants.  
 5.—Mr. J. P. Terry's 1st prize Fat Cow.  
 6.—Messrs. Bubb, jun., Scudamore, and J. E. Smith.  
 7.—Mr. J. Warner (Eastington) 1st for Baby Beef.  
 8.—Mr. A. Warner with his Champion Beast, winner of Messrs. Pope's classes.  
 9.—Watching the Judging.  
 10.—Messrs. Watts (The Leigh), W. J. Davies (Arlingham), Poulton (Goombe Hill).





**PRACTISING SCHOOL OLD BOYS' DINNER.**

The Annual Dinner of the Training College Practising School Old Boys' Association was held at the Cadena Café, High Street, Cheltenham, on Wednesday, Dec. 5th, about 130 Old Boys being present. ["Cheltenham Chronicle" Photo. Copies 1s. and 1s. 9d. each, post extra.]

**Knight & Hutchings,  
XMAS GIFTS**

FOR MEN.

Most Acceptable: "Something to Wear."



FANCY PULLOVERS, 6/11, 25/-  
ALL-WOOL CARDIGANS, 7/6,  
and 21/-.  
ALL-WOOL WAISTCOATS,  
10/6, 21/-.  
"DENT'S" LINED GLOVES,  
6/11, 15/6.  
"WATTS" TROUSER  
PRESSES, 10/6, 30/-.  
TIE PRESSES, 2/6, 4/6.  
SILK TIES, 1/6, 2/6, 3/6.  
SILK HANDKERCHIEFS 1/-,  
6/6.  
TIE and HANDKERCHIEF to  
match 2/11, 5/11.  
SCARVES, 2/6, 10/6.  
FANCY GOLF HOSE,  
FANCY SOCKS,  
DRESSING GOWNS, Etc.

**74 HIGH STREET, CHELTENHAM**  
(Facing Bath Road).

**CHRISTMAS GIFTS.**

: A Choice Selection of :  
Finished and Unfinished

**NEEDLEWORK.**

Traced Linens & Tapestries.

**WOOLS and SILKS**

in All Shades.

**PRITCHARD'S  
Art Needlework Studio,**

: 14 Colonnade, :  
**CHELTENHAM.**

**CHRISTMAS NOVELTIES**

In Fancy Goods, Cosies, Sachets, Pincushions,  
Necklets, etc.



**NORTHERN SENIOR LEAGUE CUP TIE IN CHELTENHAM.**  
Cheltenham Town played its First Round Tie on Saturday last, Dec. 8th, in above League, at the Whaddon Lane ground, their opponents being Cinderford. After a very even game, the match resulted in a draw of one goal each.

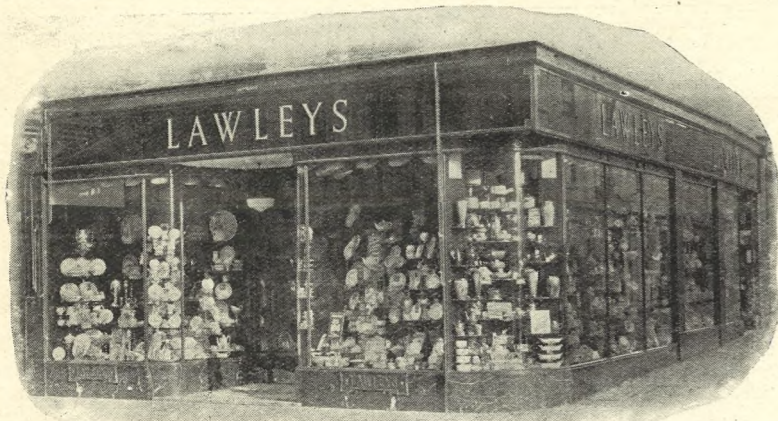
1.—The Cheltenham team (left to right): T. A. E. Smith, J. R. Hill, Castle (Linesman), J. Groves, A. F. Gell, 2, 3, 7, and 8.—Spectators. Fields, F. Weaving, A. Meek, S. Walker, W. Lucas (Linesman). In front: T. R. Smith, H. Woodrow, R. Pearce, J. Kilbey, W. Warwick, F. Davis.  
Watts, D. Regan, G. Watson (Trainer). 4.—First goal for Cheltenham.  
In front: J. W. Smith, A. E. Sinkinson, 5.—Cinderford team: Tingle (Trainer), A. Ellis, F. Selwyn, J. Wood, W. White, W. 6.—Heads for the ball in front of Cinderford's goal.

**R. G. STEPHENS & SON, for XMAS GIFTS.**

Trunks, Suit, Blouse, Writing, Music Attache, and Fitted Cases. School Bags. Wallets, Note Cases, Purses, Mirrors. Collar and Hat Boxes. Hand Bags. Ladies' and Gents' Hair Brushes, Seat Sticks, Hunting Crops, etc.

**CORNER HOUSE, WINCHCOMB STREET AND ALBION STREET, CHELTENHAM.**





LAWLEYS' NEW PREMISES IN HIGH STREET.

## Lawleys' Gifts in China and Glass.

### Artistic and Useful Christmas Presents

Will be found in abundance at LAWLEYS' at prices suitable to any expenditure. No Presents will give more pleasure—to the proud recipients or to you who choose them from our comprehensive stock. *Your visit of inspection is invited.*

**LAWLEYS (1921) Ltd.,** Specialists in Glass & China, 109 High St., Cheltenham.  
*(Removed from the Promenade).*

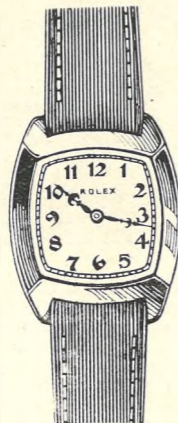


The marriage took place at St. Gregory's R.C. Church, on Nov. 24th, of Mr. Albert Nicholls, Albion Gardens, Gloucester-road, Cheltenham, to Miss Beatrice Maud Richards, eldest daughter of Mr. and Mrs. R. Richards, The Farmers' Arms, Apperley, near Tewkesbury.

### Compliments at Gift Time!

## ROLEX

WATCHES OF PRECISION.



SILVER ..... 50/ to £5.  
GOLD ... 4 Gns. to £12.

NO finer choice than a  
ROLEX. No more  
greatly appreciated gift.

GOLD ... 5 Gns. to £10.  
GEM SET ... £18 to £90.

The choice of Rolex Wristlets as gifts for your friends is a compliment to their appreciation of beauty and a tribute to your own good taste. The 24 Awards won by Rolex bear testimony to the un-deviating accuracy of their watches.



**H. M. SIMMONS,**

Goldsmiths and Silversmiths,

384 HIGH STREET,  
CHELTENHAM



### ST. JAMES'S CHURCH, GLOUCESTER, SALE OF WORK.

In aid of School improvements, Church repairs, and other needs, a two days' Sale was held in St. James's School on Thursday and Friday, Dec. 6 and 7. The opening ceremony was performed on Thursday by Miss Headlam, of The Palace, Gloucester, the Chairman being the Mayor (Alderman J. O. Roberts). Group at the opening. Miss Headlam seated, third from left. The Mayor standing fourth from left. Seated fourth from left is the Mayoress, and second from right is Lady Bruton.

\*\*\*\*\*  
**H. E. RANDALL, Ltd.,** HAND-SEWN MAKING from 30/-  
6c PROMENADE, CHELTENHAM, REPAIRS SAME DAY.  
ARE NOW SHOWING a Large Selection of JOINT AND ARCH SPECIALISTS AND  
Slippers, Evening Shoes & Hose BUNION CURERS,  
SUITABLE FOR CHRISTMAS GIFTS. London City Honours.  
**PROGRESS BOOT WORKS,**  
21 MONTPELLIER STREET, CHELTENHAM  
(Opposite P.O.).  
Agents for "CANTILEVER" Shoes.



MR. AND MRS. JOHN MILES, of Fox Hill Inn, Naunton, who celebrated their golden wedding on Nov. 30th. They are both very active, and have five sons and four daughters living, 24 grandchildren, and one great-grandchild. One of their sons is P.C. J. Miles, of Cheltenham Police Force.

### "Picturesque Gloucestershire."

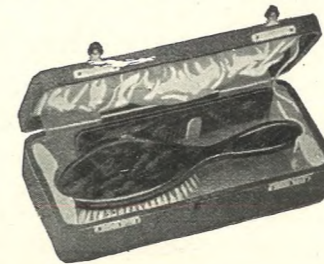
A BOOK EVERY GLOUCESTRIAN SHOULD POSSESS.  
CALL AT THE "ECHO" OFFICES AND SEE FOR YOURSELVES.

## "VALET" Auto Strip Safety Razor



We invite your inspection of our large assorted stock of Useful Gifts.

**WILLIAMS**  
THE CUTLERS,  
19 WINCHCOMB ST.,  
CHELTENHAM.



## SPECIAL CHRISTMAS DISCOUNT OFFER!

10%—2/- in the £  
(Excepting Price Maintained Goods)

DISCOUNT ON ALL  
CASH PURCHASES  
BEFORE XMAS

AT

THE SHOP  
RENOWNED  
FOR BEST  
VALUE  
FOR  
MONEY

FOR BEST  
SELECTION

MY  
SPECIAL  
STOCK OF  
USEFUL

XMAS  
PRESENTS FOR  
MOTORISTS AWAITS  
YOUR INSPECTION.

THE MOTOR-CYCLE  
SPECIALIST,

BATH STREET,  
CHELTENHAM.

BUY  
FROM  
PAYNTER.

*Leslie Paynter*





**ST. LUKE THE LESS, GLOUCESTER, SALE OF WORK.**

A Bazaar for funds to complete the Church Building was held on Wednesday and Thursday, Dec. 5th and 6th, in the Old Corn Exchange. The opening ceremony was performed on Wednesday by the Lord Bishop, and on Thursday by Lady Guise. Group at Thursday's ceremony. Lady Guise is seated third from left, Mr. F. K. Foster (Chairman), The Vicar (Rev. E. G. Pritchard), and Councillor Edwards are seated on right.

["Cheltenham Chronicle" Photo. Copies 1s. and 1s. 9d. each, post extra.

\*\*\*\*\*

**YOUR YEARLY PROBLEM SOLVED AT "THE FAMOUS"**

**TIE and HANDKERCHIEF SETS**

**COLOURED SILK HANDKERCHIEFS,**

**PULLOVERS,**

**GLOVES,**

**SHIRTS,**

**PYJAMAS,**

**TIES,**

**FUR GLOVES,**

**MOTOR RUGS,**

Many an anxious time can be saved over the Gift Question for Men and Boys by a Visit to "The Famous." There is not a shadow of a doubt that the vast majority of Men far prefer something to wear. Our Stocks are Fuller and More Comprehensive than ever, and "Famous" Prices are always Keen Prices.

**"THE FAMOUS"**

Proprietor: A. N. COLE.

The District Shopping Centre for Men's and Boys' Christmas Wear and Gifts.

**350-1 HIGH STREET, Cheltenham**

**SOCKS & STOCKINGS, TROUSER PRESSES, LEATHER WEAR,**

**CARDIGANS, GOLF HOSE,**

**WOOL SCARVES, DRESSING GOWNS,**

**MOTOR GAUNTLETS, 'WOLSEY' and 'THETA.'**

**White Handkerchiefs, Silk & Wool Scarves,**

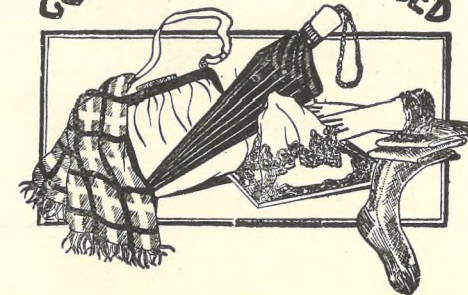
**Say a Happy Xmas with Gifts FROM**

**WARD'S**



Choosing Xmas Gifts becomes a real pleasure at Ward's instead of a somewhat harassing problem. There is such extremely wide variety of presents to Suit All Tastes, everything is so ably arranged, and all goods are such Excellent Value for Money. Why not come to Ward's and do your Xmas Shopping to-day?

**GOOD GIFTS - LOW PRICED**



**FOR LADIES :**

FURS, GLOVES, HANDKERCHIEFS, ART SILKS, UNDIES, SCARVES, HOSIERY, HANDBAGS, UMBRELLAS, MANICURE SETS, ATTACHE CASES, FANCY GOODS, Etc. Etc.

**FOR CHILDREN :**

WOOLLIE SETS, PARTY FROCKS, HANDKERCHIEFS, GLOVES, Etc. ALL KINDS OF TOYS, GAMES, AND BOOKS FROM THE GRAND TOY BAZAAR.

**FOR THE HOME :**

CUSHIONS, COSIES, FANCY LINENS, EIDER-DOWNS, QUILTS, CURTAINS, SHEETS, BLANKETS, DAMASK CLOTHS.

SEE WINDOWS FOR INSPIRATIONS.



**BRING THE KIDDIES TO ALLADIN'S CAVE AND THE GRAND TOY BAZAAR**

**SOME SPECIAL VALUES :-**

Fur-Back GLOVES. We hold a Wonderful Selection from 8/11.

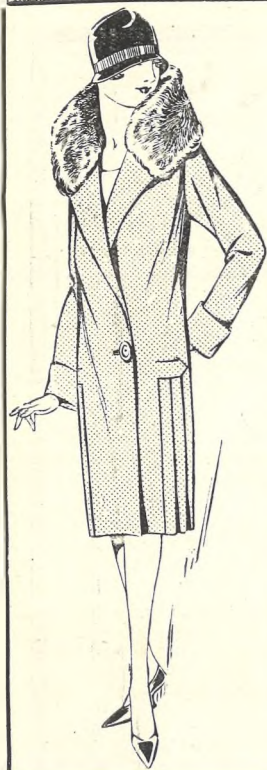
CHUBBY UMBRELLAS in Every Shade. Prices from 5/-.  
CARDIGANS and JUMPERS make an Ideal Gift. Prices range from 6/11½ to 29/11.

HANDBAGS. Our Value and Selection is Unequalled. Prices range from 3/11½.  
OUR SCENIC BAZAAR, in which we have reproduced "ALADDIN'S CAVE," is the first taste of Christmas Joys; something that cannot be seen anywhere else. Admission to "ALADDIN'S CAVE" 6d. each. PRESENTS FOR ALL, Adults as well as Children. Each Present for Adults is Numbered, certain of them (1 in every 30) are Lucky Numbers, entitling the Holder to a FREE GIFT VALUE 5s.

**E. L. WARD LIMITED, HIGH ST., CHELTENHAM**

'PHONE 3781.





A smart WINTER COAT, in Wool Velour, Trimmed Fur Collar, Smartly Cut and Tailored, and half lined Art. Silk. In the New Mahogany Shades. 49/6

Try Dicks first

# GIFT SUGGESTIONS

Practical and Inexpensive.

At no other store will you find such a wide range of Useful and Attractive Articles Suitable for Gifts, every one being selected with the greatest care by buyers of lifelong experience, which enables us to Offer You Good Taste and Economy.

## FATHER XMAS

Has now arrived in our

## TOY BAZAAR

and wants all the children to visit him and then write him a letter for which prizes will be offered.



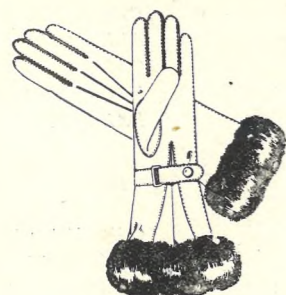
Dainty DANCE FROCKS in Celanese Taffeta, with Frilled Skirt, in Flame, Peach, Powder Blue, etc. 21/6



TRINITY SETS (Knickers attached), in Non-Ladder Crepe-weave Art Silk, Trimmed Lace. A Special Purchase. Usually Sold at 10/11. All Shades ... 6/11 1/2



New Shape Tie Side OVERALLS, in Good Quality Printed Cambrics, 3/11, 2/11, and ... 1/11 1/2



A Smart GLOVE in Selected Nappa, Fleecy Lined, with Fur Top and Strap Wrist. In Tan only 8/11 1/2



Also in Fine Quality Doe-skin, Fleecy Lined, with Fur Wrist Inside 12/11



Pure Silk HOSE, with Long Fashioned Panel and Wide Susp. Top, Pointed Heel, and Lisle Heel and Toe. In 15 shades. 4/11 1/2

Pure Silk HOSE, Reinforced Art Silk, Long Panel, with Reinforced Art Silk Susp. Top, fully fashioned. Pointed Heel and Lisle Heel and Toe. 20 shades. A very attractive Stocking, giving all the appearance of Pure Silk ... 3/11 1/2

**Dicks & Sons Ltd.**  
172 & 173 HIGH STREET  
**Cheltenham Spa**  
50 YEARS REPUTATION FOR VALUE.  
TEL

# THE CHELTENHAM CHRONICLE AND GLOUCESTERSHIRE GRAPHIC

GRATIS SUPPLEMENT. With which is incorporated the "Cheltenham Looker-On." Saturday, December 22, 1928. No. 1,460.

## CHELTENHAM THEATRE AND OPERA HOUSE.

THIS WEEK: THEATRE CLOSED. Re-opening Boxing Day at 2.30 and 7.30 with the GRAND CHRISTMAS PANTOMIME "CINDERELLA."

### THE PALACE, HIGH STREET, Cheltenham.

Director: Shakspeare Shenton.  
Monday and Wednesday:—  
**REGINALD DENNY** in **RED HOT SPEED.**  
Red-hot Love! Red-hot Trouble! White-hot Laughter!  
Screened at 2.45, 4.45, 6.45, 8.45.  
Thursday, Friday, Saturday:—  
**CHARLIE MURRAY**  
**ALICE DAY**, and Big All-Star Cast in  
**THE GORILLA.**  
Laughs! Thrills! Mystery! Suspense! Surprising! Sensational! Spooky! Better than the Play!  
Screened at 2.45, 4.45, 6.45, 8.45.  
Palace Popular ORCHESTRA.

### THE DAFFODIL

Cheltenham's Premier Cinema.  
Continuous Daily, 2.30 to 10.15.  
Monday, Dec. 24, for Five Days (Closed Christmas Day).  
A Comedy of Naval Life,  
**SAILORS DON'T CARE.**  
A Dish that will Tickle the Palate of Old and Young.  
Featuring **ESTELLE BRODY** and **JOHN STUART.**  
This is Joy Week at the Daffodil. Bring the Youngsters to this Great Laugh Programme.  
The Daffodil Orchestra at All Performances.

Christmas, 1928.  
**MARTIN & CO., LTD.**

ENGAGEMENT RINGS From 25 5s.

PROMENADE, Cheltenham.  
Phone 2821. Established 1806.



### INTERESTING CHELTENHAM WEDDING.

The marriage took place on Sunday, Dec. 9th, at St. Paul's Church, Cheltenham, of Mr. Geoff. Wakefield, second son of the late Mr. and of Mrs. T. J. Wakefield, of Homeleigh, New-street, Cheltenham, to Miss Eva Edwards, youngest daughter of Mr. R. and the late Mrs. Edwards, of 11 Hanover-street, St. Paul's, Cheltenham. The bride and bridegroom leaving the church.

["Cheltenham Chronicle" Photo. Copies may be obtained.

### Winter Garden

NEW KINEMA, PROMENADE, CHELTENHAM  
Director: Shakspeare Shenton.  
Monday and Wednesday:—  
**LYA MARA** and **BEN LYON** in **DANCING VIENNA.**  
Screened at 2.45, 4.45, 6.45, 8.45.  
**Roller Skating, South Pavilion,** 11 to 12.30, 2.30 to 4.30, 6.30 to 10.  
Thursday, Friday, Saturday:—  
**Ford Sterling, Ruth Taylor,** **Alice White, Chester Conklin** in **GENTLEMEN PREFER BLONDES.**  
Screened at 2.45, 4.45, 6.45, 8.45.  
**Maurice Maivern and Orchestra.**  
FREE CAR PARK.

### COLISEUM CHELTENHAM.

Monday, 24th Dec. (Closed Christmas Day).  
6.40 and 8.40 p.m.  
Matinee Boxing Day, 2.30 p.m.  
THE BIG MUSICAL SHOW:  
**BACK YOUR FANCY.**  
Including "Shooting Star," the racehorse.

### North Street

PICTURE HOUSE, Cheltenham  
From 2.30 p.m. Continuous.  
Monday and Wednesday:—  
**THE WARNING.**  
Featuring **JACK HOLT** and **DOROTHY REVIER.**  
Thursday, Friday, Saturday:—  
**RANGER OF THE NORTH,**  
Featuring **LINA BASQUETTE** and the Dog "Ranger."

You can't Look Smarter. You can't Feel Cosier than in the Famous SODEN WARM.

**Sensier,**  
3886 HIGH STREET, CHELTENHAM.

Telephone 2558.  
**W. Scott Cooper,**  
Diamond Merchant, Jeweller, Goldsmith and Silversmith,  
The Promenade, Cheltenham  
LICENSED VALUER.

# DALE, FORTY and CO. LTD For The Best PIANOS





**FUNERAL OF MR. H. W. ALBINO AT BOURTON.**

The funeral of Mr. H. W. Albino, son of Mrs. Albino, of The Manor, Bourton-on-the-Water, who at the age of only twenty years was killed in a motor accident at Upper Slaughter, took place at Bourton Parish Church on Friday, Dec. 14th.

1.—The funeral procession passing down the old-world main street of Bourton on its way to the cemetery. 2.—Mr. H. H. Albino (brother), Mr. Stanley Morgan, and Mr. Whiting (undertaker).

3.—Mr. E. W. and Miss Kendall. 4.—The deceased.

5.—The four bearers (left to right): Messrs. F. Whiting, E. Hemming (gardener at The Manor), J. Ollife, and J. Williams (outler).

6.—Mourners following coffin from church.

["Cheltenham Chronicle" Photos. Copies 1s. and 1s. 0d. each, post extra.

“ ? \* ! ; ! ! — ? ”

WHAT CAN I GIVE HIM?

This Question Can Soon be Settled to Your Liking by Paying a Visit to—

**F. H. EDWARDS,**

116a HIGH STREET (opposite Regent Street), CHELTENHAM SPA.

And Inspecting His Large Stock of

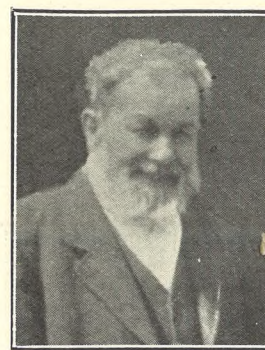
PULLOVERS, CARDIGANS, SHIRTS, GLOVES, HATS, TIES, SOCKS, DRESSING GOWNS, TIE SETS, HANDKERCHIEFS, etc.

Let **MOUSELLS** Move You

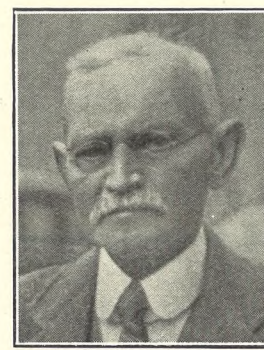


Estimates for Removals and Storing Free. 'PHONE 2112.

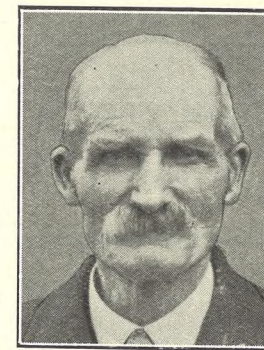
Offices: **CHELTENHAM.** **AMBROSE STREET.**



**MR. EDWARD GEORGE KILBEY,** who died on December 10th, aged 79 years. He was a prominent member of the Shipton Ollife Primitive Methodist Church, and a local preacher for the past 40 years.

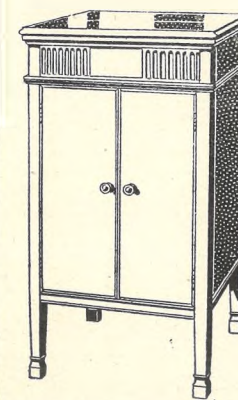


**MR. ALBERT H. THOMAS,** of 77 Worcester-street, Gloucester, whose death took place on Dec. 17th, 1928, at the age of 71 years. Mr. Thomas was an old Gloucesterian, and for many years resided at Leeds.



**MR. WILLIAM T. COX,** fruiterer, of St. George's-road, Cheltenham, who passed away on Dec. 8th after a painful illness, patiently borne, aged 68 years. He lived in the Christ Church district nearly all his life.

**A New Gramophone with a New Thrill.**  
ANOTHER GREAT COLUMBIA TRIUMPH!



Introducing the 1929 Viva-Tonal "PLANO-REFLEX" Principle of Amplification.

INCREASED VOLUME.

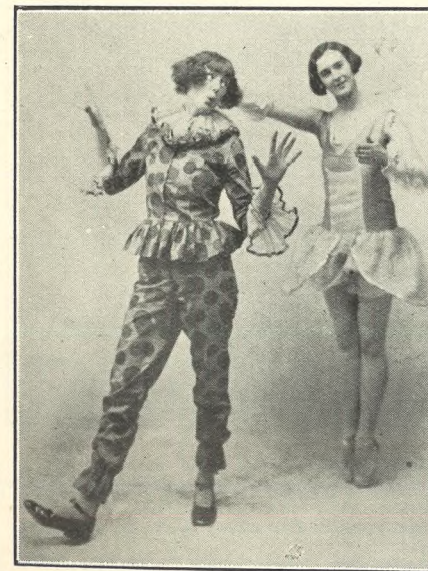
INCREASED RANGE.

IMPROVED TONE.

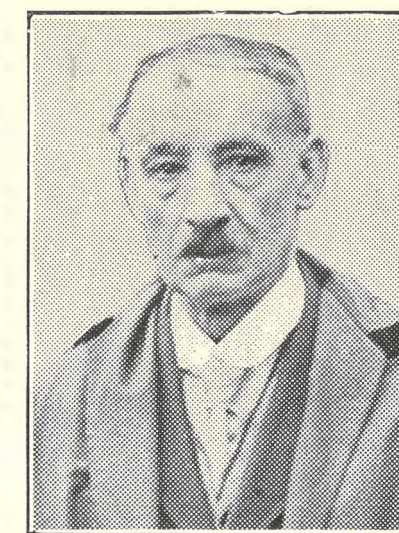
New Models in stock from £11 10 0.

Columbia Portables from . £3 10 0.

**Crichton's** Gramophone : Depot, :  
The Strand, CHELTENHAM. 'PHONE 2378.



**CABARET PERFORMERS AT THE ART SCHOOL BALL AT CHELTENHAM TOWN HALL LAST NIGHT.** Misses E. Hastie and Murray (Instructress).



**MR. FRANK H. BASTIN,** of 46 Winchcombe-street, Cheltenham, who died Dec. 12, aged 67 years. He sat for the North Ward on the Town Council from 1921 to 1927, and was an electrical contractor.

**LANCE'S**

WILL OFFER ON

**Thursday Next,**

**DEC. 27th,**

A Wonderful Collection of

**Ladies' Gowns,**

Made from the Beautiful  
:: Celanese Fabrics. ::

The Usual Price of these Gowns  
**2½ Gns. to 3½ Gns.**

On **THURSDAY NEXT**  
: they will be sold at :

**29/6.**

See Windows and  
Visit Showrooms.

**JOHN LANCE & Co.,**  
LTD.  
**CHELTENHAM SHOPPING CENTRE.**





**PICTURESQUE GLOUCESTERSHIRE.—MISERDEN.**

Miserden is a village on the Cotswolds, eight miles from Cirencester and ten from Cheltenham. Far from the main roads, it is very secluded, but it has an interesting history. The fine Manor House, one of the gems of the Cotswolds, now owned by Mrs. Noel Willis, was garrisoned by Cromwell during the Civil Wars of the Caroline period. It was carefully restored and considerably added to by the late Mr. F. N. H. Willis, whose death last year was so deeply deplored.

- 5.—The Entrance Door and Porch of Miserden Park. It is contemporaneous and of similar ornament and decoration as the Stanway gatehouse.
- 6.—The staircase from the hall.
- 7.—A cedar avenue on South side of the grounds.
- 8.—The fine stone fireplace in the hall, with the Sandys' arms. The Sandys' family lived here for generations.

[“Cheltenham Chronicle” Photos. Copies 1s. 9d. each, postage extra.]



**ROUND THE TOWN IN CHELTENHAM: SOME SNAPS THIS WEEK.**

**STEPHENS & SON for NEW YEAR GIFTS.**  
 Trunks, Suit, Blouse, Writing, Music Attache, and Fitted Cases. School Bags. Wallets, Note Cases, Purses, Mirrors. Cellar and Hat Boxes. Hand Bags. Ladies' and Gents' Hair Brushes, Seat Sticks, Hunting Crops, etc.  
**CORNER HOUSE, WINCHCOMB STREET AND ALBION STREET, CHELTENHAM.**





**DO YOU REMEMBER?**

Cheltenham Board of Guardians about 45 years ago, evidently taken on an outing. This is a veritable link with the past, as most of those in the picture can be recalled by Cheltonians of middle age, yet everyone is now dead, Sir James Agg-Gardner being the last to pass away this year. It is interesting to note the Georgian style of coat worn by Mr. S. Onley on extreme left.

Back Row: Messrs. S. Onley, Geo. Mitchell, G. Nicholas, H. Weaver, W. H. Ferguson, Dr. H. E. Jessop, H. Pumfrey, E. H. Parsonage, E. A. Dunn, S. B. Dix, J. Woodward, — Humphries, A. J. Shinner, W. Hicks, E. Shipway, H. Neale.  
 Second Row: Messrs. J. Tanner, J. Price, W. Heath, G. M. Kite, J. T. Agg-Gardner, Canon Trye, G. Parsonage, W. H. Gwinnett, C. W. Lovesy, J. B. Taylor.  
 Front Row: Messrs. S. H. Brookes, W. Simms-Bull, F. Ticehurst, G. B. Witts, J. T. Darby, B. Hack.

**GIFTS APPRECIATED**  
 By Men-Folk.

LINED GLOVES,  
 HANDKERCHIEF and TIE,  
 WOOL JACKET,  
 Or DRESSING GOWN,  
 PULLOVER,  
 TROUSER PRESS.  
 A FINE SELECTION OF EACH.  
 'Phone 2706.

**A. BECKINGSALE,**  
 111 High Street, CHELTENHAM.

**YOU CAN BE SURE**

OF FINDING A GOOD  
 SELECTION OF THE  
**Better Qualities**

IN  
**MEN'S WEAR**

AT  
**RAYMOND JAMES',**  
 78 WINCHCOMBE STREET.  
 'Phone 2648.

**BEST QUALITY**

**CIDERS**

IN BOTTLE.—Sparkling and Still

**BARTHOLOMEW,**

419, 420 HIGH STREET,  
 CHELTENHAM.

Wines, Spirits, Ales, Table Waters, & Grocery



**OLD CHELTONIANS' RUGBY TEAM WHO BEAT CHELTENHAM COLLEGE ON TUESDAY LAST.**  
 From left: G. C. Tanner, A. L. S. Jackson, C. G. Burton, R. L. Demuth, H. D. Griffith, J. A. M. Rice-Evans, R. Ling, J. P. W. Mallalieu, G. G. Maby, J. D. Kerr, E. E. T. Taylor, G. T. B. Leigh, R. C. Cheyne, G. J. King-Turner, G. H. T. Billson.

**JACOBS & SMITH,**  
 The Popular FURRIERS.

THE HOUSE FOR  
 RELIABLE FURWEAR  
 And THE CHEAPEST.

Always something Smart to show you.

**104 High Street,**  
**:: CHELTENHAM ::**

(FACING LLOYDS BANK).



**GABARET PERFORMERS AT THE ART SCHOOL BALL.**  
 Pupils of the Irving Academy, Bath-road, Cheltenham, who gave a clever Cabaret Performance at the Art School Ball last night at the Cheltenham Town Hall. ["Cheltenham Chronicle" Photo. Copies may be obtained on application.]

*Entertain Your Guests*  
 AT THE  
**COLISEUM THEATRE**

(Phone 3715) CHELTENHAM. (Phone 3715)

Week Commencing Mon., 24th Dec. (Closed Xmas Day)  
 6.40. TWICE NIGHTLY. 8.40.  
 Matinee, Boxing Day, 2.30 p.m.

THE BIG LAUGHTER SHOW—  
**Back Your Fancy,**

A FIRST-CLASS MUSICAL REVUE, INCLUDING  
 THE "RACEHORSE" "SHOOTING STAR."

This is an entertainment suitable for young and old. Bring the Children to Boxing Day Matinee. They will enjoy it.

PRICES (including Tax):  
 Orchestra Stalls. Dress Circle. Pit Stalls. Pit Boxes (for 4).  
 1/9. 1/3. 9d. 6d. 10/6.  
 THERE IS NO EXTRA CHARGE FOR BOOKING.

**ROBERTSON & Co.**

(T. R. PRITCHARD, Proprietor),

**CIGAR and CIGARETTE**

IMPORTERS,

8 Colonnade, CHELTENHAM.

*Specialities.*

Robertson's Fdinburgh Smoking Mixture.	Robertson's Home-Made Virginia Cigarettes.	Robertson's Celebrated "Croesus" Cigars.
4/6 per 1/4 lb.	100 .. 6/8 50 .. 3/4 25 .. 1/8	50 .. 30/- 25 .. 16/-

Noted House for PIPES in all the Best Makes.  
 AGENTS for Barling, Loewe, Dunhill,  
 :: and B.B.B. Celebrated Briars. ::

A Large Variety of Cigarette Cabinets.





**CHRIST CHURCH, CHELTENHAM, INFANTS' SCHOOL CONCERT.**

A little concert by the children of above school was given on Tuesday afternoon, Dec. 18th, to their parents and friends.

- 1.—Rosie and her Wonderful Dollies.
- 2. Christmas Stockings.
- 3.—Nursery Rhymes.
- 4.—Market Square.
- 5.—The Snowman.

["Cheltenham Chronicle" Photos. Copies 6d. and 1s. each, post extra.

**HAND-SEWN MAKING from 30/-**  
 REPAIRS SAME DAY.  
 JOINT AND ARCH SPECIALISTS AND  
 BUNION CURERS.  
 London City Honours.  
**PROGRESS BOOT WORKS,**  
 21 MONTPELLIER STREET, CHELTENHAM  
 (Opposite P.O.)

**FOR PRESENTS GIVE PICTURES.**  
**WALLACE RODWAY,**  
 Picture Framers and Gilder.  
 13 PORTLAND STREET, CHELTENHAM  
 Has an Up-to-date Selection of  
 Framed and Unframed Pictures  
 Suitable for Christmas Gifts.

**H. E. RANDALL, Ltd.,**  
 6c PROMENADE, CHELTENHAM,  
 ARE NOW SHOWING a Large Selection of  
**Slippers, Evening Shoes & Hose**  
 SUITABLE FOR CHRISTMAS GIFTS.  
 Agents for "CANTILEVER" Shoes.

**GIVE  
 PURE  
 SILK.**

That very special last-minute gift... choose it at our newly-opened display of ties, scarves, handkerchiefs, shawls, pyjamas, jumpers, gowns... plain, shot, and printed silks.  
 WE ARE OPEN ALL DAY SATURDAY.  
**CRyseDE, Ltd., 4 LITTLE PROMENADE, Cheltenham**

Crystede pure silks are spun, woven, dyed, and hand-block printed in ENGLAND.

**THE CHELTENHAM CHRONICLE AND GLOUCESTERSHIRE GRAPHIC**

GRATIS SUPPLEMENT.

With which is incorporated the "Cheltenham Looker-On."  
 Saturday, December 29, 1928.

No. 1,461.

**CHELTENHAM THEATRE AND OPERA HOUSE.**

**TO-DAY, at 2.30 and 7.30, and next week at 7.30. Usual Matinees, THE GRAND CHRISTMAS PANTOMIME "CINDERELLA."**

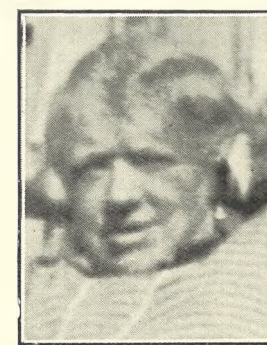
**THE PALACE, HIGH STREET, Cheltenham.**  
 Director: Shakspeare Shenton.

All That is Brightest and Best To You All for 1928.  
 Monday, Tuesday, Wednesday:—  
**BILLIE DOVE,**  
 Gilbert Roland, Noah Beery, in  
**THE LOVE MART,**  
 A Colourful, Romantic Story of New Orleans.  
 One of the Year's Greatest Pictures!  
 Screened at 2.45, 4.45, 6.45, 8.45.  
 Thursday, Friday, Saturday:—  
 Milton Sills, Doris Kenyon in  
**VALLEY OF THE GIANTS.**  
 Peter B. Kyne's Smashing Novel of Love, Thrills, and Fights in the Timber Country.  
 Screened at 2.45, 4.45, 6.45, 8.45.  
**PALACE Popular ORCHESTRA**



MRS. CHARLOTTE ROBESON.

of Abbey Cottage, Tewkesbury, who died on Dec. 20, 1928, in her 85th year, widow of the late Ven. Archdeacon Hemming Robeson (Vicar of Tewkesbury 1877-1892).



MISS FLORENCE FANNY YARNOLD, for many years with Messrs. Dobell and Co., at their Grosvenor-street, Cheltenham, establishment, who died suddenly at the home of her brother, Councillor H. T. Yarnold, on Dec. 18th, aged 52 years.

**THE DAFFODIL**  
 Cheltenham's Only Real Cinema.

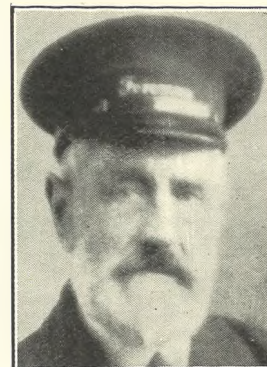
Continuous Daily 2.30 to 10.15.  
 Monday, Tuesday, Wednesday:—  
 TWO-FEATURE SHOW.  
**MARION DAVIES** in  
**THE 'VARSITY GIRL,**  
 And **REX,** The King of Wild Horses, in  
**GUARDIANS OF THE WILD.**  
 Thursday, Friday, Saturday:—  
 H. A. Vachell's Famous Story.  
**QUINNEY'S,**  
 Starring **ALMA TAYLOR** and **JOHN LONGDEN.**  
 Accompanied by  
**THE DAFFODIL ORCHESTRA**

**MARTIN & CO., LTD.**

**ENGAGEMENT RINGS**  
 From £5 5s.

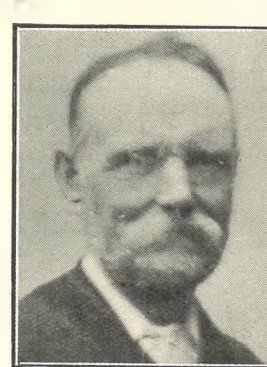
PROMENADE,  
**Cheltenham.**

'Phone 2821. Established 1806.



MR. A. PERKS,

foreman Tewkesbury Railway Station. Served 51 years on the L.M.S.R., 46 at Tewkesbury, to whom was made a presentation of Treasury notes amounting to £24 on Thursday night. Retired end of Oct.



MR. EDWARD WILLIAMS, of 28 Sandford-street, Cheltenham, who died on Dec. 13th, aged 83 years. He enlisted in the R.E.'s over 60 years ago, and retired on pension in 1874. He was carried to his grave under a Union Jack by old members of the R.E.

**Winter Garden**

**NEW KINEMA, PROMENADE, CHELTENHAM**  
 Director: Shakspeare Shenton.  
**FOR SIX DAYS!**  
 Wishing You All a Bright and Prosperous New Year.  
 The Companion Picture to "Beau Geste."  
 Gary Cooper, Evelyn Brent, and **NOAH BEERY** in  
**BEAU SABREUR,**  
 From the Famous Novel by Major P. C. Wren.  
 You Simply Must See the Sequel to "Beau Geste."  
**Maurice Malvern and Orchestra.**  
**FREE CAR PARK.**  
 Roller Skating, South Pavilion, 11 to 12.30, 2.30 to 4.30, 6.30 to 10.

**COLISEUM**  
 CHELTENHAM. 'Phone 3715.  
**MUSICAL COMEDY REVUE, STEADY TRADE.**

**North Street**  
 PICTURE HOUSE, Cheltenham.  
 From 2.30 p.m. Continuous.

Monday, Tuesday, Wednesday:—  
**SIR ALAN COBHAM, K.B.E.,**  
 Featuring in  
**THE FLIGHT COMMANDER.**  
 Thursday, Friday, Saturday:—  
**GRIP OF THE YUKON.**  
 Featuring **NEIL HAMILTON** and **FRANCIS X. BUSHMAN.**

**MAISON ANNETTE,**  
 Specialists in Exclusive  
**CORSETS & LINGERIE.**

Kensington House,  
 PROMENADE,  
 CHELTENHAM.

'Phone 2122.

**DALE, FORTY and Co. Ltd. For The PIANOS**



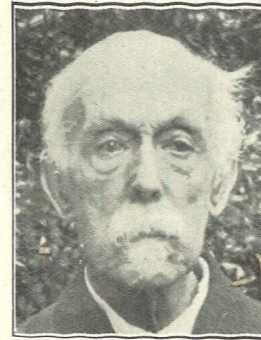


**CHILDREN'S MEET OF THE COTSWOLD HOUNDS AT SEVEN SPRINGS HOUSE.**

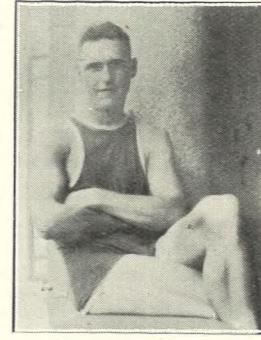
A most interesting meet for children of Members of the Cotswold Hunt took place on Dec. 21st at Seven Springs House, the residence of Capt. and Mrs. Richardson, who hospitably entertained all comers. Children were appointed first and second Whips and acted as such in the field.

- 1.—Part of the big field waiting while the hounds were laid on.
- 2.—Little Miss Bagnall on her first mount.
- 3.—The First Whip (Master Simon Leveson) and Second Whip (Miss Esme Brierley).
- 4.—The Master, Staff, and many of the children riders, before mounting.
- 5.—Some of the field.
- 6.—Master Barry Peacey making friends with the hounds.
- 7.—A youthful enthusiast.
- 8.—Spectators.
- 9.—The Master arranging the appointments in the field.
- 10.—Moving off. The First Whip rides with one of the Staff Whips.

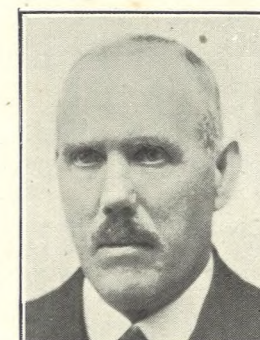
["Cheltenham Chronicle" Photos. Copies 1s. and 1s. 9d. each, post extra.



**SIR WM. THISELTON DYER, K.C.M.G., C.I.E., M.A., D.Sc., Ph.D., J.P.,** of The Ferns, Crickley Hill, who died on Dec. 23rd, aged 85 years. He was for many years a Director of Kew Gardens (1885-1905), and was a great scientific botanist, and contemporary and friend of Charles Darwin.



**GUARDSMAN W. G. HOLTAM,** only son of Mr. and Mrs. W. Holtam, of Holdenhurst, Winstonian-road, Cheltenham, who is captain of the 2nd Battalion Scots Guards' Water Polo Team, now stationed at Shanghai.



**MR. J. E. WHITTAKER,** of 3 Hawarden-parade, Cheltenham, who is retiring on pension on Dec. 31st, after 40 years' service with the Wesleyan and General Assurance Society in Cheltenham.

\*\*\*\*\*

**NEW YEAR GIFTS For Men-Folk.**

LINED GLOVES, HANDKERCHIEF and TIE, WOOL JACKET, Or DRESSING GOWN, PULLOVER, TROUSER PRESS.

A FINE SELECTION OF EACH. 'Phone 2706.

**A. BECKINGSALE,** 111 High Street, CHELTENHAM.

**HALF-PRICE SALE.**

From DEC. 29th to JAN. 7th, the **Progress Boot Works,** Of 21 MONTPELLIER STREET and 295 HIGH STREET, CHELTENHAM. Are offering the Whole of Their New and Extensive Stock at Exactly **HALF-PRICE.** GRASP THIS OPPORTUNITY.

**Read the "Echo" Daily.**

**FOR PRESENTS GIVE PICTURES. WALLACE RODWAY,** Picture Framer and Gilder, 13 PORTLAND STREET, CHELTENHAM. Has an Up-to-date Selection of Framed and Unframed Pictures Suitable for Christmas Gifts.

**H. E. RANDALL, Ltd.,** 6c PROMENADE, CHELTENHAM, **ANNUAL SALE, NOW PROCEEDING.** Bargains in all styles of Footwear.

Agents for "CANTILEVER" Shoes.

**Let MOUSELLS Move You**



Estimates for Removals and Storing Free. 'PHONE 2112.

Offices: **CHELTENHAM. AMBROSE STREET.**

**1929 CALENDARS and BOOKLETS AT REDUCED PRICES** to effect quick clearance. **THE CHRISTIAN LITERATURE DEPOT,** 19 PROMENADE, CHELTENHAM (Next Y.M.C.A.).

**YOU CAN BE SURE**

OF FINDING A GOOD SELECTION OF THE **Better Qualities**

IN **MEN'S WEAR**

AT **RAYMOND JAMES',** 78 WINCHCOMBE STREET. 'Phone 2648.

**It Pays to Advertise-- in the "Echo."**

**LANCE'S GREAT Winter SALE**

Commences on **Monday Next, DEC. 31st.**

**Huge Bargains**

Will be found in All Departments, with the additional **DISCOUNT of 10 o/o**

**2/- in the £** for Cash at time of Purchase.

**JOHN LANCE & Co., LTD.**

**CHELTENHAM SPA**





CHELTENHAM SCHOOL OF ART FANCY DRESS BALL, AT THE TOWN HALL, DECEMBER 21st.  
 1.—Miss Leeson's Party. 2.—Mrs. Holman's Party. 3.—Mr. T. Harry's Party. 4.—The Staff and Pupils of the Art School.

**NEW YEAR'S EVE**  
 (RACE NIGHT),  
**TOWN HALL,**  
 CHELTENHAM,  
 MONDAY, 31st December.

**Hospitals' Ball. Clifford Essex Band.**

SPECIAL ENGAGEMENT OF

DANCING 9 p.m. to 2 a.m.  
 TICKETS 15s. EACH (including Supper and Buffet), TOWN HALL BUREAU, Cheltenham.



**CHELTENHAM SCHOOL OF ART FANCY DRESS BALL.**  
 Held at Cheltenham Town Hall on Friday, Dec. 21st, it was the most successful of the whole series, the decorations of the Hall and the high quality of the dresses being noteworthy. Over 500 people were dancing.

5.—The prize-winners and the two judges, who were also in fancy dress. All in this group won prizes.  
 6 and 7.—Mr. Boulter's group.  
 8.—Miss Guise's party of Spaniards.  
 9.—Mr. C. Farmer's party.  
 10.—The School of Art Toy Soldiers' Orchestra.  
 11.—Pantoys' party.

[“Cheltenham Chronicle” Photos. Copies 1s. and 1s. 9d. each, post extra]





**POOR CHILDREN'S CHRISTMAS TEA IN CHELTENHAM.**

Nearly 2,000 children from various schools in the Town were Entertained to a splendid Tea and Entertainment at Cheltenham Town Hall on Thursday afternoon, Dec. 20th. Councillor Jas. Allen was one of the principal subscribers and took a great part in carrying the affair through so successfully.

Top. The children at Tea. Bottom. Assembled for the Concert.

**JACOBS & SMITH,**  
The Popular FURRIERS.

For Chilly Days  
Smart Furwear  
Makes an Ideal Gift.

104 High Street,  
:: CHELTENHAM ::  
(FACING LLOYDS BANK).



**GLOUCESTER TO CHELTENHAM ROAD RACE.**

The old Gloucester to Cheltenham Road Race was revived on Boxing Day, when trophies given by Mr. Chas. Dickinson were competed for. 1.—The scene at the finish. A Bourton, of Birchfield and Cheltenham Harriers (arrow), beating H. W. Townsend, of Westbury (extreme left). Both were entered individually. 2.—Left to right: A. Bourton 1st, H. W. Townsend 2nd, and E. Peach (Wesley St. George), 3rd, with Mr. Featherstone. 3 and 4.—The officials at the finish. 5.—Some of the crowd. 6.—The start in Gloucester.

**CAVENDISH HOUSE,**  
CHELTENHAM,  
**WINTER SALE**

Commences

**MONDAY NEXT, Dec. 31st.**

*Genuine Reductions in All Departments.*



# VANDERPLANK

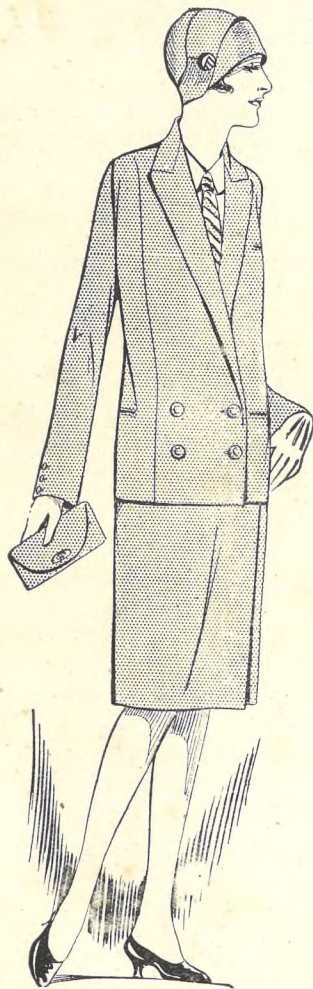
(FROM HARRODS)

# WINTER SALE

Commences

*Thursday Next, Jan. 3rd, at 9 a.m.,*

AND CONTINUES THROUGHOUT JANUARY.



**T**HE object of our Annual Winter Sale is to clear the remaining stocks, and drastic reductions have been made to ensure this, and it offers you exceptional opportunities.

Every Suit, Coat, Dress, Hat and Fur are up to our usual high standard of quality. In many cases the Models are half price or less.

### TYPICAL EXAMPLES.

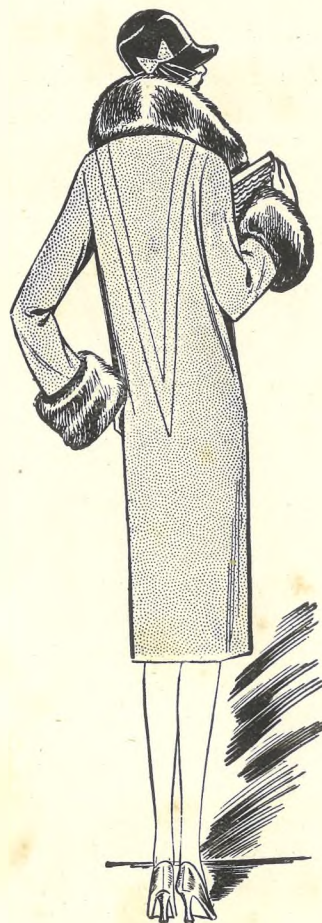
#### TAILORED SUITS (as sketch).

that are perfect fitting, cut on the newest lines that will be the Vogue for the Spring, 1929. Suits for which this House is far famed. Navy Suitings, Grey and Fawn Suitings, Tweeds, etc. A number Reduced to **3 GNS.**

Many Half-Price.

#### GOATS.

The remaining Collection of Coats, both Fur Trimmed and Plain, in Velour, Face Cloth, and Tweeds. This season's Coats in this season's Colours. All sizes, and many Half-price or less. **SALE PRICE 1 to 10 GNS.**



PAY AN EARLY VISIT TO

**381 HIGH STREET, CHELTENHAM SPA.**