

THE CHELTENHAM CHRONICLE AND GLO' SHIRE GRAPHIC

GRATIS SUPPLEMENT.

With Which is Incorporated the "Cheltenham Looker-On,"
Saturday, March 3, 1928.

No. 1,418.

CHELTENHAM THEATRE AND OPERA HOUSE.

This Afternoon (2.30) & Evening (6.40 & 8.40) — THE ITALIAN MARIOKETTES.

NEXT WEEK:

"The Constant Nymph," The Sensational
Success of 1927.

THE PALACE, HIGH STREET, CHELTENHAM

Director: Shakspeare Shenton.

Two Big Features in One Program
Monday, Tuesday, Wednesday:—
The Greatest Circus Film Ever
Made,

BIGGER THAN BARNUM'S

With Viola Dana and
George O'Hara.

Screened at 2.35, 5.0, and 8.25.

LONG PANTS.

Harry Langdon in a Classic of the
Bashful Age.

Screened at 3.50, 6.15, and 8.40
Douglas Cochrane and his Popular
Orchestra.

Thursday, Friday, Saturday:—
TIN-TIN-TIN, The Wonder Dog,
in

HILLS OF KENTUCKY.

Screened at 2.45, 4.45, 6.45, 8.45.

THE DAFFODIL

Cheltenham's Only Real Cinema.
Continuous Daily 2.30 to 10.15.
Monday, March 5th, and During
the Week:—

Huge Double-Feature Show

JACKIE COOGAN in
JOHNNIE GET YOUR HAIR
CUT.

Jackie Coogan in a Racing Thriller
Also

TIN HATS.

The Story of Three B-r-r-ave Sol-
diers Exploring a Haunted Castle.
Fun Galore.

Accompaniment by The Finest
Orchestra in Cheltenham.
Mus. Dir.: Mr. Arthur Burrows,
Violinist.

Established 1806.

MARTIN & CO., Limited,

THE COUNTY JEWELLERS,
Pearl and Diamond Merchants,

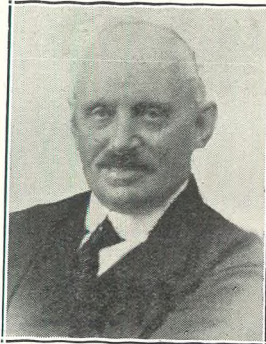
A Large Selection of Second-hand
Silver and Old Sheffield Plate.
We are Purchasers of Antique
Silver and Fine Quality Gems.

Best Prices Given.

LICENSED VALUERS,

Promenade, Cheltenham.

CHELTONIANS HONORED.



MR. H. W. BENNETT,
P.G.M.,

of Cheltenham, who, at the
annual meeting of the Glou-
cester Conservative Benefit
Society on Thursday last,
was, after an interval of 25
years, re-elected Grand
Master.



MRS. PIPPARD,

wife of Mr. J. A. Pippard,
P.G.M., who on Saturday
last was, after an interval
of 14 years, re-elected Grand
Mistress of the Gloucester
Women's Conservative Bene-
fit Society.—Photo by Hollo-
way, Cambray, Cheltenham.



MR. "FRANK" G.
BURROUGHS,

of Kayte Farm, Southam,
near Cheltenham, who died on
Feb. 24th, aged 77 years. He
was one of the best known
agriculturists in the county,
being a sporting farmer of
the best type. He had occu-
pied many official positions,
and was popular wherever he
went.



MR. HORACE EDWARDS,
of 10 Pittville-villas, Chelten-
ham, who died on Feb. 23rd,
aged 85 years. He was for
many years a printer and
stationer in High-street, fol-
lowing his father in the same
business. He was a man of
great religious and philan-
thropic principles, and in his
old home at Herbert Villa
entertained thousands of
Cheltenham Sunday School
children.

Winter Garden

NEW KINEMA,
PROMENADE, CHELTENHAM.
Director: Shakspeare Shenton.

FOR SIX DAYS!

West of England Premier, Direct
From the New Gallery Kinema.

NORMA TALMADGE

Noah Beery, Gilbert Roland,
And Big All-Star Cast in

THE DOVE,

David Belasco's Great Stage
Success

A Colorful Cabaret in a Forgotten
Land! A Gorgeous Dancing Girl!

A Braggag Bully!

A Romantic Romeo.

The Best Orchestra in Town
Under Lester Burrows.
IN THE SOUTH PAVILION-
SKATING.

COLISEUM,

CHELTENHAM. 'Phone 3715.
6.40 and 8.40 p.m.

The Famous Musical Comedy,
THE GIRL IN THE TAXI.

From the Lyric Theatre, London.

North Street

PICTURE HOUSE, Cheltenham.

From 2.30 p.m. Continuous.

Monday, Tuesday, Wednesday:—

SKY HIGH SAUNDERS,

Featuring AL WILSON.

Thursday, Friday, Saturday:—

THE BORDER CAVALIER,

Featuring FRED HUMES

"Distinction with Economy"
HATS GOWNS
SPORTS WEAR

Sensier,

388b HIGH STREET,
CHELTENHAM.

Telephone 2580.

W. Scott Cooper,

Diamond Merchant, Jeweller,
Goldsmith, and Silversmith.

The Promenade, Cheltenham.

LICENSED VALUER

DALE, FORTY and Co. Ltd For the Best PIANOS.



FUNERAL OF THE LATE MR. BEYNON MORGAN AT GLOUCESTER.

The Funeral Service of the late Mr. Beynon Morgan, for many years the organist and choirmaster of St. Catherine's Church, Gloucester, took place at the church on Thursday, Feb. 23rd, before a very large congregation. The interment afterwards took place at Highnam, where he lived as a boy and young man.

- 1.—Cortege leaving the Church. The Vicar, Rev. H. J. Hensman, on right.
- 2, 3, and 7.—Family mourners entering Church.
- 4.—Rev. P. E. Prince, of Elmore.
- 5, 9, 12, 13, and 14.—Mourners entering Church.
- 6.—Archdeacon C. H. Ridsdale (x).
- 8.—The Choir.
- 10.—Mr. Annis.
- 11.—Mr. Wm. Bailey.

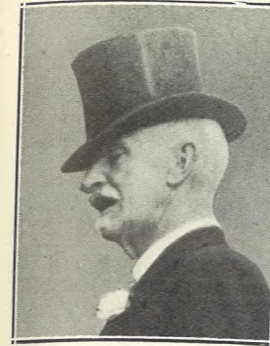
["Cheltenham Chronicle" Photos. Copies 1s. each.]



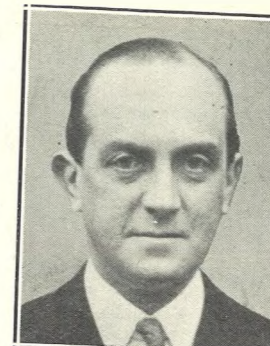
MOTOR TRADE DINNER AND DANCE IN CHELTENHAM.

On Tuesday, Feb. 21st, Messrs. Reed and Patterson (Cheltenham), Ltd., the Daimler and Singer Distributors and Specialists, of Bath-road, Cheltenham, invited their registered Daimler and Singer agents and their friends to a delightful dinner and dance at Cheltenham Town Hall. There were about 130 present, including the Mayor, Mayoress, and Town Clerk of Cheltenham, Messrs. Price, Roxburgh, Ashford, and Griffiths (representatives of the Daimler Company), and the Directors of the Company (Messrs. D. W. Reed, G. H. Patterson and C. Dickens). The company in the vestibule.

["Cheltenham Chronicle" Photo. Copies 1s. 9d. each.]



MR. A. H. P. STRICKLAND of Apperley Court, Apperley, near Tewkesbury, who died in Jamaica on Feb. 22nd, aged 64 years. He was a partner in the London bank of Messrs. Hoare & Co., of Fleet-street, and was Squire of Apperley. He had been ill for some time, and went to Jamaica for his health.



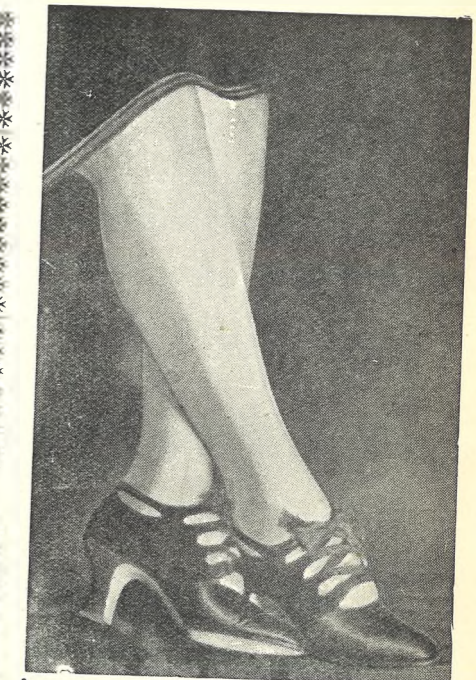
COMMANDER ARTHUR MARSDEN, R.N. (O.C.), who was the principal speaker at the Cheltenham Women's Conservative Association Mass Meeting at the Theatre on Wednesday afternoon last. He is the prospective Conservative Candidate for Battersea North, where he is fighting the Communist M.P. Saklatvala. He played for Cheltenham Rugby Football Club from 1903 to 1907, and commanded a ship at the Battle of Jutland. It was sunk and he was the sole survivor, being found after many hours in the water.



MR. DAVID JAMES, of Elmstone Hardwicke, near Cheltenham, who died in the Cheltenham General Hospital on Feb. 24th from injuries received in a bicycle accident the previous evening. He collided with a tree, on his way home, just past Tewkesbury-road bridge. He was a carter in the employ of the G.W.R.

IT PAYS TO ADVERTISE.

ADVERTISE IN THE "ECHO."



SPECIAL DISPLAY AT LANCE'S
Ladies' Ladderproof PURE SILK STOCKINGS

GUARANTEED NOT TO LADDER.
Stocked in the following Colours—
Alesan, Champagne, French Beige, Fresh, Grain, French Grey, Lizard, Natural, Peach, Pearl, Piping Rock, Rougeur, Shell Grey, Silver Grey, Touraine, or Black.

7/11 A PAIR,
Or 3 Pairs for 23/3.
John Lance & CO., LTD.,
CHELTENHAM'S SHOPPING CENTRE.



A Broadwood Piano for £67:10:0

THE hundreds and hundreds of music lovers who want a Broadwood Piano but have been debarred on account of price will welcome the introduction of this Overstrung Upright Model 7

at such an extraordinarily low price. If you cannot call to hear and test it in person, write at once to Dept 21 for illustrated leaflet and name of nearest Broadwood Agent.

You need not pay cash if it is not convenient to do so. A very small deposit secures immediate delivery, the balance being spread over one, two or three years.
Sole Agents:
Crichton's
(Ernest Crichton, Ltd.),
The Piano House,
394 High St., CHELTENHAM.
Phone 2378.

Let MOUSELLS Move You



Estimates for Removals and Storing Free.
PHONE 2112.
Offices: AMBROSE STREET.
CHELTENHAM.

SHIRTS.
SPECIAL HARD-WEAR SHIRTS.
White Grounds. Coloured Stripes. Fast Colour. Lined Back and Front.
8/6.
Own Manufacture.
FLANNEL SHIRTS,
8/11, 10/6, 12/6. All My Own Make.

A. BECKINGSALE,
HOSIER,
111 HIGH STREET, CHELTENHAM.
Phone 2706.

BEST QUALITY **CIDERS**
IN BOTTLE.—Sparkling and Still.
BARTHOLOMEW,
419, 420 HIGH STREET,
CHELTENHAM.
Wines, Spirits, Ales, Table Waters, & Groceries.
Tel. 3590.



LADIES' COUNTY HOCKEY IN CHELTENHAM.

- On Saturday last, in brilliant weather, on the East Gloucestershire Ground, Gloucestershire defeated Warwickshire by 11 goals to 5, and Somerset Schoolgirls beats Worcestershire by 15 goals to nil.
- 1.—Worcestershire Schoolgirls, from left: Moore, Tompkins, Heming, Dallman, Barnard, Skinner (capt.), Wrenlok, Archer, Lovegrove, Owen-John, Morgan.
 - 2 and 4.—Ladies' College pupils on the touch-line.
 - 3.—The Gloucestershire centre-forward.
 - 5.—A hot attack by Gloucestershire.
 - 6.—Gloucestershire, from left: Townsend, Thomas, Edmonds, Bland, Spear (captain), Bull, Greenway, Southall, Mortimer-Scott, Carter.
 - 7.—Somerset Schoolgirls, from left: Bate, Bray, Ward, Urtin, Jutsun (captain).
 - 8.—Miss Tuckett (x) cuts through and scores.
 - 9.—Miss Spear (Glos. goalkeeper) lets one through.
 - 10.—College girls use a roller as grandstand.



FUNERAL OF LATE MR. FRANK BURROUGHS.

The very large attendance of mourners (some hundreds were present) at Bishop's Cleeve Church on Monday last testified to the esteem and affection in which the late Mr. "Frank" Burroughs was held. He was taken to the church in a farm wagon, and a large number followed from Kayte Farm; a still larger number joined at the church.

- 1.—Leaving the old home for the last time. There were two wagon loads of lovely flowers. The coffin is in the first wagon.
- 2.—Messrs. Alf. Newey, Saxby, and Griffiths.
- 3.—Mr. P. J. Norman and ex-Sergt. Glover.
- 4.—Family mourners. Mr. Alec Newman (brother-in-law) and Mrs. Newman (third and second from right).
- 5.—The body and family mourners coming out of the old Norman doorway of Cleeve Church.
- 6.—Bishop's Cleeve residents, who attended.
- 7.—ex-Supt. D. MacRae and Mr. G. R. Barlow.
- 8.—Family mourners.
- 9.—Sections of the procession of mourners entering the church.
- 10.—The body and family mourners coming out of the old Norman doorway of Cleeve Church.
- 11.—ex-Supt. D. MacRae and Mr. G. R. Barlow.

[“Cheltenham Chronicle” Photos. Copies 1s. each, postage 2d. extra.]



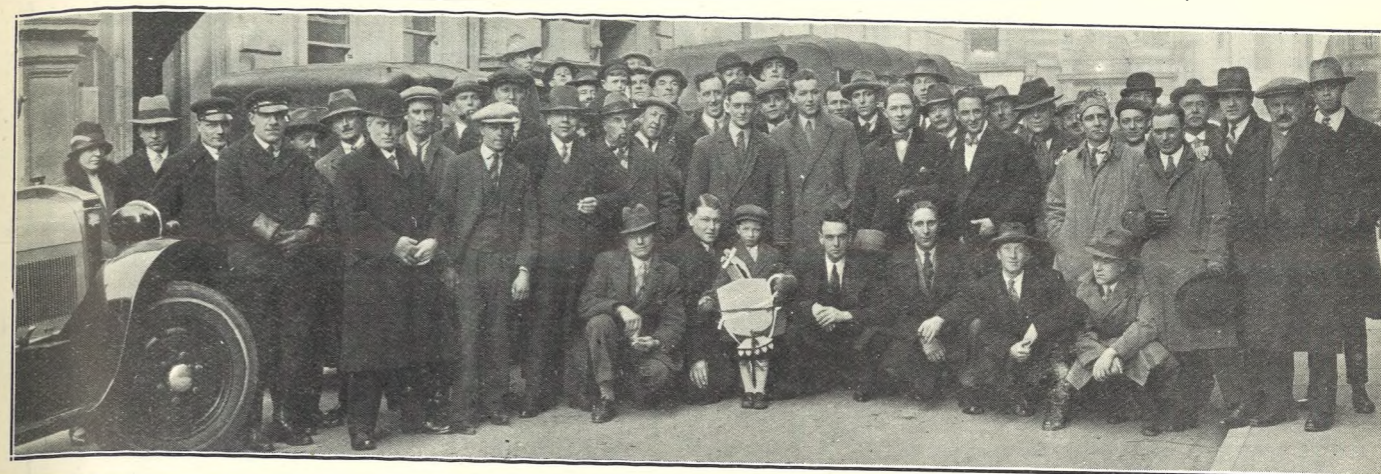
COUNTY HOCKEY MATCH IN CHELTENHAM.

Worcestershire were the visitors to the Victoria Ground on Thursday, Feb. 23rd, when they defeated Gloucestershire by nine goals to four.
 1.—The Gloucestershire Team.
 2.—Worcestershire left wing (on right) beats E. G. Hoare (centre) to score.
 3.—Worcestershire winger coming through again. He played a fine game.
 4.—Captains tossing for choice of ends.
 5.—K. Wilson (Glos.) (on right), frustrates an attack on the home goal.



FUNERAL OF MR. HORACE EDWARDS.

The Funeral Service of the late Mr. Horace Edwards was held at Holy Trinity Church, Cheltenham, on Monday afternoon, Feb. 27th, and was attended by a large number of friends of deceased, especially from Charlton Kings.
 1.—Family mourners leaving church at close of service.
 2.—Mourners watching cortege leave church. Mr. and Mrs. Walker on extreme left.
 3.—Messrs. F. J. Peacey, J.P., and F. J. Fry, of Charlton.
 4.—Mourners leaving church; included are Messrs. W. S. F. Harris, L. Bayley, Brasher, Ald. Stewart, and Rev. H. A. Corke.
 5.—Mr. Jeremy Thomas.
 6.—Mr. and Mrs. W. Hicks, nearest camera.
 7.—Rev. C. H. Scott, of Christ Church, who assisted with the service.
 8 and 9.—Mr. and Mrs. Barcham.
 10.—Mr. Arthur Davies.
 11.—Mrs. G. Stone and Mrs. Gunning.
 12.—Miss and Mr. Hancock entering church.



CHELTENHAM "SOCCER" SUPPORTERS OFF TO CIRENCESTER.

On Saturday last Cheltenham Town beat Lister's in the semi-final for the Northern Senior Cup, played at Cirencester. The Town Club and supporters taken before leaving for the match. They travelled in various motor-coaches.
 ["Cheltenham Chronicle" Photo. Copies 1s. 9d. each.]



COUNTY LIBERAL CONFERENCE AT STROUD.

The 13th Annual Conference of Gloucestershire County Liberal Committee was held at the Liberal Hall, Stroud, on Saturday last, Feb. 25th.
 1.—Two County Prospective Liberal Candidates, Mr. J. A. Day (Thornbury) and Mr. A. W. Stanton (Stroud), with Mr. F. W. Raffety (ex-M.P. for Bath), the speaker.
 2, 4, and 5.—Delegates entering hall.
 3.—Three County Liberal Agents: Messrs. Starling (Cheltenham), Bagnall (Stroud), and Reed (Gloucester).
 6.—Delegates from Thornbury: Messrs. G. Ansty, W. C. Cox (Treasurer), J. A. Day (Candidate), J. Clark, and A. W. Trapnell.
 7.—Messrs. Hopkins and Wood (Gloucester).
 Photos. Copies 1s. each. Postage 2d. extra.

HAND-SEWN MAKING from 30/-
 REPAIRS SAME DAY.
 SHOE AND ARCH SPECIALISTS AND BUNION CURERS.
 London City Honours.
PROGRESS BOOT WORKS,
 21 MONTPELLIER STREET, CHELTENHAM
 (Opposite P.O.).

* **FLAT FOOT**, also **KNEE, ANKLE** and **JOINT TROUBLES** of All Kinds Successfully Treated by a New Electro-Therapeutic Method, based upon latest scientific research, and Exclusively Administered by
MR. ALFRED J. VENTRIS-FIELD
 Orthopaedist and Electro-Therapeutist, Hospital (London) and 30 Years Practical Experience. Phone 3384.
 * Surgery: 8 **RODNEY PLACE, CHELTENHAM** *

WANTED
 Old Gold and Silver Jewellery, Old China, Engravings, Quaint Snuff Boxes, and Antique Furniture.
 Best Prices Given.
 ESTABLISHED 70 YEARS.
HARRY O. BOX,
 339 HIGH STREET, CHELTENHAM
 (Nearly Opposite Grammar School).

S&S Corsetry for 1928 Fashions.

Distinctive Styles at Moderate Prices.
PERFECT IN EVERY DETAIL AND UNCONDITIONALLY GUARANTEED.
 Corsets with Comfytop Busks that cannot cause a moment's discomfort.
A SHAPE TO SUIT EVERY TYPE OF FIGURE.
RUSTPROOF AND WASHABLE.



Merribel (Style D).
 Wraparound Girdle in fancy Pink material. Sizes 23 to 34ins., 7/11



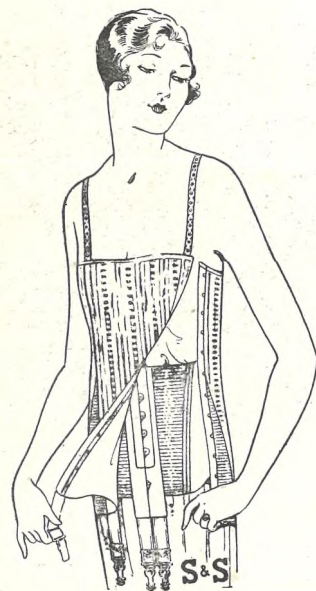
Sportette (Style B).
 Wraparound Girdle, in White and Pink Broche. Sizes 22 to 30ins., 3/11½



Kensington.
 Wraparound Girdle, with uplift Belt, in fancy Pink Striped Material. Sizes 24 to 34ins., 8/11



Merribel (Style 50).
 Corsetette, with uplift Belt, in Pink Broche Material. Sizes 32 to 44ins., 9/11



Luna.
 Corsetette, in Pink fancy striped material, fitted with uplift Belt. Sizes 32 to 44ins., 6/11



Velvetex (Style 8x).
 Corsetette, in pretty Pink Striped Material. Sizes 30 to 42ins., 5/11



Auralla.
 Buskless Girdle in Pink Broche, to fasten side front, with hooks and eyes. Sizes 22 to 34ins., 6/11

Latest Styles in Brassieres and Elastic Belts.

All Styles in S & S Velvetex (Reg.) Corsets in stock.

Comfort & Durability.

Exceptional Value.

Mrs. OWEN JAMES, 409 HIGH ST. CHELTENHAM. (THE STRAND).

PRINTED AND PUBLISHED AS A GRATIS SUPPLEMENT BY THE CHELTENHAM NEWSPAPER COMPANY, LIMITED.

THE CHELTENHAM CHRONICLE AND GLOUCESTERSHIRE GRAPHIC

GRATIS SUPPLEMENT. With Which is Incorporated the "Cheltenham Looker-On." Saturday, March 10, 1928. No. 1,419.

CHELTENHAM THEATRE AND OPERA HOUSE.

This Afternoon (2.30) and Evening (6.40 and 8.40) — "THE CONSTANT NYMPH."

NEXT WEEK: "Alf's Button," The Record-Breaking Laughing Success.

THE PALACE, HIGH STREET, CHELTENHAM
 Director: Shakspeare Shenton.

FOR SIX DAYS!
 West of England Premier Direct from the New Gallery Kinema.
"The Best Comedy of the Year."
 — "Daily Express"
BUSTER KEATON in **COLLEGE,**
 The Greatest Gag-Giggle Laugh-Roar of the Year.
 The Happiest and Speediest of All Comedies.
 Screened at 2.45, 4.45, 6.45, 8.45.
Douglas Cochrane and his Popular Orchestra, with Comedy Concoctions.

THE DAFFODIL
 Cheltenham's Only Real Cinema.

Continuous Daily, 2.30 to 10.15.
 Monday, March 12th, and All the Week:—
 Another Huge Double-Feature Show.
PAULINE FREDERICK in **THE SECOND MRS. FENWAY.**
 The Actress Without an Equal on the Screen in a Great Picture.
 Also **"RED GRANGE"** in **ONE MINUTE TO PLAY.**
 A Story of College Days.
 And **THE DAFFODIL ORCHESTRA** on the Stage Every Evening at 8 p.m. Come, Hear and See A Real Orchestra!

Established 1806.
MARTIN & CO., Limited,

THE COUNTY JEWELLERS,
 Pearl and Diamond Merchants,
 A Large Selection of Second-hand Silver and Old Sheffield Plate.
 We are Purchasers of Antique Silver and Fine Quality Gems.
 Best Prices Given.
LICENSED VALUERS.
 Promenade, Cheltenham.



THE PRINCE IN MERRY MOOD.

The Prince of Wales, with Lord Westmorland, at the Beaufort Point-to-Point Races on Thursday, March 1st, at Hazleton, near Tetbury, Glos. He is having his portrait taken by some "While-you-wait" photographers, the Prince consenting to stand for them. In No. 2 on inside page the Prince is looking at the result. ["Cheltenham Chronicle" Photo. Copies 1s. and 1s. 9d. each, Postage 2d. extra.]

Winter Garden

NEW KINEMA, PROMENADE, CHELTENHAM
 Director: Shakspeare Shenton.
FOR SIX DAYS.
 The Two Biggest Feature Films Ever Shown in One Programme.
ELAINE TERRIS,
 Annesley Hely and Lillian Hall-Davis in the Great British Production,
BLIGHTY,
 A War Story without the Horrors of War.
Charlie Murray, Chester Conklin in
McFADDEN'S FLATS.
 An Entertainment par Excellence. **Lester Burrows** and his Orchestra. IN THE SOUTH PAVILION: **SKATING.**

COLISEUM, CHELTENHAM. 'Phone 3715.
 6.40 and 8.40 p.m.
SAMSON,
 The Strongest Man in the World. With Full London Company of **VARIETY ARTISTES.**

North Street PICTURE HOUSE.
 From 2.30 p.m. Continuous. Monday, Tuesday, Wednesday:—
HOOT GIBSON in **GALLOPING FURY.**
 Thursday, Friday, Saturday:—
THE ROMANTIC AGE,
 Featuring **EUGENE O'BRIEN** and **ALBERTA VAUGHN.**

MAISON ANNETTE,
 Kensington House, PROMENADE, CHELTENHAM,
 Specialists in Exclusive **CORSETS & LINGERIE.**
 'Phone 2122.

DALE, FORTY and Co. Ltd For the Best PIANOS.



GLOUCESTER BEAT SWANSEA AT RUGBY FOOTBALL.

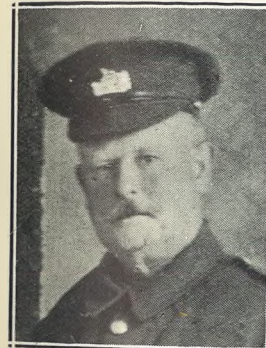
At Kingsholm, on Saturday last, in a capital game, Gloucester beat their old opponents by 2 goals 1 try (13 points) to nil. There was a fine crowd of spectators. Gloucester were full value for their win, and are a much-improved team.

- 1.—Section of the big crowd.
- 2.—Rowe Harding, Swansea's international left wing, taking the ball. He was not allowed to go far.
- 3.—Some of the Swansea team at half-time. The three in front are (from left) J. H. John, D. Parker (Captain), both internationals, and W. Clements, all forwards.
- 4.—The ball passed out from loose play to the Swansea backs.
- 5 and 7.—Sections of spectators.
- 6.—A line-out.

["Cheltenham Chronicle" Photos. Copies 1s. and 1s. 9d. each. Postage 2d. extra.]



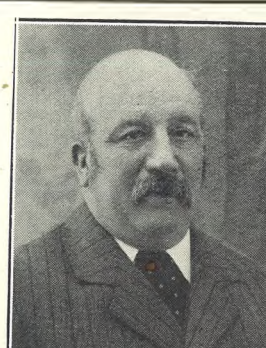
SERIOUS PERJURY CHARGE AT GLOUCESTER.
Mr. C. G. P. Dromgoole, engineer, of Tuffley, Gloucester, and Mr. R. A. Fitz Conroy, photographer, of Cheltenham, on right of photo, on their way to court, with their solicitor and others, to answer a serious charge of perjury in connection with a motor crash in Gloucester.



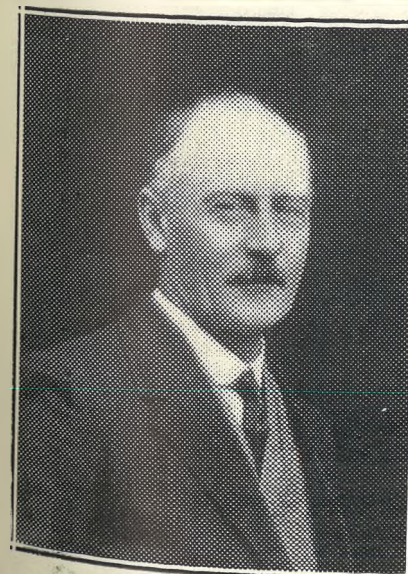
Mr. JAMES (JIM) RAWLINGS, of 12 Station-street, Cheltenham, who died suddenly on Feb. 27th, aged 72 years. He was an ex-Grenadier Guardsman, and also served in the Great War in the Gloucesters.



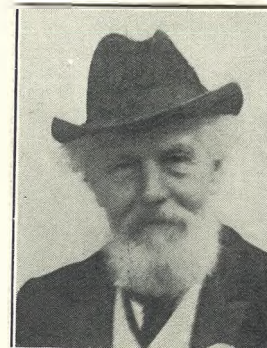
MR. H. R. CLARKE, of Ruthven, Kingsholm-square, Gloucester, who died Feb. 28th, aged 41 years. He was on the staff of the St. Paul's Training College Practising School, Cheltenham.



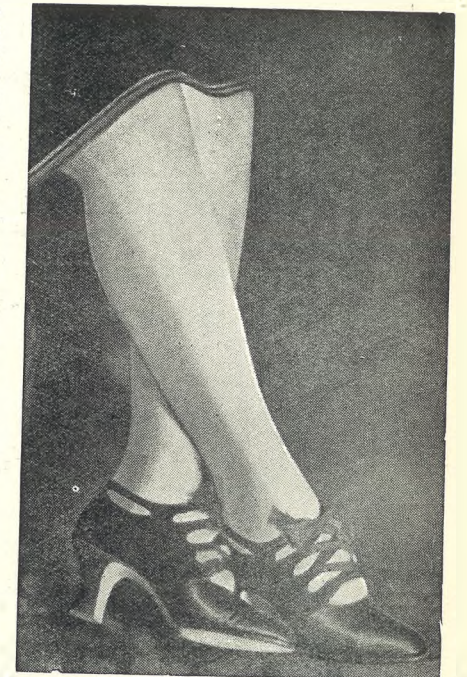
MR. HARRY PACKER, of Tewkesbury-road, Cheltenham, who died on March 2, after 14 years' illness, aged 72 years. He was the proprietor of the haulage business of H. Packer and Co., Ltd., of Cheltenham.



THE LATE MR. A. E. WOODWARD,



MR. A. H. TAYLOR, of 3 Grosvenor-place, Cheltenham, who died March 3rd, aged 85 years. He was the Managing-Director of A. H. Taylor's Butchers' Hide, Skin, and Fat Co., Ltd., Albion-street, Cheltenham; and was for 16 years Chairman of Cleeve Common Conservators. He leaves a widow (also aged 85), four sons, and five daughters. He was a strong Liberal, a good sporting shot, and an angler, being President of the Cheltenham Angling Club.

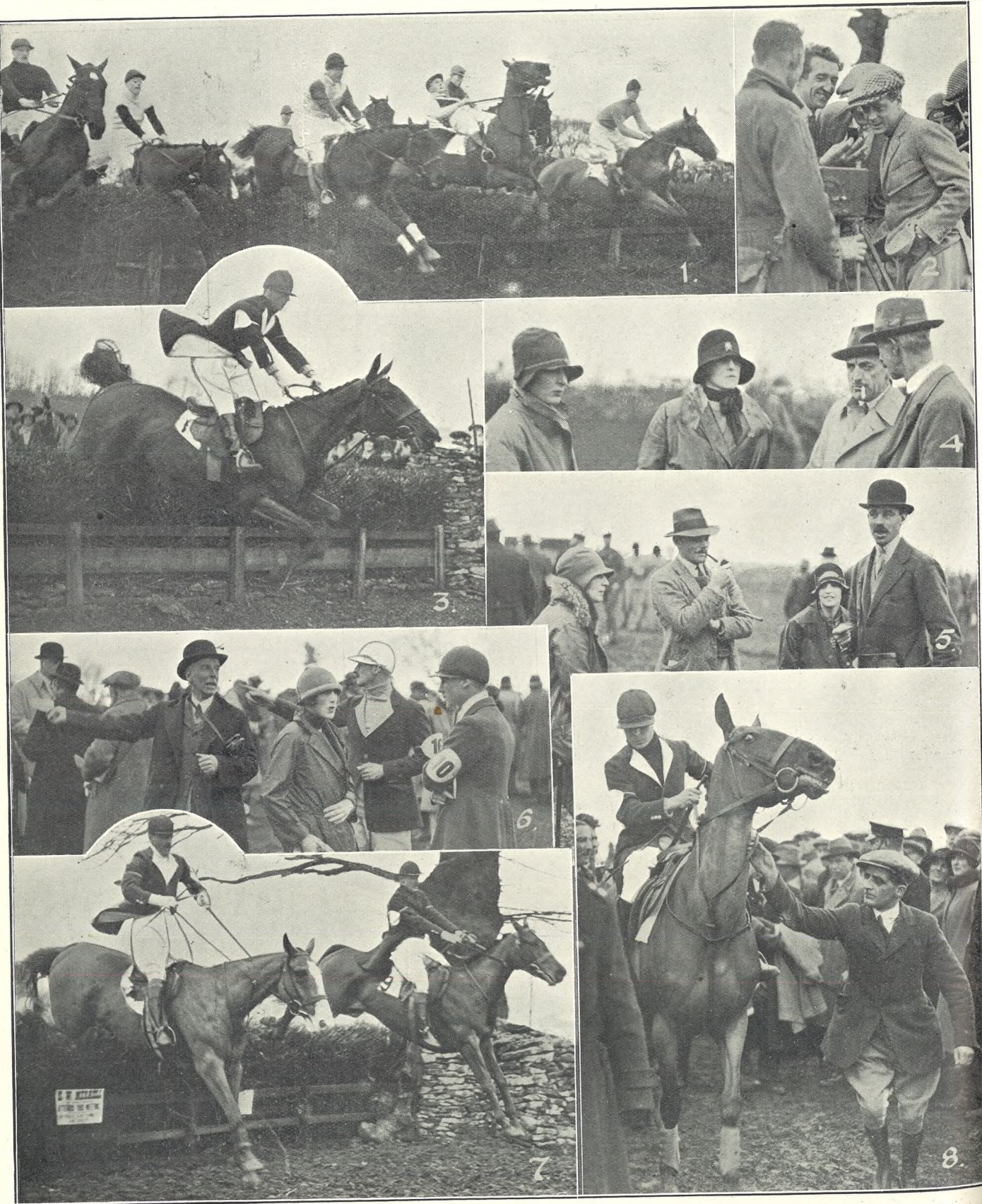


SPECIAL DISPLAY AT LANCE'S
Ladies' Ladderproof PURE SILK STOCKINGS

GUARANTEED NOT TO LADDER.
Stocked in the following Colours—
Alesan, Champagne, French Beige, Fresh, Frain, French Grey, Lizard, Natural, Peach, Pearl, Piping Rock, Rougeur, Shell Grey, Silver Grey, Touraine, or Black.

7/11 A PAIR,
Or 3 Pairs for 23/3.

John Lance & CO., LTD.,
CHELTENHAM'S SHOPPING CENTRE.



PRINCE OF WALES IN GLOUCESTERSHIRE.

H.R.H. the Prince of Wales rode his horse Degomme to victory in the Welsh Guards' Race at the Duke of Beaufort's Hunt Point-to-Point Races, held at Hazelton, near Tetbury, on Thursday, March 1st. A splendid crowd saw excellent racing during the day, the Prince's victory especially being extremely popular.

- 1.—Part of the big field taking the second jump in the Beaufort Cup Nomination Race.
- 2.—The Prince of Wales posed for "While you wait" camera men, and was highly amused with the result.
- 3.—H.R.H. at the last fence but one in Welsh Guards' Race.
- 4.—Miss Barrett, Mrs. Phipps Hornby, Major Barrett, and Mr. Ferris.
- 5.—Mrs. Ryecroft, Captain and Mrs. Vincent and Captain Pilkington.
- 6.—Major Hunloke, Lady Blanche Douglas, and Captain Vivian.
- 7.—A fence in Lightweight Subscribers' Race.
- 8.—The Prince going out to the start. ["Cheltenham Chronicle" Photos. Copies 1s. and 1s. 9d. each, postage 2d. extra.



FUNERAL SERVICE OF THE LATE SIR HERBERT BREWER.

A striking tribute was paid at Gloucester Cathedral on Tuesday last to the memory of the late Sir Herbert Brewer, for 31 years organist of the Cathedral, Conductor of the Three Choirs Festival, and a composer of world-wide fame. Long before the hour fixed for the service a queue of citizens stretched from the South Porch right round College Green to College Court, and when the doors were opened the Nave was filled with a solemn and reverent congregation.

- 1.—A part of the queue waiting for Cathedral to open.
- 2.—Major Stanley Clarke, Chief Constable of County (in bowler).
- 3.—Councillors W. R. Eggleton, Dr. J. R. Bibby, C. G. Clutterbuck, and Wallace Harris.
- 4.—Mr. C. Lee Williams, deceased's predecessor as organist, Sir Edward Elgar (in centre), and Mr. T. Hannam-Clark.
- 5.—Dr. Finlay.
- 6.—Councillor Daniels (City High Sheriff).
- 7.—Wearing top hat is Rev. W. C. Macklin (Taynton) with his sister.



ROUND THE TOWN IN CHELTENHAM.

Snaps taken on Wednesday last in the Promenade.

["Cheltenham Chronicle" Photos. Copies 1s. each, postage 2d. extra.

SHIRTS.
SPECIAL HARD-WEAR SHIRTS.
 White Grounds. Coloured Stripes. Fast Colour. Lined Back and Front.
8/6.
 Own Manufacture.
FLANNEL SHIRTS,
 8/11, 10/6, 12/6. All My Own Make.
A. BECKINGSALE,
 HOSIER,
 111 HIGH STREET, CHELTENHAM.
 Phone 2706.

HAND-SEWN MAKING from 30/-
 REPAIRS SAME DAY.
 JOINT AND ARCH SPECIALISTS AND
 BUNION CURERS.
 London City Honours.
PROGRESS BOOT WORKS,
 21 MONTELLIER STREET, CHELTENHAM
 (Opposite P.O.)

Many little patients are taken to Mr. Ventris-Field, at his Surgery—6 Rodney-place. A crooked toe, a falling arch, a painful corn, an unsightly birth-mark, or other deformity, can be often rectified in childhood and a simple operation confer a marked and lasting benefit upon the child. During the last thirty years Mr. Ventris-Field has cured hundreds of such cases.

Let MOUSELLS Move You



Estimates for Removals and Storing Free.
 'PHONE 2112.
CHELTENHAM. Offices: **AMBROSE STREET.**



FUNERAL OF THE LATE MR. E. H. DANIELLS.

There was a considerable attendance of Masonic brethren at the funeral service of the late Mr. Edmund H. Daniells, of 1 York-villas, Cheltenham, at Christ Church, on Tuesday last.

- 1.—Family mourners following coffin into church. Immediately behind are Mr. T. Overbury (step-son), Mrs. Baxter (daughter), and Mrs. Chas. Dix (step-daughter); following are Mr. A. Baker and Mr. W. H. Baker.
- 2.—Canon Johnstone (All Saints') and Canon Webb-Peploe (Vicar).
- 3.—Messrs. H. G. Beard, D. Waghorne, and A. E. Waghorne.
- 4.—Dr. Chas. Dix.
- 5.—Messrs. S. H. Healing and C. C. Dodwell.
- 6.—Messrs. E. A. Moore and Willoughby J. Moore.
- 7.—Mr. W. S. F. Harris and The Mayor (Mr. C. H. Margrett).
- 8.—Mr. Ernest W. Moore.
- 9.—Misses Sawyer and Witcomb.
- 10.—Mr. Ben James.
- 11.—Messrs. W. E. Compton, E. Jefferies, and C. F. Dennis.

["Cheltenham Chronicle" Photos.]

Architectural
Decorators



to H.M.
King George V.

By Appointment.

H. H. '
MARTYN
 & Co., Ltd.,
CHELTENHAM.

5 Grafton St., Bond-St., London.



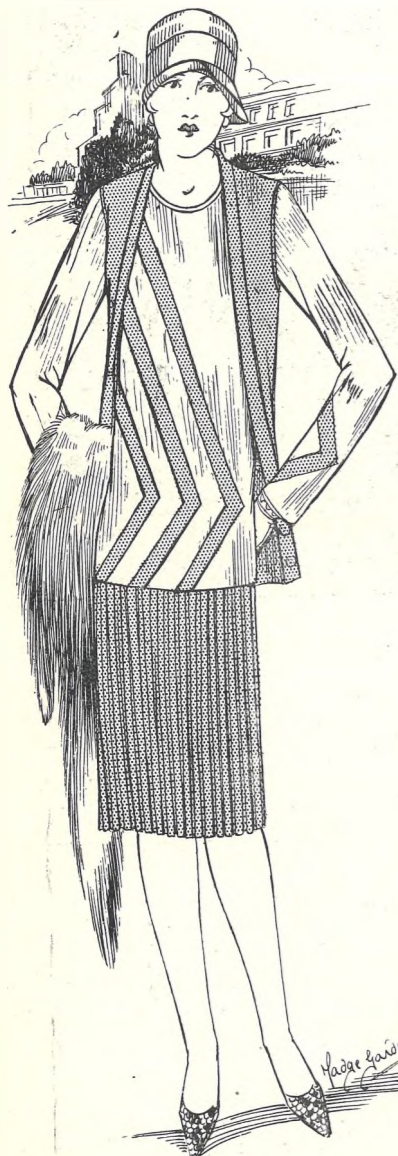
Carving in King's Room on S.S. Medina.

Messrs. Collcutt & Hamp, F.F.R.I.B.A.,
Architects, London.

H. H. Martyn & Co. Ltd., invite enquiries for all kinds of Decorative Work, Church Interior Woodwork, Wood Carving, Carving in Stone, Marble and Alabaster, Wrought and Cast Metalwork, Sculpture, Modelling, Fibrous Plaster, etc., etc.

The illustration shews a carved Lime Tree Wreath for the King's Room on the S.S. Medina.

IT DOES COST LESS TO DRESS AT VANDERPLANK (FROM HARRODS).



SPRING, 1928.

THREE PIECE SUITS —THE VOGUE.

THE Vogue of the Three-Piece Suit has rapidly found favour, for they are practical for all daytime occasions, and are tailored from a variety of new Fabrics allied to Wools, Silks, and Tinsel.

Preference for Models by Vanderplank increases apace. Ladies recognise more than ever this Spring, Vanderplank leadership in fine Fashions.

The selection is immense—it is the finest collection of Fashion Wear of quality to be found in the County. Visit Vanderplank to-day—select the Model that appeals most to your particular need. We invite comparison—then you will understand why even the lower priced Models by Vanderplank are displacing some of the most costly creations shown by other houses.

Pure Wool Stockinette Three-Piece Suits,
prices range from 5 Gns. to 29/11.

Finely Knitted Wool Three-Piece Suits, from 6½ Gns. to 45/9.

Tinsel Model Three-Piece Suits . . . from 8½ Gns. to 3 Gns.

Tweed, Suiting, & Crepella Three-Piece Suits, from 13 Gns. to 3 Gns.

Some Models have sleeves to Jumper, others sleeves to Cardigan Coat, many with both—all sizes.

Sketched is a fine example of the new geometrical designed Three Pieces. The Model is in Navy, with Beige Jumper, inlet with Navy as used in Cardigan. Skirt has pleats, giving freedom of movement. Its Price is 75/9. Other Colours and O.S. Sizes Available.

Vanderplank

From Harrods Ltd.

FASHIONS AND FURS.
381 HIGH STREET, CHELTENHAM SPA.

PRINTED AND PUBLISHED AS A GRATIS SUPPLEMENT BY THE CHELTENHAM NEWSPAPER COMPANY, LIMITED.

THE CHELTENHAM CHRONICLE AND GLO' SHIRE GRAPHIC

GRATIS SUPPLEMENT. With Which is Incorporated the "Cheltenham Looker-On."
Saturday, March 17, 1928. No. 1,420.

CHELTENHAM THEATRE AND OPERA HOUSE. This Afternoon (2.30) and Evening (6.40 and 8.40) — "ALF'S BUTTON."
NEXT WEEK: London's Greatest Musical Comedy:
"The Last Waltz."

THE PALACE,
HIGH STREET, CHELTENHAM
Director: Shakespere Shenton.

If it's the Best Show in the Town
It's at The Palace!
Monday, Tuesday, Wednesday:—
Gene Stratton Porter's Famous
Story,

LADDIE,

With Little Gene Stratton and
John Bowers.
Screened at 2.45, 4.45, 6.45, 8.45.
Douglas Cochrane and his Popular
Orchestra will Charm You!

Thursday, Friday, and Saturday:—
Corinne Griffith, Tom Moore, and
Lee Moran in

SYNCOATING SUE,

Gripping in its dramatic intensity,
Irresistible in its Diverting
Humour.

THE DAFFODIL
Cheltenham's Only Real Cinema.

Continuous Daily 2.30 to 10.15.
MONDAY, MARCH 19th, and
ALL THE WEEK,

BELLE BENNETT and
VICTOR McLAGLEN in
MOTHER MACHREE,

A Story as Beautiful as Irish Lace.
A Film that will live long in your
memory.

Presented and Accompanied in the
Daffodil Way.

Special Intermission Nightly at
8 p.m. by the **DAFFODIL GRAND
ORCHESTRA.**

Established 1806.
MARTIN & CO.,
Limited,

THE COUNTY JEWELLERS,
Pearl and Diamond Merchants,

A Large Selection of Second-hand
Silver and Old Sheffield Plate.
We are Purchasers of Antique
Silver and Fine Quality Gems.

Best Prices Given.
LICENSED VALUERS.

Promenade, Cheltenham.



NATIONAL HUNT STEEPLECHASES IN CHELTENHAM.

At the magnificent race meeting held at Cheltenham on Tuesday, Wednesday, and Thursday last, everybody prominent in the winter section of the racing world was present. Above are Lord Lonsdale (left) and Lord Westmorland having a chat in Tattersall's. "Cheltenham Chronicle" Photo. Copies 1s. each, postage extra.

Winter Garden
NEW KINEMA,
PROMENADE, CHELTENHAM.

Director: Shakespere Shenton.
FOR SIX DAYS!
West of England Premieres Present-
ation, Direct from the New
Gallery Kinema.
Beautiful **CORINNE GRIFFITH,**
Louise Dresser, Lowell Sherman
In **THE**

GARDEN OF EDEN,
A Comedy Romance, based on the
Great London Stage Success.
Screened at 2.45, 4.45, 6.45, 8.45.
Lester Burrows and his Orchestra.
IN **THE SOUTH PAVILION:—
SKATING.**

COLISEUM,
CHELTENHAM. 'Phone 3715.
6.40 p.m. and 8.40 p.m.

HOT POT,
By Max Allen.
**THE FUNNIEST COMEDY
OF THE MOMENT.**

North Street
PICTURE HOUSE, Cheltenham.
From 2.30 p.m. Continuous.

Monday, Tuesday, Wednesday:—
TOM TYLER in
RED HOT HOOPS.

Thursday, Friday, and Saturday:—
BILLY SULLIVAN in
SMILING BILLY.

"Distinction with Economy."
Something **NEW** in **EASTER**
Gowns, Hats, Sports Wear.

Sensier,
388b HIGH STREET,
CHELTENHAM.

Telephone 2580.
W. Scott Cooper,

Diamond Merchant, Jeweller,
Goldsmith, and Silversmith.

The Promenade, Cheltenham.
LICENSED VALUER

DALE, FORTY and Co. Ltd For the **BEST PIANOS.**



NATIONAL HUNT STEEPLECHASES IN CHELTENHAM.

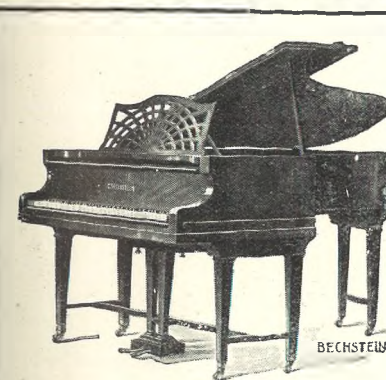
The National Hunt Steeplechase was run on Wednesday, the second day of the meeting, and the paddock and enclosures were packed with people. The Prince of Wales attended and walked about with his friends in the paddock and outside on the course to watch the jumping. The weather was delightful.

- 1.—The Parade for the National Hunt Steeplechase in front of the crowded stands.
- 2.—The first jump in National Hunt Steeplechase. There were 32 runners. Mr. W. West can be seen falling from his horse, Miss Bell, on extreme right, the only casualty at this fence.
- 3.—The second jump in National Hunt Race.
- 4.—Leading in Cryptical, the winner of National Hunt Race, Major T. F. Cavenagh up.
- 5.—The winner taking last jump, followed by Mrs. Whitelaw's Big Wonder.

[“Cheltenham Chronicle” Photos. Copies 1s. and 1s. 9d., postage 2d. extra.]



DO YOU REMEMBER?—Cheltonians' Masonic Outing to Ross in 1904.
 Back Row.—Messrs. W. H. Lamb, A. W. Tuson, F. H. Rea, Robert E. Steel, E. H. Daniels, C. C. Castle, J. McFee, T. Steel, R. Minett, G. H. Bayley, Ben Combe.
 Middle Row.—Dep.-Chief-Constable A. W. Hopkins, Alfred Holman, Jas. Villar, Rev. A. Grant Lane, Arthur Lamb.
 Front Row.—J. S. Bushnell, S. H. Fox, F. B. Pottinger, John Waghorne, T. J. Richards, and T. H. Packer.

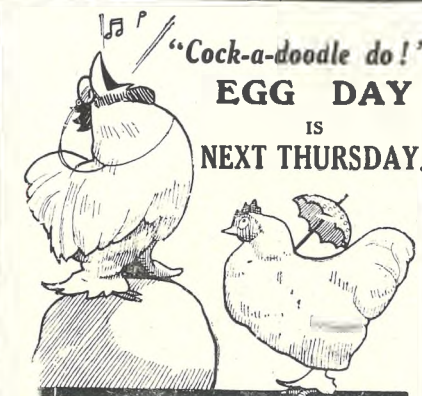


THE BECHSTEIN
 PIANO needs little recommendation to cultured tastes.

Its beautiful tone and incomparable touch—qualities which have gained for it the esteem of every music lover, and have set a standard to the world—are as exquisite and as characteristic as ever.

Write or Call for Catalogue.

Sole Agent :—
Crichton's
 (Ernest Crichton, Ltd.),
 The Piano House,
 394 HIGH STREET,
 CHELTENHAM.
 Phone 2378.



CHELTENHAM GENERAL AND EYE HOSPITALS'

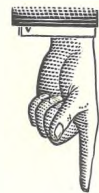
EGG DAY

is
Thursday Next, MARCH 22.

Please remember the date and bring us EGGS or MONEY.

Eggs will be Received All Day at Both Hospitals and at the following places:—
 JAVENDISH HOUSE;
 GILLER & SONS, PITTVILLE;
 No. 10 LANSDOWN CRESCENT;
 MR. YARNOLD, 296 HIGH STREET;

Read the “Echo” Every Night, and Send the “Chronicle and Graphic” to Your Friends Every Week.



SEE
LANCE'S

SPECIAL DISPLAY

OF

EARLY SPRING Millinery.

All Exclusive Models are .. shown in .. their Salon.

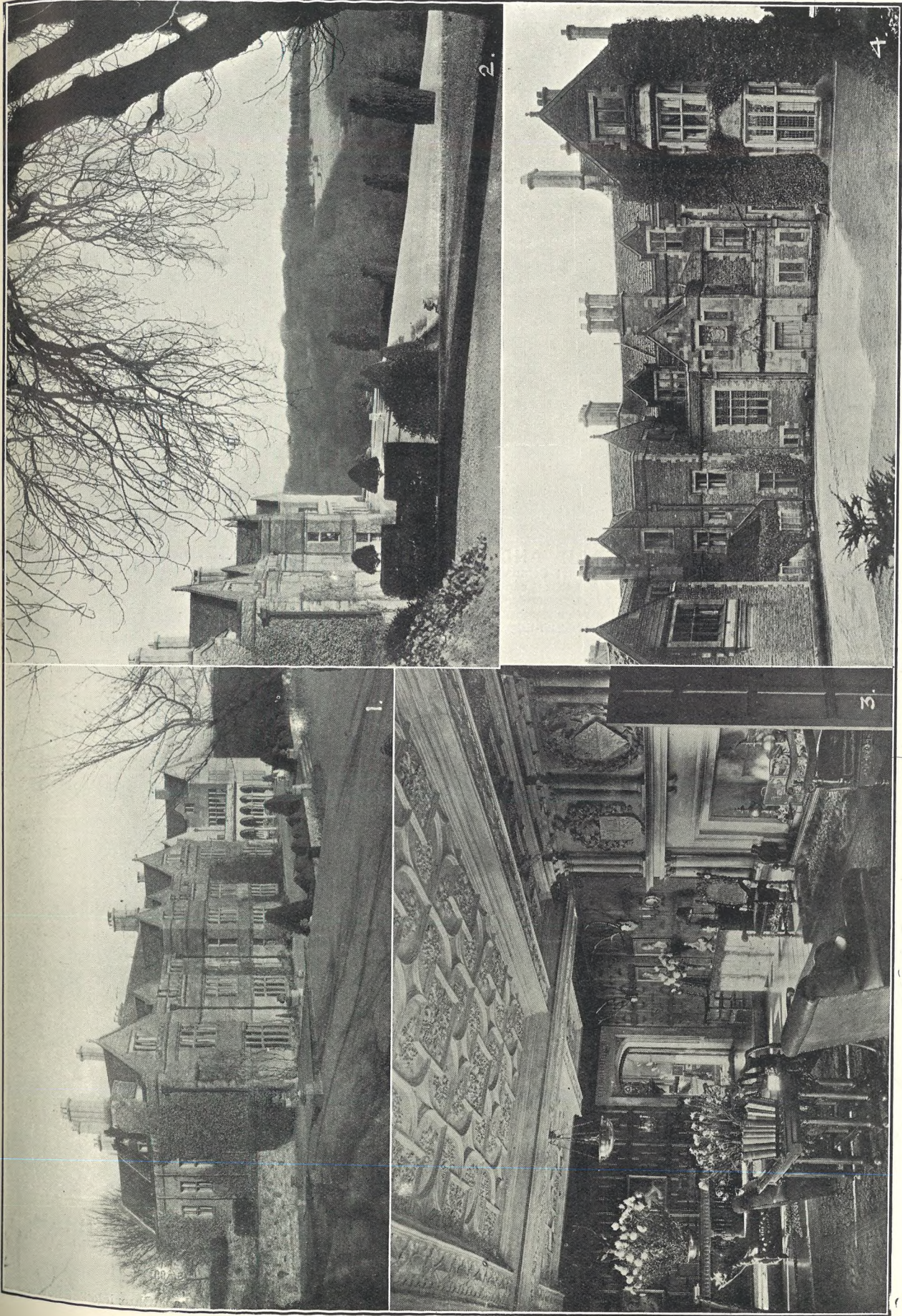
John Lance & CO., LTD.,
 CHELTENHAM'S SHOPPING CENTRE.



NATIONAL HUNT STEEPLECHASES IN CHELTENHAM.

- The whole three days of the Cheltenham Meeting were favoured with fine weather, the going was exceptionally good, and the meeting can be considered as one of the most brilliant ever held in the history of steeplechasing. The attendance was very satisfactory.
- 6.—A fence in Cotswold Steeplechase, Calibre leading.
 - 7.—The Prince of Wales (in centre) watching a race, which Mr. H. A. Brown won on Dudley. He is with Mrs. H. A. Brown.
 - 8.—Manito winning Cotswold Steeplechase, Old Hickory second, and Annandale third.
 - 9.—Sprig, Ted Leader up, taking the water in Gold Cup Race on Tuesday.
 - 10.—Members entering enclosure after watching races on course.
 - 11.—Hon. Sylvia Portman (centre) with her sister and a friend.
 - 12.—Crowd at first jump in National Hunt Race.

[“Cheltenham Chronicle” Photos. Copies 1s. and 1s. 9d., postage 2d. extra.]



PICTURESQUE GLOUCESTERSHIRE.—MISERDEN.

Miserden is a secluded village on the Cotswolds, 10 miles from Cheltenham and eight from Cirencester. Miserden Park is a glorious old house in beautiful grounds, till lately the seat of the late Mr. F. N. H. Wills, whose recent death is so deeply deplored. His widow and family now reside there. It is a most historic place, and was garrisoned by Cromwell in the Civil War.

1.—Miserden Park. The house, south-east side. The new part on right was added by the late Mr. Wills.
2.—The terrace, on south-east, with a view of the undulating and finely wooded park in the distance.
3.—The dining-room, with the Sandys fireplace. It is a Tudor fireplace, containing the Sandys arms. This family owned Miserden for generations.
4.—The north-west front, showing entrance and porch.

These pictures are included in our book of "Picturesque Gloucestershire", published this week, Price £1 1s. Copies 1s. 9d. each, post extra.



GIRL GUIDES' BAZAAR AND PLAY AT WINCHCOMBE.

At the Infants' Schools, Winchcombe, on Saturday last, the 1st Company of Winchcombe Girl Guides held a Bazaar and gave a short Play, entitled "A Little Learning is a Dangerous Thing."
 1.—Brownies and Guides of the 1st Company, 2.—Miss Douglas-Jones (left), Commissioner for Winchcombe, and three Guides from Weston-Sub-Edge. 3.—The Performers. 4.—Mothers and children watching Play.

["Cheltenham Chronicle" Photos. Copies 1s. and 1s. 9d. each.



GLOUCESTERSHIRE RED CROSS NURSES ANNUAL COMPETITION IN CHELTENHAM.
 The Competitions in First Aid, Nursing, and Cookery were held on Saturday last at Naunton Park Council Schools, Cheltenham. Twelve teams competed, the winners being Minchinhampton (Glos. 112). Some of the competitors.
 1.—Nailsworth (Glos. 54). 2.—Dumbleton (Glos. 14). 3.—Leckhampton B (Glos. 42), third in the competitions. 4.—Miss Ratcliff's (Southam) (Glos. 14). 5.—Stroud B (Glos. 90). 6.—Fairford (Glos. 94).
 ["Cheltenham Chronicle" Photos.



INTER-COLLEGE ATHLETIC SPORTS AT ST. PAUL'S COLLEGE, CHELTENHAM.
 On Saturday last, in bitterly cold weather, St. Paul's College, Cheltenham, and Saltley College, Birmingham, engaged in their annual athletic contest, on the Folly Ground, Cheltenham. The sports were watched with keen interest by the rest of the students. St. Paul's won the contest by 78 points to 24.
 1.—The two teams and their principals. 2.—W. W. Dent in the long jump. He was second, beaten by his college mate, L. B. White. 3.—Some of the student spectators. 4.—A fine finish of the half-mile race; J. Owen (left, Saltley) beating T. Dransfield (St. Paul's) on the tape. 5.—W. W. Dent, principal winner for the College, "shouldered" off at the finish. 6.—Four St. Paul's students shouldered a coffin to the ground, inscribed "Dead Salts." 7.—Finish of 100 Yards Race, won by H. Ward (Saltley) on extreme left.

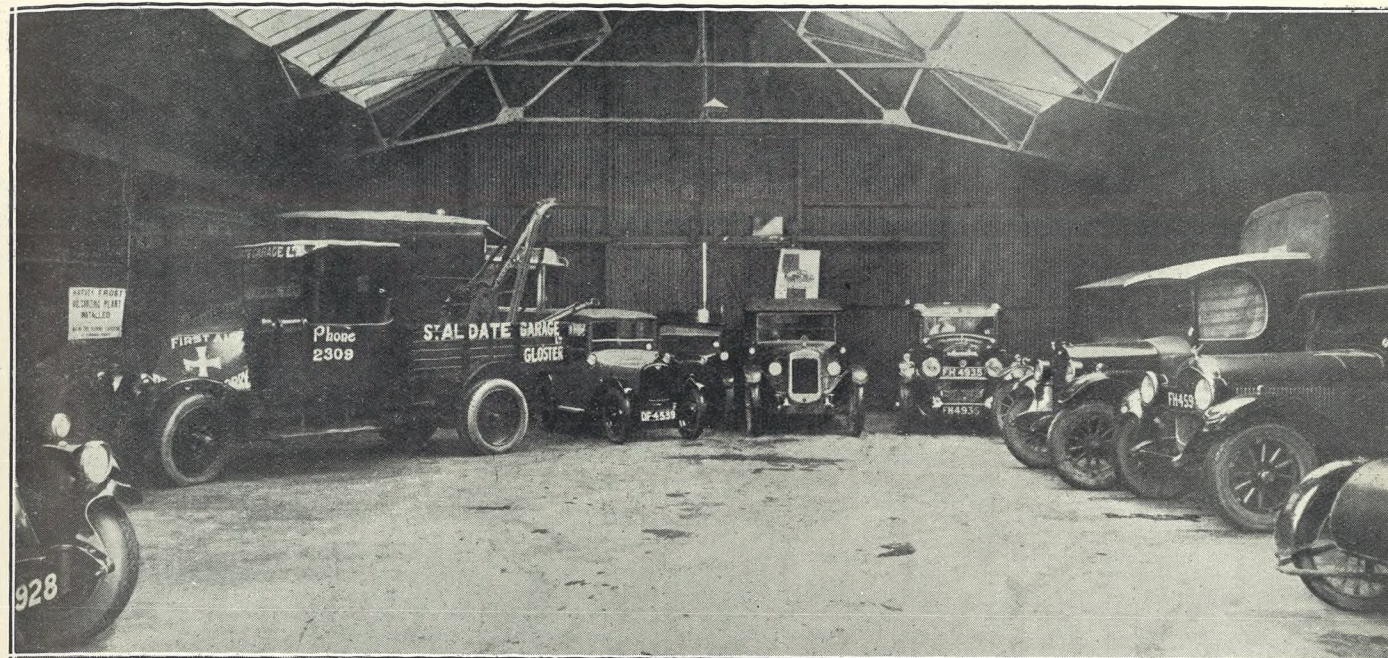
["Cheltenham Chronicle" Photos. Copies 1s. and 1s. 9d. each.

THE CHELTENHAM AND GLOUCESTER CAR MART, LTD,



THE CHELTENHAM CAR MART, 37-38 WINCHCOMBE STREET, CHELTENHAM.

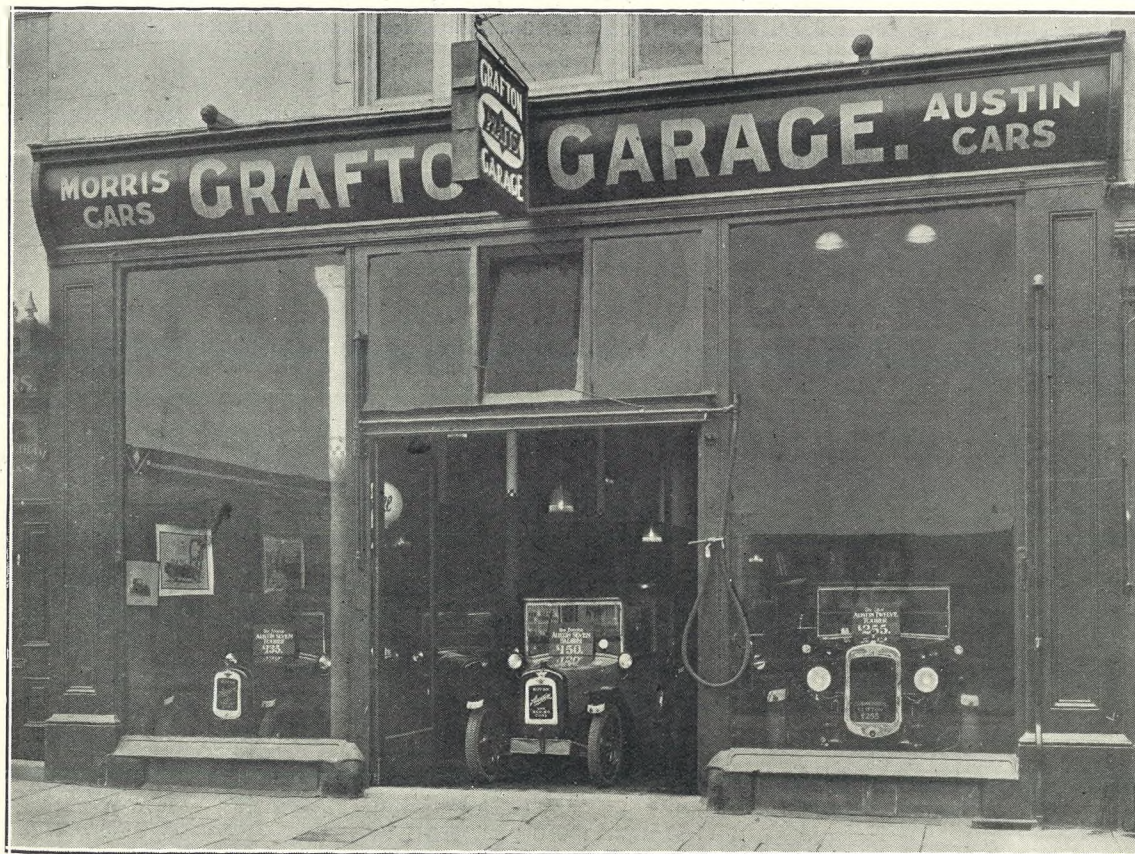
ANNOUNCE THAT THEY HAVE NOW ACQUIRED



ST. ALDATE'S GARAGE, ST. ALDATE STREET, GLOUCESTER.



HARTWELL'S GARAGE, NORTHGATE STREET, GLOUCESTER.



THE GRAFTON GARAGE, SUFFOLK ROAD, CHELTENHAM.

ALSO THE PITTVILLE GARAGE, WINCHCOMBE STREET, CHELTENHAM, AND ROOMS TO BE SHORTLY OPENED IN PROMENADE (NEAR PARKING CENTRE). The continuity of these businesses is assured, as each maintains its identity. Improvements in the organisation of the whole, however, will result in the motoring public having the advantage of a wider range of Cars from which to choose, and an "After Purchase Service" which will be eminently satisfactory. Being Austin Distributors for Cheltenham and Gloucester, all Austin owners and prospective purchasers will feel an added confidence that their interests will be a primary consideration. The Company is under the joint control of Mr. James Allen and Arthur Guy, both of whom are well known to motorists in the district.

AUSTIN,

CHRYSLER,

TALBOT,

SINGER,

RENAULT,

MORRIS.

FREE TUITION GIVEN. EXCHANGES. DEFERRED SERVICE AFTER SALE. ANY MAKE OF NEW CAR SUPPLIED.



FUNERAL OF MR. A. E. WOODWARD.

The Funeral Service of the late Mr. Albert E. Woodward, of 17 Cambray, Cheltenham, took place at All Saints' Church, on Saturday, March 10th. A considerable number of old friends attended, including members of Cheltenham Bowling Club, of which deceased was last year's captain, Masonic friends, and members of the musical profession.

- | | | |
|--|--|---------------------------|
| 1.—The coffin leaving the church, followed by family mourners. | 4.—Messrs. Syd.Tonge, T. J. Booy, and J. A. Silvester. | 7.—Mr. H. T. Thornhill. |
| 2.—Mr. Thompson, Mrs. L. G. Thompson, and Mrs. F. Fisher. | 5.—Mrs. Laurence Woodward and Miss Woodward. | 8.—Mr. R. W. W. Edwards. |
| 3.—Messrs. T. D. Boulton, W. Ford, A. Vaughan, and A. Lane. | 6.—Mr. H. Boulter. | 9.—Mr. F. Green. |
| | | 10.—Mr. and Mrs. Prew. |
| | | 11.—Mr. and Mrs. Painter. |

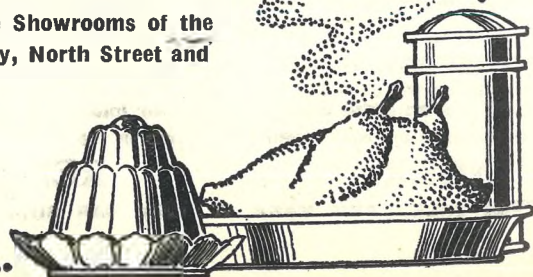
["Cheltenham Chronicle" Photos. Copies 1s. and 1s. 9d. each.

Free A series of
Cookery Demonstrations
 will be held at
The GAS SHOWROOMS
NORTH ST

MONDAY to FRIDAY, March 19th to 23rd

1928,
 At 11.30 a.m. and 3 p.m. DAILY.

Programmes (Free) now Available at the Showrooms of the Cheltenham Gas-Light and Coke Company, North Street and 40 Promenade.



ROUND THE TOWN IN CHELTENHAM.

Snaps taken in the Promenade on Saturday morning last. It was very fine, but very cold. No. 5 (on right) is Mr. F. W. Golesworthy.

["Cheltenham Chronicle" Photos. Copies 1s. each, postage 2d. extra.

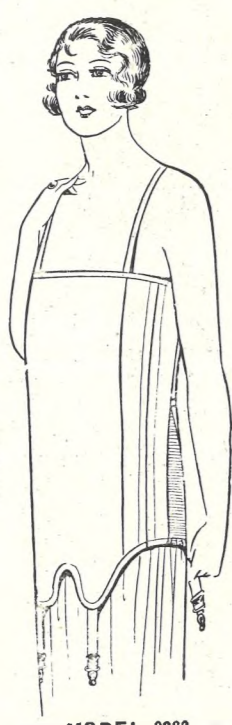
SEND THE "CHRONICLE AND GRAPHIC" TO YOUR FRIENDS EVERY WEEK.

SEE OUR DISPLAY OF *Twilfit* Corsetry

"Twilfit" Corsets give perfect freedom of movement and adequate support. Manufactured from specially woven materials, double stitched in all wearing parts, made with English thoroughness and attention to detail, they are the only Corsets carrying a full guarantee against everything.



MODEL 0535.
A Corset of silk-striped batiste, with the advantage of a boned uplift belt to mould the figure correctly. Elastic inserted on the hips, fastening at the left side, with hooks and eyes. Two pairs of good hose supports. Dainty ribbon shoulder straps. In pink and white. Bust sizes 30 to 44 inches **10/11**



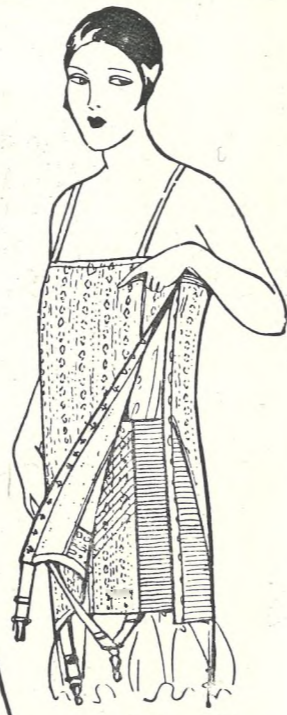
MODEL 0282.
Corset of strong pink coutil, suitable for sports wear, or if worn over corsets it will greatly assist in moulding the figure to the fashionable straight lines. Fastened at side with hooks and eyes. Bust sizes 32 **8/11** to 44in.



MODEL 812.
A new number modelled on the very latest lines. 1-inch waist-line. Made from very strong striped silk-finish cloth. Fitted with four suspenders. Sizes 21-30 inches, in pink and white. **6/11**



MODEL 0319.
Specially deep Corset of fancy washable broche. Elastic inserted on hips; fastens on left side with hooks and eyes; strong shoulder straps; and fitted with four hose supporters. Sizes 32-44 inches. **5/11**



MODEL 0505.
Suitable for stout figures. Made from strong Pink materials. The under-belt is of good elastic, lightly boned. The Corset is boned up the back, fastened at the sides with locks and eyes. Fitted with six hose suspenders. Bust sizes **16/11** 34 to 44ins.



MODEL 81. medium depth. Latest design. Made from very strong material, with fancy elastic top. Four suspenders. In Pink and White. Sizes 21 to 30 inches. **5/11**



MODEL SPORTS A.
Made with elastic round top, specially adapted for slender figures. In pink and white. Fitted with rustless and unbreakable "Twilfit" Spiral Steels and four hose supporters. Sizes 21-30ins. **4/11**

A CORSET FOR EVERY FIGURE
SEE THE "TWILFIT" FILM AT THE DAFFODIL PICTURE HOUSE NEXT WEEK.
A PRICE FOR EVERY PURSE.

OSBORNE HOUSE
(Proprietor: D. J. REES),
High Street, Cheltenham.



NATIONAL HUNT STEEPLECHASES IN CHELTENHAM.
The Cheltenham National Hunt Meeting is now looked upon as the finest meeting in England under National Hunt Rules, and it was finer than ever this year. A feature of the Meeting is the tremendous motor traffic. On Wednesday all the motor enclosures were packed, and it was a matter of time to get away from the course.

- 13.—The second jump in Cheltenham Gold Cup, Sprig leading on left.
- 14.—A gentleman in the enclosure in a teddy bear coat.
- 15.—Hon. Mrs. Aubrey Hastings and Lord Londesborough.
- 16.—F. Rees, on Patron Saint (leading), winning the Gold Cup Race, followed by Koko (third) and Vive (second) at last fence.
- 17.—Members round parade ring. Sir Anselm Guise in centre.
- 18.—Lord Dorchester and Colonel Morrison Bell.
- 19.—Members returning to enclosure.
- 20.—Rossieny winning Amateur Riders' Handicap Chase on Tuesday, followed by Glenoge.

["Cheltenham Chronicle" Photos. Copies 1s. and 1s. 9d., postage 2d. extra.

NEW MILLINERY SHOWROOMS at



View of New Showroom devoted entirely to Ladies' and Children's Ready-to-Wear Millinery.

Our Millinery Buyer is in the market every week searching for something new and up-to-date and at reasonable prices.

We Specialise in
Smart
READY-TO-WEAR
Millinery,
From
3/11½ to 25/6.

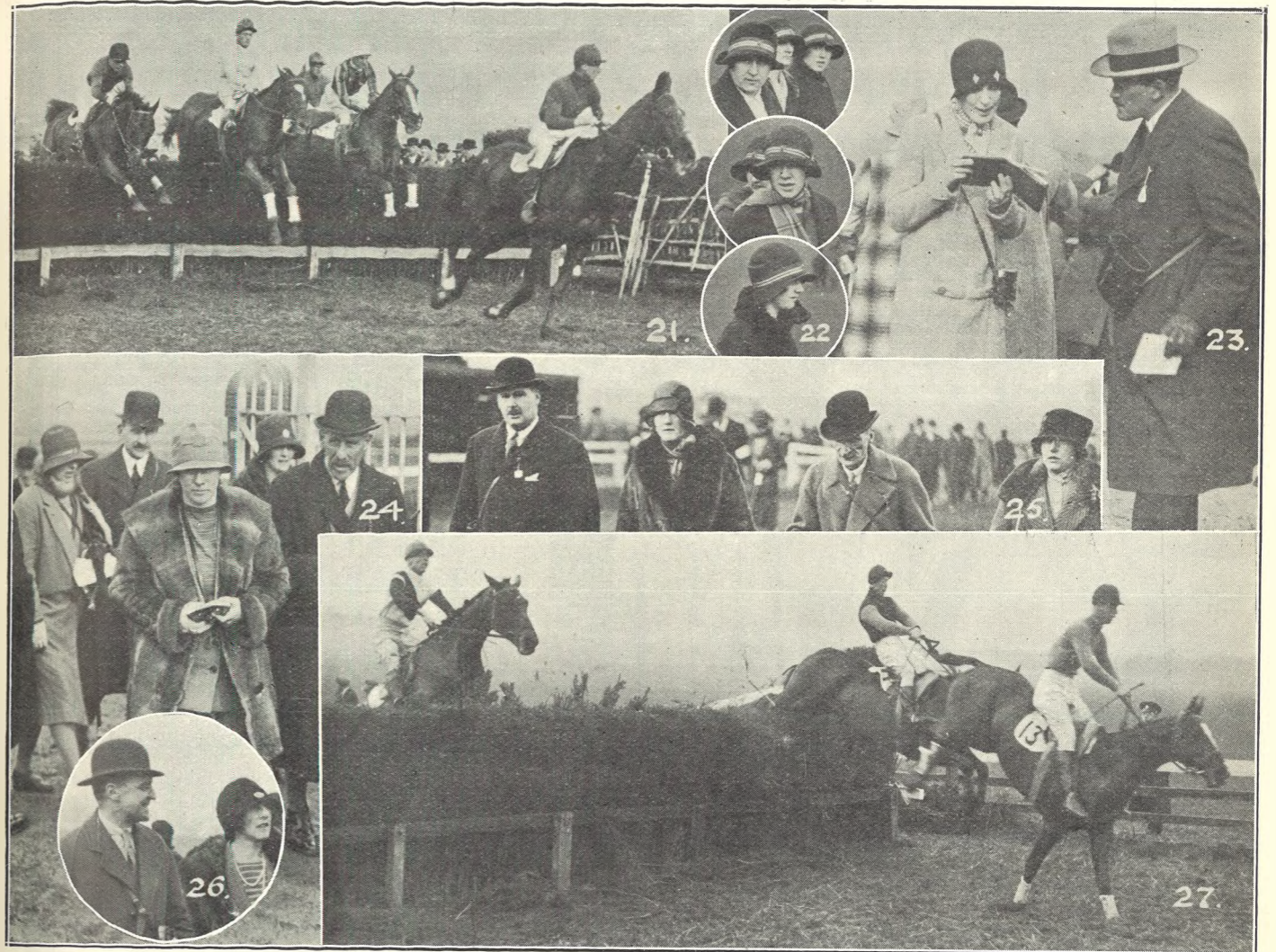


Another Corner of our Millinery Showroom

Dicks & Sons Ltd.
172 & 173 HIGH STREET
Cheltenham Spa
50 YEARS REPUTATION FOR VALUE.

**DICKS
&
SONS,**
LTD.

The House of Dicks has a record of over 57 years' steady growth, and have recently made large extensions of their Showrooms for Ladies' Ready-to-Wear Goods, which will add greatly to the comfort of their customers, the number of whom are steadily increasing.



NATIONAL HUNT STEEPLECHASES IN CHELTENHAM.
Further snaps of pictures taken on Tuesday and Wednesday last at this brilliant meeting.
21.—A fence in Coventry Cup Race on Wednesday. Reading from left: Grakle (second), Canopus, Dudley (winner), Beggar's End, and Thrown In.
22.—Unusual visitors at the races, from a Ladies' College.
23.—Lady Irene Cubitt with a friend.
24.—Members returning to Paddock from the course.
25.—Captain de Lisle Bush, Mrs. and Major Veal, and Miss Corryton.
26.—A lady and gentleman in enclosure.
27.—A jump in United Hunts' Challenge Cup, I Like That leading, followed by Upper Grange (winner), and Private Mac.
[“Cheltenham Chronicle” Photos. Copies 1s. and 1s. 9d., postage 2d. extra.]

**BEST QUALITY
CIDERS
IN BOTTLE.—Sparkling and Still.
BARTHOLOMEW,**
418, 420 HIGH STREET,
CHELTENHAM.

Wines, Spirits, Ales, Table Waters, & Grocery.
Tel. 3590.

WANTED
Old Gold and Silver Jewellery, Old China, Engravings, Quaint Snuff Boxes, and Antique Furniture.
Best Prices Given.
ESTABLISHED 70 YEARS,
HARRY O. BOX,
538 HIGH STREET, CHELTENHAM
(Nearly Opposite Grammar School).

Let **MOUSELLS** Move You



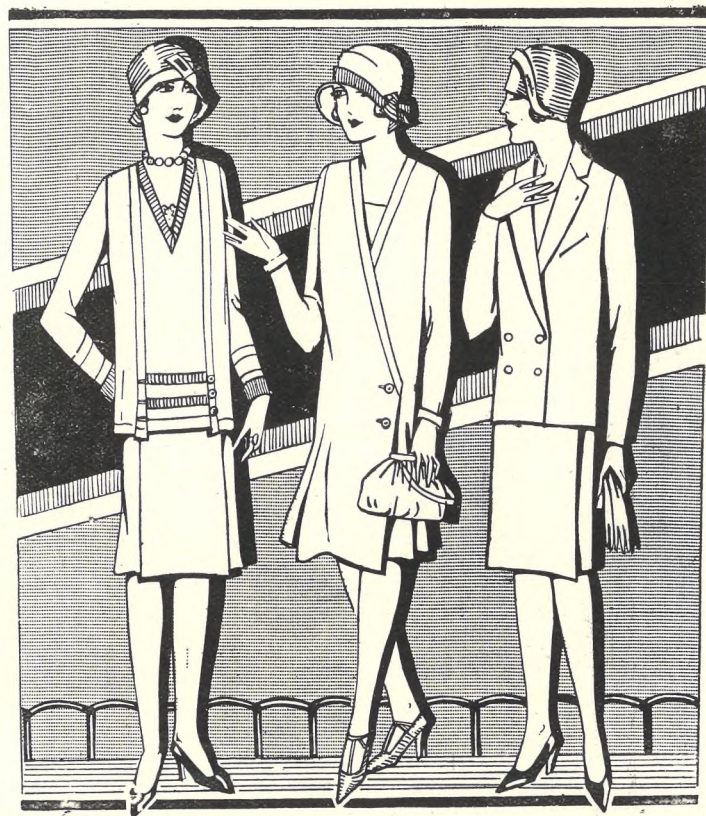
Estimates for Removals and Storing Free.
'PHONE 2112.
CHELTENHAM. Offices: **AMBROSE STREET.**

PLACE YOUR ORDER.
at once for a Copy of "Picturesque Gloucestershire," the handsome Guinea Volume which we are producing this month, in which will be beautifully printed nearly 200 full page illustrations of Towns, Villages, Scenery, and Ancient Buildings in the County. Order at "Echo" Offices.

SHIRTS.
SPECIAL HARD-WEAR SHIRTS.
White Grounds. Coloured Stripes. Fast Colour. Lined Back and Front.
8/6.
Own Manufacture.
FLANNEL SHIRTS,
8/11, 10/6, 12/6. All My Own Make.
A. BECKINGSALE,
HOSIER,
111 HIGH STREET, CHELTENHAM.

HAND-SEWN MAKING from 30/-
REPAIRS SAME DAY.
JOINT AND ARCH SPECIALISTS AND UNION CURERS.
London City Honours.
PROGRESS BOOT WORKS,
21 MONTPELLIER STREET, CHELTENHAM
(Opposite P.O.).

DON'T FAIL TO VISIT WARD'S GREAT SPRING AND PRE-EASTER FASHION SHOW!



Ward's extensive Showrooms are now devoted to a Special Show of the smartest of Styles for the New Season, while their Windows are arranged to make a complete and authoritative Display of the Latest Fashions. There will be shown a Collection of the

**SMART MILLINERY,
THREE-PIECE SUITS
KNITTED WEAR.
GOWNS, LINGERIE,
Etc.,**

that will rival the Displays made by many of London's leading stores, whilst as ever the value will be the keenest in the country. You are cordially invited to inspect this Special Spring Fashion Window Display, and assured that a visit will be well worth while.

STYLISH HATS.

Wonderful Selection of SEMI-TRIMMED HATS, in Paribuntle, Hemp, and Bangkok, in all the Newest Shades and Shapes. Prices from 25/9.

Popular Lines, ranging from 8/11 to 21/9, in Straw and Felt. Large Selection of CHILDREN'S HATS

COATS.

Telemac Light-Weight COAT. Full range of New Art Shades. Guaranteed for 2 years, ... 21/-.

3-PIECE SUITS.

Smart THREE-PIECE SUITS in Wool and Silk Wool Bonclette, etc., 25/9 to 4 1/2 Gns.

JUMPER SKIRTS in a wonderful range of Materials, Pleated & Plain, 12/11 to 23/9.

GOWNS.

Smart Tweed WEATHER COATS, trimmed Leather on Collar and Pockets, in Small and Full Sizes, 30/-.

SILK COATS in Plain and Fancy Silks. Colours: Black and Navy, Tan. Many Fur trimmed. 35/9 to 6 Gns.

E. L. WARD
LIMITED.
HIGH ST., CHELTENHAM.
'PHONE 3781.

THE CHELTENHAM CHRONICLE AND GLO'SHIRE GRAPHIC

GRATIS SUPPLEMENT. With Which is Incorporated the "Cheltenham Looker-on."
Saturday, March 24, 1928. No. 1,421.

CHELTENHAM THEATRE AND OPERA HOUSE.

This Afternoon (2.30) and Evening (6.40 and 8.40) — "THE LAST WALTZ."

NEXT WEEK: The Irish Players present—
"BIDDY." AN IRISH STEW.

THE PALACE, HIGH STREET, Cheltenham.

Director: Shakspeare Shenton.
FOR SIX DAYS.
West of England Premier from the New Gallery Kinema.
MARY PICKFORD,
"The World's Sweetheart," in
MY BEST GIRL.

From the Famous Novel by Kathleen Norris.
You'll Fall in Love with Mary
All Over Again when you see her in the Best Picture she has made for years.

Douglas Cochrane and His Popular Orchestra will Charm You.

THE DAFFODIL Cheltenham's Only Real Cinema.

Continuous Daily 2.30 to 10.15.
Monday, March 26th, and During the Week, we Present

A HUGE TWO-FEATURE FILM SHOW.
Gene Stratton Porter's Most Famous Story,

THE KEEPER OF THE BEES.

Starring CLARA BOW, and ROBERT FRASER.
And

GOING THE LIMIT.

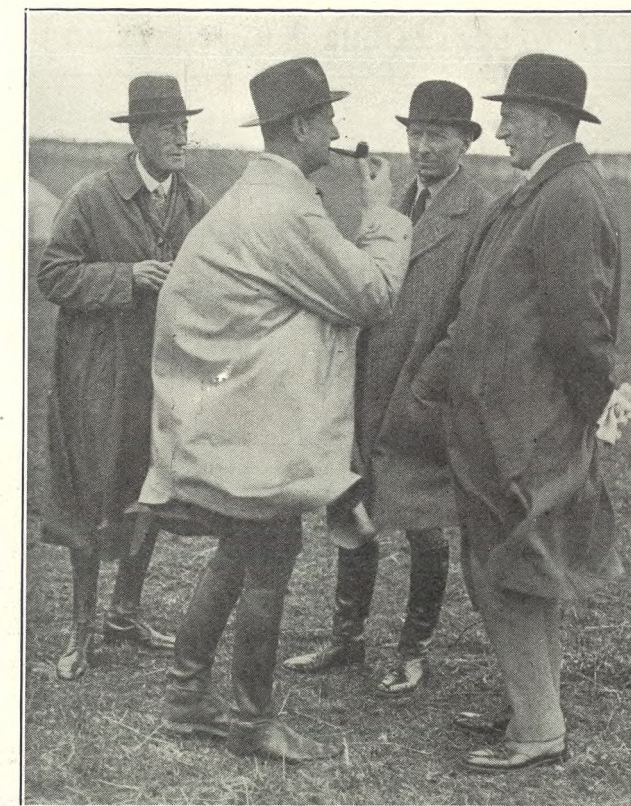
The Rollicking Romance of a Bashful Youth, with GEORGE O'HARA.

MARTIN & CO.,

Limited,
COUNTY JEWELLERS,
Pearl and Diamond Merchants.

Wedding Presents, Antique Silver, Old Sheffield Plate, Early English Clocks,

Promenade, Cheltenham.
Established 1806. 'Phone 2821.



AT THE COTSWOLD HUNT STEEPLECHASES.

Lieut.-Colonel B. R. K. Tarte, a strong supporter and follower of the Hunt, Captain G. N. Reynolds, Gorndean Hall (Honorary Secretary and Treasurer of the Steeplechases), Rear-Admiral F. A. Marten, M.F.H., and Mr. Arthur Mitchell, M.F.H. The two latter are the new Joint Masters of the Hunt.

["Cheltenham Chronicle" Photos. Copies 1s. each.

ADVERTISE IN THE "ECHO."

Winter Garden NEW KINEMA, PROMENADE, CHELTENHAM.

Director: Shakspeare Shenton.

Colossal Two-Feature Programs!
Monday, Tuesday, Wednesday:—

BEBE DANIELS in
SENORITA.
FOR SIX DAYS!

A Great British Triumph!
Isabel Jeans and Robin Irvine in
EASY VIRTUE.

Thursday, Friday, Saturday:—
REGINALD DENNY in
ON YOUR TOES.

Lester Burrows and his Orchestra
IN THE SOUTH PAVILION:
SKATING.

COLISEUM. CHELTENHAM. 'Phone 3715.

6.40 p.m. and 8.40 p.m.
FED UP.
A First-Class Musical Comedy
Revue Production.

North Street PICTURE HOUSE.

From 2.30 p.m. Continuous.
Monday, Tuesday, Wednesday:—

THE BIG BLUFF.

Featuring HARRY PEEL,
The Sensational Stunt Artist.
Thursday, Friday, Saturday:—

THE CLOWN.
Featuring DOROTHY REVIER
and WILLIAM V. MONG.

MAISON ANNETTE,

Kensington House,
PROMENADE,
CHELTENHAM,

Specialists in Exclusive
CORSETS &
LINGERIE.

'Phone 2122.

DALE, FORTY and Co. LTD For the Best PIANOS.



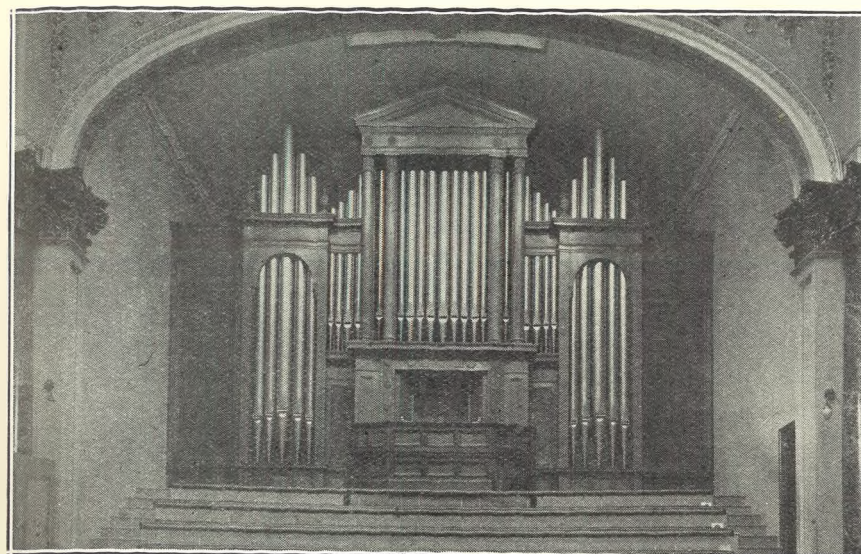
CHELTENHAM TOWN HALL, SHOWING NEW ORGAN.

Mr. and Mrs. E. J. Burrow's gift to Cheltenham, the New Organ in the Town Hall, is to be opened next Wednesday. ["Cheltenham Chronicle" Photo. Copies 1s. 9d. each.]



CHELTENHAM TOWN IMPROVEMENTS.

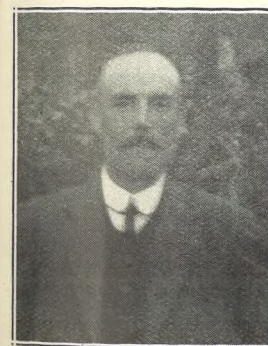
The above premises—in the most beautiful part of Cheltenham—testify to the good taste of MADAME SPENCE. This is also carried out in the Furs, Costumes, Gowns, and Millinery, for which MADAME SPENCE is so well noted; good taste, refinement, and moderate charges combine to make this successful business still more successful. MADAME SPENCE invites the ladies of Gloucestershire to see her wonderful selection of Spring Goods, and thanks them for a visit, which she feels sure will appeal to all. Note only address: 10 MONTPELLIER WALK, CHELTENHAM SPA.



THE NEW TOWN HALL ORGAN.

The fine new Organ in Cheltenham Town Hall, presented to the Town by Mr. and Mrs. E. J. Burrow in commemoration of the Jubilee of the Borough. It was built by Messrs. Rushworth and Dreaper, Ltd., of Liverpool; and the case was executed by Messrs. R. L. Boulton and Sons, of Cheltenham.

["Cheltenham Chronicle" Photo. Copies 1s. 9d. each.]



MR. EDGAR CLIFFORD, a retired draper, of London-street, Fairford, Glos., who died on March 1st, the result of a shooting accident while on holiday with his brother, Mr. John Clifford, at Whalley Farm, Andoversford. His age was 53.



MR. ALF. E. (FRED) JONES, of Birmingham, formerly of Tivoli, Cheltenham, who died on March 13th, 1928, aged 56 years. He was for many years manager to the late Mr. J. F. Sadler, grocer, of Tivoli. Since the War he had been a manager in the firm of Wrenson's, Ltd., Birmingham. He leaves a widow.



MRS. EMMA TANNER, of Parkend-road, Gloucester, who died on her 81st birthday, March 19th, 1928. She was the widow of the late Mr. Alfred Tanner, painter and decorator, of Gloucester, and was Grand Mistress of the Gloucester Conservative Benefit Society some 20 years ago.

Let **MOUSELLS** Move You



Estimates for Removals and Storing Free.

'PHONE 2112.

CHELTENHAM.

Offices: **AMBROSE STREET,**

SHIRTS.

SPECIAL HARD-WEAR SHIRTS.
White Grounds. Coloured Stripes. Fast Colour. Lined Back and Front.

8/6.

Own Manufacture.

FLANNEL SHIRTS,
8/11, 10/6, 12/6. All My Own Make.

A. BECKINGSALE,
HOSIER,

111 HIGH STREET, CHELTENHAM.



SEE

LANCE'S

SPECIAL DISPLAY

OF

EARLY SPRING

Millinery.

All Exclusive Models are .. shown in .. their Salon.



John Lance

& CO., LTD.,

CHELTENHAM'S SHOPPING CENTRE.



DICKENS' "GREAT EXPECTATIONS" AT CHELTENHAM TOWN HALL.

Members of the Dickens Fellowship (Cheltenham Branch) gave three performances of "Great Expectations," dramatised by another member (Mr. H. O. Barnett), at the Town Hall on Friday and Saturday, March 16th and 17th, in aid of Cheltenham General Hospital Extension Fund.

1.—Mr. G. S. Pardington as Mr. Pumblechook, and Mr. W. H. Banks as Mr. Wopsle.
 2.—Mr. A. G. Dye as Joe Gargery, and C. E. Emery as Pip Gargery.
 3.—Mr. E. Colwell as a Sergeant, and Mr. W. H. Knee as a Soldier.

4.—Mr. G. S. Giller as Mr. Jaggers.
 5.—Messrs. V. Smith as Herbert Pocket, M. A. Porter as Bentley Drummle, and P. Gillitt as Phillip Pirrip.
 6.—Miss F. Beard as Mrs. Gargery.

7.—Miss H. Pattison as Biddy and Mrs. Leedham as Miss Havisham.
 8.—Messrs. S. J. V. Rouch as Compeyson, and W. Palmer as Abel Magwitch.
 9.—Mr. E. H. Williams as Mr. Pip, and Miss Enid Leeson as Estella.

["Cheltenham Chronicle" Photos. Copies 1s. each.



MESSRS. BRUTON, KNOWLES & CO'S ANNUAL SALE OF PEDIGREE SHORTHORNS

AT GLOUCESTER MARKET, FRIDAY, MARCH 16th.

- 1.—Mr. G. N. Bruton (on left) selling cattle.
- 2.—Messrs. W. H. Blake, F. J. Blake, and Mr. Purnell.
- 3.—Messrs. Norman, A. Peter, James Peter (Judge), and W. Hitch.
- 4.—Messrs. E. J. Jones and Tom Marsden.
- 5.—Messrs. R. Butt, F. Littleton, O. Knight, and "Bill" Coole.
- 6.—H.R.H. Prince of Wales's Clonsland Baronet, the Reserve Champion Bull.
- 7.—The Champion Bull of Show, Sir G. A. Willis's Rickford Butterfly Duke.

["Cheltenham Chronicle" Photos. Copies 1s. and 1s. 9d. each, post 2d. extra.

Messrs. Bruton, Knowles & Co. beg to announce the following Sale Fixtures:

- Tuesday, March 27th—**
 STANCOMBE HOME FARM, STINCH-COMBE, Dursley; LIVE and DEAD FARMING STOCK, by direction of Mrs. Purnell Edwards.
- Friday, April 13th—**
 PRIORS COURT, PENDOCK, the Valuable HOUSEHOLD FURNITURE, 400 Head of Pure-bred POULTRY, Poultry-Houses and Appliances.
- Saturday, April 14th—**
 THE BELL HOTEL, GLOUCESTER.—DWELLING-HOUSES at LITTLEDEAN and MITCHELDEAN, suitable for business Purposes.
- Tuesday, April 7th—**
 GLOUCESTER MARKET (April Fair), Special SALE OF HORSES.
- Wednesday, April 18th—**
 THE STAR HOTEL, WORCESTER.—A Residential FRUIT FARM of about 170 Acres, situate at PERSHORE; and BRICK BARNS FARM, near WORCESTER, a FRUIT FARM of about 251 Acres.
- Wednesday and Thursday, April 18th and 19th—**
 FRAMPTON LODGE, FRAMPTON-ON-SEVERN, 10 miles from Gloucester.—The Valuable FURNITURE and EFFECTS, Wolseley 11 h.p. Saloon Car, etc., by direction of the Executors of the late Major-General C. J. Blomfield, C.B., D.S.O.
- Friday, April 13th—**
 2½ h.p. Petter Engine, Agricultural Implements, by direction of the Executors of the late Captain J. H. Peel.
- Saturday, April 12th—**
 PRIORS COURT, PENDOCK, near Tewkesbury, LIVE and DEAD FARMING STOCK, including 73 Cattle, 5 Horses, 40 Kerry Hill Ewes, 20 h.p. Fordson Tractor,



OPERETTA BY ST. GREGORY'S SCHOOLCHILDREN AT CHELTENHAM COLISEUM.

The children of above School gave a very clever performance, to a large audience on Saturday afternoon last, of an Operetta, "The Royal Jester." The acting and singing of principals and chorus was remarkably good for children.

1.—A group of Courtiers.

2.—The King and Queen and retinue. Queen Zitania (N. Bond) and King Ortensis (H. Abbott) on left.

3.—Chancellor of Exchequer (E. Gull), Admiral (D. Burke), Executioner (J. Rummings), and sailors.

4.—The King's Jester (T. May), in centre, with Imps and Granks.

5.—Princess Sylvia (M. Taylor) and Shepherdesses.



ROUND THE TOWN IN CHELTENHAM.

Snaps in the Promenade on Saturday morning last. No. 2 is Mr. H. T. Dartnall.

["Cheltenham Chronicle" Photos. Copies 1s. and 1s. 9d. each, post extra.

SEND THE "CHRONICLE AND GRAPHIC" TO YOUR FRIENDS EVERY WEEK.



A CORNER OF OUR EXTENDED COSTUME AND COAT SHOWROOM.

The extension and re-arrangement of this department will add greatly to the comfort of our customers, who will now have plenty of room when selecting their Costumes, Coats, or Gowns.

Our Ready-to-Wear Fashion Goods are selected with the greatest care and discrimination as to style, cut, and tailoring, with the result that we can offer

REALLY SMART UP-TO-DATE GOODS AT REASONABLE PRICES

We specialise in Extra Large Sizes in all goods; also always carry a full stock of Ready-to-Wear Mourning Goods.



Smart Tailor-made Showerproof TWEED COATS ... 15/11 to 69/6.

Dicks & Sons Ltd.
172 & 173 HIGH STREET
Cheltenham Spa
50 YEARS REPUTATION FOR VALUE.



Attractive 3-PIECE SUITS, in Fine Wool Cashmere Stockinette. 18/11 to 69/6.



THE COTSWOLD HUNT POINT-TO-POINT STEEPLECHASES AT HASELTON.

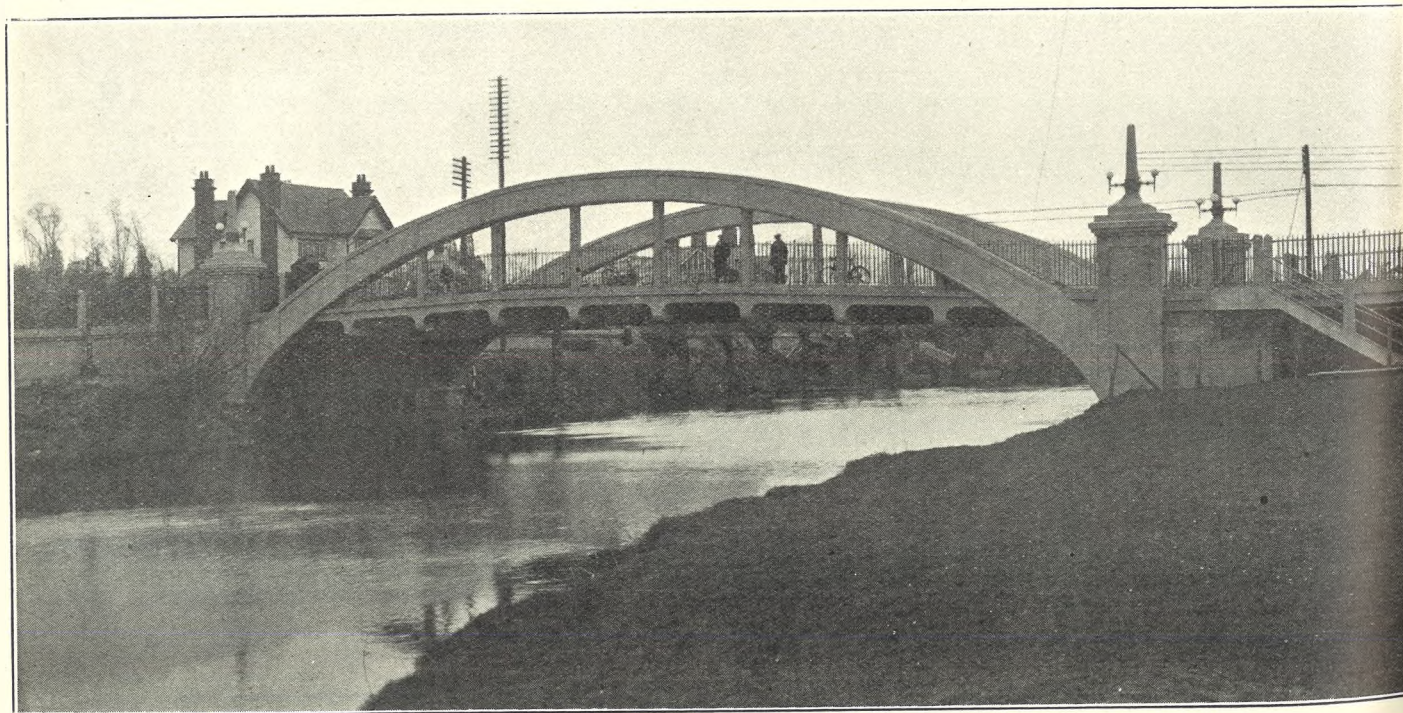
This Meeting was again a most successful one, and gave great pleasure to the farmers and their friends, for whose benefit it is run. The entire course was on the farm of Mr. Geo. Wood, and was in beautiful condition, and the weather was splendid.

- 1.—One of the grandstands. Mr. G. Wood's party in a wagon at the winning post.
- 2.—Mr. Geo. Wood (left), over whose farm the races were run, with his son (centre), and Colonel Elwes.
- 3.—Messrs. Norbery, Victor Barton, Sam Hoskins, Wm. Midwinter, and Stephens.
- 4.—The last fence in Open Nomination Race, Mr. A. Knowles's Royal Sovereign (favourite, on left) falling, Mr. W. E. Stokes's Kind Knight (Captain Sherard, in centre) winning.
- 5.—Mr. R. A. Gunther's Matador (winner) in front at last fence in Cotswold Light-Weight Race.
- 6.—Mr. Martin (Ebworth Park) and Colonel Bonham.
- 7.—Mr. "Barry" Mortimer gives a Salvation "Lassie" a 10s. note for her box to have her photo taken with the "bookies."
- 8.—First fence in Open Nomination Race.
- 9.—Messrs. Pullen, jun., T. Hyett, and Pullen, sen.



THE "ECHO" AND "CHELTENHAM CHRONICLE" NEW OFFICES.

The opening ceremony for the new suite of offices for the "Gloucestershire Echo" and "Cheltenham Chronicle and Graphic" took place on Wednesday last, when the Rev. R. H. M. Bouth, a Director and Secretary of the Company, in the absence of the Chairman of Directors (Sir Jas. Agg-Gardner, P.C., M.P.), and in the presence of a large company of shareholders and friends, declared the building open. After the company had inspected the entire range of offices and works, afternoon tea was served. Our picture shows the exterior of the new offices. They were formerly the Sale Rooms of Messrs Young and Gilling. The character of the building has been well preserved by the Architects, Messrs. Barnard and Partners, Cheltenham, and the alterations have been admirably carried out by Messrs. S. C. Morris and Son, Tivoli, Cheltenham.



EVESHAM'S NEW BRIDGE.

On Thursday next, the new Road Bridge over the River Avon at Evesham will be formally opened by Mr. Wilfred Ashley, the Minister of Transport. The bridge and viaduct have taken some two years to build, and is of reinforced concrete. It has cost £40,000. It is designed to relieve the traffic through the narrow and congested Bridge Street and over the old bridge. The bridge is situate facing the Cheltenham road on entering Evesham.

["Cheltenham Chronicle" Photo. Copies 1s. 9d. each.

"Picturesque Gloucestershire."



To-day we are publishing in book form a reprint of the series of views of Gloucestershire towns and villages that we have been producing in the "Cheltenham Chronicle and Graphic" since February, 1921. It is a magnificent book, well bound in blue buckram, printed on finest art paper, containing 384 pages, and having 184 full pages of pictures: meaning that there are over 730 separate views of houses and scenes in our beautiful county. Facing each page of pictures is a short and succinct account describing each village and town, with historical and archaeological notes. No more welcome present could be given to absent friends than one of these books, bringing to their memory the old familiar scenes of their childhood; and no county has ever been more profusely illustrated than in this book. The price of the book is One Guinea (£1 1s.), and we should advise readers to send us their orders at once, as we expect to sell out the first edition very quickly. There is not a single advertisement in the book, and it is of interest from cover to cover.



CHELTENHAM GOLDEN WEDDING.

Mr. and Mrs. W. Lett, of 18 Francis-street, Cheltenham, who celebrated their golden wedding on Tuesday, March 20th. They were married on March 20th, 1878, at Leckhampton Parish Church, by the Rev. Canon Trye. They have had 12 children (eight sons and four daughters). Only two sons are now living, and three grandchildren.—["Cheltenham Chronicle" Photo. Copies 1s. each.

HAND-SEWN MAKING from 30/-
REPAIRS SAME DAY.
JOINT AND ARCH SPECIALISTS AND
BUNION CURERS.
London City Honours.
PROGRESS BOOT WORKS,
 21 MONTPELLIER STREET, CHELTENHAM
 (Opposite P.O.)

GOLDEN WEDDING AT KEMERTON.

Mr. and Mrs. Albert Smith, of Kemerton, who celebrated their golden wedding on March 4th. They were married at Kemerton, and are both in good health and with no intention of giving up work. They live in their own cottage. They were presented with an easy chair and a clock by several local friends.

ANY MAKE OF MOTOR-CYCLE

WHICH HAS TAKEN YOUR FANCY
 OR MADE AN OUTSTANDING PERFORMANCE
 IN THE STOCK MACHINE SIX DAYS TRIAL,

Can be obtained from—

Leslie Paynter

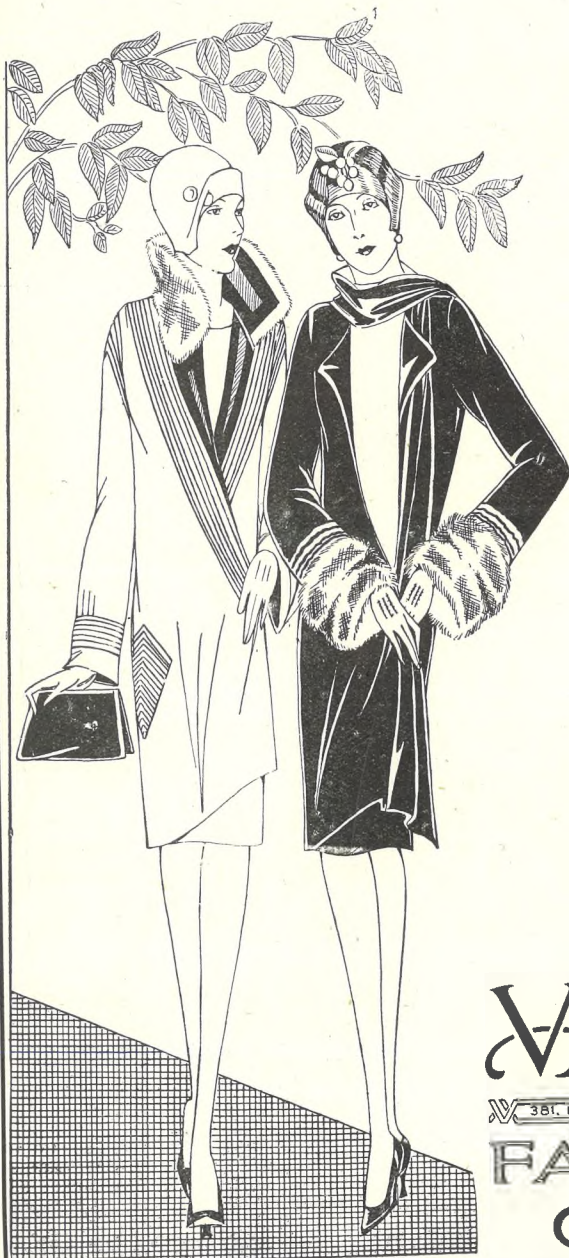
THE MOTOR-CYCLE SPECIALIST,
BATH STREET, CHELTENHAM.

Delivery from Stock for your EASTER RIDING of the following—
B.S.A., NORTON, FRANCIS-BARNETT, NEW IMPERIAL,
CALTHORPE, LEVIS, RUDGE, DOUGLAS, NEW GERRARD, &c.

Second-hand Bargains Always Available at Reasonable Prices.



EXHIBIT OF NEW STYLES



FOR Easter by Vanderplank (from Harrods), of Cheltenham Spa. The task of selecting and assembling these new styles has been difficult, though most enjoyable. The responsibility of style leadership must of necessity cause us to be very exacting in every detail.

Those who look to this House for guidance in authoritativeness, not only in style correctness, but for exclusiveness, quality, and moderation in price, will find each factor fully expressed in this Fashion Exhibition to which a cordial invitation is now extended to all ladies of taste and discrimination in dress.

- Perfect Man-Fitting Tailor-made Suits from 3 Gns.
- Three-Piece Suits, Knitted and Cashmere, „ 29/6.
- „ „ „ Suitings & Charmalaine „ 3 Gns.
- Coats, Border and Plain Suitings - „ 29/11.
- „ Repp. Charmalaine, and Silk - „ 49/6.
- Models that are Models - - - „ 7½ Gns.

Is it wise to delay your buying?
—The selection is now at its best.

Write for Catalogue.

VANDERPLANK

381, HIGH STREET HARRODS

FASHIONS AND FURS

CHELTENHAM SPA.

THE CHELTENHAM CHRONICLE AND GLOUCESTERSHIRE GRAPHIC

GRATIS SUPPLEMENT. With Which is Incorporated the "Cheltenham Looker-on," Saturday, March 31, 1928. No. 1,422.

CHELTENHAM THEATRE AND OPERA HOUSE. This Afternoon (2.30) and Evening (6.40 and 8.40)—"BIDDY." NEXT WEEK (Excepting Friday)—"AFTER DARK." Matinee Saturday: "GRUMPY."

THE PALACE, HIGH STREET, Cheltenham. Director: Shakspeare Shenton.

Monday, Tuesday, Wednesday:—**CORINNE GRIFFITH,** Einar Hansean, Ward Crane, in **THE LADY IN ERMINE.**

FOR SIX DAYS! The 1928 **GRAND NATIONAL STEEPLECHASE.** Every Fence from Start to Finish. Exclusive and Official Film.

Thursday and Saturday:—**HARRY PEEL** in The **THE ADVENTURE OF THE MIDNIGHT EXPRESS.**

THE DAFFODIL Cheltenham's Only Real Cinema.

Continuous Daily, 2.30 to 10.15.

Monday Next, April 2nd, and **ALL THE WEEK,** By Universal Request, A Special Return Visit of the World's Greatest Film—**BEN HUR.**

Full Exclusive Presentation.

CONTINUOUS PERFORMANCE

NO INCREASE OF PRICES.

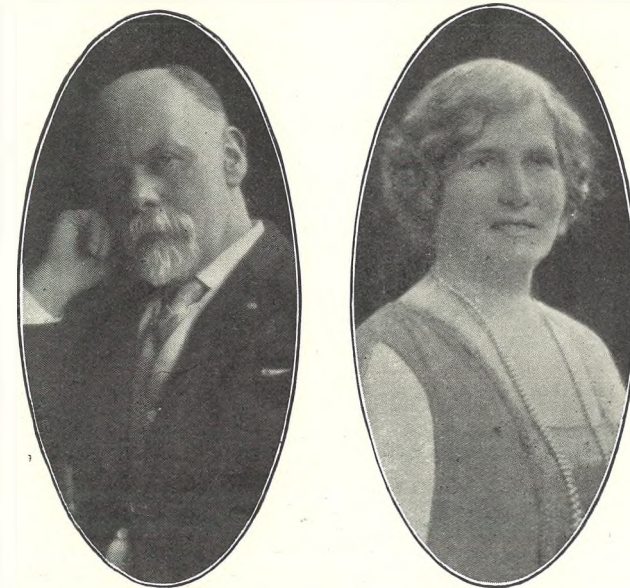
Closed Good Friday.

MARTIN & CO., Limited,

COUNTY JEWELLERS, Pearl and Diamond Merchants.

Wedding Presents, Antique Silver, Old Sheffield Plate, Early English Clocks.

Promenade, Cheltenham. Established 1806. 'Phone 2821.



CHELTENHAM BENEFACTORS.

Mr. and Mrs. E. J. Burrow, of Wayside, London-road, Cheltenham, who on Wednesday last handed over the keys of a magnificent new organ at the Cheltenham Town Hall to the Mayor of Cheltenham. This organ they have had built at their own expense for presentation to the town as a memento of the Jubilee of the Incorporation of the Borough. An organ recital was afterwards given by Dr. Harold Darke, F.R.C.O., organist of St. Michael's, Cornhill; and a representative party was entertained to tea by the Mayor and Mayoress and the Donors. We published pictures of the organ in our last week's issue.

[Photos by Messrs. Debenhams, Longman, and Co., Ltd., of the Promenade, Cheltenham.]

ADVERTISE IN THE "EGHO."

Winter Garden NEW KINEMA, PROMENADE, CHELTENHAM. Director: Shakspeare Shenton. A Magnificent Summer Production. **THE WRATH OF THE GODS.**

A Magnificent Story of a Gigantic Ice Mountain World, where Glaciers Glitter in Brilliant Sunshine and Diotima, the Ice Queen, reigns supreme.

1928 **GRAND NATIONAL STEEPLECHASE.** Every Fence from Start to Finish. Official and Exclusive Film.

Thursday and Saturday:—**ADDED ATTRACTION, JETTA GOUDAL** in **WHITE GOLD.**

Human! Dramatic!! Thrilling!! In the South Pavilion: **Skating.**

COLISEUM. CHELTENHAM. 'Phone 3715. 6.40 p.m. and 8.40 p.m. **FRED LE GREN** Presents **OH! LAW** MUSICAL COMEDY REVUE.

North Street PICTURE HOUSE. From 2.30 p.m. Continuous. Monday, Tuesday, Wednesday:—**HER SISTER'S HONOUR.** Featuring Marguerite de La Motte Malcolm McGregor. Thursday and Saturday:—**THE PONY EXPRESS.** Featuring Ricardo Ortey and Betty Compson.

"Distinction with Economy." New Season's **MILLINERY** and Smart **SPRING COATS.**

Sensier, 388b HIGH STREET, CHELTENHAM.

Telephone 2580. **W. Scott Cooper,** Diamond Merchant, Jeweller, Goldsmith, and Silversmith. The Promenade, Cheltenham. LICENSED VALUER

DALE, FORTY and Co., Ltd. For the **BEST PIANOS.**



FUNERAL OF THE LATE REV. A. E. CLEASE.

There was a great congregation of clergy, churchworkers, and parishioners at the Funeral Service of the late Rev. A. E. Cleave, at St. Peter's Church, Cheltenham, on Tuesday last. Owing to the tragic suddenness of his death, and his eleven years' devoted work in the parish, great sympathy was shown to his family.

- 1.—Dr. S. T. Pruen, a mourner.
- 2.—The funeral procession entering the Church. Deceased's widow and two sons are immediately behind the coffin.
- 3.—The Choir entering Church.
- 4.—Mr. A. W. Bryant.
- 5.—Mr. Edward Bourne.
- 6.—Colonel and Miss Strachan.
- 7, 9, and 10.—Local clergy present They lined each side of the church path.
- 8.—Adult members of the Choir.
- 11.—Mourners leaving the Church.

NOW READY. "PICTURESQUE GLOUCESTERSHIRE." ORDER YOUR COPY NOW.

A BOOK EVERY GLOUCESTRIAN SHOULD POSSESS.

We have pleasure in announcing that we have now published in book form a reprint of the series of views we have been producing in the "Cheltenham Chronicle and Graphic" since February, 1921, entitled "Picturesque Gloucestershire."

These make a magnificent book, well bound in blue buckram, printed on finest art paper, containing 384 pages, and having 184 full pages of pictures. This means that there are over 730 views

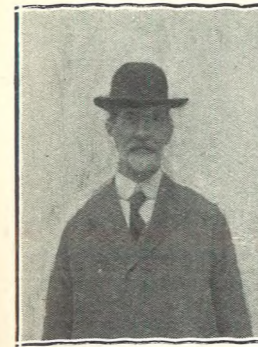
of houses and places in our famous county, all taken especially for us week by week by our own photographer.

Facing each page of pictures is a short and succinct account describing each village and town, with archæological and historical notes.

If anything can touch the heart-strings of the exiles of Gloucestershire who are quartered in lands far from home, it would be the sight of the old familiar

places collected together as in this volume, and no finer present could be imagined.

The price of the book is One Guinea (£1 1s.), and never has better value, or a more profusely-illustrated book, been published at the price. Send us your order now, as we expect to sell out the first edition very quickly. There is not a single advertisement in the book; and it is of interest from cover to cover.



MR. W. J. S. OVERETT,

of 1 Rosedale-villas, King's-road, Cheltenham, who died in the Imperial Nursing Home on Monday, March 27, the same day that his only child, Miss Irene Overett, was buried. He was only ill a week, and was about 70 years of age. He was a nephew of Mr. W. H. Horsley, estate agent and auctioneer, of the Promenade, in whose business he had been engaged since 1880.



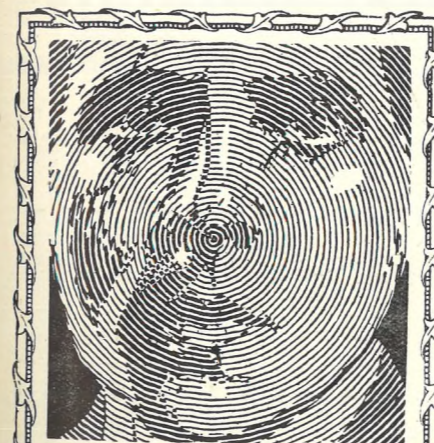
MISS IRENE OVERETT,

only child of Mrs. Overett and the late Mr. W. J. S. Overett, of 1 Rosedale-villas, King's-road, Cheltenham, who died on March 21st, aged about 34 years. She had been ailing for some time, and died on the day her father was removed to a nursing home for an operation. He never knew of her death.



REV. O. E. HAYDEN, M.A.

Rector of Avening, near Tetbury, into whose conduct an enquiry has been ordered by the Bishop of Gloucester, to take place in the Shire Hall, Gloucester, on April 10th. He was formerly Head Master of the King's School, Gloucester for 18 years, and Minor Canon and Sacrist of the Cathedral. He is an ex-captain of Gloucester City Cricket Club, and was on the Committee of the Gloucester City Rugby Football Club, besides being a very keen golfer.



CORTOT
the great French Pianist
says:—

"No instrument approaches the 'Duo-Art' in the fidelity of musical reproduction."

The DUO-ART PIANOLA PIANO

Three Instruments in one

A perfect piano for hand-playing, a 'Pianola' Piano on which the unskilled can play all pianoforte music with complete personal expression, and a reproducing piano which will bring into your home the actual playing of the world's greatest pianists.

Hear the wonderful 'DUO-ART' in our showrooms

Crichton's
(Ernest Crichton, Ltd.)
394 HIGH STREET, Cheltenham.
Phone 2378.



REV. A. E. CLEAVE,
of St. Peter's Vicarage, Cheltenham, who died on Thursday, March 22nd, with tragic suddenness as he was going upstairs to bed, apparently in the best of health. His age was 66 years. He had been Vicar of St. Peter's for 11 years, exchanging livings with Rev. Heaton Renshaw, he being previously in Birmingham.

EASTER WEDDINGS.

22ct. GOLD RINGS, as sold by us for 75 years (by Weight), 21s. to 80s. Each.
Useful Present Given.

HARRY O. BOX,
339 HIGH STREET, CHELTENHAM
(Nearly Opposite Grammar School).

HAND-SEWN MAKING from 30/- REPAIRS SAME DAY.

JOINT AND ARCH SPECIALISTS AND BUNION CURERS.
London City Honours.

PROGRESS BOOT WORKS,
21 MONTPELLIER STREET, CHELTENHAM
(Opposite P.O.).



SEE

LANCE'S

SPECIAL

**.Easter.
Fashion
Display.**

Ladies', Gents',
and
Children's Wear.



John Lance

& CO., LTD.,

CHELTENHAM'S SHOPPING CENTRE,



NORTH COTSWOLD HUNT POINT-TO-POINT RACES.

An excellent afternoon's sport was enjoyed by a big crowd at the North Cotswold Hunt Point-to-Point Races, held at Buckland, near Broadway, on Tuesday, March 27th. Big fields and delightful weather combined to make the meeting a great success.

1.—Hon. Osmond Hastings, Mr. E. Hanson, and Mr. W. C. Jeffries.
 2.—Master Roderick Mackenzie, Mr. Jeune, and Mrs. Mackenzie.
 3.—A view of the big crowd in the enclosure.
 4.—A fence in Adjacent Hunts Farmers' Race, won by Mr. G. G. Guilding's Demon II.
 5.—A "grandstand" at winning post. Mr. C. Hilton Green, M.F.H., is marked X.
 6.—Sir Lionel Darell with two ladies.
 7.—A tipster busy "telling the tale."
 8.—Miss Mann Thompson, Miss Brooke, and Miss Fenwick, with an equine friend.
 9.—Messrs. Hughes Bros' two entries, Bugler and Sweet Maluer, jumping together in North Cotswold Farmers' Race. Bugler (on right) was the winner.
 10.—The first fence in Adjacent Hunts Members' Race, won by Captain C. R. Pawson's Top Line.

["Cheltenham Chronicle" Photos. Copies 1s. and 1s. 9d., post extra.



OPENING NEW OFFICES FOR "ECHO" AND "CHELTENHAM CHRONICLE."
 On Wednesday, March 21, fine new Offices were formally opened by Rev. R. H. M. Bouth, a Director and Secretary of the Cheltenham Newspaper Company. We give an illustration of the interior of the public office, which is panelled throughout in mahogany. It was designed by Messrs. Barnard and Partners, and Messrs. S. C. Morris and Son, of Tivoli, Cheltenham, were the builders.

The **WHOLE** of the **ALTERATIONS** and **RECONSTRUCTION WORK**

For the

'**Echo**' and '**Chronicle**' **Offices Extension**

WERE CARRIED OUT BY

S. C. Morris and Son,
 F.I.O.B., R.P.C.,

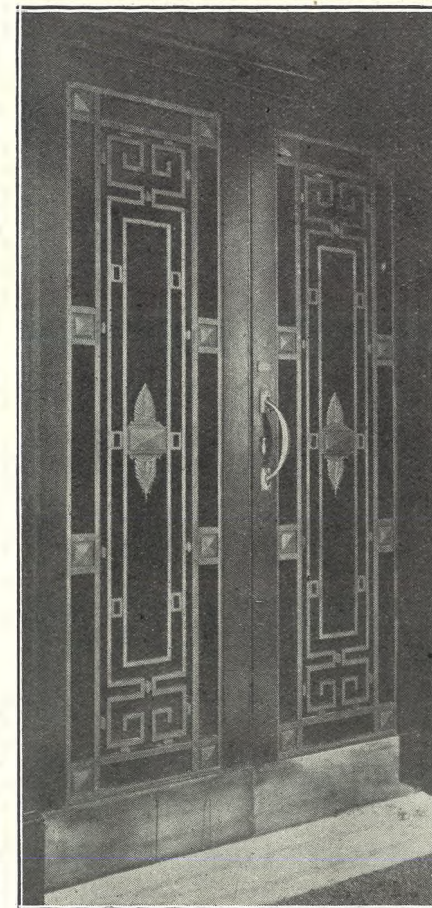
BUILDERS, CONTRACTORS, SANITARY ENGINEERS, DECORATORS, &c.,

Tivoli Place, Cheltenham

(Phone 2922),

Who have also recently carried out many important Building Contracts in Cheltenham and the surrounding districts.

SEND THE "CHRONICLE AND GRAPHIC" TO YOUR FRIENDS EVERY WEEK.



ENTRANCE DOORS TO "ECHO" NEW OFFICES.

The entrance to the New Offices are by three pairs of handsome doors, constructed in bronze, mahogany, and glass. Above is a single pair of the doors. The Bronze work was executed by Messrs. R. E. and C. Marshall, Clarence Street, Cheltenham.

John Lance AND CO., LTD.,

WERE RESPONSIBLE FOR THE FLOOR COVERING OF THE ABOVE OFFICES, WHICH WAS CARRIED OUT IN SUPER TILE PATTERN INLAID LINOLEUM.

A FULL RANGE OF BEAUTIFUL DESIGNS MAY BE SEEN IN THEIR SHOWROOMS.

John Lance AND CO., LTD.,

House Furnishers and Contractors,

CHELTENHAM SPA.

ESTIMATES FREE.

SEND THE "CHRONICLE AND GRAPHIC" TO YOUR FRIENDS EVERY WEEK.



CHELTENHAM COLLEGE CROSS-COUNTRY RACE.

On Saturday last Cheltenham College held their annual cross-country race, in which the Cheltenham and County Harriers were again invited to compete for the seventh time. The Harriers won the match by 23 points to 76 points, furnishing the first four men home. 120 Collegians started and 23 Harriers.

- 1.—The Harriers lined up at the start.
- 2, 5, 8.—College boys waiting to start.
- 3.—Harriers' officials.
- 4.—A. Bourton (C. & G.H.), first man home.
- 6.—Rev. Peel, Mr. H. Hardy (Headmaster, who laid the trail), and Mr. R. Juokes.
- 7.—Mr. C. G. Tanner discusses the race with H. G. Fairlie.

["Cheltenham Chronicle" Photos. Copies 1s. each.]



SHIRTS.

SPECIAL HARD-WEAR SHIRTS.
White Grounds. Coloured Stripes. Fast Colour. Lined Back and Front.

8/6.

Own Manufacture.

FLANNEL SHIRTS,

8/11, 10/6, 12/6. All My Own Make.

A. BECKINGSALE,
HOSIER,

111 HIGH STREET, CHELTENHAM.

Let **MOUSELLS** Move You



Estimates for Removals and Storing Free.

'PHONE 2112.

CHELTENHAM.

Office: AMBROSE STREET.

BEST QUALITY

CIDERS

IN BOTTLE.—Sparkling and Still.

BARTHOLOMEW,

419, 420 HIGH STREET,
CHELTENHAM.

Wines, Spirits, Ales, Table Waters, & Groceries.
Tel. 3599.



OPENING OF PARK GARDENS, STROUD.

A large company of Stroud folk participated in an interesting little ceremony on Saturday afternoon last, when the Park Gardens, situated in 51st-road, Stroud, were formally declared open. The land, together with railings, entrance gates, and memorial stone, have been given by Councillor S. B. Park in memory of his son, who was killed in the War. Subscriptions are still needed to lay out the gardens, but £597 has been already subscribed for the purpose.

- 1.—A view of the Gardens, which are on a big slope, with a picturesque situation.
- 2.—Two members of the platform.
- 3 and 4.—Sections of the large crowd present.
- 5.—The Memorial Tablet, unveiled by Mrs. Park.
- 6.—Section of audience, Supt. Goulder on left.
- 7.—Mr. S. B. Park presenting the deeds. From left: Sir Frank Nelson, M.P., Mr. H. W. Holloway (Chairman), Mr. O. J. Pearce (Vice-Chairman of Council), Councillor S. B. Park.
- 8.—Sir Frank Nelson (who declared the Park open), Mr. and Mrs. S. B. Park, Lady Nelson, and Rev. Canon E. H. Hawkins.



New Easter Apparel.

ALTHOUGH the Fashions shown in this announcement are offered at inexpensive prices, they must only be associated with the highest quality, perfect tailor-made garments always shown by Vanderplank. It is impossible to assess their quality, style, appearance, and finish from the sketches, but the name Vanderplank is the guarantee of their standard of excellence.

No. 1.
Smart Three-Piece Suit in Wool Charmelaine, with fancy Stockinette Jumper. Coat piped to match Jumper. Shades: Rose, Rose-beige, Cocoa, Tan, Light Navy, and Navy. Price 3 GNS. Splendid Value at 3 GNS.

No. 2.
Attractive Three-Piece Suit in good quality All-Wool Charmelaine. Skirt pleated on left side. Sleeveless Jumper of fancy Wool Stockinette. Shades: Fawn, Lido Blue, Rosewood, Light Navy, and Navy. Price 79/6

No. 3.
This attractive Model is in Black or Navy Charmelaine. It is beautifully tailored and trimmed throughout. It is remarkable Value. Price 75/9

No. 4.
A Three-Piece Suit, with well tailored Coat and Skirt of Fancy Suiting, and a Jumper of Silk and Wool Stockinette. This is a very practical Garment in a Vogue which will be greatly worn. Price 5 GNS.

No. 5.
Effective Three-Piece Suit in Wool Charmelaine. The Jumper of fine Wool and Tinsel Stockinette, finished with stitched strap of Charmelaine in front. Shades: Fawn, Grey, Rosewood, Cocoa, Lido Blue, and Navy. Price 5 1/2 GNS.

This Easter buy Correct Fashion Wear from

Vanderplank

From Harrods Ltd

381 HIGH STREET, - - - CHELTENHAM SPA.



CHELTENHAM COLLEGE SPORTS.

For once in a way, these Sports were favoured with fine weather, and there was a capital crowd of parents, friends, and O.C.'s to watch a splendid afternoon's sport. Some good jumping was seen, and Murphie, quite a small boy, won the Open Mile in grand style.

- 1.—The Open Relay Steeplechase. H. C. Fairlie getting away on left.
- 2.—H. C. Fairlie winning Long Jump (19ft. 4in.).
- 3.—O.C.'s Race, won by C. G. Maby.
- 4.—Maby (on right) winning Open Hurdles.

- 5 and 6.—Revs. R. V. and H. V. Hodson, twin sons of the late Rev. T. Hodson, formerly of Charlton Kings, both O.C.'s. Both ran in the O.C. race. The former is Vicar of Puddeston, Hereford, and the latter Vicar of Northleach. They were respectively second and third.

- 7.—Hurdles Race, under 15, won by Baring.
- 8.—First lap in Mile Race, won by Murphie, second from left.
- 9.—Steeplechase Relay Race, under 16, first lap.

["Cheltenham Chronicle" Photos. Copies 1s. each.



FUNERAL OF THE LATE MR. A. H. P. STRICKLAND.

The Funeral of the late Mr. Algernon H. P. Strickland, of Apperley Court, who died last month in Jamaica, whither he had gone for his health, took place at Apperley Churchyard on Monday, March 26th. His remains arrived at Avonmouth on Sunday, and were brought on to Apperley Church. There was a large congregation of personal friends and village people, showing the esteem in which deceased was held.

- 1.—Interment in Apperley Churchyard. The coffin was a most beautiful bit of work in dark brown West Indian wood, with carved corners.
- 2.—Three of the family mourners.
- 3.—Village people at graveside.
- 4.—There was a wealth of wonderful floral tributes, the mound near grave being covered.
- 5 and 6.—Village mourners.
- 7.—The Countess of Wemyss, with a lovely wreath of orchids, with Mr. J. Gopp, an old retainer of the Strickland family.
- 8.—The Archdeacon of Warwick (Ven. H. W. Back), who conducted the service.
- 9.—Apperley folk at the funeral.

["Cheltenham Chronicle" Photos. Copies can be obtained.



OPENING OF EASTINGTON VILLAGE HALL.

The New Village Hall at Eastington was opened on Monday, March 26th, by the Countess of Ducie in the presence of a large gathering of villagers and friends. It is due to the munificence of Mr. and Mrs. Geo. de Lisle Bush, of Eastington Park, and of Mr. James Warner that the building is out of debt.

- 1.—A view of the new Hall.
- 2.—Group of officials at opening ceremony. A—Mrs. de Lisle Bush, B—Mr. G. de Lisle Bush (Chairman), C—Countess Ducie, E—Earl Ducie, F—Captain C. de Lisle Bush.
- 3 and 4.—Villagers at the opening. ["Cheltenham Chronicle" Photos. Copies 1s. and 1s. 9d. each.

EASTER FASHIONS.

A SPECIAL SHOW of Hats, Coats, Woollen Jersey Suits and Dresses, for Boys and Girls of all ages, now being displayed at

Mrs. Owen James'
LADIES' & CHILDREN'S OUTFITTING WAREHOUSE

Ladies' Three-Piece and Jumper Suits in the Latest Styles at reasonable prices.

All Leading Makes of Ladies' Hosiery stocked in all sizes. Gloves, Scarves, and Underwear.

NOTE THE ADDRESS:
409 High Street (The Strand), CHELTENHAM.

AGENT FOR "CHILPRUFÉ."

NEW STYLES



FOR EASTER,

1928.

Court Shoes are very fashionable, and MELVILLE'S have a large range of Distinctive Models that will appeal to every woman of taste and discernment; and we safely vouch for their superior materials, finish, and fit.

- LOTUS 135, As illustrated, in Patent Leather, 25/9.
- LOTUS 5A6, Patent Leather, trimmed with watersnake, 25/9.
- LOTUS 5A7, A beautiful shade of Light Blue Glace Kid, 25/9.
- Also in Sudan Glace Kid, 21/-.
- Black Patent Leather, 19/9.

Write for Catalogue.



W. J. MELVILLE,
408 THE STRAND,
CHELTENHAM SPA.

Telephone 2715.

WARD'S WINDOWS

Show by far—the most becoming

EASTER FASHIONS



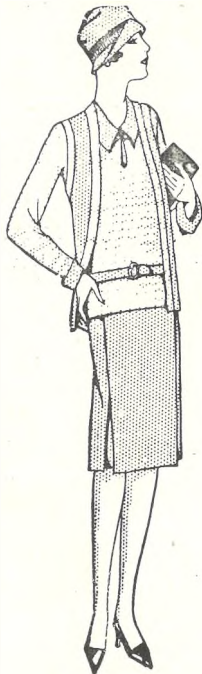
A Walmar Hat

Smart Hat in Hemp, trimmed Velvet Ribbon, in Black, Grey, Thistle-tuft, New Red, Venetian, and Sandlewood. 21/11

You could not possibly wish for a more wonderful collection of Spring Fashions than Ward's from which to choose becoming and pleasure-giving outer-wear for welcome Easter-time. These chic and wholly delightful styles are a very carefully selected range, amazing in variety and unexcelled in value. Coats, Coat Frocks, Costumes, Knitted Fashions, no matter what you require, inexpensive holiday wear or distinctive productions, they are now at Ward's in a range that includes ALL sizes, from Maids' to X.O.S.

STYLISH COATS, COSTUMES, and MILLINERY, Smart MACS., Newest KNIT-WEAR MODES, POPULAR 2 and 3-PIECE SUITS, HOSIERY, GLOVES, &c.

The Value below shows how much better it is to come to WARD'S.



SHOWER PROOF TWEED COATS, in Mixtures of Grey, Fawns, etc. 23/9 to 41½ GNS.

Full Range of "Zambrene" Coats in Stock. We Specialise in Popular Price MILLINERY. The neat Felt, for Sports Wear, in a variety of shapes, from 5/11½

Smart, 3-Piece JUMPER SUITS, in Natural Grounds and Marl effects 18/11 to 41½ GNS.

Bangkok, Paribunkle, and Hemp STRAWS from 25/11

Large Selection of Semi-Trimmed HATS at 12/11



E. L. WARD,

LIMITED,

136, 137, 138, 139, 140 HIGH STREET, CHELTENHAM.