

THE CHELTENHAM CHRONICLE AND GLO' SHIRE GRAPHIC

GRATIS SUPPLEMENT.

With Which is Incorporated the "Cheltenham Looker-On."
Saturday, February 4, 1928.

No 1,414.

CHELTENHAM THEATRE AND OPERA HOUSE.

This Afternoon (2.30) and Evening (7.45): "THE WRECKER."

NEXT WEEK: Personal Visit of Rupert Ingalese with
"A Show Superlative."

THE PALACE, HIGH STREET, CHELTENHAM

Director: Shakspeare Shenton.

FOR SIX DAYS!

The Steady, Unbeatable Flow,
Hit after Hit, Week after Week!

POLA NEGRI,
CLIVE BROOK,
EINAR HANSON in

BARBED WIRE,

From Hall Caine's Famous Story.

"THE WOMAN OF
KNOCKALOE."

Douglas Cochran and his Popular
Orchestra will Charm You!

THE DAFFODIL

Cheltenham's Only Real Cinema.

Continuous Daily 2.30 to 10.15.

FOR ONE WEEK,
Commencing Monday, Feb. 5th.

JOHN BARRYMORE and
DOLORES COSTELLO in

HIS LADY.

They Defied the World for Love.
Presented in Cheltenham exactly
as shewn to H.R.H. the Prince of
Wales in London's Plaza Theatre.

SPECIAL ANNOUNCEMENT!

The Daffodil Grand Orchestra on
the Stage Every Evening at
8 p.m.
Mr. Arthur Burrows, Mus. Dir.

Established 1806.

MARTIN & CO.,
Limited,

THE COUNTY JEWELLERS,
Pearl and Diamond Merchants,

A Large Selection of Second-hand
Silver and Old Sheffield Plate.

We are Purchasers of Antique
Silver and Fine Quality Gems.
Best Prices Given.

LICENSED VALUERS,

Promenade, Cheltenham



MR. AND MRS. T. H. LEWIS,

of Holmeside, Hayward's-road, Cheltenham, who are being presented with a clock and cheque by the members of the congregation of Bayshill Unitarian Church, at their meeting on Wednesday next. They have been caretakers for the Church and Hall for the past 33 years.

Winter Garden

NEW KINEMA,
PROMENADE, CHELTENHAM.
Director: Shakspeare Shenton.

FOR SIX DAYS!

The World's Greatest Motion
Picture.

WHAT PRICE GLORY?

With VICTOR McLAGLEN,
EDMUND LOWE,
DOLORES DEL RIO,
And a Superb Cast.

Screened at 2.30, 4.30, 6.30, 8.30.
A Terrific Screen Achievement!
Lester Burrows and his Orchestra
IN THE SOUTH PAVILION:—
SKATING.

COLISEUM,

CHELTENHAM. Tel. 3715.
6.40 p.m. and 8.40 p.m.

VAUDEVILLE SUPREME,

The Finest Company of Artistes
Ever Presented in Cheltenham!
Book Your Seats. No Booking
Fees.

North Street,

PICTURE HOUSE

From 2.30 p.m. Continuous.

Monday, Tuesday, Wednesday:—

ALBERTA VAUGHN in

UN-EASY PAYMENTS,

Thursday, Friday, Saturday:—

WILLIAM FAIRBANKS in..

FLYING HIGH,

Sensier.

Clearance SALE of all HATS
NOW PROCEEDING.
388b HIGH STREET,
CHELTENHAM.

Telephone 2580.

W. Scott Cooper,

Diamond Merchant, Jeweller,
Goldsmith, and Silversmith.

The Promenade, Cheltenham.

LICENSED VALUER.

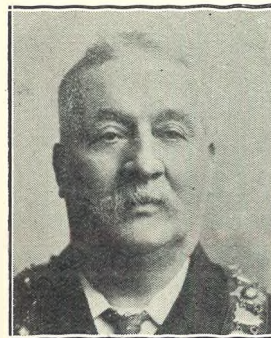
DALE, FORTY and Co., Ltd For the **BEST PIANOS.**



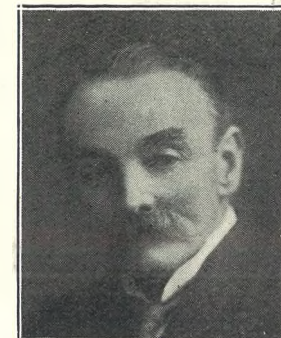
ROUND THE CITY IN GLOUCESTER.

* * *
 Snaps taken around the Cross on Tuesday last.
 ["Cheltenham Chronicle" Photos. Copies 1s. each, postage 2d. extra.]

SEND THE "CHRONICLE AND GRAPHIC" TO YOUR FRIENDS EVERY WEEK.



MR. EDWIN G. TOVEY, of The White Swan Inn, Burton-street, Cheltenham, who died last week, aged 89 years. He was a carpenter in the employ of Messrs. Billings and Sons for many years, and he was for 10 years licensee of the White Swan. He was Provincial Grand Master of the District in the Manchester Unity of Oddfellows.



POSTMAN CHARLES H. MILLS, of Cheltenham Postal District, who is retiring this week, after more than 40 years' service. He is very popular on his circuit, and is a great book-lover, having quite a good library of his own. In his younger days he took an active part in establishing the Union of Post Office workers.

PLACE YOUR ORDER.

at once for a Copy of "Picturesque Gloucestershire," the handsome Guinea Volume which we are producing this month, in which will be beautifully printed nearly 200 full page illustrations of Towns, Villages, Scenery, and Ancient Buildings in the County. Order at "Echo" Offices.



is generally considered in the Musical World to be the

STRADIVARIUS
 OF PIANO Makers.

One of the most refined and brilliant violinists of world-wide repute

SARASATE wrote "BECHSTEIN is the STRADIVARIUS of the piano."

One of the greatest Piano teachers and Master of Padrewski

LESCHETIZKY wrote

"The BECHSTEIN Piano is of the same importance to the Pianist as a Stradivarius is to the violinist."

One of the most Poetical Pianists, whose refined playing is admired all the world over

PACHMANN writes

"The Beauty of tone of a BECHSTEIN Piano I can only compare with that of a Stradivarius string quartette."

Again, one of the rising generation of master pianists

G. BERTRAM confirms

"BECHSTEIN is the Stradivarius of the piano."

Stradivarius sold his fiddles for a few pounds. Faithful and well-made modern copies can still be bought about that price, yet professional violinists will pay £3,000 to £5,000 for a genuine Stradivarius. They bring this sacrifice solely on account of the exquisite and inimitable tonal qualities of the original.

BECHSTEIN pianos are being made and offered at prices based on cost of manufacture. What would great pianists pay for them if their manufacture were to cease?

Sole Agent: **ERNEST CRICHTON'S, Ltd.**, 394 High Street, CHELTENHAM.

FLAT FOOT.
 Also KNEE, ANKLE, & JOINT TROUBLES of All Kinds Successfully Treated by a New Electro-Therapeutic Method, based upon latest Scientific Research, and Exclusively Administered by

MR. ALFRED J. VENTRIS-FIELD
 ORTHOPÆDIST and ELECTRO-THERAPEUTIST.
 Hospital (London) and 30 Years' Practical Experience. 'Phone 3266.

Surgery: 6 RODNEY PLACE, CHELTENHAM.

BEST QUALITY

CIDERS
 IN BOTTLE.—Sparkling and Still.
BARTHOLOMEW,
 419, 420 HIGH STREET,
 CHELTENHAM.

Wines, Spirits, Ales, Table Waters, & Grocery. Tel. 3590.

Let MOUSELLS Move You



Estimates for Removals and Storing Free.

'PHONE 2112.

Offices: **CHELTENHAM, AMBROSE STREET.**

SHIRTS.
SPECIAL HARD-WEAR SHIRTS.
 White Grounds. Coloured Stripes. Fast Colour. Lined Back and Front.
 8/6.

Own Manufacture.
FLANNEL SHIRTS,
 8/11, 10/6, 12/6.
 All My Own Make.

A. BECKINGSALE,
 HOSIER,
 111 HIGH STREET, CHELTENHAM.
 'Phone 2706.

LAST WEEK OF LANCE'S GREAT Winter SALE.

EXCEPTIONAL :: BARGAINS ::
 Will be offered in all Departments, With the **SPECIAL DISCOUNT** of 10 %

2/- in the £
 allowed for Cash at time of Purchase.

Sale Definitely Closes
 Saturday, Feb. 11th,
 at 1 o'clock.

John Lance
 & CO., LTD.,
 CHELTENHAM'S SHOPPING CENTRE.



PICTURESQUE GLOUCESTERSHIRE.—TETBURY.

Tetbury is an ancient market town on the main road from Bath to Oxford, and on the Wiltshire border, with a terminal station on the branch G.W.R. line from Kemble. It is 10 miles from Cirencester. Rudder says, in 1779, "It is not large, but well frequented, and deservedly claims the third place in precedence among the towns in Gloucestershire." It would be more like tenth now.

1.—Old Houses near the Churchyard. The stone, shell shaped, porch or awning to second house, is a fine one. There is one at Nailsworth almost identical.

2.—The Old Town Hall, in Market-place, is of Elizabethan date, and stands on stone pillars.

3.—The fine perpendicular Church. It was built about 1785, the old church being

taken down. The spire is a very high one, and was rebuilt, with the tower, in 1890-93 by Mr. W. H. Yatman at a cost of £10,000.

4.—Some fine old houses in the town. The old house on right is known as Porch House, and is occupied by Dr. Francis.



ROUND THE TOWN IN CHELTENHAM.

HAND-SEWN MAKING from 30s.
 REPAIRS SAME DAY.
 JOINT AND ARCH SPECIALISTS AND
 BUNION CURERS.
 London City Honours.
PROGRESS BOOT WORKS,
 31 MONTPELLIER STREET, CHELTENHAM
 (Opposite F.O.)

CORSETS AND BELTS

Made, Copied, Cleaned, and Repaired.
 Hours: 10 a.m. till 6 p.m. Saturdays 1 p.m.
 or by appointment. Phone 3615.

MISS FRUIN (Late with Madame Annette),
 23 Bath Parade, CHELTENHAM.

AN INTERESTING SHOP
 FOR SMALL ANTIQUITIES AND
MODERN JEWELLERY.
 Goods Bought and Sold.
 ESTABLISHED 75 YEARS.

HARRY O. BOX,
 339 HIGH STREET, CHELTENHAM.
 (nearly opposite Grammar School).
 GENUINE ANTIQUES ONLY.



GLOUCESTER LIBERALS' WINTER CARNIVAL.

Held at the Public Baths on Saturday last, when the special feature was a Fancy Dress Parade for Children, with Competition. The Prospective Candidate (Mr. T. W. Casey, J.P.) was present.

- 1.—A group of little ones.
- 2 and 3.—Various competitors.
- 4.—Some of the prize-winners.
- 5.—Prize-winners of Senior Section, reading from right:—1st Hy. Staite (Frothblower), 2nd Doreen Bennett (Miss 1928), 3rd Winifred Freemantle (South Sea Islander), 4th Annie Kingscott (C.O.D.), Evelyn Powell (Pillar Box), 6th Jim Price
- 6.—Mr. G. Reed (Agent), Mr. Gillett (Chairman Young Liberals), Councillor T. W. Casey, J.P. (Prospective Liberal Candidate), Councillor J. W. Embling.
- 7.—Prize-winners (Intermediate Section), from right: 1st Iris Dyer (Daffodil), 2nd Doreen Roberts (Fairy Rosebud), 3rd
- 8 and 9.—Various competitors.
- 10.—Prize-winners (Juvenile Section), from right: 1st Wallace Freeman (Bricklayer), 2nd Josephine Tranter (Fairy), 3rd Henry Poole (Cracker), 4th Kenneth Roberts (Policeman).



CHELTENHAM SOCIETY WEDDING.

At St. Gregory's R.C. Church, Cheltenham, on January 26th, the marriage was solemnised of Dr. Leslie Newell Moss, son of Mr. and Mrs. E. W. Moss, of Cambridge, to Miss Hilda Mary Cecile Edge, daughter of Mr. and Mrs. R. C. Edge, of Eastlands, Leckhampton. The bridal group.

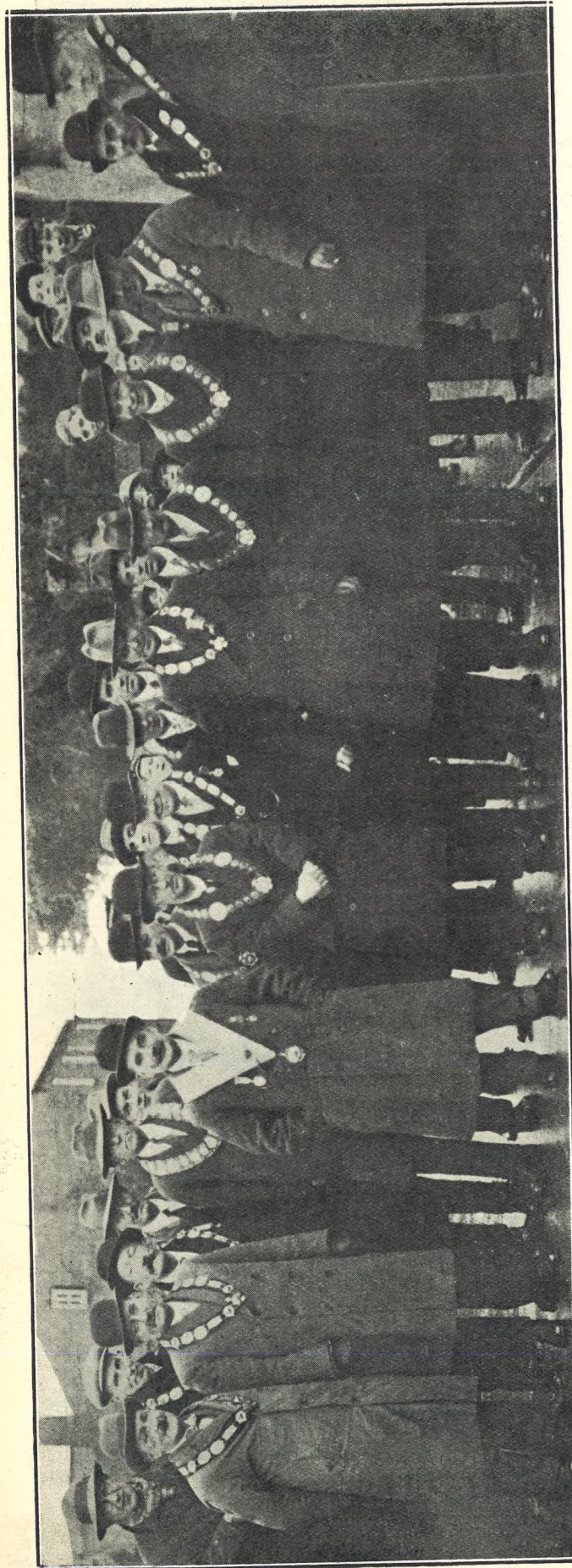
“Cheltenham Chronicle” photo.



GLOUCESTER LIBERALS' WINTER CARNIVAL.

Held at the Public Baths on Saturday, Jan. 28th, when a special feature was the Fancy Dress Parade for Children from 3 to 14 years of age. Some of the “intermediate” children.

“Cheltenham Chronicle” Photos. Copies 1s. and 1s. 9d. at “Echo” Office, Queen-street, Gloucester, or Head Office, Cheltenham.



BUFFS AT THE CHARLTON KINGS BROTHERHOOD. On Sunday afternoon last, January 29th, the members of the Victory Lodge, R.A.O.B., and delegates of various town Lodges paid a regatta visit to the Charlton Kings Brotherhood. The bad weather prevented many from attending. Photo. Copies 1s. and 1s. 9d. each.



ROUND THE TOWN IN STROUD: TAKEN WEDNESDAY MORNING LAST.

PRINTED AND PUBLISHED AS A GRATIS SUPPLEMENT BY THE CHELTENHAM NEWSPAPER COMPANY, LIMITED.

THE CHELTENHAM CHRONICLE AND GLO' SHIRE GRAPHIC

GRATIS SUPPLEMENT. With Which is Incorporated the "Cheltenham Looker-On." Saturday, February 11, 1928. No 1,415.

CHELTENHAM THEATRE AND OPERA HOUSE. This Afternoon (2.30) & Evening (7.45): "A SHOW SUPERLATIVE" NEXT WEEK: London's Latest Farical Comedy Success—**"THARK."**

THE PALACE,
HIGH STREET, Cheltenham.
Director: Shakspeare Shenton.

Huge Two-Feature Programme!
Monday, Tuesday, Wednesday—
Anna Q. Nilsson, Kenneth Harlan,
and Billy Bevan in
EASY PICKINGS.

A Drama of a Night Mystery.
Nicholas Rimsky in
JIM THE CRACKSMAN.

A Strange Mix-up of Lace,
Burglary, Adventure, and the
Guillotine.
Douglas Cochrane and his Popular
Orchestra will Charm You.
Thursday, Friday, Saturday—
"REX."

THE DEVIL HORSE,
The Famous Flashing Black Horse
in an Amazing Human Drama.
Screened at 2.45, 4.45, 6.45, 8.45.

THE DAFFODIL
Cheltenham's Only Real Cinema.

Continuous Daily 2.30 to 10.15.

Week Commencing Feb. 13th—
Huge Double-Feature Programs!
Monday, Tuesday, Wednesday—
CLARA BOW
In Elinor Glyn's Story,
"IT."

Also **JOHN GILBERT** in
"THE SHOW."
Thursday, Friday, Saturday—
MARION DAVIES in
THE RED MILL,

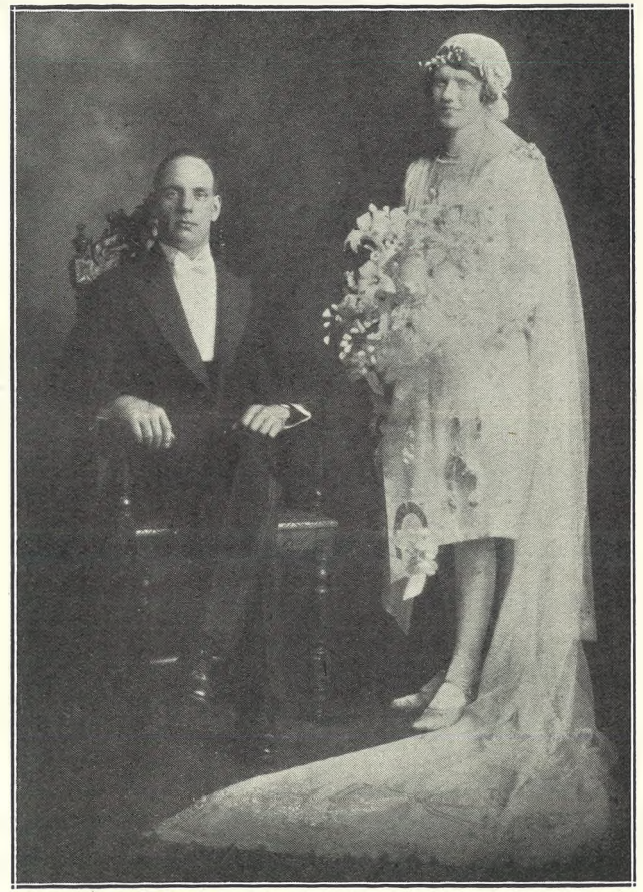
And **BEBE DANIELS** in
"STRANDED IN PARIS,"
With the Finest Orchestra in
Cheltenham at Each Performance

Established 1806.
MARTIN & CO.,
Limited,

THE COUNTY JEWELLERS,
Pearl and Diamond Merchants,

A Large Selection of Second-hand
Silver and Old Sheffield Plate.
We are Purchasers of Antique
Silver and Fine Quality Gems.
Best Prices Given.

LICENSED VALUERS.
Promenade, Cheltenham.



CHELTONIANS MARRIED IN AUSTRALIA.

The marriage took place at Holy Trinity Church, Melbourne, Australia, at the end of last year, of Mr. Arthur Ludlow Organ, elder son of Mr. and Mrs. Organ, Hannington, Leckhampton-road, Cheltenham, to Miss Dora Gertrude Tracey, twin daughter of Mr. Geo. Tracey, of 15 Swindon-street, Cheltenham. The bridegroom has been in Australia for eight years, and the bride went out last year to be married.

Winter Garden
NEW KINEMA,
PROMENADE, CHELTENHAM.
Director: Shakspeare Shenton.

FOR SIX DAYS.
Premier Presentation for the
West of England.
Count Leo Tolstoy's Immortal
Love Drama,
ROD LA ROCQUE in
RESURRECTION,
With **DOLORES DEL RIO.**
A Dashing Prince, a Young
Peasant Belle, Lavishness and
Splendour, and a Great Love.
Screened at 2.30, 4.30, 6.30, 8.30.
Lester Burrows and his Orchestra
IN THE SOUTH PAVILION—
SKATING.

COLISEUM,
CHELTENHAM. 'Phone 3715.

6.40 p.m. and 8.40 p.m.
THE BIG JAZZ REVUE,
JUST FOR LUCK,
A Most Elaborate Production in
22 Scenes.

North Street
PICTURE HOUSE,

From 2.30 p.m. Continuous.
Monday, Tuesday, Wednesday—
THE TIMID TERROR,
Featuring **GEORGE O'HARA.**
Thursday, Friday, Saturday—
THE OVERLAND STAGE,
Featuring **KEN MAYNARD** and
His Horse **"TARZAN."**

MAISON
ANNETTE,

Kensington House,
PROMENADE,
CHELTENHAM,

Specialists in Exclusive
CORSETS &
LINGERIE.

'Phone 2122.

DALE, FORTY and Co. Ltd For the Best PIANOS.



CHELTENHAM'S TRIBUTE TO MEMORY OF FIELD-MARSHAL LORD HAIG.

A Service in memory of Lord Haig was held at the War Memorial, Cheltenham Promenade, on Sunday afternoon last, with impressive reverence and ceremonial. A very large number of ex-Service men attended, as did also the Mayor and Corporation, with members of other official bodies.

- 1.—Scene round War Memorial while Service was on.
- 2.—Colonel Stratford Burton, who organised the Service, and Colonel the Rev. W. J. Selby, C.B.E., who gave the address.
- 3.—The Mayor, with Sir J. T. Agg-Gardner, P.C., M.P., and members of the Corporation.
- 4.—The Parish Church Choir, under Mr. Leonard Wheeler.
- 5.—Ex-Servicemen, including many officers.
- 6 and 8.—Sections of the congregation.
- 7.—Members of Women's Section of British Legion.
- 9.—The first man is J. Lawrence, Earl Haig's bugler in the 17th Lancers, who sounded the "Last Post."

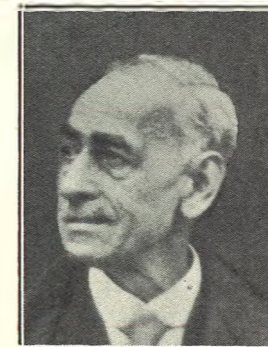
["Cheltenham Chronicle" Photos. Copies 1s. and 1s. 9d. each



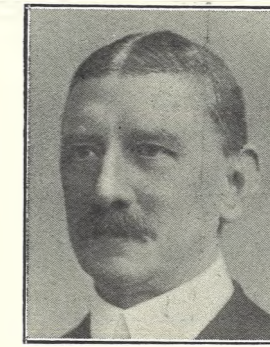
GAS EXPLOSION IN THE HIGH STREET.
Shopkeepers and pedestrians in High Street, Cheltenham, had an alarming experience shortly after 10 o'clock on Saturday morning, when, owing to an accumulation of gas, the tops of two manholes were blown off, smashing the paving stones. The photo was taken 15 minutes after the explosion, showing the broken lid of the manhole opposite to Mr. Hancock's shop.



MRS. RICHARD GUILDING, of The Park Farm, Kemer-ton, who died after a few hours' illness, on Jan. 26th, aged 64 years. Her husband, with whom much sympathy is felt, is a prominent farmer and pedigree Shorthorn breeder.



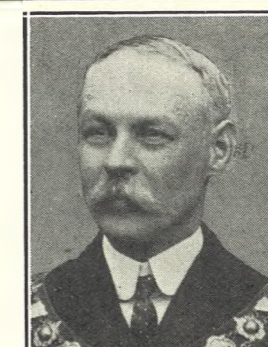
MR. E. E. (TED) BICK, of 3 Spa Buildings, Cheltenham, who died on Feb. 7th, aged 72 years, after a long and trying illness. He was a well known and popular Montpelier tradesman, proprietor of the leather trunk business founded by his grandfather in Montpelier-walk 100 years ago. He was a prominent Liberal, and a fine athlete in younger days.



MR. J. F. BUSHNELL, formerly a well-known dentist in Cheltenham, who died somewhat suddenly at Cots-wold Cottage, St. Andrew's-road, Caversham, on Feb. 2. His age was over 70. He practised for many years at Thornbury House, High St. He was a prominent Free-mason, a bachelor, and had a large circle of friends.



MR. W. A. DUNN, formerly of Cheltenham, who left Cheltenham 19 years ago for Salt Lake City, Utah, U.S.A. He has just been back to England for the first time on a visit to his mother, brother, and sisters, and his wife's relatives. He was formerly a Rugby football player, being captain of Miss Champaign's Bible Class Rugby XV., and playing for Cheltenham Wednesday and Cheltenham II. He left for New York yesterday.



MR. ALBERT EDWARD SAWYER, Manager of Cheltenham Billposting Co., Ltd., of 31 Bath Street, Cheltenham, who died suddenly while in his motor car at Bristol on Saturday last, Feb. 4th, collapsing at the driving wheel. He was 57 years of age, and brother of Councillor Wm. Sawyer, coal merchant, and of the late Mr. John Sawyer, C.C., and was a prominent Oddfellow, being a P.P.G.M. He leaves a wife, son, and daughter.

Spring, 1928.
LANCE
& Co.
WILL MAKE A
SPECIAL
DISPLAY
OF
.. Early ..
.Spring.
Fashions

ON
Monday Next,
February 13th,
AND THROUGHOUT THE WEEK.

John Lance
& CO., LTD.,
CHELTENHAM'S SHOPPING
CENTRE.



GLOUCESTER CO-OPERATIVE CHILDREN AT A FANCY DRESS BALL.

Gloucester Co-operative Children's Fancy Dress Dance was held at the Shire Hall on Thursday, February 2nd. The costumes were very varied and many were excellent.
 ["Cheltenham Chronicle" Photos. Copies 1s. and 1s. 9d. each.]



HAIG MEMORIAL SERVICE AT GLOUCESTER.

* *

A Memorial Service for the late Earl Haig was held at Gloucester on Sunday, February 5th. Ex-Service men, Territorials, Scouts, Girl Guides, etc., paraded at The Park and marched to the Cathedral, headed by the bands of the Gloucestershire Hussars and the 5th Gloucester Territorials.

- 1, 2, 3, 7, 8, and 9.—Sections of ex-Service men paraded at the Park.
- 4.—Body of St. John Ambulance men.
- 5.—Territorials.
- 6.—A Cadet company.

["Cheltenham Chronicle" Photos. Copies 1s. and 1s. 9d. each.]

SEND THE "CHRONICLE AND GRAPHIC" TO YOUR FRIENDS EVERY WEEK.



CHILDREN'S FANCY DRESS PARTY AT PRESTBURY.

The Children's Annual Fancy Dress party at the Women's Institute, Prestbury, was a splendid success. The children's costumes were prettier and better than ever. The children, with their parents and friends.



CHILDREN'S FANCY DRESS PARTY AT PRESTBURY.

Many of the prize-winning and other costumes at the above party on Friday, February 3rd. [Cheltenham Chronicle" Photos. Copies 1s. each.

"PICTURESQUE GLOUCESTERSHIRE."

A BOOK EVERY GLOUCESTRIAN SHOULD POSSESS.

At the end of this month we are publishing in book form a reprint of the series of views we have been producing in the "Cheltenham Chronicle and Graphic" since February, 1921, entitled "Picturesque Gloucestershire."

This will make a magnificent book, well bound in blue buckram, printed on finest art paper, containing 384 pages, and having 184 full pages of pictures. This will mean there are over 730 views of

houses and places in our famous county, all taken especially for us week by week by our own photographer.

Facing each page of pictures will be a short and succinct account describing each village and town, with archæological and historical notes.

If anything can touch the heart-strings of the exiles of Gloucestershire who are quartered in lands far from home, it would be the sight of the old familiar

places collected together as in this volume, and no finer present could be imagined.

The price of the book is One Guinea (£1 1s.), and never has better value, or a more profusely-illustrated book, been published at the price. Send us your order now, as we expect to sell out the first edition very quickly. There is not a single advertisement in the book; and it is of interest from cover to cover.



STAFF SOCIAL AND FANCY DRESS DANCE.
The Staff and Employees of Messrs. Shirer and Haddon were entertained by the directors to a social evening and dance. The feature of the evening was the fancy dress, and many prizes were given for this and other competitions. The bottom picture shows the fancy dress competitors. ["Cheltenham Chronicle" Flashlight Photos.

SHIRER AND HADDON, LTD.,
THE SENIOR HOUSE OF CHELTENHAM.

SPRING 1928. Novelties in All Departments. Early Inspection Invited.
GOOD VALUE. LARGE ASSORTMENT. COURTEOUS SERVICE.

Let **MOUSELLS** Move You



Estimates for Removals and Storing Free.

PHONE 2112.
CHELTENHAM. Ambrose Street.

HAND-SEWN MAKING from 30/-

REPAIRS SAME DAY.
JOINT AND ARCH SPECIALISTS AND
BUNION CURERS.
London City Honours.

PROGRESS BOOT WORKS,
21 MONTPELLIER STREET, CHELTENHAM
(Opposite P.O.).

The Daily IF!

If you are worried about Legal matters, get the "Chronicle and Graphic." All your questions answered by a Solicitor FREE.

SHIRTS.

SPECIAL HARD-WEAR SHIRTS.
White Grounds. Coloured Stripes. Fast
Colour. Lined Back and Front.

8/6.

Own Manufacture.
FLANNEL SHIRTS,
8/11, 10/6, 12/6. All My Own Make.

A. BECKINGSALE,

HOSIER,
111 HIGH STREET, CHELTENHAM.
Phone 2706.



"BREWERS" v. POLICE AT FOOTBALL.
On the Brewery Sports Ground on Saturday, the Cheltenham Original Brewery team met the Cheltenham Police in a Charity match. The "Brewers" found the Police off form, and won by 8 goals to nil. Top picture is the Brewery team, bottom the Police team. ["Cheltenham Chronicle" Photos. Copies 1s. and 1s. 9d. each.]

THE CHELTENHAM CHRONICLE AND GLO'SHIRE GRAPHIC

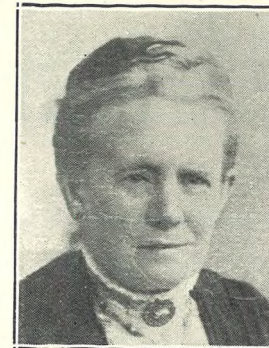
GRATIS SUPPLEMENT. With Which is Incorporated the "Cheltenham Looker-On." Saturday, February 18, 1928. No. 1,416.

CHELTENHAM THEATRE AND OPERA HOUSE.

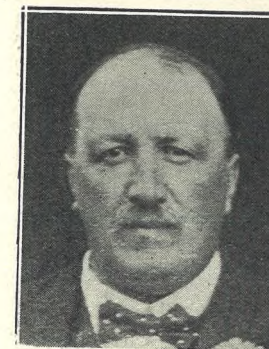
This Afternoon (2.30) and Evening (7.45): "THARK."
NEXT WEEK: Macdonald and Young present—
"The Student Prince."

THE PALACE, HIGH STREET, CHELTENHAM

Director: Shakspeare Shenton
FOR SIX DAYS!
Colossal 10,000ft. Solus Picturization!
YOU'LL LOVE THIS PICTURE.
NOAH BERRY, CHARLES FARRELL, and MARY ASTOR in the
THE TRUMPET CALL.
"The best film of the year."—G.A.A., "Daily Express."
The Sensational Success from the Plaza Theatre, London.
Screened at 2.30, 4.30, 6.30, 8.30.
Douglas Cochrane and his Popular Orchestra will Charm You!



MRS. W. C. FERRIS, of Norfolk House, London-road, Gloucester, who died on Sunday, Feb. 12, after several years of illness. She was the third daughter of the late Mr. Joseph Meredith, builder, of Alvin-street, Gloucester, and married Mr. Ferris (the hatter and hosier) 55 years ago.



MR. FREDK. J. HITCH, of Shurdington House, Shurdington, who died Feb. 14th, after a long illness, aged 54 years. He was a prominent agriculturist, and represented Shurdington as Rural District Councillor and Guardian.

Winter Garden NEW KINEMA, PROMENADE, CHELTENHAM.

Director: Shakspeare Shenton.
FOR SIX DAYS!
FREE Car Park for Patrons.
MARIA CO'EDA, The Beautiful Star of the Screen, in
DANCING MAD.
Thursday, Friday, Saturday—
ADDED PROGRAMME!
LVA DE PUTTI and **ROBERT EDSON** in the
THE HEART THIEF.
Lester Burrows and his Orchestra. IN THE SOUTH PAVILION: **SKATING.**

COLISEUM, CHELTENHAM.

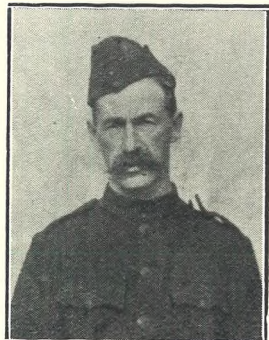
'Phone 3715.
6.40 p.m. and 8.40 p.m.
The Greatest Thriller of all.
THE CREAKING CHAIR,
It Ran for Over 1,000 Nights in London.
North Street PICTURE HOUSE.
From 2.30 p.m. Continuous.
Monday, Tuesday, Wednesday—
A GYPSY ROMANCE,
Featuring **MISS SHANNON DAY.**
Thursday, Friday, Saturday—
RICHARD BAPTHELMESS in **THE WHITE BLACK SHEEP.**

"Distinction with Economy."
Everything for Eve's Adornment at The **LITTLE SALON,**
Sensier.
388b HIGH STREET, CHELTENHAM.

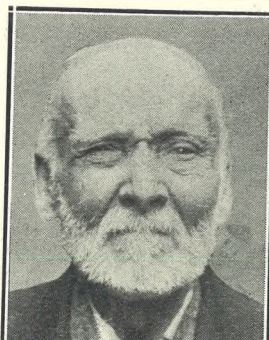
Telephone 2580.
W. Scott Cooper,
Diamond Merchant, Jeweller, Goldsmith, and Silversmith.
The Promenade, Cheltenham.
LICENSED VALUER.

THE DAFFODIL

Cheltenham's Only Real Cinema.
Continuous Daily 2.30 to 10.15.
Monday, Feb. 20th, **FOR ONE WEEK:**
The Screen's Most Perfect Picture.
SEVENTH HEAVEN,
With **JANET GAYNOR** and **CHARLES FARRELL.**
The Most Human and Appealing Picture of All Time.
Please Note Approximate Times of Showing:—
2.45, 5.15, and 8.15 p.m.
The Theme Song "DIANE" by the Daffodil Grand Orchestra on the Stage.
Mus. Dir.: Mr. Arthur Burrows.



MR. CHARLES HENRY WAKEFIELD, of Bath-road, Cheltenham, who died very suddenly on Saturday, Feb. 11th, aged 63 years. He was a well-known antique dealer in business for many years in Bath-road, and for many years an enthusiastic member of the old 2nd V.B.G.R., and a fine shot, representing the regiment at Bisley many times.



MR. WM. H. HERBERT, of 28 Brunswick-street, St. Paul's, Cheltenham, to whom was presented, on Saturday last, an illuminated address and a wallet of money by friends and fellow-members of the Cheltenham Branch of Building Trade Workers, in appreciation of his long membership. He joined the Masons' Society Sept. 28th, 1863. He will be 89 in March.

Established 1806.
MARTIN & CO., Limited,
THE COUNTY JEWELLERS,
Pearl and Diamond Merchants,
A Large Selection of Second-hand Silver and Old Sheffield Plate.
We are Purchasers of Antique Silver and Fine Quality Gems.
Best Prices Given.
LICENSED VALUERS.
Promenade, Cheltenham.

DALE, FORTY and Co., Ltd. For the Best PIANOS.



Architectural Decorators

to H.M. King George V.

By Appointment.

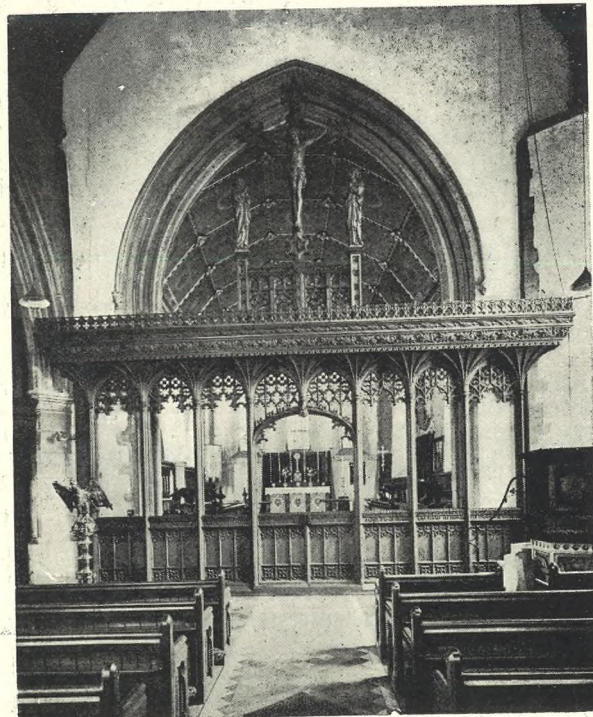
H. H. MARTYN & Co., Ltd., CHELTENHAM,

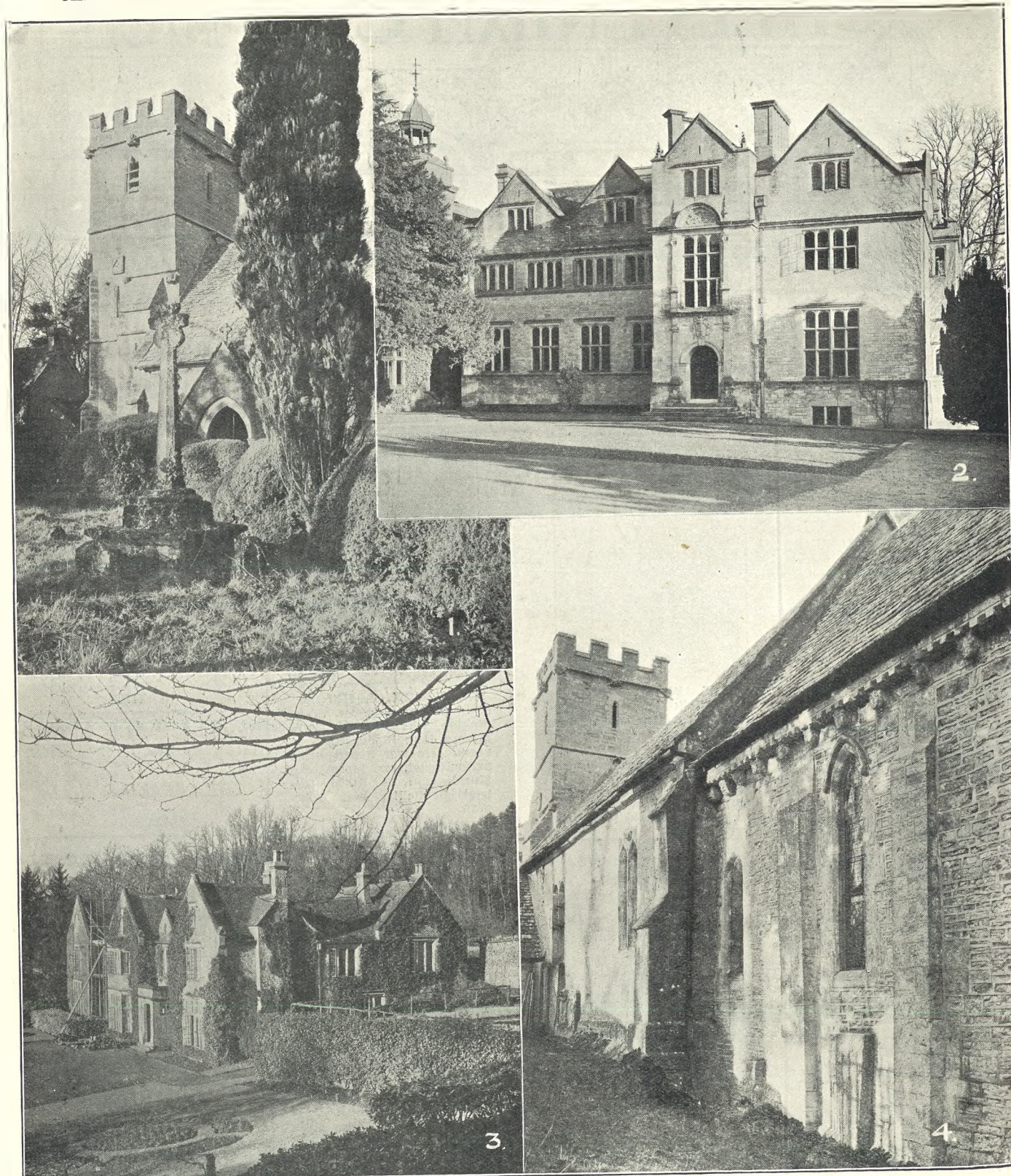
5 Grafton St., Bond St., London.

H. H. Martyn & Co., Ltd., invite enquiries for all kinds of Decorative Work, Church Interior Woodwork, Carving in Stone, Wood, Alabaster, &c.. Wrought Iron, Bronze, Castings in all metals, Sculpture, Modelling, Fibrous Plaster, &c., &c.

All work executed at the Cheltenham Studios by expert craftsmen and artists.

The illustration shows the Chancel Screen and Rood recently executed in English Oak at the Church of St. Lawrence, Reading, to the design of the late S. Slingsby Stallwood, Esq.





PICTURESQUE GLOUCESTERSHIRE.—EDGEWORTH.

Edgeworth is a small parish in one of the most secluded spots of the Cotswolds, quite away from any main roads, and situated amidst typical Cotswold scenery. It is three miles from Bisley, eight from Stroud, and 12 from Cheltenham. The fine manor house, owned and occupied by Mr. A. James, adjoining the church, was built in 1685 and added to in 1890.

- 1.—The Church Tower and Porch, showing the ancient village Churchyard Cross.
- 2.—The Manor House, Edgeworth. The front.
- 3.—Sudgrove House, which is in a hamlet of Miserden and adjoins Edgeworth. It is the residence of Mr. H. Hamilton Mills, and was formerly the residence of the Warnefords, a knightly family, who sold it to Mr. John Mills about 1775.
- 4.—The South side of Edgeworth Church, showing the quaint Norman Corbel Course on exterior of Chancel.

["Cheltenham Chronicle" Photos. Copies 1s. 9d. each.

Give your Order for our New Book on "Picturesque Gloucestershire," 184 Pages like this, with full descriptions.

**MAKE
A
RESOLUTION
TO
INSPECT
NEW
&
PERMANENT
HAIR-WAVING
ENTERPRISE.
LATEST
PURE
STEAM SYSTEM.**

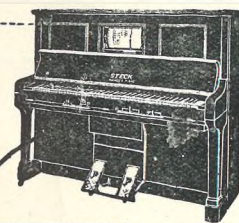
Shingle
and Long
HAIR,
30/-

Side
Pieces,
7/6



23-24 'REGENT STREET (opposite Little Promenade),
CHELTENHAM SPA.

WEST END AND CONTINENTAL EXPERIENCE. :: On Parle Francais. :: 'PHONE 3568.



The Piano for You!
The 'Pianola' Piano allows you all the delights of music and the supreme joys of actual playing. All the exquisite musical effects that the sensitive, highly trained fingers of the pianist can produce—your fingers can control through

The **STECK
PIANOLA
PIANO**

The introduction of the 'Pianola' mechanism in no way affects the tone quality of the piano; whether played by roll or by hand as an ordinary piano, the beautiful, rich singing tone of the famous Steck Piano is always evident.

Ask for all particulars and details of our special easy terms of payment. Your present instrument will be accepted in part payment.

Sole Agents: **Crichton's**
(Ernest Crichton Ltd.),
The Piano House,
394 High St., CHELTENHAM.
'Phone 2378.

**BEST QUALITY
CIDERS
IN BOTTLE.—Sparkling and Still.**
BARTHOLOMEW,
419, 420 HIGH STREET,
CHELTENHAM.

Wines, Spirits, Ales, Table Waters, & Grocery.
Tel. 3590.

Let MOUSSELLS Move You



Estimates for Removals and Storing Free.

'PHONE 2112.
Offices: **AMBROSE STREET,**
CHELTENHAM.

SHIRTS.
SPECIAL HARD-WEAR SHIRTS.
White Grounds. Coloured Stripes. Fast
Colour. Lined Back and Front.
8/6.

Own Manufacture.
FLANNEL SHIRTS,
8/11, 10/6, 12/6. All My Own Make.

A. BECKINGSALE,
HOSIER,
111 HIGH STREET, CHELTENHAM.
'Phone 2706.

Spring, 1928.

LANCE

& Co.

Are now making
a

**SPECIAL
DISPLAY**

OF

.. Early ..

.. Spring ..

Fashions

See
Windows.



John Lance

& CO., LTD.,

**CHELTENHAM'S SHOPPING
CENTRE.**



PRIMROSE LEAGUE WHIST DRIVE AND DANCE.

A most enjoyable function, held at the Town Hall on Tuesday, February 14th.

Photos No. 2, 3, 5, and 6 are various groups of "Buds" present for dancing. 1.—Some of the Wardens. A—Mrs. Lindsey Clark (Secretary) B—Mrs. Bower (Dame Warden). 4.—Primrose Buds, who gave a dancing exhibition. They were trained by Miss Wilkins (extreme left).

A Further Series of Pictures will be Published Next Week.

["Cheltenham Chronicle" Photos. Copies 1s. and 1s. 9d. each.



COLMORE CUP RELIABILITY TRIAL.

Held on Saturday, Feb. 11th. Part of the course was in the Gotswood Hills, near Cheltenham and Winchcombe, among the tests being Mill Lane, Post Office Lane (Cleeve Hill), and Gypsy Lane, near Winchcombe. The last named was in an awful condition, being a veritable quagmire. Over 200 competitors took part.

- 1.—C. M. Harley (Rudge) makes a good ascent of Gypsy Lane.
- 2.—Stable companions from Cheltenham.
- 3.—Local Officials and Competitors (left to right): Messrs. A. A. Williams, Newcombe, J. Williams, G. G. Pyecroft, and —.
- 4.—Riders starting out from Winchcombe, where lunch was taken. No. 75 is Mrs. L. McLean (Douglas).
- 5.—Interested spectators.
- 6.—B. J. Jenkins (Triumph) in the quagmire of Gypsy Lane.
- 7.—R. F. Brown (Rudge) going well.
- 8.—S. R. Mardon (Raleigh) strikes a boggy patch on Gypsy Lane.

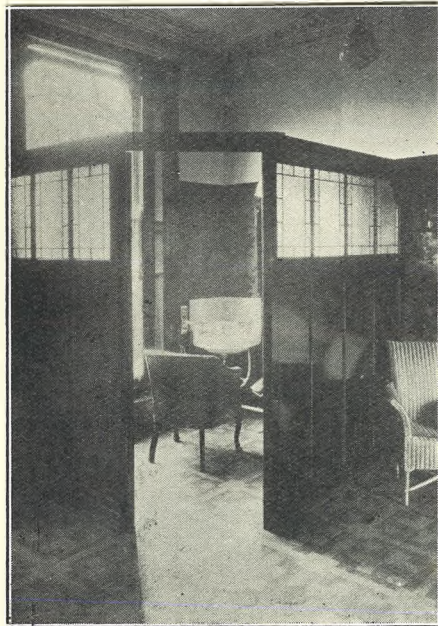
["Cheltenham Chronicle" Photos. Copies 1s. and 1s. 9d.

ILLUSTRATIONS OF THE GENTLEMEN'S HAIRDRESSING DEPARTMENT AT CAVENDISH HOUSE.



VIEW OF THE GENERAL SALON,

One of the finest in the Provinces. Equipped with Modern Hygienic Appliances.



A PRIVATE CUBICLE.



RECEPTION AND TOILET GOODS ROOM.

THE SALON FOR GENTLEMEN, AS ILLUSTRATED ABOVE, IS SITUATE ON THE FIRST FLOOR. (ENTRANCE MEN'S OUTFITTING DEPARTMENT).

CAVENDISH HOUSE Co., Ltd., CHELTENHAM, Ladies' & Gents' Hairdressers.

THE CHELTENHAM CHRONICLE AND GLOUCESTERSHIRE GRAPHIC

GRATIS SUPPLEMENT.

With Which is Incorporated the "Cheltenham Looker-On."
Saturday, February 25, 1928.

No. 1,417.

CHELTENHAM THEATRE AND OPERA HOUSE.

This Afternoon (2.30) and Evening (7.45): **THE STUDENT PRINCE.**
NEXT WEEK: TWICE NIGHTLY (6.40 and 8.40)—
Special Engagement of the World Famous **Italian Marionettes.**

THE PALACE, HIGH STREET, CHELTENHAM

Director: Shakspeare Shenton.

FOR SIX DAYS!

The Film Sensation of the Year, Produced under the Patronage of the German Admiralty.

THE EMDEN.

See the Sinking of the Emden by H.M.S. Sydney.

A NAVAL BEAU GESTE.

Thursday, Friday, Saturday—ADDED ATTRACTION!

LAURA LA PLANTE in

SILK STOCKINGS.

Douglas Cochrane and his Popular Orchestra will Charm You.

THE DAFFODIL

Cheltenham's Only Real Cinema.

Continuous Daily—2.30 to 10.15.

Week Commencing Monday next, Feb. 27th.

We Present for SIX DAYS:—

THE SORROWS OF SATAN

By MARIE CORELLI,

with ADOLPHE MENJOU.

Approximate Times: 2.45, 4.45, 6.45, and 8.45.

This Master Production, accompanied by a Beautiful Music Score by CHELTENHAM'S FINEST ORCHESTRA.

Established 1806.

MARTIN & CO., Limited,

THE COUNTY JEWELLERS, Pearl and Diamond Merchants,

A Large Selection of Second-hand Silver and Old Sheffield Plate.

We are Purchasers of Antique Silver and Fine Quality Gems.

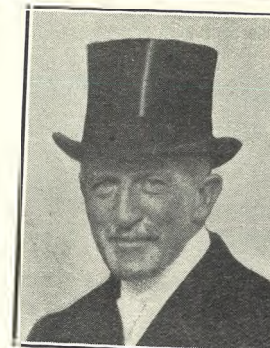
Best Prices Given.

LICENSED VALUERS, Promenade, Cheltenham.



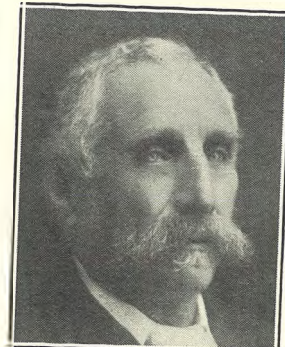
REAR-ADMIRAL F. A. MARTEN, C.B., C.M.G., C.V.O.

of Karsna, Bath-road, Cheltenham, who has been appointed Joint Master of the Cotswold Hunt in succession to Captain Colville. He has just retired after a successful career in the Navy.



MR. ARTHUR MITCHELL, of the Glenfall, Charlton Kings.

a popular member of Cotswold Hunt for some years, who has been appointed joint Master of the Hunt. He is one of the proprietors of the firm of brewers, Messrs. Mitchell and Butler, of Birmingham.



MR. F. L. SCHUSTER, of Heysham House, Park-place, Cheltenham.

who died on Feb. 19th. He would have been 89 next month. He had been married for 63 years, and his widow, a son (Sir Claud Schuster, G.C.B., C.V.O., K.C.), and three daughters survive him. He was a cousin of Sir Felix Schuster and Sir George Schuster.



CAPTAIN R. C. WYNTER (O.C.), of 11 Lansdown-place, Cheltenham.

who died on Feb. 19, aged 33 years. He was the second son of the late Mr. H. D. Wynter, of Kempsey, Worcs., and of Mrs. Domville Wynter, Cheltenham. War privations and foreign service broke down his health, and he had been ill for five years.

Winter Garden

NEW KINEMA, PROMENADE, CHELTENHAM
Director: Shakspeare Shenton.

Big Two-Feature Program! Monday, Tuesday, Wednesday:—Marie Prevost & Charles Ray in GETTING GERTIE'S GARTER!

FRED THOMPSON and his Horse—"SILVER KING," in THE TWO-GUN MAN,

Lester Burrows and his Orchestra Thursday, Friday, Saturday:—

From the Popular Novel by A. S. M. Hutchinson

ONE INCREASING PURPOSE With Edmund Lowe & Lila Lee.

Screened at 2.45, 4.45, 6.45, 8.45. IN THE SOUTH PAVILION—SKATING.

COLISEUM, CHELTENHAM.

'Phone 3715. 6.40 p.m. and 8.40 p.m.

ALL SMILES. MUSICAL COMEDY REVUE, Starring BILLY ROWLANDS and MAY ROYAL.

North Street PICTURE HOUSE.

From 2.30 p.m. Continuous. Monday, Tuesday, Wednesday:—

CIRCUMSTANTIAL EVIDENCE Featuring DOROTHY REVIER and MALCOLM MCGREGOR.

Thursday, Friday, Saturday:—ZANE GREY'S MYSTERIOUS RIDER, Featuring JACK HOLT.

MAISON ANNETTE,

Kensington House, PROMENADE, CHELTENHAM,

Specialists in Exclusive CORSETS & LINGERIE.

'Phone 2122.

DALE, FORTY and Co. Ltd For the Best PIANOS.

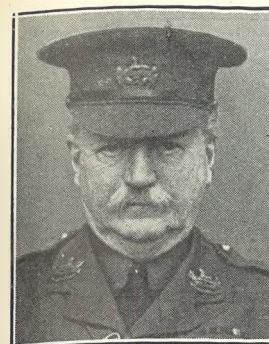


CHILDREN'S FANCY DRESS DANCE IN CHELTENHAM.

The children of the Cheltenham members of the Gloucester Co-operative Society spent a most enjoyable evening at the Town Hall on Monday, Feb. 20th, on the occasion of their Fancy Dress Dance. Costumes were extremely varied and imaginative, and the attendance was over 500.

- 1.—Some of the Officials and Judges.
- 2 to 8.—Groups of Fancy Dress Competitors. ["Cheltenham Chronicle" Flashlight Photos. Copies 1s. and 1s. 9d.]

SEND THE "CHRONICLE AND GRAPHIC" TO YOUR FRIENDS EVERY WEEK.



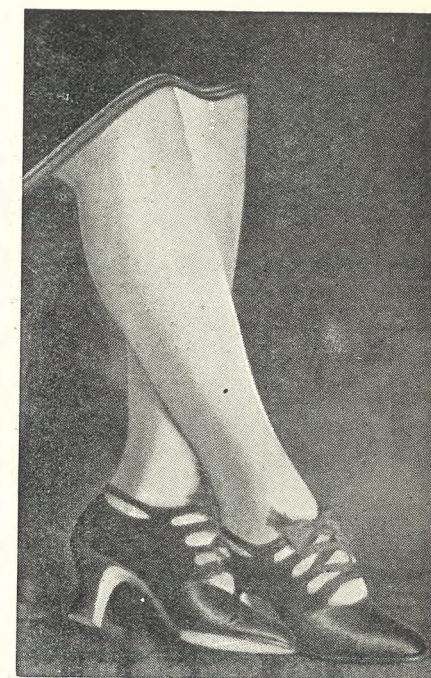
COLONEL J. C. VINES, of 64 Curzon-street, Mayfair, London, who died suddenly on Feb. 1st after dining out with a friend. He was formerly in command of the 28th Battalion (Gloucesters), and went through the South African War with the 2nd Gloucesters. During the Great War he raised and trained the 9th Battalion Gloucesters, mostly in Cheltenham.



MR. BEYNON W. MORGAN, of Cheriton, Longford-road, near Gloucester, who died somewhat suddenly at the Gloucester Royal Infirmary on Sunday, Feb. 19th, aged 40 years. He was of great musical ability, and had been organist and choirmaster at St. Catherine's Church, Gloucester, since 1914; and was well known in all musical circles in the City. He leaves a widow and two children.



CHELTENHAM'S OLDEST MILKMAN. Mr. Fred Cotton, who after 58 years' service in the employ of Mr. F. Hicks, of Leckhampton and Church Farms, Leckhampton, has just retired, at the age of 73 years. He comes of an old Leckhampton family, and is well known.



SPECIAL DISPLAY AT LANCE'S
Ladies' Ladderproof PURE SILK STOCKINGS

GUARANTEED NOT TO LADDER.

Stocked in the following Colours—Alesan, Champagne, French Beige, Fresh, Frain, French Grey, Lizard, Natural, Peach, Pearl, Piping Rock, Rougeur, Shell Grey, Silver Grey, Touraine, or Black.

7/11 A PAIR, Or 3 Pairs for 23/3.

John Lance & CO., LTD.,
CHELTENHAM'S SHOPPING CENTRE.



Cotswold Motor-Cycle Trial in the Stroud District, Saturday, Feb. 18th
A number of local competitors at Birdlip.

Let **MOUSELLS** Move You



Estimates for Removals and Storing Free. PHONE 2112.

CHELTENHAM. Offices: AMBROSE STREET.

HAND-SEWN MAKING from 30/-

REPAIRS SAME DAY. JOINT AND ARCH SPECIALISTS AND BUNION CURERS. London City Honours. **PROGRESS BOOT WORKS,** 21 MONTPELLIER STREET, CHELTENHAM (Opposite P.O.).

SHIRTS.

SPECIAL HARD-WEAR SHIRTS. White Grounds. Coloured Stripes. Fast Colour. Lined Back and Front.

8/6.

Own Manufacture. **FLANNEL SHIRTS,** 8/11, 10/6, 12/6. All My Own Make.

A. BECKINGSALE, HOSIER,

111 HIGH STREET, CHELTENHAM. Phone 2706.

PLACE YOUR ORDER.

at once for a Copy of "Picturesque Gloucestershire," the handsome Guinea Volume which we are producing this month, in which will be beautifully printed nearly 200 full page illustrations of Towns, Villages, Scenery, and Ancient Buildings in the County. Order at "Echo" Offices.



CHELTENHAM TOWN v. CHELTENHAM COLLEGE AT RUGBY FOOTBALL.

This, the match of the season, took place on the Athletic Ground, under splendid football conditions, before a capital crowd of spectators, easily the "gate" of the season. The boys did not quite play up to their reputation, and were beaten by 12 points (2 goals (1d.) and 1 try) to 3 points (1 try) in a very good and enjoyable game.

- 1.—The College Team, from left: C. S. Lee, I. L. Reeves (capt.), F. D. G. O'Dwyer, R. R. Seddon (Touch Judge), H. C. Fairlie, R. L. Demuth, F. P. R. Compton, E. A. Thompson, E. E. T. Taylor, J. N. Bryce-Smith, J. A. Crawford, G. C. Burton, R. J. Woollatt, R. M. Wilkinson, J. R. Kerr, D. A. C. Page.
- 2.—Sections of enthusiastic Collegians, who always support the Town Club with their presence at these matches.
- 3.—James (in centre) tackled in possession.
- 4.—Lady spectators in front of stand.
- 5.—Collegian falls on ball to stop a rush.
- 6.—Town supporters.
- 7.—The Colours being received at door of Church.
- 8.—Town supporters.

["Cheltenham Chronicle" Photos. Copies 1s. and 1s. 9d. each.



THE 9th GLOUCESTERS' COLOURS DEPOSITED IN CHELTENHAM PARISH CHURCH.

With befitting ceremonial, and in the presence of a packed congregation, the King's Colour of the old 9th (Service) Battalion of the Gloucestershire Regiment was deposited in the Parish Church, Cheltenham, on Sunday afternoon last. A great muster of old members of the Regiment took place, and Colonel Julian Fane, D.S.O., who was in command of the Regiment during the whole of its active service, and Major E. F. Broome-Witts, second-in-command, were present.

- 1.—The Colours, borne by Captain Morton (now of 1st Battalion), entering church.
- 2 to 8.—Various sections of the men on parade.
- 7.—The Colours being received at door of Church.

["Cheltenham Chronicle" Photos. Copies 1s. each, Postage 2d. extra.



FUNERAL OF MR. F. J. HITCH, AT SHURDINGTON, FRIDAY, FEBRUARY 17.

1, 2, and 3.—Family mourners and friends in procession. 4.—Mr. Steve Sharpe and Mr. Chas. Castle. 5.—Some of the congregation looking at the wreaths after the service. 6.—Messrs. Newton Vizard and Arthur S. F. Pruett. 7.—Mr. Tom Marsden (right), of Boddington. 8.—Mr. Constable Hayes (Shurdington) in centre. ["Cheltenham Chronicle" Photos. Copies may be obtained.]



INTERESTING CHELTENHAM WEDDING.

The Wedding took place at Emmanuel Church, Cheltenham, on Saturday last, February 18th, of Mr. Leonard Mayfield, only son of the late Mr. H. Mayfield and Mrs. H. Mayfield, of 2 Naunton Terrace, Cheltenham, and Miss Barbara Thour, eldest daughter of Mr. and Mrs. F. Thour, of Glasgow. 1.—Bride, Bridegroom, and guests. 2.—Walking with St John Ambulance, guard of honour, to their home. 3.—Watching photographer. 4.—Leaving the Church. ["Cheltenham Chronicle" Photos. Copies may be obtained.]



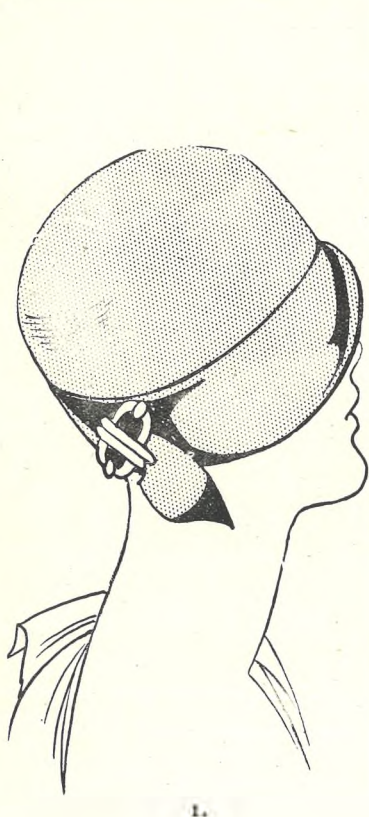
MILITARY FUNERAL IN CHELTENHAM.

The Funeral took place at Cheltenham Cemetery on Thursday, February 16th, with military honours, of Mr. Chas. H. Wakefield, antique dealer, of Bath-road, Cheltenham. Old comrades of the Gloucestershire Volunteers acted as bearers, and a firing party and buglers of the 5th Battalion Gloucestershire Regiment attended. 1.—Cortege arriving at the Cemetery, preceded by firing party. 2.—The flower-laden hearse passing between guard of honour, with reversed arms. 3.—Old comrades of deceased who attended, some of whom were bearers. 4.—Officers of 5th Gloucesters leading—Captain Kitching, Lieut. Tibbles, and Ex-R.S.M. Spragg. 5.—The flag-draped coffin being borne to grave, followed by family mourners. ["Cheltenham Chronicle" Photos. Copies 1s. and 1s. 9d. each.]



PRIMROSE LEAGUE WHIST DRIVE AND DANCE.

A further series of pictures of some of the Primrose "Buds" at their Fancy Dress Dance at the Town Hall on February 14th. Other groups appeared last week. ["Cheltenham Chronicle" Photos. Copies 1s. and 1s. 9d. each.]



1.



2.



3.

SPRING, 1928.

EXCLUSIVE MODEL MILLINERY BY VANDERPLANK.

THAT deft touch of good taste that will appeal irresistibly to those who appreciate fine fashions, beautiful materials, authentic styles, becoming exquisite colours. These are the distinguishing features that set the Millinery by Vanderplank apart. Yet it is not costly, for the large purchasing facilities of Vanderplank, because of their large and ever increasing clientele, make possible Hats at prices from 12/11—Real Bankoks at 25/9!

All fittings and sizes—specially full size fittings. May we have the pleasure of showing you? You will need a new Hat—why not visit Vanderplank (from Harrods) to-day? We are sure we have a Model to suit you, and at the price you wish to pay.

No. 1.—Fine quality Felt Hat, featured for the Shingled with roll-up brim, in all newest colorings. Price ... 15/11

No. 2.—Tailored Bankok Straw, trimmed Petersham ribbon. This useful Model is suitable for both small and large fittings. In all colorings. Sizes 6½, 7½. Price 33/9

No. 3.—Made in fine quality Chinese Hemp. This becoming Matron's shape has Velvet trimming on Crown with Velvet binds. 7½ fitting. In a few new colours. Price ... 29/11

Vanderplank

From Harrods Ltd.

FOREMOST FOR FASHIONS AND FURS OF QUALITY,
381 HIGH STREET, CHELTENHAM SPA.