

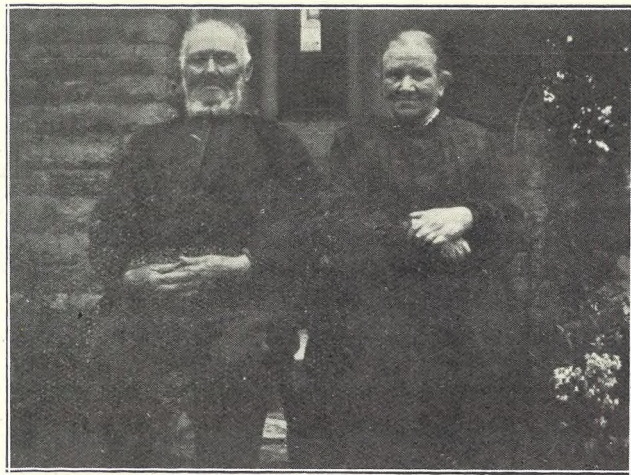
THE CHELTENHAM CHRONICLE AND GLO' SHIRE GRAPHIC

GRATIS SUPPLEMENT. With Which is Incorporated the "Cheltenham Looker-On."
Saturday, June 4, 1927. No. 1,379.

CHELTENHAM THEATRE AND OPERA HOUSE.

This Afternoon (2.30.) & Evening (7.45)—The Stratford-Upon-Avon Shakesperian Co.
NEXT WEEK: Personal Visit of Dorothy Minto in "Hell-cat-Hetty."

THE PALACE
HIGH ST., CHELTENHAM.
Director: Shakspeare Shenton.
THE CINEMA COOL.
HARRY LANGDON
In his First Feature Comedy,
"TRAMP, TRAMP, TRAMP,"
Screened at 2.45, 4.45, 6.45, 8.45.
Three thousand miles of Chuckles,
Chortles, and Side-Splitting
Screams!
The Greatest Laugh Show!
Special Musical Settings by
Douglas Cochrane and his Popular
Orchestra.
Next Week: **Lewis Stone, Barbara
Bedford** in **"THE DESERT
HEALER,"** by E. M. Hull, author
of "The Sheik."



THE DAFFODIL
Cheltenham's Premier Cinema.
Continuous Daily, 2.30 to 10.15.
Monday, June 6th, Tuesday, and
Wednesday:
Megalomania and Melodrama.
"THE HYPOCRITE,"
Starring **Patsy Ruth Miller.**
Thursday, Friday, Saturday:
RIN TIN TIN in
"A Hero of the Big Snows,"
Beautiful, Exciting. A pleasure
to see.
An Exclusive Programme sup-
ports each of the above Feature
Films.
The Daffodil Grand Orchestra
at All Performances. Musical
Director: Mr. Arthur Burrows.



Established 1806.
Martin & Co.,
Limited,
The County Jewellers,
Pearl and Diamond Merchants.
A Large Selection of Second-hand
Silver and Old Sheffield Plate.
We are Enchasers of Antique
Silver and Fine Quality Gems.
Best Prices Given.
LICENSED VALUERS,
Promenade, Cheltenham.

TWO HATHEROP GOLDEN WEDDINGS.
Both couples have spent all their married life in the village.
Mr. and Mrs. Thomas Smith, who celebrated their Golden Wedding
last month. He was a gardener at the Castle for many years, and
is postmaster of Hatherop.
Mr. and Mrs. Alfred Hope, who also celebrated their Golden
Wedding last month. He also was a gardener at the Castle for many
years.—Photos by Mrs. L. E. Cheales, Hatherop Rectory.

WINTER GARDEN,
Cheltenham's Super Cinema.
Where Everybody Goes.
GREAT REPERTORY WEEK:
Monday and Tuesday:
DOUGLAS FAIRBANKS in
"The Three Musketeers,"
Wednesday and Thursday:
WALLACE BEERY in
"Richard, the Lion-Hearted,"
(First Showing in Cheltenham).
Friday and Saturday:
D. W. Griffiths's
"One Exciting Night,"
Featuring **Carol Dempster** and
C. H. Croker-King.

COLISEUM
CHELTENHAM. 'Phone 3715.
6.40 p.m. and 8.40 p.m.
BIG HOLIDAY ATTRACTION.
"LAUGHTER FIRST,"
Musical Comedy Revue.

**NORTH STREET
PICTURE HOUSE.**
Continuous from 2.30 p.m.
Monday, Tuesday, Wednesday:
"The Clinging Vine,"
Featuring
Leatrice Joy and **Tom Moore.**
Thursday, Friday, and Saturday:
"Wild Horse Stampede,"
Featuring **Jack Hoxie.**

**MAISON
ANNETTE,**
Kensington House,
PROMENADE,
CHELTENHAM,
Specialists in Exclusive
**CORSETS &
LINGERIE.**
'Phone 2122.

For the Best **PIANOS, DALE, FORTY and Co. Ltd**

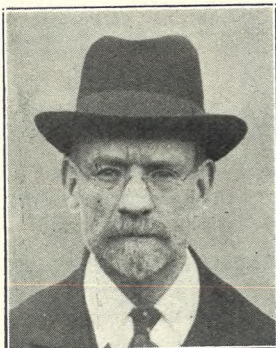


COUNTY RED CROSS COMPETITIONS AT SOUTHAM.

In perfect weather, the Annual County Competitions in connection with the Gloucestershire Branch of the British Red Cross Society were held at Southam de la Bere at Mrs. Ratcliff's beautiful old Tudor mansion at the foot of Cleeve Hill on Saturday last. The Dowager Duchess of Beaufort distributed the prizes.

- 1.—At the prize giving. From left are Brig. Gen. H. B. Champain, Col. de la Pryme, Lady Percival Marling; behind Lady Marling is Sir Harry Waters.
- 2.—The platform, from left: Miss Allen (County Director), the Dowager Duchess of Beaufort, Lady Oliver (head of the V.A.D. Department), and Miss Ratcliff.
- 3, 6, and 7—Nurses in various competitions.
- 4.—The Fairford Team, who were second.
- 5.—The Team who went to London for competition.
- 8.—Nurses on parade at prize giving.

"Cheltenham Chronicle" Photos. Copies 1s. each, postage 2d. extra.



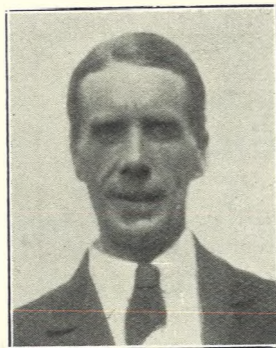
MR. W. W. BASTIN.

Of 25 Bennington Street, Cheltenham, who died on Thursday, May 26th, aged 70 years. He was for over 40 years a printer and lithographer in Bennington Street, and was a well-known bellringer, Oddfellow, and a Conservative in politics.

"Distinction with Economy."
Supreme Value in French Summer Frocks, Coats and Distinctive Hats
Sensier
 THE LITTLE SALON,
 388b High Street, Cheltenham.

ACTUAL PHOTOGRAPHS Of Pictures

Appearing in the "Graphic" May be seen at the "Echo" and "Chronicle" Offices, Clarence Parade, Cheltenham.



MR. ALBERT EDWARD COOKE,

Of 23 Winchcombe Street, Cheltenham, who died on May 29th, aged 52 years. He was the second son of Mr. James Cooke, of Shaftesbury, Grange Crescent, Cheltenham. Some years ago he was on the staff of Cavendish House Company, Ltd.



A pleasant spot for a drink after the Cricket or any other time—the Garden of the Wiltshire Brewery, Cheltenham. It is entered by the lane at back of Berkeley Garage, Hewlett Street. Stroud Brewery Ales and Stouts in fine condition. Teas, etc., also supplied.



CHELTHENHAM PRACTISING SCHOOL BOYS' CHOIR,

Who won the Rotary Silver Challenge Cup at the Cheltenham Musical Festival and who were complimented by the Judge. They were conducted by Mr. H. R. Clarke.

"Cheltenham Chronicle" Photo. Copies 6d., 1s. and 1s. 9d. each.



GLOUCESTER-ROAD INFANTS' SCHOLARS,

who won a Cup at the Cheltenham Musical Festival for School Choirs (under 7). They were conducted by Miss F. Ellis.

"Cheltenham Chronicle" Photo. Copies 6d., 1s. and 1s. 9d. each.

Lance's

SPECIAL DISPLAY

FOR

Holiday Wear.

Coats, Costumes, Millinery,
 Dresses, and Furs, Etc.



This delightful COAT may be had in Fancy Silk, Navy or Black. PRICE—

4 Gns.

Lined throughout.

Large range of Black and Navy Satin Coats. All sizes. Prices—59/6 to 10 Gns.

John Lance

& Co., Ltd.,

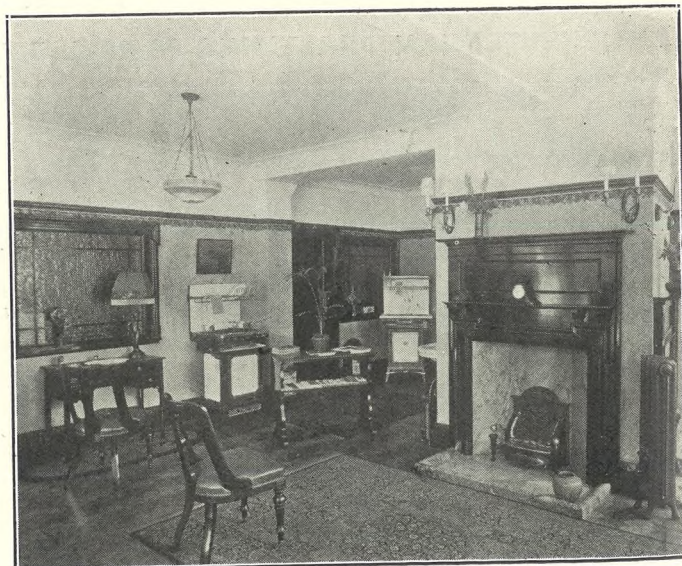
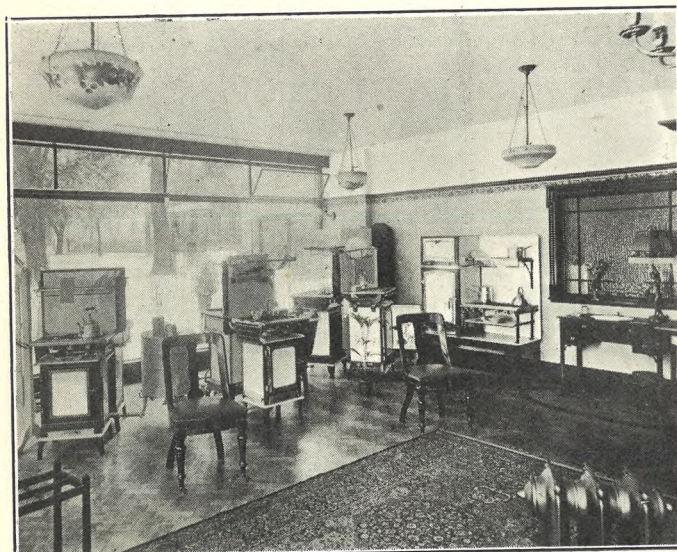
CHELTHENHAM SPA.

CHELTENHAM.

NEW SHOWROOMS IN THE PROMENADE.



No. 40 PROMENADE (opposite the Neptune Fountain).
The frontage is of Sicilian marble, relieved by black Napoleon marble.
(Architects: L. W. Barnard and Partners).



TWO INTERIOR VIEWS—No. 40 Promenade.

The Cheltenham Gas Company's new premises, illustrated above, are proving an attractive addition to the town's business establishments, and the public are making good use of the opportunity of becoming acquainted with the latest aids to household efficiency.



ROYAL AGRICULTURAL COLLEGE, GIRENCESTER, ANNUAL SPORTS.

These sports were held on the College ground on Thursday, May 25th, in perfect weather conditions and before a good crowd of spectators.

- 1.—E. H. Lewis Bowen winning the 440 yards from A. E. Barbour.
- 2.—Four lady spectators.
- 3.—Interested in the programme.
- 4.—Alcorta winning 100 yards from German (2nd). Professor M. J. K. Dunstan (Principal) on extreme right.
- 5.—E. H. Lewis Bowen winning 220 yards.
- 6.—The ladies' race, won by Miss King Turner (third from right). Miss Moore (extreme right) was second.

"Cheltenham Chronicle" Photos. Copies 1s. and 1s. 9d. each. Postage 2d. extra.

Flannel Trousers.

A superior make of good cloth, in Light or Dark Grey 14/11
White All Wool Flannel 21/-

We :: PHOTO OR :: do your
Make PICTURE FRAMES order
IN 24 HOURS!

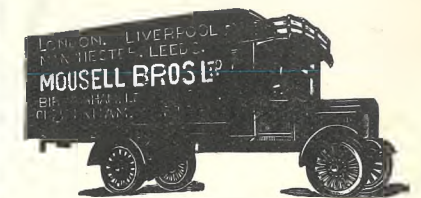
LEE, Stationer & Picture Framer
CAXTON HOUSE,
Wingheombe Street : : CHELTENHAM.

N.B. Hair Cut Shingle Wave or Shave

Phone 2706. A. BECKINGSALE, Phone 12706.
111 High Street, CHELTENHAM.

PHONE 3490 CHELT. FOICE, PROMENADE FOR APPOINTMENT.

LET MOUSELLS MOVE YOU



Estimatee for Removals and Storing Free.
'PHONE 2112.

CHELTENHAM. Ambrose Street.



DRILL AND GYMNASTIC DISPLAY BY CRYPT SCHOOL, GLOUCESTER, BOYS.

On Thursday May 26th, Crypt School boys gave a capital display of drill and gymnastics on their school playground before a large crowd of parents and friends in aid of Toc H Poor Children's Holiday Camp Fund.

- 1.—Mr. Keble, gymnastic instructor, giving an exhibition of vaulting.
- 2, 4, 7, 8, and 9.—Various spectators interested in the display.
- 3.—Group of boys with their instructor, who gave gymnastic display.
- 5.—Landing after jumping through hoop.
- 6.—A balancing feat.

"Cheltenham Chronicle" Photos. Copies 1s. each. Postage 2d. extra.



PRUDENTIAL STAFF UNION CONFERENCE IN CHELTENHAM.

The seventeenth annual conference of the Prudential Staff Union was held in Cheltenham on Thursday and Friday, May 26 and 27, when some 250 delegates from all parts of the United Kingdom, representing the outdoor workers of the Prudential Assurance Society met to discuss Prudential matters. They were officially welcomed by the Mayor (Ald. C. H. Margrett) and used the Supper-room of the Town Hall for their deliberations. The Union held its conference in Cheltenham as recently as four years ago.

No. 1. is a group of the President (Mr. J. C. Kinniburgh) and the Executive; all other photos are snaps of the delegates leaving the Town Hall.

"Cheltenham Chronicle" Photos. Copies 1s. each unmounted, 1s. 6d. mounted. Postage 2d. extra.



TEWKESBURY GRAMMAR SCHOOL SPORTS.

These annual sports were held on the Swilgate ground on Thursday, May 19th, in beautiful weather. There was a capital attendance of parents and friends.

- 1.—Grammarians watching the sports.
- 2.—A close finish in 100 yards senior race, won by J. F. Taylor (on left). H. Coombes was second.
- 3.—H. Coombes winning senior long jump (18ft. 7in).
- 4.—Competitors.
- 5.—The sack race in progress.
- 6.—Officials. The Headmaster (Mr. W. H. Struthers) sitting in centre.
- 7.—House team winners of relay race. Left to right: W. Bartlett, I. Kettlety, H. Coombes, and H. A. Legge.

"Cheltenham Chronicle" Photos. Copies 1s. and 1s. 9d. each according to size. Postage 2d. extra.



GLYNGARTH SCHOOL ATHLETIC SPORTS.

These Sports were held on Saturday afternoon last on the pretty playing ground of the School, before a capital crowd of parents and friends.

- 1.—Boys who ran in relay race.
- 2.—Bown winning Open 100 Yards from Sewell.
- 3.—The Sisters' Race.
- 4.—Mr. Clayton Perman (right), the Headmaster, talking to Dr. and Mrs. Lewis Marshall.
- 5.—Mrs. Nigel Jones (right) and friends.
- 6.—Brown II, winning Consolation Race.

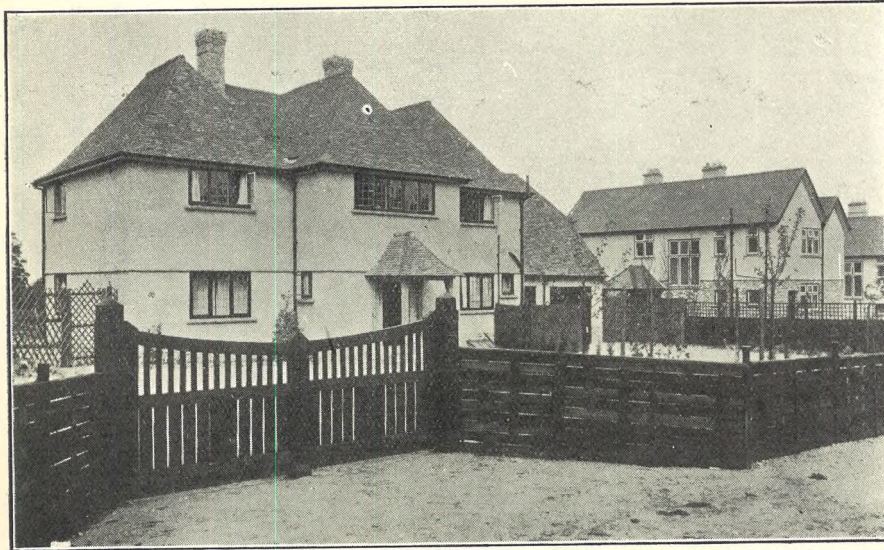


CHARLTON KINGS SCHOOL SPORTS.

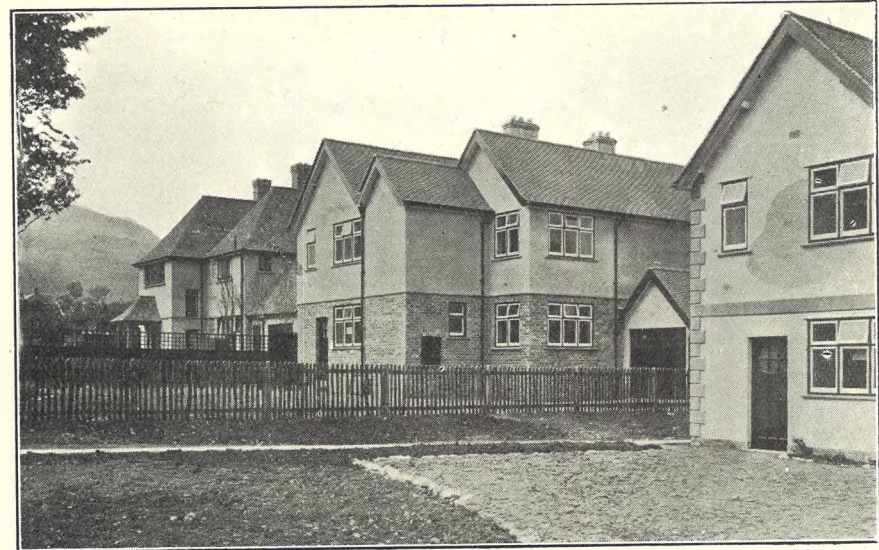
Held on Saturday last at The Beeches, East End, Charlton, in beautiful weather.

- 1.—A group of competitors.
- 2.—F. Bloodworth winning High Jump (under 12) at 3ft. 10in., 4ins. over the record made last year.
- 3.—Masters and Committee, Mr. Thorn (Headmaster) on extreme left, General Burton (next him) and Rev. E. Neale (in centre).
- 4.—A spill on the tape in a close finish in the Three-legged Race.

"Cheltenham Chronicle" Photos. Copies 1s. each.



NEW HOUSES IN LECKHAMPTON ROAD RECENTLY BUILT BY MESSRS.
S. C. MORRIS & SON.



NEW HOUSES IN LECKHAMPTON ROAD RECENTLY BUILT BY MESSRS.
S. C. MORRIS & SON.

Messrs. S. C. Morris & Son,

F.I.O.B., R.P.C., Etc.,

*Builders, Sanitary Engineers, and
::: General House Decorators, :::*

**.. Tivoli Place, ..
CHELTENHAM,**

Are illustrating above some modern houses they have recently erected. The old class of stereotyped rows of houses, all built alike, is happily disappearing, and a new type of house, artistic, with modern comforts and spaciousness is being built, making one's home an individual pleasure and pride. The new houses sell with wonderful success. Many others are being built, and the firm will be pleased to estimate for any type of house required, or repairs to present houses. Telephone 2922.



CHARNWOOD, MOOREND PARK ROAD.



CRUSADERS AT CHURCH IN CHELTENHAM.

The second commemoration service of the Sphinx Conclave of the Most Noble Order of Crusaders was held at the old Parish Church, Cheltenham, on Sunday last, there being about sixty members present. All robed at Brunner's Cafe and marched in procession to the church.

- 1.—The Ensign-bearer, with Freemen, Yeomen, and Esquires.
- 2.—Master of a visiting conclave.
- 3.—The M.W. Master of Sphinx Conclave.
- 4.—Officers of Sphinx Conclave.
- 5.—Members of visiting conclaves.

"Cheltenham Chronicle" Photos. Copies 1s. each, postage 2d. extra.



A GLOUCESTER DIAMOND WEDDING.

On Monday last, May 30th, Mr. and Mrs. Charles Gardner, of Woodville, Stroud-road, Gloucester, celebrated their Diamond Wedding, having been married by Rev. W. Collins on that date in 1867, in Brunswick Road Baptist Church. They have one son and five daughters and numerous grandchildren. Mr. Gardner is head of the firm of Gardner and Saunders, dentists, of Troy House, Barton Street, Gloucester. A family re-union was held at Tudor Cottage, the home of their youngest daughter and son-in-law, Mr. and Mrs. W. J. B. Hall, at which above photo was taken.

Photo by Mr. R. Hall, photographer, Clarence Street, Gloucester.



COUNTRYSIDE MUSICAL FESTIVAL IN GLOUCESTER.

A countryside Musical Festival was held in the Gloucester Shire Hall on Thursday, Friday, and Saturday, May 26th, 27th, and 28th, and exhibitions of Folk Dancing given on the Friday and Saturday in College Green by the Gloucester and Bristol Folk Dancing Society.

- 1.—Girl Guides from all parts of the county who competed for Singing at Shire Hall.
- 2, 3, 4, and 5.—Sections of spectators in College Green watching dancing.
- 6 and 7.—Bristol Dancers giving an exhibition of the Helston Flurry Dance in Westgate Street. They danced from College Court down Westgate Street, along College Street into College Green.
- 8.—The dancing exhibition in progress on College Green.

“Cheltenham Chronicle” Photos. Copies 1s. and 1s. 9d., postage 2d. extra.

THE CHELTENHAM CHRONICLE AND GLOUCESTERSHIRE GRAPHIC

GRATIS SUPPLEMENT. With Which is Incorporated the “Cheltenham Looker-On.”
Saturday, June 11, 1927. No. 1,380.

CHELTENHAM THEATRE AND OPERA HOUSE. This Afternoon (2.30.) & Evening (7.45)—“HELL-CAT-HETTY.”
NEXT WEEK: Return Visit of the Eminent Actor—**Frank Forbes-Robertson**, Supported by Miss Sydney Thornton & full London Co.

THE PALACE.
HIGH ST., CHELTENHAM.
Director: Shakspeare Shenton.

THE CINEMA COOL.
“THE DESERT HEALER,”
From the Famous Novel of the East, by E. M. Hull, Author of “The Sheik.”
With Lewis Stone, Barbara Bedford, and All-Star Cast.
“Nothing better this season” (Press).
Special Musical Settings by **DOUGLAS COCHRANE** and his Popular Orchestra.

THE DAFFODIL
Cheltenham's Premier Cinema.

Continuous Daily 2.30 to 10.15.
Monday, June 13th, Tuesday and Wednesday:
“THE FAMILY UPSTAIRS.”
An amusing and romantic story of everyday life, depicting the humour, pathos and humanity of a typical middle-class family.
Starring **VIRGINIA VALLI.**
Thursday, Friday, Saturday:
BETTY BLYTHE in
“A DAUGHTER OF ISRAEL.”
An Adaptation of the Famous French Novel, “Jacob's Well.”
Usual Big Exclusive Supporting Programme.

Established 1806.
Martin & Co.,
Limited,
The County Jewellers,
Pearl and Diamond Merchants.
A Large Selection of Second-hand Silver and Old Sheffield Plate.
We are Purchasers of Antique Silver and Fine Quality Gems.
Best Prices Given.
LICENSED VALUERS.
Promenade, Cheltenham.



CO-OPERATIVE CONGRESS IN CHELTENHAM.
At the Annual Conference, held in Cheltenham this week, when over 2,000 delegates attended, many notable men in the Co-operative world were present. Above (left) are Mr. David Williams, M.P. for Swansea East, who opened the Exhibition on Saturday last, and who is the leader and stalwart of the Co-operative work in Swansea, with Mr. A. Whitehead, General Secretary of the Co-operative Union, on whose shoulders fell the arrangements and conduct of the business of the Conference.

WINTER GARDEN,
Where Everybody Goes.

MONDAY & ALL THE WEEK:
Nightly at 7.45 p.m., Matinees on Wednesday, Thursday and Saturday at 2.45 p.m.—
WILL GANE and His Famous PIERROT, PIERRETTE, AND PIANO.
Originality! Humour! Charm!
The Company has played over 2,000 performances and created a furore in every town visited.
Popular Prices: 1/3, 1/-, 9d. (including Tax), and 5d. (limited).
The 1/3 Seats may be Booked without extra charge.

COLISEUM
CHELTENHAM. Phone 3715.
6.40 p.m.—Nightly—8.40 p.m.
“WHAT'S ON?”
An Entirely New Musical Comedy Revue.

NORTH STREET PICTURE HOUSE.
Continuous from 2.30 p.m.
Monday, Tuesday, Wednesday:
“WEBS OF STEEL,”
Featuring Helen Holmes.
Thursday, Friday, Saturday:
“MAN FROM THE WEST,”
Featuring Art Acord.

“Distinction with Economy.”
LINEN FROCKS. TENNIS FROCKS. AFTERNOON GOWNS.

Sensier

388b High Street, CHELTENHAM SPA
Telephone 2580.

W. Scott Cooper,
Diamond Merchant, Jeweller, Goldsmith, and Silversmith,
The Promenade, Cheltenham.
LICENSED VALUERS.

For the Best **PIANOS, DALE, FORTY and Co. Ltd**



ST. PAUL'S TRAINING COLLEGE, CHELTENHAM, BIENNIAL RE-UNION.

Owing to the Coal Strike last year the Biennial Re-union of Old Chelts at St. Paul's College, due at Whitsun, 1926, had to be hastily postponed, and it was therefore three years since the last Re-union was held. Consequently there were more than ever present this year, and it was one of the jolliest of the whole series. There were over 500 present at some of the various Whitsuntide functions. Above we give groups of the Old Students grouped in the years they were at College.

- 1.—Students of 1924-1926.
- 2.—Students of 1878-79 and 1884-85.
- 3.—Students of 1908-09.
- 4.—Students of 1922-24.
- 5.—Students of 1900-02.
- 6.—Students of 1923-25.
- 7.—Students of 1895-6-7-8.
- 8.—Students of 1921-23.

"Cheltenham Chronicle" Photos. Copies may be obtained, large size 1s. 9d., small size 1s. Postage 2d. extra.



ST. PAUL'S TRAINING COLLEGE WHITSUNTIDE RE-UNION IN CHELTENHAM.

Among the many pleasurable functions of the Whitsun Re-union was the usual Athletic Sports Meeting of the present students on Saturday afternoon, June 4th. Another feature was the breakfast on Whit-Monday and the speeches afterwards. This affair lasted from 9 to 11.30.

- 9.—Dent winning 223 Yards Race.
- 10.—Spectators at the Sports Meeting.
- 11.—Old friends meet again.
- 12.—Old Chelts of 1904-06.
- 13.—The present Students' Tug-of-War team being beaten by the past.
- 14.—Finish of Half Mile, won by Dransfield.
- 15.—O.C.'s of 1920-22.
- 16.—A couple of 1891-92 Students with their wives, and an older Chelt still.
- 17.—Spectators (mostly present Students) interested in a race.
- 18.—1907-09 Old Chelts.

"Cheltenham Chronicle" Photos. Copies, large size 1s. 9d., small 1s. Postage 2d. extra.



NEW SPIRITUALIST CHURCH OPENED IN CHELTENHAM.

On Friday morning, June 3rd, at 8 o'clock, Mr. Henry Bubb, of Ullenwood, near Cheltenham, opened a new Spiritualist Church in Bennington Street, Cheltenham. Mr. Bubb is in centre wearing silk hat. His daughter is next him. Other members of congregation are present.



Swindon-road, Cheltenham, Council Schoolboys off to Camp at Dawlish, Saturday, June 4th.



CHELTENHAM ROTARIANS OFF TO OSTEND.

A wonderful International Congress of Rotarians is being held at Ostend this week. Above are the Cheltenham representatives and their wives leaving the G.W.R. Station at 7.20 last Saturday morning.



MISS M. PEARCE,
Of 64 Upper Park Street, Cheltenham, who died on June 1st, aged 70 years. She was for twenty years cook at the New Club, Cheltenham.

ADVERTISE IN THE "ECHO."

GLOUCESTER CO-OPERATIVE & INDUSTRIAL SOCIETY LIMITED.

EACH FOR ALL.
ALL FOR EACH.

How the child has grown!
AND IS STILL GROWING!

| | |
|------------|-----------|
| Sales 1860 | £308. |
| Sales 1870 | £25,735 |
| Sales 1875 | £50,924 |
| Sales 1880 | £69,811 |
| Sales 1890 | £112,854 |
| Sales 1900 | £139,391 |
| Sales 1910 | £198,315 |
| Sales 1915 | £343,208 |
| Sales 1920 | £699,103 |
| Sales 1925 | £ 699,500 |
| Sales 1926 | £ 699,827 |

STRIVE TO INCREASE YOUR PURCHASES AND TO INTRODUCE NEW MEMBERS!

A CONTINUED INSPIRING RECORD OF PROGRESS

SUCCESS AND MORE TO COME!

KNOWLEDGE IS POWER.

The Society has now a Membership of 22,881, and a Share Capital of £564,868. It carries on business in 26 shops in Gloucester, and 17 in Cheltenham, and one Branch Store each in Sharpness, Tewkesbury, and Newent. It has over 500 employees, and pays in wages and salaries over £63,000 annually, and about £4,500 in rates and taxes. It owns and operates two machine and three smaller bakeries, and produces and delivers to its Members 5 million 2lb. loaves annually. It sells and delivers over 22,000 tons of coal yearly, and owns and keeps fully employed 63 horses and 93 road vehicles, together with 61 railway coal wagons, and 19 motors (3 four tons, 1 two-and-a-half tons, 3 two tons, 1 one-and-a-half tons, 9 one ton), and two pneumatic-tyred charabancs (to hold 28 and 19 persons), which are let out on hire. For particulars enquire at the Office, Brunswick Road, Gloucester.

It owns all but one of the shops in which it carries on business, as well as an estate of eight-and-a-half acres of land at India Road, Gloucester, on which is erected extensive stabling, garage, abattoirs and pork factory, dairy and warehouse accommodation, works department, consisting of carpenters', painters', wheelwrights', blacksmiths', plumbers' and electricians' shops. It also owns twenty-seven dwelling houses let on rental, and two farms situated at Badgeworth and Churchdown, with an acreage of 394.

Its business for the year ending March, 1927, amounted to £704,527. The profits divided amongst its Members for the year amounted to £72,205, in addition to £20,735 as interest on their Share Capital. Since it was established it has lent its Members to purchase their own houses nearly £325,000, representing over 858 properties fully purchased and 548 partly purchased.

Join the Society and help to bring about the Co-operative Commonwealth.

MEMBERSHIP IS OPEN TO ALL.



"THE MERCHANT OF VENICE," BY GLOUCESTER HIGH SCHOOL GIRLS.

The annual Shakespearean matinee given by the pupils of the Ribston Hall High School for Girls was held at the Hippodrome, Gloucester, on Thursday, June 2, before a large audience. Considering the age of the artistes it was quite a notable performance.

1.—The Trial Scene, with Shylock demanding his pound of flesh.
 2.—Group of principal characters.
 3.—Gratiano and his merry friends.
 4.—Bassanio and Portia in Casket Scene.
 5.—The Prince of Morocco taking his departure.
 6.—Kindergarten children and Forms 1 and 2 as Venetian children.

"Cheltenham Chronicle" Copyright photos.

Copies 1s. and 1s. 3d. according to size.

SHE IS RIGHT!



She rightly assures her friend that

C.W.S. PRODUCTIONS

are the best for all purposes in the home, and make the biggest dividend at the



CO-OPERATIVE SOCIETY.

Co-operative Wholesale Society, Ltd., 1 Balloon Street, Manchester.

SOME OF THE PRODUCTIONS OF THE C.W.S.



- Bedding.
- Bedsteads.
- Biscuits.
- Blankets.
- Boots & Shoes.
- Blouses.
- Blue.
- Boot Polishes.
- Brushes.
- Butter.
- Candied Peel.
- Candles.
- Caps.
- Cardboard Boxes.
- Cardigans.
- Cheese.
- Chemicals.
- Chocolate.
- Cigars.
- Cigarettes.
- Clothing.
- Cocoa.
- Colours.
- Coloured Cotton Goods.
- Condensed Milk.
- Confectionery.
- Corsets.
- Crockery.
- Cutlery.
- Cycles.
- Drugs.
- Earthenware
- Jars.
- Feeding Cakes and Meals.
- Flannels.
- Flour.
- Furniture.
- Fustians.
- Galvanised Iron Goods.
- Glass Bottles.
- Glue.
- Glycerine.
- Hardware.

SOME OF THE PRODUCTIONS OF THE C.W.S.



- Hats.
- Hosiery.
- Household Utensils.
- Infants' Food.
- Jams.
- Kerseys.
- Ladies' Underwear.
- Lard.
- Leather.
- Leather Bags.
- Mantles.
- Mattresses.
- Millinery.
- Margarine.
- Mats.
- Motor Vehicles.
- Nutrix.
- Oil Cakes.
- Oils.
- Overalls.
- Paints.
- Pants.
- Pinafores.
- Pickles.
- Preserves.
- Scales.
- Sheetings.
- Shirts and Shirtsings.
- Silesias.
- Snuff.
- Soap.
- Starch.
- Sweets.
- Tinplate Ware.
- Tobacco.
- Umbrellas.
- Underclothing.
- Varnishes.
- Vinegar.
- Weighing Machines.
- Wringing Machines.
- Woolens.
- Yeast.



RENDCOMBE COLLEGE v. TEWKESBURY GRAMMAR SCHOOL INTER-SCHOOL SPORTS.

In an athletic contest between these local schools at the Athletic Ground, Cheltenham, on Thursday, June 2nd, Rendcombe College won by 22 points to 11.

- | | | |
|--|--|--|
| 1.—The Tewkesbury team. | 4.—Tewkesbury boy spectators. | 7.—W. S. Morgan (R.) winning 100 yards senior. |
| 2.—M. R. Weaver (Rendcombe) winning the 100 yards (Junior). He also won Junior high jump (4ft. 6in.), and the 440 yards Junior race. | 5.—The Rendcombe College team. | 8.—W. S. Morgan (R.) winning 440 yards senior. |
| 3.—F. H. Jones (R.) winning senior high jump at 4ft. 9½in. | 6.—H. Coombes (T.) winning long jump at 19ft. 4in. | 9.—J. F. Taylor (T.) winning mile race. |

"Cheltenham Chronicle" Photos. Copies 1s. each, large size 1s. 9d. Postage 2d. extra.



CO-OPERATIVE CONGRESS IN CHELTENHAM.

Cheltenham during the week has been full of Co-operative Societies' delegates from all over the United Kingdom, and some even from Sweden, Russia and Poland. They have been holding their Annual Congress in the Town Hall, close on 2,000 delegates being present. The Chairman for the week has been Mr. J. T. Jackson, the General Manager of the Gloucester Co-operative Society.

- | | | |
|---|---|---|
| 1.—The United Board. | 5.—Section of crowd at opening of the Exhibition. | 8.—Delegates leaving Town Hall. |
| 2.—Mr. W. R. Rae and Mr. H. J. Wilkins, President of the C.W.S. | 6.—Messrs. T. W. Mercer, J. T. Davies (C.W.S. Board), T. Major (P.P.), and W. Gallaher (Scottish C.W.S.). | 9.—Mr. A. Barnes, M.P. for S.E. Ham, with his two kiddies, Mrs. Barnes, and Councillor McGiff, of East Ham. Mr. Barnes is Chairman of Co-operative Parliamentary Party. |
| 3.—Mr. W. Gallaher (Scottish C.W.S.), in light coat and hat, and friends. | 7.—Members of Central Board and friends. | |
| 4.—Delegates arriving on Saturday. | | |

"Cheltenham Chronicle" Photos. Copies 1s. each, postage, 2d. extra.

Gloucester Co-operative & Industrial Society, Ltd.

**What is
Co-operative
Trading?**

Co-operative trading puts a 'square deal' before profit. Service and satisfaction come first.

Any article you purchase is bought in the knowledge that it was made under good conditions of labour.

Those engaged both in production and distribution are paid not less than the Trade Union rate, and every encouragement is given to all employed by us to organise themselves for Trade Union purposes.

Producers, Distributors, and Consumers are United for Mutual Benefit.

The business is owned and controlled by the members. Every member has one vote, and once a quarter, meetings of members are held to consider and discuss the report of the Management Committee. Every Half Year an Election for vacancies on the Management Committee takes place. All members may vote, and, subject to simple qualifications, all members may offer themselves for election to the Management Committee.

Thus you get full ownership and control by the customers.

Every member is enrolled under our Free Death Benefit Scheme. Without medical examinations or premiums both Husband and Wife are included under this scheme, and a sum is paid to the legal next-of-kin at death. The payment is based on the amount spent with the Society. This unique benefit has brought over £22,000 to our members.

Join to-day, and you begin at once to qualify for this advantage.

NOTE OUR VARIED TRADES:

Grocery and Provision Dealers, Bakers and Confectioners, Boot Factors and Repairers, Drapers, Tailors and Gents' Outfitters, English and Colonial Pork Butchers, Hardware and Furniture Dealers, Milk Vendors, and Coal and Oil Merchants,

And our Business Premises are situated as follows:

TELEPHONE NUMBERS—

GLOUCESTER: 829, Private Branch Exchange.

CHEL TENHAM: 90 High Street, 2614.

CHARLTON KINGS: 3691 Cheltenham.

NEWENT: 24.

GLOUCESTER:

Registered Offices, Board Room, Lecture Hall, Reading Room, Confectionery and Refreshment Rooms, Central Grocery and Provision Stores, Furnishing & Hardware, and Tailoring and Outfitting Departments:

BRUNSWICK ROAD.

Reading and Meeting Room:

QUEEN STREET.

Drapery and Millinery Department:

BRUNSWICK RD. AND EASTGATE ST.

Boot and Shoe Department:

EASTGATE STREET.

Tailoring Workroom:

QUEEN STREET.

Butchering Departments:

BRUNSWICK ROAD.

BARTON STREET.

ALVIN STREET.

HIGH STREET.

TREDWORTH ROAD.

VICTORIA STREET.

SELMOUR ROAD.

VICARAGE ROAD.

WESTGATE STREET.

Branch Grocery and General Stores:

No. 1: 203 BARTON STREET.

No. 2: ALVIN STREET.

No. 3: WESTGATE STREET.

No. 4: STROUD ROAD.

No. 10: HIGH STREET.

No. 12: SEYMOUR ROAD.

No. 13: BARNWOOD.

No. 14: TREDWORTH ROAD.

No. 16: CALTON ROAD.

No. 20: VICARAGE ROAD.

No. 21: VICTORIA STREET.

General Grocery and Hardware Warehouse, Petroleum Stores, Cattle Lairs and Slaughterhouses, Sausage Factory, Accommodation Land and Motor Garage:

INDIA ROAD ESTATE, GLOUCESTER.

CHEL TENHAM:

Offices, Reading Room and Reference Library, No. 6 Branch Grocery and Provision Stores, Drapery, Boot and Shoe, Furnishing, and Hardware Departments: 90 and 91 HIGH STREET & GROSVENOR PLACE SOUTH.

Outfitting Department: 407 HIGH STREET.

Branch Grocery and General Stores:

No. 7: 238 HIGH STREET.

No. 11: BATH ROAD.

No. 18: SWINDON ROAD.

No. 19: HEWLETT ROAD.

No. 22: PRESTBURY ROAD.

Butchering Departments:

GROSVENOR PLACE.

SWINDON STREET.

HEWLETT ROAD.

BATH ROAD.

PRESTBURY ROAD.

CHARLTON KINGS:

Grocery, General Stores, Butchering, and Stabling: No. 15 BRANCH.

SHARPNESS:

Grocery and Provisions, Bakery, Drapery, Hardware, Furnishing, and Stabling:

No. 8 BRANCH, NEWTOWN.

TEWKESBURY:

Bakery, Grocery, General Stores, and Stabling:

No. 9 BRANCH, 114 HIGH STREET.

NEWENT:

Grocery and Provisions, Bakery, Drapery, Boots, Furnishing, Stabling, etc.:

No. 17 BRANCH.

Machine Bakeries and Corn and Flour Stores:

Gloucester—Stratton Road.

Cheltenham—Grosvenor Place South.

Coal Depots:

Gloucester—Midland Railway Coal Wharf, Station Road;

Cheltenham—Great Western Coal Wharf, St. James' Square;

Charlton Kings—Great Western Coal Wharf, Stables:

Gloucester—India Road;

Cheltenham—Market Street.

Farms:

Green Farm, Badgeworth; and Parton Court and Parton Manor Farms, Churchdown.



ARLE COURT PUPPY SHOW.

Held at the Kennels on Wednesday, June 1st, the judges being Mr. A. Wilmot (Master of Weston Harriers) and Mr. P. Turner (Master of Clifton Harriers). Mr. W. C. Unwin, M.H., entertained the puppy walkers and friends to luncheon.

- 1.—Dr. Bower (centre) interested in the judging.
- 2.—Mr. A. Wilmot, M.H., one of the judges.
- 3.—Misses de Winton, Mrs. Herbert Bagnall, Miss Bagnall, and Col. Tarte.
- 4.—Miss Gibson, talking to Mr. P. Turner, M.H., a judge.
- 5.—Miss Newman with her couple. She won 1st for dogs and 3rd for couple.
- 6.—Forecast and Festive, first for couple.
- 7.—Miss de Winton, who walked them.

"Cheltenham Chronicle" Photos. Copies 1s. each. Postage 2d. extra.

Architectural
Decorators



to H.M.
King George V.

H. H. MARTYN & Co., Ltd.

CHEL TENHAM,

5 Grafton St., Bond St., London.



H. H. Martyn & Co., Ltd., invite enquiries for all kinds of Decorative Work.

Church Interior Woodwork, Carving in Stone, Wood, Alabaster, &c., Wrought Iron, Bronze, Castings in all metals, Sculpture, Modelling, and Fibrous Plaster, &c., &c.

All work executed at the Cheltenham Studios by expert craftsmen and artists.

The illustration shews the Chancel Screen and Rood recently executed in English Oak at the Church of St. Lawrence, Reading, to the design of the late S. Slingsby Stallwood, Esq.

C.W.S. PRODUCTIONS.

The annual Co-operative Congress is an occasion for the renewal of enthusiasm and of faith in ideals. This advertisement is a reminder to Delegates and all other Co-operators that loyalty to Co-operation is best shown by utilising C.W.S. Productions for every possible use in the home.

A study of selections from C.W.S. productions and special lines will help you to buy better. From groceries to watches everything named is C.W.S., obtainable from every co-operative society—C.W.S. productions not being sold elsewhere.

This is a selection only. A full list would fill a big book.

FOR THE TABLE.

Tongues in glass moulds: 1lb., 1lb., 7lb., 11lb., and 2lb. Rolled Ox Tongue, Lunch Tongue, Sliced Ox Tongue, Spiced Beef and Tongue.

Galantine Rolls: Chicken and other flavours.



Sandwich Pastes. 20 Fish and Meat flavours, in tumbler and small glasses.

Norfolk Liquid Soups in 1 pint and 1/2 pint cans. **Norfolk Dried Soups** in cans. **Jennie Herrings** in tomato sauce, 1/2's & 1's cans.

Jennette. The well-known little blue and white package containing C.W.S. sandwich paste.

Bottled and Canned Fruits. Golden and Victoria Plums, Dessert Strawberries, Loganberries, Greengages, Damsons, Black Currants, Wimperberries.

Sauces, etc., Territorial Sauce, Worcester, J.P., and Grill Sauces. Horseradish Cream.

Pickles: Ideal, Mixed, Piccalilli, Walnuts, Cabinet, Oriental, Territorial.

Jams and Marmalade. All the usual delicious C.W.S. Jams and Marmalades.

Biscuits, Butter Crackers, Cream Crackers, Nutrix Rusks, Chocolate, and over a hundred others.

C.W.S. Flour and Self-Raising Flour, from the giant C.W.S. Flour Mills, for bread, puddings, cakes, and pastry.



Avondale Lactic Cheese, Cheddar flavour.

Friary Lactic Cheese, Cheddar flavour.

Zum-zet, Pure Lactic Cheese, creamy flavour. Illustration: Zum-set Lactic Cheese.

Avondale, Daisymead, Mayflower, Friary Tablet Butter. 1lb. and 1lb.

Devon Shape 1lb. Butter Rolls.

Rich Thick Cream, 1 and 1/2 Pints.

Fancy Transparent Packets of Gums, Caramels, Fruit Pastilles, etc.

Lemon Curd, in jars, tumblers, milk jugs, sugar basins, cream jugs, pickle jars, tankards.

Temperance Wines: Decanters and Water Bottles.

Superfine Digestive Tea Tips, superior to any other for weak digestions.

Also the Popular Packet Teas, No. 11, No. 40, and many others.

Pure Coffee: Brown Label and Yellow Label: 4oz. and 8oz. tins.



Sutox. Shredded Beef Suet (no preservatives).

Silver Seal Margarine. For the return of four 1lb. or eight 1/2lb. Silver Seal Margarine bands one packet of Sutox is given free.

Red Seal Margarine.

Fresh Rolls.

Lard. Silver Medal. 1lb. packets.

Illustration: Sutox packet.

Chocolates.

C.W.S. fine assortments in 1/2lb., 1lb., 1lb., and 2lb. packets and handsome boxes.

Milk, Vanilla, and Nut block Chocolate, Neapolitans, plain and cream bars.

Cocoa: C.W.S. famous Lutona natural Cocoa.

Illustration: One of the many pretty chocolate boxes.



C.W.S. TABLE SUPPLIES.

Bacon and Hams. From C.W.S. own factories.

Butter. Special imports: New Zealand, Australian, and Danish. From co-operative producers.

C.W.S. Canned Foods. Brisling, Californian Pilchards, etc. Apricots, Peaches, Pears, Pine apples, etc.

C.W.S. Muscatels, Sultanas, Currants, Figs, Dates, Dried Plums, Evaporated Fruits.

Oranges, Apples, Grapes, and all fruits. C.W.S. imports and own estates.

FOR HOUSEHOLD USE.



Household and Toilet Soaps, Soap Powders, Polishing Powders, etc.

Bath Crystals, in handsome fancy glass jars.

Bath Cubes, boxes of 12, for softening and perfuming water. Four perfumes: Rose, Lavender, Violet, and Eau de Cologne.

Illustration: Bath Crystals. A dainty gift. Refined; delicately perfumed and coloured.

MEN'S WEAR AND USE.

Men's and Boys' Suits, Overcoats, Sports Wear, Overall, etc.

Socks, in all the latest designs.

Umbrellas in attractive gift boxes.

Handkerchiefs. Unitas, printed borders or plain. Daroc, woven borders. Hemstitched lawn.

Collars. Imperial, Perfecta, Belgrave, Aldwyck, Marquis, and Gresham. Modern shapes, in depths from 1 1/2 to 2 1/4 inches.

Shirts are made by the C.W.S. in smart styles to meet every need.

LADIES' WEAR.

Articles for wear and use are supplied through co-operative stores by the C.W.S. warehouses in Manchester, Newcastle, London, and elsewhere, which in turn draw upon at least forty workshops and factories throughout the country.

Frocks for business, house, special occasion, or evening wear.

Jumpers and Over-blouses. C.W.S. make, in Silks, Satins, Crêpes, and Artificial Silk.

Overalls, in light and dark print, many patterns, tie at sides, or slip-over style.

Camisoles and Cami-knickers, in Crepe de Chine, Silk, and Artificial Silk.

Cami-bockers. The newest Undie, combining Princess Skirt and Knickers.

Nightdresses. Many styles in Winceyette, Flannelette, Embroidered Cream and the pale shades.

Art Silk Stockings.

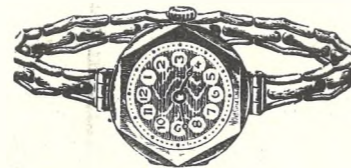
Underwear. Mollissa Woven. See that the woven label, "C.W.S. Mollissa Underwear," the guarantee of perfect workmanship, is on every garment.



Other attractive C.W.S. articles for personal use: **Unitas Handkerchiefs, Daroc Handkerchiefs,** plain or in smart coloured bordered designs. C.W.S. make and most popular and reliable.

Handkerchief Satchels.

Illustration: Box of Daroc Handkerchiefs opened to show the special woven border handkerchiefs. A popular present.



Wristlet Watches.

From 12s. 6d. (18s. 6d. gent's.) upwards.

The Popular, Smart, Reliable Rolled Gold Expanding Bracelet, 28s. 6d.

Rolled Gold 10-year guarantee cases. Reliable Swiss movements, guaranteed one year against any defect.

Illustration: "The 'Popular' Wristlet Watch." One of the attractive Wristlet watches from the C.W.S. Factory.

Watches for Men and Boys.

The Supreme, Beautifully finished ten years' guaranteed rolled gold Dennison case; fifteen-jewelled lever movement, fully guaranteed, 55s.



CO-OPERATIVE CONGRESS IN CHELTENHAM.

Snapshots of many celebrities in the Co-operative world of the United Kingdom and Ireland, who have been present at the important and successful Conference held at the Town Hall during this week.

- 10.—The President (Mr. J. T. Jackson), Manager of Gloucester Co-operative Society, deposits a wreath on the War Memorial; the Deputy Chairman, Ald. F. Hayward, J.P., ex-Mayor of Burslem behind him.
- 11.—Ald. F. Hayward, Mr. J. T. Davis, and others.
- 12.—Mr. H. J. Wilkins, President C.W.S., Mr. J. T. Davis, Director C.W.S., and Mr. Tippetts (Bristol).
- 13.—Mr. David Williams, M.P. for Swansea E., opening the Exhibition on Saturday.
- 14.—Messrs. Justham (Bristol), T. J. Arnold (Chairman at Opening of Exhibition), and Tom Horrocks (Assistant Secretary Co-operative Union).
- 15.—Scottish C.W.S. Directors and Officials.
- 16.—Mr. H. J. May (International Secretary, Co-operative Union), Sir Thos. Allen, and Mr. W. T. Charter.
- 17.—Mr. J. J. Dent, C.M.G.
- 18.—Mr. Reuben R. Chappell (Gloucester), member of United Board.
- 19.—Mr. Lancaster (Secretary C.W.S.).
- 20.—Messrs. A. R. Parkhill (Secretary Irish Section), W. J. McGuffin (Belfast), H. J. May (General Secretary Co-operative Union), R. Stewart (Scotland), and — Gilchrist (Irish Secretary).

"Cheltenham Chronicle" Photos. Copies 1s. each, postage 2d. extra.

C.W.S. Productions are sold by Co-operative Societies only.



CO-OPERATIVE CONGRESS IN CHELTENHAM.

Further snaps of the delegates outside the Town Hall and Winter Gardens.

- 21.—A group of delegates leaving on Tuesday.
- 22.—A Scotch party. Messrs. W. T. Laing J. Downie (Chairman of the Scottish Section), Mrs. J. Downie, —, Cuthbertson (Renfrew), and W. Anderson (Renfrew).
- 23.—Swedish and Scottish delegates. Messrs. Axel Gjores (Sweden), Watkins (Manchester), W. T. Laing (Glasgow), Bachmann (Sweden), and J. Downie (Scotland).
- 24 and 25.—Delegates leaving Hall for lunch on Tuesday.
- 26.—A Scotch party, with their wives, resting in the Winter Gardens on Saturday.
- 27.—The President (second from right) and "Cheltenham Chronicle" Photos. Copies 1s. each, postage 2d. extra.
- General Secretary (extreme right) and party at the War Memorial on Tuesday morning, where they deposited a beautiful wreath from the Conference.
- 28, 29, 30, and 31.—Various sections of delegates.



CO-OPERATIVE CONGRESS IN CHELTENHAM.

Snaps of the main body of delegates taken on various days during the past week, as they entered or left the Town Hall and Winter Gardens.

- No. 37 shows Messrs. A. V. Alexander, M.P. for the Hillsboro' Division of Sheffield; M. Goorevitch (a Russian delegate); and "Cheltenham Chronicle" Photos. Copies 1s. each, postage 2d. extra. When ordering Photos, please quote number of Photo. as shown in this paper, and remit with order.
- Ald. F. Hayward, of Burslem, Chairman of United Board.
- No. 46 is a party from Northern Ireland. All others are of delegates.



THE BECHSTEIN

PIANO needs little recommendation to cultured tastes.

Its beautiful tone and incomparable touch—qualities which have gained for it the esteem of every music lover, and have set a standard to the world—are as exquisite and as characteristic as ever.

Write or Call for Catalogue.

Sole Agent:—

Crichton's

(Ernest Crichton, Ltd.),

The Piano House,

394 HIGH STREET,

:: CHELTENHAM. ::

'Phone 2378.



THE TOUCH of an ARTIST.

THE EUGENE System of Permanent Hair Waving is acknowledged as one of the foremost methods of re-producing Nature's beauty; but it is the work of an artist to give just that touch which is so often lacking. Mr. F. J. Foice has spent many years, both in London and the Provinces, as a Hair Waver, and his personal guarantee is given for the success of the work he undertakes. Call for particulars and interview.

FOICE,

HAIR SPECIALIST.

Promenade, Cheltenham.

'PHONE 3490.

Flannel Trousers.

A superior make of good cloth, in Light or Dark Grey 14/11

White All Wool Flannel 21/-

Phone 2706. **A. BECKINGSALE,** Phone 2706.

111 High Street, CHELTENHAM.

LET MOUSSELLS MOVE YOU



Estimates for Removals and Storing Free. 'PHONE 2112.

CHELTENHAM AMBROSE STREET.



MRS. VICTORIA WOODHULL MARTIN. Of Norton Park, Bredon's Norton, near Tewkesbury, who died at midnight on Thursday, June 9th, in her 90th year. She was an eminent Anglo-American, champion of women's rights, and a social reformer, and 55 years ago was a candidate for the Presidency of the United States. She was a great benefactress to the village and district in which she made her home.

ACTUAL PHOTOGRAPHS Of Pictures Appearing in the "Graphic" May be seen at the "Echo" and "Chronicle" Offices, Clarence Parade, Cheltenham.

Lance's

SPECIAL DISPLAY

:: FOR ::

Holiday Wear.

Coats, Costumes, Millinery, :: Dresses, and Furs, Etc. ::



This delightful COAT may be had in Fancy Silk, Navy or Black. PRICE—

4 Gns.

Lined throughout.

Large range of Black and Navy Satin Coats. All sizes. Prices—59/6 to 10 Gns.

John Lance

& Co., Ltd.,

CHELTENHAM SPA.

THE CHELTENHAM CHRONICLE AND GLOUCESTERSHIRE GRAPHIC

GRATIS SUPPLEMENT. With Which is Incorporated the "Cheltenham Looker-On." Saturday, June 18, 1927. No. 1,381.

CHELTENHAM THEATRE AND OPERA HOUSE. This Afternoon (2.30) and Evening (7.45)—FRANK FORBES-ROBERTSON and Co. in "Coming thro' the Rye." NEXT WEEK: "MRS. 'ARRIS," The biggest laugh since "Charley's Aunt."

THE PALACE, HIGH ST., CHELTENHAM.

Director: Shakspeare Shenton. Always Delightfully Cool and Refreshing.

Monday to Wednesday: Aileen Pringle, Lowell Sherman in THE

"WILDERNESS WOMAN,"

She came from the rocky fastness of Alaska into the shocking fastness of a great city—out of Iceland into Loveland! What a Woman! What a Picture!

DOUGLAS COCHRANE and his Popular Orchestra.

Thursday to Saturday: Pauline Garron, Cullen Landis in

"Christine of the 'Circus.'"

A Great Circus Story, full of human heart interest, Thrilling Scenes, and Highly Dramatic Incidents.

THE DAFFODIL,

Cheltenham's Premier Cinema.

Continuous Daily, 2.30—10.15. Monday, June 20th, Tuesday, and Wednesday:

Right Away! Now for Ninety Minutes' Sheer Delight Aboard

"The Honeymoon Express,"

With IRENE RICH. Thursday, Friday, & Saturday:

Huge Two-Feature Show. TOM MIX and TONY in

"The Great K. and A. Train Robbery."

Also "THE SAP." Featuring Kenneth Harlan.

Established 1896.

Martin & Co., Limited,

The County Jewellers,

Pearl and Diamond Merchants. A Large Selection of Second-hand Silver and Old Sheffield Plate.

We are Purchasers of Antique Silver and Fine Quality Gems. Best Prices Given.

LICENSED VALUERS. Promenade, Cheltenham.



CAPT. W. R. BAILEY, Who was adopted by the Conservative Party as their Parliamentary Candidate for the Forest of Dean Division at a meeting held in Gloucester on Saturday last. Capt. Bailey flew his own aeroplane, a D.H. Moth, from Stag Lane Aerodrome, London, to Gloucester, landing at the Brockworth Aerodrome in about fifty minutes. The three Press Photographers who were waiting for him did not hear or see the machine until it ran alongside them.

WINTER GARDEN,

MONDAY & ALL THE WEEK. Nightly, at 7.45. Matinees Wednesday, Thursday, and Saturday, at 2.45.

Usual prices, 1s, 3d., 1s., 9d., and 5d.

THE FIRST ARMY FOLLIES

(Original members of "Splinters"), known in France as Les Rouges et Noirs, will submit their Show Without a Chorus, entitled

"CHIPS UP TO DATE."

The actual performers from the Savoy, Coliseum, and Queen's Theatres, London, and all the principal tours.

The Most Wonderful Impersonation of Ladies ever presented to the public.

COLISEUM

CHELTENHAM. 'Phone 3715. 6.40 p.m. and 8.40 p.m. The Kaleidoscopic Kabaret-Revue

"IT'S IT,"

In 24 Scenes.

NORTH STREET PICTURE HOUSE.

Continuous from 2.30 p.m. Monday, Tuesday, Wednesday:

"The Social Highwayman,"

Featuring Dorothy Devore and Montague Love.

Thursday, Friday, Saturday: **"LAZY LIGHTNING,"**

Featuring Art Acord.

MAISON ANNETTE,

Kenington House, PROMENADE, CHELTENHAM,

Specialists in Exclusive

CORSETS & LINGERIE.

'Phone 2122.

For the Best **PIANOS, DALE, FORTY and Co. Ltd.**



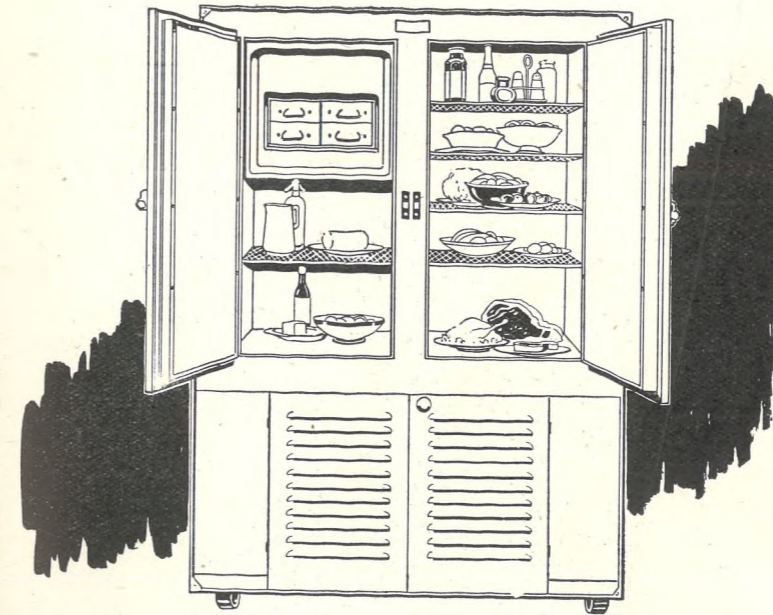
CHELTENHAM COLLEGE JUNIORS' SPORTS.

The Annual Athletic Sports of the Junior Department of Cheltenham College took place in glorious weather in the pretty grounds of Lake House on Tuesday last before quite a large crowd of parents and friends. The head of the Department, Mr. B. A. Bowers, entertained all the visitors to an *à fresco* tea on the lawn.

1.—A record number of old boys ran in the "Old Juniors' Race."
 2.—Waiting at the tape for the "Future Cheltonians' finish."
 3.—The Future Cheltonians lining up.
 "Cheltenham Chronicle" Photos. Copies 1s. and 1s. 9d. each, according to size.

4.—Robinson and A. Powell (left and centre), who tied for the High Jump at 3ft. 11in., and Hodson, who was third. A. Powell won nearly all the open events, and took the Champion Cup.
 5.—The "Seniors" at start of three-legged race.
 6.—Start of 150 Yards Race (under 12).
 7.—Junior Hurdles. Boy in centre knocked his hurdle and fell.
 8 and 9.—Final of Open Hurdles, won by Hearn.
 10.—Some of the competitors in Three-legged Race.

Come and see



what Frigidaire means to your home

Come and inspect these beautiful, white porcelain cabinets that keep your food always fresh and pure and wholesome.

You just connect with your electric supply, and you have an electrically-cooled larder, in which meat, game, poultry, vegetables, cream, milk, fruit, keep perfectly.

Let us show you how Frigidaire makes ice; how it works without any attention on your part; how inexpensive it is to buy and to run.

Come and choose the right Frigidaire for your home.

R. E. & C. Marshall, Ltd.,
 5, Clarence Street,
 Cheltenham.

National Telephone No 2351.



Call, Write, or Phone 3488.

A WOMAN NATURALLY DESIRES AT ALL TIMES TO LOOK HER BEST.

With the intimate knowledge born of experience, we practice the Art of the modern Hair Specialist, and our departments embrace:—

- | | |
|---------------------|------------------|
| PERMANENT WAVING, | MARCEL WAVING, |
| PERMANENT STAINING, | HAIR TREATMENTS, |
| SHINGLING, | FACE MASSAGE, |
| MANICURE, | CHIROPODY. |

FOICE, PROMENADE, CHELTENHAM SPA.

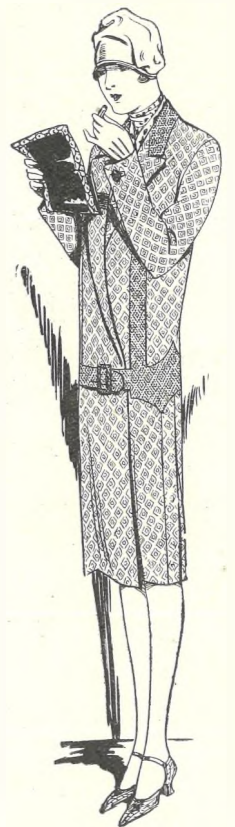
Lance's

SPECIAL DISPLAY

:: :: FOR :: ::

Holiday Wear.

Coats, Costumes, Millinery,
 :: Dresses, and Furs, Etc. ::



This delightful COAT may be had in Fancy Silk, Navy or Black. PRICE—

4 Gns.

Lined throughout.

Large range of Black and Navy Satin Coats. All sizes. Prices—59/6 to 10 Gns.

John Lance

& Co., Ltd.,

CHELTENHAM SPA.



ECKINGTON VILLAGE PAGEANT.

On Wednesday and Thursday, June 15th and 16th, a pretty little pageant of three episodes was enacted on a capital site in the grounds of Eckington Manor, the residence of Mr. E. G. Cholmondeley. The latter acted as Pageant Master, and was responsible for the origination and control of the whole proceedings. As all the 150 actors and actresses were Eckington people, and the costumes were made by themselves in the village, great credit reflected on all for a very fine show, and an admirable example of what a village can do.

- 1.—A Nun and an Ale-wife.
- 2.—First Episode. Druids sacrificing at altar.
- 3.—Second Episode. The Abbot of Pershore and his retinue.
- 4.—The Druid Maiden to be sacrificed, and her Mother.
- 5.—Third Episode. At "Eckyntone Fayre."
- 6.—The Bailiff of Westminster and suite in Second Episode.
- 7.—The Abbot of Pershore (centre), with his Sorivener (left) and Page.

"Cheltenham Chronicle" Photos. Copies 1s. and 1s. 9d. each, according to size. Another page of pictures will appear next week.



BOURTON VALE LAWN TENNIS TOURNAMENT.

The annual tennis tournament in connection with the Bourton Vale Tennis Club was played at Bourton-on-the-Water last week in good weather. Some snaps on Friday, June 10th.

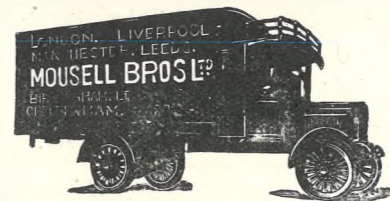
- 1.—Miss R. Champney in play.
- 2.—Miss B. Kemble, Capt. H. Bubb, Major Jewdwin (referee), Miss Brown and Mr. H. N. Negretti.
- 3.—Hon. Ursula Bathurst returning.
- 4.—Col. Brassey and Mrs. Daly (on right).
- 5.—Miss H. L. Eddis and Mr. R. Studd.
- 6.—Col. J. H. Collett (on right).
- 7.—Interested in the play.
- 8.—One of the competitors.
- 9.—Mrs. R. J. Mullings and Mrs. B. A. Clerk (finalists in ladies' handicap doubles), and Mrs. Hazel and Miss Wynne (finalists in open ladies' doubles).
- 10.—Miss V. Maxwell (nearest camera), Miss Eyras Monsell (next her), and Hon. Ursula Bathurst (behind on extreme right).

"Cheltenham Chronicle" Photos. Copies 1s. each. Postage 2d. extra.

Flannel Trousers.

A superior make of good cloth, in Light or Dark Grey 14/11
 White All Wool Flannel 21/-

LET MOUSSELLS MOVE YOU



Estimatee for Removals and Storing Free. PHONE 2112.

BEST QUALITY CIDERS IN BOTTLE.—Sparkling and Still.

BARTHOLOMEW,
 419, 420 HIGH STREET, CHELTENHAM.

Wines, Spirits, Ales, Table Waters, & Groceries. Tel. 3590.

A. BECKINGSALE,
 111 High Street, CHELTENHAM.

CHELTENHAM AMBROSE STREET,



GLOUCESTERSHIRE BEATEN IN MIDDLETON CUP MATCH BY OXFORDSHIRE.

In a most exciting finish, and by the last wood bowled in the match, Oxfordshire defeated Gloucestershire on the Ashburne Bowling Green, Cheltenham, on Saturday last, by one point—108 to 107. When the last wood of the match was bowled, Gloucestershire had three woods on, with the score level, and the match seemed won, but Mr. W. J. Clarke, the Oxford skip, managed to knock the Gloucester woods off and leave his the on-wood, and secured a fine victory for his side.

- 1.—View of green with play in progress.
- 2.—The Gloucestershire team. Mr. Freeman (captain) had left early and is not in picture.
- 3.—Messrs. M. Goddard and F. R. Willis, two Gloucestershire players.
- 4.—Mr. A. Jones's rink.
- 5.—Mr. A. D. Lansley's rink.
- 6.—Mr. T. E. Goddard's rink, who scored 21 to 14.
- 7.—Measuring up for the 25 yards—an unusual occurrence in a match. An Oxford player questioned the throw of the jack as being under 25 yards, but he was wrong. This was preliminary to the last end, which decided the match.

"Cheltenham Chronicle" Photos. Copies



TEWKESBURY Y.M.C.A. AND GIRL GUIDES' FETE.

In aid of the funds of the above organisations a very successful fete was held on Thursday, June 9th, at Oldfield, Tewkesbury, the residence of Mr. and Mrs. F. H. Healing.

- 1.—Joyce Dixon and Freda Newman presenting bouquets to Mrs. Maxwell-Gumbleton, who opened the fete.
- 2.—Round the gypsy cauldron.
- 3.—Mr. G. L. Dixon (Secretary Tewkesbury Y.M.C.A.), the Mayor (Coun. Boughton, Pres. Y.M.C.A.), and Mr. G. R. Williams (Hereford Y.M.C.A.).
- 4.—Rev. T. W. Lambert interested in one of the competitions.
- 5.—"Charleston Lizzie," who gave an amusing dancing display.
- 6.—Two balloon sellers.
- 7 and 8.—Competitors in tennis tournament.
- 9.—Stall-holders.
- 10.—Tennis competitors, Mrs. and Mr. Drake (Evesham) on right.

"Cheltenham Chronicle" Photos. Copies 1s. each. Postage 2d. extra.



ST. PAUL'S PRACTISING SCHOOL, CHELTHENHAM, ATHLETIC SPORTS.

Held on the Folley Playing Field on Friday, June 10th, before a good attendance of parents and friends.

- 1.—Finish of open 100 yards race. 2.—Attwood winning open high jump. 3.—Finish of three-legged race. 4.—Boys lined up for their heats. 5.—Finish of semi-final of 50 yards (under 10).

"Cheltenham Chronicle" Photos. Copies 1s. each.

Cheltenham Jubilee Celebrations,

WEDNESDAY, JUNE 29th,

TO CELEBRATE THE INCORPORATION OF THE BOROUGH IN 1876.

MAGNIFICENT PROGRAMME OF EVENTS.

A Beautiful Pageant of Cheltenham,
PAST AND PRESENT, with over 300 PERFORMERS, in
PITTVILLE GARDENS, at 4 p.m., and a
Grand Procession OF MOTOR CARS,
DECORATED VEHICLES, ETC.

ONE OF THE GREATEST ATTRACTIONS
CHELTHENHAM HAS EVER KNOWN.

Book at once for the Grand Pageant.

Tickets at Messrs. DALE, FORTY & Co, Promenade.

Numbered and Reserved 3s. 6d., Reserved but unnumbered 2s. 4d., Unreserved 1s. 2d., all tax included. Tickets taken in advance include admission to Gardens.

ENTER AT ONCE FOR THE PROCESSION.

Decorate a Car, Waggon, Lorry, or other Vehicle for any of the following Classes:

- 1—ORIGINAL. 2—HISTORIC. 3—COMIC. IN TABLEAUX. Or Don a Walking Costume for Pedestrian.

VALUABLE PRIZES, including—

Solid Silver Challenge Bowl, VALUE 30 GNS. (presented by Messrs. G. H. Norton & Co., Ltd.)
Silver Challenge Shield (presented by F. M. Smith, Esq., Wycliffe Motor Co.).

Particulars and Entry Forms obtainable at the Spa Bureau, Town Hall; Municipal Offices Inquiry Office, Messrs. John Lance and Co., Ltd.; Messrs. Smith Bros., Albion Street; Montpellier Wireless Supplies, 7 Rotunda Terrace; Public Library and Art Gallery.

JUBILEE BALL, TOWN HALL, JUNE 30, 9 TO 2.

"The Rythmists."

::

TICKETS 5/6, including Refreshments.



BIBURY HORSE SHOW.

- This Show was held on Saturday, June 11th, in beautiful weather, and was a great success both from a sporting and financial point of view.
- 1.—The parade of prize winners.
 - 2.—Mr. Dan Iles and Mr. R. F. Melville-Harvey, two Judges.
 - 3.—Mr. L. Stokey and Miss Newburn winning second prize in Wheelbarrow Race.
 - 4.—Messrs. E. W. Radway (Chairman), L. Lees (Treasurer), and A. Glead.
 - 5.—Mr. Iles and Mrs. K. Gascoigne Harrison.
 - 6.—Rev. Hodson, Vicar of Northleach, a well-known sportsman.
 - 7.—Mrs. M. M. Leatham's Damsel and Flower, who won first prize for best team in wagons.
 - 8.—Making their way to the show.
 - 9.—Miss M. Banbury, who won first prize for best-ridden pony for children under 15 years.
 - 10.—Mr. W. R. Scantlebury's Commander, who won Challenge Cup in best working Cart Horse Class.

"Cheltenham Chronicle" Photos. Copies 1s. each, postage 2d. extra.



LECKHAMPTON RED CROSS NURSES.
Who won the County Cup at the Competition for County, held at Southam de la Bere on May 28th.

If you love Flowers

DO NOT MISS
... **CHEL TENHAM'S** ...
GREAT
FLORAL FETE

AND
National Rose Society's Show,
MONTPELLIER WEDNESDAY AND THURSDAY,
... GARDENS, .. JULY 6th and 7th, 1927.

Nearly
£1,000
IN PRIZES.

The Most Beautiful Exhibition Ever Seen in the West.
THE BANDS H.M. LIFE GUARDS.
1st and 2nd
Pat Collins' FUN CITY.

SPECIAL NOTICE TO INTENDING EXHIBITORS.

All Classes in the National Rose Society's Show are Open to Members Only. Join at once. Send for Entry Form to the Hon. Secretary, National Rose Society, 28 Victoria Street, S.W.1. ENTRIES CLOSE JUNE 30th, at 4 p.m. Valuable Prizes and Trophies for Nurserymen, Amateurs, Ladies' Artistic Classes, etc.

THE CHELTENHAM FLOWER SHOW COMMITTEE are Offering many Valuable Prizes and Trophies in the LARGE OPEN TRADE CLASSES.

There are also MANY CLASSES FOR AMATEURS, Ladies' and Children, Dinner Table Decorations, Wild Flowers and Grasses, etc.

ENTRIES CLOSE JUNE 29th.

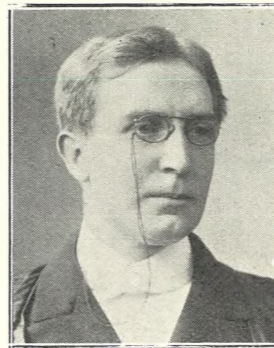
Send for Schedules of Prizes at once to the Hon. Floral Secretary, Mr. Cyril Cassidy, 58 High Street, Cheltenham, who will also supply any information.

We : PHOTO OR : : your
Make PICTURE FRAMES order
IN 24 HOURS!
LEE, Stationer & Picture Framer
CAXTON HOUSE,
Winchcombe Street CHELTENHAM.

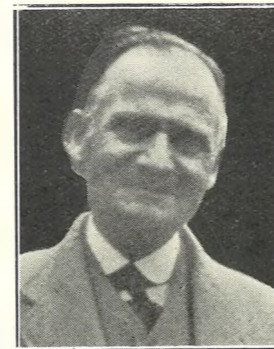
ARTHRITIS ELECTRONIC TREATMENT
14 IMPERIAL SQUARE, CHELTENHAM
Phone 3278.
10 to 6 and by Appointment.
Also NEURITIS, SCIATICA, and various ORTHOPÆDIC COMPLAINTS



DR. W. L. LISTON, M.R.C.S., L.R.C.P., M.D.,
Of Tewkesbury, who died on June 11th, aged 59 years. He was a brilliant Surgeon-Physician, who practised in Tewkesbury for some 35 years, and was greatly respected and beloved. A very large congregation attended the memorial service to him.

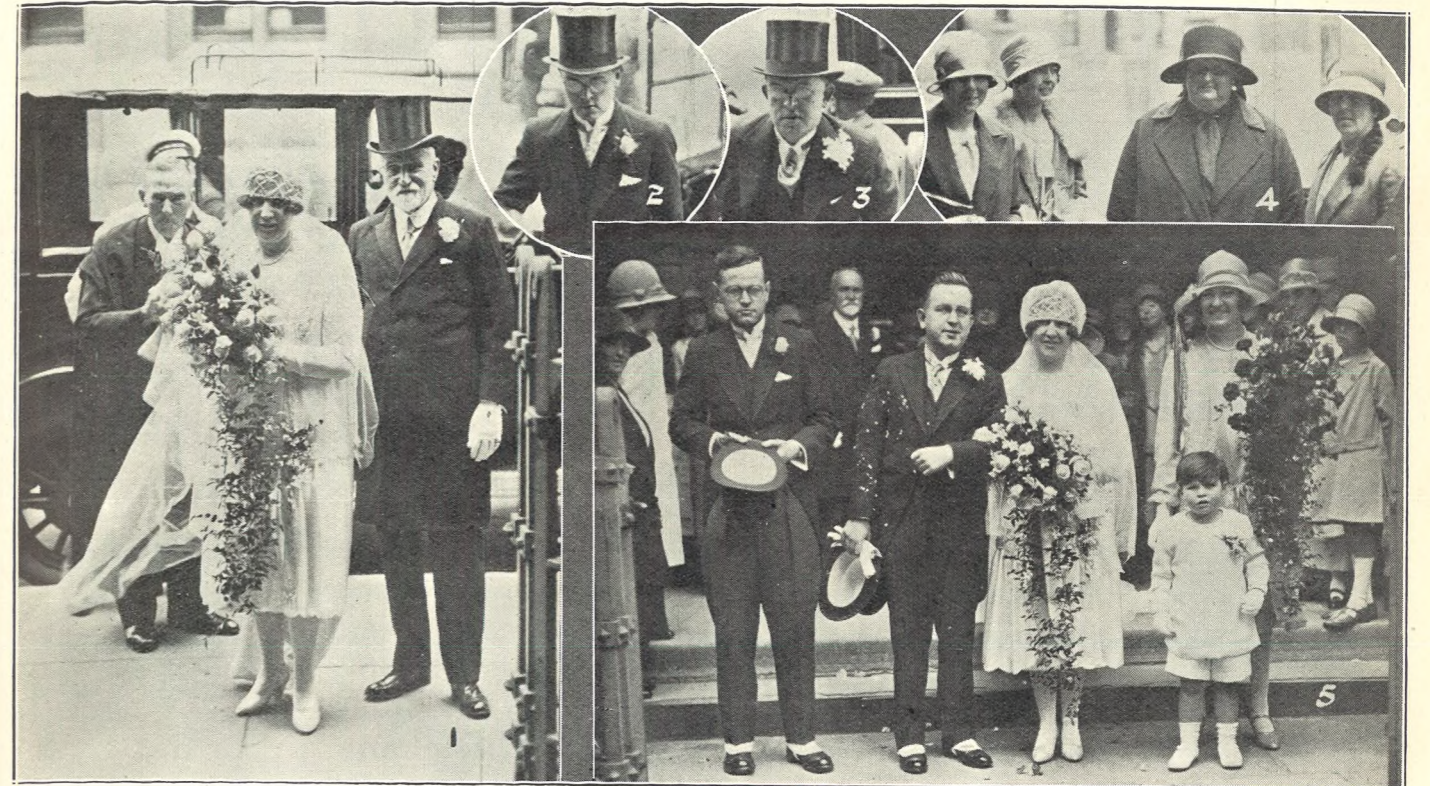


REV. J. FISHER JONES,
Of 10 Clarence Street, Cheltenham, who died on Tuesday, June 7th, aged 65 years. He came to Cheltenham in 1895 as Unitarian Minister, and was pastor of that church for twelve years, retiring to live with Mr. Treleaven at above address. He was a bachelor, and had been a fine tenor soloist.



MR. THOMAS VERRINDER,
Of Battledown View, Cheltenham, who died on June 4th, aged 84 years. He was a native of Cranham, and came to Cheltenham seventy years ago, becoming a butcher and an associate of the late Rev. Cuff. He carried on a butcher's business in Hewlett Road from 1871 to 1911, after which he retired to live in Cemetery Road.

M. LASKY AND SON,
12 Montpellier Arcade, Cheltenham, and 116 Amhurst Road, Hackney, London, E.8. Best Prices given for Old Silver Articles, Jewellery, Artificial Teeth. Furniture, Old China, etc. Any condition.

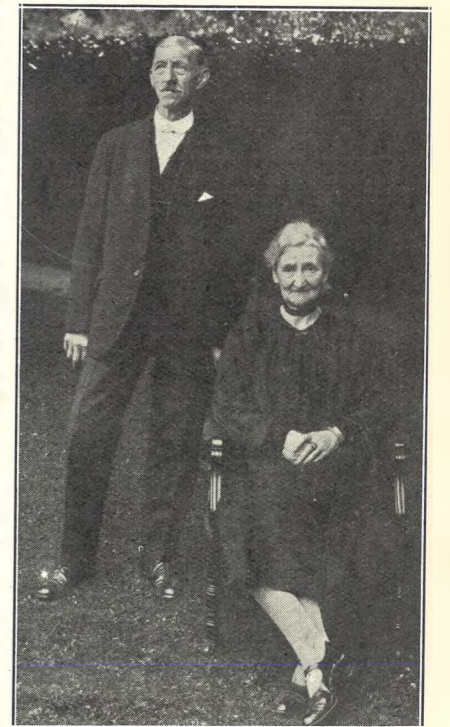


PRETTY CHELTENHAM WEDDING.

The marriage of Mr. Edgar Lee, of Kingston-on-Thames, to Miss Dorothy Tomlinson, only daughter of Mr. and Mrs. J. R. Tomlinson, of Queen's Parade, Cheltenham, took place at St. Matthew's Church, Cheltenham, on Saturday last, June 11th.
1.—The Bride and her Father arriving at church. 2.—The Best Man (Bridegroom's brother). 3.—The Bridegroom arriving. 4.—The Bridegroom's Mother (in black) and friends. 5.—The Bridal Party leaving the church. "Cheltenham Chronicle" Photos. Copies 1s. each, postage 2d. extra.



ST. PAUL'S COLLEGE RE-UNION.—On Whit-Saturday morning, as part of the Re-union proceedings, a water polo match was played at Alstone Baths between teams of Old Chelts and present students. The two teams.—"Cheltenham Chronicle" Photos. Copies 1s. each.



A GLOUCESTER GOLDEN WEDDING.

Mr. and Mrs. Joseph Dilloway, of Ingleside, Denmark Road, Gloucester, who to-day (June 18th) celebrated their Golden Wedding. Mr. Dilloway was for many years in business in King Street, Gloucester.—"Cheltenham Chronicle" Photo. Copies 1s. each.

"Distinction with Economy."
Supreme Value in French Summer
Frocks, Coats and Distinctive Hats
Sensier
THE LITTLE SALON,
388b High Street, Cheltenham.

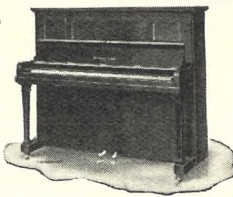
Are you without a Cook?
THEN BUY DELICIOUS READY COOKED DISHES
RISSOLES, : PIES,
GALANTINES, Etc.,
From
The Shamrock Tea Rooms
31 PROMENADE, CHELTENHAM.
Delightful (3 Course) Luncheons 1/9 (inclusive).
12.30-2 p.m.

The Great BROADWOOD MUSICAL PRIZE COMPETITION.

Open to all
between the
residing in
including the
who have
a First Prize
Competition,
or Degree



Boys & Girls
ages of 8 & 18
Gloucestershire
whole of Bristol,
not won
in an Open
a Diploma
since June, 1925.



In order to stimulate and foster a real love of music amongst our young folk and to encourage them in their pianoforte studies, Messrs. John Broadwood and Sons, Limited—the world-famous pianoforte manufacturers, of 158 New Bond Street, London, W.1.—are generously presenting these three beautiful Broadwood Pianos as prizes in a great Musical Prize Competition, open to all boys and girls between the ages of eight and eighteen, residing in Gloucestershire, including the whole of Bristol, who have not won a first prize in an open competition, a diploma or degree since June, 1925, to be held at Bristol and Cheltenham in October next.

All Test Pieces obtainable at Crichton's.

ALL ENTRIES MUST BE RECEIVED THIS MONTH.

If you have not yet sent in your Coupon, cut this out and post it without delay.

Full particulars of the Competition and the names of the Test Pieces are given in the Competition Handbook, a copy of which will be sent post free on receipt of this coupon.

WRITE AT ONCE FOR YOUR COPY.

Crichton's

(ERNEST CRICHTON, LTD.)

76 Park Street,
Bristol.

'Phone 3880.

394 High Street,
Cheltenham.

'Phone 2378.

The Secretary,
The Broadwood Musical Prize Competition,
Crichton's, Ltd.,
394 High Street, Cheltenham.

Please send me, post free, a copy of the
Broadwood Musical Prize Competition Hand-
book.

Name

Address

Age Date

Please write in capital letters.

THE CHELTENHAM CHRONICLE AND GLOUCESTERSHIRE GRAPHIC

GRATIS SUPPLEMENT. With Which is Incorporated the "Cheltenham Looker-On."
Saturday, June 25, 1927. No. 1,382.

CHELTENHAM THEATRE AND OPERA HOUSE. THIS EVENING (6.40—8.40)—"MRS. 'ARRIS."
NEXT WEEK, Twice Nightly (6.40—8.40):
"What Happened to Jones?" An Original Farce,
in Three Acts.

THE PALACE,
HIGH ST., CHELTENHAM.

Director: Shakspeare Shenton.

Always Delightfully Cool and Refreshing.

Monday to Wednesday:
RICHARD BARTHELMESS,
Dorothy Mackall, in
"RANSON'S FOLLY,"
Flaming Days of Indian Wars.
Nights of Prairie Love.
Douglas Cochrane and the All
the Round Orchestra.

Thursday to Saturday:
James Oliver Curwood's Great
Novel, "Broadway and the
Wilderness."

"The COUNTRY BEYOND,"
With Olive Borden, Ralph
Graves, Gertrude Astor.

THE DAFFODIL,
Cheltenham's Premier Cinema.

Continuous Daily, 2.30 to 10.15.

Monday, June 27th, Tuesday, and
Wednesday.

George Pearson's British Success,
"THE LITTLE PEOPLE,"

Starring
Mona Maris & Frank Stanmore.

A Picture that is different.

Thursday, Friday, and Saturday:
Betty Blythe & Victor McLaglen
in
"MOTHER'S BOY."

He was only Mother's Hothouses
Flower, but Getting Wilder
Every Hour.

The Daffodil Orchestra at All
Performances. M. ARTHUR
BURROWS, Musical Director.

Established 1806.

Martin & Co.,
Limited.

The County Jewellers,
Pearl and Diamond Merchants.

A Large Selection of Second-hand
Silver and Old Sheffield Plate.
We are purchasers of Antique
Silver and Fine Quality Gems.
Best Prices Given.
LICENSED VALUERS.

Promenade, Cheltenham.



INTERESTING CHELTENHAM WEDDING.

The marriage took place on Wednesday, June 22nd, at St. Stephen's Church, Cheltenham, of Mr. Kenneth A. Woodward, son of the late Mr. and Mrs. E. T. Woodward, of Ross and Cheltenham, and Miss Irene Lilian Jessop, daughter of the late Mr. Hylton Jessop and Mrs. Jessop, of 5 Park Place, Cheltenham. Both Bride and Bridegroom are well-known playing members of the Cheltenham Golf Club. The happy couple leaving the church.

"Cheltenham Chronicle" Photos. Copies may be obtained.

WINTER GARDEN,
CHELTENHAM.

Monday and All the Week:—
Nightly at 7.45 p.m. Matinees:
Wednesday, Thursday and
Saturday at 2.45 p.m.

Ronald Frankau Productions,
Ltd., Present
"THE CABARET KITTENS."

"The Cabaret Kittens" are a
Famous Party in the world of
Pierrotic Entertainment—second
only in repute to the
"Co-optimists."

ORIGINAL LYRICS.

ORIGINAL SKETCHES.

Popular Prices: 1s. 3d., 1s., 9d.
(including Tax), & 5d. (limited).
The 1s. 3d. Seats may be Booked
without extra charge.

COLISEUM
CHELTENHAM. 'Phone 3715.

6.40 p.m. and 8.40 p.m.

"LOTTERIES."

A Wonderful Show and Cast,
With Laughter Love, and Ladies.

NORTH STREET
PICTURE HOUSE.

Continuous from 2.30 p.m.
Monday, Tuesday, Wednesday.

"Then Came the Woman,"

Featuring
Cullen Landis and Frank Mayo.

Thursday, Friday, and Saturday:
"THE STOLEN RANCH,"

Featuring Fred Humes.

"Distinction with Economy."

LINEN FROCKS. TENNIS
FROCKS. AFTERNOON GOWNS.

Sensier

388b High Street, CHELTENHAM SPA

Telephone 2580.

W. Scott Cooper,

Diamond Merchant, Jeweller,
Goldsmith, and Silversmith.

The Promenade, Cheltenham.

LICENSED VALUERS.

For the Best PIANOS, DALE, FORTY and Co., Ltd.



THE BISHOP OF GLOUCESTER'S FETE.

- A two days' fete arranged by the Lord Bishop of Gloucester took place in the Gardens of the Palace and Cathedral Precincts on Wednesday and Thursday last, in aid of the maintenance of the Church Schools of the city...The principal feature of the fete was a striking pageant in the Cathedral grounds setting forth the history of the Abbey of St. Peter, now the cathedral, from its foundation in A.D. 681 to the times of George III.
- 1.—The Herald, Major Parry-Hawkshaw, who blows a fanfare on his trumpet and opens the pageant.
 - 2.—Scene I. Founding the Abbey of St. Peter, A.D. 681, by King Osric.
 - 3.—Scene II. Appointment of Serlo as Abbot of Gloucester by William the Conqueror, A.D. 1072.
 - 4.—Isabella, the Queen Mother (Mrs. Janvrin), with the young King Henry III., who was crowned at Gloucester, Oct. 28, A.D. 1216, when 9 years old (Harry Finch), and the young Princess Joan.
 - 5.—Scene III. William the Conqueror gives orders for the Domesday Survey, A.D. 1085, in Gloucester.
 - 6.—Scene IV. Anselm (on extreme right) forced to be Archbishop of Canterbury by William Rufus, A.D. 1093 (on extreme left).
 - 7.—Mrs. A. T. Voyce, Mrs. Geo. Romans, Mrs. G. Bland and Mr. Geo Bland (Raikes).

"Cheltenham Chronicle" Photos.



THE BISHOP OF GLOUCESTER'S FETE.

- 8.—Some of the Druids who open the Pageant.
- 9.—Miss Cabham (Tudor Lady), Miss Hadow (13th Century Lady), and Rev. H. E. Hadow as Abbot of Gloucester 1085.
- 10.—Scene VI. Funeral of Edward II., A.D. 1327.
- 11.—Scene VII. Visit of Henry VIII. and Queen Anne Boleyn, A.D. 1535. Mr. W. Fitzherbert as Henry VIII. and Miss Violet Eliot as the Queen.
- 12.—Part of the Nuns' Chorus.
- 13.—Rev. C. W. Janvrin, Rev. H. E. Hadow, Canon Billett and Queen (Miss Howman) in Scene 3.
- 14.—Earl of Leicester (Mr. J. D. Creadson) and Lady Leicester (Mrs. E. S. Martin).
- 15.—Scene VIII. Visit of Queen Elizabeth, A.D. 1574 (Mrs. Matthews, Berkeley).
- 16.—Scene IX. Visit of George III. (Mr. J. A. Stock) and Queen Charlotta (Miss Ormerod) to Gloucester, A.D. 1788.

"Cheltenham Chronicle" Photos.



SOCIETY WEDDING AT PRESTBURY.

On Saturday last, June 18th, the marriage took place at Prestbury Parish Church, before a large and fashionable congregation, of Mr. Albert C. McCarthy, of Radlett, Herts, to Miss Rachel Bagnall-Oakeley, only daughter of Mr. and Mrs. R. H. Bagnall-Oakeley, of Cleve-mont, Marle Hill, Cheltenham.

- 1.—The Bride and her Father arriving at the church.
- 2.—The Bridegroom arriving with the best man, Mr. J. R. Bagnall-Oakeley, the Bride's brother.
- 3.—The married pair leaving the church.
- 4.—Guests arriving at church.
- 5.—The three Bridesmaids. The two little girls carried the Bride's train.
- 6.—Guests leaving the church.

"Cheltenham Chronicle" Photos. Copies 1s. each, postage 2d. extra.

BEST QUALITY
CIDERS
IN BOTTLE.—Sparkling and Still.

BARTHOLOMEW,
419, 420 HIGH STREET,
CHELTENHAM.

Wines, Spirits, Ales, Table Waters & Grocery
Tel. 3590.

Are you without a Cook?

THEN BUY DELICIOUS
READY-COOKED DISHES

RISSOLES, : PIES,
GALANTINES, Etc.,

From
The Shamrock Tea Rooms
31 PROMENADE, CHELTENHAM.

Delightful (3 Course) Luncheons 1/9 (inclusive).
12.30-2 p.m.

LET MOUSELLS MOVE YOU



Estimates for Removals and Storing Free.
'PHONE 2112.

CHELTENHAM. Offices:
AMBROSE STREET.



CHELTENHAM POLICE V. BIRMINGHAM POLICE AT CRICKET, Victoria Ground, Cheltenham, Wednesday, June 15th, before a large crowd, the local team winning by 210 to 179.

- 1.—Sergt. Fluck and Mr. R. S. D. Lee, a great patron of cricket in Cheltenham.
- 2.—Supt. W. J. Lane and Rev. Madan Pratt.
- 3.—The Cheltenham Police Team. Standing: Sergt. Wicks (Treas.), P.C.'s Hancock, Walkley, Dascombe, Inspt. A. Hopkins, P.C.'s Packer, Wagstaff, Oakley (Hon. Sec.), and Russell. Seated: D.C. Brant, Supt. Harrison (Birmingham), D.S. Illes Cheltenham, ex-Supts. Cooke (Birmingham) and Griffen (Cheltenham).
- 4.—Detective Hart crooked.
- 5.—Mr. Ralph Roberts (Glos.), Supts. Price (Cirencester), Lane (Cheltenham), and Harrison (Birmingham).
- 6.—Ex-Supt. Shakespeare (formerly of Birmingham) now retired to live in "Cheltenham Chronicle" Photos. Copies 1s. and 1s. 9d. each. Postage 2d. extra.
- 7.—Supt. Shellswell tells a "Forest" story. Standing: P.C. Oakley, Mr. W. Ansell, Sergt. Fluck, Supt. Price, Supt. Cooke, and Supt. Pass (Evesham). Seated: L. Cummins, D.C. Hart, R. Roberts, and Supt. Shellswell.



Central Brotherhood Outing on Saturday last, in the Wye Valley.

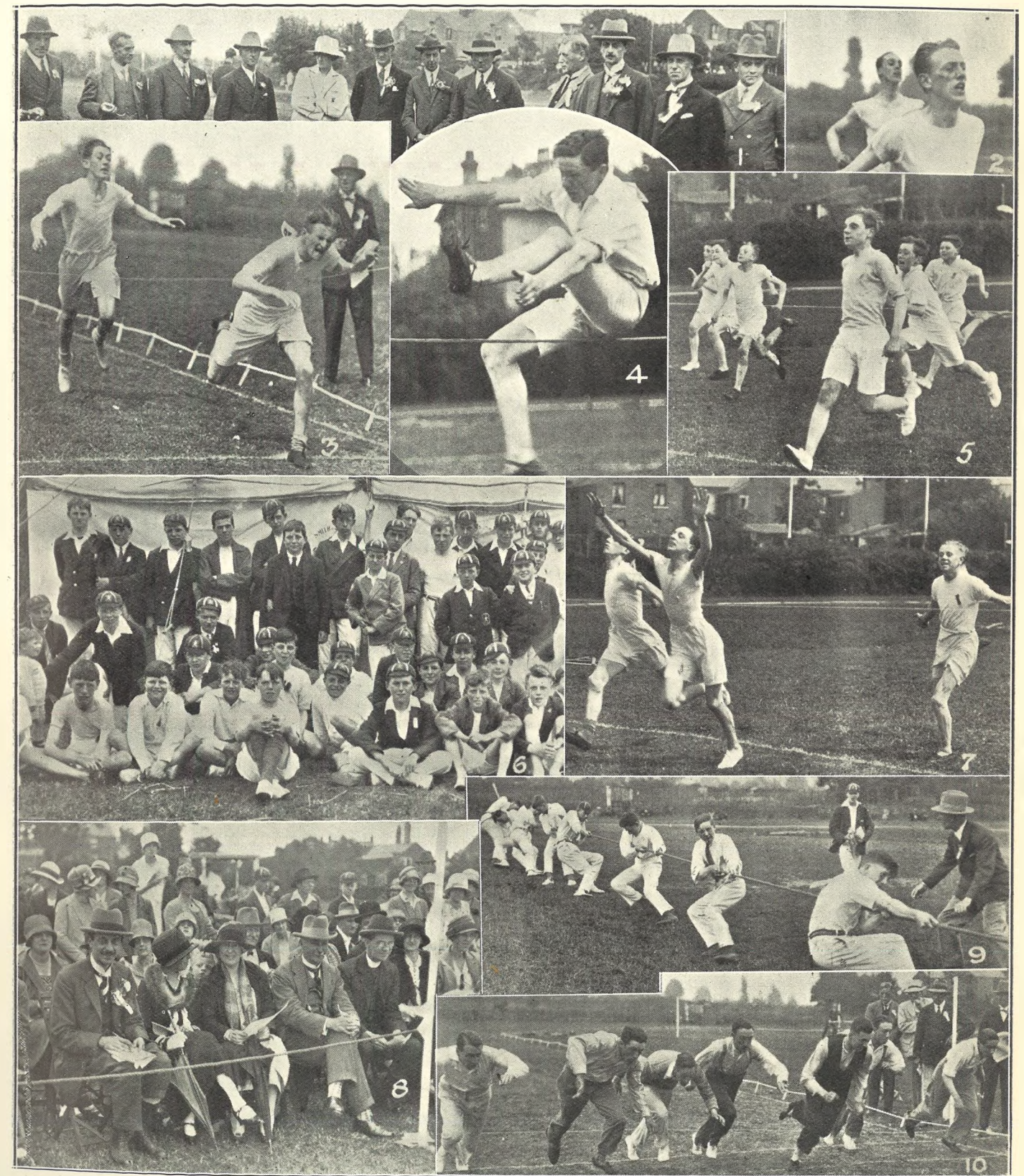


ECKINGTON VILLAGE PAGEANT.

Further pictures of this beautiful little pageant, which was held in the grounds of Eckington Manor on Wednesday and Thursday, June 15 and 16. The Pageant Master was Mr. E. C. Cholmondeley, who also wrote the book, originated and controlled the whole proceedings, and to whom much credit was due, as well as to the villagers themselves. A page of pictures was published in our last week's issue.

- 8.—Children following the Jester in Episode 3 at Ekynton Fayre.
- 9.—Mrs. Madeley Mole (on left), who as "Clio, Muse of History," recited the prologue.
- 10.—Druid Boys.
- 11.—Roman Soldiers in 1st Episode.
- 12.—Ladies in Episode 3, "Ekynton Fayre."
- 13.—Joculators.
- 14.—Village Maids in "Ekynton Fayre."
- 15.—Village Ladies and Girls in "Ekynton Fayre."

"Cheltenham Chronicle" Photos. Copies 1s. each, large size 1s. 9d., postage 2d. extra.



SIR THOMAS RICH'S SCHOOL, GLOUCESTER, ANNUAL ATHLETIC SPORTS.

These Sports were held on Thursday, June 16th, on the Denmark Road Playing Ground, in delightfully warm weather, before a record crowd of parents and friends. The prizes were distributed by Mrs. W. W. Whitman.

- 1.—Members of the Staff of School, who were Officials of the Sports. Mr. E. Rogers-Tillstone, the Headmaster, third from right.
- 2.—J. Gilbert winning 220 Yards Handicap from L. Warner.
- 3.—W. H. G. Morgan winning Open Quarter-Mile (all out) from W. H. Stephens.
- 4.—A. J. Cole winning High Jump at 4ft. 8in.
- 5.—C. Edwards winning 100 Yards Handicap (12 to 14).
- 6.—Some of the boy competitors and others.
- 7.—L. Warner winning 100 Yards Handicap (over 14).
- 8.—The Headmaster (left), Mrs. W. W. Whitman, Councillor S. J. Gillett (Chairman of Education Committee) in light suit, and friends.
- 9.—The winning tug-of-war team.
- 10.—Start of Old Boys' Race.

"Cheltenham Chronicle" Photos.



BROOKTHORPE AND WHADDON GARDEN SALE.

A Garden Sale of Work and Summer Fete was held in the grounds of Brookthorpe Vicarage on Thursday, June 16th, in aid of Parochial Funds.

1 and 7.—Stallholders.
 2.—Guessing weight of cake.
 3.—Rev. L. B. Cholmondeley, Vicar of Edge, showing a visitor round.
 4.—Mr. Ryder, in charge of bowls competition.
 5.—Mrs. J. O. Roberts (X), who opened sale, Rev. E. W. Jones, Vicar of Brookthorpe (standing), Mr. Geo. Aldridge, J.P. (seated), and Col. E. S. Sinnott.
 6.—Mr. Wheatley bowling.
 8.—Interested in the competitions.
 "Cheltenham Chronicle" Photos.



Twigworth Garden Fete, Thursday, June 16, in the Grounds of Twigworth Lodge.

1.—Stallholders and helpers at opening ceremony—Rev. Canon A. H. Cheeseman (A.), Vicar of Twigworth, Hon. Mrs. Dutton (B.), Hon. Mrs. Galvert (C.).
 2.—The Misses Helps chatting to Mr. Gardom.
 3.—Stallholders at Produce Stall.
 4.—Miss Sparks bowling for pig.
 "Cheltenham Chronicle" Photos. Copies 1s. and 1s. 9d. each. Postage 2d. extra.



MISSIONARY FETE AND PAGEANT AT STANWAY HOUSE, JUNE 18.

1.—Residents of Alderton and Buckland representing India.
 2.—Rev. Bateman, Toddington, and Rev. W. B. Rickards, Vicar of Buckland.
 3.—The Mother Church (Miss McLean) and Handmaidens.
 4.—China, by residents of Stanway.



Cheltenham North Ward Conservative Women's Outing to Birmingham, June 21.

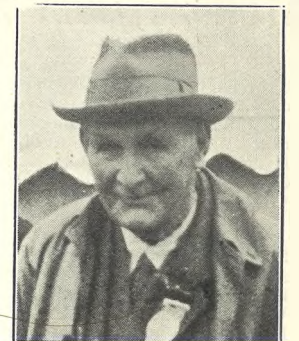


MR. WILFRED RAYNER, formerly of 2 Eastbourne Villas, College-road, Cheltenham, who died on June 16th in a nursing home after a long illness, aged 62 years. He was a solicitor, but never practised in Cheltenham, where he had resided as a bachelor for 34 years. He was at one time secretary of East Gloucester Lawn Tennis Club, and secretary of Cheltenham Golf Club, and a good golf player.

Flannel Trousers.

A superior make of good cloth, in Light or Dark Grey **14/11**
 White All Wool Flannel **21/-**

Phone 2706. **A. BECKINGSALE,** Phone 2706.
 111 High Street, CHELTENHAM.



ARTHRITIS ELECTRONIC TREATMENT
 4 IMPERIAL SQUARE, CHELTENHAM
 Phone 3278.
 10 to 6 and by Appointment.
 Also NEURITIS, SCIATICA, and various ORTHOPÆDIC COMPLAINTS

MR. GEO. F. MOORE, J.P., of Chardwar, Bourton-on-the-Water, who died on Sunday morning, June 19, aged 72 years. He was a native of Bourton, and after living in an isolated part of Ceylon, where he made his fortune rubber planting, he retired to his native village and proved one of its greatest benefactors. He interested himself in no uncertain manner in everything for the good of the neighbourhood.



CHEL TENHAM AND GLOUCESTER ROTARIANS PLAY CRICKET AT STROUD.

A triangular contest in various sports took place between the Rotarians of Gloucester, Cheltenham and Stroud, and on Monday last the above teams met at Farmhill Stroud, Gloucester won somewhat easily. The Stroud Rotarians hospitably entertained their visitors.

1.—Messrs. Percy Davies and T. J. Craig open Cheltenham's innings. 2.—The Gloucester Team. 3.—Captain Langley, Mrs. Harris (Cheltenham), Mr. C. Gardner (Stroud), Mr. W. S. F. Harris (President, Cheltenham), and Mr. Saunderson (Stroud). 4.—Councillor J. P. Pates made 17. 5.—Stroud Rotarians' wives, who waited at the tea table. 6.—Cheltenham Rotarians. 7.—Messrs. Saunderson (Stroud), O. J. Pearce (Stroud President), C. Gardner (Stroud), and Ellis (Gloucester). 8.—The Cheltenham Team.

BRUTON, KNOWLES & Co.,

ALBION CHAMBERS :: GLOUCESTER.

ILLUSTRATED PROPERTY REGISTER PUBLISHED. Estate Agents, Surveyors, Auctioneers, Agricultural and Timber Valuers, and Valuers for Estate Duty. Telephone 2267 (two lines).

Messrs. Bruton, Knowles & Co. will Sell by Auction, at The Bell Hotel, Gloucester, on SATURDAY, JULY 2nd, 1927, at Three o'clock, the following Valuable PROPERTIES:

By Direction of G. L. Snell, Esq.

CHURCH FARM, HEMPSTED, within one mile of Gloucester. An Important Freehold Residential and Accommodation Farm, comprising an Excellent Farm House, Buildings, and 138a. 0r. 8p. of Sound Pasture and Meadow Land and Pasture Orchard. Vacant Possession on Completion. Solicitors: Messrs. Bretherton and Sons, Gloucester.

By Direction of Dr. E. A. King.

SOUTHFIELD POULTRY FARM, LECKHAMPTON. An Attractive Small Residence, Garage, Outbuildings, and Pasture Land, the whole being 15a. 0r. 6p. in extent. Vacant Possession on Completion. Solicitors: Messrs. Rickerby, Thompson, and Yeaman, Cheltenham.

By Direction of Mrs. Herbert.

PARKEND VILLA, HARDWICKE. An Attractive Small Residence, adjoining the main Gloucester and Bristol Road, and comprising a Substantially-built Residence, Large Garden and Paddock, with Fruit Trees. Vacant Possession on Completion. Solicitors: Messrs. Treasure, Gloucester.

ONGERS GREEN FARM, BROOKTHORPE. A Valuable Small Dairy Farm, 85a. 1r. 21p. in extent, and 11a. 1r. 37p. of Accommodation Pasture Land. Vacant Possession on Completion. Solicitors: Messrs. Treasure, Gloucester.

By Direction of Mr. Charles Mogg.

POLIASE COTTAGE, MINSTERWORTH. An Attractive Small Holding, comprising a Brick-built Cottage, with Garden and Outbuildings, and an Excellent Pasture Orchard, the whole being about 3a. 2r. 28p. in extent. Vacant Possession on Completion. Solicitors: Messrs. Bradley and Cuthbertson, Birmingham.

By Direction of the Executors of the late Mr. G. Trotman.

TWO SEMI-DETACHED COTTAGES at UPTON ST. LEONARDS, Gloucester. Solicitors: Messrs. Treasure, Gloucester.

FURTHER PARTICULARS OF THE ABOVE SALES MAY BE HAD OF THE AUCTIONEERS, GLOUCESTER.



THE COMPLETE FRONTAGE.



A MODERN HOSIERY QUICK-SELLING FIXTURE.

"THE FAMOUS," DISTRICT SHOPPING CENTRE FOR MEN'S AND BOYS' OUTFITTERS.

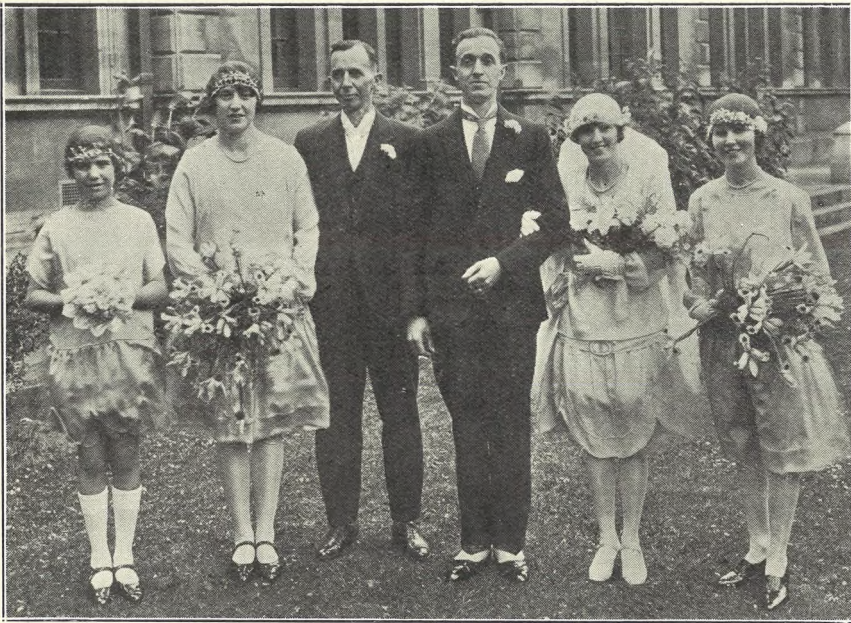
PROPRIETOR: A. N. COLE,

350/1 HIGH STREET, CHELTENHAM.

The above photos represent further improvements to local business premises. "The Famous," Proprietor Mr. A. N. Cole, the well-known Men's and Boy's Outfitters, have completely remodelled their frontage and interior. Readers will, we have no doubt, agree with us that the above firm have one of the best equipped Men's and Boys' Stores, dealing in medium class goods, in the district.

They wish to specially point out that their Men's and Youths' Clothing departments are now privately situated on the first floor, and contain the most up-to-date stock of "present-wear" goods.

"Cheltenham Chronicle" Photos.



A PRETTY CHELTENHAM WEDDING.

The Wedding of Mr. Charles Payne, of Leicester, to Miss Katie Wakefield, second daughter of Mr. and Mrs. T. Wakefield, of Holmleigh, New Street, Cheltenham, took place on Whit-Monday at St. Paul's Church, Cheltenham. The Bridal Party.

Lance's

SUMMER SALE

WILL COMMENCE ON

Thursday Next,
JUNE 30th.



Huge Reductions

in all Departments to effect
 ::: a speedy clearance. :::

Our Fashion Sections will offer
WONDERFUL COLLECTIONS
 of **NEWEST STYLES** at less than
HALF PRICES.

FABRICS for FASHION
 and **FURNISHING** will
 be ruthlessly **REDUCED,**
 and our Dependable Goods in
HOUSEHOLD LINENS, Etc ,
 are all marked at much below
 to-day's marked values, and,
 in addition, a

Special Discount of 10%

2/- in the **£**

will be allowed on all Cash
 transactions, except a few
 Proprietary Articles.



John Lance

& Co., Ltd.,
CHELTENHAM SPA.

THE PIANO OF THE NATION



**A Baby Grand that costs
 little more than an
 Upright.**

Its tone has the rich resonance
 and wonderful singing quality
 of

THE TRUE BROADWOOD.

Yet its cost is small. Send for
 the free paper plan D, which
 shows exactly how much space
 this piano would occupy in
 your room, mentioning Model
 100. Your present piano will
 be accepted in part exchange,
 and payments may be spread
 over one, two, or three years
 to suit your convenience.

BROADWOOD.

SOLE AGENTS:

Crichton's

(Ernest Crichton, Ltd.),
 394 HIGH STREET,
 CHELTENHAM.

LET A CRAFTSMAN
 DRESS YOUR HEAD.



You cannot be too discriminating in your
 choice of a Hairdresser. Whether for Permanent
 or Marcel Waving, Bobbing, Shingling, Curling,
 Tinting, or Re-setting, you can place implicit
 confidence in the

HOUSE OF FOICE,

THE PROMENADE, CHELTENHAM SPA.
 Call, Write, or 'Phone 3490.

We :: PHOTO OR :: in your
 Make PICTURE FRAMES order

IN 24 HOURS!

LEE, Stationer & Picture Framer

CAXTON HOUSE,
 Winecombe Street, CHELTENHAM

M. LASKY AND SON,
 12 Montpellier Arcade, Cheltenham, and 116
 Amhurst Road, Hackney, London, E.8. Best
 Prices given for Old Silver Articles,
 Jewellery, Artificial Teeth, Furniture, Old
 China, etc. Any condition.