

# THE CHELTENHAM CHRONICLE AND GLO' SHIRE GRAPHIC

With Which is Incorporated the "Cheltenham Looker-On,"  
GRATIS SUPPLEMENT. Saturday, March 5th, 1927.

No. 1,366.

## CHELTENHAM THEATRE AND OPERA HOUSE.

This Afternoon (2.30) and Evening (7.45)—"WILDFLOWER."

NEXT WEEK: Leslie Fuller presents—  
"The Margate Ped'lers,"  
From the Coliseum and Alhambra Theatres, London.

### THE PALACE, HIGH ST., CHELTENHAM.

The Palace Delivers the Goods!

Monday to Wednesday:  
Belle Bennett, James Kirkwood,  
In  
"RECKLESS LADY."  
Screened at 2.45, 4.45, 6.45, 8.45.

Our Gang Comedy:  
"JUBILO JUNIOR."  
Thursday to Saturday:

Lila Damita in  
"ROAD TO HAPPINESS."  
Screened at 2.45, 4.45, 6.45, 8.45.

BINDLE.  
Last Episode: "Cocktails."  
Douglas Cochrane and his  
Popular Orchestra.

### THE DAFFODIL, Cheltenham's Premier Cinema.

Continuous Performance 2.30 to  
10.15.

MONDAY March 7th, and ALL  
THE WEEK  
IVOR NOVELLO

As  
"THE LODGER"  
(By Mrs. Belloc Lowndes).  
Also featuring June and Mary  
Ault.

"The Lodger" comes direct to  
this Theatre from the Marble  
Arch Pavilion, W., where the  
film caused a furore.

Only to be seen at the Daffodil,  
the Theatre with the Orchestra.

Established 1806.

### Martin & Co., Limited,

The County Jewellers,

and Diamond Merchants,  
A Large Selection of Second-hand  
Silver and Old Sheffield Plate.  
We are Purchasers of Antique  
and Fine Quality Gems.  
Best Prices Given.

LICENSED VALUERS.  
Promenade, Cheltenham.



### ROUND THE TOWN IN CHELTENHAM.

\* \*

Snaps taken on Tuesday last in the Promenade.

No. 2 is Mr. Breese. No. 3.—Mr. Frampton. No. 4.—Mr. Christie.  
"Cheltenham Chronicle" Photos. Copies 1s. each.

Send a "Chronicle and Graphic" to Your Friends.

### WINTER GARDEN, CHELTENHAM. 'Phone 1212.

Monday, Tuesday, Wednesday:  
Neil Hamilton & Shirley Mason  
In Zane Grey's Novel,  
"DESERT GOLD."  
Cyclonic Thrills, Wild Rides,  
and Tender Romance  
Thursday, Friday, & Saturday:  
Bebe Daniels, Warner Baxter,  
and Ford Sterling  
In a Fast Funny Society Comedy  
"Miss Brewster's Millions."  
Gowns, Jazz, Love, Fun.  
The Super Orchestra — All  
Soloists—including Frank Vicary  
(the Popular Violinist).

### COLISEUM CHELTENHAM. 'Phone 3715.

6.40 p.m. and 8.40 p.m.  
THE NEW REVUE,  
"40 WINKS,"  
Featuring FRANK MONCKTON  
The Natural Comedian.

### NORTH STREET PICTURE HOUSE.

Continuous from 2.30 p.m.  
Monday, Tuesday, & Wednesday:  
"THE RUNAWAY EXPRESS."  
Featuring  
Jack Daugherty and  
Blanche Mehaffey.  
Thursday, Friday, & Saturday:  
"ODDS ON GALLAGHER."  
Featuring the New Western Star,  
TOM TYLER.

"Distinction with Economy."  
ORIGINAL GOWNS  
FOR  
ORIGINAL WOMEN.

*Sensier*

388b High St., Cheltenham

Telephone 1080.

W. Scott Cooper,  
Diamond Merchant, Jeweller,  
Goldsmith and Silversmith,  
The Promenade, Cheltenham.  
LICENSED VALUER.

For the  
Best

# PIANOS, DALE, FORTY and Co. Ltd



**ROUND THE CITY IN GLOUCESTER.**

- Some snaps of well-known citizens and others taken on Tuesday morning last.
- 1.—Rev. and Mrs. Burgoyne, who, after 10½ years at Brunswick Road Baptist Church, are leaving at the end of March for Shenfield, Essex.
  - 2.—A stop for a chat.
  - 3.—Off to lunch.
  - 4.—Shopping.
  - 5.—Mr. C. Jones.
  - 6.—On business bent.
  - 7.—A quiet stroll.
  - 8.—Mr. J. Cooper, a retired postal official of 43 years' service, and Mr. J. S. Vines, another Postal official.
  - 9.—In a hurry.
  - 10.—Mr. Jesse Jones (left) chatting to Mr. Cooke, a retired G.W.R. engine driver of 43 years' service.

"Cheltenham Chronicle" Photos. Copies 1s. each, postage 2d. extra.



**St. Paul's Training College, Cheltenham, v. Dudley College.**

The above Colleges met on the Folly Ground, Cheltenham, on Saturday last, in an Association Football Match, the Cheltonians winning by 2 goals to nil.  
"Cheltenham Chronicle" Photo. Copies 1s. and 6d. each, postage 2d. extra.



**The Steck  
MINIATURE GRAND  
Piano.**

A BEAUTIFUL INSTRUMENT  
AT AN EXTREMELY  
MODERATE PRICE.

The smallest High Grade Piano  
in the world.

**120 Guineas  
CASH.**

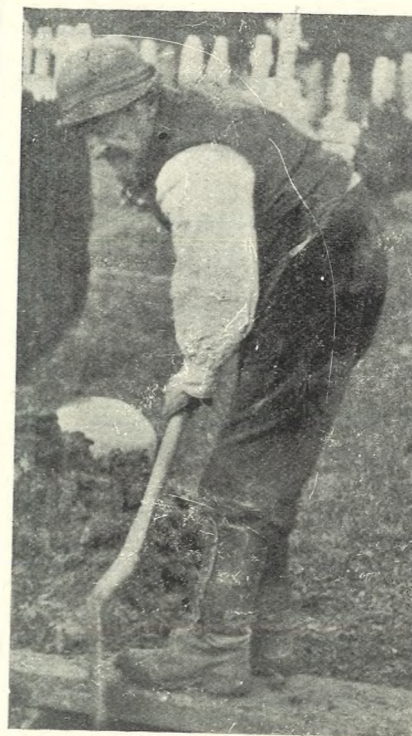
Sole Agents:

**Crichton's**

(Ernest Crichton, Ltd.)

394 HIGH STREET,  
CHELTENHAM.

'Phone 2378.



**MR. THOMAS ELLIOTT,**

of 260 High-street, Cheltenham, who died on Feb. 25th, aged 79 years. He was the gravedigger at Cheltenham Cemetery for over 40 years, having started work there in 1875. He retired a few years ago. He was a strong Conservative, and leaves a widow.

We :: PHOTO OR :: to your  
Make PICTURE FRAMES order

IN 24 HOURS!

**LEE,** Stationer & Picture Framer,  
CAXTON HOUSE,

Winchcombe Street, CHELTENHAM.

**Lance's**

Have a most charming  
range of

**COATS  
FOR SPRING WEAR.**

Newest Cloths and Shades  
to choose from, and invite  
your inspection.



This stylish COAT may be had in fine  
Saxony Tweed Suiting. Shades of Fawn,  
Beige, Grey, Almond, Rose, and Blue.

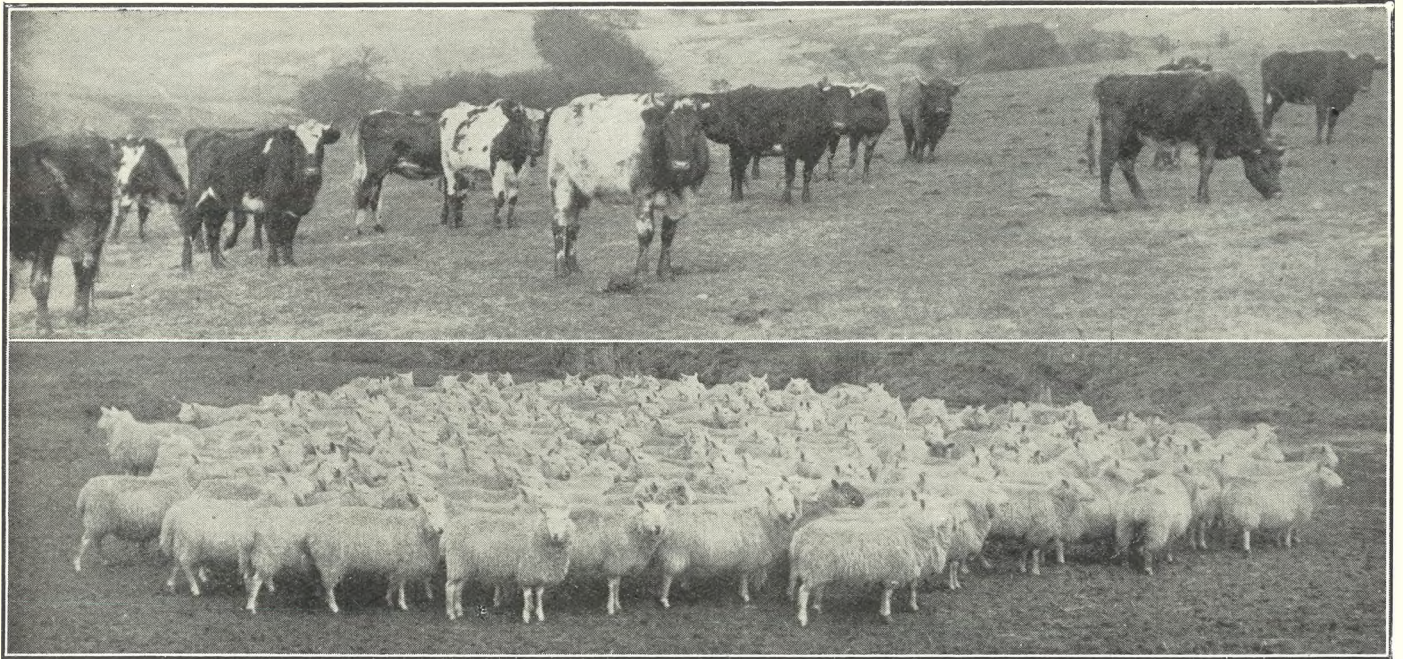
PRICES FROM .. .. **63/-**

Other qualities in Tweed Suitings  
may be seen in our Showrooms.  
Prices from 29/6 to 10 Gns.

**John Lance**

& Co., Ltd.,

Cheltenham's Shopping Centre.



**IMPORTANT FARM STOCK SALE AT COMPTON CASSEY.**

On Thursday next, at 11 o'clock, Messrs. Bruton, Knowles, and Co., of Albion Chambers, Gloucester, instructed by Professor Sir William Somerville, for whom they have sold the Estate, will sell by auction the whole of the Live and Dead Farm Stock, Estate Yard Effects, and a portion of the Household Furniture. The Sale includes 658 Sheep, 89 Cattle, 6 Horses, 57 Pigs, and Valuable Machinery. The photographs above show some of the Cheviot Ewes and 18 months' old Shorthorn Heifers, taken on Wednesday last.

"Cheltenham Chronicle" Photos. Copies 1s. and 1s. 9d. each.

**ARTISTRY IN HAIRWORK.**

SHINGLED HEADDRESS  
OR PERMANENT WAVE



at **F. J. FOICE & CO.'S,**  
THE PROMENADE, CHELTENHAM.

Tel. 3490.



**MR. HERBERT S. ("BERT") SLADE,**  
Of Brookwood, Parabola road, Cheltenham, who died suddenly on Wednesday, March 2, having passed away in his sleep, aged 48 years. He was the third son of the late Mr. and Mrs. W. D. Slade, of Promenade Villas, Cheltenham, and with his brother William succeeded to the boot and shoe business in the Promenade. He had been a successful athlete, playing twice for England at hockey. He was a bachelor, with three brothers and four sisters.

**RACE NUMBER  
OF THE  
'Chronicle & Graphic.'**

Next Week's Issue of the "GRAPHIC" will be **ENLARGED** to **SIXTEEN PAGES**, and will contain Several Exclusive Pages illustrating the Important **NATIONAL HUNT STEEPLECHASE MEETING** in Cheltenham on Tuesday, Wednesday, and Thursday Next.

Orders for the Paper should be placed **AT ONCE**, as it will be impossible to Reprint.

Actual Copies of the Photographs may be seen at the "Echo" and "Chronicle" Offices during the week.

**H. E. RANDALL, LTD.,**

6c THE PROMENADE, CHELTENHAM.  
**HIGH-GRADE FOOTWEAR.**

SPECIAL VALUE: **GENT'S OXFORD SHOES**  
In Fine Willow, Box Calf, or Glacé Kid,

**21/-**

CALL AND LOOK AT THESE.

BEST QUALITY

**CIDERS**

IN BOTTLE.—Sparkling and Still.

**BARTHOLOMEW,**

419, 420 HIGH STREET,  
CHELTENHAM.

Wines, Spirits, Ales, Table Waters, & Grocery.

Tel. 3590.

NEW DESIGNS IN

**Hard Wear SHIRTS,**

Colour fast to boiling & light. **8/11.** Lined back and front.

Own Manufacture.

**A. BECKINGSALE,**

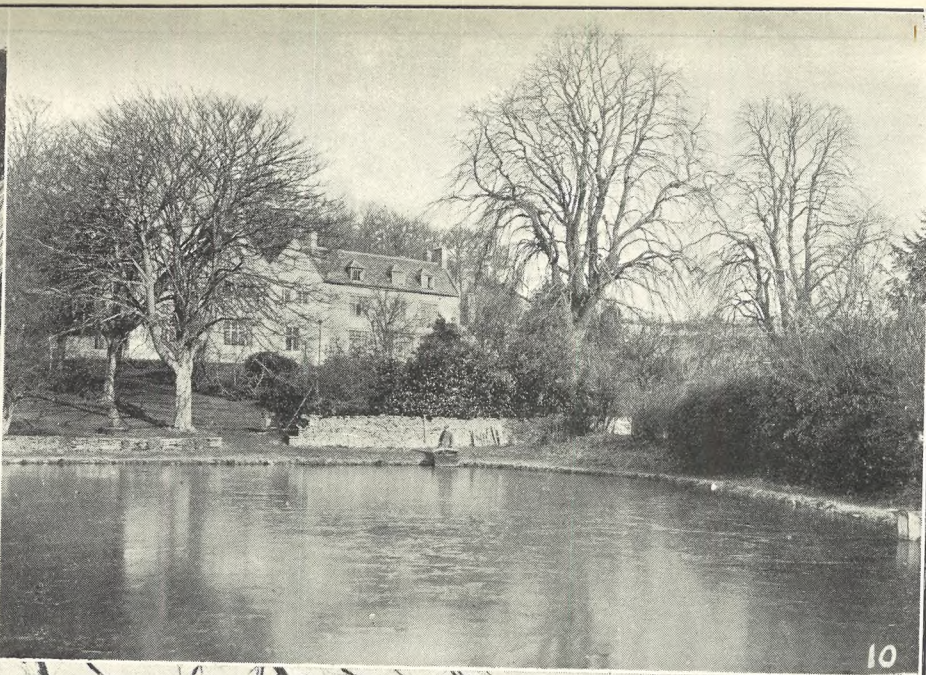
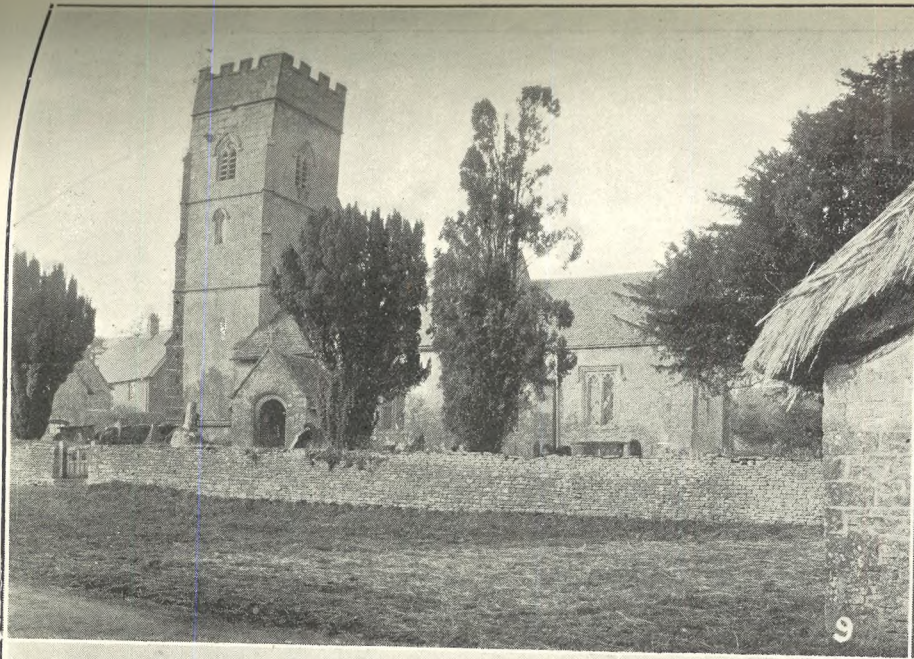
111 High Street, CHELTENHAM.

**LET MOUSELLS MOVE YOU**



Estimates for Removals and Storing Free.  
'PHONE 2112.

**CHELTENHAM.** Offices: **AMBROSE STREET.**



**PICTURESQUE GLOUCESTERSHIRE.—TURKDEAN AND HAMPNETT.**

We publish above the third of our series of Turkdean pictures, the other sets having been published on Feb. 19 and Feb. 26. It is a most interesting and picturesque village. Leygore Manor, the residence of Mr. A. E. Moss, J.P., is the third manor in the village. It is situate nearer Northleach than the others, and is mentioned in Rudder (1779) as continuing in lay hands.

9.—Hampnett Church. Hampnett is only a mile from Northleach, on the old Fosse Way. The Church is surrounded by a farmyard, that of Mr. Aubrey Handy. It has many Norman remains. It is, unfortunately, one of the few country churches that is kept locked.

10.—Leygore Manor, from the lake. This is a very fine lake, in beautiful order and stocked with fish. There is an island with water birds living on it.

11.—A close-up view of Leygore Manor.

12.—View of Lower Dean from the top of the Beech Avenue.

“Cheltenham Chronicle” Photos. Copies 1s. 9d. each.



**STROUD BEAT CHELTENHAM AT RUGBY FOOTBALL.**

The game between these old rivals at Fromehall Park, on Saturday last, was spoilt by the atrocious weather conditions, rain descending in torrents, accompanied by a strong south-westerly gale. Stroud won by a goal to a try (5 points to 3), both scored in the first half.

- 1.—The Stroud team. From left: F. J. Gladwin, W. Wagner, D. S. O. Newman, V. Osborne, S. J. Smith, H. J. E. Baldwin, F. Bennett, J. Harris, A. Neale, C. A. Watkins (capt.), W. Hall, A. E. Swayne, A. J. Perrett, T. Gough, F. Stinchcombe.
- 2.—Youthful enthusiasts.
- 3.—A line-out.
- 4.—Stroud supporters.
- 5.—Spectators on the shilling side.
- 6.—Some of the Stroud team at half-time.
- 7.—H. Goring (Cheltenham) stopping a Stroud forward rush. Some of the men on left are obviously off-side.

"Cheltenham Chronicle" Photos. Copies 1s. and 1s. 9d. each according to size, postage 2d. extra.



**ROUND THE TOWN IN STROUD.**

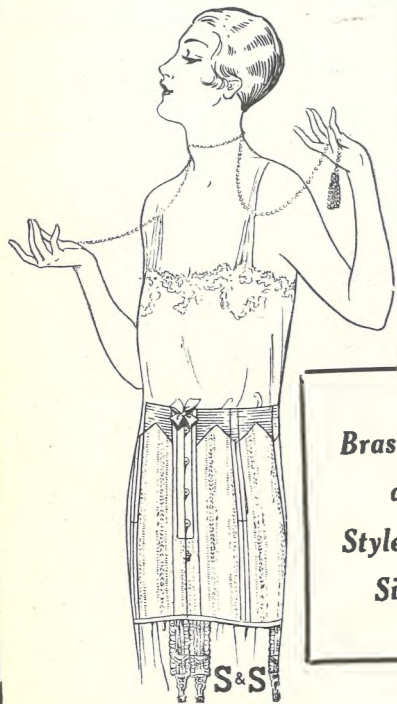
- Snaps taken by a "Cheltenham Chronicle" photographer in Stroud on Saturday last.
- 1.—Returning from the Library.
  - 2.—Mr. Sidney Smith, of "Stroud Journal."
  - 3.—After visiting the florist's.
  - 4.—A bunch of violets for some one.
  - 5.—Intent on business.
  - 6.—A snap in Gloucester Street.
  - 7.—Mr. C. Ashman Carter and "Dr." Cooke having a chat on bowling business evidently.
  - 8.—Shopping.
  - 9.—Mr. Tuck (on left).
  - 10.—Homeward bound.
  - 11.—Taking a brisk walk.
  - 12.—Mr. C. E. Jackman, a well-known Stroud chess expert.
  - 13.—Rev. E. W. Moore, of Randwick.
  - 14.—Mr. J. H. Norton.

"Cheltenham Chronicle" Photos. Copies 1s. each, postage 2d. extra.

# MRS. OWEN JAMES.

THE CELEBRATED **S&S** CORSETS ARE  
PERFECTION OF  
*Style, Shape, and Finish.*

RUSTPROOF  
AND  
WASHABLE.

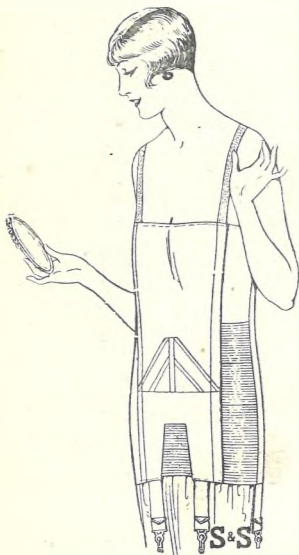


**"SANDOWN."**  
Fancy striped material, 2-inch Art. Silk elastic all round top, busk 9 inch, with hook and eye below, suitable for the average figure, sizes, 22ins. to 30ins. PRICE ..... **6/11**

Brassieres  
all  
Styles and  
Sizes.

All  
Models  
are  
Designed  
on  
Living  
Figures.

S & S  
Velvetex  
(Regd.)  
Corsets  
in stock.



**COMBINAIRE (Style 100).**  
Brassiere and girdle combined, strongly boned Diaphragm and abdominal control, wide elastic panel at sides. Bust measurements, 30ins. to 40ins. PRICE ..... **6/11**

We particularly desire to call attention to our extensive range of the latest creations designed for wearing with the PREVAILING STYLE OF DRESS.

Every production is the result of careful thought and experienced workmanship.

An S & S Corset for every type of figure in stock.



**"CADOGAN."**  
White Coutille, heavily boned, fitted with four strong suspenders. Specially designed for full figures and outsizes. Sizes 31 to 36ins. PRICE **9/11**

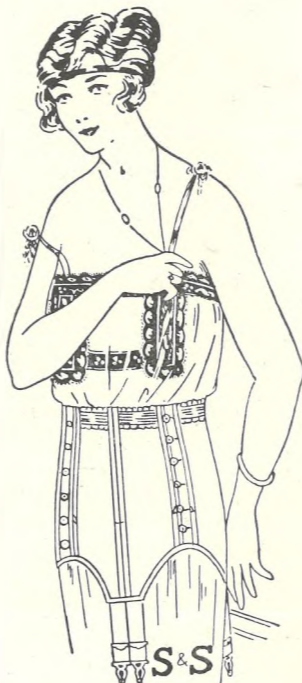
S & S  
CORSETS  
The Fashion  
all over  
the world.

S & S  
Corsets  
give perfect  
freedom of  
movement  
and  
adequate  
support.

Elastic  
Belts  
and  
Corsets  
all prices.



**COMBINAIRE (Style 295).**  
Suitable for full figures, with under-belt of material and elastic. Made in pink striped material, with panels of elastic on hips, well boned with rustless spiral steels, and fitted with four adjustable suspenders. Bust measurements 32in. to 40in. PRICE ..... **8/11**



**"LILETTE."**  
Fine White Coutille, 1 1/2 in. Art. Silk elastic all round top, plain front, fastened each side with pearl buttons. Suitable for sports. Sizes 22ins. to 28ins. PRICE ..... **7/11**

**Mrs. Owen James, 409 High Street, CHELTENHAM.**

(BETWEEN CAMBRAY AND BATH ROAD.)



**ROUND THE TOWN IN CHELTENHAM.**

Snaps taken on Tuesday last in the Promenade.

1.—Miss Gobey and Mrs. Bickham.

6.—Mrs. W. A. Davies (on right) and her sister.

"Cheltenham Chronicle" Photos. Copies 1s. each, postage 2d. extra.

SEND THE "CHRONICLE & GRAPHIC" TO YOUR FRIENDS EVERY WEEK.

SEE OUR DISPLAY OF

ENGLISH  
MADE.

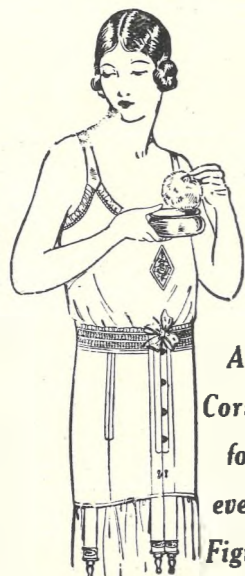
*Twilfit* FULLY  
GUARANTEED.

CORSETS.



MODEL 812.

A new number modelled on the very latest lines. 1-inch waist-line. Made from very strong striped silk-finish cloth. Fitted with four suspenders. Sizes 21-30 inches. in 6/11 pink and white.



MODEL SPORTS A. Made with elastic round top, specially adapted for slender figures. In pink and white. Fitted with rustless and unbreakable "Twilfit" Spiral Steels and four hose supporters. Sizes 21-30 ins. 4/11

Every Twilfit Corset is fitted with rustless and unbreakable Spiral Steels—an exclusive Twilfit feature.



MODEL B1. A Sports Corset of medium depth. Latest design. Made from very strong material, with fancy elastic top. Four suspenders. In pink and white. Sizes 21 to 30 inches. 5/11

When ordering Wrap-round Corsets, a size three inches larger than usually worn should be quoted.

**OSBORNE HOUSE**

(Proprietor: D. J. REES),

High Street, Cheltenham.

NOTE THE GUARANTEE.

NOTE THE GUARANTEE.



MODEL 0505.

Suitable for stout figures. Made from strong pink materials. The under-belt is of good elastic, lightly boned. The Corset is boned up the back, fastened at the sides with hooks and eyes. Fitted with six hose suspenders. Bust sizes 34 to 44 ins. 16/11



MODEL 0319. Specially deep Corset of fancy washable broche. Elastic inserted on hips; fastens on left side with hooks and eyes; strong shoulder straps, and fitted with four hose supporters. Sizes 32-44 ins. 5/11

Twilfit Corset carry a definite guarantee of "Money returned or Corsets exchanged if not completely satisfied."



MODEL 0535.

A Corset of silk-striped batiste, with the advantage of a boned uplift belt to correctly mould the figure. Elastic inserted on the hips, fastening at the left side, with hooks and eyes. Two pairs of good hose supports. Dainty ribbon shoulder straps. In pink and white. Bust sizes 30 to 44 ins. 10/11



**ST. JOHN'S (CHELTENHAM) GIRLS' SCHOOL CONCERTS.**

The Girls' Department, under Miss Dallimore, gave two concerts at the School on Thursday and Friday, Feb. 24 and 25. They were most successful. Photo of Performers in Operetta "Sunrise Land."

"Cheltenham Chronicle" Photo. Copies 1s. 9d. and 6d.



**ST. JOHN'S (CHELTENHAM) GIRLS' SCHOOL CONCERTS.**

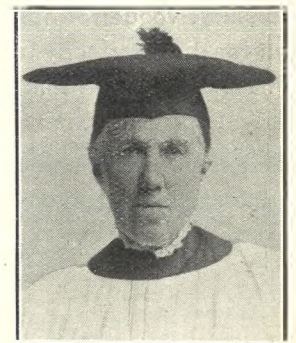
Some of the Performers in the Miscellaneous Programme.

"Cheltenham Chronicle" Photo. Copies 6d. each, postage 2d. extra.

**OLD GOLD, SILVER, AND JEWELLERY**

Purchased at the Day's Full Market Price at  
**HARRY O. BOX'S,**  
233 HIGH STREET, CHELTENHAM  
(Nearly Opposite Grammar School).  
ESTABLISHED 75 YEARS.

**CORSETS AND BELTS**  
MADE, COPIED, CLEANED AND REPAIRED.  
Hours: 10 a.m. to 6 p.m. Saturdays, 1 p.m. to 5 p.m.  
or by appointment. PHONE 3915.  
**MISS FRUIN** (formerly with Madame Annetto)  
23 Bath Parade, CHELTENHAM



MISS JUGGINS,

who was on Thursday, March 3rd, the recipient of a useful present, the gift of the parishioners, in recognition of fifty years' devoted service in connection with St. Paul's Church, Cheltenham.

Are YOU looking for a really delightful Luncheon?

(3 COURSES 1/9.)

You will find this at

**The Shamrock Tea Rooms**

(On the Promenade Parking Station),

CHELTENHAM.

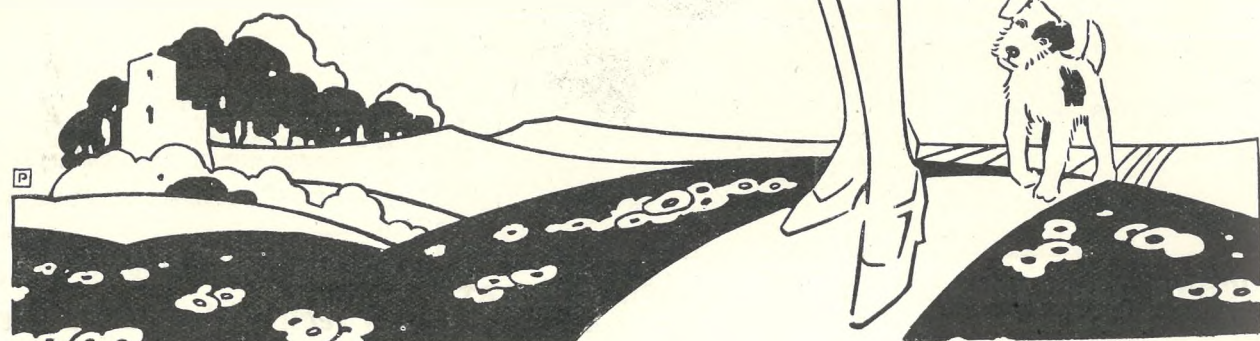
Afternoon Teas. : Home-made Cakes. : Breads.

# The FASHIONS of 1927 by VANDERPLANK

**Q**UALITY first. Vanderplank will pursue their well-known Policy which has earned—and well earned—for them so enviable a reputation for Fashion Wear of quality. Expert craftsmanship in tailoring—the finest of materials and the resources of a House that are Fashion Specialists, only with an ever-increasing Clientele that enables them to offer for 1927 still greater value than ever.

Sketched is one of the new Tailor-mades which will be the foremost vogue for Spring. Vanderplank are well-known for their perfectly fitting Suits, and this season they have a collection that is unrivalled. Ladies particularly appreciate the perfect cut and tailoring of Vanderplank Models, and they know that they cost no more than Suits of less distinction—3 to 12 Gns.

May we have the privilege of fitting YOU?



Cheltenham Spa

VANDERPLANK (FROM HARRODS) FOR PERFECT TAILOR-MADES

# THE CHELTHENHAM CHRONICLE AND GLOUCESTERSHIRE GRAPHIC

With Which is Incorporated the "Cheltenham Looker-On."  
GRATIS SUPPLEMENT. Saturday, March 12, 1927.

No. 1,367.

**CHELTHENHAM THEATRE  
AND OPERA HOUSE.**

This Afternoon (2.30) and Evening (7.45)—"THE MARGATE PEDLERS."  
NEXT WEEK:—Tom Arnold Presents the Successful Comedy—  
**"IS ZAT SO?"**  
THE SHOW WITH A PUNCH.

**THE PALACE**  
HIGH ST., CHELTHENHAM.

Huge Monday to Wednesday  
Two-Feature Three Hours'  
100 per cent. Programme!  
Blanche Sweet and Jack Mulhall  
In  
**"THE FAR CRY,"**  
A Powerful Love Story and  
Spectacular Scenes in Natural  
Colours.  
Olive Barden and Ralph Ince in  
**"YELLOW FINGERS,"**  
Gene Wright's Novel of Adventure  
in the South Seas.  
Thursday to Saturday:  
Ben Lyons and Lois Wilson in  
**"BLUEBEARD'S 7 WIVES."**  
Something New, with a Laugh  
Record that exceeds any recent  
Picture.

**THE DAFFODIL,**  
Cheltenham's Premier Cinema.

Continuous Daily, 2.30 to 10.15.  
Monday, March 14th, Tuesday,  
and Wednesday,  
**"THE PLEASURE GARDEN."**  
By Oliver Sandys.  
Starring Virginia Valli.  
Thursday, Friday, and Saturday:  
**"RIN-TIN-TIN"** in  
**"THE NIGHT CRY."**  
Dog and Bird of Prey in Death  
Struggle.  
"Rinty" in a Great New Film.  
The Daffodil Grand Orchestra at  
All Performances.  
Musical Director: Mr. Arthur  
Burrows.

Established 1806.

**Martin & Co.,**  
Limited,

**The County Jewellers,**

Pearl and Diamond Merchants,  
A Large Selection of Second-hand  
Silver and Old Sheffield Plate.  
We are Purchasers of Antique  
Silver and Fine Quality Gems.  
Best Prices Given.

LICENSED VALUERS.  
Promenade, Cheltenham.



**NATIONAL HUNT STEEPLECHASES  
IN CHELTHENHAM.**

Lord Lonsdale, who was Acting Steward of the day on Tuesday, on left, congratulating Mr. F. H. Cathcart, of Messrs. Pratt and Co., on the wonderful success of the meeting on Wednesday. The attendance was a record, as was also the number of runners (43) in the big race.  
"Cheltenham Chronicle" Photo.

**WINTER GARDEN,**  
CHELTHENHAM. Phone 2212.

**THE SUPER CINEMA,**  
Where Everybody Goes.

MONDAY and All the Week,  
**MARY PICKFORD**

In her Very Latest Super-  
Production,  
**"HUMAN SPARROWS."**

Unanimously acclaimed her Best  
yet.  
Adventure and Drama, Surprise  
and Thrills, Laughs and Tears,  
and—Mary Pickford.  
Full Supporting Programme  
Changed Mid-Week.

**COLISEUM**

CHELTHENHAM. Phone 3715.  
8.40 and 8.40 p.m.  
THE NEW COMEDY REVUE,  
**"THE DOINGS,"**  
In Sixteen Scenes.

**NORTH STREET  
PICTURE HOUSE.**

Continuous from 2.30 p.m.  
Monday, Tuesday, Wednesday:  
**"EARLY TO WED,"**

Featuring  
Matt Moore and Zasu Pitts.  
Thursday, Friday, and Saturday:  
**"LURE OF THE WILD,"**

Featuring  
Jane Novak and "Lightning."  
The Greatest Dog Drama Ever  
Produced.

MAISON

**ANNETTE,**

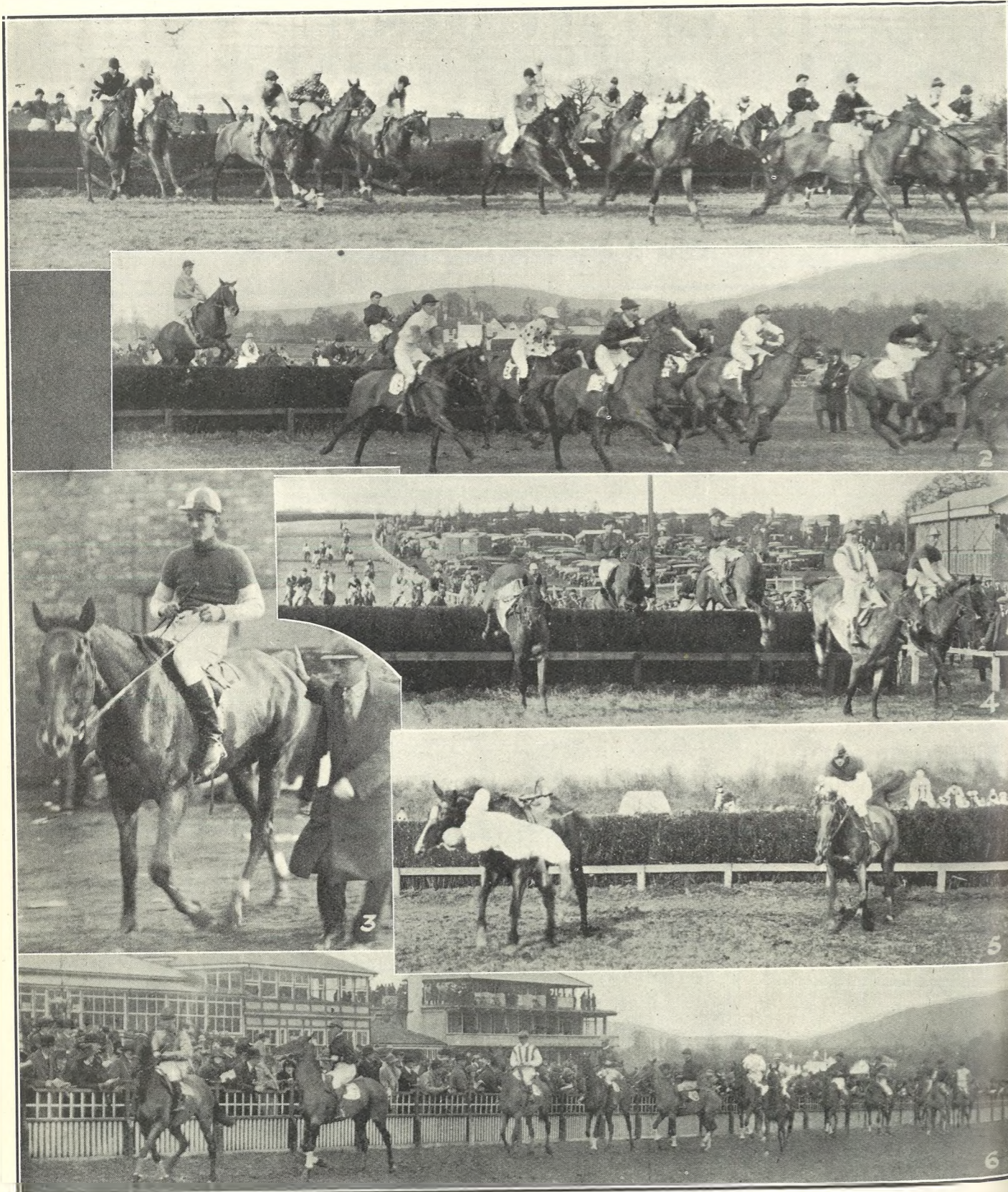
Kensington House,  
PROMENADE,  
CHELTHENHAM,

Specialists in Exclusive  
**CORSETS &  
LINGERIE.**

Phone 2122.

For the Best **PIANOS, DALE, FORTY and CO. LTD**





**NATIONAL HUNT STEEPLECHASES IN CHELTENHAM.**

The National Hunt Steeplechase, run on Wednesday last, was the most important of the meeting, and the number of runners (43) was a record for the Race. H.R.H. the Prince of Wales came to see this race, a most thrilling one. Various phases of the race are illustrated above.

- 1.—First fence in National Hunt Race. No horses fell here, the whole 43 getting over, although some big gaps were made in the fence, parts of which can be seen flying in the air.
- 2.—The second fence.
- 3.—The winner, Mrs. C. Stevens's Fine Yarn, coming in. It was ridden by Mr. J. Stevens, a son of the owner, and trained by her husband, Major Stevens, at Eastbury.
- 4.—Fence No. 15, where the horses jumped on to the regular course.
- 5.—The last fence. Tuskar was leading, but blundered and threw his jockey, Capt. W. McMullen, who hung on to the reins, remounted and finished 11th.
- 6.—The parade before National Hunt Steeplechase.

**BRUTON, KNOWLES & CO.,**

*Estate and House Agents, Surveyors, Auctioneers, Agricultural and Hotel Valuers, and Valuers for Estate Duty,*

**ALBION CHAMBERS, : : : : : GLOUCESTER.**

Messrs. Bruton, Knowles & Co. beg to announce the following Sale Fixtures:

- TUESDAY, MARCH 15th.**  
JOURDENS, LONGHOPE: LIVE and DEAD FARM STOCK, HAY, POULTRY and POULTRY APPLIANCES, and a Portion of HOUSEHOLD FURNITURE, by direction of G. G. Tweed, Esq.
- WEDNESDAY, MARCH 16th.**  
At THE BELL HOTEL, GLOUCESTER: VALUABLE CITY PROPERTIES.
- THURSDAY, MARCH 17th.**  
FIELD FARM, COALEY: 31 SHORT-HORN CATTLE, 30 GRASS TEGS, 36 PIGS, AGRICULTURAL IMPLEMENTS, by direction of Mr. J. L. Smith, who is giving up the farm.
- FRIDAY, MARCH 18th.**  
GLOUCESTER MARKET: ANNUAL SHOW and SALE of PEDIGREE SHORTHORN CATTLE, comprising 113 BULLS and 17 COWS and HEIFERS from Noted Breeders, and including Entries from H.R.H. THE PRINCE OF WALES, K.G.; also the Entire Pedigree Herd of Cows and Heifers, the Property of Mrs. Gwynne Holford, Hartpury House, near Gloucester.
- SATURDAY, MARCH 19th.**  
At the BELL HOTEL, Gloucester: HASKINS and HILL FARMS, TAYNTON, 99 Acres in Extent; and GROVE END FARM, HARDWICKE, 16a. 2r. 13p. in Extent.
- TUESDAY, MARCH 22nd.**  
WALROND FARM, FLAXLEY: LIVE and DEAD FARM STOCK, by Direction of Mr. W. C. Butler.
- WEDNESDAY, MARCH 23rd.**  
WADFIELD FARM, WINCHCOMBE: 98 CATTLE, 8 HORSES, Petrol Engine, Harness, and Valuable Agricultural Implements, by direction of G. H. Henly, Esq., who is giving up the Farm.
- THURSDAY, MARCH 24th.**  
GLOUCESTER MARKET: Collective SALE of PEDIGREE PIGS. Entry Forms may be had of the Auctioneers.
- FRIDAY, MARCH 25th.**  
HILL VIEW, HARTPURY: FURNITURE and OUTDOOR EFFECTS, by Direction of Mr. H. Longney.
- TUESDAY, MARCH 29th.**  
HANMAN'S FARM (THE ELMS), TIBBERTON: 6,000 Gallons Cider and several hundred dozens of Choice Old Bottled Cider, by direction of Mr. H. J. Phelps.
- FRIDAY, APRIL 1st.**  
GLOUCESTER MARKET: SPECIAL SPRING SHOW and SALE of HORSES. Entries Close March 19th.
- TUESDAY, APRIL 26th.**  
DURSLEY CROSS FARM, LONGHOPE: ANNUAL SPRING SALE of SHEEP, CATTLE, HORSES, &c.

CATALOGUES OF THE ABOVE SALES MAY BE HAD OF THE AUCTIONEERS, GLOUCESTER.

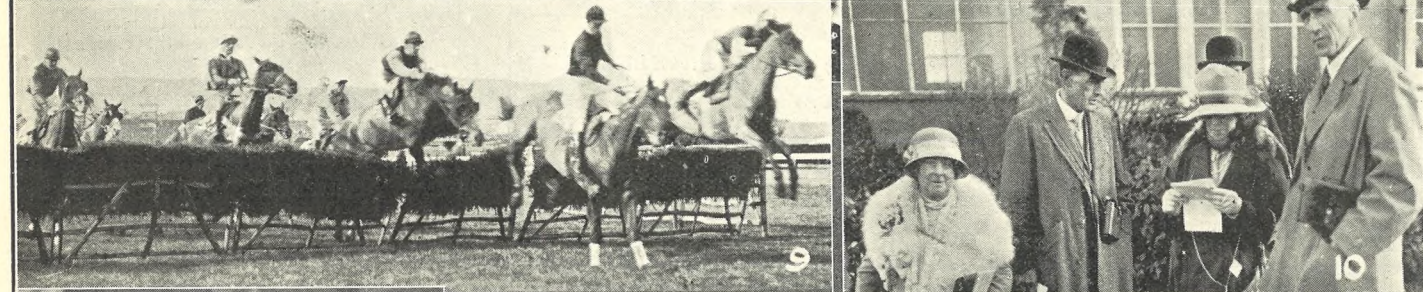


**CHELTENHAM PRIMROSE BUDS IN A FAIRY PLAY.**  
In their monthly entertainment on February 26th, the Buds performed "The Intruders" capitally. They were trained by Mrs. N. Wilkins, who also designed and made most of the costumes.  
"Cheltenham Chronicle" Photo. Copies 1s. 9d. each.

AGENTS FOR  
**SUNBEAM CYCLES.**  
THE ONLY  
HIGH-GRADE CYCLE MADE.  
CYCLES REPAIRED.

BUY YOUR 1927 CYCLE FROM  
**J. WHEWAY & CO.**  
(Estd. 1892),  
30 CLARENCE STREET,  
2 and 3 SUFFOLK ROAD,  
1 HEWLETT STREET, CHELTENHAM.  
CLARENCE CYCLES from £4 19s. 6d.

AGENTS FOR  
**HUMBER CYCLES.**  
QUALITY & PRICE UNSURPASSED.  
CYCLES FOR HIRE.



**NATIONAL HUNT STEEPLECHASES IN CHELTENHAM.**

This meeting, now admittedly the finest purely steeplechase meeting in England, was favoured with delightful weather. There was a record attendance, the going was almost ideal, racing was good, the arrangements perfect, the best class of sporting society was present, and Cheltenham must have secured a wonderful advertisement for its beautiful racecourse and surroundings.

- 7.—The Sale Ring after the first race on Tuesday.
- 8.—Miss Gordon and Mrs. Newman.
- 9.—First fence in Stayers' Selling Hurdle Race of £500 on Wednesday.
- 10.—Mrs. and Col. Tarte (left) with friends.
- 11.—Lieut.-Colonel A. J. Palmer (on right) with a friend.
- 12.—A view in the Paddock on Tuesday, showing Refreshment Bar and the Members' bridge.

"Cheltenham Chronicle" Photos. Copies 1s. and 1s. 9d. each, postage 2d. extra.



**PRESENTATION TO MR. H. J. MCCORMICK.**

On Friday, March 4th, Mr. H. J. McCormick, who for nearly 27 years has been manager of the Cheltenham and District Light Railway, was presented by the Mayor (Ald. C. H. Margrett), on behalf of a number of subscribers, with a handsome silver-gilt loving cup and an illuminated address, as a token of affection and appreciation. At the same time Mrs. McCormick was presented with a gold and turquoise cross.

- Bottom Step: Mr. H. J. McCormick, Mrs. McCormick, Councillor W. Welstead.
- Second Step: Mr. N. W. Payne, Mr. W. H. Lamb, The Mayor (Alderman C. H. Margrett).
- Third Step: Councillor Jas. Moore, Mr. H. W. Bennett, Councillor H. Miller.
- Fourth Step: Mr. W. J. Bache (Borough Electrician), Councillor E. L. Ward, Mr. J. Ball, Mr. F. F. Handley, Mr. J. H. Boulter.
- Top Row: Mr. R. Owen Seacome (Town Clerk), Mr. W. D. Farrar, Mr. E. Waghorne, Mr. R. Board (Chief Clerk Town Clerk's Department), Mr. G. Stannard.

**LET MOUSELLS MOVE YOU**



Estimates for Removals and Storing Free. 'PHONE 2112.

**CHELTENHAM.** Offices: AMBROSE STREET.

We :: PHOTO OR :: do you  
Make PICTURE FRAMES' order

IN 24 HOURS!

**LEE,** Stationer & Picture Framer.  
CAXTON HOUSE,  
Winchcombe Street, : : CHELTENHAM.

**H. E. RANDALL, LTD.,**

6c THE PROMENADE, CHELTENHAM.  
HIGH-GRADE FOOTWEAR.

Special Value: GENT'S OXFORD SHOES  
In Fine Willow, Box Calf, or Glacé Kid,

21/-

CALL AND LOOK AT THESE.

NEW DESIGNS IN

**Hard Wear SHIRTS,**

8/11.

Colour fast to boiling & light.

Lined back and front.

Own Manufacture.

**A. BECKINGSALE,**  
111 High Street, CHELTENHAM.

**FLAT FOOT,**

Also  
KNEE, ANKLE, AND JOINT TROUBLES  
All Kinds Successfully Treated by a New Electro-Therapeutic Method based upon Latest Scientific Research, and Exclusively Administered by

**Mr. Alfred J. VENTRIS-FIELD,**  
Orthopaedist and Electro-Therapeutist, Hospital (London) and 30 Years' Practical Experience.

'Phone 3266.  
Surgery:  
6 RODNEY PLACE, CHELTENHAM.

ADVERTISE IN THE "ECHO."

**CORSETS AND BELTS**  
MADE, COPIED, CLEANED AND REPAIRED.

Hours: 10 a.m. to 6 p.m. Saturdays, 1 p.m., or by appointment. 'PHONE 3915.

**MISS FRUIN** (formerly with Madame Annette)  
23 Bath Parade, CHELTENHAM



**"THE SECOND GUEST"—A COMEDY BY MRS. VIOLET SEELEY.**

A Scene from Act. II. of a new Comedy, by Mrs. Seeley, of Boddington Manor, which is being performed by a capable company of local amateurs at a number of Gloucestershire villages from February 26th to April 29th.  
 From left.—Nathaniel Plim (Mr. J. S. Gibbons), Nicholas Treasury (Mr. C. G. Irving), Gwendoline (Mrs. R. E. Grice-Hutchinson), Cis May (Miss Diana Buckle), Ray Weatherby (Mrs. Seeley), Philip Hankey (Mr. C. Coxwell-Rogers), Penelope Staverton (Mrs. C. G. Irving).

INSTAL GAS  
 APPLIANCES  
 THIS SPRING  
 AND—

*Spring Cleaning!*

HAVE LESS  
 HOUSEWORK  
 TO DO ALL THE  
 YEAR ROUND.

Cheltenham Gas Co.

**ROBERTSON & Co.**

(T. R. PRITCHARD, Proprietor),

**CIGAR and CIGARETTE**

...: IMPORTERS, ...:

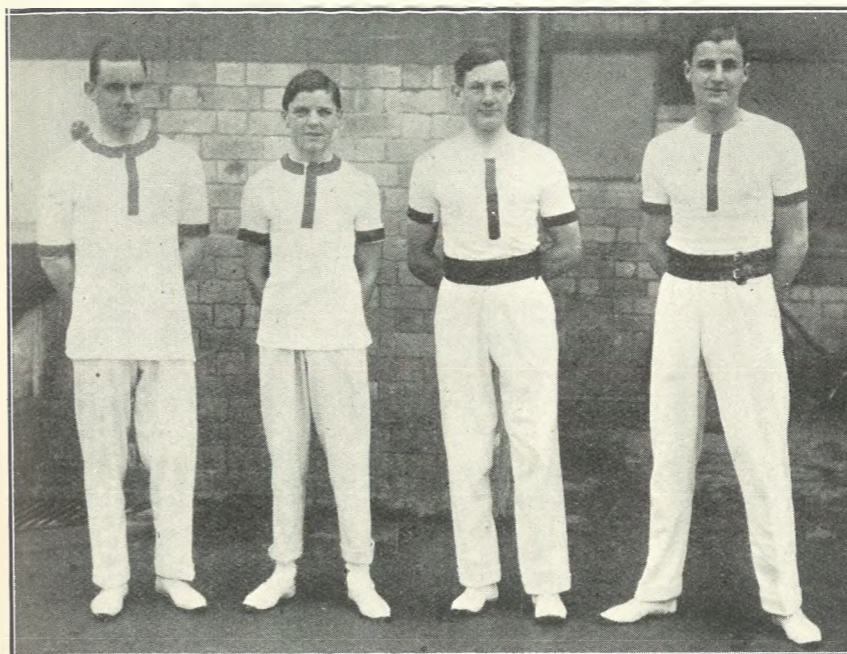
8 Colonnade, CHELTENHAM.

**Specialities.**

|   |   |                                     |
|---|---|-------------------------------------|
| Robertson's<br>Edinburgh<br>Smoking<br>Mixture. | Robertson's<br>Home-Made<br>Virginia<br>Cigarettes. | Robertson's<br>"Croesus"<br>Cigars. |
| 4/4<br>per 1/4 lb.                              | 100 ... 6/8<br>50 ... 3/4<br>25 ... 1/8             | 50 ... 30/-<br>25 ... 16/-          |

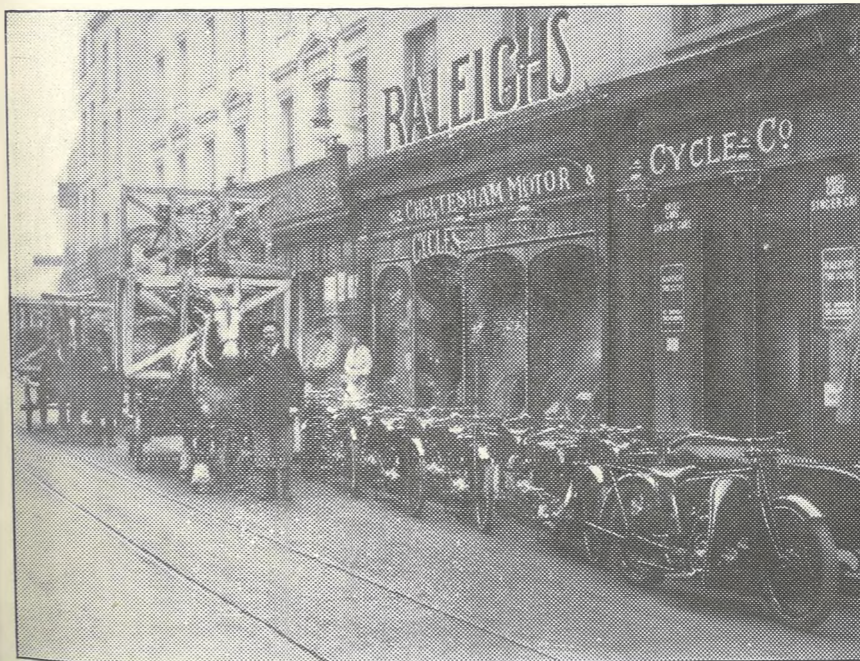
N.B.—Noted House for PIPES in all the best makes,  
 viz.:

Loewe, Barling, B.B.B., Orlik, & Dunhill.



**GYMNASTIC COMPETITION AT CHELTENHAM COLLEGE.**  
 After the boxing contests at the College on Saturday, March 5th, two Cheltenham College boys met two Malvern College boys in a gymnastic duel. From left: Williams and Duncan (Malvern), Howell and Wybrants (Cheltenham).

**THE ARRIVAL**



of 1927 RALEIGH MOTOR CYCLES  
 AND BICYCLES.

Motor Cycles from £29 0 0 **BETTER VALUE THAN EVER!** Bicycles from £6 7 6

ALL SPARES STOCKED :: TERMS ARRANGED.

**CHELTENHAM MOTOR AND CYCLE CO.,**  
 SOLE RALEIGH DISTRIBUTORS.

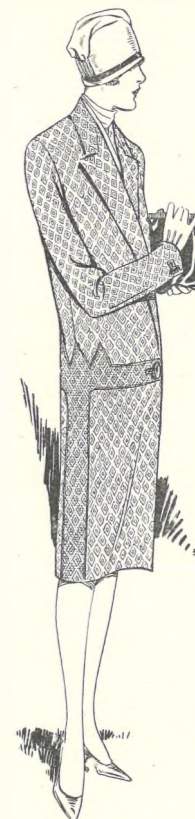
82 High Street, CHELTENHAM. :: Tel. 2166.

**Lance's**

Have a most charming  
 :: :: range of :: ::

**COATS**  
 FOR SPRING WEAR.

Newest Cloths and Shades  
 to choose from, and invite  
 :: :: your inspection. :: ::



This stylish COAT may be had in fine  
 Saxony Tweed Suiting. Shades of Fawn,  
 Beige, Grey, Almond, Rose, and Blue.

PRICES FROM :: :: **63/-**

Other qualities in Tweed Suitings  
 may be seen in our Showrooms.  
 Prices from 29/6 to 10 Gns.

**John Lance**

& Co., Ltd.,

Cheltenham's Shopping Centre.



**FUNERAL SERVICE FOR THE LATE MR. H. S. (BERTIE) SLADE.**

The first part of the funeral service for the late Mr. "Bertie" Slade, who died so suddenly last week, was held at the Cheltenham Parish Church on Saturday morning last, preparatory to the interment at Worcester. There was a large congregation, testifying to his popularity in a wide circle.

- 1.—Family mourners leaving the church, two of his brothers leading, Messrs. Huber C. and William T. Slade.
- 2.—Mourners leaving church, amongst them being Messrs. H. Merry, F. W. Billings, Lyn Rainger, R. W. W. Edwards, R. Webb, and A. Bence.
- 3.—Messrs. A. Turner and Geo. Reynolds, of Lloyds Bank.
- 4.—Messrs. Lyn Rainger and W. J. Davidson.
- 5.—Mrs. A. M. Allen and Mrs. G. Allen.
- 6.—Mourners leaving church.
- 7.—Capt. Anderson, Mr. H. E. Owen, and Mr. S. T. Walford.
- 8.—Messrs. W. H. Hudson and Geo. Straw.
- 9.—Messrs. Lewis Vizard and Newton Vizard.
- 10 and 11.—Mourners leaving church.

"Cheltenham Chronicle" Photos. Copies may be obtained at Office.



**BUSINESS MEN OF CHELTENHAM: WINCHCOMBE STREET TRADESMEN.**

- 1.—Mr. C. T. Painter, of Messrs. Jackson and Painter, grocers, 22 Winchcombe-street.
- 2.—Councillor F. H. Bastin, electrical engineer, 86 Winchcombe-street.
- 3.—Mr. H. Gibbons, hairdresser, 5 Winchcombe-street.
- 4.—Mr. Sid Tonge, music dealer, The Arcade, Winchcombe-street.
- 5.—Mr. H. W. Symes, boot and shoe dealer, 85 Winchcombe-street.
- 6.—Mr. S. J. Powell, jeweller, of 13 Winchcombe-street.
- 7.—Mr. A. F. Evans, Watchmaker and Jeweller, of Winchcombe Street.
- 8.—Mr. W. F. Lee, stationer and picture framer, 17 and 18 Winchcombe-street.
- 9.—Mr. Chas. Mitchell, antique dealer, 7 Winchcombe-street.
- 10.—Mr. W. T. Morris, fishmonger, of 92 Winchcombe-street.
- 11.—Mr. Willfred Davis, butcher, of 90 Winchcombe-street.
- 12.—Mr. A. E. Dex, butcher, of 12 Winchcombe-street.

"Cheltenham Chronicle" Photos. Copies 1s. each, 1s. 6d. mounted.

Telegrams :  
 "Sunningend, Cheltenham."  
 "Sunningend, London."

Architectural  
 Decorators



to H.M.  
 King George V.

By Appointment.

Telephones :  
 3061-2-3-4 Cheltenham.  
 7355/6 Regent, London.

# H. H. MARTYN & CO., LTD.,

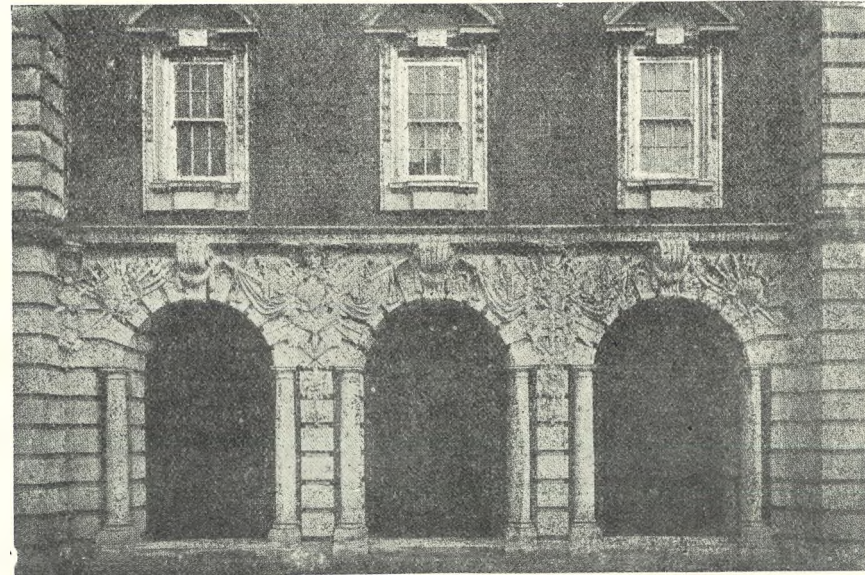
Sunningend Works,  
 CHELTENHAM.

5 1/2 Grafton Street, Bond Street,  
 LONDON, W.1.

STONE  
 &  
 WOOD  
 CARVING.

WROUGHT  
 AND CAST  
 METALS OF  
 ALL KINDS.

FIBROUS  
 PLASTER  
 DECORATION.



STONE CARVING, WOOLWICH TOWN HALL. Architect: Sir A. Brumwell Thomas.

JOINERY  
 AND  
 PANELLING.

SCULPTURE  
 AND  
 MODELLING.

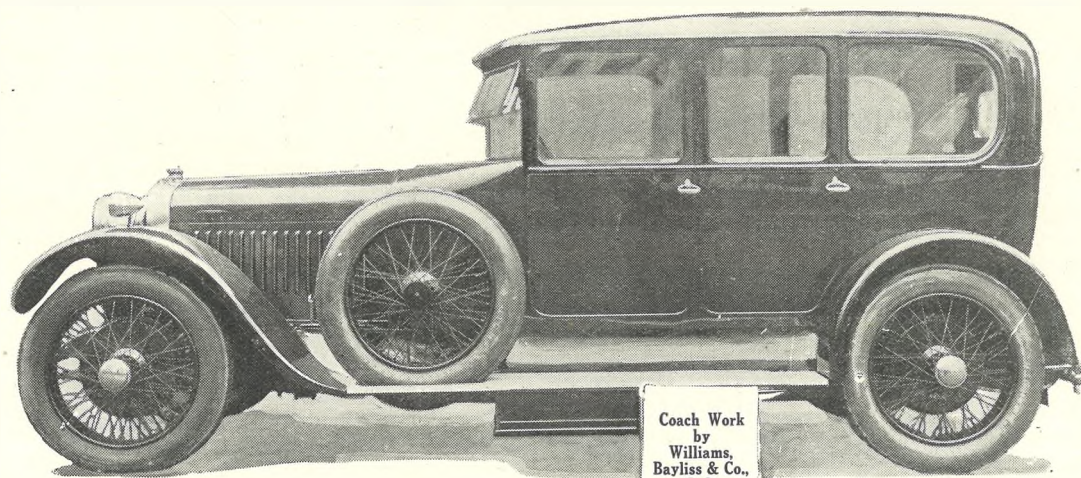
MEMORIAL  
 TABLETS,  
 ETC.

'Phone 3389.

'Phone 3389.

## High-Class Motor Body Builders & Motor Engineers.

Estimates  
 Given  
 for all  
 Classes  
 of  
 Bodywork.



Coach Work  
 by  
 Williams,  
 Bayliss & Co.,  
 Ltd.

Any  
 Make  
 of  
 Chassis  
 Supplied.

Licensed Builders of Weymann Bodies.

Touring Bodies Converted to Saloons.

BELCO CELLULOSE SPRAY-PAINTING on the Premises.

*Inspection Invited.*

# WILLIAMS, BAYLISS & Co., Ltd.,

WORKS: BERKELEY AVENUE and Pittville Garage, Winchcombe St., CHELTENHAM SPA.



### ROUND THE TOWN IN TEWKESBURY.

Snapshots taken by our own Photographer in Tewkesbury streets.

- 1.—Rev. and Mrs. A. F. Scudamore.
- 2.—Mr. J. Willis, J.P., senr., ex-Mayor of Tewkesbury.
- 3.—Are they sisters?

- 4.—Mrs. White.
- 5.—Reflections.
- 6.—Out from business for a few minutes.

- 7.—Shopping.
- 8.—A young cyclist.
- 9.—Mrs. Healey.

"Cheltenham Chronicle" Photos. Copies 1s. each, postage 2d. extra.

# CHELTENHAM CAR MART

FOR

## YOUR NEW CAR.

### Austin

CHRYSLER.

TALBOT.

CLYNO and MORRIS.

EXCHANGES  
OR  
DEFERRED  
PAYMENTS  
TO SUIT  
YOUR  
CONVENIENCE.

ANY MAKE OF  
CAR SUPPLIED.

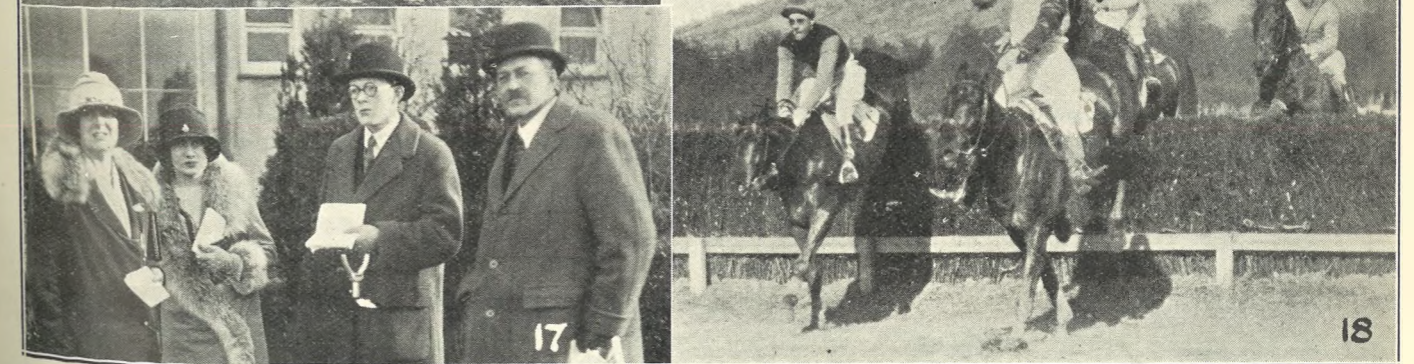
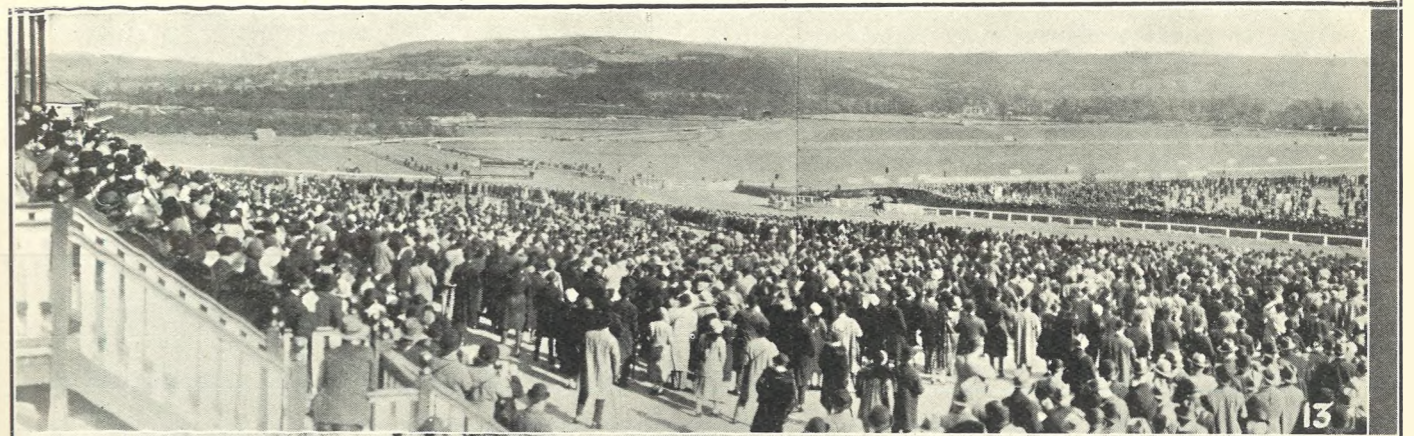
### Cheltenham Car Mart

WINCHCOMB STREET

and GRAFTON GARAGE, SUFFOLK ROAD,

Phone: 2604. : CHELTENHAM. : Wires: "Car Mart, Cheltenham."

A REPRESENTATIVE  
WILL INSPECT  
YOUR PRESENT CAR  
ANYWHERE UPON  
RECEIPT OF  
ENQUIRY.  
BEST ALLOWANCE  
GIVEN.



### NATIONAL HUNT STEEPLECHASES IN CHELTENHAM.

Further scenes at the meeting taken on Tuesday and Wednesday.

13.—General view of course on Tuesday, taken from one of the stands in Tattersall's, showing the beautiful panorama. The light was wonderful.  
14.—Start of United Hunts' Challenge Cup Steeplechase on Tuesday, won by Mr. W. N. Unwin's (of Cheltenham) Alfredo.  
15.—Mrs. Harry A. Brown, Mr. Harry A. Brown (after a nasty fall on Lord Londesborough's Dudley), Dr. Morton Smart,

and Lord Londesborough walking up the course after the Cheltenham Grand Annual Steeplechase. The Prince of Wales, who had gone to the last fence to watch the racing, waited after the race and walked down to meet them, obviously to enquire whether Mr. Brown was hurt.  
16.—Messrs. Griff Thomas, J. Richards, Peter Roberts, Owen Anthony, and W.

T. Anthony watching the racing on the course.  
17.—Mrs. McKurdy, Miss Fletcher, Mr. McKurdy, and Capt. McKurdy, of Malmesbury.  
18.—Last fence in United Hunts' Challenge Cup, Mr. W. N. Unwin's Alfredo (winner) leading. Mr. Bob Eaton rode him splendidly.

# SHIRER & HADDON'S Ltd.



A New Model in Black Marocain, with Panel Hem of Contrasting Colour. In Beige.

Price, 9½ Guineas.

## FASHION SECTION. DISPLAYS EVERY DAY.

Here are assembled for your choice hundreds of Fashionable Garments, from inexpensive to elaborate creations of noted artists. All entirely new, and entirely different.

The moment for Spring choice is particularly happy at present, for a large collection of Models from our Manniquin Parade, of Friday last, are now showing.

### MATRONS' AND SMALL SIZES.

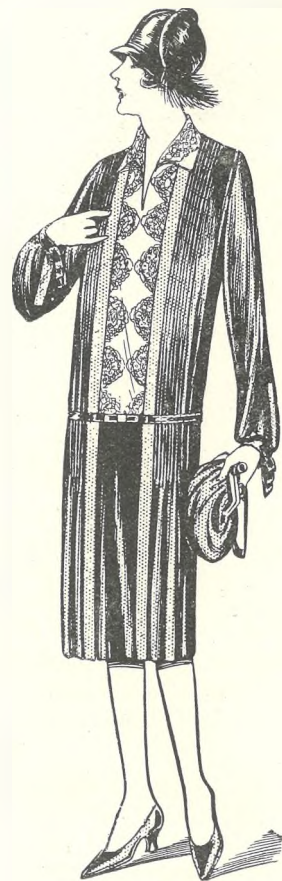
YOU CAN ALWAYS FIND A GOOD SELECTION HERE, WE SPECIALISE IN MATRONS' AND SMALL SIZES.

SPECIAL FASHION WEEK

MARCH 14th TO 19th.

Colonnade and Clarence Street, CHELTENHAM.

THE KEYNOTES OF OUR FASHION SALONS ARE TASTE AND SOUND VALUE.



Another charming Frock in Heavy Navy Crepe de Chine, with Strap Back and Front of Contrasting Colour. Vest of Beige Georgette and Lace Motifs.

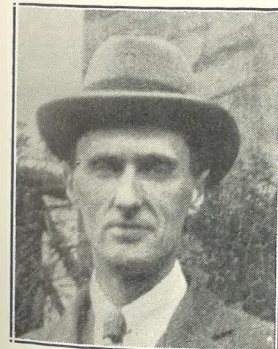
Price, 9 Guineas.



### NATIONAL HUNT STEEPLECHASES IN CHELTENHAM.

- 19.—Wind Swept (second), who pecked, and Socrates (winner) taking last fence in Cheltenham Grand Annual Steeplechase.
- 20.—The four runners in Champion Hurdle Cup. From left: Boddam (second), Harpist (third), Blaris (winner, G. Duller riding), and Labrador.
- 21.—Two members in enclosure.
- 22.—Lord Gifford (left) and Mr. John Ripley.
- 23.—Sir Geo. Bullough, Hon. Wm. and Mrs. Lambton, and Mr. Bass.
- 24.—Lady Ebrington and Hon. Sylvia Portman.

"Cheltenham Chronicle" Photos. Copies 1s. and 1s. 9d. each.



DR. PERCY C. GARRETT, M.R.C.S., L.R.O.P.,

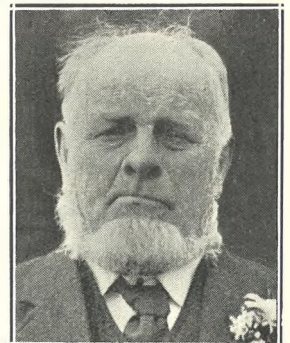
of Royal Parade, Cheltenham, who died of pneumonia on March 7th, aged 46 years. He was the Medical Officer of the Cheltenham Friendly Societies' Medical Association since 1911. He was formerly in practice at Dursley, and leaves a widow.

"DISTINCTION WITH ECONOMY."

EVERYTHING In Perfect Taste for SPRING WEAR: JUMPER SUITS, TWEED COATS, and LARGE SELECTION OF HATS at:

*Sensier*

THE LITTLE SALON, 388b High Street, Cheltenham.



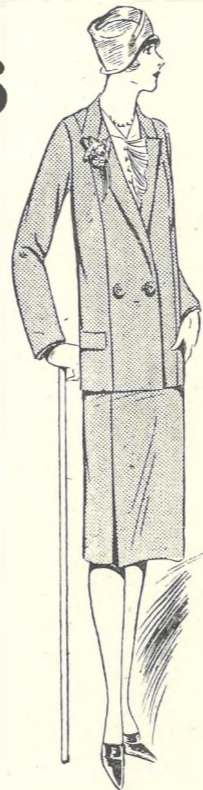
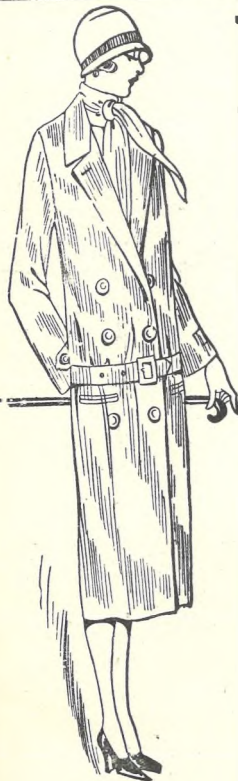
MR. HENRY GRIPPS,

Of The Quarrs, Caudle Green, near Cheltenham, who died on March 6th, in his 79th year. He had lived 45 years in the same house at Caudle Green, and was greatly respected. He celebrated his Golden Wedding on April 6th, 1922, when all his nine children and 24 grandchildren were present. His widow survives him.

Read the Echo Every Day

# New Spring Fashions FOR TO-DAY WEAR.

In selecting Our Ready-to-Wear Garments, Our First Consideration is Always the Correct Cut and Style, and just that Extra Finish which makes all the difference. The result is we can Guarantee Every Garment. As we are just out of the high rent district, you should Inspect Our Selection before choosing Your Spring Costume.



64-in. ALL-WOOL REPP., very fine quality, made from the softest of yarns ..... **6/11½**  
In all colours.

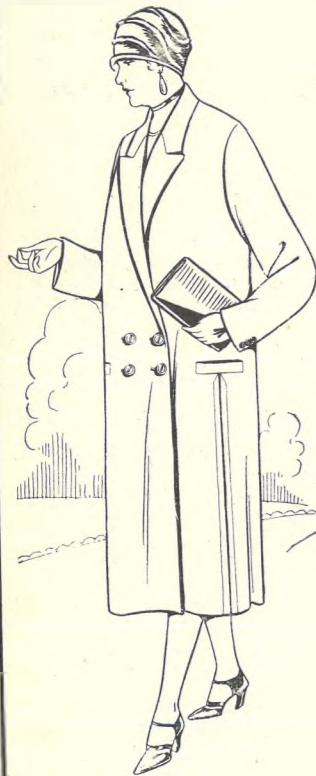
40-in. ALL-WOOL SANTOL, an extremely useful material for Ladies' or Girls' Frocks, ..... **2/11½**  
In all new colours.

54-in. ALL-WOOL JACQUARD REPP., a very fine quality material, with a self-coloured design woven in cloth. Usual Price 8s. 1½d. Our Price **3/11½**  
In Grey, Tomato, Tan, and Black.

Ladies' Featherweight Rubber-lined MACINTOSHES, well cut and finished, by one of the best makers, guaranteed two years, in various shades. **21/6**

Ladies' Plain Tailor-made COSTUME, in Wool Repp. lined Art. Silk, extremely well cut, and usually sold at 63s. **49/6**

WE SPECIALISE IN EXTRA LARGE and EXTRA SMALL SIZES.



Try Dicks first



Girls' NAVY MACINTOSHES, for school wear, rubber-lined, in all sizes, from **12/11**

Ladies' New OVER-BLOUSE, in fine Cream Poplin, with fancy coloured Tie and pockets. Also in Crepe de Chene, in all colours, 18s. 11d. **5/11½**

MATRONS' COAT, in medium to very large sizes, smartly cut and beautifully tailored in Wool Repp. Navy, Black and Mole, and all shades **£3/19/6**

We stock Extra Large Size in Black and Coloured Coats from 29s. 6d. to 6 Guineas.

## Dicks & Sons Ltd.

172 & 173 HIGH STREET  
Cheltenham Spa  
50 YEARS REPUTATION FOR VALUE.

Ladies' Light-weight SHOWERPROOF TWEED COATS, in new shades, well cut and Tailored. Also **29/6**  
21s. 6d. to 79s. 6d.

# THE CHELTENHAM CHRONICLE AND GLO' SHIRE GRAPHIC

With Which is Incorporated the "Cheltenham Looker-On."  
GRATIS SUPPLEMENT. Saturday, March 19, 1927. No. 1,368.

## CHELTENHAM THEATRE AND OPERA HOUSE.

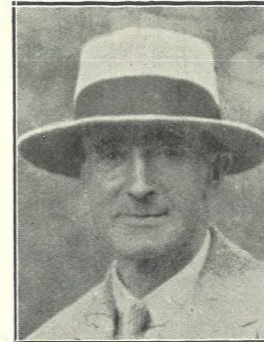
This Afternoon (2.30) and Evening (7.45)—"IS ZAT SO?"  
NEXT WEEK:—St. James's Productions present—  
**"ASK BECCLES."**  
MARTIN LEWIS as "BECCLES."

### THE PALACE HIGH ST., CHELTENHAM.

Big Two-Feature Three Hours' Programme!  
Monday to Wednesday:  
A Cecil Hepworth British Production, with **Alma Taylor**, from the Famous Novel by John Goodwin,

"The House of Marney,"  
A Roystering, Breezy Melodrama.  
**Seena Owen** and **Joseph Schildkraut** in  
"SHIPWRECKED."  
A Thrilling Photoplay of a Storm and Disaster at Sea.  
Thursday to Saturday:  
**Johnny Hines**

In his Laugh Special,  
"RAINBOW RILEY."  
**Douglas Cochrane** and his Popular Orchestra.



MR. WALTER C. UNWIN, M.H.

Of Arle Court, near Cheltenham, who was presented with a solid silver salver, engraved in facsimile with the autographs of the subscribers, at a meet of his Harriers at Arle Court on Friday, March 18th, as an appreciation of the sport he has shown with his pack of Harriers for many seasons, at his own entire expense.



MR. "JACK" SLATTER, Of Glebe Farm, Wood Stanway, who died in Cheltenham General Hospital on Sunday morning last from injuries received in a fall from his motor-cycle at Prestbury the previous evening. He collided with a pedal cyclist in front, whom he did not see until too late. He was 29 years of age.

### THE DAFFODIL, Cheltenham's Premier Cinema.

Continuous Daily, 2.30 to 10.15.  
FOR ONE WEEK,  
Commencing Monday, March 21st.  
England's Movie Queen,

**BETTY BALFOUR**, in  
"CINDERS,"

The Adorable Betty, of "Love, Life, and Laughter Days."  
A Greater British Picture.  
Musical Intermission Daily at 8 p.m. by the Daffodil Grand Orchestra. Musical Director, Mr. Arthur Burrows.

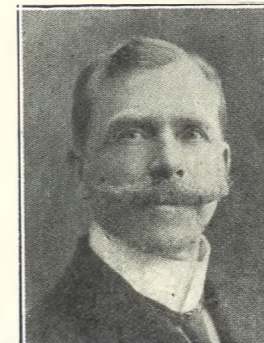
Established 1806.

### Martin & Co., Limited,

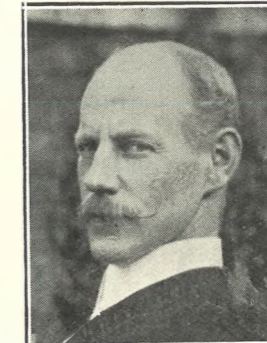
The County Jewellers,  
Pearl and Diamond Merchants.

A Large Selection of Second-hand Silver and Old Sheffield Plate.  
We are Purchasers of Antique Silver and Fine Quality Gems. Best Prices Given.

LICENSED VALUERS.  
Promenade, Cheltenham.



DR. JOHN H. BLAKENEY, Who for some years practised in Cheltenham, died in Worcester of pneumonia on March 12th, aged about 60 years. He came to Cheltenham about 20 years ago from Birmingham, and joined up at the outbreak of War, not returning to Cheltenham.



MR. W. HADEN, Of Omeo Lodge, College-road, Cheltenham, who died on March 14th, aged 56 years. He was a dentist, and for many years was assistant to the late Mr. J. L. Robertson. He leaves a widow, one son, and one daughter.

### WINTER GARDEN, CHELTENHAM. Phone 2212.

THE SUPER CINEMA.  
Where Everybody Goes.  
Monday, Tuesday, Wednesday:  
**DOUGLAS FAIRBANKS**  
In a Rattling Comedy

"When the Clouds Roll By,"  
A Picture of hundreds of laughs and thrills in Fairbanks' most refreshing manner.

Thursday, Friday, and Saturday:  
The Picture of all time & climes.  
**Lillian Gish** and **Richard Barthelmess**

In D. W. Griffith's Masterpiece,  
"WAY DOWN EAST,"  
Seats can be reserved now for Cherry Kearton Matinees, March 31st, April 1st and 2nd.

### COLISEUM CHELTENHAM. Phone 3715.

6.40 and 8.40.  
The Big Comedy Revue,  
"MUSTARD,"  
The Scream of 1927.

### NORTH STREET PICTURE HOUSE.

Continuous from 2.30 p.m.  
Monday, Tuesday, Wednesday:  
"The Gentle Cyclone,"  
Featuring **Buck Jones**,  
Thursday, Friday, and Saturday:  
"Should a Woman Tell,"  
Featuring **Constance Bennett** and **Wallace MacDonald**.

"Distinction with Economy."  
Everything for Eve's adornment at THE LITTLE SALON.

## Sensier

388b High St., Cheltenham

Telephone 1080.

**W. Scott Cooper**,  
Diamond Merchant, Jeweller,  
Goldsmith and Silversmith.

The Promenade, Cheltenham.  
LICENSED VALUERS.

## For the Best PIANOS, DALE, FORTY and Co. Ltd.





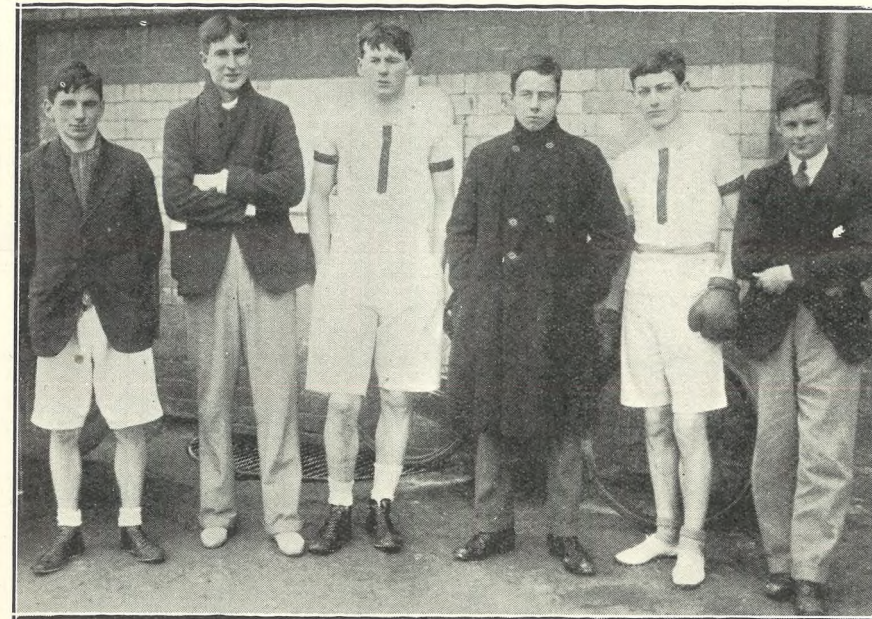
**ROUND THE CITY IN GLOUCESTER.**

Snaps on Tuesday last round and about the Cross.

2.—Mr. Harley K. Butt.  
5.—Mr. C. King.

10.—Mr. Smith (Master of the Workhouse),  
P.S. Antill, and Councillor ex-D.C.C.  
Harrison.

"Cheltenham Chronicle" Photos. Copies 1s. each, postage 2d. extra.



**CHELTENHAM COLLEGE BOXING TEAM,**  
Who, on March 5th, won the Inter-College Boxing Match by 14 points against Downside (12), Clifton (10), and Malvern (6).  
P. C. Grant (Bantam), won; J. O. Crewe-Read (Captain) (Welter), won; W. R. Formby (Heavy), won; J. S. Curtis (Feather), lost; B. S. Kent (Light), lost; C. W. Powell (Fly), lost.



**THE BECHSTEIN**

PIANO needs little recommendation to cultured tastes.

Its beautiful tone and incomparable touch—qualities which have gained for it the esteem of every music lover, and have set a standard to the world—are as exquisite and as characteristic as ever.

Write or Call for Catalogue.

Sole Agent:—

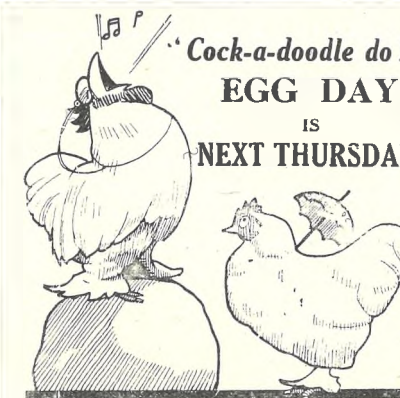
**Crichton's**

(Ernest Crichton, Ltd.),

The Piano House,

**394 HIGH STREET,  
CHELTENHAM.**

'Phone 2378.



**CHELTENHAM GENERAL  
AND EYE HOSPITALS'**

**EGG DAY**

IS  
**Thursday Next,  
MARCH 24.**

Please remember the date  
and bring us EGGS or MONEY.

Eggs will be Received All Day at Both Hospitals and at the following places:—  
CAVENDISH HOUSE  
THE CREAMERY, PITTVILLE STREET.  
GLOUCESTERSHIRE DAIRY CO., LTD.,  
SUFFOLK PARADE.  
MR. YARNOLD, 296 HIGH STREET.

We :: PHOTO OR :: to your  
Make PICTURE FRAMES order  
IN 24 HOURS!

**LEE,** Stationer & Picture Framer,  
CAXTON HOUSE,  
Winchcombe Street, CHELTENHAM.

*Spring Cleaning  
Time.*

**Lance's**

Have just received  
a large delivery of

... LACE ...  
**CURTAINS,**  
Curtain Nets,  
**CASEMENT  
CLOTHS, ..**  
Cretonnes,  
**CARPETS, &c.**

Largest Selection in the West  
of England to choose from, and  
::: most moderate in price. :::

CATALOGUES MAY BE  
:: HAD ON REQUEST. ::

**John Lance**

& Co., Ltd.,

::: COMPLETE :::  
HOUSE FURNISHERS,  
**CHELTENHAM.**



**CHELTENHAM MEMORIAL TABLET TO WILLIAM CHARLES MACREADY.**

On Tuesday last, March 15th, General Sir Nevil Macready unveiled a Memorial Tablet on No. 6 Wellington Square, the house in which his father, the famous Shakespearean Actor, lived from 1860 to 1873, and in which he (Sir Nevil) was born.

- 1.—Rt. Hon. Gen. Sir Nevil Macready, Bart., G.C.M.G., K.C.B. (O.C.), with his son, Maj. Macready (O.C.), his nephew, Mr. Wm. Macready, and his daughter, Mrs. Puckle.
- 2.—Part of the audience at unveiling ceremony.
- 3.—The bronze panel, with raised letters, was the work of Messrs. Hancock & Son, the well-known Cheltenham craftsmen.
- 4.—Sir Nevil Macready and his niece, Mrs. Semple.
- 5.—The ceremony on the steps of No. 6 Wellington-square. From left: Sir Nevil Macready, Mr. Paine, Mr. A. Miles, The Mayor (Ald. C. H. Margrett), and Mr. D. W. Herdman (Hon. Sec.).



- 1.—Miss Bland (Clifton) winning high jump at 4ft. 1in.
- 2.—Competitors shooting at bucket.
- 3.—Finish of Open 100 Yards Race, won by Miss Norman (East Gloucester). Miss Jervis (Clifton) was second.
- 4.—The winning Relay Team (East Gloucester).

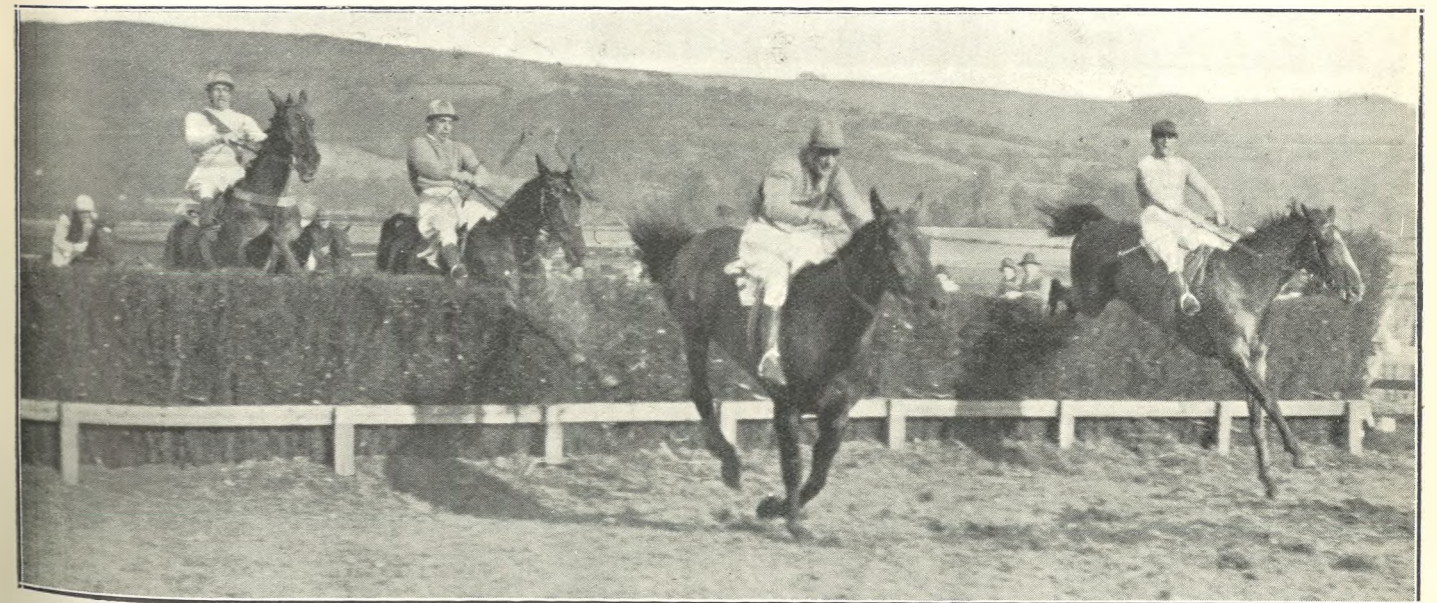
Gloucestershire Ladies' Hockey Inter-Club Sports, held on the East Gloucestershire Ground on Saturday, March 12th.



**CHELTENHAM SEES SIR ALAN COBHAM'S FAMOUS AERO ENGINE.**

Extraordinary interest was aroused by the Exhibition at Messrs. Norton and Company's Showrooms of the famous Siddeley Jaguar Engine which propelled Sir Alan Cobham's machine on his historical flights to South Africa and to Australia. In conjunction with this Messrs. Norton arranged a special display of the newest Armstrong Siddeley cars, and the scene in Messrs. Norton's showrooms is here illustrated. The men who made Sir Alan Cobham's engine also make Armstrong Siddeley cars.

\*\*\*\*\*



**NATIONAL HUNT STEEPLECHASES IN CHELTENHAM: THE RACE OF THE MEETING.**

The finest race of the magnificent three days' Race Meeting in Cheltenham was seen on Thursday, March 10th, in the National Hunt Handicap Steeplechase of 1,000 sovs., when the pick of the best steeplechasers in England competed, many of them Grand National horses. Our photo shows the last fence, with "Herbert's Choice," ridden by F. Gurney, just landed, "White Park," the favourite, ridden by E. Foster, on right, jumping, "Vive," ridden by Jack Anthony, third, and "Donegal," ridden by W. Gurney, next. After a neck and neck finish up the hill "Herbert's Choice" won by a short head from "White Park." The latter was carrying two stone six lbs. more than the winner. There was a great discrepancy of opinion as to which horse cleared the last fence first, but our picture clearly shows the winner in front.

"Cheltenham Chronicle" Photo. Copies 1s. 9d. each, postage 2d. extra.



**ROUND THE TOWN IN CHELTENHAM.**

Taken in the Promenade on a fine Sunday afternoon.

"Cheltenham Chronicle" Photos. Copies 1s. each, Postage 2d. extra.

\*\*\*\*\*

**SEND THE "CHRONICLE & GRAPHIC" TO YOUR FRIENDS EVERY WEEK.**



**ENGLISH INTERNATIONAL HOCKEY TRIAL MATCH IN CHELTENHAM.**

The final Trial Match between England and the Rest took place on Saturday, March 12th, on Dean Close School Hockey Ground. England won by two goals to nil.

- 1.—The teams. England played in white.— From left: Messrs. Harlan (umpire), G. P. Vines, \*A. W. Kirkaldy, \*C. C. Brooks, \*F. C. Harrison, \*E. S. Hoare, E. T. Hollins, K. G. Chilman, H. P. Hanham, W. P. Phillips, Lieut. N. R. Salem, \*A. P. Ogilvy, L. H. Shelley, \*T. A. Rotheram, \*Warrant-Officer Godfrey E. Hartley, \*F. E. Nugent, \*S. H. Saville, E. T. Haywood, J. Gregory, H. Clements, \*H. J. Still, \*H. R. Searby. Those marked \* have since been chosen to play for England.
- 2.—An attack on Rest goal, cleared by goalkeeper.
- 3.—Dean Close School boys watching the match.
- 4.—Hot work in circle, cleared by Hoare (in black and white halved shirt).
- 5.—The first goal—scored with a lightning shot by Saville (in white in centre of picture).
- 6.—Cheltenham College boys, who supported the match in large numbers.
- 7.—A duel—who will get the ball? Hanham and Ogilvy.

"Cheltenham Chronicle" Photos. Copies 1s., 1s. 9d. and 2s. 6d. according to size. Postage 2d. extra.



**ROTARY CONFERENCE IN CHELTEMHAM.**

The annual conference of the 10th (or Western) District of the Rotary International of the British Isles was held at Cheltenham on Friday and Saturday, March 11th and 12th. Some of the visiting and local Rotarians who lunched at the Town Hall. "Cheltenham Chronicle" Photo.

\*\*\*\*\*



**Gloucestershire v. Middlesex in Tennis Hard-Court Championship.**  
 On Saturday last, Middlesex outplayed Gloucestershire at the East Gloucestershire ground, Cheltenham, in the semi-final of the County National Hard Court Championship by 10 matches to one, G. G. McIlquham being the only one to win a match for Gloucestershire. "Cheltenham Chronicle" Photo. Copies 1s. and 1s. 9d. Postage 2d. extra.

**SIGNS OF A REAL HAIRDRESSING SERVICE.**



Member of the Hairdressers' Guild.



Registered Hairdresser.



Member of the National Federation of Hairdressers.

TEL. 3490.

THE PROMENADE,

CHELTEMHAM.



**GOTSWOLD HUNT POINT-TO-POINT RACES AT HASELTON.**

This popular fixture, held on Wednesday last, was one of the most successful in the history of the Hunt. The course was laid out entirely on the farm of Mr. Geo. Wood, of Haselton, and from the high ground could be seen in its entirety. It was beautifully dry and clean, with the going perfect, and capital racing. Over 500 farmers sat down to luncheon in a big marquee, supplied by Messrs. George's, Ltd.

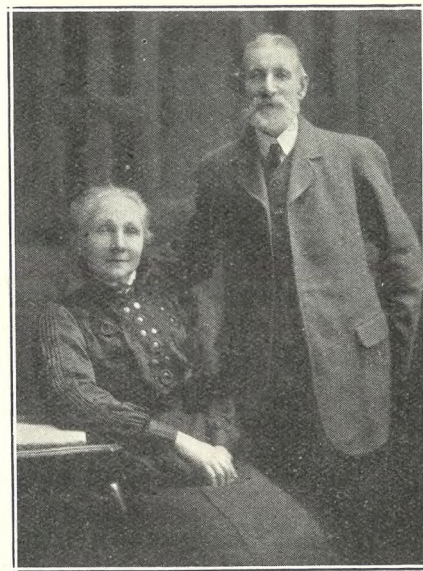
- 1.—Mr. Ben Garmen, Mrs. Taylor, and Mrs. Henley.
- 2.—A big mound in centre of field used as a grand stand.
- 3.—Professor Duncan, R.A.C., with Dr. and Mrs. Grove White.
- 4.—Messrs. Hughes Bros.' Lady Bountiful winning Cotswold Hunt Farmers' Race, carrying 13st. 10lbs. She is a wonderful old mare.
- 5.—A luncheon party. Mr. M. Turk (left) and Mr. and Miss Ward (on right) with friends.
- 6.—(On right) Mr. E. J. Gibbins, Mr. A. Cresswell, and Mr. Ellis Hicks-Beach.
- 7.—Looking at the horses.
- 8.—The first fence in Open Nomination Race.
- 9.—Mr. Walter Herring (Gloucester), Mr. J. Sivell, and Mr. T. J. Long.

"Cheltenham Chronicle" Photos. Copies 1s. and 1s. 9d., postage 2d.



**Cheltenham Schoolboys' Association Football Team.**

Who, on Saturday last, beat Stroud Schoolboys by four goals to nil in the semi-final of the J. A. Stevens' Cup Competition.  
 At back—Messrs. Poulton, Barker, P. Close (referee), and Armstrong. Second row: Green, Smith, Webb. Seated: Cook, Bruntnell, Boote, Ralph, and Jones. In front: Taylor, Prothero, and Messer. "Cheltenham Chronicle" Photo. Copies 1s.



**BISHOP'S CLEEVE GOLDEN WEDDING.**

Mr. and Mrs. Charles Thomas Oakley, of The Thoughts Gardens, Bishop's Cleeve, who on Tuesday last (March 15th) celebrated their Golden Wedding. Mr. Oakley is a market gardener of many years' standing, and his father carried on a similar business before him. He is 78 and his wife 75 years of age. They have six children—three sons and three daughters; eight grandchildren, and one great-grandchild.

\*\*\*\*\*

**"DORWARD"  
 PLUS FOUR  
 :: SUITS. ::**

TAILORED IN SCOTLAND.

Real Harris, Home Spun,  
 :: and Fancy Tweeds. ::

SEE and TRY ON a Suit.

Priced from Five Guineas

**Raymond James,**

Phone : WINCHCOMBE STREET,  
 2648. CHELTENHAM.

ACTUAL PHOTOGRAPHS  
 Of Pictures  
 Appearing in the "Graphic" and  
 "Chronicle" Offices, Clarence Parade,  
 Cheltenham.

*The Repairers say—*

**"Have good advice, but,  
 choose your car yourself."**

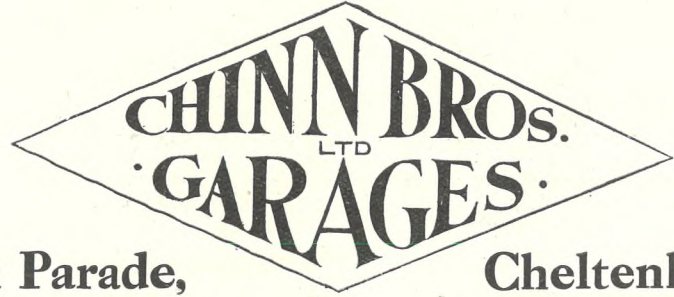


Buying a new car is quite a different proposition to selecting the most attractive Spring model hat—the Milliner cares not at all which you choose so long as you make a choice.

With a car, Mr. Sole Agent quite naturally wishes to interest you in the "Gloria 4"—oh! a most perfect car, for which he is sole agent; all other cars are, of course, obsolete. Yet, what of the "Velvet 6" for which Mr. A. N. Other, sole agent, claims perfection, thus relegating the "Gloria 4" to the scrap heap?

Why be influenced by all this sole-agency talk—it's a real good car you want. Why not let us explain the true merits or failings of all. Being free of sole agencies, our unbiased opinion will be given free of all prejudice.

May we help you decide on the soundest make of car to suit your particular taste and pocket?



Bath Parade, Cheltenham.

*"The Better Motor Repairers"*

BEST QUALITY  
**CIDERS**  
 IN BOTTLE.—Sparkling and Still.  
**BARTHOLOMEW,**  
 419, 420 HIGH STREET,  
 CHELTENHAM.  
 Wines, Spirits, Ales, Table Waters, & Grocery.  
 Tel. 3590.

**CORSETS AND BELTS**  
 MADE, COPIED, CLEANED AND REPAIRED  
 Hours: 10 a.m. to 6 p.m. Saturdays, 1 p.m. or by appointment. PHONE 3615.  
**MISS FRUIN** (formerly with Madame Annette)  
 23 Bath Parade, CHELTENHAM

LET MOUSELLS MOVE YOU



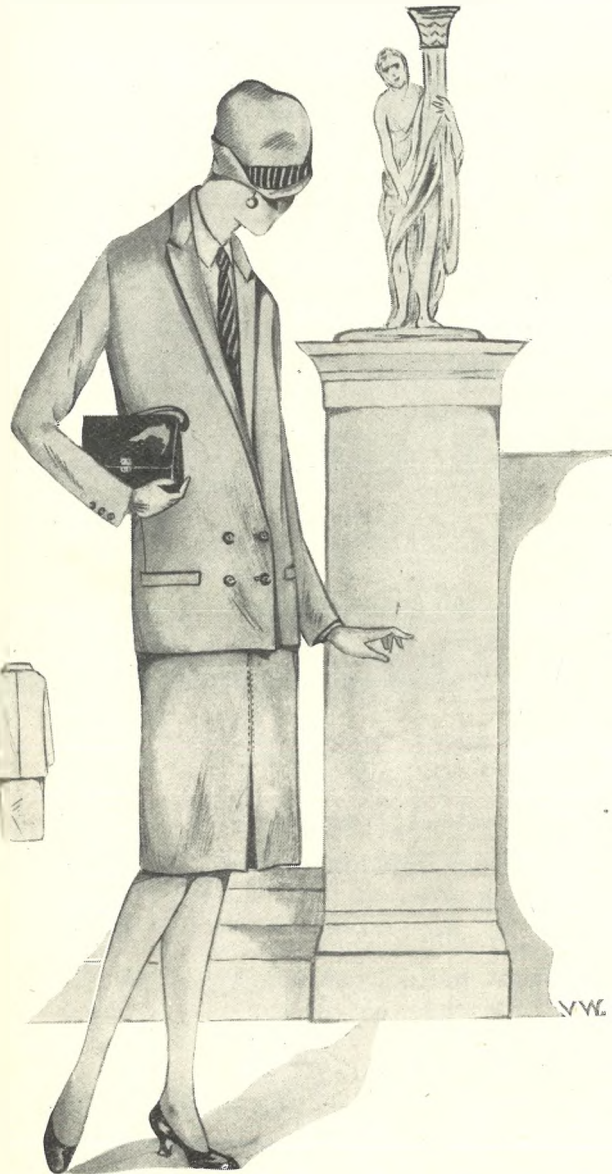
Estimates for Removals and Storing Free.  
 "PHONE 2112.  
**CHELTENHAM.** Offices: AMBROSE STREET.

Are YOU looking for a really delightful Luncheon?  
 (3 COURSES 1/9.)  
 You will find this at  
**The Shamrock Tea Rooms**  
 (On the Promenade Parking Station),  
 CHELTENHAM.  
 Afternoon Teas. : Home-made Cakes. : Breads.

SPECIALIST FOR DISEASES OF THE FOOT.  
**MR. ALFRED J. VENTRIS-FIELD,**  
 ORTHOPÆDIST AND ELECTRO-THERAPEUTIST  
 Author of "The Treatment of Talipes Valgus," "Pedic Surgery," "Poisonous Animals and Vegetables of the Countryside," "Orthopedic Principles of Foot Manipulation," etc.  
 Surgery:  
 6 Rodney Place, Cheltenham. Phone 3266.

NEW DES'GNS IN  
**Hard Wear SHIRTS,**  
 Colour fast to boiling & light. **8/11.** Lined back and front.  
 Own Manufacture.

**A. BECKINGSALE,**  
 111 High Street, CHELTENHAM.



## A FULL SPRING SHOW OF FASHIONS

BY

### VANDERPLANK

THAT will make a sure appeal, because—

- Firstly, They are authentic in style.
- Secondly, There is a selection that is large enough to satisfy all requirements.
- Thirdly, They are value that is beyond compare.

### SPRINGTIME VOGUE.

- Man-fitting Tailor-made Suits, perfect in every detail . . . . . 3 to 12 Gns.
- Coats for Town, Country, or Car . . . . . 2 to 10½ Gns.
- Knitted Sports Wear in all its phases.
- Dresses for each and every occasion.
- Millinery for Maid or Matron, shingled or unshingled . . . . . 12/11 to 5 Gns.

Sketched is a much favoured style in a perfectly plain Tailored-made Suit. Made in a pure wool Navy Coating Serge of finest quality. PRICE, 4½ Gns. The same style is available in checked or plain Suitings.

There is a Style, Size, and Colour to suit you at



FASHIONS AND FURS,

381 HIGH STREET, CHELTENHAM SPA.



With Which is Incorporated the "Cheltenham Looker-On." GRATIS SUPPLEMENT. Saturday, March 26, 1927.

No. 1,369.

## CHELTENHAM THEATRE AND OPERA HOUSE.

This Afternoon (2.30) and Evening (7.45)—"ASK BECCLES."

NEXT WEEK:—Personal Appearance of

**Lydia Kyasht**, *The world-famous Dancer*, and her London Company.

### THE PALACE HIGH ST., CHELTENHAM.

#### THE CINEMA SUPREME.

Monday to Wednesday: Milton Sills, Betty Bronson, Noah Beery, And Big All-Star Cast in "PARADISE."

A Thrilling Story of an English Nobleman's Fight for Fortune in the South Seas. Screened at 2.45, 4.45, 6.45, 8.45. Douglas Cochrane and His Popular Orchestra.

Thursday to Saturday: George O'Brien, Joan Renee, Stewart Rome, in "NOSTROMO,"

From the Novel by Joseph Conrad Screened at 2.45, 4.45, 6.45, 8.45.

### THE DAFFODIL, Cheltenham's Premier Cinema.

Continuous Daily, 2.30 to 10.15. FOR ONE WEEK,

Commencing Monday, March 28: Huge Two-Feature Programme. **BUSTER KEATON** In the Unrivalled Stage Success, "BATTLING BUTLER,"

and **TOM MIX** with the Famous **TONY** in "NO MAN'S GOLD." By far the Best Picture Mix has Yet Done. The above are both Super Pictures and constitute a record for One Programme.

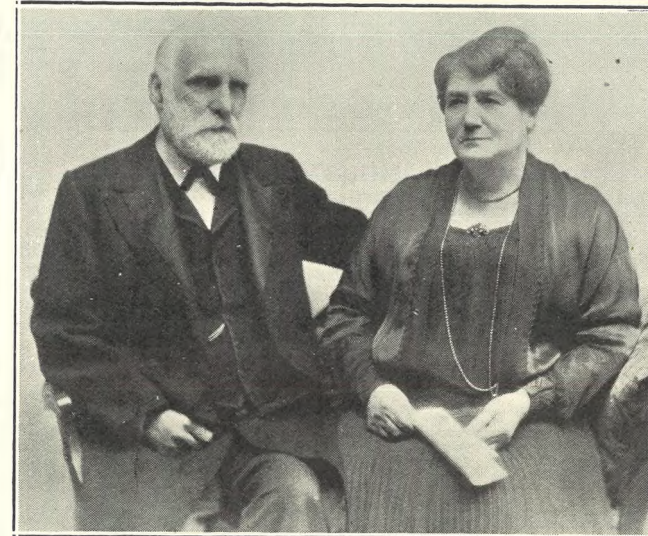
Established 1806.

### Martin & Co., Limited,

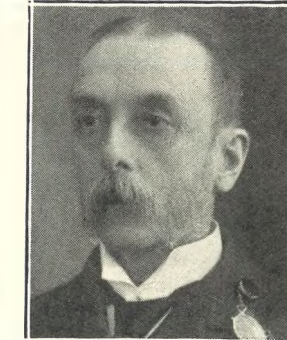
#### The County Jewellers,

Pearl and Diamond Merchants. A Large Selection of Second-hand Silver and Old Sheffield Plate. We are Purchasers of Antique Silver and Fine Quality Gems. Best Prices Given.

LICENSED VALUERS. Promenade, Cheltenham.



Rev. and Mrs. Edwin H. Spring, of the Church of Christ, Derby Road, Gloucester, who on Saturday, March 19th, celebrated their Golden Wedding. They received many presentations.



MR. G. M. CURRIE, Late I.C.S., Of 26 Lansdown Place, Cheltenham, who died on March 19th, in his 86th year. He retired from India in 1892 after 32 years' service, and resided in Cheltenham since.



MR. HEDLEY ("DICK") WIGGETT, Custodian of the Athletic Ground, Cheltenham, who died on March 21st, aged 62 years. He was check-taker at the Opera House for over thirty years.

### WINTER GARDEN, CHELTENHAM.

Monday, Tuesday, Wednesday: **HOOT GIBSON** in "THE SILENT RIDER." Thursday, Friday, Saturday: **MATINEES ONLY!** **CHERRY KEARTON** and His Wondrous Chimpanzee Mary, with the amazing Animal Film, "WITH KEARTON IN THE JUNGLE."

EVENINGS ONLY! 4.45 Continuous. Douglas Maclean and Claude Gillingwater. In a Rollicking, Up-Roaring Comedidrama that starts fast and finishes faster, entitled "THAT'S MY BABY."

### COLISEUM CHELTENHAM. 'Phone 3715.

6.40 and 8.40 p.m. THE MUSICAL COMEDY SHOW, "OUR CABARET," In 25 Original Scenes.

### NORTH STREET PICTURE HOUSE.

Continuous from 2.30 p.m. Monday, Tuesday, Wednesday: **JACK HOXIE**, The Popular Western Star, in "HIDDEN LOOT." Thursday, Friday, Saturday: **JANE NOVAK** in "THE SUBSTITUTE WIFE."

### MAISON ANNETTE,

Kensington House, PROMENADE, CHELTENHAM,

Specialists in Exclusive CORSETS & LINGERIE.

'Phone 2122.

## For the Best PIANOS, DALE, FORTY and Co. Ltd



**GUSTAV HOLST FESTIVAL.**

At the first of the two concerts on Tuesday last of the Holst Festival at Cheltenham Town Hall, the famous Cheltenham-born composer was introduced to the Mayor and Corporation, who attended in State. Above he is photographed with them and other distinguished visitors.  
 Back Row.—Mr. Heller Nicholls, Dr. J. H. Garrett, Messrs. R. Board, T. Allan-Burns, R. O. Seacome, Councillors J. P. Pates, Brig.-Gen. H. M. Thomas, Mr. J. S. Pickering, Cr. F. H. Bastin, Mr. W. J. Bache, Mr. E. W. Deacon, Mrs. Sidaway.  
 Second Row.—Mr. P. J. Taylor, Miss Amy James, Miss Watts, Councillors W. Welstead, J. Moore and H. Miller, Mr. H. Bowd (Mace Bearer), Councillors L. James and E. L. Ward, Rev. C. W. Birley, Miss Alice Crawley, Miss D. Treseder, Mrs. Gustav Holst, Mrs. Gerald Forty, Mr. Gerald Forty.  
 Seated.—Councillor H. W. Thomas, Alderman P. P. Taylor, Alderman J. D. Bendall, Alderman J. Stewart, Mr. Gustav Holst, The Mayor (Alderman C. H. Margrett), Mr. Lewis Hann, Alderman R. Steel, Councillors A. Mann and H. T. Yarnold, Miss Imogen Holst, Mr. W. L. Mellersh.  
 "Cheltenham Chronicle" Photo. Copies unmounted 2s., mounted 3s.



**GLOUCESTERSHIRE HOCKEY TEAM,**

Who lost to Somerset on March 16th, at Victoria Ground, Cheltenham.  
 Standing.—Snell (Bristol), Price (W. Gloucester), Dean (Kemerton), Henderson (Bristol), and Wilson (Cheltenham).  
 Seated.—Tuckwell (Cheltenham), Giles (Bristol), Harrison (W. Gloucester), Baber (W. Gloucester), and Hoare (Cheltenham).  
 "Cheltenham Chronicle" Photo. Copies 1s. 9d. each, postage 2d. extra.

**Picturesque Gloucestershire.**

"DISTINCTION WITH ECONOMY."  
**SPRING**  
 HATS, COATS, and JUMPER SUITS,  
 ... IN EXCLUSIVE STYLES, at ...  
*Sensier*  
 THE LITTLE SALON,  
 388b High Street, Cheltenham.

DURING the past four or five years we have published in the "Cheltenham Chronicle and Graphic" a series of illustrations (all taken by our own photographer) of Views of this County, with curious and interesting Archaeological Studies, all selected with an eye to the picturesque. Gloucestershire is perhaps the most interesting and picturesque county in England, especially in regard to its domestic architecture; and it is probable that never has a county been so extensively illustrated as we have covered the Northern part of Gloucestershire.

We have repeatedly been asked by our readers to publish this series of illustrations in book form; and it is our intention to do so if a sufficient number of subscribers will warrant the expense, which is very considerable.

We propose to publish the book, well bound and splendidly printed on the best Art Paper, with no advertisements, there being about 200 pages. Size of book about 12in. by 9in.

The price will be One Guinea (£1 1s.).

Up to the present (March 1927) we have illustrated 115 Villages and Towns, with 170 separate blocks (mostly full-page illustrations), and over 650 separate photos of places in this county.

We would be grateful if our readers who intend to subscribe for this book would send us their names at once, as it will depend on the response to this notification as to whether it will be worth our while to publish.

The number will be limited, and the book should much increase in value in the future.

We :: PHOTO OR :: to your  
 Make PICTURE FRAMES order  
 IN 24 HOURS!

**LEE,** Stationer & Picture Framer,  
 CAXTON HOUSE,  
 Wincombe Street : CHELTENHAM.

**LET MOUSELLS MOVE YOU**



Estimates for Removals and Storing Free.

"PHONE 2112.

**CHELTHENHAM** Offices:  
 AMBROSE STREET.

**CORSETS AND BELTS**  
 MADE, COPIED, CLEANED AND REPAIRED  
 Hours: 10 a.m. to 6 p.m. Saturdays, 1 p.m. or by appointment.  
 "PHONE 3615.  
**MISS FRUIN** (formerly with Madame Annette)  
 23 Bath Parade, CHELTENHAM

Spring Cleaning Time.

**Lance's**

Have just received a large delivery of

... LACE ...  
 CURTAINS,  
 Curtain Nets,  
 CASEMENT  
 .. CLOTHS, ..  
 Cretonnes,  
 CARPETS, &c.

Largest Selection in the West of England to choose from, and  
 ... most moderate in price. ...

CATALOGUES MAY BE  
 :: HAD ON REQUEST. ::

**John Lance**  
 & Co., Ltd.,

:: :: COMPLETE :: ::  
 HOUSE FURNISHERS,  
 CHELTENHAM.

EASY TERMS  
 OF  
 PAYMENT  
 ARRANGED.

**E. TRELEAVEN,**

10 Clarence Street,

FOR GOOD VALUE IN

MUSIC,  
 TUNING,  
 AND  
 REPAIRING.

**Pianos and Musical Instruments.**

:: :: AGENT FOR :: ::

**John Brinsmead Pianos.**

Prices to suit all purchasers. :: NEW PIANOS from 25 Gns.

**E. TRELEAVEN,** 10 CLARENCE ST., **CHELTENHAM.**





**MEET OF A NEW PACK OF FOXHOUNDS AT NEWENT.**

The pack of Hounds owned by Colonel Spence-Colby, and to be hunted by him at his own expense in part of the Ledbury country, met on Tuesday last in Newent Market Place, in beautiful weather. There was a capital crowd to welcome him, and the scene was picturesque.

- |  |                                    |   |
|--|------------------------------------|---|
| 1.—The Master, Col. Spence-Colby, the only son of the late Dean Spence, of Gloucester, with his pack. He was superbly mounted. | 5.—Mr. J. M. Scott.                | 9.—Foot-folk in the Market-place.                 |
| 2.—Lady Bullough (on right).   | 6.—A lady follower riding astride. | 10.—Keenly interested in the pack.                |
| 3.—Major Battine and a friend.   | 7.—Three Newent ladies.            | 11.—Mrs. Johnstone (x) with friends and children. |
| 4.—Mr. E. Conder and Sir George Bullough.  | 8.—Watching the meet.              |   |

"Cheltenham Chronicle" Photos. Copies 1s. each, postage 2d. extra.



**FUNERAL OF MR. "JACK" SLATTER, AT ALDERTON.**

The funeral of the late Mr. "Jack" Slatter, of Glebe Farm, Wood Stanway, who met with such a tragic death on the previous Sunday, took place at Alderton Churchyard on Thursday, March 17th. He was only 29, and the fact of his being killed while riding home on his motor-bicycle on Saturday evening added greatly to the sorrow felt by such a wide circle of friends, and there was a very big congregation of mourners to show their sympathy.

- |   |  |  |
|---|--|--|
| 1.—Farm wagon bearing wreaths.              | 4, 6, and 7.—Mourners entering church. | 9.—Rev. Collins Ashwin.                          |
| 2.—Six of his friends carried his coffin.   | 5.—Family mourners.                    | 10.—Clergy preceding coffin.                     |
| 3.—Countess of Wemyss and Mr. E. J. Walker. | 8.—Mr. Gardener.                       | 11.—Mourners unable to gain admission to church. |

"Cheltenham Chronicle" Photos. Copies 1s. each, postage 2d. extra.



**PRESENTATION TO MR. WALTER C. UNWIN, M.H., AT ARLE COURT.**

At a special meet of the Arle Court Harriers on Friday, March 18th, a presentation was made by followers of the Hunt to the Master, of a silver server, engraved in facsimile with the autographs of the subscribers, and a beautifully engraved large silver cigarette box. It was a function with the real old-world flavour. Everyone sat down to a hunting breakfast before the presentation, and afterwards went hunting.

The beautiful presents were all supplied by Mr. H. M. Simmons, the County Gold and Silversmith, of High-street, Cheltenham. The cigarette box was specially engraved with a portrait group of the Master (mounted), with his hounds, and was very much admired.

- 1.—The pack, with the Master in centre, and his fiancée, Miss Gibson. All were mounted on greys and looked very picturesque. On foot on left, Dr. J. A. Bower (Field Master), to whom a silver cigarette case was presented in recognition of his services to the Hunt. 2.—The crowd at the presentation on the steps in front of Arle Court. Mr. Unwin stands on the left of the gifts and Miss Gibson on right.

"Cheltenham Chronicle" Photos. Copies (10 by 8) 2s. each, postage 2d. extra.

\*\*\*\*\*

**THE BEST PRESENT YOU COULD SEND TO YOUR FRIENDS AWAY FROM CHELTENHAM WOULD BE A COPY OF THE "CHRONICLE & GRAPHIC" EVERY WEEK. JUST THINK HOW YOU WOULD APPRECIATE IT IF YOU WERE AN "EXILE."**



**BOYS' INTERNATIONAL RUGBY FOOTBALL MATCH AT GLOUGESTER: England v. Wales.**

This match, played at Kingsholm on Saturday, March 19th, aroused great interest, about 9,000 persons being present. The Welsh boys were much too good for England, and won by 2 goals 4 tries (22pts.) to nil.

- 1.—Smith, Drake, and Dix, the three Gloucester boys in the English team. 3.—A line-out in midfield. 5.—The Welsh team.  
2.—A breakaway in midfield by the Welsh boys. 4.—The English team. 6, 7, and 8.—Sections of the crowd.

"Cheltenham Chronicle" Photos. Copies 1s. each, postage 2d. extra.

**SEND THE "CHRONICLE & GRAPHIC" TO YOUR FRIENDS EVERY WEEK.**



**BADMINTON TOURNAMENT IN CHELTENHAM.**

The Cheltenham Badminton Club held their first Open Tournament since 1925 at the Alstone Baths on Saturday last. Players from London, Birmingham, and Bristol helped to make it most successful. A group of competitors. Standing.—Mrs. Duncan-Jones, Miss Powell, Miss Wilson, Mrs. White, Col. Collingwood, Miss Allen, Mrs. Metcalfe, Miss Sennington, Mr. English, Mr. Kilgour, Mr. Field. Sitting.—Mrs. Prettejohn, Miss Atkin, Mrs. Linton, Miss O'Brien, Miss Coop. In front.—Mrs. Gwythers, Dr. McCall, Mrs. Gooper, Dr. MacFarlane, Mr. Diemer.

"Cheltenham Chronicle" Photos.



**CHELTENHAM DICKENSIANS PERFORMANCE.**

On Friday and Saturday last the members of the Cheltenham branch of the Dickens Fellowship gave three very fine performances of scenes from "Pickwick Papers." The Supper Room at the Town Hall, where the performances were held, was crowded on each occasion. At back.—Miss H. Pattison (Mary), Miss E. Leeson (Isabella Wardle), Mrs. W. H. Banks Mr. G. S. Giller (Tony Weller), Mr. M. A. Porter (Augustus Snodgrass), Mr. E. H. Williams (Sam Weller), Mr. G. Pardington (Tracy Tupman and Mr. Stiggins), Mr. W. H. Banks (Alfred Jingle), Mr. H. O. Barnett, Mrs. E. Leeson (Mrs. Weller), Mr. V. Smyth (Mr. Perker), Mr. A. G. Dye (Mr. Wardle), Mrs. R. Norman (Mrs. Gimblett), Mrs. O. Edgell (Landlady), and Mr. W. Palmer (Nathaniel Winkle). In front.—Mr. E. Colwell (Cab Driver), Miss J. Lovell (Emily Wardle), Mrs. Leedham (Mrs. Wardle), Mr. W. Longman (Samuel Pickwick), Miss F. Beard (Rachael Wardle), Mr. S. McVitie (Joe the Fat Boy).

"Cheltenham Chronicle" Photos.



**PRESENTATION MEET AT ARLE COURT.**

At the Meet at Arle Court on Friday, March 18th, a great number were present to honour the Master at the presentation of plate to him. 1.—Some of the farmers. 3.—The oldest and youngest followers present—Mr. Chatham (aged 81) and Miss Rosemary Davis. 5.—Mr. Palmer. 6.—Mr. Warner. 7.—Mr. Chatham. 8.—Dr. J. A. Bower, Field Master (to whom a presentation was made by the Master and his fiancee), and Mrs. Bower.

"Cheltenham Chronicle" Photos. Copies 1s. each, postage 2d. extra.



**CHELTENHAM GRAMMAR SCHOOL SENIOR AND JUNIOR STEEPLCHASES.**

1.—Seniors lined up for start. 3.—The three first juniors home: A. G. Norman 1, S. H. Jenkinson 2, Pilkington 3. 5.—The first three seniors: G. L. Webb 1, J. J. Causon 2, Yarnold 3.

2.—A. G. Norman winning Junior Race. 4.—Starting the juniors.

Telephone  
: 3042 :  
TWO LINES

# Cavendish House

Company · Ltd

THE FASHION CENTRE  
OF  
CHELTENHAM · SPA  
AND THE WEST

Telegrams:  
CAVENDISH  
CHELTENHAM

Directors Office :

“ADOPT. ADAPT. IMPROVE.”

Extract from speech by  
H.R.H. The Prince of Wales  
at the opening of The  
British Industries Fair,  
Feb. 21st, 1927.

THIS HAS BEEN THE MOTTO of CAVENDISH HOUSE since its formation more than a century ago, and although its methods are constantly followed by others the business continues to progress and its prestige remains unimpaired.

The directors are pleased to report

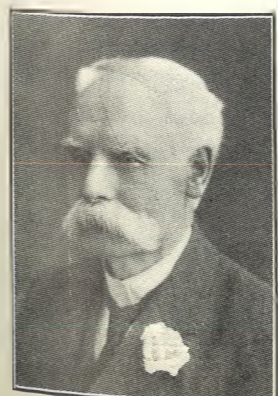
A RECORD YEAR OF BUSINESS, the Turnover, Gross and Nett Profits, all being the largest in the history of the Company. This result is the more satisfactory inasmuch as the lamentable strike in the early part of the year had, generally, an adverse effect on trade.

It is interesting to know that the number of customers served has again increased by over 20,000, making an advance of more than 50,000 during the past two years, and the Directors take this opportunity of respectfully tendering thanks to their clientele for the patronage extended to the establishment.

Many important Additions and Improvements have been carried out, including the provision of further accommodation in the Ladies' Hairdressing & Beauty Culture Department, by the construction of new cubicles. This has proved a great convenience to customers.



**INTERESTING BERKELEY WEDDING.**  
The marriage took place at Berkeley Church on Monday, March 21st, of Mr. John Clutterbuck, eldest son of Mr. John Clutterbuck, of Berkeley, to Miss Nan King, eldest daughter of Mr. and Mrs. J. W. King, of Berkeley, and sister of Mrs. Tom Voyce, of Gloucester.  
1.—The Bridal Group, with relatives. 2.—Some of the other guests present.



EX-ALDERMAN  
EDWINSON G.  
GREEN,  
Of Windsorton,  
London Road,  
Cheltenham, who  
died on March  
the 18th, aged  
88 years. He  
started the busi-  
ness of a gun-  
smith in Chelten-  
ham between 60  
and 70 years ago,  
and very clever  
in his profession.  
For 21 years he  
served the town  
as Councillor  
and Alderman.

NEW DESIGNS IN  
**Hard Wear SHIRTS,**  
Colour fast to  
boiling & light. **8/11.** Lined back and  
front.  
Own Manufacture.  
**A. BECKINGSALE,**  
111 High Street, CHELTENHAM.

MR. STANLEY  
PIZER,  
Of Hemmingsdale  
Road, Gloucester,  
who was killed  
in a motor acci-  
dent on Sunday  
morning last at  
Twigworth, aged  
30 years. He was  
a driver in the  
employ of the  
Wessex Garage,  
Gloucester, and  
was collecting  
milk urns in a  
lorry. He leaves  
a widow and one  
child.



# DIANA NEW SPRING FOOTWEAR

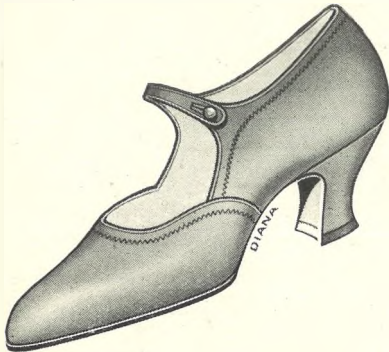
## Now Ready for Your Inspection.



No. 648.—Smart Cork Calf Shoe, with neat cut out displaying Parchment Calf underlay. **16/6**



No. 635.—Patent Bar Shoe, with Smart Punched Insertion round vamp. Shaped Leather Heel **16/6**



No. 207.—Smart and Attractive Shoe in Mastic Galce Kid, Trimmed with Fancy Stitching. A fine Model for **18/6**



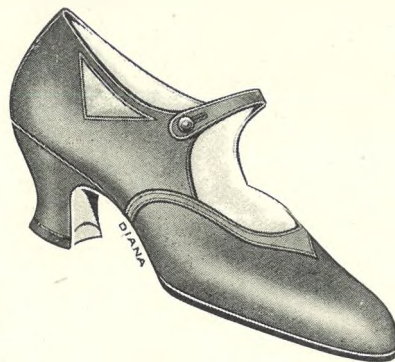
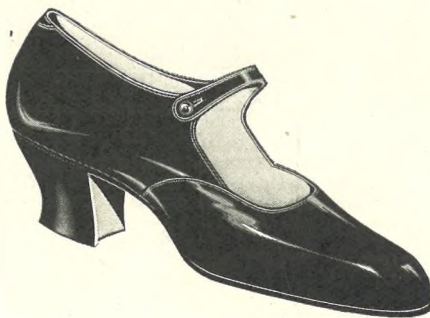
No. 202.—Very shapely Diana, in Patent, neat and delightful, with Smart Louis Heel. Costs only **19/9**

**Broadway-Diana, the SPECIAL SHOE FOR BROAD FEET.**

Broadwood-Diana Shoes are ideal for broad feet, because they allow ample width whilst maintaining a normal appearance. Made in all the newest styles and colours they bring up-to-date smartness combined with perfect comfort.



No. 616. — Very shapely Patent Broadway Shoe, of neat and distinctive design. Comfortable Shaped Heel **20/-**



No. 210.—Smart New Broadway Model made in Noisette Glace Kid, Trimmed with Pastel Parchment Kid **25/-**

Come and see all the Fine New Models at—

# Dicks & Sons Ltd.

ART & ECONOMY BUILDINGS  
High St. **Cheltenham.**