

# THE CHELTENHAM CHRONICLE AND GLO'SHIRE GRAPHIC

With Which is Incorporated the "Cheltenham Looker-On." **GRATIS SUPPLEMENT.** Saturday, May 1, 1926. **No. 1,322.**

## CHELTENHAM THEATRE AND OPERA HOUSE.

This Afternoon (2.30) & Evening (7.45)—"THE CABARET GIRL."  
 Next Week (Six Nights, 7.45, Matinee Saturday, 2.30):  
 LONDON'S LATEST AND GREATEST SUCCESS—"The Creaking Chair."

**THE PALACE,**  
 High Street, CHELTENHAM.  
 The Superior Picture Theatre.  
 MONDAY to WEDNESDAY:  
 BERT LYTELL in  
**"Steele of the Royal Mounted."**  
 By James Oliver Curwood.  
 Pete Morrison in  
**"SANTA FE PETE,"**  
 A Tale of the Western Hills.  
**FOR SIX DAYS:**  
 All-British Racing Classic.  
 Steve Donoghue and Violet Hopson in  
**"BEATING THE BOOK."**  
 THURSDAY to SATURDAY:  
 George O'Brien and Billie Dove  
 In  
**"Thorns and Passions."**  
 From the "Roughneck," by  
 Robert W. Service.

**THE DAFFODIL,**  
 Cheltenham's Premier Cinema.  
 Continuous Daily, 2.30 to 10.15.  
**FOR ONE WEEK.**  
 Commencing Monday, May 3rd,  
**SIR RIDER HAGGARD'S**  
 World Famous Novel  
**"SHE"**  
 Featuring BETTY BLYTHE.  
 Please note approximate times of  
 showing: 2.30, 4.30, 6.30, & 8.30.  
**The Daffodil Grand Orchestra.**  
 Musical Director: Frank Vicary.

Established 1806.  
**Martin & Co.,**  
 Limited.  
**The County Jewellers,**  
**PEARL & DIAMOND MERCHANTS,**  
 A Large Selection of Second-hand  
 Silver and Old Sheffield Plate.  
 We are purchasers of Antique  
 Silver and Fine Quality Gems.  
 Best Prices Given.  
**LICENSED VALUERS.**  
 Promenade, Cheltenham.



**INTERESTING KEMERTON WEDDING.**

The Bride and Bridegroom leaving St. Benet's (R.C.) Church, Kemerton, on Tuesday last at a wedding which created much interest in the vicinity. The bridegroom was Mr. Stanley Baylis, son of the late Mr. Thomas Baylis and of Mrs. Baylis, of Barnt Green; while the bride is the younger daughter of Mr. and Mrs. Richard Guilding, of the Park Farm, Kemerton. A further series of pictures were taken at the wedding, and will appear in next week's issue of the "Cheltenham Chronicle and Graphic."

Copies 1s. each, postage 2d. extra.

**WINTER GARDEN,**  
 CHELTENHAM.  
**MONDAY AND ALL THE WEEK.**  
 Come and See all the Fun of  
 the Circus!!!  
 D. W. GRIFFITH'S  
 Empire Theatre Circus Success,  
**"SALLY OF THE SAWDUST,"**  
 Featuring  
 CAROL DEMPSTER  
 And the New Comedian,  
 W. C. FIELDS.  
 A real romance amid the most  
 Wonderful Circus ever Screened.  
 This film showing at 2.45, 5.20,  
 7.55 p.m.

**COLISEUM THEATRE.**  
 CHELTENHAM.  
 6.40 and 8.40.  
**"HOW DARE YOU."**  
 MUSICAL COMEDY REVUE.

**NORTH STREET**  
**PICTURE HOUSE.**  
 Continuous, from 2.30 p.m.  
 Monday, Tuesday, Wednesday:  
**"His Last Race,"**  
 Featuring "BOOMERANG,"  
 The Wonder Horse.  
 Thursday, Friday, Saturday:  
**"The Silent Pal,"**  
 Featuring "THUNDER,"  
 The Famous Alsatian Wolfhound

**Sensier**  
 New Spring (and Summer Models for  
 all occasions at moderate prices.  
 388b HIGH STREET, CHELTENHAM

Telephone 1080.  
**W. Scott Cooper,**  
 Goldsmith and Silversmith,  
 Diamond Merchant, Jeweller,  
**The Promenade, Cheltenham.**  
**LICENSED VALUER.**

For the Best **PIANOS, DALE, FORTY and Co. Ltd**





**JUBILEE CELEBRATIONS OF BENNINGTON HALL UNITED SUNDAY SCHOOL.**  
 On Sunday, Monday, and Wednesday last, present and past members of the above School celebrated the Jubilee of the opening of the School in 1876 under the presidency of the late Mr. James Bloodworth.  
 1—Twenty-two original members (Scholars and Teachers) of 1876 who were present at the celebrations on Monday night.



**BENNINGTON HALL JUBILEE.**  
 Mr. H. G. Ballinger (Superintendent) seated in centre, with Mrs. Ballinger and the present teaching staff of the Sunday School.

"Cheltenham Chronicle" Photo. Copies 1s. 9d. unmounted, 2s. 6d. mounted.

ADVERTISE IN THE "ECHO."



**GLOUCESTER GOLDEN WEDDING.**  
 Mr. and Mrs. George Warner, of Hyde House, Parkend-road, Gloucester, who celebrated their golden wedding on Tuesday last. They were married at the old Rycroft Chapel, Gloucester, and have lived in Gloucester all their lives. Mr. Warner is in the corn trade.



**PRESENTATION OF COUNTY BIRD AND TREE STUDY SHIELD.**

On Friday, April 23, the scholars of Tewkesbury Church of England Boys' School received the Gloucestershire Challenge Shield, Medals, and Prizes which were awarded by the Society for the Protection of Birds, and won by them in open competition for Schools in the County. Top Photograph.—A Group at the ceremony. Standing: Mr. H. W. Baker (Headmaster of Beckford), Rev T. W. Lambert (the Official Correspondent of School), Mr. H. de Courcy Peach, Mr. W. H. Hayward (Manager), Mr. G. L. Searight, The Mayor (Councillor W. T. Boughton, J.P.), Mr. E. Holt Evans and the Staff—Miss Pidgeon, Miss Arthur, Mr. W. R. Vosper and Mr. E. R. Newton. Sitting: Mr. J. J. Crofts (Manager), Mrs. Robeson, The Mayoress (Mrs. Boughton), Miss W. Mellersh (Hon. Secretary of the Society for Gloucestershire), who made the presentation, Canon Smith (Chairman of Managers), Mr. A. J. Bullied, A.C.P. (Headmaster), Mr. C. Elmes (who instructed the boys), and Miss \_\_\_\_\_ (Headmistress of Gotherington). Bottom Photograph.—The competitors, with the Winning Team seated in front row with Shield: C. Hale, F. Seabright, C. Booth, A. Haunting, S. Marston, F. Page, L. Booth, J. Seabright, and A. Page. "Cheltenham Chronicle" Photos, Copies 1s. 9d. each, Post 2d.

TAKE CARE OF YOUR  
 "Graphic."

We will forward to any reader of the "Graphic" a handsome green and gold cloth-lined case made for the collection of one year's issue of our popular Supplement. It is always nice to be able to refer back to pictures that interest you. Price, post free, 6d. each, prepaid. Send name and address to Manager, "Chronicle and Graphic," Cheltenham.

**GOLF HOSE.**

Large Variety of Designs .. from 5/6 upwards.

CHECK LEGS, 8/6 to 16/6 pair.

Pullovers & Jackets for Sports Wear.

**A. BECKINGSALE,**  
 111 High Street, Cheltenham.  
 Phone 406.

**DIABETES.**

Sufferers from Diabetes searching for a palatable, well-varied diet will find it in Cheltine Foods. They are highly nutritious and graded No. 1 (for mild cases), No. 2 (more serious cases), and "strict diet" (for extreme cases). Particulars post free, or with samples to cover postage, etc., 1s. from

**THE CHELTINE FOOD CO.,**  
 CHELTINE WORKS, CHELTENHAM.





**V.W.H. HUNT POINT-TO-POINT RACES AT BLUNSDON.**

The above meeting was held over the usual course at Blunsdon on Wednesday, April 21st, before a splendid crowd, the racing being very interesting.

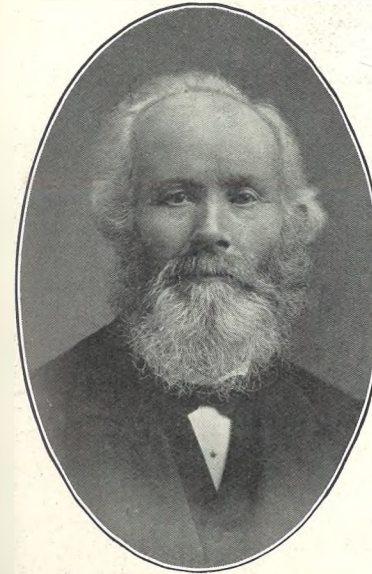
- 1.—A section of the crowd watching racing from one of the banks.
- 2.—Mr. A. P. Steavenson (Master of Old Berks Hunt) and Col. W. F. Fuller, M.F.H.
- 3.—Mrs. C. F. Birley.
- 4.—A desperate finish in Challenge Cup, won by Mr. H. C. Walford's Redgaunt-let III. (on right) by a short head, and a head from War Gratuity, and Isonomy Waves. The last fence.
- 5.—Col. Lawrence, formerly of Gloucester Yeomanry, and Capt. Miles Thompson.
- 6.—Mr. C. F. Birley.
- 7.—Major Giddins and Mr. Hewett.
- 8.—Major-Gen. Calley (Judge) and Dep. C. Constable Brooks.
- 9.—Taking the water jump in the race for the Challenge Cup.
- 10.—Earl Bathurst, M.F.H., and a lady.

"Cheltenham Chronicle" Photos. Copies 1s. and 1s. 9d. each. Postage 2d. extra.

**BENNINGTON HALL JUBILEE.**

1876.

1926.



The late Mr. James Bloodworth, Founder, and First Superintendent, died December, 1894. Mr. Henry G. Ballinger, Present Superintendent, who succeeded the late Mr. B. J. Sadler in 1923.

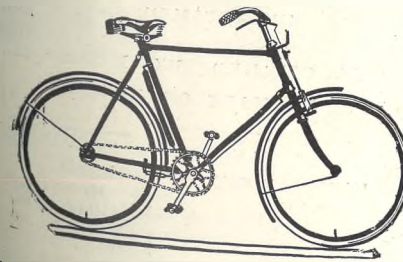


**ENTERTAINED BY PRIMROSE BUDS.**

On Saturday last the Cheltenham Primrose Buds repeated by request, at the Conservative Club, the entertainment they had previously given at their Social Evening. They were trained by Mrs. Lindsay Clark. The above group gave a little play entitled "The Fairy Wedding."

"Cheltenham Chronicle" Photos. Copies 6d., 1s., and 1s. 9d.

Telephone 729.



**A. Williams and Co.,**

AGENTS FOR ALL WELL-KNOWN MAKES OF BICYCLES,

19 PORTLAND STREET, CHELTENHAM.

GOOD VALUE FOR THE MONEY.

The PORTLAND BICYCLE, from £5 12s. 6d. A Model for Every Purpose.

Specialists in Carrier Cycles and Garrier Service. Easy Payments arranged to suit our customers' convenience.

**LANCE'S**

Special Display for HOLIDAY WEAR

Two - Piece Suits, Gowns, Millinery,

**COATS and FURS.**



The fashionable OVER-BLOUSE, perfectly made in Super Quality Ivory Schappe Silk, edge of Pockets & Collar, which also forms tie, trimmed with season's newest colours ..... **18/11** Various sizes.

SPECIAL OFFER OF **150 Art. Silk Jumpers,** in lovely shades, at **12/11** TO CLEAR. ONE PRICE..... (BLOUSE DEPARTMENT.)

**John Lance**

& Co., Ltd., CHELTENHAM SPA.





**CHELTENHAM SOCIETY WEDDING.**

The marriage was solemnised at the Church of SS. Philip and James, Cheltenham, on Saturday last, of Dr. Frank Lidderdale, the well-known and popular Cheltenham medico, to Miss Joan Isabel Vulliamy. Both are members of families well known in Cheltenham, the bridegroom being the son of Dr. and Mrs. Lidderdale, of Evesham Lodge, Prestbury-road, and the bride the daughter of the late Lieut.-Col. G. W. Vulliamy, Leicester Regiment, and of Mrs. Vulliamy, Pembroke House, The Park, Cheltenham.

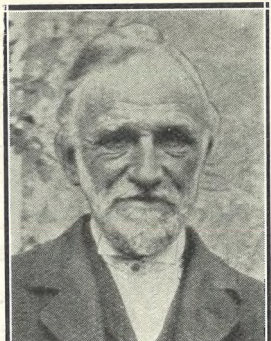
1.—The bride and bridegroom leaving the church 5th Gloucesters, of which Regiment the bridegroom is medical officer.

2.—The bridal and family group.

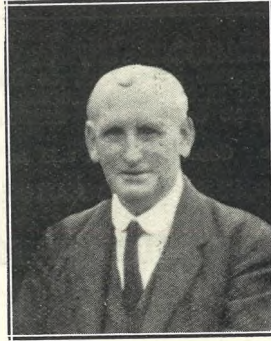
"Cheltenham Chronicle" Photo. Copies 1s. and 1s. 9d. each, postage 2d. extra.



**MR. F. J. R. MOUNTAIN,** Assistant Town Clerk of Cheltenham, who was appointed Deputy Town Clerk of Paddington on Tuesday last. He came to Cheltenham in January, 1920, and will take up his new duties in June. He is 38 years of age, and has had 17 years of Municipal experience.



**MR. FRANK DANCER,** of Bennett's Farm, Withington, Glos., who has been elected Churchwarden of Withington Church for the 51st year in succession. This must be almost an unique record in Church history.



**MR. E. S. (SAM) BARNETT** Of the Old Anchor Inn, Tewkesbury-road, Cheltenham, who died on Sunday last, aged 53 years. For 30 years past he had been the popular landlord of above inn, was a member of the Board of Guardians, and a strong worker on the Conservative North Ward Committee

**Promenade Furnishing Company,**

**CHELTENHAM**

**(E. W. ROBINSON).**

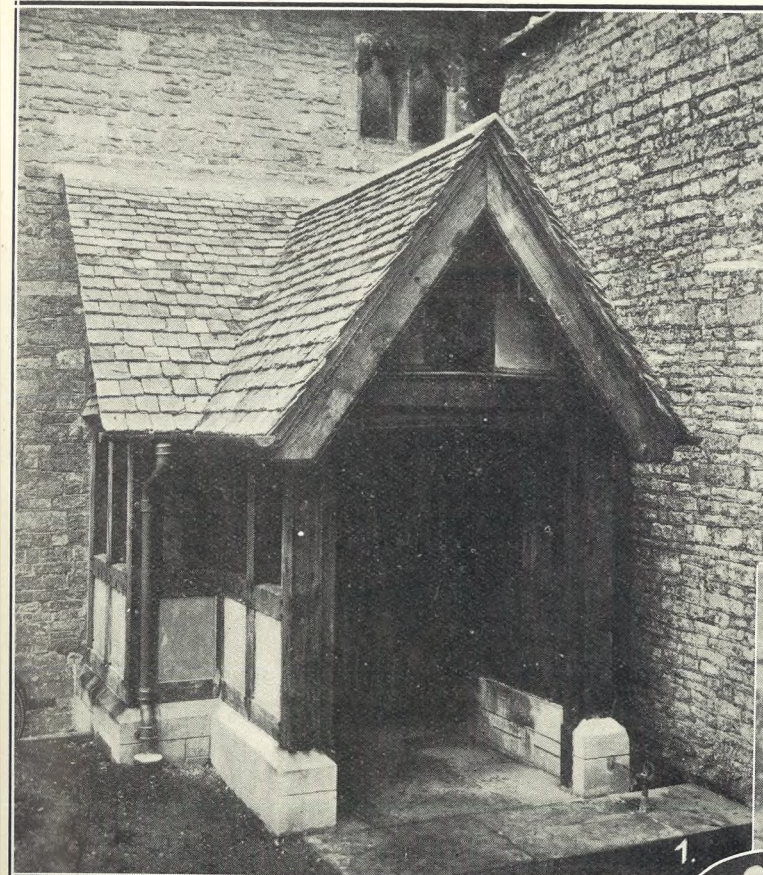
**EVERY CLASS OF SPRING CLEANING UNDERTAKEN.**

**CARPETS CLEANED BY MACHINERY. BEDDING MADE OR RE-MADE.**

**THE FINEST ELECTRICAL MACHINERY IN THE WEST OF ENGLAND.**

**LOOSE COVERS A SPECIALITY.**

**NEW AND SECONDHAND FURNITURE AT COMPETITIVE PRICES.**



**ELDERSFIELD WAR MEMORIAL DEDICATED.**

The Bishop of Worcester (Dr. Pearce) on Monday evening last dedicated a new porch erected at Eldersfield Church as a memorial to local men who fell in the War. It was given by Mr. Albert James Hatton, a retired draper, of Brighton, who was born in the village, was designed by Messrs. Healing and Overbury, of Cheltenham, and built by Messrs. Collins and Godfrey, of Tewkesbury.

- 1.—The new Porch.
- 2.—Canon Edmondson, R.D. of Upton, the Bishop of Worcester, and the donor, Mr. A. J. Hatton.
- 3.—Some of the robed clergy present.
- 4.—Rev. J. P. Hogan, Vicar-in-Charge, Mr. T. H. Bainbridge (Corse), Miss Hawkins, and Mr. Bainbridge, jun.
- 5.—The donor, Mr. A. J. Hatton.
- 6.—Hon. Bertie Roberts (Kidderminster), a former Vicar.
- 7.—The choir.
- 8.—Part of the congregation.
- 9.—Supporters of the church.

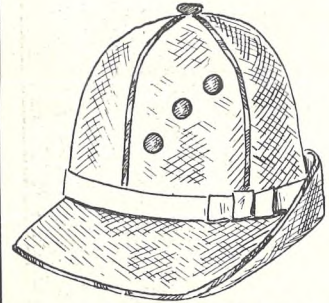
"Cheltenham Chronicle" Photos. Copies 1s. and 1s. 9d. each, postage 2d. extra.



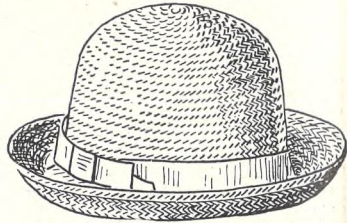
# "KOSICLAD"

FOR KIDDIES' SUMMER WEAR,  
IN WASHING MATERIALS.

Every "Kosiclad" Garment is guaranteed to wash and wear well. If not, WE WANT IT BACK. "Kosiclad" Garments are the correct shape, of reliable quality, at ECONOMICAL PRICES.



An Attractive Spring Hat for Toddlers in White Visca Silk, Piped Pink or Blue. 2/11½



Child's Serviceable Panama, White, with Plain Coloured Bands. 1/11½ Also Natural Panama, 2s. 6½d.



"Kitty," Girls' Knitted Jumper, in new multi coloured effects. 16in., 4/11½ Also in sizes 17in., 18½in., 20in., and 21½in., up 1s. each size.

"Ruby," A dainty Frock and Knickers, in a fine Mercerised Cloth. Tussore ground. Full fitting lengths. 16in., 18in., and 20in. 4/11½

"Desmond," A Washing Suit made in "Kosiclad" Tusstung Cloth, in Tussore or Sky ground. For ages 1½, 2, 3, to 4 years. 4/11½

"Carol," Washing Frocks, in Cotton and Art Silk Mixture. Will not crease. Not too thin. Just right for Spring. 18in., 2/6½ Also up to size 30in., various cols.

Girls' Knitted Wool Frocks and Knickers, Trimmed Silk Neck and Sleeves, as illustrated, in Saxe, Tango, Fawn, Putty, etc. 9/11½

Boys' Jersey Suits, Butt shoulders, as illustrated, in Almond, Saxe, Tango, Fawn, Putty ... 6/11½



"Ernie," A Casement Cloth Tunic Suit, with knickers. New design as illustration, in thoroughly reliable Blue and Buff ground. For ages, 2, 3, to 4 years. 3/6½



"Kosiclad" Slumber Suits, in Fast Col. Wincevete of reliable quality. 3/3½ In 26in. Also sizes 28in., to 36in. in proportion.



"Maisie" Jumper Suits for Girls, in Fine Wool Cashmere, knit as illustrated, in Sky, Fawn, Cream, Navy, 9/11 Cedar, 22in. Also in 24in., 26in., 28in. in proportion.



"Trixie" Knickers in medium weight Stockinette, with pocket and removable elastic at waist, full length body, short legs, in White, Navy, Saxe, Brown, 12in. 1/5¾ Also in all sizes to 26in.

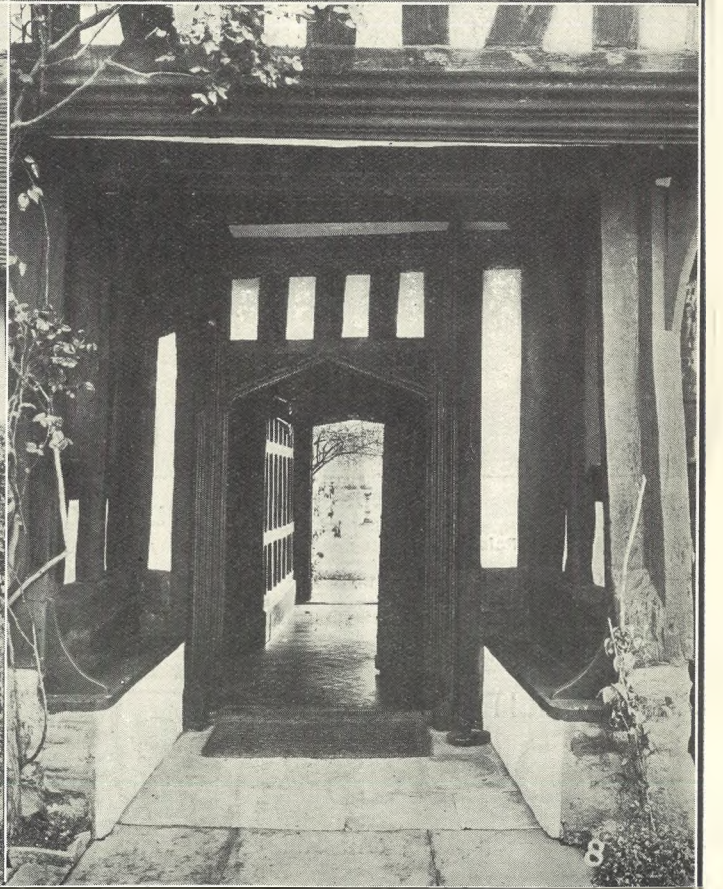
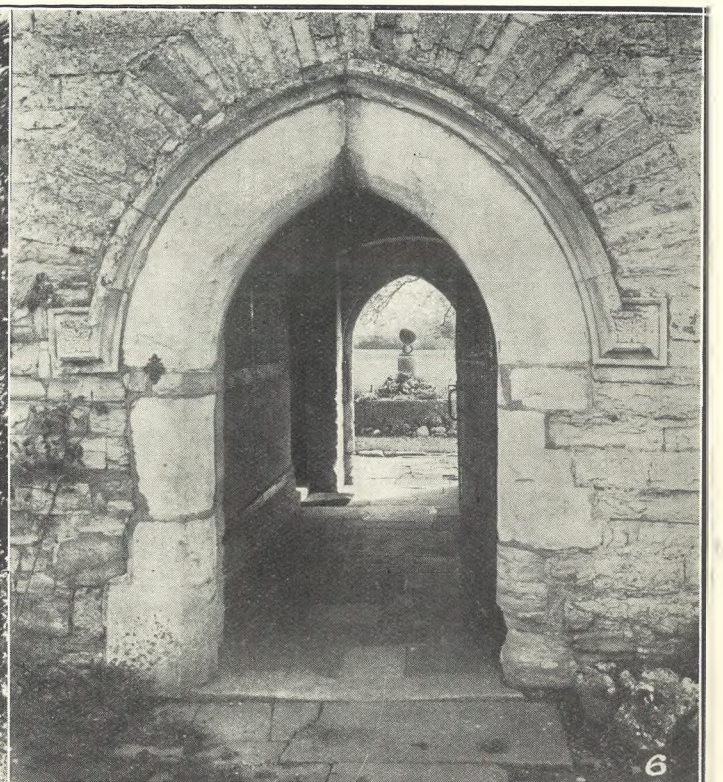
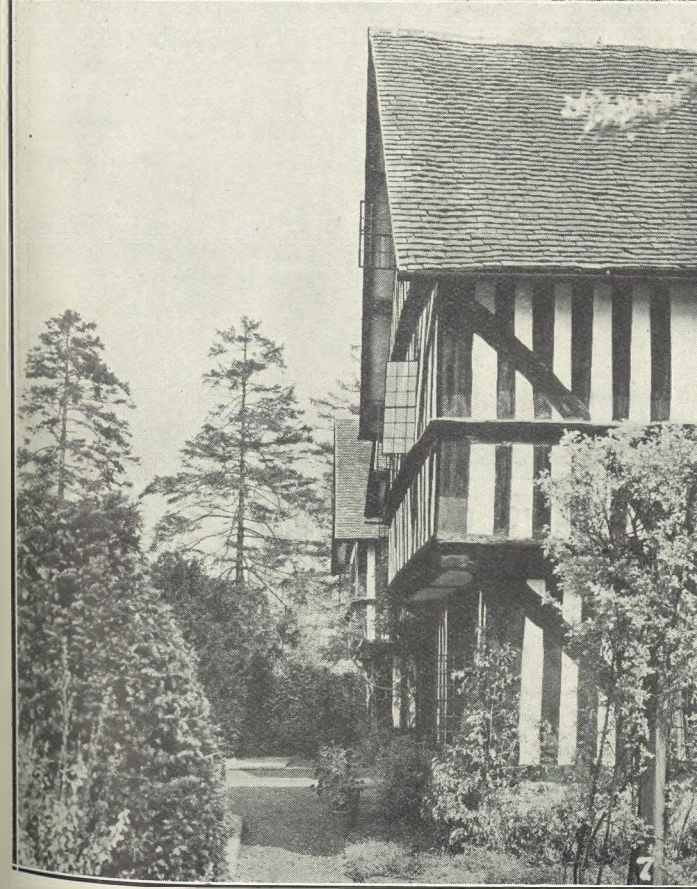


"Kosiclad" Night-dresses for Girls, in Pure Fine Longcloth, daintily Trimmed Embroidery. 26in., 3/11½ Also in all sizes up to 48in.



Wool Coat and Cap, of very fine quality, trimmed White Silk Stitching, in Powder Blue, Tango, Mauve, Fawn, etc. 15/11

**Dicks & Sons Ltd.**  
172 & 173 HIGH STREET  
Cheltenham Spa  
50 YEARS REPUTATION FOR VALUE.  
TEL. 1007



**PICTURESQUE GLOUCESTERSHIRE.—ASHLEWORTH.**  
A further series of pictures of this historic and picturesque village. The two principal houses were built in the 14th and 15th centuries and are in wonderful preservation. This fact is in strange contradiction to "Rudder's" assertion, who wrote in 1779 the following: "The cottages and farmhouses are such as might be expected, miserable hovels generally, covered with straw and in ruinous condition." The village is now quite a beautiful one.  
5.—The High Cross in the Churchyard is 14th century. It was removed to the Churchyard from the Village Green. The head is the original one, and was discovered some years ago decorating a fireplace in a cottage in the vicinity.  
6.—Front Door of The Court House, a fine 15th century house adjoining the Church.  
7.—Side view of the Old Vicarage, or Manor House, a beautiful old building.  
8.—The Front Doorway and Porch of The Manor House, with particularly interesting framing and decoration to its woodwork.  
"Cheltenham Chronicle" Photos, Copies 1s 9d. each, Postage 2d. extra.





**CHELTENHAM POLO CLUB CHILDREN'S GYMKHANA.**

The Cheltenham Polo Club Season opened on Saturday last with the Children's Gymkhana. The weather was very nice and there was a large entry.

- 1.—Miss Gillian Muir won first prize for Best Girl Rider.
- 2.—Masters K. Muir and R. Holman winning Three-Legged Race.
- 3.—Miss Diana Holman was best rider over jumps in Junior Class.
- 4 and 6.—Interested spectators.
- 5.—Mrs. Herbert distributing prizes.
- 7.—Competitor in Potato Race.
- 8.—Parade of competitors.

"Cheltenham Chronicle" Photos, Copies 1s. each, Postage 2d. extra.

**BEST QUALITY  
CIDERS**

IN BOTTLE.—Sparkling and Still.

**BARTHOLOMEW,**

419, 420 HIGH STREET,  
CHELTENHAM.

Wines, Spirits, Ales, Table Waters, & Grocery.  
Tel. 135.

**HAVE YOU FOUND US YET?**  
AT THE SIGN OF  
**The SHAMROCK**  
31 Promenade,  
CHELTENHAM.

HERE you can get the most  
**Delicious Luncheons**  
(3 Course, or a la Carte).

**Afternoon Teas,** such things as Home-made Breads, Scones, Oat Cake and Honey, Cinnamon Toast, etc., etc

FOR SALE—Meat Dishes, Cakes, Breads, Scones, etc., etc.

**LET MOUSSELLS MOVE YOU**



Estimates for Removals and Storing Free.  
'PHONE 112.

**CHELTENHAM.** AMBROSE STREET



**CYCLISTS v. RUNNERS IN A CROSS-COUNTRY MATCH.**

A novel race was held last Saturday at Shurdington between members of the Cheltenham and County Cycling Club (who rode their bicycles) and St. Gregory's Athletic Club (who ran) over a cross-country course of 5½ miles. The cyclists got three men home first, and won by 30 points to 40.

- 1.—The Cyclists: E. E. Bick (2nd), H. Giles, A. R. White, L. Boyce (1st), H. East, L. Ward, A. W. Williams, G. Wilcox, G. H. Ward, K. J. Powell, G. Butt (3rd), C. V. Wedberg, and C. J. Wood.
- 2.—Boyce (cyclist) leading over the first fence, followed by Hughes, Weaving and Boulter (St. Gregory's).
- 3.—Cyclists getting over a fence.
- 4.—The Runners (Standing): W. G. Helsden, L. M. Cummins (first runner home, fourth in actual race), Ford, C. F. Hughes, C. J. Boulter, Mr. Wall, G. Skey, H. Weaving, and T. Smith. In Front: \_\_\_\_\_, and G. Summers.

"Cheltenham Chronicle" Photos. Copies 1s. each. Postage 2d. extra.



**OPENING OF EXMOUTH BOWLING CLUB, CHELTENHAM.**

Exmouth Bowling Club opened their 1926 season on Saturday last with a match between Captain's and Vice-Captain's teams. The players.  
"Cheltenham Chronicle" Photo. Copies 1s. and 1s. 9d. each, postage 2d. extra.





## THE NEW JUMPER SUITS

**I**N Stockinette and finely knitted Wool are really most useful either for Sports, Holiday or House Wear. Moreover, the extreme diversity of effects and colourings to be seen in our newest Models make it an easy matter to satisfy all requirements. Consistently moderate prices, an unimpeachable standard of quality, and a policy of always giving the best possible value, have earned for this House an enviable reputation for Knitted Fashions of all descriptions.

Sketched is a Model in Wool or Silk and Wool, with a permanent pleated Skirt. It is of a beautifully soft quality yarn, and the colourings are perfect.  
 Its price in Wool is ..... 59/11  
 Or in Silk and Wool ..... 75/9.  
 Similar numbers in Fine Plain Wool Stockinette, ..... 29/6, etc.  
 Silk and Wool Mixtures ..... 45/9, etc.  
 The New Milanese Silk, at ..... 75/9.

MAY WE SHOW THEM YOU?

# VANDERPLANK

381, HIGH STREET HARRISON

## FASHIONS AND FURS

381 HIGH STREET,

CHEL TENHAM SPA.



# THE CHELTENHAM CHRONICLE AND GLO' SHIRE GRAPHIC

With Which is Incorporated the "Cheltenham Looker-On."  
**GRATIS SUPPLEMENT.** Saturday, May 8, 1926.

No. 1,323.

## CHELTENHAM THEATRE AND OPERA HOUSE.

This Afternoon (2.30) & Evening (7.45)—"THE CREAKING CHAIR."  
 Next Week (Six Nights, 7.45, Matinee Saturday, 2.30):  
 THE OUTSTANDING SUCCESS "No, No, Nanette."  
 OF THIS GENERATION—

### THE PALACE, High Street, CHELTENHAM.

MONDAY TO WEDNESDAY.  
 RICHARD BARTHELMESS  
 AND BESSIE LOVE in  
 "SOUL FIRE."

Steve Donoghue in "The Stolen  
 favourite."

THURSDAY TO SATURDAY.  
 Cecil B. De Mille presents  
 LEATRICE JOY in  
 "Hell's High Road."

ALBERTA VAUGHAN in the  
 PACEMAKERS.

### THE DAFFODIL, Cheltenham's Premier Cinema.

Continuous Daily 2.30 to 10.15.  
 FOR ONE WEEK.

Commencing Monday, May 10th.  
 A Grand New Edition of  
 HAROLD LLOYD'S  
 Greatest 6-reel comedy

"A Sailor-Made Man."

Supported on Monday, Tuesday,  
 and Wednesday by  
 "PRETTY LADIES,"  
 and Thursday, Friday, and Sat-  
 urday by  
 "TIME THE COMEDIAN,"  
 both being first-class Metro  
 subjects.

Established 1806.

### Martin & Co.,

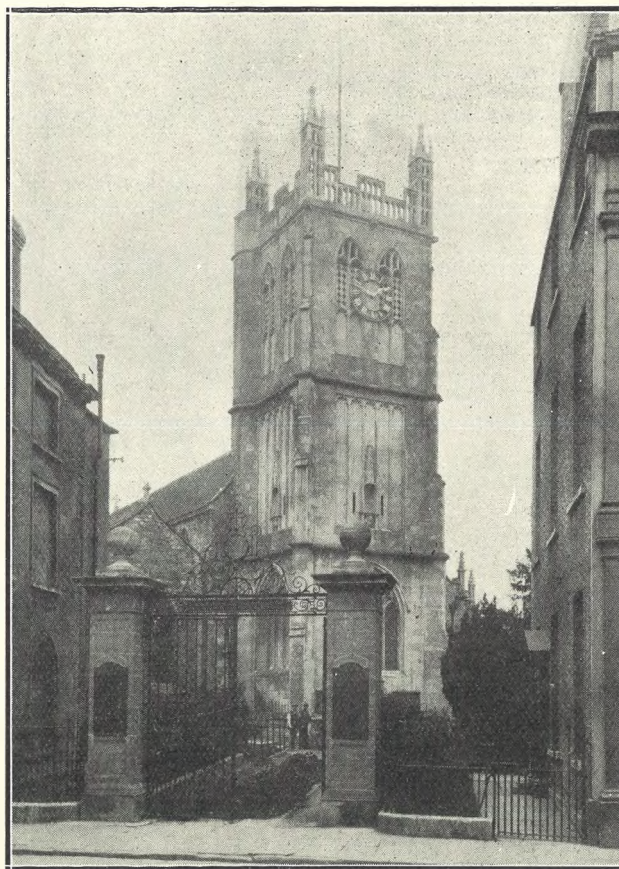
Limited.

### The County Jewellers, PEARL & DIAMOND MERCHANTS,

A Large Selection of Second-hand  
 Silver and Old Sheffield Plate.  
 We are purchasers of Antique  
 Silver and Fine Quality Gems.  
 Best Prices Given.

LICENSED VALUERS.

Promenade, Cheltenham.



Picturesque Gloucestershire.—Dursley.

The Parish Church of Dursley is an ancient and venerable building, chiefly in the Perpendicular style. It has been added to considerably at various periods and has been much restored. The tower shown above is of comparatively modern date, the ancient tower fell in 1709. The handsome iron gates at entrance of Churchyard were erected as a War Memorial to Dursley men who fell in the Great War. The tower contains a peal of Eight bells, a clock with chimes, and a carillon playing a different tune each day every three hours.

"Cheltenham Chronicle" Photo. Copies 8" x 6," 1s. 9d. each.  
 Postage 2d. extra.

### WINTER GARDEN, CHELTENHAM.

Monday, Tuesday, & Wednesday.  
 Hunting, Racing, Love and  
 Laughter.

BRIAN AHERNE AND  
 MARJORIE HUME

In a sporting production  
 "The Squire of Long Hadley."

Thursday, Friday, & Saturday.

MONTY BANKS

In a new explosion of laughter in  
 "KEEP SMILING."

A burst of original fun and sen-  
 sational thrills.  
 Subject to alteration at any  
 time.

### COLISEUM THEATRE, CHELTENHAM.

6.40—8.40.

LEW LAKE'S

Latest and Greatest Revue,  
 "SACKED AGAIN."

### NORTH STREET PICTURE HOUSE.

Continuous, from 2.30 p.m.  
 Monday, Tuesday, & Wednesday.

"You Are Guilty,"

Featuring

JAMES KIRKWOOD AND  
 DORIS KENYON.

Thursday, Friday, & Saturday.  
 "Peacock Feathers,"

Featuring

JACQUELINE LOGAN AND  
 CULLEN LANDIS.

MAISON

### ANNETTE,

Kensington House,

Promenade,

Cheltenham,

SPECIALISTS IN  
 EXCLUSIVE

CORSETS &

LINGERIE.

Phone 1122.

For the  
 Best

## PIANOS, DALE, FORTY and CO. LTD



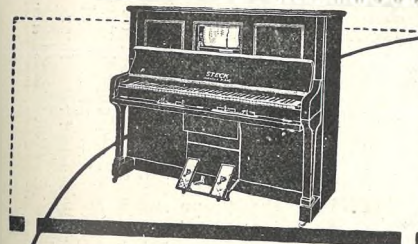


REMEMBRANCE AND ANZAC DAY IN CHELTENHAM, SUNDAY, MAY 2nd.

- 1.—Clergy who took part in Service:—  
Rev. W. J. Selby, C.B.E. (who gave the address), Rev. A. C. Phillips (representing the Free Churches), and Canon Wilson (Rector of Cheltenham).
  - 2.—Boy Scouts and Cubs.
  - 3.—The Choir.
  - 4.—Members of the R.A.O. Buffaloes.
  - 5.—Salvation Army Band, who accompanied in service.
  - 6.—Lady Members of St. Matthew's Choir.
  - 7.—Girl Guides.
  - 8.—Cheltenham Company of 5th (Territorials).
  - 9.—Placing wreaths on Cenotaph.
- "Cheltenham Chronicle" Photos. Copies 1s. each, postage 2d. extra.



**Children's Evening Play-Centre Entertainment.**  
The children attending the evening play centre of the Cheltenham Education Committee at St. John's School gave an enjoyable entertainment at Bennington Hall on Friday, April 30th., under the direction of Miss Revell (Superintendent). The children who performed "A Midsummer Night's Dream."  
"Cheltenham Chronicle" Photos. Copies 1s. 9d. each.



**The Piano for You!**  
The 'Pianola' Piano allows you all the delights of music and the supreme joys of actual playing. All the exquisite musical effects that the sensitive, highly trained fingers of the pianist can produce—your fingers can control through

**The STECK  
PIANOLA  
PIANO**

The introduction of the 'Pianola' mechanism in no way affects the tone quality of the piano; whether played by roll or by hand as an ordinary piano the beautiful, rich singing tone of the famous Steck Piano is always evident.

Ask for all particulars and details of our special easy terms of payment. Your present instrument will be accepted in part payment.

**CRICHTON'S,**  
The Piano House,  
394 High St., Cheltenham.  
Phone 378.

**LET MOUSSELLS MOVE YOU**



Estimates for Removals and Storing Free.  
'PHONE 112.

**CHELTENHAM.** Offices: **AMBROSE STREET**

**CHELTENHAM'S**  
MOST INTERESTING SHOP for SMALL GENUINE ANTIQUITIES at Remarkably Low Prices, where you can make a Purchase as low as 2s. 6d. if necessary.  
Established Over 70 Years.  
**HARRY O. BOX,**  
339 HIGH STREET, CHELTENHAM.  
Similar Goods Purchased.

**Shirts to Measure.**

NEW GOODS in  
COTTON, FINE WOOL,  
::: :: SILK, Etc. :::

Lovely Shades in Mercerised Cotton Materials at ..... 12/6 and 15/6.  
Soft as Silk.

SHIRTS MADE FROM 8/11 Upwards.

**A. Beckingsale,** 111 HIGH ST., CHELTENHAM

ADVERTISE IN THE "ECHO."

**LANCE'S**

Special Display for  
**HOLIDAY WEAR**

Two - Piece Suits,  
Gowns, Millinery,

**COATS  
and FURS.**

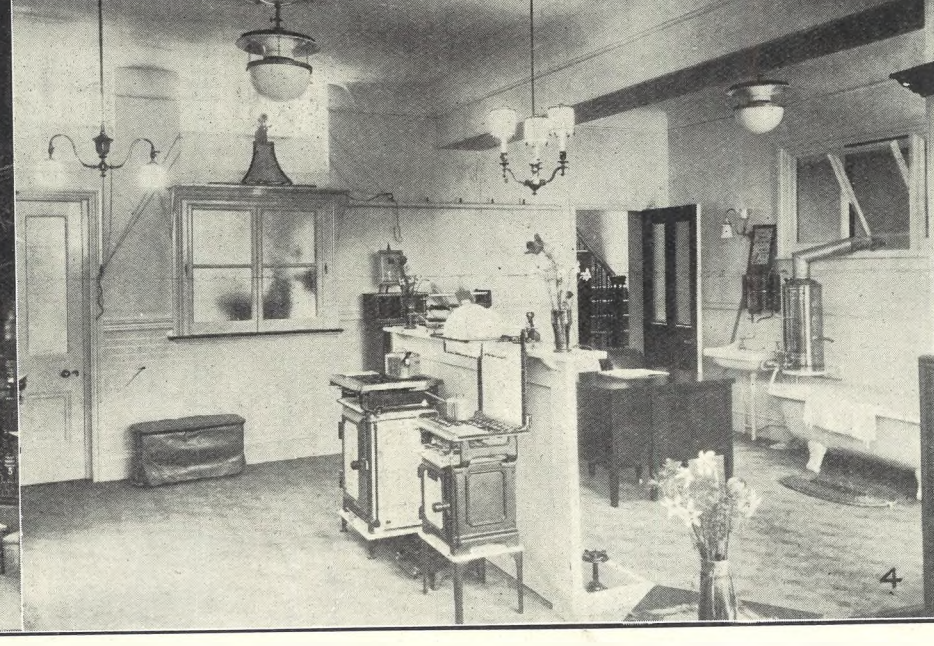
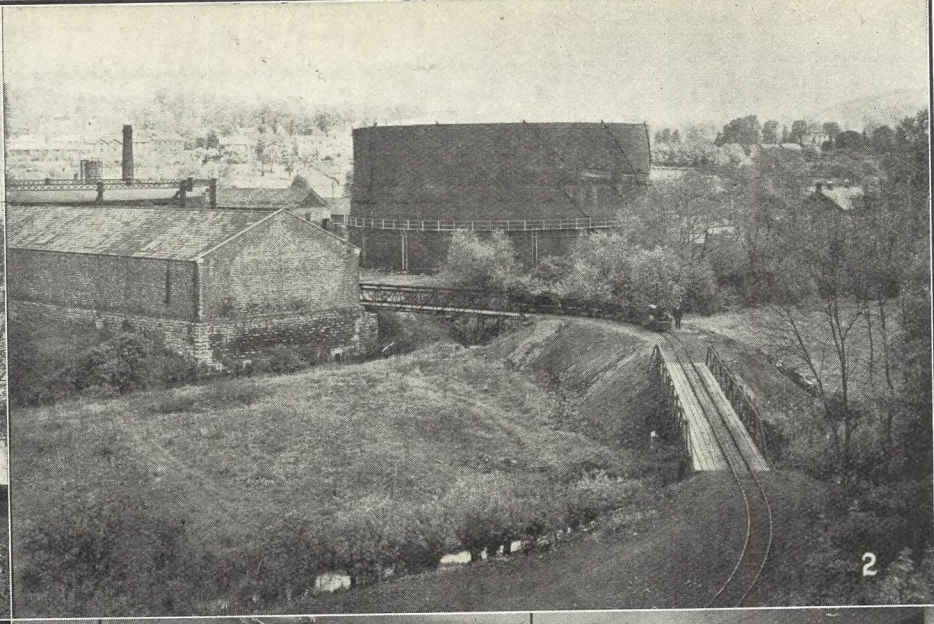


The fashionable OVER-BLOUSE, perfectly made in Super Quality Ivory Schappe Silk, edge of Pockets & Collar, which also forms tie, trimmed with season's newest colours ..... **18/11**  
Various sizes.

SPECIAL OFFER OF  
**150 Art. Silk Jumpers,**  
in lovely shades, at **12/11** TO  
ONE PRICE..... CLEAR.  
(BLOUSE DEPARTMENT.)

**John Lance**  
& Co., Ltd.,  
CHELTENHAM SPA.





**STROUD GAS COMPANY'S ENTERPRISE: VIEWS OF WORKS AND NEW SHOWROOM.**

The Stroud Gas Company held an interesting Ceremony on Tuesday last, when the new Showroom that has been provided in George St., was formally opened by Sir Percival Marling, V.C. It is situated in the centre of the town. Two shops have been converted into a most commodious and handsome Showroom, and it is fitted with the very latest appliances for the scientific and domestic use of gas.

- 1.—The Coal Tip at Gas Works. Coal is brought on a special siding by the M.R. direct to the works, where the trucks are run on a tip as shown.
- 2.—General view of the Gas Works.
- 3.—Exterior view of new Showrooms. The first floor is the Board Room.
- 4.—Interior of new Showroom, opened on Tuesday.

"Cheltenham Chronicle" Photos, Copies 1/9 each, Postage 2d. extra.



**STROUD GAS COMPANY OPEN NEW SHOWROOM.**

The new Showroom was opened by Sir Percival Marling, V.C., and in honour of the occasion the Directorate entertained an influential and representative body of the Professional and Business Men of the District to luncheon at the Bear Hotel, Rodborough, after showing them over the Gas Works. At the luncheon, Mr. W. H. Bishop, a director, presided, and was supported by Mr. T. Woodcock the General Manager and Mr. W. R. Payne, the Secretary.

- 1. and 2.—Distinguished Visitors leaving the Bear Hotel, after lunch. From left Messrs. H. W. Holloway, Barnes, F. Cutler, T. Falconer, F. Withey, E. F. Hooper, J. Paterson, J. S. Dudbridge J.P., H. E. Trinder, Col. Sir Percival Marling, V.C., C.B., Messrs F. M. Wood, F. Winterbotham, W. H. Bishop, W. Gaskin, W. R. Payne, E. Armitage, B. Hudson, J.P., N. Morgan, W. Randall and T. H. Woodcock.
- 3.—Mr. T. H. Woodcock (General Manager), Mr. W. R. Payne (secretary), and Mr. Randall (an employee for 51 years).
- 4.—The General Manager and Mr. J. Paterson (Cheltenham) in front.
- 5.—Ladies present at the Show Rooms. Lady Marling (x) in centre.
- 6.—The coal-tip filling trucks at works.

"Cheltenham Chronicle" photos, copies 1s. each, postage 2d. extra.





Interest Cheques being put up for despatch at Building Society Offices, 18 Clarence-street, Cheltenham.



Clerks taking Cheques to Post Office. "Is Yours here?"

**THE CHELTENHAM AND GLOUCESTER BUILDING SOCIETY**

Has been established for over 75 years, and not once during this period has the Dividend failed to be paid on the agreed half-yearly date.

**THRIFT IN CHELTENHAM AND COUNTY.**

Nearly £40,000 was paid as half-yearly interest on May 1st last by the Cheltenham and Gloucester Building Society. Many investors prefer their interest to accumulate. 4½ per cent. is paid, free of Income Tax, on all Paid-up Share Investments, and a great feature is the fact that the capital can be realised without depreciation at one month's notice.



**PRETTY WEDDING AT KEMERTON.**

Snaps at the marriage of Mr. Stanley Baylis and Miss Freda Guilding at Kemerton (R.C.) Church, on Tuesday, April 27th. Photo of bride and bridegroom was published in our issue of Saturday last.  
 1.—The bride and her father, Mr. Richard Guilding, arriving at the church.  
 2.—The bridal group: Mrs. T. Baylis (Bart Green), Mr. Edwin Baylis (best man), the bridegroom, the bride, Miss Daly (Cardiff) bridesmaid, Mr. R. Guilding, Mrs. R. Guilding.  
 3 and 4.—Sections of the spectators outside church.  
 "Cheltenham Chronicle" photos, copies 2s and 1s. each; postage 2d. extra.

Architectural Decorators ::



to H.M. King George V.

By Appointment.

H. H. **MARTYN** & Co., Ltd., CHELTENHAM, &

5 Grafton St., Bond St., London, W.1.

**ARCHITECTURAL DECORATORS.**

Artists and Craftsmen in all kinds of

BRONZE CASTING, JOINERY & PANELLING, SCULPTURE, STONE CARVING, FIBROUS PLASTER, MEMORIALS, Etc.

PUBLIC BUILDINGS, THEATRES, AND SHIP INTERIOR DECORATION.



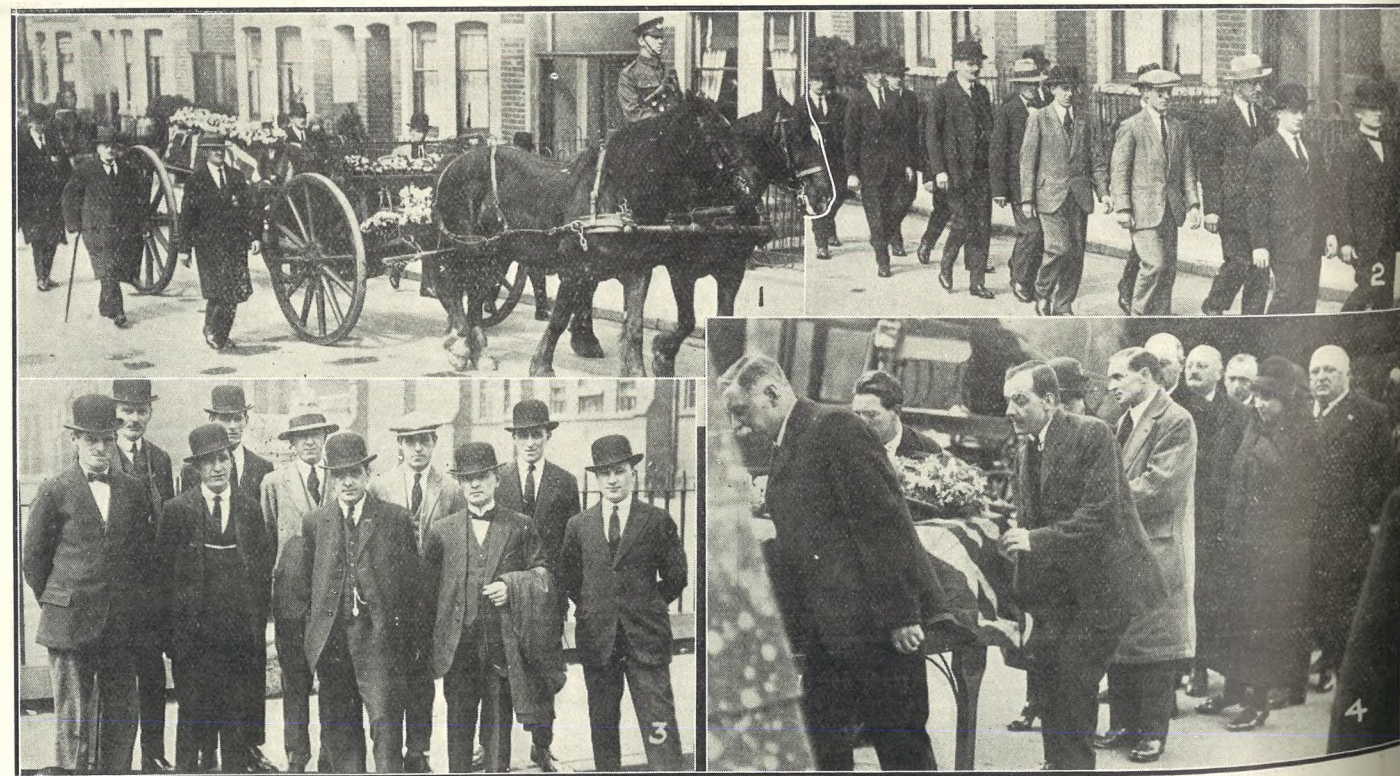
GROVELANDS PARK GATES, SOUTHGATE, LONDON, N. Executed by H. H. MARTYN & Co., Ltd. Architects: J. FARRER & SONS.





**OPENING OF GREYFRIARS BOWLING GREEN, GLOUCESTER.**

The opening of the 1926 Season on this fine green took place on Thursday, April 29, when a match between President's and Vice President's teams was played.  
 1 and 2.—Wives and friends of the players. 3.—Messrs. Shermer's and Wallace Harris's rinks. 4.—Messrs. Lansley's and Goddard's rinks. 5.—Messrs. Allen's and Sharcott's rinks.  
 Cheltenham "Chronicle" photos, copies 1s. each, postage 2d. extra.



**MILITARY FUNERAL IN GLOUCESTER.**

The funeral of the late Sergt. Albert Dennis, 1/5th Gloucesters, of 45 Tredworth-road, Gloucester, took place on Thursday April 29th at Gloucester Cemetery.  
 1.—The Gun Carriage conveying deceased's coffin covered with the Union Jack. 2 and 3.—Fellow workers from Hatherley Step works, who attended the funeral. 4.—Family mourners.  
 "Cheltenham Chronicle" Photos. Copies 1s. and 1s. 9d. each. Postage 2d. extra.

**THE CHELTENHAM CHRONICLE AND GLOUCESTERSHIRE GRAPHIC**

With Which is Incorporated the "Cheltenham Looker-On."  
**GRATIS SUPPLEMENT.** Saturday, May 15, 1926. No 1,324.

**CHELTENHAM THEATRE AND OPERA HOUSE.**

This Afternoon (2.30) & Evening (7.45)—"NO! NO! NANETTE."  
 Next Week (Six Nights, 7.45, Matinees Wed. and Sat., 2.30):  
 THE STRATFORD-UPON-AVON SHAKESPEARE FESTIVAL Co. in Repertoire.

**THE PALACE, High Street, CHELTENHAM.**

Monday to Wednesday,  
 Maurice Flynn & Dorothy Dwan  
 In  
**"SPEED WILD."**  
 For Six Days,  
 Steve Donoghue in  
**"THE GOLDEN SPURS,"**  
 A Tale of the Derby.  
 Thursday to Saturday,  
 Tom Gallon's Novel "Tatterley,"  
**"OFF THE HIGHWAY,"**  
 With William V. Mong, Marguerite de la Motte, and John Bowers.

**THE DAFFODIL, Cheltenham's Premier Cinema.**

Continuous Daily, 2.30 to 10.15.  
 Monday, May 17th, Tuesday, and Wednesday,  
 REG. BARKER'S  
 MIGHTY DRAMA OF SNOW.  
**"THE WHITE DESERT."**  
 Thrilling Adventure at the Roof of the World,  
 Starring Claire Windsor and Pat O'Malley,  
 Thursday, Friday, and Saturday,  
 Fay Compton and Jack Buchanan  
 In  
**"SETTLED OUT OF COURT."**  
 A Picture that is a credit to the British Film Industry.  
 Latest News in Pictures and usual All Exclusive Programme.

Established 1806.  
**Martin & Co., Limited.**

**The County Jewellers, PEARL & DIAMOND MERCHANTS,**  
 A Large Selection of Second-hand Silver and Old Sheffield Plate. We are purchasers of Antique Silver and Fine Quality Gems. Best Prices Given.  
**LICENSED VALUERS.**

Promenade, Cheltenham.



The late Lady Bledisloe, Wife of Lord Bledisloe, who died at her home, Lydney Park, on Thursday, May 6.

**CHELTENHAM SPA OPEN COMPETITION Musical Festival, Town Hall, Cheltenham Spa, May 18th & 19th, 1926.**

Sessions each day at 10 a.m. and 2.30 p.m. : : : ADMISSION 1/-.  
**Grand Concert** by prize winners & presentation of prizes on Wednesday at 8 p.m.  
 ADMISSION 1/- and 2/-.  
 (Seats may be reserved at Messrs Dale, Forty & Co., Promenade).  
 Season Tickets for the Festival 2/6 each. Souvenir Programmes 6d. each.

For the Best **PIANOS, DALE, FORTY and CO. LTD**

**WINTER GARDEN, CHELTENHAM.**

Monday, Tuesday, Wednesday:  
**TOM MIX and TONY in "THE EVERLASTING WHISPER."**  
 See the Wonderful Fight with Hunger-maddened Wolves.  
 Thursday, Friday, Saturday:  
**Bryant Washburn & Billie Dove**  
 In a Comedy Drama with a Laugh in every foot.  
**"TRY AND GET IT."**

**COLISEUM THEATRE, CHELTENHAM.**

6-40-8-40.  
 The New Musical Revue,  
**"THREE BAGS FULL."**

**NORTH STREET PICTURE HOUSE.**

Continuous from 2.30 p.m.  
 Monday, Tuesday, Wednesday:  
**"THE LIMITED MAIL,"**  
 Featuring Monte Blue and Vera Reynolds.  
 Thursday, Friday, Saturday:  
**"THE NAKED TRUTH"**  
 Featuring Gareth Hughes.

**Sensier**

New Spring and Summer Models for all occasions, at moderate prices.  
 388b HIGH STREET, CHELTENHAM

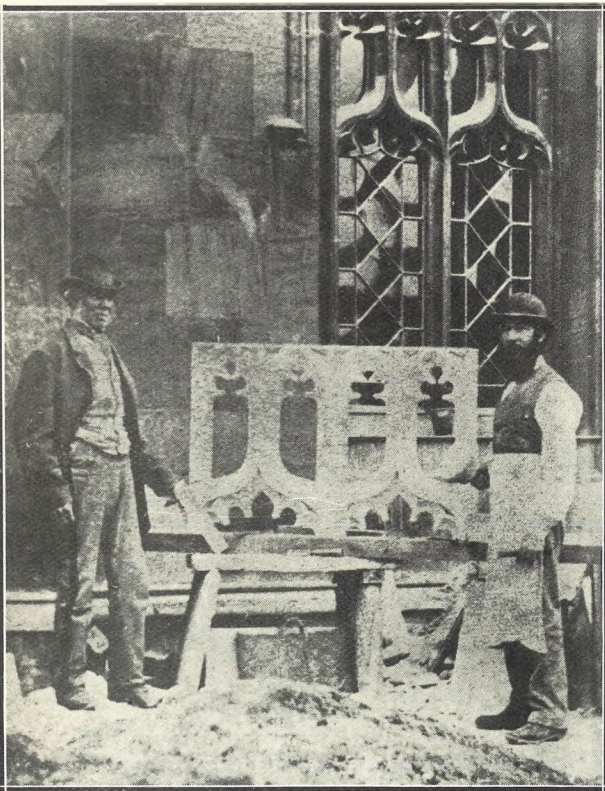
Telephone 1080.  
**W. Scott Cooper,**  
 Goldsmith and Silversmith, Diamond Merchant, Jeweller,  
 The Promenade, Cheltenham.  
**LICENSED VALUER.**



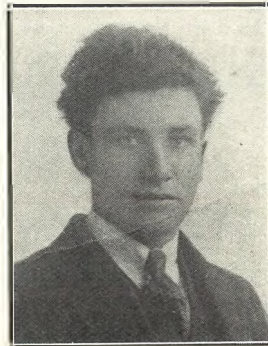


**WESLEY CHURCH, CHELTENHAM. JOINT GYM CLUB.**

Instructor for Ladies' Section is Mr. Goldthorpe (standing in centre), Instructor for Men is Mr. A. C. Stubbs, standing in centre at back.



MR. WILLIAM GILES BROWN (on right). Of Malvern House, Malvern-road, Cheltenham, who died on May 1st, aged 98 years. He was born in Cheltenham, and was associated with much of the sculptural work of the town, particularly the Caryatides (armless figures) in Montpellier Walk. He is shown in above photo working with his father at the building of the Cambray Turkish Baths. Mr. Brown, sen., died over 50 years ago, aged 73. He worked on the Pittville Pump Rooms when they were built, and did much work at Christ Church when it was built in 1838. Both father and son worked as sculptors on the Houses of Parliament.



MR. ALBERT BOULTON Of 3 Cleveland-street, Cheltenham, who died on Tuesday, May 4, at Cheltenham Hospital, from injuries sustained by falling from the tailboard of a lorry belonging to Messrs Shirer and Haddon, for whom he worked. He was 25 years of age. The lorry was descending Leckhampton Hill, and in passing over the old tram lines, halfway down the Hill, the hooks of the tailboard were jerked out, throwing the man and his companion to the ground. He was an old "Echo" boy, and a good, steady and obliging workman.

Read the "ECHO" Every Day.

**DIABETES.**

Sufferers from Diabetes searching for a palatable, well-varied diet will find it in Cheltine Foods. They are highly nutritious and graded No. 1 (for mild cases), No. 2 (more serious cases), and "strict diet" (for extreme cases). Particulars post free, or with samples to cover postage, etc., 1s. from

**THE CHELTINE FOOD CO.,**  
CHELTINE WORKS, CHELTENHAM.

SPECIALIST FOR DISEASES OF THE FOOT.

MR. ALFRED J. VENTRIS-FIELD,  
ORTHOPÆDIST AND ELECTRO-THERAPEUTIST.  
Author of "The Treatment of Talipes Valgus," "Pedic Surgery," "Poisonous Animals and Vegetables of the Country-side," "Orthopædic Principles of Foot Manipulation," etc.).

Surgery:  
6 RODNEY PLACE, CHELTENHAM.

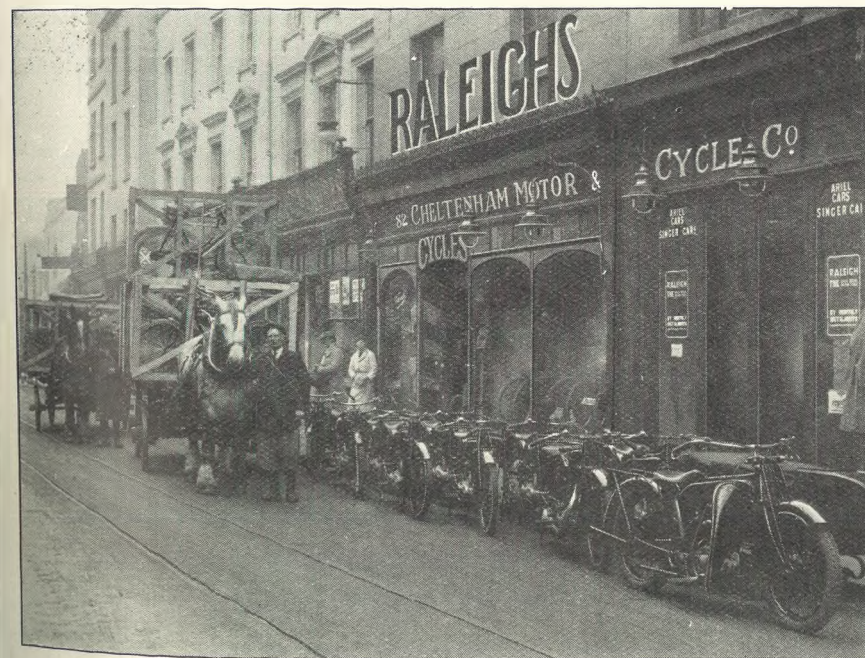
**HAVE YOU FOUND US YET?**  
AT THE SIGN OF The SHAMROCK  
31 Promenade, CHELTENHAM.

HERE you can get the most **Delicious Luncheons** (3 Course, or a la Carte).  
**Afternoon Teas**, such things as Home-made Breads, Scones, Oat Cake and Honey, Cinnamon Toast, etc., etc.  
FOR SALE—Meat Dishes, Cakes, Breads, Scones, etc., etc.



**SHURDINGTON SCHOOL CHILDREN'S ENTERTAINMENT.**  
A Scholars' Concert, together with a short setting of "A Midsummer Night's Dream," was performed by the local children at the Village Hall, Shurdington, on May 1st. The children who gave "A Midsummer Night's Dream."

**THE ARRIVAL**



of 1926- RALEIGH MOTOR CYCLES AND BICYCLES.

Motor Cycles from £28 0 0. **BETTER VALUE THAN EVER!** Bicycles from £6 7 6.

ALL SPARES STOCKED. TERMS ARRANGED.

**CHELTENHAM MOTOR & CYCLE CO.**  
THE NEW RALEIGH DISTRIBUTORS,

82 High Street, CHELTENHAM. : Tel. 166.

**LANCE'S**

Special Display for HOLIDAY WEAR

Two - Piece Suits, Gowns, Millinery, **COATS and FURS.**



The fashionable OVER-BLOUSE, perfectly made in Super Quality Ivory Schappe Silk, edge of Pockets & Collar, which also forms tie, trimmed with season's newest colours ..... **18/11**  
Various sizes.

SPECIAL OFFER OF **150 Art. Silk Jumpers,** in lovely shades, at **12/11 TO ONE PRICE CLEAR.** (BLOUSE DEPARTMENT.)

**John Lance** & Co., Ltd., CHELTENHAM SPA.





**ROUND THE CITY IN GLOUCESTER.**

- Snaps on and around the Cross on Saturday last. The general strike made the streets very crowded and animated.
- 1.—Mr. Peck and a lady.
  - 2.—A number of G.W.R. employees discussing the strike.
  - 3.—Chief Staff Clerk Evans and ex-Inspectors Pritchard and Phillips (all of the G.W.R.).
  - 4.—Mr. F. J. Cullis (a well-known Gloucester archaeologist) and his nephew, Mr. C. J. Cullis (on left).
  - 5.—Shurdington visitors.
  - 6.—Mr. C. E. Gardner (centre) and his two sons at cricket.
  - 7.—Two old Railway employees sunning themselves at the Cross.
  - 8.—Some Wagon Works officials making the best of a fine morning.

"Cheltenham Chronicle" Photos, Copies 1/- each. Postage 2d. extra.

**Shirts to Measure.**

LET MOUSELLS MOVE YOU

BEST QUALITY

**CIDERS**

IN BOTTLE.—Sparkling and Still.

**BARTHOLOMEW,**

419, 420 HIGH STREET, CHELTENHAM.

Wines, Spirits, Ales, Table Waters, & Grocery  
Tel. 135.

NEW GOODS in  
COTTON, FINE WOOL,  
SILK, Etc.  
Lovely Shades in Mercerised Cotton  
Materials at 12/6 and 15/6.  
Soft as Silk.



Estimates for Removals and Storing Free.  
PHONE 112.

SHIRTS MADE FROM 8/11 Upwards.  
A. Beckingsale, 111 HIGH ST., CHELTENHAM

CHELTENHAM.

Offices: AMBROSE STREET



**OPENING OF COUNTY CRICKET SEASON.—Gloucestershire v. Lancashire at Gloucester.**

Gloucestershire opened their 1926 Season on Saturday last, at the Wagon Works ground, Gloucester, Lancashire being their opponents. Lancashire only made 145 in their first innings, Gloucester completing the day's cricket by scoring 79 for 1, rain stopping play at 5 o'clock. It was very cold and dull, but there was a capital attendance.

- 1.—Major L. Green, the Lancs. Captain.
- 2.—Four Cheltonians: Percy Mills, Sergt.-Major Martin, Charlie Parker and Mr. John Evans.
- 3.—Hallows coming out.
- 4.—Three Gloucester professionals: Bloodworth, Goddard and Pope.
- 5.—Mrs Hammond, mother of W. Hammond, the brilliant Gloucester player, talking to Col. D. C. Robinson.
- 6.—R. Tyldesley (right) with a friend.
- 7.—P. T. Eckersley (Lancs.) and G. Wedel (Glos.).
- 8.—Three Cheltonians: Messrs. E. L. Ward, E. How, F. W. Posnette.
- 9.—A group of spectators, mostly Cheltonians.
- 10.—Three shivering Lancastrians: Makepeace and Watson (seated), Duckworth (standing).

"Cheltenham Chronicle" Photos, Copies 1/- each. Postage 2d. extra.



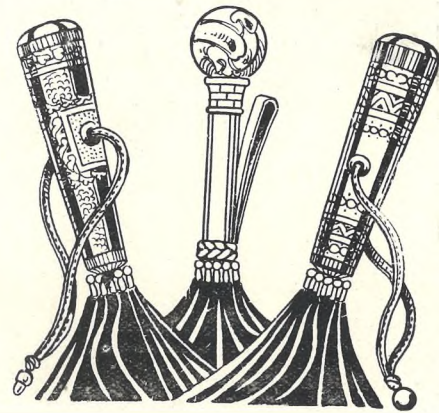
# SPECIAL OFFERS OF READY-TO-WEAR GOODS FOR WHITSUNTIDE.

We made our preparations long before the Strike, so that we hold a full and well selected stock for your Holiday requirements. UP-TO-DATE, RELIABLE GOODS AT MODERATE PRICES, and the lowest possible consistent with quality.

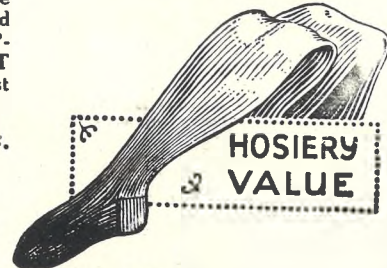
We invite you to Inspect Our Values.



50 LADIES' RUBBER-LINED MACS. Special purchase from maker's much below price, in fawn and navy only. Usual price 18/11. All sizes, 44in. to 50in. 12/11

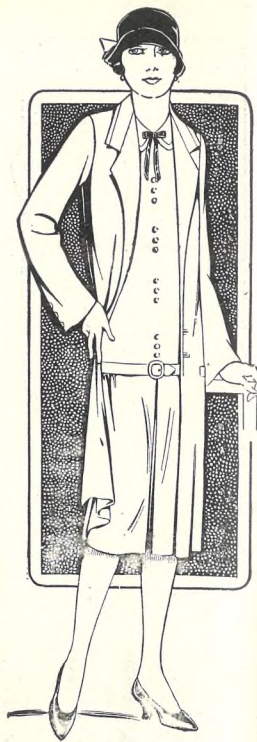


SPECIAL UMBRELLA OFFER. We are now offering a Special Purchase of Umbrellas, with new Chubby Handles and reliable Fabric Cover. Usual price 6s. 11d. ... 5/-



HOSIERY & VALUE

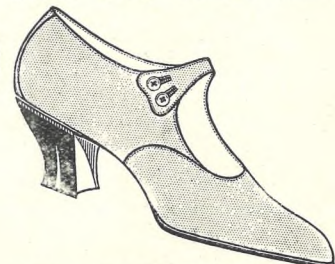
SPECIAL NON-LADDER ART SILK HOSE. Long Art Silk Panel, with wide suspender-top, in all the new shades 1/11 1/2  
 PURE SILK HOSE, reinforced with Art Silk, and cotton foot. Wide suspender-top. In 15 colours. These hose have all the appearance of a pure silk 2/11 1/2  
 PHOENIX PURE SILK HOSE, reinforced cotton foot, and wide suspender-top. Non-ladder. 10 miles of pure silk in every pair. Seamed back, elegant, and of wonderful durability. All colours 4/11 1/2  
 PURE SILK HOSE, seamed back, long silk panel, spliced cotton foot, and wide suspender-top. In all new shades 3/11 1/2



SMART 2-PIECE SUITS, in fine quality Wool Gabardine, well cut and tailored. Fully lined coat. All colours ... 59/6 Also better qualities in Repp to 7 guineas.

## Diana FOOTWEAR ELEGANCE and COMFORT

... at Reasonable Prices. ... EVERY PAIR GUARANTEED.



SMART 1-BAR SHOES in fine quality black patent leather. Also in Golden Brown Glace. 16/11  
 DAINTY 1-BAR SHOE in fine Glace leather, in popular champagne colour 20/-  
 1-BAR SHOE in fine quality new Naco calf, in grey and light fawn. 20/-  
 "DIANA" SHOES are the last word in value. They are well cut, beautifully finished, and will wear well.

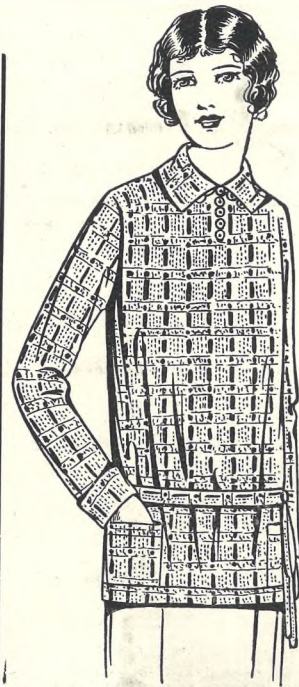
## GLOVES.

DUPLEX SUEDE-FINISH FABRIC GLOVES. 2-dome fastenings. Washable. A really well-cut and good wearing glove 2/11 1/2

3-BUTTON FINE QUALITY SUEDE GLOVE, beautifully cut and made, for dress wear. In Pastel, Fawn, Grey, etc. 5/11 1/2

DENT'S 2-BUTTON WASHABLE DOESKIN GLOVES. A useful glove for ordinary wear, in Chamois and White ... 3/11 1/2

3-BUTTON SUEDE FINISH FABRIC GLOVE of very fine texture, and well finished. In All shades 2/3 1/2



A SMART JUMPER of knitted Art Silk, in delightful soft colour mixtures, convertible collar, long sleeves ... 18/11 Also similar, in other qualities, 4s. 11d. to 29s. 6d.



SMART COAT, in Wool Repp, featuring newest cut, well tailored and finished, in the beautiful new Pastel shades 39/6 Also at 25s. 6d., 49s. 6d., 59s. 6d.

# Dicks & Sons Ltd.

172 & 173 HIGH STREET  
**Cheltenham Spa**  
 50 YEARS REPUTATION FOR VALUE.  
 TEL. 1007



### Gloucestershire Red Cross Society Nurses' Competition for County Cup and Bowl.

The annual competitions for the County Cup and County Bowl were held on Saturday last at Naunton Park Schools, Cheltenham, the various detachments travelling by motor vehicles from distances owing to the general strike. The whole sixteen teams entered turned up. Leckhampton, who entered three teams, won the Cup and Bowl with their A and C teams respectively.

- |   |  |   |
|---|--|---|
| 1.—Leckhampton.                                     | 4.—Miss Ratcliff's (Southam).              | 7.—Gloucester City.                       |
| 2.—Gloucester City (XXXII.) fourth with 377 points. | 5.—Gloucester City (XCVI).                 | 8.—Leckhampton A (winners of County Cup). |
| 3.—Nailsworth A (third with 383 points).            | 6.—Leckhampton C (winners of County Bowl). | 9.—Officials and helpers.                 |

"Cheltenham Chronicle" Photos, Copies 1/- each, Postage 2d. extra.





This Model (sketched) is of "Nilcrush" Irish Linen which has hand-drawn threadwork and inverted "kick" pleats in front. An ideal Tennis Frock. It is remarkable value. Price 21/9 in all colours and contrasts.

## PRACTICAL & OTHERWISE SUMMER FROCKS.

A FULL COLLECTION  
BY VANDERPLANK.

**B**EAUTY—Woman has always loved Lovliness: to-day she demands it. That simple fact goes far to explain the great selling power of Vanderplank Frocks. Day in, day out, they charm ladies by their rich colourful beauty. Each is a triumph of design newly created or copied by skilled Artists. It means they are in conformity with the latest trend in Fashion, and that the style has been adapted only within the limits of good taste.

**IN VOILES**, prettily embroidered, at 19/11 ; also 21/9 to 3 Gns.

**SILKS**, both plain and striped, at all prices.

**CREPE DE CHENES** in beautiful designs.

**GEORGETTES**, floral and plain, for day and evening wear.

VANDERPLANK HAVE A FULL COLLECTION OF  
WHITSUNTIDE FASHIONS IN ALL DEPARTMENTS.

**VANDERPLANK**  
381, HIGH STREET HARRODS  
**FASHIONS AND FURS**

381 HIGH STREET, CHELTENHAM SPA.

# THE CHELTENHAM CHRONICLE AND GLOUCESTERSHIRE GRAPHIC

With Which is Incorporated the "Cheltenham Looker-On."  
GRATIS SUPPLEMENT. Saturday May 22, 1926. No. 1,325.

**C**CHELTENHAM THEATRE  
AND OPERA HOUSE.

This Afternoon (2.30) "THE MERCHANT OF VENICE." and  
Evening (7.45) "ROMEO AND JULIET."

Next Week (Six Nights, 7.45, Matinee Saturday, 2.30):  
SUPPORTED BY HER  
**LYDIA KYASHT**, CELEBRATED LONDON COMPANY

**THE PALACE,**  
High Street, CHELTENHAM.

MONDAY to WEDNESDAY  
A Story of Stamboul, by Sir  
Phillip Gibbs.  
"THE CITY OF  
TEMPTATION"  
with  
Julanne Johnston & Hugh Miller  
Sunshine Comedy—  
A SCIENTIFIC HUSBAND.  
THURSDAY to SATURDAY  
Colleen Moore & Lloyd Hughes  
in the  
"DESERT FLOWER."  
O'Henry Comedy—Transients in  
Arcadia.  
Alberta Vaughan in the  
"PACEMAKERS."  
Douglas Cochrane and His  
Orchestra.

**THE DAFFODIL,**  
Cheltenham's Premier Cinema.

Continuous Daily 2.30 to 10.15.  
Monday, May 24th, Tuesday and  
Wednesday  
LON CHANEY and NORMA  
SHEARER in  
"THE TOWER OF  
LIES,"  
A Great Metro Picture.  
Thursday, Friday and Saturday,  
Special Return Visit of that  
Glorious Picture  
"IN A MONASTERY  
GARDEN"  
Starring VIOLA DANA.  
The best in Motion Pictures and  
music that charms.

Established 1806.

**Martin & Co.,**  
Limited.

The County Jewellers,  
PEARL & DIAMOND MERCHANTS.

A Large Selection of Second-hand  
Silver and Old Sheffield Plate.  
We are purchasers of Antique  
Silver and Fine Quality Gems.  
Best Prices Given.  
LICENSED VALUERS.

Promenade, Cheltenham.



CHELTENHAM MUSICAL FESTIVAL.

The Chairman of Selection Committee, Mr. Lewis Hann, A.R.A.M.,  
in centre, with the two Adjudicators, Dr. (of Music) E. Markham  
Lee, M.A. (left), and Dr. (of Music) Albert C. Tysoe, F.R.C.O.

"Cheltenham Chronicle" Photo. Copies 1s. each. Postage 2d. extra.

**WINTER GARDEN,**  
CHELTENHAM.

Monday, Tuesday, Wednesday:  
DOUGLAS MACLEAN in  
"INTRODUCE ME."  
It begins with a laugh and ends  
with a gasp.

Thursday, Friday, Saturday,  
HENRY AINLEY (in his original  
part) and ISOBEL ELSOM  
in  
"QUINNEYS,"  
H. A. Vachell's famous novel and  
play.

**COLISEUM THEATRE,**  
CHELTENHAM.

6.40—8.40.  
SIX BROTHERS LUCK  
Present  
"FELLOW WORKERS"  
Musical Comedy Revue.

**NORTH STREET  
PICTURE HOUSE.**

Continuous from 2.30 p.m.  
Monday, Tuesday, Wednesday:  
HOOT GIBSON in  
"The Arizona Sweepstakes."  
Thursday, Friday, Saturday:  
"Before Midnight,"  
Featuring William Russell and  
Barbara Bedford.

MAISON  
**ANNETTE,**  
Kensington House,  
Promenade,  
Cheltenham,  
SPECIALISTS IN  
EXCLUSIVE  
**CORSETS &  
LINGERIE.**

Phone 1122.

For the Best **PIANOS, DALE, FORTY and Co., Ltd**





**THE GENERAL STRIKE IN CHELTENHAM.**

On Saturday morning last there was a procession of men from the Labour Hall in High Street to the Gloucestershire Aircraft Company's Works, where employees signed on to start work on Monday. They were accompanied by a number of railway employees and members of the local Strike Committee and "Council of Action."

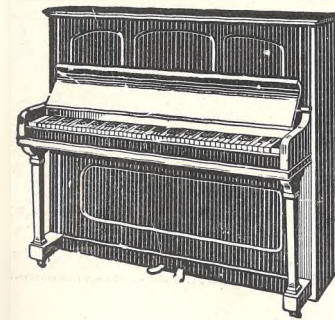
- 1.—The Council of Action: (a) Mr. S. Gale, (b) H. Allsopp, (c) Mrs. Carr, (d) Mr. E. Burge, (e) Mrs. E. Burge, (f) Mr. H. Mees, (g) Mr. F. Hobbs, (h) Mr. F. Virgo.
- 2, 3, 4, and 6.—Groups of Railway employees.
- 5.—Women workers at Sunningend.
- 7, 8, 9, and 10.—Sunningend employees who signed on to start on old terms.

"Cheltenham Chronicle" Photos. Copies 1s. each, postage 2d. extra.



**A RECORD WEEK AT CHELTENHAM OPERA HOUSE.**  
The takings during last week's performances of "No, No, Nanette," at Cheltenham Opera House, were a record during the history of the Theatre. The queue on Saturday night last for the Pit and Upper Circle. Every seat was filled during the whole week.

Sole Agent for Bechstein, Broadwood & Steck Pianos.  
AS USED AT THE MUSICAL FESTIVAL.



**Pianos and Pianola-Pianos.**

No place in the County offers such a fine and large stock of personally selected High-Grade Pianos and Pianola-Pianos at such low prices, either for cash or deferred payment. The latest new models can be tested side by side, ensuring a satisfactory choice.

Accredited Agent for  
"His Master's Voice"

**Gramophones and Records.**

**Tuning and Repairing.**

At your service, a special staff of highly-trained Tuners, Pianola Experts, and Repairmen capable of attending to the most exacting requirements of all instruments. Efficiency and satisfaction.

**Music, Songs and Books.**

This Department is replete with a carefully graded and selected stock of Classical and Modern Musical Publications suitable for all requirements.

Everything Musical at

**Crichton's,**

The Piano House,

394 High Street, CHELTENHAM.

Phone: 378.

Also at Bristol.



**A LEONARD STANLEY WEDDING.**  
The marriage of Mr. Henry Large, aged 75 years, and Mrs. Joseph Long, aged 68 years, took place at Leonard Stanley last week. The happy couple at home.

**BOURTON-ON-THE-WATER**  
**NURSING ASSOCIATION FETE**  
At BOURTON MANOR  
(By kind permission of Mrs. Albino),  
WEDNESDAY, JUNE 30th, 2.30 to 10.0.  
Further particulars later.

**ENGLAND AND THE EMPIRE..**

**LANCE'S**

Will make a  
**SPECIAL SHOW**  
OF

**All British**

**Productions,**

From

**May 24th to 29th,**  
AND INVITE YOUR INSPECTION.

**"ADMIRALTY" SERGES.**  
EVERY YARD GUARANTEED.  
Prices . 2/11 to 12/11 Yd.

Artificial Silk and Cotton Fabrics.  
Wonderful Collection of Designs  
and Shades. 1/0½ to 3/11 Yd.

Hosiery, Gloves, Underwear,  
:: :: and Fancy, :: :: ::

Celanese Silk for Dresses and  
Lingerie Wear. 6/11 Yd.  
All Colours.

"Japshan" Pure Silk, in Plain and  
Stripes. Natural Shade, 5/9 Yd.  
Plain Colours and Stripes, 7/11 Yd.

Carpets, Furniture, Linens,  
:: :: and Linoleum. :: ::

**SEE WINDOWS**

Monday Next, and following days.

**John Lance**

& Co., Ltd.,

CHELTENHAM'S SHOPPING CENTRE.





**CHELTENHAM MUSICAL FESTIVAL.**

- On Tuesday and Wednesday last Cheltenham Town Hall was the scene of Cheltenham's first Musical Festival.
- 1.—Uley Village Choir.
  - 2.—Mr. Leslie Honeysett, winner for Violin Playing (under 16).
  - 3.—Competitors (under 13) in Elocution Class.
  - 4.—The Chairman (in centre) and members of Committee. Mr. Philp (in circle).
  - 5.—Bass Soloists. Messrs. J. Williams, W. Richards (2nd), Marshall Jones (1st), C. Ireland, A. Willis, and R. Richards.
  - 6.—Evesham Quartette, who tied for first prize.
  - 7.—Miss Sybil Clarke (first for Piano playing, open).
  - 8.—Miss Margaret Davies (second for Piano playing, open).
  - 9.—Miss Georgina Vance (Glos.) and Miss Nesta Brand (Glos.) first and second for Contralto Solo.
  - 10.—Mr. Geo. Taylor (Minety) and Mr. R. Rivington (Redditch) first and second for Tenor Solo.
  - 11.—Miss G. Linnet and Miss A. Ludlow-Hewitt (Minety) first and second for Soprano Solo.
  - 12.—Miss Vera G. Bayfield, first for Elocution, open.
  - 13.—Miss Mary Palmer, first for Sight Reading, Piano (under 18).
  - 14.—Miss Phyllis Burrows, first for Piano Solo (under 18).



**CHELTENHAM MUSICAL FESTIVAL.**

- There was a large number of competitors from a wide district at the Festival, and on Wednesday night a grand concert was given, when the first prize winners in the various competitions performed.
- 15.—Cheltenham Central School Girls, winners of the "Woodward" Trophy for School Choirs.
  - 16.—Competitors for Piano Solo (15 or under). Standing: R. Turner, I. Jones, K. Munn, J. Webb. Seated: P. May, Esme Webb (Bristol) (2nd prize).
  - 17, 18, 19, and 20.—The Minety Quartette, who tied for 1st prize.
  - 21.—Competitors for Piano Solo (15 or under). Standing: R. Turner, I. Jones, K. Munn, J. Webb. Seated: P. May, Esme Webb (Bristol) (2nd prize).
  - 22.—Tewkesbury C. of E. School Boys, bracketed 5th for Boys' School Choirs.
  - 23.—Naunton Park Girls' School, second for School Choirs by one point.
  - 24.—Competitors for Piano Solo (under 12).
  - 25.—Piano Soloists (under 12): M. Deavin, M. Brunson, M. Hambling, and M. Fildes.
  - 26.—Practising School, Cheltenham (2nd for Boys' Choirs).





CHARLTON KINGS BOYS' SCHOOL ANNUAL ATHLETIC SPORTS, MAY 14.

1.—Committee.  
2.—F. Bloodworth winning 880 Yards Handicap.  
3 and 4.—Lady helpers.

5.—F. Bloodworth winning 80 yards (under 10).  
6.—Some of the spectators.  
7.—The Cross Country Runners; the three winners in centre.

"Cheltenham Chronicle" Photos. Copies 1s. each, postage 2d. extra.

LET MOUSELLS MOVE YOU



Estimates for Removals and Storing Free.  
'PHONE 112.

CHELTENHAM. OFFICES: AMBROSE STREET

**CHELTENHAM'S**  
MOST INTERESTING SHOP for SMALL  
GENUINE ANTIQUITIES at Remarkably Low  
Prices, where you can make a Purchase as  
low as 2s. 6d. if necessary.  
Established Over 70 Years.  
**HARRY O. BOX,**  
339 HIGH STREET, CHELTENHAM.  
Similar Goods Purchased.

**TRINITY COLLEGE OF MUSIC,**  
LONDON.  
The last days of entry for the forthcoming  
Examinations are as follows:—  
**THEORY, MAY 26th.**  
**PRACTICAL, JUNE 5th.**

ERNEST A. DICKS, F.R.C.O., Local Sec.,  
Buckingham Lawn, Wellington Street.

Shirts to Measure.

NEW! GOODS in  
COTTON, FINE WOOL,  
SILK, Etc. C

Lovely Shades in Mercerised Cotton  
Materials at 12/6 and 15/6.  
'Soft as Silk.

SHIRTS MADE FROM 8/11 Upwards.

**A. Beckingsale,** 111 HIGH ST.,  
CHELTENHAM

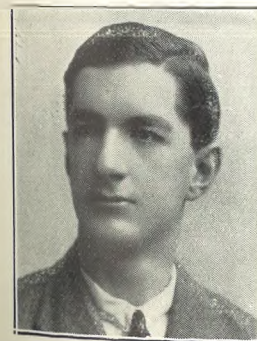


DISORDERLY DOCKERS PROSECUTED IN GLOUCESTER.

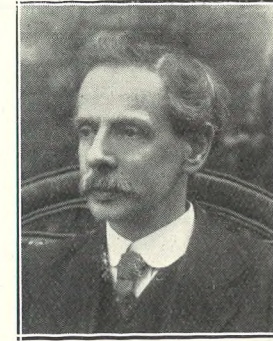
On Tuesday last thirteen dock workers were each sentenced to fourteen days' hard labour, under the Emergency Act, for preventing the working of the canal bridge during some exciting scenes at Hempsted on the previous Thursday.

1.—The crowd outside police-court. 4.—The procession of police and prisoners from court to the prison.  
2.—Three of the men in charge of police. 5.—Police keeping crowd back from entering police-court.  
3.—Charles Overthrow, who was acquitted.

"Cheltenham Chronicle" Photos. Copies 1s. each, postage 2d. extra.



**MR. JOHN ENFIELD TAYLOR,**  
Eldest son of Sir Francis and Lady Scott, Swindon House, near Cheltenham, who died on May 2nd of pneumonia at Kuala Lumpur Hospital, aged 21 years.



**MR. ALFRED LENGDEN,**  
Of Rothesay, Sandford Mill-road, Cheltenham, who died on May 14th at the Imperial Nursing Home, where he had been a patient over three months, aged 64 years. He was dispenser at the General Hospital for 30 years, but since 1914 he had had the chemist's business at 337 High-street.

For Perfect Satisfaction and Enjoyment this Whitsun  
BUY OR HIRE ONE OF  
**Wheway's Reliable Bicycles.**

Agents for "Sunbeam," "Humber," and "Centaur" Bicycles.  
REPAIRS TO ANY MAKE OF CYCLE.  
Trams, Push Cars, and Wheelchairs for Hire.  
ADDRESSES:  
30 Clarence St., 1 Hewlett St., & 3 Suffolk Parade, Cheltenham.



REPAINTING "THE PLOUGH."

The front of the Plough Hotel has just been repainted by Chas. H. Rainger, of Cheltenham, and was carried out by means of the "Cradle" system of scaffolding supplied by the Scaffolding Co. of Great Britain, Ltd.





**SALVATION ARMY FUNERAL IN CHELTHENHAM.**

The funeral of the late Mrs. E. J. Godsell, the wife of Sergt.-Major Godsell, of the Cheltenham Salvation Army, took place on Wednesday last, amidst scenes of sorrow and sympathy.

1.—The Band of Salvation Army heading funeral procession. 2.—Outside the barracks. 3.—Soldiers in procession. 4.—All the members wore white armlets.



**COUNTY BOWLS MATCH AT GLOUCESTER.**

On Saturday last, Gloucestershire played their first county match of the season against Northants on the City green, and lost by 2 shots.

1.—Mr. F. Willis's rink. 2.—Mr. Wallace Harris (with handkerchief), of Gloucester, and Mr. W. Munks (Northants), two skips. 3.—Some well-known Gloucestershire watching play. Mr. Davies (2nd from left), Mr. H. A. Dancey (extreme right). 4.—Mr. G. Wright, of Kettering, President of English Bowling Association, played for Northants, and is second from left; Mr. T. Goddard, the opposing skip, second from right.

PRINTED AND PUBLISHED AS A GRATIS SUPPLEMENT BY THE CHELTHENHAM NEWSPAPER COMPANY, LIMITED.

**THE CHELTHENHAM CHRONICLE AND GLOUCESTERSHIRE GRAPHIC**

With Which is Incorporated the "Cheltenham Looker-On." No. 1,326.  
 GRATIS SUPPLEMENT. Saturday, May 29, 1926.

**CHELTHENHAM THEATRE AND OPERA HOUSE.**

This Afternoon (2.30) and Evening (7.45) LYDIA KYASHT in "Cabaret Up-to-Date."  
 Next Week (Six Nights, 7.45, Matinee Saturday, 2.30): "THE LAST of MRS. CHENEY," The Enormously Successful Play from St. James Theatre, London.

**THE PALACE, High Street, CHELTHENHAM.**

Delightfully Cool Always! Monday to Wednesday: Cecil B. de Mille presents "THE COMING of AMOS," With Rod La Rocque, Jetta Goudal. From the Famous Novel by William J. Locke. Douglas Cochrane and His Orchestra. Thursday to Saturday: Peggy Hyland, Clifford McLaglen, In "Forbidden Cargoes." An Enthralling Romance of Old Cornwall. An All-British Film for the British Public.

**THE DAFFODIL, Cheltenham's Premier Cinema.**

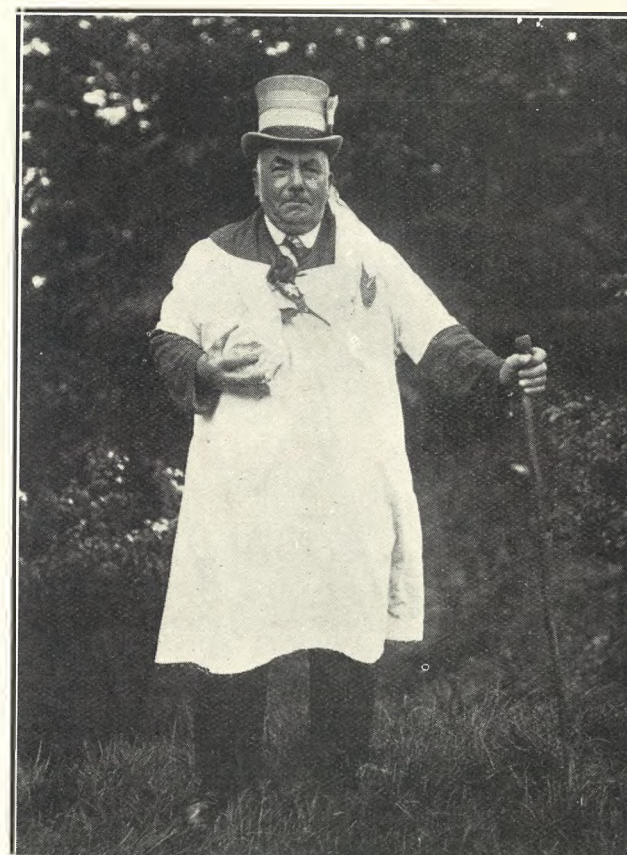
Continuous Daily—2.30 to 10.15. FOR ONE WEEK. Commencing Monday, May 31st.

REX BEACH'S Famous Story—"THE GOOSE WOMAN," Starring LOUISE DRESSER and CONSTANCE BENNETT. Another Milestone on the road where The Daffodil journeys... Miles Ahead of All.

Established 1806. **Martin & Co., Limited.**

The County Jewellers, PEARL & DIAMOND MERCHANTS. A Large Selection of Second-hand Silver and Old Sheffield Plate. We are purchasers of Antique Silver and Fine Quality Gems. Best Prices Given. LICENSED VALUERS.

Promenade, Cheltenham.



**"FARMER" WILLIAM BROOKS.**

Of Cooper's Hill, who has for many years acted as Master of Ceremonies at Cooper's Hill "Wake." The "Farmer" always wears a voluminous lady's chemise, a tall white hat decorated with red, white, and blue ribbons, carries a long ash stick, and controls the proceedings with inimitable humour and old-world country speech. This "Wake" has been held from mediæval times, and is still kept up every Whit-Monday evening, when cheeses are bowled down the precipitous slope of the hill for venturesome youths and men to run after—first man down securing the cheese. The top of the hill is common land, and parishioners have the right of pasturage. It is 800 feet high, with very picturesque surroundings, and glorious views from summit.

**WINTER GARDEN, CHELTHENHAM.**

Monday, Tuesday and Wednesday NIGEL BARRIE In an intensely thrilling romance of aviation—"THE TOWER OF SILENCE." Thursday, Friday and Saturday. RIN-TIN-TIN, The Wonder Dog, in "BELOW THE LINE."

**COLISEUM THEATRE, CHELTHENHAM.**

6.40—8.40. "THE JIG SAW," The Famous Musical Comedy Revue.

**NORTH STREET PICTURE HOUSE.**

Continuous from 2.30 p.m. Monday, Tuesday and Wednesday "CONDEMNED," Featuring MILDRED DAVIS, FRANCIS FORD, and GEORGE COOPER. Thursday, Friday and Saturday. FRANKLYN FARNUM in "A Two-Fisted Tenderfoot."

**Sensier**

New Spring and Summer Models for all occasions at moderate prices. 388b HIGH STREET, CHELTHENHAM

Telephone 1080. **W. Scott Cooper,** Goldsmith and Silversmith, Diamond Merchant, Jeweller, The Promenade, Cheltenham. LICENSED VALUER.

For the Best **PIANOS, DALE, FORTY and Co. Ltd**





**CHELTENHAM TOWN v. CHELTENHAM COLLEGE AT CRICKET.**

The Town beat the College somewhat easily in the latter's first match of the season on the College ground on Saturday last by 142 to 55.

1.—The Town team:—E. A. Field, Frank Harris (screr), P. Barnett, O. Jewell, F. H. Lewis, R. Horton, F. Bliss, L. P. Hedges (capt.), J. G. Edge, Geo. Dennett (umpire), W. C. Woof, and H. Jowett.

2 and 6.—College boys who had finished their own game watching the match.

3.—Town spectators.

4.—College team:—C. M. N. Baker, H. N. E. Alston, T. Martin, E. W. Lovegrove, E. Wellings, R. P. Edwards, C. K.

5.—The match in progress.

7.—Throe O.C.'s.

**DIABETES.**

Sufferers from Diabetes searching for a palatable, well-varied diet will find it in Cheltine Foods. They are highly nutritious and graded No. 1 (for mild cases), No. 2 (more serious cases), and "strict diet" (for extreme cases). Particulars post free, or with samples to cover postage, etc., 1s. from

**THE CHELTINE FOOD Co.,**  
CHELTINE WORKS, CHELTENHAM.

**HAVE YOU FOUND US YET?**  
AT THE SIGN OF **The SHAMROCK**  
31 Promenade, CHELTENHAM.

**HERE** you can get the most **Delicious Luncheons**  
(3 Course, or a la Carte).

**Afternoon Teas,** such things as Home-made Breads, Scones, Oat Cake and Money, Cinnamon Toast, etc., etc

FOR SALE—Meat Dishes, Cakes, Breads, Scones, etc., etc.

**BEST QUALITY CIDERS**  
IN BOTTLE.—Sparkling and Still.

**BARTHOLOMEW,**  
419, 420 HIGH STREET, CHELTENHAM.

Wines, Spirits, Ales, Table Waters, & Grocery  
Tel. 135.



**EMPIRE DAY AT GLOUCESTER ROAD SCHOOLS.**  
The Infants of the above School in their various costumes.

"Cheltenham Chronicle" Photos. Copies 1s. each unmounted.



**COMMANDANT AND MRS. HOJGAARD,**  
Who have taken over the command of the Salvation Army in Cheltenham. They were publicly welcomed at the Citadel on Whit-Monday at a tea and musical entertainment. They have come from Bootle (Lancs).



**CAPT. E. DAVEY,**  
Formerly of Bilston, who has been appointed second in command of the Cheltenham Salvation Army Corps.



**MR. HUGH ANDREWS, D.L., J.P.,**  
Of Toddington Manor, near Winchcombe, who died on Tuesday, May 25th. He lived in one of Gloucestershire's stateliest homes, built by the Hanbury-Tracy family in 1800 at a cost of £150,000. He was over 90 years of age, and a man of great wealth. He leaves a widow but no children. He was a great benefactor to the district. The portrait shows him at the door of his residence, and was taken a few years ago.

ADVERTISE IN THE "ECHO."

**SILKS,**

FASHION'S PREMIER  
FABRIC,

To be shown in all its phases in our

**GREAT SILK WEEK.**

Commencing on **THURSDAY,**  
**JUNE 3rd,**

**LANCE'S**

will offer

**£5,000**

of Rich and Charming

**SILKS**

at

**Special Prices :**

**2/- to 8/- Per Yard.**

SEE WINDOWS AND VISIT SHOWROOMS ON **THURSDAY NEXT.**

**John Lance & Co., Ltd.,**

Cheltenham's Silk Specialists.





**COOPER'S HILL "WAKE."**

This historic old "Wake" was held as usual on Whit-Monday evening, when four Cheeses were rolled down the steep declivity from the May-pole, for venturesome boys and youths to chase, and old-fashioned races were run on the top of the hill.  
 1.—Farmer Brooks (in centre in chemise), carrying a cheese, with a number of ladies and gentlemen who support these old-time sports each year. 2.—Three of the starters in ladies' race. 3.—Another lady runner. 4.—Farmer Brooks sending off a number of boy. 5.—Starting the little girls' race.

"Cheltenham Chronicle" Photos. Copies 1s. each, postage 2d. extra.



**CHELTHENHAM MUSICAL FESTIVAL.**

Winning Competitors in last week's Musical Festival at Cheltenham Town Hall.  
 1.—Charlton Kings Council School Boys' Choir, winner of Rotary Silver Cup for best Boys' Choir. 2.—Competitors for Girl Soloists (under 16), Miss Muriel Phillips (Cheltenham), winner, is seated in centre. 3.—Gloucester Road (Cheltenham) School, second for Infants (under 7). 4.—Holy Trinity Mixed School Choir, winner of Dale, Forty, Trophy Shield.

"Cheltenham Chronicle" Photos. Copies 1s. each, postage 2d. extra.



**FETE AT PITTVILLE PARK ON WHIT-MONDAY.**

There was a big crowd of visitors to the Annual Whit Monday Fete at Pittville, the Children's Sports, Concerts, and Spectacular Dancing being the main attractions.

- 1.—Finish of Boys' Race.
- 2.—A Tea Party.
- 3.—Miss Lynda Richards (centre), with her pupils, who gave exhibition dances.
- 4.—The Children's Sports Committee.
- 5.—Watching the fun of the fair.
- 6.—Spectators at the races.
- 7.—At the prize-giving.
- 8.—A section watching the dancing.
- 9.—A little equestrian exercise.

"Cheltenham Chronicle" Photos. Copies 1s. each, postage 2d. extra.





**HEAD-ON MOTOR COLLISION AT NORTON.**

Five persons were injured in a violent head-on collision between a 28 h.-p. Buick Motor and a Morris-Cowley two-seater, at Norton (between Gloucester and Coombe Hill) on Saturday afternoon last. The Buick, belonging to Mr. Cottrell, The Manor, Bredon, and driven by his chauffeur, C. E. Clinton, containing two ladies, was going to Gloucester; the Morris-Cowley was driven from Pontypool by Mr. Jackson, who had his wife and son with him, and was going towards Tewkesbury. Only Clinton escaped injury.

- 1.—The two cars locked together.
- 2.—Sergt. Wilks and P.C. Pittaway, with Minnie Tanner (an eye-witness of accident).
- 3.—The front of the Morris car.
- 4.—Mr. C. E. Clinton, the uninjured chauffeur (x), explaining the accident.
- 5.—A close-up of the two cars locked together.

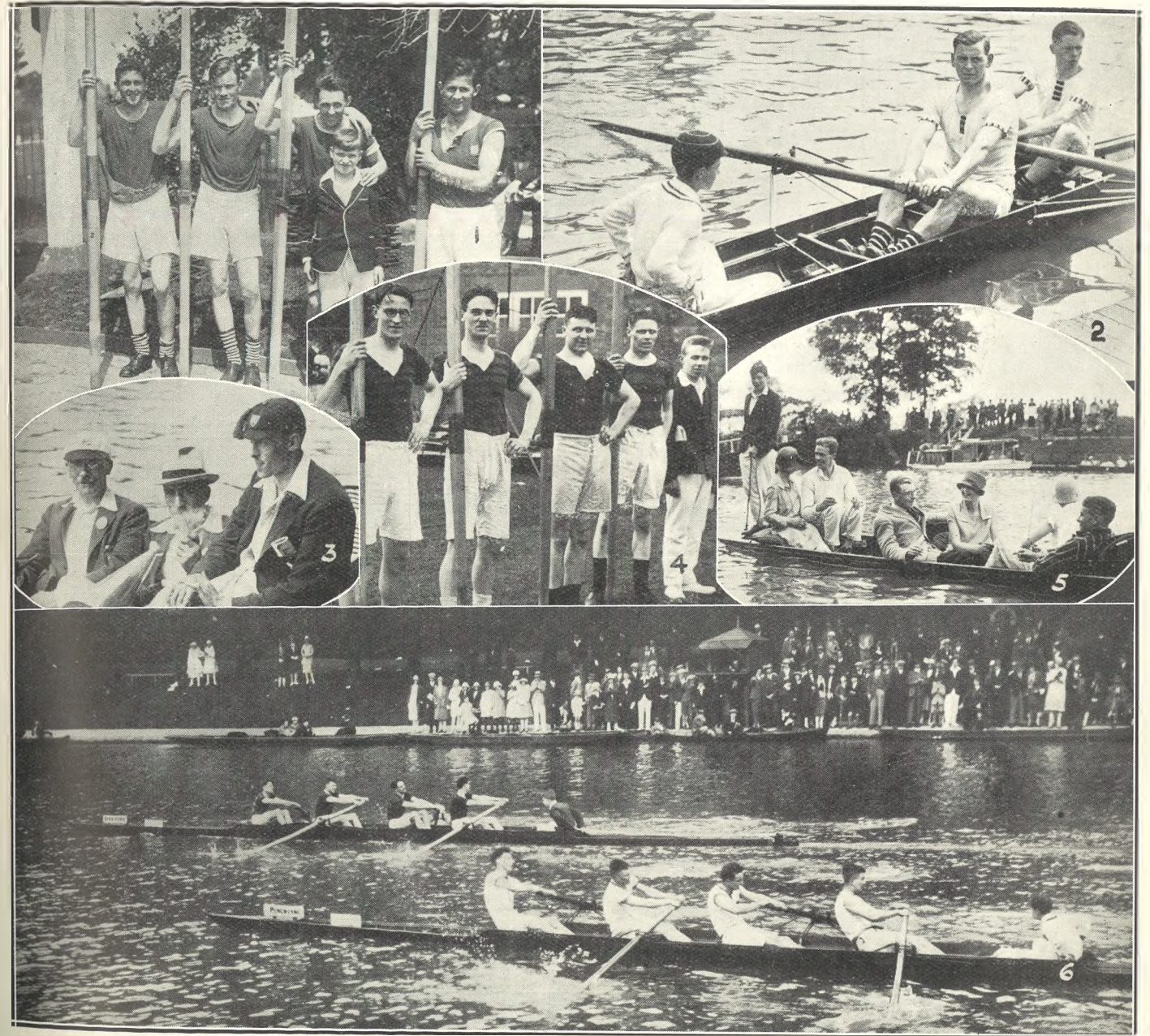
“Cheltenham Chronicle” Photos. Copies 1s. and 1s. 9d. each, postage 2d. extra.



**CIRENCESTER CONSERVATIVE BENEFIT SOCIETY FETE AT PUESDOWN.**

The Fête was held in beautiful weather in a field adjoining the Puesdown Inn on Whit-Monday. The Committee and Officials.

“Cheltenham Chronicle” Photos. Copies 1s. and 1s. 9d. each, postage 2d. extra.



**EVESHAM REGATTA.**

- 1.—Members of Evesham R.C., who were beaten in the semi-final in Market Gardeners' Plate.
- 2.—The Gloucester pair, who were beaten before reaching final.
- 3.—Messrs. J. Lloyd (Clerk of Course), R. Sollers, and H. Fletcher (Officials).
- 4.—Stratford, winners of Vale of Evesham Challenge Vase for Junior Fours.
- 5.—Punting on the river.
- 6.—Final for Vale of Evesham Challenge Vase. Stratford just beating Pengwern.

“Cheltenham Chronicle” Photos. Copies 1s. each, postage 2d. extra.

LET MOUSSELLS MOVE YOU



Estimates for Removals and Storing Free. 'PHONE 112.

CHELTENHAM. Offices: AMBROSE STREET

COAL. Tel. 215. BATH ROAD. E. A. & W. J. MOORE, COAL OFFICE, COKE. (Near St. Luke's Schools, Cheltenham).

Freshly Made Chocolates, 2/- and 3/6 lb. PURE TOFFEE, 1/- lb. TURLEY'S, 336 HIGH STREET.

Shirts to Measure.

NEW GOODS in

COTTON, FINE WOOL, SILK, Etc.

Lovely Shades in Mercerised Cotton Materials at 12/6 and 15/6. Soft as Silk.

SHIRTS MADE FROM 8/11 Upwards.

A. Beckingsale, 111 HIGH ST., CHELTENHAM





EVERY  
PAIR  
GUARANTEED.

THE  
STYLES  
CHANGE  
THE  
QUALITY  
AND  
VALUE  
ARE  
ALWAYS  
THERE.



THE  
MARK  
OF  
VALUE  
AND  
THE  
SIGN  
OF  
ORIG-  
INALITY.

BRITISH  
AND  
BEST.



From MAY 31st to JUNE 5th inclusive, Madame Webster, the renowned Corset Expert & Lecturer, will demonstrate on living models the very latest C.B. productions. Fittings by Madame Webster all day. Lectures & Demonstrations at 11.30 a.m. and 3 p.m.

"C.B." M.27. A very perfectly cut Wraparound Model, for average and well developed figures. Tailored in Finest Quality White Figured Brocade, 4 high-grade Elastic Panels. Price ... **27/6**  
24 to 30 ins.  
Price 31 to 36ins., **30s.**  
Wraparound Models should be ordered 3ins. larger than the Laced Back Types.



"C.B." M.26. Special Wrap-around Model, for all average and well-developed figures. In rich Flesh Brocade, with high grade fully guaranteed Elastic Panels, and cleverly designed inserts for figure comfort. Price ... **25/-**  
25ins. to 30ins.  
Price 31ins. to 36ins., **27s. 6d.**  
Models should be ordered 3ins. larger than the Laced Back Types.

"C.B." Models are fitted throughout with Rustless Unbreakable Spiral Steel-Royal Supports, and they are absolutely guaranteed. We are featuring an impressive array of "C.B." Models, which give the correct foundation for the perfect Silhouette,

These Models represent a perfect harmony of fine corsetry. They combine economy with discrimination, and represent the utmost in value. They carry to the wearer a message of dainty beauty and are superbly suited to the needs of fashion's requirements.

"C.B." CORSETS SATISFY—  
THEY NEVER DISAPPOINT.  
BUY A "C.B." ONCE AND  
YOU BUY IT ALWAYS.  
EVERY MODEL IS MARKED  
BY DISTINCTION. TRY THE  
MODEL FOR YOU.

"C.B." M.15. Strong Wrap-around Model, cleverly cut for all average and well-developed figures. In Super Quality White Coutil, with reinforced Elastic Panels. A most comfortable model for perfect figure control. Sizes 24ins. to 30ins. Per Pair ... **12/11**  
Sizes 31ins. to 36ins., per Pair **14s. 6d.**  
"C.B." M.21. Model as above, but with extra strong Super Elastic Panels and Inserts; specially recommended for hard wear; fine White Coutil. Price, 25in. to 30in., **17/6.**  
Price, 31in. to 36in., **19/6.**

Model M.35. A distinctive, soft, pliable, and extremely comfortable Combinaire. In rich pink Rayette Cloth, with cleverly placed abdominal control belt. Fitted reliable hose supporters. Strongly recommended for average and well developed figures. Bust measurement sizes, 34, 36, 38, 40, 42, 44. Price ..... **18/6**

Wraparounds should be ordered 3ins. larger than the Laced Back Types.

FOR 60 YEARS "C.B." CORSETS HAVE LED CORSETRY FASHION THROUGH ITS CHANGING PHASES. EVERY MODEL REPRESENTS HIGHEST QUALITY FOR THE LOWEST PRICE.

**E. L. WARD,** HIGH STREET, CHELTENHAM,  
CORSET SPECIALIST.