

# THE CHELTENHAM CHRONICLE AND GLO' SHIRE GRAPHIC

With Which is Incorporated the "Cheltenham Looker-On."  
GRATIS SUPPLEMENT. Saturday, April 3, 1926.

No. 1,318.

## CHELTENHAM THEATRE AND OPERA HOUSE.

This Afternoon (2.30) and Evening (7.45)—"PATRICIA."  
Next Week (Six Nights, 7.45, Matinees, Thurs. and Sat., 2.30):  
"The Ghost Train."

### THE PALACE.

High Street, CHELTENHAM.  
**BIG HOLIDAY PROGRAMME**  
at the Superior Picture House.  
MONDAY to WEDNESDAY:  
**LEATRICE JOY, ERNEST TORRENCE** and the 14 International Beauty Models in the  
"Dressmaker From Paris."  
Col. Selig's Jungle Stories—  
"Ware Tiger."  
**Douglas Cochrane**, the brilliant Violinist, from the Trocadero, London, and his Orchestra.  
THURSDAY to SATURDAY:  
**Richard Dix, Neil Hamilton, Claire Adams**, in  
"Men and Women,"  
William De Miles' best.

### THE DAFFODIL, CHELTENHAM'S PREMIER CINEMA.

Continuous Daily—2.30 to 10.15.  
Easter Monday and All the Week.  
**GIVE YOURSELF A REAL  
HOLIDAY AND SEE  
BETTY BALFOUR**  
In the Charming All-English Photoplay—  
"MONTE CARLO,"  
The real Monte Carlo and the real Betty at her charming best.  
**The Daffodil Grand Orchestra** (Musical Director, Mr. Frank Vicary) supplies the accompaniment. An entertainment without comparison in the county.

Advertise in the "Echo."

Established 1806.

**Martin & Co.,**  
Limited.

**The County Jewellers,**

PEARL & DIAMOND MERCHANTS,

A Large Selection of Second-hand Silver and Old Sheffield Plate. We are purchasers of Antique Silver and Fine Quality Gems. Best Prices Given.

LICENSED VALUERS.

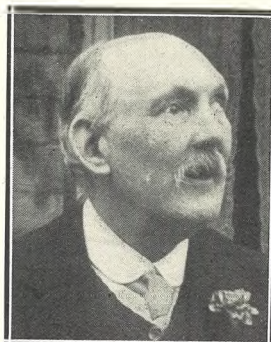
Promenade, Cheltenham.



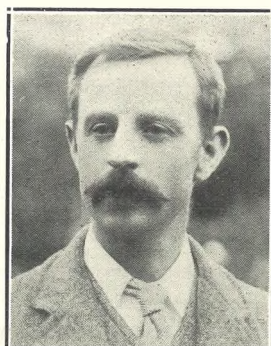
**REV. STEPHEN STROUD,**  
Of 100 Oxford-street, Gloucester, who died on March 26th, aged 64 years. He was a native of Gloucester and a Freeman. After serving for many years in the Nonconformist ministry, he retired to Gloucester in 1909 in ill-health, and was on the plan of the Wesleyan Circuit.



**MR. A. HARRY MILLARD,**  
Of Stanleyville, Windsor-street, Cheltenham, who died on March 28th, aged 58 years. He was the local inspector for the Gresham Insurance Co., and was well-known. He leaves a widow, two sons, and three daughters.



**DR. T. A. DICKSON,**  
Of Brierley, Cirencester-road, Cheltenham, who died on Tuesday, March 23rd, aged 67 years. He had the misfortune to lose his sight as a young man, shortly after passing his medical examinations. He had resided in Cheltenham for some years.



**MR. ALFRED TAYLOR,**  
For many years landlord of the Woolpack Inn, Stonehouse, who died on March 21st, 1926.

### WINTER GARDEN, CHELTENHAM.

Easter Monday and All the Week,  
**WILLIAM S. HART**  
In  
"TUMBLEWEEDS,"

Hart's return to the screen in a tremendous story of the great West and its famous land rush. Daily. at 2.40, 4.45, 6.45, and 8.50 p.m.

ROLLER SKATING DAILY IN  
THE PAVILION.

### COLISEUM THEATRE, CHELTENHAM.

6.40 p.m. and 8.40 p.m.,  
"DING DONG,"  
THE LATEST MUSICAL  
COMEDY REVUE.

### NORTH STREET PICTURE HOUSE.

From 2.30 Continuous.  
Monday, Tuesday and Wednesday:  
**JACK DEMPSEY and ESTELLE TAYLOR** (Mrs. Dempsey)  
In a thrilling Drama entitled—  
"A Wild Night."  
Thursday, Friday and Saturday:  
**LIONEL BARRYMORE** in  
"Fifty Fifty,"  
An Amusing Comedy Drama.

"DISTINCTION WITH ECONOMY."  
Smart Tailored Showerproof Coats  
and Chic Hats for Easter.

**Sensier**

The Little Salon.  
388b HIGH STREET, CHELTENHAM

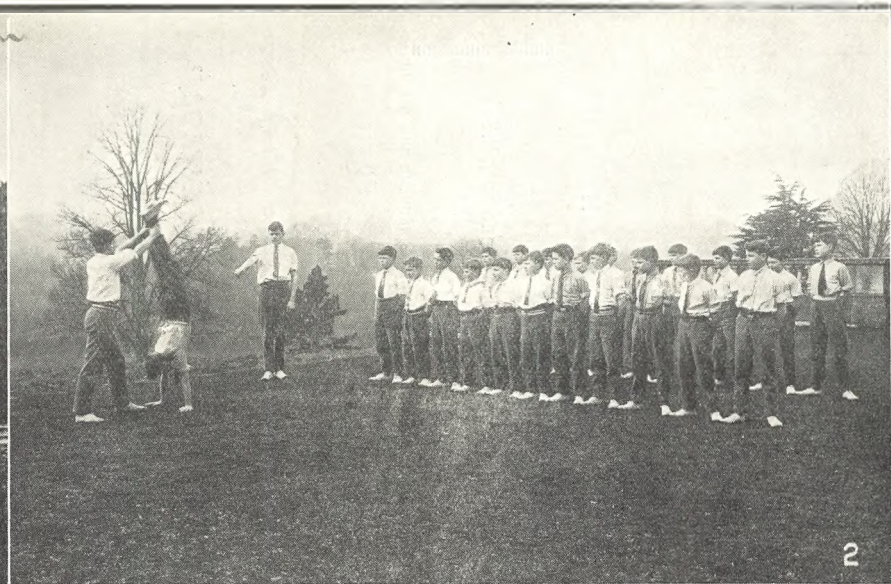
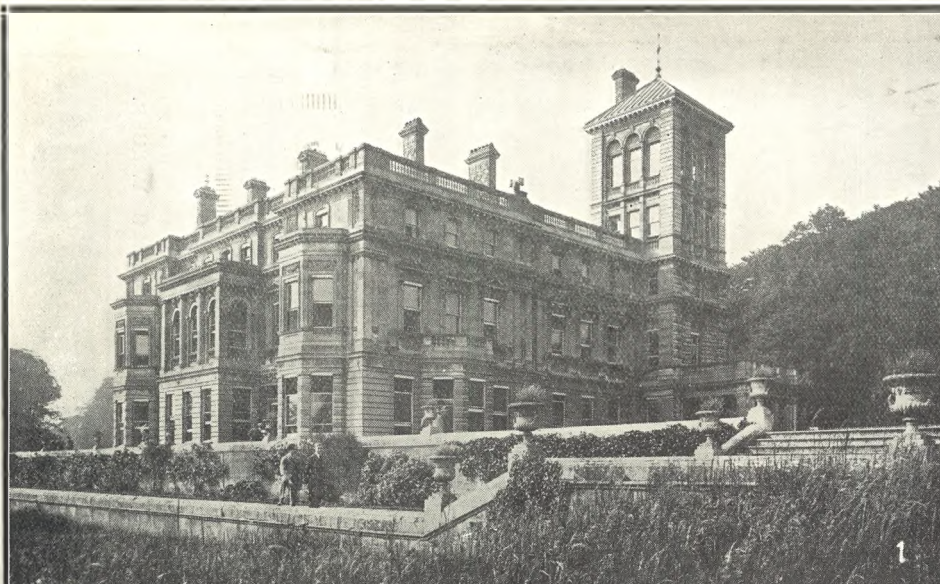
Telephone 1080.

**W. Scott Cooper,**  
Goldsmith and Silversmith,  
Diamond Merchant, Jeweller,

The Promenade, Cheltenham.  
LICENSED VALUER.

For the Best **PIANOS, DALE, FORTY and Co. Ltd**





**RENDCOMB COLLEGE.**

Illustrating Article in Main Sheet of "Chronicle" on "Gloucestershire Schools and Scholars."  
 This College is most picturesquely situated in a Mansion placed in a beautiful park between Cheltenham and Cirencester, and always strikes the observer in passing along the road as one of the "Stately Homes of England."

1.—Rendcomb College, taken from the Park. There is a beautiful trout stream running through the Park.      2.—Physical training in the open air. This precedes the daily morning work.  
 3.—The Library and Recreation Room.      4.—A meeting of the boys. These meetings decide many points of discipline, and exercise much responsibility.

Photos by Mr. W. Dennis Moss, Gainsborough House, Cirencester, from whom copies can be obtained.





ROUND GLOUCESTER.—2 Messrs. Wallace Smith and W. H. Taylor, Conservative Agent. 3 Mr. Roland Austin, City Librarian and the Dean 4 Mr. Geo. Worgan, Manager Gloucester Coffee House Co. 6 Mr. Pearce Pope, Auctioneer.

# DIABETES.

Sufferers from Diabetes searching for a palatable, well-varied diet will find it in Cheltine Foods. They are highly nutritious and graded No. 1 (for mild cases), No. 2 (more serious cases), and "strict diet" (for extreme cases). Particulars post free, or with samples to cover postage, etc., 1s. from

**THE CHELTINE FOOD CO.,**  
CHELTINE WORKS, CHELTENHAM.



**HAVE YOU FOUND US YET?**

AT THE SIGN OF  
**The SHAMROCK**  
31 Promenade,  
CHELTENHAM.

**HERE** you can get the most  
**Delicious Luncheons**

(3 Course, or a la Carte).

**Afternoon Teas**, such things as Home-made Breads, Scones, Oat Cake and Honey, Cinnamon Toast, etc., etc  
FOR SALE—Meat Dishes, Cakes, Breads, Scones, etc., etc.

# SILKS FROM LANCE'S

ON

**Thursday Next, APRIL 8th,**

JOHN LANCE & Co.  
will offer the Largest  
and most varied stock of

## LINGERIE SILK FABRICS

IN THE WEST OF ENGLAND,

At 25 % under to-day's value

SILK STOCKINETTE,  
52 inch wide. All colours. **3/11**  
Special Price, YARD.

Our Noted LANCELLA  
CREPE. 40 shades. **5/9**  
Special Price, YARD.

CELANESE STOCK-  
INETTE. Non-Ladder. **6/11**  
All colours. 54 inch wide. Special Price, YARD.

CREPE DE CILMA.  
40 inch wide. Shades—  
Pink, Salmon, Sky, Lemon,  
and Mauve. **2/11**  
Special Price, YARD.

LINGERIE CREPE.  
40 inch wide. 30 beau-  
tiful colours. **4/9**  
Special Price, YARD.

All these Fabrics are  
Guaranteed Good  
Washing Fabrics.

**John Lance**  
& Co., Ltd.,  
CHELTENHAM.





**WYCLIFFE COLLEGE, STONEHOUSE, ANNUAL ATHLETIC SPORTS.**

The Annual Sports were held in the Playing Fields of the College on Thursday, March 25th, before a capital crowd of parents, old boys, and friends. The weather was very pleasant.

- |  |                          |   |                                  |                                  |  |  |                    |  |                              |
|--|--------------------------|---|----------------------------------|----------------------------------|--|--|--------------------|--|------------------------------|
| 1.—C. Barnett winning Open High Jump, 4ft. 8½in. | 2.—A number of students. | 3.—Final of Open 100 Yards, won by C. Farmer. | 4.—A. Jenkins winning Long Jump. | 5 and 8.—Sections of spectators. | 6.—Mr. T. M. Sibly with the School House Relay Team, winners of Junior Relay Race. | 7.—C. Barnett, jun., Miss Holborough, and Mr. and Mrs. C. Barnett, senr. | 9.—A Family Group. | 10.—Finish of 220 Yards, won by M. Howel/Davies. | 11.—Start of 440 Yards Open. |
|--|--------------------------|---|----------------------------------|----------------------------------|--|--|--------------------|--|------------------------------|

"Cheltenham Chronicle" Photos. Copies 1s. each, postage 2d. extra.



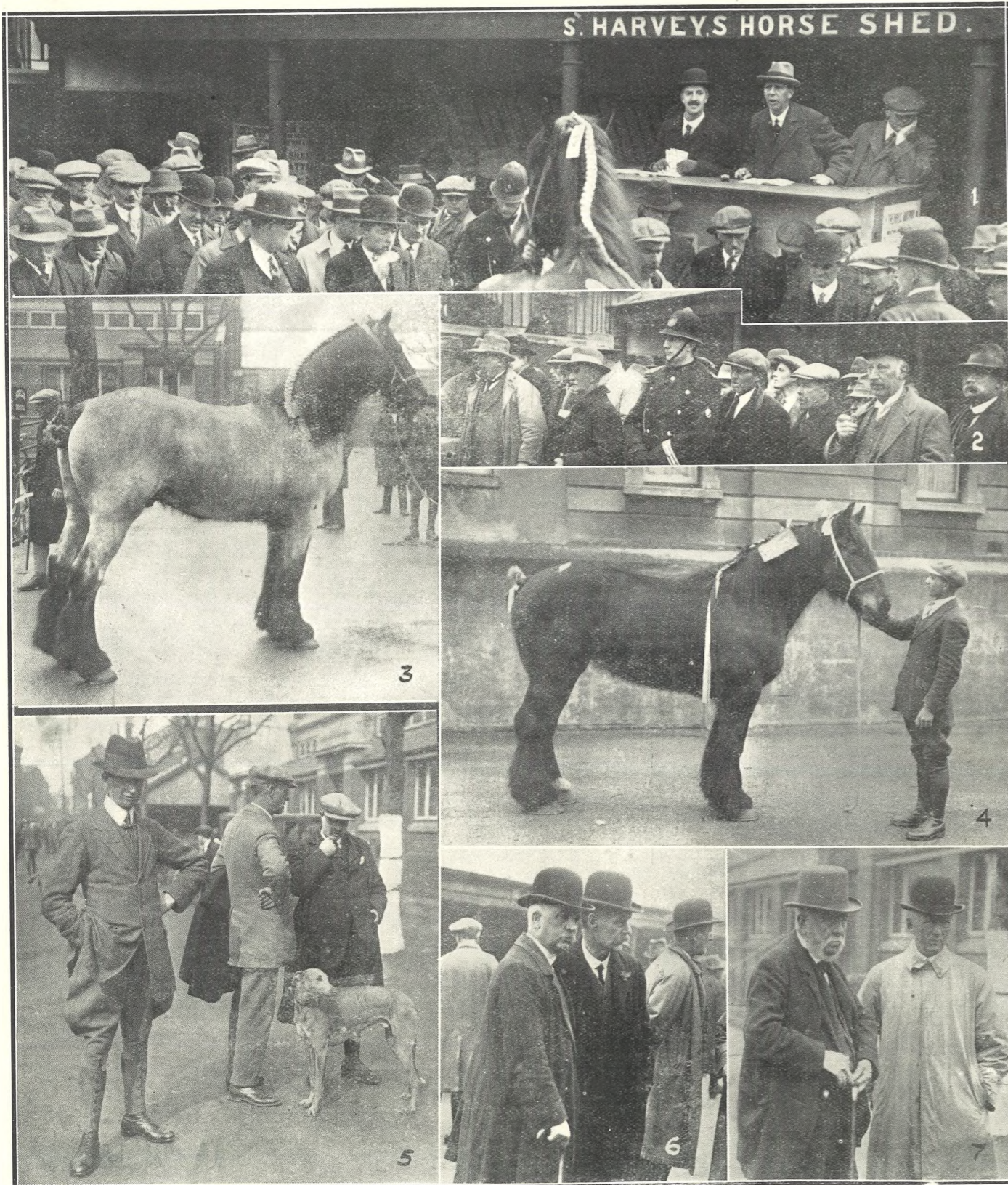
**PATE'S GRAMMAR SCHOOL, CHELTENHAM, ANNUAL ATHLETIC SPORTS.**

These popular Sports were held on the Battledown Playing Fields on Saturday afternoon last in beautiful weather, before a capital crowd of parents, sisters, and friends. The going was exceptionally good for the time of year, and a record was broken.

- |   |  |  |  |   |  |  |
|---|--|--|--|---|--|--|
| 1.—South winning Open High Jump, at 4ft. 9½ins. | 2.—The Head Master, Mr. R. R. Dobson, points a moral to the Mayor and Mayoress and Councillor J. P. Pates, who look impressed. | 3.—Grist breaking the School record in the 440 Yards Open (57secs.). | 4.—Meadows winning 100 Yards (under 14). | 5, 6, and 8.—Various sections of the spectators. It is a favourite meeting for the sisters. | 7.—Parker and Snowsell winning Three-legged Race (under 14). | 9.—Cottrell (nearest camera) winning 100 Yards (under 13). |
|---|--|--|--|---|--|--|

"Cheltenham Chronicle" Photos. Copies 1s. each, postage 2d. extra.





S. HARVEY'S HORSE SHED.

**SHOW AND SALE OF CART HORSES AT GLOUCESTER MARKET.**

The annual Spring horse show and sale, organised by Messrs. Bruton, Knowles and Co., was held in Gloucester Market on Friday, March 26th. The Auctioneers provided a prize list of £20.

- 1.—Mr. Norman Bruton selling one of the prize-winners.
- 2.—Watching the judging.
- 3.—Mr. K. H. Collins's (Brockworth) first prize gelding in Vanner Class, sold for 37 guineas.
- 4.—Mr. G. F. Cullimore's (Berkeley) first prize mare in Heavy Class, sold for 48 guineas. The second prize gelding fetched 62 gns.
- 5.—Messrs. R. G. Williams, Ashley Pregnell, and G. Stock.
- 6.—Messrs. G. S. Price (the Judge) and E. P. Fowler (Steward).
- 7.—Mr. Sidney Harvey (a well-known horse dealer) and Mr. H. Smith.

"Cheltenham Chronicle" Photos. Copies 1s. each. Postage 2d. extra.

**BRUTON, KNOWLES & CO.,**  
 Albion Chambers, : : : GLOUCESTER.

*Estate Agents, Surveyors, Auctioneers, Agricultural and Hotel Valuers, and Valuers for Estate Duty.*

Telephone 967 Gloucester (2 lines).

Messrs. Bruton, Knowles & Co. beg to announce the following Sale Fixtures:

- WEDNESDAY, APRIL 7th.**  
 TWEENHILLS, HARTPURY, within five miles of Gloucester: 32 CATTLE, including a Herd of 28 Dairy Cows; HORSES, AGRICULTURAL IMPLEMENTS, etc., by direction of Mrs. Pearce Ellis, who is giving up the Farm.
- THURSDAY, APRIL 8th.**  
 GLOUCESTER MARKET: 176 SHORT-HORN CATTLE, including 91 Bulls, chiefly pure-bred, and including Entries from H.M. the King and H.R.H. the Prince of Wales, K.G.
- TUESDAY, APRIL 13th.**  
 HOMEDOWNS FARM, ASHCURCH (within ten minutes' walk of Ashchurch Station). The ENTIRE EDGBASTON
- WEDNESDAY, APRIL 14th.**  
 STANLEY FARM, BLAISDON: 56 SHORTHORN CATTLE, including a Herd of 27 WELL-BRED DAIRY COWS and HEIFERS, 147 SHEEP, 5 HORSES, PIGS, Harness, Agricultural Implements, HOUSEHOLD FURNITURE, etc., by direction of Mr. J. Pember, who is giving up the Farm.
- FRIDAY, APRIL 16th.**  
 HILL FARM, TAYNTON: 114a. 2r. 1p. of EXCELLENT GRASS KEEP (in Ten Lots) to December 25th, 1926, by direction of W. H. Hazlewood, Esq.
- FRIDAY, APRIL 23rd.**  
 At the NEW INN HOTEL, Gloucester: SALE OF GLOUCESTER CITY PROPERTIES.
- SATURDAY, MAY 8th.**  
 At the BELL HOTEL, Gloucester: SALE OF COUNTY PROPERTIES, including:—TUFFLEY KNOLL, GLOUCESTER; EAVES COURT, STINCHCOMBE; POUND FARM, BROCKWORTH; and HANDLOW HOUSE, CHURCHAM.
- MONDAY, MAY 10th.**  
 At the STAR HOTEL, WORCESTER: The NORTON HALL, ESTATE, Near WORCESTER.

Further particulars of the above Sales may be had of the Auctioneers, Albion Chambers, Gloucester.



**PIC DEMONSTRATION NEAR TEWKESBURY.**

- On Thursday, March 25th, interesting lectures and demonstrations regarding pig breeding and feeding were given at Messrs. Martin's experimental pig breeding farm, Pike House Farm, near Tewkesbury.
- 1.—Messrs. J. O. Martin, H. Jessup, G. C. Martin, P. Webster Cory (Notgrove), and H. Trow, of Messrs. Harris, Ltd.
  - 2 and 3.—Some of the farmers attending the lectures.
  - 4.—Messrs. R. A. Gaze, F. E. Bullock, and S. Healey.
  - 5.—Messrs. J. Goodson and N. H. Padfield, secretary and chairman of Tewkesbury Farmers' Union.
  - 6.—Messrs. S. Grimmett and H. G. Attwood (Overbury).

"Cheltenham Chronicle" Photos, Copies 1s. each, postage 2d. extra.





**CHELTENHAM COLLEGE CROSS-COUNTRY RUN.**

The Annual Match between the College and the Cheltenham and County Harriers took place on Saturday last over the usual course, starting and finishing in the College Playing Field. There were 138 starters, 113 Collegians and 25 C. H. Three Harriers came in first.

1.—The big field starting from College. 3.—A. Stote (right), who finished third, just beating Noakes, the first College boy home.

2.—The Harriers' contingent. 4, 5, and 7.—Collegians waiting to start.

6.—Geo. Chudleigh (C. and C. H.), first home in record time of 30mins, 33secs. 8.—Collegians stripped ready to start.

"Cheltenham Chronicle" Photos. Copies 1s. each, postage 2d. extra.

**GOLF HOSE.**

Large Variety of Designs .. from 5/6 upwards.  
CHECK LEGS, 8/6 to 16/6 pair.

Pullovers & Jackets for Sports Wear.  
**A. BECKINGSALE,**  
111 High Street, Cheltenham.  
Phone 406.

**LET MOUSSELLS MOVE YOU**



Estimates for Removals and Storing Free.  
'PHONE 112.

**CHELTENHAM.** Offices: AMBROSE STREET

**BEST QUALITY CIDERS**  
IN BOTTLE.—Sparkling and Still.

**BARTHOLOMEW,**

419, 420 HIGH STREET, CHELTENHAM.

Wines, Spirits, Ales, Table Waters, & Groceries.  
Tel. 124.

**THE CHELTENHAM CHRONICLE AND GLOUCESTERSHIRE GRAPHIC**

With Which is Incorporated the "Cheltenham Looker-On."  
**GRATIS SUPPLEMENT.** Saturday, April 10, 1926. No. 1,319.

**CHELTENHAM THEATRE AND OPERA HOUSE.**

This Afternoon (2.30) and Evening (7.45)—"THE GHOST TRAIN."  
Next Week (Six Nights, 7.45, Matinee Saturday, 2.30):  
**"White Cargo,"** THE SENSATION OF THE LONDON STAGE.

**THE PALACE,**  
High Street, CHELTENHAM.

Cheltenham's Number 1 Picture Theatre. 100 p.c. Entertainment.  
Monday to Wednesday  
Dorothy MacKail, John Bowers, Hobart Basworth in  
**"CHICKIE."**

For Six Days—All British Racing Classic.  
**STEVE DONOGHUE & JUNE**  
in  
**"Riding For a King."**

Thursday to Saturday:  
**VIOLA DANA, BEN LYON** in the  
**"Necessary Evil."**  
Douglas Cochrane & his Orchestra

**THE DAFFODIL,**  
CHELTENHAM'S PREMIER CINEMA.

Continuous Daily 2.30 till 10.15.  
**FOR THE WHOLE WEEK**  
Commencing Monday, April 12th,  
The BIG PARAMOUNT Success

**"M E N."**  
Starring **POLA NEGRI.**  
Also a Brand New Edition of the World's Greatest Comedy—  
**"THE KID,"**

The Screen Masterpiece of **CHARLES CHAPLIN** and **JACKIE COOGAN.**  
The Daffodil Grand Orchestra at all performances.

**Advertise in the "Echo."**

Established 1806.

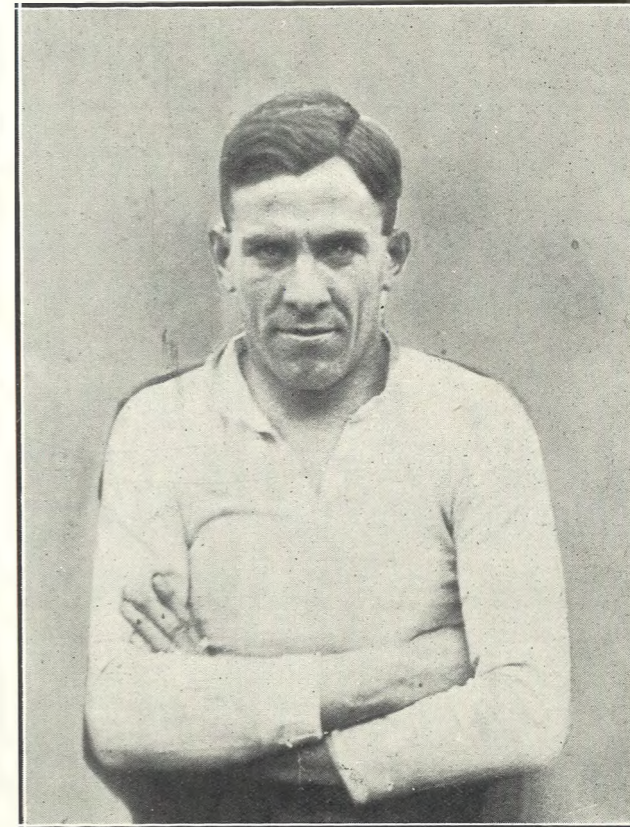
**Martin & Co.,**  
Limited.

**The County Jewellers,**  
PEARL & DIAMOND MERCHANTS,

A Large Selection of Second-hand Silver and Old Sheffield Plate. We are purchasers of Antique Silver and Fine Quality Gems. Best Prices Given.

LICENSED VALUERS.

Promenade, Cheltenham.



**MR. SIDNEY A. BROWN,**

Vice-Captain of Gloucester Rugby Football Club, who was injured in the match last Saturday against Aberavon on the Kingsholm Football Ground, and died after an operation at the Gloucester Royal Infirmary on Sunday morning. He was 28 years of age, a clerk at the Gloucester Wagon Co., and a son of Mr. Albert Brown, a member of the Gloucester Rugby Club Committee. His permanent address was at Primrose Hill, Lydney, and he leaves a widow and one child. He was a most popular player, very steady and unassuming. He was a very capable performer on the running track, having won many prizes over 100 yards.

**WINTER GARDEN,**  
CHELTENHAM.

Monday, Tuesday & Wednesday:  
The Greatest racing film of all—  
**"KENTUCKY PRIDE."**

Thursday, Friday & Saturday:  
**William Haines, Madge Bellamy,**  
and **Stuart Holmes** in a mysterious  
Ghost Story—  
**"A Fool and His Money."**

Roller Skating Daily.

**COLISEUM THEATRE.**  
CHELTENHAM.  
6.40—AND—8.40.

**"SPEED,"**  
Two Hours of Fun.  
MIRTH. MELODY. MOTION.

**NORTH STREET**  
PICTURE HOUSE.  
From 2.30 Continuous.

Monday, Tuesday & Wednesday:  
**FRED THOMSON & "SILVER KING"** (The Wonder Horse) in  
**"That Devil Quemado."**

Thursday, Friday & Saturday:  
**HOOT GIBSON** in  
**"Spook Ranch."**

**MAISON ANNETTE,**

Kensington House,  
Promenade,  
Cheltenham,  
SPECIALISTS IN  
EXCLUSIVE

**CORSETS & LINGERIE.**

Phone 1122.

For the Best **PIANOS, DALE, FORTY and Co. Ltd**

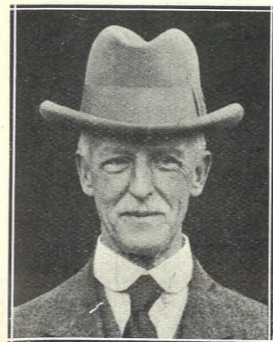




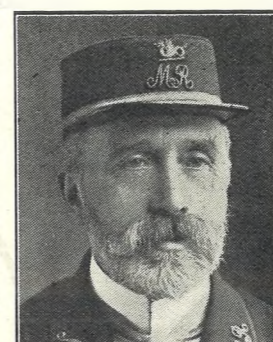
**CHELTENHAM COLLEGE ANNUAL ATHLETIC SPORTS.**

- These sports were held on the College field on Easter Saturday, April 3rd, before a good crowd of spectators in warm but dull weather.
- 1.—Wheaden winning High Jump (under 16) at 5 ft. 0½ ins.
  - 2.—Taking the Water Jump in the Steeplechase (Relay) Race (under 16).
  - 3.—The start of the One Mile Open, won by Rice Evans, third from left.
  - 4.—W. Martin putting up a new record for the Long Jump (open), at 20ft. 4½ ins.
  - 5.—Mr. Dennis, Major-Gen. Sir Guise Guise-Moore, K.C.M.G., C.B., who presented the prizes, and Capt. A. G. Renny (all O.C.'s)
  - 6.—Another O.C., Mr. G. O. Shelmerdine.
  - 7.—Rev. H. V. Hodson (of Miserden) winning the O.C. race.
  - 8.—Spectators in the grand stand.

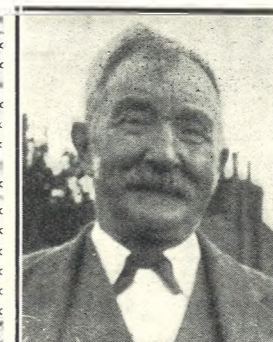
"Cheltenham Chronicle" Photos. Copies 1s. each. Postage 2d. extra.



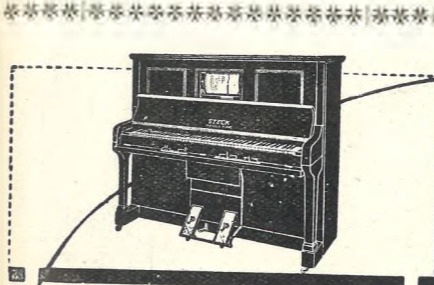
**MR. THOMAS COBOURNE,**  
Of Malvern Villa, Malvern-road, Cheltenham, who died on Tuesday last, aged 61 years, after an illness of about a month. He was G.W.R. Stationmaster at Cheltenham from 1918 till two years ago, when he retired after completing 46 years' service with the Company. He was treasurer of Cheltenham Bowling Club.



**MR. WILLIAM WATKINS,**  
Late Stationmaster at Ashchurch M.R. Station, who died on April 4th, aged 68 years. He retired from Ashchurch Station in January, 1923, after 20 years' service there, and was presented with a cheque and address. His son (a clerk at Ashchurch Station) became a Lieut-Col. in the Army during the Great War.



**MR. JOHN CRUSE,**  
Of 8 Mossleigh Terrace, Great Western-road, Cheltenham, who died on Sunday last, aged 68 years. He was for many years clerk at the G.W.R. Colonnade Office, and was very well-known, having a host of friends. He had lost one foot in a railway accident. He was a keen Rugby football follower.



*The Piano for You!*  
The 'Pianola' Piano allows you all the delights of music and the supreme joys of actual playing. All the exquisite musical effects that the sensitive, highly trained fingers of the pianist can produce—your fingers can control through

**The STECK 'PIANOLA' PIANO**

The introduction of the 'Pianola' mechanism in no way affects the tone quality of the piano; whether played by roll or by hand as an ordinary piano the beautiful, rich singing tone of the famous Steck Piano is always evident.

Ask for all particulars and details of our special easy terms of payment. Your present instrument will be accepted in most payment.

Sole Agents:  
**CRICHTON'S,**  
The Piano House,  
394 High St., CHELTENHAM.  
'Phone 378.

THE CHELTENHAM SPA  
FIRST ANNUAL  
Open-Competitive

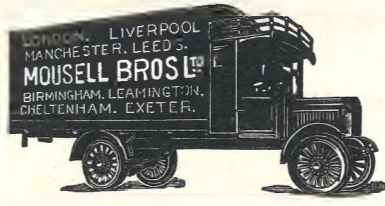
**Musical Festival,**

TOWN HALL,  
Cheltenham Spa,  
MAY 18th and 19th, 1926.

32 CLASSES,  
comprising:  
Vocal, :: Instrumental,  
Elocution,  
Open Competitions.

Entries Close April 21st, 1926  
Syllabus and Entry Forms from the  
Hon. Secretary, Town Hall Bureau,  
Cheltenham Spa.

**LET MOUSSELLS MOVE YOU**



Estimates for Removals and Storing Free.  
'PHONE 112.

**CHELTENHAM.** AMBROSE STREET

**SILKS**  
FROM  
**LANCE'S**

JOHN LANCE & Co.  
are now offering the  
Largest and most varied  
stock of  
**LINGERIE  
SILK FABRICS**  
IN THE WEST OF ENGLAND,  
At 25 o/o under to-day's value

SILK STOCKINETTE, 3/11  
52 inch wide. All colours. Special Price, YARD.

Our Noted LANCELLA 5/9  
CREPE. 40 shades. Special Price, YARD.

CELANESE STOCK- 6/11  
INETTE. Non-Ladder. All colours. 54 inch wide. Special Price, YARD.

CREPE DE CILMA. 2/11  
40 inch wide. Shades—Pink, Salmon, Sky, Lemon, and Mauve. Special Price, YARD.

LINGERIE CREPE. 4/9  
40 inch wide. 30 beautiful colours. Special Price, YARD.

All these Fabrics are  
Guaranteed Good  
Washing Fabrics.

**John Lance**  
& Co., Ltd.,  
**CHELTENHAM.**





**FUNERAL OF THE LATE MR. SID A. BROWN AT GLOUCESTER.**

The funeral of Mr. Sid A. Brown, whose tragic death on Sunday last from a football injury the day before has caused so much sorrow, took place on Thursday amidst a profound demonstration of sympathy from an immense concourse of the citizens of Gloucester. The long cortege went first from his father's house to All Saints' Church, where an impressive service was held, the interment afterwards taking place in the Cemetery.

- 1.—The scene as the body was carried out by six comrades from All Saints' Church.
- 2.—Employees of Bristol 'Bus Company in procession.
- 3, 4, and 5.—Sections of the big procession of comrades and friends, who followed to the Cemetery.
- 6.—The bearers, all Gloucester players, led by A. T. Voyce and F. Ayliffe.
- 7.—Gloucester Rugby players.
- 8.—Members of Gloucester Committee formed a guard of honour on each side of motor hearse.

"Cheltenham Chronicle" Photos. Copies 1s., 1s. 9d. and 2s. 6d. each, according to size.



**GROOME HUNT POINT-TO-POINT STEEPLECHASES.**

This fine Hunt Meeting was held over the usual course at Upton-on-Severn on Tuesday last, before an immense crowd. It was a fine afternoon, and the racing was much enjoyed.

- 1.—Capt. H. Rushton's Hop-the-Twig winning Groome Hunt Members' Race from Mr. W. J. Gresson's Co-Optimist. Note the big crowd present. It was a record meeting.
- 2.—The two new Joint Masters of the Groome Hounds, Col. Wiggin and Major W. H. Taylor (with Miss Wiggin).
- 3.—A Hunt supporter.
- 4.—Interested in the racing.
- 5.—Hop-the-Twig and Blondin taking a fence in the Members' Race.
- 6.—Mr. W. J. Gresson, the ex-Master, with Lady Barbara Dudley Smith.
- 7.—Sir Ivor Atkins (right), the famous composer and organist, has a day's racing.
- 8.—Countess Beauchamp and her daughter, Lady Lettice Lygon (on right).
- 9.—Studying their cards.
- 10.—Mr. W. N. Unwin's Alfredo winning the Nomination Race.

"Cheltenham Chronicle" Photos. Copies 1s. each. Postage 2d. extra.





**ROUND THE TOWN IN CHELTHENHAM.**

Some snaps taken on Easter Monday morning in the Promenade. It was a delightful day, and the Promenade was very animated.

- 1.—Enjoying their morning out.
- 2.—Taking the kiddies for an airing.
- 3.—A Constitutional.
- 4.—Enjoying the day off.
- 5.—Making the most of the sunshine.
- 6.—Martial glory.
- 7.—Mr. T. Kenny (right) and a friend.
- 8.—Easter Monday, and making the most of it.

"Cheltenham Chronicle" Photos. Copies 1s. each. Postage 2d. extra.

\*\*\*\*\*

**SEND THE "CHRONICLE & GRAPHIC" TO YOUR FRIENDS EVERY WEEK.**



**HURSLEY PARK, WINCHESTER.**  
 Architect: A. MARSHALL MACKENZIE, Esq., F.R.I.B.A.  
 Interior Decoration by H. H. MARTYN & Co., Ltd.

Architectural Decorators  
 By Appointment.  
 to H.M. King George V.

**H. H. MARTYN & Co., Ltd., CHELTHENHAM, &**

5 Crafton St., Bond St., London, W.1.  
**ARCHITECTURAL DECORATORS.**

Artists and Craftsmen in all kinds of

BRONZE CASTING,  
 JOINERY & PANELLING,  
 SCULPTURE,  
 STONE CARVING,  
 FIBROUS PLASTER,  
 MEMORIALS, Etc.

PUBLIC BUILDINGS, THEATRES,  
 AND SHIP INTERIOR DECORATION.

\*\*\*\*\*



**CHRIST CHURCH BOYS' SCHOOL FOOTBALL TEAM.**

Who have this year won the Challenge Shield for inter-School Football in Cheltenham. Christ Church School at present hold nearly all the challenge sporting trophies of the town.

"Cheltenham Chronicle" Photo. Copies 1s. each. Postcards 6d. each.

\*\*\*\*\*

**THE HOUSE FOR ANTIQUITIES.**  
 An interesting stock of Genuine Antique Jewellery, Sheffield Plate, China, Quaint Boxes, etc., at low prices.  
**HARRY O. BOX,**  
 339 HIGH STREET, CHELTHENHAM.  
 Nearly Opposite Grammar School.  
 Established Over 70 years.  
 Similar Goods Bought.

**TO ADVERTISERS!**

Your Announcements if Illustrated are doubled in effectiveness and value. We send photographers to any address to take your orders, make the necessary blocks (half-tone or line), and insert same in the "Chronicle and Graphic," the "Echo," or any other paper at an inclusive charge. Write for prices.

**GOLF HOSE.**

Large Variety of Designs .. from 5/6 upwards.  
 CHECK LEGS, 8/6 to 16/6 pair.

Pullovers & Jackets for Sports Wear.

**A. BECKINGSALE,**  
 111 High Street, Cheltenham.  
 Phone 406.



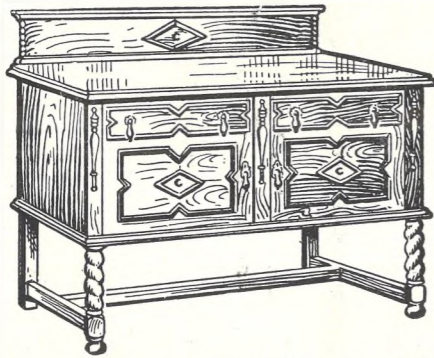
**GOTSWOLD MOTOR-CYCLE FATALITY.**  
 Mr. Owen Charles Minett, aged 25, who was killed on Wednesday morning at Todenham, near Moreton-in-Marsh, while riding a motor-cycle; and his sister Phyllis, aged 18, who was seriously injured at the same time. She was riding on the pillion seat.



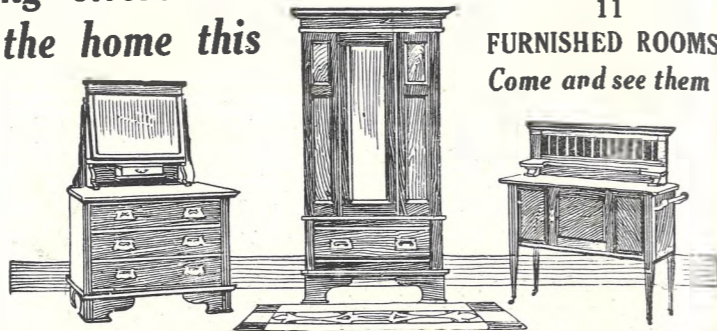
# TYPICAL FURNITURE BARGAINS

Now being offered to beautify the home this spring.

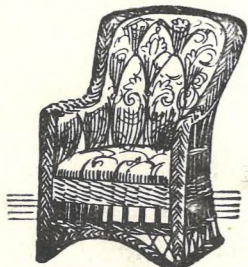
11 FURNISHED ROOMS. Come and see them!



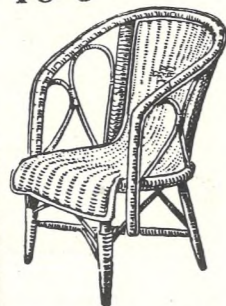
SOLID OAK SIDEBOARD 4/10/0  
Better Goods in Stock up to 20 guineas.



BEDROOM SUITE in Solid Oak, similar to above. Better Goods with Drawer in Robe 15 guineas. Ditto with 4-foot Wardrobe, 19 guineas. 10/19/6



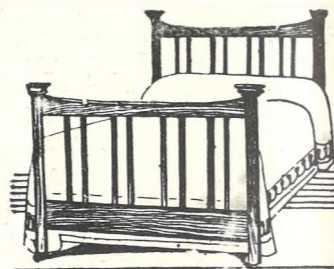
WICKER CHAIR. 15/11  
Not upholstered 8/11.



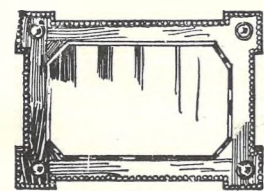
WICKER CHAIR. 6/11  
Also at 12/11.



BEDSTEAD in Oak, 3ft., with Spring. 39/6



Full Size OAK BEDSTEAD for Better Goods up to 10 guineas. 2/19/6



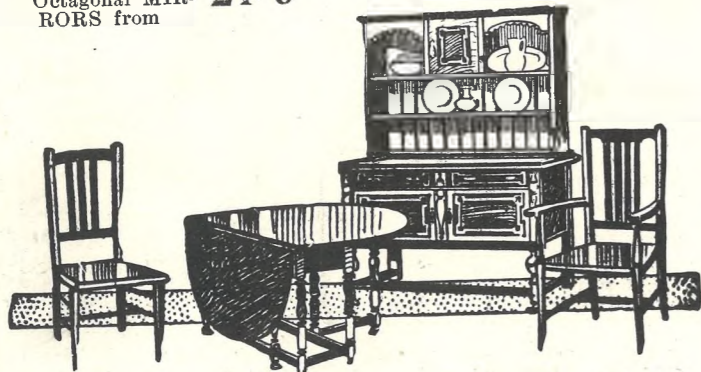
Oval, Square or Octagonal MIRRORS from 21/9



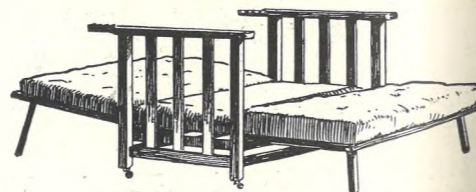
Drop End CHESTERFIELD and 2 EASY CHAIRS from 12/12/0



Solid OAK BUREAU 4/19/6  
Mahogany at 5/19/6.



OAK DRESSER or Sideboard 5/19/6  
Gate-Leg or Pull-Out OAK TABLE from 4/10/0.  
Set of Four OAK CHAIRS, and one Carver 5/19/6.



Adjustable EASY CHAIR with Brown Velvet Cushions. A Chair by Day. A Bed by Night. 39/6

**Dicks & Sons Ltd.**  
172 & 173 HIGH STREET  
**Cheltenham Spa**  
50 YEARS REPUTATION FOR VALUE.  
TEL. 1007.

Free Delivery in our own Motors to your door.

Free Illustrated Catalogue post free on application.

PRINTED AND PUBLISHED AS A GRATIS SUPPLEMENT BY THE CHELTENHAM NEWSPAPER COMPANY, LTD.

# THE CHELTENHAM CHRONICLE AND GLO'SHIRE GRAPHIC

With Which is Incorporated the "Cheltenham Looker-On."  
GRATIS SUPPLEMENT. Saturday, April 17, 1926.

No. 1,320.

## CHELTENHAM THEATRE AND OPERA HOUSE.

This Afternoon (2.30) and Evening (7.45)—"WHITE CARGO."  
Next Week (Six Nights, 7.45, Matinee Saturday, 2.30):  
Welcome Return "Paddy The Next Best Thing."

### THE PALACE, High Street, CHELTENHAM.

The Only Picture Theatre screening exclusively First-Run Productions.  
MONDAY to WEDNESDAY: AL WILSON and VIRGINIA LEE CORBIN in the "Cloud Rider."  
For Six Days, British Racing Classic. Steve Donoghue and June in "Dark Horses."  
THURSDAY to SATURDAY: TOM MOORE, PAULINE STARKE, WALLACE BEERY in "Adventure."  
From the Novel by Jack London. Douglas Cochrane and His Orchestra.

### THE DAFFODIL, Cheltenham's Premier Cinema.

Continuous Daily—2.30 to 10.15.  
FOR SIX DAYS ONLY, Commencing Monday, April 19th.  
THE FAMOUS MUSICAL COMEDY "THE MERRY WIDOW,"  
Without a Doubt the Screen Sensation of the Year.  
MAE MURRAY as "The Merry Widow."  
JOHN GILBERT as "Danilo."  
Directed by Stroheim, and accompanied by the Original Music by a Real Orchestra. A Lavish Entertainment.

### Martin & Co., Limited.

The County Jewellers, PEARL & DIAMOND MERCHANTS,  
A Large Selection of Second-hand Silver and Old Sheffield Plate. We are purchasers of Antique Silver and Fine Quality Gems. Best Prices Given.  
LICENSED VALUERS.

Promenade, Cheltenham.



Gloucester Rugby International's Wedding.  
Mr. A. T. Voyce, Gloucester's popular International Rugby Football forward, was married on Monday last at Berkeley to Miss Pat King, daughter of Mr. and Mrs. J. W. King, of Berkeley. There was a large crowd of people at the wedding, both inside and outside the church. The happy couple leaving the church amidst a shower of confetti.

"Cheltenham Chronicle" Photo. Copies 1s. each, postage 2d. extra.

### WINTER GARDEN, CHELTENHAM.

Monday, Tuesday, Wednesday: TOM MIX and TONY in "The Lucky Horseshoe."  
Thursday, Friday, and Saturday: ELAINE HAMMERSTEIN and LOW TELLEGEN in "After Business Hours."  
Next Week (April 26th):— VALENTINO in "GUBRA."  
ROLLER SKATING DAILY.

### COLISEUM THEATRE, CHELTENHAM.

6.40—AND—8.40.  
The Big Laughter Revue—"THE PAINT BOX,"  
In Fifteen Glorious Scenes.

### NORTH STREET PICTURE HOUSE.

From 2-30 Continuous.  
Monday, Tuesday, Wednesday: SESSUE HAYAKAWA In a Gripping Social Drama "Loyalty."  
Thursday, Friday, Saturday: HOOT GIBSON In the Greatest Rodeo Event of the Year. "The Calgary Stampede"

## Sensier

New Spring and Summer Models for all occasions at moderate prices.  
388b HIGH STREET, CHELTENHAM

Telephone 1080.

**W. Scott Cooper,**  
Goldsmith and Silversmith,  
Diamond Merchant, Jeweller,  
The Promenade, Cheltenham.  
LICENSED VALUER.

## For the Best PIANOS, DALE, FORTY and Co. Ltd.





**GLOUCESTER RUGBY INTERNATIONAL'S WEDDING AT BERKELEY.**

Great interest was evinced in the marriage in the old Parish Church at Berkeley on Monday last of Mr. "Tom" Voyce, one of the best known Rugby football players in England, and son of Mr. and Mrs. Voyce, of Dean's Walk, Gloucester, to Miss Pat King, daughter of Mr. and Mrs. J. W. King, of Berkeley.

- 1.—The Brides' Group. The best man is Mr. A. F. Blakiston, another Rugby International forward, and the bridesmaids were Miss Nan King and Miss Bartie King (sisters of the bride), Miss P. M. Voyce (sister of bridegroom), and Miss Connie Clarke.
- 2.—The bride and her father entering the church.
- 3.—Rev. H. C. Armour (Vicar of Berkeley) and Canon A. H. Cheeseman (Vicar of Twigworth), who conducted the service, and a friend.
- 4.—Guests at the reception, mostly Cheltonians.
- 5.—Waiting for the Bride to arrive.
- 6.—Guests. Second from left is Mrs. A. F. Blakiston, next Mr. Voyce, sen., next Mrs. King (bride's mother).

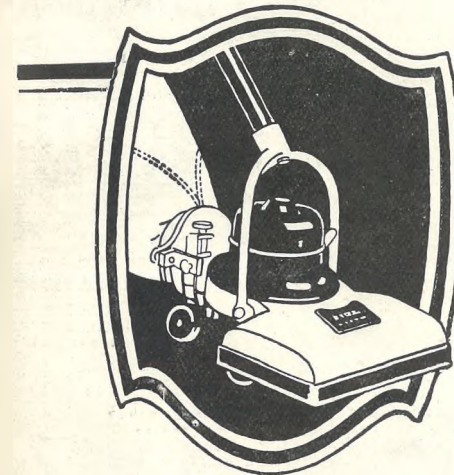
"Cheltenham Chronicle" Photos. Copies 1s. and 1s. 9d. each, postage 2d.



**A PRETTY CHELTENHAM WEDDING.**

The marriage was solemnised at Trinity Church, Cheltenham, on Wednesday last, of Mr. M. Jones, son of Mr. and Mrs. Jones, Winstonian-road, Cheltenham, to Miss P. Compton, daughter of Mr. and Mrs. W. E. Compton, 28 Clarence-square, Cheltenham. The bride's father is assistant secretary of the Cheltenham and Gloucester Building Society, and the happy couple are both members of the same staff; the bridegroom is assistant organist at Trinity Church. "Cheltenham Chronicle" Photo. Copies 1s. each. Postage 2d. extra.

\*\*\*\*\*



**Your Carpet  
Hoover-  
Cleaned  
FREE!**

Haven't you a carpet you specially value? A carpet you want cleaned *thoroughly*, as it deserves — cleaned so that all the rich colourings are brought to life again? We'll do that for you with the Hoover — free of cost, and without any obligation to purchase. We'll beat and sweep it electrically, and suction clean it, too, in a single dustless operation, while it's still on the floor. Rid it of all its dirt, however deeply embedded. Just write or phone us when to call.

A British Empire Product  
Authorised Dealer

**SHIRER & HADDON, Ltd.,**  
18—30 Clarence Street,  
CHELTENHAM.

**The HOOVER**

REG. TRADE MARK  
It BEATS . . . as it Sweeps . . . as it Cleans

**SILKS**  
.. FROM ..  
**LANCE'S**

JOHN LANCE & Co.  
are now offering the  
Largest and most varied  
stock of

**LINGERIE  
SILK FABRICS**

IN THE WEST OF ENGLAND,

At 25 o/o under to-day's value

SILK STOCKINETTE, 3/11  
52 inch wide. All colours. YARD.  
Special Price,

Our Noted LANCELLA 5/9  
CREPE. 40 shades. YARD.  
Special Price,

CELANESE STOCK- 6/11  
INETTE. Non-Ladder. YARD.  
All colours. 54 inch wide.  
Special Price,

CREPE DE CILMA. 2/11  
40 inch wide. Shades— YARD.  
Pink, Salmon, Sky, Lemon,  
and Mauve.  
Special Price,

LINGERIE CREPE. 4/9  
40 inch wide. 30 beau- YARD.  
tiful colours.  
Special Price,

All these Fabrics are  
Guaranteed Good  
Washing Fabrics.

**John Lance**  
& Co., Ltd.,  
CHELTENHAM.





**CHELTENHAM APRIL STEEPLECHASES.**

The Cheltenham April Meeting was held on Wednesday and Thursday last. The going was very hard on Wednesday, but rain fell heavily during the night, and improved conditions for Thursday.

- 1.—Messrs. D Harrison, the trainer, Ted Arnold, the ex-Worcestershire cricketer, and Hon. Mrs. Mundy.
- 2.—Ted Leader walking in after a fall on Gold Willow (favourite) in Tewkesbury Hurdle Race
- 3.—Two successful owners during the day: Miss Rodocanachi (owner of Plumado) and Mr. G. C. Lees-Milne, on extreme right (owner of Truthful James).
- 4.—Mr. H. Brown on Ground Scout (left) beating Landrock in Ledbury Chase.
- 5.—W. Speck, the jockey, Mrs. Driscoll (centre), and Mrs. W. Speck.
- 6.—Mr. Geo. Lashwood, the well-known music-hall artist, with Mr. and Mrs. Alf. Newey each side of him, and two lady friends.
- 7.—Members in Paddock.
- 8.—First time round in Ledbury Chase.
- 9.—Major Ricardo with a lady.
- 10.—Truthful James (winner) leading in Tewkesbury Hurdle Race.
- 11.—Mr. A. Holman (left) chatting to Hon. Aubrey Hastings, Mrs. Hastings, and their little daughter.
- 12.—Col. E. P. Brassey (left) and a friend.

Cheltenham Chronicle Photos. Copies 1s. each, postage 2d. extra.



**FUNERAL OF THE LATE MR. THOS. COBOURNE**, ex-G.W.R. Cheltenham Stationmaster, on Thursday, April 8th. The Service was held at Cheltenham Parish Church and the interment at Wrexham. 1 and 7.—Members of the Cheltenham Bowling Club, of which deceased was the Treasurer. 2.—Family mourners. 3.—G.W.R. Officials. 4.—Mourners leaving church. 5.—Carrying deceased into church. 6.—Messrs. E. George (Gloucester Stationmaster) and W. J. Boyd (ex-Stationmaster at Kemble).—Cheltenham Chronicle Photos. Copies 1s. each, post 2d.

# ATTRACTIVE FASHIONS

AT ECONOMICAL PRICES.

We specialise in Ready-to-Wear Garments at reasonable Prices. In our Showrooms you will find that although our prices are so moderate the Cut and Finish have not suffered in any way, and we invite you to inspect our stock before deciding on your new suit. Shown herewith are one or two Garments of outstanding value.

A smart Two-Piece SUIT in All-Wool Repp of exceptional quality. Cut on the very newest lines and beautifully tailored in Beech and other colours .. **£4 19 6**

A smart COAT, featuring the newest cut, in fine quality Wool Repp. Mary Blue and other colours..... **£3 19 6**

Also cheaper Coats in Repp 29/6 to 39/6.

Two-Piece SUIT in Wool Repp, smartly cut and tailored. Coat lined Broche (as illustrated). In all colours. **69/6**

Also similar in Gabardine 39/6

## Dicks & Sons Ltd.

172 & 173 HIGH STREET  
Cheltenham Spa  
50 YEARS REPUTATION FOR VALUE

TEL. 1007





**GLOUCESTER CRYPT SCHOOL SPORTS.**

The Annual Sports were held in the School Playground on Friday, April 9, in beautiful weather, before a big crowd of parents and friends. They were postponed from the previous day owing to wet.

- 1.—Part of crowd at prize-giving.
- 2.—Paget winning Open High Jump at 4ft. 11ins.
- 3.—Paget (in centre) wins Open Hurdles.
- 4.—T. R. Drury winning 100 Yards Race (under 15 years of age).
- 5.—A merry group of pupils.
- 6.—Start of 440 Yards Open Race (won by Hoare)
- 7.—Climbing an obstacle in Seniors' Obstacle Race.
- 8.—Final of Open 100 Yards, won by Paget on extreme right; Johnson, extreme left, second.

"Cheltenham Chronicle" Photos, Copies 1s. Each.



**BERKELEY HUNT POINT-TO-POINT RACES.**

The Annual Races in connection with the above Hunt were held on Friday, April 9, over the usual course. There was a big crowd of spectators and the weather was delightful.

- 1.—The crowd in a queue for the luncheon tent.
- 2.—Capt. A. Peacey has a toss from Polly Perkins in Subscribers' Race.
- 3.—Taking the water in Adjacent Hunts Race.
- 4.—Mr. W. N. Unwin's Alfredo (left), who won Open Nomination Race, and White Light (second) taking the water jump.
- 5.—Mr. A. H. Arnold and Miss Arnold enjoying the racing.
- 6.—In the Paddock.
- 7.—Capt. and Mrs. Jarrett Thorpe.
- 8.—Hon. Mrs. Munday, who acted as starter.
- 9.—Messrs. Hooper and R. C. Jones.

"Cheltenham Chronicle" Photos, Copies 1s. each, postage 2d. extra.





**SHOW AND SALE OF SHORTHORN CATTLE AT GLOUCESTER MARKET.**

Messrs. Bruton, Knowles and Co., Auctioneers, Gloucester, held their Annual Sale of Shorthorn Bulls and Heifers at the Market on Thursday, April 8th. Prizes were given value £95, and H.M. the King had three entries from his Windsor Herd.

1.—Messrs. J. P. Terry, Pearce, and F. Ellis (all of Highnam). Messrs. Terry and Ellis were Stewards.  
 2.—The King's First Prize Heifer Windsor Butterfly.  
 3.—Mr. H. Knowles (left).

4.—Two Catholic priests were very interested in the Sale.  
 5.—Mr. Edmonds, Mr. G. Donnie's herdman and Mr. Jorgenson.  
 6.—Mr. McDowell, M.R.C.V.S., advises Mr. M. P. Price.

7.—Lieut.-Colonel E. P. Brassey's Proud Monarch, Champion Bull of Show.  
 8.—Mr. Sidney Dennis, a noted breeder.  
 9.—Watching the Judging.

"Cheltenham Chronicle" Photos, Copies 1s. each, Postage 2d. extra.

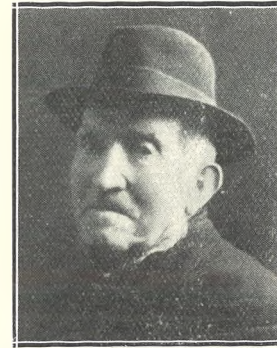
**Three Counties Agricultural Show**

AT GLOUCESTER, JUNE 8th, 9th, and 10th, 1926.

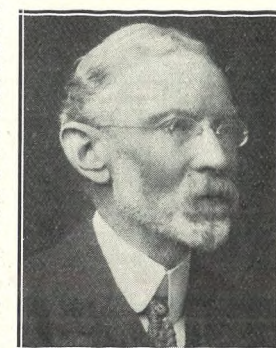
**Stock and Implement Entries Close To-Day, April 17th.**

First Post on Monday in time.

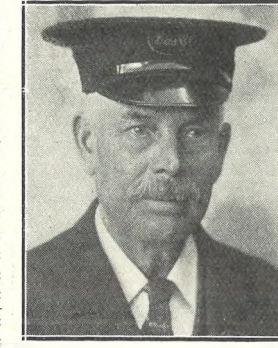
Secretary: T. H. EDWARDS, Leominster.



MR. GEORGE WILLIAMS, Of 14 Glenfall-street, Cheltenham, who died on Tuesday, April 6th, aged 78. For many years he was a road sweeper for the Cheltenham Corporation. He was well known in the town, and was always in the best of health and spirits.



MR. E. B. KILMINSTER, Of Heathfield, All Saints' road, Cheltenham, who died on Friday, April 9th, aged 69 years. He was a partner for many years in the firm of Beynon and Co., Art Publishers, retiring 18 months ago through ill-health. He was a master of shorthand and typewriting at the Technical Schools, and a staunch supporter of Salem Baptist Church.



MR. C. G. MOULDER, Chief Inspector Cheltenham Gas Co., who retired on Pension owing to ill-health on April 12th, after serving for 47 years. In early days he was a Sergeant in the 4th Gloucesters, and a Sergeant in the ex-1st G.R.E.V. He was the First Secretary of the Gas Works Athletic Club.

**DIABETES.**

Sufferers from Diabetes searching for a palatable, well-varied diet will find it in Cheltine Foods. They are highly nutritious and graded No. 1 (for mild cases), No. 2 (more serious cases), and "strict diet" (for extreme cases). Particulars post free, or with samples to cover postage, etc., 1s. from

**THE CHELTINE FOOD CO.,**  
CHELTINE WORKS, CHELTENHAM.

**HAVE YOU FOUND US YET?**  
AT THE SIGN OF THE SHAMROCK  
31 Promenade, CHELTENHAM.

HERE you can get the most **Delicious Luncheons**  
(3 Course, or a la Carte).

**Afternoon Teas,** such things as Home-made Breads, Scones, Oat Cake and Honey, Cinnamon Toast, etc., etc  
FOR SALE—Meat Dishes, Cakes, Breads, Scones, etc., etc.

**THE ARRIVAL**



of 1926 **RALEIGH MOTOR CYCLES AND BICYCLES.**

Motor Cycle from £28 0 0. **BETTER VALUE THAN EVER!** Bicycles from £6 7 6.

ALL SPARES STOCKED. TERMS ARRANGED.

**CHELTHENHAM MOTOR & CYCLE CO**  
THE NEW RALEIGH DISTRIBUTORS,

82 High Street, CHELTENHAM. Tel. 166.

BEST QUALITY **CIDERS**

IN BOTTLE.—Sparkling and Still.

**BARTHOLOMEW,**

419, 420 HIGH STREET, CHELTENHAM.

Wines, Spirits, Ales, Table Waters, & Grocery. Tel. 135.

**GOLF HOSE.**

Large Variety of Designs .. from 5/6 upwards.  
CHECK LEGS, 8/6 to 16/6 pair.

Pullovers & Jackets for Sports Wear.

**A. BECKINGSALE,**  
111 High Street, Cheltenham.  
Phone 406.

LET MOUSSELLS MOVE YOU



Estimates for Removals and Storing Free. PHONE 112.

**CHELTHENHAM.** Offices: AMBROSE STREET





**Cheltenham and Gloucestershire Canine Society's Spring Show at Gloucester, April 13.**

- 1.—Prestbury Monomark, Mrs. D. F. Gardner's Sealyham, winner of Whishaw Cup and four first prizes.
- 2.—Hanham Abbots Imperatrice, a winning Bull Bitch.
- 3.—Members of Committee.
- 4.—Mr. J. H. Genge's Adelson, winner of Open First for Bulldogs.
- 5.—The Misses Le Roy, exhibitors in Children's Class.
- 6.—Dainty Lady and Imperial Bruce, both first prize winners for Great Danes.
- 7.—Mrs. E. Penney and Prince of Marcle, winner of two firsts in Alsations.
- 8.—Cornwell White Knight, winner of Open Class for Wire-haired Fox Terriers.
- 9.—Miss H. Bullough and Handsomis, winner for Open Bitch.
- 10.—Bit of Fluff, first in Open Bitch Aire dale.

“Cheltenham Chronicle” Photos. Copies 1s. each, postage 2d. extra.



**GOTSWOLD HUNT POINT-TO-POINT RACES AT STANLEY PONTLARGE.**

- 1.—Mrs. E. E. Turner, Mr. H. H. Scott, and friends.
- 2.—Mr. and Mrs. Hughes Martin and Capt. Willes (behind).
- 3.—Capt. G. N. and Mrs. Reynolds (centre) and Mr. R. H. A. Gresson (right).
- 4.—Watching the racing from the car.
- 5.—Mr. G. H. Henley's Kildare winning Gotswold Hunt Farmers' Race.
- 6.—Kildare leading in Adjacent Hunt Farmers' Race.

“Cheltenham Chronicle” Photos. Copies 1s. each.

**E. L. WARD, HIGH STREET, CHELTENHAM, CORSET SPECIALIST.**

Display of  
New Spring  
: Styles. :



British—  
Every  
Stitch.



2939 “C.B.” CORSET.  
New Model Broche Corset, with silk elastic top, four suspenders. Sizes: 21—28. **8/11½**

3041 “C.B.” CORSET.  
New Front Lacing Model, in strong Coutil, for average figure. Gives graceful control of hips. Sizes: 23—32. **10/11**

Specialists in  
Corsets  
and Underwear.



3044 “C.B.” CORSETS.  
A Dainty Broche Corset, closed back, suitable for all average figures, four suspenders. Sizes: 21—28..... **15/11**



1467 “C.B.” CORSET.  
Very popular Model, medium fitting four suspenders. Sizes: 22—30 ..... **6/11½**

3022 “C.B.” CORSET.  
Beautiful Broche Model, for average figure, fitted four suspenders. Sizes: 21—28. **21/9**

Let us show you  
the New Models,  
4/11 to 35/9.



IT COSTS LESS TO DRESS AT VANDERPLANK (FROM HARRODS).

## SUMMERTIME FASHIONS.



**L**ADIES who seek the finest—ladies who like the luxury and confidence that highest quality assures—will buy garments by Vanderplank.

Because the style of Vanderplank garments is dependable—they voice perfectly accepted tastes and prevailing Modes. They present a pleasing variety of Models appropriate for different occasions. They are made in all sizes, and are not expensive.

**TWO-PIECE SUITS,**  
Models at all prices from 3½ Gns.

**COATS,**  
In every Material and Style.

**COAT-FROCKS**  
and Dresses. An innumerable variety, including ones with new Cape.

**JUMPER SUITS,**  
In Wool, Silk, and Silk and Wool from 29/6.

**SUITS.**  
The new Man-fitting Tailor-made at 4½ Gns., in Repp and fine Suitings.

**K904.**  
Perfectly fitting Coat Frock, with flare at side. The Collar and Pippings of Oriental material to tone. It is tailored from fine quality Repp. The one sketched is in Mauve, but is obtainable in Black, Navy, and all New Shades. In all sizes.  
**PRICE 4½ Guineas.**

**K905.**  
This Frock of Soft Repp, with Circular Flare Skirt, has new Eton Collar, with contrasting Crepe de Chine Tie and Handkerchief. In Shades of Blue, Parma, Green, etc. It is remarkable value. S.W. and W Sizes.  
**PRICE 55s. 9d.**

THE CORRECT MODE IS FIRST SEEN AT—

# VANDERPLANK

381, HIGH STREET HARRODS  
**FASHIONS AND FURS**

**381 HIGH STREET, CHELTENHAM SPA.**

PRINTED AND PUBLISHED AS A GRATIS SUPPLEMENT BY THE CHELTENHAM NEWSPAPER COMPANY, LIMITED.

# THE CHELTENHAM CHRONICLE AND GLOUCESTERSHIRE GRAPHIC

With Which is Incorporated the "Cheltenham Looker-On."  
**GRATIS SUPPLEMENT.** Saturday, April 24, 1926.

No. 1,321.

**CHELTENHAM THEATRE AND OPERA HOUSE.**

This Afternoon (2.30) & Evening (7.45) "PADDY THE NEXT BEST THING."  
Next Week (Six Nights, 7.45, Matinee Saturday, 2.30):  
**THE FAMOUS "The Cabaret Girl."**  
Musical Comedy

**THE PALACE,**

High Street, CHELTENHAM.  
MONDAY to WEDNESDAY.  
Ronald Golman, Blanch Sweet in

"His Supreme Moment"

For SIX Days  
All British Racing Classic  
Steve Donoghue and June in  
"A Knight of the Pigskin."

THURSDAY to SATURDAY:  
Jack Buchanan, Betty Faire,  
Juliette Compton in

"Bull Drummond's  
Third Round"

By SAPPER. Britain's Latest  
Picture Play.  
Alberta Vaughan in the  
**PACEMAKERS.**

**THE DAFFODIL,**

Cheltenham's Premier Cinema.

Continuous Daily—2.30 to 10.15.  
FOR ONE WEEK, Commencing  
Monday, April 26th, 1926,

**BUSTER KEATON**  
And His New Leading, Lady  
"BROWN EYES,"  
In a Rip Roaring Riot of Fun—

"GO WEST,"

Direct from the Tivoli, London.  
Supported by two High-Class  
Metro Features.

The Daffodil Grand Orchestra  
Plays Daily. Musical Director:  
Frank Vicary.

Established 1806.

**Martin & Co.,**  
Limited.

**The County Jewellers,**  
PEARL & DIAMOND MERCHANTS,

A Large Selection of Second-hand  
Silver and Old Sheffield Plate.  
We are purchasers of Antique  
Silver and Fine Quality Gems.  
Best Prices Given.

**LICENSED VALUERS.**

Promenade, Cheltenham.



**CHARMING STRATTON WEDDING.**

The happy couple leaving Stratton Church, near Cirencester, on Saturday last, when Mr. Rodney Fawcett Butler married Miss Angela Lyon Stephens. The bridegroom is the only son of Mr. and Mrs. Fawcett Butler, Parabola House, Cheltenham, and the bride is the eldest daughter of Mr. and Mrs. Harry Stephens, of Stratton End Cirencester, and a granddaughter of the late Mr. and Mrs. John Stephens, of Barnwood and Gloucester.  
"Cheltenham Chronicle" Photo.

**WINTER GARDEN, CHELTENHAM.**

Monday AND ALL THE WEEK,  
Colossal Attraction !!

**RUDOLPH VALENTINO**

In his very latest Tempestuous  
Love Story—

"COBRA,"

An entirely Modern Story of  
Italian gardens and New York  
Night Clubs with a terrific climax  
**WHO ARE COBRA-WOMEN ?**  
Showing Daily at 2.50, 4.55, 6.55  
and 8.55 p.m.

**COLISEUM THEATRE, CHELTENHAM.**

6.40 and 8.40.

The Scotch-American Revue—  
"SCOTCH FOLLIES."

**NORTH STREET PICTURE HOUSE.**

From 2.30 Continuous.  
Monday, Tuesday, Wednesday:

"Bobbed Hair,"

Featuring  
Marie Prevost & Kenneth Harlan

Thursday, Friday, Saturday:  
**RICHARD TALMADGE** in  
"The Fighting Demon."

MAISON

**ANNETTE,**

Kensington House,  
Promenade,  
Cheltenham,

SPECIALISTS IN  
EXCLUSIVE

**CORSETS & LINGERIE.**

'Phone 1122.

For the Best **PIANOS, DALE, FORTY and Co. Ltd**





**CRAIK CENTENARY CELEBRATIONS AT TEWKESBURY.**

Tuesday, April 20th, was the Hundredth Anniversary of the birth of Dinah Mulock (Mrs. Craik), author of "John Halifax"; and in celebration a service was held in Tewkesbury Abbey, at which an address was given by the Dean of Gloucester; and a Dinner was held at the Town Hall, where Sir Arthur Quiller-Couch ("Q"), the well-known English author and man of letters, gave a delightful speech on the Authoress.

- 1 and 8.—Cheltonians entering the Abbey.
- 2.—The Mayor's Chaplain and Town Councillors in procession.
- 3.—Mrs. Godfrey, senr., in centre.
- 4.—Archdeacon Ridsdale and Miss Ridsdale, the Dean of Gloucester, and Canon Smith, Vicar of Tewkesbury entering the Abbey.
- 5.—A visitor
- 6.—Sir Arthur, Lady, and Miss Quiller-Couch arriving at Abbey.
- 7.—Mr. Wright, Mr. W. E. Palser, Mrs. Wright, and Mrs. Palser (all of Cheltenham).
- 9.—Tewkesbury Town Councillors.
- 10.—The Recorder of Tewkesbury (Mr. H. M. Brice, K.C.), the Town Clerk, the Mayor of Gloucester, and Mayor of Tewkesbury.
- 11 and 13.—Visitors.
- 12.—The Vicar receiving the civic procession

"Cheltenham Chronicle" Photos. Copies 1s. each, postage 2d. extra.



**British Commercial Gas Association.—Midland Salesmen's Conference in Cheltenham.**

The monthly conference of above was held at Cheltenham Gas Offices on April 14th. Third from left, seated, Messrs. L. E. Twycross (Engineer Cheltenham Gas Co.), G. L. Grundy (Chairman Cheltenham Gas Co.), H. G. Wilberforce (President of Circle), A. H. Wyatt (Director Cheltenham Gas Co.), and C. W. Welford (Commercial Manager Cheltenham Gas Company).

"Cheltenham Chronicle" Photo. Copies 1s. 9d. unmounted, 2s. 6d. mounted. Postage extra.



  
**BECHSTEIN**  
 PIANOS

are renowned all the world over for beauty of tone, charm, and exquisite delicacy of touch. Every living pianist of international fame refers to them in superlatives of admiration. Ask the owner of any BECHSTEIN piano what he thinks of his there are over 60,000 of them in Great Britain alone—and then inspect the selection of Grands and Uprights at

**THE SOLE AGENT.**  
 Of importance to you is the fact that every Bechstein Piano standing in the many Showrooms has been personally selected by an expert, which ensures that every instrument is guaranteed to be the most perfect of its make and the best at its price. May I have the privilege of showing them to you to-day?

**THE PIANO HOUSE,**  
**Crichton's,**  
 394 High Street, Cheltenham.  
 'Phone : 378.

**GOLF HOSE.**  
 Large Variety of Designs .. from 5/6 upwards.  
 CHECK LEGS, 8/6 to 16/6 pair.  
 Pullovers & Jackets for Sports Wear.  
**A. BECKINGSALE,**  
 111 High Street, Cheltenham.  
 'Phone 406.

*Sensier*  
 New Spring and Summer MODELS for all occasions at moderate prices.  
 388b HIGH STREET, CHELTENHAM.

**COAL.** Tel. 215.  
 BATH ROAD  
**E. A. & W. J. MOORE,**  
 COAL OFFICE,  
 (Near St. Luke's Schools, Cheltenham). **COKE.**

**LET MOUSELLS MOVE YOU**



LONDON. LIVERPOOL.  
 MANCHESTER. LEEDS.  
**MOUSELL BROS LTD**  
 BIRMINGHAM. LEAMINGTON.  
 CHELTENHAM. EXETER.  
 Estimates for Removals and Storing Free.  
 'PHONE 112.  
**CHELTENHAM.** Offices: **AMBROSE STREET**

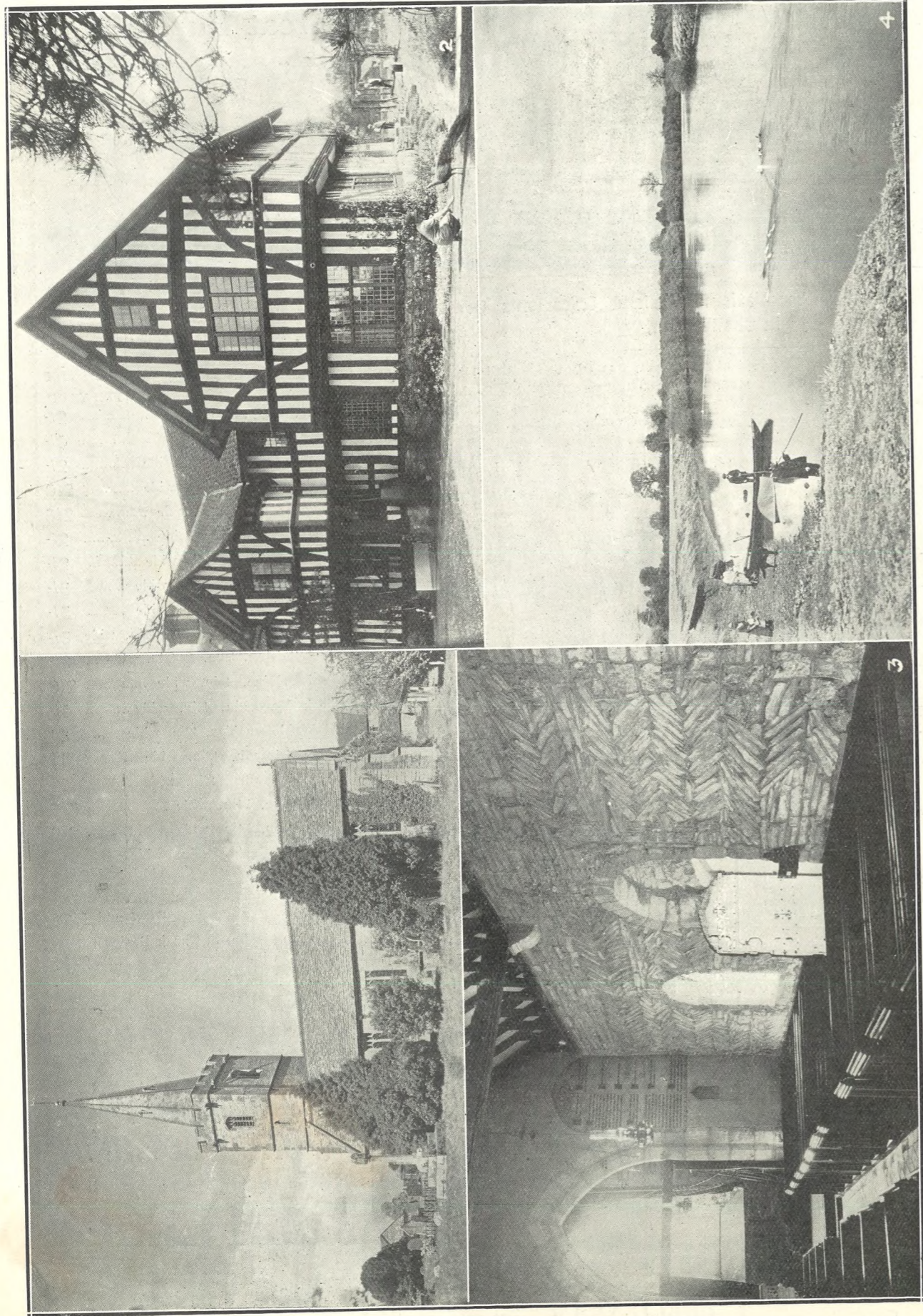
Great Purchase of  
**WOOLLEN FABRICS**  
 BY  
**LANCE'S**

WHICH COMPRISE:

	<i>Special Price</i>
	PER YARD
Covert Repp, 42in. wide .....	2/-
Covert Repp, 42in. wide .....	4/-
Wool Estemene, 42in. wide .....	2/-
Wool Marocain, 42in. wide .....	2/6
French Twill, 42in. wide .....	2/6
Cheviot Serge, 54in. wide .....	2/-
Hopsac Suiting, 54in. wide .....	2/-
Wool Gabardine, 54in. wide .....	3/-
Wool Gabardine, 54in. wide .....	5/-
Stripe Marocain, 52in. & 42in. wide	3/-
Wool Suiting, 52in. & 42in. wide ...	3/-
Wool Delaine, 40in. wide .....	2/6
Check Marocain, 42in. wide .....	4/-
All Wool San Toy, 42in. wide .....	2/11
Wool Ottoman, 42in. wide .....	3/11
French Armure, 42in. wide .....	3/11
Wool Repp, 54in. wide .....	5/6
Wool Repp, 54in. wide .....	8/6
Imitation Kasha, 40in. wide	4/11 and 3/11
Imitation Kasha, 54in. wide	5/11 and 4/11
Imitation Kasha, in Check Designs, 40in. wide .....	2/11

THE WHOLE OF THE STOCK  
 WILL BE OFFERED ON  
**MONDAY NEXT,**  
 APRIL 26th,  
 For **ONE WEEK ONLY**  
**John Lance**  
 & Co., Ltd.,  
**CHELTENHAM.**





**PICTURESQUE GLOUCESTERSHIRE.—ASHLEWORTH.**

Ashleworth (ancient Escelesworde) is a most interesting and picturesque village situate on the west bank of the Severn about six miles north of Gloucester. It contains some most interesting 15th Century houses in wonderful preservation; and the Bristol and Gloucestershire Archaeological Society selected this village for their Jubilee meeting on Wednesday last. There are good examples of Saxon masonry in the north wall of the most interesting church.

1.—The exterior of Ashleworth Church, from the south-east. The base of tower is 14th Century upper part and spire 15th Century.

2.—The "Old Vicarage," or Manor House, is one of the finest timber houses in the county. The owners and occupiers are Rev. and Mrs. F. R. Gillespy. A peep from the north-west.

3.—The interior of church, looking west, showing the Saxon herring-bone masonry and the ancient north door and arch.

4.—The Severn at Ashleworth. This is the historic ferry to Sandhurst, and the ferry rights belong to the proprietor of the old Ferry Inn, being granted to his ancestors by charter.

Cheltenham Chronicle Photos. Copies 1s 9d. each. Postage 2d. extra.



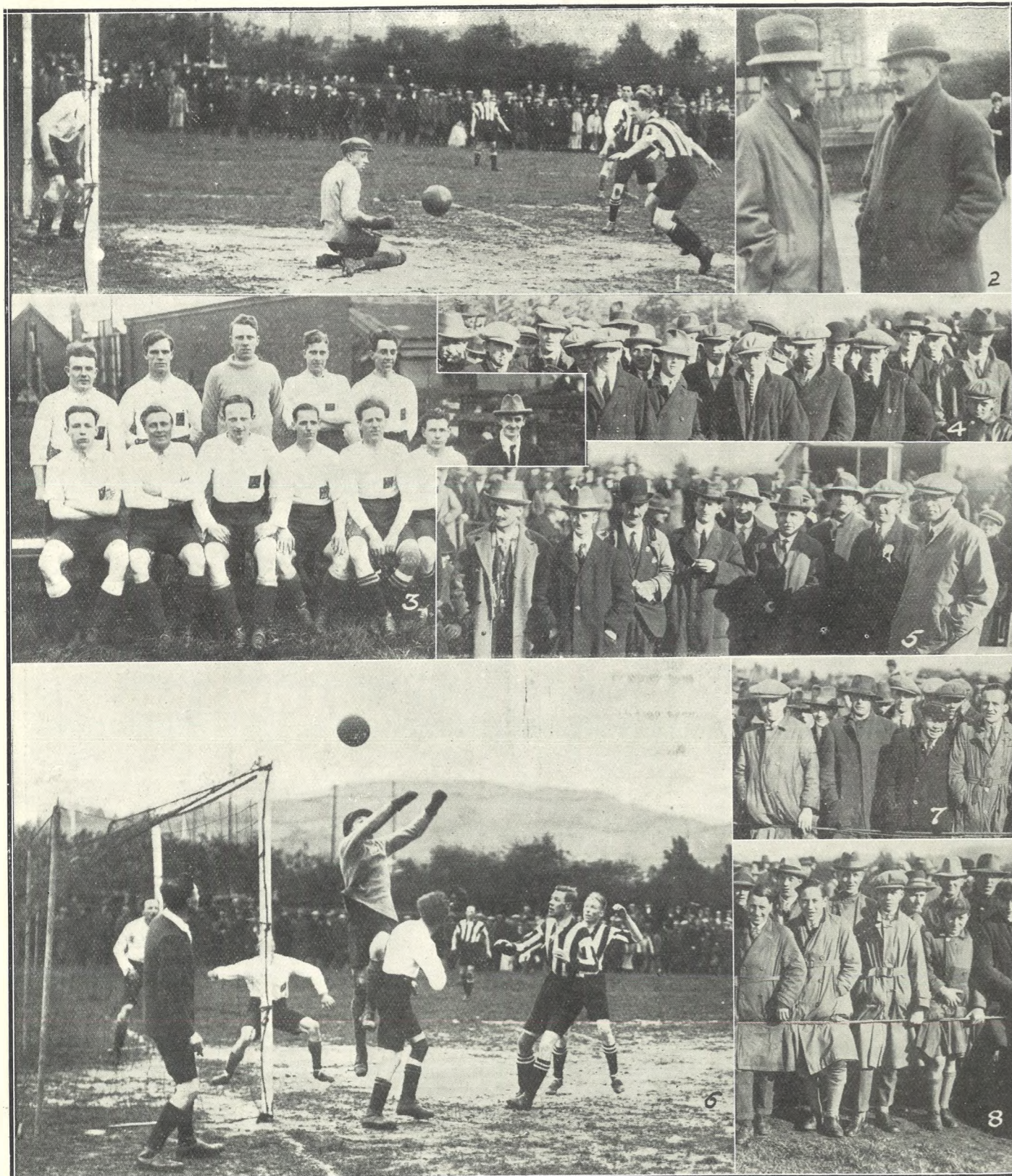
**JUBILEE MEETING OF BRISTOL AND GLOUCESTERSHIRE ARCHÆOLOGICAL SOCIETY.**

Wednesday last, April 21st, was the fiftieth anniversary of the birth of the above Society, and in celebration of the occasion a Spring meeting and excursion was held on that day at Gloucester, Ashleworth, and Tewkesbury. Ashleworth was thoroughly explored, under the guidance of Mr. T. Overbury, A.R.I.B.A., and the above snaps were taken in that village.

- 1.—Mr. Courtney Wells, of Gloucester, the oldest member of the Society (86), second from left, and Mr. Hawkins, of Cheltenham (right), and others inspecting an old well head (one single stone) in Ashleworth Churchyard.
- 2.—Rev. F. R. and Mrs. Gillespy and family, who welcomed the Society to their lovely old house, the Old Vicarage.
- 3.—Mr. S. Healing (on left) chatting to two members.
- 4.—Mr. T. Overbury, of Cheltenham (right), who lectured to the party on the various buildings.
- 5.—Two lady members.
- 6.—Two original members of the Society who were present, Mr. Walter Derham and Major H. N. Herapath.
- 7.—Mr. Jackson, of the Court Farm, Ashleworth, with two lady members.
- 8.—Mr. J. E. Pritchard, F.S.A., of Bristol.
- 9.—Three Gloucester members on right, Rev. W. G. Pritchard, Mr. T. G. Smith, and Councillor C. W. Barnett.
- 10.—Two members.

Cheltenham Chronicle Photos, Copies 1s. each. Postage 2d. extra.





**WILTSHIRE BEAT GLOUCESTERSHIRE AT ASSOCIATION FOOTBALL.**

At Gloucester on Saturday last, a match was played between these two counties before a good crowd. Wiltshire played a much cleverer game than the home side, and won by five goals to one.

- |   |   |  |
|---|---|--|
| 1.—Gloucestershire goalie drops to a low shot.  | 3.—The Gloucestershire team.  | J. Palmer, H. F. Midwinter, R. Minett, |
| 2.—Messrs. L. A. Beddis (Gloucester City Secretary) and Alex G. Raisbeck (Bristol City Secretary). The latter is an ex-Scottish international, and played against England seven times and once against Wales. | 4.—A section of the crowd.  | —, H. C. Ward, E. F. Davy,             |
|   | 5.—Some of the G.F.A. officials at the match —Messrs. T. Andrews, A. C. Chappelle | and D. Rowles.                         |
|   |   | 6.—Gloucestershire clearing a corner.  |
|   |   | 7 and 8.—Spectators.                   |

"Cheltenham Chronicle" Photos. Copies 1s. each. Postage 2d. extra



**INTERESTING WEDDING AT STRATTON.**

Snaps at the marriage of Mr. R. F. Butler, son of Mr. and Mrs. Fawcett Butler, of Parabola House, Cheltenham, to Miss A. L. Stephens, eldest daughter of Mr. and Mrs. Harry Stephens, of Strattonend, Cirencester.

- |   |  |   |
|---|--|---|
| 1.—The Bride and her Father arriving at church, which was filled with guests. | 3.—Mrs. Cridland and Mrs. J. Bates.    | 6.—The Bridesmaids and Train-bearers waiting for bride at church porch. |
| 2.—Stratton folk watching the wedding outside church.                         | 4.—Mrs. Garth Porter and Mrs. Crystal. |   |
|   | 5.—Mr. and Mrs. Jack Sturgess.         |   |

"Cheltenham Chronicle" Photos. Copies 1s. each, postage 2d. extra.



BEFORE RESTORATION.	<b>A. WHITCOMBE</b> & Co., Ltd.,	AFTER RESTORATION.
	 <p><b>:: PICTURE ::</b> <b>RESTORERS,</b></p>	
	<b>12 Colonnade, ::::: CHELTENHAM.</b>	
<p>The Governors of the Shakespeare Memorial Theatre, Stratford-Upon-Avon, have placed the restoration of the valuable paintings and frames with the above firm. ::: Advice and Estimates given in any part of the country.</p>		





**FASHIONABLE DURSLEY WEDDING.**

The marriage was solemnised at the Parish Church, Dursley, on Wednesday, April 14th, of Mr. Graham Maxwell Cummings, son of Mr. A. W. Cummings, of Charlton Kings, Cheltenham, to Miss Madeleine Edith Owen, second daughter of Mr. and Mrs. H. A. Owen, York House, Dursley. The bridegroom is a member of the staff of Messrs. R. A. Lister and Company.

Photo by Mr. Mallett, photographer, Dursley.

**MRS. K. R. CLIFT,**  
Wife of Mr. W. E. Clift, of St. Michael's House, Gloucester, who died on April 15th, following an operation. She was a keen supporter of the Gloucester Rugby Club, and had a large circle of friends in Gloucester and Cheltenham.



\*\*\*\*\*



**MRS. ANNE WHEELER,**  
Widow of late John Wheeler, who died on Saturday, April 10th, at the residence of her daughter, 14 Dean's Walk, Gloucester, aged 94 years. She lived in Cheltenham 88 years, the remaining six with her daughter.

**THE HOUSE FOR ANTIQUITIES.**

An interesting stock of Genuine Antique Jewellery, Sheffield Plate, China, Quaint Boxes, etc., at low prices.

**HARRY O. BOX,**

339 HIGH STREET, CHELTENHAM.  
Nearly Opposite Grammar School.  
Established Over 70 years.  
Similar Goods Bought.

**KNIGHT & HUTCHINGS**

(TEL. 1497)

Have a Wonderful Range of the Newest Goods for :::::

**SPORTS WEAR, GOLF WEAR, TENNIS WEAR, . . . . . and the**

**BOYS' SCHOOL OUTFIT.**



**MEN'S**

Sports Coats . . . 16/6—45/-  
Flannel Trousers 10/6--25/-  
Plus-4 Suits . . 63/-— 105/-  
New Fawn Bags . . . . . 24/6  
Ditto Grey . . . 18/6—21/6  
Shirts. Socks. Ties.

**BOYS'**

Grey Flannel Suits 12/6--25/-  
Belts. Ties. Hose.  
Hats, Etc.

**74 High St. (FACING BATH RD.) CHELTENHAM.**

**ECONOMICAL MOTORING**

Is only enjoyed when even the Car's smallest repairs are efficiently supervised and carried out in a thorough manner.

**OUR CLIENTS TELL US** that as repair and maintenance specialists we have cut their repair bill by half. This sounds a big claim, but ask others about us, and then to your advantage won't you call at :::::

'Phone—57.



**"The Better Motor Repairers."**

ALL CLASSES OF REPAIRS, PAINTING, &c.

16, 17 & 18 BATH PARADE, CHELTENHAM.