

THE CHELTENHAM CHRONICLE AND GLO' SHIRE GRAPHIC

With Which is Incorporated the "Cheltenham Looker-On."
GRATIS SUPPLEMENT, Saturday, March 6, 1926.

No. 1,314.

CHELTENHAM THEATRE AND OPERA HOUSE.

This Afternoon (2.30) and Evening (7.45)—"LAVENDER LADIES."

Next Week: VIOLET FAREBROTHER in
"Johanna Godden," From Sheila Kaye-Smith's famous novel.

THE PALACE, High Street, CHELTENHAM.

Monday to Wednesday:
Raymond Griffith, Vera Reynolds,
Wallace, Beery, Louise Fazenda,

In
"The Night Club,"
A Mad, Merry Melange of Girls
and Gaiety.
Colonel Selig's Jungle Stories:
"The Lion's Mate,"
Douglas Cochrane and His
Orchestra.

Thursday to Saturday:
Betty Compson and Jack Holt

In
"Eve's Secret,"
The Story of a Modern Charmer
and the Men she Dazzled.

THE DAFFODIL, Cheltenham's Premier Cinema.

Continuous Daily, 2.30 to 10.15.
Monday, March 8th, Tuesday,
and Wednesday,
ALICE TERRY

In
"CONFESSIONS OF A
QUEEN."

Thursday, Friday, and Saturday:
"THE SWAN,"

A Charming Picture, with a
Superb Cast, including
ADOLPHE MENJOU.
Special Intermissions Daily by
the Augmented Daffodil Grand
Orchestra. Musical Director:
Mr. Frank Vicary.

Advertise in the "Echo."

Established 1806.

Martin & Co., Limited.

The County Jewellers,
PEARL & DIAMOND MERCHANTS.

A Large Selection of Second-hand
Silver and Old Sheffield Plate.
We are purchasers of Antique
Silver and Fine Quality Gems.
Best Prices Given.

LICENSED VALUERS.

Promenade, Cheltenham.



ADMIRAL EARL BEATTY RIDES AT
HAZELTON RACES.

Admiral of the Fleet Earl Beatty and his elder son, Viscount Borodale, both rode in the race for the Prince of Wales's Cup at the Army Point-to-Point Races at Hazelton, nr. Tetbury, on Tuesday last. They are here shown after the race chatting to Lord Westmorland, who is in centre.

"Cheltenham Chronicle" Photo. Copies 1s. each. Postage 2d. extra.

WINTER GARDEN, CHELTENHAM.

MONDAY and All the Week,
LILIAN and DOROTHY GISH

In
D. W. GRIFFITH'S Supreme
Triumph,

"HEART OF THE
WORLD,"

A Story of Love and Sacrifice,
with the Great War as a back-
ground.

Roller Skating in the Pavilion.

COLISEUM THEATRE.

CHELTENHAM.

6.40 and 8.40 Nightly.

"COLOURED LIGHTS,"
A South American Grotesque Revue.
25 Coloured Performers.

NORTH STREET PICTURE HOUSE.

Continuous from 2.30 p.m.

Monday, Tuesday, Wednesday:

"Heart's Desires,"

Starring the Great Danish Actor,
Benjamin Christensen.

Thursday, Friday, and Saturday:

REED HOWES

Featuring in

"A Regular Sport."

"DISTINCTION WITH ECONOMY."
You Will Dance Best and Feel
Happiest in an Exclusive Frock.

Sensier

The Little Salon.
388b HIGH STREET, CHELTENHAM

Telephone 1080.

W. Scott Cooper,

Goldsmith and Silversmith,
Diamond Merchant, Jeweller,

The Promenade, Cheltenham.

LICENSED VALUER.

For the Best **PIANOS, DALE, FORTY and Co. Ltd**



CHELTENHAM v. CHELTENHAM COLLEGE AT RUGBY FOOTBALL.

A very fine game was seen on the Athletic Ground last Saturday, when Cheltenham College played the Town team, and only succumbed by four points (22 points to 18) after brilliant open play in the best style of Rugby football.

- 1.—The College team. From left: H. D. Griffith, F. Willcox, J. P. W. Mallaleu, J. D. Kerr, I. L. Reeves, H. W. Sharp, W. Martin, C. G. Lloyd Brown, E. W. Lovegrove, D. H. E. McCowen, R. P. Edwards, J. A. M. Rice Evans (capt.), C. G. Maby, C. C. Tanner, and T. W. B. Gombe.
- 2.—Tanner punts through and follows up.
- 3 and 5.—College boys enthusing over the performance of their team.
- 4.—From left: Mr. H. H. Hardy (Headmaster of College), Mr. P. Hedges (the Kent and Cheltenham cricketer, who was on crutches), a master, Mr. Gurney, and Dr. G. G. C. Taylor, of the Gloucester team.
- 6.—Spectators in front of grand stand.
- 7.—Martin, the College right wing, scoring one of his three tries. Tanner (on extreme right), cut out the openings for him.

“Cheltenham Chronicle” Photos.

**BEST QUALITY
CIDERS
IN BOTTLE.—Sparkling and Still.**
BARTHOLOMEW,
419, 420 HIGH STREET,
CHELTENHAM.

Wines, Spirits, Ales, Table Waters, & Groceries.
Tel. 135.

DIABETES.

Sufferers from Diabetes searching for a palatable, well-varied diet will find it in Cheltine Foods. They are highly nutritious and graded No. 1 (for mild cases), No. 2 (more serious cases), and “strict diet” (for extreme cases). Particulars post free, or with samples to cover postage, etc., 1s. from
THE CHELTINE FOOD Co.,
CHELTINE WORKS, CHELTENHAM.

LET MOUSELLS MOVE YOU



Estimates for Removals and Storing Free
PHONE 112.

CHELTENHAM. Offices: AMBROSE STREET



BIG FIRE AT BLOCKLEY.

A fire, which practically gutted a building, occurred at Blockley on Tuesday last. It broke out about one o'clock (mid-day) in the house and greengrocer's shop of Mr. Ronald Dyer. The Blockley Fire Brigade, with their primitive engine, can be seen at work, and although they were assisted by the Moreton-in-Marsh Fire Brigade, very little was saved.

[Photo by W. Packer, Chipping Norton.]

SHIRTS TO MEASURE.
MADE IN OUR OWN FACTORY.
New Patterns & Materials
NOW IN STOCK.
SHIRTS TO MEASURE from 8/11.
Oxfords. Twills. Fine Flannels. Silks.
A. BECKINGSALE,
111 High Street, Cheltenham.
Phone 406.

HAVE YOU FOUND US YET?
AT THE SIGN OF
The SHAMROCK
31 Promenade,
CHELTENHAM.
HERE you can get the most
Delicious Luncheons
(3 Course, or a la Carte).
Afternoon Teas, such things as Home-made Breads, Scones, Oat Cake and Honey, Cinnamon Toast, etc., etc
FOR SALE—Meat Dishes, Cakes, Breads, Scones, etc., etc

CORSETS AND BELTS
MADE, COPIED, CLEANED, AND REPAIRED.
Hours: 10 a.m. to 6 p.m. Saturdays, 1 p.m., or by appointment. PHONE 915.
MISS FRUIN (late with Madam Annette)
23 Bath Parade, CHELTENHAM.

THE
CHELTENHAM SPA
FIRST ANNUAL
Open Competitive
Musical Festival,
TOWN HALL,
Cheltenham Spa,
MAY 18th and 19th, 1926.

32 CLASSES, comprising:
Vocal, :: Instrumental,
Elocution,
Open Competitions.
Entries Close April 21st, 1926
Syllabus and Entry Forms from the
Hon. Secretary, Town Hall Bureau,
Cheltenham Spa.

H. E. RANDALL, Ltd.,
6c The Promenade, CHELTENHAM.
Are Now Showing the Latest Designs in
HIGH GRADE FOOTWEAR
FOR PRESENT WEAR.

ADVERTISE IN THE “ECHO.”

The Reputation
:: of ::
LANCE'S

AS

“Specialists in
Dress Fabrics”

is fully maintained by
their attractive offer
::: on :::

MONDAY NEXT,
MARCH 8th,

When will be offered
:: a Large Stock of ::

Kamella
CHECKS,

IN A HUGE RANGE of SHADES.

“Kamella” is a most
wonderful Woollen
Fabric, suitable for
Ladies' and Children's
Wear. 40 inch wide.

Special
Price, **2/11** per
Yard.

OBTAINABLE ONLY AT—

John Lance & Co.,
LIMITED,

Cheltenham's Shopping Centre.



THE ARMY POINT-TO-POINT STEEPLECHASES NEAR TETBURY.

A brilliant point-to-point meeting was held at Hazelton, near Tetbury, on Tuesday last, when many notable officers were seen in the saddle, the most famous being Earl Beatty, who rode his own horse in the Prince of Wales's Cup.

- 1.—A fence in the Nomination Race.
- 2.—The Duchess of Beaufort.
- 3.—Capt. M. J. Kingscote, on Ballycaghan, winning the Nomination Race, Lord Westmorland second, and Mr. W. F. Holman third.
- 4.—Major Sir Lionel Darell with a friend.
- 5 and 6.—Mr Thos. Kingscote with friends.
- 7.—Russian boots in variety.
- 8.—Chatting in the Paddock.
- 9.—The Duchess of Beaufort presenting Earl Haig's Cup to Capt. G. W. E. Heath, General The Earl of Cavan, assisting.
- 10.—A fence in the race for Prince of Wales's Cup, Admiral Beatty, R.N., on extreme left, on Pilgrim.

"Cheltenham Chronicle" Photos. Copies 1s., 1s. 9d., or 2s. each. Postage 2d. extra.

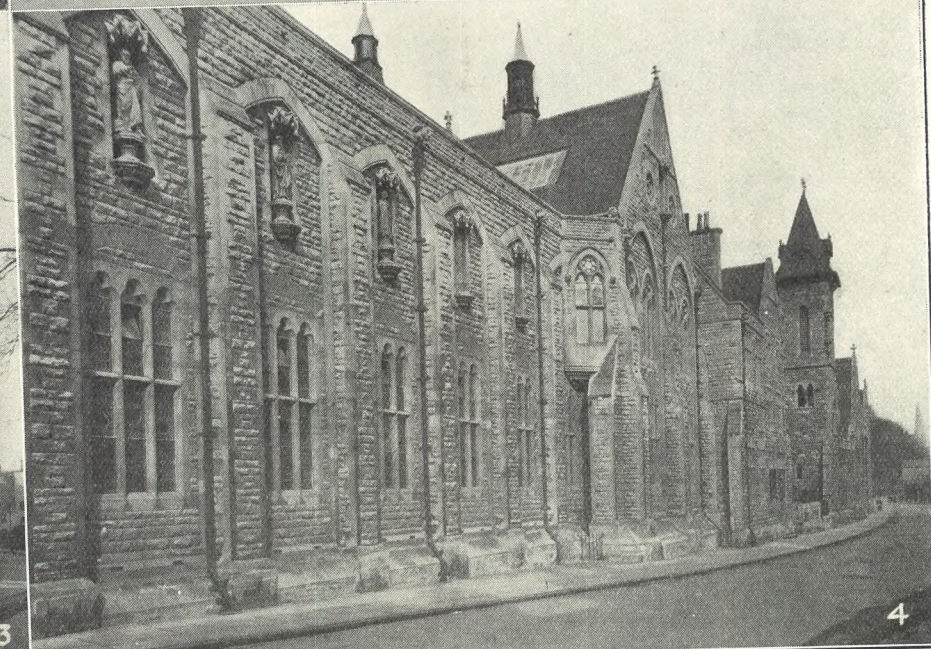
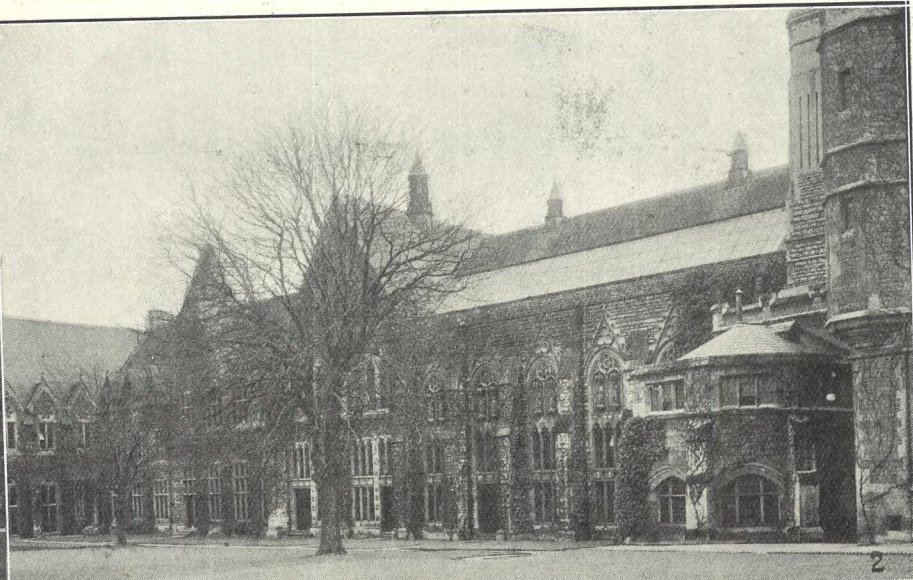


ROUND THE TOWN IN CHELTENHAM.

Snaps in and around the Promenade on Monday last. Miss Gladys Cooper, the celebrated London actress, was in Cheltenham, paying Cavendish House a visit for the purpose of introducing beauty preparations bearing her name, and many ladies congregated to see her.

- 1.—On the sunny side of the Prom.
- 2.—Mrs. K. Tarrant on right.
- 3.—Mrs. Drake and her little boy.
- 4.—Monday was half-term day at the Ladies' College, and many girls were out with their relatives.
- 5.—Miss Gladys Cooper and Mrs. Geo. Turk (manageress of Beauty Parlour at Cavendish House).
- 6.—A Football trio: Messrs. J. Curtis, T. Harry, and W. T. Leonard.
- 7 and 8.—Ladies waiting outside Cavendish House to see Miss Gladys Cooper leave.

"Cheltenham Chronicle" Photos. Copies 1s. each. Postage 2d. extra.



CHEL TENHAM LADIES' COLLEGE.

Illustrations of Article in Main Sheet of the "Chronicle" on "Gloucestershire Schools and Scholars." These pictures were all taken this week, and show some of the magnificent buildings of what is the finest girls' school in England.

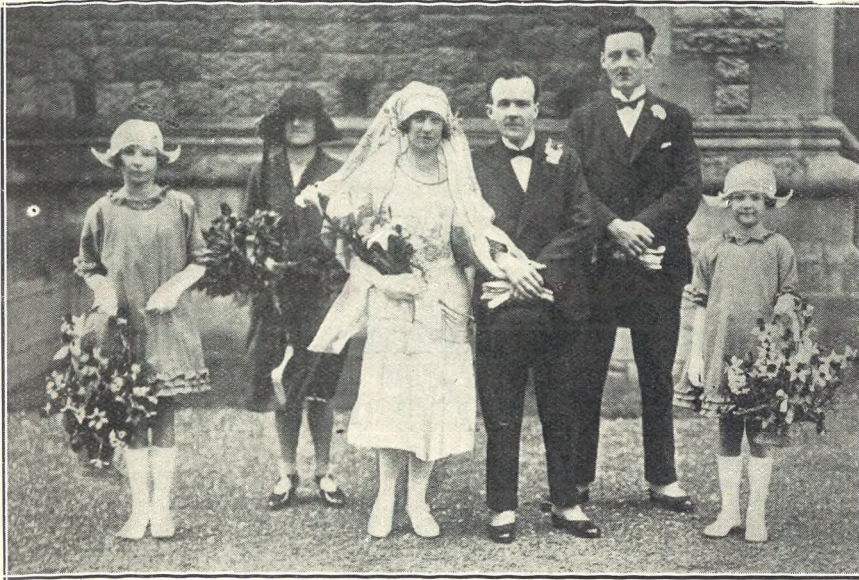
1.—The Science Wing, taken from North Quadrangle.

2.—One side of the South Quadrangle, looking from West.

3.—Exterior of the Princess Hall.

4.—Exterior of College Buildings in Montpellier-street (looking North).

"Chetltenham Chonicle" Photos. Copies may be obtained—1s 9d. each unmounted, 2s. 6d. mounted



A CHELTENHAM WEDDING.

The wedding was solemnised at All Saints' Church, Cheltenham, on Saturday, February 27th, of Mr. Victor Henry Wallington, eldest son of Mr. Wallington, 47 Tennyson-road, Cheltenham, to Miss Hilda Poytress, youngest daughter of Mr. and Mrs. C. H. Poytress, of 8 All Saints'-road, Cheltenham. "Cheltenham Chronicle" Photo.

2,000 SQUARE YDS.

British Made,

CORK LINOLEUM AND FLOORCLOTHS.

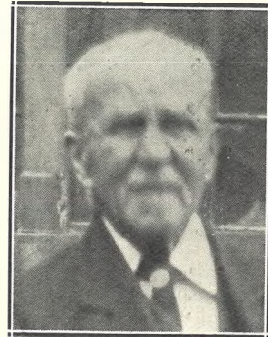
Just delivered direct from Makers in new season's designs at unusually low prices.

Printed Floorcloth 1s. 6½d., 1s. 3½d., 1s. 11½d., and 2s. 6½d. per square yard.

Real Cork Linoleum 1s. 11½d., 2s. 6d., 2s. 11d., and 3s. 6d.

Real Inlaid Cork Linoleum, pattern solid right through, 3s. 6½d., 3s. 11d., 4s. 11d., 5s. 11d., and 6s. 11d.

Dicks & Sons Ltd
172, 173 HIGH STREET
Cheltenham Spa
50 YEARS REPUTATION FOR VALUE



MR. BENJAMIN SKINNER,

Of 41 All Saints'-road, Cheltenham, who died on February 22nd, aged 82 years. He was a compositor by trade, working for 19 years on the "Cheltenham Chronicle," and since then for 27 years with Messrs. Norman, Sawyer and Co., retiring at the age of 71.

EGG DAY

:: at the ::

CHELTENHAM GENERAL AND EYE HOSPITALS

:: is on ::

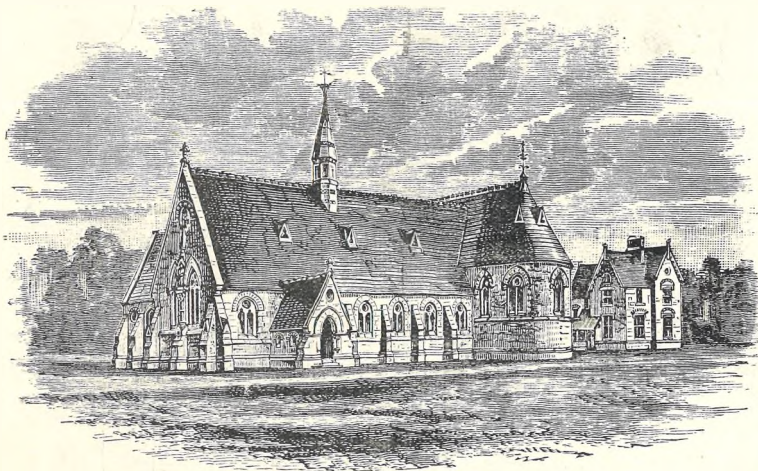
MONDAY, MARCH 22.

Please begin to save up your contribution.

TAKE CARE OF YOUR

"Graphic."

We will forward to any reader of the "Graphic" a handsome green and gold cloth-lined case made for the collection of one year's issue of our popular Supplement. It is always nice to be able to refer back to pictures that interest you. Price, post free, 6d. each, prepaid. Send name and address to Manager, "Chronicle and Graphic," Cheltenham.



CHELTENHAM LADIES' COLLEGE.

The first buildings of Cheltenham Ladies' College on the present site, in 1873. West View. (Block lent by Cheltenham Ladies' College).



CAMBRAY HOUSE IN 1826.

The original Ladies' College. This house is still used by the College, although considerably altered. (Block kindly lent by Cheltenham Ladies' College).

E. L. WARD, HIGH STREET, CHELTENHAM,

announces a Spring Demonstration commencing **MONDAY NEXT.**

Special Engagement of **MADAME LEMPRIERE,**

the well-known LONDON Corsetiere.

Fitu

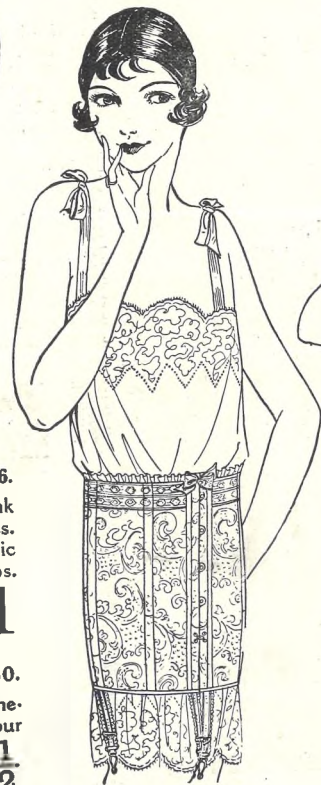
Corsets & Brassières

"The Secret of Figure Beauty."



FITU "MYSTIC" FRONT, No. 1046.
Wraparound, in artificial silk pink striped material. For average figures. **NO BUSK!** No lacing. Elastic insets under bust, and over hips. Designed with very low fitting backs. **10/11**
Sizes (hips) 30-38.

FITU CORSET, No. 450.
Sports Corset, in artificial silk broche. Silk elastic all round top. Four fancy suspenders. **4/11 1/2**
Sizes (Waist) 21-28.....



FITU "MYSTIC" FRONT, No. 1525.

For average figure. Good fancy broche. Strongly boned diaphragm and abdominal control. Overlapping bust section ensures perfectly smooth front when sitting. Very firm hip supports. Spiral Steels at back. **12/11**
Sizes (bust) 30-42

FITU CORSET, No. 2250
In pink broche. Low bust. Elastic round top. Firm elastic insets at back and sides. **NO LACING.** Excellent model for average figures. Imparts smart, chic appearance by bracing the figure well in below waist without the slightest discomfort to wearer. **21/-**
Sizes (waist) 22-32

PRINTED AND PUBLISHED AS A GRATIS SUPPLEMENT BY THE CHELTENHAM NEWSPAPER COMPANY, LIMITED.

THE CHELTENHAM CHRONICLE AND GLOUCESTERSHIRE GRAPHIC

With Which is Incorporated the "Cheltenham Looker-On,"
GRATIS SUPPLEMENT. Saturday, March 13, 1926.

No. 1,315.

CHELTENHAM THEATRE AND OPERA HOUSE. This Afternoon (2.30) and Evening (7.45)—"JOANNA GODDEN."
Next Week (Six Nights and Matinee Thursday & Saturday):
CHARLES DORRAN "The Cardinal."

THE PALACE,
High Street, CHELTENHAM.

Monday, Tuesday, Wednesday:

BARBARA LA MARR and CONWAY TEARLE in the
"HEART OF A SIREN."

"THE BIG GAME HUNTER."
Thursday, Friday, Saturday:

ALICE JOYCE and NEIL HAMILTON in the
"Little French Girl."

LEIGE CONLEY in
"HOT AND HEAVY."

THE DAFFODIL,
CHELTENHAM'S PREMIER CINEMA.

Continuous Daily: 2.30 to 10.15.

Monday, Tuesday, Wednesday:
"THE WOMAN WHO DID."

Starring **ALEXANDRA SORINA.**

Thursday, Friday, Saturday:
"SUN UP."

A Great Film, with **CONRAD NAGEL.**
Special Intermision Daily by the **DAFFODIL GRAND ORCHESTRA.**

Musical Director:
Mr. Frank Vicary.

Advertise in the "Echo."

Established 1806.

Martin & Co.,
Limited.

The County Jewellers,
PEARL & DIAMOND MERCHANTS.

A Large Selection of Second-hand Silver and Old Sheffield Plate. We are purchasers of Antique Silver and Fine Quality Gems. Best Prices Given.

LICENSED VALUERS.

Promenade, Cheltenham.

For the Best **PIANOS, DALE, FORTY and Co. Ltd**



The Prince of Wales in Gloucestershire.

H.R.H. the Prince of Wales at the Duke of Beaufort's Point-to-Point Races at Hazelton, near Tetbury, on Thursday, March 4th. He is seen here with the Hon. Mrs. Aubrey Hastings (nee Miss Forsyth Forrest) and Lord Westmorland in the enclosure. He stayed with Lord Westmorland from Tuesday till Thursday. "Cheltenham Chronicle" Photo. Copies 1s. each, postage 2d. extra.

WINTER GARDEN,
CHELTENHAM.

Monday, Tuesday, Wednesday:

"RIN TIN TIN,"
The Famous Police Dog, in
"Tracked in the Snow Country."

Thursday, Friday, and Saturday:

IAN HUNTER, JOAN LUCKTON, and GLADYS HAMER in
"CONFESSIONS,"
Just a London Love Story.

ROLLER SKATING IN THE PAVILION.

COLISEUM THEATRE,
CHELTENHAM.

6.40—8.40.

High Class Vaudeville.
A Specially Selected Company of Artists.

NORTH STREET
PICTURE HOUSE.

From 2.30 Continuous.

Monday, Tuesday, Wednesday:
ELINOR GLYN'S Famous Novel,
"MAN AND MAID,"
Featuring **RENEE ADOREE** and **LEW CODY.**

Thursday, Friday, Saturday:
RICHARD TALMADGE
In His Latest Production:
"Jimmie's Millions."

MAISON

ANNETTE,

Kensington House,

Promenade,

Cheltenham,

SPECIALISTS IN
EXCLUSIVE

CORSETS & LINGERIE.

'Phone 1122.



THE PRINCE OF WALES IN GLOUCESTERSHIRE.

The Duke of Beaufort's Point-to-Point Races were held at Hazelton, near Tetbury, on Thursday, March 4th, and were especially notable this year in the fact that H.R.H. the Prince of Wales rode one of his own horses in the Welsh Guards' Race which was included in the card. He finished fifth.

- 1.—The first fence in the Welsh Guards' Race. The Prince is leading in centre of picture.
- 2.—Sheltering from the cold wind and making the most of the sun.
- 3.—The Prince evidently feeling for his cigarette case.
- 4.—A snap in the Paddock.
- 5.—Hon. Mrs. Aubrey Hastings and Capt. MacMullen.
- 6.—Finish of Beaufort Cup (Open) Race. Miss P. Broadbent's Rajah (left), the winner, and Lord Stalbridge's Sunnywood (right), who was second, at last fence; Cortigan's Joy was third.
- 7.—Members of the Duke's Hunt.
- 8.—The Duke of Beaufort and Mr. Leonard Taylor (Secretary of Hunt).
- 9.—A snap in Paddock.
- 10.—Watching the Prince at a jump. "Cheltenham Chronicle" Photos. Copies 1s. each Postage 2d. extra.



PATE'S GRAMMAR SCHOOL FOR GIRLS, CHELTENHAM.

The Staff of Assistant Mistresses at the above School. Miss Miles, the Headmistress, is not in the group.

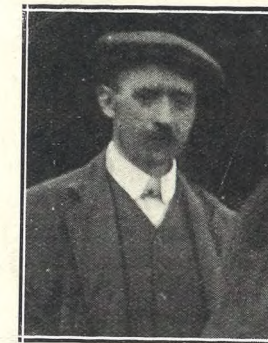
"Cheltenham Chronicle" Photo. Copies 1s. 9d. each.



MRS. JAMES WINTERBOTHAM,
Of Cranley Lodge, Wellington Square, Cheltenham, who died on Sunday, March 7th, aged 78 years. She was the widow of the late Ald. J. B. Winterbotham, J.P., who died in Egypt in 1914, and mother of Ald. Clara Winterbotham, the only lady Mayor of Cheltenham.



MRS. ALCEY TAYLOR,
Of Southam House, Gratton-road, Cheltenham, who died on the 23rd ult. For twelve years before she retired in 1901 she was headmistress of Milsom-street School. Ever since she came to Cheltenham in 1889 she had been a leading worker in Cambray Baptist Church.



MR. H. W. HUMPHRIES,
Fishmonger, of Hailes-street, Winchcombe, who died on Wednesday, March 3rd, aged 48 years. His heart failed while he was undergoing a serious operation at Cheltenham Hospital.

CORSETS AND BELTS
MADE, COPIED, CLEANED, AND REPAIRED.
Hours: 10 a.m. to 6 p.m. Saturdays, 1 p.m. or by appointment. PHONE 915.
MISS FRUIN (Late with Madam Annette)
23 Bath Parade, CHELTENHAM.

THE HOUSE FOR ANTIQUITIES.
An interesting stock of genuine antique Jewellery, Sheffield Plate, China, Quaint Boxes, Etc., at low prices.
HARRY O. BOX,
339 HIGH STREET, CHELTENHAM.
Nearly opposite Grammar School. Established over 70 years.
Similar goods bought.

SEND THE "CHRONICLE & GRAPHIC" TO YOUR FRIENDS EVERY WEEK.

LANCE'S

SPECIAL
EASTER SHOW.

Coats, Costumes,
Gowns, Furs,
: Millinery. :

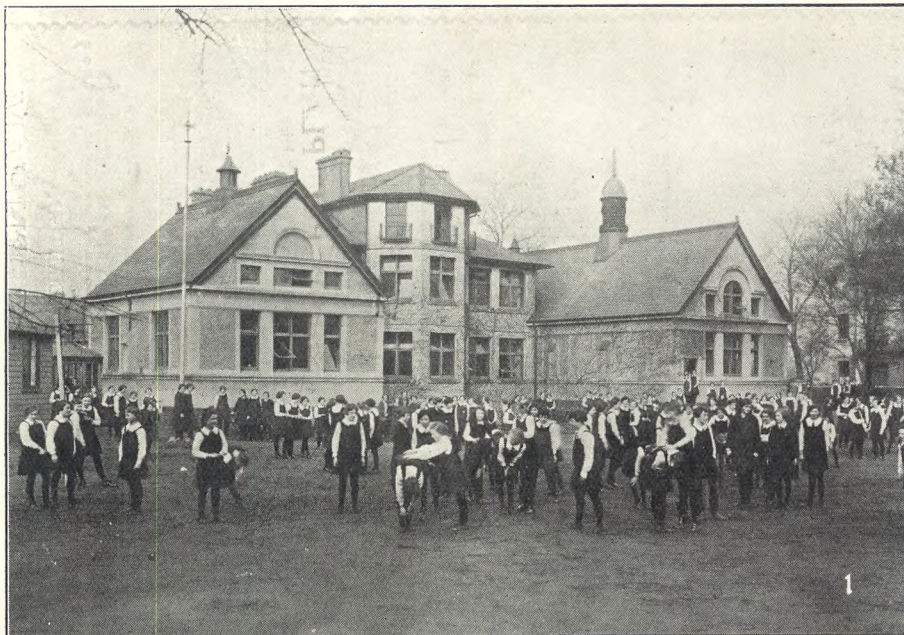
A most wonderful collection may be seen in our Showrooms, in all the Newest Styles and Shades.



Delightful WRAP COAT 3 1/2 Gns.
in Wool Repp, newest shades

In Fancy Tweeds from 49/6.

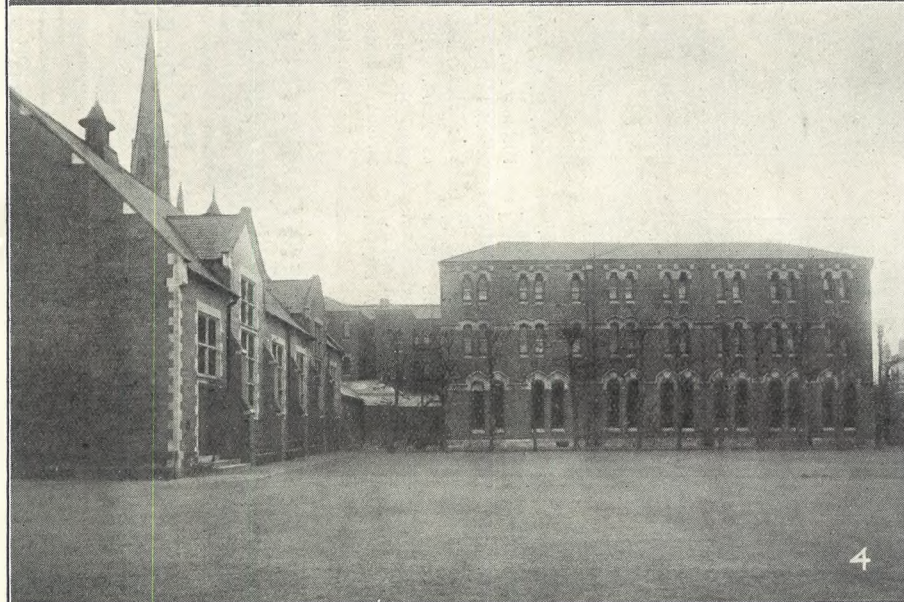
John Lance & Co.,
LIMITED,
CHELTENHAM.



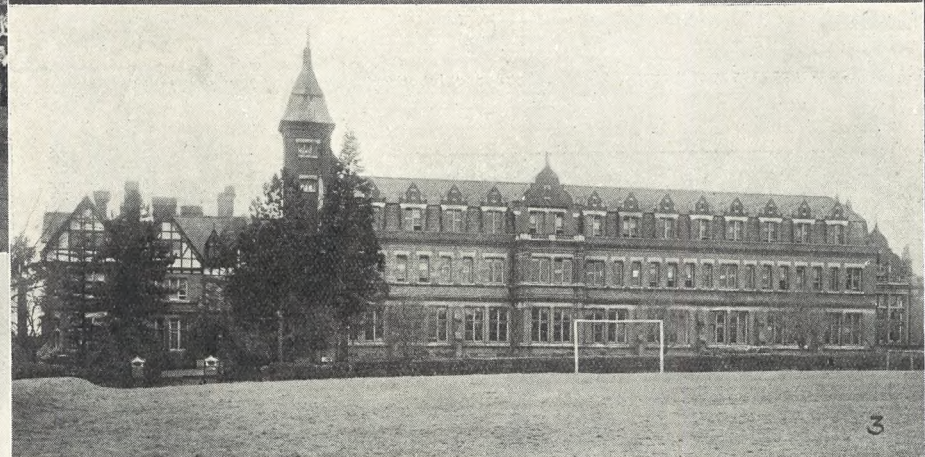
1



2



4



3



5

FOUR CHELTENHAM COLLEGES AND SCHOOLS.

Illustrations of Article in Main Sheet of the "Chronicle" on "Gloucestershire Schools and Scholars." Cheltenham is renowned for its educational facilities; it has the best Ladies' College in England, and the Boys' College is one of the finest public schools in the country. We publish above pictures of Dean Close School, another fine public school; Pate's Grammar School for Girls (about 380 pupils); and the two Training Colleges for Schoolmasters and Mistresses, St. Paul's Training College, and St. Mary's Hall.

1.—Pate's Grammar School for Girls, from playground. 2.—St. Paul's Training College. 3.—Dean Close School, front.

4.—St. Mary's Hall (from tennis lawn). 5.—Dean Close School (North side).

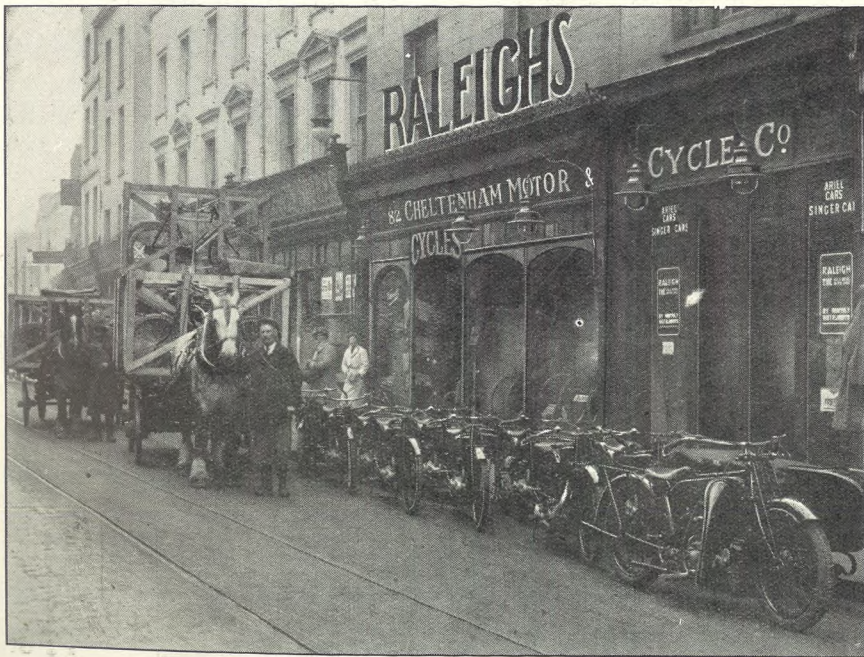


"ROBIN HOOD" BY SHIPTON SCHOOL CHILDREN.

A capital little operetta, "Robin Hood and Merry England," was performed last week by children from the Shipton Oliffe Parish School in the Reading Room. The performers:

"Cheltenham Chronicle" Photo. Copies 1s. 9d. each. Postage 2d. extra.

THE ARRIVAL



of 1926 **RALEIGH MOTOR CYCLES AND BICYCLES.**

Motor Cycles from £28 0 0.

BETTER VALUE THAN EVER!

Bicycles from £6 7 6.

ALL SPARES STOCKED. :: TERMS ARRANGED.

CHELTENHAM MOTOR & CYCLE CO.

THE NEW RALEIGH DISTRIBUTORS,

82 High Street, CHELTENHAM. : Tel. 166.

Passenger Flights and Great Aviation Display

AT

BENHALL FARM,

GLOUCESTER ROAD, CHELTENHAM,

From March 18th to 29th Inclusive.

PASSENGER FLIGHTS DAILY

At 5/-, 10/-, 15/-, and £1.

Looping the Loop 15s.

Other Stunts by arrangement. We guarantee satisfaction or money refunded. Many thousands of passengers have flown with us without a single complaint.—"Be up-to-date and Aviate."



For your home
THE STECK SMALL GRAND

A magnificent Piano of international fame, perfect in tone and action, beautiful in case design, occupying less wall space than an upright piano.

Prices very moderate.

Easy payment exchange terms.

FREE PAPER PLAN

Post this coupon to-day—it will bring you a full-sized paper plan of the Steck Baby Grand, which will enable you to ascertain the exact floor space it will occupy in your room.

STECK BABY GRAND PLAN.

Please send, post free, plan of the STECK Baby Grand Piano; also prices and easy payment and exchange terms.

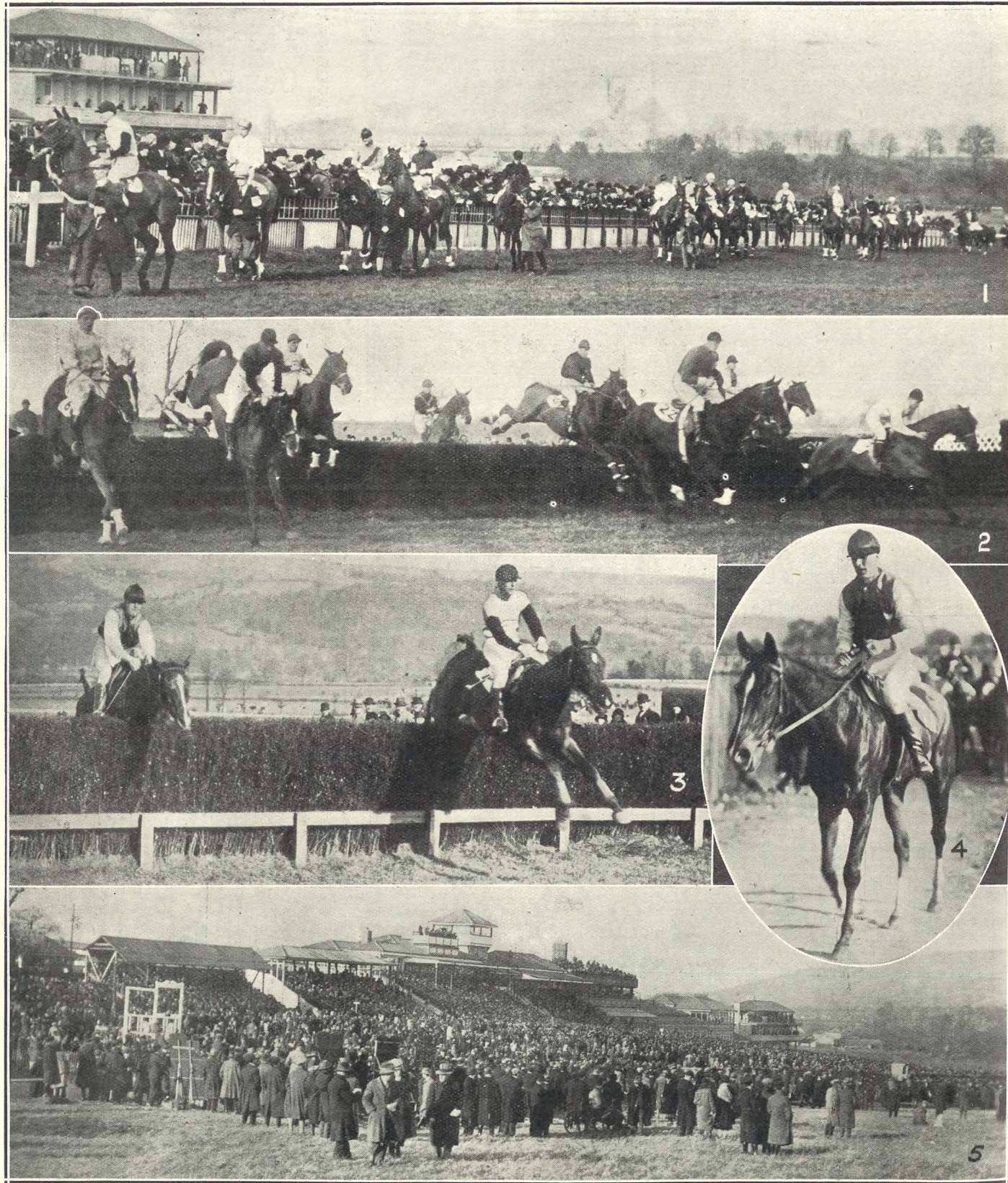
Sole Agents:

CRICHTON'S,

The Piano House,

394 High St., CHELTENHAM.

Phone 378.



NATIONAL HUNT RACES IN CHELTENHAM.

The National Hunt Meeting on Tuesday, Wednesday, and Thursday last at Prestbury Park was a greater success than ever; and on Wednesday, during the running of the National Hunt Race, the scene was brilliant in the extreme. There was a record number of runners in this race (39), and probably a record number of spectators. H.R.H. the Prince of Wales was present on Thursday.

- 1.—The Parade in front of the stands for the National Hunt Race.
- 2.—The First Fence in National Hunt Race.
- 3.—The Last Fence in National Hunt Race. Mr. J. C. Paterson's "Cloringo" on left won, Lord Grimthorpe's "Lissett III." leading, being beaten in the run in.
- 4.—The winner coming in, Mr. W. Dutton up.
- 5.—A view of the stands and crowd from the back of 2s. 6d. enclosure.

"Cheltenham Chronicle" Photos. Copies 1s., 1s. 9d., and 2s. 6d. each. Postage extra.



A PROGRESSIVE ASSURANCE SOCIETY.

The modern improvements at Cheltenham are by no means confined to the Promenade. In Manchester Street we have the improvement pictured above, and it is noteworthy of the progressive nature of the Wesleyan and General Assurance Society. A particularly attractive House Purchase Plan, by which as much as 80 per cent. is advanced on the Value of Freehold Property, is issued by this Society, whilst the following comprise some of the Classes of Insurance Business transacted:—Life, Burglary, Personal Accident, Motor, Fire, Plate Glass, Employers' Liability, House Purchase, Live Stock, Etc.

ROBERTSON & Co.

(T. R. PRITCHARD, Proprietor),

CIGAR and CIGARETTE

... IMPORTERS, ...

8 Colonnade, CHELTENHAM.

Specialities.

Robertson's Edinburgh Smoking Mixture.	Robertson's Hand-Made Virginia Cigarettes.	Robertson's "Croesus" Cigars.
4/4	100 ... 6/8	50 ... 30/-
per 1/4 lb.	50 ... 3/4	25 ... 16/-
	25 ... 1/8	

N.B.—Noted House for PIPES in all the Best Makes, viz.:
Loewe, Barling, B.B.B., Orlik, and Dunhill.

H. M. SIMMONS, The County of Gloucester Goldsmiths & Silversmiths



RACE CUPS. Messrs. Simmons, The County of Gloucester Goldsmiths and Silversmiths, are renowned throughout the West of England for Silver Cups & Trophies. Comparison of prices invited.

314 HIGH STREET, CHELTENHAM. Established 1876.



GLOUCESTER BEAT BRISTOL IN THEIR RETURN RUGBY MATCH.

Before a splendid crowd of spectators at Kingsholm, Gloucester, after a stern fight, defeated their old rivals by 8 points to 3. The match was too closely contested to be a good one, and very little open or clever play was seen.

1—The Gloucester Team and Committee.—Back row: Messrs H. T. Balchin, N. Hayes, S. Smart, A. Brown (Chairman), J. T. Brookes, G. Clutterbuck, Collingbourne. Second row: Dr. G. C. C. Taylor, G. Foulkes, M. Short, S. Williams, S. Duberley, E. Triggs-Herbert, G. McIlwaine, C. Fox. Seated:

T. Bagwell, J. Hemmings, S. R. Crowther, E. H. Hughes, T. Millington, A. T. Joyce (captain), S. A. Brown, F. Ayliffe, H. Roberts, R. C. Thompson. In front: G. Thomas, R. Milliner.

2, 3, and 4.—Spectators on Dean's Walk banking.
5.—A line-out near the Bristol line.
6.—Thompson (on right) getting away with the ball.

"Cheltenham Chronicle" Photos. Copies 1s. each, Postage 2d extra



BUSINESS MEN OF GLOUCESTER.

- Snaps taken on Saturday last of well-known professional and business men in the trading life of Gloucester
- 1.—Mr. W. C. Ferris, of Ferris Bros., hosiers and hatters, 37 Northgate-street.
 - 2.—Mr. W. C. Mann, the well-known jeweller and watchmaker, of the Cross.
 - 3.—Mr. J. T. Wright, tailor, of 31 Westgate-street.
 - 4.—Mr. R. Sievers, surgeon-dentist, of 3 College Green.
 - 5.—Alderman W. J. Johnston-Vaughan, J.P., a very well-known Gloucesterian.
 - 6.—Mr. H. E. Jones, photographer, of Northgate-street.
 - 7.—Mr. W. J. Vance (father) and (8) Mr. G. C. Vance (son), of Vance and Son, tailors, Clarence-street.
 - 9.—Mr. Wallace Smith, of D. Lane and Son, hootmakers, Westgate-street (President of Chamber of Trade of Gloucester).
 - 10.—Mr. C. Morris, J.P., of Sterry and Morris, grocers.
 - 11.—Mr. C. Granville Clutterbuck, solicitor, Clarence-street.
 - 12.—Mr. Wm. Dancey, auctioneer, Clarence-street.
 - 13.—Mr. J. T. Jackson, General Manager of Gloucester Co-operative Society.
 - 14.—Mr. O. G. Davies, of Stewart's, tailors, Westgate-street (Secretary of Gloucester Welsh Society).

"Cheltenham Chronicle" Photos.



GLOUCESTER CITY v. CHELTENHAM TOWN AT ASSOCIATION FOOTBALL.

Played at Gloucester on Saturday last. A good crowd of spectators were present, the Cheltenham team taking over a sprinkling of supporters. Playing better football, Gloucester won by 4 goals to 2.

- 1.—The Gloucester City team.
- 2 and 4.—Spectators.
- 3.—The Gloucester goalkeeper saving from Fogerty and Smith.
- 5.—Cheltenham supporters.
- 6.—Gloucester clear from a corner.
- 7.—The Cheltenham team.

“Cheltenham Chronicle” Photos.

SHIRTS TO MEASURE.

MADE IN OUR OWN FACTORY.

New Patterns & Materials
NOW IN STOCK.

SHIRTS TO MEASURE from 8/11.
Oxfords. Twills. Fine Flannels. Silks.

A. BECKINGSALE,
111 High Street, Cheltenham.
Phone 406.

LET MOUSELLS MOVE YOU



Estimator for: Removals and Storing Free
PHONE 112.

CHELTENHAM. Offices: AMBROSE STREET

EGG DAY

at the
**CHELTENHAM GENERAL
AND EYE HOSPITALS**
is on
MONDAY, MARCH 22.

Please begin to save up your contribution.



NATIONAL HUNT RACES IN CHELTENHAM.

This meeting is now recognised as the finest Steeplechase meeting in England, and is really the Ascot of the jumping season. Everybody who is anybody in the Steeplechase world can be seen in the Paddock or Club enclosure, and it is one of the big Social functions of the Spring season.

- 6.—Mr. H. S. Kenyon's "Black Miner" (leading) winning easily from "Jargon" and "Clashing Arms" in the Cheltenham Grand Annual Steeplechase.
- 7.—Snapped in the Enclosure.
- 8.—Mr. Mitchell (who married Mrs. Muir) left, Mr. H. O. Lord (centre), and two friends.
- 9.—W. Gurney vaulting the fence without his horse "Dare All," which fell in the Cheltenham Grand Annual Steeplechase.
- 10.—St. Caradoc (Mr. T. Griffiths riding) came down at second fence in National Hunt Race.
- 11.—Members in Paddock.
- 12.—Some of the crowd by the Polo Stables.
- 13.—"Black Miner" leading first time round in Cheltenham Grand Annual 'Chase.
- 14.—A striking leopard skin coat.

“Cheltenham Chronicle” Photos. Copies 1s., 1s. 9d., and 2s. 6d. Postage 2d. extra



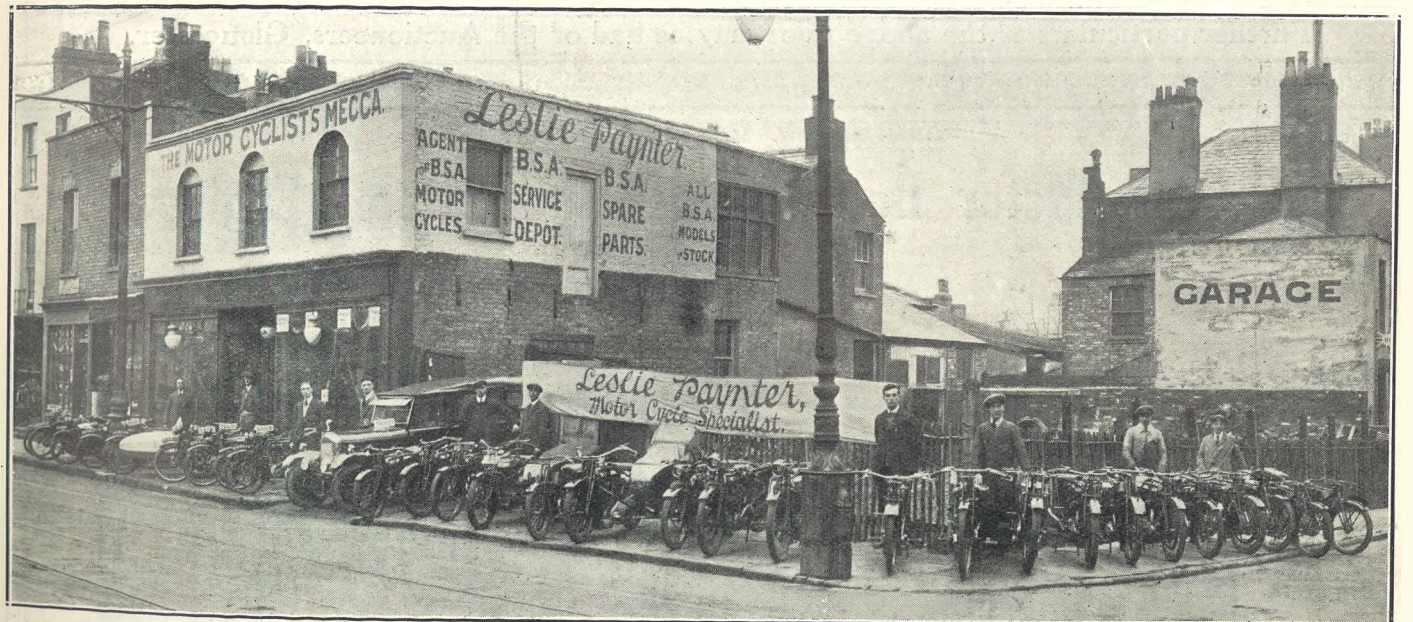
NATIONAL HUNT RACES IN CHELTENHAM.

- The big National Hunt Race was not held on the first day, as usual, but on the Wednesday, consequently there were not so many present on the first day as last year, but the racing was very interesting, with splendid fields.
- 15.—First Fence in Cheltenham Gold Cup, won by Koko.
 - 16.—Two brothers in the Paddock: Hon. Mr. Henry Coventry and Col. Hon. C. J. Coventry, both sons of Lord Coventry.
 - 17.—Mr. Strickland (in centre) with two friends.
 - 18.—Lord Lonsdale inspecting the second fence in National Hunt Race.
 - 19.—Mrs. Hoare, Mrs. Huntriss, and Mrs. Aldridge sheltering from the wind behind a fence.
 - 20.—Mr. E. G. Pease's Upper Grange beating Blank Cartridge in United Hunts Race.
 - 21.—Two members in the paddock.
 - 22.—Mr. Harry Brown and Mrs. Aubrey Hastings
 - 23.—Koko winning Gold Cup (at last fence) from Old Tay Bridge (second) and Ruddyglow (third).
 - 24.—Grakle winning Juvenile Steeplechase from Gun Runner.
- "Cheltenham Chronicle" Photos. Copies 1s., 1s. 9d. and 2s. 6d. Postage 2d. extra.



One Day's Delivery of New Machines.

Local Agent for
B.S.A.,
 Norton, Douglas,
 New Imperial,
 Francis Barnett,
 Etc.



SOME OF LESLIE PAYNTER'S REPRESENTATIVE STOCK OF NEW MOTOR CYCLES, Etc., AVAILABLE FOR IMMEDIATE DELIVERY.

A Large Selection of Guaranteed Second-hand Mounts is always on hand. Your enquiries will be appreciated & will receive prompt & courteous attention.

THE Motor Cycle Specialist.

Only Address: **BATH STREET, CHELTENHAM.**

TEL. 887.

BRUTON, KNOWLES & CO.,

Albion Chambers, - - - GLOUCESTER.

Estate and House Agents, Auctioneers, Agricultural, Timber and Hotel Valuers and Valuers for Estate Duty.

Telephone 967 Gloucester (2 lines).

Messrs. Bruton Knowles & Co., beg to announce the following Property, Farm Stock, Furniture and other sale fixtures:—

WEDNESDAY, MARCH 17th.

LYLEY HOUSE, BRADLEY STREET, WOTTON - UNDER - EDGE: Surplus FURNITURE and EFFECTS, the property of Miss S. G. Perkins.

FRIDAY, MARCH 19th.

GLOUCESTER MARKET. ANNUAL SHOW and SALE OF SHORTHORN BULLS, COWS, and HEIFERS (including 157 Bulls), chiefly Pure-Bred, and including Entries from H.M. the King and H.R.H. the Prince of Wales, K.G. £95 in Prizes.

MONDAY, MARCH 22nd.

SANDFIELDS, CHURCHDOWN: LIVE and DEAD FARM STOCK, the property of Mr. W. R. Stamp, who is giving up the Land.

WEDNESDAY, MARCH 24th.

HALMORE MILL, CAM: LIVE and DEAD FARM STOCK, the property of Mr. W. S. W. Trotman, who is giving up a portion of the Farm.

FRIDAY, MARCH 26th.

GLOUCESTER MARKET: SPECIAL SPRING HORSE SHOW and SALE. £20 in Prizes. Entries close this day.

SATURDAY, MARCH 27th.

At THE BELL HOTEL, GLOUCESTER. SEVERN HOUSE and About 13 ACRES at FRAMILODE; PARKEND VILLA, HARDWICK; BLENHEIM HOUSE, CHURCHDOWN; and a SMALL RESIDENCE at ASHLEWORTH.

TUESDAY and WEDNESDAY, MARCH 30th and 31st.

DEAN FOREST TIMBER CO., CINDERFORD. Freehold Land, Buildings, Plant, Machinery, Stock-in-Trade, etc., by Order of the Trustee.

TUESDAY, APRIL 20th.

DURSLEY CROSS FARM, LONGHOPE: ANNUAL SPRING STOCK SALE.

WEDNESDAY and THURSDAY, APRIL 21st and 22nd.

WYNSTONE PLACE, BROOKTHORPE: Valuable Contents of the Residence, by Direction of the Executors of the late Mrs. J. M. Collett.

THURSDAY, MAY 27th.

BOWDEN HALL, UPTON ST. LEONARDS: FURNITURE & EFFECTS—the property of Major J. D. Birchall, M.P.

Further particulars of the above sales may be had of the Auctioneers, Gloucester.

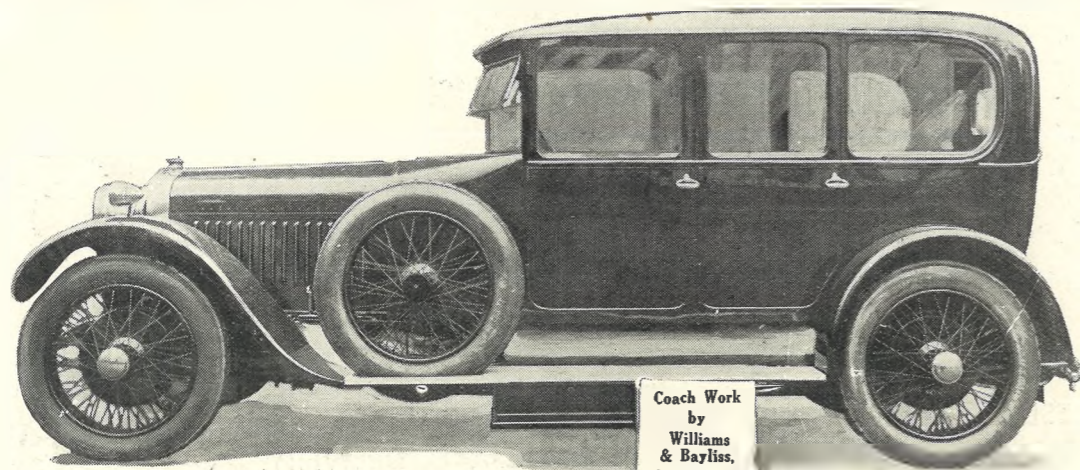
'Phone 1389.

FORMERLY W. MILLS & SONS, LTD..

'Phone 1389.

High-Class Motor Body Builders and Motor Engineers.

Estimates Given for all Classes of Bodywork.



Any Make of Chassis Supplied.

Licensed Builders of Weymann Bodies.

Touring Bodies Converted to Saloons.

CELLULOSE SPRAY-PAINTING on the Premises.

Inspection Invited.

WILLIAMS & BAYLISS

(F. J. WILLIAMS, Proprietor).

WORKS: BERKELEY AVENUE and Pittville Garage, Winchcombe St., CHELTENHAM SPA.

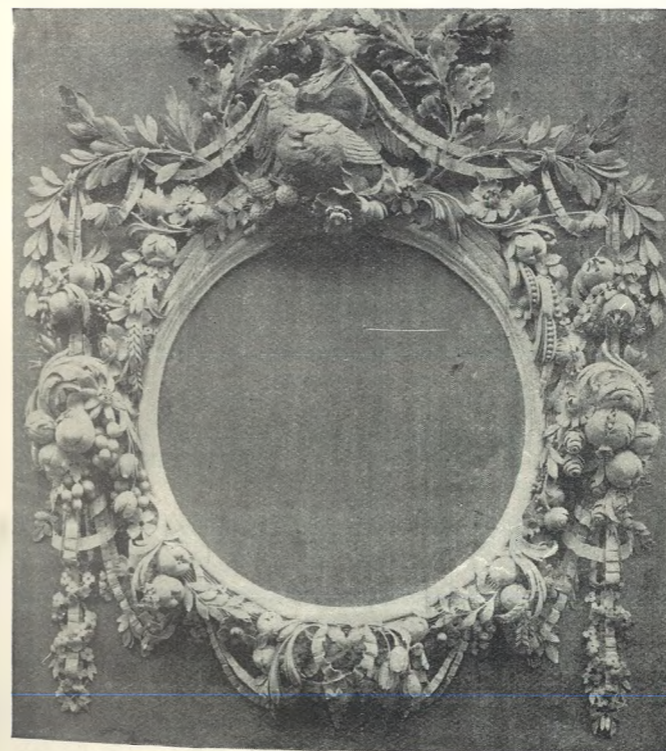
- BEDROOM SUITES.
- BEDSTEADS.
- BEDDING.
- EASY CHAIRS.
- SETTEES.
- BUREAUX.
- SIDEBOARDS.
- TABLES.
- MIRRORS.



- CARPETS AND RUGS.
- LINOLEUMS.
- BLINDS.
- CURTAINS.
- FURNISHING FABRICS.
- HALL STANDS.
- NURSERY FURNITURE.
- HEARTH FURNITURE.

NEW FURNITURE SHOWROOM AT DRAKE'S.

Owing to development of the Furniture Department of their business, Messrs. Drake & Co., of Winchcomb Street, have found it necessary to arrange for further Showrooms, one of which, on the second floor, is illustrated above. The majority of the pieces shown are the latest 1926 productions, selected at the Olympia Exhibition of last month. Inspection is cordially invited. Expert advice in all furnishing matters willingly given.



Carved Lime Tree Mirror Frame. EXECUTED BY H. H. MARTYN & CO., LTD.

Architectural Decorators to H.M. King George V. By Appointment.

H. H. MARTYN

& Co., Ltd.,

CHELTENHAM, & 5 Grafton St., Bond St., London, W.

ARCHITECTURAL DECORATORS.

Artists and Craftsmen in all kinds of

JOINERY & CARVING, BRONZE CASTING, SCULPTURE, STONE CARVING, FIBROUS PLASTER, MEMORIALS, Etc.

FIRST—AS USUAL—IN EVERY FASHION.



This is a Model Coat in Navy, with Beige facings and trimmings, lined Beige Crepe de Chine to match. Suitable for any smart occasion. The Hat is one of our Models.

THE Lady who walks among the well-dressed knows perfectly well that she is being observed. Providing she is confident that her toilette is satisfactory she is content to be looked at—admired. But the style, the material, the cut and the tailoring must be perfect, and, to ensure their being so, she relies on Vanderplank. She relies upon their skill, their interest and the reputation they have won.

Vanderplank Models are designed for the Lady of taste of every age in every walk of life. There is a Spring Model to suit YOU at the price you wish to pay.

SPRINGTIME VOGUE

- Two-Piece Suitsat 3 to 15 Gns.
- Costumesfrom 3 Gns.
- Coatsat 39/6 to 13 Gns.
- Coat Frocksfrom 35/9.
- Jumper Suitsfrom 21/9.
- Millinery Modelsat all prices.

All available in authentic styles and colours.

IT COSTS LESS TO DRESS AT—

VANDERPLANK

FASHIONS AND FURS

381 HIGH STREET, CHELTENHAM SPA.

THE CHELTENHAM CHRONICLE AND GLOUCESTERSHIRE GRAPHIC

With Which is Incorporated the "Cheltenham Looker-On." No. 1,316.
GRATIS SUPPLEMENT, Saturday, March 20, 1926.

CHELTENHAM THEATRE AND OPERA HOUSE. This Afternoon (2.30) and Evening (7.45)—"THE CARDINAL."
Next Week (Six Nights and Matinee Saturday, 2.30): THE BRILLIANT COMEDY—"At Mrs. Beam's."

THE PALACE, High Street, CHELTENHAM.

Cheltenham's Number 1 Picture Theatre.
100 per cent. Entertainment.
SIR JOHN MARTIN HARVEY As Sidney Carton, in "THE ONLY WAY," Produced by Herbert Wilcox, Britain's Pre-eminently Successful Director.
Screened at 2.15, 4.15, 6.15, 8.15. A Beautiful 10,000ft. Solus Picturisation!
DOUGLAS COCHRANE, the Brilliant Violinist, from the Trocadero, London, and His Orchestra.

THE DAFFODIL, CHELTENHAM'S PREMIER CINEMA.

2.30—Continuous Performance Daily—10.15.
Monday, Tuesday, Wednesday: "SIEGE,"
A Screen Epic of Matrimony's Lights and Shadows, Starring Virginia Valli and Eugene O'Brien
Thursday, Friday, Saturday: "Lorraine of the Lions,"
A Girl. A Man. A Gorilla. The Strangest Love Story ever told. Starring PATSY RUTH MILLER and NORMAN KERRY.
Special Intermissions Daily by The Daffodil Grand Orchestra.

Advertise in the "Echo."

Established 1806. Martin & Co., Limited.

The County Jewellers, PEARL & DIAMOND MERCHANTS.

A Large Selection of Second-hand Silver and Old Sheffield Plate. We are purchasers of Antique Silver and Fine Quality Gems. Best Prices Given.

LICENSED VALUERS. Promenade, Cheltenham.



A PRESENT OF £1,206.

Rev. W. H. A. Truell, the oldest Cheltenham College cricket captain (on right), handing over to Mr. W. A. Woolf a security for £1,206 at the Gymnasium, Cheltenham College, on Monday last. Mr. H. V. Page, who organised the subscription, is standing behind. This money was subscribed by past and present Cheltonians in recognition of "Woolf's" long and faithful service (forty years) as cricket coach at Cheltenham College. -- "Cheltenham Chronicle" Photo. Copies 1s. each unmounted, 1s. 6d. mounted.

READ THE "ECHO" EVERY DAY.

For the Best PIANOS, DALE, FORTY and Co., Ltd

WINTER GARDEN, CHELTENHAM.

MONDAY—AND ALL WEEK
RUDOLPH VALENTINO in "THE EAGLE."
Delicious Comedy, Ravishing Splendour, Fascinating Romance—Everything to charm and allure. Showing at 2.45, 4.50, 6.50 and 8.50 p.m.

COLISEUM THEATRE, CHELTENHAM.
6.40 p.m. and 8.40 p.m.
The Famous Musical Comedy—"The Balkan Princess," From the "Prince of Wales" Theatre, London.

NORTH STREET PICTURE HOUSE.
Continuous from 2.30 p.m. Monday, Tuesday and Wednesday: "A Woman of 40," Featuring DIANA KARENNE. Thursday, Friday and Saturday: BILLY SULLIVAN in "The Goat Getter."

"DISTINCTION WITH ECONOMY." Smart Tailored Showerproof Coats and Chic Hats for Easter.

Sensier

The Little Salon. 388b HIGH STREET, CHELTENHAM

Telephone 1080.

W. Scott Cooper,

Goldsmith and Silversmith, Diamond Merchant, Jeweller, The Promenade, Cheltenham.

LICENSED VALUER.



WYCLIFFE COLLEGE, STONEHOUSE, GLOS.

- Illustrations of Article in Main Sheet of the "Chronicle" on "Gloucestershire Schools and Scholars."
- 1.—Ivy Grove, the residence of Mr. G. W. Silby, M.A., the founder of the College in 1882. Part of this house, together with an isolation ward behind, is used as a Sanatorium.
 - 2.—Officers of the League of Honour, 1926. A comfortable School Dress in summer time.
 - 3.—The School House. An old country "Hall," to which many successive additions have been made at various times.
 - 4.—The Chapel. The Spire and Clock Tower are the School War Memorial.
 - 5.—The Headmaster and Staff. Standing: Messrs. N. E. Webb, T. S. Dixon (music), A. G. Caudle, E. J. Bevan, G. F. Timpson, E. J. French. Seated: Messrs. P. Thuyn, R. V. Ward, T. M. Sibly (Housemaster of School House), W. A. Sibly (Headmaster and Housemaster of Springfield), G. L. Reade (Housemaster of Haywardsfield), E. F. Hugill, and R. E. Pryce.



CHELTENHAM GRAMMAR SCHOOL CROSS-COUNTRY RUN (SENIOR AND JUNIOR).

The Annual Senior and Junior Cross-Country Run was held on Saturday last, a beautiful hot afternoon, over the usual course, starting from the Toll House, Battledown Reservoir, and finishing in the School playing field.

1.—There were 177 starters for the Junior race. They are here resting waiting for the start.
2.—Grist (head boy of school) first home in Seniors' race.

3.—Seniors taking the first obstacle.
4.—The first three Senior's home: 1st G. Grist, 2nd G. L. Webb, 3rd S. Griffen.

5.—Carter finishing first in Juniors' race. The second and third are close behind.
6.—The first three Juniors: 1st M. Carter, 2nd R. G. Norman, 3rd K. Jones.

"Cheltenham Chronicle" Photos. Copies 1s., 1s. 9d., and 2s. each according to size



ROUND THE CITY IN GLOUCESTER.

Snaps taken in the principal streets of Gloucester on a recent Saturday.

- 1.—Snapped in Eastgate-street.
- 2.—Waiting for a job in the market.
- 3.—Off to the Cathedral.
- 4.—The ladies were busy shopping.
- 5.—Mr. Nippers on his tricycle.
- 6.—Messrs. A. Galt (Winchcombe), Gardner, and R. A. Horlick, of Messrs. Foster Bros.
- 7 and 8.—Friends.
- 9.—The Mayor and Mayoress (Mr. and Mrs. W. Jones).
- 10.—Waiting for the 'bus.
- 11.—Messrs. P. D. Clark, M.B.E., and Sinnett.

"Cheltenham Chronicle" Photos. Copies 1s. each. Postage 2d. extra.

SEND THE "CHRONICLE & GRAPHIC" TO YOUR FRIENDS EVERY WEEK.

DIABETES.

Sufferers from Diabetes searching for a palatable, well-varied diet will find it in Cheltine Foods. They are highly nutritious and graded No. 1 (for mild cases), No. 2 (more serious cases), and "strict diet" (for extreme cases). Particulars post free, or with samples to cover postage, etc., 1s. from **THE CHELTINE FOOD CO., CHELTINE WORKS, CHELTENHAM.**

BEST QUALITY CIDERS IN BOTTLE.—Sparkling and Still.

BARTHOLOMEW,

418, 420 HIGH STREET, CHELTENHAM.
Wines, Spirits, Ales, Table Waters, & Groceries. Tel. 135.

HAVE YOU FOUND US YET?
AT THE SIGN OF **The SHAMROCK**
31 Promenade, CHELTENHAM.
HERE you can get the most **Delicious Luncheons**
(3 Course, or a la Carte).
Afternoon Teas, such things as Home-made Breads, Scones, Oat Cake and Honey, Cinnamon Toast, etc., etc.
FOR SALE—Meat Dishes, Cakes, Breads, Scones, etc., etc.

LET MOUSSELLS MOVE YOU



Estimates for Removals and Storing Free. 'PHONE 112.

CHELTENHAM. Offices: **AMBROSE STREET**

CORSETS AND BELTS
MADE, COPIED, CLEANED, AND REPAIRED.
Hours: 10 a.m. to 6 p.m. Saturdays, 1 p.m. to 5 p.m. or by appointment. 'PHONE 915.

MISS FRUIN (Late with Madam Annette)
23 Bath Parade, CHELTENHAM.

ADVERTISE IN THE "ECHO."

THE CHELTENHAM SPA
FIRST ANNUAL Open Competitive

Musical Festival,

TOWN HALL, Cheltenham Spa,
MAY 18th and 19th, 1926.

32 CLASSES, comprising:
Vocal, :: Instrumental, Elocution, Open Competitions.

Entries Close April 21st, 1926
Syllabus and Entry Forms from the Hon. Secretary, Town Hall Bureau, Cheltenham Spa.

NEXT WEEK'S "GRAPHIC" will again consist of Sixteen Pages. The recognised County Pictorial Paper. Just the thing for your friends in distant places.

GOLF HOSE.

Large Variety of Designs .. from 5/6 upwards.
CHECK LEGS, 8/6 to 16/6 pair.

Pullovers & Jackets for Sports Wear.

A. BECKINGSALE,
111 High Street, Cheltenham.
'Phone 406.

PROMENADE FURNISHING CO., :: CHELTENHAM.

E. W. Robinson.

If You Require ..

NEW OR SECOND-HAND FURNITURE--see our Stock.

3/- in the £ Discount.

SALE NOW ON.

H. E. RANDALL, Ltd.,
6c The Promenade, CHELTENHAM,
Are Now Showing the Latest Designs in **HIGH GRADE FOOTWEAR** FOR PRESENT WEAR.

LANCE'S

SPECIAL **EASTER SHOW.**

Coats, Costumes, Gowns, Furs, : Millinery. :

A most wonderful collection may be seen in our Showrooms, in all the Newest Styles and Shades.



Delightful WRAP COAT in Wool Repp, newest shades **3 1/2 Gns.**
In Fancy Tweeds from 49/6.

John Lance & Co., LIMITED, CHELTENHAM.



CHELTENHAM HOSPITAL CUP FINAL TIE.

In glorious weather the two finalists, Leckhampton and Alderton, met on the Town Ground, Whaddon Lane, on Saturday last, before a capital crowd of spectators. Leckhampton won by two goals to nil.

- | | | |
|--|---|--|
| 1.—The Alderton goalkeeper punches out. | son, J. Foster. Kneeling: Russell. Seated: Turner, Shill, H. Bendall, Pilkington (captain), Protherough. | Stanley, L. Mansell. Seated: W. Banks, J. Malin, J. Walker (capt.), C. Diston, W. Evans. |
| 2.—A hot attack on the Alderton goal. | 5.—Alderton:—Standing: W. Rogers, V. Cook, A. Tripp, F. Harvey, F. Clark (secretary). Kneeling: A. Tustin, W. | 6.—Russell misses a header for goal. |
| 3.—Rev. C. Hanson handing the cup to Pilkington, the Leckhampton captain. | | 7.—Play in the Alderton half. |
| 4.—Leckhampton team—Standing: L. Harley, A. Bendall, Bailey, Bassett, Allen, Mender- | | 8.—Some of the spectators. |

"Cheltenham Chronicle" Photos. Copies 1s. each, postage 2d. extra



GLOUCESTERSHIRE LADIES' HOCKEY TOURNAMENT IN CHELTENHAM.

On Saturday last, fifteen teams of the affiliated clubs in Gloucestershire Women's Hockey Association held a tournament on the Cheltenham and East Gloucester grounds, in which matches of 15 minutes' duration between all the teams were played. Over 30 matches were played, Clifton winning the final, and Wreford being the runners-up.

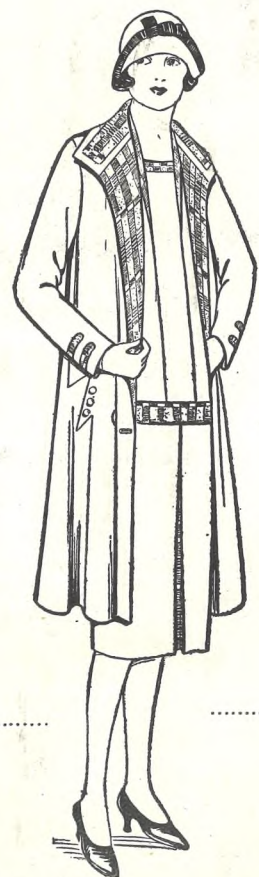
- | | | |
|------------------------------------|---|--|
| 1.—Clifton, winners of tournament. | 5.—Newent (second in section). | 9.—Mid-Cotswold. |
| 2.—Wreford, second in tournament. | 6.—Bourton-on-the-Water. | 10.—Cotswold (tied top of section). |
| 3.—Gavendish House, Cheltenham. | 7.—Cheltenham (tied top of section). | 11.—East Gloucester (winners of section), third in Tournament. |
| 4.—Andoversford. | 8.—Gloucester School of Domestic Science (second in section). | |

"Cheltenham Chronicle" Photos. Copies 1s. unmounted, 1s. 6d. mounted, postage 2d. extra.

12.—N.C.

LEADING FASHIONS :: FOR SPRING WEAR. ::

Here are fashion values that only E. L. WARD'S can offer you. The very newest styles in Two-Piece Suits, Repp Coats, Jumper Suits, Millinery, Sports Wear, etc. Each one is of that excellent quality for which E. L. Ward's are famous, and combined with a standard of exceptionally low prices. They offer value that cannot be equalled anywhere. Look at the prices quoted here, compare them with others you have seen elsewhere, you will then understand why E. L. Ward's have so many satisfied customers. Why not spend a pleasant hour inspecting our New Spring Stocks. Our Windows and Showrooms are now attractively displaying the leading Fashions for Spring Wear.



Two-Piece SUITS in Repp, in a variety of new styles similar to sketch, in Blue, Green, Parma, Tan.

3 1/2 to 6 Gns.



"DIANA."—Smart HAT of Visca Straw, with new high back and velvet ribbon trimming in Bois de Rose, New Blue, Mulberry, and Black.

16/11.

Large selection of Semi-Trimmed HATS, in all sizes, from

6/11 1/2.

Special Show of MILLINERY at 12/11.

Two-Piece SUIT in rich quality Repp. Frock in smart Check. Coat lined to match. In Parma and all leading shades.

79/9.

COAT FROCKS in Repp, Cabardine, Etc. Perfectly tailored in Black and all leading shades. Prices—

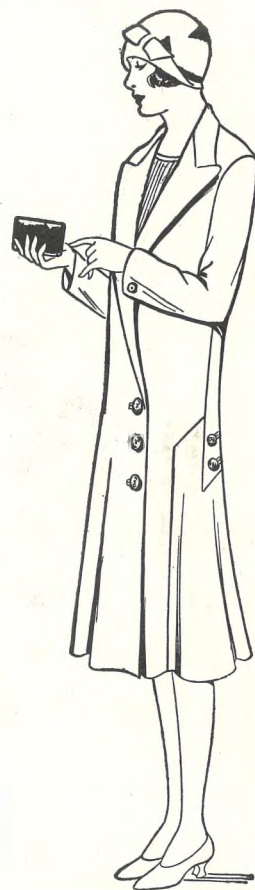
29/11 to 6 Gns.

Smart FROCKS, made in the latest Glen Checks, in shades of Parma, Flame, Tans.

23/9 to 45/9.

Extensive range of Maids' Wear—COATS, TWO-PIECE SUITS, Etc., Girls' Navy D.B. SUITING COSTUMES, skirt with detachable top. All sizes.

45/9.



COAT in fine Repp, flared from hips, half-lined Shot Silk, in all new shades.

59/11.

Unrivalled selection of COATS, in Tweeds, Silk, and Repp, in all sizes.

23/11 to 6 Gns.

SMART JUMPER SUITS.

Jumper Suits, in All Wool fine Cashmere, knit in Parma, Grey, Blue, Green, with cami-top to skirt and inverted pleats.

29/11.

We are now showing the latest Novelties in Art. Silk and Wool Jumpers, in all the latest colours.

12/11 to 29/11.

MANY MORE FASHIONS DISPLAYED IN OUR WINDOWS AND SHOWROOMS.

E. L. WARD,
HIGH STREET, CHELTENHAM.



PRESENTATION OF £1,206 TO MR. W. A. WOOF.

1.—Mr. and Mrs. Woof in centre, with subscribers and friends at the presentation. Seated: Mr. A. A. Hunter, Mrs. and Mr. H. V. Page, Mr. H. Browne, Mr. and Mrs.

W. A. Woof, Rev. W. H. A. Truell, Mr. Stevens, Dr. Gabb.

2.—Rev. W. H. A. Truell, the oldest O.C. College Captain living (1862), and 4, Mr.

P. Higson (youngest O.C. Captain, 1924-25)

3.—"Woofie" with the Senior boys, who were present.



GLOUCESTERSHIRE LADIES' HOCKEY ASSOCIATION TOURNAMENT IN CHELTENHAM.
12.—Newport (Berkeley). 13.—Stow-on-the-Wold. 14.—Barnwood, near Gloucester. 15.—St. Cross (Bristol).

ENGLISH MADE THROUGHOUT & FULLY GUARANTEED

ENGLISH MADE.

Twilfit FULLY GUARANTEED.

CORSETS.

Twilfit Corsets give perfect freedom of movement and adequate support, and have proved themselves to be the Best Corset Value in the world. They are the only Corsets carrying a full guarantee against everything.



MODEL 581.
A Charming Model suitable for the average figure. Made from a strong light coutil, in dove, pink, and white. Low in bust and deep over hips. Trimmed with fancy barmen and four hose supporters. Sizes 21-30 ins. **8/6**



A Corset for every Figure.



A Price for every Purse.



MODEL 0319.
Specially deep Corset of fancy washable broche. Elastic inserted on hips; fastens on left side with hooks and eyes; strong shoulder straps; and fitted with four hose supporters. Sizes 24-36 ins. **5/11**



MODEL 80.
This is for average figures, having a medium bust and being long over the hips. Fitted with the renowned "Twilfit" unbreakable Spiral Steel. Finished with dainty embroidery round bust. In white and dove. Four suspenders. Sizes 21-30ins. **5/6**



MODEL 25.
A specially designed model, with Duro elastic gusset bottom of front. Fitted with rustless and unbreakable "Twilfit" Spiral Steels and four strong hose supporters. Sizes 21-30ins. **7/11**

MODEL SPORTS A.
Made with elastic round top, specially adapted for slender figures. In pink and white. Fitted with rustless and unbreakable "Twilfit" Spiral Steels and four hose supporters. Sizes 21-30 ins. **4/11**

Every Twilfit Corset is fitted with rustless and unbreakable Spiral Steels — an exclusive Twilfit feature.

MODEL 8089.
A model in handsome blue, pink, or white broche of very special value. Fitted with "Twilfit" Spiral Steels and four suspenders. Free hip model, with very low bust, being one inch above waist line. Suitable for average figures. Sizes 21-30 ins. **12/11**

Twilfit Corsets carry a definite guarantee of "Money returned or Corsets exchanged if not completely satisfied."

When ordering Wrap-round Corsets, a size three inches larger than usually worn should be quoted.

OSBORNE HOUSE

(Proprietor: D. J. REES),

High Street, Cheltenham.

NOTE THE GUARANTEE.

SEE OUR DISPLAY.

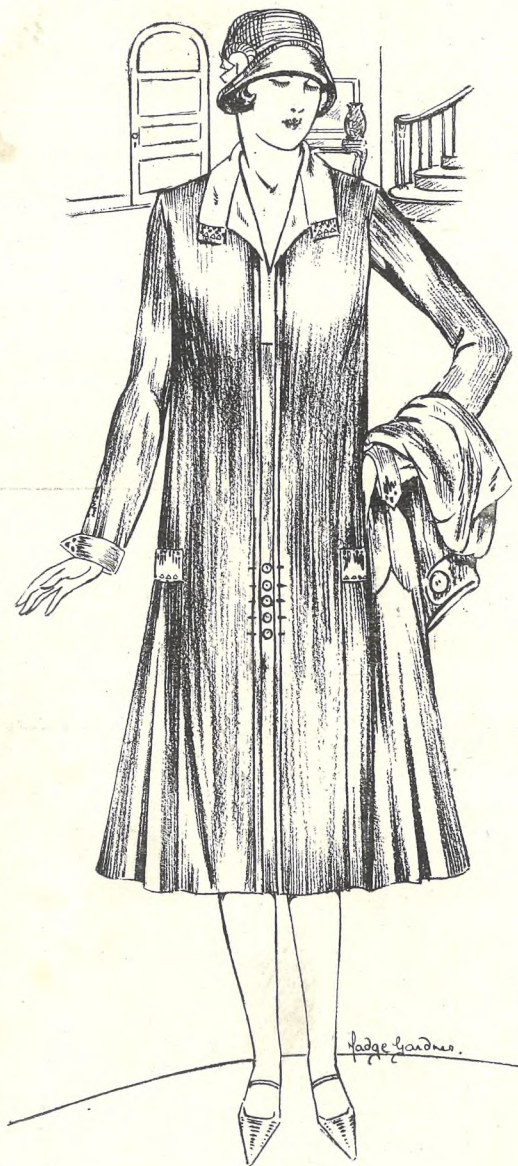


CHELTENHAM AND COUNTY CYCLING CLUB INTER-CLUB RUN.
The first summer run of the season of the above club was held on Sunday last, when the members cycled to Kingham, where they met members of the Oxford City Road Club, and then went on to Rollright Stones and Long Compton.
Back Row.—W. White, G. Wilcox, O.C., O.C., — Whitley, O.C., O.C., L. Hansford, H. Giles, E. E. Bick, H. Davis, G. H. Ward.
Front Row.—C. Butt, W. Fry, J. Adams, O.C., — Farquharson, Owen-Tibbles (captain), — Wood, K. J. Powell, A. W. Williams, R. Innes, F. Meadows.—Note: "O.C." stands for Oxford City member.



ROUND THE TOWN IN CHELTENHAM.
1, 2, 4, and 5.—Gentlemen taking their constitutional.
3.—A chat outside the Post Office.
6.—Having a morning off and enjoying their pipe.
7.—The Promenade seats are well used on a fine morning.
"Cheltenham Chronicle" Photos. Copies 1s. each, postage 2d. extra.

YOUR SPRING TWO-PIECE SUIT.



This Two-Piece Suit is a becoming Model. The Coat (over arm) is flared to match the Dress. It is of All Wool Repp, and has Vest of Crepe de Chene. 6 Gns. It is fine value at Obtainable in any colour.

Reasons why it should be purchased from Vanderplank.

- 1 Because the new Styles created by Vanderplank designers express all that is smartest in Fashion Wear for 1926.
- 2 Because you should be able to prove before you decide to buy that it is in keeping with your personality and your need, by putting it on and seeing how you look and feel in it, which is exactly what you can do in Vanderplank Showrooms.
- 3 Because our concern in fitting and suiting you is even greater than your concern in being fitted and suited.
- 4 Because you are more free to walk out without a Suit than with one that does not satisfy you in every particular.
- 5 Because Vanderplank extensive and ever-increasing clientele makes it possible to show under one roof an immense selection in every style, at every price, suitable for every lady of every age, in every walk of life.

If unable to call write for Spring Fashion Brochure.

IT COSTS LESS TO DRESS AT—

VANDERPLANK

281, HIGH STREET, CHELTENHAM

FASHIONS AND FURS

381 HIGH STREET, CHELTENHAM SPA.

THE CHELTENHAM CHRONICLE AND GLOUCESTERSHIRE GRAPHIC

With Which is Incorporated the "Cheltenham Looker-On,"
GRATIS SUPPLEMENT. Saturday, March 27, 1926.

No. 1,317.

CHELTENHAM THEATRE AND OPERA HOUSE.

This Afternoon (2.30) and Evening (7.45)—"AT MRS. BEAM'S."
Next Week (Five Nights & Two Matinees, Thurs. & Sat., 2.30):
THE POPULAR "Patricia."
MUSICAL COMEDY

THE PALACE, High Street, CHELTENHAM.

Monday, March 29, for Five Days (Closed Good Friday),
POLA NEGRI
In

"THE CHARMER,"
From the Novel "Mariposa," by Henry Baerlein.

Flirtatious. Audacious. Vivacious.

1926 GRAND NATIONAL STEEPLECHASE.
Every Fence from start to finish. Douglas Cochrane, the Brilliant Violinist, from the Trocadero, London, and His Orchestra.

THE DAFFODIL, CHELTENHAM'S PREMIER CINEMA.

Continuous Daily, 2.30 to 10.15. For ONE WEEK (except Friday),
Commencing Monday, March 29,

"THE LOST CHORD,"

Based on Sir Arthur Sullivan's Famous Song,

This great film is being specially accompanied by the Daffodil Grand Orchestra and MR. AUBREY STANDING, Principal Tenor, Moody Manners and Italian Opera Companies.

Advertise in the "Echo."

Established 1806.
Martin & Co., Limited.

The County Jewellers,
PEARL & DIAMOND MERCHANTS,

A Large Selection of Second-hand Silver and Old Sheffield Plate. We are purchasers of Antique Silver and Fine Quality Gems. Best Prices Given.

LICENSED VALUERS.
Promenade, Cheltenham.



HONOURING TWO BRAVE MEN.

The Presentation of Medals, etc., to P.C. Bleakin (Coleford) and Mr. Frank Reese (Symonds Yat) at Police Headquarters, Cheltenham, on Wednesday last, in recognition of their bravery in rescuing a dog from a 50ft. quarry, containing water, at Broadwell, in January last.

- 1.—Colonel Carter presenting medals on behalf of the N.S.P.C.A. to P.C. Bleakin. Mr. Reese standing behind.
- 2.—Miss Provis presenting a case of pipes to P.C. Bleakin on behalf of the National Canine Defence League.

"Cheltenham Chronicle" Photos. Copies 1s. each, postage 2d. extra.

READ THE "ECHO" EVERY DAY.

WINTER GARDEN, CHELTENHAM.

MONDAY and ALL THE WEEK (Good Friday excepted),

"YPRES" ("WIPERS").

A Pageant of Heroism.

OFFICIAL FILM OF Grand National, 1926.

COLISEUM THEATRE, CHELTENHAM.

6.40 and 8.40 p.m.
"Crossing the Line,"
MUSICAL REVUE.

An Entertainment to please everybody.

NORTH STREET PICTURE HOUSE.

From 2.30 Continuous. Monday, Tuesday, Wednesday:
BETTY BLYTHE

In "Going the Limit,"
Thursday, Friday, Saturday:
REED HOWES

In "The Courageous Fool."

MAISON ANNETTE,

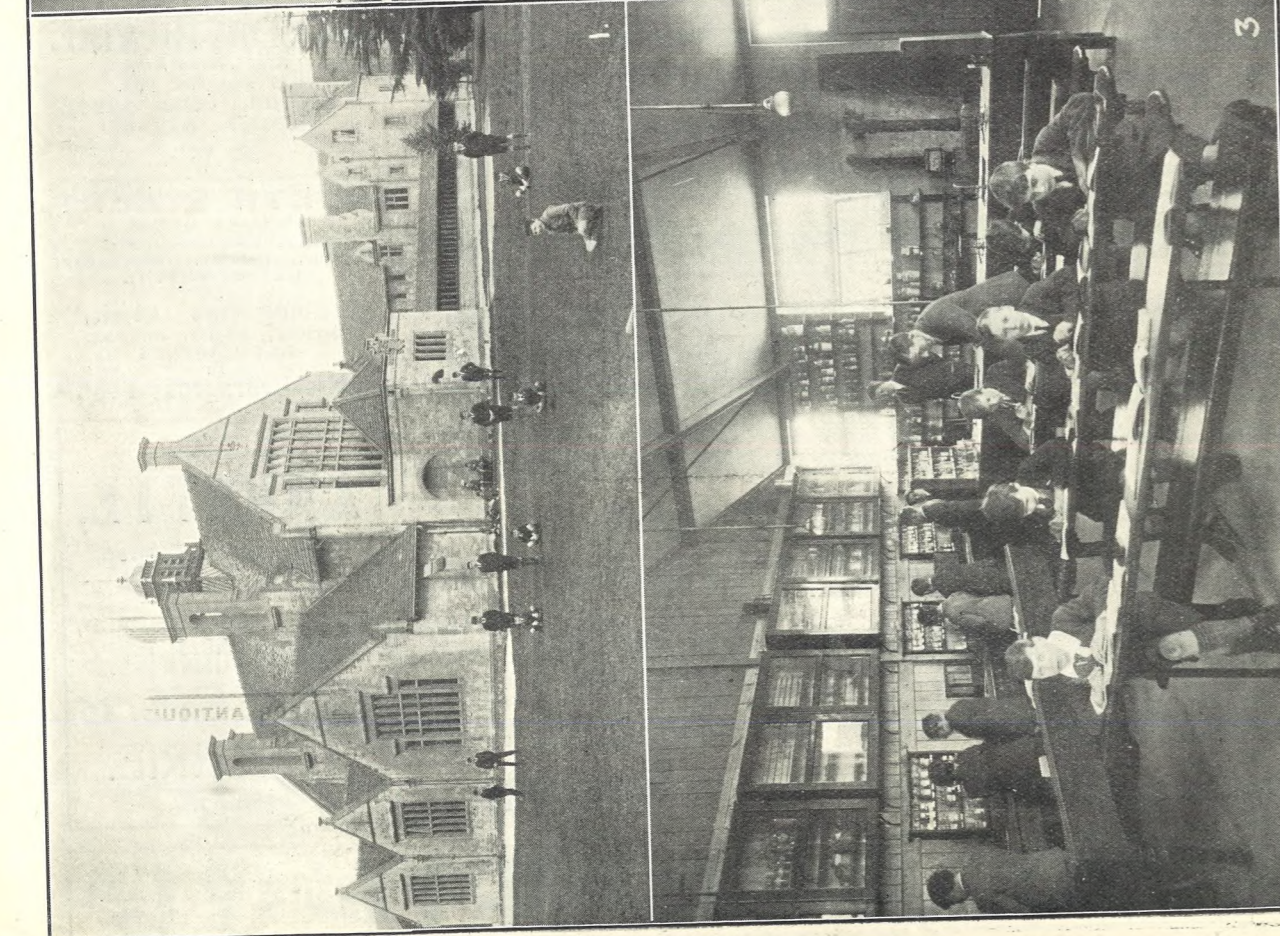
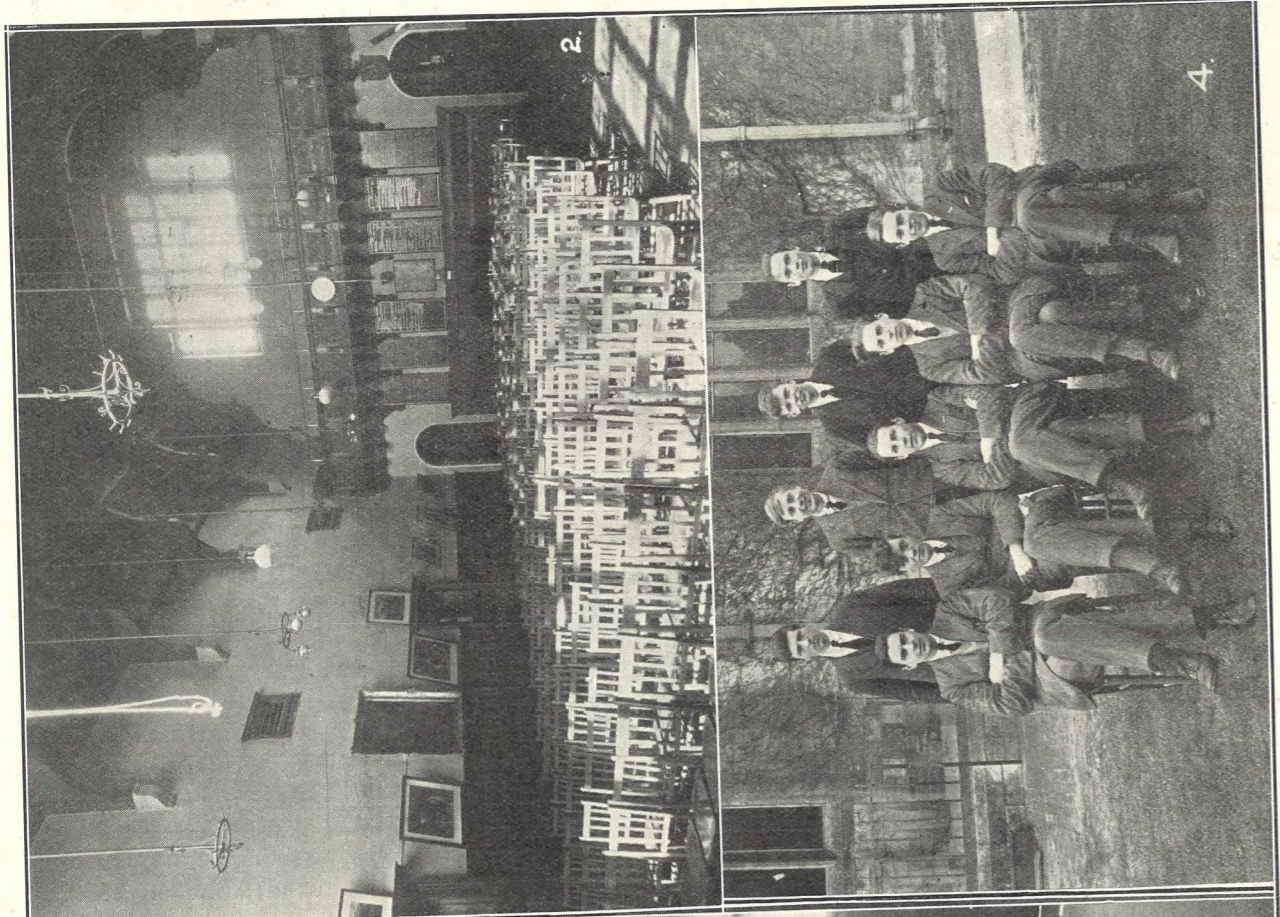
Kensington House, Promenade, Cheltenham,

SPECIALISTS IN EXCLUSIVE

CORSETS & LINGERIE.

'Phone 1122.

For the Best PIANOS, DALE, FORTY and Co. Ltd



MARLING SCHOOL, STROUD. "Gloucestershire Schools and Scholars." on "The Chemical Laboratory, with a class at work." on extreme right, taken from the Playing Field. Its architectural features are very pleasing, and as it stands clear in its own very pretty grounds, the school is quite one of the features of the road.

Illustrations of article in main sheet of "Chronicle" on "The School Prefects, Standing: R. L. M. Allen, M. R. Mills, L. E. Reynolds, W. W. Barrett, Seated: K. M. Artus, L. A. Ballinger, F. G. N. Smith (Senior Prefect), J. D. G. Apperly, J. D. Ayres. Photos. Copies 1s. 9d. each unmounted. Postage 2d. extra.



PATE'S SCHOOL FOR GIRLS: COMING-OF-AGE. Performers in an Old English play, "Phillippine," at the Cheltenham Town Hall, on Wednesday and Thursday last. They are all pupils of the Grammar School. "Cheltenham Chronicle" Photos. Copies 1s. each, postage 2d. extra.



THE BECHSTEIN
PIANO needs little recommendation to cultured tastes.

Its beautiful tone and incomparable touch—qualities which have gained for it the esteem of every music lover, and have set a standard to the world—are as exquisite and as characteristic as ever.

Write or Call for Catalogue.

Sole Agents:—

Crichton's,

The Piano House,
394 HIGH STREET,
CHELTENHAM.

'Phone 378.

ADVERTISE IN THE "ECHO." *****

GLOVES
to fit a lady's hand.



Everyone says it is lucky to wear something new at Easter. And, whatever be the weather, a new pair of Gloves from Drake's should be part of your Easter shopping.

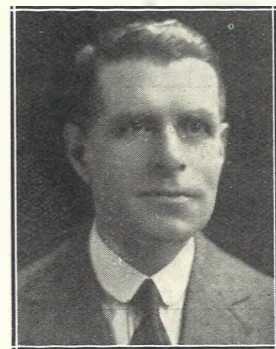
Our choice of dependable Gloves is more varied than ever; and every Glove has been carefully selected from the pick of the Glove makers. Here are a few suggestions:—

- IN NAPPA.—2-button length, Fownes' make, 3/11½, 4/11½, Fancy Gauntlets, 3/11½, 4/11½, 5/11½, 6/11½.
 - IN WASHABLE CASTOR.—Pull-on Gauntlets, 3/11½, 2-button length, Fownes' make, 4/11½, Elastic Wrist Gauntlet, 4/11½, 5/11½.
 - IN SUEDE.—2-button length from 2/11½, Fancy Gauntlets, 5/11½ to 12/11; Fownes', washable, 5/11½, Elastic Wrist, 6/11½.
 - IN DUPLEX FABRIC.—2-button and Elastic Wrist, exceptional value, 2/6½, Also at 2/11½, 3/6½.
- Suede Finish Fabric Gloves, 1/0¾, 1/6¾, 1/11½

AGENTS FOR
FOWNES'
WORLD-FAMED GLOVES,

DRAKE'S,
WINCHCOMB ST., CHELTENHAM.

THE HOUSE FOR ANTIQUITIES.
An interesting stock of genuine antique Jewellery, Sheffield Plate, China, Quaint Boxes, Etc., at low prices.
HARRY O. BOX,
339 HIGH STREET, CHELTENHAM.
Nearly opposite Grammar School.
Established over 70 years.
Similar goods bought.



MR. F. C. PHILLIPS,

Of the School House, Churchdown, near Gloucester, who is Grand Master this year of the Gloucester Conservative Benefit Society.

COAL. Tel. 215.

BATH ROAD
E. A. & W. J. MOORE,
COAL OFFICE,
(Near St. Luke's Schools, Cheltenham). **COKE.**

H. E. RANDALL, Ltd.,
6c The Promenade, CHELTENHAM,
Are Now Showing the Latest Designs in
HIGH GRADE FOOTWEAR
FOR PRESENT WEAR.

CORSETS AND BELTS
MADE, COPIED, CLEANED, AND REPAIRED.

Hours: 10 a.m. to 6 p.m. Saturdays, 1 p.m. or by appointment. PHONE 915.

MISS FRUIN (late with Madam Annette)
23 Bath Parade, CHELTENHAM.

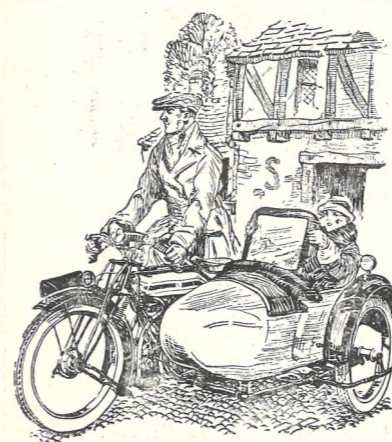


PRESENTATION OF MEDALS TO POLICEMAN AND CIVILIAN.
 In recognition of their bravery in rescuing a dog from a quarry, 50 feet deep and containing deep water, at Broadwell last January, presentations of medals, a case of pipes, and a cigarette case, on behalf of the N.S.P.C.A., National Canine Defence League, and Our Dumb Friends League, were made on Wednesday last at Police Headquarters, Cheltenham, to P.C. Bleakin (Coleford) and Mr. Frank Reese (Symonds Yat).
 1.—Constabulary present.
 2.—Dean Forest policemen present with the two recipients. Four of these men (x) have received medals in three years for similar actions. Standing: Sergt. Hobday (x), P.C.'s Clutterbuck, Hull (x), Hicks, Beddes (x), and Sergt. Beale. Seated: Supt. Shelswell (Lydney), Mr. Frank Reese, P.C. Bleakin (Coleford), Inspector Bent (Coleford).
 3 and 4.—Visitors at ceremony.
 "Cheltenham Chronicle" Photos. Copies 1s. each, postage 2d. extra.



NORTH COTSWOLD HUNT POINT-TO-POINT RACES AT DUMBLETON, MARCH 22.
 1.—Major Hawkshaw and Colonel Jeune.
 2.—A new style of footwear, very comfortable on such a day.
 3.—Mrs. Hughes' "Lady Bountiful" winning Farmers' Race.
 4 and 5.—Mr M. Turk and a lady friend.
 6.—Colonel Sidney and the Misses Fenwick.
 7.—Hon. C. G. Cubitt on "Hard Cash," winning Nomination Race.

HOLIDAYS



ARE oft-times disappointing affairs--arrangements go wrong—you miss the train—or, worse still, SHE does. Take her on a motor-bike or in a sidecar. Don't be left behind again. Go, and return at your leisure.

We sell the best—on the best Pay-as-you-ride plan, or part exchange if you wish. And we give the best possible service when those little adjustments need attention. Call and inspect our stock, and let us go into the matter of cost. We can supply the machine you want—whatever the make.

REPAIRS. :: ACCESSORIES. :: TYRES.

A. WILLIAMS & Co.,

Specialists in Motor Cycles for 21 Years,
PORTLAND ST., CHELTENHAM.
35 WESTGATE ST., GLOUCESTER.



EASTER, 1926. MRS. OWEN JAMES,

409
 HIGH STREET,
 : Cheltenham Spa :
 (Between Cambray and Bath Road).

CORSETS.
 The celebrated "S and S" CORSETS and CORSELETTES. Stocked in all sizes. 2/11½ to 15/9. BRASSIERES, 1/6½ to 5/11.

HOSIERY.
 The renowned "IPSWICH 859" HOSE. Pure Silk reinforced with artificial silk, at 3/11½

"THREE KNOTS," the Hose for hard wear, at 3/11. In all the leading shades—Nude, Skin, Champagne, Pongee, Bran, Tinsil, Platinum, Black, 9 inch, 9½ inch, 10 inch.
 GIRLS' GYMN. HOSE, 2/11½, 3/11½.

The Newest Shades in Ladies' ETON COLLAR JUMPERS. Wool and Silk and Wool Mixtures. 13/9, 18/9.

GIRLS' STRAW HATS, in the newest Shades — Blue, Almond, Tan, Beech, Cedar, Rosewood. 2/11½ to 18/9.



As sketch, Fancy MOUFFLON HAT. Almond, Tan, Cedar, Blue. 3/6.

BOYS' and GIRLS' Tailor-made COATS, in Repp and Covert Cloths. 16 inch to 30 inch. 15/9 to 38/9.

Infants' Layette's a Speciality. : Agent for "Chilprufe."

The "MURIEL" CASHMERE FROCK SET, with "Eton" Collar & Box-Pleated Skirt In Fawn and Powder.
 18 inch. 20 inch. 22 inch.
 15/9. 16/9. 17/9.
 BOYS' JERSEY SUITS, in all colours. 14 inch to 26 inch. 5/11 to 21/9.
 WOOLLEN COATS, with Hats to match. All sizes. 9/11 to 35/9.

SOMETHING NEW TO WEAR FOR THE EASTER HOLIDAYS. VISIT WARD'S FIRST

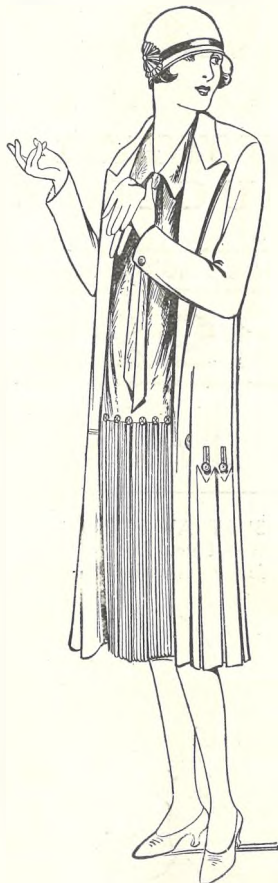
Easter is the time of year when people begin to feel the need for newer and brighter things, especially those going away on holiday. The wonderful range of Hats, Two Piece Suits and Coats now in stock at Wards justifies any intention of going there for your new clothes. Everything is right up to date in style, colour and material, with quality—as always—the leading feature.

Visit our Millinery Salons.

In order to complete the new Spring outfit, such accessories as Bags, Gloves and Stockings are needed. Of these we have a great variety—Bags of all kinds at low price, but high quality, the latest styles and novelties in Gloves and Stockings of every colour and texture. Come then and inspect our special Easter window displays.

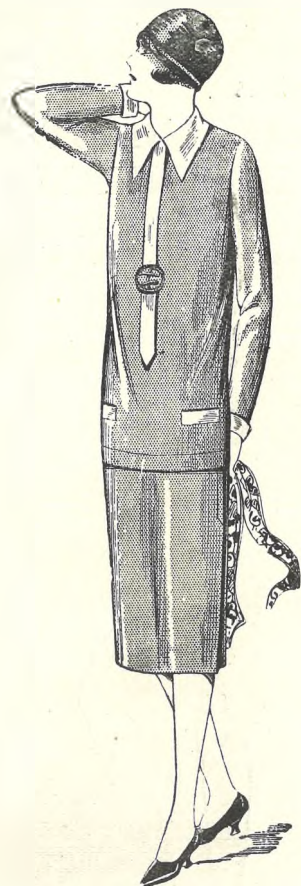


NANETTE. "New in every way" aptly describes the light-weight Tagel, with new crown, cut brim, and Velvet bound front—a clever combination of French style and British neatness. In all new shades, 14s. 11d.



Two-piece Suits in best quality Repp in all fittings. Colours: Amethyst, Sax, Green, Cedar, Navy, Black. 3½ to 7 guineas.

The largest selection of Spring Coats in town. Repp Suitings, Silk, etc. 23s. 9d. to 6 guineas.



Jumper Suits in all wool Cashmere, perfect fitting skirts with Cami tops, in all fashionable shades. 29s. 11d. to 3½ guineas.

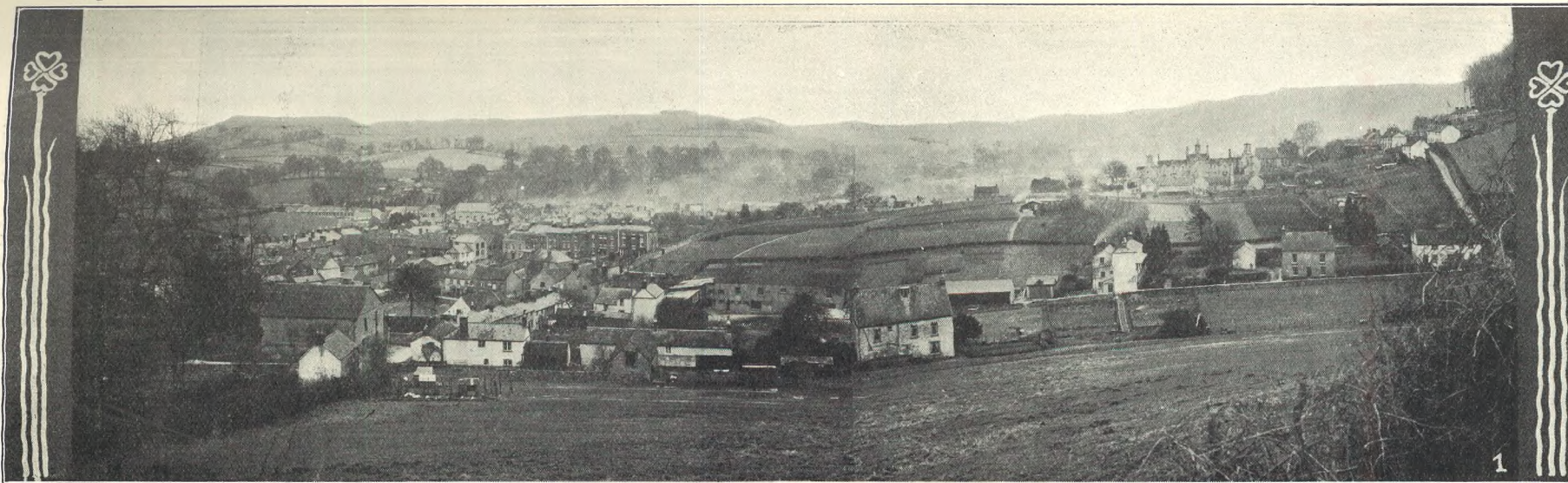
Put a "Telemac" Mackintosh in your pocket, in all colours, two years' guarantee 29s. 6d.

BAGS FOR THE :: HOLIDAYS. ::

Made in real Morocco leather, with leather lacing round flap, gilt frame, with inner division fitted mirror tablet and pencil, in Brown and Black 10s. 6d

Large selection of Travelling requisites, Attaché Cases, Brush sets, Manicure sets, etc.

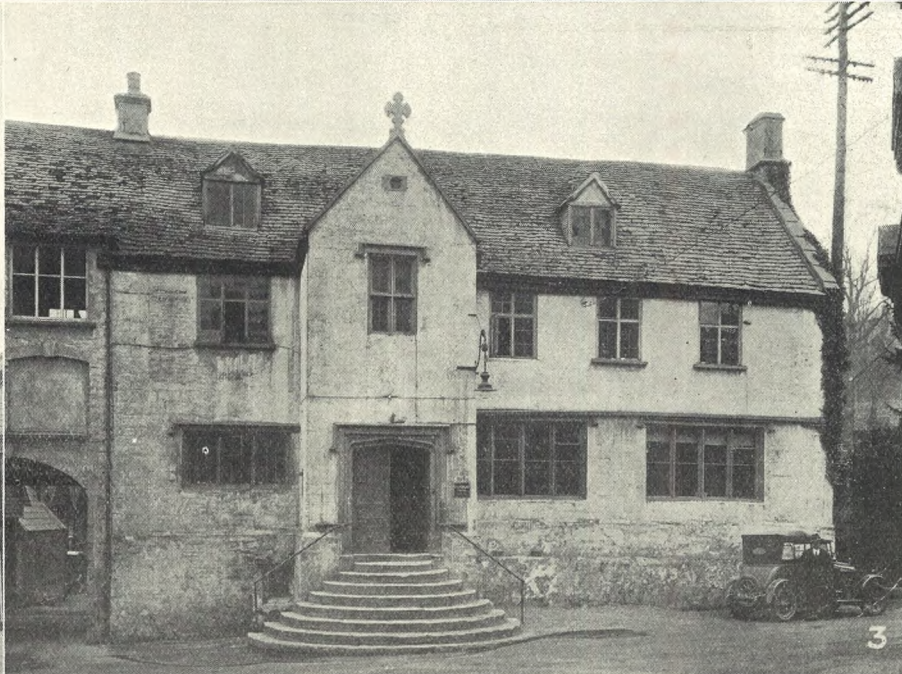
E. L. WARD,
136-40 HIGH ST., CHELTENHAM.



1



2



3

PICTURESQUE GLOUCESTERSHIRE.—DURSLEY.

Dursley is a small and ancient town, situated under the picturesque slopes of Stinchcombe Hill, 15 miles south of Gloucester, and was noted in medieval days for the manufacture of cloth. It is now the centre of a big manufactory of agricultural and dairy machinery (Messrs. R. A. Lister and Co., Ltd.), and there is also a carpet factory.

2.—The Market House, built of stone about 1738. There is a statue of Queen Anne in a niche at East End and the arms of the Lord of the Manor in front.

3.—The Priory, a fine old Cotswold house, now in the possession of Messrs. R. A. Lister and Co. and used as offices. The boardroom is an old oak-panelled room with an elaborately carved overmantel. In another room is a Latin inscription carved round the frieze, which translated runs as follows: "Give of your possessions whilst they are yours to give; after death they are no longer yours. Do good while you live if you wish to live after death."

"Cheltenham Chronicle" Photos. Copies 1s. 9d. each, postage 2d. extra.



ROUND THE TOWN IN CHELTENHAM.

- 1.—Miss Croome, on left, with a friend.
- 2.—Amused.
- 3.—Selling a pup!
- 4.—A quiet walk.

- 5.—Off to hockey.
- 6.—Did he snap us?
- 7.—Visitors

- 8.—Enjoying the sunshine.
- 9.—A constitutional.
- 10.—Busy shopping.

"Cheltenham Chronicle" Photos. Copies 1s. each.

SEND THE "CHRONICLE & GRAPHIC" TO YOUR FRIENDS EVERY WEEK.

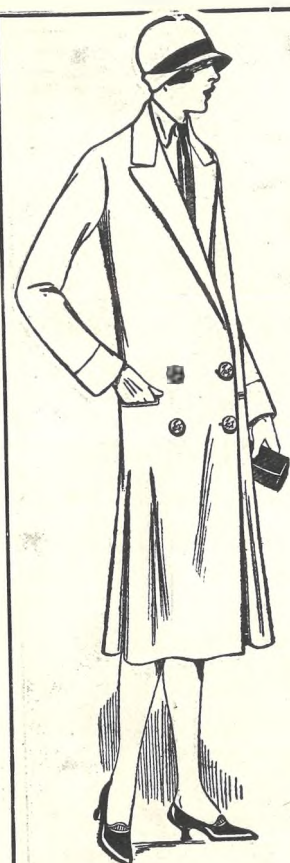


ENGLISH FOLK DANCE SOCIETY GATHERING AT CHELTENHAM TOWN HALL.

A Folk Dance gathering of members of the Gloucestershire and Bristol Branch was held at the Town Hall, Cheltenham, on Saturday last. Children performed in the afternoon, adults in the evening.

- 1.—Uley School Boys and their Master (Mr. Prior). They gave sword dances.
- 2.—Northleach School.
- 3.—Derby Road School, Gloucester.
- 4.—Tidenham School, near Chepstow.
- 5.—Widden Street School, Gloucester.
- 6.—Miss Brinkworth's School, Stroud.
- 7.—Rendcombe School.
- 8.—St. Gregory's School, Cheltenham.
- 9.—Christ Church School, Gloucester.
- 10.—St. Luke's School, Cheltenham.

"Cheltenham Chronicle" Photos. Copies 1s. each. Postage 2d. extra.



This Practical Coat may be had in all the Newest Shades and Cloths. Prices from 42s. to 6½ guineas.

LANCE'S Easter Fashion Offers.

::::: MILLINERY, :::::
Two Piece Suits, Gowns,
COATS and FURS.

Smart JUMPER SUITS, in the Newest
Fabrics and Shades from 29/11.

MOST USEFUL HOLIDAY GARMENTS.

JOHN LANCE & Co., Ltd.,
CHELTENHAM.



A Charming
Collection of
Two - Piece
Suits in Silk
and All-Wool
tepp
Material.
Prices from
4 to 10 gns.

Select Your New Motor Cycle from the
COTTON, DOUGLAS, NORTON,
B.S.A.,
NEW IMPERIAL, FRANCIS BARNETT,
RANGE.

To ensure prompt delivery and satisfaction
order only from

THE MOTOR CYCLE SPECIALIST—

Leslie Paynter,

BATH STREET, CHELTENHAM.

TEL. 887.



GLOUCESTER v. ROYAL AIR FORCE AT RUGBY FOOTBALL.

Gloucester played the R.A.F. Rugby Club at Kingsholm on Thursday, March 18th, winning a capital game by 21 points to 3.

1.—Spectators between the old stand and dressing-room.
2.—Lady and gentleman entering the ground.
3.—On the way to the match.
4.—Sid Brown, with the ball, cuts out a nice opening in the centre, with Loveridge (on right) ready for the pass.
5.—Motorists arriving for the match
6.—Part of the crowd.

"Cheltenham Chronicle" Photos. Copies 1s. each, postage 2d. extra.



OLD PATESIANS, CHELTENHAM, RUGBY FOOTBALL TEAM.

Standing: Messrs. E. Webb, J. Till, L. Mills, H. Vizard, J. D. Lane, I. C. Bendall, C. Hawker, H. Bastin, T. G. Morgan, W. W. Yeend.
 Seated: C. J. Stayt, H. A. Pitts, A. Butler, C. J. Price (capt.), L. H. Keveren, J. F. Drake, H. W. Constable, A. E. Lucas.
 "Cheltenham Chronicle" Photo. Copies 1s. and 1s. 9d. Mounted 1s. 6d. and 2s. 6d.



KNIGHT & HUTCHINGS
 (TEL. 1497)

ARE NOW SHOWING LATEST STYLES AND NOVELTIES FOR

Easter Holiday Wear.

NEWEST STYLE SHIRTS .. from 4/6 (COLLARS TO MATCH).
 SILK FOULARD TIES .. 2/6 (IDEAL FOR HOLIDAYS).
 FANCY SOCKS .. from 1/- Pair (FOR SPRING WEAR).
 SPORTS COATS .. from 16/6 (NEW PLAIN BACKS).
 GREY FLANNEL TROUSERS .. from 10/6 (FULL CUT STYLE).
 FAWN BAGS AND NEW SHADES 23/6 (PURE WOOL).
 PLUS-FOUR SUITS .. from 63/- (NEW SHADES).
 HATS AND CAPS, HOSE, Etc.

74 High St. Cheltenham. (FACING BATH ROAD)

ART NEEDLEWORK,

Etc.

A Choice Selection of Every Requisite Finished and Un- : : finished. : :

A FINE ASSORTMENT OF WOOLS AND ARTIFICIAL : SILKS IN ALL SHADES. :

Art Needlework Studio
 (T. R. Pritchard, Proprietor),
 1 Imperial Buildings, Promenade,
 : : : : : CHELTENHAM. : : : : :
 Special Attention paid to Orders by Post.

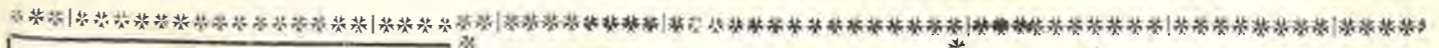


COUNTESS BEAUCHAMP OPENS GRAMMAR SCHOOL CELEBRATIONS.

The Coming-of-Age Celebrations in connection with Pate's Grammar School for Girls were continued on Wednesday last, when a two-day Sale of Work and Dramatic Entertainments at the Cheltenham Town Hall was opened by Countess Beauchamp; Mr. H. H. Hardy, Headmaster of Cheltenham College, taking the chair.

- 1.—Countess Beauchamp (in white), Mr. H. H. Hardy next her on right, Miss Miles next on right, and members of Committee.
- 2 and 5.—The School, from 1905 to 1926, represented by old pupils.
- 3.—Waitresses (all old girls).
- 4.—Old students in pageant, representing professions.
- 6.—Group of dancers who performed in the pageant

"Cheltenham Chronicle" Photos. Copies 1s. each, postage 2d. extra.



GOLF HOSE.
 Large Variety of Designs .. from 5/6 upwards.
 CHECK LEGS, 8/6 to 16/6 pair.
 Pullovers & Jackets for Sports Wear.
A. BECKINGSALE,
 111 High Street, Cheltenham.
 Phone 406.

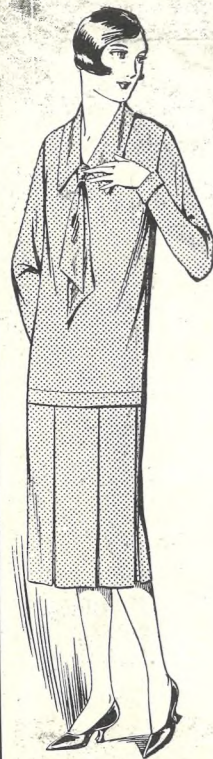
LET MOUSELLS MOVE YOU

LONDON. LIVERPOOL. MANCHESTER. LEEDS. BIRMINGHAM. LEAMINGTON. CHELTENHAM. EXETER.
 Estimates for Removals and Storing Free.
 'PHONE 112.
CHELTENHAM. Offices: AMBROSE STREET

PROMENADE FURNISHING CO., :: CHELTENHAM.
 E. W. Robinson.
 If You Require ..
NEW OR SECOND-HAND FURNITURE—see our Stock 3- in the £ Discount.
SALE NOW ON.

SPECIAL OFFER OF NEW SPRING FASHION GOODS FOR EASTER.

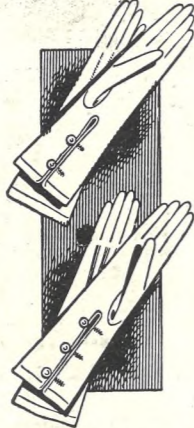
There are special reasons why you should inspect our Stock. No business can live very long on its reputation alone, but must be constantly adding to it, and that is what we have been doing for 55 years. We are out of the high rent zone, and as we buy for cash we can offer real solid advantages in all Departments. UP-TO-DATE RELIABLE GOODS AT MODERATE PRICES.



Ladies' All - Wool Cashmere Knit Jumper Suit, in all the new shades, with the New Inverted Pleated Skirt. **29/6**



New Collar Furs, in Stonemarten, Dyed Opossum, Of exceptional quality Lined Fur. **18/11**

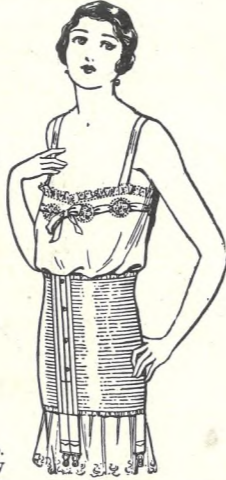


Special Value in Gloves. Dublex 2-Dome Chamois Fabric, of exceptional quality. **2/11 1/2**

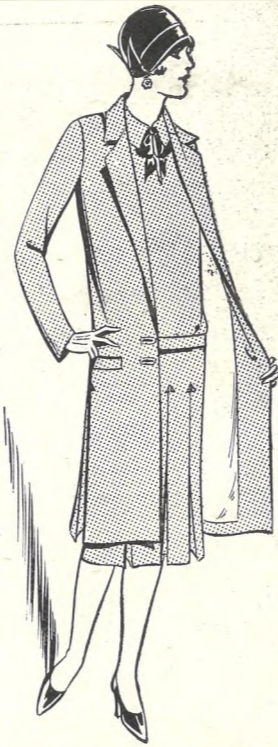


NON-TADDER ART-SILK

Art Silk Hose. Special Heavy Reinforced Toe and Heel. Guaranteed to wear. In 20 shades. **2/11 1/2**



A Dainty All-Elastic Corset, with laced back or wrap round. Fitted four suspenders. In Blush and White. Also at 2s. 11 1/2d.



An attractive well-cut Two-Piece Suit, in Covert Repp. Lined Coat and Pleated Skirt. In New Mahogany Colour (as illustrated). Also other shades. **£3/19/6**

Dent's Castor 2-Button Washable Doe-skin Gloves. In White and Chamois **3/11 1/2**

"KOSICLAD" FOR KIDDIES' WEAR IN SUMMER OR WINTER.



Art Silk Knitted Jumper, in two-tone mixture shades. Heavy quality. Full size and adaptable. Collar. All Colours. **10/11**



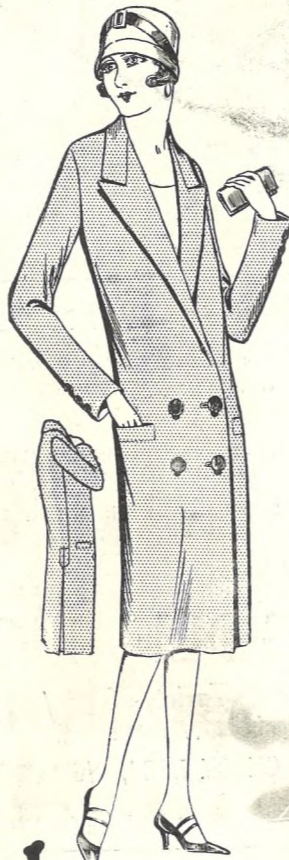
Girls' Wool Jumpers with turn-down Collar, as illustrated. In Plain or Fancy Colours. 5s. 11d., 6s. 11d., 8s. 11d., and **3/11 1/2**



"Norman." Boys' Wool Jersey Suits, with Art Silk Mixture at neck, etc., as illustrated. In all colours. Other sizes in proportion. **6/6 1/2** Age 2 years.



Girls' All - Wool Cashmere Jumper Suit (as illustrated). Skirt with Jumper Bodice top and Jumper separate. In all colours. Other sizes in proportion. Size 22-inch. **9/11**



A Smart Well-tailored Coat (as illustrated), in Ottoman Repp, in beautiful Lovat mixtures, of various colours. **49/6**

Dicks & Sons Ltd.

172 & 173 HIGH STREET
Cheltenham Spa
50 YEARS REPUTATION FOR VALUE.
TEL. 1007.



DEAN CLOSE SCHOOL SPORTS.

The annual Athletic Sports were held on Monday and Tuesday last in bitterly cold weather, on the Playing Field.

- 1.—Finish of Open 100 Yards Race, won by J Carpenter in 10 4-5secs.
- 2.—J. B. Harrison winning Open High Jump, at 5ft. 0 1/2 in.
- 3 and 8.—Sections of the enthusiastic spectators.
- 4.—S. A. Carpenter winning Open Long Jump, at 17ft.
- 5.—Race for Junior Hurdles, won by Hay (second from left).
- 6.—Mr. Neill, with his house team, winners of Inter-House Half Mile Relay.
- 7.—Officials with Mr. P. Bolton (head-master) and Mrs. Bolton.
- 9.—Start of the Open Mile Race.

"Cheltenham Chronicle" Photos. Copies 1s. each, postage 2d. extra.

PROOF THAT VANDERPLANK LEADS IN FASHION WEAR



THE Sales of Vanderplank Fashions have been mounting each year for many years. But comparison with last year for the same period this year already shows the remarkable leap of 15 0/0—and this in spite of bad trade conditions.

What better proof could there be than the wide-spread appreciation of Vanderplank Vogue and Value?

Vanderplank Fashion Wear is designed for the Lady of taste, and is perfectly tailored from the finest materials obtainable, in authentic styles, and at prices which are the lowest possible consistent with quality.

INEXPENSIVE MODELS for EASTER

That are designed to give complete satisfaction. The standard of fashionable style is maintained throughout—the note of distinction is retained—but the prices will appeal to those who wish to study economy.

All available in authentic styles and colours.

Practical TWO-PIECE MODEL in Repp, cut on straight, becoming lines, with inverted pleats on hips of Coat, and lined throughout with figured Morocain to tone. The Dress is effectively trimmed with Suedine and Gold Bind, with pleats to match Coat in front and back. It is splendid value at 4 GNS.

This TWO-PIECE SUIT, we say with the greatest confidence, is the very finest value obtainable. It is of a good quality all-Wool Repp, and the Coat is lined throughout. It is flared on hips in Fashion's Latest Style. The Frock is cut on new lines with inverted pleats in front. PRICE 75/9

In all the most Modern Colours.

IT COSTS LESS TO DRESS AT—

VANDERPLANK

381, HIGH STREET HARROD

FASHIONS AND FURS

381 HIGH STREET,

CHELTENHAM SPA.