

# THE CHELTENHAM CHRONICLE AND GLO'SHIRE GRAPHIC

With Which is Incorporated the "Cheltenham Looker-On."  
GRATIS SUPPLEMENT. Saturday, February 6, 1926.

No. 1,310.

## CHELTENHAM THEATRE AND OPERA HOUSE.

This Afternoon (2.30) & Evening (7.30)—"SPRING CLEANING."  
NEXT WEEK *Cheltenham Dramatic & Operatic Society.*

Mon., Wed., and Fri., at 7.45, Matinee Sat., 2.30—"LOYALTIES."  
Tues., Thurs., and Sat., at 7.45—"THE LILIES OF THE FIELD."

### THE PALACE, High Street, CHELTENHAM.

Monday to Wednesday:

**NAZIMOVA,**  
The Empress of Emotions, in  
"MY SON."

Col. Selig's Jungle Stories:  
No. 1: "The Jungle Heroine."  
Lloyd Hamilton Comedy,  
"WAITING."

Thursday to Saturday:

**BETTY COMPSON** in  
"New Lives For Old."  
Racing, No. 4: Glorious Goodwood.  
LONDON CABARETS.

Sunshine Comedy:  
"WHEN DUMB BELLS RING."

### THE DAFFODIL, Cheltenham's Premier Cinema.

LAST WEEK OF CHAPLIN'S  
COLOSSAL PICTURE,

## "The Gold Rush."

The Performances will be  
CONTINUOUS DAILY from  
2.30 to 10.15.

Your Last Chance to See This  
EPIC OF THE SCREEN.

Established 1886.

## Martin & Co., Limited.

The County Jewellers,  
PEARL & DIAMOND MERCHANTS.

A Large Selection of Second-hand  
Silver and Old Sheffield Plate.  
We are purchasers of Antique  
Silver and Fine Quality Gems.  
Best Prices Given.

LICENSED VALUERS.

Promenade, Cheltenham.



### COUNTY WEDDING IN CHELTENHAM.

The marriage was solemnized at Christ Church, Cheltenham, on Wednesday last of Mr. Gilbert McIlquham, J.P., C.G., of Staverton House, near Cheltenham, a member of the firm of Messrs. Ticehurst, McIlquham, and Wyatt, Solicitors, to Miss Maud Adeline Anley, of Oakley, The Park. The married couple leaving the Church.

"Cheltenham Chronicle" Photo.

### WINTER GARDEN, CHELTENHAM.

Monday, Tuesday, Wednesday:  
"Barriers Burned Away"

Featuring  
Wanda Hawley and Frank Mayo.  
Special "Felix the Cat" Cartoon.

Thursday, Friday, Saturday:  
Fred Thompson and his Wonder  
Horse in

"A Tight Corner."

### COLISEUM THEATRE.

6.40 p.m. and 8.40 p.m.

"PARCELS."

A Novel Up-to-Date Revue, in  
Seven Scenes.

### NORTH STREET PICTURE HOUSE.

Continuous, from 2.30 p.m.  
Monday, Tuesday, Wednesday:  
"THE ADVENTUROUS SEX,"

Featuring  
Clara Bow and Herbert  
Rawlinson.

Thursday, Friday, Saturday:  
BILLY SULLIVAN  
In

"The Fear Fighter."

"DISTINCTION WITH ECONOMY."  
You Will Dance Best and Feel  
Happiest in an Exclusive Frock.

## Sensier

The Little Salon.  
388b HIGH STREET, CHELTENHAM

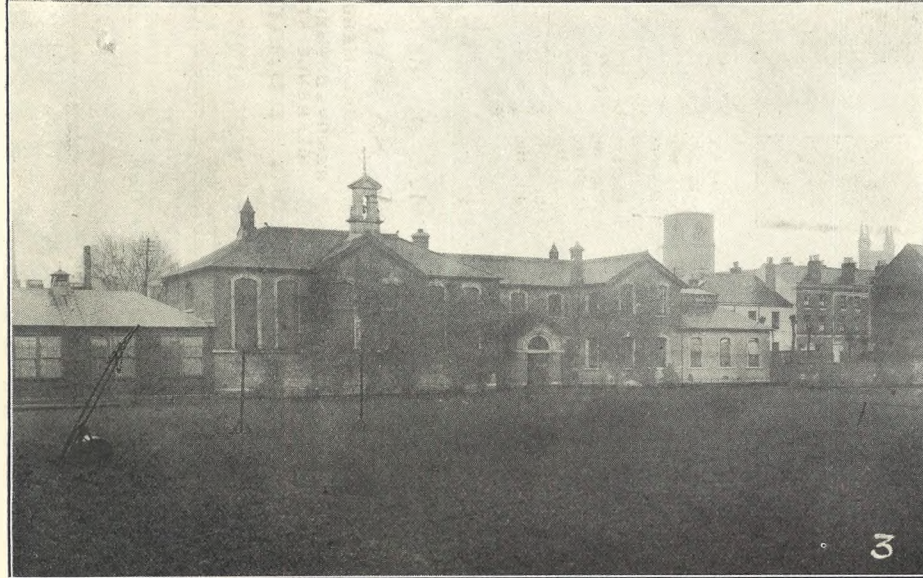
Telephone 1080.

## W. Scott Cooper,

Goldsmith and Silversmith,  
Diamond Merchant, Jeweller,  
The Promenade, Cheltenham.

LICENSED VALUER.

For the Best **PIANOS, DALE, FORTY and Co. Ltd.**



**THE CRYPT GRAMMAR SCHOOL, GLOUCESTER.**

Illustrations of Article in main sheet of the "Chronicle" on "Gloucestershire Schools and Scholars."

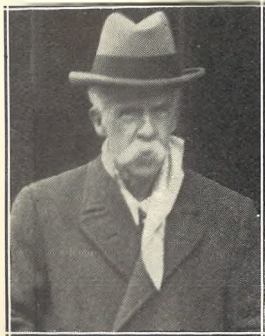
- 1.—The front of Old Crypt School in Southgate-street, adjoining the Crypt Church. It is the school Robert Raikes attended, and the desk he used there is preserved in the Crypt Church vestry.
- 2.—The new School House in Brunswick-road.
- 3.—Part of the School buildings. Crypt Church and Cathedral in background.
- 4.—The Old School from the Crypt Churchyard. This school is now used as a Sunday School, and caretaker's house.



**CRYPT SCHOOL, GLOUCESTER,  
THE MONITORS.**

Standing.—W. K. Masters, R. A. G. Smith, W. G. P. D. Painter, E. H. F. Baldwin, H. Donington Smith, G. J. Romans, D. A. Ball.  
Seated.—W. L. Colugh, W. N. S. Hoare, N. E. Browning, N. R. Johnson, J. F. S. Martin.

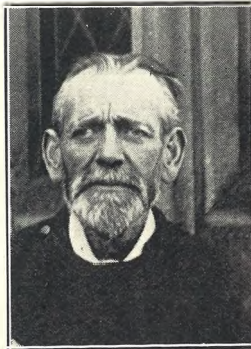
"Cheltenham Chronicle" Photo. Copies 1s. 9d. each.



**MR. WALTER B. WOOD,**  
Architect, of 12 Queen-street, Gloucester, and Avenue Cottage, Barnwood, who died suddenly on Thursday, Jan. 28th, aged 74 years. He was one of the best known of Gloucesterians, and was responsible for many fine buildings in Gloucester, notably St. Catherine's Church. This photo was snapped about a month ago.



**MR. ROBERT C. RADWAY,**  
Of Central Inn, Bennington-street, Cheltenham, who died on Jan. 26, aged 42 years. He was for many years property master at Cheltenham Theatre. During the War he was shot through the chest while serving in the Gloucester Regiment. He leaves a widow, one son, and one daughter.



**MR. HARRY TIMBRELL,**  
Builder and Decorator, of Kimberley Villa, Ryeworth-road, Charlton Kings, who died recently, aged 66 years. He had been ill for some time. He was for many years verger of Holy Apostles' Church, and was a strong Conservative supporter.

# LANCE'S

## Last Six Days of WINTER SALE.

**HUGE STOCK OF  
DEPENDABLE GOODS**

Will be offered at  
**Final Reduced Prices**

On **MONDAY NEXT,**  
and throughout the Week.

And, in addition, the  
**SPECIAL DISCOUNT of 10%.**

**(2/- IN THE £)**

will be allowed on all Cash Transactions.

All Costumes, Coats, Millinery, Underwear, Furs, etc., will be sold at **Less Than Cost Price.**

Household Linen & Furnishing Goods at **Further Reduced Prices.**

All Remnants of Woollen Dress Materials and Silk Fabrics will be sold at **Half the Marked Prices.**

○ ○ ○

**John Lance & Co.,**  
LIMITED,  
*Cheltenham's Shopping Centre*



**MISS L. P. CHANDLER,**  
Of the Loyal Sisters' Self Help Lodge, Cheltenham, who has been elected Deputy Grand Master for Cheltenham and Cirencester District of the Independent Order of Oddfellows, M.U., I.O.O.F., 1926.

**NOTICE OF REMOVAL.**  
**W. SAWYER & CO.,**  
COAL MERCHANTS,  
HAVE REMOVED THEIR OFFICES FROM  
CLARENCE STREET TO  
**19 PROMENADE**  
(Adjoining Y.M.C.A.). 'Phone 373.

**FLAT FOOT,**  
Also KNEE, ANKLE, and JOINT TROUBLES  
of All Kinds Successfully Treated by a New  
Electro-Therapeutic Method, based upon latest  
Scientific Research, and Exclusively Administered by  
**MR. ALFRED J. VENTRIS-FIELD,**  
Orthopædist and Electro-Therapeutist. Hospital  
(London) and 30 years' Practical Experience.  
Surgery: 6 **RODNEY PLACE,** Cheltenham.



**Gloucestershire Ladies' Hockey Match v. Monmouthshire at East Gloucestershire Ground, January 28th.**

1.—Gloucestershire: D. Wigg, K. Sessions, G. Stephens, J. Thomas, W. Carter, D. Spear (capt.), P. Danger, R. Swain, O. Bennett, V. Brain, E. Key. 2.—Monmouth pressing round Gloucestershire goal at the start. 3.—Gloucestershire forwards coming through. 4.—Spectators.  
 "Cheltenham Chronicle" Photos, Copies 1s. each, Postage 2d. extra.



**COUNTY RUGBY FOOTBALL AT GLOUCESTER.**

On Thursday, January 28th, Gloucestershire played Devon at Kingsholm to decide a tie for top honours in the South-Western County Championship. Gloucestershire, with a weak team, won a stirring match by 10 points to 3, and have to play Hampshire in the semi-final on February 20th, at Southampton.

1.—There was a fine crowd of spectators, over 500 being taken at the gates. Part of the Dean's Walk bank. 2.—On the Old Stand side. 3.—The Winning Team. Standing—Mr. Ralph Roberts (Secretary and Touch Judge), F. Ayliffe, S. Weaver, E. Hughes, J. Carpenter, R. C. Thompson, M. Short, J. Morman, J. Hemming, G. L. Jones, F. Fear (Referee). Seated—S. A. Brown, P.C. Taylor, M. V. Shaw, (Captain), T. Millington, B. S. Chantrill. In Front—A. Watkins, R. Milliner. 4.—Bunching for a throw-out. 5 and 6.—A Gloucester forward rush; Short with the ball. 7.—Morman jumping for ball in a line-out.  
 "Cheltenham Chronicle" Photos, Copies 1s. each, Postage 2d. extra.



**Gloucestershire Cross-Country Championship Meeting at Berkeley, January 30th.**

1.—The Start for Junior Event: 1st J. W. T. Vallender (St. Gregory's), 2nd L. Goddard, and 3rd W. F. Longhead are marked. 2.—Three Westbury members. 3.—Cheltenham and County Harriers in Senior Race. 4.—St. Gregory's Team, who were second in Team Race. 5.—Sir T. Rich's School, Gloucester, members, who ran in Junior Event. 6.—Officials: F. Blackwell, W. W. Alexander, Alf. Kiddle (Chairman), W. Mabbett, H. A. Butler, D. Lyons, Joe Binks, A. C. White, and G. Jenkins.  
 "Cheltenham Chronicle" Photos, Copies 1s. each, Postage 2d. extra.



**GLOUCESTER AMATEUR OPERATIC SOCIETY IN "TOM JONES."**

The whole of next week the boards of the Gloucester Hippodrome will be occupied by the Gloucester Amateurs in the above Comic Opera. Some of the Principals.

- 1.—Geo. Lister, jun., as Tom Jones, Mrs. Geo. Romans as Lady Bellaston, and Mollie Goatman as Sophia.
- 2.—At Back: Margaret Estcourt as Peggy, Kathleen Harris as Honour, Wilfred Hawkins as Gregory. In Front: Gwen Blackwell as Betty, Claude R. Cliff as Dobbin, and Geo. Romans as Grizzle.
- 3.—Douglas D. Newman as Mr. Allworthy, Madge Risbey as Miss Western, and Harry Marshall as Squire Western.
- 4.—Leslie C. Furley as Blifil.
- 5.—Stanley G. Bennett as Ben Partridge (a Village Barber) and Nesta Brand as Hostess of Upton Inn.

[Photos by Mr. Richard Hall, Clarence-street, Gloucester.]

BEST QUALITY  
**CIDERS**  
IN BOTTLE.—Sparkling and Still.

**BARTHOLOMEW,**  
419, 420 HIGH STREET,  
CHELTENHAM.

Wines, Spirits, Ales, Table Waters, & Grocery.  
Tel. 135.



HAVE YOU FOUND  
US YET?

AT THE SIGN OF  
The SHAMROCK  
31 Promenade,  
CHELTENHAM.

HERE you can get the most  
**Delicious Luncheons**  
(3 Course, or a la Carte).

**Afternoon Teas,** such things as Home-made Breads, Scones, Oat Cake and Honey, Cinnamon Toast, etc., etc.

FOR SALE—Meat Dishes, Cakes, Breads, Scones, etc., etc.

**DIABETES.**

Sufferers from Diabetes searching for a palatable, well-varied diet will find it in Cheltine Foods. They are highly nutritious and graded No. 1 (for mild cases), No. 2 (more serious cases), and "strict diet" (for extreme cases). Particulars post free, or with samples to cover postage, etc., 1s. from

**THE CHELTINE FOOD CO.**  
CHELTINE WORKS, CHELTENHAM.



**SUNNINGEND ENGINEERING DEPARTMENT ANNUAL DINNER.**

The Engineering Department of the Gloucestershire Aircraft Co. Ltd., Sunningend Works, Cheltenham, held their second annual dinner at the Town Hall, on Saturday evening, January 30th. Some interesting statements as to further progress in aircraft construction were made in the after-dinner speeches. The party present.  
"Cheltenham Chronicle" Flashlight Photo. Copies 2s. 6d. each (mounted).



**NEW ADDITION AT GEORGES LTD.**

The new "Blue Room" at Messrs. Georges Ltd., which has recently been opened, is the latest addition to the most beautiful suite of Tea and Breakfast Rooms in the West of England. Specially suitable for At Homes, Receptions, Private Dances, Dinners, etc., without extra charge. Comfort, Efficiency, and Economy ensured.—Georges Ltd. (The Highest Class Caterers), two doors from Promenade, High St., Cheltenham.



**MEET OF ARLE COURT HARRIERS AT THE BARROW FARM.**  
 This popular Pack, under the charge of the Master, Mr. Walter Unwin, met at The Barrow Farm, the residence of Mr. Tom Marsden, on Friday, Jan. 29th. Mr. and Mrs. Marsden welcomed a big field in hospitable style, and a capital day's sport was seen.  
 1.—The Master, in centre, with his pack. 4.—Mr. F. Lowsley Williams and Mr. W. N. Unwin. 6.—Mr. Davis and Mr. J. S. Gibbons (Boddington Manor).  
 2.—Mrs. Marsden. 5.—The Master takes a stirrup cup with his host. 7.—Miss Alford.

"Cheltenham Chronicle" Photos, Copies 1s. each, Postage 2d. extra.

LET MOUSELLS MOVE YOU



Estimates for Removals and Storing Free.  
 'PHONE 112.

CHELTENHAM. Offices: AMBROSE STREET

**H. E. RANDALL, Ltd.,**  
 The Promenade, CHELTENHAM.  
**Annual Sale of Smart Shoes**

NOW PROCEEDING.  
 Many Bargains Below Cost.

**CORSETS AND BELTS**  
 MADE, COPIED, CLEANED, AND REPAIRED.  
 Hours: 10 a.m. to 6 p.m. Saturdays, 1 p.m. to 5 p.m. by appointment. 'PHONE 915.

**MISS FRUIN** (Late with Madam Annette),  
 23 Bath Parade, CHELTENHAM.

THE  
**HARD WEAR COTTON SHIRT**

at 8/11

of our Own Manufacture is still Unequaled.

**A. Beckingsale,**  
 111 HIGH STREET, CHELTENHAM.

Printed and Published as a Gratis Supplement by the Cheltenham Newspaper Company, Ltd.

# THE CHELTENHAM CHRONICLE AND GLOUCESTERSHIRE GRAPHIC

With Which is Incorporated the "Cheltenham Looker-On,"  
 GRATIS SUPPLEMENT. Saturday, February 13, 1926. No. 1,311.

**CHELTENHAM THEATRE AND OPERA HOUSE.**

This Afternoon (2.30) and Evening (7.30)—CHELTENHAM DRAMATIC AND OPERATIC SOCIETY.  
 Next Week "Our Betters," a sensational play by Somerset Maugham. (Six Nights & Matinee):

**THE PALACE,**

High Street, CHELTENHAM.  
 Monday to Wednesday:  
 Ricardo Cortez and Jetta Goudal

in  
**"Spanish Love,"**  
 From the Novel by Juanita Savage.  
 Larry Semon Super Comedy:  
**"The Cloud-Hopper."**  
 Douglas Cochrane, from the Trocadero, London, and His Orchestra.

Thursday to Saturday:  
 Adolphe Menjou and Aileen Pringle in  
**"A Kiss in the Dark,"**  
 From the West End Success:  
**"Aren't We All?"**  
 Imperial Comedy: **"Papa's Darling."**

**THE DAFFODIL,**

Cheltenham's Premier Cinema.  
 Continuous Performance Daily,  
 2.30 to 10.15.

FOR THE WHOLE WEEK,  
 Commencing Monday, Feb. 15th,  
**"MADAME**

**SANS GENE,"**  
 From Sardou's Famous Play,  
**"THE DUCHESS OF DANZIG."**  
 Starring

**GLORIA SWANSON.**  
 Without doubt the most perfect Motion Picture we have ever seen on a screen. This Great Film is in 12 Reels, and will be accompanied by a special Music Score, played by Musicians.

Established 1806.  
**Martin & Co.,**  
 Limited.

**The County Jewellers,**  
 PEARL & DIAMOND MERCHANTS.

A Large Selection of Second-hand Silver and Old Sheffield Plate. We are purchasers of Antique Silver and Fine Quality Gems. Best Prices Given.  
 LICENSED VALUERS.

Promenade, Cheltenham.



**INTERESTING CHELTENHAM WEDDING.**  
 The Bride and Bridegroom leaving Holy Apostles' Church after the wedding of Mr. Chas. Williams, of Hornsea, and Miss Judith Joan Ward, daughter of Mr. E. L. Ward, the well-known Cheltenham draper, of High-street, and of Toddington.  
 "Cheltenham Chronicle" Photo. Copies may be obtained.

**WINTER GARDEN, CHELTENHAM.**

Monday, Tuesday, Wednesday:  
**ERNEST TORRENCE**  
 In the London Pavilion Success,  
**"NORTH OF 36."**

Thursday, Friday, and Saturday:  
**RUDOLPH VALENTINO**  
 in  
**"M. BEAUCAIRE."**  
 Reserve your Seat for Feb. 22:  
**"LIVINGSTONE."**

**COLISEUM THEATRE.**

6.40 p.m. and 8.40 p.m.  
 The Super Musical Revue,  
**"CHARITIES,"**  
 A Great Cast includes  
 O'BRIAN and HART,  
 BUD RICHIE,  
 HARRY ROXBURY.

**NORTH STREET PICTURE HOUSE.**

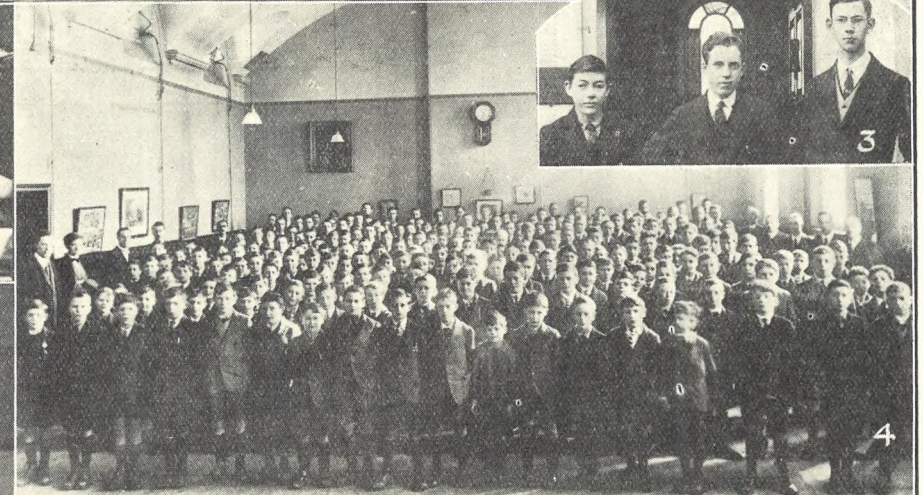
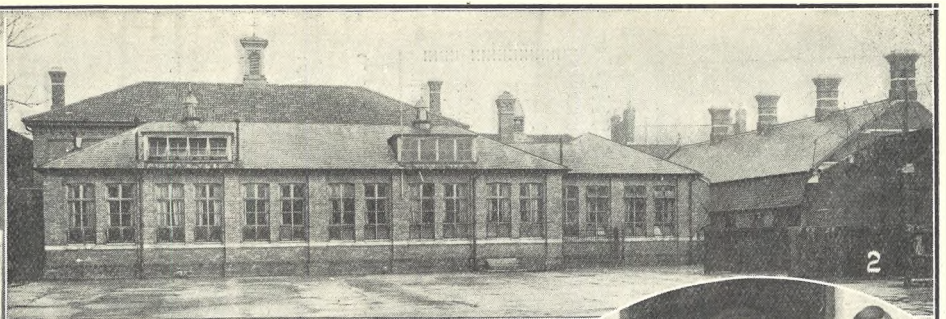
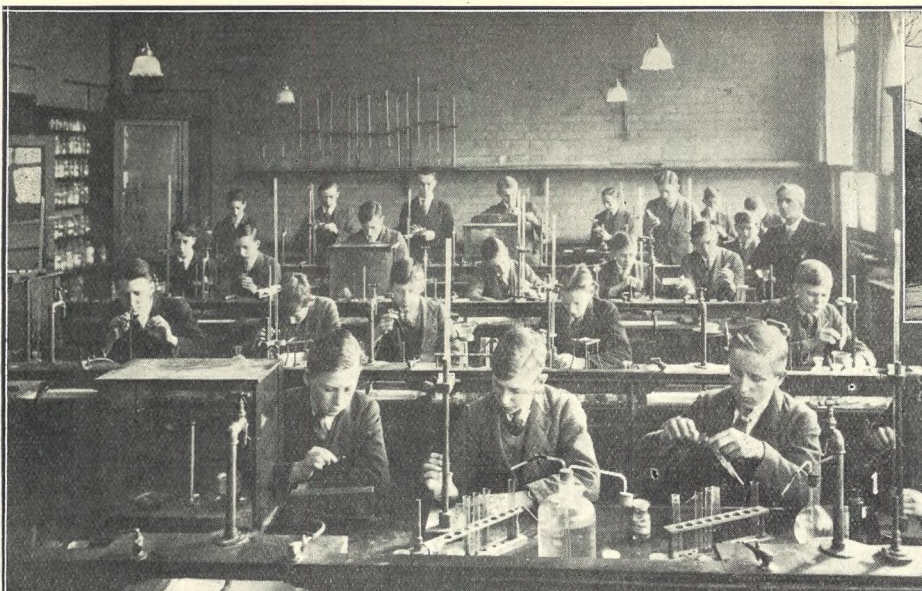
Continuous from 2.30 p.m.  
 Monday, Tuesday, Wednesday:  
**"WHO CARES,"**  
 The Famous Novel by Cosmo Hamilton.  
 Featuring Wanda Hawley and Dorothy Devore.

Thursday, Friday, and Saturday:  
**JACK HOXIE** in  
**"The Western Wallop."**

**MAISON ANNETTE,**  
 Kensington House,  
 Promenade,  
 Cheltenham,  
 SPECIALISTS IN EXCLUSIVE  
**CORSETS & LINGERIE.**

'Phone 1122.

For the Best **PIANOS, DALE, FORTY and Co. Ltd.**



**SIR THOMAS RICH'S SCHOOL, GLOUCESTER.**

- Illustrations of Article in Main Sheet of the "Chronicle" on "Gloucestershire Schools and Scholars."
- 1.—The Chemical Laboratory, with pupils at work.
  - 2.—The School from Playground. The Playground attached to the school is an extensive one. Buildings in foreground are the Chemical and Physics Laboratories.
  - 3.—Three School Prefects: W. H. Stephens, R. Upham (capt of school), and J. D. Hodgkinson.
  - 4.—The School assembled in the School Hall. This is done every morning on arrival.
  - 5.—Mr. H. F. Rogers-Tillstone, the Head Master in his study.
  - 6.—The Staff. Standing: Messrs R. H. Saunders, A. J. Hayward, Miss Thompson, Messrs. H. Hands, A. W. Nesbitt, C. V. Southam, J. R. Nicholas. Seated: J. S. Geake, H. A. West, H. Benfield (first assistant), H. F. Rogers-Tillstone (Head Master), H. G. Sherwood, F. J. Freeman, F. Davies.

"Cheltenham Chronicle" Photos. Copies 1s. 6d. unmounted, 2s. mounted.



**CHELTENHAM WESLEYAN LADIES' HOCKEY TEAM.**  
 Who played Bethesda Ladies on Saturday last, winning by 6 goals to 3.  
 Standing: Misses E. Watts, M. Robson, D. Gill, N. Archer, E. Thorndale, W. Amery, E. Hodgkinson, K. Hodgkinson.  
 Seated: Miss V. Jackson, Mrs. A. Stubbs, Misses C. Hyde, and W. Archer.  
 "Cheltenham Chronicle" Photo. Copies 1s. each unmounted.



**CHELTENHAM BETHESDA LADIES' HOCKEY TEAM.**  
 Standing.—Misses W. Selley, D. Isaacs, D. Whittle, F. Lamb, H. Selley, W. Dobson.  
 Seated.—Misses G. Pugh, M. Isaacs, P. Selley, M. White, D. Dyer.  
 "Cheltenham Chronicle" Photo, Copies 1s. Each.

LET MOUSSELLS MOVE YOU



Estimates for Removals and Storing Free.  
 'PHONE 112.

**CHELTENHAM.**

Offices: AMBROSE STREET

THE  
**HARD WEAR  
 COTTON SHIRT**

at **8/11**

or our Own Manufacture is still Unequaled.

**A. Beckingsale,**

111 HIGH STREET, CHELTENHAM.

# LANCE'S

## Special SPRING SHOW

... OF ...

Costumes,  
 .. Coats, ..

### MILLINERY,

Two-Piece  
 .. Suits, ..

### GOWNS

### and FURS,

... ON ...

**Monday Next,**  
 FEBRUARY 15th.

o o o

**John Lance & Co.,**

LIMITED,

Cheltenham's Shopping Centre.



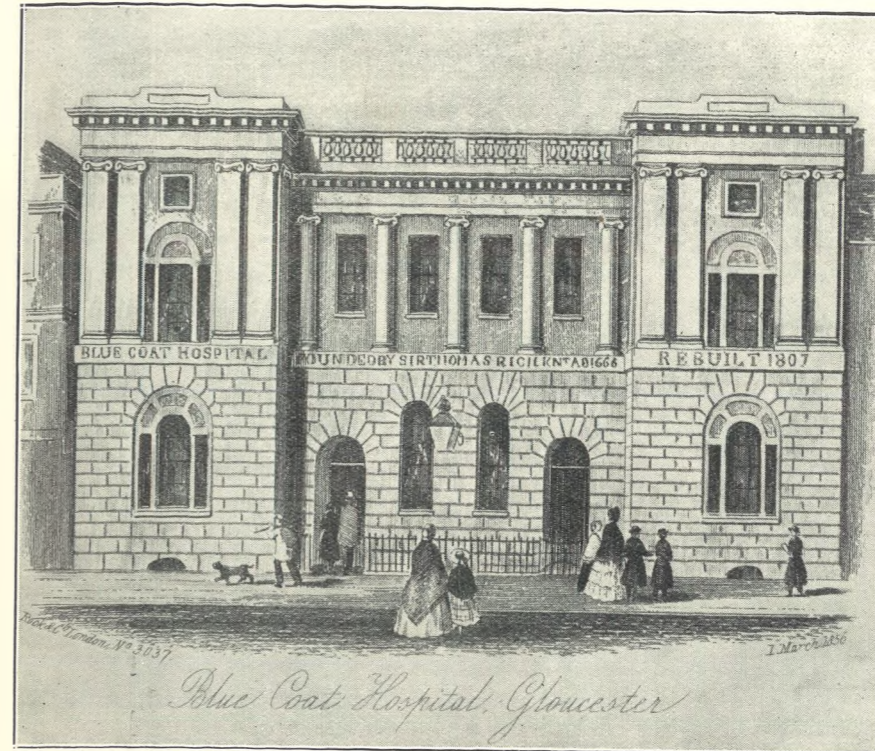


**FOOTBALL IN CHELTENHAM.—GLOUCESTERSHIRE NORTHERN MINOR CUP SEMI-FINAL: All Saints' Old Boys v. Eastington Athletic.**

Played on the All Saints' ground on Saturday last, at Stonewall Field, Prestbury, before a capital crowd of spectators. Eastington won by three goals to one.

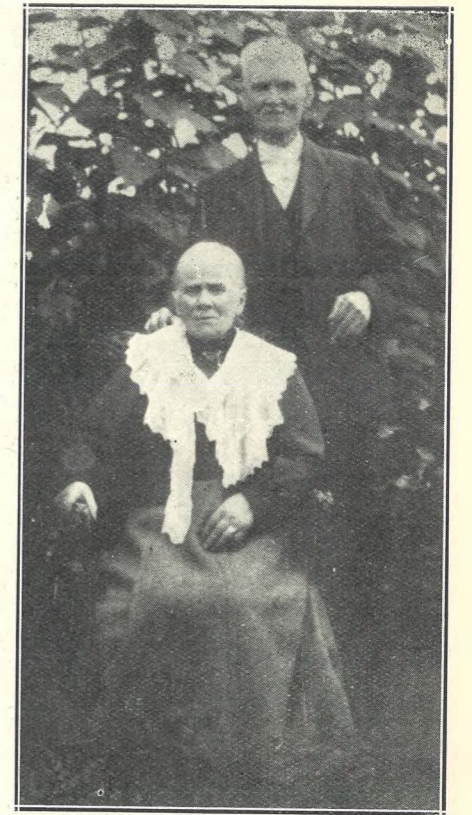
- 1.—A close shave for the Eastington goal in the first half.
- 2.—A Prestbury cricket group watching play.
- 3, 4 and 5.—All Saints' supporters.
- 6.—Eastington team and supporters.
- 7.—All Saints' Old Boys. Standing: Mr. S. Hobbs (linesman), W. May, F. Taylor, T. Drew, —, Kennedy, F. Hopkins, W. Champion, G. Hopkins, Mr. Spreadbury (linesman). Seated: F. Wells, —, Harvey (captain), J. Ingram (secretary), F. Nicholls, —, White.
- 8.—All Saints' attacking in first half, when they did not take all their chances.

"Cheltenham Chronicle" Photos. Copies 1s. each. Postage 2d. extra.



**SIR THOMAS RICH'S SCHOOL, GLOUCESTER.**

The old school, which stood where the Guildhall is now built, and was known as the Blue Coat School. (See special article in main sheet of "Chronicle").



MR. AND MRS. JOHN EDMUNDS, Of 115 Naunton-crescent, Cheltenham, who celebrated their Diamond Wedding on Thursday, February 4th.



ONE OF SEVERAL GROUPS OF SCULPTURE EXECUTED BY US FOR THE VICTORIA MEMORIAL, CALCUTTA. Architect: Vincent J. Esch, Esq., F.R.I.B.A., F.S.A., C.V.O.

Architectural Decorators ::  to H.M. King George V. By Appointment.

**H. H. MARTYN & Co., Ltd., CHELTENHAM,** and 5 Grafton Street, London, W. 1.

**Architectural Decoration IN ALL BRANCHES.**

SCULPTURE, MODELLING, WOOD CARVING. WROUGHT AND CAST IRON AND BRONZE. FIBROUS PLASTER, JOINERY & PANNELLING. MEMORIALS, Etc.

Architects' enquiries invited.



**INTERESTING CHELTENHAM WEDDING.**

The marriage was solemnised at Holy Apostles' Church, Cheltenham, on Wednesday last, of Mr. Charles Kenneth Williams, son of the late Mr. Charles Williams and of Mrs. Williams, of Hornsea, to Miss Judith Joan Ward, eldest daughter of Mr. and Mrs. E. L. Ward, of The Lydes, Toddington. Mr. Ward, the bride's father, is the well-known draper in High-street.

- 1.—The Bridal Group. Standing: Mr. C. Wright (best man), Bridegroom, Bride, Miss Barbara Ward (bridesmaid), Mr. E. L. Ward. Seated: Mrs. C. Williams (mother of bridegroom), Mrs. E. L. Ward (mother of bride).
- 2.—The bride and her father arriving at church.
- 3, 5, 6, 7, and 8.—Sections of the guests entering the reception at Holy Apostles' Church Hall.
- 4.—Relatives of bride and bridegroom watching the photographer at work.

"Cheltenham Chronicle" Photos. Copies may be obtained.



**CROSS-COUNTRY RUNNING IN CHELTENHAM.**

On Wednesday last Dean Close School "A" team ran against a St. Gregory's mid-week team over a course of four miles five furlongs. The School won by 38 to 45 points. Twenty-three ran, six a side counting.

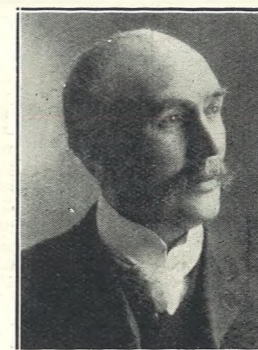
- 1.—The Dean Close School team.
- 2 and 3.—Pupils at Dean Close watching the race.
- 4.—The St. Gregory's A.C. team.
- 5.—Some of the officials.
- 6 and 7.—A. J. Carpenter and H. J. Wood, the two trail-layers (of Dean Close).
- 8.—Yeend, of St. Gregory's, the first man home.
- 9 and 11.—Mr. P. Bolton, the headmaster, and Mrs. Bolton.
- 10.—The race soon after the start.
- 12.—Baylis, first home for Dean Close, second in race.

"Cheltenham Chronicle" Photos. Copies 1s. each.



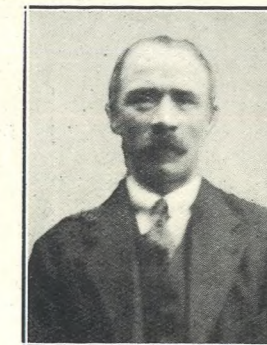
**SUB-LIEUT. JOHN B. C. LUTMAN, R.E.,**

Elder son of Mr. and Mrs. J. B. Lutman, of Tivoli Lawn, Cheltenham, who was killed while motoring in Rochester on Saturday morning last. He was an Old Cheltonian, and about 20 years of age.



**MR. ROBERT ("BOB") ORCHARD,**

Of 2 Sunnyside, Tuffley-avenue, Gloucester, who died on Sunday last, aged 72 years. He was formerly in business in King-street as a second-hand dealer, and was socially a great favourite.



**MR. GIDEON THOMAS SIMONS,**

Of 6 All Saints'-road, Cheltenham, who was seriously injured in stopping a runaway horse at Messrs. A. C. Billings and Sons' builders' yard, where he was employed, on Tuesday afternoon last. He died the same night.



**MR. J. T. BROTHERIDGE,**

Of Tewkesbury, who died on January 30th, aged 78 years. He was connected with Tewkesbury Y.M.C.A. in various offices for over forty years as hon. secretary, vice-president, or president.

DRILL HALL, NORTH STREET,  
CHELTENHAM.

NINE DAYS'  
BLIND AND CRIPPLED GIRLS'

**FLORAL  
EXHIBITION**

(JOHN GROOM'S CRIPPLEAGE).  
OPENING ON THURSDAY NEXT,  
FEBRUARY 18th, at 3 p.m.,

By the  
COUNTESS BEAUCHAMP, J.P.

Chairman:  
HIS WORSHIP THE MAYOR OF  
CHELTENHAM.

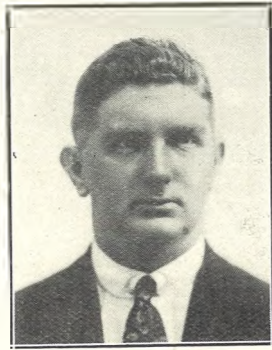
MUSIC. REFRESHMENTS.  
ADMISSION FREE.

**THE HOUSE FOR ANTIQUITIES.**  
An interesting stock of genuine antique  
Jewellery, Sheffield Plate, China, Quaint  
Boxes, Etc., at low prices.  
**HARRY O. BOX,**  
339 HIGH STREET, CHELTENHAM.  
Nearly opposite Grammar School.  
Established over 70 years.  
Similar goods bought.

**CORSETS AND BELTS**  
MADE, COPIED, CLEANED, AND REPAIRED.

Hours: 10 a.m. to 6 p.m. Saturdays, 1 p.m.,  
or by appointment. PHONE 915.

**MISS FRUIN** (Late with  
Madam Annette)  
23 Bath Parade, CHELTENHAM.

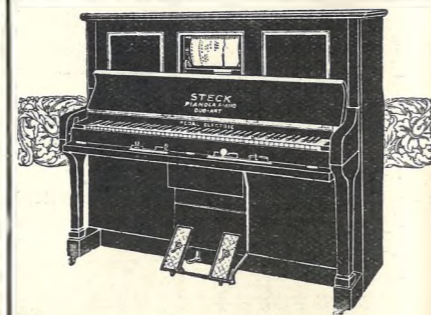


**DETECTIVE INSPECTOR CONDUIT,**  
Of the Shanghai Police, China, who has just  
been specially promoted for the arrest of a big  
gang (59) of kidnapers in Shanghai. He is  
a son of the late Mr. W. B. Conduit, of 12  
Brandon-terrace, and was formerly in the  
Gloucester Police Force. He served through-  
out the Great War.



**GIPSY LEAH,**  
The world-renowned scientific palmist and  
phrenologist, who may now be consulted at  
the Winter Garden, Cheltenham, on matters  
relating to Health, Matrimony, and Business.  
She has been patronised by British and  
Foreign Royalty, and is on tour with the  
British Empire Exhibition.

ADVERTISE IN THE "ECHO."



**The Popular Steck  
Pianola-Piano.**

It is easier to own a beautiful  
Pianola than perhaps you have  
thought possible. Our system of  
gradual payments sees to this. A  
moderate cash payment brings im-  
mediate delivery. The balance can  
be paid by instalments to suit your  
convenience, and we offer a generous  
exchange allowance for your present  
Piano. You are invited to visit our  
Salons to play the Pianola yourself,  
and have its advantages fully ex-  
plained.

SOLE AGENTS:

**Crichton's,**  
394 High Street,  
CHELTENHAM. Phone 378.

GREAT SALE OF PIANOLA MUSIC ROLLS  
NOW PROCEEDING. Prices from 6d. and 1/-  
each.

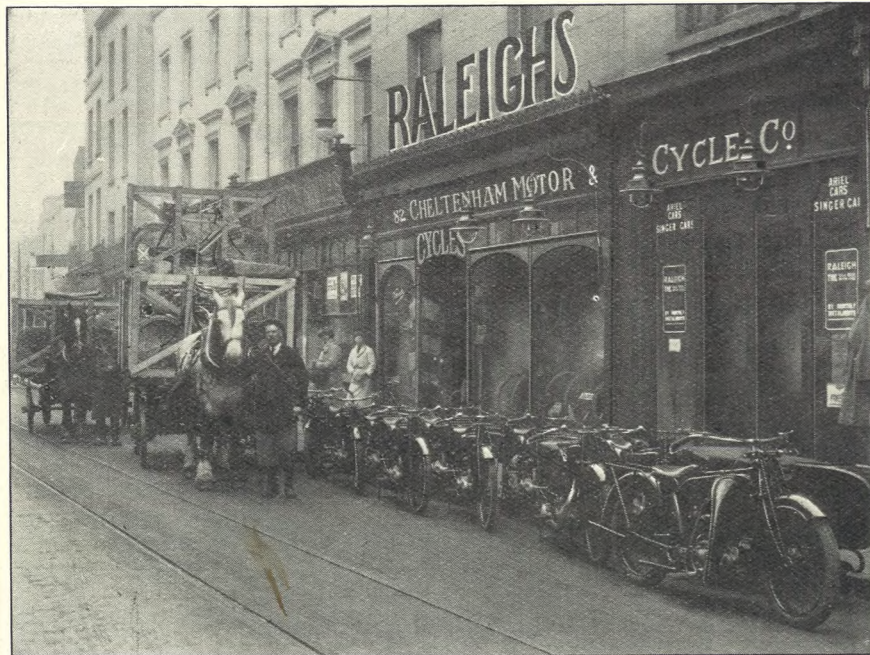


**BUSINESS MEN OF CHELTENHAM.**

- 1.—Mr. B. Gough, proprietor of Messrs. Gough and Edwards, drapers, High-street.
- 2.—Messrs. W. Wilks and F. Wilks, for many years fishmongers of High Street, and now with Messrs. C. Barnett and Sons.
- 3.—Mr. Ernest How, of London Supply Stores, grocers, High Street.
- 4.—Mr. W. H. Russell, solicitor, of Regent Street.
- 5.—Mr. A. E. Woodward (left), musical instrument dealer, High Street; and Mr. T. D. Boulton, of Messrs. R. L. Boulton and Sons, sculptors, Bath Road.
- 6.—Mr. E. W. A. Hambling, watchmaker, High Street.
- 7.—Mr. H. H. Chandler, ladies' tailor, High Street.
- 8.—Messrs. F. Knight and J. G. Hutchings, tailors and outfitters, High Street.
- 9.—Mr. Jas. Hedley, proprietor of Stroulger and Co., pork butchers, High Street.

"Cheltenham Chronicle" Photos, copies 1s. each

**THE ARRIVAL**



of 1926 RALEIGH MOTOR CYCLES  
AND BICYCLES.

Motor Cycles from £28 0 0. **BETTER VALUE THAN EVER!** Bicycles from £6 7 6.

ALL SPARES STOCKED. :: TERMS ARRANGED.

**CHELTENHAM MOTOR CYCLE CO.,**

RALEIGH DISTRIBUTORS.

82 High Street, CHELTENHAM. : Tel. 166.



**ROUND THE CITY IN GLOUCESTER.**

Snaps taken in Barton Street, Gloucester, on Saturday morning last.

- 1.—Mr. Peter Stubbs.
- 2.—Mr. Davis, of Newent.
- 3, 4, and 5.—Various citizens on duty bent.
- 6.—Two Guardsmen.
- 7.—A nice little family.
- 8.—Shopping.
- 9 and 11.—Making for home and dinner.
- 10.—Waiting.

"Cheltenham Chronicle" Photos. Copies 1s. each, postage 2d. extra.



**CHELTENHAM HOSPITAL CUP, JUNIOR DIVISION FINAL.**

The above game was played on Saturday last, on the Leckhampton ground, between Andoversford and Charlton St. Mary's. Andoversford won by 5 goals to 1.

- 1.—St. Mary's supporters.
- 2.—An attack by Andoversford.
- 3.—Mr. P. E. Close (centre), referee, with the linesmen, Messrs. E. Brant (left) and H. C. Ward (right).
- 4.—The Andoversford team.
- 5.—Charlton St. Mary's team.
- 6.—Andoversford supporters.

**SPECIAL SALE of LADIES' Light-Weight RAINPROOF TWEED COATS.**



We have just received a portion of a Liquidation Stock of one of the finest Coat Manufacturer's which enable us to offer the Coats at

**Nearly 50% Below Ordinary Prices.**

These Coats are thoroughly well cut and tailored, being regular goods made for ordinary stock. The Prices are—

**10/11, 15/11, 18/11, 25/6, 29/6.**

Usual Prices, 25/6, 29/6 to 49/6.

**Dicks & Sons Ltd.**  
HIGH STREET  
**Cheltenham.**

**SPECIAL SALE of REAL HAND-MADE INDIAN CARPETS.**

Having secured a parcel under exceptional circumstances, as always, we are passing the advantage on to our Customers at **Nearly 30% UNDER ORDINARY PRICES.**

Size.	Colour.	Usual Price.	Sale Price.
12ft. 4in. x 9ft. 4in.	Blue Ground	£10/10/0	£7/19/6
12ft. 1in. x 8ft. 3in.	Buff	£8/19/6	£6/19/6
12ft. 1in. x 9ft. 4in.	Red	£10/10/0	£7/19/6
12ft. 7in. x 10ft. 6in.	Red	£12/19/6	£9/9/0
11ft. 10in. x 9ft. 8in.	Red	£12/12/0	£8/19/6
12ft. 6in. x 9ft. 4in.	Buff	£14/14/0	£10/10/0
12ft. 1in. x 9ft. 6in.	Buff	£14/14/0	£10/10/0
9ft. 5in. x 9ft. 1in.	Cream	£12/12/0	£8/8/0
9ft. 2in. x 6ft. 6in.	Pink	£8/19/6	£5/19/6
6ft. 0in. x 6ft. 5in.	Red	£5/19/6	£3/19/6
9ft. 0in. x 5ft. 0in.	Red	£5/19/6	£3/19/6
9ft. 0in. x 6ft. 3in.	Red	£7/7/0	£4/19/6
12ft. 1in. x 9ft. 7in.	Buff	£14/19/6	£10/10/0
10ft. 2in. x 7ft. 4in.	Red	£9/18/6	£6/19/6
10ft. 1in. x 7ft. 3in.	Blue	£9/9/0	£6/19/6
9ft. 3in. x 9ft. 0in.	Buff	£9/9/0	£9/19/6
10ft. 4in. x 7ft. 7in.	Red	£10/19/6	£7/19/6

**DON'T MISS THIS OPPORTUNITY!**

**Dicks & Sons Ltd.**  
HIGH STREET  
**Cheltenham.**

SEND THE "CHRONICLE & GRAPHIC" TO YOUR FRIENDS EVERY WEEK.

# A MODERN BRISTOL STORE.

## JAMES & SHORT

(Est. 1860.) :: (F. J. VANDERPLANK, from Harrods),

27 and 28 College Green,  
BRISTOL.

**A**N entirely new steel framed structure, faced with stone, built to the special requirements of Mr. F. J. Vanderplank, and forming the first portion of a Bristol Corporation street widening scheme.

Messrs. Healing and Overbury, of Lloyds Bank Chambers, Cheltenham, were the Architects, for this important work, Mr. C. W. F. Dening, Architect, of Bristol, acting for the Corporation.

Composed of four floors and basement, all devoted to Ladies' High-class Fashion Wear, and fitted throughout by Messrs. Geo. Parnell & Co. in Ancona Walnut and Oak, the exterior and interior is most pleasing and restful to the eye.

Mr. Vanderplank (of Vanderplank from Harrods), 381 High Street, is the sole proprietor; the business having been purchased from the late Mr. E. James's executors in October, 1923.

Rebuilding was decided upon after the Architects' report upon the premises, they being considered unsafe in view of the great increase of motor traffic.



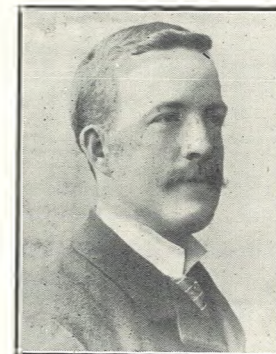
# THE CHELTENHAM CHRONICLE AND GLOUCESTERSHIRE GRAPHIC

With Which is Incorporated the "Cheltenham Looker-On."  
GRATIS SUPPLEMENT. Saturday, February 20, 1926. No. 1,312.

**C**HELTENHAM THEATRE AND OPERA HOUSE. This Afternoon (2.30) and Evening (7.45)—"OUR BETTERS."  
NEXT WEEK (Six Nights and Matinee)—  
"Beginner's Luck," From the Globe Theatre, London.

### THE PALACE, High Street, CHELTENHAM.

Monday to Wednesday:  
Jacqueline Logan, Mary Astor, Olive Brook, in  
"Playing With Souls."  
Imperial Comedy:  
"A HIGH JINX."  
Douglas Cochrane, the Brilliant Violinist, from the Trocadero, London, and His Orchestra.  
Thursday to Saturday:  
ZANE GREY'S  
"Code of the West,"  
With Owen Moore and Constance Bennett.  
Sporting Life: "RACING."  
No. 3.—Complete Scenes at Ascot.  
Next Week:—Direct from one year's run in New York:  
"THE IRON HORSE."



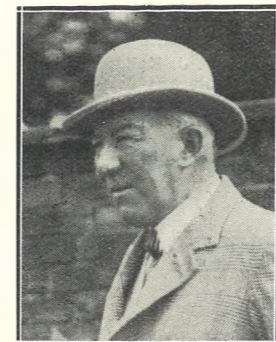
MR. A. F. BICK, Of 7 Asquith-road, Cheltenham, who died on February 9th, aged 52 years. He was a postman in Cheltenham since 1892, and was secretary of their Mutual Benefit Society, etc. He leaves a widow and five children.



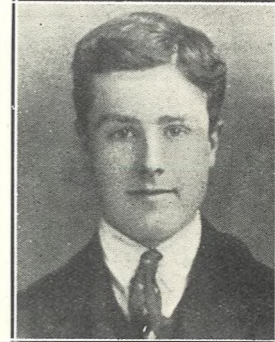
MISS L. J. WILLIAMS, A Cheltenham Post Office Sorting Clerk and Telegraphist, of 2 Bath-place, who died on February 9th, aged 28 years. Her home was at Abergavenny. She had been at Cheltenham P.O. since 1915.

### THE DAFFODIL, Cheltenham's Premier Cinema.

Continuous Performance Daily, 2.30 to 10.15.  
MONDAY, Feb. 22nd, and ALL THE WEEK,  
IVOR NOVELLO and ISABEL JEANS  
In the Great ALL-BRITISH PICTURE,  
"THE RAT,"  
The Most Perfect British Film yet put on the Screen.  
The Daffodil Grand Orchestra at All Performances.  
Musical Director: Mr. F. Vicary.



MAJ. JOHN GRATWICKE BLAGRAVE, Of Trelawney, Earley, near Reading, who died on Feb. 12th, aged 72 years. He was very well known in Cheltenham, where he resided for some years at Hambrook House. He married Lady Edward Somerset, who survives him, with two sons.



MR. THOS. JAS. TURNER, Of 9 Union-street, Cheltenham, who had been missing since January 8th, and whose body was found in Pittville Lake on February 11th. He was marker at the Glevum Billiards Hall, Gloucester, for the past two years, aged 24 years, and a most steady and respectable young man.

### Established 1806. Martin & Co., Limited.

The County Jewellers,  
PEARL & DIAMOND MERCHANTS,  
A Large Selection of Second-hand Silver and Old Sheffield Plate. We are purchasers of Antique Silver and Fine Quality Gems. Best Prices Given.  
LICENSED VALUERS.

Promenade, Cheltenham.

### WINTER GARDEN, CHELTENHAM.

MONDAY, FEBRUARY 22nd  
And All the Week.  
Daily at 2.30, 4.30, 6.30 & 8.20 p.m.  
(Not Continuous).

The Film of the Life and Love Story of DAVID

### LIVINGSTONE, Explorer and Empire Builder.

The 1s. 3d. and 1s. Seats May Now be Reserved (Booking Fee 3d. per Seat Extra).  
Special Terms will be Quoted for Parties.

### COLISEUM THEATRE.

6.40 and 8.40 p.m.  
"DANCING AROUND,"  
The Latest Musical Production.

### NORTH STREET PICTURE HOUSE.

Continuous from 2.30 p.m.  
Monday, Tuesday, Wednesday:  
"Super Speed,"  
Featuring  
Reed Howes and Mildred Harris.  
Thursday, Friday, and Saturday:  
"Pal O' Mine,"  
Featuring  
Irene Rich and Willard Louis.

"DISTINCTION WITH ECONOMY."  
You Will Dance Best and Feel Happiest in an Exclusive Frock.

### Sensier

The Little Salon,  
388b HIGH STREET, CHELTENHAM

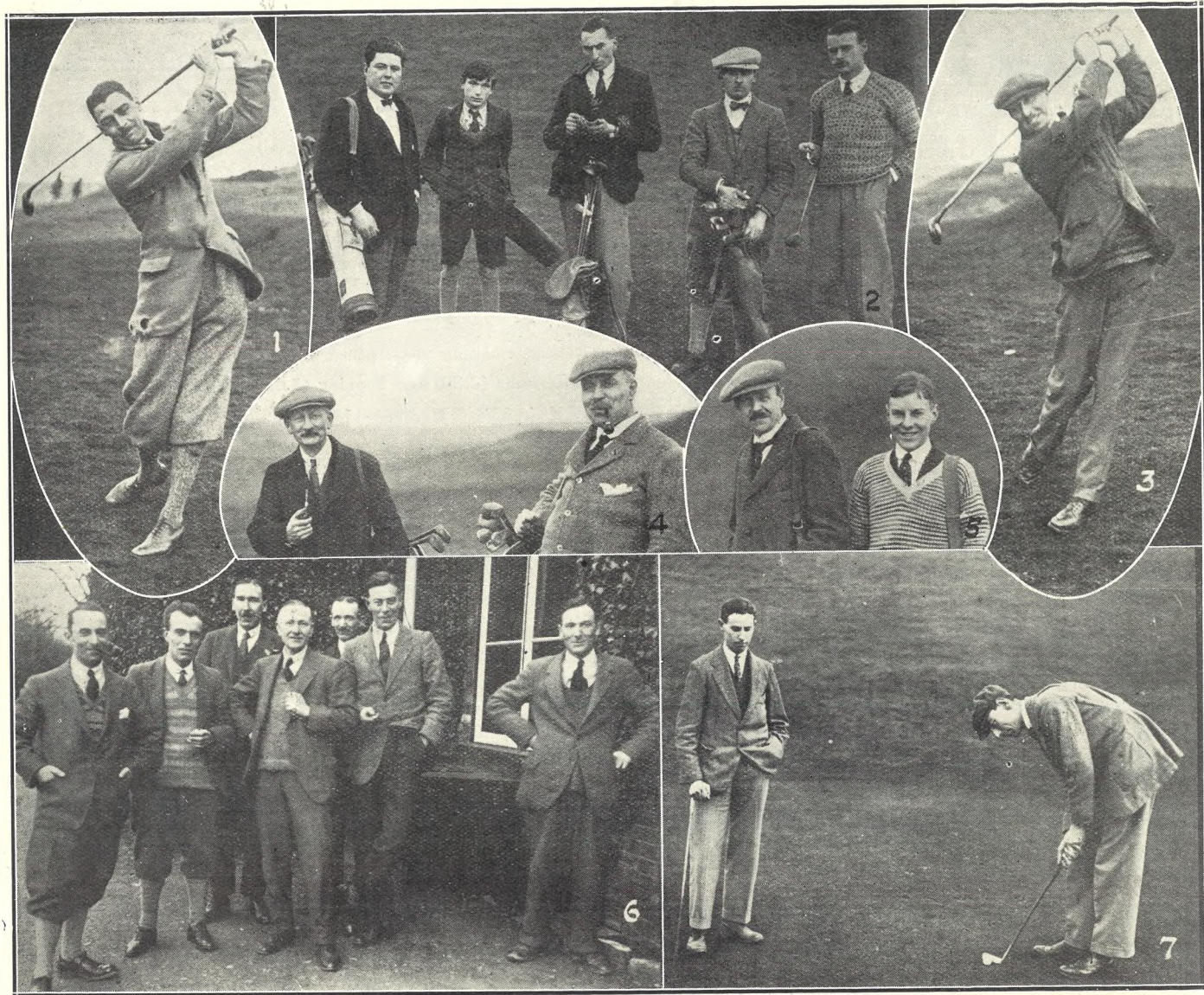
Telephone 1080.

### W. Scott Cooper,

Goldsmith and Silversmith,  
Diamond Merchant, Jeweller,  
The Promenade, Cheltenham.

LICENSED VALUER.

## For the Best PIANOS, DALE, FORTY and CO. LTD.



**GOTSWOLD HILLS GOLF CLUB, BARNETT CUP COMPETITION.**

- Played on Saturday last on Cleeve Hill in lovely golfing weather, P. Jewell winning after a tie with E. J. Emms.
- 1.—Mr. Tarrant driving.
  - 2.—Messrs. A. L. Morris (hon. secretary), C. J. Bailey, P. Jewell, and E. J. Emms. The two latter tied, Jewell eventually winning.
  - 3.—Mr. R. P. Humphries driving.
  - 4.—Messrs. Sid Sweeting and W. J. Kelland.
  - 5.—Mr. H. M. Simmons and his son John.
  - 6.—Messrs. Smith, S. G. Sims, J. Goodwin, Evans, A. Madgwick, T. Bailey, and Parker.
  - 7.—Messrs. Horace Sharpe and Bob Bailey on the last green. Both did it in three.

“Cheltenham Chronicle” Photos. Copies 1s. each.

**BEST QUALITY  
CIDERS**

IN BOTTLE.—Sparkling and Still.

**BARTHOLOMEW,**

419, 420 HIGH STREET,  
CHELTENHAM.

Wines, Spirits, Ales, Table Waters, & Grocery.  
Tel. 135.

LET MOUSELLS MOVE YOU



Estimates for Removals and Storing Free.

'PHONE 112.

**CHELTENHAM.** Office: AMBROSE STREET

THE  
**HARD WEAR  
COTTON SHIRT**

at **8/11**

or our Own Manufacture is still Unequaled.

**A. Beckingsale,**

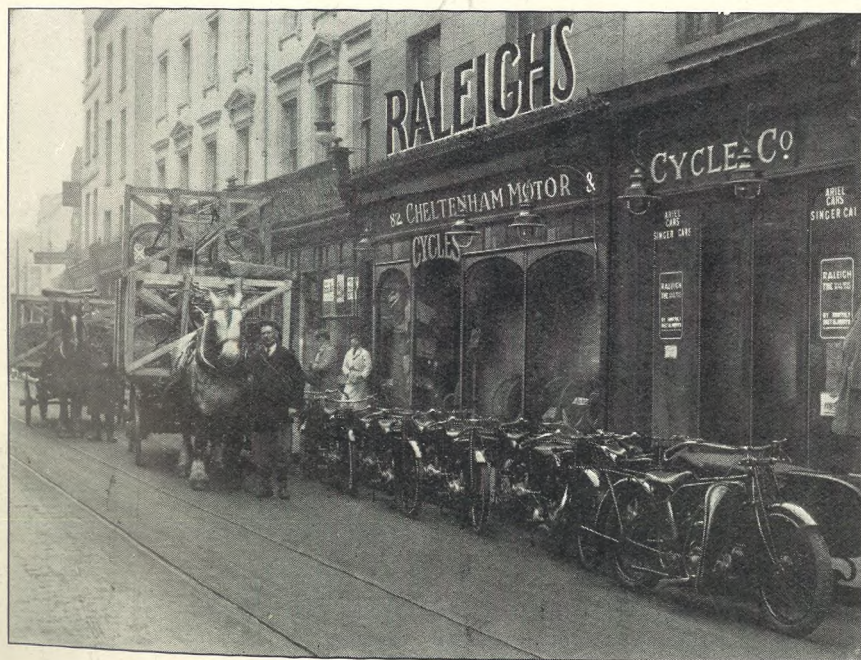
111 HIGH STREET, CHELTENHAM.

SEND THE "CHRONICLE & GRAPHIC" TO YOUR FRIENDS EVERY WEEK.



**MR. AND MRS. H. C. WHITE,**  
Of Ebley, near Stroud, who celebrated their Diamond Wedding on January 23rd. They are here shown with their sons and daughters, the group being taken on the Diamond Wedding Day.

**THE ARRIVAL**



of 1926 **RALEIGH MOTOR CYCLES  
AND BICYCLES.**

Motor Cycles  
from £28 0 0.

**BETTER VALUE THAN EVER!**

Bicycles  
from £6 7 6.

ALL SPARES STOCKED. :: TERMS ARRANGED.

**CHELTENHAM MOTOR & CYCLE CO.,**  
THE NEW RALEIGH DISTRIBUTORS.

82 High Street, CHELTENHAM. : Tel. 166.

**LANCE'S**

Special  
**SPRING  
SHOW**

... OF ...

Costumes,  
.. Coats, ..

**MILLINERY,**

Two-Piece  
.. Suits, ..

**GOWNS**

and **FURS,**

IS NOW  
PROCEEDING.

o o o

**John Lance & Co.,**  
LIMITED,

Cheltenham's Shopping Centre.



**PATE'S GRAMMAR SCHOOL FOR BOYS, CHELTENHAM.**

Illustrating Special Article in Main Sheet of "Chronicle" on "Gloucestershire Schools and Scholars."

1.—The Headmaster and Staff. Standing: Mr. Nutbourne, Mr. Havergal, Miss Jenkins, Mr. Schofield, Miss Young, Mr. Vaughan, Mr. Jones, Mr. Oakey, Mr. Hearn, Mr. Somers, Mr. Ryland, Mr. Roach, Mr. Wright.

Seated: Mr. Cheney, Mr. Bassett, Mr. Harris, Mr. Lyon (second master), Mr. Dobson (headmaster), Mr. Baron, Mr. Wilson, Mr. Sheldrick, Mr. Broad.

2.—Pupils in the Advanced Courses (Post Matriculation work), with Headmaster.

3.—Scene on the playing-field, Battledown.

"Cheltenham Chronicle" Photos. Unmounted 1s. 6d. Mounted 2s each

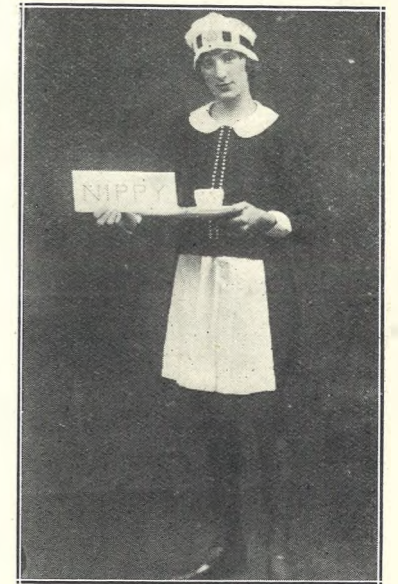


**PATE'S GRAMMAR SCHOOL FOR BOYS, CHELTENHAM.**  
Illustrating Article on "Gloucestershire Schools and Scholars" on Main Page of "Chronicle."  
THE SCHOOL BUILDINGS IN HIGH STREET.



**PATE'S GRAMMAR SCHOOL, CHELTENHAM, TAKEN ABOUT 50 YEARS AGO, BEFORE THE ALTERATIONS.**

READ THE "ECHO" EVERY DAY.



**A NICE LITTLE "GIRL."**  
Mr. Sydney Holloway, of Messrs. John Lance and Co., as "Nippy," who won first prize for original costume at Nazareth House Dance at Cheltenham Town Hall. The first prize was a dinner for twelve at Georges, Ltd.

**DIABETES.**

Sufferers from Diabetes searching for a palatable, well-varied diet will find it in Cheltine Foods. They are highly nutritious and graded No. 1 (for mild cases), No. 2 (more serious cases), and "strict diet" (for extreme cases). Particulars post free, or with samples to cover postage, etc., 1s. from

**THE CHELTINE FOOD Co.,**  
CHELTINE WORKS, CHELTENHAM.



**HAVE YOU FOUND US YET?**

AT THE SIGN OF  
**The SHAMROCK**  
31 Promenade,  
CHELTENHAM.

**HERE** you can get the most  
**Delicious Luncheons**  
(3 Course, or a la Carte).

**Afternoon Teas**, such things as Home-made Breads, Scones, Oat Cake and Honey, Cinnamon Toast, etc., etc

FOR SALE—Meat Dishes, Cakes, Breads, Scones, etc., etc.

**CORSETS AND BELTS**  
MADE, COPIED, CLEANED, AND REPAIRED.

Hours: 10 a.m. to 6 p.m. Saturdays, 1 p.m., or by appointment. PHONE 915.

**MISS FRUIN** (Late with Madam Annette)  
23 Bath Parade, CHELTENHAM.



**ANDOVERSFORD SHOW AND SALE OF FARM STOCK.**

- The Andoversford Fat Stock Show and Sale was held at the Market on Friday, February 12th, and proved the most successful on record.
- 1.—Messrs. Harris (Cheltenham) and R. Belcher (West Bromwich), the latter judge of fat cattle.
  - 2.—Mr. Taylor, junr., selling pigs; Mr. Troughton, the clerk.
  - 3.—Waiting for the pig sale.
  - 4.—Miss Meikle (right), selling catalogues.
  - 5.—A family group (Mr. Dudley's second prize sow and pigs).
  - 6.—Three Charlton worthies: Messrs. G. Shaylor, W. Peacey and C. Randall, who were visitors.
  - 7.—Mr. Finch and Rev. E. C. Hanson (Ship-ton) at the market.
  - 8.—Mr. J. Aubrey Handy (Hampnett) and his son, Mr. Aubrey W. Handy (Sherborne), two leading Cotswold farmers.
  - 9.—Mr. Evan Jefferies' pen of five tugs, winner of two silver challenge cups.
  - 10.—Mr. Crewdson on right.
  - 11.—Mr. Fletcher (Sierford), Mr. J. C. Meikle (Hon. Secretary), and Mr. Tayler (Auctioneer).

"Cheltenham Chronicle" Photos, Copies 1s. each, Postage 2d. extra.



**BOYS' DRAMATIC ENTERTAINMENT AT BREDON.**

- On Thursday, Feb. 11, boys from the Norton Training School, Birmingham, gave two Dramatic Entertainments at the Village Hall in aid of the Church Parochial Fund. There was a capital attendance, including Lord Norton.
- 1.—Rev. Webb, of Bredon, and old ladies from the Read Almshouses, Bredon.
  - 2.—Mrs. Taylor (Birlingham) (left), Mrs. Jewell (Upton-on-Severn), Hon. Mrs. Stewart, and young ladies, who formed part of the audience.
  - 3.—A Bredon villager.
  - 4.—Mrs. Butler (of Twynning Park) (left), a friend (centre), and Mrs. Graham-Arnold.
  - 5.—Mrs. and Ald. Baker, of Tewkesbury.
  - 6.—Hon. Mrs. Stewart and her father, Lord Norton.
  - 7.—Two Bredon ladies.
  - 8.—Mrs. Taylor (centre), a visitor aged 91, and Mrs. Dugdale (Bredon) (on right).
  - 9.—The five performers in "Bluebeard."
  - 10.—The cast in "When Anne was Queen." The lady at back is Miss Joan Arnold, who trained the boys.

"Cheltenham Chronicle" Photos.





**Tewkesbury v. Forest Green Rovers in Semi-Final of Gloucestershire Northern Senior Cup.**

This match was played in Earl Bathurst's Park, Cirencester, on Saturday last, and after a strenuous game resulted in a draw, with nothing scored. The game will have to be re-played, probably at Cheltenham.

- 1, 2, 3, and 4.—Sections of Spectators, mostly Cirencesterians.
- 5.—The Forest Green team.
- 6.—Tewkesbury team.
- 7.—Tewkesbury supporters on Cirencester platform.
- 8.—Light refreshments at half-time for referee and linesmen.
- 9.—Another section of spectators.
- 10.—A regular "Tishy." A Forest Green player taking a shot at goal.

"Cheltenham Chronicle" Photos. Copies 1s. each, postage 2d. extra. Larger size 1s. 9d.



**LADIES' HOCKEY INTERNATIONAL TRIAL IN CHELTENHAM.**

On Monday last, West of England ladies played South of England on the East Gloucester ground before a good crowd of spectators. West won by 3 to 1.

- 1.—A Ladies' College quintette.
- 2.—Spectators on the line.
- 3.—The West XI.: Misses Laurence, Lingwood, Chamberlain, Platt, Mason, Ealand (capt.), Osmond, Mrs. Scott Bowden, Misses Northwood, Hughes, and Bartlett.
- 4.—South XI.: Misses Campbell, Hewlett, Finnimore, Burness, Hulbert, Partridge, Brown, Mrs. Maltby (capt.), Misses Hodgeson, Bryant, and Albright.
- 5.—Miss Partridge (South) left, coming across to stop a Western forward.
- 6.—West attacking in first half.
- 7.—Exciting play in front of South goal.
- 8.—Miss Ealand, West goalkeeper coming out to stop a dangerous attack.

"Cheltenham Chronicle" Photos. Copies 1s. each. Postage 2d. extra.

\*\*\*\*\*  
**THE BLAZERS WORN BY THE TEAMS WERE SUPPLIED BY THOS. PLANT & CO., LTD.,**  
**18 COLONNADE, CHELTENHAM SCHOOL AND SPORTS CLOTHING OUTFIT SPECIALISTS.**



**COLMORE CUP RELIABILITY TRIAL: SCENES ON CLEEVE HILL.**

On Saturday last the famous Colmore Cup Reliability Trial was run, the test hills being mainly obscure lanes on the Cotswold Hills in this neighbourhood. On Cleeve Hill, Gambles, Post Office Lane, and Bushcombe Hill were negotiated. Bushcombe Hill, with its loose stones on a severe gradient, and a stop and restart test at its worst point, was one of the most difficult tests of the day.

1.—Two competitors at the Plough. It is difficult to distinguish male from female riders. It is a lady on right.

2.—G. Denley, on a Velocette, fails at Bushcombe.

3.—R. C. Bennett, on a Federation, comes up Bushcombe easily.

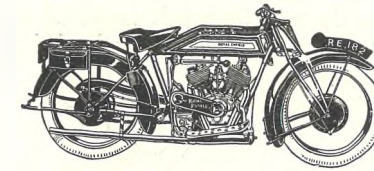
4.—P. Cranmore, B.S.A. and sidecar, last year's winner, starting from Plough Hotel, Cheltenham. He was No. 1.

5.—H. R. Davies, winner of the T.T. Senior Race, "conks" out on Bushcombe on a 498 H.R.D.

6.—H. S. Kershaw, 346 New Hudson, does a good climb on Bushcombe.

7.—W. L. Handley, 344 Rex Acme, winner of T.T. Junior and Light-Weight last year, at the Plough, Cheltenham, where he retired.

"Cheltenham Chronicle" Photos. Copies 1s. each, postage 2d. extra.



**YOU  
.. WE**

Can emulate that star climb of BUSH-COMBE——IF you ride the right machine.

Can supply it for CASH, DEFERRED TERMS, or PART EXCHANGE, whatever the make.

REPAIRS.

ACCESSORIES.

TYRES.

**A. WILLIAMS**

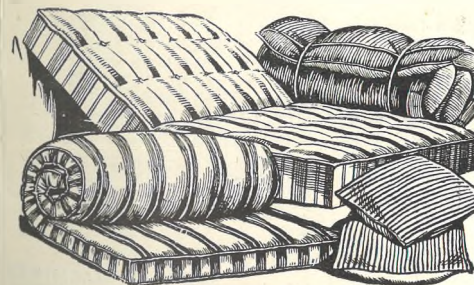
THE MOTOR CYCLE SERVICE DEPOT,

PORTLAND ST., CHELTENHAM. :: 35 WESTGATE ST., GLOUCESTER.

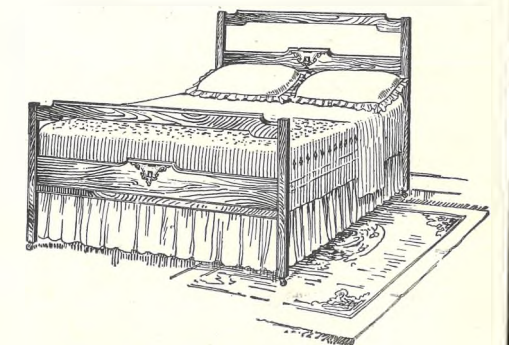
**BEDDING**  
Cleaned & Re-made

Our Remade Mattresses are in every respect equal to new. We have special Machinery for Extracting Dust, Teasing, Cleaning, and Re-making Bedding, and can do this work quickly and economically. May we call for YOUR Bedding.

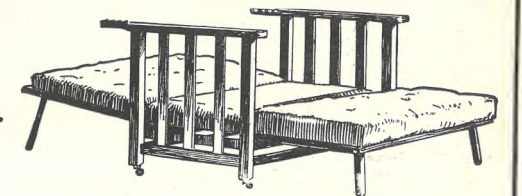
PRICE LIST WILL BE SENT FREE ON APPLICATION.



We offer Special Bargains in Wool Overlays, Feather Pillows, and Spring Mattresses.



**NEW STYLE BEDSTEAD.**  
Full Size in Dark Oak ...£4 10s.  
4ft. 6in. Oak Bedsteads from £2 10s.



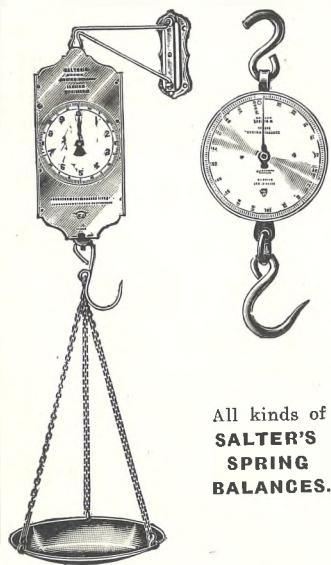
A Chair by day and a Bed by night,  
Frame polished as Dark Oak.  
39/6 to £4/10/0.

Cushions are Upholstered in a Corded Velveteen of Rich Brown Colour.

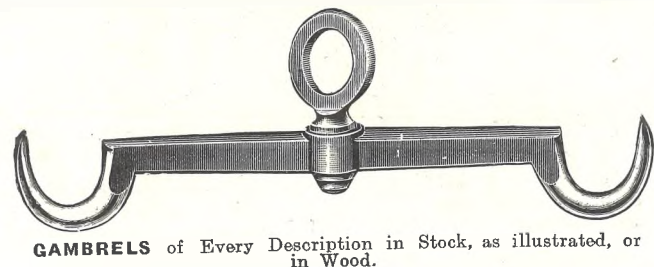
**Dicks & Sons Ltd.**  
172 & 173 HIGH STREET  
Cheltenham Spa  
TEL. 1007  
50 YEARS REPUTATION FOR VALUE.

# A New Store for Butchers, Grocers & Fishmongers Outfitting.

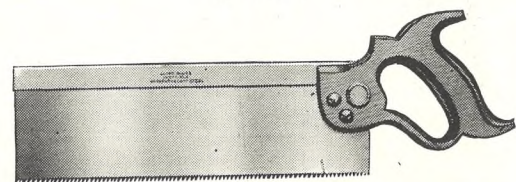
WILLIAMS & Co., The Cutlers, 19 Winchcomb Street, Cheltenham, beg to announce that in consequence of their increasing trade in these supplies, it has become necessary to Open A SPECIAL BRANCH at 24 ST. GEORGE'S ST. for these departments ONLY. :: Complete stocks of trade necessities are on view, and inspection is invited. :: A few sample lines illustrated below.



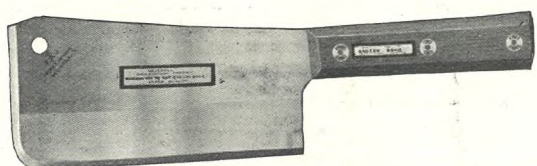
All kinds of **SALTER'S SPRING BALANCES.**



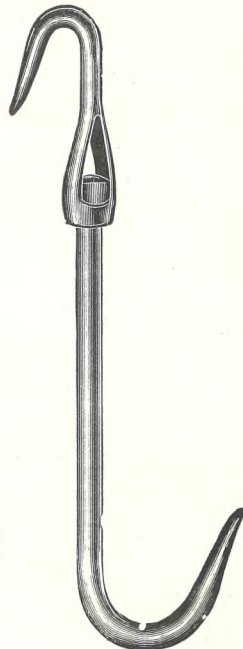
**GAMBRELS** of Every Description in Stock, as illustrated, or in Wood.



**SAWS** for Every Trade, All Guaranteed.



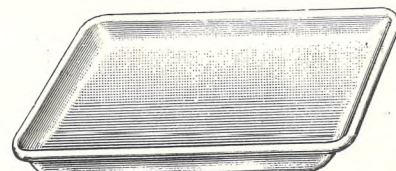
Agents for Spear and Jackson's "Neverfail" **CLEAVERS** and **CHOPPERS.**



All Kinds and Sizes of **HOOKS** in Stock. The "Puvirtin," as advertised.



**CHINA BUTTER STANDS**, Various Sizes; also many other requisites for the Dairy Trade.

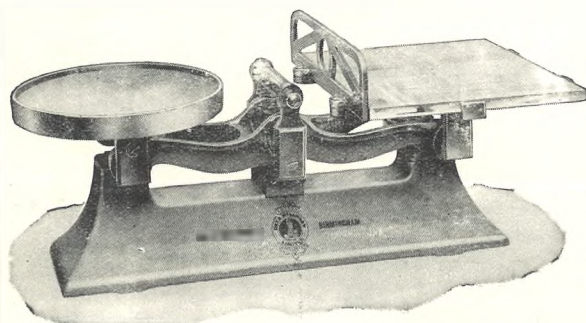


**TRAYS** of Every Description and Size in China or Enamel. Brawn Moulds, etc.

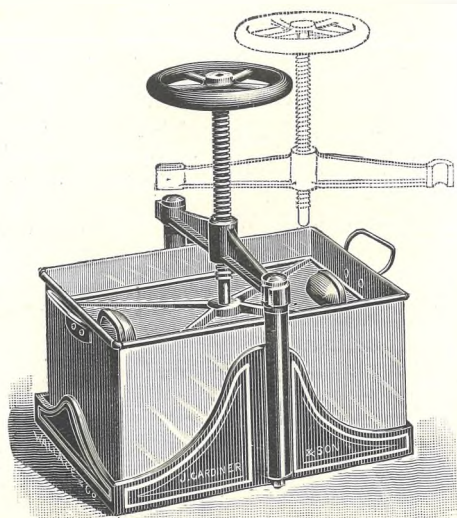
**WOODWARE.**

All Kinds of **Butchers' Blocks, Tables, etc., Butter Beaters, Knives, and All Woodware** for Dairy Use.

**Pork Pie Moulds** in Stock.



**SCALES, STEELYARDS,** etc. Special Showroom for these goods. Models for Every Trade. Automatic, etc. Special Lines Suitable for **Tobaccoists and Confectioners.**



Gardener's and Swift's **SAUSAGE MACHINES** and **FILLERS, BEEF & BRAWN PRESSES,** etc.



**PRICE TICKETS** and **MOTTOES** in All Wordings and Prices, for All Trades. Special Tickets for **Fruiterers.**

**SKEWERS** in All Sizes, Cane, Maple, or Metal. **BLOCK BRUSHES, TICKET PINS, SCRUBBERS, BROOMS, Etc.**

Don't Send Away and Buy from Lists, **CALL** and **SEE** the Article.

**WILLIAMS & Co.,** Butchers', Grocers' & Fishmongers' Outfitting Department, **24 St. George's St., Cheltenham.**

PRINTED AND PUBLISHED AS A GRATIS SUPPLEMENT BY THE CHEL TENHAM NEWSPAPER COMPANY, LTD.

# THE CHEL TENHAM CHRONICLE AND GLO'SHIRE GRAPHIC

With Which is Incorporated the "Cheltenham Looker-On,"  
**GRATIS SUPPLEMENT.** Saturday, February 27, 1926.

No. 1,313.

**CHEL TENHAM THEATRE AND OPERA HOUSE.** This Afternoon (2.30) and Evening (7.45)—"BEGINNER'S LUCK." **NEXT WEEK (Six Nights and Matinee)—"Lavender Ladies,"** A COMEDY IN THREE ACTS.

**THE PALACE,** High Street, CHELTENHAM.

10,000ft. Solus Picturization! Direct from one year's Run in New York:

**"THE IRON HORSE,"** Blazing the Trail of Love and Civilisation, with **George O'Brien, Madge Bellamy.** A Mighty Screen Epic of the building of a Trans-Continental Rail-Road. Screened at 2.15, 4.15, 6.15, 8.15. **Special Music and Effects by Douglas Cochrane and His Orchestra.**

**THE DAFFODIL,** Cheltenham's Premier Cinema.

Continuous Daily, 2.30 to 10.15. **MONDAY, MARCH 1st, and ALL THE WEEK,**

**Cecil B. De Mille** Presents **"THE GOLDEN BED."** A Lavish De Mille Triumph. **Special Novelty Intermissions** Daily by the Daffodil Grand Orchestra. **Musical Director: Mr. Frank Vicary.**

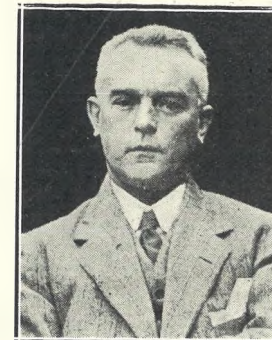
Advertise in the "Echo."

Established 1806. **Martin & Co., Limited.**

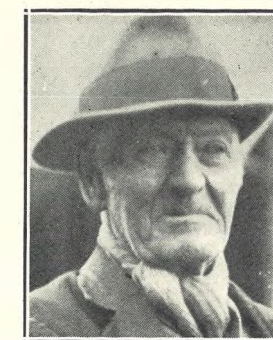
**The County Jewellers,** PEARL & DIAMOND MERCHANTS.

A Large Selection of Second-hand Silver and Old Sheffield Plate. We are purchasers of Antique Silver and Fine Quality Gems. **Best Prices Given.**

**LICENSED VALUERS.** Promenade, Cheltenham.



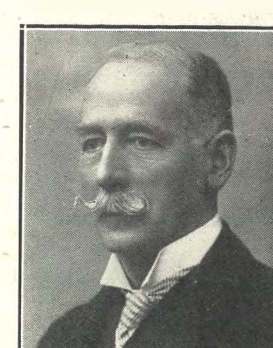
**MR. E. A. ADAMSON,** For 27 years Headmaster of Alderton School, who died on Friday, February 19th, aged 57 years. He took an active interest in all local affairs, and was greatly respected.



**MR. W. HOPKINS,** Of 28 Naunton-crescent, Cheltenham, who died on Tuesday last, February 23rd, aged 83 years. He was a bricklayer, and worked up to a few months ago. He was a member of the South Ward Conservative Committee.



**MR. ERNEST H. D. ADCOCK,** Of 195 High Street, Cheltenham, who died on February 22nd, aged 52 years. He was for 28 years in business as a shoemaker at the above address, and was a keen follower of Cheltenham football for many years. He leaves a widow, four sons, and one daughter.



**MR. GEO. NEVILLE WYATT, O.C.,** Son of the late Mr. G. Neville Wyatt, formerly of Lake House, Cheltenham, who died at Clifton on Tuesday, February 16th. He played cricket for Gloucestershire, Surrey, and Sussex. He retired from the Army in 1875.

**WINTER GARDEN,** CHELTENHAM.

Monday, Tuesday, Wednesday: **Kenneth Horton and Madge Bellamy** in **"On the Stroke of 3."** Thursday, Friday, Saturday: **"Mother,"** An Epic of Mother-Love and a Wonderful Avalanche. Roller Skating Daily in the Pavilion.

**COLISEUM THEATRE,** 6.40 and 8.40 Nightly.

**"THE REAL STUFF,"** An Up-to-Date Musical Revue.

**NORTH STREET PICTURE HOUSE.**

From 2.30 p.m. Continuous. Monday, Tuesday, Wednesday: **RICHARD TALMADGE** in **"Laughing at Danger."** Thursday, Friday, Saturday: **REGINALD DENNY** in **"California in Straight Ahead."**

**MAISON ANNETTE,** Kensington House, Promenade, Cheltenham.

**SPECIALISTS IN EXCLUSIVE CORSETS & LINGERIE.**

'Phone 1122.

For the Best **PIANOS, DALE, FORTY and Co., Ltd**



**FUNERAL OF MR. E. A. ADAMSON AT ALDERTON.**

The funeral took place on Tuesday last of the late Mr. Ernest Arthur Adamson. He had been Schoolmaster at Alderton for 27 years. A large crowd assembled to pay their last respects to a very popular and much respected friend.

- 1.—The service round the graveside.
- 2.—The family mourners, Mrs. Adamson and her five sons.
- 3.—Six old scholars who acted as bearers: Messrs. A. G. Gandler, E. C. Cook, S. Cook, F. J. Marshall, V. Cook, and F. Joyner.
- 4.—Friends following in procession.
- 5 and 6.—The school children who lined the Churchyard path.
- 7.—Mr. J. D. Tombs (Temporary Headmaster), with Miss Franklin and Miss Lane, two of the teachers at the school.
- 8.—Family mourners and others in the procession.

"Cheltenham Chronicle" Photos. Copies 1s. each. Postage 2d. extra.

**COAL.** Tel. 215.  
BATH ROAD  
**E. A. & W. J. MOORE,**  
COAL OFFICE,  
(Near St. Luke's Schools, Cheltenham). **COKE.**

**H. E. RANDALL, Ltd.,**  
6c The Promenade, CHELTENHAM,  
Are Now Showing the Latest Designs in  
**HIGH GRADE FOOTWEAR**  
FOR PRESENT WEAR.

THE SPORTING EVENT OF THE SEASON!  
**CHELTENHAM**  
**TOWN RACE BALL,**  
TOWN HALL,  
WEDNESDAY, MARCH 10th, 1926,  
9 p.m. to 2 a.m.  
AUGMENTED SUPER SIX BAND.  
TICKETS 5/6 (INCLUDING BUFFET).  
Mrs. E. H. Bissett (Hon. Sec.),  
Spa Bureau, Town Hall, Cheltenham  
(Phone 878).  
**NO TICKETS SOLD AT THE DOOR.**

**EASTER**  
WILL SOON BE HERE.  
We Specialise in the Renovation of any make of Bicycle, or can supply you with a New One. **Cash or Easy Terms.**  
AGENTS for **SUNBEAM, HUMBER, B.S.A., and CENTAUR CYCLES.**  
**J. Wheway and Co.,**  
CLARENCE STREET;  
3 SUFFOLK PARADE; and  
1 HEWLETT STREET, CHELTENHAM.  
Over 30 years' reputation for Value.



**THE CHELT SCHEME INQUIRY.**

- 1.—The Inspector from Ministry of Health, who conducted the Inquiry, Mr. G. H. Thiselton-Dyer, M.Inst.C.E., with the Mayor of Cheltenham, Councillor W. J. M. Dicks.
- 2.—Mr. H. Langley-Smith, solicitor, Gloucester, and Mr. Dymond, who opposed the Lavatory Scheme.
- 3.—Messrs. Poulton and Matthews.
- 4.—Mrs. Mann, on right, was an interested spectator.
- 5.—Dr. J. Howell, who upheld the Chelt Scheme.
- 6.—Rev. C. C. Petch, St. Luke's, who did ditto.
- 7.—The Opposition Party: From left, Miss Matthews, Mr. H. O. Box, Mrs. James, Mrs. Cook, Mr. Geo. Bradfield, Mrs. Burgo.



**THE CHELT SCHEME INQUIRY.**

Miss Gladys Cooper, the celebrated actress, who is visiting Cavenish House, the Fashion Centre of Cheltenham Spa and the West, on Monday next, March 1st, from 11 a.m. to 1 p.m.

Four Ratepayers going to the Public Inquiry held on Wednesday last. From left: Messrs. J. Pitcher, F. Sheppard, C. W. Pratley, and C. Moulder.—"Cheltenham Chronicle" Photo.



**ROUND THE CITY IN GLOUCESTER.**

- 1.—The Head Market Inspector chatting to Mr. J. W. Bayley, wine merchant.  
 2.—Three farmers from Tewkesbury district in the Market.  
 3.—Mr. Arthur Bourhier, with his Election Agent, off to the football match.  
 4.—A snap in Eastgate-street.  
 5.—Mr. Lacey (Cam) and Mr. Stanley Gullimore (Berkeley).  
 6.—Self-denial on the Cross.  
 7.—Mr. Sidney Chandler and Mr. E. A. Boyce (Tewkesbury).  
 8.—Off to the football match.  
 9.—Mr. Trewen (Eldersfield) and Mr. Frank Vines (Twigworth).  
 "Cheltenham Chronicle" Photos. Copies 1s. each, postage 2d. extra



**GLOUCESTERSHIRE RUGBY FOOTBALL PLAYERS AND FRIENDS ON BOARD THE WHITE STAR LINER "MAJESTIC."**

The Gloucestershire team met Hampshire in the semi-final of the Rugby County Championship, on Saturday, February 20th, at Southampton, when the latter won by 16pts. to 8pts. In the morning the Gloucestershire men were kindly conducted over the magnificent steamship "Majestic" by Mr. P. E. Gurry, J.P. (under x), the local manager of the White Star Line.



**"WHEN FAIRIES DANCE,"**  
 Pupils of Mrs. McLellan, who gave a pretty ballet, "When Fairies Dance," at Cheltenham Town Hall, at the Dance Tea in aid of the Loan Fund for Pate's Grammar School for Girls, on Saturday, February 13th.  
 "Cheltenham Chronicle" Photo. Copies 1s. 9d. each.

**LET MOUSSELLS MOVE YOU**

LONDON, LIVERPOOL, MANCHESTER, LEEDS, BIRMINGHAM, LEAMINGTON, CHELTENHAM, EXETER.

Estimates for Removals and Storing Free. 'PHONE 112.

**CHELTENHAM.** Offices: **AMBROSE STREET**

---

**THE HARD WEAR COTTON SHIRT**  
 at 8/11  
 or our Own Manufacture is still Unequaled.

**A. Beckingsale,**  
 111 HIGH STREET, CHELTENHAM.

**THE HOUSE FOR ANTIQUITIES.**  
 An interesting stock of genuine antique Jewellery, Sheffield Plate, China, Quaint Boxes, Etc., at low prices.  
**HARRY O. BOX,**  
 339 HIGH STREET, CHELTENHAM.  
 Nearly opposite Grammar School.  
 Established over 70 years.  
 Similar goods bought.

---

**CORSETS AND BELTS**  
 MADE, COPIED, CLEANED, AND REPAIRED.  
 Hours: 10 a.m. to 6 p.m. Saturdays, 1 p.m. or by appointment. 'PHONE 915.

**MISS FRUIN** (Late with Madam Annette)  
 23 Bath Parade, CHELTENHAM.

The Reputation  
 :: of ::  
**LANCE'S**

AS  
**"Specialists in Dress Fabrics"**

is fully maintained by their attractive offer  
 :: on ::

**MONDAY NEXT,**  
**MARCH 1st,**

When will be offered  
 :: a Large Stock of ::

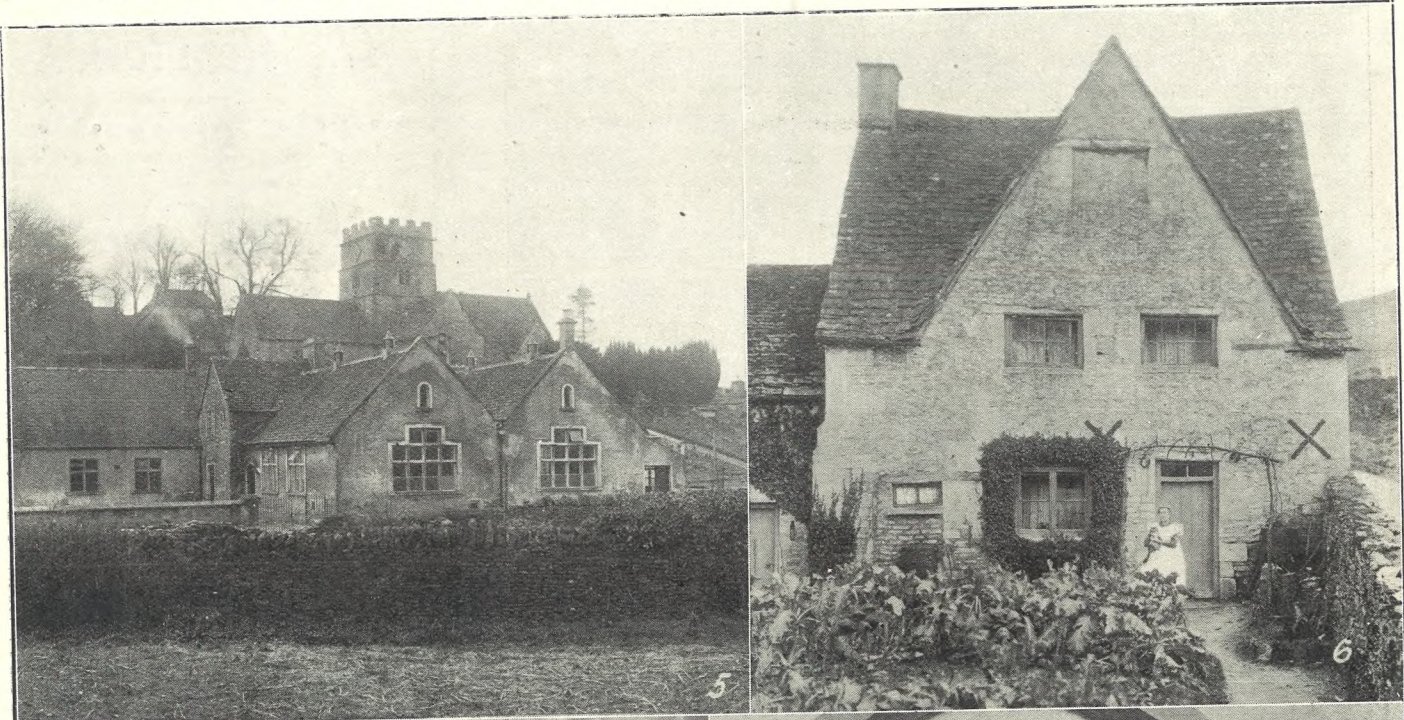
**Kamella CHECKS,**

IN A HUGE RANGE of SHADES.

"Kamella" is a most wonderful Woollen Fabric, suitable for Ladies' and Children's Wear. 40 inch wide.

Special Price, **2/11** per Yard.

OBTAINABLE ONLY AT—  
**John Lance & Co.,**  
 LIMITED,  
 Cheltenham's Shopping Centre



**PICTURESQUE GLOUCESTERSHIRE.—AVENING.**

One of the most interesting features of this picturesque village, situate between Nailsworth and Tetbury, and three miles from the latter is the ancient Norman Church. It is a cruciform building, with much of its Norman work existing and with stone groined roof to its chancel and under part of tower, the latter centrally situated.

5.—The School and Church, the latter situated on a steep slope.  
 6.—An ancient Cotswold Cottage on the Avening Court estate.  
 7.—The fine Norman Arch to North door of Church. It has handsome twisted columns, with most interesting carved capitals.  
 8.—The East end of Church showing groined roof under tower in foreground, and the groining to Chancel roof, with Norman columns.

"Cheltenham Chronicle" Photos. Copies 1s. 9d. each. Postage 2d. extra.



**BUSINESS MEN OF STROUD.**

Snap taken on Saturday last of well-known professional and business men in the trading life of Stroud.

1.—Mr. H. E. Trinder, china merchant, George-street.  
 2.—Mr. F. Hill, watchmaker, George-street.  
 3.—Mr. H. W. Holloway, head of the cloth factory of Holloway Bros., Ltd., Stroud.  
 4.—Mr. R. W. Freeman, hatter and hosier, Russell-street.  
 5.—Mr. J. W. Lewis, partner in the firm of Messrs. Lewis and Godfrey, drapers, King-street.  
 6.—Mr. Harry Warner, butcher, High-street.  
 7.—Mr. George Scriven, stock and share broker, of Stroud and Gloucester.  
 8.—Mr. W. J. Williams, a well-known resident.  
 9.—Mr. Bert Woodford, tobacconist, confectioner, and commission agent, Russell-street and Great Western-road.  
 10.—Mr. W. H. Collins, printer and stationer, High-street.  
 11.—Mr. Roche, manager of Palace Theatre, King-street.  
 12.—Mr. J. S. Mackney, gentleman's hosier, King-street.  
 13.—Mr. E. C. Peckham, photographer, Russell-street.

"Cheltenham Chronicle" Photos. Copies, unmounted 1s. each, mounted 1s. 6d. each, postage 2d. extra.



**CROSS-COUNTRY RUN IN CHELTHENHAM.**

The Cross-Country Run between teams from Dean Close School and Oriel College, Oxford, was held on Thursday, February 18th, over a course of four and a half miles in the Hatherley-Badgeworth district. Oriel College included two Oxford Blues in W. A. M. Edwards (an Old Decanian) and A. S. Walford, and these two finished 1st and 2nd respectively. Oriel won by 21 points to 34.

- 1.—The Dean Close team.
- 2 and 3.—Dean Close pupils watching the run.
- 4.—W. A. M. Edwards (Oriel) the first man home.
- 5.—A. L. Burrow Smith and A. S. Walford, both of Oriel, who were 3rd and 2nd.
- 6.—Interested in the start.

"Cheltenham Chronicle" Photos. Copies 1s. each. Postage 2d. extra.



**NATIONAL DEPOSIT FRIENDLY SOCIETY LUNCHEON AT CLOUGESTER.**

The 25th Anniversary Celebrations of the Gloucester Division of the above Society were held at the Raikes Memorial Hall, Gloucester, on Thursday, Feb. 18th. Guests at the Luncheon.

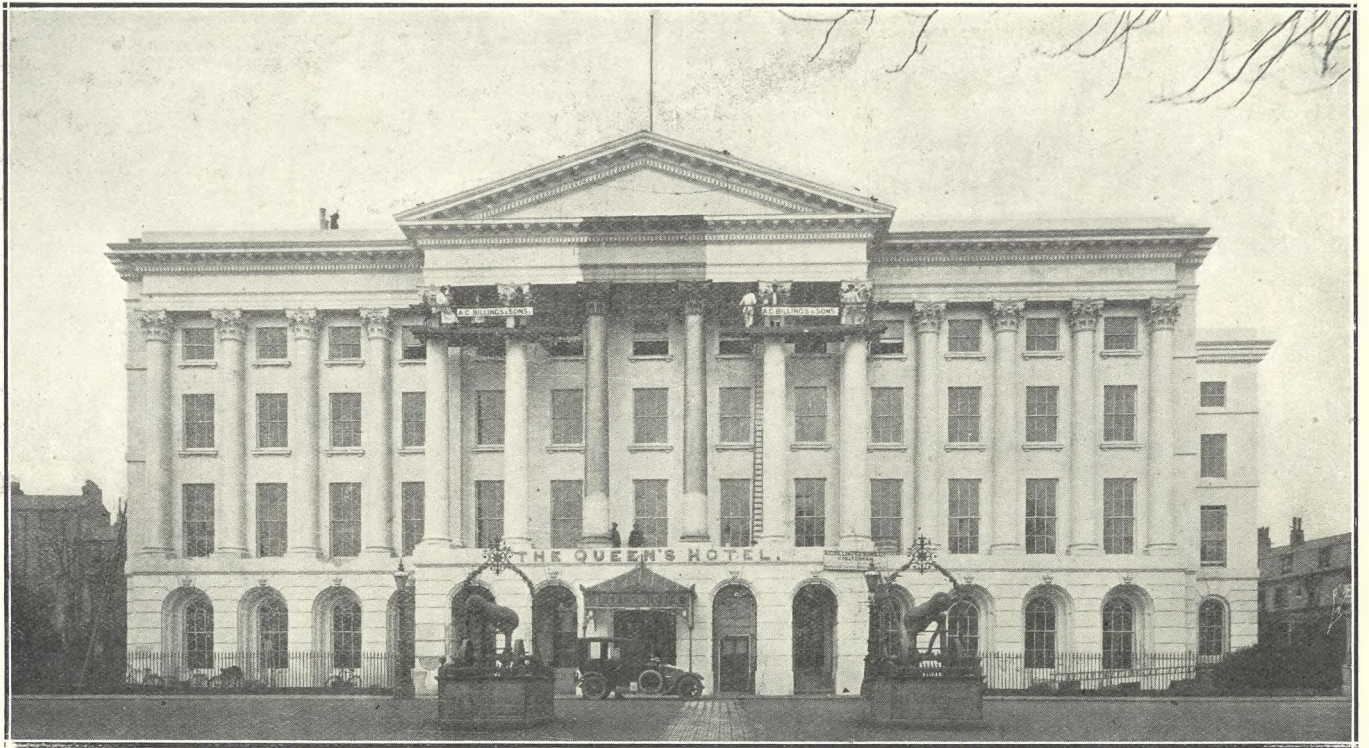
"Cheltenham Chronicle" Photo. Copies 1s., 1s. 9d., or 2s., according to size; Postage 2d. extra.



**GOTSWOLD COURSING CLUB OPEN MEETING AT SHERBORNE.**

- A very fine coursing meeting was held on Woeful Lake Farm, Sherborne, the residence of Mr. W. F. Ing, on the estate of Lord Sherborne, on Wednesday last. There was a large attendance, and the coursing was excellent.
- 1.—Watching the coursing.
  - 2.—Lord Sherborne's staff of eight keepers, who assisted as beaters. The head keeper controlled operations. Farmington keeper on right.
  - 3.—Mr. H. Groom, hon. secretary National Coursing Club, Capt. E. Fawcett, and Mrs. Poppy before a course.
  - 4.—Mr. F. C. Minoprio and Mrs. D. Woodcock.
  - 5.—Mr. M. J. Habgood, the hon. slipper.
  - 6.—Massaging Mr. T. J. Mason's Kingsland.
  - 7.—Major L. Lyne Dixon, the judge.
  - 8.—Cheltonians, Messrs. S. Sharpe, J. Pratley, C. Castle, and Gem.
  - 9.—Waiting for their turn.
  - 10.—Mr. W. F. Ing, on whose farm the meeting was held, and who did everything he could to make it a success.

"Cheltenham Chronicle" Photos. Copies 1s. each, postage 2d. extra.



### BRINGING THE QUEEN'S HOTEL UP-TO-DATE.

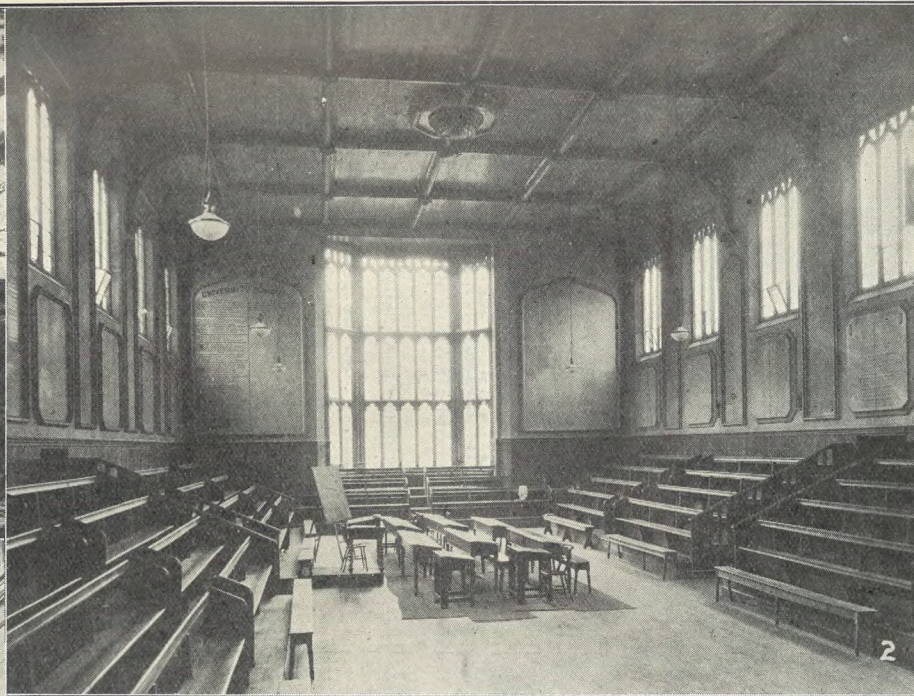
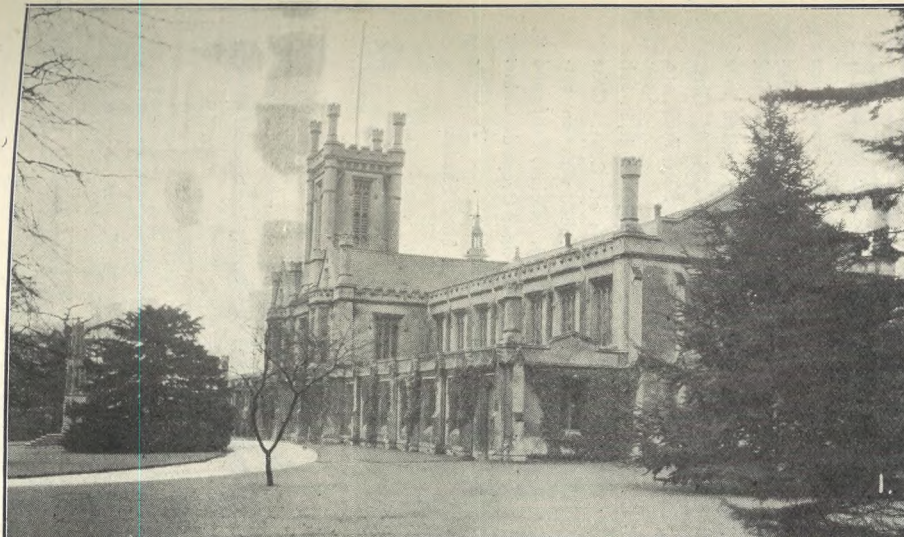
The above Photograph illustrates the painting of the outside of the Queen's Hotel, Cheltenham—almost the final phase in its complete re-decoration and fitting with every modern improvement ready for reception of visitors to the National Hunt Meeting. Messrs. A. C. Billings and Sons, Ltd., of Cheltenham, have carried out the work, which has been one of the biggest contracts of its kind ever undertaken in the district, under the supervision of Messrs. Healing and Overbury, Architects, Cheltenham.

Photo by Cheltenham Newspaper Co., Ltd.



The spacious Garage adjoining has also been re-organised throughout and brought up-to-date by H. E. Steel (Himself), the oldest established Automobile Engineer in the West of England, who is now trading entirely on his own account. Only address: Queen's Garage. Everything has been installed to meet the requirements of the present-day Motorist: Repair Shops (complete with modern machinery), Petrol and Oil Installations, ample lock-up and wash-down accommodation; also Showrooms and Offices. H. E. Steel and his Staff are delighted to render prompt and efficient service to all clients.





**CHELLENHAM COLLEGE.**

Illustrations of Article in Main Sheet of the "Chronicle" on "Gloucestershire Schools and Scholars."

- 1.—Cheltenham College, fronting Bath Road, from the S.W.
- 2.—The Big Classical, showing the new oak seating all round. This was the original College building, in which four or five forms were taught. Now every form has a separate class-room.
- 3.—The interior of College Chapel, showing the fine reredos, which was erected as a memorial of scholars who fell in the South African War.
- 4.—The College Buildings, from the Playing Field, showing in centre of foreground the old Chapel (now Library) and the new Chapel on extreme right.

"Cheltenham Chronicle" Photos. Copies 1s. 9d. each.

# Springtime



No. 1.

No. 2.

## TWO-PIECE SUITS THE VOGUE.

**D**ISTINCTION, Beauty, Comfort! What man, this Spring, would deny this trinity to the Ladies of his household if he knew he could afford to provide it?

And what lady, always appreciative of fine values, would be satisfied with less if she knew that a Vanderplank Two-Piece Tailored Suit would cost no more than others offering less of the details ladies love most?

Vanderplank Models are an expression of the very newest Modes for the Spring, tailored from the finest of materials, produced at prices from 3 Gns. There is a Model for every lady of every age in every walk of life.

### MODELS SKETCHED.

No. 1.—A perfectly cut Two-Piece Suit, made in Black Repp with Beige Facings and fancy trimmings, Coat and Frock with Flare particularly suited to a full figure. **PRICE, 8½ Gns.** Can be had in shades of Blue, Puce, etc.

No. 2.—A smart Two-Piece Suit, in self striped Repp, Godettes on Coat. Coat lined throughout and faced with contrasting Crepe de Chine. Collar, Cuffs and Panels of Frock also lined Crepe de Chine. It is a perfect Model at . . . **7½ Gns.** Colours—All New Shades.

IT COSTS LESS TO DRESS AT—

# VANDERPLANK

381, HIGH STREET HARRODS

## FASHIONS AND FURS

381 HIGH STREET,

CHELTENHAM SPA.