

THE CHELTENHAM CHRONICLE AND GLO' SHIRE GRAPHIC

With Which is Incorporated the "Cheltenham Looker-On."
GRATIS SUPPLEMENT. Saturday, November 7, 1925.

No. 1,297.

CHELTENHAM THEATRE AND OPERA HOUSE.

This Afternoon (2.30) & Evening (7.45) "THE STREET SINGER."
NEXT WEEK: "The Sport of Kings."

A RACING COMEDY. BY IAN HAY.

THE PALACE,

High Street, CHELTENHAM.
Director: Shakspeare Shenton.

Monday to Wednesday:
ALMA RUBENS

In
"SHE WOLVES."

From Red Sea to Blue Nile."
Brilliant Record of Rosita Forbes.
"Felix the Greater Cat."

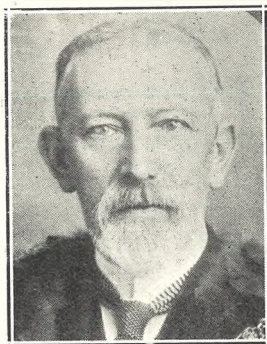
By Pat Sullivan.
Lloyd Hamilton Comedy—
"Half a Hero."

Thursday to Saturday—
Antonio Moreno, Patsy Ruth
Miller, in

"Her Husband's Secret."

Van Bibber Comedy
The Guest of Honour.

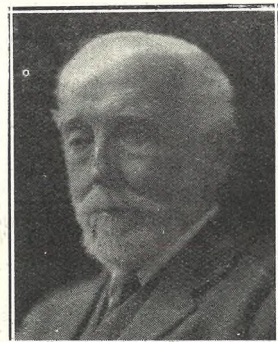
At St. John in Dynamite Doggie.



ALDERMAN AND MRS. A. BAKER,

Of The Gables, Tewkesbury, who celebrated their Golden Wedding on Wednesday last, having been married on November 4th, 1875, at Upton-on-Severn. They were the recipients of numerous presents, particulars of which will be found in main sheet of "Chronicle."

Ald. Baker has been six times Mayor of Tewkesbury.



MR. AND MRS. WILLIAM PRIDAY.

Of Huoclecote, nr. Gloucester, to whom presentations of enlarged photographs of themselves are being presented on Monday next at the Gloucester Root, Fruit, and Grain Society's Show. Mr. Priday has been chairman of the Society for 41 years, and has been connected with it for 62 years.

Photos by Mr. R. Hall, Clarence-street, Gloucester.

WINTER GARDEN, CHELTENHAM.

Monday, Tuesday, Wednesday:
GLORIA SWANSON

In

"HER LOVE STORY,"

A Romantic Royal Love Story.
New and Complete "Felix the
Cat." Special Cartoon.

Thursday, Friday, and Saturday:
TOM MIX and TONY

In

"The Rainbow Trail."

Zane Grey's Thrilling Story.

COLISEUM THEATRE.

6.40 and 8.40.

"WET AND DRY,"

The Great Comedy Revue.

NORTH STREET PICTURE HOUSE.

2.30 to 10.30 Continuous.

Monday, Tuesday, Wednesday:
"The Trail Rider,"

Featuring BUCK JONES.

Thursday, Friday, and Saturday:

"The Air Hawk,"

Featuring AL. WILSON
(The Dare-Devil Aviator) and
VIRGINIA BROWN FAIRE.

MAISON

ANNETTE,

Kensington House,

Promenade,

Cheltenham,

SPECIALISTS IN
EXCLUSIVE

CORSETS &
LINGERIE.

'Phone 1122.

Established 1806.
Martin & Co.,
Limited.

The County Jewellers,
PEARL & DIAMOND MERCHANTS.

A Large Selection of Second-hand
Silver and Old Sheffield Plate.
We are purchasers of Antique
Silver and Fine Quality Gems.
Best Prices Given.
LICENSED VALUERS.

Promenade, Cheltenham.

For the
Best

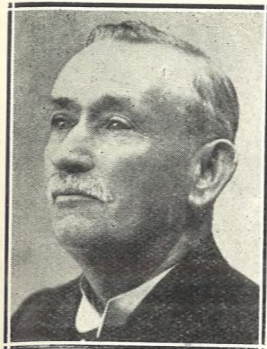
PIANOS, DALE, FORTY and CO. LTD



MUNICIPAL ELECTIONS IN CHELTENHAM AND GLOUCESTER.

Only two contests took place in Cheltenham—in the South and East Wards—but in Gloucester, the Labour Party contested every Ward, winning only one, Mr. F. Burlton (Labour) defeating Mr. James Blackwell (Con.) in the Southend Ward.

- 1.—Mr. Leigh James (Con.), who retained his seat in the South Ward, Cheltenham, driving, with Mr. Wm. Hopkins (aged 83) and Mr. Taylor (at back) and Mr. John Beamish (in front).
- 2.—Mr. D. L. Lipson (x) with workers in South Ward, Cheltenham.
- 3.—Mr. James Blackwell (Southend), Gloucester, with his two daughters.
- 4.—Mr. Frank Burlton (Southend), Gloucester, canvassing two young ladies. He was the only successful Labour candidate.
- 5.—Mr. T. Heatt (Tuffley), Gloucester, with his wife and daughter (Labour).
- 6.—Taking voters to Archdeacon Schools. Mrs. Bouchier in car.
- 7.—Mr. W. H. Madge (Con.) Kingsholm, returned.
- 8.—Messrs. S. J. Gillett (Con.), Barton, Gloucester, N. Prince and Hyett.
- 9.—Messrs. S. H. Pinnell (Ward Sec.) and W. S. Carver (South), Gloucester, the unsuccessful Labour candidate.
- 10.—Mrs. Julia Siveter (x), Tuffley, with supporters (Con.).
- 11.—Mr. J. W. Embling (x, Lib.), West Gloucester, with supporters.



MR. DENIS DRISCOLL, Of 64 Marle Hill Parade, Cheltenham, who has just completed fifty years' service with Messrs. C. Bailey and Son, Ambrose Street. In celebration of the event Mr. J. F. Bailey entertained the staff and their wives to dinner, and presented a handsome arm chair to Mr. Driscoll.



MR. ROBERT EVANS, Of Tetbury-street, Minchinhampton, who collapsed and died while playing football on Saturday last for Minchinhampton against Brimscombe. He was 19 years of age, and was a baker in the employ of Stroud Co-operative Society.



MR. M. G. MATTY, Of 79 Rycroft-street, Gloucester, who retired on October 31st after 47 years' service as telegraphist with the Midland Railway Co., 42 of which were at the Gloucester office.

AUTUMN UNDERWEAR

MEN'S VESTS, PANTS, AND COMBINATIONS, In WOOL and WOOL and COTTON. WOOL JACKETS, PULLOVERS, AND WAISTCOATS. IN LARGE VARIETY.

A. BECKINGSALE, 111 High St., Cheltenham

LET MOUSELLS MOVE YOU



'PHONE 112. Estimates for Removals and Storing Free. **CHELTENHAM.** Offices: **AMBROSE STREET.**



MR. AND MRS. SILAS KERLEY, Of 31 Sidney-street, Gloucester, who celebrated their golden wedding on November 2nd. Mr. Kerley has been an employee of the Gloucester Co-operative Society for the past 45 years, and is still working.



MR. AND MRS. T. CHAMBERLAIN, Of Yew Tree Cottage, Bafford, Charlton Kings, who celebrated their golden wedding yesterday, having been married in Warwickshire on November 6th, 1875. Mr. Chamberlain, aged 70, is a Fairford man, and his wife, who is 73, came from Bourton-on-the-Water. They have lived in Cheltenham about 20 years, and have five sons and three daughters living, and twelve grandchildren.

LANCE'S THE GREAT SILK HOUSE.

Famous for over Half of a Century.

On **THURSDAY NEXT,** NOVEMBER 12th, **JOHN LANCE & Co.** will offer a stock of

£5,000 worth of **BEAUTIFUL SILKS**

at Pre-Budget Prices **For One Week Only!**

- Plain and Fancy Crepe de C'ene 4/-, 5/- yd., 6/- yd., and 7/- yd.
- Black Duchess Mousseline, 36ins. wide, 4/- yd.
- Japanese Silk, 50 shades, 1/10½ yd.
- Schappe Crepe for Lingerie, wide width, 3/- yd. All colours.
- French Ottoman, in Black only, 36ins. wide, 7/- yd.
- Heavy weight Shantung Silk, 33ins. wide, 2/6 yd.
- Silk Stockinette, 54ins. wide, all colours, 5/- yd.
- Crepe Negligee for Lingerie, 5/- yd. 10 shades.
- Black Charmont, 38ins. wide, 7/- yd.

The above items are only a few of the many Special Lines which we shall offer on **THURSDAY NEXT,** NOV. 12th, and an Early Visit is advisable.

John Lance & Co., LIMITED, CHELTENHAM SPA.

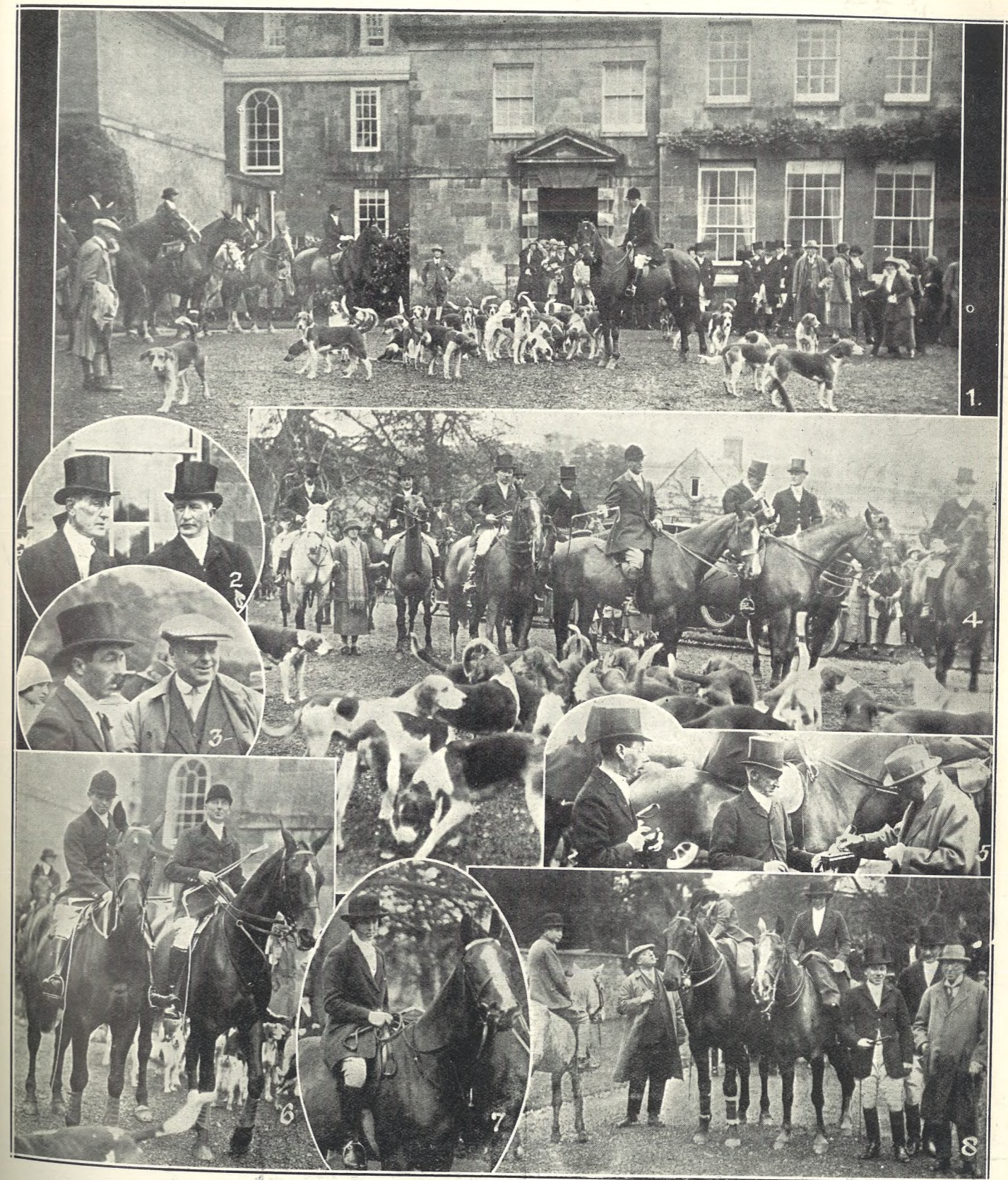


COMMEMORATION DAY AT DEAN CLOSE SCHOOL.

The Annual "Commemoration Day" at Dean Close in honour of Old Decanians who fell in the Great War was held on Saturday last, October 31st, the Dean of Hereford, a former Headmaster of Cheltenham College, preaching a special sermon.

- 1.—Mr. P. Bolton, Headmaster, coming out of Chapel, followed by Dean Waterfield (left), Canon Wilson (right), Rev. F. J. Horsefield (left), and Rev. D. H. Bodley (right).
- 2 and 4.—Members of the Choir.
- 3 and 5.—The O.T.C. of the School.
- 6.—O.T.C. marching to Chapel.
- 7.—Three ladies in the congregation.
- 8.—The Guard of Honour carrying out the Roll of Honour to be read by Mr. Ellam.
- 9.—Awaiting the arrival of the Clergy.
- 10.—Some Old Boys present.

"Cheltenham Chronicle" Photos. Copies 1s. and 1s. 9d. according to size. Postage 2d. extra.



OPENING MEET OF THE COTSWOLD HOUNDS.

Tuesday last was the opening day of the season of this popular pack, and the meet at the Master's new residence, Sandywell Park, was a brilliant one. Capt. T. E. and Mrs. Colville dispensed liberal hospitality to all comers. The day's sport was excellent, and augurs well for a very promising season.

- 1.—The pack at Sandywell Park.
- 2.—Col. Tarte and Mr. Arthur Mitchell.
- 3.—Major Sopper and Mr. H. E. Owen.
- 4.—A number of members in the drive.
- 5.—Mr. Peel (hon. secretary) in centre collecting for Earl Haig's fund; Mr. Harenc (left), and Mr. A. Holman (right).
- 6.—The Master (right) and the huntsmen moving off.
- 7.—Mrs. Lloyd.
- 8.—(From left): Master Holman, Mr. Owen, Miss Budd, Mrs. Holman, Mr. Preston Jones, Mr. Holman and Mr. Alfred Holman.

"Cheltenham Chronicle" Photos. Copies 1s. or 9d. each, according to size. Postage 2d. extra.



CHELTENHAM COLLEGE v. CLIFTON COLLEGE.

This annual Rugby football match was played at Cheltenham on Saturday last, the Cliftonians winning by 10 points to nil.

1 and 2.—Collegian spectators.
 3.—A good tackle by a Cheltonian.
 4.—Clifton scores a try.
 5.—Cheltenham team (from left): J. P. W. Reeves, C. C. L. Brown, J. B. Podlashuk, H. D. Griffith, G. H. T. Billson, N. J. T. Hogg, C. C. Tanner, G. G. Maby, W. R. Meathrel, D. H. E. H. W. Sharp, R. P. Edwards, W. Martin, J. A. M. Rice Evans (capt.), I. L. McCowen.

"Cheltenham Chronicle" Photos. Copies 1s. each.



CHELTENHAM v. GLOUCESTER AT RUGBY FOOTBALL.

A record "gate" watched the match last Saturday between these old rivals, Gloucester eventually winning a good game by 19 points to 5. The weather kept dry, but the light was very bad.

1.—A Gloucester player passes to Hopcroft on left as Hart tackles him.
 2.—Three Gloucesterian enthusiasts.
 3.—Mr. A. H. Margrett (Gloucester) with Ben Daunter, the old Cheltenham full-back.
 4.—A line-out.
 5.—Part of the record crowd on the 1s. side.

"Cheltenham Chronicle" Photos. Copies 1s. each. Postage 2d. extra.



PEDIGREE RED POLL CATTLE SALE AT SEVEN SPRINGS.

Messrs. John Thornton and Co., of London, conducted a sale of Capt. Richardson's fine herd of Red Poll Cattle at Seven Springs House on October 28th.

1.—Round the sale ring.
 2.—Seven Springs Rosemary, which was sold for 60 gns.
 3.—Harefield Clinker sold for 100gns.
 4.—Mr. Clark (secretary of Red Poll Society) and Mr. Matthews, auctioneer (on right).
 5.—Interested in the sale. Capt. Richardson (x).

"Cheltenham Chronicle" Photos. Copies 1s. each.



OPENING MEET OF ARLE COURT HARRIERS.

The opening meet of Mr. Walter Unwin's pack was held at the Kennels on Friday, October 30th, where he dispensed hospitality to a large number of followers. It was a brilliant morning.

1.—Some of the foot-folk present.
 2.—A farmer on his nag jogging to the meet.
 3.—In centre are Mrs. Herbert and Mrs. Bower, with two other ladies watching the draw.
 4.—Mr. W. N. Unwin (left), Hon. Ursula Bathurst (in centre), and two ladies at Heyden.
 5.—Mr. Pullen, jr.
 6.—Mr. Hewinson.
 7.—Capt. Gardner and Capt. Balfour.

"Cheltenham Chronicle" Photos. Copies 1s. each. Postage 2d. extra.



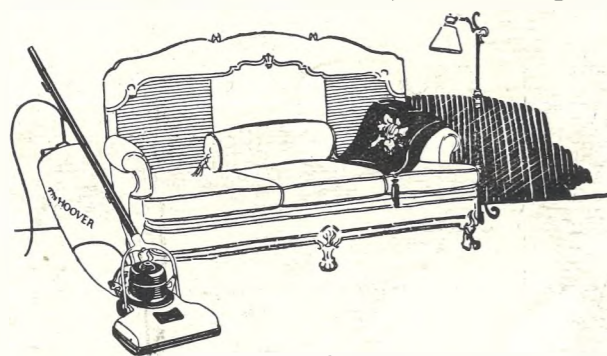
LOCAL SUCCESS AT THE LONDON DAIRY SHOW, 1925.
 Penhurst Hyacinth, No. 30384, British Friesian Cow, owned and exhibited by Mr. F. W. Palmer, of Benthams, nr. Cheltenham, gained the following awards:—Commended on inspection, commended and certificate of merit in milking trials, the Society's prize of £15 for giving over 65lbs. of milk in 24 hours. In 1923, this cow also gained first prize at Kent County Show, 2nd at Surrey County Show, and a 3rd at Monmouth this year.

The HOOVER

It BEATS . . . as it Sweeps . . . as it Cleans

The Complete Cleaner at Last!

Your grandmother swept her carpets with a dusty broom; beat them with a stick. Then the vacuum cleaner arrived, cleaning dustlessly—but, alas, only cleaning the surface, unable to remove deeply trodden-in, embedded dirt. And now comes the Complete Cleaner, the electric Hoover Suction Sweeper, uniting the thoroughness of old-fashioned methods to the dustlessness of the new. For the Hoover beats carpets; and sweeps electrically; and vacuum cleans—in one easy, dustless operation.



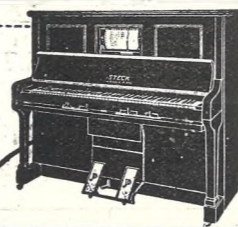
Authorised Dealer
SHIRER & HADDON, Ltd.,
 18-30 Clarence Street,
 CHELTENHAM.

REAL HARRIS TWEED.
 THE IDEAL CLOTH FOR
PLUS-FOUR SUITS.
 TAILORED IN SCOTLAND BY
 MESSRS. DORWARD, LTD.
 THESE SUITS ARE IN STOCK READY
 FOR WEAR.
 ALSO A DELIGHTFUL RANGE OF
 PATTERNS.
 PRICE 5½ GUINEAS.
Raymond James,
 Specialist in Men's Wear,
 78 WINCHCOMBE STREET,
 CHELTENHAM.
 Phone 1048.

Regent Wool Stores,
 2 REGENT STREET.

KNITTING WOOL, from 3s. 11½d. lb.
 ARTIFICIAL SILK for JUMPERS, from
 1s. 9d. Hank.
 GOOD QUALITY VEST WOOL, 7s. 6d. lb.
 TRANSFERS, EMBROIDERED SILKS
 BEADS, etc.
 We Stock "Hosezene," "Mene," and Southall's
 Specialities for Ladies.

TWO DOORS FROM HIGH STREET.



The Piano for You!

The 'Pianola' Piano allows you all the delights of music and the supreme joys of actual playing. All the exquisite musical effects that the sensitive, highly trained fingers of the pianist can produce—your fingers can control through

The STECK PIANOLA PIANO

The introduction of the 'Pianola' mechanism in no way affects the tone quality of the piano; whether played by roll or by hand as an ordinary piano, the beautiful, rich singing tone of the famous Steck Piano is always evident.

Ask for all particulars and details of our special easy terms of payment. Your present instrument will be accepted in part payment.

SOLE AGENTS:
Crichton's,
 The Piano House,
 394 HIGH ST., CHELTENHAM.
 Phone 374.

THE CHELTENHAM CHRONICLE AND GLOUCESTERSHIRE GRAPHIC

With Which is Incorporated the "Cheltenham Looker-On."
GRATIS SUPPLEMENT. Saturday, November 14, 1925.

No. 1,298.

CHELTENHAM THEATRE AND OPERA HOUSE. This Afternoon (2.30) & Evening (7.45) "THE SPORT OF KINGS." NEXT WEEK: Cheltenham Amateur Operatic Society in "MERRIE ENGLAND."

THE PALACE.
 High Street, CHELTENHAM.
 Director: Shakspeare Shenton.

Continuous 2.15 to 10.15.
 Big Sure-Fire 10,000 feet Solus Picturisation!
 Bessie Love, Lewis Stone, Wallace Beery, Lloyd Hughes, In
"THE LOST WORLD,"
 From the Novel by Sir Arthur Conan Doyle.
 Don't miss the Great Dinosaurs, Brontosaurus, and the strangest monsters of all ages.

THE DAFFODIL,
 Suffolk Parade, Cheltenham.
 Cheltenham's Premier Cinema.

Continuous Performance Daily, 2.30 to 10.15.
FOR THE WHOLE WEEK, Commencing Monday, Nov. 16th,
 H. de Vere Staepoole's Famous Story of the West Indies,
"SATAN'S SISTER,"
 Starring England's Sweetheart, BETTY BALFOUR.
 It's an All-English Photoplay, produced, of course, in the West Indies.
 The Daffodil Grand Orchestra at All Performances.
 Musical Director: Mr. Frank Vicary.

Established 1806.
Martin & Co.,
 Limited.
 The County Jewellers,
 PEARL & DIAMOND MERCHANTS.

A Large Selection of Second-hand Silver and Old Sheffield Plate. We are purchasers of Antique Silver and Fine Quality Gems. Best Prices Given.
LICENSED VALUERS.

Promenade, Cheltenham.



The New Mayor and Sheriff of Gloucester.
 The newly-elected Mayor and City High Sheriff of Gloucester leaving the Guildhall, immediately after their appointment, on the way to the Shire Hall to open the Root, Fruit, and Grain Show. Councillor S. J. Gillett (Deputy Mayor), Mr. William Jones, of Caplow, Tuffley, the new Mayor, Rev. M. C. Perfit (Mayor's Chaplain), and Councillor Wm. John Bell (City High Sheriff).
 "Cheltenham Chronicle" Photos. Copies 1s. each, postage 2d. extra.

WINTER GARDEN,
 CHELTENHAM.

Monday, Tuesday & Wednesday
THOMAS MEIGHAN and **EILEEN PERCY** in
"Tongues of Flames,"
 The story of an innocent man sent to jail.
 Thursday, Friday & Saturday
 Chas. Ray, Wallace Beery, and Jacqueline Logan in
"The Agony of Fear."
BETTY COMPSON in
"The Garden of Weeds."

COLISEUM THEATRE.
 6.40 and 8.40.

"RED HOT,"
 The Successful Comedy Revue.

NORTH STREET PICTURE HOUSE
 Continuous 2.30 to 10.30.

Monday, Tuesday, Wednesday:
 Fred Thomson & "Silver King," the Wonder Horse, in
"The Dangerous Coward."
 Thursday, Friday, and Saturday:
"Reckless Speed,"
 Featuring Frank Merrill, The New Athletic Star.

Send the "CHRONICLE and GRAPHIC" to Your Friends Every Week.

Telephone 1080.

W. Scott Cooper,
 Goldsmith and Silversmith,
 Diamond Merchant, Jeweller,
 The Promenade, Cheltenham.
 LICENSED VALUER.

For the Best **PIANOS, DALE, FORTY and Co. Ltd.**



1.—Queen's Fool and Folly (R. Dutton and Miss Marjory Silk).
 2.—The May Queen (Miss Ella Cope).
 3.—The Four Men of Windsor (W. G. Hosey, W. T. Pates, Lyn Rainger, F. E. Hughes).
 4.—Simkins (W. L. Johnstone).
 5.—Long Tom and Big Ben (Howell Davies and W. James).



1.—Wilkins (Tom Morgan).
 2.—"Jill-All-Alone" (Miss Vera Growse).
 3.—Bessie Throckmorton (Miss Violet Leach).
 4.—Queen Elizabeth (Miss Enid Rhodes).
 5.—Sir Walter Raleigh (E. Jones).
 6.—Earl of Essex (F. Pates).

"MERRIE ENGLAND" AT THE CHELTHENHAM OPERA HOUSE.

The whole of next week, each evening at 7.45 and matinee on Saturday at 2.30, the Cheltenham Amateur Operatic Society are giving a series of performances of the comic opera "Merrie England," by Edward German and Basil Hood. It is the first time this opera has been staged in Cheltenham. It has been admirably cast and most thoroughly rehearsed, and promises to be a great success. Seats should now be booked at Messrs. Dale, Forty, and Co., Ltd., Promenade.

"Cheltenham Chronicle" Photos. Copies 1s. each, or 6d. mounted

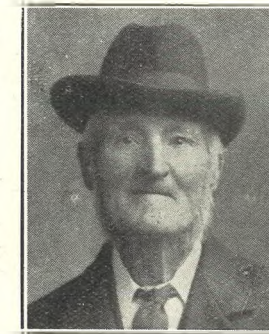


THE TWO MINUTES SILENCE IN CHELTHENHAM.

Some of the participants of the service on Armistice Day at Cheltenham War Memorial.
 1.—A section of the crowd.
 2.—Red Cross Nurses.
 3.—Ex-Service men, under Colonel Pearson (in bowler hat).



THE NEW MAYORESS OF GLOUCESTER.
 Mrs. W. Jones, of Caplow, Tuffrey, leaving the Guildhall, Gloucester, on Monday last, after the election of her husband as Mayor. Her son and daughter (on right) are behind.



MR. WILLIAM BENNETT,
 Of 50 Sun-street, Cheltenham, who has just celebrated his 80th birthday. He is grandfather to 21 and great grandfather to 12. He is still very active, and works at hedging and ditching. He started work at eight years of age from 6 a.m. to 6 p.m. for 2s. a week. His wife died Sept. 17, 1925, aged 77.

**BIRDS, ANIMALS, HORNS,
 PRESERVED AND MOUNTED IN BEST
 STYLE.**

Ogden and Scotford,

42 WINGCOMBE STREET, CHELTHENHAM.

LANCE'S
 : OFFER :
**HIGH-GRADE
 FURS**

AT
**EXCEPTIONALLY
 LOW PRICES.**



Natural Mongolian FOX TIE. Soft, silky skins, lined good quality Silk.

SPECIAL PRICE . . . 42/-.

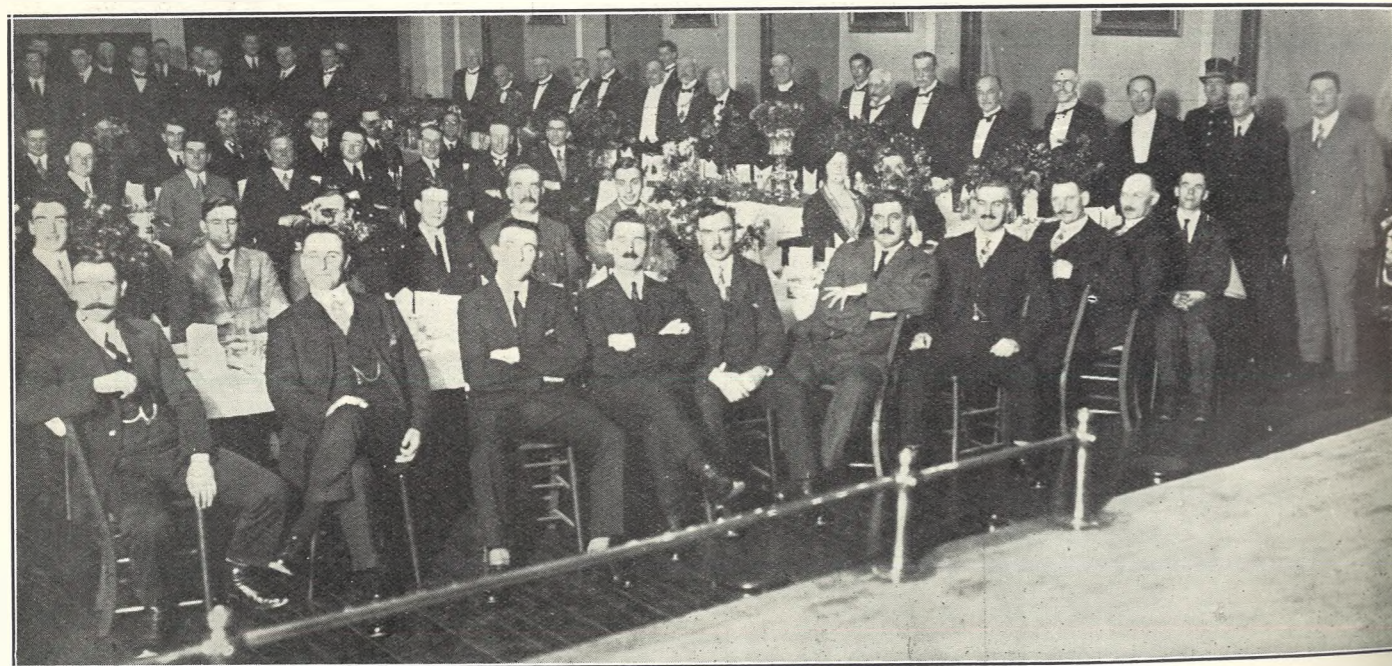
This style may also be had in Blue Wolf. Large, silky Skins, 52/6.

**John Lance & Co.,
 LIMITED,
 CHELTHENHAM'S
 SHOPPING CENTRE.**



MAYOR-CHOOSING DAY AT GLOUCESTER, NOVEMBER 9th.

From left: Rev. Hensman, ex-Mayor's Chaplain, Councillor W. H. Madge (retiring Sheriff), Councillor Wm. John Bell (new High Sheriff), Mr. Wm. Jones (new Mayor), the Town Clerk (Mr. G. Sheffield Blakeway), Mr. F. W. Duart Smith (retiring Mayor).



Gloucester City Police Entertained by the Ex-Mayor and Ex-Sheriff, November 6th.

DRESSING GOWNS,
25s. to 63s.
WOOL JACKETS,
7s. 6d. to 25s.
FANCY PULLOVERS
IN VARIETY.
LINED GLOVES. SILK SCARVES.

A. Beckingsale,
111 HIGH STREET, CHELTENHAM.

LET MOUSSELLS MOVE YOU



PHONE 112.
Estimates for Removals and Storing Free.
CHELTENHAM. Office: **AMBROSE STREET.**

"MR. VENTRIS-FIELD has numerous patients to consult him FROM ALL PARTS OF THE KINGDOM. London's most eminent Physician recently sent his daughter to him for treatment."

THERE IS A REASON.
A thorough scientific training, medical, surgical, and pharmaceutical, and 30 years practical experience, has given him an unique position in his profession.

He is recognised by those qualified to know. **THE CONSULTANT** on all matters appertaining to Diseases and Deformities of the Foot and Facial Disfigurements.

SURGERY: 6 Rodney Place, Cheltenham. Telephone 1266.



ARMISTICE SUNDAY IN CHELTENHAM.

In accordance with a custom now established in Cheltenham, past and present members of organisations connected with the Military forces assembled outside the Queen's Hotel on Sunday last, November 8th, and marched in procession to the Parish Church, where a Service of Remembrance was held.

- 1.—Ex-Service Men.
 - 2.—Some of the 2/5th Gloucesters.
 - 3.—St. John Ambulance and Officers.
 - 4.—Some old 1/5th.
 - 5.—More ex-Service men.
 - 6.—Veterans.
 - 7.—A few of the present 1/5th Gloucesters.
- "Cheltenham Chronicle" Photos. Copies 1s. each. Postage 2d. extra.

AT THE
Shamrock Tea Rooms,
31 Promenade, CHELTENHAM.

You may be sure of getting
EXCELLENT COFFEE,
Served with Cream.
ATTRACTIVE LIGHT LUNCHEONS,
Three Course, 1/9, or a la Carte
HOME-MADE BREADS, SCONES, etc.,
Served for
AFTERNOON TEA.

BEST QUALITY
CIDERS
IN BOTTLE.—Sparkling and Still.

BARTHOLOMEW,
119, 420 HIGH STREET,
CHELTENHAM

Wines, Spirits, Ales, Table Waters, & Grocery. Tel. 135.

DIABETES.

Sufferers from Diabetes searching for a palatable, well-varied diet will find it in Cheltine foods. They are highly nutritious and graded No. 1 (for mild cases), No. 2 (more serious cases), and "strict diet" (for extreme cases). Particulars post free, or with samples to cover postage, etc., 1s. from

THE CHELTINE FOOD Co.,
CHELTINE WORKS, CHELTENHAM.



ARMISTICE SUNDAY AT GLOUCESTER.

The commemoration of the Great Armistice was continued in Gloucester on Sunday last, November 8th, when a Drumhead Service was held at the 5th Gloucester Memorial in the Park. The Mayor and Corporation attended in state, and the congregation was very representative of the military services and associations of the City.

- 1.—Some of the 1-5th Territorials.
- 2.—Part of congregation.
- 3.—Red Cross Nurses.
- 4.—Rev. G. F. Helm, ex-Chaplain of the 1-5th Gloucesters, conducted the services and gave the address.
- 5 and 7.—Ex-Service men.
- 6.—Girl Guides.
- 8.—Gloucester Sea Scouts.
- 9.—The Mayor and Mayoress placed a wreath on the Memorial.
- 10.—Part of congregation outside the Park.

"Cheltenham Chronicle" Photos. Copies 1s. each. Postage 2d. extra.



SPORTING SPANIEL TRIALS NEAR CHELTENHAM.

The 22nd Working Trials of the Sporting Spaniel Society for England and Scotland were held at Compton Abdale on Friday and Saturday, Nov. 6th and 7th, on the estate of Mr. E. E. Turner, of Shipton Oliffe, who is President of the Society. Friday was a lovely day. There was any amount of fur and feather, and a big crowd of spectators saw some splendid sport, including a capital drive of pheasants across a big lake.

- 1.—The spaniels watch the trials as keenly as their masters, and are eager to get to work.
- 2.—Mrs. Dudley Goots's Laverstoke Pauline retrieving a pheasant from water. This dog was third in Novices and reserve in Open.
- 3.—A handler, the Hon. W. J. Hewitt, Mr. Ernest E. Turner (the two judges), and Mrs. E. E. Turner.
- 4.—One of the winning dogs.
- 5.—Boss of Glasnevin (Mr. H. Bushell's) retrieving a pheasant from water. This dog was third in Novices and reserve in Open.
- 6.—Well known in the doggy world.
- 7.—The trials in progress on a Compton Abdale bank.
- 8.—Mrs. Quintin Dick (the principal winner) and Lord Sherborne (one of the guns, and a brilliant shot).
- 9.—A row of competitors waiting to start work.

"Cheltenham Chronicle" Photos. Copies 1s. each. Postage 2d. extra. Larger sizes 1s. 9d. and 2s. each.



BEDFORD-STREET CHAPEL, STROUD, SALE OF WORK.

The annual sale of work arranged by members of the above chapel, on behalf of church funds, was held on Thursday, November 5th, and was most successful.

1.—Stall Holders.

2.—Gipsy Stall in charge of Sunday School Teachers dressed as gypsies.

3.—Mr. W. R. Payne, Alderman C. E. Clark, J.P., of Chalford (chairman), and Mrs. Stanley Porter, of Melksham, who opened the sale.

"Cheltenham Chronicle" Photos. Copies 1s. or 1s. 9d. each, according to size. Postage 2d. extra.

Telegrams :
"Sunningend, Cheltenham."
"Sunningend, London."

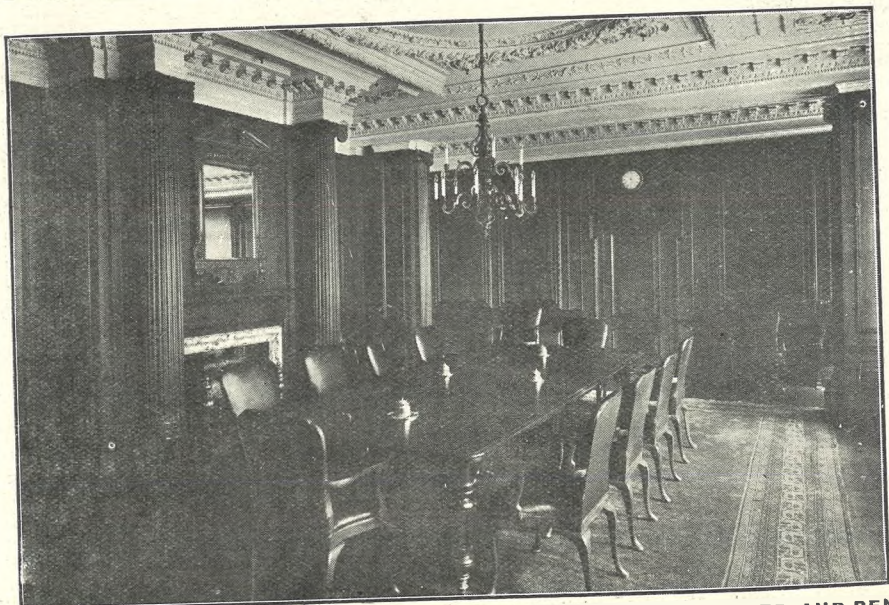


to H.M. King George V.

Telephones :
1161-2-3-4 Cheltenham.
7355-6 Regent, London.

H. H. MARTYN & CO., LTD.,
CHELTENHAM. :: :: And 5 Grafton Street, London, W.

ARCHITECTURAL
DECORATION
IN ALL
BRANCHES
TO
ARCHITECTS'
INSTRUCTIONS.



- STONE CARVING.
-
- SCULPTURE.
-
- MODELLING.
-
- WOOD CARVING.
-
- WROUGHT,
AND
CAST IRON
AND
BRONZE WORK.
-
- FIBROUS
PLASTER.

CALICO WALLPAPER ASSOCIATION, MANCHESTER. Architects: MESSRS. FRYER AND PENMAN.
INTERIOR DECORATIONS, PANELLING, FIBROUS PLASTER, ETC., by H. H. MARTYN AND CO. LTD.



CHELTENHAM STEEPLCHASES.

- The Cheltenham Autumn Race Meeting on Monday and Tuesday last was again a great success, there being a splendid lot of runners; the going was perfect, the light brilliant, and the attendance very satisfactory, a large and fashionable company being present.
- 1.—Mr. F. Lambert's Elson (right) leading over last fence from Dare All, to win by three-quarters of a length in the Cheltenham Handicap Steeplechase.
 - 2.—Capt. F. Mitchell, of Tetbury, with friends.
 - 3.—Mr. G. T. Unwin's Chicot being led in by Mrs. Unwin after winning Cotswold Steeplechase.
 - 4.—Coming out of members' enclosure.
 - 5.—Mr. Perry, Mr. Studd, and Capt. Derik Savile in paddock.
 - 6.—Mr. Wade Dutton and Mr. Herbert Peel.
 - 7.—Miss Gwynne Holford, Mr. Stubbs, Mrs. Huntress, Major Dunbar, and Miss Barrett.
 - 8.—Drumhirk winning Amateur Riders' Hurdle Race, with his owner, Mr. H. Deterding, up.
 - 9.—Leaving members' enclosure.
 - 10.—Miss Foster Harter with a friend.
 - 11.—Taking a jump in Cheltenham Handicap Steeplechase.

"Cheltenham Chronicle" Photos. Copies 1s. each, postage 2d. extra.



From November 16th to 21st we are making a particularly attractive and very novel Window Exhibition of the Latest "C.B." Models, which are beautifully designed for proportion of line; they are fashioned to fit, and the differences noticeable are scientific in purpose to truly feature the important straight back and perfection of diaphragm control. These Models represent a perfect harmony of Fine Corsetry; they combine economy with discrimination, and represent the very utmost in value. They carry to the wearer a message of dainty beauty, and are superbly suited to the needs of Fashion's requirements.

During our Special Window Exhibition we have secured the services of that famous London Corset Expert, Madame Betty Webster, from November 16th to 21st. She will give Daily Demonstrations on Living Mannequins, and explain the fit and purpose of the various Models. Her advice should be of material assistance to you in choosing just that particular Model most suitable to you.

No. 3022.
A delightful creation which possesses all the latest figure lines. In Rich Silk Figured Brocade, and very reliable elastic. This model is beautifully cut, and has the new fitting back, which is the strong feature of the very latest designs.
Price 21s. 9d.

No. 3075.
A very charming Model, specially designed for slight and average figures; deep, close-fitting back of reliable Coutil, dainty elastic hips. A perfectly shaped creation in the very latest style.
Price 15s. 11d.

No. 2976.
A Deep Wrap-round Corset of reliable White Coutil, with very serviceable elastic panels. This model is cunningly designed for hip control, and is strongly recommended for all average figures; four strong Hose Supporters.
Price 10s. 11d.

"C.B." Models are fitted throughout with Rus'le's, Unbreakable Spiral Steel-Royal Supports; they are absolutely guaranteed; this definitely removes possibility of dissatisfaction in wear. We are featuring an impressive array of "C.B." Models, which give the correct foundation of the perfect Silhouette Vogue. Types which guarantee gentle diaphragm control and the long unbroken figure line. These models are constructed from compactly woven fabrics of proven durability. They are strictly modern in every way, delicate light garments, with just that little necessary boning which means figure happiness and a smooth unbroken contour.

Madame Betty Webster, in addition to fitting you correctly, will demonstrate on the Living Models the correct method of fitting and adjusting Corsets. Her advice and assistance are offered to you entirely free of cost. Do not fail to take advantage of this unique opportunity.

E. L. WARD, 136, 137, 138, 139, 140 HIGH STREET, CHELTENHAM.

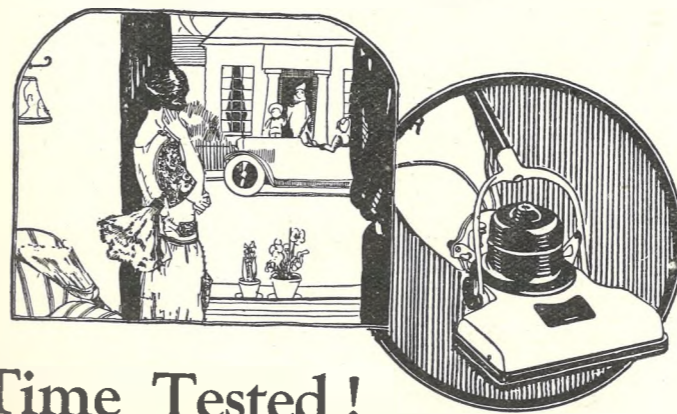


CHURCHDOWN WOMEN UNIONISTS' ASSOCIATION.

The above Association held a Social Afternoon at their headquarters, Chosen Hotel, Thursday, November 5th, Mrs. Cavenagh Manwaring and Mrs. Vale (seated in front, on right), from Cheltenham, being present. The afternoon meeting.

"Cheltenham Chronicle" Photo.

The HOOVER
It BEATS . . . as it Sweeps . . . as it Cleans



Time Tested!

On the Hoover's exclusive, threefold cleaning process, time has set the seal of success. For fifteen years the Hoover has been beating, sweeping and cleaning; adding years to the life of millions of carpets; dowering hundreds of thousands of women with millions of leisure hours. . . .

Your Hoover is here, with this long, labour-saving lineage behind it; and a lifetime's future of cleaning service ahead — in your home.

Authorised Dealer
SHIRER & HADDON, Ltd.,
18-30 CLARENCE STREET,
CHELTENHAM.

The Business Man.



The first of a series.

FOR the business man this attractive design of tortoiseshell rims with solid gold bridge is most pleasing. They are distinctive in appearance, of exceptional lightness, and fit snugly, yet securely, in wear.

Of more importance, however, is the lens and accuracy of prescribing. If you require glasses always ensure that only a fully qualified optician is entrusted with the testing of your sight, as the slightest error in the lenses will nullify the benefit your sight should receive and may even cause permanent injury.

At 27, The Promenade, our fully qualified and competent opticians test your sight, consultations and advice are free by appointment, and glasses are never prescribed unless absolutely necessary.

We can supply glasses from our extensive range to meet your every need.

OF EXCEPTIONAL INTEREST AND QUITE FREE.

Send to-day for your copies of the "Trilok" Brochure and "Sights of London" Booklet, both profusely illustrated.

AITCHISON
AND COMPANY LIMITED
CONSULTING OPHTHALMIC OPTICIANS
27, PROMENADE, CHELTENHAM



Look for the Owl in the Window

SEE
WINDOWS.

VANDERPLANK

(FROM HARRODS).

SEE
WINDOWS.

SPECIAL COAT SALE

FOR ONE WEEK ONLY,
Commences TO-DAY (Saturday), Nov. 14th.



This is for YOU
An Exceptional Opportunity.

TWO-High-Class Makers' Stocks of Coats have been purchased by Vanderplank at a big discount, and will be sold this week at really bargain prices, together with our own stock which has been specially reduced for this week only.

They are all this Season's Coats in the most modern materials, shapes, and colours.

When you consider that at their ordinary Prices Vanderplank give remarkable value—A PROOF AS TO THIS is that this season Vanderplank have sold more Coats than ever in their history. At the special reduced prices they are truly bargains.

AN EARLY VISIT IS ADVISABLE.

SALE PRICES from 29/6 to 10 GNS.

TWO EXAMPLES.

Fine quality plain and Ottoman Velour, with Natural Opossum Collar and Cuffs or Beaver Coney, half-lined Broche, with Flare (as sketch or similar). Reduced from 6 Gns to **3 Gns.**
Colours—Navy, Bottle Green, New Blue, Brown, Cedar, etc.

Handsome Model Coat, in a number of colours and materials, trimmed real Fur, lined Crepe de Chine. Originally 12 Gns. Sale Price, **7½ Gns.**

381 HIGH STREET, CHELTENHAM.

PRINTED AND PUBLISHED AS A GRATIS SUPPLEMENT BY THE CHELTENHAM NEWSPAPER COMPANY, LIMITED.

THE CHELTENHAM CHRONICLE AND GLOUCESTERSHIRE GRAPHIC

With Which is Incorporated the "Cheltenham Looker-On."
GRATIS SUPPLEMENT. Saturday, November 21, 1925. No. 1,299.

CHELTENHAM THEATRE AND OPERA HOUSE. This Afternoon (2.30) & Evening (7.45) "MERRIE ENGLAND"
NEXT WEEK: Doris Sainsbury presents—
"THE BRIDE," a Three Act Comedy.

THE PALACE,
High Street, CHELTENHAM.
Director: Shakspeare Shenton.

Monday to Wednesday:
The Hon. Mrs. John Russell
In her own Original Story,
"AFRAID OF LOVE."
Priscilla Dean in "The Crimson
Runner."
Douglas Cocirane, the Brilliant
Violinist (from the Trocadero,
West End, London), and His
Orchestra.
Thursday, Friday, and Saturday:
Milton Sills and Doris Kenyon
in
"I WANT MY MAN."
Van Bibber Comedy: "So This is
Art."

THE DAFFODIL,
Suffolk Parade, Cheltenham.
Cheltenham's Premier Cinema.

Continuous Performance Daily,
2.30 to 10.15.
FOR THE WHOLE WEEK,
Commencing Monday, Nov. 23rd,
FAY COMPTON and JACK
BUCHANAN in
"THE HAPPY
ENDING,"
(By Ian Hay).
An Impressive Picture, streets
ahead of anything Miss Compton
has previously done.
Thursday, Friday, and Saturday:
"THE DEVIL'S CARGO."
Featuring Pauline Starke.
Accompanied at each Performance
by a Real Orchestra.

Established 1806.
Martin & Co.,
Limited.
The County Jewellers,
PEARL & DIAMOND MERCHANTS.

A Large Selection of Second-hand
Silver and Old Sheffield Plate.
We are purchasers of Antique
Silver and Fine Quality Gems.
Best Prices Given.
LICENSED VALUERS.
Promenade, Cheltenham.



THE ROYAL VISIT TO CHELTENHAM.

Her Royal Highness the Duchess of York, smiling to the people outside the Queen's Hotel, Cheltenham, on her visit to Cheltenham on Tuesday last. She charmed everyone by her graciousness, her beauty, and smiling good humour, and it was easy to understand why she has become so great a favourite since wedding the King's second son.

"Cheltenham Chronicle" Photo. Copies 1s. each, postage 2d. extra.

WINTER GARDEN,
CHELTENHAM.

MONDAY and ALL THE WEEK,
James Kirkwood, Alma Rubens,
and Marguerite De La Motte
in
"GERALD CRANSON'S
LADY."
From the Famous Novel by
Gilbert Frankau.
Showing Daily at 8.0, 5.35, and
8.10 p.m.
See the Aeroplane Flight in a
Storm from Croydon Aerodrome.
He married for Position—SHE for
Money—SEE what was the result.
As shown at the Empire Theatre,
London.

COLISEUM THEATRE.
6.40 and 8.40.

LONDON VAUDEVILLE
COMPANY.
"THE PICK OF VARIETY."

NORTH STREET
PICTURE HOUSE
2.30 to 10.30—Continuous.

Monday, Tuesday, Wednesday:
Jack Hoxie in
"Ridin Thunder."
Thursday, Friday, and Saturday:
"Let Women Alone,"
Featuring
Wanda Hawley & Wallace Beery.

MAISON
ANNETTE,
Kensington House,
Promenade,
Cheltenham,
SPECIALISTS IN
EXCLUSIVE
CORSETS &
LINGERIE.
'Phone 1122.

For the Best PIANOS, DALE, FORTY and Co. Ltd

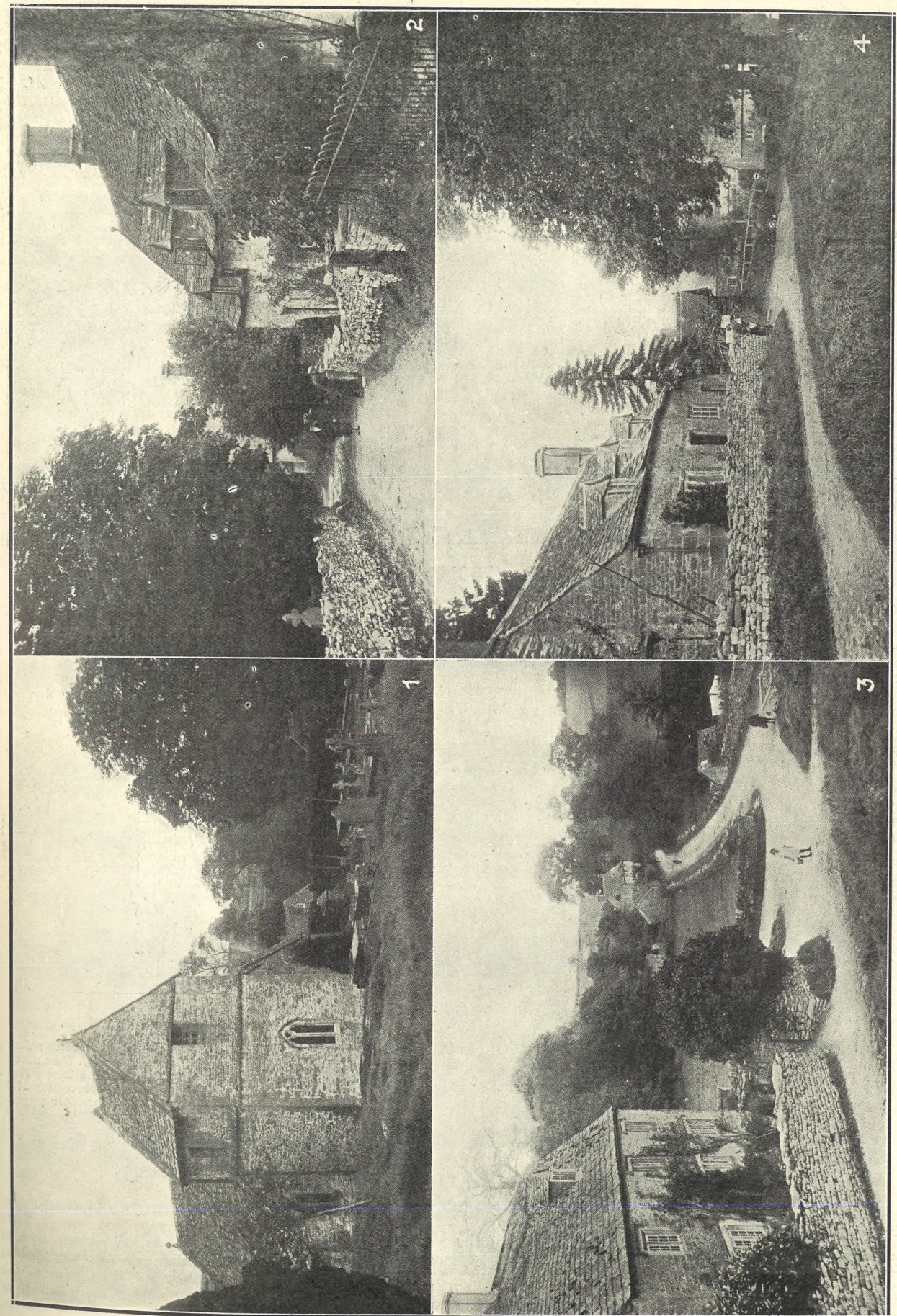


THE ROYAL VISIT TO CHELTENHAM.

On Tuesday last H.R.H. the Duchess of York came to Cheltenham to support a Bazaar held at the Town Hall in Aid of the Gloucestershire Nursing Association, and to receive Purses collected by the Children of the County for the same funds.

- 1.—The Procession coming up the Promenade, which was lined by people the whole way.
- 2.—The Duchess of Beaufort, who welcomed H.R.H., and who opened the Bazaar on the second day.
- 3.—Miss Ratcliff, Hon. Secretary of Bazaar, and Mrs. Eyre, Assistant Secretary.
- 4.—Miss Wykeham Musgrave (assistant at Bazaar).
- 5.—Lady Catherine Meade (Lady in Waiting) and the Mayoress of Cheltenham (Miss Olive Dicks).
- 6.—Miss Betty Harford, the Dowager Duchess of Beaufort, and Miss Bowle Evans.
- 7.—The Mayor of Cheltenham (Councillor W. J. M. Dicks), H.R.H. the Duchess of York, and the Dowager Duchess of Beaufort arriving at the Queen's Hotel, where they lunched.
- 8.—The Countess of Bathurst, Mrs. F. Cripps, and Mrs. Butt Miller, who took a stall at the Bazaar.

"Cheltenham Chronicle" Photos. Copies 1s. and 1s. 9d. each, post 2d. extra.



PICTURESQUE GLOUCESTERSHIRE.—DUNTISBOURNE ABBOTS.

- 1.—The Church of St. Peter is charmingly situated on a slope, with extensive views from the churchyard. The traceried bellry windows are unusual.
- 2.—Cottages near the Churchyard.
- 3.—View from the Village Green, showing the right corner of the spring from which the villagers get their drinking water.
- 4.—The Village Green, with two fine elms from the latter, and six miles from the latter, to Cirencester Abbey.

"Cheltenham Chronicle" Photos. Copies 1s. 9d. each. Postage 2d. extra.



CO-OPERATIVE MARKETING SOCIETY'S FRUIT SHOW.

The Sixth Annual Prize Show and Sale of Fruit in connection with the Gloucestershire Co-operative Marketing Society, Ltd., was held at Cheltenham Market on Thursday, Nov. 12th.

1 and 4.—Officials, Buyers, Growers, etc. and A. Whiting (Divisional Inspector of the Ministry of Agriculture).
 2.—The Judges—Messrs. G. H. Hollingworth (Gloucester), F. Paget Norbury (Malvern), and Messrs. F. May and Bruce Swanwick.

"Cheltenham Chronicle" Photos. Copies 1s. each, postage 2d. extra.



Group of Cups Competed for and Won at the Cheltenham Root, Fruit, and Grain Society Show.



MADAME ETHEL IRVING,

Of the Irving Academy, Bath-road, Cheltenham, who organised and carried through the successful Pageant of Peace, held at the Town Hall, Cheltenham, on Wednesday, November 11th. The Pageant is illustrated on another page.

TO ADVERTISERS !

Your Announcements if illustrated are doubled in effectiveness and value. We send photographers to any address to take your orders, make the necessary blocks (half-tone or line), and insert same in the "Chronicle and Graphic," the "Echo," or any other paper at an inclusive charge. Write for prices.



THE ROYAL VISIT TO CHELTENHAM.

On the arrival of the Duchess of York at the G.W.R. Station, she was received by the Mayor and Corporation, with the Duchess of Beaufort and the Dowager Duchess of Beaufort, and she then drove in an open carriage drawn by two horses, via Ambrose Street, High Street, and the Promenade, preceded and followed by an escort of mounted police. She received a warm and enthusiastic welcome.

9.—The crowd near Queen's Hotel watching the Press photographers at work.
 10, 11, and 12.—Various sections of the crowd on the route.
 13.—Part of crowd outside Town Hall.
 14.—Boys on one of the Russian guns cheering the Duchess.

15.—Some of the County Nurses, who were inspected by the Duchess at Town Hall.
 16.—Group who welcomed the Duchess at United Services Club: Miss Robinson (hon. secretary), Mrs. Edward Lake (vice-chairman), Miss Iris Burton (Capt. Girl Guides), Mrs. Stratford Burton (chairman), and Col. G. Stratford Burton. In front, Miss Chesterman, who presented bouquet to the Duchess.
 17.—Spectators on another Russian gun.

"Cheltenham Chronicle" Photos. Copies 1s. each, postage 2d. extra.



THE ROYAL VISIT TO CHELTENHAM.

After leaving the Bazaar at the Town Hall, the Duchess of York drove to the United Services Club, in Fairview Road, to pay a visit to the Cheltenham Branch of the Women's Section of British Legion and to inspect the Girl Guides and Brownies. She also inspected a Guard of Honour of ex-Service men, under Lieut. Sabbatella, D.C.M.

18.—The Duchess with Lieut. Sabbatella, inspecting the Guard of Honour in Fairview. Behind are Major Stanley Clarke (Chief Constable), Lady Catherine Meade, and the Duchess of Beaufort.

19 and 20.—Sections of the crowd in Wincombe Street.

21 and 22.—Members of Women's Section of British Legion.

23 and 24.—Sections of crowd outside United Services Club.

25.—The Duchess of York waving to the people as she left the G.W.R. Station. The Dowager Duchess of Beaufort is with her.

"Cheltenham Chronicle" Photos. Copies 1s. each, postage 2d. extra.



BUFFALOES' CHURCH PARADE IN CHELTENHAM.

On Sunday afternoon, Nov. 15th, Brethren of the Local and Provincial Lodges of the R.A.O.B. assembled at the King's Head Inn, Lower High Street, to march to the Parish Church to a service conducted by Brother Rev. Canon Wilson, Rector of Cheltenham.

1.—Knights Chapter, Provincial Grand Lodge.
 2.—Brother C. Cadle, G.P. (left), with wreath for War Memorial, and Bro. Harry Davis, C.P. (Marshal of Procession), with wreath for Boer War Memorial.

3.—King George V. Lodge, Cheltenham.
 4.—Leckhampton Lodge, Cheltenham.
 5.—Some North Ward children interested.

6.—United Services Lodge, Cheltenham.
 7.—Sir Robert Drake Lodge, Gloucester.

8.—Firemen in the Procession.
 9.—Bell Lodge, Cheltenham.
 10.—Sir Wm. Rose Lodge, Tewkesbury.
 11.—Gotswold Lodge, Cirencester.

"Cheltenham Chronicle" Photos. Copies 1s. each, postage 2d. extra.

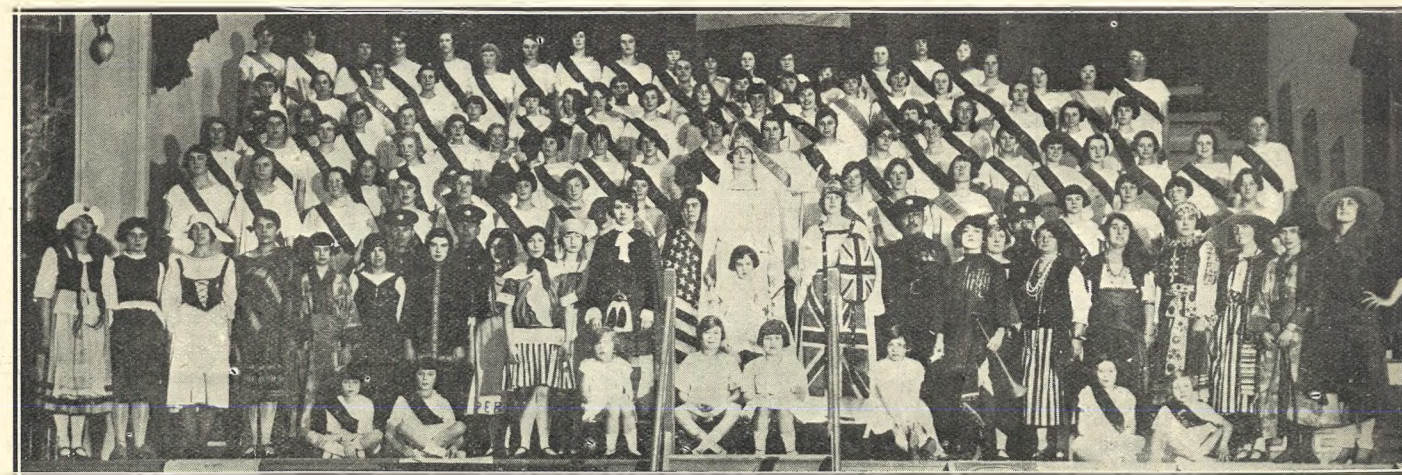


ARMISTICE DAY IN CHELTENHAM: SCENE DURING THE TWO MINUTES' SILENCE AT THE CENOTAPH IN THE PROMENADE.

"Cheltenham Chronicle" Photograph. Copies may be obtained at the Office, 2s. each.



LAST COURT LEET IN CHELTENHAM, FRIDAY, NOV. 13, 1925.—Steward, Constables, Jurymen, Tythingmen, and Crier.



"PAGEANT OF PEACE" AT THE TOWN HALL.

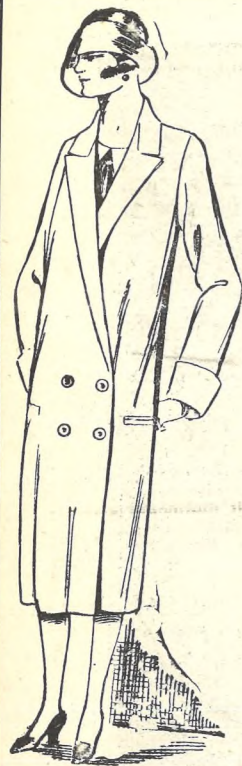
On Wednesday, Nov. 11th, a "Pageant of Peace," under the auspices of the Local Branch of the League of Nations, was held in the Town Hall, Cheltenham. The performers numbered about 200, and were drawn from The Hall, Montpellier, and the Ursuline Convent School, Fullwood Park. Madame Ethel Irving directed the Pageant.

"Cheltenham Chronicle" Photos. Copies 1s. 9d. and 2s. according to size.

Special Offers of SEASONABLE GOODS AT ECONOMICAL PRICES.

From time to time during the season we are able to secure small parcels of goods from the makers on special terms for cash, and this advantage is always passed on to Our Customers.

OUR PRICES ARE
ALWAYS THE LOWEST
POSSIBLE CONSISTENT
WITH QUALITY.



A Smart Coat in Ottoman Velour, well cut and tailored, 29/6 Usual Price 39s. 6d. In Rust, Flaked Blue, Green.



Girls' Smart Tailor-made Coats (as illustrated), well cut and finished in good quality Nap and Velour Cloths, Navy only, in all sizes, from 15/11 to 50s. Girls' Strong School Coats, 7s. 11d. to 18s. 11d.



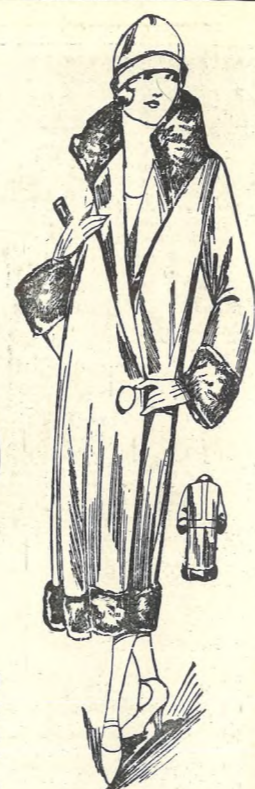
Fur Collars, in Skunk Dyed 15/11 Goat. Also Larger Sizes, 21s. 6d., 29s. 6d.



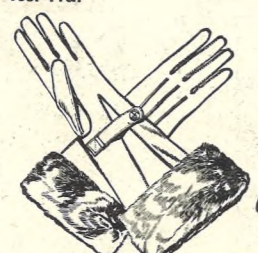
Large Animal-Shaped Fur, in Natural Wolf, Lined Silk. Usual Price 39s. 6d. Also Red Fox, 29s. 6d., 39s. 6d., 49s. 6d. to 6 Gns.



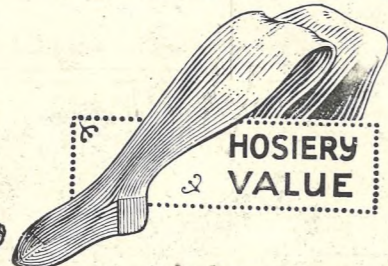
Smart Knitted Wool Jumper, as illustrated, Or with New Eton Collar, in Plain or Marle effect, 6s. 11d. Better Qualities, 8s. 11d., 10s. 11d., 12s. 11d., 15s. 11d., and 18s. 11d.



Smart New Coat in Heavy Blanket Velour Cloth, trimmed Stranded Coney Sable (as illustrated) 59/6 In Beaver, Rust, Brown, etc.



Fur Lined and Trimmed Gloves, Suede Finished Fabric, strapped wrist, in Brown, Mole, etc. Fleecy Lined, hard-wearing Nappa Gloves, 4s. 11d., 6s. 11d.



HOSIERY & VALUE

Wool and Art. Silk Mixture Hose, in fine Marle effect, Plain Weave ... 1/11 1/2 All Wool Ribbed Hose, in Plain Colours, 1s. 6d., 1s. 11d., 2s. 11d.



Natural Merino Nightdresses, generously cut, as illustrated, 5/11 Also in Cream, 9s. 11d. Flannelette and Win-cyette Nightdresses, 2s. 11d., 3s. 11d., 4s. 11d. to 18s. 11d.



Real Down-filled Quilts, covered Artistic Cambric, with Plain Coloured Panel. S.B. Size: 14s. 11d., 18s. 11d., 25s. 6d., 33s. 6d. D.B. size: 18s. 11d., 25s. 6d., 29s. 6d., 39s. 6d., to 6 guineas.

Real Witney Blankets, S.B. size, 19s. 11d., 24s. 6d., 32s. 6d., 39s. 6d. Double Bed size, 27s. 6d., 37s. 6d., 49s. 6d., 59s. 6d.

Dressing Gowns, in Ripple Cloth 6/11 1/2 Also Better Qualities, 10s. 11d., 12s. 11d., 15s. 11d., 18s. 11d., 25s. 6d. Dressing Jackets, 2s. 6d., 3s. 11d., 6s. 11d.

Dicks & Sons Ltd.

ART & ECONOMY BUILDINGS
High St. Cheltenham.

Ladies' Warm Fleecy-lined Combinations, 3/11 1/2 as illustrated, in Cream only. O.S., 4s. 11d. All Wool Combinations, 3s. 11d., 6s. 11d., 10s. 11d., 18s. 11d. Wolsey Combs., 10s. 11d.



"MERRIE ENGLAND" AT THE CHELTENHAM OPERA HOUSE.
The Cheltenham Amateur Operatic and Dramatic Society are this week giving clever performances every night of Basil Hood and Edward German's comic opera "Merrie England." Members of the Chorus. There is a matinee this (Saturday) afternoon.

1.—Standing: Miss E. Wetherhead, Mr. W. G. Leishman, Miss M. Martyn, Mr. W. A. Richards, Miss S. McAlldowie. Kneeling: Miss Dunn, Mrs. R. Haiden, Miss F. Handy.
2.—Misses N. V. Rice, K. Bell Haworth, L. Bell Haworth, P. Marshall.
3.—C. C. Mayo, Page; Mr. H. M. N. O'Connor, Page; H. H. Gardner.
4.—Standing: Mrs. C. Teal, Mr. W. H. Horton, Miss N. Day, Mr. N. Trafford. Seated: Mrs. K. Craig, Miss M. Jenkins.
5.—Standing: Miss D. Panter, Miss V. Charleworth, Mrs. R. V. Copeland, Mr. R. V. Copeland, Miss D. Smith, Mrs. H. O'Connor, Miss M. Cope. Kneeling: Mr. P. Boulton, Mr. E. Robbins.
"Cheltenham Chronicle" Photos. Nos. 1 and 3 1s. each; 2, 4, and 5 1s. 9d. each.

FUR GLOVES
From 12s. 6d.
LEATHER COATS
From 84s.
SCOTCH UNDERWEAR.
ALL-WOOL SHIRTS & PYJAMAS.
PULLOVERS.

Raymond James,
SPECIALIST IN MEN'S WEAR,
78 WINCHCOMBE STREET,
CHELTENHAM. 'Phone 1048.

LET MOUSSELLS MOVE YOU



'PHONE 112.
Estimates for Removals and Storing Free.
CHELTENHAM. Offices: **AMBROSE STREET.**

DRESSING GOWNS,
25s. to 63s.
WOOL JACKETS,
7s. 6d. to 25s.
FANCY PULLOVERS
IN VARIETY.
LINED GLOVES. SILK SCARVES.

A. Beckingsale,
111 HIGH STREET, CHELTENHAM.

LANCE, of CHELTHENHAM, FASHION SPECIALISTS.

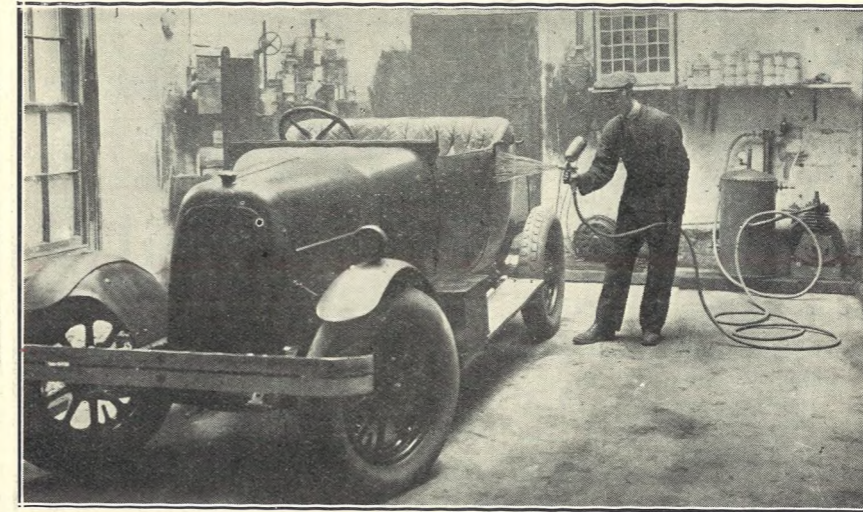
CHARMING
STYLES
MAY BE
HAD IN
LADIES'
COATS.

A large variety
of
CLOTHES,
Trimmed
Natural Fur,
in shades of
Bottle Green,
the New Blue,
Burnt Red,
Bois de Rose,
Almond,
Brown, Navy,
and Black.
PRICES from
3 Gns.
to
8½ Gns.



Gowns,
Costumes,
Blouses,
Furs,
Millinery,
Underwear,
Hosiery,
and
Fancy
Goods.

John Lance & Co., Ltd., General Drapers & House Furnishers,
CHELTHENHAM SHOPPING CENTRE.



THE CELLULOSE LACQUER SYSTEM OF FINISH FOR COACHWORK OF MOTOR CARS, Etc.

Messrs. W. G. Tibbles and Co., Ltd., Motor Engineers and Coach Builders, of College Road Corner, Cheltenham, have now installed the Latest Plant for this New System of Finish for Coachwork and Motor-Cars, etc. Not only is it possible to renovate cars in half the time required by the old process of paint and varnish, but cars may be used in any weather immediately the work is finished. This Cellulose Lacquer process resists the action of Mud, Acids, Alkalis, Benzol, Tar, Hot Water, etc., and instead of rubbing causing a dull surface it actually improves it, while cars may be left dirty indefinitely without the risk of injury. Messrs. Tibbles and Co. are pleased to give full particulars and prices on application. Phone 283.

SUN LIFE ASSURANCE COMPANY OF CANADA, THE GREAT ANNUITY Co. ASSETS (under strict Government Control) £56,000,000.

SPECIAL AND VERY IMPORTANT POLICY FEATURES.

1. **GUARANTEED** reserve to keep Policy from lapsing should you be unable to pay the premium.
2. **GUARANTEED** and very liberal cash surrender value and loan.
3. **GUARANTEED** and valuable options.
4. **GUARANTEED** that in the event of death before Policy matures sum assured paid, and, in addition, 50 % of all premiums returned.
5. **GUARANTEED** that you receive a monthly Pension and Policy kept in force without any payment by you should you as the result of any sickness or accident be unable to follow a gainful occupation.

(All above plainly shown in Policy.)

For particulars of any Assurance apply to—
Managers: **E. BRUCE GEORGE—CHARLES G. IRVING.**
County Office: 3 PROMENADE TERRACE, CHELTHENHAM
Tel. No.: 1209. (opposite New Club).

Enquiries invited in confidence. Calls made by request ONLY.



COUNCILLOR W. J. KING-TURNER,
Of 4 East Cliff Gardens, Folkestone, who has represented the East Ward of that town for 13 years, and who was again returned at the head of the poll at the recent municipal elections. He has also been a member of the Board of Guardians for 14 years. He is an old Cheltonian.



BECHSTEIN PIANOS.

THE BECHSTEIN PIANO needs little recommendation to cultured tastes.

Its beautiful tone and incomparable touch—qualities which have gained for it the esteem of every music lover, and have set a standard to the world—are as exquisite and as characteristic as ever.

Write or Call for Catalogue.

Sole Agents:—

Crichton's

The Piano House,
394 HIGH STREET,
CHELTHENHAM.

Phone 378.

IF YOU LIKE THE "GRAPHIC," why not place an Order for it to be delivered to you regularly? Agents throughout the county, or order direct from the Head Office in Cheltenham.

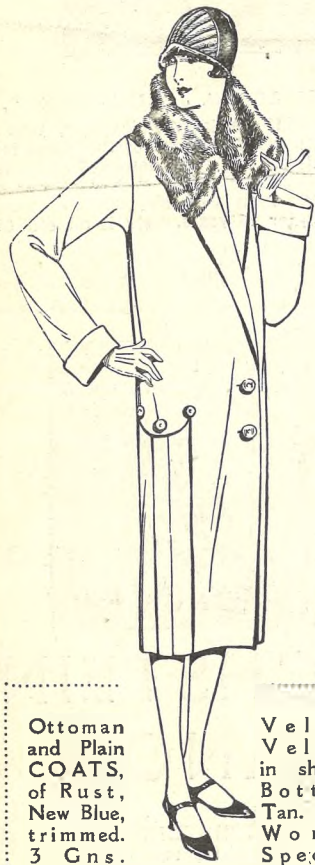
WARD'S SPECIAL COAT AND MILLINERY OFFER.

Special Prices--For One Week Only,

Commencing MONDAY, NOV. 23rd.

A new Winter Coat is a real necessity now. This is your opportunity to get a stylish and fashionable Coat at specially reduced prices, just when the cold season is commencing; also Millinery at special prices for this week only.

GRAND XMAS BAZAAR
OPENS SATURDAY, NOV. 28th.



Ottoman and Plain COATS, of Rust, New Blue, trimmed. 3 Gns.

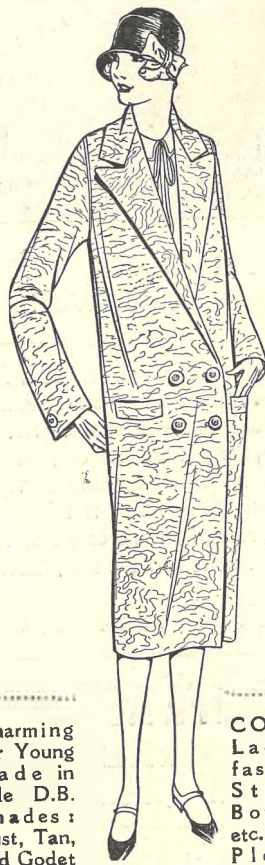
Velour Velour in shades Bottle, Tan. Fur Worth Special

Price, 42/-
Plain Tailored Velour COATS in super cloths, in every shade, 29/11.
Special Offer of Tweed & Velour COATS, many trimmed handsome Collar. Usually 3 to 4 Gns. Offered at One Price, 30/-.



Exceptional Offer of MODEL MILLINERY. Usual Price, 18/11 to 35/11. Now offered at 14/11, 18/11, 25/11.—A Very Special Lot will be cleared at One Price, 10/-.—Semi-Trimmed FELTS in Havana, Blue, Grey, Bois de Rose, Black, and other leading shades, all at 6/11½.

Real VELOUR HATS, in latest colours, 12/11.—Children's HATS all offered at exceptionally low prices.—A Large Selection of EVENING FLOWERS and FEATHERS on show in our Millinery Salon this week.



Charming for Young made in able D.B. Shades: Rust, Tan, and Godet

COATS Ladies, fashion-Style. Bottle, etc. Plain Pleats.

39/11 to 3½ Gns.
Ladies' ¾-length Coney COATS, in Black only, 3 Gns., 4½ Gns., 5 Gns. Worth double, Model COATS, in Fancy Velours and Plain Velours. In all colours and Black. Trimmed handsome Fur Collars. Usually 5½ to 8 Gns. Offered at 4½ to 6 Gns.

E. L. WARD,

136—140 HIGH STREET, CHELTENHAM.



THE ROYAL VISIT TO CHELTENHAM.
Some of the performers at Concert at Town Hall, which H.R.H. the Duchess of York attended. Miss Sybil Maden, Miss Frances Morgan Brown, Miss Gwen Lewis, Miss Nancy Essery, Mr. Aubrey Standing, and Mr. S. W. Underwood.
"Cheltenham Chronicle" Photo. Copies 1s. each.

The HOOVER

It BEATS . . . as it Sweeps . . . as it Cleans



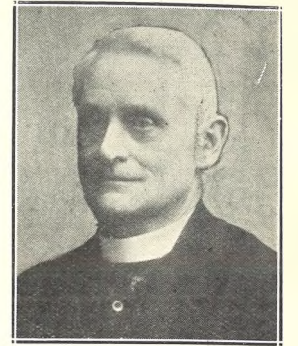
If You Want to Get All the Dirt

The Hoover may cost a little more than the ordinary vacuum cleaner, just as a railway ticket to where you want to go costs more than one for half-way.

But it's the only cleaner that gets *all* the dirt from your carpets; that *beats* out all the trodden-in, embedded dirt that only beating can remove; that electrically sweeps up all clinging surface litter; and vacuum-cleans as well.

Made Within the Empire--Used throughout the World.

Authorised Dealer:
SHIRER & HADDON, Ltd.,
18—30 Clarence Street,
CHELTENHAM.



REV. A. H. CHEESMAN, M.A., Vicar of Twigworth, near Gloucester, has been appointed Honorary Canon of Gloucester Cathedral.

FLAT FOOT,
Also KNEE, ANKLE, AND JOINT TROUBLES Of All Kinds Successfully treated by a New Electro-Therapeutic Method, based upon latest scientific research, and Exclusively Administered by
MR. ALFRED J. VENTRIS-FIELD,
Orthopaedist and Electro-Therapeutist. Hospital (London) and 30 years' Practical Experience.
SURGERY: 6 Rodney-place, Cheltenham.

To Cheltenham Readers.

If you have any difficulty in obtaining the "Echo," become a regular subscriber. Paper delivered every night. Accounts sent quarterly. Our boys cover every street in Cheltenham.

TOWN HALL, CHELTENHAM.

The Twenty-third Annual

ATHLETIC DISPLAY

BY 60 GIRLS

Will be given in Aid of the Y.M.C.A.
ON THURSDAY, NOV. 26,
AT 7.45 P.M.

"A triumph of organisation and a clever and wonderful display."—"Echo," 1922.
MUSIC by the SILVER BAND of the Gloucester Railway Carriage and Wagon Co.
RESERVED SEATS 3s. 6d. and 2s. 4d.;
UNRESERVED, 1s. 6d.; BALCONY 9d.

Tax Included. Doors Open 7.15.
Ticket-Holders Admitted at 7.0 p.m.

WIRELESS MASTS.

SOLID DRAWN TUBE 1¼ DIAM;
WEIGHT OF 30 FOOT MAST 48 lbs.
LIGHT, STRONG AND EASILY
ERECTED; MADE IN SECTIONS
WITH SLIP ON JOINTS (NO
SCREWING) VERY NEAT, PAINTED
WHITE; NO DIGGING, THE MAST
STANDS ON STONE OR BRICK;
FITTED WITH PULLEY, CLIP,
AND STRANDED GALV. WIRE
GUYS.
PRICE 1/6 PER FOOT
(PLUS CARRIAGE)
SUCHL ENGINEERS
CHELTENHAM GLOS.



LADIES' HAIRDRESSING. EXPERT POSTICHEURS.

We are Specialists in the art of
**MARCEL WAVING, PERMANENT WAVING, HAIR
TINTING, CHIROPODY, MASSAGE, and MANICURE.**

All these important sections are staffed only by Qualified Operators, and the most approved methods of Hygiene are installed. The Salons are perfectly equipped and conveniently adjoin *The Times Book Club* Library, and Rest Room, and the important FASHION SECTIONS.

Our Specialist is always at the service of those desiring advice on matters relative to HAIR and SKIN troubles.

This Department also carries a large stock of leading English and Foreign TOILET REQUISITES, including Elizabeth Arden, Cyclax, Madame Rubenstein, Gladys Cooper, etc.

PERSONAL ATTENTION is given to Children in our unique Salon for Juveniles. Special attention is also given to Children's Hair Culture.

CONSULTATIONS AND ADVICE free with our Specialist, by appointment.

CAVENDISH HOUSE

Company, Limited,

The Fashion Centre of CHELTENHAM SPA and the West.

THE CHELTENHAM CHRONICLE AND GLOUCESTERSHIRE GRAPHIC

With Which is Incorporated the "Cheltenham Looker-On."
GRATIS SUPPLEMENT. Saturday, November 28, 1925.

No. 1,300.

CHELTENHAM THEATRE AND OPERA HOUSE.

This Afternoon (2.30) and Evening (7.45)—"THE BRIDE."

NEXT WEEK: MONDAY & TUESDAY NIGHT, "ROMANCE."
and SATURDAY (Matinee)—

WEDNESDAY, THURSDAY, FRIDAY, "ST. ELMO."
and SATURDAY NIGHT—

THE PALACE,

High Street, CHELTENHAM.

Director: Shakespere Shenton.

MONDAY to WEDNESDAY.

RICHARD BARTLEMESS

In the laugh special:

"NEW TOYS,"

Watch beautiful **MARY HAY** controlling hubby "on" the Screen as well as "off."

ledal Comedy: "Fares, Please."

THURSDAY to SATURDAY:

AILEEN PRINGLE

In the thrilling racing drama:

"Wildfire."

Imperial Comedy: "Lion Love."

THE DAFFODIL,

Suffolk Parade, Cheltenham.

Cheltenham's Premier Cinema.

Continuous Daily, 2.30 to 10.15.

Monday and All the Week.

"SUNDOWN,"

An Epic of Great Hearts and Mighty Events; a companion picture to the "Covered Wagon."

Also Thursday, Friday & Saturday

That fine Paramount Picture:

"Contraband,"

Starring **LOIS WILSON.**

The best in motion pictures, with an Orchestra that charms.

Musical Director: Mr. F. Vicary.

Established 1806.

Martin & Co.,

Limited.

The County Jewellers,

PEARL & DIAMOND MERCHANTS.

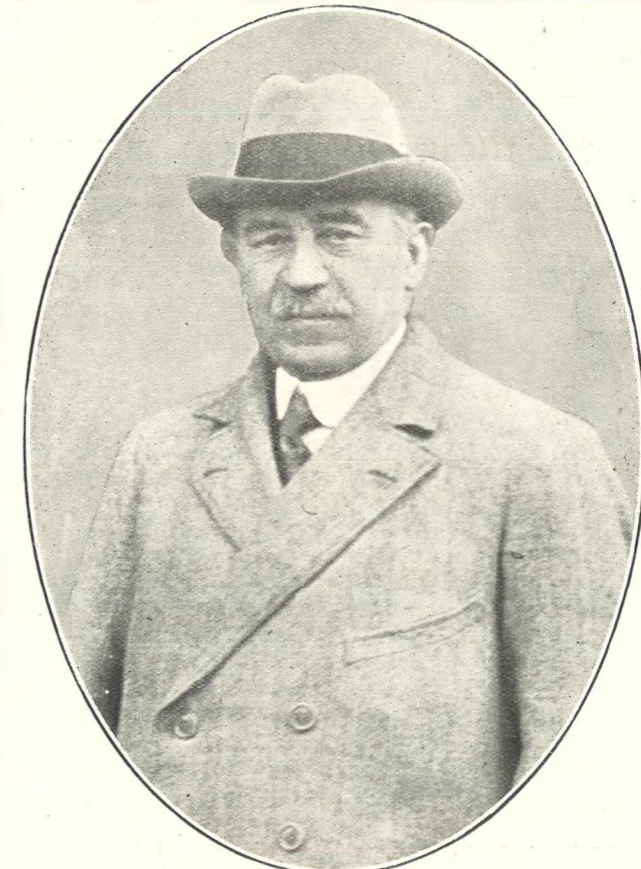
A Large Selection of Second-hand Silver and Old Sheffield Plate.

We are purchasers of Antique Silver and Fine Quality Gems.

Best Prices Given.

LICENSED VALUERS.

Promenade, Cheltenham.



MR. TOM H. PACKER.

Of Ivy Villa, Gloucester-road, Cheltenham, who died suddenly on November 18th, aged 67 years. For thirty-two years (since 1893) he had been Political Agent for the Cheltenham Conservative Association, succeeding Mr. John Waghorne, and had fought many great fights in the Conservative interest. He also served for some years on the Town Council and on the Board of Guardians. He was a man universally respected and liked; was looked upon as an authority on election law, registration, and organisation, and held a position of prominence in the fraternity of Conservative Agents. He was a bachelor, a keen amateur photographer, and intensely patriotic to his town, county, and country. This photograph was taken on the Friday before his death.

Copies may be obtained at "Chronicle" Offices.

WINTER GARDEN, CHELTENHAM.

Monday and All the Week.

2.30—Continuous—10.15.

"DAUGHTERS OF

THE DESERT,"

A story of supreme sacrifice in the land of Sheiks, with wonderful desert scenes and pursuits ending in the siege of a house by Arabs.

Coming Shortly: "YPRES"

(Wipers).

COLISEUM THEATRE.

6.40 and 8.40.

"KISSING TIME,"

The Great musical Comedy

Success from the Winter Garden

Theatre, London.

(Early booking of Seats Advisable).

NORTH STREET PICTURE HOUSE.

2.30 to 10.30—Continuous.

Monday, Tuesday, Wednesday:

HUGH GIBSON in

"Let 'er Buck."

Thursday, Friday, Saturday:

HARRY LAKEY in

"Soft Shoes."

"DISTINCTION with ECONOMY."

See the Exclusive Modes in

DAY and EVENING WEAR at

THE LITTLE SALON,

Sensier

3000 HIGH ST., CHELTENHAM

Telephone 1080.

W. Scott Cooper,

Goldsmith and Silversmith,

Diamond Merchant, Jeweller,

The Promenade, Cheltenham.

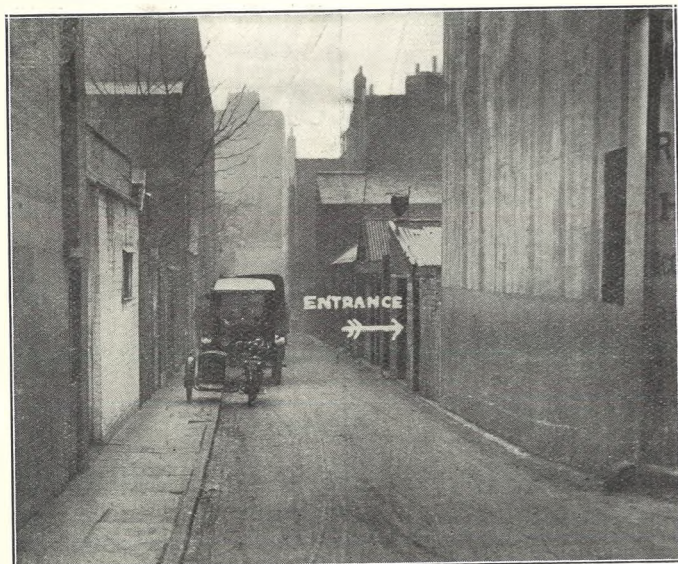
LICENSED VALUER.

For the Best PIANOS, DALE, FORTY and Co. Ltd



NEW PUBLIC CONVENIENCE FOR CHELTENHAM.

The Clarence Lamp, the site which meets with popular approval. The Corporation are hesitating, however, and suggest that a house at the rear of Messrs. Wheway's premises, close by, with entrances both from Clarence Parade and Post Office Lane, shall be converted for the purpose.



The Post Office Lane entrance. Note the extreme narrowness of the lane, not sufficient for two vehicles to pass, and with no pavement on the right-hand side.



The Clarence Parade entrance, with flight of steps thereto. The purchase price of the premises is £500.

BEST QUALITY
CIDERS

IN BOTTLE.—Sparkling and Still.

BARTHOLOMEW,

419, 420 HIGH STREET,
CHELTENHAM.

Wines, Spirits, Ales, Table Waters, &
Grocery. Tel. 135.

LET MOUSSELLS MOVE, YOU



'PHONE 112.
Estimates for Removals and Storing Free.

CHELTENHAM. Offices
AMBROSE-STREET.

DRESSING GOWNS,
25s. to 63s.

WOOL JACKETS,
7s. 6d. to 25s.

FANCY PULLOVERS
IN VARIETY.

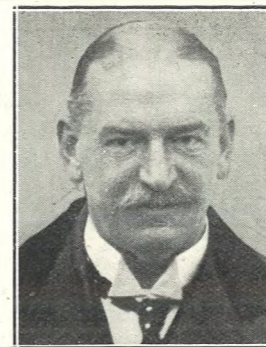
LINED GLOVES. SILK SCARVES.

A. Beckingsale,

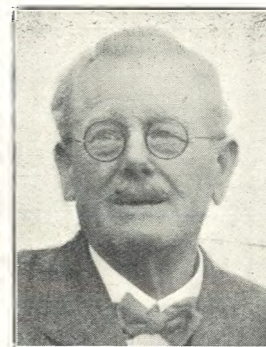
111 HIGH STREET, CHELTENHAM.



MR. ALBERT D. WILLCOX
Of Chaxhill House, Westbury-on-Severn, and for many years of Raymeadow Farm, Toddington, who died at Sherbourne Nursing Home, Gloucester, November 21, aged 58 years. He was widely known and universally respected throughout the County. He was a most successful and up-to-date farmer, a pioneer in the Cider Industry, a founder and firm supporter of the Farmers' Union, and a grower of roots and grain.



DR. C. EWANK LANSDOWN,
of 5 Berkeley-place, Cheltenham, who died suddenly from heart failure on Nov. 24th. He had lived in Cheltenham for many years, where he had a large private practise, and he was universally liked. He was an enthusiastic Freemason and held high rank in the Craft. He leaves a widow, two sons, and a daughter; one of the former being in the Navy.



MR. CHARLES E. TURNER
Of Messrs. Turner, Pritchard, and Sons, Plumbers, of Barton-street, Gloucester, who died somewhat suddenly on November 22nd, after a period of ill-health of several months. He was a life-long resident in Gloucester, and in former years was a member of the City Cycling Club and Gloucester Angling Club. He was a keen bowler, Vice-President and life member of the City Bowling Club, and a member of Grey Friars Bowling Club.

The **HOOVER**

It BEATS . . . as it Sweeps . . . as it Cleans

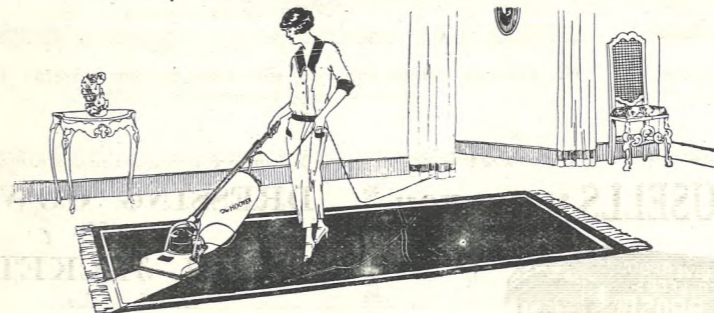
Saves Carpets!

It isn't wear that ruins carpets—it's sharp-edged, gritty particles of dirt. Continually trodden in, they cut the pile and cause bare patches.

Sweeping won't reach this dirt—it's beneath the surface; suction can't remove it—it's matted into the pile.

Only *beating* can dislodge it.

And the Hoover is the only cleaner that *beats* out and shakes loose to the surface all this embedded dirt; as it sweeps electrically and suction cleans.



Made within the Empire—Used throughout the World.

Authorised Dealer:
SHIRER & HADDON, Ltd.,
18-30 Clarence Street,
CHELTENHAM.

LANCE'S

Are offering
their Large
: Stock of :

FURS

AND

: FUR :

COATS

AT VERY SPECIAL
PRICES.

SEE WINDOWS
AND VISIT SHOWROOMS.

John Lance & Co.,
LIMITED,
CHELTENHAM'S
SHOPPING CENTRE.



FUNERAL OF THE LATE MR. T. H. PACKER.

The funeral service to the late Conservative Agent for Cheltenham was held at the Parish Church on Tuesday last, and the great and representative congregation present was eloquent of the esteem and respect which the genial and generous personal qualities of Mr. Tom Packer had inspired.

- 1.—Ex-Alderman E. C. Green.
- 2.—Coffin coming from church with family mourners.
- 3.—Messrs. W. Payne, C. Roberts, Donald McRae, and two Tewkesbury members of Cordwainers' Society, Messrs. G. R. Barlow and W. H. Hayward.
- 4.—Masonic friends: Brothers Lewis Vizard, Tom Bence, Newton Vizard, W. H. Hudson, and F. T. Palmer.
- 5.—Councillor O. Dunn and Mr. C. Craddock.
- 6.—Two Conservative Agent friends.
- 7.—Father and son: Capt. Brill (son) and Sergt.-Major Brill (father).
- 8.—Mrs. and Councillor J. G. Cavanagh-Mainwaring.
- 9.—Mr. W. Herwig.
- 10.—Mr. Arthur Wheeler.
- 11.—Councillor Jas. Moore and Ald. C. H. Margrett.

"Cheltenham Chronicle" Photos.



ROUND THE TOWN IN CHELTENHAM.

- 1.—Mr. Ormerod and Commander Smythies.
- 2.—A-shopping we will go.
- 3.—Discussing the news.
- 4 and 5.—Snapped in the Promenade.
- 6.—Out to see "the pretty shops."
- 7.—Miss E. A. Jenking and Miss Archer.
- 8.—Are they presents for the ladies?
- 9 and 10.—More snaps in the Promenade.
- 11 and 13.—A stroll round the town.
- 12.—Stopping for a chat.

"Cheltenham Chronicle" Photos. Copies 1s. each, postage 2d. extra.

SEND THE "CHRONICLE & GRAPHIC" TO YOUR FRIENDS EVERY WEEK.



FUNERAL OF LADY HORLICK AT COWLEY CHURCHYARD, NOVEMBER 24th.

- 1.—Mr. J. D. Crewdson and Col. H. C. Elwes, M.V.O., D.S.O. (left), and the Hon. Thomas and Mrs. Kingscote (right).
 2.—Coffin being brought out of Church.
 3.—The Dean of Gloucester, Rev. T. S. Tonkinson, and Rev. J. H. L. Giffard.
 4.—Some of the tenants and staff.

"Cheltenham Chronicle" Photos.

BE WISE, and BUY a B.S.A

The Outstanding VALUE FOR MONEY Motor Cycle.

TO ENSURE SATISFACTORY AFTER SERVICE
 YOU MUST be sure and BUY DIRECT from

Leslie Paynter,

The Motor Cycle and B.S.A. Specialist,

ONLY ADDRESS: **BATH STREET, CHELTENHAM.**

ALL MODELS IN STOCK FOR IMMEDIATE DELIVERY.

Sole Local Agent and Officially Appointed Spare Parts Stockist, Service Agent, and Repairer for B.S.A. Motor Cycles.



FUNERAL OF THE LATE MR. A. D. WILLCOX.

The late Mr. A. D. Willcox, for many years of Raymeadow, Dumbleton, and latterly of Ghaxhill House, Westbury-on-Severn, was laid to rest in Nawnham Churchyard on Wednesday last. Many old personal friends from the Winchcombe and Cheltenham district, where he was so well known and respected, were present.

- 1.—Scene at graveside in Nawnham Churchyard, a most beautiful spot.
 2.—An old friend and neighbour, Mr. E. W. Walker.
 3.—The three friends at back are Messrs. J. H. Cliford, S. S. Starr, and A. R. Littleton.
 4.—Many old friends from Winchcombe district can be seen.
 5.—The deceased was borne to the grave by farmers' sons from the Toddington district, all great friends of the family.
 6.—Heading procession are Messrs. Frank Burroughs and R. Blandford.
 7.—Mr. G. Raper (Winchcombe) in centre.
 8.—Friends standing in village street as coffin arrives by motor hearse.

"Cheltenham Chronicle" Photos. Copies can be obtained.



MR. JAMES LOVEDAY, for 34 years Master of North Cerney School, died on November 4th, aged 80 years.

EXHIBITION of CHRISTMAS CAKES, Etc.

DECEMBER 15th to 19th, AT THE

Shamrock Tea Rooms, 31 Promenade, CHELTENHAM.

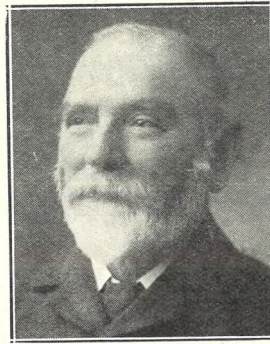
ORDERS FOR CAKES SHOULD BE GIVEN EARLY.

DIABETES.

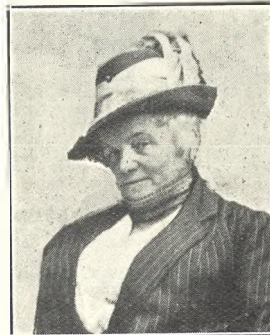
Sufferers from Diabetes searching for a palatable, well-varied diet will find it in Cheltine foods. They are highly nutritious and graded No. 1 (for mild cases), No. 2 (more serious cases), and "strict diet" (for extreme cases). Particulars post free, or with samples to cover postage, etc., 1s. from

THE CHELTINE FOOD Co.,
CHELTINE WORKS, CHELTENHAM.

COAL. Tel. 215.
BATH ROAD
E. A. & W. J. MOORE,
COAL OFFICE,
(Near St. Luke's Schools, Cheltenham). **COKE.**



MR. JOHN K. MEAD, of Home Farm Swindon, near Cheltenham, who died November 22nd, aged 77 years. He was a well-known farmer. He had been ill for the last three or four years.



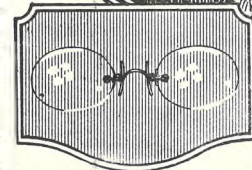
MRS. CHARLES YEEND, of 44 Brighton-road, Cheltenham, who died on Nov. 25th, aged 57 years. She was a strong Conservative worker in the East Ward, and much respected.



NURSE MARY JANE ELLIOTT, Of the Gloucester District Nursing Association, who has been missing since Sunday evening last, when she left the Home in Clarence-street, Gloucester, to go to Church. She is 34 years of age, has been in Gloucester for some years, and so far as is known had nothing to cause her trouble or anxiety. Her home is at Brampton, Huntingdonshire.

NEURITIS and Rheumatism successfully treated by a new electro-therapeutic method based upon latest scientific research, and exclusively administered by Mr. Alfred J. VENTRIS-FIELD, Electro-Therapist, Hospital (London) and 30 years' practical experience. Surgery: 6 RODNEY PLACE, CHELTENHAM.

The Young Girl.



The second of a series

THE energy of youth demands security in its eyeglasses, and, especially when appearance must not be sacrificed, the "TRILOK" Pince-Nez is the ideal form for wear on all occasions.

The "TRILOK" method of attachment — an exclusive Aitchison production — is exceptionally neat in appearance, affording a maximum of comfort combined with absolute security.

With the young girl, especially, the greatest care should be taken that the sight is entrusted only to a fully qualified optician. At 27 Promenade our qualified staff is always in attendance to examine your eyes and give you the benefit of their experience and advice free of all cost.

Make an appointment to-day.

We can supply glasses from our extensive range to meet your every need.

OF EXCEPTIONAL INTEREST AND QUITE FREE.

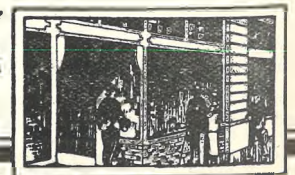
Send to-day for your copies of the "Triok" Brochure and "Sights of London" Booklet, both profusely illustrated.

AITCHISON

AND COMPANY LIMITED
CONSULTING OPHTHALMIC OPTICIANS

27, PROMENADE, CHELTENHAM

opposite the fountain



Look for the Owl in the Window