

THE CHELTENHAM CHRONICLE AND GLO'SHIRE GRAPHIC

With Which is Incorporated the "Cheltenham Looker-On."

GRATIS SUPPLEMENT.

Saturday, March 7, 1925.

No. 1,262.

CHELTENHAM THEATRE AND OPERA HOUSE.

This Afternoon (2.30) and Evening (7.45)—"RICHARD LOVELACE."
NEXT WEEK:—The Charming Comedy—
"PEG O' MY HEART."

THE PALACE, HIGH STREET, CHELTENHAM.

The Tivoli's Greatest Punch!
REX INGRAM'S stupendous
Drama of Flaming Love in the
Land of the Sheiks,

"THE ARAB."

With RAMON NAVARRO and
ALICE TERRY.

Beautiful Arabian Girls in
Gorgeous Oriental Costumes.
Dare-Devil Arabs in Hippodromic
Feats of Horsemanship.

Thrilling Battles in the Desert!
Screened at 2.45, 4.45, 6.45, 8.45.
SPECIAL MUSICAL SETTINGS
by Clarence B. Smith and His
Orchestra.

THE DAFFODIL, SUFFOLK PARADE.

FOR THE WHOLE WEEK:
Commencing, Monday, March 9,
TWO GREAT PICTURES IN
ONE PROGRAMME.

"BETWEEN FRIENDS."

An Exceptional Vitagraph
Picture.
Starring LOU TELEGEN and
ANNA Q. NILSSON.

"Circus Mania."

A Riot of Fun in Six Reels.
Starring MAX LINDER.
Accompanied by a Real Orchestra.
Musical Director: Mr. Frank
Vicary.

Established 1806.

Martin & Co., Limited,

The County Jewellers,
PEARL & DIAMOND MERCHANTS.

A Large Selection of Secondhand
Silver and Old Sheffield Plate.

We are purchasers of Antique
Silver and Fine Quality Gems.
Best Prices Given.
LICENSED VALUERS.

Promenade, CHELTENHAM.



Seven Welsh Internationals Against Cheltenham.

On Monday last Aberavon played Cheltenham Rugby football team on the Athletic Ground, winning by 28 points to nil. Aberavon is probably the finest team in Wales this season, and included in the team which came to Cheltenham were seven of the Welsh International team and one reserve International (illustrated above).

Standing: C. F. Rowlands, E. Phillips, D. H. Davis, L. Jenkins, W. J. Hopkins.

Seated: W. P. James, R. Randel, E. Williams.

"Cheltenham Chronicle" Photo. Copies, unmounted 1s. 9d., mounted 2s. 6d. each, postage 2d. extra.

ADVERTISE IN THE "ECHO."

WINTER GARDEN, CHELTENHAM.

Monday, Tuesday, Wednesday:

Douglas MacLean

In the Screen Version of the
GAIETY MUSICAL COMEDY,

"GOING UP."

Thursday, Friday, Saturday:

The New Theatre, London,
Record Breaker,

"The Great Well."

LLOYD HAMILTON in
COMEDY.

COLISEUM THEATRE. 6.40 and 8.40.

THE FAMOUS REVUE,

"MR. TOWER OF LONDON."

From the Alhambra, London.

NORTH STREET PICTURE HOUSE.

From 2.30 Continuous.

Monday, Tuesday, Wednesday:

"RESTLESS WIVES."

Featuring DORIS KENYON and
MONTAGUE LOVE.

Thursday, Friday, Saturday:
LEO MALONEY in

"Payable on Demand."

Telephone 1080.

W. Scott Cooper,

Goldsmith and Silversmith,
Diamond Merchant, Jeweller,

The Promenade, Cheltenham.

A large selection of Second-Hand
Jewels and Antique Silver always
in Stock at Bargain Prices.

Estimates, designs free of charge.
Old Gold, Silver, and Gems
purchased for cash or taken in
exchange.

For the
Best

PIANOS, DALE, FORTY and CO. LTD



"LOVE'S LABOUR'S LOST" BY CHELTENHAM SHAKESPEAREAN SOCIETY.

On Friday and Saturday last at Cheltenham Town Hall, and on Saturday evening at Cheltenham Ladies' College, this Society gave a clever rendering of this seldom-acted play.

- | | | |
|---|---|--|
| 1.—Misses E. L. Davis as Maria, G. D. Desmond as Katherine, M. Evans as the Princess of France, and Miss M. Pownoll Williams as Rosaline. | 3.—Miss W. Power as 1st Lord. | Biron, Mr. W. Palmer as Longaville, Miss V. Grouse as 1st Page, and Mr. I. D. Yeaman as Dull, a Constable. |
| 2.—Mr. W. L. Johnstone as Costard, Mr. I. D. Yeaman as Dull, Miss J. Lovell as Jaquenetta, Mr. W. Bell Haworth as Holofernes, and Mr. P. Clauss as Sir Nathaniel. | 4.—Mr. T. Hannam-Clark as Don Adriano de Armado, and Miss G. Anton as Moth. | 6.—Col. Lake as Boyet and Mr. C. C. Dodwell as a Forester. The latter was also Stage Manager. |
| | 5.—Miss V. Leach as 2nd Page, Mr. J. D. Lane as Dumain, Mr. H. O. Barnett as Ferdinand, Mr. Coxwell Rogers as | |

"Cheltenham Chronicle" Photos.

RIDE A B.S.A. MOTOR BICYCLE.

PRICES FROM **£36 15 0** CASH, or by Deferred Payments.

Demor-strations at any time or place.

CALL AND INSPECT THE 1925 MODELS IN STOCK

At Official Distributors—**CHELTENHAM MOTOR AND CYCLE Co., CHELTENHAM.**

82 High Street, Tel. 166.

BEST QUALITY CIDERS

IN BOTTLE.—Sparkling and Still.

BARTHOLOMEW,

419, 420 HIGH STREET, CHELTENHAM.

Wines, Spirits, Ales, Table Waters, and Grocery Tel. 18.

MR. ALFRED J. VENTRIS-FIELD,
Surgeon-Chiroprapist, Orthopaedist, and Electro-Therapeutist,
Surgery: 6 RODNEY PLACE, CHELTENHAM

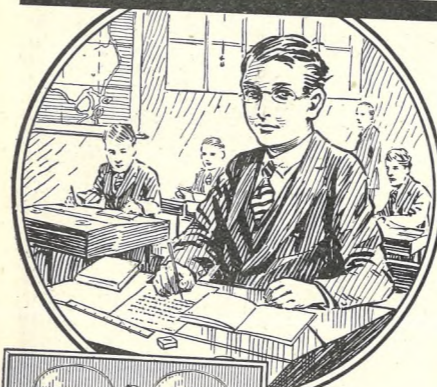
Hospital trained, possession the highest qualifications, with thirty years' practical experience. Mr. Ventris-Field is undoubtedly the leading Specialist for the treatment of Foot Diseases and Deformities, and the removal of Facial Disfigurements.

—"Looker-On."

N.C.T.E.—The above is Mr. Ventris-Field's sole address, and he attends patients only at his own Surgery.

HOURS: 9.30 a.m. until 8.30 p.m.

The School-boy



The fourth of a series

FOR school-boys sturdiness must be the first consideration, and for this purpose spectacles giving a maximum of security and comfort are recommended.

The perfect adjustment of lenses that will rectify and help to correct the existing defect of vision is by far the most important factor, and for this reason the "seller of spectacles" should be avoided and the care of the eyes entrusted to a fully qualified optician.

At 27 Promenade you will find fully qualified and competent opticians always in attendance, who will, by appointment, test your eyes and give you the benefit of their experience and advice free of all cost.

Make an appointment to-day.

We can supply glasses from our extensive range to meet your every need.

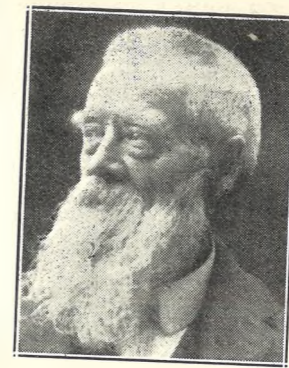
OF EXCEPTIONAL INTEREST AND QUITE FREE.

Send to-day for your copies of the "Trilok" Brochure and "Sights of London" Booklet, both profusely illustrated.

AITCHISON AND COMPANY LIMITED
CONSULTING OPHTHALMIC OPTICIANS
27, PROMENADE, CHELTENHAM



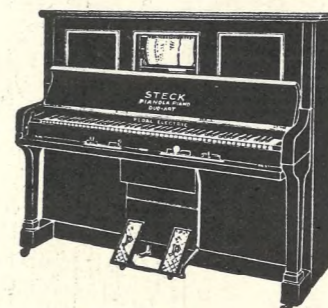
Look for the Owl in the Window



MR. GEO. J. MAYO, Of Ellenville, Naunton-lane, Cheltenham, who died on March 1st, aged 89 years. He was the last survivor of a family of 17. He was a nursery gardener for many years in Cheltenham.

DOUBLE NUMBER OF THE GRAPHIC

Next Week's Issue will be one of 16 Pages, which will be largely devoted to the Great Cheltenham Race Meeting. Scores of Exclusive Pictures. SAME PRICE—2d. ORDER AT ONCE.



The "DUO-ART" REPRODUCING PIANO

reproduces the actual playing of the great pianists.

Every element of tone, technique and expression is faithfully preserved. Over one hundred of the world's first pianists have recorded for the "Duo-Art."

THE "DUO-ART" IS ALSO A "PIANOLA" and as such it endows you with the ability to play yourself and express your own ideas of interpretation.

AND FINALLY IT IS A PIANO FOR ORDINARY HAND-PLAYING, giving the choice of the STEINWAY, WEBER & STECK. Each the leading piano in its class.

May be purchased on terms to suit your convenience. A liberal allowance on your present instrument.

Catalogue on application To the Sole Agent—

Crichton's,
The Piano House,
394 HIGH STREET. Phone 378.

LET LIVING FINGERS PLAY YOUR DANCE ACCOM'ANIMENTS
The "Duo-Art" offers a human touch, a perfect sense of time and rhythm that makes dancing a joy.

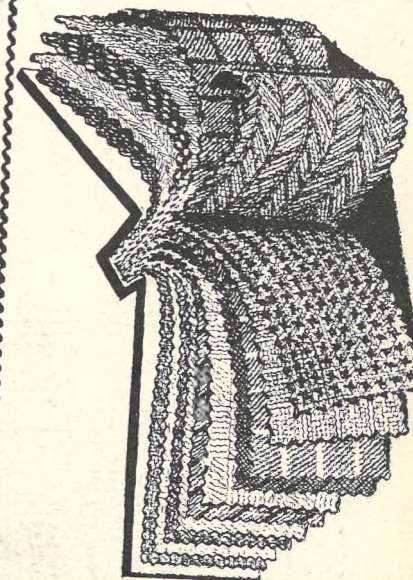
LANCE'S

UNRIVALLED

Spring Show

OF **NEW FABRICS**

IN **SILK, WOOL AND COTTON MATERIALS.**



"Admiralty" Serges

Are made expressly for JOHN LANCE & Co. They are Pure Wool, and every yard is guaranteed. May be had in Navy and Black. 40 to 54 inches wide.

2/11, 3/11, 4/11, 5/11 to 12/11.

'Admiralty' Gabardines.

Black, Nigger, Navy, Tan, Beaver, Fawn, Grey, and all the newest spring shades.

4/11, 5/11, 6/11 to 12/11 a Yard.

Special Offer in All-Wool Tweed Suiting. May be had in 10 shades, including the new Cocoa shades. 54 inches wide. Price, 5/11.

John Lance & Co., LIMITED, CHELTENHAM.



INTERESTING NORTHLEACH WEDDING.

The marriage was solemnized at Northleach Church on Monday last of Mr. Stanley Raymond Buckler, only son of Mr. and Mrs. J. Buckler, 142 Divinity-road, Oxford, to Miss Minnie Tyack, youngest daughter of Mr. and Mrs. J. P. Tyack, of The Union Hotel, Northleach. The church was full of guests and spectators.

- 1.—The bride and her father entering church.
- 2.—Mrs. Tyack (third from left), with four of her sisters and her two nieces.
- 3.—Some of the lady guests.
- 4.—The bridegroom and bride.
- 5.—Northleach friends watching the wedding.
- 6.—Some gentlemen guests.
- 7.—Watching the photographer at work.
- 8.—The bridal party outside the hotel.
- 9.—A jovial crowd of friends.

"Cheltenham Chronicle" Photos Copies 1s. each unmounted, 1s. 6d. mounted. Postage 2d. extra.



ROUND THE CITY IN GLOUCESTER.

- 1, 2, and 3.—Snaps of City men on business bent in Eastgate-street.
- 4.—Mr. Moore, of Eastmans, Ltd.
- 5.—Mr. Nicholls, a well known bulder in Gloucester.
- 6.—A chat in Eastgate-street.
- 7.—Good-bye, outside the Eastgate Market.
- 8.—Mr. White on right.
- 9.—Doing her Saturday shopping in shawl and apron.
- 10.—Mr. Shaw and his little boy.
- 11.—Waiting for the Tuffley tram.
- 12.—Two ladies with baskets to fill.

"Cheltenham Chronicle" Photos. Copies 1s. each, Postage 2d. extra.



A CURIOUS STREET ACCIDENT IN CHELTENHAM.
One day last week, while a Sentinel Steam Trolley belonging to the Stroud Brewery was delivering beer to a public-house in Hewlett-place (a small street joining Hewlett-street and Priory-street), it sank through the crust of the road into a deep pit, which rapidly filled with water. It took two days to get it out.



CHELTONIANS NOMINATED FOR THE COUNTY COUNCIL ELECTIONS.

Snaps on Nomination Day.—From left: Mr. G. L. Searight (N.C.U.), St. Mark's Division; Mr. J. O. M. Skelton (L.) Dunalley Division; Mr. D. L. Lipson (L.), Spa Division; Mr. J. W. T. Jackson (Ind.), St. Peter's Division.
"Cheltenham Chronicle" Photos. Copies 1s. each, Postage 2d. extra.

LET MOUSSELLS MOVE YOU

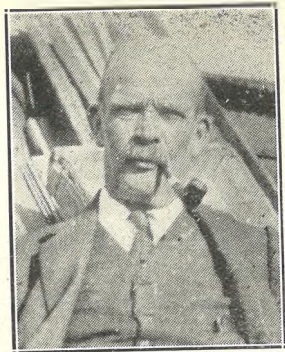


Estimates for Removals and Storing Free.
CHELTENHAM. Office: AMBROSE STREET

Men's PULL-OVERS

New Goods for Spring Wear.
ENGLISH and SCOTCH KNITS.
10/6 TO 30/-.
OVER 50 DESIGNS OR COLOURS.

A. BECKINGSALE
111 HIGH STREET, CHELTENHAM.
Phone 406.



MR. W. G. TANNER,
Builder and contractor, of Cirencester, who died February 25, aged 62 years.



MR. W. J. A. WORTHING,
Of 22 Great Norwood-street, Cheltenham, who died at Bury St. Edmunds on February 20, aged 38 years. He was travelling with the "Little Red Riding Hood" Pantomime Company as stage carpenter.



PHOTOGRAPHY:
THE FRIEND OF MEMORY.

IF YOU LIKE THE "GRAPHIC," why not place an Order for it to be delivered to you regularly? Agents throughout the county, or order direct from the Head Office in Cheltenham.

AT THE
Shamrock Tea Rooms,
31 Promenade, CHELTENHAM.
YOU MAY BUY

HOME MADE CAKES, BREADS AND SCONES, READY COOKED DISHES.

AND
YOU MAY ENJOY
DELIGHTFUL THREE COURSE LUNCHEONS (1/9).
AFTERNOON TEAS (8d.).
Caed Mille Faiete.



WEST v. MIDLANDS: LADIES' LACROSSE MATCH.
Played on the East Gloucestershire ground on Monday last, the West winning by 14 goals to 10.
1.—West team: 2.—West scoring a goal. 3.—A high pass. 4.—Midland team.



THIRD ROUND REPLAY OF THE GLOUCESTERSHIRE NORTHERN SENIOR AMATEUR CUP.
After a draw at Cheltenham, Tewkesbury Town and Cheltenham Town again drew in the above competition on Saturday last, February 23, at Tewkesbury.
1.—Tewkesbury team 2.—Some of the Spectators. 3.—Some of the Spectators. 4.—Cheltenham team 5.—Moss (Tewkesbury) on right puts in a shot. 6.—Wagstaffe (back to camera) scoring Tewkesbury's goal after Trowt (centre) partially clears.

NEXT WEEK at E. L. WARD'S.

Mrs. Tristram (from London) demonstrates the new FITU "Mystic" Front Corsetry.

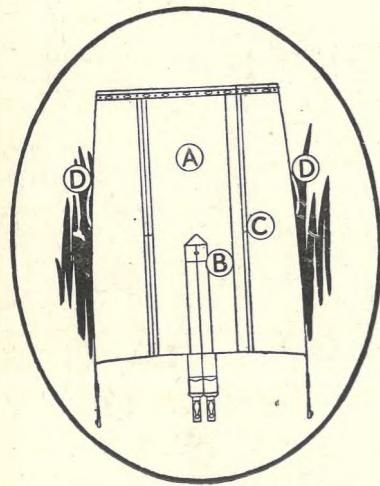
TO-DAY and every day this week MRS. TRISTRAM is demonstrating the new "Mystic" Front Corsetry, which gives perfect figure control, a perfect line—without a BUSK! Don't endure for one day more the discomfort of that rigid steel sticking into your flesh. See the New "Mystic" Front to-day!

Fitu

"Mystic" Front

(Regd)

NO BUSK to hurt you!



Study this Diagram!

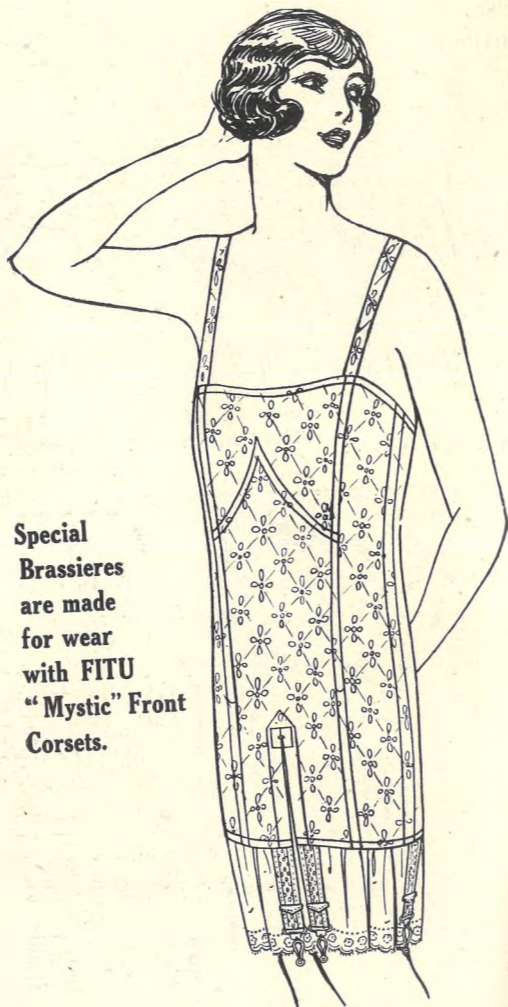
Note the "Mystic" Front (A)—NO BUSK to hurt you! The special opening (B) allowing full freedom of leg movement. The new invisible fastening (C), easy to manipulate and tremendously strong; cannot injure underclothing. The new loops (D) for fastening Brassiere.

Buy no more corsets (Ladies) until you have seen the New "Mystic" Front.

SOLD BY HIP MEASURE.
FITU "Mystic" Front Corsets are sold by hip measure. "Mystic" Front Corsets by bust measure. Correct size is one inch less than actual hip measure. If measure is taken over clothing fully dressed, correct size is three inches less.

FULLY GUARANTEED.
The FITU "Mystic" Front is fully guaranteed by the manufacture. If any FITU "Mystic" Front Corset fails through any fault in manufacture to give complete satisfaction in wear, it will be exchanged free of charge.

FITU "MYSTIC" FRONT, No. 3549.
For short, full figures. Fine quality pink art-silk broche. Diaphragm and abdominal control. Spiral steels. Lacing at back. Front 18½ ins. deep. Back 17 ins. Four suspenders. Sizes **35/6.** (bust) 36—50.



Special Brassieres are made for wear with FITU "Mystic" Front Corsets.

E. L. WARD, 136—140 High Street, CHELTENHAM.

PRINTED AND PUBLISHED AS A GRATIS SUPPLEMENT BY THE CHELTENHAM NEWSPAPER COMPANY, LIMITED.

THE CHELTENHAM CHRONICLE AND GLO'SHIRE GRAPHIC

With Which is Incorporated the "Cheltenham Looker-On."
GRATIS SUPPLEMENT. Saturday, March 14, 1925. No. 1,263.

CHELTENHAM THEATRE AND OPERA HOUSE. This Afternoon (2.30) and Evening (7.45)—"PEG O' MY HEAR."
NEXT WEEK: WARBURTON'S REPERTORY COMPANY, including HAMILTON DEANE.

THE PALACE, HIGH STREET, CHELTENHAM.

Monday, Tuesday, Wednesday: Jacqueline Logan, Antonio Moreno, and Walter Hiers in "FLAMING BARRIERS."
Jack Dempsey, the world's greatest fighter, in "FIGHT AND WIN."
Clarence D. Smith and his Orchestra.
Thursday, Friday, and Saturday: Reginald Denny in the "Reckless Age."
Mack Bennett Comedy: "PITFALLS OF A BIG CITY."
Next Week: Jackie Coogan in "LITTLE ROBINSON CRUSOE."

THE DAFFODIL, SUFFOLK PARADE.

FOR THE WHOLE WEEK. CONTINUOUS PERFORMANCE
D. W. Griffiths Presents
"LOVE & SACRIFICE."
Romance, Laughter, and Adventure in this Big, Latest Grintas Picture, from the story by Robert W. Chambers.
On Monday: "SLEIGHTS OF LONDON."
On Thursday: "THE PICADILLY REVELS," with the Original Music Score by Jack Hylton, will be performed by MR. VICARY and the DAFFODIL ORCHESTRA.

Established 1806.

Martin & Co., Limited.

The County Jewellers, PEARL & DIAMOND MERCHANTS.

A Large Selection of Secondhand Silver and Old Sheffield Plate. We are Purchasers of Antique Silver and Fine Quality Gems. Best Prices Given. LICENSED VALUERS.

Promenade, CHELTENHAM.



DR. J. D. PEARSON, M.R.C.S., L.R.C.P.

Late of Greville Lodge, Cheltenham, who died in the Imperial Nursing Home, Cheltenham, on March 4th, after being ill since last September. He was 47 years of age, and was a Day Boy at Cheltenham College 1888-95. He studied at Guy's Hospital, and opened practice in Cheltenham about 20 years ago. He was a captain in the R.A.M.C. during the war. He leaves a widow and daughter.

ADVERTISE IN THE "ECHO."

WINTER GARDEN, CHELTENHAM.

2.30 Continuous 10.15 p.m.
MONDAY, MARCH 16th, AND ALL THE WEEK:
LIONEL BARRYMORE AND IVY DUKE IN "DECAMERON NIGHTS."

The famous Eastern Love story that ran for over a year at Drury Lane Theatre.

Mr. George Newman, Late Carl Rosa Opera Company, at each performance will feature the world-famous waltz song:—"Decameron Nights."

COLISEUM THEATRE. 6.40 and 8.40.

"THE GAY CITY." MUSICAL COMEDY REVUE.

NORTH STREET PICTURE HOUSE.

From 2.30 Continuous.
Monday Tuesday, Wednesday: LABEL NORMAND in "THE EXTRA GIRL."
Thursday, Friday, Saturday: "The Ranger and the Law."
Featuring LESTER CUNEO.

MAISON ANNETTE

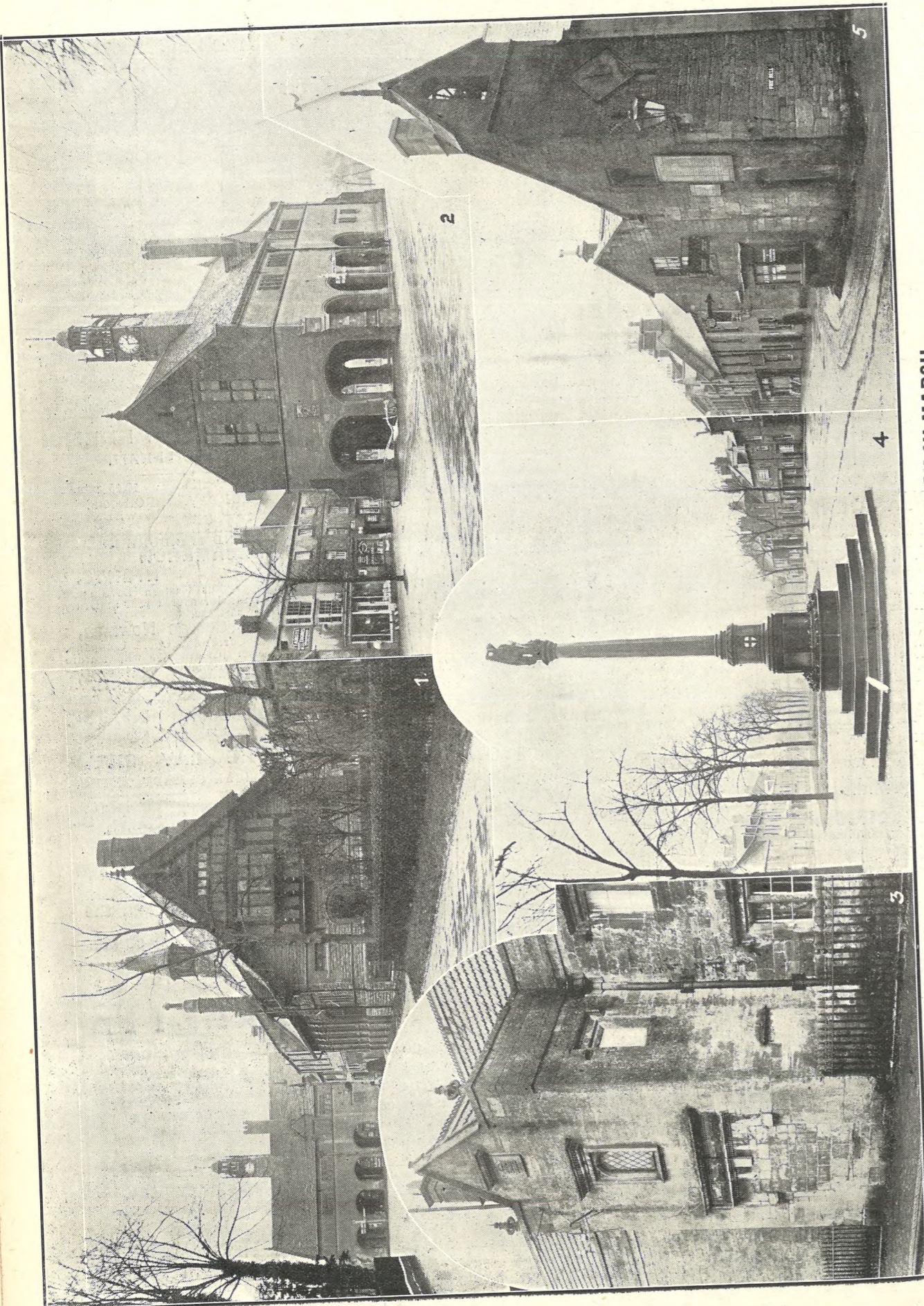
Kensington House, Promenade, Cheltenham,

SPECIALISTS IN EXCLUSIVE

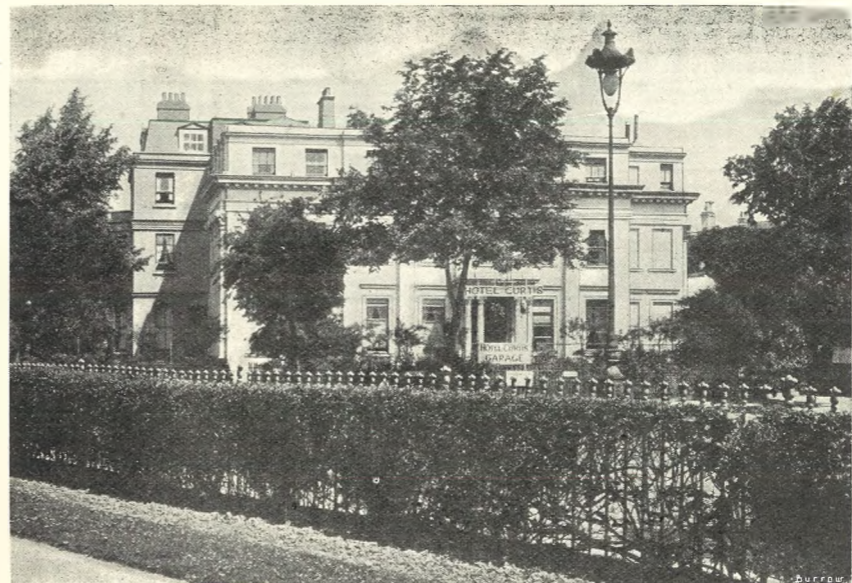
CORSETS & LINGERIE.

'Phone 1122.

For the Best **PIANOS, DALE, FORTY and Co. Ltd**



PICTURESQUE GLOUCESTERSHIRE.—MORETON-IN-MARSH. It consists chiefly of a very wide street Moreton-in-Marsh is an ancient small Market Town in the North of the County, and on the main Worcester to Oxford line of the G.W.R. It was erected in 1887, about half a mile in length. The dominating feature is the Redesdale Public Hall, standing in the centre of the street, an imitation of the old Market Halls. The old Curfew Tower, still standing, is an interesting survival of ancient times. 1.—The Mann Institute, erected in 1891 by Miss Mann. On left is a side view of the is now used in case of fire. The wire rope is outside, and must be a temptation to the local boys. 2.—The Redesdale Hall, a fine building. 3.—Portico of an old house, dated 1688, in the main street. It is a pity not to open the fine 4.—The old Curfew Tower, of the War Memorial and town street. 5.—The Mann Institute, erected in 1891 by Miss Mann. On left is a side view of the is now used in case of fire. The wire rope is outside, and must be a temptation to the local boys. "Cheltenham Chronicle" Photos. Copies 1s. 9d. each, postage 2d. extra.



THE HOTEL CURTIS, BAYSHILL ROAD, CHELTENHAM.
Ample Garage Accommodation. Wireless Installation. Hard and Green Tennis Courts.
Telegraphic Address: "Hotel Curtis, Cheltenham." Phone 1079.



DINING ROOM OF THE HOTEL CURTIS.

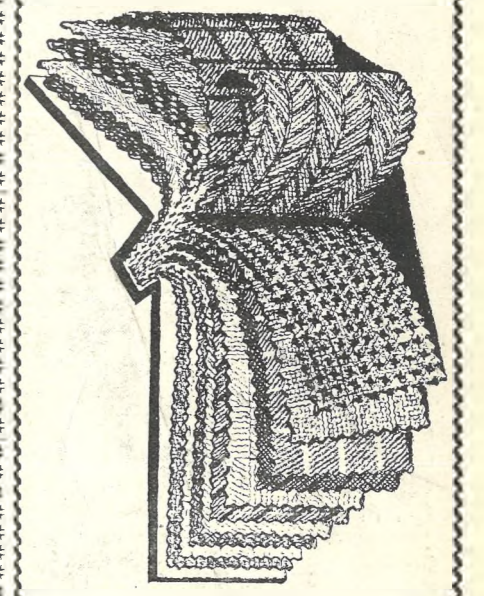
RIDE A B.S.A. MOTOR BICYCLE.
PRICES FROM
£36 15 0 CASH, Demonstrations at any time or :: place. :::
or by Deferred Payments.
CALL AND INSPECT THE
1925 MODELS IN STOCK
At Official Distributors—
CHELTENHAM MOTOR AND CYCLE Co., 82 High Street, CHELTENHAM.
Tel. 166.

LET MOUSELLS MOVE YOU
LONDON. LIVERPOOL. MANCHESTER. LEEDS.
MOUSELL BROS LTD
BIRMINGHAM. LEAMINGTON.

Estimates for Removals and Storing Free.
CHELTENHAM. Offices: AMBROSE STREET. PHONE 112.

SEND THE "CHRONICLE AND GRAPHIC" TO YOUR FRIENDS EVERY WEEK.

LANCE'S
::: UNRIVALLED :::
Spring Show
OF
NEW FABRICS
IN
SILK, WOOL AND
COTTON MATERIALS.



"Admiralty" Serges
LEIGH MILLS

Are made expressly for JOHN LANCE & Co. They are Pure Wool, and every yard is guaranteed. May be had in Navy and Black. 40 to 54 inches wide.

2/11, 3/11, 4/11, 5/11 to 12/11.

'Admiralty' Gabardines.

Black, Nigger, Navy, Tan, Beaver, Fawn, Grey, and all the newest spring shades. 4/11, 5/11, 6/11 to 12/11 a Yard.

Special Offer in All-Wool Tweed Suiting. May be had in 10 shades, including the new Cocoa shades. 54 inches wide. Price, 5/11.

John Lance & Co., LIMITED, CHELTENHAM.



OPENING OF THE NEW PIKE BRIDGE, EASTINGTON.

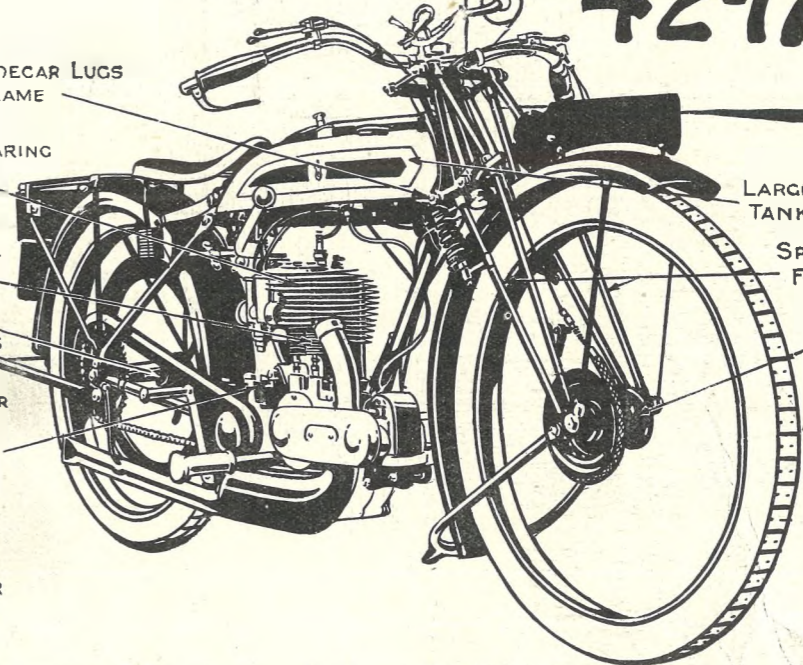
The new concrete bridge at Eastington, replacing a most dangerous and narrow construction, was formally opened by Lady Darell on Thursday, March 5th, at an interesting little ceremony, which a large number of people attended.

1.—The New Bridge, Mr. Holbrough, the builder, at side.
 2.—Lady Darell cutting the ribbon and declaring the bridge open. Mr. E. Larque, Surveyor of District, with her.
 3.—Mr. M. H. Grist and Rev. G. T. A. Ward, of Eastington.
 4.—Some local members of the R.D.C.
 5.—Colonel E. S. Sinnott (County Surveyor).
 6.—Ald. T. E. Wake, Colonel Sinnott, and Mr. F. A. Little.
 7.—Some of the school children on the bridge.
 8.—Mr. A. W. Keys, Mr. E. Larque, and Mr. Holbrough (builder).
 9.—Lady Darell and Mrs. Sinnott.
 10.—Members of R.D.C. and others at the ceremony.
 11.—Mr. J. W. Rowbotham, schoolmaster, on right, calling for three cheers for Sir Lionel and Lady Darell.
 12.—The school children lining the bridge.

"Cheltenham Chronicle" Photos. Copies 1s. each, postage 2d. extra.

£42-17-6

INCORPORATED SIDECAR LUGS
 UNBREAKABLE FRAME
 4.94 ENGINE
 DOUBLE BALL BEARING
 CRANKSHAFT
 ROLLER BEARINGS
 TO BIG END
 VALVES OF COBALT
 CHROME STEEL
 TAPER ROLLER
 BEARINGS IN HUBS
 ALL-CHAIN DRIVE
 SHOCK ABSORBER
 3 SPEED GEAR,
 GEARS OF HIGH
 TENSILE NICKEL
 CHROME STEEL,
 PLATE CLUTCH
 KICK STARTER,
 BALL AND ROLLER
 BEARINGS
 THROUGHOUT.

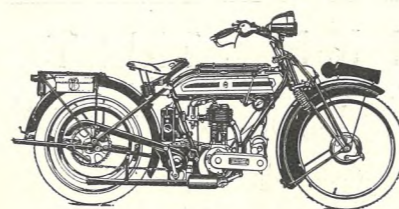


LARGE CAPACITY TANK

SPRING FORKS

TAPER ROLLER BEARING IN HUBS

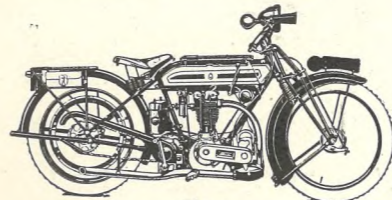
DUNLOP CORD TYRES 26x2 1/2 IN



TRIUMPH
 S.D.3 ALL-CHAIN DRIVE

In trials long and strenuous throughout the five Continents of the World, the 5.50 h.p. TRIUMPH has proved its reliability over and over again. That is why we can so strongly recommend it to all Motor Cyclists requiring a splendid mount.

Type "S.D.1," without Lamps and Horn £66 10 0
 .. "S.D.3," as illustrated, with Lucas Electric Lamps and Horn £74 10 0



TRIUMPH
 R.1 4.94 H.P. FAST ROADSTER

No other Motor Cycle could give better service, and no other has given such profound satisfaction to its owners as the TRIUMPH type "R." As a fast touring mount, it is admittedly "the goods." Why not try out its capabilities yourself?

Type "R.1," with Lamps and Horn £69 10 0
 .. "R.3," as illustrated, with Lucas Electric Lamps and Horn £77 10 0

10 GUINEAS DOWN SECURES
 the new 4.94 H.P. "Triumph," type "P," on our "Pay-as-you-ride-plan," including full and free Insurance. Seize this brilliant opportunity now!

No other machine of like power can compare with it for price, quality and reliability. In the recent Colmore Cup Trial an entry of 3 secured Two Gold Medals and the Hassall Cup for the best 500 c.c. performance. It is built for your service and satisfaction, and is in every way a "TRIUMPH"—trustworthy as ever. Search the world's markets and you will not find better value. You save pounds by selecting a "TRIUMPH," and still get the best.

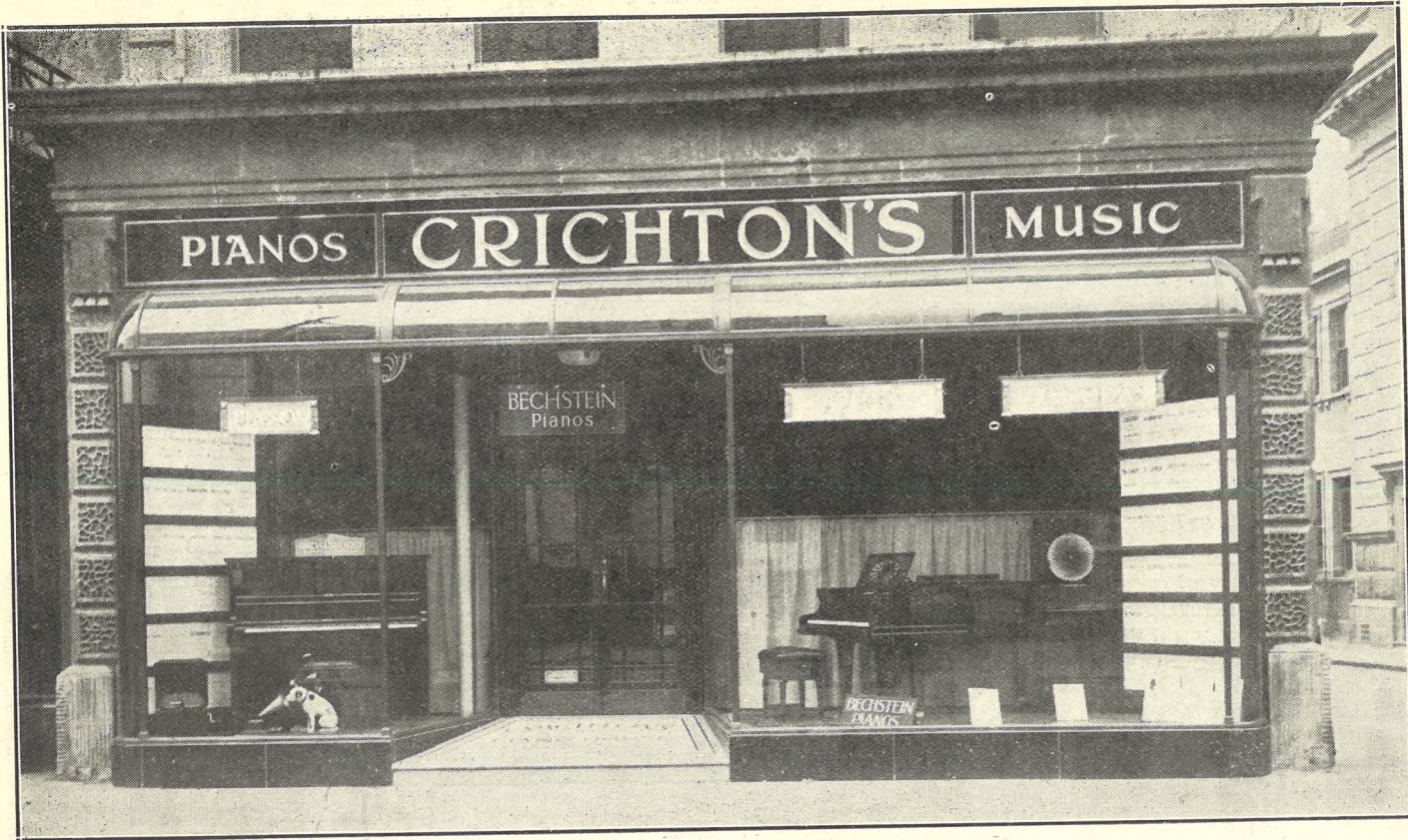
Let us show you the machine, and demonstrate its capabilities. Note its smooth performance, how easy to handle, how comfortable to ride, and then think of its price. You will appreciate the value offered.

CATALOGUES SENT POST FREE ON REQUEST

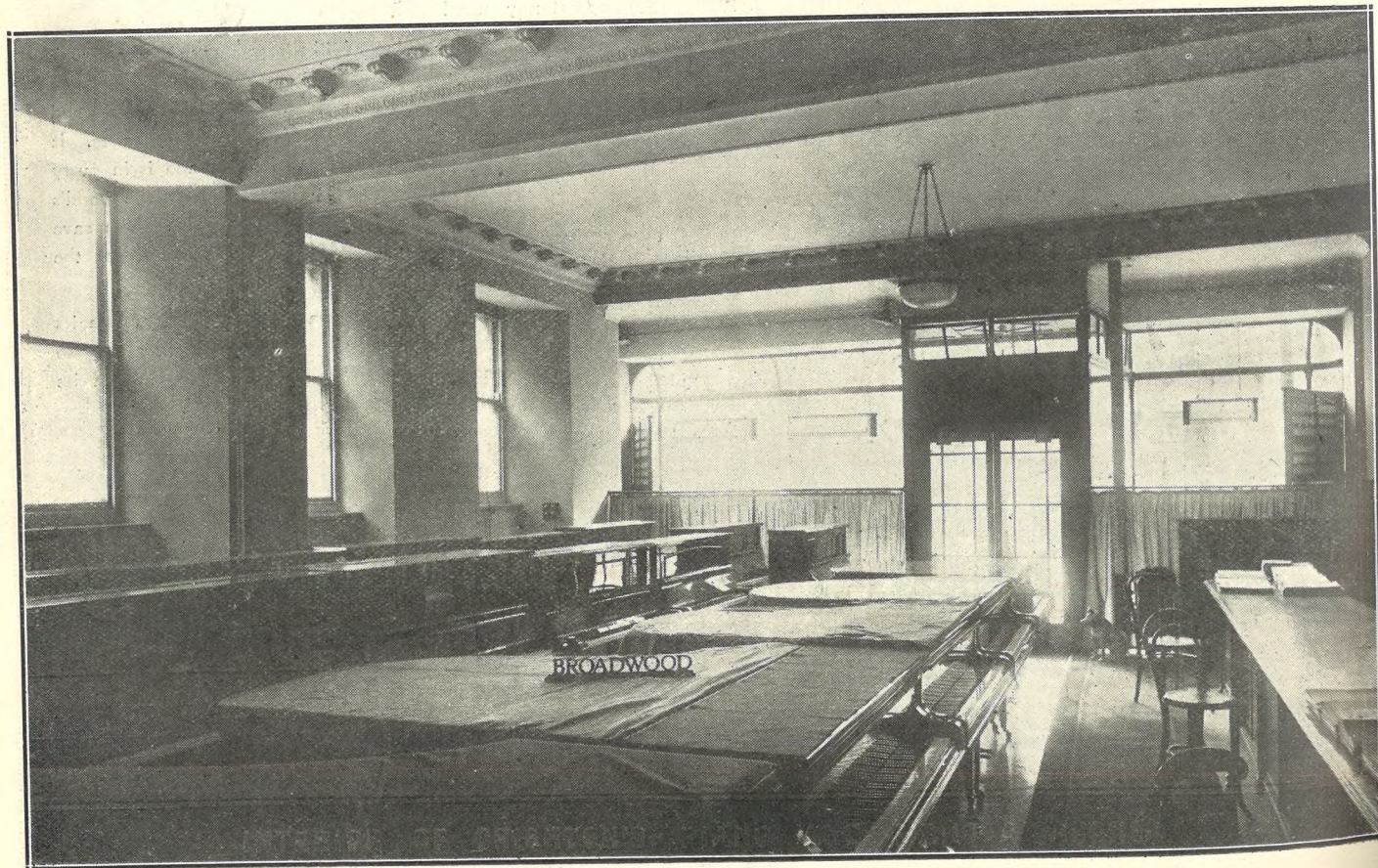
TRIUMPH

PLACE YOUR ORDERS NOW WITH THE LOCAL AGENTS:

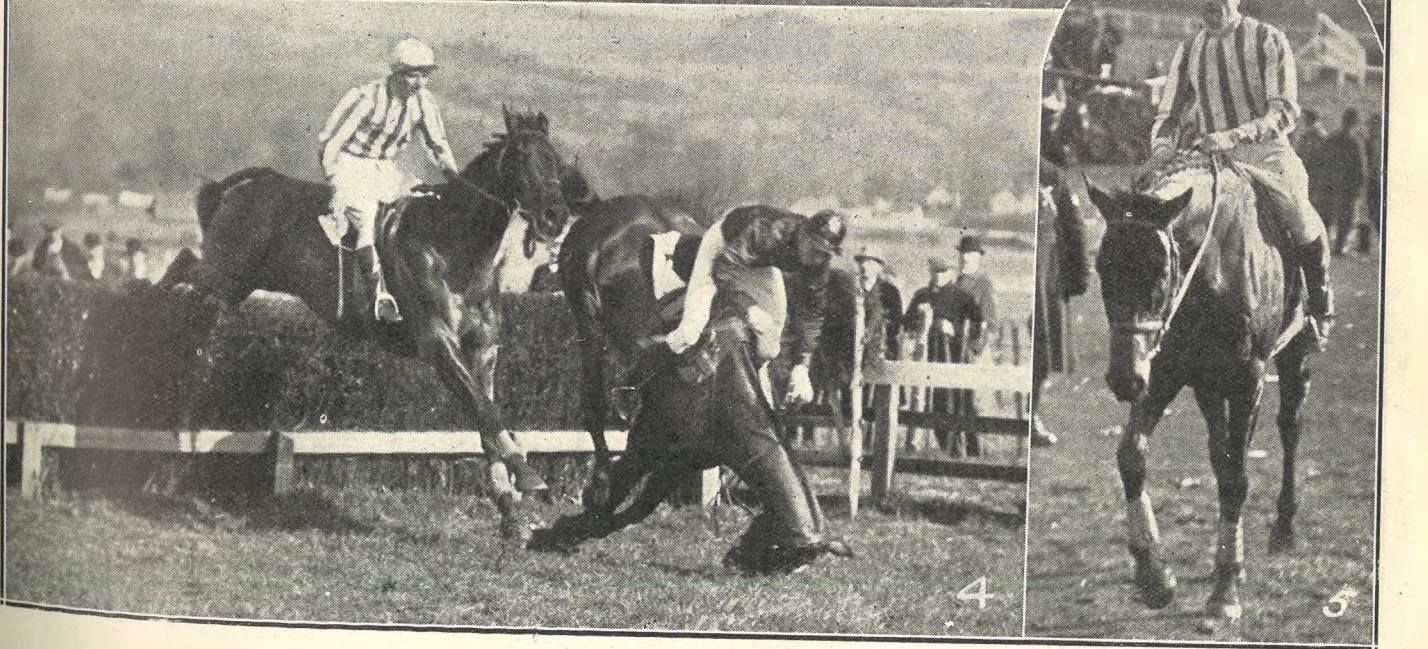
A. WILLIAMS & Co.,
 PORTLAND ST., CHELTENHAM; 35 WESTGATE ST., GLOUCESTER.



THE PIANO HOUSE, 394 HIGH STREET
 (FORMERLY THE OLD BANK),
 RECENTLY ACQUIRED BY THE ENTERPRISING FIRM OF CRICHTON'S.
 Established 1856.



INTERIOR OF CRICHTON'S PIANO AND PIANOLA SALONS.



NATIONAL HUNT STEEPLECHASES IN CHELTENHAM.

The wonderful luck of the Cheltenham Steeplechase Club regarding the weather for their big three-day meeting continued this year, and on the opening day, Tuesday, it was perfect for enjoying the racing. There was an enormous crowd present, and everything points to the fact that Cheltenham must be regarded as the finest Steeplechase meeting in England.

- 1.—The parade for the National Hunt Race.
- 2.—The first fence in the National Hunt Race. Two horses, Iliston Baby and Poppyland, fell here.
- 3.—The second fence in National Hunt Race.
- 4.—The last fence in the big race. Ardvasar (left) and Little Jim II, had been racing neck and neck, clear of the field, when Little Jim, leading, fell at this fence, leaving Ardvasar to come in a very tired horse by 15 lengths.
- 5.—Ardvasar coming in, Mr. P. Dennis up.

"Cheltenham Chronicle" Photos. Copies 1s., 1s. 9d., or 2s., according to size, postage 2d. extra.



NATIONAL HUNT STEEPLECHASES IN CHELTENHAM.

The lovely weather on Tuesday and the sporting character of the racing brought together a brilliant social crowd, and practically everybody prominent in the racing world was present. The Club enclosure and Tattersall's were crowded, despite the increased accommodation.

6.—Lord Lonsdale and Mr. Hastings Clay.
 7.—Sancroft (winner) on right and Fortissimo (second) at the last fence in Cotswold Steeplechase.
 8.—Mrs. Surman and Mrs. Donald Pearce.
 9 and 10.—Club members in the Paddock.
 11.—Hon. Mrs. Aubrey Hastings and Mr. Harry A. Brown watching the racing.
 12.—Dudley, Mr. H. A. Brown up, winning Cheltenham Grand Annual Steeplechase in a canter.
 13.—Mr. Fenwick (left) with Sir George Bullough (right) and a friend.

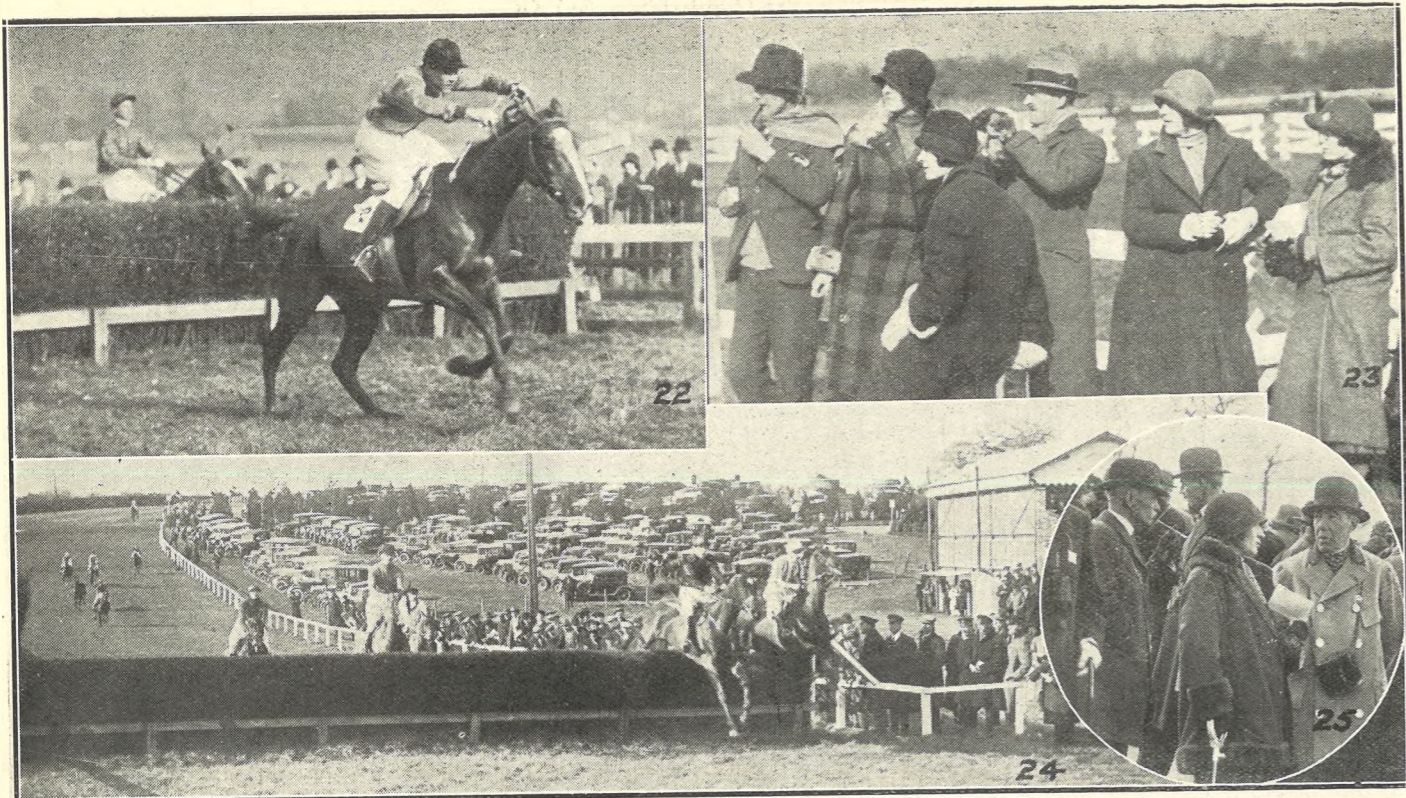
"Cheltenham Chronicle" Photos. Copies 1s., 1s. 9d., and 2s., according to size. Postage 2d. extra.



NATIONAL HUNT STEEPLECHASES IN CHELTENHAM.

The attendance on the second and third days was almost as satisfactory as the first, and the racing was probably of higher class. The feature of the second day was the fine running of Ballinode, the Grand National candidate, who smothered Alcazar in winning the Cheltenham Gold Cup.

14.—A snap of the crowd round the Sale Ring.
 15.—Colonel Talbot, Mrs. Micholls, and Major Micholls.
 16.—Major Dunbar, Mrs. Dunbar, and Mrs. Lewis.
 17.—Miss Roddick, Mr. G. Roddick, and Mrs. Lumsden.
 18.—Another improvement by Messrs. Pratt and Co. A cosy corner at the entry to private boxes, with a fine fireplace designed by Messrs. Chatters, Smithson, and Rainger, architects to the Race Course.
 19.—Left to right: Mrs. Heasman, Mrs. Brian Lemon, Mrs. Wigney, and Mrs. Elliott.
 20.—Warwick, on right, winning Stayers' Selling Hurdle Race.
 21.—Start of United Hunts' Challenge Cup on Wednesday.



NATIONAL HUNT STEEPLECHASES IN CHELTENHAM.

22.—Ballinode, at last fence, easily beating Alcazar for Cheltenham Gold Cup. 23.—Mr. M. Morris, Miss Joan Croft, Miss Mercy Morris, Capt. Bretherton, and Mrs. Clerk watching racing. 24.—Coming down the hill on to the racecourse proper in National Hunt Race, Ardivasar and Little Jim II. leading. 25.—Mr. Soutar-Sanderson on right.

H. M. SIMMONS, The County of Gloucester Goldsmiths & Silversmiths



RACE CUPS. Messrs. Simmons, The County of Gloucester Goldsmiths and Silversmiths, are renowned throughout the West of England for Silver Cups & Trophies. Comparison of prices invited.
384 HIGH STREET, CHELTENHAM. Established 1876.

ROBERTSON & Co.

(T. R. PRITCHARD, Proprietor),

CIGAR and CIGARETTE

IMPORTERS,

8 Colonnade, CHELTENHAM.

Specialities.

Robertson's Edinburgh Smoking Mixture.	Robertson's Hand-Made Virginia Cigarettes.	Robertson's "Croesus" Cigars.
4 4 per 1/2 lb.	100 ... 6/8 50 ... 3 4 25 ... 1/8	50 ... 30/- 25 ... 16/-

N.B.—Noted House for PIPES in all the Best Makes, viz.:
Loewe, Barling, B.B.B., Orlik, and Dunhill.



NADIA, THE BEAUTIFUL RUSSIAN MANNEQUIN, WHO PARADED AT RECAMIER SHOW ON THURSDAY, MARCH 5, WEARING HER ASCOT FROCK.—RECAMIER, LONDON, PARIS, and NEW YORK.



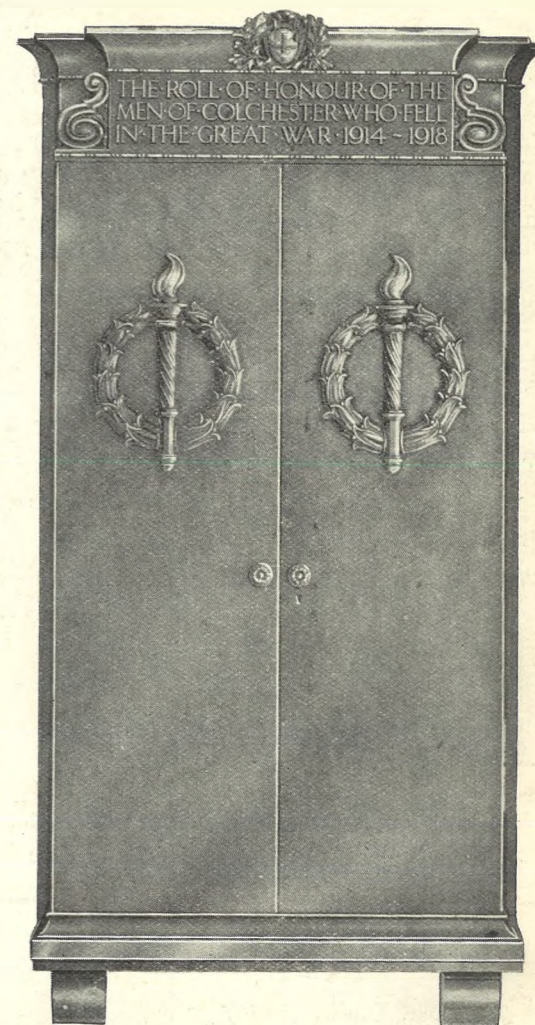
MR. AND MRS. CHARLES DAFT, Of The Woodlands, Gloucester-road, Cheltenham, who on March 16, 1925, celebrated their Golden Wedding, having been married at Cambray Baptist Chapel on March 10, 1875, by Rev. H. Julian.



MR. E. R. PEACEY, Of 6 Sherborne place, Cheltenham, who died Feb. 27, aged 42. He was a plumber with Messrs. Pates, of Hewlett-street, Cheltenham.



PHOTOGRAPHY: THE FRIEND OF MEMORY.



BRONZE TRYPTYCH (Closed)

Executed for Colchester War Memorial to the design of the Architect,
DUNCAN W. CLARK, Esq., A.R.I.B.A., F.S.I.,

BY

H. H. MARTYN & Co., Ltd.
SUNNINGEND WORKS,
CHELTENHAM,

Telegrams "Sunningend."

Telephones: 1161-2-3-4.

Bind your Back Numbers
of
"THE GRAPHIC."

Attractively Printed Cloth Covers for "The Graphic," including Title Page and index.

PRICE 6D. EACH.
POST FREE, 9d.

To be obtained from "Chronicle and Graphic" Offices, Cheltenham.



Police Funeral of Ex-Sergeant Sam Spicer, of Stonehouse, at Stroud, Thursday, March 5th.

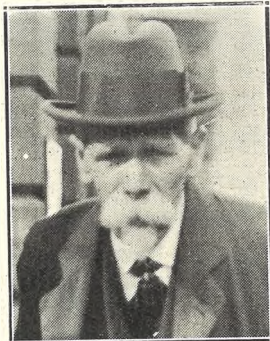
- 1.—Police bearing their old comrade to the church.
- 2.—Ex-Sergt. Baker, ex-Insp. Brotheridge, ex-Sergt. Poulton, and ex-Sergt. Smith.
- 3.—Ex-Sergt. Deakins, ex-P.C.'s Hayward, Wellington, and Phillips.
- 4.—Supts. W. J. Lane and Biggs, with a number of Stroud tradesmen.
- 5.—The deceased's widow and family mourners.



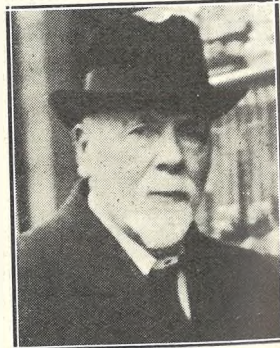
EX-P.S. SAM SPICER,
Of Bridge House, Stonehouse, who died on Feb. 28th, aged 60 years. He was for many years stationed in Stroud, and was a most popular and efficient officer. He had been retired a few years.



MRS. MINNIE ALLEN,
Of Ashleigh, Swindon-road, Cheltenham, who was elected to the County Council for the St. Peter's Division of Cheltenham. She is the first lady Councillor in this county, and is the wife of a railway official. She defeated Mr. J. W. T. Jackson.



MR. F. W. STEPHENSON,
Of Gloucester, who is retiring from the secretaryship of the Gloucester Provident Dispensary after 48 years' service. He has been clerk to the Cathedral Chapter for 64 years.



MR. GEORGE ALDRIDGE,
Of Gloucester, who is retiring from the chairmanship of the Gloucester Provident Dispensary after 36 years' service. He is in his 80th year, and succeeded to the chair in 1915.

Men's PULL-OVERS

New Goods for Spring Wear.
ENGLISH and SCOTCH KNITS.
10/6 TO 30/-.
OVER 50 DESIGNS OR COLOURS.

A. BECKINGSALE

111 HIGH STREET, CHELTENHAM.
Phone 406.

THE FOOT SPECIALIST.
MR. ALFRED J. VENTRIS-FIELD,
SURGEON-CHIROPODIST, ORTHOPÆDIST,
and ELECTRO-THERAPEUTIST.
(Author of "The Treatment of Talipes Valgus,"
"Pedic Surgery," "Poisonous Animals and
Vegetables of the Countryside," "Orthopedic
Principles of Foot Manipulation," etc.).
Consultant H.M. Forces. Surgery:
6 RODNEY PLACE, CHELTENHAM.
Telephone 1266.

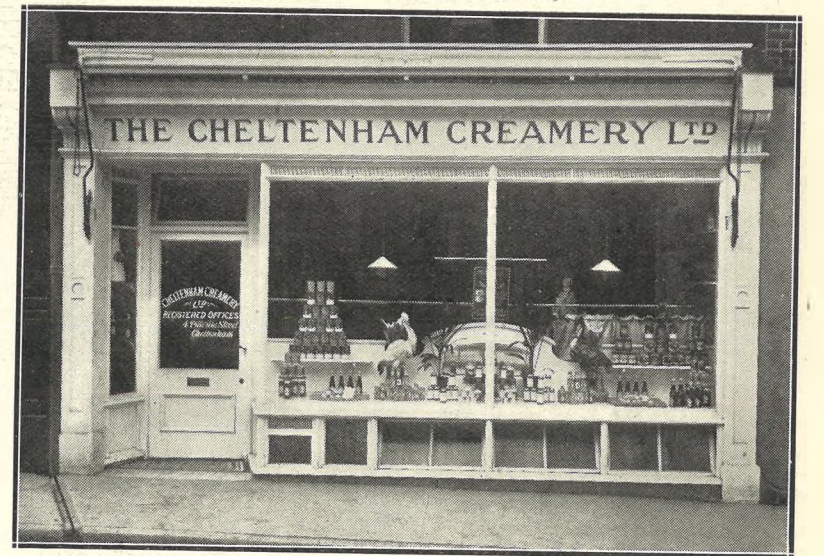
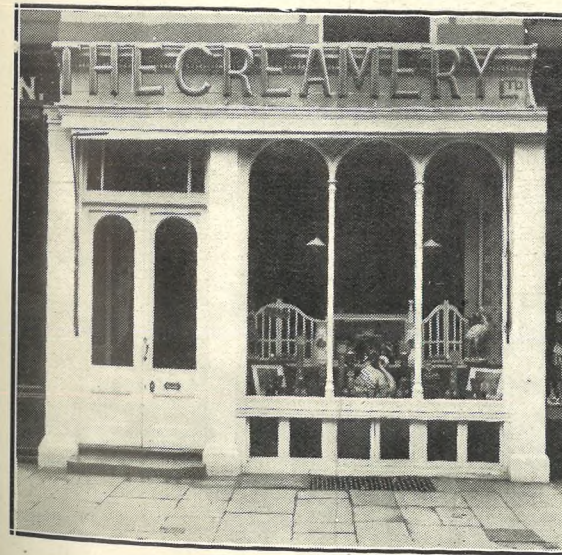
A SMALL ADVERTISEMENT IN THE
"ECHO" PAYS FOR ITSELF OVER
AND OVER AGAIN.

Shoes for Springtime.

NEWEST STYLES in CALF, KID, PATENT
and FANCY LEATHERS NOW ON SHOW.
QUALITY—HIGH-GRADE.
FITTINGS—COMFORTABLE.
PRICES—REASONABLE.

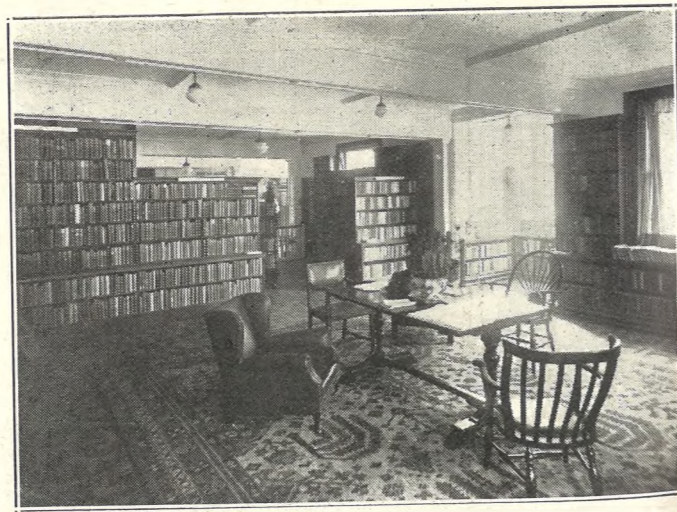
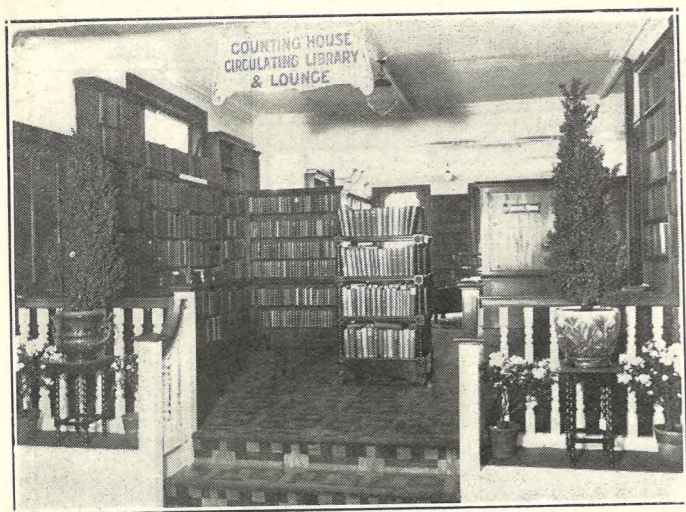
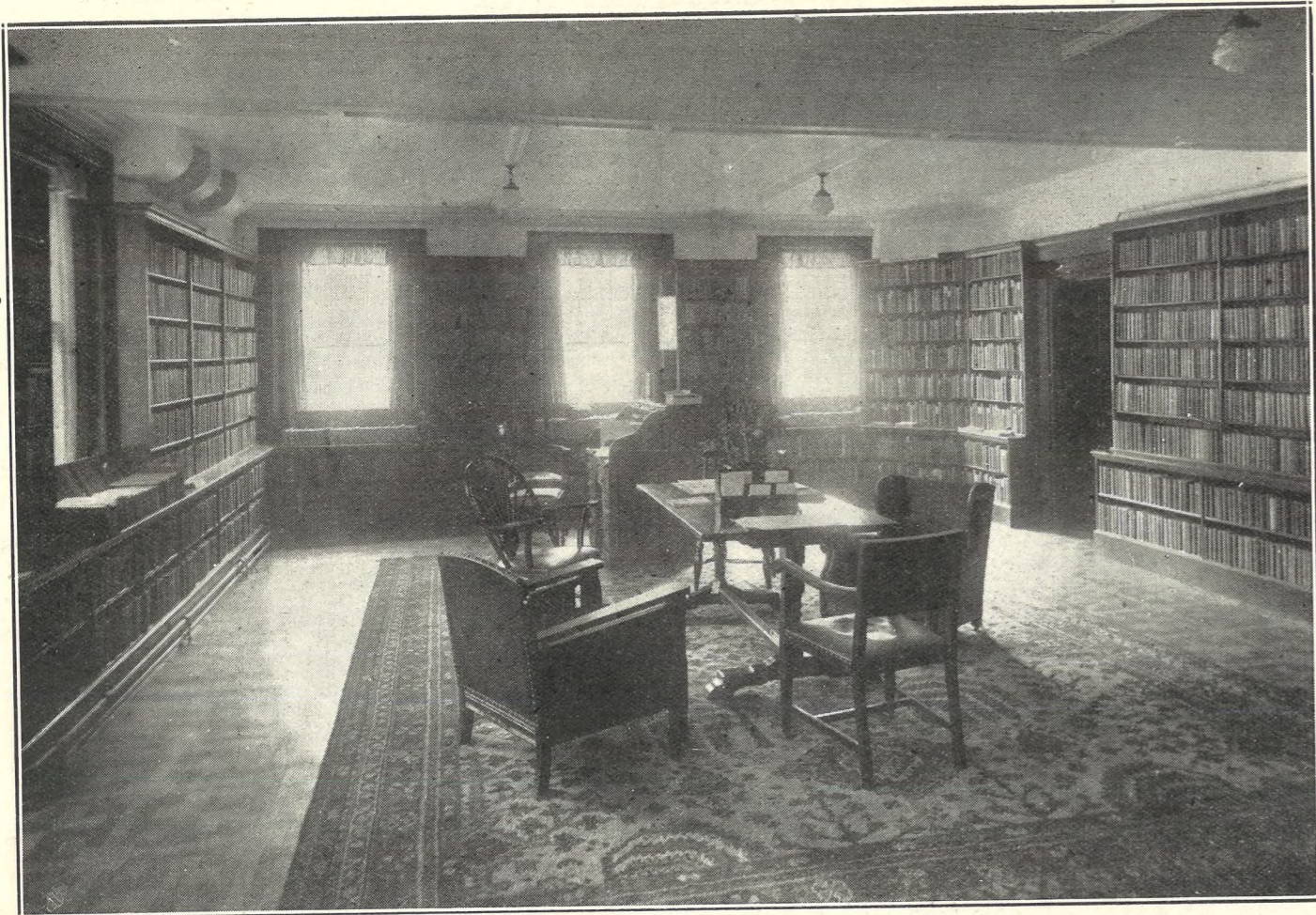
Wilfrid M. Appleby,

CLARENCE STREET
(NEAR PUBLIC LIBRARY).
CHELTENHAM.



The Establishments of the Cheltenham Creamery, Ltd.

Photo No. 1 shows the recently extended and modernised front installed at their principal shop in Pittville Street, Cheltenham. Constantly increasing demand for the Company's high-class dairy produce made necessary the taking in of adjoining premises, and one of the nicest fronts in the town has been constructed, with room available for the new "Devonshire Dainties" department, which is meeting with much favour. The Cheltenham Shop Fitting Company carried out the work. No. 2 depicts the branch at 4 Montpellier Avenue, Cheltenham; and No. 3 that at 16 George Street, Stroud.



CAVENDISH HOUSE Co., Ltd., THE FASHION CENTRE OF CHELTENHAM and the West of England.

ANOTHER NEW & IMPORTANT FEATURE in connection with this Establishment:
"THE CAVENDISH" CIRCULATING LIBRARY,

in conjunction with *The Times Book Club*, the best book lending service in the world.

This luxuriously appointed department, including LOUNGE & WRITING ROOM, which is always at the service of our clientele, was opened on Monday, March 2nd.

- 1.—General view of Interior of Library and Lounge.
- 2.—Entrance to Library from Ladies' Hairdressing Salon and Fashion Sections.
- 3.—Another glimpse of the Interior.



ROUND THE TOWN IN CHELTENHAM.

Some snaps in High-street on Saturday afternoon last, when many housewives were busy on their week-end shopping.

- 1.—Taking his time.
- 2.—A Badminton player.
- 3.—Shopping.
- 4.—A constitutional.
- 5.—Colonel Longridge.
- 6.—Mr. and Mrs. Chas. Cook.
- 7.—A lady motor-cyclist.
- 8.—Mrs. T. Hailing and her daughter.
- 9.—A clergyman in High-street.
- 10.—Mr. Bendall.
- 11.—A family party shopping.
- 12.—A chat over the pram and bicycle.
- 13.—A 'cellist and a perambulator.

"Cheltenham Chronicle" Photos. Copies 1s. each, postage 2d. extra.

VANDERPLANK FROM HARRODS

381, HIGH STREET
CHELTENHAM



FASHIONS AND FURS

SPRING—1925.

COSTUMES for some and—for others Coats. Either are smart, and at the same time correct wear. The Englishwoman alone is at her best in a "Tailor-made," and we have a collection consisting of not only the latest styles and colours, but in sizes that will suit all figures. The prices, too, will suit you, and detailed attention is given to each and all.

Only a lady with an unerring sense of Style knows fully the perplexities of making a wise choice—the need for careful consideration in deciding as to "line," in selecting appropriate colourings, in appraising the "rightness" of a decorative touch.

Only such a lady knows the profound satisfaction of being able to choose from so varied, so distinguished a collection as it is Vanderplank (from Harrods) pride to offer.



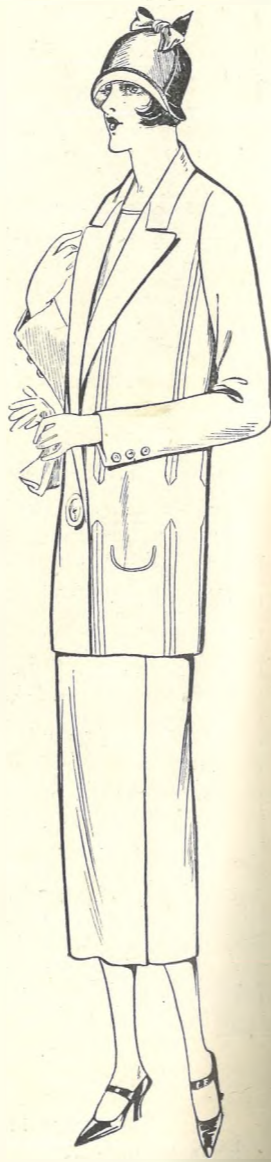
Beautiful Model Coat, in Black Face Cloth trimmed with black and white check material. Lined throughout Black Crepe de Chene.

Price 9 Gns.

Perfect Fitting Man-Tailored Suit, with not too exaggerated a line. Wrap-over Skirt, made in Covert or Plain Repp. In all this season's colours—Alabaster, Oyster, etc. Lined Crepe de Chene.

Price 7½ Gns.

SUITS FROM 3 TO 13 GNS.



VANDERPLANK,

CHELTENHAM SPA.

PRINTED AND PUBLISHED AS A GRATIS SUPPLEMENT BY THE CHELTENHAM NEWSPAPER COMPANY, LIMITED.

THE CHELTENHAM CHRONICLE AND GLO'SHIRE GRAPHIC

With Which is Incorporated the "Cheltenham Looker-On."
GRATIS SUPPLEMENT. Saturday, March 21, 1925.

No. 1,264.

CHELTENHAM THEATRE AND OPERA HOUSE.

This Afternoon (2.30) Hamilton Deane in "SMITH," and Evening (7.45)—"DRACULA."
NEXT WEEK: The Latest Musical Play: "Madame Pompadour."

THE PALACE, HIGH STREET, CHELTENHAM.

Continuous, 2.30 to 10.15.
From "The Tivoli, London."
THE BEST PICTURE OF HIS GREAT CAREER.
JACKIE COOGAN in

"LITTLE ROBINSON CRUSOE."

A Little Waif, the Last Survivor of the Crew of the Good Ship "Sara Winch." What does he do?
See Jackie's Latest.
FULL PROGRAMME Changed Monday and Thursday. SPECIAL MUSICAL SETTINGS and EFFECTS by Clarence B. Smith and His Orchestra.

THE DAFFODIL, SUFFOLK PARADE.

FOR THE WHOLE WEEK!
Commencing Monday, March 23.
The Big Paramount Special:

"WANDERER OF THE WASTELAND."

The Whole Film is Produced in NATURAL COLOURS, And Comes to this Theatre Direct from THE LONDON PAVILION. FRANK VIGARY and the DAFFODIL ORCHESTRA. At All Performances. ANOTHER WONDERFUL ENTERTAINMENT.

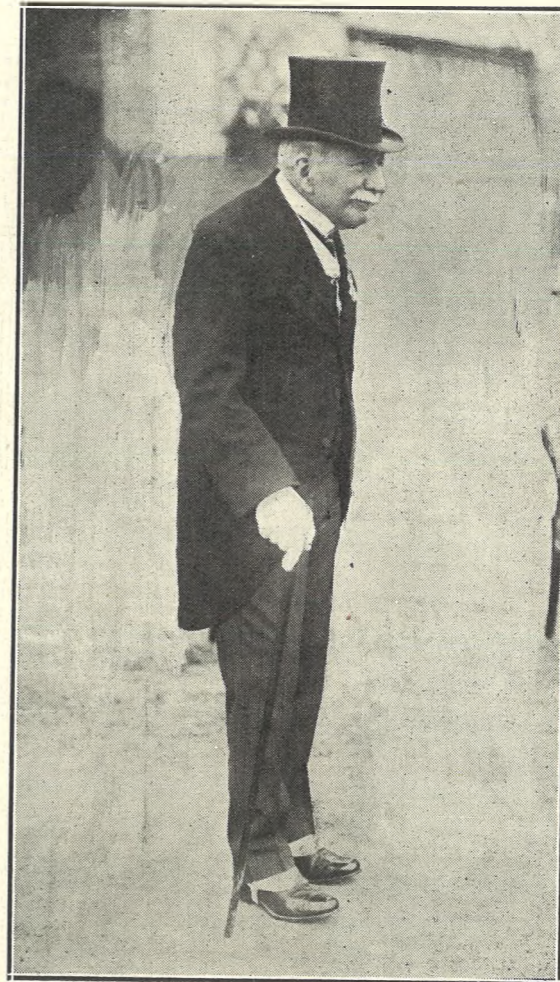
Established 1806.

Martin & Co., Limited.

The County Jewellers, PEARL & DIAMOND MERCHANTS.

A Large Selection of Secondhand Silver and Old Sheffield Plate. We are Purchasers of Antique Silver and Fine Quality Gems. Best Prices Given. LICENSED VALUERS.

Promenade, CHELTENHAM.



Lieut.-General M. W. Willoughby, C.S.I.

Of 17 Lansdown-place, Cheltenham, who died on Tuesday, March 17th, on the eve of his 92nd birthday. He was one of the first boys to enter Cheltenham College for its opening term in 1841, and he held a warm regard for his school, as did the school for him. He had a distinguished career in the Indian Army, from which he retired in 1894, coming to live in Cheltenham.

WINTER GARDEN, CHELTENHAM.

Monday, Tuesday, Wednesday:
GLORIA SWANSON in "ZAZA."

The World's Most Famous Love Story.

Thursday, Friday, Saturday:

Tom Mix and Tony In "LADIES TO BOARD." JACK HOLT in "THE CALL OF THE NORTH."

Seats May be Reserved for the Next Week: "SCARAMOUCHE."

COLISEUM THEATRE.

6.40 and 8.40.

"RADIANA."

Supported by No. 1 VAUDEVILLE COMPANY.

NORTH STREET PICTURE HOUSE.

From 2.30 Continuous.

Monday, Tuesday, Wednesday:
"NOT ONE TO SPARE."

Featuring ETHEL WALES and WILLIS MONKS.

Thursday, Friday, Saturday:

"Outlaws of the Rio Grande,"

Featuring JACK FERRIN and PEGGY O'DAY.

Telephone 1080.

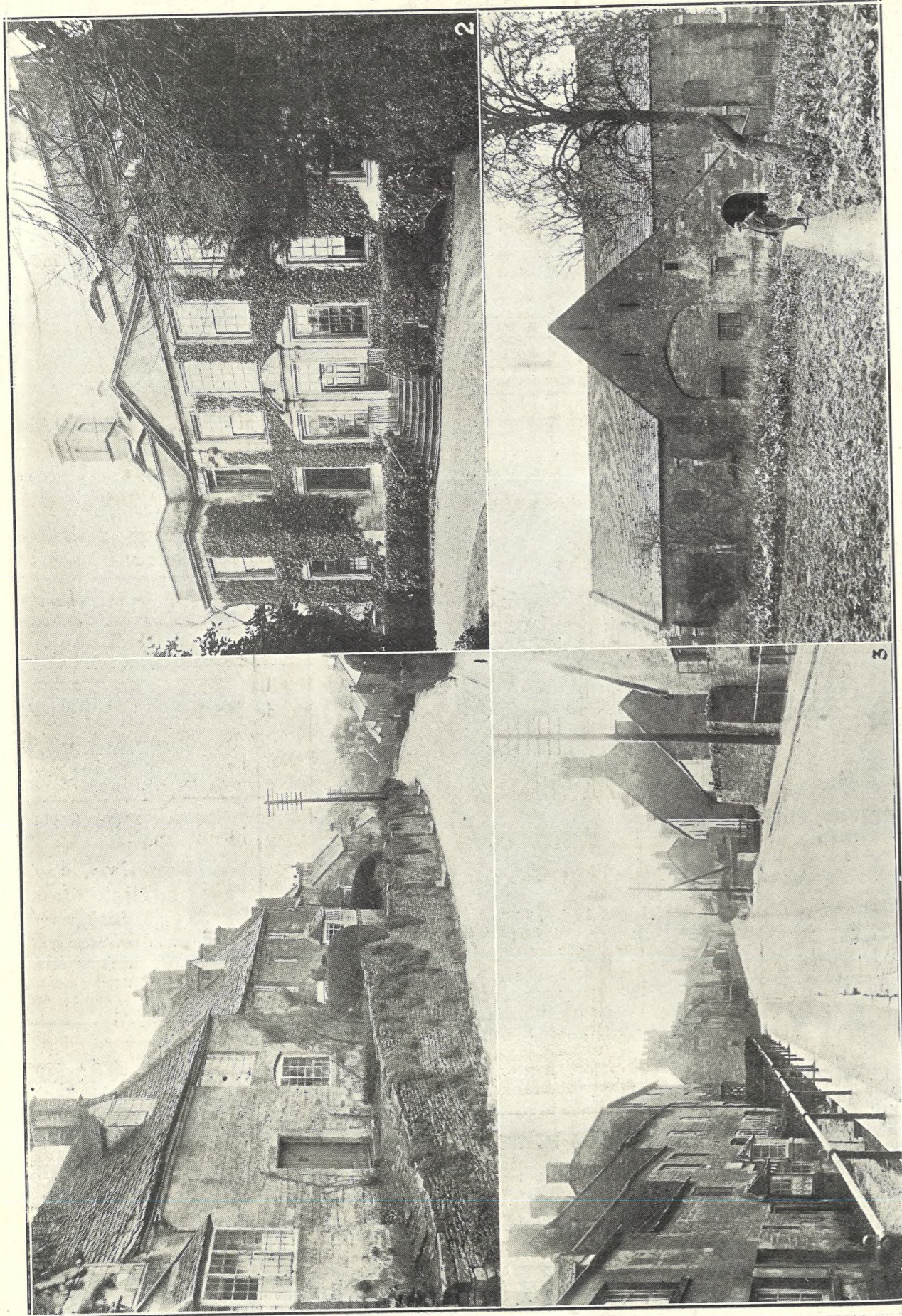
W. Scott Cooper,

Goldsmith and Silversmith, Diamond Merchant, Jeweller, The Promenade, Cheltenham.

A large selection of Secondhand Jewels and Antique Silver always in Stock at Bargain Prices.

Estimates, designs free of charge. Old Gold, Silver, and Gems purchased for cash or taken in exchange.

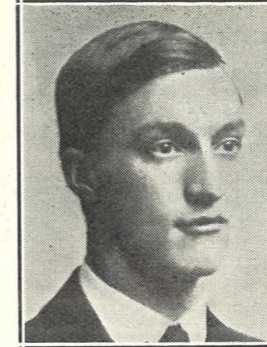
For the Best PIANOS, DALE, FORTY and Co., Ltd.



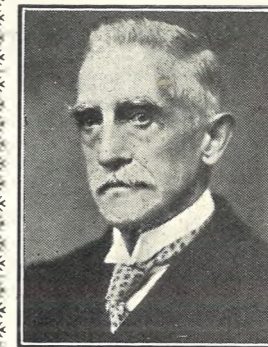
PICTURESQUE GLOUCESTERSHIRE.—BOURTON-ON-THE-HILL. Bourton-on-the-Hill is a most picturesque and old world village two miles from Moreton-in-the-Marsh. It is a long street built on the slope of a hill, and the houses stretch from the bottom to the top, the handsome and well-kept old church and churchyard being about half-way up. There are fine views from the top looking over Moreton-in-the-Marsh. **1.—**View of Village Street looking towards Moreton. **2.—**Bourton House, the residence of Mrs. D'Esté East, a fine old mansion of stone, very pleasantly situated. **3.—**View of Village Street, showing its picturesque quaintness. **4.—**The famous old tithe barn at Bourton House. It is considered one of the finest stone barns in England, and bears the date 1570. "Cheltenham Chronicle" Photo. Copies 1s. 9d. each (unmounted). Postage 2d. extra.



CAPT. A. E. HARRIS, Of Sarina, Tuffley-avenue, Gloucester, who died on March 12th, aged 40 years. He was in command of the s.s. Aylestone when taken ill on a voyage from Texas in April, 1924, and had been ill ever since. He was a son of Mr. F. W. Harris, of the Gloucester Dock Company.



MR. CHARLES WILLIAM WEBB, Of 114 Barton-street, Gloucester, who died on March 12. Mr. Webb was 27 years of age, and after leaving Sir Thomas Rich's School, he entered the office of the Gloucester Board of Guardians. In 1921 he obtained an appointment as assistant clerk in the office of the Dudley Guardians, but contracted a chill a year later, and tuberculosis intervening, he remained at home until the time of his death.



MR. T. W. WILSON, Of 45 Dean's-walk, Gloucester, who died on Saturday, March 14th, aged 67 years. He was for 25 years secretary to the St. John Ambulance Society, being made an esquire of the order, and he only retired a few weeks ago. He was for 24 years traveller to Messrs. Washbourne, Bros., Bell-lane.



BECHSTEIN PIANOS.

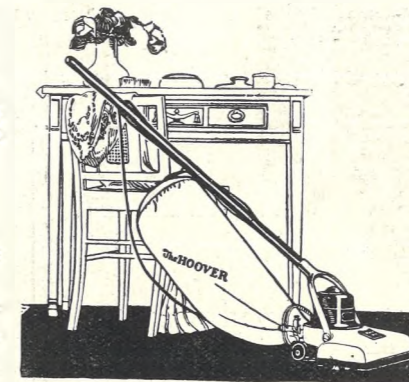
THE BECHSTEIN PIANO needs little recommendation to cultured tastes.

Its beautiful tone and incomparable touch—qualities which have gained for it the esteem of every music lover, and have set a standard to the world—are as exquisite and as characteristic as ever.

Write or Call for Catalogue.

Sole Agents:—

Crichton's,
The Piano House,
394 HIGH STREET,
CHELTENHAM.
Phone 378.



Our Free Hoover Week Offer

Have the electric Hoover Suction Sweeper working in your home free!

Then you can beat, sweep and clean your floor or stair carpets in one easy, dustless action, as they lie on the floor. Air-clean your curtains, hangings and upholstery, free your rooms of dust—dustlessly.

Just 'phone or write.

Authorised Dealer

SHIRER & HADDON,
LTD.,
18-30 Clarence Street,
CHELTENHAM.

The **HOOVER**
It BEATS... as it Sweeps... as it Cleans

LANCE'S

... FOR ...

LOVELY SILKS.

The Largest and Most Varied Collection in the West of England.

Beautiful **Crepe de Chene**, 40in. wide. All colours. Reliable Fabric. **Special Price ... 4/11**

Heavy-weight **Crepe de Chene**. 40 shades. **Special Price 6/11**

Lingerie Crepe, good, durable quality. All colours. 40in. wide. **Special Price 3/11**

Negligé Crepe. A delightful Fabric for Ladies' Underwear. 40in. wide. 10 shades. **Special Price 4/11**
Made expressly for John Lance & Co.

Silk Stockinette. 54in. wide. Shades: Tan, Beaver, Beige, Fawn, Cham, Ivory, Navy, Saxe, Brown, Chestnut, Tabac, Black, Putty, Green, and Light and Dark Grey. **Special Price 5/9**

Jap Schappe. Natural shades only. 30in. wide. **Special Price 2/11**

Artificial Silks, in a huge range of designs and colours. **Special Prices from 1/11½ to 5/11**

French Government Silk, Beautiful designs. 27in. wide. **Special Price 1/9½**

John Lance & Co.,
LIMITED,
CHELTENHAM'S SILK SPECIALISTS.



MOTHERCRAFT EXHIBITION IN GLOUCESTER.

The opening of a three-days' mother craft and nursing exhibition at the old Corn Exchange, Gloucester, took place on Tuesday, March 17th.

- 1.—Sir Arthur Newsholme, K.C.B., M.D., and members of the platform at the opening ceremony. 2.—Some of the nurses and helpers at Exhibition.

"Cheltenham Chronicle" photos. Copies 1s. each, postage 2d. extra.



SUN LIFE ASSURANCE COMPANY OF CANADA

TRUSTEES:

RT. HON. EARL OF ALBEMARLE, RT. HON. REGINALD McKENNA, P.C.

RESULTS FOR YEAR 1924.

Total Assurances	£179,103,381
Annuity purchase	£1,602,687
Paid to Policy Holders	£38,000,000
ASSETS (under Government supervision)	£56,328,165
Increase over 1923 of over	£13,000,000

SPECIAL AND IMPORTANT POLICY FEATURES.

1. Guaranteed Reserves to keep policy in force if you are unable to pay premiums.
2. Guaranteed and liberal cash surrender values.
3. Guaranteed and Valuable Options.
4. In event of your death before policy matures the sum assured, etc., is paid, and in addition 50% of all the premiums you have paid are returned.
5. Should you become totally disabled by any accident or any sickness, payment of premiums stops, and you receive a monthly cash income until death or the policy matures when sum assured, etc., is paid in full.
6. In event of premium being payable quarterly or half-yearly, sum assured, etc., is paid free from deduction of any premium due to complete the year.

County Managers: E. BRUCE GEORGE. CHARLES G. IRVING,
CLARENCE CHAMBERS, Clarence Parade, CHELTENHAM
 Tel. No. 10. Opposite "Echo" Office.

ANNUITIES:—Revised and attractive rates with Guaranteed return of the whole of your purchase money payable monthly, quarterly, half-yearly, or yearly.

LOTUS & DELTA
Shoes of Standing



LOCAL AGENT—
W. J. MELVILLE,
 408 High Street,
 CHELTENHAM.

Let Us Illustrate

YOUR BUSINESS PREMISES

We send Photographer,
 Make Block, and
 Quote you an Inclusive
 Price for its Insertion
 in the Graphic.
 Afterwards the Photograph
 And the Block become
 Your Property, and
 You can use them for
 Circulars, Bill Heads, etc.



LADIES' ATHLETIC SPORTS.

The Gloucestershire Women's Hockey Association held their first Athletic Sports on the East Gloucester ground, Cheltenham, on Saturday last. A large number of competitors made the meeting a success.

- | | | |
|--|--|---|
| 1.—Officials. | 4.—Spectators. | 7.—Competitors in Sack Race. |
| 2.—Cotswold team, winners of Relay Race. | 5.—East Gloucester winning Tug-of-War. | 8.—Competitors watching Shooting at Bucket. |
| 3.—Competitors. | 6.—Miss Sheriff winning High Jump. | |

"Cheltenham Chronicle" photos. Copies 1s. each, postage 2d. extra.



ENGLISH FOLK DANCE SOCIETY COMPETITIONS IN CHELTENHAM.

On Saturday last, Cheltenham Town Hall was full of dancers the whole day long, and competitions of the above Society were held in the big room for juveniles and adults.

- 1.—Gloucester Junior Technical School "B" team.
- 2.—Northleach Juniors.
- 3.—St. Gregory's School, Cheltenham.
- 4.—Derby-road Central School, Gloucester, "A" team.
- 5.—Lydney Church of England School.
- 6.—Derby-road Central School, Gloucester, "C" team.

"Cheltenham Chronicle" photos. Copies 1s. each, postage 2d. extra.

Men's PULL-OVERS

New Goods for Spring Wear.
ENGLISH and SCOTCH KNITS.
10/6 TO 30/-.
OVER 50 DESIGNS OR COLOURS.

A. BECKINGSALE
111 HIGH STREET, CHELTENHAM.

'Phone 406.

LET MOUSELLS MOVE YOU



Estimates for Removals and Storing Free.

CHELTENHAM.

Offices: AMBROSE STREET.

BEST QUALITY

CIDERS

IN BOTTLE.—Sparkling and Still.

BARTHOLOMEW,

419, 420 HIGH STREET,
CHELTENHAM.

Wines, Spirits, Ales, Table Waters, and Groceries.
Tel. 13.



ENGLISH FOLK DANCE SOCIETY COMPETITIONS IN CHELTENHAM.

In the Country Dances for children under 14, Tewkesbury children (No. 11) were second in Morris Dances, St. Gregory's (No. 3) were first, and Northleach Juniors (No. 2) were second, and in Country Dances, Gloucester Junior Technical School "A" team were second and "B" team fourth.

- 7.—Gloucester Junior Technical School "A" team.
- 8.—Derby-road Central School "D" team.
- 9.—Widden-street Girls' School, Gloucester, "B" team.
- 10.—Derby-road Central School, Gloucester, "B" team.
- 11.—Tewkesbury Church of England School.
- 12.—Great Rissington School.

"Cheltenham Chronicle" photos.

AT THE
Shamrock Tea Rooms,
31 Promenade, CHELTENHAM.

YOU MAY BUY

HOME MADE CAKES, BREADS
AND SCONES, READY COOKED
DISHS.

AND
YOU MAY ENJOY

DELIGHTFUL THREE COURSE
LUNCHEONS (1/9).
AFTERNOON TEAS (8d.).

Caed Mille Faiete.

RIDE A B.S.A. MOTOR BICYCLE.

PRICES FROM
£36 15 0 CASH, Demonstrations
at any time or place. or by Deferred Payments.

CALL AND INSPECT THE
1925 MODELS IN STOCK

At Official Distributors—
**CHELTENHAM MOTOR AND
CYCLE Co.,** 82 High Street,
CHELTENHAM.
Tel. 166.

IF YOU LIKE THE "GRAPHIC,"
why not place an Order for it to be
delivered to you regularly? Agents
throughout the county, or order direct
from the Head Office in Cheltenham.



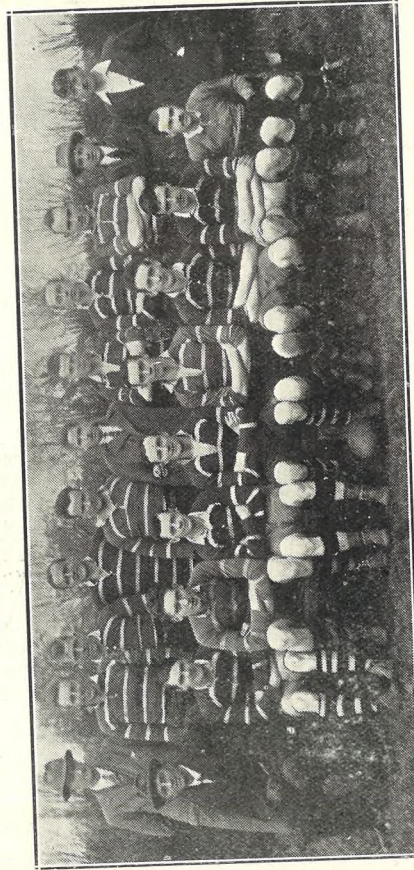
**PHOTOGRAPHY:
THE FRIEND OF MEMORY.**

COUNTY CHAMPIONSHIP.

Boys, in the above competition, by 2 goals to 1.



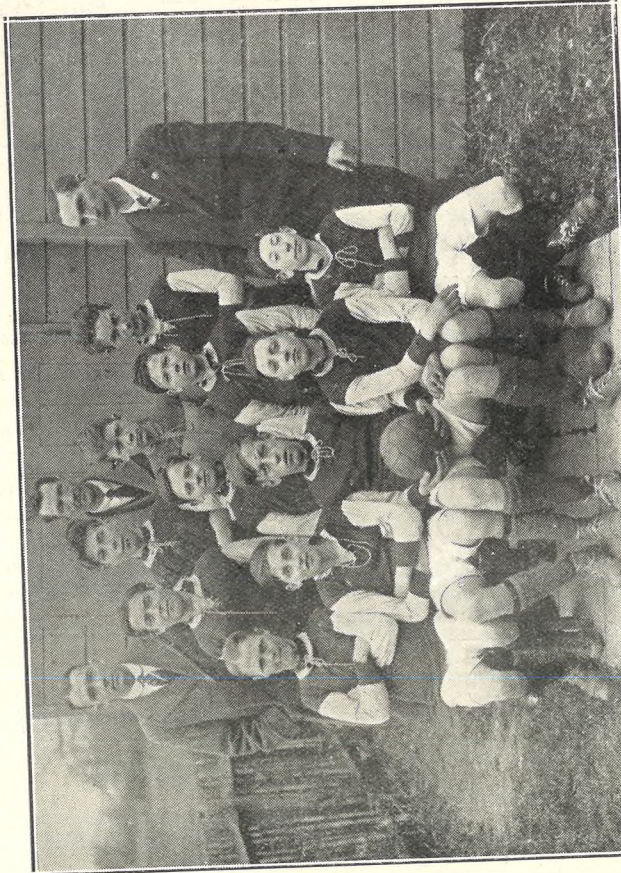
Cheltenham Boys.—Standing (left to right): Carpenter, Mills, Mr. Morris, Peacey, Seabrook, Protherough, and Jennings. Seated (left to right): Garland, Dodwell, Maisy, Hazard, and Cox. "Cheltenham Chronicle" photos. Copies 1s. each, postage 2d. extra.



CHEL TENHAM OLD PATESIANS' RUGBY FOOTBALL TEAM.
Standing (left to right)—W. Wicks, A. G. Allen, A. Millard, J. Gardner, H. Vizard, G. J. Price, H. Constable, H. Jackson, C. Alcock, D. Ricketts, and J. Curtis.
Seated (left to right)—E. D. Ricketts, J. Yeend, C. J. Stayte, H. A. Bendall, J. Drake, E. J. N. Webb, J. Stayte, A. Ryland, and W. W. Yeend.
"Cheltenham Chronicle" photos. Copies 1s. 9d. each, postage 2d. extra.

GLOUCESTERSHIRE SCHOOLS' CHAMPIONSHIP.

Cheltenham Boys, on Saturday last, lost to Wotton-under-Edge



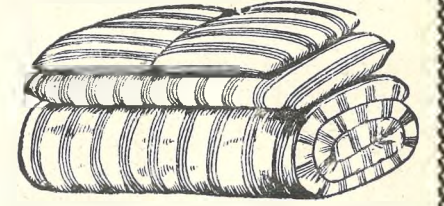
Wotton-under-Edge.—Back row (left to right): Mr. A. S. E. Drew, Weaver, Mr. J. W. Barnes, Oakhill, Barnes, and Mr. C. A. Pearce (Hon. Secretary).
Right; Pearks, Nottingham, and Tanner. Seated (left to right): Reynolds, Chappell, Brown, Green, and Pruet.



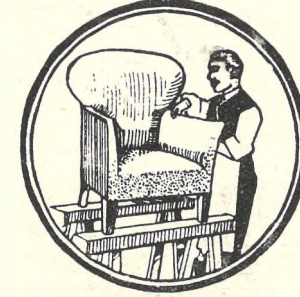
ST. PAUL'S COLLEGE DRAMATIC SOCIETY.
Group of performers and producers who staged a short Operetta and A. A. Milne's "Wurzel Fummery" for the entertainment of students and staff of St. Paul's Training College.
"Cheltenham Chronicle" photos. Copies 1s. 9d. each, postage 2d. extra.

LET US HELP YOU SPRING CLEAN.

It is surprising for what small cost we can relieve you of a lot of the hard work, such as taking up, beating, and relaying carpets, etc. On receipt of a post card our van will call, collect your carpets, and in a few days' time we can put them down again thoroughly Beaten without any trouble to yourself at all.



We have special Machinery for Extracting Dust, Teasing, Cleaning, and Re-making Bedding, and can do this work quickly and economically. May we call for YOUR Bedding.



PRICE FOR RE-MAKING WOOL MATTRESSES.

Re-making Mattress in same Tick, 2ft. 6in., 8s. 11d.; 3ft., 9s. 11d.; 4ft., 11s. 11d.; 5ft., 13s. 11d.; 6ft., 15s. 11d.; 7ft., 17s. 11d.; 8ft., 19s. 11d.; 9ft., 21s. 11d.; 10ft., 23s. 11d.; 11ft., 25s. 11d.; 12ft., 27s. 11d.; 13ft., 29s. 11d.; 14ft., 31s. 11d.; 15ft., 33s. 11d.; 16ft., 35s. 11d.; 17ft., 37s. 11d.; 18ft., 39s. 11d.; 19ft., 41s. 11d.; 20ft., 43s. 11d.

WINDOW BLINDS.
Ready made Lancaster Holland, trimmed lace, 36ins wide, 3/11½.
LET US GIVE YOU AN ESTIMATE FOR BLINDS.

RE-UPHOLSTERY AND LOOSE COVERS.
Let us give you an estimate for re-covering your favourite chair.

Dicks & Sons Ltd.
ART & ECONOMY BUILDING
High St. Cheltenham.

Spring is Here!

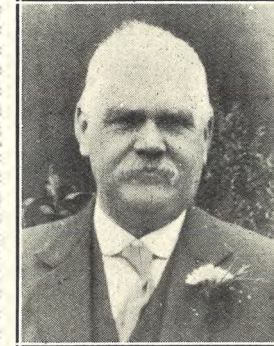
YOU MUST HAVE A CAR TO ENJOY YOURSELF.

CALL AND SEE . . .

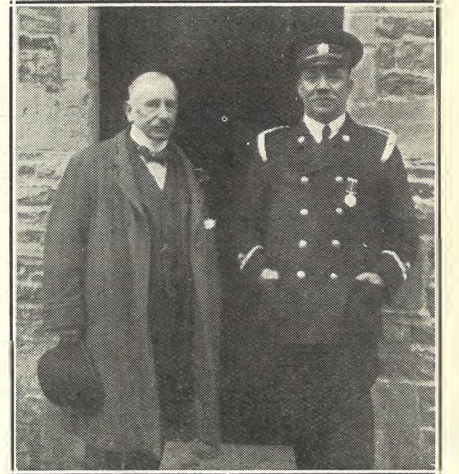
Haines & Strange,
AUTOMOBILE SPECIALISTS,

Albion Street, CHELTENHAM,

Who are the recognised Agents
:: for all the Best Makes ::
RILEY—FIATS—CITROENS—&c.



MR. THOMAS DAVID KIDDLE,
10 Worcester-street, Gloucester, who died on March 13th. He was a prominent Liberal and a good sportsman.



Opening New Fire Station at Moreton-in-the-Marsh.

On Saturday last, a new fire station was opened by Mr. Howard Warden at Moreton-in-the-Marsh. Mr. Warden and Chief-Officer F. Clayton.

Photo by Percy Simms, Moreton-in-the-Marsh.

Advertise the 'Echo.'



COTSWOLD HUNT POINT-TO-POINT RACES AT STANLEY PONTLARGE, FRIDAY, MARCH 17.

1. Finish of Cotswold Farmers' Race, won by Messrs. Hughes' Lady Bountiful,
2. and 3. Students of R.A.C., Cirencester.
4. These handsome trophies were presented by Capt. A. Herbert, Capt. G. N. Reynolds, Cotswold Hunt ladies, Mr. R. H. A. Gresson, and Mr. Walter C. Unwin, M.H., and were supplied by the well-known firm of Messrs. H. M. Simmons, the County Goldsmiths and Silversmiths, 384 High-street, Cheltenham.
5. Mrs. Noton and Miss Noton.
6. The Master, Capt. T. Colville, on Chieftain, winning Lightweight Race.
7. Mr. W. N. Unwin on St. Jean de Luz (second) leading at last fence but one in Open Race. Miss Timmis' Peter, in centre, won the race.
8. The Judge's "Box."
9. Miss Abell, Col. Blagrove, Mrs. Macfarlane.
10. Major Swann, and Mrs. Milne in front
11. Mr. Lake and Miss Hope.
12. Mr. Frank Idiens (on left) with friends.



Every Staples Bedstead is fitted with the regally luxurious Staples Mattress. No. 2165 (in oak as above), 4 ft. 6 in., £14 14 0; 3 ft., £12 15 0. Staples Mattress "cannot sag." It softly supports you in a health-giving position—you rise fit, fresh and happy. "The most luxurious mattress made."

BY APPOINTMENT
Wire Mattress and
Bedstead Manufacturers
to H.M. THE KING

NATIONAL WINDOW DISPLAY

FROM MARCH 19th to 28th WE ARE MAKING A SPECIAL DISPLAY OF STAPLES BEDSTEADS AND STAPLES MATTRESSES AS SUPPLIED TO H.M. THE KING

You are particularly asked to come in and see other designs and enquire prices of our staff, who during these dates are specially at your disposal to demonstrate the luxury of these goods. It costs no more to have your mattresses and beds made by the manufacturers that make beds and wire mattresses for The King himself. "A Staples is a possession to boast of."

Staples Mattress is the most luxurious mattress made and commended by ALL Doctors because it cannot sag and also induces sleep. 3 ft. 99/-; 4 ft. 6 in. 118/6.



STAPLES

MATTRESS

"Built for Sleep"

SHIRER & HADDON, Ltd.,
Colonnade and Clarence Street,
CHELTENHAM.

The
Housewife



THE housewife needs spectacles which will under all circumstances give her complete comfort yet not hamper her range of vision in the slightest. Such glasses are the "Trilok."

The "Trilok" spectacles are the neatest design ever produced, and apart from their exceedingly neat and inconspicuous appearance, they have a rigidity hitherto unknown. They can be worn all day and every day, their appearance being unnoticed by the wearer apart from the aid rendered to the sight, and since the pressure of the combined spring, bridge and clip is so light, it is not possible for irritation to occur.

Call at 27 Promenade and have the features of the "Trilok" demonstrated to you. No obligation is entailed in the slightest.

We can supply glasses from our extensive range to meet your every need.

OF EXCEPTIONAL INTEREST AND QUITE FREE.

Send to-day for your copies of the "Trilok" Brochure and "Sights of London" Booklet, both profusely illustrated.

AITCHISON

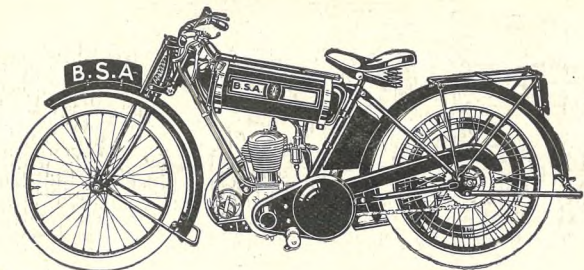
AND COMPANY LIMITED
CONSULTING OPHTHALMIC OPTICIANS
27, PROMENADE, CHELTENHAM

opposite the fountain



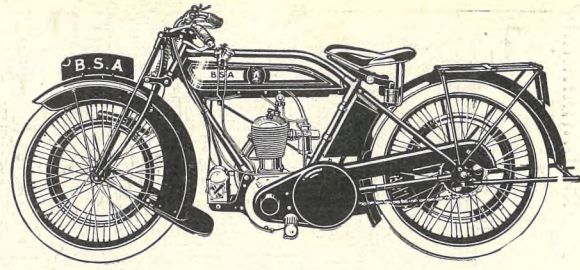
Look for the Owl in the Window

 Advertise in the "Echo." It pays for itself.



2.49-h.p., 4-stroke, 2-speed, clutch, k.s., mechanical oil pump, all-chain drive.

35 gns.



3.49-h.p., 3-speed, clutch, k.s., mech. oil pump, adjustable handlebars and footrests.

43 gns. Cash.

Examine these low prices.

From 35g. Gns. Cash, or on Deferred Payments, arranged to suit your convenience.

B.S.A. 1925 Prices are well worth studying. A copy of the B.S.A. Catalogue should be in the hands of every potential motor cyclist, it includes prices and Hire Purchase terms of every model, and there is a machine to suit the requirements of every rider. Do not make a choice before you have seen my comprehensive stock. I can give immediate delivery of any model from a 2.49 h.p. Lightweight to a 9.86 h.p. de Luxe two-seater combination. Why not call to-day and talk it over with me? I shall be pleased to point out the many interesting features of B.S.A. Motor Bicycles without placing you under any obligation whatever.

A few questions you should ask before placing your order for a

B.S.A. Motor Cycle—

Who is the B.S.A. Officially Appointed Service Agent and Repairer?

Who carries the Largest Stock of B.S.A. Spare Parts?

Who concentrates his whole attention on MOTOR CYCLISTS' requirements?

Who gives that unapproachable AFTER SALES SERVICE you hear about?

Who has the Largest Stock of B.S.A.'s for you to select from?

Who shall I give MY order to?

“Who———?” Why, of course,

Leslie Paynter,

THE MOTOR CYCLE SPECIALIST, OF CHELTENHAM.

Address: 23—24, REGENT STREET. :: Telephone 887.

THE CHELTENHAM CHRONICLE AND GLO' SHIRE GRAPHIC

With Which is Incorporated the “Cheltenham Looker-On.”
GRATIS SUPPLEMENT. Saturday, March 28, 1925.

No. 1,265.

CHELTENHAM THEATRE AND OPERA HOUSE. This Afternoon (2.30) and Evening (7.45)—“MADAME POMPADOUR.”
NEXT WEEK: “Ida Stratham and Principal Company in ‘TIGER CATS.’”

THE PALACE, HIGH STREET, CHELTENHAM.

Monday, Tuesday, Wednesday:
JOHN BARRYMORE,
America's Most Distinguished Actor, in
“BEAU BRUMMEL,”
with Mary Astor, Irene Rich,
and Alec B. Francis.
JACK DEMPSEY in
“FIGHT AND WIN.”
SPECIAL! Thursday, Friday, and Saturday On: 1925 GRAND NATIONAL STEEPLECHASE. Every fence from start to finish.
Thursday, Friday, Saturday:
JAMES KIRKWOOD, Norma Shearer and Mae Busch in
“Broken Barriers.”
Hal Roach Comedy:
“UNCENSORED MOVIES.”

THE DAFFODIL, SUFFOLK PARADE.

FOR THE WHOLE WEEK!
Commencing Monday, March 30th.
G. B. SAMUELSON'S TRIUMPH.
“THE UNWANTED.”
“A really great picture.”—vide the Press.
LILLIAN HALL-DAVIS and AUBREY SMITH.
Thursday, Friday, Saturday:
CARNIVAL TIME AT THE CRITERION.
London's Famous Cabaret.
Mr. Frank Vicary and The Daffodil Orchestra at All Performances.

Established 1806.
Martin & Co.,
Limited.
The County Jewellers,
PEARL & DIAMOND MERCHANTS.

A Large Selection of Secondhand Silver and Old Sheffield Plate.
We are Purchasers of Antique Silver and Fine Quality Gems.
Best Prices Given.
LICENSED VALUERS.

Promenade, CHELTENHAM.



COL. R. F. PEARSON, T.D.,
In command of the Officers' Training Corps at Cheltenham College since 1909, is retiring at the end of the present term under Army age regulations, to the great regret of all at the College. He entered the Army in 1888, and after active service in Chitral, Tirah, and the Boer War, was Inspector and Company Commander at Sandhurst R.M.C., and later at Woolwich R.M.A. until 1908. His farewell to the Corps is illustrated on another page.
Photo by Debenhams, Longman, and Co., Promenade, Cheltenham.

WINTER GARDEN, CHELTENHAM.

MONDAY NEXT and ALL THE WEEK.
Daily at 2.15, 5.0, and 8.0 p.m. (Not Continuous).
REX INGRAM'S PRODUCTION
“SCARAMOUCHE,”
Featuring Ramon Novarro and Alice Terry.
SPECIAL MUSIC & EFFECTS. AUGMENTED ORCHESTRA.
Direct from Tivoli Theatre, London.
Seats may be Reserved.
Free List Suspended.

COLISEUM THEATRE.

6.40 and 8.40.
NEXT WEEK:—
“BRILLIANTS.”
A BRILLIANT REVUE IN 15 SCENES.

NORTH STREET PICTURE HOUSE.

From 2.30 Continuous.
Monday, Tuesday, Wednesday:
“Dark Stairways.”
Featuring Herbert Rawlinson.
Thursday, Friday, Saturday:
“North of Nevada,”
Featuring FRED THOMPSON
And His Wonderful Horse SILVER KING.

MAISON
ANNETTE
Kensington House,
Promenade,
Cheltenham,
SPECIALISTS IN
EXCLUSIVE

CORSETS &
LINGERIE.
'Phone 1122.

For the Best PIANOS, DALE, FORTY and Co. Ltd



CHELTENHAM COLLEGE O.T.C. FAREWELL TO COL. PEARSON.

On Monday afternoon last the College O.T.C. held a ceremonial parade, under the command of Major M. D. Seaton, to take a formal leave of their old and popular Commandant.

- 1.—One of the platoons, led by Capt. J. C. Gurney, O.B.E., who will be the new Commandant.
- 2.—Colonel Pearson receiving the general salute. Major Seaton with him.
- 3.—Officers of the Corps. Standing: Second-Lieut. G. F. Scott, Under Officer G. A. Churchill, Senior Under Officer J. K. K.

Morrison, Under Officer P. S. Palmer, Under Officer G. G. Maby, Under Officer P. Higson, Lieut. F. Wood. Seated: Capt. P. H. B. Lyon, M.C., Major M. D. Seaton, Colonel R. F. Pearson, T.D., C.O., Capt. J. C. Gurney, O.B.E., Lieut. and Adj. W. L. King, M.C.

- 4.—Sergeants of the Corps.
- 5.—The Colours being marched off under escort.
- 6.—Ladies watching proceedings.

"Cheltenham Chronicle" Photos. Copies 1s. each.

Fully Jewelled and Guaranteed.

45/-.

All Gold Bracelet Watches.

CANNOT BE REPEATED. ONLY A FEW LEFT

Edgar Mann, 84 High Street, CHELTENHAM.

Continuation Sale UNTIL EASTER.

EASTER PRESENTS AT BARGAIN PRICES. STATIONERY, LEATHER, AND FANCY GOODS

AT 2D. IN 1S. DISCOUNT.

SEE OUR STANDS OF ODDMENTS AT "GIVE-AWAY" PRICES. STATIONERY GIFTS FOR EASTER.

Jesse J. Gillham & Son, PRINTERS AND BOOKBINDERS, 396 HIGH STREET, CHELTENHAM.

LET MOUSSELLS MOVE YOU



PHONE 112

Estimates for Removals and Storing Free.

CHELTENHAM. Offices: AMBROSE STREET.

LANCE'S ... SPECIAL ... EASTER SHOW

OF **Costumes, Gowns, Blouses, Furs and Coats.**

SPRING MILLINERY.

Here you will find Fresh and Dainty Millinery in great profusion. Everything from the useful Knock-about to the most exclusive Paris Model can be obtained.

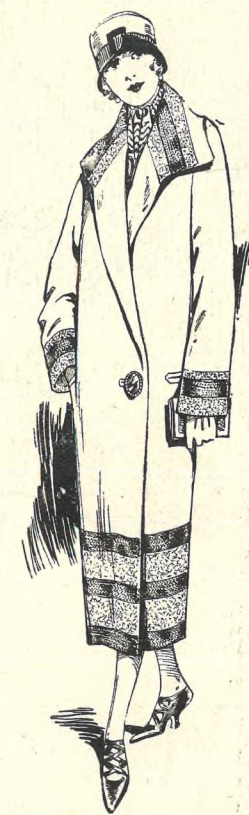
DRESSES for Sports Wear in a variety of materials are a feature of our range; and another interesting development is a nice selection of Large Size Dresses.

A delightful range of **FURS** for Spring may be seen in our Show-rooms.



Stylish **COAT** in Black Ottoman. Lined Silk. In three sizes.

Price, 4½ Gns.



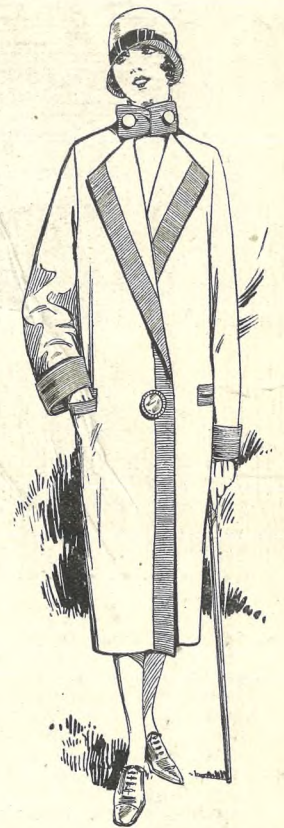
This delightful **WRAP COAT** may be had in the New Rep Material. Shades: Navy, Black, Tan, and Grey. Trimmed Fancy Wool Material. Style as sketch.

Price, 7½ Gns.



Practical **WASHING DRESS** in good quality Crepe de Chene. Ivory Collar and Cuffs, edged with Ronteau of Self Material. Self Tie at waist. Good range of colours.

Price, 56/6.



Smart **COAT** in Fine Quality Wool Rep, with Border & Cuffs trimmed contrasting shades to tone. Tan, Brick, Grey, Navy, Black, and the New Wood Shades.

Price, 9 Gns.

JOHN LANCE & Co., LTD., CHELTENHAM'S SHOPPING CENTRE.



NORTH COTSWOLD HUNT POINT-TO-POINT RACES.

These races were held on Tuesday last over the same course at Dumbleton as they were two years ago, the fixture being abandoned last year owing to foot-and-mouth disease. There was a capital company present, and the racing was most enjoyable.

- 1.—Capt. Forsyth-Forest winning Members' Light-weight Race on Mrs. R. B. Brassey's The Orphan.
- 2.—Two local farmers.
- 3 and 4.—Watching the racing from the hillside.
- 5.—Capt. Forsyth-Forest gets a fall on Leighlin Bridge in Open Nomination Race.
- 6.—From left, Mr. Gaskell, Miss Holmes, Mrs. de Freville, Miss Atherley, Mr. Pease.
- 7.—The Misses Vestey.
- 8.—Interested.
- 9.—Capt. Brunner on Capt. T. Colville's Jacqueline winning Open Nomination Race from Mr. F. R. Gaskell's Isonomy's Waves. The leading horses taking the last jump.

"Cheltenham Chronicle" Photos. Copies 1s. each. Postage 2d. extra.



SHOW AND SALE OF PEDIGREE SHORTHORN BULLS AT GLOUCESTER.

Messrs. Bruton, Knowles, and Co. held their Annual Show and Sale of Shorthorn Bulls in the Gloucester Market on Friday, March 20th.

- 1.—Purchasers and spectators round sale ring.
- 2.—Messrs. F. Ellis J. Peter (Berkeley) and W. H. Hitch.
- 3.—Messrs. Foster, Annand (who represented the Prince of Wales), Meikle, and Skinner (of Worcester).
- 4.—Messrs. F. Ellis, R. N. Norman, C. W. Bruton, and Gibbs.
- 5.—The Prince of Wales's bull, which took a first prize.

BRUTON, KNOWLES & Co.,

Estate and House Agents, Auctioneers, Agricultural, Hotel .. and Timber Valuers, and Valuers for Estate Duty. ..

Albion Chambers, GLOUCESTER.

Telephone 967.

Messrs. BRUTON, KNOWLES & Co. beg to announce the following Property, Farm Stock and other Sales :

TUESDAY, MARCH 31st—Midland Works, Russell Street, Gloucester :

MACHINERY, STOCK IN-TRADE, etc., by direction of Messrs. Garbutt's Products, Ltd., who are moving to new premises.

WEDNESDAY, APRIL 1st—At the Swan Hotel, Thornbury : Spreyton Coombe, Rockhampton. DAIRY and FRUIT FARM.

TUESDAY, APRIL 7th Spreyton Coombe, Rockhampton : FARM STOCK, by direction of Miss Camm.

WEDNESDAY, APRIL 8th—Saul Lodge, Fretherne. FURNITURE AND EFFECTS, by direction of Major Sir Lionel E. Darell, Bart., D.S.O.

FRIDAY, APRIL 17th—Gloucester Market : SPECIAL SPRING SHOW and SALE OF HORSES.

SATURDAY, APRIL 18th—At the Bell Hotel, Gloucester : Ivy Cottage, Huntley : A BUNGALOW and THREE COTTAGES at Huntley; and 2 MARKET GARDEN HOLDINGS at Saint-bridge.

FRIDAY, APRIL 24th—Hanman's Farm, The Elves, Tibberton :

Surplus LIVE FARM STOCK and IMPLEMENTS, including 260 Pigs, 4 Horses, and about 100 acres of grass keep, by direction of Mr. Harold J. Phelps

SATURDAY, MAY 23rd—At the Bell Hotel, Gloucester :

WALTON HILL FARM, near TEWKESBURY, 168a. 3r. 5p. in extent.

RUDGEWAY FARM, near TEWKESBURY, 70a. 0r. 23p. in extent.

A VALUABLE ACCOMMODATION PASTURE FIELD of 14a. 1r. 29p., situate in the Parish of Deerhurst, Gos.; ST. MARY'S WORKS, TEWKESBURY; and THE LAURELS, ECKINGTON, a market garden holding of 10a. 3r. 30p.

SATURDAY, JUNE 13th :

THE BOWDEN HALL ESTATE.



GLOUCESTERSHIRE GIRL GUIDES COUNTY RALLY IN CHELTENHAM.

Cheltenham Town Hall was the objective of a great pilgrimage on Saturday last, when 1,700 Girl Guides from the length and breadth of the county concentrated to be reviewed by the Chief Guide, Lady Baden-Powell. Above are various companies present.

- | | | |
|--|--|--|
| 1.—Miss Maye Bruce (County Commissioner), Lady Baden-Powell, and Miss O. Burges (Divisional Commissioner for the West of England). | 4.—Bream. | 7.—Aston Somerville, with Miss Lambert in command. |
| 2.—1st Gloucester Company (Gloucester). | 5.—4th Gloucester (Gloucester). | 8.—Stroud High School. |
| 3.—1st Soundwell (near Bristol). | 6.—1st Aylburton, Miss Tyler on left, Hon. Ursula Bathurst (on right). | 9.—Bisley, near Stroud. |

“Cheltenham Chronicle” Photos. Copies 1s. each. Postage 2d. extra.



GLOUCESTERSHIRE GIRL GUIDES COUNTY RALLY IN CHELTENHAM.

The Town Hall was a fine sight during the afternoon, being packed from floor to ceiling with Guides and visitors. The presentation of the County Shield was made to the 2nd Gloucester Company (No. 19 above). A feature of the afternoon was the fine camp-fire singing in parts by the whole of the companies present.

- | | | |
|--------------------|---------------------|---|
| 10.—Beckford. | 15.—Minchinhampton. | 18.—8th Gloucester. |
| 11.—1st Hardwicke. | 16.—Lydbrook. | 19.—2nd Gloucester (winners of County Shield for best all-round company). |
| 12.—Uley. | 17.—Stonhouse. | |
| 13.—Maisemore. | | |
| 14.—1st Blakeney. | | |

“Cheltenham Chronicle” Photos. Copies 1s. each. Postage 2d. extra.



FUNERAL OF THE LATE LIEUT.-GENERAL M. W. WILLOUGHBY, C.S.I.

The funeral of the late much-beloved and respected Lieut.-General M. W. Willoughby took place on Friday, March 20th, at Cheltenham Cemetery, a service being first held at Christ Church, which was attended by a great congregation.

- 1.—Mourners outside the church. Among others can be seen the prefects from Cheltenham College, all of whom attended.
- 2.—Mr. F. T. Palmer, the Dean of Hereford, and Colonel Swiney.
- 3.—Carrying the deceased general into church.
- 4, 10, and 12.—Family mourners.
- 5.—Mr. and Mrs. Bell Haworth.
- 6.—Canon Cox, Rev. H. H. Webb-Peploe (vicar), and Rev. C. H. Scott (curate).
- 7.—Mr. W. H. Glenny and J. A. Broun, I.S.C.
- 8.—Messrs. B. A. Bowers and Tapsfield (College Masters).
- 9.—Mr. S. D. Scott (of Cheltenham College).
- 11.—Dr. Gabb.

“Cheltenham College” Photos.



TEWKESBURY ABBEY 14th CENTURY WINDOWS RE-DEDICATED.

On Wednesday last the Dean of Gloucester, acting for the Bishop of Gloucester, who was ill, rededicated the seven clerestory windows. These windows were presented to the Abbey between 1282 and 1328 A.D., and contain some of the finest 14th Century glass in England.

- 1.—The three Deans of Wells, Worcester, and Gloucester, with Bishop Gresford Jones, Vicar of Pershore, and attendant clergy, entering the Abbey.
- 2.—The augmented choir.
- 3.—Mr. G. R. Barlow, Borough Accountant.
- 4.—Canon Smith, R.D., Vicar of Tewkesbury, who has so identified himself with the restoration.
- 5.—The Mayoress (left), Mrs. G. P. Howell, and Miss Howell.
- 6.—Rev. and Mrs. Havergal, of Twynning.
- 7.—The Vicar welcoming the Mayor and Corporation.
- 8.—Congregation leaving the Abbey.
- 9.—Earl and Countess of Coventry with Mr. Vincent Yorke (Chairman of Restoration Committee).
- 10.—Members of Corporation leaving.
- 11.—Two clergymen leaving.
- 12.—Clergy in procession to the Abbey.

“Cheltenham Chronicle” Photos. Copies 1s. each. Postage 2d. extra.



CHELTENHAM GRAMMAR SCHOOL SENIOR AND JUNIOR CROSS-COUNTRY RUNS.

These runs took place last Saturday afternoon over the new course, starting from the top of Battledown, and finishing in the playground at Battledown Approach.

1.—Scene at the starting point. There were over 100 competitors. 2.—The three first seniors, from left: 1 E. F. Wood, 2 G. Grist, 3 J. H. Williams. 3.—Mr. Broad giving instructions to the juniors. 4.—A batch of competitors.

"Cheltenham Chronicle" Photos. Copies 1s. each, postage 2d. extra.



CHELTENHAM COLLEGE CROSS-COUNTRY RUN.

The Annual Cross-Country Run, together with the match against the Cheltenham and County Harriers, was held on Saturday last, the finish taking place in a snowstorm.

1.—The Harriers team lined up for the start. 2, 3, and 4.—Various sections of College competitors.

"Cheltenham Chronicle" Photos. Copies 1s. each. Postage 2d. extra.



Semi-final Team for Ladies' County Tennis Championship (Hard Courts)

Gloucestershire Ladies, who played and lost to Middlesex Ladies at East Gloucester in the above Championship by 3 matches to 6 on Saturday last. Mrs. Champney, Miss H. B. Weston, Mrs. Whitley, Mrs. Melliquam, Mrs. Bridge, and Miss de Putron.

"Cheltenham Chronicle" Photo. Copies 1s. each. Postage 2d. extra.

Men's PULL-OVERS

New Goods for Spring Wear.
ENGLISH and SCOTCH KNITS.
10/6 TO 30/-.
OVER 50 DESIGNS OR COLOURS.

A. BECKINGSALE
111 HIGH STREET, CHELTENHAM.
Phone 406.

RIDE A B.S.A. MOTOR BICYCLE.

PRICES FROM
£36 15 0 CASH. Demonstrations at any time or place. or by Deferred Payments.

CALL AND INSPECT THE
1925 MODELS IN STOCK
At Official Distributors—
CHELTENHAM MOTOR AND CYCLE Co., 82 High Street, CHELTENHAM.
Tel. 166.



PHOTOGRAPHY:
THE FRIEND OF MEMORY.



A BROADWAY WEDDING.

The marriage was solemnised at Broadway on Saturday, March 21st, of Mr. Wm. Fredk. Acocks, eldest son of Mr. and Mrs. J. C. Acocks, of Stow-on-the-Wold, to Miss Eleanor Simmonds, only child of Mr. and Mrs. F. Simmonds, of Broadway. The bridegroom is well-known and popular in Stow and district.

Photo by Mr. Fred Gegg, Evesham.

IF YOU LIKE THE "GRAPHIC," why not place an Order for it to be delivered to you regularly? Agents throughout the county, or order direct from the Head Office in Cheltenham.

THAT REMINDS ME.

Are You Making a Home?



Your Linen

should be one of its chief charms.

MAKE A POINT of visiting our showroom at your first opportunity.

During the War and since, Good Linen has been expensive. We have altered all that. We specialise in IRISH HOUSEHOLD LINENS and COTTONS, and offer you Value that places the Finest and Most Durable Fabrics at the disposal of the most slender purse. For COTTON and LINEN SHEETS, PILLOW-CASES, TABLE NAPERY, FANCY LINENS, etc.,

The Montpellier Linen Hall

(ADJOINING QUEEN'S HOTEL)
CHELTENHAM.

TROUSSEAU SPECIALISTS.

VANDERPLANK

381, HIGH STREET From HARRODS

FASHIONS AND FURS

STYLE!

Indefinable, yet very real, and can always be seen in a Vanderplank Garment. For this season's Costumes are perfect, the range of shades comprehensive, and only the finest materials are used—in short, all the Tailor's art and experience have been concentrated on making Suits of wonderful value at a reasonable price. Therefore the Costume you choose from our collection is all that a Costume should be—a compliment to personal beauty, a faultless reflection of the newest fashion rulings, and unmistakable testimony to your good taste.

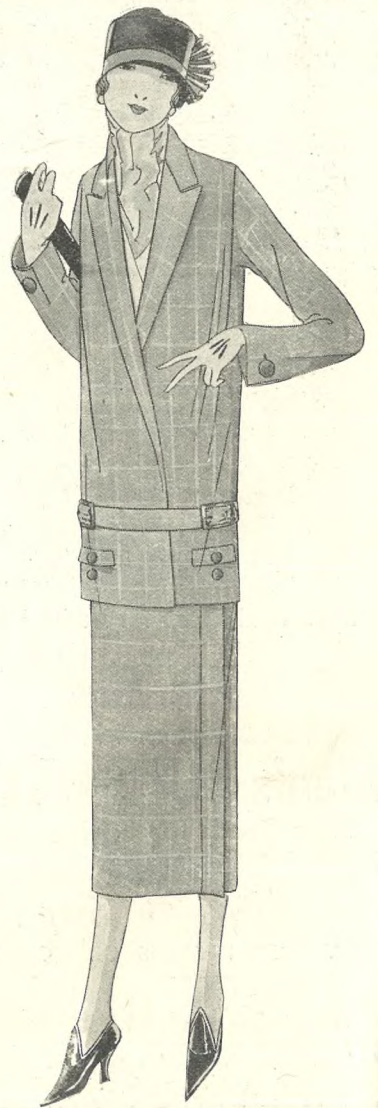
Suits in the new Covert Repp—the material so much to the fore this Spring—in a variety of styles and colours, from Plain Repps and Cabardines, Suitings and Tweeds of the finest qualities are obtainable at the same prices. **3 Gns.**

Two-Piece Suits—a Dress when you will, a Coat when you wish, and complete, a Tailored Suit: in all materials, from **5½ Gns.**

Models that are Models from **7½ Gns.**

Why not call and see them to-day?

Wherever the sportive mood of fancy finds you—whether by Sea, or Field, or Fairway—if you are wearing a Vanderplank Garment you will have the satisfaction of knowing you are correctly attired.



**VANDERPLANK,
381 HIGH STREET,
CHELTENHAM.**

