

# THE CHELTENHAM CHRONICLE AND GLO' SHIRE GRAPHIC

With which is incorporated the "Cheltenham Looker-On."

GRATIS SUPPLEMENT

Saturday, October 4, 1924.

No. 1,240.

## CHELTENHAM THEATRE AND OPERA HOUSE.

Next Week: Personal Visit of SIR FRANK BENSON & his Company.

Monday, "Merchant of Venice"; Tuesday, "The Tempest"; Wednesday (matinee), "Julius Caesar"; Wednesday evening, "Midsummer Night's Dream"; Thursday, "Romeo and Juliet"; Friday, "Twelfth Night"; Saturday (matinee), "As You Like It"; Saturday evening, "Macbeth."

### THE PALACE, HIGH STREET, CHELTENHAM.

Monday, Tuesday, Wednesday:  
CONSTANCE TALMADGE  
In her first big Romantic Drama,  
The

#### "Dangerous Maid."

With Conway Tearle and  
Marjorie Daw.

Thursday, Friday, Saturday:  
Direct from its Sensational Success  
at the New Oxford Theatre,  
London.

MAE BUSCH and CONRAD  
NAGEL in

#### "Name the Man."

From Sir Hall Caine's Famous  
Nova, "Master of Man."  
"LEATHER PUSHERS."

### THE DAFFODIL, SUFFOLK PARADE,

CHELTENHAM'S PREMIER  
PICTURE HOUSE.

FOR THE WHOLE WEEK:  
Commencing Monday Next, Oct. 6

#### Pola Negri

#### in "THE CHEAT."

Without question Pola Negri's  
Greatest Picture, in which she is  
supported by JACK HOLT and  
a Big Cast.

The Picture will be accompanied  
by The Daffodil Orchestra.  
Daily at 3.0, 5.30, and 8 o'clock.

Established 1866.

### Martin & Co., Limited,

The County Jewellers,  
PEARL & DIAMOND MERCHANTS.

A large selection of Second-hand  
Silver and Old Sheffield Plate.

We are purchasers of Antique  
Silver and Fine Quality Gems.  
Best Prices Given.

LICENSED VALUERS.

Promenade, CHELTENHAM.



Another Fountain for Cheltenham.

This artistic Fountain has just been erected on the Cheltenham Spa Bowling Green, St. George's Square, adding to the beauty of what is one of the greatest improvements in this part of the town for many years. It has been given by the Mayor of Cheltenham (Councillor Walter J. M. Dicks), who has personally defrayed the cost, and it was designed and erected by the Leckhampton Quarries Co., Ltd., Cheltenham. The figure on top is called the Water Carrier. Pipes pass through it, and water can always run as illustrated. The ferns and water plants have been supplied by Messrs. Fuller and Maylam, Cheltenham.

### WINTER GARDEN, CHELTENHAM.

MONDAY & ALL THE WEEK.  
Daily at 2.15, 5.0, and 8.0 p.m.  
(Not Continuous).

#### Sir FRANK BENSON

in

#### "BECKET,"

Lord Tennyson's Famous Play.

TO AVOID THE QUEUE,  
RESERVE YOUR SEAT.

### COLISEUM THEATRE.

6.40 and 8.40.

#### "OH! BETSY."

THE SUCCESSFUL MUSICAL  
COMEDY.

### NORTH STREET PICTURE HOUSE

From 2.30--Continuous.

Monday, Tuesday, Wednesday:

#### Sessue Hayakawa

and

#### Ivy Duke.

In "THE GREAT PRINCE  
SHON"

Thursday, Friday, Saturday:

RICHARD TALMADGE in  
"LUCKY DICK."

Telephone 1080.

### W. Scott Cooper,

Goldsmith and Silversmith,

Diamond Merchant, Jeweller,

The Promenade, Cheltenham.

A large selection of Second-hand  
Jewels and Antique Silver always  
in Stock at Bargain Prices.

Estimates, designs free of charge.  
Old Gold, Silver, and Gems  
purchased for cash or taken in  
exchange.

For the  
Best

# PIANOS, DALE, FORTY and CO. LTD





**INTERNATIONAL WATER POLO MATCH IN CHELTENHAM.**

The first International Water Polo Match ever played in Cheltenham was held at Alstone Baths on Saturday night last, when England beat Ireland by 8 goals to 2. Both teams were entertained to luncheon by the Cheltenham Chamber of Commerce at the Municipal Offices, with the Right Hon. Sir James Agg-Gardner, P.C., M.P., in the chair. The luncheon party on the steps of the Municipal Offices. It included both teams, members of Chamber of Commerce, and Cheltenham Polo and Swimming Club members.

Cheltenham Chronicle" Photo. Copies, mounted 3s., postage 6d.; unmounted 2s., postage 2d.



**ENGLISH INTERNATIONAL WATER POLO TEAM.**

Who beat Ireland at Alstone Baths, Cheltenham, on Saturday, September 27, by 8 goals to 2.  
 Standing.—W. H. M. Marx (manager of team), H. E. Annon (Croydon), J. Budd (Maricians) reserve, C. Bugbee (City of London Police), W. F. Matthews (St. James's), H. E. Fern (hon. secretary A.S.A.).  
 Seated.—N. Chapman (Nelson), R. Hodgson (captain) (Blackburn), W. H. Dean (Hyde Seal), M. Ryan (Walsall).  
 "Cheltenham Chronicle" Photo. Copies, 1s. 9d. unmounted, 2s. 6d. mounted. Postage extra.

**LANCE'S**

**Special Fur Week**

COMMENCES ON:  
**THURSDAY NEXT, Oct. 9th.**

Our entire stock of FURS and FUR COATS have been carefully selected and priced to suit everyone.



Two Skin Tie in Natural Fitch. Special Price, 79/6.  
 Sable Dyed Fitch, 69/6.  
 One Skin Stone Martin Ties. Special Prices, 5½ Gns. to 8½ Gns.  
 One Skin Baum Martin Ties. Special Prices, 9½ Gns. to 12 Gns.  
 Animal Shape Ties in Martin, Dyed Fox, Red Fox, Grey Fox, and Cross Fox. Special Prices, 69/6 to 12½ Gns.

SPECIAL AUTUMN CATALOGUE SENT ON REQUEST, POST FREE.

**John Lance & Co., LIMITED, CHELTENHAM SPA.**



**IRISH INTERNATIONAL WATER POLO TEAM.**

Standing.—C. J. Scott (referee, Cardiff), J. P. Convery (Clonard), N. Judd (Dublin), J. S. Brady (Clontarf), F. E. Lane (Cheltenham, goal judge).  
 Seated.—S. Barratt (Clontarf), J. O'Connor (Dublin), N. M. Purcell (captain, Dublin), P. McClure (Clonard).  
 "Cheltenham Chronicle" Photo. Copies, 10in. by 8in., 2s. unmounted, 3s. mounted. Post extra.

**Leslie Paynter**  
*The Motor Cycle Specialist*  
 Regent Street, Cheltenham.  
 Telephone No. 887.

**ADVERTISE—IT WILL PAY YOU!**

**Knight & Hutchings**

(From BRYANT & CO.)

LOCAL AGENTS FOR HIGH GRADE BRANDED GOODS REGD.

Known the World over by Merits of Value and Distinction.

**"N. & C. Nicholson" Overcoats**

(Warmth and Style without Weight).

**"Spur Brand" Clothing**

(See the Spur (Regd.) on each Garment).

**"Saddle Brand" R.M. Suits**

(Specially made for School-wear).

**"Glenhunt" Overcoats**

(See our Window Show of these Exclusive Models).

TAILORS & BREECHES MAKERS,  
**74 High St. Cheltenham.**

(FACING BATH ROAD)



**MR. H. C. W. BELCHER,** Printer, of Winchcombe, who died suddenly on Sunday last, aged 48 years. He was a humorous singer, and was very well known. He was district reporter for the "Echo" and "Chronicle."



**INSPECTOR J. H. WRIGHT,** of Cheltenham Midland Station, who retired on Tuesday last, after 47 years in the employ of the M.R. Co. A testimonial to him is being freely subscribed to by his friends and admirers.

**Art Needlework Studio,**

1 IMPERIAL BUILDINGS, PROMENADE, CHELTENHAM,

ARE NOW SHOWING THE LATEST SHADES FOR THE AUTUMN IN

**Wools and Artificial Silks.**

SPECIAL IN ALL COLOURS ARTIFICIAL SILK, 1/11½ FOUR-OUNCE HANKS.





**ROUND THE TOWN IN CHELTENHAM.**

Snapshots in High Street and Promenade on Tuesday morning this week.

Copies 1s. each, by post 2d. extra

\*\*\*\*\*  
**SEND THE "CHRONICLE AND GRAPHIC" TO YOUR FRIENDS EVERY WEEK.**  
 \*\*\*\*\*

**MODERN CORSETRY.**

**CORSETS**

AND ALL KINDS OF

**ABDOMINAL BELTS**

And **SUPPORTS**

Made & Copied;

also

Cleaned and

Renovated.

Telephone 915.



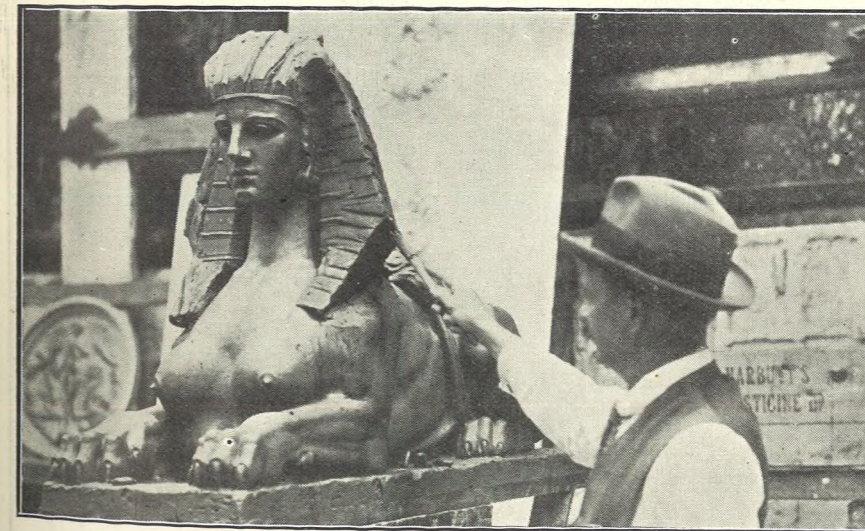
All Work Executed Quickly on Premises at Prices within reach of all.

Only Best Quality Broches, Coutilles and Tricots used.

Hours 10-6. Saturdays 1 o'clock, or by appointment.

Actual Makers-Not Agents.

**MISS FRUIN** 23 BATH PARADE  
 (Near Montpellier Baths, Bath Road)  
**CHELTENHAM SPA.**  
 (Late with Madam Annette),



**THE 5th GLOUCESTERS' WAR MEMORIAL.**  
 The model of the Sphinx which will form the top of the 5th Gloucesters War Memorial, to be erected in Gloucester shortly to the memory of the men of the various sections of this Regiment who fell in the Great War. The work is being executed by Messrs. H. H. Martyn and Sons, Sunningend Works, Cheltenham.

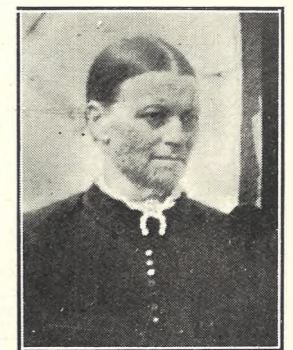


THE HOUSE FOR GOOD PHOTOGRAPHS.

IF YOU LIKE THE "GRAPHIC," why not place an Order for it to be delivered to you regularly? Agents throughout the county, or order direct from the Head Office in Cheltenham. Price 2d., by post 3d. weekly.



**MR. LIONEL V. GRIMES,** Who died at Tongshan, China, after a short illness, on August 27th, aged 34 years. He was the youngest son of Mr. Isaac Grimes, of Lynville, Shurdington-road, Cheltenham. He served with the Royal Engineers in France from 1915 until the Armistice, attaining the rank of staff captain.



**MRS. HESTER HANNAH LITTLE,** Of Bentham, who died on Tuesday, Sept. 23rd, at the age of 75 years. For more than 27 years she had carried on her husband's business of haulier, carting the stones for road-making in the district, and work of that description.

**LET MOUSSELLS MOVE YOU**



PHONE 112.

Estimates for Removals and Storing Free.

**CHELTENHAM.** Offices: **AMBROSE STREET**

**MEN'S ALL-WOOL UNDERCLOTHING**

**VESTS 8/11, 10/6 up.**  
 LONG OR SHORT SLEEVES. PANTS TO MATCH.

No Increase on Last Year's Prices.

**A. Beckingsale, 111 HIGH ST., CHELTENHAM.**

Phone 406.



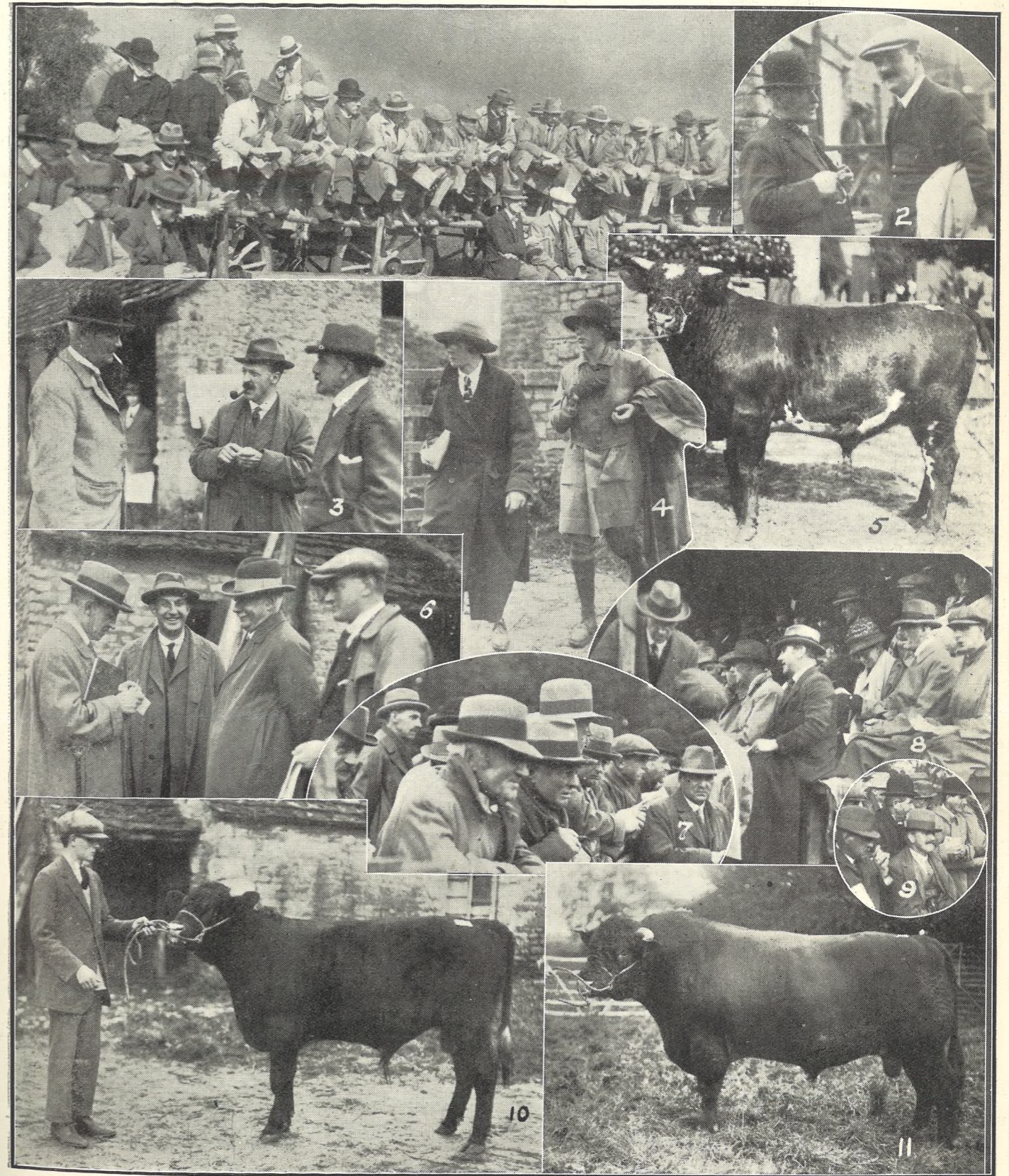


**PRUDENTIAL ASSURANCE STAFF CONFERENCE AND LUNCH.**

The staff of the Prudential Assurance Company and their wives from the group comprising Cheltenham, Gloucester, Stroud, and Stratford-on-Avon districts met at Cheltenham Town Hall on Saturday, September 27th, when they were addressed by Sir Joseph Burn, K.B.E., F.I.A., the General Manager and Actuary, who, with Lady Burn, held a reception.

- 1.—The General Manager and Superintendents with their wives. From left: Mr. J. J. Evans, Miss Burn, Mrs. J. J. Evans, Mr. D. P. Power, Lady Burn, Mr. G. H. Grail, Sir Joseph Burn, Mrs. H. Hatley, Mr. W. N. Hough, Mr. B. Knowles, Mr. R. Eaton, Mrs. B. Knowles, Mr. H. Hatley, Mrs. Eaton.
- 2, 2a, and 6.—Gloucester officials and their wives.
- 3.—A Stratford party.
- 4.—Cheltonians.
- 5, 7, and 9.—Sections of the Stroud party.
- 8.—More from Stratford.
- 10.—Gloucesterians.

"Cheltenham Chronicle" Photos. Copies 1s. each half-plate size, 1s. 9d. whole plate (8in. by 6in.). Postage 2d. extra.



**SALE OF PEDIGREE SHORTHORN CATTLE AT SIDDINGTON.**

The dispersal sale of the Pedigree Herd of Dairy Shorthorns of the late Mr. J. A. Attwater, Grylaze, near Cirencester, was held on Friday, September 26th, by Messrs. John Thornton and Co. A fine company assembled, and prices made up to 150 guineas.

- 1.—Section of Sale Ring.
- 2.—Mr. A. F. Chillingworth and Mr. Schofield (live stock officer).
- 3.—Mr. Crossland, Mr. Smith Rewse, and Mr. S. R. Sherwood.
- 4.—Two ladies in professional attire.
- 5.—Vanity Fair, a handsome young roan bull, which made 150 guineas.
- 6.—Mr. Matthews (the auctioneer) left, Mr. Percy Perkins, Mr. W. C. Spencer (Tewkesbury), and Mr. V. T. Spencer.
- 7 and 9.—Sections of Sale Ring.
- 8.—Part of grand stand.
- 10.—Heather Minstrel II., a fine young bull, held by Mr. Jack Attwater.
- 11.—Tockenham Minstrel II., an old bull, who fetched 150 guineas.

"Cheltenham Chronicle" Photos. Copies 1s. each, postage 2d. extra.



# Special Show of Twilfit Corsets for Autumn Modes.



MODEL 8089.  
A model in handsome broche of very special value, fitted with wide rustless and unbreakable "Twilfit-Spiral" Steels and four hose supporters. Free hip model, with very low bust, being one inch above the waist line. Suitable for average figures, in pink, white, and sky. Sizes 20-26in 12/11

*Twilfit*  
English Regd. Made.  
**CORSETS.**

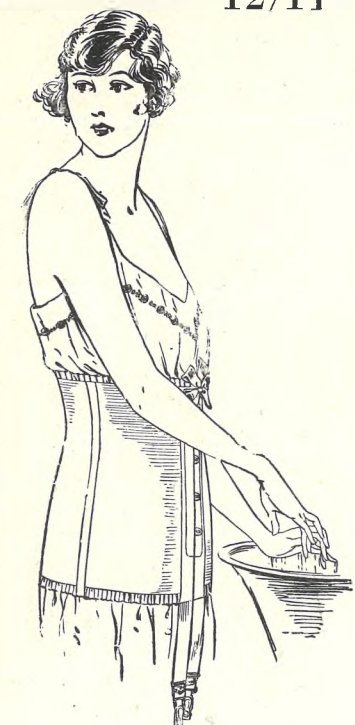
**TWILFIT** Corsets will form a perfect basis for your dress-maker's skill.

**EVERY** Twilfit Corset is fitted with rustless and unbreakable Spiral Steels—an exclusive Twilfit feature.

**TWILFIT** Corsets carry a definite guarantee of "Money returned or Corsets exchanged if not completely satisfied."



MODEL BROCHE 10.  
A smart model made from a figured brocade in pink and white. Low bust and deep over hips. Trimmed with embroidery turned over top and four hose supporters. Suitable for average and medium figures. 4/11



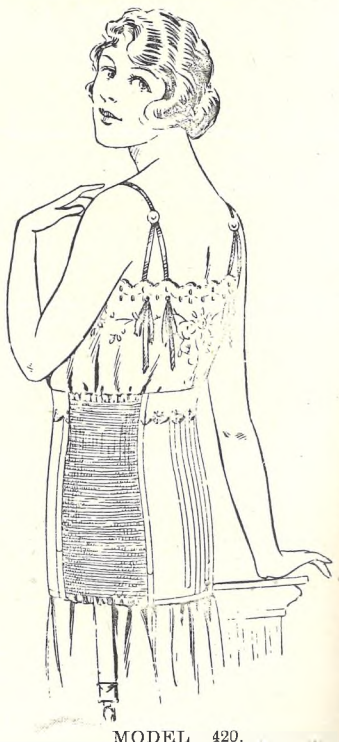
MODEL A20.  
Elastic Corset Belt, 11in. deep, in pink or white. Fitted with 8in. busk and "Twilfit-Spiral" Hip Steels. Sizes 21 to 28in. For slender figure. Four adjustable suspenders 12/11

An Expert Corsetiere in Attendance.



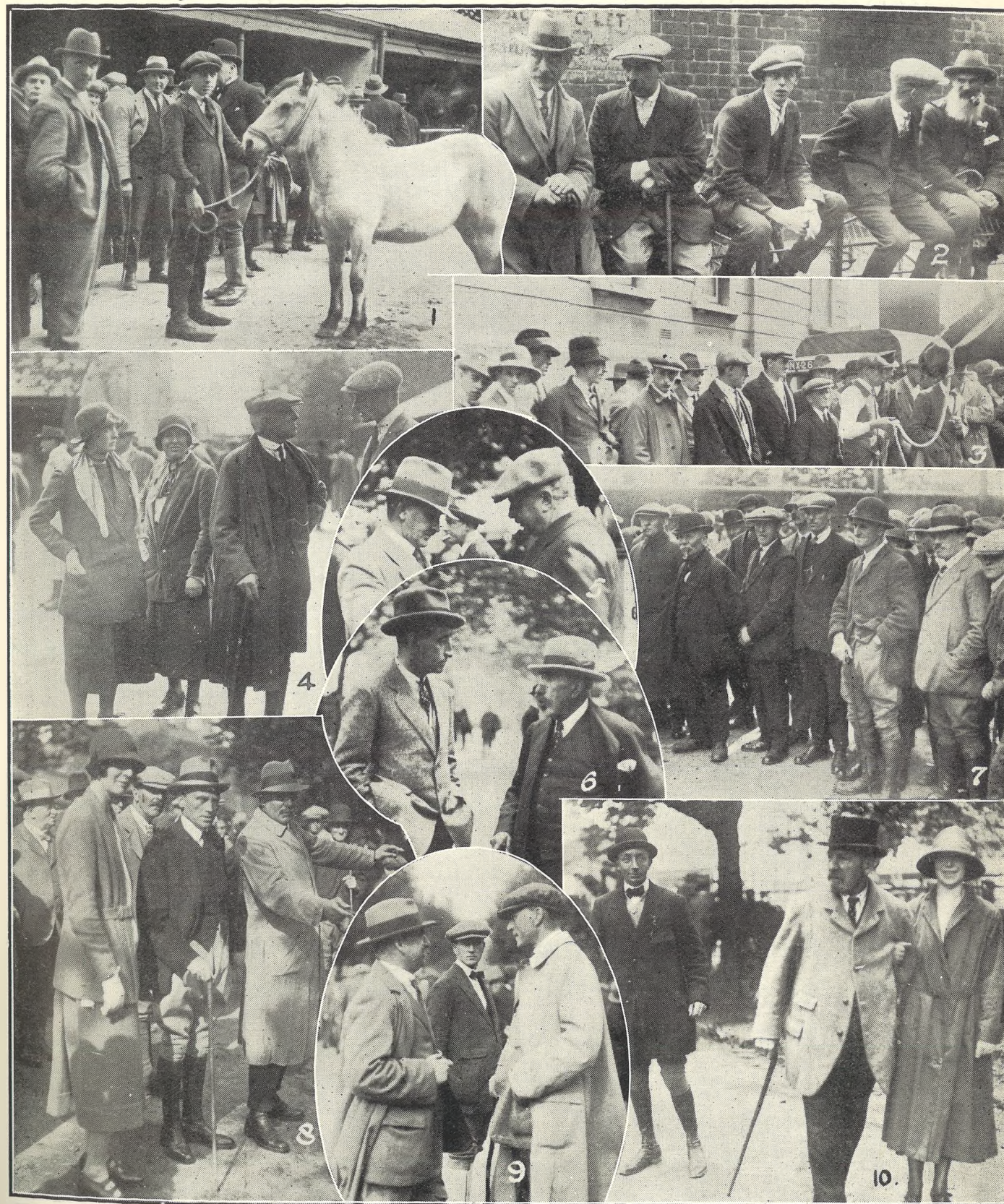
MODEL 1010.  
A special reducing model with patented cross supports, in dove and white coutil, with six hose suspenders. Sizes 24 to 30 ins. 15/11  
Sizes 31 to 36ins. 16/11

A Guarantee with Every Pair of TWILFIT Corsets.



MODEL 420.  
A Wrap-round model with 11in. elastic let in under arm, 5in. wide. Boned with Twilfit and Unbreakable Spiral Steels and trimmed with embroidery turned over top. Made in pink and white 4/11

**OSBORNE HOUSE HIGH ST. (adjoining Grammar School), CHELTENHAM.**  
(Proprietor: D. J. REES)



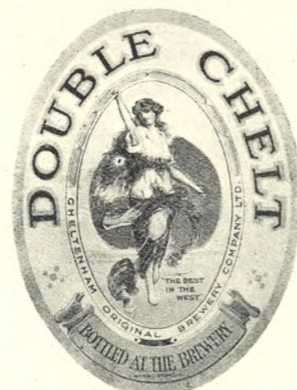
**GLOUCESTER BARTON FAIR.**  
September 23th came on Sunday this year, so Barton Fair was held on Monday last, the 29th. The scenes in the Cattle Market were the same as ever; and one had to be careful not to get knocked down by the Irish and Welsh horse dealers running their wares up and down, with much flag-flapping and loud shouting.

- 1.—Trying to sell a pony.
- 2.—Tired.
- 3.—Admiring a horse dealer's efforts.
- 4.—Hon. Miss. PEGGY Coventry, with a lady friend, Mr. A. Cranton (Overbury), and Mr. Holland Martin (Overbury), looking out for some Irish hunters.
- 5.—Mr. McDowell, a Gloucester Veterinary Surgeon, with Mr. Percy Wheeler, of Bulley.
- 6.—Mr. Bob Apperley (formerly of Prestbury) with his father.
- 7.—Admiring the horses.
- 8.—Mrs. Muir, of Postlip, with Mr. Parsons (Veterinary Surgeon), of Cheltenham, selecting some pony colts.
- 9.—Mr. Brain (Veterinary Surgeon), Cheltenham, with two friends.
- 10.—Mr. Holtham, the veteran Vet. of Gloucester, with his son (on left).

"Cheltenham Chronicle" Photos. Copies 1s. each, postage 2d. extra.



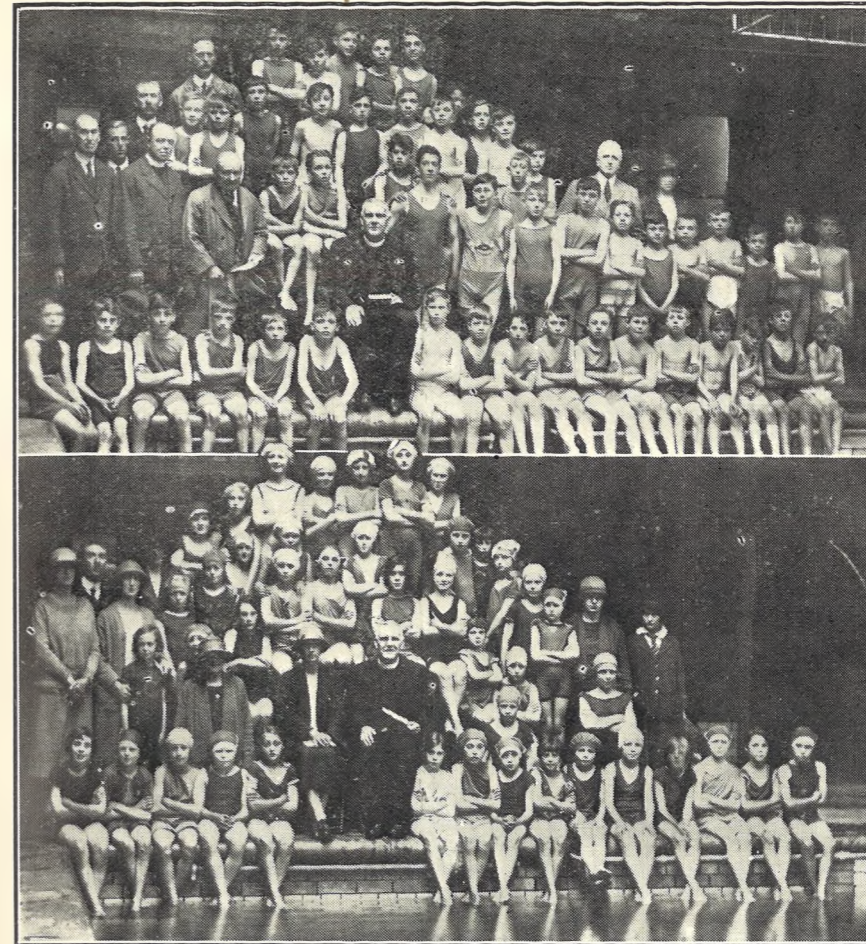
THE NEW  
and  
IMPROVED  
Cheltenham Ale  
and  
Double Chelt



Bearing the above labels are now  
on sale at all the Company's Houses.

AND IS STILL  
THE BEST IN THE WEST  
AND  
HIS MASTER'S CHOICE.

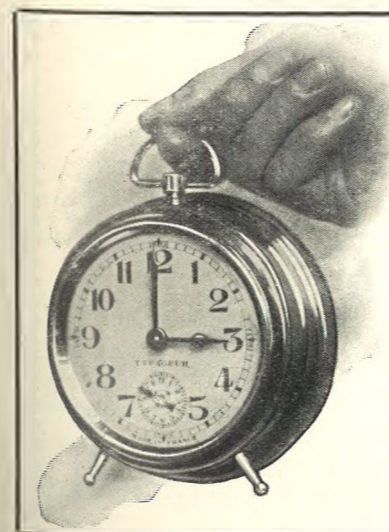
The CHELTENHAM ORIGINAL BREWERY CO., LTD., with which is Amalgamated ARNOLD, PERRETT & Co'



All Saints' Schools, Cheltenham, Swimming Sports.

The Annual Sports of both Boys and Girls' Schools were held at Alstone Baths on September 25. The Vicar, Rev. P. M. C. Johnstone, is seated in centre of boys' group (top). With him are two of the managers, Messrs. Shelmerdine and Whitbread, also Rev. J. Harris (curate) and the teaching staff. In the girls' group Miss Warren (head mistress) is seated with the Vicar.

\*\*\*\*\*



When Winter Comes

and dark mornings, the alarm clock is a necessity. This looks like an ordinary clock, but it isn't: it is a reliable Alarm Clock of sound FRENCH make, and inexpensive.

The Gong is placed on the back of the clock, it has a refined silvered Dial, with plain or luminous figures and a convex glass.

It is a timekeeper with a guarantee, backed up by our own practical experience of a well-built clock.

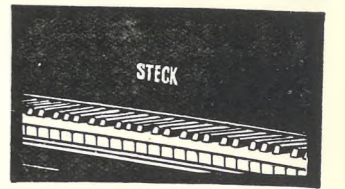
TRY ONE OF OUR "TAPAGEUR" ALARM CLOCKS.

SEE OUR WINDOWS.

WAITE & SON, Watch & Clock Dealers,  
349 High Street, CHELTENHAM.

\*\*\*\*\*

SEND THE "CHRONICLE AND GRAPHIC" TO YOUR FRIENDS  
EVERY WEEK.



THE VALUE OF A NAME.

THE value of the name Steck on your piano is two-fold, it not only adds to the intrinsic value of the instrument, but it is also a perpetual testimony to the taste and judgment of its owner. It is a guarantee of all those qualities that go to the making of a perfect piano.

The STECK PIANO

is universally recognised as one of the world's most famous pianos, and to-day it represents the best value obtainable in its class.

Write or call for particulars of Reduced Prices, Deferred Payments, and Liberal Exchange Terms.

SOLE AGENTS—

**Crichton's,**  
THE PIANO HOUSE,  
Promenade, CHELTENHAM.  
Phone 378.

Let us Illustrate

YOUR BUSINESS PREMISES.

We send Photographer, Make Block, and Quote you an Inclusive Price for its Insertion in the "Graphic." Afterwards the Photograph And the Block become Your Property, and You can use them for Circulars, Bill Heads, etc.

BEST QUALITY

CIDERS

IN BOTTLE.—Sparkling and Still.

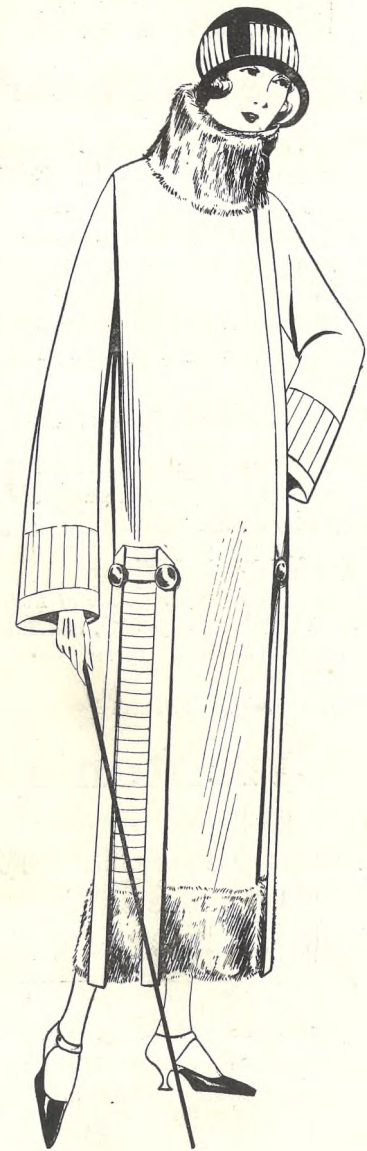
BARTHOLOMEW,

419, 420 HIGH STREET,  
CHELTENHAM.

WINES, SPIRITS, ALES, TABLE WATERS  
and GROCERY. Tel. 13.



# NEWEST COATS OF CORRECT LINE



FOR AUTUMN AND WINTER  
BY VANDERPLANK (From Harrods.)

**E**LEGANT COATS for smart outdoor occasions, suitable for the Gentlewoman, are now being displayed in our Windows and Showrooms.

Everything that *IS* Correct in Style—every Beautiful and Reliable Material—all the Best Trimmings—the Finest Workmanship is Incorporated in our Garments—Distinctive and Attractive Models at a Moderate Price.

There is a Coat in good quality Velour Cloth, cut on the newest lines, in all this Autumn's shades, priced at 59/6, and in the same material there is one with Collar of real Skunk, really remarkable value at 4½ Gns. Also, too, we have a splendid range of Coats at 75/9. Fur trimmed and with the new Scarf Collar. One of course would not overlook the New Tweed Coats. We have a collec-

tion that cannot fail to interest you. With Fur and without.

From 5 to 7½ Gns. we can show you a great number of the finest French Velour Cloth Coats, handsomely trimmed with Fur, in all colors.

Lastly, we have exclusive Models, impossible to describe, but which we should be delighted to show YOU.

### FURS of QUALITY.

VANDERPLANK (from Harrods) are now displaying a wonderful selection of the Finest Quality Furs—Furs beautifully made of the best possible skins and moderately priced.

# VANDERPLANK

381 HIGH STREET HARRODS

## FASHIONS AND FURS

381 HIGH ST., CHELTENHAM.

# THE CHELTENHAM CHRONICLE AND GLOUCESTERSHIRE GRAPHIC

With which is Incorporated the "Cheltenham Looker-On."

GRATIS SUPPLEMENT

Saturday, October 11, 1924.

No. 1,241.

## CHELTENHAM THEATRE AND OPERA HOUSE.

**Next Week: The D'Oyly Carte Opera Co.**  
Monday and Thursday "The Mikado."  
Tuesday "Yeomen of the Guard."  
Wednesday "H.M.S. Pinafore" and "Cox and Box."  
Friday and Saturday (and Saturday matinee) "Ruddigore."

### THE PALACE, HIGH STREET, CHELTENHAM.

Director: Shakspeare Shenton.  
NEXT WEEK (for Six Days): Direct from its Phenomenal Run at the New Oxford Theatre, London,  
AILEEN PRINGLE and CONRAD NAGEL in The Romance of a Queen.  
ELINOR GLYNN'S Own Screen Production of her Famous Novel, "THREE WEEKS."  
Screened at 2.45, 4.45, 6.45, 8.45. Musical Settings by the Palace Orchestra.

### THE DAFFODIL, SUFFOLK PARADE,

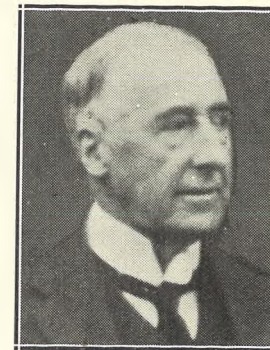
Monday, Tuesday, Wednesday: "LET NOT MAN PUT ASUNDER."  
An eight-reel Special, starring PAULINE FREDERICK.  
SPECIAL—"The Daffodil News," Specially arranged for this Theatre, and the only Exclusive News Pictures in Cheltenham.  
Thursday, Friday, Saturday: "WHY WORRY."  
HAROLD LLOYD'S Big Laugh in six reels.  
"VINDICTA," with BISCOT.  
"THE DAFFODIL NEWS."  
Musical Interlude Daily at 3 & 8 by the Daffodil Orchestra.

Established 1886.

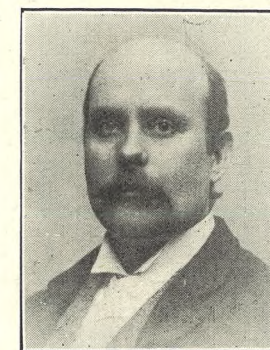
### Martin & Co., Limited,

The County Jewellers,  
PEARL & DIAMOND MERCHANTS.

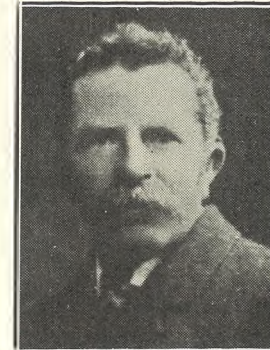
A large selection of Second-hand Silver and Old Sheffield Plate. We are purchasers of Antique Silver and Fine Quality Gems. Best Prices Given.  
LICENSED VALUERS.  
Promenade, CHELTENHAM.



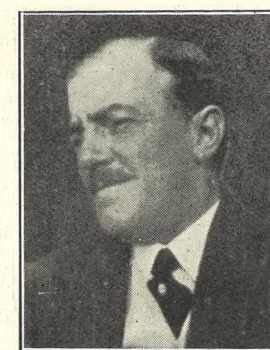
MR. GRANVILLE E. LLOYD-BAKER, J.P., Of Hardwicke Court, near Gloucester, who died suddenly in his grounds on Oct. 3rd, 1924, aged 83 years. He was a great public worker, a J.P. since 1862, Chairman of Wheatenhurst Union, both Guardians and R.D.C., a County Councillor, and on numerous public committees.



MR. THOMAS G. SMITH, Of Victoria House, High Street, Tewkesbury, who died October 2nd, 1924, aged 63 years. He had been in business as a draper in Tewkesbury since 1907, but was previously with Messrs. Blinkhorn, of Gloucester.



MR. ALFRED DUDFIELD, Of Ashbury Farm, Kemerton, who died on October 2nd, 1924, aged 65 years. He had been a farmer in the Tewkesbury district all his life.



MR. A. T. WHALEY, Of 62 Conduit Street, Gloucester, who died on Sept. 26, 1924, after a very long illness. He was a keen Rugby football enthusiast, and played cricket for many years.

### WINTER GARDEN, CHELTENHAM.

Monday, Tuesday, Wednesday: BETTY BLYTHE in "HOW WOMEN LOVE."  
IVY DUKE and GUY NEWALL in a Geo. Clark Picture, "The Starlit Garden." By H. de Vere Stacpoole.  
Thursday, Friday, Saturday: TOM MIX in "3 JUMPS AHEAD."  
GEO. ROBEY in "One Arabian Night."

### COLISEUM THEATRE.

6.40 and 8.40.

"OH! NORMAN."  
Musical Comedy Revue.

### NORTH STREET PICTURE HOUSE.

From 2.30—Continuous.

Monday, Tuesday, Wednesday: LEO MALONEY in "King's Greek Law."  
Thursday, Friday, Saturday: "Poisoned Paradise."  
Featuring CARMEL MYERS and KENNETH HARLAN.

### MAISON ANNETTE

Kensington House, Promenade, Cheltenham,  
SPECIALISTS IN EXCLUSIVE

### CORSETS & LINGERIE.

'Phone 1122.

For the Best **PIANOS, DALE, FORTY and Co. Ltd.**





**ROUND THE TOWN IN CHELTENHAM.**

Saturday last was a beautiful day, and the streets of Cheltenham were particularly animated when our photographer had a morning shoot. Above is his bag.

- 1.—Mr. A. G. Wheeler (right), headmaster for many years of St. Peter's Boys' School, Cheltenham, who is retiring shortly, chatting to a friend.
- 2.—A clergyman, with an O.C.
- 3.—Col. Miller on left.
- 4.—A stroll in the Prom.
- 5.—Fashion of to-day.
- 6.—Unconscious of being snapped.
- 7.—Dr. G. F. Edwards, the Shakesperian reciter.
- 8.—Mr. A. H. Phipps, a retired Cheltenham tradesman.
- 9.—Capt. Vale with a lady.
- 10.—In the Promenade.
- 11.—Mrs. White (on left).

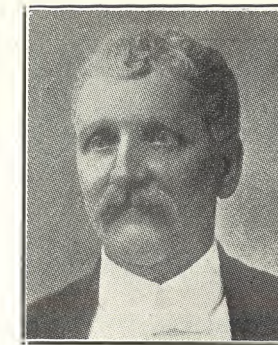
"Cheltenham Chronicle" Photos. Copies 1s. each, postage 2d. extra.

**CORSETS AND BELTS**  
MADE, COPIED, CLEANED, AND REPAIRED.  
Hours: 10 a.m. to 6 p.m. Saturdays, 1 p.m. or by appointment. PHONE 915.  
**MISS FRUIN** (Late with Madam Annette),  
23 Bath Parade, CHELTENHAM.

THE FOOT SPECIALIST.  
**MR. ALFRED J. VENTRIS-FIELD,**  
SURGEON-CHIROPODIST, ORTHOPEDIST,  
and ELECTRO-THERAPEUTIST  
(Author of "The Treatment of Talipes Valgus,"  
"Pedic Surgery," "Poisonous Animals and  
Vegetables of the Countryside," "Orthopaedic  
Principles of Foot Manipulation," etc.).  
Consultant H.M. Forces. Surgery:  
6 RODNEY PLACE, CHELTENHAM.  
Telephone 1266.



THE HOUSE FOR GOOD PHOTOGRAPHS.



**MR. F. C. MILNER,**  
Of Hatherop, Ewlyn Road, Cheltenham, who died suddenly on October 4th, aged 62 years. He was formerly Postmaster and Bookseller at Barry, and came to live at Cheltenham on his retirement three years ago. He was a prominent Freemason, being a past Worshipful Grand Master of Barry Lodge, and since coming to Cheltenham he took an active part in the formation of the new Perseverance Lodge, of which he was the Immediate Past Master. He was a valued member of both the Norwood and Exmouth Bowling Clubs.

**LANCE'S**

*Special*  
**Fur Week**

Our entire stock of FURS and FUR COATS have been carefully selected and priced to suit everyone.



- Two Skin Tie in Natural Fitch. Special Price, 79/6.
- Sable Dyed Fitch, 69/6.
- One Skin Stone Martin Ties. Special Prices, 5½ Gns. to 8½ Gns.
- One Skin Baum Martin Ties. Special Prices, 9½ Gns. to 12 Gns.
- Animal Shape Ties in Martin, Dyed Fox, Red Fox, Grey Fox, and Cross Fox. Special Prices, 69/6 to 12½ Gns.

SPECIAL AUTUMN CATALOGUE  
SENT ON REQUEST, POST FREE.

**John Lance & Co.,**  
LIMITED,  
CHELTENHAM SPA.

*Humbers*  
**Cars.**

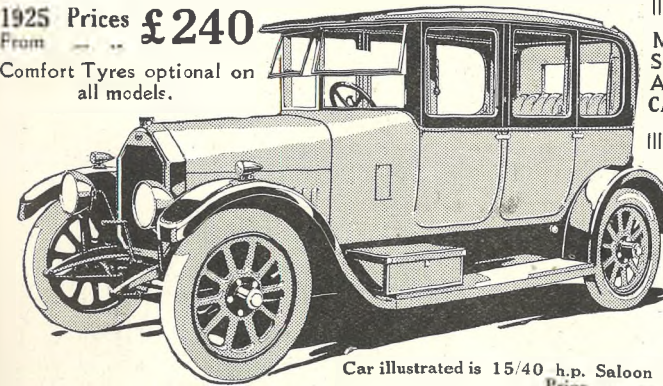
**Beauty—Dignity—Performance—All British**

Quality built in every detail,  
which tells in the long run.

1925 Prices **£240**  
From

Comfort Tyres optional on all models.

MAY WE  
SEND YOU  
AN ART  
CATALOGUE



Car illustrated is 15/40 h.p. Saloon **£845**  
Price

Three Powers: 8/18, 12/28, 15/40,  
but only one quality—the proved best.

Our services will be at your disposal on **Stand 128** at the Olympia Show, where the new features of 1925 Humbers can be seen.

Sole District Agents:

**W.G. TIBBLES & Co., Ltd.**

MOTOR ENGINEERS & COACH BUILDERS.

**High Street, CHELTENHAM.**

TELEPHONE 283.

ESTABLISHED 1896.





**FUNERAL OF THE LATE MR. GRANVILLE E. LLOYD-BAKER.**

The funeral of the late Mr. Granville E. Lloyd-Baker took place at Hardwicke Church on Tuesday, October 7th, amidst every manifestation of regret from a very large number of mourners, representative of the public and private life of the county. The deceased gentleman had been associated during his long life with so many public bodies that the little church would not hold all those who wished to do honour to his memory.

1.—The Choir and Clergy at head of funeral procession. 2.—The coffin borne by tenants of the estate and followed by family mourners. 3 and 4.—Tenants of the estate and villagers.

"Cheltenham Chronicle" Photos. Copies 1s. each, postage 2d. extra.



**FUNERAL OF THE LATE MR. GRANVILLE E. LLOYD-BAKER.**

- 5.—County Council members arriving at church. a: Mr. Gardom, Clerk to the Council. b: Lieut.-Col. Russell B. Kerr (Chairman).
- 6.—Major Gist, Sir Lionel Darell, Mr. Stamford Hutton, and Mr. Ellis Hicks-Beach.
- 7.—County representatives: (a) Mr. F. B. de Saunsmarez, (b) Capt. Trye, (c) Sir Francis Hyett.
- 8.—Mourners leaving the Churchyard, (x) Major F. W. B. Cripps (Vice-Chairman of County Council); in front, Rev. G. F. Helm and Canon Brewster.
- 9.—Rev. D. Jenner-Fust and Mr. Jenner-Fust.
- 10.—Col. C. Turner and a friend.
- 11.—Two members of Wheatenhurst Guardians.
- 12.—(a) Earl Bathurst, (b) Major G. Codrington.
- 13.—Four farmers of the district.
- 14.—Mr. Stanley Tubbs (left).
- 15.—Dowager Lady Guise and Mr. Ellis Hicks Beach.
- 16.—Rev. W. G. Pritchard and Mr. W. H. Whyte (Governor of H.M. Prison, Gloucester).
- 17.—Mr. Lowsley Williams.
- 18.—Mr. Staunton.
- 19.—Mr. Wykeham Musgrave.
- 20.—On extreme right is Rev. P. E. Prince, Vicar of Elmore.





**ROUND THE CITY IN GLOUCESTER.**

- Snaps round about the Cross on Mop Monday morning. The old scenes usual on Mop Monday a quarter of a century ago are departed for ever. Farm labourers and servant girls used to stand about waiting to be hired, and the Cross was then almost impassable. Now, all are gone!
- 1.—Messrs. Thornbury and Murdoch.
  - 2.—Mr. Charles Morris, J.P.
  - 3.—Mr. F. W. Stephenson (secretary to Provident Dispensary).
  - 4.—Sister Lewis and P.C. Tonra.
  - 5.—Clergyman meditating.
  - 6.—Mr. W. Bartlett, a well-known Gloucesterian.
  - 7.—Mr. Osborne, an octogenarian printer, from St. Mary's Square.
  - 8.—Ex-Police-Inspector Elliott.
  - 9.—Mr. Geo. Wood.
  - 10.—A little chat on the milk round.
  - 11.—Taking the boy out shopping.
  - 12.—Mr. Thos. Farley chatting with a lady at door of Bank at Cross.
- "Cheltenham Chronicle" Photos.



**CHELTENHAM v. PENARTH AT RUGBY FOOTBALL.**

- Cheltenham Rugby Football Club played their best team on Saturday last against Penarth, on the Athletic Ground, and won a capital game by nine points to three. The weather was delightful, and the match deserved a much better attendance.
- 1.—"Tim" Moore tackles a Penarth centre.
  - 2.—"Bunching" in the line-out.
  - 3.—Cheltenham make a forward rush.
  - 4.—Well-known supporters applauding the play.
  - 5.—A drink at half-time.
  - 6.—Messrs. H. B. L. Wake (a Cheltenham "Cheltenham Chronicle" Photos. Copies 1s. each, postage 2d. extra.
  - 7.—W. J. Fellows, wing three-quarter, and Somerset County forward) and Geo. Romans (referee), with a Penarth player, knocks-on, and misses a chance to score.

**LET MOUSSELLS MOVE YOU**



**CHELTENHAM.** Offices: AMBROSE STREET

PHONE 112.

Estimates for Removals and Storing Free.

**OPEN NOW.**

THE **SHAMROCK** : 31 :  
**TEA ROOMS,** Promenade, Cheltenham

This is a Branch of the Well-known Shamrock Tea Rooms in Oxford; and here may be tasted the same dainty and invitingly simple fare which characterises the Oxford Shamrock.

Home-made Cakes, Irish Bread and Scones a Special Feature. Light Luncheons are served 12.30—2 p.m. CAED MILLE FAILTE.

**MEN'S ALL-WOOL UNDERCLOTHING**

**VESTS 8/11, 10/6 up.**

LONG OR SHORT SLEEVES. PANTS TO MATCH.

**No Increase on Last Year's Prices.**

**A. Beckingsale, 111 HIGH ST., CHELTENHAM.**

'Phone 406.



**Special Sale of NEW AUTUMN GOODS**

**AT BARGAIN PRICES**

TO CELEBRATE THE

**Opening of New Windows and Reconstructed Interior**

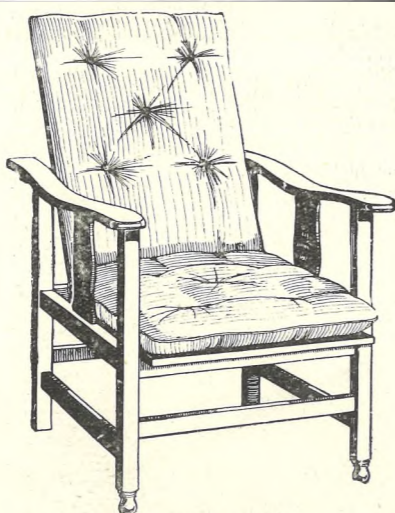
Bringing our Store right up-to-date, and giving much more room in all Departments.



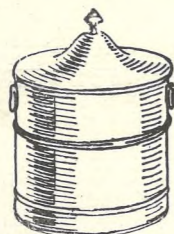
Maids' Coats, Heavy Wool Blanket Cloth, Velour finish. Fur Collar. Sale price 39s. 6d.



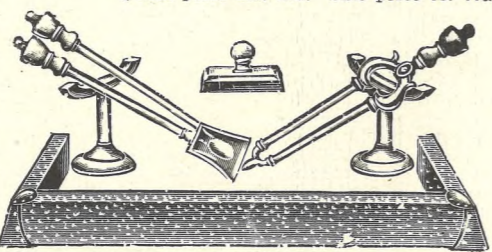
Special Purchase of Coal Cauldrons, as illustrated, in Plain Black. Usual price 5s. 6d. Sale 3s. 11½d.



Adjustable Reclining Chair, with wide curved arms, painted Jacobean colour. Corded Velvet Cushions, in assorted colours. A large, reliable chair. Usual price 39s. 6d. Sale price 29s. 6d.



Oxidised Copper Coal Vases, with lid and strong loose lining. Usual price 29s. 6d. Sale price 19s. 11d.



Companion Sets, in Oxidised Copper, with Brush, Poker, Tongs, and Shovel. Usual price 10s. 11d. Sale price 7s. 11d.

Oxidised Copper Kerbs, 24 inches to 36 inches. Suitable for bedrooms or small Dining Rooms. 6s. 11½d. Fire Irons to match, 6s. 11d.



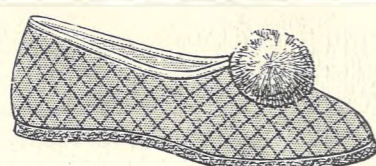
A Handsome Skunk Coat, Fur Collar, Animal shape, Lined Silk. Usual price 27s. 6d. Sale 18s. 11d.



Ladies' Fleecy-lined Knickers, Elastic Waist and Knee. Full size, 1s. 6½d.

Ladies' All-Wool Directoire Knickers, Elastic Waist and Knee. Full size, 3s. 11½d. O.S. 4s. 11d.

Children's Knitted Wool Frocks, all sizes from 14 inch, 2s. 6d., 2s. 11d., 3s. 6d., 3s. 11d., 4s. 11d., 6s. 11d., 8s. 11d., and 10s. 11d.



Ladies' Quilted Satin Slippers, Trimmed Pompon, with Flexible Leather Soles. Black only. Usual price 4s. 11d. Now 3s. 11½d.

Special offer. Ladies' Ribbed Combs, in very fine quality. Round neck, short sleeves. Very flexible and soft. Usual price 4s. 11½d. Now 3s. 11½d.



100 Ladies' Coats, in Velour Cloth. Good quality. Well cut and Tailored. Fur Collar. In all colours. Sale price 42s.



Girls' School Coats, for hard wear, in Heavy Blanket Cloth. All sizes. 27 inches from 8s. 11d.



Ladies' Austrian Velour Hat, for all weather. Trimmed Ribbon Band. In all colours. Usual price 10s. 11d. Now 8s. 11d.

**WE GUARANTEE YOU THE FINEST VALUE!**

**Dicks & Sons Ltd.**  
ART & ECONOMY BUILDINGS  
High St. Cheltenham.

**THE CHELTENHAM CHRONICLE AND GLOUCESTERSHIRE GRAPHIC**

With which is Incorporated the "Cheltenham Looker-On."  
GRATIS SUPPLEMENT. Saturday, October 18, 1924.

No. 1,242.

**CHELTENHAM THEATRE AND OPERA HOUSE.** Next Week: Charles Buckmaster's Company IN THE GREAT PLAY—**"THE OUTSIDER."**

**THE PALACE HIGH STREET, CHELTENHAM.**

Director ... Shakspeare Shenton.  
Monday, Tuesday, Wednesday:  
Rex Beach's Great Novel,  
**"FLOWING GOLD."**  
With ANNA Q. NILSSON and MILTON SILLS.  
SUNSHINE COMEDY.  
Thursday, Friday, Saturday:  
GLORIA SWANSON in  
**"Bluebeard's Eighth Wife."**

**"THE LEATHER PUSHERS."**  
NEXT WEEK, Visit Fairyland:  
**"WEMBLEY BY NIGHT."**

**THE DAFFODIL, SUFFOLK PARADE.**

CHELTENHAM'S PREMIER CINEMA HOUSE.

FOR THE WHOLE WEEK:  
Commencing, Monday, Oct. 20th.  
**"THE WHITE ROSE."**

By D. W. GIFFITH.  
Starring MAE MARSH and IVOR NOVELLO.  
A HUGE 10-REEL FILM.  
NEXT WEEK:  
**"COMIN' THRO' THE RYE."**  
SPECIAL PRESENTATION.  
Book Your Seats Now, which will be Guaranteed.

Established 1806.  
**Martin & Co., Limited,**  
**The County Jewellers,**  
PEARL & DIAMOND MERCHANTS.

A large selection of Second-hand Silver and Old Sheffield Plate.  
We are purchasers of Antique Silver and Fine Quality Gems.  
Best Prices Given.  
LICENSED VALUERS.

Promenade, CHELTENHAM.



**INTERESTING GLOUCESTER WEDDING.**

The marriage was solemnised at St. Michael's Church, Gloucester, on October 8th, of Mr. W. H. Morgan, third son of Rev. and Mrs. E. Morgan, Ystradiffin Vicarage, Llandovery, to Miss Kathleen Huntley, youngest daughter of the late Mr. T. Carey Huntley and Mrs. Huntley, Beresford House, Brunswick Road, Gloucester. Both the bride and bridegroom have been on the staff of Lloyds Bank, and the bride is well known as one of the principals in the Gloucester Amateur Operatic Society.

Photo by Richard Hall, 'Debenhams' Studio, Gloucester.

**Advertise—It Will Pay You!**

**WINTER GARDEN, CHELTENHAM.**

Monday, Tuesday, Wednesday:  
ENID BENNETT in  
**"THE BAD MAN."**  
A Story all about a Bandit who brings a thrill and a laugh at Every Turn.

Thursday, Friday, and Saturday:  
SIR HALL CAINE'S World-Renowned Story,  
**THE ETERNAL CITY.**

Featuring BARBARA LA MARR and LIONEL BARRYMORE.

**COLISEUM THEATRE.**

6.40 and 8.40.  
**"WHAT CHEER."**  
MUSICAL REVUE.

**NORTH STREET PICTURE HOUSE.**

From 2.30—Continuous.  
Monday, Tuesday, Wednesday:  
MATHESON LANG in  
**"Slaves of Destiny."**  
Thursday, Friday, Saturday:  
**"Who Am I?"**  
ALL STAR CAST.

Telephone 1080.  
**W. Scott Cooper,**  
Goldsmith and Silversmith,  
Diamond Merchant, Jeweller,  
The Promenade, Cheltenham.

A large selection of Second-hand Jewels and Antique Silver always in Stock at Bargain Prices.  
Estimates, designs free of charge. Old Gold, Silver, and Gems purchased for cash or taken in exchange.

For the Best **PIANOS, DALE, FORTY and Co. Ltd.**





**C.E.M.S. ANNUAL CONFERENCE IN CHELTENHAM.**

The annual conference of the C.E.M.S. Gloucester Diocesan Union was held on Saturday last in the Parish Church Room, Cheltenham, Archdeacon Ridsdale presiding. Some of the delegates.



**DIAMOND WEDDING AT FORD.**

Mr. and Mrs. Alfred Court, of Ford, near Winchcombe, celebrated their diamond wedding on Thursday, October 9th. The old couple were married at Tewkesbury Abbey in 1864, and lived at Ashton-under-Hill for fifty years, Mr. Court being in business as a baker and confectioner. He retired about ten years ago. They have four sons, two daughters, 22 grand-children, and three great-grand-children. A family group taken on the Diamond Wedding Day.

Standing: Mrs. F. H. Court, Mr. F. H. Court, Mr. R. Court, Mrs. W. Turner (daughter), Mr. C. Edwin, Mrs. A. E. Court, Mr. W. Turner.

Seated: Mrs. C. Edwin (daughter), Mr. A. F. Court, Mrs. A. F. Court, Mr. A. E. Court.  
"Cheltenham Chronicle" Photo. Copies 1s. 9d. unmounted, 2s. 6d. mounted. Postage extra.

**LET MOUSELLS MOVE YOU**



Estimates for Removals and Storing Free.

**CHELTENHAM.** Offices: **AMBROSE STREET**

PHONE 112.

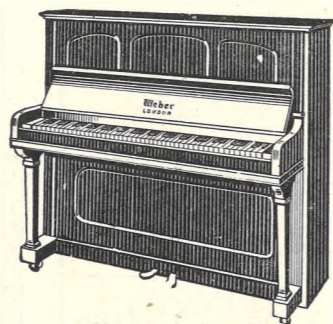


A GOOD Photograph is the ideal Xmas Gift.

**CORSETS AND BELTS**  
MADE, COPIED, CLEANED, AND REPAIRED.

Hours: 10 a.m. to 6 p.m. Saturdays, 1 p.m. or by appointment. PHONE 915.

**MISS FRUIN** (Late with Madam Annette).  
23 Bath Parade, CHELTENHAM.



**The Weber Piano**

THE pre-eminence of the Weber Piano is due to its surpassing musical excellence. It is the instrument which mostly fulfills the ideals of musicians and layman alike.

**Recently Reduced Prices,**

liberal exchange and easy payment terms bring the Weber Piano within the reach of everyone.

Call or write for particulars.

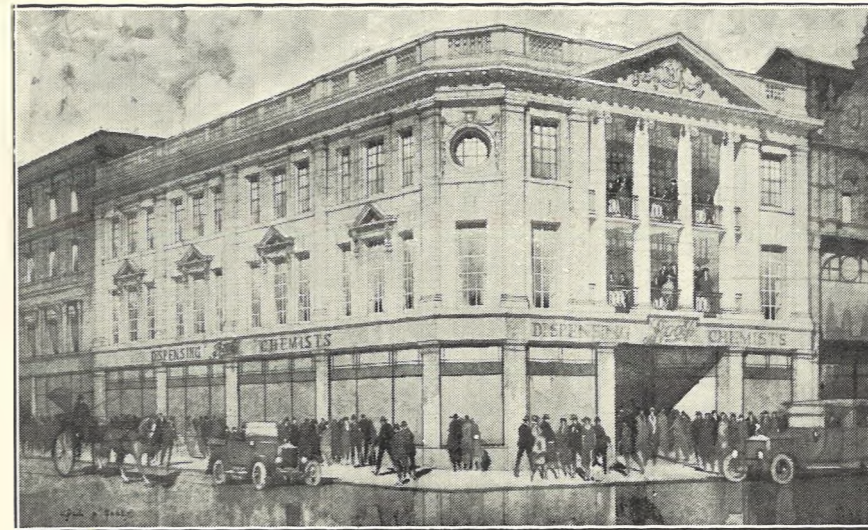
**Crichton's,**

SOLE AGENTS,

Promenade, CHELTENHAM.

'Phone 378.

Advertise in the 'Echo.'



AS IT WILL BE.



AS IT IS NOW.

Directly the Christmas rush of trade is over, the shops of Messrs. Boots, Ltd., facing the Promenade are going to be revolutionised. The whole of the Bank premises on the corner, together with the Wool Shop and the Café adjoining, have been purchased, and the whole will be pulled down and a handsome front in Bath stone, with granite pillars to the shop windows, will be erected. We publish above the Architect's drawing showing the appearance of the corner when finished, and below we give a photograph, taken this week, of the present appearance. The front is going to be set back a foot in North Street, by the wish of the Town Council, Messrs. Boots, Ltd., having kindly given this up.

**MEN'S ALL-WOOL UNDERCLOTHING**

VESTS 8/11, 10/6 up.

LONG OR SHORT SLEEVES. PANTS TO MATCH.

No Increase on Last Year's Prices.

**A. Beckingsale,** 111 HIGH ST., CHELTENHAM.

'Phone 406.

**BEST QUALITY CIDERS**

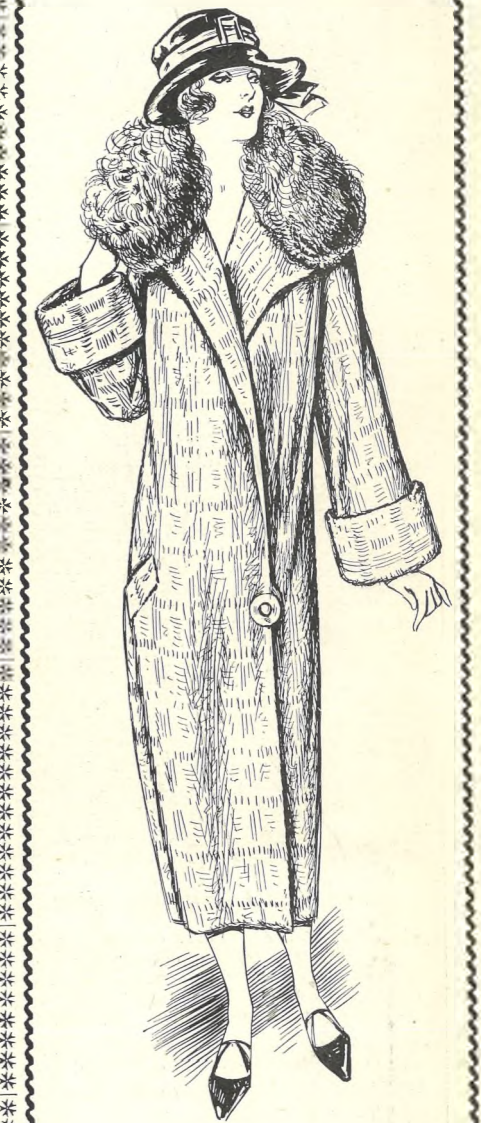
IN BOTTLE.—Sparkling and Still.

**BARTHOLOMEW,**

419, 420 HIGH STREET, CHELTENHAM.

WINES, SPIRITS, ALES, TABLE WATERS and GROCERY. Tel. 13.

**LANCE'S**  
FOR Fashionable Tweed **COATS.**



This attractive COAT may be had in a large variety of Novelty Tweeds, with varied designs of Overchecking and Stripes. Collar trimmed Mouflon Fur or Dyed Hare to tone with material.

Price, **49/6.**

Other qualities and styles may be had from 59/6 to 6½ Guineas.

**John Lance & Co.,** LIMITED,  
CHELTENHAM'S SHOPPING CENTRE.





**ROUND THE TOWN IN CHELTENHAM.**

Snaps in High Street on Monday morning last. Monday was one of the finest and warmest days of the year, and the streets were full of people.

- |  |  |                           |
|--|--|---------------------------|
| 1.—Two friends in High Street.   | 5.—Mrs. Ponting (daughter of Mrs. Trotman)                         | 8.—Going home to lunch.   |
| 2.—Enjoying his pipe. Behind are Mr. Starling, the Liberal agent, and Mrs. Starling. | 6.—Mr. Trevena, who acted as Clerk of Works on the Housing Estate. | 9.—Taking the family out. |
| 3.—Promenading.  | 7.—Mr. Phillips, for many years at Shirer and Haddon's.            | 10.—Mr. A. P. Caley.      |
| 4.—Mrs. Trotman.   |  | 11.—"Take my arm, dear!"  |

"Cheltenham Chronicle" Photos. Copies 1s. each, postage 2d. extra.

# Waist and Hips Reduced Quickly with New Kind of Girdle.

The moment you put on this new kind of girdle your waist and hips look inches thinner—and you get thin while looking thin, for this new invention produces the same results as an expert masseur. Makes fat vanish with surprising rapidity while you walk, play, work or sleep, yet it does it so gently that you hardly know it is there. No more heart-straining exercises—no more disagreeable starving diets—no more harmful medicines—no more bitter self-denials.

At last! A wonderful new scientific girdle that improves your appearance immediately and reduces your waist and hips almost "while you wait!" The instant you put on the new girdle the bulky fat on the waist and hips seems to vanish, the waist-line lengthens, and your body becomes erect, graceful, youthfully slender! And then—with every step you make, with every breath you take, with every little motion, this new kind of girdle gently massages away the disfiguring useless fat—and you look and feel many years younger!

### Look More Slender at Once!

Think of it—no more protruding abdomen—no more heavy bulging hips. By means of this new invention, known as the Madame X Reducing Girdle, you can look more slender immediately! You don't have to wait until the fat is gone in order to appear slim and youthful! You actually look thin while getting thin! It ends forever the need for stiff corsets and gives you with comfort Fashion's straight boyish lines!

The Madame X Reducing Girdle is different from anything else you've seen or tried—far different

from ordinary special corsets or other reducing methods. It does not merely draw in your waist and make you appear more slim; it actually takes off the fat, gently but surely!

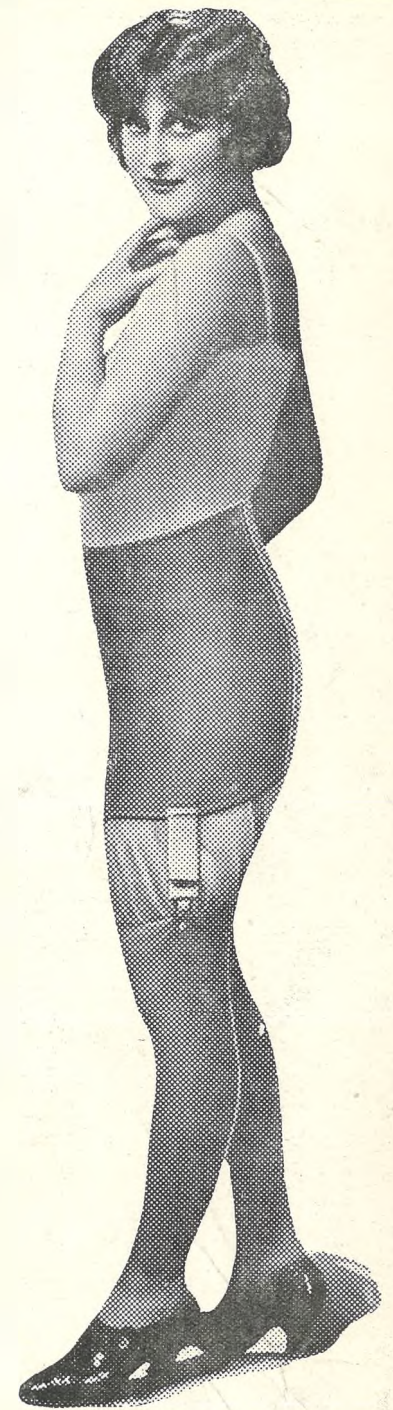
### Actually Reduces Fat.

The Madame X Reducing Girdle is built upon scientific massage principles. It is made of the most resilient rubber—especially designed for reducing purposes—and is worn over the undergarment. Gives you the same slim appearance as a regular corset without the stiff appearance and without any discomfort. Fits as snugly as a kid glove—suspenders attached—and so constructed that it touches and gently massages every portion of the surface continually! The constant massage causes a more vigorous circulation of the blood, not only through these parts, but throughout the entire body! Particularly around the abdomen and hips, this gentle massage is so effective that it often brings about a remarkable reduction in weight in the first few days.

Those who have worn it say you feel like a new person when you put on the Madame X Reducing Girdle. You'll look better and feel better. You'll be surprised how quickly you'll be able to walk, dance, climb, and indulge in outdoor sports.

### Come In! And See The Madame X Reducing Girdle.

You can't appreciate how marvellous the Madame X Reducing Girdle really is until you actually see and examine it. And this you can easily do. We invite you to call at our corset shop to-day and earn all about this easy and pleasant way of becoming fashionably slender.



The Madame X Reducing Girdle takes the place of stiff corsets and gives you with comfort Fashion's straight boyish lines. Makes you look and feel years younger.

## —Madame X Reducing Girdle—

IS NOW ON DISPLAY AT

# SHIRER & HADDON,

The Colonnade and Clarence Street CHELTENHAM.



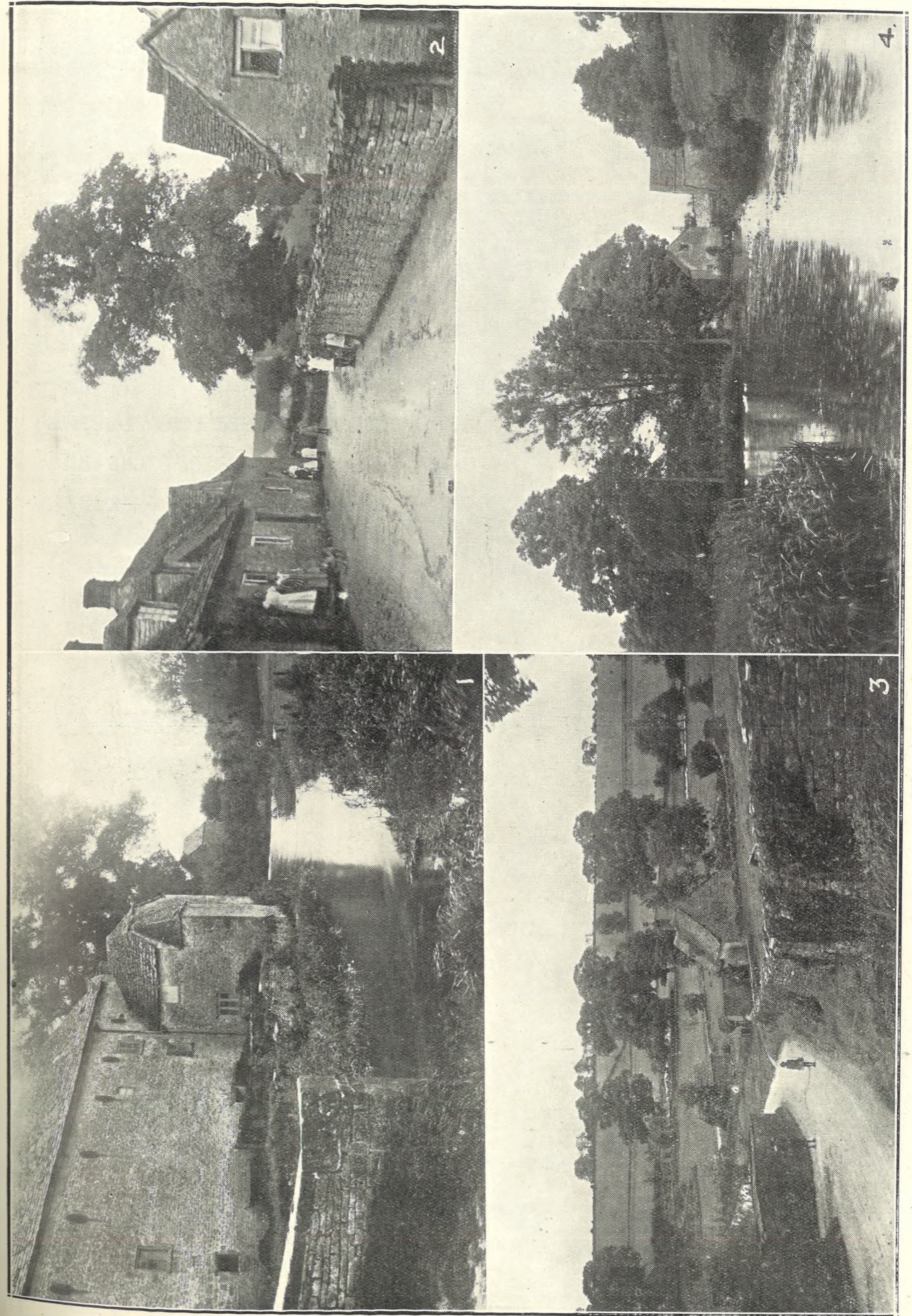


**CHELTENHAM COLLEGE v. BLACKHEATH A.**

The College Rugby XV. played the first match of the season on Saturday afternoon, and although beaten by a much heavier and faster team by 23 points to 8, they showed great promise of being a fast and clever team.

- 1.—The College (in white) breaking away, with Martin (left) and Jowett (centre) leading.
- 2.—Three College masters. On right, wearing bowler (x) is Mr. Desages, who has just retired after 40 years' service as French master; in centre, Mr. Mayne, his successor.
- 3.—A Blackheath three-quarter coming round with the ball.
- 4 and 6.—Spectators. There was a large crowd present.
- 5.—A fine dribble by the Blackheath forwards.
- 7.—The College team. They played in white jerseys, because Blackheath wear the Black and Red of the College.
- 8.—A Blackheath forward gets the ball in a line-out.

"Cheltenham Chronicle" Photos. Copies 1s. each.



**PICTURESQUE GLOUCESTERSHIRE.—BAUNTON.**

Baunton is a picturesque old-world village, lying on the side of the main road from Cheltenham to Cirencester, 1½ miles from the latter. All the houses are of stone of about the 17th Century, and are particularly interesting. The little trout stream, the Churn, opens out to feed the mill, and makes a most artistic piece of water, as shown in No. 4.

- 1.—The old Mill, from the road.
- 2.—Cottages at Baunton.
- 3.—Entrance to the village, from the main road.
- 4.—The Mill stream, showing Mill in distance.

"Cheltenham Chronicle" Photos. Copies 1s. 9d. each, postage 2d. extra.



: 344 :  
HIGH STREET,  
CHELTENHAM.

# WORTH'S

: 344 :  
HIGH STREET,  
CHELTENHAM.

SPECIALISATION  
MEANS  
EXTRA VALUE.

RELIABLE GARMENTS  
WHICH ARE  
MODERATELY PRICED.

**"THAT'S A LOVELY COAT!"**  
—a remark passed daily by people gazing into Worth's, the Fashion Specialists', Windows. Don't let the low price deceive you as to the quality. Values are remarkable. If you see THE Coat in Worth's, step inside and secure it. It's yours, and reserved for you for a small deposit.



We Specialise in—  
**Velour Coats,  
Furs and Fur Coats,  
Woollen Costumes & Dresses  
Jumpers, Coat Frocks and  
Costumes (Plain or Fancy).**

Reliable FURS  
in Animal Ties  
or Wraps from  
**19/11  
TO  
4 Gns.**

Beautiful  
FUR COATS.  
Lengths—  
32in. from 5 Gns.  
48in. ,, 10 Gns.



Above Coat can be obtained in all wool Check Tweed or Velour. Two or three colour combination, trimmed collar and cuffs, Thibet, Bear or Mouflon. A neat and attractive coat for day-wear. Colours: Tan/Beige, Nigger/Red, Blue/Grey and Tan/Nigger, Etc. Prices from **52/6 to 6 Gns.**



A most popular number this season is as sketched above, good Velour Coat, half lined, lovely fur collar, pin tuck cuffs, and on front. Priced at **45/9 only**

WHEN IN DOUBT WEAR A  
**"WORTHYMAC"**

If it doesn't rain to-day—it probably will to-morrow.

NAVY OR FAWN, 46 to 50 ins.

➔ **19/11 ONLY.**

INEXPENSIVE YET RELIABLE.

A large and varied selection of Trimmed and Untrimmed Coats from 35/9 to 7 Gns.

THE HOUSE FOR VALUE!

# WORTH'S

BEST QUALITY ALWAYS!

344 HIGH STREET,

CHELTENHAM.



- ALTERATIONS IN CHELTENHAM'S SHOPPING CENTRE.**
- 1.—The old Capital and Counties Bank premises in High Street being converted into a new shop for Messrs. Crichtons, now of the Promenade.
  - 2.—Gill's old Toy Shop, "Kiddieland," in High Street, now being converted into two shops.
  - 3.—The Imperial Cafe, now converted into an hotel on the upper stories, and the ground floor converted into two shops.
  - 4.—Ormond Place, turning out of the Promenade, purchased by Madame Wright, of the Colonnade, being converted into a magnificent shop.
  - 5.—Part of Shirer and Haddon's new premises. They have purchased practically the whole of the north side of the Colonnade.
  - 6.—Mr. Dangerfield's old Book Shop, now being added to Messrs R. E. and C. Marshall's premises.
  - 7.—Messrs. Bryant's old premises at the corner of the Promenade, purchased and being altered by the Saxone Shoe Co.
  - 8.—Another shop being added to the Creamery premises in Pittville Street.

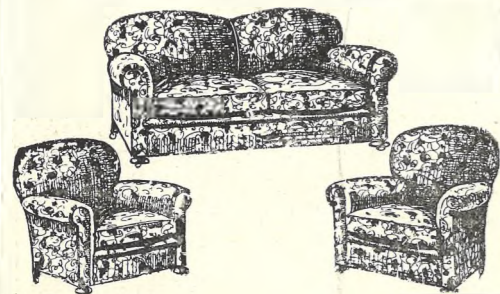
"Cheltenham Chronicle" Photos. Copies 1s. 9d. each, postage 2d. extra.



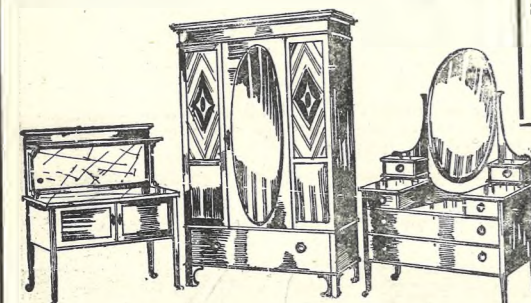
# SPECIAL SALE FURNITURE & CARPETS.

OF **RELIABLE GOODS AT BARGAIN PRICES.**

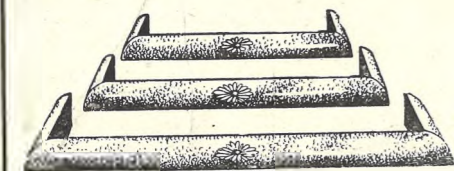
Having now completed extensive alterations to our Store and Display Windows, we are holding this SPECIAL SALE in all Departments to inaugurate the Opening of these additional Display Windows, and induce the public to come and inspect the interior also. Much greater space is now given to our Drapery Departments and the light greatly improved, thus giving increased comfort in shopping. **OUR PRICES ARE ALWAYS THE LOWEST POSSIBLE!**



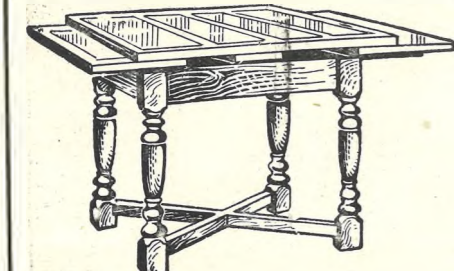
W20—A 3-Piece Chesterfield Suite, comprising well-made fully sprung Chesterfield and two comfortable Easy Chairs, Upholstered in Handsome Tapestry. Usual price 15gs. **12 GNS.**



W25—Handsome Inlaid Mahogany Bedroom Suite, well-made and highly polished, comprising 4ft Wardrobe, fitted Bevelled Mirror and Drawer, Sunk Centre Dressing Chest with Oval Mirror and Drawers, Washstand with Marble Slab and Back, fitted Towel Rail and 1 Chair. Usual price 32gs. **25 GNS.**



W21—Oxidised Copper Curbs, Artistic and labour saving. 27 inches to 36 inches **4/11**



W22—Solid Oak Pull-out Dining Table, highly polished in Antique colour. Size 5ft. by 3ft. 6in. **5/19/6**  
Usual price £7 10s.

## Special Offers of CARPETS at Reduced Prices.

### WOOL ART CARPETS.—In Artistic Colours, for Bedrooms.

Size 7ft. 6in. by 9ft. Usually 45/6. Sale 35/6.  
Size 9ft. by 9ft. Usually 54/6. Sale 42/6.  
Size 10ft. 6in. by 9ft. Usually 63/-. Sale 49/6.  
Size 9ft. by 12ft. Usually 72/6. Sale 55/6.

### REVERSIBLE ART SQUARES.—For Bedrooms.

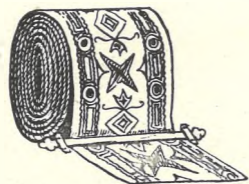
Size 7ft. 6in. by 9ft. Usually 29/6. Sale £1 2s. 6d.  
Size 9ft. by 9ft. Usually 39/6. Sale £1 7s. 6d.  
Size 10ft. 6in. by 9ft. Usually 45/6. Sale £1 12s. 6d.  
Size 12ft. by 9ft. Usually 55/6. Sale £1 19s. 6d.

### RICH AXMINSTER SQUARES.

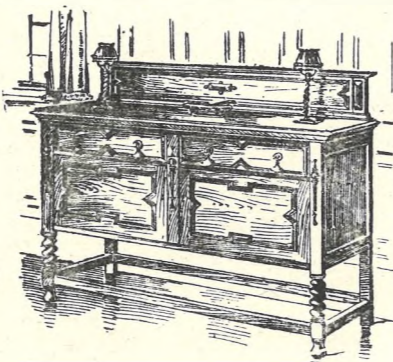
Size 9ft. by 7ft. 6in. Usually 5gs. Sale £3 19s. 6d.  
Size 9ft. by 9ft. Usually £6 10s. Sale £4 19s. 6d.  
Size 10ft. 6in. by 9ft. Usually £7 18s. 6d. Sale £5 19s. 6d.  
Size 12ft. by 9ft. Usually 9gs. Sale £6 19s. 6d.

Real **MURZAPORE RUGS**. 3ft. by 6ft. Usual price 45/6. Sale 29/6.  
Real **MURZAPORE CARPET**, in rich Turkey colourings. Size 12ft. by 15ft. Usually 21 gns. Sale 15 Gns.

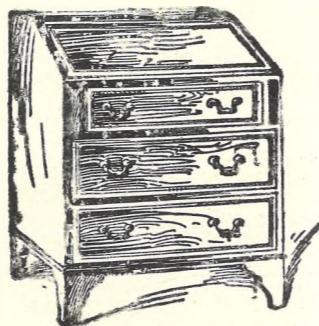
C27.—Wilton Stair Carpet, in good hard-wearing quality. Plain marle centre, with Colour Borders. 18ins. wide 4/11, 22ins. wide 6/6.



C23.—Stair Carpet, in Rich Axminster, Turkey colours, 18ins. wide. Usual price 8/11. Sale price 6/11.



W24.—4ft. Solid Oak Sideboard, as illustrated, well-made and highly polished in Antique colour, fitted 2 Drawers and 2 Cupboards **5/19/6**  
Usual price £7 15s.



V23.—Solid Oak Bureau, with 3 Drawers and fitted Pigeon Holes. Finished Antique Colour **5/5/0**  
Usual price £6 19s.

### SPECIAL OFFER.

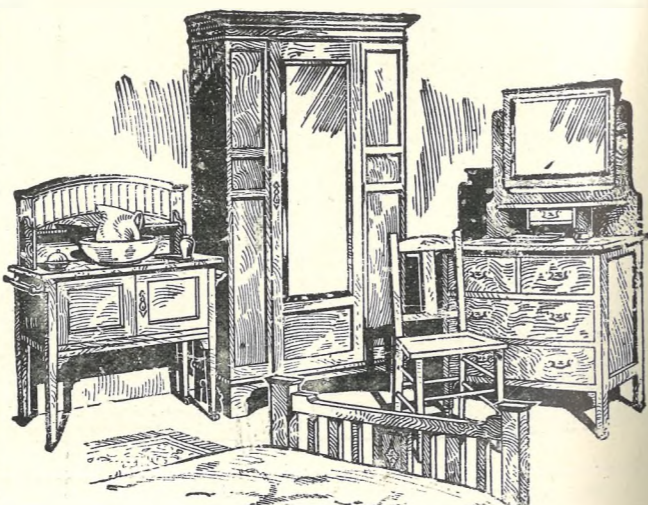
## 250 Reversible Rugs.

In Rich Oriental Designs. Mostly Red Grounds.

Size 24in. by 48in. Price, 3/11½

Size 28in. by 4ft. 7in. Price, 4/11½

Size 6ft. by 3ft. Price, 7/11½



W26.—Solid Oak Bedroom Suite, well-made and finished in antique or fumed oak, comprising 3ft. Wardrobe, with Long Mirror, Dressing Chest with Mirror and 3 Drawers, Washstand with Marble Top, Tiled Back, and fitted Towel Rail, and Chair to match. Usual price 16gs. **12/19/6**  
Oak Bedstead to match ..... 2/19/6.

**Dicks & Sons Ltd.**  
Cheltenham.



## GREAT MISSIONARY EXHIBITION IN CHELTENHAM TOWN HALL.

From Wednesday last until next Friday the Cheltenham Town Hall is housing one of the biggest exhibitions of its kind ever held in Cheltenham, entitled "Africa and the East," organised by the Church Missionary Society. It was opened on Wednesday by the Mayor of Cheltenham, who is seen above with other members of the platform at the opening ceremony.

Standing: Rev. T. Bloomer, Rev. C. H. Lancaster, Mr. Everett, Rev. A. A. Headley, Mr. Baxter, Major Rickerby, Mr. Jeremy Thomas, Rev. H. S. Naylor, Rev. N. E. O Thackwell.

Seated: Mrs. Marsden, Ald. Clara Winterbotham, Ald. Margrett, the Mayor, the Rector, Rev. C. H. Boothroyd, Miss Rhodes, Mrs. Harper.



## THE MISSIONARY EXHIBITION IN CHELTENHAM.

Some of the local ladies who are assisting as waitresses in the Refreshment Rooms.

\*\*\*\*\*

SEND THE "CHRONICLE AND GRAPHIC" TO YOUR FRIENDS EVERY WEEK.





1—Is a smart Afternoon GOWN in Morocain, with Tunic effect and Self Embroidery, in all this Autumn and Winter colours. Price, £4 19 6.

2—An effective Semi-Evening GOWN in an excellent quality Morocain. Daintily Pleated Cape and Sides. In shades of Blue and Brown. Price, 5½ Gns.

3—Inexpensive Evening GOWN in Artificial Satin, Ostrich Feather and Silk Tassel at side. In a lovely shade of Green. Price, 59/11.

Other Models not sketched, but too numerous to try and describe, from 2 to 10 Gns. In authentic styles for this season.

## ATTRACTIVE GOWNS OF DISTINCTIVE DESIGN BY VANDERPLANK.

PERHAPS you have always associated the name of Vanderplank with perfectly fitted Tailor-mades and Furs—and rightly so, for our reputation is far famed, both for their excellent taste and fine qualities. We would, therefore, wish to bring to your notice that we have always a very fine collection of Afternoon and Evening Gowns. It has been the aim of our designers to create Garments which shall not only be moderate in price, but possess individuality and be in good taste.

THE materials employed are all quite reliable and exquisite in their colourings, and the cut and workmanship are of a very high standard. YOU will want one or two Gowns for "this or that" occasion, and we invite you to call and see our collection at 381 High Street, Cheltenham. If you appreciate Gowns of daintiness and distinction at real economy prices, you will gain both profit and pleasure by accepting our cordial invitation.

*A Vanderplank Garment to-day is the vogue of to-morrow.*

# VANDERPLANK

381, HIGH STREET HARRODS  
FASHIONS AND FURS

381 HIGH ST., CHELTENHAM.

# THE CHELTENHAM CHRONICLE AND GLO' SHIRE GRAPHIC

With which is Incorporated the "Cheltenham Looker-On."  
GRATIS SUPPLEMENT. Saturday, October 25, 1924.

No. 1,243.

CHELTENHAM THEATRE AND OPERA HOUSE. Next Week: The Record Breaker—  
"CHARLEY'S AUNT."

THE PALACE,  
HIGH STREET, CHELTENHAM.

Director ... Shakspeare Shenton.  
VISIT FAIRYLAND  
**Wemley by Night.**  
The Evening Gaiety and Beauty of the World's Greatest Exhibition  
Monday, Tuesday, Wednesday:  
THOMAS MEIGHAN in  
"WOMAN PROOF."  
Thursday, Friday, Saturday:  
REGINALD DENNY in  
"SPORTING YOUTH."  
BILLY SULLIVAN in  
"FAST STEPPERS."

THE DAFFODIL,  
SUFFOLK PARADE,  
CHELTENHAM'S PREMIER  
CINEMA HOUSE.

FOR THE WHOLE WEEK,  
Commencing Monday, Oct. 27th:  
"COMIN' THRO' THE RYE."  
The World's Sweetest Love Story.  
To be Presented Three Times  
Daily, 2.30, 5.45, and 8 o'clock.  
Full Orchestra and Musical  
Prologue at Each Performance.  
Vocalist: Miss MARIE ELLIOT.  
The Film will be presented as  
Only THE DAFFODIL can  
Present.  
Advance Booking Office Now  
Open. All Seats Guaranteed.

Established 1886.  
Martin & Co.,  
Limited,  
The County Jewellers,  
PEARL & DIAMOND MERCHANTS.

A large selection of Second-hand  
Silver and Old Sheffield Plate  
We are purchasers of Antique  
Silver and Fine Quality Gems  
Best Prices Given.  
LICENSED VALUERS.  
Promenade. CHELTENHAM.



### A HOCKEY WEDDING.

The marriage of Captain Allman Vizer Bridge, M.C., son of Mr. and Mrs. H. P. Bridge, of Langton House, Charlton Kings, to Miss Kathleen Eleonora Lidderdale, the renowned international hockey player and daughter of Dr. James and Mrs. Lidderdale, of Evesham Lodge, Prestbury-road, Cheltenham, took place at Prestbury Church on Monday morning last. The Prestbury girls, dressed in white, made an arch of hockey sticks down the churchyard path. "Cheltenham Chronicle" photo, copies 1s. each, postage 2d. extra.

WINTER GARDEN,  
CHELTENHAM.

Monday, Tuesday, Wednesday:  
"The Silent Command."  
A Sensational and Spectacular  
Story of the High Seas.  
Buster Keaton  
In a Five-Reel Absurdity,  
"OUR HOSPITALITY."  
Thursday, Friday, Saturday:  
Norma Talmadge  
In her Very Latest Desert Story,  
"THE SONG OF LOVE."

COLISEUM THEATRE.  
6.40 and 8.40.  
"PARADISE ALLEY."  
MUSICAL REVUE.

NORTH STREET PICTURE  
HOUSE.  
From 2.30—Continuous.  
Monday, Tuesday, Wednesday:  
"Why Men Leave  
Home."  
Featuring Helene Chadwick, Mary  
Carr, and Lewis Stone.  
Thursday, Friday, Saturday:  
"Love, Life, Laughter."  
Featuring BETTY BALFOUR.

MAISON  
ANNETTE  
Kensington House,  
Promenade,  
Cheltenham,  
SPECIALISTS IN  
EXCLUSIVE

CORSETS &  
LINGERIE.  
Phone 1122.

For the Best  
PIANOS, DALE, FORTY and Co. Ltd





**THE GENERAL ELECTION: GLOUCESTER NOMINATIONS.**

The nominations of the three candidates for Gloucester took place at the Guildhall, Gloucester, on Saturday morning last, the time for such being from 11 to 1 o'clock.

- 1.—Conservative Candidate and supporters. Mr. W. H. Taylor (Conservative agent), Col. J. and Mrs. Horlick, and Mr. J. O. Roberts.
- 2.—Some interested spectators.
- 3.—The Liberal Candidate arrives: Mr. Reed (agent, left) and Mr. Theobald Mathew, the candidate.
- 4.—Dr. Bibby (left) and Mr. Spring, supporters of Mr. Price, outside Guild-hall.
- 5.—Mr. Price, the Labour Candidate, and his party arriving: Mr. Curtis (agent, at back), Mrs. M. P. Price, Mr. M. P. Price, and Councillor W. L. Edwards.
- 6.—Councillor W. C. Matthews and Alderman Langley-Smith, two prominent Liberal supporters.
- 7.—Four interested spectators.
- 8.—Mr. W. H. Madge and Sir James Bruton arriving to support Col. Horlick.

“Cheltenham Chronicle” photos, copies 1s. each, postage 2d. extra.

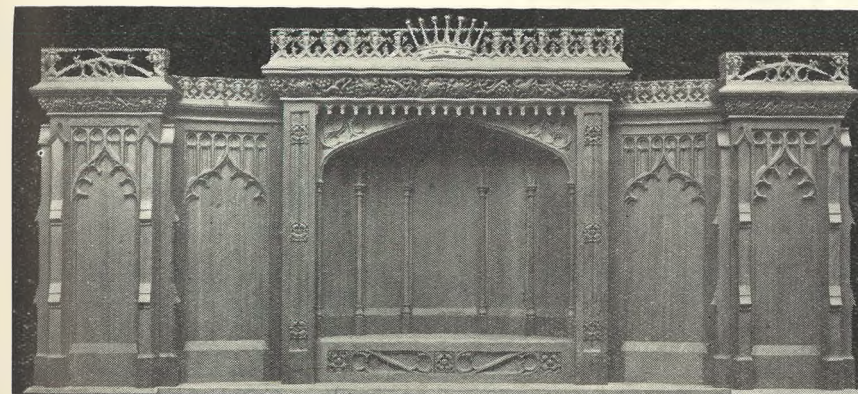


**PRETTY WEDDING AT CHURCHDOWN.**

The bridal group at the wedding on Wednesday, Oct. 15, of Mr. H. R. Hunt, Churchdown, to Miss Katherine Boadicea, daughter of Mrs. James Nicholls and the late Mr. James Nicholls, of Hazel Dean House, Churchdown.

Photo by Cheltenham Newspaper Co., Ltd.

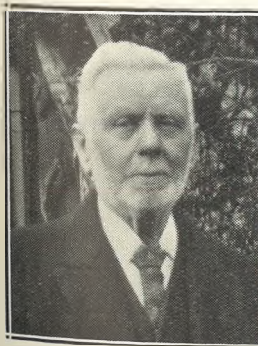
\*\*\*\*\*



**A FINE REREDOS.**

The above reredos has just been executed for Brymbo Church by R. L. Boulton and Sons, Bath Road, Cheltenham. It is to the design of L. W. Barnard, Esq., F.R.I.B.A., and is executed in English oak. It is part of a scheme which embodies the enrichment of the chancel with paneling, altar rails, etc.

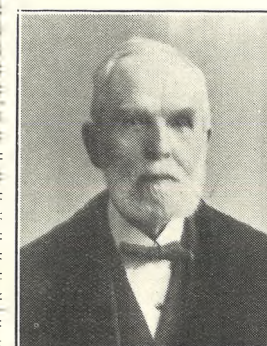
\*\*\*\*\*



**MR. CHAS. WILLIAM GREENSLADE,**  
Of Glyn Cottage, Francis-street, Cheltenham, who died on Oct. 16th, aged 79 years. He had lived in Cheltenham 52 years, and was for over 50 years a member of Emmanuel Church and people's warden for 17 years.



**MR. ROBERT SPENCER COLLETT,**  
Of 19 Furlley-road, Gloucester, chief clerk in the employ of the Gloucester Co-operative and Industrial Society, who died on Thursday, October 16th, 1924.



**MR. JOSEPH WARD,**  
Of 29 Park-road, Gloucester, who died on Oct. 21, 1924, aged 83 years. He was a widely-known and most respected citizen, having served on the City Council for 25 years, and was a J.P. For over 50 years he was a chemist in Northgate-street.

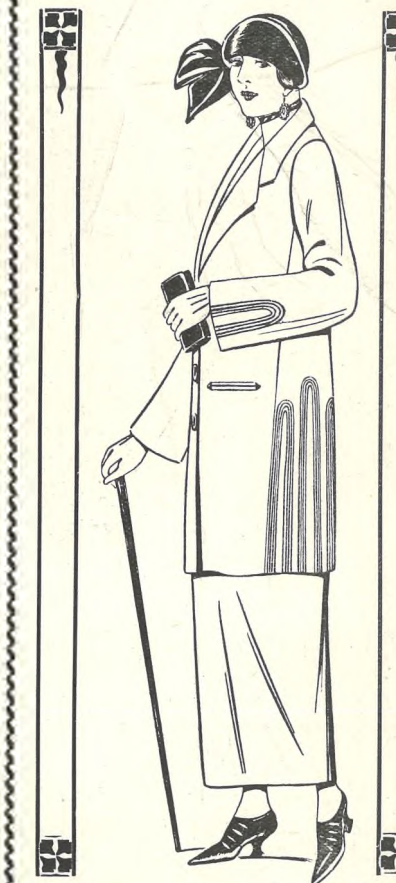
\*\*\*\*\*  
SEND THE "CHRONICLE" TO YOUR FRIENDS EVERY WEEK.

**LANCE'S**

Have ALWAYS made a Special Feature of Large Sizes in : : :

**COSTUMES and GOWNS**

And now hold a wonderful selection of the New Season's Models at prices ranging from : : 42/- to 12 Gns. : :



Sketched is a Smartly Tailored SUIT in All-Wool Gabardine. Coat trimmed braid and lined throughout. In Out-Size only. Colours : Navy and Black.

PRICE, 5½ Gns.

**John Lance & Co., LIMITED,**  
CHELTENHAM'S SHOPPING CENTRE.





**A COLLEGE "RAG" IN CHELTENHAM.**

The "Soccer" match between the students of St. Paul's College, Cheltenham, and Saltley College, Birmingham, took place on Saturday afternoon last, and the rest of the St. Paul's students organised an amusing "rag" to celebrate the event. They carried a full-sized coffin in procession to and from the football ground, the inscription on which can be read thereon.

- 1.—The College XI.
- 2.—A choice group, which included three "ladies."
- 3.—An arrest, with a love-making trio.
- 4.—The four bearers with their coffin, and the undertaker.
- 5 and 6.—Sections of procession arriving on the ground.
- 7.—The War Dance and War Cry before the match.
- 8.—A musical quintette.

"Cheltenham Chronicle" photos, copies 1s. each.



**INTERESTING PRESTBURY WEDDING.**

Prestbury Church was packed on Monday morning last, when Miss Kathleen E. Lidderdale, the renowned international hockey player, was wedded to Capt. A. V. Bridge, M.C. The couple are also well-known on the tennis grounds of the country, where they have won many prizes, both singly and in partnership.

- 1.—The bridal group.
- 2.—The bride and her father, Dr. James Lidderdale, arriving at the church.
- 3.—Guests at the reception on the lawn.
- 4.—Mrs. and Major Reiss, of Dowdeswell Manor, at the church.
- 5.—Mrs. Bridge, the bridegroom's mother, with Dr. J. Lidderdale.
- 6.—Mrs. Lidderdale, mother of bride, with Rev. Noel Lidderdale, her eldest son.
- 7.—Mrs. Eyre, bride's sister, and Mr. J. Eyre.
- 8.—Dr. Frank Lidderdale, best man, and the bridegroom arriving at church.

"Cheltenham Chronicle" photos. Copies may be obtained at the Offices.





**CIRENCESTER & TEWKESBURY CONSERVATIVES MEET IN CHELTHENHAM.**

Members of the Conservative and Unionist Association of the Cirencester and Tewkesbury Division of Gloucestershire met at the Conservative Club, Cheltenham, on Friday, Oct. 17th, to formally adopt Sir Thomas Davies as their candidate for the General Election.

- 1.—Sir Thomas Davies and his daughter, with some of his supporters.
- 2, 3, 5, 6, and 8.—Various members leaving the meeting.
- 4.—Sir Thomas Davies shaking hands with an old friend and constituent. Sir Philip Stott, behind on step.
- 7.—Sir Philip Stott leaving with Mr. Gilbert Melliquam.

"Cheltenham Chronicle" photos, copies 1s. each, postage 2d. extra.

**WINTER UNDERWEAR.**

All-Wool VESTS.  
LONG OR SHORT SLEEVES.  
8/11, 9/6, 10/6, 13/6.  
Best of English and Scotch Makes.  
PANTS TO MATCH in all qualities.  
Good Mixture Hosiery, 4/11.  
in many qualities. : : : VESTS from

**A. Beckingsale, 111 HIGH ST., CHELTHENHAM.**



A GOOD Photograph is the ideal Xmas Gift.

**CORSETS AND BELTS**  
MADE, COPIED, CLEANED, AND REPAIRED.

Hours: 10 a.m. to 6 p.m. Saturdays, 1 p.m., or by appointment. PHONE 915.

**MISS FRUIN** (Late with Madam Annette),  
23 Bath Parade, CHELTHENHAM.

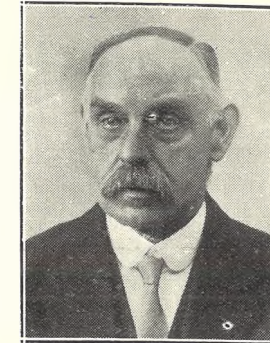
**LET MOUSSELLS MOVE YOU**



PHONE 112.

Estimates for Removals and Storing Free.

**CHELTHENHAM.** Offices: AMBROSE STREET



**Mr. C. Mayall,**  
Of Cyprus Lodge, St. Stephen's, Cheltenham, Superintendent of Cheltenham Post Office, who retired yesterday after 45 years' service. He came to Cheltenham from Tewkesbury on October 24th, 1881, as assistant sorting clerk. "Cheltenham Chronicle" Photo.



**Mrs. J. T. Smith,**  
Of Faith, Hucclecote, Gloucester, who died on Oct. 16th, 1924. She is here shown with her husband on their diamond wedding day, which they celebrated on June 2, 1923. Mr. Smith is with Messrs. J. C. Wheeler and Son, seed merchants, Gloucester.

**THE GENERAL ELECTION: CHELTHENHAM NOMINATIONS.**

The nominations for Electoral Candidates took place on Saturday morning last throughout the country.

The top picture shows Sir James Agg-Gardner, the Conservative candidate, arriving with his supporters at the Municipal Offices. From left: Alderman C. H. Margrett, Sir James Agg-Gardner, Mrs. Cavenagh-Mainwaring, Mrs. Vale, and Mr. T. H. Packer (agent); behind is Mr. Monro Briggs.

Beneath are Alderman Clara Winterbotham, Mr. J. S. Holmes (the Liberal candidate), and Mr. Starling (Liberal agent) on the Municipal Offices steps.

"Cheltenham Chronicle" photos, copies 1s. each.

**DISEASES AND DEFORMITIES OF THE FOOT.**

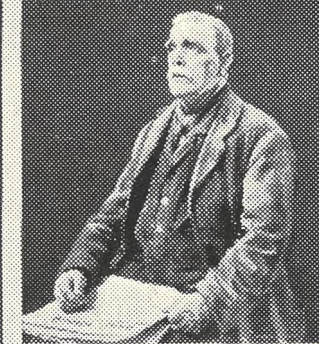
**MR. ALFRED J. VENTRIS-FIELD,**  
SURGEON-CHIROPEDIST, ORTHOPÆDIST,  
and ELECTRO-THERAPEUTIST.  
(Author of "The Treatment of Talipes Valgus,"  
"Pedic Surgery," "Poisonous Animals and  
Vegetables of the Countryside," "Orthopædic  
Principles of Foot Manipulation," etc.)  
Consultant H.M. Forces. Surgery:  
6 RODNEY PLACE, CHELTHENHAM.  
Telephone 1266.

**Fireworks! Fireworks!!**

A large assortment of all the Latest Novelties.  
Well-assorted Boxes 2/6 and 5/-.  
BY CARRIER. CARRIAGE FREE.

**OGDEN & SCOTFORD, 42 Winchcomb St., CHELTHENHAM**

**"DISILLUSIONED"**



"THE SOCIALISTS!  
THEY'VE DONE NOTHING  
FOR ME!"

**SEND THE "CHRONICLE & GRAPHIC" TO YOUR FRIENDS.**



# New Kind of Girdle. Makes You Look Thin While Getting Thin!

The instant you put on this new girdle—worn in place of stiff corsets—the bulky fat on waist and hips seems to vanish, the waist-line lengthens, and your body becomes erect, graceful, youthful, slender! And then—with every step, with every breath, with every little motion, it gently massages away the useless disfiguring fat—and you look and feel many years younger!

**T**HINK of it! No more heart-straining exercises—no more disagreeable starving diets—no more harmful medicines—no more bitter self-denials! This new scientific girdle ends all need of that for ever! The moment you put it on, the bulky fat on waist and hips seems to vanish, and your body becomes erect, graceful, youthfully slender! And then—with every step you make, with every breath you take, with every little motion, this new kind of girdle gently massages away the disfiguring, useless fat—and you look and feel years younger!

### Takes the place of Stiff Corsets.

Now you can wear the stylish, becoming clothes your heart desires—without worrying about your figure. You don't have to wait until the fat is gone in order to appear slim. You can look more slender at once—without stiff, harmful corsets of any kind. By means of this new invention, known as the Mme. X Reducing Girdle, you get a stylish, graceful appearance instantly, and actually get thinner every day.

No matter how many other reducing methods you've tried without results; no matter how heavy your waist and hips may be—the Madame X Reducing Girdle is guaranteed to make them look inches thinner—instantly—and to gradually and gently take off the fat itself.

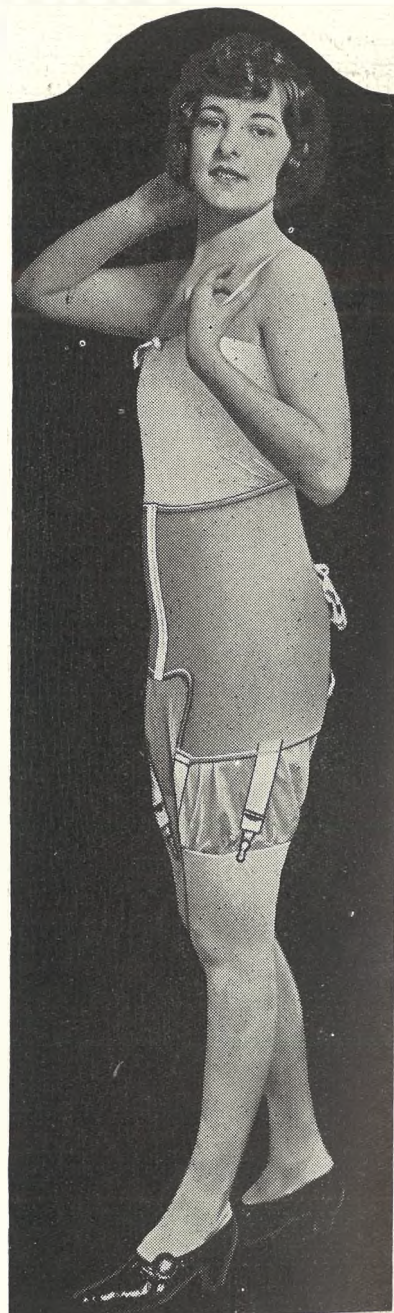
The Madame X Reducing Girdle is built upon scientific massage principles which have caused reductions of 5, 10, 20, even 40 pounds. It is made of the

most resilient Para rubber—especially designed for reducing purposes—and is worn over the under-garment. Gives you the same slim appearance as a regular corset—and without any discomfort. Fits as snugly as a kid glove—has suspenders attached—and so constructed that it touches and gently massages every portion of the surface continually! The constant massage causes a more vigorous circulation of the blood, not only through these parts, but throughout the entire body! Particularly around the abdomen and hips, this gentle massage is so effective that it often brings about a remarkable reduction in weight in the first few days.

### Gives you, with comfort, Fashion's Straight Boyish Lines.

Those who have worn it say you feel like a new person when you put on the Madame X Reducing Girdle. You'll look better and feel better. You'll be surprised how quickly you'll be able to walk, dance, climb, indulge in outdoor sports.

Many say it is fine for constipation, which is often present in people inclined to be stout. For besides driving away excess flesh, the Madame X Reducing Girdle supports the muscles of the back and sides, thus preventing fatigue; helps hold in their proper place the internal organs, which are often misplaced in stout people—and thus brings renewed vitality and aids the vital organs to function normally again.



The special open-front ensures perfect comfort while you sit, work, or play. And the back lacing makes belt easy to adjust as you become more slender.

## Now on Sale—Come and See It To-day.

You can't appreciate how marvellous the Madame X Reducing Girdle really is until you actually see and examine it. And this you can easily do. We invite you to call at our corset shop to-day and learn all about this easy and pleasant way of becoming fashionably slender.

# Madame X Reducing Girdle.

Makes You Look Thin While Getting Thin.

IS NOW ON DISPLAY EXCLUSIVELY AT

# SHIRER & HADDON,

THE COLONNADE, - - - CHELTENHAM.