

THE CHELTENHAM CHRONICLE AND GLO' SHIRE GRAPHIC

With which is incorporated the "Cheltenham Looker-On."

GRATIS SUPPLEMENT.

Saturday, January 5, 1924.

No. 1,201.

CHELTENHAM THEATRE AND OPERA HOUSE.

(THE HOME OF PANTOMIME).

To-night at 7.15. Matinee to-day (Saturday) & next Wednesday & Saturday at 2 p.m.
CHELTENHAM'S CHRISTMAS PANTOMIME:—

"CINDERELLA"

THE PALACE, HIGH STREET, CHELTENHAM.

Monday to Wednesday:—

Jackie Googan

THE WONDER CHILD, in
DADDY

"The Picture with a Soul."

Monte Banks' Comedy,
"HANGING ROUND."

Thursday to Saturday:—
ALFRED LUNT and EDITH
ROBERTS in
BACKBONE

"OUR GANG" COMEDY.
FELIX THE SUPER CAT.
Reginald Denny in
THE LEATHER PUSHERS.

DAFFODIL PICTURE HOUSE.

Monday, Jan. 7, and ALL THE
WEEK:—

WANDA HAWLEY, NIGEL
BARRIE, STEWART ROME
and PEDRO DE CORDOBO, in

FIRES OF FATE

From the Novel "Tragedy of the
Korosko," by Sir Arthur Conan
Doyle.

A First Run Exclusive Production
Topical, Interest, Travel, Serial.

NEXT WEEK:—
"THE WORLD'S A STAGE."

Established 1806.

Martin & Co., Limited,

The County Jewellers,
PEARL & DIAMOND MERCHANTS.

A Fine Collection of Rare Antique
Silver and Old Sheffield Plate

We are purchasers of Antique
Silver and Fine Quality Gems
Best prices given.

LICENSED VALUERS

Promenade, CHELTENHAM.



Miracle Play at Tewkesbury Abbey.

Revived after the lapse of some centuries, a Miracle Play of the
First Christmas was enacted at Tewkesbury Abbey on Thursday
and Friday evenings, December 27th and 28th. Three of the
principal characters are represented above—the Rev. N. Morgan-
Brown (Rector of Bishop's Cleeve), "The Angel Gabriel";
Miss Morgans, "The Virgin Mary"; and Mr. Bannister,
"St. Joseph."

"Cheltenham Chronicle" Photo

Advertise in the "Echo."

WINTER GARDEN, CHELTENHAM.

Monday, Tuesday, Wednesday:—

Dustin Farnum

in
"The Yosemite Trail"

A powerful story of Adventure.

Larry Semon Comedy

Joe Rock Comedy. Gazette.

Thursday, Friday, and Saturday:

Violet Hopson

In the Great Racing Thrill,

"The Lady Owner"

Century Comedy. Gazette.
FELIX THE CAT.

H. E. RANDALL, Ltd.

6c The Promenade, CHELTENHAM,

Annual SALE.

NOW PROCEEDING.

Bargains in All Styles of
Footwear.

Watch Our Windows for Oddment
Bargains in Small and Large
Sizes.

MAISON

ANNETTE

Kensington House,
Promenade,

Cheltenham,

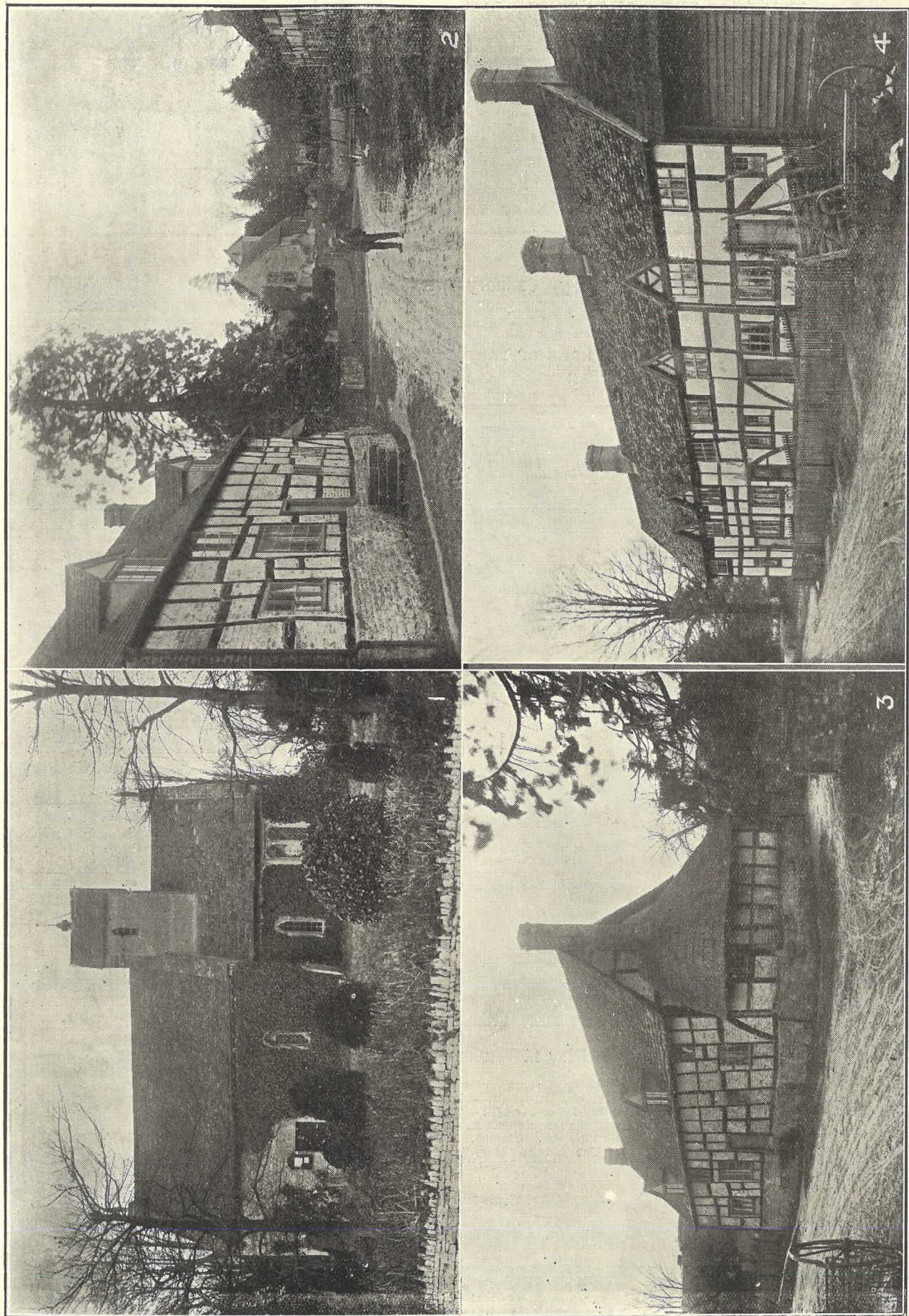
SPECIALISTS IN
EXCLUSIVE

CORSETS & LINGERIE.

'Phone 1122.

For the
Best

PIANOS, DALE, FORTY and Co., Ltd

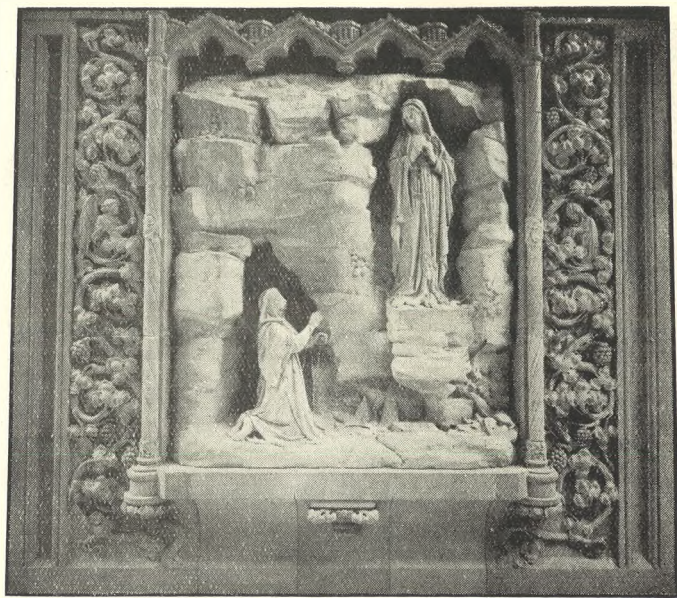


PICTURESQUE GLOUCESTERSHIRE: GREAT WASHBOURNE.

Great Washbourne is a small but most picturesque village, lying about one mile from Beckford, between that place and Alderton. The church is very small, but very ancient, in Early English style. The pews are the old-fashioned, high, square ones, with seats around inside, and the pulpit is an ancient three-decker, exceedingly quaint. There are some delightful half-timbered houses, as can be seen above.

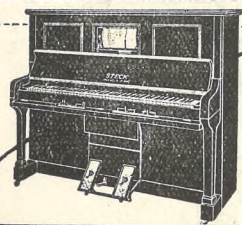
1.—The Church of St. Mary, which stands well up above the road. 2.—A view up the village, looking towards the Beckford Road. 3.—Some quaint cottages, partly thatched. 4.—A row of most distinctive half-timbered cottages, with tiled roofs, which were evidently thatched in former times.

"Cheltenham Chronicle" Photos. Copies 1s. 9d. each unmounted, postage 2d. extra.



Grotto of Our Lady of Lourdes.

The above Grotto has been erected in stone at St. Dominic's Priory, Haverstock Hill, by R. L. Boulton and Sons, Bath Road, Cheltenham. The firm will be pleased to quote for all kinds of Church fittings and Memorials in Wood, Stone, Marble, Alabaster, or Metals.



The Piano for You!

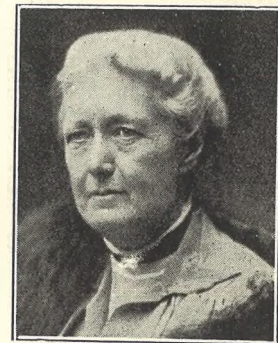
The 'Pianola' Piano allows you all the delights of music and the supreme joys of actual playing. All the exquisite musical effects that the sensitive, highly trained fingers of the pianist can produce—your fingers can control through

The STECK 'PIANOLA' PIANO

The introduction of the 'Pianola' mechanism in no way affects the tone quality of the piano; whether played by roll or by hand as an ordinary piano the beautiful, rich singing tone of the famous Steck Piano is always evident.

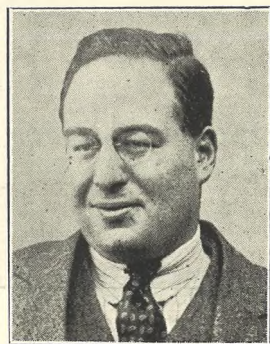
Ask for all particulars and details of our special easy terms of payment. Your present instrument will be accepted in part payment.

Crichton's Ltd.,
Sole Agents,
Promenade, Cheltenham.
Phone 378.



Miss F. A. Baddeley.

Of Cathedral House, Gloucester, who died on December 31st. She was the organising secretary of the Gloucestershire School of Domestic Science, and was widely known and greatly respected.



Mr. A. Goldstein.

Who, since July, 1917, has been H.M. Inspector of Taxes in Cheltenham for the Cheltenham District, left Cheltenham this week to take up a similar position at Newport, Mon., a much larger "charge." He leaves Cheltenham with the reputation of being an exceptionally energetic and capable official.

**LANCE'S
GREAT
WINTER
SALE**

**NOW IN
PROGRESS.**

A Sale that commands the attention of those buying for present and Spring requirements and Home Furnishings, in as much as it presents substantial reductions on goods in season for months to come, and of our

Dependable Goods

With the additional 10/0

2/- in the £

Discount for Cash at the time of Purchase.

John Lance & Co.,
LIMITED,
CHELTENHAM SPA.



CHELTENHAM DECEMBER STEEPLECHASES.

- The last Racing Meeting of the Year was held at Cheltenham on Monday last, December 31st. Notwithstanding the uncomfortable conditions—it rained all the afternoon—the racing was particularly good, and there was quite a satisfactory attendance.
- 1.—A part of one of the stands in Tattersall's Ring.
 - 2.—"Let me mark your card."
 - 3.—Discussing the racing outside weighing room.
 - 4.—Mr. D. D. Stewart on Rockmeadow (winner) taking last fence in Amateur Riders' Steeplechase.
 - 5.—Taking a fence in Amateur Riders' Steeplechase.
 - 6.—Waiting for "inspiration."
 - 7.—A chat in the paddock.
 - 8.—Viscount Deerhurst (eldest son of Lord Coventry) with Major Ian Bullough (Master of Ledbury Hounds).
 - 9.—Moroney, on Slovenly Saint, coming in after winning Leckhampton Novices' Steeplechase.

"Cheltenham Chronicle" Photos. Copies 1s. each, postage 2d. extra.



CHELTENHAM v. PENARTH RUGBY FOOTBALL MATCH.

- This match was played on the Athletic Ground, Cheltenham, on Saturday last, December 29th, Penarth winning by one point (10 points to 9). It was quite an interesting game to watch, although the gate was not so good as it ought to have been.
- 1.—A lineout in Penarth half.
 - 2.—Fainer and son (Mr. Thomas and his little boy) watching the match.
 - 3.—Mr. W. Lewis (Penarth Treasurer), T. Garrett (a son of Dick Garrett, the famous Welsh International), half-back for Penarth, and T. O'Brien, a forward.
 - 4.—A fine combined rush by the forwards. Note the eagerness to get the ball.
 - 5.—A couple of supporters.
 - 6 and 7.—Sections of spectators.

"Cheltenham Chronicle" Photos. Copies 1s. each, Postage 2d. extra.

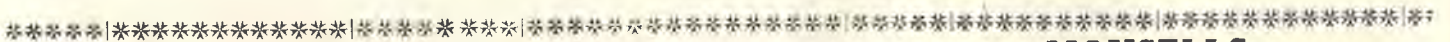


MIRACLE PLAY AT TEWKESBURY ABBEY.

Representation of "The First Christmas," at Tewkesbury Abbey, on Thursday and Friday evenings, December 27th and 28th. Some of the Characters:—

From left.—J. Dudley, E. Freeman (Candle Bearers), Rev. E. C. Hanson, Bishop's Cleeve (Angel of the Star), Mr. E. Boulton (Standard Bearer), Rev. J. A. B. Mercier, Kemerton (Melchior), Mr. H. Norman (Standard Bearer), Mr. J. V. Parsons (Balthasor), Mr. H. Healey (Standard Bearer), Rev. T. W. Lambert, of the Abbey (Caspar), D. Taylor (Candle Bearer).
Kneeling.—H. Morris, W. Purser (Reliquary Bearers).

"Cheltenham Chronicle" Photo. Copies 1s. 9d. each. Postage 2d. extra.



MIRACLE PLAY AT TEWKESBURY ABBEY.

The Shepherds.—Mr. C. E. Hopkins (3rd Shepherd), A. Custance, G. Smith, Mr. R. A. Newman (2nd Shepherd), W. Simms, G. Hobbs, J. Jones, Mr. A. J. Bullied (1st Shepherd), Mr. F. Pemberton. In front.—H. Purser.

"Cheltenham Chronicle" Photo. Copies 1s. each, postage 2d. extra.

LET MOUSSELLS MOVE YOU.



PHONE 112.

Estimates for Removals and Storing Free.

CHELTENHAM. Offices: **AMBROSE STREET.**

EVENING WEAR.

DRESS SHIRTS, Stiff or Fancy Soft Fronts, 8/6, 10/6.

WHITE KID GLOVES, from 2/11.

WING COLLARS, Round or Square Shape 10½.

DRESS TIES, White or Black in Variety.

A. Beckingsale, 111 HIGH STREET, CHELTENHAM.

'PHONE 406.



Christmas Festivities at Cheltenham General Hospital.
 Some of the Wards, notably No. 8, were beautifully decorated for Christmas, and on Saturday and Monday last concerts were given in No. 8 Ward to all patients who were able to be moved, by a party of the nurses. One side of No. 8 Ward.
 "Cheltenham Chronicle" Photo. Copies 1s. 9d. each.

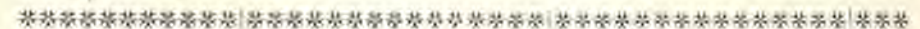


The party of nurses at Cheltenham General Hospital who gave two concerts last Saturday and Monday to the patients and staff. They were trained by Sister Price, who is sitting to left of the Matron (in centre).
 "Chronicle" Photos. Copies 1s. 9d. each.



Another Old Cheltenham Landmark Going.

No. 411a High Street, Cheltenham, owned and occupied by Mr. A. L. Robinson, as a Fruiterer and Florist, is about to be re-built. It is one of the last of the old-fashioned low ceiling shops left in High Street. It was formerly occupied for many years by Alderman Robert Steel as a Fruiterer.
 "Cheltenham Chronicle" Photo.



WORKMEN'S COMPENSATION ACT, 1923.

ALTERATIONS AND ADDITIONS.

DUTIES PLACED ON EMPLOYERS.

UNDER THE ABOVE ACT, ON AND AFTER JANUARY 1st, 1924, IT IS COMPULSORY FOR EMPLOYERS TO PROVIDE

FIRST-AID BOXES

IN ALL BUSINESS HOUSES AND WORKS.

C. & P. JAMES, LTD.,

PHARMACISTS BY APPOINTMENT TO CHELTENHAM GENERAL AND EYE HOSPITALS,

5 PROMENADE, CHELTENHAM,

Carry a FULL RANGE OF DRESSINGS, and can supply CABINETS for Establishments with over 50 Employees for **£5 5 0**

Establishments with under 50 Employees **£3 7 6 AND £1 10 0**

These Outfits conform to the Official Specification of the Home Office. They are packed in a manner which affords adequate protection for the Dressings, and are plainly labelled, so that the various contents can be quickly recognised in cases of emergency.

VANDERPLANKS GREAT SALE

where a lower price never means a lower standard.

THE rigid adherence to our policy of clearing out all items of fashion almost regardless of cost, is reflected in all departments—Costumes, Coats, Gowns, Furs, Millinery, Blouses, and Knitted Wear—Fashion Garments of the regular high quality standard for which this house is famous, are marked down to surprisingly low prices—some at less than a quarter their original cost.

SPECIAL OFFER OF FURS.—Numerous bargain opportunities are available in the Fur Department, and sketched are three examples chosen at random.



Very handsome Short Coat, in electric seal coney. Becoming style with large shawl collar. Bargain Price Reduced from 21 Gns. **14 Gns.**

New Coatee in fine quality seal Coney of reliable quality. A great bargain. SALE PRICE **10 Gns.** Usually 18 Gns.

Elegant full length Coat in electric seal coney, richly lined. The generous size allows for the Wrap effect so much favoured to-day. Winter Sale Price **25 Gns.** Same model in Beaver Coney 18 Gns.

SALE NOW PROCEEDING.

VANDERPLANK, ONLY ADDRESS: **CHELTENHAM**
ALSO PROPRIETORS OF JAMES AND SHORT, COLLEGE GREEN, BRISTOL.

PRINTED AND PUBLISHED AS A GRATIS SUPPLEMENT BY THE CHELTENHAM NEWSPAPER COMPANY, LIMITED.

THE CHELTENHAM CHRONICLE AND GLOUCESTERSHIRE GRAPHIC

With which is incorporated the "Cheltenham Looker-On."
GRATIS SUPPLEMENT. Saturday, January 12, 1924.

No. 1,202.

CHELTENHAM THEATRE AND OPERA HOUSE.

This Afternoon (2 o'clock) and Evening (7.15) Last Two Performances of "CINDERELLA."
NEXT WEEK:—The World Famous Play: "PETER PAN."

THE PALACE, HIGH STREET, CHELTENHAM.

Monday to Wednesday:—
MAE MARSH in
TILL WE MEET AGAIN.
"THE LEATHER PUSHERS."
"WILD LIFE ACROSS THE WORLD."
Thursday to Saturday:—
The Man Next Door.
Starring ALICE CALHOUN,
From the Novel by Emerson Hough.
AL. ST. JOHN COMEDY.
"Hunting Big Game in Africa."
"FELIX THE SUPER CAT."

DAFFODIL PICTURE HOUSE.

Grand Double Programme.
MONDAY NEXT and ALL THE WEEK:—
DOROTHY PHILLIPS in
"THE WORLD'S A STAGE."
By ELINOR GLYNN.
Monday to Wednesday Only:—
HERBERT RAWLINSOIN in
"The Prisoner."
Thursday, Friday, Saturday:—
"The Hill Park Mystery."
Featuring OLGA DORBE.
"FIGHTING BLOOD." Rnd. 7.
Next Week:—"INIQUITY."

Established 1806.

Martin & Co.,
Limited,
The County Jewellers,
PEARL & DIAMOND MERCHANTS.

A fine collection of Rare Antique Silver and Old Sheffield Plate. We are purchasers of Antique Silver and Fine Quality Gems. Best Prices Given.
LICENSED VALUERS

Promenade, CHELTENHAM.



Famous Gloucestershire Rugby Football Internationals.

LEN CORBETT (Bristol). TOM VOYCE (Gloucester). B. S. CHANTRILL (Bristol).

The above three famous Gloucestershire players have been given places in the English team which meets Wales at Swansea on Saturday next, January 26th. Corbett will be one of the centre three-quarters, Voyle is a forward with a roving commission, and Chantrell will occupy the responsible position of full back.

"Cheltenham Chronicle" Photos. Copies 1/9.

Advertise in the "Echo."

WINTER GARDEN, CHELTENHAM.

Monday, Tuesday, Wednesday:—
Constance Talmadge.
In her Latest Laughter Special,
"DULGY."
Thursday, Friday, Saturday:—
The Tales of Hoffman.
The Famous Opera Filmed.
OFFENBACH'S MUSIC BY
SPECIALLY AUGMENTED
ORCHESTRA.
Harold Lloyd
"DON'T WEAKEN."

H. E. RANDALL, Ltd.

6c The Promenade, CHELTENHAM,
Annual SALE.
NOW PROCEEDING.
Bargains in All Styles of Footwear.
Watch Our Windows for Oddment Bargains in Small and Large Sizes.

"ALLADIN" PARAFFIN INCANDESCENT LAMPS.

All Models in stock.
SHADES and ACCESSORIES.
Sole Local Distributors:
ECONOMY SUPPLY STORES,
Lighting, Cooking, and Heating Specialists,
ARCADE, 11 CHELTENHAM.

Telephone 1080.

W. SCOTT COOPER,

Goldsmith and Silversmith,
Diamond Merchant, Jeweller,
The Promenade, Cheltenham.

A large selection of secondhand Jewels and Antique Silver always in stock at bargain prices. Estimatee, designs free of charge. Old Gold, Silver, and Gems purchased for cash or taken in exchange.

For the Best PIANOS, DALE, FORTY and Co. Ltd



**"SHELL" LEADS THE WAY.
Withdrawal of "Shell" Roadside Signs.**

The photograph depicts the dismantling and removal of one of the familiar signs in this locality this week. In sympathy with the movement for the preservation of the natural beauty of the countryside, Messrs. Shell Mex. Ltd., are removing all their road signs of an exclusively advertising character throughout the country.



The New and Old Clerk to the Cheltenham Guardians.

Mr. H. J. Kotch, formerly clerk to Bedwelty Guardians, Tredegar, who has just taken up his duties as Chief Clerk, with Mr. John Meek, the retiring Clerk, who has completed 42 years Poor Law service.

"Cheltenham Chronicle" Photo.



PRESENTATION TO MR. JOHN MEEK.

On Tuesday afternoon last a presentation was made by the Officials of the Cheltenham Union to Mr. John Meek, who has lately retired after 42 years' service in the administration of the Poor Law (23 years as Clerk to the Guardians). The Officials with Mr. Meek. Seated in front from left are Mr. Meek's little grand-daughter, Superintendent Nurse Phillips, Dr. Richard Davies (Chairman), Mr. John Meek, Mrs. Meek, Mr. Stonier (Master), Mrs. Stonier.

"Cheltenham Chronicle" Photo. Copies 1s. 9d. each.



A CHELTENHAM SOCIETY WEDDING.

The marriage was solemnised at St. Peter's Church, Leckhampton, on Saturday, January 5th, of Capt. R. C. R. Stevenson, R.E., son of Mr. and Mrs. J. Stevenson, of Fort James, Co. Derry, and Dalkeith, Cheltenham, to Miss Margery Anley, younger daughter of Mr. and Mrs. J. Bentley Anley, Dimsdale, Leckhampton-road, Cheltenham.

From left—Miss Grace Stevenson, Miss Phyllis Tyson, Capt. G. H. H. Lee, R.E., the Bride, the Bridegroom, and Miss Muriel Wyatt.

Photo by Urwin, Promenade, Cheltenham.



**BROADWOOD
PIANOFORTES**

*Two Centuries
of Perfection*

FOR nearly two hundred years the name Broadwood upon a piano or upon its forerunner, the harpsichord, has meant the highest perfection of its time.

To-day its meaning is the same. It is your certain assurance of permanent and abundant satisfaction with your choice, whether it be a small upright at 70 guineas or a concert grand at 433 guineas.

Crichton's Ltd.,

THE PIANO HOUSE,
Promenade, CHELTENHAM

Phone 378.

LET MOUSSELLS MOVE YOU.



PHONE
112.

Estimates for Removals and Storing Free.

CHELTENHAM. Offices: AMBROSE STREET.

**BEST QUALITY
CIDERS**

IN BOTTLE.— Sparkling and Still.

BARTHOLOMEW,
419, 420 HIGH STREET,
CHELTENHAM.

WINES, SPIRITS, ALES, TABLE WATERS
and GROCERY. Tel. 13.

IF YOU LIKE THE "GRAPHIC,"

but do not subscribe to it regularly, why not do so? We can post it from the Head Office at a quarterly subscription of 3s. 3d., or the paper can be obtained of any Newsagent in Town or County at Twopence Weekly.

**Extraordinary Bargains
IN
COSTUMES
AT
LANCE'S**

**GREAT
WINTER SALE.**



This perfectly made COSTUME may be had in the best French Velour Cloth. Coat lined Silk, with a delightful Collar of Chappelle Skins at a

BARGAIN PRICE OF 63/-.

A SPECIAL DISCOUNT OF 2/- in the £

is allowed on all Cash transactions during the Sale.

**John Lance & Co.,
LIMITED,
CHELTENHAM SPA.**



PICTURESQUE GLOUCESTERSHIRE.—LITTLE WASHBOURNE, WOOLSTONE, AND BANGROVE.

These Villages, or Hamlets, are close together, each being only a few miles from the Teddington Cross Hands, and lying close to each other. Little Washbourne consists of a church, farm, and two cottages; and Bangrove, or Bengrove, a hamlet of Beckford, is even smaller. Woolstone is a very small village, picturesquely situated off the Cheltenham—Evesham road.

1.—Woolstone Church of St. Martin, an ancient building in Early English style.
2.—Bangrove Farm, the residence of Mr. Wm. Sixty.

3.—Little Washbourne Church is known as St. Mary's Chapel of Ease, and is attached to St. Faith's, Overbury, in the Diocese of Worcester. It is only a chancel and nave, very much buttressed, but very interesting.

4.—Interior of Little Washbourne Church. The pews are the old-fashioned high, square ones, and the pulpit is a three-decker. View from chancel.



ROUND THE TOWN IN CHELTENHAM.

A series of snaps taken in the Promenade on Monday last, a nice morning, with plenty of promenaders.

"Cheltenham Chronicle" Photos. Copies 1s. each. Postage 2d. extra.



SEND THE "CHRONICLE AND GRAPHIC" TO YOUR FRIENDS EVERY WEEK.

OUR GREAT SALE

OVERFLOWING WITH BARGAINS



OUR GREAT SALE

IS NOW PROCEEDING.

£10,000 Worth of Surplus Stock to be cleared before stocktaking and audit.

BELOW WE GIVE A FEW REPRESENTATIVE BARGAINS, AND A VISIT TO OUR BARGAIN COUNTER WILL AMPLY REPAY YOU.

Ladies' Hand-Knitted ART SILK JUMPERS, in various colours. Sale Price **12/11**
Usual price 35s. 6d.

300 Pairs Ladies' ART SILK HOSE, in Plain Colours, full lengths, with Suspender Tops. Sale Price **1/3 3/4**
Usual price 2s. 6 3/4d.

100 COLOURED COUNTERPANES, with Fringe. Sale Price **3/11 1/4**
Usual price 5s. 11d.

60 LADIES' VELOUR COATS, new gathered and Fur Trimmed Collars, etc. **30/-**
Usual prices 39s. 6d. to 69s. 6d. each.

300 Yards HAIR CORD STAIR CARPET, in Grey, with Coloured Borders. 18-inch wide **2/11 1/2** Yard. Usual price 3s. 11d.
22 1/2-inch wide **3/11 1/2** Yard. Usual price 4s. 11d.

Ladies' FLEECY LINED DIRECTOIRE KNICKERS. In Colours and Grey **1/3 3/4** Pair. Usual price 1s. 11 1/2d.

250 Brown Striped TURKISH TOWELS, Good Size and Quality **8 3/4** D. Each. Usual price 1s. 0 1/2d.

LADIES' GAITERS, Fawn, Grey, and Navy Cloth. Clearing Price **1/6 1/2**
Usual prices 2s. 11 1/2d. and 3s. 11d.

Twenty Ladies' SILK FROCKS, in Chiffon, Taffeta, & Crepe de Chene, Trimmed Lace, etc. Usual price 35s. 6d. **21/-**

500 YARDS CREAM FLANNELETTE. Sale Price **1/-** Per Yard. To-Day's Value 1s. 6 1/2d.

Children's Coloured OVERALLS and PINA-FORES. Factory Samples (Soiled). Sale Price **6 3/4** D. 9 1/2d., 1s. 0 1/2d., 1s. 6 1/2d., and 1s. 11 1/2d. Usual price 1s. 0 1/2d. to 5s. 11d.

100 Pairs LACE CURTAINS. Solid Samples. In All Qualities. **HALF PRICE.**

200 Remnants FLOORCLOTH and LINOLEUM in Useful Lengths. To be Cleared at **NEARLY HALF-PRICE.**

"LUVISCA" SILK BLOUSES. In Smart Stripes **5/-**
Usual price 9s. 11d.

80 Pairs WHITE TWILLED SHEETS. Full D. Bed Size. Per Pair **15/11**
Usual price 23s. 6d.

LADIES' BOX SHOES, Strong and Reliable. Government Stamped 17s. 6d. Clearing Price **6/11**

Eighty LADIES' WINTER COATS, in Plain Blanket Velour Cloth and Tweed. A Maker's Clearing line **10/-**
Usual prices 15s. 11d. to 35s. 6d.

Three Pieces Only, 54-Inch STRIPED DRESS MATERIAL. All Wool. Sale Price **2/6 3/4**
Usual price 4s. 11 1/2d.

150 Pairs REAL WITNEY ALL-WOOL BLANKETS. Large D.B. Size. Sale Price **27/6**
Usual price 39s. 6d.

58-Inch ALL-WOOL TWEED. One Piece Only. Exceptional Quality **2/11 1/2** Yard. Usual price 6s. 11 1/2d.

200 Pairs LADIES' FABRIC GLOVES. Travellers' Samples. All One Price. Per Pair **1/3 1/2**
Usual prices 1s. 11 1/2d. to 4s. 11d.

Ladies' Natural Merino COMBINATIONS. V Neck, Short Sleeves **1/11 1/2**
Usual price 2s. 11 1/2d.

50 Pairs Plain UNBLEACHED SHEETS. Full D. Bed Size. Really fine, heavy quality **14/6** Pair. Usual price 22s. 6d.

WONDERFUL BARGAINS in LADIES' BROGUE and GLACE SHOES. Sale Price **12/11**
Original prices 21s. 9d. to 29s. 6d.



ANIMAL LOVERS' FAIR AT CHELTENHAM TOWN HALL.

This two-day Bazaar, held on Wednesday and Thursday last, was opened on Wednesday morning by Mrs. Flora Annie Steel. Above is seen a number of prominent workers, with Mrs. F. A. Steel seated in centre, in fur coat, holding the dog. After the Opening Ceremony.

"Cheltenham Chronicle" Photo. Copies 1s. 9d. each.

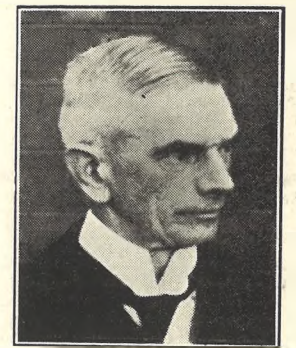


REMOVING FAMILIAR ROAD SIGNS.

With a view to beautifying the country side, the British Petroleum Company have commenced to remove their roadside signs. Above are seen the workmen taking down a sign on the Tewkesbury-Cheltenham road, while an interested motorist stops to watch the operation. "Cheltenham Chronicle" Photo.

COVERS FOR THE "GRAPHIC."

WE HAVE IN STOCK A NUMBER OF STOUT COVERS FOR THE "GRAPHIC," IN DARK GREEN CLOTH AND GILT LETTERING. THE COVERS WILL TAKE A FULL YEAR'S ISSUE OF THE POPULAR PICTURE PAPER, AND YOU CAN THUS KEEP THE "GRAPHIC" FROM WEEK TO WEEK AND KNOW WHERE TO FIND IT. POST FREE TO ANY ADDRESS **SIXPENCE.**



Rev. William Davies.

Who at the end of 1923 retired from the Pastorate of Tewkesbury Congregational Church, which he had held for 35 years.

EVENING WEAR.

DRESS SHIRTS, Stiff or Fancy Soft Fronts, **8/6, 10/6.**

WHITE KID GLOVES, from **2/11.**

WING COLLARS, Round or Square Shape **10 1/2.**

DRESS TIES, White or Black in Variety.

A. Beckingsale, 111 HIGH STREET, CHELTENHAM.

'PHONE 406.

Particulars of some Wonderful Bargains in FURNITURE will be found on Page 7 of the "Chronicle."

THE HOUSE FOR VALUE.

Dicks & Sons Ltd.

172 & 173 HIGH STREET
Cheltenham Spa
TEL. 1007 50 YEARS REPUTATION FOR VALUE

THE HOUSE FOR VALUE.

SPECIAL OFFER
OF COATS AT
21/9. Usually 59/6.

VANDERPLANKS

EXCEPTIONAL BARGAINS
IN NAVY and GABARDINE
SERGE COSTUMES, 45/9.
Usually 4 Gns.

GREAT BARGAIN SALE

IS NOW PROCEEDING.

And there are Enormous Reductions in all departments. But especially this week Gowns have been drastically reduced, so that remarkable values are obtainable. Sketched are three practical but distinctive Frock Bargains.



Young Ladies' Dance Gown, in heavy-weight Crepe-d'-Chene, with tight fitting bodice and full skirt, as of early Victorian period, with bunched posies on shoulder and at waist.
BARGAIN PRICE, **4 Gns.**

Beautiful quality Chiffon Velvet Gown. Straight and yet graceful in style. Swathed and finished at side with rosette of brilliants and velvet, with wing sleeves of Georgette.
REDUCED FROM 7½ GNS. TO **4½ Gns.**

A rich quality Faconne is chosen to make this simple yet elegant Gown. Tucked at side to define the waist line, falling softly with a drape on left side. The sleeves are of elbow length and open at side.
GREAT BARGAIN AT **5½ Gns.**

VANDERPLANK, ONLY ADDRESS: 381 HIGH ST. CHEL TENHAM

ALSO PROPRIETORS OF JAMES AND SHORT, COLLEGE GREEN, BRISTOL.

PRINTED AND PUBLISHED AS A GRATIS SUPPLEMENT BY THE CHEL TENHAM NEWSPAPER COMPANY, LIMITED.

THE CHEL TENHAM CHRONICLE AND GLO' SHIRE GRAPHIC

With which is Incorporated the "Cheltenham Looker-On."
GRATIS SUPPLEMENT. Saturday, January 19, 1924.

No. 1,203.

CHEL TENHAM THEATRE AND OPERA HOUSE.

This Afternoon (2.30) and Evening (7.30)—"PETER PAN."

NEXT WEEK:—"AT MRS. BEAMS," direct from its Enormous Success at the Royalty Theatre, London.

THE PALACE, HIGH STREET, CHEL TENHAM.

MONDAY AND ALL THE WEEK:—

Owing to the length of this film it will be screened at 2.15, 4.15, 6.15, 8.15.

Direct from its Sensational Run at the Palace Theatre, London.

"IF WINTER COMES,"

A. S. M. Hutchinson's Famous Novel.

MIGHTIER THAN THE BOOK!

DAFFODIL PICTURE HOUSE.

MONDAY, Jan. 21, and ALL THE WEEK:—

Another Huge Programme. The Great Colossal Production—"INIQUITY"

A story of the Borgias, featuring the most beautiful woman in the World—

Liane Haid

and

Conrad Veidt.

"Secrets of Nature."

Thursday, Friday, Saturday:— In addition to "Iniquity," "FIGHTING BLOOD," Rnd. 8. Colonel Heeza Liar Cartoon.

Established 1806.

Martin & Co.,
Limited,

The County Jewellers,
PEARL & DIAMOND MERCHANTS.

A fine collection of Rare Antique Silver and Old Sheffield Plate. We are purchasers of Antique Silver and Fine Quality Gems. Best Prices Given.

LICENSED VALUERS

Promenade, CHEL TENHAM.1



EARLY VICTORIAN.

Miss Sheila Earle, of Cheltenham, who won the First Prize for Girls' Dress at the Children's Fancy Dress Dance Tea at Cheltenham Town Hall on Saturday last. The dress was one of the successes of the season. The dress was Early Victorian, carried out in Cambridge Blue, and was a charming creation.

—"Cheltenham Chronicle" Photo. Copies 1s. each unmounted.

WINTER GARDEN, CHEL TENHAM.

Monday, Tuesday, Wednesday:—

OMAR THE TENTMAKER.

A Story of Eastern Splendour. Thursday, Friday, Saturday:—

Hilda Bayley

in

"THE SCANDAL."

BUCK JONES in "THE IMPERSONATORS."

H. E. RANDALL, Ltd.

6c The Promenade, CHEL TENHAM,

Annual SALE

NOW PROCEEDING.

Bargains in All Styles of Footwear.

Watch Our Windows for Oddment Bargains in Small and Large Sizes.

MAISON

ANNETTE

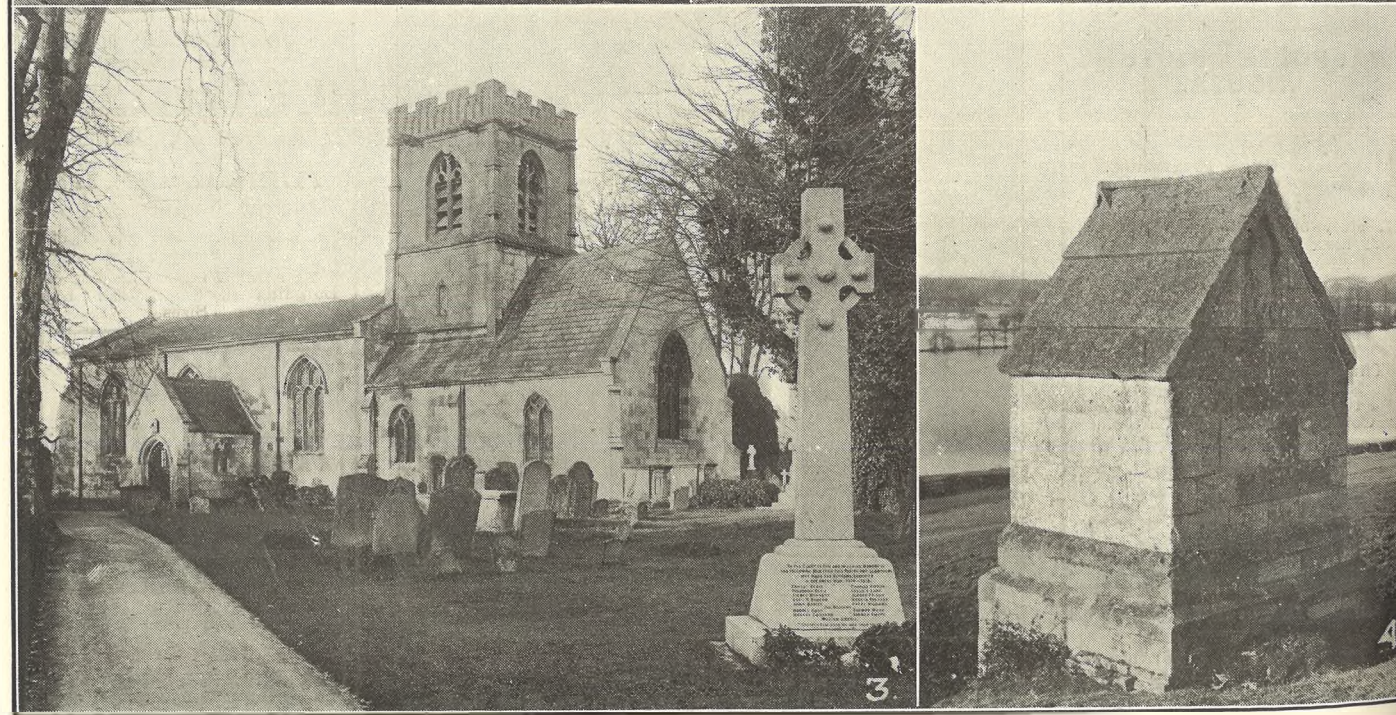
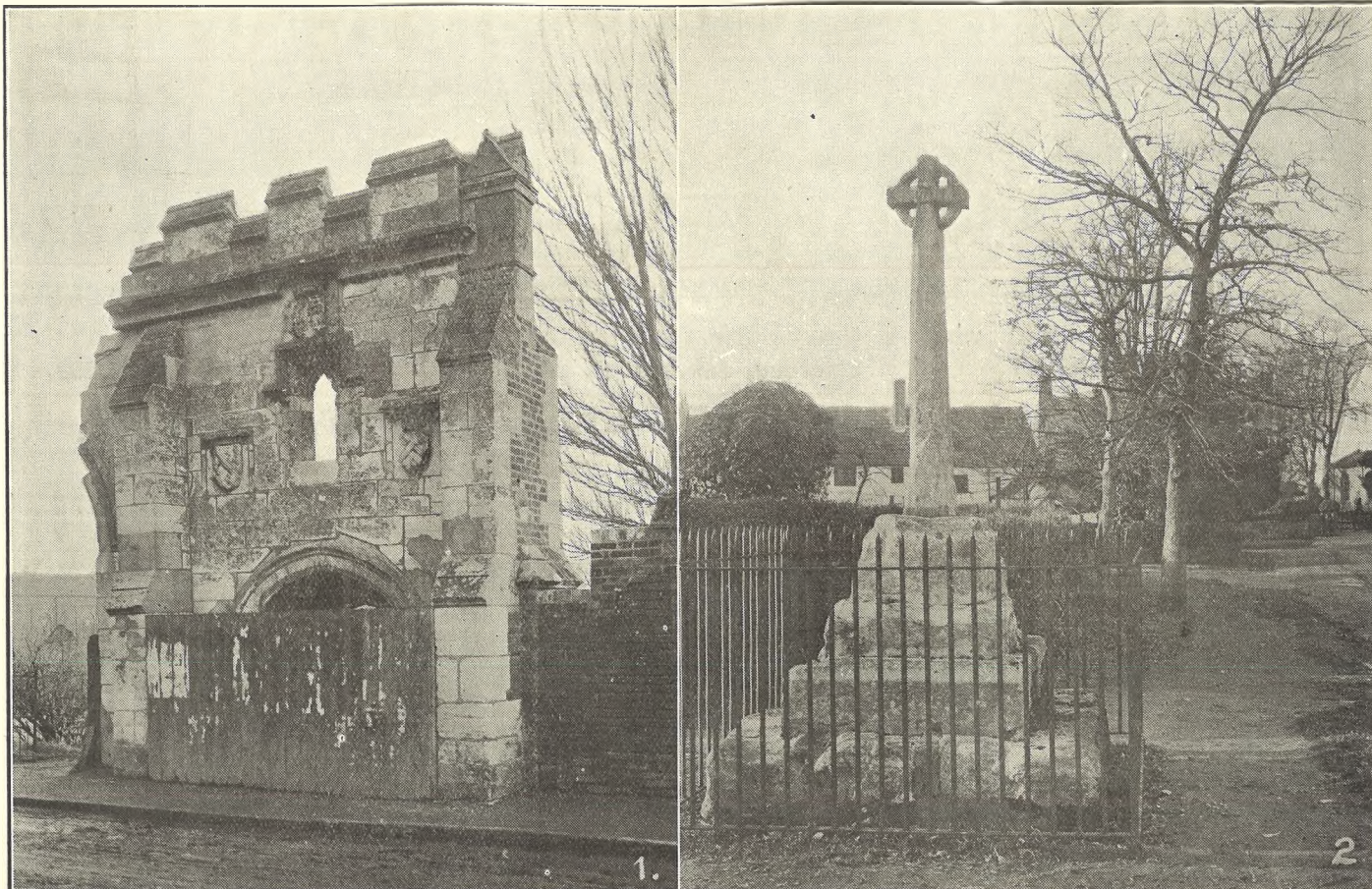
Kensington House,
Promenade,
Cheltenham,

SPECIALISTS IN
EXCLUSIVE

CORSETS & LINGERIE.

'Phone 1122.

For the Best **PIANOS, DALE, FORTY and Co. Ltd**



PICTURESQUE GLOUCESTERSHIRE.—HEMPSTEAD.

Hempstead is a pleasant suburb of Gloucester, situate between the Canal and the Severn, only 1½ miles from the centre of the City. The ruins of Llanthony Abbey stand on the road between the City and Hempstead, and the Church of St. Swithin at Hempstead is believed to have been erected about 1500 by Henry Dene, Prior of the Abbey and Archbishop of Canterbury.

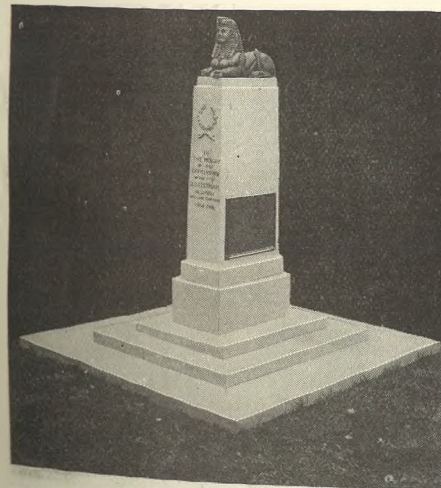
- 1.—A noble embattled gateway of the Decorated Period at Llanthony—all that remains of the Priory, founded in 1136, and demolished at the Reformation.
- 2.—The fine old Village Cross at Hempstead.
- 3.—Hempstead Church, with the Village War Memorial on right. The church is built in Early Perpendicular style, and is very pleasantly situated.
- 4.—“Lady’s Well,” probably at some time a shrine, or Holy Well, connected with the Abbey. It stands on an eminence in fields overlooking the Severn, and a beautiful stream of water trickles out at the foot. The remains of a Madonna are carved in a panel.

Photos. Copies 1s. 9d. each, postage 2d. extra.



Statuary Group

Erected in Ford Cemetery, Liverpool, to the design of A. Gilbertson, Esq., architect, by R. L. Boulton and Sons, Bath Road, Cheltenham. Estimates given for all kinds of Monuments and Church Fittings in Wood, Marble, Alabaster, Granite, Stone, or Metals.

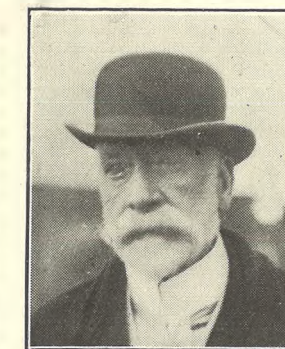


The Fifth Gloucesters’ Memorial.

Above photo shows the accepted design of the Memorial to be erected in Gloucester (the county town) as a reminder of the sacrifice of 1,088 officers and men of the Regiment who gave their lives in the Great War. £400 is still required to meet the cost of the Memorial, and subscriptions will be gladly received by Capt. Dudbridge, 8 Lansdown, Stroud.



MR. ALBERT COLLINS,
Of Gloucester, who died in the Royal Infirmary on Jan. 10th, from pneumonia, aged 54 years. He was the old Gloucester City and County Rugby Football forward, and a member of a famous family of footballers.



MR. EDMUND GEORGE POWYS WOOD,
Of Heynsham House, The Park, who died at the Royal Nursing Home, Cheltenham, on January 11th, aged 80 years. He was a familiar figure in the town.



MRS. R. L. P. VILES,
Of 3 Bennington-street, Cheltenham, who died suddenly on Tuesday, January 15th, aged 57 years. She was the widow of Mr. George Viles, tripe dresser, who died ten years ago, since when she has continued the business.

Advertise in the “Echo.”

LANCE’S

Have purchased a large
Manufacturer’s Collection
:: :: of :: :: ::

**LADIES’
WINTER
COATS,**

Made in the Best Quality
Velour Cloth, all of this
Season’s Styles, in Plain
and Fancy Cloths, and
:: many Half Lined Silk. ::

*These Garments have been classified
into Five Lots—*

LOT 1.—PLAIN VELOUR CLOTH.
Shades—Beaver, Navy, Saxe,
Rust, and Tan.
Season’s Price, 59/6. **21/6**

LOT 2.—PLAIN & STRIPED VELOUR.
HALF LINED. Shades—
Beaver, Mole, Navy & Grey.
Season’s Price, 3 Gns. **25/6**

LOT 3.—PLAIN & FANCY VELOUR.
Shades—Grey, Mole, Navy,
and Beaver.
Season’s Price, 3½ Gns. **29/6**

**LOT 4.—PLAIN AND JACQUARD
VELOUR.** Shades—Beaver,
Grey, Nigger, Tan, Navy,
Mole, and Black.
Season’s Price, 4 Gns. **39/6**

**LOT 5.—PLAIN AND JACQUARD
VELOUR.** Shades—Beaver,
Mole, Navy, Tan, Grey,
Nigger, and Black.
Season’s Price, 4½ Gns. **49/6**

THESE GARMENTS CANNOT BE SENT ON APPROVAL.

THE SPLENDID QUALITY that has
made this House famous was never more
evident than in this Great Winter Sale;
and a SPECIAL DISCOUNT of 10 0/0

2/- in the £

will be allowed on all Cash Transactions.

John Lance & Co.,
LIMITED,
General House Furnishers and Drapers,
CHEL TENHAM SPA.



CHILDREN'S FANCY DRESS DANCE TEA.

This Corporation Entertainment was held at the Town Hall, Cheltenham, on Saturday afternoon last, and was an unbounded success, both from the attendance point (over 880 paid) and from the artistic side, the dresses worn being charming in their beauty and variety.

- 1.—A Roman Soldier, a Cupid, a Fairy, and a Norwegian Girl.
- 2.—First prize for boys' costume—E. Farrand (of Kinsham) as an Indian Prince.
- 3.—Betty Bence as a Shrimp, Master Mellersh as a Crusader, with other pretty children.
- 4.—Alice in Wonderland (centre), Winter (left), and an Italian.
- 5.—Miss Orford as a Peacock (centre), a Red Indian, and a Jester.
- 6.—A pretty group.
- 7.—Second prize for girls' costume, Marjorie Drakeford as a Hawaiian girl.
- 8.—Another pretty group.

"Cheltenham Chronicle" Photos. Copies 1s. each unmounted, 1s. 6d. mounted.



CHILDREN'S FANCY DRESS DANCE TEA.

A feature of the Dance Tea was the grand parade after tea, when the costumes were judged by Mr. Drew, a London lady. The Committee gave three prizes for costumes to boys and three to girls, and the difficulty of judging such a multiplicity of pretty dresses can be imagined.

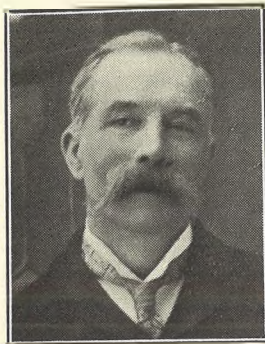
- 9.—Equal second prize for boys. Kenneth MacDonald as a Chinaman.
- 10.—The little girl in front—Eileen Yates—won equal second prize for girls as a Chicken.
- 11.—Second prize for boys—Bryan Lane as a Red Indian.
- 12.—Molly Graves, Jack Pates (Jazz), and Barbara Pates (Jackie Coogan), highly commended.
- 13.—Master Locke as a Rabbit, with a real dog, in mutual admiration.
- 14.—Misses and Master Allan Burns.
- 15.—Miss B. Burns.
- 16.—Dr. Syntax, a Gondolier, a fine Indian Princess, and a pretty Pierrot.
- 17.—Betty Locke as a Russian Dancer.

"Cheltenham Chronicle" Photos. Copies 1s. each unmounted.

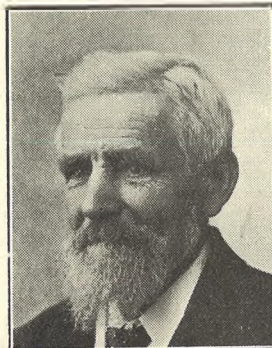


GLOUCESTERSHIRE CROSS-COUNTRY CHAMPIONSHIP.

The first Cross-Country Championship of the newly-formed Gloucestershire A.A.A. was run over a heavy six-mile course on Saturday last at Berkeley. There were 29 starters, and three Cheltonians finished first, second, and third, as follows:—1, J. Peacey, 39m. 59s.; 2, Larry Cummins, 40m. 5s.; 3, G. Chudleigh, 41m. 20s. Our pictures show the men lining up for start. "Cheltenham Chronicle" Photos.



Mr. Joseph Newman
Of Middle-street, Stroud, who died January 11th, aged 68 years. He was for 25 years in the service of Messrs. Holloway Bros., Ltd., as engineer and fitter, and was one of the oldest members of the Holloway Benefit Society.



Mr. Mark Owen.
Of Sandfield House, Ebley, near Stroud, who died recently, aged 84 years. One of the oldest bellringers in the country.

EVENING WEAR.

DRESS SHIRTS, Stiff or Fancy Soft Fronts, 8/6, 10/6.
WHITE KID GLOVES, from 2/11.
WING COLLARS, Round or Square Shape 10½.
DRESS TIES, White or Black in Variety.

A. Beckingsale, 111 HIGH STREET, CHELTENHAM.

PHONE 406.

LET MOUSSELLS MOVE YOU.



PHONE 112.

Estimates for Removals and Storing Free.

CHELTENHAM. Office: AMBROSE STREET.



ROUND THE CITY IN GLOUCESTER.

- Some snaps taken in the vicinity of the Cross on Tuesday morning last. It was a beautiful day, and the streets were quite animated and busy.
- 1.—Coming out of the Post Office.
 - 2.—Mr. Priday.
 - 3.—An old Gloucesterian taking a constitutional with a lady.
 - 4.—Mr. Clark, a well-known Conservative.
 - 5.—Out for a long walk.
 - 6.—Friends having a chat.
 - 7.—Taking a walk round the old City.
 - 8.—P.-Sgt. Kingscote and Inspector Skinner, S.P.C.A., have a chat over a new Agricultural Order.
 - 9.—Mr. W. B. Selley and Mr. W. H. Taylor (Conservative agent).
 - 10.—A passing joke. Mr. Simmonds on left.
 - 11.—A snap in Southgate-street.

"Cheltenham Chronicle" Photos. Copies 1s. each. Postage 2d. extra.



MR. A. J. DAVIS,
Of Acre-street, Stroud. Died January 10th, aged 50 years. For many years in the employ of Messrs. Slade and Son, Clothiers, of Nelson-street, Stroud. He was a member of Stroud Baptist Church, and highly respected.



MRS. LEONARD PARSONS
Of France Lynch. Died December 31st, aged 69 years. For many years Matron of the Stroud Poor Law Institution, retiring three years ago.



MISS MARY ANN DAVIS,
Of Rodborough. Died Jan. 7th, aged 89 years. For over sixty years leader of the infants' Class of the Sunday School at Rodborough Tabernacle.

COLISEUM THEATRE, Cheltenham.

(Phone 415.)

6.40. NIGHTLY. 8.40.

LONDON VAUDEVILLE

COMPANY.

NORTH STREET PICTURE HOUSE.

From 2.30 -Continuous-

MON. TUES. **VENGEANCE OF THE DEEP**

WED. Feat. ROLF LEWIS.

THURS. FRI. **SIX FEET FOUR.**

SAT. From the Novel by JACKSON GREGORY, featuring WILLIAM RUSSELL.



A choice selected skin of Red Fox, full haired and beautiful marking, with exceptionally fine brush.

PRICE, **5 Gns.**

Also in Natural, Mongolian, and Cross Canadian, 6, 10, and 21 Gns.

Luxurious is this Five Stranded WRAP of Natural Skunk, with rich lining to tone of Crepe de Chene.

Usually 29 Gns. NOW **21 Gns.**

In Skunk Opossum, 8 and 10 Gns.

Rich FUR COAT of Nutria Beaver. Long Roll Collar, new wrap-over style, lined throughout Broche Silk.

Usually £52 10 0. SALE PRICE, **35 Gns.**

Also similar shape Seal Coney, 15 Gns.

OUR WINTER SALE.

VANDERPLANK, 381 HIGH STREET, CHELTENHAM.

Also Proprietors of James & Short, College Green, Bristol.

Wonderful Bargains in Choice Furs.

Drastic Price Reductions in all Departments, but Furs especially to the fore This Week with Exceptional Bargains. Luxurious Fur Coats—our regular stock—beautiful in character and thoroughly reliable in quality, Greatly Reduced for the Sale. Above are three examples chosen at random from a large selection.

THE CHELTENHAM CHRONICLE AND GLO' SHIRE GRAPHIC

With which is incorporated the "Cheltenham Looker-On." GRATIS SUPPLEMENT. Saturday, January 26, 1924.

No. 1,204.

CHELTENHAM THEATRE AND OPERA HOUSE.

This Afternoon (2.30) and Evening (7.30)—"AT MRS. BEAM'S." NEXT WEEK:—First Visit of the Famous Play "ANNA CHRISTIE."

THE PALACE, HIGH STREET, CHELTENHAM.

MONDAY to WEDNESDAY MARION DAVIES in **WHEN KNIGHTHOOD WAS IN FLOWER.** Cherry Kearton's "WILD LIFE ACROSS THE WORLD."

THURSDAY to SATURDAY, HOUSE PETERS and PAULINE STARKE in **LOST AND FOUND** ON A SOUTH SEA ISLAND. "HUNTING BIG GAME IN AFRICA." "Our Gang" Comedy.

DAFFODIL PICTURE HOUSE.

MONDAY, JAN. 28. 3 DAYS. BETTY COMPSON and BERT LYTELL in the Paramount Super **TO HAVE AND TO HOLD.**

Final Episode: "WITH STANLEY IN AFRICA" "Secrets of Nature." Goldwyn "Brays." Thursday, Friday and Saturday. **My American Wife. Do and Dare. "FIGHTING BLOOD,"** Round 9.

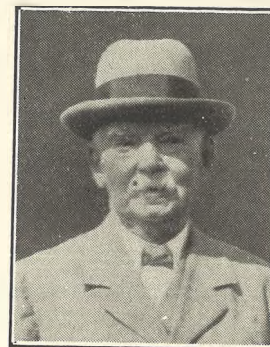
Established 1806.

Martin & Co., Limited,

The County Jewellers, PEARL & DIAMOND MERCHANTS.

A fine collection of Rare Antique Silver and Old Sheffield Plate. We are purchasers of Antique Silver and Fine Quality Gems. Best Prices Given. LICENSED VALUERS

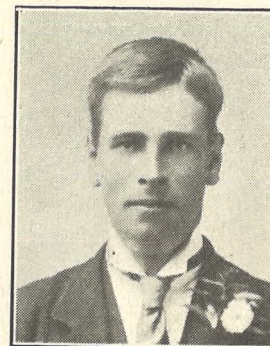
Promenade, CHELTENHAM.



MR. H. J. GALLOP, Late of 144 High-street, Cheltenham, who died on January 16th, aged 83 years. He had been in business as a confectioner for over fifty years. He was a strong Liberal, and Vice-President of the Liberal Club.



MR. R. I. TIDSWELL, M.A., J.P., D.L., C.C., Late of Haresfield Court, near Gloucester, who died at his residence on Friday, January 15th, from injuries sustained while hunting with the Berkeley Hounds the previous day. He was 77 years of age.



MR. HUBERT L. ORGAN, Cattle salesman for Mr. Geo. Hannis, of Churchdown, who met with an accident in the Hatherley-road, Cheltenham, on Monday, Dec. 17th, and died in Cheltenham General Hospital the next day, aged 44 years.



MR. SAMUEL N. WYNN, Son of Mrs. Wynn, of Church-street, Stroud, who died at Minchinhampton on January 15th. He was only 17½ years of age, and had recently enlisted in the Gloucestershire Regiment.

WINTER GARDEN, CHELTENHAM.

2.30—CONTINUOUS—10.15. Free List Entirely Suspended. ALL THE WEEK. D. W. GRIFFITHS'S Great Super Mystery Masterpiece, **ONE EXCITING NIGHT.** Featuring C. H. CROKER-KING. Special Music and Effects. KINDLY NOTE.—The programme is continuous, but you are especially asked to see the film from the start so as not to solve the mystery first. Showing at 2.30, 5.5, and 7.40 p.m.

H. E. RANDALL, Ltd.

6c The Promenade, CHELTENHAM.

Annual SALE

NOW PROCEEDING. Bargains in All Styles of Footwear.

Watch Our Windows for Oddment Bargains in Small and Large Sizes.

COVERS FOR THE "GRAPHIC."

We have in Stock a Number of Stout Covers for the "Graphic," in Dark Green Cloth and Gilt Lettering. The Covers will take a full year's issue of the popular Picture Paper, and you can thus keep the "Graphic" from week to week and know where to find it. Post Free to any address 6d.

Telephone 1080.

W. SCOTT COOPER,

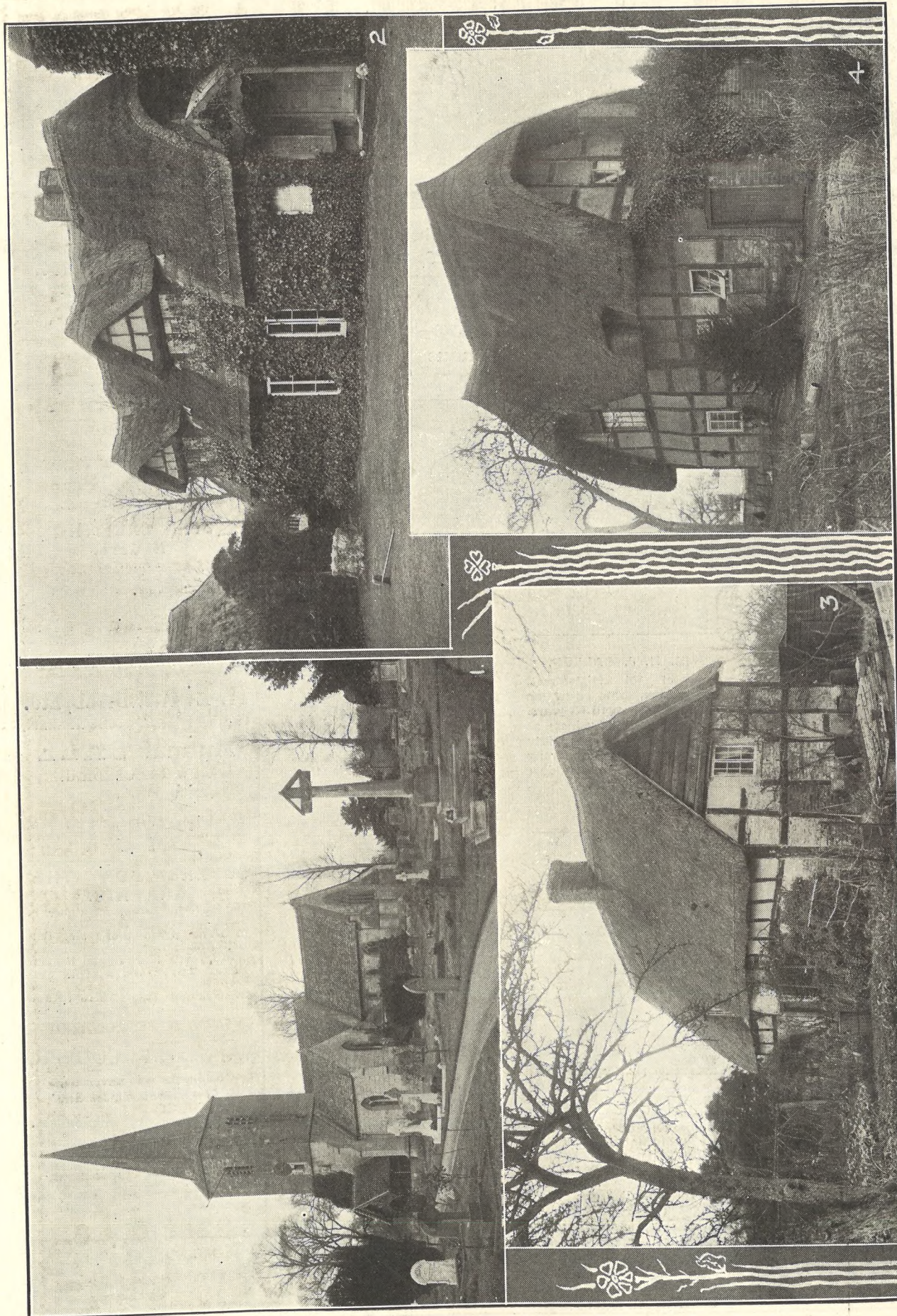
Goldsmith and Silversmith, Diamond Merchant, Jeweller,

The Promenade, Cheltenham.

A large selection of secondhand Jewels and Antique Silver always in stock at bargain prices.

Estimates, designs free of charge. Old Gold, Silver, and Gems purchased for cash or taken in exchange.

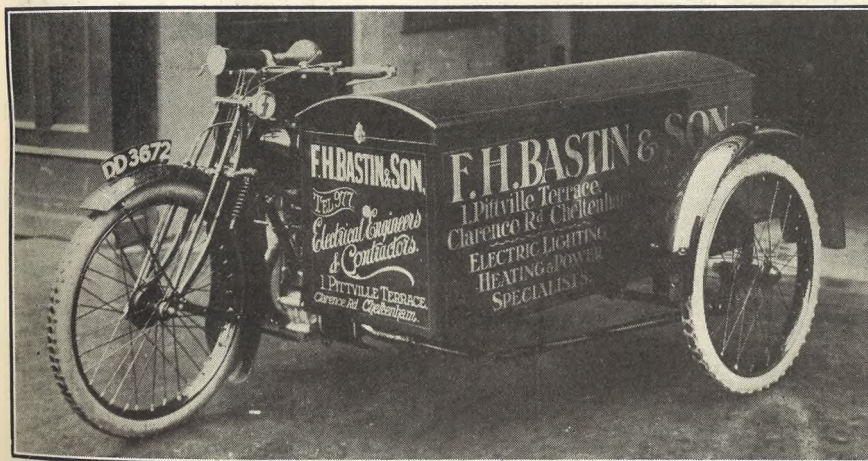
For the Best PIANOS, DALE, FORTY and Co., Ltd.



PICTURESQUE GLOUCESTERSHIRE—QUEDGELEY.
 Quedgeley is a village on the high road from Gloucester to Bristol, about three miles from Gloucester, and contains a number of quaint old half-timbered houses, near the main road. 1.—The Church of St. James. The Cross in Western tower and spire, containing eight bells, and the south aisle is also ancient, but the rest of the church is largely modern. 2.—A quaint old thatched house, which has been modernized by the addition of French windows and a porch. 3 and 4.—Two picturesque thatched cottages on the side of the high road—which have not been modernized. Copies 1s. 3d. each unmounted. Postage 2d. extra. "Cheltenham Chronicle." Photos.



46 YEARS AGO.
 The above photograph of the Telegraph Messengers of the G.P.O. (Cheltenham) was taken just after the removal of the Head Office from Clarence-street (now the Labour Exchange) to the Promenade in 1877. Back row: Bradshaw, A. E. Staito (ex-Service Man), Constable, Hooper, W. Forty (still in the Service as Assistant Inspector of Postmen). Front row: Wildes, F. Weaver ('Daddy,' postman, recently retired on pension), Lewis, Parry, King, and Saunders.



ECONOMICAL TRANSPORT.
 A 2½ h.p. Humber Motor-Cycle and Box Delivery Side-car, supplied to the order of Messrs. F. H. Bastin and Son, Pittville Terrace, by Messrs. A. Williams and Co., "The Motor-Cycle Service Depot," Portland-street. Its low initial cost and cheap upkeep makes it an ideal means of transport for a tradesman, and its power is sufficient to climb any of the local hills fully loaded. A passenger can also be carried. Full details and prices on application to Messrs. A. Williams and Co., Portland Street, Cheltenham.

A. BECKINGSALE'S OWN MAKE HARD WEAR SHIRT.
 FAST DYE. **8/11.** SINGLE CUFF.
 LINED BACK AND FRONT.
 A Garment enhancing our reputation.
 111 High Street, CHELTENHAM. **CHELTENHAM.** OFFICE: AMBROSE STREET.



Estimates for Removals and Storing Free.

LANCE'S

Have purchased a large Manufacturer's Collection
 :: :: of :: ::

LADIES' WINTER COATS,

Made in the Best Quality Velour Cloth, all of this Season's Styles, in Plain and Fancy Cloths, and :: many Half Lined Silk. ::

These Garments have been classified into Five Lots—

- LOT 1.—PLAIN VELOUR CLOTH.** Shades—Beaver, Navy, Saxe, Rust, and Tan. **21/6**
 Season's Price, 59/6.
- LOT 2.—PLAIN & STRIPED VELOUR.** HALF LINED. Shades—Beaver, Mole, Navy & Grey. **25/6**
 Season's Price, 3 Gns.
- LOT 3.—PLAIN & FANCY VELOUR.** Shades—Grey, Mole, Navy, and Beaver. **29/6**
 Season's Price, 3½ Gns.
- LOT 4.—PLAIN AND JACQUARD VELOUR.** Shades—Beaver, Grey, Nigger, Tan, Navy, Mole, and Black. **39/6**
 Season's Price, 4 Gns.
- LOT 5.—PLAIN AND JACQUARD VELOUR.** Shades—Beaver, Mole, Navy, Tan, Grey, Nigger, and Black. **49/6**
 Season's Price, 4½ Gns.

THESE GARMENTS CANNOT BE SENT ON APPROVAL.

THE SPLENDID QUALITY that has made this House famous was never more evident than in this Great Winter Sale: and a SPECIAL DISCOUNT of 10 0/0

2/- in the £

will be allowed on all Cash Transactions.

John Lance & Co., LIMITED,
 General House Furnishers and Drapers,
CHELTENHAM SPA.

PHONE 112.



CHELTENHAM v. MIDDLESEX HOSPITAL AT RUGBY FOOTBALL.

The Cheltenham team played a capital game on the Athletic Ground last Saturday to beat Middlesex Hospital by 15 points to 3, the match well repaying the somewhat poor crowd of spectators who were present.

1.—Shaw (right) and Statham leading a fine rush of Cheltenham forwards. ... All the forwards played a good game.

2.—W. Fellows tackled by the leg just as he was getting clear, but he scored two tries.

3.—Hart (on left) trying to dribble through in an attack by the Town.

"Cheltenham Chronicle" Photos. Copies 1s. or 1s. 9d. each, according to size.



ROUND THE TOWN IN CHELTENHAM.

Snaps taken in the Promenade on a wet morning this week.

1.—Mr. W. Harle (on left), an old Cheltenham resident, with Mr. Brian T. Gurney.

5.—Mrs. G. A. Hawkins with two of her children.

2, 3, 4, 6, 7, 8, 9, 10, 11.—Cheltonians and Visitors chatting, shopping, or promenading.

"Cheltenham Chronicle" Photos. Copies 1s. each. Postage 2d. extra.



FUNERAL OF COL. A. H. GODFREY, J.P.

The funeral of Col. A. H. Godfrey took place at Badgeworth Churchyard on Wednesday morning last.

- 1.—Immediately behind the coffin is Mr. A. H. Godfrey, Miss Godfrey, Miss L. Godfrey, and Mr. C. D. Godfrey (family mourners).
 2.—Lt.-Gen. M. W. Willoughby, C.S.I., and Major H. H. Hardy on left.
 3.—Colonel Georges.

“Cheltenham Chronicle” Photos.



ROUND THE CITY IN GLOUCESTER.

- 1.—A Chat in Southgate-street.
 2.—A well-known Gloucesterian.
 3.—Ex-P.C. Harding, of Hucclecote.
 4.—Shopping.

- 5.—Apparently out-of-work.
 6.—Going to the Post Office.
 7.—Looking pre-occupied.
 8 and 10.—On business bent.

- 9.—Mr. Brown, of “The Ship,” Maisemore.
 11.—Mr. Walter Madge (right) chats with a friend.

“Cheltenham Chronicle” Photos. Copies 1s.