

# THE CHELTENHAM CHRONICLE AND GLO'SHIRE GRAPHIC

With which is Incorporated the "Cheltenham Looker-On."  
GRATIS SUPPLEMENT. Saturday, October 6, 1923.

No. 1,188.

## CHELTENHAM THEATRE AND OPERA HOUSE.

THIS AFTERNOON (2.30) AND EVENING (7.30): "WHIRLED INTO HAPPINESS."

NEXT WEEK: First Visit of the Captivating and Gorgeous Musical Comedy—"THE CABARET GIRL."

### THE PALACE, HIGH STREET, CHELTENHAM.

MONDAY to WEDNESDAY.

POLA NEGRI in  
"PASSION."

A Mighty Epic of the Screen.  
Great Wireless Chapter Play,  
"The Radio King."

THURSDAY to SATURDAY.

POLA NEGRI in  
"SUMURUN."

A Mighty Spectacle.  
"Nick Carter."

### DAFFODIL PICTURE HOUSE.

Monday, Tuesday, Wednesday.  
BEBE DANIELS, JAMES KIRK-  
WOOD, ANNA Q. NILSSON,  
RAYMOND HATTON in  
"PINK GODS."

Wonder Women of the World.  
WITH STANLEY IN AFRICA.  
Topical. Interest. Travel.

Thursday, Friday, Saturday.  
MABEL NORMAND in  
"HEAD OVER HEELS."

WHITE EAGLE.

The Zoo Who's Who.  
LLOYD HAMILTON COMEDY.  
Topical. Interest. Travel.

COMING: Betty Balford in  
LOVE, LIFE, & LAUGHTER.

### FILMS POSTED

to us are despatched same  
day Developed and Printed.

NEW FILMS POST FREE.

R. F. HUNTER, Ltd.,

Specialists in Photography.

3 Promenade, CHELTENHAM.

### MARTIN & CO. LTD.,

Promenade, Cheltenham.  
Purchase for Cash Antiques of  
all kinds, including Old Silver  
Jewellery, Sheffield Plate, China,  
Gems, Miniatures, etc. Highest  
Prices given for Rare Pieces.



### Gloucester Scoutmaster's Wedding.

The marriage took place at St. James' Church, Gloucester, on Saturday last of Mr. Rolf R. Roberts, member of 1st Glos. British Boy Scouts since its inception in 1909, and Miss Edith R. Brown. The Scouts formed a guard of honour at church. Mr. Lionel C. Hobbs, Commissioner of the Glos. B.B.S., was best man.

Photo by Mr. H. K. Fox, Barton Street, Gloucester.

## Art Needlework Studio

1 Imperial Buildings, Promenade, CHELTENHAM,

FOR NEW SEASON'S WOOLS.

SPECIAL—Cream Artificial Silk, 1st Quality, 2/9½ 4 ozs.

### WINTER GARDEN, CHELTENHAM.

MONDAY and ALL THE WEEK  
"THROUGH THREE  
REIGNS."

As shown to H.M. the King and  
Royal Family at Balmoral.  
A unique record of actual events  
between 1898 and 1911.

Monday to Wednesday Only.  
COLLEEN MOORE in an Irish  
Love Story, "DARLIN'."

Thursday to Saturday Only.  
TOM MIX in "Up and Going."

### Real Double Gloucester CHEESE.

QUALITY  
PERFECT. 1/4 per lb.

SILK & SONS,  
146, 430 & 431 HIGH ST.,  
CHELTENHAM. Phone 249.

Advertise in the "Echo."

FISHER'S (Late  
E. Fisher)  
69 Regent Street, Cheltenham  
High-Class TAILORS.

:: AUTUMN :: BRECHES  
NEW PATTERNS. | a Speciality.

First-class Cutter--25 years' London experience

Telephone 1080.

W. SCOTT COOPER,

Goldsmith and Silversmith,  
Diamond Merchant, Jeweller,

The Promenade, Cheltenham.

A large selection of Second-hand  
Jewels and Antique Silver always  
in stock at bargain prices.  
Estimates, designs free of charge.  
Old Gold, Silver, and Gems  
purchased for cash or taken in  
exchange.

For the  
Best

# PIANOS, DALE, FORTY and Co., Ltd.



**HARD-COURT TENNIS TOURNAMENT AT STROUD.**

During the week ending Sept. 29th a capital Tournament was held on the splendid set of hard courts on the Slad Road, the property of the Stroud Tennis Club.

- 1.—View of courts, showing play in progress.
- 2.—Spectators move on to watch another match.
- 3.—Capt. Creighton, R.N., and Mr. J. C. F. Simpson, who defeated him. Mr. Melliquam beat the latter in final.
- 4.—Mr. C. T. Mullins serving.
- 5.—Col. J. H. Collett serving.
- 6.—A move for tea.
- 7.—The match between C. T. Mullins and Major Beaman (who won) and G. R. Smith and R. Curtis-Hayward.

"Cheltenham Chronicle" Photos. Copies 1s. each. Postage 2d. extra.

BEST QUALITY

**CIDERS**

IN BOTTLE.—Sparkling and Still.

**BARTHOLOMEW,**

419, 420 HIGH STREET,  
CHELTHENHAM.

WINES, SPIRITS, ALES, TABLE WATERS  
and GROCERY. Tel. 13.

LET MOUSSELLS MOVE YOU. **FLANNEL SHIRTS**



Estimates for Removals and Storing Free.

**CHELTHENHAM.** Office: AMBROSE STREET.

PHONE 112.

8/11, 10/6, 12/6.

ALL WOOL - 13/6

THE WHOLE OF OUR STOCK  
OF THESE  
IS OUR OWN MANUFACTURE.

**A. Beckingsale, CHELTHENHAM.**  
111 HIGH STREET.  
'Phone 406.

**R.F. BEARD LTD.**  
SANDRINOHAM HOUSE

**MOTOR MASCOTS.**

NO CAR IS COMPLETE WITHOUT A MASCOT.

VARIOUS DEVICES FROM  
FINELY SCULPTURED MODELS  
:: :: IN SOLID METAL. :: ::

SPECIAL MASCOTS REPRODUCED  
:: :: FROM SEALS, ARMS, Etc. :: ::

PROMENADE  
CHELTHENHAM

Let the Great Musicians choose for you.

AMONG the many musicians who have played and praised the Steck Piano are such authoritative names as Franz Liszt, Wagner, Grieg, Karl Jörn, Emil Sjögren, Josef Holbrooke and Gustav Hollander.

Such approval is surely conclusive proof of the high qualities the connoisseur looks for when buying a piano for the home.

**THE STECK SMALL GRAND**

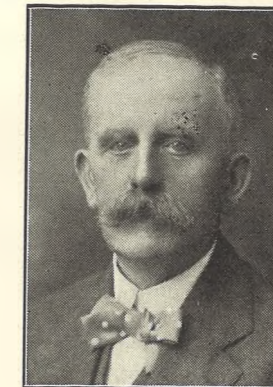
is an instrument which will satisfy the most trained and critical ear, and meet the demands of the most able pianist.

Despite the fact that its length is but five feet, this wonderful piano retains all those features which recommend the Grand to musicians of discriminating taste. Dainty and graceful in outline, occupying little more space than an upright yet losing none of the fulness of the "Steck Grand" tone, this instrument has attained world-wide renown.

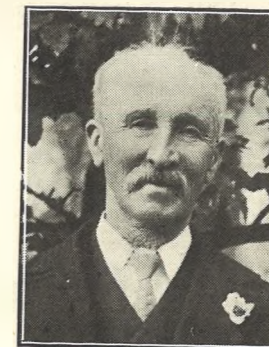
Call at our Showrooms and test for yourself the perfect tonal qualities of the Steck.

SOLE AGENTS:  
**CRICHTON'S LTD.,**  
THE PIANO HOUSE,  
Promenade, Cheltenham,  
'Phone 378.

IF YOU LIKE THE "GRAPHIC," but do not subscribe to it regularly, why not do so? We can post it from the Head Office at a quarterly subscription of 3s. 3d., or the paper can be obtained of any Newsagent in Town or County at Twopence Weekly.



**Mr. H. J. Brewer,**  
Of Lansdown, Stroud, who died on Tuesday, October 2nd, aged 75 years. He was secretary to Messrs. Holloway Bros., Ltd., for 45 years, retiring in July this year, and he was also for many years chief secretary of the Stroud Conservative Benefit Society. He was a prominent Freemason.



**Mr. William Butcher,**  
Of Winchcombe House, Nelson-street, Stroud, who died on Thursday, Sept. 27th, aged 75 years. He was one of the oldest Stroud tradesmen, for many years carrying on business as a house furnisher at The Cross, and later in London-road, Stroud. He was a member of Bedford-street Congregational Church, and a most acceptable preacher and speaker.

Read the Echo Every Day

**LANCE'S**

ARE FAMOUS FOR HIGHEST GRADE GOODS OF EVERY DESCRIPTION FOR

**Ladies' and Children's Wear...**



Smart COAT, in the New Jacquard Velour may be had in all shades.

SPECIAL PRICE, **69/6.**

A delightful range of COATS may be seen in our Showrooms, in all the Newest Styles & Cloths. Prices from 49/6, 59/6 to 12 Gns.

**John Lance & Co. LIMITED,**  
CHELTHENHAM SPA.



**ROUND THE CITY IN GLOUCESTER ON "MOP" DAY.**

The first Mop was held on Monday last, and Gloucester was crowded, as usual, although the pleasure fair is now held on the Oxleaze, where the folk all eventually made for.

- 1.—Just off to the pleasure fair.
- 2.—Country people at the Cross.
- 3.—Looking at the traffic.
- 4.—A family party.
- 5.—It seemed to be quite a children's day out.
- 6.—Waiting for the 'bus.
- 7.—Making for the Oxleaze.

"Cheltenham Chronicle" Photos. Copies 1s. each. Postage 2d. extra.



**GLOUCESTER v. HARLEQUINS RUGBY FOOTBALL MATCH.**

This interesting match was played on the Kingsholm Ground last Saturday, Gloucester winning by 1 goal 3 tries (14 points) to 2 goals (10 points). It was a brilliant open game, enjoyable to spectators and players.

- 1.—A. D. Stoop, the old English captain, was touch-judge. He seemed as keen as ever.
- 2.—Daniels scoring first try for Gloucester.
- 3.—"Tommy" Joyce at half-time has another new-jersey, as usual.
- 4.—Three of the Gloucester team coming out.
- 5.—The new stand now being built on the south side of the ground.
- 6 and 7.—Sections of spectators. There was a fine crowd present.
- 8.—A meleé in midfield.
- 9.—Collins makes a fine opening for Gloucester.

"Cheltenham Chronicle" Photos. Copies 1s. each. Postage 2d. extra.



**GLOUCESTER BARTON FAIR.**

- Barton Fair came this year on Friday, Sept. 28th, and the same old animated scenes were witnessed in the Cattle Market, where the Irish and Welsh horse dealers disposed of their animals with much noise and gusto. Messrs. Bruton, Knowles, and Co. held a big Ram Sale in the Market.
- 1.—Watching the horse dealers at work.
  - 2.—A friendly chat.
  - 3.—Some farmers having a deal.
  - 4.—Mr. H. T. Bruton selling rams.
  - 5.—The market was packed with sheep. Some of the pens.
  - 6.—Customers at the ram sale.
  - 7.—Selling a horse.
  - 8.—The horse section of the market. It required care to negotiate this part, as the vendors rushed their horses up and down.

“Cheltenham Chronicle” Photos. Copies 1s. each. Postage 2d. extra.



**SPREAD EAGLE HOTEL, MARKET PARADE, GLOUCESTER, ON BARTON FAIR DAY.**  
 The Spread Eagle is the headquarters of the Gloucester Rotary Club, the Motor-Cycle and Light Car Club, and several other organisations.  
 1.—View of Hotel front, Market Parade. 2.—Rotary Dining Room. 3.—View of Yard from Market Parade. 4.—View of Yard from Northgate Street.

\*\*\*\*\*



**GLOUCESTER BARTON FAIR.**

- 9.—Familiar faces at the Horse Fair. Some further pictures taken in the Cattle Market. On extreme left is Mr. Davies, of Boddington. On G.W.R. He still keeps up his big button-hole, by which he was so familiar on Gloucester Station.
- 10.—A horse deal. Some well-known faces.

“Cheltenham Chronicle” Photos. Copies 1s. each. Postage 2d. extra.

**Actual Manufacturers.**

Saddlery  
and  
Harness  
FOR ALL  
PURPOSES.

LARGE STOCK  
FOR  
AGRICULTURAL  
USE  
LEGGINGS,  
ETC.



FANCY LEATHER ARTICLES IN GREAT VARIETY.

**SOUTHGATE, GLOUCESTER**

SUIT and  
ATTACHE  
CASES.  
GLADSTONE,  
KIT and  
FOOTBALL  
BAGS.  
TRUNKS,  
etc.

Telephone 712.

**Wessex Hotel,  
GLOUCESTER.**

LEADING  
TEMPERANCE HOTEL

(Opposite Cattle Market,  
close to Railway Station).

EVERY  
ACCOMMODATION.

Terms Moderate.

Creamery and  
Restaurant adjoining.

PARTIES CATERED FOR

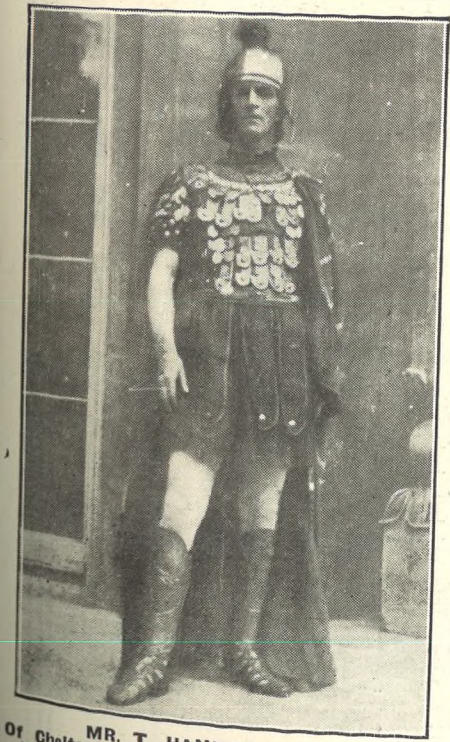
Photo "Cheltenham Chronicle."



The Hotel comprises the main corner block, with the three houses adjoining in Clarence Street.



**ROUND THE CITY IN GLOUCESTER ON "MOP" DAY.**  
8.—Three country visitors, quite unconscious of being snapped.  
9.—Selling toy balloons to 'bus passengers.  
10.—At the Cross.  
11.—Walking to the fair.  
12.—There was a continuous stream of motor coaches running from the Cross.  
"Cheltenham Chronicle" Photos. Copies 1s. each. Postage 2d. extra.



MR. T. HANNAM-CLARK  
Of Cheltenham, as Demetrius in "Midsummer Night's Dream," at the Brighton Shakespeare Festival. The "Morning Post" says the part was "very well played."

WE ARE NOW BOOKING  
SPACES FOR  
**Christmas  
Advertising**  
In the  
**"Chronicle and  
Graphic."**

SEVERAL GOOD POSITIONS  
LEFT.

Apply for Terms to Advertisement  
Department, "Echo" and  
"Chronicle" Offices, Chelten-  
ham.



**CHELTONIANS IN AMERICA.**  
Two old Cheltenham boys and a friend resident in Cheltenham Township, on the borders of Philadelphia City. From left, Ernest Roebuck, Geo. W. Roebuck, and Alfred Judd.

Advertise in the "Echo."

# OSBORNE HOUSE

ENGLISH  
MADE

*Twilfit* FULLY  
GUARANTEED

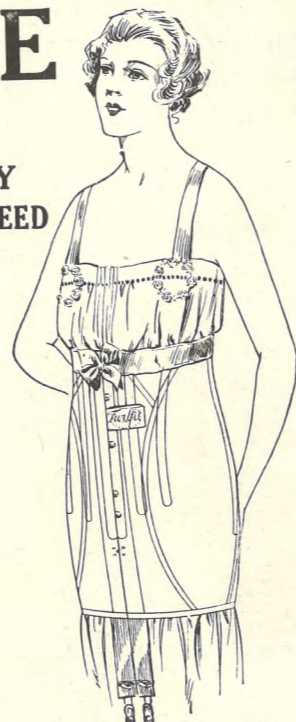
## CORSETS

represent the best corset value in the world. Every pair carries a full guarantee of satisfaction or money back. Every Twilfit Corset is fitted with Rustless and Unbreakable Twilfit Spiral Steels—an exclusive Twilfit feature found in no other Corset.

There is a Twilfit for every figure at a price to suit every pocket.



MODEL 508.  
An extremely popular number, with two-inch waist line. Cut from superfine dove and white coutil. Fitted with rustless and unbreakable "Twilfit-Spiral" Steels, and four extra strong adjustable hose supporters. **13/6**



MODEL 357.  
In dove and white, from specially woven coutil, fitted with rustless and unbreakable "Twilfit-Spiral" Steels, adjustable suspenders, Satinette trimming. **5/6**



MODEL 8089.  
A Model in Handsome Broche of very special value, fitted with wide Rustless and Unbreakable "Twilfit-Spiral" Steels, and four hose supporters. Free hip Model, with very low bust, being one inch above the waist line. Suitable for average figures, in Pink, White, or Sky **12/11**  
Sizes: 20 to 26in.

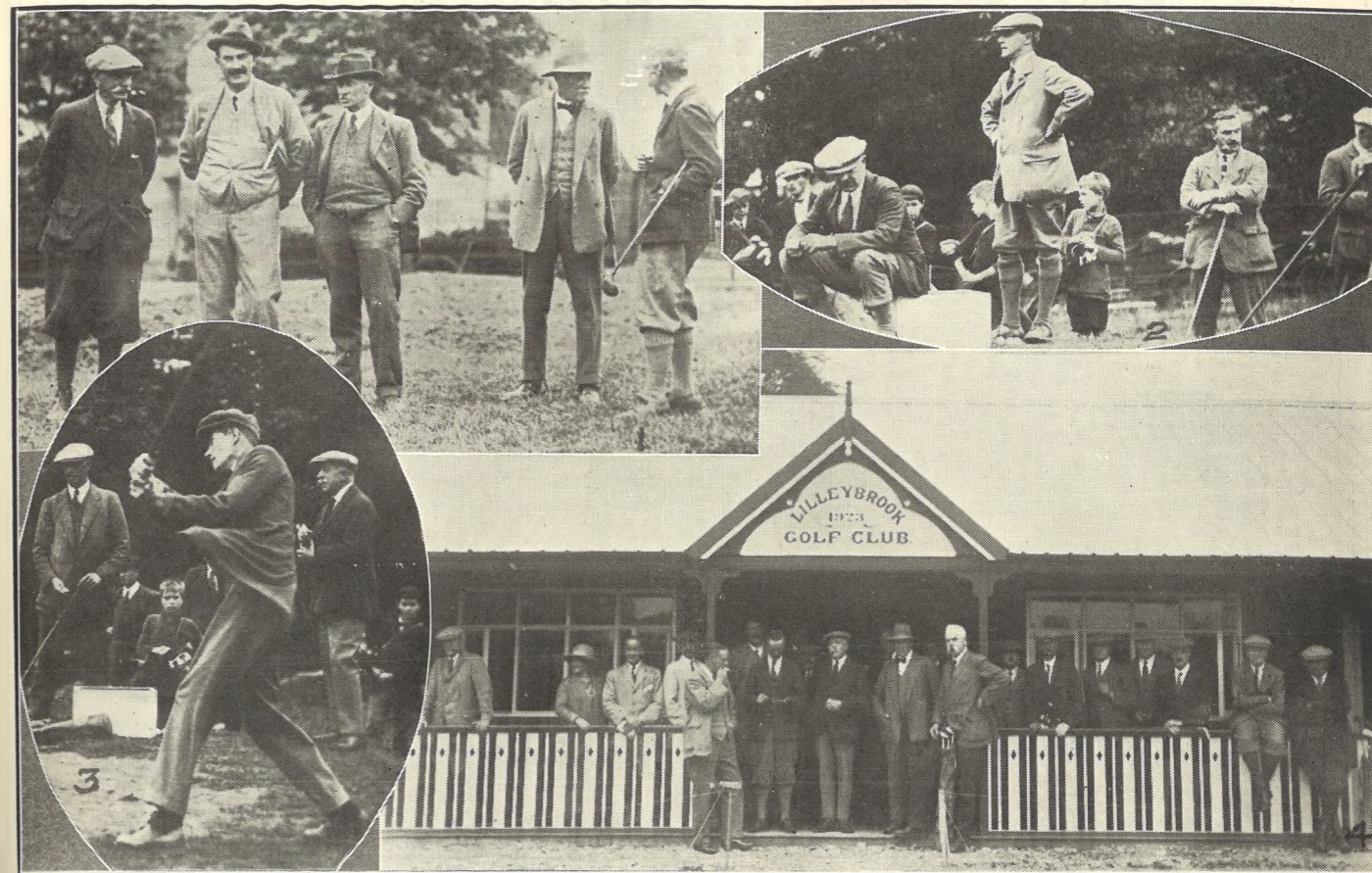
MODEL 1010.  
A Special Reducing Model, with patented cross suspenders, in Dove and White Coutil, with six Hose Supporters. **15/11**  
Outsize ..... **16/11**



MODEL 468.  
In Dove and White, from good yarn dyed coutil, fitted with Rustless and Unbreakable "Twilfit-Spiral" Steels, adjustable suspenders, and embroidery trimming. **6/11**

MODEL SPORTS 2.  
An ideal model for all descriptions of sports. In Pink and White. Elastic round top. Fitted with Rustless and Unbreakable "Twilfit-Spiral" Steels, and four adjustable hose supporters. **7/6**

MADE IN ENGLAND.  
**OSBORNE HOUSE,**  
(Proprietor: D. J. REES)  
**HIGH STREET, CHELTENHAM.**



### OPENING OF THE NEW GOLF CLUB AT LILLEYBROOK.

The new 18-holes golf course at Lilleybrook, Charlton Kings, was officially opened on Saturday last by Mr. Alfred Drake, and the Autumn Meeting was inaugurated.

- 1.—Major Gall, Col. Hay, Mr. A. Drake, and Mr. Milne (Hon. Sec.).
- 2.—Dr. Forster about to drive on first tee.
- 3.—A member driving off, Mr. Joyce behind.
- 4.—The new pavilion and some of the members.

"Cheltenham Chronicle" Photos. Copies 1s. each. Postage 2d. extra.

## VENICE IN CHELTENHAM,

Tuesday & Wednesday Next, Oct. 9th & 10th. ♦ IN aid of Holy Apostles Church Hall Fund.

Admission :

TUESDAY,  
11 to 6, 2/-  
after 6, 1/-

WEDNESDAY,  
2 to 6, 1/-  
after 6, 6d.

Season Tickets,  
2/6.

Children  
Half-Price.



REPLICAS OF THE SCENERY AND NOTABLE BUILDINGS  
TOWN HALL, CHELTENHAM.

## Covers for the Graphic.

WE HAVE IN STOCK A NUMBER OF STOUT COVERS FOR THE "GRAPHIC," IN DARK GREEN CLOTH AND GILT LETTERING. THE COVERS WILL TAKE A FULL YEAR'S ISSUE OF THE POPULAR PICTURE PAPER, AND YOU CAN THUS KEEP THE "GRAPHIC" FROM WEEK TO WEEK AND KNOW WHERE TO FIND IT. POST FREE TO ANY ADDRESS **SIXPENCE.**

# VANDERPLANK (FROM HARRODS)

## FASHIONS AND FURS.

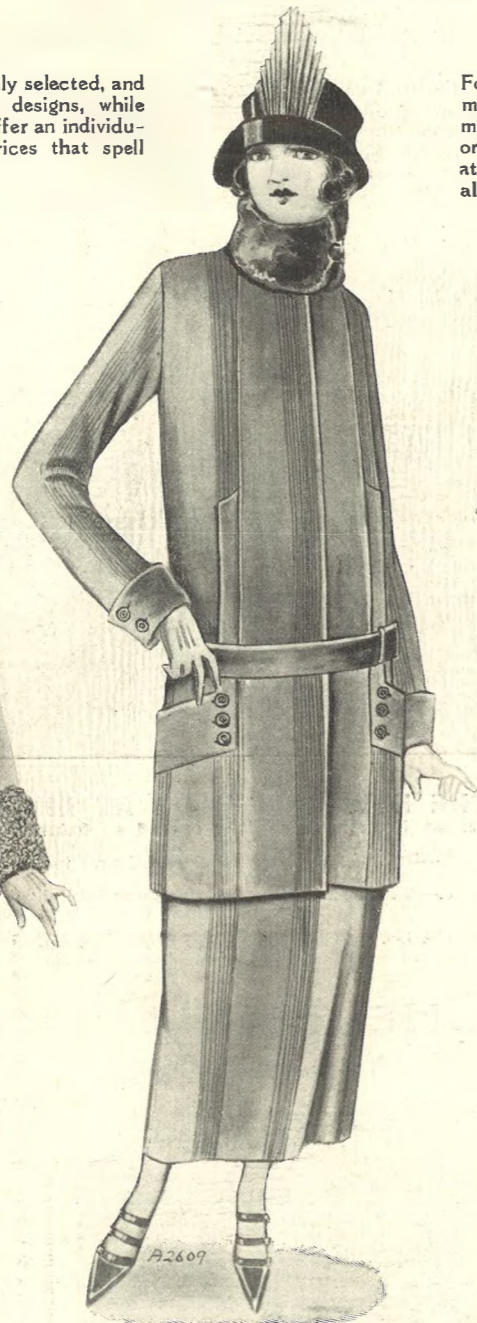
### COSTUMES

For present wear that have been carefully selected, and comprise Models of new and exclusive designs, while reflecting the latest phases of Fashion, offer an individuality in character and refinement at prices that spell Moderation.



New Velour Cloth COAT, with plaited cloth girdle and clasp ornament fastening on side, curl cloth collar and cuffs to match. PRICE **3 Gns.**

Navy, Grey, Havana, Mole, Etc.



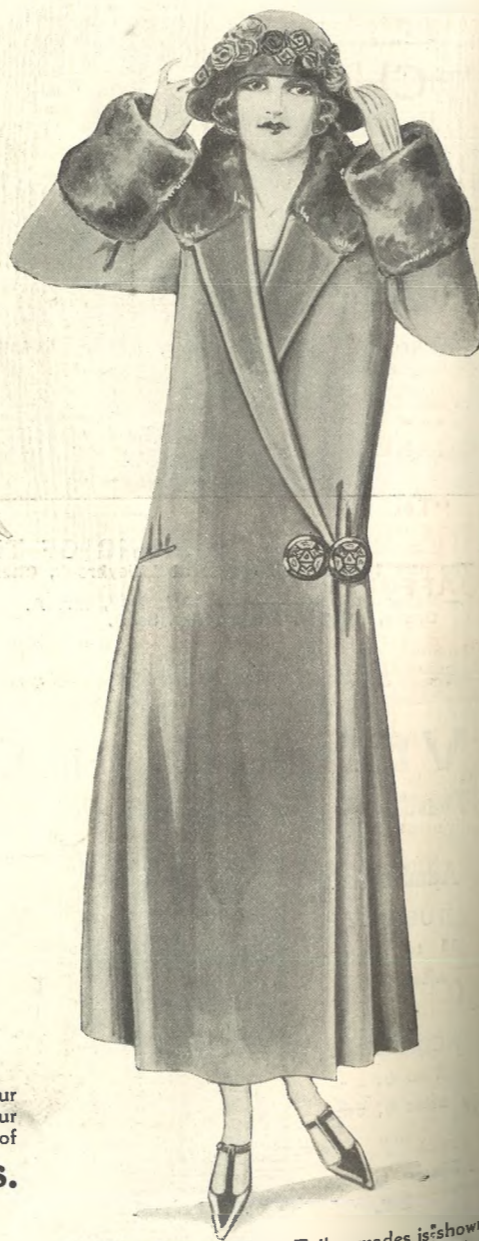
COSTUME, of finest quality Velour Cloth, with self stripe and adaptable Fur collar (Russian style). In soft shades of Grey or Brown, lined with satin. PRICE **7½ Gns.**

#### IMPORTANT NOTICE!

Having disposed of the lease of our Promenade Establishment, we are offering there, to ladies, a remarkable opportunity to purchase their Winter Fur Coats and Furs at exceptional prices.

### COATS

For Winter that are perfect in style, workmanship, and finish. In a variety of materials of best qualities, either with Self or Fur collars. Beautifully warm, wonderfully attractive, and at prices which will appeal all, ranging as they do from 55/9 to 15 Gns.



The New Smart Line for Tailor-mades is shown to advantage in this perfectly cut Coat, fastening on side with ornamental clasps. Draped Fur collar & cuffs, half lined with silk. PRICE **7 & 10 Gns.**

Colours: Navy, Brown, Grey, and Black.

**381 High Street, CHELTENHAM, and Promenade.**

# THE CHELTENHAM CHRONICLE AND GLOUCESTERSHIRE GRAPHIC

With which is Incorporated the "Cheltenham Looker-On."  
GRATIS SUPPLEMENT. Saturday, October 13, 1923.

No. 1,189

## CHELTENHAM THEATRE AND OPERA HOUSE.

THIS AFTERNOON (2.30) AND EVENING (7.30): "THE CABARET GIRL."  
NEXT WEEK: First Visit of the London Season's Most Successful Musical Comedy—"SALLY."

### THE PALACE, HIGH STREET, CHELTENHAM.

NEXT WEEK ONLY.

Four Distinct Shows Daily, 2.30, 4.30, 6.30, 8.30.

NOT CONTINUOUS.

Balcony Seats 1s. 3d., booking fee 3d., may be booked at Rehearsal Club, 385 High St. (facing the Palace) daily from 10 to 7.

### CHARLIE CHAPLIN

in "THE PILGRIM," FOUR RIOTOUS REELS. HIS SUPREME TRIUMPH.

### DAFFODIL PICTURE HOUSE.

Monday, Tuesday, Wednesday, Dorothy Dalton and Jack Holt in

### "On the High Seas." JAPANESE EARTHQUAKE."

(TWO REELS) Will be Shown All the Week. "Wonder Women of the World." "With Stanley in Africa."

Thursday, Friday, Saturday, VIVIAN MARTIN in THE

### "Song of the Soul." "WHITE EAGLE," Ep. 10.

Up-to-date Leading FOOTBALL CLUBS.

Monday, Oct. 22, and all week: LOVE, LIFE, & LAUGHTER.

### FILMS POSTED

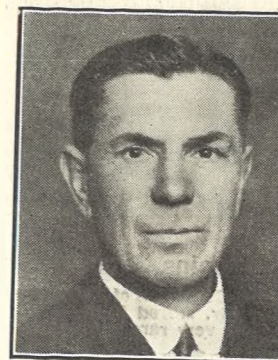
to us are despatched same day Developed and Printed.

### NEW FILMS POST FREE.

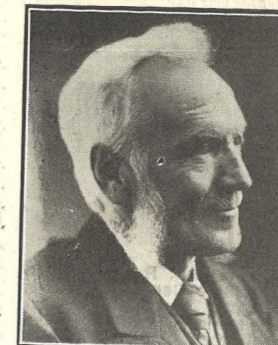
R. F. HUNTER, Ltd., Specialists in Photography, 3 Promenade, CHELTENHAM.

### MARTIN & CO. LTD.,

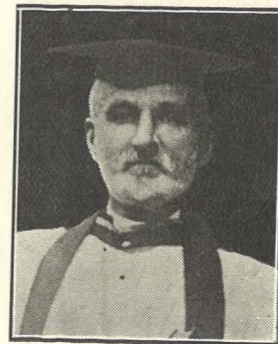
Promenade, Cheltenham, Purchase for Cash Antiques of all kinds, including Old Silver Jewellery, Sheffield Plate, China, Coins, Miniatures, etc. Highest Prices given for Rare Pieces.



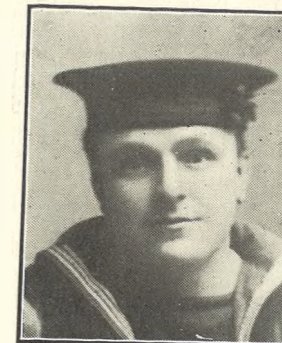
MR. H. V. PAGE, Of Courtra, Andover-place, Cheltenham, who has recently retired from Cheltenham College, where he has been an assistant master for many years. He has been a great athlete, an Oxford Double Cricketer and Rugby Footballer.—Photo by Debenhams, Longman, and Co., Cheltenham.



MR. ALFD. MILES, C.C., Of St. Anne's, Cheltenham, who has this week presented to the town a valuable collection of coins in a handsome mahogany case, which has been placed in the Cheltenham Museum.—Photo by Debenhams, Longman, and Co.



REV. N. A. HOLTUM, Of 15 Sydenham Villas, Cheltenham, who died on Oct. 6th, aged 73 years. He was for twenty-one years Vicar of Compton Abdale, Glos. retiring to live in Cheltenham in 1917.



MR. REGINALD GILL, Of 6 Twyver-street, Gloucester, who was knocked down on the Great Western Railway at Over and killed.

### WINTER GARDEN, CHELTENHAM.

Monday, Tuesday, Wednesday, OWEN NARES

In "The Faithful Trait," From Monckton Hogge's Play. Thursday, Friday, Saturday, TOM MIX AND HIS HORSE

In "JUST TONY."

HAROLD LLOYD

In "AMONG THOSE PRESENT."

### Real Double Gloucester CHEESE.

QUALITY PERFECT. 1/4 per lb.

SILK & SONS, 146, 430 & 431 HIGH ST., CHELTENHAM. Phone 249.

Advertise in the "Echo."

### MAISON ANNETTE

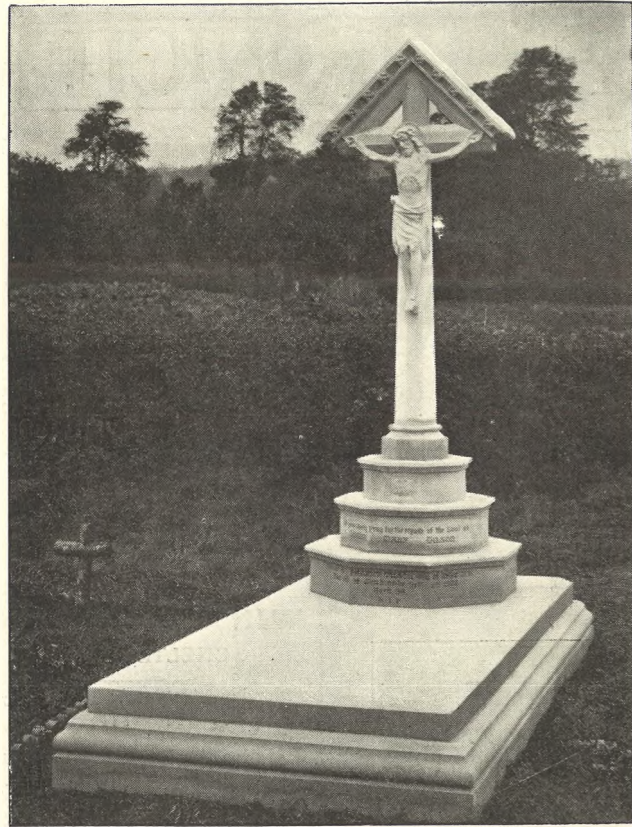
Kensington House, Promenade, Cheltenham,

SPECIALISTS IN EXCLUSIVE

### CORSETS & LINGERIE.

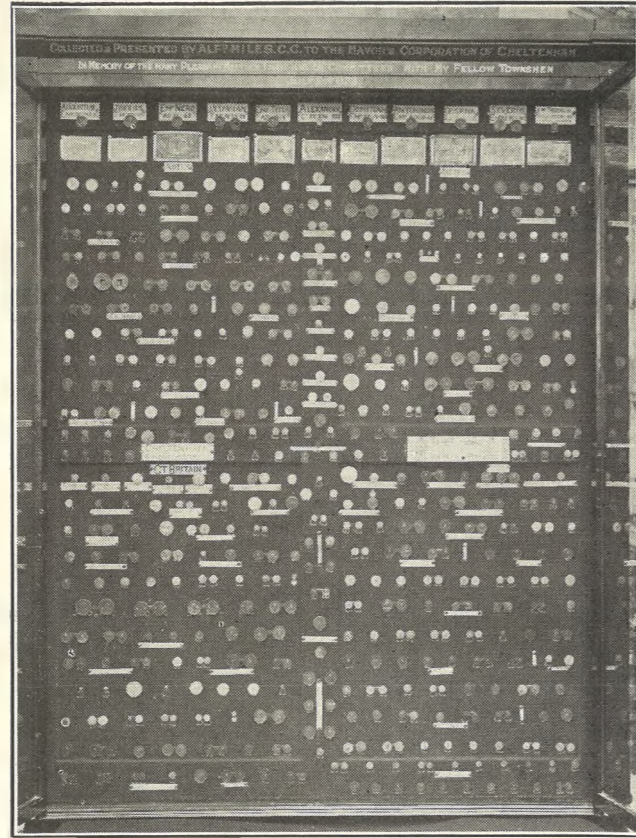
Phone 1122.

## For the Best PIANOS, DALE, FORTY and Co., Ltd.



**An Artistic Memorial.**

The above Memorial has just been erected by Messrs. R. L. Boulton and Sons, Bath Road, Cheltenham, in Wincombe Cemetery. It is to the memory of the late Mrs. Patrick Wilson, and is executed throughout in Portland Stone. The firm will be pleased to give estimates for all kinds of Memorials and Church Furnishings in wood, marble, granite, stone, and metals.



**Coins Presented to Cheltenham Museum.**

The Collection of Coins presented to the above Museum this week by Mr. Alfred Miles, C.C. They are over 600 in number, many of them very rare and valuable, and have taken the donor many years to collect.

"Cheltenham Chronicle" Photo. Copies may be obtained.



**THE CHELTENHAM JOINT IMPROVEMENT CLASS, 1923-24, FOR ENGINE-DRIVERS, FIREMEN AND CLEANERS.**

Completion of G.W.R. group by acquisition of the M. and S.W.J.R.  
 "Cheltenham Chronicle" Photo. Copies, mounted 3s., unmounted 2s. Postcards 6d. each.



**CHELTENHAM LADIES' WATER POLO TEAM.**

At back.—Miss Richards, Mrs. Stevens, Mrs. Pilkington.  
 Standing.—Miss Vera Stevens, Miss E. Dodwell, Miss Scott (hon. secretary), Mrs. A. Waite, Miss P. Wesley, Miss P. Keen.  
 Seated.—Miss M. Usher-Somers, Miss Hilda Fryer, Miss M. Holborow (captain), Miss Elsie James, Miss B. Holborow.  
 In front.—Miss Vera Kirkham, Miss E. Usher-Somers.  
 "Cheltenham Chronicle" Copyright Photo, Copies (10in. by 8in.), mounted 3s. each, unmounted 2s. each.



**CHELTENHAM WATER POLO TEAM.**

**WINNERS OF WESTERN COUNTIES' POLO CHAMPIONSHIP.**  
 Standing.—E. Warner, G. Hinch, O. Tippets, Percy Gallop, Alan E. Lewis, H. W. Pilkington, W. Williams.  
 Seated.—F. E. Lane (hon. secretary), D. K. Higgs, A. F. Waite (vice-captain), W. Cook (captain), W. Tiver, H. R. Sims (chairman).  
 In front.—H. Coulson, J. Voyce.  
 "Cheltenham Chronicle" Photo. Copies (10in. by 8in.), mounted 3s. each, unmounted 2s. each.

**Missing.**

Mr. Arthur Tillon, of Providence Cottage, Haunton Parade, Cheltenham, has been missing from his home since 6.30 a.m. Saturday, Sept. 15th. He is 53 years of age, medium height, very dark hair, scar under left eye, and is suffering from a nervous breakdown, with perhaps, loss of memory. He was wearing a dark working suit of painter's class. Will any one recognising him communicate with his wife at above address.

**PHOTOGRAPH ENLARGEMENTS.**

WE can Enlarge to Cabinet Size any Individual Photograph in any of the groups in the "Graphic," or we can Enlarge the Entire Group. Splendid results guaranteed. Results on application.

**LANCE'S**  
**RELIABLE**  
**FURS**  
 AT  
**Moderate Prices.**



This fashionable Short COAT, style as sketch, may be had in Mole Coney at 8½ Gns.

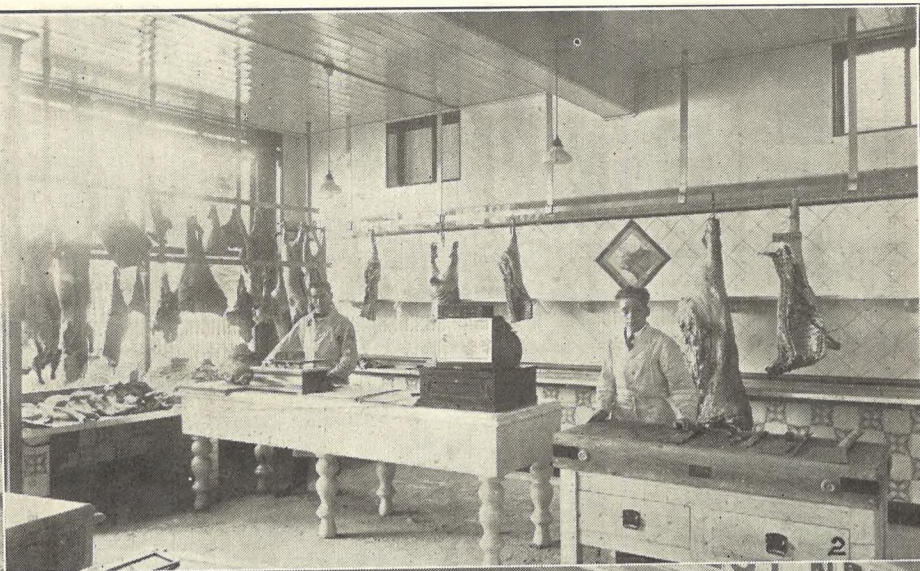
Beaver Coney .. .. . 10½ Gns.  
 Seal Coney .. .. . 8½ Gns.  
 Silver Mushquash .. .. . 7½ Gns.

It may also be had in good quality Curl Cloth, in Black, Brown, Grey, Beave. Prices from 39/6 to 79/6.

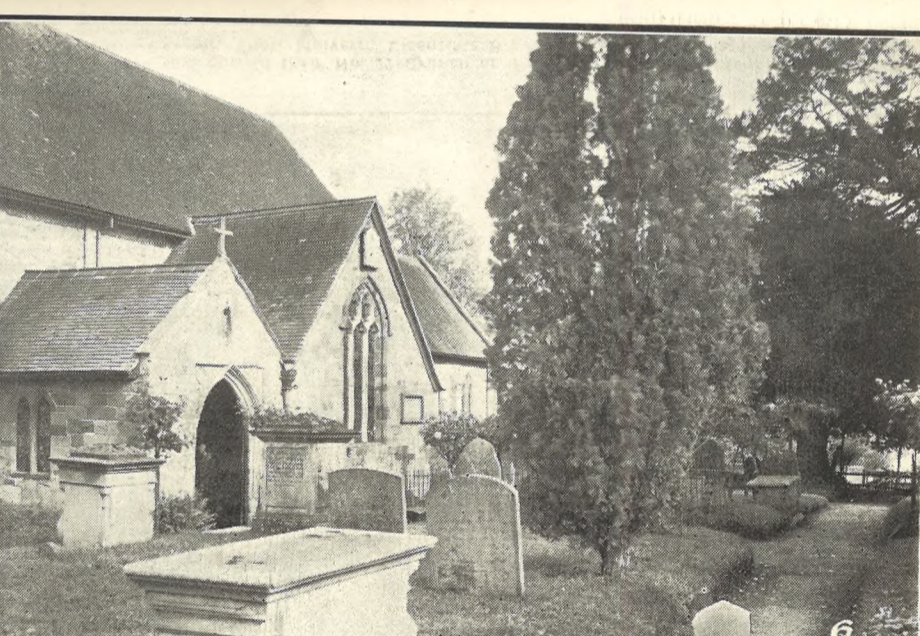
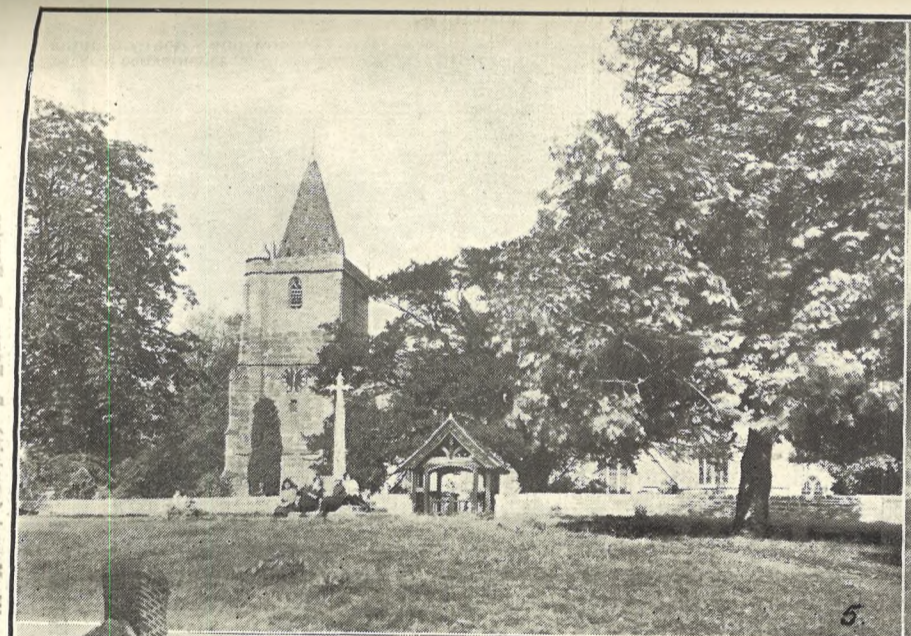
**John Lance & Co.**  
 LIMITED, FUR SPECIALISTS  
**CHELTENHAM SPA.**



GLOUCESTER CO-OPERATIVE AND INDUSTRIAL SOCIETY, LTD.'S NEW SHOP AT THE OAKLANDS, PRESTBURY ROAD, CHELTENHAM.



For the convenience of their many Customers in this district, the Gloucestershire Co-operative Society have just opened their No. 22 Branch at Prestbury Road, Cheltenham. Its fully equipped Grocery and Butchery Departments will be of great benefit to the neighbourhood. The architect was Mr. Thos. Malvern, Licentiate R.I.B.A., and the builders Amos Wilson and Sons, Swindon Road, Cheltenham.



PICTURESQUE GLOUCESTERSHIRE: DYMOCK.

Dymock is a big straggling village on the Herefordshire border, four miles beyond Newent. This week it is celebrating the 300th anniversary of the Consecration of the Church, which was originally a Norman one, of which traces still exist. Extensive repairs have been recently executed to the fabric, but donations are still badly needed to re-hang the peal of bells, etc.

5.—The Church, Lych-gate, and War Memorial from the Village Green.

6.—The South Porch, South Chapel, and Eastern End. The old yew tree on right is said to be over 500 years old.

7.—A picturesque cottage in the village, with a peep of the church spire in distance.

8.—Another black and white picturesque cottage.

"Cheltenham Chronicle" Copyright Photcs. Copies 1s. 9d. each, postage 2d. extra. A further series of pictures of Dymock will appear in later issues.



**PONY RACES AT GLOUCESTER.**

A capital race meeting for ponies was held at Barnwood on Saturday last, but the attendance was not so good as the meeting warranted. 1 and 5.—Sections of spectators. 2.—The judge's box. 3.—R. Gibson, who rode a dead heat for the first race and won the second and third races. 4.—Mr. Ward's Sunspot, which won the Gloucester Handicap, the principal race.

"Cheltenham Chronicle" Photos. Copies 1s. each. Postage 2d. extra.

\*\*\*\*\*  
**LET MOUSELLS MOVE YOU.**  
 \*\*\*\*\*



PHONE 112.

Estimates for Removals and Storing Free.  
**CHELTHENHAM.** Office: AMBROSE STREET.

**FLANNEL SHIRTS**

8/11, 10/6, 12/6.

ALL WOOL - 13/6

THE WHOLE OF OUR STOCK

OF THESE IS OUR OWN MANUFACTURE.

**A. Beckingsale, CHELTENHAM.** 111 HIGH STREET. Phone 406.



**CHELTHENHAM II. WATER POLO TEAM.**

Seated.—B. Coulson, A. Pears, W. Yeend (captain), B. Eager, R. Fowles.  
 In front.—E. Jennings, M. Blake.  
 "Cheltenham Chronicle" Photo. Copies (10in. by 8in.), mounted 3s., unmounted 2s. each.



**FUNERAL OF MR. H. J. BREWER AT STROUD.**

The respect in which the late Mr. H. J. Brewer, of Lansdown, Stroud, was held was demonstrated at his funeral on Saturday afternoon last, when some hundreds of mourners, employees of Messrs. Holloway Bros., Ltd., fellow Freemasons, and members of public bodies attended the Parish Church and Cemetery to pay their last tribute.

- 1.—The coffin and family mourners entering the church.
- 2.—Freemasons being given sprigs of acacia before the ceremony.
- 3.—Directors of Messrs. Holloway Bros.
- 4.—Freemasons arriving at church.
- 5.—Employees of Messrs. Holloway Bros., Ltd., leaving the church.
- 6.—Mourners arriving at church.
- 7 and 8.—Mourners leaving the church.

"Cheltenham Chronicle" Photos. Copies 1s. each. Postage 2d. extra.



FASHIONS.

**VANDERPLANK**

(FROM HARRODS)

FURS.

have beautiful Furs  
of reliable qualities.



The greatest care is taken to provide a thoroughly reliable garment at the lowest possible price, combining refinement of taste with the highest grade of excellence.

Vanderplank's are specialists and have expert knowledge to place at your disposal, and are showing the Newest Fashions in Fur Wear of high grade peltry, with the advantage of choice from the largest stock,

Sketched on the left is a Coat of beautiful quality Seal Coney, has new draped collar, and is a really handsome model. Price 21 and 30 Gns. Same Model also in Nutria Beaver. It is impossible to sketch in the Musquash Coat on the right the richness of colour and the depth of fur. Priced at 35 and 50 Gns. Or without Skunk Collar 21—25 Gns.

The disposal of the lease of our Promenade Establishment offers a unique opportunity to purchase from a fine collection of Furs at at least a third under market value. This includes a beautiful collection of natural Cross Canadian Foxes, Red Fox, Blue Wolves, etc

381 HIGH ST. & PROMENADE,  
CHELTENHAM.



**THE CHELTENHAM CHRONICLE**  
AND  
**GLO'SHIRE GRAPHIC**

With which is Incorporated the "Cheltenham Looker-On."  
GRATIS SUPPLEMENT. Saturday, October 20, 1923.

No. 1,190.

**CHELTENHAM THEATRE AND OPERA HOUSE.**

THIS AFTERNOON (2.30) AND EVENING (7.30): "SALLY."  
NEXT WEEK: A New Musical Comedy—"THE COUSIN FROM NOWHERE."  
Direct from the Prince's Theatre, London.

**THE PALACE,**  
HIGH STREET, CHELTENHAM.

Continuous, 2.30 to 10.15.  
MONDAY to WEDNESDAY.  
EILEEN PERCY and Special  
Cast in  
"THE FLIRT,"  
Booth Tarkington's Masterpiece.  
Great Wireless Chapter Play:  
"THE RADIO KING."  
THURSDAY to SATURDAY.  
RICHARD BARTLEMESS  
(Of "Way Down East" fame) in  
"TOL'ABLE DAVID,"  
The Gold Medal Best of the Year  
Production.  
NICK CARTER SERIES.  
Our Gang Comedy:  
"THE FIREFIGHTERS."

**DAFFODIL PICTURE  
HOUSE.**

MONDAY and ALL THE WEEK.  
Great Cinematograph Masterpiece  
"LOVE, LIFE, AND  
LAUGHTER."  
Featuring BETTY BALFOUR.  
Times: 3.30, 6.0, and 8.30.  
Monday, Tuesday, Wednesday:  
Wonder Women of the World.  
With Stanley in Africa, Ep. 4.  
Thursday, Friday, Saturday.  
In addition to "Love, Life, and  
Laughter."  
Milton Rosmer & Irene Rooks in  
LADY WINDERMERE'S FAN.  
"White Eagle," Episode 11.  
Up-to-date Leading Football Clubs

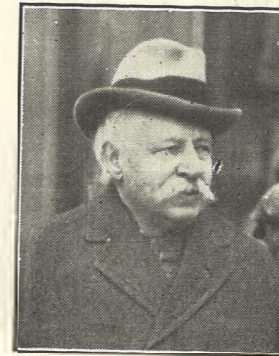
Established 1806.

**Martin & Co.,**  
Limited.

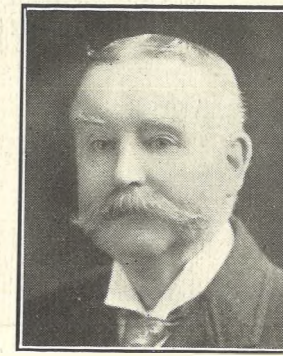
**The County Jewellers,**  
PEARL & DIAMOND MERCHANTS.

A Fine Collection of Rare Antique  
Silver and Old Sheffield Plate.  
We are purchasers of Antique  
Silver and Fine Quality Gems.  
Best prices given.  
LICENSED VALUERS.

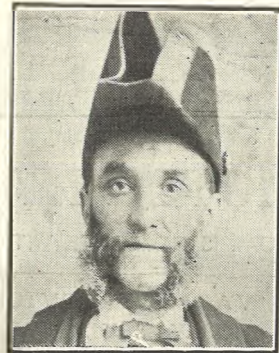
Promenade, CHELTENHAM.



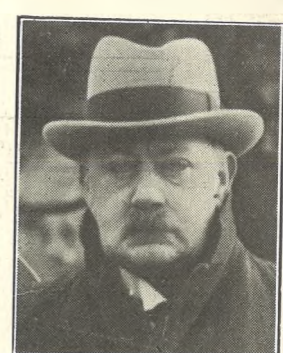
**MR. H. P. FERNALD,**  
Of 7 Montpelier-villas, Cheltenham, who died on October 12th, aged 80 years. He was always known as "Doctor" and was a great favourite. He fought and was wounded in the American Civil War, and retained his American nationality.



**MR. W. L. HAMBLING,**  
Of Cheena, Coronation-road, Cheltenham, and late of 414 High-street, who died on Oct. 9th, aged 68 years. He was a well-known watchmaker and jeweller in High-street, and a member of All Saints' Church Choir for many years.



**MR. NELSON T. TOWNLEY**  
Of Tewkesbury, who died on October 8th, in his 83rd year. He was formerly Town Crier of the Borough and a Mace-bearer.



**MR. A. E. SCOTT,**  
Of The Hawthorns, St. Mark's, Cheltenham, who died October 13th, aged 58 years. He was the proprietor for some years of the pawnbroker's establishment in Chester-walk, and was a popular member of the Cheltenham Bowling Club.

**WINTER GARDEN,**  
CHELTENHAM.

MONDAY to WEDNESDAY.  
"THE GRADLE OF  
THE WORLD."  
Or 5,000 MILES ACROSS  
CENTRAL AFRICA WITH A  
CAMERA.  
As now being shown at the  
Philharmonic Hall, London.  
THURSDAY to SATURDAY.  
Constance Talmadge  
IN A FRISKY EXAMPLE  
FROM EVE,  
"MAMMA'S AFFAIR."

Telephone 1080.  
**W. SCOTT COOPER,**

Goldsmith and Silversmith,  
Diamond Merchant, Jeweller,  
The Promenade, Cheltenham.

A large selection of Second-hand  
Jewels and Antique Silver always  
in stock at bargain prices.  
Estimates, designs free of charge.  
Old Gold, Silver, and Gems  
purchased for cash or taken in  
exchange.

**FISHER'S** (Late  
E. Fisher)

69 Regent Street, Cheltenham  
High-Class TAILORS.

:: AUTUMN :: BREECHES  
NEW PATTERNS. | a Speciality.  
First-class Cutter—25 years' London experience

**FILMS POSTED**

to us are despatched same  
day Developed and Printed.

NEW FILMS POST FREE.  
**R. F. HUNTER, Ltd.,**  
Specialists in Photography.  
3 Promenade, CHELTENHAM.

For the Best **PIANOS, DALE, FORTY and Co. Ltd**



**CHELTENHAM DICKENS FELLOWSHIP PERFORM "GREAT EXPECTATIONS."**

On Friday and Saturday, October 12th and 13th, the Cheltenham Dickens Fellowship gave three performances at the Town Hall of "Great Expectations."

- 1.—Mr. L. P. Pugh as "Herbert Pocket," Mr. W. Palmer as "Mr. Jaggers," and Mr. L. Harrison as "Bentley Drummie."
- 2.—Mrs. A. G. Dye as "Biddy," and Miss F. Beard as "Mrs. Gargery."
- 3.—Mrs. A. G. Dye, Miss Enid Leeson as "Philip Pirrip" (Little Pip), and Mr. A. G. Dye as "Joe Gargery."
- 4.—Miss J. Lovell as "Estella."
- 5.—Mr. W. H. Knee as a soldier, and Mr. C. J. Birkin as a sergeant.
- 6.—Mr. G. Pardington as "Mr. Pumblechook."
- 7.—Mr. H. O. Barnett as "Abel Magwitch."
- 8.—Mrs. Leedham as "Miss Havisham," and Mr. E. H. Williams as "Mr. Pip."

"Cheltenham Chronicle" Photos. Copies 1s. each, unmounted. Postage 2d. extra.

**BRITAIN'S BOAST.**



BETTY BALFOUR, Britain's own film star, who proves in "Love, Life, and Laughter," that she has no equal in the world, showing at the Daffodil Picture House all the week, commencing Monday, October 22nd.

**R.F. BEARD IP.**  
SANDRINGHAM HOUSE

**MOTOR MASCOTS.**

NO CAR IS COMPLETE WITHOUT A MASCOT.

VARIOUS DEVICES FROM  
FINELY SCULPTURED MODELS  
:: :: IN SOLID METAL. :: ::

SPECIAL MASCOTS REPRODUCED  
:: :: FROM SEALS, ARMS, Etc. :: ::

PROMENADE  
CHELTENHAM

WHEN YOU HAVE READ THE "GRAPHIC," SEND IT TO YOUR FRIENDS AWAY.

THE  
All-British Piano  
of  
TRADITIONAL SUPREMACY—  
**Broadwood**

The choice of all Great Masters  
from Handel to the present  
day.



**Crichton's Ltd.,**

THE PIANO HOUSE,  
Promenade, Cheltenham.  
(Opposite G.P.O.)



BETTY BALFOUR, in "Love, Life, and Laughter," at Daffodil Picture House, all next week.

**WOOL UNDERCLOTHING**

"THETA" FINISH.  
Thoroughly Reliable and Recommended.  
**VESTS, 8/11, 10/6, 12/6.**

Long or Short Sleeves. For 36 Chest  
PANTS TO MATCH at slightly higher prices.  
All Sizes up to 48-inch Waist.  
Better and Lower Qualities also in Stock.

**A. Beckingsale,** 111 HIGH STREET,  
CHELTENHAM.  
Phone 406.

**LANCE'S**  
**RELIABLE**  
**FURS**  
AT  
Moderate Prices.



This fashionable Short COAT, style as sketch, may be had in Mole Coney at 8½ Gns.

- Beaver Coney .. .. 10½ Gns.
- Seal Coney .. .. 8½ Gns.
- Silver Mushquash .. .. 7½ Gns.

It may also be had in good quality Curl Cloth, in Black, Brown, Grey, Beave. Prices from 39/6 to 79/6.

**John Lance & Co.**  
LIMITED, FUR SPECIALISTS  
CHELTENHAM SPA.



**AMBULANCE DAY IN CHELTENHAM.**

A snap of workers at the Children's Corner Stall, in the Promenade.  
"Cheltenham Chronicle" Photo. Copies 1s. each.

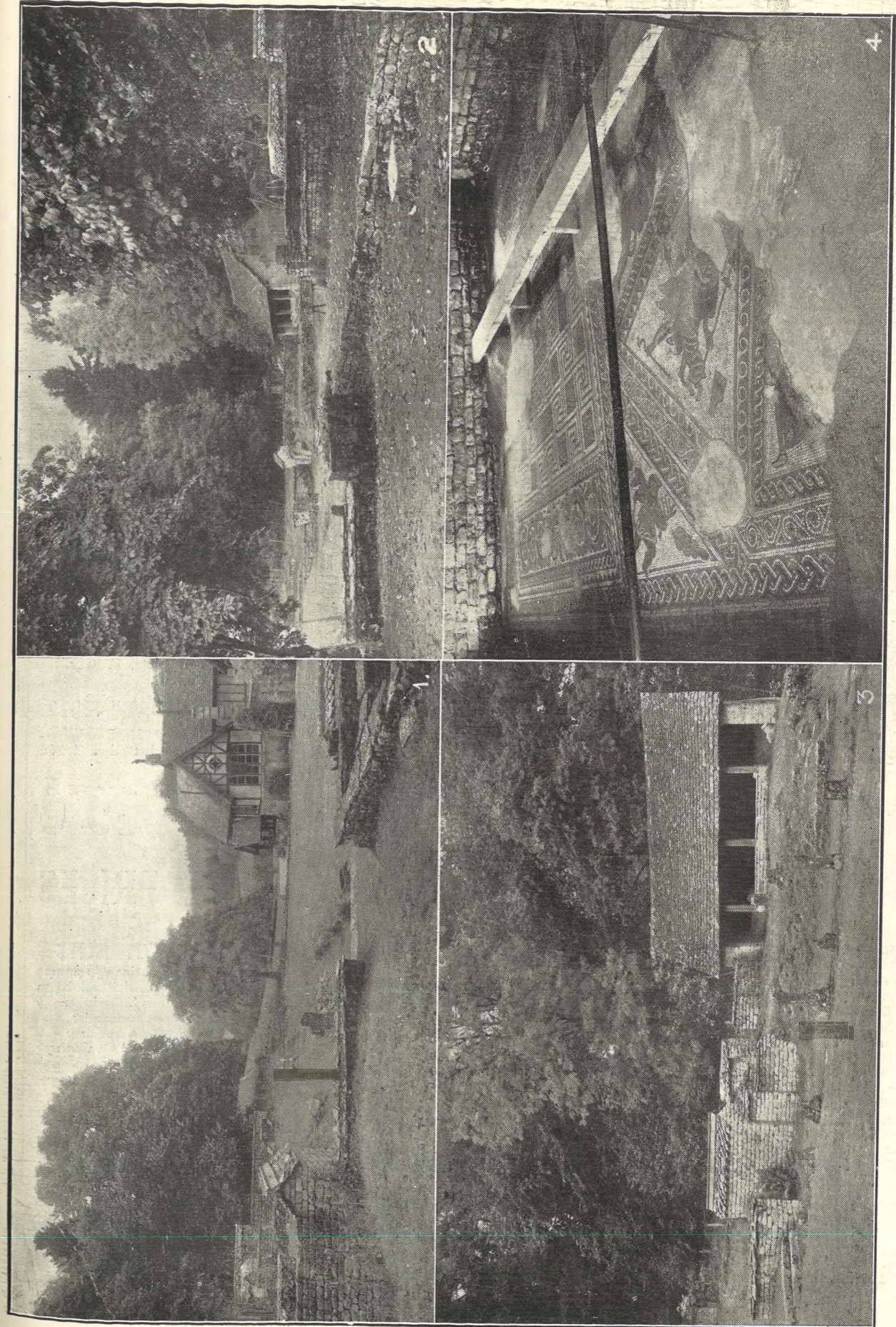


**NEW MASONIC LODGE CONSECRATED IN CHELTENHAM.**

On Tuesday afternoon the Right Worshipful Provincial Grand Master, Sir James Bruton, M.P., assisted by W. Bro. F. K. Foster, O.B.E., D.P.G.M., and their Provincial Officers, consecrated the new Perseverance Lodge of Freemasons, in Cheltenham at the Town Hall. A great many county members were present, and a banquet was afterwards held.

- 1.—Bro. H. A. Dancey on left (Gloucester).
- 2.—Dr. Ewbank Lansdown and Bro. G. F. Collett.
- 3.—Bros. Clutterbuck and Dimmer (Cheltenham).
- 4.—Bro. Roberts (Gloucester) in centre.
- 5.—The lady entered the Town Hall with the others.
- 6.—Bros. Broom and Daniels (Cheltenham).
- 7.—Dr. Ewbank Lansdown and Bro. G. F. Collett.
- 8.—Bro. Roberts (Gloucester) in centre.
- 9.—The lady entered the Town Hall with the others.
- 10.—Bro. Roberts (Gloucester) in centre.
- 11.—The lady entered the Town Hall with the others.
- 12.—Various Brethren arriving.

"Cheltenham Chronicle" Photos. Copies 1s. each. Postage 2d. extra.

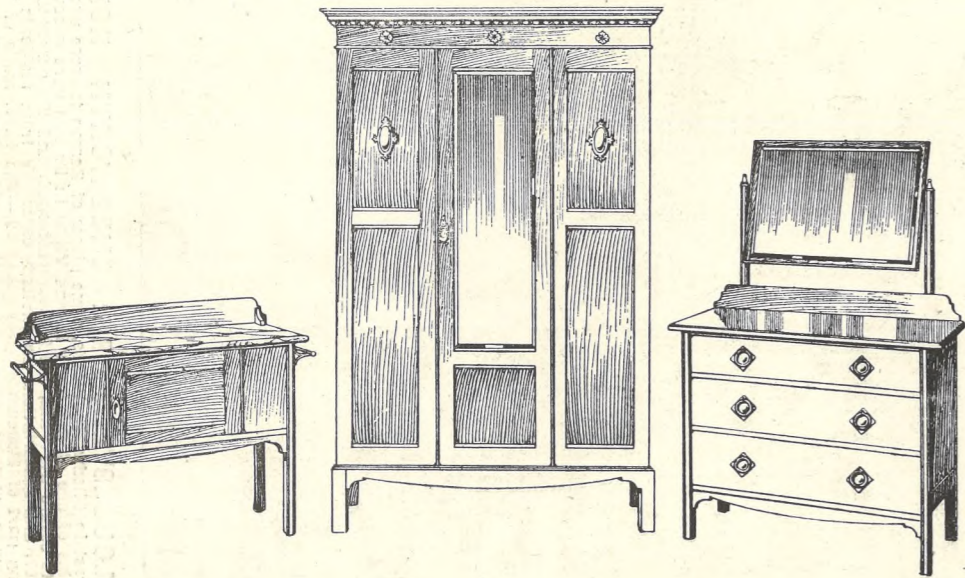


**PICTURESQUE GLOUCESTERSHIRE: CHEDWORTH ROMAN VILLA.**  
 In the year 1864, while a rabbiting party were digging for a lost ferret in Chedworth Woods, some pieces of Roman tesserae were unearthed on the Earl of Eldon's estate, and on further scientific digging, under Lord Eldon's enlightened care, the remains of one of the finest Roman Villas in Britain were uncovered. The Stowell Estate having been recently sold, a fund is now being raised by Mr. St. Clair Baddeley, of Painswick, Glos., to secure the Villa, the Museum attached, and the surrounding site of about seven acres for the National Trust at the N.W. angle of Villa remains.  
 1.—View from N.W., showing part of Museum and caretaker's lodge, with remains of Roman Colonnade and Walls.  
 2.—The Dining Room.  
 3.—The Dining Room.  
 4.—The Dining Room.  
 "Cheltenham Chronicle" Copyright Photos, unmounted, 1s. 9d. each. Postage 2d. extra.

# BLINKHORN'S GREAT FURNISHING WEEK.

You will be well advised to visit BLINKHORN'S this week to see for yourself the Wonderful Value offered in Bedroom, Dining Room & Upholstered Suites. This is what the bargains amount to—The Furniture for 2 Bedroom, a Dining Room and a Sitting Room, all bearing the guarantee of Complete Satisfaction, for something less than £75.

But come and see for yourself the amazing Bargains.



### THE "DEERHURST" SUITE.

A splendidly built Oak Bedroom Suite, finished in dark brown, antique shade, designed for Bungalows, Municipal Buildings, etc. Comprising 4ft. Wardrobe, with good dress accommodation, full length Mirror in door; 3ft. 3in. Dressing Chest with adjustable mirror and three long drawers; 3ft. 3in. Washstand, enclosed bottom, with marble top and back, also towel rail. Price separately—Wardrobe, 11 Gns., Dressing Chest & Washstand 11 Gns. The Suite complete, 17 Gns.

### THE "BEAUFORT" SUITE.

Details as above, but 2ft. 9in. Wardrobe, 2ft. 9in. Washstand, and 2ft. 6in. Dressing Chest.

The Suite Complete, **£9 19 6**

## GUARANTEED GOODS at GLOUCESTER'S LOWEST PRICES

### THE BIRCHWOOD SUITE

A luxurious three-piece Upholstered Suite, soundly constructed on the most satisfactory and hygienic lines that modern methods can devise. This Suite is of handsome appearance & designed for solid comfort. It is splendidly upholstered in a good quality Shadow Tissue or Fadeless Damask of attractive designs on neutral coloured grounds, comprising 5ft. Settee with drop end, deep seating accommodation; also Two Large Divan Easy Chairs. Each piece is well sprung and stuffed, will give splendid service. The Suite complete,

**£21**

Can be purchased separately—Settee, £12, Easy Chair, each £5 19 6.

### THE GLOUCESTER SUITE

A comfortable and reliable three-piece Suite, fully upholstered, well sprung and carefully stuffed, covered in a beautifully designed Damask or Tapestry of reliable quality. The Suite comprises a 4ft. Settee, one end of which is made to drop down, has splendid and comfortable seating accommodation; also Two Large Easy Chairs, giving the maximum amount of comfort. The Suite complete,

**12 Gns.**

Can be purchased separately—Settee, 6 Gns., Easy Chairs, 75/- each.

### THE DE LUXE SUITE

A Roomy Bedroom Suite of fine appearance and excellent workmanship, finished in a beautiful antique shade. The Suite is heavily built, has every possible accommodation, and will give splendid service. Comprising 4ft. Wardrobe with good dress room, Oval Mirror in door; 3ft. 3in. Dressing Chest; with sunk centre of excellent proportions and plenty of drawer space, 2 large and 2 small, with adjustable Oval Toilet Mirror; 3ft. 3in. Washstand, enclosed, with marble top and back; also Towel Rails at each side. The Suite complete.

**22 Gns.**

Can be purchased separately Wardrobe 14 Gns., Dressing Chest and Washstand 14 Gns.

WRITE FOR FREE ILLUSTRATED LEAFLET of FURNITURE BARGAINS.

BLINKHORN Ltd.,

EASTGATE STREET,

GLOUCESTER.



### PROPOSED NEW MOTOR FIRE ENGINE FOR CHELTHENHAM.

On Thursday, October 11, the members of the Cheltenham Town Council and Rural District Council gathered in Pittville Park to witness a demonstration by a Leyland Motor Fire Engine. The two Councils propose to jointly purchase a new Motor Fire Engine.

- 1.—Demonstrating how high a jet of water can be thrown, in comparison to height of Pump Room.
- 2.—The Mayor and members of the Councils have a ride on the engine.

- 3.—This jet reached right across Pittville Lake.
- 4.—Seven hose pipes being used at once, six from water pumped from lake, and the

- 5.—Members of the Councils watching demonstrations.

"Cheltenham Chronicle" Photos. Copies 1s. each. Postage 2d. extra.

BEST QUALITY  
CIDERS

IN BOTTLE.—Sparkling and Still.  
BARTHOLOMEW,  
419, 420 HIGH STREET,  
CHELTHENHAM.

WINES, SPIRITS, ALES, TABLE WATERS  
and GROCERY.

LET MOUSELLS MOVE YOU.



Estimates for Removals and Storing Free.

CHELTHENHAM.

Offices: AMBROSE STREET.

HIGH PRICES

Paid for Ladies', Gentlemen's, and Children's Discarded Wearing Apparel—Boots, Shoes, etc. A Postcard to

DEANE'S WARDROBE DEPOT,  
31 Worcester Street,  
GLOUCESTER,

Will Receive Prompt Attention.

THE NOTED HOUSE FOR FAIR PRICES



**Cheltenham College v. Blackheath A, Saturday, October 13th. The College were Beaten by 34 pts. to 5.**  
 1.—In centre, the Rector of Cheltenham; on left of him, Mr. A. A. Hunter; on right, Mr. H. V. Page.  
 2.—Some of the juniors enjoying themselves.  
 3.—Pacey kicks a fine goal from the touch line, Bunny, the scrum half, who played a noticeably fine game, placing the ball.  
 4.—The College team.  
 5.—A good tackle.  
 6.—A fine round of passing by Blackheath, from which they scored.

**SPECIAL OFFERS. READY-to-WEAR GOODS AT UNUSUALLY Low Prices.**

We make a Speciality of stocking all sizes in Ready-to-Wear Garments, particularly extra large sizes.

**Ladies' Velveteen Frocks** of splendid quality, with plaited girdle (as illustrated), in Saxe, Golden, Brown and Navy, 35s. 6d.

**Girls' Dresses** in Serge, 10s. 11d. to 25s. 6d. G y m. Slips 4s. 11d. to 13s. 11d.

**Infants' and Toddlers' Coats** from 3s. 11d. to 25s. 6d.  
**Knitted Wool Sets** (Coat, Brechettes, and Cap) 9s. 11d., 15s. 11d., 18s. 11d.

**Fur Necklets** in Black Goat, with head and tail 8s. 11d. In Grey Fox 49s. 6d.

**Ladies' Jaconard Velour Coats**, lined Fur on Collar, Worth 59s. 6d. 39s. 6d.  
**Special Tailor-made Showers**, Tweed Coats, 21s. 6d. Usually 39s. 6d.

**Dicks & Sons Ltd.**  
 172 & 173 HIGH STREET  
**Cheltenham Spa**  
 50 YEARS REPUTATION FOR VALUE.  
 TEL. 1007.

PRINTED AND PUBLISHED AS A GRATIS SUPPLEMENT BY THE CHELTENHAM NEWSPAPER COMPANY, LIMITED.

# THE CHELTENHAM CHRONICLE AND GLOUCESTERSHIRE GRAPHIC

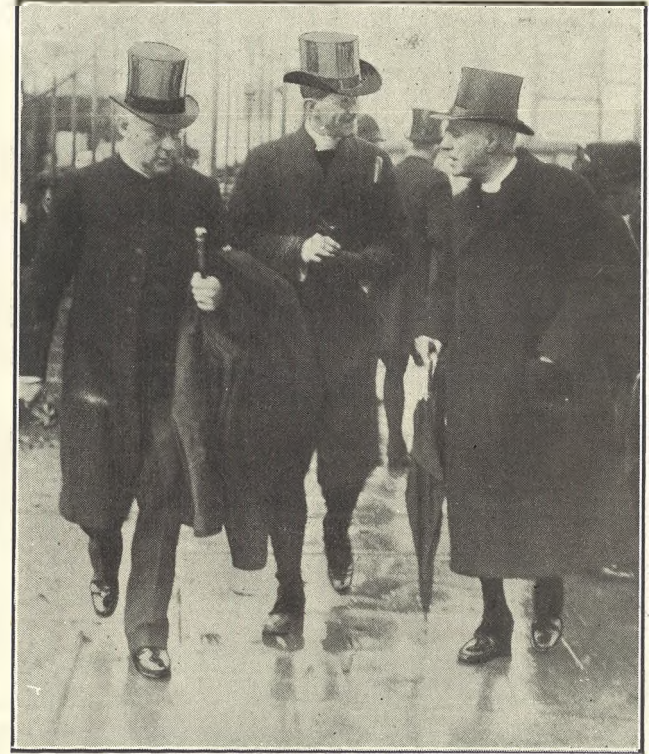
With which is Incorporated the "Cheltenham Looker-On."  
 GRATIS SUPPLEMENT. Saturday, October 27, 1923. No. 1,191.

**CHELTENHAM THEATRE AND OPERA HOUSE.**  
 THIS AFTERNOON (2.30) AND EVENING (7.30): "THE COUSIN FROM NOWHERE."  
 NEXT WEEK: Sir Gerald Du Marier and Frank Curzon's Co. in—"THE DANCERS."

**THE PALACE, HIGH STREET, CHELTENHAM.**  
 Continuous, 2.30 to 10.15.  
 MONDAY to WEDNESDAY.  
 PAULINE STARKE and Special Cast in  
**"My Wild Irish Rose."**  
 Introduction by Ballad Singer. Comedy: "BE A BUTLER."  
 THURSDAY to SATURDAY.  
 LOUISE GLAUM and JAMES KIRKWOOD in the Bantini Pathocolour Picture Play,  
**"LOVE."**  
 FELIX, THE SUPER CAT. Johnny Jones Comedy, "SUPPLY AND DEMAND."

**DAFFODIL PICTURE HOUSE.**  
 Monday, Tuesday, Wednesday.  
 HELENE CHADWICK and an All Star Cast in The  
**"DUST FLOWER."**  
 Bryant Washburn in "IT PAYS TO ADVERTISE." With Stanley in Africa, Ep. 5.  
 Thursday, Friday, Saturday.  
**"What Do Men Want?"**  
 "WHITE EAGLE," Episode 12. Football Clubs: Sunderland. Comedy. Interest. Travel.  
 Next Week: "THE MONKEY'S PAW."

Established 1806.  
**Martin & Co., Limited,**  
**The County Jewellers,**  
 PEARL & DIAMOND MERCHANTS.  
 A Fine Collection of Rare Antique Silver and Old Sheffield Plate. We are purchasers of Antique Silver and Fine Quality Gems. Best prices given.  
 LICENSED VALUERS.  
 Promenade, CHELTENHAM.



**Tewkesbury Abbey Octo-Centenary.**  
 Never before in the history of the Abbey of Tewkesbury has such a distinguished galaxy of ecclesiastical and civic dignitaries assembled as that which gathered on Tuesday morning last to celebrate the 800th anniversary of that, the noblest parish church in England. Above is seen two Archbishops entering the Abbey, the Archbishop of Dublin in centre, the Archbishop of Canterbury on right.—"Cheltenham Chronicle" Photo. Copies 1s. each, postage 2d. extra.

**CHELTENHAM ROOT, FRUIT, GRAIN and CHRYSANTHEMUM SHOW**  
 THURSDAY NEXT. ∴ TOWN HALL, CHELTENHAM.  
 A SPLENDID EXHIBITION.

**WINTER GARDEN, CHELTENHAM.**  
 2.30—Continuous—10.15.  
 MON. and ALL THE WEEK.  
**JACKIE COOGAN**  
 In his Latest and Greatest,  
**"TROUBLE."**  
 A SHOWER OF LAUGHS and A SPRINKLE OF TEARS. "FELIX THE CAT."  
 In two different editions of Eve's Review, one on Monday, Tuesday and Wednesday, and another Thursday, Friday, and Saturday.

**MAISON ANNETTE**  
 Kensington House, Promenade, Cheltenham,  
 SPECIALISTS IN EXCLUSIVE  
**CORSETS & LINGERIE.**  
 Phone 1122.

**R. F. HUNTER, Ltd., OFFER**  
 1/4-Plates at 2/3 per Doz.  
 1/2-Plates at 4/6 " " "  
 Postcards (ALL GRADES) 5/6 100.  
 3 Promenade, Cheltenham (Opposite Cavendish House).

For the Best **PIANOS, DALE, FORTY and Co., Ltd.**



**Mr. F. G. Fildes' New Grocery Premises at Montpellier.**



Mr. F. G. Fildes, of Cheltenham Spa Stores, has now opened what is undoubtedly one of the finest grocery and provision stores in Cheltenham at No. 1 Rotunda Terrace, Montpellier. Mr. Fildes has been established for 19 years as a high-class grocer five doors below, but having no room for expansion, and owing to his increased clientele, he was obliged to seek larger premises. The new place is ideally situated at the top of Montpellier, facing the Gordon Lamp. It is stocked with the choicest and best of everything sold by the trade. Many shop windows have been fitted recently in Cheltenham, but none will beat the above for general appearance and easy display of goods. The architect for the alterations was Mr. L. W. Barnard, A.R.I.B.A., Cheltenham, and Messrs. A. C. Billings and Sons were contractors.—“Cheltenham Chronicle” Photos. Copies may be obtained.



**Gloucestershire Branch of the Scientific Poultry Breeders' Association.** Some of the party who visited the Green Poultry Farm, Shurdington, on Saturday last. “Cheltenham Chronicle” Photo. Copies 1s. each, postage 2d. extra.



**BROCKHAMPTON CHAPEL HARVEST THANKSGIVING.** The Altar Table was very nicely decorated at the Thanksgiving Services at Brockhampton Baptist Chapel.

**COVERS FOR THE “GRAPHIC.”**

WE HAVE IN STOCK A NUMBER OF STOUT COVERS FOR THE “GRAPHIC,” IN DARK GREEN CLOTH AND GILT LETTERING. THE COVERS WILL TAKE A FULL YEAR'S ISSUE OF THE POPULAR PICTURE PAPER, AND YOU CAN THUS KEEP THE “GRAPHIC” FROM WEEK TO WEEK AND KNOW WHERE TO FIND IT. POST FREE TO ANY ADDRESS **SIXPENCE.**

**LANCE'S**

*Astounding Offer of*

**Woollen Fabrics**

**BRADFORD MAKER'S STOCK.**

*Will be offered for a few days at*

**Half to-day's Prices**

The Stock comprises of useful  
Tweeds, Gabardine  
Suitings, Blanket  
Velour, All Wool  
Delaines, Serges,  
Wool Velour, Curl  
::: Cloths, Etc., :::

and will be cleared at prices ranging from

**2/- 3/- 4/-  
5/- to 10/- Per Yard.**

The materials offered are useful for a variety of purposes, and we have every confidence in recommending our Customers to take advantage of this unique offer.

**John Lance & Co.**  
LIMITED,  
CHEL TENHAM SPA.



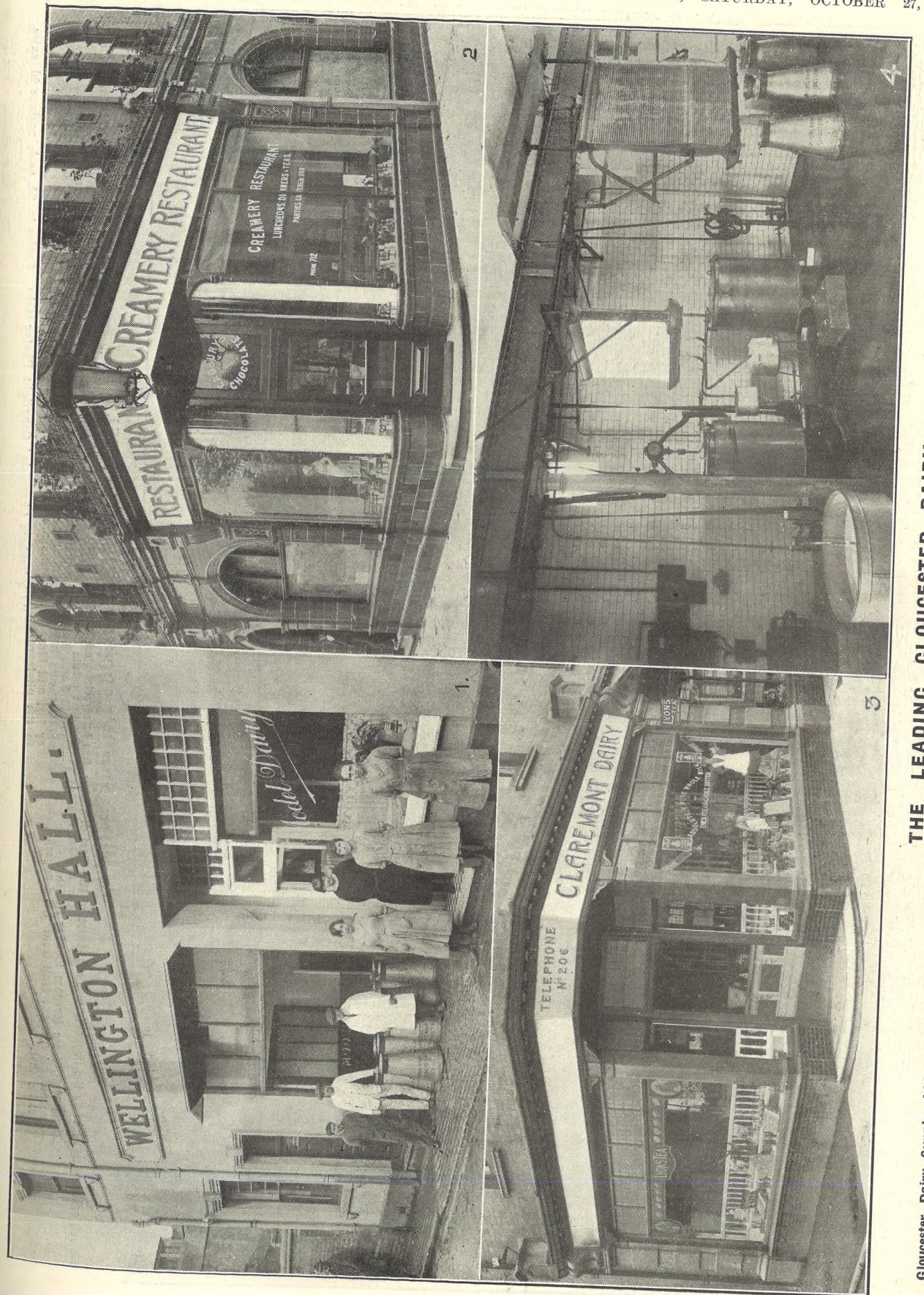


**ROUND THE TOWN IN CHELTENHAM.**

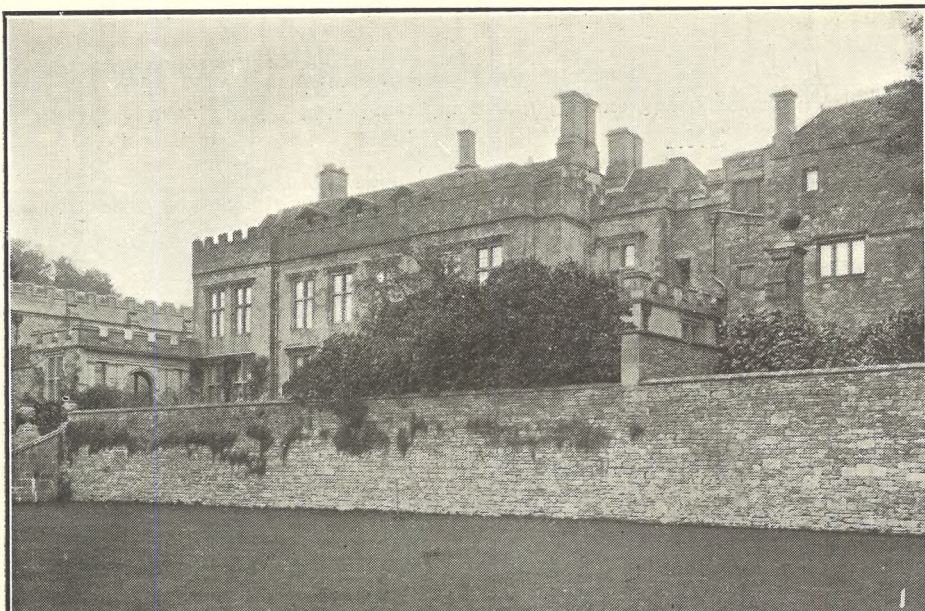
Some snaps in Cheltenham on Wednesday morning last, taken between the showers.

- |  |   |   |
|--|---|---|
| 1.—Pleasant company.                                   | 5.—Making for home and dinner.                | 8.—Striking up a canine acquaintanceship. |
| 2.—Col. G. W. B. Swiney chatting with a friend.        | 6.—Doggie must not get his feet wet.          | 9.—Carrying mother's umbrella.            |
| 3.—Umbrellas shut for the time being.                  | 7.—Miss Winterbotham with two of her nephews. | 10.—Making the most of the morning.       |
| 4.—Mr. P. E. Boddington, Art Master of Grammar School. |   |   |

"Cheltenham Chronicle" Photos. Copies 1s. each, postage 2d. extra.



**THE LEADING GLOUCESTER DAIRY.**  
 Gloucester Dairy Supply, Ltd., Longsmith Street, Clarence Street, Wellington Street, Gloucester. Established 1885. Manufacturers of Choicest Dairy Products.  
 1.—The Model Dairy and Working Factory, Longsmith Street. Telephone 206.  
 2.—The Creamery, Clarence Street, and the branch shops: Claremont Dairy, London Road.  
 3.—The Creamery, Clarence Street, and the branch shops: Claremont Dairy, London Road.  
 4.—The Pasteurizing and Cooling Plant at Longsmith Street.  
 5.—The Pasteurizing and Cooling Plant at Longsmith Street.  
 "Cheltenham Chronicle" Photos. Copies 1s. 9d. each, postage 2d. extra.



**PICTURESQUE GLOUCESTERSHIRE: STOWELL.**

Stowell Hall, until recently the property and residence of the Earl of Eldon, has lately changed hands. It is picturesquely situated near the Northleach and Cheltenham road, and adjoining the famous Fosse-way. On this estate is the famous Chedworth Roman Villa.

1.—The Hall, from terraces looking north.  
2.—Another view of the Hall from the Lodges, looking east.

3.—The old Farm House, Yanworth, a very old Cotswold homestead, now occupied by Mr. and Mrs. Telling, who are seen in the photograph.

4.—The Toll Barn, Church Farm, Yanworth. Note the Early English doorway now built in at side.

“Cheltenham Chronicle” Copyright Photographs. Copies 1s. 9d. each, postage 2d. extra.



**IMPORTANT AGRICULTURAL SALES ON THE STOWELL PARK ESTATE, GLOS.**

Photographs of some of the Cattle and Sheep included in the Sales which Messrs. Bruton, Knowles, and Co. are conducting for the Right Hon. the Earl of Eldon, for whom they have sold the Estate. There are three separate sales of farm stock, Nov. 2, Nov. 14, and Nov. 20.

1.—The herd of Dairy Cows to be sold at Stowell Park Farm on Friday, Nov. 2nd, 1923, at 11 o'clock.

2.—Four of the in-calf heifers, to be sold on November 14th.

3.—Team of working oxen, to be sold at Stowell Park Farm, Oxpens Buildings, on Wednesday, Nov. 14th, 1923, at 11 o'clock.

4.—Some of the ewe lambs to be sold at Church Farm, Yanworth, on Tuesday, November 20th, 1923.

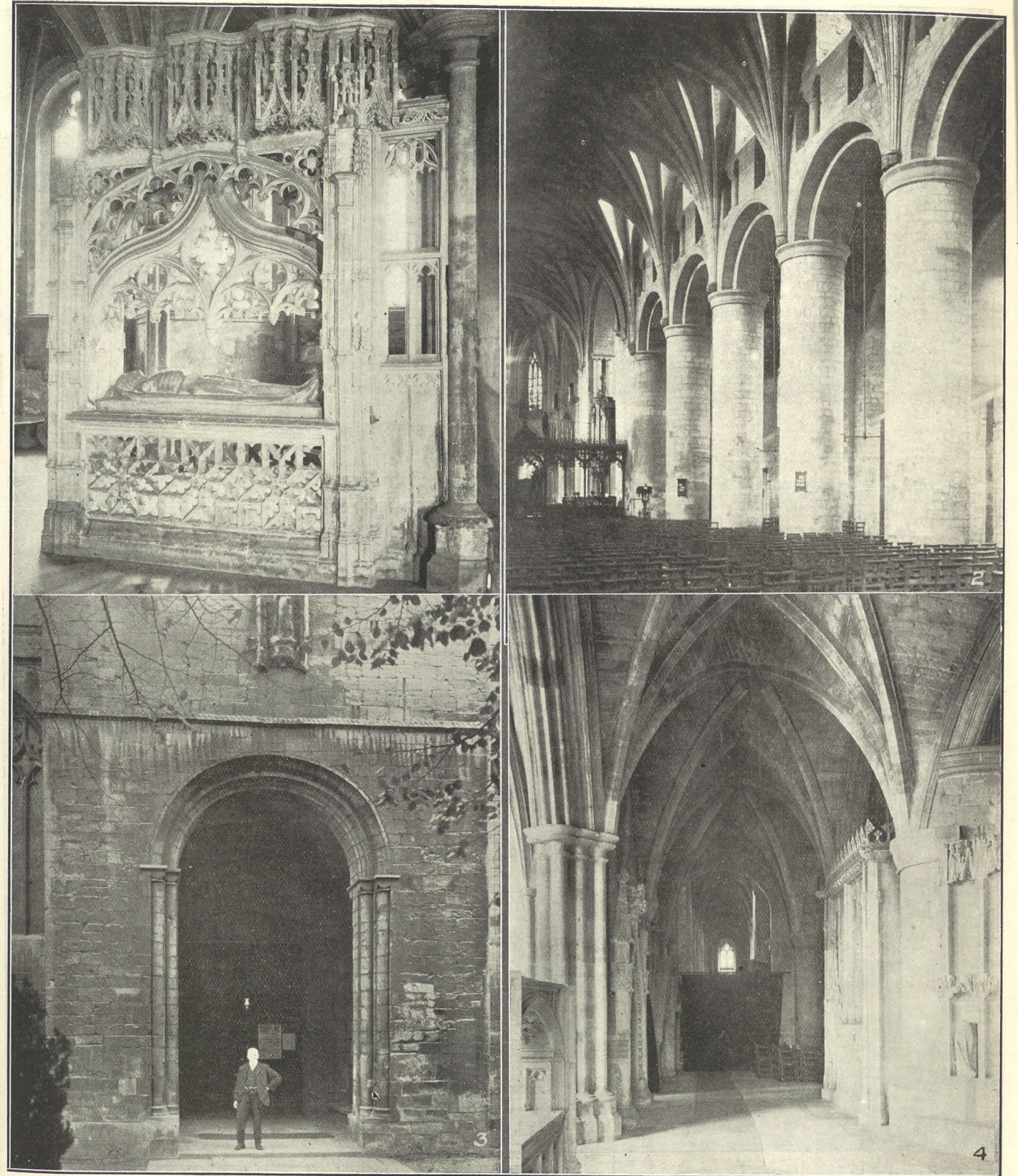
“Cheltenham Chronicle” Photos. Copies 1s. each unmounted, postage 2d. extra.



**TEWKESBURY ABBEY 800th ANNIVERSARY.** Among many celebrated personages connected with the History of England who are buried here are George Duke of Clarence, who was drowned in a butt of Malmsey wine in the Tower of London, in 1478, and Edward, Prince of Wales, son of Henry VI., who was murdered after the Battle of Tewkesbury.

1.—The East end of the Abbey, showing exterior of apsidal chapels.  
 2.—The massive Norman pillars of the nave. Each is 6ft. 3in. in diameter and 30ft. high.  
 3.—View of Abbey from S.W.  
 4.—The Ambulatory, showing in centre the Clarendon tomb, on right the Wakeman Genotaph, and in foreground the Archdeacon Robeson memorial.

"Cheltenham Chronicle" Photos. Copies 1s. 9d. each, postage 2d. extra.



**800th ANNIVERSARY OF THE CONSECRATION OF TEWKESBURY ABBEY.**

The 800th anniversary of Tewkesbury Abbey's consecration was celebrated on Tuesday, October 23rd. We illustrate above some of the important and picturesque details of the famous old building, which was founded by Robert Fitz-Hamon, and completed by Robert Fitz-Roy in 1123.

- 1.—The Wakeman Genotaph, or "Monument of the Starved Monk."
- 2.—The massive Norman pillars of the nave. Each is 6ft. 3in. in diameter and 30ft. high.
- 3.—The north porch is of very fine proportions, but singularly plain. In doorway is Mr. W. G. Bannister, Sacristan of the Abbey for 32 years.
- 4.—View from South Ambulatory, looking down South aisle.

"Cheltenham Chronicle" Photos. Copies 1s. 9d. each, postage 2d. extra.



**GLOUCESTER v. CARDIFF RUGBY FOOTBALL MATCH.**

A very fine encounter was witnessed on Saturday last at Kingsholm, when these two famous sides played a drawn match of eight points each, before a fine crowd of over 5,000 spectators.

- 1.—Brown (Gloucester) in foreground, coming across to stop some tricky Cardiff play at a line-out. The new stand in distance.
- 2.—Some of the spectators.
- 3.—Hall saving a Cardiff forward rush.
- 4.—Bunching and jumping for the ball, a feature of the many line-outs.
- 5.—A Cardiff wing three-quarter kicking across.
- 6.—A view of one of the grand stands.

"Cheltenham Chronicle" Copyright Photos. Copies 1s. each, postage 2d. extra.

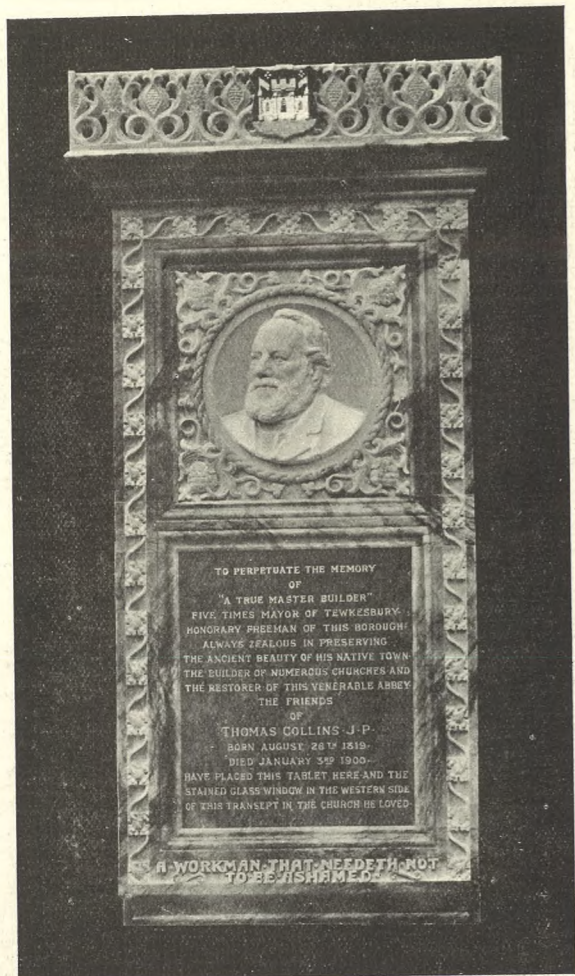
When You Have Read the "Graphic" Send It To Your Friends Away.



**A MAGNIFICENT GLOUCESTER BUSINESS.**

The fine premises of MESSRS. LEA & CO., of 60 NORTHGATE & ST. ALDATE ST., GLOUCESTER. They are known as Lea's Corner, and stretch up St. Aldate St., as far as the photograph shows. Messrs. Lea & Co., have been established over 150 Years, and are now the best house in the County for VALUE IN HOUSE FURNISHING GOODS both New and ANTIQUE. The ANTIQUE SHOP adjoins the above premises, and is stocked with valuable and interesting goods, well worthy of inspection.

ENQUIRIES SOLICITED. 'Phone 267. ALL GOODS DELIVERED FREE.



Being the Octocentenary of Tewkesbury Abbey, it may be of interest to recall the late Thomas Collins, J.P., who during his lifetime had so much to do with the Abbey. He died in 1900, and the above tablet was erected to his memory. Messrs. R. L. Boulton and Sons, Bath Road, Cheltenham, executed the work to the design of J. Oldrid Scott, Esq., F.R.I.B.A.

THE NOTED CUTLERY HOUSE. (Estab. 1820)

**HAYWARD & SONS**

Agricultural, General and Furnishing Ironmongers.

TEWKESBURY and UPTON-ON-SEVERN. Phone 39. Phone 7.

Cycles, Motor Cycles and Accessories. GUNS AND AMMUNITION.

Electric Lighting Supplies. Country House Lighting Plants. ESTIMATES FREE.

China and Glass Departments at Tewkesbury and Upton.

**Hop Pole Royal Hotel, TEWKESBURY.**

Proprietress: E. HALSALL.

FIRST-CLASS FAMILY AND COMMERCIAL HOTEL. Redecorated and brought Up-to-Date. EXCELLENT CUISINE. MODERATE TARIFF. Phone 36. "Grams—" Hop Pole.

"RIVERSIDE" Private Hotel and Gardens adjoining. (Under same management.)

**DON'T YOU WANT? SOME NEW SHIRTS?**

Our New Stock of "RADIAC" FLANNEL SHIRTS is sure to please you. There are such smart designs to choose from that you'll be delighted with them, and they are guaranteed unshrinkable.

PRICES range from - 6/11 to 14/6.

**DIXON & SONS, 2 High Street, TEWKESBURY.**

Gents' and Boys' Outfitters.

**Central Garage,**

Proprietor: THE CROSS, F. J. GYNGELL, TEWKESBURY.

Open and Closed Cars for Hire.

Agents for Daimler, B.S.A. and Standard Cars.

Raleigh Motor Cycles and Cycles.

GARAGE ACCOMMODATION FOR 50 CARS

Telephone No. 35. **BELL HOTEL, TEWKESBURY.** R.A.C., A.A., & C.T.C. (Opposite the Abbey Church).



The House depicted in "John Halifax Gentleman." Celebrated Bowling Green.

This Historic Old Hostel is known far and wide as being one of the most comfortable and best appointed in the country. Excellent Accommodation and First-Class Cuisine are its characteristics.

GOOD GARAGE. A. H. BOWERS, Proprietor.

**TO SUFFERERS from Rheumatism, COLD FEET, Etc.**

**RELIEF AT ONCE** BY USING ELECTRO-GALVANIC SOLES 2/6 pair. POST FREE.

Worn inside Boot. Send size Ladies' or Gent's. Extracts from a few Testimonials: "Relief in two days," "Relief after first day," "Great Benefit," "Most comfortable," "Wonderful effect."

**T. B. MILNER, 4 HIGH STREET, TEWKESBURY.**

**SWAN HOTEL.**

THE OLDEST AND PRINCIPAL HOTEL IN TEWKESBURY. (R.A.C., A.C.U.)

Established early in 1400. Terms Moderate.

Apply W. R. HOPKINS, Manager. Telephone 29. Telegrams "Swan."

**TEWKESBURY ABBEY**

AND ITS ASSOCIATIONS.

By the Rev. J. H. Blunt, M.A., with 14 Illustrations. Cloth, 138 pp., 3s. 6d.; Post free 4s.

SANDAL, SWORD AND SCEPTRE or 800 years of Tewkesbury Abbey, 62 pp. by the Rev. E. F. Smith, M.A., Vicar of Tewkesbury. 1s.; Post free 1s. 1d.

From R. A. NEWMAN, (late North), 139 High Street, TEWKESBURY.

IF YOU LIKE THE "GRAPHIC," but do not subscribe to it regularly, why not do so? We can post it from the Head Office at a quarterly subscription of 3s. 3d., or the paper can be obtained of any Newsagent in Town or County at Twopence Weekly.



**TEWKESBURY ABBEY OCTO-CENTENARY.**

- The magnificent service in memory of the 800th Anniversary of the Consecration of the Abbey took place on Tuesday last before a packed congregation.
- 1.—The civic procession leaving the Abbey, a Tewkesbury mace-bearer leading, followed by the Mayor and Town Clerk of Gloucester, then the Mayor of Cheltenham (Miss Clara Winterbotham), the rest covered by umbrellas in the pouring rain.
  - 2.—The Bishop of Hereford (Right Rev. M. Linton Smith, D.S.O., D.D.), with a lady entering the Abbey.
  - 3.—Ven. Archdeacon C. Ridsdale on right.
  - 4.—Front row: The Bishop of Hereford, the Bishop of Gloucester, the Archbishop of Canterbury, the Archbishop of Dublin, the Bishop of Llandaff.
  - 5.—Visitors leaving the Abbey.
  - 6.—Standing: The ex-Bishop of Gloucester, Rev. E. F. Smith (Vicar of Tewkesbury), two choir boys, Rev. H. H. V. de Candole (holding Archiepiscopal Cross), the Bishop of Worcester.

"Cheltenham Chronicle" Copyright Photos. Copies may be obtained, 1s. each, postage 2d. extra.



**TEWKESBURY ABBEY OCTO-CENTENARY.**

The weather was, unfortunately, very bad on Tuesday. Incessant rain stopped all outdoor proceedings, the picturesque procession of choirs, clergy, Bishops, and Archbishops, with their attendant chaplains, banners, etc., taking place inside the Abbey, instead of outside as planned.

7 and 8.—Tewkesbury civic officials leaving the Abbey, headed by the Mayor and Town Clerk.  
9.—The Bishops of Worcester (Right Rev. E. H. Pearce, D.D., C.B.E.) and Llandaff

(Right Rev. J. F. Hughes, D.D.) arriving at the Abbey.  
10.—The Archbishop of Canterbury arriving in Lord Coventry's car. He was met by the Dean of Gloucester (Very Rev. H. Gee, D.D.) and Colonel Sinnott.

11.—Earl Coventry disdained an umbrella. Rain was sheeting down.  
12.—A party of schoolgirls from Malvern.

"Cheltenham Chronicle" Photos. Copies 1s. each, larger size 1s. 9d., postage 2d. extra.



13.—Mr. J. Willis, sen. (left), J. Willis, jun. (right).  
14.—The head of the civic procession, Supt. Hopkins (Cheltenham) and Inspector Welchman (Tewkesbury) leading.  
15.—Three country visitors.  
16.—The Vicar of Tewkesbury, Rev. E. F. Smith, R.D., receiving Earl Beauchamp.  
17.—Visitors leaving the Abbey in the pouring rain.

"Cheltenham Chronicle" Photos. Copies 1s. each, postage 2d. extra.



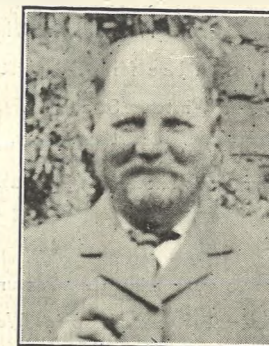
FOR CHRISTMAS CARDS : CHRISTMAS GIFTS :  
CALENDARS AND DIARIES FOR 1924.

**Historic . . .  
Tewkesbury.**

Described and Illustrated with fourteen woodcuts by  
**DOROTHY A. H. MILLS.**

Banks and Smith, Cheltenham; Davies and Minchin & Gibbs, Gloucester; Sesame Shop, Stroud; and Newman, Tewkesbury.

PRICE - 5/-



**Mr. Anson Slater,**  
Of Norton Cottage, Bredon's Norton, who died recently, and was buried at Bredon's Norton Churchyard on October 17th, amid every mark of respect.

DISEASES & DEFORMITIES OF THE FOOT  
**MR. ALFRED J. VENTRIS-FIELD.**  
SURGEON-CHIROPODIST, ORTHOPÆDIST, and ELECTRO-THERAPEUTIST.  
Author of "Pedic Surgery," "The Treatment of Talipes Valgus," "Poisonous Animals and Vegetables of the Countryside," etc., etc.  
Consultant H.M. Forces.  
Surgery: 6 RODNEY PLACE, CHELTENHAM.  
Telephone: Cheltenham 1266.

**WOOL UNDERCLOTHING**

"THETA" FINISH.  
Thoroughly Reliable and Recommended  
**VESTS, 8/11, 10/6, 12/6.**  
Long or Short Sleeves. For 36 Chest  
PANTS TO MATCH at slightly higher prices.  
All Sizes up to 48-inch Waist.  
Better and Lower Qualities also in Stock.

**A. Beckingsale,** 111 HIGH STREET, CHELTENHAM.  
'Phone 406.

ADVERTISE IN THE "ECHO."

**LET MOUSELLS MOVE YOU.**



Estimates for Removals and Storing Free.

Read the Echo Every Day **CHELTENHAM.** Offices: **AMBROSE STREET.**



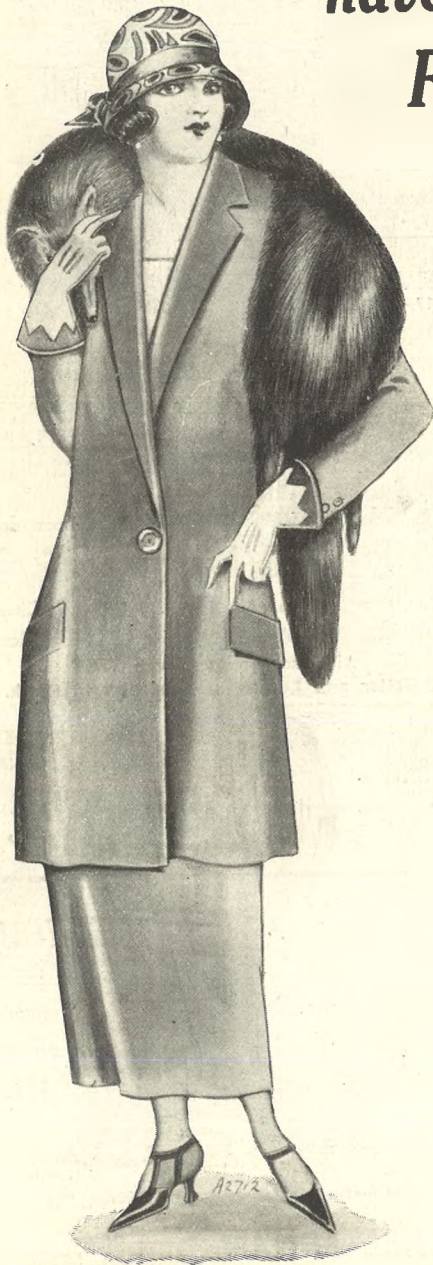
FASHIONS.

VANDERPLANK

(FROM HARRODS).

FURS.

have the Newest Winter Fashions and Furs.



The Winter Vogue of the Woman of Fashion is more than a change it is a transformation. The revived vogue of stateliness marks the triumphant entry of the Winter MODE.

The Costume Suit is the smart Suit. A practical fashion one must admit. The jauntiest of Tailor Mades form the pivot of these Costumes for Winter. Straight of line as a young birch tree, trimmed with Fur, or perfectly tailored, as sketch, at 5½ Gns.

Fur Stoles to wear with the Costumes in the popular Animal shape, Foxes or Wolves, fine, sleek silky pelts, and priced so low 'tis a shame to be without one. Kit Fox, 55/9; Red Fox from 73/6; Grey Wolf, 6½ Gns. upwards.

Fur Coats in Bunny or Beaver according to the price you wish to pay, but VALUE ALWAYS.



381 HIGH ST., CHELTENHAM.

Printed and Published as a Gratis Supplement by the Cheltenham Newspaper Co., Ltd.