

THE CHELTENHAM CHRONICLE AND GLO'SHIRE GRAPHIC

With Which is Incorporated the "Cheltenham Looker-On."

GRATIS SUPPLEMENT.

Saturday, May 5, 1923.

No. 1,166.

CHELTENHAM THEATRE AND OPERA HOUSE.

Resident Manager: H. OSWALD REDFORD.

This Afternoon (2.30), "THE PASSING OF THE THIRD FLOOR BACK"; This Evening (7.30), "DAVID GARRICK."

NEXT WEEK—The Successful Farce, "Oh! Alexander!"

THE PALACE, HIGH STREET, CHELTENHAM.

Continuous 2.30 to 10.15.
MONDAY to WEDNESDAY:
VIOLET HOPSON & STEWART
ROME in the
"WHITE HOPE."
A Brilliant All-British Sporting
Picture Play.
Comedy: "HIGH FLIERS."
THURSDAY to SATURDAY.
BETTY BLYTHE in
"MOTHER O' MINE,"
From the story of "The Octopus"
by Charles Belmont Davis.
Joe Rock Comedy: "Solid Ivory."

DAFFODIL PICTURE HOUSE, SUFFOLK PARADE.

MON., TUES., and WEDS.
RODOLPH VALENTINO and
ALICE TERRY in
"The Conquering Power."
PHILLI COMEDY.
THURS., FRI., and SAT.
Another Paramount Success.
ELSIE FERGUSON in
"FOOTLIGHTS."
"A BROKEN DOLL,"
A Delightful Comedy.
"THE JUNGLE GODDESS."
Episode 2: "The City of Blind
Waters."

COVERS FOR THE "GRAPHIC."—
We have in Stock a Number of
Stout Covers for the "Graphic,"
in Dark Green Cloth and Gilt
Lettering. The covers will take
a Full Year's Issue of the
Popular Picture Paper, and you
can thus keep the "Graphic"
from week to week, and know
where to find it. Post Free to
any address, Sixpence.

MARTIN & CO. LTD., Promenade, Cheltenham,

Purchasers for Cash Antiques of
all kinds, including Old Silver,
Jewellery, Sheffield Plate, China,
Coins, Miniatures, etc. Highest
Prices given for Rare Pieces.



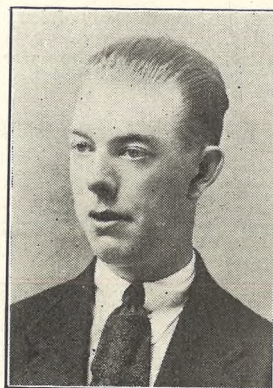
MR. W. W. TAYSUM,
Of Mount Cottage, Chal-
ford, who died Wednesday,
April 25th, aged 76 years.
He was a blacksmith and
a loyal Conservative.



MR. DAN WILTSHIRE,
Of Chalford Hill, Stroud,
who died on April 11, aged
57 years. He was a very
prominent member of the
Chalford Tabernacle.



MR. BERT PHELPS,
Younger son of Mr. and
Mrs. Leonard J. Phelps, of
the Union Inn, Stroud, who
died Tuesday, April 24th,
aged 25 years, from tuber-
culosis, the after-effects of
being gassed while in
France.



MR. W. H. BRIDGMAN,
Junr.,
Of Beaufort, Croft-road,
Charlton Kings, who died
in Cheltenham General
Hospital, April 20, aged 25
years. He was an assistant
of the Gloucester Co-op.
Society.

WINTER GARDEN, CHELTENHAM.

MONDAY NEXT & ALL WEEK.
Three times daily at 2.30, 5.15,
and 8 p.m. NOT CONTINUOUS.
D. W. GRIFFITH presents his
GREAT DRAMATIC EPIC,
"ORPHANS OF THE
STORM,"

Featuring
LILLIAN & DOROTHY GISH,
Supported by a Stupendous Cast
In a Story of Love and Adventure
during the Reign of Terror, and
founded on the World-famous
Play, "The Two Orphans."
USUAL PRICES.—The 1/3 and
1/- Seats may now be reserved.
Booking Fee 3d. extra. Phone
212.

Send the "Chronicle and
Graphic" to your friends.

FISHER'S (Late
E. Fisher)
69 Regent Street, Cheltenham
High-Class TAILORS.
: SEASON'S : BREECHE
NEW PATTERNS. | a Speciality.
First-class Cutter--25 years' London experience

DO YOU WANT
MORE BUSINESS?

Advertise in THE
"ECHO" and
"CHRONICLE"
—it brings results.

For the
Best

PIANOS, DALE, FORTY and CO. LTD



OPENING OF CHELTHENHAM TOWN BOWLS CLUB.

The Premier Club opened their beautiful green for the 1923 season on Saturday last, Mr. H. Unwin, vice-President, bowling the first wood on the second new green, which has been enlarged and relaid with sea-washed turf.

1—Mr. H. Unwin bowling the first wood. with lady friends and others. The Agg-Gardner, M.P., on behalf of the members.
 2, 3, 4, and 6.—Various rinks during play. The settee was presented to Mr. Ricketts during the afternoon by Sir James
 5—Mr. and Mrs. E. D. Ricketts (on settee)

"Cheltenham Chronicle" Photos. Copies 1s. each.

BELOW THE TOWN CLOCK.

An interesting establishment to be found in Cheltenham's new business centre (below the Town Clock), established over 70 years, supplying JEWELLERY and ANTIQUES at rock-bottom prices.

HARRY O. BOX,

(Note the Number) 339 HIGH STREET. Wedding and Engagement Rings our speciality.

BEST QUALITY

CIDERS

IN BOTTLE.—Sparkling and Still.

BARTHOLOMEW,

419, 420 HIGH STREET, CHELTHENHAM.

WINES, SPIRITS, ALES, TABLE WATERS and GROCERY. Tel. 15.

R.F. BEARD LTD.
SANDRINGHAM HOUSE

THE "SANDRINGHAM" CASSEROLE

IS HEAVILY SILVER PLATED, WITH A FIRE-PROOF LINING AND COVER.

Meat cooked in this Casserole is rendered quite tender, and can be served up hot and appetising.

HANDSOME AND USEFUL. SIMPLE AND ECONOMICAL.

OVAL OR ROUND. VARYING IN PRICE FROM 22/6 to 50/-.

PROMENADE CHELTHENHAM



WIRELESS EXHIBITION IN CHELTHENHAM.

An exhibition and demonstration by local experts and amateurs of wireless apparatus was held at the United Services Club, Cheltenham, on Monday last. Flashlight photo of the members and some of the apparatus by Mr. W. G. H. Brown, 52 Winstonian-road, Cheltenham.

Protect your Carpets.

Barnby Bendall

& Co., Limited,

PROMENADE, CHELTHENHAM,

Will Beat or Vacuum Clean, removing all dust & impurities.

Ordinary Prices.

BEDDING EXPERTS.

Re-making of Bedding by Electrical Process. All dust drawn away during cleaning.

ADVERTISE IN THE "ECHO."

BUILDING & Timber

of Every Description in Stock.

Also

FLOORINGS, MATCHINGS, PLASTER LATHES, POLES, and DOORS.

Geo. Bence & Sons,

Limited, Builders' Merchants, Fairview Road, : CHELTHENHAM.

Moussell Bros., Ltd.

(Opposite G.W.R. Station), CHELTHENHAM.

FURNITURE REMOVALS.

BY RAIL OR MOTOR.

Phone 112.

HIGH PRICES

Paid for Ladies', Gentlemen's, and Children's Discarded Wearing Apparel—Boots, Shoes, etc. A Postcard to

DEANE'S WARDROBE DEPOT
31 Worcester Street, GLOUCESTER,

Will Receive Prompt Attention.

THE NOTED HOUSE FOR FAIR PRICES

Telephone 970.

Telegrams: "Wardrobes, Gloucester."

SPRING GOODS.

JUST RECEIVED!

WHITE SWEATER JACKETS, for all Sports, 12/6.

SPORTS STOCKINGS, fancy top, 8/6 to 11/6.

WHITE and CREAM TENNIS and CRICKET SHIRTS, good variety, 5/11 to 14/6.

GREY FLANNEL TROUSERS.

A. Beckingsale, 111 HIGH STREET, CHELTHENHAM.

Advertise in the "Echo."

John Lance

& Co.

Having Purchased for Cash the

WHOLE OF THE STOCK
of Piece Materials

of a

Retired High-Class

Costumier,

Will offer the same on

Thursday, May 10th,

At about

One Quarter of
To-day's Value.

54 inch ALL WOOL TWEEDS, GABARDINES, SERGES, CHEVIOTS, SUITINGS, Etc., in a large range of shades,

1/- to 6/- PER
YARD.

The Articles offered are useful for a variety of purposes, and we have every confidence in recommending our Customers to take advantage of this unique offer—even to the extent of anticipating their needs for the coming Autumn.

NO PATTERNS CAN BE CUT OR SENT.

John Lance & Co.,

LIMITED,

CHELTHENHAM SPA.

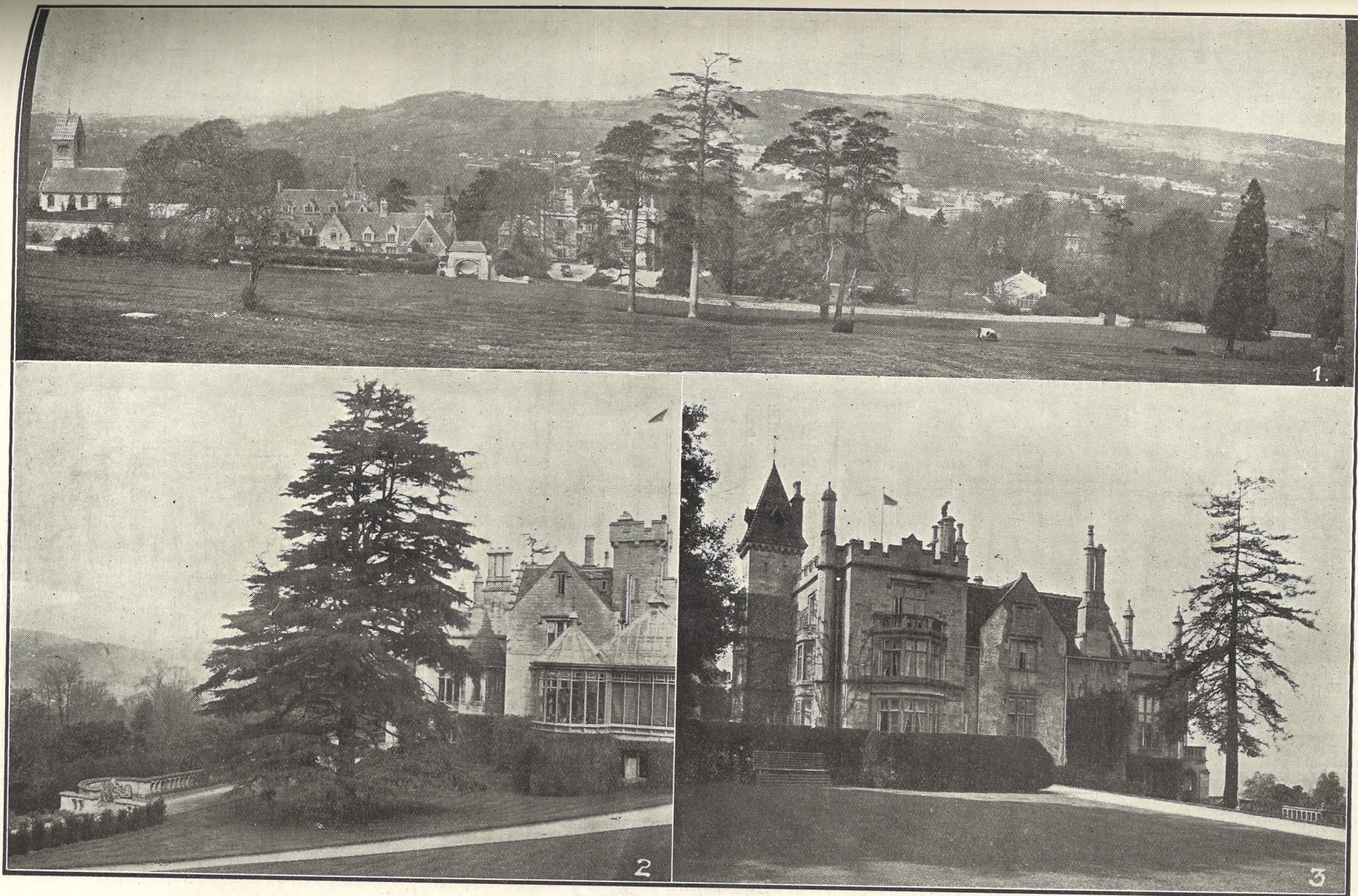


ANZAC DAY IN CHELTENHAM.

Anzac Day in Cheltenham was commemorated on Sunday last by a procession of Scouts, Cubs, and Girl Guides to the graves of the ten Australians buried at the Cemetery, and a service conducted by the Rector at the graveside. There were many hundreds of people present.

- 1.—The Rector (Canon H. A. Wilson) deposits a wreath on one of the graves.
- 2.—The Rector giving an address.
- 3.—Guides and Scouts with a truck-cart full of flowers.
- 4 and 5.—Scouts and Cubs round the graves.
- 6 and 7.—Girl Guides outside Municipal Offices in Promenade.
- 8.—Cubs with totem poles.

"Cheltenham Chronicle" Photos. Copies 1s. each.



PICTURESQUE GLOUCESTERSHIRE.—SELSLEY.

Selsley is an ecclesiastical district formed in 1863 out of the parish of Kingstanley, and is about two miles from Stroud, situated on the slope of one of those gorgeous valleys of the Cotswolds that so beautify the Stroud district. Stanley Park, the seat of Col. Sir Percival Scrope Marling, V.C., C.B., D.L., J.P., is a beautifully situated residence, part of it Elizabethan, built in 1584. Sir Percival is lord of the manor and principal land-owner, and the church, which can be seen on the extreme left in No. 1 photograph, was built by his family.

1.—A panoramic view of the valley from above Stanley Park, showing the manor, church, stables, and grounds. In

centre of picture, Cainscross can be seen in the distance, while on extreme left in distance is the broad estuary of the Severn.

2 and 3.—Stanley Park from the South and North. On the North Side (No. 3) is the older part built in 1584—the date can be seen over one of the windows.

["Cheltenham Chronicle" Photos. Copies may be had on application.



OPENING OF NORWOOD BOWLING GREEN.

This green was opened for play on Saturday last for the 1923 season by a match between the Captain's and sub-Captain's teams.
 1.—Messrs. H. B. Folland and F. Carter scoring. 2.—General view of the green. 3 and 4.—Two rinks at play. "Cheltenham Chronicle" Photos. Copies 1s. each.



CHILDREN'S DANCE MATINEE AT THE CHELTENHAM COLISEUM.

Miss Marjorie Silk and her pupils gave a Dance Matinee, on Saturday last, in aid of the Children's Hospital, Harp Hill, to an appreciative audience. The Performers.

["Cheltenham Chronicle" Photo. Copies 2s. 6d. mounted, 1s. 9d. unmounted.]

Next Saturday's "Graphic" will be Enlarged to Sixteen Pages. Same price—2d.



Mr. Clinton G. Mellquham's Wedding.

Wedding of Mr. Clinton G. Mellquham and Miss Mary Hart, at Bamburgh Church, Northumberland. The bride and bridegroom leaving the church.



Cheltonians in Malay.

Inspector Harry Lloyd (in centre), of Cheltenham, and Mr. Jack Vallender, son of Mr. and Mrs. Vallender, Swindon Dairy, Swindon-street, Cheltenham. Mr. Lloyd was a well-known Good Templar and a Freemason in Cheltenham. The men on left are Malays, and the one on right is a Chinese detective. They were out after tiger, but bagged a black bear.

Advertise Your Wants in the "Echo."



ENGLISH CUP FINAL AT WEMBLEY STADIUM.

- 1.—Some on the ground some time before the pitch was cleared by the police. It got very much worse before it was actually cleared.
- 2.—Cheltonians at Swindon on their way to the match. Only two or three of these got into the ground!
- 3.—The crowd surging up the terrace of the Stadium early in the day.
- 4.—Play in progress. Bolton's first goal is actually being scored.

Photos by Cheltenham Newspaper Co., Ltd.

Next Saturday's "Graphic" will be Enlarged to Sixteen Pages. Same price—2d.

Vanderplank's, The Recognised House for High-class Tailored Garments, Millinery and Furs,



A163. A very smart Three-Piece SUIT of rich quality Grey Gabardine. The Frock is cut on simple, straight lines, and braided to tone, ornamented with Steel Cabochens. The Coat is also trimmed with Braid and Cabochens, the collar being adaptable to wear high or low, Satin lined to match **10½ Gns.**

Display the Newest Fashions

At lower than London's advertised prices for a similar quality article.

These two Garments illustrated are taken from our large range of Costumes and Coat Frocks.

Between these prices we have a better collection than has ever been seen previously in our Establishment.

Expert Fitters and Staff for Alterations.



A1145. Very inexpensive COAT FROCK of Navy Serge is trimmed with Silk Braid, has adaptable collar to be worn high or low, all round Sash Belt. **PRICE, 35/9.** In 3 sizes. Navy and Black only.

POST FREE IN GREAT BRITAIN.

381 High Street and Promenade, CHELTENHAM SPA.

THE CHELTENHAM CHRONICLE AND GLOUCESTERSHIRE GRAPHIC

With Which is Incorporated the "Cheltenham Looker-On."
GRATIS SUPPLEMENT. Saturday, May 12, 1923.

No. 1,167.

CHELTENHAM THEATRE AND OPERA HOUSE.

Resident Manager: H. OSWALD REDFORD.

THIS AFTERNOON (2.30) AND EVENING (7.30): "OH! ALEXANDER!"
NEXT WEEK—Return Visit of the Renowned Success, "ARE YOU A MASON."

THE PALACE, HIGH STREET, CHELTENHAM.

Continuous, 2.30 to 10.15.
Scientifically Ventilated & Cooled
with Powerful Aero and Typhoon
Electric Fans.
MONDAY to WEDNESDAY.
ALICE CALHOUN in
"THE GIRL IN HIS
ROOM."

Broadway Comedy: TOMAU O!
THURSDAY to SATURDAY.
HOUSE PETERS, the Popular
Hero of "The Storm," in
"LYING LIPS."
Joe Rock Comedy: FAST MALE.

DAFFODIL PICTURE HOUSE, SUFFOLK PARADE.

Monday, Tuesday, Wednesday.
ANITA STEWART in
"SOWING THE WIND."
From the Play by Sydney Grundy.
HANK MANN COMEDY,
"The Paper Hanger."

Thursday, Friday, Saturday.
"THE SIN FLOOD,"
Featuring HELEN CHADWICK,
RICHARD DIX, JAMES
KIRKWOOD.
"The Jungle Goddess."

DO YOU WANT MORE BUSINESS?

Advertise in THE
"ECHO" and
"CHRONICLE"
—it brings results.

MARTIN & CO. LTD.,

Promenade, Cheltenham,
Purchase for Cash Antiques of
all kinds, including Old Silver,
Jewellery, Sheffield Plate, China,
Coins, Miniatures, etc. Highest
Prices given for Rare Pieces.



Miss Marjorie Silk,
Of Cheltenham, in one of the dances she gave at the Coliseum
on April 28th in aid of the Children's Hospital, Harp Hill.
She has given many exhibition dances during the past season.
["Cheltenham Chronicle" Photo.]

WINTER GARDEN, CHELTENHAM.

Monday, Tuesday, Wednesday.
CHARLES DICKENS' Immortal
Story of Home,
"THE CRICKET ON
THE HEARTH."
LIFE OF A RACEHORSE.
"The Steeplechasers," Comedy.
Christie Comedy, Eve's Review,
Budget.

Thursday, Friday, Saturday.
HENRY EDWARDS and
CHRISSE WHITE in
An Irresponsible Comedy,
"TIT FOR TAT."
Chaplin and Semon Comedies.

FISHER'S (Late E. Fisher) 69 Regent Street, Cheltenham High-Class TAILORS.

SEASON'S BRE ECHES
NEW PATTERNS. a Speciality.
First-class Cutter—25 years' London experience

MAISON ANNETTE

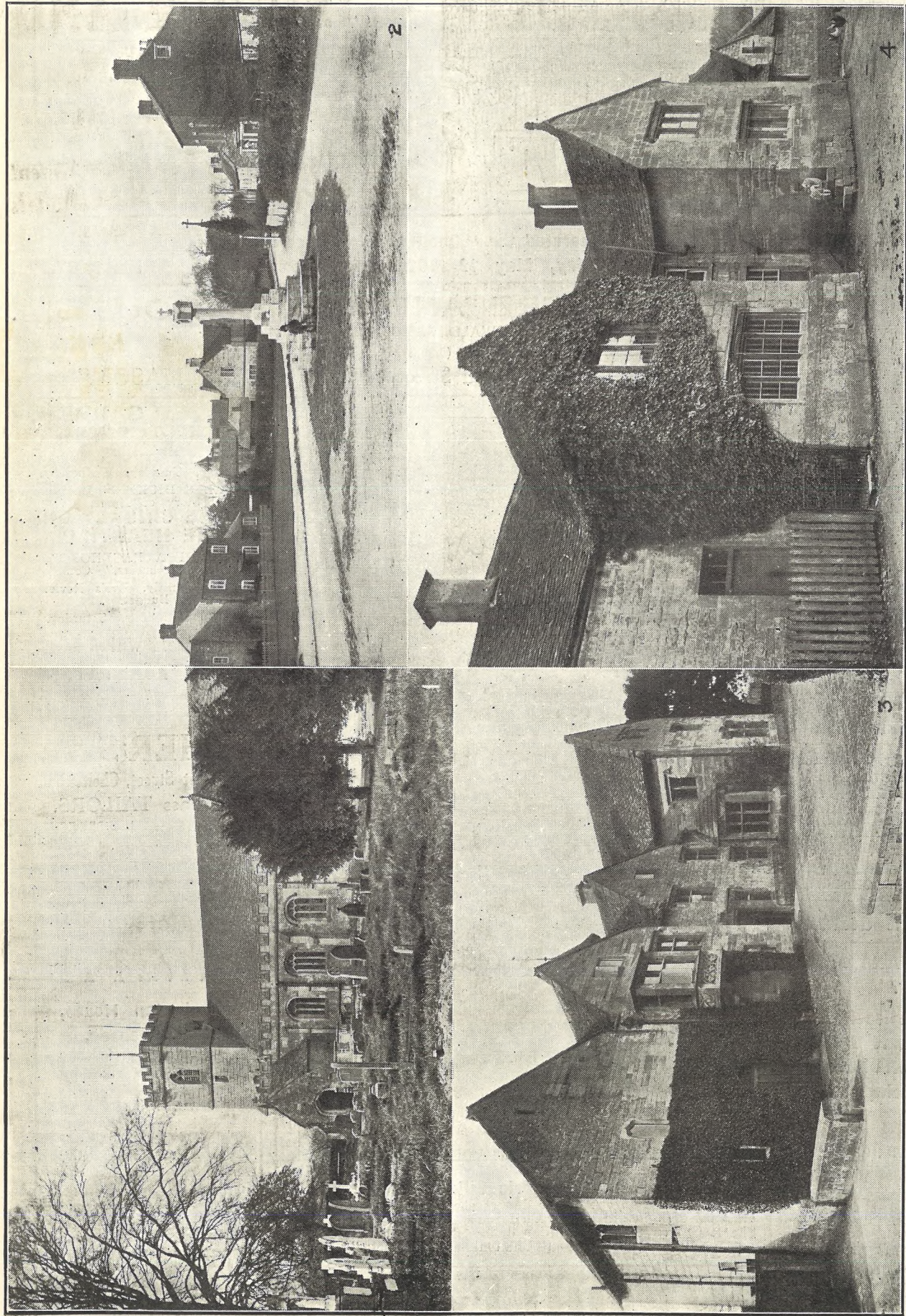
Kensington House,
Promenade,
Cheltenham,

SPECIALISTS IN
EXCLUSIVE

CORSETS & LINGERIE.

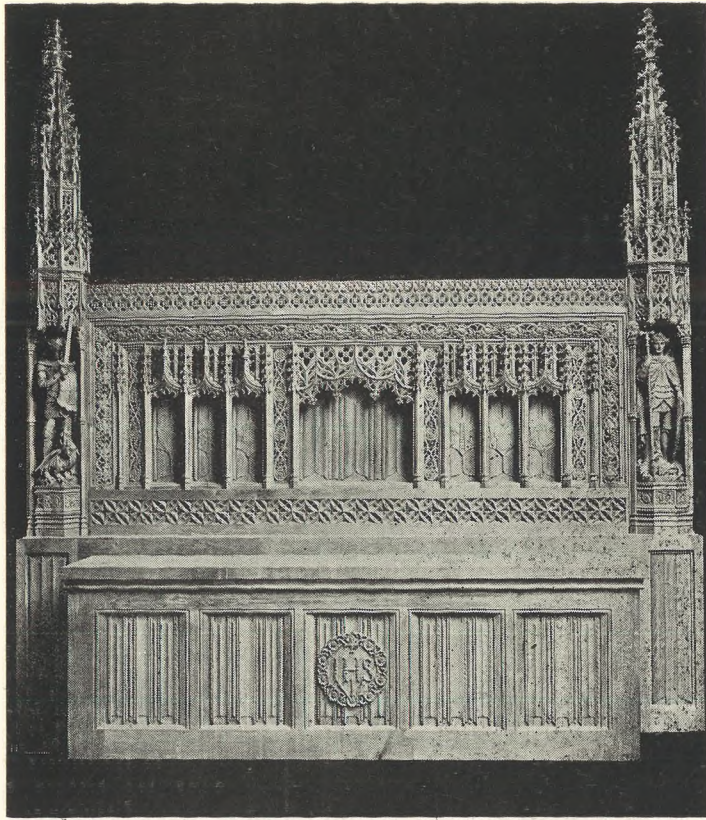
Phone 1122.

For the Best PIANOS, DALE, FORTY and CO. LTD.



PICTURESQUE GLOUCESTERSHIRE—KINGSTANLEY.

Kingstanley is a picturesque village adjoining Selsley—the latter being an ecclesiastical parish formed from Kingstanley, and is 2½ miles south-west of Stroud, lying in one of the charming valleys of the Cotswolds, for which the Stroud district is famous. 1.—The Church is partly Norman, but has been much altered and restored. The register dates from 1575. The church-yard is a pretty one. 2.—The Village Green. In centre is the War Memorial, in the head of which is a lantern, which automatically lights every night and burns till 11. 3.—The Rectory, a fine old stone building. 4.—Court Farm, a fine old 15th or 16th Century farmhouse, until recently occupied by Mr. J. E. King. [Cheltenham Chronicle] Photos. Copies unmounted 1s. 9d. each, postage 2d. extra.



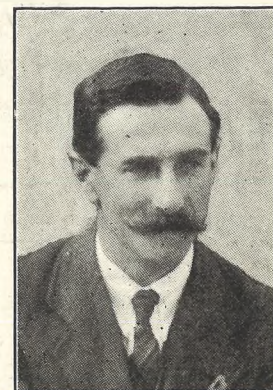
A FINE REREDOS.

The above Reredos has been erected at St. Michael's Church, Bramhall, by Messrs. R. L. Boulton and Sons, Bath-road, Cheltenham. It is executed throughout in oak, and the sculptured figures are of St. Michael and St. George. At a later date sculptured figures are intended to be placed under the six canopies in the Reredos, with a sculptured group in the centre. The work is to the design of J. Harold Gibbons, Esq., M.C., F.R.I.B.A., London and Manchester.



Mr. George Hogarth,

For many years manager of the Gloucester branch of Lloyds Bank (Capital and Counties Section), who died in Gloucester on Thursday, April 26th, in his 70th year. He retired in 1919 after a service of over 40 years with the Capital and Counties Bank, and came to reside in Cheltenham, afterwards going to Bournemouth, returning to Gloucester in September last.



Mr. C. Browning,

Chairman of Amberley Football Club and a prominent resident of Amberley, who died on Thursday, April 26, aged 40 years, after a severe operation at Cheltenham General Hospital.

COVERS FOR THE "GRAPHIC."—We have in Stock a Number of Stout Covers for the "Graphic," in Dark Green Cloth and Gilt Lettering. The Covers will take a Full Year's Issue of the popular Picture Paper, and You can thus keep the "Graphic" from week to week and know where to find it. Post Free to any address 6d.

SHIRER AND HADDON.

THE HOUSE OF FASHION.

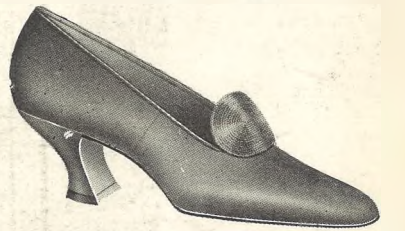
Our New Footwear Department is replete with the latest Models at Moderate Prices.



No. 24.—Smart White Canvas Walking Shoe, 10/9.



No. 23.—The "Lenglen" White Canvas Tennis Shoe, 10/9.



No. 2.—Glacé Kid, Grey, Tan, Golden Brown, or Black, 21/9.



No. 5.—Black or Nigger Glacé Kid, also Patent, 26/9.



No. 22.—Glacé Kid, silent sole. Delightful shoe for nurses' wear, 12/9.

LADIES' FOOTWEAR, SIZES 2 TO 9.

Satisfaction by Post.



CHELTENHAM GOLF CLUB LADIES' SPRING MEETING.

The Spring Meeting for the Ladies was held in beautiful weather on Thursday and Friday, May 3 and 4, on the Cleeve Hill Links, which were in capital playing condition.

- 1.—Miss A. Isaac (captain) watching Miss N. Lewis driving from the 8th tee.
- 2.—Some of the Committee.—Standing: Mrs. Whitehouse, Mrs. Alexander, Mrs. E. C. Willoughby, Mrs. Lawrence, Miss Healing, Miss Hands. Seated: Miss A. Isaac (Captain), Miss V. Winterbotham (Hon. Secretary), Mrs. Robinson.
- 3.—Miss N. Duncuft waiting her turn to drive off.
- 4.—Miss Duncuft.
- 5.—Miss Devereux.
- 6.—Miss Hands driving, Miss P. Alexander watching.
- 7.—Miss Latham and Miss Duncuft.
- 8.—Miss Healing driving off from first tee.
- 9.—Playing from 8th tee in four-ball foursomes.
- 10.—Mrs. Sheldon driving.

["Cheltenham Chronicle" Photos. Copies 1s. each, by post 2d. extra.



ANOTHER CHELTENHAM IMPROVEMENT.

MELVILLE'S, 408 UPPER HIGH STREET, CHELTENHAM,

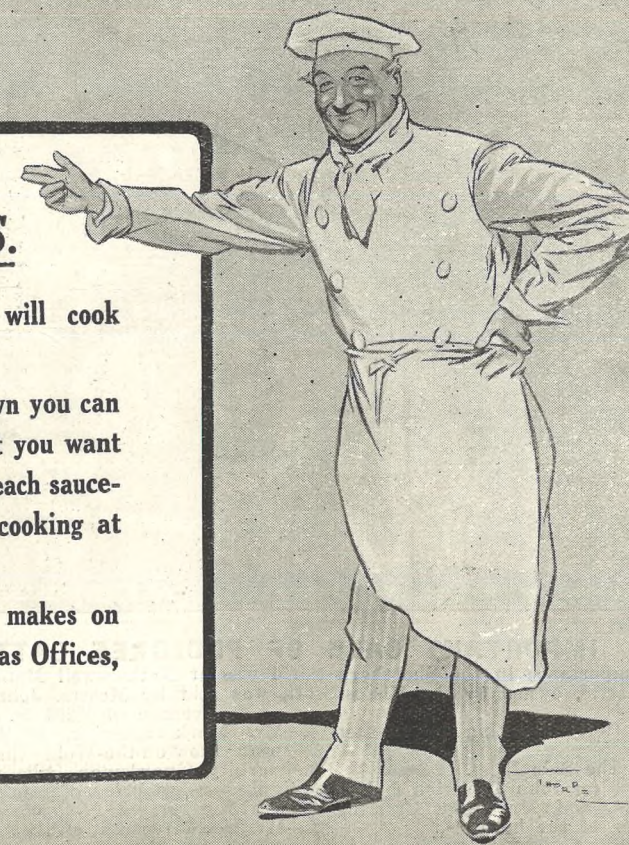
Have considerably improved their establishment with a handsome Arcade Window and New Fitting Rooms. Here is being shewn the best selection of Footwear in the West of England, including Lotus, Delta, Phat-Pheet, Norvic, Mascot, Moccasins, Etc. The multiplicity of fittings stocked assures Perfect Foot Comfort.

A BOON TO COOKS.

Use a Gas Cooker and you will cook everything better.

By turning burners up or down you can have exactly the degree of heat you want at any moment — different for each saucepan and half-a-dozen things cooking at once.

Gas Cookers of all sizes and makes on Hire or Hire Purchase at the Gas Offices, North Street, Cheltenham.





IMPORTANT SALE OF PEDIGREE CATTLE AT NETHERSWELL.

Everybody of importance in the Shorthorn world was at Netherswell Manor on Tuesday last, when the whole of the famous herd of Shorthorn Cattle, owned by the Misses Scott, was sold by Messrs. John Thornton & Co. Forty lots realized £8,254, an average of £206 7s.

- 1.—Miss Scott (left) speaking to another lady.
- 2.—Scene round the Sale Ring.
- 3.—Mr. Matthews (of John Thornton & Co.), Capt. Willes, and Mr. John Crombie (the manager of the herd).
- 4.—Two buyers.
- 5.—Mr. Mark Fenwick, of Abbotswood, near Stow-on-the-Wold (in centre).
- 6.—Garbity Guardsman, who fetched 420 guineas—top price of sale.
- 7.—Waiting for sale to commence.
- 8.—Mr. Geo. Freeman, of Sherborne (left), and a friend.
- 9.—Mr. Matthews at rostrum, selling in front of grand stand.
- 10.—Sittyton Orange Blossom, a ten-months-old heifer calf, who was sold to Miss Brocklebank for 360 guineas.

Cheltenham Chronicle" Photos. Copies 1s. each, by post 2d. extra.

R. F. BEARD LTD.
SANDRINGHAM HOUSE



SILVER TEA SETS
Of Unique Design.
SILVER TEA POTS,
SUGAR BASINS,
CREAM JUGS.
Reproduced from the Antique.
The Latest Reduced Prices.
A BEAUTIFUL SELECTION NOW SHOWING IN OUR NEW WINDOWS.

**PROMENADE
CHELTENHAM**



**The Leading Pianoforte,
Player-Piano & Gramophone
Salons**

HIGH-CLASS NEW & SECOND HAND INSTRUMENTS
BY THE MOST FAMOUS MAKERS

WE invite you to call and hear our latest selection of beautiful pianos—instruments that have been proclaimed by the greatest living artists as world-supreme—beautiful in tone and volume, mellowness and perfection of touch.

Crichton's Ltd.,
The Piano House,
Promenade, Cheltenham.

Call or Write for Full Particulars of our
Deferred Payment Terms

WHY DO YOU ALLOW YOUR COMPETITOR TO PICK ALL THE FRUIT?
 Advertise to-day and take your share.
 The "ECHO" will introduce you in the right quarters.

Take an "Echo" home with you.
 'Twill Give you the News of the Day and help to pass a Pleasant Evening.

John Lance & Co.
 Having Purchased for Cash the
WHOLE OF THE STOCK
 of Piece Materials
 of a
Retired High-Class Costumier,

Are offering the same for the
NEXT FEW DAYS
 At about
One Quarter of To-day's Value.

54 inch ALL WOOL TWEEDS,
 GABARDINES, SERGES,
 CHEVIOTS, SUITINGS, Etc., in a
 large range of shades,

1/- to 6/- PER YARD.

The Articles offered are useful for a variety of purposes, and we have every confidence in recommending our Customers to take advantage of this unique offer—even to the extent of anticipating their needs for the coming Autumn.

NO PATTERNS CAN BE CUT OR SENT.

John Lance & Co.,
 LIMITED,
 CHELTENHAM SPA.



GLOUCESTER LABOUR PARTY'S MAY DAY CELEBRATIONS.

The Gloucester Labour Party celebrated May Day on Saturday and Sunday last, the proceedings on Sunday taking the form of a monster procession from the Spa to the Cathedral, where a Service was held and the Bishop of Gloucester preached a sermon which Mr. G. Lansbury, M.P., afterwards referred to as "extraordinary."

1.—Some of the leaders of the procession: Mr. Geo. Lansbury, M.P. (A), Mr. W. L. Edwards (B), Mrs. W. L. Edwards (C), Mr. M. P. Price (D), the Gloucester Labour Party Candidate for Parliament, Mrs. M. P. Price (E), the German wife of the Candidate, who was being introduced to the constituency. 2 to 8.—Various sections of the Procession taken on the Spa Cricket Ground.

[Copies of any of these photographs may be obtained by quoting the number, from "Echo" and "Chronicle" Offices, price 1s. each, by post 2d. extra.]



GLOUCESTER LABOUR PARTY'S MAY DAY CELEBRATIONS.

The weather on Sunday afternoon was gloriously fine, and a great crowd watched the assembly at the Spa and lined the streets en route to the Cathedral. The procession was the largest ever organised in the City by the Labour Party, and quite filled both the Nave and Choir of the Cathedral. Two bands marched with the procession—the Wagon Works Silver Band (No. 15) heading it, and the Upton St. Leonards Band (No. 16) coming near the rear, playing alternately. Nos. 9 to 16 are various sections on parade.

[Copies of any of these Photographs can be obtained at the "Echo" and "Chronicle" Offices, price 1s. each, by post 2d. extra. Please quote number of photo required.]



ROUND THE TOWN IN CHELTENHAM.
SNAPS IN THE PROMENADE ON WEDNESDAY AFTERNOON.

BUILDING & JOINERY Timber
of Every Description in Stock.

Also
FLOORINGS, MATCHINGS,
PLASTER LATHES, POLES,
and DOORS.

Geo. Bence & Sons,
Limited, Builders' Merchants,
Fairview Road, : CHELTENHAM.

ROBINSON'S
Noted Leather Warehouse

For all classes of LEATHER & SUNDRIES.
BOOTS AND LEGGINGS
Made to order at the Lowest Possible Prices.
REPAIRS executed upon modern machinery
NOTE NAME AND ADDRESS:

ROBINSON'S,
191 HIGH ST., Cheltenham.

Moussell Bros., Ltd.

(Opposite G.W.R. Station).
CHELTENHAM.

FURNITURE REMOVALS.
BY RAIL OR MOTOR.

Phone 112.

HIGH PRICES

Paid for Ladies', Gentlemen's, and Children's Discarded Wearing Apparel—Boots, Shoes, etc. A Postcard to

DEANE'S WARDROBE DEPOT
31 Worcester Street, GLOUCESTER,

Will Receive Prompt Attention.
THE NOTED HOUSE FOR FAIR PRICES

Telephone 970.

Telegrams: "Wardrobes, Gloucester."

Sanderson's
The
BLOUSE SHOP

OF HIGH STREET, CHELTENHAM,
and KENDRICK STREET, STROUD.

BLOUSES
and **FROCKS**
FOR THE HOLIDAYS.

Famous throughout the entire County
for Beautiful Styles and Inexpensive
Prices.

SEE WINDOWS.



All Wool Gabardine
Costume, in Navy
Nigger, Grey or
Black. Handsomely
braided
and richly
lined - - **45/9**
Worth 59/6.

Wonderful Offer of
Knitted Wool Frocks,
trimmed contrasting
colours, with
Cirdle and Tassel - - **12/11**
Worth 21/9.

500 BLOUSES for the Holidays **12/11**
in Rich Silk Crepe de Chene
or Sanderson's Famous Jap Tang Silk.
Almost Everlasting Wear. All One Price.

THE CHEAPEST High-Class FROCK in the Country,
in Finest ART Silk, Elaborately Worked. **29/6**
Worth 4½ Gns. at least.

SANDERSON'S, The Blouse Shop,
HIGH STREET, CHELTENHAM.

SPECIAL OFFERS
for
Whitsuntide.

Up-to-Date and Dependable, at Moderate Prices.



Ladies' Striped Sponge
Cloth and Ratine DRESSES
12/11 to 35/6.
Plain Coloured Sponge
Cloth, **8/11**



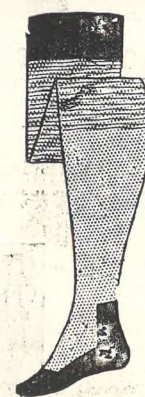
HOLIDAY HATS, in white Imitation
and Real Panama, **2/11½, 3/11, 4/11**
to **18/11**



Ladies' Silk Tafetta DRESS
29/6
Also Similar Models in
Tafetta and Palette Silks,
29/6 35/6 39/6

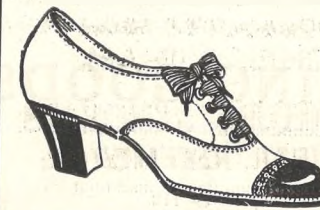


Girls' FROCKS for
Present Wear, in
Cambric and Sponge-
cloth, **2/11 to 25/6.**
White Embroidered
Muslin, **2/11 to**
29/6



Art Silk HOSE.
Special Offer:
Silk Ankle, Lisle
foot, with susp.
top, in Grey,
Fawn, Navy, and
Black.
Our Price **1/3½.**
Usual Price **1/11½.**

"DIANA"
FOOTWEAR.



This Brand is recognised as
being the finest value
obtainable, Smart, Up to
Date, and Dependable, in
all New Styles.
16/6 20/- 25/6
The last word in Comfort,
Elegance and Economy.



Ladies' Chemise
VESTS, Fancy
Tops, **1/11½, 2/11½.**
Ladies' Shetland
Wool Underwear:
Combinations, **3/11½.**
Cami-Knickers, **4/11**
Camisoles, **1/11½.**
Knickers, **3/11½.**



Ladies' All-Wool
Sports COATS, **8/11**
10/11, 12/11, to
45/-.
All-Wool Sports
CARDIGANS, **6/11**
to **35/6.**
In All Colours.

Dicks & Sons Ltd.
ART & ECONOMY BUILDING
High St. Cheltenham.



OPENING GAMES OF CHELTENHAM POLO CLUB.

This club opened its season on Saturday last with a local Tournament between three teams drawn from the club members.
 1.—White Team: Mr. W. Unwin, Capt. C. T. Roark, Major Hon. Bamfylde, Mr. Leschallas (Hon. Secretary).
 2.—Spectators.
 3, 4, and 6.—Snaps of the play.
 5.—Spectators.
 6.—Red Team: Mr. Holman, Capt. McMullen, Mr. W. E. Steel, Mr. F. Idiens.

[“Cheltenham Chronicle” Photos. Copies 1s. each, by post 2d. extra.]



Mr. Jack Ayres,

Of Stroud, who died on the homeward journey from Brazil, where he had been for two years engaged on special engineering work. He was buried at Oporto.

SPRING GOODS.

JUST RECEIVED!

WHITE SWEATER JACKETS, for all Sports, **12/6.**

SPORTS STOCKINGS, fancy top, **8/6 to 11/6.**

WHITE and CREAM TENNIS and CRICKET SHIRTS, good variety, **5/11 to 14/6.**

GREY FLANNEL TROUSERS.

A. Beckingsale, 111 HIGH STREET, CHELTENHAM.

We are Advertising Agents, and can undertake Contracts for any Newspapers in any part of the world, either single insertion or for a series.



Mr. James Keen,

Of Colesborne, who died on April 27th, at Cheltenham General Hospital after an operation, aged 43 years. He had been employed on the Colesborne estate over 20 years and was much respected and esteemed, practically the whole of the villagers attending his funeral.

The Fashion Centre of Cheltenham.

SHIRER & HADDON.

WHITSUN and the warm weather suggest Summer and Holiday Attire. Here are collected the loveliest of Fashions in profusion. The Newest in Knitted Costumes and Coats. Our Millinery has a wonderful note of taste—and for Tennis we have made great efforts to secure the loose, comfortable Blanket Coat and the easiest of Shoes.

A walk through our Saloons is a delight.

In our Windows are showing the new features in COTTON FROCKS for the warmer weather.

A lovely Wool Jumper in all the smartest colours.

10/11.

A Dainty Coat for sports wear in the best Blanket Cloth and all shades.

42/-.

FOR THE EVENING.—A Marabout Cape in the new shape. Black, Marle, Nigger, Brown.

8/11.

Woollen Suits for sports and holiday wear. These have proved their popularity.

Dainty Suits in artificial silk. Charming colours and styles in stock from

63/-.

SATISFACTION BY POST.

ALL CARRIAGE IS PAID.



D 1.—A dainty Costume in dainty colours, in artificial silk.

Price, **63/-**

D 2.—This three-piece Suit illustrating one of the newest fashions is in knitted silk and wool.

Price, **5½ Guineas.**

D 3.—Special Value. Knitted Wool Costumes in 7 new Marle colours.

Price, **42/-**



OPENING OF THE NEW GREEN OF EXMOUTH BOWLING CLUB.

On Saturday last, the Bowling Green of the Exmouth Club was re-opened by Mr. Hopcraft, general manager of the Cheltenham Original Brewery. The green has been enlarged, ditches and banks made and a great part of it laid with sea-washed turf at a cost of several hundred pounds.

- 1.—Group of players on green after tea.
- 2.—Mr. Hopcraft bowling the first wood.
- 3 and 4.—Members and friends of the club, all enthusiastic bowlers.
- 5.—Mr. Walter Cowley, President, bowling, Mr. Rumboll, Hon. Secretary, on extreme right.
- 6.—A corner of the green, with match in progress, showing the new service bar and pavilion.

[“Cheltenham Chronicle” Photos. Copies 1s. each, larger sizes 1s. 9d. and 2s.]

Send the “Chronicle and Graphic” to Your Friends Every week. They will enjoy it.

SEE
OUR
WINDOWS

WORTH'S

SEE
OUR
SHOWROOMS



FIT

**NEW FASHIONS
FOR
WHITSUNTIDE**

STYLE.

Outsizes
a
Speciality.

Large Selection of
**COSTUMES,
COAT FROCKS,
WRAP COATS,
DRESSES,
JUMPERS,
& MILLINERY.**

Most
Obliging
Staff.

VALUE.

**344 HIGH STREET
CHELTENHAM.**

VARIETY.



GET IT FROM LLOYD & KING.

“Eureka”

WEED

Least
trouble.



KILLER

No empties
to return.

POWDER.

IN TINS—

For 12½ gals., for about 50 sq. yards of path,	1/9.
“ 12 “ “ 100 “ “	3/-.
“ 100 “ “ 400 “ “	11/-.

AGENTS—

LLOYD & KING,

CHEMISTS,

109 High Street, CHELTENHAM.

Knight and Hutchings.

Special
**Tennis and
Cricket Wear.**

Sports Coats, from	16/6
Flannel Trousers, from	10/6
Boys' Flannel Suits, from	10/6
Cream Tennis Shirts (Gent's), from	4/11
(Boys' “ “ “ “	3/9
Straw Boaters, from	3/11
Panamas, from	5/6

SPLENDID RANGE.

Sportswear Specialists,

74 HIGH STREET,
Cheltenham. :: Opposite Bath Road.

Charming Display of Ready-to-Wear Garments for the Holidays.



Ladies' SPORTS CARDIGAN. Ideal for Sports or Indoor Wear, in White, Navy, Saxe, Mastic, Jade, Nigger, and Black.

8/11 Each.



Heavy All-Wool Gabardine COSTUME. Coat beautifully braided, lined Silk Polonaise throughout. Colours: Navy, Black, Grey, Beaver, Nigger, and Fawn.

Special Price, 75/9.

At WARD'S there is a lovely assemblage of all that is NEWEST and BEST in SPRING FASHIONS, most Moderately Priced, suitable for the Holidays.

There are countless introductions of Novelties and New Features that express a wonderful charm and distinctness at once pleasing and effective.

MAKE A POINT OF VISITING WARD'S NEXT WEEK.



Smart Novelties in Ladies' SPORTS WRAPS, in Moufflon, Teddy Bear and Cream Serge. Most suitable for present wear, from

23/9.



CHOICE MILLINERY FOR WHITSUN. Trimmed Millinery, in Crinoline, Crepe de Chine, Etc.

Special Offer, 12/11.



Useful Pull-on FOLDING FELTS, in All Shades. 2/11½ and 3/11.



Smart KNITTED COSTUME, new Marl effects, in Nigger, Tan, Mastic, Grey, Navy, and Fawn.

Special Whitsun Offer, 27/9.

E. L. WARD,
HIGH STREET,
CHELTENHAM SPA.

THE CHELTENHAM CHRONICLE AND GLO'SHIRE GRAPHIC

With Which is Incorporated the "Cheltenham Looker-On."
GRATIS SUPPLEMENT. Saturday, May 19, 1923.

No. 1,168.

CHELTENHAM THEATRE AND OPERA HOUSE.

Resident Manager: H. OSWALD REDFORD.

THIS AFTERNOON (2.30) AND EVENING (7.30): "ARE YOU A MASON?"

NEXT WEEK—Return Visit of THE NEW SHAKESPEARE COMPANY in Repertoire.

THE PALACE, HIGH STREET, CHELTENHAM.

MONDAY to WEDNESDAY.
BILLIE BURKE in the

"EDUCATION OF ELIZABETH,"

From the Famous Stage Play. "TRAVELAUGHS." Such is Life in Monte Carlo. Monte Banks' Comedy, "BULLET PROOF."

THURSDAY to SATURDAY.
HOBART BOSWORTH
And All Star Cast in the

"CUP OF LIFE."

A Gripping Romance of the Two Worlds. Reginald Denny in the "LEATHER PUSHERS." Monte Banks' Comedy, "THE ARTIST."

DAFFODIL PICTURE HOUSE, SUFFOLK PARADE.

MONDAY, TUESDAY, and WEDNESDAY.

OWEN MOORE in

"THE CHICKEN IN THE CASE."

Mary Miles Minter in "DON'T CALL ME LITTLE GIRL."

THURSDAY, FRIDAY, and SATURDAY.

"N E R O."

The Greatest Screen Spectacle of all times. The Grandiose Spectacle of Ancient Rome. "THE JUNGLE GODDESS." Episode 4: "The Terror Ship."

MARTIN & CO. LTD.,

Promenade, Cheltenham,

Purchase for Cash Antiques of all kinds, including Old Silver, Jewellery, Sheffield Plate, China, Coins, Miniatures, etc. Highest Prices given for Rare Pieces.



EIGHTY YEARS A PEER.

The Earl of Coventry (right) at Cheltenham Steeplechases, on Wednesday last, chatting to Mr. A. E. Hancock, the Judge. His Lordship celebrated his 85th birthday last week (on May 9th), and Tuesday was the 80th anniversary of his succession to the title. Although the cold and wet kept many young people away from the races, the Earl moved about the Paddock keenly enjoying the proceedings. He is truly the Grand Old Man of English Racing.

["Cheltenham Chronicle" Photo.]

WINTER GARDEN, CHELTENHAM.

WHIT-MONDAY, TUESDAY, and WEDNESDAY.

Harold Lloyd

In his Latest Style Five Reel COMEDY,

"GRANDMA'S BOY." Buster Keaton

In "THE PLAYHOUSE." SEMON and LION COMEDY.

THURSDAY, FRIDAY, and SATURDAY.

"THE GAME OF LIFE."

All British Cast in a Story that will make the dimples catch the tears.

PROLOGUE by MR. GEORGE C. NOYES. CHAPLIN in "THE RINK."

FISHER'S (Late E. Fisher)

69 Regent Street, Cheltenham
High-Class TAILORS.

SEASON'S NEW PATTERNS. BRE ECHES a Speciality.

First-class Cutter--25 years' London experience

Advertise—it Pays!

A. A. ELLIS,

of the Cake Shop,
97 WINCHCOMB STREET,
CHELTENHAM,

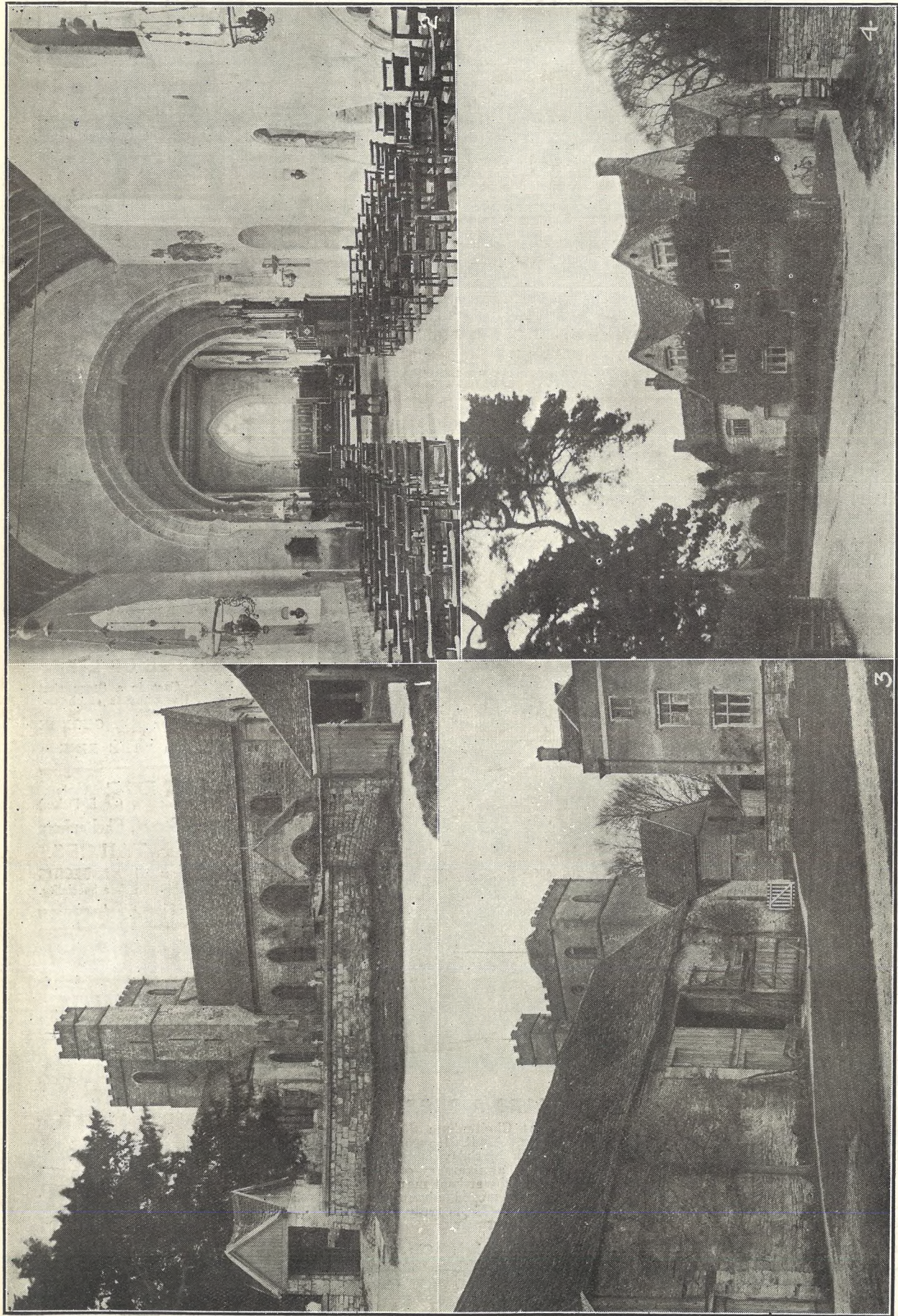
Has OPENED A BRANCH at

No. 2 St. Ann's Prom.,
ALBION STREET,

With a Choice Selection of their Noted Best Quality

HOME-MADE Cakes & Pastries.

For the Best **PIANOS, DALE, FORTY and Co. Ltd.**

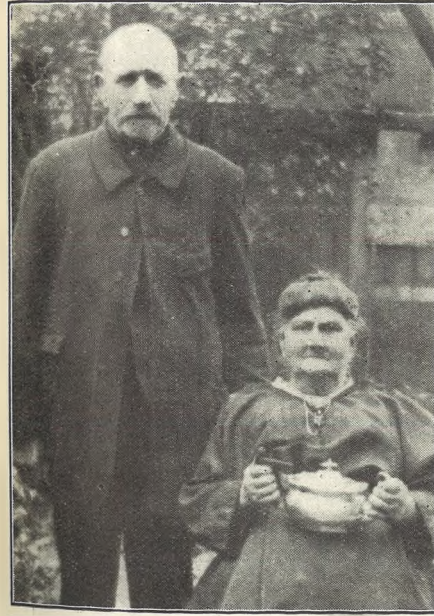


PICTURESQUE GLOUCESTERSHIRE.—LEONARD STANLEY.
 Leonard Stanley, or Stanley St. Leonards, is four miles S.W. from Stroud, and was formerly the seat of the Priory of St. Leonard, to which the Church of St. Swifthin belonged. It is a most interesting Church, and the remains of the Priory buildings, which adjoin and which are now used as farm buildings, are of great interest to archaeologists.
 1.—The Church. The tower is peculiar and unique in many features.
 2.—The interior of Church. On extreme right can be seen the opening to the rood loft, which is in the centre of the nave; the Church, at one time being divided into two—the Chancel part for the monks of the Priory, the other part for the parish.
 3.—The remains of the Priory: Saxon stonework can be seen in the walls of the old barn, which was formerly a church.
 4.—Church Farm, a fine old 15th or 16th Century house, occupied by Mr. Tennyson Fawkes.
 [Cheltenham Chronicle] Photos. Copies 1s. 9d. each, postage 2d. extra.

The Piano You Buy
 MAKE IT AN INVESTMENT.
 NOT MERELY A PURCHASE.

MAKE it an investment, so that, in years to come, when you have had the greatest pleasure from its possession, it will still be worth every penny that you paid for it. An instrument that will ripen and mellow with years—an instrument whose brilliance will never fade—that will become more valuable to you the longer you keep it. These are the Pianos that can be seen in our showrooms at any time, and that you are cordially invited to inspect.

Crichton's Ltd.,
 THE PIANO HOUSE,
 Promenade, CHELTENHAM.



A Gloucester Golden Wedding.
 MR. AND MRS. SIMMONS,
 of Philip-street, Gloucester, who celebrated their Golden Wedding on April 13th, having been married at St. Mark's Church, Gloucester, in 1873. Mrs. Simmons was for 50 years in the employ of Messrs. Moreland & Sons, match manufacturers, and retired on a full pension some months back.

BELOW THE TOWN CLOCK.
 An interesting establishment to be found in Cheltenham's new business centre (below the Town Clock), established over 70 years, supplying JEWELLERY and ANTIQUES at rock-bottom prices.

HARRY O. BOX,
 (Note the Number) 339 HIGH STREET.
 Wedding and Engagement Rings our speciality.



CORSETS & BELTS
 Made, Copied, Cleaned & Repaired

MISS FRUIN
 (Late with Madame Annette),
 23 Bath Parade, CHELTENHAM
 (Near Montpellier Baths). TELEPHONE 915.
 Hours: 10 till 6. Saturdays, 1 o'clock. Or by appointment.

LANCES

Attractive Offer
 OF
INEXPENSIVE FASHIONS
 For Holiday Wear.

Costumes, Gowns,
 Sports Coats, Wraps,
 and Millinery.



Delightful JUMPER in Stockinette, beaded with steel and contrast colours. Navy, Black/Self, Black/Steel.
 PRICE, 27/6.

SPECIAL SILK OFFER.
 100 Pieces of French Government Silk. All Colours.
 Plain, 1/6½ yd. Stripe, 1/9½ yd.

John Lance & Co.,
 LIMITED,
 CHELTENHAM SPA.

Take an "Echo" home with you.
 'Twill Give you the News of the Day and help to pass a Pleasant Evening.



CHELTENHAM COLLEGE JUNIOR ATHLETIC SPORTS.

These Annual Sports were held on Saturday last in fine but cold weather. There was a big crowd of spectators, and much enthusiasm prevailed among the youthful competitors. Some huge fields were seen. Thornton's last year as Head of Junior School.

1, 5, and 7.—A few of the starters in the Consolation Race.
 2.—Prize-winners waiting to be rewarded.
 3.—Parents and admirers.
 4.—A race in progress.
 5.—A group of boys.
 6.—Finish of 100 Yards (under nine).
 7.—Start of 100 Yards (under nine).
 8.—A group of boys.
 9.—A study in expression: How to get over!
 10.—Watching the jumping.
 11.—Major H. H. Hardy, the Headmaster, and Mrs. and Mr. Thornton, Heads of the Junior School. It is Mr. and Mrs. Offer, who has won the Championship Cup two years in succession, and who on Saturday broke the College record for 440 Yards.

["Cheltenham Chronicle" Photos. Copies 1s. each, postage extra.



CHELTENHAM SPRING STEEPLECHASES.

The Spring Meeting at Cheltenham was held on Wednesday and Thursday in very cold weather, with occasional storms. The attendance was not so large as usual. The going was perfect and the visibility especially good, Cleeve Hill appearing quite close.

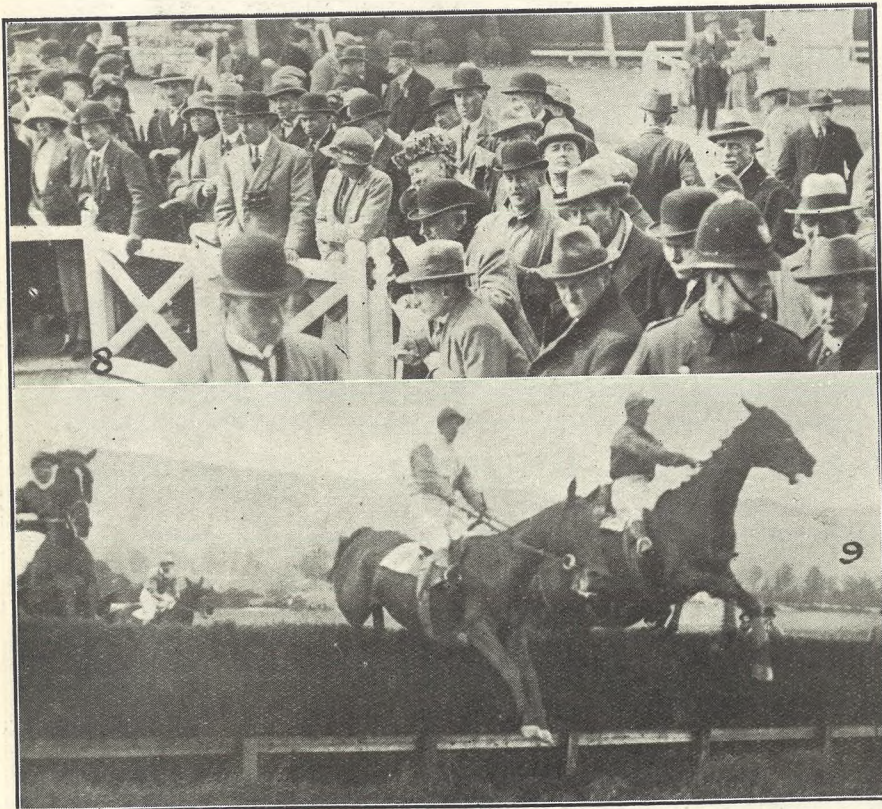
1.—Members in the covered bridge watching the sales in Ring.
 2.—Three ladies in Paddock.
 3.—Taking a fence in Cheltenham Open Military Steeplechase, Dibbinsdale leading.
 4.—A quiet smoke and chat near saddling boxes.
 5.—Messrs. Pratt & Co. are always improving the Course, and the new Unsaddling Enclosure for 1st, 2nd, and 3rd horses is an innovation. Harmonious (winner) has just arrived.
 6.—Master Robert (Mr. P. Roberts) up at last fence in Open Military Steeplechase.
 7.—Round the Sale Ring.

["Cheltenham Chronicle" Photos. Copies 1s. each, postage 2d. extra.



A HANDSOME ADDITION TO THE PROMENADE.

This New Shop Front of R. F. Beard, Ltd. (Directors: Messrs. T. W. Waite and W. H. Symonds), is of quite unique design, and is framed throughout in Copper Bronze. The Display Windows stand on a fine marble plinth and are surmounted with domed lights, giving the appearance of extended bays.



CHELTENHAM SPRING STEEPLECHASES.

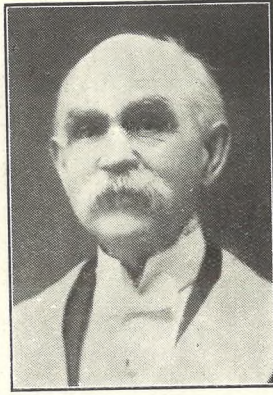
SNAPS ON WEDNESDAY AT PRESTBURY PARK.

8—Watching the unsaddling.

9—A jump in the Ledbury Handicap 'Chase The Heir and Tullycorey leading.

[“Cheltenham Chronicle” Photos. Copies 1s. each, postage 2d. extra.]

ECHO EVERY EVENING.



Mr. William Charles Frith,

Of 89 London road, Gloucester, who died on May 9th. Deceased was for nearly 50 years in the employ of Messrs. Conway Jones and Co., of Gloucester, and was Tyler of the Zetland Lodge of Freemasons.

BEST QUALITY

CIDERS

IN BOTTLE.—Sparkling and Still.

BARTHOLOMEW,

419, 420 HIGH STREET, CHELTENHAM.

WINES, SPIRITS, ALES, TABLE WATERS and GROCERY. Tel. 13.

ADVERTISE IN THE “ECHO.”

BUILDING & Timber

of Every Description in Stock.

Also

FLOORINGS, MATCHINGS, PLASTER LATHES, POLES, and DOORS.

Geo. Bence & Sons,

Limited, Builders' Merchants, Fairview Road, CHELTENHAM.

LET MOUSSELLS MOVE YOU.



PHONE 112.

Estimates for Removals and Storing Free.

CHELTENHAM. Offices: AMBROSE STREET.



PRUDENTIAL INSURANCE STAFF UNION IN CHELTENHAM TOWN HALL, MAY 10 AND 11. THE PRESIDENT, COMMITTEE AND DELEGATES.

[“Cheltenham Chronicle” Photo. Copies: Unmounted 2s. each, postage 2d. extra; Mounted 3s., by post 3s. 6d.]

TRINITY COLLEGE OF MUSIC, LONDON.

Last days of Entry for Summer Examinations:—Theory, May 23rd; Practical, June 9th. Entry forms from Mr. Ernest A. Dicks, local secretary, Buckingham Lawn, Cheltenham.

SPRING GOODS.

JUST RECEIVED!

WHITE SWEATER JACKETS, for all Sports, 12/6.
SPORTS STOCKINGS, fancy top, 8/6 to 11/6.
WHITE and CREAM TENNIS and CRICKET SHIRTS, good variety, 5/11 to 14/6.
GREY FLANNEL TROUSERS.

A. Beckingsale, 111 HIGH STREET, CHELTENHAM.



Bristol and Bath District Synod of the Wesleyan Methodist Church in Cheltenham.

Held on Tuesday, Wednesday, and Thursday, in Cheltenham, at the Town Hall and Wesleyan Church. A group of clerical delegates at the Wesleyan Church on Tuesday.

[“Cheltenham Chronicle” Photo. Copies 1s. 9d., postage 2d. extra.]

SHIRER & HADDON.

Cheltenham's
Centre of
Fashion.

The House for EXCLUSIVE NOVELTIES

IN

Gowns, Costumes, Millinery

AND ALL THINGS APPERTAINING TO DRESS.

YOU are invited to walk through our Showrooms and inspect the vast assemblage of NOVELTIES.



We illustrate a few of the SPECIAL VALUE Productions to be found in our Blouse Department.

B. 1 Exceptional Value. Wool Cardigan, drop stitch fabric, in all the leading colours. PRICE 6/11

B. 4. Dainty Jumper in Fancy Artificial Silk, Full Length Sleeve. PRICE 18/11

Wool Jumpers, in Large Variety, from PRICE 10/11

B. 2. Very Smart Ribbed Wool Coat, with becoming Roll Collar, in Lemon, Amethyst, Grey, Putty, Champ., Saxe, White, also Black. PRICE 35/-

Similar Coat in New Marl Mixtures, also PRICE 35/-

B. 5. A new Model in Striped Japshan Silk. Collar can be worn high, as sketch, or low. PRICE 33/11

Same Model in Plain Cream Japshan. PRICE 29/11

B. 3. Exceedingly Smart Double-breasted Ribbed Wool Cardigan, in all the leading Shades. PRICE 16/11

Smart Single-breasted Models in Marl Mixtures. PRICE 23/9

B. 6. Striped Tricoline Shirt, in Best Quality. Tailor-made adaptable collar in newest Stripes. PRICE 15/11

In Plain Heavy-weight Crepe de Chine, 29/6. Japschappe, 18/11.

Write for our Special Value Wool or Artificial Silk Jumper at 12/11.

CHELTENHAM SPA.

PRINTED AND PUBLISHED AS A GRATIS SUPPLEMENT BY THE CHELTENHAM NEWSPAPER CO., LTD.

THE CHELTENHAM CHRONICLE AND GLO'SHIRE GRAPHIC

With Which is Incorporated the "Cheltenham Looker-On." GRATIS SUPPLEMENT. Saturday, May 26, 1923.

No. 1,169.

CHELTENHAM THEATRE AND OPERA HOUSE.

Resident Manager: H. OSWALD REDFORD.

THIS AFTERNOON (2.30), "MIDSUMMER NIGHT'S DREAM"; EVENING (7.30), "MACBETH."

NEXT WEEK—Last Week of present season. First time in Cheltenham: "Mr. PIM PASSES BY."

THE PALACE, HIGH STREET, CHELTENHAM.

MONDAY to WEDNESDAY. HELENE CHADWICK and RICHARD DIX in the

"GLORIOUS FOOL."

From the Famous Story by Mary Roberts Rinehart. Out of the Inkwell Cartoon. Broadway Comedy: "Ali at Sea." THURSDAY to SATURDAY. ROMANTIC SUPER COMEDY.

"Too Much Business."

Jack London's Famous Stories: TALES OF THE FISH PATROL. Monty Banks Comedy, Rent Day.

DAFFODIL PICTURE HOUSE, SUFFOLK PARADE.

Monday, Tuesday, Wednesday.

THE WONDER FILM:

"Nanook of the North."

SECRETS OF NATURE. "The Sparrow Hawk." PHILLI COMEDY.

Thursday, Friday, Saturday.

"The Luck of the Irish,"

Featuring Anna Q. Nilsson and James Kirkwood.

"THE JUNGLE GODDESS."

"Wild Beasts in Command."

DO YOU WANT MORE BUSINESS?

Advertise in THE "ECHO" and "CHRONICLE"—it brings results.

MARTIN & CO. LTD.,

Promenade, Cheltenham,

Purchase for Cash Antiques of all kinds, including Old Silver, Jewellery, Sheffield Plate, China, Coins, Miniatures, etc. Highest Prices given for Rare Pieces.



Hon. Ursula Bathurst,

Daughter of Lord and Lady Bledisloe, Lydney Park, playing in the American Tennis Tournament at Montpellier Gardens on Whit Monday. Although playing a splendid game, she did not win a prize.

["Cheltenham Chronicle" Photo.]

WINTER GARDEN, CHELTENHAM.

Monday and all the Week

Three Distinct Performances Daily at 2.30, 5.15, and 8 p.m. Not Continuous. The Audience—must kindly leave the Hall after each Performance.

"A ROYAL DIVORCE"

Adapted from the World-famous Play.

USUAL PRICES. The 1s. 3d. and 1s. Seats may be reserved in advance, booking fee 3d. extra.

FISHER'S (Late E. Fisher)

69 Regent Street, Cheltenham

High-Class TAILORS.

::: SEASON'S ::: BREECHEES

NEW PATTERNS. a Speciality.

First-class Cutter- 25 years' London experience

Advertise—it Pays!

MAISON

ANNETTE

Kensington House, Promenade, Cheltenham,

SPECIALISTS IN EXCLUSIVE

CORSETS & LINGERIE.

'Phone 1122.

For the Best PIANOS, DALE, FORTY and CO. LTD.



CHELTENHAM GOLF CLUB SPRING MEETING.

- The Annual Spring Meeting was held on Friday and Saturday, May 18 and 19, on Cleeve Hill, in splendid golfing conditions.
- 1.—Col. Ussher driving. He did the lowest morning round (69 nett), but was not qualified for a prize.
 - 2.—Some of the Committee: Messrs. W. M. Alford, J. P. Winterbotham, H. W. Stephens, Capt. W. L. P. Tombs, Mr. Cope Proctor, Col. E. V. Thompson, R. B. Prettejohn, and W. S. Whitehouse.
 - 3.—Mr. O. A. Critchley driving from first tee.
 - 4.—Mr. W. S. Whitehouse takes the sand in his drive from the first tee. He and Mr. Prettejohn were second in four-ball foursomes with 8 up.
 - 5.—Mr. T. Bailey and Mr. P. P. Davies (who won the Four Ball Foursomes against bogey with a score of 9 up) and Col. Ussher waiting to play off second tee.
 - 6.—Capt. W. C. Steele playing off first tee. Mr. W. M. Baker watching.
 - 7.—Putting on 15th green—the British Camp.
 - 8.—Capt. Bennett playing off first tee.
 - 9.—Mr. R. B. Prettejohn driving at eighth tee. He won the running bogey first prize with 6 up.
- ["Cheltenham Chronicle" Photos. Copies 1s. each, by post 2d. extra.



A FINE HIGH ALTAR.

The above is a High Altar, to the design of T. H. B. Scott, Esq., F.R.I.B.A., erected in Upton Park Catholic Church by Messrs. R. L. Boulton and Sons, of Bath-road, Cheltenham. The firm will be pleased to give estimates for all kinds of Church Fittings in Wood, Marble, Alabaster, Stone and Metals.

LET MOUSSELLS MOVE YOU.



PHONE 112.

Estimates for Removals and Storing Free.

CHELTENHAM. Offices: AMBROSE STREET.

GLOUCESTER TRADE FAIR.

JUNE 11-16.

Special Double Number of the "Graphic" Next Week in connection with this event. Order Early.



A Nailsworth Diamond Wedding.

MR. AND MRS. ALFRED JEFFERY, Of Nailsworth, who, on May 25th (yesterday), celebrated their Diamond Wedding, having been married at St. Luke's, Bedminster, Bristol, on that date in 1863. The couple are both 84 years of age, and they have three sons, three daughters, 10 grandchildren, and two great-grandchildren. Mr. Jeffery is an engineers' brassfounder, and worked at his trade in Bristol and Nailsworth for 61 years.

THE BURBERRY.

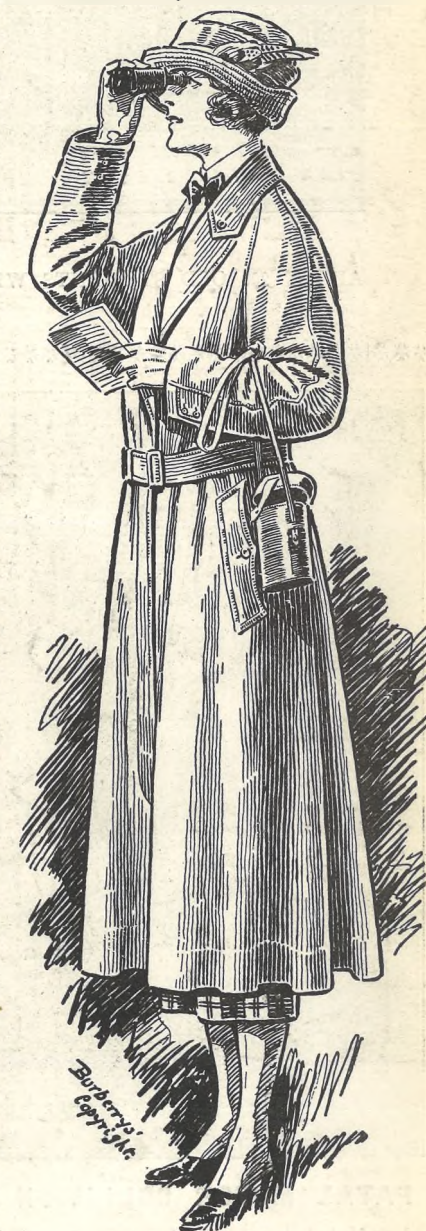
For Spring and Summer, with their changes of weather and temperature—sunshine alternating with rain and cold—no safeguard can compare with the Burberry for distinction, weather-resistance, ease and comfort. Its design is attractive and combines a sporting touch which instantly appeals to the woman who seeks her pleasure out o' doors.

SPECIAL DISPLAY

of Burberry Weatherproofs, including the latest models for Town and Country, Sport, Motoring and Travel, designed at Burberrys' London House, will commence on

MONDAY

And Daily until June 2nd.



Burberry's Appointed Agents:—

JOHN LANCE & Co., Ltd.,
CHELTENHAM.



WHITSUNTIDE RE-UNION AT MARY'S HALL, CHELTENHAM.

ABOUT 200 OLD STUDENTS WERE PRESENT AT THE BIENNIAL RE-UNION OVER THE WHITSUNTIDE WEEK-END. PHOTOGRAPHS OF THE PRESENT STUDENTS AND OF THE SHAKESPEAREAN PLAYS WILL APPEAR IN OUR NEXT WEEK'S

["Cheltenham Chronicle" Photo. Copies 10 x 8, unmounted, 2s. each; 20 x 8, 4s. unmounted; postage 2d. extra.



FATAL MOTOR COLLISION NEAR CHIPPING NORTON.

A dreadful motor accident occurred on Whit-Monday evening at the Chapel House, Cross-road, near Chipping Norton, the large Studebaker car crashing into the bonnet of the Ford at the junction of roads. The Ford occupants were thrown out and the Studebaker rose in the air, turned turtle, and fell on two of them. Seven people were seriously injured, and Mr. Joseph Hiff, of London, succumbed to his injuries.

[Photos by Mr. Percy Simms, Chipping Norton.



Death of Cheltenham's Oldest Inhabitant.

MRS. SARAH POULTON, Of 52 Sun-street, Cheltenham, who died on Tuesday, May 23, in her 102nd year. She was born on November 5th, 1821, and had lived in the town all her life. She is here shown with her brother: the photo was taken on her 100th birthday.



AMERICAN TENNIS TOURNAMENT AT MONTEPELLIER GARDENS.

This interesting Tournament was played on Whit Monday, May 21, over fifty competitors taking part. (second), P. Sheen and G. Butler 7.—Miss A. Hill and Mrs. Stephens, winners of Ladies' Doubles, with Mr. F. W. Nicholson. 5.—Mr. H. Boulton. 6.—Finalists in Mixed Doubles: Miss de Winton and Mr. C. Turner (winners). 8.—Miss Chapman. Miss N. Franklin and Mr. T. Harry.

["Cheltenham Chronicle" Photos



CHELTENHAM COLLEGE v. CHELTENHAM TOWN.

This interesting match, the first of the College season, was played on the College Ground on Saturday, May 19, before a big crowd. A draw resulted.

- 1.—Watching the College batting: from left, Messrs. Pakenham, W. W. Coyney, Dr. Dighton, Duleep Sinhji.
- 2.—The College XI.
- 3.—Some of the Town Team: Messrs. Leonard (Umpire), Rex Horton, T. F.
- 4.—Spectators.
- 5.—Sir Richard Vassar-Smith, Bart., with Mr. Wright.
- 6.—Duleep Sinhji, the College Captain, who scored a beautiful 103 and fielded and bowled exceptionally well.
- 7.—N. Sharpe, of College, who made 34.



CHELTENHAM CHALLENGE CUP TEAM.

Who were beaten by the Cheltenham Town Team on Whit-Monday by 82 runs.
 Standing.—A. E. South (League Hon. Secretary), W. R. Davis (Post Office), E. Yeates (Hatherley), J. G. Carter (Hatherley), J. Packer (Prestbury) W. G. Hervey (Prestbury), A. W. Parker (Sunningend), W. Caine (Umpire).
 Sitting.—C. Caudle (Post Office), C. Calway (Post Office), A. E. Bayliss (Sunningend), J. E. Green (Captain, Prestbury), J. Compton (Prestbury), C. Fisher (Cheltenham Wednesday).

BUILDING & JOINERY Timber
of Every Description in Stock.
 Also
 FLOORINGS, MATCHINGS,
 PLASTER LATHES, POLES,
 and DOORS.

Geo. Bence & Sons,
 Limited, — Builders' Merchants,
 Fairview Road, : CHELTENHAM.

Take an "Echo" home with you.
 'Twill Give you the News of the
 Day and help to pass a Pleasant
 Evening.



CHILDREN'S FETE AT PITTVILLE GARDENS ON WHIT-MONDAY.

- 1.—Watching Sports.
- 2.—On Dome of Pump Room.
- 3.—Some of Sports Committee.
- 4 and 5.—Watching Punch and Judy show.
- 6.—Girls' Race (under 13).

["Cheltenham Chronicle" Photos. Copies 1s. each.]

R.F. BEARD IP
 SANDRINGHAM HOUSE

THE CHELTENHAM SOUVENIR SPOON.
 A CORRECT REPLICA OF THE BOROUGH ARMS.
 The crest embodies the legend of the discovery of the mineral waters by the pigeon. The OPEN BOOKS are emblems of Education—the OAK TREE is the symbol of the Garden Town.
 SOLID SILVER AND ENAMELLED IN COLOURS.

PROMENADE
CHELTENHAM

A FINE SELECTION OF
Summer Shirts,
 with Double Cuff. :: Colours Guaranteed
 7/6, 8/11, 9/6, 10/6.
 RELIABLE QUALITIES.
SHIRTS OF ALL DESCRIPTIONS
 For Tennis, Cricket, Golf,
 :: Day or Dress Wear. ::
A. Beckingsale, 111 HIGH STREET,
 CHELTENHAM.

WHY DO YOU ALLOW YOUR
 COMPETITOR TO PICK ALL
 THE FRUIT?
 Advertise to-day and take your
 share.
 The "ECHO" will introduce you in
 the right quarters.

SHIRER AND HADDON, COLONNADE, CHELTENHAM.

Special Sale of White Underclothing

ENDS THURSDAY NEXT, MAY 31st.

Large Purchase at 50 % BELOW TO-DAY'S VALUES.

:: Every penny of advantage is offered to our customers.



FINE LAWN DIRECTOIRE KNICKERS, trimmed lace ... **4/11**
To-day's price 8/11



Fine Lawn Lace Trimmed SLIP-ON NIGHTGOWNS, trimmed Cluny Lace. Each **8/11**
Usual Price 13/9

KNICKERS, to match, Per Pair **4/6**

Usual Price 6/11
Pink, Lemon, Sky, Mauve.

White Lawn NIGHTGOWNS, Trimmed Sky, Pink, Mauve, Lemon, Lawn ... **4/11**
Also in All White.

These are Marvellous Value.



FINE LONGCLOTH DIRECTOIRE KNICKERS trimmed lace and embroidery ... **3/11**
Reduced from 6/11



LONGCLOTH NIGHTGOWNS, high neck, long sleeves, trimmed embroidery.

10/11 12/11 13/9
reduced to reduced to reduced to
6/11 7/11 8/11



Fine Lawn CAMISOLE trimmed lace, jumper shape and buttoned **2/11 1/2**
EACH.



CAMISOLES in large variety, jumper and button shapes (as sketch), in fine long-cloth **1/11 1/2**



SLIP-ON COMBINATIONS, white lawn, trimmed lace and coloured lawn. Pair **5/11**
Usual Price 9/6
Also in Hemstitched Long-cloth ... Pair **4/11**