

THE CHELTENHAM CHRONICLE AND GLO' SHIRE GRAPHIC

With Which is Incorporated the "Cheltenham Looker-On."

GRATIS SUPPLEMENT.

Saturday, January 6, 1923.

No. 1,149.

CHELTENHAM THEATRE AND OPERA HOUSE.

Resident Manager: H. OSWALD REDFORD.

Nightly at 7.15. Matinees Mondays, Wednesdays and Saturdays at 2. The Cheltenham Annual Pantomime, "BABES IN THE WOOD."

THE PALACE, HIGH STREET, CHELTENHAM.

Continuous, 2.30 to 10.15.
Monday, Tuesday, Wednesday.
ALICE BRADY, supported by a
Beauty Chorus of Broadway
Beides in

"Out of the Chorus."

"AFTER THE DOUGH."
Thursday, Friday, Saturday.
MARION DAVIES in

'BURIED TREASURE.'

THE DAFFODIL PICTURE HOUSE, SUFFOLK PARADE.

Monday, Jan. 8, for Three Days.

"JACK AND THE
BEANSTALK."

Greatest Fairy Story ever filmed.
W. S. HART in

"Marked Deck."

Thursday, for Three Days.
ANITA STEWART in
"Playthings of Destiny"

W. S. HART in MR. NOBODY.

Next Week:
"A BILL OF DIVORCEMENT."

START THE NEW YEAR WELL.

By Having Your
SUNDAY NEWSPAPERS

Delivered by
Brown's Newsagency,
226 HIGH STREET, CHELTENHAM
Accounts Quarterly.

MARTIN & CO. LTD.,

Promenade, Cheltenham,
Purchase for Cash Antiques of
all kinds, including Old Silver,
Jewellery, Sheffield Plate, China,
Coins, Miniatures, etc. Highest
Prices Given for Rare Pieces.



Mr. and Mrs. H. J. Brewer,

Of Stroud, who, on December 24th, celebrated their Golden Wedding. Presentations from the Directors and from the Staff were made to Mr. Brewer, who is Secretary to Messrs. Holloway Bros., Ltd.



P.C. FRED. R. BARNES,
Of 9 Nettleton-road Gloucester, who was presented with a barometer by his comrades on retiring on pension after 26 years' service, 23 years in Gloucester.



MR. ERNEST W. BURCH,
of Flesk Lodge, Wellington-square, Cheltenham, who has just retired on superannuation from the position of District Goods Manager of G.W.R. (Gloucester District).

WINTER GARDEN, CHELTENHAM.

WEEK, JANUARY 8, 1923.

Daily at 2.30, 5.15, 8 p.m.

D. W. Griffith's
Enormous Attraction,
"WAY DOWN EAST."

From Empire Theatre, London.
PRICES (owing to enormous
expense): 2/4 and 1/3
(including tax).

Knight & Hutchings

SCHOOL & COLLEGE
OUTFITS

at greatly reduced prices.

74 High St, Cheltenham

(Opposite Bath Road.)

H. E. Randall, Ltd.,

6c The Promenade,
CHELTENHAM.

Annual SALE

Now Proceeding.

SPECIAL LINES:
GENT'S DRESS SHOES, 10/6.
LADIES' GLACE TIE SHOES, 15/-.

Oddments and Samples
; much below costs. ;

SEE WINDOWS.

For the
Best

PIANOS, DALE, FORTY and Co., Ltd.



THE 5th GLOUCESTER'S SHOOTING TEAM.

RUNNERS-UP FOR THE LORD LIEUTENANT'S SHIELD T.A., 1922, OPEN TO GREAT BRITAIN.
 Back Row.—Pte. J. Mann, Sergt. P. L. Speck, Pte. Dan Collins, Lieut. H. H. Forster, Capt. J. W. Wright, M.C., L-Sergt. L. C. Meadows, Sergt. H. Hull, M.M., C.-S.-M. J. Huxford, D.C.M., C.-Q.-M. Sergt. W. G. Tibbles, M.C.
 Front Row.—Sergt. H. F. Speck, Major R. J. Carruthers Little, Sergt. J. Pickering, Lieut. J. K. Armstrong (Captain of Team), Sergt. G. Critchley, M.M., Capt. W. Wynter Morgan, M.C., Sergt. L. R. Lively [Photo by Mr. W. Slatter, Cheltenham.]



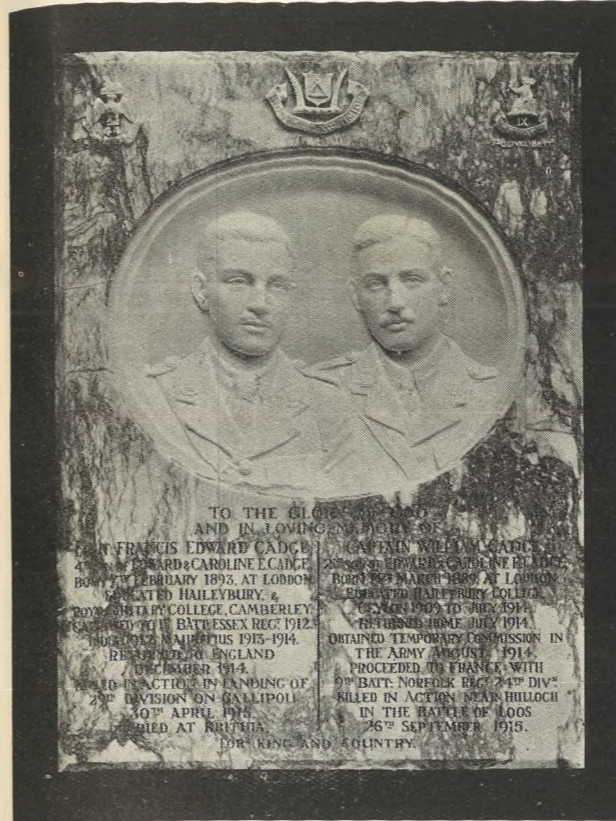
THE STAFF AND PATIENTS AT ST. MARTIN'S HOSPITAL, CHELTENHAM.

Phone 311.
Geo. Bence & Sons,
 LTD.,
 — 41, 43, 45 & 47 —
 Fairview Rd., CHELTENHAM.
 DEPOT for
WALPAMUR
 (Water Paint).
 SATINETTE ENAMEL. KEYSTON OIL FLAT.
 GRIPON—Ready Mixed White Paint.
 Beaver Boards—Matchboards—Floorboards.

Moussell Bros., Ltd.
 (Opposite G.W.R. Station),
 CHELTENHAM.
FURNITURE REMOVALS.
 BY RAIL OR MOTOR.
 Phone 112.

DRESS SHIRTS.
 STIFF OR SOFT FRONTS.
DRESS TIES.
 READY-MADE OR TO TIE.
DRESS GLOVES.
 2/11—3/11.
DRESS COLLARS.

A. Beckingsale, 111 HIGH STREET,
 CHELTENHAM
 Phone 406.



A Beautiful Memorial Tablet.
 The above Tablet has been executed by R. L. Boulton & Sons, Bath-road, Cheltenham, and fixed in Loddon Church, Norfolk. It is in memory of two brothers who were killed in the war. The sculptured panel is in Statuary Marble, with the frame is polished alabaster, and the busts were copied from photographs. The firm will be pleased to give estimates for any kind of Church fittings in wood, marble, alabaster, stone, granite, or metals.



MR. RICHARD JONES,
 Of 29 Townsend-street,
 Cheltenham, who died after
 a sudden illness during
 Christmas, aged 77 years.
 He was a firewood mer-
 chant for many years, and
 was very stout, being a
 familiar figure on his fire-
 wood wagon.

ADVERTISE
 IN THE
 "ECHO."

R. F. BEARD LTD.
 SANDRINGHAM HOUSE

WE HAVE AN EXCELLENT STOCK
 OF
ENGAGEMENT RINGS
 COSTING JUST AS LITTLE
 OR JUST AS MUCH
 AS YOU WISH TO SPEND.

**PROMENADE
 CHELTENHAM**

CORSETS AND BELTS
 MADE, COPIED, CLEANED, AND REPAIRED.
 Hours: 10 a.m. to 6 p.m. Saturdays, 1 p.m.
 or by appointment. PHONE 915.
MISS FRUIN (Late with
 Madam Annette),
 23 Bath Parade, CHELTENHAM.

NEWS OF INTEREST.
JESSE J. GILLHAM AND SON'S
STOCK-TAKING CLEARANCE SALE
 IS NOW PROCEEDING.
 Great Bargains will be found in all Depart-
 ments. The prices of Stationery and Stationers'
 Sundries eclipse those of any London Store,
 whilst the Leather and Fancy Goods are offered
 at startling reductions in the Showrooms at 396
 High Street, Cheltenham. C1695

LANCE'S
Great
WINTER
SALE

DEPENDABLE GOODS
 that Beat the most
 SENSATIONAL SALE
 OFFERS.

Costumes,
 Gowns, Coats,
 Furs, Millinery,
 General Drapery,
 AND
 Household
 Furnishing.

AND, IN ADDITION, A
Special Discount
of 2/- in the £

Will be allowed on all Goods PAID FOR
 AT THE TIME OF PURCHASE, except
 a few Proprietary Articles.

John Lance
 and Co. - - - Limited,
 Cheltenham Spa.



PICTURESQUE GLOUCESTERSHIRE—HIDCOTE BARTRIM.

Hidcote Bartrim is a hamlet of Mickleton, situated about 1½ miles south-east of the latter, and in a very out-of-the-way position on a spur of the Cotswolds. It is a very pretty little place, and has two fine old houses.

- 1.—The Manor, Hidcote Bartrim, a most picturesque old Cotswold house, now occupied by Mrs. Winthrop.
- 2.—Hidcote House, a fine stone house in the late Tudor style, built in 1663, and now owned by Major J. B. Muir, of Kiftgate House, Mickleton. It has been unoccupied for two or three years.
- 3.—A typical Cotswold farm house at Hidcote Bartrim, built early in the 17th Century.
- 4.—General view of the hamlet of Hidcote Bartrim, with some picturesque old thatched cottages.

[“Cheltenham Chronicle” Photos. Copies 1/9 each.]



The Christmas Meeting of the Cheltenham Stock Exchange Co. was held on Thursday, December 28. It was a beautiful day, the Casino, golf, and amusements were most enjoyable.

- CHELLENHAM RACES.**
- 1.—Jimmy Wilde, the famous light-weight boxer, on left, is here a tall-blown book-maker, and stands in Tattersall's ring.
 - 2.—General View of State Ring.
 - 3.—Mr. E. C. Doyle on "Bar and Away" winning Cheltenham Amateur Class from "Barnwood" (Mr. P. Roberts up) at last fence.
 - 4.—Lieut.-Colonel Hon. C. J. Coventry, the "Cheltenham Chronicle" Photos. Copies 1s. each. Postage extra.



ROUND THE TOWN IN CHELTENHAM.
 THREE SNAPS IN THE PROMENADE ON WEDNESDAY LAST.
 1.—Getting his shopping done during the holidays.
 2.—Mr. Wedberg, many years in business in Montpellier as a tailor.
 3.—“Teddy,” one of the Midland Railway dray horses, gets on the pavement of the Promenade every morning to beg for apples or sweets at the shops where he calls.
 “Cheltenham Chronicle” photos. Copies 1s. each.



THE “HAPPY FAMILY” PIERROT TROUPE.
 who are giving performances (for the benefit of the Hospital) at St. Stephen's Hall, on Wednesday, January 10th, and three following evenings, at 8 p.m., with a Saturday matinee, at 3.0. They have excellent Press notices. On the right, Miss Leslie Goddard, leader of the troupe, who sang for over a year with the Lena Ashwell Concert Parties in France during the war.



Shirer & Haddon's

ONE GREAT SALE.

Record Bargains and Record Results.

Ladies' Woollen UNDERWEAR at nearly HALF PRICE.

£3,000 of SILKS (a Manufacturer's Stock) at ASTOUNDING VALUES.

Complete Stock of FURNITURE at 10% REDUCTION for CASH.

Visit the House and Inspect Bargains in all the 24 Sections.

... SALE ...
 Throughout January.

SHIRER & HADDON,
CHELTENHAM SPA.



THE “BABES IN THE WOOD” AT CHELTENHAM OPERA HOUSE.
 Mr. George Brydon Phillips' Company, who are performing the above Pantomime with great success, until Saturday next.



THE DRUMS OF THE 2ND GLOUCESTERSHIRE REGIMENT.
 The 2nd Gloucesters are now at Connaught Barracks, Rawal Pindi, India, and we publish a photo above of the drums of the Regiment taken with the late C.O. of the Regiment, Col. R. P. Jordan, C.M.G., D.S.O., a Gloucestershire man. Nearly all the men above come from this county.

COVERS FOR THE “GRAPHIC.”—WE HAVE IN STOCK A NUMBER OF STOUT COVERS FOR THE “GRAPHIC,” IN DARK GREEN CLOTH AND GILT LETTERING. THE COVERS WILL TAKE A FULL YEAR'S ISSUE OF THE POPULAR PICTURE PAPER, AND YOU CAN THUS KEEP THE “GRAPHIC” FROM WEEK TO WEEK AND KNOW WHERE TO FIND IT. POST FREE TO ANY ADDRESS **SIXPENCE.**

OUR ANNUAL STOCKTAKING SALE

Begins SATURDAY, JAN. 6.

WE ARE OFFERING **BIGGER BARGAINS** THAN EVER
In order to reduce our Stock before Audit.

OVER 50 YEARS REPUTATION FOR VALUE



HOUSEHOLD LINENS.

We have scoured the Markets to Secure Bargains for this Sale, and by offering Goods enumerated below (which are typical of many other lines equally cheap) we are confident that customers can secure a real advantage by a purchase at this Sale.

300 Yards Fine Quality MADAPOLLAM, Usual Price 8/6. Sale Price 4/3d.
400 Yards White TERRY TOWELLING, Reduced from 8/6 to 4/3d.
40 Full-size Coloured BEDSPREADS, Slightly Imperfect, Reduced from 6/11 to 3/11d.
20 Dozen Hemmed GLASS CLOTHS, worth 4/9 the half-dozen, for 2/4d.
20 Dozen Red Bordered TABLECLOTHS, 50 inches square, worth 4/11, for sale at 3/6
Several dozen large size CHECK DUSTERS, worth 3/4 the half-dozen, for 1/10d.
300 Yards of 36-inch LONGCLOTH, worth 9/6, for 6/3d.
40-inch PILLOW COTTON, worth 1/9, for 1/0d.

TOWELS.

ADMIRALTY BROWN TURKISH TOWELS, 26 inches by 48 inches, worth 2/11, for 1/11d.
30 Dozen WHITE TURKISH TOWELS, Reduced from 10/6 to 6/3d.
20 Dozen WHITE TURKISH TOWELS, a good size, worth 1/9, for 1/1d.
150 Large STRIPED TURKISH TOWELS, worth 1/4, for 10/3d.
HUCKABACK TOWELS, a good useful line, worth 2/6, for 1/6d.

TABLE CLOTHS.

Special Purchase of Travellers' Samples in WHITE TABLE CLOTHS and SERVIETTES to be Cleared at exactly HALF-PRICE.

Unbleached TABLE CLOTHS, breakfast size, a good hard-wearing quality, reduced to 2/11d.
WHITE DAMASK CLOTHS, reduced from 6/11 to 4/11d.
Extra Quality in DAMASK CLOTHS, reduced from 9/11 to 6/1d.
WHITE DAMASK SERVIETTES, worth 4/9 the half-dozen, for 3/4d.
DAMASK LINEN SERVIETTES, worth 8/6 the half-dozen, for 6/4d.
WHITE DAMASK TABLING, Special Line, per Yard 2/11d.
Unbleached DAMASK TABLING, 50-inches, a good wearing quality, reduced to 1/11d.

LADIES' AND CHILDREN'S COATS, COSTUMES, Etc.

We are Offering Bigger Bargains than ever in this Department—DON'T MISS THEM.

30 Ladies' TWEED and BLANKET CLOTH COATS, new styles and all colours. Usual Prices 15/11 to 29/6. Each 10/-
39 Ladies' Plain Coloured BLANKET COATS, in good quality, this season's models, various colours. Usual Price 21/6 to 29/6. Each 15/-
50 Ladies' Heavy Quality BLANKET CLOTH and TWEED COATS, new models (some with fur collars). Usual Price 29/6 to 39/6. Each 20/-
60 Ladies' COATS, in Fine Quality REAL VELOUR and BLANKET TWEEDS, new models and all colours. Usual Price 45/6 to 65/6. Each 30/-
50 Girls' Coats in TWEEDS and Plain Coloured BLANKET CLOTHS, in all sizes. Usual Prices 16/11 to 25/6. 10/-
25 Only Girls' COATS, in TWEEDS, CURL CLOTH, BLANKET CLOTH, etc. Usual Prices 15/11 to 35/6. Each 7/6

CHILDREN'S HOSE.

20 Dozen BOYS' KNICKER HOSE, in Black, Sizes 3 to 8. Usually 1/11d to 3/11. Per Pair 1/9d.

LADIES' VESTS.

10 Dozen Ladies' CHEMISE VESTS, extra Long and Heavyweight. Usual Price 2/11d. Each 1/11d.
50 Ladies' FANCY TOP VESTS, slightly soiled. Usual Price 2/6. Each 1/11d.
300 Travellers' Samples of Ladies' HOSE, VESTS, etc., to be cleared LESS THAN FACTORY COST.

LADIES' BLOUSES.

100 Ladies' Smartly Cut SHIRT BLOUSES, in Striped Cambrics. Usual Prices 3/11, 4/11 and 6/11. Each 1/11d.
50 Ladies' BLOUSES, Shirt and Jumper Style, in various Materials. Usual Price 2/11 to 4/11. Each 1/-
100 Ladies' BLOUSES and JUMPERS, in Cambric, Crepe-de-Chine, Paillette Silk, All Wool Flannel, Voile, Georgette, etc. Usual Prices 6/11 to 12/11. Each 5/-
20 Ladies' Tailor-made SHIRT BLOUSES, in Finest Quality All-Wool Crepe Cloth, particularly suitable for Sports wear. Original Price 25/6. Each 7/6
50 Ladies' Crepe-de-Chine and Knitted SILK BLOUSES and JUMPERS. Usual Price 15/11 to 35/6. Each 10/-

LADIES' AND CHILDREN'S UNDERCLOTHING.

We have a Large Stock of these Goods, including a few Remains from Odell's Stock. Travellers' Samples, and Soiled Factory Samples, which we are offering at Ridiculously Low Prices. Below are a Few Examples.

20 Dozen Ladies' DIRECTOIRE KNICKERS Heavy Quality, Fleecy Lined, elastic knee and waist, in Navy, Grey, Saxe, Brown, Cream, etc. Usual Price 4/11d. ... 1/11d.
15 Dozen Ladies' MERINO COMBINATIONS, in Cream, Special Quality. Usual Price 6/11d. ... 3/11d.
10 Dozen Ladies' NATURAL COMBS., heavyweight, fleecy lined. Worth 5/11d. ... 3/11d.
6 Dozen Ladies' All-Wool COMBINATIONS, in Cream. Worth 9/11. ... 6/11d.
6 Dozen Ladies' RIBBED COMBS., in Cream, medium weight. Usually 3/11d. ... 1/11d.
10 Dozen Ladies' FLANNELETTE NIGHT-DRESSES, in Cream. Usual Price 5/11d. ... 3/11d.
5 Dozen Ladies' WINCEYETTE NIGHT-DRESSES, in Cream, Special Quality. Usual Price 10/11. ... 6/11d.
20 Dozen FACTORY SOILED SAMPLES, comprising Children's Pinatores, Overalls, Infants' Gowns, Maids' Aprons, Ladies' Nightdresses, Ladies' Cambric Combs., Ladies' Cambric Knickers, Ladies' Underskirts, Camisoles, Ladies' Coloured Overall, etc. All to be Cleared at 6d. to 2/6d.
10 Dozen TRAVELLERS' SAMPLES of Ladies' WOVEN COMBINATIONS. All to be Cleared at about HALF-PRICE.

GLOVE BARGAINS.

100 Pairs of Men's Heavy WOOLEN GLOVES. Reduced from 1/6 to ... 6d.
70 Pairs of Ladies' WHITE GLACE KID GLOVES. These are worth securing for the Spring. Usual Price 3/11d. Sale Price 1/11d.
6 Dozen Pairs of Ladies' Grey Mocha Suede GLOVES. Usual Price 3/11d. Reduced to 2/6d.
30 Pairs only Ladies' Real Antelope Skin GLOVES. Reduced from 10/11 to 6/11.
Men's FUR-BACK NAPPA GLOVES, lined. Reduced from 21/6 to 14/6.
Ladies' WOOL GAUNTLETT GLOVES, reduced to 1/9d.
ODELL'S STOCK of CHILDREN'S FABRIC GLOVES, Reduced to 3d.

A LIST of FURNITURE Will be Found on Page 7 of the "CHRONICLE."

Dicks & Sons Ltd.

ART & ECONOMY BUILDINGS
High St. Cheltenham.

A LIST of FURNITURE Will be Found on Page 7 of the "CHRONICLE."

THE CHEL TENHAM CHRONICLE AND GLOUCESTERSHIRE GRAPHIC

With Which is Incorporated the "Cheltenham Looker-On."
GRATIS SUPPLEMENT. Saturday, January 13, 1923. No. 1,150.

CHEL TENHAM THEATRE AND OPERA HOUSE.

Resident Manager: H. OSWALD REDFORD.

THIS AFTERNOON AT 2, EVENING AT 7.15:—"BABES IN THE WOOD."
NEXT WEEK—6 Nights at 7.30, Matinee Saturday at 2.30: "BULL-DOG DRUMMOND."
London's Great Success, Still Playing at Wyndham's Theatre, London.

THE PALACE, HIGH STREET, CHEL TENHAM.

Continuous, 2.30 to 10.15.
Monday, Tuesday, Wednesday.
PRISCILLA DEAN in Her New Dramatic Sensation, "REPUTATION."
Joe Rock Comedy, "ALL WET."
Thursday, Friday, Saturday.
"TOO MUCH SPEED."
Featuring WALLACE REID and AGNES AYRES.
Monty Banks' Comedy, "HERO AT ZERO."

THE DAFFODIL PICTURE HOUSE, SUFFOLK PARADE.

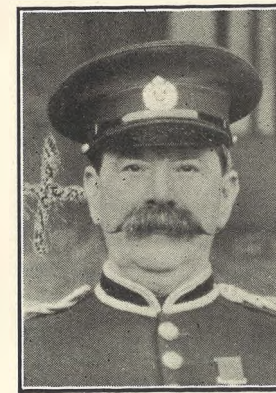
Monday, Jan. 15, and all the week.
Clemence Dane's GREAT PLAY, "A BILL OF DIVORCEMENT,"
FEATURING Constance Binney, Fay Compton, and ALL-STAR CASTE.

NOW PROCEEDING DAILY.

Jesse J. Gillham and Sons' Great Stocktaking Sale. Special cash discount of 2d. in the 1s. on attache, glove, and handkerchief, dressing, jewel, and music cases, auto albums, manicule sets, handbags, purses, Treasury note cases, cigar and cigarette cases, travelling bags, photo frames, postcard and cigarette albums, hair brushes, brass fern and flower pots, brass candlesticks, gongs, trays and rose bowls, writing cases, blotters, collar boxes, hand mirrors. Is. stand of useful articles all offered at 10d. Trays of ornaments 3d., 6d., 9d., 1s., 1s. 6d., and 2s. 6d., all less than half-price. Calendars, wall-papers—396 High Street, Cheltenham.



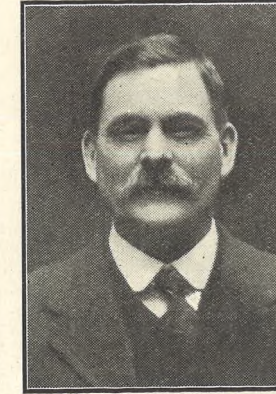
CHIEF OFFICER JAMES MOBLEY, Of H.M. Prison, Gloucester, recently retired on pension after 30 years' service, and to whom a presentation has just been made.



MR. CALEB STEPHENS, Of 9 Worcester-street, Gloucester, who died January 6, aged 69. He was a painter and decorator, and was formerly sergeant-major in the Engineer Volunteers.



MR. W. SHELLSWELL, Of Gloucester Post Office, who has retired from the position of overseer on attaining the age limit, and to whom a presentation has just been made.



MR. JAS. KEVEREN, Who died recently. He was pensioned off last July after 50 years' continuous employment with Messrs. S. J. Moreland and Sons, Ltd., Gloucester.

WINTER GARDEN, CHEL TENHAM.

Monday, Tuesday, Wednesday.
HENRY EDWARDS and CHRISIE WHITE in "SIMPLE SIMON."
An Original Story set in English Country Lanes.
Monday, Tuesday, Wednesday.
A Visit to the UGAL Works at Cheltenham.
Showing the Methods of a Present day Manufacturing Chemist.
Thursday, Friday, Saturday.
IAN MACLAREN'S famous novel, "Beside the Bonnie Briar Bush."
Featuring MARY GLYNNE, DONALD CRISP and ALL-BRITISH CAST.
First of a Series of RAINBOW COMEDIES.

Mr. Alfred J. VENTRIS-FIELD,

SURGEON-CHIROPODIST, ORTHOPÆDIST, and ELECTRO-THERAPEUTIST.

(Hospital and 30 years' Practical Experience. Highest Qualifications. Author, "The Treatment of Talipes Valgus." Consultant H.M. Forces.)

DISEASES and DEFORMITIES of the FEET successfully and Painlessly Treated by the latest Scientific Methods. VARIOUSE VEINS cured by Mr. Ventris Field's new Electro-Therapeutic Treatment. FACIAL DISFIGUREMENTS permanently cured by ELECTROLYSIS, without the slightest Scar.
Surgery: 6 RODNEY PLACE, CHEL TENHAM. Telephone 1266.

MARTIN & CO. LTD.,

Promenade, Cheltenham,
Purchase for Cash Antiques of all kinds, including Old Silver, Jewellery, Sheffield Plate, China, Coins, Miniatures, etc. Highest Prices Given for Rare Pieces.

For the Best PIANOS, DALE, FORTY and Co. Ltd.



MEET OF BERKELEY HOUNDS AT HARDWICKE COURT, NEAR GLOUCESTER.

Owing to an erroneous report gaining currency that the Prince of Wales was attending this meet on Tuesday last, there was a great concourse of foot folk and motorists to welcome him, but they were disappointed, although the meet was a most picturesque one.

- 1.—Some of the large number of foot-folk present.
- 2.—Mr. R. I. Tidswell chatting to the Huntsman.
- 3.—Hon. Ursula Bathurst, daughter of Lord Bledisloe, with Sir Percival Marling, V.C.
- 4.—Mr. Tidswell chatting to Mr. Granville Lloyd Baker.
- 5.—The Master, the Earl of Berkeley.
- 6.—Sir Lionel Darell looking at the pack.
- 7 and 9.—Guests on lawn at Hardwicke Court.
- 8.—Colonel Lloyd Baker, of Cheltenham College.

["Cheltenham Chronicle" Photos. Copies 1s. each, postage 2d. extra.

SHIRER & HADDON'S

GREAT SALE

for JANUARY.

WONDERFUL BARGAINS In Ladies' Outfitting.

Woven & Silk UNDERWEAR at HALF USUAL PRICES.

The record business has been done in our Linen Section, where values have never been so good.

Costumes, Gowns, Coats, Blouses and Millinery marked at still : : lower prices. : :

THIRD WEEK OF SALE.

Remnant Day :

FRIDAY, JANUARY 26, When they will be available at HALF the Marked Prices.

SHIRER & HADDON, CHELTENHAM SPA.



Miss Mollie Johnson, The leading lady in next week's special attraction at the Opera House, Cheltenham, "Bull-Dog Drummond," still playing at Wyndham's Theatre, London.

A PIANO BARGAIN.

AS we are constantly taking Pianos in exchange for genuine Pianola-Pianos, we have opened a

BARGAIN DEPARTMENT,

and will occasionally offer one of these exchanged Pianos by a special advertisement. It is well to remember that these bargains are not worn-out instruments—but reliable Pianos by good makers—are fully guaranteed, and give you the opportunity of securing a superior Piano at a considerable reduction.

THIS WEEK'S BARGAIN :

UPRIGHT, OVERSTRUNG PIANO by

BURKHARDT,

Trichord, Full Compass, Steel Frame. A Very Special Bargain.

Present Value 60 Gns. Cash.

Bargain Price only 48 Gns. cash,

Or by Deferred Payments.

Why not write or call to-day ?

CRICHTONS Ltd,

The Piano House, Promenade, Cheltenham (Opposite G.P.O.).

LANCE'S

Great WINTER SALE

DEPENDABLE GOODS that Beat the most SENSATIONAL SALE OFFERS.

Costumes, Gowns, Coats, Furs, Millinery, General Drapery,

AND Household Furnishing.

AND, IN ADDITION, A Special Discount of 2/- in the £

Will be allowed on all Goods PAID FOR AT THE TIME OF PURCHASE, except a few Proprietary Articles.

John Lance and Co. - - - Limited, Cheltenham Spa.



CHELTONHAM ROUND THE TOWN.

SNAPS OF CHELTONIANS IN AND AROUND THE PROMENADE DURING THE WEEK-END.

- | | | |
|---|--|--|
| 1.—Arm-in-arm. | 3.—Mr. A. Bamber and Mr. R. F. Beard. | 8.—Plus-fours and a pipe. |
| 2.—Ex-Colour-Sergt. J. C. Thompson, Royal West Kent Regiment, now a corporal in Chelsea Hospital, on a visit to his daughter (on left), Mrs. Kibblewhite. | 4.—Is it father and son? | 9.—Mr. Dobson (right), headmaster of Pate's Grammar School, with a friend; two ex-students of St. Paul's College behind. |
| | 5.—Miss Anley with a friend. | |
| | 6.—Shopping in the Promenade. | |
| | 7.—Mrs. Arthur Workman, with her second daughter and her grandson. | |

["Cheltenham Chronicle" photos, copies 1s. each.]



CHELTONHAM ROUND THE TOWN.

SNAPS OF CHELTONIANS AND VISITORS TAKEN DURING THE LAST WEEK-END.

- | | | |
|--|--|-------------------------|
| 10.—Mrs. Willoughby Moore and Mrs. Ernest Moore. | 14.—Admiring the windows in the Prom., where the sales are now in progress. | 16.—Promenading. |
| 11.—Coming from the Library. | 15.—Mr. Fenning, who has recently retired from the headmastership of Naunton Park Schools. | 17.—Taking care of her. |
| 12.—A family party. | | 18.—Out with his boys. |
| 13.—Shopping. | | |

["Cheltenham Chronicle" photos, copies 1s. each.]



THE MAYOR OF GLOUCESTER'S CHILDREN'S FANCY DRESS BALL, WEDNESDAY, JAN. 10.

- 1.—Betty Green as "Bacchante."
- 2.—Isabel Brinkworth as a gipsy.
- 3.—John Gibbs, pierrot.
- 4.—Graham Clift as "Harlequin."
- 5.—Molly Botherway as a Dutch girl.
- 6.—Barbara Overthrow, "Poudreé."
- 7.—Ronald Woodman, Red Indian.
- 8.—Muriel Beard, Chinese lady.
- 9.—Geoffry Botherway, Dutch boy.

[Photos by Debenhams, Gloucester.]

DRESS SHIRTS.
STIFF OR SOFT FRONTS.
DRESS TIES.
READY-MADE OR TO TIE.
DRESS GLOVES.
2/11—3/11.
DRESS COLLARS.

A Beckingsale, 111 HIGH STREET
CHELTENHAM.
*Phone 406.

Moussell Bros., Ltd.
(Opposite G.W.R. Station),
CHELTENHAM.
FURNITURE REMOVALS.
BY RAIL OR MOTOR.
*Phone 112.

*Phone 311.
Geo. Bence & Sons,
LTD.,
— 41, 43, 45 & 47 —
Fairview Rd., CHELTENHAM.
DEPOT for
WALPAMUR
(Water Paint).
SATINETTE ENAMEL. KEYSTONE OIL FLAT.
GRIPON—Ready Mixed White Paint.
Beaver Boards—Matchboards—Floorboards.

ANNUAL SALE. GREAT FUR BARGAINS
VANDERPLANK (From Harrods), The Fashion and Fur House.

Sale of Furs and Fur Coats at prices very much under the market values for cash. Seal Musquash, Moleskin, Nutria, Beaver, Seal, and Beaver Coney Coats; also Skunk and Skunk Opossum Stoles, Wolf, Fox, and Beaver Ties, all at Great Bargain Prices next 3 days only—SALE ENDS JAN. 17th.

SPECIAL BARGAIN.

Nutria - Beaver COAT reduced from 89 Gns. to **39 Gns.**
Moleskin COAT reduced from 69 Gns. to **29 Gns.**
Seal Musquash **69 Gns.** Reduced from 150 Gns.



Fine Natural Skunk STOLEs and CAPES are being sold at very low prices. Large WRAP of Natural Strands. 60 inch long.

21 Gns.



ONE OF MANY COATS.
A fine quality Beaver Coney COAT, well made of very fine soft skins and richly lined.
BARGAIN PRICE. 21 Gns.
In Seal and Beaver Coney, similar styles 12, 14, and 18 Gns.

VANDERPLANK,
381 High Street and Promenade, CHELTENHAM SPA.



POLICE v. PANTOMIME FOOTBALL MATCH.

Played on Whaddon Rec. on Tuesday in aid of charity, the Police winning by 12 goals to 5.
 "Cheltenham Chronicle" photos. Copies 1s. 9d. each.

R. F. BEARD & CO.
SANDRINGHAM HOUSE

THE SPECIAL REDUCTIONS
WILL CONTINUE
UNTIL ALTERATIONS ARE COMMENCED
NEXT MONTH.

Silver Goods. Sandringham Plate. Jewellery and Bracelet Watches.

**PROMENADE
CHELTENHAM**

JEWELLERY AND ANTIQUES
 MARKED DOWN TO THE LOWEST PRICES
 Now is Your Opportunity to Obtain
REMARKABLE BARGAINS
 in both Departments.
 Many Articles less than cost price.
HARRY O. BOX,
 339 HIGH STREET (just below Town Clock).

Make it known through the "Echo."

CORSETS AND BELTS
 MADE, COPIED, CLEANED, AND REPAIRED.
 Hours: 10 a.m. to 6 p.m. Saturdays, 1 p.m. to 5 p.m.
 or by appointment. **PHONE 915.**

MISS FRUIN (Late with Madam Annette),
 23 Bath Parade, CHELTENHAM.

HIGH PRICES
 Paid for Ladies', Gentlemen's, and Children's Discarded Wearing Apparel—Boots, Shoes, etc. A Postcard to

DEANE'S WARDROBE DEPOT,
 31 Worcester Street, GLOUCESTER,
 Will Receive Prompt Attention.

THE NOTED HOUSE FOR FAIR PRICES.
 Telephone 970.
 Telegrams: "Wardrobes, Gloucester."

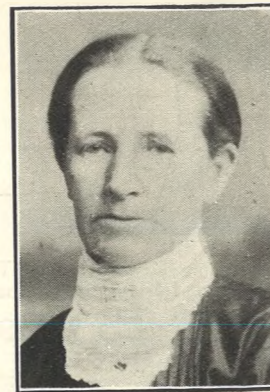
Mrs. W. P. James, of Pontypool, the first woman J.P. in Monmouthshire, and a prominent Liberal and social worker, died on Tuesday.

Printed and Published as a Gratis Supplement by the Cheltenham Newspaper Co., Ltd.



Mr. Mark Martin,

Of 15 Bloomsbury-street, Cheltenham, who died recently, aged 69. He retired on pension in July, 1912, having been a postman for 38 years in Cheltenham.



Mrs. G. Williams,

Of 21 Queen's-retreat, St. George's-road, Cheltenham, who died on Jan. 8th, aged 75 years, after a long and painful illness.

THE CHELTENHAM CHRONICLE AND GLOUCESTERSHIRE GRAPHIC

With Which is Incorporated the "Cheltenham Looker-On."
 GRATIS SUPPLEMENT. Saturday, January 20, 1923. No. 1,151.

CHELTENHAM THEATRE AND OPERA HOUSE.

Resident Manager: H. OSWALD REDFORD.
 THIS AFTERNOON (2.30) AND EVENING (7.30)—"BULL-DOG DRUMMOND."
 Next Week—Mon., Tues., & Fri., at 7.30, "The Walls of Jericho." Wed., Thurs., & Sat., at 7.30, "Leah Kleschna."

**THE PALACE,
HIGH STREET, CHELTENHAM.**

Continuous, 2.30 to 10.15.
 MONDAY to WEDNESDAY.
 GLORIA SWANSON and MILTON SILLS in the
"GREAT MOMENT,"
 By Elinor Glyn.
 Larry Semon in Super Comedy,
"A PAIR OF KINGS."
 THURSDAY to SATURDAY,
 British Super Production,
"THE PUPPET MAN."
 By Cosmo Gordon Lenox.
 Broadway Comedy,
"CLIO'S EASY MARK."

**THE DAFFODIL
PICTURE HOUSE,
SUFFOLK PARADE.**

Continuous from 2.30.
 A Grand Double Programme.
 Monday, Tuesday, Wednesday.
**THE GREAT SUCCESS,
A Pair of Silk Stockings,**
 Featuring
 CONSTANCE TALMADGE,
 In Five Parts.
 W. S. Hart in
OVER THE GREAT DIVIDE.
 Thursday, Friday, Saturday.
 The Wonderful Comedian,
 HAROLD LLOYD,
 In his Latest Success,
"A Sailor-Made Man."
 A Scream from Start to Finish.
 In Five Parts.
 The Great Picture,
"PRIMAL LAW."

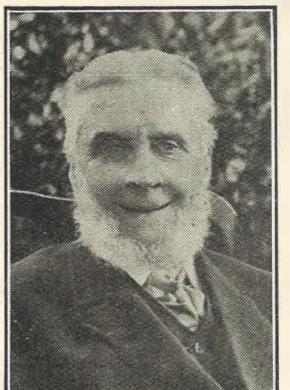
GET AHEAD OF THE TIMES
 By Having Your
SUNDAY NEWSPAPERS
 Delivered by
BROWN'S NEWSAGENCY,
 226 HIGH STREET, CHELTENHAM
 Accounts Quarterly.

**MARTIN & CO.
LTD.,**

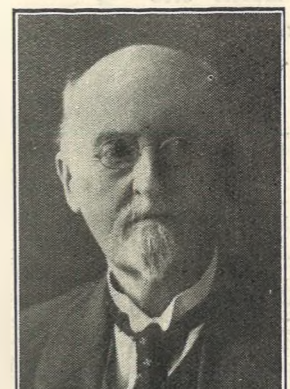
Promenade, Cheltenham,
 Purchase for Cash Antiques of all kinds, including Old Silver, Jewellery, Stafford Plate, China, Glass, Miniatures, etc. Highest Prices Given for Rare Pieces.



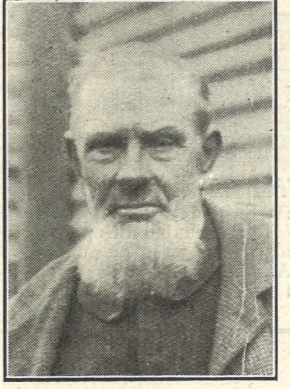
MRS. MARGARET LEWIS,
 Of 1 St. George's-place, Cheltenham, who died December 21, 1922, aged 73 years. She had kept a shop at this address for 27 years.



MR. JOHN SMART,
 Of Westbury, a retired cabinet maker, of Gloucester, who was killed on Jan. 12 at Westbury railway crossing. He was 93 years of age.



MR. J. L. TICKELL, I.S.C.,
 Civil Engineer, of Westbourne, St. Mark's, Cheltenham, who died on Jan. 12. He belonged to an old Cheltenham family, and had a distinguished career.



MR. EDWARD TEALE,
 Of 8 Malvern Street, Cheltenham, who died on Jan. 10, aged 80 years. He was for many years landlord of the Vauxhall Inn, Cheltenham, and a Conservative worker.

**WINTER GARDEN,
CHELTENHAM.**

MONDAY, Jan. 22, and ALL WEEK.
**Victorien Sardou's
Mighty Spectacle,
"THEODORA."**
 As shown at Covent Garden Theatre, London.
 25,000 People. 30,000 Costumes.
 USUAL TIMES & PRICES.

H. E. Randall, Ltd.,
 6c The Promenade,
 CHELTENHAM.

**Annual SALE
Now Proceeding.**

SPECIAL LINES:
 GENT'S DRESS SHOES, .. 10/6.
 LADIES' GLACE TIE SHOES, 15/-.
 Oddments and Samples
 ; much below costs. :
SEE WINDOWS

**ADVERTISE IN
THE "ECHO."**

CYCLES REPAIRED

Overhauled, and New Tyres Fitted at lowest prices for : reliable workmanship. :
H. SELLEY,
 3 SHERBORNE ST.
 CHELTENHAM.

For the Best **PIANOS, DALE, FORTY and Co. Ltd.**

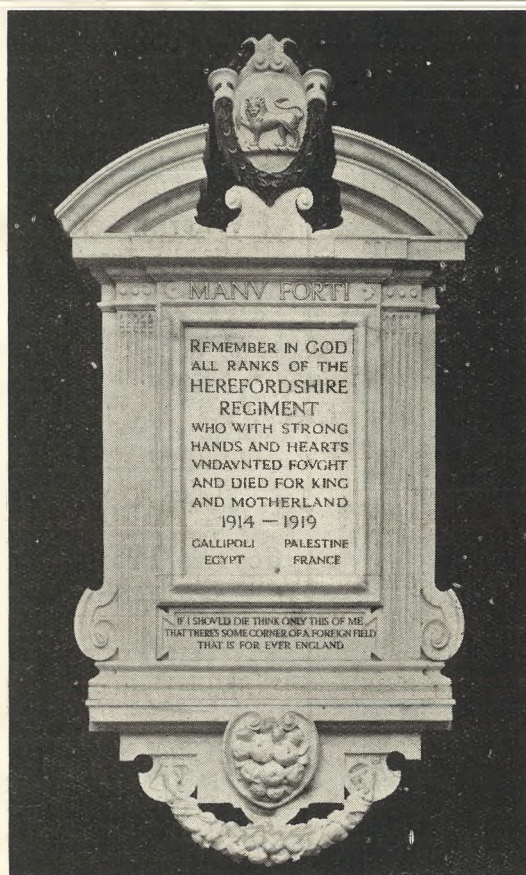


CHELTENHAM A.F.C. BEATEN AT HOME.

Cheltenham Association Football team, who have been playing very well this season, met with a reverse last Saturday in the North Gloucestershire Senior League, being beaten by Forest Green Rovers 2-1. Cheltenham attacking.



Spectators at Cheltenham v. Forest Green Rovers Football Match.



Herefordshire Regimental War Memorial.

The above mural tablet was unveiled last Saturday in Hereford Cathedral by Colonel G. Drage, D.S.O. It is executed in opaque alabaster, with decorated regimental badge and wreath, and is to the design of W. D. Caroe, F.R.I.B.A., London. The work was executed by Messrs. R. L. Boulton and Sons, Bath Road, Cheltenham.



Mr. and Mrs T. H. Poynton,

Of Southend House, Prestbury-road, Cheltenham, who on Monday next will celebrate their Golden Wedding.

Send the
"Chronicle
and
Graphic"
to your
Friends.

**Remodelling, Renovations
AND
Alterations of Gowns & Garments**
Miss Anne Wallis

Has now
OPENED WORKROOMS at "BARKLEY"
(corner of Albion Street and North
Place, opposite Gas Offices),
CHELTENHAM,
And assures Clients of best attention.

BEST QUALITY

CIDERS

IN BOTTLE.—Sparkling and Still.
BARTHOLOMEW,
419, 420 HIGH STREET,
CHELTENHAM.

WINES, SPIRITS, ALES, TABLE WATERS
and GROCERY. Tel. 13.

Moussell Bros., Ltd.

(Opposite G.W.R. Station),
CHELTENHAM.
FURNITURE REMOVALS.
BY RAIL OR MOTOR.
Phone 112.

Phone 311.
Geo. Bence & Sons,
LTD.,
— 41, 43, 45 & 47 —
Fairview Rd., CHELTENHAM.
DEPOT for
WALPAMUR
(Water Paint).
SATINETTE ENAMEL. KEYSTONA OIL FLAT.
GRIPON—Ready-Mixed White Paint.
Beaver Boards—Matchboards—Floorboards.



THE BREDON FOOTBALL ASSAULT CASE.

On Tuesday, January 9, Sam Collins, a Bredon footballer, was charged at Pershore Police Court with assaulting the referee at a Bredon football match, and was fined £5. The prosecuting solicitor and witnesses on the way to Police Court in motor were stuck up by the floods at Eckington; and in circle the defendant Collins.

R.F. BEARD IP.
SANDRINGHAM HOUSE

THE SPECIAL REDUCTIONS
WILL CONTINUE
UNTIL ALTERATIONS ARE COMMENCED
NEXT MONTH.

Silver Goods. Sandringham Plate. Jewellery and Bracelet Watches.

PROMENADE
CHELTENHAM

Send the "Chronicle and Graphic" to Your Friends.

LANCE'S
Great
WINTER
SALE

SPECIAL BARGAINS
WILL BE FOUND IN THEIR
Household Linen
DEPARTMENT.

The whole of the reliable Stock
of Standard Goods is now being
OFFERED AT SALE PRICES
with the additional advantage of
10 % (2/- in the £)

Discount off all Goods paid for
at the time of Purchase.

Ready-made SHEETS, frilled or plain,
From 12/11 Pair.

PILLOW CASES, full size,
12 3/4 d. Each.

Hemstitched ditto -- 1/6 1/2 Each.

Unbleached Twill SHEETS, Warm
and durable, full size .. 9/11 Pair.

Messrs. Rigg Bros.' Famous SHEETS
and PILLOW CASES,
20 % Under To-day's Value.

TABLE LINEN of the Best Makes
procurable are being offered at a
Big Reduction to Clear Oddments

Glass, Tea, Pantry, Kitchen, and Basin
CLOTHS at Special Bargain Prices.

John Lance
and Co. - - - Limited,
Cheltenham Spa.

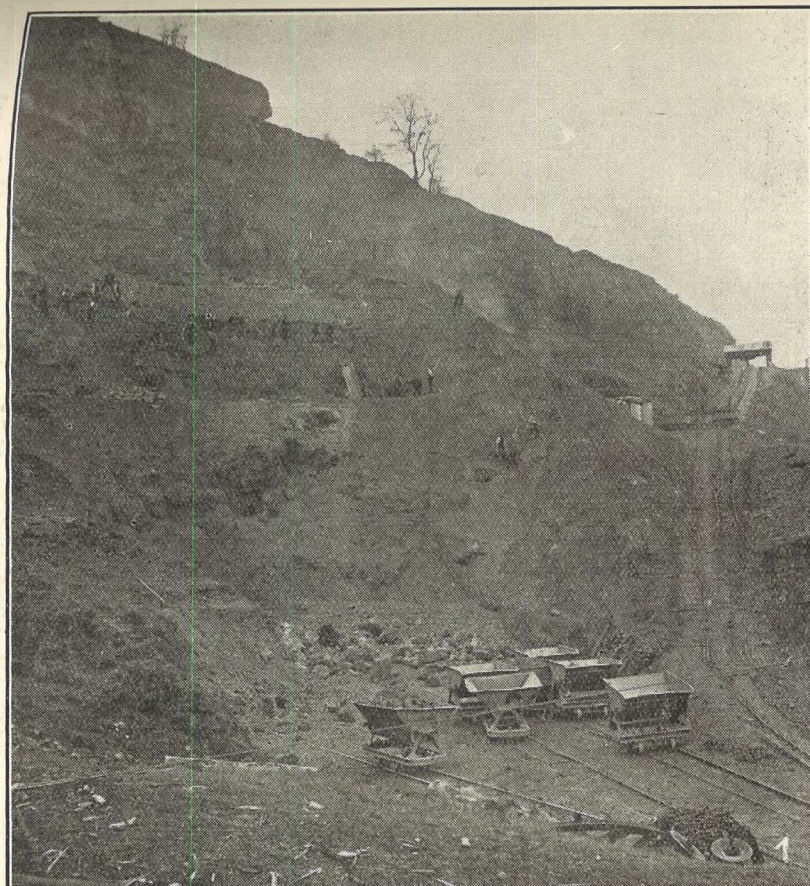


PICTURESQUE GLOUCESTERSHIRE.—MICKLETON AND WESTON-SUB-EDGE.

Mickleton and Weston-sub-Edge are two villages three miles apart on the main road from Broadway to Stratford-on-Avon. Mickleton is much the larger of the two, and has some interesting old houses, two of which we illustrate. Weston-sub-Edge is very picturesque and quaint, and the houses are very old.

1.—Medford House, Mickleton, a stately and beautifully designed old stone house.
 2.—Tudor House, Mickleton, a fine old delightfully old-world residence, with lawns flush with the top of the wall.
 3.—Yew Tree House, Weston-sub-Edge, a Cotswold residence.
 4.—Some fine old cottages at Weston-sub-Edge. The white object in front is the village war memorial—a German shell.

["Cheltenham Chronicle" photos. Copies 1s. 9d. each unmounted, postage 2d. extra.



BUILDING THE NEW LECKHAMPTON RAILWAY.

Great progress is being made on Leckhampton Hill with the new Railway work, and above we give scenes taken on Wednesday on the Hill.

1.—Cutting out debris from face of Hill. This debris is being used to build up a big embankment across the valley below, utilizing many thousands of tons of materials. The lime-kilns will be built on the space now being cleared.
 2.—Cutting out side of Hill for ballast. The lime-kilns will be built on the space now being cleared.
 3.—The viaduct, or embankment, being built across the valley.
 4.—Workmen at dinner round a fire.

["Cheltenham Chronicle" Photos. Large ones 1s. 9d. each, Small Size 1s. each.



ROUND THE TOWN IN CHELTENHAM.

Snaps on Monday morning in the vicinity of the Fountain.

- 1—Making for home and lunch.
 2.—Mr. David Lewis, C.C., J.P.
 3.—Mr. Wingate and Mr. Henry Rogers,
 both distinguished members of the musical world of Cheltenham.
 4—Making for the "Cosy Corner" in a happy frame of mind.
 5, 6, 7, 8, and 9.—Various snaps in the Promenade.

["Cheltenham Chronicle" photos. Copies 1s. each unmounted.



CHELTENHAM POST-OFFICE CHORAL SOCIETY.

Conductor, Mr. A. G. Calvert (Postmaster), who is leaving Cheltenham for Peterborough at the end of this week
 Back Two Rows (reading left to right)—Miss Howells, Messrs. George, Bleney, Kendall, Miss Alsbury, Miss Roberts, Messrs. Vizard, (back) Sheen, Whitehead, Hopkins, W. Durn, F. W. Bull (at back), T. Durn, Bartlett, Handley, Bridgeman (back), Ruddock, Parsons, Bolton.
 Second Row—Misses Williams, Mayos, Savery, Ford, Mrs. Bolton, Miss White, Miss Davenport, Miss Mayall, Miss Acock
 Front Row.—Misses Wilton, Delaney, Mr. A. Roberts, Miss Calvert, Mr. A. G. Calvert (Postmaster), Mrs. A. T. Calvert, Mr. Mayall (Superintendent), Miss E. Mayall, Mr. G. Hamblin.

["Cheltenham Chronicle" Photo. Copies 3s. Mounted, 2s. Unmounted.



GLOUCESTRIANS IN INDIA.

Signallers of the Headquarters Company 2nd Gloucestershire Regiment, now stationed at Rawal Pindi, India. Most of these men are from Gloucestershire.



"STOW SPA,"

Now Spa Cottages, Lower Swell. An oval tablet, bearing the words, "Carbonated Chalybeate, discovered 1807," is over the door of the cottage on the extreme left of the picture. See Special Article in Main Sheet of "Chronicle."

DRAKE'S,
HOSIERY SPECIALISTS,
OFFER SPECIAL VALUES IN
GYMNASTIC HOSE.



ALL MAKES.
36 INS. LONG.
CASHMERE.
Morley's Make.
Fully fashioned,
wide tops, made
from best two-
fold yarns.
8½, 9, 9½, 10 inch
foot.

PAIR, 4/11½

MERCERISED.
Best Quality Yarn
with silky finish,
fully fashioned.
9, 9½ inch foot.

PAIR, 4/6½

CASHMERE.
The renowned
"Lena Lastik"
Make. Spliced
heels and toes.
9, 9½ inch foot.

PAIR, 3/6½

WINCHCOMB ST., CHELTENHAM.

CORSETS AND BELTS
MADE, COPIED, CLEANED, AND REPAIRED.

Hours: 10 a.m. to 6 p.m. Saturdays, 1 p.m.,
or by appointment. PHONE 915.

MISS FRUIN (Late with Madam Annette),
23 Bath Parade, CHELTENHAM.



Mr. Fred. Harper, J.P.,

Of 13 York Terrace, Cheltenham, who died on Tuesday, January 16, aged 66 years. He was President of the Free Church Council, and an active Liberal worker. He was chairman of the firm of John Harper and Co., ironfounders, of Willenhall, but had retired from active participation about five years ago to live in Cheltenham. He was a brother-in-law of Mr. David Lewis, J.P., C.C., of the Building Society.

DRESS SHIRTS.
STIFF OR SOFT FRONTS.

DRESS TIES.
READY-MADE OR TO TIE.

DRESS GLOVES.
2/11—3/11.

DRESS COLLARS.

A. Beckingsale, 111 HIGH STREET
CHELTENHAM.
Phone 406.

**SHIRER &
HADDON'S**

GREAT

SALE

for **JANUARY.**

**WONDERFUL
BARGAINS**

In Ladies' Outfitting.

Woven & Silk UNDERWEAR
at HALF USUAL PRICES.

The record business has been
done in our Linen Section,
where values have never been
so good.

Costumes, Gowns, Coats,
Blouses and Millinery
marked at still
: : lower prices. : :

FOURTH WEEK OF SALE

Remnant Day :
FRIDAY, JANUARY 26,

When they will be available
at HALF the Marked Prices.

SHIRER & HADDON,
CHELTENHAM SPA.

**THE CHELTENHAM CHRONICLE
AND
GLOUCESTERSHIRE GRAPHIC**

With Which is Incorporated the "Cheltenham Looker-On."
GRATIS SUPPLEMENT. Saturday, January 27, 1923.

No. 1,152.

CHELTENHAM THEATRE AND OPERA HOUSE.

Resident Manager: H. OSWALD REDFORD.

THIS EVENING (7.30): "LEAH KLESCHNA."

NEXT WEEK—First Visit of Mr. Donald Calthorp's Co.—"DOUBLE OR QUITS."

THE PALACE,
HIGH STREET, CHELTENHAM.

Continuous, 2.30 to 10.15.
MONDAY to WEDNESDAY,
ALICE JOYCE in
'The Sporting Duchess,'
Or "DERBY WINNER."
The Celebrated Drury Lane
Medodrama.
Joe Rock Comedy,
"HIS WEDDING DAZE."
THURSDAY to SATURDAY,
WILLIAM S. HART in
"THE WHISTLE."
Goldwyn-Lion Comedy,
"PUT AND TAKE."

**THE DAFFODIL
PICTURE HOUSE,**
SUFFOLK PARADE.

MONDAY, Jan. 29, and WEEK.

Another Huge
Programme.

THE BIG SUPER SPECIAL:
**"The Woman in His
House,"**

Featuring MILDRED HARRIS
CHAPLIN and the Wonderful
Boy Actor, DICKIE HEADRICK
"WOMAN IN HIS HOUSE."
An Absolute Cinematograph
Masterpiece, tuned to all
Women's Hearts.

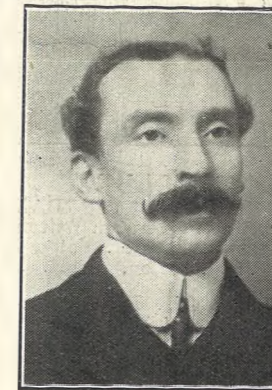
GET AHEAD OF THE TIMES
By Having Your

SUNDAY NEWSPAPERS

Delivered by
BROWN'S NEWSAGENCY,
226 HIGH STREET, CHELTENHAM
Accounts Quarterly.

**MARTIN & CO.
LTD.,**

Promenade, Cheltenham,
Purchase for Cash Antiques of
all kinds, including Old Silver,
Jewellery, Sheffield Plate, China,
Coins, Miniatures, etc. Highest
Prices Given for Rare Pieces.



**MR. JAMES GEORGE
HILL,**

Of 29 Westgate-street, Gloucester, who died on Saturday, Jan. 20, aged 52 years. He was a boot and shoe factor, but retired about four years ago.



Mrs. ALFRED GIBBONS,
Of McKinley Villa, Church-
road, Leckhampton, who
died on Jan. 13th. She was
for 34 years well known
and respected in Suffolk-
road.

**WINTER GARDEN,
CHELTENHAM.**

MONDAY, Jan. 29, and WEEK.

ALL-BRITISH CAST in
**"A PRINCE OF
LOVERS,"**

Being The
Romance of Lord Byron.

A Great British Film Classic
showing the Life Story of a man
over whom a thousand women
went crazy.

ADVERTISE IN
THE "ECHO."

**BOUND
VOLUMES**

of the :

"GRAPHIC"

: For 1922 :

NOW ON SALE.

Bound in Half-Calf, ONE
with Gold Lettering, GUINEA
Cloth Coverings : : 12/6.

A SPLENDID PRESENT.

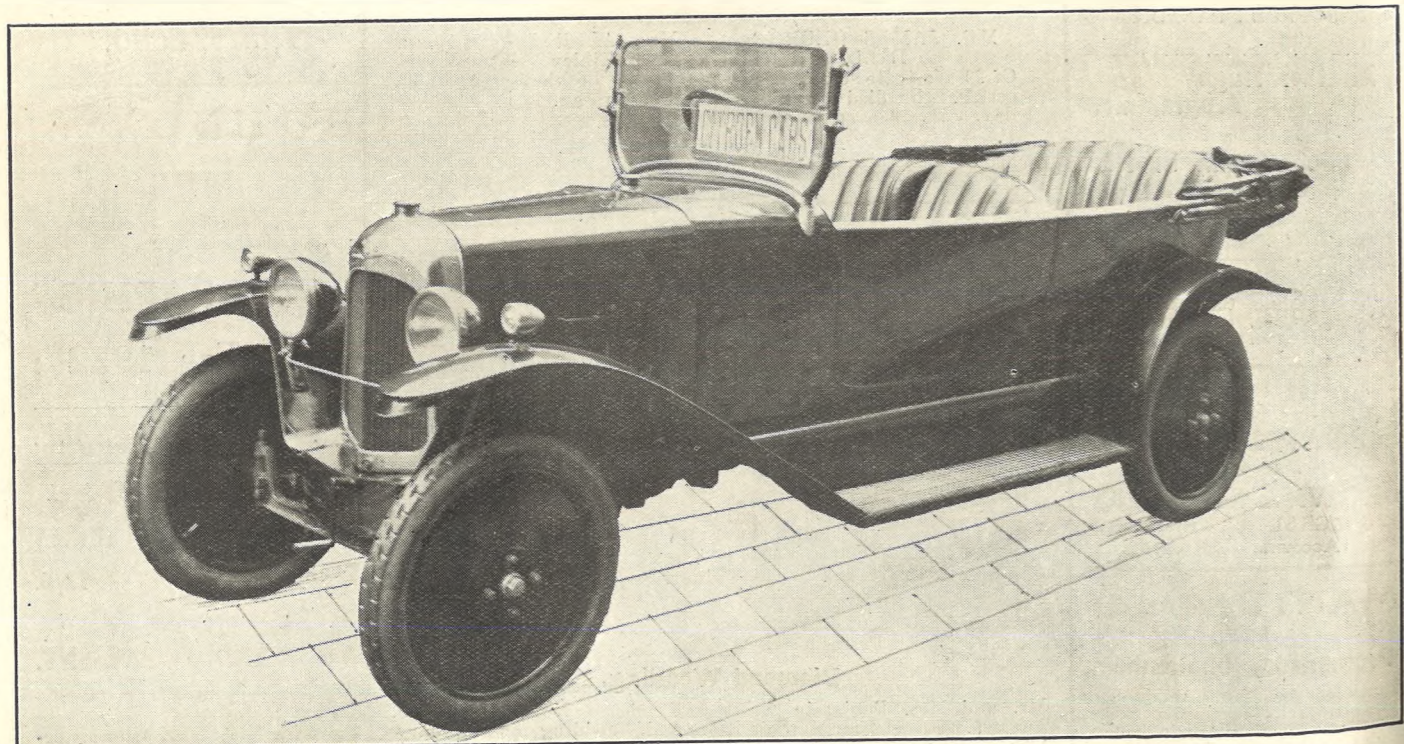
Pictorial History of Gloucester-
shire for the Year. : : :

For the Best **PIANOS, DALE, FORTY and CO. LTD.**



CHEL TENHAM HOCKEY CLUB.

SOME OF THE MEMBERS TAKEN ON THE VICTORIA GROUND, ON SATURDAY, JANUARY 20th, 1923.
 Back Row.—J. Morgan, C. Birkin, J. L. Bendall, F. Taylor, H. W. T. Jowett, K. Wilson, R. Wilton, V. Eastwood, L. Neale, C. Pearce.
 Third Row.—P. M. Stallard, W. T. Jones (Coach), Miss M. Young, S. Lovell, Miss M. Pates, J. A. Lovell, Miss D. Harris, Miss J. Steel, L. Cook (Vice-Captain 1st XI.), Misses K. and M. Yeend, F. J. Addison, W. H. Denham (Hon. Secretary), W. T. Danahy (Umpire).
 Sitting.—R. Lonsdale, St. Clair Bower, Miss E. Watts (Vice-Captain 2nd XI.), G. F. Robinson (Captain 1st XI.), Miss H. Roberts (Captain 2nd XI.), E. W. Burton (Captain 2nd XI.), Miss E. James, H. Hawkins, Miss M. Holborow, Miss Hoskins.
 Front Row.—Miss J. Arnold, Miss L. Hyatt, J. Ponting, Miss F. Bendall, T. G. Underhill (Hon. Secretary), Miss E. Leeson, Miss M. Hawker, A. Wakefield.
 ["Cheltenham Chronicle" Photos. Copies Mounted 3s., Unmounted 2s. each.]



FINE PERFORMANCE BY THE CITROEN CAR.

This is the 11-14 h.p. Citroen Car which successfully crossed the wild wastes of the Sahara Desert, the most gruelling test of reliability ever undertaken with a car. The cars were absolutely standard, with the exception of the tractor attachment, which replaced the rear wheels. This wonderful performance only confirms what thousands of users have experienced during the past four years. Buy a Citroen and be free of worry. Sole agents: Haines and Strange, 19 to 91 Albion Street, Cheltenham, from whom full particulars and demonstration runs can be obtained. £265 COMPLETE.



A TESTIMONIAL.

"Echo" advertisement last Saturday:—"Wanted, 20 local children: to appear for one week in the "Home of the Fairies."—Apply Monday morning, stage-door of the Coliseum." The Applicants!
 ["Cheltenham Chronicle" Photos.]

**R. F. BEARD & CO.
 SANDRINGHAM HOUSE**

**TO THOSE WHO WOULD BUY
 TABLE WARE TO ADVANTAGE**

The opportunity is given of procuring reliable quality Silver Plated Goods at a reduction of 25 per cent. (5/- in £).

This sacrifice is made solely to reduce the Stock, and so minimise risk of damage during Extensive Alterations shortly to be commenced.

SEE OUR WINDOWS.

**PROMENADE
 CHELTENHAM**

**LANCE'S
 Great
 WINTER
 SALE**

**SPECIAL BARGAINS
 WILL BE FOUND IN THEIR
 Household Linen
 DEPARTMENT.**

The whole of the reliable Stock of Standard Goods is now being OFFERED AT SALE PRICES with the additional advantage of **10 % (2/- in the £)** Discount off all Goods paid for at the time of Purchase.

Ready-made SHEETS, frilled or plain, From 12/11 Pair.

PILLOW CASES, full size, 12½d. Each.

Hemstitched ditto .. 1/6½ Each.

Unbleached Twill SHEETS, Warm and durable, full size .. 9/11 Pair.

Messrs. Rigg Bros.' Famous SHEETS and PILLOW CASES, 20 % Under To-day's Value.

TABLE LINEN of the Best Makes procurable are being offered at a Big Reduction to Clear Oddments

Glass, Tea, Pantry, Kitchen, and Basin CLOTHS at Special Bargain Prices.

**John Lance
 and Co. - - - Limited,
 Cheltenham Spa.**



PICTURESQUE GLOUCESTERSHIRE—ASHTON-UNDER-HILL.

Ashton-under-Hill is a picturesque old village on the Worcestershire border, with many half-timbered black and white thatched cottages. For a time it was a popular resort for political outings from Cheltenham.

1.—The ancient Village Cross, with sundial, standing opposite entrance to Churchyard, a picturesque feature of the village. 2.—A fine old farmhouse, with a quaint old building (on left) attached. 3.—The Plough and Harrow, familiar to Cheltenham politicians, the quaint old licensed house. 4.—The curious old South Porch to the Church.

[“Cheltenham Chronicle” Photos. Copies 1/9 each unmounted, postage 2d. extra.]



PICTURESQUE GLOUCESTERSHIRE—KEMERTON.

Kemerton is a big village, situated in a delightfully picturesque locality, surrounded by hills commanding extensive views, and is bounded on the north, east, and west by Worcestershire. It is 5 miles from Tewkesbury.

1.—Entrance to village from Bredon direction, showing War Memorial in distance. 2.—Lower Farm, Kemerton, a quaint farmhouse, now occupied by Mr. Wm. Smith. 3.—The church tower of St. Nicholas—the only part of the church not rebuilt. 4.—A picturesque old thatched cottage on the slope of the hill.

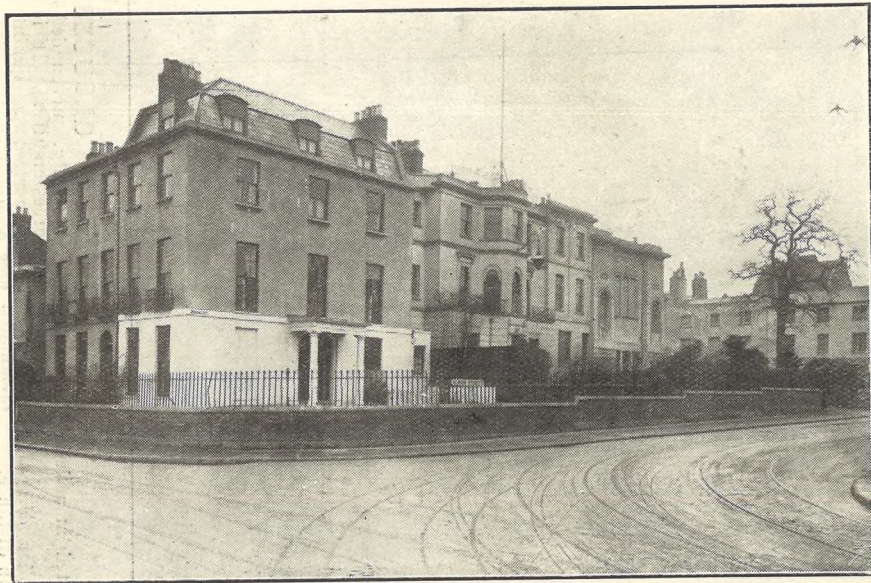
[“Cheltenham Chronicle” Photos. Copies 1/9 each unmounted, postage 2d. extra.]



PROPOSED CHELTENHAM STREET IMPROVEMENT.

Photograph of the narrow junction of Winchcombe-street and High-street, Cheltenham, showing on right the two shops (Messrs. Higgins' and Moody's) which have been purchased by Messrs. Dunn, the London hatters, who are going to open a new shop on this corner. On the left is Messrs. Lloyd and King's shop, which a correspondent suggests might be set back to the white line shown in the photo, giving another 2ft. 9ins. to the pavement, which is less than 3ft. wide at this point. The owners, we believe are prepared to give up the space if the Corporation will take down and re-erect the wall. It is also suggested that Messrs. Dunn's new frontage might also be set back a little.

["Cheltenham Chronicle" Photo. Copies 1/9 each unmounted, postage 2d. extra.



ANOTHER PROPOSED STREET IMPROVEMENT.

The Streets and Highways Committee of the Corporation are considering a scheme for the widening of Albion Street in front of the Conservative Club, and at the same time improving the dangerous corners opposite Earlington House and the Masonic Hall, by setting back the wall and railings some six or eight feet.

**CORSETS AND BELTS
MADE, COPIED, CLEANED, AND REPAIRED.**

Hours: 10 a.m. to 6 p.m. Saturdays 1 p.m. to 5 p.m.
or by appointment. PHONE 915.

MISS FRUIN (Late with Madam Annette),
23 Bath Parade, CHELTENHAM.

JEWELLERY AND ANTIQUES

MARKED DOWN TO THE LOWEST PRICES
Now is Your Opportunity to Obtain
REMARKABLE BARGAINS
in both Departments.
Many Articles less than cost price.

HARRY O. BOX,

389 HIGH STREET (just below Town Clock).

Mousell Bros., Ltd.

(Opposite G.W.R. Station),
CHELTENHAM.
FURNITURE REMOVALS.
BY RAIL OR MOTOR.
Phone 112.

MEN'S WEAR.

A FINE SELECTION OF
Fur Felt Hats,
15/6 to 21/-.
Velours, 16/6
Upwards.
Tweed CAPS in variety.

A. Beckingsale, 111 HIGH STREET,
CHELTENHAM.
Phone 406.



**BROADWOOD
PIANOFORTES**

*The True Measure
of Cost*

MEASURE the cost of a Broadwood by the pleasure it gives. The initial cost may be a little more, but initial cost should be the last consideration in the purchase of a pianoforte. A lifetime—and more—of complete satisfaction, is of more importance than the immediate saving of a few pounds.

Yet the possession of a Broadwood does not necessarily involve great outlay. Prices now range upwards from as low as 70 guineas.

Won't you call and try the latest models at the Sole Agents—

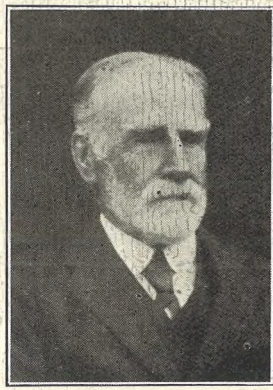
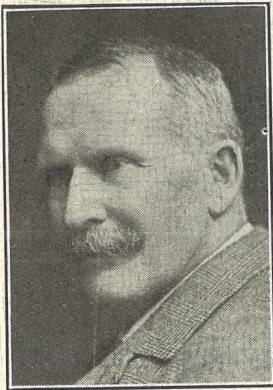
Crichtons Ltd.,
PROMENADE,
CHELTENHAM.



ROUND THE TOWN IN CHELTENHAM.

Copies of any of the above Photographs can be obtained at the "Chronicle" Offices, Clarence Parade, price 1s. each unmounted, 1s. 6d. mounted, postage 2d.

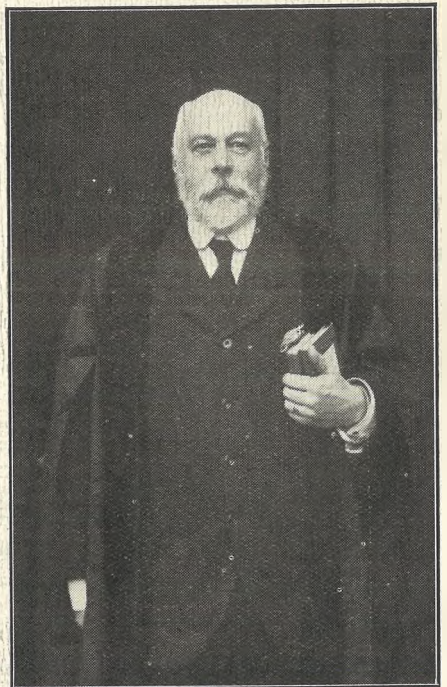
Send the "Chronicle and Graphic" to Your Friends, and Get the "Echo" Every Night.



MR. J. P. WILTON HAINES,
Of 3 Spa Villas, Gloucester, who died on Tuesday, aged 72 years. He was a prominent solicitor—partner in the firm of Haines and Sumner, Gloucester.

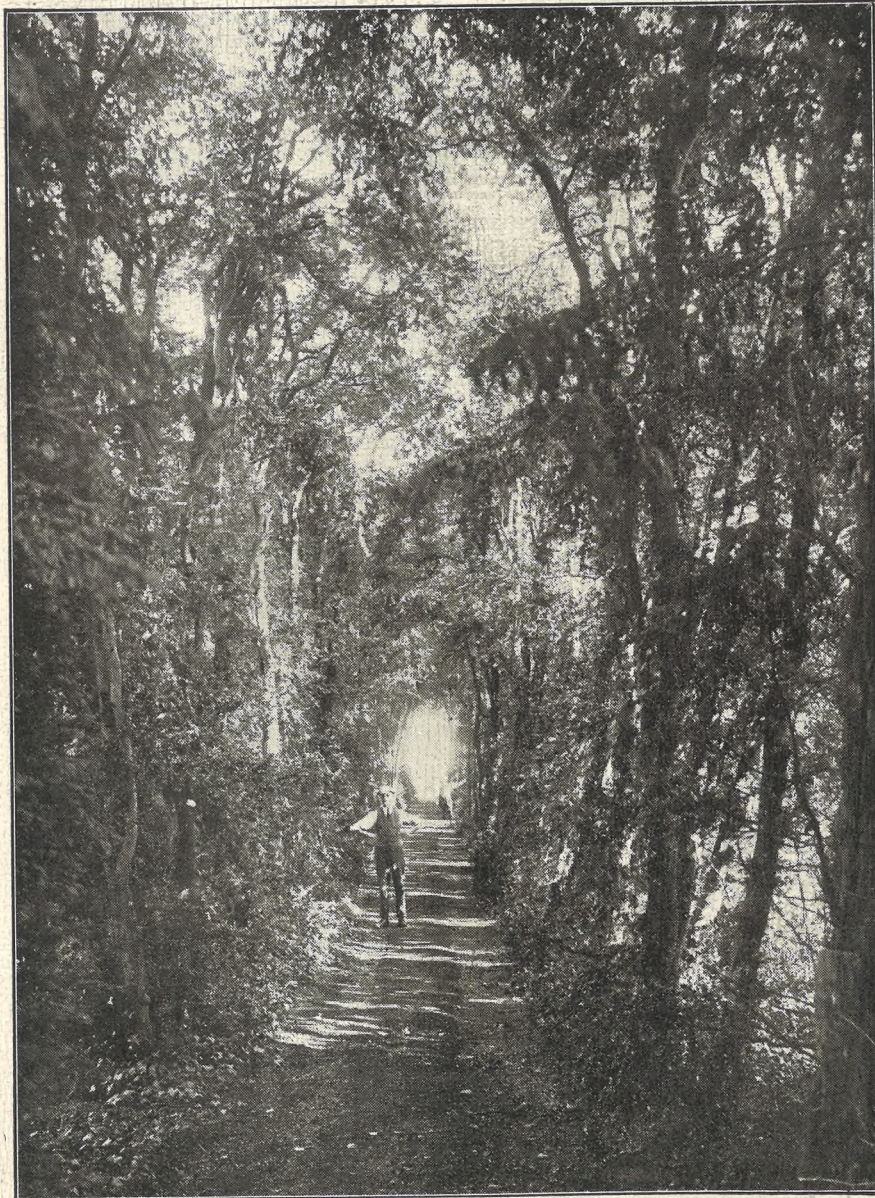
MR. P. J. EVANS, J.P.,
Of St. Michael's Garth, Bussage, who died on Jan. 18, aged 78 years. He was for many years in chief control of the firm of P. C. Evans and Sons, of Brimscombe.

REV. JAMES BELL COX,
Of 22 Park-place, Cheltenham, who died on Sunday last, aged 85 years. He was for 52 years associated with St. Margaret's, Liverpool. He was a prominent High Churchman.



Mr. Charles Moorey,

Of 2 St. James'-villas, Gloucester-road, Cheltenham, who, on December 31st last, completed 50 years' service to Christ Church, first in the capacity of Assistant Vestry Clerk and later as Verger and Vestry Clerk. On Tuesday, Jan. 16, he was the recipient of a pair of silver candlesticks, a silver inkstand, and an address from the congregation, as a recognition of his jubilee of faithful work for the Church.—[“Cheltenham Chronicle” photo.]



Beautiful Gloucestershire.—A Wonderful Box Avenue.

This avenue of Box Trees, 110 yards long, and said to be several centuries old, is unique in England. It is in the grounds of Beckford Hall, the residence of Captain Henry Ashton Case, J.P. [“Cheltenham Chronicle” Photo. Copies 1/9 each

Phone 311.

Geo. Bence & Sons,
LTD.,
— 41, 43, 45 & 47 —
Fairview Rd., CHELTENHAM.
DEPOT for
WALPAMUR
(Water Paint).
SATINETTE ENAMEL. KEYSTON OIL FLAT.
GRIPON—Ready Mixed White Paint.
Beaver Boards—Matchboards—Floorboards.

HIGH PRICES

Paid for Ladies', Gentlemen's, and Children's Discarded Wearing Apparel—Boots, Shoes, etc. A Postcard to

DEANE'S WARDROBE DEPOT,

31 Worcester Street, GLOUCESTER,

Will Receive Prompt Attention.

THE NOTED HOUSE FOR FAIR PRICES.

Telephone 970.

Telegrams: “Wardrobes, Gloucester.”

Printed and Published as a Gratis Supplement by the Cheltenham Newspaper Co., Ltd.