

# THE CHELTENHAM CHRONICLE AND GLO'SHIRE GRAPHIC

With Which is Incorporated the "Cheltenham Looker-On."  
GRATIS SUPPLEMENT. Saturday, December 2, 1922.

No. 1,144.

## CHELTENHAM THEATRE AND OPERA HOUSE.

Resident Manager: H. OSWALD REDFORD.

THIS AFTERNOON (2.30) AND EVENING (7.30): "THE WHEEL."

NEXT WEEK—Dorothy Neave in "THE HEART OF A CHILD."

### THE PALACE, HIGH STREET, CHELTENHAM.

Continuous, 2.30 to 10.15.  
Monday, Tuesday, Wednesday:  
MAE MURRAY in the  
"GILDED LILY."  
A Romance of New York and its  
Gay Night Life.  
ELMO, KING OF THE JUNGLE  
Thursday, Friday, Saturday:  
AGNES AYLES and MILLION  
SILLS in  
"THE FURNACE."  
A Lavish Production.  
Comedy: "A HANDSOME  
BUTLER," and Final Programme.

### THE DAFFODIL PICTURE HOUSE, SUFFOLK PARADE.

MONDAY FOR THREE DAYS.

All Should See Pathe's  
Supreme Epic of  
Womanhood,

"HAIL THE WOMAN."

Showing simultaneously in the  
West End of London.  
A Story you can "live" as you  
see the Picture.  
Thursday for Three Days:  
NORMA TALMADGE.

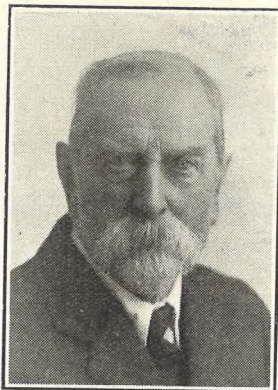
All Your Wants  
Supplied

If you have a small  
prepaid advertisement  
in the "Echo" and the  
"Chronicle." It is the  
combination that does  
it, for it reaches ALL

### MARTIN & CO. LTD.,

Promenade, Cheltenham,

Purchase for Cash Antiques of  
all kinds, including Old Silver,  
Jewellery, Sheffield Plate, China,  
Coins, Miniatures, etc. Highest  
Prices Given for Rare Pieces.



MR. THOMAS A.  
JEFFREY,  
Of 3 Pittville-villas, Cheltenham, who died suddenly on Tuesday, Nov. 28, aged 87 years. He was for many years a chemist at Pittville, and leaves two sons and three daughters.



MRS. ALFRED GODFREY,  
matron of the Cheltenham  
Boys' Orphanage and wife  
of the superintendent, who  
died on Nov. 24th, aged 37  
years.



MR. H. URMSEN,  
Of 6 Langton Grove-road,  
Charlton Kings, who died  
suddenly at Leckhampton  
on Nov. 19th, aged 75 years.  
He was a retired school-  
master and a Conservative  
worker.



MR. J. E. E. SESSIONS,  
Son of Mr. and Mrs. A.  
Sessions, of 30 Lypiatt-  
street, Cheltenham, who  
died on Nov. 14, aged 21  
years.

### WINTER GARDEN, CHELTENHAM.

MONDAY AND WHOLE WEEK  
A FEAST OF LAUGHTER.

JACKIE GOOGAN in  
"MY BOY."

Also Monday, Tuesday, and  
Wednesday Only:  
LARRY SEMON AND  
CAMPBELL COMEDIES.

"Felix, the Cat," will  
Re-appear.

And Thursday, Friday, and  
Saturday only:  
"SKILLED INSECTS," LEES  
KIDDLES IN COMEDY  
"THE THREE MUSKETEERS."

### COLISEUM CAFE, ALBION STREET,

Has been taken over by

LEOPOLD'S,

Who will be supplying the same  
High Class Goods which are so  
well known at his High St. Shop.

### Photograph Enlargements.

We can enlarge to Cabinet size  
any individual Photograph in  
any of the groups in the  
"Graphic," or we can enlarge the  
entire group. Splendid results  
guaranteed. Prices on application

### E. M. YEEND, Jeweller and Optician,

HIGH ST. (Opposite Town Clock).

Great Variety XMAS NOVELTIES, Pudding  
Sets, etc., at prices that defy competition.

### XMAS CARDS Xmas Presents.

ALL READY FOR YOU at

LEE, Caxton House,  
STATIONER, WINCHCOMBE ST.,  
CHELTENHAM.

For the  
Best

# PIANOS, DALE, FORTY and CO., LTD



**STROUD v. CHELTENHAM AT RUGBY FOOTBALL.**

1.—A long line out in front of Stroud goal. Cheltenham supporters are noticeable. 5.—Fitz, of Cheltenham, getting the ball back from a squash. 2, 3, 4, 6, and 7.—Various sections of the spectators. In No. 3 a number of Stroud "gates" are not what they were in the old days. ["Cheltenham Chronicle" Photos.]



**LOTUS  
DELTA,  
AND  
PHAT-  
PHEET.**

LOCAL AGENT:  
**W. J. MELVILLE,**  
408 HIGH STREET, CHELTENHAM.

**Moussell Bros., Ltd.**  
(Opposite G.W.R. Station),  
**CHELTENHAM.**  
**FURNITURE REMOVALS.**  
BY RAIL OR MOTOR.  
Phone 112

**HIGH PRICES**

Paid for Ladies', Gentlemen's, and Children's Discarded Wearing Apparel—Boots, Shoes, etc. A Postcard to

**DEANE'S WARDROBE DEPOT,**  
31 Worcester Street, GLOUCESTER  
Will Receive Prompt attention.  
THE NOTED HOUSE FOR FAIR PRICES.  
Telephone 970.  
Telegrams: "Wardrobes, Gloucester."

*You Can Save Money  
By Shopping at*  
**Shirer &  
Haddon's.**

GO THERE AND SEE THE  
LOVELY ASSORTMENT OF  
**Christmas & New Year  
GIFTS**

TO CHOOSE WHAT YOUR  
FRIENDS MOST DESIRE  
WILL BE AN EASY MATTER.

There are delightful Silk or Beaded Bags of every description from 3/11 and 14/11; and dainty Gloves in all newest suede colourings for evening wear, from 9/11.

Cosy Suede Dressing Slippers, edged fur, for wintry evenings, Price 12/9.

Ladies' fine Linen Embroidered Handkerchiefs, Price from 1/6½ Each; and Children's Printed Coloured Handkerchiefs, in every design, from 2/- per Box.

Ladies' useful and Warm Fleecy All Wool Scarves from 3/11.

Don't miss paying a visit to our **ART NEEDLEWORK DEPT.**, where you will see lovely Sachets, Lavender Bags, and many other charming Gifts at Moderate Prices.

WE NOW ARE MAKING  
A SPECIALITY OF OUR  
**PERFUME DEPARTMENT.**

AND ALL PERFUMES ARE  
OF THE FINEST QUALITY.

Ask to see our XMAS CALENDARS.  
See the Promenade Windows!

For Splendid Values  
**SHIRER & HADDON,**  
CHELTENHAM SPA.



**Mr. A. St. Clair,**

Of Brighton Lodge, Battledown Approach, who has been adopted as the Conservative and National Citizens' Union candidate for the East Ward election on Dec 6th, to fill the vacancy caused by the election of Miss Winterbotham to an Aldermancy.

Send the "Chronicle and Graphic" to Your Friends Every Week.

TWO  
NEW MODELS  
of the celebrated  
**MILLARD  
PIANO.**

48 Guineas and  
52 Guineas Cash.

Manufactured under best possible conditions to meet the demand for a THOROUGHLY WELL-MADE and RELIABLE Instrument at a MODERATE COST.

These Pianos have a sweet and dulcet tone, and delightfully responsive touch.

You are invited to call and test these Pianos at the Sole Agents—

**Crichtons Ltd.,**  
PROMENADE, :: CHELTENHAM.

**LANCE'S**

Give you an opportunity  
to buy before :

**XMAS**

at

**Reduced Prices**

**Monday, Dec. 4th,  
FOR ONE WEEK.**

Day and Evening  
Gowns.

Coat Frocks.

Costumes. Skirts.

Blouses.

COATS, Fur Trimmed & Plain,  
**FUR COATS & FURS,**  
&c.

A VISIT TO OUR  
SHOWROOMS IS  
: SOLICITED. :

**Xmas Holidays.**

Our Establishment will be CLOSED  
At 1 o'clock on Saturday, Dec. 23,  
until Thursday Morning, Dec. 28.

**John Lance  
& Co., : : : Limited,**  
**CHELTENHAM SPA.**

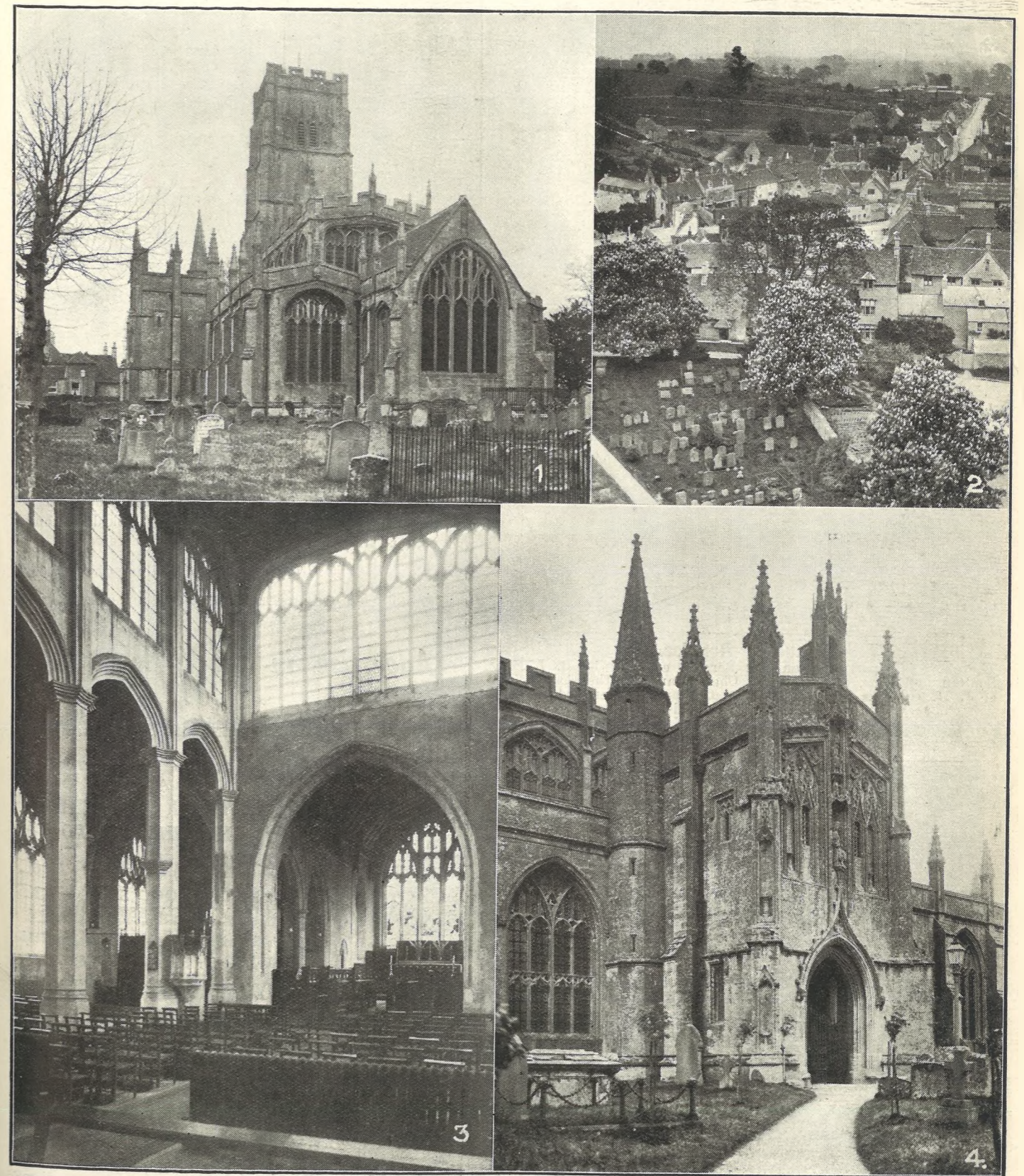


**ROUND THE TOWN IN CHELTENHAM.**

AS CHRISTMAS DRAWS NEARER THE SHOPPING STREETS BECOME MORE ANIMATED EVERY DAY.

- 1.—Looking quite pleased with life.
- 2.—A stroll in the Promenade.
- 3.—Off to the Library.
- 4.—Well wrapped up.
- 5.—Mr. J. Page, of Prestbury-road, a familiar figure in Cheltenham for many years. He was formerly a partner in the firm of Holliday and Page, butchers.
- 6.—A fine morning.
- 7.—Another familiar face in Cheltenham.
- 8 and 9.—Snapped in the Prom.
- 10.—The Y.M.C.A. Secretary.
- 11.—Mr. Childs, an ex-Police Constable, now on pension.

[“Cheltenham Chronicle” Photos. Copies 1s. each, by post 2d. extra.]



**PICTURESQUE GLOUCESTERSHIRE.—NORTHLEACH.**

Northleach, partly owing to its geographical position on the main coach road from London to South Wales, was a considerable place in former days, and when the Cotswold wool trade was flourishing in the Sixteenth Century, was a rich town of some importance. It suffers now in being so far from a railway, but it is quaintly picturesque, as befits one of the five Cotswold towns.

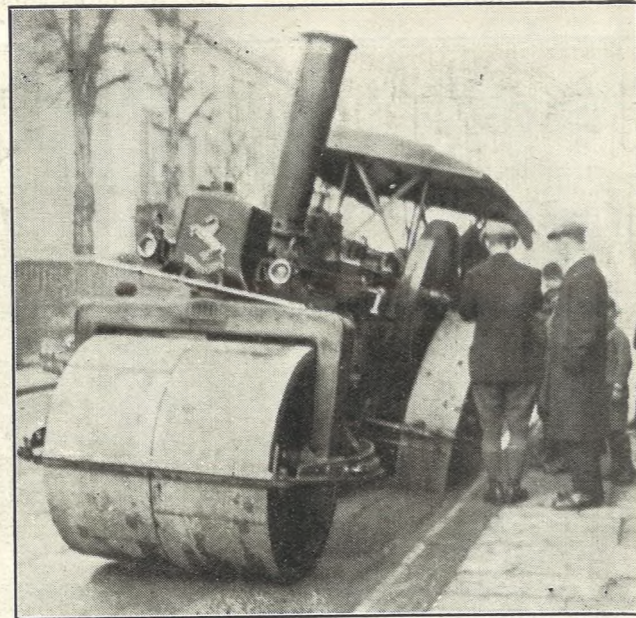
- 1.—Northleach Church from the east. It is a noble edifice, built in the 15th Century.
- 2.—A peep, looking east, from the top of the Church Tower.
- 3.—The interior of the beautiful old Church, so delightfully light and graceful.
- 4.—The glorious South Porch. It is practically untouched since being built in the 15th Century, and is one of the most beautiful in the country.

[“Cheltenham Chronicle” Photos. Copies 1/9 each, postage extra. Further Northleach pictures will appear next week.]



**A Beautiful Reredos.**

The above is a portion of an Oak Reredos executed by E. L. Boulton and Sons, of Bath-road, Cheltenham, to the design of J. H. Gibbons, Esq., F.R.I.B.A., London, and erected at St. Chad's Church, Leeds.



**Cheltenham Steam Roller in a Well.**

On Thursday morning, Nov. 23rd, as one of the town steam-rollers was at work in Priory-street, its side wheel broke through into an old well. It was eventually jacked up and moved off, and the top of the well efficiently covered.

[Photo by D. Hess, Cheltenham.]

\*\*\*\*\*  
**Advertise in the "Echo."**  
 \*\*\*\*\*



\*\*\*\*\*  
 "PHONE 311.  
 Telegrams "BENCE, CHELTENHAM."  
**FOR ALL KINDS OF  
 TIMBER AND BUILDING  
 MATERIALS — GO TO  
 Geo. Bence & Sons Ltd.**  
 WHO HOLD GOOD STOCKS AT  
 TO-DAY'S LOWEST PRICES.  
 Electric Sawmills. Sawing done for the Trade  
 Showrooms for Baths, Grates, &c., &c.  
**FAIRVIEW ROAD, CHELTENHAM.**  
 \*\*\*\*\*

**Presentation for Bravery in Cheltenham.**

At the County Constabulary Headquarters, Holland House, Cheltenham, on Friday (Nov. 17th) the Mayor of Cheltenham presented to P.C. Wynniatt (standing on right), of Headquarters Staff, and to Mr. Wm. Swinford, of 1 Orchard-place, Cheltenham (standing in centre), cheques of three guineas each and certificates for bravery in saving the life of a woman at 5 Orchard-place. P.C. Garner, of Bristol (standing on left) received a like award for saving the life at Winterbourne. In front: The Deputy-Mayor (Ald. C. H. Margrett), The Mayor (Ald. Clara Winterbotham), and Chief Constable (Major Stanley Clarke).  
 ["Cheltenham Chronicle" Photo.]



**ROUND THE TOWN IN GLOUCESTER.**

SOME SNAPS IN THE CITY ON WEDNESDAY AFTERNOON.

- 1.—Taking her for a walk.
- 2.—Inquiring after the invalid's health
- 3.—Taking the spaniel for a run.
- 4.—A trio of shoppers.
- 5.—Mr. A. F. Kiddle and Mr. J. Follard.
- 6.—Baby gets out and walks.

["Cheltenham Chronicle" Photos. Copies 1s. each, by post 2d. extra.]

\*\*\*\*\*  
**R.F. BEARD LTD.**  
 SANDRINGHAM HOUSE  
 WHY NOT BUY ARTICLES OF LASTING VALUE  
**For Christmas Gifts?**  
 We have a great assortment of  
**GUARANTEED RELIABLE WRIST WATCHES,**  
 Rings, Brooches, Necklaces, Slave Bangles, Gold and Silver Cigarette Cases. Everything in SOLID SILVER & Durable "Sandringham" Plate.  
 As we are shortly making extensive alterations, we offer nearly all our Stock at a reduction of 25 % off present day prices.  
**A REAL SAVING OF 5/- IN EVERY POUND.**  
**PROMENADE  
 CHELTENHAM**  
 \*\*\*\*\*

**FLANNEL SHIRTS.**

**OUR 10/6 GARMENT**

IS BEST VALUE OBTAINABLE!

Stout Union-Flannel, Made in our Own Work-rooms, and of Full Cut.

Other Qualities, 8/11, 12/6. All Wool, 13/6.

**A. Beckingsale, 111 HIGH STREET,  
 CHELTENHAM.**

'Phone 406.

**CORSETS AND BELTS  
 MADE, COPIED, CLEANED, AND REPAIRED.**

Hours: 10 a.m. to 6 p.m. Saturdays, 1 p.m. or by appointment. 'PHONE 915.

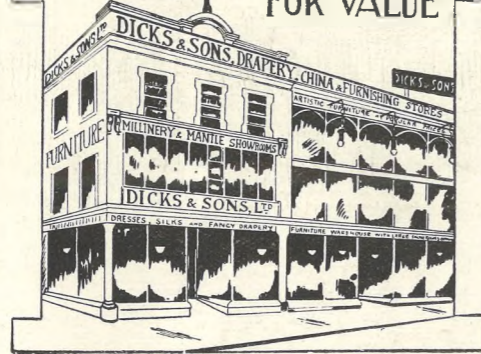
**MISS FRUIN** (Late with Madam Annetto),  
 23 Bath Parade, -CHELTENHAM.

\*\*\*\*\*  
**Make it known through the "Echo."**  
 \*\*\*\*\*

# THE Gift Store.

EVERY DEPARTMENT BRIMFUL OF USEFUL AND ACCEPTABLE GIFTS.

OVER 50 YEARS REPUTATION FOR VALUE



# THE Gift Store.

EVERY DEPARTMENT BRIMFUL OF USEFUL AND ACCEPTABLE GIFTS.



A Smart BLOUSE in plain Jap Spun Silk, Trimmed Lace, as illustrated. Also Plain Shirt Style, 12/11. In Jumper Style, Trimmed Embroidery, 9/11. **15/11**



Bring the Kiddies.



Children's FROCKS in White Voile and Muslin, Trimmed Embroidery, Lace, etc., 6/11, 8/11, 10/11, to 27/6. Special Line in Fine Poplin, Saxe, and Rose, 6/11 to 14/11.



Ladies' Dainty FROCKS in all colours Made in Chiffon Taffeta, Also in Georgette and Voile. Light colours, 12/11, 15/11, 18/11. **29/6**



Ladies' BEDROOM SLIPPERS in Dainty Colourings. Made in Plain Coloured Felt, Trimmed Ribbon and Silk Pompom. - PAIR **3/6**



Ladies' HANDKERCHIEFS. In Special Gift Boxes. 1/0 3/4, 1/11 3/4, 2/11, 3/11, 4/11. Always an acceptable Gift.

**Dicks & Sons Ltd.**  
172 & 173 HIGH STREET  
**Cheltenham Spa**  
TEL. 1007. 50 YEARS REPUTATION FOR VALUE.

# THE CHELTENHAM CHRONICLE AND GLOUCESTERSHIRE GRAPHIC

With Which is Incorporated the "Cheltenham Looker-On."  
GRATIS SUPPLEMENT. Saturday, December 9, 1922.

No. 1,145.

## CHELTENHAM THEATRE AND OPERA HOUSE.

Resident Manager: H. OSWALD REDFORD.

THIS AFTERNOON (2.30) AND EVENING (7.30): "THE HEART OF A CHILD."

TUESDAY NEXT, Dec. 12, and week, Cheltenham Operatic Society in a New Opera, "THE MASQUERADE."

### THE PALACE, HIGH STREET, CHELTENHAM.

Continuous 2.30 to 10.15. Monday, Tuesday, Wednesday:

#### "The Son of Wallingford,"

By Mr. and Mrs. George Handolph Chester, with All Star Cast. A Stupendous Super Production. ELMO, KING OF THE "JUNGLE" "INKY DINK."

No. 2.—Invisible Ink. Thursday, Friday, Saturday:

#### "Our Mutual Friend,"

By CHARLES DICKENS. A Superb Nordic Masterpiece. "BREAKING THROUGH," A New Sensational Chapter Play.

### THE DAFFODIL PICTURE HOUSE, SUFFOLK PARADE.

MONDAY FOR THREE DAYS. **NORMA TALMADGE**

#### "The Forbidden City."

GLASS OF FASHION. THURSDAY FOR THREE DAYS

#### PINA MENICHELLI in "The Second Mrs. Tanqueray."

GLASS OF FASHION.

### All Your Wants Supplied

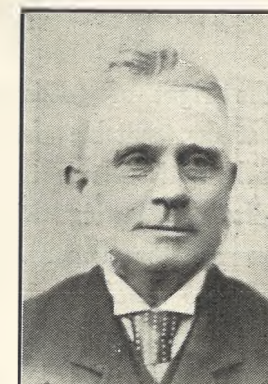
If you have a small prepaid advertisement in the "Echo" and the "Chronicle." It is the combination that does it, for it reaches ALL

### MARTIN & CO. LTD., Promenade, Cheltenham,

Purchase for Cash Antiques of all kinds, including Old Silver, Jewellery, Sheffield Plate, China, Coins, Miniatures, etc. Highest Prices Given for Rare Pieces.



MISS E. A. LEA, of Caer Glow House, Churchdown, who died November 27th, in her 91st year. She was a sister of Alderman Edwin Lea, of Gloucester.



MR. T. STALLARD, of Coberley Lodge, Coberley, who died Nov. 23rd, aged 79 years. He was for many years gamekeeper on the Colesbourne estate.

### WINTER GARDEN, CHELTENHAM.

Monday, Tuesday, Wednesday: **Lillian Gish**

In D. W. GRIFFITH'S Masterpiece:

#### "Broken Blossoms."

Thursday, Friday, Saturday: **BUSTER KEATON**

In his first FIVE-REEL Laughing Sensation:

#### "The Saphead."

FOR RELIABLE

Hire Cars and Charabancs **RING 1055.**

**CHAS. H. REASON,**

LANSDOWN GARAGE, Lansdown Place, CHELTENHAM.

### Photograph Enlargements.

We can enlarge to Cabinet size any individual Photograph in any of the groups in the "Graphic," or we can enlarge the entire group. Splendid results guaranteed. Prices on application

MAKE YOUR SUNDAY AFTERNOONS A PLEASURE

By Having Your

**SUNDAY NEWSPAPERS**

Delivered by

**Brown's Newsagency,** 226 HIGH STREET, CHELTENHAM

**XMAS CARDS**

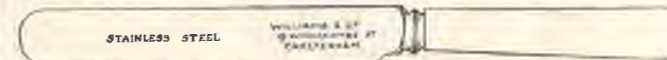
Xmas Presents.

ALL READY FOR YOU at

**LEE, Caxton House,** STATIONER, WINCHCOMBE ST., CHELTENHAM.

## Don't Blame The Turkey!

or create a bad impression. Have your Carving Knives, Table Knives, etc., Ground and Polished (Stainless included) in readiness, and at the same time inspect our stock of really good Useful Presents.



**WILLIAMS & Co.,**

THE CUTLERS.

19 Winchcombe St., Cheltenham

For the Best **PIANOS, DALE, FORTY and Co. Ltd.**

# CHRISTMAS GIFTS THAT PLEASE BECAUSE OF THEIR UTILITY



**T**HERE'S a list on the right of goods selected from our extensive stocks, suitable for giving at Christmas. Particularly noticeable is their practical nature—all are gifts of lasting and useful qualities, by which you as the donor will long be remembered. We want to be of service to you in the somewhat difficult task of gift selection. Our experience may be of great help to you—at all events, by purchasing Gifts from us you will save considerably on your expenditure. Shop soon.

Beautiful Cushions, 4/11 to 21/9.  
Down Quilts, best makes, 25/9 to 50/-.  
Artificial Silk Blouse Lengths, 4/6.  
Boxes of Fancy Handkerchiefs, 1/6 to 6/11½.  
Gloves, in great variety, good quality Castor, from 3/11½.  
Fur Lined Gloves from 12/11 to 44/-.  
Useful All Wool House Coats from 4/11½.  
Beautiful Silk Jumpers, 10/11½.  
Special Value in Art Silk Scarves from 1/11½.

## E. L. WARD,

136-140 HIGH STREET,  
CHELTENHAM.

### SOME GIFT SUGGESTIONS.

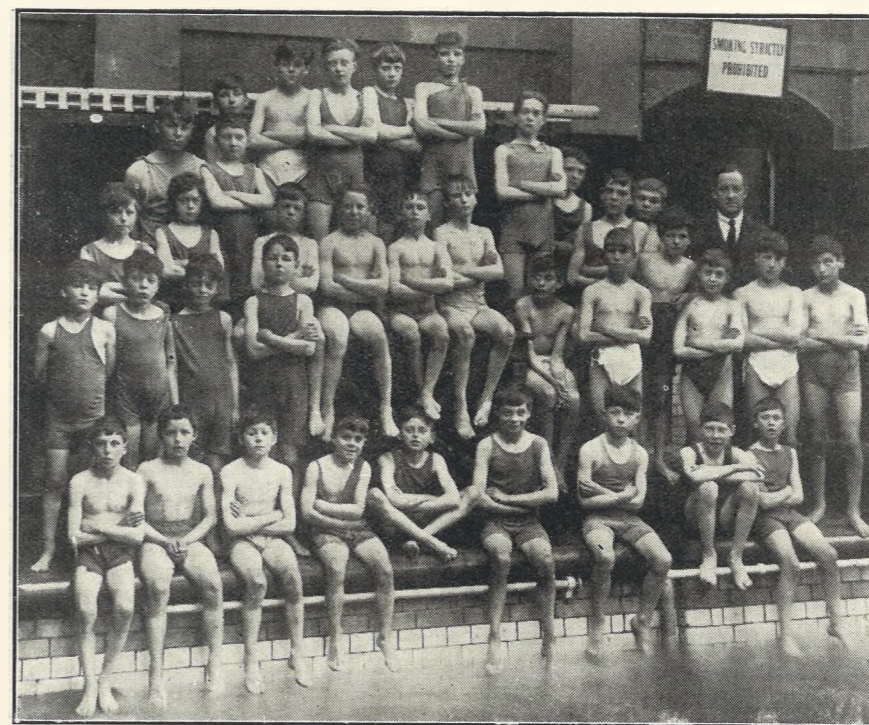
- HANDKERCHIEFS.
- SCARVES.
- GLOVES.
- HOSIERY.
- PIN CUSHIONS.
- HAT PINS.
- TRAYS.
- BLOUSES.
- JUMPERS.
- HOUSE COATS.
- 5 o/c TEA CLOTHS.
- CUSHIONS. FURS.
- COSIES, etc.

# LANCE'S,

Cheltenham's  
Shopping Centre.

ARTICLES OF EVERY DAY USE  
AND WEAR MAKE GOOD

## Xmas Gifts.



**CHRIST CHURCH, CHELTENHAM SWIMMING DISPLAY.**

A number of the scholars from Christ Church Boys' School, who gave a capital display of swimming at Alstone Baths at the close of the season.

["Cheltenham Chronicle" Photo. Copies 1s. each.



**CHAFFEURS AT THE FORSTER-DANIELLS WEDDING.**

There was a big crowd of motor-cars outside the Church on Nov. 1st when Miss D. Forster was married. These are a few of the drivers.

["Cheltenham Chronicle" Photo. Copies 1s. each.

BEST QUALITY  
**CIDERS**

IN BOTTLE.—Sparkling and Still.  
**BARTHOLOMEW,**  
419, 420 HIGH STREET,  
CHELTENHAM.

WINES, SPIRITS, ALES, TABLE WATERS  
and GROCERY. Tel. 15.

**Mousell Bros., Ltd.**

(Opposite G.W.R. Station),  
**CHELTENHAM.**  
**FURNITURE REMOVALS.**  
BY RAIL OR MOTOR.  
Phone 112

Stranded Squirrel Tail STOLES,  
Skunk Dye, Special Prices from  
89/6 to 7½ Guineas.

Ladies' and Gents' UMBRELLAS,  
from 5/11 to 29/6.

TRAVELLING RUGS, 13/11 to  
39/6.

BLOUSE LENGTHS from 5/11 to  
21/6.

SKIRT LENGTHS 4/11 to 12/11.

### Xmas Holidays.

This Establishment will be CLOSED at  
1 o'clock on Saturday, Dec. 23, until  
Thursday Morning, Dec. 28. The sup-  
port of the Public by Shopping EARLY  
is respectfully solicited.

## John Lance

and Co. - - - Limited,  
CHELTENHAM.



**FUNERAL OF MR. HENRY J. ELWES, J.P., AT COLESBOURNE.**

Many influential and representative men from a wide radius attended the funeral at the quaint little Church at Colesbourne of the talented and widely-travelled squire, who was buried on Thursday, November 30th.

1.—Sir George Holford (on left), with two other gentlemen. 3.—Major Frank Mitchell (grandson), with a lady. 4.—Mr. and Mrs. G. Adamthwaite. 5.—Mr. Lloyd Baker and a lady.

2.—The sad procession from the house to Church. The coffin was drawn on a bier by six workmen of the estate. 6.—Mr. Geo. Moore, of Bourton-on-the-Water. 7.—The procession from the Church to grave.

["Cheltenham Chronicle" Photos. Copies can be obtained at Office.



**ANOTHER CHELTHENHAM CENTENARIAN.**

Mrs. Sarah Waltham, of Kingston Villa, St. George's-road, Cheltenham, on Wednesday Dec. 6, completed her 100th year. The above photo was taken on her birthday, and shows her with her son and daughter—Mr. Waltham, of Bristol, and Miss Waltham, who resides with her. Her health is quite good, although her sight is practically gone.

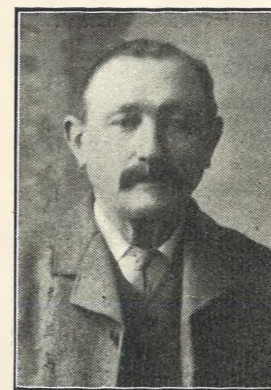
**R.F. BEARD LTD.  
SANDRINGHAM HOUSE**

**A Valid Reason**

For the large reduction of 25 o/o now being made. It is to avoid the risk and expense of removal previous to alterations. Many purchasers are expressing great satisfaction at the value they are getting.

A DIRECT SAVING OF 5/- IN THE £

**PROMENADE  
CHELTHENHAM**



**Mr. William Bradley,**  
of 4 Northfield-terrace, Cheltenham, who died on Tuesday, Dec. 5, at the age of 75.

WE SHALL ISSUE ANOTHER  
DOUBLE NUMBER OF  
THE "GRAPHIC" NEXT  
WEEK.

THE FOOT SPECIALIST.  
**MR. ALFRED J. VENTRIS-FIELD.**  
SURGEON-CHIROPODIST, ORTHOPÆDIST,  
AND ELECTRO-THERAPEUTIST.  
Author of "Pedic Surgery," "The Treatment of Talipes Valgus," "Poisonous Animals and Vegetables of the Countryside," etc., etc.  
Consultant H.M. Forces.  
Surgery: 6 RODNEY PLACE, Cheltenham.  
Telephone 1266.

You Can Save Money  
By Shopping at

**Shirer & Haddon's.**

GO THERE AND SEE THE  
LOVELY ASSORTMENT OF  
**Christmas & New Year  
GIFTS**

TO CHOOSE WHAT YOUR  
FRIENDS MOST DESIRE  
WILL BE AN EASY MATTER.

There are delightful Silk or Beaded Bags of every description from 3/11 to 14/11; and dainty Gloves in all newest suede colourings for evening wear, from 9/11.

Cosy Suede Dressing Slippers, edged fur, for wintry evenings, Price 12/9.

Ladies' fine Linen Embroidered Handkerchiefs, Price from 1/6½ Each; and Children's Printed Coloured Handkerchiefs, in every design, from 2/- per Box.

Ladies' useful and Warm Fleecy All Wool Scarves from 3/11.

Don't miss paying a visit to our **ART NEEDLEWORK DEPT.**, where you will see lovely Sachets, Lavender Bags, and many other charming Gifts at Moderate Prices.

WE NOW ARE MAKING  
A SPECIALITY OF OUR  
**PERFUME DEPARTMENT,**

AND ALL PERFUMES ARE  
OF THE FINEST QUALITY.

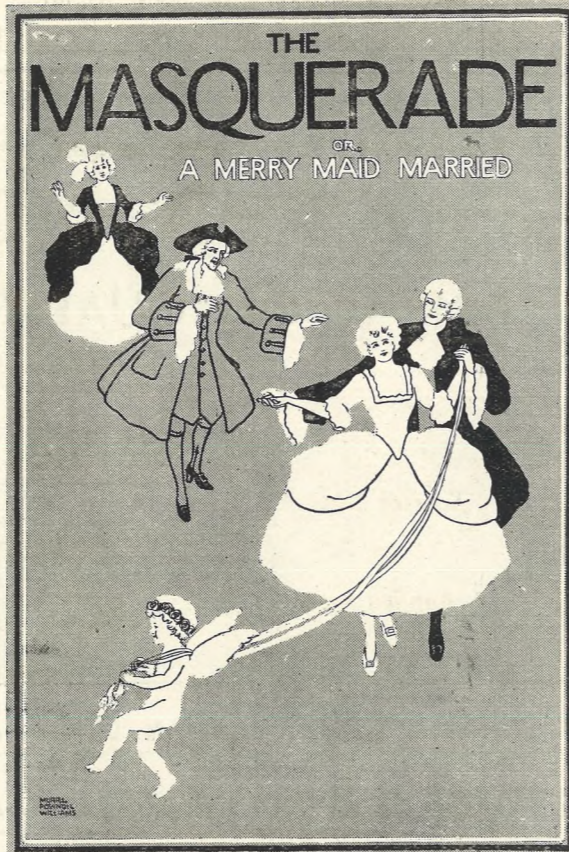
Ask to see our **XMAS CALENDARS.**  
See the Promenade Windows!

For Splendid Values  
**SHIRER & HADDON,**  
**CHELTHENHAM SPA.**



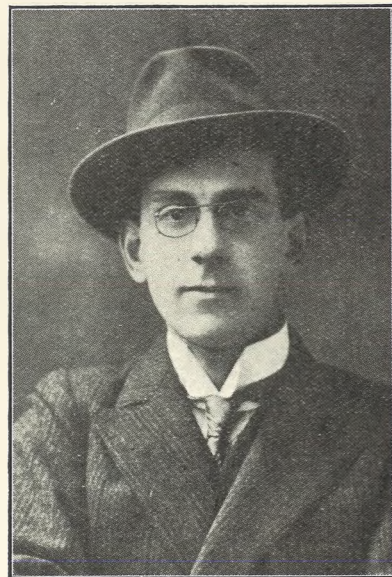
**A FINE WAR MEMORIAL.**

The above War Memorial has been erected in the St. Matthew's Churchyard, Burnley, by Messrs. R. L. Boulton and Sons, Cheltenham, to the design of J. Harold Gibbons, Esq., M.C., F.R.I.B.A. It is executed in Portland Stone, and bears a gilded aluminium crucifix. The firm will forward Estimates Free.



**A CHELTENHAM OPERA.**

A clever poster by Miss Pownoll Williams advertising the new Comic Opera to be produced at the Opera House, Cheltenham, next Tuesday, by Mr. Herbert T. Rainger, of Cheltenham. The music is composed by Mr. S. J. Grove, an ex-Cheltonian. The Opera is being given by the Cheltenham Operatic Society, and conducted by Mr. Whittaker.



MR. HERBERT T. RAINGER, Of Cheltenham, who has written the libretto for the Romantic Comic Opera, "The Masquerade, or a Merry Maid Married," which is being performed by the Cheltenham Amateur Operatic Society at the Opera House all next week.



MR. S. J. GROVE, Formerly of Cheltenham, and now musical conductor of "La Poupee" and "Les Cloches de Corneville" on tour in England, who composed the music for the above opera.

A Splendid Display of  
**Suitable GIFTS**  
for the present season.

**Robertson & Co.,**

CIGAR AND CIGARETTE IMPORTERS,  
8 Colonnade, CHELTENHAM.

Agents for LOEWE'S—BARLING'S  
and B.B.B. Celebrated Briars.

Specialites :  
ROBERTSON'S Celebrated Edinburgh

**Smoking Mixture**  
—Mild, Medium, or Full.—

Robertson & Co.'s Famous Hand  
made Virginia Cigarettes.

100	50	25
6/8.	3/4.	1/8.

**STEEL'S**

'Phone 838.

Established 1839.

FOR GOOD QUALITY & MODERATE PRICES.

**All the Best Makers :**

Special Lists  
on  
Application.

"Queen," "Bective,"  
"K," "Jaeger,"

AND OTHERS.

Special Lists  
on  
Application.

79 High Street, CHELTENHAM SPA.

SPECIAL OFFER OF

**Dainty Frocks** FOR Xmas Holidays

We are making a Special Offer of these inexpensive FROCKS. They are made up in good quality Taffetas, Crepe de Chine, etc., in beautiful colours, particularly suitable for Whist Drives and Semi-Evening Wear,

AT REMARKABLY LOW PRICES.

HERE ARE THE TWO EXAMPLES.



A Smart FROCK in Chiffon Taffeta, with Embroidered Belt, as illustrated, in Brown, Kingfisher Blue, 29/6 and Navy . . . Also lighter shades in this and other Models, in Crepe de Chine and Georgette.



**Bring the Kiddies**

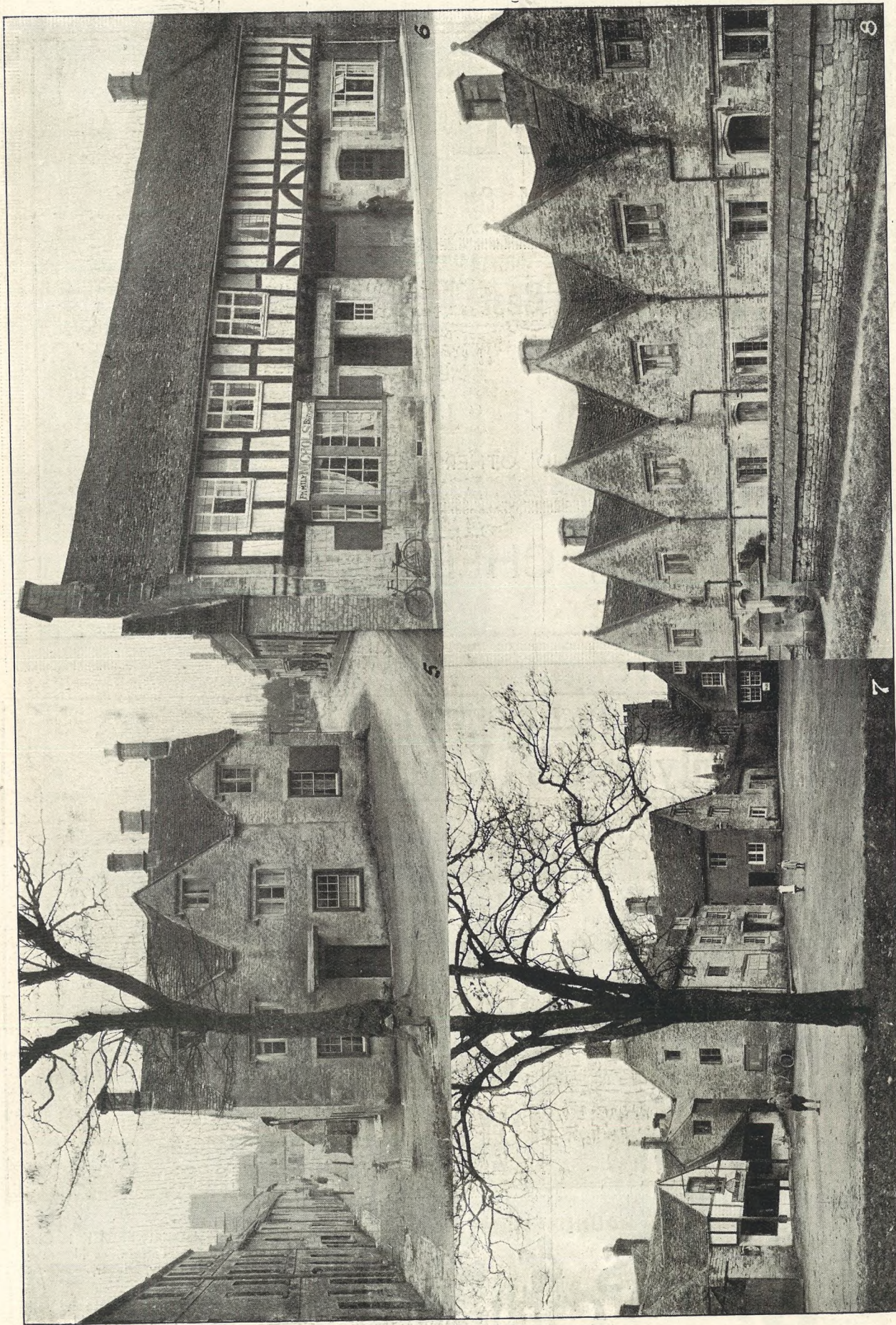
TO OUR  
**GRAND TOY CARNIVAL**  
NOW OPENING.



A Dainty FROCK in Chiffon Taffeta, as illustrated, in Navy, Nigger, 29/6 Saxe . . . Also in Georgette and Voile, 12/11, 15/11, 18/11.

**Dicks & Sons Ltd.**  
172 & 173 HIGH STREET &  
**Cheltenham Spa**  
TEL. 1007. 50 YEARS REPUTATION FOR VALUE.



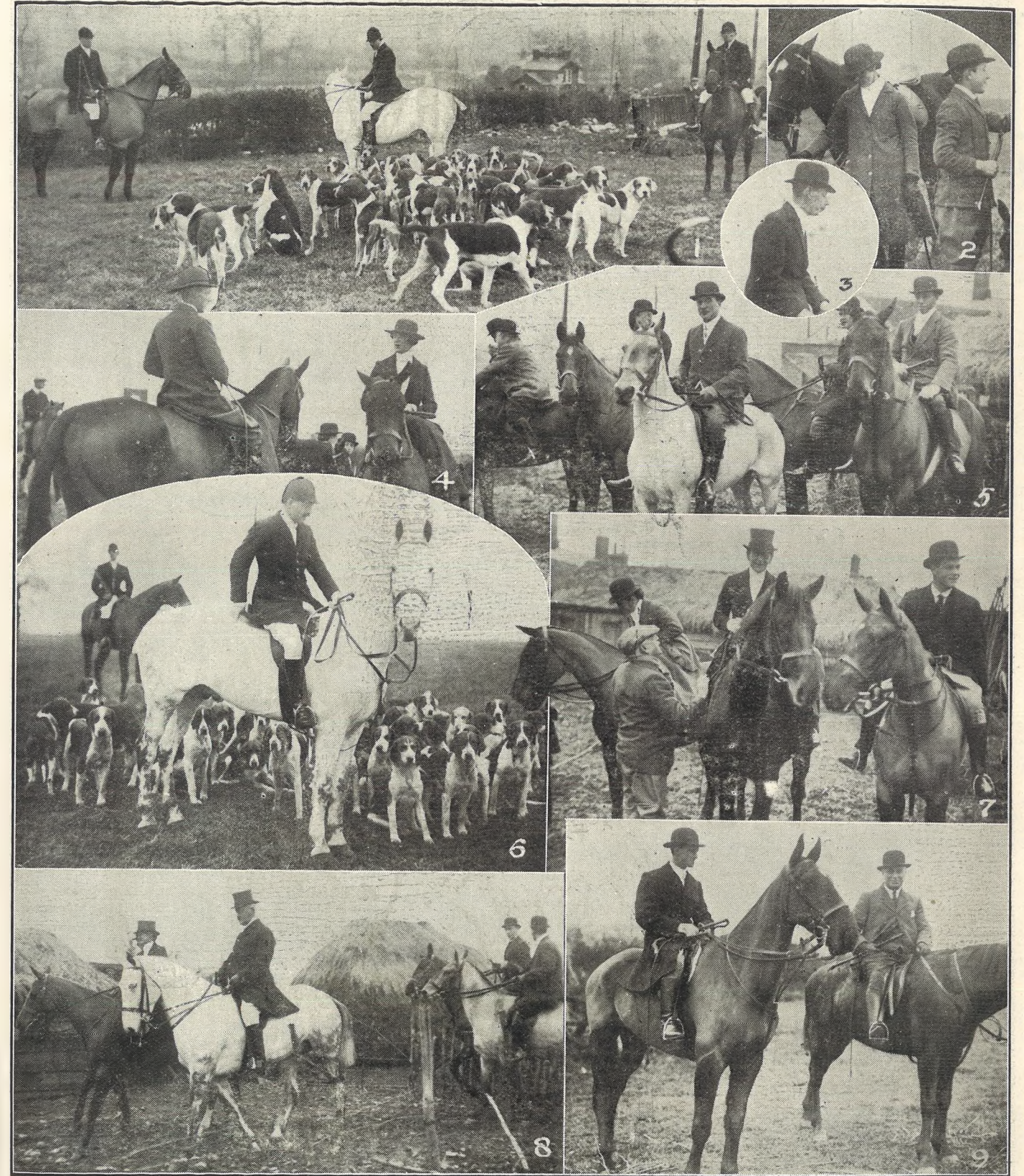


**PICTURESQUE GLOUCESTERSHIRE—NORTHLEACH.**

Northleach, with its quaint old stone houses and old-world air, perched away up on the Cotswolds, remote by many miles from any railway station, is always interesting, and recalls to memory the old coaching days, when it was a stage of considerable importance. The old Sherborne Almshouses at the top end of town. There are other almshouses in the town. These were Arms and Church in distance. Photos. Copies 1/9 each, postage 2d. extra.

5.—The Green, with old house in centre. 7.—Another view of The Green, or Square, with old houses and the Arms and Church in distance.

6.—A picturesque old house, in the green, now used as a butcher's shop. 8.—The old Sherborne Almshouses at the top end of town. There are other almshouses in the town. These were Arms and Church in distance.



**GOTSWOLD HOUNDS MEET AT COOMBE HILL.**

There was a big field out for this popular Meet on Tuesday last, and as the scent had improved a good day's sport was enjoyed.

- 1.—The Master (in centre), with the pack and first and second whips.
- 2.—Two youthful followers.
- 3.—Mr. Harenc.
- 4.—Geo. Travess (ex-Huntsman) and Miss Freda Williams.
- 5.—Some local farmers.
- 6.—Major Jackson, M.F.H., with the mixed pack.
- 7.—Miss Denne (on left) and Miss M. Byng Morris.
- 8.—Col. Thoyts on the grey, a fine weight carrier.
- 9.—Mr. "Billie" Smith (on right)

["Cheltenham Chronicle" Photos. Copies 1s. Each, by Post 2d. extra.

# BLINKHORN'S

IS THE PLACE FOR TOYS

**CUDDLY TOYS.** Pip, Squeak and Wilfred. Beautifully made in good quality Teddy Bear Fur. Dogs, Teddy Bears, Cats, and a host of other animals. Price from 2/6 to ..... **2/6**

**BABY'S TOYS.** Soft Dolls, best quality. Made of strong Stockinette, with nothing to pull off or hurt baby. Various Sizes. Prices from 5/6 to ..... **1/11 1/2**

**GAMES.** For Parties, Wet Days and Evenings. Over 50 different ones to select from. Prices from 10/6 to ..... **9 1/2 d.**

**DRESSED DOLLS.** Pretty Dolls, daintily dressed, dark and fair, and in all sizes. Prices from 18/11 to ..... **6 3/4 d.**

**UNDRESSED DOLLS.** Well-made jointed Undressed dolls, in all sizes, dark or fair. Prices from 12/11 to ..... **4 1/2 d.**

**CLOCKWORK TRAINS.** Reliable clockwork trains, complete with rails, in all sizes, including Hornby Trains. Prices from 5 Gns. to ..... **3/11 1/2**

**CLOCKWORK TOYS.** A host of Motors, Trains, Vans, Fire Engines, Animals, etc., etc. Prices from 42/- to ..... **6 3/4 d.**

**CONSTRUCTIVE TOYS.** Meccano, Erector, Pin-it, Gilbert, Scientific Toys at Lowest Prices. 45/9 to ..... **2/6**

**WOODEN TOYS** Strongly made and painted in bright colours, including Wheelbarrows, 6/9, 4/6, 3/9; Traction Engines, 4/11, Vans 8/6 and 7/6; Lorries, Charabancs, 19/11; Engines, 12/6, 8/6, 6/6, 5/11, 3/11, and ..... **1/11 1/2**

**DOBBINS.** Well-made Wooden Push Horses on wheels, in various sizes. Prices, 8/6, 6/6, 4/11, 3/6, 2/9, and **1/6 1/2**

**BOXES OF SOLDIERS.** No. 1 Box containing Mounted, Marching, Kneeling, Firing, in all Regiments. Price, a box, 6/6, 4/11, 2/11, 1/11, 1/6, 1/- ..... **6 3/4 d.**

**CRACKERS.** A large variety of excellent Crackers, containing Toys, Puzzles, Jewels, etc. Per Box of 12. From 5/- to ..... **10 1/2 d.**



**BLINKHORN LTD., GLOUCESTER. : : :**

**OF COURSE!**



**ST. MARTIN'S HOSPITAL, CHELTENHAM, SALE OF WORK.**  
A Sale of Work executed by the patients of St. Martin's was opened by Countess Bathurst on Wednesday last. Over £120 was taken. The Countess (in centre), with Miss Young (Commandant), Rev. R. H. M. Bouth, and some of the patients.



**ST. JOHN'S, CHELTENHAM, SALE OF WORK.**  
A GROUP AT THE OPENING CEREMONY ON WEDNESDAY. ["Cheltenham Chronicle" Photo.]

PHONE 311.  
Telegrams—"BENCE, CHELTENHAM."  
FOR ALL KINDS OF  
**TIMBER AND BUILDING MATERIALS—GO TO**  
**Geo. Bence & Sons Ltd.**  
WHO HOLD GOOD STOCKS AT TO-DAY'S LOWEST PRICES.  
Electric Sawmills. Sawing done for the Trade  
Showrooms for Baths, Grates, Etc., Etc.  
**FAIRVIEW ROAD, CHELTENHAM.**

**JEWELLERY AND ANTIQUES**  
MARKED DOWN TO THE LOWEST PRICES  
Now is Your Opportunity to Obtain  
**REMARKABLE BARGAINS**  
in both Departments.  
Many Articles less than cost price.  
**HARRY O. BOX,**  
339 HIGH STREET (just below Town Clock).  
**CORSETS AND BELTS**  
MADE, COPIED, CLEANED, AND REPAIRED.  
Hours: 10 a.m. to 6 p.m. Saturdays, 1 p.m. or by appointment. PHONE 915.  
**MISS FRUIN** (Late with Madam Annette),  
23 Bath Parade, CHELTENHAM.

**FLANNEL SHIRTS.**  
**OUR 10/6 GARMENT**  
IS BEST VALUE OBTAINABLE!  
Stout Union Flannel, Made in our Own Work-rooms, and of Full Cut.  
Other Qualities, 8/11, 12/6. All Wool, 13/6.  
**A Beckingsale,** 111 HIGH STREET, CHELTENHAM  
Phone 406.



# For Christmas AND New Year Gifts

You cannot beat the "Values" obtained at this Establishment.

IT WILL PAY YOU to see our Selection before making your final decision.

**DO YOU REALISE—**

That "Below the Town Clock" is  
TO-DAY'S SHOPPING CENTRE?

## OSBORNE HOUSE, HIGH STREET, CHELTENHAM.

(ADJOINING THE GRAMMAR SCHOOL)

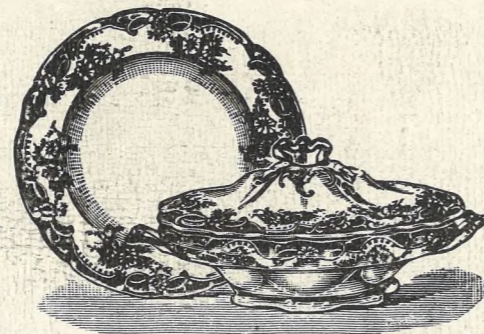


A Good Display of **GIFTS for CHRISTMAS**  
Very Attractive —

May be Seen in the Windows represented above

At 84 HIGH STREET, CHELTENHAM, EDGAR MANN IS SHOWING A FINE SELECTION OF GOLD WATCH BRACELETS AT £3 3 0 EACH, AND IT WILL BE WELL WORTH WHILE TO SEE THEM BEFORE BUYING ELSEWHERE.

All Kinds of Silver Watches, Jewellery and Plate in Stock.



Crown Derby Coloured TEA SETS 13/6 Early Morning TEA SETS, in Solid Pink and Blue, etc., with Black Handles 8/6

TOILET SETS, Six Pieces, in Solid Colours, 24/6

Largest Variety of Cheese Dishes, Fruit Bowls, Tea Pots, Sets of Jugs Biscuit Barrels and Flower Pots in the County.

THE LARGE CHIPPENDALE

Salad Bowl for 7/11.



CANDLESTICKS, 2/11 Old Georgian QUART GLASS JUGS, very brilliant 4/6

### FLETCHER'S, PITTVILLE STREET, CHELTENHAM.

The Unrivalled Stores for XMAS PRESENTS.



### ROUND THE TOWN IN CHELTENHAM.

SOME SNAPS ON SATURDAY MORNING LAST ROUND AND ABOUT THE PROMENADE.

- 1.—Mrs. J. T. Rogers.
- 2.—Captain Allen.
- 3.—Mr. Arbury (Wantage), well-known to Cheltenham motor-cyclists.
- 4.—A constitutional.
- 5.—Two familiar faces in Cheltenham.
- 6.—A chat about the baby.
- 7.—Mr. and Mrs. Chandler. Mr. Chandler is the well-known M.R. Stationmaster.
- 8.—A morning stroll.
- 9.—Buying a bunch of flowers.
- 10.—Shopping in the Prom.

["Cheltenham Chronicle" Photos.]

# IDEAL XMAS GIFTS.

**2/6** This COUPON is value Two Shillings and Sixpence and will be accepted as part payment of Goods purchased in any department to the value of 30/- and upwards if purchased not later than Dec. 23. One Coupon to each customer. **2/6**



## BLOUSES.

A beautiful Selection of Lace trimmed Crepe de Chine, Eolienne, Soft Satin, ranging from 15/11 to 32/- . We illustrate Heavy Crepe de Chine Blouse, in Pink, Sky, Cham., White, Lemon, Grey and Black. PRICE 23/6.

## JUMPERS.

Of Every Variety, in Art Silk and Wool, at Prices from 5/11 All Wool to 39/6 for Hand Made Art Silk. The sketch is of Shetland Wool Jumper, which can be supplied in all useful shades. PRICE 10/11.

## FUR and FUR COATS.

Grey Fox Ties, 39/6, 49/6, 69/6, 94/6 5 Guineas.  
Skunk-Goat Stoles, 29/6, 59/6, 69/6, 79/6.  
Skunk Oppossum Cape, 63/-, 5 Gns.  
Handsome Musquash Coat, 19 Gns.  
Seal-Coney Coat, Full Length, 5 Gns.  
Beaver-Coney Coat, excellent Value, 18 Guineas.

## THE HOUSE FOR VALUE!



## COATS.

Ladies' Velour Coats, with handsome Beaver-Coney Collar, in Grey, Beaver, Nigger, Navy, etc., 59/6 to 5 Guineas.

## SILK DRESSES.

For Ladies: Crepe de Chine, Satin, Taffetas. Prices from 29/6 to 5 Guineas.  
Girls' Dance Dress, Lace, Net, Silk, in all sizes, from 18/11.

## HOSIERY.

Ladies' Cashmere Hose, Embroidered Silk Clox, 2/11½ and 4/11½.  
Holeproof Art Silk Hose, Black and Colours, 3/11½.  
Heavy Art Silk Plain, also Ribbed, all colours, Price 5/11½.  
Sports Hose, wide rib, Heather Mixtures, Price 2/11½, 4/11½.  
Girls' Gym. Stockings, 2/9½, 4/11½, 5/6, 5/11½.

## SCARVES.

Shetland Scarves, White with Pale Colours of Contrasting Shades, 3/11½.  
Warm Wool Scarf, Self Colours or Two-tone, from 1/11½ to 12/11.



## BAGS & UMBRELLAS.

Ladies' Leather Bags, Grey and Tan Suede, Price 3/11½.  
Leather Pouches, 1/6½.  
Ladies' Umbrellas, in great variety, from 3/11½ to 18/11

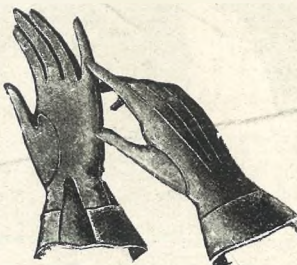


## HANDKERCHIEFS.

Ladies' Linen Hemstitched Handkerchiefs, 6½d., 8½d., 10½d. each.  
Ladies' Fancy Embroidered and Coloured Handkerchiefs, 2½d., 3½d., 4½d., 6½d., 8½d. each.  
Dainty Boxes, containing 3, 6, and 12 Handkerchiefs, 1/0½, 1/11½, 2/11½, 3/11½, 4/11, 6/11, 10/11.  
Children's Picture Handkerchiefs, 1½d., 2½d., 3½d., 4½d. each.

## GLOVES.

Ladies' Tan Nappa Gauntlet Gloves, strap fastener, Price 5/11.  
Fringed Gauntlet Gloves, Price 8/11.  
Badger Fur Back Gloves, lined wool, Price 15/11.  
Natural Lamb Back Gloves, lined, Price 10/11.  
Tan and Grey Fur-Lined Gloves, 8/11, 14/11, 29/6.



**R. T. ADAMS, 75 and 76 High Street, Cheltenham Spa.**



## TEWKESBURY v. CHELTENHAM IN THE GLOUCESTERSHIRE NORTHERN SENIOR CUP.

A fine match was played between these capable teams on The Ham, Tewkesbury, on Saturday last before 2,000 spectators. Cheltenham winning by 5 goals to 2.

- 1.—The Tewkesbury goalie fists out from a corner, from this Collier scored.
- 2.—The Tewkesbury Team, reading from left to right:—C. Collins (Captain), H. Sayers, W. Goodwin, W. H. Mason, H. Bourton, M. Hopton, E. Devereux, W. Avery, A. Parker, E. Wagstaff and E. Jordan.
- 3, 5, 6, 7 and 8.—Sections of the large crowd present.
- 4.—Cheltenham Team, from left to right: Langford, Hopkins, T. Hiron, Wood—
- 9.—Jim Preece rushes the Tewkesbury goalie.

["Cheltenham Chronicle" Photos. Copies 1/- each, by Post 2d. extra.

**Important Sale.**

ESTABLISHED 1806.

**MARTIN & CO. LTD.,**

THE COUNTY JEWELLERS,

Promenade - - Cheltenham,

**B**EG TO ANNOUNCE THEIR FIRST  
**CHRISTMAS SALE**

in which they are giving a Genuine Guaranteed Discount, from 10% to 25% off the whole of their extensive stock, comprising all the Latest and most Fashionable Jewellery, also a Great Display of Fine Quality and

Artistic Designs in Pearl, Diamond, & Fancy Stone Necklets, Gem Rings, Diamond & Fancy Stone Brooches, Watch Bracelets, Gentlemen's Evening Dress Watches, Gentlemen's Gold Strap Wristlets, Sterling Silver Hall Marked Trays, Waiters, Tea Sets, Sauce Boats, Spoons and Forks, etc., also a large range of Real Tortoiseshell, Silver & Tortoiseshell, Engine Turned, and Plain Silver Brush Sets. Finest Silver Plated Wares, Cutlery, etc. Folding and Fancy Travelling Clocks. Unique Collection of Valuable Antique Silver Old Sheffield Plate, and Early English. Martin & Co.'s Stock has never been so complete. A Vast & Exclusive Array of Charming Christmas Presents, at London's lowest prices. Martin & Co. wish particularly to bring to the notice of their prospective clients that all goods are marked in plain readable figures. Therefore sound value and lasting satisfaction is assured. This is the key note to the success of this old-established business. We respectfully solicit your patronage at an early date.

Remodelling out-of-date Jewellery is a speciality with us. Watch, Clock, and Jewellery Repairs very carefully attended to. Martin & Co are purchasers of Jewels, Old Silver, and Sheffield Plate. Best Cash Prices given to any amount.

PRINTED AND PUBLISHED AS A GRATIS SUPPLEMENT BY THE CHEL TENHAM NEWSPAPER CO., LTD.

**THE CHEL TENHAM CHRONICLE**  
AND  
**GLOUCESTERSHIRE GRAPHIC**

With Which is Incorporated the "Cheltenham Looker-On."  
GRATIS SUPPLEMENT. Saturday, December 16, 1922.

No. 1,146.

**CHEL TENHAM THEATRE AND OPERA HOUSE.**

Resident Manager: H. OSWALD REDFORD.

THIS AFTERNOON (2.30) AND EVENING (7.30): Cheltenham Operatic Society in a New Opera, "THE MASQUERADE."  
NEXT WEEK:—Theatre closed for preparations for the gorgeous Pantomime, "THE BABES IN THE WOOD."

**THE PALACE,**  
HIGH STREET, CHELTENHAM.

Monday, Tuesday, Wednesday:  
BETTY COMPTON in  
"At the End of the World."

A Story of Love and the Underworld in the "Paris of the East."  
ELMO, KING OF THE JUNGLES.

Comedy,  
"MEET MY HUSBAND."

Thursday, Friday, Saturday:  
ALICE CALHOUN in the

"Matrimonial Webb."

A Delightful Tale of a 1922 Smuggling Adventure.

Broadway Comedy,  
"SHOULD BRIDES MARRY?"

**THE DAFFODIL**  
**PICTURE HOUSE,**  
SUFFOLK PARADE.

MONDAY FOR THREE DAYS

Fay Compton

In  
"Diana of the Crossways."

THURSDAY FOR THREE DAYS

Clara Kimball Young

In  
"MAGDA."

**All Your Wants**  
**Supplied**

If you have a small prepaid advertisement in the "Echo" and the "Chronicle." It is the combination that does it, for it reaches all

**MARTIN & CO.**  
LTD.,

Promenade, Cheltenham,

Purchase for Cash Antiques of all kinds, including Old Silver, Jewellery, Sheffield Plate, China, Coins, Miniatures, etc. Highest Prices Given for Rare Pieces.



"The Masquerade" at Cheltenham Opera House  
This Week.

Mr. A. F. Hughes as "Sir Peter Pommers" and Miss Violet Leach as "Joan Warden."

["Cheltenham Chronicle" Photos.]

SEND THE "CHRONICLE & GRAPHIC"  
TO YOUR FRIENDS EVERY WEEK.

**WINTER GARDEN,**  
CHELTENHAM.

Monday, Tuesday, Wednesday:  
Alice Calhoun

In  
"PEGGY PUTS IT OVER."  
"Infant Welfare in Birdland."

Thursday, Friday, Saturday:

"The Secret of the Hills,"  
From the Novel by Wil. Garrett.

"The Why of a Volcano."

**FISHER'S**  
(Late E. Fisher),

69 REGENT STREET,  
CHELTENHAM.

CHRISTMAS PRESENTS.—Gloves, Silk Handkerchiefs, Scarves, Ties, etc. TAILORING.

**Photograph**  
**Enlargements.**

We can enlarge to Cabinet size any individual Photograph in any of the groups in the "Graphic," or we can enlarge the entire group. Splendid results guaranteed. Prices on application

MAKE YOUR SUNDAY  
AFTERNOONS A PLEASURE  
By Having Your

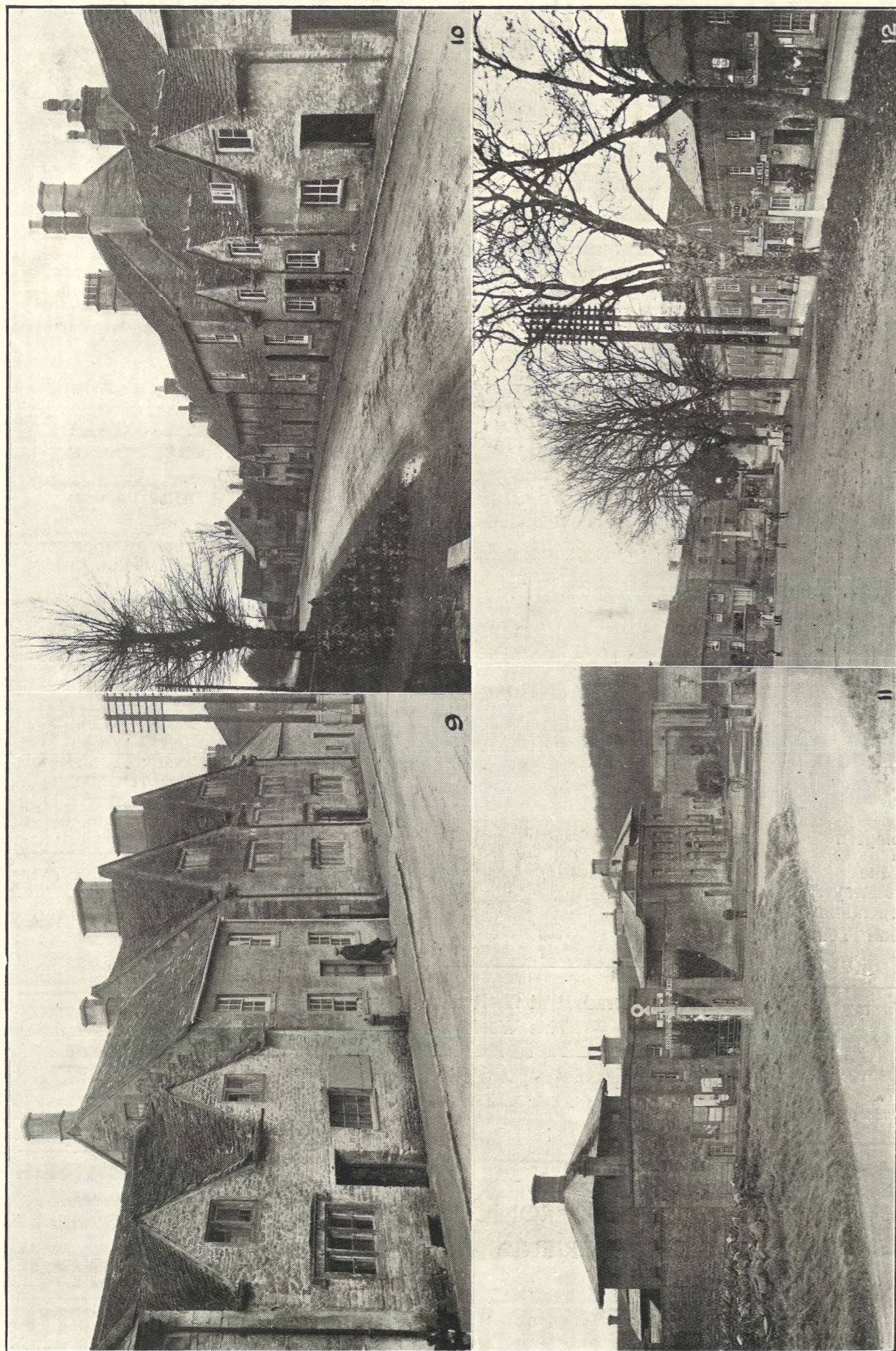
**SUNDAY NEWSPAPERS**

Delivered by  
**Brown's Newsagency,**  
226 HIGH STREET, CHELTENHAM

**XMAS CARDS**  
Xmas Presents.

ALL READY FOR YOU at  
**LEE, Caxton House,**  
STATIONER, WINCHCOMBE ST.,  
CHELTENHAM.

For the Best **PIANOS, DALE, FORTY and CO. LTD.**



A further series of Northleach pictures, the first of which were published in our issue of December 2nd. The town is most interesting to archaeologists, and the air, as befits one of the highest points of the Cotswolds, is very pure and bracing.

9.—Old houses at East end of the town.  
 10.—More old houses at West end, looking up main road towards Cheltenham.  
 11.—The old Prison. It is not used as a prison now-a-days, but a Police Superintendent, sergeant, and constable reside there, and two cells are in use for casual prisoners.  
 12.—The Square, or Green, showing War Memorial and main street.

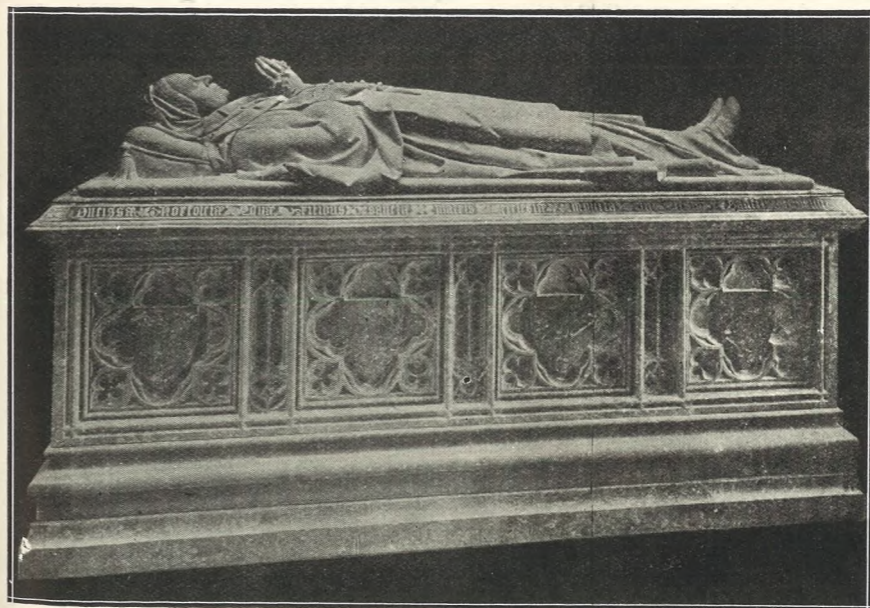
**PICTURESQUE GLOUCESTERSHIRE—NORTHLEACH.**

“Cheltenham Chronicle” photos. Copies 1s. 9d. each, postage 2d. extra.



**POUND DAY AT CHELTENHAM GENERAL HOSPITAL.**

Rev. R. H. M. Bouth (chairman) and Mrs. Bouth (on extreme right at back), with the Matron (in front) and a number of lady workers on behalf of the Pound Day on Thursday, December 7th, taken on the Hospital steps. The day was quite a success.



**A BEAUTIFUL MEMORIAL.**

Tomb and Effigy erected in the Fitzalan Chapel, Arundel, to the memory of the late Dowager Duchess of Norfolk. Executed by Messrs. R. L. Boulton and Sons, sculptors, of Bath-road, Cheltenham.

**PRACTICAL XMAS GIFTS**

No need to go further than—

**LANCE'S**



Maid's AFTERNOON APRONS, Style as sketch. Prices from 2/9 to 4/6.  
 Dainty TEA APRONS, from 1/9 to 10/6.  
 Maids' CAPS, COLLARS and CUFFS, in Large Variety and Becoming Shapes.  
 HANDKERCHIEFS, Fancy Embroidered, Six in Box, 1/11 to 10/9.  
 SPECIAL VALUE in PURE LINEN HANDKERCHIEFS, Six in Box, 5/11.

Huge Collection of Fancy Goods to Choose From.

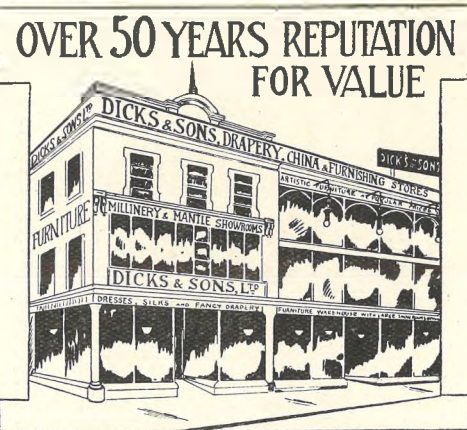
**Xmas Holidays.**

This Establishment will be CLOSED at 1 o'clock on Saturday, Dec. 23, until Thursday Morning, Dec. 28. The support of the Public by Shopping EARLY is respectfully solicited.

**John Lance and Co. Limited, CHELTENHAM.**

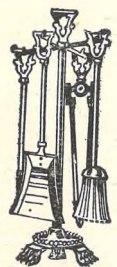
# THE Gift Store

Useful and Acceptable  
Gifts for the Home at  
Remarkably Low Prices.

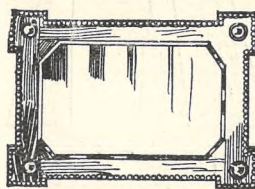


# THE Gift Store

Well Selected Gifts  
: : : for : : :  
Ladies' & Children's Wear



COMPANION SETS, in Oxidised Copper, 8/11 to 45/-.  
Real Down Filled QUILTS, Covered Sateen, with Satin Panels. 49/6.

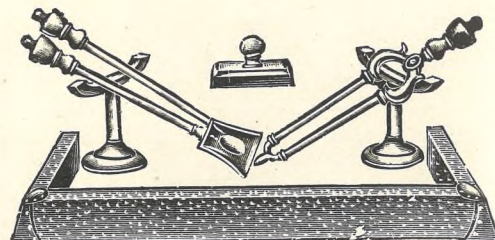


BEVELLED MIRRORS, in Jacobean Oak Frames, similar to illustration, also Oxidised Copper and Silver, 25/6 to 6 Gns.



Large Size Decorated FLOWER POTS, 4/11½.  
Small Sizes, in Plain Art Colours, from 3½d.

**GIFTS** are expressions of Gesteem—measured not by the cost but by the thought and care expended in selection, their good taste, appropriateness and use. Nowhere in the West of England can you see a greater selection of Gifts at moderate cost than in this Store.



OXIDISED COPPER CURBS.  
Small Bedroom Size, 4/11½. Large Size, 6/11 to 42/-.  
Solid Oak Curbs, 25/6.

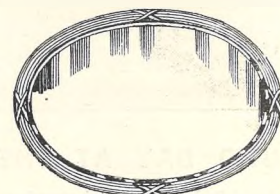
**CHRISTMAS**



**TOYS**

BRING THE KIDDIES to our  
Grand TOY CARNIVAL.

Let them have a good look round,  
and then tell : : :  
**FATHER CHRISTMAS**  
personally what they want.



OVAL MIRRORS (Bevelled), in Mahogany, Gilt and Oak Frames, as illustration, 29/6 to 5 Gns.

**The House for Value!**



Rich AXMINSTER HEARTHUGS  
8/11, 10 11, 12/11, 18/11 to 65/-

We shall be OPEN until 8 o'clock  
on WEDNESDAY, December 20.

We Deliver FREE  
in  
Our Own Motors.

**Dicks & Sons Ltd.**  
172 & 173 HIGH STREET  
**Cheltenham Spa**  
TEL. 1007. 50 YEARS REPUTATION FOR VALUE.

Father Xmas  
Has  
Now Arrived.



**GLOUCESTER CHRISTMAS MARKET.**

The Christmas Market at Gloucester, on Monday last, was one of the largest and best ever remembered, the market being packed with stock of magnificent quality. There were large numbers of buyers and prices were very satisfactory.

- 1.—A first prize pen of porkers, only 14 weeks old.
- 2.—Looking at the pigs.
- 3.—Three local farmers: Mr. Pratley on left.
- 4.—Familiar faces in the Market.
- 5.—Professional critics: Mr. Crewdson, of Syde, on right.
- 6.—Judging the pigs. A Mr. Arthur Hiscock, of Blandford (Judge), B Mr. Knowles, and Stewards.
- 7.—Pig buyers.
- 8.—General view of Market.
- 9.—Two ex-police officers now interested in agriculture: Supt. Dennis on left.
- 10.—Rev. Winnington Ingram, of Lasington, interested.

["Cheltenham Chronicle" Photos. Copies 1s. each, by post 2d. extra.

# CHRISTMAS GIFTS THAT PLEASE BECAUSE OF THEIR UTILITY



**T**HERE'S a list on the right of goods selected from our extensive stocks, suitable for giving at Christmas. Particularly noticeable is their practical nature—all are gifts of lasting and useful qualities, by which you as the donor will long be remembered. We want to be of service to you in the somewhat difficult task of gift selection. Our experience may be of great help to you—at all events, by purchasing Gifts from us you will save considerably on your expenditure. Shop soon.

- Beautiful Cushions, 4/11½ to 21/9.
- Down Quilts, best makes, 25/9 to 50/-.
- Artificial Silk Blouse Lengths, 4/6.
- Boxes of Fancy Handkerchiefs, 1/6½ to 6/11½.
- Gloves, in great variety, good quality Castor, from 3/11½.
- Fur Lined Gloves from 12/11 to 44/-.
- Useful All Wool House Coats from 4/11½.
- Beautiful Silk Jumpers, 10/11½.
- Special Value in Art Silk Scarves from 1/11½.

## E. L. WARD,

136-140 HIGH STREET,  
CHELTENHAM.

- SOME GIFT SUGGESTIONS.**
- HANDKERCHIEFS.
  - SCARVES.
  - GLOVES.
  - HOSIERY.
  - PIN CUSHIONS.
  - HAT PINS.
  - TRAYS.
  - BLOUSES.
  - JUMPERS.
  - HOUSE COATS.
  - 5 o/c TEA, CLOTHS.
  - CUSHIONS. FURS.
  - COSIES, etc.



**GLOUCESTER BEAT CHELTENHAM AT RUGBY FOOTBALL.**  
In the second encounter of the season, Gloucester beat Cheltenham at Kingsholm by 13 points to 3.

1 and 4.—Sections of spectators. 2.—A stoppage for repairs. 3.—A line out.  
["Cheltenham Chronicle" Photos. Copies 1s. each.]

\*\*\*\*\*

**R. F. BEARD LTD.**  
SANDRINGHAM HOUSE

**THE GIFT OF GIFTS :  
A WRIST WATCH.**

Our 25 o/o reduction enables you to buy a High-grade Watch for a low price, viz:—

- A Gold Bracelet Watch, usually sold for £10, will now only cost you £7-10-0.
- A Gold Strap Watch, usually sold for £5, will now only cost you £3-15-0.
- A Silver Strap Watch, usually sold for £4, will now only cost you £3.

We sell Watches only by makers of repute.

**PROMENADE  
CHELTENHAM**

Military honours were, on Tuesday, at Bristol, accorded the remains of the late R.S.-Major Alfred C. G. Sealfe, whose death took place on Friday at the age of 54. Deceased served a long period in the 1st Gloucestershire Regiment, and for some time during the war he was sergt.-major to the 12th Gloucester Regiment.

At Chalfont St. Peter the death has occurred in his 84th year of Mr. Ralph Stone, known as "Father Abraham" by reason of his long white flowing beard. From 212 applicants Col. F. J. Lemon, Chief Constable of Leeds, was on Tuesday appointed Chief Constable of Nottinghamshire at a salary of £800 and £350 allowances.

A Splendid Display of  
**Suitable GIFTS**  
for the present season.

**Robertson & CO.,**  
CIGAR AND CIGARETTE IMPORTERS,  
8 Colonnade, CHELTENHAM.

Agents for LOEWE'S—BARLING'S  
and B.B.B. Celebrated Briars.

Specialites :  
ROBERTSON'S Celebrated Edinburgh  
**Smoking Mixture**  
—Mild, Medium or Full.—

**Robertson & Co.'s Famous Hand  
made Virginia Cigarettes.**

100	50	25
6/8.	3/4.	1/8.

**COVERS FOR THE "GRAPHIC."**—WE HAVE IN STOCK A NUMBER OF STOUT COVERS FOR THE "GRAPHIC," IN DARK GREEN CLOTH AND GILT LETTERING. THE COVERS WILL TAKE A FULL YEAR'S ISSUE OF THE POPULAR PICTURE PAPER, AND YOU CAN THUS KEEP THE "GRAPHIC" FROM WEEK TO WEEK AND KNOW WHERE TO FIND IT. POST FREE TO ANY ADDRESS **SIXPENCE.**





**A CHELTENHAM OPERA PRODUCED BY CHELTONIANS IN CHELTENHAM.**

On Tuesday and every other day this week a Comic Opera entitled "The Masquerade," or "A Merry Maid Married," was performed at the Opera House by the Cheltenham Amateur Operatic Society. It was composed by Mr. S. J. Grove and the Libretto written by Mr. Herbert T. Rainger, both of Cheltenham.

- 1 and 3.—The Producer and Librettist as Percival Trivet.
- 2.—Miss Beatrice Baber as Phoebe Neville.
- 4.—Mr. H. O. Barnett as Sharpe.
- 5.—Miss Marie Elliott as Eleanor.
- 6.—Mr. Bick (Chorus).
- 7.—Mrs. S. Fielding (Chorus).
- 8.—Mr. Frank Pates as Sir Anthony Warden.
- 9.—Mr. W. J. Wodehouse as Landlord of The New Inn.
- 10.—Mr. Giller (Chorus).
- 11.—Mr. Lyn Rainger as Rev. Dr. Budget.
- 12.—Miss Collis (Chorus).
- 13.—Miss McAldowie and Mr. Caesar (Chorus).
- 14.—Miss M. Handy (Chorus).
- 15.—Mr. A. J. W. Willink as Capt. Morel.

["Cheltenham Chronicle" Photos, Copies 1s. each unmounted, 1s. 6d. mounted]



**A CHELTENHAM OPERA BY CHELTENHAM AMATEURS.**

It is probably an unique occurrence for two members of an amateur operatic society to write and compose a long comic opera for production by the Society, and interest in the clever performances being given this week is very great.

- 16.—Mr. Burton Clark (Chorus).
- 17.—The Sedan Chair, carried by Messrs. F. J. Collins and F. E. Knight. In it is seated Mr. A. F. Hughes as Sir Peter Pommers, and the page is Master Roy Gardner.
- 18.—Mrs. Gardner (Chorus).
- 19.—Miss Hilda Pattison as Margery (an actress).
- 20.—Special Ballet. At back:—Misses I. Hodges and Weatherhead. In centre: Misses Singleton, Violet Winterbotham and Pates. In front:—Misses Marjorie Silk, Christine Harrison, and Winifred McLellan.
- 21.—Mr. C. Coxwell Rogers as Roland Neville.
- 22.—Messrs. G. Romans and W. Holloway in Chorus and Captain Holroyd.
- 23.—Miss Pattison.
- 24.—Mr. Hughes as an Arcadian Shepherd.
- 25.—Messrs. Hawker, Sidaway and W. T. Pates (Chorus).

["Cheltenham Chronicle" Photos. Copies can be obtained at Office.

Be prepared. Winter finds out the weak spots. What's better for a Xmas Gift than a

# "FLANNAGH" 6/6 SHIRT?

With each Shirt we give a Collar value 10½d. each.

**HAWKER**  
81, High Street,  
CHELTENHAM.

**SUITABLE XMAS GIFTS.**—6 Handkerchiefs for 2/9, name marked on face, other prices 8½d., 10½d., 1/-; Umbrellas, Gents or Ladies, from 10/6; Lined Gloves from 6/6 to 21/-; Magnificent variety of Knitted Ties from 1/- to 5/-

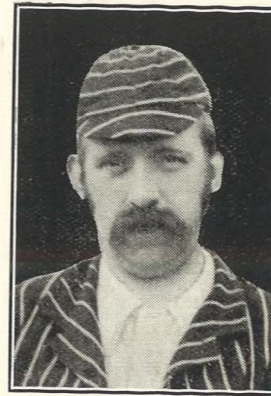
SPECIALISTS IN  
**TAILORING.**

Navy Blue Suits to measure, from 55/- to 105/-. Grey Tweeds from 45/- up. Overcoats, blue nap, 45/-; Greys from 30/-. Call or send for Patterns.

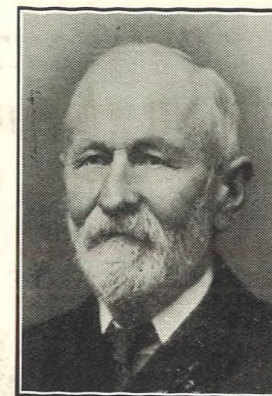
Underwear that  
will Underwear.

Special prices in Pants & Vests, all Wool, from 6/6 to 14/6. Mixture from 2/11 to 5/11. All-Wool Socks 1/- to 2/6.

Fancy Waistcoats from 7/6 to 21/-. Special Show of Pure Silk Long Scarves, usual price 35/-, reduced to 19/11.



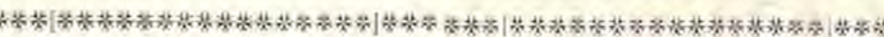
MR. JOSEPH J. STEPHENS, Of Gannicox, Stroud, who died on Dec. 12th, aged 70 years. He was a member of Stroud Cricket Club for over 50 years and a famous player in his time. He was principal of the firm of Baxter and Stephens, hop merchants, Stroud.



MR. SAMUEL SMART, Of 22 Salisbury-road, Gloucester, who died on Wednesday, December 6th, aged 74 years.



SIGNALMAN SYDNEY COOK, R.N., Son of Mr. and Mrs. Wm. Cook, of 16 Hungerford-street, Cheltenham, who fell while descending the ship's side on Saturday, Dec. 9, and was drowned. He was only 21 years of age, and was expected home next Monday on Xmas leave.



## A PIANO BARGAIN

AS we are constantly taking Pianos in exchange for genuine Pianola-Pianos, we have opened a "Bargain Department," and will occasionally offer one of these exchanged Pianos by a special advertisement. It is well to remember that these bargains are not worn-out instruments—but reliable Pianos by good makers—are fully guaranteed, and give you the opportunity of securing a superior Piano at a considerable reduction.

### THIS WEEK'S BARGAIN.

Reliable Upright Piano by Broadwood, Full Compass, Ivory Keys, Trichord, Walnut Case.

PRESENT VALUE 45 Gns.

Bargain Price 36 Gns.

or by deferred payments.

Why not write or call to-day?

## CRICHTONS Ltd.,

The Piano House,  
Promenade Cheltenham.

Phone 378.



### A Pretty Stroud Wedding.

The Marriage was solemnised at the Church of St. Lawrence, Stroud, on Dec. 2nd, of Mr. Clarence W. Caulkett, of Cheltenham, to Miss K. Belle Stone, of Stroud. The happy couple leaving the church.

### HIGH PRICES

Paid for Ladies', Gentlemen's, and Children's Discarded Wearing Apparel—Boots, Shoes, etc. A Postcard to

### DEANE'S WARDROBE DEPOT,

31 Worcester Street, GLOUCESTER  
Will Receive Prompt attention.

THE NOTED HOUSE FOR FAIR PRICES.  
Telephone 970.

Telegrams: "Wardrobes, Gloucester."

## You Can Save Money By Shopping at Shirer & Haddon's.

GO THERE AND SEE THE LOVELY ASSORTMENT OF

## Christmas & New Year GIFTS

TO CHOOSE WHAT YOUR FRIENDS MOST DESIRE WILL BE AN EASY MATTER.

There are delightful Silk or Beaded Bags of every description from 3/11 to 14/11; and dainty Gloves in all newest suede colourings for evening wear, from 9/11.

Cosy Suede Dressing Slippers, edged fur, for wintry evenings, Price 12/9.

Ladies' fine Linen Embroidered Handkerchiefs, Price from 1/6½ Each; and Children's Printed Coloured Handkerchiefs, in every design, from 2/- per Box.

Ladies' useful and Warm Fleecy All Wool Scarves from 3/11.

Don't miss paying a visit to our ART NEEDLEWORK DEPT., where you will see lovely Sachets, Lavender Bags, and many other charming Gifts at Moderate Prices.

WE NOW ARE MAKING A SPECIALITY OF OUR PERFUME DEPARTMENT,

AND ALL PERFUMES ARE OF THE FINEST QUALITY.

Ask to see our XMAS CALENDARS. See the Promenade Windows!

For Splendid Values  
**SHIRER & HADDON,**  
CHELTENHAM SPA.

# Christmas Gifts.

- Brass Rose Bowls.
- Gongs.
- Table Kettles.
- Flower Vases.
- Candlesticks.
- Cutlery.
- Cruets.
- Biscuit Barrels.
- Marmalade Jars.
- Butter Dishes.
- Safety Razors.

**A** VISIT to our Establishment will make the selection of Xmas Gifts quite a pleasure. We possess a wide range of very acceptable Presents, comprising Nickel Plated Goods and Cutlery, Leather, Fancy Brass and Copper Goods, Cycle and Electrical Accessories, etc., also

**New Stock of Excellently Made Toys.**

SEE OUR WINDOWS!

- Travelling Cases.
- Wrist Bags.
- Writing Cases.
- Hair Brushes (in Cases).
- Purses.
- Collar Boxes.

- Electric Cycle Lamps.
- Flash Lamps.

**H. G. NORTON & Co. (1917) Ltd.**

HIGH STREET — and — BATH ROAD.

## Perfumes, Etc., For Gifts.

EAU de COLOGNE—ALL MAKES.  
LAVENDER WATER, 1/-, 2/-, 2/6, &c.

**EXTRAORDINARY VALUE!**

Eau de Cologne, 4/6 bot. for 3/-; 8/6 bot. 5/6.  
Ditto, Wickered, 8/6. Small Bottles, 1/- & 1/6.

PIVER'S PERFUMES, 4/6 and 8/-.  
ROGER & GALLET'S PERFUMES.  
In Pretty Boxes .. 6/6.

SHAVING BRUSHES from 1/6.  
HAIR BRUSHES .. from 2/6.

MANICURE SETS, 2/6, 3/-, 6/-.

PERFUME SPRAYS.

SAFETY RAZORS:  
"Autotrop," .. 6/-.  
"Ever-Ready," .. 6/-.

IT WILL REPAY YOU TO INSPECT OUR FIVE  
WINDOWS.

**LLOYD & KING,**

CHEMISTS,

Opposite the Plough Hotel, CHELTENHAM.

## DRAKE'S DISTINCTIVE GLOVES

MAKE IDEAL GIFTS FOR LADIES, GENTLEMEN AND CHILDREN.

A REMARKABLE VARIETY OF RENOWNED MAKES.

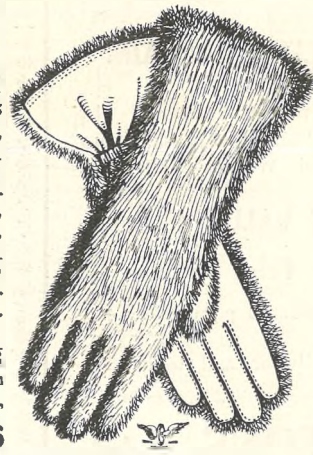
SUEDE AND NAPPA GLOVES.

Ladies' Suede. 2 button, in grey & tan, 3/11½, 3/6½, and .. 2/11½

Ladies' Nappa. 2 button, in tans, 5/11½, 4/11½, and .. 3/11½

Ladies' Nappa. Fownes' Make. In grey and tan, 6/11½

Gent.'s Suede, in nigger and grey, superior skins .. 10/6



FLEECE LINED GLOVES.

Ladies' Real Nappa, in tan .. 7/11½

Ladies' Suede, superior skins, in sable and mole .. 10/11

Gent.'s Suede, in tan, pique sewn .. 11/9

Children's Suede, in grey, superior skins .. 6/11½

SUEDE GAUNTLETS.

Ladies' Soft Suede, in nigger, 5/11½

FUR BACK GLOVES.—Tan leather palms, elastic wrists & warm lining. Worth 18/11. .. 12/11.

GAUNTLETS, with elastic wrists with palms of nappa, suede, etc. 18/11, 22/6, 27/6 to 49/6. Children's Sizes from 7/11½.

FRINGE GAUNTLETS.

In nigger, suede, Morley's Make. 10/11

DRAKE & Co., WINCHCOMB ST., CHELTENHAM.



### NAUNTON PARK AND OLD PATESIANS' RUGBY FOOTBALL TEAMS.

THE OLD PATESIANS LOST THEIR UNBEATEN RECORD ON SATURDAY LAST TO NAUNTON PARK BY 7 Pts. TO 5. NAUNTON PARK.—Standing.—Allen, J. Wilson, C. C. Channon (Team Secretary), A. E. Carey, W. H. Pears, Kilminster, S. E. Harding, S. Alsbury, C. Taylor, Holloway, H. Sheen. Sitting.—C. Powell, A. Bendall, A. Green, J. Voyce, H. W. Hall (capt.), W. Sly, N. Powell, H. R. Symonds. In front.—H. A. Bendall and C. Goldthorpe. OLD PATESIANS.—Standing.—A. G. Bloodworth (Chairman), Wicks (Linesman), J. Hobbs, E. J. P. Dale, A. C. Ryland, D. Stayte, T. Harry, O. J. Bloodworth (hon. secretary). Sitting.—W. L. Johnstone, J. D. Lane (hon. treasurer), C. W. Morris, W. W. Yeend (capt.), C. J. Price, J. F. Drake, W. J. Harding, K. Norman. In front.—S. Hyam and C. R. Aleock.

["Cheltenham Chronicle" Photos. Copies 2/6 each.

### CORSETS AND BELTS

MADE, COPIED, CLEANED, AND REPAIRED.

Hours: 10 a.m. to 6 p.m. Saturdays, 1 p.m. or by appointment. PHONE 915.

MISS FRUIN (Late with Madam Annette), 23 Bath Parade, CHELTENHAM.

### Photograph Enlargements.

We can enlarge to Cabinet Size any Individual Photograph in any of the Groups in the "Graphic," or we can Enlarge the Entire Group. Results Guaranteed. Prices on Application.

### JEWELLERY AND ANTIQUES

MARKED DOWN TO THE LOWEST PRICES

Now is Your Opportunity to Obtain REMARKABLE BARGAINS in both Departments.

Many Articles less than cost price.

HARRY O. BOX,

339 HIGH STREET (just below Town Clock).

# VANDERPLANK (From Harrods, Ltd.)

## THE FASHION & FUR HOUSE.

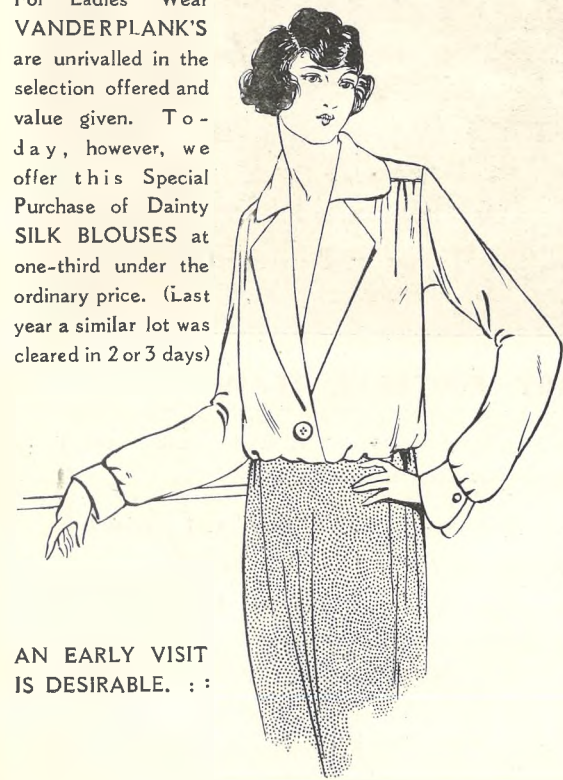
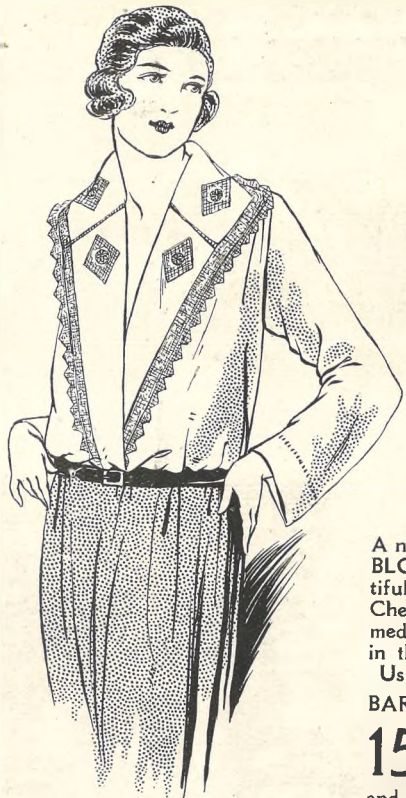
**Special SALE**  
OF  
Crepe de Chene  
**Blouses**  
AND  
**Jumpers**  
FOR  
**Presentation or Xmas Wear**

AN ARTICLE FOR PERSONAL WEAR OR USE IS THE MOST ACCEPTABLE GIFT—IS IT NOT?

For Ladies' Wear VANDERPLANK'S are unrivalled in the selection offered and value given. Today, however, we offer this Special Purchase of Dainty SILK BLOUSES at one-third under the ordinary price. (Last year a similar lot was cleared in 2 or 3 days)

AN EARLY VISIT IS DESIRABLE. . .

381 HIGH STREET AND PROMENADE, **CHELTENHAM.**



An attractive BLOUSE, in a beautiful quality Crepe de Chene, prettily trimmed with Filet Lace, in the newest style. Usual Price, 25/9.

**BARGAIN PRICE, 15/11.** Also in the same and similar Models in Spun Silk. Price, 12/11. Usually 19/11 and 23/9.

A well-cut SHIRT BLOUSE (a limited number only), in Jap Shappe of fine quality. Will wear and wash splendidly. Usually 19/11.

**SALE PRICE, 12/11**  
Same shape in 12 Momme Jap Silk. Usual Price, 25/9. DURING SALE, 18/9. Also in heavy-weight Crepe de Chene. REDUCED TO 21/9.



# FURS.

THE LURE OF PELTRY IS IRRESISTIBLE TO EVE.

FROM PRICELESS CHINCHILLA DOWN TO THE LOWLY CONEY. WHEN WINTRY WINDS DO BLOW THE DREAM OF EVERY WOMAN CENTRES ROUND A FUR COAT—THE LURE OF PELTRY IS A VERY REAL ONE TO EVE.

## Give Furs!

BUT, PURCHASE FROM A HOUSE KNOWN FOR RELIABILITY AND VALUE!

The charming WRAP we depict is made of fine quality Skunk Opossum & Natural Skunk, with Squirrel Tails.

**SPECIAL PRICE, 8 GNS.** Or in fine Natural Skunk, 21 Gns.

4-Strand WRAPS from  
**5 GNS.** In Skunk Opossum and Natural Skunk, 13 1/2 Gns.

COATS of fine shaded Beaver Coney, very soft skins, lined Silk, full length.

**SPECIAL PRICE, 15 GNS.** Seal Coney, with Skunk Opossum Collar, 14 Gns. Same quality, with Pillow Collar, 12 Gns.

A FINE SELECTION OF BETTER GRADE FURS ALWAYS IN STOCK.

## ST. DUNSTAN'S BAZAAR AT CHELLENHAM TOWN HALL.

Before a big crowd of sympathetic supporters, the Duchess of Beaufort opened a most successful bazaar on Thursday, Dec. 7th. Over £400 was realised.



1.—The Duchess of Beaufort and Mrs. Arnold (Commandant), with a number of the blind soldiers.



2.—Performers in Pantomime "Babes in the Wood," given by the blind men, assisted by four local amateurs. Back row:—Mr. W. H. Jessop (O'George, of U.S.A.), Mr. C. Coxwell-Rogers (Jack of the Beanstalk), T. Martin (Fairy Godmother), Miss Marie Elliott (Morgiana), Miss J. C. Arnold (Cinderella) H. Lincoln (Jack's Mother). Seated:—J. B. Fay (Sleeping Beauty), J. Thomas (Babe), Ramsbotham (Small Robber), T. Morrison (Large Robber), H. Joba (Ugly Sister), W. White (Ugly Sister), T. Rogers (Aladdin), J. F. Besley (Bluebeard). ["Cheltenham Chronicle" Photos.]

PHONE 311.  
Telegrams—"BENCE, CHELLENHAM."  
FOR ALL KINDS OF  
**TIMBER AND BUILDING MATERIALS—GO TO**  
**Geo. Bence & Sons Ltd.**  
WHO HOLD GOOD STOCKS AT TO-DAY'S LOWEST PRICES.  
Electric Sawmills. Sawing done for the Trade  
Showrooms for Baths, Grates, &c., &c.  
**FAIRVIEW ROAD, CHELLENHAM.**

**Moussell Bros., Ltd.**  
(Opposite G.W.R. Station),  
**CHELLENHAM.**  
**FURNITURE REMOVALS.**  
BY RAIL OR MOTOR.  
Phone 112

**FLANNEL SHIRTS.**  
OUR 10/6 GARMENT  
IS BEST VALUE OBTAINABLE!  
Stout Union Flannel, Made in our Own Work-rooms, and of Full Cut.  
Other Qualities, 8/11, 12/6. All Wool, 13/6.  
**A. Beckingsale, CHELLENHAM,**  
111 HIGH STREET,  
Phone 406.

# IMPORTANT SALE.

ESTABLISHED 1806.

## MARTIN & CO. LTD.,

THE COUNTY JEWELLERS,

Promenade - - Cheltenham,

### BEG TO ANNOUNCE THEIR FIRST CHRISTMAS SALE

in which they are giving a Genuine Guaranteed Discount, from 10% to 25% off the whole of their extensive stock, comprising all the Latest and most Fashionable Jewellery, also a Great Display of Fine Quality and

Artistic Designs in Pearl, Diamond, & Fancy Stone Necklets, Gem Rings, Diamond & Fancy Stone Brooches, Watch Bracelets, Gentlemen's Evening Dress Watches, Gentlemen's Gold Strap Wristlets, Sterling Silver Hall Marked Trays, Waiters, Tea Sets, Sauce Boats, Spoons and Forks, etc., also a large range of Real Tortoiseshell, Silver & Tortoiseshell, Engine Turned, and Plain Silver Brush Sets. Finest Silver Plated Wares, Cutlery, etc. Folding and Fancy Travelling Clocks. Unique Collection of Valuable Antique Silver Old Sheffield Plate, and Early English. Martin & Co.'s Stock has never been so complete. A Vast & Exclusive Array of Charming Christmas Presents, at London's lowest prices. Martin & Co. wish particularly to bring to the notice of their prospective clients that all goods are marked in plain readable figures. Therefore sound value and lasting satisfaction is assured. This is the key note to the success of this old-established business. We respectfully solicit your patronage at an early date.

Remodelling out-of-date Jewellery is a speciality with us. Watch, Clock, and Jewellery Repairs very carefully attended to. Martin & Co are purchasers of Jewels, Old Silver, and Sheffield Plate. Best Cash Prices given to any amount.

# THE CHELTENHAM CHRONICLE AND GLOUCESTERSHIRE GRAPHIC

With Which is Incorporated the "Cheltenham Looker-On,"  
GRATIS SUPPLEMENT. Saturday, December 23, 1922.

No. 1,147.

## CHELTENHAM THEATRE AND OPERA HOUSE.

Resident Manager: H. OSWALD REDFORD.

THIS WEEK:—Theatre closed in preparation for Cheltenham's Gorgeous Pantomime—"THE BABES IN THE WOOD."  
OPENS ON BOXING DAY (MATINEE AND EVENING) AND CONTINUED UNTIL FURTHER NOTICE.

### THE PALACE, HIGH STREET, CHELTENHAM.

Continuous from 2.30 to 10.15.  
BOXING DAY & WEDNESDAY.

MARIE PREVOST in the  
**'MARRIED FLAPPER'**

Broadway Comedy:  
"A DESIGNING HUSBAND."  
Thursday, Friday, and Saturday.

BEBE DANIELS in  
**"Ducks and Drakes."**

A Film de Luxe Comedy.  
Monty Bank's Comedy:  
"BE CAREFUL."

### THE DAFFODIL PICTURE HOUSE, SUFFOLK PARADE.

Tuesday and Wednesday:  
DOROTHY GISH in

**"THE GHOST IN THE  
GARRET."**

Thursday, Friday, and Saturday.

**"ONCE UPON A  
TIME."**

A Fairy Story for both old and  
young.  
Most hygienic and comfortable  
Picture House in Cheltenham.

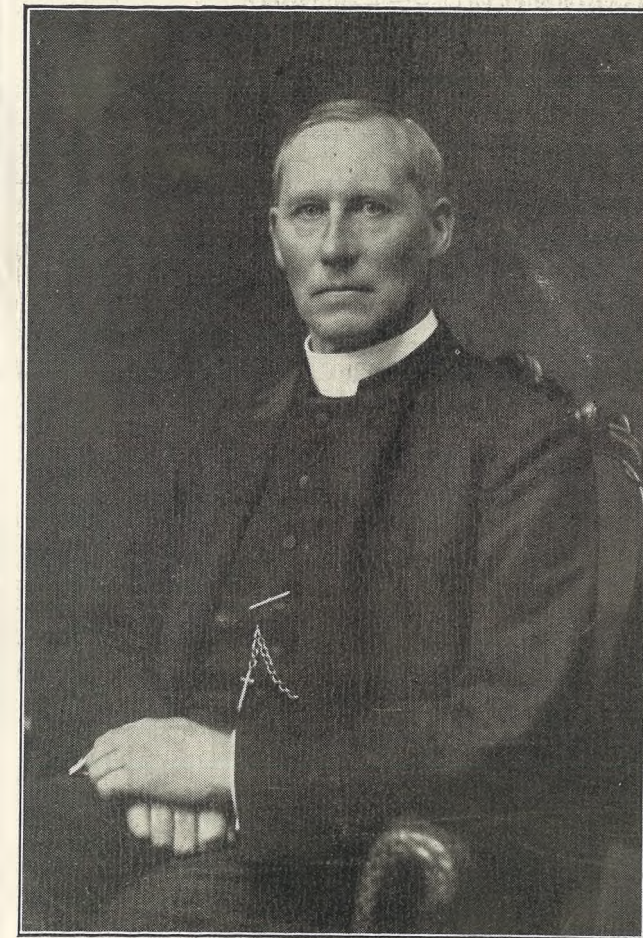
### All Your Wants Supplied

If you have a small  
prepaid advertisement  
in the "Echo" and the  
"Chronicle." It is the  
combination that does  
it, for it reaches ALL  
Classes.

### MARTIN & CO. LTD.,

Promenade, Cheltenham,

Purchase for Cash Antiques of  
all kinds, including Old Silver,  
Jewellery, Sheffield Plate, China,  
Coins, Miniatures, etc. Highest  
Prices Given for Rare Pieces.



### THE NEW BISHOP OF GLOUCESTER. Rev. Canon Arthur Gayley Headlam,

Canon of Christ Church, Oxford, and Regius Professor of  
Divinity, who has been appointed by the King to the Bishopric  
of Gloucester, vacant by the resignation of the Right Rev. E.  
C. Sumner Gibson. The new Bishop is 60 years of age and the  
eldest son of the Rev. A. W. Headlam, of Whorlton Hall,  
Barnard Castle. He is a great scholar, a born teacher, a  
brilliant theologian, and excels in controversy.  
[Photo by Russell and Sons, Baker-street, London.]

### WINTER GARDEN, CHELTENHAM.

BOXING DAY & WEDNESDAY.

THE WONDER FILM  
**'ROBINSON CRUSOE.'**  
CENTURY AND LEE KIDDY  
COMEDIES.

Thursday, Friday, and Saturday.

ALL-BRITISH CAST IN THE  
FAMOUS SCHOOL STORY,  
**"The Fifth Form of St.  
Dominic."**

### Photograph Enlargements.

We can enlarge to Cabinet size  
any individual Photograph in  
any of the groups in the  
"Graphic," or we can enlarge the  
entire group. Splendid results  
guaranteed. Prices on application

MAKE YOUR SUNDAY  
AFTERNOONS A PLEASURE  
By Having Your

### SUNDAY NEWSPAPERS

Delivered by  
**Brown's Newsagency,**  
226 HIGH STREET, CHELTENHAM

THE  
"CHRONICLE & GRAPHIC"  
BY POST COSTS  
6/6 PER HALF YEAR,  
PREPAID.

### XMAS CARDS Xmas Presents.

ALL READY FOR YOU at  
**LEE Caxton House**  
STATIONER, WINCHCOMBE ST.  
CHELTENHAM.

## For the Best PIANOS, DALE, FORTY and Co. Ltd.



**THE FIRST GIRLS' FOOTBALL MATCH IN CHELTENHAM.**

Played on the Athletic Ground, on Saturday last, in aid of the Funds for Unemployed Relief, this match between the girl employees of Sunningend Aircraft Works and Ucal Chemical Works caused much fun and attracted a large crowd.

1 and 4.—Portions of the crowd. 2.—One of the Sunningend girls scores a goal. 3.—Another shot which passed outside.



**GIRLS' FOOTBALL MATCH IN CHELTENHAM.**

**SUNNINGEND TEAM, WHO WON BY 3 GOALS TO NIL.**

Standing.—Mrs. Walter, Misses Cooke, D. Dodwell, G. Franklin, I. Leach, E. Dodwell, A. Higgs, Mrs. Hill.  
Sitting.—Misses E. Cooper, F. Cooke, D. Brown, G. Smith (Captain), F. Long, E. H. Cooper, E. Carter.

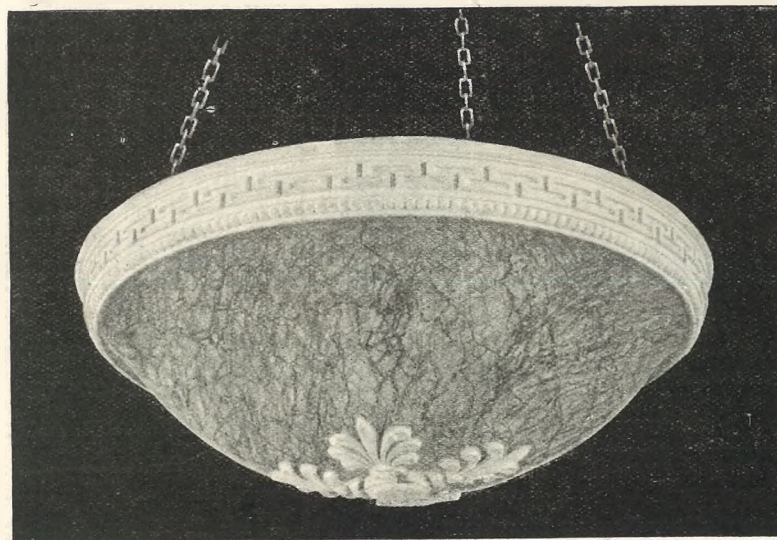


**UCAL TEAM.**

Standing.—Misses P. Everett, E. Summers, Mrs. Sage, Misses W. Hale, and F. Tame.  
Sitting.—Misses W. Brown, E. Hale, D. Wade, I. Jenkins (Captain), I. Stephens, G. Woodward, D. Walters.

[“Cheltenham Chronicle” Photos. Copies (Whole-Plate Size) 1/9 Unmounted, 2/6 Mounted.]

**“MARCO” BOWLS.** For the CORRECT Diffusion of ELECTRIC LIGHT with an ILLUMINATING SURFACE.  
(Patent 159100/21.) They PROTECT the SIGHT.



Made in specially prepared and exquisitely moulded plaster, showing only a clear surface when not illuminated. ::  
ARTISTIC EFFECTS CAST NO BEAUTY IN THE HOME.  
to tone with any scheme. SHADOWS. CLARITY IN THE OFFICE.  
ANY DESIGN OR MOULDING to suit PUBLIC BUILDINGS or for Advertising purposes.  
PRICES—8 inch 10/-; 12 inch 25/-; 14 inch 30/-; 16 inch 42/-; 18 inch 84/-; 24 inch 105/-.  
Larger and Special Designs quoted for.  
“MARCO” BOWLS are now being shown in use in OUR WINDOWS, and ORDERS may be placed with our Furnishing Department.  
**SHIRER & HADDON, Promenade & Clarence St., Cheltenham**



**BLACK DOG LOST.**

Lost on September 3rd, near Tredington, a SHAGGY BLACK DOG, Medium Size; answers to the name of Mop. Has not been recovered after numerous advertisements. Owner most distressed and anxious to find him, or information which would lead to his whereabouts. Good Reward.—Write C1655, Echo Office, Tewkesbury

**Photograph Enlargements.**

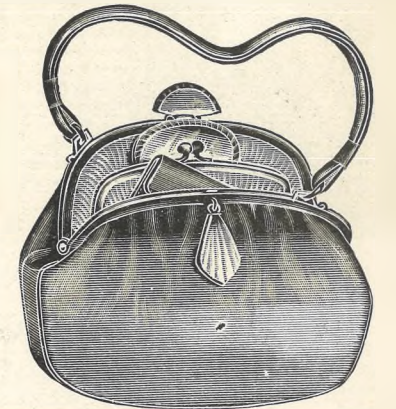
We can enlarge to Cabinet Size any Individual Photograph in any of the Groups in the “Graphic,” or we can Enlarge the Entire Group. Results Guaranteed. Prices on Application.

Phone 311.  
**Geo. Bence & Sons,**  
LTD.,  
— 41, 43, 45 & 47 —  
Fairview Rd., CHELTENHAM.  
DEPOT for  
**WALPAMUR**  
(Water Paint).  
SATINETTE ENAMEL. KEYSTONA OIL FLAT.  
GRIPON—Ready Mixed White Paint.  
Beaver Boards—Matchboards—Floorboards.

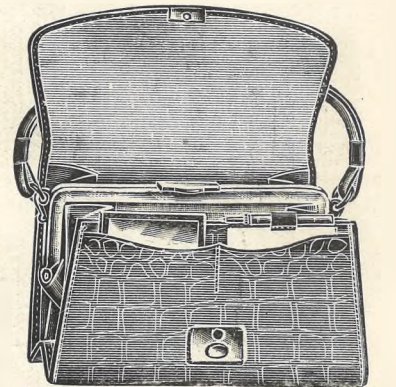
**Moussell Bros., Ltd.**  
(Opposite G.W.R. Station),  
CHELTENHAM.  
**FURNITURE REMOVALS.**  
BY RAIL OR MOTOR.  
Phone 112

**LANCE'S**  
SPECIAL  
**New Year's Offer.**

500 Ladies' Bags at BARGAIN PRICES.



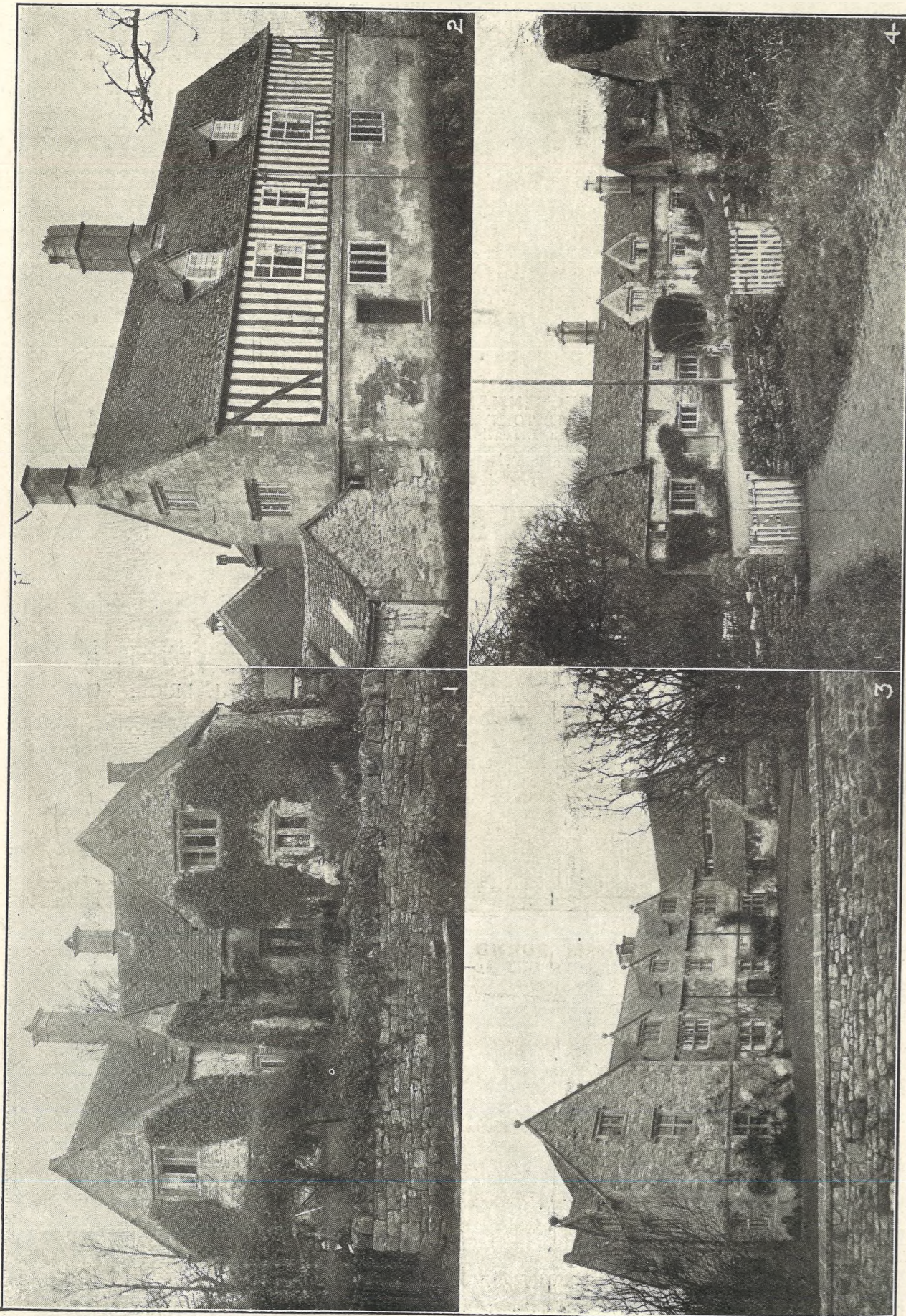
Dainty Calf BAG, in Fawn, Light Grey, and Brown (as sketch).  
SPECIAL PRICE, 29 6.



Crocodile Calf BAG (as sketch), in Fawn, Brown, and Grey.  
SPECIAL PRICE, 15/9.

A Huge Stock of BAGS, in Silk, Beaded, and Leather, will be marked at Special Prices for One Week Only, 3/11 to 4 1/2 Gns. Each.

**John Lance**  
and Co., - - Limited,  
**CHELTENHAM.**



**PICTURESQUE GLOUCESTERSHIRE—ASTON-SUB-EDGE.** Aston-sub-Edge is a small but pretty village, lying just off the main road from Broadway to Stratford and extends to the Worcestershire border, about 2½ miles from Chipping Campden. It is of great antiquity and has some beautiful old stone houses. A parish register dating from 1539 is kept in the parish chest at Mickleton. 1.—Glebe Farm, an old 16th Century house, 2.—Gardener's Farm, partly stone and partly half-timbered, and very picturesque. 3.—Crossing the road. 4.—The Manor Farm, a very stately and fine old farm house, evidently the Manor House in olden days. Gloucestershire. [“Cheltenham Chronicle” Photos. Copies 1/9 each unmounted, 2/6 mounted, postage extra.



**CHELTENHAM ROUND THE TOWN.** SOME SNAPS OF CHELTENHAM FOLK OUT FOR THEIR CHRISTMAS SHOPPING. 1.—Getting books for the holidays. 2.—Chatting to nurse. 3.—Crossing the road. 4.—Past and present Collegians. The Prom. is out of bounds during term. 5.—A Cheltenham face. 6.—Col. Longridge meets a friend. 7.—Protecting her while crossing the road. 8.—Well wrapped up. 9 and 10.—Two friends.

**Gifts for Gentlemen.**

A very fine range of **NECKWEAR**, 1/6 2/6 3/6 4/6.  
**SILK HANDKERCHIEFS**, from 2/6 to 8/11.  
**LINEN AND LAWN HANDKERCHIEFS**, 3/6, 4/6, 6/-, 9/- per ½-Doz. Box. Neatly Marked Free of Charge.  
**TROUSER PRESSES.** **GLOVES.**  
**NECK SCARVES.** **DRESSING GOWNS.**

**A. Beckingsale,** 111 HIGH STREET, CHELTENHAM. Phone 406.

**HIGH PRICES**

Paid for Ladies', Gentlemen's, and Children's Discarded Wearing Apparel—Boots, Shoes, etc. A Postcard to

**DEANE'S WARDROBE DEPOT,** 31 Worcester Street, GLOUCESTER

Will Receive Prompt attention. THE NOTED HOUSE FOR FAIR PRICES.

Telephone 970. Telegrams: "Wardrobes, Gloucester."

**BEST QUALITY**

**CIDERS**

IN BOTTLE.—Sparkling and Still. **BARTHOLOMEW,** 419, 420 1/2 HIGH STREET, CHELTENHAM.

WINES, SPIRITS, ALES, TABLE WATERS and GROCERY. Tel. 13



**A Beautiful Altar and Reredos.**

Architect: G. H. Fellowes Prynne, Esq., F.R.I.B.A.  
 This fine Altar and Reredos has been executed by Messrs. R. L. Boulton and Sons, Bath-road, Cheltenham, to the designs of the above Architect, and fixed in St. Mary's Church, East Grinstead, Sussex. It is executed throughout in Oak and forms a very handsome memorial. The firm will be pleased to quote for any kind of ecclesiastical furniture, either in Wood, Marble, Alabaster, Stone, or Metals, or any kind of Memorial.

**Modern Corsetry**



**CORSETS and BELTS**

Made to Measure.

COPYINGS. CLEANINGS. RENOVATIONS.

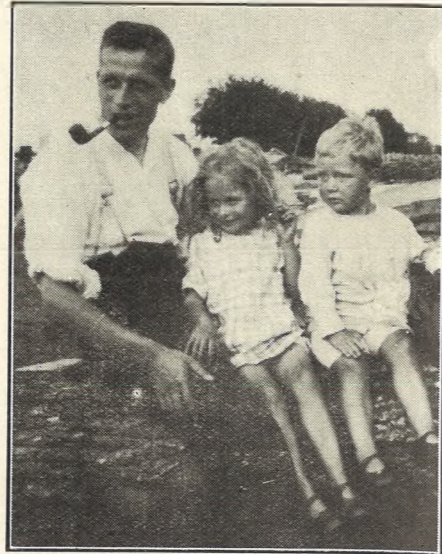
**MISS FRUIN**

(Late with Madame Annette),

25 Bath Parade, Cheltenham.

Telephone 915.

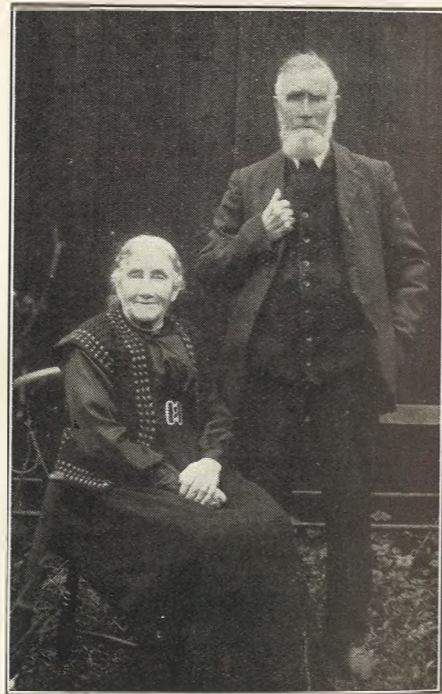
Hours: 10 till 6. Saturdays, 1 o'clock. Or by appointment.



**Mr. Harry Bruton Pugmire,**

Of Lansdown, Stroud, who was killed while motor cycling on Sunday last in a collision on the Bristol-Gloucester road. He was a linotype operator on the "Stroud Journal," and is here shown with his two children, aged 5½ and 4 years, who were in the side-car at the time of the accident.

\*\*\*\*\*



**Mr. and Mrs. Ford,**

Of 82 Calton-road, Gloucester, who celebrated their Golden Wedding on Dec. 2nd.

M. A. Porter, Cheltenham Grammar School, has been awarded an open scholarship of £60 a year at Clare College, Cambridge.

It is announced that Lord Gainsford has agreed to accept the chairmanship of the British Broadcasting Company, just registered. An arrangement has been made with the four principal British Press Agencies for the supply of a nightly summary of the world's news.



**COURT OF KING ARTHUR AT THE CHELTENHAM ART SCHOOL BALL.**

THIS BALL WAS HELD AT THE TOWN HALL ON FRIDAY, DECEMBER 15, AND WAS A GREAT SUCCESS.

At Back.—Messrs. Beck, Clark, Bamford, Miss Grant, Mr. H. Winterbotham, Mrs. and Mr. R. R. Tomlinson, Mr. Dudley. Centre Row.—Messrs. White, Nott, Archer, Miss Baker, Mr. Molyneux, Misses I. Phillips, Griffiths, Silk, Gardom, Weatherhead, E. Unwin.

Seated.—Mr. Keveren, Misses Fenning, Robinson, Martin, Hills, Mrs. Dudley, Miss M. Phillips, Miss I. Pownoll Williams.

[Photo by Mr. P. Fripp, Cheltenham.]

\*\*\*\*\*



**ST. PAUL'S, CHELTENHAM, WORLD'S FAIR.**

St. Paul's, Cheltenham, are renowned for their annual successful Sales of Work. This year they called it a "World's Fair," and it was bigger and better than ever. The scene outside the Mission Room on Tuesday, Dec. 12, when the Sale was opened by

Mrs. H. H. Hardy (standing in centre, next the Vicar).

**R.F. BEARD LTD.**  
 SANDRINGHAM HOUSE

WE HAVE AN EXCELLENT STOCK  
 OF  
**ENGAGEMENT RINGS**  
 COSTING JUST AS LITTLE  
 OR JUST AS MUCH  
 AS YOU WISH TO SPEND.

PROMENADE  
 CHELTENHAM

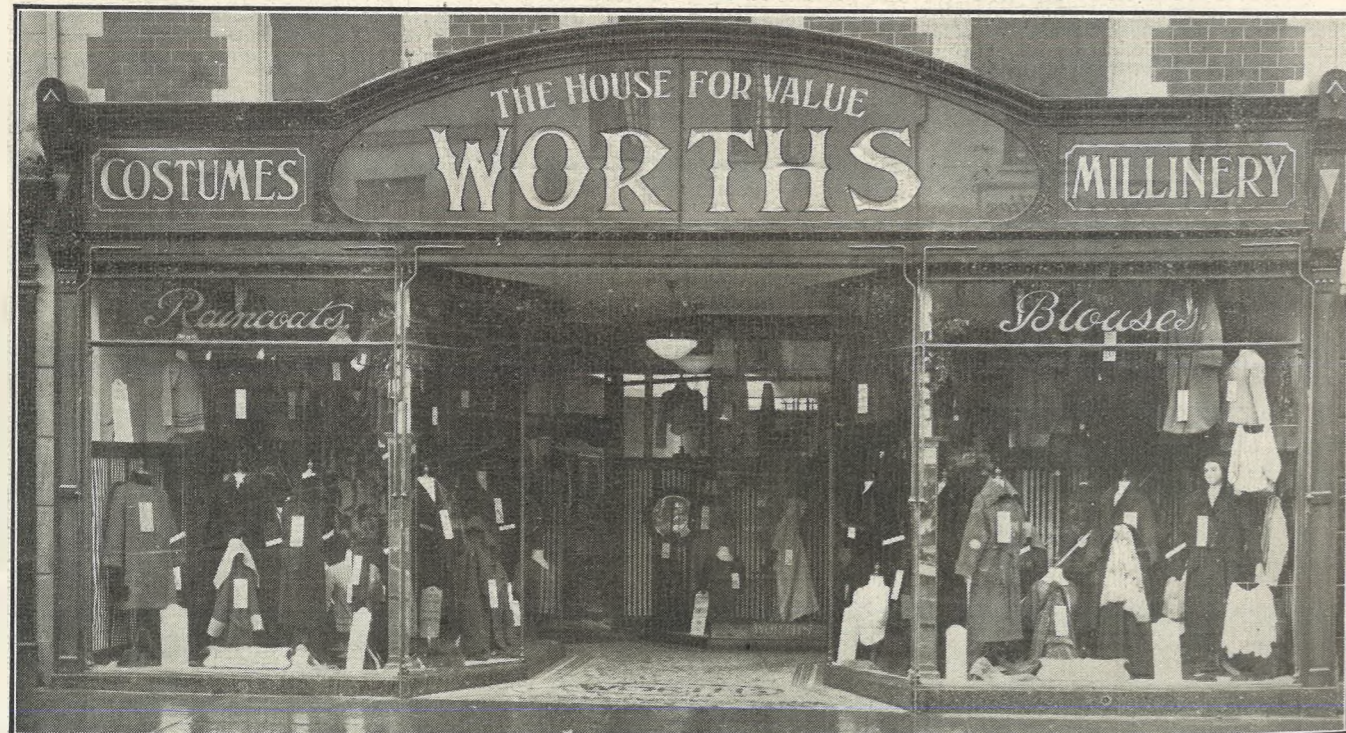
ADVERTISE IN THE "ECHO."





**WIRELESS DEMONSTRATION AT MESSRS. R. E. AND C. MARSHALL LTD.'S SHOP.**

Rev. R. H. M. Bouth (right) and Mr. Chas. Marshall "listening in" to a Birmingham Broadcasting Concert. See article on Page 6 of main sheet. ["Cheltenham Chronicle" Photo.]



The above photograph shows the great improvement effected by Messrs. Worths, who have recently taken over the business of Mr. F. Odell, at 344 High-street, Cheltenham. A fine example of modern shop front building, it allows the firm ample scope for the display of the latest in Costumes, Blouses, Skirts, Frocks, Coats, etc., which they specialise in, and certainly adds to the shopping attractions of our beautiful town. ["Cheltenham Chronicle" Photo.]

PRINTED AND PUBLISHED AS A GRATIS SUPPLEMENT BY THE CHELTENHAM NEWSPAPER CO., LTD.

# THE CHELTENHAM CHRONICLE AND GLO'SHIRE GRAPHIC

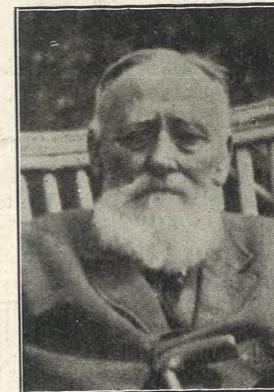
With Which is Incorporated the "Cheltenham Looker-On."  
 GRATIS SUPPLEMENT. Saturday, December 30, 1922. No. 1,148.

## CHELTENHAM THEATRE AND OPERA HOUSE.

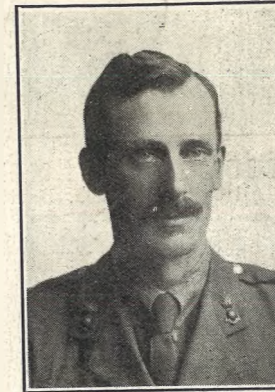
Resident Manager: H. OSWALD REDFORD.  
 Nightly at 7.15. Matinees Mondays, Wednesdays and Saturdays at 2. The Cheltenham Annual Pantomime, "BABES IN THE WOOD."

### THE PALACE, HIGH STREET, CHELTENHAM.

Monday, Tuesday, Wednesday.  
 MARY MILES MINTER in  
**"ALL SOULS' EVE."**  
 Comedy: THEIR DIZZY FINISH  
 Thursday, Friday, Saturday.  
 Harold Lloyd  
 In his FIRST FIVE-PART  
 MIRTH-QUAKE,  
**"A Sailor-Made Man."**  
 A Side-splitting Cruise on the  
 Ocean of Laughter.



MAJOR-GENERAL W. SMITH,  
 Of Balcarras House, Charlton Kings, who died on Christmas Day in his 88th year. He was an Indian Mutiny veteran.



MAJOR E. W. A. CARTER,  
 the Gloucester City Surveyor, who died at Newark on Dec. 22nd, aged 49 years. He had been ill since last July.

### WINTER GARDEN, CHELTENHAM.

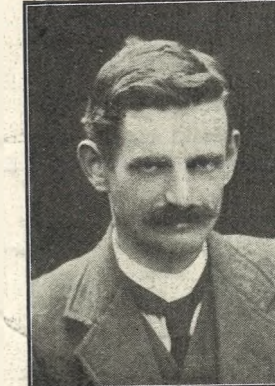
Monday, Tuesday, Wednesday.  
**"CABIRIA,"**  
 As shown recently at Philharmonic Hall, London.  
 Thursday, Friday, Saturday.  
**"RIP VAN WINKLE."**  
 NOW BOOKING SEATS FOR JANUARY 8 AND WEEK.  
**"WAY DOWN EAST,"**  
 D. W. Griffith's Record Breaker.

### THE DAFFODIL PICTURE HOUSE, SUFFOLK PARADE.

Monday, for Three Days.  
**"Once Upon a Time."**  
 WILLIAM S. HART in  
**"HATERS."**  
 SHIRLEY MASON in  
**"QUEENIE."**  
 Thursday, for Three Days.  
 WILL ROGERS in  
**"Guile of Women."**  
**"The Croxley Master,"**  
 By CONAN DOYLE.



MR. EDWIN TIPPETTS,  
 Of Linton Villa, Tivoli, Cheltenham, who died on Dec. 24 at the Hospital, aged 60 years. He was a postman for many years, retiring in August last.



MR. E. E. AWRE,  
 Of Gloucester, commercial traveller for Messrs. Bellamy and Vicker, who was seriously injured in a murderous attack at Churchdown on Dec. 7th.

### FLETCHER'S GREAT

**GENUINE SALE of China and Glass.**  
 Pittville St., Cheltenham Spa.  
 Your Opportunity Now!

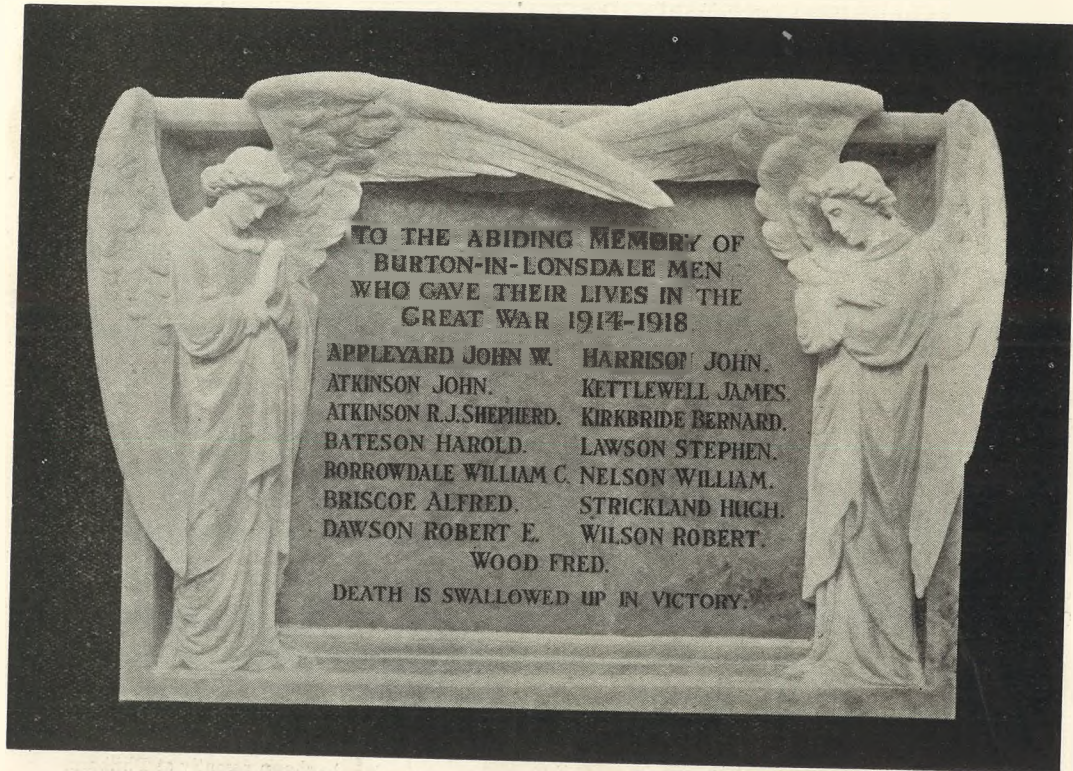
MAKE YOUR SUNDAY AFTERNOONS A PLEASURE  
 By Having Your  
**SUNDAY NEWSPAPERS**  
 Delivered by  
**Brown's Newsagency,**  
 226 HIGH STREET, CHELTENHAM

THE  
**"CHRONICLE & GRAPHIC"**  
 BY POST COSTS  
 6/6 PER HALF YEAR,  
 PREPAID.

### XMAS CARDS Xmas Presents.

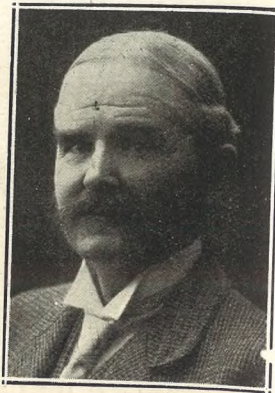
ALL READY FOR YOU at  
**LEE, Caxton House,**  
 STATIONER, WINCHCOMBE ST., CHELTENHAM.

## For the Best PIANOS, DALE, FORTY and CO., LTD.



**A HANDSOME WAR MEMORIAL.**

This Tablet has just been unveiled at All Saints' Church, Burton-in-Lonsdale. It is in White Marble, and is the work of Messrs. R. L. Boulton and Sons, the well-known Sculptors



MR. FRANCIS W. JONES, of Gloucester, who died on Wednesday, Dec. 27, aged 77 years. He had served for over 50 years as Clerk of the Peace at the City Quarter Sessions, celebrating his jubilee on Jan. 9 this year.

ADVERTISE  
IN THE  
"ECHO."



**TRAIL OF PENNIES FOR THE UNEMPLOYED.**

In Thursday, December 21, a Trail of Pennies was commenced by the Mayor at the Corner of the Promenade and High-street. Over £50 was secured for the Unemployed Christmas Fund by this means. 1.—The Mayor (Miss Clara Winterbotham), with some of the Committee. 2, 3, and 4.—Scenes at Promenade Corner when the Trail was started. ["Cheltenham Chronicle" Photos. Copies 1/- each.]



**CHELTENHAM HARRIERS' BOXING DAY RUN.**

Start from the Belle Vue Hotel of the Annual Run, won by G. Chudleigh from scratch. There were 17 starters, some members of the Y.M.C.A. team taking part. ["Cheltenham Chronicle" Photo. Copies 1/- each.]

**A Piano Bargain.**

AS we are constantly taking Pianos in exchange for genuine Pianola-Pianos, we have opened a "Bargain Department," and will occasionally offer one of these exchanged Pianos by a special advertisement. It is well to remember that these bargains are not worn-out instruments—but reliable Pianos by good makers—are fully guaranteed, and give you the opportunity of securing a superior Piano at a considerable reduction.

**THIS WEEK'S BARGAIN.**

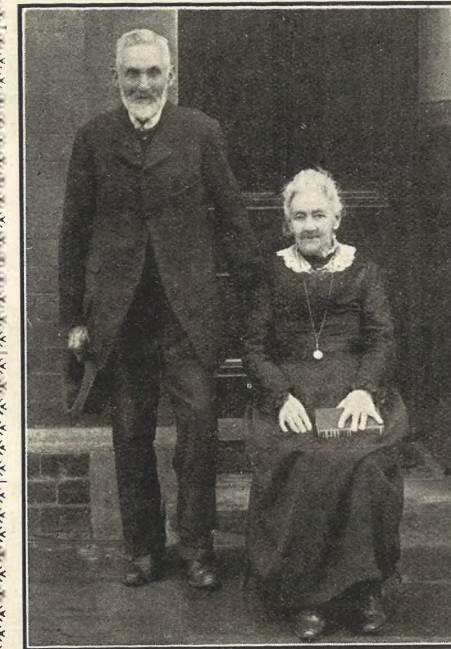
Reliable Upright Piano by Smallwood Full Compass, Trichord, Solid Rosewood Case; every Modern Improvement.

**PRESENT VALUE 55 Gns.  
Bargain Price 44 Gns. cash,**

Or by Deferred Payments.  
Why not write or call to-day?

**CRICHTONS Ltd.**

The Piano House,  
Promenade, Cheltenham.  
(Opposite G.P.O.)



**Mr Thomas Waring,**

Of 3 Stoneville-street, Cheltenham, who died on Christmas Eve, aged 87 years. He was landlord of The Kilkenny Inn for over 50 years, and celebrated his Diamond Wedding in February last. The above is the Diamond Wedding photo.

**Moussell Bros., Ltd.**

(Opposite G.W.R. Station),  
**CHELTENHAM.**  
**FURNITURE REMOVALS.**  
BY RAIL OR MOTOR.  
Phone 112.

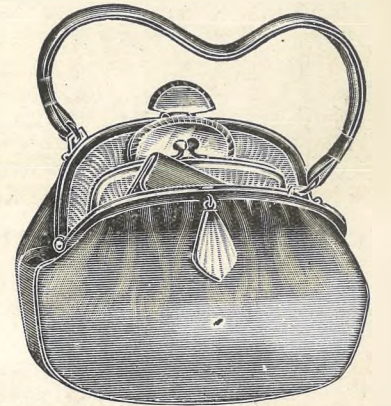
**Photograph Enlargements.**

We can enlarge to Cabinet Size any Individual Photograph in any of the Groups in the "Graphic," or we can Enlarge the Entire Group. Results Guaranteed. Prices on Application.

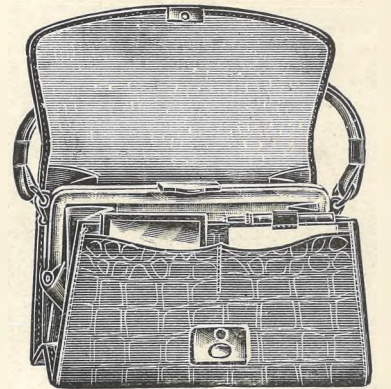
**LANCE'S**

SPECIAL  
**New Year's Offer.**

500 Ladies' Bags at BARGAIN PRICES.



Dainty Calf BAG, in Fawn, Light Grey, and Brown (as sketch).  
SPECIAL PRICE, 29 6.



Crocodile Calf BAG (as sketch), in Fawn, Brown, and Grey.  
SPECIAL PRICE, 15 9.

A Huge Stock of BAGS, in Silk, Beaded, and Leather, will be marked at Special Prices for One Week Only, 3/11 to 4 1/2 Gns. Each.

**John Lance**  
and Co. - - - Limited,  
**CHELTENHAM.**



**CHRISTMAS DAY AT THE WORKHOUSE.**

The inmates of the Cheltenham Poor Law Institution were well looked after during the Christmas festivities, and above we give a series of pictures of the Infirmary and the inmates in Swindon-road taken during the Christmas. The beautiful floral decorations were all made by the nurses and were very tastefully done.

1.—Men's Convalescent Ward. 2.—Women's Convalescent Ward. 3.—Decorations in Women's Infirmary. 4.—The Nursing Staff. Nurse Phillips, the Superintendent, is seated in centre. 5.—A corner of another Women's Ward. 6.—Part of one of the Men's Wards, where patients are confined to bed.

[“Cheltenham Chronicle” Photos. Copies can be obtained.



**CHELLENHAM ROUND THE TOWN.**

Some Snaps in Cheltenham on the Saturday morning preceding Christmas, when the streets were very lively and the tradesmen were very busy.

1.—Enjoying a stroll and a pipe. 2.—Taking the dog as well: but why does it not walk? 3.—Mrs. Eyre shopping.

4.—Mr. Mercer, of Cheltenham College. 5.—Friends or brothers? 6.—Getting the coppers out for violets. 7.—Taking home the holly. 8.—Shopping. 9.—Old Patersons' "training" for their after-noon's rugby match. 10.—Old Patersons' "training" for their after-noon's rugby match. 11.—Old Patersons' "training" for their after-noon's rugby match.

[“Cheltenham Chronicle” Photos. Copies Is. each.



**PUPILS AND RESIDENT STAFF OF THE HALL, MONTEPELLIER, CHELTENHAM.**  
 PHOTOGRAPH TAKEN IN THE GARDEN, CHRISTMAS, 1922.

[Photo by Debenhams, Longman and Co., Cheltenham.]



**Mr. and Mrs. G. Viner,**

Of 40 Hinton-road, Gloucester, who celebrated their Golden Wedding on Dec. 19th, having been married at St. Mary de Lode Church in 1872 by Rev. Minchin.



**Mr. and Mrs. J. Wheeler,**

Of 11 Hatherley-road, Gloucester, who celebrated their Golden Wedding on Dec. 23rd. Mr. Wheeler is a retired engine driver, and the happy couple both enjoy good health.

**CORSETS AND BELTS**  
 MADE, COPIED, CLEANED, AND REPAIRED.  
 Hours: 10 a.m. to 6 p.m. Saturdays, 1 p.m., or by appointment. PHONE 915.  
**MISS FRUIN** (Late with Madam Annette).  
 23 Bath Parade, CHELTENHAM.

Phone 311.  
**Geo. Bence & Sons,**  
 LTD.,  
 — 41, 43, 45 & 47 —  
 Fairview Rd., CHELTENHAM.  
 DEPOT for  
**WALPAMUR**  
 (Water Paint).  
 SATINETTE ENAMEL. KEYSTON OIL FLAT.  
 GRIPON—Ready Mixed White Paint.  
 Beaver Boards—Matchboards—Floorboards.

**A CORRECTION.**  
 The photograph of Mr. and Mrs. Ford published in last week's "Graphic," celebrated their DIAMOND Wedding, not their Golden Wedding, as stated. They were married at Warminster on Dec. 2nd, 1862—60 years ago.  
 BEST QUALITY  
**CIDERS**  
 IN BOTTLE.—Sparkling and Still.  
**BARTHOLOMEW,**  
 419, 420 HIGH STREET,  
 CHELTENHAM.  
 WINES, SPIRITS, ALES, TABLE WATERS and GROCERY.  
 Tel. 13.

**Gifts for Gentlemen.**  
 A very fine range of NECKWEAR,  
 1/6 2/6 3/6 4/6.  
 SILK HANDKERCHIEFS,  
 from 2/6 to 8/11.  
 LINEN AND LAWN HANDKERCHIEFS,  
 3/6, 4/6, 6/- 9/- per 1/2-Doz. Box.  
 Neatly Marked Free of Charge.  
 TROUSER PRESSES. GLOVES.  
 NECK SCARVES. DRESSING GOWNS.  
**A. Beckingsale,** 111 HIGH STREET  
 CHELTENHAM  
 Phone 406.

**JEWELLERY AND ANTIQUES**  
 MARKED DOWN TO THE LOWEST PRICES  
 Now is Your Opportunity to Obtain  
 REMARKABLE BARGAINS  
 in both Departments.  
 Many Articles less than cost price.  
**HARRY O. BOX,**  
 389 HIGH STREET (just below Town Clock).



**Mr. and Mrs. C. W. Barrett,**  
 Who celebrated their Silver Wedding on Dec. 27, 1922. Theirs was the first wedding at Zion Chapel, Pilley, it being conducted by Rev. Robert Gordon Fairbairn, Cheltenham.



**MR. E. H. FLOOD,**  
 Solicitor, of Chester-walk, Cheltenham, who died on Dec. 22nd, aged 60 years. He was one of the best-known men in Cheltenham, his portly presence being very familiar; and his geniality and love of sport made him popular with all. He leaves a widow and one daughter.

Advertise in the "Echo."



**Christmas Tree at The Elms.**  
 The Christmas Tree and some of the smaller kiddies who participated in its pleasures, at the Poor Law Institution, on Wednesday, Dec. 27th. The tree and presents were the gift of the Banks' family.

Read the "Echo" every day.

**OUR ANNUAL SALE COMMENCES (Saturday, TO-DAY Dec. 30).**

**Drastic Price Reductions in all Departments.  
 For 15 Days Only.**

**GREAT BARGAINS in**  
 VELOUR FUR TRIMMED COATS *Half-Price.*  
 Navy & Coloured GABARDINE COSTUMES.  
 FUR COATS AND FUR STOLEES.  
 MILLINERY AT HALF-PRICE.  
 BLOUSES & SPORTS COATS.

**TO-DAY**  
 and following 14 Days.

**381 High Street  
 and Promenade.**

**VANDERPLANK** From Harrods.

# SHIRER & HADDON'S

## : : ONE : : GREAT SALE

MODEL  
GOWNS,  
HATS,  
BLOUSES,  
COATS,  
Etc., Etc.,

Slightly soiled  
during recent  
Building  
Alterations,

At Sensational  
Prices.

We have not dissipated our Bargains in a series of MID-SEASON SALES!


To effect an ENTIRE Clearance of Autumn and Winter Stocks, we are making Drastic Reductions in all departments.

*Purchasers will prove the ENORMOUS SAVING we are passing on to our customers.*

The  
Last  
Opportunity  
before  
Stocktaking.

A Further  
**5%**  
in addition  
to huge  
reductions  
from cash  
sales.

A few examples of the Thousands of Bargains.

 WATCH OUR WINDOWS.

### GOWNS AND COSTUMES.

- 256 Afternoon and Semi-Evening Gowns, in Crepe de Chene, Taffetas, etc., etc. To be Cleared at **21/-, 29/-, 35/-**. Stock Prices over double.
- 12 Knitted Wool Costumes. The Newest Goods, **42/-**. Less than Half Price.
- 50 only Dress Skirts, in Tweeds, Cheviots, Suitings, etc., **10/6** each.
- 10 Girls' Cheviot and Tweed Costumes, in Rose, Saxe, and Heather Mixtures. Reduced from 50/- and 63/- to **21/-** each.

### SILKS AND MATERIALS.

Just in from France. Manufacturer's Stock of Silks, Satins, Broches, Taffetas, Duchesse Mousselines, and Charmeuse. £2,000 purchase offered at less than today's cost of production. A Wonderful Opportunity.

### LADIES' OUTFITTING.

- 100 Pairs All Wool Combinations, Low Neck, No Sleeves, **7/11** Pair.
- 200 Travellers' Samples, Wool Merino Combs., Natural and White, **6/11, 7/11,** and **8/11** Pair. Nearly Half Price.
- 4 Dozen All Wool Wolsey Combs, **11/6** Pair.
- 200 Pairs Pink and Grey Twilfit and other well-known makes of Corsets, **4/11**. Usual Prices from 7/11 to 10/11.
- 50 Pairs of Pink Spiral Steel Sports Corsets, **6/11** Pair.

  
**Real  
Witney  
Blankets**

Single Bed,  
**19/11.**

Double Bed,  
**29/11**

a Pair.

Wonderful  
Value  
on a rising  
market.



All regular makes of Tricot, Elastic, and the Famous Redusco Corsets Greatly Reduced.

All Children's Outfitting very much reduced, and marked without regard to cost. Fifty Girls' Coats, **10/-** Each.

### MANTLES, COATS & BLOUSES.

20 Only Tweed Coats, **10/6** Each. Usual Prices 42/- to 84/-.

25 Tweed and Blanket Coats, 45/- to 5 gns. To Clear, **18/11**. These will be gone at once.

A Large Stock of Fur Coats at Half Marked Prices. All Furs Greatly Reduced.

10 only, Velour Coats, with Fur Collars. Only Reduced to make room for Spring Numbers. **4½ Guineas.**

50 Jap Silk Shirts at **12/11**, Sale Price. Shirts Value 18/11 and 25/9.

All Odd Colours in Artificial Silk Coats. One Price, **10/9.**

Entire Stock of Winter Millinery offered at just the prices that will effect a Clearance.

### FURNITURE OF DISTINCTION.

During the whole of January we shall offer the complete stock of Furniture, Upholstery, etc., at a Special

**DISCOUNT of 10 %**

Rare Bargains in—BEDROOM SUITES, LOUNGES, and EASY CHAIRS, and DINING ROOM SUITES.

COME AND WALK ROUND