

# THE CHELTENHAM CHRONICLE AND GLO' SHIRE GRAPHIC

With Which is Incorporated the "Cheltenham Looker-On."  
GRATIS SUPPLEMENT. Saturday, November 4, 1922.

No. 1,140.

## CHELTENHAM THEATRE AND OPERA HOUSE.

Resident Manager: H. OSWALD REDFORD.

THIS AFTERNOON (2.30) AND EVENING (7.30): "LA POUPEE."

NEXT WEEK—The George Edwardes' Company in the New Musical Play—"SYBIL."

### THE PALACE, HIGH STREET, CHELTENHAM.

Monday, Tuesday, Wednesday:

#### THE STORY OF "Ginger Mick,"

As Told by his Cobber.  
"THE SENTIMENTAL BLOKE"  
From the famous verses by  
C. J. DENNIS.  
The Wild Animal Chapter Play  
Supreme!

#### "Elmo, King of the Jungle."

Larry Semon in his Super Comedy  
"THE SHOW."

#### Thursday, Friday, Saturday: "Silks and Saddles,"

A Thrilling and Popular Drama  
of the Australian Turf.  
Goldwyn Comedy, Friday the 13th.

### THE DAFFODIL PICTURE HOUSE,

Monday, Tuesday, Wednesday:

Continuous from 2.30.

SIR JAMES BARRIE'S

#### "Sentimental Tommy,"

With Gareth Hughes and May  
McAvoy, at 3.0, 5.30, and 8.0.

Thursday, Friday, Saturday:

#### "The Autumn of Pride"

3.0, 5.30, and 8 o'clock.

Tea served in Balcony Stalls from  
4 to 4.30 without extra charge.

### YOUR NEW CYCLE.

Let me build your New Cycle for  
you of "B.S.A." or "Brampton"  
fittings.

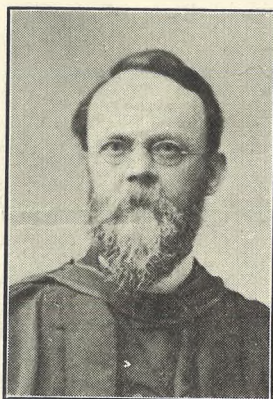
H. SELLEY,

3 SHERBORNE STREET,  
CHELTENHAM.

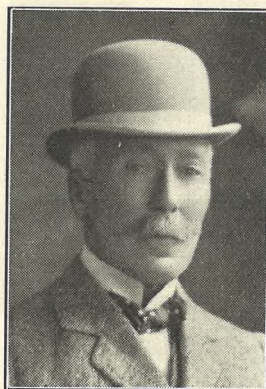
### MARTIN & CO. LTD.,

Promenade, Cheltenham,

Purchase for Cash Antiques of  
all kinds, including Old Silver,  
Jewellery, Sheffield Plate, China,  
Coins, Miniatures, etc. Highest  
Prices Given for Rare Pieces.



MR. FREDERICK J.  
BUTLER, M.A., B.D.,  
Of Littlebeck, Painswick-  
road, Cheltenham, died  
Oct. 17th, aged 71 years.  
He was a tutor and coach,  
and had resided in Chel-  
tenham for 40 years.



CAPTAIN WALTER FOX  
TOSSWILL,  
Of Rosehill, Cheltenham,  
who was killed while hunt-  
ing with the Cotswold  
Hounds on Saturday last.  
He was aged 68, and was  
formerly a captain of the  
4th Gloucesters (Militia).



MR. CHARLES FRYER,  
Late of 5 Suffolk-parade,  
Cheltenham, died Oct. 29,  
aged 79 years.



MR. ERNEST A. SLIM,  
Of 16 Leighton-road, Chel-  
tenham, died Oct. 19th,  
aged 46 years.

### WINTER GARDEN, CHELTENHAM.

Monday, Tuesday, Wednesday:

#### Sybil Thorndike AND

#### Malvina Longfellow

In "MOTH AND RUST."  
From the Novel by Mary  
Cholmondeley.

Times of Showing: 3.25, 5.55, 8.30.

#### Wild Animal Hunt Pictures.

THE STORY of the JAGUAR.  
Times of Showing: 3.5, 5.40, 8.15.  
CAMPBELL AND CHRISTIE  
COMEDIES.

Thursday, Friday, Saturday:

#### Cecil Bode

LIGHT BARITONE,  
WILL SING A PROLOGUE TO  
THE FILM

#### "Smilin' Through,"

Featuring

#### Norma Talmadge.

Times of Showing: 3.0, 5.30, 8.5.

LOWEST PRICES.

### OIL LAMPS & STOVES.

Incandescent Burners, Mantles, &c.

### MILLER,

IRONMONGER,

163 High St., Cheltenham  
(Facing Fleece Hotel).

### Knight & Hutchings

School & College Outfitters.

SPECIAL WOLSEY WEEK.

See Windows.

74 High St., Cheltenham

(Opposite Bath Road). TERMS: Nett Cash.

BUY

The Right STATIONERY

At The Right PRICE.

LEE, Caxton House,  
WINCHCOMBE ST.,

CHELTENHAM.

For the Best **PIANOS, DALE, FORTY and Co., Ltd.**









**ROUND THE TOWN IN CHELTENHAM.**

- ANOTHER SET OF SNAPS OF THE WORLD AND HIS WIFE IN CHELTENHAM ON A FINE MORNING THIS WEEK.
- 1.—Making for home and lunch.
  - 2 and 4.—Mr. Loftus Tottenham with a lady.
  - 3.—A constitutional.
  - 5.—Both evidently shopping.
  - 6, 8, 10 and 12.—Snaps in the Prom.
  - 7.—A serious conversation.
  - 9.—Coming from the Library.
  - 11.—Furs have been necessary this week.
  - 13.—Mr. G. Coventry, of Upton-on-Severn, a regular Cheltenham visitor.
  - 14.—Businesslike.
  - 15.—A familiar figure in Cheltenham streets—the Fleece Hotel out-porter.

["Cheltenham Chronicle" Photo. Copies 1s. each, postage 2d. extra.



**THE COLLEGE MATCH OF THE SEASON.**

- On Saturday last the Cheltenham College Rugby XV. played their principal match, against Rugby School, on the Cheltenham Ground. Cheltenham have a very good side again this year, and won somewhat easily by 18 points to 3. There was one of the largest crowds ever seen on the College ground for a Rugby match.
- 1.—The teams being photographed.
  - 2.—Even Lieut.-Gen. M. Willoughby (x) turned out for the match. He is in his 80th year and is the oldest Cheltonian, being a pupil in the first term.
  - 3.—Duleep Sinhji (full back) hard pressed on his own line. Was the Rugby boy in white being fouled by a tackle from behind?
  - 4.—Danby (on right) sailing in for a beautiful try. He scored three of them.
  - 5 and 8.—Sections of the big crowd present.
  - 6.—Duleep Sinhji (full back) hard pressed on his own line. Was the Rugby boy in white being fouled by a tackle from behind?
  - 7.—One of the fine features of Rugby football: the defeated team cheering their victors as they come off.

["Cheltenham Chronicle" Photos. Copies 1/- each, by post 2d. extra.





**"THE MERCHANT OF VENICE" BY CHELTENHAM AMATEURS.**

The Cheltenham Branch of the British Empire Society gave three performances of the above Play on Friday and Saturday last at the Town Hall. Part of Company. ["Cheltenham Chronicle" Photo.]

\*\*\*\*\*

**R.F. BEARD LTD.**  
SANDRINGHAM HOUSE

Previous to Extensive Alterations

T. W. WAITE & W. H. SYMONDS  
(Proprietors of R. F. BEARD, Ltd.)

Are now offering the Stock acquired from their  
Predecessors

**TWENTY-FIVE PER CENT.**  
BELOW CURRENT PRICES.

**A Direct Saving of 5/- in the Pound.**

ALL GOODS ARE MARKED IN PLAIN FIGURES.

PROMENADE  
CHELTENHAM

\*\*\*\*\*

**WINTER HOSIERY.**

ALL WOOL VESTS, Long or Short Sleeves,  
8/11 10/6 12/6 14/6.

PANTS to match in all qualities at about 1s. extra.  
THETA, WOLSEY, and PESCO Brands Stocked.

MERINO and Wool with Cotton  
UNDERCLOTHING . . from 4/11.  
A large variety and range of sizes in stock.

**A. Beckingsale,** 111 HIGH STREET,  
CHELTENHAM.  
Phone 406.

**Moussell Bros., Ltd.**

(Opposite G.W.R. Station),

CHELTENHAM.

**FURNITURE REMOVALS.**

BY RAIL OR MOTOR.

Phone 112.

**SHIRER & HADDON**

CHELTENHAM SPA,

Having purchased a  
**Manufacturer's**  
**.. Stock of. .**

**115**

**.. DAY, ..**  
**SEMI-....**  
**EVENING**  
*and*  
**EVENING**  
**GOWNS,**

Are offering the same between  
**November 1st & 15th**

at from  
**20 % to 33<sup>1</sup>/<sub>3</sub>**  
below the usual prices.

A SPECIAL DISCOUNT of 10 o/o  
will be allowed for Cash.

**THESE GOWNS ARE WELL  
CUT, NICELY FINISHED,  
GOOD IN QUALITY & STYLE.**

At the same time a SPECIAL DIS-  
COUNT of 10 o/o will be given  
on all

**Millinery Models.**

**WE SPECIALISE IN DRESSMAKING**



**A FINE CATHOLIC ALTAR—ST. DOMINIC'S, HARROW.**

A. Young, Esq., F.R.I.B.A., Architect.

The firm of R. L. Boulton and Sons still continue to excel in high-class Sculpture and Carving, as is instanced in the above illustration. They will be pleased to give estimates for any kind of Memorials in Wood, Marble, Alabaster, Stone, Granite, or Metals.

**R. L. BOULTON & SONS, BATH ROAD, CHELTENHAM.**

\*\*\*\*\*



**BROADWOOD  
PIANOFORTES**

*Two Centuries  
of Perfection*

FOR nearly two hundred years the name Broadwood upon a piano or upon its forerunner, the harpsichord, has meant the highest perfection of its time.

To-day its meaning is the same. It is your certain assurance of permanent and abundant satisfaction with your choice, whether it be a small upright at 70 guineas or a concert grand at 433 guineas.

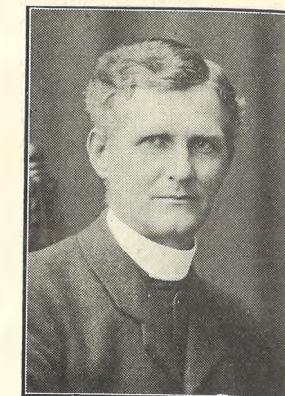
You are invited to inspect the  
New Models at the Sole Agents,

**CRICHTONS Ltd.**

Promenade, CHELTENHAM

(Opposite G.P.O.)

Make it known through the "Echo."



REV. GEO. WARNER,  
Curate of St. Peter's  
Church, Cheltenham, to  
whom a series of presenta-  
tions was made on Tues-  
day last. He has been  
presented to the living of  
Sherborne with Windrush.

Send the "Chronicle  
and Graphic" to  
Your Friends Every  
Week.

PHONE 311.

Telegrams "BENCE, CHELTENHAM."  
FOR ALL KINDS OF  
TIMBER AND BUILDING  
MATERIALS—GO TO  
**Geo. Bence & Sons Ltd.**  
WHO HOLD GOOD STOCKS AT  
TO-DAY'S LOWEST PRICES.

Electric Sawmills. Sawing done for the Trade  
Showrooms for Baths, Grates, &c., &c.  
**FAIRVIEW ROAD, CHELTENHAM.**

**CORSETS AND BELTS**  
MADE, COPIED, CLEANED, AND REPAIRED.

Hours: 10 a.m. to 6 p.m. Saturdays, 1 p.m.,  
or by appointment. PHONE 915.

**MISS FRUIN** (Late with  
Madam Annette),  
23 Bath Parade, CHELTENHAM.

**TRINITY COLLEGE OF MUSIC, LONDON.**  
Last Days for Entry for Forthcoming  
Examinations:—  
PRACTICAL ..... Nov. 4, 1922.  
THEORETICAL ..... Nov. 16, 1922.  
ERNEST A. DICKS,  
Buckingham Lawn, Wellington-street,  
Cheltenham.

**HIGH PRICES**  
Paid for Ladies', Gentlemen's, and Chil-  
dren's Discarded Wearing Apparel—Boots,  
Shoes, etc. A Postcard to  
**DEANE'S WARDROBE DEPOT,**  
**31 Worcester Street, GLOUCESTER**  
Will Receive Prompt attention.  
THE NOTED HOUSE FOR FAIR PRICES.  
Telephone 970.  
Telegrams: "Wardrobes, Gloucester."





Suede Finish VELOUR COAT, smartly cut, with gathered sides, tie belt and pockets, trimmed Beaver Coney Collar, body of Coat half lined Art Silk. In Beaver, Nigger, Navy, Mole, Etc.

PRICE, 84/-.  
Also similar style without lining, 59/6.

Wool VELOUR COAT, with Beaver Coney Collar and Floss Silk Stitching. In all the new colours.  
PRICE, 69/6.

We hold the largest stock of COATS at Popular Prices, in six sizes for Ladies and eight sizes for Children.  
INSPECTION INVITED.

**2/6** FREE TO "GRAPHIC" READERS. This Coupon is value Two Shillings and Sixpence, and will be accepted in part payment of Goods purchased in any Department to the value of 30/- and upwards if presented not later than Nov. 11. One Coupon to each customer. **2/6**

R. T. ADAMS, 75-76 HIGH STREET, CHELTENHAM SPA.



Useful COAT. All Wool Blanket Cloth. Nigger, Beaver Grey, Peacock, Navy, Brown.  
PRICE, 29/6.  
Wonderful Value.

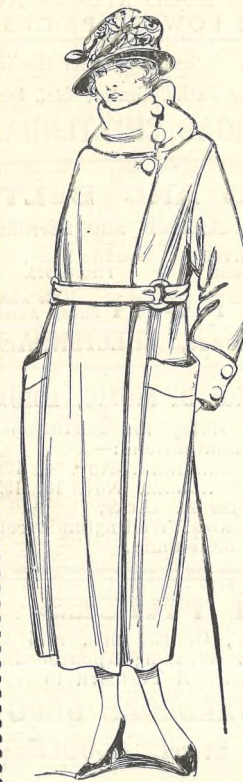


Tailor-made All Wool Nap Cloth COAT. Light Grey, Mole, Beaver, Peacock, Navy, Nigger.  
PRICE, 39/6.

R. T. ADAMS, 75-76 HIGH STREET, CHELTENHAM SPA.

## SPECIAL SALE OF LADIES' AND CHILDREN'S WINTER COATS.

We have recently been able to secure a portion of a Manufacturer's Stock at a big reduction in price, and are now offering them at very low prices to ensure a quick clearance.



### LADIES' COATS,

In Blanket Cloth, Velour Cloth, New-Tweeds.

12/11 to 5 Gns.

LARGE SIZES A-SPECIALITY.



### MAIDS' COATS, IN BETWEEN SIZES.

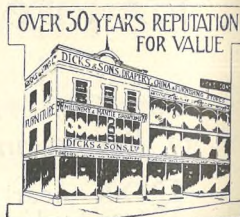
Blanket and Velour Cloths and Tweeds.

14/11 to 63/-.

### CHILDREN'S COATS

FOR SCHOOL WEAR.

8/11 to 45/6.



OVER 50 YEARS REPUTATION FOR VALUE



**Dicks & Sons Ltd.**  
172 & 173 HIGH STREET  
Cheltenham Spa  
TEL. 1007  
50 YEARS REPUTATION FOR VALUE.

PRINTED AND PUBLISHED BY THE CHELTENHAM NEWSPAPER CO., LTD., AS A GRATIS SUPPLEMENT.

# THE CHELTENHAM CHRONICLE AND GLOUCESTERSHIRE GRAPHIC

With Which is Incorporated the "Cheltenham Looker-On."  
GRATIS SUPPLEMENT. Saturday, November 11, 1922.

No. 1,141.

## CHELTENHAM THEATRE AND OPERA HOUSE.

Resident Manager: H. OSWALD REDFORD.  
THIS AFTERNOON (2.30) AND EVENING (7.30): The New Musical Play, "SYBIL."  
NEXT WEEK—The Robert Courtneidge's Co. in—"PADDY THE NEXT BEST THING."

### THE PALACE, HIGH STREET, CHELTENHAM.

Continuous Daily, 2.30 to 10.15.  
Monday, Tuesday, Wednesday:  
A Romance by Sir Anthony Hope, "PHROSO."  
The Fascinating Novel of Love and Adventure, featuring MALVINA LONGFELLOW, ELMO, KING OF THE JUNGLE, "INKY DINK."  
In "Out of the Inkwell" Comedies. Thursday, Friday, Saturday:  
FLORENCE VIDOR in Eltis Parker Butler's Popular Novel, "THE JACK-KNIFE MAN,"  
THE PURPLE RIDERS, Monty Banks Comedy, "UP THE POLE."



MR. WM. ROBERT ROBINS, Of Swindon, Wilts, the Labour Candidate for the Cirencester and Tewkesbury Division. He is 36 years of age.



MR. JAS. BLACKWELL, Of Theresa-place, Gloucester, Conservative Candidate, who was elected for the Southend Ward, Gloucester, at the recent Municipal Elections.

### THE DAFFODIL PICTURE HOUSE,

Monday, Tuesday, Wednesday:  
"MILESTONES," By Arnold Bennett.  
ESOP'S FABLES, COMEDY. INTEREST, TRAVEL.  
Thursday, Friday, Saturday:  
JACK HOLT in "THE GRIM COMEDIAN," By Rita Weiman.  
SHERLOCK HOLMES. Tea served in Balcony Seats without extra charge.

FOR RELIABLE Hire Cars and Charabancs RING 1055 CHAS. H. REASON, LANSDOWN GARAGE, Lansdown Place, CHELTENHAM.

### MARTIN & CO. LTD.,

Promenade, Cheltenham, Purchase for Cash Antiques of all kinds, including Old Silver, Jewellery, Sheffield Plate, China, Porcelain, Miniatures, etc. Highest Prices Given for Rare Pieces.



COUNCILLOR CHAS. BALL, Of the Upper Lode, Tewkesbury, the newly-elected Conservative member of the Town Council.



MR. S. W. UNDERWOOD, F.R.C.O., Of Stroud, who has been elected Hon. Conductor of the Cheltenham Philharmonic Society.

### WINTER GARDEN, CHELTENHAM.

Monday, Tuesday, and Wednesday:  
PAULINE FREDERICK in "ROADS OF DESTINY," Wild Animal Hunt Film, "TIGERLAND."  
CAMPBELL AND CHRISTIE COMEDIES.

Thursday, Friday, and Saturday:  
BEN TURPIN

Assisted by a FARMYARD OF ANIMALS in a MACK SENNETT's screamingly funny 5-reel Super Comedy,

"DOWN ON THE FARM." ALICE JOYCE in "THE INNER CHAMBER."

### FISHER, TAILOR,

REGENT STREET (Late E. Fisher, 375 High Street), CHELTENHAM.  
Cardigans, Gloves, Etc. New Suitings.

### Knight & Hutchings

SPECIAL Wolsey Week.

SEE WINDOWS. SEE WINDOWS. 74 High St., Cheltenham (Opposite Bath Road). TERMS: Nett Cash.

BUY

The Right STATIONERY At The Right PRICE.

LEE, Caxton House, WINCHCOMBE ST., CHELTENHAM.

For the Best **PIANOS, DALE, FORTY and Co. Ltd.**





**OPENING MEET OF ARLE COURT BEAGLES.**

A big crowd of hunting folk from hill and vale in the Cotswold Country were present at the Opening Meet of Mr. Walter Unwin's Harriers at Arle Court on Friday, November 3rd.

- 1.—Watching the start from the terrace. Dr. Hawkins on right.
- 2.—The Pack, with the Master in centre.
- 3.—Mr. A. H. Berney and Capt. Perkins, with a lady.
- 4.—Mrs. Guise, Mr. Lindsey Vears, and Mr. W. N. Unwin.
- 5.—Mr. Prizeman and Miss Sedgely, with Master and Miss Muir, children of the late Capt. M. W. Muir, M.F.H., and of Mrs. Muir, of Postlip Hall.
- 6.—Capt. Harry P. de Winton and his two daughters.

["Cheltenham Chronicle" Photos. Copies 1s. each, by post 2d. extra.

**JEWELLERY AND ANTIQUES**

MARKED DOWN TO THE LOWEST PRICES  
Now is Your Opportunity to Obtain  
REMARKABLE BARGAINS  
in both Departments.  
Many Articles less than cost price.

**HARRY O. BOX,**

339 HIGH STREET (just below Town Clock).  
CHELTENHAM.

**Photograph Enlargements.**

We can enlarge to Cabinet Size any Individual Photograph in any of the Groups in the "Graphic," or we can Enlarge the Entire Group. Results Guaranteed. Prices on Application.

**CORSETS AND BELTS**

MADE, COPIED, CLEANED, AND REPAIRED.

Hours: 10 a.m. to 6 p.m. Saturdays, 1 p.m. or by appointment. PHONE 915.

**MISS FRUIN** (Late with Madam Annette).  
23 Bath Parade, CHELTENHAM.

**LANCE'S**

NOTABLE OFFERS OF THE VERY

**NEWEST SILKS.**

*YOU* have only to compare these *VALUES* with others to find the very best of reasons for coming to *LANCE'S* at once for all your requirements in *SILKS*.

**CREPE MAROCAIN.**

40 inches wide, an Exceedingly Beautiful Crepe of Medium Weight, Eight Delightful Colours. EXCEPTIONAL VALUE ..... 7/11.

**LINGERIE CREPE.**

40 inches wide, a Superior Quality Silk, Strongly Recommended for Hard Wear, Ten Shades. SPECIAL VALUE ..... 5/11.

**SATIN GRENADINE.**

40 inches wide, a Soft-finished Satin, will give every satisfaction in wear. Suitable for Gowns, etc. EXCEPTIONAL PRICE ..... 6/11.

**CREPE DE CHENE.**

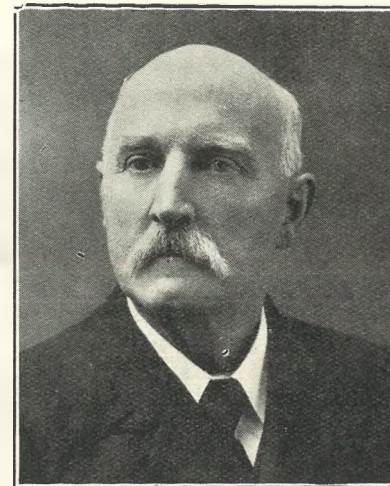
40 inches. We Offer Unrivalled Values in this Delightful Fabric. Splendid weight, and in a wonderful Variety of Exquisite Shades, Suitable for Day and Evening wear. SPECIAL PRICE ..... 6/11.

**SATIN IMPERIAL.**

Of British Manufacture, delightful Soft Silk and Wool Fabric, Ten Beautiful Shades. EXCEPTIONAL VALUE ..... 2/11.

Patterns sent post free.

**John Lance & Co., : : : Limited, CHELTENHAM.**



**Mr. W. Hobbs,**

Of Gloucester, the Conservative Candidate, who was elected for the Lower Barton Ward, Gloucester, in the recent Municipal Elections, winning the seat from Labour.

"Victory for the Republic," or utter defeat and extermination" is the latest watchword of "President" De Valera, in an announcement issued from Dublin on Monday. He indignantly denies that peace negotiations are in progress with the Free State Government.



PHONE 311.  
Telegrams—"BENCE, CHELTENHAM."  
FOR ALL KINDS OF  
**TIMBER AND BUILDING MATERIALS—GO TO**  
**Geo. Bence & Sons Ltd.**

WHO HOLD GOOD STOCKS AT TO-DAY'S LOWEST PRICES.

Electric Sawmills. Sawing done for the Trade  
Showrooms for Baths, Grates, &c., &c.  
**FAIRVIEW ROAD, CHELTENHAM.**

Make it known through the "Echo."

**WINTER HOSIERY.**

ALL WOOL VESTS, Long or Short Sleeves, 8/11 10/6 12/6 14/6.  
PANTS to match in all qualities at about 1s. extra.  
THETA, WOLSEY, and PESCO Brands Stocked.

MERINO and Wool with Cotton UNDERCLOTHING . . . from 4/11.  
A large variety and range of sizes in stock.

**A. Beckingsale,** 111 HIGH STREET, CHELTENHAM.  
Phone 406.

**SHIRER & HADDON**  
CHELTENHAM SPA.

**Down Quilts.**

Covered in Cambric and Sateen  
Pretty Designs.

Filled With Pure Down.  
Single Bed Size, 25/11.  
Double Bed Size, 35/11.

Superior Quality Figured Sateens.

Single Bed Size, 29/11.  
Double Bed Size, 39/11.

Down Quilts for Children's Cots from 6/11 Each.

REAL

**Witney Blankets**

Made by the Original Witney Makers.

All Pure Wool. Exceptional Value.

For Single Beds, 19/11 Pair.  
For Double Beds, 29/11 Pair.

Superior Quality, Extra Heavy Weight.

For Single Beds, 21/11 Pair.  
For Double Beds, 33/11 Pair.

PLAIN

**Coloured Blankets.**

In New Art Shades,  
All Pure Wool, 12/11 Each.

FRINGED PURE WOOL  
**Travelling Rugs,**  
16/11 Each.

EXCEPTIONAL VALUE IN  
**Household Linens.**





**OPENING MEET OF NORTH COTSWOLD HOUNDS AT BROADWAY.**

- At the Opening Meet of above Hounds at the Lygon Arms, Broadway, on Nov. 2nd, a presentation was made to the retiring Hon. Treasurer, Mr. T. Bayliss, after 20 years' service.
- 1.—Scene outside the Lygon Arms.
  - 2.—The Runner, with his terriers.
  - 3.—Mr. Kidd, the Master, with the Pack.
  - 4.—Visitors outside Hotel. Mr. de Navarro (x), husband of Mary Anderson.
  - 5.—Mr. T. Bayliss, the ex-Hon. Treasurer
  - 6.—The Master, with a lady friend.
  - 7.—Mr. C. T. Scott, ex-M.F.H. (on wall), making presentation.
  - 8.—A subscriber.
  - 9.—Capt. Stacey, ex-M.F.H., Mr. C. T. Scott, ex-M.F.H., and Mr. Kidd, M.F.H.
  - 10.—Cheltenham Chronicle Photos. Copies 1s. 9d. and 1s. each, postage 2d. extra.



**CHELTENHAM v. GLOUCESTER AT RUGBY FOOTBALL.**

- A splendid crowd witnessed the first of three matches to be played between the neighbouring rivals, on the Athletic Ground, Cheltenham, on Saturday last. Gloucester won a good game by 15 points to 6.
- 1.—A Gloucester three-quarter gets in a kick to touch just in time.
  - 2, 3, 5 and 6.—Various sections of the big crowd present. £112 odd was taken at the gates.
  - 4.—Gloucester supporters fixing mascots on the goal posts.
  - 7.—The queue at the gate.
  - 8.—N. Daniell (Gloucester) (on right) charging Dean, the Cheltenham full back, as he catches the ball.
  - 9.—A Cheltenham forward rush.
  - 10.—Some lively members of the Gloucester Supporters' Club, well decorated.

["Cheltenham Chronicle" Photos. Copies 1s. each, by post 2d. extra.]





**CHELTENHAM AND COUNTY CYCLING CLUB (Section of Cheltenham and County Harriers).**

Back Row.—J. Wilson, F. M. Fletcher, S. T. Tibbles, A. E. Freeman, C. V. Wedberg (Hon. Treasurer and Racing Hon. Sec.), C. J. Wood, H. Vizard, C. Bowsher (Sub-Captain), J. H. Haines, W. Coates, W. White, E. E. Bick (Vice-Chairman).  
 Second Row.—A. R. White, C. G. Beams, K. S. Powell, D. Boyce, E. S. Nichols, W. J. Fry, H. E. Clift, R. A. Innes, I. C. Hansford, A. Blake, H. East, W. H. Rowley, A. R. Ames.  
 Front Row.—C. Brown (Hon. Secretary), W. J. Johnson, G. Jenkins, Capt. Forsyth J. Grant (Vice-President), C. F. Williams (Vice-President), W. A. Cooke (Vice-President, Chairman), A. A. Williams (Vice-President), E. Eager, O. Tibbles (Capt.), S. Whitley, C. R. Evans, F. Meadows.

["Cheltenham Chronicle" Photo. Copies 3s. each mounted, 2s. unmounted (10 x 8).



**A Cheltenham Golden Wedding.**

Col. and Mrs. Haynes, of Darley Dale, Libertus-road, St. Mark's, Cheltenham, who celebrated their Golden Wedding on November 9th. They are here shown with their daughter. They were married at Allahabad, when the Colonel was a lieutenant in the 21st Hussars. Mrs. Haynes is a daughter of Mr. T. H. Kavanagh, V.C., of the Indian Civil Service.



**Capt. and Mrs. Bennett,**

Of Gloucester, the former of whom is in charge of the Church Army Home, and is Police Court Probation Officer. He was in attendance on Major Armstrong up to the time of his execution in Gloucester Gaol. They are shortly leaving Gloucester for work in New Zealand.

Advertise in the "Echo"

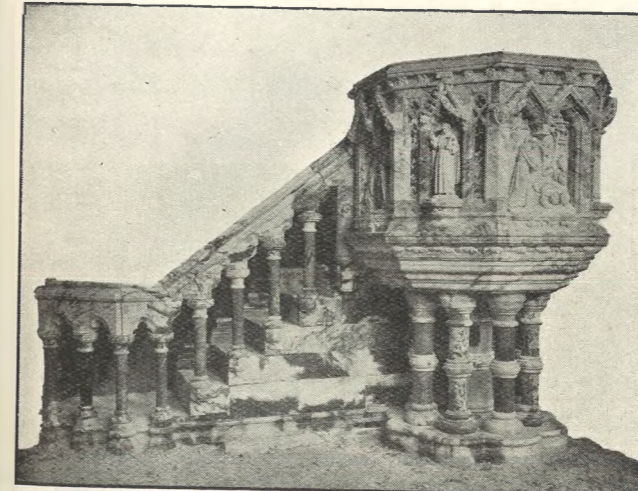
**COVERS FOR THE "GRAPHIC."**—WE HAVE IN STOCK A NUMBER OF STOUT COVERS FOR THE "GRAPHIC," IN DARK GREEN CLOTH AND GILT LETTERING. THE COVERS WILL TAKE A FULL YEAR'S ISSUE OF THE POPULAR PICTURE PAPER, AND YOU CAN THUS KEEP THE "GRAPHIC" FROM WEEK TO WEEK AND KNOW WHERE TO FIND IT. POST FREE TO ANY ADDRESS **SIXPENCE.**



**CHELTENHAM FRUIT MARKET EXHIBITION AND SALE.**

The Third Annual Show of Graded Apples and Pears packed for sale was held at the Market on Tuesday last, November 7.  
 1.—Mr. Price (x), the auctioneer, with a number of prominent growers.  
 2.—Three buyers: Messrs. Hall, S. Sharpe and Johnson.  
 3.—The Judges consulting—Messrs. W. Blakey, Jackson, G. H. Hollingsworth and S. C. Hill.  
 4.—Buyers, porters, and spectators.

["Cheltenham Chronicle" Photos. Copies 1s. each, by post 1s. 2d.



**A FINE ALABASTER PULPIT.**

Pulpit executed in Alabaster for St. Francis Church, Cumberland-street, Glasgow.  
 R. L. Boulton and Sons, Bath Road, Cheltenham, will be pleased to give estimates for any kind of ecclesiastical fittings in wood, marble, alabaster, granite, stone or metals. Estimates free.



**LOTUS, DELTA, AND PHAT-PHEET.**

SOLE AGENT:  
**W. J. MELVILLE,**  
 409 HIGH STREET, CHELTENHAM.

**Moussell Bros., Ltd.**

(Opposite G.W.R. Station),

**CHELTENHAM.**  
**FURNITURE REMOVALS.**  
 BY RAIL OR MOTOR.  
 'Phone 112.

**R. F. BEARD & CO.**  
**SANDRINGHAM HOUSE**

**BUYING TO ADVANTAGE.**

The stock of Jewellery, Watches, Silver and Electro Plate now Reduced previous to Alterations, includes—

|                           |                            |
|---------------------------|----------------------------|
| 22 Gold Bracelet Watches. | 9 Cases Fish Slice & Fork. |
| 172 Diamond & Gem Rings.  | 15 " Afternoon Tea Knives. |
| 29 Gold Signet Rings.     | 16 " Silver Tea Spoons.    |
| 18 Pearl Necklets.        | 32 Pairs Serviette Rings.  |

These goods, and a large variety of others, are offered at a Reduction of 25 per cent. below current prices—a direct saving of Five Shillings in the Pound.

**PROMENADE CHELTENHAM**

**BEST QUALITY CIDERS**  
 IN BOTTLE.—Sparkling and Still.  
**BARTHOLOMEW,**  
 419-420, HIGH STREET,  
 CHELTENHAM.

WINES, SPIRITS, ALES, TABLE WATERS and GROCERY.  
 Tel. 13





# Vanderplank From Harrods.

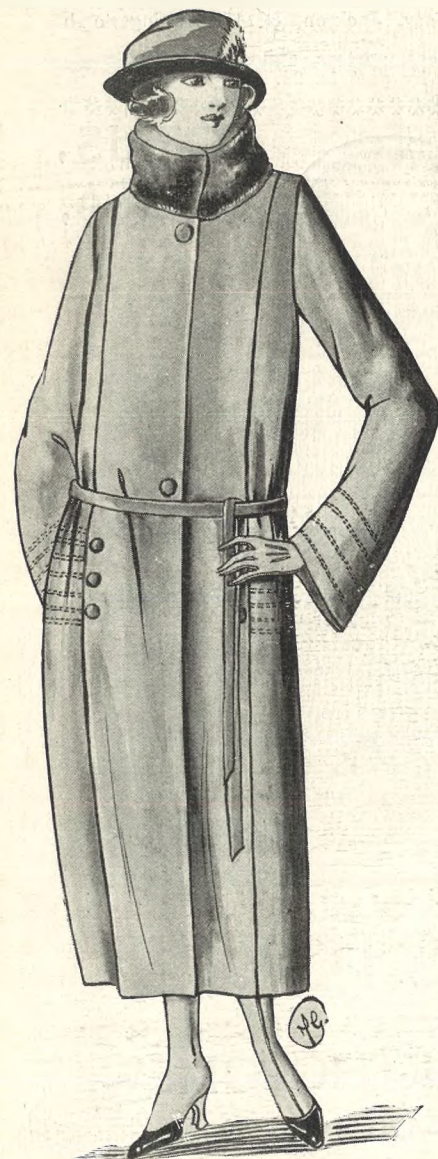
## SALE OF A COAT STOCK.

**D**URING the next few days we are offering remarkable bargains in Velour Fur Trimmed Coats. An offer of a high-class maker's stock at greatly reduced prices was accepted, and the advantage gained is now passed along to you.

We are unable to illustrate these Special Sale Bargains, but depict a few of our ordinary stock which we are also reducing for this week.

### SPECIAL MILLINERY WEEK

A New Coat also needs a New Hat to wear with it. We are reducing all our Early Models and clearing a quantity of Austrian Velours and Semi-Trimmed Felts at Bargain Prices.



A New Short COAT, in Beaver Coney. The Fashionable Fur of the Season. Special Bargain for This Week. **18 Gns.** Reduced from ~~22 1/2~~ Gns.



E3844—Wool Velour Cloth COAT, with Mole or Beaver Coney Collars, all round Sash Belt and Silk Stitching. Bargain Price, **73/6.**

E3945—A smart shape in Wool Velour, with large Roll Collar of Beaver Coney. Bargain Price, Reduced from 8 1/2 Gns. In leading colours. **6 1/2 Gns.**

381 High Street and Promenade, CHELTENHAM.

PRINTED AND PUBLISHED AS A GRATIS SUPPLEMENT BY THE CHELTENHAM NEWSPAPER CO., LTD.

# THE CHELTENHAM CHRONICLE AND GLOUCESTERSHIRE GRAPHIC

With Which is Incorporated the "Cheltenham Looker-On."  
GRATIS SUPPLEMENT. Saturday, November 18, 1922. No. 1,142.

## CHELTENHAM THEATRE AND OPERA HOUSE.

Resident Manager: H. OSWALD REDFORD.  
THIS AFTERNOON (2.30) AND EVENING (7.30): "PADDY THE NEXT BEST THING."  
NEXT WEEK—The London Production, "A CASE OF DIAMONDS."

**THE PALACE, HIGH STREET, CHELTENHAM.**  
Continuous Daily: 2.30 to 10.15.  
Monday, Tuesday, Wednesday: The Greatest Love Story of Ages unfolded in Dramatic and spectacular scenes of "MAN-WOMAN MARRIAGE."  
Allen Holubar's Wonder Production, tracing the Agonies and Glories of Womanhood from the beginning of time down to the present Turbulent Age. Starring DOROTHY PHILLIPS and JAMES KIRKWOOD  
Thursday, Friday, Saturday: Alma Taylor in "TANSY," A Beautiful Picture taken on the Sussex Downs.  
Carmel Myers and Wallace Macdonald in "BREAKING THROUGH." Starts this week.

### THE DAFFODIL PICTURE HOUSE,

Monday, Tuesday, Wednesday: Pauline Johnstone and David Hawthorne IN "Glass and No Glass." Interest, Comedy, Travel, Topical.  
Thursday, Friday, Saturday: House Peters IN "Silk Husbands & Calico Wives." SHERLOCK HOLMES "Black Peter." Comedy. Interest. Topical.

### W. A. WOOF, Ltd.,

For Football Goods.  
FOOTBALLS from 4/6 to 10/6  
Phone 888. CHELTENHAM.

### MARTIN & CO. LTD.,

Promenade, Cheltenham,  
Purchase for Cash Antiques of all kinds, including Old Silver, Jewellery, Sheffield Plate, China, Coins, Miniatures, etc. Highest Prices Given for Rare Pieces.



Cheltenham November Steeplechases.

Mr. J. R. Anthony coming in on Woodchurch, after winning the Southam Selling Hurdle Race on Tuesday in the fog. Behind is his brother Ivor on Clandurra, who was not placed. This photo is a good example of how fog and bad light may be circumvented.

["Cheltenham Chronicle" Photo. Copies 1s. each.

**JEWELLERY AND ANTIQUES. MARKED DOWN TO THE LOWEST PRICES.**—Now is Your opportunity to obtain REMARKABLE BARGAINS in both Departments. Many Articles less than cost.  
**HARRY O. BOX,** 339 High Street (Just below Town Clock), CHELTENHAM.

### WINTER GARDEN, CHELTENHAM.

MONDAY, NOVEMBER 20, 1922.  
For the whole week  
**MARY PICKFORD** in her very latest dual role success "LITTLE LORD FAUNTLEROY."  
A story that has delighted millions and will live in the memory of men and women.  
Times of showing: 2.50, 5.25, 8.0

**Mr. Alfred J. VENTRIS-FIELD,** Surgeon-Chiroprapist, Orthopaedist, and Electro-Therapeutist. (Hospital and 30 years' Practical Experience. Highest Qualifications. Author "The Treatment of Talipes Valgus." Consultant, H.M. Forces.)

Diseases and Deformities of the Feet successfully and Painlessly treated by the latest Scientific Methods. Varicose Veins Cured by Mr. Ventriss-Field's new Electric Therapeutic Treatment. Facial Disfigurements permanently removed by Electrolysis without the slightest scar.

Surgery: 6 Rodney Place, CHELTENHAM. Telephone 1266

### Photograph Enlargements.

We can enlarge to Cabinet size any individual Photograph in any of the groups in the "Graphic," or we can enlarge the entire group. Splendid results guaranteed. Prices on application

### BUY

The Right STATIONERY At The Right PRICE.  
**LEE,** Caxton House, WINCOMBE ST., CHELTENHAM.

## For the Best PIANOS, DALE, FORTY and Co. Ltd.





**CHELTENHAM NOVEMBER STEEPLECHASES.**

Despite the foggiest day, Cheltenham Steeplechase Company have experienced for a meeting, quite a good crowd was present on Tuesday, and the racing was quite good—what could be seen of it.

- 1.—Mr. F. H. Cathcart, chairman of Company with Earl Coventry, who defied the fog and cold.
- 2.—The Stand in Tattersall's Ring.
- 3.—The gentleman in white top hat is a well-known tipster. Behind him is another tip being given, confidentially.
- 4.—On right Mr. Davies, of Pershore, with a friend—both familiar figures at Cheltenham.
- 5.—The Amateur Riders' Hurdle Race, won by Someday, lying third.
- 6.—Colonel Sir Percival Marling, V.C., on right, with a friend.
- 7.—A chat in the Paddock.

**R. F. BEARD & CO.**  
SANDRINGHAM HOUSE

**Interesting Announcement.**

The proprietors are pleased that many of their patrons have already taken advantage of their special offer, and have expressed real satisfaction.

Nearly the whole stock is now offered at 25 Per Cent. (Five Shillings in the Pound) below current prices—prior to extensive alterations.

**PROMENADE  
CHELTENHAM**

**WINTER HOSIERY.**

**ALL WOOL VESTS**, Long or Short Sleeves,  
8/11 10/6 12/6 14/6.  
PANTS to match in all qualities at about 1s. extra.  
THETA, WOLSEY, and PESCO Brands Stocked.

**MERINO and Wool with Cotton  
UNDERCLOTHING** . . from 4/11.  
A large variety and range of sizes in stock.

**A. Beckingsale**, 111 HIGH STREET,  
CHELTENHAM  
Phone 406.

Send the "Chronicle and Graphic"  
to Your Friends Every Week.

**LANCE'S**

IMPORTANT  
OFFER OF

**£5,000 Worth  
OF  
LOVELY  
SILKS**

On **MONDAY,**  
**November 20th,**  
FOR ONE WEEK ONLY.

The Selection includes all the NEWEST  
TEXTURES, DESIGNS, and Colours for  
**AUTUMN WEAR.**

Many exclusive Novelties figure in this  
SUPERB Assortment, and all are offered  
at far

Below Prevailing Prices.

Indications from PARIS, LYONS, and  
other manufacturing centres, point to an  
early sharp **ADVANCE** in the price of  
**SILKS**. This offer is therefore par-  
ticularly timely, and should on no account  
be missed on **MONDAY, November 20,**  
and the following days.

PATTERNS SENT FREE ON APPLICATION.

During this Special Event we shall offer  
**300 Yds. of All Wool Ratine**  
In Navy.  
PRICE ONLY **2/- PER YARD.**  
40 inch wide. Usual Price, 4/11 per yd.

**John Lance  
& Co., : : : Limited,  
CHELTENHAM SPA.**



**Moreton-in-Marsh War Memorial.**  
This beautiful memorial was unveiled at Moreton-in-Marsh on March 26th, 1921, by Lord Redesdale. It was designed by Mr. E. Guy Dawber, architect, and was executed by Messrs. R. L. Boulton and Sons, the celebrated sculptors, of Bath-road, Cheltenham.

**BECHSTEIN  
PIANOS.  
BECHSTEIN  
PIANOS.  
BECHSTEIN  
PIANOS.  
BECHSTEIN  
PIANOS.**

Inspection invited of the  
Latest Grands & Uprights

at the  
**SOLE AGENTS—  
CRICHTONS Ltd.,  
Promenade, : Cheltenham.  
Opposite the G.P.O.**

**SHIRER &  
HADDON  
CHELTENHAM SPA.**

**Down Quilts.**

Covered in Cambric and Sateen  
Pretty Designs.

Filled With Pure Down.

Single Bed Size, **25/11.**

Double Bed Size, **35/11.**

Superior Quality Figured  
Sateens.

Single Bed Size, **29/11.**

Double Bed Size, **39/11.**

Down Quilts for Children's  
Cots from **6/11** Each.

REAL  
**Witney Blankets**

Made by the Original Witney  
Makers.

All Pure Wool.  
Exceptional Value.

For Single Beds, **19/11** Pair.

For Double Beds, **29/11** Pair.

Superior Quality,  
Extra Heavy Weight.

For Single Beds, **21/11** Pair.

For Double Beds, **33/11** Pair.

PLAIN  
**Coloured Blankets.**

In New Art Shades,  
All Pure Wool, **12/11** Each.

FRINGED PURE WOOL  
**Travelling Rugs,**  
**16/11** Each.

EXCEPTIONAL VALUE IN  
**Household Linens.**





**PRESENTATION OF THE BATHURST SHIELD TO TEWKESBURY COUNCIL SCHOOLS.**

On Wednesday afternoon, November 8, Mr. Kimmins (Chairman of the County Education Committee), who was accompanied by Mr. H. W. Household (Secretary) and Mr. G. H. Hollingsworth (County Horticultural Expert), presented to the above School the Bathurst Shield, which had been won in open competition of Schools of the County for Gardening and Nature Study.

- 1.—The Girls.
- 2.—County Officials, Committee, etc. Back Row: Rev. W. Davies, Coun. J. Walker, Ald. H. H. Papps, Ald. H. Bishop, Coun. W. Walkley, Mr. G. M. Rice, Coun. A. Macdonald, Mr. W. H. Hayward, Coun. L. Aldridge, Coun. G. P. Howell, J.P., Coun. C. W. Jones, Mr. Willis, senr., J.P. Front Row: Rev. G. S. Winter, Miss Hunt, M.A.; The Mayor (Coun. W. T. Boughton), Mr. H. W. Household, Mr. J. C. Kimmins, Mr. G. H. Hollingsworth, Ald. A. Baker, J.P., Rev. E. F. Smith, and the Headmaster (Mr. A. E. Leatham, A.C.P.).
- 3.—The Boys, with Shield in centre.

[“Cheltenham Chronicle” Photos. Copies 1s. 9d. each at “Echo” Office Tewkesbury



**GENERAL ELECTION SCENES IN CHELTENHAM.**

- 1.—Some North Warders outside Conservative Committee Rooms in Lower High-street. Mr. H. R. Sims was in charge and can be seen at back, with Mr. W. Bastin.
- 2.—The defeated Liberal Candidate, Mr. Plaistowe, with Mr. G. J. Hobbs, one of his leading supporters.
- 3.—Musical enthusiasts for Sir James in Baker-street.
- 4.—Fetching a crowd of voters from Albert-street.
- 5.—The Victor, Sir Jas. T. Agg-Gardner, M.P.
- 6.—Mr. T. Packer's big traction engine decorated and drawing a big decorated van in Charlton Kings. It toured the constituency.
- 7.—Liberal supporters outside Liberal Committee Rooms in Baker-street.
- 8.—Baker-street workers.
- 9.—Mrs. Dix (x), who is a valuable worker in the North Ward, with some supporters.





**"THE PIRATES OF PENZANCE" AND "TRIAL BY JURY" BY GLOUCESTER AMATEURS.**

Capital performances of Gilbert and Sullivan's famous Operas are being given this week at the Hippodrome, Gloucester, by the Caer Glow Amateur Operatic Society.

- 1.—Misses P. Weaver, B. Morgan and N. Jakeman, as General Stanley's daughters.
- 2.—The Defendant (Mr. T. Hall) in "Trial by Jury."
- 3.—Mr. Reg. H. Finch as Gen. Stanley.
- 4.—Mr. Sydney Capener as Samuel.
- 5.—The Judge (Mr. Eric Fowler) and Plaintiff (Mrs. F. C. J. Romans).
- 6. Miss Muriel Jones as Mabel.
- 7.—The Pirate King (Mr. Gilbert Brook- ing), Frederick (Mr. Reg. Morgan), and Ruth (Mrs. G. H. Bland).

[Photos by H. K. Fox, 40 Barton-street, Gloucester.

\*\*\*\*\*



**CHELTENHAM SCHOOLS FOOTBALL TEAM KNOCKED OUT OF ENGLISH CUP IN FIRST ROUND.**

- 1.—The Cheltenham team, who were knocked out in the first round of the English Cup, on Saturday, Nov. 11, on the Agg-Gardner Recreation Ground, by Longton Schools, Staffordshire, who won by 4 goals to nil.
- 2.—Alderman Margrett kicking off.

**Moussell Bros., Ltd.**

(Opposite G.W.R. Station).

**CHELTENHAM.  
FURNITURE REMOVALS.  
BY RAIL OR MOTOR.  
Phone 112.**

Make it known through the "Echo."

**CORSETS AND BELTS**

MADE, COPIED, CLEANED, AND REPAIRED.

Hours: 10 a.m. to 6 p.m. Saturdays, 1 p.m. or by appointment. PHONE 915.

**MISS FRUIN** (Late with Madam Annette).  
23 Bath Parade, CHELTENHAM.



**ARMISTICE DAY IN CHELTENHAM.**

On Armistice Day, Nov. 11, a large crowd gathered round the War Memorial in the Promenade, where the Mayor placed a wreath from the town, and with the officials stood to respect the "two-minutes' silence."

- 1.—Crowd on steps of the Municipal Offices.
- 2.—The Mayor and Ald Margrett coming out of Offices with wreath.
- 3.—Mayor depositing wreath on Memorial.
- 4.—Ex-Sergt. Maj. Tibbles carrying wreath from the 5th Gloucesters.
- 5 and 6.—Sections of the crowd.

[Cheltenham Chronicle Photos. Copies 1s. each.]

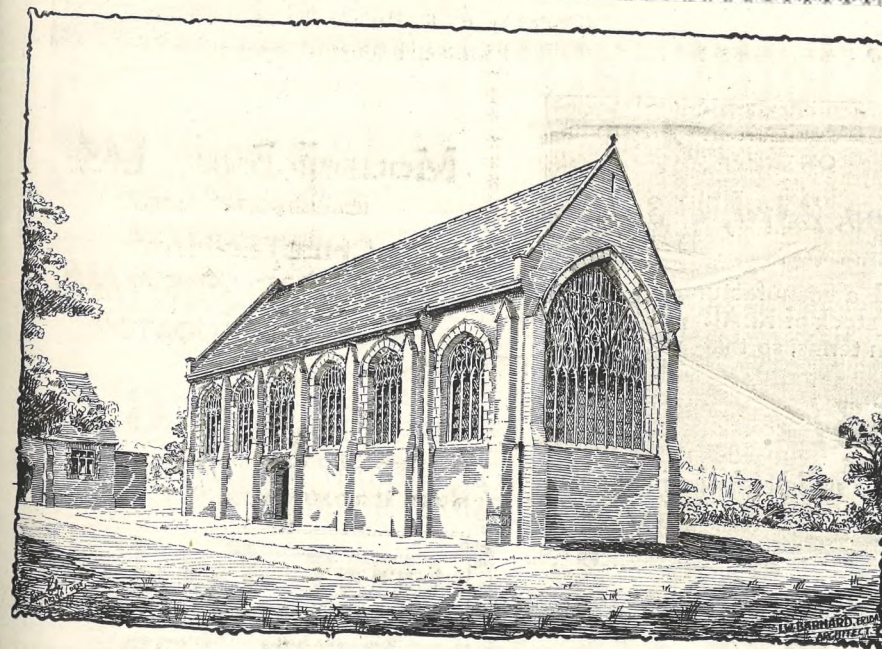
\*\*\*\*\*

**HIGH PRICES**

Paid for Ladies', Gentlemen's, and Children's Discarded Wearing Apparel—Boots, Shoes, etc. A Postcard to

**DEANE'S WARDROBE DEPOT,  
31 Worcester Street, GLOUCESTER**

Will Receive Prompt attention.  
THE NOTED HOUSE FOR FAIR PRICES.  
Telephone 970.  
Telegrams: "Wardrobes, Gloucester."



**THE NEW CHAPEL FOR DEAN CLOSE SCHOOL.**

To-day (Saturday) is to be laid the foundation stone of the new School Chapel, of which the above drawing by Mr. L. W. Barnard, the Architect, is the design for same.



**LOTUS,  
DELTA,  
AND  
PHAT-PHEET.**

LOCAL AGENT:

**W. J. MELVILLE,  
409 HIGH STREET, CHELTENHAM.**

\*\*\*\*\*



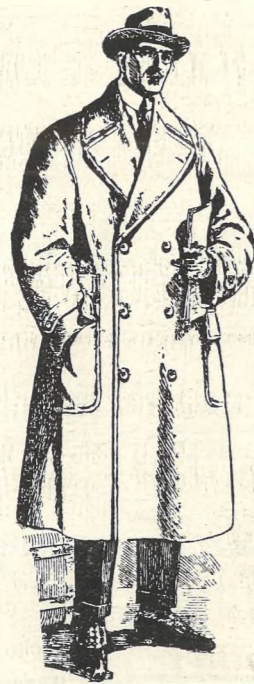
# THORNTON & COMPANY, 380 HIGH STREET, CHELTENHAM.

Generously Cut,  
Double Breasted  
COATS and  
ULSTERS

from  
**65/-**  
to  
**7 Gns.**

MOTOR  
COATS,

Lined Plush Fleece,  
from  
**69/6.**



WEATHERPROOFS,  
WATERPROOFS,  
and  
**Overcoats**

**Hot-Water Bottles.**

FULLY GUARANTEED.  
IN 3 QUALITIES.

|         | Popular. | Standard. | Super. |
|---------|----------|-----------|--------|
| 8 x 10  | 3/11     | 5/3       | 7/3    |
| 8 x 12  | 4/6      | 5/9       | 7/11   |
| 10 x 12 | 5/11     | 7/-       | 9/6    |

Five other sizes at proportionate prices.  
FLEECY COVERS TO FIT, 1/6, 1/9, 2/-.

Light,  
Easy Fitting  
OVER-  
COATS,

In All Wool  
Fleeces & Tweeds,  
from  
**3 Gns.**

Scotch  
Fleeces and  
Cheviots,

In Newest Shades,  
from  
**5 Gns.**



Tan Chrome Leather Coats from 5½ Gns.

Leather Lined Coats from 5 Gns.

## SPECIAL SALE

OF

50 LADIES' **Velour Cloth Coats**

ON

**Thursday, Nov. 23rd, at 3 o'clock.**



We found a manufacturer of high-class Coats very anxious to clear his remaining stock of REAL VELOUR COATS, and were able to secure them at our own terms, so that we can now offer NEW SEASON'S COATS AT HALF PRICE!

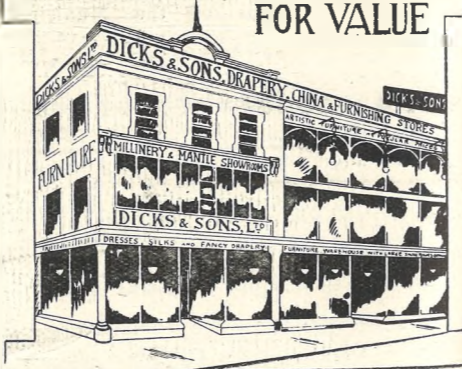
Usual Price, **63/-.**

SALE PRICE, **29/6.**

These Coats will be shown in our Window on **TUESDAY NEXT**, but not sold until 10 o'clock on **THURSDAY MORNING.**

**Dicks & Sons Ltd.**  
172 & 173 HIGH STREET  
**Cheltenham Spa**  
30 YEARS REPUTATION FOR VALUE.  
TEL. 1007.

OVER 50 YEARS REPUTATION FOR VALUE



# THE CHELTENHAM CHRONICLE AND GLOUCESTERSHIRE GRAPHIC

With Which is Incorporated the "Cheltenham Looker-On."  
GRATIS SUPPLEMENT. Saturday, November 25, 1922.

No. 1,143.

## CHELTENHAM THEATRE AND OPERA HOUSE.

Resident Manager: H. OSWALD REDFORD.

THIS EVENING (7.30): "A CASE OF DIAMONDS."

NEXT WEEK—Personal Visit of Charles Kenyon in "THE WHEEL."

### THE PALACE, HIGH STREET, CHELTENHAM.

Continuous Daily, 2.30 to 10.15.

ALL THE WEEK:

**CHARLIE CHAPLIN**  
In his Latest Brand New Comedy

"PAY DAY,"  
A RIOT OF MIRTH.  
Showing 2.35, 4.45, 6.50, 9.0.  
CAN ONLY BE SEEN AT  
THE PALACE.

### THE DAFFODIL PICTURE HOUSE, SUFFOLK PARADE.

Continuous from 2.30.  
Monday, Tuesday, Wednesday:  
TOM MOORE in

"Hold Your Horses."  
Thursday, Friday, Saturday:  
NORMA TALMADGE in  
"The Moth,"

One of the most successful  
Pictures in which Norma  
Talmadge has ever played.

### COLISEUM CAFE, ALBION STREET,

Has been taken over by  
**Mr. F. LEOPOLD,**  
Who will be supplying the same  
High Class Goods which are so  
well known at his High St. Shop.

### MARTIN & CO. LTD.,

Promenade, Cheltenham,  
Purchase for Cash Antiques of  
all kinds, including Old Silver,  
Jewellery, Sheffield Plate, China,  
Glass, Miniatures, etc. Highest  
Prices Given for Rare Pieces.



#### Interesting Cheltenham Wedding.

The marriage was solemnized at Charlton Kings Church on Saturday last of Mr. J. W. Pritchard, of St. Edward's House, Stow-on-the-Wold, a member of the firm of Messrs. Tayler and Fletcher, Auctioneers, Cold Aston, and Miss Mollie Smith, daughter of Mr. Charles Smith, of Ryeworth Farm, Charlton Kings. The wedding party leaving church: Mrs. Pritchard (bridegroom's mother), Mr. Teagle (best man), Mr. C. Smith (father of bride), the Bridegroom, Bride. In front: Miss Jean Organ and Miss Daphne Belcher (bridesmaids). ["Cheltenham Chronicle" Photo. Copies: Whole-plate size, mounted 2/6 each, postage extra.

### WINTER GARDEN, CHELTENHAM.

Monday, Tuesday, Wednesday:  
**Douglas Fairbanks**  
In his Latest and Greatest Film,  
"One of the Blood."  
Thursday, Friday, Saturday:  
"The 11th Hour," BY  
**Ethel M. Dell,**  
**Shirley Mason** IN  
"Lovetime."

FOR RELIABLE  
Hire Cars and Charabancs  
RING 1055.  
**CHAS. H. REASON,**  
LANSDOWN GARAGE, Lansdown Place,  
CHELTENHAM.

### Knight & Hutchings

Men's and Youths'  
N & C OVERCOATS.

74 High St., Cheltenham  
(Opposite Bath Road). TERMS: Nett Cash.

### Photograph Enlargements.

We can enlarge to Cabinet size  
any individual Photograph in  
any of the groups in the  
"Graphic," or we can enlarge the  
entire group. Splendid results  
guaranteed. Prices on application.

BUY

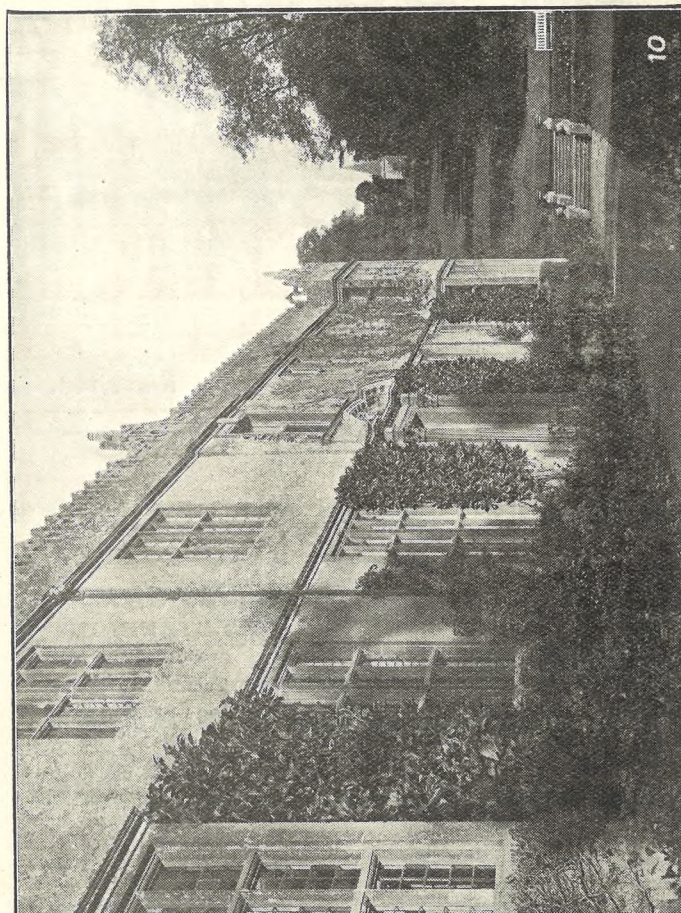
The Right STATIONERY  
At The Right PRICE.

**LEE,** Caxton House,  
WINCHCOMBE ST.,  
CHELTENHAM.

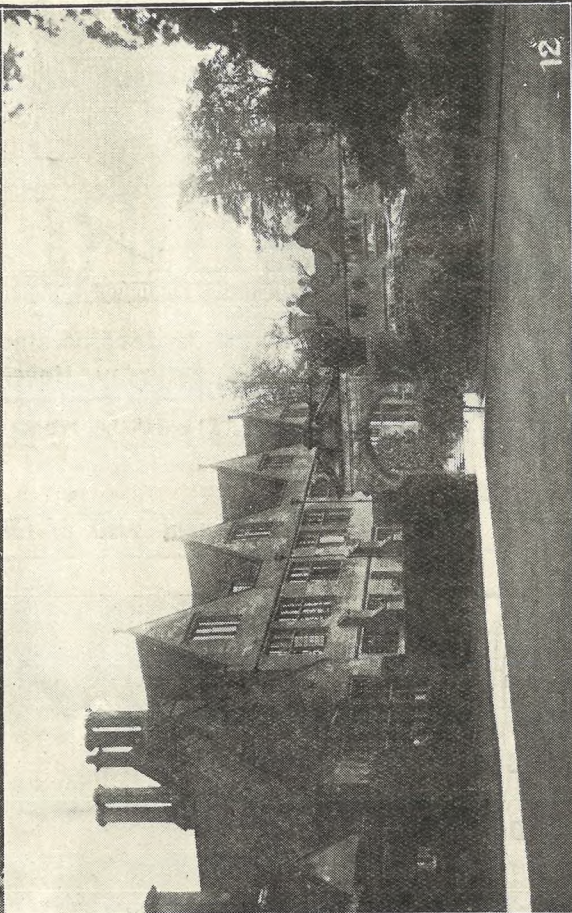
For the  
Best

# PIANOS, DALE, FORTY and CO. LTD.

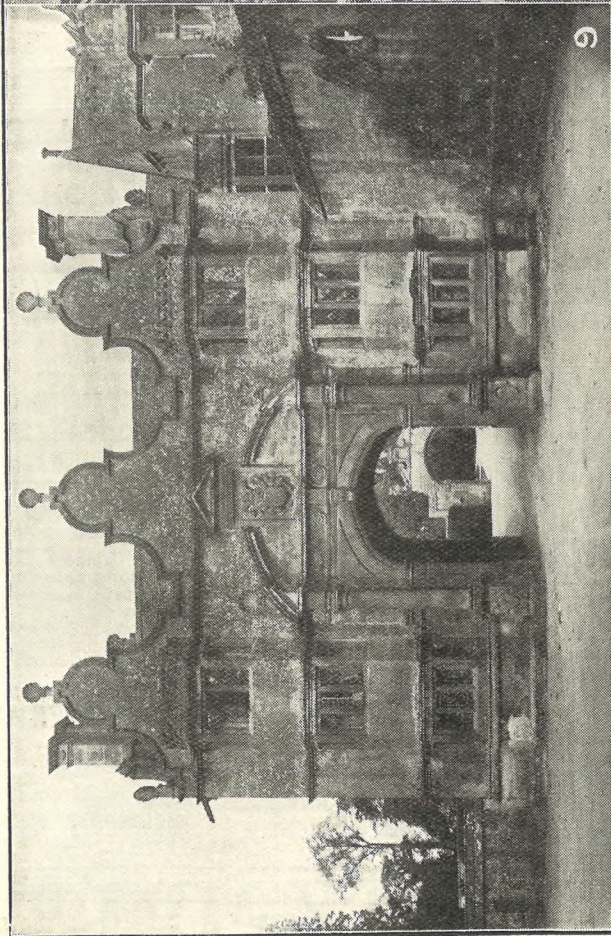




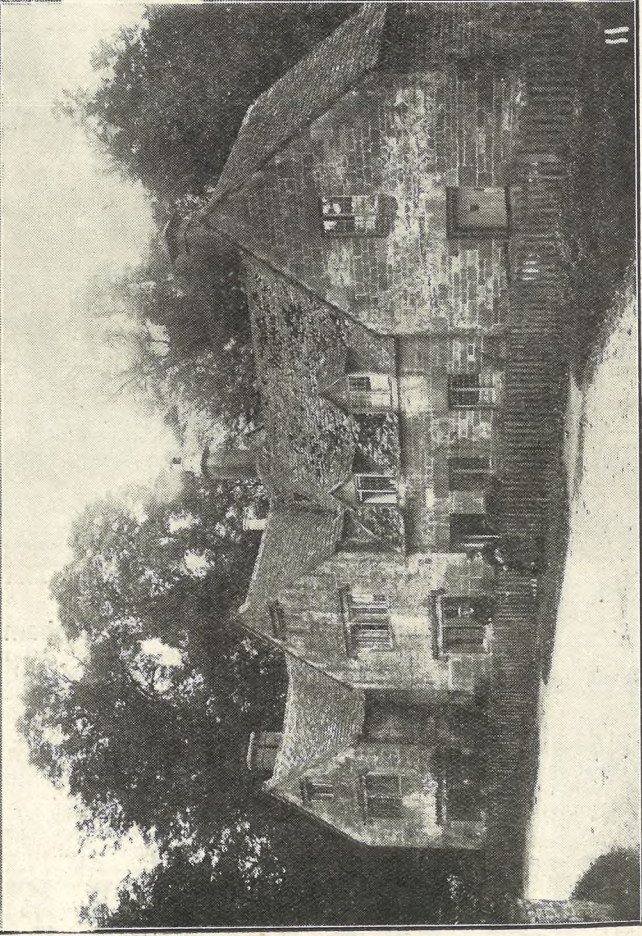
10



12



9



11

**PICTURESQUE GLOUCESTERSHIRE.—STANWAY.**

Stanway is the Gloucestershire seat of the Earl of Wemyss and March, and many distinguished visitors have been entertained there. Lord Balfour is a frequent visitor, as is also Sir James Barrie. The house is very picturesquely situated, with a fine entrance gate-house, designed by Inigo Jones, and magnificent woods sloping down to the back of the house.

9.—The Entrance Gate House. The house was built in 1626 by Sir Paul Tracey.

10.—The South Side of House.

11.—The old Vicarage, now occupied as cottages. A pretty trout stream flows between the railings seen and the front doors of the houses.

12.—The South West, or main frontage of Stanway House from the Lawn. Copies 1s. 9d. each, postage 2d. extra.

**SHIRER & HADDON**

COLONNADE, CHELTENHAM.

Hundreds of Useful and Tasteful Presents for Xmas.



Super quality Japshan Shirt Tailor made in all sizes. Collar can be worn high or low, Price

**25/9**

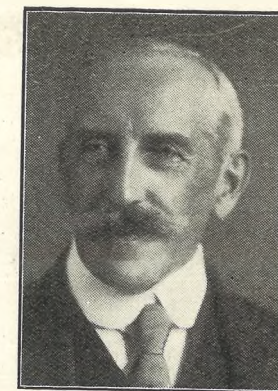
Other Styles, Same quality, from 21/9

A large assortment of WOOL JUMPERS in all the newest colourings in stock. Price from 10/11 Also Plain and Stripe WOOL CARDIGANS from 5/11



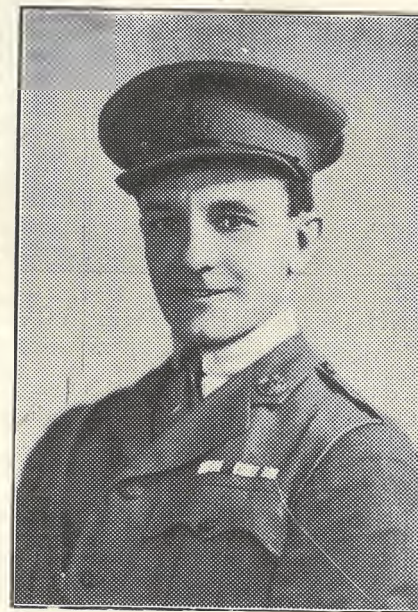
Heavy-weight CREPE DE CHINE BLOUSE with adaptable Collar, stocked in Black and all leading Colours; wear guaranteed. Price 42/-

Hard Beaded ARTIFICIAL SILK JUMPERS in all leading shades, from 35/9



The Right Hon. Lord Askwith, K.C.B.,

Of 5 Cadogan Gardens, London, S.W., who has been elected Chairman of Committee of Cheltenham Ladies' College in succession to the late Sir R. V. Vassar-Smith, Bart.—Photo by Mendoza Galleries, Old Bond-street, London.



Charles Kenyon,

Who plays Capt. Leslie Yeullat ("Tim") in "The Wheel" at the Opera House, Cheltenham, next week.

PHONE 311.  
Telegrams "BENCE, CHELTENHAM."  
FOR ALL KINDS OF  
**TIMBER AND BUILDING MATERIALS — GO TO**  
**Geo. Bence & Sons Ltd.**  
WHO HOLD GOOD STOCKS AT TO-DAY'S LOWEST PRICES.  
Electric Sawmills. Sawing done for the Trade  
Showrooms for Baths, Grates, &c., &c.  
**FAIRVIEW ROAD, CHELTENHAM.**

A GREAT OPPORTUNITY FOR SIX DAYS ONLY AT **LANCE'S** NEXT WEEK. Great COAT and FUR DISPLAY at AFTER SEASON'S PRICES.



Delightful Coat in SOFT VELOUR, Roll Collar of Beaver Coney, Half-lined Silk, Shades—Mole, Navy, Beaver, Nigger, and Black. Usual Price 7½ Gns. SPECIAL PRICE 5 Gns.

THE WHOLE OF OUR STOCK OF FURS AND COATS WILL BE MARKED AT SPECIAL BARGAIN PRICES.

John Lance & Co., Ltd., Cheltenham.





**CHEL TENHAM ROUND THE TOWN.**

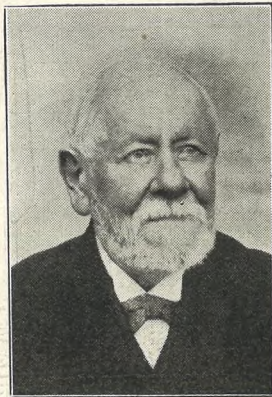
- 1.—Two ladies shopping on a wet morning.
- 2.—The well-equipped cyclist.
- 3.—A familiar Cheltenham face.
- 4.—Heavily laden.
- 5.—Taking baby out.
- 6.—Weather doesn't matter at this age.
- 7.—Taking the children for their morning walk.
- 8.—Making the best of the weather.

["Cheltenham Chronicle" Photos. Copies 1/- each Unmounted, 1/6 Mounted, Postage extra.

\*\*\*\*\*



MRS. CHARLOTTE FORD TAYLOR, Of Grosvenor-street, Cheltenham, whose funeral took place on Nov. 21. She was the widow of Mr. Fred Taylor, of Northleach, and a daughter of the late Mr. Thos. Doogood, builder, of Cheltenham.



MR. EDWARD PEAKE, Of Rolls Court, Cambridge, Glos., who died on Nov. 16 aged 81 years. He was for many years in business in Gloucester as a timber merchant, and was a Conservative Councillor for the West Ward for some years, being a keen politician to the last.



CORPL. JAMES TAYLOR, Of 9 Marsh-lane, Cheltenham, who died on Nov. 21 at the age of 89. With the 44th Foot he fought in the Crimea, the Indian Mutiny and the China War.

**WINTER HOSIERY.**

ALL WOOL VESTS, Long or Short Sleeves, 8/11 10/6 12/6 14/6. PANTS to match in all qualities at about 1s. extra. THETA, WOLSEY, and PESCO Brands Stocked.

MERINO and Wool with Cotton UNDERCLOTHING . . from 4/11. A large variety and range of sizes in stock.

**A. Beckingsale,** 111 HIGH STREET, CHELTENHAM. 'Phone 406.

Abdul Medjid, the Heir Presumptive to the Turkish throne, has been elected Caliph by the Angora Assembly.

Professor D. S. Cairns, of Aberdeen, has been chosen as the Moderator of the next General Assembly of the United Free Church of Scotland.

\*\*\*\*\*  
Advertise in the "Echo."

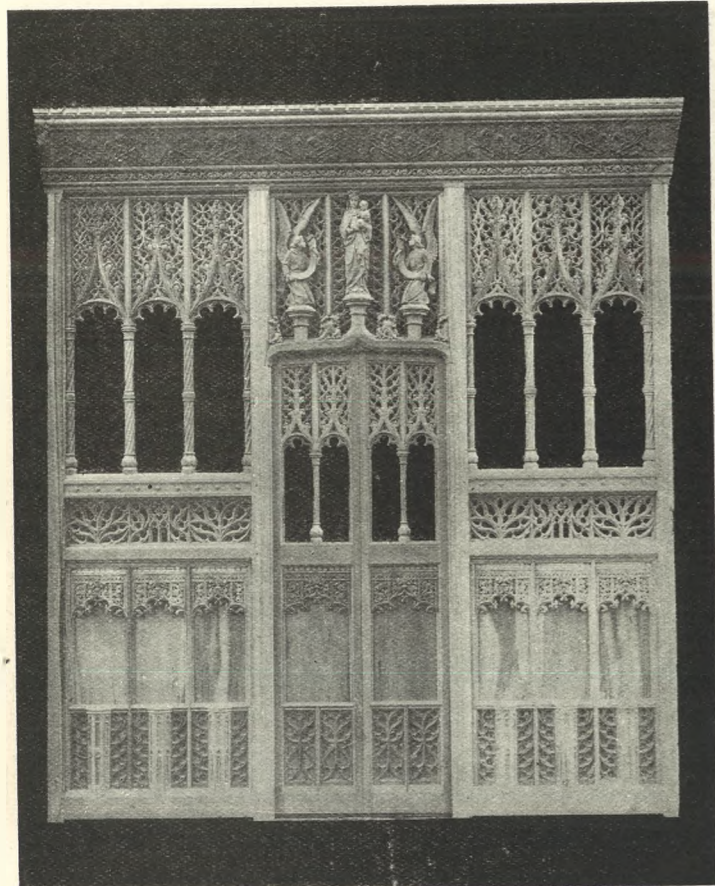
SEND THE "CHRONICLE AND GRAPHIC" TO YOUR FRIENDS EVERY WEEK.



**LAYING THE DEDICATION STONE OF DEAN CLOSE SCHOOL NEW CHAPEL.**

- 1.—Part of the guard of Honour of the School O.T.C.
- 2.—The procession to the Chapel, led by Sir Jas. Agg-Gardner and Dr. Flecker, the Headmaster.
- 3.—Scene while Dr Flecker was speaking.
- 4.—Masters of the School.
- 5.—Sir James (on left), with silver trowel, declaring the stone "well and truly laid."
- 6.—Major Selwood, M.C., an old boy,
- 7.—The Chapel Roll of Honour being brought out with due ceremonial.
- 8.—The Roll of Honour, containing the names of 116 Old Boys.





**A Beautiful Chancel Screen.**

The above Screen has been erected in St. Aiden's Church, Small Heath, Birmingham, to the design of F. Bligh Bond, Es., F.R.I.B.A., by R. L. Boulton and Sons, Bath-road, Cheltenham. Enquiries are solicited for any kind of Church Fittings, or Monuments in Marble, Alabaster, Granite, Stone, Wood, or Metals. Medals: London and Paris.



MR. AND MRS. STANLEY TUBBS.

**STROUD DIVISION OF GLOUCESTERSHIRE.**

To the Electors.

LADIES AND GENTLEMEN,—

For the first time since 1895, the Conservative candidate has been returned to represent you in the House of Commons. This result and the magnificent majority—the largest in the history of the Division—have been achieved because of the whole-hearted and loyal support you have given me. By strict and constant attention to my duties I hope to return your confidence, and, when the time comes, to secure its renewal. It will be my earnest endeavour to serve the constituency as a whole, and representations made to me on any matter will receive my careful and sympathetic consideration. I hope to renew acquaintance with you at no distant date, and meanwhile I ask you to accept my sincere and heartfelt thanks for the great honour you have done me, an honour of which I hope to prove myself worthy.

Believe me, Ladies and Gentlemen,

Your faithful and obedient servant,

STANLEY W. TUBBS,

"Ellerncroft," Wotton-under-Edge, Nov. 24, 1922.



**R.A.M.C. ANNUAL ARMISTICE DINNER IN CHELTENHAM.**

The Annual Dinner of R.A.M.C. Officers of Cheltenham and neighbourhood (all doctors), who actually served in the fighting line, was held at the Lansdown Hotel on Saturday, Nov. 11.  
 Back Row.—Dr. G. Lidderdale, Dr. Hill, Dr. Bibby, Dr. Allman Powell, Dr. Pearson, Dr. Barrett Cardew, Dr. Tudor Edwards, Dr. Graham, Dr. Pim.  
 Second Row.—Dr. Parke, Dr. Curtis-Webb, Dr. Longridge, Dr. D. Clow, Dr. Macfie, Dr. Cox, Dr. Hugh Powell, Dr. Moore, Dr. Robinson, Col. Rogers.  
 Seated.—Dr. Marklove, Dr. Wilson, Dr. Smurthwaite, Dr. Conder, Dr. Collins, Dr. A. Sanderson Clow, Dr. Braine Hartnell, Col. Peake.  
 In front.—Dr. Robertson, Dr. Meyricke Jones, Dr. F. Lidderdale.

[Flashlight Photo by "Cheltenham Chronicle." Copies unmounted 1s. 9d. each.]

**R.F. BEARD & CO.**  
SANDRINGHAM HOUSE

**A Rare Opportunity**

To purchase articles of lasting value is given by the offer of 25% reduction (off the current prices) from the major portion of the stock, which includes—

|                                |                             |
|--------------------------------|-----------------------------|
| 42 Pairs of Gold Sleeve Links. | 16 Cases Silver Tea Spoons. |
| 43 Gent.'s Silver Watches.     | 36 Silver Cigarette Cases.  |
| 26 Ladies' do. do.             | 15 Silver Mustard Pots.     |

A large assortment of Mother 'o Pearl, Agate, Crystal Onyx, Cornelian and Coloured Stone Necklets.

**5/- IN THE POUND] DIRECT SAVING.]**

PROMENADE CHELTENHAM



Miss Jane Wood,

Who plays Ruth Dangan in "The Wheel" at the Opera House, Cheltenham, next week.

Make it known through the "Echo."

**CORSETS AND BELTS**  
MADE, COPIED, CLEANED, AND REPAIRED.  
Hours: 10 a.m. to 6 p.m. Saturdays 1 p.m. to 4 p.m. PHONE 915.  
**MISS FRUIN** (Late with Madam Annette),  
23 Bath Parade, CHELTENHAM.

**Photograph Enlargements.**

We can enlarge to Cabinet Size any Individual Photograph in any of the Groups in the "Graphic," or we can Enlarge the Entire Group. Results Guaranteed. Prices on Application.



**CALLING FOR THE EMPTIES (?)**

Dr. Davies attributes the defeat of the Liberal candidate in the Cheltenham election to "the 'Echo' and their policy of beer." Scene outside the offices next morning.

**Mousell Bros., Ltd.**

(Opposite G.W.R. Station),

CHELTENHAM.

**FURNITURE REMOVALS.**

BY RAIL OR MOTOR.

'Phone 112.

**BEST QUALITY CIDERS**

IN BOTTLE. — Sparkling and Still.

**BARTHOLOMEW,**

419, 420 HIGH STREET, CHELTENHAM.

WINES, SPIRITS, ALES, TABLE WATERS and GROCERY. Tel. 13



# This Page is worth 2/6 to you.

READ BELOW!

READ BELOW!

LADIES' VELOUR FELT HATS, Ready-to-Wear, in Newest Colourings. To Clear, 5/- and 10/-.



REAL VELOURS, as sketch, Black and all colours, Reduced to 29/6.

Also other qualities, 18/11, 21/6, 25/6



BLOUSES of Quality, in a lovely range of colours, plain and Lace trimmed, from 10/11 to 42/-.

New Striped Tricoline, very smart designs. Price, 10/11. Also O.S.

Illustrated is a Useful BLOUSE, Jap Shan. PRICE, 15/11.

CARDIGANS, Ribbed Wool, in Grey, Fawn, Saxe, Navy, Black, Cham, Lemon, Jade, Peacock 6/11, 8/11, 12/11, 18 11.

SHETLAND UNDERCOATS. White and Coloured. 4/11½.



Fine Navy Serge COAT FROCK, as sketch, trimmed Black Silk Braid Collar can be worn open or buttoned up. PRICE, 25/6.

Neat Pleated COAT FROCK. Black, Navy, Nigger, Grey, Fawn. PRICE, 63/-.

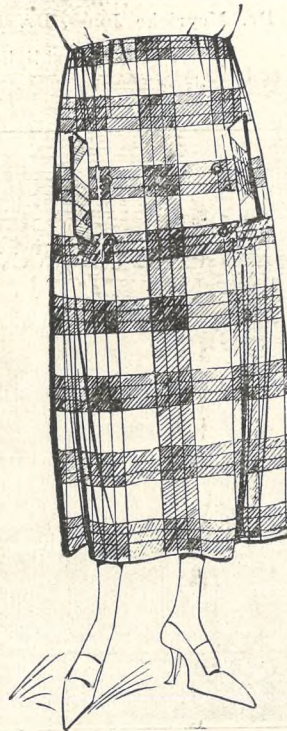
Girls' COAT FROCKS. Navy, Nigger, Gab. PRICE, 29/6



LADIES' VELOUR COAT, with handsome Beaver Coney Collar, & Tie Belt. Beaver, Grey, Nigger, Navy, Etc.

59/6.

Also in Superior Quality at 79/6 and 5 Gns.



Skirts of Special Value. Smart checks in contrasting colours, Grey, Nigger, Fawn, Blue, Rust, etc. Price 6/11, 10/11, 16 11, 18/11, 26/6,

also Pleated in plain Colour and checks, from 8/11 to 29/6.

JUMPERS, Heavy Art Silk, Hand made, Beautiful rich Colours, Price 27/6.

2/6 Free to 2/6 "Graphic" Readers

This Coupon is value Two Shillings and Sixpence, and will be accepted in part payment of Goods purchased in any Department to the value of 30/- and upwards if presented not later than December 9th. One Coupon to each customer.

R. T. ADAMS, 75—76 HIGH ST., CHELTENHAM SPA