

THE CHELTENHAM CHRONICLE AND GLO' SHIRE GRAPHIC

With Which is Incorporated the "Cheltenham Looker-On."

GRATIS SUPPLEMENT.

Saturday, June 3, 1922.

No. 1,118.

CHELTENHAM THEATRE AND OPERA HOUSE.

Lessee: ROBERT REDFORD.

The County Theatre. Established 30 Years.

General Manager: H. OSWALD REDFORD

THIS EVENING AT 7.30, "A BILL OF DIVORCEMENT."

NEXT WEEK (Last Week of the present season)—The New Musical Comedy Success, "THE GOLDEN DAWN."

THE PALACE, High Street, Cheltenham

Monday, Tuesday, & Wednesday,
Edgar Wallace's well-known Story,

"The River of Stars."

"DOUBLE ADVENTURE."

HAROLD LLOYD COMEDY,
"HIS ROYAL SLYNESS."

Thursday, Friday, & Saturday,
LIEUT. LOCKLEAR in

'The Great Air Robbery.'

Staged in the Clouds.

"FIGHTING FATE."

De Haven Comedy, "NEVER
AGAIN."

CRICKET SHIRTS.

All Wool Flannel ... 14/6.

Wincey ... 10/6.

OUR OWN MANUFACTURE.

TENNIS SHIRTS.

Good Quality White Matt Oxford,
9/6.

Boys' Shirts at proportionate prices.

SHIRTS OF ALL MATERIALS
TO ORDER.

A. BECKINGSALE,
111 High St., Cheltenham.

FISHER'S.
69 REGENT STREET,
CHELTENHAM SPA.

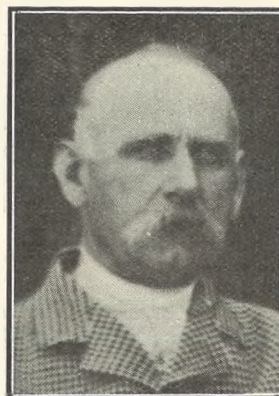
HIGH-CLASS TAILORS.
SPECIALITY—SHIRTS TO MEASURE.
HOSIERY, TIES, HANDKERCHIEFS.

MARTIN & CO.
LTD.,
Promenade, Cheltenham.

Purchase for Cash Antiques of
all kinds, including Old Silver,
Jewellery, Sheffield Plate, China,
Porcelain, Miniatures, etc. Highest
Prices Given for Rare Pieces.



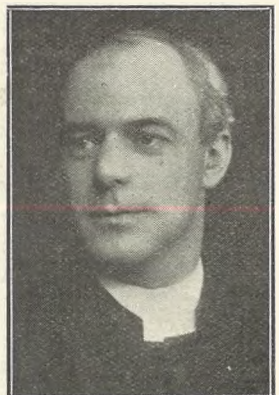
MAJ-GENERAL J. F.
WILLOUGHBY,
Of Gabari, Cheltenham,
who died on Tuesday last,
aged 77 years. He had a
distinguished Army career.



COL. F. STEVENSON, C.B.
Of Cheltenham, who was
killed in a motor accident
on Tuesday last in the
Wye Valley. He was 71
years of age.



MRS. OLIVE K.
SEYMOUR,
Wife of Mr. W. G. Sey-
mour, Rosebank, Coberley,
and daughter of Mr. Chas.
Beacham, the ex-Cotswold
huntsman, who died on
May 24, aged 24 years.



REV. A. E. FLEMING,
Precentor and Canon of
Gloucester Cathedral, who
died at his residence, 100
London-road, Gloucester,
Monday last, aged 57 years.
He leaves a widow, three
sons, and six daughters.

WINTER GARDEN, CHELTENHAM.

WHIT MONDAY AND WHOLE
WEEK,

Mark Twain's

Laughter-raising Comedy, from
London Alhambra.

"A Yankee at Court of
King Arthur."

Monday, Tuesday, and Wednesday
Only.

CHEAPLIN in "CHARLIE'S
NEW JOB."

Thursday, Friday, and Saturday
Only.

Buster Keaton Comedy.

The Building is kept cool with
Typhoon Electric Fans.

OIL COOKERS.

RIPPINGILLES. "VALOUR."

"PERFECTION." Lists Free.

MILLER,
IRONMONGER,

163 High St., Cheltenham
(Facing Fleece Hotel).

All Your Wants Supplied

If you have a small
Prepaid Advertisement
in the "Echo" and the
"Chronicle." It is the
combination that does
it, for it reaches ALL
Classes.

Promenade, :: Cheltenham.

URWIN.

Telephone - - 1206.

The Studio for natural photographs
of Children.

BUY

The Right STATIONERY
At The Right PRICE.

LEE, Caxton House,
WINCHCOMBE ST.,
CHELTENHAM.

For the
Best

PIANOS, DALE, FORTY and Co., Ltd.

GLOUCESTERSHIRE COUNTY COUNCIL DRAINAGE SCHEME.

The County Council have been making commendable use of the unemployed in a land drainage scheme recently. The scheme was in danger of being discontinued by order of higher authority, but it has been again temporarily prolonged.



General view of brook at Half-way Bridge, Churcham, before drainage operations commenced.



Excavating and shearing the same brook, during which many land drains are discovered and cleared after being closed up for many years.

[Photo by H. E. Jones, Northgate-street, Gloucester.

CORSETS MADE TO MEASURE from 25/- Pair.
Copyings, Cleanings, and Renovations.
SURGICAL BELTS.

MISS FRUIN (Late with Madame Annette),
23 Bath Parade, CHELTENHAM.

JEWELLERY AND ANTIQUES

Wanted to buy, for High Cash Prices, Old Gold and Silver for melting or re-sale. Also anything Antique in Furniture, China, Old Glass, Prints, etc. Established 70 Years.

HARRY O. BOX,
JEWELLER,
399 HIGH STREET, CHELTENHAM
(Nearly Opposite Grammar School).

SHIRER AND HADDON, COLONNADE.

It is not often that attention is called to smaller articles of every day use. Below we beg to place before you nine extremely useful items at very modest prices, out of a large assortment always stocked.



10 Yards Lingerie Braid, in Pink, Sky, Helio, Crimson, and White.
9½d. Card.



Polished Nail Brush.
3 Sizes.
6½d., 9½d., 1/0½.

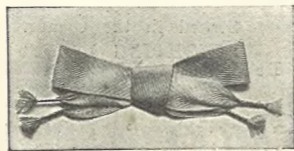
Shoe Improver and Lift.



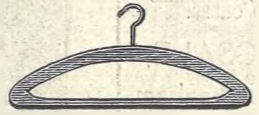
Rustless.
1/0½.



Superior Shoe Tree.
5½d.



Silk Shoe Laces.
In all colours. 26 inch.
6½d. Pair.
Better Quality, 9½d. Pair.



Polished Wood Coat and Skirt Hanger.
8½d. Each.

Durable Hose Suspen-ders.

1/0½,
1/6½,
and
1/11½
Pair.



Perfect Fitting Garment Shield.
1/11½.



Special Value Black Mending Wool.
1oz. 6½d.

ASK FOR

"Pictorial Review" Paper Patterns.

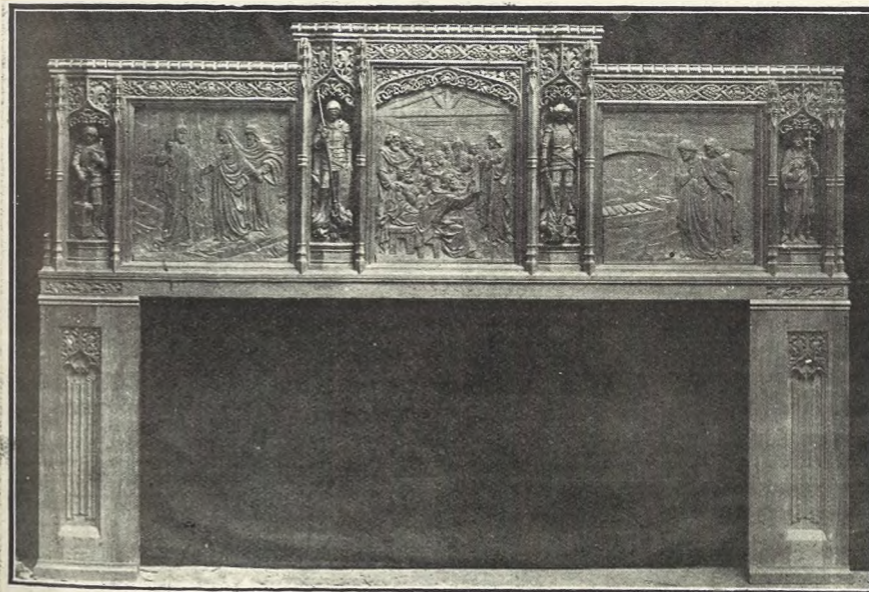


EXPERTS IN BOOK LORE.

VISIT OF THE BIRMINGHAM AND DISTRICT LIBRARY ASSOCIATION TO CHELTENHAM, THURSDAY, MAY 25, 1922.

The Party on Public Library Steps. Mr. S. Harrison, the Cheltenham Librarian, who left on Wednesday to take an important post at Barnard Castle, is standing in front on extreme right. He has received numerous presentations during the week.

[Photo by Cheltenham Newspaper Co., Ltd.



A BEAUTIFUL REREDOS.

This magnificently sculptured and carved Reredos has recently been executed and fixed at Kingswood by Messrs. R. L. Boulton and Sons, Sculptors, Bath-road, Cheltenham. The Architects were Messrs. Bligh Bond, Falconer, and Baker.

: PHOTOGRAPH : ENLARGEMENTS.

WE CAN ENLARGE TO CABINET SIZE ANY INDIVIDUAL PHOTOGRAPH IN ANY OF THE GROUPS IN THE "GRAPHIC," OR WE CAN ENLARGE THE ENTIRE GROUP. SPLENDID RESULTS GUARANTEED. PRICES ON APPLICATION.

John Lance & Co., Limited, CHELTENHAM.

In Plain Colours, Natural Shade, & Woven Stripes.

JAPSHAN

PURE SILK.



The ideal fabric for blouses & nightdresses, being soft and distinctive.

"Japshan" is well-known for its remarkable wearing qualities. It is a pure silk that embodies all the good points of a Jap Silk and a Shantung with none of the faults.

29 INS. WIDE. 4/11 PER YD.

"JAPSHAN."

John Lance & Co., Cheltenham.



GLYNGARTH SCHOOL SPORTS.

The Annual Sports were held in the pretty playground of this School on Saturday afternoon last in blazing hot weather, before a large crowd of parents and friends.

- 1.—Paulet winning high jump (4ft).
- 2.—Competitors in Relay Race.
- 3, 5 and 6.—Visitors, who tried to find as much shade as possible.
- 4.—Start of Sack Race.
- 7.—Running in Scout Relay Race.
- 8.—Finish of Open 100 Yards Race.

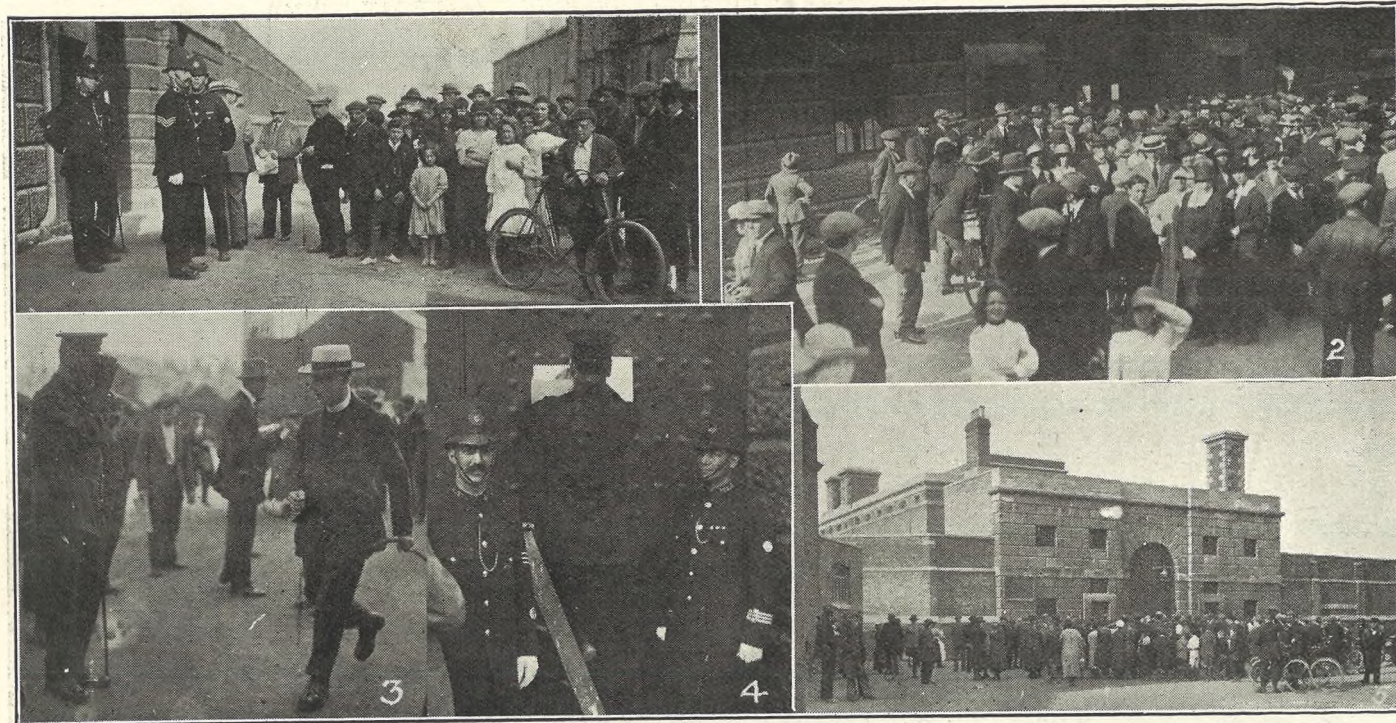
[Photos by Cheltenham Newspaper Co., Ltd., Copies 1/- Each Unmounted.]



GLOUCESTERSHIRE DIOCESAN CONFERENCE IN CHELTENHAM.

- The two days' annual assembly of the County Diocesan Conferences opened in Cheltenham on Wednesday morning. The proceedings were opened by a service at St. Matthew's Church, which was attended by the Mayor and Corporation.
- 1.—Mrs. Harford, with two clergymen, leaving the service.
 - 2.—Clergy and Churchwardens in procession.
 - 3.—Mrs. W. F. Hicks Beach and the Duchess of Beaufort leaving St. Matthew's.
 - 4 and 8.—Congregation leaving Church.
 - 5.—Lady Choristers.
 - 6.—The Choir.
 - 7.—Clergy leaving St. Mary's for St. Matthew's.
 - 9.—The Mayor of Cheltenham leaving the Church.

[Photos by Cheltenham Newspaper Co., Ltd.]



THE EXECUTION OF MAJOR ARMSTRONG AT GLOUCESTER GAOL.

The culmination of the most sensational murder case of the century was witnessed at Gloucester on Derby Day, May 31st, when Major Armstrong was hung at 8 o'clock for the murder of his wife by arsenical poisoning. There was a large crowd outside the prison gates for an hour.

- 1.—Some of the crowd congregating at 7.30 a.m. There were about 20 Press men present.
- 2.—Thicker at 8 o'clock.
- 3.—Police-Inspector Woolford salutes the Chaplain, Rev. Macklin, as he arrives for the fatal ceremony.
- 4.—A warder pinning up the notice of death and the doctor's certificate at 9.30.
- 5.—The crowd reading the death notice.

[Photos by Cheltenham Newspaper Co., Ltd.]



LECKHAMPTON FIRST TEAM.

- Top row.—K. Holdsworth, J. Charlton, H. H. Rogers (Secretary), J. Charlton, J. L. Bendall.
- Second row.—J. E. Youlds, H. S. Marshall, F. Aldridge, T. Bassett, J. Preece, P. Allen, Rev. F. Standfast, J. E. Palmer (Referee), E. J. Fletcher.
- Sitting.—F. Fisher, H. A. Bendall, S. S. Bendall, H. J. Bendall (Capt.), H. Payne, J. H. Moss, J. D. Bendall.
- In front.—A. Bendall, M. Wakefield.

ADVERTISE IT IN THE 'ECHO.'

W. A. WOOF,

Limited

(Cricket Coach Cheltenham College since 1886; 17 years Gloucestershire County XI,

4 Suffolk Road

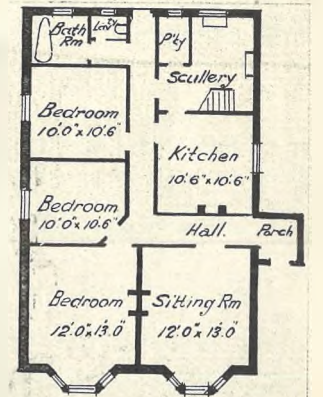
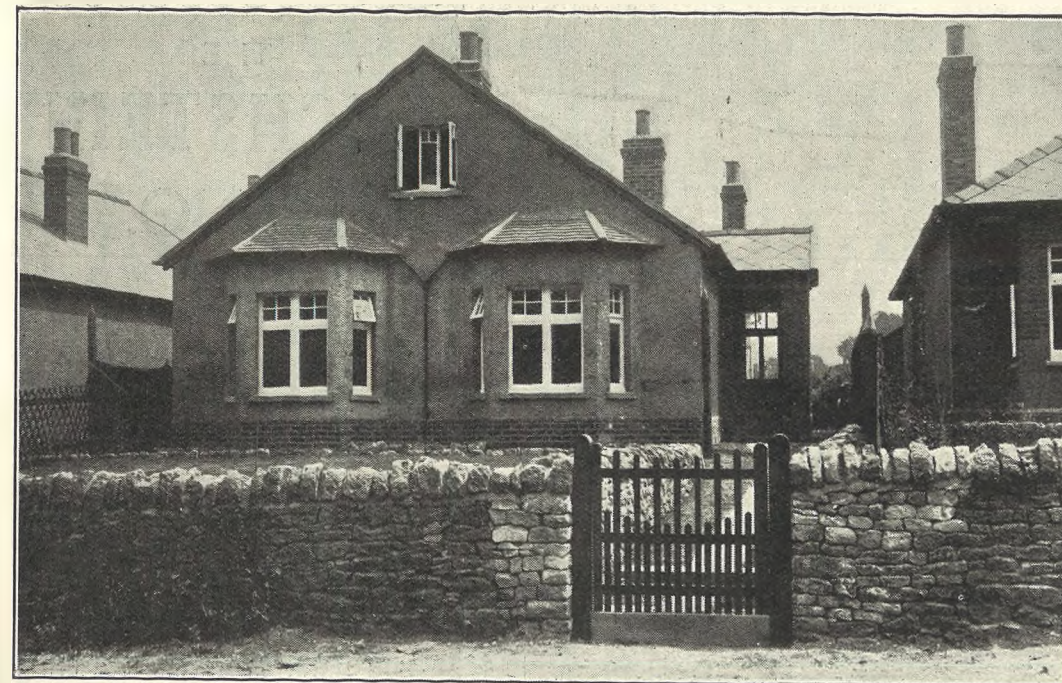
AND

1 Regent Street,

CHELTHENHAM SPA.

All Requisites for

- LAWN TENNIS, CROQUET,
- CRICKET, BADMINTON,
- GOLF, RUNNING,
- AND ALL OUT-DOOR GAMES.



The above plan shows the accommodation provided, which can be varied in details to suit prospective purchasers. Under the roof are two small extra rooms, suitable for box rooms or small extra bedrooms.

NEW BUNGALOWS FOR CHELTENHAM.

This Bungalow is one of a scheme of eight erected in Cirencester-road, Charlton Kings (opposite the beautiful grounds of the Charlton Park), by the well-known builders, Eggleton and Co., of 3 Tewkesbury-road, Cheltenham. Two have already been sold, and the remainder may now be negotiated for. This enterprising firm was the first to commence anything in the way of speculative building, which is one of the best methods to help unemployment and also to supply a public want.



CHILDREN'S AMATEUR THEATRICALS.

Cheltenham Parish Church Children, who gave performances of a little play, "The Enchanted Forest," in the Parish Church Rooms, on Wednesday last, May 31st, in aid of St. Monica's Children's Home.

[Photo by Cheltenham Newspaper Co., Ltd.]

SEND THE "CHRONICLE AND GRAPHIC" TO YOUR FRIENDS EVERY WEEK.



PICTURESQUE GLOUCESTERSHIRE.—NOTGROVE.
A charming view of Notgrove Church and a peep of the Manor House from the lovely gardens of the Manor House.



CHURCHDOWN CHILDREN'S PAGEANT.
"MASQUE OF THE EMPIRE," GIVEN ON MAY DAY AT CHURCHDOWN.
[Photo by C. Sprague, Churchdown.]

Printed and Published as a Gratis Supplement by the Cheltenham Newspaper Company, Ltd.

THE
BECHSTEIN
PIANO.

"The acme of what can be produced in this art."—BUSONI
"The ideal of perfection."—TERESA CARRENO.
"The boundless superiority of the Bechstein."—GLAZOUNOFF.
"The ideal of the artist."—GODOWSKY.
"My ideal of a piano."—HOFMANN
"An artist could not desire a more ideal instrument."—PACHMANN.
"The height of perfection."—RACHMANINOFF.

THE MANY ADMIRERS OF THE
BECHSTEIN PIANO

will be glad to know that a Representative Stock of Both
GRANDS & UPRIGHTS

May Now be Seen at the
SOLE AGENTS:

CRICHTON'S Ltd.,
Promenade, Cheltenham.
OPPOSITE THE G.P.O.

Mousell Bros., Ltd.

(Opposite G.W.R. Station),
CHEL TENHAM.
FURNITURE REMOVALS.
BY RAIL OR MOTOR.

Phone 112.

HIGH PRICES

Paid for Ladies', Gentlemen's, and Children's Discarded Wearing Apparel—Boots, Shoes, etc. A Postcard to

DEANE'S WARDROBE DEPOT,
31 Worcester Street, GLOUCESTER
Will Receive Prompt Attention.

THE NOTED HOUSE FOR FAIR PRICES.

Telephone 970.
Telegrams: "Wardrobes, Gloucester."

THE **CHEL TENHAM CHRONICLE**
AND
GLO'SHIRE GRAPHIC

With Which is Incorporated the "Cheltenham Looker-On."
GRATIS SUPPLEMENT. Saturday, June 10, 1922.

No. 1,119.

CHEL TENHAM THEATRE AND OPERA HOUSE.

Lessee: ROBERT REDFORD. The County Theatre. Established 30 Years. General Manager: H. OSWALD REDFORD
THIS AFTERNOON (2.30) AND EVENING (7.30), THE NEW MUSICAL COMEDY "THE GOLDEN DAWN."
AFTER THIS ENGAGEMENT THE THEATRE WILL BE CLOSED FOR THE USUAL SUMMER VACATION.

THE PALACE,
High Street, Cheltenham

The Building that is Scientifically Ventilated.
Monday, Tuesday, Wednesday:
From the Great Sporting Story
"Pride of the Fancy."
by George Edgar.
"Double Adventure."
Mack Sennett Comedy:
"Wedding Bells Out of Tune."
Thursday, Friday, and Saturday,
CLARA KIMBALL YOUNG in
"Mid Channel,"
From the Brilliant Play by
Sir Arthur Wing Pinero.
"Fighting Fate."
New Century Comedy:
"GOOD LITTLE BROWNIE."

CRICKET SHIRTS.

All Wool Flannel .. 14/6.
Wincey .. 10/6.
OUR OWN MANUFACTURE.

TENNIS SHIRTS.

Good Quality White Matt Oxford,
9/6.

Boys' Shirts at proportionate prices.
SHIRTS OF ALL MATERIALS TO ORDER.

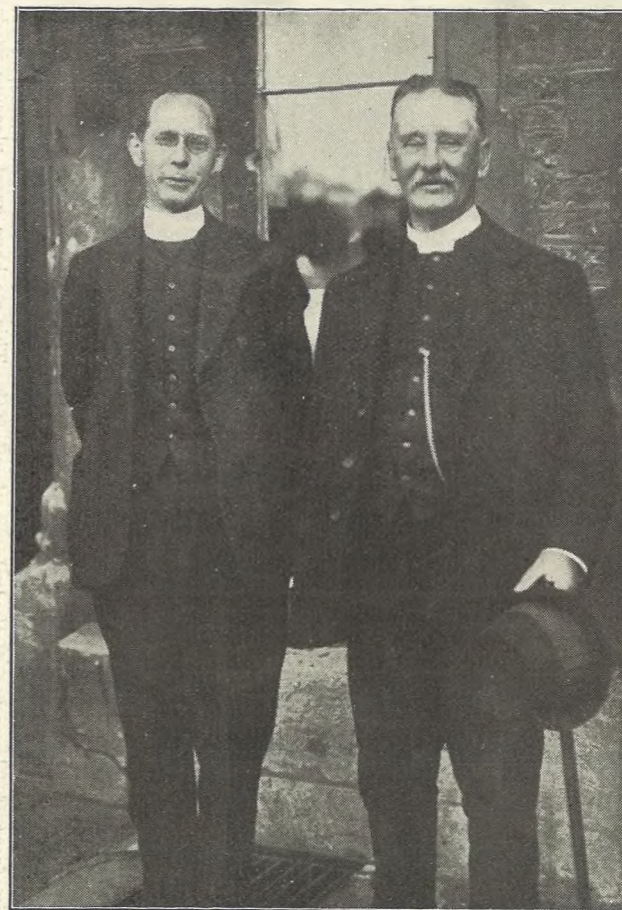
A. BECKINGSALE,
111 High St., Cheltenham.

FISHER'S,
69 REGENT STREET,
CHEL TENHAM SPA.

HIGH-CLASS LADIES' & GENT'S TAILORS.
SHIRTS TO MEASURE.
HOSIERY, Etc.

MARTIN & CO.
LTD.,
Promenade, Cheltenham.

Purchase for Cash Antiques of all kinds, including Old Silver, Jewellery, Sheffield Plate, China, Glass, Miniatures, etc. Highest Prices Given for Rare Pieces.



St. Paul's College Re-union.

The Past and Present Principals.

Rev. W. E. Beck, the present, and Rev. H. A. Bren, the past Principals of the College, taken at the biennial breakfast on Whit-Monday morning. On Saturday a presentation from all the old students of both colleges was made to the latter.

WINTER GARDEN,
CHEL TENHAM.

Monday, Tuesday, Wednesday:
"Princess Jones,"
A Delightful Comedy,

Chaplin,
In "CHARLIE'S NIGHT OUT,"
Christie and Mermaid Comedies.

Thursday, Friday, and Saturday,
"The Fruitful Vine,"
By

Robert Hichens.
"£5 Reward."

ALWAYS FAVOURITE!
ALWAYS FIRST. ALWAYS BEST
ALWAYS USED—

:: Farrar's ::
A.C. Rubbles.

Wm. D. Farrar,
103 High Street,
CHEL TENHAM.
Phone 220.

Promenade, :: Cheltenham.

URWIN.

Telephone 1206.
The Studio for natural photographs
of Children.

BUY

The Right STATIONERY
At The Right PRICE.

LEE, Caxton House,
WINCHOMBE ST.,
CHEL TENHAM.

For the Best **PIANOS, DALE, FORTY and Co. Ltd.**

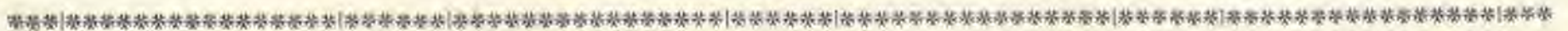


| | | | | | | | |
|------------|---------------------|------------|---------------------|------------|------------|--------------|---------------------|
| LIEUT. | ANDERSON E.C. | CORPORAL | EDWARDS J.V. | TROOPER | KENDALL W. | TROOPER | THOMAS S. |
| PLIEUT. | ARMY I.S. | TROOPER | EMERSON W.C. | TROOPER | KENTON W. | PLIEUT. ADJ. | TRICE O. |
| L-CORPORAL | ALEXANDER C. | TROOPER | EMERY E.C. | TROOPER | KIRBY G.S. | LIEUT. | QUEENINGTON M.H. |
| TROOPER | ARMEN S.W. | TROOPER | EMERY A.V. | CAPTAIN | MOYSE J.E. | PLIEUT. | ROBERTSON W. |
| .. | ANSLEY G.W. | L-CORPORAL | EVANS A.V. | LIEUT. | MOYSE J.E. | PLIEUT. | BRAWLINGS C.W.F. |
| .. | APPELBY A.L. | TROOPER | FURZER W.J. | L-CORPORAL | NEWBY J.E. | SERGEANT | BEWINGS J. |
| .. | BREWSTER E. | TROOPER | FORD E.D. | LIEUT. | NEWBY J.E. | SERGEANT | ROBERTS A.F. |
| .. | BROWNING H.O. | .. | FOWLER G.K. | LIEUT. | NEWBY J.E. | L-CORPORAL | ROWE A. |
| .. | BRYNEN P.J. | .. | FREEMAN A.S. | SERGEANT | NEWBY J.E. | TROOPER | RYLAND A.C. |
| .. | BENBOUGH J.C. | .. | FREEMAN C.S. | TROOPER | NEWBY J.E. | TROOPER | REEVES L.H.F. |
| .. | BENJAMIN B. | .. | FROST E. | .. | NEWBY J.E. | .. | ROOKS J.G. |
| .. | BENJAMIN B. | .. | FRY R.F. | .. | NEWBY J.E. | .. | ROSSER W.E. |
| L-CORPORAL | BENNETT I.E. | LIEUT. | GODWIN W.B. | .. | NEWBY J.E. | LIEUT. | SMITH W.A. |
| .. | BARTON W. | PLIEUT. | GETHING H.E. | .. | NEWBY J.E. | SODN.SGT.MR. | SMART T.G. D.C.M. |
| .. | BOULTON W.J. | CORPORAL | GASSER F.H. | .. | NEWBY J.E. | SERGEANT | SHUTE W.S. |
| .. | BAHL F.H. | .. | GREEN A.K. | .. | NEWBY J.E. | LIEUT. | SUCH A.O. |
| .. | BAKER W.M. | L-CORPORAL | GUNNING C. | .. | NEWBY J.E. | CORPORAL | SOULS F.E.F. |
| S.S.MITH | BALDWIN P.C. | TROOPER | GURNEY J. | .. | NEWBY J.E. | .. | SPRINGFIELD T.O. |
| TROOPER | BALL C.P. | .. | GURNEY J. | CORPORAL | NEWBY J.E. | .. | STANLEY L. |
| .. | BALISS K.A. | .. | GORDON D. | L-CORPORAL | NEWBY J.E. | .. | SALISBURY F.E. |
| .. | BENNETT H.A. | .. | GREEN W. | TROOPER | NEWBY J.E. | .. | SHIPPARD A.E. |
| .. | BERKELEY A.L. | .. | GREENWOOD J.L. | .. | NEWBY J.E. | .. | SIMPSON E.H. |
| .. | BISS P.F. | .. | GREENWOOD W.E. | .. | NEWBY J.E. | .. | SKINNER H.N. |
| .. | BLAKE F.H. | .. | HORLICK G.N. | .. | NEWBY J.E. | .. | SMITH W.J. |
| .. | BLANCHE A.D. | .. | HERBERT HON. E.J.E. | .. | NEWBY J.E. | .. | SPARE F.J. |
| .. | BROUARD L.J. | .. | HILL S.E. W.C. | .. | NEWBY J.E. | .. | SPENCER A.G. |
| .. | BURTON W.A. | .. | HUGGETT W.H. | .. | NEWBY J.E. | .. | ST GEORGE C.E. |
| .. | BUTLER F.W. | .. | HONEY A.T. | .. | NEWBY J.E. | .. | SUMMERFIELD S.C. |
| .. | BUTLER G.H. | L-CORPORAL | HUGGETT I.H. | .. | NEWBY J.E. | LIEUT. | SUTTON C.R.E. |
| .. | CLIFFORD H.F. | .. | HARRIS A.J. | .. | NEWBY J.E. | SERGEANT | TAYLOR C.H. |
| .. | CRADDOCK H.G. | .. | HART R.B. | .. | NEWBY J.E. | TROOPER | THOMPSON R.G. |
| .. | CHURCHILL L.G. | .. | HATCH W.K. | .. | NEWBY J.E. | .. | TAGG W. |
| .. | GROOK W.H. | TROOPER | HULBERT R. | .. | NEWBY J.E. | .. | TAYLUM H. |
| .. | GOATES J. | .. | HAGGETT T.W. | .. | NEWBY J.E. | .. | TOOBY W.J. |
| L-CORPORAL | CARTER G.E. | .. | HANDS W.J. | .. | NEWBY J.E. | .. | TOWNSEND D. |
| TROOPER | CLARK A. | .. | HANDY A.E. | .. | NEWBY J.E. | .. | TRUBODY F.H. |
| .. | CLARK R.G. | .. | HARVEY J. | .. | NEWBY J.E. | .. | TUCKFIELD L.G. |
| .. | COOK A.D. | .. | HAYARD W. | .. | NEWBY J.E. | .. | VICK J. |
| .. | COX B. | .. | HAYENS A. | .. | NEWBY J.E. | SERGEANT | VIVEASH H. |
| .. | COX H.O. | .. | HAYWARD J. | .. | NEWBY J.E. | TROOPER | WALKER W.J. |
| .. | COXWELL-ROGERS P.E. | .. | HERBERT L.S. | .. | NEWBY J.E. | SERGEANT | WARNER E.E. |
| .. | CPOCKETT T. | .. | HIGGINS A.C. | .. | NEWBY J.E. | L-SERGEANT | WALKER H.B. |
| .. | CPOCKETT W.E. | .. | HINE D.G. | .. | NEWBY J.E. | CORPORAL | WARNER H. |
| .. | CROUCH E.W. | .. | HOBBS N. | .. | NEWBY J.E. | L-CORPORAL | WALVIN O.T. |
| .. | DRAKE P.A. | .. | HOLBOROW H.L. | .. | NEWBY J.E. | .. | WETHERALL H.W. |
| LIEUT. | DAVE R.M. | .. | HOOK H.R. | .. | NEWBY J.E. | .. | WILCE S. |
| L-CORPORAL | DANIELL A. | .. | HUNT H.W. | .. | NEWBY J.E. | .. | WILLIAMS E. |
| TROOPER | DAVIS A.F. | CORPORAL | HUNT T.N. | .. | NEWBY J.E. | .. | WILTSHIRE S.H. W.A. |
| .. | DEAN L.C. | L-CORPORAL | JEFFERIES J.W. | .. | NEWBY J.E. | .. | WHEELER T.H. |
| .. | DEE F. | .. | JONES E.O. | .. | NEWBY J.E. | S.S.MITH | WOODINGTON E.W. |
| .. | DOWNHAM P.J. | .. | JONES R.R. | .. | NEWBY J.E. | SADDLER | WATTS J.C. |
| .. | DUDLEY F. | TROOPER | JAMES I. | .. | NEWBY J.E. | TROOPER | WARD C. |
| .. | DYER H.A.D. | .. | JAMES T.W. | .. | NEWBY J.E. | .. | WINTLE R. |
| .. | ELCHO H.F. LORD. | .. | JENNER N.W. | .. | NEWBY J.E. | .. | WILTSHIRE A.E. |
| CAPTAIN | ESSEX R.C. | .. | JENNINGS W.J. | .. | NEWBY J.E. | .. | WOLLEN P. |
| LIEUT. | EVERARD C.C. | .. | JOHNS E. | .. | NEWBY J.E. | .. | WOODCOCK G.F. |
| LIEUT. | ELLIS H.P. W.C. | .. | JONES W.L. | .. | NEWBY J.E. | .. | WOODWARD H. |
| .. | .. | .. | JOTCHAM C.P. | .. | NEWBY J.E. | .. | .. |

GLOUCESTERSHIRE YEOMANRY WAR MEMORIAL.

We have been asked by numerous subscribers to publish photographs of the panels of the beautiful War memorial that was unveiled by Lieut-Gen. Sir P. W. Chetwode, Bart., K.C.B., K.C.M.G., D.S.O., in front of Gloucester Cathedral, on April 29th. This we have great pleasure in doing, and we also publish above the four panels containing 200 names of Officers and Men who fell during the Great War, as well as a photograph of the Memorial itself. The Memorial was executed by Messrs. R. L. Boulton and Sons, the celebrated Sculptors, of Bath-road, Cheltenham, from designs by Messrs. Cash and Wright, of London.

Photos. by Cheltenham Newspaper Co., Ltd.

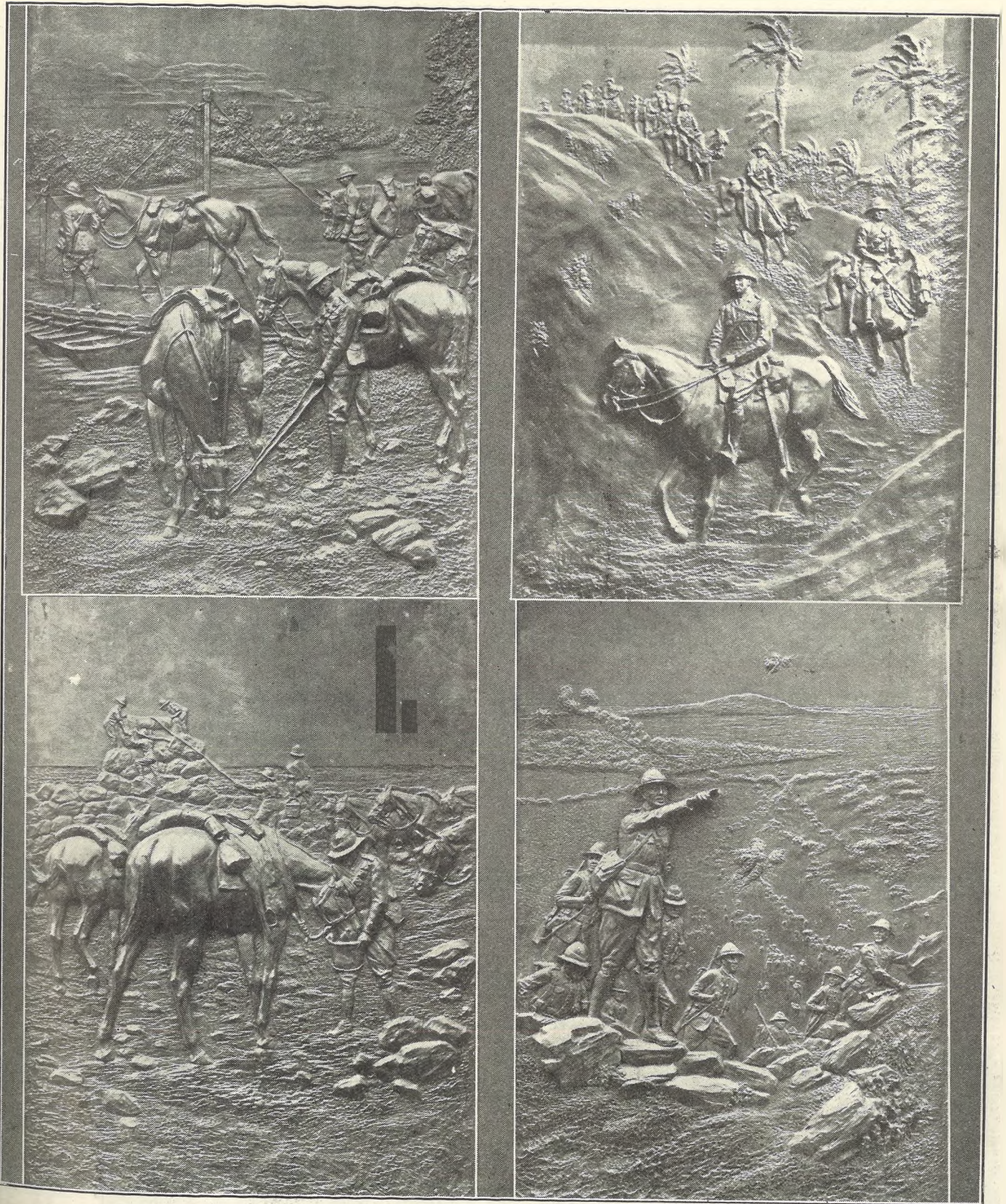


Messrs. R. L. BOULTON & SONS,

SCULPTORS IN STONE, MARBLE, ALABASTER,
WOOD, OR METAL,

Bath Road, CHELTENHAM,

Invite enquiries for Memorials of all description. They are probably the best known Gothic Sculptors in England, and have been entrusted with work for H.M. the King, H.M. Queen Victoria, the Duke of Norfolk, and most of the leading Architects in England. Medals at London and Paris. All Estimates free.



THE GLOUCESTERSHIRE YEOMANRY MEMORIAL.

The four bronze relief panels on the memorial were modelled by Captain Adrian Jones R.A., and represent four different episodes in the campaign in which the regiment took part in Palestine, Sinai, Syria, and Gallipoli.

1.—The first photo shows the Palestine panel, the Commanding Officer leading his men across the River Jordan on a bridge of boats.

2.—The Sinai panel is a reproduction from

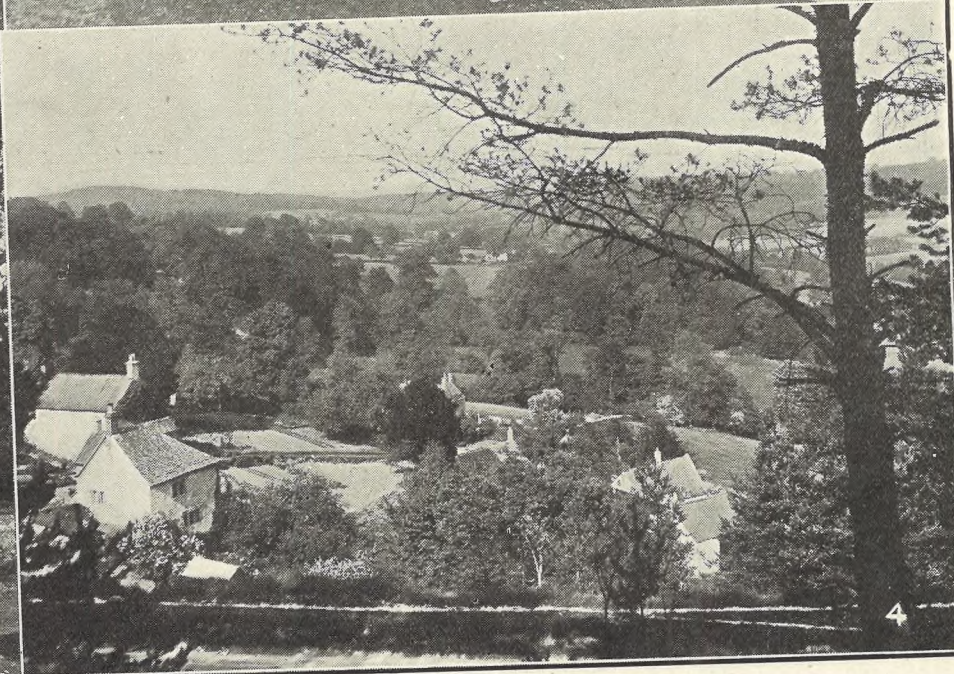
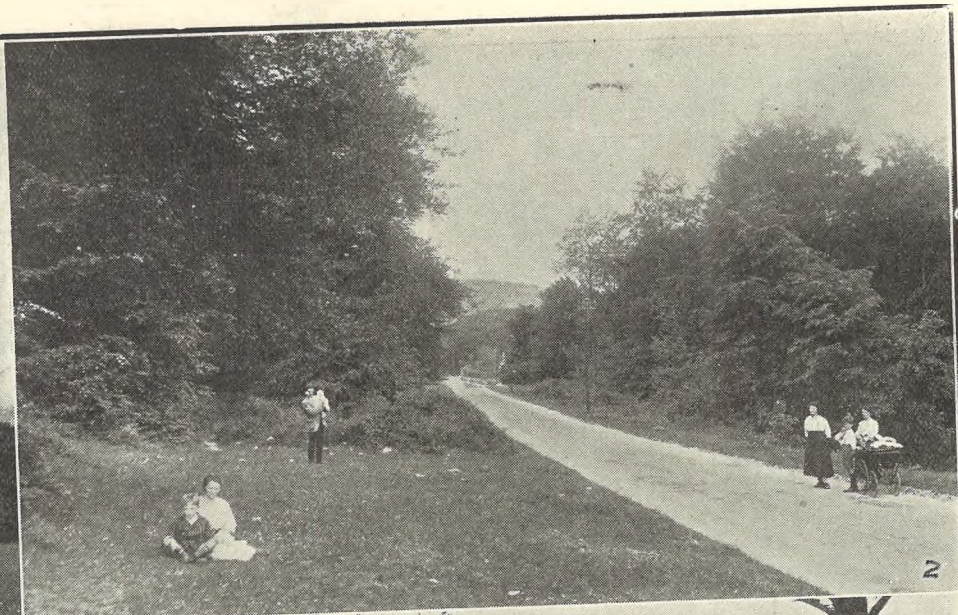
an actual vest-pocket camera snap-shot, taken as the regiment descended a sand-hill returning from a reconnaissance.

3.—The Syria panel shows a typical scene of tired and thirsty horses being watered

at a well after a long trek through the waterless plains of the country.

4.—The Gallipoli panel depicts the scene on August 21st, 1915, when the 2nd Mounted Division took part in the second attack on the Turkish lines at Saris Bay.

Photos by Cheltenham Newspaper Co., Ltd. Copies 8in. by 6in. 1s. 6d. each, postage extra.



PICTURESQUE GLOUCESTERSHIRE—CRANHAM AND PARADISE.

At this season of the year (June) the district from Cranham to Painswick is worthy of its name—Paradise. The glorious views over the Sheepscombe and Slad Valley, the wonderful vegetation, and the lovely perfume of the wild and garden flowers make the spot one of the most charming in England. No wonder the old inhabitants named this lovely little valley Paradise, and even its quaint public-house is called Adam and Eve.

1—View from Cranham over Chosen Hill, showing the Brockworth Aerodrome.

2—The road and woods near the Royal William, Cranham.

3—View over the Slad Valley.

4—A peep from the road over Paradise, Cranham Woods in the distance.

Photos, by Cheltenham Newspaper Co., Ltd.

Copies 1s. 9d. each, unmounted; post extra.



AUSTRALIAN BOWLERS' VISIT TO CHELTEMHAM.

On Saturday last the representative team of Bowlers now touring this country under the auspices of the Australian Bowling Association played Gloucestershire on the Ashburn green, Cheltenham, the county team winning a fine victory by 121 to 106. The visitors were entertained to luncheon and dinner at the Conservative Club, and on Sunday visited Gloucester Cathedral, afterwards driving through Cotswold villages.

- 1.—Mr. V. Clegg (A.) and Dr. Robertson (Glos.), rival skippers.
- 2.—It's the "left" that does it. Mr. H. J. Harris (right), president of County Association.
- 3.—Three skips, two Australian and Mr. W. Harris (right), president of County Association.
- 4.—General view of the beautiful green.
- 5.—The "right" wood of the match. Mr. F. Fisher (left), the county captain, drew a wood to touch the jack, which was already touching an Australian wood.
- 6.—Spectators.
- 7.—The two captains.
- 8.—The Mayor with Mr. A. B. Templeman, president of the Australian team.
- 9.—Mr. A. B. Clutterbuck (Gloucester) and Sir Ashtor Lister.
- 10.—The party at luncheon in Conservative Club.

[Photos by Cheltenham Newspaper Co. Ltd.]



BUFFALO CONVENTION IN CHELTENHAM.

* * *

The National Triennial Assembly of the Royal Antediluvian Order of Buffaloes was opened in the Town Hall, Cheltenham, on Whit Monday, and lasts for a week. Some 700 delegates are present. The visitors have been heartily welcomed and have much enjoyed their stay. Snaps of the delegates entering the Convention.

1.—One of the delegates has brought his wife and kiddie. 3.—Rev. D. J. Arthur, of Pyle, Glamorgan, the only clergyman delegate present. 11.—Two Grand Primos of England.

The rest of the photos are groups of the various delegates taken outside the hall. Photos by Cheltenham Newspaper Co., Ltd. Copies 1s. each, by post 1s. 2d.



BUFFALO CONVENTION IN CHELTENHAM.

The Buffaloes sitting in Convention at the Cheltenham Town Hall on Whit-Monday. They were welcomed by the Mayor, who can be seen sitting in centre of foreground, wearing her chain of office.

Photo. by Debenhams, Longman, and Co., Promenade, Cheltenham

Moussell Bros., Ltd.
 (Opposite G.W.R. Station),
CHELTENHAM.
FURNITURE REMOVALS.
 BY RAIL OR MOTOR.
 'Phone 112.

FREEMAN'S
 SPECIALLY PREPARED!



BEST QUALITY
CIDERS
 IN BOTTLE. — Sparkling and Still
BARTHOLOMEW,
 419-420, HIGH STREET,
CHELTENHAM.

FOOD

For Infants, Invalids, and the Aged.
 In Cartons, Price 1s.
BEST AND GOES FARTHEST.
 LOCAL AGENT:
W. H. MACK, Grocer, High St.

ART NEEDLEWORK
STUDIO,
 1 Imperial Buildings, Promenade,
 CHELTENHAM,
 Are Showing their Celebrated
Artificial Silk

In All Shades for
 JUMPERS, Etc.,
3/11 per 4oz. Hank.

CORSETS MADE
 TO MEASURE from **25/-** Pair.
 Copyings, Cleanings, and Renovations-
 SURGICAL BELTS.

MISS FRUIN (Late with Madame Annette),
 23 Bath Parade, CHELTENHAM.

WINES, SPIRITS, ALES, TABLE WATERS
 and GROCERY. Tel. 13.



ST. PAUL'S COLLEGE BIENNIAL RE-UNION AND DEDICATION OF WAR MEMORIAL WINDOW.
THIS YEAR, OWING TO THE WAR MEMORIAL BEING THE UNITED TRIBUTE OF BOTH ST. PAUL'S AND ST. MARY'S HALL, PAST AND PRESENT STUDENTS OF BOTH COLLEGES UNITED FOR ITS UNVEILING AND FOR THE PRESENTATION TO REV. H. A. BREN AND MR. THOMAS LYON, WHO HAVE RECENTLY RETIRED AFTER MANY YEARS' VALUABLE SERVICES, THE FORMER AS PRINCIPAL.
The top group are all past students of St. Paul's, the second group present-students of St. Paul's, and the two smaller groups are past Students of St. Mary's Hall.
[Photos by Cheltenham Newspaper Co., Ltd. from whom copies can be obtained.]



THE TRAINING COLLEGE RE-UNION.

The rules against the intermixing of the students of St. Paul's and St. Mary's Hall were relaxed during the Whitsuntide Re-union, and the past and present students of both Colleges joined in watching the sports on the Folley, and in a giant alfresco tea in the quad. at St. Paul's on Saturday afternoon.

- 1.—Past and present staff and pupils. In centre row seated are Miss Brooks, Miss A. E. Monk, M.A. (the present principal of St. Mary's Hall), Rev. H. A. Bren, Miss Reynolds (past head mistress), and Miss Richards. Second from left in front is Miss Stead (matron). The others are all old students.
- 2.—A mixed group at St. Paul's.
- 3.—Watching the sports.
- 4.—St. Mary's Hall girls, who gave a very clever performance of "Much Ado about Nothing."
- 5.—Mr. and Mrs. T. Lyon with two of their sons and a grandson.
- 6.—Past and present girls watching sports.
- 7.—A tug-of-war bout.

Photos by Cheltenham Newspaper Co., Ltd., from whom copies can be obtained.



THE TRAINING COLLEGE RE-UNION.

Further scenes at the Folley ground on Saturday last (Sports day) and on Whit Monday after the Breakfast to the past and present students at St. Paul's College.

- 8.—Spectators on the Folley ground. An exciting event in progress.
- 9.—Some old members of 1893-4 fraternise after some difficulty in recognition.
- 10.—Dr. Lloyd in his French robes.
- 11.—The oldest and youngest students present.
- 12.—Mr. Henry King, of St. Leonard's-on-Sea (1864-5) and H. Stockwell, a present student.
- 13.—Past students of 1910-12.
- 14.—A St. Paulite well looked after.
- 15.—An alfresco tea. Close on 1,000 sat on the grass in the big quad.
- 16.—Another mixed group.
- 17.—Start of relay race.
- 18.—Some old heads at the prize-giving.

Photos by Cheltenham Newspaper Co., Ltd., from whom copies can be obtained.

SHIRER & HADDON.

Art
Needlework
Dept.

A LARGE ASSORTMENT
OF

Knitting Silks.

* * *
Celebrated "Sylvan" Make,
4/11 ¼lb. Hank.

* * *
"Esplen D'or," 5/11 ¼lb.
Ball.

* * *
New Crepe Yarn, 4/6 ¼lb.
Hank.

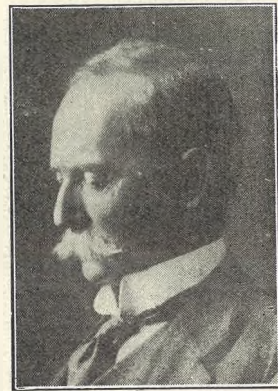
* * *
Knitting Wools in the Best
Makes.

* * *
"Kingfisher" Lustre Wool,
1/0½ 1oz. Ball.

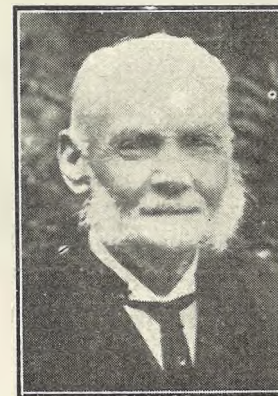
"PICTORIAL REVIEW"
PATTERNS IN STOCK.

IMPERIAL CIRCUS,
CHELTENHAM.

ADVERTISE IT IN THE 'ECHO.'



Colonel Atwell Porter,
of 7 Lypiatt Terrace, Cheltenham, who died
on Whit-Monday, June 5th, from injuries
sustained in a motor accident in the Wye
Valley, on May 30, when Colonel Stevenson
was killed. He was 72 years of age.



Mr. Henry Ellis,
of Rodborough, who died on Monday,
May 29th, aged 88 years. For 47 years he
was sub-postmaster of Rodborough, and
for 22 years verger of the Church.



Ex-Detective William Coles,
of 37 Dean's Walk, Gloucester, who died on
May 27th, aged 38 years. He had 17 years'
police service, and retired owing to a nerv-
ous breakdown through War Service with
the Gloucester Yeomanry.

John Lance & Co., Limited, CHELTENHAM.

In Plain Colours,
Natural Shade,
& Woven Stripes.

JAPSHAN

PURE SILK.



The ideal fabric for
blouses & nightdresses,
being soft and
distinctive.

"Japshan" is well-
known for its remark-
able wearing qualities.
It is a pure silk that
embodies all the good
points of a Jap Silk
and a Shantung with
none of the faults.

29 INS. WIDE. 4/11 PER YD.

"JAPSHAN."

John Lance
& Co., Cheltenham.



BRIMPSFIELD WAR MEMORIAL UNVEILED.

A handsome Stone Cross, designed by Messrs. Waller and Son, of Gloucester, the Diocesan Architects, was unveiled and dedicated by Archdeacon Ridsdale, of Gloucester, on Friday evening, June 2nd, before a large congregation. The cross is most happily situated on land given by Major Wait, on a corner at the entrance to the village.

- 1—Villagers at the service.
- 2—Lieut.-Col. R. M. Davy (Glos. Regt.), who gave an interesting address.
- 3—Part of the Congregation.
- 4—Col. Davy, Col. Waller, Mr. F. W. Waller, and Major Wait.
- 5—The Memorial. It is executed in Minchinhampton stone by Mr. J. Partridge, of Birdlip.
- 6—Archdeacon Ridsdale unveiling the memorial.
- 7—School children at the service.
- 8—Part of the Congregation.

Photos. by Cheltenham Newspaper Co., Ltd. Copies 1s. each, by post 2d. extra.



PICTURESQUE GLOUCESTERSHIRE—LOVELY CHELTEMHAM.

Cheltenham in June is at its best, the trees have donned their Spring beauty, the chestnuts are in full bloom; the limes are coming out, and no wonder our visitors are charmed with the lovely aspect of the Promenade, the Pittville, Leckhampton, and Lansdown districts—unique in England. Add to this the lovely weather of the past fortnight, and well may exiles who know and love our town sigh "O!" to be in England, now that June is here.

1.—A snap of the Promenade this week near the Fountain.
 2.—A fine row of houses—Lypiatt-terrace.
 3.—A peep down the Lansdown-road, now a perfect avenue of sweet-scented limes.
 4.—Looking down the long Garden of the Promenade, the South African War Memorial in front, the obelisk of the Great War in the distance, the Municipal Office on right, and the Promenade on left.

Photo. by Cheltenham Newspaper Co., Ltd.
 Copies 1s. 9d. each, unmounted.

CHELTENHAM.

Population, 48,444; Area, 4,726;
Death Rate, 11.57



"The Garden Town"

Rainfall Average, 26 inches.
Sunshine, average 1,488.1 hours.
Parks and Pleasure Grounds, 123 acres.

Railway and other Facilities.

CHELTENHAM is admirably served in every respect. London (109 miles) can be reached in about 2½ hours by G.W.R., and the M.R. Main line from Bristol to Birmingham and the North runs through the town. The M. & S.W.J.R. to Southampton connects with the M.R. at Cheltenham; six Motor Services are run between neighbouring towns.

Natural Beauties.

Among British Inland Towns Cheltenham has no rival. It is a place of Avenues and Parks. Profusion of foliage, combined with floral colour in public and private spaces, has gained for it the distinctive title of "The Garden Town." It is magnificently open. From almost any house-top may be obtained an unbroken view for twenty miles on all sides except one, where tower the famous Cotswold Hills.

The Public Gardens

Pittville Park (with Lake and Pump Room), lying in the midst of a fashionable residential district on the North, and Montpellier Gardens, seven acres in extent, laid out as tennis courts and archery grounds with a bijou theatre and band stand.

Sports and Pastimes.

The Cotswold Hunt has its Kennels in the town. Other Hunts easily accessible are Lord Fitzhardinge's, the V.W.H. (Earl Bathurst's), North Cotswold, Heythrop, Croome, Ledbury, and Duke of Beaufort's. The Bowling Club has an excellent new green and club house, and there are three flourishing golf clubs, two on Cleeve Hill Common, 1,000 feet above sea level, and one at Leckhampton, two miles south of the town. Tennis at Montpellier Gardens and Pittville Park is a favourite pastime.

Amusements.

During the winter concerts are provided by the most eminent London vocalists, instrumentalists, and entertainers, as well as by local entrepreneurs and musical societies. The Dansants have proved an immense success, and added greatly to Cheltenham's prestige as a social centre. The Municipal Orchestra performs daily in the Town Hall during the Winter months and on the Winter Garden bandstand in the Summer.

Shopping Facilities.

Cheltenham is a really first-class shopping centre, and local designers are equal to the demands of the most exacting taste.

Ample Hotel and Boarding House accommodation is provided for visitors, these establishments being both numerous and excellently conducted.

Climate.

The climate of Cheltenham is of a soft and mild character, an essential and valuable accessory to the Water Cure. If bracing air is yearned for, there is the mighty wind-swept Common of Cleeve Hill just outside the town. The town is protected by the Cotswolds from the biting east winds, and for this reason it is a favourite place of residence for sufferers from bronchitis.

Natural Mineral Waters.

Cheltenham is now again one of the select circle of recognised "Water Cure" towns, admitted to the Federation of British Spas, and this fact in itself tells medical adviser and patient alike that here we have a group of waters of the greatest value in the science of hydro-therapy.

The development of the Spa and the general arrangements for the administration of the waters are in the hands of a regularly constituted Medical Committee.

Medical Baths.

The Corporation have installed a complete set of the most recent type of medical baths of the highest quality. The Vichy, Plombieres, Brine, Nauheim, Sedative, Whirlpool, Paraffin, and Contrast equipments are not surpassed by any other Spa in Europe.

For full information in reference to Spas, Baths, etc., and as to the special facilities offered by the Corporation for the holding of Conferences, etc., in the town, apply to T. ALLAN-BURNS, Spa Manager, Municipal Offices, Cheltenham.
The Traders' Association maintains a Bureau for the purpose of giving every assistance and information.



TEWKESBURY GRAMMAR SCHOOL SPORTS.

The Annual Sports of the above School were held in brilliant weather on the Swilgate Meadow on Thursday, June 1st, before a large crowd of parents and friends of the scholars.

- 1, 5, 7, and 8.—Various sections of the spectators.
- 2.—Finish of 440 Yards for Seniors, won by R. H. Williams.
- 3.—R. H. Williams, second in long jump.
- 4.—C. V. Thompson clears 4ft. 6in. in high jump.
- 6.—Members of the Committee.

Photos. by Cheltenham Newspaper Co., Ltd. Copies can be obtained at our Tewkesbury Office. Price 1s.

THE CHELTENHAM CHRONICLE AND GLO' SHIRE GRAPHIC

With Which is Incorporated the "Cheltenham Looker-On."
GRATIS SUPPLEMENT. Saturday, June 17, 1922

No. 1,120.

FROCKS AND FURS FOR YOUR HOLIDAYS —AT— VANDERPLANK'S.

THE PALACE, High Street, Cheltenham

Continuous Daily—2.30 to 10.15.
Monday, Tuesday, Wednesday:
Neil Burgess' World Famous
Rural Racing Drama,
"The County Fair."
—NICK CARTER, the famous
Detective, in a Series of Ex-
citing Picture Plays.
Harold Lloyd Comedy:
"GET OUT & GET UNDER."
Thursday, Friday, Saturday:
Mrs. Sessue Hayakawa in
"In the Breath of the
Gods."
De Haven Comedy,
"KIDS IS KIDS."

Summer Underwear.

FINE ALL-WOOL COTTON
VESTS, 6s. 11d. to 12s. 6d.
Pants to match.
WOOL and COTTON VESTS,
3s. 11d. to 7s. 6d. Pants to
match.
GAUZE COTTON VESTS, 2s. 6d.
up. Also Knicker Drawers.
FANCY SOCKS in Great
Variety, 1s. 11d., 2s. 6d., 3s. 6d.,
and 3s. 11d.

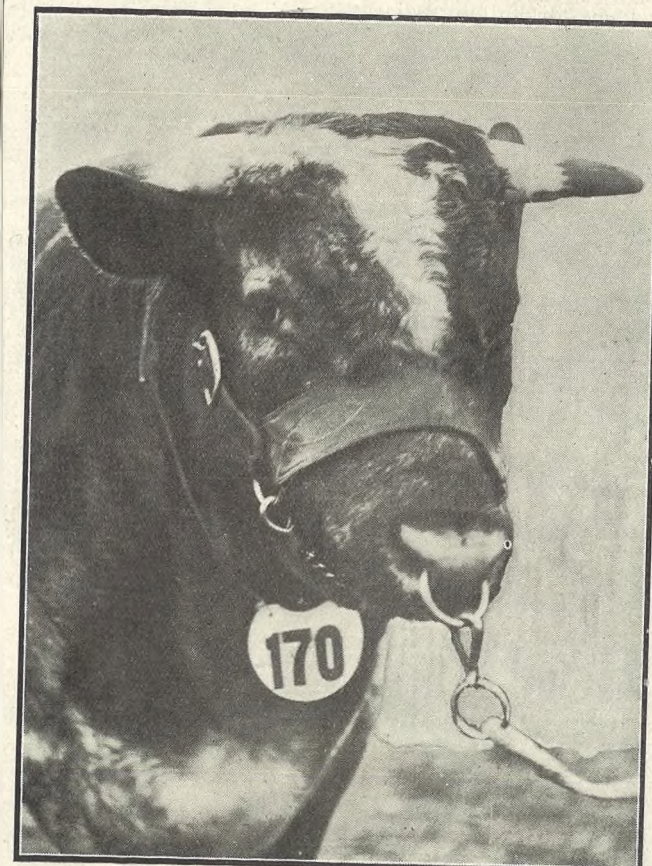
A. BECKINGSALE,
111 High St., Cheltenham.

FISHER'S,
69 REGENT STREET,
CHELTENHAM SPA.

HIGH-CLASS LADIES' & GENT'S TAILORS.
SHIRTS TO MEASURE.
HOSIERY, Etc.

MARTIN & CO.
LTD.,
Promenade, Cheltenham.

Purchase for Cash Antiques of
all kinds, including Old Silver,
Jewellery, Sheffield Plate, China,
Coins, Miniatures, etc. Highest
Prices Given for Rare Pieces.



Great Agricultural Show at Gloucester.

The first combined Show since the amalgamation of the three
Agricultural Societies of Herefordshire, Worcestershire, and
Gloucestershire, took place at Gloucester on Tuesday, Wednesday
and Thursday, June 13, 14 and 15, and was a great success.
The Champion Shorthorn of the show: the Hon. Mrs. Bruce
Ward's Godington Grand Duke, winner of Cirencester Challenge
Cup, value £250, for best Shorthorn in show; also Champion
Prize of 10 guineas for Best Bull.

(Photo by Cheltenham Newspaper Co., Ltd., Copies 2/- each
Postage 2d. extra.)

WINTER GARDEN, CHELTENHAM.

Monday, Tuesday, Wednesday:
"The Woman with the
Fan."
By Robert Hichens.
Harold Lloyd
In his Latest Super Comedy,
"Now or Never."
Thursday, Friday, Saturday:
WILL ROGERS in
"Cousin Kate,"
"CUPID THE COWPUNCHER."
"COUSIN KATE,"
By Hubert Henry Davies.

OIL COOKERS.
"VALOR-PERFECTION"
"RIPPINGILLES."
MILLER,
IRONMONGER,
163 High St., Cheltenham
(Facing Prince Hotel).

**All Your Wants
Supplied**
If you have a small
Prepaid Advertisement
in the "Echo" and the
"Chronicle." It is the
combination that does
it, for it reaches ALL
Classes.

Promenade, :: Cheltenham.

URWIN.

Telephone - - 1206.
The Studio for natural photographs
of Children.

BUY
The Right STATIONERY
At The Right PRICE.
LEE, Caxton House,
WINCOMBE ST.,
CHELTENHAM.

For the Best PIANOS, DALE, FORTY and CO., LTD.



ALDERTON CLUB DAY.

On Monday last the Annual Feast Day in connection with the old Alderton Club, which has been running continuously for over 100 years, was held in the usual place near the Two Elms, and was well attended by the country folk, especially in the evening. It was very hot.

- 1.—Greeting old acquaintances.
- 2.—General view of the Fair.
- 3.—The Band taking a rest under a tree
- 4.—A shady corner for a gossip.
- 5.—Posing for their picture.
- 6.—Mr. Hinton, of the Manor Farm.
- 7.—The Chairman, Mr. Pyke Nott (on left), with two of the speakers.
- 8.—Lining up for Boys' Races.
- 9.—Waiting for the fun to commence.
- 10.—Mr. Belcher and Mr. W. Stephens, of Winchcombe.
- 11.—Four members of the Club.

[Photos by Cheltenham Newspaper Co., Ltd. Copies 1/- each, by Post 1/2]

Mousell Bros., Ltd.
(Opposite G.W.R. Station).
CHEL TENHAM
FURNITURE REMOVALS.
BY RAIL OR MOTOR.
'Phone 112.

'Phone 311.
Telegrams: "Bence, Cheltenham."
FOR BETTER WALLS & CEILINGS
USE
BEAVER BOARD
ALL SIZES IN STOCK
AT REDUCED PRICES.
Geo. Bence & Sons, Ltd.,
Timber & Builders' Merchants,
Fairview Road, CHEL TENHAM.

THE FOOT SPECIALIST.
Mr. Alfd. J. VENTRIS-FIELD.
SURGEON-CHIROPODIST, ORTHOPEDIST
AND ELECTRO-THERAPEUTIST.
Author of "Pedic Surgery," "The Treatment
of Talipes Valgus," "Poisonous Animals and
Vegetables of the Countryside," etc., etc.
Consultant H.M. Forces.

Surgery:
6 RODNEY PLACE, CHEL TENHAM. CP4548
Telephone 1266.

JEWELLERY AND ANTIQUES
Wanted to buy, for High Cash Prices, Old Gold
and Silver for melting or re-sale. Also anything
Antique in Furniture, China, Old Glass, Prints,
etc. Established 70 Years.
HARRY O. BOX,
JEWELLER.
339 HIGH STREET, CHEL TENHAM.
(Nearly Opposite Grammar School).

COME TO
Crichton's
Piano House

For Pianos of Quality,
Fully Guaranteed, at
Present Lowest Prices.

* * *
The most celebrated ENGLISH makes
include—

BROADWOOD,
WEBER,
FARRAND,
STECK,
EVESTAFF,
MILLARD,
SMALLWOOD,

AND MANY OTHER
HIGH-CLASS MAKES.

* * *
You are cordially invited to call to-day.

CRICHTON'S Ltd.,
Promenade, Cheltenham.
OPPOSITE THE POST OFFICE.

* * *
During excavations in Millstone Lane,
Leicester, a skull and some bones were dis-
covered. Experts pronounce the skull to be
that of a Roman inhabitant of Leicester,
who died, therefore, some 1,500 years ago.

T. W. WAITE & W. H. SYMONDS
THE NEW PROPRIETORS OF

R. F. BEARD, LTD.,

Invite Inspection of their

Jewellery, Silver & Electro-Plate.

To effect a clearance in order to make room for an entirely New Stock,
a Special Discount, varying from 10 to 30 per cent., is now being
allowed off the plainly marked prices.

PROMENADE, :: CHEL TENHAM.

John Lance
& Co., Limited,
CHEL TENHAM.

In Plain Colours,
Natural Shade,
& Woven Stripes.

JAPSHAN

PURE SILK.



The ideal fabric for
blouses & nightdresses,
being soft and
distinctive.

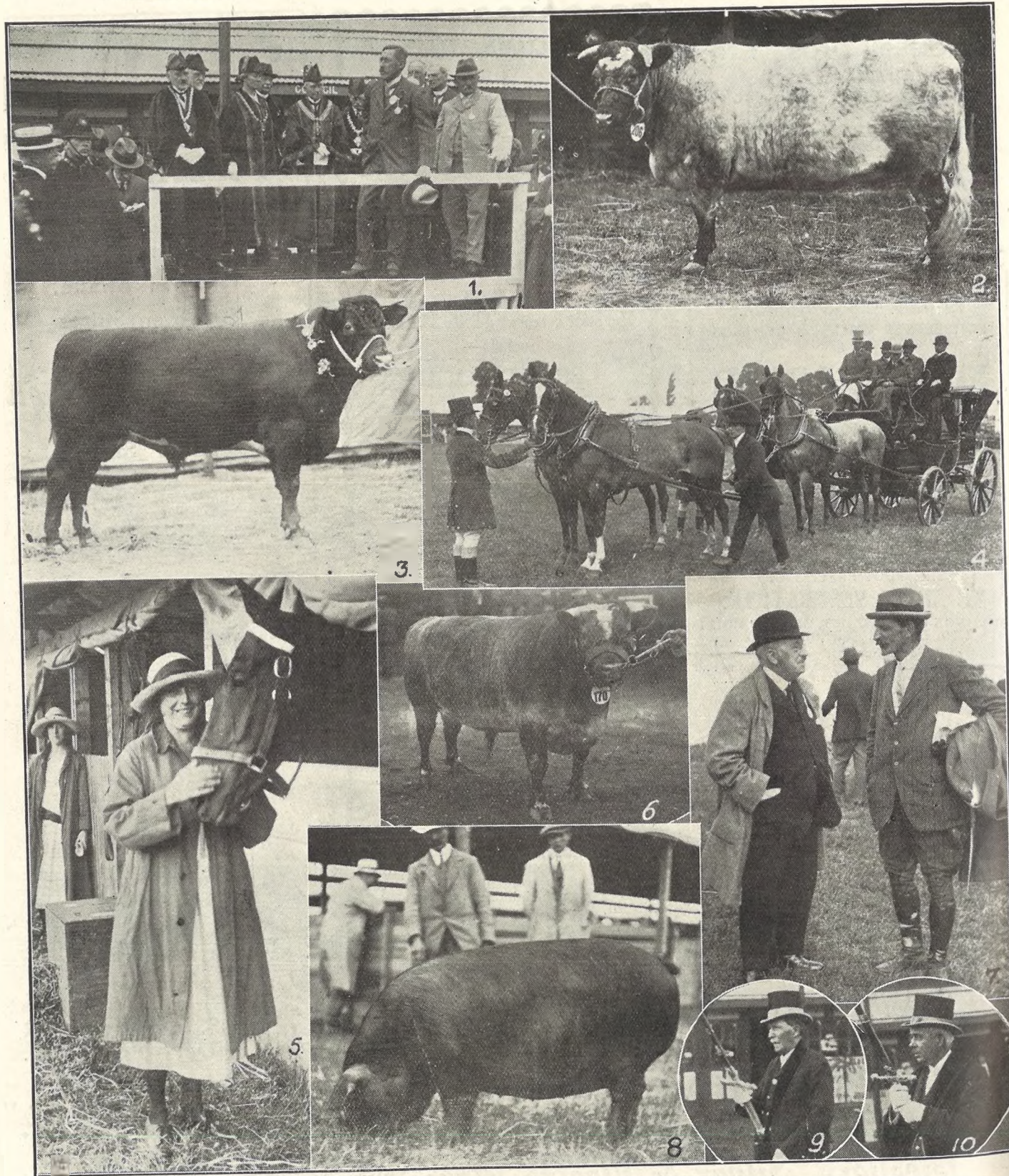
"Japshan" is well-
known for its remark-
able wearing qualities.
It is a pure silk that
embodies all the good
points of a Jap Silk
and a Shantung with
none of the faults.

29 INS. WIDE. 4/11 PER YD.

"JAPSHAN."

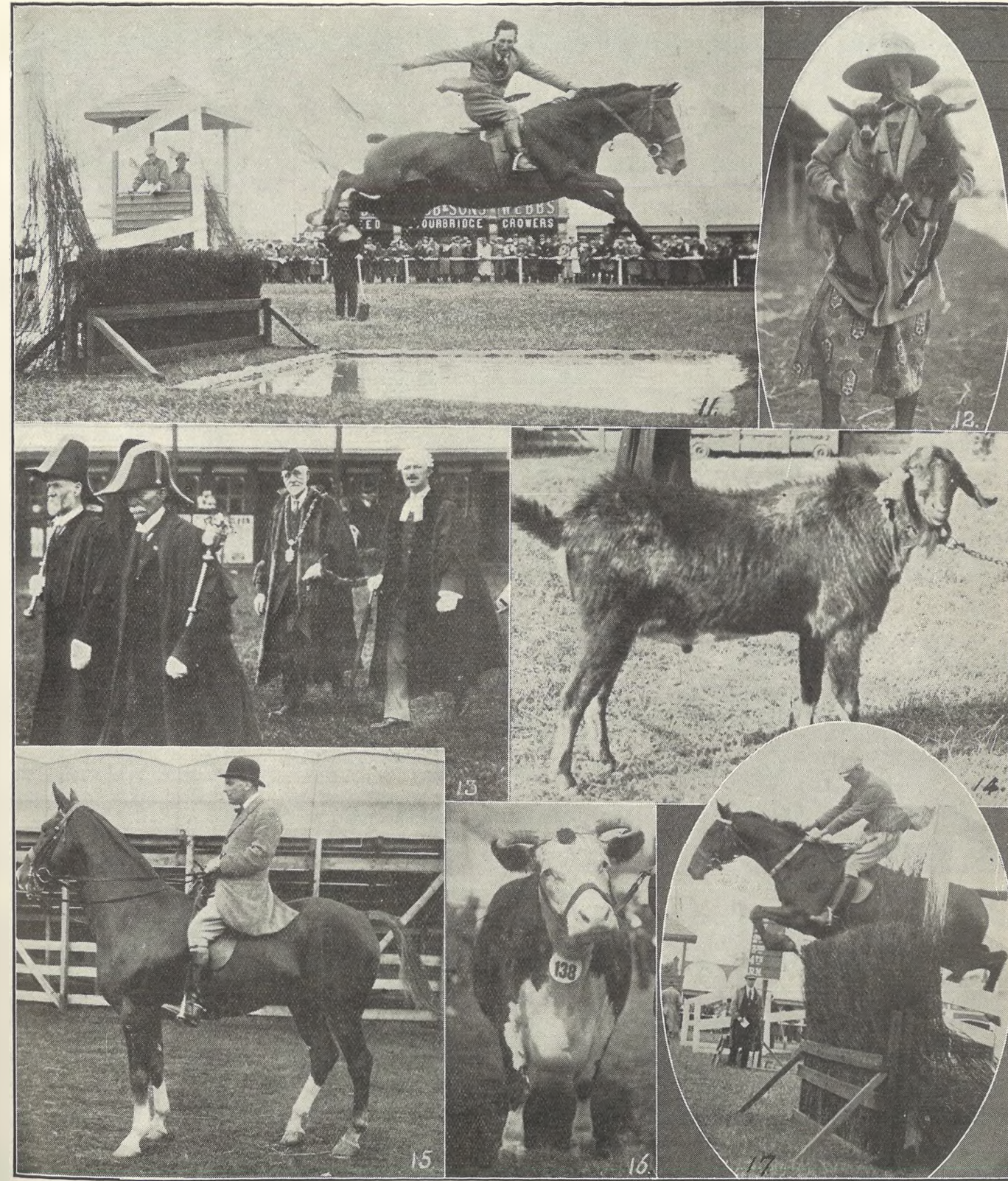
* * *

John Lance
& Co., Cheltenham.



GREAT AGRICULTURAL SHOW AT GLOUCESTER.

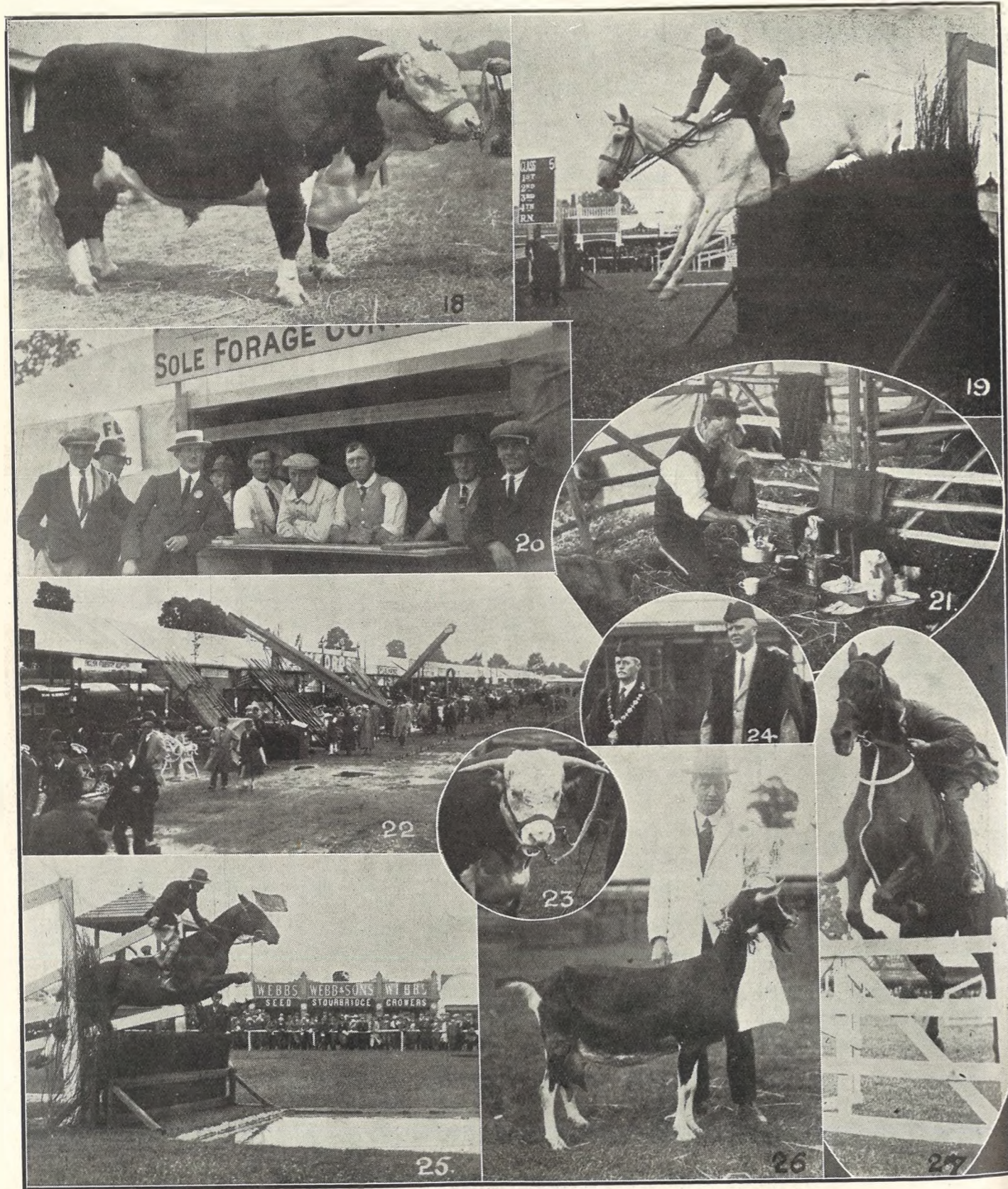
- The first combined Show of the Amalgamated Agricultural Societies of Herefordshire, Worcestershire and Gloucestershire, was held on the magnificent show ground at the Oxleaze and Portham, Gloucester.
- 1.—The opening ceremony.—From left: The Mayors of Worcester, Tewkesbury and Cheltenham, Mr. Justice Shearman, the Mayors of Gloucester and Hereford, and Col. Russell Kerr (President of the Society), with other members of Council.
 - 2.—Col. Fairfax Rhodes' Cotehay Queen Augusta, 1st prize heifer (winner of £50 Challenge Cup at last year's show).
 - 3.—Messrs. T. and S. Braithwaites' Kelm-scott Conjurer 36th, winner of Radcliffe Challenge Cup for best bull in three counties.
 - 4.—Mr. Theobald's Four-in-hand, winner of Coaching Marathon.
 - 5.—Pals.
 - 6.—Champion Shorthorn Bull—Hon. Mrs. Bruce Ward's Godington Grand Duke.
 - 7.—Messrs. Adlard and Crewdson.
 - 8.—Mr. W. Wills' Lustleigh Typical 15th, winner of Challenge Cup for the best large Black Pig.
 - 9 and 10.—Civic dignity—the Swordbearers of Worcester and Hereford.



THE THREE COUNTIES' AGRICULTURAL SHOW.

- The Show Ground was an ideal one, and everything was admirably arranged. This fact, combined with the magnificent entries of stock, led many of the experienced showmen to place it second only to the Royal Show in England.
- 11.—A fine jump over the water in local jumping class, on Tuesday, by Mr. Major, of Henley Farm, Brockworth, who tied for first prize. The judges are in box.
 - 12.—Looking after a couple of kids.
 - 13.—The Tewkesbury Mayor and Town Clerk arriving with their Mace-bearers.
 - 14.—Miss Ward's (Cheltenham) Anglo-Nubian Billy-goat, a prize-winner.
 - 15.—Commander McCowen's (Usk) Fairy House, winner of 1st prize for Heavy-weight Hunter.
 - 16.—Mr. C. H. Tinsley's (Pembroke) Hereford cow, Wise Money, winner of Championship for Females.
 - 17.—Taking a fence well in the Jumping Competitions on Tuesday.

[Photos by Cheltenham Newspaper Co., Ltd. Copies 1/- each unmounted, Post 2d. extra.]



THE THREE COUNTIES' AGRICULTURAL SHOW AT GLOUCESTER.

- The attendance on all three days of the Show has been very satisfactory, and it has been difficult to get near the ring-side on the two popular days. The ring was one of the largest in England and splendidly laid out.
- 18.—The Champion Hereford of the Show—Mr. C. H. Tinsley's (Pembroke) Twyford Fairy Boy, winner of Salway Perpetual Cup and Champion Prize.
 - 19.—A grey taking the high birch fence in Farmers' Class.
 - 20.—Calling for the forage.
 - 21.—A quiet cup of tea in a show pen.
 - 22.—General view of machinery at work.
 - 23.—Head of Fairy Boy.
 - 24.—The Mayor and Sheriff of Hereford.
 - 25.—Mr. Glencross winning 'Open Jumping'. He won 1st and 2nd prizes.
 - 26.—Mrs. Abbey's bronze medal winning goat, British Alpine.
 - 27.—A competitor at the gate in Farmers' Class.

[Photos by Cheltenham Newspaper Co., Ltd. Copies 1/- each unmounted, Post 2d. extra.]



A CHELTENHAM ST. PAUL'S WEDDING.

The marriage was solemnized at St. Paul's Church recently of Mr. Howard F. Badger, son of Mrs. J. Badger and the late Mr. J. Badger, of High Lodge, Milton-under-Wychwood, to Miss Dorothy Lilian, daughter of Mr. and Mrs. G. Hayward, of No. 2 Richmond-villas, Marle Hill-parade, Cheltenham. [Photo by E. M. Bailey, High-street, Chelt.]



A PRETTY CHELTENHAM WEDDING.

The marriage was solemnized at St. Paul's Church, Cheltenham, on Whit-Monday, of Mr. Reginald Jones, only son of Mr. A. Jones, of Barry, to Miss Olive Emily Gladys Stephens, youngest daughter of Mr. and Mrs. E. H. Stephens, of 63 Brunswick-street, Cheltenham. They received over 100 presents. [Photo by Stallard, High-street, Cheltenham]

HIGH PRICES

Paid for Ladies', Gentlemen's, and Children's Discarded Wearing Apparel—Boots, Shoes, etc. A Postcard to

DEANE'S WARDROBE DEPOT,
31 Worcester Street, GLOUCESTER
Will Receive Prompt Attention.

THE NOTED HOUSE FOR FAIR PRICES.

Telephone 970.
Telegrams: "Wardrobes, Gloucester."

* CORSETS MADE TO MEASURE from 25/- Pair. Copyings, Cleanings, and Renovations. SURGICAL BELTS.

* **MISS FRUIN** (Late with Madame Annette),
23 Bath Parade, CHELTENHAM.

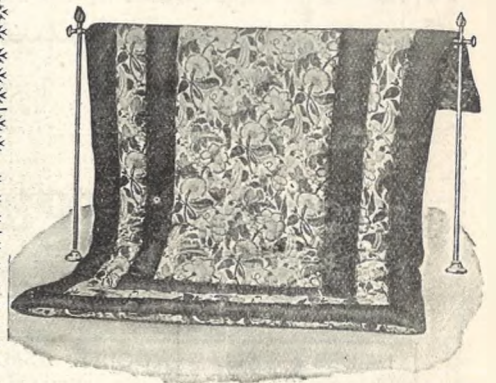
Advertise in the "Echo" Every Day.

SHIRER AND HADDON,
CHELTENHAM SPA.

Household Linen Department.

Coloured Irish DAMASK TABLE CLOTHS, Blue and Gold, 45 inches Square, each. **6/11**
(Usual Price 10/9.)

"CHRISTY'S" BATH TOWELS Suitable for Seaside, each. **1/11½**



JUST DELIVERED 100 Pure Down Quilts,

In the Newest Designs and Colourings at

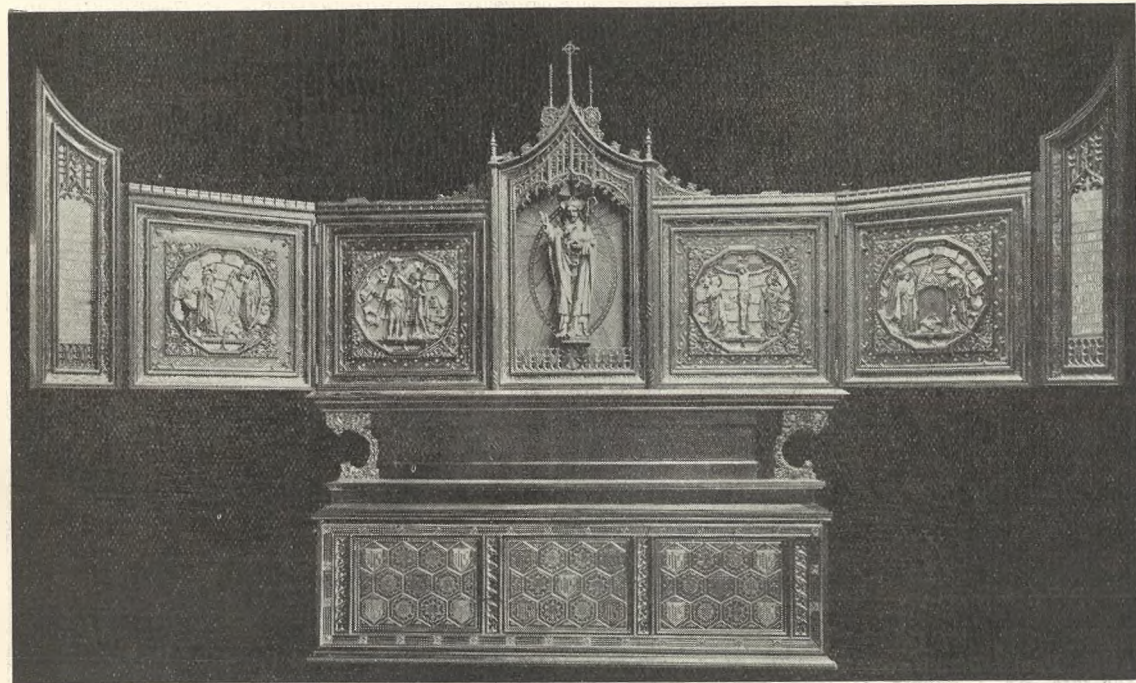
SPECIAL PRICES.

HEMSTITCHED PURE WHITE SHEETS, Size 2 x 3, per pair **18/11**

For Double Beds, per pair **21/11**

SPECIAL VALUE in PILLOW CASES.

1/0½, 1/6½ & 1/11½
each.



A FINE ALTAR IN WOOD.

This Altar has just been executed for, and fixed at, St. Luke's, Newport, Mon., by Messrs R. L. Boulton and Sons, Sculptors, of Bath-road, Cheltenham, from designs by Mr. J. Coates Carter, F.R.I.B.A., Architect, Prestbury, Cheltenham. It was on view at the Art Craftsmanship Exhibition recently held in Cheltenham.



EDWARD PERCIVAL PROUT, Of Oakey Farm, Haresfield, who was killed in a motorcycle accident at Whitminster on Whit-Sunday, June 4, 1922, aged 17 years. His two friends who were with him were very seriously injured.

READ THE "ECHO" EVERY DAY.

12 Special Bargains

Sound Reliable Goods.



12 Special Bargains

at Wonderful Prices.

| | | | |
|--|--|---|--|
| LAIDES' ALL WOOL SPORTS COATS. Heavy quality with Belt, in all colours. 12/11. worth 18/11. | SMART FOOTWEAR. DIANA SHOES, Oxford-Gibson, and Bar Shapes. 20/- equal to many sold at 42/-. | LADIES' FOLDING PANAMA HATS, with coloured Ribbon Bands, 2/11½. usually sold at 4/11½. | SMART FOOTWEAR. DIANA SHOES, in high quality Glace Kid, in Grey, Nigger, Navy, etc. 25/-. equal to many sold at 50/-. |
| 54ins' CREAM BLANKET SERGE with fine colour stripes. 6/11½ yard. last years price 15/11. | LADIES' STRIPED ZEPHYR DRESSES, various colours, smartly cut and well made, 8/11. ordinary price 12/11. | LADIES' BLACK ART SILK HOSE, fine quality, with 20in. Silk Leg, susp., Top, lisle foot. 1/11½ pair. worth 2/11½. | 54 in. GREY CHECK TWEED, all wool, 3/11½. worth to-day 6/11. |
| HEMSTITCHED SHEETS Heavy quality, S. B. size. 11/6 pair. worth to-day 15/11. | 40 in STRIPED TWEED, A special purchase much under price, 1/11½. worth 3/11. | LADIES' NAPPA GLOVES, 2 Button, in Brown only, exceptional value. 3/11. worth to-day 5/11½. | LADIES' ART SILK JUMPERS, Heavy Quality, all colours, 10/11. usually sold at 15/11. |

Dicks & Sons Ltd.
172 & 173 HIGH STREET
Cheltenham Spa
TEL. 1007. 50 YEARS REPUTATION FOR VALUE.

THE CHEL TENHAM CHRONICLE AND GLO' SHIRE GRAPHIC

With Which is Incorporated the "Cheltenham Looker-On." GRATIS SUPPLEMENT. Saturday, June 24, 1922.

No. 1,121.

VANDERPLANK'S SALE FOR THE GREATEST BARGAINS IN FASHIONS AND FURS.

THE PALACE, High Street, Cheltenham

NEW DEPARTURE: PALACE BUFFET For Cream Ices, Ice Cream Sodas and Fruit Sundaes. Monday, Tuesday, & Wednesday: THE "Forbidden Woman," Featuring CLARA KIMBALL YOUNG, NICK CARTER, Harold Lloyd Comedy: "HIGH AND DIZZY." Thursday, Friday, & Saturday: "Hard Cash," By CHARLES READE. "FIGHTING FATE."

Summer Underwear.

FINE ALL-WOOL COTTON VESTS, 6s. 11d. to 12s. 6d. Pants to match. WOOL and COTTON VESTS, 3s. 11d. to 7s. 6d. Pants to match. GAUZE COTTON VESTS, 2s. 6d. up. Also Knicker Drawers. FANCY SOCKS in Great Variety, 1s. 11d., 2s. 6d. 3s. 6d., and 3s. 11d.

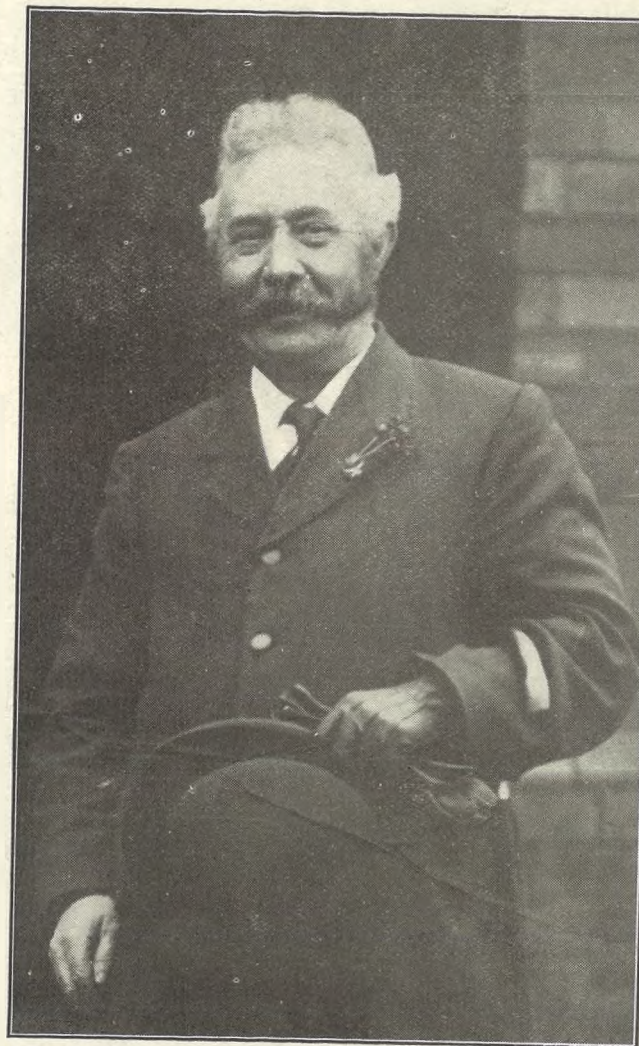
A. BECKINGSALE, 111 High St., Cheltenham.

FISHER'S, 69 REGENT STREET, CHEL TENHAM SPA.

HIGH-CLASS LADIES' & GENT.'S TAILORS. SHIRTS TO MEASURE. HOSIERY, Etc.

MARTIN & CO. LTD., Promenade, Cheltenham.

Purchase for Cash Antiques of all kinds, including Old Silver, Jewellery, Sheffield Plate, China, Coins, Miniatures, etc. Highest Price Given for Rare Pieces.



Mr. F. C. Dodwell, Of Strathcona, Keynsham-road, Cheltenham, who died on Monday, June 19th, after lying unconscious from a seizure he suffered while in one of his shops on the previous Wednesday, aged 60 years.

WINTER GARDEN, CHEL TENHAM.

Monday, Tuesday, Wednesday: FAY COMPTON, FLORENCE TURNER, and KARSAVINA (the World's Great Dancer) in "The Old Wives' Tale" by ARNOLD BENNETT. CHAPLIN in "CHAMPION CHARLIE." Thursday, Friday, Saturday: Constance Talmadge in "THE PERFECT WOMAN." "Conrad in Quest of His Youth." By LEONARD MERRICK.

ALWAYS FAVOURITE! ALWAYS FIRST. ALWAYS BEST ALWAYS USED—

:: Farrar's ::

A.C. Rubbles.

Wm. D. Farrar, 103 High Street, CHEL TENHAM. Phone 220.

Promenade, :: Cheltenham.

URWIN.

Telephone 1206.

The Studio for natural photographs of Children.

BUY The Right STATIONERY At The Right PRICE. LEE, Caxton House, WINCHCOMBE ST., CHEL TENHAM.

For the Best PIANOS, DALE, FORTY and CO. LTD.



PICTURESQUE GLOUCESTERSHIRE.—CRANHAM AND PARADISE.

The English countryside this June has been a blaze of glory, and nowhere in England has it been better displayed than in the beautiful and diversified scenery of the Cranham district—a miniature paradise living up to its name. Four pictures of this lovely district were published in our issue of June 10th.

5.—View of the Paradise Valley, looking towards Cranham and the Beacon. 6.—Meadow-sweet—a field adjoining the high road selected at random. 7.—The beautiful road through the Cranham Woods. 8.—A peep in Cranham Woods.

[Photos by Cheltenham Newspaper Co., Ltd. Copies 1/9 each unmounted, postage 2d.]



CHELTENHAM EAST WARD CONSERVATIVE OUTING TO PERSHORE, SATURDAY, June 17

[Photo by Cheltenham Newspaper Co., Ltd. Copies 1/9 each, Postage 2d. extra]



CHELTENHAM TOWN ASSOCIATION FOOTBALL CLUB.

Played 36, Won 19, Lost 13, Drawn 4. Goals for 112, against 57.

Standing—P. Minnett, E. F. Challenger, G. Hounslow, A. Sellick, A. C. Stubbs, R. Scholars, P. B. Newcombe (Secretary), J. Preece, A. J. Parr (Treasurer), C. Wilkins, E. T. Herbert, J. Stubbs.

Sitting—E. James, H. Woodrow, W. H. Simmonds (Captain), W. Buckland, F. Hopkins.

In Front.—J. R. Surman, C. Marquis, T. Hiron.

THE FOOT SPECIALIST,
Mr. Alfred J. VENTRIS-FIELD.
 SURGEON-CHIROPODIST, ORTHOPÆDIST
 AND ELECTRO-THERAPEUTIST,
 Author of "Pedic Surgery," "The Treatment
 of Talipes Valgus," "Poisonous Animals and
 Vegetables of the Countryside," etc., etc.
 Consultant H.M. Forces.
 Surgery:
 6 RODNEY PLACE, CHELTENHAM
 Telephone 1266.

BEST QUALITY
CIDERS
 IN BOTTLE.—Sparkling and Still
BARTHOLOMEW,
 419-420, HIGH STREET,
 CHELTENHAM.

WINES, SPIRITS, ALES, TABLE WATERS
 and GROCERY. Tel. 15.

Send the "Chronicle and Graphic"
 to Your Friends Every Week.



CHELTENHAM MOTOR CYCLE CLUB ENTERTAINED AT WANTAGE.

The members of the Cheltenham Motor Cycle and Light Car Club were entertained in a most hospitable manner to a garden party, tea, and supper by Mr. and Mrs. J. N. Arbery, of Brooklands, Wantage, the father and mother-in-law of Mr. Alfred Williams (one of the promoters of the Club), on Sunday last, June 18th. After a delightful run of 45 miles the company vastly enjoyed the walks in the lovely grounds of Brooklands.

- 1.—The party after tea.
- 2.—Mr. and Mrs. J. N. Arbery, the host and hostess,
- 3.—Some of the "speed merchants."
- 4.—Tea on the lawn.
- 5.—"Pavilionites": Messrs. Higgins, Sims, Kearsey, and Mrs. Sims.
- 6.—One of the tea tables.
- 7.—Visitors in a pretty corner of the grounds.

[Photos by Cheltenham Newspaper Co., Ltd.]

VANDERPLANK (From Harrods),

GREAT SUMMER CLEARANCE

381 High Street & 8a Promenade, Cheltenham Spa.

EVERYTHING FOR HOLIDAY WEAR AT BARGAIN PRICES.

Commences Monday, June 26.

GREAT REDUCTIONS in FROCKS, FEATHERS, COSTUMES, COATS, BLOUSES, & MILLINERY.



E 2733. — Matron's Crown of Check Ratine, cut full on becoming lines. Sale Price 49/6.

Q 32 — The newest Wrap for Seaside Wear is a French striped Terry Cloth, smart for promenade or beach, ideal for bathing. 52/6. Frocks to match, 73/6.

C 901 — An all Wool Bathing Costume, in lovely colours, piped contrasting shades. Sale Price 12/11.

E 2918.—Smart Frock of good quality Ratine, in Dark or Light Colours, with contrasting colour stripe and white roll collar. Sale Price 29/6.

E 2360.—Pretty washing Dress of Crepe Sponge, trimmed with self material of contrasting colours, in white or light shades. Sale Price 21/9.

E 2404.—Striped Spun Silk and Crepe de Chene are the vogue for smarter Washing Frocks. One of many styles we are clearing at 59/6. Usual Prices 69/6, 75/6, and 79/6.

E 2191.—This Smart Coat is the latest French Novelty, in "Moufflon Blanket Cloth," very light and soft, in cream and lovely new shades. Sale Price 65/9. New Cape also same Price. In Plain Blanket Cloth, 39/6.

Q 19. — The latest French novelty—Roman striped Terry Cloth, the Smartest Wear for Promenade or Beach. Sale Price 73/6. Capes to match, 52/6. E 2530.—New Cream Gab. Pleated Skirt, 19/11. Also in all colours, 25/9.

Shirer & Haddon's Great Annual Summer Sale

Commences MONDAY NEXT, JUNE 26th, and continues to July 29th.

GENUINE REDUCTIONS IN EVERY DEPARTMENT
FROM PLAINLY MARKED USUAL PRICES.

POSTAL ORDERS
RECEIVE
PERSONAL ATTENTION.

22
SPECIMEN BARGAINS.

SALE CONDITIONS
DO NOT
PERMIT OF EXCHANGES.

| LADIES' MILLINERY SECTION. | | GOWN SECTION. | | 5.— | 6.— |
|--|--|---|--|---|---|
| 1.— SPECIAL OFFER of Twilfit Corsets, In Dove and White, 22 to 29. 4/11. Worth 8/11. | 2.— 12 Only. Navy and White and Black and White ½-Sleeve FOULARD Dresses. During Sale 13/6 Each. | 3.— One Only. Apricot, Taffeta, Gold Semi-Evening Gown, Very Handsome and Quite Fresh, 29/11. Stock Value 6gns. | 4.— 6 PIECES ONLY. Plain Zephyr, In Pink, Sky, and Helio, 1/- Yard. | 5.— 200 YARDS All-Wool Cheviot, Two Colours Only, 1/11½ Yard. Usual Price 10/6. | 6.— Remaining Stock of Season's Wrap Coats, Light Checks and Fancy Tweeds. Usual Prices 35/9 to 55/-. 21/-. |
| 7.— EVERYTHING in Children's Wear GREATLY REDUCED DURING SALE. Millinery Especially Marked to Clear. | 8.— Indian Longcloth Nightgowns, 7/11, o.s. 8/6. Indian Longcloth Directoire Knickers, 4/11, o.s. 6/6, EX. O.S. 7/6. | NO GOODS TAKEN FROM WINDOW UNTIL MONDAY, JUNE 26, 9 a.m. In addition to Generous Reduc- tions in Carpets, Soft Furnishing and Cabinets, a Further 5 per Cent. is Offered on Cash Transactions. No Goods on Approbation During the First Week of Sale. | | 9.— 30 Model Hats From Paris, 25/9. These are Reduced from 49/6 and 79/6. | 10.— 50 Coloured ART SILK Jersey Coats To Clear. This Season's Price 29/6. During Sale, 16/11. |
| HOUSEHOLD REQUISITES. | | HOUSE FURNISHING SECTION. | | GLOVES AND HOSIERY. | |
| 11.— Real Witney Blankets, Single Bed, 17/11. Original Price 25/11. Double Bed, 27/11. Original Price 35/11. | 12.— 100 Pure Down Quilts, Just Delivered, Single Bed, 21/11. Autumn Price, 29/11. Double Bed, 29/11. Autumn Price, 39/11. | 13.— 420 YARDS 30in. Cretonne. Several Designs and Colourings, from 2/11 to 4/11 Per Yard. OFFERED AT 1/9 Yard. | 14.— 50 PAIRS ONLY, IVORY NET Curtains, 3 YARDS LONG. Sale Price 11/9 Pair. Usual Value 15/11. | 15.— Good Fitting French Suede Gloves from Reynied. All Shades All Sizes. 3/11. from Our Ordinary Stock at 6/11. | 16.— LUSTRE Lisle Hose, Fully Fashioned, Suspender Top, Black Only, 1/11½. In 9 and 9½. |
| 17.— IMPERIAL WHITE COTTON Sheets. Usual Price 18/11. Sale Offer— 15/11. Inferior Cotton Cotton Sheets do not wear. | 18.— WHITE and COLOURED Bath Towels. Good Sizes. 1,000 OFFERED at 1/- Each. | 19.— LUXURIOUS Lounge Chair, Generously Uphol- stered in Corduroy or Cretonne, £3 15 0. We can make only 20 at this price. | 20.— Many Bargains in Odd, but Useful PIECES OF Furniture can be made if You Visit the New SHOWROOM in CLARENCE ST. | 21.— SPECIAL LINE of NEW Metal and Steel Girdles, 1/11½. Everything in this Section Greatly Reduced. | |
| | | | | HABY AND FANCY SECTION. | |
| | | | | 22.— Splendid Value. SHAPED WOOD Coat Hanger, 3 for 1/9. 7½d. Each. | |



EAST GLOUCESTERSHIRE LAWN TENNIS WEEK.
The Annual Open Tournament of the East Gloucestershire Lawn Tennis Club is taking place on the beautiful Charlton Park ground this week. There are a number of good players of national reputation competing, and some fine play has been seen.
1.—Mrs. Parrett enjoying a cigarette while chatting and watching play.
2.—Mr. F. Warrage serving.
3.—Miss K. Lidderdale beating Mrs. Hazel in Open Singles.
4.—Ladies watching an important match.
5.—Sir Geo. Thomas consulting the programme before changing.
6.—Mr. F. M. Luce and Miss Hattersley-Smith (on right).
7.—Mr. E. M. Nall, a fine player. He is the Australian master at Cheltenham College.
8.—Mrs. Hazel, who was beaten by Miss K. Lidderdale in Open Singles after a fine match.
9.—Some spectators.
10.—Capt. Foster serving.
11.—Tea in a shady corner.
[Photos by Cheltenham Newspaper Co., Ltd.]



ROUND THE TOWN IN CHELTENHAM.

The fine June weather and the splendid shops in the Promenade and High Street bring many people out of doors, and the streets were very animated and interesting when our photographer took the above pictures one morning this week. It will be noticed that many ladies are still wearing furs.

- 1.—Taking life easily.
- 2.—General Verner.
- 3.—Stopping for a chat.
- 4.—On right are Mr. Stewart Brooke and Col. Sweeny chatting.
- 5.—Capt. Allen.
- 6, 7, and 9.—All wearing furs, the air being a little chilly.
- 8.—Deep in thought.
- 9.—Mrs. A. Bence (on right) looks amused.

[Photos by Cheltenham Newspaper Co., Ltd. Copies 1/- each.]



GRAND BROUHABA AT STANWAY HOUSE.

What a "Brouhaha" is the Countess of Wemyss frankly stated she did not know, but she opened it at her beautiful home at Stanway, on Wednesday afternoon, before a large crowd of people. It bore a distinct resemblance to an ordinary alfresco bazaar and sale of work, with its attendant sideshows, and was in aid of repairs to Didbrook Church.

- 1.—Next the nurse are the Misses Scott, of Nether Swell, with Sir Cecil Brett.
- 2.—Tan under a lovely old tree on the lawn.
- 3.—Countess of Wemyss and Mrs. Hugh Andrews.
- 4.—The Countess declaring the Brouhaha open.
- 5.—Mrs. Trevethen selling tickets for tea.
- 6.—Some youthful assistants.
- 7.—Sir Cecil Brett.
- 8.—At tea.
- 9.—One of the stalls.
- 10 and 12.—Crowd at opening ceremony.
- 11.—A peep of Stanway House.

[Photos by Cheltenham Newspaper Co., Ltd. Copies 1/- each, by Post 1/2.]

BRYANT & Co.,

Summer Striped Print
Shirts, 4/6, 7/6, 10/6.

Summer Underwear, Vests
or Drawers, 3/-.

Golf Hose, 3/9.

Real Panama Hats, 13/-.

Cotton Sun Hats, 1/6.

Tweed Caps of good
quality. 2/6.

|||||

Tailors and Outfitters.

|||||

Soft Felt Hats in new
colours and shapes, 10/6.

Grey and Cream Flannel
Trousers.

Alpaca Coats
and other

Summer and Sports
Garments.

○ ○ ○

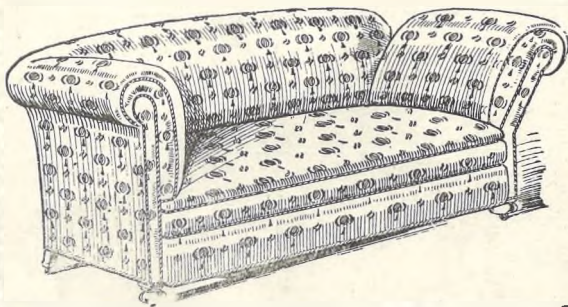
THE HOUSE FOR
QUALITY & VALUE.

1 COLONNADE, CHELTENHAM.

RELIABLE AND
LUXURIOUS
UPHOLSTERY



AT
REMARKABLY
LOW PRICES.



A Handsome Chesterfield Couch, £8 : 19 : 6
with Adjustable Drop End

These are really Luxurious Couches and an example
of our Remarkable Value. Made on Strong Frames,
Fully Sprung, including Front, and generously Uphol-
stered in Fine Quality Tapestry, also in Better
Qualities up to 30 Guineas.

OUR
ANNUAL SUMMER
SALE
COMMENCES JULY 8th.

Our Prices are always Bargain Prices,
and at Sale Time, when we make
Reductions to Clear Season's Goods,
we make no mistake as Our Prices
Demonstrate.

Write for New Illustrated Catalogue.

ALL ORDERS FOR FURNITURE OF £5 AND OVER WE
DELIVER FREE IN OUR OWN MOTORS.



A Really Comfortable Easy Chair
£4 : 10 : 0 EACH.

These Chairs are large size, made
on well-constructed frames, fully
sprung, including spring front
edge, and upholstered in fine
quality Tapestry in various
designs. Usually sold at £6-19-6.
Also a slightly smaller Chair,
covered in Cretonne, £2-19-6.

SPECIAL!—3 PIECE CHESTERFIELD SUITE, in fine quality Tapestry, 15 Guineas.

Summer Sale
Commences
JULY 8th.

Dicks & Sons Ltd.
172 & 173 HIGH STREET
Cheltenham Spa
50 YEARS REPUTATION FOR VALUE.
TEL. 1007.

HERE WILL BE
BARGAINS
WORTH LOOKING
OUT FOR.



NATIONAL CONFERENCE OF THE DICKENS FELLOWSHIP IN CHELTENHAM.

The Sixteenth Annual Conference of the above Fellowship brought about 80 Delegates to Cheltenham from all over the country, and in conjunction with members from Cheltenham, Gloucester, Tewkesbury and Cinderford branches, who received them, made a very happy party. Delegates after the Town Hall meeting.

Photo by Debenhams, Longman and Co., Ltd., Cheltenham and Gloucester.



**GEORGE'S
LIMITED,**



365-6-7
HIGH STREET,
CHELTENHAM.

*The Premier Caterers
OF THE WEST.*

THE NEW LADIES' TEA
ROOM & LOUNGE NOW
OPEN is the cosiest room out
of London.

Early Morning Coffee. Ices. Wines.

GEORGE'S ICES are noted the
World over—Pure Fruit Juices
and Glo'ster Cream—that's all.

ICED SUNDAES. ICED CREAM SODAS.

TABLE d'HOTE DINNER

Of Seven Courses every evening—7 to 9.

The Only First-Class Restaurant in the Town.

Furnishing Ironmongers & Cutlers.

ELECTRICAL WORK
IN ALL ITS BRANCHES.

PLUMBERS, RANGE FITTERS, &c.

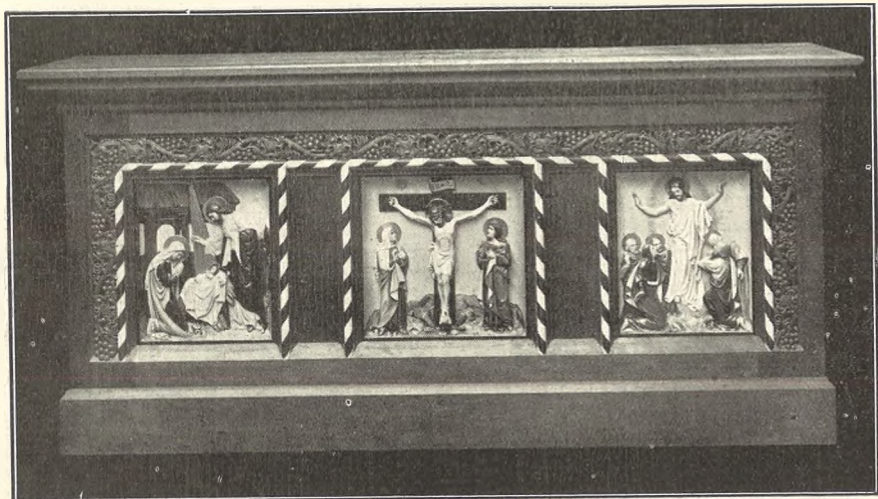
Repairs of Every Description.

CUTLERY GROUND & REPAIRED LAWN MOWER REPAIRS AND
At Short Notice, on the Premises. GRINDING A SPECIALITY.

Stainless Cutlery, Fancy Brass & Copper Goods.
Aluminium & Enamel Cooking Utensils.

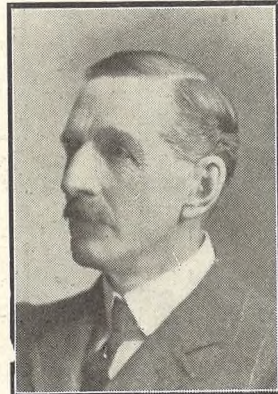
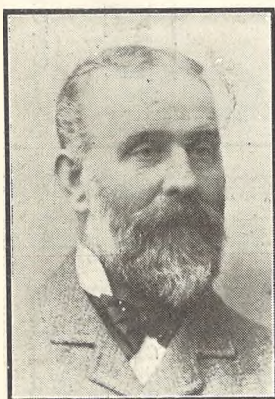
WILKINS & Co. (G. W. GOULD), IRONMONGERS,
AND CUTLERS,

110 High Street, CHELTENHAM.
OPPOSITE PLOUGH HOTEL. PHONE 855.



NEW ALTAR AT SEVERN STOKE.

This beautiful Altar has just been fixed in Severn Stoke Church by Messrs. R. L. Boulton and Sons, Bath-road, Cheltenham. It was executed entirely in oak, with decorated sculptured panels.



Mr. Walter Cook,
Of Woodville, Alexandra-street, Tivoli, who died suddenly on Thursday night, June 15, aged 75 years. He was a wheel-chair man, and had been about with his chair all day and had been gardening during the evening.

Mr. Cosmo Oliver,
Of Yew Tree Cottage, Quedgeley, who was found dead in the Gloucester and Berkeley Canal on Saturday. He was a clerk in the employ of the M.R. Co. at their Gloucester office. His age was 58.

Capt. Archibald Macbean,
Of Acomb House, London-road, Cheltenham, who died on Tuesday, June 13, aged 72 years. He retired from the Army in 1890 after 26 years' service, and had lived at Charlton for 14 years.

PHOTOGRAPH ENLARGEMENTS.

WE CAN ENLARGE TO CABINET SIZE ANY INDIVIDUAL PHOTOGRAPH IN ANY OF THE GROUPS IN THE "GRAPHIC," OR WE CAN ENLARGE THE ENTIRE GROUP. SPLENDID RESULTS GUARANTEED. PRICES ON APPLICATION.

In hope of seeing the rays of the sun strike the so-called Slaughter Stone, the annual pilgrimage to Stonehenge took place on Wednesday morning. The number of visitors was larger than usual, visitors coming from places as far distant as Brighton, Bath, and Bristol. The sun rose at 4.44 a.m. from a perfectly cloudless sky, and its first rays illumined the Slaughter Stone.

"Angling for husbands is a lost art. That is why there are so many single girls," said a woman in Bow County Court on Saturday.

Asked at Bow County Court to keep his wife quiet, a witness replied: "That has been my task for 15 years, but is unaccomplished yet."

Two Special Offers NEXT WEEK: 1,000 YARDS Silk Bourrette

3,000 YARDS WHITE EMBROIDERIES. LANCE'S

Have purchased 1,000 Yards of a French Manufacturer's Stock of

SILK BOURRETTE IN PLAIN AND FANCY STRIPES.

A beautiful Washing Fabric for Ladies' and Children's Wear.

SPECIAL PRICES, 2/11 & 3/11 Yd.

DELIGHTFUL COLOURS, AND 44 INCHES WIDE.

The White Embroidery Purchase

Comprises the Best Quality of

Longcloth Insertions and Edgings, 1 inch to 6 inches wide.

And will be sold at the Exceptional Prices of

4 3/4, 5 3/4, 6 3/4, & 8 3/4 PER YARD.

John Lance & Co., Limited, CHELTENHAM.



Church Sunday School Association Summer Gathering at Leckhampton Rectory.
Amid sylvan surroundings and in genial weather, the above Association (Cheltenham Deanery) met for its annual gathering on Saturday afternoon, June 17th, on the lawn at Leckhampton Rectory, the residence of Rev. and Mrs. F. R. Standfast. There were 140 present. The party after tea.



THE "SANDRINGHAM" CASSEROLE

is handsome and useful. Heavily Silver Plated, it has a fire-proof earthenware lining and cover. Any kind of meat cooked in it is rendered quite tender. It is simple and most economical.

AN IDEAL WEDDING PRESENT. As Illustrated, 40/- . Other Patterns from 30/-.

R. F. Beard, Ltd., Sandringham House, Promenade, Cheltenham.

Moussell Bros., Ltd.

(Opposite G.W.R. Station)

CHELTENHAM

FURNITURE REMOVALS.

BY RAIL OR MOTOR.

Phone 112.

CORSETS MADE TO MEASURE from 25/- Pair. Copyings, Cleanings, and Renovations. SURGICAL BELTS.

MISS FRUIN (Late with Madame Annette), 23 Bath Parade, CHELTENHAM.



ST. STEPHEN'S, CHELTENHAM, K.R.R. CADETS FETE AT POLEFIELD, CHELTENHAM.

A Fete, consisting of Gymnastic Displays by the Cadets, Amusements, and Competitions, with teas, etc., in aid of the Camp Fund, was held at Polefield on Friday, June 16th, by kind permission of Mr. H. Hulton.

- 1.—The Gymnastic Troupe.
- 2.—Horizontal bar tricks, the bar being supported by two Cadets.
- 3.—A pyramid.
- 4.—Spectators at Gymnastic Entertainment.
- 5.—In front is Mr. H. Hulton, of Polefield, with the Vicar, Rev. Hodson.
- 6.—Weighing him.
- 7.—Four Stallholders.
- 8.—Bowling for "a cockerel, two rabbits and a kitten"—a welcome change from the universal pig.

[Photos by Cheltenham Newspaper Co., Ltd. Copies 1/- each, postage extra.]



You can't afford to miss

BLINKHORN'S

SALE

Commencing Friday, 30th June, at 9 o/c.

BLINKHORNS Ltd., :: EASTGATE STREET, :: GLOUCESTER.



ALL SAINTS' GIRLS' CLUB OPERATIC PERFORMANCE.

On Wednesday and Thursday, June 7 and 8, the above club gave two clever performances of a comic opera entitled "Christopher Columbus" in aid of the Parish Room Fund. The Performers.

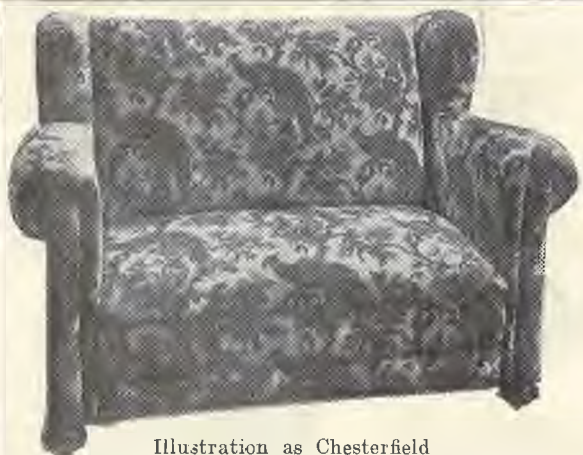


Illustration as Chesterfield

Transformed by one rapid movement from a luxurious Lounge into a beautiful buoyant Bed, with finely woven wire spring mattress and resilient wool mattress.

It is adapted in a few seconds, and a child can operate it.

The "INVISOBED" is the most hygienic combination on the market, and one of its supreme advantages is that the wool mattress can be readily removed for airing without affecting the Lounge in any way.

THE
"INVISOBED"

COMBINED

Bed & Lounge.

Also supplied in Easy Chairs, and in any Covering.



Method of Extending by Pull Bar.

A MASTERPIECE
IN SIMPLICITY
AND ELEGANCE.

The exterior of the Lounge is not used to form the Bed, thereby prolonging its life and preservation.

There is ample space inside the Lounge to store the bedclothes.

Those who see the "INVISOBED" are entranced by its beauty, and amazed by its rapid action.



Illustration when Extended as a Bed.

BARNBY BENDALL & Co., Ltd., Promenade, Cheltenham.