

# THE CHELTENHAM CHRONICLE AND GLO' SHIRE GRAPHIC

With which is Incorporated the Cheltenham "Looker-On."

GRATIS SUPPLEMENT.

Saturday, May 6, 1922.

No. 1,114.

## CHELTENHAM THEATRE AND OPERA HOUSE.

Lessee: ROBERT REDFORD.

The County Theatre. Established 30 Years.

General Manager: H. OSWALD REDFORD

TO-DAY AT 2.30 AND 7.30: "WOMAN TO WOMAN."

NEXT WEEK—"THE CHAPERON" (Mrs. Jones' Husband).

### THE PALACE, High Street, Cheltenham

Continuous Daily, 2.30 to 10.15.

Monday, Tuesday, Wednesday:

ANNA Q. NILLSON in

"The Fighting Chance."

"DOUBLE ADVENTURE."

Comedy, "GAME LADY."

Thursday, Friday, Saturday:

"Narayana,"

By the Immortal Author, Balzac.  
A Pathetic Romance.

"FIGHTING FATE."

Comedy: "A MODEL HUSBAND."

### SPRING SHIRTS AND SHIRTINGS.

Large Variety of PRINT,  
Twill, and other Shirts,  
with Double Cuffs  
and Collar, from 9/6

Lower Qualities, without collars in stock.

Cricket and Tennis Shirts.

Good Selection of Materials  
:: for SHIRTS to Order ::

A. BECKINGSALE,  
111 High St., Cheltenham.

FISHER'S,  
69 REGENT STREET,  
CHELTENHAM SPA.

SPECIAL DISPLAY TENNIS SHIRTS, WHITE  
COATS, SOCKS, Etc. TAILORING.

MARTIN & CO.  
LTD.,  
Promenade, Cheltenham.

Purchase for Cash Antiques of  
all kinds, including Old Silver,  
Jewellery, Sheffield Plate, China,  
Porcelain, Miniatures, etc. Highest  
Prices Given for Rare Pieces.



### Gloucestershire Yeomanry War Memorial.

This fine cross was unveiled on Saturday last on the College Green, Gloucester, facing the West door of the Cathedral. It was executed by Messrs. R. L. Boulton and Sons, Sculptors, of Cheltenham, and designed by Messrs. Cash and Wright, Architects, London, the sculpture panels being by Capt. Adrian Jones, R. A.

[Photo by Cheltenham Newspaper Co., Ltd. Copies 10 x 8 unmounted 2s., mounted 3s. Postage extra.

### WINTER GARDEN, CHELTENHAM.

WEEK COMMENCING MAY 8.

Monday, Tuesday, Wednesday:

"The Place of Honour,"

By ETHEL M. DELL.

Thursday, Friday, Saturday:

"Four Men in a Van"

(And Occasionally a Horse).

HAROLD LLOYD in his Latest  
Comedy, "I DO."

The Romance of the Postal  
Telegraph.

### Lowest Prices.

GARDEN TOOLS—Spades,  
Digging Forks, Wood Trellis.

MILLER,  
IRONMONGER,

163 High St., Cheltenham  
(Facing Fleece Hotel).

### All Your Wants Supplied

If you have a small  
Prepaid Advertisement  
in the "Echo" and the  
"Chronicle." It is the  
combination that does  
it, for it reaches ALL  
Classes.

Promenade, :: Cheltenham.

URWIN.

Telephone 1206.

CAMERA PORTRAITS—  
Differing from the Commonplace

### BUY

The Right STATIONERY  
At The Right PRICE.

LEE, Caxton House,  
WINCHCOMBE ST.,

CHELTENHAM.

For the  
Best

# PIANOS, DALE, FORTY and CO., LTD



**ANZAC DAY IN CHELTHENHAM.**

On Sunday last, April 30th, in remembrance of Anzac Day (which occurred on the previous Tuesday), hundreds of Boy Scouts and Girl Guides marched to the Cheltenham Cemetery and laid wreaths of flowers on the ten graves of Australian soldiers who died and were buried in Cheltenham during the war; and the Deputy Mayor, Ald. C. H. Margrett, gave an address.

- 1.—The ceremony at graveside. All ten of the Anzac graves can be seen.
- 2.—The Deputy-Mayor placing the Town wreath on the grave.
- 3, 4, 5, and 7.—Sections of the Boy Scouts round the graveside.
- 6.—The Deputy Mayor making his speech.

Photos by Cheltenham Newspaper Co., Ltd. Copies 1/- each unmounted, postage extra.

JUST RECEIVED.  
SPLendid NEW MODEL  
OF THE CELEBRATED  
"SMALLWOOD"  
UPRIGHT OVERSTRUNG PIANO



CHOICE MAHOGANY CASE.  
ALL LATEST IMPROVEMENTS.  
Fully Guaranteed. Delivered Free.  
PRICE ONLY

**56 Gns.**  
NETT CASH.

Or Deferred Terms by arrangement.

SOLE AGENTS:—

**CRICHTON'S LTD.,**  
Promenade, CHELTHENHAM.

'Phone 311.  
Telegrams: "Bence, Cheltenham."  
FOR BETTER WALLS & CEILINGS  
USE

**BEAVER BOARD**

ALL SIZES IN STOCK  
AT REDUCED PRICES.

**Geo. Bence & Sons, Ltd.,**  
Timber & Builders' Merchants,  
Fairview Road, CHELTHENHAM.

**PHOTOGRAPH  
ENLARGEMENTS.**

We can enlarge to Cabinet  
Size any Individual Photo-  
graph in any of the Groups in  
the "Graphic," or we can  
enlarge the Entire Group.  
Splendid Results Guaranteed.  
Prices on Application.



**Mrs. Mary Yiend,**

Of North-street, Winchcombe, who died on  
Sunday, April 30th, in her 101st year.  
She completed her centenary on December  
8th, 1921. Her father fought at Tratalgar  
in the next ship to the Victory.

**RISING SUN HOTEL,**  
CLEEVE HILL—GLOS.

Adjoining Golf Course. Fore-  
most for Comfort and Cuisine.  
Finest Position on the Cotswolds

Phone: CLEEVE HILL 2.

**OPEN TO NON-RESIDENTS**

FOR  
Luncheons, Afternoon Teas & Dinners

Tariff on application to the  
Proprietors: Mr. & Mrs. E. S. HART

**BEST QUALITY  
CIDERS**  
IN BOTTLE.—Sparkling and Still

**BARTHOLOMEW,**  
419-420, HIGH STREET,  
CHELTHENHAM.

WINES, SPIRITS, ALES, TABLE WATERS  
and GROCERY. Tel. 13.

**LANCE'S**

INVITE YOU TO  
COMPARE THE

**Quality & Prices**  
OF THE  
**FEATHER  
NECKWEAR**

THEY WILL OFFER FOR  
THE NEXT FEW DAYS.



A becoming MARABOUT CAPE (as  
sketch), 45 inches long, eight strands  
wide, in Black, Grey, and Nigger.  
SPECIAL PRICE ... 37/6.

May be had in Clipped Ostrich, in  
shades of Grey, Nigger, Black,  
Putty, White, Mole, and Natural,  
at 45/9.

A Huge Selection of Styles.  
Prices from 9/11 to 75/-.

**John Lance & Co.,**  
LIMITED,  
CHELTHENHAM SPA.



**COTSWOLD HUNT PUPPY SHOW.**

The annual Puppy Show of the Cotswold Hunt was held at the Kennels, on Thursday, April 27th, a large company being present. George Travers showed a capital entry, especially of dog hounds. Mrs. Muir, who was present at the show, and was responsible for the prizes, afterwards entertained the puppy walkers, judges, and committee to lunch at the Royal Hotel.

1—Col. Elwes and Mr. Blenchley, M.F.H. (Heythrop), the latter one of the judges.  
 2—Mrs. Muir with Messrs. Preston-Jones, L. R. Peel, and Willes.  
 3.—Interested spectators.  
 4.—Ladies, some of whom walked puppies.  
 5 and 6.—Keen critics of a good hound.  
 7—Mr. H. Newman with his winning couple, one of which also won 1st prize for dog hounds.  
 8—Part of the large company present.  
 9.—Judging the dog hounds.

Photos by Cheltenham Newspaper Co., Ltd. Copies 1s. each, by post 1s. 2d.

**Art Craftsmanship in Cheltenham.**

**SOUVENIR SUPPLEMENT.**

During the past month an Exhibition of Artistic and Beautiful Work of Four Cheltenham Firms—Messrs. H. H. Martyn & Co., Ltd., R. L. Boulton & Sons, R. E. & C. Marshall, Ltd., and Hancock & Son—has been held at Cheltenham Art Gallery. Probably no other town in England could have produced such a display of superb Craftsmanship in these particular branches. The following eight pages illustrate their work.

THE romance of business has seldom been more strikingly illustrated than in the development of the work of Messrs.

**H. H. Martyn & Co., Ltd.,**

Sunningend Works, Cheltenham; and it is possible that there are residents of Cheltenham at present who are unaware that in their town is executed some of the finest decorative work that the world can produce.

Founded some fifty years ago as Monumental Works, to which wood-carving was added a little later, the beauty and design of their work soon won for Messrs. Martyn more than local appreciation, and in less than five years from its inception, the Company gained the recognition of Royalty, and was entrusted with work for H.R.H. The Duke of Albany. To-day Messrs. H. H. Martyn hold a Royal Warrant as Architectural Decorators to H.M. King George V., and have carried out much beautiful work in the Royal Palaces, etc.

The Lime Carving, which has been a speciality of the firm for so many years, is second only to Grinling Gibbons, whose work it closely resembles.

Among the decorative arts in which Messrs. H. H. Martyn have gained international fame are wood-carving, panelling and joinery, sculpture, fibrous plaster work, stained glass, marble work, bronze, wrought iron and other metal work, and specimens of their work may be seen in such buildings as Buckingham Palace; Windsor Castle; British Embassy, Madrid; British Centenary Buildings, Buenos Aires; University of South Africa, Cape Town, etc., etc. In Churches, Cathedrals, and other buildings of historical and architectural interests are embodied work from the Company's Studios.

It is also interesting to note that Cheltenham played an important part in the celebrated Queen Victoria Memorial, Calcutta, opened by the Prince of Wales in December, Messrs. H. H. Martyn and Co. having executed the magnificent bronze figure of "Victory" (16ft. high) which surmounts the main dome, together with bronze entrance gates, groups of statuary, and stained glass.



WROUGHT IRON ENTRANCE DOOR, ALDFORD HOUSE, LONDON.

G. A. Grawley, Esq., Architect. Executed by H. H. Martyn & Co., Ltd.



STONE REREDOS,

MALVERN COLLEGE CHAPEL.

Designed by Sir A. Blomfield, F.R.I.B.A.

Sculptors, H. H. MARTYN & CO., LTD.



METAL : WORK  
OF EVERY DESCRIPTION.

COMPETITIVE  
DESIGNS AND ESTIMATES.

HANCOCK & SON,  
CRAFTSMEN IN METAL,  
CROWN IRON WORKS,  
BENNINGTON STREET, CHELTENHAM SPA.

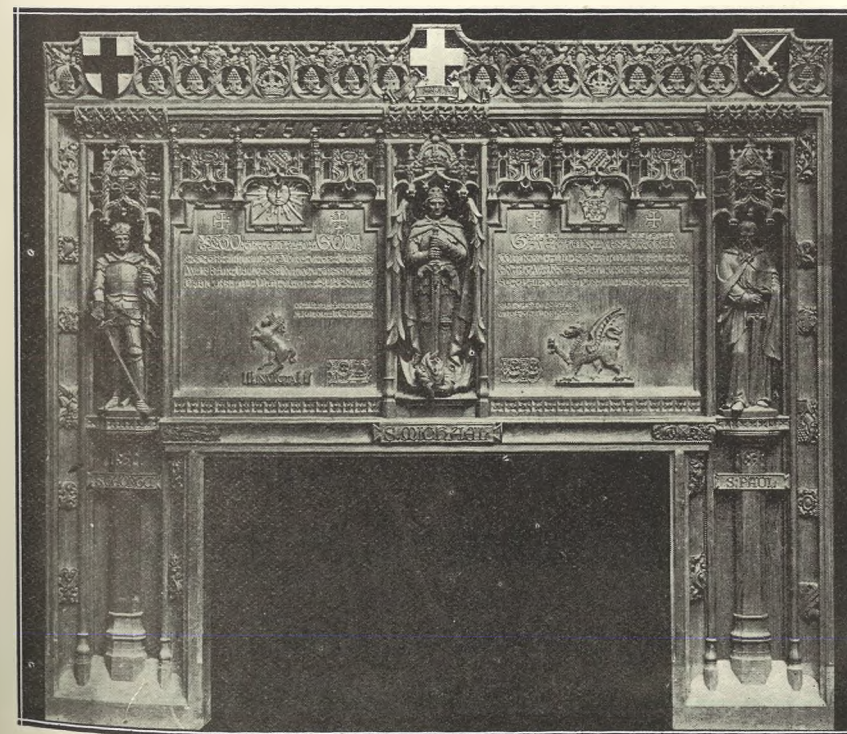
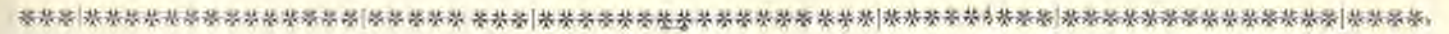
PERIOD METAL WORK & REPAIRS TO ANTIQUES.

Gates, Railings, Ballustrades. Church Screens, &c.  
Signs and Canopies. Dog Grates, Fire Irons, &c.  
Hinges, Handles & Locks. Lanterns, Vanes, &c.  
General Builders' Work.

WINDOWS & CASEMENTS IN STEEL OR BRONZE

THIS WROUGHT IRON PANEL WAS ON  
VIEW AT THE ART CRAFTS EXHIBITION

We solicit enquiries from Architects who require work carried out accurately to their Own Designs.



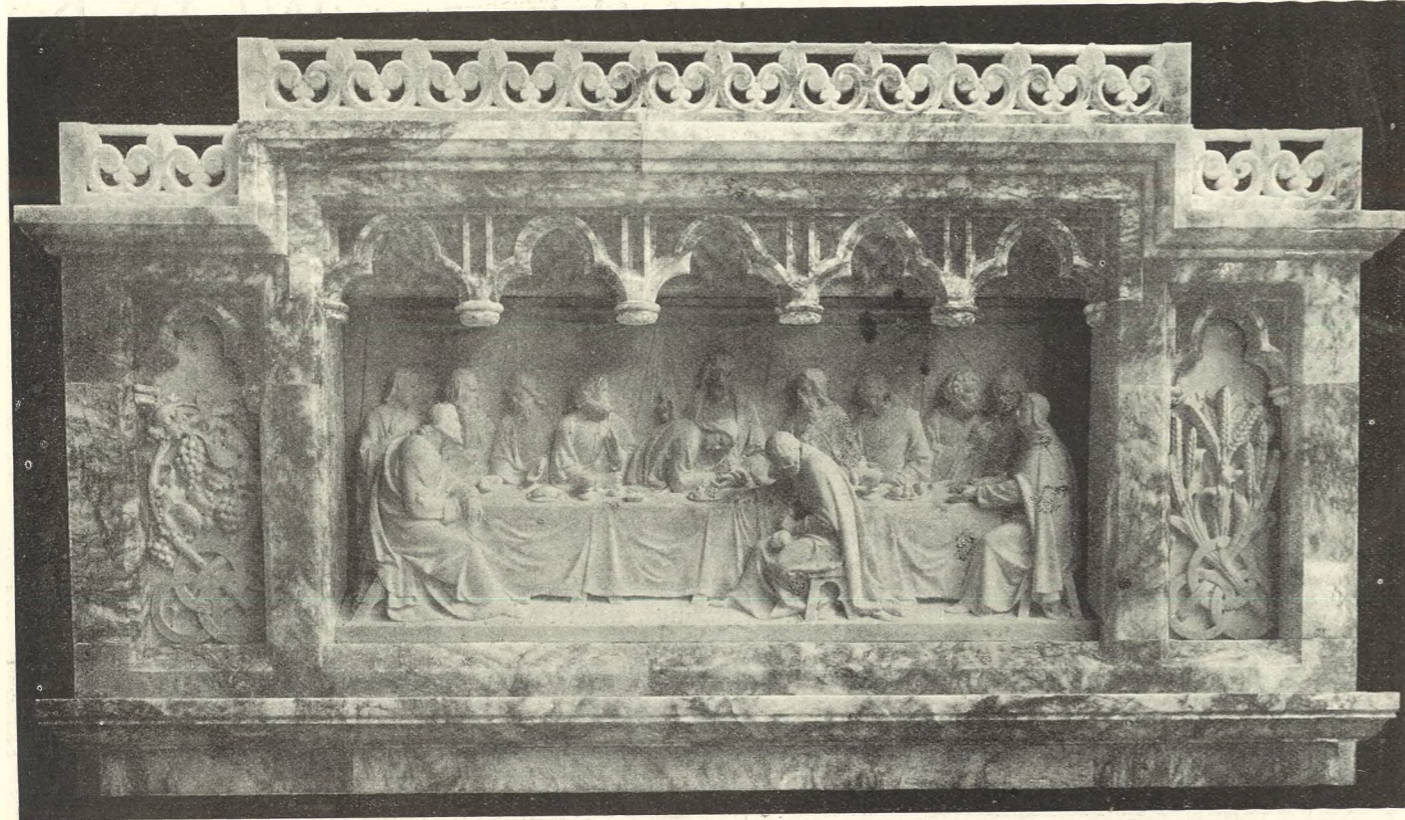
A BEAUTIFUL WAR MEMORIAL.

**R. L. Boulton & Sons,**  
SCULPTORS,  
*Bath Road, Cheltenham.*

This Memorial and the work  
illustrated on the following  
three pages has been executed  
by the above noted firm of  
Sculptors.

**A Beautiful War Memorial.**  
General Lord Horne recently unveiled this  
Memorial in Canterbury Cathedral to the  
memory of officers and men of the Buffs  
(East Kent Regiment) who fell in the Great  
War. It is executed in oak, toned to match  
the old surroundings, and Messrs. R. L.  
Boulton and Sons, Sculptors, of Bath-road,  
Cheltenham, are to be congratulated on the  
able manner they have carried out the fine  
design of Mr. W. D. Caroe, the architect,  
Westminster.

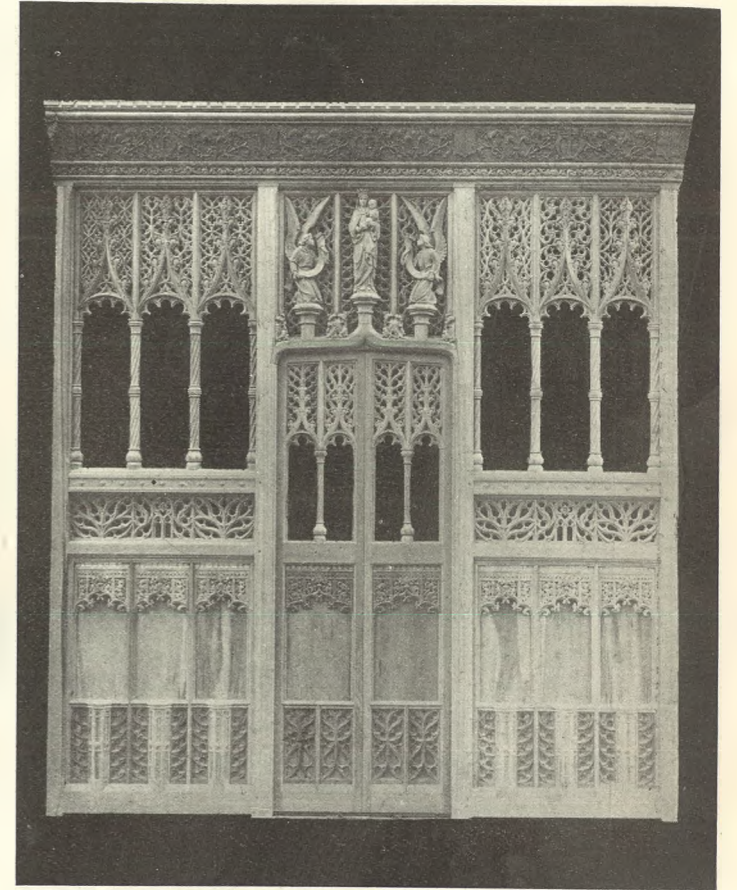
R. L. Boulton & Sons, Sculptors, Bath Road, Cheltenham.



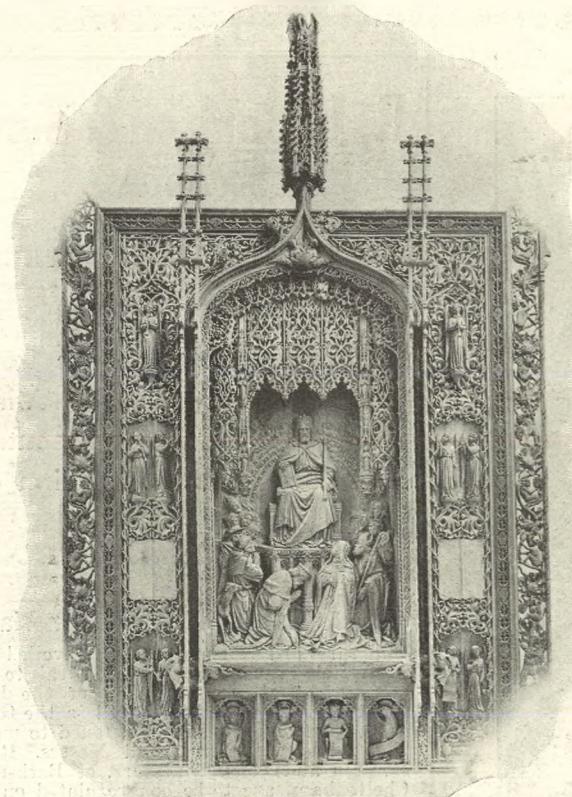
"LAST SUPPER GROUP." Executed for His Majesty King Edward VII. for Whippingham Church Reredos in Statuary Marble and Alabaster.

R. L. Boulton & Sons, Sculptors, Bath Road, Cheltenham.

Model of Statue of Edward the Confessor. executed for Her Late Majesty, Queen Victoria, submitted for Her Majesty's approval at Windsor Castle.

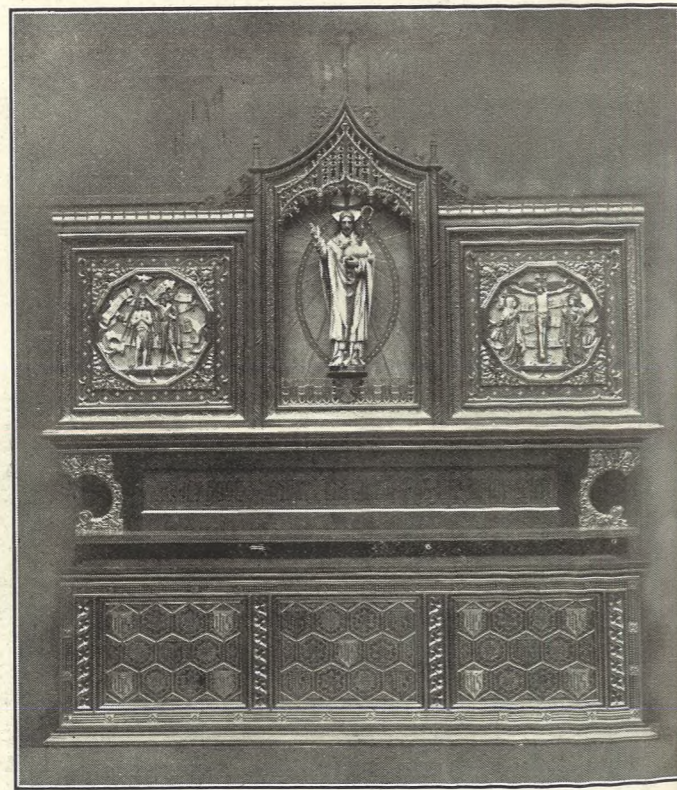


Screen executed in Oak and fixed at St. Aidan's Church, Birmingham. Architect, F. Bligh Bond, F.R.I.B.A.



**A BEAUTIFUL REREDOS.**

The above is a portion of an Oak Reredos to the design of J. Harold Gibbons, Esq., M.C., F.R.I.B.A., London, and erected at St. Chad's Church, Leeds, by R. L. Boulton and Sons, of Bath Road, Cheltenham.



Centre Portion of Altar executed for St. Luke's, Newport, Monmouth. Architect, J. Coates Carter, Esq., F.R.I.B.A., Prestbury. This part was on view at the exhibition at Art Gallery, where it was photographed. [Photo by Cheltenham Newspaper Co., Ltd.]

**R. L. Boulton & Sons,**  
Sculptors,  
BATH ROAD,  
CHELTENHAM.

Medals: London and Paris.  
Enquiries are invited for any kind of Church Fittings or Monuments in Marble, Alabaster, Granite, Stone, Wood, and Metals. — All Estimates Free.

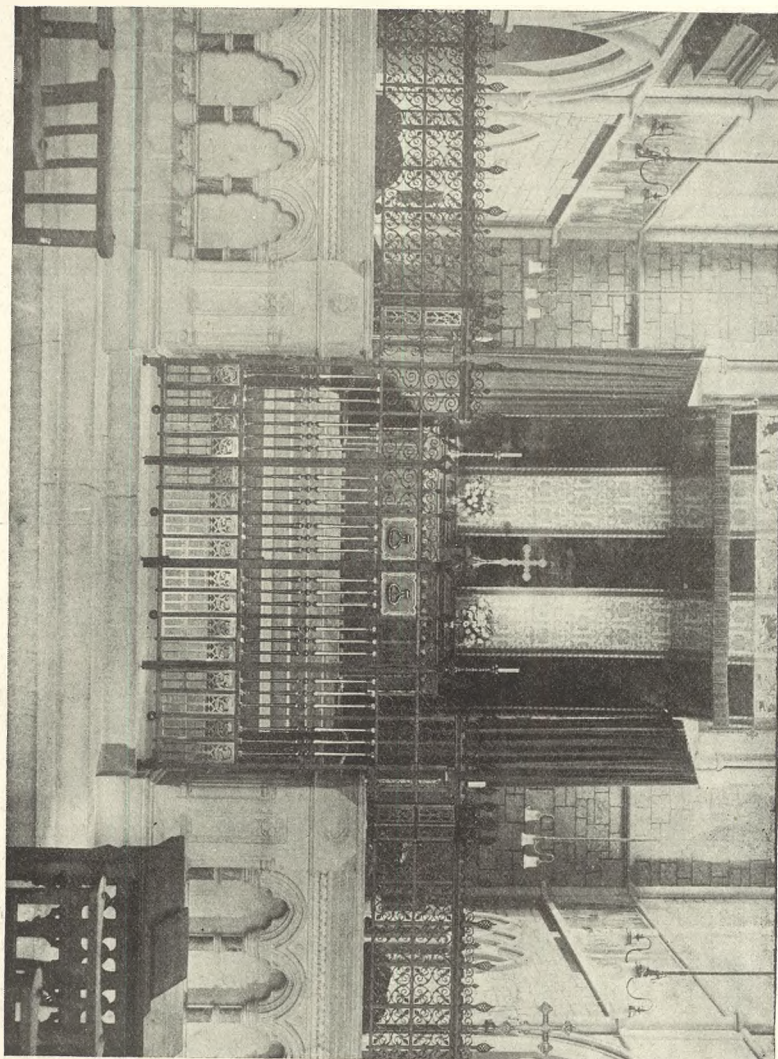


Three Mosaic Panels, for India, inlaid with Mother of Pearl. Architect, G. H. Fellowes Prynne, F.R.I.B.A.



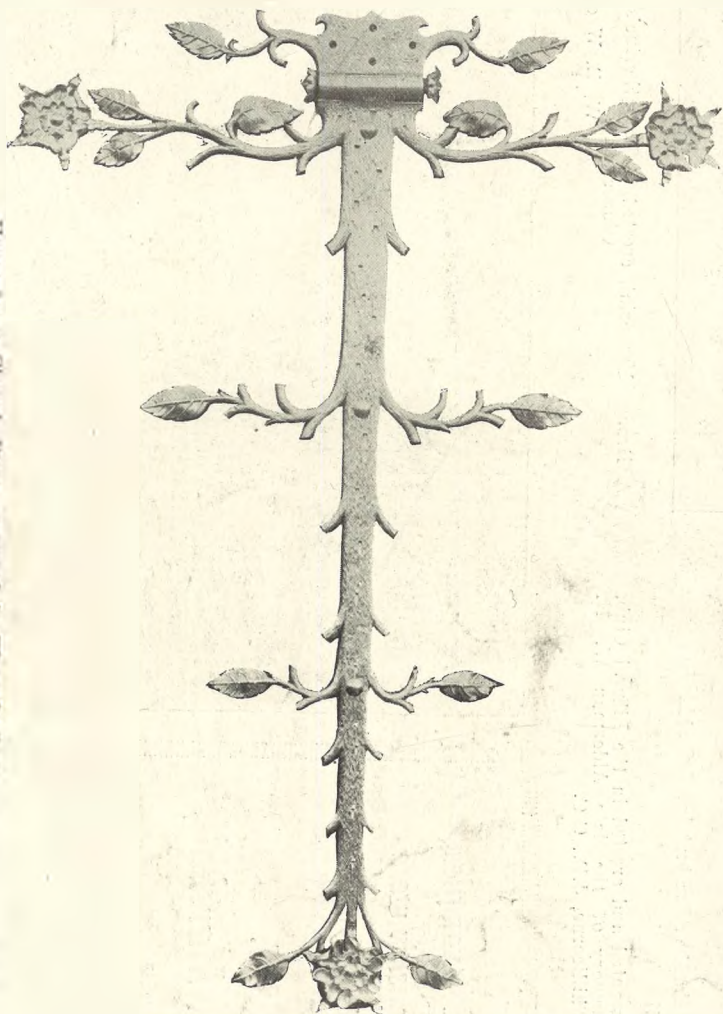
**CHELTEMHAM COLLEGE SOUTH AFRICAN WAR MEMORIAL BY MESSRS. R. L. BOULTON AND SONS.**

This work was gained in competition out of chosen firms in the United Kingdom, and is considered one of the finest Reredos of its style in the country. Many of the figures were modelled by Mr. John Angell, whose work in this and other years' Royal Academy exhibitions stamp him as one of our leading sculptors. The firm also executed the other main features in this Chapel in Oak and Marble. Designed by Messrs. Prothero, Phillott and Barnard, Architects, Cheltenham.



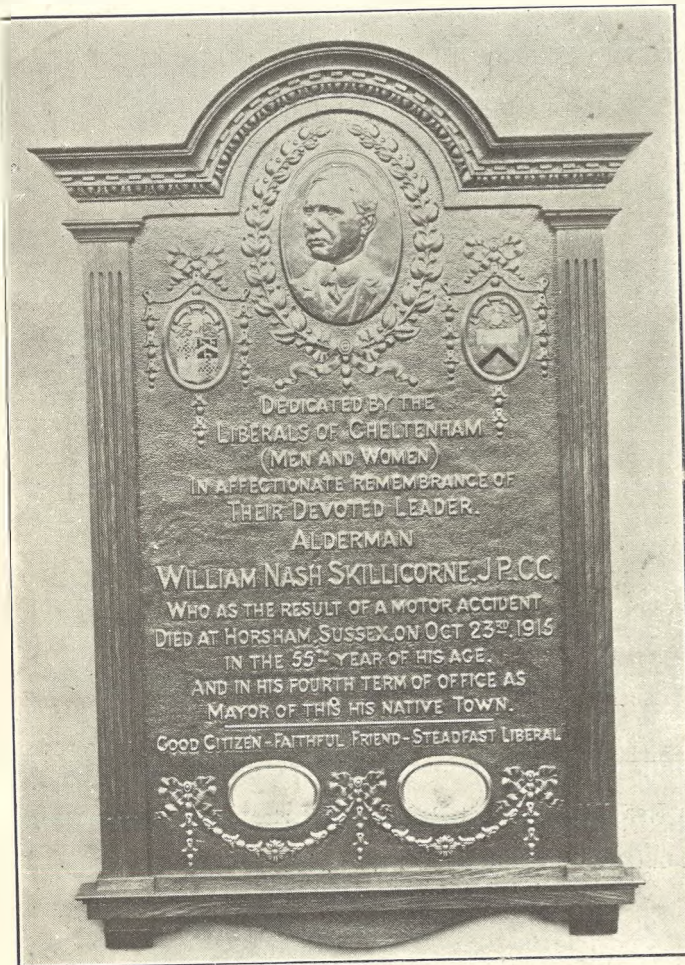
A Screen erected as part of a War Memorial, executed in Iron and Bronze, at Budleigh Salterton, Devon.

G. A. Fellowes Pryme, F.R.I.B.A., Architect.

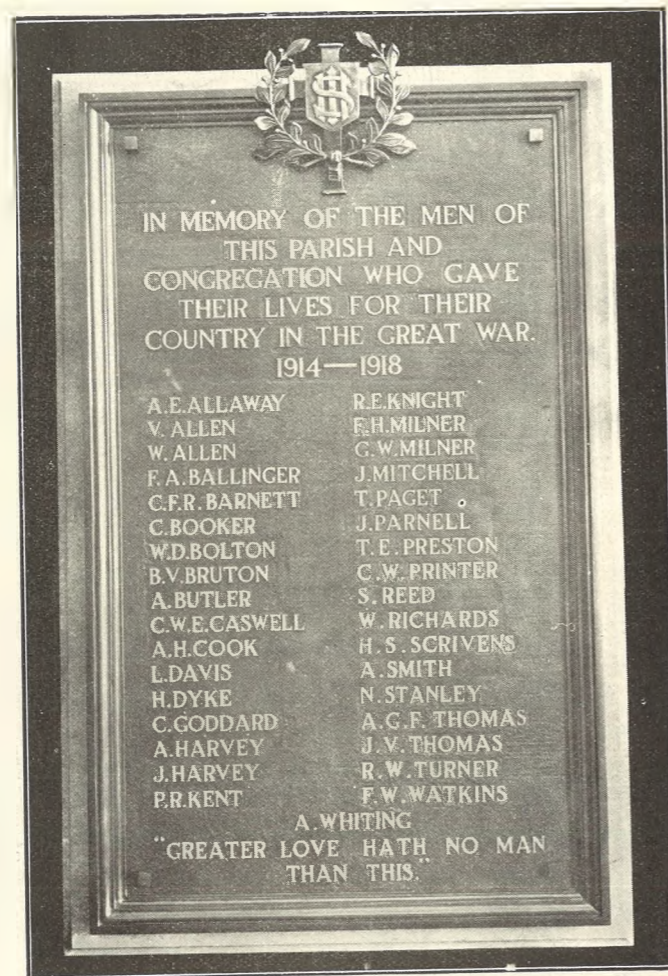


Hinge for a Church Door, executed in Wrought Iron, L. W. Barnard, Esq., F.R.I.B.A., Architect.

The above Examples of very Fine Craftsmanship are the Work of Messrs. R. E. & C. Marshall, Ltd., Cheltenham.



This Memorial was executed and erected in the Liberal Club, Cheltenham, to the memory of the late Alderman W. N. Skillicorne, J.P., C.C.

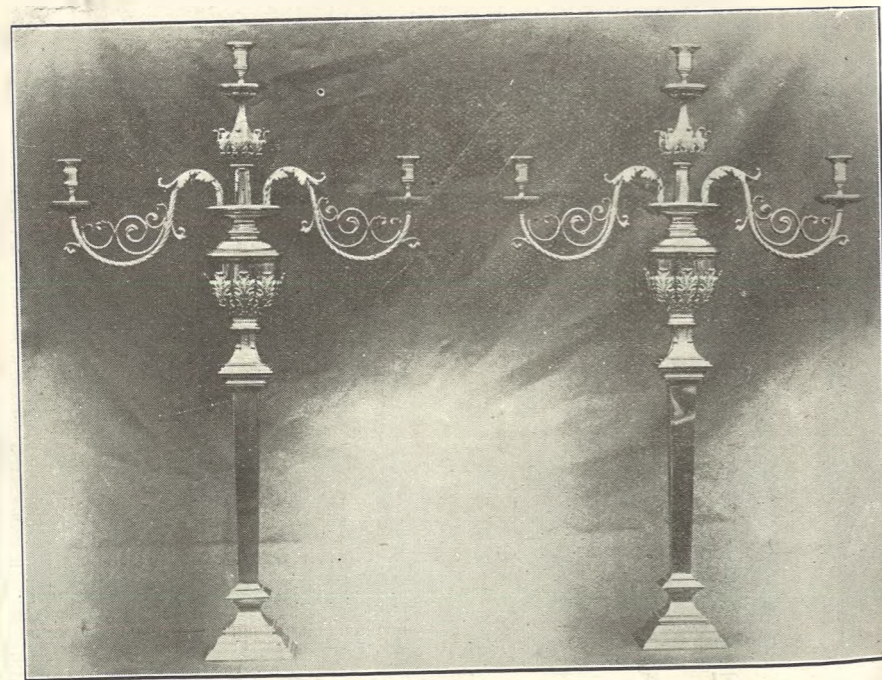


A Bronze Memorial, erected in St. Catherine's Church, Gloucester. W. B. Wood, Esq., Architect.

These fine examples of craftsmanship were executed by

MESSRS.  
**R. E. & C. Marshall,**  
Limited,  
Cheltenham,

who would be pleased to submit sketches and quotations for any similar work.



Choir Candelabra, in Electro-Gilt Brass, at Henbury Church, Bristol. Messrs. Bligh, Bond, and Anderson, Architects.



**GLOUCESTERSHIRE YEOMANRY WAR MEMORIAL UNVEILED.**

The beautiful memorial cross erected on College Green, Gloucester, to the memory of over 200 officers and men of the Gloucestershire Yeomanry who fell in the war was unveiled by Lieut-General Sir P. W. Chetwode, Bart., K.C.B., K.C.M.G., D.S.O., on Saturday afternoon last before a tremendous crowd of relatives, ex-members of the corps., and friends of the regiment.

1.—Gen. Chetwode unveiling the memorial.  
2.—The Festival Choir on the Green awaiting the service.  
3.—Part of the large number of the bereaved relatives.  
4 and 9.—Police keeping the crowd back in College Green.  
5.—Ex-members of the regiment leaving the Cathedral.  
6.—The guard of honour.  
7.—Ex-officers of the regiment fraternising after the ceremony.  
8.—General Chetwode inspecting the guard of honour.

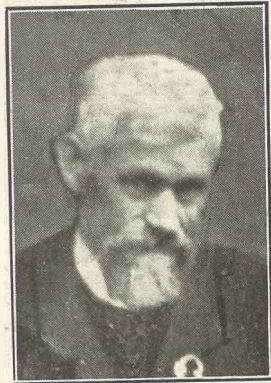
Photos by Cheltenham Newspaper Co., Ltd. Copies 1s. each, by post 1s. 2d. unmounted.



**"WAITING FOR THE 'BUS."**

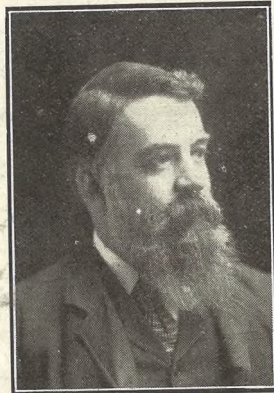
Members of the Cheltenham Amateur Operatic and Dramatic Society in the amusing curtain-raiser with above title.  
 Back row.—Mrs. Richardson, Miss Anley, Mr. I. D. Yeaman, Mrs. Leeson, Mr. J. Paterson.  
 Front row.—Mrs. Leedham, Dorothy Palmer, Enid Leeson, Misses Vera Growse, — Maynard, A. Kelley, Weatherhead.

[Photos by Cheltenham Newspaper Co., Ltd.]



**Mr. Henry Thomas Young,**

Of Naunton Nurseries, Bath-road, Cheltenham, who died on April 26th, aged 69 years. He was a well-known horticulturist, and was for many years connected with the Cheltenham Root, Fruit, and Grain Society's Show.



**Mr. E. E. White,**

Of 22 Julian's-road, Stevenage, Herts, who died on Thursday, March 23, through falling down the stairs in the Charing Cross Underground Station, aged 75 years. He was for 30 years official photographer to Cheltenham College, and carried on the business known as Dighton's Art Studio

**PAINLESS DENTISTRY,**

**Edwards and Hirst,**  
 THE DENTAL SURGERY  
 BANK CHAMBERS,  
 131 High Street, Cheltenham  
 (Corner of North Street).

Advice and Estimates Free.  
 Hours—10 till 7.

**Moussell Bros., Ltd.**  
 (Opposite G.W.R. Station),  
 CHELTENHAM.  
**FURNITURE REMOVALS.**  
 BY RAIL OR MOTOR.

'Phone 112.

**Shirer & Haddon,**

**CHELTENHAM.**

We are Showing the Newest Styles in  
**Jumpers & Sports Coats**  
 FOR TENNIS AND SUMMER WEAR.

New Shetland  
 JUMPER, with  
 pockets, in several  
 new shades,  
 Price **25/9**

In Artificial Silk.  
 39/6.

VISIT OUR NEW  
 ART  
 NEEDLEWORK  
 SECTION.



Smart  
 Striped  
 Wool  
 JUMPER,  
 Newest  
 Colourings,  
 Price  
**15/11.**

Special  
 Values  
 in  
 Summer  
 Blouses.

Useful Wool CAR-  
 DIGAN, in all the  
 leading colours,  
 15/11.

Heavier weight,  
 19/11.

A Large Selection  
 of Brushed Wool  
 Sports Coats,  
 Price 35/9 & 39/6.



VISIT OUR NEW SHOWROOMS FOR LONDON  
 FASHIONS AT MOST MODERATE PRICES.



**Y.M.C.A. CONFERENCE IN CHELTENHAM.**

A two-day Conference of delegates from the Western Divisional Union of Y.M.C.A.'s was held last Saturday and Sunday at the Cheltenham Y.M.C.A. Delegates and friends on the steps on Saturday afternoon.

[Photo by Cheltenham Newspaper Co., Ltd.]



**NORWOOD BOWLING CLUB OPENING.**

Members and Visitors at the Opening of the Season of the Norwood Bowling Club, Cheltenham, on Saturday, April 29th. Mr. H. G. Lyne, President (sitting in centre), entertained the company to tea.

[Photo by Cheltenham Newspaper Co., Ltd. Copies 1/9 unmounted, 2/6 mounted.]

**JEWELLERY AND ANTIQUES**

Wanted to buy, for High Cash Prices, Old Gold and Silver for melting or re-sa.e. Also anything Antique in Furniture, China, Old Glass, Prints, etc. Established 70 Years.

**HARRY O. BOX,**

JEWELLER,  
 339 HIGH STREET, CHELTENHAM.  
 (Nearly Opposite Grammar School).

**CORSETS MADE TO MEASURE from 25/- Pair.**  
 Copyings, Cleanings, and Renovations.  
**SURGICAL BELTS.**

**MISS FRUIN** (Late with Madame Annette),  
 23 Bath Parade, CHELTENHAM.

**THE FOOT SPECIALIST.**

**MR. A. LFD. J. VENTRIS-FIELD,**

SURGEON-CHIROPODIST, ORTHOPAEDIST, AND ELECTRO-THERAPEUTIST.

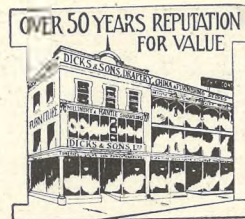
Author "The Treatment of Talipes Valgus," etc. Consultant H.M. Forces.

Surgery:  
 6 RODNEY PLACE, CHELTENHAM.  
 Telephone 1266.





Ladies' White PANAMA HATS, for Sports Wear and soft to fold up, as illustration, trimmed ribbon band. Remarkable Value. **3/11½** & **6/11½**. Also large Blocked Shapes, trimmed ribbon, 9/11 to 35/6.



**Reliable Goods**  
AT MODERATE PRICES.



HERE ARE A FEW EXAMPLES OF VALUE FOR TO-DAY'S WEAR.



A Smart HAT, in fine quality Pedal Straw, trimmed wide ribbon, all colours and various shapes, similar to illustration **12/11**. Also in Plain Straw and Crinoline, 5/11 to 21/6.



A Smart well-cut BLOUSE, in fine quality White Voile, trimmed lace and embroidery, as illustrated, **9/11**. Also similar styles in White Voile, 2/11½ to 18/11.



A Smart Costume in fine quality All-Wool Gabardine, well cut and beautifully tailored, trimmed Black Silk Braid, in Navy..... **£2.19 6**.

We are also making a Special Offer of a Smart, Well-tailored COSTUME, plain style with belt coat fully lined Silk, finished broche, in All-Wool fine quality Gabardine, in Navy, Mole, Nigger, Beaver. Today's value 63/-. Now **52/6**.



A Dainty BLOUSE, as illustrated, in extra heavy quality Crepe de Chene, beautifully cut and made, in all colours. **21/6**. Plain SHIRT BLOUSES, in heavy Jap Silk **10/11**. Plain SHIRT BLOUSES, Tricolene Cloth, in Plain Colours. **10/11**. Also in Striped Cambrics and Crepe Cloths, **1/11½** to **6/11**.

**Dicks & Sons Ltd.**  
172 & 173 HIGH STREET  
**Cheltenham Spa**  
50 YEARS REPUTATION FOR VALUE.  
TEL. 1007.

**THE CHELTENHAM CHRONICLE AND GLOUCESTERSHIRE GRAPHIC**

With which is incorporated the Cheltenham "Looker-On."  
GRATIS SUPPLEMENT. Saturday, May 13, 1922. No. 1,115.

**CHELTENHAM THEATRE AND OPERA HOUSE.**  
Lessee: ROBERT REDFORD. The County Theatre. Established 30 Years. General Manager: H. OSWALD REDFORD.

TO-DAY AT 2.30 AND 7.30: "THE CHAPERON" (Mrs. Jones' Husband).  
NEXT WEEK--Mr. Ernest Dane in repertoire of powerful plays--"Caroline," "The Mollusc," "Capt. Drew on leave."

**THE PALACE, High Street, Cheltenham**

Continuous Daily, 2.30 to 10.15.  
Monday, Tuesday, Wednesday: CATHERINE CALVERT in "Dead Men Tell No Tales" From the famous story by E. W. Hornung. A Vitagraph Super Feature. "DOUBLE ADVENTURE." "TRAVELOGUE."  
Thursday, Friday, and Saturday: Rex Beach's Famous Story, "The Silver Horde," A Big Production of the Frozen Stretches of Alaska. "FIGHTING FATE." Century Comedy, "A BUNCH OF KISSES."

**SPRING SHIRTS AND SHIRTINGS.**

Large Variety of PRINT, TWILL, and other Shirts, with Double Cuffs 9/6 and Collar, from 9/6. Lower Qualities, without collars in stock. Cricket and Tennis Shirts. Good Selection of Materials :: for SHIRTS to Order. ::

**A. BECKINGSALE,**  
111 High St., Cheltenham.

**FISHER'S,**  
69 REGENT STREET, CHELTENHAM SPA.

HIGH-CLASS TAILORS. SPECIALITY—SHIRTS TO MEASURE. HOSIERY, TIES, HANDKERCHIEFS.

**MARTIN & CO. LTD.,**

Promenade, Cheltenham. Purchase for Cash Antiques of all kinds, including Old Silver, Jewellery, Sheffield Plate, China, Coins, Miniatures, etc. Highest Prices Given for Rare Pieces.

**FOUR GENERATIONS.**



Four generations of an old Cheltenham family: Mr. Thomas Lewis, of Bayshill-terrace; his son, Mr. Thomas Henry Lewis; his grandson, Mr. Thomas Percy Lewis; and his great-grandson, Thomas Ernest Douglas Lewis.

A VISIT TO THE HOUSE OF SHIRER & HADDON IS A REAL EDUCATION OF WHAT IS ACCOMPLISHED BY THE PROGRESSIVE MIND. THEIR FURNISHING WINDOWS HAVE ATTAINED A DEGREE OF BEAUTY, AND STYLE SELDOM SEEN OUTSIDE LONDON.

IN THEIR DRAPERY STORE THE LATEST FEATURE IS AN ART NEEDLEWORK SECTION WHICH, COMBINED WITH A LARGE STOCK OF THE FAMOUS "PICTORIAL REVIEW" PAPER PATTERNS FOR HOME DRESSMAKING, HAS PROVED AN IMMEDIATE SUCCESS. THE PRICE OF THE PATTERN IS 1/6, AND ALL ARE THE LATEST IN FASHIONS FOR LADIES AND CHILDREN.

**WINTER GARDEN, CHELTENHAM.**

THOROUGHLY VENTILATED. The Coolest Spot in the Town. MONDAY, MAY 15th, AND THE WHOLE WEEK, "OVER THE HILL," "An Epoch Making Production."—"The Times." As shown for over 12 months in New York.

ALWAYS FAVOURITE!  
ALWAYS FIRST. ALWAYS BEST ALWAYS USED—

:: Farrar's ::  
**A.C. Rubbles.**

**Wm. D. Farrar,**  
103 High Street, CHELTENHAM.  
Phone 220.

Promenade, :: Cheltenham.

**URWIN.**  
Telephone - - 1206.  
The Studio for natural photographs of Children.

BUY  
**The Right STATIONERY**  
At The Right PRICE.  
**LEE,** Gaxton House, WINCHCOMBE ST., CHELTENHAM.

For the Best **PIANOS, DALE, FORTY and CO. LTD.**



**THE CORRECT TIME BY WIRELESS.**

View of Waite and Son's Establishment, 349 High Street, Cheltenham, showing their new public Time Flashing Device. The Greenwich Mean Time Signals, as they are received by Wireless, are flashed on mirrors in coloured figures. Those from the Eiffel Tower at 11.45, 11.47, and 11.49 a.m.; those from Nauen (Berlin) at 12.57, 12.58, 12.59 and 1 p.m. A loud gong sounds at the 11.50 a.m. and 1 p.m. signals.



**A FINE CATHOLIC ALTAR.—St. Dominic's, Harrow.**

A. Young, Esq., F.R.I.B.A., Architect.

The firm of R. L. Boulton and Sons still continue to excel in high-class Sculpture and Carving, as is instanced in the above illustration. They will be pleased to give estimates for any kind of Memorials in Wood, Marble, Alabaster, Stone, Granite, or Metals.

R. L. BOULTON & SONS, BATH ROAD, CHELTENHAM.

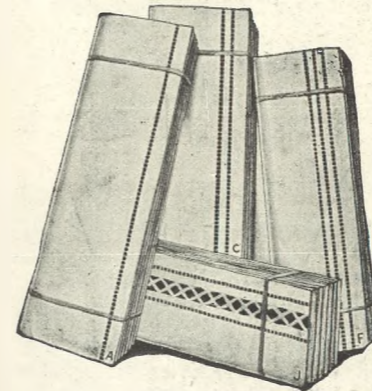


SERG.T.-MAJOR WM. HENRY BARRETT, Of 78 Upper Bath-road, Cheltenham, who died on May 7 at the General Hospital, aged 67 years. He had been gymnasium and swimming instructor at Cheltenham College for the past 36 years, and was given a military funeral on Wednesday last.

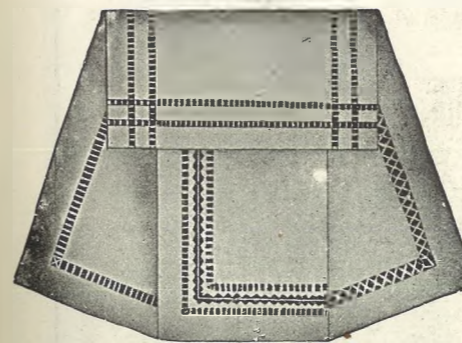
**READ THE "ECHO" EVERY DAY.**

**SHIRER AND HADDON, CHELTENHAM SPA.**

Exceptional Offer in **Household Linen DEPARTMENT.**



- Pure **White Hemmed Sheets**, Plain and Twill ..... **12/11** per Pr.
- Real Witney Blankets**, for Single Beds, from ..... **16/11** per Pair.
- British Printed **Bedspreads**, in pretty Designs ..... **6/11** Each
- Real **Indian Printed Bedspreads**, ..... **9/11** Each



- Strong Pillow Cases** ... **1/0½** Each
- Super Quality Pillow Cases**, **1/6½** Each.
- Hemstitched Pillow Cases**, **1/11½** Each.
- Linen Finished Hemstitched Pillow Cases** ..... **3/6** Each
- Reliable Huckaback Towels**, with Damask Border ..... **1/11½** Each
- Pure Irish Linen Huckaback Towels**, ..... **2/11½** Each
- "Christy's" White Bath Towels**, ..... **2/11½** Each
- Pure White Irish Damask Breakfast and Supper Cloths** ... **4/11** Each



**Miss Aimée Grattan-Clyndes**, (Mrs. Walter Saltoun), The Authoress of "Seven Nights in London," at the Coliseum Theatre this week. A well-known actress in Drury Lane drama. She is a daughter of the celebrated actor, Mr. J. H. Clyndes, of the Adelphi and Drury Lane Theatres, London.



**Mr. Walter Saltoun**, Proprietor of the Coliseum Theatre Repertory Company, and Author of fifteen successful Plays. Originally trained for journalism by the late Cornelius Brown, F.S.A., who was also the tutor of the late Nat Gould, the famous sporting writer.

**PAINLESS DENTISTRY,**  
**Edwards and Hirst,**  
**THE DENTAL SURGERY**  
**BANK CHAMBERS,**  
**131 High Street, Cheltenham**  
(Corner of North Street).

Advice and Estimates Free.  
Hours—10 till 7.

**LANCE,**

OF **CHELTENHAM SPA.**



**THE "Badminton" TAILORED SHIRT**

Tailored Shirt, in **White Jap Silk, 29/6.**

**The Perfect Shirt for Ladies.**

MADE BY HIGHLY - SKILLED WORKERS & EXPERT CUTTERS.

Ranges of various Stripes, White, and Self Colours, both in Silks & Cottons. Sizes—13 to 15½. ∴ Moderate Prices.

**HIGH-CLASS DRESSMAKING.**

Exclusive Styles.  
Perfect Workmanship.  
High-Grade Materials.

**John Lance & Co., LIMITED, CHELTENHAM SPA.**



**CHEL TENHAM STEEPLECHASES.**

A most successful two-day meeting was held on Wednesday and Thursday, this week, the conditions being delightful. 1.—Ledbury Chase, won by Habton. 2.—F. B. Rees gives a tip. 3.—Habton winning Ledbury Chase. 4.—Greenmount beats Speen in Southam Hurdle. 5.—The Sale Ring. 6.—Southam Hurdle Race. 7.—The brothers Redford of theatre fame. 8.—Messrs. Goswell and Harrison with a friend. 9.—Aerolite, winner of Amateur Riders' Hurdle Race. (Photos by Chelt. News.)



**TEWKESBURY WAR MEMORIAL UNVEILED.**

The Memorial to Tewkesbury men who fell in the Great War was unveiled and dedicated on Sunday afternoon last before a large crowd. It is erected at The Cross, and is gracefully designed in hard grey Doulting stone.

- 1.—Rev. E. F. Smith (Abbey Vicar), who dedicated the memorial, Mrs. Didcote (seated), who lost three sons in the war and who unveiled the memorial, Mr. J. R. Matthews, K.C. (Recorder of Tewkesbury), and members of Corporation.
- 2.—Mrs. Didcote laying wreath on memorial.
- 3 and 5.—Ex-Servicemen, under Lt.-Col. E. V. Thompson and Lt.-Col. H. Strevens, D.S.O., M.C.
- 4.—Salvation Army members and children.
- 6.—The Abbey Choir.
- 7.—Ald. Baker, Deputy-Mayor and Chairman of Memorial Committee (right), presents the Memorial to the Mayor for the town.
- 8.—The Memorial.
- 9.—Members of the Corporation.

[Photos by Cheltenham Newspaper Co., Ltd. Copies 1s. each unmounted, postage extra.]



**POST OFFICE WORKERS' CONFERENCE IN CHELTENHAM.**  
VIEW OF TOWN HALL WITH CONFERENCE IN PROGRESS.

Local Executive Group in next Saturday's issue. [Photo by Debenhams, Longman & Co., Ltd., Cheltenham.]

\*\*\*\*\*

**HIGH PRICES**

Paid for Ladies', Gentlemen's, and Children's Discarded Wearing Apparel—Boots, Shoes, etc. A Postcard to

**DEANE'S WARDROBE DEPOT,**  
31 Worcester Street, GLOUCESTER

Will Receive Prompt Attention.

THE NOTED HOUSE FOR FAIR PRICES.

Telephone 970.

Telegrams: "Wardrobes, Gloucester."

**Mousell Bros., Ltd.**

(Opposite G.W.R. Station),  
**CHELTENHAM.**

**FURNITURE REMOVALS.**  
BY RAIL OR MOTOR.

Phone 112.



**Mr. Thomas Peach,**

Of Bourton-on-the-Hill, who died on April 29th, aged 101 years. He had lived in the parish all his life, and is survived by a family of seven sons and three daughters.

'Phone 311.  
Telegrams: "Bence, Cheltenham."  
**FOR BETTER WALLS & CEILINGS USE**

**BEAVER BOARD**

ALL SIZES IN STOCK  
AT REDUCED PRICES.

**Geo. Bence & Sons, Ltd.,**  
Timber & Builders' Merchants,  
Fairview Road, CHELTENHAM.

**PHOTOGRAPH ENLARGEMENTS.**

We can enlarge to Cabinet Size any Individual Photograph in any of the Groups in the "Graphic," or we can Enlarge the Entire Group. Splendid Results Guaranteed. Prices on Application.

**CORSETS MADE TO MEASURE from 25/- Pair.**  
Copyings, Cleanings, and Renovations.  
**SURGICAL BELTS.**

**MISS FRUIN** (Late with Madame Annette)  
23 Bath Parade, CHELTENHAM.

SEND THE "CHRONICLE" AND "GRAPHIC" TO YOUR FRIENDS EVERY WEEK.



**POSTAL OFFICIALS' CONFERENCE IN CHELTENHAM.**

A Conference of Post Office Workers from all over the Kingdom is being held in Cheltenham this week, there being over 750 delegates present. The Town-hall is being used for the meetings. Our snaps, taken on Tuesday, show the delegates leaving the Hall at mid-day.

No. 1.—Mr. Chas. Buckland, President (in centre), with London officials.

[Photos by Cheltenham Newspaper Co., Ltd. Copies unmounted 1/- each, by post 1/2.]

# Vanderplank

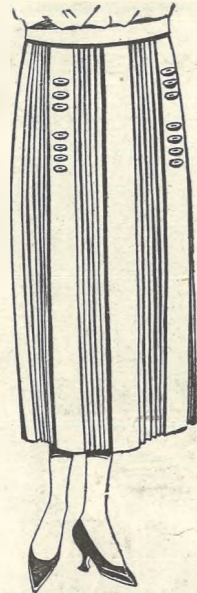
(FROM HARRODS).

## THE House for Sports Coats and Cardigans.

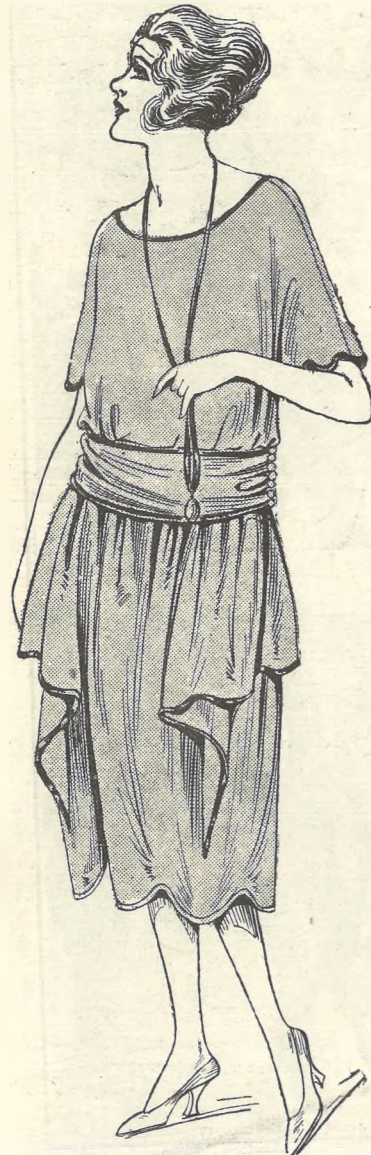
### Smart Frocks

FOR PRESENT WEAR.

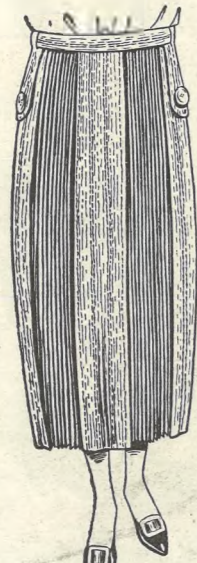
In Charmeuse, Foulards, Marocains, Crepes, &c.



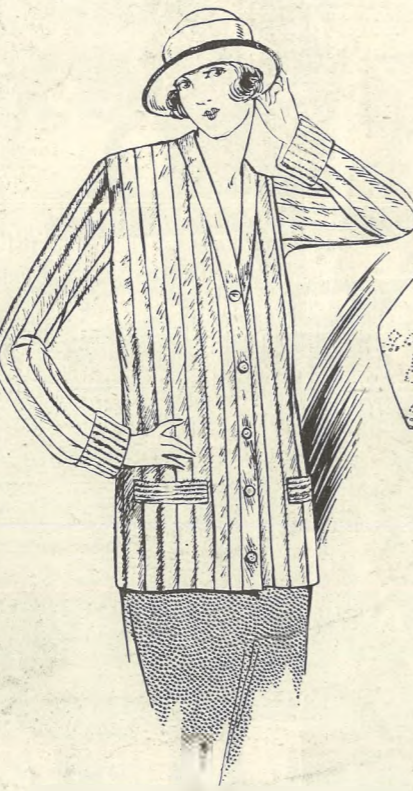
Cream pleated SKIRT of all wool Serge or Gaberdine. Price, 21/9. Also in Navy, Nigger, and Black.



Dainty FROCK in Black Satin Charmeuse, piped with contrasting colours. Other styles same price. £4-19-6.



Smart SKIRT in coloured Gaberdine, with alternate rows of narrow box and knife pleats. Price 25/9.



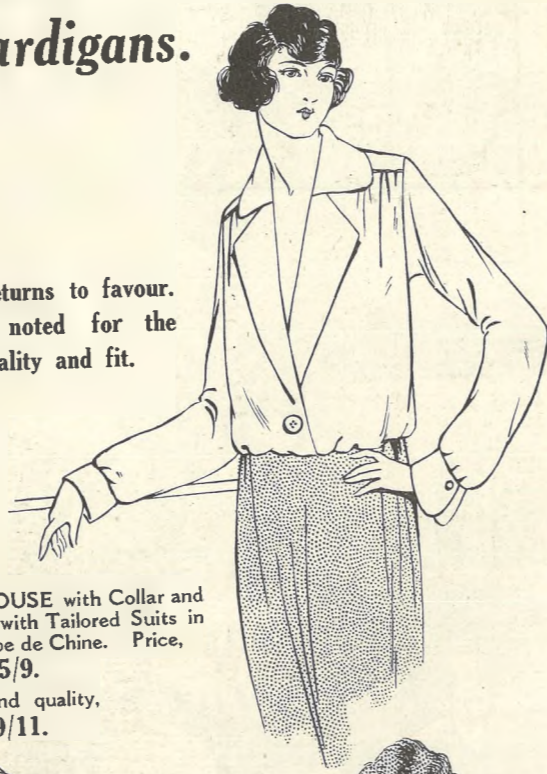
Beautiful quality Brushed Wool Cardigan SPORTS COAT, perfect fitting shape, in various ribs. Price, 21/9.

Colours—Black, Navy, Nigger, Saxe, Helio, Putty, Grey, Cham, Peach, Apricot, Jade, Etc.



A new French Beaded JUMPER in Silk Georgette or Crepe de Chine of many designs. Price, 3 Gns. Other designs from 45/9. Colours—Grey, Navy, Black/Steel, Nigger/Bronze, Blue/Gold, Etc.

The Blouse again returns to favour. Vanderplank's are noted for the excellence of quality and fit.



The new shape BLOUSE with Collar and revers for wearing with Tailored Suits in best quality Crepe de Chine. Price, 25/9.

In second quality, 19/11.

Promenade and 381 High Street, Cheltenham Spa.



With which is Incorporated the Cheltenham "Looker-On."

GRATIS SUPPLEMENT.

Saturday, May 20, 1922.

No. 1,116.

### CHELTENHAM THEATRE AND OPERA HOUSE.

Lessee: ROBERT REDFORD.

The County Theatre. Established 30 Years.

General Manager: H. OSWALD REDFORD

THIS EVENING AT 7.30: "CAPTAIN DREW ON LEAVE."

NEXT WEEK—Six Nights, & Matinees Wednesday & Saturday—THE NEW SHAKESPEARE CO. in Repertoire.

#### THE PALACE, High Street, Cheltenham

Continuous Daily, 2.30 to 10.15.

Monday, Tuesday, Wednesday:

D. W. Griffith's Production:

"True Heart Susie"

Featuring LILLIAN GISH.

A Wonderful Emotional Triumph

"DOUBLE ADVENTURE."

Comedy, "Punch of the Irish."

Thursday, Friday, Saturday:

ETHEL CLAYTON in

"Sins of Rozanne."

From the Novel "Rozanne" by Cynthia Stockley.

"FIGHTING FATE."

#### CRICKET SHIRTS.

All Wool Flannel .. 14/6.

Wincey .. 10/6.

OUR OWN MANUFACTURE.

#### TENNIS SHIRTS.

Good Quality White Matt Oxford, 9/6.

Boys' Shirts at proportionate prices.

SHIRTS OF ALL MATERIALS TO ORDER.

A. BECKINGSALE,

111 High St., Cheltenham.

#### FISHER'S,

69 REGENT STREET,

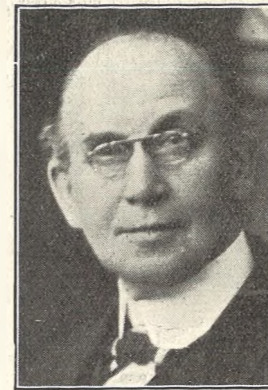
CHELTENHAM SPA.

HIGH-CLASS TAILORS. SPECIALITY—SHIRTS TO MEASURE. HOSIERY, TIES, HANDKERCHIEFS.

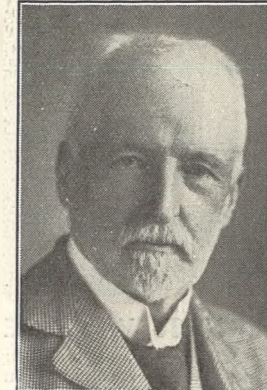
#### MARTIN & CO. LTD.,

Promenade, Cheltenham.

Purchase for Cash Antiques of all kinds, including Old Silver, Jewellery, Sheffield Plate, China, Combs, Miniatures, etc. Highest Prices Given for Rare Pieces.



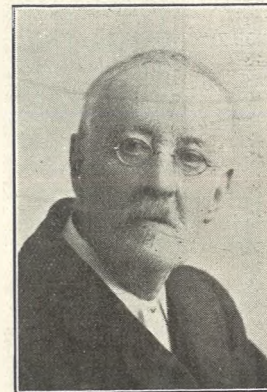
MR. J. E. BRIGNELL, Of the Cheltenham Midland Station bookstall, who, after 51 years' service with the firm of W. H. Smith and Sons (31 years at above bookstall), retired last Saturday.



MR. JAMES GOW DEWAR, J.P., Of Stoneleigh, Cheltenham, who died on May 12th, aged 69 years. He was a member of a famous Scotch family.



MRS. ROSA F. E. SWINEY, Of Sandford Lawn, Cheltenham, who died on May 3rd, aged 75 years.



MR. E. G. MILLER, Jeweller, of 47 Winchcomb-street, Cheltenham, who died on May 14, rather suddenly, aged 72 years.

#### WINTER GARDEN, CHELTENHAM.

Monday, Tuesday, Wednesday: CHRISTIE WHITE and GERALD AMES in "Wild Heather."

CHARLIE CHAPLIN in "Sunnyside."

Thursday, Friday, Saturday: FAY COMPTON and MILTON ROSEMER in

"A Woman of No Importance."

Stephen McKenna's "SONIA."

Lowest Prices. GARDEN TOOLS—Spades, Digging Forks, Wood Trellis. MILLER, IRONMONGER, 163 High St., Cheltenham (Facing Fleece Hotel).

#### All Your Wants Supplied

If you have a small Prepaid Advertisement in the "Echo" and the "Chronicle." It is the combination that does it, for it reaches ALL Classes.

Promenade, :: Cheltenham.

URWIN.

Telephone - - 1206.

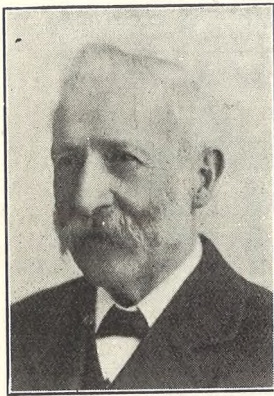
The Studio for natural photographs of Children.

BUY

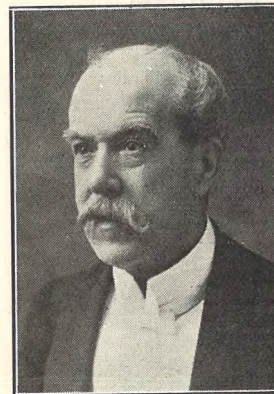
The Right STATIONERY At The Right PRICE.

LEE, Caxton House, WINCHCOMBE ST., CHELTENHAM.

For the Best **PIANOS, DALE, FORTY and CO. LTD.**



MR. Wm. BUTT WITHEY, Of High-street, Stroud, who died on May 5, 1922, aged 73 years. He was a director of Stroud Gas Co., and one of Stroud's oldest tradesmen.



MR. CHAS. J. HODGES, Of St. Monica, Midland-road, Gloucester, who died on May 14, aged 62 years. He was assistant County Accountant, and a prominent Church worker.



**SHEERNESS WAR MEMORIAL.**

The above War Memorial, representing the figure of Victory holding aloft the blazing torch, was unveiled at Sheerness a fortnight ago by Admiral Sir Hugh Evan-Thomas, K.C.B., K.C.M.G., M.V.O., LL.D., before a tremendous crowd of spectators. It is executed entirely in Portland Stone, and is the work of Messrs. R. L. Boulton and Sons, Sculptors, of Bath-road, Cheltenham.

**ART NEEDLEWORK STUDIO,**

1 Imperial Buildings, Promenade, CHELTENHAM,

Are Showing their Celebrated

**Artificial Silk**

In All Shades for JUMPERS, Etc.,

**3/11 per 4oz. Hank.**

TRINITY COLLEGE OF MUSIC, LONDON. LAST DAYS OF ENTRY FOR THE SUMMER EXAMS.:-

THEORY: MAY 27th, 1922. PRACTICAL: JUNE 3rd, 1922. LOCAL SEC.,

ERNEST A. DICKS, F.R.C.O., BUCKINGHAM LAWN, CHELTENHAM.

CORSETS MADE **25/-** Pair. TO MEASURE from

Copyings, Cleanings, and Renovations. SURGICAL BELTS.

MISS FRUIN (Late with Madame Annette), 23 Bath Parade, CHELTENHAM.



**A CHELTENHAM GOLFER'S WEDDING.**

The marriage took place at St. Mary's, Warwick, on April 29, of Mr. B. E. Hobley, eldest son of Mr. and Mrs. A. J. Hobley, of Cleeve Hill (and himself professional to the Leamington Golf Club), to Miss Gladys Mary, only daughter of Mr. and Mrs. Bissell, Warwick.

[Photo by Ernest Wells, photographer, Leamington Spa.]

'Phone 311. Telegrams: "Bence, Cheltenham." FOR BETTER WALLS & CEILINGS USE

**BEAVER BOARD**

ALL SIZES IN STOCK AT REDUCED PRICES.

Geo. Bence & Sons, Ltd., Timber & Builders' Merchants, Fairview Road, CHELTENHAM.

**JEWELLERY AND ANTIQUES**

Wanted to buy, for High Cash Prices, Old Gold and Silver for melting or re-sale. Also anything Antique in Furniture, China, Old Glass, Prints, etc. Established 70 Years.

**HARRY O. BOX,** JEWELLER,

339 HIGH STREET, CHELTENHAM. (Nearly Opposite Grammar School).

**WHEN YOU SHOP YOU WANT—**

THE BEST VALUE OBTAINABLE. VARIETY TO SELECT FROM. EXCLUSIVE & TASTEFUL STYLES. CHOICE & RELIABLE MATERIALS. COURTESY FROM ASSISTANTS.

YOU WILL FIND

all these at

**Shirer & Haddon's,**

The Firm with a long reputation, whose DEPARTMENTS are now filled with all the CHOICEST and NEWEST PRODUCTIONS in

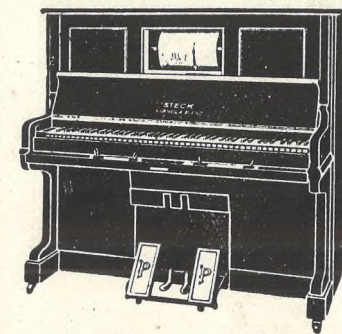
DRESSES, COSTUMES, BLOUSES, WRAPS AND COATS, MILLINERY, Etc.



RATINE DRESS, in White, Sky, Pink, Navy, Nattier, Lemon, Mauve 29/11. Other Qualities from 25/11.

SPECIAL OFFER of 750 Yds. Coloured Ratine. 2/11½ per Yard. 11 Colours, and White.

**SHIRER AND HADDON,** CHELTENHAM SPA.



A World-famous Piano and the means to play it

THESE are yours if you own a 'Pianola' Piano. It grants you the ability to play all music, to play it well and to impart to it your own personal taste and expression.

A genuine 'PIANOLA' PIANO is as easy to buy as to play. The STECK (Model 9.H.) can now be obtained for 188 Guineas Cash,

or, if desired, may be purchased on our deferred payment system, a small cash deposit ensuring immediate delivery of the instrument, the balance being payable in equal monthly instalments to suit your convenience.

SOLE AGENTS—CRICHTON'S, Ltd., The Piano House, Promenade, CHELTENHAM.

**Moussell Bros., Ltd.**

(Opposite G.W.R. Station), CHELTENHAM.

FURNITURE REMOVALS. BY RAIL OR MOTOR.

'Phone 112.

**PAINLESS DENTISTRY,**

Edwards and Hirst, THE DENTAL SURGERY BANK CHAMBERS,

131 High Street, Cheltenham (Corner of North Street).

Advice and Estimates Free. Hours—10 till 7.

LUXURIOUS SILKS AT TEMPTING PRICES NEXT WEEK.

**LANCE'S**

GREAT MID-SEASON'S

**SILK SALE**

Commences on MONDAY, 22nd.

**Crepe Marocain.**

200 Yards the New Fashionable Spring Fabric, in Eight beautiful Colours. 40in. wide. SPECIAL PRICE 13/9.

**Crepe de Chene.**

500 Yards of Rich Heavyweight Crepe de Chene, in Twelve Shades. 40in. wide. Usual Price 8/11. SPECIAL PRICE 5/11

**Silk Foulards.**

400 Yards Distinctive Designs, Navy and White, Black and White, Nigger and White, and also Colours. 40in. wide. SPECIAL PRICE 7/9

**Satin Charmont.**

500 Yards Beautifully Bright and Heavy Quality, Twenty Shades, 40in. wide. Usual Price 19/11. SPECIAL PRICE 13/11

**Satin Mouseline.**

300 Yards Delightful and Hard-wearing Quality, Ten Shades, 38 inches wide. Usual Price 8/11. SPECIAL PRICE 5/11 Yard.

**Crepe Schappe.**

130 Yards, Pastel Shades, for Lingerie, 40in. wide. Usual Price 8/11. SPECIAL PRICE 5/9 Yard.

ANY OF THE ABOVE SILKS MAY BE HAD IN BLACK.

**Jap Shan.**

1,000 Yards Pure Silk, in Natural Shade only, 30in. wide. SPECIAL PRICE 4/11

All Silks will be Marked in Plain Figures and Show a Saving of at least 25 per cent. OFF CURRENT PRICES.

We Shall include in this GREAT SILK OFFER 1,000 YARDS of ALL WOOL

**RATINE.**

Usual Price 8/11. SPECIAL PRICE 2/- YARD.

These have been Bought Under Exceptional Circumstances, and are Worth Your Inspection Early Next Week.

**John Lance & Co., LIMITED, CHELTENHAM SPA.**

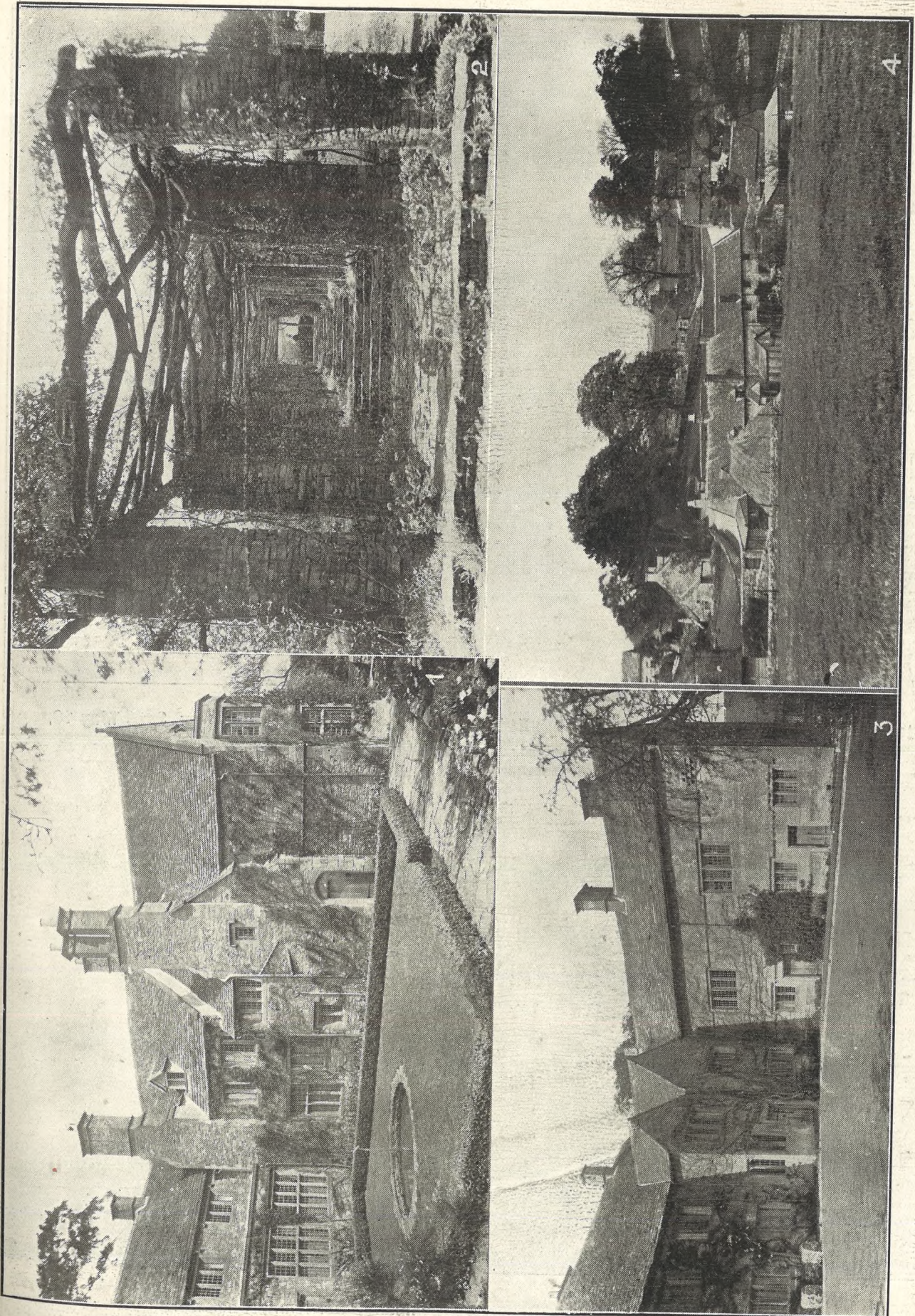


**CHELTENHAM COLLEGE JUNIOR DEPARTMENT ATHLETIC SPORTS.**

These delightful sports, held annually, took place on Saturday afternoon last in beautiful weather, and before the usual crowd of excited spectators.

- 1.—Mr. Clauss, starter (in straw hat), getting the sisters in line for their race.
- 2.—Some of the competitors.
- 3.—Start of 150 Yards Race (under 12).
- 4.—Future Cheltonians' Race.
- 5.—Watching the Hurdle Race.
- 6.—The huge field in Consolation Race.
- 7 and 8.—Watching the jumping.
- 9.—Finish of Open 100 Yards.

[Photos by Cheltenham Newspaper Co., Ltd. Copies 1/- each unmounted.]



**PICTURESQUE GLOUCESTERSHIRE.—NOTGROVE.**

Notgrove is quite a small Cotswold parish, 1½ miles from the G.W.R. Station of that name; and about 2½ miles from the Cheltenham and Slow-road. Its chief interest is the beautiful old Manor House, formerly the seat of the Whittington family, descendants of Sir Richard (Dick) Whittington, the famous Lord Mayor of London in the 14th Century. The house has been much enlarged and glorified gardens made by the late Mr. Cunard. The Church is also very interesting, with some fine old monuments, well preserved. The owner of the Manor now is Sir Alan Anderson, K.B.E.

1.—The South-West Corner of the Manor House. 2.—Part of the Rose Pergola in the gardens. 3.—The gardens at the present time are a feast of beauty, colour, and perfume.

4.—A peep at Notgrove Village from the Manor House Gardens.

[Photos by Cheltenham Newspaper Co., Ltd.]



Cheltenham Light Car and Motor Cycle Club Entertain St. Dunstan's Men at Bibury, Sat., May 13.



**Mr. and Mrs. Walter Saltoun's Repertory Company, Coliseum, Cheltenham.**  
 Back row (left to right)—Mr. Edwin Clarke, Miss Mona Hall, Mr. Richard Minster, Miss Kate Leonard, Mr. Charles Burdon, Miss May Rosine, Mr. Frank Irish, junior.  
 Front row.—Miss Holly Haslewood, Mr. A. H. Greenland (Resident Manager), Miss Aimée Grattan-Clyndes (Mrs. Walter Saltoun), Mr. Walter Saltoun, Miss Evelyn Shannon-Clyndes, Mr. Bert Pemberton, Miss Maud Lambert.



**A FINE CHELTENHAM CAFE.**

1.—ROOF GARDEN IN THE PROMENADE. 2.—SECTION OF DINING ROOMS.  
 The Gloucestershire Dairy Co. have recently extended the Roof Garden at their Cafe in the Promenade, and it now forms an almost unique rendezvous for Dainty Teas in the open air, where all the movement and interesting life of the Promenade may be watched with ease and comfort. Tables are provided for over 80 customers, and an awning protects visitors from the sun and rain, making it the daintiest place in Cheltenham for teas. The interior Dining Rooms are beautifully decorated and fitted, and the whole of the dairy produce is supplied from the Company's own Model Farms. Luncheons and Teas are provided, and rooms are retained for special parties.

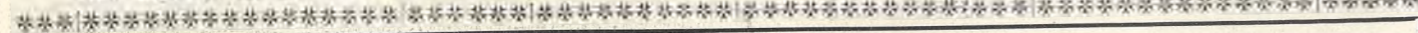
Gloucestershire Dairy Co., Ltd., 2 Promenade, Cheltenham.





**POST OFFICE WORKERS' CONFERENCE IN CHELTENHAM.**

THE LOCAL RECEPTION COMMITTEE.  
 Back Row.—F. C. Freeman, A. F. Bick, W. Richards, Miss Wilton, W. G. Evans, Miss Williams, C. H. Harding, C. H. Franklin, A. Woodford. Front Row.—H. Parsons, T. W. Major (Treasurer), Miss Roberts, A. T. Hopkins (Sec.), G. Blagg (President), Miss Alsbury, A. E. Widdows, L. F. Jones.  
 (Photo by Cheltenham Newspaper Co., Ltd.)



A very dainty little FROCK in Grey Voile, with Sash Belt in self material, in Light Grey, Saxe, and Navy Ground, as illustration, 12/11.

A Smart and Useful WASHING FROCK, in good quality Ratine cloth (as illustration), in plain colors, with black stripes, Sky, Flame, Lemon, Grey, Saxe, 15/11.

**4 Special Lines of Remarkable Value.**

**The House with 50 Years' Reputation.**

A Handsome SUMMER DRESS, in Hand Embroidered Shantung Silk, as illustrated, in special Fine Quality Silk, 39/6

A Dainty little MODEL, in fine quality White Voile, trimmed embroidery and lace insertion, as illustration, 25/6.

Dicks & Sons Ltd.  
Cheltenham.

# THE CHELTENHAM CHRONICLE AND GLOUCESTERSHIRE GRAPHIC

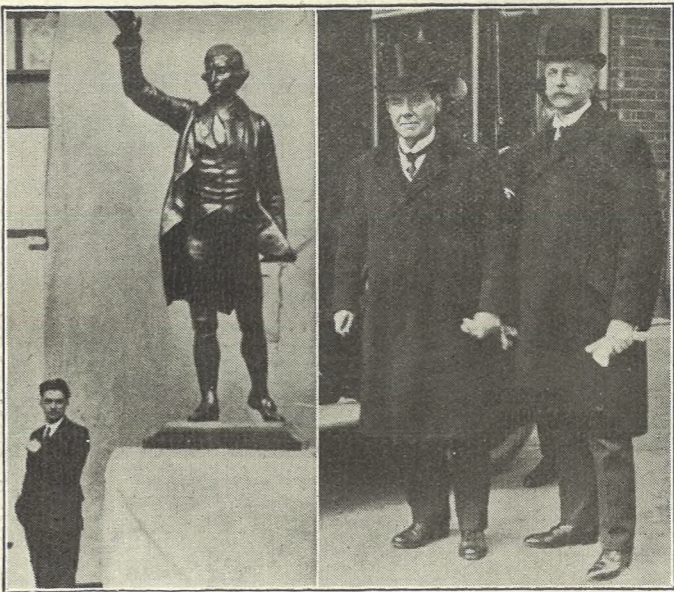
With Which is Incorporated the "Cheltenham Looker-On."  
 GRATIS SUPPLEMENT. Saturday, May 27, 1922. No. 1,117.

## CHELTENHAM THEATRE AND OPERA HOUSE.

Lessee: ROBERT REDFORD. The County Theatre. Established 30 Years. General Manager: H. OSWALD REDFORD  
 THIS AFTERNOON AT 2.30, "JULIUS CAESAR"; THIS EVENING AT 7.30, "OTHELLO."  
 NEXT WEEK—"A BILL OF DIVORCEMENT."

### THE PALACE, High Street, Cheltenham

Continuous Daily, 2.30 to 10.15.  
 The Building is kept Delightfully Cool by Typhoons Electric Fans.  
 Monday, Tuesday, Wednesday: "The Skin Game,"  
 By JOHN GALESWORTHY. All-British Cast and Production.  
 "DOUBLE ADVENTURE."  
 Comedy. "Her Circus Man."  
 Thursday, Friday, Saturday: "The Sentimental Bloke."  
 Australia's Classic Screen Picturisation of the Famous Verses written by C. J. DENNIS, The Australian "My O'd Dutch."  
 "FIGHTING FATE."  
 Comedy: "Sweetheart Days."



**Ex-Lord Mayor of London Visits Cheltenham.**  
 Sir Chas. Wakefield, Bart. (ex-Lord Mayor of London), on Thursday, May 18th, visited the works of Messrs. H. H. Martyn & Co., Ltd., Cheltenham, to inspect a statue of Edmund Burke, which he is presenting to the town of Washington, America, through the British Branch of the Sulgrave Institution. The statue has been cast in bronze by Messrs. Martyn & Co. from the statue in Bristol. On left, the statue, with Mr. George Thomas, son of the late Mr. Harvard Thomas, who modelled the original statue; on right, Sir Chas. Wakefield (in top hat) and Mr. F. E. Powell (President of the American Club, London).  
 Photos by Cheltenham Newspaper, Co., Ltd.

### CRICKET SHIRTS.

All Wool Flannel .. 14/6.  
 Wincey .. 10/6.  
 OUR OWN MANUFACTURE.

### TENNIS SHIRTS.

Good Quality White Matt Oxford, 9/6.  
 Boys' Shirts at proportionate prices.  
**SHIRTS** OF ALL MATERIALS TO ORDER.

**A. BECKINGSALE,**  
 111 High St., Cheltenham.

**FISHER'S,**  
 69 REGENT STREET, CHELTENHAM SPA.

HIGH-CLASS TAILORS.  
 SPECIALITY—SHIRTS TO MEASURE.  
 HOSIERY, TIES, HANDKERCHIEFS.

**MARTIN & CO. LTD.,**  
 Promenade, Cheltenham.

Paradise for Cash Antiques of all kinds, including Old Silver, Jewellery, Sheffield Plate, China, Coins, Miniatures, etc. Highest Prices Given for Rare Pieces.

### WINTER GARDEN, CHELTENHAM.

Special Booklovers' Week.  
 Monday, Tuesday, Wednesday: MAY ALLISON in "The Marriage of William Ashe,"  
 By Mrs. Humphrey Ward.  
 Thursday, Friday, Saturday: "Daniel Deronda,"  
 By GEORGE ELIOT.  
 "The Scallywag,"  
 By Grant Allen.

**ALWAYS FAVOURITE!**  
 ALWAYS FIRST. ALWAYS BEST  
 ALWAYS USED—

**:: Farrar's ::**  
**A.C. Rubbles.**

**Wm. D. Farrar,**  
 103 High Street, CHELTENHAM.  
 'Phone 220.

Promenade, :: Cheltenham.  
**URWIN.**  
 Telephone 1206.  
 The Studio for natural photographs of Children.

BUY  
**The Right STATIONERY**  
 At The Right PRICE.  
**LEE,** Caxton House, WINCOMBE ST., CHELTENHAM.

## For the Best PIANOS, DALE, FORTY and CO., LTD.



**OPENING OF A NEW BOWLS PAVILION ON ASHBURNE GREEN, CHELTENHAM.**

This handsome new Pavilion on the Town Bowling Green, which was declared open by Mr. H. Unwin, of Arle Court, on Saturday last. Mr. Unwin presented the Pavilion to the Club. A match was afterwards played between two pick-up teams.

[Photo by Cheltenham Newspaper Co., Ltd. Copies 2/- unmounted, 3/- mounted.]

**CORSETS MADE 25/- Pair.**  
TO MEASURE from Copyings, Cleanings, and RENOVATIONS. SURGICAL BELTS.

**MISS FRUIN** (Late with Madam Amette)  
23 Bath Parade, CHELTENHAM.

**STRAW HATS.**  
White & Grey Flannel Trousers.

**G. DIGGINS,**  
81 High Street, CHELTENHAM.

**PHOTOGRAPH ENLARGEMENTS.**

We can enlarge to Cabinet Size any Individual Photograph in any of the Groups in the "Graphic," or we can Enlarge the Entire Group. Splendid Results Guaranteed. Prices on Application.

**TRINITY COLLEGE OF MUSIC, LONDON.**  
LAST DAYS OF ENTRY FOR THE SUMMER EXAMS.:-

THEORY: MAY 27th, 1922.  
PRACTICAL: JUNE 3rd, 1922.

LOCAL SEC.,

ERNEST A. DICKS, F.R.C.O.,

BUCKINGHAM LAWN, CHELTENHAM.



**CHARLTON CHILDREN'S DANCING CLASS.**

Cheltenham and Charlton girls who hold a dancing class every Saturday at St. Clair Ford Hall; instructor, Mr. Maisey.

[Photo by Cheltenham Newspaper Co., Ltd. Copies 1s. 9d. unmounted, 2s. 6d. mounted, Postcards 6d. each.]



**A BEAUTIFUL WAR MEMORIAL.**

Memorial erected at Rylstone, in Wharfedale, Yorkshire, to two brothers killed in the late war. It was executed in Alabaster by Messrs. R. L. Boulton & Sons, sculptors, of Bath-road, Cheltenham, who will be pleased to give estimates for all kinds of Memorials.

**LANCE'S**  
SPECIAL  
**SILK SALE.**

**UNPARALLELED SILK BARGAINS**

Quoted below are the result of several Exceptional Purchases.

**Crepe de Chene.**

400 Yards of Rich CREPE DE CHENE, five colours, 42 inches wide. Usual Price 7/11. SPECIAL PRICE 4/11.

**Black Taffetta.**

150 Yards of BLACK TAFFETTA, 38 inches wide. Usual Price 8/11. SPECIAL PRICE 4/11.

**Satin Mouseline.**

300 Yards of SATIN, in Black and seven colours, 38 inches wide. Usual Price 8/11. SPECIAL PRICE 5/11.

**Crepe Schappe.**

100 Yards, in Pastel Shades, for Lingerie, 40 inches wide. Usual Price 8/11. SPECIAL PRICE 5/9.

**Jap Shan.**

700 Yards PURE SILK, in Natural Shades. SPECIAL PRICE 4/11.

**Crepe Etamine.**

350 Yards, in Fancy Designs, 38 inches wide. Usual Price 5/11. SPECIAL PRICE 3/11.

Write for Patterns and Compare Value before purchasing elsewhere.

**John Lance & Co., Limited, : : : CHELTENHAM, SILK SPECIALISTS.**



**CHARLTON KINGS IN 1635 A.D.**

On Saturday, May 20, and Monday, May 22, a pageant entitled "Charlton in 1635-1922," written by Mrs. Rose, was produced in beautiful weather in the delightful grounds of Moorend Park before large crowds of spectators, in aid of the Vassar-Smith Habitation of the Primrose League. It was very picturesque, well-dressed and well-acted.

- 1.—Lieut.-Col. H. A. Lake as his Majesty Charles I.
- 2.—Prince Rupert (Mr. B. Guthrie) with two pages.
- 3.—Two ladies in Court dress.
- 4.—Miss Harrison, who rode on and sang "God Save the King."
- 5.—A group of children who danced round the maypole.
- 6.—Villagers who danced.
- 7.—Waiting for the march past.
- 8.—In centre are Mistress Higgs (Mrs. Martyn) and Master Walter Higgs (Mr. Wonsen), with two Court ladies.

[Photos by Cheltenham Newspaper Co., Ltd. Over 70 separate photos were taken and can be seen at the "Echo" Office.]



**CHARLTON KINGS IN 1635 A.D.**

The setting at Moorend Park was ideal for a pageant—indeed the grounds are probably the prettiest of any house in or around Cheltenham. There were something like 400 performers, and the various groups in Carolean costumes, under the glorious trees or near the lake, made charming pictures.

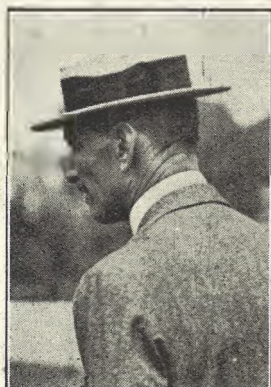
- 9.—General scene of Pageant in progress. Spectators and house in background.
- 10.—Two little dancers.
- 11.—A group of pretty children in violet and amber, who danced in one of the most effective scenes.
- 12.—General and Mrs. Cree as Colonel and Mistress Creaford, and Major and Mrs. Peake as Capt. and Mistress Peake.
- 13.—Mr. Idiens, the proprietor of Moorend Park, as Captain Osborne.
- 14.—Marjory Stubbes (Miss Barbara Rice) and Captain Delabere (Mr. Walter Jessop).
- 15.—A group of dancers.
- 16.—Marching on in procession.
- 17.—A number of gallants with their ladies waiting under trees for pageant to open.

[Photos by Cheltenham Newspaper Co., Ltd., Copies 1/- each unmounted. Over 70 different photos can be seen at "Echo" Office.]



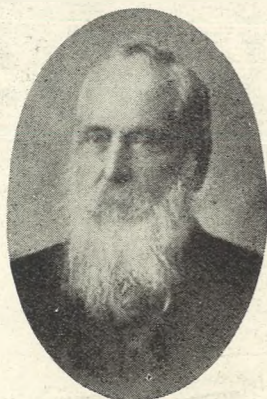
**LECKHAMPTON THIRD TEAM.**

Top row.—J. Charlton, F. Aldridge, J. L. Charlton, J. L. Bendall, L. Holmes.  
 Middle row.—A. H. Rogers (Secretary), H. Gore, E. Birt, H. Baldwin, H. King, J. D. Bendall.  
 Sitting.—J. E. Youlds, E. Shill, F. Guise, C. R. Butt (Captain), H. Boreham, Rev. F. Standfast.



**Mr. Charles Hutchings**

Of Fairleigh, Cheltenham, who died on May 20, aged 73 years. He won the Amateur Golf Championship in 1902 when 53 years of age.



**Mr. Henry Kilbey,**

Of Oakville, Sydenham-villas S., Cheltenham, who died on May 20, aged 102 years, 5 months. He was a teetotaler and non-smoker, and had always been a strong and healthy man.

**PAINLESS DENTISTRY,**

**Edwards and Hirst,**  
**THE DENTAL SURGERY**  
**BANK CHAMBERS,**  
**131 High Street, Cheltenham**  
 (Corner of North Street).

Advice and Estimates Free.  
 Hours—10 till 7.

Phone 311.  
 Telegrams: "Bence, Cheltenham."  
**FOR BETTER WALLS & CEILINGS**  
 USE  
**BEAVER BOARD**  
 ALL SIZES IN STOCK  
 AT REDUCED PRICES.  
**Geo. Bence & Sons, Ltd.,**  
 Timber & Builders' Merchants,  
 Fairview Road, CHELTENHAM.

**SHIRER AND HADDON.**

**Very Special Purchase**  
 OF  
**Cotton Underwear.**



Fine Longcloth Directoire **KNICKERS,**  
 4/6 Pair.

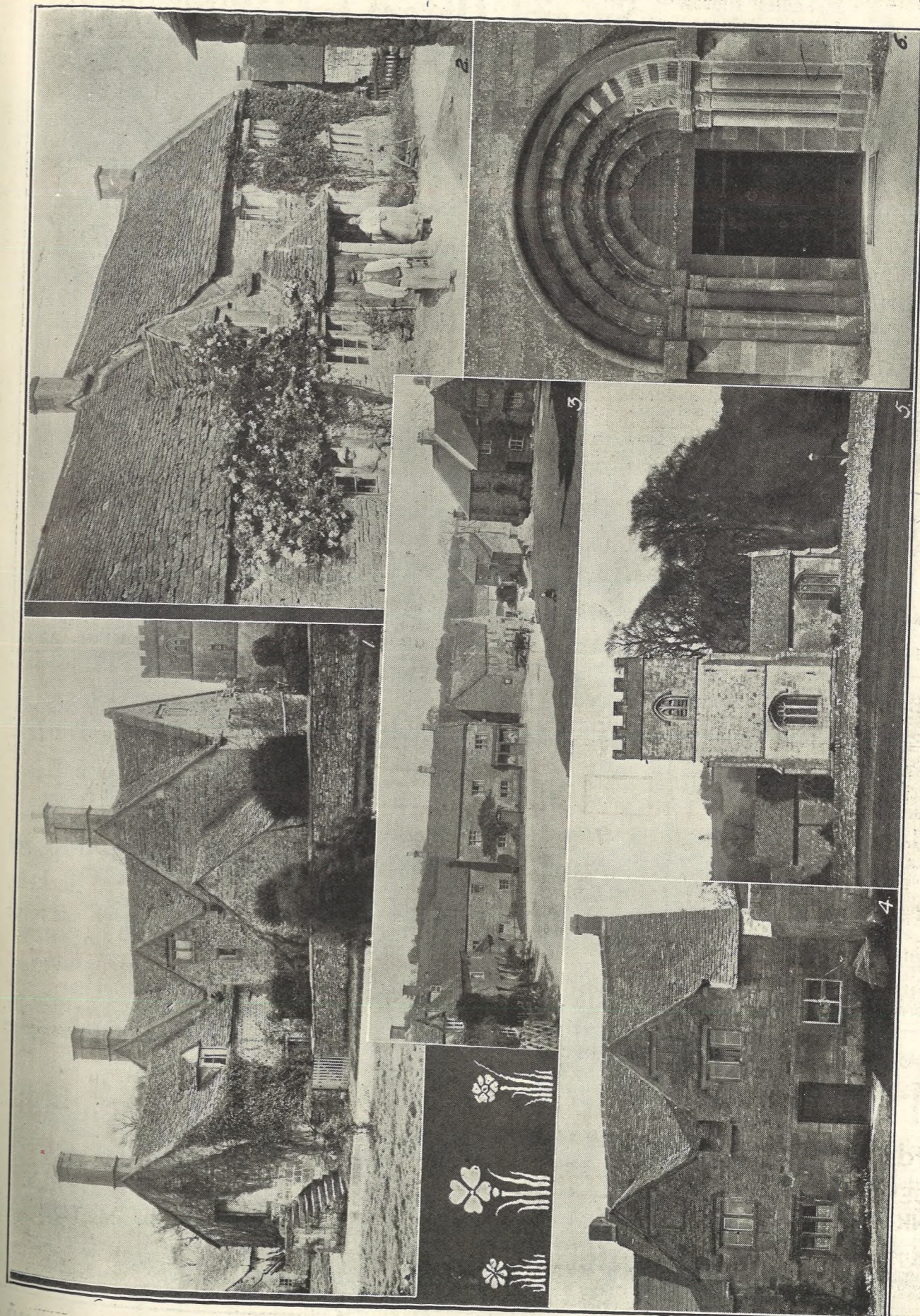


Ladies' **NIGHTGOWNS,** 6/11, 8/6,  
 and 10/11 Each.

Striped Zephyr Knickers, Directoire Shape, 3/11½, 4/6, 4/11.  
 O.S. (Women's), 4/11, 5/6.  
**WITH BANDS (Women's), 4/6.**  
 O.S. (Women's), 5/6.

A Large Selection Ladies' Tussock and Coloured Shantung  
**UNDERSKIRTS AND KNICKERS.**  
 Delightful for Hot Weather, and giving excellent wear.

**Please Visit the Children's Dept.**  
**IMPERIAL CIRCUS, CHELTENHAM SPA.**



**PICTURESQUE GLOUCESTERSHIRE.—LOWER GUITING.**  
 Lower Guiting is a picturesque old-world and typically Cotswold village, about 12 miles from Cheltenham, lying to the left of the Cheltenham to Stow road. A pretty trout stream runs through the village.  
 1.—The Manor Farm, now occupied by Mr. Hanks. It adjoins the church, and is a charming old 16th century house.  
 2.—Another fine old house, now used as a bakery. It was built in 1603.  
 3.—The Village Green.  
 4.—An old cottage in the Square.  
 5.—The Church, which has been restored.  
 6.—A fine Norman doorway to the South Porch.  
 [Photos by Cheltenham Newspaper Co., Ltd. Copies: half-plate 1s., whole-plate 1s. 9d., postage extra.]



A Smart and Useful FROCK, as illustrated, in exceptionally fine quality, highly mercerised Cotton Foulard, in Navy or Black ground with white design (looks just like silk), 15/11.

**Ladies' Gloves.**  
 Ladies' Suede Finish Gloves in all Colours, 1/11½ and 2/6½.  
 Ladies' Cotton Fabric Gloves, 1/0¾.  
 Ladies' Cotton Fabric Gloves, better quality, 1/6¾.  
 Ladies' Fancy Stitch Suede Finish Gauntlet Gloves, 3/6 pair.  
 Ladies' Heavy Suede Finish Gauntlet Gloves, strap wrist, 4/11½.  
 Ladies' White Glacé Kid Gloves, selected skins, Worth 4/11. Our Price 2/11½.  
 Ladies' Washleather Gloves, 5/6 pair.  
 Ladies' Long White Castor Gloves, 8/11½.

**Ladies' Hose.**  
 Best Silk Hose, Lisle Foot, wide suspender top, 18ins. Silk Ankle, Black and all colours, 1/11½.  
 Art Silk Hose, with full length Silk leg and garter top, Lisle foot, Ribbed, as illustration, Black and all colours, 2/11½.  
 Cashmere Finished Hose in all colours, 1/3¾.  
 All Wool Cashmere Hose, Ribbed and Plain, in all colours, 1/11½.

# Special Offers for "Whitwear."



A smart JUMPER, as illustrated, in heavy quality Crepe de Chene, trimmed glass beads, in all colours, 15/11.

## Ladies' Swiss Ribbed Combinations & Vests.

Ladies' Swiss Ribbed Combinations, In Cream, of beautifully fine Texture, Soft and Silky to the skin, Plain Tops, 2/6½, 3/11, 5/11. Fancy Tops, 2/11½, 3/11, 4/11, 5/11. Plain Ribbed Combinations, medium weight for hard wear, 3/11½.  
 Ladies' Chemise Vests, Cream Ribbed, Plain Top, 1/6¾, 1/11½, 2/6, 2/11.  
 Cream Swiss Ribbed, Fancy Top, as illustration, 1/11½, 2/6½, 2/11, 3/11.  
 Cream Swiss Ribbed Short Vests, 1/0½, 1/6¾, 1/11½.  
 All Wool Vests, cream, 2/11½, 3/11½.



A very dainty new MODEL, as illustrated, in extra heavy quality Crepe de Chene, cut with ample fullness, in Jade, Kingfisher, Shrimp, and Grey, 32/6.

# Dicks & Sons Ltd.

172 & 173 HIGH STREET  
**Cheltenham Spa**  
 50 YEARS REPUTATION FOR VALUE.  
 TEL. 1007

## A Profitable Investment!



○BTAIN health and add to your pleasure by buying or hiring a good BICYCLE.

We are Agents for "Sunbeam," "B.S.A.," "Humber," "Centaur," and "Sparkbrook" Cycles,

THE PICK OF THE MARKET!

**J. Wheway & Co.,**

Clarence Street, CHELTENHAM.

Branches—3 Suffolk Road and 1 Hewlett Street.

BEST QUALITY

# CIDERS

IN BOTTLE.—Sparkling and Still

**BARTHOLOMEW,**

419-420, HIGH STREET,  
 CHELTENHAM.

WINES, SPIRITS, ALES, TABLE WATERS  
 and GROCERY. Tel. 13.

## Art Needlework

□ Studio, □

1 Imperial Buildings,  
 — Promenade, —  
 CHELTENHAM,

Are Showing a Choice Selection of

## Traced & Finished

## .. Needlework. ..

THE NOTED HOUSE FOR  
 WOOLS AND SILKS FOR  
 KNITTING PURPOSES.

Special Value!

## ARTIFICIAL SILK

3/11 per 4oz. Hank.

In all Shades, for JUMPERS, Etc.



For  
 Tennis  
 Balls,  
 Posts,  
 Nets, and  
 Rackets,

**J. S. FRISKNEY,** THE TENNIS CENTRE.

Pittville Street, CHELTENHAM.

Send for Illustrated Catalogue.

LOCAL AGENT FOR THE CELEBRATED "Slazenger" Balls.

**Mousell Bros., Ltd.**

(Opposite G.W.R. Station),  
 CHELTENHAM.

FURNITURE REMOVALS.

BY RAIL OR MOTOR.

'Phone 112

Printed and Published as a Gratis Supplement by the Cheltenham Newspaper Co., Ltd.

ADVERTISE IT IN THE 'ECHO.'