

# THE CHELTENHAM CHRONICLE AND GLO' SHIRE GRAPHIC

With which is Incorporated the Cheltenham "Looker-On."

GRATIS SUPPLEMENT.

Saturday, April 1, 1922.

No. 1,109.

## CHELTENHAM THEATRE AND OPERA HOUSE.

Lessee: ROBERT REDFORD.

The County Theatre. Established 30 Years.

General Manager: H. OSWALD REDFORD

TO-DAY AT 2.30 AND 7.30.—"POLLY WITH A PAST."

**NEXT WEEK—"SMOULDERING FIRES."** *One of the most powerful plays of the day.*

### THE PALACE, High Street, Cheltenham

Continuous—2.30 to 10.15.  
Monday, Tuesday, Wednesday:  
Paramount Super Special,  
"Why Change Your  
Wife?"

Featuring  
Thomas Meighan and Gloria  
Swanson.  
"DOUBLE ADVENTURE."  
Thursday, Friday, Saturday:  
Beautiful Colour Picture Play,  
"A Thousand and One  
Nights."

A Gorgeous Romance of the East.  
"VEILED MYSTERY."  
LARRY SEMON in the Super  
Comedy, "BELL HOP"

### Further Reduction in Price.

THE SPECIAL

### Hard Wear Shirt

Of our own manufacture  
is now offered at ~~10/6~~ **9/6.**

Guaranteed fast colours. Now  
made in two styles. Lined back  
and front, and single cuff, double  
cuff, and no linings.

**A. BECKINGSALE,**  
SHIRT MANUFACTURER,  
111 High St., Cheltenham.

**FISHER'S,**  
69 REGENT STREET,  
CHELTENHAM SPA.

SPRING SHOW: SMART HALF HOSE,  
TIES, Etc.. TAILORING.

**MARTIN & CO.**  
LTD.,

Promenade, Cheltenham.

Purchase for Cash Antiques of  
all kinds, including Old Silver,  
Jewellery, Sheffield Plate, China,  
Cobs, Miniatures, etc. Highest  
Prices Given for Rare Pieces.



The New Masters of the Ledbury Hounds.

|| \* ||

Major the Lord Somers, D.S.O., M.C., and Major Ian Bullough,  
M.C., who have accepted the joint Mastership of the Ledbury  
Hunt in secession to Sir George Bullough, who has resigned  
after 14 seasons. A snap at the Hunt Point-to-Point Races.

[Photos by Cheltenham Newspaper Co., Ltd.]

ADVERTISE IN THE "ECHO."

### WINTER GARDEN, CHELTENHAM.

FOR THE WHOLE WEEK.

### "A RIDE IN A RUNAWAY EXPRESS."

This special one real feature was shown by  
command at Sandringham to Their Majesties  
the King and Queen and Princess Mary, and  
500 guests.

Monday, Tuesday, and Wednesday Only:  
MAE MURRAY in "IDOLS OF  
"CLAY."

Thursday, Friday, and Saturday Only:  
DAVID BUTLER in  
"GIRLS DON'T GAMBLE."  
A Comedy of Smiles.

Chaplin in "Daredevil Queen."

### ALWAYS FAVOURITE!

ALWAYS FIRST. ALWAYS BEST  
ALWAYS USED—

:: Farrar's ::

A.C. Rubbles.

Wm. D. Farrar,

103 High Street,  
CHELTENHAM.

'Phone 220.

Promenade, :: Cheltenham.

URWIN.

Telephone - - 1206.

THE STUDIO FOR  
ARTISTIC PHOTOGRAPHY

BUY

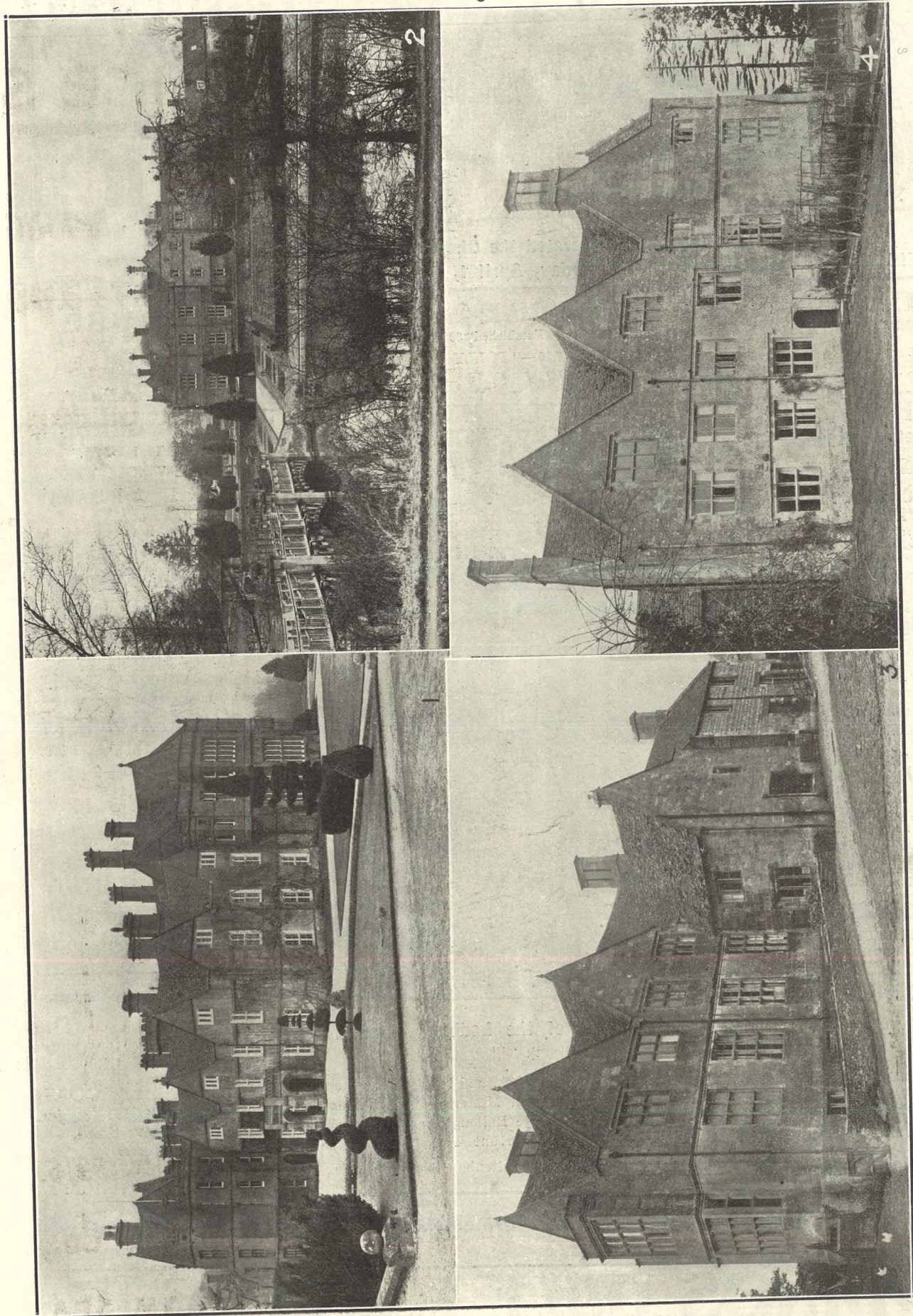
The Right STATIONERY  
At The Right PRICE.

LEE, Caxton House,  
WINCHCOMBE ST.,

CHELTENHAM.

For the  
Best

**PIANOS, DALE, FORTY and CO. LTD**



**PICTURESQUE GLOUCESTERSHIRE.—BROCKHAMPTON AND CHARLTON ABBOTS.**  
 Perched in a most picturesque situation, overlooking the valley of Corndean and Winchcombe, Charlton Abbots is one of the most out-of-the-way and inaccessible villages of this district; but the old Manor House is a wonderful relic of 16th Century building, in splendid preservation. Brockhampton is also a most interesting village with many old houses, and the Park, the residence of Col. Fairfax Rhodes, is a very fine house with beautiful grounds, formerly the lazar House of Winchcombe Abbey, from which it is only three miles distant. It contains a fine staircase and some wonderful rooms.  
 1.—Brockhampton Park from the south.  
 2.—The house and grounds, showing the lake and bridge.  
 3 and 4.—The Manor, Charlton Abbots, now occupied by Mr. R. G. Hanks. It was [Photo by Cheltenham Newspaper Co., Ltd. from whom copies can be obtained.]



**A SURREY WAR MEMORIAL.**  
 The above War Memorial has recently been erected by R. L. Boulton and Sons, sculptors, Bath-road, Cheltenham, at Tilford, Surrey. They will be pleased to estimate for memorials of any description.

**Moussell Bros., Ltd.**  
 (Opposite C.W.R. Station),  
**CHELTENHAM.**  
**FURNITURE REMOVALS.**  
 BY RAIL OR MOTOR.  
 'Phone 112.

**PAINLESS DENTISTRY,**  
**Edwards and Hirst,**  
**THE DENTAL SURGERY,**  
**BANK CHAMBERS,**  
**131 High Street, Cheltenham**  
 (Corner of North Street).

Advice and Estimates Free.  
 Hours—10 till 7.

**ADVERTISE IT IN THE 'ECHO.'**



**Edward Beech Preston,**  
 Who stands remanded charged with abducting Miss Susan Patricia Fullerton Souter-Sanderson, aged 17, from the custody of her parents, who reside in Cheltenham.

**Cheltenham Schoolboys' Football Team.**

Owing to pressure upon our space, this photograph has had to be held over until next week.

# Lance's

for  
**DELIGHTFUL SPRING**  
**Coats & Wraps**  
 OF EXCELLENT  
 TASTE AND VALUE.

**39/6 to 7½ Guineas.**



Ladies' All Wool Gabardine COAT, trimmed Silk Braid. Shades: Nigger, Navy, Grey, Fawn, and Black.

SPECIAL PRICE, **59/6.**

**John Lance & Co.,**  
 LIMITED,  
**CHELTENHAM SPA.**

Agents for Burberry and Jaeger Goods



**NORTH COTSWOLD POINT-TO-POINT RACES.**

These races were held at a new venue, at Dumbleton, over a capital course, with a natural grandstand from which the races could be followed easily. Although the weather was wet, there was a fine crowd and the races were very sporting, especially the Oxford and Cambridge Team Race.

- 1.—Mr. de Winton, Mr. Gresson (judge), and Lieut.-Col. Heyworth Savage on judge's platform with ladies.
- 2.—Mr. J. Graeme Thompson's Bellefleet (2nd) and Major C. Pemberton Stedall's Wellingate (winner) at last fence in North Cotswold Nomination Race.
- 3.—Mr. R. T. Dibben, on the The Imp IV. (2nd), and Mr. C. W. Bennett, on Heiress (winner), at last fence in the Oxford and Cambridge Team Race.
- 4.—Some local farmers.
- 5.—Hon. I. Guest having his boots cleaned before starting.
- 6.—A "bookie" paying out to a lady.
- 7.—A Cambridge man bringing part of the hedge with him.
- 8.—Watching a race.
- 9.—Mr. R. B. Moseley setting forth on Aunt Strange (finished fifth).

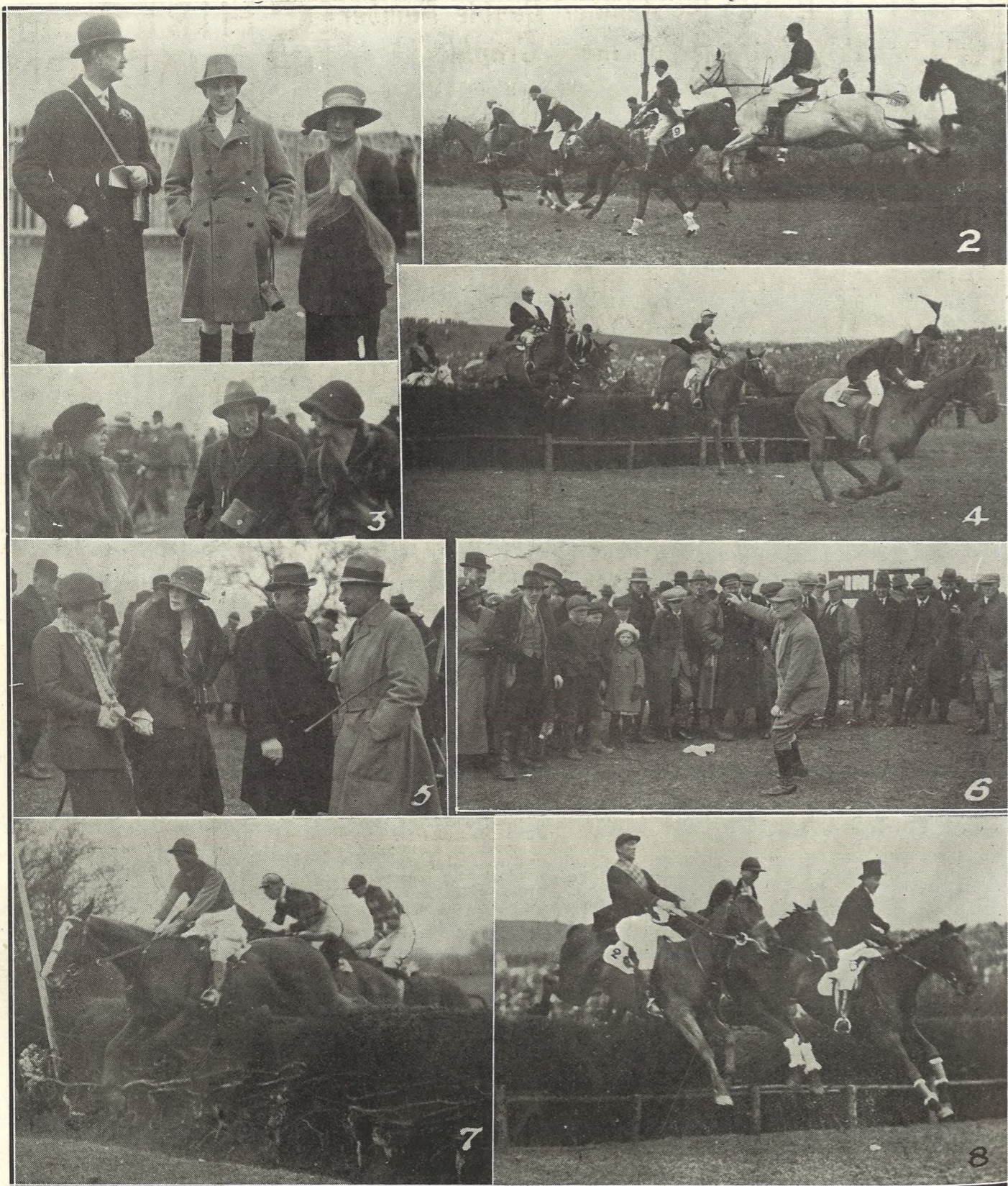


**CHELTENHAM COLLEGE CROSS-COUNTRY RUN.**

The annual long-distance run was held at the College last Saturday afternoon and was a record for the number of starters—92 Collegians and 17 Cheltenham and County Harriers running. The Harriers won the match of six-a-side by two points and G. Chudleigh was first man home, but the College boys ran them very closely.

- 1.—Lining up to start; 109 competitors.
- 2.—College competitors.
- 3.—The first three Collegians home: D. Lumsden, winner (in centre), finished second; G. G. Edelsten (on right) finished fourth; and J. I. Yates (left) finished sixth.
- 4.—Lumsden coming in.
- 5.—G. Chudleigh winning.
- 6.—Mr. H. H. Hardy, the Principal (in centre), watching the boys come in. He had just returned from laying the trail.
- 7.—The start.
- 8.—The start.

[Photos by Cheltenham Newspaper Co., Ltd. Copies (6½ x 4½) 1s. each unmounted, 1s. 6d. mounted; larger sizes if required.]



**LEDBURY HUNT POINT-TO-POINT RACE MEETING AT LONGDON.**  
 This fixture, now a bona fide meeting under National Hunt Rules, was held on the splendid course at Longdon, in beautiful weather, before an immense crowd. Capital racing was seen and the event was a most sporting and enjoyable one.  
 1.—Sir Geo. Bullough (whose last meeting it was as Master), with friends, in the Paddock.  
 2.—Taking a fence in United Hunts Steeplechase.  
 3 and 5.—A chat in the Members' Enclosure.  
 4.—Second time round in United Hunts' Steeplechase.  
 6.—Telling the tale! A tipster hard at work.  
 7.—The last fence in Lady Bullough's Challenge Cup.  
 8.—Gamble II., St. Jean de Luz (winner), and Joker VII. (2nd), racing together in the Ledbury Hunt Red Coat Race.

[Photos by Cheltenham Newspaper Co., Ltd. Copies 1s. each, by post 1s. 2d.]

**HIGH GRADE READY-TO-WEAR COSTUMES**

AT UNUSUALLY LOW PRICES.

On account of our quick cash business, we can offer you the last word in Value for Reliable Goods at Reasonable Prices.

A smart, well cut COSTUME, beautifully tailored, in good quality All Wool Gabardine, lined Broche material, the same style as illustrated, but with Belt (which can be removed if desired).

**52/6.**

Another Double Number of the "Graphic."

We shall publish a Special Easter Double Number of the "Graphic" Next Saturday.

**SHIRER and HADDON, Corset Specialists.**

**"Twilfit" Corsets.**



A Short Hip-Confiner, made from good quality Brocade, fastened in front with buttons in place of Busk, 11/6 ea. Elastic Bust Bodices, white or flesh, 3/11½ each.

Other well-known makes of Corsets will be found in Our Showroom.



A very Special Line of Artificial Silk Knickers, 9/11.

Taffeta Under-skirts, 14/11 Each. All Shades.

Tricot and Elastic Corsets a Speciality.

Our Special Reducing Models, fitted with Rustless and Unbreakable Spiral Steels, 6 Hose Suspenders, 15/11 Pair, 22 to 30in. 17/6 Pair, 30 inch to 33 inch.

**Mr. W. D. Farrar,** Of Leckhampton, who is standing for election as Rural District Councillor for that parish. He is well-known as a successful business man, and has taken for his Council ideal "Efficiency with Economy." Polling day is Monday next.

**BEST QUALITY CIDERS**

IN BOTTLE.—Sparkling and Still  
**BARTHOLOMEW,**  
 419-420, HIGH STREET,  
 CHELTENHAM.

WINES, SPIRITS, ALES, TABLE WATERS and GROCERY. Tel 15.

CORSETS MADE TO MEASURE from 25/- Pair.

Copyings, Cleanings, and Renovations. SURGICAL BELTS.

**MISS FRUIN** (Late with Madame Annette), 23 Bath Parade, CHELTENHAM.

**Colonnade and Imperial Circus : CHELTENHAM.**

**Dicks & Sons Ltd**  
 172, 173 HIGH STREET  
**Cheltenham Spa**  
 50 YEARS REPUTATION FOR VALUE

# Vanderplank Vogue.

The New  
**Spring Models**

For Varying  
Figure Types.



Long, slender lines are dominant, and this simple style in Gabardine, with silk braid panels back and front, is obtainable in fashionable colours at

**69/6.**

Here is an admirable example of the Long Waisted COAT FROCK in Gabardine. The scalloped hem to the skirt, and wide sleeves and an oxidised steel girdle add to its charm.

PRICE, **4½ Gns.**

LINES make the figure—and true style consists in wearing only that which is becoming to your own type and figure.

**A**LL that is beautiful, all that is chic in Spring and Summer designs will be found embodied in one form or another in Vanderplank's Coats and Suits for Spring. They have that style, leadership which goes with the ability to adapt the best that Paris gives to the needs of the Englishwoman.

**B**UT, further in Vanderplank's Suits and Costumes, this season's accepted styles have been adapted to widely varying figure types that the individual silhouette may have correct and becoming lines.

## Vanderplank

(From Harrods),

THE HOUSE for  
FASHIONS and FURS,

381 High St., CHELTENHAM  
AND  
8a Promenade SPA.

# THE CHELTENHAM CHRONICLE AND GLOUCESTERSHIRE GRAPHIC

With which is Incorporated the Cheltenham "Looker-On."  
GRATIS SUPPLEMENT. Saturday, April 8, 1922.

No. 1,110.

CHELTENHAM THEATRE AND OPERA HOUSE.  
The County Theatre. Established 30 Years. General Manager: H. OSWALD REDFORD

Lessee: ROBERT REDFORD.

TO-NIGHT AT 7.30 (No Matinee): "SMOULDERING FIRES."

NEXT WEEK—THEATRE CLOSED, Re-opening on Easter Monday with "BROWN SUGAR."

THE PALACE,  
High Street, Cheltenham

Continuous—2.30 to 10.15.  
Monday, Tuesday, Wednesday:

Mae Murray,

in  
"Peacock Alley,"

A Gorgeous Super Production.  
"DOUBLE ADVENTURE."  
"Movie Chats."

Thursday and Saturday:

Helene Chadwick,

in  
"Scratch My Back."  
Rupert Hughes' Famous Story.  
A Rex Black Production.  
"VELLED MYSTERY."  
Comedy: "HOODOED."

Further Reduction in Price.

THE SPECIAL  
Hard Wear Shirt

Of our own manufacture is now offered at **9/6.**  
Guaranteed fast colours. Now made in two styles. Lined back and front, and single cuff, double cuff, and no linings.

A. BECKINGSALE,  
SHIRT MANUFACTURER,  
111 High St., Cheltenham.

FISHER'S,  
69 REGENT STREET,  
CHELTENHAM SPA.

SPRING SHOW: SMART HALF HOSE,  
TIES, Etc. TAILORING.

MARTIN & CO.  
LTD.,  
Promenade, Cheltenham.

Purchase for Cash Antiques of all kinds, including Old Silver, Jewellery, Sheffield Plate, China, Coins, Miniatures, etc. Highest Prices Given for Rare Pieces.



Historic Meet at Tortworth.

The new Earl of Ducie, with the Earl of Berkeley, at a meet of the Berkeley Hounds at Tortworth on Thursday, March 30th.  
[Photos by Cheltenham Newspaper Co., Ltd.]

ADVERTISE IN THE "ECHO."

For the Best **PIANOS, DALE, FORTY and Co. Ltd**

WINTER GARDEN  
CHELTENHAM.

Monday, Tuesday, Wednesday:  
Holman Clark and Cecil Humphrey

in  
"FALSE EVIDENCE,"

by  
E. Phillips Oppenheim.

Thursday and Saturday only:

"THE CHANNINGS,"

by  
Mrs. Henry Wood.

"LONDON, OUR WONDER CITY"

Part I: A New Series of Interest Films.

Lowest Prices.  
GARDEN TOOLS—Spades,  
Digging Forks, Wood Trellis.  
MILLER,  
IRONMONGER,  
163 High St., Cheltenham  
(Facing Fleece Hotel).

All Your Wants  
Supplied

Classes.  
If you have a small Prepaid Advertisement in the "Echo" and the "Chronicle." It is the combination that does it, for it reaches ALL

Promenade, :: Cheltenham.

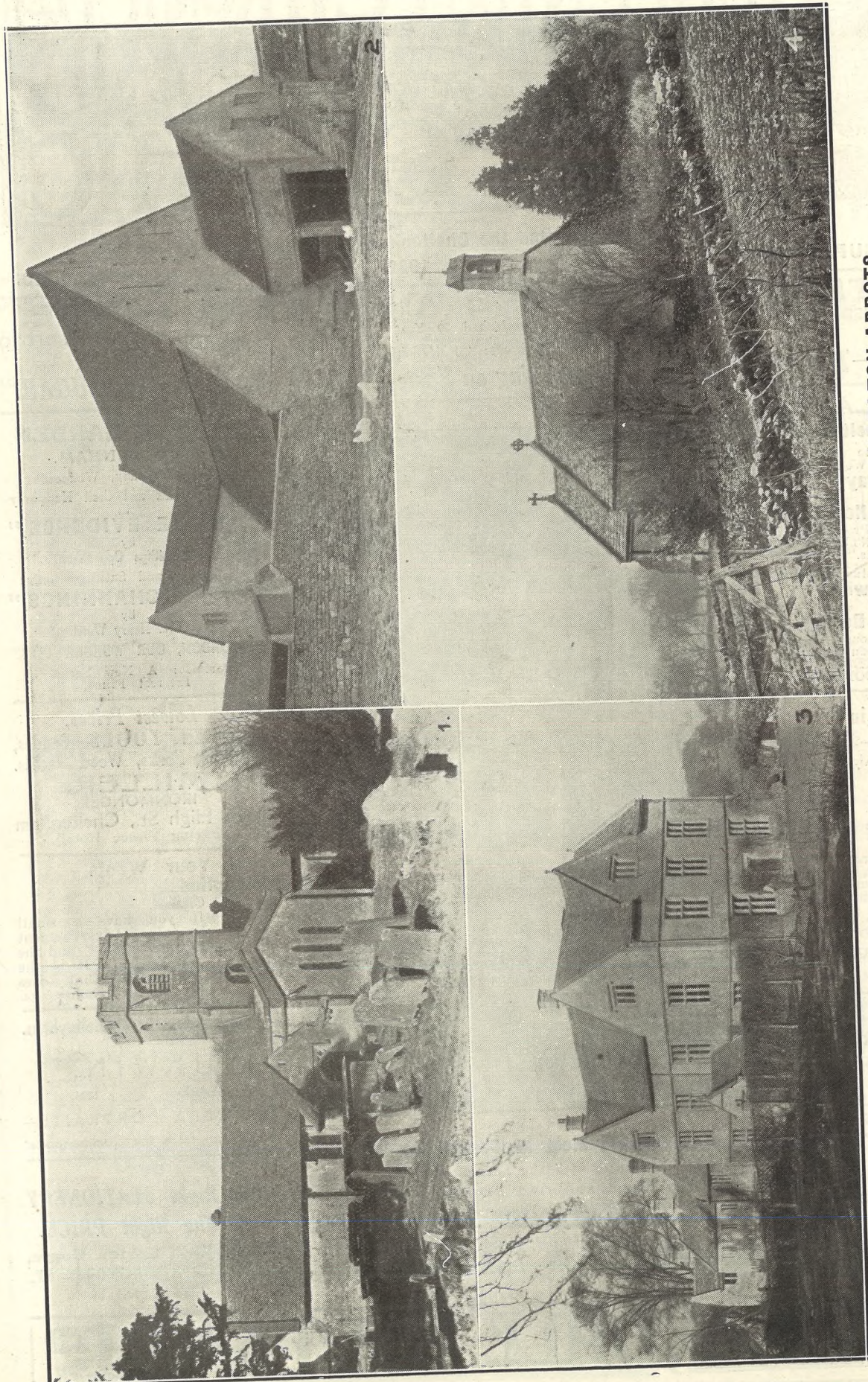
URWIN.

Telephone - - 1206.

CAMERA PORTRAITS—  
Differing from the Commonplace

BUY  
The Right STATIONERY  
At The Right PRICE.

LEE, Caxton House,  
WINCHCOMBE ST.,  
CHELTENHAM.



**PICTURESQUE GLOUCESTERSHIRE—SEVENHAMPTON AND CHARLTON ABBOTS.**

Sevenhampton, Brockhampton, and Charlton Abbots are parishes adjoining each other, the first and last only having churches. They form a line leading from Winchcombe to the Cheltenham to Stow road; Charlton Abbots being three miles from Winchcombe.

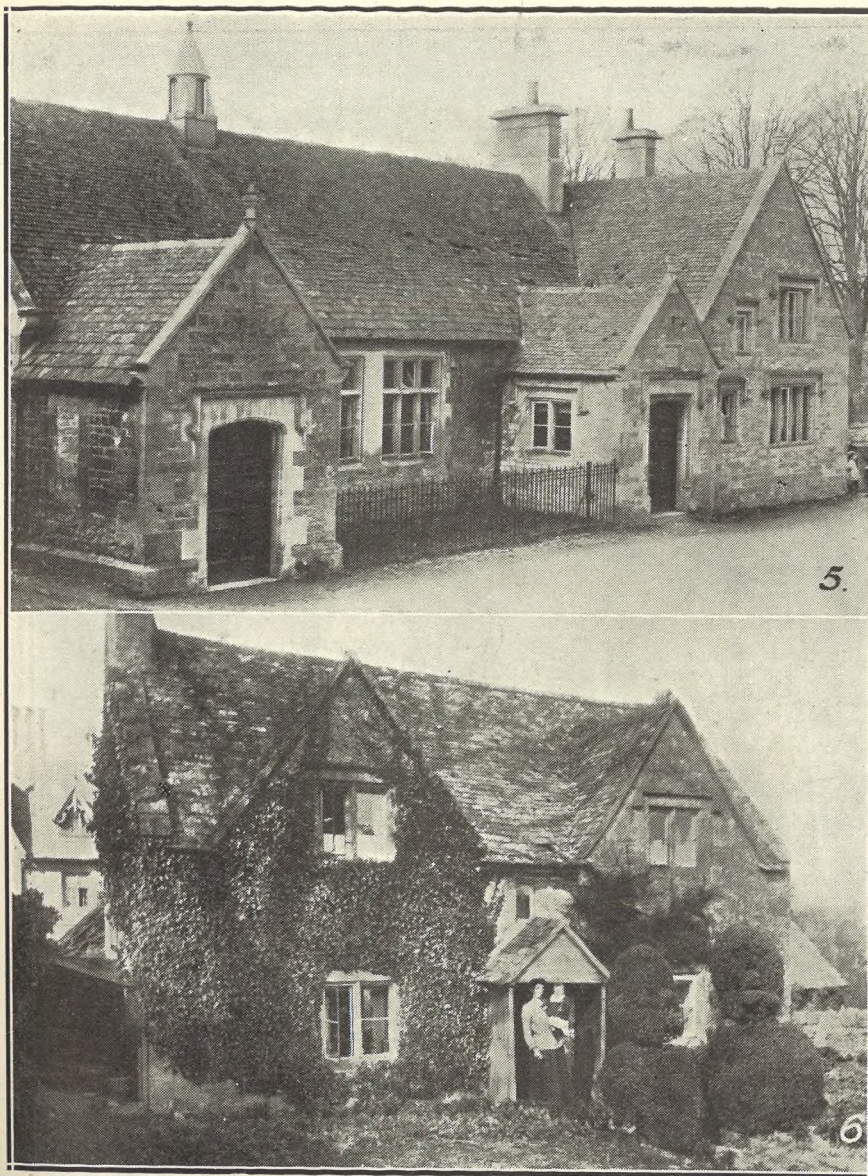
1.—Sevenhampton Church, an interesting and ancient structure, in a very picturesque situation.

2.—The Barn at Charlton Abbots Manor. This farm formerly belonged to the monks of Winchcombe Abbey, the Manor House being its lazar-house.

3.—Sevenhampton Manor, the residence of Capt. Herbert. It adjoins the church, as do most of the Cotswold Manor Houses.

4.—Charlton Abbots Church.

[Photos by Cheltenham Newspaper Co., Ltd. Copies 8 x 6 unmounted 1s. 9d., mounted 2s. 6d., postage extra.]



**Picturesque Gloucestershire—Brockhampton and Sevenhampton.**

5.—The Reading Room, Brockhampton, a modern structure in olden style. Erected by Col. Fairfax Rhodes for the villagers.

6.—An old cottage at Sevenhampton.

**Easter Engagements and Weddings.**  
Special Show of Engagement and Wedding Rings set with Real Gems, and Wedding Rings by Weight, all subject to a discount of 2s. in the £, for 21 days only.

**HARRY O. BOX,**  
JEWELLER,  
320 HIGH STREET, CHELTENHAM.  
Established 70 years.

**PAINLESS DENTISTRY,**

**Edwards and Hirst,**  
THE DENTAL SURGERY,  
BANK CHAMBERS,  
131 High Street, Cheltenham  
(Corner of North Street).

Advice and Estimates Free.  
Hours—10 till 7.

**Mousell Bros., Ltd.**  
(Opposite G.W.R. Station),  
CHELTENHAM.

**FURNITURE REMOVALS.**  
BY RAIL OR MOTOR.  
Phone 112.

CORSETS MADE TO MEASURE from **25/-** Pair.  
Copyings, Cleanings, and Renovations.  
SURGICAL BELTS.

**MISS FRUIN** (Late with Madame Annette),  
23 Bath Parade, CHELTENHAM.

WHEN WET AND COLD—  
COMBINE AGAINST  
HEALTH AND COMFORT.

**: Burberry :  
Weatherproof**

IS A VERITABLE BOON.



Special Display of BURBERRY  
WEATHERPROOF TOP  
COATS, To-Day, and daily  
until April 13th.

Prices from 4½ Gns. to 15 Gns.

Appointed Agents.—

**John Lance & Co.,**  
LIMITED,  
CHELTENHAM SPA.



**BERKELEY HOUNDS MEET AT TORTWORTH.**

On Thursday, March 30th, the Berkeley Hounds, under the Mastership of the Earl of Berkeley, met at Tortworth for the first time by the invitation of the new Earl of Ducie. Great interest was manifested in the event owing to the fact that the latter has just returned from Australia to take up the Earldom after an absence from England of over sixty years, he being over eighty years of age.

- 1.—A number of sporting Berkeley farmers, who welcomed the Earl of Ducie from horseback.
- 2.—In front are standing Lady Eleanor Brodie (sister), Lady Alice Havelock
- 3.—Three well-mounted farmers, Messrs. C. Allen (sister), Lord Ducie (in centre), and Lady Margaret Moreton (daughter), with tenant farmers in background.
- 4.—Three members of the Hunt.
- 5.—The noble Master with the pack and Hunt servants in front of Tortworth.

[Photos by Cheltenham Newspaper Co., Ltd. Copies 1s. each unmounted, 1s. 6d. mounted, postage extra.]

**MAKE A POINT OF VISITING THE SPECIAL "TWILFIT" DISPLAY AT D. J. REES, OSBORNE HOUSE.**



THE *Twilfit* CORSET

**EVERY PAIR FULLY GUARANTEED. BEST VALUE CORSET IN THE WORLD**  
*British Made Throughout.*

**F**OR 10 DAYS, commencing April 7th, we are holding a Special Window Display of the World-Famous Twilfit Corsets. We are showing as many Models as our windows will allow, but ladies who do not see exactly what they require are cordially invited to inspect a much larger range in the Corset Department

**EVERY PAIR GUARANTEED.**

Every pair of Twilfit Corsets carries the maker's guarantee of absolute perfection in fit, style, and wear. Purchase price refunded or Corsets exchanged if not to entire satisfaction.

MODEL 2003. Slender Figure. SPORTS CORSET, with Silk Elastic at top. Specially bound to prevent tearing. Lightly boned. Short cut model in front, hips, and back, and low bust. Fitted with four suspenders. Sizes 19 to 28in. Price per pair **10/6**



**"TWILFIT" SPIRAL STEELS.**

All "Twilfit" Corsets are fitted with "Twilfit" Steels: Rustless and Unbreakable. They are exclusively a Twilfit feature, and are unobtainable in any other Corset.

Style 8089. Made of Beautiful quality flowered Broche in Pale Pink, Sky, and White. Bound at the top with satin ribbon, fitted with broad spiral steels. A very low bust of 1 1/2 in. only above waist and deep fitting over hips and back. Side and front hose supports, 21 to 28in. Price **12/11**

**A VISIT TO-DAY. MEANS CORSET COMFORT TO-MORROW**

**IF YOU CANNOT CALL SEND BY POST. WE PAY CARRIAGE.**



No. 2. CROSSOVER BRASSIERE, fitted with Twilfit Spiral Unbreakable Steels, trimmed good quality embroidery. Bust sizes 32 to 44ins. Price **5/11**



REDUCING MODEL 1010. Our special Reducing Model, with patented cross supports. Fitted with "Twilfit" Spiral Unbreakable Steels. In very strong quality Coutil, and with six hose supporters. Sizes 22in. to 30in. Price per pair **15/11** Sizes 31 to 36in., **17/6**



No. 45. A BRASSIERE, specially suitable for medium to full figures needing bust support. Front fastening with buttons and cross-over tape to regulate waist line. Sizes 32 to 42in. Price **4/6**

**CHOOSE YOUR CORSETS WISELY. IT MEANS COMFORT. "TWILFIT" CORSETS ARE BUILT TO GIVE COMFORT.**

**OSBORNE HOUSE, HIGH STREET, CHELTENHAM.**



**BRASSIERES.**  
Covered by the usual Twilfit guarantee.



**CHEL TENHAM SCHOOLBOYS' ASSOCIATION XI.**

WHO DREW WITH STROUD BOYS ON SATURDAY, MARCH 18, 1922.  
 Standing (left to right).—Dodwell, Dickerson, Smith, Organ, Beck, Mr. J. E. Morris.  
 Sitting.—Rimell, Fryer, Andrews (captain), Child, Taylor.  
 In front.—E. Humphries, J. Humphries.

COME TO  
**CRICHTON'S**  
 PIANO HOUSE

For Pianos of Quality, fully guaranteed,  
 at lowest possible prices, including : :  
 BROADWOOD, BECHSTEIN,  
 STECK, WEBER,  
 GORS & KALLMAN,  
 EAVESTAFF, ROGERS,  
 MILLARD, and many others.  
 HIGHEST QUALITY. LOWEST PRICES.  
 YOU are cordially invited to call to-day.  
**Crichton's, Ltd.,**  
 Promenade, Cheltenham  
 (Opposite G.P.O.)



**Mr. and Mrs. W. C. Ferris,**  
 Of Norfolk House, London-road, Gloucester, who celebrated their golden wedding on Friday, March 31st, having been married at Edgbaston in 1872. Mr. Ferris is the proprietor of the well-known hatter's business in Northgate-street.

**MILLINERY**  
 for the  
**HOLIDAYS.**

**Mesdames M. & N. WILDING**  
 Announce an EASTER SHOW, and draw special attention to Novelties in Neckwear, Sports Coats and Frocks suitable for HOLIDAY WEAR.  
**MONTPELLIER, :: CHELTENHAM SPA.**

'Phone 311.  
 Telegrams : " Bence, Cheltenham."  
 FOR BETTER WALLS & CEILINGS USE  
**BEAVER BOARD**  
 ALL SIZES IN STOCK AT REDUCED PRICES.  
**Geo. Bence & Sons, Ltd.,**  
 Timber & Builders' Merchants,  
 Fairview Road, CHELTENHAM.

**DRAKE'S**  
 EASTER WEAR VALUE.  
**HOSIERY.**

"PSYCHOSE"  
 The superlative stocking. Heavy art silk in black, nigger, oyster, pearl, smoke coating, and Paris brown, 5/11½ pair.

PSYCHOSE REGD



**ART SILK HOSE,**  
 All perfect goods, full length and reliable makes, in 16 of the very newest Shades, and Black. 4/6½, 3/11½, 3/6½, 2/11½ pair.

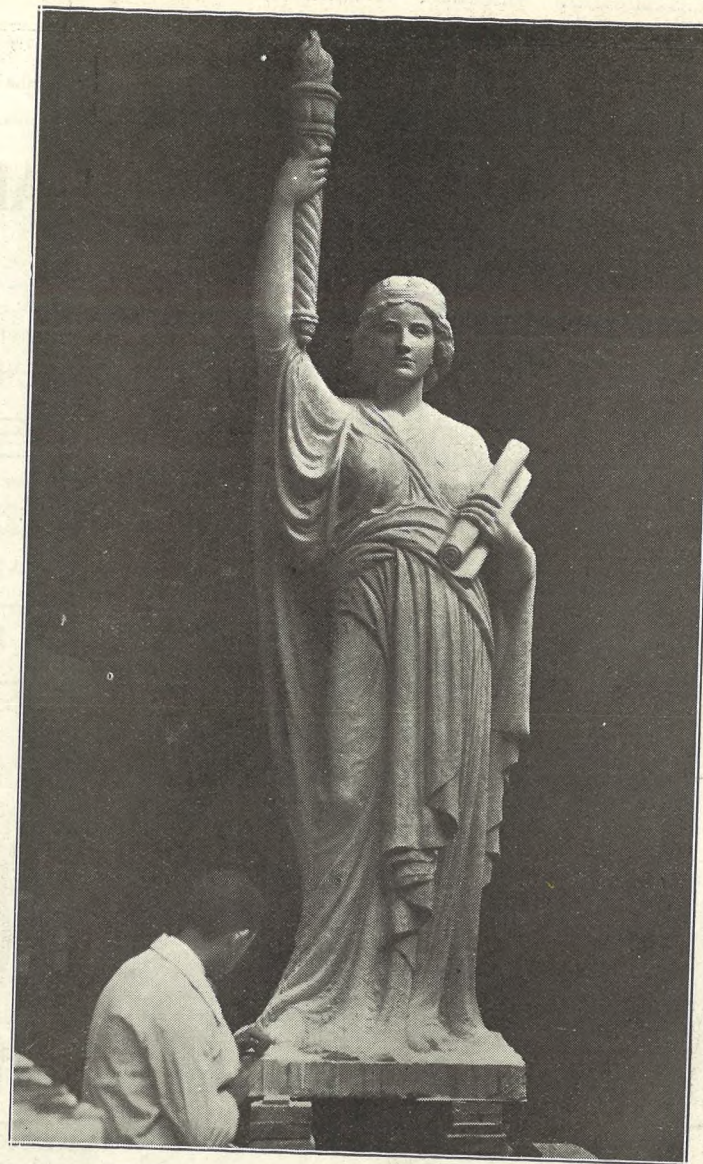
**ART SILK HOSE.**  
 A very special line, in black, nigger, suede, and silver. Perfect Goods, 16 inch leg. 1 11½ pair.

**NEW FANCY RIBBED HOSE.**  
 All pure wool, in pearl coating, smoke, mole, nigger, toney, suede, putty, cham, and black. 2/11½ pair.

**GLOVE WEAR.**

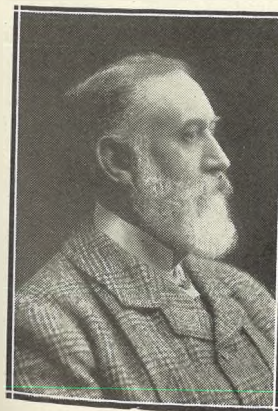
**FRENCH GLACE KID GLOVES.**  
 Specially good skins, 2 fasteners, In beaver, grey, white, and white stitched black. 3/6½ pair.  
**FRINGED CASTOR GAUNTLETS.**  
 Splendid skins, In chamois and beaver, The latest, 5/11½ pair.  
**NAPPA GAUNTLETS.**  
 Excellent skins, In tan only, with strap fasteners, 6/11½ pair.

Winchcomb St., CHELTENHAM SPA.

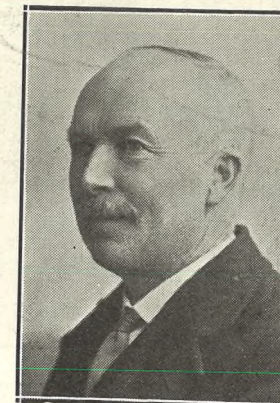


**AT WORK ON A WAR MEMORIAL.**

Figure of "Liberty," 8ft. high, in Portland stone, now in course of execution for Sheerness War Memorial, at the studios of Messrs. R. L. Boulton and Sons, sculptors, of Bath-road, Cheltenham. The sculptor can be seen at work on the statue.



**Surgeon-Major Isaac Newton, I.M.S.,**  
 of Broadlands, The Park, Cheltenham, who died on March 28th, aged 84 years. He had lived in Cheltenham over 20 years.



**Mr. J. G. Quick,**  
 Who is retiring at Easter after 37 years' service as organist and schoolmaster at Coln St. Aldwyns.

**Holiday Fashions.**  
**SHIRER**  
 AND  
**HADDON**

ARE RENOWNED FOR  
**Reliability and Value**  
 AND TO THIS MAY BE ADDED  
**Exclusiveness and Originality.**  
 IN DESIGN & COLOURING.

In their RE-CONSTRUCTED DEPARTMENTS they are showing the  
**FASHIONS FOR EASTER**  
 in all that appertains to Dress,  
 SMART AND ORIGINAL  
 Wraps, Gowns, Costumes.

**Skirts, Blouses, & Jumpers**  
 AT MODERATE PRICES.



**AN EXAMPLE OF VALUE!**  
 All-Wool GABARDINE COSTUME,  
 78/6.

Can be had in Grey, Mole, Nigger, Navy, Beaver, and Black.

A VISIT OF INSPECTION WELCOMED.

**Colonnade and Imperial Circus : CHELTENHAM.**





**CHELTENHAM ROUND THE TOWN.**

Some snaps of Cheltonians taken in the High-street on Tuesday morning last, when everyone was out enjoying the pleasant change from the previous day's blizzard.

- 1.—Mr. H. Ault.
- 2.—Stopping for a chat.
- 3.—“What’s the next shop to call at?”
- 4.—One of “the old school.”
- 5.—Shopping.
- 6.—A morning stroll.
- 7.—Taking care of the elderly lady.
- 8.—In a good humour.
- 9.—We wonder what is the joke.
- 10.—Mr. Harenc shopping.
- 11.—The poodle doesn't like waiting.

[Photos by Cheltenham Newspaper Co., Ltd.]



**CHELTENHAM GRAMMAR SCHOOL SPORTS.**

The Annual Athletic Sports, postponed from last Saturday on account of bad weather, were held on Wednesday, April 5th, in genial conditions on the Battledown Playing field.

- 1.—Jumping the rails in 'Obstacle Race.
- 2.—Part of crowd at prize-giving.
- 3.—Start of Three-legged Race.
- 4.—A “beat” crew in the “Boat” Race.
- 5.—Insley winning the 440 Yards (under 15). He also won the 100 Yards (under 16), 100 Yards (under 15), and 220 Yards (under 16).
- 6.—A laughing crowd of spectators.
- 7.—Start of 440 Yards Open Race.
- 8.—Jewell winning Open High Jump (4ft. 5 3/4 in.).
- 9.—Tibbles winning 220 Yards (under 14).

[Photos by Cheltenham Newspaper Co., Ltd. Copies 1s. each unmounted, 1s. 6d. mounted; postage extra.]

# SPECIAL OFFERS FOR EASTER WEAR AT REMARKABLY LOW PRICES.



Wool SPORTS COATS, In All Colours, 10/11, 12/11, 15/11, 18/11, 25/6, 45/6.



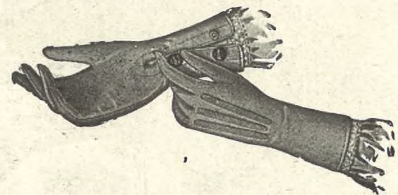
We have Just Made an Exceptional Purchase of **LOUVISCA BLOUSES.**

Made in Shirt Style, as illustration, in various coloured stripes.

Usual Price 9/11. OUR PRICE—

**6/11½.**

This is not a job purchase of badly-cut garments, but full cut, well made, regular goods.



Ladies' Suede Finish Fabric GLOVES in Grey, Beaver, Chamois, & colours, etc., 1/11½.

Ladies' White Glacé Kid Gloves. Usual Price, 4/11½. Our price 2/11½. Ladies' Chamois Gloves, 3/11½ and 4/11½.

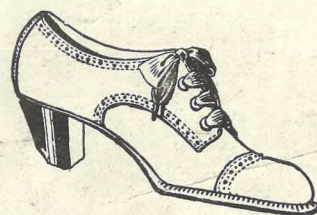


Ladies Art Silk HOSE, with 20-inch Silk Leg and Lisle top, all colours, 2/11½.

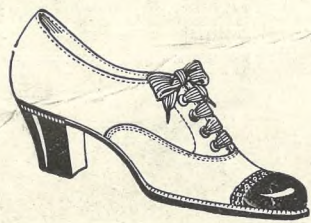
In Black Only, 1/11½, 2/11, 3/11, 4/11.

All-Wool Ribbed Cashmere Hose, all colours, 1/11½, 2/11½.

Plain Cashmere Finish Hose, in colours, 1/0½.



Ladies' Glacé Kid SHOES, Derby shape, 8/11½; With Patent Toe Cap, 12/11.



Ladies' Smart OXFORD SHOE, in Glacé Kid, with Patent Toe Caps, 16/11, 21/9, 27/6.



Smart JUMPERS, in Knitted Art Silks on Crepe de Chine, trimmed heavy Crochet, 18/11, 27/6, 35/6.

Crepe de Chine Jumpers, all colours, 10/11, 15/11, 18/11.

Fancy Mercerised Cambric or Poplin Jumpers, 4/11½.

The House with 50 Years' Reputation for Value.



Ladies' Ready-to-Wear FROCKS, in All-Wool Navy Serge, similar Models to illustration, 15/11 to 75/-.

**Dicks & Sons Ltd.**  
172 & 173 HIGH STREET  
**Cheltenham Spa**  
50 YEARS REPUTATION FOR VALUE.  
TEL. 1007.

A Smart COSTUME, well cut and beautifully tailored, with lined coat, in All-Wool Gabardine, in Navy, Beaver, Nigger, etc. £4/10/0

Also one in All-Wool Gabardine, plain style, with belt, 52/6



## ROUND THE CITY IN GLOUCESTER.

Snaps on Tuesday afternoon in the main streets. Everyone was out enjoying the beautiful day.

- 1.—Two fair equestriennes.
- 2.—Rev. Winnington Ingram, of Lassington.
- 3.—All the family out for a walk.
- 4.—Pushing her bike.
- 5.—On leave.
- 6, 8, and 9.—Taking an airing.
- 7.—An old soldier, who mends mats.

[Photos by Cheltenham Newspaper Co., Ltd. Copies 1s. each unmounted, 1s. 6d. mounted.]



**CENTRAL TRAINING COMMITTEE DOMESTIC CLASS, GLOUCESTER.**  
Unemployed girls are trained in Domestic Work, suiting them for entering service, at Calton-road Schools. The superintendent is Miss C. Christie (in centre).

# STEEL'S GLOUCESTERSHIRE GARAGES

## PLACE YOUR ORDER

For a New Car or Motor Cycle with a firm of repute. ∴ You pay no more, but you get prompt delivery and the best of service.

OUR AGENCIES INCLUDE THE FOLLOWING:

WOLSELEY,  
ROVER,  
STANDARD,  
OVERLAND,

Cars.

A.J.S.,  
EDMUND,  
EXCELSIOR,

Motor Cycles.

# H. E. STEEL LTD.

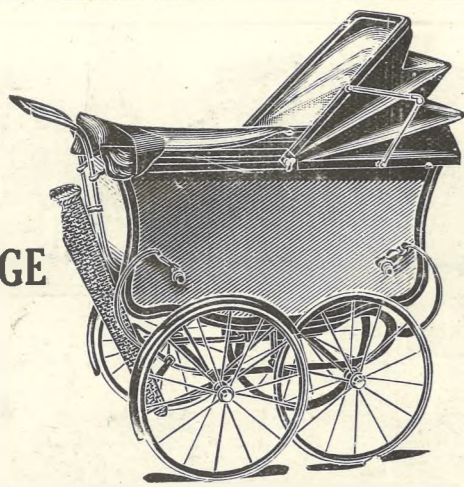
Cheltenham, Gloucester, Stroud & Cirencester



### CHELTENHAM COLLEGE SPORTS.

- In bitterly cold weather, with snow falling, the Annual Sports were held on Friday afternoon, March 31st, before a small but loyal crowd of spectators.
- 1.—Steeplechase relay (under 16): taking the water jump; every competitor went in.
  - 2.—Mr. Stevens (Sports Secretary) points out an object of interest to Young and Ireland.
  - 3.—Danby (winner of Ladies' Prize) winning the Open 200 Yards from Garner.
  - 4.—The water jump in Open Steeplechase Relay: only two competitors cleared it.
  - 5.—Three O.C.'s; Mr. Tanner in centre.
  - 6.—N. A. Armitage clears 5ft. in winning the Open High Jump.
  - 7.—K. S. Duleep Sinhji winning long jump (under 16)—17ft. 1in.
  - 8.—Competitors in House Relay Race.
  - 9.—Start of Mile Race.
  - 10.—"O.C.'s" Race, won by Mr. Clapp.

A  
BABY  
CARRIAGE  
TO BE  
PROUD OF.



That is the kind of carriage every fond mother wants for her little one—a carriage handsome yet comfortable, smart yet weatherproof, easy running yet absolutely safe, moderate in price and low in maintenance cost.

That is just the kind of carriage we specialise in, and we have a large selection to suit all tastes, all needs, all pockets. And though our prices are so moderate, we offer all our customers a special service of maintenance which saves them money all the time. For new carriages, or for repairs, renewals, or renovations to your old one, come to us; we will save you money, and we know we can please you.

MODELS IN STOCK from £4-4-0.  
And FOLDING BABY CARRIAGES at £2-10 0.  
The Cheltenham Cycle Co., 82 High Street, Cheltenham.

8

ONLY 8 DAYS MORE!

8

That's all! Only eight days more and your holidays will be here, and you will want to be "out and away."

ARE YOU PREPARED?

That Bicycle you meant to buy. Why not get it now, in time to open the Season with it? *The Money You Save in Fares will go a long way towards Paying for it!* Come and see our stocks. Or, perhaps, you already possess a Bicycle, or Motor-Bicycle. Bring it to us at once then, we'll overhaul it thoroughly before Easter. Then you can face the open road with confidence and keen anticipation of uninterrupted "road pleasure." *You will Save Money that way and get more sport.*

Come and see us to-day!

THE CHELTENHAM CYCLE Co.,  
82 High Street, Cheltenham.

8

8

# Madame Thornton

Invites a visit to her New Millinery Salons—now open on the second floor—where all Exclusive Modes and Latest Productions in Millinery are shown.

Holiday  
Hats in  
Swiss  
Tagel and  
Pedal  
Straws,  
Trimmed  
Cère  
Ribbon.  
Chic and  
Equally  
Useful.

12/11.



Suede and  
Felt Hats,  
in all  
Neutral  
and  
Bright  
Colours for  
Sports  
Wear,

4/11.

Personal  
Attention  
Given  
to All  
Customers.

4 Montpellier Walk.

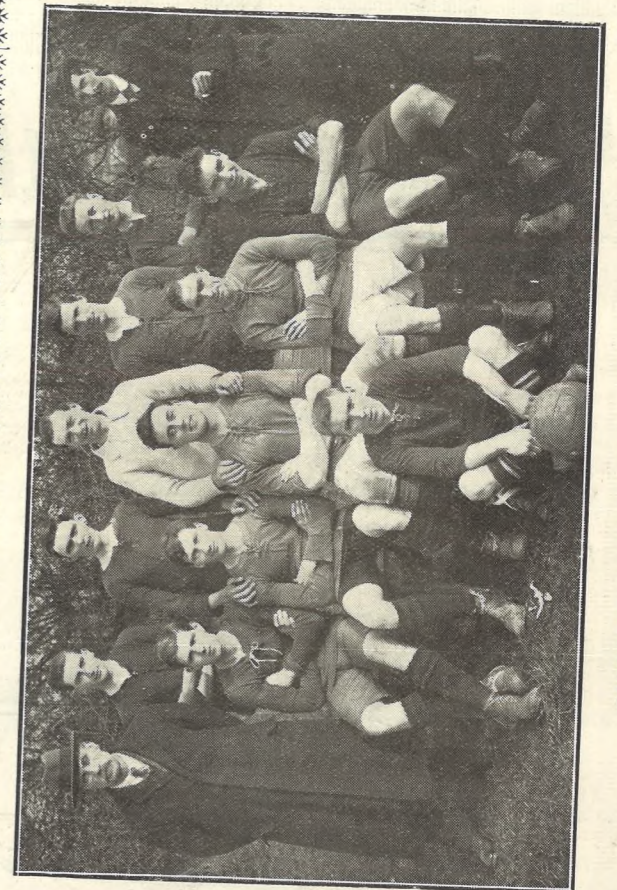
This frontage will doubtless be remembered by many ladies during Shopping Week.

The All Millinery Salons.



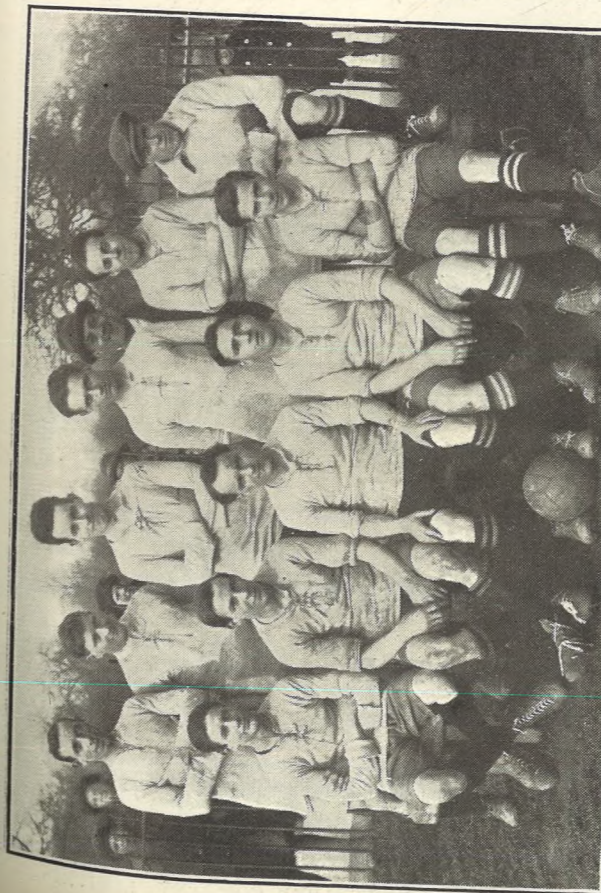
### PRESTBURY ASSOCIATION FOOTBALL TEAM.

Standing: Messrs. Le Worthy (hon. sec), Brewster (referee), F. Parker, A. W. Parker (senior) (sub-capt), F. Pitman, Surman, Hopkins, Bowler, Ackford, Cook, Wilks, C. Collier, Davis.  
Sitting: Butler, Miles, Drew (capt), Hardwicke, C. Baldwin.  
In front: Major, T. Pockett, A. W. Parker, jun., W. Davis.



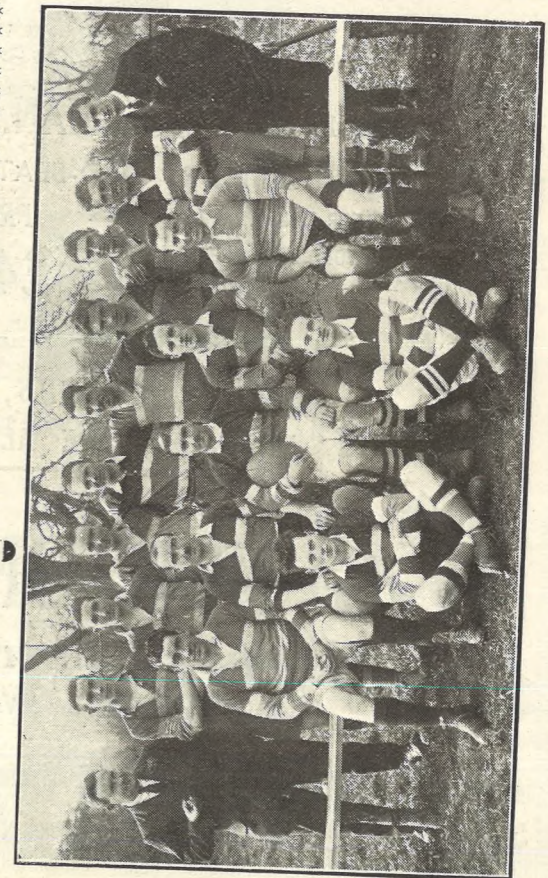
### CHELTENHAM TOWN RESERVES.

Back row.—J. Stubbs (Committee), — Fordham, R. Davis, M. Kennedy, W. G. Clarke, A. Gilman, C. James.  
Front row.—W. C. Trinder, A. J. Goodall, A. C. Stubbs (Captain), J. Phillips, and J. I. South.



### CHELTENHAM ST. MARY'S ASSOCIATION FOOTBALL TEAM.

Standing.—E. Lee, S. Stevens, W. T. Tiver, L. Snell, A. M. Harding, W. Ashfield, J. Groves, W. Johnson, P. F. Bromage (Captain), N. Sherwood, G. White.

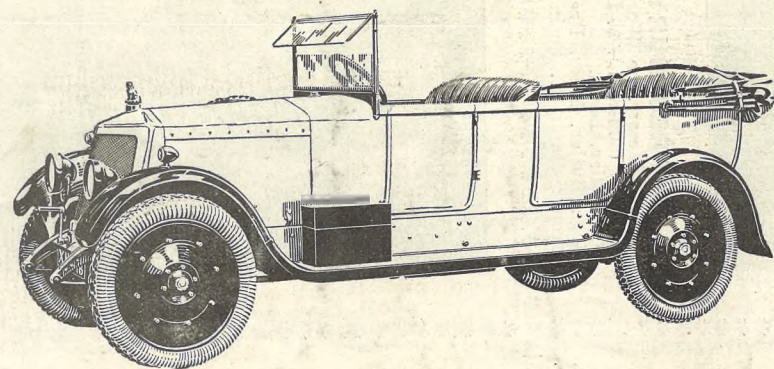


### OLD PATESIANS RUGBY FOOTBALL TEAM.

Standing.—J. Loud, E. J. N. Webb, W. Johnstone, C. W. Alcock, E. P. Dale, E. L. Wheeler, F. C. Ryland, J. D. Lane, K. Norman, C. R. Wicks.  
Seated.—C. W. Statham, G. F. Ryland, W. W. Yeend (Captain), J. F. Drake, J. B. Tregenza.  
In front.—B. E. Hawkins, H. Davis.

# The Call of the Road.

IN the Spring and Summer months the "Call to the Road" is irresistible. We feel that the beauty and health of the English countryside is necessary for us—and can it not be said that Motoring provides the best method of appreciation?



The 18 h.p. 6-Cylinder—

**"ARMSTRONG SIDDELEY."**

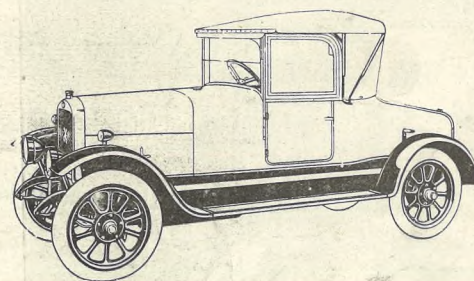
THE MOTOR CARRIAGE OF PERFECT COMFORT.

PRICE, £795.

Supplied to H.R.H. The DUKE OF YORK and H.R.H. The PRINCE HENRY.

The 11 h.p. "HILLMAN."

ALL-WEATHER TWO-SEATER —  
THE LEADER OF BRITISH LIGHT CARS. PRICE,  
OF WONDERFUL RELIABILITY AND VALUE. £495.



OUR SERVICES, ON ANY QUESTION OF MOTORING, ARE ALWAYS TO BE COMMANDED.

**H. G. NORTON & Co. (1917), LTD.,**

CHELTENHAM'S DISTINGUISHED MOTOR HOUSE.

Main Agents also for "Vauxhall" and "Arrol-Johnston" Cars.

# THE CHELTENHAM CHRONICLE AND GLOUCESTERSHIRE GRAPHIC

With which is Incorporated the Cheltenham "Looker-On."  
GRATIS SUPPLEMENT. Saturday, April 15, 1922.

No. 1,111.

**CHELTENHAM THEATRE AND OPERA HOUSE.**  
Lessee: ROBERT REDFORD. The County Theatre. Established 30 Years. General Manager: H. OSWALD REDFORD  
**THIS WEEK—THEATRE CLOSED, Re-opening on Easter Monday with "BROWN SUGAR."**

## THE PALACE, High Street, Cheltenham

Continuous Daily—2.30 to 10.15.  
Monday, Tuesday, Wednesday: Milton Sills and All Star Cast in  
**"Behold My Wife,"**  
From the Famous Novel by Sir Gilbert Parker.  
**"DOUBLE ADVENTURE,"**  
Comedy: "BABY DOLL BANDIT!"  
Thursday, Friday, and Saturday:  
PEGGY HYLAND in  
**"HONEYPOT,"**  
From the Story of the Stage by Countess Barynska.  
**"THE VEILED MYSTERY,"**  
Comedy: "THE DOG DOCTOR."

Further Reduction in Price.

## THE SPECIAL Hard Wear Shirt

Of our own manufacture is now offered at ~~12/6~~ 9/6.  
Guaranteed fast colours. Now made in two styles. Lined back and front, and single cuff, double cuff, and no linings.

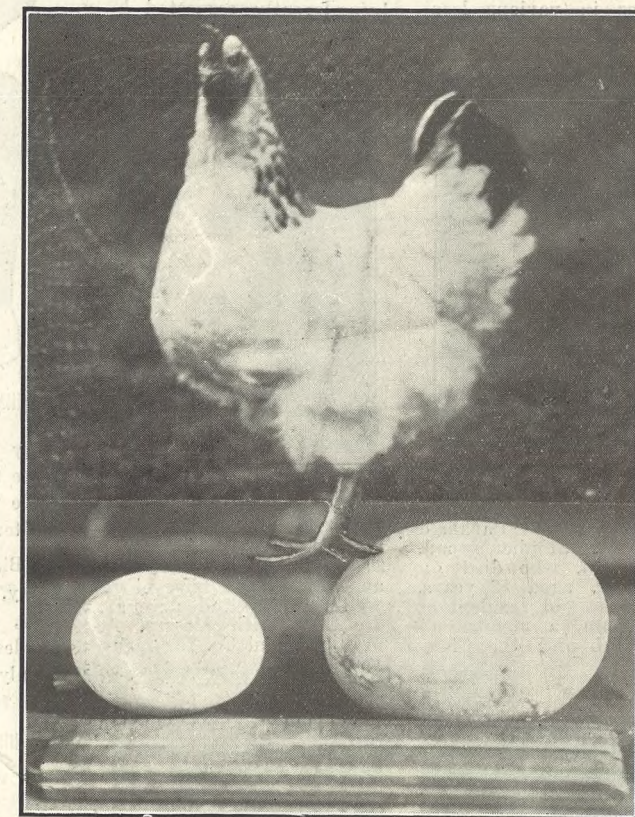
**A. BECKINGSALE,**  
SHIRT MANUFACTURER,  
111 High St., Cheltenham.

**FISHER'S,**  
69 REGENT STREET,  
CHELTENHAM SPA.

SPRING SHOW: SMART HALF HOSE, TIES, Etc. TAILORING.

**MARTIN & CO. LTD.,**

Promenade, Cheltenham.  
Purchase for Cash Antiques of all kinds, including Old Silver, Jewellery, Sheffield Plate, China, Coins, Miniatures, etc. Highest Prices Given for Rare Pieces.



## A HEN'S BIG EGG.

A Light Sussex pullet belonging to Mrs. Copp, Shardilorn House, The Reddings, near Cheltenham, laid an egg last week which weighed 7 ozs. It is 9 inches round the long way of the egg and 7 inches round the centre. It is here photographed with the egg and an ordinary-sized egg. It has laid other double-yolked eggs before.

[Photo by Cheltenham Newspaper Co., Ltd.]

ADVERTISE IN THE "ECHO."

## WINTER GARDEN CHELTENHAM.

Easter Monday, Tuesday, and Wednesday:  
**"HELIOTROPE,"**  
A Great Story of a Father's Love.  
**Buster Keaton and Chaplin.**  
Thursday, Friday, and Saturday:  
**"THE OLD NEST,"**  
As shown for over a month at Alhambra, London.  
**Dorothy Dalton**  
in "Romantic Adventurers."  
Times and Prices, see other bills.

**ALWAYS FAVOURITE!**  
ALWAYS FIRST. ALWAYS BEST ALWAYS USED—

:: Farrar's ::  
**A.C. Rubbles.**  
**Wm. D. Farrar,**  
103 High Street,  
CHELTENHAM.  
Phone 220.

Promenade, :: Cheltenham.

**URWIN.**  
Telephone - - 1206.  
CAMERA PORTRAITS—  
Differing from the Commonplace

BUY  
**The Right STATIONERY**  
**At The Right PRICE.**  
**LEE.** Caxton House,  
WINCHCOMBE ST.,  
CHELTENHAM.

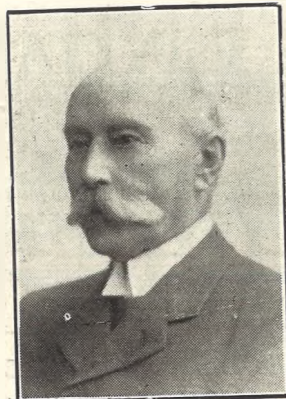
For the Best **PIANOS, DALE, FORTY and Co. Ltd.**



DR. GEO. NESBITT WYNNE,  
Of Sirsa House, Cheltenham, who died on April 5th aged 59 years. He was formerly in practice at Gloucester, but had a breakdown, caused by heavy work during and since the war.



MR. W. J. SUTTON GARDNER,  
Of Laurel House, St. George's-place, Cheltenham, who died on April 9th aged 53 years. He had practised for many years in Cheltenham as a dentist, and had branches in various local towns.



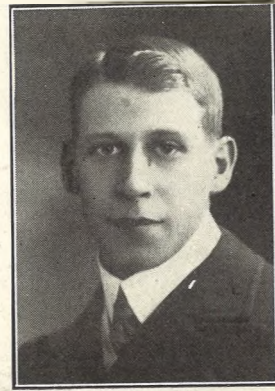
MR. H. J. F. PRATT,  
Of Perrymead, Charlton Kings, who died on April 6th in his 80th year. He had resided at Charlton since 1900, taking keen interest and part in all public and philanthropic work, being greatly respected by all.



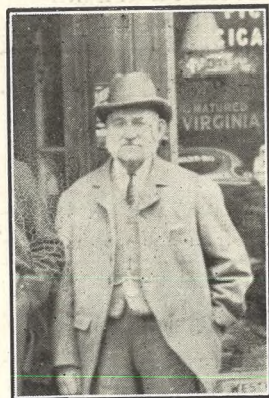
MR. JAMES J. YEEND,  
Of Rippledale, Marie Hill-road, Cheltenham, who died on March 19th. He was for very many years the popular steward of the Liberal Club, Cheltenham, only leaving recently through ill-health.



COL. GEO. A. NOYES,  
Late R.A., of Parkfield Lawn, St. Stephen's-road, Cheltenham, who died on April 8th, aged 82 years. He was an old resident of Cheltenham, a member of the Chess Club and the Chess Club.



MR. HAROLD A. COOKE,  
Of 10 Portland-street, Cheltenham, who died on April 8th aged 43 years. He was an expert motor-cyclist, well known and popular. He was with Messrs. A. Williams and Co. for many years.



MR. WM. TAPP,  
Of 312 Lower High-street, Cheltenham, who died on April 6th aged 89 years. He had carried on a pie-shop there for the past 65 years.



MR. J. W. BOYD,  
Stationmaster of Kemble Junction G.W.R. Station, who, after 48½ years' service with the Company, is retiring in May next. He had been at Kemble for 22 years.



COL. NAPIER STANLEY ROBERTS,  
Of Norma Villa, Churchill-road, Cheltenham, who died on April 9th aged 76 years. He was the brother of the late Lady Elgar. He saw considerable service abroad.

# SHIRER and HADDON.

FAMOUS FOR VALUE IN  
**Gloves & Hosiery**

Below are a few Examples from our effective selections, from which we are giving every day perfect satisfaction.



Three-Button Suede Lisle GLOVES, in Black, Pastel, Grey, White and Chamois, from 2/11½ Pair  
Fine Milanese Lisle Gloves, Three Buttons from 2/6½.

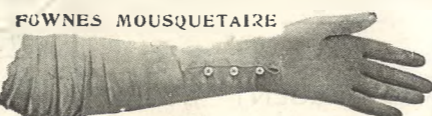
Perfect Fitting.  
Excellent Value.

## THE HOUSE WITH A REPUTATION.



Very Special Value in Pure SILK HOSE, with Lisle Thread Feet and Garter Tops, 9/11 Pr.

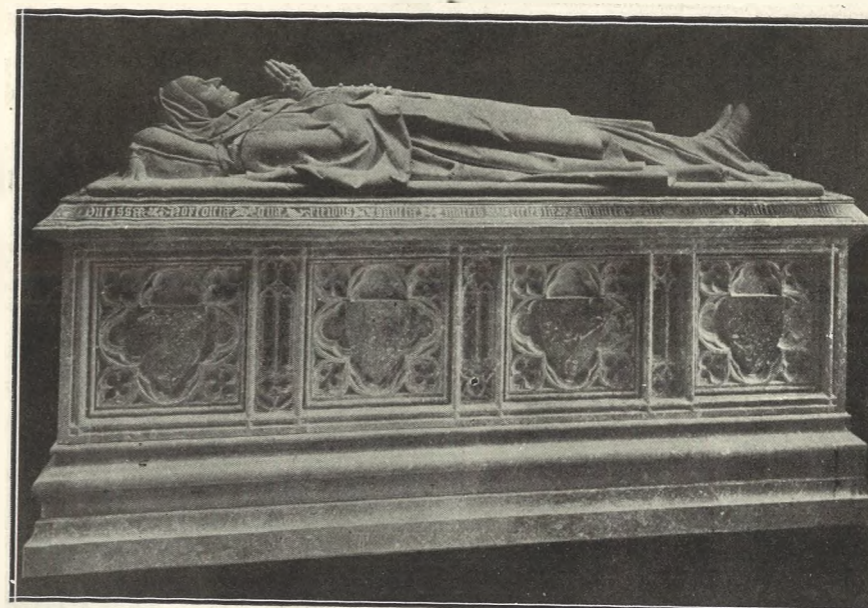
In Black, White, Putty, Navy, Nigger, Tan, Grey, Mole, and evening shades; also in Black only, Cashmere feet, 10/6 per Pair.



Suede Finish GLOVE, 12 Button, 3/11½, 4/11½.  
In White, Black, Pastel, Grey.

In Milanese Silk, 12 Button, White, 2/11½.  
Pastel and Grey, 5/11.  
16 Button White, 3/11½.  
20 Button White, 4/11½.

**Colonnade and Imperial Circus : CHELTENHAM.**



### A BEAUTIFUL MEMORIAL.

Tomb and Effigy recently erected in the Fitzalen Chapel, Arundel, to the memory of the late Dowager Duchess of Norfolk. Executed by Messrs. R. L. Boulton and Sons, Sculptors, Bath-road, Cheltenham.



### IMPROVING CHELTENHAM STREETS.

To widen the road and round off an awkward corner the wall at the junction of Albion-street and St. Anne's-road (opposite St. John's Church) is being pulled down and re-built further back on Mr. Alfred Miles' premises, effecting a great improvement, upon which Mr. Miles is to be much congratulated.

[Photo by Cheltenham Newspaper Co., Ltd.]

### PAINLESS DENTISTRY,

**Edwards and Hirst,**  
THE DENTAL SURGERY,  
BANK CHAMBERS,  
131 High Street, Cheltenham  
(Corner of North Street).

Advice and Estimates Free.

Hours—10 till 7.

### Moussell Bros., Ltd.

(Opposite G.W.R. Station),  
CHELTENHAM.

### FURNITURE REMOVALS.

BY RAIL OR MOTOR.

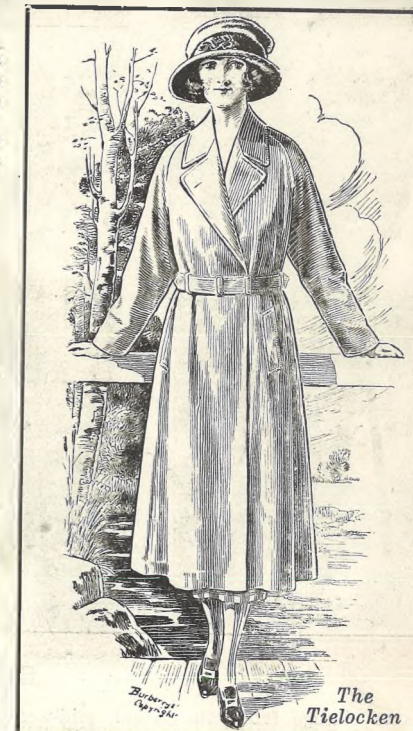
'Phone 112.

# BURBERRY TOP-COATS



The Burberry

"It is always pleasant to feel in the fashion and at the same time possess individuality in a coat which bears the unmistakable stamp of an original model. One is always sure of this in a Burberry model, which is designed on simple and original lines and in the most useful and practical form, which makes it wholly desirable at all time."  
THE LADY'S PICTORIAL,  
London's Premier Fashion Paper.



The Tielocken

**John Lance & Co., LIMITED,**  
CHELTENHAM SPA.



**CHELTENHAM ROUND THE TOWN.**

As a change from the usual mid-week photos, our photographer took his snaps on Saturday afternoon and Sunday this week. These are a few of the folks he met.

1.—Bringing "the stuff" home.  
 2.—"On Sunday, dressed in all their best, they walk abroad."  
 3.—A familiar figure.  
 4.—Two old residents of Cheltenham: Mr. Rodway and Mr. Gummer.  
 5.—Out with grand-pa. Mr. Pigott is quite proud of his little protégée.  
 6.—Mr. Cecil Gilliat, who still follows the Cotswold Hounds on foot despite his three score years and ten (and over).  
 7.—Just off home. Baby enjoys a bun.

[Photos by Cheltenham Newspaper Co., Ltd. Copies 1/- each unmounted, 1/6 mounted.]

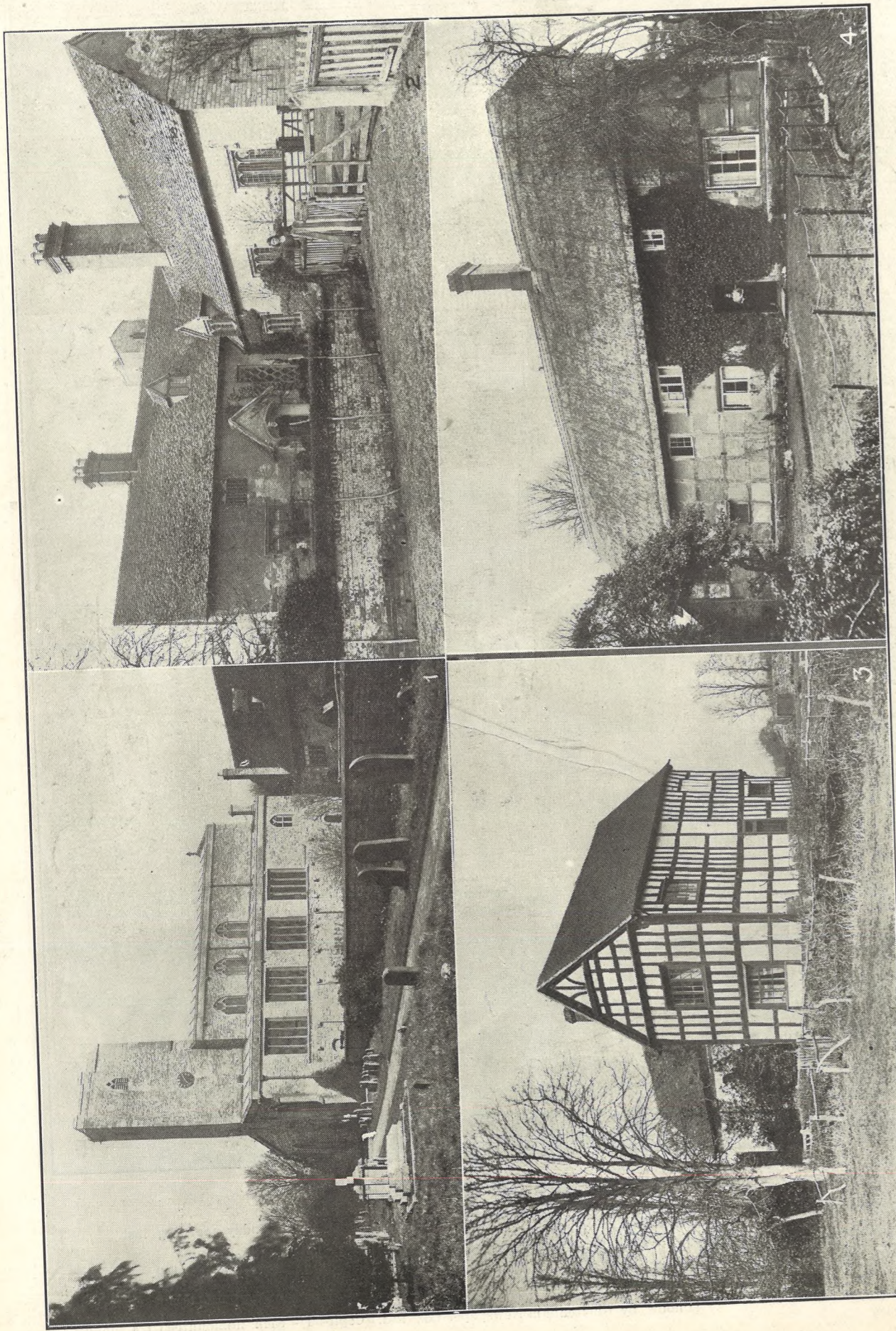


**CHELTENHAM ROUND THE TOWN.**

A further series of Snaps taken casually by our photographer on Saturday afternoon and Sunday morning last.

8.—"What's Won?" Racing "Echo" just out.  
 9.—All the family out shopping.  
 10.—"Tis in the spring a young man's fancy lightly turns to thoughts of love."  
 11.—A constitutional.  
 12.—Service and ex-Service.  
 13.—Is he snapping us?  
 14.—Taking home the new hat.  
 15.—Baby is making the best of it, and is having an uncomfortable snooze.

[Photos by Cheltenham Newspaper Co., Ltd. Copies 1/- each unmounted, 1/6 mounted.]



**PICTURESQUE GLOUCESTERSHIRE.—DEERHURST.**

One of the most ancient and interesting villages in the country, Deerhurst lies near the Severn, and about five miles from Tewkesbury. It dates back to Saxon times, and was only discovered in recent times, whilst executing alterations. This Chapel was built in 1056, and in course of centuries was incorporated into the farmhouse built and occupied by Mrs. Heald. It was only discovered in 1885 by Messrs. Collins and Godfrey of Messrs. Cheltenham Newspaper Co., Ltd. Copies 8 x 6 1/9 unmounted, 2/6 mounted; postage extra.

1.—Deerhurst Church, one of the oldest, if not the oldest, churches in England, dating from Saxon times and having much of the Saxon work remaining.  
 2.—The Priory, showing a  
 3.—Abbot's Court, with Odda's Chapel ad-  
 4.—The old Farmhouse, Deerhurst, now  
 5.—The Saxon Chapel, Deerhurst, now  
 6.—The old Farmhouse, Deerhurst, now  
 7.—The West-end of Deerhurst Church,  
 8.—Reflections, Duckpond Cottages, Walton  
 Hill, a picturesque residence near the  
 Tewkesbury-road.

[Photos by Cheltenham Newspaper Co., Ltd.]



**PICTURESQUE GLOUCESTERSHIRE.—DEERHURST.**

Deerhurst was in Saxon days one of the most important priories in the county, but now it lies on a bye-road and is only a small village. Its great archaeological interest, however, attracts numbers of visitors, and it is well worth seeing.

1.—Abbot's Court from the north-east, showing the ancient Saxon Chapel on right.  
 2.—The Saxon Font in Deerhurst Church. This font has a romantic history. The stem was discovered in a garden near the Severn in 1870 by a lady, and was recognized as belonging to the bowl which was then in Longdon Church. It was formerly in Deerhurst, and was subsequently restored to its original position.  
 3.—The West-end of Deerhurst Church, showing the curious and unique Saxon two-light window in the tower wall.  
 4.—Reflections, Duckpond Cottages, Walton Hill, a picturesque residence near the Tewkesbury-road.

[Photos by Cheltenham Newspaper Co., Ltd.]





**WHITESHILL ASSOCIATION FOOTBALL TEAM.**

Who played Ashton-under-Hill, on Saturday last, at Cheltenham in Northern Minor Cup Final.

Back row.—H. Mills, A. Durn, F. Gibbons (Secretary), A. S. Hogg, A. E. Billett, W. Gibbons, A. Little, H. Young, G. Davis, R. Bassett.  
Front row.—H. Hopkins, F. Durn, G. Durn, W. Papps, W. Payne, P. Chandler.  
(Photo by Cheltenham Newspaper Co., Ltd.)



**ASHTON-UNDER-HILL FOOTBALL TEAM,**

Who beat Whiteshill last Saturday, at Cheltenham, in the Final of Northern Minor Cup, by 5 goals to 2.

Standing.—C. Heath, E. Morrison, A. Holmes, F. Griffin, P. Griffin, H. Cotton, L. Price, J. Lampit, F. Barnes, W. Hunt.  
Sitting.—A. Hunt, S. Bell, S. Rowlands (Captain), W. Clements, A. Winnet (Vice-Captain).

(Photo by Cheltenham Newspaper Co., Ltd.)

**HIGH PRICES**

Paid for Ladies', Gentlemen's, and Children's Discarded Wearing Apparel—Boots, Shoes, etc. A Postcard to

**DEANE'S WARDROBE DEPOT,**  
31 Worcester Street, GLOUCESTER  
Will Receive Prompt Attention.

THE NOTED HOUSE FOR FAIR PRICES.

Telephone 970.  
Telegrams: "Wardrobes, Gloucester."

Printed and Published as a Gratis Supplement by the Cheltenham Newspaper Co., Ltd.

**WAITE & SON,**  
Craftsmen in Gold  
CHELTENHAM, ENGLAND.



DIAMOND RINGS SET IN PLATINUM  
BY RING EXPERTS  
AT ROCK BOTTOM PRICES.

Send for the interesting Booklet "Gold and Gem Jewellery" post free td.

**BEST QUALITY  
CIDERS**  
IN BOTTLE.—Sparkling and Still  
**BARTHOLOMEW,**  
419-420, HIGH STREET,  
CHELTENHAM.

WINES, SPIRITS, ALES, TABLE WATERS  
and GROCERY. Tel. 13.

**CORSETS MADE TO MEASURE from 25/- Pair.**  
Copyings, Cleanings, and Renovations.  
SURGICAL BELTS.

**MISS FRUIN** (Late with Madame Annette),  
23 Bath Parade, CHELTENHAM.

**SPECIALIST FOR DISEASES OF THE FOOT.**

**MR. ALFD. J. VENTRIS-FIELD,**  
SURGEON-CHIROPODIST, ORTHOPEDIST,  
AND ELECTRO-THERAPEUTIST.  
Hospital Trained (London), Highest Qualifications, Thirty Years' Practical Experience.  
Author, "The Treatment of Talipes Valgus."  
Surgery:  
6 RODNEY PLACE, CHELTENHAM.

**PHOTOGRAPH ENLARGEMENTS.**

We can enlarge to Cabinet Size any Individual Photograph in any of the Groups in the "Graphic," or we can enlarge the Entire Group. Splendid Results Guaranteed. Prices on Application.

'Phone 311.  
Telegrams: "Bence, Cheltenham."  
FOR BETTER WALLS & CEILINGS USE

**BEAVER BOARD**  
ALL SIZES IN STOCK  
AT REDUCED PRICES.

**Geo. Bence & Sons, Ltd.,**  
Timber & Builders' Merchants,  
Fairview Road, CHELTENHAM.

**THE CHELTENHAM CHRONICLE AND GLOUCESTERSHIRE GRAPHIC**

With which is Incorporated the Cheltenham "Looker-On."  
GRATIS SUPPLEMENT. Saturday, April 22, 1922.

No. 1,112.

**CHELTENHAM THEATRE AND OPERA HOUSE.**  
The County Theatre. Established 30 Years. General Manager: H. OSWALD REDFORD

Lessee: ROBERT REDFORD.

TO-DAY AT 2.30 AND 7.30 "BROWN SUGAR."

**NEXT WEEK—Cheltenham Operatic & Dramatic Society present "BEAUTY & THE BARGE" and "RAFFLES."**

**THE PALACE,**  
High Street, Cheltenham

Continuous Daily—2.30 to 10.15.  
Monday, Tuesday, Wednesday:  
The Greatest Raging Picture ever produced,  
"Kissing Cup's Race."  
From the famous poem by Campbell, Rae-Brown.  
Featuring Violet Hopson and Joe Plant, the Famous Jockey.  
"DOUBLE ADVENTURE."  
Thursday, Friday, Saturday:  
ANNA O. NILSSON in  
"WHY GIRLS LEAVE HOME"  
The Greatest of All Human Interest Photo-plays.  
"FIGHTING FATE," featuring William Duncan & Edith Johnson Chapter 1: "A Borrowed Life".

Further Reduction in Price.

THE SPECIAL  
**Hard Wear Shirt**  
Of our own manufacture is now offered at 9/6.  
Guaranteed fast colours. Now made in two styles. Lined back and front, and single cuff, double cuff, and no linings.

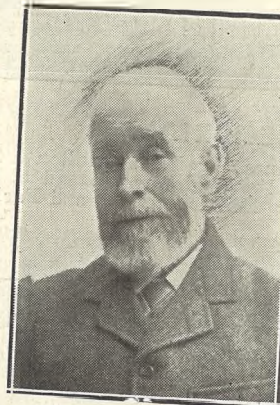
**A. BECKINGSALE,**  
SHIRT MANUFACTURER,  
111 High St., Cheltenham.

**FISHER'S,**  
69 REGENT STREET,  
CHELTENHAM SPA.

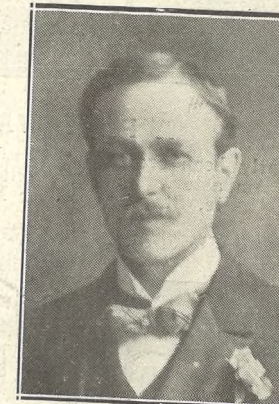
SPRING SHOW: SMART HALF HOSE, TIES, Etc., TAILORING.

**MARTIN & CO. LTD.,**

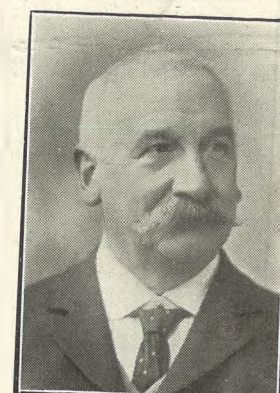
Promenade, Cheltenham.  
Purchase for Cash Antiques of all kinds, including Old Silver, Jewellery, Sheffield Plate, China, Gilt, Miniatures, etc. Highest Prices Given for Rare Pieces.



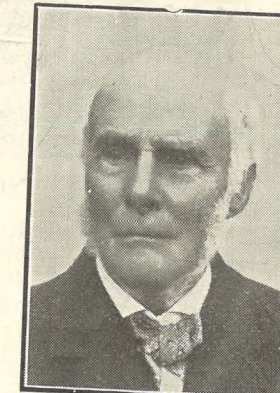
**MR. EDWARD PATES,**  
Of 1 Oxford-street, Cheltenham, who died on Easter Sunday, April 16th, aged 76 years. He was a Cheltonian by birth, and served as a Guardian over 20 years.



**MR. DALE MARSHALL,**  
Of the New Sultan Engineering Works, Winchcombe-street, Cheltenham, who died on Easter Monday, April 17th, aged 52 years. He belonged to an old Cheltenham family.



**MR. GEORGE BIRT,**  
Of Clifton-villas, Uplands, Stroud, who was killed by a motor-bus on Good Friday, April 15th, while walking on the pavement.



**MR. THOMAS HAWKINS,**  
Of Grosvenor House, Stonehouse, formerly of The Welches, Standish, who died April 8th aged 88 years.

**WINTER GARDEN, CHELTENHAM.**

Monday, Tuesday, Wednesday:  
"Belonging,"  
Adapted from the novel by Olive Wadsley.

**Buster Keaton**  
in "HARD LUCK."  
Thursday, Friday, Saturday:

**William S. Hart**  
in "THE TESTING BLOCK."  
**Harold Lloyd**

in  
"AN EASTERN WESTERNER."  
"LONDON, OUR WONDER CITY."—Chapter III.

**Lowest Prices.**  
**GARDEN TOOLS—Spades, Digging Forks, Wood Trellis.**  
**MILLER, IRONMONGER,**  
163 High St., Cheltenham  
(Facing Fleece Hotel).

**All Your Wants Supplied**  
If you have a small Prepaid Advertisement in the "Echo" and the "Chronicle." It is the combination that does it, for it reaches ALL Classes.

Promenade, Cheltenham.

**URWIN,**

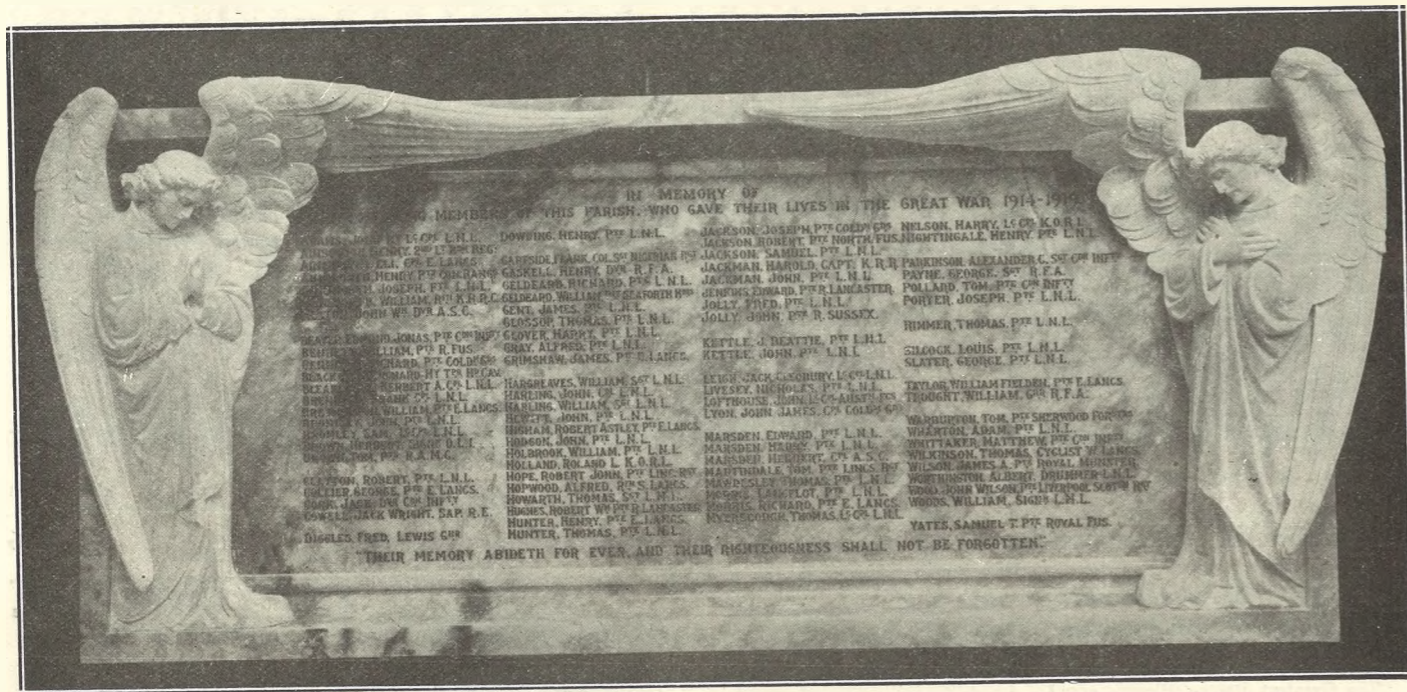
Telephone 1206.

CAMERA PORTRAITS—  
Differing from the Commonplace

BUY  
**The Right STATIONERY**  
**At The Right PRICE.**

**LEE, Caxton House,**  
WINCHCOMBE ST.,  
CHELTENHAM.

For the Best **PIANOS, DALE, FORTY and CO. LTD**



**A FINE WAR MEMORIAL.**

The above War Memorial has recently been erected at Chorley, Lancs., by R. L. Boulton & Sons, Bath-road, Cheltenham. It is executed in polished Derbyshire Alabaster. The firm will be glad to quote for any kind of Memorial, in Marble, Alabaster, Granite, Stone, Wood, or Metal. Medals: London and Paris.



**THE THEATRE, CHELTENHAM.**

The thrilling detective play in four acts, on Tuesday, Thursday, and Saturday, April 25, 27 and 29, at 7.30. Monday, Wednesday, and Friday, and Saturday Matinee "Beauty and the Barge," a farce in three acts, preceded by "Waiting for the Bus." Usual Prices.



**New Stockbroker's Office in Cheltenham.**

The offices shown in the photograph (two doors above the Municipal Offices, Promenade, Cheltenham) have just been opened by Commander Sarsfield Walsh, R.N., as a stockbroker's office. Commander Walsh is an O.C., and since retiring from the Navy has been engaged with a large firm of stockbrokers at Bristol, where he has gained a wide experience of the business.



**A PRETTY LECKHAMPTON WEDDING.**

The marriage was solemnized at Leckhampton Church, on Easter Monday, of Mr. Eric Cole, A.R.I.B.A., eldest son of Mr. W. J. Cole, Commerce House, Leckhampton, to Miss Cecily J. B. Neale, youngest daughter of Mr. and Mrs. R. Neale, 72 Winchcombe-street, Cheltenham. Coming out of Church.



**THE BRIDAL GROUP.**

[Photos by Cheltenham Newspaper Co., Ltd.]

**PAINLESS DENTISTRY,**  
**Edwards and Hirst,**  
**THE DENTAL SURGERY**  
**BANK CHAMBERS,**  
**131 High Street, Cheltenham**  
 (Corner of North Street).  
**Advice and Estimates Free.**  
**Hours—10 till 7.**

'Phone 311.  
 Telegrams: "Bence, Cheltenham."  
**FOR BETTER WALLS & CEILINGS**  
 USE  
**BEAVER BOARD**  
 ALL SIZES IN STOCK  
 AT REDUCED PRICES.  
**Geo. Bence & Sons, Ltd.,**  
 Timber & Builders' Merchants,  
**Fairview Road, CHELTENHAM.**

**1922**  
**Fabric Bargains.**  
**LANCE'S**  
 Offer Wonderful Values in  
**WOOLLEN DRESS FABRICS**  
 Next Week.  
**Great Cash Purchase**  
**£3,000**  
 WORTH OF  
**WOOLLEN DRESS**  
**MATERIALS**

Will be offered at LESS than  
**WHOLESALE PRICES.**

THESE GOODS HAVE BEEN CLASSIFIED  
 INTO FIVE LOTS:

- Lot 1.** Last season's Price, 3/11. **Bargain Price, 1/-** Yd. Includes Wool Union, Shepherd's Check, and Cream Skirt Moireen.
- Lot 2.** Last season's Price, 7/11. **Bargain Price, 2/-** Yd. & 8/11. Includes Fine All-Wool Coating and Herringbone Serge, all colours.
- Lot 3.** Last season's Price, 10/11. **Bargain Price, 3/-** Yd. & 12/11. Includes All-Wool Armure, Fine Herringbone Serge, Stripe Fannel Suitings, etc., all shades.
- Lot 4.** Last season's Price, 12/11. **Bargain Price, 4/-** Yd. & 15/11. Includes Stripe Suitings, Grey Suitings, and All-Wool Serge.
- Lot 5.** Last season's Price, 15/11. **Bargain Price, 5/-** Yd. & 17/11. Includes All-Wool Gabardine Suitings, Stripe Fannels, and Face Cloths.

We shall also offer a large range of ALL  
**WOOL GABARDINES & "ADMIRALTY"**  
**SERGES, in Navy, Nigger, Grey, Putty, and**  
**Black, at Special Prices, 3/11 to 15/11.**

THIS GREAT EVENT AT LANCE'S  
 PROVIDES A WONDERFUL  
 OPPORTUNITY FOR THE HOME  
 : : : DRESSMAKER. : : :

**SEE WINDOWS!**  
 AND VISIT OUR SHOWROOMS  
*Special Bargains Displayed Each Day.*

**John Lance & Co.,**  
 LIMITED,  
**CHELTENHAM SPA.**



**CO-OPERATIVE CONGRESS IN GLOUCESTER.**

A Conference of Delegates of the Co-operative Societies of England was held in Gloucester during last week-end. The above snaps were taken during a visit to the Cathedral on Saturday morning, when the Dean kindly showed the delegates round. [Photos by Cheltenham Newspaper Co., Ltd. Copies 1/- each, postage 2d. extra.]



**SALEM MEN'S BIBLE CLASS RE-UNION.**

To commemorate the 40 years' association of Mr. E. Saunders as leader of the above class a re-union of old members was arranged during the Easter week-end. Mr. Saunders is seated in centre of front row. [Photo by Mr. Fitz Conroy, St. George's-road, Cheltenham.]



**Mr. W. H. Bruntnell,**

Of 32 Keynsham-street, Cheltenham, died April 14th, aged 27 years, at Cheltenham General Hospital. Youngest son of Mrs. G. N. Bruntnell. He was a corporal in the 2/5th Gloucesters.

**JEWELLERY AND ANTIQUES**  
Wanted to buy, for High Cash Prices, Old Gold and Silver for melting or re-sale. Also anything Antique in Furniture, China, Old Glass, Prints, etc. Established 70 Years.

**HARRY O. BOX,**

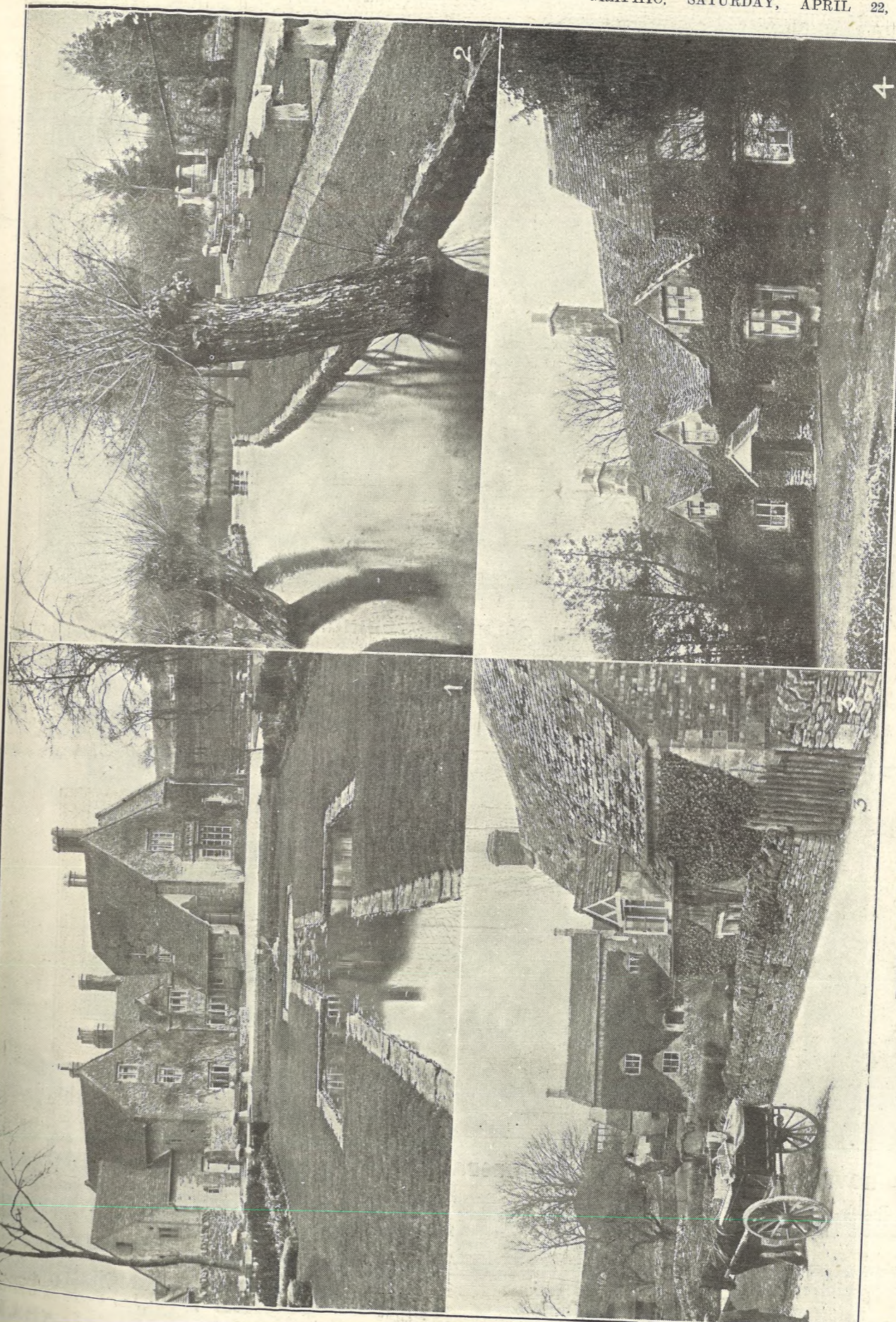
JEWELLER,  
339 HIGH STREET, CHELTENHAM.  
(Nearly Opposite Grammar School).

**SPECIALIST FOR DISEASES OF THE FOOT.**  
TEL. 1266.

**MR. ALFRED J. VENTRIS-FIELD,**  
SURGEON-CHIROPODIST, ORTHOPÆDIST,  
AND ELECTRO-THERAPEUTIST.

Surgery:  
6 RODNEY PLACE, CHELTENHAM.

**CORSETS MADE TO MEASURE from 25/- Pair.**  
Copyings, Cleanings, and Renovations. SURGICAL BELTS.  
**MISS FRUIN** (Late with Madame Annette),  
23 Bath Parade, CHELTENHAM.



This charming Cotswold village lies in a valley just off the Northleach-Cheltenham road, about one mile beyond Andoversford. It is a beautiful little trout stream flowing right through the gardens of the Manor, showing the lake in distance.

**PICTURESQUE GLOUCESTERSHIRE.—SHIPTON OLIFFE.**

Being off a main road, it is very secluded, but it well repays a visit. A lovely old manor farm, now known as the Upper Farm. It has an old building attached with ecclesiastical windows, which was evidently a chapel in former days, now is a store house and loft.

[Photos by Cheltenham Newspaper Co., Ltd. Copies 5in. Is. 9d. unmounted, 2s. 6d. mounted.]



**CAUDLE GREEN GOLDEN WEDDING.**

On April 6th Mr. and Mrs. Henry Cripps, of The Quarrs, Caudle Green, Birdlip, attained their Golden Wedding Day. Owing to the heavy and impassable snow, however, celebrations of the event had to be postponed to Easter Monday. They are aged 74 and 72 respectively, both being born on May 24th. They have had 9 children and 24 grandchildren, all of whom are alive and in the above group. They have lived for 40 years in the same house. Both are natives of Caudle Green, and Mr. Cripps is one of a family of 23. [Photo by Cheltenham Newspaper Co., Ltd.]

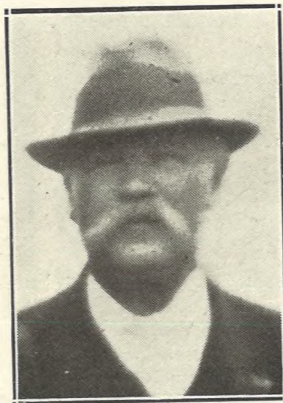


**BOURTON ROVERS' FOOTBALL CLUB—WEDNESDAY TEAM.**

Standing.—P. Buckle, A. J. Lawrence, R. Kettle, H. C. Pegler, W. Duester (linesman).  
Sitting.—G. Lerner, E. Gillett, C. Townsend, K. V. Williams (Capt.), V. G. Collett, C. Boulton, W. Wilsdon.

**PHOTOGRAPH : ENLARGEMENTS.**

WE CAN ENLARGE TO CABINET SIZE ANY INDIVIDUAL PHOTOGRAPH IN ANY OF THE GROUPS IN THE "GRAPHIC," OR WE CAN ENLARGE THE ENTIRE GROUP. SPLENDID RESULTS GUARANTEED. PRICES ON APPLICATION.



**Mr. Joel Jones,**  
Of Bafford Farm, Charlton Kings, who died on April 17th aged 57 years.

**Moussell Bros., Ltd.**

(Opposite G.W.R. Station),  
**CHELTENHAM.**

**FURNITURE REMOVALS.**

BY RAIL OR MOTOR.

'Phone 112.

Spring and Early  
: : Summer : :  
**FASHIONS**

AT  
**Shirer & Haddon's**

Important Deliveries of New Costumes,  
Gowns, Wraps, Millinery, etc.

Exclusive and Original in Design and Colouring, and  
marked at extremely LOW PRICES.



SMART COSTUME.—Coat of Plain  
Tweed and Pleated Skirt of the  
same colour, with contrasting  
stripes. **5**  
Gns.

Colonnade and Imperial  
Circus : **CHELTENHAM.**



**ON TOUR.**

The Bradford Rugby Football Team on the steps of the Royal Hotel, Cheltenham, where they stayed for the Easter week-end while on tour, playing Cheltenham, Gloucester, and Bristol. They enjoyed themselves.

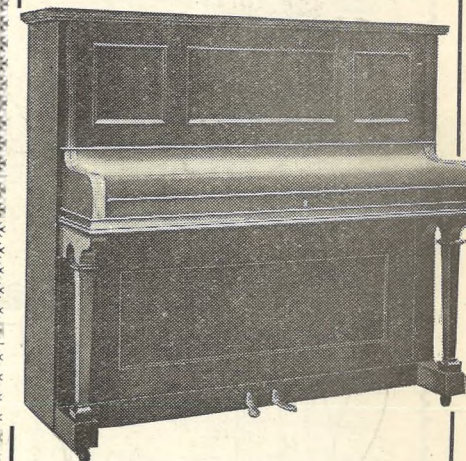


**Golden Wedding at Gloucester.**

REV. J. J. AND MRS. LUCE,  
Who celebrated their Golden Wedding on Sunday, April 9. Rev. Luce has been the beloved vicar of St. Nicholas, Gloucester, for over 30 years, and he was the recipient of a handsome presentation from his parishioners.—Photo by H. E. Jones, Northgate-street, Gloucester.

ADVERTISE IT IN THE 'ECHO.'

SPECIAL NEW MODEL  
of the celebrated  
**Millard Piano.**



Price, 52 Guineas Net Cash.

Manufactured under best possible conditions to meet the demand for a THOROUGHLY WELL-MADE and Reliable Instrument at a MODERATE COST.

This Piano has a sweet and dulcet tone, a delightfully responsive touch.

You are Invited to Call and Test these Pianos at the Sole Agents—  
**CRICHTON'S Ltd.,**  
Promenade, CHELTENHAM.  
Opposite G.P.O. Next Cavendish House.

# Special Sale of Ladies' Corsets and Underclothing

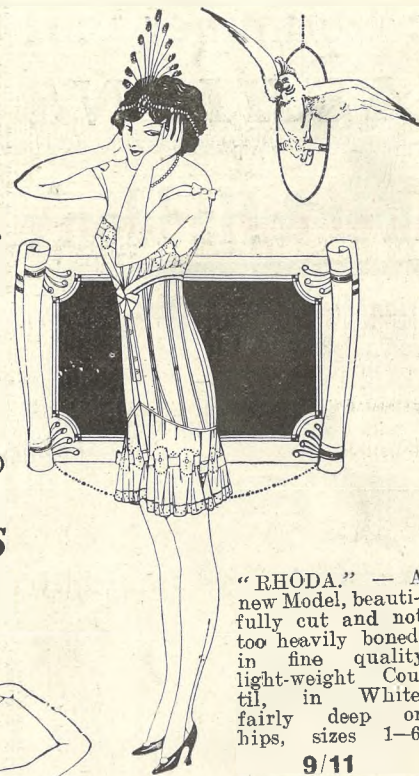
At Prices 30% to 50% LOWER THAN LAST YEAR.

(For Underclothing see our Displayed Advert. in page 7 of "Chronicle.")

THESE ARE JUST A FEW MODELS FROM OUR LARGE RANGE.



"MARGOT."—A smartly-cut Corset, in good quality Couil, in White and Dove, low in front, with good support to back, deep on hips, Rustless spring Steels, Sizes 2-30. 10/11.



"RHODA."—A new Model, beautifully cut and not too heavily boned, in fine quality light-weight Couil, in White, fairly deep on hips, sizes 1-6. 9/11



"IDA."—A useful Corset at a Popular Price, well cut, low in bust, medium length over hips, fitted two suspenders, in White Couil, suitable for medium figures, sizes 0-6. 3/11.



"CLARE."—A very popular Corset, well cut and lightly supported with finest spring steels, low in bust and not too deep over hips, in fine quality White Couil, suitable for medium figures, sizes 0-29. 8/11.



"MERYL."—A very smartly-cut Corset, on newest lines, in White Couil, trimmed embroidery Rustless Steels, suitable for medium figures, sizes 0-6. 7/11.

**Dicks & Sons Ltd.**  
172 & 173 HIGH STREET  
Cheltenham Spa  
TEL. 1007. 50 YEARS REPUTATION FOR VALUE.

# THE CHELTENHAM CHRONICLE AND GLOUCESTERSHIRE GRAPHIC

With which is Incorporated the Cheltenham "Looker-On."  
GRATIS SUPPLEMENT. Saturday, April 29, 1922.

No. 1,113.

## CHELTENHAM THEATRE AND OPERA HOUSE.

Lessee: ROBERT REDFORD. The County Theatre. Established 30 Years. General Manager: H. OSWALD REDFORD

TO-DAY AT 2.30, "BEAUTY AND THE BARGE"; AT 7.30, "RAFFLES."

NEXT WEEK—Six Nights and Matinee Saturday—"WOMAN TO WOMAN" ("Femme Contre Femme").

### THE PALACE, High Street, Cheltenham

Continuous Daily—2.30 to 10.15.  
Monday, Tuesday, Wednesday:  
GLORIA SWANSON and All Star  
Cast in the Paramount Super  
Special.

"SOMETHING TO THINK ABOUT."  
Then one day the great thing came! Something even bigger than love; something no other picture ever has brought to the screen. Something you'll think about, too!

"DOUBLE ADVENTURE."  
Thursday, Friday, and Saturday:  
REX BEACH'S Famous Alaskan  
Railroad Novel,  
"IRON TRAIL."

Featuring Wyndham Standing.  
A Sensational Railroad Melodrama  
"FIGHTING FATE."

### SPRING SHIRTS AND SHIRTINGS.

Large Variety of PRINT, TWILL, and other Shirts, with Double Cuffs and Collar, from 9/6

Lower Qualities, without collars, in stock.  
Cricket and Tennis Shirts.  
Good Selection of Materials  
:: for SHIRTS to Order. ::

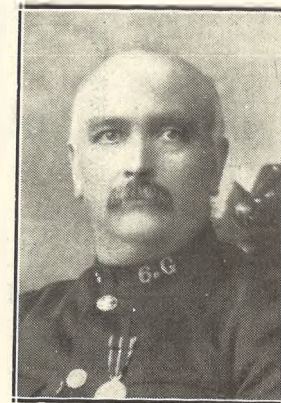
A. BECKINGSALE,  
111 High St., Cheltenham.

FISHER'S,  
69 REGENT STREET,  
CHELTENHAM SPA.

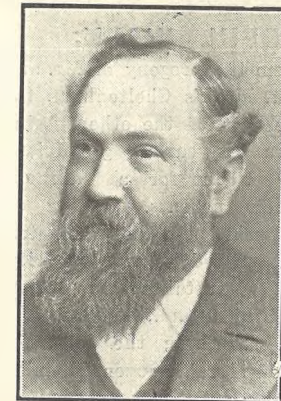
SPECIAL DISPLAY TENNIS SHIRTS, WHITE COATS, SOCKS, Etc. TAILORING.

MARTIN & CO. LTD.,  
Promenade, Cheltenham.

Purchases for Cash Antiques of all kinds, including Old Silver, Jewellery, Sheffield Plate, China, Coins, Miniatures, etc. Highest Prices Given for Rare Pieces.



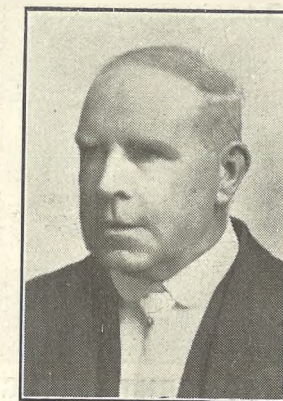
EX-P.C. W. H. HOWES, Of 3 Melville-terrace, Swindon-road, Cheltenham, who died on April 14th.



MR. EDWARD TERRETT, Who died in London on April 21st aged 78 years. He was for many years in business in Cheltenham.



PTE. W. W. COPESTAKE, R. Warwick Regt., youngest son of the late Mr. and Mrs. Copestake, 29 Columbia-st., Cheltenham, who died in Cheltenham General Hospital, on April 9, from meningitis, following injuries received in the war.



MR. WILLIAM EVANS, Of Royal Well Tavern, Cheltenham, who died on April 24th, aged 66 years. He had been for many years landlord of the above inn.

### WINTER GARDEN, CHELTENHAM.

2.30—Continuous—10.15.  
MONDAY, May 1, AND WEEK,

Douglas Fairbanks in  
'THE THREE MUSKETEERS.'  
The Film of the century, as shown at COVENT GARDEN OPERA HOUSE, LONDON.

Times of commencing programmes approximately—  
2.30 p.m., 5 p.m., & 7.30 p.m., Daily.

ALWAYS FAVOURITE!  
ALWAYS FIRST. ALWAYS BEST ALWAYS USED—

:: Farrar's ::  
A.C. Rubbles.  
Wm. D. Farrar,  
103 High Street,  
CHELTENHAM.  
Phone 220.

Promenade, :: Cheltenham.  
URWIN.  
Telephone 1206.  
CAMERA PORTRAITS—  
Differing from the Commonplace

BUY  
The Right STATIONERY  
At The Right PRICE.  
LEE, Caxton House,  
WINCHCOMBE ST.,  
CHELTENHAM.

For the Best **PIANOS, DALE, FORTY and Co. Ltd.**



**CHILDREN'S WONDERFUL WALK.**

The above seven children—six of them the progeny of Mr. and Mrs. G. Day, of 63 Roman-road, St. Mark's Cheltenham, the eldest boy 10 years of age, and the ages of the others being respectively 8, 7, 5, 3, and 1½, with a ten-year-old girl friend from next door named Rene Jones—set out for a walk one morning last week unknown to their parents. Fixing on Gloucester as their objective, they pushed the perambulator, containing the two youngest, there; walked round the city, visited Tuffley, and, with only a bun to sustain them, turned and walked home, arriving safely about 6 p.m., much to the relief of their parents, who had been searching the town for them. They must have covered considerably over 20 miles with a heavy pram.



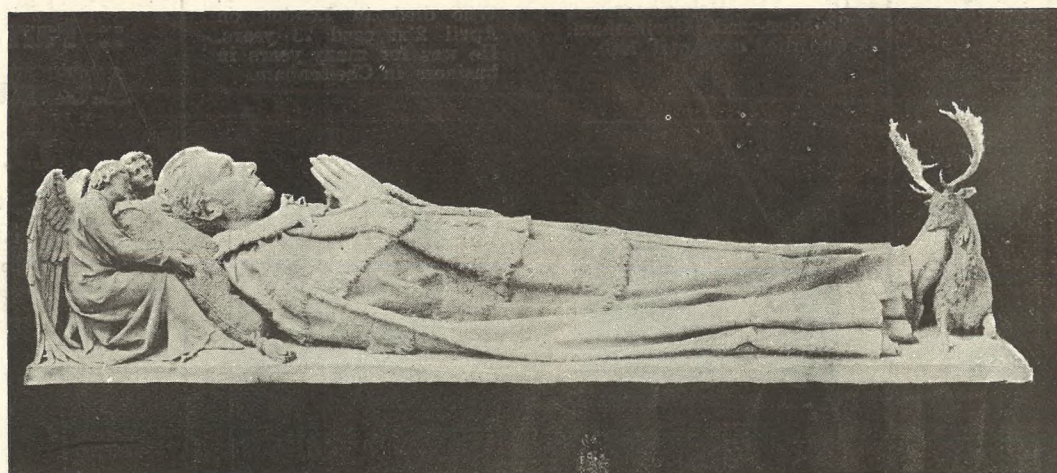
**Mr. and Mrs. Geo. Mumford,**  
Of Hillside, Kemerton, Gloucestershire, who celebrated their Golden Wedding on Easter Sunday, April 16th. Mr. Mumford's family have been associated with Kemerton for generations, while Mrs. Mumford is a native of Beckford. They have three children and five grandchildren.

READ  
THE  
"ECHO"  
EVERY  
DAY.

**Moussell Bros., Ltd.**

(Opposite G.W.R. Station),  
**CHELTENHAM.**  
**FURNITURE REMOVALS.**  
BY RAIL OR MOTOR.

'Phone 112.



**RECUMBENT EFFIGY OF EARL DENBIGH.**

Erected at Pantasaph, Wales, by R. L. Boulton and Sons, Bath Road, Cheltenham, who invite enquiries for all kinds of memorials in Wood, Marble, Alabaster, Granite, Stone, or Metals. Estimates Free.

CORSETS MADE TO MEASURE from **25/-** Pair.  
Copyings, Cleanings, and Renovations  
SURGICAL BELTS.

**MISS FRUIN** (Late with Madame Annette),  
23 Bath Parade, **CHELTENHAM.**

**RISING SUN HOTEL,**  
**CLEEVE HILL—GLOS.**

Adjoining Golf Course. Foremost for Comfort and Cuisine.  
Finest Position on the Cotswolds  
Phone: CLEEVE HILL 2.

**OPEN TO NON-RESIDENTS**

FOR  
Luncheons, Afternoon Teas & Dinners  
Tariff on application to the  
Proprietors: Mr. & Mrs. E. S. HART

**May Fashions, 1922**

**SHIRER and HADDON**

CHELTENHAM SPA,  
ARE NOW SHOWING  
**New : Models**

IN  
COSTUMES and GOWNS,  
SMART TENNIS COATS,  
FROCKS : and : WRAPS,  
RECEPTION and  
VISITING GOWNS,  
PLEATED SKIRTS in New  
Stripes and Checks,  
MORNING FROCKS in  
Silk, Cotton, & Linen.



Inexpensive TUB FROCK,  
in Striped Zephyr **24/6.**

All Goods are marked at Moderate  
Prices.



A scene from the powerful play "Woman to Woman," which appears at the Opera House, Cheltenham, next week for six nights and Saturday matinee.

**BEST QUALITY CIDERS**  
IN BOTTLE.—Sparkling and Still  
**BARTHOLOMEW,**  
419-420, HIGH STREET,  
CHELTENHAM.

WINES, SPIRITS, ALES, TABLE WATERS  
and GROCERY. Tel. 13.

'Phone 311.  
Telegrams: "Bence, Cheltenham."  
FOR BETTER WALLS & CEILINGS  
USE

**BEAVER BOARD**  
ALL SIZES IN STOCK  
AT REDUCED PRICES.  
**Geo. Bence & Sons, Ltd.,**  
Timber & Builders' Merchants,  
Fairview Road, **CHELTENHAM.**

**PAINLESS DENTISTRY,**

**Edwards and Hirst,**  
THE DENTAL SURGERY  
BANK CHAMBERS,  
131 High Street, Cheltenham  
(Corner of North Street).  
Advice and Estimates Free.  
Hours—10 till 7.

**LANCE'S**

INVITE YOU TO  
COMPARE THE  
**Quality & Prices**  
OF THE  
**FEATHER  
NECKWEAR**

THEY WILL OFFER FOR  
THE NEXT FEW DAYS.

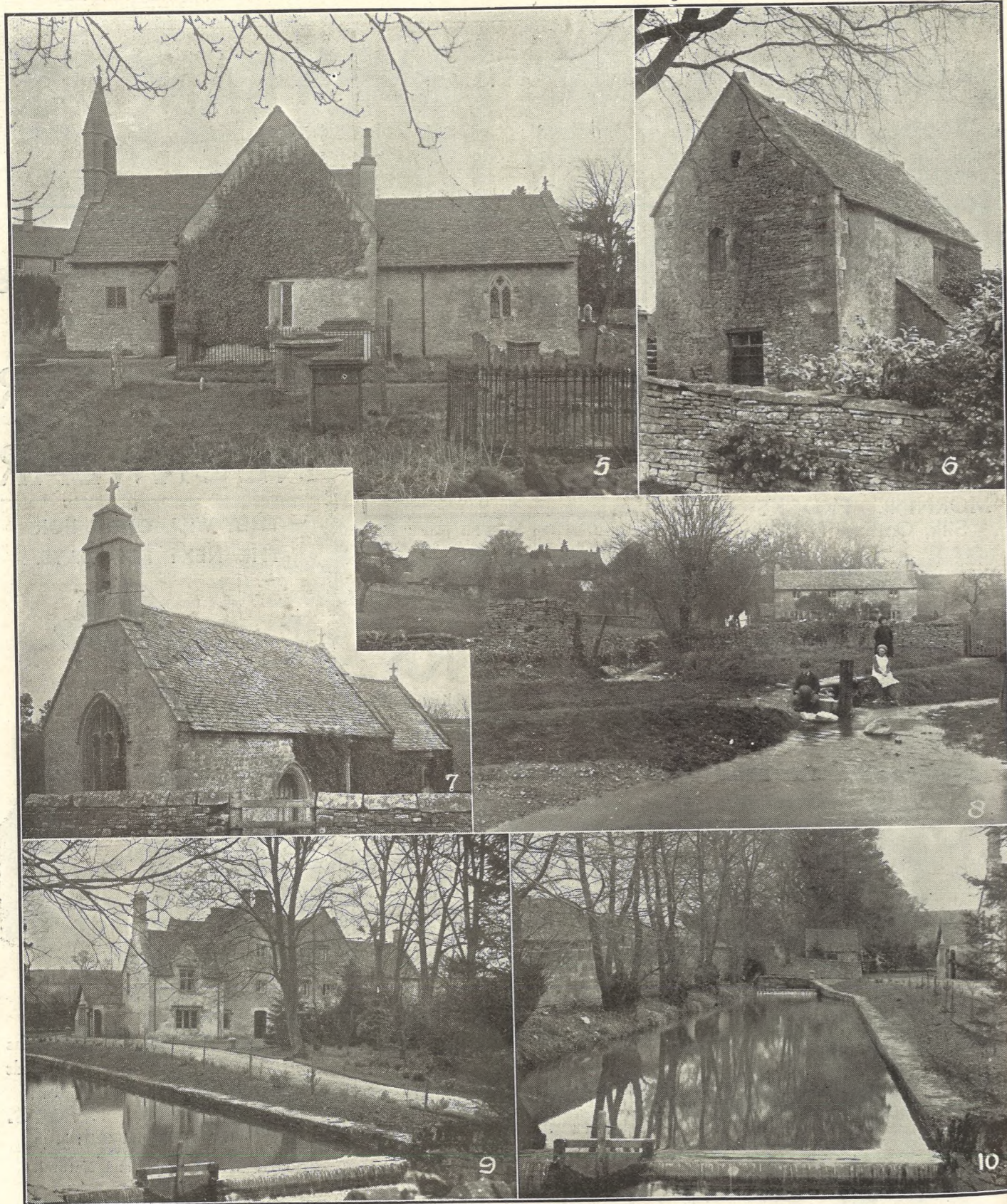


A becoming MARABOUT CAPE (as sketch), 45 inches long, eight strands wide, in Black, Grey, and Nigger.  
**SPECIAL PRICE 3/76.**

May be had in Clipped Ostrich, in shades of Grey, Nigger, Black, Putty, White, Mole, and Natural, at **45/9.**

A Huge Selection of Styles.  
Prices from 9/11 to 73/-.

**John Lance & Co.,**  
LIMITED,  
**CHELTENHAM SPA.**



**PICTURESQUE GLOUCESTERSHIRE.—SHIPTON OLIFFE,**

Four photographs of this secluded but charming Cotswold village were published in our issue of April 22nd. The above completes the series.

- 5.—The quaint little Church in centre of village. The ancient Bell Tower is one of its most interesting architectural features. There are two churches in the village.
- 6.—A building, with ecclesiastical windows, attached to the old Manor Farm, known as Upper Farm. Though now used as a loft and storehouse, it was probably a private chapel originally.
- 7.—The old Church, now disused and falling into decay.
- 8.—The ford at top end of village.
- 9.—Shipton Sollars Manor Farm.
- 10.—Part of the Coln, adjoining above farm.

[Photos by Cheltenham Newspaper Co., Ltd. Copies: large size, 1/9 unmounted, 2/6 mounted; smaller size 1/- and 1/6.]



**CHELTENHAM AMATEUR DRAMATICS.**

The Cheltenham Operatic and Dramatic Society are giving a triple bill at the Opera House this week, the farcical comedy entitled "Beauty and the Barge" occupying the boards on Monday, Wednesday, and Friday nights and Saturday matinee. The Performers:

- 1.—Mr. H. O. Barnett (Capt. Barley).
- 2.—Mr. Keith Jackson (Lieut. Seton Boyne, R.N.).
- 3.—Mrs. B. Bowers (Mrs. Baldwin).
- 4.—Mr. W. Palmer (Alf).
- 5.—Mr. Lyn Rainger (Tom Codd).
- 6.—Mr. W. J. Woodhouse (Geo. Porter), Mrs. Leeson (Mrs. Porter).
- 7.—Mr. E. H. Williams (Augustus), C. G. Smith (Joe), and W. Pates (Bill).
- 8.—Miss Bouth (Lucy Dallas) and Mr. Prideaux Pugh (Herbert Manners).
- 9.—Mr. Paul Clauss (Major Smedley) and Mr. T. Hannam Clark (Dibbs).
- 10.—Miss Anton (Ethel Smedley) and Miss I' Pownoll Williams (Mrs. Smedley).

[Photos by Cheltenham Newspaper Co., Ltd. Copies 1/- each unmounted, 1/6 mounted.]



**CHEL TENHAM AMATEURS' WEEK AT THE OPERA HOUSE.**

The members of the Cheltenham Amateur Operatic and Dramatic Society, who are giving very clever performances this week of the famous play "Raffles."

Standing.—Messrs. Geo. Romans, G. S. Giller, R. Webb, W. H. Jessop, W. H. Banks, W. Bell Haworth, H. T. Rainger, and Mrs. W. H. Brierley.  
Sitting.—Misses Marie Elliot, M. Pownoll Williams, Mr. C. Coxwell-Rogers, Misses Barbara Rice, and W. Power.

[Photo by Cheltenham Newspaper Co., Ltd. Copies 1/- and 1/9 unmounted, 1/6 and 2/6 mounted.

\*\*\*\*\*



**OPENING OF EXMOUTH BOWLING CLUB.**

On Saturday last, this popular Green was opened for the season by a match between the President's (Ald. J. D. Bendall) team versus the Captain's (Mr. F. Palmer) team. Alderman Bendall entertained the whole company to tea.

[Photo by Cheltenham Newspaper Co., Ltd. Copies, 10 x 8, unmounted 2/-, mounted 3/-.



**GOLF.—JAMES BRAID AT STINC COMBE HILL.**

To open the season on the beautiful links at Stinchcombe Hill, James Braid played an exhibition match against Mr. H. S. B. Tubbs, the County Champion and Finalist in last year's Amateur Championship, on Thursday, April 20th; and in the afternoon the players paired against Brews (of Minchinhampton) and R. Fraser (of Stinchcombe) in a foursome match.

1.—Standing: Mr. W. J. Pepworth, Brews, 2 and 3.—Spectators.  
Mr. R. H. Penley (chairman), R. Fraser. 4.—Mr. Tubbs driving.  
Mr. F. J. Bloodworth. Seated: Mr. E. 5.—Mr. Tubbs playing a chip shot on to the green.  
M. Chaffers (treasurer), Mr. H. S. B. 6.—Braid driving. There was little difference in the length of their drives.  
Tubbs, Mr. Geo. Lister (hon. secretary), James Braid, Capt. Forestier Walker.

7.—Holing out on the "Winterbotham" green.  
8.—Competitors walking to the 16th green.  
9.—A little spectator on a curious grandstand.

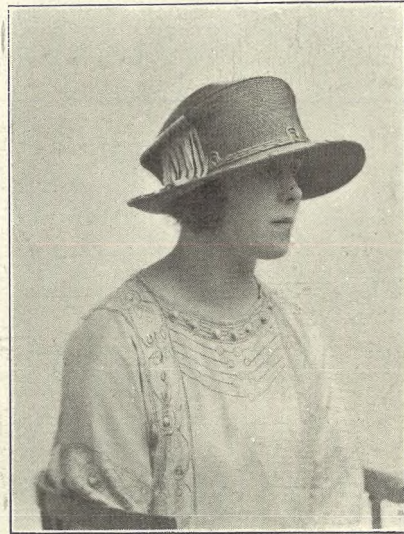
[Photos by Cheltenham Newspaper Co., Ltd. Copies 1s. each unmounted, Postage 2d. extra.



# Spring Suits

(and Hats).

*Have you made your choice ?*



**"BEATRICE."**

An original HAT, in a pretty mushroom shape of Fawn Pedal, semi-trimmed with narrow ribbon in self colours.

**45/9.**



**G**ABARDINE has been the favourite wear for years, and will not die despite old cloths under new names and new cloths under old names, it is as popular as ever for Spring wear. The Suit on the left is of Nigger Gabardine and Coffee Coloured Cloth, perfect tailoring. **12 Gns.**

A plain tailor-made, in spite of or because of a surfeit of braided styles, we find a big demand for Plain Suits. This smart style is made of a fine Repp Suiting, with a self coloured stripe lined silk, and priced at

**5½ Gns.**

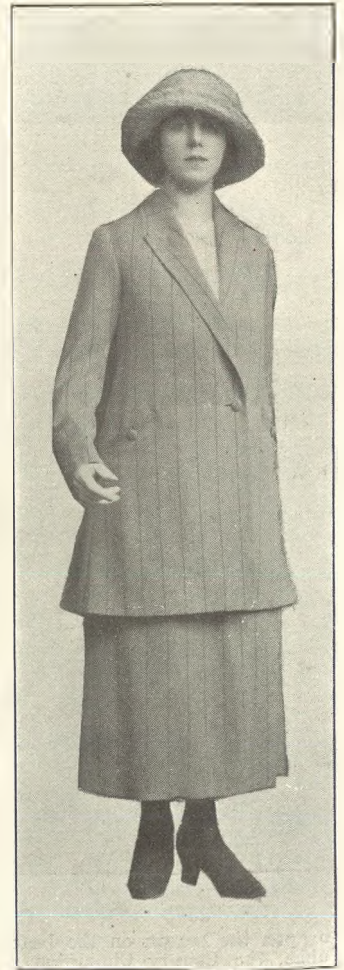
Try on over  
WARNER'S CORSETS.

# Vanderplank

(FROM HARRODS),

**The Leading House  
For Tailored Wear,**

Are showing delightful NEW SUITS in Gabardine and Repps, the season's Newest Productions by the best London Tailors, adapted to the style of the Englishwoman from the latest Paris Mode.



381 HIGH STREET.

8a PROMENADE.