

# THE CHELTENHAM CHRONICLE AND GLO'SHIRE GRAPHIC

With which is incorporated the Cheltenham "Looker-On."

GRATIS SUPPLEMENT.

Saturday, July 2, 1921.

No. 1,070.

## CHELTENHAM THEATRE AND OPERA HOUSE.

Lessee: ROBERT REDFORD.

The County Theatre, Established 30 Years

General Manager: H. OSWALD REDFORD

Re-opening Monday Next, July 4th, **Four Weeks' Summer Season**, Return of the Favourite Actor **EDWARD F. FURNEAU AND COMPANY** in "**Shadows of a Great City.**" Reduced Prices 5d. to 10/6.

### THE PALACE,

High Street, Cheltenham.  
Proprietor, Shakspeare Shenton.

Will be  
CLOSED

From July 4, for a Short Season,  
to enable

RENOVATIONS,  
DECORATIONS,  
and ALTERATIONS  
to be carried out,  
RE-OPENING

with a Stupendous Array of the  
World's Finest Super Productions.

### THE WINTER GARDEN PICTURE HOUSE, PROMENADE, CHELTENHAM

July 4th and Week.

Monday, Tuesday, & Wednesday:  
Ciara Kimball Young in

"THE EYES OF YOUTH."

From the London Play.  
"The Silent Avenger" (Serial).

Thursday, Friday, and Saturday:

Mabel Normand in  
"UPSTAIRS."

A Stool-Golawyn Production.  
"The Third Eye" (Serial).  
"A Day with Jack Dempsey."

### All Your Wants Supplied

If you have a small  
Prepaid Advertisement in  
the "Echo" and the  
"Chronicle." It is the  
combination that does it,  
for the two papers reach  
all classes.

### MARTIN & CO., LTD.,

Promenade, Cheltenham

Purchase for Cash Antiques of  
all kinds, including Old Silver,  
Jewellery, Sheffield Plate, China,  
Coins, Miniatures, etc. Highest  
Prices Given for Rare Pieces.

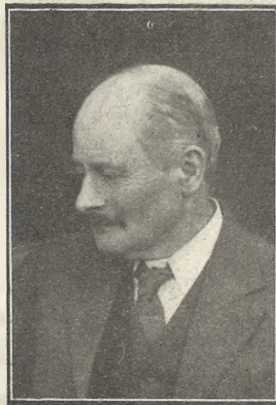
### WAR DECORATIONS.

Investiture at the Shirehall, Gloucester, Tuesday, June 25th,  
by the Lord Lieutenant.

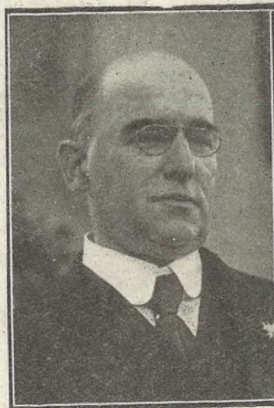
FOUR OF THE RECIPIENTS.



MAJOR WM. STOYLE,  
R.F.A., received the O.B.E.



MR. E. WHITBREAD,  
Of Cheltenham, received the  
M.B.E.



MR. G. S. GILLER, F.S.I.,  
Of Cheltenham, received the  
M.B.E.



MR. PERCY D. CLARKE,  
Received the M.B.E.

### SUNDAY NEWSPAPERS.

To Avoid any Disappointment in  
obtaining Your Sunday Newspaper,  
send a Postcard, stating your  
requirements to

W. BROWN,

226 HIGH ST., CHELTENHAM.

THE HOUSE FOR ALL THE  
LEADING DAILIES.

Do not trust to itinerant  
street sellers.

### OUTDOOR

### PHOTOGRAPHY.

Are you thinking of  
having Group Photo-  
graphs taken—Garden  
Parties, Tennis and  
Croquet Parties, Wed-  
dings, &c., &c. We  
are the people for this  
class of work. Write  
to Manager "Chronicle  
and Graphic" Photo  
Department for full  
terms and particulars.

For a  
Suitable **FRAME**

for your photograph, try

**LEE**, Caxton House,  
STATIONER, WINCHCOMBE ST.,

CHELTENHAM.

For the  
Best

# PIANOS DALE, FORTY and Co. Ltd



**ST. PAUL'S TRAINING COLLEGE CRICKET AND TENNIS TEAMS.**

1.—First XI Cricket Team. 2.—First Tennis Team. 3.—Second XI Cricket Team. 4.—Second Tennis Team.

(Photos by Cheltenham Newspaper Co., Ltd. from whom copies can be obtained.)

\*\*\*\*\*

**IF YOU HAVE ANYTHING YOU WISH TO SELL OR EXCHANGE ADVERTISE IT IN THE 'ECHO.'**

**BARGAINS  
IN  
CARPETS.**

**SHIRER & HADDON'S**  
**Summer SALE** NOW IN  
PROGRESS.

**SHOWROOMS  
IN:  
CLARENCE ST.**



**INTERESTING TEWKESBURY WEDDING.**

The nave of Tewkesbury Abbey was full of interested friends and spectators on Tuesday afternoon, when the marriage was solemnized of ex-Lieut. Wm. E. Lane, only son of Supt. W. J. Lane, formerly of Cheltenham and Tewkesbury, now of Chipping Sodbury, to Miss Hilda Muriel (Queenie) Williams, eldest daughter of Mr. and Mrs. Frank Williams, of The Cross, Tewkesbury. On left are Supt. and Mrs. Lane with their daughter and the best man, and on right are Mr. and Mrs. Williams with their daughter and Mrs. Williams' mother.

[Photo by Cheltenham Newspaper Co., Ltd.]

**HIGH PRICES**

Paid for Ladies', Gentlemen's and Children's discarded wearing apparel—Boots, Shoes, etc. A postcard to

**DEANE'S WARDROBE DEPOT,**  
31 Worcester Street, GLOUCESTER

Will receive Prompt Attention.

THE NOTED HOUSE FOR FAIR PRICES.

Telephone 970.

Telegrams: "Wardrobes, Gloucester."

**PAINLESS DENTISTRY,**

**Edwards and Hirst,**  
THE DENTAL SURGERY,  
BANK CHAMBERS,  
131 High Street, Cheltenham

(Corner of North Street).

Advice and Estimates Free.

Hours 10 till 7.

ESTABLISHED OVER 19 YEARS

The only Brush Manufacturers in Cheltenham.

**E. JOYNER & SON,**  
BRUSH & BASKET WAREHOUSE  
31 SUFFOLK PARADE (Nr. St. James' Church),  
CHELTENHAM.

All Kinds of Brushes Manufactured on the Premises

**Mouzell Bros., Ltd.**

(Opposite G.W.R. Station),  
CHELTENHAM.

**FURNITURE REMOVALS**  
BY RAIL OR MOTOR.

'Phone 112.

**SPECIAL LINE.**

GENTLEMEN'S  
ALL LINEN HANDKERCHIEFS.

HEMSTITCHED, 16-17 inch ... 12/- Doz.  
HEMMED, 20-inch ..... 18/- Doz.

A Limited Number Only in Stock.

**A. BECKINGSALE,**

111 HIGH STREET, CHELTENHAM.

'Phone 406.

**OUR PHOTOGRAPHS.**

Copies of "Chronicle and Graphic"  
Photographs may be obtained at the  
Office—Mounted 1s. 6d. each, Un-  
mounted 1s. each. Postage 2d.

**Lance's**  
RENOWNED  
**Summer**  
**SALE.**

OF

**DRAPERY**

AND

**Furnishing**

**Goods**

**NOW IN PROGRESS.**

**SPECIAL DISCOUNT**  
of

**2/- IN THE £**

Allowed off all goods paid for  
at the time of purchase, except  
a few proprietary articles.

The whole of the immense stock has  
been thoroughly overhauled and re-  
marked at to-day's market value.

**JOHN LANCE**

AND COMPANY, LIMITED,

Cheltenham Spa.



**ST. PAUL'S CHURCH, CHELTENHAM, SUNDAY SCHOOL OUTING.**

Held at the Pleasure Grounds, Bishop's Cleeve, on Saturday last, to where the party was conveyed by special G.W.R. train.

- |  |  |  |
|--|--|--|
| 1.—Waiting to entrain home.                                | 4.—Nearly bowled in Ladies v. Gentlemen's cricket match. | 7.—Waiting for their train.                  |
| 2.—Part of the Boys' Brigade Band, who led the procession. | 5.—On the Aerial Flight.                                 | 8.—Part of the Women's Bible Class.          |
| 3.—Ladies watching cricket match.                          | 6.—Taking kiddies down the Chute.                        | 9.—Some of the big girls enjoying the Chute. |

[Photos by Cheltenham Newspaper Co., Ltd., from whom copies can be obtained price 1s. each, by post 1s. 3d.]



**EVENING ATHLETIC MEETING IN CHELTHENHAM.**

On Wednesday, June 22nd, the Cheltenham and County Harriers held a most enjoyable Evening Sports Meeting on Victoria Cricket Ground.

1.—T. L. Wilcox (on left) winning 100 Yards Junior Handicap.  
 2 and 7.—Some "heads" at the prize-giving.  
 3.—Competitors in Relay Race.  
 4, 6, and 10.—Sections of the spectators.

5.—A much-discussed finish in the final of 100 Yards Inter-Club Handicap, won by W. J. Fellows (second from right), S. Hyam second (on extreme right), and F. W. Willis third (second from left).

H. Bradbury (on extreme left) being unplaced by the judges.  
 6.—C. Parker winning 880 Yards Club Handicap from R. Earp (second).  
 8.—Final of Scholars 100 Yards Handicap, won by R. Locke (on left).

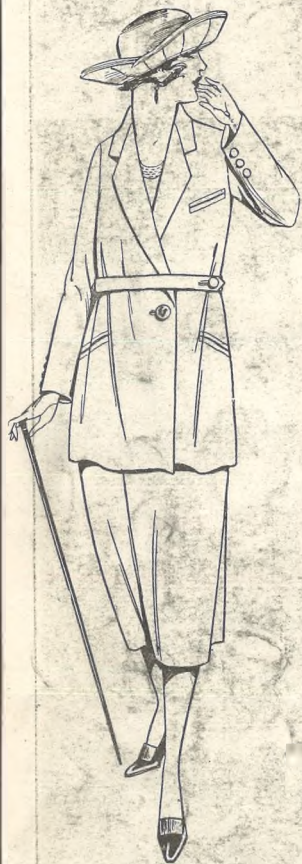
[Photos by Cheltenham Newspaper Co., Ltd., from whom copies can be obtained price 1s. each, by post 1s. 2d.]

# Cheltenham's Biggest Bargains

TO-DAY at

## R. T. ADAMS' GREAT SALE.

NOTE CAREFULLY THE BARGAINS BELOW, AND REMEMBER THAT THEY ARE ONLY A FEW OF THE HUNDREDS THAT AWAIT THE THRIFTY SHOPPER



100 Most Useful COSTUMES of All Wool Tweeds, nice colourings in Blue, Brown, Mauve, Heathers, etc., built on Newest Lines, as sketch. Recently Sold at 4 Guineas.

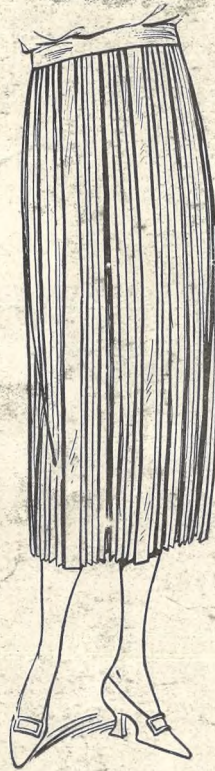
**SALE PRICE, 29/6.**

Very Practical COSTUME, in Medium Grey Wool Suiting, Perfectly Cut and Tailored, Coat Belted, Skirt Plain.

**SALE PRICE, 39/6.**

DAINTY COSTUMES in Very Good Quality Gabardines, in Grey, Saxe, Putty, Nigger, Navy, Black, 59/6, 69/6, 79/6, 89/6, 99/6.

Navy Botany Serge COSTUMES, Medium and Better Qualities are Handsomely Braided. **SALE PRICES** from 42/-, 49/6, 59/6.



We have made a Fortunate Purchase of Smart Tailor Made COAT FROCKS, of Fine Quality All Wool Suiting, handsomely trimmed Black Silk Braid and Heavy Cable Stitching in contrasting shades. Black and Navy only. **SALE PRICE 29/6.**

Superior Qualities 35/6, 39/6, 49/6, 59/6; in a large variety of styles. Wonderful Value!

Check Zephyr ROBES, with White Muslin Collar and Cuffs, 12/11, 14/11, 18/11, 21/6, Etc.

Smart Taffeta ROBE, as sketch, Fasten Front with High Collar, Pleated Skirt. **PRICE 69/6.**

Special SKIRT VALUE. Pleated Navy Botany Serge, Also in Navy, Nigger, Black, Taffeta, 39/6.

Useful TWEED SKIRTS, 4/11, 5/11, 8/11, 10/11, as sketch. Sale Price 14/11. Out Size, in Useful Dark Grey, 10/11.



Brushed Wool SPORTS COATS, with Roll Collar and Sash, in Putty, Cham, Lemon, Rose, Saxe, Navy, Black, Amethyst, White, Green. **SALE PRICE 14/11.**

Ladies' Knitted GLOVES All Colours. 6½d. Pair.

RAINCOATS, All-round Belt, Convertible Collar, and Lined Check, in all sizes. **SALE PRICE 21/9.** Superior Qualities 29/6, 35/6, 39/6, 42/6, etc. Also in Girls' Sizes

JUMPER SILK in all colours, 5/9½ per ¼lb. WHITE SPUN SILK, 4/9½ per ¼lb.

JUMPER WOOL The best Double or 4-Ply Fingering, in All Colours. 3d. per Ounce, 3/9 per Pound.

30-inch Casement Cloth, White, Cham, Navy, Pink, Brown, Mauve, etc. Sale Price 1/0½.

56-inch GABARDINE, Navy, Nigger, Black. Recent Price 25/6 Yard. Sale Price 12/9.

56-inch Navy BOTANY SERGE Suiting, HALF-PRICE. 6/11 Yard

Boys' Heather Threequarter HOSE, coloured Tops, all sizes, 1/11½. Children's Socks, assorted colours, 6½d. Pair.

Mercerised DIVIDED SKIRTS, in all colours. **SALE PRICE 2/9½.** Girls' Summer Divided Skirts. Sale Price 1/9½.

CORSETS! Special Value, 2/11½, 3/11½, 4/11½.

SPORTS CORSETS, 3/9½, 4/9½, 5/9½, 6/9½.

Ladies' ART SILK HOSE, 1/11½.

Lisle Hose, with Wool Feet and Tops, 2/9½.



Ladies' Two-Button LISLE GLOVES, as sketch, in all colours. Recent Price 2/6 Pr. **SALE PRICE 8½d. Pair.**

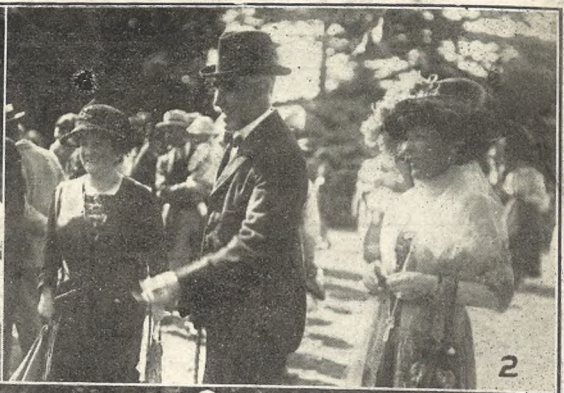
MILLINERY.—We are Offering the Remains of Our Summer Stock of Semi-Trimmed and Model Hats at Greatly Reduced Prices.

SPECIAL! Natural Panama, with Black Band. **SALE PRICE 6/11.**

SEE WINDOWS FOR BIGGEST BARGAINS.

THE HOUSE FOR BEST VALUE.

### R. T. ADAMS, 75-76 High St., CHELTENHAM.



**OLD ENGLISH FAYRE AT CAINSCROSS.**

A highly successful Garden Fete and Sale was held in the beautiful grounds of the residence of Mr. H. O. Roberts, at Cainscross, on Thursday, June 23rd, in aid of Church Funds. It was opened by Lady Marling.

- 1.—Scholars from Cainscross School, giving a maypole dance.
- 2.—Mr. H. O. Roberts, Major Marling, and Lady Marling at one of the stalls.
- 3.—A Y.M.C.A. Concert Party from Gloucester.
- 4.—The Maypole Dancers from Cainscross School, with the Headmaster, Mr. J. Dee, and Mrs. Dee.
- 5.—Mr. H. O. Roberts (in centre) talking to Mr. Curtis, of Apperley, Curtis and Co.
- 6.—Sheltering from the heat.
- 7.—Morris Dancers (teachers from the Slad School).
- 8.—The Cake Stall.

[Photos by Cheltenham Newspaper Co. Ltd., from whom copies can be obtained price 1s. each, by post 1s. 2d.]



**CHELTENHAM COLLEGE SPEECH DAY.**

The annual Speech Day and Prize Giving at the College took place on Saturday last, the day being gloriously fine but intensely hot. Lord Lee presented the prizes. A very fashionable throng attended the proceedings, and the scene in the afternoon in the cricket field was very picturesque and animated.

- 1.—The Headmaster (Mr. H. H. Hardy), with Lord and Lady Lee.
- 2.—The College Council (left to right):— Messrs. R. G. Hardy, C.S.I., D. E. Norton, Lt.-Gen. Willoughby, Sir Cecil Brett, Lord Lee, Messrs. A. Drake, C. E. Ashford (Headmaster Dartmouth Naval College), Sir John Brunner.
- 3.—Three ladies arriving.
- 4.—Mr. A. S. Owen (tutor of Keble, Oxford), an O.C., and an ex-master on left.
- 5.—Two of the boys with an O.C. chum.
- 6.—Some of the prize-winners.
- 7.—Mr. Mytton (O.C.), Col. Porter (O.C.), Miss Gantillon, and another lady.

[Photos by Cheltenham Newspaper Co., Ltd., from whom copies can be obtained price 1s. each, by post 1s. 2d.]





**CHELTENHAM COLLEGE SPEECH DAY.**

- One of the features of the day was the usual cricket match against an O.C. XI. This commenced on Friday and was brilliantly won by the College XI, who are exceptionally strong this year, by 10 wickets.
- 1.—A prize winner, with his father and mother being congratulated.
  - 2.—Mr. de Saumarez giving advice to one of the boys
  - 3.—Waiting to enter the prize-giving.
  - 4.—The lady on left has a novel fan.
  - 5.—Ladies at cricket match.
  - 6.—A lady and gentleman entering College.
  - 7.—Ladies entering College.
  - 8.—Mr. Owen with O.C.'s.
  - 9.—Mr. Hyett (a master), on right, with two O.C.'s.
  - 10.—Capt. Unwin, V.C., with two of his daughters.

[Photos by Cheltenham Newspaper Co., Ltd., from whom copies can be obtained price 1s. each, by post 1s. 2d.]

# VANDERPLANK (FROM HARRODS), PROMENADE and HIGH STREET,

## Display Beautiful Frocks for Special Occasions.



CLAIRE.

Simplicity and charm is evolved in this effective Gown of Lemon and White Crepe de Chine, the latter forming the pleated foundation. A dainty finish is given by the Ribbon Belt and Loops

SALE PRICE .. 8 Gns.

Other colours to order in a few days.



ERINA.

Grey Georgette of superfine quality mounted over a Crepe de Chine is chosen for this attractive Gown. A smart contrast is introduced by the Navy Georgette Band at hem and dainty rosettes at waist.

Other colours to order.

SALE PRICE .. 8 Gns.



MEDUSA.

Extremely graceful and most inexpensive is this handsome Gown of Black Char-meuse carried out with fine Lace over Crepe de Chene Foundation. The Jet Girdle gives an added note. All Ivory, Gold/Bronze, Royal/Black to order.

SALE PRICE .. 9½ Gns

### The Fashion and Fur House, Cheltenham Spa.



**GARDEN FETE AT WITCOMBE PARK.**

On behalf of the Church Organ Fund a Sale of Work and Garden Fete was held on Wednesday, June 22nd, at the residence of Mr. and Mrs. Hicks Beach, at Witcombe.

1.—Throwing at Aunt Sally.  
2.—Ladies at the Bargain Stall.

3.—Boys "fishing."  
4.—A lady tries her luck at the "fish pond."  
5.—Resting in the shade.

6.—A lady bowling for the pig.  
7.—Playing quoits.

[Photos by Cheltenham Newspaper Co., Ltd.]



**CHELTENHAM CENTRAL WARD CONSERVATIVE OUTING.**

Workers of the Central Ward Conservative Party, who held a very pleasant motor-coach outing, on Saturday last, through Cotswold villages, with tea at the Bear Hotel, Rodborough.

[Photos by Cheltenham Newspaper Co., Ltd., from whom copies can be obtained.]



THE QUALITY SIGN.

# THE HOUSE OF SUEDES AND DAINTY FOOTWEAR

IN FAWN, NIGGER, MOLE, FRENCH GREY, PEARL GREY,  
BLACK, ETC. ∴ VARIOUS SHAPES AND FITTINGS.

We have in Stock a Large Selection of  
"NORVIC," "DIFLOMA," &  
"MASCOT" SHOES for Ladies

As Advertised in all the Leading Papers.

## Good Shoes Make Shapely Feet.

GOOD SHOES GIVE FOOT DISTINCTION AND A FEELING OF  
SATISFACTION. THEY WEAR LONGER, AND THEREFORE COST LESS.

∴ A Large Selection of ∴  
**CRICKET AND TENNIS  
BOOTS & SHOES** IN CANVAS  
& BUCKSKIN



SPECIAL THIS WEEK:-  
Fine Glacie 'Gibson,' 'Oxford,'  
'Langtry' or Bar Shoe, 25/-

For Children

we Stock the celebrated "FREEDOM" Boots  
and Shoes. They give freedom and play to  
the growing feet.



**MOCCASINS for MEN**  
IN BOX CALF, WILLOW CALF  
or GLACIE KID. Special Price, **29/6.**

**W. J. MELVILLE,**  
408  
UPPER HIGH STREET, Cheltenham Spa.

THE  
MOST  
CONVENIENT  
RENDEZVOUS  
FOR  
SHOPPING  
EXPEDITIONS.



# CLARENCE RESTAURANT

(Late National Kitchen),

6 Clarence Street,  
**CHELTENHAM.**

ICES.

TEAS.

Open from 10 a.m. Hot Luncheons 12 to 3 p.m.  
POPULAR MENUS AT REASONABLE PRICES.

**CLEANLINESS AND GOOD COOKING OUR SPECIALITY.**

## Cooked Food

may be purchased and taken away, but Customers  
are requested to provide own dishes, &c.

## Meals Sent Out

BY ARRANGEMENT.

EVERY FACILITY FOR  
CATERING FOR LARGE  
PARTIES.

:: Private Rooms if required. ::

TARRIFF FROM THE MANAGERESS. : : : : : : : 'Phone 831.



## Annette,

CORSET  
SPECIALIST,

28 Clarence Street,

BEGS to announce her  
REMOVAL on  
Monday Next, July 4th,  
to

**KENSINGTON  
HOUSE,**

PROMENADE

(Next to the Blue Bird Cafe).



Personal attention to each  
Client.

FIGURES INCLINED TO  
STOUTNESS A SPECIAL  
STUDY.

Corsets Cleaned and Repaired.

THE LITTLE MONEY  
SAVED IN CHEAP  
CORSETS IS NOT  
WORTH THE RISKS  
INVOLVED IN BAD  
FITTING.

## W. A. WOOF,

LIMITED

(Cricket Coach Cheltenham College since 1886,  
17 years Gloucestershire County Eleven),

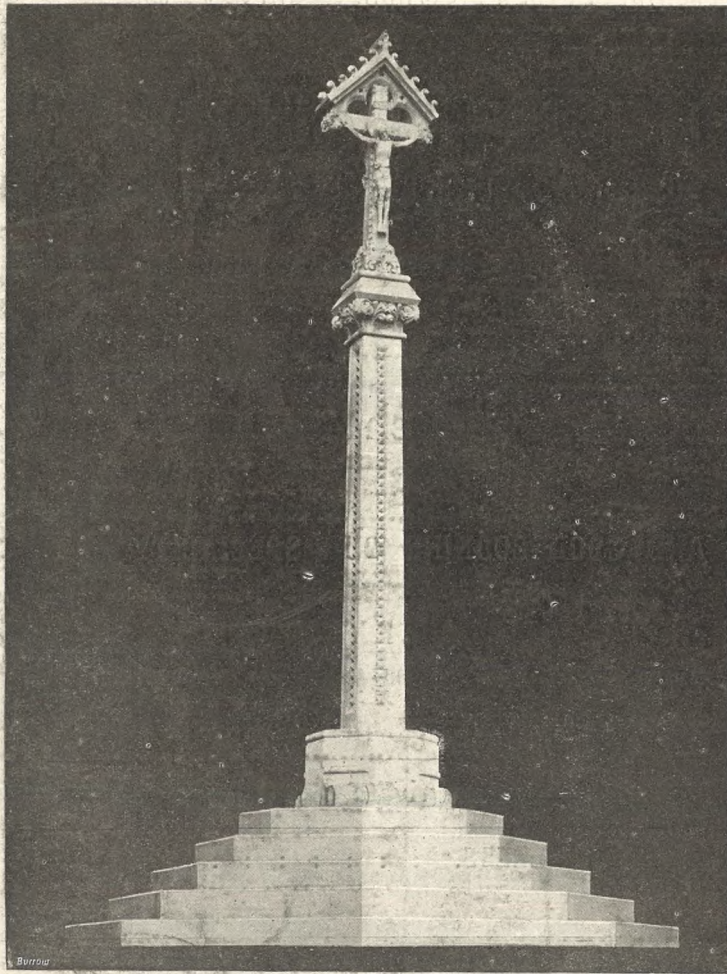
4 SUFFOLK ROAD &  
1 REGENT STREET,

:: :: CHELTENHAM SPA. :: ::

ALL REQUISITES FOR

Lawn Tennis, Croquet,  
Cricket, Badminton,  
Football, Squash Rackets,  
Hockey, Golf,  
Lacrosse, Running,

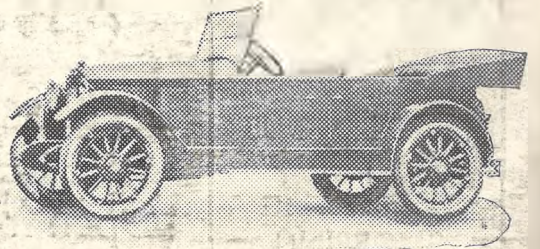
And all Out-door Games.



**Memorial Cross at Arundel.**

A beautiful Memorial Cross executed in stone for the Duke of Norfolk by the celebrated firm of Sculptors, Messrs. R. L. Boulton and Sons, of Bath-road, Cheltenham. They will be pleased to give estimates for memorials of any description.

THE  
**“Cleveland” Six**  
 21-HORSE POWER 5-SEATER.



From 5 to 50 M.P.H. on Top.

25 MILES TO THE GALL.

ELECTRIC LIGHTING AND STARTER.

This is the finest value Car on the market, and for smooth running and power on hills is not surpassed by Cars of double the price and power.

**£595 Complete.**

Payments by instalments, without interest, if desired.

LET US GIVE YOU A TRIAL RUN.

**ALAN EVANS Ltd.,**  
 Norwood Road, :: CHELTENHAM  
 COUNTY AGENTS.

**ARTHUR BESSELL,**

CHINA AND GLASS ROOMS,

**Wedgwood House CHELTENHAM.**

(OPPOSITE QUEEN'S HOTEL).



WEDGWOOD

SPECIAL PURCHASE of a large Stock of

:: :: VERY FINE ENGLISH CUT GLASS. :: ::

Magnificent Specimens, at REMARKABLY LOW PRICES.

Tea and Dinner Services, Toilet Sets and Ornamental China at prices to Suit all purchasers.  
 All goods marked in plain figures. Your inspection invited.

**IMPORTANT NOTICE.**—ARTHUR BESSELL has no interest in any other business, neither is he connected with any other firm in Cheltenham.

ONLY ADDRESS:

**WEDGWOOD HOUSE, Cheltenham.**



**TEWKESBURY C.E. BOYS' SCHOOL SPORTS.**

- Held on the Swilgate Meadow on Thursday, June 23rd, before a large crowd of parents and friends.
- 1.—Spectators.
  - 2.—Mr. W. D. Ricketts, headmaster, with some of his pupils.
  - 3.—The field in 220 yards race (Middle School).
  - 4.—Some of the competitors.
  - 5.—R. Green winning Junior 100 Yards.
  - 6.—A. Weaver winning 100 Yards (Middle School).
  - 7.—T. Collins winning 440 Yards (Seniors).
  - 8.—Start of final 100 Yards (Seniors).

[Photos by Cheltenham Newspaper Co., Ltd., from whom copies can be obtained price 1s. each.]



**AN ALFRESCO CONCERT AT BIBURY.**

- Saturday last a Cheltenham Concert Party, the "M. and B.'s," gave a capital concert in the beautiful gardens of the Swan Hotel, Bibury, to a very appreciative audience.
- 1.—The performers.
  - 2.—Part of the audience.

[Photos by Cheltenham Newspaper Co., Ltd.]

In Next Saturday's "Graphic" a series of fine photographs illustrating Bibury, which is, perhaps, the most beautiful village in the county, will be published.

# :: OUR SPECIAL ::

# Super Bargain SALE

## OPENS TO-DAY, JULY 2nd.



Prices in all Departments have been cut without reference to costs in order to clear our Stocks.

BELOW ARE SOME EXAMPLES OF BARGAINS FROM OUR DRAPERY DEPARTMENT.

	June, 1920, Prices.	Sale Price To-day		June, 1920, Prices.	Sale Price To-day.
<b>Blankets.</b> —A Special Clearing line of fine quality Heavy Blankets in Double Bed Size. ....	55/- Pr.	<b>32/6</b>	<b>200 Pillow Cases,</b> Hemstitched and Embroidered .....	2/6 $\frac{3}{4}$	<b>1/3<math>\frac{3}{4}</math></b>
A Similar Offer in better quality.	70/-	<b>45/- Pr.</b>	<b>Children's Pinafores,</b> Factory Samples. These are soiled, but nicely trimmed and only require washing .....	1/11 $\frac{1}{2}$ to 5/11	<b>8<math>\frac{3}{4}</math>d. to 1/3<math>\frac{3}{4}</math></b>
<b>Shetland Wool Blankets.</b> —These are good hard wearing Blankets, but not quite white. ....	30/- Pr.	<b>15/11 Pr.</b>	<b>Children's Rompers,</b> in Strong Prints and Gingham, 2 sizes	2/11 o 4/11	<b>1/6<math>\frac{3}{4}</math> to 1/11<math>\frac{1}{2}</math></b>
<b>50-inch Casement Cloth.</b> —A good quality fabric in all colours, offered at Pre-War Price. ....	3/11 $\frac{1}{2}$	<b>1/11<math>\frac{1}{2}</math> Yd.</b>	<b>Ladies' Overalls</b> in Plain Cambrics, munion shapes wih sleeves. ....	6/11	<b>3/11<math>\frac{1}{2}</math></b>
<b>30-inch Cretonnes,</b> in fine colouring and artistic designs .....	1/11 $\frac{1}{2}$	<b>1/0<math>\frac{3}{4}</math> Yd.</b>	<b>Children's Overalls,</b> in coloured Zephyrs and Prints, nicely trimmed and with long sleeves ...	5/11, 4/11	<b>1/6<math>\frac{3}{4}</math>, 1/11<math>\frac{1}{2}</math></b>
Also some Special Designs suitable for dresses now so popular ...	2/11 $\frac{1}{2}$	<b>1/11<math>\frac{1}{2}</math></b>	<b>Ladies' Overalls,</b> in Fey. Cambrics.	3/11 $\frac{1}{2}$	<b>1/11<math>\frac{1}{2}</math></b>
<b>Lace Curtains.</b> —A Special Purchase from Makers, in handsome designs, 2 $\frac{1}{2}$ yards long. ....	6/11 $\frac{1}{2}$	<b>1/0<math>\frac{3}{4}</math> and 3/11<math>\frac{1}{2}</math></b>	<b>Ladies' Corsets,</b> in Grey Coutil. ...	5/11 $\frac{1}{2}$	<b>2/11<math>\frac{1}{2}</math></b>
<b>Lace Curtains.</b> —Sample Pairs, only slightly soiled; mostly Single Pairs, but a few in two pairs, all qualities .....		<b>Half Price</b>	<b>Ladies' Tailor-made Costumes,</b> in Tweed, well cut and finished ....	39/6 to 63/-	<b>20/-</b>
			<b>Ladies' Tailor-made Costumes,</b> in good quality light coloured Tweed for present wear .....	84/-	<b>29/6</b>
<b>HOSIERY DEPARTMENT.</b>			<b>Ladies' Cotton Voile Dresses,</b> in beautiful colourings .....	25/6 to 35/6	<b>10/-</b>
<b>Ladies' Black Silk Hose,</b> perfect goods, with Double Feet .....	3/11 $\frac{1}{2}$	<b>1/11<math>\frac{1}{2}</math></b>	<b>Ladies' Eolienne Frocks,</b> in all colours, verious models .....	59/6 to 79/6	<b>29/11</b>
100 Pairs <b>Coloured Silk Hose,</b> slightly imperfect .....	6/-11	<b>2/6<math>\frac{1}{2}</math></b>	<b>Mercerised Art Silk Sports Coats,</b> in various colours .....	35/6	<b>10/-</b>
<b>Ladies' White Chemise Vests,</b> with Plain and Fancy Tops .....	3/11 $\frac{1}{2}$	<b>1/6<math>\frac{3}{4}</math></b>	<b>White Washing Skirts,</b> well cut and made; also in Pique .....	12/11 15/11	<b>6/11 8/11</b>
100 Pairs Ladies' very good quality <b>Cotton Hose,</b> in all colours .....	1/11 $\frac{1}{2}$	<b>1/0<math>\frac{3}{4}</math></b>	<b>Dress Skirts</b> in Gabardine and Tweed, a Few Only .....	15/11 to 21/6	<b>5/-</b>
100 Pairs <b>Children's Socks</b> in Black, Navy and Tan .....	1/6 $\frac{3}{4}$	<b>3<math>\frac{3}{4}</math>d.</b>	<b>Rainproof Capes,</b> very smart, for present wear .....	70/-	<b>25/6</b>
<b>36-inch Silk Embroidered Flouncing.</b> Last Year's Price, Ladies' <b>Fabric Gloves.</b> Last Year...	6/11. 1/0 $\frac{3}{4}$ .	<b>2/11<math>\frac{1}{2}</math> 2<math>\frac{3}{4}</math>d.</b>	<b>Fawn Gabardine Raincoats,</b> in light colour; 6 only .....	37/6	<b>18/11</b>
			<b>Ladies' Crepe de Chene and Knitted Jumpers,</b> in all colours .....	18/11 to 25/6	<b>10/-</b>
<b>HOUSEHOLD LINENS, Etc.</b>			<b>Ladies' Blouses,</b> in various materials and all colours, to be Cleared ....	9 11	<b>3/11<math>\frac{1}{2}</math> 10/-</b>
200 yards 50 to 60-inch <b>Curtain Net,</b> in good quality and handsome designs for long curtains .....	5/6 $\frac{3}{4}$	<b>1/11<math>\frac{1}{2}</math></b>	<b>Ladies' Spun Silk Shirts,</b> in stripes.	18/11	<b>3/11<math>\frac{1}{2}</math></b>
100 <b>Roller Towels,</b> in heavy Crash (ex-Government), ready hemmed	2/11 $\frac{3}{4}$	<b>1/0<math>\frac{3}{4}</math></b>	<b>Ladies' White Voile Blouses,</b> trimmed Embroidery .....	5 11 $\frac{1}{2}$	
150 <b>White Damask Tablecloths,</b> of fine texture and artistic designs, 48in. x 48in. ....	5/6	<b>2/11<math>\frac{1}{2}</math></b>			

**Kid Gloves,**  
Last Year's Price,  
7/11.  
**Clearance Price 1/-.**

# Dicks & Sons Ltd.

172 & 173 HIGH STREET  
Cheltenham Spa  
50 YEARS REPUTATION FOR VALUE.  
TEL. 1007

**Pretty Voiles**  
for Washing  
Dresses, 1/11 $\frac{1}{2}$ .  
Last Year's Price,  
3/11.



# THE CHELTENHAM CHRONICLE AND GLO'SHIRE GRAPHIC

With which is incorporated the Cheltenham "Looker-On."

GRATIS SUPPLEMENT.

Saturday, July 9, 1921.

No. 1,071.

## CHELTENHAM THEATRE AND OPERA HOUSE.

Lessee: ROBERT REDFORD.

The County Theatre, Established 30 Years.

General Manager: H. OSWALD REDFORD

TO-NIGHT, at 7.30, EDWARD F. FURNEAU & COMPANY in "SHADOWS OF A GREAT CITY."

NEXT WEEK: "A GIRL WORTH LOVING." Reduced Prices 5d. to 10/6.

### THE WINTER GARDEN PICTURE HOUSE, PROMENADE, CHELTENHAM

July 11th and Week:

Monday, Tuesday, & Wednesday:

MARY MILES MINTER  
in the Charming Comedy Drama,  
"A BACHELOR'S WIFE."  
"The Silent Avenger" (Serial).  
Comedy. Topical.

Thursday, Friday, and Saturday:

Godfrey Tearle and Unity Moore  
in the Great British Production,  
"QUEEN'S EVIDENCE."  
"The Third Eye" (Serial).  
Comedy. Topical.

### A B.S.A. Bicycle for Full Value—

Judged by the standards of value and service there is no comparison between a B.S.A. Bicycle and a so-called "cheap" bicycle. The low-priced bicycle, owing to its inferior material and workmanship, not only costs more in the end, but the rider misses half the real pleasure of cycling.

Particulars of B.S.A. Bicycles from

### WHEWAY & CO.,

Sole District Agents,  
CLARENCE ST., SUFFOLK  
ROAD, HEWLETT STREET,  
B.S.A. Catalogue Free.

### ANNETTE,

High-class Corset Maker

FRENCH MODELS IN STOCK.

ONLY ADDRESS—

3 PROMENADE VILLAS,

Corsets Copied, Cleaned and Repaired

### MARTIN & CO., LTD.,

Promenade, Cheltenham

Purchase for Cash Antiques of all kinds, including Old Silver, Jewellery, Shell and Plate, China, Coins, Miniatures, etc. Highest Prices Given for Rare Pieces.



Mr. Sidney Poulston,

Killed by falling from his bicycle in Yorkshire on July 1st.

### SUNDAY NEWSPAPERS.

To Avoid any Disappointment in obtaining Your Sunday Newspaper, send a Postcard, stating your requirements to

W. BROWN

226 HIGH ST., CHELTENHAM.

THE HOUSE FOR ALL THE LEADING DAILIES.

Do not trust to itinerant street sellers.

### OUTDOOR

### PHOTOGRAPHY.

Are you thinking of having Group Photographs taken—Garden Parties, Tennis and Croquet Parties, Weddings, &c., &c. We are the people for this class of work. Write to Manager "Chronicle and Graphic" Photo Department for full terms and particulars.

For a Suitable FRAME

for your photograph, try

LEE, Caxton House,  
STATIONER, WINCHCOMBE ST.,

CHELTENHAM.

For the Best

# PIANOS, DALE, FORTY and CO. LTD.



**CONSERVATIVE FETE AND GYMKHANA AT STANTON COURT.**

In aid of the party funds, a capital garden sale, fete, and gymkhana was held at Stanton Court, the residence of Sir Philip and Lady Stott, by the local organisation of the Cirencester and Tewkesbury Division Conservative Party on Thursday, June 30.

- 1.—Rev. and Mrs. Hutchinson, of Buckland.
- 2.—Sir Philip Stott opening the sale, Lady Stott behind.
- 3.—Competitors in Lloyd Lindsay competition.
- 4.—Local children who performed old English dances on the lawn.
- 5, 6, and 8.—Spectators at Gymkhana.
- 7.—A merry tea party.

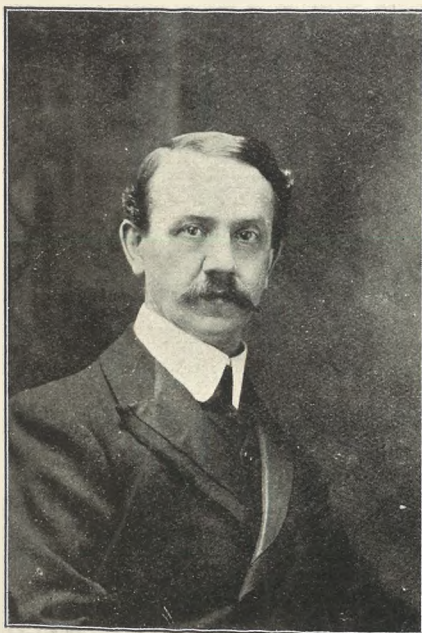
[Photos by Cheltenham Newspaper Co., Ltd., from whom copies may be obtained, price 1s. each.

\*\*\*\*\*  
 Owing to pressure on our space, photos of Bibury Village, Cheltenham Fishmongers' Association, Junior Imperialist League Outing, and Church Army Meeting at Badgeworth are held over until next week's issue.



**RETFORD WAR MEMORIAL.**

The above Eleanor Cross is now being erected as a Town War Memorial at Retford, Notts. It is being executed in Stancliffe Stone by R. L. Boulton and Sons, Bath Road, Cheltenham, from designs by L. W. Barnard, Esq., F.R.I.B.A., Cheltenham.



**Mr. E. Gascolgne Clare,**  
Died on Thursday, July 7th, aged 61 years.



**Mr. Walter Peacey,**  
Of Willisdene, Cirencester-road, Charlton Kings, who died on June 24th, aged 84 years. He had lived in Charlton Kings the whole of his life, as did his father and grandfather before him.

In many districts in Devon, both on Exmoor and in the Torquay neighbourhood, badgers have become numerous, and levy heavy toll on poultry runs.

**Lance's**  
RENOWNED  
**Summer**  
**SALE.**

OF  
**DRAPERY**  
AND  
**Furnishing**  
**Goods**  
**NOW IN PROGRESS.**

**SPECIAL DISCOUNT**  
of

**2/-** IN THE **£**

Allowed off all goods paid for at the time of purchase, except a few proprietary articles.

The whole of the immense stock has been thoroughly overhauled and re-marked at to-day's market value.

**JOHN LANCE**

AND COMPANY, LIMITED,

**Cheltenham Spa.**



1.—General View of Lilleybrook from grounds.

2.—Members of Chamber of Commerce and friends on the Terrace, showing part of south front.

THE LILLEYBROOK HOTEL COMPANY, LTD., HAS RECENTLY BEEN FORMED FOR THE PURPOSE OF CONVERTING THE WH  
CORDIALLY WELCOMED BY THE COUNTY GENERALLY AND BY INVITATION OF THE DIRECTORS THE MEMBERS OF THE C  
A REPORT OF THE VISIT AND SPEECHES APPEARS IN THE MAIN PAGE OF THE "CHRONICLE." OUR PHOTOGRAPH

**HOTEL ENTERPRISE**



1.—View of grounds from windows and terrace. 2.—Mr. A. Sydney Watson, M.A., F.R.G.S., and Mr. S. H. Hudston Directors, with Mr. W. H. Russell, solicitor to the Company. 3.—The Chamber of Commerce party and friends in the grounds.

[Photos by Cheltenham Newspaper Co., Ltd., from whom copies can be obtained.]

**CHELTHENHAM.**

WELL-KNOWN MANSION, LILLEYBROOK, CHARLTON KINGS, INTO A MODERN HOTEL OF THE HIGHEST CLASS. THE STEP IS HELTENHAM CHAMBER OF COMMERCE, WHO ARE AMONG ITS WARMEST SUPPORTERS VISITED THE SCENE ON TUESDAY, AND SHOW THE GREAT BEAUTY OF THE MANSION AND GROUNDS, AND THEIR SUITABILITY FOR THE NEW PURPOSE.



**BRANDON HOUSE SCHOOL SPORTS.**

The annual sports were held in the beautiful grounds of the school on June 29.

- 1.—A group of laughing competitors.
- 2.—100yds. race (under 11).
- 3.—Visitors.
- 4.—The competitors in "Strangers" race.
- 5.—Start of 100yds (under 10).
- 6.—The boys resting on rockery

BEST QUALITY  
**CIDERS**

IN BOTTLE. — Sparkling and Still.

**BARTHOLOMEW,**  
419-420, HIGH STREET,  
CHELTENHAM.

WINES, SPIRITS, ALES, TABLE WATERS  
and GROCERY. Tel. 135.

**Moussell Bros., Ltd.**

(Opposite G.W.R. Station),  
**CHELTENHAM.**

**FURNITURE REMOVALS  
BY RAIL OR MOTOR.**

'Phone 112.

**DENTISTRY.**



Hours 10 a.m.  
7 p.m. Daily.

Est, 1891

'Phone 782, Cheltenham.

**MR. SUTTON GARDNER,**  
**LAUREL HOUSE**  
(Near Public Library).

**CHELTENHAM.**

Branches at Cirencester, Stow, Bourton, &c.



**CHELTENHAM BEAT GLOUCESTER AT CRICKET.**

In the second match this season between these old rivals Cheltenham scored 175 to Gloucester's 129.

- 1.—Messrs. O. Jewell, S. S. Freeman, —, and A. T. Voyce, the latter nursing a baby.
- 2.—Some of the crowd, a record one for the season.
- 3.—The first Gloucester pair, W. H. Chubb and R. E. Gurney.
- 4.—S. P. Ball and R. U. Loveridge (Gloucester) with O. Jewell.
- 5.—Three generations: W. C., W. C., jun., and W. A. Woof (the grandfather and father were playing).
- 6.—Spectators.
- 7.—Enthusiasts. Dr. Lidderdale, S. H. Healing, A. Holman, and C. Barnett.

[Photos by Cheltenham Newspaper Co., Ltd. from whom copies may be obtained.]

<p><b>PAINLESS DENTISTRY,</b></p> <p><b>Edwards and Hirst,</b>  <b>THE DENTAL SURGERY,</b>  <b>BANK CHAMBERS,</b>  <b>131 High Street, Cheltenham</b>          (Corner of North Street).  <b>Advice and Estimates Free.</b>  <b>Hours 10 till 7.</b>  <b>ESTABLISHED OVER 19 YEARS.</b></p>	<p><b>HIGH PRICES</b></p> <p>Paid for Ladies', Gentlemen's and Children's discarded wearing apparel—Boots, Shoes, etc. A postcard to</p> <p><b>DEANE'S WARDROBE DEPOT,</b>  <b>31 Worcester Street, GLOUCESTER</b>          Will receive Prompt Attention.</p> <p><b>THE NOTED HOUSE FOR FAIR PRICES.</b>          Telephone 970.          Telegrams: "Wardrobes, Gloucester."</p>	<p><b>SPECIAL LINE.</b></p> <p><b>GENTLEMEN'S</b>  <b>ALL LINEN HANDKERCHIEFS.</b></p> <p>HEMMED, 20-inch ..... 18/- Doz.          HEMSTITCHED, 16-17 inch ..... 12/- Doz.  <b>A Limited Number Only in Stock.</b></p> <p><b>A. BECKINGSALE,</b>  <b>111 HIGH STREET, CHELTENHAM.</b></p>
---	--	---



### INTERESTING CHELTENHAM WEDDING.

At Emmanuel Church, on June 23, the wedding was solemnised of Mr. Cecil William Powell, son of the late Mr. W. Powell, of Stroud, and Miss Dorothy Mary Merrett, only daughter of Mr. Alfred Merrett, of 13 Naunton Park Road, Cheltenham. The wedding reception was held at the Cosy, Corner, Cheltenham. [Photos by Cheltenham Newspaper Co., Ltd.]



### STROUD LIBERALS VISIT CHELTENHAM.

The Committee and friends of the Stroud Liberal organisation visited Cheltenham on Saturday last, and at a meeting on the Liberal Club lawn it was announced that Mr. A. W. Stanton would contest Gloucester City in the Liberal interest at the next election. Mr. Stanton is sitting in centre (without hat), Mrs. Stanton being on left.

**21,031**— This represents the Number of Articles we Repaired in the Twelve Months to June 30, 1921.

**8,303** were Scissors Ground and Polished.

**2,742** were Razors Ground and Set.

The remainder consisted of Table Cutlery, Garden Shears, Chisels, Choppers, etc.  
Have we Repaired Any of Your Cutlery?

**Williams & Co.,** THE CUTLERS,  
19 Winchcombe Street, CHELTENHAM.

The Original and Only Working Cutlers in the Town. Every description of New Goods in stock.



# THE CHELTENHAM CHRONICLE AND GLO' SHIRE GRAPHIC

With which is incorporated the Cheltenham "Looker-On."

GRATIS SUPPLEMENT.

Saturday, July 16, 1921.

No. 1,072.

## CHELTENHAM THEATRE AND OPERA HOUSE.

Lessee: ROBERT REDFORD.

The County Theatre, Established 30 Years.

General Manager: H. OSWALD REDFORD

TO-NIGHT, at 7.30, EDWARD F. FURNEAU & COMPANY in "A GIRL WORTH LOVING."

NEXT WEEK: "A WHITE MAN'S WAY." Reduced Prices 5d. to 10/6.

### The WINTER GARDEN PICTURE HOUSE, PROMENADE, CHELTENHAM

July 18th and Week:

Monday, Tuesday, & Wednesday:

WALLACE REID in  
"HAWTHORNE THE  
ADVENTURER."

"THE SILENT AVENGER"  
(Serial).

Thursday, Friday, and Saturday:

The Charming Stoll-Goldwyn  
Production,  
"HEARTSEASE."

"THE THIRD EYE" (Serial).

### OIL COOKING AND BOILING STOVES.

LARGE VARIETY.

### MILLER,

IRONMONGER,

163 High St., Cheltenham  
(Facing Fleece Hotel).

MR. ALFD. J. VENTRIS-FIELD  
Has had a Thorough Training:  
Medical, Surgical, and Pharma-  
ceutical, and 30 Years' Practical  
Experience in Treating all

DISEASES & DEFORMITIES  
OF THE FOOT & FACIAL  
DISFIGUREMENTS.

Surgery: 6 RODNEY PLACE,  
CHELTENHAM.

### ANNETTE,

High-class Corset Maker

FRENCH MODELS IN STOCK.

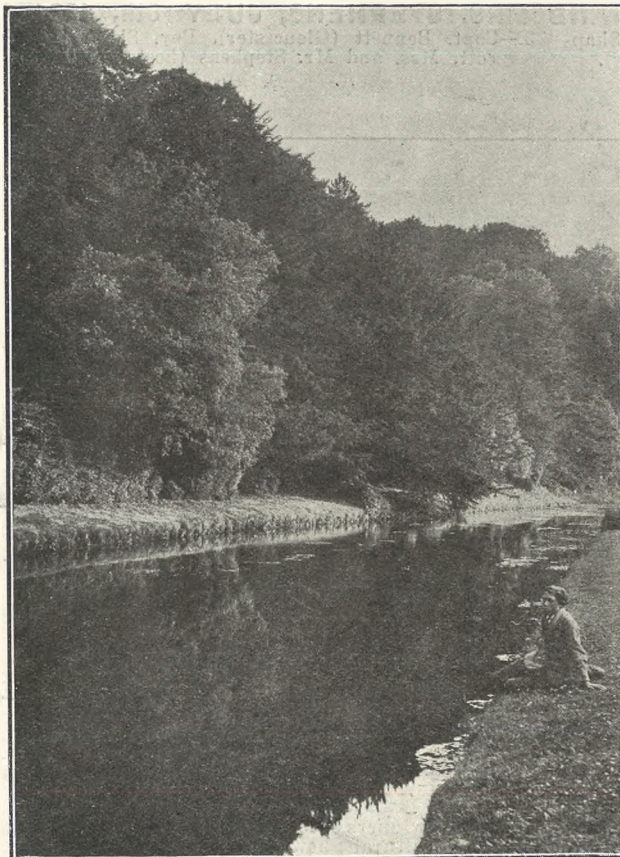
ONLY ADDRESS—

3 PROMENADE VILLAS,

Corsets Copied, Cleaned and Repaired

### MARTIN & CO., LTD., Promenade, Cheltenham.

Purchase for Cash Antiques of  
all kinds, including Old Silver,  
Jewellery, Sheffield Plate, China,  
Gems, Miniatures, etc. Highest  
Prices Given for Rare Pieces.



### Picturesque Gloucestershire.—Bibury.

A view of the Coln in the grounds of Bibury Court. The Coln is a famous trout stream, and the fish can be seen in plenty darting to and fro and lying with their heads pointing upstream.

[Photo by Cheltenham Newspaper Co., Ltd.]

ADVERTISE IT IN THE 'ECHO.'

### SUNDAY NEWSPAPERS.

To Avoid any Disappointment in  
obtaining Your Sunday Newspaper  
send a Postcard, stating your  
requirements to

### W. BROWN,

226 HIGH ST., CHELTENHAM.

THE HOUSE FOR ALL THE  
LEADING DAILIES.

Do not trust to itinerant street  
sellers.

### OUTDOOR

### PHOTOGRAPHY.

Are you thinking of  
having Group Photo-  
graphs taken—Garden  
Parties, Tennis and  
Croquet Parties, Wed-  
dings, &c., &c.? We  
are the people for this  
class of work. Write  
to Manager "Chronicle  
and Graphic" Photo  
Department for full  
terms and particulars.

For a  
Suitable **FRAME**

for your photograph, try

**LEE**, Caxton House,  
STATIONER, WINCHCOMBE ST.,

CHELTENHAM.

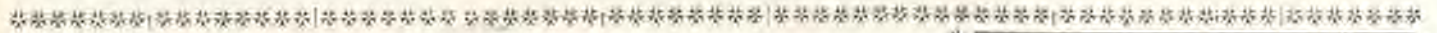
For the  
Best

**PIANOS, DALE, FORTY and CO. LTD**



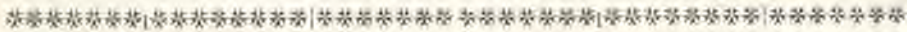
**CHURCH ARMY GARDEN MEETING AT BADGEWORTH COURT, THE RESIDENCE OF MR. AND MRS. STEPHENS, JULY 5th, 1921.**

1 and 2.—Listening to Rev. W. H. G. Shapcott, M.A. (Metropolitan Secretary). 3.—Capt. Bennett (Gloucester), Rev. Shapcott, Mrs. and Mr. Stephens (hosts). 4.—In centre is Mr. White, Governor of Gloucester Prison.



**A FINE CHELTENHAM TEAM.**

Mr. W. W. Theobald's fine four-in-hand team of roans, winners of 1st prizes at Olympia, Richmond, and at the Royal Agricultural Show.



**E. MERRY & SON, Ltd.,**  
8 Clarence Street, CHELTENHAM.

THE HOUSE FOR ANTIQUES at Reasonable Prices.

CHOICE COLLECTION OF ALL PERIODS.

**A PERFECT PIANO,**  
BRITISH IN EVERY DETAIL.

Since the inception of the firm, in 1843, by the late Mr. George Rogers, the

**ROGERS PIANOS**

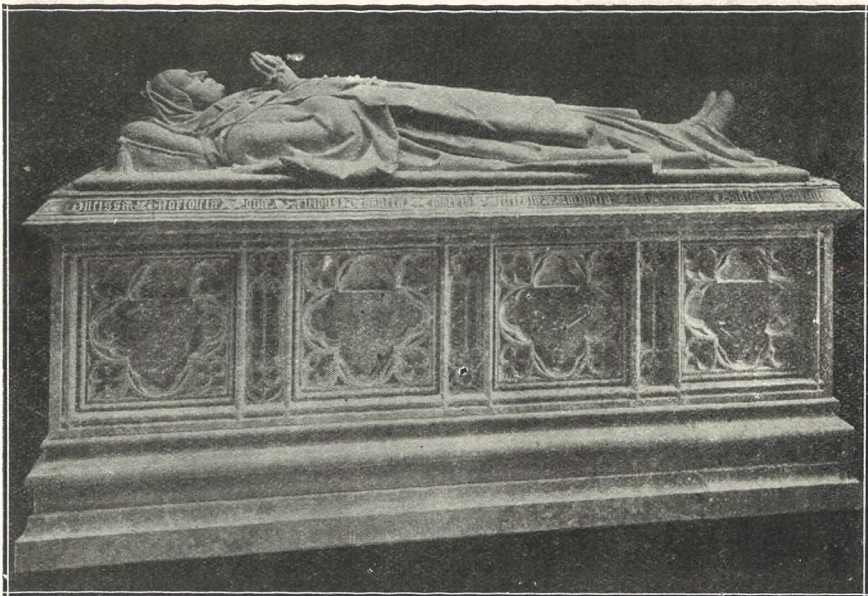
have been universally recognised as instruments of the very highest order, upholding the finest traditions of British workmanship.

**BABY GRANDS**

The high position and prestige which the Rogers Baby Grand enjoys to-day among musical connoisseurs is the result of many years' experience in the manufacture of Short Grands. Its remarkable fulness of tone is a revelation to those unacquainted with this model. Insist on trying one before deciding elsewhere.

THE SOLE AGENTS ARE—

**Crichton's Ltd.**  
PROMENADE  
Opposite the Post Office. CHELTENHAM.



**MEMORIAL TO THE DUCHESS OF NORFOLK.**

Recumbent effigy executed in white statuary marble, and fixed in the private chapel at Arundel Castle by the famous firm of sculptors, Messrs. R. L. Boulton and Sons, Bath-road, Cheltenham.



**CHELTENHAM JUNIOR IMPERIAL LEAGUE OUTING.**

The members visited Lower Lode Hotel on Saturday, July 2, in two parties.

[Photos by Cheltenham Newspaper Co., Ltd., from whom copies can be obtained.]

**Lance's**  
Renowned **SUMMER**  
**SALE.**

OF  
**DRAPERY**  
AND  
**Furnishing**  
**Goods.**

**INCOMPARABLE**  
**BARGAINS**

In All Departments.

**THE SUPREME SELLING**  
**EFFORT OF THE YEAR!**

To ensure this, we are cutting Prices to the **ABSOLUTE MINIMUM.** We must clear our Stocks, & have Drastically Reduced Prices to ensure this; and, in addition, a **SPECIAL DISCOUNT** of

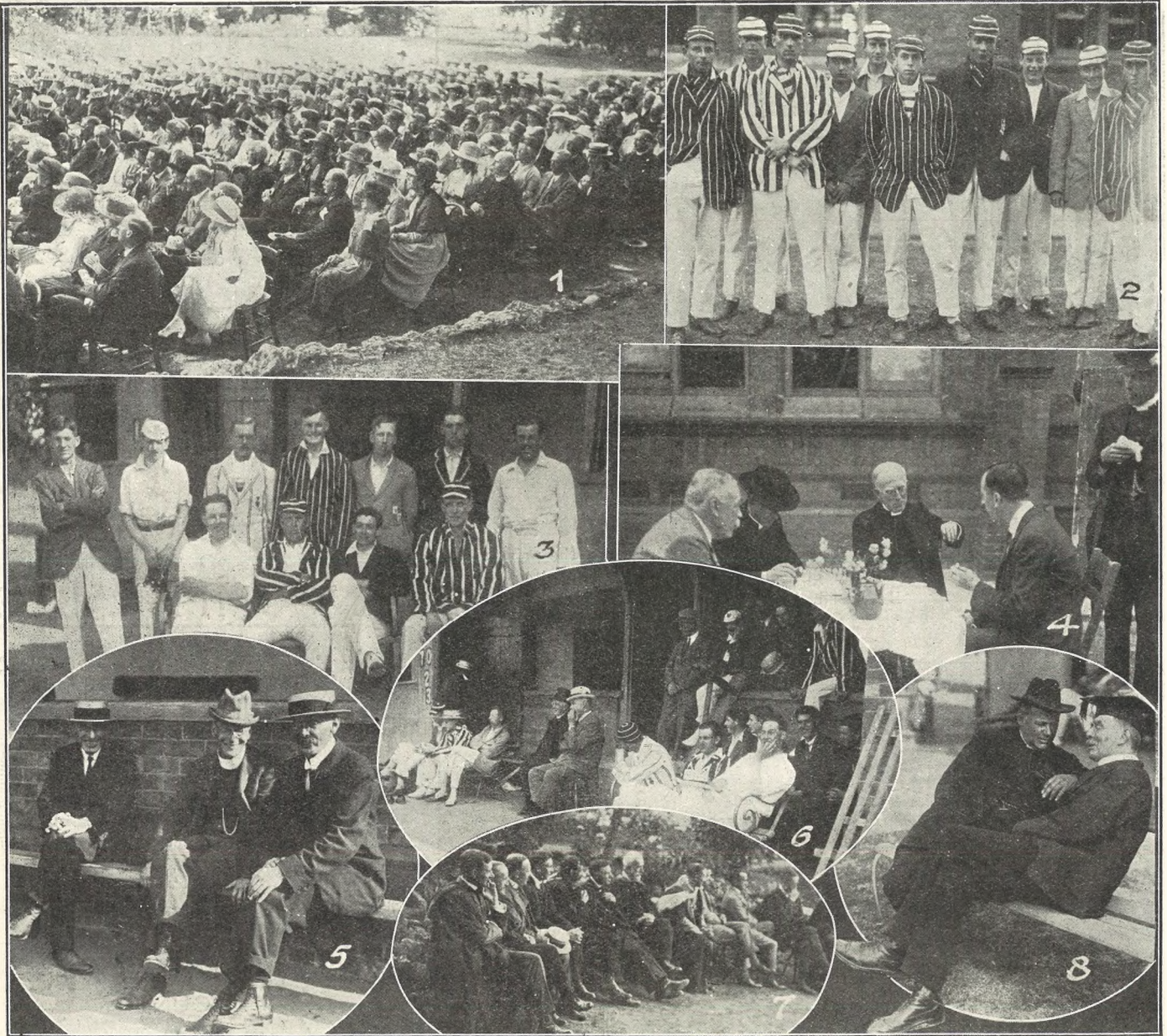
**2/- IN THE £**  
for Cash at time of Purchase.

**Sensational Purchase.**

**5 000 of**  
**BLACK SILK,**  
Including Crepe de Chine, Taffeta, Mouseline, Satin Grenadine, and Radium; original cost prices 8s. 11d., 10s. 11d., 12s. 11d., 15s. 11d., and 17s. 11d.

**All to be Cleared at 6/11.**  
36 to 40 inches wide.

**JOHN LANCE**  
AND COMPANY, LIMITED,  
**Cheltenham Spa.**



**DEAN CLOSE SCHOOL SPEECH DAY.**

The annual Speech Day proceedings on Friday, July 8th, followed the happy precedent of being conducted in the open air in beautiful weather, the Bishop of Chelmsford distributing the prizes.

- 1.—Some of the audience under the fine elms at the prize giving on Dr. Flecker's lawn.
- 2.—The School XI, who beat the Old Decanians in a two-day match.
- 3.—The Old Decanians' XI.
- 4.—Col. Rickerby, the Rector of Cheltenham, the Bishop of Chelmsford, and Mr. H. H. Hardy, Headmaster of Cheltenham College, at tea on the lawn.
- 5.—Three of the masters, Mr. Ellam on right.
- 6.—The Bishop (in centre) enjoying the cricket.
- 7.—Some of the masters.
- 8.—Rev. —. Kerr, father of senior prefect, having a chat with Dr. Flecker.

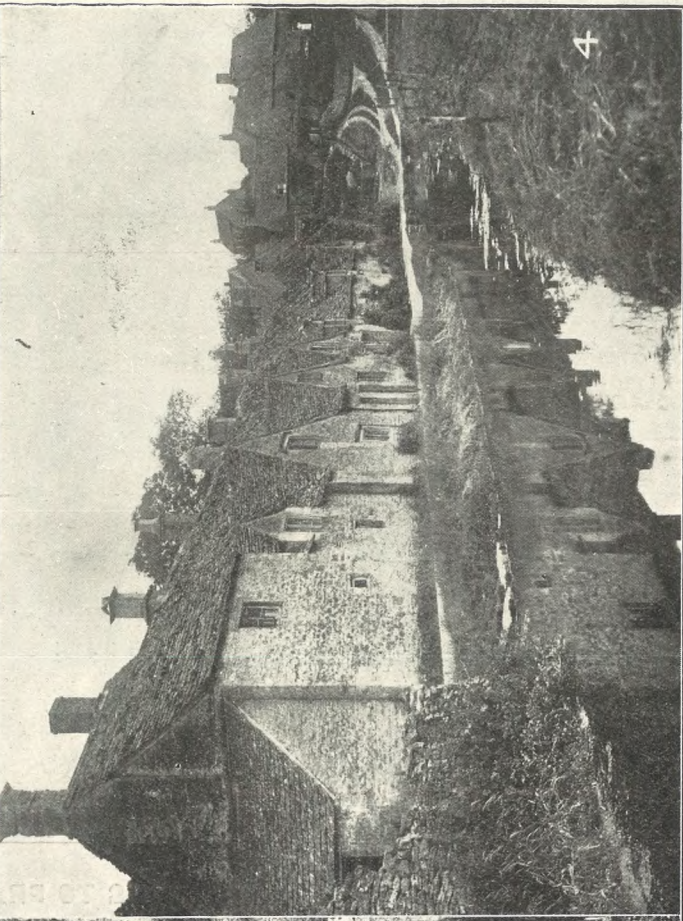
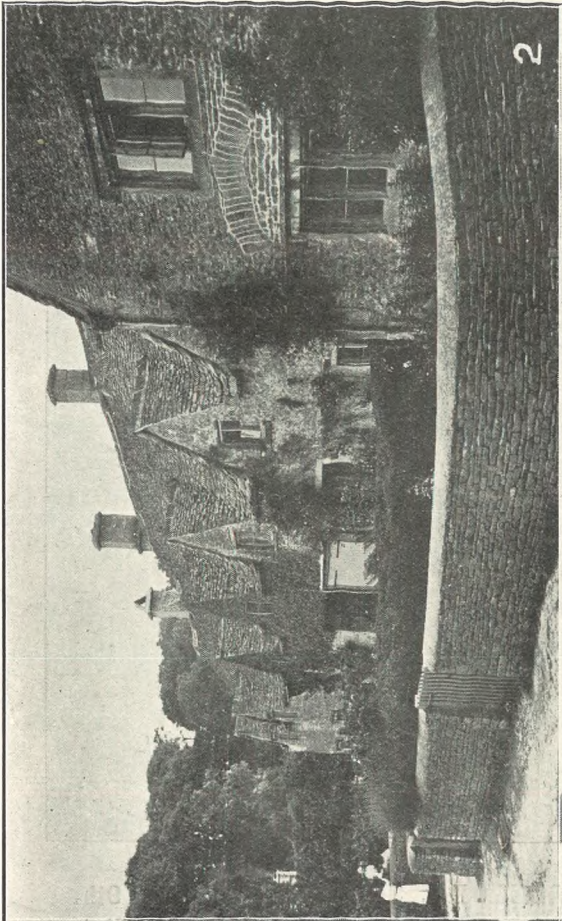
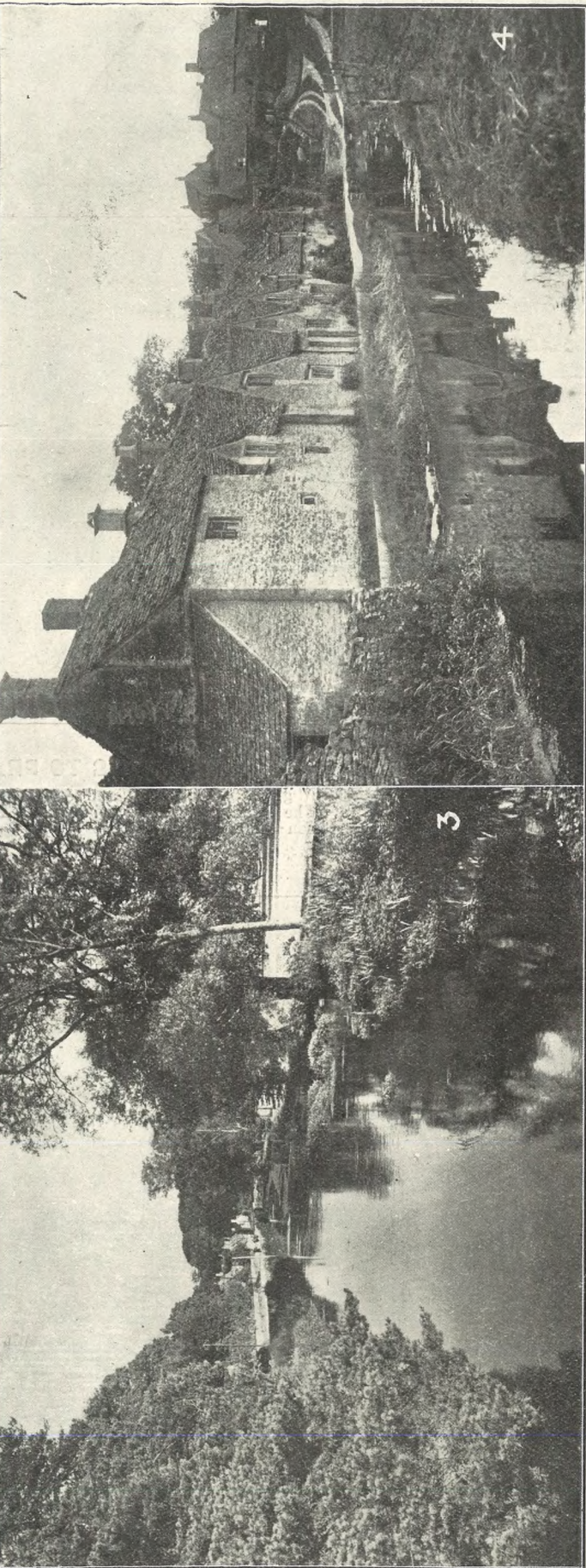
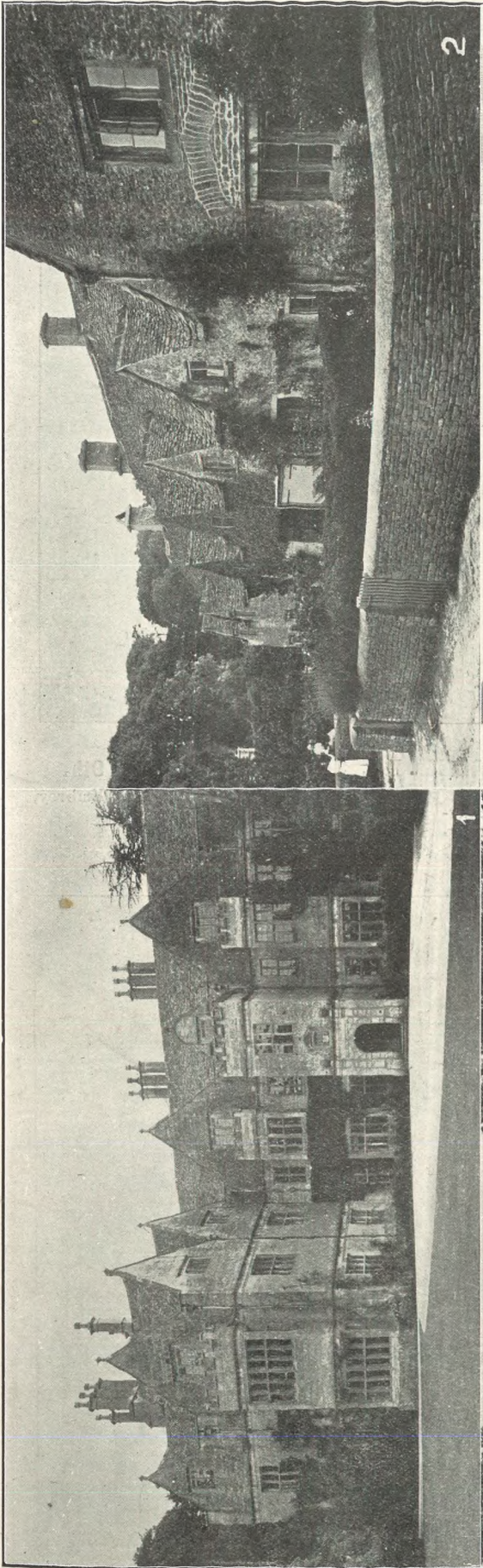
[Photos by Cheltenham Newspaper Co., Ltd.]

\*\*\*\*\*

**PAINLESS DENTISTRY,**  
**Edwards and Hirst,**  
**THE DENTAL SURGERY,**  
**BANK CHAMBERS,**  
**131 High Street, Cheltenham**  
 (Corner of North Street).  
**Advice and Estimates Free.**  
**Hours 10 till 7.**  
**ESTABLISHED OVER 19 YEARS.**

**Mousell Bros., Ltd.**  
 (Opposite G.W.R. Station),  
**CHELTENHAM.**  
**FURNITURE REMOVALS**  
**BY RAIL OR MOTOR.**  
 'Phone 112.

**SPECIAL LINE.**  
 ● ●  
**GENTLEMEN'S**  
**ALL LINEN HANDKERCHIEFS.**  
 HEMMED, 20-inch ..... 18/- Doz.  
 HEMSTITCHED, 16-17 inch ..... 12/- Doz.  
 A Limited Number Only in Stock.  
**A. BECKINGSALE,**  
**111 HIGH STREET, CHELTENHAM.**



**PICTURESQUE GLOUCESTERSHIRE: BIBURY.**

Bibury is considered by many people the most beautiful village in Gloucestershire; and with its glorious trout stream, limpid springs, sylvan scenery, and fine old gabled stone houses, it must be hard to beat in England. It is famed to artists, and Arlington Row, which is illustrated above, has figured more than once on the walls of the Royal Academy. So interesting is the village, we are publishing a second series in a future issue of the "Graphic."

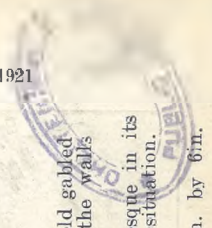
1—Bibury Court, a fine old Tudor mansion, now a blaze of colour. It is at present empty.

2—A fine row of cottages, now a blaze of colour. It is at present empty.

3—A view of the Coln, taken from the bridge opposite the Swan. It is renowned as a trout stream.

4—Arlington Row, most picturesque in its delightful irregularity and situation.

[Photos by Cheltenham Newspaper Co., from whom copies can be obtained. Unmounted, price 1/9 each. Size 8in. by 6in.]





**GLOUCESTER DICKENS SOCIETY ANNUAL OUTING TO FRAMILODE, SATURDAY, JULY 9th.**

- 1.—Homeward bound. 3.—A group of members and ex-Soldiers. Sir Jas. Bruton, M.P., Mr. Embrey, and Mr. Bretherton.  
 2.—Some of the ex-Service men invited to the outing. 4.—The committee, Messrs. Kendall Pearson (hon. secretary), \_\_\_\_\_, \_\_\_\_\_,



**CHELTENHAM FISHMONGERS' ASSOCIATION 2nd ANNUAL OUTING, LOWER LODGE, JULY 4.**

[Photos by Cheltenham Newspaper Co., Ltd., from whom copies may be obtained.



**WYCLIFFE COLLEGE WAR MEMORIAL DEDICATION.**

On Monday, July 11th, the School Memorial to the old boys of the College was dedicated by the Rev. T. Ferrier Hulme, M.A. It consists of a spire about 100 feet high to the School Chapel, in which is fixed a fine four-faced clock. The whole has cost over £4,000.

- 1.—The new Tower, a striking object in a view of Stonehouse. (headmaster); sitting, Mr. J. Bramley, J.P. (brother-in-law), Dr. F. Arthur Sibly, Mr. G. W. Sibly (founder of school), Mr. Mervyn Sibly.
- 2.—The Sibly family, who have been connected with the school for three generations. Standing, Mr. W. A. Sibly
- 3.—Mr. Wm. Jones, J.P., unveiling exterior tablet.
- 4.—Some of the old boys present.
- 5.—Parents, friends, and boys at the ceremony.

[Photos by Cheltenham Newspaper Co., Ltd.]

**WANTED!**

OLD GOLD or SILVER for melting, any interesting Antiques in Furniture, China, Prints, Paintings, Etc. High Cash Prices Given.

**HARRY O. BOX,**

339 HIGH STREET, CHELTENHAM.  
Opposite Grammar School. Established nearly 70 years.  
Price No Object for Fine Pieces.

**All Your Wants Supplied**

If you have a small Prepaid Advertisement in the "Echo" and "Chronicle." It is the combination that does it, for the two papers reach all classes.

The only Brush Manufacturers in Cheltenham

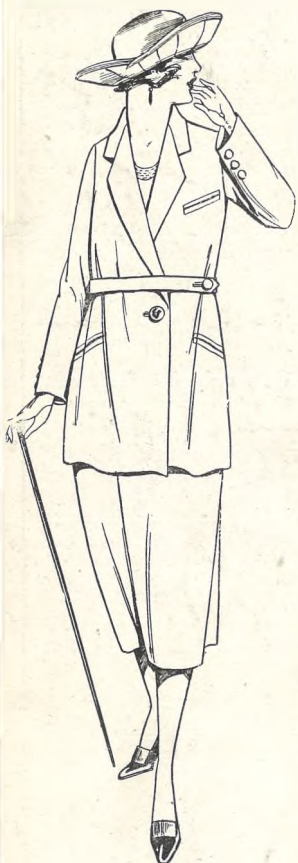
**E. JOYNER & SON,**  
**BRUSH & BASKET WAREHOUSE**  
31 SUFFOLK PARADE (Nr. St. James' Church),  
CHELTENHAM.  
All Kinds of Brushes Manufactured on the Premises.

# Cheltenham's Biggest Bargains

TO-DAY at

## R. T. ADAMS' GREAT SALE.

NOTE CAREFULLY THE BARGAINS BELOW, AND REMEMBER THAT THEY ARE ONLY A FEW OF THE HUNDREDS THAT AWAIT THE THRIFTY SHOPPER



100 Most Useful COSTUMES of All Wool Tweeds, nice colourings in Blue, Brown, Mauve, Leathers, etc., built on Newest Lines, as sketch. Recently Sold at 4 Guineas.

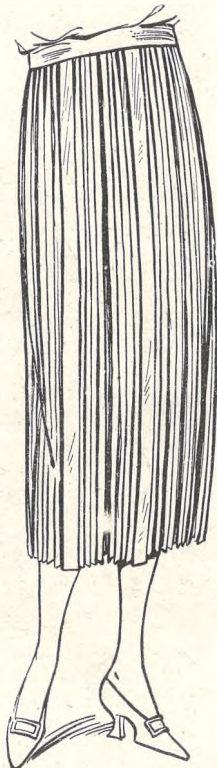
**SALE PRICE, 29/6.**

Very Practical COSTUME, in Medium Grey Wool Suiting. Perfectly Cut and Tailored, Coat Belted, Skirt Plain.

**SALE PRICE, 39/6.**

DAINTY COSTUMES in Very Good Quality Gabardines, in Grey, Saxe, Putty, Nigger, Navy, Black, 59/6, 69/6, 79/6, 89/6, 99/6.

Navy Botany Serge COSTUMES, Medium and Better Qualities are Handsomely Braided. **SALE PRICES** from 42/-, 49/6, 59/6.



We have made a Fortunate Purchase of Smart Tailor-Made COAT FROCKS, of Fine Quality All Wool Suiting, handsomely trimmed Black Silk Braid and Heavy Cable Stitching in contrasting shades. Black and Navy only. **SALE PRICE 29/6.**

Superior Qualities 35/6, 39/6, 49/6, 59/6; in a large variety of styles. Wonderful Value!

Check Zephyr ROBES, with White Muslin Collar and Cuffs, 12/11, 14/11, 18/11, 21/6, Etc.

Smart Taffeta ROBE, as sketch, Fasten Front with high Collar, Pleated Skirt. **PRICE 69/6.**

Special SKIRT VALUE, Pleated Navy Botany Serge, Also in Navy, Nigger, Black, Taffeta, 39/6.

Useful TWEED SKIRTS, 4/11, 5/11, 8/11, 10/11, as sketch. Sale Price 14/11. Out Size, in Useful Dark Grey, 10/11.



Brushed Wool SPORTS COATS, with Roll Collar and Sash, in Putty, Cham, Lemon, Rose, Saxe, Navy, Black, Amethyst, White, Green. **SALE PRICE 14/11.**

Ladies' Knitted GLOVES All Colours. 6½d. Pair.

RAINCOATS, All-round Belt, Convertible Collar, and Lined Check, in all sizes. **SALE PRICE 21/9.** Superior Qualities 29/6, 35/6, 39/6, 42/6, etc. Also in Girls' Sizes

JUMPER SILK in all colours, 5/9½ per ¼lb. WHITE SPUN SILK, 4/9½ per ¼lb.

JUMPER WOOL The best Double or 4-Ply Fingering, in All Colours. 3d. per Ounce, 3/9 per Pound.

30-inch Casement Cloth, White, Cham, Navy, Pink, Brown, Mauve, etc. Sale Price 1/0½.

56-inch GABARDINE, Navy, Nigger, Black, Recent Price 25/6 Yard. Sale Price 12/9.

56-inch Navy BOTANY SERGE Suiting, HALF-PRICE. 6/11 Yard

Boys' Heather Threquarter HOSE, coloured Tops, all sizes, 1/11½. Children's Socks, assorted colours, 6½d. Pair.

Mercerised DIVIDED SKIRTS, in all colours. **SALE PRICE 2/9½.** Girls' Summer Divided Skirts. Sale Price 1/9½.

CORSETS! Special Value, 2/11½, 3/11½, 4/11½.

SPORTS CORSETS, 3/9½, 4/9½, 5/9½, 6/9½.

Ladies' ART SILK HOSE, 1/11½.

Lisle Hose, with Wool Feet and Tops, 2/9½.



Ladies' Two-Button LISLE GLOVES, as sketch, in all colours. Recent Price 2/6 Pr. **SALE PRICE 8½d. Pair.**

MILLINERY.—We are Offering the Remains of Our Summer Stock of Semi-Trimmed and Model Hats at Greatly Reduced Prices.

SPECIAL! Natural Panama, with Black Band. **SALE PRICE 6/11.**

THE HOUSE FOR BEST VALUE.

SEE WINDOWS FOR BIGGEST BARGAINS.

# R. T. ADAMS, 75-76 High St., CHELTENHAM.



# THE CHELTENHAM CHRONICLE AND GLO' SHIRE GRAPHIC

With which is incorporated the Cheltenham "Looker-On."  
GRATIS SUPPLEMENT. Saturday, July 23, 1921.

No. 1,073.

## CHELTENHAM THEATRE AND OPERA HOUSE.

Lessee: ROBERT REDFORD.

The County Theatre, Established 30 Years

General Manager: H. OSWALD REDFORD.

TO-NIGHT, at 7.30, EDWARD F. FURNEAU AND COMPANY in "A WHITE MAN'S WAY."

NEXT WEEK: "THE OTHER WOMAN'S HUSBAND." Reduced Prices 5d. to 10/6.

### The WINTER GARDEN PICTURE HOUSE, PROMENADE, CHELTENHAM

The Coolest House in Town.  
July 18th and Week.  
Monday, Tuesday, & Wednesday:  
Franklyn Farnum in  
"THE ARLINGTON MYSTERY."  
"The Silent Avenger" (Serial).  
Comedy. Topical Events.  
Thursday, Friday, and Saturday:  
Marguerite Clark in  
"LUCK IN PAWN."  
"The Third Eye" (Serial).  
Comedy. Topical Events.

### WHERE SHALL WE GO

ON

### August Bank Holiday ?

TO THE

Cheltenham and County  
Harrers'

SECOND ANNUAL

### ATHLETIC FESTIVAL

AT

Montpellier Gardens.

Buy your ticket NOW, YOURS  
might be the Lucky Number  
for the Bicycle.

Tickets can be obtained from  
Sports Hon. Secretary,

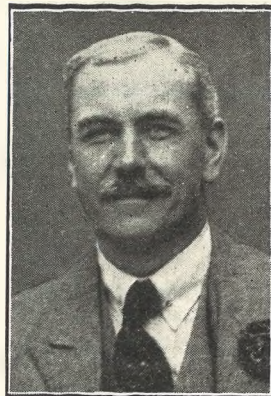
WALTER J. JOHNSON,  
9, 11, 13 Fairview Road.

Watch This Space for Further  
Announcements.

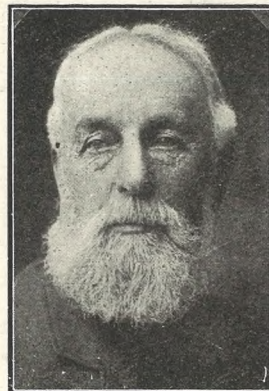
### MARTIN & CO., LTD.,

Promenade, Cheltenham.

Purchase for Cash Antiques of  
all kinds, including Old Silver,  
Jewellery, Sheffield Plate, China,  
Coins, Miniatures, etc. Highest  
Prices Given for Rare Pieces.



MR. A. W. STANTON,  
Of Field House, Stroud,  
who was adopted as Liberal  
Candidate for Gloucester by  
the Liberal Association on  
Monday last.



MR. THOS. COMELY,  
Of Westfield, Naunton, who  
died on July 11, aged 82.



MR. CLIVE CHARLES  
MATTHEWS,  
Only son of Mr. and Mrs.  
John Matthews, Manor  
Farm, Hempsted, who was  
drowned in the river Severn  
while bathing on July 8th.



PTE. H. W. (BERT)  
SPICER,  
1st Batt. Grenadier Guards,  
died suddenly on July 14th,  
at Aldershot. Son of Mr.  
and Mrs. Geo. Spicer, of  
19 Grosvenor Place South,  
Cheltenham.

### COME TO THE GARDEN FETE

at

COBERLEY RECTORY,  
Saturday, July 30th, 1921

UNLIMITED SIDE-SHOWS.

Motor leaves Plough Yard at 2.15.



WATCH THIS  
SPACE

WEEK BY WEEK  
for  
REAL INTERESTING  
ANNOUNCEMENTS.

'NUF SED.



ca/1.

E. FISHER,  
375 HIGH STREET, CHELTENHAM.

EXPIRATION OF LEASE.  
ENTIRE STOCK TO BE CLEARED  
GREAT REDUCTIONS  
IN HOSIERY AND CLOTH

For a  
Suitable FRAME

for your photograph, try

LEE, Caxton House,  
STATIONER, WINCHCOMBE ST.

CHELTENHAM.

For the  
Best

# PIANOS DALE, FORTY and Co., Ltd



**CHELTENHAM MOTOR-CYCLE CLUB GYMKHANA.**

The above Club held a most successful after noon Sports on Saturday last in a field at Whittington. There were 331 entries.

- 1.—Some of the competitors. Mr. A. Williams in centre.    2.—Well out of the side-car in Potatoe Race.    5.—One of the side-car races.  
 3.—Stunt riding in Solo Potato Race.    6.—Spectators.  
 4.—Egg and Spoon Race for married ladies.

[Photos by Cheltenham Newspaper Co., Ltd., from whom copies can be obtained, price 1s. each.



LOOK!

STARTLING PRICE REDUCTION!

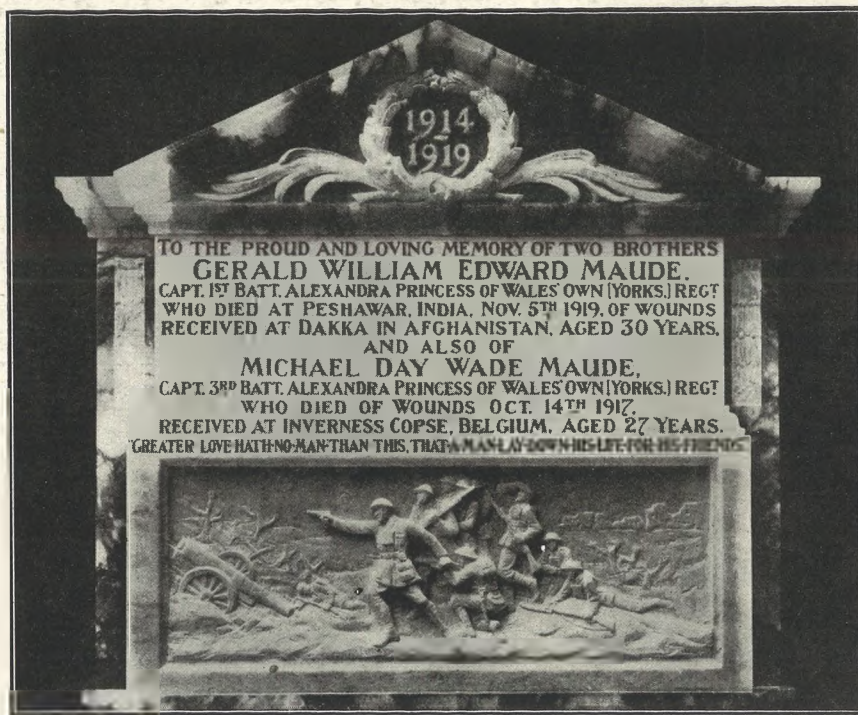
38 Gns. O.K. JUNIOR MOTOR CYCLE. 38 Gns.

NO OTHER MACHINE CAN CHALLENGE THIS VALUE.

TRIAL RUNS & IMMEDIATE DELIVERY FROM THE DISTRICT AGENTS,

A. WILLIAMS & Co., The Motor Cycle Specialists,

PORTLAND STREET, CHELTENHAM.



TO THE PROUD AND LOVING MEMORY OF TWO BROTHERS  
**GERALD WILLIAM EDWARD MAUDE.**  
 CAPT. 1ST BATT. ALEXANDRA PRINCESS OF WALES' OWN (YORKS.) REGT  
 WHO DIED AT PESHAWAR, INDIA, NOV. 5TH 1919, OF WOUNDS  
 RECEIVED AT DAKKA IN AFGHANISTAN, AGED 30 YEARS.  
 AND ALSO OF  
**MICHAEL DAY WADE MAUDE,**  
 CAPT. 3RD BATT. ALEXANDRA PRINCESS OF WALES' OWN (YORKS.) REGT  
 WHO DIED OF WOUNDS OCT. 14TH 1917,  
 RECEIVED AT INVERNESS COPSE, BELGIUM, AGED 27 YEARS.  
 GREATER LOVE HATH NO MAN THAN THIS, THAT A MAN LAY DOWN HIS LIFE FOR HIS FRIENDS.

**A BEAUTIFUL WAR MEMORIAL.**

Memorial recently erected at Rylstone, in Wharfedale, Yorks, to two brothers killed in the late war. It was executed in Alabaster by Messrs. R. L. Boulton and Sons, Sculptors, of Bath Road, Cheltenham, who will be pleased to give estimates for all kinds of Memorials.

**PAINLESS DENTISTRY.**

**Edwards and Hirst,**  
 THE DENTAL SURGERY,  
 BANK CHAMBERS,  
 131 High Street, Cheltenham  
 (Corner of North Street).  
 Advice and Estimates Free.  
 Hours 10 till 7.  
 ESTABLISHED OVER 19 YEARS

**Mousell Bros., Ltd.**

(Opposite G.W.R. Station),  
**CHELTENHAM.**

**FURNITURE REMOVALS  
 BY RAIL OR MOTOR.**

'Phone 112.

BEST QUALITY

**CIDERS**

IN BOTTLE.—Sparkling and Still.

**BARTHOLOMEW,**  
 419-420, HIGH STREET,  
 CHELTENHAM.

WINES, SPIRITS, ALES, TABLE WATERS  
 and GROCERY. Tel. 135.

**OUR PHOTOGRAPHS.**

Copies of "Chronicle and Graphic"  
 Photographs may be obtained at the  
 Office—Mounted 1s. 6d. each, Un-  
 mounted 1s. each. Postage 2d.

**CHEESERIGHTS' SALE**

**SPECIAL HALF-PRICE WEEK**

Dressing Gowns and Jackets,  
 Camisoles, Corsets, Skirts,  
 Blouses, Hosiery, Gloves,  
 Swiss Ribbed Combinations and  
 Vests,  
 Handkerchiefs, Laces. &c.

Sports Coats, Jumpers, Jumper  
 Blouses, Aprons, Overalls  
 AT SPECIALLY REDUCED PRICES.

**CHEESERIGHTS' SALE,**  
 Montpellier, Cheltenham Spa.

**Lance's**  
 Renowned **SUMMER**  
**SALE.**

OF  
**DRAPERY**

AND  
**Furnishing  
 Goods.**

**INCOMPARABLE**

**BARGAINS**

In All Departments.

**THE SUPREME SELLING  
 EFFORT OF THE YEAR!**

To ensure this, we are cutting  
 Prices to the **ABSOLUTE**  
**MINIMUM.** We must clear  
 our Stocks, & have Drastically  
 Reduced Prices to ensure this;  
 and, in addition, a **SPECIAL**  
**DISCOUNT** of

**2/- IN THE £**

for Cash at time of Purchase.

**Sensational Purchase.**

5,000 of

**BLACK SILK,**

Including Crepe de Chine, Taffeta,  
 Mouseline, Satin Grenadine, and  
 Radium; original cost prices 8s. 11d.,  
 10s. 11d., 12s. 11d., 15s. 11d. and  
 17s. 11d.

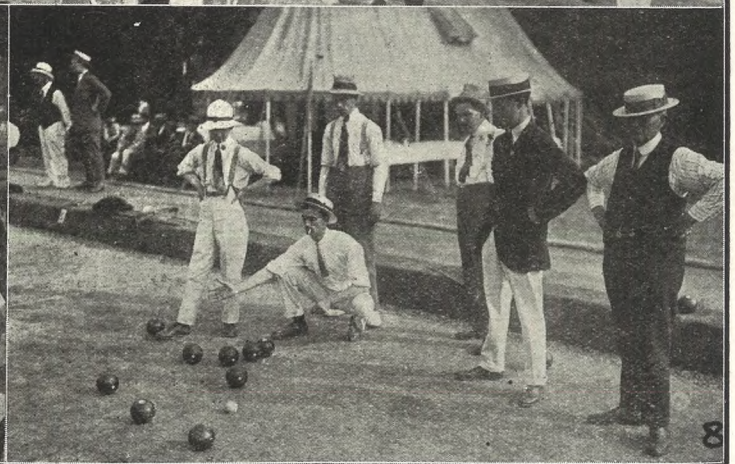
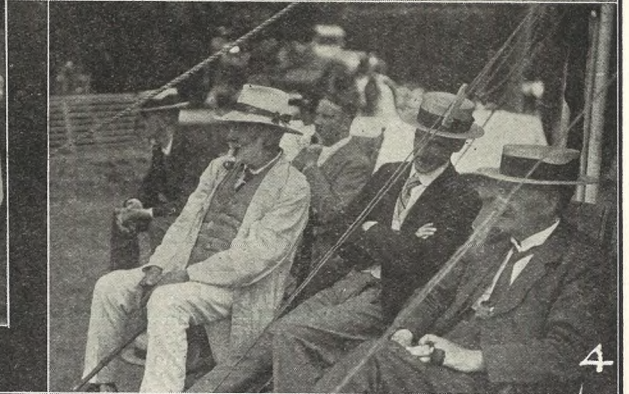
**All to be Cleared at 6/11.**

36 to 40 inches wide.

**JOHN LANCE**

AND COMPANY, LIMITED

Cheltenham Spa.



**COUNTY BOWLS MATCH IN CHELTENHAM.**

The first County Match on the new green of the Cheltenham Club was played on Wednesday, July 13, Gloucestershire beating Wiltshire by 133 points to 94.

1.—The Cheltenham Contingent in County Team: Messrs. J. Crankshaw, F. Willis, C. Clark, E. Ricketts, Rev. W. Earee, F. Fisher, and F. W. Brookman.

2.—Mr. Wallace Harris, who sailed yester-

day to play with the E.B.A. in Canada, in centre

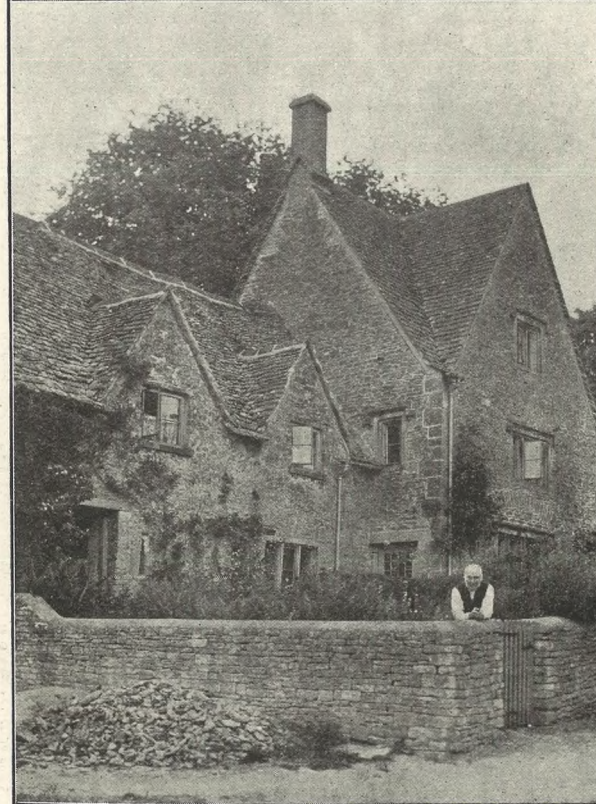
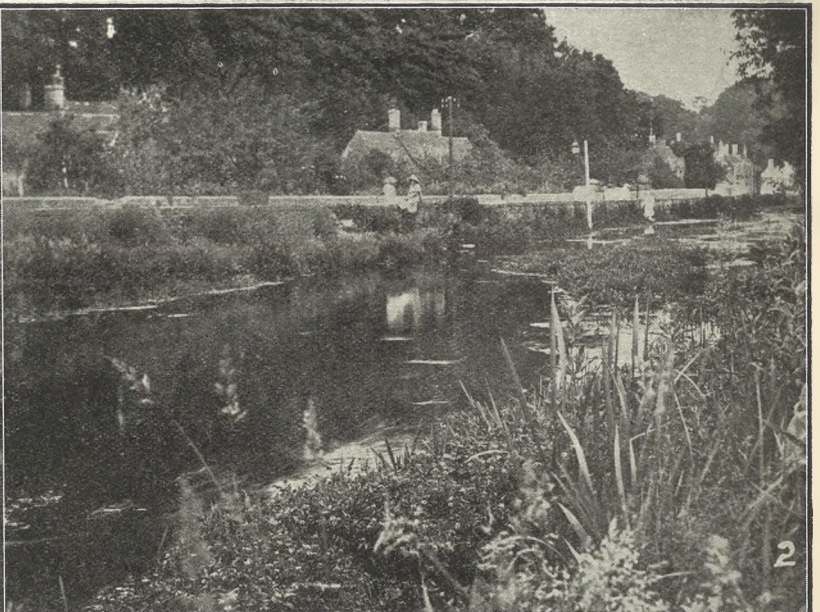
3.—Players at tea.

4.—"Dr." Goold, in white, looks very cool.

5, 6, and 8.—Snaps of the play. The weather was vrey hot, with glaring sunshine.

7.—In centre are Messrs. Goldsworthy (Cheltenham), S. Robertson and G. Brace (Gloucester) enjoying the match.

[Photos by Cheltenham Newspaper Co., Ltd., from whom copies can be obtained.



**PICTURESQUE GLOUCESTERSHIRE.—BIBURY (Series II.).**

We give a further series of this Queen of Cotswold Villages, which, since the advent of motor traffic, has become one of the show places of the neighbourhood. It is equally available from Oxford, and is getting a favourite place of call for motor-coaches. It is quite unspoilt as yet in its sylvan and simple beauty.

- 1.—One of the old mills. 2.—The trout stream and village "street."  
 3.—Arlington Row, from the top end. The stream in front of the houses teems with trout.  
 4.—A typical Cotswold house and garden. 5.—A peep from the road.

[Photos by Cheltenham Newspaper Co., Ltd., from whom copies can be obtained.]



**"THE MERCHANT OF VENICE" BY CATHOLIC SCHOOL CHILDREN.**

The children of St. Gregory's (R.C.) School, Cheltenham, gave three performances at Montpellier Gardens on Wednesday, Thursday, and Saturday of "The Merchant of Venice."

**W.A. WOOF, LIMITED**

(Cricket Coach Cheltenham College since 1886, 17 years Gloucestershire County Eleven),

**4 Suffolk Road,**  
 . . . . . AND . . . . .  
**1 Regent Street**  
**CHELTENHAM**  
 :: :: SPA. :: ::

**ALL REQUISITES?**

FOR

- Lawn Tennis, Croquet,
- Cricket, Badminton,
- Football, Squash Rackets,
- Hockey, Golf,
- Lacrosse, Running,
- And all Out-door Games.

**WATTS HIS NAME**

THE MEN'S WEAR SPECIALIST,  
 FOR FINEST VALUE IN

**GENT.S' OUTFITTING.**

**THIS WEEK'S SPECIAL BARGAINS:**

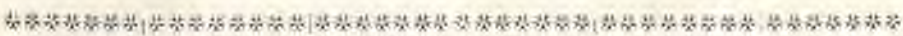
- 4/11,** TUNIC SHIRTS for Gentlemen. Exceptional Value, Smart Patterns, Cool and Comfortable. Worth 7s. 11d. each.
- 2/11½,** COOL PANTS or VESTS. Wonderful Value, very hard wearing. Usually 3s. 11d. each.
- 15/11,** GREY FLANNEL TROUSERS. Worth 21s. pair; all sizes in stock.
- GENTS.' SPORTS JACKETS,** grand value, 32s. 6d.
- 1/11½,** ALL WOOL CASHMERE SOCKS; Unique Offer, Smart Colours. Worth 8s. 6d. pair.
- 6½** all sizes.
- 6½,** HANDKERCHIEFS for Gentlemen, plain or hemstitched, also fancy coloured borders.

NOTE ADDRESS—  
**CHARLES WATTS,**  
 141 High Street (Near Town Clock),  
 CHELTENHAM.



**CHELTENHAM NORTH WARD CONSERVATIVE WOMEN'S  
OUTING TO WORCESTER, JULY 13th, 1921.**

[Photos by Cheltenham Newspaper Co., Ltd. from whom copies may be obtained.]



**DENTISTRY. MR. SUTTON GARDNER,**

**LAUREL HOUSE  
(Near Public Library).**

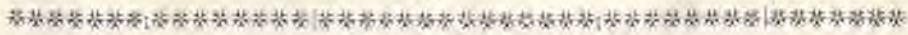
Hours 10 a.m.  
7 p.m. Daily.

**CHELTENHAM.**



Est. 1891

'Phone 782. Cheltenham. Branches at Cirencester, Stow, Bourton, &c.



**ADVERTISE IN THE "ECHO."**

**CHELTENHAM CRICKET  
FESTIVAL.**

SATURDAY, AUGUST 14 to TUESDAY,  
AUGUST 23, 1921,  
during which

**GLOUCESTERSHIRE**

will play:—

August 13, 15, 16 (Saturday, Monday, Tuesday).

**LANCASHIRE**

August 17, 18, 19 (Wednesday, Thursday, Friday).

**SUSSEX;**

August 20, 22, 23 (Saturday, Monday, Tuesday).

**AUSTRALIANS**

Wickets Pitched First Day of Matches at  
12 o'clock, other days 11.30 o'clock.  
Gates Open at 10.30.

**ADMISSION:**

Australian Match.—2s., Enclosure 2s., Lower  
Stand 1s. (all inclusive of Tax).

Lancashire and Sussex Matches.—Admission  
1s. 3d., Enclosure 1s. 1d., Lower Stand 7d. (all  
inclusive of Tax).

Admission after 4 o'clock to Lancashire and  
Sussex Matches only, 8d.

No Seats Reserved.

Sectional Tickets (12s. 6d.) for all Cheltenham  
matches can be obtained of Messrs. Woolf,  
Regent-street, and at the "Echo" Office, and  
these admit to all parts of the ground and  
stands.

Luncheons on the Ground by Georges Ltd.

**THE NEW  
"LUCKY WINKLE"  
JEWELLERY.**



**As Brooches, Pendants, Charms, &c.  
IN GOLD AND SILVER.**

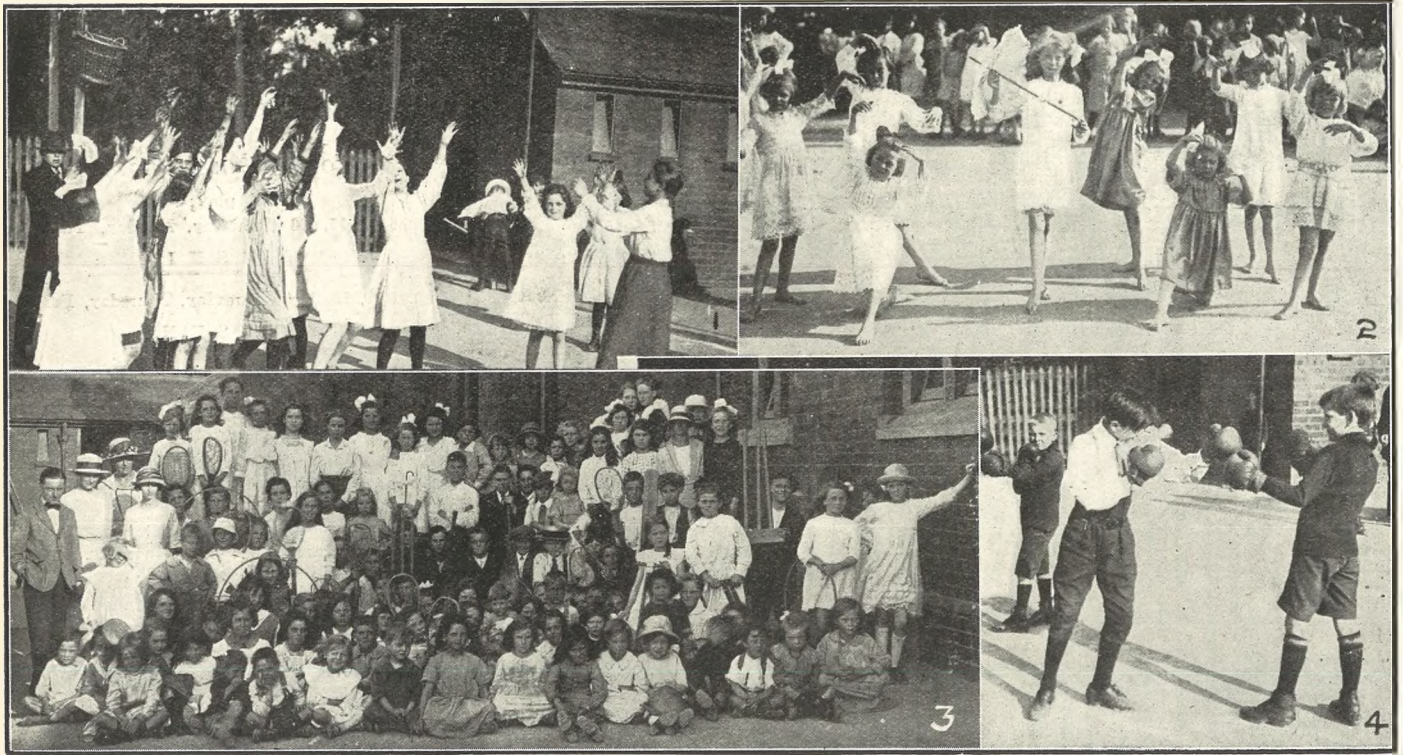
**E. M. YEEND,  
Jeweller & Optician (Opposite Town Clock)  
CHELTENHAM.**

**HOLIDAY WEAR.**

**FLANNEL TROUSERS** (Grey or  
White),  
**CRICKET and TENNIS SHIRTS,  
GOLF, FISHING, and SPORTS  
HOSE,  
SWEATERS,  
BATHING COSTUMES,  
THIN UNDERCLOTHING.**

**A. BECKINGSALE,  
111 HIGH STREET, CHELTENHAM.**

Sunday being the third anniversary of  
the murder of the late Emperor Nicholas  
and the Imperial Russian family, a Russian  
Service and Requiem was held at St. Mary-  
le-Bow Church, Cheapside. The congrega-  
tion was large, numbering about 400, nearly  
all Russians.



**ST. PETER'S, CHELTENHAM, PLAY CENTRE.**

Snaps of children at play in organised games and dancing at St. Peter's Boys' School, Cheltenham  
 1.—Girls at basket ball. 2.—Dancing in bare feet. 3.—A group of the children. 4.—Boys learning boxing.  
 [Photos by Cheltenham Newspaper Co., Ltd.]

\*\*\*\*\*|\*\*\*\*\*|\*\*\*\*\*|\*\*\*\*\*|\*\*\*\*\*|\*\*\*\*\*|\*\*\*\*\*|\*\*\*\*\*|\*\*\*\*\*|\*\*\*\*\*|\*\*\*\*\*|\*\*\*\*\*



**CHELTENHAM CROQUET OPEN TOURNAMENT.**

The Annual Tournament, now revived since pre-war days, commenced on Monday and concludes to-day.  
 1.—Rev. J. M. Ford (on right) having tea with a clerical friend. 3.—Sir F. Colchester-Wemyss, Mr. H. de Winton (on left). 5.—Mrs. A. Crawford, who was knocked out by Mr. H. E. Foll. 6.—Miss D. D. Steel and Col. Thoyses having a cup of tea.  
 2.—Miss N. S. L. Gilchrist, the English champion, playing in Open Singles. 4.—Lord Tollemache with a lady.



# THE CHELTENHAM CHRONICLE AND GLO' SHIRE GRAPHIC

With which is incorporated the Cheltenham "Looker-On."  
GRATIS SUPPLEMENT. Saturday, July 30, 1921.

No. 1,074.

## CHELTENHAM THEATRE AND OPERA HOUSE.

Lessee: ROBERT REDFORD.

The County Theatre, Established 30 Years.

General Manager: H. OSWALD REDFORD.

To-Night, at 7.30, Edward F. Furneau and Co. in "THE OTHER WOMAN'S HUSBAND." Prices. 6d. to 10/6.  
OPENING OF THE AUTUMN SEASON! MONDAY NEXT (Bank Holiday), & during Week, at 7.30, "IN THE NIGHT."

### The WINTER GARDEN PICTURE HOUSE, PROMENADE, CHELTENHAM

Enormous Holiday Attractions for  
August 1st and Week:

Monday, Tuesday, & Wednesday:  
The ever popular screen artist,  
Wm. S. Hart, in  
"WAGON TRACKS."

"The Silent Avenger" (Serial).

Thursday, Friday, and Saturday:  
"THE DUKE OF CONNAUGHT'S  
TOUR TO INDIA."

Being an Official Film Record of  
His Memorable Visit. An historic  
film of intense interest to all.  
Seats now booked at Box Office.  
Phone 212.

### SUNDAY NEWSPAPERS.

To avoid any Disappointment in  
obtaining Your Sunday Newspaper  
send a Postcard, stating your  
requirements to

**W. BROWN,**  
226 HIGH ST., CHELTENHAM.

THE HOUSE FOR ALL THE  
LEADING DAILIES.

Do not trust to itinerant street  
sellers.

**ANNETTE,**  
High-class Corset Maker  
FRENCH MODELS IN STOCK.

ONLY ADDRESS—

KENSINGTON HOUSE, PROMENADE.  
Corsets Copied, Cleaned and Repaired

**MARTIN & CO., LTD.,**  
Promenade, Cheltenham.

Purchase for Cash Antiques of  
all kinds, including Old Silver,  
Jewellery, Sheffield Plate, China,  
Coins, Miniatures, etc. Highest  
Prices Given for Rare Pieces.

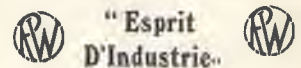


### Charity Organisation Society Fête at Montpellier.

The first and second prize-winners in Fancy Dress Competition on Wednesday and Thursday, July 20, 1921. Mr. Bedford as Red Indian (1st), and the Hon. Miss Turnour as Coster (second).

[Photo by Cheltenham Newspaper Co., Ltd.]

ADVERTISE IN THE "ECHO."

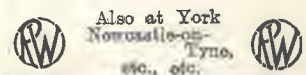


### AN INVITATION.

Business Men desirous of  
keeping au fait with the  
Latest Productions in  
Office Appliances & Labour  
Saving Devices, should call  
or write to an old Cheltonian  
known by the nom d'guerre  
of

"WHIRLWIND" (Reg.)

117 High Street,  
CHELTENHAM.  
Telephone 307.



**E. FISHER,**  
375 HIGH STREET, CHELTENHAM.

EXPIRATION OF LEASE.  
ENTIRE STOCK TO BE CLEARED  
FURTHER REDUCTIONS  
IN HOSIERY AND CLOTH

For a  
Suitable **FRAME**

for your photograph, try

**LEE,** Caxton House,  
STATIONER, WINCHCOMBE ST.,  
CHELTENHAM.

For the Best **PIANOS, DALE, FORTY and Co. Ltd.**



**GLOUCESTER ROYAL INFIRMARY OPEN BOWLING TOURNAMENT, KINGSHOLM BOWLING CLUB, GLOUCESTER, FRIDAY, JULY 22nd.**

THE COMPETITORS.—Winner (Mr. William Goddard) seated on right, in shirt sleeves.

[Photos by Cheltenham Newspaper Co., Ltd., from whom copies can be obtained; 1s. 9d. unmounted, 2s. 6d. mounted.]



**Cheltenham South Ward Conservatives' Outing, Saturday, July 23rd.**

**HIGH PRICES**

Paid for Ladies', Gentlemen's and Children's discarded wearing apparel—Boots, Shoes, etc. A postcard to

**DEANE'S WARDROBE DEPOT,**  
31 Worcester Street, GLOUCESTER  
Will receive Prompt Attention.

THE NOTED HOUSE FOR FAIR PRICES.

Telephone 970.

Telegrams: "Wardrobes, Gloucester."

**Mousell Bros., Ltd.**

(Opposite G.W.R. Station),  
**CHELTENHAM.**

**FURNITURE REMOVALS**  
BY RAIL OR MOTOR.

'Phone 112.



**Mrs. Sarah Jane Wade,**

Widow of the late Mr. Jonathan Wade, of 15 Marie Hill-parade, Cheltenham, who died somewhat suddenly on July 22nd, 1921, at 27a Manchester-street, aged 75 years

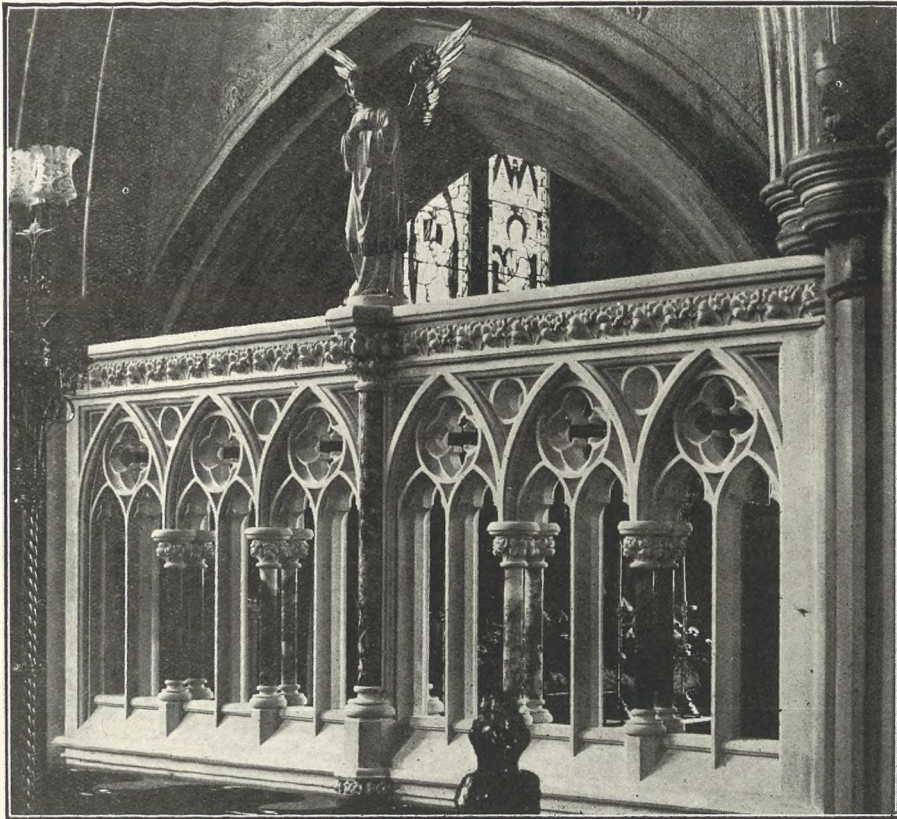
**PAINLESS DENTISTRY,**

**Edwards and Hirst,**  
THE DENTAL SURGERY,  
BANK CHAMBERS,  
131 High Street, Cheltenham  
(Corner of North Street).

Advice and Estimates Free.

Hours 10 till 7.

ESTABLISHED OVER 19 YEARS.



**CHELTENHAM CATHOLIC MEMORIAL.**

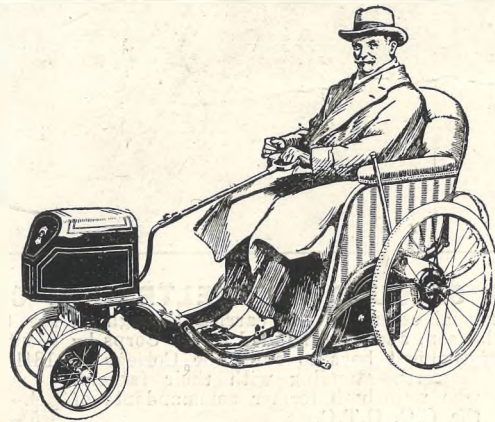
One of the two Sanctuary Screens which have been erected in St. Gregory's (R.C.) Church, Cheltenham, in memory of the Bingham family, and also of members of the Congregation who died in the Great War. They were unveiled and dedicated by the Bishop of Clifton. They are executed in Caen Stone, Alabaster and Marble, the work being carried out by Messrs. R. L. Boulton and Sons, Sculptors, Bath-road, Cheltenham. Mrs. W. Baring Bingham was the donor

**ELECTRICALLY DRIVEN**  
: : AND ORDINARY : :  
**Invalid Chairs.**

ENQUIRIES INVITED.

**G. H. BENDY,**  
LOCAL AGENT for CARTER'S,  
the World-famous Specialists in  
these articles,  
Glenside, Langdon Road,  
CHELTENHAM.

RENOVATIONS OF EVERY DESCRIPTION.



PONY PHAETON ON HIRE.

**CHEESERIGHTS' SALE.**

**SPECIAL HALF-PRICE WEEK.**  
Dressing Gowns and Jackets,  
Camisoles, Corsets, Skirts,  
Blouses, Hosiery, Gloves,  
Swiss Ribbed Combinations and  
Vests,  
Handkerchiefs, Laces, &c.  
Sports Coats, Jumpers, Jumper  
Blouses, Aprons, Overalls,  
AT SPECIALLY REDUCED PRICES.

**CHEESERIGHTS' SALE,**  
Montpellier, Cheltenham Spa.

The only Brush Manufacturers in Cheltenham  
**E. JOYNER & SON,**

**BRUSH & BASKET WAREHOUSE**

31 SUFFOLK PARADE (Nr. St. James' Church),  
CHELTENHAM.

All Kinds of Brushes Manufactured on the  
Premises.

**MR. ALFD. J. VENTRIS FIELD,**

Has had a Thorough Training: Medical,  
Surgical, and Pharmaceutical; and 30 Years'  
Practical Experience in Treating all

**DISEASES AND DEFORMITIES OF THE**  
FOOT & FACIAL DISFIGUREMENTS.

Surgery:  
6 RODNEY PLACE, CHELTENHAM.

**Lance's**  
AMAZING  
: SALE :  
BARGAINS.

Further  
Reductions  
: : IN ALL : :  
DEPARTMENTS.

Special  
DISCOUNT

of

**2/- IN THE £**

allowed off all goods paid  
for at the time of  
Purchase.

THOUSANDS  
OF  
REMNANTS

in Wool and Silk Fabrics to be  
cleared at

**HALF - PRICE.**

Special REMNANT Days,  
Thursday, Friday and Saturday.

**JOHN LANCE**

AND COMPANY, LIMITED  
Drapers and Furnishers,  
Cheltenham Spa.



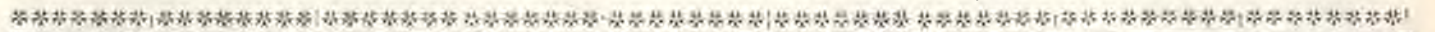


**CHELTHENHAM COLLEGE O.T.C. GYMKHANA.**

On Saturday afternoon, July 23rd, the annual Gymkhana was held on the College Ground before a large crowd of spectators. An interesting and amusing programme was carried through.

- 1.—The first shower after the long drought came on during the afternoon.
- 2.—The push-pole contest. Teams of four have to push their opponents out of the white circle. Christowe won.
- 3.—The four-legged race.
- 4.—Spectators and Competitors.
- 5.—Over the carts and through wire obstacle race.
- 6.—Tilting at the ring on bicycles. D. C. Tanner on left has secured his ring.

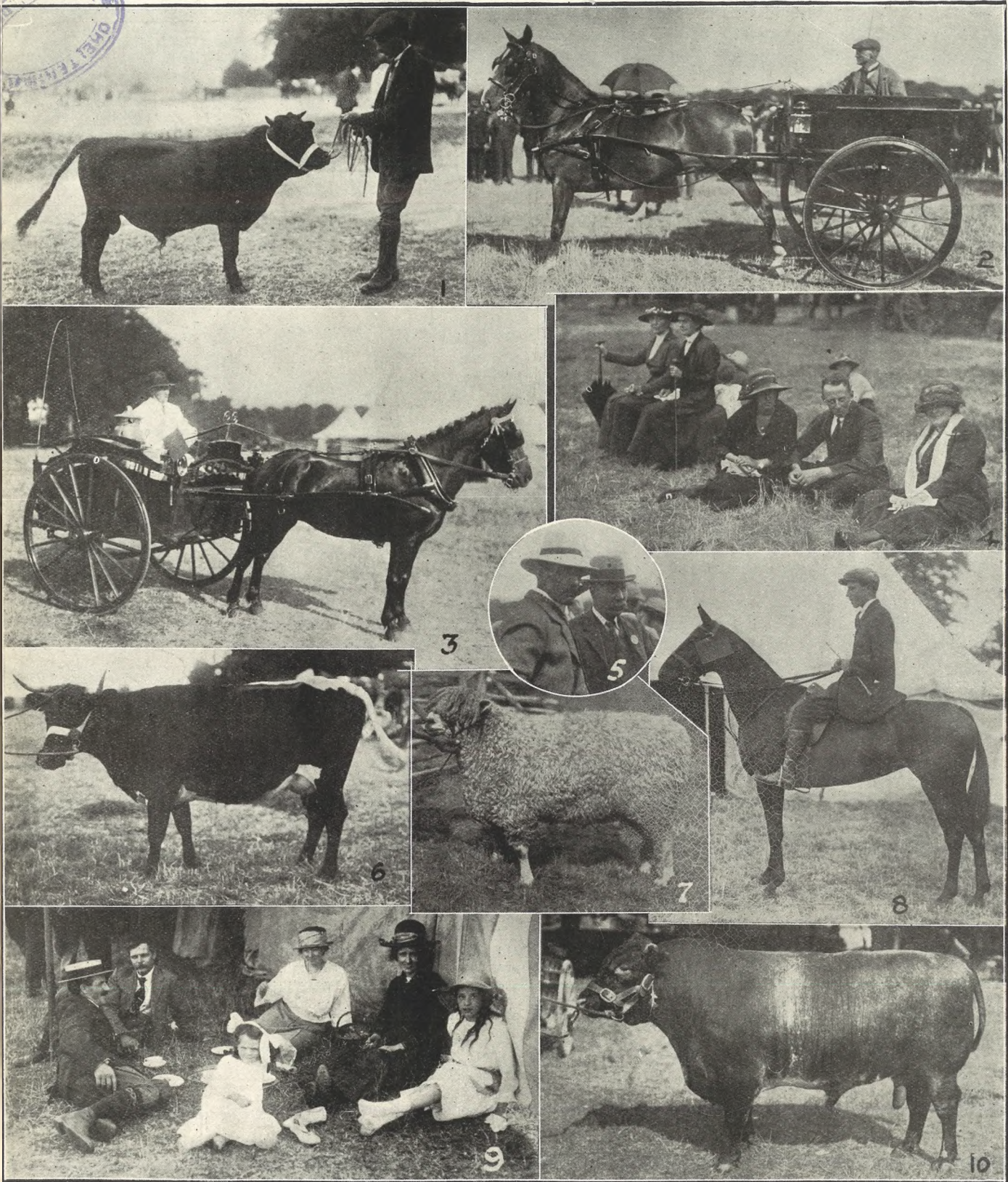
[Photo by Cheltenham Newspaper Co., Ltd. from whom copies may be obtained.]



Official Tailors  
to nearly all  
the Schools  
in Cheltenham.

**BRYANT AND CO.,**  
School and College  
Complete Outfitters,  
1 Colonnade, :: CHELTENHAM.

Official Tailors  
to nearly all  
the Schools  
in Cheltenham.

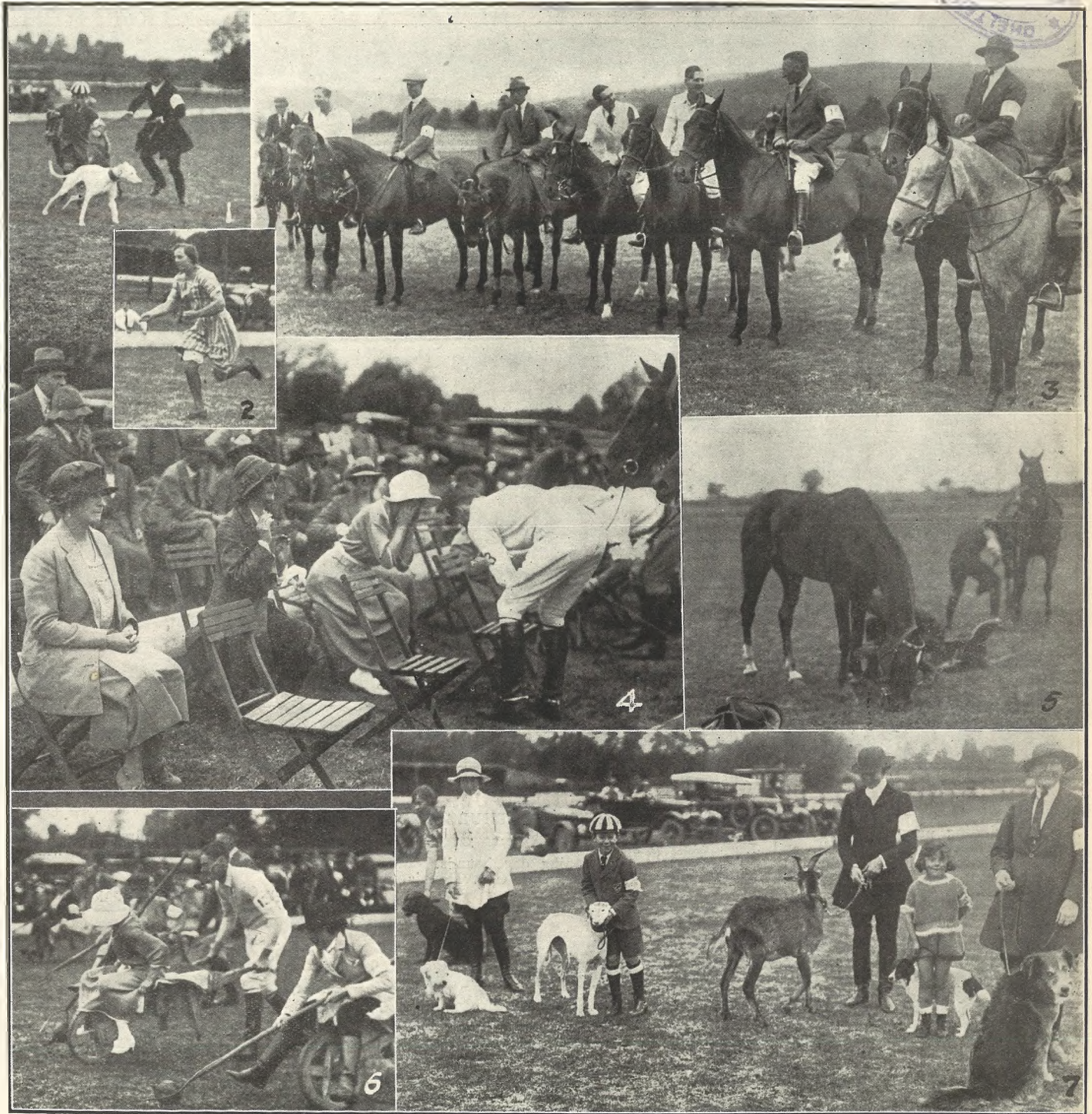


**COTSWOLD AGRICULTURAL SOCIETY'S SHOW AT STOW-ON-THE-WOLD.**

This moveable one-day show was held this year at Mangersbury Park, Stow-on-the-Wold, on Wednesday, July 20th, in glorious weather and before a big crowd.

- |   |   |  |
|---|---|--|
| 1.—Mrs. Atherton-Brown's Dexter Bull, which won 1st prize at Royal Show.      | 4.—Tired.   | 8.—Messrs. Phipp Bros.' first prize in pony class.                 |
| 2.—Messrs. Florey and Jeffries' first-prize winner in driving class.          | 5.—Committee men.   | 8.—Taking refreshment.   |
| 3.—First prize tradesman's turn-out, Messrs. J. H. Tarplatt and Son, Moreton. | 6.—Col. Elwes' old Gloucestershire cow.                           | 10.—Misses Scott's (Nether Swell) first prize bull (over 2 years). |
|   | 7.—Mr. W. Garne's (Ablington) first prize Cotswold shearling ram. |  |

[Photos by Cheltenham Newspaper Co., Ltd., from whom copies can be obtained price 1s. each, by post 1s. 2d.]



**CHELTENHAM POLO CLUB WEEK. THE ANNUAL GYMKHANA.**

Held on the Polo Ground, on Wednesday afternoon, July 27th, before a good crowd of spectators.

- 1.—The Goat and Greyhound get mixed in Menagerie Race.
- 2.—The winner in Menagerie Race, Miss Stevens.
- 3.—Competitors in Snatching Pole Competition.
- 4.—Whistling Race. Ladies have to whistle tune to gentlemen, who writes name of tune and rides back. One lady has her fingers in ears while she whistles.
- 5.—Grooms' Competition. Quickest to saddle up and put boots on.
- 6.—Spearing Mangolds Race. Lady rides in barrow and uses a pitchfork.
- 7.—The Competitors in Menagerie Race.

[Photos by Cheltenham Newspaper Co., Ltd., from whom copies can be obtained

ESTABLISHED  
1876.

**H. M. SIMMONS,** THE COUNTY OF GLOUCESTER  
GOLDSMITHS & SILVERSMITHS  
High Street and Promenade, Cheltenham.

The Cheapest House in the District for Jewelry, Household Plate, Watches, Clocks.



**GOTSWOLD HUNT PUPPY SHOW.**

HELD AT THE KENNELS ON THURSDAY, JULY 21st.

- 1.—Three winning puppy walkers: Messrs. Dudley (1st), B. James (3rd), and J. Davies (2nd), for dog hounds.
- 2.—Mr. Hicks Beach (2nd from left) with some of the walkers.
- 3.—The three winning dog hounds.
- 4.—Eight huntsmen, with Geo. Hannis (on right).
- 5.—Geo. Travess, whose first show it was as Huntsman, with the three winning bitches.

[Photos by Cheltenham Newspaper Co., Ltd.]



**A MISSIONARY PLAY AT CRANLEY LODGE, CHELTENHAM**  
 Given by local children on the lawn, in aid of Mrs. H. D. Hooper's Industrial School for Girls in East Africa, at a Garden Entertainment, on Thursday, July 21.

**HOLIDAY WEAR.**

- FLANNEL TROUSERS (Grey or White),
- CRICKET and TENNIS SHIRTS, GOLF, FISHING, and SPORTS HOSE,
- SWEATERS, BATHING COSTUMES, THIN UNDERCLOTHING.

**A. BECKINGSALE,**  
 111 HIGH STREET, CHELTENHAM

**TO ENJOY YOUR HOLIDAYS**

||| HIRE or BUY a |||  
 ||| RELIABLE BICYCLE |||  
 FROM

**Wheway & Co., Cheltenham.**

Printed and Published as a Gratis Supplement by the Cheltenham Newspaper Company, Ltd.