

THE CHELTENHAM CHRONICLE AND GLO'SHIRE GRAPHIC

With which is incorporated the Cheltenham "Looker-On."

GRATIS SUPPLEMENT.

Saturday, May 7, 1921.

No. 1,062.

CHELTENHAM THEATRE AND OPERA HOUSE.

Lessee: ROBERT REDFORD.

The County Theatre, Established 30 Years.

General Manager: H. OSWALD REDFORD

This Afternoon (2.30) and Evening (7.30)—"THE MAID OF THE MOUNTAINS."

Next Week—First visit of the New Musical Comedy "THE GIRL FOR THE BOY."

THE PALACE,

High Street, Cheltenham.

Proprietor, Shakspeare Shenton.

Monday, Tuesday, & Wednesday:
Great All British Photo-Play,

TEMPORARY GENTLEMAN,
Cast includes Owen Nares, Madge Titheradge, Sydney Fairbrother
"The Invisible Hand."
Marvels of the Universe.
Graphic. Film Pie.

Thursday, Friday, and Saturday:
Josephine Earle in
"THE EDGE OF YOUTH."
"Adventures of Shorty Hamilton."
Edgar Comedy. Bray Pictograph.
Gaumont Graphic.

THE WINTER GARDEN

PICTURE HOUSE,

PROMENADE, CHELTENHAM

Week Commencing May 9th.

Monday, Tuesday, & Wednesday:
"THE LADY CLARE"
(Tennyson's famous work).

Thursday, Friday, and Saturday:
"THE IDOL DANCER."

"Hawk's Trail," Serial.

ANNETTE,

High-class Corset Maker

FRANCE MODELS IN STOCK.

ONLY ADDRESS—

28 CLARENCE STREET.

Corsets Copied, Cleaned and Repaired

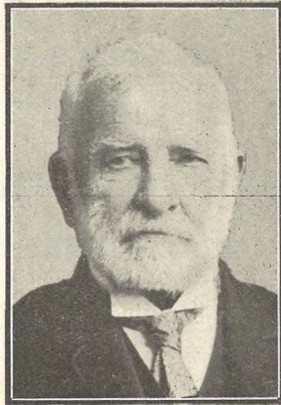
MARTIN & CO., LTD.,

Promenade, Cheltenham

Purchase for Cash Antiques of all kinds, including Old Silver, Jewellery, Sheffield Plate, China, Coins, Miniatures, etc. Highest Prices Given for Rare Pieces.



MR. THOMAS KNIGHT, Of 22 Fairview-road, Cheltenham, who died on Tuesday, April 26, aged 81 years. He had carried on a butcher's business for about 30 years in which he originally worked as a journeyman, and retired about six years ago. He was one of the oldest Odd-fellows in Cheltenham, and was a Churchman and a Liberal.



MR. JOHN THOMAS, Of 77 Worcester-street, Gloucester, who died on Monday, April 25, aged 92 years. He was a retired postman, and one of the oldest campanologists in the country. He assisted in ringing a muffled peal in London at the funeral of the Duke of Wellington in 1852. He was a member of the Cathedral band of ringers for 70 years.

EASTINGTON & FROCESTER HORSE SHOW & SPORTS,

AUGUST 20th, 1921.

F. PETERS & SONS' Roundabouts & World's Fair.

NAILSWORTH SILVER BAND.

F. C. KIRBY, SEC., EASTINGTON.

ADVERTISE IN THE "ECHO."

SUNDAY NEWSPAPERS.

To Avoid any Disappointment in obtaining Your Sunday Newspaper, send a Postcard, stating your requirements to

W. BROWN,

226 HIGH ST., CHELTENHAM.

THE HOUSE FOR ALL THE LEADING DAILIES.

This Newsagency has been established 70 years.

OUTDOOR

PHOTOGRAPHY.

With the coming of the long days you will probably be thinking of having Group Photographs taken—Garden Parties, Tennis and Croquet Parties, Weddings, &c., &c. We are the people for this class of work. Write to Manager "Chronicle and Graphic" Photo Department for full terms and particulars.

For a Suitable FRAME

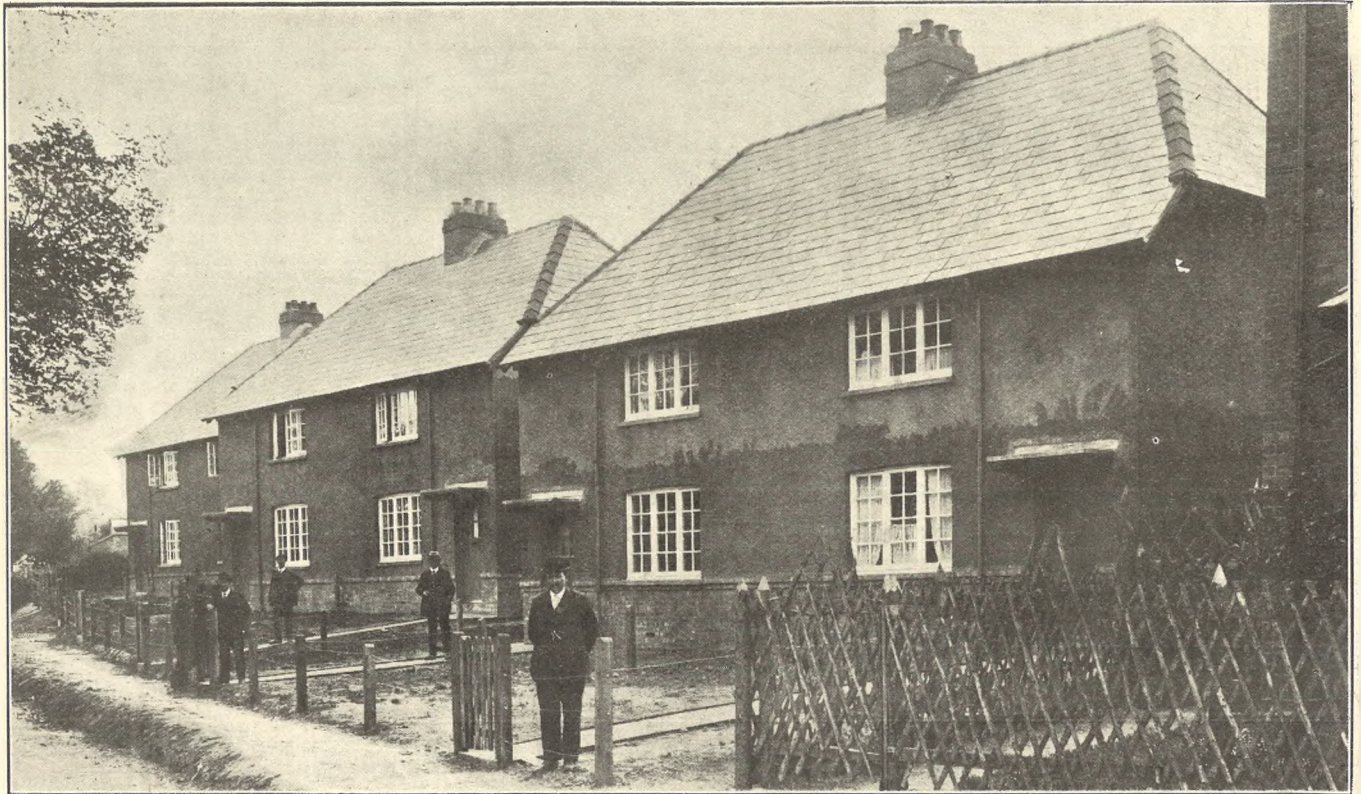
for your photograph, try

LEE, .Caxton House, STATIONER, WINCHCOMBE ST.,

CHELTENHAM.

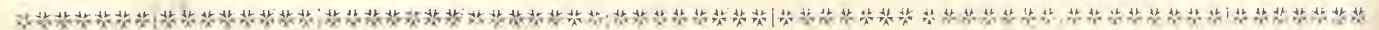
For the Best

PIANOS, DALE, FORTY and CO. LTD



CHARLTON KINGS HOUSING SCHEME.

View of a block of six houses now completed at Charlton Kings. Mr. James Villar is the architect for the scheme, and the work, which is being carried out by Messrs. Eggleton and Co., Builders and Contractors, 3 Townsend-place, Cheltenham (workshops and sawmills Swindon-road), is tribute to this firm's excellent building.



CHELLENHAM AND COUNTY HARRIERS. COMMITTEE AND MEMBERS.

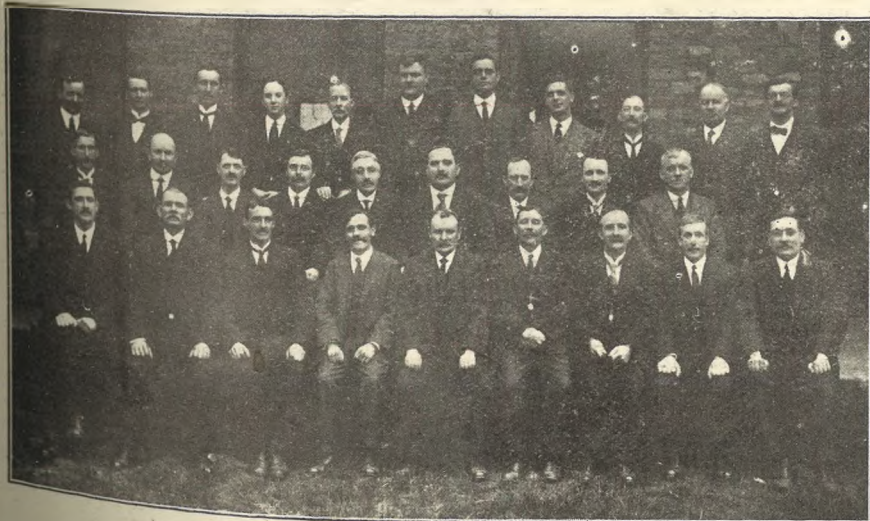
Back row.—Tawney, F. Curtis, Jenkins, Featherstone, Mann, Aston, Roberts, W. Brown, Page, Sergt. Wakefield, Palmer, Parker, Archer, Belleher, Lloyd.
 Second row.—A. Haines, Tiesac, Harris, Dyer, Wzencroft, J. Cummins, A. Stone, Tovey, T. Smith, W. Curtis, W. Skey, W. Fellows, G. Skey, Hamlin.
 Sitting.—Wilcox, Hicks, Johnson, A. T. Smith, Eager, G. Jenkins, H. Davis, Stone (senr.), W. Tovey, A. Scarrott.
 On ground.—Hale, Hopton, Rimell, Fletcher, Jenkins, Wood, Burnett, Webb, Holtham, Clements

[Photo by Cheltenham Newspaper Co., Ltd.]



MAY-DAY LABOUR DEMONSTRATION IN CHELTENHAM, SUNDAY, MAY 1st.

1—Mr. Chandler, stationmaster of Midland Station, Cheltenham, in centre with pipe in mouth. 2.—Some members of the Typographical Association. 3—Procession passing up High Street.



THE CELEBRATED PORT TALBOT GLEE SOCIETY, Who will Cheltenham on Sunday Next, at Pittville Gardens (if fine) in the Afternoon and the Glee Fest at Night. This choir toured America under the present conductor, Ald John Phillips, J.P.

Special Offer

OF

SMART

Coats^a and Wraps^d

FOR THE

HOLIDAYS.

Prices from 29/6 to 8 Gns.



Ladies' Gabardine Coat Cut on practical and becoming lines, Trimmed Braid in BLACK and NAVY. **6¹/₂ Gns.**

GREAT SILK OFFER.

500 yards of Rich Black Silk Taffeta 38 ins wide.

Original Price 12/.1.

SPECIAL PRICE 6/11

Patterns may be had on application.

JOHN LANCE

AND COMPANY, LIMITED,

CHELTENHAM SPA



COUNTY ASSOCIATION FOOTBALL AT STROUD.

Gloucestershire played Worcestershire at Fromehall Park, Stroud, on Saturday last, in very hot weather, before a splendid crowd of spectators. A draw of 2-2 resulted.

1, 3, 5, and 7.—Sections of the big crowd present.

2.—Worcester goalkeeper fists out.

3.—Council: Messrs. T. E. Andrews, C. H. Lewis, J. E. Palmer (hon. sec.), A. F. Davis (G.F.A. gen. sec.), A. C. Chappelle, W. J. Pepworth (chairman), D. Rowles, H. Parsons, F. C. Ford, H. C. Ward.

4.—The Gloucestershire Northern Divisional Council.

5.—Gloucester pressing from a corner.

6.—Gloucester pressing from a corner. [Photo by Cheltenham Newspaper Co., Ltd.]

The only Brush Manufacturers in Cheltenham.
E. JOYNER & SON,
 BRUSH & BASKET WAREHOUSE
 31 SUFFOLK PARADE (Nr. St. James' Church),
 CHELTENHAM.
 All Kinds of Brushes Manufactured on the Premises.

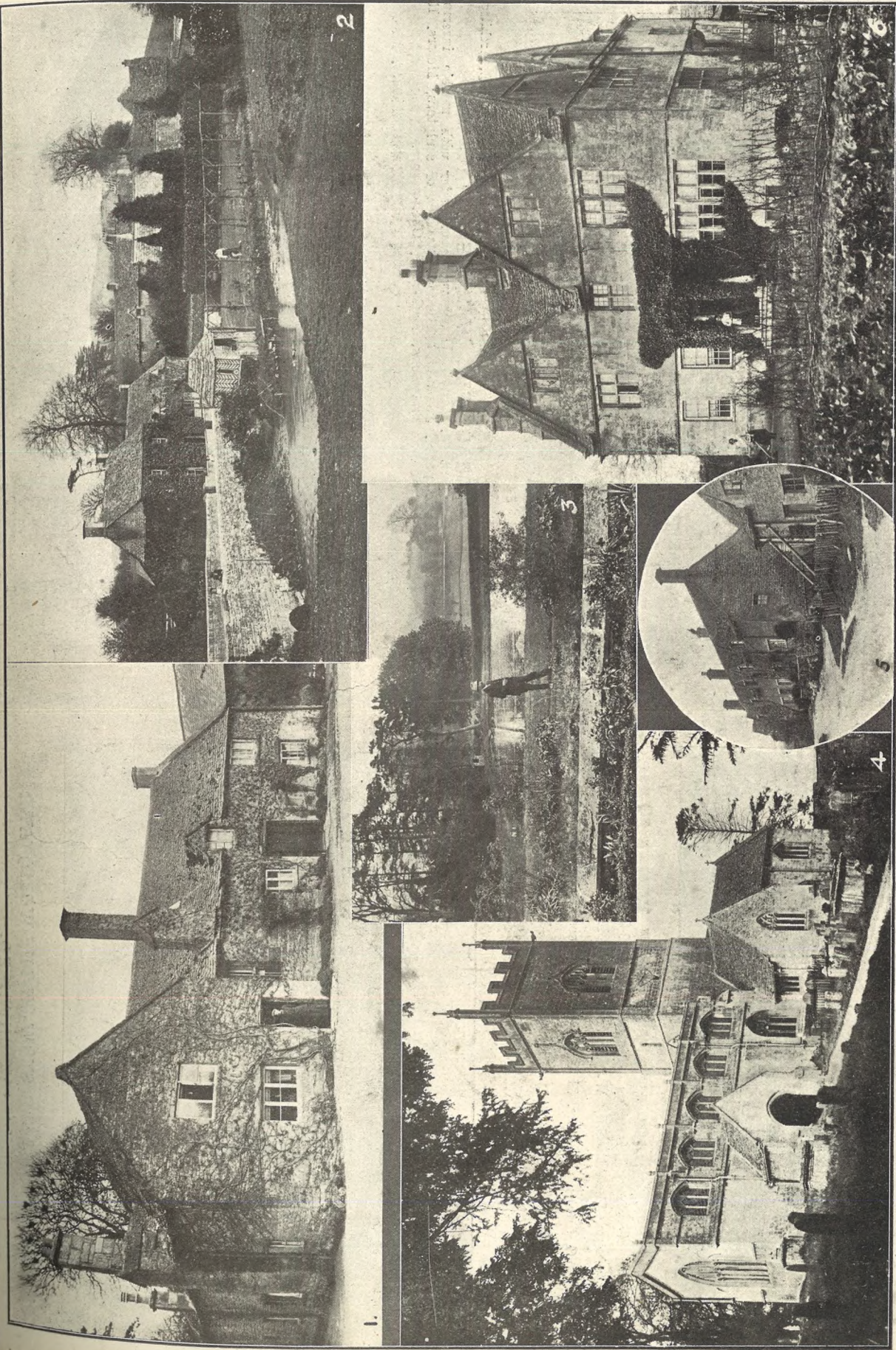
WHITSUN ONLY
 A FEW DAYS.

Wheway & Co.

BUY your New BICYCLE NOW.

HAVE the Best Bicycles manufactured in stock, viz., Sunbeams, B.S.A., Humbers, Centaurs, and Sparkbrooks. A Few 1920 Models to be Sold at Reduced Prices. Addresses:—

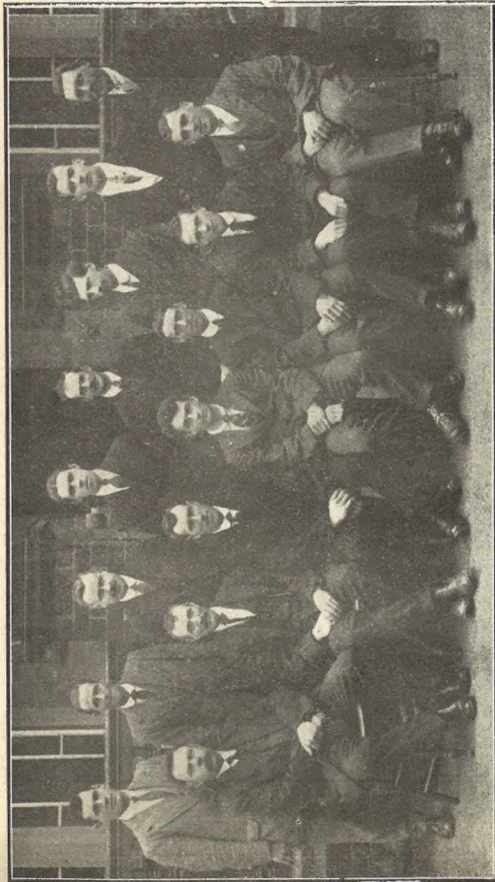
CLARENCE STREET, SUFFOLK ROAD,
 AND HEWLETT STREET } **CHELTENHAM.**



PICTURESQUE VILLAGES OF GLOUCESTERSHIRE: WITHINGTON.

Withington, one of the Cotswold villages not far from Cheltenham, is justly distinguished for its fine stone houses, and the sylvan beauty of the surroundings makes it a jewel of the countryside. The lovely trout stream which meanders through the village, the old inn, and the delightful views all help to make Withington a most desirable haven of rest.

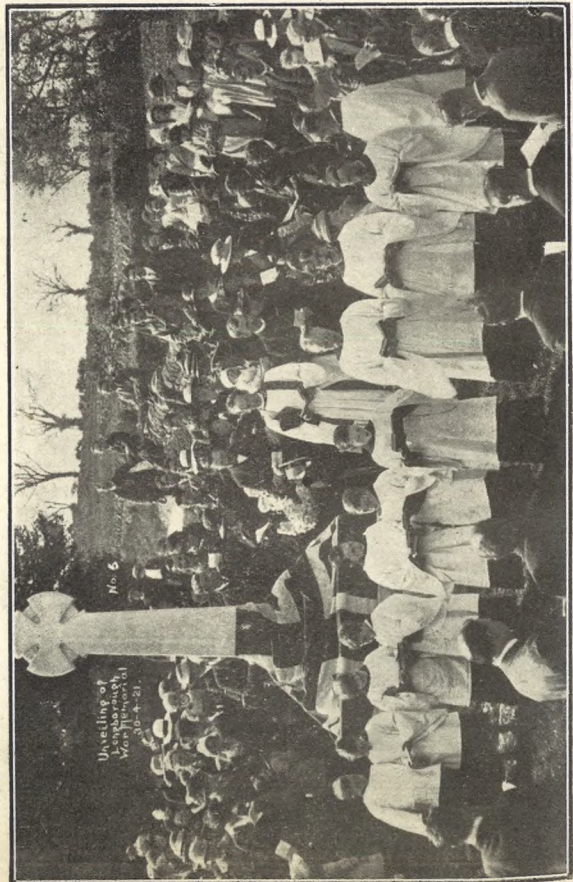
1.—The Corner House and the old Forge. 3.—A view from the Vicarage Garden.
 2.—The Mill Inn and Old Mill with trout stream. 4.—Withington Church.
 5.—Old Cotswold Cottages on the Ched. 6.—The Manor House, a beautiful specimen of pure Cotswold architecture.
 [Photos by Cheltenham Newspaper Co., Ltd., from whom copies can be obtained.]



CHARLTON KINGS CLUB AND INSTITUTE WHIST TEAM.

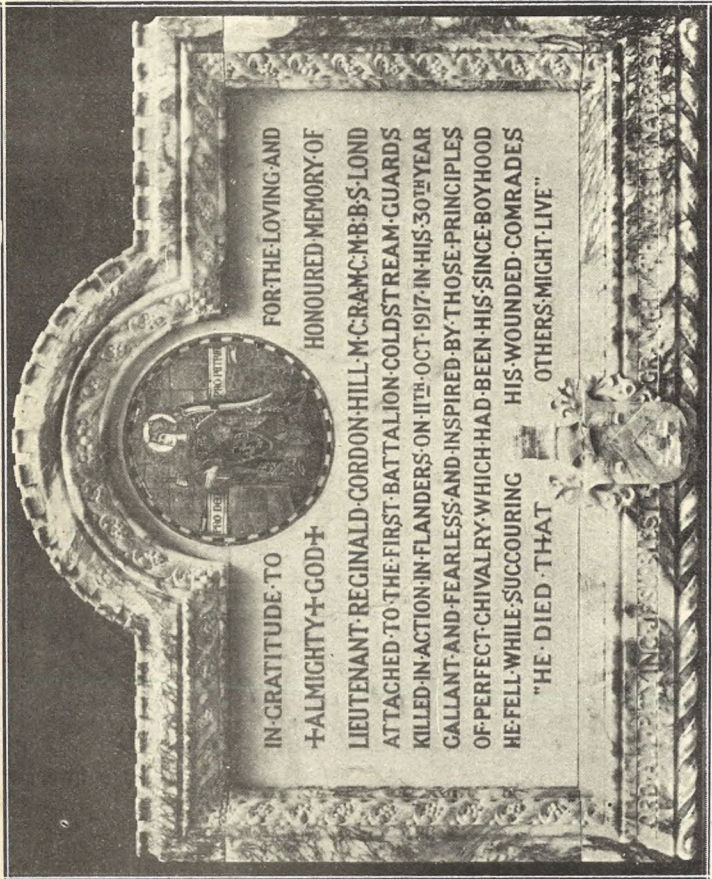
Winners Cheltenham Whist League, 1920-21.
 Standing.—W. Scarveus, H. Attwood, W. Bond, W. Keen, H. Matthews, W. Brown,
 R. Ellison, T. Seanson.
 Sitting.—T. Hogg, C. Taylor, F. Dyer, M. Wakefield (hon. secretary), W. Phipps, J.
 Peacey, R. Nation.

[Photo by J. A. Bailey, Charlton Kings.]



LONGBOROUGH (NEAR STOW-ON-THE-WOLD) WAR MEMORIAL UNVEILED.

[Photo by W. J. Butt, Bourton-on-the-Water.]



IN GRATITUDE TO
 †ALMIGHTY †GOD †
 FOR THE LOVING AND
 HONOURED MEMORY OF
 LIEUTENANT REGINALD GORDON HILL M.C. R.A.M.C. M.B. B.S. LOND
 ATTACHED TO THE FIRST BATTALION COLDSTREAM GUARDS
 KILLED IN ACTION IN FLANDERS ON 11TH OCT. 1917 IN HIS 30TH YEAR
 CALLANT AND FEARLESS AND INSPIRED BY THOSE PRINCIPLES
 OF PERFECT CHIVALRY WHICH HAD BEEN HIS SINCE BOYHOOD
 HE FELL WHILE SUCCOURING HIS WOUNDED COMRADES
 "HE DIED THAT OTHERS MIGHT LIVE"

G. H. Fellowes Pryne, Esq., Architect.

A BEAUTIFUL WAR MEMORIAL.

Tablet recently erected at St. Anne's, Highbury, in alabaster with marble inscription panel and mosaic panel, executed by the famous firm of sculptors, Messrs. R. L. Boulton and Sons, Bath-road, Cheltenham.



MEMBERS OF BAKER STREET INSTITUTE WHIST TEAM, 1920-1



KINGSTANLEY RESERVES ASSOCIATION FOOTBALL TEAM,
WINNERS OF THE STROUD AND DISTRICT LEAGUE CUP (FOURTH DIVISION).

[Photo by Reynolds, Russell-street, Stroud.]

PAINLESS DENTISTRY,

Edwards and Hirst,
THE DENTAL SURGERY,
BANK CHAMBERS,
131 High Street, Cheltenham
(Corner of North Street).

Advice and Estimates Free.
Hours 10 till 7.
ESTABLISHED OVER 19 YEARS



Mrs. Benjamin Gregory,
Of Grasmere, Glencairn Park-road, Cheltenham, who died on Monday, May 2nd, aged 80 years. She was the widow of the late Mr. Benjamin Gregory, F.R.A.S., who died in 1916. She had lived in Cheltenham for 55 years, and was associated all the time with the Wesleyan Church, St. George's-street, and St. Mark's. She lost a son (Mr. Harold Gregory) and nephew (Mr. Gordon Thorpe, M.C.) in the war.

Mousell Bros., Ltd.

(Opposite G.W.R. Station),
CHELTHENHAM.

FURNITURE REMOVALS
BY RAIL OR MOTOR.

'Phone 112.



DENTISTRY.

Hours 10 a.m. till
7 p.m. Daily.

Est, 1891

'Phone 782. Cheltenham.

MR. SUTTON GARDNER,
LAUREL HOUSE

(Near Public Library).

CHELTHENHAM

Branches at Cirencester, Stow, Bourton, &c.

WANTED!

OLD GOLD or SILVER for melting, and interesting Antiques in Furniture, China, Prints, Paintings, Etc. High Cash Prices Given.

HARRY O. BOX,
339 HIGH STREET, CHELTHENHAM.
Opposite Grammar School. Established nearly 70 years.
Price No Object for Fine Pieces.

HIGH PRICES

Paid for Ladies', Gentlemen's and Children's discarded wearing apparel—Boots, Shoes, etc. A postcard to

DEANE'S WARDROBE DEPOT,
31 Worcester Street, GLOUCESTER

Will receive Prompt Attention.

THE NOTED HOUSE FOR FAIR PRICES.

Telephone 970.

Telegrams: "Wardrobes, Gloucester."

INVALID CHAIRS of Every Description.

G. H. BENDY, the Bathchairman,
GLENSIDE, Langdon-road, Cheltenham.

Supplies Direct from the Makers at Lowest Prices for Cash. Any Kind of Invalid Chairs. District Agent for Ward's and Harry Rayner's Self-Propelling Chairs. NEW TYRES. RENOVATIONS.

SPORTS WEAR.

CRICKET AND TENNIS.

SHIRTS in Flannel Wincey and Silk 13/6 to 30/-.
TROUSERS at various prices. SOCKS in White and Colors 2/11 Up. BELTS, Leather or Elastic.

GOLF.

HOSE with fancy tops 4/6 to 14/6 pair.
Chamois Glovss, etc.
Knickerbocker Drawers, Combination Underwear, and a Full Range of Summer Hosiery.

A. BECKINGSALE,
111 HIGH STREET, CHELTHENHAM.

SPECIAL OFFER FOR ∴ WHITSUNTIDE ∴ AT LOWER PRICES.



Princess SKIRTS, trimmed embroidery, 3/11.
Other Prices, 5/11, 6/11 to 21/6.
Ladies' COMBINATIONS, summer weight.
With V Neck 3/11.
With Lace Tops, 4/11 to 15/11.
Ladies' Ribbed Chemise VESTS.
Lace Tops, 1/11, 2/11, 3/11.
Plain V Necks, 1/3.



Ladies' H O S E, All-Wool Cashmere, 2/11, 3/11.
Art Silk Ankles (Black), 2 6/11, 2/11.
Cashmere Finish Cotton Hose, all colours, 1/6.
Mercerised Lisle Hose, Cashmere Foot, 1/11.



Smart BLOUSE, as illustrated, in Heavy Crepe de Chine, all colours, 13/11.
Jap Silk BLOUSES and JUMPERS, 6/11.



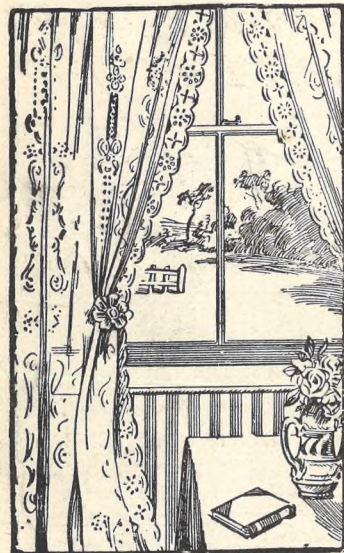
Dainty Georgette R O B E, in Rust Colour, Champagne, and Saxe, 27/6.

Also similar styles in Voile.

Navy Serge COAT FROCKS, trimmed Braid and Figure Stitching, 42/11.

Ladies' Tailor-Made COSTUMES in Navy Serge, Belted, with Coat lined Polonaise, £3 13 6.

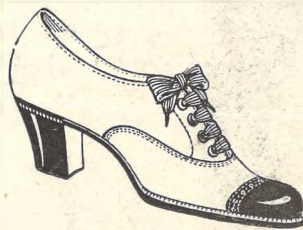
Smart Tweed COSTUMES, in Grey and Fawn, 35 6.



Nottingham Lace CURTAINS, 30 per cent. lower in price—4/11, 5/11, 6/11 to 29/6.

Useful CRETONNES, 1/3, 1/6 to 3/11.

Shadow TISSUES, 3/11 yard.



LADIES' AND CHILDREN'S Boots and Shoes.

Special Offer of our well-known "Uniform" Make

Ladies' Glace Kid SHOES, with Patent Caps. Worth 21 9. Our Price,

16/11

Ladies' Patent SHOES, smart style, Bar and Court Shape, for 6/11.

Ladies' Tan Glace Kid SHOES 15/11. Last years' price 32/6.

Ladies' Black Glace Kid SHOES for 8/11. Last years' price 15/6.

Children's Patent Bar SHOES. Special Price, 4/11 and 5 6.

SPECIAL PURCHASE OF LADIES' MACKINTOSH SETS,

Comprising Coat, Cap, and Hoodback to match.

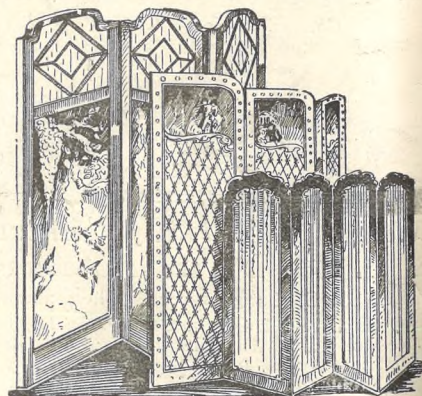
In Grey, Navy, Rust and Mole colours,

Recently sold at 45/-, now 29/6 the Set.

LADIES' COTTON DRESSES

For Summer wear, in all colours in Zephyr, 12 11.

Also Better Qualities in Voile, etc.



FIRE SCREENS, Double Fold, in Artistic Colourings, 2/11, 3/11, 4/11, 6 11.

Compressed Fibre SUIT CASES, with protected corners and 2 Locks, 6/11, 8/11, 10/11, 12/11.

THE HOUSE
FOR VALUE.

Dicks & Sons Ltd.

172 & 173 HIGH STREET
Cheltenham Spa
TEL. 1007
50 YEARS REPUTATION FOR VALUE.

THE HOUSE
FOR VALUE.

THE CHELTENHAM CHRONICLE AND GLO' SHIRE GRAPHIC

With which is incorporated the Cheltenham "Looker-On."

GRATIS SUPPLEMENT.

Saturday, May 14, 1921.

No. 1,063.

CHELTENHAM THEATRE AND OPERA HOUSE.

Lessee: ROBERT REDFORD.

The County Theatre. Established 80 Years

General Manager: H. OSWALD REDFORD

This Afternoon (2.30) and Evening (7.30)—"THE GIRL FOR THE BOY."

Next Week—First visit of the London Success "FRENCH LEAVE."

THE PALACE,

High Street, Cheltenham.

Proprietor, Shakspeare Shenton.

Monday, Tuesday, & Wednesday:
Marguerite Clark in the Famous
Stage Play,
"ALL OF A SUDDEN PEGGY."
A Breezy Romantic Comedy.
"The Invisible Hand."
Marvels of the Universe. Graphic.
Goldwyn-Capitol Comedy.
Thursday, Friday, and Saturday:
Henry Edwards and Chrissie
White in
"JOHN FORREST FINDS
HIMSELF."
From Story by Donovan Bayley.
"Adventures of Shorty Hamilton."
Sunshine Comedy.

THE WINTER GARDEN

PICTURE HOUSE,

PROMENADE, CHELTENHAM

Special Holiday Programmes.
May 16 and Week.
Monday, Tuesday, & Wednesday:
MARGUERITE CLARK in
"A WIDOW BY PROXY."
"Silent Avenger" (Serial), with
William Duncan.
Thursday, Friday, and Saturday:
Maurice Tourneur's Masterpiece,
"VICTORY."
"Hawk's Trail" (Serial).
Performances 2.30 to 10 p.m.
Whit Monday from 2 p.m.

ANNETTE,

High-class Corset Maker

FRENCH MODELS IN STOCK.

ONLY ADDRESS—

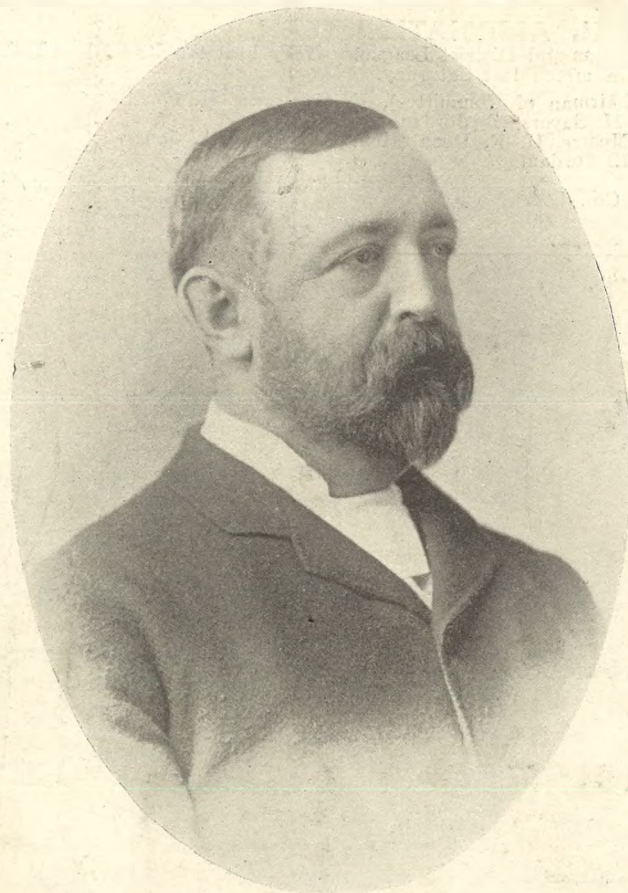
28 CLARENCE STREET.

Corsets Copied, Cleaned and Repaired

MARTIN & CO., LTD.,

Promenade, Cheltenham

Purchase for Cash Antiques of
all kinds, including Old Silver,
Jewellery, Brasses, Plate, China,
Coins, Miniatures, etc. Highest
Prices Given for Rare Pieces.



SIR JAMES HORLICK,

Formerly of Cowley Manor, near Cheltenham, who died at his London residence, 2 Carlton House-terrace, St. James's, W., on Saturday, May 7th, in his 77th year. He was the founder and proprietor of the celebrated Malted Milk Co., which bears his name, was a native of Gloucestershire, and a great benefactor to its various institutions. He leaves a widow and two sons. He was buried on Thursday at Cowle,

ADVERTISE IN THE "ECHO."

SUNDAY NEWSPAPERS.

To Avoid any Disappointment in
obtaining Your Sunday Newspaper,
send a Postcard, stating your
requirements to

W. BROWN,

226 HIGH ST., CHELTENHAM.

THE HOUSE FOR ALL THE
LEADING DAILIES.

This Newsagency has been estab-
lished 70 years.

OUTDOOR

PHOTOGRAPHY.

With the coming of
the long days you will
probably be thinking of
having Group Photo-
graphs taken—Garden
Parties, Tennis and
Croquet Parties, Wed-
dings, &c., &c. We
are the people for this
class of work. Write
to Manager "Chronicle
and Graphic" Photo
Department for full
terms and particulars.

For a
Suitable **FRAME**

for your photograph, try

LEE, Caxton House,
STATIONER, WINCHCOMBE ST.,

CHELTENHAM.

For the
Best

PIANOS, DALE, FORTY and CO., LTD.



TEWKESBURY 1st XI. ASSOCIATION TEAM.

Winners of the First Division, Cheltenham and District League. They beat the Rest of League in a match last Saturday.

Back row.—Messrs. H. W. Brown (Chairman of Committee), E. Devereux, H. Gwilt, E. L. Wall (Linesman), T. Mason, H. Sayers, T. Jordan.
 Second row.—Master Derek Godfrey, Messrs. H. F. Dean (Hon. Secretary), A. Jones, B. Parsons (Captain), C. Collins, E. Jordan.
 Sitting.—Messrs. J. Heath, M. Hopton.
 [Photo by Cheltenham Newspaper Co., Ltd. from whom copies may be obtained]



THE "REST OF LEAGUE" TEAM.

Back row.—Messrs. J. E. Green, H. F. Milwinter, P. E. Close.
 Standing.—H. C. Ward (Referee), F. Eager, R. Keen, R. Masters, J. Large, M. Wakefield, H. Allen, R. Wakefield, A. C. White (Chairman of League).
 Sitting.—J. Peart, F. H. Taylor, A. E. Butt, F. Phipps (Captain), C. Tovey.
 In front.—A. Abbotts, T. H. Protherough.
 [Photo by Cheltenham Newspaper Co., Ltd. from whom copies may be obtained.]

W. JAMES & SONS,
 Motor and General Engineers,
 Bayshill Works, ∴ Cheltenham..
 ESTAB. 1872.

Cylinders Rebored and New Pistons Fitted.
 Spur Gears Cut. Petrol and Steam.
 Complete Overhauls,
 Water Wheels and Pumping Plants.

VANDERPLANK
 (From Harrods)

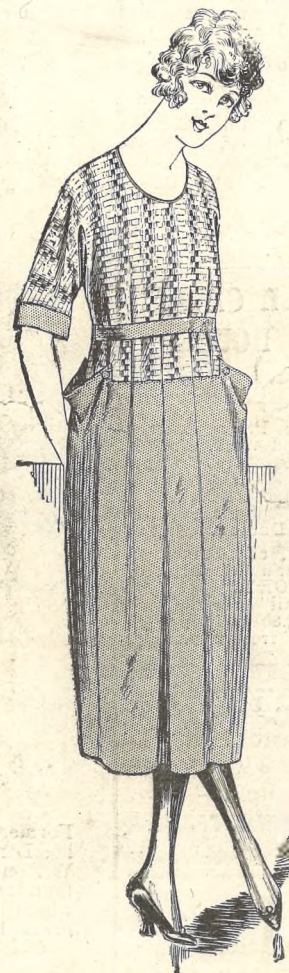
ARE NOW SHOWING
 REMARKABLE VALUE IN

Sports Wear

Woollen Sports Coats,
 Sports Suits
 and Dresses.

29/6, 39/6, 45/9

THE EARLIER PRICES WERE TWICE
 AND THREE TIMES AS MUCH.



A fortunate purchase of
SPORTS COATS.

We have secured a large number of well knit Coats in all colours and several shapes. These are for sale this week at

29/6 & 39/6.

SPORTS SUITS

(Coat and Skirt) in New Colours. A very smart Suit for Sport or Holiday Wear in pure soft wool. Bargain Price at

45/9.

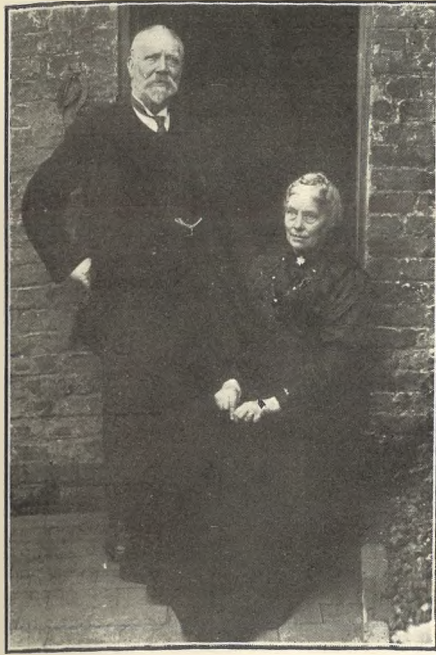
A smart knitted **DRESS**

In pure soft ribbed wool, has contrasting stripes round skirt but ribs form long lines giving smart effect.

Price **39/6.**

A smart 'FROCK for Tennis is made with Bodies of Fancy Knit and Skirt of plain colour, Silk Jersey Cloth. Price **89/6.**

381
HIGH STREET,
CHELTHENHAM



Mr. and Mrs. Barnet White,
Of 86 Upper Bath-road, Cheltenham, who celebrated their Golden Wedding on Monday, May 6th, having been married on that date in 1871 at Bishop's Cleeve Church. Mr. White, who is 71, has lived all his life in Cheltenham, and is now the proprietor of the taxidermist's business formerly carried on by his father and brother. Mrs. White is 73. They have three children living, eight grandchildren, and one great-grandson.

BEST QUALITY
CIDERS
IN BOTTLE. — Sparkling and Still.
BARTHOLOMEW,
419-420, HIGH STREET,
CHELTENHAM.

WINES, SPIRITS, ALES, TABLE WATERS
and GROCERY. Tel. 135.

Mousell Bros., Ltd.

(Opposite G.W.R. Station),
CHELTENHAM.

FURNITURE REMOVALS
BY RAIL OR MOTOR.

'Phone 112.

OUR PHOTOGRAPHS.

Copies of "Chronicle and Graphic" Photographs may be obtained at the Office—Mounted 1s. 6d. each, Un-mounted 1s. each. Postage 2d.



Tomb and Effigy recently erected in the Fitzalan Chapel, Arundel, to the memory of the late Dowager Duchess of Norfolk. Executed by Messrs. R. L. Boulton and Sons, Sculptors, etc., of Bath Road, Cheltenham.

INVALID CHAIRS of Every Description.
G. H. BENDY, the Bathchairman,
OLNSIDE, Langdon-road, Cheltenham.

Supplies Direct from the Makers at Lowest Prices for Cash. Any Kind of Invalid Chairs. District Agent for Ward's and Harry Rayner's Self-Propelling Chairs. NEW TYRES.

THE FOOT SPECIALIST.
MR. ALFRED J. VENTRIS FIELD.
SURGEON CHIROPODIST, ORTHOPÆDIST,
AND ELECTRO-THERAPEUTIST,
Hospital Trained (London). Highest Qualifications. Thirty Years' Practical Experience. Author "The Treatment of Talipes Valgus." Consultant H.M. Forces.
6 RODNEY PLACE, CHELTENHAM.

1921
The Fashion year for
SILKS.

**GREAT SILK
REDUCTION**

Commences on **THURSDAY,**
MAY 19th.
FOR SIX DAYS ONLY.

Write for a full list of Bargains at
less than half last year's prices.

- 1,000 Yards of LANCELLA CREPE RAJAH, 40 Colours. Last season's price 10/11. **SPECIAL PRICE 5/11.**
- 20 Pieces of Plain TAFFETA, 38 inches wide. Ten useful colours. Last season's price 10/11. **SPECIAL PRICE 4/11.**
- 10 Pieces of Shot TAFFETA, 38 inches wide. Delightful Colourings. Last season's price 12/11. **SPECIAL PRICE 6/11.**
- 6 Pieces of NATURAL JAP SHAN, 33 inches wide. Last season's price 8/11. **SPECIAL PRICE 4/9d.**
- 500 Yards NATURAL SHANTUNG, 34 inches wide. Last season's price 5/11. **SPECIAL PRICE 2/6.**
- Also 700 Yards, to be CLEARED at 3/11. Last season's price 8/11. Very Fine Quality.
- 1,000 Yards WHITE JAP SILK, 36 inches wide. Last season's prices 5/11, 7/11, 9/11, 12/11. **SPECIAL PRICES 2/9d, 3/9d, 4/11, 5/9d.**
- 500 Yards of CREPE CRYSTAL, GEORGETTE, and CREPE DELHI. Last season's prices 5/11 and 7/11. **SPECIAL PRICES 2/11 and 3/11.**
- 8 Pieces of CREPE DE CHINE. Delightful Colours. Last season's price 10/11. **SPECIAL PRICE 4/11.**
- 20 Pieces of Heavy Weight CREPE DE CHINE. Last season's price 15/11. **SPECIAL PRICE 8/6.**
- 34-inch COLOURED SHANTUNG, 30 Shades. Last season's price 9/11. **SPECIAL PRICE 5/6.**
- 700 Yards of BLACK DUCHESSE MOUSSELINE. Last season's price 12/11. **SPECIAL PRICE 5/11.**
- 600 Yards of BLACK TAFFETA SILK, 38 inches wide. Last season's price 13/11. **SPECIAL PRICE 6/11.**
- ALL FANCY SILKS in FOULARD, SHANTUNG, SATIN, and JAP are marked down to **LESS THAN HALF LAST SEASON'S PRICE.**

JOHN LANCE
AND COMPANY, LIMITED,
SILK SPECIALIST,
CHELTENHAM SPA.

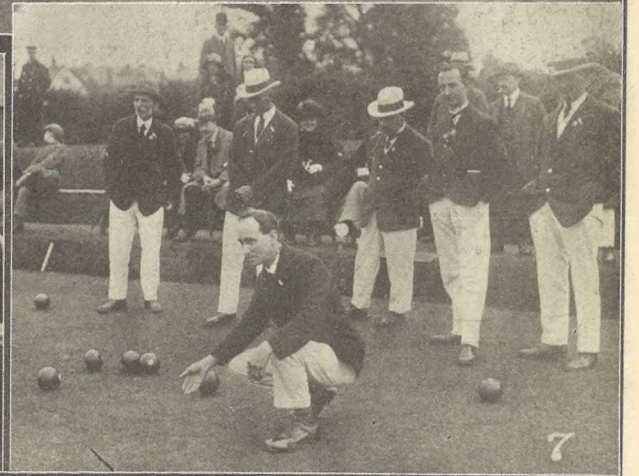


ROUND THE TOWN IN CHELTENHAM.

A FEW SNAPS IN THE PROMENADE AND HIGH STREET TAKEN ONE FINE MORNING THIS WEEK.

- | | | |
|---|---|--|
| 1.—Mr. J. A. Smith talking to a lady friend. | 5.—Out for a walk. | 8.—Evidently a business discussion. Mr. Camden and Mr. Tyrrell talk over the dance arrangements. |
| 2.—Mrs. and Mr. H. W. Chatters, with Mr. W. C. Chanon. | 6.—"Old Kate," who used to sell race cards and flowers to King Edward at Epsom and Newmarket, selling laces and "Old Moore's" in High-street. | 9.—A stroll in the Promenade. |
| 3.—Mr. Playle consults the Food Controller (Mr. A. E. Hudson), who manages to keep smiling. | 7.—"What's he snapping me for?" | 10.—Mr. Corbett selling a car. |
| 4.—Very interested. | | 11.—Mrs. Robb with her little boy (on right). |
| | | 12.—A morning constitutional. |

Photos by Cheltenham Newspaper Co., Ltd., from whom Copies can be obtained, 1s. each unmounted. Postage 2d. extra.



NEW ZEALAND BOWLERS AT GLOUCESTER.

On Saturday, May 7th, the team of bowlers from New Zealand, now touring England, played the Gloucestershire team on the Gloucester Wagon Co.'s green, winning by 126 to 101. It was a very wet day, and the game did not commence until 5 o'clock. The teams were entertained to tea by Mr. J. J. Macgregor and the directors of the Wagon Co.

- 1.—The two teams photographed together before the match.
- 2.—A Cheltenham rink: Mosses, E. Ricketts, P. Fisher, and C. Clarke can be seen.
- 3.—Ladies (many of them New Zealanders) watching the match.
- 4.—Some New Zealanders watching a finish.
- 5.—Mr. H. Turner's rink included Ralph Roberts, H. K. Fox, and W. H. Shapcott (all Gloucestershire).
- 6.—Ladies (many of them New Zealanders) watching the match.
- 7.—Mr. C. Shermer's rink included H. J. Raleigh, T. F. Goddard, and E. Crankshaw.

[No. 1 photo by Mr. H. K. Fox, Gloucester; others by Cheltenham Newspaper Co., Ltd., from whom copies can be obtained.]



PICTURESQUE VILLAGES OF GLOUCESTERSHIRE. — CHURCHDOWN.

Churchdown, situate, as it is, midway between Cheltenham and Gloucester, has become a favourite residential resort of business people from both towns. It is now a village of modern-built houses, and its great attractions are the sylvan beauties of the fine Chosen Hill, with the old Church on top, and the fine views from the broad summit. There are still a few of the old houses of the village existent, some of which we illustrate.

- 1.—The "Old House at Home," formerly a public-house, is delightfully quaint.
- 2.—The "Old Elm," another quaint old house, is still licensed.
- 3.—A peep of the old Church through the trees.
- 4.—The "Old School," on the Village Green, in ancient days was actually the school.
- 5.—A pretty old cottage, nearly hidden behind its hedge.
- 6.—Where "the rude forefathers of the hamlet sleep." Glorious views can be seen from the Churchyard.
- 7.—A pretty corner of one of the lanes.

[Photos by Cheltenham Newspaper Co., Ltd. from whom copies may be obtained.]



GLOUCESTER—OLD AND NEW.

Handsome New Business Premises

in NORTHGATE STREET,

Recently opened by Mr, W. B. GIBB.



THE OLD SHOP WHICH FORMERLY
 OCCUPIED THE SAME SITE

Opening of New Motor Cycle Premises.

A NOTHER great improvement has recently been made in Northgate-street, Gloucester, in the erection of a really up-to-date Motor Cycle Shop, with handsome overhanging cornice and an effective architectural frontage. The position was formerly occupied by some old-fashioned shop premises, which have been pulled down. We illustrate the new and old premises—an eye-opener as to what can be done by energy and zeal, coupled with a knowledge of the wants of your trade and ingenious ideas.

The business has been opened by Mr. W. B. Gibb, the famous motor-cycle expert, whose many successes in the great reliability trials and other competitions has made his name renowned in the motor-cycling world. Finding his premises in Worcester-parade much too small for his increasing business he has launched out with commendable enterprise, and he now has a stock of Motor Cycle and Small Cars second to none in the county. He is agent for most of the best known and popular machines; and with a well fitted workshop is now enabled to make repairs an even stronger feature of his business than he had been able to do in the past. With such an expert to “tune up” your bike, you know the best is being made of your machine.



Shaking Hands After the Match.

Messrs. J. O. Sivewright (Secretary of the New Zealand Team) and Wallace Harris (Gloucester), the two last skips to finish in the match between Gloucestershire and New Zealand last Saturday, shaking hands after bowling the last woods.



DO YOU RECOGNISE THAT THE "CHELTENHAM CHRONICLE AND GRAPHIC" IS AN ILLUSTRATED HISTORY OF CHELTENHAM AND DISTRICT; AND IN AFTER YEARS WILL BE VALUABLE AS A REFERENCE TO THE LIFE OF OUR TIME. SEND YOUR NAME IN AS A REGULAR SUBSCRIBER AT ONCE, AND LOOK FORWARD TO ITS WEEKLY ARRIVAL.

SPECIAL NEW MODEL
of the celebrated
Millard Piano.



Price, 68 Guineas Net Cash.

Manufactured under best possible conditions to meet the demand for a THOROUGHLY WELL-MADE and Reliable Instrument at a MODERATE COST.

This Piano has a sweet and dulcet tone, a delightfully responsive touch.

You are invited to Call and test these Pianos at the Sole Agents—

CRICHTON'S Ltd.,
Promenade, CHELTENHAM.
Opposite G.P.O. Next Cavendish House.



WARRANT OFFICERS AND SERGEANTS, 5th GLOUCESTERS.

A group of the Officers and Sergeants of the old Regiment now in camp at Didcot as part of the National Defence Corps. In centre are R.-S.-M. Spragg, Lieut.-Col. J. H. Collett, and Major G. N. Waller.

ADVERTISE IT IN THE 'ECHO.'

PAINLESS DENTISTRY,
Edwards and Hirst,
THE DENTAL SURGERY,
BANK CHAMBERS,

131 High Street, Cheltenham
(Corner of North Street).

Advice and Estimates Free.

Hours 10 till 7.

ESTABLISHED OVER 19 YEARS.

SPORTS WEAR,
CRICKET AND TENNIS.

SHIRTS in Flannel Wincey and Silk 13/6 to 30/-. TROUSERS at various prices. SOCKS in White and Colors 2/11 Up. BELTS, Leather or Elastic.

GOLF.

HOSE with fancy tops 4/6 to 14/6 pair. Chamois Gloves, etc.

Knickerbocker Drawers, Combination Underwear, and a Full Range of Summer Hosiery.

A. BECKINGSALE,
111 HIGH STREET, CHELTENHAM.

THE CHELTENHAM CHRONICLE AND GLO' SHIRE GRAPHIC

With which is incorporated the Cheltenham "Locker-On."

GRATIS SUPPLEMENT.

Saturday, May 21, 1921.

No. 1,064.

CHELTENHAM THEATRE AND OPERA HOUSE.

Lessee: ROBERT REDFORD.

The County Theatre Established 30 Years

General Manager: H. OSWALD REDFORD

This Afternoon (2.30) and Evening (7.30)—"FRENCH LEAVE."

Next Week: Mon., Wed. & Fri. Even. & Sat. Mat, "THE RIVALS"; Tues., Thurs. & Sat. Even., "THE MAN from BLANKLEY'S."

THE PALACE,

High Street, Cheltenham.

Proprietor, Shakspeare Shenton.

Monday, Tuesday, & Wednesday:

May Allison in
"FAIR AND WARMER."
The play that made the weather
famous.
"The Invisible Hand."

Thursday, Friday, and Saturday:

Frank Keenan in
SMOULDERING EMBERS."
"Adventures of Shorty Hamilton."
Bray Photograph. Graphic.
Henry Edwards & Christie White
in "The Amazing Quest of Mr.
Ernest Bliss."

THE WINTER GARDEN

PICTURE HOUSE,

PROMENADE, CHELTENHAM

May 23rd and Week.

Monday, Tuesday, & Wednesday:
"AT THE VILLA ROSE,"
From the world-famous Novel by
A. E. W. Mason and the London
Play.

"Silent Avenger" (Serial).

Thursday, Friday, and Saturday:
The Great Stage Production,
"THROUGH THE WRONG
DOOR."

"Hawk's Trail" (Serial).

ANNETTE,

High-class Corset Maker

FRENCH MODELS IN STOCK.

ONLY ADDRESS—

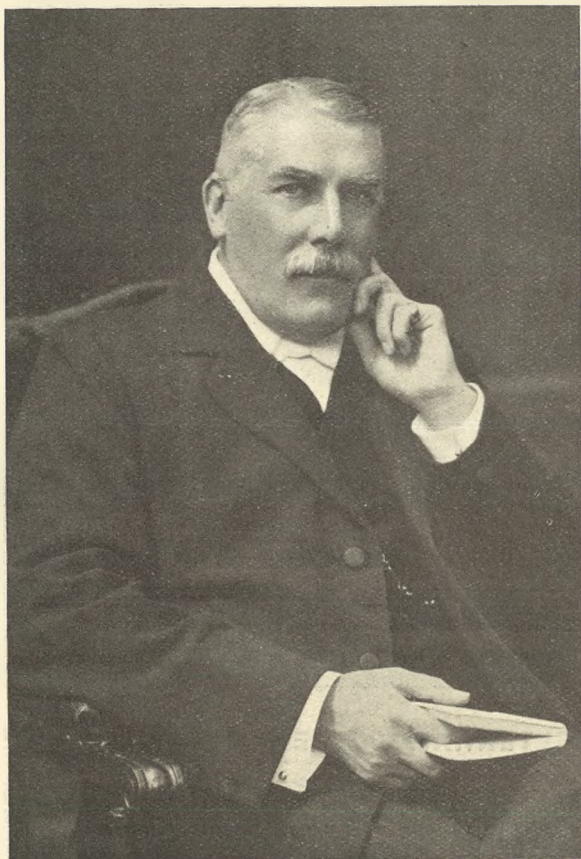
28 CLARENCE STREET.

Corsets Copied, Cleaned and Repaired

MARTIN & CO., LTD.,

Promenade, Cheltenham

Purchase for Cash Antiques of
all kinds, including Old Silver,
Jewellery, Sheffield Plate, China,
Crests, Miniatures, etc. Highest
Prices Given for Rare Pieces.



REV. PHILIP HENRY SMITH,

Of Pokesdown, Bournemouth, who has accepted a unanimous call to the pastorate of Highbury Congregational Church, Cheltenham, and will enter upon it in July. The pastorate has been vacant since the departure of the Rev. Stanley Shrubsole to Sutton 16 months ago.

ADVERTISE IN THE "ECHO."

SUNDAY NEWSPAPERS.

To Avoid any Disappointment in
obtaining Your Sunday Newspaper
send a Postcard, stating your
requirements to

W. BROWN.

226 HIGH ST., CHELTENHAM.

THE HOUSE FOR ALL THE
LEADING DAILIES.

This Newsagency has been estab-
lished 70 years.

OUTDOOR

PHOTOGRAPHY.

With the coming of
the long days you will
probably be thinking of
having Group Photo-
graphs taken—Garden
Parties, Tennis and
Croquet Parties, Wed-
dings, &c., &c. We
are the people for this
class of work. Write
to Manager "Chronicle
and Graphic" Photo
Department for full
terms and particulars.

For a
Suitable **FRAME**

for your photograph, try

LEE, Caxton House,
STATIONER, WINCHCOMBE ST.,

CHELTENHAM.

For the
Best

PIANOS, DALE, FORTY and CO. LTD



CHEL TENHAM COLLEGE JUNIOR SPORTS.

This time-honoured and delightful annual event was held on the junior playground on Saturday last in glorious weather before a big crowd of parents, friends and admirers of the boys.

- 1.—The 11-year-old section in the 300yds race.
- 2.—Getting ready for a start.
- 3.—Galletti wins the high jump (4ft. 1in.).
- 4.—A future Cheltonian selecting his own prize, assisted by Mr. Thornton, to the amusement of Mr. H. H. Hardy (the College Headmaster), on left.
- 5.—A big field in the 300yds. handicap. They stretched half-way round the ground.
- 6.—A. Galletti, who won the Champion Cup.
- 7.—Some of the sisters were quite interested in the jumping.
- 8.—Meikle wins the 100yds. handicap (under 11), with Greening and Ellis dead-heating for second place.
- 9.—A laughing group of students.

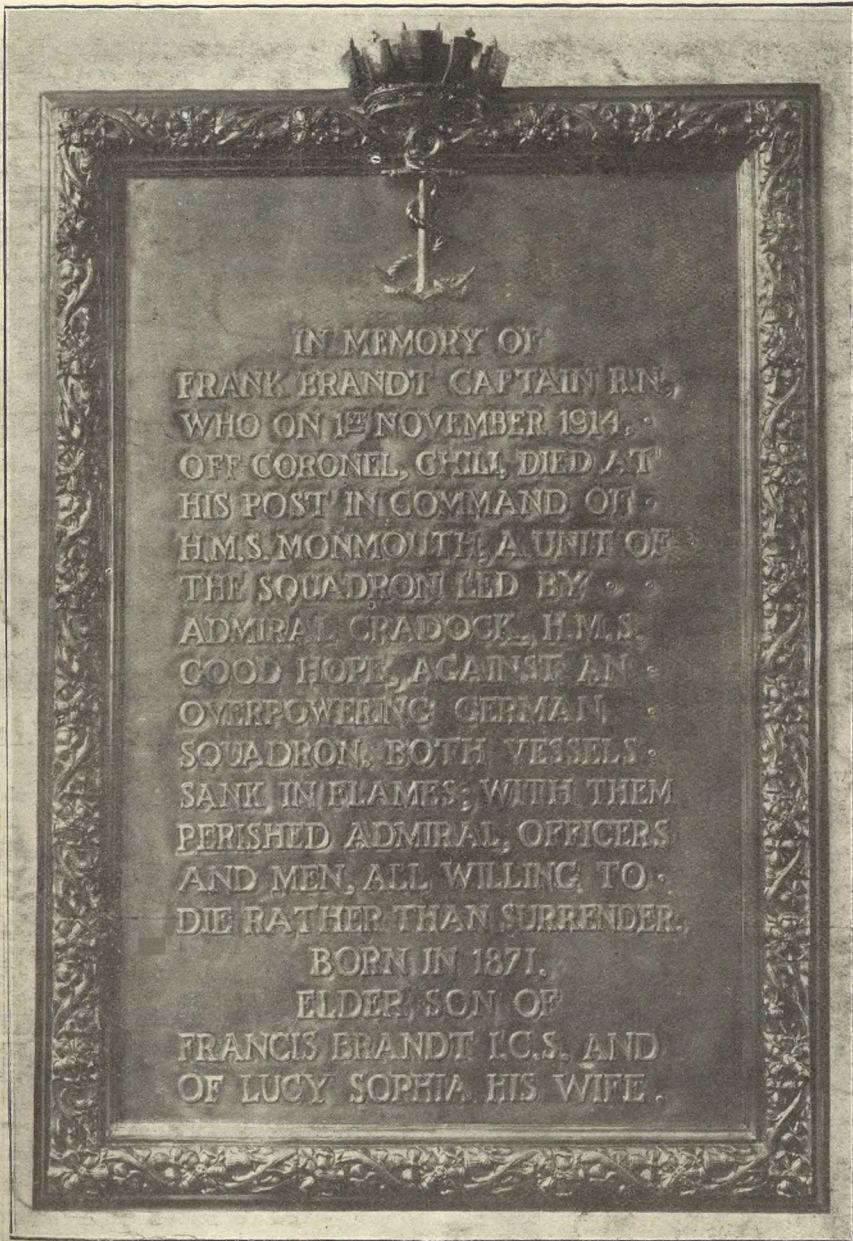
Photos by Cheltenham Newspaper Co., Ltd., from whom Copies can be obtained, 1s. each unmounted. Postage 2d. extra.

TRINITY COLLEGE OF MUSIC.
 Last Days of Entry for Summer Examinations:
 THEORY, WEDNESDAY, MAY 25th.
 PRACTICAL, SATURDAY, JUNE 4th.
 Entry Forms from Mr. Ernest A. Dicks, F.R.C.O., Buckingham Lawn, Wellington Street, Cheltenham. C4528

OUR PHOTOGRAPHS.
 Copies of "Chronicle and Graphic" Photographs may be obtained at the Office—Mounted 1s. 6d. each, Unmounted 1s. each. Postage 2d.

ADVERTISE IN THE "ECHO."

THE FOOT SPECIALIST.
MR. ALFD. J. VENTRIS F.I.E.D.
 SURGEON CHIROPODIST, ORTHOPEDIST, AND ELECTRO-THERAPEUTIST,
 Hospital Trained (London). Highest Qualifications. Thirty Years' Practical Experience.
 Author "The Treatment of Talipes Valgus"
 Consultant H.M. Forces.
 6 RODNEY PLACE, CHELTENHAM



IN MEMORY OF
 FRANK BRANDT CAPTAIN R.N.,
 WHO ON 13 NOVEMBER 1914,
 OFF CORONEL, CHILL, DIED AT
 HIS POST IN COMMAND OF
 H.M.S. MONMOUTH, A UNIT OF
 THE SQUADRON LED BY
 ADMIRAL CRADOCK, H.M.S.
 GOOD HOPE, AGAINST AN
 OVERPOWERING GERMAN
 SQUADRON, BOTH VESSELS
 SANK IN FLAMES; WITH THEM
 PERISHED ADMIRAL, OFFICERS
 AND MEN, ALL WILLING TO
 DIE RATHER THAN SURRENDER.
 BORN IN 1871,
 ELDER SON OF
 FRANCIS BRANDT I.C.S. AND
 OF LUCY SOPHIA HIS WIFE.

MEMORIAL TO CAPT. F. BRANDT, R.N.

The above tablet has just been placed in St. Matthew's Church, Cheltenham, by Mr. and Mrs. Francis Brandt to the memory of their son Captain Frank Brandt, R.N. Beautifully executed in bronze, it is the work of Messrs. R. E. and C. Marshall, Ltd., to the design of Mr. L. W. Barnard, F.R.I.B.A.

HIGH PRICES

Paid for Ladies', Gentlemen's and Children's discarded wearing apparel—Boots, Shoes, etc. A postcard to

DEANE'S WARDROBE DEPOT,
 31 Worcester Street, GLOUCESTER

Will receive Prompt Attention.

THE NOTED HOUSE FOR FAIR PRICES.

Telephone 970.

Telegrams: "Wardrobes, Gloucester."

PAINLESS DENTISTRY,

Edwards and Hirst,
 THE DENTAL SURGERY,
 BANK CHAMBERS,

131 High Street, Cheltenham

(Corner of North Street).

Advice and Estimates Free.

Hours 10 till 7.

ESTABLISHED OVER 19 YEARS.

1921

THE FASHION YEAR FOR

SILKS.

**Great Silk
 Reductions.**

FOR SIX DAYS ONLY!

Write for a full list of Bargains at less than half last year's prices.

- 1,000 Yards of LANCELLA CREPE RAJAH, 40 Colours. Last season's price 10/11. SPECIAL PRICE 5/11.
- 20 Pieces of Plain TAFFETA, 38 inches wide. Ten useful colours. Last season's price 10/11. SPECIAL PRICE 4/11.
- 10 Pieces of Shot TAFFETA, 38 inches wide. Delightful Colourings. Last season's price 12/11. SPECIAL PRICE 6/11.
- 6 Pieces of NATURAL JAP SHAN, 33 inches wide. Last season's price 8/11. SPECIAL PRICE 4/9½.
- 500 Yards NATURAL SHANTUNG, 34 inches wide. Last season's price 5/11. SPECIAL PRICE 2/6.
- Also 700 Yards, to be CLEARED at 3/11. Last season's price 8/11. Very Fine Quality.
- 1,000 Yards WHITE JAP SILK, 36 inches wide. Last season's prices 5/11, 7/11, 9/11, 12/11. SPECIAL PRICES 2/9½, 3/9½, 4/9½, 5/9½.
- 500 Yards of CREPE CRYSTAL, GEORGETTE, and CREPE DELHI. Last season's prices 5/11 and 7/11. SPECIAL PRICES 2/11 and 3/11.
- 8 Pieces of CREPE DE CHINE. Delightful Colours. Last season's price 10/11. SPECIAL PRICE 4/11.
- 20 Pieces of Heavy Weight CREPE DE CHINE. Last season's price 15/11. SPECIAL PRICE 8/6.
- 34-inch COLOURED SHANTUNG, 30 Shades. Last season's price 9/11. SPECIAL PRICE 5/6.
- 700 Yards of BLACK DUCHESSE MOUSSELINE. Last season's price 12/11. SPECIAL PRICE 5/11.
- 600 Yards of BLACK TAFFETA SILK, 38 inches wide. Last season's price 13/11. SPECIAL PRICE 6/11.
- ALL FANCY SILKS in FOULARD, SHANTUNG, SATIN, and JAP are marked down to LESS THAN HALF LAST SEASON'S PRICE.

JOHN LANCE

AND COMPANY, LIMITED,

SILK SPECIALIST,

CHEL TENHAM SPA.



BIENNIAL RE-UNION AT ST. MARY'S HALL, CHELTHENHAM, WHIT-SATURDAY, SUNDAY, AND MONDAY.

This re-union, so much looked forward to by the present and past students of the Training College in Cheltenham, was held at St. Mary's Hall this year, in delightful weather. Over 250 old students were present. The above group consists of the staff and the present second-year students. Two other groups will be published in next week's issue of the performers in "Much Ado About Nothing" and the past and present staff.

[Photo by Cheltenham Newspaper Co., Ltd. from whom copies may be obtained.]



FUNERAL OF SIR JAMES HORLICK AT COWLEY.

The funeral of Sir James Horlick, Bart., formerly of Cowley Manor, took place at Cowley Churchyard (in the Manor grounds) on Thursday, May 12.

- 1.—The body being brought through the beautiful grounds. Immediately behind the coffin are the two surviving sons, Sir E. Horlick and Colonel James Horlick.
- 2.—Mourners following in procession.
- 3 and 4.—Friends and neighbours in the Churchyard.

[Photos by Cheltenham Newspaper Co., Ltd.]



CO-OPERATIVE JUNIOR CHOIR CONCERT.

Recently held at Cheltenham Town Hall, the whole proceeds of which were in aid of Cheltenham General Hospital. The children were trained by Miss Mullins.

- 1.—Some of the performers.
- 2.—Children in the "Doll" Song.
- 3.—Dancers.
- 4.—Fairies.

[Photos by Cheltenham Newspaper Co., Ltd.]

SEND THE "CHRONICLE AND GRAPHIC" TO YOUR FRIENDS EVERY WEEK.



CORPORATION FETE AT PITTVILLE ON WHIT-MONDAY.

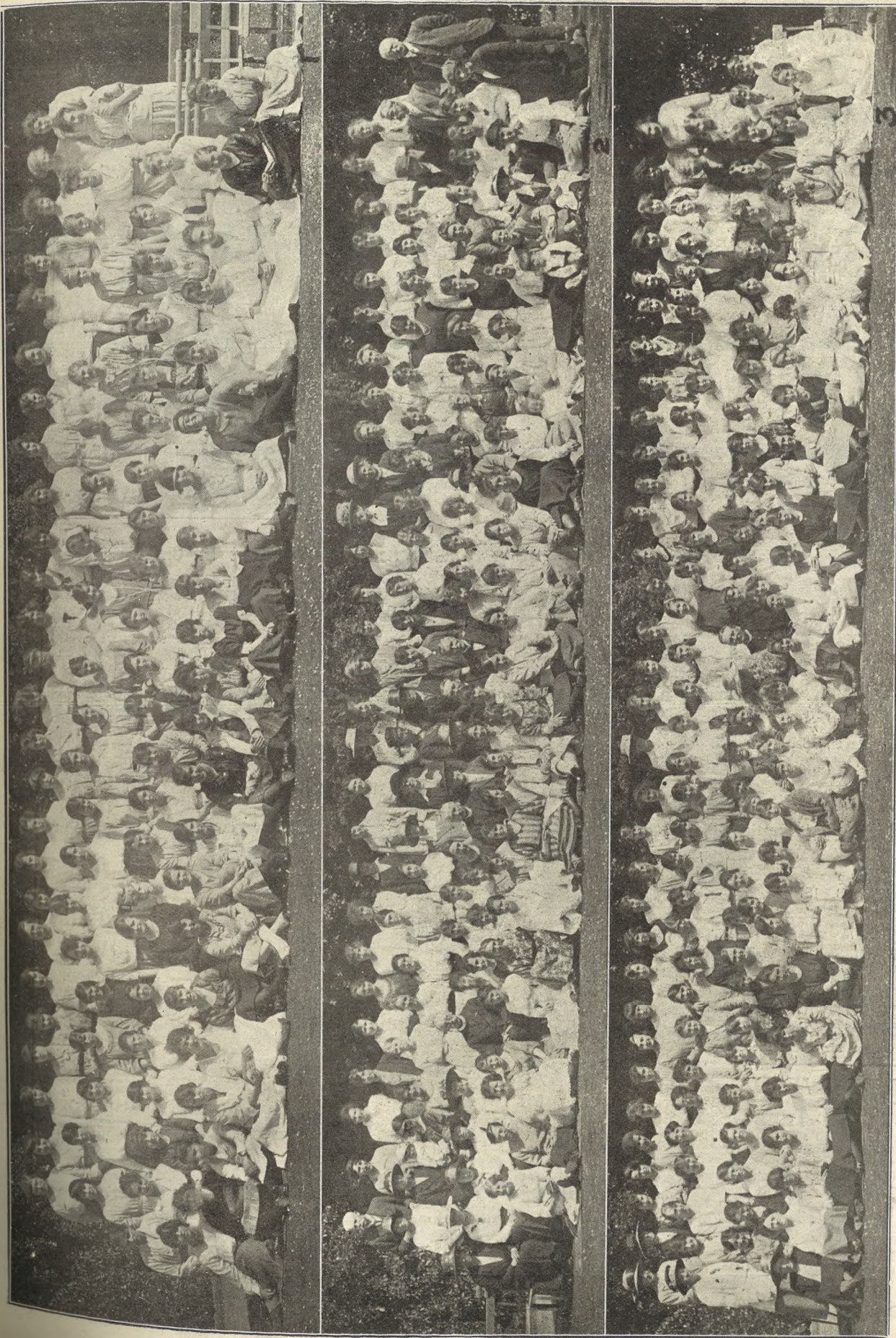
A popular fete, under the auspices of the Corporation of Cheltenham, was held at Pittville Park on Whit Monday. There was a very big crowd present.

- 1.—Waiting for the prize-giving.
- 2.—Two girls going high on the kiddies' swings.
- 3.—So glad of a rest and a sit down on the grass.

- 4.—Playing among the rockery.
- 5.—The lake was fringed all the afternoon by a crowd of kiddies, for whom water always has an attraction.

- 6.—Listening to the Welsh Choir.
- 7.—There was a crowd waiting to go on the boats all the afternoon.
- 8.—Listening to "The Frills" outside the Pump Room.

[Photos by Cheltenham Newspaper Co., Ltd., from whom copies may be obtained.]

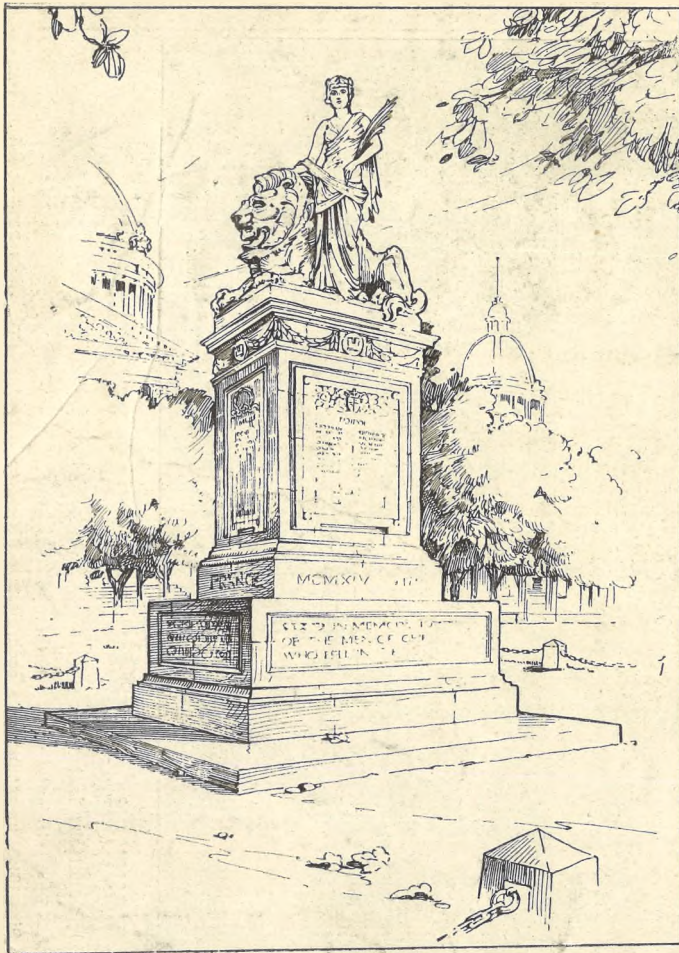


ST. MARY'S HALL, CHELTENHAM, WHITSUNTIDE REUNION OF PAST AND PRESENT STUDENTS.

Three sections of the ladies who participated in the enjoyable functions last week-end at St. Mary's Hall, Cheltenham.

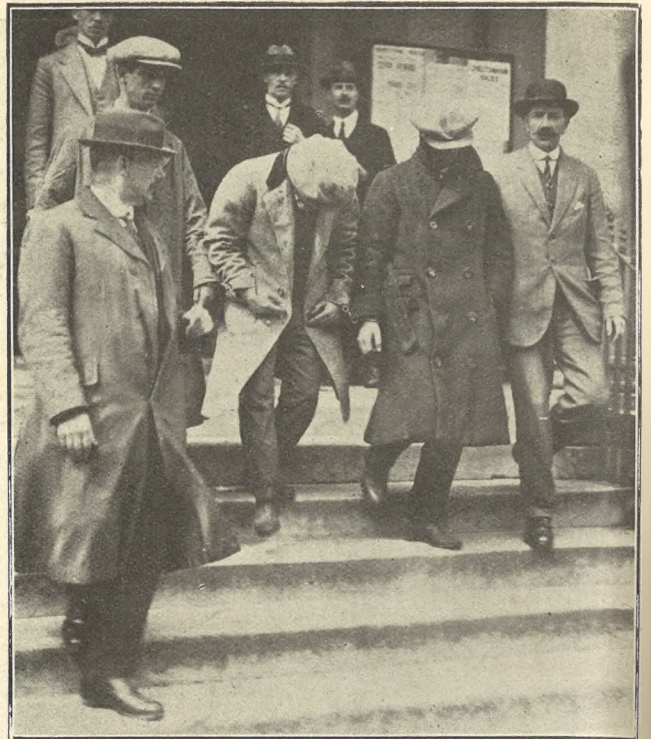
1.—Present first-year students. 2 and 3.—Past students with members of the staff.

Photos by Cheltenham Newspaper Co., Ltd., from whom copies can be obtained. Size 10x8, un mounted, 2s. each, postage 2d. extra; if mounted, 3s. each, postage 6d. extra.



Design for a War Memorial.

R. L. Boulton and Sons, Sculptors, Bath Road, Cheltenham, will be pleased to supply full particulars on application for War Memorials of every description. Medals: London, 1851; Paris, 1855; London, 1868.



Sensational Arrest in Cheltenham.

The Cheltenham Police effected a smart capture on Thursday night, May 12, when three alleged motor thieves were laid by the heels by members of the local detective force. Our snap shows the captives, handcuffed together, being removed from the station to a car, in which they were taken to Upton, Worcestershire, where they will be charged on Thursday.—Photo by Cheltenham Newspaper Co., Ltd.

ADVERTISE IT IN THE 'ECHO.'

W. JAMES & SONS,
 Motor and General Engineers,
 Bayshill Works, ∴ Cheltenham..
 ESTAB. 1872

Cylinders Rebored and New Pistons Fitted.
 Spur Gears Cut. Petrol and Steam.
 Complete Overhauls,
 Water Wheels and Pumping Plants.

WANTED!

OLD GOLD or SILVER for melting, any interesting Antiques in Furniture, China, Prints, Paintings, Etc. High Cash Prices Given.

HARRY O. BOX,
 339 HIGH STREET, CHELTENHAM.
 Opposite Grammar School. Established nearly 70 years.
 Price No Object for Fine Pieces.

SPORTS WEAR.
CRICKET AND TENNIS.

SHIRTS in Flannel Wincey and Silk 13/6 to 30/-.
 TROUSERS at various prices. SOCKS in White and Colors 2/11 Up. BELTS, Leather or Elastic.

GOLF.

HOSE with fancy tops 4/6 to 14/6 pair.
 Chamois Gloves, etc.

Knickerbocker Drawers, Combination Underwear, and a Full Range of Summer Hosiery.

A. BECKINGSALE,
 111 HIGH STREET, CHELTENHAM.

Mousell Bros., Ltd.

(Opposite G.W.R. Station),
 CHELTENHAM.

FURNITURE REMOVALS
 BY RAIL OR MOTOR.

'Phone 112.

The only Brush Manufacturers in Cheltenham.

E. JOYNER & SON,
BRUSH & BASKET WAREHOUSE

31 SUFFOLK PARADE (Nr. St. James' Church),
 CHELTENHAM.

All Kinds of Brushes Manufactured on the Premises.

DENTISTRY.



Hours 10 a.m. till
 7 p.m. Daily.

Est, 1891

'Phone 782. Cheltenham.

MR. SUTTON GARDNER,
LAUREL HOUSE

(Near Public Library).

CHELTENHAM.

Branches at Cirencester, Stow, Bourton, &c.

ADVERTISE IT IN THE 'ECHO.'

SUMMER SUITS

Made to Measure from £4-4-0.

G. DIGGINS,
 81 High Street, Cheltenham.

Printed and Published as a Gratis Supplement
 by the Cheltenham Newspaper Company, Ltd.

THE CHELTENHAM CHRONICLE AND GLO' SHIRE GRAPHIC

With which is incorporated the Cheltenham "Looker-On."

GRATIS SUPPLEMENT.

Saturday, May 28, 1921.

No. 1,065.

CHELTENHAM THEATRE AND OPERA HOUSE.

Lessee: ROBERT REDFORD.

The County Theatre, Established 30 Years.

General Manager: H. OSWALD REDFORD

This Afternoon "THE RIVALS." Evening "THE MAN FROM BLANKLEY'S."

Next Week: The New Shakespeare Co, from Stratford-on-Avon Memorial Theatre, in "SHAKESPEARIAN REPERTOIRE."

THE PALACE,

High Street, Cheltenham.
Proprietor, Shakspeare Shenton.

Monday, Tuesday, & Wednesday:
Shirley Mason in
"MOLLY AND I."
Serial, "Invisible Hand."
"Marvels of the Universe."
Capitol Comedy.

Thursday, Friday, and Saturday:
Marjorie Hulme in
"THE DUCHESS OF SEVEN
DIALS."

A Romance of London.
Henry Edwards & Chrissie White
in "The Amazing Quest of Mr.
Ernest Bliss." By E. Phillips
Oppenheim.
Al. St. John Comedy.

THE WINTER GARDEN PICTURE HOUSE, PROMENADE, CHELTENHAM

May 30 and Week:
All British Week.

Monday, Tuesday, & Wednesday:
Isobel Elsom & Tom Reynolds in
"MRS. THOMPSON."
"Last Rose of Summer."
"Silent Avenger" (Serial).

Thursday, Friday, and Saturday:
PATRICIA BRENT,
"SPINSTER."

Own Nares in
"THE HUSBAND HUNTER."
"Hawk's Trail" (Serial).

ANNETTE,

High-class Corset Maker
FRENCH MODELS IN STOCK.

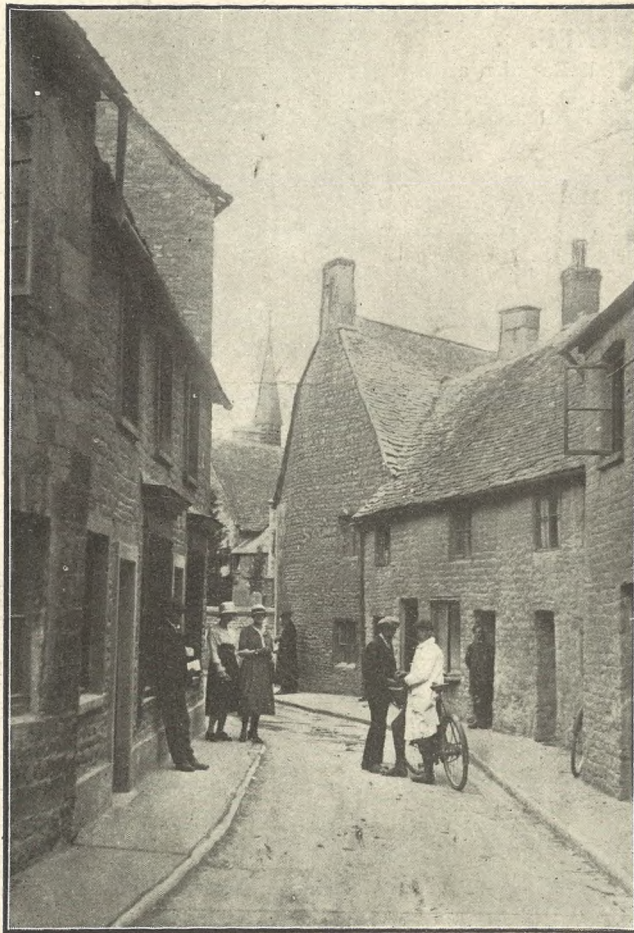
ONLY ADDRESS—

28 CLARENCE STREET.

Corsets Copied, Cleaned and Repaired

MARTIN & CO., LTD., Promenade, Cheltenham

Purchase for Cash Antiques of
all kinds, including Old Silver,
Jewellery, Sheffield Plate, China,
Coins, Miniatures, etc. Highest
Prices Given for Rare Pieces.



Picturesque Gloucestershire.—Stow-on-the-Wold.

A peep in Church Street, showing the old stone houses, narrow street, and, in distance, spire of St. Edward's Hall. A set of Stow pictures in connection with our "Picturesque Gloucestershire" series will appear in next week's "Graphic."

ADVERTISE IN THE "ECHO."

SUNDAY NEWSPAPERS.

To Avoid any Disappointment in
obtaining Your Sunday Newspaper,
send a Postcard, stating your
requirements to

W. BROWN,

226 HIGH ST., CHELTENHAM.

THE HOUSE FOR ALL THE
LEADING DAILIES.

This Newsagency has been estab-
lished 70 years.

OUTDOOR

PHOTOGRAPHY.

With the coming of
the long days you will
probably be thinking of
having Group Photo-
graphs taken—Garden
Parties, Tennis and
Croquet Parties, Wed-
dings, &c., &c. We
are the people for this
class of work. Write
to Manager "Chronicle
and Graphic" Photo
Department for full
terms and particulars.

For a
Suitable **FRAME**

for your photograph, try

LEE, Caxton House,
STATIONER, WINCHCOMBE ST.,

CHELTENHAM.

For the
Best

PIANOS, DALE, FORTY and CO., LTD.



ST. MARY'S HALL AND ST. PAUL'S TRAINING COLLEGES STAFF.

Taken at St. Mary's Hall Re-union at Whitsuntide.

Back row.—Messrs. F. G. Perrins, B.A., B. J. Greening (Secretary), E. F. Ridgeway, A.R.C.A., A. H. Mann, B.Sc., C. E. Tomlinson, B.A., Miss H. A. Pringle, B.Sc., and Mr. C. E. Walsh, B.A., B.Sc.
 Standing.—Miss M. M. Clarkson, B.A., Rev. C. K. Gimson, B.A., Miss Stead, Miss P. M. Tompson, Miss J. Allen, M.A. (Bris.), Miss E. L. Brooks, Mr. H. Lane, B.A., Miss D. M. Smith, B.A., Mr. C. R. Mapp, B.Sc., Rev. S. Jackson, M.A. (Vice-Principal), Miss G. Winfield, L.L.A., Dr. J. B. Lloyd, B.Sc.
 Sitting.—Miss Gratton, Mrs. Bren, Miss A. C. Harvey, M.A. (Vice-Principal of St. Mary's), Rev. H. A. Bren, M.A., (Principal), Miss Reynolds (former Vice-Principal), Mrs. J. C. Crigan (Vice-Principal of Hostel), Miss E. M. Herbert.

[Photo by Cheltenham Newspaper Co., Ltd.]



ST. MARY'S HALL, CHELTENHAM, RE-UNION.

On Whit-Saturday a number of the present students gave a clever performance of scenes from "Much Ado About Nothing" before the visitors. The performers.

[Photo by Cheltenham Newspaper Co., Ltd.]

W. JAMES & SONS,
 Motor and General Engineers,
 Bayshill Works, ∴ Cheltenham..
 ESTAB. 1872

Cylinders Rebored and New Pistons Fitted.
 Spur Gears Cut. Petrol and Steam.
 Complete Overhauls,
 Water Wheels and Pumping Plants.

COME TO
CRICHTON'S
PIANO HOUSE

For Pianos of quality,
 fully guaranteed, at
 present lowest prices,
 including



BROADWOOD,
BECHSTEIN,
MILLARD,
ROGERS,
SAMES,
WEBER,

AND MANY OTHER
 HIGH-CLASS MAKES

YOU are cordially invited to call to-day,
 ∴ at ∴

Crichton's Ltd.
 PROMENADE,
 (Opposite the Post Office,)
CHELTENHAM.

TRINITY COLLEGE OF MUSIC.

Last Days of Entry for Summer
 Examinations:

THEORY, WEDNESDAY, MAY 25th.
 PRACTICAL, SATURDAY, JUNE 4th.

Entry Forms from Mr. Ernest A. Dicks,
 F.R.C.O., Buckingham Lawn, Wellington
 Street, Cheltenham. C4528

MR. ALFD. J. VENTRIS-FIELD

Has had a Thorough Training: Medical,
 Surgical, and Pharmaceutical, and 30 Years
 Practical Experience in Treating all

**DISEASES AND DEFORMITIES OF THE
 FOOT & FACIAL DISFIGUREMENTS.**

Surgery:
 6 RODNEY PLACE, CHELTENHAM.

ART NEEDLEWORK STUDIO

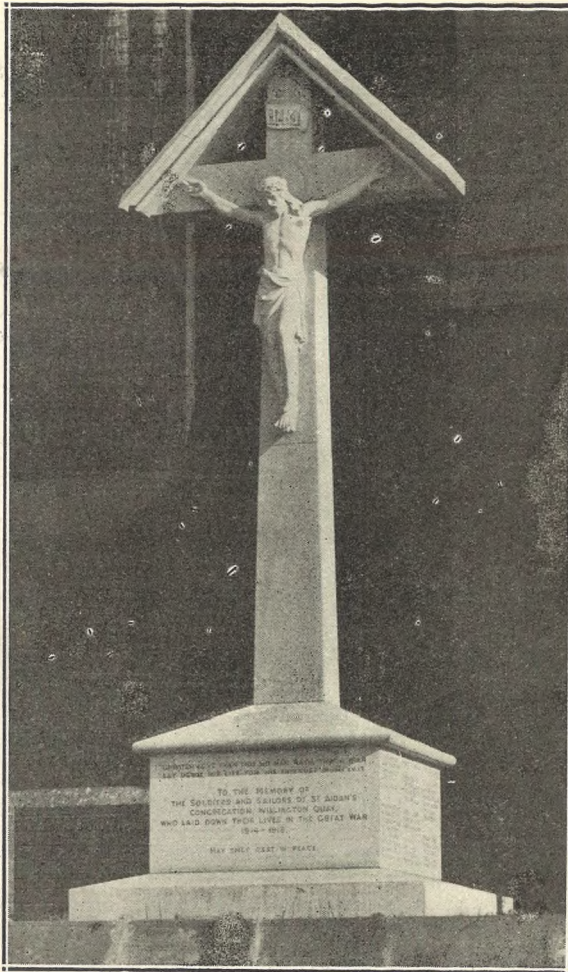
WE HOLD A VERY LARGE
 SELECTION OF

ARTIFICIAL SILK,
6/11 per Hank.

JUMPERS Made to Order
from 2½ Guineas.

OUR SPECIALITY IS FINISHED
 AND TRACED UNDERCLOTHING.

1 IMPERIAL BUILDINGS
 (Near The Fountain),
 PROMENADE, CHELTENHAM.



FINE WAR MEMORIAL.

Recently fixed at Willington Quay on Tyne by Messrs. R. L. Boulton and Sons, the celebrated sculptors, of Bath road, Cheltenham.

SPORTS WEAR.

CRICKET AND TENNIS.

SHIRTS in Flannel Wincey and Silk 13/6 to 30/-.
TROUSERS at various prices. SOCKS in White and Colors 2 11 Up. BELTS, Leather or Elastic.

GOLF.

HOSE with fancy tops 4/6 to 14 6 pair.
Chamois Gloves, etc.

Knickerbocker Drawers, Combination Underwear, and a Full Range of Summer Hosiery.

A. BECKINGSALE,
111 HIGH STREET, CHELTENHAM.

BEST QUALITY

CIDERS

IN BOTTLE. — Sparkling and Still.

BARTHOLOMEW,
419-420, HIGH STREET,
CHELTENHAM.

WINES, SPIRITS, ALES, TABLE WATERS
and GROCERY. Tel. 135.

Mousell Bros., Ltd.

(Opposite G.W.R. Station),
CHELTENHAM.

FURNITURE REMOVALS

BY RAIL OR MOTOR.

'Phone 112.

PAINLESS DENTISTRY,

Edwards and Hirst,

THE DENTAL SURGERY,

BANK CHAMBERS,

131 High Street, Cheltenham

(Corner of North Street).

Advice and Estimates Free.

Hours 10 till 7.

ESTABLISHED OVER 19 YEARS.

COATS and COAT WRAPS

FOR EVERY USE & OCCASION.



LADIES' SAND SERGE COATS in Two Sizes. Last Season's Price 63/6.

SPECIAL PRICE **49 6.**
May also be had in Cream Blanket Cloth at 49/6, 59/6, and 69/6.



LADIES' KNITTED WOOLLEN SPORTS COATS in Twelve Shades. Original Price 45/6.

SPECIAL PRICE **29/6.**

JOHN LANCE

AND COMPANY, LIMITED,

CHELTENHAM SPA.



NATIONAL CHAMBER OF TRADE CONFERENCE IN CHELTENHAM.

The 23rd annual conference of the National Chamber of Trade was held at the Cheltenham Town Hall during this week. Most of the delegates arrived last Saturday, but owing to the strike and restricted transport service, the numbers were not so large as usual. The delegates attended the Parish Church on Sunday and various public functions during the week, and were delighted with the town. Snaps of some of the delegates leaving the Town Hall at an adjournment. In No. 1 (marked with xx) are the President (Mr. Felix J. Blakemore, F.G.I.) and his wife. He was re-elected president again this year.

Photos by Cheltenham Newspaper Co., Ltd., from whom copies can be obtained, price 1s. each, by post 1s. 3d.



CHAMBER OF TRADE GARDEN PARTY AT PITTVILLE.

A most enjoyable garden party was given by the members of the Cheltenham Chamber on Wednesday afternoon to the delegates of the National Chamber of Trade, who have been in conference in Cheltenham during the week. Held at Pittville Park in glorious summer weather, it was one of the most delightful functions of the week.

- 1.—The General Secretary, President and his wife, with Messrs. Welstead, Whitbread, Midwinter, and Lamb (of Cheltenham) on the steps of the Pump Room.
- 2.—A "mixed" party listening to the band.
- 3.—A North Country party.
- 4.—In front of pavilion.
- 5.—A Bournemouth party.
- 6.—In the shade.
- 7.—A cup of tea on the lawn.
- 8.—Mr. Welstead and Mr. Whitbread welcoming the delegates.
- 9.—Resting from the heat.
- 10.—Mrs. Meyrick Jones and Howell, with Mrs. Meyrick Jones and a friend.
- 11.—Mrs. Bisset, Madame Ethel Irving, Miss Channon, and a lady friend.

[Photos by Cheltenham Newspaper Co., Ltd., from whom copies may be obtained.]



CHELTENHAM RACE MEETING.

In lieu of the two-day meeting in April, which was abandoned through the coal strike, a one-day meeting was held at Prestbury Park on Saturday last, May 21

- 1.—These four ladies found a shady seat.
- 2.—The ladies' costumes were a feature of the meeting.
- 3.—Rathleague winning Swindon Selling Steeplechase, with Redman (left) second and Section Leader (No. 20) third.

- 4.—Mr. Lewis Smith with two ladies in paddock.
- 5 and 6.—Gentlemen in enclosure.
- 7.—Mr. J. T. Bogue was thrown by Sunny-croft.

- 8.—Racing men resting on bottom of grand stand.
- 9.—Resting in the shade.
- 10.—Jimmy Rafter (leading), Boils (second), and Pitcher (third), who were all unplaced in Swindon Selling Steeplechase.



EARL BEAUCHAMP UNVEILS CHELTENHAM PARISH SCHOOL OLD BOYS' WAR MEMORIAL.

With fitting ceremonial the Lord Lieutenant of the County unveiled this memorial on May 19.

- 1.—Waiting while Earl Beauchamp inspects guard of honour. 2 and 3.—The Earl inspecting guard of honour, all ex-Service men and old boys of the school. 4.—The Earl, Mr. L. Wheeler, and the Rector. 5.—Dean Close School Cadets blowing the Last Post. 6.—The guard of honour.

(Photos by Cheltenham Newspaper Co., Ltd. from whom copies can be obtained price 1s each, postage 2d. extra.)

VISIT . . .

Messrs. **SHIRER & HADDON'S,**

. . THE COLONNADE, . .

Well-Appointed Showrooms

For COSTUMES, MILLINERY, COATS, JUMPERS,
LADIES' :: AND :: CHILDREN'S :: OUTFITTING.

::: HIGH-CLASS GOODS AT POPULAR PRICES. :::



:: SPECIAL SALE of :: BLOUSES & JUMPERS



We have just been through our stock and find we have about
500 OVER STOCK.

These we have decided to clear immediately, and are offering them in a : : : : :

Special Blouse Week, STARTING MAY 28th (Saturday).

MANY HALF-PRICE AND UNDER HALF-PRICE.

50 Ladies' BLOUSES, New Models in Ivory Jap Silk, Silk Poplin, Tussore Silk, Crepe de Chine Striped Spun Silk and Tricolene in All Colours. Usual Price 21/6, 24/6, 27/6, 18/11, 15/11.

10/-

14 CREPE DE CHENE and UNMITTED ART SILK JUMPERS, in Various Colours and Models. Usual Price 27/11, 29/11, 35/11.

15/11

30 Ladies' White Voile, COTTON BLOUSES, in New Styles. Usual Price 6/11, 4/11.

2/11½

28 CREPE DE CHENE JUMPERS, in fine quality Crepe in Various Colours and Styles. Usual Price 35/6, 42/-.

10/-

35 JAP SILK and VOILE JUMPERS, in All Colours and Various Styles. Usual Price 8/11, 10/11.

4/11

27 COTTON CREPE JUMPERS, with Beadments, All Colours. Usual Price 10/11, 12/11, 15/11.

6/11½

46 Ladies' BLOUSES in white Voile, Ivory Jap Silk, Striped Washing Material, and Cotton Poplin in all Colours. Usual Price 8/11, 6/11, 10/11.

3/11½

27 Ladies' BLOUSES in White Voile, Jap Silk, and Poplin, etc., in All Colours. Usual Prices 10/11, 12/11, 15/11.

5/11

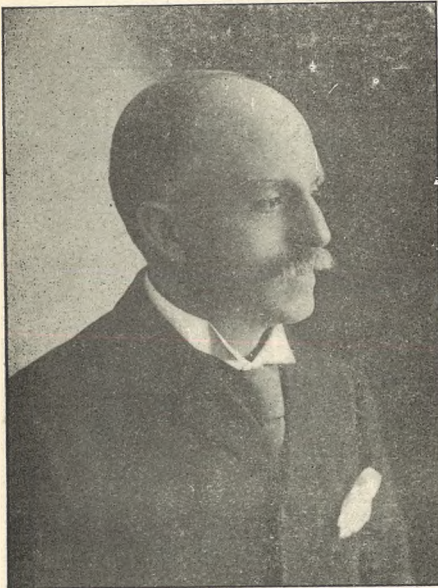
10 CREPE DE CHENE JUMPERS, in Various Colours, Metal and Lace Trimming. Usual Price 25/11, 29/11.

10/11

WE LEAD IN
LOWEST PRICES.

Dicks & Sons Ltd.
172 & 173 HIGH STREET
Cheltenham Spa
TEL. 1007. 50 YEARS REPUTATION FOR VALUE.

WE SPECIALISE IN
RELIABLE GOODS
at Moderate Prices.



Mr. Frederick Hannam-Clark, Of 4 Lansdown Place, Cheltenham, who died on Sunday, May 22, aged 71 years. He was the well known Gloucester solicitor and ex-Mayor of that city, and had also served as High Sheriff. He was an ardent musician, a vigorous Churchman, a leading Freemason, and a strong Conservative, serving many years on the City Council as representative of the Lower Barton Ward, and afterwards becoming an alderman. He leaves a widow, three sons, and two daughters.

THEATRE AND OPERA HOUSE CHELTENHAM. THE COUNTY THEATRE.

NEXT WEEK:
* MONDAY, May 30, to SATURDAY, June 4,
* Last Week of the Present Successful Season.

The Cheltenham Shakespearian Festival.
Return Visit of the

NEW SHAKESPEARE COMPANY.

From the Memorial Theatre,
Stratford-on-Avon.
Under the Direction of W. Bridges-Adams.
Chairman, Sir Johnston Forbes-Robertson.

Monday, May 30, at 7.30,
"ANTHONY AND CLEOPATRA."

Tuesday, May 31, at 7.30,
"MACBETH."

Wednesday, June 1, at 2.30,
"AS YOU LIKE IT."

Wednesday, June 1, at 7.30,
"THE MERRY WIVES OF WINDSOR."

Thursday, June 2, at 7.30,
"ANTHONY AND CLEOPATRA."

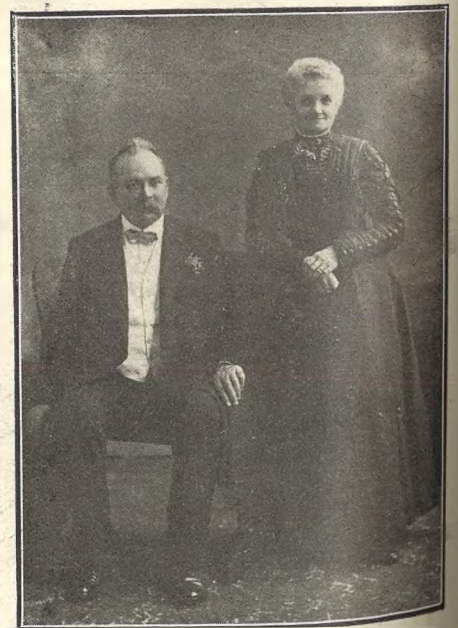
Friday, June 3, at 7.30,
"THE SCHOOL FOR SCANDAL."

Saturday, June 4, at 2.30,
"A MIDSUMMER NIGHT'S DREAM."

Saturday, June 4, at 7.30,
"KING RICHARD THE THIRD."

PRICES AS USUAL.
Box Office now Open at Dale, Forty, and
Co., Ltd., Promenade, Cheltenham.

After the above engagement the Theatre will close for a short vacation, re-opening with Mr. Edward F. Furneau and his Popular Company.



A Gloucester Golden Wedding.
Mr. and Mrs. C. J. Allen, Of Allion House, King Street, Gloucester, who celebrated their golden wedding on Monday, May 23, having been married at Bristol on that date in 1871. Mr. Allen is an ex-constable, and retired in 1903.

Printed and Published as a *Gratis Supplement* by the Cheltenham Newspaper Company, Ltd.