

# THE CHELTENHAM CHRONICLE AND GLO' SHIRE GRAPHIC

With which is incorporated the Cheltenham "Looker-On."

GRATIS SUPPLEMENT.

Saturday, February 5, 1921.

No. 1,049.

## CHELTENHAM THEATRE AND OPERA HOUSE.

Lessee: ROBERT REDFORD.

The County Theatre, Established 30 Years.

General Manager: H. OSWALD REDFORD.

This Afternoon (2-30) and Evening (7-30)—Percy Hutchison in "A PAIR OF SIXES."

Next Week—Nightly at 7.30, Matinees Wednesday and Saturday, 2.30: "CHU CHIN CHOW."

Special prices for this engagement.

### THE PALACE,

High Street, Cheltenham

Proprietor, Shakspeare Shenton.

Monday, Tuesday, & Wednesday:

From the Famous Novel by  
Silas K. Hooking,  
"HER BENNY."

All British Star Cast.  
Serial, "Smashing Barriers."  
"Marvels of the Universe."  
Pathe Sunbeams.

Thursday, Friday, and Saturday:

Robert Warwick in  
"THE TREE OF KNOWLEDGE."  
Serial—

"Round the World for a Wager."  
Mack Sennett Comedy.

Pictorial. Graphic.

### THE WINTER GARDEN

PICTURE HOUSE,

PROMENADE, CHELTENHAM

Enormous Attractions for

February 7th and Week:

Monday, Tuesday, & Wednesday:

MARY PICKFORD in Her Third

Super Production,  
"HEART OF THE HILLS."

Second Episode of  
"1,000,000 Dollars Reward" (Ser.).

Thursday, Friday, and Saturday:

DUSTIN FARNUM in  
"LIGHT OF WESTERN STARS."

From Zane Grey's famous novel,  
"The Whirlwind" (Serial).

Usual Times and Prices.

### ANNETTE,

High-class Corset Maker

FRENCH MODELS IN STOCK.

ONLY ADDRESS—

28 CLARENCE STREET.

Corsets Copied, Cleaned and Repaired

### MARTIN & CO., LTD.,

Promenade, Cheltenham

Purchase for Cash Antiques of  
all kinds, including Old Silver,  
Jewellery, Sheffield Plate, China,  
Coins, Miniatures, etc. Highest  
Prices Given for Rare Pieces.



A Home-Made War Memorial.

Mr. Edward John Clifford, of Stow-on-the-Wold, has executed a War Memorial, on which he has inscribed and painted the names of all Stow men who fell in the Great War. It is based on the design of Enoch's Pillar, which used to stand at Enoch's Tower, in Oddington-road, Stow. He has offered to present it to the town, which has no War Memorial, but up to the present it has not been accepted. Mr. Clifford is here shown as a cornetist, and with his War Memorial.

ADVERTISE IN THE "ECHO."

### BEST OF EVERYTHING IN FOOTWEAR

at Prices that you should compare  
before you buy.

Repairs Same Day.

PROGRESS BOOT INDUSTRY,  
371 HIGH STREET, Cheltenham.

### DENTAL SURGERY.

ARTIFICIAL PAINLESS  
TEETH. EXTRACTIONS.

All Advice and Estimates Free.

Mr. T. HOLBOROW,  
1 NORTH STREET,  
CHELTENHAM.

Personal Attention to every Patient.

Over 20 YEARS' Experience in  
England and France.  
HOURS 10-7 DAILY.

### STIFF COLLARS.

WING SHAPE, Round or Square  
Points.

DOUBLE SHAPE, with Round or  
Square Corners. 1s. Each.

NEARLY 500 DOZENS IN STOCK

### SOFT COLLARS.

Pointed or Double Shape. White  
or Coloured. Our Own Make.

Sizes:  
12 to 17½. 10½d. Each.

### A. BECKINGSALE,

Shirt Manufacturer,

111 High St., Cheltenham.

Phone 406

For a  
Suitable FRAME

for your photograph, try

LEE, Caxton House  
STATIONER, WINCHCOMBE ST.,

CHELTENHAM.

For the  
Best

PIANOS DALE, FORTY and CO. LTD

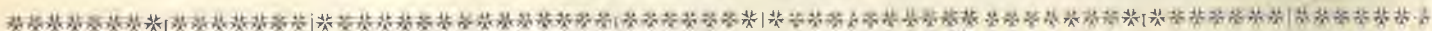


**CHELTENHAM v. BRISTOL RUGBY FOOTBALL.**

Cheltenham played Bristol a surprisingly good game on Saturday last, the latter being very lucky to win by 18 points to 8, as the Cheltenham forwards completely beat the Bristol pack.

- 1.—A run by the Bristol three-quarters.
- 2, 3, and 5.—Sections of the spectators.
- 4.—A scrum by Bristol forwards.
- 6.—The Bristol Team. Back row H. S.

Gould, Stanley, H. Budd, A. E. Kibby, J. Boughtor, A. T. Hore, H. H. Schonburg, E. S. Bostock-Smith, M. Shaw, P. J. Williams, — Bennett (trainer), J. Oates. Sitting: T. Spoors, W. J. Wring, L. J. Corbett, R. C. W. Pickles, R. G. B. Quick, F. J. Coventry, T. J. Bateman. In front: H. Hayshaw, H. L. Feltham. [Photos by Cheltenham Newspaper Co., Ltd.]



**Albert Smith,**  
Of Gloucester, who has been awarded three bronze medals, one silver medal, four silver bars, a gold medal, silver watch and a silver chain by the City of Gloucester Education Committee for having attended the Hatherley-road Council Schools for eleven years without having been once late or absent.

**PRICES DOWN.**

GENT'S SUITS TO MEASURE.  
INDIGO BLUE AND FANCY TWEEDS,  
£4-4-0.

**G. DIGGINS.**

81 High Street, Cheltenham.

THE SPECIALIST FOR DISEASES AND DEFORMITIES OF THE FOOT.

**MR. ALFRED J. VENTRIS-FIELD,**

SURGEON CHIROPODIST, ORTHOPÆDIST, AND ELECTRO-THERAPEUTIST.

Surgery:  
6 RODNEY PLACE, CHELTENHAM.  
Hospital Trained (London). Highest Qualifications. 30 Years' Practical Experience.  
Author "The Treatment of Talipes Valgus."  
Consultant, H.M. Forces.



**Mr. Edwin Mearing,**

Of Beechville, Gloucester-road, Cheltenham, who died on Jan. 28th, at his home, aged 50 years. He was for over 30 years with Messrs Olive and Olive, Colonnade, and for the last 13 years as manager. He was a popular playing member of the Cotswold Hills Golf Club,

**All Your Wants Supplied**

If you have a small Prepaid Advertisement in the "Echo" and "Chronicle." It is the combination that does it, for the two papers reach all classes.



**War Memorials of Every Description**

R. L. Boulton and Son, Sculptors, Bath-road, Cheltenham, will be pleased to supply full particulars on application. Medals: London, 1851; Paris, 1855; London, 1883.



**ST. PAUL'S OLD BOYS', CHELTENHAM, FOOTBALL TEAM.**

Back row.—A. B. Cove, F. Tamer, C. Deacon, W. Smith, A. Fowler, H. Yiend (Referee), E. Brunson, H. E. Carey, E. Harding, A. Wright, E. R. G. Smith (Hon. Secretary)

Sitting.—T. W. Merrell, W. Jackson, F. Hopkins, C. Morton (Capt.), H. Dean, F. Morton, E. Dean.

In front.—A. Fitz, J. Davies. (Photo by Cheltenham Newspaper Co., Ltd.)

**READ THE "ECHO" EVERY EVENING.**

REMARKABLE BARGAINS IN

**Ladies' Raincoats**

AT

**LANCE'S  
Great Winter Sale**



**65/- Coat for 39/6.**

**5 Dozen Ladies' Reliable Raincoats**

Lined throughout Good Quality Check Material, in Light and Dark Fawn only, Style as sketch. SALE PRICE 39s. 6d. Usual Price 65s.

**SPECIAL DISCOUNT**

**2/- in the £**

allowed on all goods except Proprietary articles paid for at the time of Purchase

**Silk and Dress Material.**

ALL REMNANTS and ODDMENTS will be Cleared at HALF the MARKED PRICES Each THURSDAY THROUGHOUT the SALE.

**JOHN LANCE**

AND COMPANY, LIMITED,  
SILK SPECIALISTS.

**CHELTENHAM SPA.**



**GIVING A "SEND-OFF" TO A COLLECIAN.**

Owing to ill-health, caused by being gassed on War Service, Mr. A. Anthony, of Maesteg, one of the students at St. Paul's Training College, Cheltenham, had to give up his college course. His fellow-collegians gave him a splendid send-off in real college style on Friday, Jan. 28th, towing him round the town in a taxi with ropes, and waking up the G.W.R. station with College cries, war-whoops, and songs.

- 1.—Towing him into the station.
- 2.—Singing on the station platform.
- 3.—"Shouldering" him out of the Collage.
- 4—"Good bye" as the train moves off.

[Photos by Cheltenham Newspaper Co., Ltd.]



**CO-OPERATIVE CHILDREN'S FANCY DRESS PARTY.**

On Monday, January 24th, the Children of Members of the Gloucester Co-operative Society in Cheltenham were entertained to a fancy dress dance and party at the Victoria-rooms. A few of the prettiest dresses. [Photo by Cheltenham Newspaper Co., Ltd.]



*Gloucester  
Operatic  
The Yeomen*

*Amateur  
Society  
of the Guard.*

**"THE YEOMEN OF THE GUARD" AT GLOUCESTER.**

The members of the Gloucester Amateur Operatic Society are giving a series of clever performances of Gilbert and Sullivan's famous Opera at the Hippodrome, Gloucester, each night this week to crowded houses.

- |  |   |   |
|--|---|---|
| 1.—Mr. S. Billington as Sir Richard Cholmondeley | 4.—Mr. D. Price as Leonard Meryll.          | 8.—Mr. J. R. A. Jones as Sergt. Meryll.     |
| 2.—Mrs. Geo. Romans as Phoebe Meryll.            | 5.—Mr. W. Hawkins as Jack Point.            | 9.—Mrs. E. M. Gostling as Kate.             |
| 3.—Miss Kathleen Huntley as Elsie Maynard.       | 6.—Mr. Frank Frigg as Col. Fairfax.         | 10.—Mrs. J. R. A. Jones as Dame Carruthers. |
|  | 7.—Mr. Stanley Bennett as Wilfred Shadboht. |   |

{Photos by Debenhams, Longman and Co., Ltd., Clarence-street, Gloucester, and Cheltenham.



**ROUND THE TOWN IN CHELTENHAM.**

1.—A novel way of advertising the motorists' dance on the following day.  
2.—Most men show a peculiarity in walking. Note this gentleman's methods of carry-

ing his hands.  
3—A pretty nurse.  
4.—Darby and Joan shopping.  
5.—Messrs. J. Bendall and F. Powis having

a business chat.  
6.—A connoisseur. Mr. Stubbs examines a print at his shop door.  
7.—Arm-in-arm.

**PAINLESS DENTISTRY,**  
**Edwards and Hirst,**  
**THE DENTAL SURGERY,**  
**BANK CHAMBERS,**  
**131 High Street, Cheltenham**  
(Corner of North-street).  
Advice and Estimates Free.  
Hours 10 till 7.  
ESTABLISHED OVER 19 YEARS.

**Mousell Bros., Ltd.**  
(Opposite G.W.R. Station),  
**CHELTENHAM.**  
**FURNITURE REMOVALS**  
**BY RAIL OR MOTOR.**  
'Phone 112.

**BEST QUALITY**  
**CIDERS**  
IN BOTTLE. — Sparkling and Still.  
**BARTHOLOMEW,**  
419-420, HIGH STREET,  
CHELTENHAM.

WINES, SPIRITS, ALES, TABLE WATERS  
and GROCERY. Tel. 135.





**MISS DOROTHY TRESEDER OFF TO THE FAR EAST.**

Miss Dorothy Treseder, the well-known pianist, leaving Cheltenham on Wednesday en route for India and the Far East, where she is fulfilling a tour of over a hundred concerts. She is standing second from left, carrying a bunch of violets.

(Photo by Cheltenham Newspaper Co., Ltd.)



**A Cheltenham Sailor's Wedding.**

At Emmanuel Church on January 12th, the marriage was solemnized of Stoker Petty-Officer Raymond Edward Smith, second son of Mr. and Mrs. E. J. Smith, of Pailley, Cheltenham, to Miss Daisy May, third daughter of Mr and Mrs. W. F. Sims, Moorend Dairy, Cheltenham.

**THORNTON & COMPANY,**

—Waterproofers and Rubber Merchants,—  
HIGH STREET, CHELTENHAM.

Annual  
Discount  
SALE.

- 50 % off Odd WATERPROOFS, RAINCOATS, Etc.
- 25 % off all OVERCOATS, WATERPROOFS, RAINCOATS.
- 15 % off ZAMBRENE Weatherproofs and Rubber Goods.

Many Slightly Soiled Waterproofs and Raincoats at Nominal Prices to Clear.

**A WORD TO THE WISE—**

Be sure and see the Maker's Name and Sheffield stamped on any Cutlery you may be purchasing!

German Cutlery is often not stamped at all. Why? **THINK!!!**



ONLY THE BEST QUALITY SHEFFIELD MADE CUTLERY KEPT IN STOCK AT  
**WILLIAMS & Co.,** 19 Winchcombe Street, CHELTENHAM.  
THE PRACTICAL CUTLERS,



**Dame Clara Butt,**

Who is giving her Farewell Concert prior to her Tour of the World, at the Town-hall, Cheltenham, on Feb. 10. Tickets for this Concert can be obtained at Crichtons Ltd., the Promenade, Cheltenham.

**Buy the "Echo" Every Evening.**

Printed and Published as a Gratis Supplement by the Cheltenham Newspaper Company, Ltd.



# THE CHELTENHAM CHRONICLE AND GLO' SHIRE GRAPHIC

With which is Incorporated the Cheltenham "Looker-On."

GRATIS SUPPLEMENT.

Saturday, February 12, 1921.

No. 1,050.

## CHELTENHAM THEATRE AND OPERA HOUSE.

Lessee: ROBERT REDFORD.

The County Theatre, Established 30 Years.

General Manager: H. OSWALD REDFORD.

This Afternoon (2-30) and Evening (7-30)—"CHU CHIN CHOW."

Next Week— Mon., Tues, & Wed. (Matinee Wed. at 2.30) at 7.30, PHYLLIS NEILSON—TERRY in "TRILBY.",  
SPECIAL PRICES FOR THIS ENGAGEMENT.

### THE PALACE,

High Street, Cheltenham  
Proprietor, Shakspeare Shenton.

Monday, Tuesday, & Wednesday.  
The Great NAZIM VA in  
"THE RED LANTERN."  
"Smashing Barriers."  
"Marve's of the Universe."  
"Pathe Sunbeams."

Thursday, Friday, and Saturday:  
BILLIE BURKE in  
"WANTED, A HUSBAND."  
"The Adventures of Shorty  
Hamilton."  
Thrilling Secret Service Serial.  
Pictorial Graphic.  
1921 Sunshine Comedy.

### THE WINTER GARDEN PICTURE HOUSE, PROMENADE, CHELTENHAM

February 14th and Week:  
"WESTWARD HO."

From the World-famous Novel by  
Charles Kingsley.

Thursday, Friday, and Saturday:  
Additional Attraction,  
HAYFORD HOBBS in  
"FETTERED."

### ANNETTE,

High-class Corset Maker  
FRENCH MODELS IN STOCK.

ONLY ADDRESS—

28 CLARENCE STREET.

Corsets Copied, Cleaned and Repaired

### MARTIN & CO., LTD.,

Promenade, Cheltenham

Purchase for Cash Antiques of  
all kinds, including Old Silver,  
Jewellery, Sheffield Plate, China,  
Coins, Miniatures, etc. Highest  
Prices Given for Rare Pieces.



Cheltenham Society Wedding.

\* \*

The marriage was solemnised at All Saints' Church, Cheltenham, on Tuesday, February 8, of Mr. Edwin H. Goodeve, son of the late Mr. G. W. Goodeve, J.P., and of Mrs. Good- eve, Hawksworth, Pittville, to Miss Dorothy Lillian Steward, daughter of the late Colonel H. W. Steward, South Staffs. Regt., and of Mrs. H. W. Steward, Terhill, Pittville Circus.

[Photo by Cheltenham Newspaper Co., Ltd.]

ADVERTISE IN THE "ECHO."

### BEST OF EVERYTHING IN FOOTWEAR

at Prices that you should compare  
before you buy.

Repairs Same Day.

PROGRESS BOOT INDUSTRY,  
371 HIGH STREET, Cheltenham.

### DENTAL SURGERY.

ARTIFICIAL PAINLESS  
TEETH. EXTRACTIONS.

All Advice and Estimates Free.

Mr. T. HOLBOROW,  
1 NORTH STREET,  
CHELTENHAM.

Personal Attention to every Patient.

Over 20 YEARS' Experience in  
England and France.  
HOURS, 10-7 DAILY.

### STIFF COLLARS.

WING SHAPE, Round or Square  
Points.

DOUBLE SHAPE, with Round or  
Square Corners. 1s. Each.

NEARLY 500 DOZENS IN STOCK

### SOFT COLLARS.

Pointed or Double Shape. White  
or Coloured. Our Own Make.

Sizes:  
12 to 17½. 10½d. Each.

A. BECKINGSALE,  
Shirt Manufacturer,

111 High St., Cheltenham.  
Phone 406.

For a  
Suitable FRAME

for your photograph, try

LEE, Caxton House  
STATIONER, WINCHCOMBE ST.,  
CHELTENHAM.

For the  
Best

# PIANOS, DALE, FORTY and CO. LTD



**ENGELFONTAINE, THE FRENCH VILLAGE WHICH CHELTENHAM HAS ADOPTED.**

Some views taken since the war showing the damage caused by the Germans to the village of Engelfontaine. Sir J. T. Agg Gardner, M.P., recently visited the village, and will report to the Mayor of Cheltenham the needs of the villagers. We hope to publish in the "Echo" and "Chronicle" an account of the Borough Member's experiences.

- 1.—At the door of their badly shelled home. 3.—Girls' School and Cemetery. 5.—The Church, which is practically gutted.  
 2.—The Mairie, or Town-hall. 4.—More shell damage. 6.—Ruined houses at the cross-roads.

**THORNTON & COMPANY,**

—Waterproofers and Rubber Merchants,—  
**HIGH STREET, CHELTENHAM.**

**Annual  
 Discount  
 SALE.**

**50 % off Odd WATERPROOFS,  
 RAINCOATS, Etc.**

**25 % off all OVERCOATS,  
 WATERPROOFS, RAINCOATS.**

**15 % off ZAMBRENE Weatherproofs  
 and Rubber Goods.**

**Many Slightly Soiled Waterproofs and  
 Raincoats at Nominal Prices to Clear.**

**DENTISTRY.**



Hours 10 a.m. till  
 7 p.m. Daily.

Est, 1891 'Phone 782, Cheltenham.  
**MR. SUTTON GARDNER,  
 LAUREL HOUSE  
 (Near Public Library),  
 CHELTENHAM.**

Branches at Cirencester, Stow, Bourton, etc.

**15 per Cent. (3/- in the £).**

The above Handsome Discount off present-  
 marked prices of Any Article in my Interesting  
 Stock of Jewellery and Antiques.

**HARRY O. BOX,  
 289 HIGH STREET, CHELTENHAM.**



**ST. PAUL'S TRAINING COLLEGE 2nd RUGBY XV.**

Standing.—E. Griffin, Diggle, Hughes, A. C. Williams, Mercer, Macarthy, Bayley, Groves, S. J. Williams, T. Evans.  
 Sitting.—W. H. Jones (sec.), E. E. Jones, H. H. T. Davis (capt.), Vaughan, Edwards.  
 In front.—Eaton and Goring.

SPORTS

[Photo by Cheltenham Newspaper Co., Ltd.]



**ST. PAUL'S TRAINING COLLEGE 2nd ASSOCIATION XI.**

Standing.—Sewell, Johnson, Tarrant, Beddis (vice-captain), Harrison W. Morris, J. Peart (secretary).  
 Sitting.—Self, Cullingford, Sheeres (capt.), D. T. Jones, Grace.  
 In front.—Grant, H. Smith.

[Photo by Cheltenham Newspaper Co., Ltd.]

**HIGH PRICES**

Paid for Ladies', Gentlemen's, and Children's discarded wearing apparel—Boots, Shoes, etc. A postcard to

**DEANE'S WARDROBE DEPOT,**  
 31 Worcester Street, GLOUCESTER  
 Will receive Prompt Attention.

THE NOTED HOUSE FOR FAIR PRICES.

Telephone 970.

Telegrams: "Wardrobes, Gloucester."

**Moussell Bros., Ltd.**

(Opposite G.W.R. Station),

**CHELTENHAM.**

**FURNITURE REMOVALS**

**BY RAIL OR MOTOR.**

'Phone 112.

**LAST DAY OF SALE:**

**FRIDAY, February 18th.**

**FINAL CLEARANCE**  
 OF

**LANCE'S**  
**Huge Winter Sale**

**COSTUMES, COATS,**  
**MILLINERY, UNDERCLOTHING,**  
**Furnishing and**  
**General Drapery.**

Many REMNANTS and  
 ODDMENTS to be Cleared  
 at HALF-PRICE, and a  
**Special Discount of**  
**2/- IN THE £**  
 will be allowed FOR CASH  
 at the time of purchase.

**A FEW OF THE MANY BARGAINS**  
**ARE DESCRIBED BELOW.**

|  | Original Price. | Final Reduced Price. |
|--|-----------------|----------------------|
| 100 Yards of Navy and White Pin Stripe Suiting, 54 inches wide | 16/11           | 10/11                |
| 10 Pieces of 38 inch Taffata Silk, Plain and Shot              | 12/11           | 6/11                 |
| 150 Yards of 38 inch Black Mousilene                           | 12/11           | 6/11                 |
| Good Quality Tweed Costume                                     | 5 gns.          | 59/6                 |
| Navy Gabardine Costume   | 9 gns.          | 6 gns.               |
| 6 Ladies' Blanket and Velour Coats                             | 7 gns.          | 79/6                 |
| Men's nearly all wool Flannel Shirts                           | 16/11           | 11/9                 |
| Ladies' 3-Button Kid Gloves, Brown and Tan                     | 8 11            | 5/11                 |
| Ladies' Black Cashmere all wool Seamless Hose                  | 4 11            | 3 6                  |
| Marabout Collars   | 35/-            | 21 -                 |
| 150 Yards of Double Width Cretonne                             | 8/11            | 3 11                 |
| 250 Yards of Satin Stripe Poplin                               | 12/11           | 8/11                 |
| Government Cooking Aprons with Pockets                         | 3/11            | 1/11½                |
| 100 Pair Soiled Unbleached Sheets                              | 18/6            | 12/6                 |

**JOHN LANCE**

AND COMPANY, LIMITED,

**CHELTENHAM SPA.**



**GLOUCESTER BEAT CHELTENHAM AT FOOTBALL.**

The return match between the neighbouring clubs of Cheltenham and Gloucester was played at Kingsholm on Saturday last. Cheltenham put up a surprisingly good fight against their strong opponents, who the previous week broke the record of the victorious Newport XV., and only lost by 18 pts. to 9. The whole of the gate was given to the Royal Gloucester Infirmary.

1.—Dix being attended to for an injured leg.  
2.—Some of the Cheltenham team collecting at half-time for the infirmary.

3.—A dribble by Gloucester forwards.  
4, 6, 7, and 10.—Sections of the spectators.  
5.—Another forward rush.

8.—A line-out.  
9.—Cheltenham attacking, the three-quarters passing  
[Photos by Cheltenham Newspaper Co., Ltd.]



**NEW CORN MARKET FOR CHELTENHAM.**

With the idea of making and installing a proper Corn Market in Cheltenham, the old Lamb Hotel, in High-street, has been reconstructed and turned inside-out. The old and inconvenient bar has been taken down completely, and in its place a very handsome and commodious saloon has been erected, as shown in above photograph. On the opposite side the kitchens and sculleries have been demolished, and a series of offices have been built for the use of the various corn and cake merchants. In the spacious, airy, and glass-covered vestibule the farmers meet every Thursday, and it is hoped the market will gradually become one of the largest and best in the West of England. Cheltenham is indebted to the Cheltenham Original Brewery Co. for what is a great improvement to the town and district.

1.—The new Bar. 2.—The Corn Market and Offices.

Photos by Cheltenham Newspaper Co., Ltd.

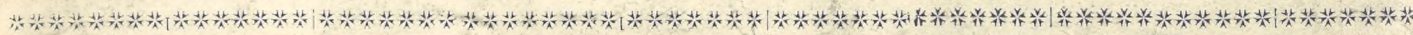


**CHELTENHAM BEAT STONEHOUSE AT FOOTBALL.**

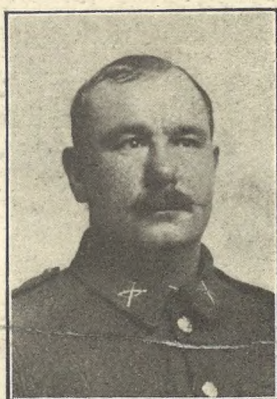
Cheltenham Town beat Stonehouse by 2 goals to nil at Whaddon-lane on Saturday last before a big crowd of spectators.

- 1. and 2.—Spectators, some of them from Stonehouse.
- 3.—Woodrow and a Stonehouse back jumping for the ball!
- 4.—A hot attack by Cheltenham.
- 5.—Stonehouse goalie saves.
- 6.—The ball goes behind in another hot attack.

[Photos by Cheltenham Newspaper Co., Ltd.]



**CADET JOHN A. HOUGHTON,**  
Late lieutenant in Royal Sussex Regiment, who was killed in the land mine outrage near Ballinalee, Ireland, on Thursday, Feb. 3, when three Auxiliaries were killed and five dangerously wounded. He was a Cheltonian who formerly lived in King's-road, and whose sister lives in the town. He was a nephew of Mr. A. Wiggett, of Church Farm, Prestbury. He was only married on Boxing day last.



**Q.M.S. C. W. CROWTHER**  
Died of wounds received at Dardanelles in Chepstow Military Hospital, Dec. 11, 1920, aged 41 years. He was the only brother of Mr. F. G. Crowther, newsagent, Cheltenham.



**EX-SERVICEMAN JOHN LONG, M.T.A.S.C.,**  
Who died in Cheltenham General Hospital, January 22, aged 28 years. He was an old Trinity School boy, and had been in the employ of Messrs. Stephens and Finch since leaving school. His mother lives at 29 Fairview-street, Cheltenham.



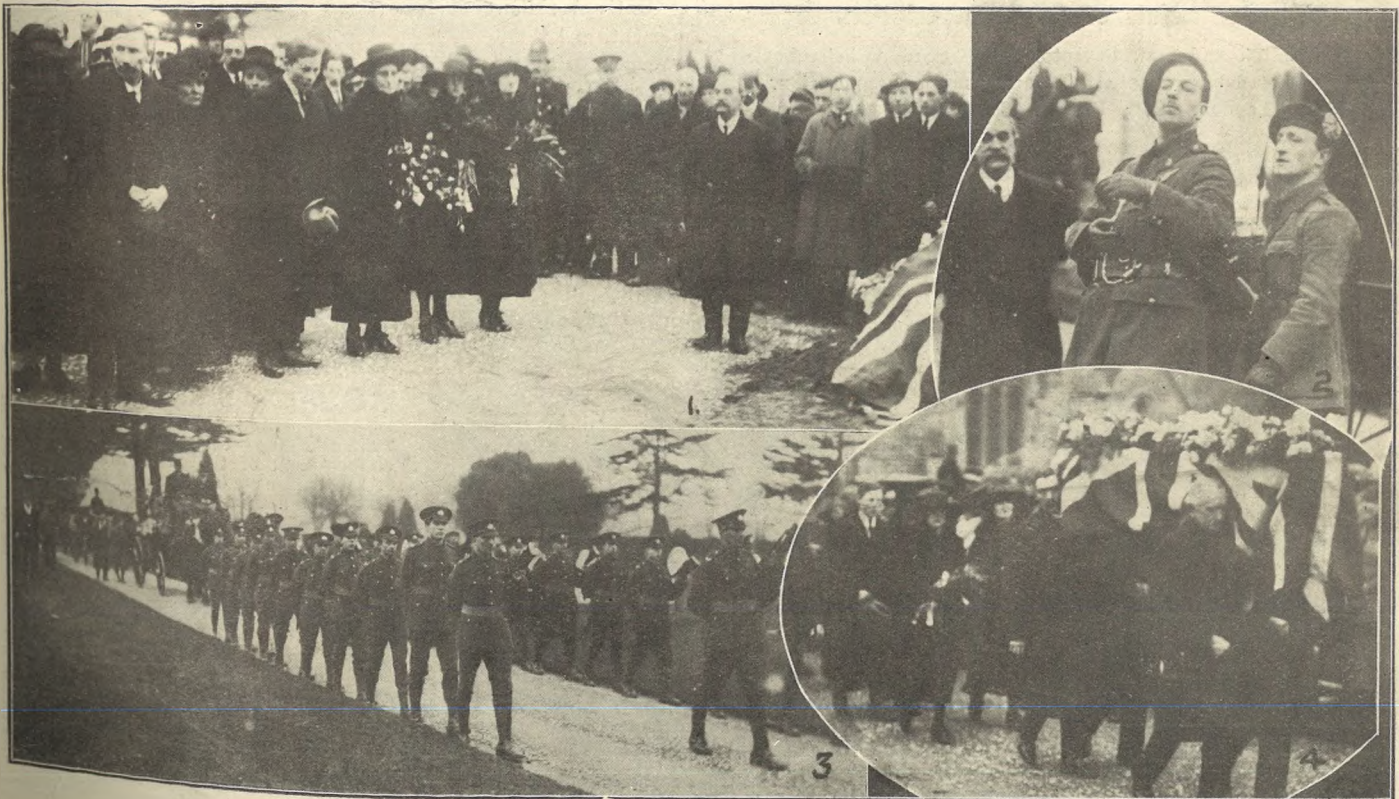
**EX-STAFF SGT. SIMON ELLIOTT,**  
Of Hibernia House, Naunton Park Cheltenham, who died in the General Hospital on February 4, aged 40, leaving a widow and three young children. He had been foreman for many years at Messrs. Norton and Co.'s garage, Regent-street, and joining up in the first year of war, became a staff sergeant in the repairing section of M.T.A.S.C., gaining the Meritorious Service Medal.

**READ THE "ECHO" EVERY EVENING.**



**THE MOST ECONOMICAL CAR ON THE ROAD.**

The above cars are a few of the famous 10h.p. Andre Citroen cars recently supplied to owners in Cheltenham and district by the Sole Agents, HAINES & STRANGE, 18, 19, 90, and 91 Albion-street, Cheltenham. It is the most economical car at present offered to the public, viz., Four-seater touring, ready for the road, £395. 38 m.p.g. petrol 1,000 m.p.g. oil.

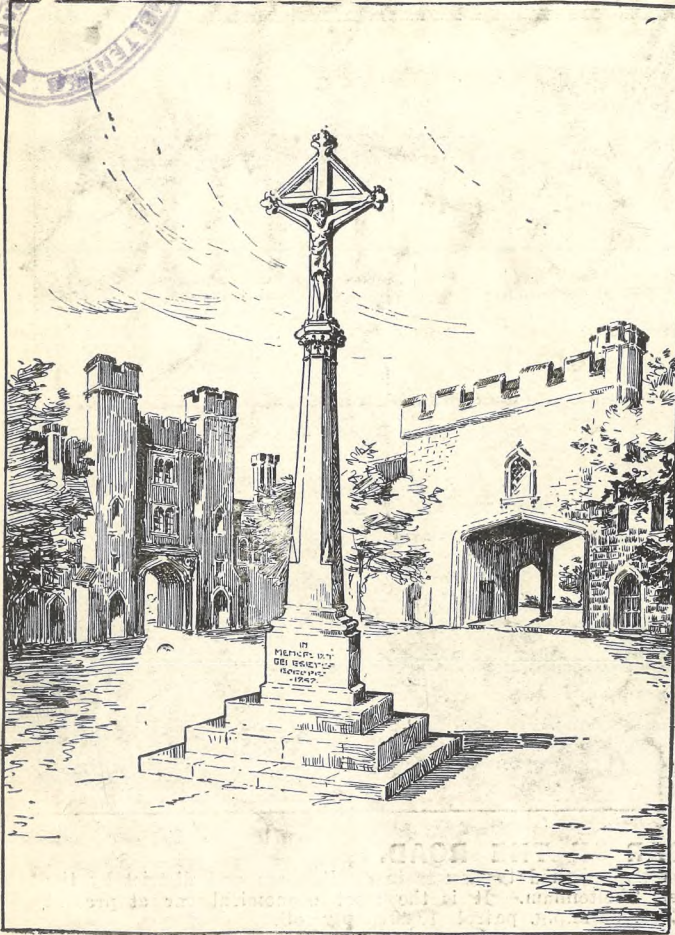


**FUNERAL OF A CHELTONIAN MURDERED IN IRELAND.**

The funeral of the late Lieut. John A. Houghton, of Cheltenham, who met his death as a cadet in the Auxiliary Division of the I.R.A., took place at Cheltenham Cemetery on Monday, February 7, before a large and sympathetic congregation. Maddox and Capt. H. A. Paton-Bruhl. 4.—The coffin covered with Union Jack. [Photos by Cheltenham Newspaper Co., Ltd.]

1.—Mourners at graveside.  
2.—Two of deceased's comrades, Capt. C.H.

3.—The firing party preceding hearse.



**War Memorials of Every Description.**

R. L. Boulton and Son, Sculptors, Bath-road, Cheltenham, will be pleased to supply full particulars on application. Medals: London, 1851; Paris, 1855, London, 1868

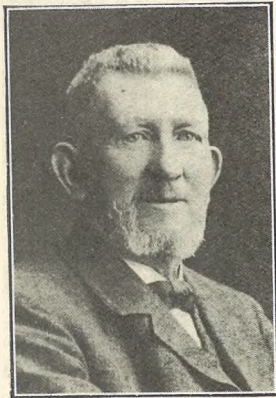


**Mr. and Mrs. Edwin Sabin,**

Of 11 Great Norwood-street (late of Suffolk-parade), Cheltenham, who celebrated their golden wedding on Friday, Feb. 4th, having been married on that date in 1871 at St. Philip's Church, Cheltenham. Mr. Sabin has been for many years a wheelchairman and writer, and despite his 75 years still works his wheelchair. They have five children living; (two sons and three daughters) and eighteen grandchildren, two being in New Zealand.

**To our Readers!**

The Postage on the "Chronicle and Graphic" is One Penny per copy. The "Graphic" is a Gratis Art Supplement, and therefore goes with the "Chronicle" by the Penny Post.



**Mr. Robert Wood,**

Of Linecroft, Weston-road, Gloucester, who died at his home on January 18, aged 87 years. He was a commercial traveller of the old school, and was one of the original members of their local association, taking great interest in it even after leaving "the road." He was widely respected and known.

The only Brush Manufacturers in Cheltenham.

**E. JOYNER & SON,**  
BRUSH & BASKET WAREHOUSE  
31 SUFFOLK PARADE (Nr. St James' Church),  
CHELTENHAM.

All Kinds of Brushes Manufactured on the Premises by Experienced Workmen.

**PAINLESS DENTISTRY,**  
**Edwards and Hirst,**  
THE DENTAL SURGERY,  
BANK CHAMBERS,  
131 High Street, Cheltenham  
(Corner of North-street).

Advice and Estimates Free.  
Hours 10 till 7.

ESTABLISHED OVER 19 YEARS.

THE  
**PIANOLA**  
PIANO.



THE WORLD'S PREMIER  
PIANO-PLAYING INSTRUMENT.

The infinite variety of touch—the rich tonal effects—the almost limitless range of musical expression it makes possible—have brought the Pianola-Piano the patronage and endorsement of the great musicians, of the leading educators, of the men and women foremost in every walk of life.

You are invited to call and try these famous instruments at the SOLE AGENTS:

**CRICHTON'S L<sup>td</sup>.**  
**Promenade, CHELTENHAM**  
Opposite G.P.O.  
Next Cavendish House.

Printed and Published as a Gratis Supplement by the Cheltenham Newspaper Company, Ltd.



# THE CHELTENHAM CHRONICLE AND GLO' SHIRE GRAPHIC

With which is incorporated the Cheltenham "Looker-On."

GRATIS SUPPLEMENT.

Saturday, February 19, 1921.

No. 1,051.

## CHELTENHAM THEATRE AND OPERA HOUSE.

Lessee: ROBERT REDFORD.

The County Theatre, Established 30 Years.

General Manager: H. OSWALD REDFORD.

This Afternoon (2-30) and Evening (7-30)—"THE PRIVATE SECRETARY."

Next Week—Successful revival of the Famous Musical Comedy "THE LADY SLAVEY."

### THE PALACE,

High Street, Cheltenham

Proprietor, Shakspeare Shenton.

Monday, Tuesday, & Wednesday:

MARY PICKFORD in Her Latest Super Production,

"HEART O' THE HILLS."

"Smashing Barriers."

"Marvels of the Universe."

"Pathe Sunbeams."

Thursday, Friday, and Saturday:

Dorothy Dalton in

"HIS WIFE'S FRIEND."

"Adventures of Shorty Hamilton."

Pictorial. Graphic. Film Pie.

### THE WINTER GARDEN

PICTURE HOUSE,

PROMENADE, CHELTENHAM

February 21st and Week.

Monday, Tuesday, & Wednesday:

"A PRINCE OF BHARATA."

Thursday, Friday, and Saturday:

"A DAUGHTER OF BRAHMA."

"WITH EDGED TOOLS."

By H. Seton Merriman.

Book Seats Now for "Prince of Wales' Tour," March 7 and week.

### ANNETTE,

High-class Corset Maker

FRENCH MODELS IN STOCK.

ONLY ADDRESS—

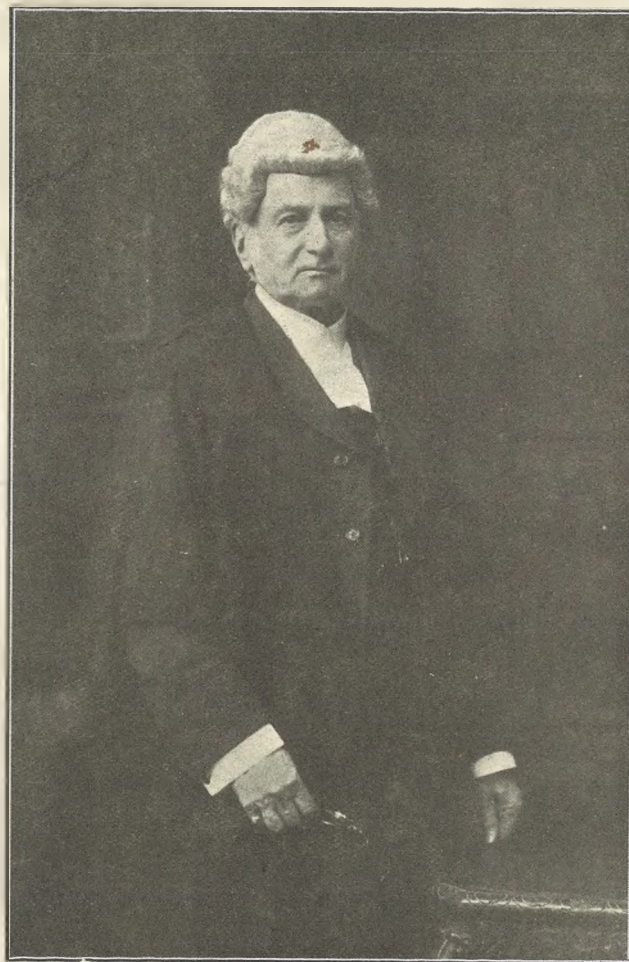
28 CLARENCE STREET.

Corsets Copied, Cleaned and Repaired

### MARTIN & CO., LTD.,

Promenade, Cheltenham

Purchase for Cash Antiques of all kinds, including Old Silver, Jewellery, Sheffield Plate, China, Coins, Miniatures, etc. Highest Prices Given for Rare Pieces.



Mr. Alfred John Morton Ball,

Of The Green, Stroud, who died on Sunday, Feb. 13, aged 75 years. He was principal of the firm of Messrs. Ball, Smith and Playne, solicitors, of Stroud. He had been Coroner for the division for nearly fifty years, was Registrar of Stroud County Court, a great worker for education, a staunch Churchman, and a leader in all charitable work.

### BEST OF EVERYTHING IN FOOTWEAR

at Prices that you should compare before you buy.

Repairs Same Day.

PROGRESS BOOT INDUSTRY,

371 HIGH STREET, Cheltenham.

ARTIFICIAL PAINLESS  
TEETH. EXTRACTIONS.

Mr. T. A. HOLBOROW,

Dental Surgery.

N RTH STREET CHAMBERS,

1 North Street, Cheltenham.

HOURS, 10-7 DAILY.

### PRICES DOWN.

Gents' Suits to Measure.  
Indigo Blue and Fancy Tweeds,  
£4 4 0.

### G. DIGGINS.

81 High Street, Cheltenham.

### NEW GOODS

at Much Lower Prices.

COLORED CASHMERE  
SOCKS 3/6 pair.

Covert, Tan, Gendarme, Cham-  
pagne; also with

COLORED SILK GLOX  
4/6 pair.

Navy and Black All Wool Cash-  
mere Socks, from 2s. 11d. pair.

### A. BECKINGSALE,

111 High St., Cheltenham.

For a  
Suitable **FRAME**

for your photograph, try

**LEE**, Caxton House,  
STATIONER, WINCHCOMBE ST.,

CHELTENHAM.

For the  
Best

**PIANOS, DALE, FORTY and CO., LTD**



**CHELTHENHAM SCHOOLBOYS VERSUS STROUD SCHOOLBOYS.**

On Saturday last a team of boys from various Cheltenham Schools played a team of Stroud boys on the Whaddon-lane ground before about 800 spectators. The result was a draw of four goals each, but Stroud played the better football.

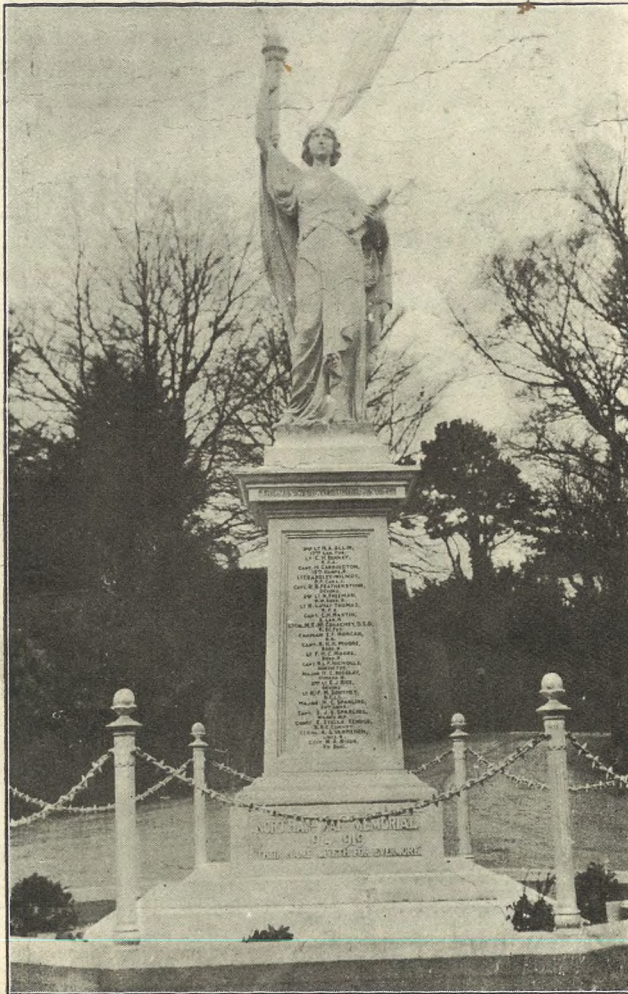
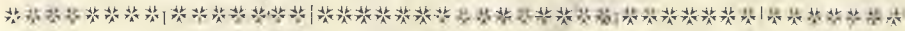
- 1.—The Stroud Boys' team.
- 2, 3, and 7.—Sections of the crowd of boy spectators.
- 4.—Cheltenham goalie misses the ball, which scored in corner of net.
- 5.—The Cheltenham Boys.
- 6.—Disabled ex-Service men from St. Martin's Hospital.
- 3.—Cheltenham goalie fists away from a melee in front of goal.
- 9.—A goal against Stroud: the goalie could not reach it.

Photos by Cheltenham Newspaper Co., Ltd.



**A FINE WELSH CHOIR IN CHELTENHAM.**

The Crumlin Male Voice Choir Party, who are singing at the Town-hall on Sunday next at 3 and 8.15 p.m. This Choir, the pick of Welsh Singers, are Winners of the South Wales Challenge Cup, 1920.



**Northam War Memorial.**

This handsome War Memorial has been recently erected at Northam, near Bideford, N. Devon. It was executed in Portland stone by the celebrated Cheltenham firm of Sculptors, Messrs. R. L. Boulton and Sons Bath-road, Cheltenham. Its height is about 17 feet.

Present Day Bargains.  
SPECIAL

**Silk Purchase.**

The present state of the FRENCH SILK MARKET has given us the opportunity of making a large purchase of

**Beautiful Silks**

which we shall offer on Monday, February 21st, and following days at practically

**Half the Original Prices**

|  | Original Price per yd. | Sale Price per yd. |
|--|------------------------|--------------------|
| Double width Duchess Mouseline, 8 colors .. .. .                 | 12/11                  | 5/11               |
| Double width Taffeta Silk Plain and Shot .. .. .                 | 12 11                  | 5/11               |
| Double width Black Mouseline Silk .. .. .                        | 12 11                  | 6/11               |
| Double width Black Taffeta .. .. .                               | 12 11                  | 7/11               |
| 10 Pieces of the Noted Lancellata Crepe, all good colors .. .. . | 10 11                  | 5/11               |
| 200 yds of Beautiful Fancy Satins .. .. .                        | 30 - to 42 -           | 10/11              |
| 20 yards Black Satin Charmeuse .. .. .                           | 29 6                   | 15/11              |

SEE WINDOWS FOR OTHER SPECIAL SILK BARGAINS.

**JOHN LANCE**

AND COMPANY, LIMITED,

Silk Specialists

**CHELTENHAM SPA.**



**ROUND THE TOWN IN CHELTENHAM.**

All sorts and conditions of men and women snapped in the Promenade on Monday morning this week. It was one of the beautiful spring-like days we have enjoyed this week.

- |  |                                       |   |
|--|---------------------------------------|---|
| 1.—Laden with pretty flowers—and other things. | 3.—Attracted by the windows.          | 7, 8, 9, and 10.—Various snaps.                           |
| 2.—A happy family party                        | 4.—Taking a constitutional.           | 11.—Saying “good-bye” to baby—Miss A. Hill and Mrs. Lucy. |
|  | 5.—Mrs. Walker and her two daughters. |   |
|  | 6.—Mr. Horace Fisher.                 |   |

Photos by Cheltenham Newspaper Co., Ltd.

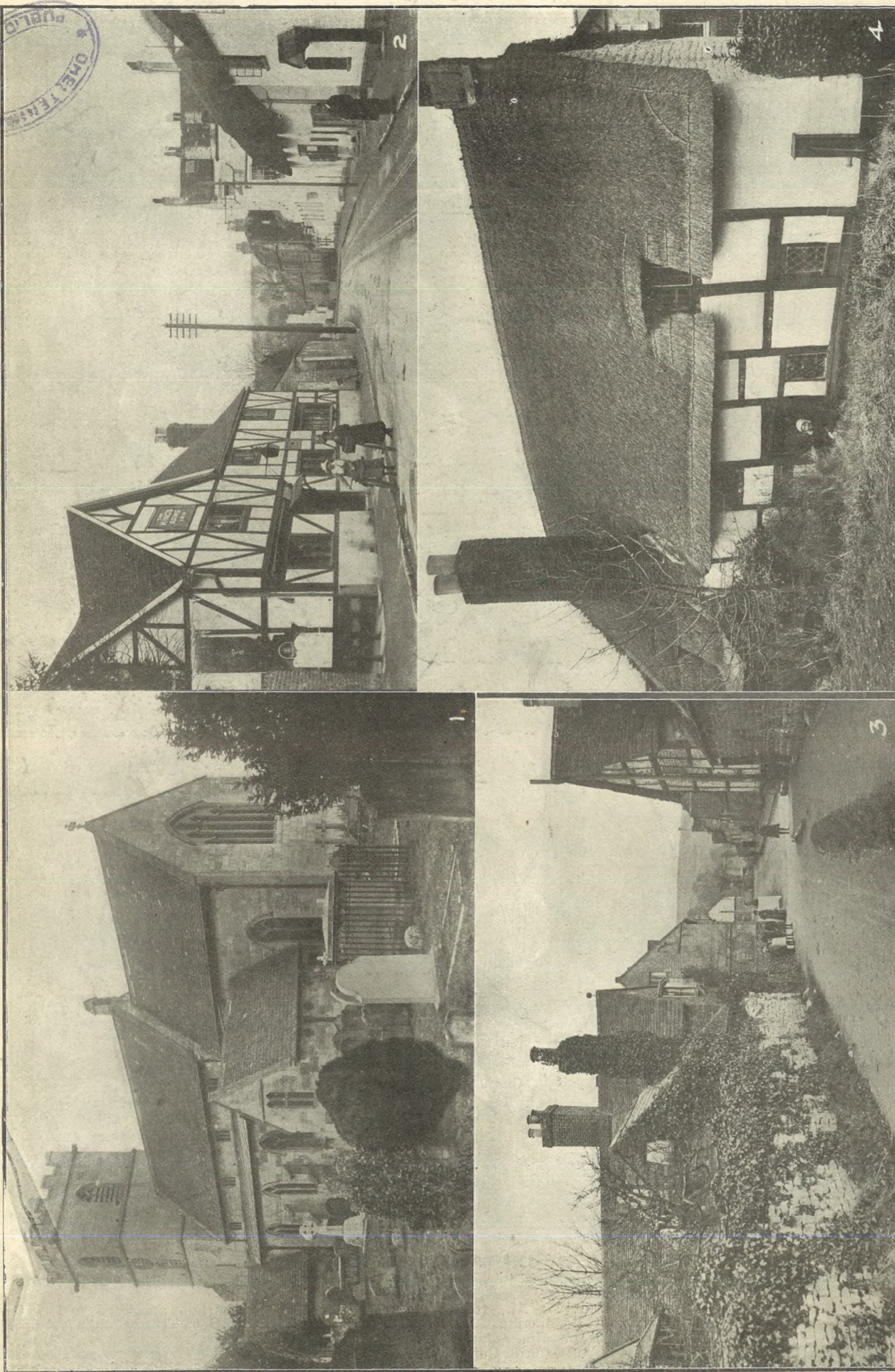


**THE COTSWOLD HOUNDS IN THE VALE.**

The Cotswold Hounds met at Coombe Hill on Tuesday morning in beautiful hunting weather. There was a very large field

- 1.—Mrs. Mellquham.
- 2.—Hounds arriving by road.
- 3.—Geo. Travess, who has been appointed huntsman to succeed Charlie Beecham at the end of this season. He is riding Grey Fox.
- 4.—Capt. Muir, M.F.H., talking to Mr. Davis, of Boddington.
- 5.—Mrs. Muir on Jim, a favourite hunter.
- 6.—Mr. Lange (of Oxford), Capt. Thorpe, and Col. Jeune.
- 7.—Some of the foot folk present at the meet.
- 8.—Jack Warburton, appointed first whip to succeed Geo. Travess, riding Fancy.
- 9.—Mrs. P. Lewis.
- 10.—A general view of the meet.
- 11.—Mr. F. H. Lewis, a local farmer.

[Photos by Cheltenham Newspaper Co., Ltd.]



**PICTURESQUE VILLAGES OF GLOUCESTERSHIRE:—PRESTBURY.**

Gloucestershire, with its varied scenery: its Cotswold uplands, the fertile Severn Vale, its Forest of Dean sylvan beauty, and the glorious Wye vistas, must be one of the most beautiful counties in England. Not the least of its jewels are the charming villages, with their old stone houses and many half-timbered relics of Elizabethan days. We propose to publish a series of illustrations of some of the prettier villages in Gloucestershire, and give this week the first of the number in Prestbury, nr. Cheltenham.

- 1.—The Church.
- 2.—The Main Street, showing the King's Arms on left.
- 3.—A view of The Burgage.
- 4.—The Almshouses, which were given to the parish in 1720 by Anne Goodricke.

Photos by Cheltenham Newspaper Co., Ltd., from whom copies can be obtained.



**PICTURESQUE PRESTBURY.**

5.—The Plough Inn at the back of the Churchyard.

6.—Lake Cottage.  
7.—Old thatched houses in High-street.

8.—The War Memorial Corner.

[Photos by Cheltenham Newspaper Co., Ltd., from whom copies can be obtained.]

**PAINLESS DENTISTRY,**  
**Edwards and Hirst,**  
**THE DENTAL SURGERY,**  
**BANK CHAMBERS,**  
**131 High Street, Cheltenham**  
(Corner of North-street).

Advice and Estimates Free.  
Hours 10 till 7.  
ESTABLISHED OVER 19 YEARS.

**Moussell Bros., Ltd.**  
(Opposite G.W.R. Station),  
**CHELTENHAM.**  
**FURNITURE REMOVALS**  
**BY RAIL OR MOTOR.**  
Phone 112.

**BEST QUALITY**  
**CIDERS**  
IN BOTTLE. — Sparkling and Still.  
**BARTHOLOMEW,**  
**419-420, HIGH STREET,**  
**CHELTENHAM.**

WINES, SPIRITS, ALES, TABLE WATERS  
and GROCERY. Tel. 135.

THE SPECIALIST FOR DISEASES AND  
DEFORMITIES OF THE FOOT.  
**MR. ALFRED J. VENTRIS-FIELD,**  
SURGEON CHIROPODIST, ORTHOPÆDIST,  
AND ELECTRO-THERAPEUTIST,  
Surgery: 6 RODNEY PLACE, CHELTENHAM.  
Hospital Trained (London). Highest Qualifica-  
tions. 30 Years' Practical Experience.  
Author "The Treatment of Talipes Valgus."  
Consultant, H.M. Forces.

**The Best**  
**Investment**  
**for 1921**

Is to buy a **BICYCLE** with a  
**REPUTATION** behind it, ∴  
SUCH AS A  
SUNBEAM, B.S.A., HUMBER, CENTAUR, OR  
SPARKBROOK,  
FROM **J. WHEWAY & Co., Agents, CHELTENHAM.**  
REPAIRS AND RENOVATIONS.

# ARTHUR BESSELL,

CHINA, GLASS, AND EARTHENWARE ROOMS,

Wedgwood House,

QUEEN'S CIRCUS (Opposite Queen's Hotel),

CHEL TENHAM.



WEDGWOOD

Your kind inspection is invited of my NEW and UP-TO-DATE STOCK.

All Goods Marked in Plain Figures at MOST REASONABLE PRICES.

## IMPORTANT NOTICE.

ARTHUR BESSELL has no interest in any other business, neither is he connected with any other firm in Cheltenham.

ONLY ADDRESS:—

WEDGWOOD HOUSE, Cheltenham.

# ∴ SPECIAL SALE OF ∴ Ladies' & Children's Boots & Shoes.

**EXTRAORDINARY BARGAINS!**

**For 10 Days Only.**

THESE LINES ARE WORTH READING ABOUT.

LADIES' BOX BOOTS, Recent Value 12/11.  
For **6/11½**.

LADIES' GLACE SHOES. Usual Price 12/11.  
Reduced to **8/11**.

LADIES' GREY SHOES, Crocodile Leather. Recent Value 25/6.  
Now **15/11**.

Our Famous "UNIFORM" SHOES, Glace Kid. Usual Value 21/9.  
For **12/11**.

LADIES' GLACE BOOTS. Reliable make. Recent Price 27/6.  
Reduced to **18/11**.

ODD MAKES in LADIES' BOOTS Reduced to about HALF PRICE.

LADIES' SUEDE FINISH SHOES, for ... **6/11**.

LITTLE CHILDREN'S SLIPPERS, **1/6½, 1/11½**.

60 Pairs SCHOOL BOOTS for BOYS or GIRLS, Box leather. Reduced from 10/11 to ... **6/11½**.

BOYS' TONEY RED BOOTS. Special Bargain. Reduced to **8/11**.

LADIES' VELVET BAR SHOES. Usual Value 8/6.  
Reduced to **4/11½**.

GIRLS' SUEDE FINISH GIBSON SHOES, Brown and Black, to be Cleared at ..... **3/11½**.

LADIES' STRONG WALKING SHOES, Tan & Black, Brogue Style. Usual Value 25/6.  
Reduced to **18/11**.

BOX CALF SHOES for Ladies' Wear. Usual Value 27/6.  
Reduced to **17/6**.

GIRLS' OXFORD SHOES, Box Leather. Reduced to **7/11**.

FROM THIS DAY UNTIL FEBRUARY 28th ONLY.

# Dicks & Sons Ltd.

ART & ECONOMY BUILDINGS  
High St. Cheltenham.



# THE CHELTENHAM CHRONICLE AND GLO' SHIRE GRAPHIC



With which is incorporated the Cheltenham "Looker-On."

GRATIS SUPPLEMENT.

Saturday, February 26, 1921.

No. 1,052.

## CHELTENHAM THEATRE AND OPERA HOUSE.

The County Theatre. Established 30 Years

Lessee: ROBERT REDFORD.

General Manager: H. OSWALD REDFORD.

This Afternoon (2-30) and Evening (7-30)—"THE LADY SLAVEY."

Next Week—The Ever Popular Musical Play "THE QUAKER GIRL."

### THE PALACE,

High Street, Cheltenham  
Proprietor, Shakspeare Shenton.

Monday, Tuesday, & Wednesday:  
The Incomparable NAZIMOVA in  
"THE BRAT."  
The Screen's Wonder Woman.  
"Smashing Barriers."  
"Marvels of the Universe."  
"Pathe Sunbeams."  
Thursday, Friday, and Saturday:  
Monroe Salisbury in  
"THE SLEEPING LION."  
"Adventures of Shorty Hamilton."  
Pictorial. Graphic.  
Mack Sennett Comedy.

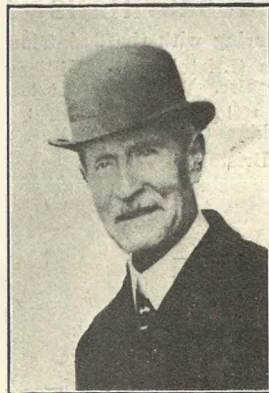
### THE WINTER GARDEN PICTURE HOUSE, PROMENADE, CHELTENHAM

February 28th and Week:  
Lyn Harding and London  
Company in  
"THE BARTON MYSTERY."  
From the Famous Novel and Play.  
Monday, Tuesday, & Wednesday:  
Norma Ta-madge in  
"ISLE OF CONQUEST."  
Thursday, Friday, and Saturday:  
"THE BLUFFERS."  
Next Week—"Prince of Wales's  
Tour." Book Seats Now.

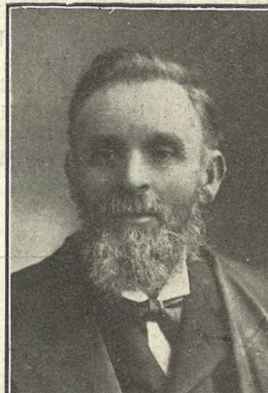
**ANNETTE,**  
High-class Corset Maker  
FRENCH MODELS IN STOCK.  
ONLY ADDRESS—  
28 CLARENCE STREET.  
Corsets Copied, Cleaned and Repaired

### MARTIN & CO., LTD., Promenade, Cheltenham

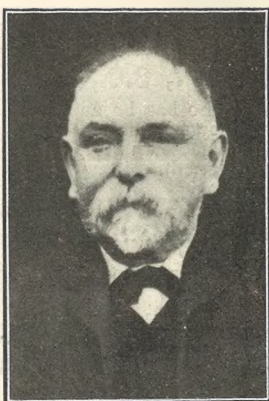
Purchase for Cash Antiques of  
all kinds, including Old Silver,  
Jewellery, Sheffield Plate, China,  
Coins, Miniatures, etc. Highest  
Prices Given for Rare Pieces.



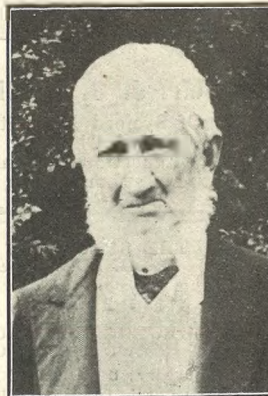
MR WILLIAM R. WEST,  
Of Worcester-street, Glou-  
cester, died very suddenly  
in Southgate-street, Glou-  
cester, on Feb. 21, aged 71.  
He was the oldest journa-  
list in the county, and for  
16 years on this paper.



MR. JOHN SIMMONDS,  
Of Marlborough House,  
Conduit-street, Gloucester,  
who died on Feb. 18th,  
aged 70 years. He sat for  
several years on the City  
Council for Barton Ward.



MR. W. W. CROWTHER,  
Of 52 Winchcombe-street,  
Cheltenham, who died after  
a long illness on Feb. 14,  
aged 69 years.



MR. THOMAS KNIGHT,  
Of Stanbrook Farm, Hart-  
pury, who died on Feb. 7,  
aged 90 years. He was a  
trusted old servant of the  
Symes family, Redmarley.

### BEST OF EVERYTHING IN FOOTWEAR

at Prices that you should compare  
before you buy.

Repairs Same Day.

PROGRESS BOOT INDUSTRY,  
371 HIGH STREET, Cheltenham.

### ARTIFICIAL PAINLESS TEETH. EXTRACTIONS.

Mr. T. A. HOLBOROW,  
Dental Surgery.

NORTH STREET CHAMBERS,  
1 North Street, Cheltenham.  
HOURS, 10-7 DAILY.

### EVERYTHING MUSICAL.

### "CHORISTER" SYMPHONIC SUPER- TONE GRAMOPHONE NEEDLES

get the best tonal effects out of  
all records. Unsurpassed for pro-  
ducing purity and mellowness of  
tone. 200 in artistic box, sealed  
2s. post free. Try a box to-day!  
"CHORISTER," 22 Montpelier St.,  
CHELTENHAM. (Copyright).

### NEW GOODS

at Much Lower Prices.

### COLORED CASHMERE SOCKS 3/6 pair.

Covert, Tan, Gendarme, Cham-  
pagne; also with

### COLORED SILK GLOX 4/6 pair.

Navy and Black All Wool Cash-  
mere Socks, from 2s. 11d. pair.

A. BECKINGSALE,  
111 High St., Cheltenham.

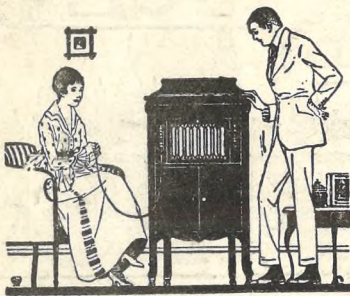
### For a Suitable FRAME

for your photograph, try

LEE, Caxton House,  
STATIONER, WINCHCOMBE ST.,  
CHELTENHAM.

For the  
Best

# PIANOS, DALE, FORTY and Co., Ltd.



**The  
Aeolian  
'VOCALION'**

A greater gramophone

THE first gramophone to mirror perfectly all the tones of voices and instruments and, through the medium of the 'Graduola' device, place these tones under the control of its owner.

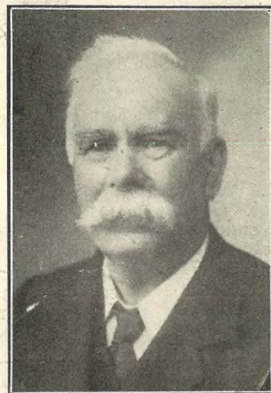
Call at our showrooms or write for illustrated catalogue

SOLE AGENT—  
**CRIGHTON'S LTD**  
PROMENADE  
CHELTENHAM.  
(Opposite the Post Office),



**GLOUCESTRIANS IN INDIA.**

A group of local boys serving with the 2nd Gloucesters, now at Rawal Pindi, India.  
Standing.—Pte. S. Evans (Bristol), Pte. Williams (Cheltenham), Pte. Mehute (Bristol), Pte. Reed (Bristol), Pte. Ward (Gloucester).  
Sitting.—Pte. Williams (Gloucester), L.-Corpl. Reid (Dymock), Pte. Woolley (Birmingham), Pte. Hoskins (Leckhampton).  
In front.—Pte. White (Bristol).



**Mr. J. C. C. Kimmins, J.P., C.C.,**

Of Ryeford Hall, Stonehouse, who has been elected Chairman of the Gloucestershire Education Committee in succession to Mr. Tom Davies, M.P. (resigned).

THE SPECIALIST FOR DISEASES AND DEFORMITIES OF THE FOOT.

**MR. A. LFD. J. VENTRIS-FIELD,**

SURGEON CHIROPODIST, ORTHOPÆDIST, AND ELECTRO-THERAPEUTIST,

Surgery: 6 RODNEY PLACE, CHELTENHAM. Hospital Trained (London). Highest Qualifications. 30 Years' Practical Experience. Author "The Treatment of Talipes Valgus." Consultant, H.M. Forces.

**15 per Cent. (3/- in the £).**

The above Handsome Discount off present marked prices of Any Article in my interesting Stock of Jewellery and Antiques.

**HARRY O. BOX,**

389 HIGH STREET, CHELTENHAM.

**WINFIELD'S  
"Reliable" Seeds.**

**SOW NOW**

WINFIELD'S SELECTED UP-TO-DATE ONION.

A perfectly-formed globe variety of large size and weight, and skin of bright straw colour. One of the best keepers ever introduced

Per Packet, 6d. Per Oz., 2s.

Mr. T. Burden, Grocer, of Seymour-road, Gloucester, said—

"I had a wonderful crop of onions from 4 ounces of your Up-to-Date Onion Seed. My crop weighed 16 cwt., and those I have left are as firm as when lifted."

WINFIELD'S SEED LIST POST FREE.

**G. WINFIELD & SON,**

Seed and Scotch Seed Potato Merchants,  
**WESTGATE, GLOUCESTER.**

**ADVERTISE IN THE "ECHO."**

**PRICES DOWN.**  
GENT'S SUITS TO MEASURE.  
INDIGO BLUE AND FANCY TWEEDS,  
£4-4-0.  
**G. DIGGINS.**  
81 High Street, Cheltenham.



**DENTISTRY.**

Hours 10 a.m. till 7 p.m. Daily.

Est. 1891 Phone 782. Cheltenham.

**MR. SUTTON GARDNER,**  
LAUREL HOUSE  
(Near Public Library),  
**CHELTENHAM.**

Branches at Cirencester, Stow, Bourton, etc.

The only Brush Manufacturers in Cheltenham.

**E. JOYNER & SON,**  
BRUSH & BASKET WAREHOUSE  
31 SUFFOLK PARADE (Nr. St. James' Church),  
CHELTENHAM.

All Kinds of Brushes Manufactured on the Premises by Experienced Workmen.

**All Your Wants Supplied**

If you have a small Prepaid Advertisement in the "Echo" and "Chronicle." It is the combination that does it, for the two papers reach all classes.



WAR MEMORIAL EUSTON.

This handsome War Memorial is now being executed for the L. and N.W. Railway Co in memory of the 3,717 employees who lost their lives in the War, and is to be fixed in London. The total height is about 45ft., and the material of the lower portion is grey granite, and upper portion Portland Stone, with four very fine bronze statues of heroic size. These latter represent four branches of the service all standing at the position "on your arms reversed." The shaft of the obelisk is surmounted by four large bronze wreaths, springing out of which is the Cross. The work is being carried out by Messrs. R. L. Boulton and Sons, the well-known Sculptors, of Cheltenham.



St. Paul's, Cheltenham, and Saltley, Birmingham, Training Colleges at Football.

Distinctive

Early

Spring Models

:: IN ::

Costumes, Gowns, Millinery,  
Coat Frocks, Skirts, Blouses,

Sports Coats and  
Jumpers.

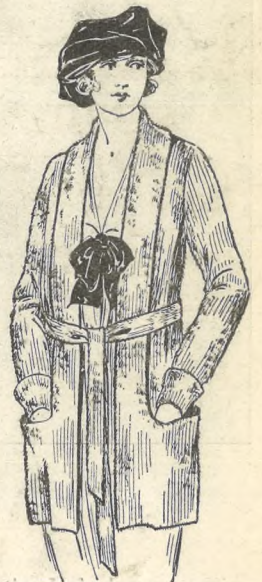


Delightful  
SPORTS  
COAT  
in  
Brushed Wool.  
Six colors.  
Special Price,  
**72/6.**

May also be had  
in Knitted Rib,  
59/6.

Ladies'  
Brushed Wool  
SPORTS  
COATS,  
in twelve  
delightful colors.  
Price

**45/6.**



**JOHN LANCE**

AND COMPANY, LIMITED,

Silk Specialists

CHELTENHAM SPA.



**FUNERAL OF MR. A. J. MORTON BALL.**

The funeral of Mr. A. J. Morton Ball, the late Coroner for the Stroud Division, took place at the Slad, Stroud, on Thursday, Feb. 17th. Part of the service was held at the Parish Church, where a great number of residents attended to show their deep sympathy with the relatives and respect for the memory of a good and faithful public-spirited gentleman.

- 1.—The cortege leaving deceased's residence.
- 2.—The coffin with the family floral tributes.
- 3.—Family and other mourners entering the church.
- 4 and 5.—Gentlemen, representing various public bodies of Stroud with which the deceased was connected, entering and leaving the church.
- 6.—The head of procession entering church.
- 7.—Mourners leaving the church.

[Photos by Cheltenham Newspaper Co., Ltd.]



**THE COUNTY CHAMPIONSHIP SEMI-FINAL AT GLOUCESTER.**

The Semi-final in the Rugby County Championship was played at Kingsholm on Thursday, Feb 17th, between Gloucestershire and Surrey before a record "gate" of over £850. The play was brilliant, Gloucestershire winning handsomely, through superior combination, by 21 points to 3.

- 1.—Pickles kicks a brilliant goal. He kicked thru during the afternoon.
- 2.—Part of the crowd in front of grandstand.
- 3.—One of Gloucestershire's typical passing movements: Feltham is coming through with the ball and is just about to pass to Voyce (on left), the Surrey full back is on his toes waiting for them.
- 4.—Mr. E. J. C. Palmer as "Micawber," collecting for the unemployed.
- 5.—Another section of spectators. They were as thick all round the ground.
- 6.—The Gloucestershire Team.
- 7.—L. G. Brown (leader of England's forwards), E. Smart G. Romans, and three of the English Selection Committee—Mr. Roberts, Major Stanley, and Mr. J. Daniels.
- 8.—A Surrey three-quarter stops a rush.

Photos by Cheltenham Newspaper Co., Ltd.



**CHELTHENHAM MUNICIPAL BAL MASQUE.**

A highly-successful Ball, at which many capital fancy-dress costumes were worn, was held at the Town-hall on Wednesday, Feb. 16th. Over 500 were present.

- 1.—Miss Lulu Smith in a Jazz costume.
- 2.—Back row: Miss Harris, Mr Gibbs, Miss D. Smith, Mr. Gilbert Sharpe, Mr. Cyril Boulter, Miss Thelma Swift. In centre: Mr. Bob Edwards, Mr. Coyney. Front row: Misses Elsie James, Nancy Franklin, and Marjorie Boulter
- 3.—Miss Clark as Early Victorian.
- 4.—Miss Stephens as Vivandiere.
- 5.—Miss Mortimer in a Jazz costume.
- 6.—An elaborate Eastern Costume.
- 7.—Miss Denton as "Bobbies."

[Photos by Debenhams, Longman and Co. Promenade, Cheltenham

**PAINLESS DENTISTRY,**  
**Edwards and Hirst,**  
**THE DENTAL SURGERY,**  
**BANK CHAMBERS,**  
**131 High Street, Cheltenham**  
 (Corner of North-street).

Advice and Estimates Free.  
 Hours 10 till 7.  
 ESTABLISHED OVER 19 YEARS.

**Moussell Bros., Ltd.**  
 (Opposite G.W.R. Station),  
**CHELTHENHAM.**  
**FURNITURE REMOVALS**  
**BY RAIL OR MOTOR.**

Phone 112.

**HIGH PRICES**  
 Paid for Ladies', Gentlemen's, and Children's discarded wearing apparel—Boots, Shoes, etc. A postcard to  
**DEANE'S WARDROBE DEPOT,**  
**31 Worcester Street, GLOUCESTER**  
 Will receive Prompt Attention.  
**THE NOTED HOUSE FOR FAIR PRICES.**  
 Telephone 970.  
 Telegrams: "Wardrobes, Gloucester."



**CHELTENHAM TOWN v. CHELTENHAM COLLEGE AT FOOTBALL.**

In aid of the Cheltenham General Hospital, a match was played on the Athletic Ground, Cheltenham, on Wednesday afternoon before a splendid crowd of spectators, between the above teams, the Town winning by 14 points to 12.

- 1.—A run by Fitz, the Town scrum half (on extreme right), who is just collared by a College three-quarter.
- 2.—Coming off the field, Burford and Benbow leading.
- 3.—The College boys made a picnic of it,

- 4.—The College Team.
- 5.—Shouting for the Coll.
- 6.—A Collegian collared with the ball.

- 7.—College masters watching play, Mr. H. H. Hardy, the headmaster, marked x.
- 8.—Some of the crowd.
- 9.—General view of the game: College attacking
- 10.—Fennell coming off at close of play.

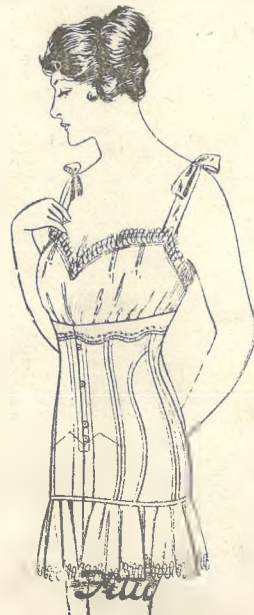
[Photos by Cheltenham Newspaper Co., Ltd.]

# Dainty Corsets of Practical Utility.

The busy, active woman, whether in the home or at business, makes constant demands on her corsets, and it is the wear and tear of "the daily round" that tests their worth. The constant and ever-growing popularity of "Fitu" Corsets prove that they have stability of character, and can withstand the ceaseless fret of the wearer's movements.



66.—White and Dove, for low average figures. 7/11



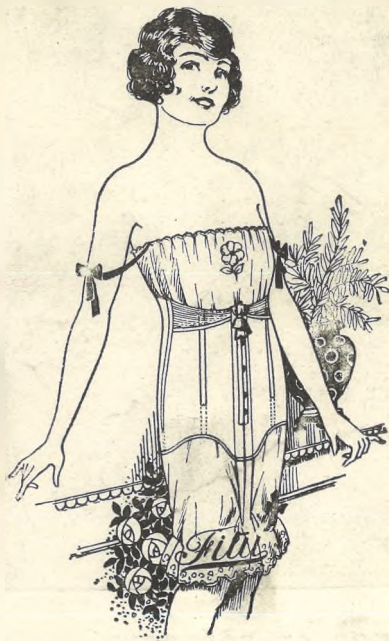
575.—Low fitting, short Corset, for all types. Sizes 0 x 8. White & Dove. 9/11

Advanced Advertisement of some of the many "Fitu" Models that will be included in the Full Page "Fitu" Advertisement of the "Daily Mail," February 26th,

# Fitu



## BRITAIN'S LEADING CORSETS.



Comfort, style and lasting satisfaction are assured to wearers of "Fitu" Corsets, because they are designed on living models carefully chosen for their perfect proportions, are made in strong, wear-resisting materials, and being fitted throughout with finely tempered steels will always keep their shape and style. EVERY "FITU" CORSET IS GUARANTEED.

738. White and Pink. Very low fitting. 8/11

530. White and Pink. For average figures. 9/11



YOUR "FITU" IS OBTAINABLE FROM  
**E. L. WARD, 136-140 High St., CHELTENHAM.**