

# THE CHELTENHAM CHRONICLE AND GLO' SHIRE GRAPHIC

With which is incorporated the Cheltenham "Looker-On."

GRATIS SUPPLEMENT.

Saturday, November 6, 1920.

No. 1,036.

## CHELTENHAM THEATRE AND OPERA HOUSE.

Lessee: ROBERT REDFORD.

The County Theatre, Established 30 Years.

General Manager: H. OSWALD REDFORD.

This Afternoon (2.30) and Evening (7.30): "GYPSY LOVE."

Next Week: The New Musical Play "THE KISS CALL."

### THE PALACE,

High Street, Cheltenham

Proprietor, Shakspeare Shenton.

Monday, Tuesday, & Wednesday:

Bombardier Billy Wells in

"SILVER LINING."

On the river, in the ring, and over

the course.

Serial, "Barrabas."

"Marvels of the Universe."

Thursday, Friday, and Saturday:

Madeline Seve in

"THE GARDEN F POISONED

FLOWERS."

Mack Sennett Comedy,

"A Woman in Grey."

"Movie Chats."

### THE WINTER GARDEN

PICTURE HOUSE,

PROMENADE, CHELTENHAM

November 8th and Week

Monday, Tuesday, & Wednesday:

Ama Layor and Gerald Ames in

"SHEBA."

From the famous novel by

"Rita,"

"The Back Secret" Serial.

Thursday, Friday, and Saturday:

MARY PICKFORD in

"HEARTS ADRIFF."

"The Whirlwind."

Matinees Daily, 2.30-4.30.

Continuous Performance, 6-10 p.m.

### WINTER OVERCOATS.

RAINCOATS and

MACKINTOSHES

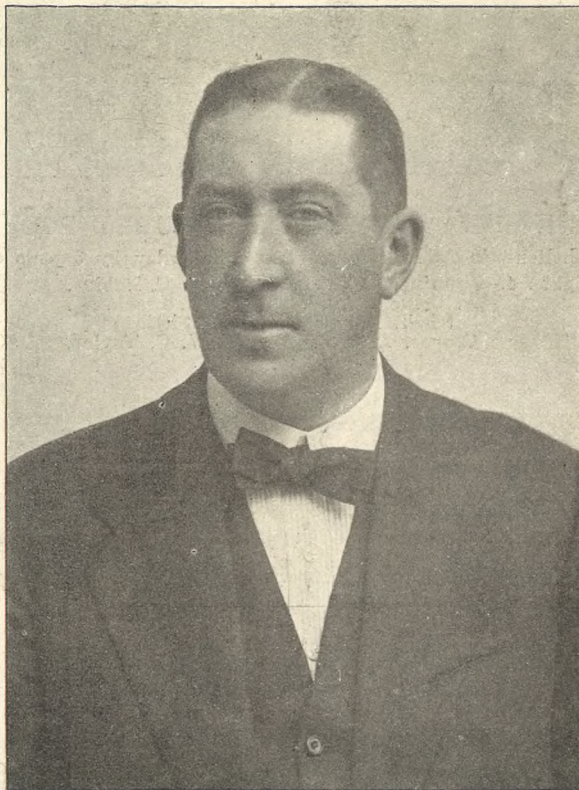
### G. DIGGINS,

81 HIGH ST., CHELTENHAM.

### MARTIN & CO., LTD.,

Promenade, Cheltenham

Purchase for Cash Antiques of  
all kinds, including Old Silver,  
Jewellery, Sheffield Plate, China,  
Coins, Miniatures, etc. Highest  
Prices Given for Rare Pieces.



Mr. J. H. Whittaker.

The popular musical director of the Cheltenham Operatic Society, who is producing "Iolanthe" at the Opera House shortly. Mr. Whittaker has also achieved great popularity as honorary conductor at the Sunday Evening Concerts with an orchestra of forty.

Buy the "Echo"  
Every Evening.

### MAKE LIFE'S WALK EASY

IN OUR FOOTWEAR.

Latest Models on Show. Best of  
Everything for Boot Making.  
Repairs Same Day.

PROGRESS BOOT INDUSTRY, CO  
371 HIGH STREET, Cheltenham.  
First Class Honours London  
City Guild.

### ANNETTE,

High-class Corset Maker

FRENCH MODELS IN STOCK.

ONLY ADDRESS—

28 CLARENCE STREET.

Corsets Copied, Cleaned and Repaired

Trinity College of Music,  
LONDON.

LAST DAYS OF ENTRY for  
Forthcoming Examinations:  
Practical Nov. 6; Theory, Nov. 11.  
Entry Forms from  
MR. ERNEST A. DICKS,  
BUCKINGHAM LAWN,  
Wellington Street, Cheltenham.

### WINTER HOSIERY.

All Wool VESTS and PANTS  
from 16/11 up.

Wool and Cotton UNDERWEAR  
in good variety from 8/6 garment.

Ribbed All Wool Socks from 3/6 pr.

FLANNEL SHIRTS, a large selection  
from 12/6 to 22/6, also to  
Measure.

### A. BECKINGSALE,

111 High St., Cheltenham.  
Phone 406.

Splendid Selection  
CHRISTMAS CARDS

for  
FOREIGN POSTAGE

now on Show.—

LEE, Caxton House,  
STATION BR., WINCHCOMBE ST.,  
CHELTENHAM.

For the  
Best

PIANOS, DALE, FORTY and CO. LTD



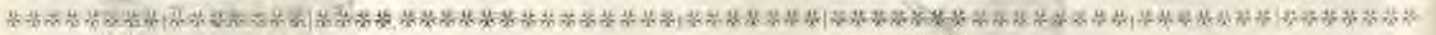


**SUNNINGEND v. CAINSCROSS RUGBY FOOTBALL.**

Sunningend beat Cainscross on the Cheltenham Athletic Ground last Saturday by 3 goals (1d. 1p.) and 1 try (15 points) to nil.

- |   |  |  |
|---|--|--|
| 1.—T. Merrell takes a pass on the right wing. | 4.—Sunningend XV. Back row: C. Robins, A. Collier, T. W. Merrell, J. Leach, W. Satchell, G. Cresswell. Sitting: H. Cooper, A. W. Rawlings, W. C. Taylor, | H. Hughes (capt.), W. Tanner, E. Eden, G. L. Thomas. Front: A. J. Smith, G. Attwood. |
| 2.—A Cainscross rush.                         |  | 5.—Cainscross team.  |
| 3.—Some heads at the match.                   |  |  |

[Photos by Cheltenham Newspaper Co., Ltd.]



**"T.B." CYCLE CAR.**  
Car Comforts—Motor Cycle Costs.

Detachable Wheels—Shaft Drive—3 Speeds and Reverse — Air or Water Cooled.

AGENCY AND SERVICE DEPOT—  
**HYDE'S** MOTOR WORKS & GARAGE,  
STOW-ON-THE-WOLD.

**WONDERFUL VALUE!**

**FINEST Milk Chocolate,**  
in Half-pound Cakes, PER 2/8 POUND.  
USUAL PRICE 4/- PER LB.

**SILK & SON,**  
146, 430 and 431 High St., Cheltenham.  
Phone 249.

**MODEL STEAM TURBINE.**  
Complete 4/11, Postage 9d.  
**J. P. PATES,**  
Promenade, Cheltenham Spa.

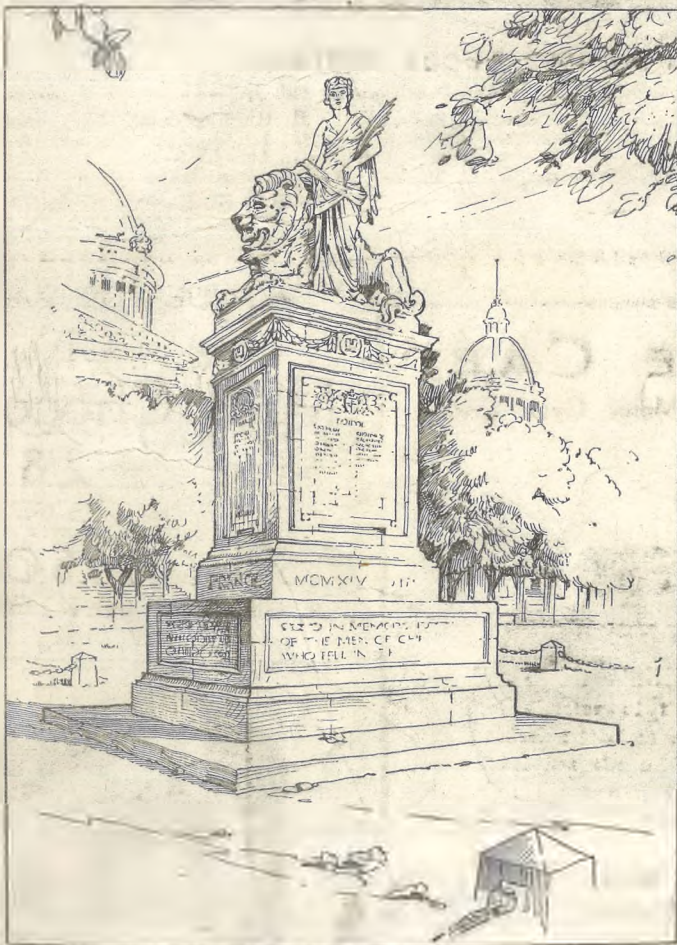




**ST. PAUL'S COLLEGE CRICKET TEAM, 1920, 1st XI.**

Back row—J Fargher (scorer), E. G. Goodey, G. A. Willetts, A. J. Hackett, G. Tocknell, R. Garland, S. Amos (umpire).  
 Middle row—L. A. Beddis (secretary), Mr. Mann, L. R. Coates (capt.), T. R. Goddard (vice-captain).  
 Front row.—W. Morris, H. Frampton, E. P. Pickens.

[Photo by Cheltenham Newspaper Co., Ltd.]



**War Memorials of Every Description**

R. L. Boulton and Son, sculptors, Bath-road, Cheltenham, will be pleased to supply particulars on application. Medals: London, 1851; Paris, 1855; London, 1868.

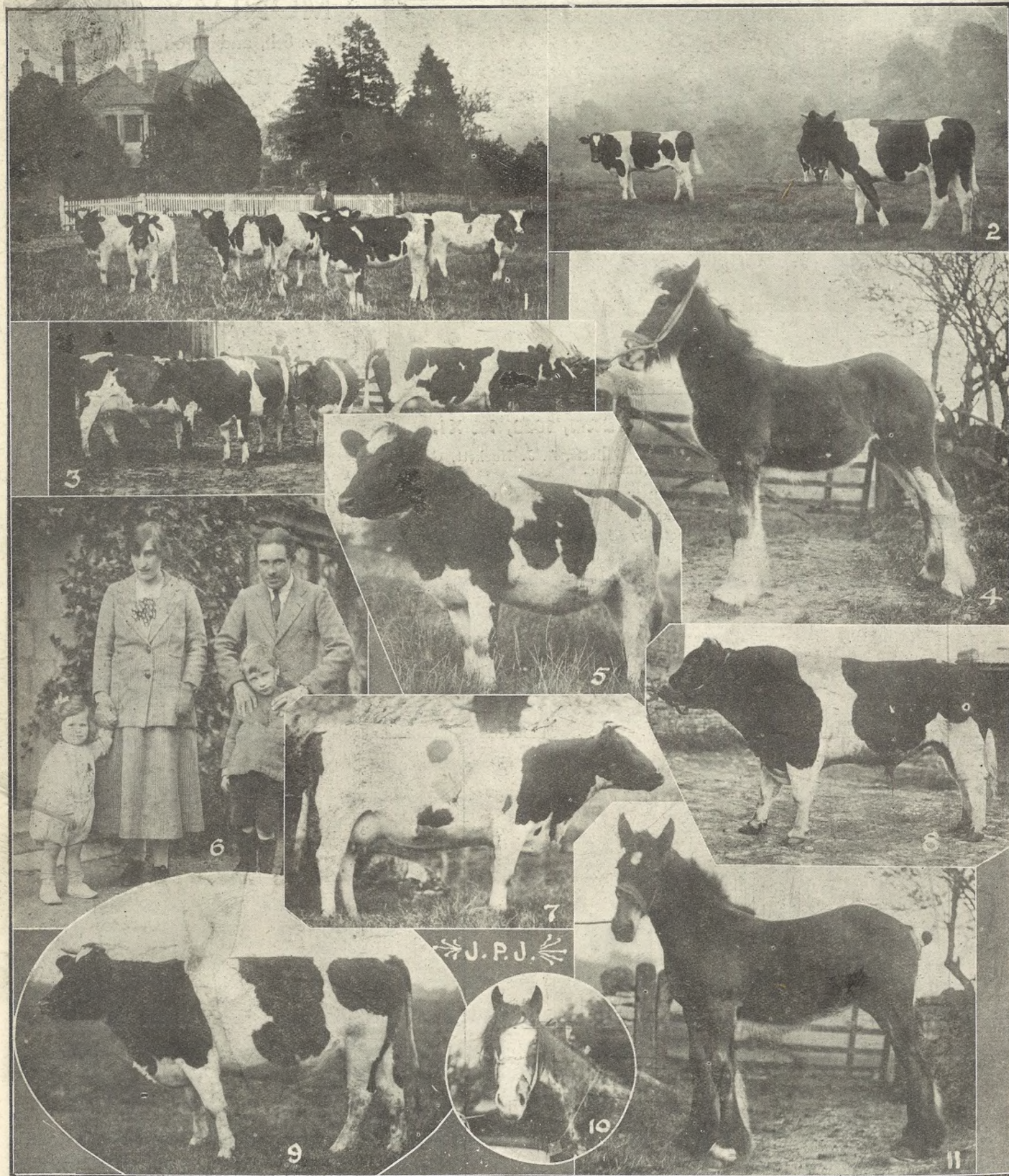
**MONDAY NEXT,**  
 Nov. 8th, and throughout the Week.  
**Great Clearance**  
 OF  
**FUR COATS**  
 AT  
**REMARKABLE REDUCTIONS**



Charming Fur Coat in Seal Coney, with Large Collar of Skunk Opossum. **£29.**  
 SPECIAL PRICE,  
 Sable Dyed Wallaby Coat, similar style to sketch. **25 GUINEAS.**  
 SPECIAL PRICE,

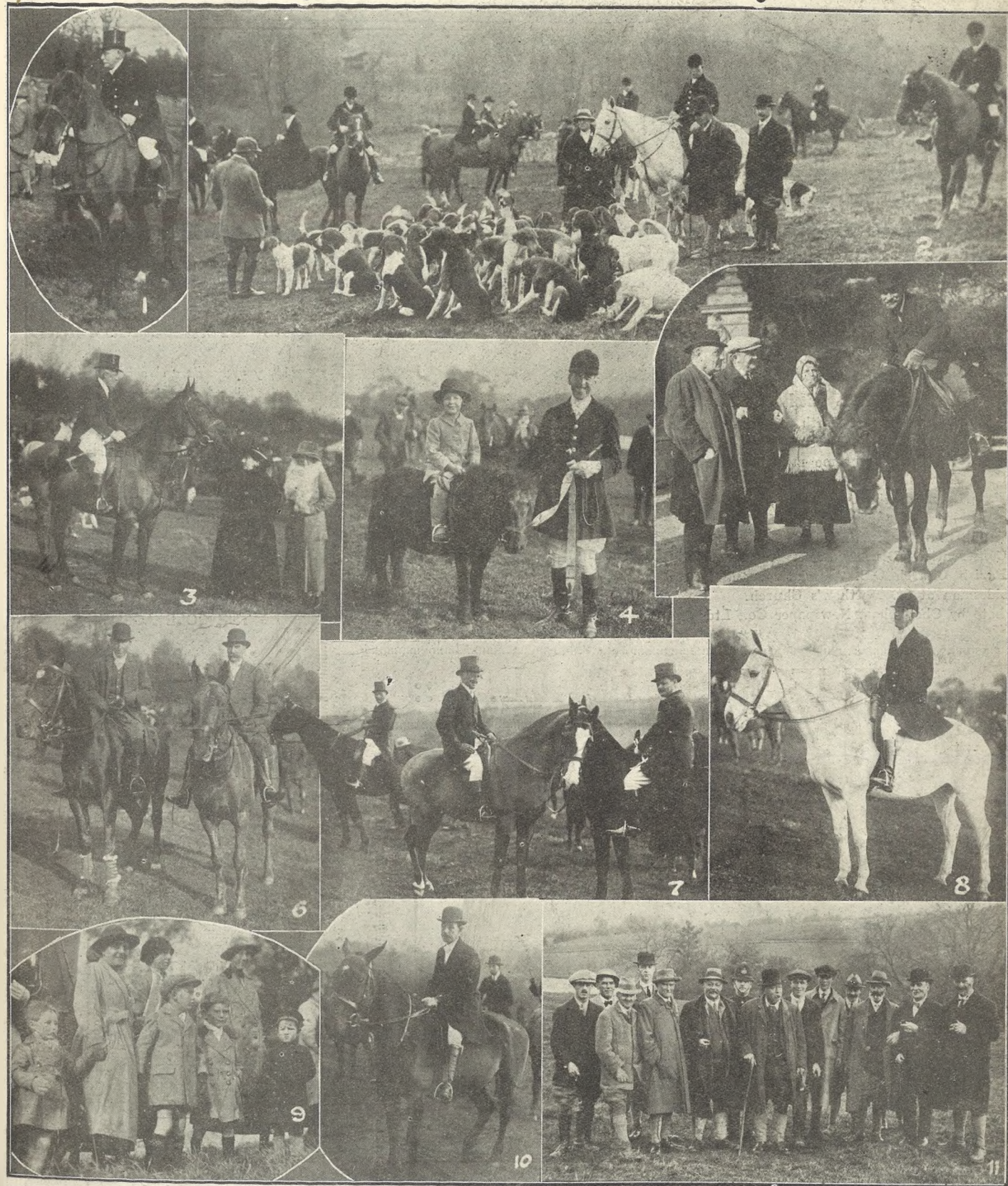
**JOHN LANCE**  
 AND COMPANY, LIMITED,  
**CHELTENHAM SPA.**  
 SERVICE — and — QUALITY





**GLOUCESTERSHIRE FARMS AND FARMERS.**

- Another Black and White Farm is illustrated this week, farmed and owned by Mr. J. Preston Jones, Rushbury, near Winchcombe. The house is a very fine old Elizabethan Manor House, and according to the title deeds was given to Sir Christopher Hatton, Keeper of the Privy Purse (after whom Hatton Garden in London is named), by Queen Elizabeth in 1582. Mr. Preston Jones specialises in British Frisian cattle.
- 1.—Home bred yearling heifers, most of which are by imported bulls.
  - 2.—Twin in-calf heifers by Hedges (Imp.) Fokke
  - 3.—Four pedigree cows, three of them heifers.
  - 4.—Cockbury Linnet, daughter of Roel Linnet (winner five firsts and two championships).
  - 5.—Langley Success, yearling heifer, a grand-
  - 6.—Mr. and Mrs. J. Preston Jones, with their son and daughter.
  - 7.—Gorstage Genista, a grand-daughter of a 1,780 gallon cow.
  - 8.—Routh Dutchman, a pure imported bull,
  - 9.—Stanfield Lillian, winner this year, first at Madresfield and Winchcombe, and third at Warwick County Show.
  - 10.—Roel Linnet, a grand shire mare.
  - 11.—A grand-daughter of Champion Goal-keeper, winner of two firsts at Derbyshire Show.
- [Photos by Cheltenham Newspaper Co., Ltd.]



**GOTSWOLD HOUNDS' OPENING MEET.**

- The Cotswold Hounds' opening meet of the season was held at Postlip Hall, the residence of the Master, Capt. and Mrs. Muir, on Tuesday last in ideal weather. A very large company was present, and the scene in the sunshine, with the slopes of the Cotswolds in their autumn colours forming a charming background, was picturesque in the extreme.
- 1.—Colonel George.
  - 2.—General view, with pack in foreground.
  - 3.—Mr. Lucas, with Mrs. Lucas and Miss Humphrys.
  - 4.—Her first Meet, The Master, Capt. Muir, with his little daughter on her Shetland.
  - 5.—Messrs. C. Alcock and J. Hedley, with Mrs. Hedley, chatting to Mr. Millard.
  - 6.—Veteran followers, Messrs. A. Holman and T. Brain.
  - 7.—Messrs. Robinson, Peel (hon. secretary), and Col. Green.
  - 8.—Mr. E. J. Gibbins, the Deputy Master.
  - 9.—Children at the Meet.
  - 10.—Mr. Harenc.
  - 11.—A group of farmers and friends. Messrs. J. Tippetts, F. Humphries, Young, Burroughs, Coyney, Geo. Hannis, Sergt. O'Rourke, T. Brooks, Fardon, Grotorex, T. Mann, Hudson, and R. W. Edwards.
- [Photos by Cheltenham Newspaper Co., Ltd. from whom copies may be obtained.]





**Mr. Walter J. Mullins,**

Of 31 St. Paul's-street North, Cheltenham, who died on Monday, November 1st, after a painful illness of some months' duration. He was for some years in the Water Department of the Corporation, and was a member of the committee of the Conservative Club, a prominent member of the Conservative Benefit Society and the Parish Church O.B. Association, and a sidesman at St. Matthew's Church.

Photo by Cheltenham Newspaper Co., Ltd.



**Rev. J. R. Penrose,**

Of Cheltenham, who was inducted to the pastorate of the Union Church, Aberdeen, on October 27th.

The only Brush Manufacturers in Cheltenham.

**E. JOYNER & SON,**  
BRUSH & BASKET WAREHOUSE  
31 SUFFOLK PARADE (Nr. St. James' Church),  
CHELTENHAM.

All Kinds of Brushes Manufactured on the Premises by Experienced Workmen.

:: "THE KISS CALL." ::



**MISS LAURA HAYWARD**  
as "Pauline Deare."



**STEPHEN FRAYNE**  
as "Dr. Thos. Pym."

**At the OPERA HOUSE, CHELTENHAM,**  
NEXT WEEK, for Six Nights, at 7.30. Matinee, Sat., Nov. 13, at 2.30.  
BOX OFFICE now open at Messrs. DALE, FORTY & Co., Ltd.

THE  
**PIANOLA PIANO**

takes you straight to the

**HEART OF MUSIC.**

It brings you the priceless gift of musician-ship. It provides you with a master skill to play the piano, and by means of the metrostyle device

**The Greatest Musicians**

guide your hands and show you how to get the fullest expression out of the music you are playing.

The "PIANOLA PIANO" stands unequalled. Its wonderful pneumatic system gives a touch with a delicacy, a power, a capacity for infinite gradation scarcely equalled by the human hand.

You are courteously invited to test these instruments yourself at

THE SOLE AGENT—

**Crichton's Ltd.,**

PROMENADE

(Opposite the Post Office), CHELTENHAM.

:: QUALITY ::

**Boots & Shoes.**

- "Queen,"
- "Bective,"
- "Jaeger,"
- "K" Footglove.

Call and Inspect at either Branch:

79 High Street;  
3 Queen's Circus,  
CHELTENHAM.

**Thos. Steel & Son.**

Established 1839.





**MUNICIPAL ELECTIONS IN CHELTENHAM.**

Contests were held in Cheltenham in four wards on Monday last, Mr. Dan Regan (Ind. Lab.) (North), Mr. W. Welstead (I.) (Central), Mr. J. Moore (C.) (South), and Miss Winterbotham (I.) (East) being elected.

- 1.—Mr. Dodwell, junr., bringing lady voters to poll in his side-car, his father standing at side.
- 2.—Workers for Mr. Welstead outside his Committee Rooms.
- 3.—A lady voter coming out of Winchcombe-street polling booth, the tellers putting down her number.
- 4.—Councillor Yarnold (standing in car), Mr. Dan Regan (the successful North Ward candidate), and Mr. W. W. Bastin (a strong supporter of Mr. Dodwell).
- 5.—A batch of voters and others off to poll.
- 6.—Mr. Holtham coming out of a polling booth.
- 7.—Mr. W. Welstead, the successful candidate, in car.
- 8.—A lady in wheel chair goes to vote.
- 9.—Another side-car voter.
- 10.—A lady voter leaving polling booth.

[Photos by Cheltenham Newspaper Co. Ltd.]





**STANWAY WAR MEMORIAL UNVEILED.**

This beautiful War Memorial was unveiled by Lady Elcho on Saturday, October 30th, before a large congregation. 1.—Countess of Wemyss (on right) speaking. 2.—Ex-Service men. 3 and 4.—Sections of congregation. 5.—Mr. Alexander Fisher, of Kensington, who modelled the figures of St. George and Dragon, chatting to Sir Philip and Lady Stott. 6.—Lady Elcho (on right) with her son. 7.—The Memorial. 8.—Countess of Wemyss speaking. 9.—Visitors. [Photos by Cheltenham Newspaper Co., Ltd.]

**DEANE'S**  
**HIGH CLASS WARDROBE DEPOT**  
 THE NOTED HOUSE FOR FAIR PRICES.

Ladies and Gentlemen's WARDROBES Purchased for Cash. Clients waited upon in town or country. Distance no object. Prompt attention given to Post or Train Parcels. Cheques sent per return subject to customer's full approval.

Note the Address:—  
**31 WORCESTER ST., Gloucester.**  
 Tel 970. Telegrams: "Wardrobes," Glos.

**Mousell Bros., Ltd.**

(Opposite G.W.R. Station),  
**CHELTENHAM.**

**FURNITURE REMOVALS**

**BY RAIL OR MOTOR.**

'Phone 112.

**PAINLESS DENTISTRY,**  
**Edwards and Hirst,**  
**THE DENTAL SURGERY,**  
**BANK CHAMBERS,**  
**131 High Street, Cheltenham**  
 (Corner of North-street).  
 Advice and Estimates Free.  
 Hours 10 till 7.  
 ESTABLISHED OVER 19 YEARS.



# THE CHELTENHAM CHRONICLE AND GLO'SHIRE GRAPHIC

With which is incorporated the Cheltenham "Looker-On."

GRATIS SUPPLEMENT.

Saturday, November 13, 1920.

No. 1,037.

## CHELTENHAM THEATRE AND OPERA HOUSE.

Lessee: ROBERT REDFORD.

The County Theatre, Established 30 Years.

General Manager: H. OSWALD REDFORD.

This Afternoon (2.30) and Evening (7.30): "THE KISS CALL."

Next Week: The New Musical Play "KISSING TIME."

### THE PALACE,

High Street, Cheltenham

Proprietor, Shakspeare Shenton.

Monday, Tuesday, & Wednesday:

H. B. WARNER in  
"THE PAGAN GOD,"  
By F. McGrow Willis.

Serial: "BARRABAS,"  
Maavels of the Universe.  
Pathe Sunbeams.

Thursday, Friday, and Saturday:

VIOLET HOPSON and  
STEWART ROME in  
"HER SON,"  
"A WOMAN IN GREY."  
GAUMONT GRAPHIC.

### THE WINTER GARDEN PICTURE HOUSE,

PROMENADE, CHELTENHAM

Monday, Tuesday, & Wednesday:

MARY DORJ and JAMES  
CAKEW in  
"TWELVE-TEN"

PEARL WHITE in  
"THE BLACK SECRET."

Thursday, Friday, and Saturday:

STELLA MUIR in  
"THE HEART OF A ROSE."  
"THE WHIRLWIND."  
A Serial of Surprises.  
LOGICAL EVENTS, ETC.

### ANNETTE,

High-class Corset Maker

FRENCH MODELS IN STOCK.

ONLY ADDRESS—

28 CLARENCE STREET.

Corsets Copied, Cleaned and Repaired

### MARTIN & CO., LTD.,

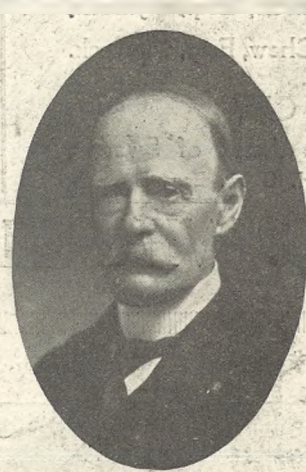
Promenade, Cheltenham

Purchase for Cash Antiques of  
all kinds, including Old Silver,  
Jewellery, Sheffield Plate, China,  
Coins, Miniatures, etc. Highest  
Prices Given for Rare Pieces.



COBPL. FRANK  
DURRANT,

Gloucester Regiment  
(one of eight military sons  
of Mr. and Mrs. W. Dur-  
rant, Barton-road, Tewkes-  
bury), recently awarded a  
first-class certificate in  
music at the Royal Military  
College of Music, Twicken-  
ham, with a special prize  
for 'cello playing—the first  
certificate of its kind ever  
given to the Gloucester  
Regiment, aged 20 years,  
and likely to fulfil the  
prophecy of becoming the  
youngest bandmaster in the  
British Army.



SIR CECIL M. W.  
BRETT, J.P., C.S.I.,  
Of Wood Stanway, near  
Winchcombe, who has been  
appointed a Justice of the  
Peace for the County of  
Gloucester.

An advertisement in the  
"Chronicle and  
Graphic" reaches all  
classes, and is a sure  
business-getter. Terms  
on application.

### DEANE'S HIGH-CLASS WARDROBE DEPOT.

THE NOTED HOUSE FOR FAIR PRICES.

Ladies' and Gentlemen's WARDROBES Purchased for Cash,  
Clients waited upon in town or country. Distance no object.  
Prompt attention given to Post or Train Parcels. Cheques  
sent per return subject to customer's full approval.

Note Address—31 WORCESTER ST., Gloucester.

Tel. 970. Telegrams: "Wardrobes," Glos.

### MAKE LIFE'S WALK EASY

IN OUR FOOTWEAR.  
Latest Models on Show. Best of  
Everything for Boot Making.  
Repairs Same Day.

PROGRESS BOOT INDUSTRY,  
371 HIGH STREET, Cheltenham.  
First Class Honour London  
City Guild.

Wonderful Value!

FINEST  
Home-Made Marmalade.

2 LBS.

Only 2/2 Each.

SILK & SON,  
146, 430 & 431 High St.  
CHELTENHAM.  
Phone 249.

### WINTER HOSIERY.

All Wool VESTS and PANTS  
from 16/11 up.

Wool and Cotton UNDERWEAR  
in good variety from 8/6 garment.  
Ribbed All Wool Socks from 3/6 pr.  
FLANNEL SHIRTS, a large selec-  
tion from 12/6 to 22/6, also to  
Measure.

### A. BECKINGSALE,

111 High St., Cheltenham.  
Phone 406.

Splendid Selection  
CHRISTMAS CARDS  
for  
FOREIGN POSTAGE  
now on Show.—

LEE, Caxton House,  
STATIO R, WINCHCOMBE ST.,  
CHELTENHAM.

For the  
Best

# PIANOS, DALE, FORTY and CO., LTD.



# Remarkable Success

At the Gloucestershire Root, Fruit and Grain Show, November 9th, 1920. :: ::

THE PRIZES BELOW WERE WON WITH CROPS GROWN FROM

## WINFIELD'S SEEDS

(See Pictures on Page 5).

### THE COUNTY CUP

(THE PREMIER WEST OF ENGLAND PRIZE)

For the Best General Crop of Roots

First Prize won by J. Williamson, Esq., Dymock.

Second Prize won by A. H. Chew, Esq., Dymock.

### The CORPORATION CUP

For the Best Three Acres of Swedes.

First Prize won by A. H. Chew, Esq., Dymock.

### The FOSTER BROS. CUP

For the Best Two Acres of Mangels.  
First Prize won by Miss F. Gibbons, Sandhurst.

### The MORRIS & GRIFFIN CUP

For the Best Four Acres of Swedes.  
First Prize won by E. Jenner, Esq., Newent.

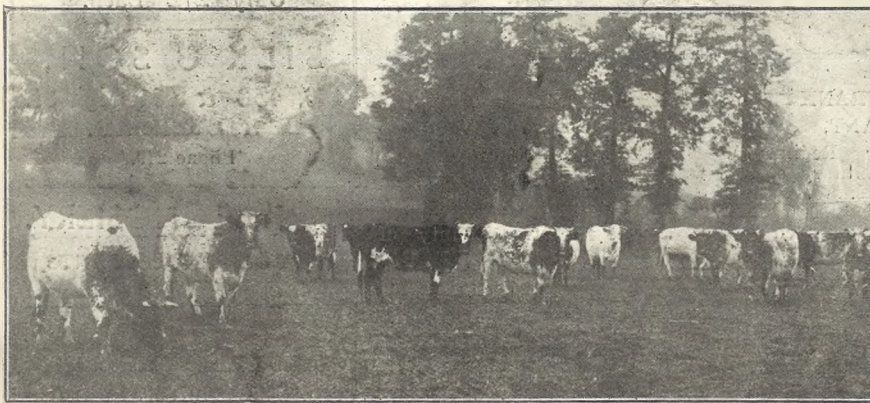
### The WINFIELD & SON'S CUP

For the Best General Crop of Mangels & Swedes.

First Prize won by J. Williamson, Esq., Dymock.  
Second Prize won by Miss F. Gibbons, Sandhurst.

Also NUMEROUS PRIZES for SPECIMEN ROOTS GROWN FROM SEEDS SUPPLIED BY

**G. WINFIELD & SON, GLOUCESTER.** ---SEED MERCHANTS---



### HERD OF EXCEPTIONALLY CHOICE DAIRY COWS,

The property of Mr. M. E. Ireland, of Jenkins' Farm, The Edge, Painswick, to be sold on November 16th, at 12.30, by Messrs. Bruton, Knowles and Co., as advertised.  
[Photo by Cheltenham Newspaper Co., Ltd.]

NOW is the Time to BUY a  
**HOT-WATER BOTTLE.**

The Largest Stocks and the Lowest Prices are to be found at

**LLOYD & KING'S,**

Please Shop as Early in the Day as possible.

**LLOYD AND KING,**

Dispensing Chemists,

109 High Street, Cheltenham.

**Moussell Bros., Ltd.**

(Opposite G.W.R. Station),

**CHELTENHAM.**

**FURNITURE REMOVALS**

BY RAIL OR MOTOR.

'Phone 112.

## NEW PIANOS

FOR THE HOME.



The Piano is the Premier Musical Instrument for the Home, and if you do not possess one we suggest that you give us a call. You can examine here some of the best instruments on the market; you can make here the most exhaustive comparisons, and choose the Piano that exactly fits your idea of case-design, of tone-quality, and of price.

**Crichton's Ltd.,**

PROMENADE,

**CHELTENHAM.**

(Opposite the Post Office).





**FRUIT SHOW AND SALE AT GLOUCESTER MARKET.**

The Annual Fruit Show at Gloucester Fruit Market was held on November 3rd, and despite the bad fruit season, was an unqualified success.

- 1.—Messrs Sandoe, senr., Sandoe, junr., Exhibitors and sellers
- 2.—Councillor H. O. Roberts, the Mayor, 3.—Buyers.
- 3.—Councillor Mrs Siveter, and Mr. Clut- 4.—The fruit auction in progress.
- 4.—terbuck (City Accountant).

[Photos by Cheltenham Newspaper Co., Ltd.]

**PAINLESS DENTISTRY,**  
**Edwards and Hirst,**  
**THE DENTAL SURGERY,**  
**BANK CHAMBERS,**  
**131 High Street, Cheltenham**

(Corner of North-street).  
 Advice and Estimates Free.  
 Hours 10 till 7.  
 ESTABLISHED OVER 19 YEARS.

Buy the "Echo"  
 Every Evening.

**BEST QUALITY**  
**CIDERS**  
 IN BOTTLE. — Sparkling and Still.

**BARTHOLOMEW,**  
**419-420, HIGH STREET,**  
**CHELTENHAM.**

WINES, SPIRITS, ALES, TABLE WATERS  
 and GROCERY. Tel. 135.

For Nature study a rockery is to be built  
 in Kensington-avenue School playground,  
 East Ham.

Great Clearance  
 OF  
**FUR COATS**  
 AT  
 REMARKABLE REDUCTIONS



Charming Fur Coat in Seal Corey, with Large  
 Collar of Skunk Opossum. **£29.**

Sable Dyed Wallaby Coat, similar style to  
 sketch. **25 GUINEAS.**

**JOHN LANCE**  
 AND COMPANY, LIMITED.  
**CHELTENHAM SPA.**  
 SERVICE — and — QUALITY





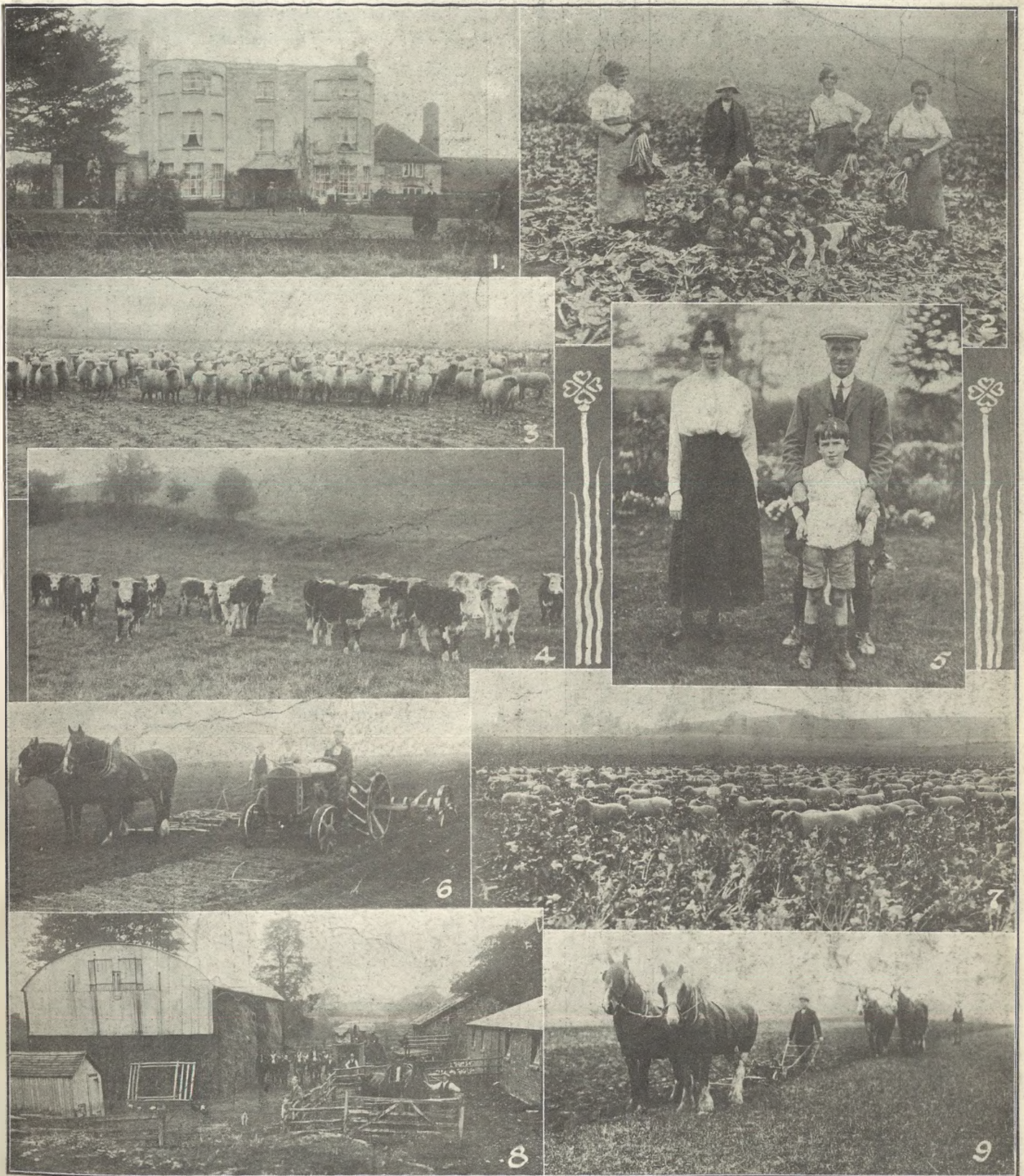
**Cheltenham College (8pts.) v. Rugby School (31pts.), November 6th, 1920.**

1.—Spectators. 2.—Danby handing off. 3.—Perreau kicks a goal. 4.—Well tackled. 5.—Harding (Chelt.) heads a dribble. 6.—Spectators. 7.—Danby gets over with a try which the referee disallowed.



**Hockey—Western Counties Ladies (No. 3) v. American Ladies (No. 2), at East Gloucester Ground, Nov. 6**





**GLOUCESTERSHIRE FARMS AND FARMERS.**

Winner of the County Cup for Roots of the Gloucester Root, Fruit, and Grain Society. It was announced at the show of the above Society, on Tuesday last, that Mr. John Williamson, of Lintridge, Dynock, had won the County Cup or 20 guineas for the best general crop of roots in the county. Mr. Williamson's farm is a model of cleanliness and good farming, and although he does not specialise in pedigrees, the stock on the farm is of good class and in splendid condition.

- 1.—Lintridge Farm. The house.
- 2.—Women pulling and topping mangold's.
- 3.—Flock of tegs on turnips.
- 4.—Store Hereford bullocks, 15 to 18 months old.
- 5.—Mr. and Mrs. Jno. Williamson, with their youngest son.
- 6.—Working the ancient and modern methods.
- 7.—Flock of tegs feeding on rape and turnips—an unusual sight nowadays.
- 8.—Some of the buildings at Lintridge Farm.
- 9.—Ploughing a field for wheat.

[Photos by Cheltenham Newspaper Co., Ltd.]

A photo of the farm of Mr. A. H. Chew, who won second prize, will appear in next week's issue.





**THE HOST AND GUESTS AT THE MUNICIPAL BANQUET, CHELTENHAM TOWN HALL, NOVEMBER 9th.**

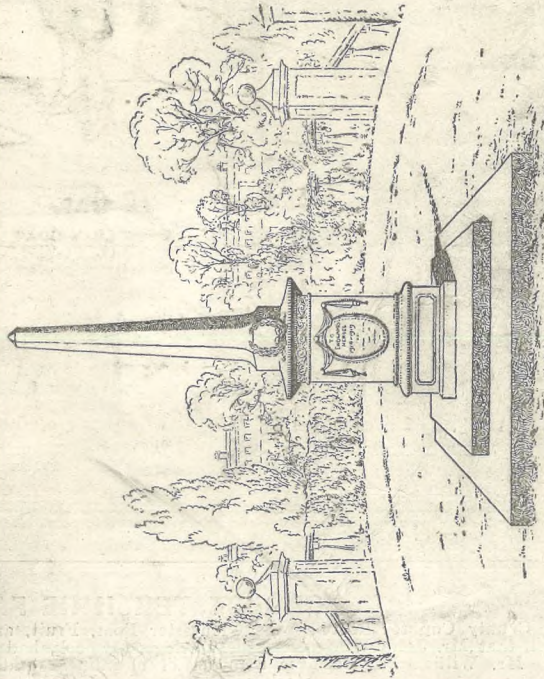
Back Row.—S. Bendall, A. J. Barker, R. Minnett, J. E. Bendall, F. J. Mountain, A. E. Hudson, Jos. Bendall, F. C. Dodwell, Dr. J. Howell, E. D. Ricketts, Jno Bendall, G. E. Sharpe, T. A. Burns, J. S. Pickering, F. H. Harris, Wm. Alford.  
 Second row—Supt. Griffin, Ald. Hensley, Rev. C. E. Stone, R. O. Seacome, Coun. Dicks, H. E. Bianch, S. E. Harrison, Coun. D. Reub, H. Hardy, W. T. Long, Dr. Garnett, Coun. Moore, Coun. Sawyer, T. H. Packer, Coun. Rogers, Rev. Dr. Flecker, Coun. Jamieson, Dr. Kirk and E. Bourne, D. Lewis, Coun. Pates, F. Cooper, J. W. Betteridge, Major Stanley Clarke.  
 Seated.—Councillors Stewart, Mann, Thomas, and Whitaker, Ald. Steel, Coun. Miss Winterbotham, The Mayor, Rev. H. A. Wilson, Ald. Green, Councillors Yearold, Stanley, and Wilkine, Ald. Taylor, Ald. Mangrett.



**CHELTENHAM ROOT, FRUIT, AND GRAIN SHOW.**

Back row.—E. T. Leighton, Sid Staur, Gillett, G. Page  
 Middle Row.—F. J. Peacey, F. Hitch, L. R. Peel, C. Jackson, C. Roberts, J. Colebath, T. Hyatt, W. Ride, W. Hitch.  
 Seated.—W. H. Smith, W. Cypher, G. Mellingham, A. D. Wilcox, W. F. Hicks Beach (chairman), C. C. Castle (hon. sec.), W. W. Theobald (vice-chairman), Major C. L. Harford (hon. treasurer), E. J. Gibbins.

[Photo by Cheltenham Newspaper Co., Ltd.]



**War Memorials of Every Description**

R. L. Boulton and Son, sculptors, Bath-road, Cheltenham will be pleased to supply full particulars on application. Medals: London, 1861; Paris, 1865; London, 1868.



# SANDERSON'S

## Wonderful FUR COAT BARGAINS.

**MONDAY NEXT, and few following days.**

**D**AY in and day out—Summer as well as Winter—for the last 16 years Mr. Sanderson has been buying and selling Fur Coats. In Brighton and London he is known as an expert in Fur Coats, and holds a big reputation for the Wonderful Bargains he invariably secures.

In our very modest premises, with extremely little window display, we are probably already selling more Fur Coats than any other firm in the district. The reason is SANDERSON'S SELL COATS in many cases cheaper than Local Shops can BUY them, and people are constantly finding it out. Let us quote YOU in competition with any London or Local Store. We will save you £s.

**THE PICK OF THE PELTS. QUALITY & SATISFACTION GUARANTEED. LONDON AND PARIS STYLES.**

Walk round the Showroom.—Examine any Coat—inside Leather as well as outside Fur—and try where you will, no firm will offer you the same high quality under £5 to £20 per Coat more, according to price of Coat.



The "Ritz" wonderful FUR COAT, in Long Hair Coney, richly lined Silk, at the Absurd Price of **10 Gns.** Worth £21.



One of the Sumptuous FUR COATS at **15 Gns.** The Cheapest Fur Coats in England.

Wonderful Value in **MOLE CONEY COATS.** Delightful New Shapes. Clear Silky Skins. Elaborately Lined Rich Silk. Bargain Price **15½ Gns.** Worth £25



**21 Gns.**

Delightful MODEL in Rich Seal Coney, lined Silk, ABSURDLY CHEAP.

**12 Gns.**

Smart Little COAT in SEAL CONEY. Many Extraordinary Bargains.

**18 Gns.**

As Sketch.—A magnificent FUR CAPE in Rich Kolinsky Coney, lined silk to match. As advertised at £35. SANDERSON'S PRICE, **18 Gns.** In Mole Coney 32½ Gns.

The "Pearless."—A SUPERB MODEL MOLE CONEY FUR COAT. Massive adaptable Wrap Collar. Delightful shape with Skins of Flounce worked reverse way. Lined Satin to match. **25½ Guineas.** As advertised at 67 Gns.

Extraordinary Offer of Maker's Stock of

**10 Gns. Model VELOUR FUR COLLAR COATS.**

Many lined expensive French Floral Silks. Elaborate new styles in Navy, Beech, Saxe, Wheat, Fawn, Nigger, etc.

**79/6.**

The Cheapest Coats in England.

Wonderful VELOUR COATS, with massive Mole Coney Fur Collar, lined Silk, at **79/6** Instead of 10 guineas.

The "Regal" SQUIRREL CONEY is the Newest of this Season's Fashions. Charming Model, 45 ins. long, with deep inset sleeves and extravagantly large collar, superbly coloured French lining. USUAL PRICE **37½ GNS.**

SALE PRICE **19 Gns.** Cash

The "Paris," gorgeously rich KOLINSKY CONEY FUR COAT, made of skins specially chosen for their softness, lightness and the clear depth of the dark brown colour. The model is from an exclusive Paris shape, lined with Soft French Plain or Flowered Silks.

ABSURDLY CHEAP. **18 Gns.**

Exact Copy of £100 Model. The Cheapest Fur Coats in England.

The "Berkley," Superb Model composed of MOLE AND SEAL CONEY, breaks away from the sombre all-black coat. Skins of rich and lustrous beauty, light in weight and of pleasing softness. 46-ins. long, lined soft silk.

USUAL PRICE **35 GNS.**

This Week **15½ Guineas.**

Also in Mole Coney, 15 Gns.

The "Princess," luxurious MODEL FUR COAT in finest Soft Silky French Coney Skins, with large REAL NATURAL SKUNK COLLAR. Elaborately lined Multi Coloured French Satin.

SALE PRICE

**39 Guineas**

Net Cash.

As advertised in London at £75.

The "Grosvenor." To find a good, reliable BROWN FUR COAT at a moderate price is difficult now that natural Musquash is commanding such high prices. This smart and exquisitely made Model is in Brown Kolinsky Coney of exceedingly rich quality, lined rich silks in various tones. Usual Price 35 Gns.

**17½ Guineas**

Spot Cash.

ABSURDLY CHEAP.

SANDERSON'S, The Famous Blouse Shop, HIGH STREET (Cambray Corner), CHELTENHAM.





**COUNTY CHAMPIONSHIP MATCH AT GLOUCESTER.**


Gloucestershire played Devonshire in the first of this season's championship matches at Kingsholm, Gloucester, on Saturday last, handsomely winning a fine game by 15 points to 3. The Gloucestershire backs played a brilliant game.

- 1.—One of the many illegal incidents in the match unseen by the referee. A Devon forward pushing Williams as he jumps for the ball.
- 2.—Spectators. There was a fine "gate."
- 3.—Feltham, the Bristol wing three-quarter, who played a fine game, coming through with the ball.
- 4.—The Gloucestershire team.
- 5.—Spectators on the outside stand.
- 6.—The play leading up to Pickles's try.
- 7.—Voyce fails at goal.

[Photos by Cheltenham Newspaper Co., Ltd.]

\*\*\*\*\*

**WANTED!**  
I am anxious to Purchase for Ready Cash, at Tip-Top Prices, Valuable Pieces of Diamond and Gem-set Jewellery. Price No Object for the Right Class of Goods.  
**HARRY O. BOX,**  
339 HIGH STREET, CHELTENHAM.  
(Opposite Grammar School.)  
Established Nearly 70 Years.



**DENTISTRY.**  
Hours 10 a.m. till 7 p.m. Daily.

**MR. SUTTON GARDNER,**  
**LAUREL HOUSE**  
(Near Public Library),  
**CHELTENHAM.**

Est, 1891 Phone 782, Cheltenham. Branches at Cirencester, Stow, Bourton, etc.



# THE CHELTENHAM CHRONICLE AND GLO' SHIRE GRAPHIC

With which is incorporated the Cheltenham "Looker-On."

GRATIS SUPPLEMENT.

Saturday, November 20, 1920.

No. 1,038.

## CHELTENHAM THEATRE AND OPERA HOUSE.

Lessee: ROBERT REDFORD.

The County Theatre, Established 30 Years.

General Manager: H. OSWALD REDFORD.

This Afternoon (2.30) and Evening (7.30): "KISSING TIME."

Next Week: First Visit of the enormously successful comedy "THREE WISE FOOLS."

### THE PALACE,

High Street, Cheltenham

Proprietor, Shakspeare Shenton.

Monday, Tuesday, & Wednesday:

From the Story by Stuart Woodley,  
"A TEMPORARY VAGABOND,"

Featuring Henry Edwards and  
Chrissie White.

Serial, "BARRABAS."

Thursday, Friday, and Saturday:

Ivy Close, in  
"THE FLAG LIEUTENANT."

Mack Sennott Comedy.  
"A Woman in Grey."  
Movie Chats."

### THE WINTER GARDEN PICTURE HOUSE,

PROMENADE, CHELTENHAM

Enormous Attraction for

November 22 and Week:

LESLIE HENSON,  
In.

"ALF'S BUTTON,"

The Film of the Season.

Continuous Performance 2.30 to  
10 p.m.

Seats Booked for 2.30 and 6.0 p.m.  
only.

Phone 212.

### ANNETTE,

High-class Corset Maker

FRENCH MODELS IN STOCK.

ONLY ADDRESS -

28 CLARENCE STREET.

Corsets Copied, Cleaned and Repaired

### MARTIN & CO., LTD.,

Promenade, Cheltenham

Purchase for Cash Antiques of  
all kinds, including Old Silver,  
Jewellery, Sheffield Plate, China,  
Coins, Miniatures, etc. Highest  
Prices Given for Rare Pieces.



### Amateur Operatics in Gloucester.

The Gloucester branch of the National Carol League (formed to aid St. Dunstan's) are giving a week's performance of "H.M.S. Pinafore" at the Palace Theatre, Gloucester.

- 1.—Hebe (Mrs. F. C. J. Romans) and Sir Jas. Porter, K.C.B., (Mr. R. Finch).
- 2.—Bob Becket (Mr. W. F. Virgo), Ralph Rackstraw (Mr. Reg. Morgan), and Bill Bobstay (Mr. G. Brooking).
- 3.—Capt. Corcoran (Mr. E. R. Lewis) and Dick Deadeye (Mr. S. Capener).
- 4.—Buttercup (Mrs. G. H. Bland).

[Photos by H. E. Jones, Northgate-street, Gloucester.]

### BEST OF EVERYTHING IN FOOTWEAR

at Prices that you should compare  
before you buy.

Repairs Same Day.

PROGRESS BOOT INDUSTRY,  
371 HIGH STREET, Cheltenham.

### DENTAL SURGERY.

ARTIFICIAL PAINLESS  
TEETH. EXTRACTIONS.

All Advice and Estimates Free.

Mr. T. HOLBOROW,

1 NORTH STREET,  
CHELTENHAM.

Personal Attention to every Patient.

Over 20 YEARS' Experience in  
England and France.  
HOURS 10-7 DAILY.

### WINTER HOSIERY.

All Wool VESTS and PANTS  
from 16/11 up.

Wool and Cotton UNDERWEAR  
in good variety from 8/6 garment.

Ribbed All Wool Socks from 3/6 pr.

FLANNEL SHIRTS, a large selection  
from 12/6 to 22/6, also to  
Measure.

### A. BECKINGSALE,

111 High St., Cheltenham.  
'Phone 406.

Splendid Selection

CHRISTMAS CARDS

for

FOREIGN POSTAGE

now on Show.—

LEE, Caxton House,  
STATION R., WINCHCOMBE ST.,  
CHELTENHAM.

For the  
Best

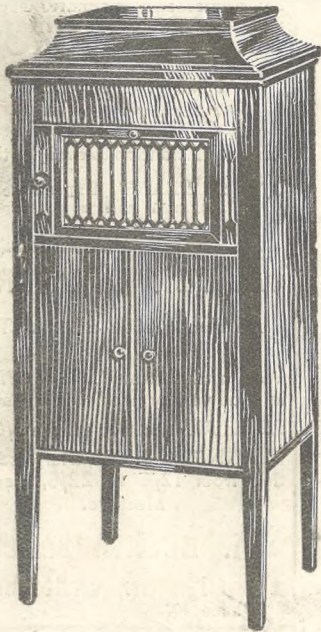
# PIANOS, DALE, FORTY and CO., LTD.





**CHELTENHAM COLLEGE ENTERTAINMENT TO EX-SERVICE MEN ON ARMISTICE DAY.**

**THE  
AEOLIAN  
VOCALION.**



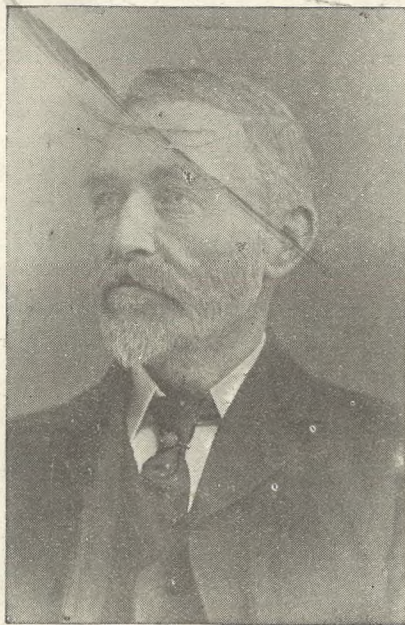
**THE DANCER'S GRAMOPHONE.**

Great Reduction in Prices.

Sole Agent:

**Crichton's Ltd.,**  
PROMENADE,  
**CHELTENHAM.**

Representatives  
Paul. O'May.



**Councillor W. T. Boughton, J.P.,**

Of 1100 Farm, near Tewkesbury, and clothier and outfitter, Barton-street, Tewkesbury, elected Mayor of Tewkesbury, November, 1920, 32 years Councillor (L.).



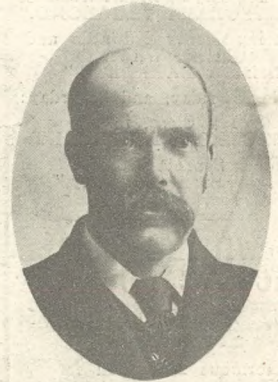
**YOU CAN'T DO BETTER**

Than send a P.C. for your  
**SUNDAY NEWSPAPERS**

to—

**BROWN'S NEWSAGENCY,**  
226 High Street, Cheltenham.

A landlord stated at Wandsworth County Court that he had received over 2,000 applications for an empty flat at Putney.



**Alderman John W. Howell,**

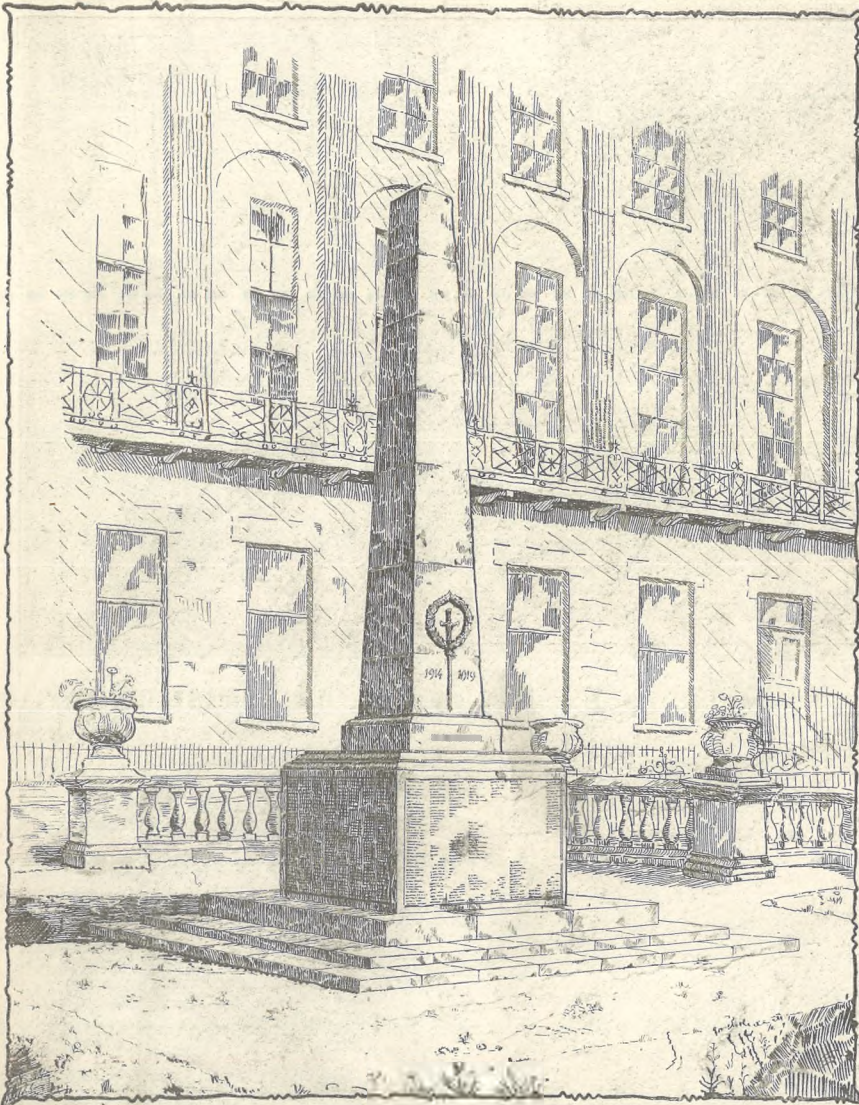
Builder, of Tewkesbury, who was elected Alderman on retiring from councillorship on November 9th. He had been a councillor since 1906.



**Mr. W. B. Coopey,**

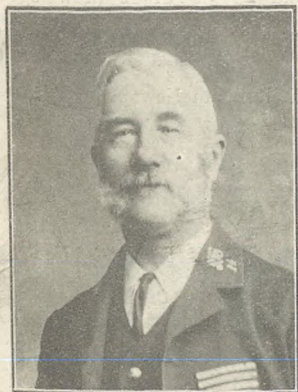
Late of 10 Montpellier-villas, Cheltenham, and of Bentham, who died on Wednesday, November 10, aged 72 years. He was for many years assistant overseer for Badgeworth, Witcomb, and Shurdington, retiring in 1916. He was a staunch Conservative, and secretary for many years of the Shurdington branch of the Gloucester Conservative Benefit Society.





**The Cheltenham War Memorial.**

This design for the Cheltenham War Memorial has been finally selected by the Committee, and the work has now been put in hand by the famous firm of sculptors, Messrs. R. L. Boulton and Sons, Bath-road, Cheltenham. It is to be erected in the centre of the Promenade Gardens, in the old bandstand space, and the names of the fallen will be inscribed on the four sides of the base. The cost is £1,320 without the inscriptions, which will be an extra £580, including the rank and regiment of the deceased soldiers, a total of £1,900. The amount subscribed up to the present is £1,665 10s 11d., and additional subscriptions are earnestly desired, and should be paid to the Treasurer, care of "Echo" Office, Cheltenham.



**Mr. John Smith,**

Cirencester Lodge, Fairview, Cheltenham, who died on Nov. 3rd, aged 66 years. He was an ex-postman, who retired six years ago after 38 years' service, receiving the long service medal.

**SPECIALIST FOR DISEASES OF THE FOOT**  
**MR ALFD. J. VENTRIS FIELD.**  
 Surgeon-Chiropodist, Orthopaedist, and Electro-Therapeutist, Hospital Trained (London). Highest Qualifications. 30 Years' Practical Experience. Author "The Treatment of Talipes Valgus." Consultant H.M. Forces. Surgery: 6 RODNEY PLACE, CHELTEMHAM.

**Mousell Bros., Ltd.**

(Opposite G.W.R. Station),

**CHELTEMHAM.**

**FURNITURE REMOVALS**

**BY RAIL OR MOTOR.**

'Phone 112.

**LANCE'S**  
**Great Silk Offer**

**£5,000**

WORTH OF

**SILKS**

At 30 to 50 per cent. off present prices.

An Unprecedented Opportunity for buying Perfect Goods at Remarkable : : : : : Prices. : : : : :

Heavy Weight Crepe de Chine—Pink, Sky, Ivory, Mauve & Black. Season's Price, 12/11. **Special Price, 7/11.**

The Noted "Lancella" Crepe, in forty delightful colours. A good washing fabric. Season's Price, 10/11. **Special Price, 7/11.** 40 inches wide.

Double Width Taffeta Silk, in Black Mole, Grey, Saxe, and Amethyst. Usual Price, 12/11. **Special Price, 8/11**

**IMPORTANT NOTICE.**

SPECIAL ATTENTION IS PARTICULARLY INVITED TO THE REMARKABLE PRICE CONCESSION IN OUR HUGE STOCK OF WOOLLEN DRESS FABRICS SUITABLE FOR DRESSMAKING.

**JOHN LANCE**

AND COMPANY, LIMITED,

**CHELTEMHAM SPA.**





**CHEL TENHAM V. GLOUCESTER AT FOOTBALL.**

The first match this season between these old rivals was played on the Athletic Ground on Saturday last, Gloucester winning easily by 24 points to 3.

- 1.—A fine rush of Gloucester forwards in the first half.
- 2, 4, and 5.—Spectators. There was a fine "gate."
- 3.—A. Hudson (the Gloucester sec.), J. Southey (the referee), and the respective captains (Fred Webb and Bert Davy), neither of whom played owing to injuries.
- 6.—Two old Gloucester players, Walter Taylor and Frank Stout (now spectators).
- 7.—The Gloucester three-quarters on the move. Daniell making a dash for the line.

[Photos by Cheltenham Newspaper Co., Ltd.]

|  |  |  |
|--|--|--|
| <p><b>PAINLESS DENTISTRY,</b><br/><b>Edwards and Hirst,</b><br/><b>THE DENTAL SURGERY,</b><br/><b>BANK CHAMBERS,</b><br/><b>131 High Street, Cheltenham</b><br/><small>(Corner of North-street).</small><br/>Advice and Estimates Free.<br/>Hours 10 till 7.<br/><b>ESTABLISHED OVER 19 YEARS.</b></p> | <p><b>WANTED!</b><br/>I am anxious to Purchase for Ready Cash, Tip-Top Prices, Valuable Pieces of Diamond and Gem-set Jewellery. Price No Object for the Right Class of Goods.<br/><b>HARRY O. BOX,</b><br/>339 HIGH STREET, CHELTENHAM.<br/>(Opposite Grammar School.)<br/>Established Nearly 70 Years.</p> <hr/> <p>The only Brush Manufacturers in Cheltenham.<br/><b>E. JOYNER &amp; SON,</b><br/><b>BRUSH &amp; BASKET WAREHOUSE</b><br/>31 SUFFOLK PARADE (Nr. St. James' Church), CHELTENHAM.<br/>All Kinds of Brushes Manufactured on the Premises by Experienced Workmen.</p> | <p><b>SPECIAL OFFER.</b><br/><b>CALIFORNIAN SEEDED RAISINS.</b><br/><i>MOST ECONOMICAL TO USE.</i><br/><b>1/5 per packet.</b><br/><b>16/6 per dozen packets.</b><br/>TRY US FOR QUALITY AND VALUE.</p> <hr/> <p><b>SILK &amp; SON,</b><br/><b>146, 430 and 431 High St., Cheltenham.</b><br/>PHONE 249</p> |
|--|--|--|





**CHELTENHAM RACES.**

A brilliant two-day meeting was held on Tuesday and Wednesday last, the weather being glorious, the number of runner record, and the attendance splendid.

- 1.—Messrs. Stratton (left) and Healing (right) with a friend.
- 2.—At the last fence in Southam Selling Hurdle Race, won by Col. D. H. Leslie's Life Buoy; Myran Style, the favourite.
- 3.—Last fence in Cleeve Selling Steeplechase, won by Mr. H. A. Brown's The Lust, owner up (on left), Oppidan 2nd.
- 4.—First time round in first race of first day.
- 5.—Ladies in paddock.
- 6.—A discussion regarding what to follow.
- 7.—Wilton Heath winning Amateur Riders' Hurdle Race.
- 8.—A College boy and his mother.

[Photos by Cheltenham Newspaper Co., Ltd.]



**CUP TIE FOOTBALL MATCH AT TEWKESBURY.**

Tewkesbury Association team played Cheltenham on Saturday, November 13, in a round of the Northern Junior Cup Competition before a splendid crowd of spectators.

- 1, 2, 3, 4, and 5.—Sections of the spectators.
- 6.—Exciting play in front of Tewkesbury goal.
- 7.—The Cheltenham team.

[Photos by Cheltenham Newspaper Co., Ltd.]





**THE GREAT SILENCE IN CHELTEMHAM.**

At 11 o'clock on November 11 the two minutes' silence was strictly observed throughout Cheltenham, as elsewhere. At the corner of the Promenade, where a large number of people congregated, the effect was most profound, the only sounds heard being a baby crying and the click of our photographer's camera as he recorded the above scenes.

[Photos by Cheltenham Newspaper Co., Ltd.]

**Remarkable Success**

At the Gloucestershire Root, Fruit and Grain Show, November 9th, 1920. :: ::

THE PRIZES BELOW WERE WON WITH CROPS GROWN FROM

**WINFIELD'S SEEDS**

(See Pictures on Page 7 opposite).

**THE COUNTY CUP**

(THE PREMIER WEST OF ENGLAND PRIZE)

For the Best General Crop of Roots

First Prize won by J. Williamson, Esq., Dymock.

Second Prize won by A. H. Chew, Esq., Dymock.

**The CORPORATION CUP**

For the Best Three Acres of Swedes.

First Prize won by A. H. Chew, Esq., Dymock.

**The FOSTER BROS. CUP**

For the Best Two Acres of Mangels.

First Prize won by Miss F. Gibbons, Sandhurst.

**The MORRIS & GRIFFIN CUP**

For the Best Four Acres of Swedes.

First Prize won by E. Jenner, Esq., Newent.

**The WINFIELD & SON'S CUP**

For the Best General Crop of Mangels & Swedes.

First Prize won by J. Williamson, Esq., Dymock.

Second Prize won by Miss F. Gibbons, Sandhurst.

Also NUMEROUS PRIZES for SPECIMEN ROOTS GROWN FROM SEEDS SUPPLIED BY

**G. WINFIELD & SON, GLOUCESTER.** ---SEED MERCHANTS.---





**GLOUCESTERSHIRE FARMS AND FARMERS.**

The second prize in the County Cup Competition of the Gloucestershire Root, Fruit, and Grain Society for the best general crop of roots was won on Nov. 9th by Mr. A. H. Chew, Callow Farm, Dymock, who also won the Gloucester Corporation Cup for the best three acres of swedes. This farm we illustrate above. It is another model of farming, beautifully clean, hedges closely cut, horses and stock in fine condition, good outbuildings, and the whole homestead, including farm buildings, profusely lit by electric light, which costs nothing, the dynamo being driven by water power from a small stream.

- 1.—The house and lawn. The date on fireplace in the hall is 1641.
- 2.—Tractor ploughing for wheat.
- 3.—Hedge trimming. Mr. Chew inspecting
- 4.—The teams just returned from work.
- 5.—Feeding bullocks.
- 6.—The Kerry Hill breeding flock.
- 7.—Callow Farm, general view of house and buildings.
- 8.—Some of the yearling cattle.
- 9.—One of the cottages on the farm.
- 10.—Pedigree Gloucester Old Spot pigs.

[Photos by Cheltenham Newspaper Co., Ltd.]



# FURNITURE OF UNUSUAL VALUE.

We are continually fighting high prices, and invite you to Visit our Showrooms, where we can demonstrate that

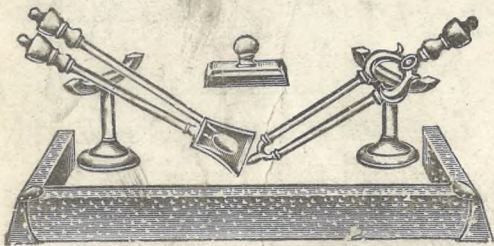
**REALLY WELL MADE AND ARTISTIC FURNITURE CAN STILL BE SOLD AT REASONABLE PRICES.**



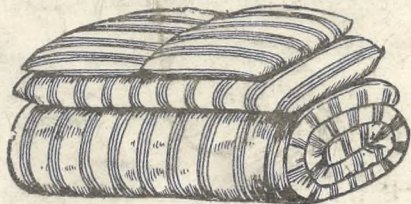
3-Piece Drop End Chesterfield Suites, Upholstered in Tapestry, from **19 Guineas.**



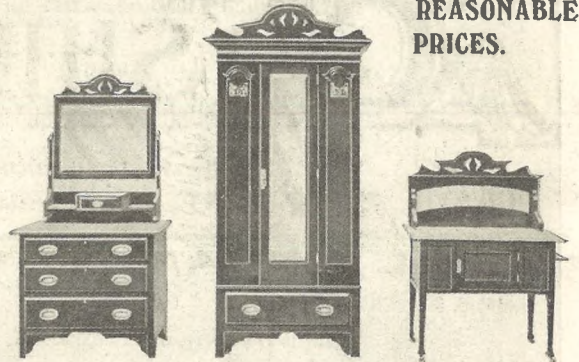
Divan Chairs, Upholstered in Tapestry, **£3 17s. 6d.**



Hearth Curbs, in Oxidised Copper, **10/11 to 3 Guineas.**  
Fireirons to match, **12/11 to 2 Guineas.**



Purified Hygienic Bedding, 4ft. 6in., Wool Mattress, **50/- to £4 15s. 0d.**  
Pillows, **4/11 to 15/11.**

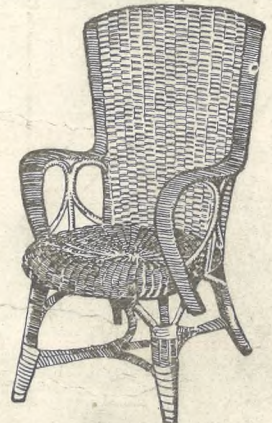


Bedroom Suites, handsomely made and highly finished, similar to illustration, in Satin Walnut, Polished Mahogany Colour, or in Solid Oak in Fumed or Antique Colour. **24 Guineas.**  
4ft. 6in. Bedstead to match, **£5 19s. 6d.**

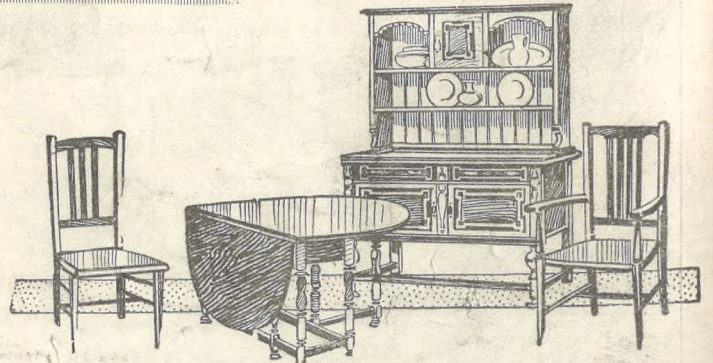
**SPECIAL BARGAINS IN BOOT DEPARTMENT.**



Ladies' Velvet Box Shoes, similar to illustration, but with Higher Heels, **4/11 1/2** Usual Price, 6/11. Pair.



Wicker and Rush Chairs, strongly made. Similar design to illustration, **12/11, 15/11.**



Reproduction in Oak, Fumed and Antique Colour Chair Suites, **10 Guineas**; Antique Design Dresser, **12 Guineas**; Gate Leg Table, **£5 18s. 6d.**

Real Witney Blankets,  
Single Bed Size,  
**32/6 Pair.**

**Dicks & Sons Ltd.**  
172 & 173 HIGH STREET  
**Cheltenham Spa**  
TEL. 1007  
50 YEARS REPUTATION FOR VALUE.

Real Witney Blankets,  
Double Bed Size,  
**57/6 Pair.**



# THE CHELTENHAM CHRONICLE AND GLO'SHIRE GRAPHIC

With which is incorporated the Cheltenham "Looker-On."

GRATIS SUPPLEMENT.

Saturday, November 27, 1920.

No. 1,039.

## CHELTENHAM THEATRE AND OPERA HOUSE.

The County Theatre, Established 30 Years.

Lessee: ROBERT REDFORD.

General Manager: H. OSWALD REDFORD.

This Afternoon (2.30) and Evening (7.30): "THREE WISE FOOLS."

Next Week: The Cheltenham Operatic and Dramatic Society present "IOLANTHE."

### THE PALACE,

High Street, Cheltenham

Proprietor, Shakspeare Shenton.

Monday, Tuesday, & Wednesday  
"DARBY AND JOAN."  
By Sir Hal Caine,  
Featuring Derwent Hall Caine and  
Ivy Close.

Serial:—  
"SMASHING BARRIERS."  
"Marvels of the Universe."  
"Pathe Sunbeams."  
Thursday, Friday, and Saturday:  
"DARBY AND JOAN."  
Matinees Only.  
John Barrymore in  
"ON THE QUIET."  
Evenings Only.  
Mack Sennett Comedy.  
"A Woman in Grey."  
"Movie Chats."

### THE WINTER GARDEN PICTURE HOUSE, PROMENADE, CHELTENHAM

November 29th and Week:  
LOUISE GLAUM in  
"S A H A R A"  
Beautiful Scenes of the Mysterious  
Desert.  
Monday, Tuesday, & Wednesday:  
Pearl White in  
"THE BLACK SECRET."  
Matinee Film.  
"Love the Only Law."  
Thursday, Friday, and Saturday:  
"THE WHIRLWIND," Serial.  
Matinee Film,  
"The Fringe of Society."  
Continuous Performance from 2.30  
to 10 p.m.

### ANNETTE,

High-class Corset Maker

FRENCH MODELS IN STOCK.

ONLY ADDRESS -  
28 CLARENCE STREET.

Corsets Copied, Cleaned and Repaired

### MARTIN & CO., LTD.,

Promenade, Cheltenham

Purchase for Cash Antiques of  
all kinds, including Old Silver,  
Jewellery, Sheffield Plate, China,  
Coins, Miniatures, etc. Highest  
Prices Given for Rare Pieces.



Married 71 Years.

Mr. and Mrs. Henry Fisher, of Bismore, Eastcombe, near Stroud, whose happy wedded life lasting 71 years was brought to a close by the death of Mr. Fisher last week at the age of 96. Mrs. Fisher, who survives, is 95. They were married in 1849. He was a Primitive Methodist for over 50 years, and was a regular attendant at the chapel at Chalford. In the old days he used to "pitch" the tune and led the hymns on a clarinet. He began work at the age of 12 for 3d. a day, and his occupation was that of a woodman. He was in the employment of the late Sir John Derington, at Lypiatt Park, for over 30 years.

### VISITORS AND RESIDENTS

Are invited to inspect the interesting Collection of  
ORIENTAL and ENGLISH ANTIQUE OBJECT  
d'ARTS, PORCELAINS, ENAMELS, FURNITURE,  
Etc., in the GALLERY NOW OPENED AT  
19 PROMENADE, CHELTENHAM, by :: :: ::

JOHN BRYANT, OF STROUD,

Collector of Antiques.

Established 1857.

### ANCIENT COTSWOLD CHURCHES BY ULRIC DAUBENY.

Important original work describing 100 Churches in a  
district where Norman work abounds and even Saxon  
evidences are plentiful. Fully illustrated from line draw-  
ings and photographs. Cloth bound. Crown quarto size  
(10 x 7½). Limited Subscribers' Edition One Guinea net.

ED. J. BURROW, & Co., Ltd., CHELTENHAM.

### BEST OF EVERYTHING IN FOOTWEAR

at Prices that you should compare  
before you buy.

Repairs Same Day.

PROGRESS BOOT INDUSTRY,  
371 HIGH STREET, Cheltenham.

### DENTAL SURGERY.

ARTIFICIAL PAINLESS  
TEETH. EXTRACTIONS

All Advice and Estimates Free.

Mr. T. HOLBOROW,

1 NORTH STREET,  
CHELTENHAM.

Personal Attention to every Patient.

Over 20 YEARS' Experience in  
England and France.

HOURS 10-7 DAILY.

### WINTER HOSIERY.

All Wool VESTS and PANTS  
from 16/11 up.

Wool and Cotton UNDERWEAR  
in good variety from 8/6 garment.

Ribbed All Wool Socks from 3/6 pr.

FLANNEL SHIRTS, a large selec-  
tion from 12/6 to 22/6, also to  
Measure.

### A. BECKINGSALE,

111 High St., Cheltenham.  
Phone 406.

Splendid Selection

### CHRISTMAS CARDS

for  
FOREIGN POSTAGE  
now on Show.—

LEE, Caxton House,  
STATION, R. WINCHCOMBE ST.,  
CHELTENHAM.

For the  
Best

# PIANOS, DALE, FORTY and Co. Ltd





**HOCKEY MATCHES IN CHELTHENHAM.**

On Saturday last Cheltenham Town Ladies played St. Mary's Hall Ladies at Hockey on the Victoria ground, and Cheltenham Town II. played Pershore II. The four teams.

1.—Cheltenham Town II.—Standing: J. Penning, Dakon, F. Tredwell, T. Underhill, W. Denham (capt.), W. Coyney, R. Edwards, E. Field, Kneeling.—J. Powell, J. Jones, W. Colson.

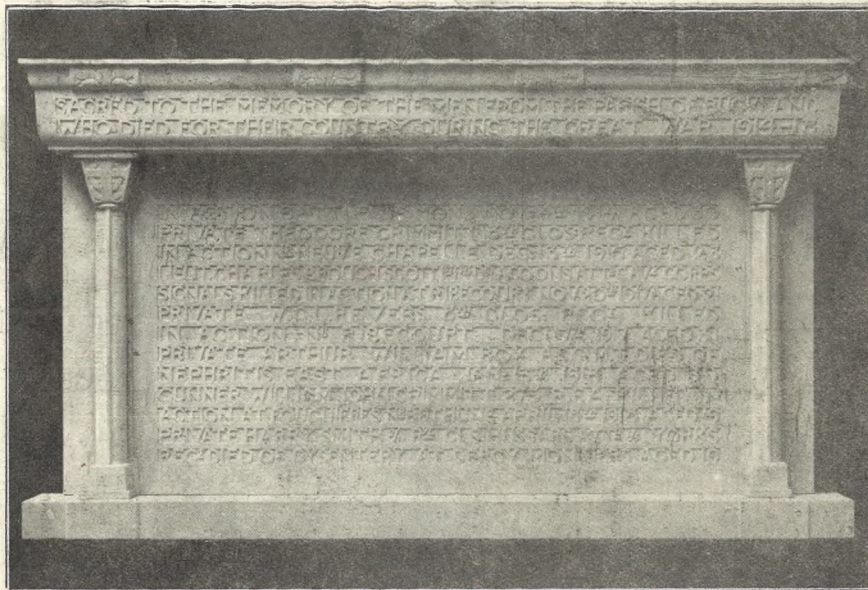
2.—Cheltenham Ladies.—Standing: Miss S. Swift, Mrs. E. Lovell, Mrs. M. Lewis, Misses P. Powell, M. Bennett, M. Cole, Mrs. E. Arkel. Sitting: Misses E. Brunt, V. Brain (capt.), K. Gridley, G. Harvey.

3.—St. Mary's Hall.—Standing: Misses D. Wilson, C. Withers, K. Jones, M. Stock, M. Higginbottom, E. Irwine, L. Gay, F. Leedham. Sitting: Misses M. Webber, R. Cotterill, R. Marling.

4.—Pershore II.—Standing: A. Preeve, H. Coombe, J. Spiers, G. Gardner, F. Crooke, J. W. Lord, L. Hook, Daniel. Seated: B. Jones, R. Prothero, D. Brown.

[Photos by Cheltenham Newspaper Co., Ltd., from whom copies can be obtained.]





**WAR MEMORIAL AT BUCKLAND.**

Tablet erected in Buckland Church, Broadway, to the design of Mr. A. Fisher, Architect, London, and executed by Messrs. R. L. Boulton and Sons, Sculptors, Bath-road, Cheltenham.

WONDERFUL VALUE!

Special Purchase South African  
**CANDIED PEEL,**

Orange 1/10 per lb.  
7-lb. Tin for 12/6.

Splendid Selection of **DRIED FRUITS**

**SILK & SON,**

146, 430 and 431 High St., Cheltenham.  
PHONE 249

**Moussell Bros., Ltd.**

(Opposite G.W.R. Station),

**CHELTENHAM.**

**FURNITURE REMOVALS**

**BY RAIL OR MOTOR.**

Phone 112.

BEST QUALITY  
**CIDERS**

IN BOTTLE. — Sparkling and Still.

**BARTHOLOMEW,**  
419-420, HIGH STREET,  
**CHELTENHAM.**

WINES, SPIRITS, ALES, TABLE WATERS  
and GROCERY. Tel. 135.



**Four Generations of Conrads.**

Mr. Conrad Hall, of Winchcombe, can boast of the unusual distinction of being the first of a line of four generations on the male side with the same name. He himself is 80 years of age, whilst his son, Mr. Conrad P. Hall, has been headmaster of Tregynon (Montgomeryshire) School for 37 years. His grandson, Mr. A. Conrad Hall, is in the Customs Department of the Civil Service; while his great-grandson is a chubby young gentleman of fourteen months. The son was a volunteer during the war, and the grandson served as a lieutenant in the Army. Mr. Conrad Hall is well-known in Winchcombe, where he has served as people's warden at the Parish Church for many years past.

Buy the "Echo"  
Every Evening.

**LANCE**  
— OF —  
**CHELTENHAM.**

**Lower Special Prices.**

Day and Evening Gowns,  
Costumes, Skirts, Blouses, Shirts,  
Jumpers, Millinery.

**ALL MODELS AT LESS  
THAN COST PRICE.**



Good Quality Tweed Costumes,  
89/6 Special Price 89/6.

**JOHN LANCE**

AND COMPANY, LIMITED,

High-Class Dressmaking, Costumiers,  
Drapers, House Furnishers.

**CHELTENHAM SPA**





**ROUND THE TOWN IN CHELTENHAM.**

Another series of snaps of Cheltonians taken on Tuesday morning last as they were bent on business, pleasure, health, or shopping. Tuesday was an especially fine morning.

- |   |                                      |   |
|---|--------------------------------------|---|
| 1.—Lieut. and Mrs. K. F. Tarrant, with her father, Brig.-Gen. H. Read, C.B. | 4.—A constitutional.                 | 10.—In the Promenade.                           |
| 2.—On business.   | 5.—A study in furs.                  | 11.—Mr. Sylvestre (on right) lays down the law. |
| 3.—The new baby, a centre of admiration and conversation.                   | 6.—Enjoying the sunshine.            | 12.—All three unconscious of the photographer.  |
|   | 7.—A soliloquy.                      |   |
|   | 8.—Mrs. Rich (on left) with friends. |   |
|   | 9.—Three chums.                      |   |

[Photos by Cheltenham Newspaper Co., Ltd.]





**HUCCLECOTE WAR MEMORIAL UNVEILED.**

The Hucclecote War Memorial, a grey granite cross, 14ft. high, situate on the main Gloucester-Birdlip-road, at the corner of Green-lane, was unveiled on Sunday afternoon, November 21, by Mrs. Fred Bircher, a Hucclecote war widow, at a deeply impressive service, before a large congregation.

- 1.—The Hucclecote Cadets standing with arms reversed.
- 2.—The general scene at unveiling.
- 3.—Ex Service officers present.
- 4.—The cross with floral tributes.
- 5, 6, and 8.—Parts of the congregation.
- 7.—The schoolchildren.
- 9.—Ex-Service men, under the command of Colonel Adderly (on right).

[Photos by Cheltenham Newspaper Co., Ltd. from whom copies can be obtained, price 1s. each unmounted.]





**OFFICIAL OPENING OF THE CENTRAL SCHOOL, CHELTENHAM.**

The Central School, Cheltenham, was officially opened on November 19 by Sir Robert Blair, LL.D., Director of Education for the London County Council.

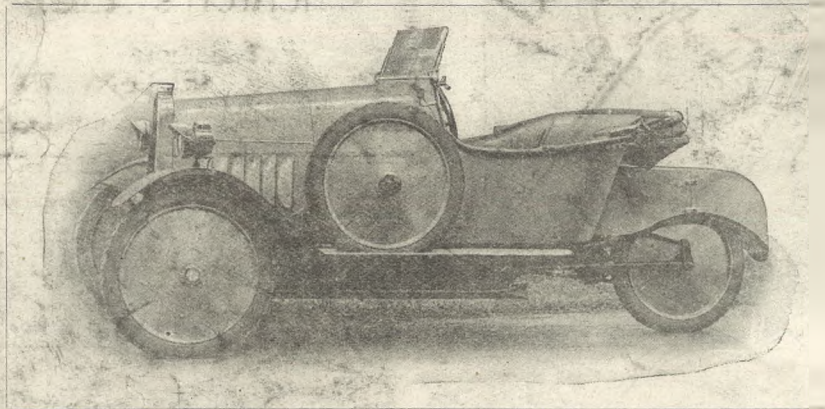
Sitting.—Sir J. T. Agg-Gardner, M.P., the Mayor, Alderman C. H. Margrett, J.P. (chairman of Education Committee), Lady Blair, Sir Robert Blair, LL.D., Mrs. Margrett, the Mayor, Miss E. M. Guinness (Vice-Principal of Ladies' College).

Standing.—Mr. W. T. Long (secretary, Education Committee), Mr. R. R. Dobson (Headmaster, Grammar School).

[Photos by Cheltenham Newspaper Co., Ltd.]



**"T.B." CYCLE CAR.**  
Car Comforts—Motor Cycle Costs.



Detachable Wheels—Shaft Drive—3 Speeds  
and Reverse — Air or Water Cooled.

Agency and Service Depot—

**HYDE'S MOTOR WORKS & GARAGE,**  
**STOW-ON-THE-WOLD.**



**Mr. G. W. Blackall,**

has just retired from the position of Divisional Engineer of the Gloucester Division of the Great Western Railway, of which he had had charge for 16 years. He was the recipient on Saturday, Nov. 13, of a silver inkstand and a silver rose bowl, suitably engraved, from over 700 of the workmen from Swindon to South Wales. He now resides in Western-road, Cheltenham.

**PAINLESS DENTISTRY!**  
**Edwards and Hirst,**  
**THE DENTAL SURGERY,**  
**51 BANK CHAMBERS,**  
**131 High Street, Cheltenham**  
(Corner of North-street).  
Advice and Estimates Free.  
Hours 10 till 7.  
ESTABLISHED OVER 19 YEARS.



**DENTISTRY. MR. SUTTON GARDNER,**  
**LAUREL HOUSE**  
(Near Public Library),  
**CHELTENHAM.**

Hours 10 a.m. till  
7 p.m. Daily.

Est, 1891

Phone 782, Cheltenham.

Branches at Cirencester, Stow, Bourton, etc.





**The 1/5th Gloucester's Picture at Cheltenham Art Gallery.**

The scene, as painted by Mr. Fred Roe, R.I., depicts a relieved platoon of the 1/5th Gloucesters marching in from the trenches past headquarters at Hebuterne in 1916. The officers, reading from left, are the late Lieut. Cyril Winterbotham, Rev. G. F. Helm, Lieut. J. P. Winterbotham, Colonel Collett, Major J. F. Tarrant, and Major Waller. The picture was painted purposely for the Cheltenham Art Gallery, but was first exhibited at the Royal Academy.



**FIRST AND THIRD TEAMS IN AMBULANCE COMPETITION.**

In the recent ambulance teams competitions at the Drill Hall, Cheltenham the Police 1st team won the shield, and their 2nd team won third prize. The first team won the shield in 1910-11-12-13, and 1920. The second team won the cup for third prize in 1912-13 and 1920.

Standing.—Police Constables T. Lewis (2nd), H. O'pin (res.), A. Willis (1st), A. Hancock (2nd), J. Jones (1st), J. Hatton (2nd), V. Davies (2nd).  
Sitting.—Sergt. G. S. Williams (1st), P.C. A. Gladwell (capt. 2nd) (winner of cup for highest in individual work), Dr. Hugh Powell (instructor), Supt. T. Griffin, Inspector C. A. Welchman (capt. 1st team), Sergt. J. Hughes (1st).

The sweetest story ever told might suitably be accompanied by a bottle of perfume.

**PIVER'S PERFUMES 10/6.**

**JONTEEL " 12/6.**

Vanity Fair 4 -.

Yardley's Nell Gwynne, Freesia etc., 5/-.

**LLOYD AND KING,**  
CHEMIST,

109 High Street, Cheltenham.

'Phone 171.



**YOU CAN'T DO BETTER**

Than send a P.C. for your  
**SUNDAY NEWSPAPERS**

to—

**BROWN'S NEWSAGENCY,**

226 High Street, Cheltenham.

**Xmas Cards and Calendars.**  
CHOICE SELECTION.

Also Fancy Goods & Smokers' Requisites

**H. F. MONKLEY, Newsagent,**  
SUFFOLK ROAD, CHELTENHAM.  
Prompt Delivery of Newspapers.

THE  
**SAMES**

**PIANO**

IS LIKE A  
**BANK OF ENGLAND**  
**NOTE—**

Always worth its face value,  
and readily exchanged for cash.

This important fact cannot be over-estimated, as so many other makes rapidly depreciate in value.

Apart from this—the Sames is the true Musician's Piano and the Artiste's choice—as it fully responds to their requirements in volume and purity of tone, with perfect delicacy of touch.

Intending purchasers are courteously invited to come to our Showrooms to see and hear the Sames Pianos. May we have the opportunity of showing them, to you to-day?

Sole Agent:

**Crichton's Ltd.,**

PROMENADE,

(Opposite the Post Office), **CHELTENHAM.**



**Mr. Thomas Woodfield,**

Batch Farm, Cranham, Glos., who died after a long illness on November 13, aged 83 years. He leaves eight daughters and a son.

"Every one possessing a spare suit of underclothes, felt boots, boots, overcoat or jacket, must give it to the Red Army."—From a decree by the Russian Central Soviet Executive.





LESS THAN FOUR WEEKS TO XMAS!



'PHONE  
1048.

# RAYMOND JAMES,

SPECIALIST IN  
MEN'S WEAR,

78 Winchcomb Street, Cheltenham

(OPPOSITE Highbury Church).

Evening  
Dress  
Shirts.  
Waistcoats.  
Socks.  
Ties.  
Gloves.  
Braces, etc.

KNITTED JACKETS. FUR GLOVES. FLEECE SCARVES.

Fur Gloves  
from 21/-.  
Leather, lined  
fur, from 27/6.  
Lined wool, 15/6.  
Unlined, 12/6.  
Buck Gloves, 15/6  
Wash leather, 7/6  
Wool Gloves,  
from 2/-.

Knitted Ties,  
from 2/6 to 15/6.  
Silk Handker-  
chiefs, 2/6 to 9/6  
Linen ditto  
from 2/-.  
Cotton ditto  
from 9d.

Shirts & Pyjamas  
in All Wool and  
Mixtures.  
Best Makes of  
Underwear.  
Vests and Pants  
from 5/6.  
All Wool Socks  
from 3/6.



Knitted Jackets  
and Waistcoats  
in Canary, Fawn,  
Lovat, Sax, Grey,  
Clerical . . .  
and Heather  
Mixtures, etc.,  
Scotch Wool and  
Camelhair.

Fleece, Silk and  
Mercerised  
Scarves, 4/6 to  
35/-.

Raincoats, Fleece  
& Tweed Over-  
coats.  
Nicholson's Make.

Velours and Soft Felts  
from 10/6 to 52/6.

## MEN'S WEAR for 'XMAS PRESENTS.

Tweed Hats and Caps  
from 4/6 to 15/6.