

# THE CHELTENHAM CHRONICLE AND GLO' SHIRE GRAPHIC

GRATIS SUPPLEMENT.

Saturday, June 5, 1920.

No. 1,014.

## CHELTENHAM THEATRE AND OPERA HOUSE.

Lessee: ROBERT REDFORD.

The County Theatre. Established 30 Years

General Manager: H. OSWALD REDFORD.

To-Day at 2.30 & 7.30: The Martin Harvey Vacation Co. in "THE ROBBERY OF THE LYONS MAIL,"

Next Week: Monday Tuesday & Wednesday & Wednesday Matinee, "TRELAWNY OF THE WELLS."

### THE PALACE,

High Street, Cheltenham

Lessee, Shakspeare Shenton.

Monday, Tuesday, & Wednesday:  
Sto. Godwyn Super Production,  
"THE FEAR WOMAN."  
Featuring Pauline Frederick.  
"Transients in Arcadia."  
Featuring Patricia Palmer.  
Changed Monday and Thursday  
Thursday, Friday, and Saturday:  
Florence Reed and Wm. Desmond  
in  
"THE CALL OF THE HEART."  
Comedy, "No Mother to Guide  
Her."  
Miss Texas Guinan Series:  
No. 12, "Just Bill."  
Next Week—"The Kinsman."

**A. G. BIGGS & CO.,**  
**GROSVENOR GARAGE,**  
GROSVENOR TERRACE,  
CHELTENHAM.

**R**ELIABLE TOURING CARS  
FOR HIRE.  
Private Address.—6 Northfield-  
terrace, Cheltenham.

FOR  
**CHOICE WEDDING GIFTS**  
TRY  
**Edgar Mann (Jeweller),**  
84a UPPER HIGH STREET,  
CHELTENHAM.

**YOUR OPPORTUNITY!**  
200 PAGE  
WRITING PAD **1/-.**  
Obtainable only from  
**LEE,** Caxton House,  
Winchcomb Street,  
Stationer, CHELTENHAM.

**MARTIN & CO., LTD.,**  
Promenade, Cheltenham,  
Purchase for Cash Antiques of  
all kinds, including Old Silver,  
Jewellery, Sheffield Plate, China,  
Coms, Miniatures, etc. Highest  
Prices Given for Rare Pieces.



**St. Paul's, Cheltenham, War Memorial Unveiled.**

The Vicar, Canon Longhurst, and Bishop Frodsham leaving the church.

\*\*\*\*\*  
**DEANE'S HIGH-CLASS WARDROBE DEPOT.**

THE NOTED HOUSE FOR FAIR PRICES.

Ladies' and Gentlemen's WARDROBES Purchased for Cash.  
Clients waited upon in town or country. Distance no object.  
Prompt attention given to Post or Train Parcels. Cheques  
sent per return subject to customer's full approval.

**Note Address—31 WORCESTER ST., Gloucester.**

Tel. 970. Telegrams: "Wardrobes," Glos.

### COLISEUM

(late Hippodrome),  
CHELTENHAM.

TWICE NIGHTLY, 6.45 and 8.50  
**HIGH CLASS VARIETY.**  
No Charge for Booking.

**PICTURE HOUSE,**  
North Street, Cheltenham.

CONTINUOUS. 2.30 to 10.30.  
**EXCLUSIVE PICTURES.**

No Charge for Booking.

Put your  
**BOOT and SHOE TROUBLES**  
in your Bag. Bring them to  
371 High Street, Cheltenham,  
**PROGRESS BOOT INDUSTRY.**  
And Smile, Smile, Smile.  
First-class Honours London City  
Guilds.

### TRUSSES.

Much suffering prevented by  
correct and comfortable fitting.  
Our Trusses are reliable and  
adaptable to body movement.  
Private Fitting Rooms.  
Lady in Attendance.  
**Glos. Surgical Appliance Co.,**  
1 BELLE VUE LAWN,  
CHELTENHAM.

### THIS IS AN INCH ADVT.

You can have a similar space for  
**Five Shillings Per Week.**  
Your Announcement will reach  
All Classes,  
And be read by over 10,000  
Persons.

### For FISH

of Finest Quality at  
Try Lowest Possible Prices,  
**BOYTON (EX-SERVICE)**  
MAN  
FAIRVIEW ROAD, WINCHCOMBE ST.,  
CHELTENHAM.

For the  
Best

# PIANOS, DALE, FORTY and CO. LTD



County Competition Match on the Exmouth Green.—Painswick (No. 1) versus Longford (No. 2).



**CHELTENHAM SOCIETY WEDDING.**

The marriage was solemnised at Christ Church, Cheltenham, on Tuesday last of Mr. Reginald George Wallich, late Gloucester Regiment, second son of Mr. H. C. Wallich, of Carcavellos, Portugal, and late of Cheltenham, and Miss Clarice Georgette Fort Swiney, only child of Lieut.-Col. G. W. B. Swiney and Mrs. Swiney, of Swinfort, Bay skill.—The wedding-party.



**MAY FESTIVAL AT WESTON-SUB-EDGE.**

Two pictures of a pretty oldtime festival at Weston-sub-Edge on Whit-Monday.

**LANCE,  
OF  
CHELTENHAM.**

**SPECIAL OFFER**

**Jumpers, Sports Coats  
and Blouses.**

For one week only, commencing  
Monday, June 7th.



Ribbed Pure Wool Sports Coat, Useful, Smart, and Becoming, made in lovely Scotch Yarn and Well Finished, Eight Delightful Colours. Special Value, 55/6.

**OTHER BARGAINS TO ENQUIRE FOR.**  
Artificial Silk Sports Coats, from 21/6 to 5/6s.  
Silk and Wool Jumpers, 18/11 to 3/6s.  
Woolen Sports Coats, 29/6 to 3/6s.  
**SEE SPECIAL WINDOWS AND VISIT  
OUR SHOWROOMS FOR UNIQUE  
VALUES.**

**JOHN LANCE & Co., Ltd.,  
CHELTENHAM.**



**A Tewkesbury Scout's Record.**

Troop-Leader Henry J. Lawrence, of the 2nd Tewkesbury (18th Cheltenham) B.P. Scout Troop, King's Scout, winner of Red and White A.I. Round Cords, of 16 proficiency badges, and war service badge; 6 1/2 years' service as a scout; winner of the 2nd Tewkesbury's "Inter-Patrol Silver Challenge Cup," 1917 and 1918; recently obtained an appointment with a Birmingham firm of solicitors, and left Tewkesbury this week.



**Mr. H. W. Gist,**

Of Alstone Manor, who died May 27, 1920, aged 43. He was buried in Alstone Churchyard May 31 1920. He was a very popular sporting squire, and great regret and sorrow is felt for his early death.

**ANTIQUES.**

An interesting Stock of Small ANTIQUE ARTICLES at Low Prices. No Reproductions. All guaranteed Genuine. Established 65 years.

**HARRY O. BOX,**

339 HIGH STREET, CHELTENHAM,  
(Opposite Grammar School).

Old Gold, Silver, Artificial Teeth, Old Jewellery  
Purchased at top prices.

**Buy the "Echo" Every Evening.**



**ROUND THE TOWN IN CHELTENHAM.**

- |  |                                     |  |
|--|-------------------------------------|--|
| 1, 2, and 8.—Students from St. Mary's Hall on a holiday afternoon. | 4.—Interested in baby.              | 7.—Quite unsuspecting of being snapped.    |
| 3.—Councillor Yarnold caught with a lady in the Promenade.         | 5.—Two ladies in the Prom.          | 9.—Mr. Bailey.                             |
|  | 6.—Mrs. Locke with her little girl. | 10.—A snap in Winchcombe-street.           |
|  |                                     | [Photos by Cheltenham Newspaper Co., Ltd.] |

POST THE "CHRONICLE AND GRAPHIC" TO YOUR FRIENDS EVERY WEEK.



**GLOUCESTERSHIRE v. YORKSHIRE, AT GLOUCESTER.**

In beautiful weather, on the pretty Spa Cricket Ground, Gloucester, Gloucestershire commenced their match against Yorkshire last Saturday before a splendid crowd of spectators. They collapsed badly, and the match was finished on Monday morning, the home county suffering an innings defeat.

- 1.—Mr. W. H. Brown (County Committee) and Earl Beauchamp watching the cricket.
- 2.—Outside the Sheriff of Gloucester's tent.
- 3.—Spectators on the grass.
- 4.—Capt. Hutchinson, Gloucester County secretary (on right), with Mr. George Romans, of Gloucester.

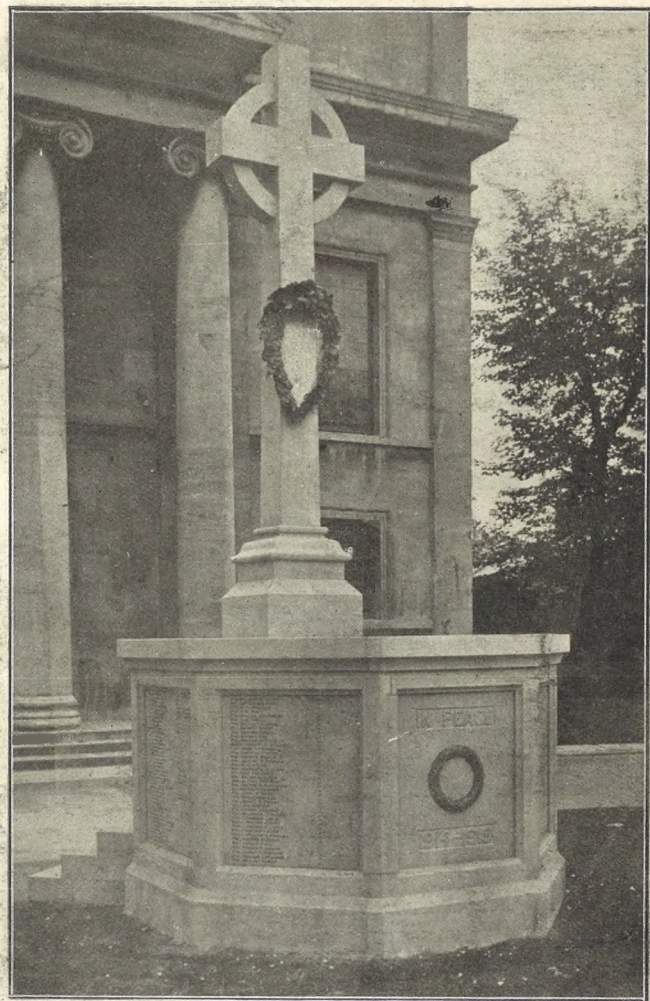
- 5.—Mr. H. G. Norman, City High Sheriff (on right), who entertained a large company of guests in a fine marquee on the ground, with Mrs. and Miss Norman, and Mr. C. H. Margrett (County Committee).
- 6.—Holmes and Sutcliffe, the first pair for Yorkshire.

- 7 and 8.—Sections of the spectators.
- 9.—G. Robinson, P. F. C. Williams, and W. H. Rowlands (Gloucestershire).
- 10.—Yorkshire's brilliant cricketer, Robinson.
- 11.—Gange, D. C. S. Burton, Dennett, and Smith

[Photos by Cheltenham Newspaper Co., Ltd.]

**TRELAWNY OF THE WELLS**

**CHELTENHAM DRAMATIC SOCIETY**  
**AT THE THEATRE; JUNE 7, 8, 9.**



**St. Paul's Parish War Memorial.**

Dedicated Sunday, May 30, by Bishop Frodsham, this Preaching Cross stands in front of St. Paul's Church, Cheltenham. Executed by Messrs. R. L. Boulton & Son, sculptors, Bath-road, Cheltenham, in Stancliffe stone.



**BUFFS ENTERTAIN THEIR EX-SERVICE MEMBERS IN CHELTENHAM.**

On Thursday, May 27, the "Star" Lodge of the R.A.O.B. entertained their ex-Service brethren to a dinner at the Cosy Corner. In centre of group sitting (each holding an umbrella) are Bro. W. T. Bray, of Colchester, Grand Primo of England, and Bro. W. H. Rose, R.O.H. of Cheltenham, Grand Secretary of England. [Photo by Cheltenham Newspaper Co., Ltd.]



**CHELTENHAM GOLF CLUB SPRING MEETING.**

- In beautiful weather, the above meeting was held on the Cleeve Hill Links on Friday and Saturday, May 28 and 29.
- 1.—W. S. Whitehouse driving from first tee. He won the Challenge Bowl and was first with J. H. Baker in the Open Bogey Four-Ball Foursome.
  - 2.—E. J. Cox driving at second tee. He was first in the foursome against bogey.
  - 3.—Mr. J. H. Baker driving. His play was the feature of the meeting. He won on both days for the lowest gross score and
  - 4.—Mr. E. Mearing driving in the foursome.
  - 5.—Dr. Maynard driving. He was second for Lane-Gladwin Cup.


[Photos by Cheltenham Newspaper Co., Ltd.]

**PAINLESS DENTISTRY,**  
**EDWARDS AND**  
**HIRST,**  
**THE DENTAL SURGERY,**  
**BANK CHAMBERS,**  
**131 High Street, Cheltenham**  
(Corner of North-street).  
Advice and Estimates Free.  
Hours 10 till 7.  
ESTABLISHED OVER 19 YEARS.

**MR. ALFRED J. VENTRIS F.R.C.S., Surgeon-Chiro-**  
**dist, Orthopaedist, and Electro-Therapeutist,**  
Hospital, trained (London); highest qualifications,  
30 years' practical experience; author of "The  
Treatment of Talipes Vagus," etc., etc.  
**THE latest scientific methods for the cure of**  
corns, bunions, in-growing nails, and all  
diseases and deformities of the foot.  
**THE Ventris' Field's new electro-therapeutic**  
treatment of Varicose Veins  
**SUPERFLUOUS hair, moles, port wine stains,**  
and other facial disfigurements permanently  
removed by electrolysis, without the slightest  
pain.  
**SURGERY: 6 Rodney Place, Cheltenham.**

**Summer Shirts**  
in Great Variety, 10/6, 13/6, 15/11, including  
One Soft Collar to match.  
Coloured TUNIC SHIRTS, with Double  
Cuff, 8/6, 9/6, 10/6, 11/6.  
Hard-Wearing COTTON SHIRTS, Lined  
Back and Front, 8/11, 10/6, 12/6. Our own  
manufacture.  
**SUMMER-WEIGHT HOSIERY, in Wool,**  
Cotton, and Mixtures

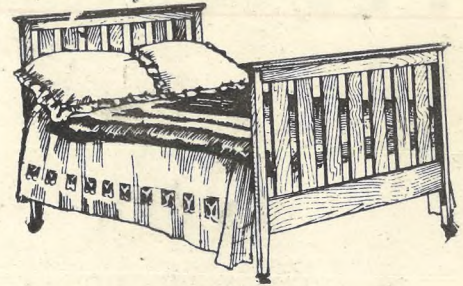
**A. Beckingsale,** — 111 —  
High Street,  
**CHELTENHAM.** — Phone 406

**DENTISTRY.**  
  
Hours 10 a.m. till  
7 p.m. Daily.  
**MR. SUTTON GARDNER,**  
**LAUREL HOUSE,**  
**CHELTENHAM.**  
Branches at Cirencester, Stow, Bourton, etc.  
Est. 1891. 'Phone 782, Cheltenham.

**THIS IS AN INCH ADVT.**  
You can have a Similar Space for  
**Five Shillings Per Week.**  
Your Announcement Will Reach  
All Classes,  
And be read by over 10,000 Persons.

# The IDEAL HOME EXHIBITION.

:: :: A PRACTICAL DEMONSTRATION OF THE LAST WORD IN :: ::  
**Artistic, Economical & Labour-Saving House Furnishing**



Our Ten Specimen Rooms have just been redecorated and laid out as two Completely Furnished Houses, fully equipped for immediate use.—A Villa Furnished for 260 Gns. complete; a smaller House for 130 Gns.

## Below are Particulars of our 260 Guinea House :

### DINING ROOM Furnished in Solid Oak. Jacobean Style.

	£	s.	d.
Jacobean Oak Sideboard .....	19	19	0
Gate-leg Table in Jacobean Style .....	7	15	0
Set of Jacobean Chairs, four small and one arm chair .....	10	10	0
Two Adjustable Easy Chairs .....	9	9	0
Jacobean Overmantel with bevelled glass .....	4	10	0
Axminster Carpet, Turkey design and colours, 9ft. x 10ft. 6in. ...	12	12	0
Fire-place Curb, Tongs & Poker .....	1	17	6
Coal Cauldron .....	17	6	
Curtain Pole and Fittings .....	7	6	
	67	17	6

### RECEPTION ROOM.

Drop-end Chesterfield Couch upholstered in tapestry of good design and quality .....	15	15	0
Two lounge Easy Chairs to match .....	14	14	0
Three occasional Chairs .....	3	15	0
Occasional Table in Mahogany ...	3	3	0
China Cabinet in Mahogany .....	6	18	6
Oval Mirror for Mantelpiece in Inlaid Mahogany .....	4	15	0
Velvet Pile Carpet, 9ft. x 10ft. 6in. ...	8	17	6
Antique Brass Hearth Curb, with Tongs and Poker .....	1	15	0
Coal Cauldron .....	15	0	
Curtain Poles and Fittings .....	7	6	
Cake Stand for three plates .....	1	9	6
	62	5	0

### HALL AND LANDING.

	£	s.	d.
Oak Umbrella and Coat Stand ...	5	18	0
Fourteen yards Lino .....	5	19	0
Ten yards Carpet for Stairs .....	3	19	0
Brass or Oak Rods and Eyes .....	1	9	0
Three Door Mats .....	1	0	0
Cocoa Mat for inside front door...	10	0	
	15	14	3

### KITCHEN.

Kitchen Table .....	2	2	0
Two Chairs .....	1	10	0
China and Earthenware .....	5	0	0
Brushes and Baskets .....	1	10	0
Cutlery and Plate .....	3	0	0
Furnishing Ironmongery, Sauce-pans, etc. ....	5	0	0
One Cocoa Mat .....	6	0	
	17	15	10

### BEST BEDROOM.

Solid Oak Bedroom Suite in Jacobean Style, with 4ft. Wardrobe, Dressing Chest with three long drawers, jewel drawer and bevelled mirror, Washstand with marble slab, tiled back, and cupboard, also two chairs to match .....	42	0	0
4ft. 6in. Bedstead to match, with Three-ply Spring Mattress and Wool Overlay, Bolster and two Feather Pillows .....	15	15	0
Art Carpet, size 9ft. x 9ft. ....	4	10	0
Set of shaded Toilet Ware .....	1	1	9
Fire-place Curb .....	10	11	
Occasional Table .....	9	0	
Curtain pole and fittings .....	5	6	
	64	12	2

### SECOND BEDROOM. £ s. d.

Bedroom Suite in White Enamel, comprising: Wardrobe, Dressing Chest with three long drawers, and mirror, marble-top washstand with towel rail, and one Chair .....	19	19	0
3ft. white Bedstead, with Spring, Wool Mattress, Bolster and Feather Pillow .....	6	5	0
Set of Toilet ware, shaded in art colour .....	1	1	9
Fire-place Curb .....	10	11	
Art Carpet, 9ft. x 7ft. 6in. ....	2	10	0
Curtain and Fittings .....	5	6	
	30	12	2

### THIRD BEDROOM.

Dressing Chest with mirror and three long drawers, Washstand with towel rail, and one Chair, all grained as oak to match .....	7	18	6
3ft. Bedstead with spring, also Wool Overlay, Bolster, and Feather Pillow .....	5	10	0
Toilet Ware .....	15	0	
Two Bedside Rugs .....	1	1	10
Curtain Pole and Fittings .....	3	0	
Corner Fitting, with Curtain for hanging dresses .....	2	15	0
	18	3	4

### RECAPITULATION.

Dining Room .....	67	17	6
Reception Room .....	62	5	0
Hall and Landing .....	15	4	3
Kitchen .....	17	15	10
Best Bedroom .....	64	12	2
Second Bedroom .....	30	12	2
Third Bedroom .....	18	3	4
	276	10	3

Particulars of the House Completely Furnished for 130 guineas will be found in main sheet of "Chronicle."

**ADMISSION FREE** OPEN JUNE 7th, and following days from 10 a.m. to 8.30 p.m., Wednesdays 1 p.m.

We cordially invite you to visit this Exhibition, which you will find extremely interesting, and you will not be pressed to buy.

IF YOU HAVE NOT ALREADY HAD ONE OF OUR NEW CATALOGUES, PLEASE WRITE FOR ONE.

Printed and Published as a Gratis Supplement by the Cheltenham Newspaper Company, Ltd.

**Dicks & Sons Ltd.**  
 172 & 173 HIGH STREET  
**Cheltenham Spa**  
 50 YEARS REPUTATION FOR VALUE.  
 TEL. 1007



# THE CHELTENHAM CHRONICLE AND GLO'SHIRE GRAPHIC

GRATIS SUPPLEMENT.

Saturday, June 12, 1920.

No. 1,015.

FELT HATS. FLANNEL TROUSERS. SPORTS COATS.  
SHIRTS MADE TO MEASURE. SUMMER UNDERWEAR.  
**G. DIGGINS, 81 HIGH STREET, CHELTENHAM.**

## THE PALACE, High Street, Cheltenham

Lessee, Shakspeare Shenton

Monday, Tuesday, & Wednesday.  
Henry Edwards and Chrissie  
White in the  
"KINSMAN"  
Hedworth-Edwards Production  
from the World-famed Novel by  
Mrs. Alfred Sidgwick.  
'Heir to the Broken O.'  
featuring Patricia Palmer.  
Comedy: "Harems & Hockums."  
Gaumont Graphic changed  
Monday and Thursday.  
Thursday, Friday, & Saturday.  
"LURE OF LUXURY"  
(Ruth Clifford).  
Comedy: "Tup & Stitch Tailors."  
"Their Island of Happiness."

## A. G. BIGGS & CO., GROSVENOR GARAGE, GROSVENOR TERRACE, CHELTENHAM.

**R**ELIABLE TOURING CARS  
FOR HIRE.  
Private Address.—6 Northfield-  
terrace, Cheltenham.

## THIS IS AN INCH ADVT.

You can have a similar space for  
**Five Shillings Per Week.**  
Your Announcement will reach  
All Classes,  
And be read by over 10,000  
Persons.

## YOUR OPPORTUNITY! 200 PAGE WRITING PAD 1/-. Obtainable only from

**LEE,** Caxton House,  
Winchcomb Street,  
Stationer, CHELTENHAM.

## MARTIN & CO., LTD., Promenade, Cheltenham,

Purchase for Cash Antiques of  
all kinds, including Old Silver,  
Jewellery, Sheffield Plate, China,  
Coins, Miniatures, etc. Highest  
Prices Given for Rare Pieces.



## "Trelawny of the Wells."

Miss W. Power, Miss Growse, and Miss Ranken in the above  
play at Cheltenham Opera House this week.  
[Photo by Cheltenham Newspaper Co., Ltd.]

## ANNETTE, ——— HIGH CLASS ——— CORSET & BELT MAKER.

STOUT FIGURES A SPECIALITY.  
FRENCH MODELS IN STOCK.  
CORSETS CLEANED & REPAIRED.  
ONLY ADDRESS—  
28 CLARENCE STREET, CHELTENHAM.

## COLISEUM

(late Hippodrome),  
CHELTENHAM.

TWICE NIGHTLY, 6.45 and 8.50  
HIGH CLASS VARIETY.  
No Charge for Booking.

## PICTURE HOUSE, North Street, Cheltenham.

CONTINUOUS, 2.30 to 10.30.  
EXCLUSIVE PICTURES.

No Charge for Booking.

Put your  
**BOOT and SHOE TROUBLES**  
in your Bag. Bring them to  
371 High Street, Cheltenham,  
**PROGRESS BOOT INDUSTRY.**  
And Smile, Smile, Smile.  
First-class Honours London City  
Guilds.

## LET US TAKE A PHOTOGRAPH

of your Business Premises,  
make a Half-Tone Block  
of it, and insert it with  
suitable wording as an  
Advertisement in the  
"Graphic." Any size.  
Inclusive Terms on appli-  
cation.

## TRUSSES.

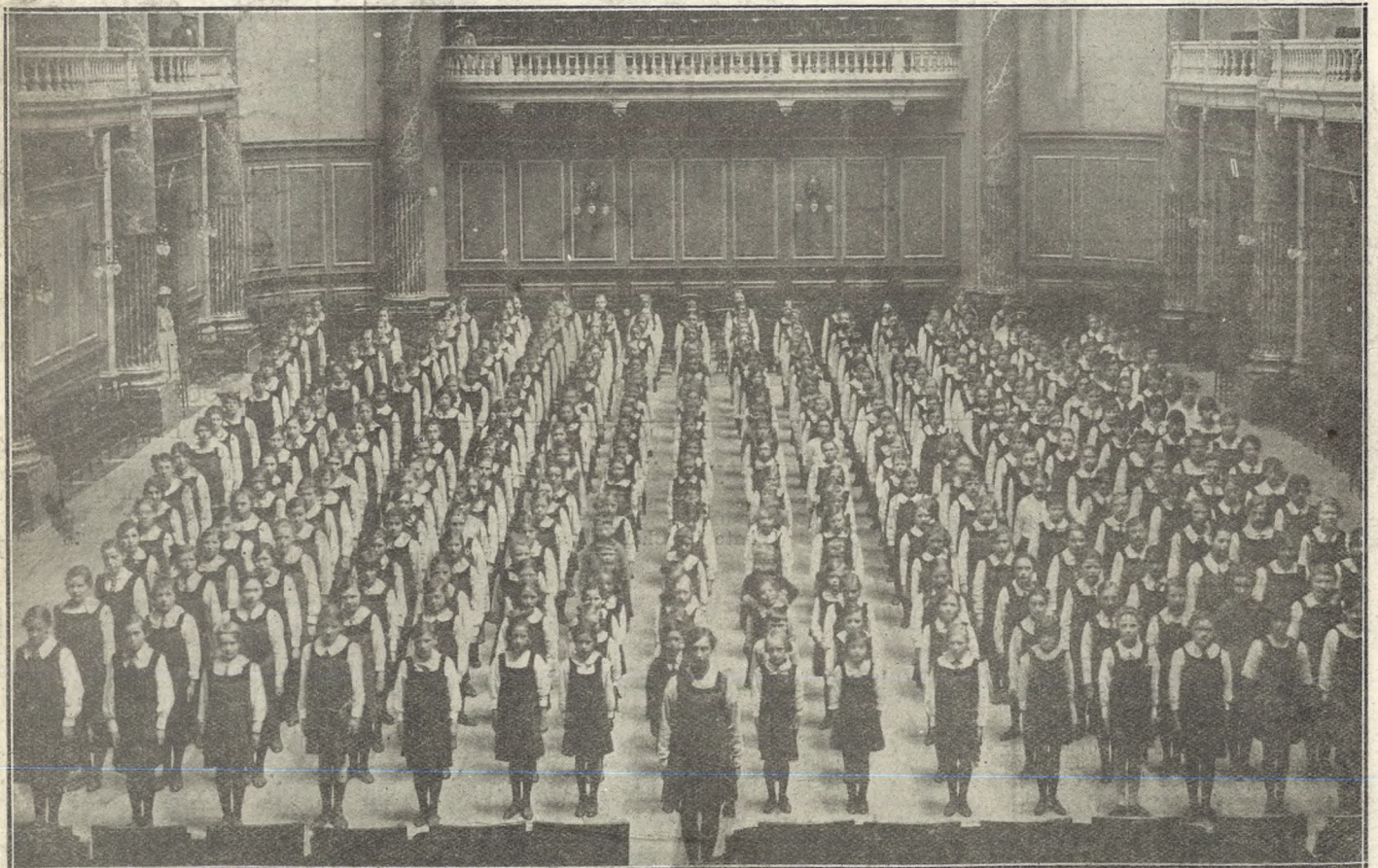
Much suffering prevented by  
correct and comfortable fitting.  
Our Trusses are reliable and  
adaptable to body movement.  
Private Fitting Rooms.  
Lady in Attendance.  
Glos. Surgical Appliance Co.,  
1 BELLE VUE LAWN,  
CHELTENHAM.

For the  
Best

# PIANOS, DALE, FORTY and Co., Ltd.



**CHELTENHAM ORPHEUS SOCIETY.—Conducted by Mr. J. Chas. Williams.**



**PATE'S GRAMMAR SCHOOL FOR GIRLS AT DRILL ON WEDNESDAY.**

[Photos by Cheltenham Newspaper Co., Ltd.]



**UNVEILING ST. PAUL'S WAR MEMORIAL.**  
Scenes on Sunday, May 30th.



**PATE'S GRAMMAR SCHOOL GIRLS.—UPPER III.**

# LANCE, OF CHELTENHAM.

SPECIAL OFFER

**Jumpers, Sports Coats  
and Blouses.**

For one week only, commencing  
Monday, June 7th.



Ribbed Pure Wool Sports Coat, Useful,  
Smart, and Becoming, made in lovely Scotch  
Yarn and Well Finished, Eight Delightful  
Colours. Special Value, 55/6.

**OTHER BARGAINS TO ENQUIRE FOR.**

Artificial Silk Sports Coats, from 21/6 to 5 gs  
Silk and Wool Jumpers, 18/11 to 3gs.

Woolen Sports Coats, 29/6 to 3½gs.

**SEE SPECIAL WINDOWS AND VISIT  
OUR SHOWROOMS FOR UNIQUE  
VALUES.**

**JOHN LANCE & Co., Ltd.,  
CHELTENHAM.**



**BALNEOLOGICAL SOCIETY IN CHELTENHAM.**

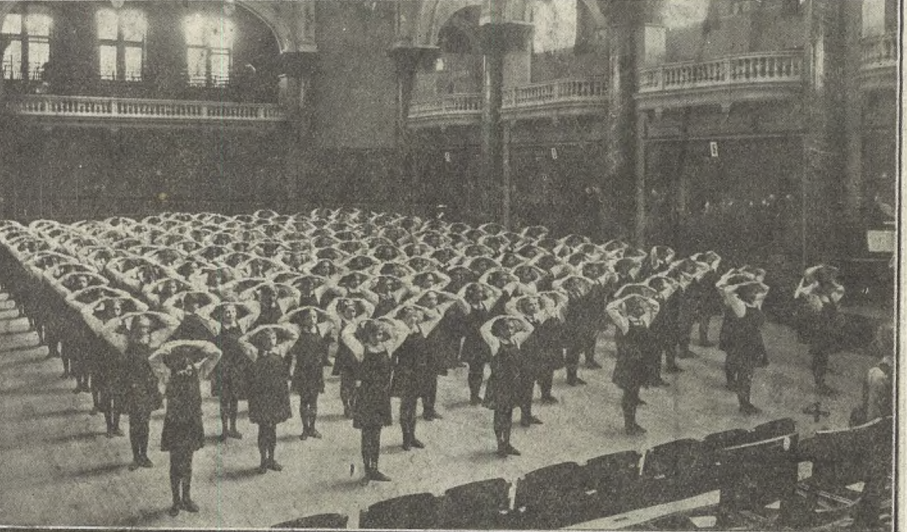
The members of the Section of Balneology and Climatology of the Royal Society of Medicine held their annual meeting at the Town-hall, Cheltenham, on Saturday last. The Mayor entertained the party, together with the Cheltenham doctors, members of the Town Council, and a large number of friends to a garden party at Pittville.

1.—Members of the medical profession in Cheltenham.

Back row.—T. Holmes, S. M. Hebblethwaite, A. Barrett Cardew, H. M. Meyrick-Jones, A. M. McAlldowie, D. Clow, C. Braine-Hartnell, R. B. McFie, J. Allman Powell, J. Wilson, J. Middleton Martin, A. P. E. O'Leary, W. Hutton.

Seated.—E. A. Dent, J. G. Soutar, S. T. Pruett, G. A. Cardew, R. Kirkland, Mrs. A. Saunderson Clow, J. F. Johns, J. Howell, J. R. Collins.

2.—The party after tea on the steps of the Pumproom.



**PATE'S SCHOOL FOR GIRLS', CHELTENHAM, DRILL DISPLAY.**

At the Town Hall, Cheltenham, on Wednesday afternoon, the pupils of the above school gave an exceedingly clever and well-drilled display of drill and country dances before a large audience of parents and friends. Over 400 girls took part.

1.—The Junior School, who performed singing games.

2.—Part of Upper III, Class, who performed country dances.

3.—Upper IV, Class, who very cleverly gave Morris dances.

4.—An effective action during drill by the Higher School.

[Photos by Cheltenham Newspaper Co., Ltd.]

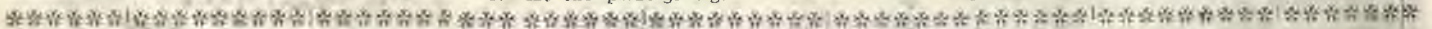


**DIAMOND JUBILEE OF CHELTHENHAM ARCHERY.**

To celebrate the Diamond Jubilee of the Cheltenham Archery Society a meeting was held at Montpellier Gardens on Thursday, June 3rd.

- 1.—Miss Legh (1st), Mr. Hussey (2nd), Miss Newbo'd (4th from left).
- 2.—Miss Hyde, English Champion (marked with x).
- 3.—At the prize-giving.
- 4.—A fair competitor.
- 5.—Withdrawing arrows.

[Photos by Cheltenham Newspaper Co., Ltd.]



THE CENTRE FOR ALL.

**Archery, Croquet**

AND

**Tennis Requisites**

THE HOUSE OF

**FRISKNEY,**

ESTABLISHED OVER 60 YEARS.

LOCAL DEPOT FOR

Ayres' & Slazenger's

**Tennis Balls**

AND

**Rackets.**

23 and 24 Pittville Street,  
CHELTHENHAM.

Prop., H. W. GILL. Tel. 833.

**PAINLESS DENTISTRY,**

**EDWARDS AND**

**HIRST,**

**THE DENTAL SURGERY,**

**BANK CHAMBERS,**

131 High Street, Cheltenham

(Corner of North-street).

Advice and Estimates Free.

Hours 10 till 7.

ESTABLISHED OVER 19 YEARS.

VALUE IN

**Summer Fabrics**

at CHELTHENHAM'S LOWEST PRICES.

**COTTON VOILES,**  
40 inch, in 14 New Shades, 2s. 6d. per Yard.  
To-Day's Value 3s. 11d.

**SPONGE CLOTHS**  
In 12 New Colours.  
LYONAISE SILK, 27 inch, 4s. 6½d. yard.  
COTTON SPONGE, 40 inch, 4s. 9d. ,,  
COTTON RABINE, 40 inch, 5s. 6½d.

**CREPE GEORGETTE**  
In 5 Lovely Shades, 40 inch, 4s. 6½d.  
Worth 5s. 11½d.

**TOOTAL'S TOBRALCO,**  
In 24 Designs, including 10 Plain Colours,  
27 inch, 2s. 6d. Last year's price.

PATTERNS POST FREE ANYWHERE.

**DRAKE & Co.,**

THE DRESS WAREHOUSE.

83 Winchcombe Street,  
CHELTHENHAM SPA.



**CHELTENHAM DRAMATIC AND OPERATIC SOCIETY IN "TRELAWNY OF THE WELLS."**

Members of the above society gave memorable performances of Pinero's celebrated play "Trelawny of the Wells" at the Cheltenham Opera House from Monday to Thursday this week. Performers of the play, with Mr. E. Flood (stage manager) and Mr. S. Harrison (secretary). [Photo by Cheltenham Newspaper Co. Ltd.]



**War Memorials of Every Description.**

This handsome War Memorial Cross has been erected at Shalbourne, near Hungerford, Berks., by the well-known firm of sculptors—Messrs. R. L. Boulton and Sons, of Bath Road, Cheltenham.

**HAVE YOU SEEN THEM?**  
**KNOTT'S DELIVERY TROLLEYS**  
 Are now Delivering their  
**SPARKLING GINGER BEER**  
 and  
**HOP ALE**  
 DAILY.  
 Shops and Large Quantities Supplied at Reduced Prices.  
 Full Particulars on Request.  
**KNOTT'S SPARKLING GINGER BEER,**  
 INDISPENSABLE FOR SUMMER.  
**KNOTT'S COALS,**  
 INDISPENSABLE FOR WINTER.  
**E. KNOTT and CO.,**  
 COAL MERCHANTS AND BOTANICAL BREWERS,  
 5a NORTH STREET, CHELTENHAM SPA.

**EVERY** week we have complaints of persons being unable to secure the "Chronicle and Graphic" owing to applying too late, and we again point out that orders **must** be given to the Newsagent to ensure obtaining a copy regularly.



**THE MAYORAL GARDEN PARTY TO BALNEOLOGISTS.**

Snaps at the garden party at Pittville Gardens on Saturday last. The weather was delightful. About 200 guests were present and tea was served in the Pump Rooms making a most enjoyable function.

- 1.—The Mayor and Mayoress on right.
- 2.—Dr. Hutton in front.
- 3.—Doctors' wives and friends.
- 4.—Dr. Hugh Powell (on right) chatting to two conferees.
- 5.—Mr. and Mrs. Harry Lewis with Mr. C. Marshall

[Photos by Cheltenham Newspaper Co., Ltd.]

**DENTISTRY.**  
 Hours 10 a.m. till 7 p.m. Daily.  
**MR. SUTTON GARDNER,**  
**LAUREL HOUSE,**  
**CHELTENHAM.**  
 Branches at Cirencester, Stow, Bourton, etc.  
 Est, 1891 Phone 782. Cheltenham.

**FIRST QUALITY**  
**CIDERS** in bottle,  
 SPARKLING AND STILL.  
**BARTHOLOMEW,**  
 419-420 HIGH ST., CHELTENHAM.  
 Wines, Spirits, Ales, Table Waters,  
 and Grocery. TEL 135

**Summer Shirts**  
 in Great Variety, 10/6, 13/6, 18/11 including One Soft Collar to match.  
 Coloured TUNIC SHIRTS, with Double Cuff, 8/6, 9/6, 10/6, 11/6.  
 Hard-Wearing COTTON SHIRTS, Lined Back and Front, 8/11, 10/6, 12/6. Our own manufacture.  
 SUMMER-WEIGHT HOSIERY, in Wool, Cotton, and Mixtures

**A. Beckingsale,** High Street,  
**CHELTENHAM.** Phone 406.

**THIS IS AN INCH ADVT.**  
 You can have a Similar Space for **Five Shillings Per Week.**  
 Your Announcement Will Reach **All Classes,**  
 And be read by over **10,000 Persons.**

Dr. William F. J. Whitley, of Swindon, has been appointed medical officer of health for the county of Northumberland. The President of the Probate, Divorce, and Admiralty Division (Sir Henry Duke) on Monday made absolute 243 decrees nisi for dissolution of marriage.  
 Printed and Published as a Gratis Supplement by the Cheltenham Newspaper Company, Ltd.

**CORNS, bunions, in-growing nails, hammer toe, flat foot, and all diseases and deformities of the foot painlessly cured by Mr. Alf. J. Ventris Field, surgeon-chiropodist, orthopaedist, and electro-therapeutist. Highest qualification (London), author of "Treatment of Talipes Valgus," etc. etc. Consult H.M. Physio-Surgery, 6 Rodney-place, Cheltenham.**

# THE CHELTENHAM CHRONICLE AND GLO' SHIRE GRAPHIC

GRATIS SUPPLEMENT.

Saturday, June 19, 1920.

No. 1,016.

**SHIRER AND HADDON'S** THE HOUSE OF REPUTE  
 Sale of Surplus Stock of High-Class Reliable Goods in all Departments  
 Will commence on THURSDAY NEXT, JUNE 24th.

**THE PALACE,**  
 High Street, Cheltenham  
 Lessee, Snakspeare Shenton.

Monday, Tuesday, & Wednesday,  
 The most Thrilling and Dare-Devil  
 Riding Serial yet created—  
 "THE MASKED RIDER."  
 Episode 1: "The Hole in the Wall"  
 "The ETERNAL MAGDALENE,"  
 with Maxine Elliott, the Mystery  
 woman of all ages.  
 Granger's Marvels of the Universe.  
 Comedy: "Zip and Zest."  
 Thursday, Friday, & Saturday,  
 All-British Hepworth Production,  
 "THE NATURE OF THE  
 BEAST."  
 Featuring Alma Taylor, Gerald  
 Ames, and James Carew.  
 "Mystery of the Throne Room."

**A. G. BIGGS & CO.,**  
 GROSVENOR GARAGE,  
 GROSVENOR TERRACE,  
 CHELTENHAM.

**R**ELIABLE TOURING CARS  
 FOR HIRE.  
 Private Address.—6 Northfield-  
 terrace, Cheltenham.

**THIS IS AN INCH ADVT.**

You can have a similar space for  
**Five Shillings Per Week.**  
 Your Announcement will reach  
 All Classes,  
 And be read by over 10,000  
 Persons.

**YOUR OPPORTUNITY!**  
 200 PAGE  
 WRITING PAD **1/-.**

Obtainable only from  
**LEE,** Oaxton House,  
 Winchcomb Street,  
 Stationer, CHELTENHAM.

**MARTIN & CO., LTD.,**  
 Promenade, Cheltenham,

Purchase for Cash Antiques of  
 all kinds, including Old Silver,  
 Jewellery, Sheffield Plate, China,  
 Coins, Miniatures etc. Highest  
 Prices Given for Rare Pieces.



**All Saints' War Memorial.**

This beautiful Calvary in Bath stone, 27ft. high, was unveiled  
 by the Bishop of Gloucester on June 10th. It was designed  
 by Mr. J. Coates Carter, Prestbury, and executed by Messrs.  
 R. L. Boulton and Sons, the famous sculptors, of Bath-road,  
 Cheltenham.

[Photo by Cheltenham Newspaper Co., Ltd.]

**COLISEUM**

(late Hippodrome),  
 CHELTENHAM.

TWICE NIGHTLY, 6.45 and 8.50  
 HIGH CLASS VARIETY.  
 No Charge for Booking.

**PICTURE HOUSE,**  
 North Street, Cheltenham.

CONTINUOUS, 2.30 to 10.30.  
 EXCLUSIVE PICTURES.

No Charge for Booking.

Put your  
**BOOT and SHOE TROUBLES**  
 in your Bag. Bring them to  
 371 High Street, Cheltenham,  
**PROGRESS BOOT INDUSTRY.**

And Smile, Smile, Smile.  
 First-class Honours London City  
 Guilds.

**LET US TAKE  
 A PHOTOGRAPH**

of your Business Premises,  
 make a Half-Tone Block  
 of it, and insert it with  
 suitable wording as an  
 Advertisement in the  
 "Graphic." Any size.  
 Inclusive Terms on appli-  
 cation.

**TRUSSES.**

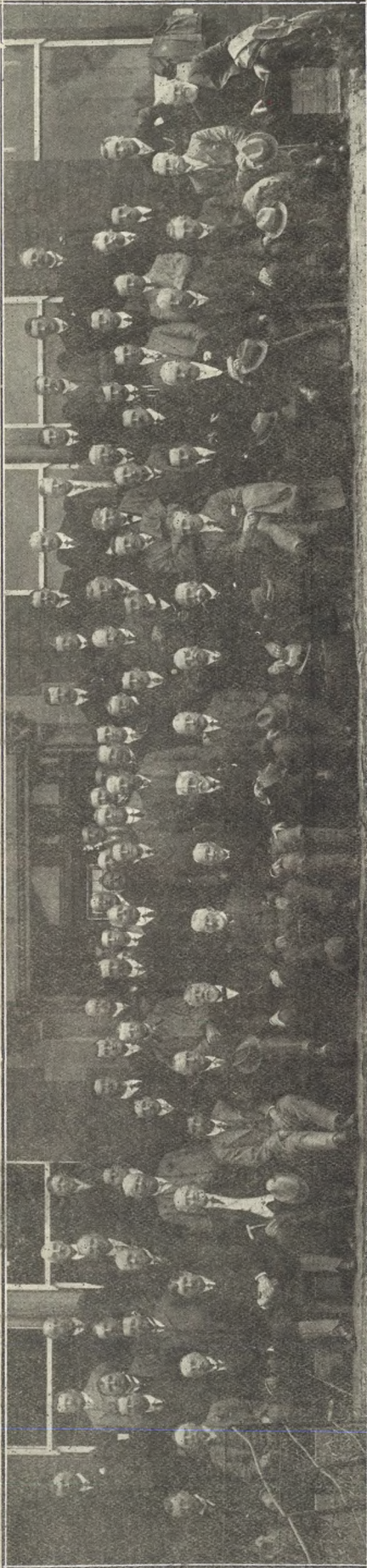
Much suffering prevented by  
 correct and comfortable fitting.  
 Our Trusses are reliable and  
 adaptable to body movement.  
 Private Fitting Rooms.  
 Lady in Attendance.

Glos. Surgical Appliance Co.,  
 1 BELLE VUE LAWN,  
 CHELTENHAM.

For the  
 Best

**PIANOS, DALE, FORTY and Co. Ltd**





**GLOUCESTERSHIRE ROOT, FRUIT, AND GRAIN SOCIETY FIELD DAY.**

Members of the Society in front of the Severn Bridge Hotel, Sharpness, June 11th. Photo by H. E. Jones, Northgate-street, Gloucester.

\*\*\*\*\*



**INTERESTING COUNTRY WEDDING.**

Before a packed congregation of neighbours and friends of the families, the son and daughter of two well-known Gloucestershire farmers were united in wedlock at St. Andrew's Church, Toddington, on Tuesday afternoon. The bridegroom was Mr. Walford Izod, of Runner Hall, Stratford-on-Avon, and son of Mr. Izod, of Chipping Campden, and the bride was Miss Gladys Victoria, eldest daughter of Mr. and Mrs. Albert D. Willcox, of Raymeadow, Dumbleton. The wedding festivities were kept up in the real old-fashioned yeoman style at Raymeadow.

[Photo by Cheltenham Newspaper Co. Ltd.]

# Outdoor Toys

FOR  
Boys and Girls.

STRING BATS, 9d. and 1s. 6d. each.  
TENNIS RACQUETS, 6s. 9d., 8s. 6d.,  
13s. 6d., 16s. 9d., etc., each.  
CRICKET BATS, 2s. 11d., 3s. 6d., 4s. 9d.,  
9s. 6d., 12s. 6d., etc., each.  
CRICKET STUMPS, 2s., 2s. 6d., 4s., 6s. 6d.,  
per Set.  
CRICKET BALLS (COMPO.), 4d., 9d.,  
1s. 6d., 2s. 3d. each.  
CRICKET BALLS (LEATHER) 7s. and  
8s. 6d. each.  
SEASIDE BUCKETS and SPADES, ALL  
PRICES.  
BOYS' FISHING RODS, 1s. 6d., 2s. 9d.,  
etc., each.  
BOYS' FISHING LINES (complete), 6l.,  
9d., 1s. 3d., etc., each.  
FIREWORKS and BALLOONS IN STOCK.  
Write for Catalogue (Post Free).

**J. P. PATES,**  
PROMENADE TOY SHOP,  
CHELTENHAM.

TEL. 940.

## To ride a B.S.A. Bicycle

is to experience perfect cycling, for the B.S.A. is the "Perfect in Every Part" bicycle and will always afford easy and enjoyable cycling. Take advantage of the easy terms upon which B.S.A. Bicycles can be supplied, and have one now. Particulars from

AGENTS—

**J. WHEWY AND CO.,**  
CLARENCE STREET,  
SUFFOLK ROAD, and  
HEWLETT STREET,  
CHELTENHAM.

*B.S.A. Catalogue free*

Specialist for Diseases of the Foot.

**Mr ALFRED J. VENTRIS FIELD,**  
SURGEON-CHIROPODIST, ORTHOPÆDIST  
and ELECTRO-THERAPEUTIST.  
Hospital Trained (London). Highest  
Qualifications 30 Years' Practical Experience.  
Author—"The Treatment of Talipes Valgus."  
Consultant, H.M. Forces.  
Surgery: 6 RODNEY PLACE,  
CHELTENHAM.

All Your Wants Supplied

If you have a small Prepaid Advertisement in the "Echo" and "Chronicle." It is the combination that does it, for the two papers reach all classes.



Three Gloucestershire Soldiers in Egypt.

Standing is Saddler E. R. Hancox (of Stroud) and sitting are Corpl. Bennett and Trooper Clifford, both of Cheltenham. All three are in the 20th Hussars, now stationed in the Egyptian desert. They get the "Chronicle" every week in this "rotten" country, as they call Egypt.

PAINLESS DENTISTRY,

**EDWARDS AND  
HIRST,**

THE DENTAL SURGERY,  
BANK CHAMBERS,  
131 High Street, Cheltenham

(Corner of North-street).

Advice and Estimates Free.

Hours 10 till 7.

ESTABLISHED OVER 19 YEARS.

# LANCE, OF CHELTENHAM,

Are Presenting the Most Wonderful Value in

**COATS  
and  
WRAPS**

Suitable for  
All Occasions  
**NEXT WEEK.**



Special Offer in Ladies' SAND SERGE COAT. Price 55s. 6d. Six only, Useful WRAP in Sand Serge, with large Shawl Collar. Special Price 45s. To-day's Value 59s. 6d.



Delightful CLOAK in Cloth Gabardine, Satin, and Shantung. Price from 5gns. to 8½gns.



Useful Showerproof DUST WRAP, may be had in Shades of Grey, Navy, Fawn, Nigger, and Black. Special Price, 5gns.

**JOHN LANCE & Co., Ltd.,  
CHELTENHAM.**



**BEAUTIFUL CATHOLIC PROCESSION IN CHELTENHAM.**

The procession in celebration of the feast of Corpus Christi was held in the lovely grounds of Fullwood, the Park, on Sunday last, over 1,000 taking part in the picturesque ceremony.

- |  |   |   |
|--|---|---|
| 1.—The head of the procession.           | 4.—High School children from Fullwood Park. | 6.—Girls from High School, Fullwood Park. |
| 2.—The children of St. Mary, Gloucester. | 5.—The Host covered by canopy.              | 7.—Procession winding round lake.         |
| 3.—The Girls' Society of Cheltenham.     |   | 8.—Nuns in the procession.                |

[Photos by Cheltenham Newspaper Co., Ltd., from whom copies can be obtained. Price 1s. each unmounted.]



**UNVEILING ALL SAINTS', CHELTENHAM, WAR MEMORIAL.**

The memorial to the soldiers connected with All Saints' Church, Cheltenham, who fell in the Great War takes the form of an imposing and artistic Calvary in stone, erected in the corner of the churchyard. It was unveiled by the Bishop of Gloucester on Thursday, June 10th.

1.—Part of the large congregation.

2.—Clergy who took part.

3.—The choir.

4.—The Bishop unveiling the Calvary.

5.—The choir heading procession from the church.

6.—Boy Scouts and schoolchildren.

7.—Another section of the congregation.

8.—Mr. F. Harris, of R. L. Boulton and Sons (the sculptors), and Mr. Coates Carter (the architect of the Calvary).

9.—Mr. Gough, one of the churchwardens.

10.—The Bishop, with Rev. R. Williams carrying Pastoral Staff, and Mayor and Mayoress following.

[Photos by Cheltenham Newspaper Co., Ltd.]



**GLOUCESTERSHIRE ROOT, FRUIT, AND GRAIN SOCIETY FIELD DAY.**

- 1.—One of Messrs. Fosters' Steam Trolleys.
  - 2.—Watching unloading of cotton seed at Fosters' mills.
  - 3.—Going aboard the "Wave."
  - 4.—A group at Sharpness point.
  - 5.—Having tea on board.
  - 6.—Mr. Prout, the oldest member.
  - 7.—Messrs. W. Priday (chairman), J. A. Smithin (hon. treasurer), G. H. Hollingworth, and Sidney S. Starr (secretary).
  - 8.—Waiting to start back.
- [Photos by Cheltenham Newspaper Co., Ltd.]

**Summer Shirts**

in Great Variety, 10/6, 13/6, 18/11, including One Soft Collar to match.  
 Coloured TUNIC SHIRTS, with Double Cuff, 8/6, 9/6, 10/6, 11/6.  
 Hard-Wearing COTTON SHIRTS, Lined Back and Front, 8/11, 10/6, 12/6. Our own manufacture.  
 SUMMER-WEIGHT HOSIERY, in Wool, Cotton, and Mixtures

**A. Beckingsale, — 111 — High Street, CHELTENHAM. — Phone 406.**

**Cheltenham and Gloucestershire CANINE SOCIETY.**

**ANNUAL SHOW.**

**Wednesday, June 23rd, WINTER GARDEN, CHELTENHAM,**

In Aid of Local Charities.

**ENTRIES EXCEED 650.**

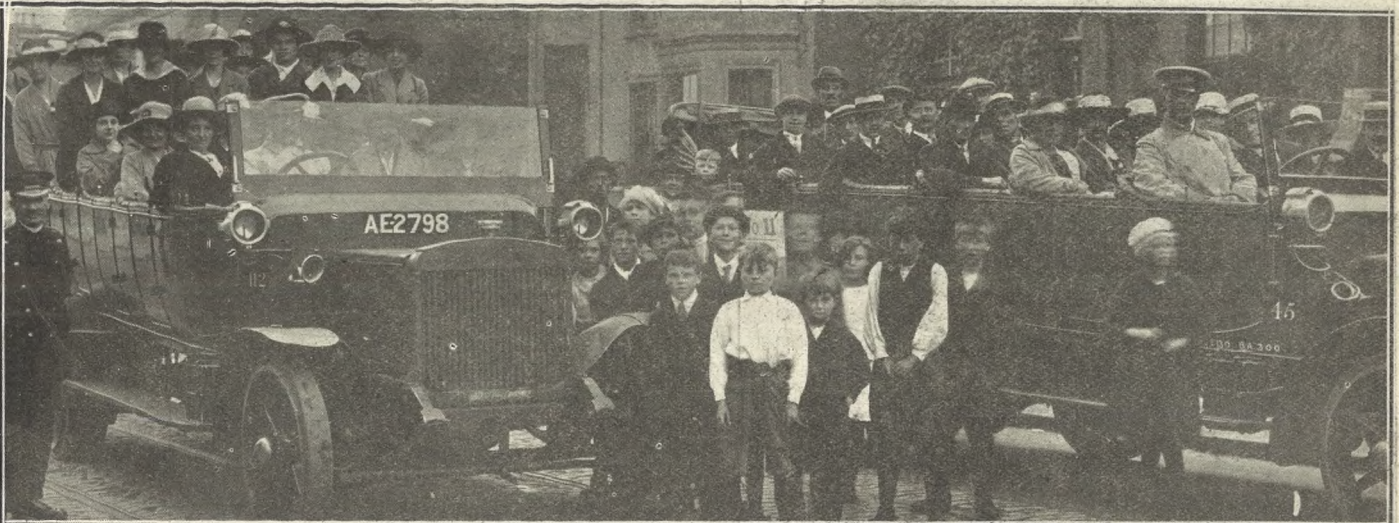
Judging Commences 10 a.m. Admission: Up to 2 o'clock, 2/6; afterwards, 1/-.  
 R. L. WATTS, Hon. Sec., 7 Berkeley Place, Cheltenham.

**DEANE'S HIGH CLASS WARDROBE DEPOT**

THE NOTED HOUSE FOR FAIR PRICES.

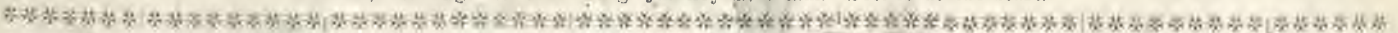
Travellers and Gentlemen's WARDROBES Purchased for Cash. Clients waited upon in town or country. Distance no object. Prompt Attention given to Post or Train Parcels. Cheques sent per return subject to customer's full approval.

Note the Address—  
**31 WORCESTER ST., Gloucester.**  
 Tel. 970. Telegrams: "Wardrobes," Glos.



**OUTING OF EMPLOYEES AT MESSRS. STEPHENS' VINEGAR WORKS, GLOUCESTER.**

The whole of the staff of the above works journeyed to Weston-super-Mare on Monday last in 15 or 16 large char-a-bancs and lorries, starting on their long journey at 7 a.m. Scenes at the start.



**DENTISTRY.**

Hours 10 a.m. till  
7 p.m. Daily.

**MR. SUTTON GARDNER,  
LAUREL HOUSE,**

**CHELTENHAM.**

Branches at Cirencester, Stow, Bourton, etc.

Est, 1891

'Phone 782, Cheltenham.

**ANTIQUES.**

\* An interesting Stock of Small ANTIQUE  
\* ARTICLES at Low Prices. No Reproductions.  
\* All guaranteed Genuine. Established 65 years.

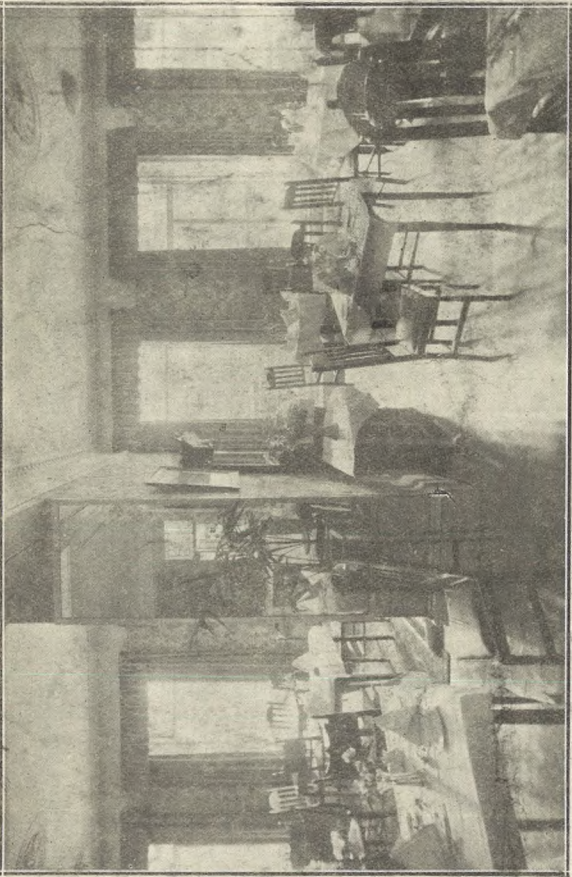
**HARRY O. BOX,**

339 HIGH STREET, CHELTENHAM,  
(Opposite Grammar School).

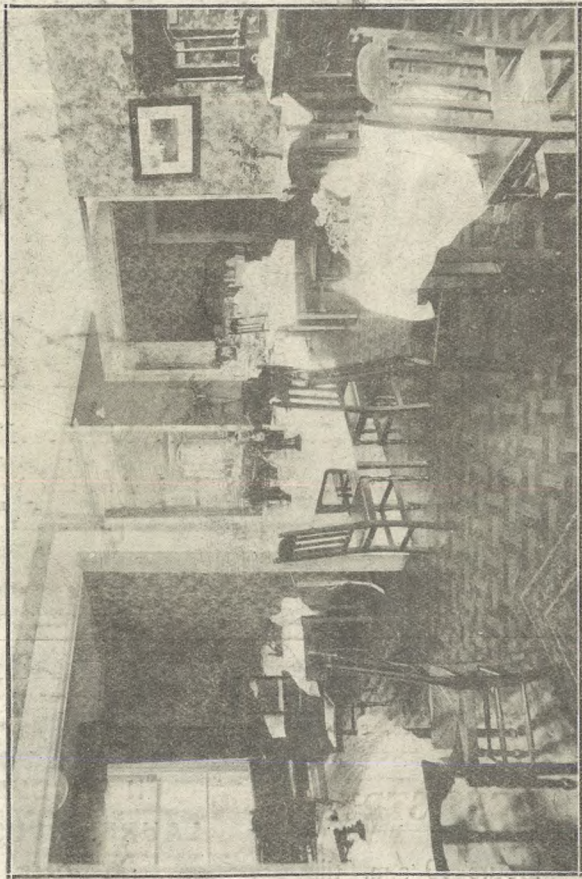
\* Old Gold, Silver, Artificial Teeth, Old Jewellery  
\* Purchased at top prices.



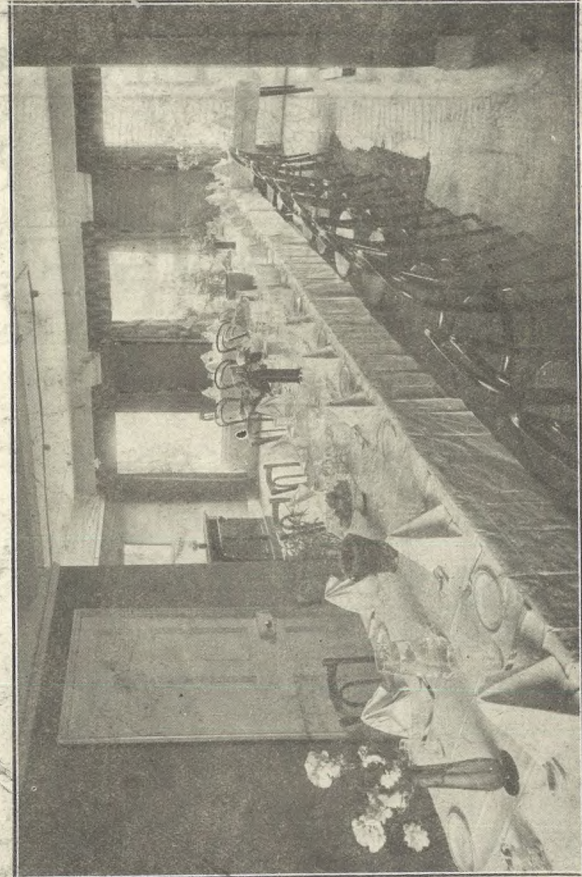
ROOF GARDEN, OVERLOOKING THE PROMENADE.



LUNCHEON AND TEA ROOMS ON FIRST FLOOR.



TEA ROOMS, FIRST FLOOR.



LARGE ROOM RESERVED FOR PARTIES.

# PROMENADE CAFE, CHELTENHAM SPA.

Proprietors —  
Gloucestershire Dairy Co., Ltd.

These Refreshment Rooms have been recently Extended and Redecorated Thoroughly.

Printed and Published as a Gratis Supplement by the Cheltenham Newspaper Company, Ltd.

# THE CHELTENHAM CHRONICLE AND GLO' SHIRE GRAPHIC

GRATIS SUPPLEMENT.

Saturday, June 26, 1920.

No. 1,017.

**SHIRER AND HADDON'S** THE HOUSE OF REPUTE  
 Sale of Surplus Stock of High-Class Reliable Goods in all Departments  
**NOW PROCEEDING.**

**THE PALACE,**  
 High Street, Cheltenham  
 Lessee, Shakspeare Shenton.

Monday, Tuesday, & Wednesday:  
 "ISLAND OF ADVENTURE."  
 Featuring Monroe Salisbury,  
 "THE MASKED RIDER."  
 Starring Harry Myers and Ruth  
 Stonehouse.  
 Ep. 2, "In the Hands of Pancho."  
 Changed Monday and Thursday.  
 Granger's Marvels of the Universe,  
 "Odd Hoofed Animals."  
 GAUMONT GRAPHIC,  
 Thursday, Friday, and Saturday:  
 Alice Joyce in  
 "THE THIRD DEGREE."  
 "The Hunchback's Romance."  
 "Hearts and Flowers."

**PITTVILLE PARK,**  
 Cheltenham.  
 July 14, 15, 16 and 17.  
**GREAT  
 HOSPITALS CARNIVAL  
 AND COUNTRY FAIR.**

Organised by the Cheltenham  
 Chamber of Commerce and Traders'  
 Association and Hospitals' Com-  
 mittee.

Full particulars next week.

**YOUR OPPORTUNITY!**  
 200 PAGE  
 WRITING PAD **1/-.**

Obtainable only from  
**LEE,** Caxton House,  
 Stationer, Winchcomb Street,  
 CHELTENHAM.

**MARTIN & CO., LTD.,**  
 Promenade, Cheltenham,

Purchase for Cash Antiques of  
 all kinds, including Old Silver,  
 Jewellery, Sheffield Plate, China,  
 Coms, Miniatures, etc. Highest  
 Prices Given for Rare Pieces.



**Gloucester Wedding.**

Bride and bridegroom leaving St. Catherine's Church, Gloucester at the wedding of Mr. J. O. Martin, of Tewkesbury, to Miss Gladys Blinkhorn, Gloucester.

[Photo by Cheltenham Newspaper Co., Ltd.]

Buy the "Echo" Every Evening.

**COLISEUM**  
 (late Hippodrome),  
 CHELTENHAM.

TWICE NIGHTLY, 6.45 and 8.50  
 HIGH CLASS VARIETY.  
 No Charge for Booking.

**PICTURE HOUSE,**  
 North Street, Cheltenham.

CONTINUOUS. 2.30 to 10.30.  
 EXCLUSIVE PICTURES.

No Charge for Booking.

Put your  
**BOOT and SHOE TROUBLES**  
 in your Bag. Bring them to  
 371 High Street, Cheltenham,  
**PROGRESS BOOT INDUSTRY.**  
 And Smile, Smile, Smile.  
 First-class Honours London City  
 Guilds.

For  
**TENNIS RACKETS,  
 BALLS, Etc.**

Write—  
**FRISKNEY,**  
 TENNIS CENTRE,  
 CHELTENHAM.  
 Telephone 883.

**TRUSSES.**

No need for the Ruptured to suffer.  
 Properly Fitted Trusses cause no  
 inconvenience. If present truss  
 not satisfactory, please call.

Glos. Surgical Appliance Co.,  
 1 BELE VUE LAWN,  
 CHELTENHAM.  
 Lady in Attendance.

For the  
 Best

**PIANOS, DALE, FORTY and Co., LTD**





**CHELTENHAM PARISH CHURCH FETE AT MONTPELLIER GARDENS, WEDNESDAY, June 16.**

- 1.—Countess Beauchamp being welcomed by the Rector, Sir Jas. Agg-Gardner, M.P., and the Dean of Hereford.
- 2.—Waitresses.
- 3.—Amateur ice cream sellers.
- 4.—Dean Waterfield, of Hereford, chatting to Mr. R. G. Hardy.
- 5.—Eastern cigarette merchant.
- 6.—Donkey rides.
- 7.—Workers at confectionery buffet.
- 8.—Tea.

[Photos by Cheltenham Newspaper Co., Ltd.]

**FIRST QUALITY  
CIDERS** in bottle,  
SPARKLING AND STILL.

**BARTHOLOMEW,**  
419-420 HIGH ST., CHELTENHAM.

Wines, Spirits, Ales, Table Waters,  
and Grocery.

TEL 135



**DENTISTRY.**

Hours 10 a.m. till  
7 p.m. Daily.

**MR. SUTTON GARDNER,  
LAUREL HOUSE,  
CHELTENHAM.**

Branches at Cirencester, Stow, Bourton, etc.

Est, 1891

'Phone 782, Cheltenham.

**Summer Shirts**

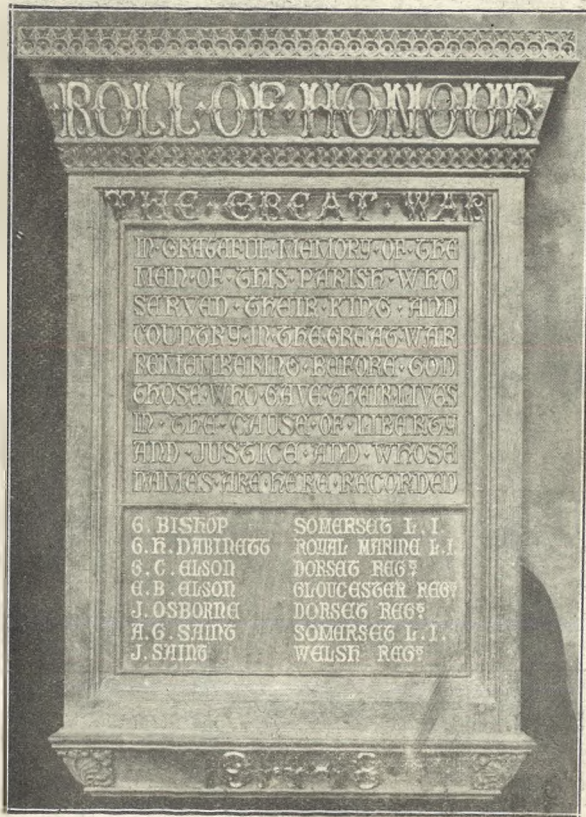
in Great Variety, 10/6, 13/6, 18/11, including  
One Soft Collar to match.  
Coloured TUNIC SHIRTS, with Double  
Cuff, 8/6, 9/6, 10/6, 11/6.  
Hard-Wearing COTTON SHIRTS, Lined  
Back and Front, 8/11, 10/6, 12/6. Our own  
manufacture.  
SUMMER-WEIGHT HOSE, in Wool,  
Cotton, and Mixtures

**A. Beckingsale,** —111—  
High Street,  
CHELTENHAM. —'Phone 406.



**GLOUCESTERSHIRE UNION GOLF MEETING.**

- 1.—Messrs. A. S. Winterbotham, J. H. Baker, Eric Fowler, J. P. Winterbotham, J. G. Baker, and Talbot Plum (County Hon. Sec).  
 2.—C. J. Bailey (16), the youngest competitor, who won first prize for nett score and was first in both sweeps.  
 3.—The County Champion (Mr. J. H. Baker) with his father (Mr. J. G. Baker). They won first and second prizes for best gross scores.  
 4.—Col. G. F. Colett, Mr. S. W. Jamieson, and Capt. Allen (Hon. Sec).  
 [Photos by Cheltenham Newspaper Co., Ltd.]



This beautiful Tablet has been erected at North Perrott, Somerset, to the design of W. W. Caroe, Esq., architect, by the well-known firm of Sculptors, Messrs. R. L. Boulton and Sons, Bath-road, Cheltenham. It is executed in oak, the inscription being gilded, and the names in ivorine.

**LANCE'S  
RICH  
SILKS.**

Unrivalled Stocks and the Greatest saving to Customers.

Prices are based upon old contracts, and show a saving of at least

**30% off Current Prices**

40 Pieces of Lancella Crepe, delightful washing fabric, all colors, 8/9½ yard.

Double width Taffeta, Plain & Shot, all colors, 9/11 & 10/11 yard.

Double width Duchess Mouseline, Plain & Shot, all colors, Prices 9/11, 10/11 & 12/11.

40 inch Jap Charmeuse, all colors, 9/6.

34 inch Dyed Shantung, 35 beautiful art colors. Price 6/11 & 8/11.

All Silk Foulard, 38 inch wide, 10/11 to 17/11.

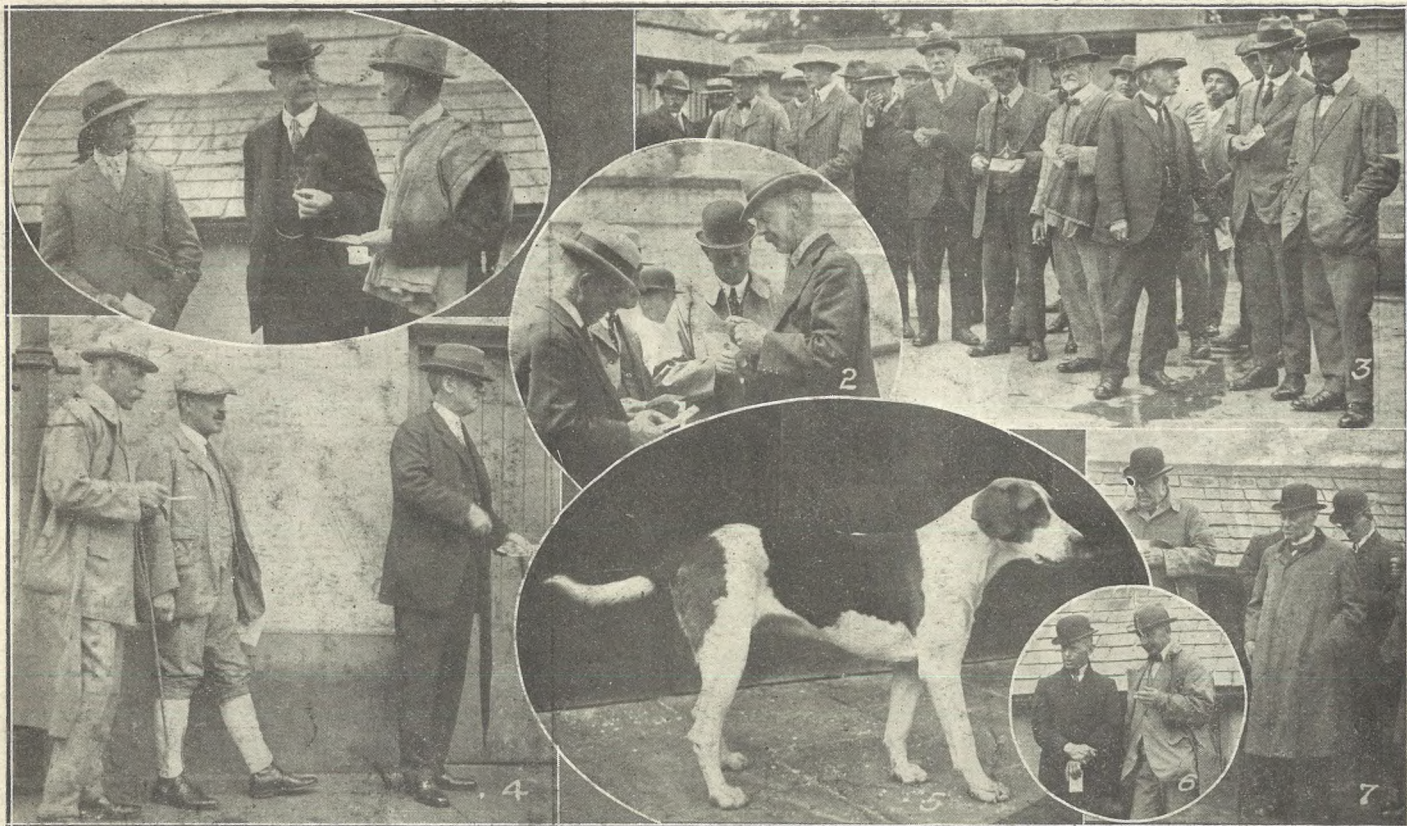
40 inch Crepe de Chines, 50 delightful colors. Prices 7/11, 8/11, 10/11 & 12/11.

100 yards of Black Taffeta, Double width, Special Price 8/11.

Fancy Silks in Shantung, Crepe de Chine, Satin de Chine, & Jap Silk, Prices 5/11 to 25/11.

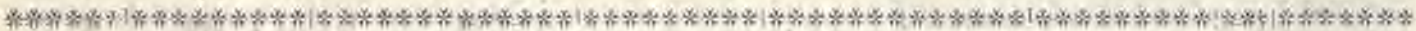
See Windows on Monday, June 28.

**JOHN LANCE & Co., Ltd.,  
CHELTENHAM.**



**PUPPY SHOW OF EARL BATHURST'S (V.W.H.) HOUNDS, SATURDAY, JUNE 19th.**

- |  |                                  |  |
|--|----------------------------------|--|
| 1.—Earl Bathurst (centre) with Capt. Fuller (left) and a friend. | 2.—The Earl with the judges.     | 5.—Viceroy, first prize dog-hound.         |
|  | 3.—Spectators and puppy walkers. | 6 and 7.—Puppy walkers.                    |
|  | 4.—Mr. A. L. Elwes on right.     | [Photos by Cheltenham Newspaper Co., Ltd.] |



**GLOUCESTER WEDDING.**

The marriage was solemnised at St. Catherine's Church, Gloucester, on June 17th, of Mr. John Osborne Martin, younger son of Mrs. F. C. Martin, of Tewkesbury, to Miss Gladys Blinkhorn, youngest daughter of the late Mr. Tom Blinkhorn, J.P., and Mrs. Blinkhorn, Sandling, Gloucester. [Photo by Cheltenham Newspaper Co., Ltd.]



**GLOUCESTER DICKENS SOCIETY OUTING TO FRAMPTON-ON-SEVERN, THURSDAY, JUNE 17th**

In No. 3 are Lady Bruton and Mrs. H. G. Norman in centre.  
No. 5.—Mr. E. K. Pearson, hon. sec., chatting to Mr. Edwards.

No. 4—Mr. Embrey lecturing at Moreton Valence Church.  
[Photos by Cheltenham Newspaper Co., Ltd.]



**PERFORMANCE BY ALL SAINTS' "KING'S MESSENGERS."**

Members of the junior missionary organisation connected with All Saints', Cheltenham, performed a pretty musical sketch entitled "The Madcap Months" on the Vicarage lawn last Saturday afternoon.



**EAST GLOUCESTERSHIRE LAWN TENNIS WEEK.**

- 1.—Prize-giving.
- 2.—Miss Lidderdale (on left) and the two finalists, Miss K. Lidderdale and Miss de Putron (on right). They won the Open Doubles Ladies' Handicap.
- 3.—Miss K. Lidderdale playing in final, which she won.
- 4.—Sir G. A. Thomas, who took the three open cups.
- 5.—Spectators.
- 6.—Miss Hogarth playing. She was in four finals.



**CHELTENHAM ENGINEMEN AND FIREMEN'S INSTRUCTION CLASS.**

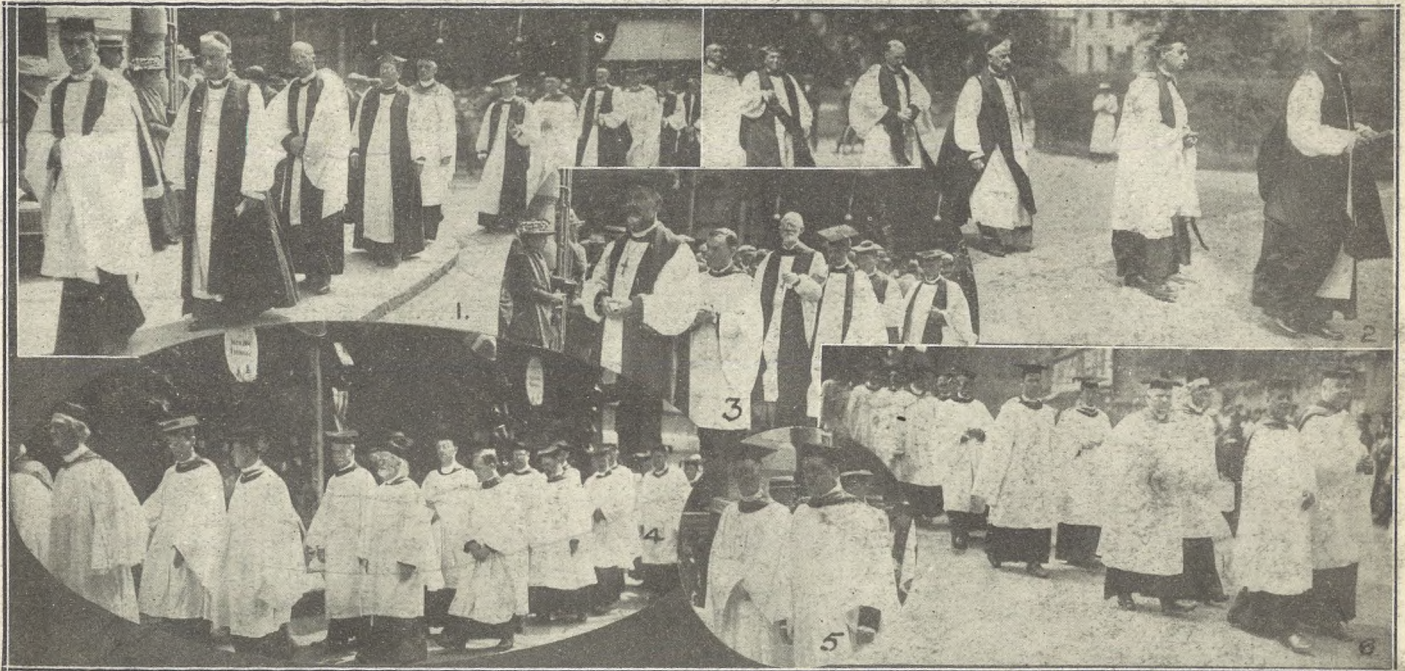
Great Western and Midland and South-Western Junction Railways, June, 1920.

Names of above are on opposite page.



**Cheltenham East Ward Conservative Outing to Stratford-on-Avon, Saturday, June 19th, 1920.**

[Photo by Cheltenham Newspaper Co., Ltd.]



**DIOCESAN MISSIONARY FESTIVAL IN GLOUCESTER.**

In connection with the above Mission, over a hundred surpliced clergy, with eleven Bishops in their robes, went in procession from the Guildhall to a service at the Cathedral.

1 and 3.—Bishops with their attendant chaplains passing the Cross.

2.—Bishops entering the Cathedral.

4, 5, and 6.—Clergy in the procession.



**SPECIALIST FOR DISEASES OF THE FOOT.**  
**MR. A. LFD. J. VENTRIS FIELD,**  
 SURGEON-CHIROPODIST, ORTHOPÆDIST  
 and ELECTRO-THERAPEUTIST.  
 Hospital Trained (London). Highest  
 Qualifications 30 Years' Practical Experience.  
 Author—"The Treatment of Talipes Valgus."  
 Consultant, H.M. Forces.  
 Surgery:  
**6 RODNEY PLACE, CHELTENHAM.**

Names of Railwaymen's Instruction Class.—  
 Back row. H. Wilcox, J. G. Carr, T. Colcomb,  
 W. Palmer, C. Davies, V. Farley, R. Mitchell,  
 J. Hillier, E. Clapton, A. Parsons, F. Godwin.  
 Second row. J. Taylor, H. Roberts, H. Allen, A.  
 Parsons, A. Caudle, C. Barnfield, R. Warriner,  
 H. Bradfield, Sitting, W. T. Tilling, W. Bull,  
 C. Allen (secretary), G. Wride, J.P., H. Allsop  
 (chairman), H. Lockey (treasurer), W. Ockwell,  
 J. Bradfield.

**PAINLESS DENTISTRY**

**EDWARDS & HIRST,**

The Dental Surgery,  
**BANK CHAMBERS, 131 High Street, Cheltenham.**  
 (Corner of North Street).  
 Advice and Estimates Free. Hours 10 till 7.  
 ESTABLISHED OVER 19 YEARS.

# VANDERPLANK (From Harrods) FASHIONS and FURS.

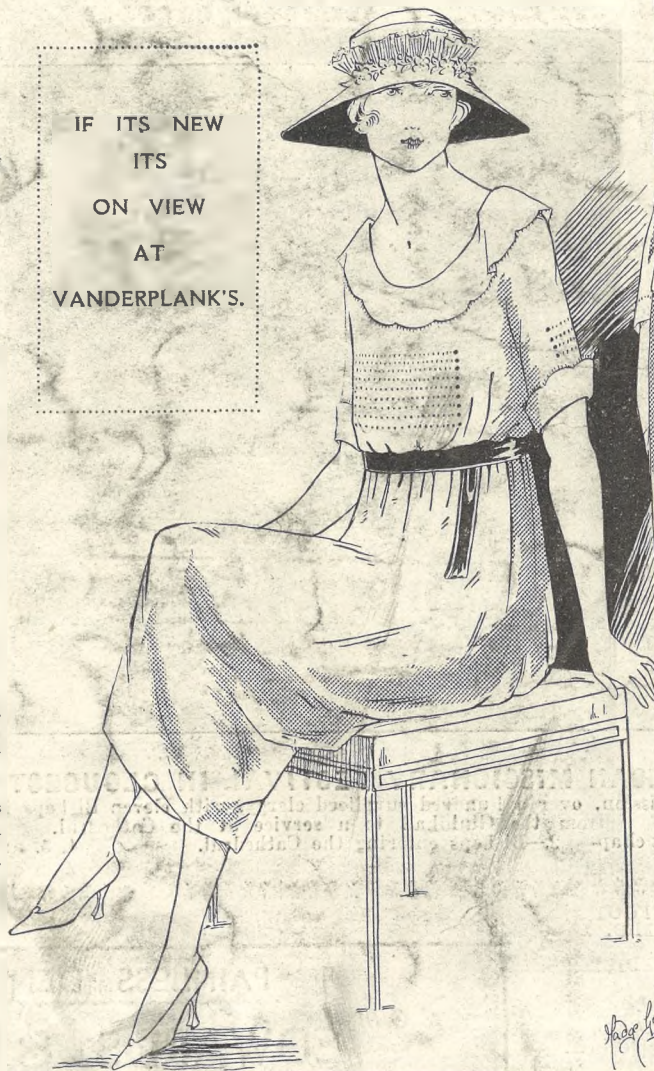
## INEXPENSIVE FROCKS

OF DISTINCTION AND  
SIMPLICITY-ALTOGETHER  
ALLURING IN THEIR  
FRESH, COOL DAININESS  
ARE TO BE FOUND IN  
OUR SHOWROOMS.



A Beautiful JUMPER of Wool  
in all the Newest Colours.  
Price—25/9.

IF ITS NEW  
ITS  
ON VIEW  
AT  
VANDERPLANK'S.



Pretty GOWN in Coloured Voile. Embroidered  
Contrasting Shades of Stitching. Price 47/9.



Charming Voile FROCK in New Blouse Jumper  
Style, in all Summer Shades. Price 45/9.

### EXQUISITE STYLES IN JUMPERS.

We specially invite attention to our  
Jumpers. In Wool and Silk these practical  
but charming articles of wear are necessities  
to the well-dressed woman. We are  
showing exclusive models—novelty  
designs in Silk and Wool Jumpers for  
Summer Wear; in fact a splendid  
array

AT OUR  
HIGH STREET ESTABLISHMENT.

Promenade and 381 High Street, Cheltenham Spa.