

THE CHELTENHAM CHRONICLE AND GLO' SHIRE GRAPHIC

ART
AND
LITERARY SUPPLEMENT

No. 988.

Saturday, December 6, 1919.

Circulation Guaranteed
Largest in Gloucestershire.

CHELTENHAM THEATRE.

This Afternoon at 2.30 and Evening at 7.30
"THE PURPLE MASK."

NEXT WEEK:

The Cheltenham Operatic and Dramatic Society
Present

"THE MIKADO."

Or "THE TOWN OF TITIPU."

THE PALACE,

HIGH STREET, CHELTENHAM.

Monday, Tuesday, and Wednesday:

MRS. CHARLIE CHAPLIN

MILDRED HARRIS IN

"BORROWED CLOTHES."

Another Episode of "ELMO THE MIGHTY."

Thursday, Friday, and Saturday:

"REAL FOLKS."

Episode 10 of "THE SILENT MYSTERY."
"Ghastly Haunts."

H. H. MARTYN & CO. LIMITED.

Architectural
Decorators



to H.M.,
KING GEORGE
V.

Monuments, Memorials, Calvaries,
and Stained Glass Windows.

Executed and Forwarded to All Parts of
the World.

"SUNNINGEND," HIGH ST.,
CHELTENHAM.

Telegrams: "Sunningend, Cheltenham."
Telephone No. 283.

MARTIN AND CO., LTD.,

Promenade, Cheltenham,

Purchase for Cash ANTIQUES of all kinds,
Including OLD SILVER, JEWELLERY,
SHEFFIELD PLATE, CHINA, COINS,
MINIATURES, Etc.

Highest Prices Given for Rare Pieces.



CLARA BUTT AND KENNERLEY RUMFORD IN CHELTENHAM.

On Friday, November 28th, Madame Clara Butt and her husband, Mr. Kennerley Rumford, gave a magnificent concert at Cheltenham Town-hall in conjunction with the fine band of the Coldstream Guards (over 60 performers). Our snaps show some of the band-men chatting outside and Madame Butt and her husband arriving. It was very dark (4 o'clock) when she arrived, consequently the photo is a poor one.

[Photos by Cheltenham Newspaper Co., Ltd.]

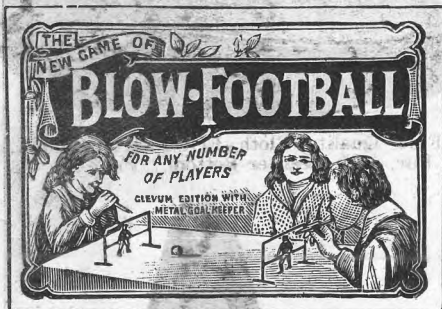
For th:
Best

PIANOS, DALE, FORTY and CO. LTD

GAMES FOR CHRISTMAS.



- Tiny Tots' Jolly Spots, 2/9.
- Tiny Tots' Post Office, 1/0½, 2/-, 3/-
- Tiny Tots' Crayon Mosaic, 1/0½, 2/-, 5/-.
- Tiny Tots' School, 1/0½, 2/-, 5/-, 10/6.
- Tiny Tots' Sunday School, 1/0½.
- Tiny Tots' Laundry, 2/-, 4/9.
- Tiny Tots' Paper Weaving, 1/0½, 2/-.
- Tiny Tots' Artist and Stenciller, 1/0½, 2/-, 5/-.



- Blow Football, 9d., 1/9, 4/6.
- Table Croquet, 1/0½, 2/6, 5/-.
- Magnetic Fishing, 1/3, 2/3, 4/6.
- Planchette, 2/-, 4/6, 6/6.
- Jiggle Joggle, 2/-, 4/6.
- Hunting, 2/-, 4/9.
- Conjuring Tricks, 2/-, 5/-, 9/6, 18/6.
- Quick Change Artist, 2/6.
- Table Tennis, 5/-, 6/-, 9/6, 13/6.

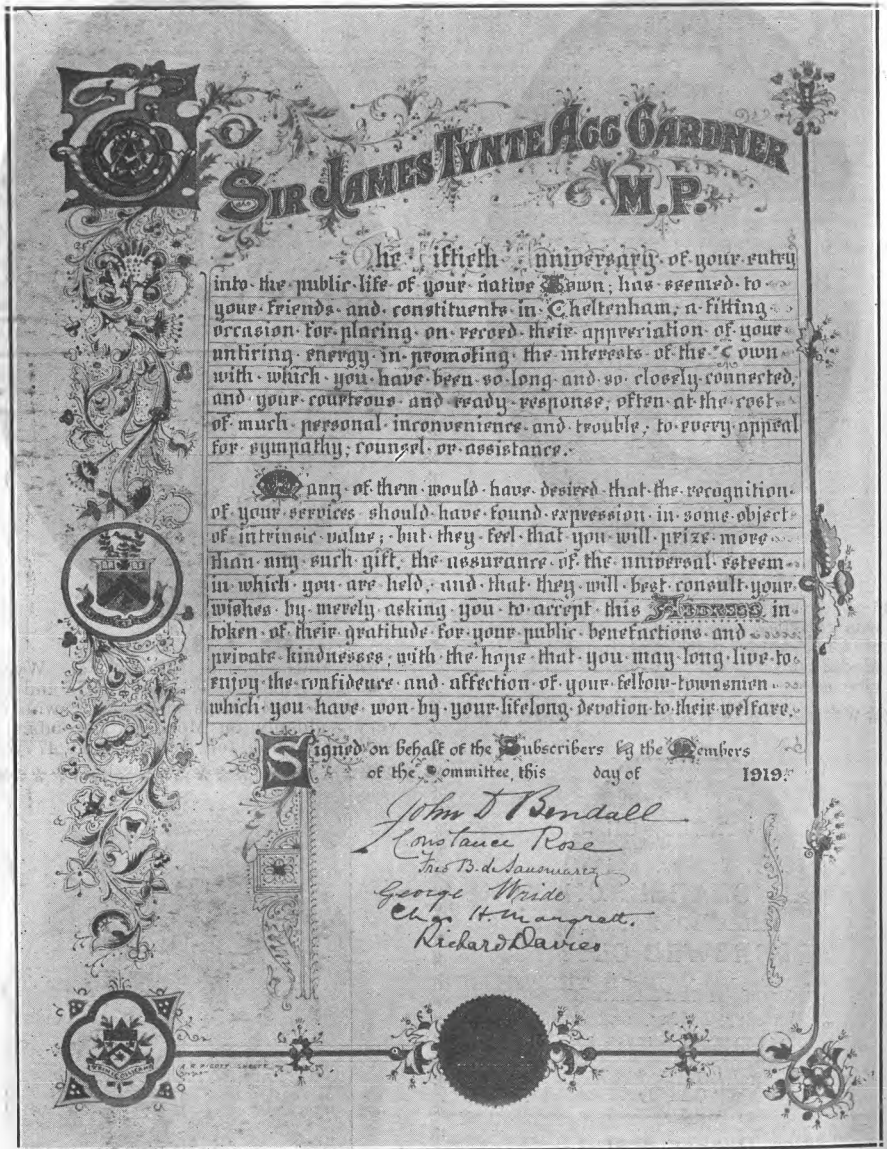
Postage, 6d. per Parcel extra.

LARGEST STOCK OF GAMES
IN THE
WEST OF ENGLAND.

Toy Catalogue Post Free on Application.

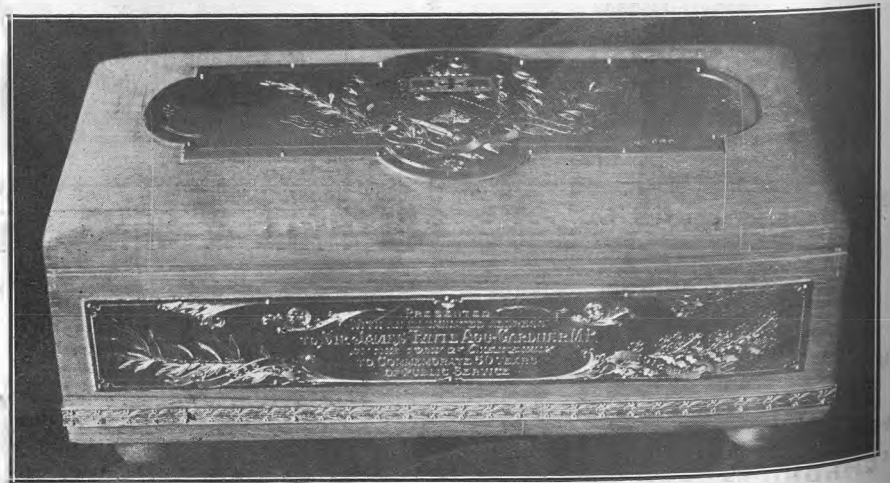
J. P. PATES,

Promenade Toy Shop,
Tel. 940. CHELTENHAM.



Recognition of Sir J. T. Agg-Gardner's 50 years' public service for Cheltenham.

The illuminated scroll of vellum which was presented to Sir James Tynnt Agg-Gardner, M.P., by his fellow townsmen on Thursday, December 4th. It explains itself. The work was executed by Mr. A. R. Pigott.



The cedar and silver casket in which the scroll was enclosed. It was executed by Messrs. Martin and Co., Ltd., Promenade, Cheltenham.
[Photos by Cheltenham Newspaper Co., Ltd.]



Mr. W. S. Barrow,

Of 13 Grange-crescent, Cheltenham, who was recently presented by the Postmaster of Cheltenham with the Imperial Service Medal for 28 years' absolutely faithful service as a postal servant.



Mr. J. S. Evans,

Senior Mathematical Master at Wycliffe College, Stonehouse, since 1897, and O.C. of the School Corps since 1915, who died very suddenly on Monday, December 1st, whilst dressing for school, aged 47 years.



Miss Rachel Williams,

For 47 years a faithful servant of the late Dean of Gloucester and Mrs. Spence Jones, who died at Port Talbot on Nov. 27, aged 79 years.



Mrs. Jane Rogers,

Widow of the late Col. Richard Rogers, V.D., J.P., who died on December 1st at her home, Ainstable, Imperial-square, Cheltenham. She was Mayoress of Cheltenham five times.



Mr. D. C. Williams, M.A.,

Of 145 Wilmer-road, Heaton, Bradford, who has been appointed the new headmaster of the Crypt Grammar School, Gloucester.

W. HALL & SONS, LTD.,

Fishmongers, . . . Game Dealers,
Fruiterers . . . Florists,

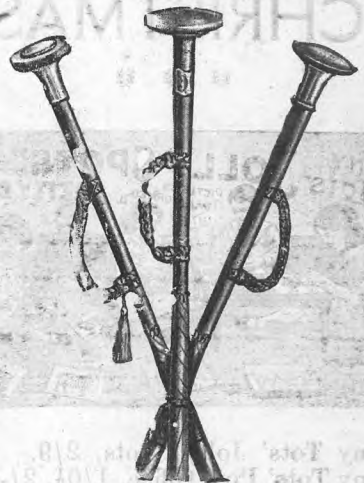
92, 92a High Street, Tel. 85.

16 Montpellier Walk, Tel. 285.

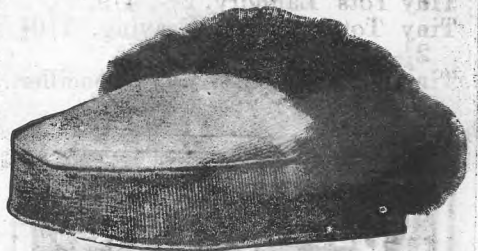
CHELTENHAM.

Choiceest Fruits Obtainable Always on Sale.
Turkeys, Geese, Capons, Ducks, Fowls,
Game and Oysters.

USEFUL CHRISTMAS PRESENTS



SPECIAL VALUE IN LADIES' UMBRELLAS, In Crooked or Straight Handles, Price 10s. 6d. Worth 15s. Also a Large Range of Ladies' Umbrellas in stock from 5s. 11d., 7s. 11d., 10s. 6d., 13s. 11d., to 4 Guineas.



Fine Quality Cloth FOOT MUFF, Lined Fur, with Leather Bottom. Price 25s. 6d.



Useful TRAVELLING RUGS, very light in weight. Price 29s. 6d.

PLAID and FANCY RUGS from 15s. 11d. to 4½ Guineas.

JOHN LANCE & CO., Ltd.
CHELTENHAM.

"CHRONICLE AND GRAPHIC" Every Saturday.



THE STRIKE AT U.C.A.L. WORKS, CHELTENHAM.

A large number of employees at the U.C.A.L. (Chemistry) Works came out on strike on Monday night, Dec. 1, after considerable negotiations between the leaders of their union and the directors of the works, in order to obtain better wages. From 250 to 300 girls and men are affected, mostly girls. We give a series of snaps of the strike on Tuesday and Wednesday.

- 1.—Girls on picket duty in Corpus-street.
- 2.—The girl pickets persuade a G.W.R. carman to turn round and not deliver his dray load of goods.
- 3.—Girl pickets at dinner time tackling the men as they left work.
- 4.—Pickets in Keynsham-road giving out circulars.
- 5.—Tackling the men leaving work.
- 6.—Who could resist such charming pickets as these?
- 7 and 9.—Men leaving the works after applying for a job on Wednesday and being told to come again on Saturday.
- 8.—Pickets at work.
- 10.—Girl pickets outside Priory Court.

250 applied on Wednesday morning. [Photos by Cheltenham Newspaper Co., Ltd.]



CIRENCESTER CHRISTMAS MARKET.

A big market was held at Cirencester on Monday, December 1st, but the weather was atrocious, rain pouring down all the time and the light was very bad. Our photographer took a few snaps at random at the market and in the Market-place.

- 1.—The market policeman chatting with an ex-Sergt. of police and a friend.
- 2.—A relic of bye-gone days up for sale in the Market-place.
- 3.—Leather laces, three pairs a 1s. (another article "gone up.")
- 4.—The market clerk under an "umbrella."
- 5.—Cronies. Three farmer friends.
- 6.—Mr. Tidmarsh (in bowler) with a friend.
- 7.—Another carriage umbrella in use.
- 8.—Pig-buyers.

[Photos by Cheltenham Newspaper Co., Ltd.]



A MUNICIPAL BYE-ELECTION IN CHELTENHAM.

Owing to the elevation of Councillor P. P. Taylor to an Aldermancy, an election was held in the Central Ward on Friday, Nov. 28th, Messrs. A. E. Stanley (Soldiers and Sailors) and Mr. Burge (Labour) being the candidates, the former being elected by 845 majority.

- 1.—Some of Mr. Stanley's assistants.
- 2.—Rev. McL. Marsden (Trinity Church) leaving the polling station.
- 3.—An old lady voter.
- 4.—Another voter leaving (Mr. Harris).
- 5.—Some of Norman Bros.' girls want a vote.

[Photos by Cheltenham Newspaper Co., Ltd.]

**RAISINS,
CURRANTS,
SULTANAS.**

PLENTIFUL SUPPLY.

SILK AND SON,
146, 430, and 431 High Street,
Cheltenham.

ANNETTE
High-Class Corset Maker.

**CORSETS MADE TO
MEASURE & COPIED;
also Cleaned and Repaired.**

CLARENCE ST., CHELTENHAM.

DENTISTRY.

**Painless
Extractions,
etc.**

**MR. SUTTON GARDNER,
LAUREL HOUSE,
CHELTENHAM.**

HOURS 9 A.M. TILL 8 P.M. DAILY.
Branches at Stroud, Nailsworth, Winchcombe, Bourton, etc.

Est. 1891 'Phone 782, Cheltenham.



A CIRENCESTER FOOTBALL DERBY.

Cirencester Town and Comrades versus Cirencester Juniors at football last Saturday was a local Derby and a big crowd turned out to witness the Juniors beaten by 5 goals to 1 on a snow-covered field.

1, 3, 4, 5, and 6.—Snaps of various groups of spectators. 2 and 7.—Snaps of mid-field play.

S.H. BRUNT,
DECORATOR and FURNISHER,
 88 Winchcomb Street, CHELTENHAM

Removals. Warehousing. Upholstering. Repairs,

CHEESERIGHTS LIMITED

FOR

VARIETY AND VALUE.

SEASONABLE GOODS AT REASONABLE PRICES.

Wool Gloves, Scarves, Hosiery, Dressing Gowns, Dressing Jackets, Pure Wool Combinations, Vests, Spencers, Skirts, Underclothing, Blouses in great variety, Corsets, Laces, Ribbons, etc.

Large Stocks at Competitive Prices.

CHEESERIGHTS LIMITED,
 MONTPELLIER, CHELTENHAM SPA.

WHAT SHALL I GIVE HIM?

HANDKERCHIEFS—

Hemstitched Lawn, 9d. to 1/- each.
 Hemstitched Linen, 1/3 to 2/6 each.
 Also with Neat Initial: Lawn 1/-,
 Linen 1/11.

TIES in Very Large Assortment:
 1/6 to 5/6.

GLOVES—

Leather-lined, 10/6 to 18/6 Pair.
 Also Fabric and Wool.

**BRACES, SHIRTS, MUFFLERS,
 HOSIERY, PYJAMA SUITS.**

A. BECKINGSALE,
 111 High Street, Cheltenham.

XMAS CARDS for OVERSEAS.

We have a charming selection now on show. This Season's Designs.

Low Prices. Come and See Them.

LEE, CAXTON HOUSE,
STATIONER, Winchcombe Street, Cheltenham

DEANE'S

HIGH CLASS WARDROBE DEPOT

THE NOTED HOUSE FOR FAIR PRICES.

Ladies' and Gentlemen's WARDROBES Purchased for Cash. Clients waited upon in town or country. Distance no object. Prompt Attention given to Post or Train Parcels. Cheques sent per return subject to customer's full approval.

Note the Address—

31 WORCESTER ST., Gloucester.

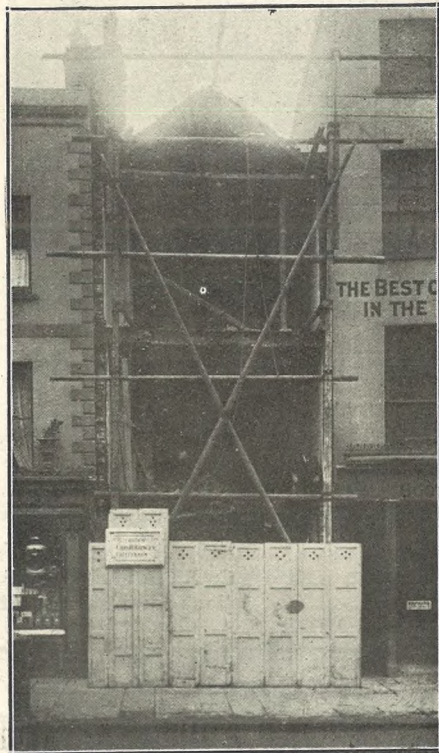
Tel. 970. Telegrams: "Wardrobes," Glos.



ST. PAUL'S, CHELTENHAM, ANNUAL SALE OF WORK.

This two-day Sale was opened on Tuesday morning by Sir James T. Agg-Gardner, M.P., with his accustomed graciousness and interest in all good work connected with Cheltenham. A number of those present at the opening ceremony.

[Photo by Cheltenham Newspaper Co., Ltd.]



Disappearance of Another Cheltenham Landmark.

The front of Messrs. Wilks and Co., fish-mongers in High-street, Cheltenham, has been pulled right out, and a new shop front is being put in for the fish business controlled by Lord Leverhulme, who has taken the premises. Our photo shows the present state of the premises, with the two floors sustained by the adjoining shops.—Photo by Cheltenham Newspaper Co., Ltd.



Mde. Elsa Stralia,

The great prima donna, who will sing in "The Messiah" on Tuesday, December 16, at the Town Hall, Cheltenham.



P.S. JAMES,
Of New Court, Cheltenham, who with Sergt. Wateley (Yorks.) represents on the Joint Central Committee of the Police Federation the whole of the county police sergeants in England and Wales. He is one of the three sons of Mr. Tom James, of Rodborough.

LIGHTS OUT!

An amusing story is related by a Cheltonian in which he says that while at the front one night the call went for "lights out" at 10 o'clock. Seeing a light, the sergeant shouted, "Put that cigarette out," and as there was no response he proceeded to enforce the order. Imagine the sergeant's surprise on finding that the supposed cigarette light was none other than the glow from the luminous watch worn by the innocent soldier. The watch was one of Messrs. Waite and Son's genuine Radio dial watches, which goes to prove their wonderful illuminating power. Buy genuine Radio luminous watch and buy it of Messrs. Waite and Son, Watch-makers, 349 High Street, Cheltenham.

HAVE YOU GOT A BABY?

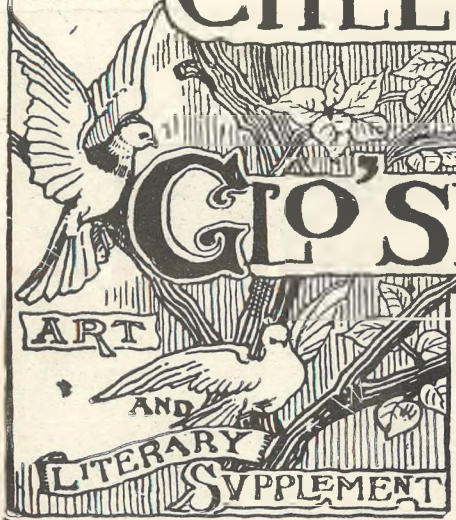
If so, ask for **CHELTINE MILK & MALTED FOOD**
Sold Everywhere. Manufactured by **THE CHELTINE FOODS Co., CHELTENHAM**

HARRY O. BOX.

339 HIGH STREET, CHELTENHAM,
Offers the Best Prices for Old Jewellery, Silver, Artificial Teeth, Antique Furniture, Cut Glass, Old China, Etc.
Estab. 65 Years. Opposite Grammar School.

Printed and Published as a Gratis Supplement by the Cheltenham Newspaper Company, Ltd

THE CHELTENHAM CHRONICLE AND GLOUCESTERSHIRE GRAPHIC



No. 989.

Saturday, December 13, 1919.

[Circulation Guaranteed Largest in Gloucestershire.]

CHELTENHAM THEATRE.

This Afternoon (2.30), Evening (7.30):
The Cheltenham Operatic Society in
"THE MIKADO."

After the Above the Theatre will be CLOSED
for Preparation for the Gorgeous PANTOMIME,
"LITTLE JACK HORNER."

THE PALACE, HIGH STREET, CHELTENHAM.

Monday, Tuesday, Wednesday:
"Girl of the Timber Claims."
Featuring CONSTANCE TALMADGE.

"ELMO THE MIGHTY."
Starring Elmo Lincoln and Lucille Love.

Thursday, Friday, and Saturday:
"Her Excellency the Governor."
Presenting Wilfred Lucas and Eida Miller.
"SILENT MYSTERY," featuring Francis Ford.
Episode 11, "Yellow Shadows."

Gaumont Graphic, and Choice Selection of
Comedy, Interest, and Travel Pictures.
Changed Twice Weekly.

**FIRST QUALITY
CIDERS** in bottle,
SPARKLING AND STILL.

BARTHOLOMEW,
419-420 HIGH ST., CHELTENHAM.

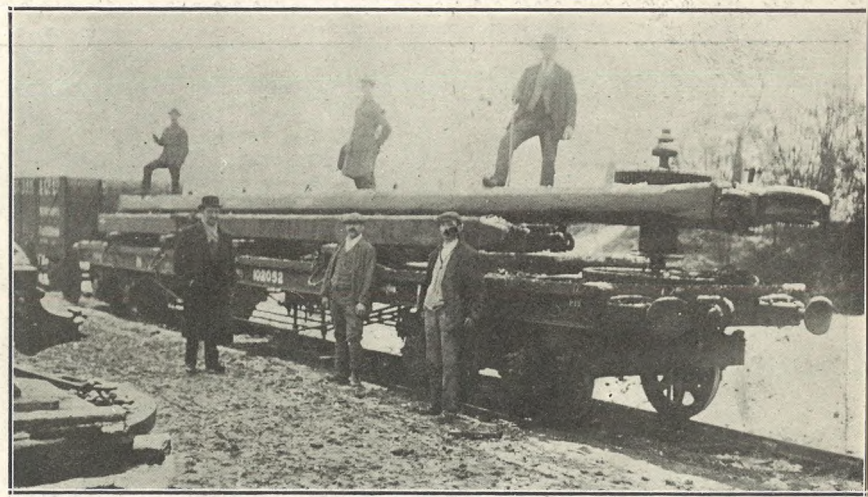
Wines, Spirits, Ales, Table Waters,
and Grocery. TEL 135

MARTIN AND CO., LTD.,
Promenade, Cheltenham,
Purchase for Cash ANTIQUES of all kinds.
Including OLD SILVER, JEWELLERY,
SHEFFIELD PLATE, CHINA, COINS,
MINIATURES, Etc.
Highest Prices Given for Rare Pieces.



BETHESDA SALE OF WORK.

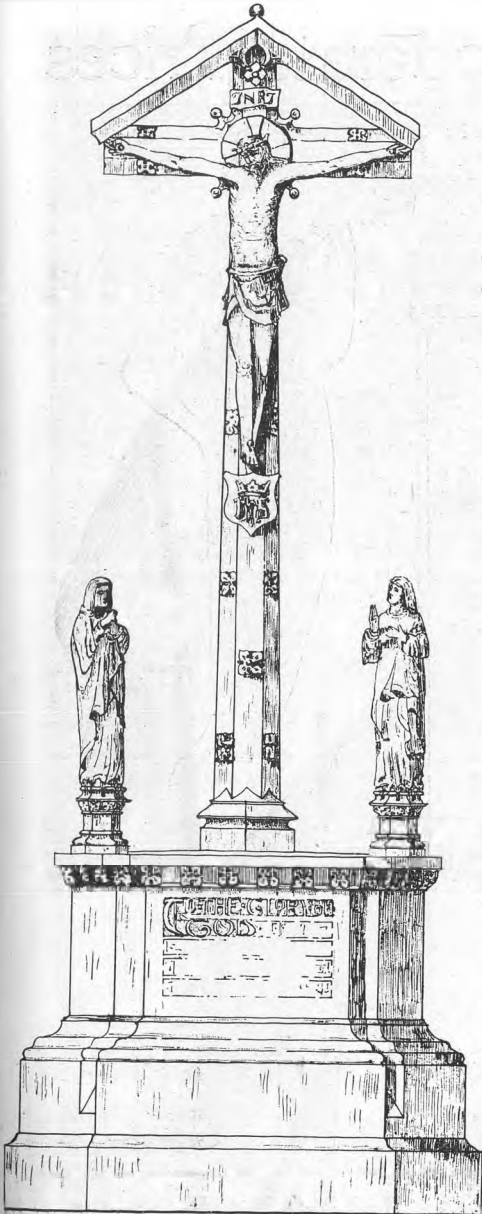
The officials at the splendid sale at Bethesda Wesleyan Schools on December 4th and 5th, when over £400 was raised for Church purposes.
Standing.—Messrs. E. Selley, W. T. Smith, Rev. P. Smith, Rev. Gearld P. W. Heathcote, Mr. F. W. Harper, J.P., Rev. J. H. Greeves, Mr. J. Willis, J.P., Mr. Brookman
Sitting.—Mr. C. Selley, Mrs. D. Lewis, the Mayoress, the Mayor, Mrs. F. W. Harper, Mr. P. Lamb.
[Photo by Cheltenham Newspaper Co., Ltd.]



BIG CRANE FOR LECKHAMPTON HILL.

A very large crane (shown on railway truck) has now been fixed in the Leckhampton stone quarries.
[Photo by Cheltenham Newspaper Co., Ltd.]

For the Best **PIANOS, DALE, FORTY and Co., Ltd.**



A Local War Memorial.

This is an illustration of the war memorial which is to be erected at All Saints', Cheltenham. The work is being executed by Messrs. R. L. Boulton and Sons, Bath-road, Cheltenham, to the design of Mr. J. Coates Carter, architect, Prestbury.



Rev. Kenneth Keay,

Who was inducted to St. Andrew's Presbyterian Church, Cheltenham, on December 4th. He is shown in uniform taken in 1915 when serving as an officer in the Cameronians.

Xmas Novelties
IN
Art Needlework, &c.

Choice Selection of
— Every Requisite —
Finished and Unfinished.

SPECIALITIES:

Fine Assortment of Beads.
Specimens in Cluny and Broderie
Work.

WOOLS, SILKS, and COTTONS.

ART NEEDLEWORK STUDIO

(T. Pritchard, Proprietor),

1 IMPERIAL BUILDINGS.

(By the Fountain),
CHELTENHAM.

Xmas Puddings,
Mincemeat.

FOR QUALITY TRY

SILK & SON,

146, 430, and 431 High Street,
Cheltenham.

EST. 1843.

TEL. 249.

Seasonable and
Useful Gifts. . .

TROUSER PRESSES, 24/- to 45/-.

HANDKERCHIEFS, 6/6 to 16/2
per Dozen.

(White, Lawn, and Coloured Border.)

GLOVES, Woollen and Kid, 2/11
to **21/-** per Pair.

TIES, 1/6, 2/6, and 4/6.

All Clean and Fresh Stock.

GENT'S HALF-HOSE, Cashmere
and **Worsted, 2/11, 3/11, 4/6.**

Gent's Cardigan Jackets.

Boys' Jerseys, Hose, etc.

THE FAMOUS,

Complete Outfitters,

351 High Street, CHELTENHAM.

CHOICE COLLECTION OF
XMAS PRESENTS

in our **FANCY BAZAAR.**



LADIES' BLACK LEATHER
HANDBAG, 10/6.

HANDBAGS in Suede, Leather, Silk, and
Beaded; also **PURSES, MANICURE SETS,**
SCISSOR CASES, HAIRBRUSHES,
ANTIMONY WEAR.

Lovely Selection of **LADIES' HANDKER-**
CHIEFS in **FANCY BOXES** containing Six,
from 2/3½ to 8/11 the box.

PLAIN and FANCY LINEN and LAWN
HANDKERCHIEFS, all prices.

HANDKERCHIEF SACHETS,
PIN CUSHIONS, TEA COSIES,
BEADED NECKLETS, ETC.

A Large Selection of **MAIDS' CAPS** and
APRONS in Stock.

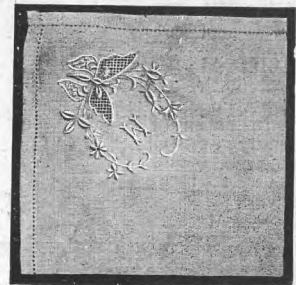
USEFUL AND IDEAL PRESENTS

Are to be seen in our Silk Showroom
on the Ground Floor.

Dainty Silk Blouse Lengths from
7/11 to 45/-.

Dress Lengths from **10/11 to 65/-.**
Ladies' and Gent's Umbrellas, 5/11
to 45/-.

Pram Rugs, Foot Muffs, Travelling
Rugs, etc., all at Special Prices.



INITIAL HANDKERCHIEF, Pure Linen,
1/0½; also Better Quality, 1/6.

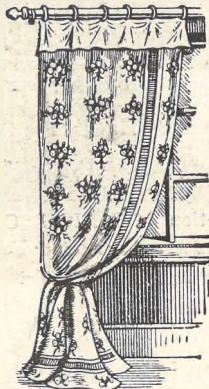
□ □ □

JOHN LANCE & CO., Ltd.
CHELTENHAM.

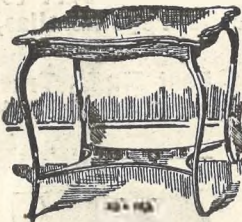
Useful Artistic Gifts at Moderate Prices.



Special Line in 10 MOME BLOUSES, 12/11. This (Extra Heavy) JAP SILK Blouse is worth 21/6, and we cannot repeat orders.



LACE CURTAINS, 4/6½ Pair to 29/6 Pair. CASEMENT CURTAINS in all Colours and Prices.



OCCASIONAL TABLES, as illustrated, Polished Mahogany, etc., 29/6. Also in other Designs, in Mahogany and Oak, 16/11 to 5½ Guineas.



PLAIN CUSHIONS, for Covering, from 1/11½. USEFUL CUSHIONS, Covered Plain Casement Cloth, from 2/6½.

It is not so much the actual cost of a Gift, but the care in its selection that is appreciated.

To select your gifts early will amply repay you in every way, including far greater comfort than in the rush of the last few days before Xmas.

ALL OUR DEPARTMENTS ARE BRIMFUL OF ARTICLES SUITABLE FOR GIFTS.

XMAS Toy Fair

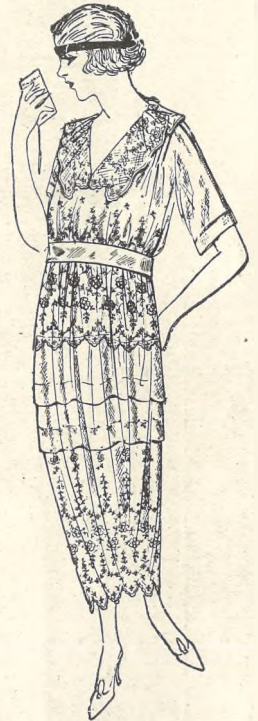
This will be in some cases the first Xmas, and in still more the first since 1914 that Daddy has been home, so let it be

A RIGHT ROYAL TIME FOR THE KIDDIES.

Bring them to our big TOY FAIR and let them have a good look round, and watch their eyes sparkle with delight—it is well worth the trouble.

*****|*****|*****|*****

Our TOY FAIR has now regained its pre-war standard of Variety and Value.



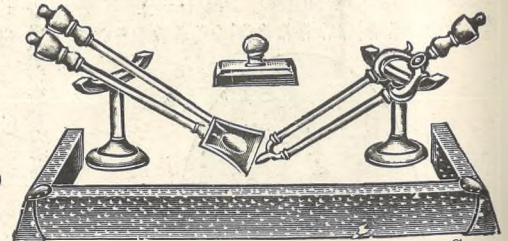
A PRETTY DRESS in Lace, 31/6



Also in Better Quality £5 10s.



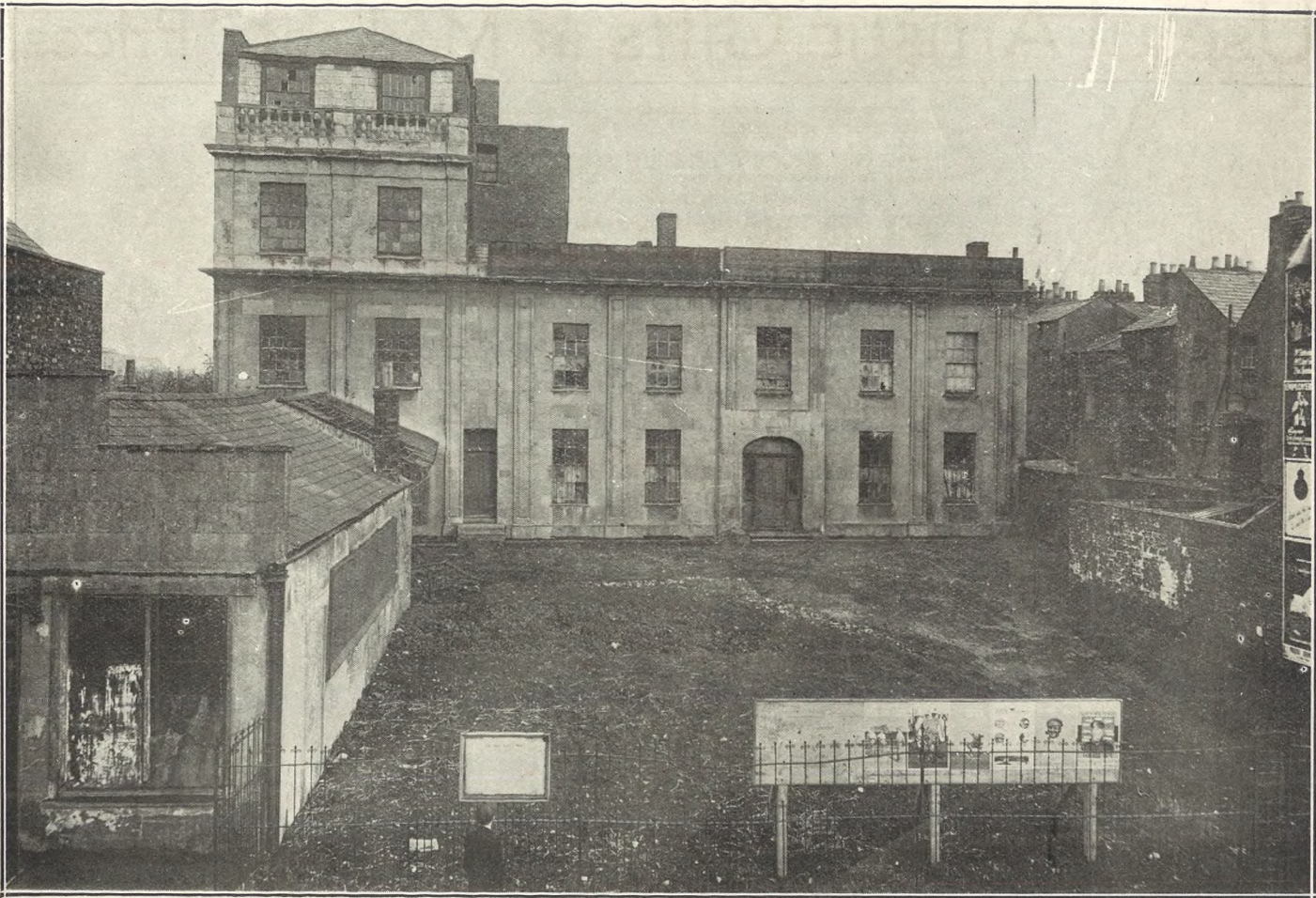
21-PIECE TEA SETS, in Imitation Derby Design, 10/11. Also other Beautiful Designs, 21/6 to 6 Gns.



OXIDISED BRASS CURBS, 10/11 to 3 Gns. FIRE IRONS to match, 18/11, etc. A USEFUL SUITE, as illus., £2 15s. 6d.

A very useful Reclining Chair, with adjustable back and seat, built of Solid Oak and well upholstered in Tapestry or Velvet Cord, in Fumed or Antique Colour, £4 10s.

Dicks & Sons Ltd.
ART & ECONOMY BUILDINGS
High St. Cheltenham Spa.
46 Years' Reputation for Value.



PROPOSED NEW SOLDIERS' CLUB IN CHELTENHAM.

The old warehouse, formerly used by Messrs Shirer and Haddon, in High-street, (opposite St. George's-square), and prior to that the first Cheltenham General Hospital, on the site of which it is proposed to build a club for demobilised service men, costing about £10,000. It is hoped to get a large grant in aid of same from the Canteens Fund, now being administered by General Byng.



SALE OF WORK AT ST. JOHN'S, CHELTENHAM.

A two-days' Sale of Work was opened at St. John's Parish Room on Tuesday, December 2nd. A number of the workers outside the room at the opening ceremony on Wednesday morning. [Photos by Cheltenham Newspaper Co., Ltd.]



"THE MIKADO" AT CHELTENHAM OPERA HOUSE.

The Opera House has been packed the whole of this week, the draw being a very fine performance of "The Mikado," Gilbert and Sullivan's famous operatic masterpiece, by the members of the Cheltenham Operatic and Dramatic Society.

- | | | |
|--|--|--|
| 1.—Messrs. C. G. Smith and E. L. Smith. | 5.—Mr. L. Morris, one of the chorus. | 10.—Bobbie Banks, the sword bearer to the Mikado. |
| 2.—Mr. Herbert T. Rainger as Ko-Ko, one of the clever successes of the piece. | 6.—Major Bell Haworth as the Mikado. | 11.—Misses Margaret Lidderdale, Grace Webb, and Vera Growse as Peep-Bo, Yum-Yum, and Pitti-Sing, the three little maids from school. |
| 3.—Mr. Sydney Harrison as Pooh-Bah, a clever and successful impersonation. | 7.—Miss Marie Elliot as Katisha, a splendid study of a tragically forlorn old thing. | |
| 4.—Mr. Edgar Barnett as Nanki-Poo, whose artistic tenor voice was a great asset. | 8.—Mesdames P. Allen, C. Barnett, Clark. | |
| | 9.—Mesdames Marston Davis and Pike as schoolgirls. | |

[Photos Nos. 2 and 6 by Messrs. Debenhams, Longman, and Co.; all others by Cheltenham Newspaper Co., Ltd.]



"THE MIKADO" AT CHELTENHAM OPERA HOUSE.

A further series of pictures of the performers in the artistic and musical success of this week, the last performance of which takes place this evening. All of these are members of the large and capable chorus.

- | | | |
|---|---|---|
| <p>12.—Mrs. P. Allen, Miss Garfit, and Mrs. G. Allen as schoolgirls.</p> <p>13.—Messrs. Burton Clarke, W. James, I. D. Yeaman, and C. Hall as nobles.</p> <p>14.—Miss Chambers and Mrs. Copeland as schoolgirls.</p> <p>15.—Messrs. W. O. Griffith and S. Bick as nobles.</p> | <p>16.—Messrs. Leslie Gillham (understudy to Pish-Tush), J. N. Sidaway, and W. H. Jessop as nobles in chorus.</p> <p>17.—Mrs. Lindsey Clark, Miss Esme Fulton, and Miss Violet Leach as schoolgirls.</p> <p>18.—Miss Cates, Miss Bastard, and Mrs. Leeson as schoolgirls.</p> <p>19.—Misses Gladys Workman (understudy to Peep-Bo) and Miss Edith Anley as schoolgirls.</p> | <p>20.—Standing: Misses Ella Thompson (understudy to Pitti-Sing), Browning, Lye, Agnes Ruck. Sitting: Misses Pattison, Irene Bouth, Evelyn Crane, Brown Constable, who took parts as schoolgirls.</p> |
|---|---|---|

[Photos by Cheltenham Newspaper Co., Ltd.]



BIG SHOW AND SALE OF FRUIT AT CHELTENHAM MARKET.

- The first competitive show of choice fruit held at Cheltenham Market took place on Thursday, December 4th.
- 1.—The auctioneer (Mr. Price, without hat), with the Mayor (next to right), Mr. G. H. Hollingworth (on left), and a number of growers and buyers.
 - 2.—Buyers at the sale.
 - 3.—Mr. G. H. Hollingworth, Mr. W. Res tall and the Mayor chatting.
 - 4.—A couple of spectators.
 - 5.—Ald. H. R. Braine (chairman of Gloucester Markets Committee) and Mr. Chatterback (Gloucester City Accountant) having a look round and talking to Mr. J. T. Pratley.
 - 6.—Some of the buyers.
 - 7.—Mr. A. Peters (Markets Committee), Mr. G. H. Hollingworth (County Agricultural expert), and Mr. Bruce Swanwick (chairman of County Markets Committee).
 - 8.—The four judges: Mr. R. Robinson (Leeds), Mr. S. Sharpe (Cheltenham), Mr. A. Morris (Smithfield Market, London), and Mr. Bishop (Port Talbot).

[Photos by Cheltenham Newspaper Co. Ltd.]

J. P. Pates for Xmas Toys

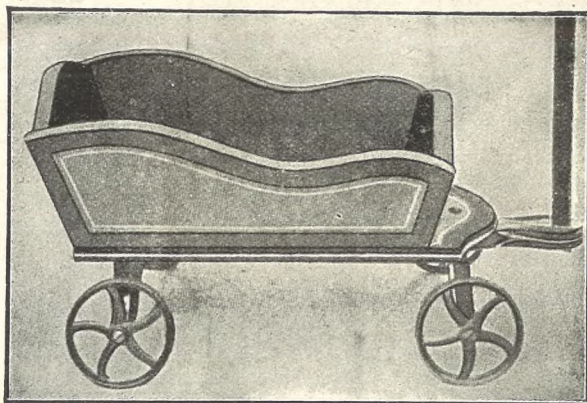
Promenade, Cheltenham. Tel. 940.

*****|*****|*****|*****|*****|*****



KINDERGARTEN TOYS.

LETTER PIECES, 8d. and 1/3.
 FIGURE LAYING, 8d. and 1/3.
 EMBROIDERY BOXES, 8d.,
 1/3, and 2/6.
 MAT WEAVING, 1/3, 2/6.
 JAPANESE STRAW WORK,
 1/3 and 2/6.
 JUMBLED PICTURES, 2/6, 4/6.
 HEMP PLAIT WOOL BALL,
 7/6.



PULL CARTS.
 STAINED WOOD, 4/6 and 7/6.
 DITTO, ELM (Varnished), 17/6, 21/-, 25/-.



A.B.C. PICTURE BLOCKS, 7½d., 1/0½, 1/6.
 2/6, and 5/6 per Box.
 PICTURE CUBES, 1/6, 2/6, 3/6, 4/6, 5/6,
 8/-, 9/6, and 12/6 per Box.
 DISSECTING PUZZLES, 9d., 1/3, 2/6, 3/6,
 4/6, and 6/- Each.
 LOTT'S BRICKS (Stone), 4/6, 5/6, 10/6,
 21/-, 42/-.
 A.B.C. (ALPHABET CUT OUT), 3/6 & 4/6.
 WOOD BUILDER, 1/3, 2/6.
 CABINET MAKER, 1/0½, 2/6, 6/-,
 and 2/6.



ANIMALS (ON WOOD WHEELS).
 DOGS, CATS, and RABBITS, 4/6, 6/6, 9/6,
 and 16/6 Each.
 LARGER ANIMALS (as Illustrated), strong
 enough to carry a child, 15/6, 21/-, 35/-,
 50/-, and 63/- Each.

TERMS—Cash with Order.

POSTAGE—6d. Extra on Parcels of 5/-
 and under. Over this and under 21/-,
 1/- Actual cost charged for large or
 heavy parcels.

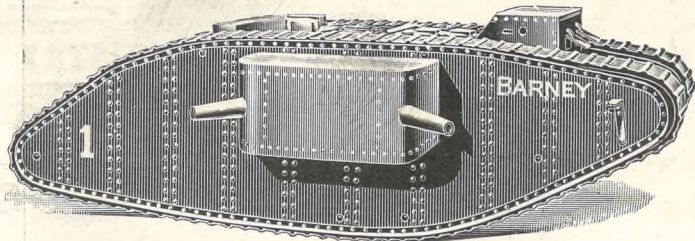
ILLUSTRATED CATALOGUE POST
 FREE.



TIN TEA SETS (2 Cups),
 1/6 the Set.
 DITTO (4 Cups), 2/3 the Set.
 CHINA TEA SETS, 3/9, 4/9,
 and 7/6 the Set.
 PAPER MACHE TRAYS, 1/6

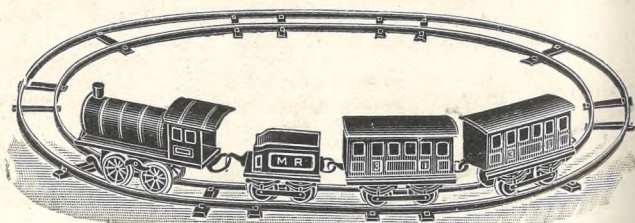
Christmas Tree Decorations.

BOXES OF FROST, 1d. and 3d. Each.
 TINSEL, 4½d., 7½d., and 9d. per Skein.
 COMETS, 2d. Each.
 POMS, 3d. Each.
 METAL FLOWERS, 3d. and 6d. Each.
 TINSEL BOSSES, 1/3½ Each.
 CANDLES, 1d. Each, two for 1½d.
 CANDLE CLIPS, 2d. Each.
 CHRISTMAS TREES (Small), 1/9 Each.
 FAIRY DOLLS, 5/- and 7/6 Each.
 DOLL'S HOUSES (Miniature), 2/-.



TANKS, PROPELLED BY STRING, 8/-
 Each.

DITTO (MECHANICAL), as Illustrated,
 Correct in Detail, Climbs Over Obstacles,
 Original Colours, 8 inches long, 21/- Each.



PULL-ALONG ENGINES, 1/6; DITTO
 TRAINS, 4/6 Each.
 CLOCKWORK CARPET ENGINES, 2/9,
 5/-, 6/11, 12/6 Each.
 CLOCKWORK CARPET TRAINS, 4/6 and
 5/- Each.
 CLOC KWORK TRAINS (WITH LINES),
 8/6, 10/6, 12/6, 20/-, 35/-, and 45/- Each.



THE U.G.A.L. WORKS STRIKE.

Strikers receiving strike pay on Saturday morning, December 6th, at their room at the Imperial Cafe, High-street, Cheltenham.

[Photo by Cheltenham Newspaper Co., Ltd.]



WORKERS FOR CHARITY.

Members of the C.M.M.A.S. Committee, Cheltenham, held an All-day Working Party on Saturday, December 6th, at Holy Trinity Mission Hall.

[Photo by Cheltenham Newspaper Co., Ltd.]

H. H. MARTYN & CO. W. HALL & SONS, LTD., LIMITED.

Architectural Decorators to H.M. KING GEORGE V.

Monuments, Memorials, Calvaries, and Stained Glass Windows.

Executed and Forwarded to All Parts of the World.

"SUNNINGEND," HIGH ST., CHELTENHAM.

Telegrams: "Sunningend, Cheltenham." Telephone No. 283.

Fishmongers, . . . Game Dealers, Fruiterers . . . Florists, 92, 92a High Street, Tel. 85. 16 Montpellier Walk, Tel. 285. CHELTENHAM.

Choiceest Fruits Obtainable Always on Sale. Turkeys, Geese, Capons, Ducks, Fowls. Game and Oysters.



THE LYRIC GLEE SINGERS.

TERMS AND VACANT DATES APPLY— Secretary—W. A. HEATH, "Avening," Old Bath-road, Cheltenham.

WHAT SHALL I GIVE HIM ?

HANDKERCHIEFS—

Hemstitched Lawn, 9d. to 1/- each. Hemstitched Linen, 1/3 to 2/6 each. Also with Neat Initial: Lawn 1/-, Linen 1/11.

TIES in Very Large Assortment: 1/6 to 5/6.

GLOVES—

Leather-lined, 10/6 to 18/6 Pair. Also Fabric and Wool.

BRACES, SHIRTS, MUFFLERS, HOSIERY, PYJAMA SUITS.

A. BECKINGSALE, 111 High Street, Cheltenham.

ANNETTE

High-Class Corset Maker.

CORSETS MADE TO MEASURE & COPIED; also Cleaned and Repaired.

CLARENCE ST., CHELTENHAM.

DENTISTRY.



Painless Extractions, etc.

MR. SUTTON GARDNER, LAUREL HOUSE, CHELTENHAM.

HOURS 9 A.M. TILL 8 P.M. DAILY. Branches at Stroud, Nailsworth, Winchcombe, Bourton, etc.

Est. 1891

'Phone 782, Cheltenham.



THE SPLENDID NEW SHOP FRONT OF MR. R. T. ADAMS, COSTUMIER, ETC., 75 AND 76 HIGH STREET, CHELTENHAM.

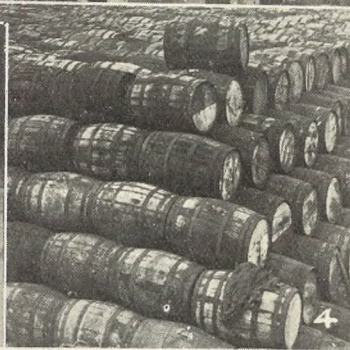


You are Invited to Inspect the NEW WINDOWS for the Best

:: :: Selection of USEFUL PRESENTS FOR LADIES. :: ::

R. T. ADAMS, 75 & 76 High Street, Cheltenham.

[Photos by Cheltenham Newspaper Co., Ltd.]



CHELLENHAM FRUIT-PULPING FACTORY.

The Cheltenham Market Gardeners' Association this season opened a pulping factory of their own in Dunalley-street, and many tons of fruit have been scientifically reduced into pulp ready for the jam makers, most of it being apples. A great quantity of blackberries were taken over during the railway strike and pulped.

- 1.—Group of some of the employees. Seated are Mr. H. Patience, F.R.H.S. (foreman), Mr. F. May (manager), Miss D. May (clerk).
 2.—These barrels are all full of pulp.
 3.—The pulping vats. It is all pulped by steam.
 4.—More full casks.
 5.—Putting the fruit on to the lift.
 6.—Running out the pulp into barrels.
 [Photos by Cheltenham Newspaper Co., Ltd.]

Sensible Suggestions for Xmas.



PRACTICAL GIFTS

are always most appreciated, and this year presents of real utility will be the order of the day.

We cordially invite you to inspect our Christmas display :: at an early date. ::

**DRESSING GOWNS, RUGS,
WOOL JACKETS, SILK
SCARVES, LINED GLOVES,
TIES IN ALL SHAPES, ETC.**

Bryant & Co., HIGH STREET,
CHELTENHAM.

Xmas Presents

*****|*****|*****|*****|*****

Before making up your mind Inspect Our Window.

**LARGE SELECTION OF USEFUL
AND SERVICEABLE PRESENTS.**

Sets of Bread Trenchers, Butter Dishes,
:: Bread Knives and Butter Knives. ::

STAINLESS CUTLERY IN ALL PATTERNS.

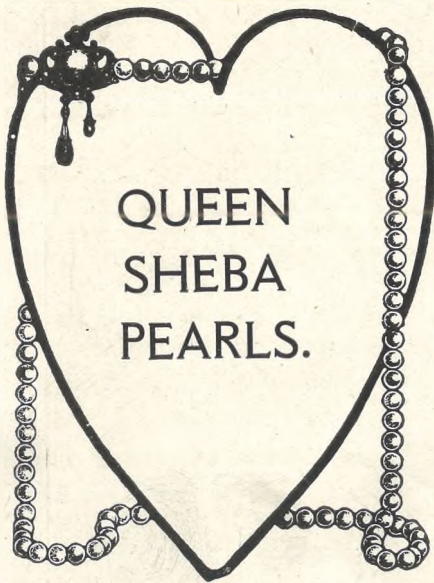
Safety Razors, Pocket and Sportsmen's
Knives in Great Variety.

NOTE ADDRESS—

Williams & Co. THE CUTLERS,

19 WINCHCOMBE STREET, CHELTENHAM.

THE ORIGINAL AND ONLY WORKING CUTLERS
IN THE TOWN.



QUEEN
SHEBA
PEARLS.

There is no adornment for a lady more becoming than Pearls. There is no gift more acceptable — no present gives more pleasure.

A Necklet of Pearls of beautiful lustre around the neck gives tone and dignity to the wearer, and is the admiration of her friends.

See our exhibition of Queen Sheba Pearls. They are :: perfect replicas — permanent and unbreakable. :: If you cannot call, send for a selection on approval.

Waite & Son, JEWELLERS,
349 HIGH STREET,
CHELTENHAM. ::

The Cheltenham Original BREWERY COMPANY, LIMITED.



A corner of
the Cellars.

Organised on modern lines and backed by **140 YEARS' EXPERIENCE**, offer you ALES and STOUT of unequalled Purity. Send your XMAS ORDER to **166 HIGH STREET, CHELTENHAM.**



CHELTENHAM COLLEGE v. MARLBOROUGH COLLEGE.

THIS IMPORTANT RUGBY FOOTBALL MATCH WAS PLAYED ON CHELTENHAM COLLEGE GROUND ON SATURDAY, DECEMBER 6th, THE MARLBOROUGH BOYS GAINING AN OVERWHELMING VICTORY BY 31 POINTS TO NIL.

- 1 and 4.—Sections of the boys interested in the play. 2.—Some Marlborough players at half-time. 3.—A Marlborough three-quarter coming through with the ball. 5.—Cheltenham get the ball out. 6.—Spectators.

[Photos by Cheltenham Newspaper Co., Ltd.]

Ideas for Xmas Presents.

Photo Frames, Fountain Pens, Purses, Hand Bags, Dolls, Boxes of Handkerchiefs, Irish Linen Cloths, Irish Lace, Cushion Covers, Tea Cosies.

COME AND INSPECT OUR SPLENDID SELECTION. Quality right! Price right!

LEE, CAXTON HOUSE, Winchcombe Street, STATIONER, Cheltenham

HAVE YOU GOT A BABY? If so, ask for **CHELTINE MILK & MALTED FOOD** Sold Everywhere. Manufactured by **THE CHELTINE FOODS Co., CHELTENHAM**

"Echo" Every Evening.



Bro. Harry Bowd, K.O.M., Of Cheltenham, President Certifying Council, Glos., recently elected Prov. Grand Primo, Glos., for 1920, in the Royal Ancient Order of Buffaloes.

Advertise in the "Echo."

SIDECARS! COMPLETE. Fit Any Machine.

1920 MODELS NOW READY.—Light, Heavy and Touring. ORDER NOW! Early Delivery.

BRYANT & HANCOX,

Sidecar Builders, 122 Rupert St., Nechells, Birmingham

S.H. BRUNT, DECORATOR and FURNISHER, 88 Winchcomb Street, CHELTENHAM

Removals. Warehousing. Upholstering. Repairs

SEASONABLE GIFTS.

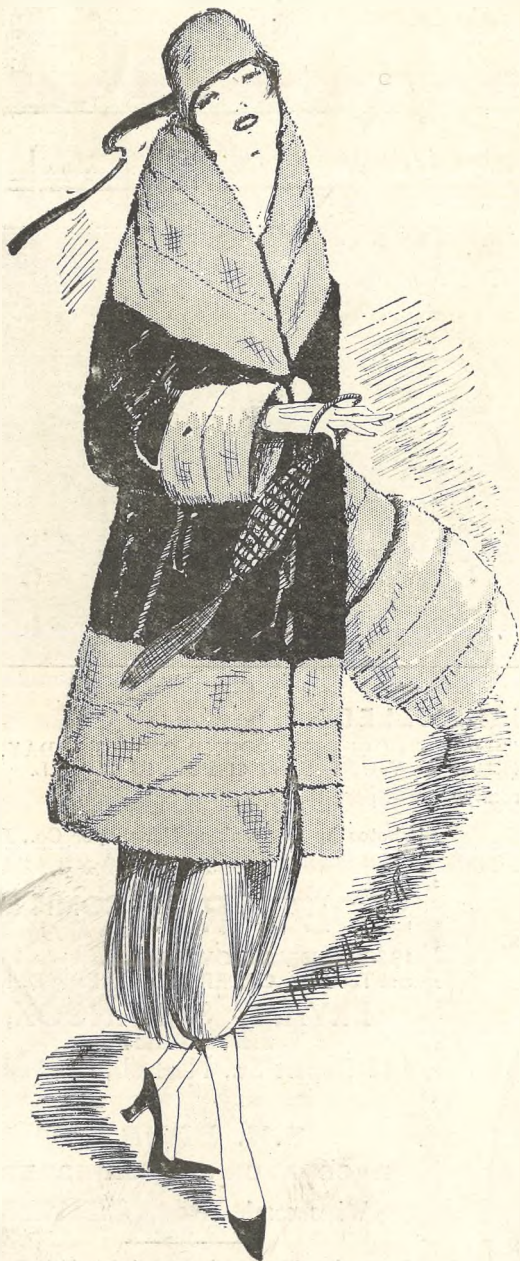
Ties, Handkerchiefs, Mufflers, and Shirts. TROUSER PRESSERS.

G. DIGGINS, 81 High Street, Cheltenham.

Madrid is without newspapers, in consequence of the printers' strike.

A Paris rag and bone dealer, who bought 100 tons of waterproof coats at the sale of American war stores, made a profit on their resale of £6,400. This sum he invested in further purchases, which on being sold have realised for him a fortune of about £40,000.

Shop at **Vanderplank's** THIS XMAS!



A Suitable and Seasonable Gift
of a Seal Coney and Mole Coat
as sketch.

Priced at 16 guineas net.

AN infinite variety of articles
suitable for **PRESENTS**
pleasing to the feminine mind,
at prices within reach of all,
should make **VANDERPLANKS**
the first to be visited this 'Xmas.

FURS of **LUXURIOUS QUALITY** but quite
inexpensive, and a further concession of 10 p.c.
discount off Coats & Sets intended for presents.

NEW WINTER MILLINERY, the latest
Shapes and Colourings in Velvet and Fur.

CHARMING BLOUSES. dainty Lace and
Silk Georgette Slips and Camisoles.

NEW WOOLLIES. Jumpers and Sports
Coats for House and Sports wear, the finest
selection in the district.

HOSIERY and GLOVES are always accept-
able if of our well known standard qualities.

HANDKERCHIEFS. Thousands of pretty
Hankies in Coloured Silks or Soft Cambrics,
Hand Embroidered or Lace Edges, single or
boxed in half-dozens.

MEDIÆVAL LEATHER Bags, Blotters,
Autograph Books, Photo Frames, Note Cases,
etc., etc.

VERY SPECIAL VALUE THIS XMAS.

381 High Street & Promenade, Cheltenham Spa.

THE CHELTENHAM CHRONICLE AND GLO'SHIRE GRAPHIC

ART AND LITERARY SUPPLEMENT

No. 990. Saturday, December 20, 1919. [Circulation Guaranteed Largest in Gloucestershire.]

CHELTENHAM THEATRE.

Nights at 7, 9 Matinees at 2, commencing Boxing Day, Dec. 26, at 2.
CHELTENHAM'S GRAND CHRISTMAS PANTOMIME,
"LITTLE JACK HORNER."

THE PALACE, HIGH STREET, CHELTENHAM.

Matinees Daily, 2.30 to 4.30. Evenings (Continuous), 6 to 10.15
SPECIAL CHRISTMAS ATTRACTIONS.
Monday, Tuesday, and Wednesday:
MARGERY WILSON in
"OLD LOVES FOR NEW."
"GLO THE MIGHTY." Gaumont Graphic.
Big Sunshine Comedy.

Palace will be Closed on Christmas Day, KING DAY and SATURDAY. Special Times Showing: Continuous from 2.30 to 10.15.
"HER FATHER'S KEEPER."
Featuring Irene Howley.
"THE SILENT MYSTERY."



AN INTERESTING CHELTENHAM SOCIETY WEDDING.

A big congregation witnessed the marriage, on Tuesday, December 16th, at the Old Parish Church, Cheltenham, of Dr. John Henry Garrett, Medical Officer of Health for Cheltenham, to Miss Victoria Elizabeth (V.va) Parkinson, youngest daughter of the late Major-General C. F. Parkinson and of Mrs. Parkinson, of Athgarvon Lodge, Cheltenham.
The bridal party.
[Photo by Cheltenham Newspaper Co., Ltd.]

H. MARTYN & CO. LIMITED.

to H.M., KING GEORGE V.

Monuments, Memorials, Calvaries, and Stained Glass Windows.
Executed and Forwarded to All Parts of the World.
"Sunningend," HIGH ST., CHELTENHAM.

Programs: "Sunningend, Cheltenham." Telephone No. 283.

MARTIN AND CO., LTD., Promenade, Cheltenham,

for Cash ANTIQUES of all kinds, including OLD SILVER, JEWELLERY, SHEFFIELD PLATE, CHINA, COINS, MINIATURES, Etc.
Highest Prices Given for Rare Pieces.

W. HALL & SONS, LTD.,

Fishmongers, . . . Game Dealers,
Fruiterers . . . Florists,
92, 92a High Street, Tel. 85.
16 Montpellier Walk, Tel. 285.
CHELTENHAM.

Choiceest Fruits Obtainable Always on Sale.
Turkeys, Geese, Capons, Ducks, Fowls, Game and Oysters.

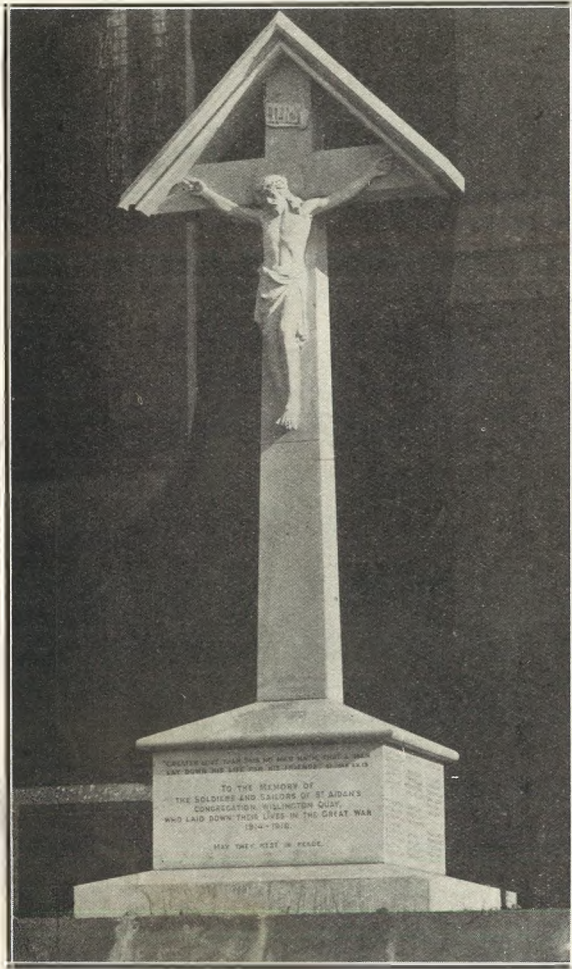
DEANE'S

HIGH CLASS WARDROBE DEPOT

THE NOTED HOUSE FOR FAIR PRICES.
Ladies' and Gentlemen's WARDROBES Purchased for Cash. Clients waited upon in town or country. Distance no object. Prompt Attention given to Post or Train Parcels. Cheques sent per return subject to customer's full approval.

Note the Address—
31 WORCESTER ST., Gloucester.
Tel. 970. Telegrams: "Wardrobes," Glos.

For the Best PIANOS, DALE, FORTY and CO., LTD.



War Memorials of all Descriptions.

The above cross has recently been erected by Messrs. R. L. Boulton and Sons, sculptors, of Cheltenham, at Wellington Quay-on-Tyne. Full particulars will gladly be given on application to the firm, and for War Memorials of every description.



MAJOR ROBERT CHARLES DUDGEON, Of Invercairn, Charlton Kings, who died on Dec. 13, aged 77 years. He was one of the most respected and beloved residents of Charlton Kings. He had been a churchwarden, was a great worker for and supporter of the Gordon Boys' Brigade.

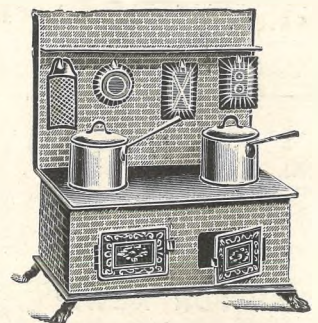


MR. THOMAS BELLAMY, Of 16 St. Paul's-street N., who died on December 6th, aged 75. He was with Messrs. W. Sharpe and Sons for nearly 50 years as a trusted and faithful friend.

TOYS.



BEECH HORSES, 2/6, 4/6, 6/-, and 8/6.
 SHAPED HORSES on Wheels (as illustrated), 30/-, 35/6, 42/-, 47/6, and 52/6.
 ROCKING HORSES, 42/-, 70/-, 99/-, & 140/-.
 CINEMAS (complete), 10/6 each.
 CLOCKWORK ENGINES (O Gauge, very strong), 8/6 and 12/6 each.



KITCHEN RANGES, 3/- and 4/- each.
 CHINA TEA SETS, 3/9, 4/9, 7/6, 10/6, etc., each.
 DOLLS' HOUSES, 2/-, 3/6, 6/6, etc., up to 10 guineas each.
 BOXES OF EMBROIDERY, 8d., 1/3, & 2/6.
 SEWING MACHINES (Working Models), 25/- each.

CHRISTMAS TREE DECORATIONS:

BOXES OF FROST, 1d., 2d., and 6d. each.
 TINSEL, 4½d., 7½d., and 9d. per Skein.
 COMETS 2d., POMS. 3d. each.
 METAL FLOWERS (Assorted Colours), 3d. and 6d. each.
 TINSEL BOSSES (Coloured Centre), 1/3½ each.
 CANDLES, two for 1½d. or 2/- per box.
 CANDLE CLIPS, 2d. and 3d. each.
 CHRISTMAS TREES (Miniature), 1/9 each.

Hours of Closing Saturday (to-day).
 6 p.m.

Monday, Tuesday & Wednesday 8 p.m.

J. P. PATES,
PROMENADE TOY SHOP.
 Telephone 940.

Ideas for Xmas Presents.

Photo Frames, Fountain Pens, Purses, Hand Bags, Dolls, Boxes of Handkerchiefs, Irish Linen Cloths, Irish Lace, Cushion Covers, Tea Cosies.

COME AND INSPECT OUR SPLENDID SELECTION.

Quality right! Price right!

LEE, CAXTON HOUSE,
 Winchcombe Street,
 STATIONER, Cheltenham

"Echo" Every Evening.

ANNETTE
 High-Class Corset Maker.

CORSETS MADE TO MEASURE & COPIED;
 also Cleaned and Repaired.

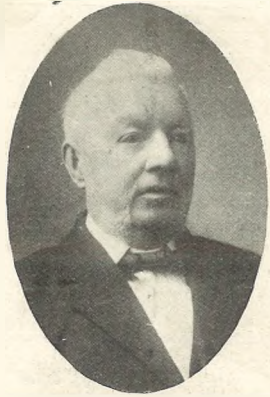
CLARENCE ST., CHELTENHAM.

PERAMBULATORS

A Few Good SECONDHAND ONES to Clear at BARGAIN PRICES.

THE PRAM SHOP,

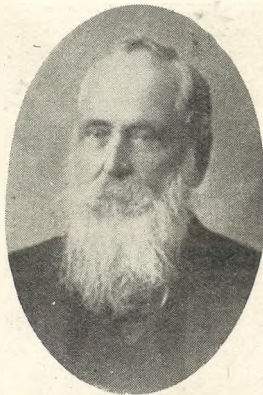
2 & 3 SUFFOLK ROAD, CHELTENHAM.
 New Dolls' Prams in Stock for Christmas presents.



MR. JOHN DERRICK,
Who for about 66 years was connected with the firm of Shirer and Haddon, Cheltenham, died at his daughter's residence, Market Rasen, Lincoln, on Dec. 13, aged 83 years. He was a familiar figure in Cheltenham.



MR. RICHARD TRIGG,
Of Farnham House, Gloucester-road, who has rung the bells of the Old Parish Church for over 50 years and who has retired. A testimonial is now being raised for him.—Photo by Cheltenham Newspaper Co., Ltd.



MR. HENRY KILBEY,
Of Oakville, Sydenham-road South, who completed his 100th year on Thursday, December 18. He was in business for 70 years as a builder and decorator at the corner of Winchcombe-street. He is still in good health.

USEFUL XMAS GIFTS



Gentlemen's Fleece Wool **CARDIGANS**, Grey, Canary, or Camel, 24/9 to 63/.



Ladies' Knitted Wool **SHAWL**, 10/6, 12/6, 18/6, 25/-.



Gentlemen's **CONEY FUR GLOVES**, lined Lambswool, 40/- pair. Raccoon fur, ditto, 27/6.



Ladies' 12-button length **WHITE SUEDE GLOVES**, 11/9 pair.

Ladies' Holeproof **SILK HOSE**, Black, Grey, Champagne, Brown, 3 pairs for 31/-.
Guaranteed wear for three months.

JOHN LANCE & CO., Ltd.
CHELTHENHAM.

Seasonable and Useful Gifts. . .

TROUSER PRESSES, 24/- to 45/-.
HANDKERCHIEFS, 6/6 to 16/2
per Dozen.

(White, Lawn, and Coloured Border.)

GLOVES, Woollen and Kid, 2/11
to 21/- per Pair.

TIES, 1/6, 2/6, and 4/6.

All Clean and Fresh Stock.

GENT'S HALF-HOSE, Cashmere
and Worsted, 2/11, 3/11, 4/6.

Gent's Cardigan Jackets.
Boys' Jerseys, Hose, etc.

THE FAMOUS,
Complete Outfitters,
351 High Street, CHELTENHAM.

CHRISTMAS CRACKERS,
CRYSTALYED FRUITS,
FRENCH PLUMS,
WINES AND SPIRITS.

SILK & SON,

146, 430, and 431 High Street,
Cheltenham.

EST. 1843.

TEL. 249.

During the season of navigation, 141,000 immigrants arrived at Quebec, which is an increase of 101,000 over 1918.

COMRADES OF THE GREAT WAR—

Support the Only Ex-Time-Serving
Newsagent in the Town—

W. BROWN,
226 High Street,
Cheltenham.

All Sunday Papers Supplied.

USEFUL GIFTS.

Large Assortment of Fancy Handkerchiefs and Ties, Fancy Hosiery, etc.

G. DIGGINS,
81 High Street, Cheltenham.

CHEESERIGHTS LIMITED

FOR **VARIETY AND VALUE.**

SEASONABLE GOODS AT REASONABLE PRICES.

Wool Gloves, Scarves, Hosiery, Dressing Gowns, Dressing Jackets, Pure Wool Combinations, Vests, Spencers, Skirts, Underclothing, Blouses in great variety, Corsets, Laces, Ribbons, etc.

Large Stocks at Competitive Prices.

CHEESERIGHTS LIMITED,
MONTPELLIER, CHELTENHAM SPA.

HARRY O. BOX.

339 HIGH STREET, CHELTENHAM,

Offers the Best Prices for Old Jewellery, Silver, Artificial Teeth, Antique Furniture, Cut Glass, Old China, Etc.

Estab. 65 Years, Opposite Grammar School.



COUNTY FOOTBALL MATCH AT GLOUCESTER.

Very fine play was seen in the Rugby match between Gloucestershire and Cornwall at Gloucester on Saturday, December 13th, when Gloucestershire won by 6 tries (18 points) to 1 goal 1 try (8 points).

- 1.—The three Gloucester forwards, A. Hall, T. Voyce, and G. Holford, who are playing to-day in the International Trial.
- 2.—In front row of stand are: The Sheriff of Gloucester (to left of post) and the Mayor (to right of post, in centre).
- 3.—Gloucester forwards dribbling through.
- 4 and 6.—Spectators, many Cheltonians.
- 5.—Gloucestershire attacking.
- 7.—In front of grand stand.
- 8.—A line-out.

[Photos by Cheltenham Newspaper Co., Ltd.]

S.H. BRUNT,
 DECORATOR and FURNISHER,
 88 Winchcomb Street, CHELTENHAM
 Removals. Warehousing. Upholstering. Repairs



DENTISTRY.
 Painless
 Extractions,
 etc.

MR. SUTTON GARDNER,
 LAUREL HOUSE,
 CHELTENHAM.
 HOURS 9 A.M. TILL 8 P.M. DAILY.
 Branches at Stroud, Nailsworth, Winchcombe, Bourton, etc.
 Est. 1891 Phone 782, Cheltenham.



ST. PETER'S, CHELTENHAM, WAR MEMORIAL CHURCH PARADE.

For the purpose of solemnising the memory of fallen parishioners in the Great War and assisting the fund of a war memorial, a military procession round the parish and a service at the above church was held on Sunday afternoon, December 14th.

- 1.—Ex-Service men lined up.
- 2.—Officers of the Cheltenham College O.T.C.: Major Lloyd Baker, D.S.O., Lieut. Stevens, Capt. Seaton, and Major Bell Haworth.
- 3.—North Ward residents.
- 3a.—Major H. H. Hardy, M.B.E., Headmaster of Cheltenham College.
- 4.—Col. Pearson (centre), in command, chatting to Major Hardy.
- 5.—North Warders watching the procession.
- 6.—More well-known residents.
- 7.—Councillors Yarnold and Stanley (in front) with other workers.
- 8.—Formed up to start.
- 9.—The Mayor and Deputy Mayor (on left) and Capt. Pigg (on right), with members joining in at St. George's-street.

[Photos by Cheltenham Newspaper Co., Ltd.]



BOXING AT CHELTENHAM COLLEGE.

A series of contests at various weights between pupils of the College have taken place on three afternoons recently, the finals being held on Tuesday, December 16th, in the Gymnasium. Some of the competitors. In centre is Rev. M. P. G. Leonard, D.S.O., who acted as referee and M.C., behind is Mr. M. D. Seaton, timekeeper.

HAVE YOU GOT A BABY ?

If so, ask for

CHELTINE MILK & MALTED FOOD

Sold Everywhere. Manufactured by

THE CHELTINE FOODS Co., CHELTENHAM

A Splendid Display of

Suitable GIFTS

for the present season.

ROBERTSON & Co.,

CIGAR AND CIGARETTE IMPORTERS,

8 COLONNADE, CHELTENHAM.

Agents for LOEWE'S—BARLING'S Celebrated Briars.

Speciality:

ROBERTSON'S Celebrated Edinburgh

Smoking Mixture

—Mild, Medium, or Full.—



Mr. and Mrs. Dean,

of 5 St. John's-cottages, Alstone-lane, Cheltenham, who celebrated their golden wedding on December 11th, and in whose honour a quarter peal was rung on the bells of St. Mark's Church, Cheltenham, on December 12th.

"Echo" Every Evening.

WHAT SHALL I GIVE HIM ?

HANDKERCHIEFS—

Hemstitched Lawn, 9d. to 1/- each.
Hemstitched Linen, 1/3 to 2/6 each.
Also with Neat Initial: Lawn 1/-,
Linen 1/11.

TIES in Very Large Assortment:
1/6 to 5/6.

GLOVES—

Leather-lined, 10/6 to 18/6 Pair.
Also Fabric and Wool.

**BRACES, SHIRTS, MUFFLERS,
HOSIERY, PYJAMA SUITS.**

A. BECKINGSALE,
111 High Street, Cheltenham.

ARTHUR BESSELL,

WEDGWOOD HOUSE (opposite Queen's Hotel)

SPECIAL DISPLAY:

Exclusive Novelties for Christmas Presents.

Please Note ONLY Address:

WEDGWOOD HOUSE, Queen's Circus, Cheltenham.



CHEL TENHAM COLLEGE v. CLIFTON COLLEGE.

These old rivals met on the Cheltenham ground on Saturday last at Rugby football, the home team being again badly defeated by 21 points to nil.

1, 5, 6, and 7.—Various sections of spectators. There was a big crowd present.

3.—A run down touch.

4.—Cheltenham try to dribble through. [Photos by Cheltenham Newspaper Co., Ltd.]



Parish Church, Cheltenham, Workers' Sale of Work, in aid of Foreign Missions, on Wednesday, December 3.

THE NEWEST . . .

SPORTS COATS

and

Jumpers



The Gorlstone

A Warm Cardigan Knit Coat with Brushed Wool Revers and Cuffs of Contrasting Stripes, Long Sash Belt.

Price. 75 9.

Colours :—Navy - Jade, Purple - Grey, Cham-Purple, etc,



The Bognor

New Ribbed Wool Jumper in winter weight, V neck, Sash Belt and bands of contrasting Colours.

Price. 29 11.

In all colours.



The Brighton

Very Smart Warm Coat in fine Ribbed Cashmere with Brushed Wool Collar & Pockets and Tasselled Sash Belt.

Price. 75/9.



The Folkestone

Smart Coat in Plain Cardigan Knit Wool long new roll Collar and Belt.

Price. 52/6

In New Shades.



The Westward Ho

New Jumper of fine Ribbed Cashmere with bands of artificial Silk in Contrasting colour caught with Tasselled band

Price. 75 9.

In lovely colours.

Vanderplank

(From HARR ODS).

CHELTENHAM SPA.

Vanderplank's pay Carriage

Printed and Published as a Gratis Supplement by the Cheltenham Newspaper Company, Ltd.

THE CHELTENHAM CHRONICLE AND GLO' SHIRE GRAPHIC

ART
AND
LITERARY SUPPLEMENT

No. 991.

Saturday, December 27, 1919.

[Circulation Guaranteed
Largest in Gloucestershire.]

CHELTENHAM THEATRE.

11 Nights at 7, 9 Matinees at 2, commencing
Boxing Day, Dec. 26, at 2.

CHELTENHAM'S GRAND CHRISTMAS
PANTOMIME,

"LITTLE JACK HORNER."

THE PALACE,

HIGH STREET, CHELTENHAM.

Matinees Daily, 2.30 to 4.30.

Evenings (Continuous), 6 to 10.15.

Monday, Tuesday, and Wednesday:

"LOST IN TRANSIT."

Featuring George Beban.

"ELMO THE MIGHTY."

Starring Elmo Lincoln and Lucile Love.

Friday and Saturday:

ALICE BRADY in

"THE DEATH DANCE."

"THE SILENT MYSTERY."

Episode 13, "Tricked."

Great L-Ko de Luxe Comedy.

"CHARLIE, THE LITTLE DARE-DEVIL."



CONCERT PARTY AT BETHESDA BAZAAR, DECEMBER 3, 1919.



Part of a big elm tree in Lyplatt-terrace blown down in recent gale.
[Photos by Cheltenham Newspaper Co., Ltd.]

FIRST QUALITY
CIDERS in bottle,
SPARKLING AND STILL.

BARTHOLOMEW,
419-420 HIGH ST., CHELTENHAM.

Wines, Spirits, Ales, Table Waters,
and Grocery. TEL 135

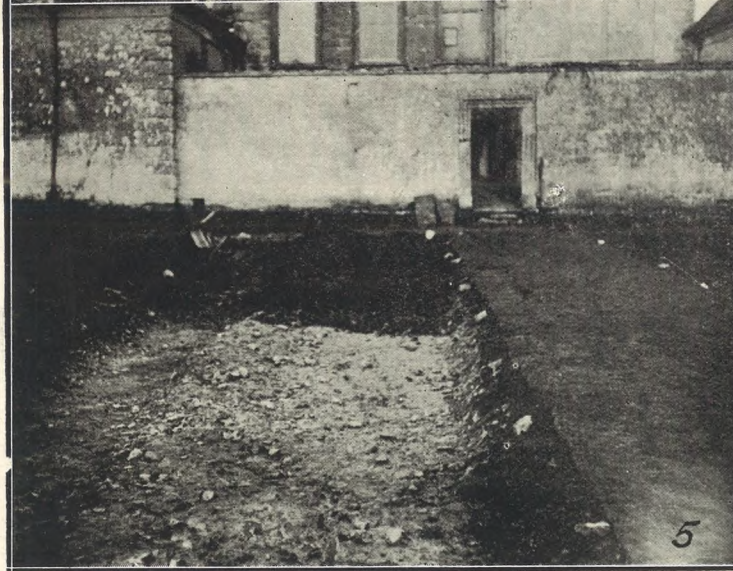
MARTIN AND CO., LTD.,
Promenade, Cheltenham,

Purchase for Cash ANTIQUES of all kinds,
including OLD SILVER, JEWELLERY,
SHEFFIELD PLATE, CHINA, COINS,
MINIATURES, Etc.

Highest Prices Given for Rare Pieces.

For the
Best

PIANOS, DALE, FORTY and CO. LTD



SNAPS ROUND THE TOWN IN STROUD.

- Half-a-dozen snaps were taken by our photographer in Stroud one day about a fortnight ago.
- 1.—Lypiatt Lodge, Stroud, where a number of skeletons have recently been found while making a tennis lawn, being only two feet beneath the surface.
 - 2 and 4.—Snaps in Stroud streets.
 - 3.—The bones collected and put in a sack. The white substance above the figure 3 is one of the skulls which has been washed.
 - 5.—The place where skeletons were found.
 - 6.—A French Socialist, now a hawker in the Stroud district, watering his horse.

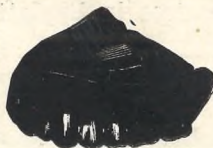
[Photos by Cheltenham Newspaper Co., Ltd.]

HAVE YOU GOT A BABY?

If so, ask for

CHELTINE MILK & MALTED FOOD

Sold Everywhere. Manufactured by
THE CHELTINE FOODS Co., CHELTENHAM



DENTISTRY.

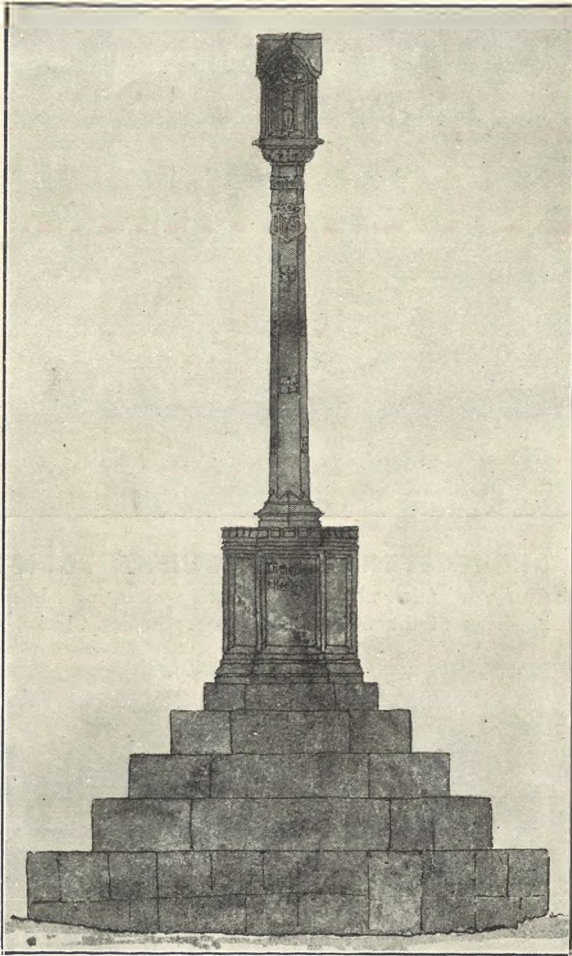
Painless Extractions, etc.

MR. SUTTON GARDNER, LAUREL HOUSE, CHELTENHAM.

HOURS 9 A.M. TILL 8 P.M. DAILY.
Branches at Stroud, Nailsworth, Winchcombe, Bourton, etc.

Est, 1891

'Phone 782, Cheltenham.



Prestbury War Memorial.

The Prestbury War Memorial, which is being erected in stone by Messrs. R. L. Bolton and Sons, sculptors, of Bath-road, Cheltenham, to the design of Mr. J. Coates Carter, architect, of Prestbury. It is to be erected on a site in the centre of the village. The names of fallen soldiers will be cut on the top step.



MR. HARRY PERCY NICHOLL,

Of Gloucester, who has just retired from the Postal Service, at the age of 62 years, after 37 years' service. He has been presented with a barometer in handsome oak case by the postmaster from the employees. He was employed solely with the parcel mails at the railway station.

LET US TAKE A PHOTOGRAPH

Of your Business Premises, make a Half-tone Block of it, and insert it with suitable wording as an Advertisement in the "Graphic." Any size. Inclusive Terms on application

LANCE'S Winter Sale...

:: OF ::

General Drapery and Furnishing Goods

COMMENCES ON . .

January 1st, 1920



SEE "ECHO" WEDNESDAY, DECEMBER 31st, FOR UNIQUE OFFER.



JOHN LANCE & Co. LIMITED, CHELTENHAM.

W. F. LEE sends hearty good wishes for the coming year, and takes this opportunity of thanking his patrons for their support in the past, and trusting for a continuance in **1920.**

LEE, CAXTON HOUSE, Winchcombe Street, STATIONER, Cheltenham

W. HALL & SONS, LTD., Fishmongers, Game Dealers, Fruiterers, Florists, 92, 92a High Street, Tel. 85. 16 Montpellier Walk, Tel. 285. CHELTENHAM.

Choiceest Fruits Obtainable Always on Sale. Turkeys, Geese, Capons, Ducks, Fowls, Game and Oysters.

WHAT SHALL I GIVE HIM? HANDKERCHIEFS—

Hemstitched Lawn, 9d. to 1/- each. Hemstitched Linen, 1/3 to 2/6 each. Also with Neat Initial: Lawn 1/-, Linen 1/11. TIES in Very Large Assortment: 1/6 to 5/6.

CLOVES—

Leather-lined, 10/6 to 18/6 Pair. Also Fabric and Wool.

BRACES, SHIRTS, MUFFLERS, HOSIERY, PYJAMA SUITS.

A. BECKINGSALE, 111 High Street, Cheltenham.

Lieut. Long has made the first flight across Bass Strait, between Australia and Tasmania, taking four hours.

Twenty inhabitants of Brussels, who subscribed to a German war loan during the occupation, have been arrested.

THIS IS AN INCH ADVT.

You can have a Similar Space for **Five Shillings Per Week.** Your Announcement Will Reach All Classes, And be read by over 10,000 Persons.



CHELTENHAM VOLUNTEERS' DINNER.

The Cheltenham Volunteers held a farewell dinner at the North-street Drill-hall, on Friday, December 5th, to celebrate their demobilisation.

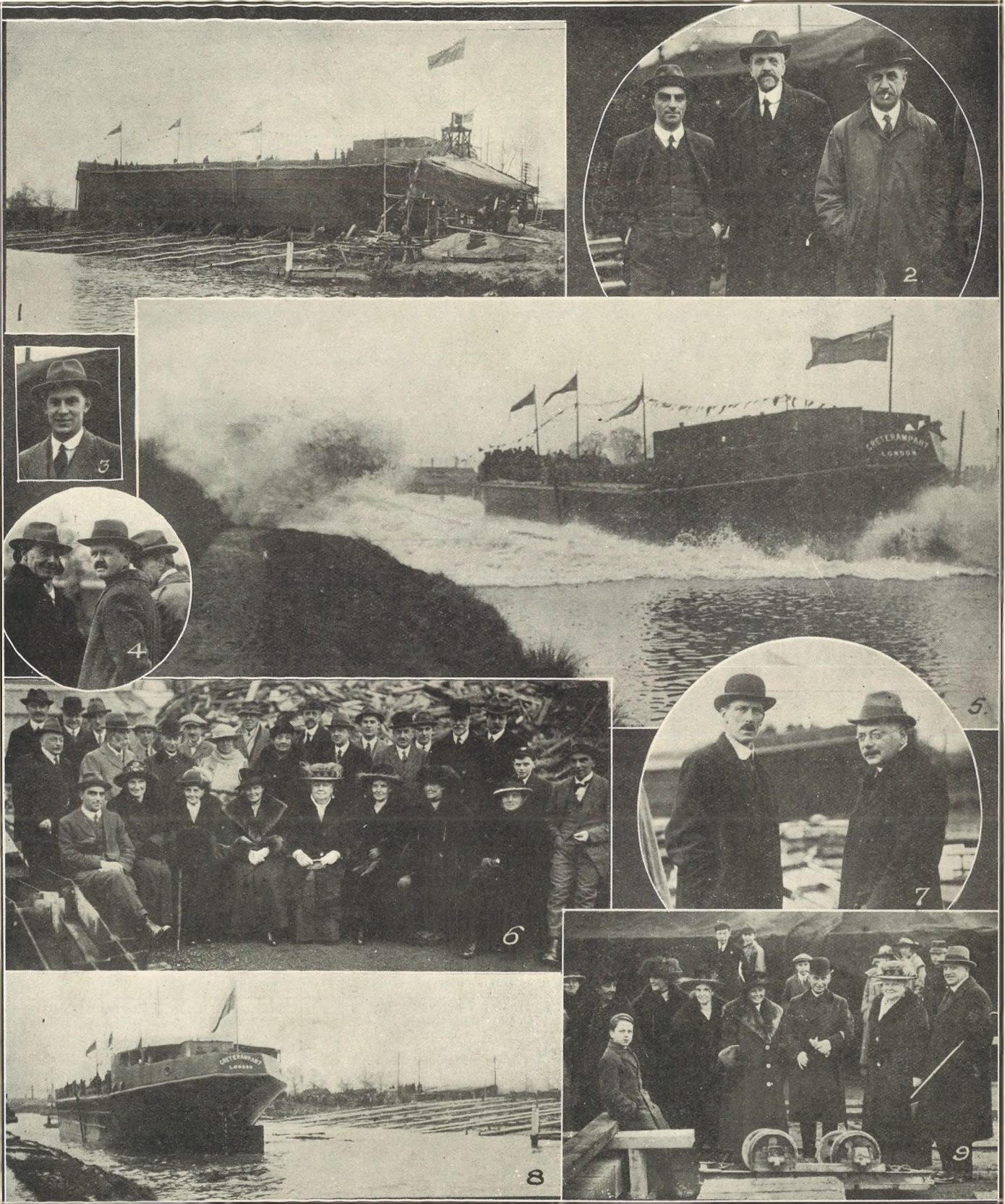
[Flashlight photo by Cheltenham Newspaper Co., Ltd.]



GLOUCESTERSHIRE RUGBY FOOTBALL TEAM.

The Gloucestershire team which so decisively beat Cornwall at Gloucester on December 13th.
 Back row.—Messrs. Berthon, Fielding, ———, Craddock (all County Committee).
 Second row.—Mr. J. H. Tratt, A. Hall, B. Davy, A. T. Voyce, Holford, ———, ———, R. Roberts (secretary).
 Sitting.————, Webb, ———, A. Hudson, Coventry, S. Smart, ———.
 In front.—Hamblin, Dix.

[Photo by H. K. Fox, photographer, Barton-street, Gloucester.]



LAUNCH OF ANOTHER CONCRETE SHIP AT GLOUCESTER.

The "Creterampart," the last of the five concrete ships built by the Gloucester Concrete Shipbuilding Company, was successfully launched on Wednesday, December 17th. These ships, of 1,000 tons deadweight, are slid broadside on into the canal, and every one has been launched without a hitch.

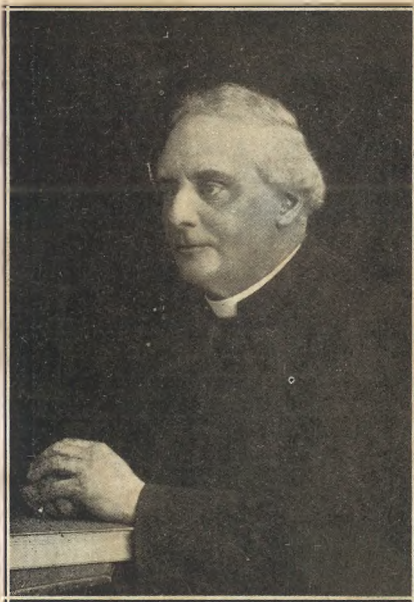
- 1.—On the stocks just before the launch.
- 2.—Mr. Nicholls (a partner), Mr. Cullis (Civil Engineer in charge of launch), and Mr. Hobrough (partner).
- 3 and 4.—Visitors at launch.
- 5.—The launch. Note the wave going over tow-path and adjoining hedge.
- 6.—The luncheon party, including the Mayor and Mayoress of Gloucester, Lady Bruton, and the Sheriff.
- 7.—Messrs. E. W. A. Carter and J. S. Pickering, the borough surveyors of Gloucester and Cheltenham, inspecting the works.
- 8.—Afloat immediately after launch, showing the ways down which the slid and the floating timbers of the cradle.
- 9.—Inspecting the concrete works. The Mayor and Mayoress in centre, Lady Bruton and Mr. H. G. Norman, City Sheriff, on right.



SNAPS AT WINCHCOMBE.

A couple of snaps of Winchcombe folk at the Cattle Market a week ago.

[Photos by Cheltenham Newspaper Co., Ltd.]



Rev. Canon L. A. Lyne,

Vicar of St. Mark's, Gloucester, who was accidentally killed while crossing the railway at Armscroft Crossing, near Barnwood Bridge, Gloucester, on Thursday, Dec. 18, his dead body being found by the fireman of a train. He was 59 years of age, and had been vicar of St. Mark's for 19 years. He was previously for 10 years senior curate of All Saints' Church, Cheltenham.

A Christmas "share-out" at Sheffield of £61,000 has beaten all records in that city.

ANNETTE
 High-Class Corset Maker.

CORSETS MADE TO
 MEASURE & COPIED;
 also Cleaned and Repaired.

CLARENCE ST., CHELTENHAM.

H. H. MARTYN & CO.
 LIMITED.

Architectural Decorators



to H.M. KING GEORGE V.

Monuments, Memorials, Calvaries,
 and Stained Glass Windows.

Executed and Forwarded to All Parts of
 the World.

**"SUNNINGEND," HIGH ST.
 CHELTENHAM.**

Telegrams: "Sunningend, Cheltenham."
 Telephone No. 283.

A Christmas card and a pound Treasury note are being sent by the Mayor of Newport to each war widow in the borough.

Printed and Published as a Gratis Supplement by the Cheltenham Newspaper Company, Ltd.



A Much Travelled Dog.

Three years ago this dog was found straying at Lillers, in France, by C.Q.M.S. Fruin, of 23 Bath-parade, Cheltenham. It attached itself to him, and he kept it with him on his military adventures into Belgium and afterwards to Italy on the Piave and on the Asiago Plateau. It has just arrived at his home in Cheltenham after six months' quarantine at the R.S.P.C.A. Kennels in Surrey.

**IF YOU LIKE THE "GRAPHIC,"
 RECOMMEND IT TO YOUR
 FRIENDS,**