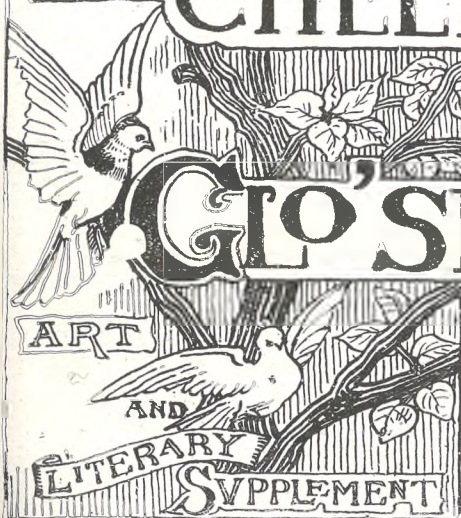


# THE CHELTENHAM CHRONICLE AND GLO' SHIRE GRAPHIC



No. 714.

Saturday, September 5, 1914.

## OPERA HOUSE, CHELTENHAM.

THIS AFTERNOON, 2.30; EVENING, 8.  
The Latest London Attraction:  
"DIPLOMACY."

THE THEATRE WILL BE CLOSED FOR  
NEXT WEEK ONLY, RE-OPENING  
SEPTEMBER 14, AS USUAL.

## W. HALL & SONS, LTD.,

Fruiters, - - Florists,  
Fishmongers, - - Game Dealers,

92, 92a High Street, TEL. 85.  
16 Montpellier Walk, TEL. 285.  
CHELTENHAM.

English Hothouse Grapes, Melons, Peaches,  
Nectarines, Black and White Grapes,  
Cherries, Greengages, etc., etc.

## DENTISTRY. Est. 1861.

'Phone 782, Cheltenham.



PAINLESS  
EXTRACTIONS,  
ETC.

MR. SUTTON GARDNER,  
LAUREL HOUSE,  
CHELTENHAM.

HOURS 8 A.M. TILL 8 P.M. DAILY.

Branches at Stroud, Nailsworth, Winchcombe, Stow, Bourton, etc.

## STEPHENS & FINCH,

Heating Engineers,  
Crosvenor Works, Cheltenham.

We have the Largest Stock in the County  
of Boilers, Radiators, Pipes and Connections  
of all classes of Heating and Hot-Water  
Supply Horticultural Heating a Speciality.  
Telephone 35x1.



## ALL SAINTS' BOY SCOUTS.

Our Photo shows the All Saints' Scouts who competed for Shield. The Scouts are divided into three patrols, the winning patrol holding it for one year.

[Photo by Cheltenham Newspaper Co., Ltd.]

WEBLEY,  
COLT,  
BROWNING



QUARTER SIZE  
PISTOLS,  
6 & 8 shot Automatic Magazines,  
Officers' Models,  
50/-, 60/- to 5 Guineas each.

Householders' Automatics & Revolvers from 20/-  
50yds. length open-air Range, complete with  
steel Targets, adjoining premises, which we shall  
be pleased for officers and civilians to use Free  
of Charge.

EDWINSON GREEN & SONS,  
GUNMAKERS, CHELTENHAM.  
Also at Gloucester.

Emigrants before leaving should pay for  
twelve months' "Chronicle and Graphic"  
and thus keep in touch with the home land.

## MARTIN AND CO., LTD., Promenade, Cheltenham,

Purchase for Cash, ANTIQUES of all kinds,  
including OLD SILVER, JEWELLERY,  
SHEFFIELD PLATE, CHINA, COINS,  
MINIATURES, Etc.

High Prices Given for Rare Pieces.

## BRITONS!

Buy British-made Stationery and Frames.

## W. F. LEE,

CAXTON HOUSE, WINCHCOMBE STREET,  
CHELTENHAM,

has a Splendid Range for you to Purchase.

For the  
Best

# PIANOS, DALE, FORTY and CO., LTD



**RED CROSS FIELD DAY AT COLESBORNE.**

ON SUNDAY, AUG. 30, THE CIRENCESTER AND CHARLTON KINGS MEN'S DETACHMENTS OF THE BRITISH RED CROSS SOCIETY, TOGETHER WITH MEMBERS OF THE ST. JOHN AMBULANCE BRIGADE HELD A UNITED FIELD DAY AT COLESBORNE PARK.

1.—Group of men who took part.

2.—Packing up stretchers.

3.—Getting ready to leave for home.

4.—Some of the Cheltenham Corporation team.

5.—Attending to a wounded man.

6 and 7.—Some of the men having a rest.

[Photos by Cheltenham Newspaper Co., Ltd.]



**NEW RECRUITS FROM THE COTSWOLDS.**

On Monday last, August 31st, 1914, about 50 young fellows, including 30 belonging to the Cirencester Men's Detachment of the British Red Cross Society, left Cirencester for Bristol, where they are going in training for a short period.

1 and 2.—Some of the recruits.  
3.—Outside their carriage at Station.  
4.—Spectators and Friends.

5.—Marching to Station.  
6.—Watching train off.

7.—Spectators on lines.  
8.—More spectators.

[Photos by Cheltenham Newspaper Co., Ltd.]

**MONEY IS SCARCE.**

Then why not hunt up your old gold and silver and bring to us, and turn into Cash. Also buyers for ready Cash of genuine old Antique China, Plated Articles, Prints, Paintings, Ivories, Bronzes, Cut Glass, Artificial Teeth, &c.

**JOSEPH BOX,**

339 HIGH STREET, CHELTENHAM  
(Opposite Grammar School).



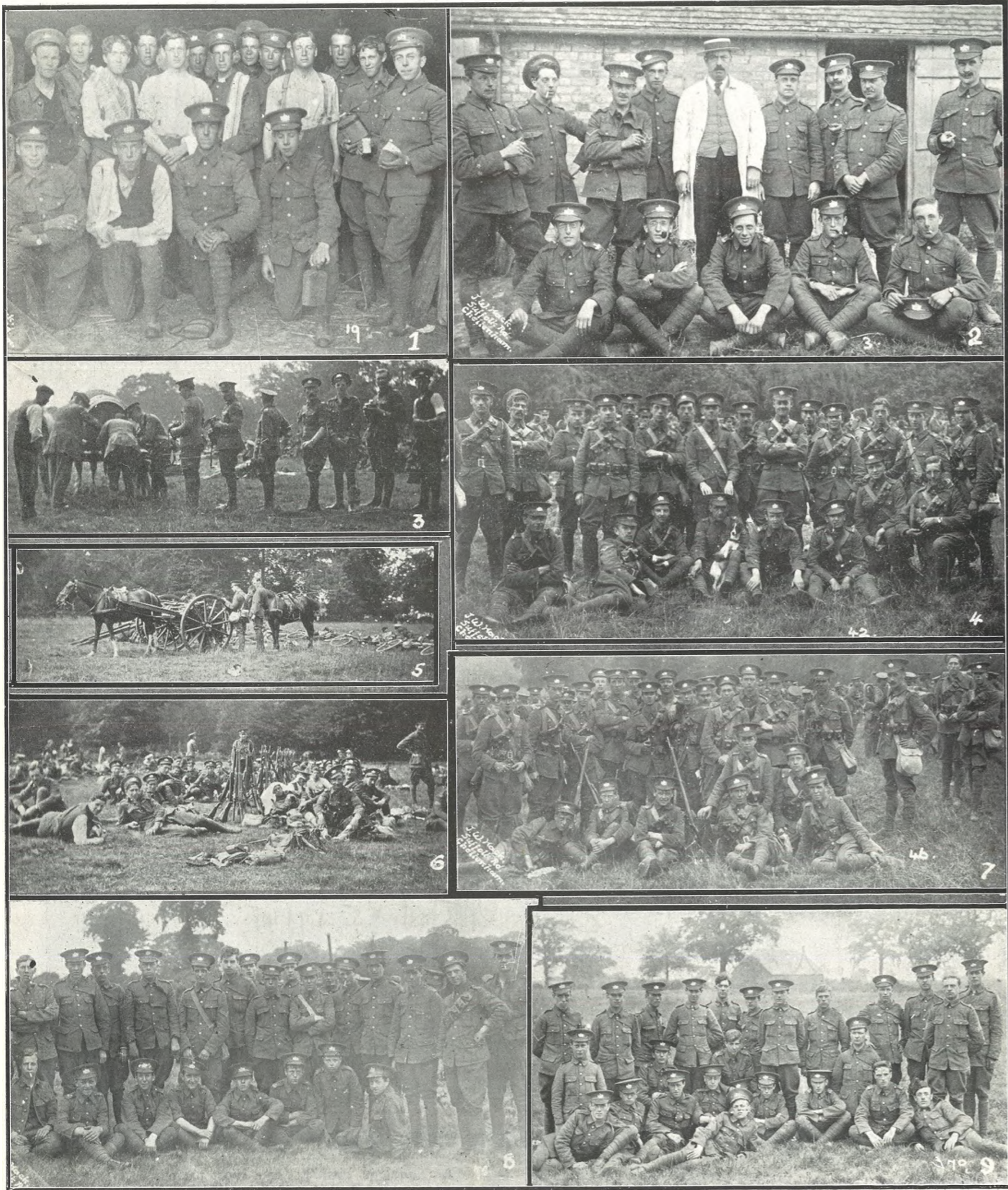
SUFFERERS FROM  
**DIABETES**

Should write to  
**CHELTINE FOODS CO., CHELTENHAM, ENG.,**  
FOR SAMPLES AND BOOKLET.



**CYCLISTS!!**—Buy a Bicycle that will give you All-the-Year-Round Satisfaction. The Famous *NEW HUDSON* is obtainable from £5 18s. 6d. Your old cycles taken in part payment. Catalogues post free.—**F. E. HUGHES & CO., MONTPPELLIER STREET, CHELTENHAM.**

c3476



**5th GLOUCESTERS AT CHELMSFORD.**

THESE PHOTOS WERE TAKEN DURING THEIR MARCH OF ABOUT 80 MILES TO CHELMSFORD, WHERE THEY ARE AT PRESENT.

- 1.—F Company (Cheltenham) at Ivy Farm, Stanbridge.
- 2.—No. 3 Section, E Company (Cheltenham), at Stanbridge.
- 3.—Serving out water during a short rest.
- 4.—No. 4 Section, E Company.
- 5.—Preparing to start after a rest.
- 6.—No. 2 Section, E Company, at Hexton Park.
- 7.—Resting.
- 8.—No. 3 Section, A Company (Gloucester), at Weald Bassett.
- 9.—4th Section, B Company (Gloucester), at Weald Bassett.

[Photos 1, 2, 4, 7, 8, and 9 by J. W. Hack, Cheltenham.]



**CHELTENHAM TERRITORIALS FOR FOREIGN SERVICE.**

ON MONDAY LAST ABOUT 70 RECRUITS LEFT CHELTENHAM FOR GLOUCESTER TO UNDERGO TRAINING. THE MEN LOOKED PARTICULARLY SMART AS THEY MARCHED TO THE STATION, HEADED BY THE CHURCH LADS' BRIGADE BAND. THERE WAS A GOOD NUMBER OF SPECTATORS TO SAY GOOD-BYE.

- 1.—Spectators on the railway line at the G.W.R. Station.
- 2 and 3.—Some of the recruits and friends.
- 4.—Church Lads' Brigade buglers give a salute as the train leaves.
- 5.—Men formed up in Drill-hall.
- 6.—Spectators.

[Photos by Cheltenham Newspaper Co., Ltd.]



### DUMBLETON FLOWER SHOW.

THIS SHOW WAS HELD IN THE PARK, THE BEAUTIFUL RESIDENCE OF LIEUT. EYRES MONSELL, R.N., ON WEDNESDAY, AUGUST 26, 1914, WHEN A FAIRLY GOOD CROWD ATTENDED. THE PROFITS WERE GIVEN TO THE PRINCE OF WALES' RELIEF FUND.

1.—Group of boys in tug-of-war.  
2.—Watching tug-of-war.  
3.—Watching the bowling for pig.

4.—First time round in Two Miles Bicycle Race.  
5.—Bowling for live pig.  
6.—Winner of Sack Race.

7.—Start of Half-mile Race.  
8.—Start of 100 Yards Race.  
9.—Spectators.  
[Photos by Cheltenham Newspaper Co., Ltd.]



**WEDDING AT BODDINGTON CHURCH.**

ON AUG. 15TH, 1914, MISS ELLEN ELIZABETH PRICE, DAUGHTER OF HENRY PRICE, OF ELMSTONE HARDWICK, WAS MARRIED TO MR. ARTHUR WILLIAMS, FOR SOME YEARS HEAD BOOTS AT THE FLEECE HOTEL, CHELTENHAM. [Photo by H. Stokes, Cheltenham.]

\*\*\*\*\*



**WEDDING AT ST. MARY'S, CHELTENHAM.**

THE WEDDING TOOK PLACE ON AUGUST 26, 1914, OF MISS IDA MAUD WHEATLEY AND MR. HARRY EDWARDS.

\*\*\*\*\*



**SWINDON DEFENCE AND WORK COMMITTEE.**

THERE ARE 50 MEMBERS ON THE REGISTER, AND OF THESE 44 TURNED OUT ON SUNDAY, AUG. 23, 1914. MR. E. GREY IS THE INSTRUCTOR. [Photo by H. Stokes, Cheltenham.]



**5th GLOUCESTERS AT CHELMSFORD.**

This photo was taken on Friday, Aug. 28th, 1914, during the route march of 10 miles round Chelmsford.



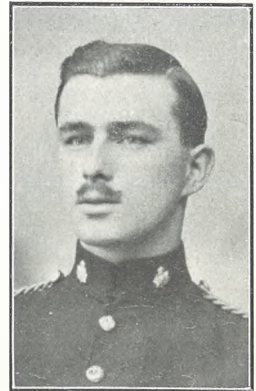
**A Gloucester Golden Wedding Pair.**

Mr. and Mrs. Courtney J. Francombe, of Glengarriff, Hucclecote, who celebrated their golden wedding on Aug. 8th, 1914.



**MORE RECRUITS FOR THE YEOMANRY.**

On Tuesday, Sept. 1st, 1914, about half-a-dozen recruits left Cheltenham to join the Royal Gloucestershire Hussars. Our photo shows them with friends before leaving.



**Private Ernest C. Williams,**

Of the Army Service Corps, severely injured by a motor explosion while conveying ammunition to the front in France on August 22. He is a son of Mr. W. Williams, of Oakland Cottage, Greenway-lane, Charlton Kings.

**AUTUMN DELIVERY**  
OF  
**FLANNEL SHIRTS,**  
4/6 TO 10/6.

A GOOD SELECTION SUITABLE FOR CHARITABLE PURPOSES.

**A. BECKINGSALE,**  
111 High Street, Cheltenham. Tel. 406.

**D. CORE BOODLE & CO., LTD.,**  
NORTH HOUSE, CHELTEMHAM.

Every Day from 9 a.m. till 8 p.m.  
A LADY ALWAYS IN ATTENDANCE.  
**PAINLESS EXTRACTIONS**

We Extract Teeth Painlessly and Supply you with Natural-looking and Perfect-fitting Teeth at Reasonable Prices.  
Entire Satisfaction to each of our Patients is our first consideration.

**EXTRACTIONS First Hour FREE.**  
BRANCHES EVERYWHERE,  
including Cirencester (Every Monday), Bourton-on-the-Water (Tuesdays), Chipping Norton (Wednesdays), Monmouth (Fridays), and Winchcombe (Every Saturday).

**BEHIND THE KHAKI MAN.**

Behind the man in khaki is a nation of patriotic shopkeepers, the majority of whom, despite the depression caused by War, are striving to retain their staffs and pay full wages in order to lessen the unavoidable suffering and privation of the coming months. Will you help in this effort by entrusting your watch, clock, jewellery, and silver repairs to us? The continued confidence shown in our workmanship by our patrons enables us to retain all our hands and pay full wages.—Waite and Son, Jewellers, etc., 349 High-street, Cheltenham.

**TO OUR READERS ABROAD.**

We are always glad to receive Letters and photographs from readers abroad, especially from those who have relatives or friends in any part of Gloucestershire.

LACQUERING  
BRONZING  
**BRASS WORK**  
REPAIRS,  
DESIGNS & ESTIMATES.  
**G.H. WYNN & SONS,**  
ESTD 1883. KNAPP ROAD, CHELTEMHAM.

# THE CHELTENHAM CHRONICLE AND GLO'SHIRE GRAPHIC

ART AND LITERARY SUPPLEMENT

No. 715.

Saturday, September 12, 1914.

## OPERA HOUSE, CHELTENHAM.

RE-OPENING MONDAY, SEPTEMBER 14.  
Mr. George Edwardes' Company present the  
Ideal Musical Comedy,  
"THE MARRIAGE MARKET."

## Old Selected SCOTCH WHISKIES.

B BLEND 42 - per Doz.; 3/6 per Bott.  
BB BLEND 48 - per Doz.; 4/- per Bott.  
BBB BLEND 51/- per Doz.; 4/3 per Bott.

## BARTHOLOMEW,

419-420 HIGH ST., CHELTENHAM.

TAWNY PORTS. Old in Wood.  
30/-, 36/-, 42/- per Doz.;  
2/-, 3/-, 3/6 per Bott.

**DENTISTRY.** Est. 1861.  
Phone 782, Cheltenham.



**PAINLESS  
EXTRACTIONS,  
ETC.**

**MR. SUTTON GARDNER,**  
LAUREL HOUSE,  
CHELTENHAM.

HOURS 8 A.M. TILL 8 P.M. DAILY.

Branches at Stroud, Nailsworth, Winchcombe, Stow, Bourton, etc.

**STEPHENS & FINCH,**  
Heating Engineers,  
Grosvenor Works, Cheltenham.

We have the Largest Stock in the County of Boilers, Radiators, Pipes and Connections of all classes of Heating and Hot-Water Supply. Horticultural Heating a Speciality. Telephone 35x1.



## A CHELTENHAM WEDDING.

On Aug. 22 Mr. Ernest Smith, of 15 Devonshire-street, son of Mr. William Smith, was married to Miss Daisy Jones, daughter of Mr. Frederick Jones, of Bream.

**MARTIN AND CO., LTD.,**  
Promenade, Cheltenham,

Purchase for Cash, ANTIQUES of all kinds, including OLD SILVER, JEWELLERY, SHEFFIELD PLATE, CHINA, COINS, MINIATURES, Etc.

High Prices Given for Rare Pieces.

**W. HALL & SONS, LTD.,**

Fruiterers, - - Florists,  
Fishmongers, - - Game Dealers,

92, 92a High Street, TEL. 85  
16 Montpellier Walk, TEL. 285.  
CHELTENHAM.

English Melons, Pineapples, Muscat and Black Grapes, Choice Pears, Apples, Bananas, etc.  
Partridges, Grouse, Goslings, Quail, Native Oysters.

## TO-DAY IS THE TEST!

British Stationers ask you to rally to the Flag by buying as usual, and thus keep the factories going.—RESPOND Now.—TO-DAY.

**W. F. LEE, Stationer,**  
CAXTON HOUSE, WINCHCOMBE STREET,  
CHELTENHAM,

WOOL HALF-HOSE,  
1/-, 1/6.

KNITTED JACKETS,  
10/6.

FLANNEL SHIRTS,  
4/6 to 10/6.

FOR HOME USE OR FOR SENDING TO THE TROOPS.

**A. BECKINGSALE,**  
111 High Street, Cheltenham. Tel. 406.

For the Best

# PIANOS, DALE, FORTY and CO., LTD





**RECRUITS IN GLOUCESTER.**

ON THURSDAY, SEPT. 3, 1914, ABOUT 250 RECRUITS FOR THE 5TH BATTALION GLOUCESTERSHIRE REGIMENT LEFT THE BARRACKS, GLOUCESTER, FOR THE G.W.R. STATION HEADED BY THE BUGLE BAND OF THE GLOUCESTER CHURCH LADS' BRIGADE, WHERE THEY ENTRAINED FOR PADDINGTON, AND LEFT AMID ENTHUSIASTIC CHEERS. SOME RECRUITS ALSO LEFT FOR BRISTOL TO JOIN KITCHENER'S ARMY.

1.—Some of the Yeomanry recruits drilling.  
2.—Recruits of the 5th Gloucesters on their way to station.  
3.—Drilling in the Barracks yard.

4.—Gloucester Church Lads' Brigade band.  
5.—Recruits for Lord Kitchener's Army marching to station.

6 and 7.—Yeomanry recruits drilling in the Barracks yard.

[Photos by Cheltenham Newspaper Co., Ltd.]



**THE FIFTH BATTALION GLOUCESTER REGIMENT AT CHELMSFORD.**

WE GIVE A FURTHER SERIES OF THE 5TH GLOUCESTERS AT WORK AND PLAY, GETTING FIT AND READY FOR FOREIGN SERVICE FOR WHICH THEY HAVE VOLUNTEERED. THEY ARE NOW BILLETED AT CHELMSFORD.

1.—Watering the transport horses.

2.—A motor-cycle and side-car, formerly belonging to a German resident in Chelmsford, which has been commandeered. Sitting behind the man at

the wheel is young Mills, the Cheltenham schoolboy international.

3.—Officers' servants of Gloucester Battalion.

4.—B Company (Gloucester) on parade.

5.—Gloucester National Reserves attending 5th Battalion as transport.

6.—Gun section filling Maxim belts.

7.—Cooks and shoemaker with E Company.

8.—Some of the H Co. (Chipping Campden).

[Photos by J. W. Hack, Suffolk-road, Chelt.]



**MORE RECRUITS FOR KITCHENER'S ARMY.**

ON SEPT. 1 AND 2 THE RECRUITS FOR LORD KITCHENER'S 2ND ARMY LEFT CHELTENHAM FOR BRISTOL TO UNDERGO THEIR TRAINING. THE MEN, WHO LOOKED SMART, WELL-SET-UP, AND WERE ANXIOUS TO START, HAD A SPLENDID SEND-OFF AT THE STATION.

1.—Recruits who left on Sept. 1.  
2.—Some of Messrs. J. Lance and Co.'s men  
—in straw hats.

3 and 4.—More of the recruits at the recruit-  
ing station.  
5.—Men cheering Major Shewell.  
6 and 7.—More recruits.

8.—Men employed at the Cotswold Hunt  
kennels who have enlisted.  
9.—More recruits.  
[Photos by Cheltenham Newspaper Co., Ltd.]



**NEW RECRUITS FOR GLOUCESTERSHIRE YEOMANRY.**

ON MONDAY, SEPT. 7TH, ABOUT ONE HUNDRED SPLENDID RECRUITS FOR THE GLOUCESTERSHIRE YEOMANRY (R.G.H.I.Y.) WERE DESPATCHED FROM GLOUCESTER STATION TO NEWBURY RACECOURSE, WHERE THE REGIMENT IS NOW QUARTERED. THEY ARE TO FILL UP THE PLACES OF THE MEN WHO DID NOT VOLUNTEER FOR FOREIGN SERVICE, OR WERE REJECTED BY THE DOCTORS. THE NEW MEN CAN ALL RIDE AND SHOOT, AND HAVE BEEN DRILLED ASSIDUOUSLY DURING THE PAST WEEK.

- 1.—Some of the new recruits.
- 2.—Group outside carriage door on the G.W.R. Station, where they had a splendid send-off.
- 3.—A jovial Fairford batch.
- 4.—The Bishop of Gloucester (Chaplain of the regiment) addressing the recruits.
- 5.—Billeted at Bell Hotel. Some well-known riders and sports. Left to right :—, —, R. Eaton, A. Byard, Will Boddington, Owen Anthony, Blofeld, —, J. Braine, —.
- 6.—A Chipping Sodbury party arrive in a taxi.
- 7.—A Bristol batch.
- 8.—Dipper, the County cricketer, on extreme right, with a number of his friends who have joined.

[Photos by Cheltenham Newspaper Co., Ltd.]



**MORE RECRUITS FROM STROUD BREWERY CO., LTD.**

29 EMPLOYEES OF STROUD BREWERY CO., LTD., WHO VOLUNTEERED ON SEPT. 1, 1914, FOR ACTIVE SERVICE WITH LORD KITCHENER'S ARMY, IN ADDITION TO 13 OTHER EMPLOYEES WHO WERE ALREADY AT THE FRONT.

[Photo by H. J. Comley, County Studio, Stroud.]



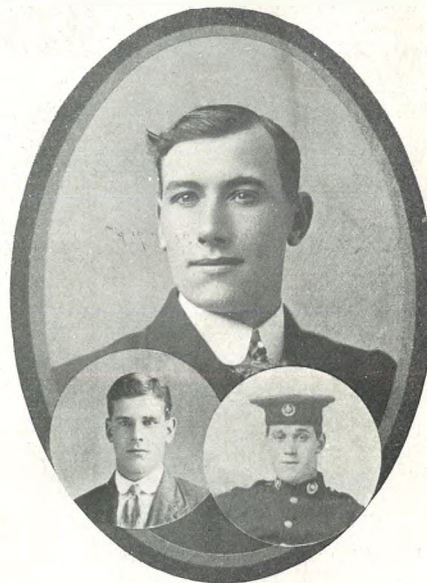
**Second Lieut. John Byron Noel,**

Of 2nd Battalion (King's Own) Yorkshire Light Infantry, and son of Major G. T. and Mrs. Noel, of Temple Guiting House, who was killed in action with the British Expeditionary Force in France. Aged 23. He was educated at Eton and Sandhurst, and was a very popular and respected young officer, whose early death has cut short a promising career, and caused much sorrow among his friends.



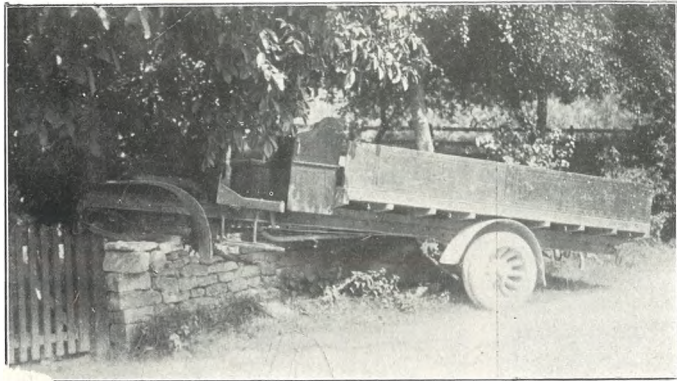
**New Cheltenham Minister.**

Rev. James Macara Gardner, M.A., new minister of St. Andrew's Presbyterian Church, Cheltenham.



**Three Patriotic Churchdown Brothers.**

Henry (centre), R.N. Reserve; Wm. (left), R.H. Artillery; and Albert (right), Royal Marines, sons of Mr. and Mrs. Henry Partridge, of Gothic Cottage, Churchdown, who are all now serving their country. Their parents have resided in Churchdown for 18 years.



**THE ARMY MOTOR LORRY FATALITY.**

The motor lorry which ran down Crickley Hill on Sunday night, September 6th, causing the death of Mr. Frederick Hancock, of Cheltenham, who was having a ride. It mounted the wall and ran into a tree which stopped it.

[Photo by Cheltenham Newspaper Co., Ltd.]



**A WOUNDED CHELTONIAN.**  
Private G. Owen, 1st Glos. Regt., who was wounded in the recent battles in France, and is now in Royal Herbert Hospital, Woolwich. His home is Naunton-lane, Leckhampton.

**Vanderplank**

(FROM HARROD'S)

THE HOUSE FOR  
**CORRECT WEAR.**

OPENING

SHOW

OF

AUTUMN

FASHIONS

ON

MONDAY

NEXT.



**CHELTONIAN IN AUSTRALIA.**  
Mr. Walter W. Deane, of Sydney, N.S.W., Australia, an old Cheltenham St. John's Boy, now superintendent over Ambulance Corps, at the Broken Hill Proprietary Steel Works, Australia, from whom an interesting letter appears in the main sheet of "Chronicle."



**ARMY MOTOR LORRY FATALITY.**  
Mr. Frederick Hancock, of 115 Fairview-road, Cheltenham, who sustained a fractured skull in an army motor lorry accident on Crickley Hill, on Sunday, Sept. 6th, dying the next morning in Cheltenham Hospital. He was butler to Sir Wm. Thiselton Dyer, of Witcombe, and was formerly footman to the late Lady Baden-Powell, of Cheltenham.



**"BILL" PACKER,**  
Of Stroud, an ex-Artilleryman, who volunteered for the front, but was rejected on account of defective teeth. He says he wanted to fight the Germans, not to eat 'em.

**SPECIALITE:**

English Tailor-made Costumes,  
30/- to 6 Gns.  
Gowns from 15 11.  
Coats, 21/- to 10 Gns.

**CORRECT MILLINERY.**

**DAINTY BLOUSES.**

**FURS.**

**LOWEST CASH PRICES.**

APPROVED ACCOUNTS RENDERED  
MONTHLY.

**381 HIGH STREET, CHELTENHAM.**

ANY MAKE OF CYCLE REPAIRED.  
24 YEARS' EXPERIENCE.

**H. SELLEY,**

THE MOUNTPLEASANT CYCLE WORKS.  
Sherborne Street, Cheltenham.

NEW-HUDSON Cycles possess in the highest degree the essentials of Dependable Quality and Satisfactory Service. Gracefully modelled and superbly finished. 30 New Models from £4 10s. to £10 10s. Catalogues post free from E. E. HUGHES & CO., MONTPELLIER, CHELTENHAM. c3077

**A POSTCARD**

WILL BRING AN ESTIMATE FOR ANY REPAIRS.

Special Terms for Schools, Institutions, Hotels, etc.

**WILLIAMS, The Cutlers,**

19 WINCHCOMBE ST., CHELTENHAM.

LACQUERING  
BRONZING  
**BRASS WORK**  
REPAIRS,  
DESIGNS & ESTIMATES.  
**G.H. WYNN & SONS,**  
ESTD 1883. KNAPP ROAD, CHELTENHAM.



**A TEWKESBURY WEDDING.**

On Aug. 20, at St. Peter's, Bushley, Mr. E. Walter E. King, son of Mr. Humphrey King, of Tewkesbury, was married to Miss E. Beatrice Strawbridge Rusling, youngest daughter of Mr. J. W. Rusling, of Bushley.

\*\*\*\*\*



**STOW-ON-THE-WOLD RECRUITS.**

A party of Recruits who were sworn in at Stow on Monday, Sept. 7th. At the back are Major-General Willoughby and Mr. W. M. Scott. [Photo by J. W. Farrall, Stow-on-the-Wold.]

\*\*\*\*\*

**MONEY IS SCARCE.**

Then why not hunt up your old Gold and Silver and bring to us, and turn into Cash. Also buy for ready Cash of Genuine Old Antique China, Plated Articles, Prints, Paintings, Ivories, Bronzes, Cut Glass Artificial Teeth, Etc.

**JOSEPH BOX,**

339 HIGH STREET, CHELTENHAM.  
(Opposite Grammar School).

**D. CORE BOODLE & CO., LTD.,**  
NORTH HOUSE, CHELTENHAM.

Every Day from 9 a.m. till 8 p.m.

A LADY ALWAYS IN ATTENDANCE.

**PAINLESS EXTRACTIONS**

We Extract Teeth Painlessly and Surp'y you with Natural-looking and Perfect-fitting Teeth at Reasonable Prices.

Entire Satisfaction to each of our Patens is our first consideration.

**EXTRACTIONS First Hour FREE.**

**BRANCHES EVERYWHERE.**

including Cirencester (Every Monday), Bourton-on-the-Water (Tuesdays), Chipping Norton (Wednesdays), Monmouth (Fridays), and Winchom'e (Every Saturday).

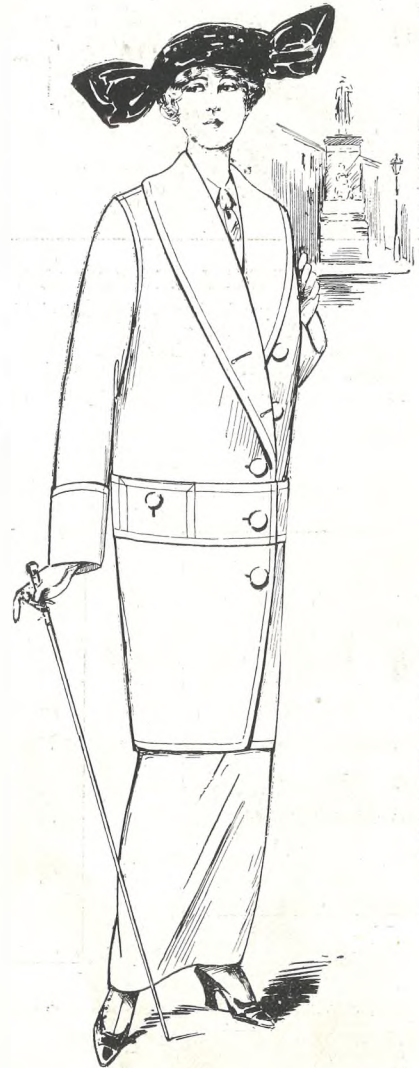
SUFFERERS FROM  
**DIABETES**  
Should write to  
**CHELTINE FOODS CO., CHELTENHAM. ENG..**  
FOR SAMPLES AND BOOKLET.

**THE ROAD TO VICTORY.**

The Firing Line is all right, nobody doubts that, but what about the supports? We at home—the great British public—are the supports; for the continuance of commerce is vital to success in the field. Don't withdraw your supports, remember that every bit of work you can give your tradesman helps to keep the wheels of trade revolving. Will you look up your Watch, Clock, or Jewellery jobs and let us have them? We specialise in all kinds of Repairs. Waite & Son, Jewellers, 349 High-Street, Cheltenham.

**R. T. ADAMS & CO.**

Having in the Early Spring placed large orders for Autumn and Winter Goods, they are now selling them at their usual Low Prices.



**COATS IN ALL THE NEWEST SHAPES.**  
Useful Nap Cloth Coat, three-quarter length (as sketch), with belt or semi-belt back, in navy, saxe, tan, etc.. 12s. 11d., 16s. 11d., and 21s. 6d.

We have a large range of Winter Coats, full length, in plain navy and grey and mixed shades; Blanket Coat, 10s. 11d., 12s. 11d., 14s. 11d., and 21s. 6d.; most useful garments for country wear.

**LADIES' COSTUMES.**

We stock seven different sizes in navy and black Coating Serge Costumes.

Our popular Coating Serge Costume, in latest style, three-quarter Coat, trimmed belt at back, Corslet Skirt, at 18s. 11d. and 21s. 6d., for value is unbeaten.

A special number in Navy Serge, with fancy, striped velvet collar, all sizes, at 19s. 11d. Tailor-made Costumes we stock at 25s. 6d., 29s. 6d., 35s. 6d. to 3 Guineas.

O.S. and Ex-O.S. black and navy Serge Costumes, made with specially-cut full skirts, at 29s. 6d., 39s. 6d., and 49s. 6d.

New Smart Tweed Costumes for present wear, 18s. 11d., 21s. 6d., and 39s. 6d.

**NEW MILLINERY! VELVET HATS!**

**R. T. ADAMS & CO.,**  
75 and 76 HIGH STREET,  
CHELTENHAM.

# THE CHELTENHAM CHRONICLE AND GLO'SHIRE GRAPHIC

ART AND LITERARY SUPPLEMENT

No. 716.

Saturday, September 19, 1914.

## OPERA HOUSE, CHELTENHAM.

THIS AFTERNOON AT 2.30 ; EVENING AT 8.

**"The Marriage Market."**

NEXT WEEK: The Great Musical Play,

**"THE GIRL IN THE TAXI."**

## W. HALL & SONS, LTD.,

Fruiterers, - - Florists,  
Fishmongers, - - Game Dealers,

92, 92a High Street, TEL. 85.  
16 Montpellier Walk, TEL. 285.

CHELTENHAM.

English Melons, Pineapples, Muscat and  
Black Grapes, Choice Pears, Apples,  
Bananas, etc.  
Partridges, Grouse, Goslings, Quail,  
Native Oysters.

## DENTISTRY. Est. 1861.

'Phone 782, Cheltenham



PAINLESS  
EXTRACTIONS,  
ETC.

MR. SUTTON GARDNER,  
LAUREL HOUSE,  
CHELTENHAM.

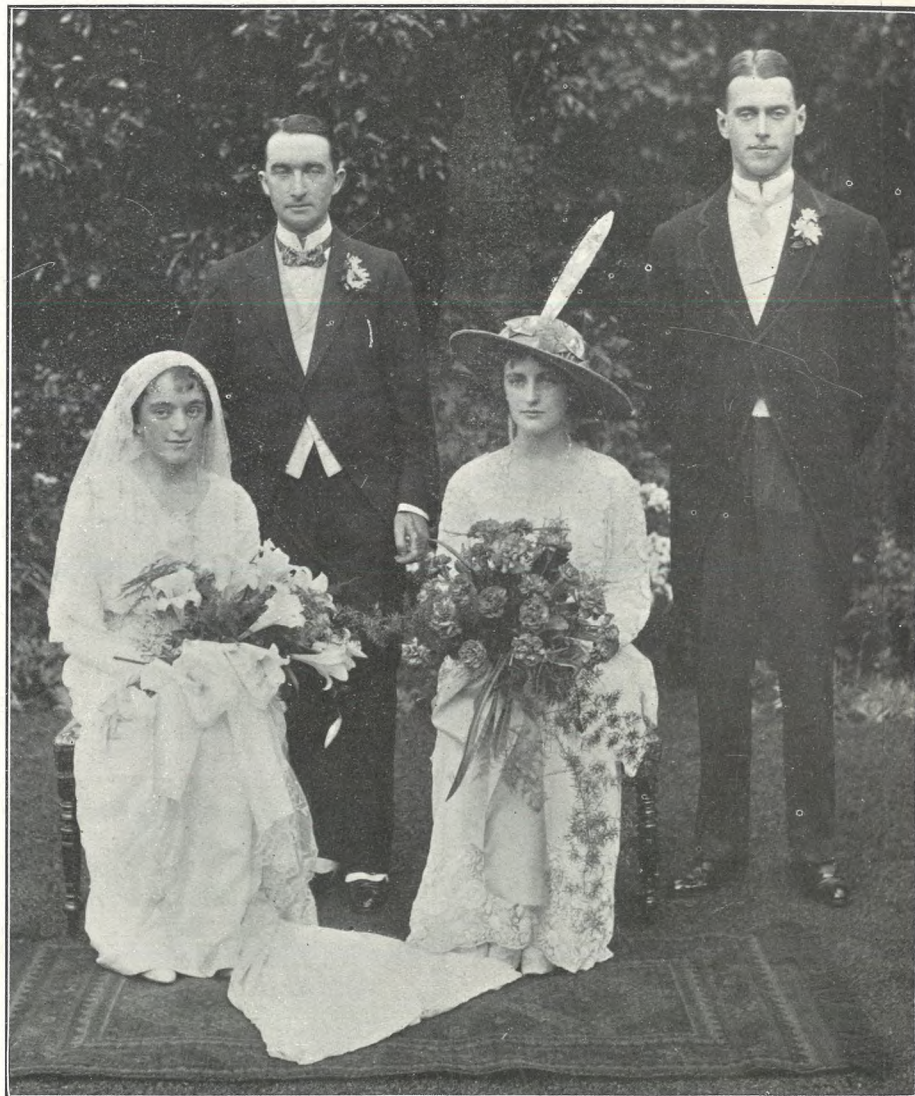
HOURS 8 A.M. TILL 8 P.M. DAILY.

Branches at Stroud, Nailsworth, Winchcombe, Stow, Bourton, etc.

## STEPHENS & FINCH,

Heating Engineers,  
Crosvenor Works, Cheltenham.

We have the Largest Stock in the County  
of Boilers, Radiators, Pipes and Connections  
of all classes of Heating and Hot-Water  
Supply. Horticultural Heating a Speciality.  
Telephone 35v1.



FASHIONABLE WEDDING IN CHELTENHAM.

The marriage of Mr. W. A. Noel Davies, son of the late Mr. and Mrs. W. H. Davies, of Alsagh, Cheshire, and Miss Raby Macintyre Landale, daughter of Surgeon-General and Mrs. Landale, of Dunholme, The Park, Cheltenham, took place at St. Stephen's Church, Cheltenham, on Tuesday, Sept. 15th. The bridesmaid was Miss Eileen Cole, and the best man Mr. G. Clinton McIlquham.

[Photo by Cheltenham Newspaper Co., Ltd.]

For the  
Best

# PIANOS, DALE, FORTY and CO. LTD





**TRAINING THE NEW 5th (RESERVE) BATTALION GLOUCESTER REGIMENT.**

THE NEW RESERVE BATTALION OF THE 5th GLOUCESTER REGIMENT IS NOW BEING FORMED AT GLOUCESTER, THE RECRUITS AS FAST AS THEY JOIN BEING BILLETED IN THE TOWN, AND DRILLING AND TRAINING IS PROCEEDING APACE. A SPLENDID LOT OF MEN ARE JOINING FROM GLOUCESTER, CHELTENHAM, TEWKESBURY, AND DISTRICT.

- 1.—A batch of recruits from Cheltenham.
- 2.—Some of the new men arriving at Barracks after passing the doctors.
- 3 and 4.—The men arriving at Barracks from a route march on Monday.

- 5 and 7.—Drawn up in Barracks Yard ready for dismissal.
- 6.—A Cheltenham section.
- 8.—Another Cheltenham batch who had just passed the doctors.

- 9.—Some of the Yeomanry who are being drilled at the Barracks.

[Photos by Cheltenham Newspaper Co., Ltd.]



**CHELTENHAM RECRUITS FOR ENGLAND'S NEW ARMY.**

A FURTHER SERIES OF PICTURES OF THE DEPARTURE OF CHELTENHAM RECRUITS FOR KITCHENER'S NEW ARMY ON THURSDAY AND FRIDAY, SEPT. 10 and 11.

- |  |  |
|--|--|
| <p>1.—The men with attendant crowd passing Montpellier Rotunda.</p> <p>2.—Some of the boys just off.</p> <p>3.—A batch of the recruits on Friday.</p> <p>4.—Another lot of Thursday's party.</p> | <p>5.—Seven old members of the 10th Cheltenham Boy Scouts who went on Thursday.</p> <p>6.—Crowd watching the departure.</p> <p>7.—The Mayor in centre, Mr. J. T. Agg-Gardner, M.P., on left, and Rev. R. H. M. Bouth on right, marching at head of party to the M.R. Station.</p> <p>8.—A merry crowd.</p> |
|--|--|

[Photos by Cheltenham Newspaper Co., Ltd.]



**CHELTENHAM RECRUITS FOR ENGLAND'S NEW ARMY.**

ON THURSDAY AND FRIDAY, SEPT. 10 and 11, TWO BIG BATCHES OF RECRUITS WERE SENT FROM CHELTENHAM TO SWELL THE FINE ARMY BEING ORGANISED BY LORD KITCHENER. FRIENDS, RELATIVES, AND THE GENERAL PUBLIC TURNED UP IN GREAT NUMBERS, AND GAVE THEM A SPLENDID SEND-OFF.

- 1.—A batch of the men in recruiting yard.
- 2.—Members of the recruiting staff.
- 3.—Lined up outside Imperial Rooms.
- 4.—A merry compartment.

- 5.—Crowd on the platform.
- 6.—Outside Stroud station watching troops.
- 7.—The crowd surging on to Cheltenham M.R. platform.

- 8.—Recruits stand to attention. Donald Bailey, the well-known Cotswold Hills golfer, nearest camera on right.

[Photos by Cheltenham Newspaper Co., Ltd.]



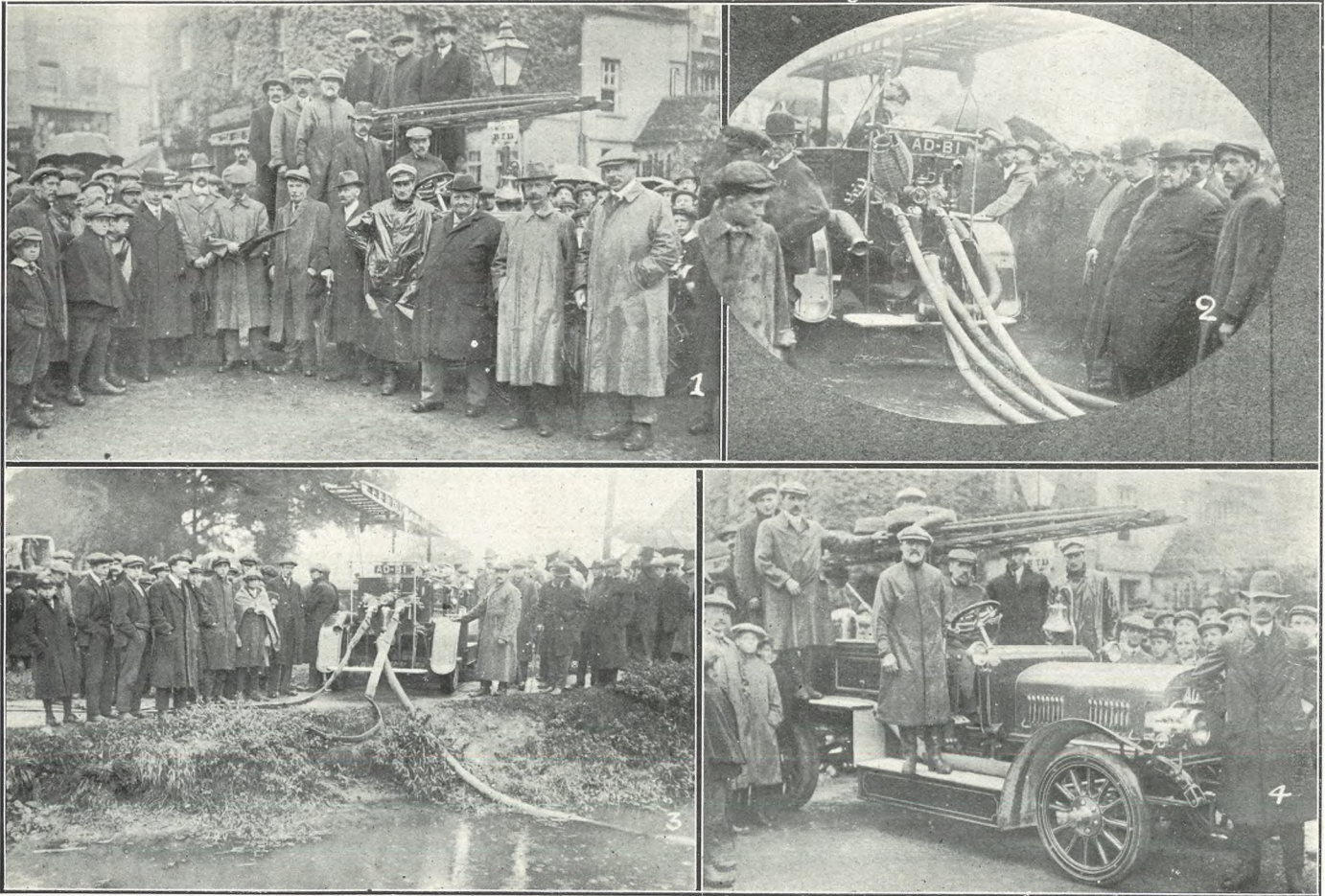
**CHELTENHAM RECRUITS FOR ENGLAND'S NEW ARMY.**

PICTURES OF THE "BOYS" WHO LEFT CHELTENHAM ON THURSDAY AND FRIDAY, SEPT. 10 and 11, FOR THE DEPOT, WHENCE THEY WILL BE DRAFTED OUT TO VARIOUS REGIMENTS FOR TRAINING.

1.—The crowd on Thursday breaking into the station yard to wish the men "good-bye."  
2.—A party of Thursday's departures.

3.—Crowd watching the men.  
4.—Another batch who went on Thursday.  
5.—Crowd on M.R. Station embankment.  
6.—Crowd watching men leave.

7 and 8.—Some of the recruits.  
9.—On the station platform.  
10.—A few of the "Fighting Thirty."  
[Photos by Cheltenham Newspaper Co., Ltd.]



**NEW MOTOR FIRE ENGINE FOR CIRENCESTER.**

THE CIRENCESTER URBAN DISTRICT COUNCIL HAVE RECENTLY PURCHASED A MERRYWEATHER MOTOR FIRE ENGINE FOR THE TOWN, AND ON SATURDAY ITS WORK WAS OFFICIALLY INAUGURATED BY A DISPLAY IN THE MARKET PLACE AND IN GLOUCESTER STREET.

1.—Members of the U.D. Council.  
2.—Watching engine at work.

3.—The engine pumping from stream in Gloucester-street.

4.—The engine and her crew.  
[Photos by Cheltenham Newspaper Co., Ltd.]

**WEBLEY, COLT, BROWNING** QUARTER SIZE  
**PISTOLS,**  
6 & 8 shot Automatic Magazines,  
Officers' Models,  
50-, 60- to 5 Guineas each.

Householders' Automatics & Revolvers from 20 - 50yds. length open-air Range, complete with steel Targets, adjoining premises, which we shall be pleased for officers and civilians to use Free of Charge.

**EDWINSON GREEN & SONS,**  
GUNMAKERS, CHELTENHAM.  
Also at Gloucester.

**MONEY IS SCARCE.**

Then why not hunt up your old gold and silver and bring to us, and turn into cash. Also buyers for ready Cash of genuine old Antique China, Plated Articles, Prints, Paintings, Ivories, Bronzes, Cut Glass, Artificial Teeth, &c.

**JOSEPH BOX,**

Established over 60 years.  
339 HIGH STREET, CHELTENHAM.  
(Opposite Grammar School).



**Driver Albert Preston,**

Of 16th Battery R.F.A., and son of Mrs. Preston, of 32 Gloucester-place, Cheltenham, who was wounded by shrapnel at the battle of Mons and died in hospital at Aldershot three weeks later. See article in main sheet.

**D. CORE BOODLE & CO., LTD.,**  
NORTH HOUSE, CHELTENHAM.

Every Day from 9 a.m. till 8 p.m.  
A LADY ALWAYS IN ATTENDANCE.

**PAINLESS EXTRACTIONS**

We Extract Teeth Painlessly and Surp'y you with Natural-looking and Perf.ct-fitting Teeth at Reasonable Prices.

Entire Satisfaction to each of our Pat ens is our first consideration.

**EXTRACTIONS First Hour FREE.**

BRANCHES EVERYWHERE.

including Cirencester (Every Monday), Boulton-on-the-Water (Tuesdays), Chipping Norton (Wednesdays), Monmouth (F idays), and Winch om.e (Every Saturday).

**TO-DAY IS THE TEST!**

British Stationers ask you to rally to the Flag by buying as usual, and thus keep the factories going.—RESPOND NOW.—TO-DAY.

**W. F. LEE, Stationer,**  
CAXTON HOUSE, WINCHCOMBE STREET,  
CHELTENHAM,

We can supply mounted or unmounted copies of any photograph which is marked "Cheltenham Newspaper Co., Ltd."

Emigrants before leaving should pay for twelve months' "Chronicle and Graphic" and thus keep in touch with the home land.



**BELGIAN REFUGEES IN STROUD.**

A party of Belgian refugees from Malines, Belgium, now at Stroud. On right is the Sister Superior of the Convent, and on left Rev. Father Fitzgerald, of the Church of the Immaculate Conception, who has been instrumental in arranging for hospitality for the refugees. Photo by Mr. W. Powell, Post-office Inn, Stroud.



**CHELTHENHAM RED CROSS MEN FOR THE FRONT.**

This (Lilley Brook) detachment of Red Cross Men left Cheltenham on Saturday, Sept. 12, for a destination unknown preparatory to going on war service. They are all qualified and efficient men, and are enlisted in the R.A.M.C.



**SWINDON LADIES' WORK ASSOCIATION,**

Who meet alternately at the Rectory, at Mrs. Moxon's, Swindon Hall, and at Mrs. Coxon's, Swindon Manor. [Photo by Harold Stokes, Cheltenham.]

**R. T. ADAMS & CO.**  
**COAT SPECIALISTS**  
**AT POPULAR PRICES.**



We illustrate below Two Excellent Numbers from our Immense Stock of Ladies' and Children's Coats for the Season which we commend to your notice.

**LADIES' NAP CLOTH COAT** (as Sketch), in Navy, Saxe, Brown, Grey, etc., at 18/11. Similar style in Cheaper Quality, 12/11 and 16/11.

**LADIES' ASTRACHAN COATS**, in Black and Colours, at 21/6.

**LADIES' O.S. and EX-O.S. CARACUL and SEAL PLUSH COATS**, 35/6 and 2 Guineas.

**MILLINERY.**

Black Velvet Hats, New Shapes, Soft or Blacked Crown, 2/11, 4/11, etc.

**CHILDREN'S COATS**, in all Sizes, Colours, and Styles, from 6/11 for 27 inch.

**MOURNING ORDERS** receive prompt and careful attention.

**BLACK COSTUMES** from 13/11.

**MILLINERY** and every requisite in stock.

Remittance should accompany order to facilitate delivery.



**R. T. ADAMS & CO.,**  
**75 and 76 HIGH STREET,**  
**CHELTHENHAM.**



**SEMI-MILITARY FUNERAL OF DRIVER PRESTON, R.F.A., IN CHELTENHAM.**

THE FUNERAL OF DRIVER PRESTON, WHO WAS FATALLY WOUNDED AT THE BATTLE OF MONS, TOOK PLACE ON WEDNESDAY AT CHELTENHAM CEMETERY.

- 1.—Boy Scouts who attended.
  - 2.—The coffin leaving deceased's home, covered with the Union Jack.
  - 3.—Men of the National Reserve who followed.
  - 4.—The funeral procession passing along Fairview-road.
  - 5.—The firing party (National Reserves), who are the only military body left in Cheltenham.
- [Photos by Cheltenham Newspaper Co., Ltd.]

WOOL HALF-HOSE,  
1/-, 1/6.

KNITTED JACKETS,  
10/6.

FLANNEL SHIRTS,  
4/6 to 10/6.

FOR HOME USE OR FOR SENDING TO  
THE TROOPS.

**A. BECKINGSALE,**

111 High Street, Cheltenham. Tel. 406.

**THE ROAD TO VICTORY.**

The Firing Line is all right, nobody doubts that, but what about the supports? We at home—the great British public—are the supports; for the continuance of commerce is vital to success in the field. Don't withdraw *your* supports, remember that every bit of work you can give your tradesman helps to keep the wheels of trade revolving. Will you lock up your Watch, Clock, or Jewellery job; and let us have them? We specialise in all kinds of Repairs. Waite & Son, Jewellers, 349 High-Street, Cheltenham.

**PRESCRIPTIONS.**

The OLD-ESTABLISHED BUSINESS of  
**PURNELL (Chemist),**  
337 High Street, Cheltenham,  
Has been taken over by A. LENGDEN,  
M.P.S., 30 Years Dispenser to General  
Hospital and Branch Dispensary.  
PHYSICIANS' PRESCRIPTIONS ACCURATELY  
DISPENSED.

**FISH NOTICE.**

FISH from North Sea. FISH from all parts  
**E. POWELL,**  
1 Winchcombe Street, Cheltenham.  
Has Large Supplies and is Selling Out Daily  
at Very Lowest Prices.  
GAME, POULTRY, and RABBITS.

**MARTIN AND CO., LTD.,**  
Promenade, Cheltenham,

Purchase for Cash, ANTIQUES of all kinds  
including OLD SILVER, JEWELLERY,  
SHEFFIELD PLATE, CHINA, COINS,  
MINIATURES, Etc.

*High Prices Given for Rare Pieces.*

SUFFERERS FROM

**DIABETES**

Should write to  
**CHELTINE FOODS CO., CHELTENHAM, ENG.,**  
FOR SAMPLES AND BOOKLET.

LACQUERING  
BRONZING  
**BRASS WORK**  
REPAIRS,  
DESIGNS & ESTIMATES.  
**G.H. WYNN & SONS,**  
KNAPP ROAD, CHELTENHAM.  
ESTD 1883.

# THE CHELTENHAM CHRONICLE AND GLO'SHIRE GRAPHIC

ART AND LITERARY SUPPLEMENT

No. 717.

Saturday, September 26, 1914.

## OPERA HOUSE, CHELTENHAM.

THIS AFTERNOON AT 2.30; EVENING AT 8.

**"The Girl in the Taxi."**

NEXT WEEK: First Visit of the Highly Successful Musical Play,

**"PRINCESS CAPRICE."**

## Old Selected SCOTCH WHISKIES.

B BLEND 42 - per Doz.; 3 6 per Bott.

BB BLEND 48 - per Doz.; 4 - per Bott.

BBB BLEND 51/- per Doz.; 4/3 per Bott.

## BARTHOLOMEW,

419-420 HIGH ST., CHELTENHAM.

## TAWNY PORTS. Old in Wood.

30/-, 36 -, 42 - per Doz.;

2/-, 3/-, 3 6 per Bott.

## DENTISTRY.

Est 1861.

'Phone 782, Cheltenham.



**PAINLESS  
EXTRACTIONS,  
ETC.**

MR. SUTTON GARDNER,

LAUREL HOUSE,

CHELTENHAM.

HOURS 8 A.M. TILL 8 P.M. DAILY.

Branches at Stroud, Nailsworth, Winchcombe, Stow, Bourton, etc.

## MARTIN AND CO., LTD.,

Promenade, Cheltenham,

Purchase for Cash, ANTIQUES of all kinds including OLD SILVER, JEWELLERY, SHEFFIELD PLATE, CHINA, COINS, MINIATURES, Etc.

High Prices Given for Rare Pieces.



## AMATEUR THEATRICALS IN CHELTENHAM.

In aid of the Prince of Wales' National Relief Fund an entertainment was given on Thursday, September 18th, organised by the Misses Eileen and Margery Growse, which realised £48 15s.

The Cast who performed Thackeray's phantasy, "The Rose and the Ring."

[Photo by Cheltenham Newspaper Co., Ltd.]

## W. HALL & SONS, LTD.,

Fruiterers, - - Florists,

Fishmongers, - - Game Dealers,

92, 92a High Street, TEL. 85.

16 Montpellier Walk, TEL. 285.

CHELTENHAM.

English Melons, Pineapples, Muscat and Black Grapes, Choice Pears, Apples, Bananas, etc.

Partridges, Grouse, Goslings, Quail, Native Oysters.

We can supply mounted or unmounted copies of any photograph which is marked "Cheltenham Newspaper Company, Ltd."

## TO-DAY IS THE TEST!

British Stationers ask you to rally to the flag by buying as usual, and thus keep the factories going.—RESPOND NOW.—TO-DAY.

W. F. LEE, Stationer,

CAXTON HOUSE, WINCHCOMBE STREET,  
CHELTENHAM,

## JEWELLERY AND ANTIQUES.

Instead of raising the price of goods, as the majority of traders in necessary commodities of life do, the jeweller and antiquarian has rather to reduce his prices in time such as these. This is the case with us. If you want anything in our way, you will find our prices lower than usual.

JOSEPH BOX,

Jeweller and Dealer in Antiques,  
339 HIGH STREET, CHELTENHAM.

For the  
Best

# PIANOS, DALE, FORTY and CO. LTD





**Amateur Theatricals in Cheltenham.**

"TILDA'S NEW HAT," SEPTEMBER 17TH.

Standing.—Miss Eileen Growse, Mr. Gerald Godley.  
Seated.—Miss Margaret Macbean, Miss Margery Growse.

[Photo by Cheltenham Newspaper Co., Ltd.]



**Cheltenham National Reserves on Service.**

This batch of old R.E. Volunteers are attached to South Midland R.E. at Chelmsford.

Standing.—W. Kent, W. Brown, W. H. Leopard, J. Larner, F. Haines.  
Sitting.—W. H. Mace, W. J. Martin, H. Farmer.

[Photo by J. W. Hack, Suffolk-road, Cheltenham.]



**Patriotic Churchdown.**

A batch of recruits for Lord Kitchener's Army, who left on Sept. 4. Sir Percy Cunningham (on extreme right) saw them off.

[Photo by C. Sprague, Churchdown.]



**Four Cheltenham Recruits off to their Regiments.**

Messrs. R. Birt, L. Birt, A. E. Howlett, and H. A. Large. Taken at Stroud Station while on their way to join their regiments.

[Photo by Cheltenham Newspaper Co., Ltd.]



**The Gloucesters in China.**

A party of the 2nd Battalion Gloucester Regiment at Tientsin, North China, at their company training building a bridge over the river. The photo was sent to us by Lance-Corpl. Ranford, a Cheltonian.



### TEWKESBURY'S CONTRIBUTION TO KITCHENER'S NEW ARMY.

ON MONDAY, SEPTEMBER 21, OVER 100 RECRUITS LEFT TEWKESBURY STATION EN ROUTE FOR BRISTOL, WHENCE THEY WILL BE DRAFTED INTO THEIR VARIOUS REGIMENTS. THE OLD TOWN GAVE ITS SOLDIER SONS A SPLENDID SEND-OFF, HUNDREDS OF PEOPLE LINING THE PLATFORM AND THE RAILS FOR SOME DISTANCE.

- 1.—Marching to the station.
- 2.—A group at a carriage door.
- 3.—The Mayor of Tewkesbury on the station with some of the men. Mr. Baker, an ex-Mayor, is on extreme right.
- 4.—The Town Band playing them to station.
- 5, 6, and 7.—The people left behind. The station approach and platforms were thronged with people to wish their "boys" good-bye.
- 8.—The Boy Scouts and Police-Inspector Lane head the procession.

[Photos by Cheltenham Newspaper Co., Ltd.]



**ANSWERING THE CALL.**

A FURTHER SERIES OF PICTURES OF MORE RECRUITS FROM CHELTENHAM AND DISTRICT FOR KITCHENER'S NEW ARMY, LEAVING THE M.R. STATION ON WEDNESDAY, SEPT. 16. MANY HUNDREDS HAVE NOW GONE FROM CHELTENHAM.

- |   |   |   |
|---|---|---|
| <p>1.—Some of the men in yard of recruiting office.</p> <p>2.—One of the compartments.</p> <p>3.—Three cheers for the King before leaving.</p> <p>4.—Some of the men.</p> | <p>5.—The Mayor wishing the men "Godspeed." Major P. Shewell, the recruiting officer, is just behind.</p> <p>6.—Splendid material for the Army. Mr. Owen Hawkins, the Conservative agent for the Tewkesbury Division, is second from the right.</p> | <p>7.—Wishing the men good-bye at the station.</p> <p>8.—The men falling in in front of recruiting station.</p> <p>9.—Arriving at the M.R. Station.</p> |
|---|---|---|

[Photos by Cheltenham Newspaper Co., Ltd.]



**FOR KING AND COUNTRY.**

MORE RECRUITS FOR KITCHENER'S NEW ARMY LEFT CHELTENHAM ON WEDNESDAY AND THURSDAY, SEPT. 16 AND 17, FOR BRISTOL, WHENCE THEY WILL BE DRAFTED INTO VARIOUS REGIMENTS. A GREAT NUMBER OF RELATIVES, FRIENDS, AND THE GENERAL PUBLIC WERE ON THE ROUTE AND AT THE STATION TO GIVE THE MEN A GOOD SEND-OFF.

- 1.—Arriving at the M.R. Station.
- 2.—The last four of the "Fighting Thirty." Messrs. J. E. Turner, A. J. White (who was promoted Lance-Corpl. and put in charge of the squad of recruits), and E. Thursfield (all of Cavendish House), and F. W. Turner (of the Gas Works office).
- 3.—The head of the procession.
- 4.—One of the compartments on Thursday.
- 5.—The batch of recruits (only 30) who left on Thursday.
- 6.—Part of the train on Wednesday.
- 7.—Mr. Jamieson, Mrs. E. C. Willoughby, Mrs. Ryland, and Mrs. E. E. Turner seeing the men off.
- 8.—Another compartment on Thursday.

[Photos by Cheltenham Newspaper Co., Ltd.]



**Six Patriotic Cheltenham Employees.**

Back row: Messrs. T. Aston, F. Oldham, W. Pashley, L. D. Crosby. In front: Percival Peck and R. S. Johnson, all employees of Messrs. John Lance and Co., Cheltenham, who joined Kitchener's Army, leaving for Bristol on Sept. 2.



**Kemerton Men for the Front.**

Seven Kemerton men who have enlisted in Kitchener's Army. G. Bartlett, F. Brown, M. Devereux, W. Devereux, H. Jones, A. Bullingham,

[Photo by W. T. Devereux, Kemerton.]



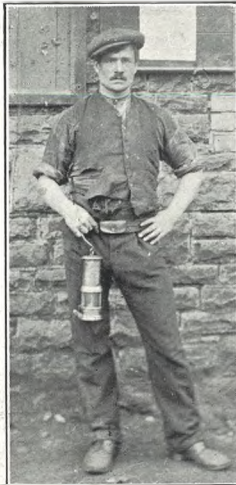
**KILLED ON THE PATHFINDER.**

Mr. Basil Hovenden Neve, who was killed when H.M.S. Pathfinder was torpedoed by a German submarine in the North Sea on Sept. 5th. He was a son of Mr. J. R. Neve, Chipping Campden, and was 39 years of age. He served through the Boer War in the Army Medical Corps, afterwards entering the engineering branch of the Royal Navy. He was married.



**CHELTONIAN'S DEATH IN CANADA.**

Mr. John Brunson, of Kenora, Winnipeg, Canada, who died of pneumonia on August 27th. He was the son of Mr. Brunson, of 8 Temple Mead, Old Bath-road Cheltenham.



**A WOUNDED CHELTONIAN.**

Private C. Cox, 2nd Gloucestershire Regiment, of 20 Queen's Retreat, Cheltenham, the first wounded Cheltonian to be sent home. At Mons he sustained three wounds from a bursting shrapnel shell, one of them severe. Pvt. Cox went through the Boer War with the 4th Rifle Brigade, and was at Spion Kop, and many other affairs.



**Three Kemerton Men for Yeomanry.**

Messrs. O. Dudfield, A. Turner, and W. Cranton, who have enlisted in the Worcester Yeomanry.—[Photo by W. T. Devereux, Kemerton.]

**FLANNEL SHIRTS**  
In Great Variety, 4s. 6d. to 10s. 6d.

**ALL WOOL KHAKI FLANNEL SHIRTS, 8s. 6d.**

**A. BECKINGSALE,**  
111 HIGH STREET,  
CHELTENHAM.

Tel. 406.

**THE ONLY 10/6 WATCH**

ONE YOU CAN RELY ON.

**EVERY WATCH**

Gun Metal or Nickel Case.

Lever Movements. Interchangeable Parts.



Established Nearly a Century.

**WAITE & SON, JEWELLERS, CHELTENHAM.**

**WITH A 3 YEARS' WARRANTY.**

ALWAYS ON CORRECT TIME.

**TESTED & TIMED.**

28 Days' Trial Given. Money Back Guarantee.

10/9 Post Free to any address in the United Kingdom.

Colonial Post, post free, 11/9.

**D. CORE BOODLE & CO., LTD.,**  
NORTH HOUSE, CHELTENHAM.

Every Day from 9 a.m. till 8 p.m.

A LADY ALWAYS IN ATTENDANCE.

**PAINLESS EXTRACTIONS**

We Extract Teeth Painlessly and Supply you with Natural-looking and Perfect-fitting Teeth at Reasonable Prices.

Entire Satisfaction to each of our Patients is our first consideration.

**EXTRACTIONS First Hour FREE.**

BRANCHES EVERYWHERE.

including Cirencester (Every Monday), Bourton-on-the-Water (Tuesdays), Chipping Norton (Wednesdays), Monmouth (Fridays), and Winchcombe (Every Saturday).



**Looking after the Navy.**

First consignment of Navy League comforts knitted for our sailors by ladies of Cheltenham and district, despatched this week by Mrs. Richard Longland, the local hon. sec., to H.M.S. Gloucester.



**A Gloucestershire Centenarian.**

Mr. James Newth, of Grammar School House, Dursley, who on Monday last, Sept. 21st, attained the age of 100 years.



**Four more for Kitchener.**

Altogether six of Messrs. Shiner and Haddon's employees have joined Kitchener's Army. The four above left Cheltenham on September 16th. Standing: H. Boulton, L. Spilsbury, W. S. Heane. Sitting: F. T. Goodhall.

**DISTINCTIVE COATS FOR 1914-15.**



We illustrate TWO BEAUTIFUL EXAMPLES of the NEW VOGUE for THIS SEASON. One in Seal Plush, trimmed with Imitation Pony, Braid, Ornament Fastenings; is suitable for all smart occasions. The other an exceedingly "Chic" Coat, in Plaid Wool Velour Cloth, three-tier cape effect, an ideal Travelling, Motor, or Country Wrap; both remarkable in value, at

**45/6.**



A SPLENDID SELECTION of COSTUMES in Navy Serge of Dependable Qualities from 29/6. COATS in NAP CLOTH, VELOUR CLOTH, BLANKET SERGE, in All Newest Styles, from 21/9.

**SPECIAL PURCHASE OF CARACUL AND PONY CLOTH COATS** In the Latest Styles, now showing in Mantle Department. Prices from 35/9.

**VANDERPLANK** From HARROD'S, 381 HIGH ST., CHELTENHAM.



**Four Wincombe Soldier Brothers.**

- 1.—Private Frank Dyde, Grenadier Guards.
  - 2.—Corporal William Ireland, Royal Berks.
  - 3.—Private Drummer Allen Dyde, Gloucester Regiment.
  - 4.—Private Alfred Dyde, Grenadier Guards.
- Nos. 1, 3, and 4 are sons of Mr. and Mrs. Charles Dyde, Wincombe. No. 2 is Mrs. Dyde's son. All four are now serving their King and country.

**PRESCRIPTIONS.**

The OLD-ESTABLISHED BUSINESS of **PURNELL (Chemist),** 337 High Street, Cheltenham, Has been taken over by A. LENGDEN, M.P.S., 30 Years Dispenser to General Hospital and Branch Dispensary. PHYSICIANS' PRESCRIPTIONS ACCURATELY DISPENSED.

**R. T. ADAMS & CO.**  
**COAT SPECIALISTS**  
**AT POPULAR PRICES.**

\*\*\*\*\*  
 This Smart New  
**ASTRACHAN**  
**COAT,**  
 in Black, Navy,  
 Tan, Purple,  
 Saxe, at  
**32/6.**

Also similar  
 style and  
 Colours in New  
 Zibeline Cloth,  
 Nap Cloth, and  
 Blanket Cloth,  
 at  
**18/11.**

\*\*\*\*\*



\*\*\*\*\*  
**BLACK**  
**CARACUL**  
**CLOTH**  
**COAT,**  
 as sketch, from  
**25/6.**

Also  
 Imitation Pony  
 Skin Cloth  
 Coat, smart  
 shape, 39s. 6d.  
 Extra large  
 size in Coats  
 and Costumes  
 always in stock.

**MOURNING.**

We hold a  
 large stock of  
 Mourning Re-  
 quisites in all  
 sizes. Fine  
 Serge Costumes,  
 18s. 11d. to 63s.

Remittance  
 should accom-  
 pany order to  
 facilitate de-  
 livery.

\*\*\*\*\*



**R. T. ADAMS & Co., 75-76 HIGH ST.,**  
**CHEL TENHAM.**



**THE TWYNING TROOP.**  
 Men from Twynning, members of Kitchener's New Army, who left Tewkesbury, Monday, Sept. 21st, for Bristol. Taken on Ashchurch platform.



**LONDON AND BUSHLEY RECRUITS.**  
 A number of recruits who left Tewkesbury on Monday, Sept. 21st, for Bristol. Most of those in photo came from London and Bushley.

*NEW-HUDSON* Cycles possess in the highest degree the essentials of *Dependable Quality and Satisfactory Service.* Gracefully modelled and superbly finished. 30 New Models from £4 10s. to £10 10s. Catalogues post free from **E. E. HUGHES & CO., MONTPELLIER, CHEL TENHAM.** c3077

Tel. 771.

**BRADBURY'S,**  
**TAILORS,**  
**CHEL TENHAM,**  
**OFFICERS' FIELD OUTFITS.**

**A POSTCARD**  
**WILL BRING AN ESTIMATE FOR ANY**  
**REPAIRS.**  
 Special Terms for Schools, Institutions,  
 Hotels, etc.

**WILLIAMS, The Cutlers,**  
 19 WINCHCOMBE ST., CHEL TENHAM.

LACQUERING  
 BRONZING  
**BRASS WORK**  
 REPAIRS,  
 DESIGNS & ESTIMATES.  
**G.H. WYNN & SONS,**  
 KNAPP ROAD, CHEL TENHAM.  
 ESTD 1883.

SUFFERERS FROM  
**DIABETES**  
 Should write to  
**CHELTINE FOODS CO., CHEL TENHAM, ENG.,**  
 FOR SAMPLES AND BOOKLET.