

THE CHELTENHAM CHRONICLE AND GLO' SHIRE GRAPHIC

No. 684.

Saturday, February 7, 1914.

ART
AND
LITERARY
SUPPLEMENT

OPERA HOUSE, CHELTENHAM.

THIS AFTERNOON (2.30) & EVENING (7.45),
"Oh! I Say!"

Next Week: Important Engagement and Return
Visit of the Great Lancashire Play,
"HINDLE WAKES."

DENTISTRY.

Est. 1891.

'Phone 782, Cheltenham.



PAINLESS
EXTRACTIONS,
ETC.

MR. SUTTON CARDNER,
LAUREL HOUSE,
CHELTENHAM.

HOURS 8 A.M. TILL 8 P.M. DAILY.
Branches at Stroud, Nailsworth, Winch-
combe, Stow, Bourton, etc.

W. HALL & SONS, LTD.,

Fruiters, - - Florists,
Fishmongers, Game Dealers,
92, 92a High Street, TEL. 85.
16 Montpellier Walk, TEL. 285
CHELTENHAM.

Pineapples, Hothouse Grapes, Bananas,
Seedless Oranges, Pears, etc.
Asparagus, French Beans, Mushrooms,
Seakale, Tomatoes, etc.

STEPHENS & FINCH,

Heating Engineers,
Grosvenor Works, Cheltenham.
We hold the Largest Stock in the County
of Boilers, Radiators, Pipes and Connections
of all classes of Heating and Hot-Water
Supply. Horticultural Heating a Speciality.
Telephone No. 35Y1.



CHELTENHAM TOWN CRICKET CLUB ANNUAL DINNER.
THIS DINNER WAS HELD AT GEORGE'S RESTAURANT ON THURSDAY,
JANUARY 29TH, ABOUT 40 BEING PRESENT.

[Photo by Cheltenham Newspaper Co., Ltd.]

SEE
THE
LATEST



BROWNING ;
also Colts' Automatic Pistols
Fires 8 shots in 4 seconds.
In all bores, from 40/- to £5.

Also everything the
best for Sportmen in
GUNS AND RIFLES
for any part of the world, from £5 to £75.

KEEPERS' GUNS from £2 10s. Second-hand Guns,
REPAIRS OF EVERY DESCRIPTION.

Also the Cross, **Edwinson Green & Sons,**
Gloucester. Cheltenham.

TO OUR READERS ABROAD.

We are always glad to receive Letters
and Photographs from readers abroad,
especially from those who have relatives
or friends in any part of Gloucestershire.

MARTIN AND CO., LTD., Promenade, Cheltenham,

Purchase for Cash, ANTIQUES of all kinds,
including OLD SILVER, JEWELLERY,
SHEFFIELD PLATE, CHINA, COINS,
MINIATURES, &c., &c.
High Prices Given for Rare Pieces.

H. W. GILL

(Late Burrough),
401 HIGH STREET, CHELTENHAM.
The Old Established

WOOL WAREHOUSE

Post Orders receive Prompt Attention.

The real test of a newspaper's value is its
circulation. The "Cheltenham Chronicle
and Graphic" guarantees a sale of over 12,000
weekly. The paper reaches all classes and
is recognised as Gloucestershire's great home
paper.

If you like the "Chronicle," order it regularly through your Newsagent or direct from the Office.



"LITTLE MRS. CUMMIN."

AT MR. H. O. REDFORD'S ANNUAL BENEFIT AT THE OPERA HOUSE ON SATURDAY, JANUARY 31.
THE CAST.

At back.—Mr. H. Howard Lewis ("Mills"), Capt. M. T. Porter ("Capt. Sands").
In front.—Mr. T. Hannam-Clark ("Uncle Horace"), Miss Sybil Ker ("Mrs. Plain"), Miss C. Holmes ("Susy Plain"), Miss Margery Growse ("Juliet Eglamore"), Miss Margaret Macbean ("Mrs. Cummin"), Mr. P. R. Clauss ("Clarence Eglamore"), Miss Eva Holme-Wiggin and Miss D. Growse (maid servants).
[Photo by Cheltenham Newspaper Co., Ltd.]

FOR EVENING WEAR.

DRESS SHIRTS.

Plain Fronts; One Studhole. 3/6, 4/6, 5/6, 6/6.
Also with Soft Fancy Fronts.

DRESS GLOVES, 1/6, 2/-.

DRESS BOWS, 4d., 6d.

**DRESS SOCKS, Cashmere, with Clox, 1/-,
1/6; Spun Silk and Silk, 2/6 to 6/11.**

A. BECKINGSALE,

111 HIGH STREET, CHELTENHAM.

Telephone 406.

SUFFERERS FROM

DIABETES

Should write to

**CHELTINE FOODS CO., CHELTENHAM, ENG.,
FOR SAMPLES AND BOOKLET.**



Mr. "Bart" Wilson,

Of St. Philip's Place, Cheltenham, who died on February 1, aged 65 years. He had been connected for 41 years with theatrical life in Cheltenham, and for the past 22 years had been master carpenter at the Opera House, Cheltenham.

The "Chronicle and Graphic" reaches all classes with a *guaranteed* circulation of over 12,000 copies weekly.

ANTIQUES.

We have a most interesting stock of Genuine Antiques—Furniture, Paintings, Prints, Water Colours, China, Cut Glass, Ivories, Miniatures, Silver, Sheffield Plate, Small Articles of Jewellery, at very low prices. Many articles at a few shillings to clear.

BOX,

339 HIGH ST. (Opposite Grammar School), CHELTENHAM.
Antiques Purchased. Estab. 60 years.

This is a One-Inch Advertisement.

You can have one like it for 2s. 6d. Which means that for that sum you have your notice printed and placed before probably 40,000 people (for we *guarantee* a weekly sale of 12,000 copies, and each copy is seen by, on the average, four persons).

The "Chronicle and Graphic" reaches all classes, with a *guaranteed* circulation of over 12,000 copies weekly.

Emigrants before leaving should pay for twelve months' "Chronicle and Graphic," and thus keep in touch with the home land.



GLOUCESTER "TRUE BLUE" DINNER.

THE OLDEST DINNER IN ENGLAND, WHICH HAS BEEN HELD CONTINUOUSLY FOR OVER ONE HUNDRED YEARS, WAS HELD AT THE BELL HOTEL, GLOUCESTER, ON WEDNESDAY EVENING, FEBRUARY 4TH. IT IS HELD TO COMMEMORATE A TORY VICTORY BY ONE VOTE.

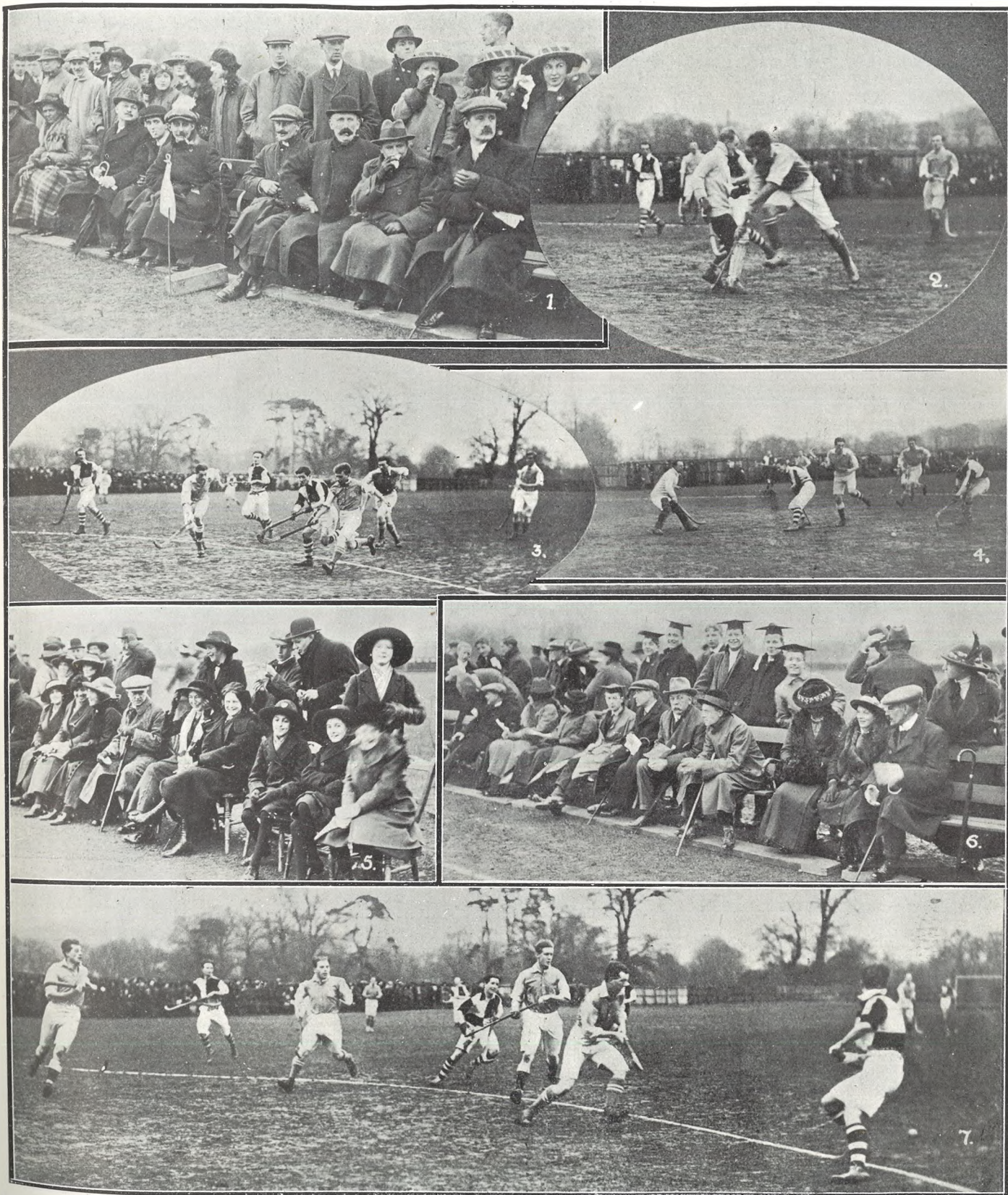
[Flashlight photo by Cheltenham Newspaper Co., Ltd.]



TEA TO POOR GLOUCESTER CHILDREN.

COUNCILLOR EMBLING, OF GLOUCESTER, ON THURSDAY, JANUARY 29TH, ENTERTAINED ABOUT 1,500 POOR GLOUCESTER CHILDREN TO A TEA AND ENTERTAINMENT AT THE CORN EXCHANGE. THE CHILDREN ARE SHOWN SEATED FOR TEA.

[Flashlight photo by H. E. Jones, Northgate-street, Gloucester.]



HOCKEY INTERNATIONAL TRIAL IN CHELTENHAM.

ON THE EAST GLOUCESTERSHIRE GROUND ON SATURDAY, JANUARY 31, TEAMS REPRESENTING THE EAST AND WEST OF ENGLAND PLAYED A FINE MATCH, THE EAST WINNING BY SIX GOALS TO TWO. MEMBERS OF THE INTERNATIONAL SELECTION COMMITTEE WERE PRESENT. THERE WAS QUITE A GOOD CROWD OF SPECTATORS.

1.—Spectators. On seats in front are members of the committee.
2.—The West goalkeeper saves brilliantly from Matthews, rushing out and kicking the ball away from his stick.

3.—A promising attack by the Western forwards.
4.—Another good chance for the Western forwards, with the East goalkeeper out of goal and a Western forward in possession.

5 and 6.—Spectators.
7.—Western forwards on attack, but find the Eastern defence too strong.

[Photos by Cheltenham Newspaper Co., Ltd.]



MARRIAGE OF THE VICAR OF SOUTH CERNEY.

The wedding of the vicar of South Cerney, Rev. Archibald Collingwood Stephens, who was for some time curate of Cirencester and Miss Ella Holme, daughter of the late Rev. H. Redmayne Holme, Bishop of British Honduras, and Mrs. Holme, South Cerney, took place at South Cerney Church on Tuesday, February 3rd. It aroused considerable interest in the neighbourhood, and large numbers of people were present. [Photos by Cheltenham Newspaper Co., Ltd.]

- 1.—The bridal party and guests.
- 2.—Bride arriving at church.
- 3.—Guests watching group being photographed.
- 4.—The Bride and Bridegroom.
- 5.—Rev. W. H. Careless, Rector of Harnhill, and Ven. Archdeacon Sinclair, who performed the ceremony.
- 6.—Parishioners outside bride's house. Showing welcoming banner erected.
- 7.—Miss Olive Holme (bridesmaid) and Miss Juliet Boucher (trainbearer).



CHELTENHAM AND DISTRICT LICENSED VICTUALLERS' ANNUAL DINNER.

HELD AT THE FLEECE HOTEL, FEB. 2, MR. J. T. AGG-GARDNER, M.P., IN THE CHAIR. ABOUT 80 SAT DOWN, GREAT UNANIMITY AND GOOD FELLOWSHIP MARKING THE POST PRANDIAL PROCEEDINGS.

[Flash-light photo by Cheltenham Newspaper Co., Ltd.]

*****|*****|*****|*****|*****



Arizona Dan,

The American Cowboy-Tourist, who is touring the world for a wager of 10,000 dollars, and will appear at Poole's Palace, Cheltenham, next week.



SOME WINCHCOMBE WORKERS.

EMPLOYEES OF MESSRS. SIXTY'S, LTD., TANNERS, OF WINCHCOMBE, TAKEN OUTSIDE THEIR WORKS.



Brother George Pearce, K.O.M., D.P.P.

Of York Hotel, Cheltenham, who was raised to the Roll of Honour or Fourth Degree, at an important ceremony of the R.A.O.B. at Oddfellows' Hall, Cheltenham, on Thursday, January 29th.

MISCELLANEOUS BARGAINS.

Handsome 14-day GREEN ONYX CLOCK, in perfect going order, case slightly chipped; originally 50s., sell for 35s. Also 14-day Marble Striking CLOCK, works in good order, originally 65s., sell for 35s.—Waite and Son, Jewellers, Cheltenham.

Case of 1 dozen pairs good-quality Electro-plated FISH KNIVES and FORKS, never been used; originally 47s. 6d., sell for 30s. Also Electro-plated CAKE BASKET, 7s. 6d., and Handsome Nautilus Shell-shape NUT or GRAPPE STAND, 10s. 6d.—Waite and Son, Cheltenham.

SYMPHONION, in nicely-made Inlaid Mahogany Case, rich tone, moveable discs; originally 40s., sell for 25s. Also MUSICAL CLOCK in Carved Walnut Case; plays tune every hour; 21s.—Waite and Son, Cheltenham.

Lady's Silver Half-Hunting Keyless WATCH, compact and plain cases, reliable jewelled movement, sell for 21s., cost double. Also Gent's Silver Keyless Waltham Lever WATCH, original well-made movement, grand time-keeper, sell for 40s.; cost nearly double.—Waite and Son, Cheltenham.

Choice CLUSTER RING, set in Platinum, with lovely coloured Burma Ruby and fine quality Diamond, sell for £5 15s. Also a few well-made good quality BROOCHES, quite perfect, to be sold trifle over old gold price.—Waite and Son, Cheltenham.

The above and many more bargains we are disposing at absurdly low prices to reduce over-laden stock.—Waite and Son, jewellers, 349 High-street, Cheltenham. Ask for list of Stock-taking bargains.



SOMETHING LIKE A CATCH.

Mr. Thos. Payne, of 48 George-street, Worcester, a member of the Cheltenham Angling Club, with 23 fish caught by him in the Club water at Eekington on Jan. 10th. Total weight 79lbs. (21 bream and 2 roach). See paragraph in main sheet.

[Photo. Dowty, Worcester.]

SLADE'S SALE

Finishes Saturday, February 14, 1914.

GENUINE CLEARANCE of 1,200 selected pairs of SLADE'S BOOTS, SHOES, etc., of the highest taste and character,

to be sold much below cost of production. When giving up stocking a certain range of goods, 2, 3, or 4 pairs get left on the shelves. Special pairs and samples are daily made by SLADE'S or received from the makers. The goods while in a clean and fresh condition are better cleared out at a loss than allowed to accumulate to form old stock. Sale prices are for cash only, and goods cannot be entered at Sale prices.

If unable to visit the Sale, do not hesitate to write for Catalogue and order by post.

W. D. SLADE,

Postal Address: **Imperial House, Cheltenham.** Tel. No. 78.
Postal Address: **92 High Street, Worcester.** Tel. No. 5x.

D. CORE BOODLE & CO., LTD., NORTH HOUSE, CHELTENHAM.

Every Day from 9 a.m. till 8 p.m.

A LADY ALWAYS IN ATTENDANCE.

PAINLESS EXTRACTIONS

We Extract Teeth Painlessly, and Supply you with Natural-looking and Perfect-fitting Teeth at Reasonable Prices.

Entire Satisfaction to each of our patients is our first consideration.

EXTRACTIONS First Hour FREE.

BRANCHES EVERYWHERE including Cirencester (Every Monday), Bourton-on-the-Water (Tuesdays), Chipping Norton (Wednesdays), Monmouth (Fridays), and Winchcombe (Every Saturday).

BOODLE'S TEETH.

TO PHOTOGRAPH COLLECTORS.

We can supply unmounted copies of any photographs appearing in these pages which are marked "Cheltenham Newspaper Co."

Size 10 x 8 1 9 EACH (Post Free),
8 1/2 x 6 1/2 1/3 EACH, 6 1/2 x 4 1/4 9d. EACH.
Mounted, 3d. each extra.

Discount on orders of 20 or more, 10 per cent.

Printed and Published as a Gratis Supplement by the Cheltenham Newspaper Company, Ltd.

THE CHELTENHAM CHRONICLE AND GLO'SHIRE GRAPHIC

ART AND LITERARY SUPPLEMENT

No. 685.

Saturday, February 14, 1914.

OPERA HOUSE, CHELTENHAM.

THIS AFTERNOON (3.0) & EVENING (7.45).

"Hindle Wakes."

Next Week: Return Visit of Mr. George Dance's
Principal Company in

"THE QUAKER GIRL."

Old Selected SCOTCH WHISKIES.

B BLEND 42/- per Doz.; 3/6 per Bott.

BB BLEND 48/- per Doz.; 4/- per Bott.

BBB BLEND 51/- per Doz.; 4/3 per Bott.

BARTHOLOMEW,

419-420 HIGH ST., CHELTENHAM.

TAWNY PORTS. Old in Wood.

30/-, 36/-, 42/- per Doz.;

2/-, 3/-, 3/6 per Bott.

DENTISTRY. Est. 1891.

'Phone 782, Cheltenham.



PAINLESS
EXTRACTIONS,
ETC.

MR. SUTTON GARDNER,
LAUREL HOUSE,
CHELTENHAM.

HOURS 8 A.M. TILL 8 P.M. DAILY.

Branches at Stroud, Nailsworth, Winchcombe, Stow, Bourton, etc.

STEPHENS & FINCH,

Heating Engineers,
Grosvenor Works, Cheltenham.

We hold the Largest Stock in the County
of Radiators, Pipes and Connections,
of all classes Heating and Hot-Water
Supply. Horticultural Heating a Speciality.
Telephone No. 35v1.



CHELTENHAM SOCIETY WEDDING.

Mr. Cecil Alexander Birtwhistle,
Son of Mr. Charles Birtwhistle, of Oakridge
Lynch, near Stroud, and Weston-super-
Mare.

Miss Effie Robinson,
Daughter of Mr. and Mrs. J. P. Robinson,
of 5 Lansdown-crescent, Cheltenham.

Who were married at Christ Church, Cheltenham, on Wednesday, February 11th.

W. HALL & SONS, LTD.,

Fruiterers, - - Florists,
Fishmongers, Game Dealers,

92, 92a High Street, TEL. 85.

16 Montpellier Walk, TEL. 285.

CHELTENHAM.

Pineapples, Hothouse Grapes, Bananas,
Seedless Oranges, Pears, etc.

Asparagus, French Beans, Mushrooms,
Seakale, Tomatoes, etc.

MARTIN AND CO., LTD., Promenade, Cheltenham,

Purchase for Cash, ANTIQUES of all kinds,
including OLD SILVER, JEWELLERY,
SHEFFIELD PLATE, CHINA, COINS,
MINIATURES, &c., &c.

High Prices Given for Rare Pieces.

Photographs on Sale.



THE original Photographs
of the full-page or any
other illustrations as they appear in
the "Graphic" are to be sold for the
moderate sum of 2/6. They make
splendid souvenirs, and look fine when
framed. The first application will
receive preference. Apply at the Offices
in Cheltenham, where only Photographs
can be obtained.

This is a One-Inch Advertisement.

You can have one like it for 2s. 6d.
Which means that for that sum you have
your notice printed and placed before
probably 40,000 people (for we guarantee a
weekly sale of 12,000 copies, and each copy
is seen by, on the average, four persons).

If you like the "Chronicle," order it regularly through your Newsagent or direct from the Office.



ST. PAUL'S TRAINING COLLEGE, CHELTENHAM.

“OLD CHELTS” MATCHES VERSUS PRESENT COLLEGIANS AT RUGBY AND ASSOCIATION FOOTBALL, PLAYED ON THE FOLLY GROUND, SATURDAY, FEBRUARY 7, THE PRESENT MEN WINNING BOTH MATCHES, THE RUGBY BY NINE POINTS TO NIL, AND THE “SOCCER” BY TWO GOALS TO ONE.

1.—A fine forward rush by Old Chelts in Rugby match.

2.—Old Chelts' Association team:—N. J. Watterson, W. Latham, W. Powell, T. Wall, J. Robson, A. H. Mann, Rev. H. A. Bren (Principal), E. E. Spragg, L. Portman (Line), W. E. Turner, G. Parthington, H. H. Williams, F. Nuttall.

3.—Present Association team:—J. Firth (Line), E. J. Evans, A. R. Glaves, H. Williams, A. E. Goddard, S. F. Crew, W. E. Harding, T. J. Gray (captain), N. Vernon, J. W. Thomas, H. R. Swindell, A. Pilling.

4.—Old Chelts' Rugby team:—H. W. Wager, R. Hill, J. Saddlers (Line), C. F. Kay, A. J. Watts, G. A. Allan, A. C. Russell.

5.—A line out.

6.—Present Rugby team:—H. E. Vanderplank, H. Hurrell, S. A. Vaughan, M. M. Evans, G. H. Goddard, A. Armstrong,

G. E. Wheeler, J. C. Booth (capt.), W. J. Wilson, R. Mitchell, E. J. Fadden (on shoulders), W. Crofts, J. G. H. Riddick, R. M. Swyer, W. Jackson, A. Luen (Line), H. L. Baynham, W. J. Fawkes.

[Photos by Cheltenham Newspaper Co., Ltd.]



GIRLS' CLUBS' FINE ATHLETIC DISPLAY.

The amalgamated Girls' Clubs of Cheltenham, which are now quite a strong body, gave their annual display at the Town Hall, Cheltenham, on Monday, February 9th. Our picture shows them seated on the floor in the form of an anchor, the closing movement of the performance, the orchestra seats at the back of the picture being crowded with spectators.

[Flash-light photo by Cheltenham Newspaper Co., Ltd.]



AMATEUR THEATRICALS AT TETBURY.

CAST OF "THE LADY OF OSTEND," PERFORMED AT INSTITUTE HALL, TETBURY, FEBRUARY 4, 5, and 6, BY A CLEVER COMPANY OF AMATEURS.

[Flash-light photo by E. E. Basevi, Abbey Studio, Malmesbury.]



CHELTENHAM DICKENS FELLOWSHIP.—BIRTHDAY CELEBRATION.

THE ANNUAL CONVERSAZIONE OF THE ABOVE FELLOWSHIP WAS HELD ON THE 102ND ANNIVERSARY OF CHAS. DICKENS' BIRTHDAY, SATURDAY, FEBRUARY 7, AT THE COSY CORNER, PROMENADE, A GOOD MANY OF THE MEMBERS APPEARING AS CHARACTERS FROM THE NOVELIST'S WORKS.

1.—Mrs. Mason as "Mrs. Copperfield."
 2.—Miss Winsor as "Mrs. Weller."
 3.—Mrs. Power as "Lucy Manette."

4.—Mrs. Ray Norman as "Mrs. Lupin."
 5.—Miss Springett as "Madame Defarge."
 6.—Miss Green as "Mrs. Gummidge."
 7.—Miss Miell as "Mrs. General."

8.—Mrs. Broom as "Agnes Wickfield."
 9.—Mrs. Bailey as "Mrs. Todgers."
 10.—Miss Mason as "Little Nell."

Photos Nos. 1, 2, 6, 7, and 10 by J. Holloway, Cambray, Cheltenham; others by Cheltenham Newspaper Co., Ltd.



CHELTENHAM DICKENS FELLOWSHIP.—BIRTHDAY CELEBRATION.

A SERIES OF THE MEMBERS IN "DICKENSIAN" COSTUMES AT THE ANNUAL CONVERSAZIONE, HELD ON SATURDAY, FEBRUARY 7, AT THE COSY CORNER, PROMENADE.

- 1.—Mrs. King Higgs as "Mrs. Varden."
- 2.—Miss Twiss as "Sairey Gamp" (winner of first prize for ladies' costume).
- 3.—Miss Phyllis Chambers as "Dolly Varden."
- 4.—Mrs. Leedham as "Mrs. Flite."

- 5.—Mr. Bessell as "Mr. Dodson, of Dodson and Fogg" (first prize for gentlemen's costume).
- 6.—Mrs. Bessell as "Sophie Crewler."
- 7.—Miss Hallewell as "Edith Dombey"
- 8.—Miss Fruin as "The Hon. Mrs. Skewton."

- 9.—Miss Beard as "Mrs. Wardle."
- 10.—Mr. J. W. F. Broom as "Mr. Wickfield."
- 11.—Miss Solly as "Mrs. Bagnet."

Photos No. 3 by Mr. F. J. Chambers, No. 9 by Mr. Beard, Nos. 5 and 10 by Mr. H. E. Branch, others by Cheltenham News., Co., Ltd.



CHELTENHAM CHORISTER'S FUNERAL.

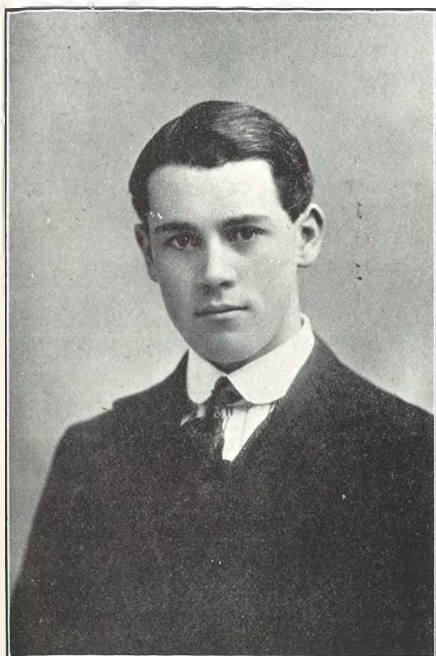
The funeral of Mr. Cecil Frederick Pugh, of 2 Selkirk-villas, Pittville, took place on Wednesday afternoon, February 11, a full choral service being held first at St. Paul's Church, where deceased was a chorister. He had also been a lieutenant in the Boys' Brigade, a Sunday School teacher, etc., and was very popular, and his untimely death caused much sorrow, not only in his family circle, but to a great many of the congregation and parishioners. The church was full, and a great number of people were outside.

- 1.—The coffin being taken into church.
- 2.—Boys' Brigade leaving church at close of service.
- 3.—Boys' Brigade line up outside house.

- 4.—Crowd outside church railings.
- 5.—Scouts outside church.
- 6.—At church porch door.

- 7.—Mourners leaving church.
- 8.—Boys' Brigade Band.
- 9.—Leaving deceased's home.

[Photos by Cheltenham Newspaper Co., Ltd.]



Mr. Cecil Frederick Pugh,

Son of Mr. and Mrs. Charles F. Pugh, of 2 Selkirk-villas, Pittville, Cheltenham, who died February 7th, aged 19 years, after a very short illness. He was an assistant to Mr. Vanderplank, and was a very well-known and popular worker at St. Paul's Church, where he was a Sunday School teacher, chorister, and lieutenant in Boys' Brigade.

[Photo by Buckland, Cheltenham.]



DEATH OF ALDERMAN COLONEL ROGERS.



Alderman Colonel Rogers, V.D., J.P., of Ainstable, Imperial-square, Cheltenham, who died somewhat suddenly on Tuesday, Feb. 10th, aged 77 years. He had been one of the most prominent figures in the public and civic life of the town for many years past, and was five times Mayor of Cheltenham. He was in command for some years of the 1st Royal Gloucestershire Engineers Volunteers. Our photos show him as Colonel of his regiment, and wearing his chain of office as Mayor in 1901, and a "snap" of him about a year ago.

"Chronicle and Graphic" Advertisements reach ALL classes.



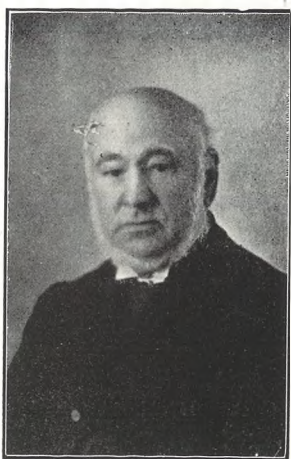
UNITED IN DEATH.

Mr. and Mrs. Josiah Jones, of the Clarence Mews, North-place, Cheltenham, who both died on Tuesday, Feb. 10th. Mr. Jones was 78 and Mrs. Jones 77. They had been married 54 years, and had lived in Cheltenham 40 years, Mr. Jones being a fly proprietor. They leave three sons and four daughters.

[Photos reproduced by J. Holloway, 32 Cambray, Cheltenham.]



MR. FREDERICK DENCHFIELD, of Townsend-street, Cheltenham, a Corporation workman, who died of pneumonia, Feb. 5th, aged 31 years.



PRIVATE JAMES HERBERT,

Of 17 Denmark-villas, Hewlett-road, who died on Monday, Feb. 9th, aged 76 years. He was a Crimean and Indian Mutiny veteran, and had lived in Cheltenham for many years. He leaves two daughters and one son. His wife predeceased him.

WE GUARANTEE A CIRCULATION OF 12,000 WEEKLY! NO FREE COPIES!

D. CORE BOODLE & CO., LTD., NORTH HOUSE, CHELTENHAM.

Every Day from 9 a.m. till 8 p.m.

A LADY ALWAYS IN ATTENDANCE.

PAINLESS EXTRACTIONS

We Extract Teeth Painlessly, and Supply you with Natural-looking and Perfect-fitting Teeth at Reasonable Prices.

Entire Satisfaction to each of our patients is our first consideration.

EXTRACTIONS First Hour FREE.

BRANCHES EVERYWHERE including Cirencester (Every Monday), Bourton-on-the-Water (Tuesdays), Chipping Norton (Wednesdays), Monmouth (Fridays), and Winchcombe (Every Saturday).

BOODLE'S TEETH.

H. W. GILL
(Late Burrough),
401 HIGH STREET, CHELTENHAM.
The Old Established
WOOL WAREHOUSE
Post Orders receive Prompt Attention.

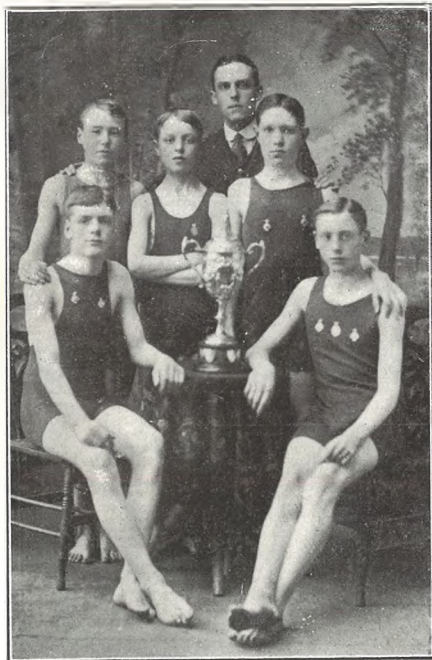
SUFFERERS FROM
DIABETES
Should write to
CHELTINE FOODS CO., CHELTENHAM, ENG.,
FOR SAMPLES AND BOOKLET.



THE BIGGEST SCOUT TROOP IN CHELTENHAM.

The Cheltenham Parish Church Troop of B.P. Boy Scouts, with the Rector (President) and Scoutmaster F. W. Dwelly (both in clerical attire). They are at present the largest troop in Cheltenham.

[Photo by Cheltenham Newspaper Co., Ltd.].



Boys' National School, Gloucester.
SWIMMING TEAM, 1913.

Have held "Clarence Trophy," open to teams from Gloucester Schools, for five years in succession, 1909-1913.

Standing: W. Hyam, G. Masters (reserve), Mr. B. Little, G. Goddard.

Sitting: J. Townsend, W. Pitt.

Townsend won Schoolboys' Championship of Gloucester, 1913.

Emigrants before leaving should pay for twelve months' "Chronicle and Graphic," and thus keep in touch with the home land.



A Painswick-Born Centenarian.

Mrs. Ann Peters, of Great Bookham, Surrey, who died on Tuesday, February 3rd, aged 100 years. She was born on December 29, 1813, at Painswick, Gloucestershire, but had lived away from her native county for nearly 80 years.

TO PHOTOGRAPH COLLECTORS.

We can supply unmounted copies of any photographs appearing in these pages which are marked "Cheltenham Newspaper Co."

Size 10 x 8 1 9 EACH (Post Free),
8 1/2 x 6 1/2 1 3 EACH, 6 1/2 x 4 1/2 9d. EACH.
Mounted. 3d. each extra.

Discount on orders of 20 or more, 10 per cent.
Orders, which must be accompanied by remittance, should be addressed to

The Manager,
"Chronicle" Office,
Cheltenham.



SALE! SALE!
NOW ON.

GREATLY REDUCED PRICES.

Be in time to secure some Wonderful Bargains.

PITCHER & SON,
85 WINCHCOMBE ST., Cheltenham.

ANTIQUES.

We have a most interesting stock of Genuine Antiques—Furniture, Paintings, Prints, Water Colours, China, Cut Glass, Ivories, Miniatures, Silver, Sheffield Plate, Small Articles of Jewellery, at very low prices. Many articles at a few shillings to clear.

BOX,

339 HIGH ST. (Opposite Grammar School), CHELTENHAM.

Antiques Purchased. Estab. 60 years.

Our Guarantee.—That we sell over 12,000 "Chronicles" every week. No free copies. A paper that is not worth buying is not worth advertising in. Any smart business man will appreciate these facts. Insist upon guarantee before placing your order. The "Chronicle" reaches all classes, and circulates not only in Cheltenham, but in scores of towns and villages throughout Gloucestershire, added to which it has hundreds of readers in the Colonies and elsewhere.

Printed and Published as a Gratis Supplement by the Cheltenham Newspaper Company, Ltd.

THE CHELTENHAM CHRONICLE AND GLO' SHIRE GRAPHIC

ART
AND
LITERARY SUPPLEMENT

No. 686.

Saturday, February 21, 1914.

OPERA HOUSE CHELTENHAM.

THIS AFTERNOON (2.30) & EVENING (7.45)

"The Quaker Girl."

Next Week: First Visit of Chas. Wingermore and

Co. in Cyril Maude's Latest Success,

"THE HEADMASTER."

W. HALL & SONS, LTD.,

Fruiters, - - Florists,

Fishmongers, Game Dealers,

92, 92a High Street, TEL. 87.

16 Montpellier Walk, TEL. 285.

CHELTENHAM.

Pineapples, Hothouse Grapes, Bananas,
Seedless Oranges, Pears, etc.

Asparagus, French Beans, Mushrooms,
Seakale, Tomatoes, etc.

DENTISTRY. Est. 1891.

'Phone 782, Cheltenham



PAINLESS
EXTRACTIONS,
ETC.

MR. SUTTON GARDNER,
LAUREL HOUSE,
CHELTENHAM.

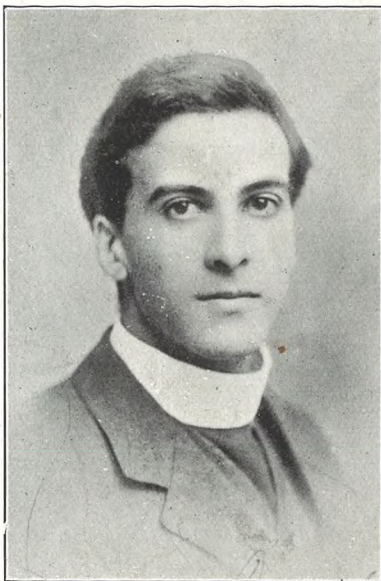
HOURS 8 A.M. TILL 8 P.M. DAILY.

Branches at Stroud, Nailsworth, Winch-
combe, Stow, Bourton, etc.

STEPHENS & FINCH,

Heating Engineers,
Grosvenor Works, Cheltenham.

We hold the Largest Stock in the County
of Boilers, Radiators, Pipes and Connections,
of all classes of Heating and Hot-Water
Supply. Horticultural Heating a Speciality.
Telephone No. 351.



CHELTENHAM CLERGYMAN'S WEDDING.

Rev. Neville Ernscliffe Grenon,

Son of the late Mr. H. N. Grenon, of
Calcutta, India, and curate of St. Peter's
Church, Cheltenham, since 1911.

Who were married before a large congregation of parishioners at St. Peter's Church,
Cheltenham, on Monday, Feb. 16th. [Photos by Debenham, Longman, and Co.]

Miss Nora Winifred Buckland,

Daughter of Mr. and Mrs. J. W. Buckland,
of Cleevemont, Marle Hill, Cheltenham,
a prominent St. Peter's worker.

SEE
THE
LATEST

BROWNING;
also Colts' Automatic Pistols

Fires 8 shots in 4 seconds.
In all bores, from 40 - to £5.

Also everything the
best for Sportmen in
for any part of the world, from £5 to £75.

KEEPERS' GUNS from £2 10s. Second-hand Guns'
REPAIRS OF EVERY DESCRIPTION.

Also the Cross. **Edwinson Green & Sons,**
Gloucester. **Cheltenham.**

Emigrants before leaving should pay for
twelve months' "Chronicle and Graphic"
and thus keep in touch with the home land.



H. W. GILL

(Late Burrough),

401 HIGH STREET, CHELTENHAM.

The Old Established

WOOL WAREHOUSE

Post Orders receive Prompt Attention.

STOCK-TAKING SALE.

SPECIAL BARGAINS!

Ladies' Tan and Glace
BOOTS & SHOES.

200 Pair Small Sizes
Half Usual Prices.

PITCHER & SON,

85 WINCHCOMBE ST., Cheltenham.



If you like the "Chronicle," order it regularly through your Newsagent or direct from the Office.



A POPULAR AND INTERESTING WEDDING IN CHELTENHAM.

The pretty wedding of the Rev. N. E. Grenon, curate of St. Peter's Church, Cheltenham, and Miss N. W. Buckland, a prominent Church worker, was solemnised at St. Peter's Church by the Rector of Cheltenham, assisted by the vicar of St. Peter's, in the presence of some hundreds of the parishioners, on Monday, February 16th.

- 1.—Parishioners outside church, with Sergt. Welshman.
- 2.—The happy couple leaving the church.
- 3.—The father, sister, and brother of bride leaving church.
- 4.—A crowd of children watching wedding.
- 5.—The bride arrives with her father.
- 6.—Bridesmaids and guests leaving church.
- 7.—Bridesmaids and page awaiting bride at church door.
- 8.—Looking over St. Peter's Church wall.

[Photos by Cheltenham Newspaper Co., Ltd.]



THE "COLMORE" CUP MOTOR TRIALS IN CHELTHENHAM AND ON CLEEVE HILL.

This trial, in which there were over 250 competitors, is one of the biggest in England, and takes place over about 125 miles on a circular route from and to Birmingham, Cheltenham being about half-way on the course. The hill climb is up "Gambles" or Rising Sun-lane, the very steep (1 in 4) track facing the Rising Sun Hotel. There were only two local competitors, Mr. W. R. Gibb (Gloucester), who won last year, and Mr. T. R. Trotter (Cheltenham), both of whom did non-stop runs.

- 1.—Mrs. Hardy, a lady competitor, having her petrol replenished.
- 2.—B. L. Bird on an "Allday's" makes a good climb, and is welcomed by a friend. He rode without any headgear.
- 3.—Some of the "steeds" at lunch time.
- 4.—Spectators, officials, timekeepers, and press photographers at top of Rising Sun-lane, the steepest part of hill.
- 5.—Some of the competitors wore weird head-dresses.
- 6.—Another lady competitor.
- 7.—Mr. T. R. Trotter (of Cheltenham) on his B.S.A. makes a splendid ascent.
- 8.—D. H. Noble on a Rover makes a good climb. Note the crowd on the hill and the view of Vale from the top.

[Photos by Cheltenham Newspaper Co., Ltd.]



LADIES' HOCKEY INTERNATIONAL TRIALS IN CHELTENHAM.

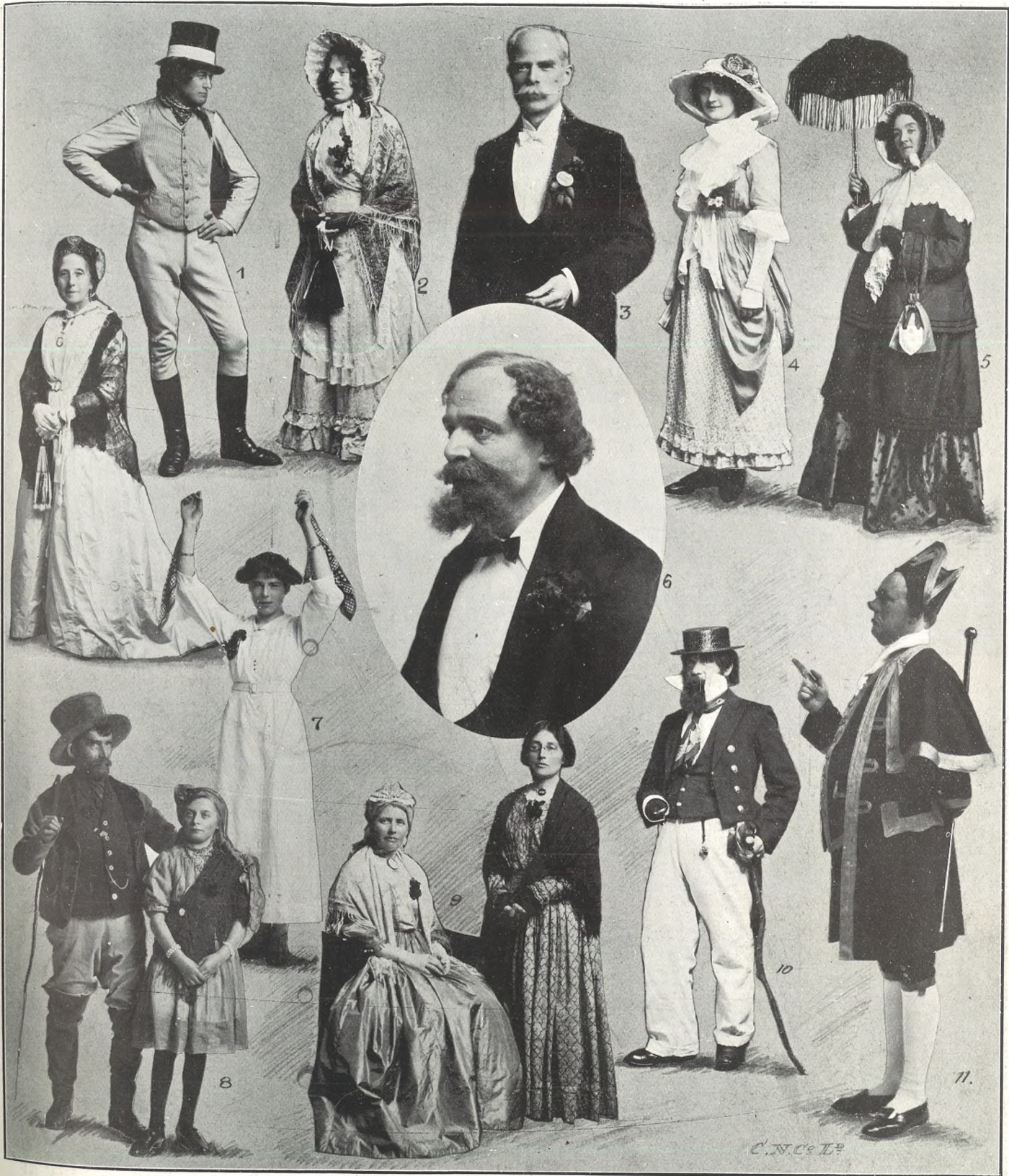
On Thursday, Monday, and Tuesday, February 12th, 16th, and 17th, the West of England played a series of trial matches, versus the Midlands, South, and East of England, on the East Gloucestershire ground.

- 1.—Miss Lidderdale (West) saves a hot shot from Midlands.
- 2.—South goalkeeper saves well from Miss Lidderdale (West).
- 3.—West forwards attacking the South goal.
- 4.—West goalkeeper's (Miss Lidderdale) fine save against Midland forwards. Note ball under foot.

[Photos by Cheltenham Newspaper Co., Ltd.]



THE GLOUCESTER "DICKENS" FELLOWSHIP.—SOCIAL EVENING AND DANCE.
 SCENE DURING THE DANCE IN THE NORTHGATE MANSIONS, MONDAY EVENING, FEBRUARY 16TH.
 [Flashlight photograph by Cheltenham Newspaper Co., Ltd.]



THE "DICKENS" FELLOWSHIP IN GLOUCESTER.

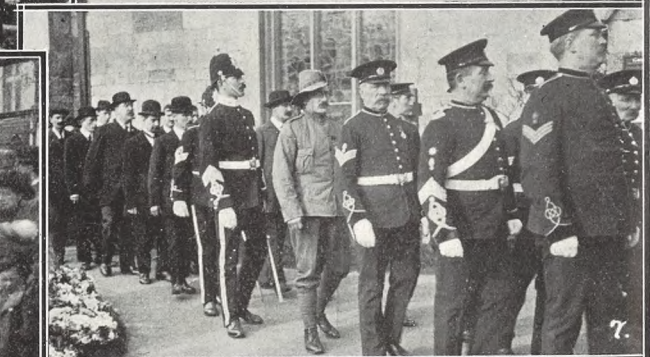
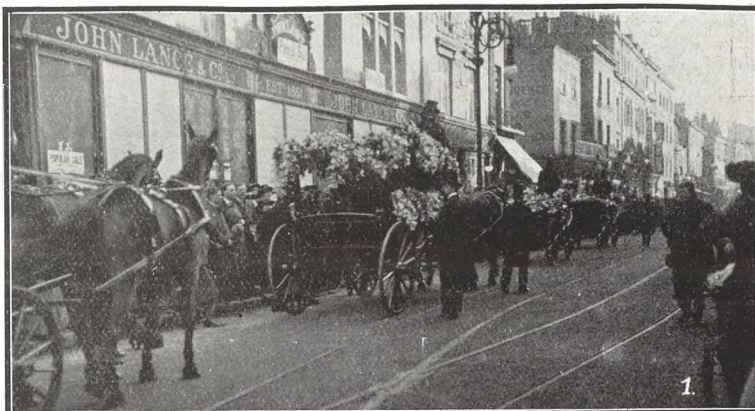
The annual social evening and dance of the Gloucester branch of the Dickens Fellowship was held at the Northgate Mansions on Monday, Feb. 16th, some 250 guests being present, amongst whom were a number of Cheltonians. A majority of those present appeared in Dickensian characters, and the scene in the dancing room was very animated and picturesque.

- 1.—Mr. A. T. Grammer as "Sam Weller."
- 2.—Mrs. A. T. Grammer as "Mrs. Weller."
- 3.—Mr. J. Richings, the hon. secretary of the Fellowship, who carried out the arrangements.
- 4.—Miss Hilda M. Toins as "Dolly Varden."

- 5.—Mrs. Ernest Phelps as "Mrs. Spottletoe," winner of first prize for ladies.
- 5a.—Mrs. H. Moffatt as "Lady Deadlock."
- 6.—Mr. E. K. Pearson as "Charles Dickens," first prize for gentlemen's costumes.
- 7.—Miss Bruton in a Morris dance.

- 8.—Mr. Chas. Fox and Miss Fox as "Dr. Marigold" and "Sophy."
- 9.—Miss D. Fox as "Berry" and Miss F. M. Fox as "Mrs. Maylie."
- 10.—Mr. H. Moffatt as "Capt. Cuttle."
- 11.—Mr. F. J. C. Palmer as "Bumble."

We are indebted for these excellent photographs to Mr. H. E. Jones, Northgate-street, Gloucester, who secured them with his special electric light apparatus.



THE FUNERAL OF ALDERMAN COLONEL ROGERS.

The remains of the late Colonel Rogers were laid to rest on Saturday, February 14th, in Charlton Churchyard, amidst a striking demonstration of respect and sorrow from the townspeople, who lined the route of the funeral in hundreds. The old Parish Church, in which the first part of the service was held, was filled with representative citizens.

- 1.—The cortege passing up High-street.
- 2.—The coffin, on which lies deceased's helmet and sword, in Charlton Churchyard, Mrs. Rogers immediately behind.
- 3.—Mourners passing into Parish Church.
- 4.—Public representatives in Charlton Churchyard.

- 5.—Non-commissioned officers in the deceased's old disbanded Engineer Regiment, and representatives of Army Service Corps, who lined churchyard path.
- 6.—The big crowd lining High-street.

- 7.—Mourners in Charlton churchyard.
- 8.—Waiting for funeral in High-street.
- 9.—Rev. R. H. M. Bouth, ex-Councillor and Mrs. Moles, Capt. Ryves, and Sergeant Major Brill entering Parish Church.

[Photos by Cheltenham Newspaper Co., Ltd.]



AMATEUR THEATRICALS AT NEWENT.

A dramatic entertainment was given in Thurston's Assembly Rooms, Newent, on Thursday, Feb. 12, in aid of Oxenhall Church.

A Friendly Understanding.

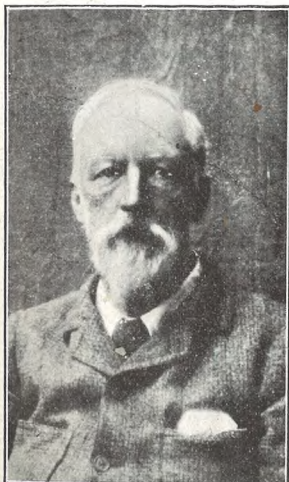
Miss Thackwell (Lady Stiffstarch), Miss Smyth (Mrs. Cattermole), Miss Joan Thackwell (Gladys Rantaway).

Bumps.

Miss Thackwell (Clarissa Clotilda), Mrs. Irving (Helena), Miss G. Hutchinson (Aunt Maria).

Owing to pressure on our space we have been compelled to hold over illustration of "Apartments to Let" until next week.

[Photos by Cheltenham Newspaper Co., Ltd.]



MR. GEO. WM. CLISSOLD, J.P.,
of Chestnut Hill, Nailsworth, who died on Wednesday, Feb. 18th, aged 75 years. He was a prominent public man, and although a brewer, was a Non-conformist and Liberal.



MR. CHARLES HALL,
of Bedford Arms Inn, Stroud, who died Feb. 12, aged 49 years. He was a retired first-class petty officer, and had been 22 years in the Navy, seeing active service at Egypt, Benin, Gambia, and China.



THE REV. M. W. F. ST. JOHN, D.D.,

Sixty-three years a clergyman, thirty years of which a Canon of Gloucester Cathedral; heir to the Bolingbroke Viscounty; died Feb. 18th, 1914, aged 86 years.—Photo by Cheltenham Newspaper Co., Ltd.



KEEN BUYERS WANTED

The following Goods are to be disposed of at absurdly low prices to reduce an overladen stock. Every article offered is, unless otherwise described, in perfect condition:—

Handsome French Bronze 14-day Striking Clock, distinguished style case, strikes hours and half hours; originally 75/-, now selling for 35/-.

Also useful 14-day Marble Striking Clock, strikes hours and half hours on gong, case shop soiled only; originally 80/-, sell for 35/-.

Lady's and Gent's Gold and Silver Watches, majority never been in use and dependable time-keepers; Lady's Gold from 35/- each, Lady's Silver from 15/-, Gent's Gold from 65/-, Gent's Silver from 15/-. Originally nearly treble these prices.

Oak Case, containing one dozen pairs good quality Electro-plated Fish Knives and Forks, suitable for hard wear, and originally marked 47/6, sell now for 30/-. Also handsome 7-bottle Dinner Cruet, cut glass, and, although secondhand, the plating equal to new, 30/-.

A small selection of Secondhand Gold Jewellery, including Locketts, Chains, Brooches, Rings, Necklets, Etc. at Bargain Prices, at WAITE & SON, the old-established Jewellers, 349 High Street, Cheltenham.

ANTIQUES.

We have a most interesting stock of Genuine Antiques—Furniture, Paintings, Prints, Water Colours, China, Cut Glass, Ivories, Miniatures, Silver, Sheffield Plate, Small Articles of Jewellery, at very low prices. Many articles at a few shillings to clear.

BOX,

339 HIGH ST. (Opposite Grammar School), CHELTENHAM.

Antiques Purchased. Estab. 60 years.

D. CORE BOODLE & CO., LTD.,
NORTH HOUSE, CHELTENHAM.

Every Day from 9 a.m. till 8 p.m.

A LADY ALWAYS IN ATTENDANCE.

PAINLESS EXTRACTIONS

We Extract Teeth Painlessly, and Supply you with Natural-looking and Perfect-Fitting Teeth at Reasonable Prices.

Entire Satisfaction to each of our patients is our first consideration.

EXTRACTIONS First Hour FREE.

BRANCHES EVERYWHERE

Including Cirencester (Every Monday), Bourton-on-the-Water (Tuesdays), Chipping Norton (Wednesdays), Monmouth (Fridays), and Winchcombe (Every Saturday).
BOODLE'S TEETH.

IDEAL

BOILERS.

IDEAL

RADIATORS, and

H. MESSENGER'S

ADVICE and WORKMEN can

make an

IDEAL

SYSTEM

For Heating Churches, Public Buildings, Hotels, Mansions, Private Houses, Greenhouses, etc. ESTIMATES GIVEN.

Address: 77 ALBION STREET, CHELTENHAM.
Telephone 816.



"THE YEOMEN OF THE GUARD."

Brilliant performances of this beautiful opera were given by the clever band of Cirencester amateurs known as the Cirencester Choral Society on February 11th, 12th, 13th, and 14th, to crowded houses at the Bingham Hall.

Back row.—Miss G. Webb, Miss George, Mr. C. Palmer (First Citizen), Miss G. Hawes, Miss D. White, Mr. E. J. Mead (The Headsman), Mr. F. Trinder, Miss C. Trinder, Miss L. Tarrant, Mr. T. Ovens, Miss D. Wakefield, Mr. P. Price.
 Second row.—Mr. F. J. Findon (Second Citizen), Miss S. Blackall, Mr. H. J. Clappen (Assistant Headsman), Miss Coslett, Mr. G. Yeandle (Assistant Headsman), Miss

Phillips, Mr. A. Andrews, Miss Hitchings, Miss Tanner, Mr. A. W. Savage (Fourth Yeoman), Miss Adams.
 Third row.—Mr. E. C. Coteman (Guard), Mr. E. Tranter, Mr. Tanner, Miss N. Conner, Miss Wrigley, Miss G. Matthews, Miss D. Burge, Mr. E. Newcombe, Miss M. Constable, Miss K. Gibbons, Mr. J. S. Saunders, Mr. P. W. Cox (Third Yeoman), Mr. W. O. Compton (Guard).

Fourth row.—Mr. H. W. Chuter, Miss C. Crook, Miss M. Gifford, Miss K. Walker, Mr. S. E. Harrison (Second Yeoman), Miss M. Harmer, Mr. G. Lafford, Mr. W. H. Court (First Yeoman), Mrs. F. N. Smith, Mr. H. Loveday, Miss Hutchings, Miss Paish, Miss Burge.
 Front row.—Mr. J. T. Savage (stage manager), Mr. Clem Matthews (Sir Richard Cholmondeley), Mrs. J. T. Longworth

(Dame Carruthers), Mr. W. G. Tovey (Sergt. Meryll), Mr. Sydney Boulton (Jack Point), Miss Dorothy Morris (Elsie Maynard), Mr. Chas. Nicholson (Col. Fairfax), Miss Mabel Suddaby (Phoebe Meryll), Mr. A. C. K. Toms (Wilfred Shadbolt), Miss L. Orpet (Kate), Mr. E. R. Howard (Leonard Meryll), Mr. A. H. Gibbons (musical director).
 [Photo by W. Dennis Moss, Cirencester.]

SUFFERERS FROM
DIABETES
 Should write to
CHELTINE FOODS CO., CHELTENHAM, ENG.,
 FOR SAMPLES AND BOOKLET.

MARTIN AND CO., LTD.,
 Promenade, Cheltenham,
 Purchase for Cash, ANTIQUES of all kinds, including OLD SILVER, JEWELLERY, SHEFFIELD PLATE, CHINA, COINS, MINIATURES, &c., &c.
 High Prices Given for Rare Pieces.

SPRING-TIME RE-DECORATING.
ALFRED MALVERN,
 Builder and Decorator,
 44 Winchcombe Street, Cheltenham.

CANADA.
 FARM HANDS AND DOMESTIC SERVANTS WANTED.
 Employment Guaranteed by Government. Assisted passages arranged. Fully particulars of **CORNELIUS and BOULTER,** Auctioneers and Shipping Agents, **PROMENADE, CHELTENHAM.**
 Agents for all Steamship lines.

THE CHELTENHAM CHRONICLE AND GLOUCESTER AND GLOUCESTERSHIRE GRAPHIC



No. 687.

Saturday, February 28, 1914.

GLOUCESTER CONSERVATIVE BENEFIT SOCIETY'S CHIEF OFFICERS.



MR. THOS. BEACALL,

secretary of the Quedgeley Lodge, and the present Deputy-Grand-Master of the Men's Society, who at the annual meeting on Thursday next will be installed as Grand-Master.



MRS. PIPPARD,

wife of Mr. J. A. Pippard, of Cheltenham, who was on Saturday last elected Grand-Mistress of North Gloucestershire Women's Benefit Society, after serving for twelve months as Deputy-Grand-Mistress.



MR. WALTER H. MADGE,

hon. treasurer of the Men's Society, and a son of the late Mr. Walter Madge, for many years secretary of the society, who will be elected Deputy-Grand-Master at next Thursday's meeting, being the only nominee for the office.

OPERA HOUSE, CHELTENHAM.

THIS AFTERNOON (2.30) & EVENING (7.45).
"The Headmaster."

Next Week: Mr. Percy Williams presents the Entire Production of
"THE FATAL WEDDING."
An Unparalleled Musical and Dramatic Success.

Old Selected SCOTCH WHISKIES

B BLEND 42/- per Doz.; 3 6 per Bott.
BB BLEND 48/- per Doz.; 4 - per Bott.
BBB BLEND 51/- per Doz.; 4/3 per Bott.

BARTHOLOMEW,

419-420 HIGH ST., CHELTENHAM.

TAWNY PORTS. Old in Wood.

30/-, 36 -, 42' - per Doz.;
2/-, 3/-, 3/6 per Bott.

DENTISTRY. Est. 1891.

'Phone 782, Cheltenham.



PAINLESS EXTRACTIONS, ETC.

MR. SUTTON GARDNER,
LAUREL HOUSE,
CHELTENHAM.

HOURS 8 A.M. TILL 8 P.M. DAILY.

Branches at Stroud, Nailsworth, Winchcombe, Stow, Bourton, etc.

STEPHENS & FINCH,

Heating Engineers,

Grosvenor Works, Cheltenham.

We hold the Largest Stock in the County of Boilers, Radiators, Pipes and Connections of all classes of Heating and Hot-Water Supply. Horticultural Heating a Speciality. Telephone 35r1.

SPRING-TIME RE-DECORATING.
 ALFRED MALVERN,
 Builder and Decorator,
 44 Winchcombe Street, Cheltenham.

MARTIN AND CO., LTD., Promenade, Cheltenham,

Purchase for Cash, ANTIQUES of all kinds, including OLD SILVER, JEWELLERY, SHEFFIELD PLATE, CHINA, COINS, MINIATURES, &c., &c.

High Prices Given for Rare Pieces.

CANADA.

FARM HANDS AND DOMESTIC SERVANTS WANTED.

Employment Guaranteed by Government. Assisted passages arranged. Full particulars of

CORNELIUS and BOULTER,
 Auctioneers and Shipping Agents,
PROMENADE, CHELTENHAM.
 Agents for all Steamship Lines.

The "Chronicle and Graphic reaches all classes with a guaranteed circulation of over 12,000 copies weekly.

J. PITCHER & SON BARGAIN SALE.

RELIABLE FOOTWEAR.

Special Clearance Line: Gent's "Reliance" & "Hiath" Boots, 12/6; Usual Price, 17/-
85 WINCHCOMBE ST., Cheltenham.

Emigrants before leaving should pay for twelve months' "Chronicle and Graphic," and thus keep in touch with the home land.

If you like the "Chronicle," order it regularly through your Newsagent, or direct from the Office.



FIRE BRIGADE FANCY DRESS BALL AT MORETON-IN-MARSH.
GROUP OF DANCERS.

[Flashlight photo by Frank Packer, Chipping Norton.]



A GLOUCESTER CELEBRITY.

MR. JOS. CAPPER,

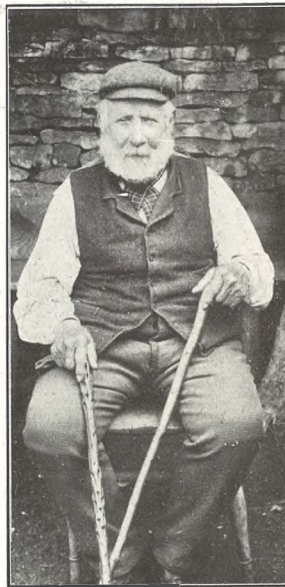
of 22 Victoria-street, Gloucester, who is 86 years of age, and rides his tricycle to work at Wintle's Brickyard four days a week.

[Photo by Cheltenham Newspaper Co.]



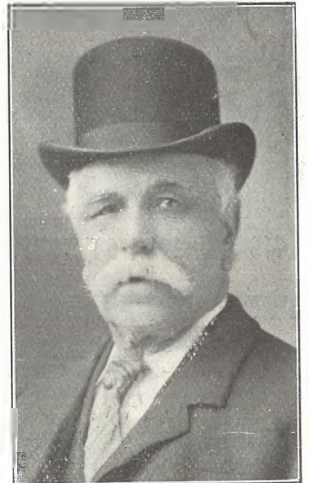
MR. REUBEN PRICE,
of Arlington, Bibury, who died, after a brief illness, Feb. 17, 1914, aged 44 years.

[Photo by R. Keble Jowett.]



THE PATRIARCH OF ADLESTROP.

Mr. Abraham Newman, of Adlestrop, who died Feb. 19, in his 98th year. He was the father of ten children, and leaves 39 grandchildren and 39 great grandchildren. He was 90 when this photo was taken.



POLICE-SERG. GEORGE BOULTON,

late of Gloucestershire Constabulary, who died on Feb. 15, aged 68 years. He was in the Gloucestershire force for 30 years, retiring on superannuation, June, 1896. The last 25 years of his service were spent: 7 at North-leach and 18 at Withington. He was buried at Bristol Cemetery Feb. 19th.

ANTIQUES.

We have a most interesting stock of Genuine Antiques—Furniture, Paintings, Prints, Water Colours, China, Cut Glass, Ivories, Miniatures, Silver, Sheffield Plate, Small Articles of Jewellery, at very low prices. Many articles at a few shillings to clear.

BOX,

339 HIGH STREET (Opposite Grammar School), CHELTENHAM.

Antiques Purchased. Estab. 60 years.

SUFFERERS FROM

DIABETES

Should write to

CHELTINE FOODS CO., CHELTENHAM, ENG.,
FOR SAMPLES AND BOOKLET.

TO PHOTOGRAPH COLLECTORS.

We can supply unmounted copies of any photographs appearing in these pages which are marked "Cheltenham Newspaper Co."

Size - 10 x 8 1/9 EACH (Post Free),
8 1/2 x 6 1/3 1/3 EACH, 6 1/2 x 4 1/4 9d. EACH.
Mounted, 3d. each extra.



SCENES FROM DICKENS.

AT THE KING'S HALL, CHELTENHAM, ON SATURDAY, FEB. 21, MEMBERS OF STAFF OF THE LADIES' COLLEGE GAVE TWO SCENES FROM DICKENS IN AID OF THE ST. MONICA'S HOME FOR GIRLS.

- 1.—Miss K. Gibson (Mrs. Sandars), Miss G. M. Leeson (Sam Weller), Miss Crowther (Mrs. Cluppins), Miss M. T. Nicholls (Mr. Winkle).
- 2.—Miss J. J. Langley (Mr. Skimpin), Miss M. J. Liddiard (Mr. Phunkey), Miss Ethel M. Smith (Sergeant Buzfuz), Miss W. M. Fayerman (Sergt. Snubbin). In front: Miss A. E. Powell (the Judge).
- 3.—Miss M. Hammond (Second Usher), Miss M. E. Biden (Mr. Dodson), Miss P. Drew (First Usher).
- 4.—Miss C. E. Wynne-Edwards (Mrs. Bardell's Friend), Miss S. M. Du Pré (Mrs. Bardell), Fraulein G. Balg (Mr. Snodgrass), ——— (Mr. Pickwick).

[Photos by Cheltenham Newspaper Co., Ltd.]

D. CORE BOODLE & CO., LTD.,
NORTH HOUSE, CHELTENHAM.

Every Day from 9 a.m. till 8 p.m.

A LADY ALWAYS IN ATTENDANCE.

PAINLESS EXTRACTIONS

We Extract Teeth Painlessly, and Supply you with Natural-looking and Perfect-fitting Teeth at Reasonable Prices.

Entire Satisfaction to each of our patients is our first consideration.

EXTRACTIONS First Hour FREE.

BRANCHES EVERYWHERE

including Cirencester (Every Monday), Bourton-on-the-Water (Tuesdays), Chipping Norton (Wednesdays), Monmouth (Fridays), and Winchcombe (Every Saturday).

BOODLE'S TEETH.

DON'T STRIKE MATCHES IN BED.

Use the New

"RADIO" WATCH

Figures and Hands permanently illuminated with Radium Compound **10/6.**

Post Free 10/9.

Informative pamphlet "The wonders of Radium," and Price List Free of



WAITE AND SON, Radium Clock Specialists, CHELTENHAM.

W. HALL & SONS, LTD.,

Fruiterers, - - Florists,

Fishmongers, Game Dealers,

92, 92a High Street, TEL. 85

16 Montpellier Walk, TEL. 285.

CHELTENHAM.

Pineapples, Hothouse Grapes, Bananas, Seedless Oranges, Pears, etc.

Asparagus, French Beans, Mushrooms, Seakale, Tomatoes, etc.



FUNERAL OF REV. CANON ST. JOHN.

The funeral service for Canon St. John was held at Gloucester Cathedral on Saturday afternoon, February 21st. The deceased Canon was afterwards buried at Frampton-on-Severn, where his wife and daughter are also buried. The choral service was simple but beautifully solemn and impressive, and an influential and large congregation was present to honour the passing of the much-loved Canon.

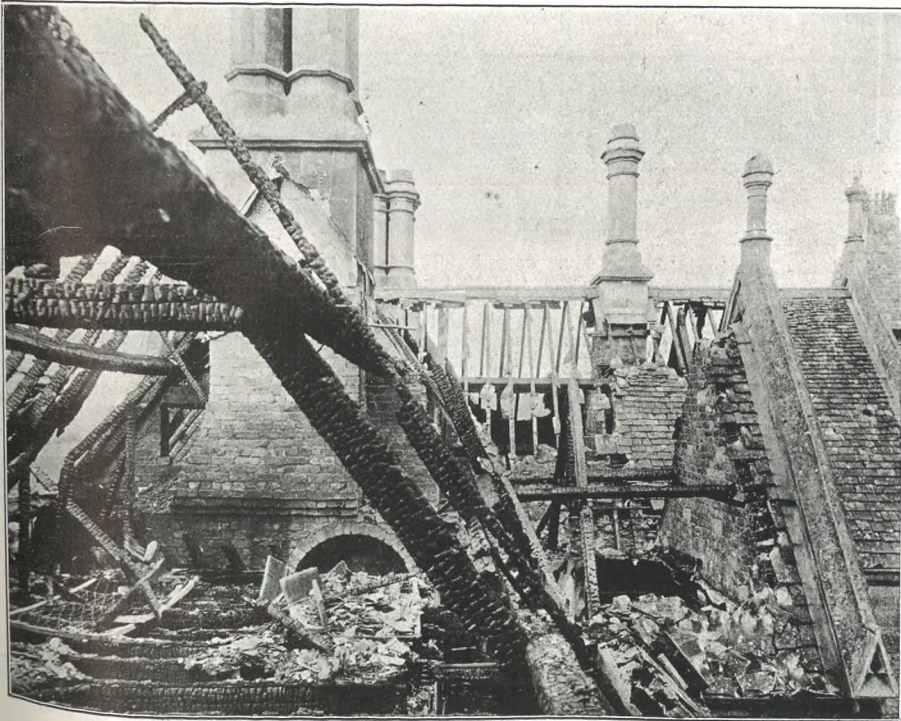
- | | | |
|---|--|---|
| <p>1.—Mr. Hobbs, with a section of the B.B. Scouts, of which the deceased Canon was president.</p> <p>2.—The funeral cortege passing through College green.</p> <p>3.—Mourners leaving the Cathedral, the</p> | <p>Rev. Jelinger E. Symons, of Gloucester, in front.</p> <p>4.—Family mourners leaving Cathedral, the Canon's two sons leading, with Mr. R. I. Tidswell (son-in-law).</p> <p>5.—Some of congregation in College Green.</p> | <p>6.—Coffin being brought out of Cathedral.</p> <p>7.—Mr. Clement Allen (Woodchester) leaving Cathedral.</p> <p>8.—Sir Wm. Guise and ladies leaving.</p> <p>9.—The Right Hon. Lord Abinger, one of the mourners.</p> |
|---|--|---|



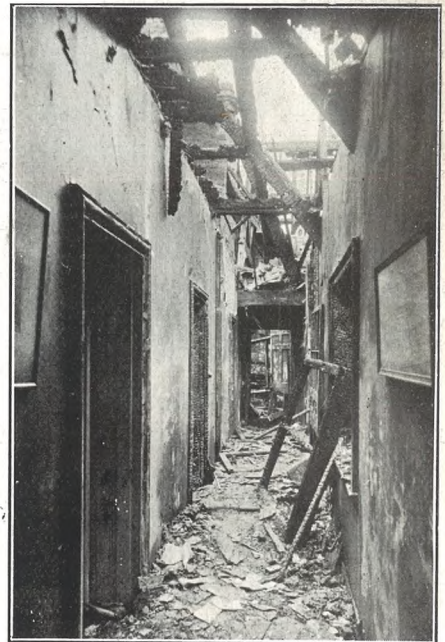
GREAT FIRE AT ARLE COURT.

ON SATURDAY NIGHT, FEBRUARY 21, ABOUT TWELVE O'CLOCK, A DISASTROUS FIRE BROKE OUT IN THE WEST-WING OF ARLE COURT, NEAR CHELTENHAM, THE RESIDENCE OF MR. AND MRS. H. UNWIN.

Despite the tempestuous weather, the inmates had to escape hurriedly in their night attire, three of the servants jumping from their bedroom window (the upstairs one on extreme left). One of them broke her arm, and another injured her spine. The Gloucester and Cheltenham Brigades attended and the fire was confined to the west wing.



A VIEW IN THE SECOND STORY, WHICH WAS COMPLETELY BURNT OUT.



* The corridor on first floor, the servants' only means of escape, which was cut off by the fire, necessitating their jumping from the window. Their bedroom is at the end.



CHELTENHAM RUGBY FOOTBALL TEAM, 1913-14.

WHO BEAT NORTHAMPTON ON SATURDAY, FEBRUARY 21, BY 20 POINTS TO NIL.

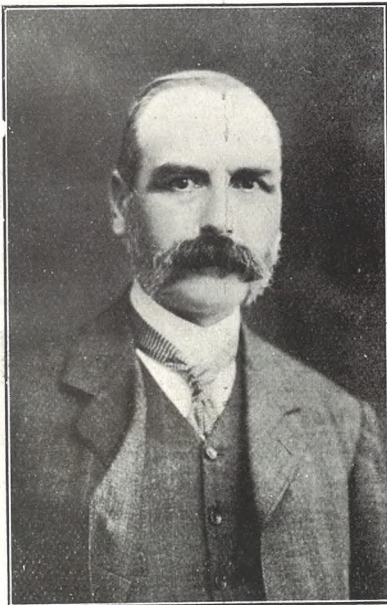
Back row.—H. Baylis, F. Welch, S. Such, A. Goddard.

Standing.—W. Sawyer (hon. sec.), Captain McLachlan, G. Ryland, F. Wixey, J. Brain, F. Taylor, T. H. Gange, A. Hayling, A. Burford, E. Ward, C. Craddock, S. H. Harris (hon. treasurer).

Seated.—C. Statham, H. Hughes, H. Wixey, B. Davy, R. McGregor, F. J. Hopkins, A. F. Burnell, A. E. Green.

In front.—B. S. Bloodworth, H. Rudge.

[Photo by Cheltenham Newspaper Co., Ltd.]



Mr. William Stoddart Huddart,

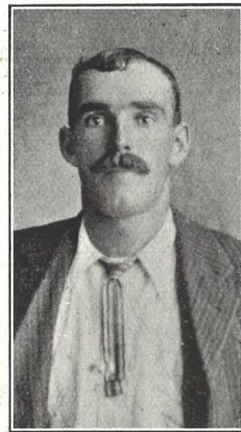
Postmaster of Cheltenham, who retired on Tuesday, Feb. 17th, on pension, after nearly 43 years P.O. service, seven of which has been as postmaster here. He is going to still reside in Cheltenham, where he is interested in the work at St. Mark's Church.—[Photo by Debenhams, Longman, and Co., Cheltenham and Gloucester.]

The real test of a newspaper's value is its circulation. The "Cheltenham Chronicle and Graphic" guarantees a sale of over 12,000 weekly. The paper reaches all classes and is recognised as Gloucestershire's great home paper.



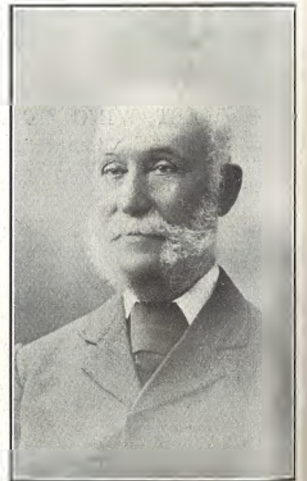
NURSE EDWARDS,

of the Victoria Nursing Home, Cheltenham, who is leaving Cheltenham after 17 years' work amongst the poor and suffering. A testimonial fund is being raised in order to make a presentation to her in recognition of her unselfish devotion.



CHELTONIAN IN AUSTRALIA.

Mr. Joseph Buckle, of Swan Creek, Queensland, Australia, and formerly of Blackledge, Leckhampton, from whom an interesting letter appears in the main sheet of today's "Chronicle."



MR. CHARLES MASTERS, of 36 Roman-road, St. Mark's, Cheltenham, who retired from all official parochial work in St. Mark's parish on Feb. 14, and who received a presentation from parishioners and church members on Feb. 26. He is 81 years of age, and has been connected with the parish since Jan. 1, 1860, 26 years of which he was official lay reader.



GEO. BENCE and SONS, LTD.

BEST WHITE LIME.

For Gardens, Land, Plastering.

FAIRVIEW ROAD, CHELTENHAM.

Phone 311.

H. W. GILL

(Late Burrough),

401 HIGH STREET, CHELTENHAM.

The Old Established

WOOL WAREHOUSE

Post Orders receive Prompt Attention.



Ladies' Hockey International Trials in Cheltenham.

The West of England team who played Midlands, South, and East at Charlton Park on February 12th, 16th, and 17th.

Back row.—Miss Tucker, Miss K. Lidderdale (Cheltenham), Miss Cade, Miss Henniker, Miss Leacroft.

Sitting.—Miss Baldwin, Miss Temple, Miss Thompson (capt.), Miss Roberts, Miss M. Lidderdale (Cheltenham).

On ground.—Miss Hill.

[Photo by Cheltenham Newspaper Co., Ltd.]



Oxenhall Amateur Theatricals at Newent, Feb. 12.

"APARTMENTS TO LET."

Miss Hayland (Mrs. Gobble), Mrs. Grafton (Matilda), Miss Grafton (Eunice), Miss Wellsman (Mrs. Choppington), Miss J. Thackwell (Lavinia).



POLICE CHANGES.

P.C. Fluck, the big policeman, who was usually on point duty at the top of Cheltenham Promenade, has just been promoted to the charge of Coombe Hill Station.

VANDERPLANK

(FROM HARRODS).

OPENING SHOWS



OF

SPRING . . FASHIONS

IN

COSTUMES, COATS, MILLINERY, AND BLOUSES.

MONDAY NEXT, AND FOLLOWING DAYS.

NEW SHOWROOMS

FOR

COSTUMES AND BLOUSES.

Combined space about 750 sq. ft.

INSPECTION INVITED.

NO PRESSURE TO PURCHASE.

381 HIGH STREET

(FACING LAMB HOTEL).

CHELTENHAM.

ANNETTE, HAS JUST RECEIVED FROM PARIS PRACTICAL CORSETIERE, AND VIENNA A CHOICE SELECTION OF ALL THE NEWEST SHAPES IN CORSETS.

She is now showing a Special Corset for growing girls and those with weak backs.

MATERNITE CORSETS AND CORSETS DE SPORT. SPECIAL ATTENTION TO FIGURES INCLINED TO OBESITY. CORSETS MADE AND COPIED.

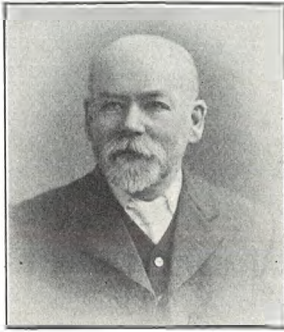
POST ORDERS RECEIVE PROMPT ATTENTION.

Telephone 1122.



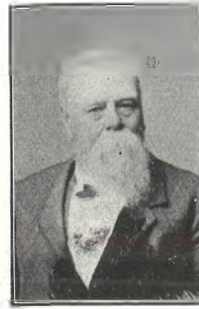
Mr. Stanley W. Jamieson,

Thirlestaine Lodge, Thirlestaine-road, Cheltenham, the popular Conservative agent for the Tewkesbury Division, who has been adopted as the Conservative candidate for the South Ward of Cheltenham for the Town Council, to contest the vacancy caused by the appointment of Mr. J. D. Bendall as Alderman.



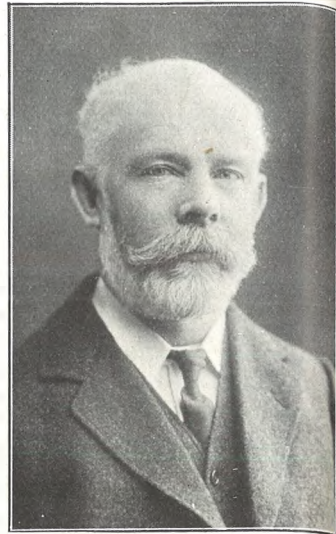
MR. ROBERT STRANG,

of Devonian, St. Mark's, Cheltenham, who died on Feb. 17, aged 72 years. He was head of the firm of ironmongers at Montpellier.



MR. JAMES CARTER,

of Bournemouth House, St. George's-place, Cheltenham, who died on Feb. 15th, aged 85 years. He was formerly a leather merchant in the Midlands, but had recently kept a draper's shop in Clarence-parade, and was much respected.



COUNCILLOR J. D. BENDALL,

who will be elected Alderman for Cheltenham at the next Council meeting, in the place of the late Col. Rogers. He has sat as Councillor for the South Ward for some years.—[Photo by Debenhams, Longman, and Co.]

We can supply customers with Splendid Reproductions of any Photograph taken by our artist for the "Graphic." Enlargements a speciality. Prices on application.



STROUD UNIONIST CELEBRATION.

On Saturday, February 21st, a dinner was held at Stroud Assembly Rooms to celebrate the winning of the 100-guinea Challenge Shield given by Sir Wm. Bull, M.P., for the best organised constituency in the country. Sir Wm. Bull was present, and made a rousing speech.

[Flash-light photo by Comely, Stroud.]