

# THE CHELTENHAM CHRONICLE AND GLO'SHIRE GRAPHIC

ART AND LITERARY SUPPLEMENT

No. 635.

Saturday, March 1, 1913.

## A FASHIONABLE WEDDING.

BRUCE—MORRIS.

### OPERA HOUSE, CHELTENHAM.

THIS AFTERNOON (2.30) & EVENING (7.45),

"THE BEAR-LEADERS."

NEXT WEEK:—

Welcome Return Visit of the Great Drury Lane Sporting Play:—

"THE WHIP."

### Old Selected SCOTCH WHISKIES.

B BLEND 42/- per Doz.; 3/6 per Bott.

BB BLEND 48/- per Doz.; 4/- per Bott.

BBB BLEND 51/- per Doz.; 4/3 per Bott.

## BARTHOLOMEW,

419-420 HIGH ST., CHELTENHAM.

### TAWNY PORTS. Old in Wood.

30/-, 36/-, 42/- per Doz.;

2/-, 3/-, 3/6 per Bott.

### DENTISTRY.

Est. 1891.

'Phone 782, Cheltenham.

**PAINLESS  
EXTRACTIONS,  
ETC.**



### MR. SUTTON GARDNER,

LAUREL HOUSE,

CHELTENHAM.

HOURS—9 A.M. TILL 8 P.M. DAILY.

Branches at Stroud, Nailsworth, Winchcombe, Stow, Bourton, etc.

### STEPHENS & FINCH,

HEATING ENGINEERS,

Grosvenor Works, Cheltenham.

We hold the Largest Stock in the County of Boilers, Radiators, Pipes, and Connections of all classes of Heating and Hot Water Supply. Horticultural Heating a Speciality.

Telephone No. 35Y1.



MR. CHAS. FITZROY BRUCE,

Son of the late Mr. Alan Cameron Bruce-Pryce, of Monkash, and sometime of Duffryn St. Nicholas, Glamorgan, and of Mrs. Bruce-Pryce, Abbeyholme, Cheltenham.

[Photo by Norman, May, & Co., Cheltenham.]



MISS DULCIE ELAINE MORRIS,

Daughter of Sir Robert Morris, Bart., of Sketty Park, Swansea, Glamorgan.



Married at St. Paul's Church, Sketty, Thursday, February 27th, 1913.

### ANDERTON'S PICTORIAL HISTORY of CHELTENHAM,

Containing 16 Full Page Photo Views; also of the leading Churches and Chapels, and Sketches of Old Cheltenham.

• • • 2d. Post Free. • • •

JAS. ANDERTON,

145 HIGH STREET (Opposite Town Clock),  
CHELTENHAM.

### W. HALL & SONS, LTD.,

Fruiterers, . . Florists,  
Fishmongers, Game Dealers,

92, 92a High Street, TEL. 85.

16 Montpellier Walk, TEL. 285.

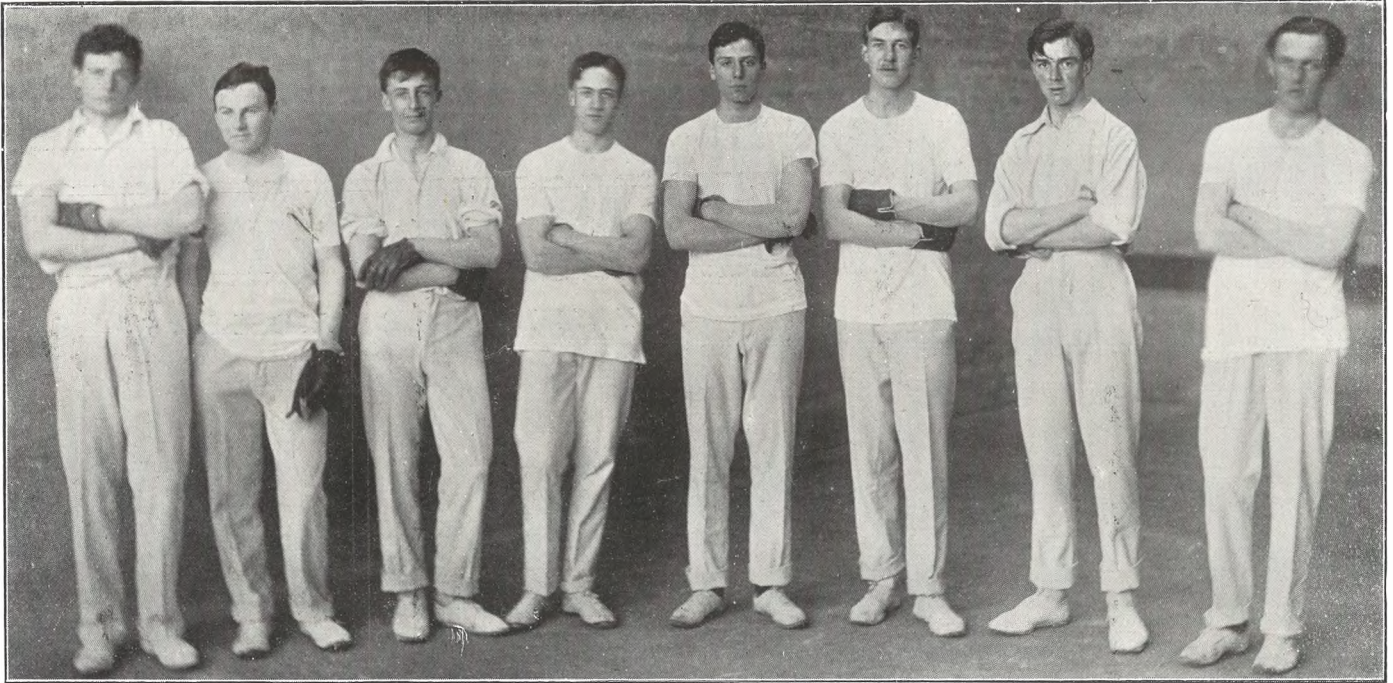
CHELTENHAM.

Pineapples, Black and White Grapes,  
Bananas, Seedless Oranges, Pears, etc.  
Asparagus, French Beans, Seakale, Mush-  
rooms, Tomatoes, etc.

Poultry, Game, etc.

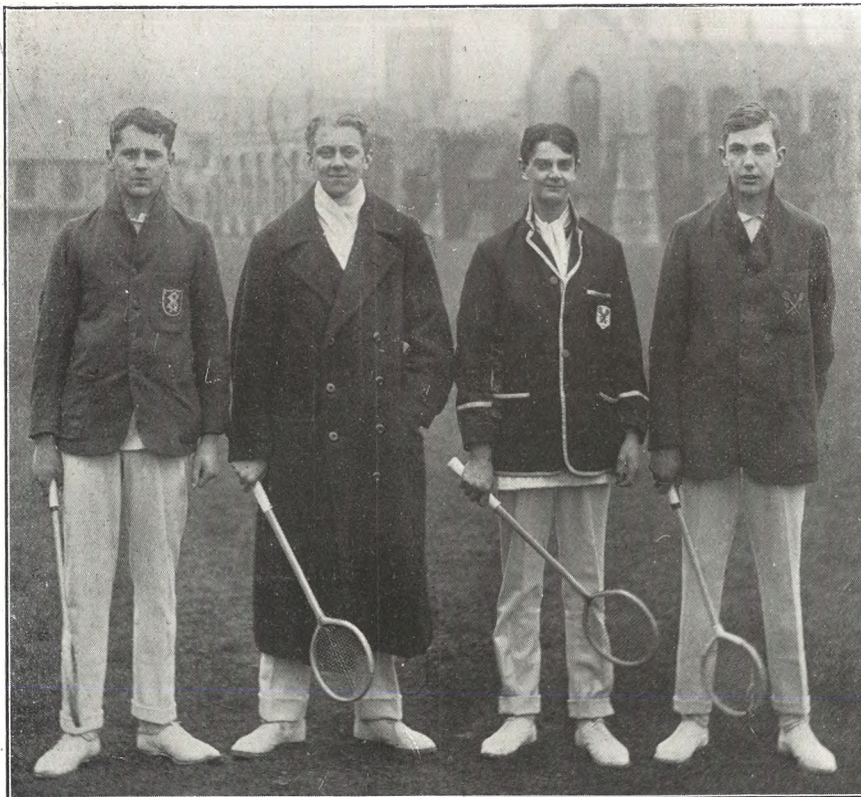
## CHELTENHAM COLLEGE v. RUGBY SCHOOL.

THE ANNUAL FIVES AND RACQUETS MATCHES BETWEEN TEAMS FROM CHELTENHAM COLLEGE AND RUGBY SCHOOL TOOK PLACE AT CHELTENHAM ON SATURDAY, FEB. 22, 1913, RUGBY EASILY WINNING ALL THE MATCHES.



THE FIVES TEAMS.

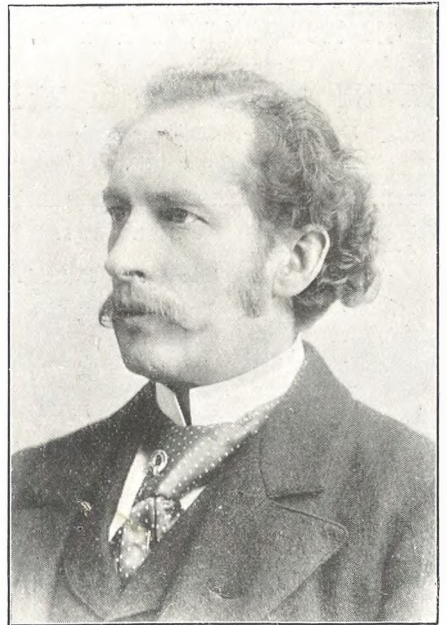
R. M. Bickersteth (Rugby), A. G. MacCall (Cheltenham), J. L. Brown (Rugby), F. W. Growse (Cheltenham), A. de Selincourt (Rugby), E. Donovan (Cheltenham), A. W. Higson (Rugby), G. C. Firbank (Cheltenham).



THE RACQUETS PAIRS.

H. F. Williams (Rugby), I. P. Campbell (Cheltenham), J. C. Hunt (Cheltenham), C. P. Johnstone (Rugby).

[Photos by Cheltenham Newspaper Co., Ltd.]



MR. WILLIAM ROBINSON WHEATLEY,  
OF 5 CHESTER WALK, CHELTENHAM,  
Who died on Feb. 20th, 1913, aged 58 years.  
He was formerly a music seller in High-  
street, Cheltenham, and was well-known  
on the Cotswolds as a tuner, and at  
Evesham as an organist.



**MOTOR-CYCLING TRIAL.**

START OF THE RELIABILITY TRIAL OF THE CHELTENHAM MOTOR-CYCLING CLUB ON SATURDAY, FEB. 22, 1913. OUTSIDE THE CLUB HEADQUARTERS, BELLE VUE HOTEL.

The trial, which was for side-cars, was won by Messrs. Gibb and Smith, who tied after each making non-stop runs, by being only 26 seconds out on time allowance. Mr. Gibb was the winner of the big Colmore Cup trials the week before. He is seen, with his wife (in side-car), in front of line. [Photo by -Cheltenham Newspaper Co., Ltd.]

\*\*\*\*\*



**CHELTENHAM HARRIERS 10-MILE TRIAL RACE.**

The Cheltenham Harriers held their 10 mile cross-country trial race for the English National on Saturday, Feb. 22, 1913, over some very heavy country, Larry Cummings winning easily by 3½ minutes. S. T. Smith was second and W. G. Rickards third. On his present form Cummings has a fine chance to win the "blue ribbon" of cross-country sport, the National Cross-Country Championship, which takes place at Wolverhampton next Saturday.

Names: G. Trapp (trainer), W. J. Thorndale, H. Williams, C. Cresswell, ———, L. Cummings, W. G. Rickards, Stanley Brown, T. Smith, P. Holland, S. T. Smith, H. E. Brown.

[Photo by W. Brown, jun., Cheltenham.]

\*\*\*\*\*

At a speed of 107 miles an hour the French airman Favre, says Reuter, flew on Saturday from Mourmelon to Juvisy, Paris, a distance of about 75 miles.

By 2242 votes to 1,763 the ratepayers of Southport rejected in a poll on Saturday a proposal to run Corporation tramway-cars on Sundays.

**Original copies of any "Chronicle and Graphic" photos may be obtained, price 1/3 each unmounted, 1/6 mounted. Special prices for quantities.**



**NEW GLOUCESTERSHIRE COUNTY COUNCILLOR.**

**MR. GILBERT MCILQUHAM,**

Who was nominated for the vacancy on the County Council vacated by the lamented death of Mr. G. B. Witts, and who has been returned unopposed.

[Photo by Debnham, Longman, and Co., Cheltenham and Gloucester.]

The late Lord Ilkeston left estate of the gross value of £19,278, of which £18,784 is not personalty.



**SCOUTS' PARADE AT WINCHCOMBE.**

ON SUNDAY, FEB. 23, 1913, A SCOUTS' PARADE SERVICE WAS HELD AT ST. MARY'S, SUDELEY MANOR.

Afterwards the troops were inspected by Col. Sturges and the Rev. R. H. M. Bouth. Medals, badges, and tokens were presented to various members by Col. Sturges, who also gave an address to the boys. The Winchcombe, Stanton, and Brockhampton Troops were on parade, as well as the local Scouts who are emigrating to Australia.

- 1.—Inspection of the Troops by Col. Sturges and Rev. R. H. M. Bouth.
- 2.—Brockhampton Troop
- 3.—Col. Sturges presenting medals.
- 4.—Spectators in Castle grounds.
- 5.—Stanton troop.
- 6.—Winchcombe Band at head of procession.
- 7.—Winchcombe Troop under P.S. O'Rourke
- 8.—Spectators in Winchcombe.

[Photos by Cheltenham Newspaper Co., Ltd.]



**CAMBRAY CHAPEL SALE OF WORK.**

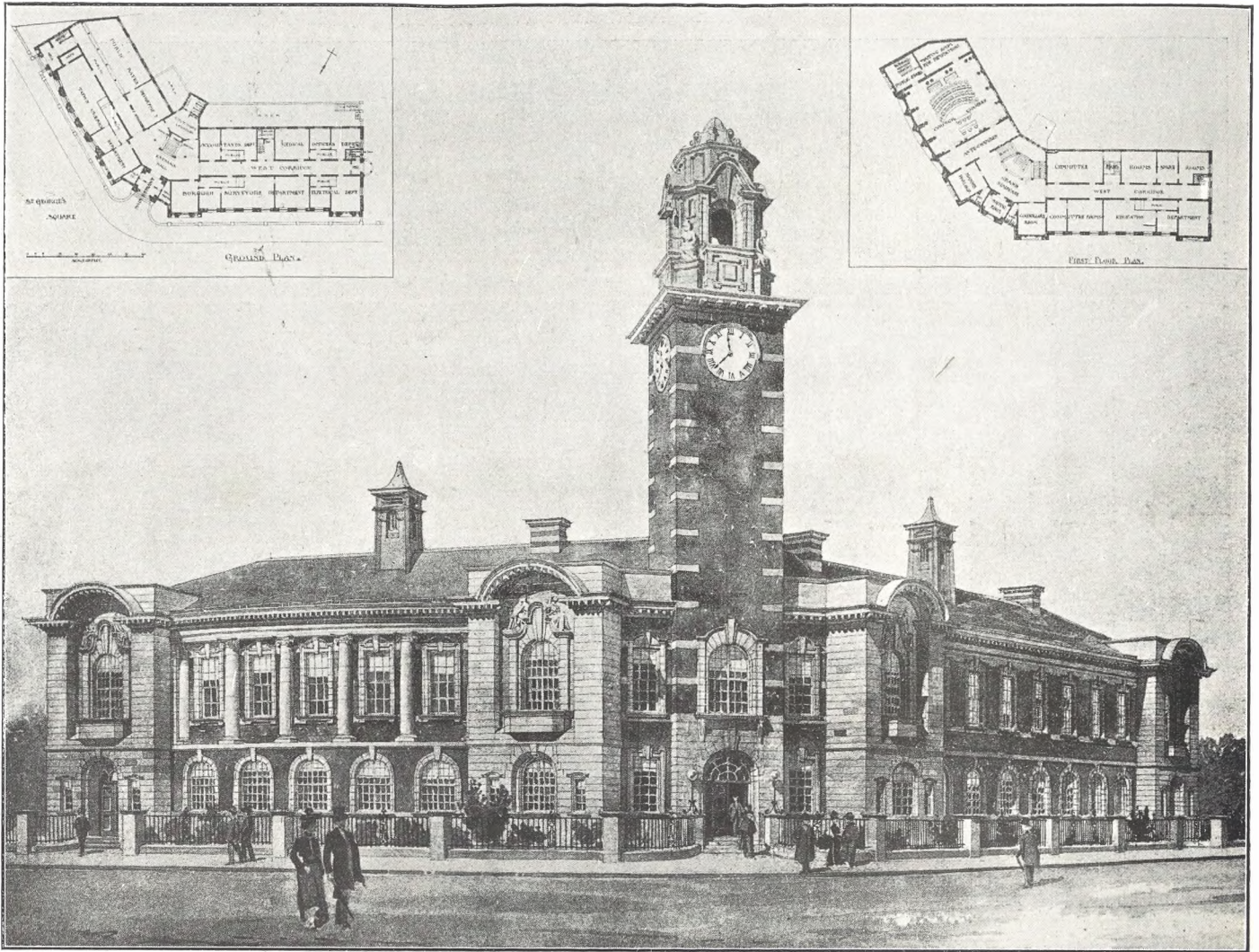
CAMBRAY CHAPEL HELD A THREE-DAYS' SALE OF WORK AT RODNEY-HALL ON TUESDAY, WEDNESDAY, AND THURSDAY, FEB. 24, 25, & 26, IN AID OF THEIR RESTORATION AND ORGAN FUND.

The Sale, which was most successful, was opened by Mrs. J. B. Winterbotham, Ald. Winterbotham being in the chair.

- 1.—The platform on opening day. Messrs. E. W. Fear, Graver, W. J. M. Dicks, Mrs. Taylor (Bazaar secretary), Mrs. Winterbotham, Ald. J. B. Winterbotham, Rev. A. Weaver Evans, Mr. J. T. Ireland, Rev. J. Foster, Mr. Watts.
- 2.—A group of amateur waitresses in the refreshment department.
- 3.—General view of the room with the bazaar in progress.
- 4.—Stallholders and workers at the door of Rodney-hall on opening day.

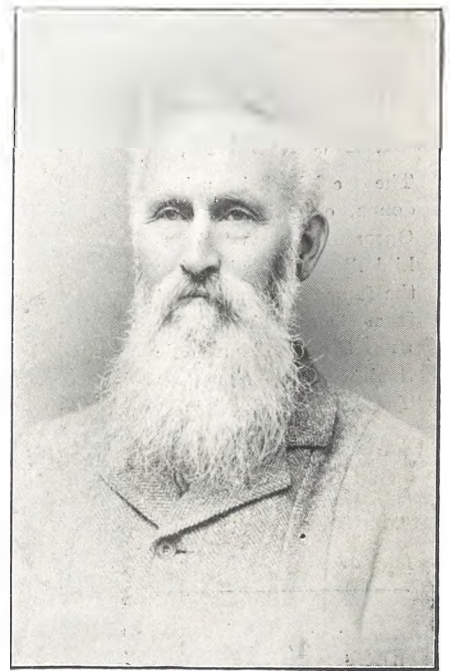
[Photo by Cheltenham Newspaper Co., Ltd.]





**SUGGESTED PLAN FOR MUNICIPAL OFFICES ON THE ST. GEORGE'S SQUARE SITE.**

\*\*\*\*\*  
 \* Design by Messrs. Pearson & Malvern, \*  
 \* architects, Cheltenham, who estimate \*  
 \* the cost of this fine elevation, with a \*  
 \* modified tower, at £12,000, the accom- \*  
 \* modation to be the same as that ar- \*  
 \* ranged for the Winter Garden site. \*  
 \* The site already belongs in part to \*  
 \* the town, and the remainder can be \*  
 \* obtained practically without cost, \*  
 \* as the rents receivable from five \*  
 \* houses to be purchased would more \*  
 \* than cover the interest. The plans \*  
 \* in the corners would require some \*  
 \* alteration, as further accommoda- \*  
 \* tion is now required, and is provid- \*  
 \* ed for in the sum quoted above. \*  
 \*\*\*\*\*



**THE RECENT RAILWAY DOUBLE FATALITY IN CHELTENHAM.**  
**SIDNEY GEORGE COLEMAN,**  
 Of Chiseldon, Wilts.,  
 Who was killed under the Arle-road Railway Bridge, Cheltenham, with the Cheltenham lad Nottingham, on Jan. 17, 1913, aged 18 years.

**HIGH-CLASS DENTISTRY.**  
**D. GORE BOODLE & CO., LTD.,**  
 Are in attendance every day at NORTH HOUSE, Cheltenham, from 9 a.m. to 8 p.m. Free Extractions first hour. A Lady always in attendance.  
**PAINLESS DENTISTRY.**  
**BRANCHES EVERYWHERE.**  
 We attend Bourton-on-the-Water every Tuesday, and Chipping Norton every Wednesday. Telephone, 166 Gloucester  
**ADVICE FREE.**  
**BOODLES' TEETH.**

**MR. CUTHBERT NEWMAN,**  
 County Council candidate for Newent, who is supported by the Farmers' Union,



**GOLDSMITHS AT DINNER.**

THE CHELTENHAM BRANCH OF THE NATIONAL ASSOCIATION OF GOLDSMITHS HELD THEIR FIRST ANNUAL DINNER AT GEORGE'S RESTAURANT ON TUESDAY, FEB. 25.

Mr. G. Dimmer, president of the Branch, was in the chair, supported by Mr. E. H. Sermon (Torquay), chairman of the National Association. About 60 members were present.

[Flashlight photograph by Cheltenham Newspaper Co., Ltd.]

\*\*\*\*\*



**MADAME GLEESON-WHITE,**

The celebrated prima donna, of Covent Garden Opera House, as "Brunhilde." She will sing the famous "Jewel Song" from Gounod's *Faust* at the Philharmonic Society's Concert on Tuesday evening next, at the Town-hall.



**WHAT IS A BARGAIN?**—A bargain is any article of merit bought at such a saving figure that the price will linger in the mind in connection with the superior worth of the goods.

**GENT'S** silver second-hand watch, good going order, 21s.; also fine quality lever watch, never been used, 35s., originally 70s.; perfect order.—Waite and Son, jewellers, Cheltenham.

**WALNUT** 8-day regulator striking clock, suit office, hall, or room, 21s., originally 35s.; 14-day inlaid marble striking clock, shop soiled, only 37s. 6d., cost 75s.—Waite and Son, jewellers, Cheltenham.

**ELECTRO-PLATED** cake basket, cruet, table centre, dessert knives and forks, spoons and forks, etc., less than cost during stock-taking week.—Waite and Son, jewellers, Cheltenham.

**SECOND-HAND** gent's 18ct. gold English lever watch, in splendid order, fully guaranteed, £5 5s., cost at least £15; also two ladies' 18ct. gold watches, quite new, 45s. and £4 4s.—Waite and Son, jewellers, Cheltenham.

**A FEW** pieces of second-hand jewellery, necklets, pendants, brooches, and rings, to be sold at exceptionally low prices; three ladies' silver watches, 15s., 20s., 21s., originally double.—Waite and Son, jewellers, Cheltenham.

**THE** above and many more bargains we are disposing of after stocktaking; we shall be pleased to show them to you.—Waite and Son, jewellers, 349 High-street, Cheltenham.

# THE CHELTENHAM CHRONICLE AND GLO'SHIRE GRAPHIC

ART AND LITERARY SUPPLEMENT

No. 636.

Saturday, March 8, 1913.

## OPERA HOUSE, CHELTENHAM.

THIS AFTERNOON (2.30) & EVENING (7.45),  
"THE WHIP."

NEXT WEEK:—

NOVEL & EXPENSIVE ENGAGEMENT OF  
**The IMPERIAL RUSSIAN BALLET**  
HUGELY INCREASED ORCHESTRA FOR  
THIS MAGNIFICENT PERFORMANCE.

## W. HALL & SONS, LTD.,

Fruiterers, . . . Florists,  
Fishmongers, Game Dealers,  
92, 92a High Street, TEL. 85.  
16 Montpellier Walk, TEL. 285.  
CHELTENHAM.

Pineapples, Black and White Grapes,  
Bananas, Seedless Oranges, Pears, etc.  
Asparagus, French Beans, Seakale, Mush-  
rooms, Tomatoes, etc.

Poultry, Game, etc.

## DENTISTRY. Est. 1891.



'Phone 782, Cheltenham.

**PAINLESS  
EXTRACTIONS,  
ETC.**

**MR. SUTTON GARDNER,  
LAUREL HOUSE,  
CHELTENHAM.**

HOURS—9 A.M. TILL 8 P.M. DAILY.

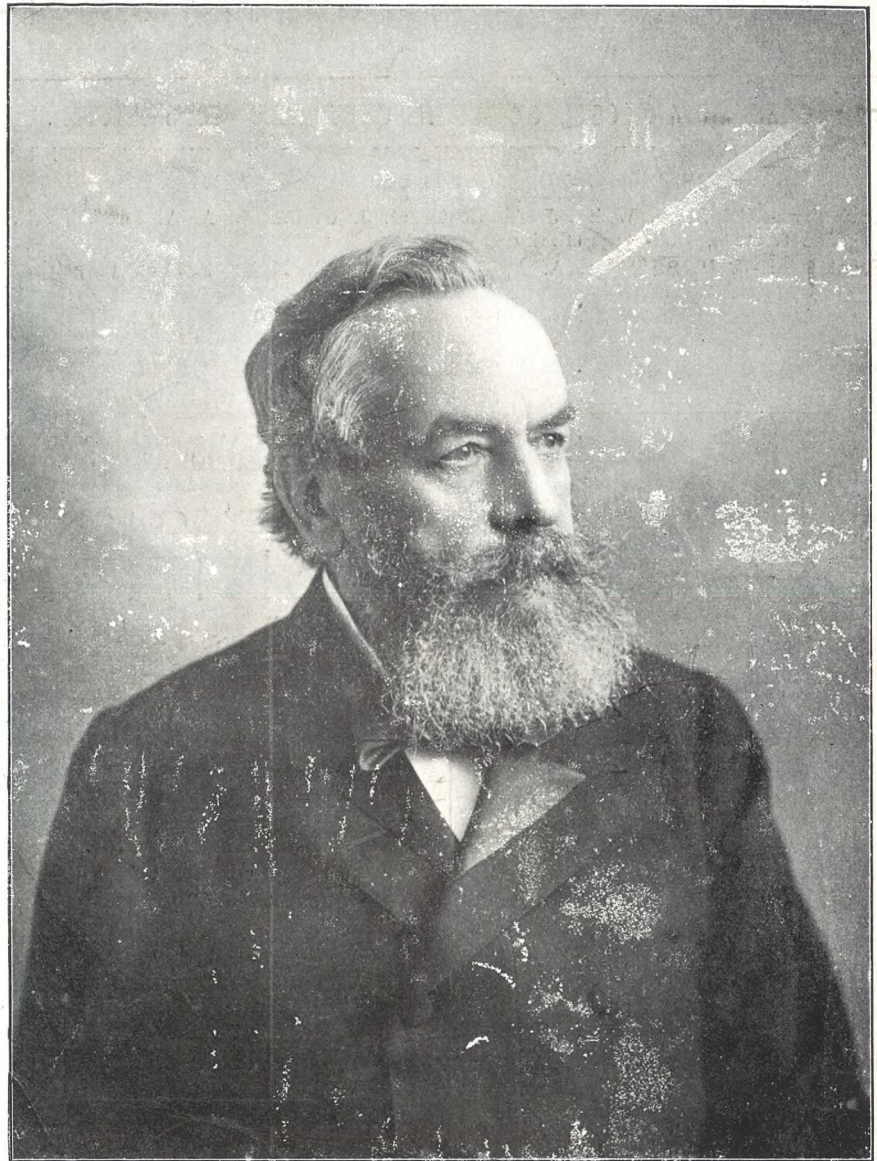
Branches at Stroud, Nailsworth, Winch-  
combe, Stow, Bourton, etc.

## STEPHENS & FINCH,

HEATING ENGINEERS,  
Grosvenor Works, Cheltenham.

We hold the Largest Stock in the County  
of Boilers, Radiators, Pipes, and Connections  
of all classes of Heating and Hot Water  
Supply. Horticultural Heating a Speciality.

Telephone No. 35Y1.



## DEATH OF CIRENCESTER'S GREATEST BENEFACTOR.

### MR. DANIEL G. BINGHAM,

WHO DIED AT HIS HOME AT UTRECHT, HOLLAND, ON SATURDAY,  
MARCH 1, AGED 83 YEARS.

Born in Cirencester, he joined the G.W.R. clerical staff, but when quite a young man he took over the entire management of the Dutch Rheinisch Railways, converting a hopeless muddle into a prosperous concern, and realising an immense fortune thereby. He built and presented the Public Library to Cirencester, also the Bingham Hall and Shooting Range, which he endowed by building six villas and twelve cottages; and during the past year he gave £2,000 to the funds of Cirencester Cottage Hospital. His death is deeply regretted in his native town.





**CHELTENHAM COLLEGE OPEN GYMNASTIC COMPETITION.**

HELD AT THE COLLEGE GYMNASIUM, MARCH 5, TO SELECT THE PAIR FOR THE PUBLIC SCHOOLS COMPETITION.

Back row:—Col.-Sergt. White, J. A. W. Grant, J. G. Caruth, A. A. Grey, W. N. C. Van Grutten, Col.-Sergt. Staines.

Front row:—J. H. Slaughter, A. A. F. Loch (winner), Major Pearson (Organiser of Gymnasia), A. T. Williams (second), A. H. Cheetham.

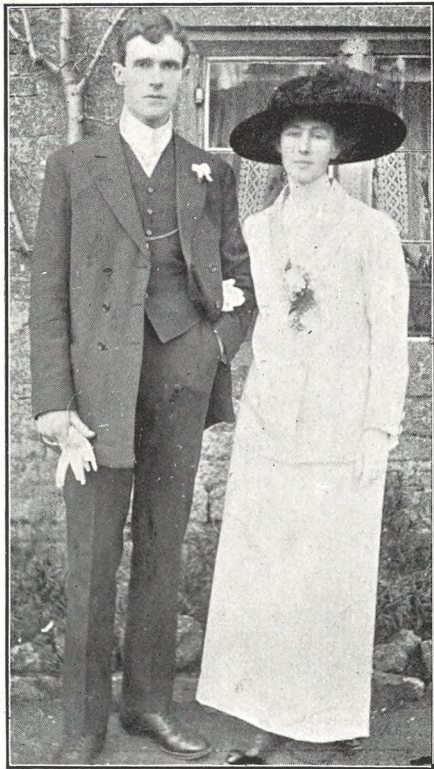
Loch and Williams will represent the College at Aldershot.

\*\*\*\*\*



**MR. GIL EVANS,  
OF LEEDS,**

And formerly of the Midland Counties, who officiated in the final of the County Championship between Gloucestershire and Cumberland last Saturday at Carlisle.



**A COTSWOLD WEDDING.  
ARNOLD—WILLIAMS.**

Mr. A. Arnold, of Capel, Dorking, Surrey, and Miss Florence L. Williams, elder daughter of Mr. and Mrs. George Williams, of Lower Slaughter, Gloucestershire, who were married at Lower Slaughter Church, Feb. 25, 1913.

[Photo by W. J. Butt, Bourton-on-the-Water]

**NEW GOODS FOR SPRING.**

FANCY COLORED  
**SHIRTS**

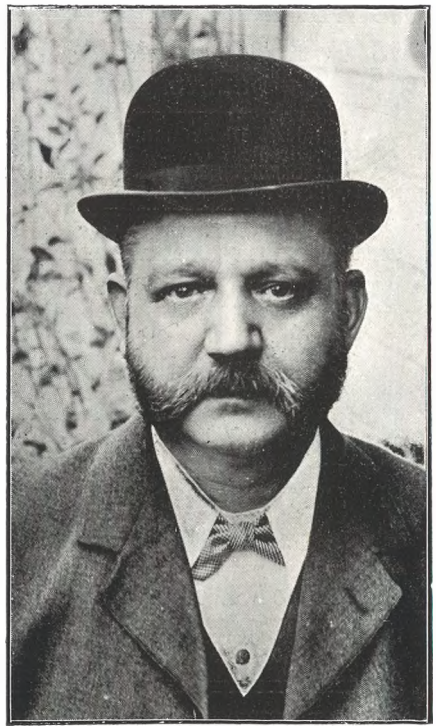
SOFT OR STIFF CUFFS. **2/11 up.**

**A. BECKINGSALE,**  
111 High Street,  
Cheltenham.  
TEL. 406.

SEE NEW WINDOWS FOR COSTUMES, MILLINERY AND BLOUSES. FANCY NECKWEAR, ETC. The Newest Fashions at the lowest Cash Prices.

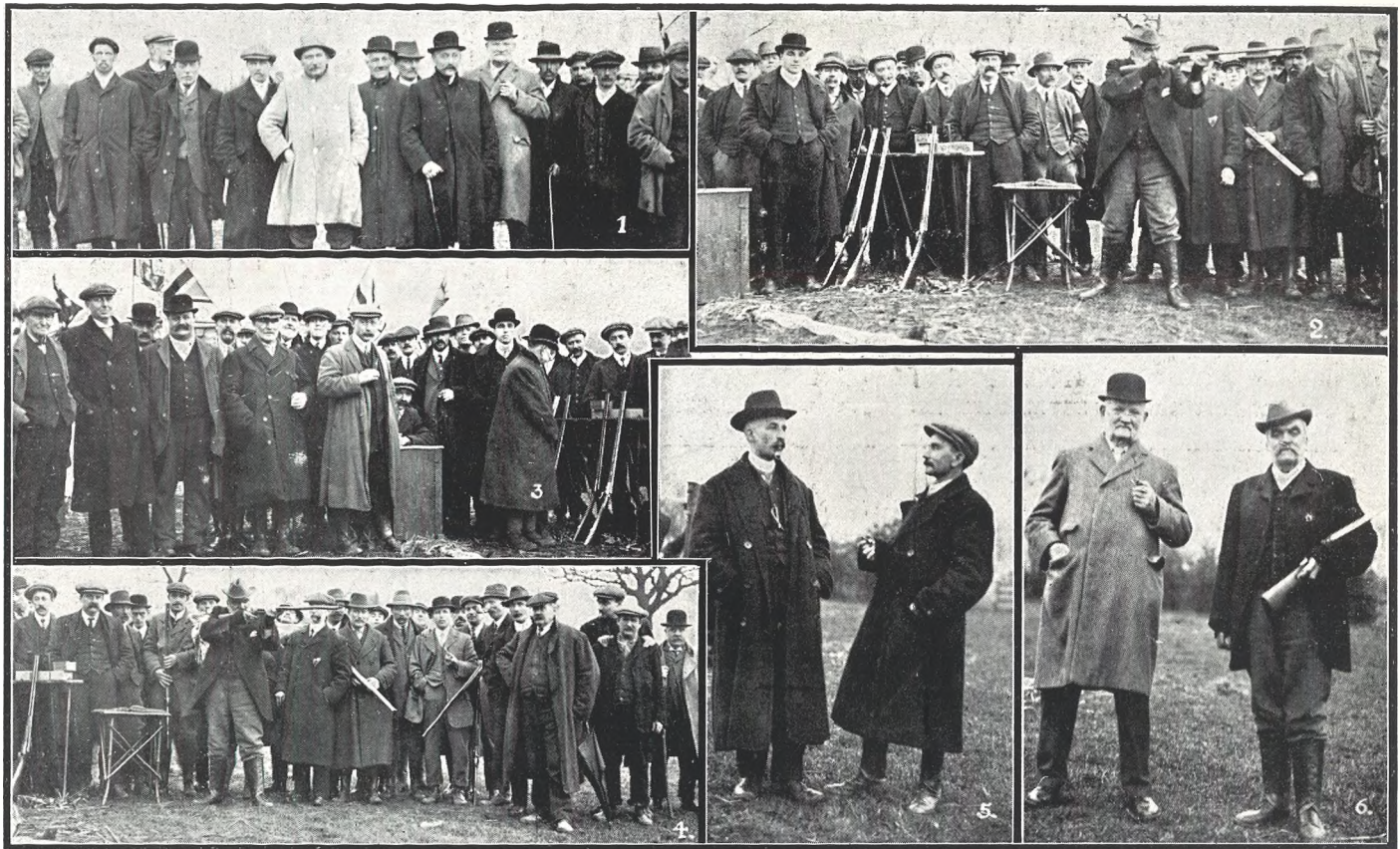
**VANDERPLANK**  
(FROM HARROD'S LTD.),  
381 HIGH STREET, CHELTENHAM.

**THERE IS ONLY ONE WAY TO SECURE THE ATTENTION OF THE PUBLIC OF GLOUCESTERSHIRE—ADVERTISE IN THE "CHRONICLE." GUARANTEED CIRCULATION OF 11,000 COPIES WEEKLY, WITH PROBABLY OVER 50,000 READERS.**



**MR. E. R. HANDS,**

**CHEMIST, OF 152 HIGH STREET, CHELTENHAM,**  
Who died February 26, 1913, aged 55 years.  
[Photo by Mr. E. W. Hands.]



**MR. JAS. BROWNING'S ANNUAL STARLING SHOOT.**

HELD IN A FIELD OPPOSITE THE BEEHIVE INN, PRESTBURY, ON WEDNESDAY, FEB. 26, 1913, BEFORE A LARGE CROWD OF LOCAL "SPORTS."

- 1.—Spectators.
- 2.—Mr. Browning shooting.
- 3.—Round the trapper's desk.
- 4.—Some of the guns. The winner of sheep, breeches, and sweepstakes (Mr. Waring, of Kilkenny) is seen just behind Mr. Browning holding gun at salute.
- 5.—Two local publicans.
- 6.—Mr. J. Ryan (who presented the breeches) and Mr. J. Browning (who organised the shoot).

[Photos by Cheltenham Newspaper Co., Ltd.]

**H. G. NORTON & CO.,**

EXPERTS IN  
**ELECTRIC LIGHTING,**  
 Motors, Telephones, Bells,  
 ETC.

**COUNTRY HOUSE AND  
 FARM LIGHTING**

A Speciality.

ADVICE AND ESTIMATES FREE.

**ANDERTON'S  
 PICTORIAL  
 HISTORY of CHELTENHAM,**

Containing 16 Full Page Photo Views; also of the leading Churches and Chapels, and Sketches of Old Cheltenham.

• • • 2d. Post Free. • • •

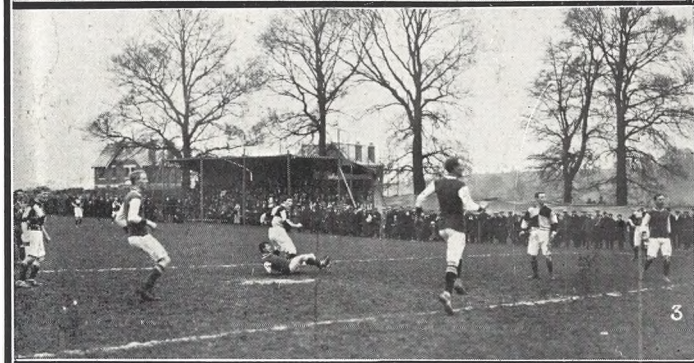
**JAS. ANDERTON,**  
 145 HIGH STREET (Opposite Town Clock),  
 CHELTENHAM.



**IMPERIAL SELECT DANCING CLASS.**

ANNUAL FANCY DRESS BALL HELD AT THE PLOUGH HOTEL ROOMS ON FEB. 13, 1913. SOME OF THE COMPANY.

[Photo by Mr. Sallis, Winchcombe-street.]



### COUNTY FOOTBALL AT DURSLEY.

GLOUCESTERSHIRE v. WORCESTERSHIRE.

ON SATURDAY, MARCH 1, GLOUCESTERSHIRE ASSOCIATION FOOTBALL TEAM PLAYED WORCESTERSHIRE A.F.C. AT DURSLEY BEFORE A SPLENDID CROWD.

The pretty little town was en fete, and a spirited and interesting game was much enjoyed. The result was a draw of 2 goals each, but Gloucestershire fully deserved to win, pressing continuously in the second half.

- 1.—Spectators.
- 2.—The Gloucestershire team.
- 3.—A hot attack by Gloucestershire; the centre forward has just shot.
- 4.—Spectators.
- 5.—Worcestershire attacking in second half.
- 6.—A melee in front of Worcester goal.
- 7.—A Gloucester half tries a long shot at goal. Note ball in air and goalie waiting for it outside goal.
- 8.—More spectators.
- 9.—Worcestershire defenders round their goal as a corner kick is taken.

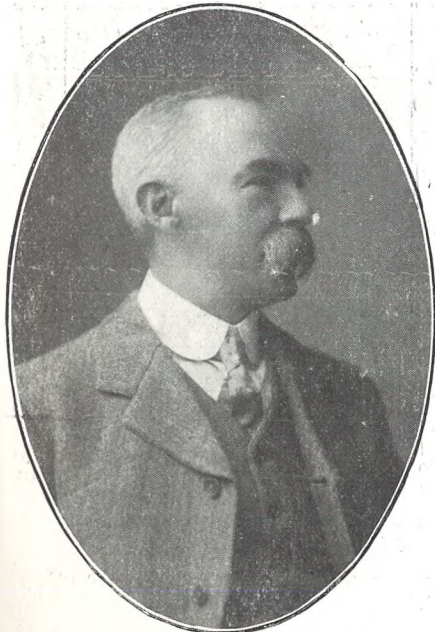
[Photos by Cheltenham Newspaper Co., Ltd.]



**CHEL TENHAM NEW MUNICIPAL OFFICES.**

The block of five houses in the centre of Promenade has been decided upon by the Cheltenham Corporation as the New Municipal Offices. We have shown the limits of the block by a white line each side. The Corporation intend to apply to the Local Government Board for a loan of £9,500 to purchase the houses; on which they hold an option, at a cost of £5,500. The alterations necessary to turn them into offices are estimated to cost about £3,300. The work on them will not be commenced for a year at least.

\*\*\*\*\*

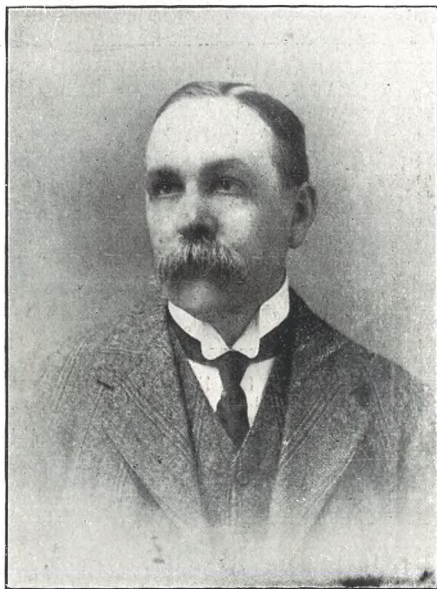


**NEW COUNTY COUNCILLOR.**

**MR. H. S. LEMON,**

Of Upton Leigh, Bayshill, Cheltenham, who was returned unopposed as the Conservative representative for the South Ward on the County Council.

[Photo by Norman May and Co., Cheltenham.]



**CHARLTON KINGS COUNTY COUNCILLOR.**

**MR. C. L. GRUNDY,**

Who is Chairman of Urban District Council and plays a prominent part in the public life of Charlton, was again elected its representative on the County Council.

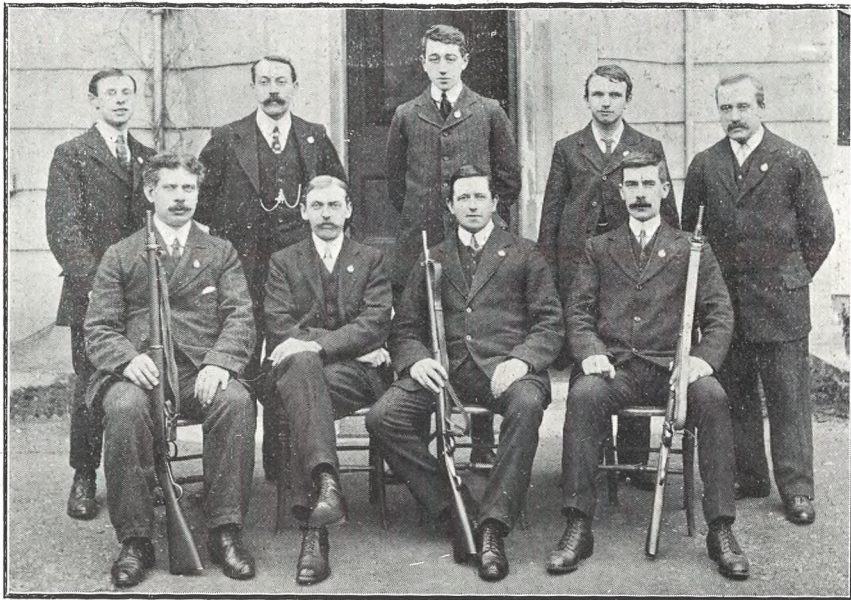


**MR. E. F. DELAMERE BOUTH,**

Of Ebworth Park, Stroud, who on Thursday, Feb. 28, at the annual meeting of the Cotswold Hounds, was elected Master of the auxiliary pack lately hunted by Capt. Elwes, which hunts the Painswick and Stroud district.

[Photo by Holloway, Cheltenham.]





**JUNIOR IMPERIAL LEAGUE RIFLE CLUB.  
OFFICIALS AND COMMITTEE.**

Back row:—J. H. Dodwell, W. B. Pugh (assistant treasurer), E. Cluff, V. Ransom, H. Wiggall.  
In front:—J. A. Surman (sub-captain), J. A. Pippard (hon. secretary of branch), G. Tombs (captain), W. Powell (assistant secretary).

[Photo by Cheltenham Newspaper Co., Ltd.]

\*\*\*\*\*



**CHELTONIAN ORGANIST FOR SCOTLAND.**  
**MR. HAROLD WINSTONE CONSTANCE,**  
Of 18 Cambray, Cheltenham, who has been appointed organist to the English Church, Galashiels, near Edinburgh. He is a pupil of Mr. Sowry, St. Matthew's Church, and has acted as assistant organist there. He is on the staff of the "Chronicle and Graphic."

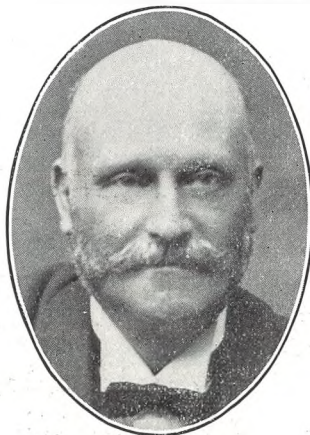
\*\*\*\*\*



**CHALLENGE SHIELD,**

Presented by Mr. R. V. Vassar-Smith, D.L., for competition between the Great Western Railway Combined Ambulance Corps, Gloucester.

[Block kindly lent by "Great Western Railway Magazine."]



**GLOUCESTERSHIRE COUNTY COUNCIL  
ELECTION.**

**MR. JOHN L. STELFOX,**

The Liberal candidate for the Newent Division. He was opposed by Mr. Cuthbert Newman. Mr. Stelfox was elected by a majority of 111.



**MR. H. D'ESTE EAST,**

Of Bourton-on-the-Hill, Gloucestershire, Conservative candidate for the Moreton-in-Marsh district on County Council, who was elected by a majority of 103.

**TO OUR READERS ABROAD.**

WE ARE ALWAYS GLAD TO RECEIVE LETTERS AND PHOTOGRAPHS FROM READERS ABROAD, ESPECIALLY FROM THOSE WHO HAVE RELATIVES OR FRIENDS IN ANY PART OF GLOUCESTERSHIRE.

**TO PHOTOGRAPH COLLECTORS.**

We can supply unmounted copies of any photographs appearing in these pages which are marked "Cheltenham Newspaper Co."

10 x 8 1/9 EACH (Post Free), size 8 1/2 x 6 1/2  
1/3 EACH, 6 1/2 x 4 1/2 9d. EACH.  
Mounted, 3d. each extra.

Discount on orders of 20 or more, 10 per cent.

Orders, which must be accompanied by remittance, should be addressed to

**The Manager,**  
**"Chronicle" Office,**  
**Cheltenham.**

It is reported from Lugano that a new tunnel is to be pierced on the St. Gothard line between Chiasso and Bellinzona, which will shorten by one hour the journey on this international line.

Mrs. Jane Calvert, aged 87, whose married daughter had left her for a moment, and had fastened her to a chair for safety, was burned to death at Rawcliffe, near Goole, on Wednesday, her apron catching fire.

# R. T. ADAMS & CO.

ARE SHOWING IN THEIR  
EXTENSIVE NEW SHOWROOM  
THE LARGEST STOCK OF EXCELLENT

## COSTUMES

## AND SPORTS COATS

SUITABLE FOR PRESENT WEAR,

Which you are invited to inspect without opportunity to purchase.

### THIS SMART TWEED COSTUME,

in Grey or Brown Donegal Effects; Well-Tailored; Coat Lined Glace Silk, Trimmed with Buttons and finished with Belt, Skirt Panel back and front.



PRICE—  
**21/6.**

SIMILAR STYLE IN NAVY SERGE.

### THE FASHIONABLE FLEECY WOOL SPORTS COATS,

In all New Shades—Champagne, Purple, Biscuit, Canary, Saxe, etc., etc., at

8/11 ————— 10/11.

AT

R. T. ADAMS & CO.,  
75-76 High Street  
(OPPOSITE BATH ROAD),  
CHELTENHAM.



### A LOCAL DERBY.

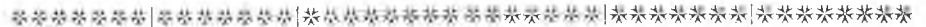
ST. PAUL'S R.F.C. ON SATURDAY LAST PLAYED NAUNTON PARK F.C. ON ST. PAUL'S GROUND. ST. PAUL'S WON BY 6 POINTS TO NIL.

#### THE TWO TEAMS.

Standing:—W. Simpson (N.), J. Addis (N.), —, Fletcher (S.P.), W. Burford (S.P.), H. Harrod (N.), G. Ryland (N.), H. Lippett (S.P.), H. Edwards (S.P.), J. Weaver (S.P.), H. Ponting (N.), J. Smith (S.P.), B. Cook (S.P.), C. W. Statham (N.), C. R. Collier (N.), E. Brain (S.P.), G. Reese (S.P.), B. Prust (N.), T. Ponting (N.), C. Dix (S.P.), A. Hayling (N.), D. Bathe (N.), H. Sheen (N.), A. Osborne (S.P.).

Sitting on Ground:—B. Hawkins (S.P.), J. L. Bendall (N.), D. Sullivan (S.P.), T. C. Poulson (N.), T. Wakefield (S.P.), and W. West (N.).

[Photo by Wm. Brown, jun., Cheltenham.]



### MR. FREDERICK BOOTH,

Of Tewkesbury, who was honoured last week by a public presentation of a certificate and £1 for saving life from drowning at Tewkesbury at a time when the river was in flood and very dangerous.

[Photo by Mallett, Tewkesbury.]



### PETROL GAS.

Cheapest and Best on the Market.  
See Specimen Light in Shop Window.

H. MESSENGER,

77 ALBION STREET, CHELTENHAM. [Tel. 816.]

### HIGH-CLASS DENTISTRY.

#### D. GORE BOODLE & CO., LTD.,

Are in attendance every day at NORTH HOUSE, Cheltenham, from 9 a.m. to 8 p.m. Free Extractions first hour. A Lady always in attendance.

### PAINLESS DENTISTRY.

#### BRANCHES EVERYWHERE.

We attend Bourton-on-the-Water every Tuesday, and Chipping Norton every Wednesday. Telephone, 166 Gloucester.

#### ADVICE FREE.

#### BOODLES' TEETH

### EASTER.

For Novelties in

### CHOCOLATE EASTER EGGS.

Charming Baskets containing Eggs, from 3d.

Special Value—6d. Nests.

### EASTER CAKE DECORATIONS.

**TURLEY, 336 High Street**  
(Opposite Grammar School)  
CHELTENHAM.

# THE CHELTENHAM CHRONICLE AND GLO' SHIRE GRAPHIC

ART AND LITERARY SUPPLEMENT

C No. 637.

Saturday, March 15, 1913.

## OPERA HOUSE, CHELTENHAM.

THIS AFTERNOON (2.30) & EVENING (7.45),  
**The IMPERIAL RUSSIAN BALLET**

NEXT WEEK:—

THEATRE CLOSED, RE-OPENING ON  
EASTER MONDAY with

**"THE AMAZONS."**

## Old Selected SCOTCH WHISKIES.

B BLEND 42/- per Doz.; 3/6 per Bott.  
BB BLEND 48/- per Doz.; 4/- per Bott.  
BBB BLEND 51/- per Doz.; 4/3 per Bott.

**BARTHOLOMEW,**  
419-420 HIGH ST., CHELTENHAM.

## TAWNY PORTS. Old in Wood.

30/-, 36/-, 42/- per Doz.;  
2/-, 3/-, 3/6 per Bott.

## DENTISTRY. Est. 1891.



'Phone 782, Cheltenham.

**PAINLESS  
EXTRACTIONS,  
ETC.**

**MR. SUTTON GARDNER,**  
LAUREL HOUSE,  
CHELTENHAM.

HOURS—9 A.M. TILL 8 P.M. DAILY.

Branches at Stroud, Nailsworth, Winchcombe, Stow, Bourton, etc.

**STEPHENS & FINCH,**  
HEATING ENGINEERS,  
Grosvenor Works, Cheltenham.

We hold the Largest Stock in the County of Boilers, Radiators, Pipes, and Connections of all classes of Heating and Hot Water Supply. Horticultural Heating a Speciality.  
Telephone No. 35Y1.



## AVIATION AT CIRENCESTER.

MR. GUSTAV HAMEL, THE GREAT ENGLISH FLYING MAN, GAVE EXHIBITION FLIGHTS FROM CAPTAIN GORDON DUGDALE'S FIELD ON THURSDAY, MARCH 6, 1913. HE IS HERE SEEN JUST STARTING ON ONE OF HIS FLIGHTS. [Photo by W. Dennis Moss, Cirencester.]



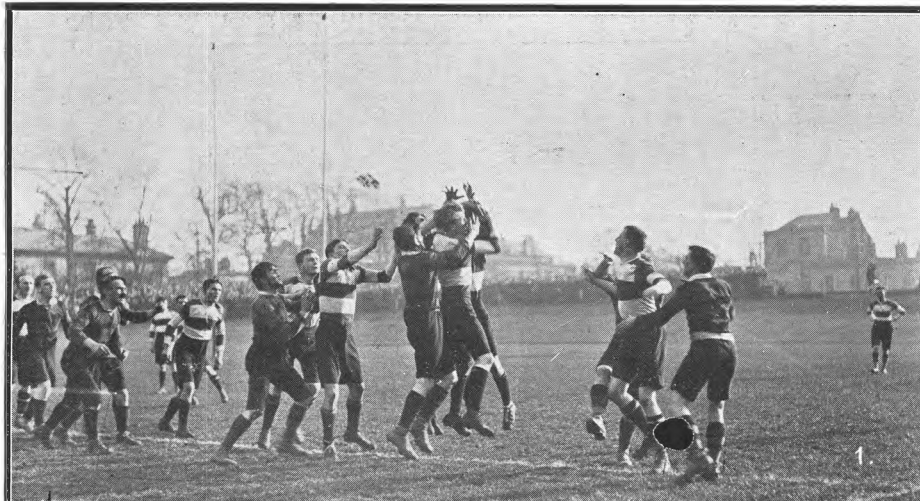
## ANOTHER CHELTONIAN FOR CANADA.

MASTERS AND A FEW FELLOW-SCHOLARS AT THE DEPARTURE OF CYRIL LANE (IN CENTRE WEARING GLASSES) FOR MANTOBA ON TUESDAY, MARCH 11, 1913.

He is a son of Mr. W. H. Lane, of Northampton House School, Cheltenham. His father and mother are seated on either side of him. He is going out to learn farming.

[Photo by Cheltenham Newspaper Co., Ltd.]





**GREAT LOCAL FOOTBALL MATCH—CHELTENHAM v. GLOUCESTER.**

This match, a very close and exciting one, took place on the Athletic Ground, Cheltenham, Saturday, March 8, Gloucester winning by 8 points to 6, after having none the best of the game. Cheltenham were splendid at forward and half.

- 1.—A line out close to Gloucester line. Note four pairs of feet off the ground together, all jumping for the ball.
- 2.—Lewis gives Hamblin a pass.
- 3.—Dix makes a mark, with the Cheltenham forwards coming up.
- 4.—Dix, with the ball, is just being encircled by the arms of a Cheltenham player.
- 5.—Baker, who is tackled, is giving a pass to Hopkins in a forward rush.
- 6.—Cook, saving well, is just about to kick to touch. Hughes is coming up to try and charge the ball down.

[Photos by Cheltenham Newspaper Co., Ltd.]

**COUNTY HOCKEY MATCH IN CHELTENHAM.**

GLOUCESTERSHIRE v. SOMERSET, PLAYED ON THE EAST GLOUCESTERSHIRE GROUND, MARCH 12, 1913, SOMERSET WINNING BY 6 GOALS TO 3.



GLOUCESTERSHIRE.

Back row:—F. J. Langford, C. N. Price, H. J. Symonds, —, Benson, B. G. Lampard, H. D. Chester, H. S. S. Shove.  
 Front row:—H. N. Chillcott, E. C. Francis, J. C. M. Ferguson, H. C. B. Sessions, B. Gregory.  
 [Photo by Cheltenham Newspaper Co., Ltd.]



SOMERSET.

Back row:—H. Archer, H. E. Hippiusley, H. J. Smythe, Rev. J. M. Stancombe, J. Payne, H. R. Poole, R. H. Lawrence, —, Pitts.  
 Seated:—S. L. Hibbard, L. D. Brown, C. S. Franklin, L. Hunter.  
 [Photo by Cheltenham Newspaper Co., Ltd.]

\*\*\*\*\*

**EASTER WEDDINGS.**

**ORIENTAL CAFE Co.,**  
 395 HIGH STREET;  
**COSY CORNER,**  
 PROMENADE, CHELTENHAM.

BRIDE CAKES IN ALL SIZES,  
 FROM 10/6 TO 10 GUINEAS.

BEST QUALITY & DECORATED  
 IN THE MOST ARTISTIC STYLE

GOLD AND SILVER MEDALLISTS  
 AT THE LEADING EXHIBITIONS.



**MEET OF HEYTHROP HOUNDS AT STOW-ON-THE-WOLD.**

THE HEYTHROP HOUNDS MET AT STOW ON FRIDAY, MARCH 7, IN THE MARKET SQUARE.

THERE WAS A LARGE AND REPRESENTATIVE FIELD.

[Photo by J. W. Farrall, Stow-on-the-Wold.]

"Many married women are miserable, and all women who are not married are miserable," said Mr. Fordham at the West London Police-court on Saturday.

A woollen mill of Messrs. Priestley and Co., of Stanningley, near Leeds, was practically destroyed by fire on Sunday, the damage amounting to many thousands of pounds.



## NATIONAL HUNT STEEPLECHASES IN CHELTENHAM.

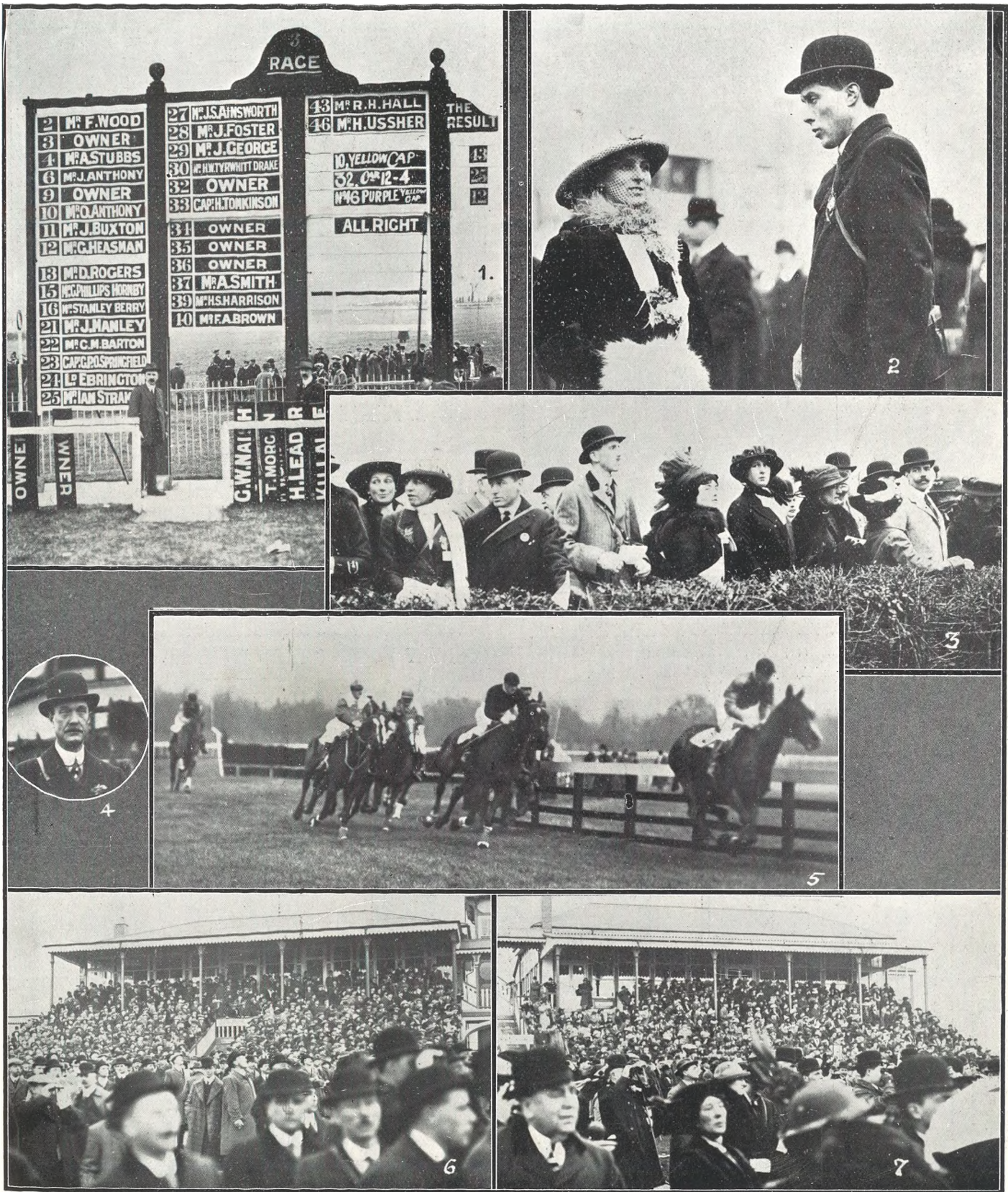
BRILLIANT RACING AND A RECORD ATTENDANCE.

The National Hunt Meeting was again held in Cheltenham on Wednesday and Thursday, March 12 and 13. There was a record crowd, every ring being packed, the going was in perfect condition, and Royalty, in the persons of the King and Queen of Portugal, was present.

- 1.—The Queen of Portugal and Lord Coventry in the Paddock.
- 2.—The King of Portugal leaving the Grand Stand with Lady Coventry.
- 3.—The King of Portugal in the Paddock. He mixed with the crowd round the ring.

- 4.—Baron Maurice de Tuyll (on left) and his mother, the Duchess of Beaufort.
- 5.—Mr. McNeill (on left) and a friend in the Paddock.
- 6.—The first jump in the National Hunt Race. There were thirty starters, but they came

- 7.—Mr. W. E. Wren's Buzzy (winner) coming over last fence in first race. very irregularly at this jump. There was one fall.
- 8.—Scene round the Paddock. [Photos by Cheltenham Newspaper Co., Ltd.]



## NATIONAL HUNT STEEPLECHASES IN CHELTENHAM.

A RECORD MEETING.

Pictures of First Day's Racing. The National Hunt Steeplechase was the big race of the day, there being thirty starters, Capt. S. P. Yates' Kransfugl, a 33 to 1 outsider, winning. The scene during the race was magnificent.

- 1.—The number board in Paddock, showing starters for National Hunt Race.
- 2.—Mr. M. P. Price, the Liberal candidate for Gloucester, chatting with a lady.
- 3.—Club members watching start of National

- 4.—Sir George Bullough, owner of Marine Parade, Regent, Distaff, and other winners.
- 5.—Coming round bend in Southam Selling

Hunt Steeplechase, won by Buzzy. 6 and 7.—The stands in Tattersall's Ring and Club Enclosure, which were literally packed at every race.

[Photos by Cheltenham Newspaper Co., Ltd.]



**GLOUCESTER WAGON WORKS [AMBULANCE CORPS.]**  
**THE WINNING TEAM FOR THE VASSAR-SMITH**  
**CHALLENGE SHIELD, 1913.**

At Back—W. J. Griffiths, A. C. White (capt.), J. Wilks.  
 In Front—F. J. D. Staite, C. H. Cole.  
 [Photo by Cheltenham Newspaper Co., Ltd.]



**CHELTENHAM BOOT TRADE'S ASSOCIATION FOOTBALL CLUB,**  
**SEASON 1912-13.**

Standing—Mr. Potts, Chandler, Warner, Lawson, Jackson,  
 Herbert, Woore.  
 Seated—B. Potts, Walker, Hince (capt.), Lewis, Davis.

[Photo by T. Giddings.]

**H G. NORTON & Co.,**  
**EXPERTS IN**

**ELECTRIC LIGHTING,**  
**Motors, Telephones, Bells, &c., &c.**

**COUNTRY HOUSE & FARM LIGHTING A SPECIALITY.**

ADVICE AND ESTIMATES FREE.

**DEATHS OF THREE WELL-KNOWN RESIDENTS IN STROUD DISTRICT.**



**MRS. JEFFERIES, OF DUDBRIDGE,**  
 Widow of Mr. Samuel Jefferies, died March  
 1st, aged 79 years. She was buried on  
 Thursday, March 6th, at Ebley Chapel.  
 [Photo by H. J. Comeley, Stroud.]



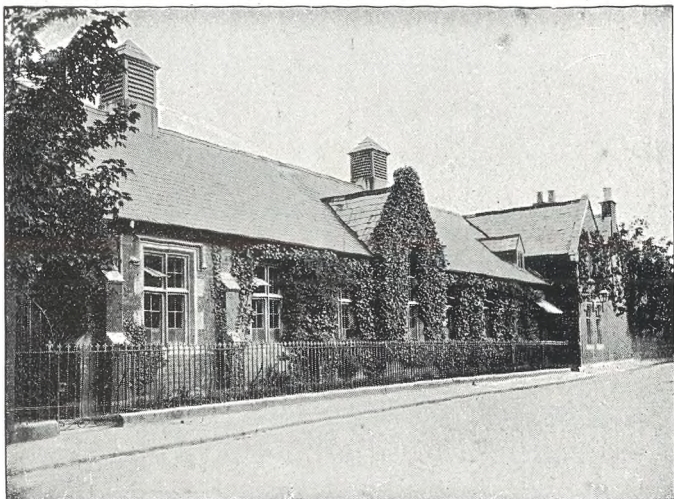
**MR. ALBERT SMART,**  
 Stroud Town Bandsman. Died Feb. 28,  
 1913, aged 38 years. He was buried on  
 Thursday, March 6th, at Stroud Cemetery.



**MR. REUBEN NIBLETT,**  
 Of Upper Dorington-terrace, Stroud, who  
 died February 28th, 1913, aged 78 years.

**TO OUR READERS ABROAD.**

WE ARE ALWAYS GLAD TO RECEIVE  
 LETTERS AND PHOTOGRAPHS FROM  
 READERS ABROAD, ESPECIALLY  
 FROM THOSE WHO HAVE RELA-  
 TIVES OR FRIENDS IN ANY PART  
 OF GLOUCESTERSHIRE



**THE OLD SCHOOL.**

Mr. F. F. Wheeler, Headmaster 1865-1905; Mr. L. V. Wheeler, Headmaster from 1905 to present time.



**CHELTENHAM PARISH CHURCH BOYS' SCHOOL,**  
DEVONSHIRE STREET. ESTABLISHED 1713.  
**BI-CENTENARY CELEBRATIONS.**

PATRON—THE MAYOR (J. T. Agg-Gardner, Esq., M.P.).  
PRESIDENT—THE RECTOR (Rev. Canon L'Estrange Fawcett, R.D.).

A MESSAGE TO ALL OLD BOYS, PARTICULARLY TO THOSE ACROSS THE SEAS.

**THE 200th BIRTHDAY OF THE SCHOOL**

Will be celebrated by an Old-time School Treat, Prizes to the Boys, Gifts to the School, Concert and Gathering of Old Boys.

An Illustrated History of the School, 1713—1913, will be published as a Souvenir. Copies may be obtained by O.B.'s on receipt of names and addresses. The Press Committee will be glad to receive fraternal greetings and photos from O.B.'s for publication. Any further information will gladly be given by the Hon. Sec., Bicentenary Committee, Parish Church School.

All donations to the Hon. Treasurer, Devonshire-street, will be promptly acknowledged.

\*\*\*\*\*|\*\*\*\*\*|\*\*\*\*\*|\*\*\*\*\*|\*\*\*\*\*|\*\*\*\*\*



Of the many kinds of rings, a Wedding ring is one where quality and durability are the first consideration. The Wedding ring transaction means giving the almost pure gold sovereign in return for an equally pure gold ring, and where the latter is sold by weight alone (as do Messrs. Waite and Son, the old-established Cheltenham Jewellers), good value for cash is the result. Inspect their stock of rings; it will be worth your while.

Note address—349 High-street (3 doors below town clock).

**W. HALL & SONS, LTD.,**  
Fruiterers, . . Florists,  
Fishmongers, Game Dealers,  
92, 92a High Street, TEL. 85.  
16 Montpellier Walk, TEL. 285.  
CHELTENHAM.

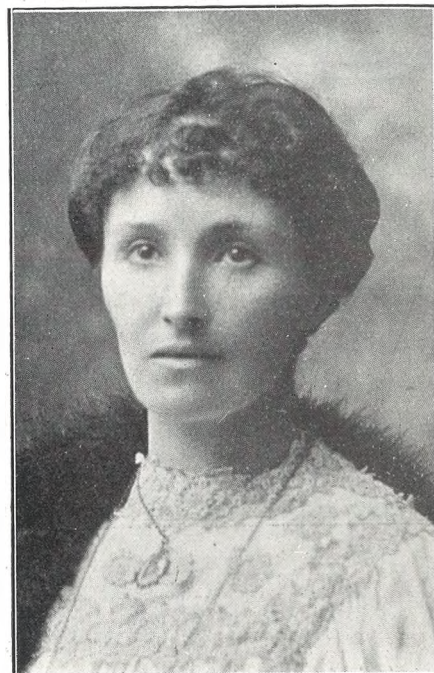
Pineapples, Black and White Grapes, Bananas, Seedless Oranges, Pears, etc.  
Asparagus, French Beans, Seakale, Mushrooms, Tomatoes, etc.  
Poultry, Game, etc.

**ANDERTON'S**  
PICTORIAL  
**HISTORY of CHELTENHAM,**

Containing 16 Full Page Photo Views; also of the leading Churches and Chapels, and Sketches of Old Cheltenham.

• • • 2d. Post Free. • • •

**JAS. ANDERTON,**  
145 HIGH STREET (Opposite Town Clock),  
CHELTENHAM.



**DEATH OF A CHELTENHAM SCHOOLMISTRESS.**

MISS ANNIE GARDNER,

Assistant at the Parish Church Infants' School, Cheltenham, for 22 years. Died March 11th. She is greatly missed by her fellow-teachers.

\*\*\*\*\*|\*\*\*\*\*|\*\*\*\*\*|\*\*\*\*\*|\*\*\*\*\*|\*\*\*\*\*



**P.C. W. H. HOWES,**

OF CHELTENHAM POLICE FORCE, Who has recently retired on pension. He was presented on March 1, 1913, by his colleagues of Cheltenham and Tewkesbury Districts with a handsome sideboard as a mark of their esteem and good wishes.

[Photo, E. & F. Baldwin, Cheltenham and Bath]



**ROLLER SKATING AT CIRENCESTER.**

SKATING RINK CARNIVAL AT ELECTRIC EMPIRE, CIRENCESTER, TUESDAY, MARCH 4, 1913.

[Flashlight photo by W. Dennis Moss, Cirencester.]

**R. T. ADAMS & Co.**

HAVE THEIR

**EXTENSIVE NEW SHOWROOM**

Fully stocked with a most excellent range of

**COSTUMES, GABERDINE COATS,  
AND SPORTS COATS,**

SUITABLE FOR PRESENT WEAR.

Navy and Tweed Costumes from 9s. 11d. to 2½ guineas.

Marvellous Value Silk-lined Coat, Panel Skirt, beautifully tailored, 21s. 6d.

Rain Coats and Gaberdines from 6s. 11d., Girls' sizes from 5s. 11d.

Sports Coat (as sketch), 8s. 11d., 10s. 11d., 12s. 11d., in Purple, Canary, Tan, Champagne, Cerise, Emerald, etc., etc.

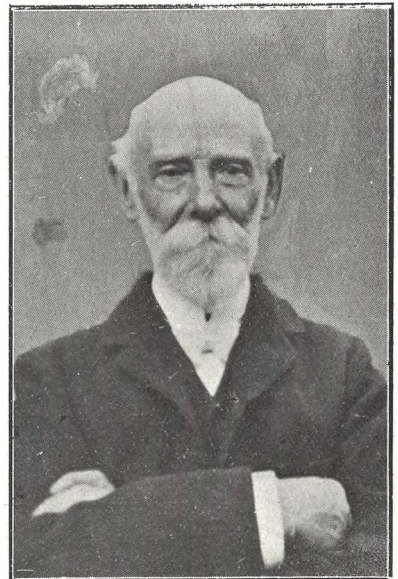


**GLOUCESTER CYCLIST'S SHOCKING DEATH.**

MR. LEONARD MORRIS SIMS,  
aged 17 years,

Who was killed on Saturday last, March 8, by colliding on his bicycle with Messrs. Arnold, Perrett, and Co.'s motor-lorry, which ran over him. He was a son of Mr. and Mrs. B. T. Sims, of 53 Barton-street, Gloucester.

[Photo by H. E. Jones, Northgate-st., Glo'ster.]



**DEATH OF AN OLD CHELTENHAM TRADESMAN.**

MR. WILLIAM HULBERT,

Late of Mythe House, Gloucester-road.

Who died March 8, 1913, aged 82 years. He was formerly a partner in the firm of Martin and Sons, jewellers, Promenade, until it was bought by Mr. Dimmer.

**EASTER HOLIDAYS**

**NEW FANCY SHIRTS**

Soft or Stiff Cuffs, 2/11 to 4/6.

**NEW FANCY TIES,**

Latest Patterns, 1/-, 1/6, 2/6.

**NEW FANCY SOCKS,**

Neat Colourings, 1/6.

**A. BECKINGSALE,**

111 High Street,

Cheltenham.

TEL. 406.

**HIGH-CLASS DENTISTRY.**

**D. GORE BOODLE & CO., LTD.,**

Are in attendance every day at NORTH HOUSE, Cheltenham, from 9 a.m. to 8 p.m. Free Extractions first hour. A Lady always in attendance.

**PAINLESS DENTISTRY**

**BRANCHES EVERYWHERE.**

We attend Bourton-on-the-Water every Tuesday, and Chipping Norton every Wednesday. Telephone, 166 Gloucester.

ADVICE FREE.

**BOODLES' TEETH.**

Printed and published as a gratis supplement by the Cheltenham Newspaper Co., Ltd.



**R. T. ADAMS & Co.,**

75-76 High Street

(OPPOSITE BATH ROAD),

**CHELTENHAM.**

# THE CHELTENHAM CHRONICLE AND GLO'SHIRE GRAPHIC

ART AND LITERARY SUPPLEMENT

No. 638.

Saturday, March 22, 1913.

## OPERA HOUSE, CHELTENHAM.

RE-OPENS ON MONDAY NEXT (BANK HOLIDAY) with

### "THE AMAZONS."

RECENTLY SUCCESSFULLY REVIVED IN LONDON.

## W. HALL & SONS, LTD.,

Fruiterers, . . Florists,  
Fishmongers, Game Dealers,  
92, 92a High Street, TEL. 85.  
16 Montpellier Walk, TEL. 285.  
CHELTENHAM.

Pineapples, Black and White Grapes,  
Bananas, Seedless Oranges, Pears, etc.  
Asparagus, French Beans, Seakale, Mush-  
rooms, Tomatoes, etc.  
Poultry, Game etc.

## DENTISTRY. Est. 1891.



'Phone 782, Cheltenham  
**PAINLESS  
EXTRACTIONS,  
ETC.**

**MR. SUTTON GARDNER,**  
LAUREL HOUSE,  
CHELTENHAM.

HOURS—9 A.M. TILL 8 P.M. DAILY.

Branches at Stroud, Nailsworth, Winch-  
combe, Stow, Bourton, etc.

## STEPHENS & FINCH, HEATING ENGINEERS, Grosvenor Works, Cheltenham.

We hold the Largest Stock in the County  
of Boilers, Radiators, Pipes, and Connections  
of all classes of Heating and Hot Water  
Supply. Horticultural Heating a Speciality.  
Telephone No. 35Y1.



### An Old Cheltenham College Shooting Team at Wimbledon in 1889.

ONE OF THE BOYS SUBSEQUENTLY BECAME GOVERNOR OF UGANDA.

Back row: Capt. M. Tanner (now Rev. M. Tanner, Cheltenham College), Pvt. McCannan,  
Pvt. Barrow, Lance-Corpl. Lyall, Sergt.-Major W. H. Barrett (instructor).

Seated: Col.-Sergt. Cordeaux (who became Governor of Uganda), Sergt. McAlister, Capt.  
Saunders, Sergt. Muntz, Pvt. Harding Newman.

In front: Pvt. Barker, Lance-Corpl. Kennard.

\*\*\*\*\*

## EASTER WEDDINGS.

◆ ◆

BRIDE CAKES IN ALL SIZES, FROM 10/6 TO  
10 GUINEAS.

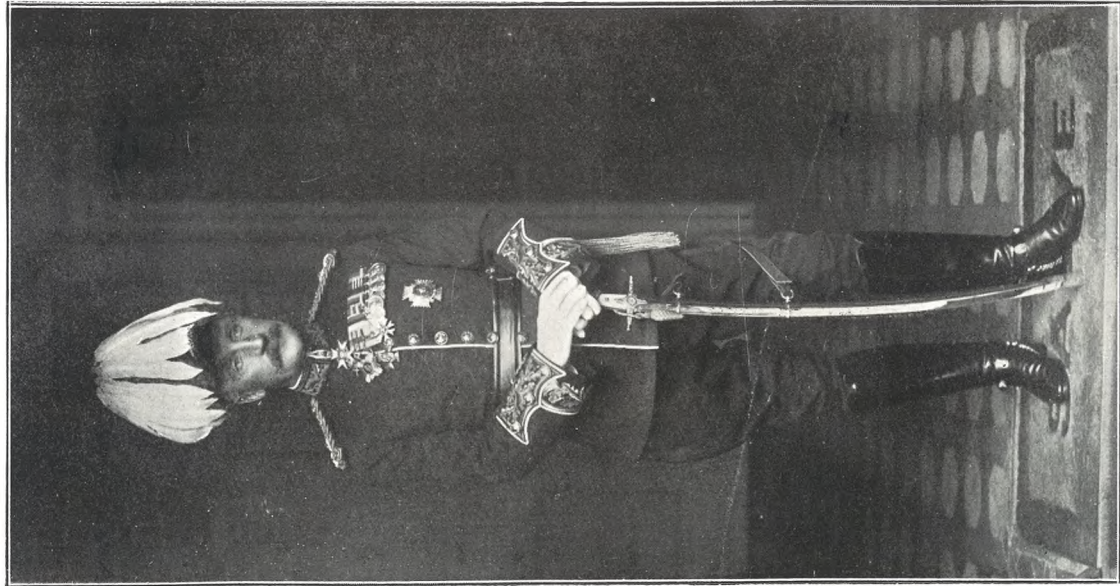
◆ ◆

BEST QUALITY AND DECORATED IN THE MOST  
ARTISTIC STYLE.

GOLD AND SILVER MEDALLISTS AT THE LEADING EXHIBITIONS.

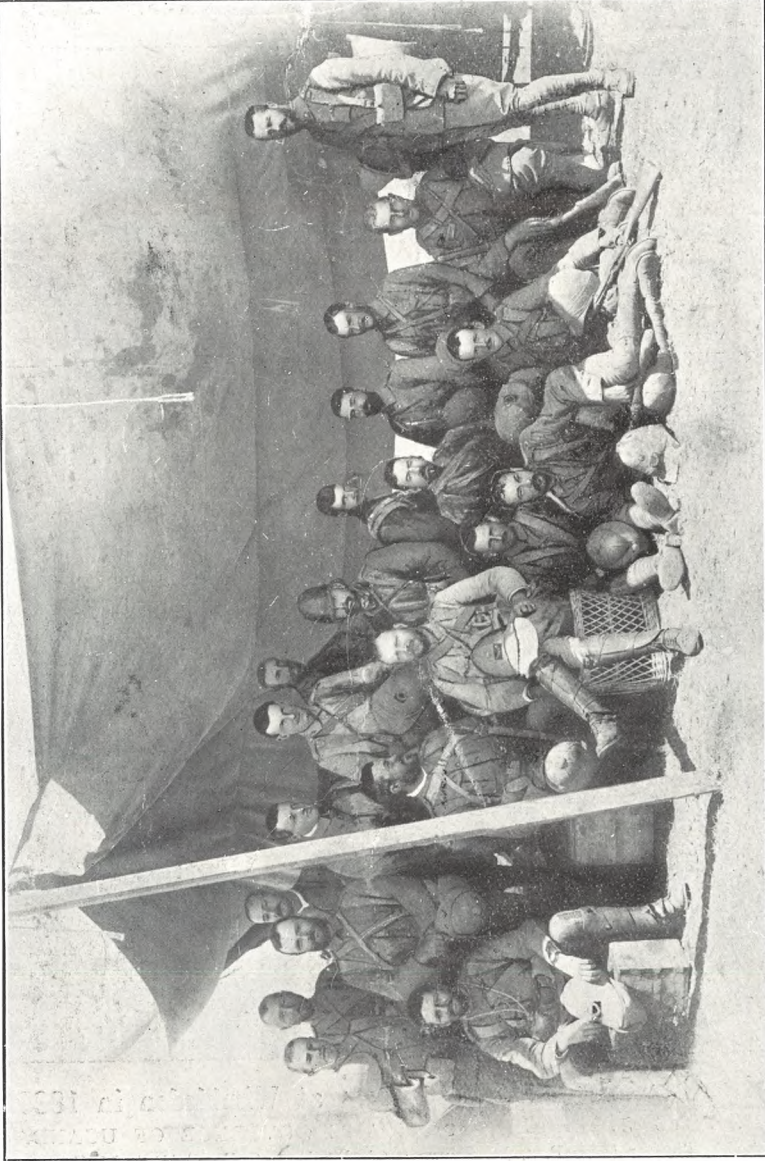
## THE ORIENTAL CAFE CO.,

COSY CORNER, \_\_\_\_\_ AND \_\_\_\_\_ 395 HIGH STREET,  
PROMENADE, \_\_\_\_\_ CHELTENHAM.



**MAJ.-GEN. SIR FRANCIS HOWARD, K.C.B., C.M.G., J.P.,**  
COLONEL OF THE REGIMENT.

Maj.-Gen. Howard's private residence is Castle Godwyn,  
Painswick.



**THE GLOUCESTERSHIRE REGIMENT.**

THE OFFICERS OF THE 2ND BATT. AT BLOEMFONTEIN, IN MARCH, 1900, AFTER THE MARCH FROM ENSLIN UNDER LORD ROBERTS.

Back row:—Major Claude Moss, Major Charles du P. Richardson-Griffiths, Lieut. Robert E. Rising, Major Bertram O. Fyffe, Lieut. Julian Fane, Lieut. Archibald A. McLeod, Lieut. Jos. R. Wethered, Lieut. Daniel Burgess, Lieut. Henry M. Harrison, Major the Hon. Robert French, Lieut. Harrington (attached), Lieut. Robert M. S. Gardner, Lieut. and Quartermaster Edward Murray, Capt. Ferguson, R.A.M.C. (attached).  
Front row:—Lieut. and Adjutant E. D'A. Le Mottée, Capt. Keith Davie, Major Charles J. Vines, Lieut. Chas. B. Messiter, Lieut. John Gabourel, Lieut. Alexander W. Pagan.

[We are indebted to the Editor of "The Army and Navy Chronicle" for the use of above photos.]



**RARE BARGAINS IN SECOND-HAND PIANOS**  
BY BECHSTEIN, CHAPPELL, IBACH, CRAMER, ETC.

**ERNEST CRICHTON,**  
**CHELTENHAM.** \* Telephone 378.  
WRITE FOR SPECIAL LIST.

\*\*\*\*\*





**A CHARLTON KINGS CRICKET TEAM SIXTEEN YEARS AGO.**

THE MATCH WAS PLAYED IN MR. MITCHELL'S FIELD, CHARLTON KINGS v. CHELTHENHAM POLICE.

Back row:—J. Knight, A. Mitchell, F. Burrows, W. Mitchell, S. H. Brookes, G. Reeves, S. Hawkes, J. Bate.

Sitting:—Hodgkinson, W. J. Brinsford, F. Peacey, G. Mitchell, W. Thorne, A. Pike, —. MacDonald.

In front:—F. H. Gregory.



**TABLEAUX AT SIDDINGTON.**

GROUP REPRESENTING BRITANNIA'S LEVEE GIVEN AT A CONCERT RECENTLY BY MEMBERS OF THE SIDDINGTON MISSION HALL.

Standing at back:—Misses S. Berry (Canada), A. Fletcher (Britannia), R. Hill (India), E. Fletcher (Ireland).

Seated:—G. Harris (Scotland), N. Miller (Wales), A. Richings (England), A. Hicks (Australia).

Kneeling:—J. Miller (West Indies), V. Wait (holding shield), R. Richings (South Africa).



**DEATH OF THE OLDEST INHABITANT OF CLEEVE.**

MRS. MARY ANN HAWKES,

Who died at Cleeve Feb. 22, 1913, aged 94 years. She was a native of Cheltenham, and leaves two children living, 25 grandchildren, 34 great-grandchildren, and 4 great-great-grandchildren.

James Murray, a spectator at the Cup Tie between Newcastle United and Sunderland at St. James' Park, Newcastle, dropped dead on Monday afternoon.

The Rev. G. Dandridge, rector of St. Nicholas, Guildford, made some outspoken comments on the ridiculousness of modern dress in the course of a series of Lenten services. He said God did not intend that a woman's body should be crippled in its movements, as it often was, or turned into a mere over-dressed, animated clothes peg, or made to look like a duck waddling to a pond. They ought not to make themselves look grotesque by the extravagance of their attire.

**TO OUR READERS ABROAD.**

WE ARE ALWAYS GLAD TO RECEIVE LETTERS AND PHOTOGRAPHS FROM READERS ABROAD, ESPECIALLY FROM THOSE WHO HAVE RELATIVES OR FRIENDS IN ANY PART OF GLOUCESTERSHIRE

A very influentially signed memorial has been addressed to the Prime Minister, pointing out the backwardness of Great Britain in the matter of aerial defence, and the urgent need of providing a million sterling or a larger sum in the Navy and Army Estimates for the purpose of improving this branch of Imperial defence.



**GLOUCESTERSHIRE COUNTY SCHOOLS' CUP COMPETITION—CHELTENHAM v. BRISTOL.**

THESE TWO TEAMS MET ON THE ATHLETIC GROUND ON SATURDAY, MARCH 15TH, 1913, THE RESULT BEING A DRAW OF 6 POINTS EACH.

1.—Cheltenham Boys:—Back row: Boite, Jordan, Bridgman, G. Pardington, Woodrow, Webb, T. R. Adams, Jackson, Powell. Front row: Davis, Fitz, Woodman, W. T. Jeffery, Bethell, Thomas, Lloyd, Bendall.

2.—Two captains tossing.  
3.—A line out.

4.—A curious tackle by a Cheltenham boy.  
5.—Another line out, the Bristol midget half on extreme left.  
6.—Spectators.  
7.—The Bristol midget half gives a splendid pass to outside half.

[Photos by Cheltenham Newspaper Co., Ltd.]



## THE NATIONAL HUNT MEETING IN CHELTENHAM.<sup>2</sup>

Snaps of the second day's racing in Cheltenham, Thursday, March 13th. The meeting was easily a record; the weather was glorious, the going perfect, and naturally the racing was of a very good class.

- 1.—Lord Ribblesdale (in brown top hat) chatting to a friend.
- 2.—Captain Paynter, on Chapelizod (winner), on left coming over last fence in Foxhunters' Challenge Cup, Fearless VII. (second) is slightly leading, and Major Purvis, on Our Philip (third), is behind.
- 3.—Over the first fence in Foxhunters' Challenge Cup. (a) Capt. Paynter, (b) Major Purvis.
- 4.—Mr. A. Smith winning second race on Yonder, coming over last fence.
- 5.—Two Portuguese gentlemen in attendance on the ex-King of Portugal.
- 6.—An accident. Ambulance bringing in Mr. Cox, who had a bad fall in first race.
- 7 and 8.—Parts of the stands on second day. [Photos by Cheltenham Newspaper Co., Ltd.]



**CHELTONIANS IN CANADA.**

Group of Cheltonians and their friends, taken at a gathering in Toronto last month. The group consists of 34 Cheltonians, whilst the others are all "Old Country" folk. All the Cheltonians are named.

Back:—Wrathall, —, —, Bellamy, —, —, J. Baker, Mullinger, C. Baker, H. Meek, Robertson, —, Mrs. C. Baker, Bastin.  
 Third row:—A. Smith, Mrs. Morgan, Mr. Morgan, Merrett, —, —, —, —, —, W. C. Payne (president), W. Betteridge (hon. treasurer), T. W. Harvey (hon. secretary), W. Haines, —, —, E. Baker.  
 Second row:— —, —, —, —, —, Mrs. Payne, Mrs. Harvey, Mrs. Betteridge, Mrs. Haines, —, —, —, Miss Bishop.  
 Front row:— —, —, Mrs. Gwilliam, Miss G. Baker, Miss L. Payne, Miss C. Baker, Miss D. Harvey, —, Miss C. Gilks, Miss E. Payne, Miss L. Betteridge, Miss H. Gilks, Miss D. Betteridge, Miss W. Payne, —.

\*\*\*\*\*

**ASSOCIATION FOOTBALL IN CHELTENHAM.**

AT WHADDON-LANE LAST SATURDAY, CHELTENHAM TOWN BEAT WOTTON-UNDER-EDGE IN A NORTH GLOUCESTERSHIRE LEAGUE MATCH BY 5 GOALS TO NIL.



CHELTENHAM TEAM.

F. Challenger, M. Stillman, W. Barker, E. James, C. E. Phillips, R. Trinder, R. Stringer (capt.), G. P. Rathbone, —, Horton, W. E. Snowsell, L. Willis, W. Allen, H. W. Ingles.



WOTTON-UNDER-EDGE TEAM.



MR. F. W. SEYMOUR,

Of the Stores, Arborfield Cross, near Reading, who has just been returned unopposed on the Wokingham Board of Guardians and Rural District Council. He is an old Cheltonian.

\*\*\*\*\*

**CYCLISTS!** let your new **New Hudson** Bicycle if you want absolute satisfaction, lasting good service, and general dependability. These and all accessories are obtainable from

**F. E. HUGHES, Montpelier Street, CHELTENHAM.**

Illustrated catalogues post free.



**FANCY DRESS BALL IN CHELTENHAM.**

Mr. Harry Jones' St. Patrick's Ball, held at the Oddfellows' hall, Cheltenham, St. Patrick's Day, March 17th, 1913. It was a great success, over 130 being present. The prize-winners are sitting in centre of third row from back, the Kismet and Red Indian being first prize for ladies and gentlemen, respectively, Spanish Dancer and Ally Sloper second prize, and Moreland's Matches and Pierrot being third prize. [Photo by Cheltenham Newspaper Co., Ltd.]



**WOMENS' CO-OPERATIVE GUILD IN CHELTENHAM.**

TEA TO 200 PAST AND PRESENT MEMBERS AT BENNINGTON HALL, MARCH 13, 1913. THE COMMITTEE.

Back row:—Mrs. Matthews, Mrs. Chandler, Mrs. James, Mrs. Skinner, Mrs. Fincher, Mrs. Cooke, Mrs. Lush, Mrs. Moreton, Mrs. Pearce.

Front row—Mrs. Parsons (treasurer), Mrs. Davis (vice-president), Mrs. Lake (president), Mrs. Wimhurst (president of Guilds), Miss Cole (sec.), Miss Chandler (assistant sec.).

[Photo by Cheltenham Newspaper Co., Ltd.]



**MR. ALFRED GREY**  
AS "LORD LITTERLEY" IN "THE AMAZONS,"

At the Opera House, Cheltenham, next week.

**FINED FOR USING A TITLE.**

It is still debasing in Bavaria to earn a living with one's hands. This fact has become known by the case of Baron von Reitzenstein, who has just been punished, under a law nearly a hundred years old. Baron von Reitzenstein is desperately poor, and made an application for a pension under the General Disability Pension Law, alleging the loss of a hand in an explosion. Investigation disclosed, says the Paris "Daily Mail," the horrible fact that he had been earning his living as the "boss" of the dynamite gang in a quarry, and he was prosecuted criminally and fined because he had used his title of baron in signing his application. The fine was imposed under a law of 1818, forming part of the Bavarian Constitution, which provides that "the use of a title of nobility is suspended during the undertaking of baser work for wages, consisting simply of work with hands or during the time one is engaged in trade in a public shop or store, or in handiwork."

**PRACTICAL BEE CULTURE.**

As the Bee Season has now opened, we have pleasure in announcing that our Special Articles on the subject will be resumed in the "Chronicle," commencing the first Saturday in April.

**PHOTOGRAPHS FOR SALE.**

We can supply customers with Splendid Reproductions of any Photograph taken by our artist for the "Graphic." Enlargements a speciality. Prices on application.



**STROUD THURSDAY ALBION ASSOCIATION FOOTBALL CLUB, 1912-13.**

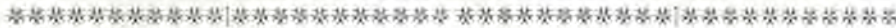
Record:—Played 13, Won 9, Lost 3, Drawn 1. Goals for 47, Against 24.

Back row:—S. A. Hewitt, A. Jones, —. Hoare, R. Goscombe, V. G. Newman, C. Elmer, P. G. Gorton.

Middle row:—R. J. Turner, —. King, J. H. Payne, W. Price, E. Smith.

In front:—C. Watkins, F. Finch.

[Photo by G. Stone, Stroud.]



**CHELTONIAN AS POSTMASTER IN CANADA.**

Mr. George Jenkins, formerly of Cheltenham, and a grandson of Mr. Thomas Jenkins, of 8 Victoria-place, Bath-road, sends us this group taken in front of his home in Ronan, Alberta, Canada. He has indicated by arrows himself, his wife, and two children. A letter from him appears in the main sheet of the "Chronicle."



**DULL STRAW**

**HAT DYE,**  
IN BLACK AND COLOURS. **3d. PER BOTTLE.**

**JAS. ANDERTON,**  
145 HIGH STREET (Opposite Town Clock),  
CHELTENHAM.

**EASTER HOLIDAYS**

**NEW FANCY SHIRTS**  
Soft or Stiff Cuffs, 2/11 to 4/6.  
**NEW FANCY TIES,**  
Latest Patterns, 1/-, 1/6, 2/6.  
**NEW FANCY SOCKS,**  
Neat Colourings, 1/6.

**A. BECKINGSALE,**  
111 High Street,  
Cheltenham.  
TEL. 405.

**H. G. NORTON & CO.,**

EXPERTS IN  
**ELECTRIC LIGHTING,**  
Motors, Telephones, Bells,  
ETC.

**COUNTRY HOUSE AND  
FARM LIGHTING**  
A Speciality.

ADVICE AND ESTIMATES FREE.

**HIGH-CLASS DENTISTRY.**

**D. GORE BOODLE & CO., LTD.,**

Are in attendance every day at NORTH HOUSE, Cheltenham, (from 9 a.m. to 8 p.m. Free Extractions first hour. A Lady always in attendance.

**PAINLESS DENTISTRY.**

**BRANCHES EVERYWHERE.**

We attend Bourton-on-the-Water every Tuesday, and Chipping Norton every Wednesday, Telephone, 166 Gloucester.

ADVICE FREE.

**BOODLES' TEETH.**

TO OUR GLOUCESTER READERS.



We shall be pleased to send our own photographer to take any events of public interest in Gloucester, free of charge, and insert the pictures in the "Gloucestershire Graphic," if you will let us know when and where they are taking place.

A splendid series of pictures of the Calton-road School Concert were taken by our own photographer, and will appear in next Saturday's "Cheltenham Chronicle and Graphic."

**TREDEGAR ESTATES.**

EXPECTED DEATH DUTIES UP TO £1,000,000.

The position of the Tredegar estates has been considerably discussed since the death of the noble viscount, and the general impression is that they will provide a "wind-fall" for the Chancellor of the Exchequer. It is computed that the death duties may run to anything between £700,000 and £1,000,000. This, coupled with the fact that the late viscount within the last few years put over £500,000 in cash into the Alexandra Docks Company, naturally makes a considerable inroad into the available cash aspect of the estates.

The Prime Minister, addressing a deputation from the Parliamentary Committee of the Trade Union Congress on Monday, declined to commit the Government to the principle of nationalisation of either mines or railways as requested by the deputation. He pointed to some experience in Germany as against nationalisation of mines and remained unconvinced regarding the nationalisation of railways. Mr. Runciman and Mr. Burns also addressed the deputation.

# THE CHELTENHAM CHRONICLE AND GLO' SHIRE GRAPHIC



No. 639.

Saturday, March 29, 1913.

## OPERA HOUSE, CHELTENHAM.

This Afternoon (2.30) and Evening (7.45)—  
"The Amazons."

NEXT WEEK:  
THE MUSICAL EVENT OF THE YEAR.  
THE O'MARA ALL-BRITISH  
OPERA COMPANY.

## Old Selected SCOTCH WHISKIES.

B BLEND 42/- per Doz.; 3/6 per Bott.  
BB BLEND 48/- per Doz.; 4/- per Bott.  
BBB BLEND 51/- per Doz.; 4/3 per Bott.

## BARTHOLOMEW,

419-420 HIGH ST., CHELTENHAM.

## TAWNY PORTS. Old in Wood.

30/-, 36/-, 42/- per Doz.;  
2/-, 3/-, 3/6 per Bott.

## DENTISTRY. Est. 1891.



'Phone 782, Cheltenham  
**PAINLESS  
EXTRACTIONS,  
ETC.**

**MR. SUTTON GARDNER,**  
LAUREL HOUSE,  
CHELTENHAM.

HOURS—9 A.M. TILL 8 P.M. DAILY.

Branches at Stroud, Nailsworth, Winchcombe, Stow, Bourton, etc.

## STEPHENS & FINCH,

HEATING ENGINEERS,  
Grosvenor Works, Cheltenham.

We hold the Largest Stock in the County of Boilers, Radiators, Pipes, and Connections of all classes of Heating and Hot Water Supply. Horticultural Heating a Speciality.  
Telephone No. 35Y1.



## DEATH OF A FAMOUS CHELTENHAM GENERAL.

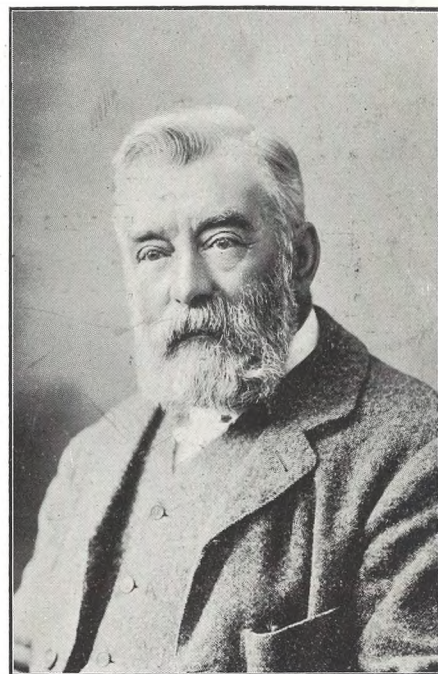
MAJ.-GEN. SIR FREDERICK CARRINGTON,  
K.C.B., K.C.M.G.,

Who died at his residence, Perrott's Brook, near Cirencester, March 22, 1913, aged 68 years. He was born in Cheltenham, educated at Cheltenham College, and won fame as a commander of irregular light horse in South Africa. He was also a great all-round sportsman.

[Photo by Cheltenham Newspaper Co. Ltd.]

## PHOTOGRAPHS FOR SALE.

We can supply customers with Splendid Reproductions of any Photograph taken by our artist for the "Graphic." Enlargements a speciality. Prices on application.



## RESIGNATION OF A VETERAN GUARDIAN.

MR. J. H. MCLQUHAM,

Of Staverton House, near Cheltenham, who on March 13 last resigned his seat on the Rural District Council and Board of Guardians. He is in his 81st year, and with the exception of three years has represented Staverton from 1870 to the present time.

[Photo by Holloway, Cheltenham.]

## W. HALL & SONS, LTD.,

Fruiterers, . . Florists,  
Fishmongers, Game Dealers,

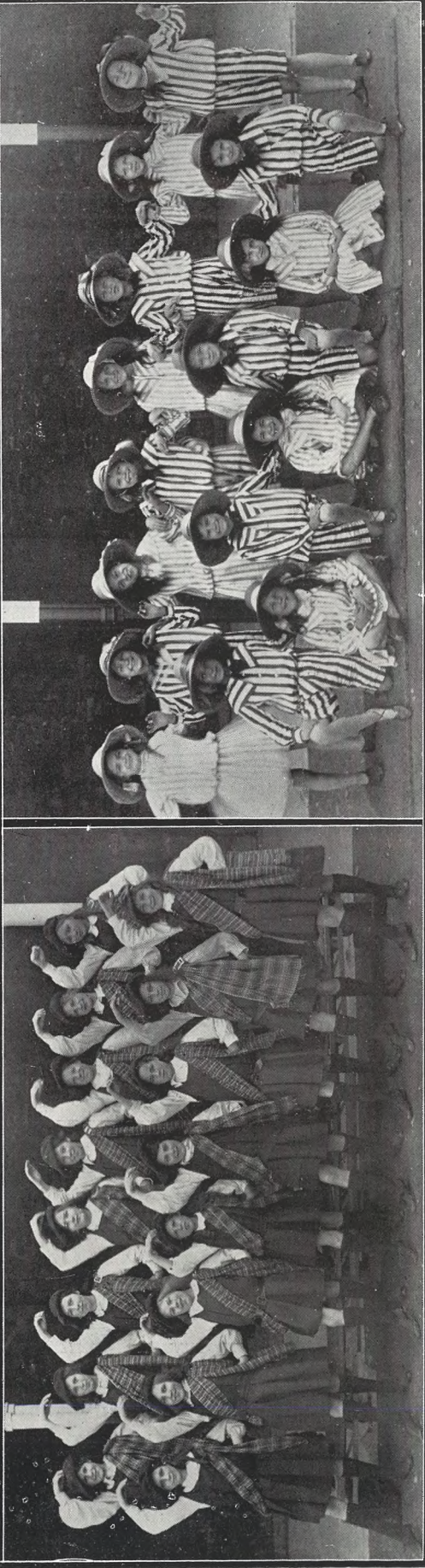
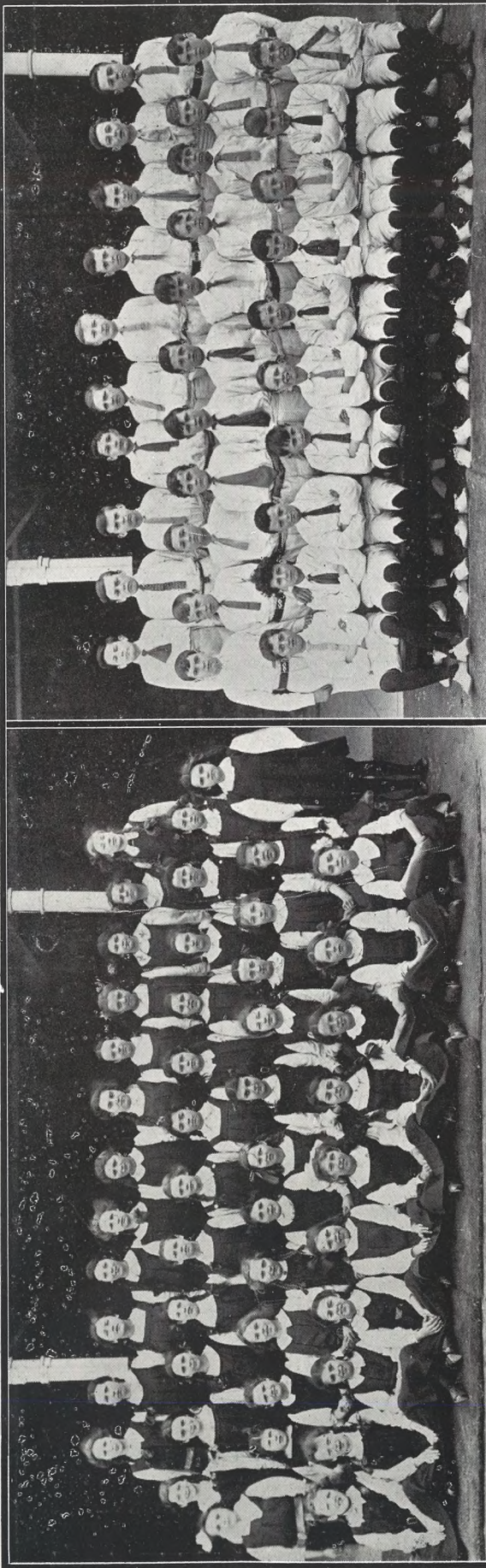
92, 92a High Street, TEL. 85.  
16 Montpellier Walk, TEL. 285.

CHELTENHAM.

Pineapples, Black and White Grapes, Bananas, Seedless Oranges, Pears, etc.

Asparagus, French Beans, Seakale, Mushrooms, Tomatoes, etc.

Poultry, Game etc.



**CALTON ROAD COUNCIL SCHOOL, GLOUCESTER.**

**Physical Culture Display by the Children, March 17th and 18th, 1913.**

THE DISPLAY (A MUSICAL ONE) TOOK PLACE IN THE SCHOOL-HALL, BOTH PERFORMANCES BEING PACKED. THE APPEARANCE OF THE CHILDREN AND THEIR CLEVER PERFORMANCE WAS GREATLY ADMIRER, AND REFLECTED GREAT CREDIT ON MR. FRANKLIN, THE HEADMASTER, AND HIS CAPABLE ASSISTANTS.

1.—The girls, who performed exercises and marching.

2.—The boys, who performed a running maze.

4.—Fifteen Coons; a delightful lot of kiddies.

[Photos by Cheltenham Newspaper Co., Ltd.]

**To our GLOUCESTER READERS.**—If you like the "Chronicle and Graphic," and would subscribe to it regularly, hand in your name and address to the Publisher at the "Echo" Office in Queen Street, Gloucester, who will see that a copy is delivered to you. Or you may purchase copies at the Office, or of Mr. J. Beard, Newsagent, The Cross. And, when you have done with the paper, kindly hand it on to your friends. They will appreciate it, and you will be doing them and us a good turn. Copies of any photograph in the paper can be obtained at a moderate charge on application to the Manager at the Cheltenham Offices.





**CALTON ROAD COUNCIL SCHOOL, GLOUCESTER.**

**Physical Culture Display.**

A group of girls who performed an Old English country dance, "Hampstead Heath." In centre are boy and girl who performed another country dance, "Dargason." [Photo by Cheltenham Newspaper Co., Ltd.]

\*\*\*\*\*



**CALTON ROAD COUNCIL SCHOOL, GLOUCESTER.**

**PHYLLIS AND VERA STRETTON,**

Who performed a Venetian dance, "Cachucha," at the Physical Culture Display.

[Photo by Cheltenham Newspaper Co., Ltd.]

**NEW HUDSON CYCLES.**—The accurate construction, perfect material and workmanship, and careful attention to the smallest detail give a lifetime satisfaction. Annual sales exceed 50,000. The No-Trouble Bicycles. Let me sent you a catalogue.

**F. E. HUGHES, Montpellier Arcade, CHELTENHAM.**



**CHELTENHAM LADY IN CANADA.**

**MR. AND MRS. A. HUBBARD,**

Of 96 London-street, Sherbrooke, P.Q., Canada. Mrs. Hubbard is a Cheltonian, her parents living in Cheltenham now. A letter from her appears in the main sheet of to-day's "Chronicle."



**MR. JAMES EDWARD MAY,**

Of 80 Fairview-road, Cheltenham. Who died Feb. 28th, 1913, aged 72 years. He was a custodian of the old Reform Club, and first caretaker of Cheltenham Liberal Club. He was also associated with the Cheltenham Fire Brigade, of which he was captain at one time. By trade he was a plumber.

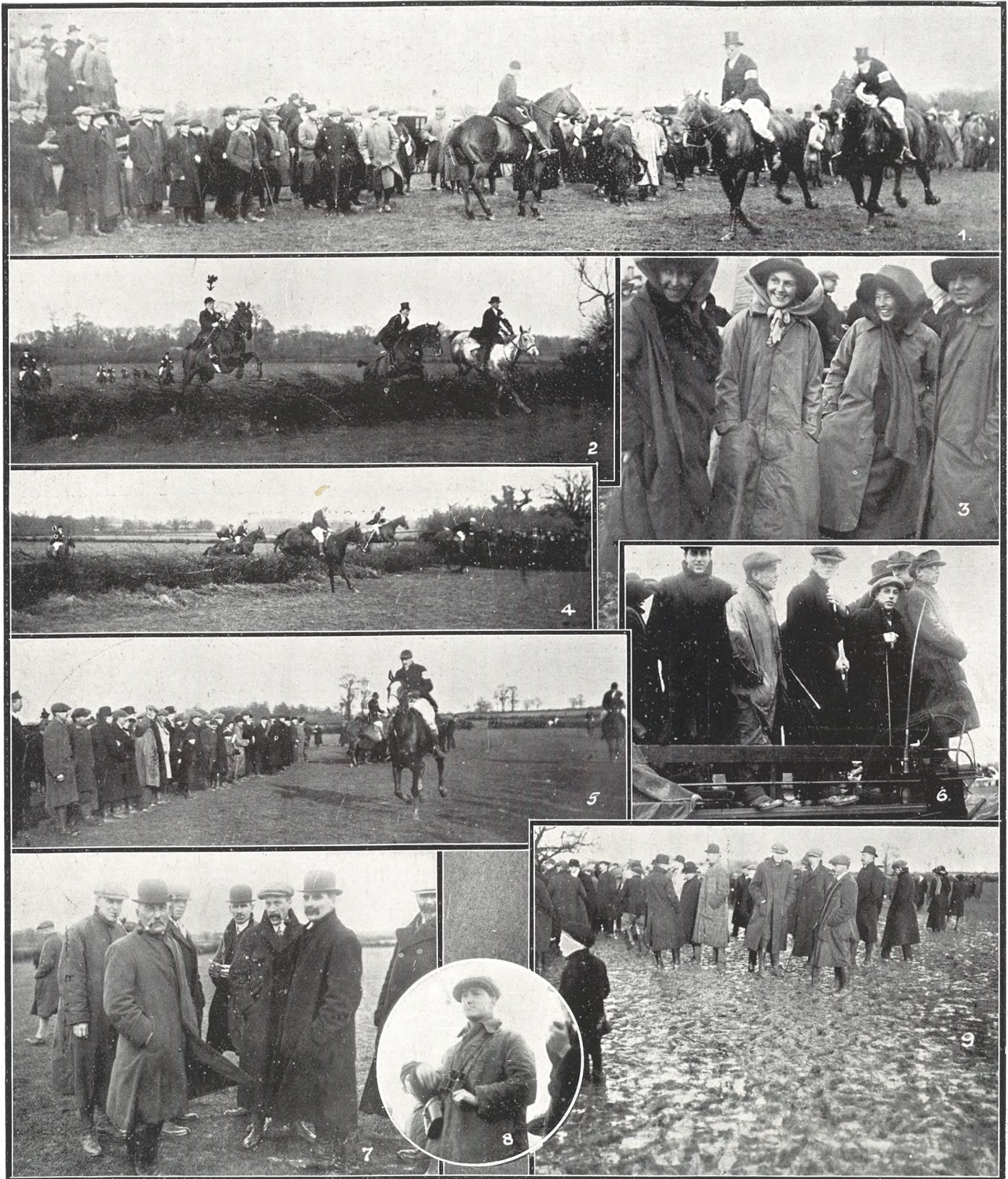
**H. G. NORTON & CO.,**

**EXPERTS IN  
ELECTRIC LIGHTING,  
Motors, Telephones, Bells,  
ETC.**

**COUNTRY HOUSE AND  
FARM LIGHTING**

**A Speciality.**

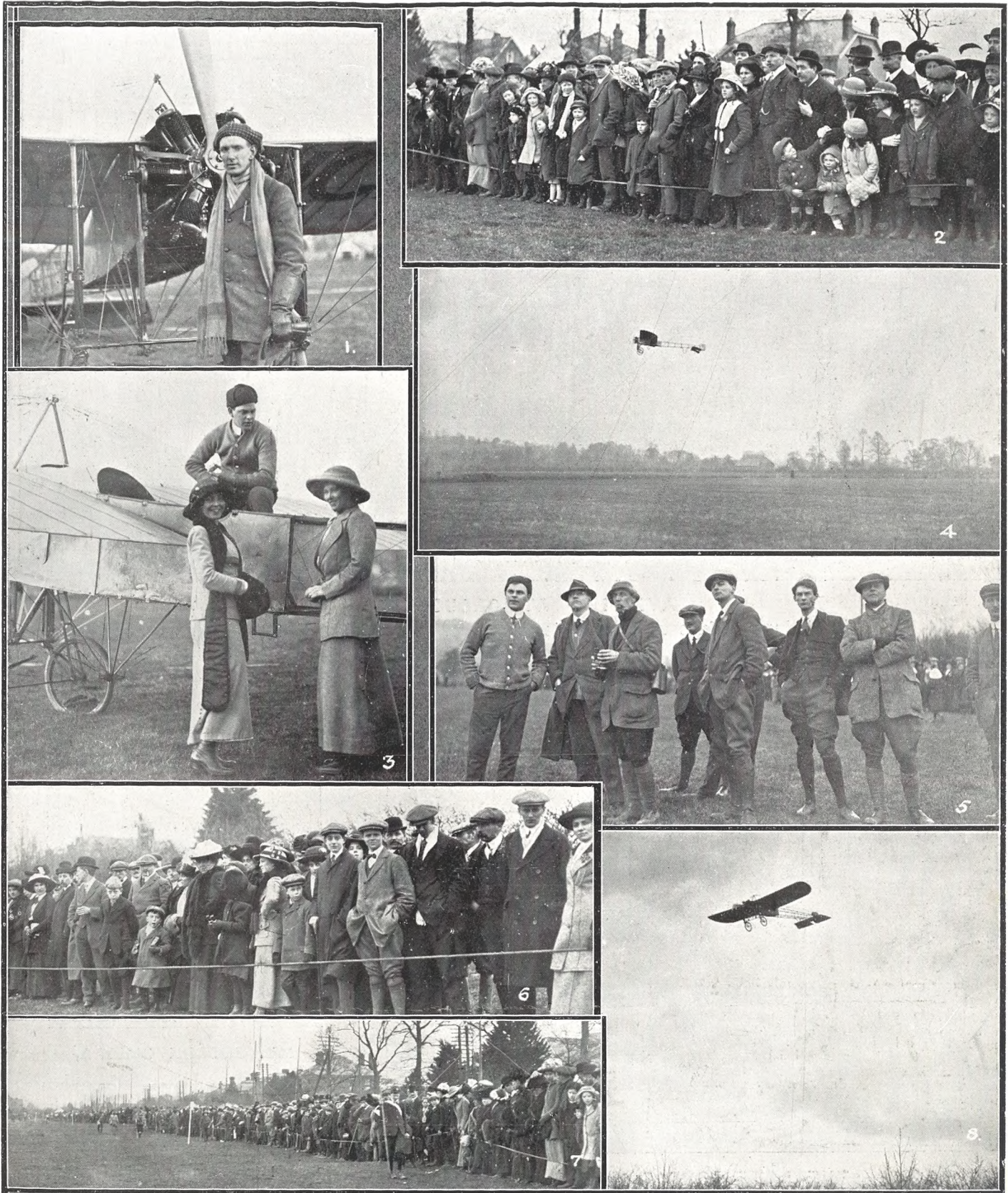
**ADVICE AND ESTIMATES FREE'**



**THE R.A. COLLEGE AND V. W.H. (EARL BATHURST'S) POINT-TO-POINT RACES.  
Held at Preston, near Cirencester, March 20th, 1913.**

The racing was capital, but the weather was atrocious, pouring rain, with thunder and lightning, and the field became a quagmire.

- 1.—Finish of College Cup race, Mr. Sydney Dennis, on Merrythought, just beating Mr. R. E. Morris-Eyton, on Hadrian, after a desperate neck and neck race.
- 2.—Taking a fence in the Siddington Cup and V.W.H. Farmers' race. Mr. H. Horton's, jun., Ariarwen (on left, marked with arrow) was favourite, and won easily.
- 3.—The ladies didn't seem to mind the mud.
- 4.—Taking a fence in College Cup race, Mr. W. Pepper, on Camilla, leading, Mr. Dennis (winner) jumping behind him.
- 5.—Captain F. W. Sopper winning Cirencester Cup on Melton. He also won the V.W.H. race.
- 6.—College students.
- 7.—Some V.W.H. supporters. Mr. W. W. Cole in centre.
- 8.—Mr. E. V. Cope, clerk of scales.
- 9.—A snapshot giving some idea of the state of the ground.



**AVIATION IN GLOUCESTER.**

**Mr. Sydney Pickles gives some fine displays over Gloucester and Cheltenham.**

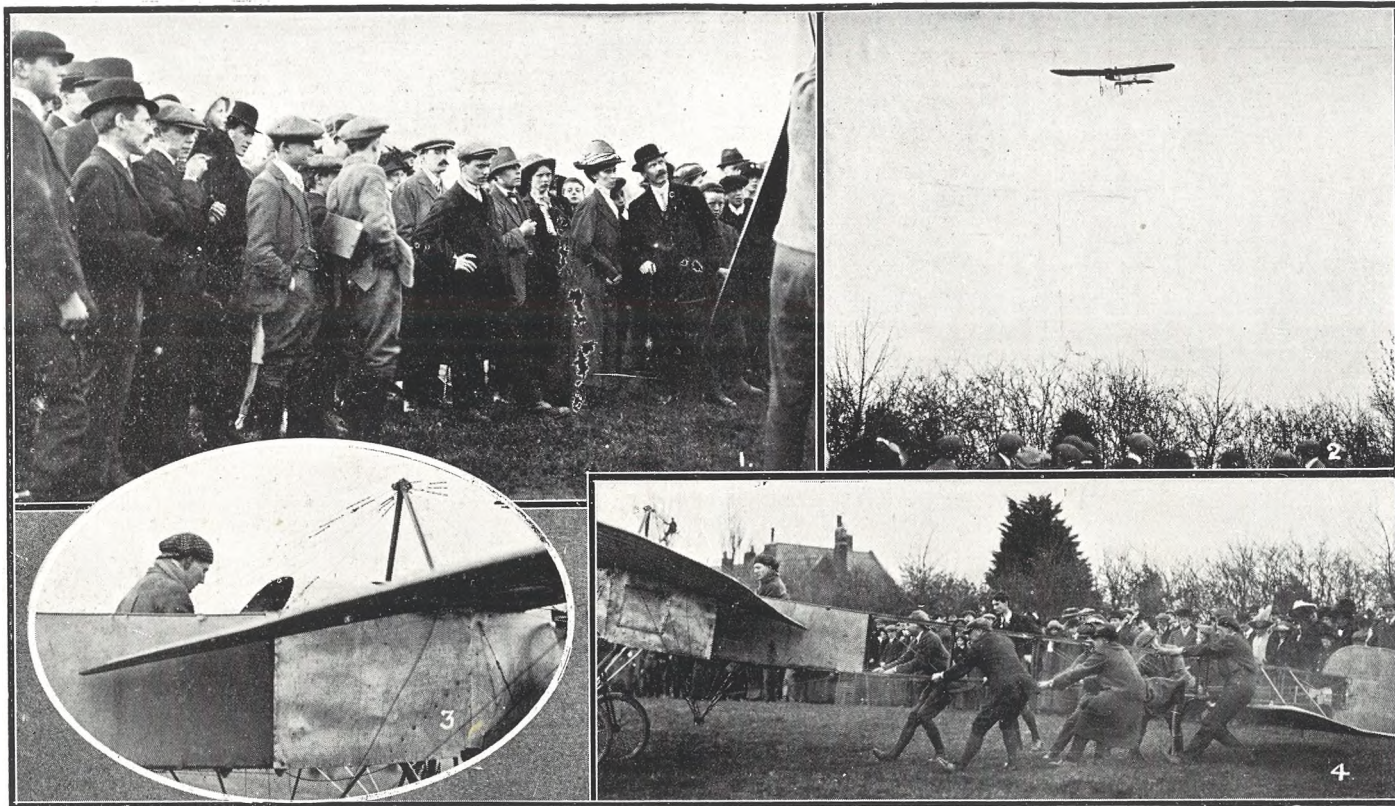
During the Easter holidays Mr. Sydney Pickles gave a fine display of flying in a Bleriot monoplane from a field at Hucclecote, going for the Midlands Height Record, and taking a passenger to Cheltenham and back two or three times.

- 1.—Mr. Sydney Pickles standing by his monoplane. It is driven by a 6 cylinder fixed Anzani engine of 60 horse-power.
- 2.—Some of the crowd on Bank Holiday afternoon.
- 3.—Two Gloucester ladies are initiated into

- the mysteries of the control by Mr. Pickles' mechanic.
- 4.—Ascending on his first flight on Monday afternoon, going towards Chosen Hill.
- 5.—Assistants watching Mr. Pickles making a local height record.

- 6.—Part of the crowd in reserved enclosure.
- 7.—Some idea of the capital gate who watched the proceedings.
- 8.—Planing down after climbing to about 7,000 feet high.

[Photos by Cheltenham Newspaper Co., Ltd.]



**AVIATION AT GLOUCESTER.**

**Mr. Sydney Pickles at Hucclecote on Easter Monday, March 24th, 1913.**

- 1.—Crowd watching mechanic cleaning engine after a flight. 2.—Descending over the hedge into aviation ground. 3.—Just about to start. 4.—Assistant holding back machine when starting.

[Photos by Cheltenham Newspaper Co., Ltd.]

\*\*\*\*\*



**THE LATE LORD WOLSELEY.**

Lord Wolseley, one of England's greatest soldiers, died on Tuesday last at Mentone, and a special memoir of the deceased nobleman appears in the "Chronicle." In the above photograph (taken in 1863 by C. R. Pottinger photographer, Cheltenham), he is shown in the company of his future wife (the present Lady Wolseley), who was then Miss Erskine, and who was a guest of Mr. Thomas Fortescue at Suffolk Hall, Cheltenham. The names in the group from left to right are as follow:— Miss Agg-Gardner, Colonel Wolseley, Miss Erskine (afterwards Lady Wolseley), Miss Beresford and Mr. Ruxton.



**MR. JOSEPH O'MARA,**

THE GREAT BRITISH TENOR.

Who will play "Don Jose" in "Carmen," "Miles Nacoppaleen" in "The Lily of Killarney," and "Raoul" in "The Huguenots," with the All British Opera Company at the Cheltenham Opera House next week.

**THE O'MARA GRAND ENGLISH OPERA COMPANY**

In the following Operas:—Monday, "Carmen"; Tuesday, "Tannhauser"; Wednesday, "Lily of Killarney"; Thursday, "Faust"; Friday, "The Huguenots"; Saturday Matinee, "La Traviata"; Saturday Evening, "Maritana."



**A YOUNG "OLD CHELTONIAN."**  
WINIFRED ELSIE COOK.

Taken on the shores of Lake Michigan, Chicago, Jan. 21, 1913. A letter from her father appears in the main sheet of to-day's "Chronicle."



**TWO GLOUCESTRIANS IN MALAY.**

Messrs. F. F. HILL and LINDSAY VEARS, of Gloucester, on the Castlefield Rubber Estate, Petaling, Selangor, Federated Malay States, Feb. 27, 1913. Mr. Vears is in charge of 700 acres of rubber plantation; and Mr. Hill, who is in business at Ipoh, was visiting him. Mr. Vears is coming home in April on leave. A letter from him appeared in last Saturday's "Football Echo."



**CHELTONIANS IN AMERICA.**

ANNUAL CONVENTION OF GRAND LODGE OF "SONS OF ST. GEORGE," ST. LOUIS, MO., 1912.

There are seven Gloucestershire men, and three old Cheltonians in the group, which was sent to us by Mr. T. A. C. Cook, from whom a most interesting letter appears in the main sheet of to-day's "Chronicle."



**MISSING GLOUCESTER BRIDEGROOM.**

MR. H. CHARLES DEAVIN, A.R.C.O.,  
Of 108 London Road, Gloucester.

He was to have been married on Tuesday morning last at St. Mark's Church, Gloucester, to Miss Voyce, of Gloucester, but mysteriously disappeared shortly before the hour fixed for the ceremony, after sending letters to his father and fiancée saying he "had undertaken too much with regard to the house." He is said to have been seen in Cheltenham later on the same day. He was the organist at St. Mark's Church, and was an uncertificated assistant at Deaconstreet School.

[Photo by H. E. Jones,  
Northgate-street, Gloucester.]

DULL STRAW

**HAT DYE,**

IN BLACK AND COLOURS. **3d.** PER BOTTLE.

**JAS. ANDERTON,**

145 HIGH STREET (Opposite Town Clock),  
CHELTENHAM.

**W**E are always glad to receive letters or photographs from Gloucestershire people now resident abroad, in order that we may insert same in the "Chronicle and Graphic." Just as news from home is welcome to them, so will be news from them to their relatives in the old country. We therefore invite correspondence, and will make a special feature of same in the "Chronicle and Graphic," and insert any photographs of interest—either of individuals, groups, home life, &c.—in the popular Art Supplement. Letters from Colonists will be especially welcomed if they contain information concerning the conditions of life, and of trade, and also the prospects for future settlers.

**R. T. ADAMS & Co.**

ARE GIVING EXCEPTIONAL VALUE  
IN

**SPRING COSTUMES.**

Navy, Saxe, Tan, and Grey Serges, from 16/11. Smart Tweeds, Well Tailored, Belted, from 21/9.

**MILLINERY.**

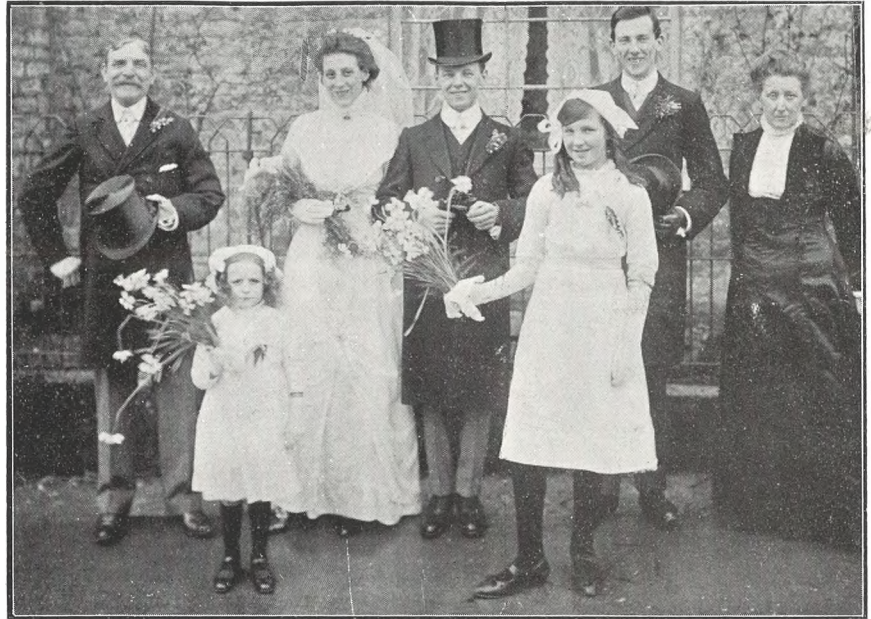
Smart semi-trimmed, from 1/11½. Tagel, all colours. New shape, 3/11½. Drake Hats. Silk, Poplin, and Strand, from 1/11½.

**COATS. . . .**

Rain Coats, as sketch, 6/11 to 30/-. Gaberdine, as sketch, from 12/11. Children's sizes, from 4/11. Sports Coats, 8/11, 10/11, 12/11. In all new shades, with skirts to match, from 4/11½.



**R. T. ADAMS & Co.,**  
75-76 High Street  
(OPPOSITE BATH ROAD),  
**CHELTENHAM.**



**A STOW-ON-THE-WOLD WEDDING.**

The wedding of Miss E. L. Plant, daughter of Mr. and Mrs. John Plant, Church-street, Stow, and Mr. H. Osborne, son of Mr. and Mrs. Thomas Osborne, Darlestone, Staffs., took place at Stow Church, March 22, 1913.

At back.—Mr. Plant, Bride, Bridegroom, Mr. J. V. Winter, Mrs. Plant.  
In front.—Kathleen Eames and Gladys Woodward (bridesmaids).

[Photo by J. W. Farrall, Stow-on-the-Wold.]

\*\*\*\*\*

**SPRING NOVELTIES**

**NEW FANCY SHIRTS**

Soft or Stiff Cuffs, 2/11 to 4/6.

**NEW FANCY TIES,**

Latest Patterns, 1/-, 1/6, 2/6.

**NEW FANCY SOCKS,**

Neat Colourings, 1/6.

**A. BECKINGSALE,**

111 High Street,

TEL. 406.

**Cheltenham.**

**HIGH-CLASS DENTISTRY**

**D. GORE BOODLE & CO., LTD.,**

Are in attendance every day at NORTH HOUSE, Cheltenham, (from 9 a.m. to 8 p.m. Free Extractions first hour. A Lady always in attendance.

**PAINLESS DENTISTRY.**

**BRANCHES EVERYWHERE.**

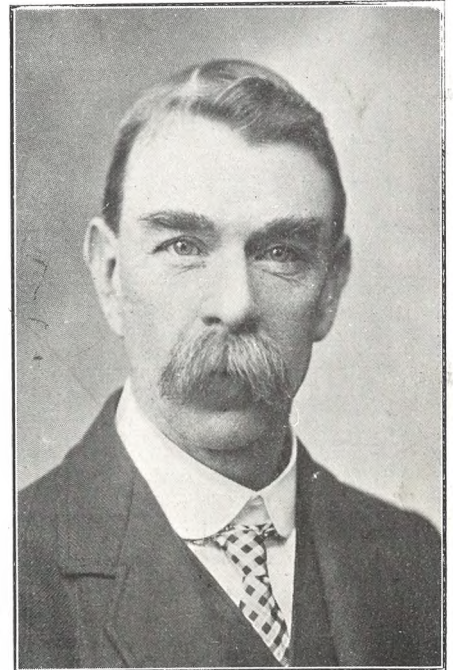
We attend Bourton-on-the-Water every Tuesday, and Chipping Norton every Wednesday, Telephone, 166 Gloucester.

**ADVICE FREE.**

**BOODLES' TEETH.**

**PRACTICAL BEE CULTURE.**

As the Bee Season has now opened, we have pleasure in announcing that our Special Articles on the subject will be resumed in the "Chronicle," commencing the first Saturday in April.



**A STROUD DOCTOR EMIGRATES TO BRITISH COLUMBIA.**

**DR. BASIL CHURCH,**

Of Minchinhampton, where he has lived and worked for twenty years, left England on Wednesday, March 26, 1913, for British Columbia. He was presented with a pair of silver entree dishes and an illuminated album, and had a wonderful send-off on Tuesday night by the townspeople, with whom he was very popular.

[Photo by Comley, Stroud.]

Printed and Published as a Gratis Supplement by the Cheltenham Newspaper Company, Limited.