

THE CHELTENHAM CHRONICLE

AND

GLO'SHIRE GRAPHIC

ART AND LITERARY SUPPLEMENT

Printed and Published as a Gratis Supplement by the Cheltenham Newspaper Co.

No. 479.

Saturday, March 5, 1910.

OPERA HOUSE, CHELTENHAM.

This Afternoon (2.30) and Evening (7.45).

The FIRES OF FATE.

NEXT WEEK—

THE POWERFUL ROMANTIC PLAY,
The BREED of the TRESHAMS.

| | | | |
|----------|----|----|--------|
| WINES. | :: | :: | ALES. |
| SPIRITS. | :: | :: | STOUT. |

BARTHOLOMEW,
419-420 HIGH ST., CHELTENHAM.
Telephone 185.

| | | |
|-------------|----|--------|
| LAGER BEER. | :: | TABLE |
| CIDER. | :: | WATERS |

ROBERTSON & CO.,

Cigar & Cigarette Importers.

(T. R. PRITCHARD, Proprietor).

8 Colonnade,
Cheltenham.

Established 1825.

W. Hall & Sons, Ltd.,
Fruiterers, . . Florists,
Fishmongers, Game Dealers,
92, 92a High Street, TEL. 85.
16 Montpellier Walk, TEL. 235.
CHELTENHAM.

Choice & Seasonable Fruits and Vegetables
always in Stock.

Guinea Fowl, White Grouse, Black Game,
Quail, and Salmon.



COLONEL CROKER-KING,

Chairman of Cheltenham General Hospital Board,

In the new chair which has lately been presented by an anonymous donor.



CHELTENHAM CONSERVATIVE CLUB ANNUAL DINNER, FRIDAY, FEBRUARY 25, 1910.

FLASH-LIGHT PHOTOGRAPH TAKEN WHILST LORD DUNCANNON, M.P., WAS SPEAKING.



ST. PAUL'S TRAINING COLLEGE, CHELTENHAM.

ANNUAL ASSOCIATION MATCH BETWEEN OLD CHELTS AND PRESENT COLLEGIANS, ON NEW FOLLEY GROUND, FEB. 26, 1910.—OLD CHELTS' TEAM,



CHELTENHAM CONSERVATIVE CLUB ANNUAL DINNER, FRIDAY, FEBRUARY 25, 1910.

FLASH-LIGHT PHOTOGRAPH OF ANOTHER SECTION OF THE LARGE COMPANY PRESENT.



ST. PAUL'S TRAINING COLLEGE, CHELTENHAM.

PRESENT STUDENTS' TEAM.



WEST v. SOUTH OF ENGLAND LADIES' HOCKEY MATCH AT CHARLTON PARK, MARCH 1, 1910.

1. West of England Team. Back row: Miss F. Thompson, Miss M. King, Miss H. Herring, Miss A. Archer, Miss C. Baldwin, Miss B. Needham. Front row: Miss E. Matthews, Miss B. Malden, Miss D.

Niblett, Miss V. Dodsworth, and Miss D. White.

2. Grand shot at goal by the West forwards.
3. South back makes a good save.
4. South goal-keeper saves goal by kicking

out. The ball can just be seen on her foot. Note her curious attitude.
5. Hot attack by South Team.
6. South of England Team.

HOCKEY.

FAIRFORD v. R.A. COLLEGE, CIRENCESTER, FEBRUARY 23, 1910.



COLLEGE TEAM:—E. C. Strickland, L. Bretherton, E. M. Mansel-Pleydell, Y. Sabit, H. Sudbury, A. C. Arden, W. D. Ward, R. S. Brander (captain), L. Stobart, A. D. Stewart, R. W. Wilson, R. P. Birchenough.



FAIRFORD TEAM:—E. Wright, the Referee, C. Slade, T. Frazer, F. R. Cole, W. R. Gauntlett (captain), H. E. Cole, A. J. Cook, L. Perry, W. V. Cole, J. R. Busby.

To sleep for thirty-six hours on end at frequent intervals is the latest cure for all ills. But we can't all get berths in Government offices.—"London Opinion."

An appeal has been entered against the sentences passed on Miss Violet Charlesworth and her mother.

William Lauder, a signalman at Greenlaw Railway Station, on the Berwickshire branch line of the North British Railway, was found dead at his post on Tuesday.

CHELTENHAM HOSPITAL EXTENSIONS.

OPENING CEREMONY, SATURDAY, FEBRUARY 26, 1910.



Left to right:—The Rector of Cheltenham, Lord St. Aldwyn, Colonel Croker King (president), Lord Duncannon, M.P., The Mayor of Cheltenham, Sir Edmund Fulton, C.S.I., and Mr. C. L. Grundy (hon. treasurer). In foreground on right, Major Percy Shewell.



THE MATRON AND NURSING STAFF ON STEPS OF HOSPITAL.

The population of New South Wales on Dec. 31 last numbered 1,645,445, an increase for the year of 40,436. Of this number 4,323 are assisted immigrants.

At the Spelthorne Licensing Sessions on Monday an application for a grocer's license to sell beer and spirits was supported in a petition by the vicar and curate of the parish.

At Maidenhead on Monday a police-constable was summoned for having ridden a bicycle without a light, was warned, and ordered to pay 5s. costs.



HISTORY & ANTIQUITIES OF CHIPPING CAMPDEN.
A CURIOUS OLD HOUSE FRONT IN CAMPDEN
HIGH-STREET. [J. Taylor, Campden.

Photo)



MR. G. F. SPINK,
OF STOW-ON-THE-WOLD, WHO DIED FEB. 23, 1910.

Mr. Spink was for thirty-eight years schoolmaster at Lower Swell School. He retired in 1907, and on Aug. 13 was publicly thanked for his services as schoolmaster, and presented with 50 guineas, a walking-stick, and an address.



MRS. McRAE,
Wife of ex-Supt. McRae, of Cheltenham,
who died Feb. 25, 1910, aged 72 years.

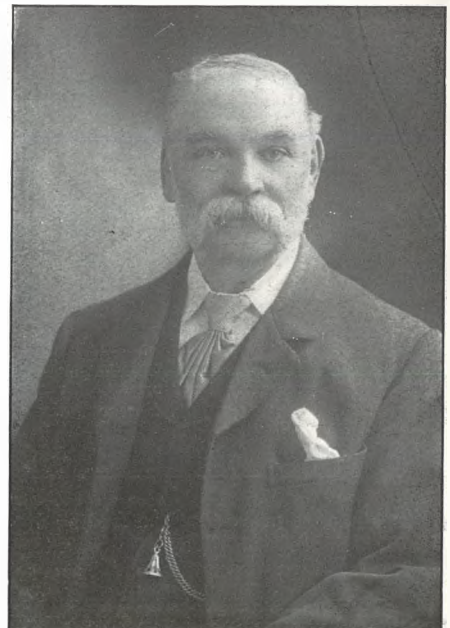
LACTOBACILLINE MILK

is the actual Sour Milk as recommended by Professor Metchnikoff prepared ready for use.

The use of Lactobacilline Milk obviates the necessity for home preparation of sour milk, and enables everyone to obtain the advantages of the Lactic Ferment Treatment without trouble or difficulty of any kind.

GLOUCESTERSHIRE DAIRY CO.,
— 2 PROMENADE, —
15 Suffolk Parade, Cheltenham.

~~~~~  
**PHOTOGRAPHS.** --- Copies of Photographs appearing in the Graphic can be obtained on application at the Office. Special Enlargements. Moderate prices.



**MR. GEORGE HENRY LEWIS,**  
Died at Gloucester Feb. 28, 1910, aged 75 years.



**WELSH BANQUET AT TOWN HALL, CHELTENHAM, ST. DAVID'S DAY, MARCH 1, 1910.**

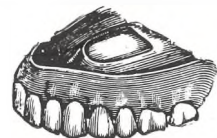
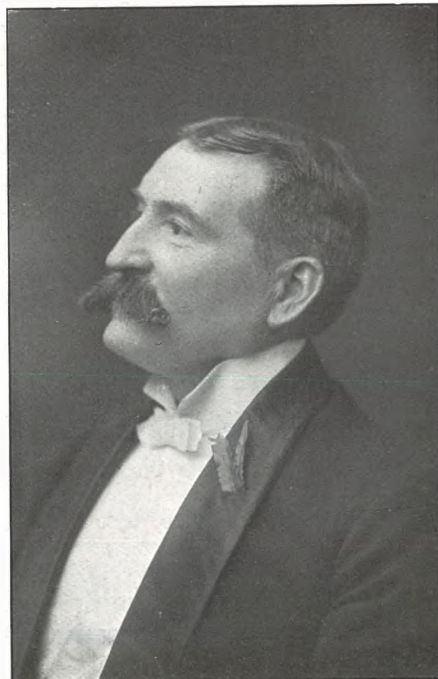
FLASHLIGHT PICTURE OF PART OF THE ROOM.



**BOODLES' TEETH.**

We attend at North House, Cheltenham, Every Day; Mr. Collett's, High Street, Bourton-on-Water, Every Tuesday; and at Hartwell's (Ironmonger), High Street, Chipping Norton, Every Wednesday.

Mr. Haldane, to prove that the loading of cordite cartridges at Woolwich was safe, told a trade union deputation on Monday that he used to have a walking-stick made of cordite with which he walked to the House of Commons every day for months.



Estb. 1891.  
Phone 32x1, Cheltenham

**Artificial  
TEETH.**

**MR. SUTTON GARDNER,  
LAUREL HOUSE,  
CHELTENHAM**

HOURS 9 A.M. TILL 8 P.M. DAILY.

Branches at Stroud, Nailsworth, Winchcombe, Stow, Bourton, etc.

On a charge of keeping the rink open and allowing a band to perform in it without having a music and dancing license, the Kingston Bench committed for trial Mr. Charles Bingham, managing director of the County Skating Rink.

**MR. D. JONES, of Cheltenham.**  
One of the pioneers of the St. David's Day Celebration, and formerly hon. secretary to the Cheltenham Committee.



# THE CHELTENHAM CHRONICLE AND GLO'SHIRE GRAPHIC

ART AND LITERARY SUPPLEMENT

Printed and Published as a Gratis Supplement by the Cheltenham Newspaper Co.

No. 480.

Saturday, March 12, 1910.

OPERA HOUSE, CHELTENHAM.  
This Afternoon (2.30) and Evening (7.45).  
The BREED of the TRESHAMS.

NEXT WEEK—  
THE NEW ROMANTIC PLAY.  
HER LOVE AGAINST the WORLD.

WINES. " " ALES.  
SPIRITS. " " STOUT.

**BARTHOLOMEW,**  
419-420 HIGH ST., CHELTENHAM.  
Telephone 135.

LAGER BEER. " TABLE  
CIDER. " WATERS

**ROBERTSON & CO.,**  
Cigar & Cigarette Importers.  
(T. E. PRITCHARD, Proprietor).  
8 Colonnade,  
Cheltenham.

Established 1825.

**W. Hall & Sons, Ltd.,**  
Fruiterers, . . Florists,  
Fishmongers, Game Dealers,  
92, 92a High Street, TEL. 85.  
16 Montpellier Walk, TEL. 285.  
CHELTENHAM.

Seasonable Fruits and Vegetables  
always in Stock.

Guinea Fowls, White Grouse, Black Game,  
Quail, and Salmon.



## SKATING CARNIVAL AT WINTER GARDEN, CHELTENHAM, MARCH 2, 1910.

Miss Hopkins in Plantation Dress, Miss Sear in Grecian Dress, Miss Hunt as a Country Girl, Miss Burford as "Harlene."

### STATISTICS OF "THE TRADE."

A Parliamentary return issued on Monday shows that for last year the number of persons in the United Kingdom licensed as brewers for sale was 4,591. Private brewers licensed as liable to beer duty numbered 1,261, and those not so liable numbered 6,221. Victuallers' licenses issued numbered 10,191, on beer licenses numbered 23,184, and off beer licenses 11,692.

THOSE OF OUR READERS WHO ONLY OCCASIONALLY SEE THE "CHRONICLE AND GRAPHIC," AND HAVE ANY DIFFICULTY IN OBTAINING THE SAME, ARE REMINDED THAT THEY CAN HAVE THE PAPER FORWARDED DIRECT FROM THE OFFICE TO ANY ADDRESS IN THE UNITED KINGDOM ON PREPAYMENT OF 1/7½ FOR A QUARTER OF A YEAR, OR 2/- IF BOOKED.



**TABLEAUX VIVANTS BY THE TEACHERS AND SCHOLARS OF PRIMITIVE METHODIST SCHOOL, BARTON STREET, GLOUCESTER, FEBRUARY 25 AND MARCH 3, 1910.**

1. "BY THE WATERS OF BABYLON."—Back row: Misses A. Holtby, E. Morse, F. Jones, L. Stokes, A. Hayward, and W. Vincent. Front row: Misses D. Click and D. Wood.  
 2. "THE BRITISH ISLES."—Back row: Miss E. Wood, Mr. C. Critchley, Miss F. Jones.

3. "THE WEDDING MORN."—Back row: Mrs. Birdseye, Mr. C. Sceats, Miss J. Wilkins, Mr. F. Simmonds, Miss A. Davies, Miss Vincent.

4. "SUFFER THE CHILDREN TO COME UNTO ME."—Back row: Misses F. Jones, E. Richings, L. Johns, and L. Badham. Front row: Misses A. Sharpe, E. Simmonds, and E. Hudson.

Second row: Misses N. Ravenhill and E. Blackwell. Front row: Master R. Stokes, Misses N. Turner, D. Critchley, M. Wood, D. Birdseye, B. Johns, D. Fisher, and Master H. Birdseye.



TABLEAUX VIVANTS BY THE TEACHERS AND SCHOLARS OF PRIMITIVE METHODIST SCHOOL, BARTON STREET, GLOUCESTER, MARCH 3, 1910.

1. "THE BOYS OF THE OLD BRIGADE."—  
Back row (left to right); Masters C. Gray, T.  
Watts, C. Tyrrell, E. Hodge, C. Critchley,  
W. Higgins, W. Roe, N. Stokes, M. Hoggs.

Front row: Masters C. Wood, L. Pitt, P.  
Watts, Mr. Morgan, Masters J. Wood, J.  
Tyrrell, and H. Birdseye.

2. "A PAGEANT OF CHILDHOOD."—Back  
row: Miss L. Johns, Master J. Wood, Miss  
N. Ravenhill, Miss E. Blackwell, and Master

L. Pitt. Front row: Miss E. Richings,  
Master B. Braseby, Miss B. Johns, Miss D.  
Fisher, Miss D. Birdseye, Master C. Wood.



MILITARY FUNERAL IN CHELTENHAM.

PRIVATE A. E. CHICK, OF THE CHELTENHAM TERRITORIALS, WAS BURIED WITH MILITARY HONOURS, SATURDAY, MARCH 5, 1910.

1. Territorials lined up outside deceased's residence.

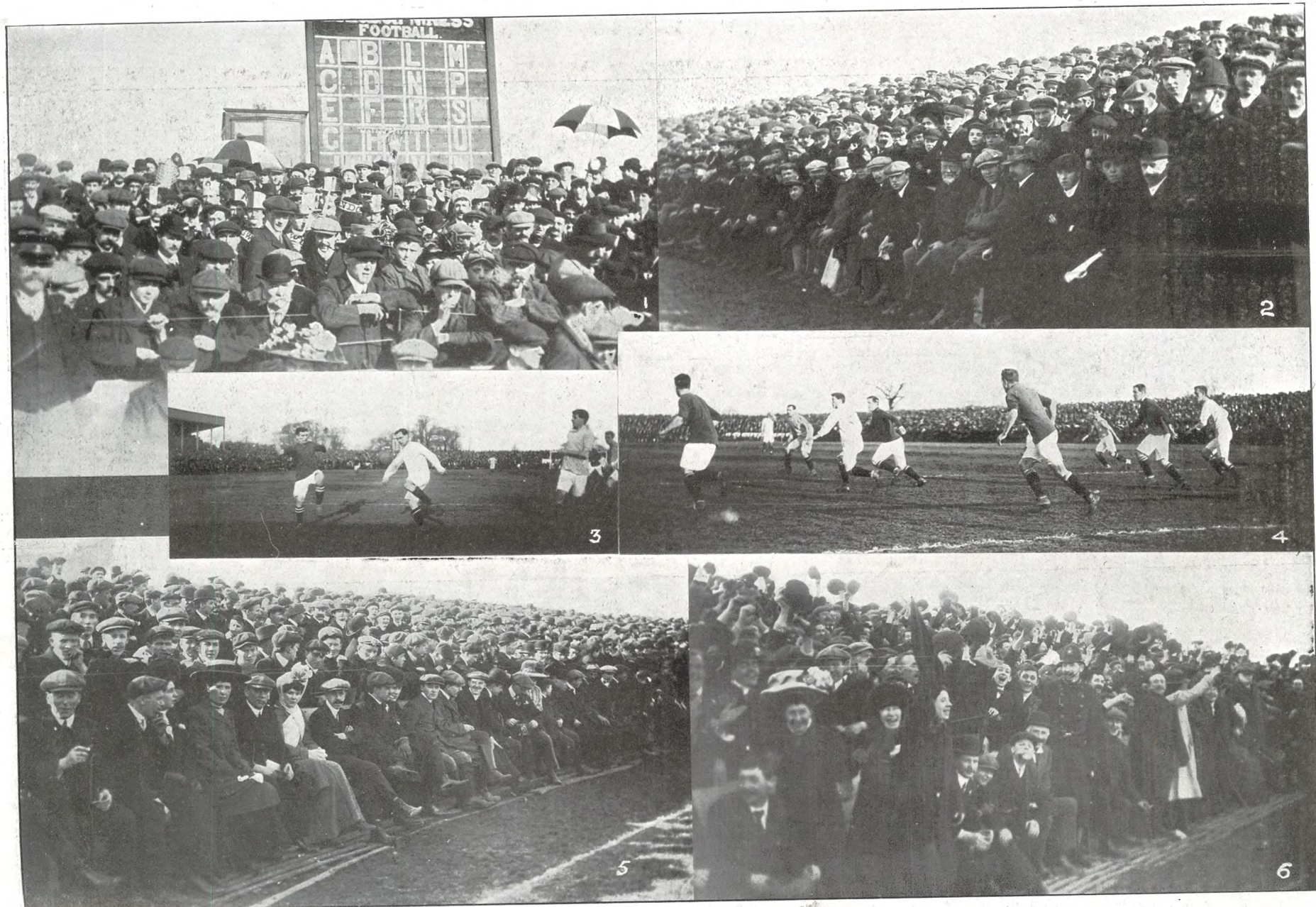
2. Coffin, leaving house, covered with Union Jack, and cap on top.

3. Cortege arriving at Cemetery.

# GREAT FOOTBALL MATCH AT SWINDON: ENGLISH CUP, FOURTH ROUND: SWINDON TOWN v. MANCHESTER CITY, SATURDAY, MARCH 5, 1910.

SWINDON WON A FINE GAME BY TWO GOALS TO NIL.

CHELTENHAM CHRONICLE AND GLOUCEstersHIRE GRAPHIC, MARCH 12, 1910.



1. Part of the record crowd (14,400). Amongst this section can be seen a party of "Moon-rakers" from Purton in fancy headgear.

2. On the shilling side of the ground.  
3. A City back captures the ball.

4. Swindon pressed in first half.  
5. Settled down for a 90 minutes' wait.

6. Goal in Swindon. The elderly lady in foreground, as well as the policeman, seems pleased.



**SATURDAY'S MATCH AT SWINDON.**

- 1. Part of crowd in 2s. enclosure. Some well-known Cheltonians can be seen in top row.
- 2. Part of grand stand.
- 3. Three Swindon players coming on.
- 4. A big jump by a City back, but the Swindon forward get the ball, which can be seen on his foot.
- 5. Fleming, the "idol" of the Swindon crowd.
- 6. "Goal!"
- 7. Swindon score their second goal. Referee is pointing to the centre. Fleming running up to congratulate Bown.
- 8. A "corner" to Swindon.



**ROYAL AGRICULTURAL COLLEGE, CIRENCESTER, BEAGLES' POINT-TO-POINT RACES,  
SIDDINGTON, MARCH 2, 1910.**

- |                                                                                                                                                                                                                      |                                                                                                                                                                                                        |                                                                                                                                                |
|----------------------------------------------------------------------------------------------------------------------------------------------------------------------------------------------------------------------|--------------------------------------------------------------------------------------------------------------------------------------------------------------------------------------------------------|------------------------------------------------------------------------------------------------------------------------------------------------|
| <p>1. Mr. T. H. Plumer, master of Beagles and chairman at luncheon, who won the College Cup on Simonstown.</p> <p>2. Earl Bathurst (on left) chatting to friend.</p> <p>3. First whip of Earl Bathurst's Hounds.</p> | <p>4. Principal Ainsworth-Davis (in bowler) consulting his racecard.</p> <p>5. Mr. C. C. Gouldsmith, who won the open race on Ablington by beating Sawdust III. by inches in a magnificent finish.</p> | <p>6. Two R.A.C. professors.</p> <p>7. The "grand" stand.</p> <p>8. Mr. Herbert Peel, the judge (in bowler).</p> <p>9. Racing enthusiasts.</p> |
|----------------------------------------------------------------------------------------------------------------------------------------------------------------------------------------------------------------------|--------------------------------------------------------------------------------------------------------------------------------------------------------------------------------------------------------|------------------------------------------------------------------------------------------------------------------------------------------------|



**MR. ARTHUR EDMUND MOSS, NEW HIGH SHERIFF OF GLOUCESTERSHIRE, AND HIS RESIDENCE, LEYGORE MANOR, Nr. NORTHLEACH.**



**MR. JOHN D. BRIDGMAN,**  
Of Cheltenham.  
Died at Buenos Ayres Jan. 31, 1910.



**BOODLES' TEETH.**

We attend at North House, Cheltenham, Every Day; Mr. Collett's, High Street, Bourton-on Water, Every Tuesday; and at Hartwell's (Iron monger), High Street, Chipping Norton, Every Wednesday.

**LACTOBACILLINE MILK**

is the actual Sour Milk as recommended by Professor Metchnikoff prepared ready for use.

The use of Lactobacilline Milk obviates the necessity for home preparation of sour milk, and enables everyone to obtain the advantages of the Lactic Ferment Treatment without trouble or difficulty of any kind.

**GLOUCESTERSHIRE DAIRY CO.,**  
**2 PROMENADE,**  
15 Suffolk Parade, Cheltenham.

"A wise wife shuts her eyes to many things," says Mr. Justice Bigham. This is justice bigham-y.—"London Opinion."



**A LOCAL SOPRANO.**

**MISS RUBY PRUEN,**  
(daughter of Dr. Pruen, of Lypiatt Lodge, Cheltenham), who achieved a genuine success as principal soprano in the performance of the "Creation" by the Cheltenham Philharmonic Society at the Town-hall, March 8, 1910.



Estb. 1891.  
Phone 32x1, Cheltenham

**Artificial TEETH.**

**MR. SUTTON GARDNER,**  
LAUREL HOUSE,  
CHELTENHAM

**HOURS 9 A.M. TILL 8 P.M. DAILY.**  
Branches at Stroud, Nailsworth, Winchcombe, Stow, Bourton, etc.

**PHOTOGRAPHS.** --- Copies of Photographs appearing in the Graphic can be obtained on application at the Office. Special Enlargements. Moderate prices.



LOCAL ASSOCIATION FOOTBALL TEAMS.



# THE CHELTENHAM CHRONICLE AND GLO' SHIRE GRAPHIC

ART AND LITERARY SUPPLEMENT

Printed and Published as a Gratis Supplement by the Cheltenham Newspaper Co.

No. 481. Saturday, March 19, 1910.

## OUR PORTRAIT GALLERY.

**OPERA HOUSE, CHELTENHAM.**  
This Evening (7.45). No matinee.  
**HER LOVE AGAINST the WORLD.**

NEXT WEEK: Theatre closed, re-opening  
Easter Monday with  
THE EVER-POPULAR PLAY,  
**THE PRIVATE SECRETARY.**

WINES.        ::        "        **ALES.**  
SPIRITS.     ::        "        **STOUT.**

**BARTHOLOMEW,**  
419-420 HIGH ST., CHELTENHAM.  
Telephone 135.

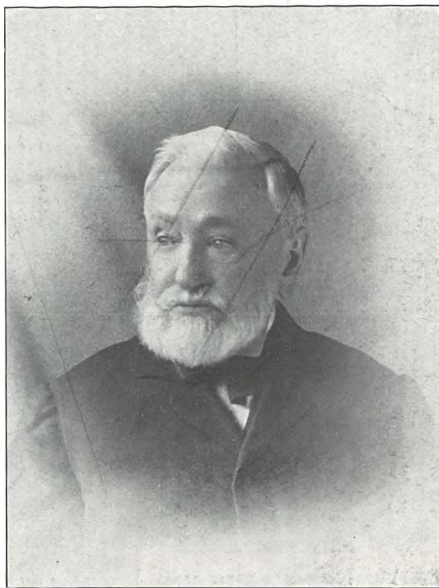
LAGER BEER.    ::        **TABLE**  
CIDER.         ::        **WATERS**

**ROBERTSON & CO.,**  
Cigar & Cigarette Importers.  
(T. E. PRITCHARD, Proprietor).  
8 Colonnade,  
Cheltenham.

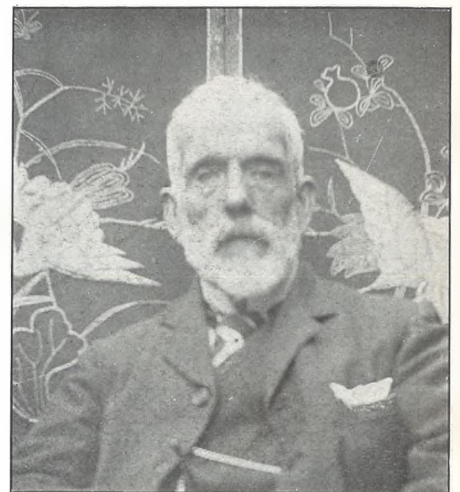
Established 1825.

**W. Hall & Sons, Ltd.,**  
Fruiterers, . . Florists,  
Fishmongers, Game Dealers,  
92, 92a High Street, TEL. 85.  
16 Montpellier Walk, TEL. 235;  
CHELTENHAM.

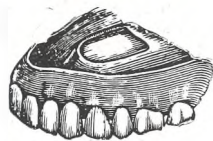
Choice Seasonable Fruits and Vegetables  
always in Stock.  
Guinea Fowls White Grouse, Black Game,  
Quail, and Salmon.



**MR. JOHN GILL,**  
Of Cheltenham, for many years a master at  
St. Paul's Training College, who died  
March 4, 1910, in his 93rd year.



**MR. CHARLES F. COOKSEY,**  
An old Gloucesterian, who died at Southamp-  
ton, his native place, on March 3, 1910,  
aged 88 years.



Estb. 1891.  
Phone 32x1, Cheltenham  
**Artificial  
TEETH.**

**MR. SUTTON GARDNER,**  
**LAUREL HOUSE,**  
**CHELTENHAM**

HOURS 9 A.M. TILL 8 P.M. DAILY.  
Branches at Stroud, Nailsworth, Winch-  
combe, Stow, Bourton, etc.



**PHOTOGRAPHS.** --- Copies of Photo-  
graphs appearing in the Graphic  
can be obtained on application at  
the Office. Special Enlargements,  
Moderate prices.

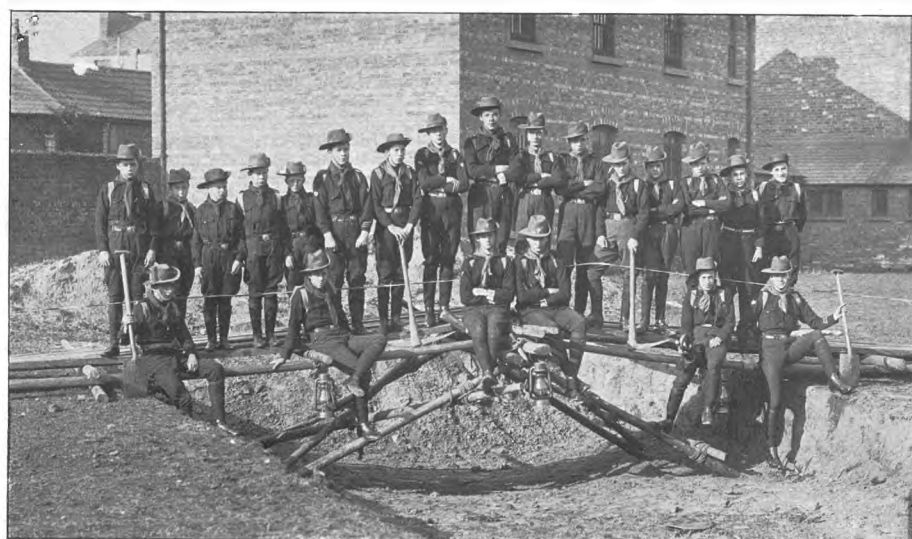
**NOW OPEN.**  
— A FIRST-CLASS —  
**GENTLEMEN'S HYGIENE  
HAIRDRESSING SALOON**  
AT 3 MONTPELLIER AVENUE  
(3 doors from Queen's Hotel), CHELTENHAM.  
Proprietor - - - F. A. Barnfield.  
Special Terms for Gentlemen's Schools.

**EASTER.**  
A FINE AND VARIED STOCK OF  
**FANCY** \* **SHIRTS**  
WITH STIFF OR SOFT DOUBLE CUFFS,  
**2/11, 3/6, 3/11, 4/6.**  
NOVELTIES FOR EARLY SPRING IN  
ALL DEPARTMENTS.  
**A. BECKINGSALE, 111 HIGH ST.,**  
'Phone 406. CHELTENHAM.



**ANTIQUITIES OF CHIPPING CAMPDEN (SEE ARTICLE, MAIN SHEET).**

1.—“Poppett’s” Alley, Campden (a typical entry). 2.—A Gabled Front in Campden High-street.—Photos by J. Taylor, Campden.



**ST. PAUL'S BOY SCOUTS.**

ON A BRIDGE BUILT BY THEMSELVES IN THE OLD ENGINEER DRILL GROUND, CHELTENHAM.

Photo by Debenhams, Longman, and Co., Ltd.



**JOSEPH BROWNETT**, of Kilkenny, Bibury.  
Died Feb. 20, 1910, aged 24 years.

**OPENING OF LYCH GATE AT NORTH CERNEY CHURCHYARD.**

TO THE MEMORY OF THE LATE CANON MEDD, BY ARCHDEACON SINCLAIR, MARCH 16, 1910.



THE SERVICE IN THE CHURCHYARD, AT THE GATE.



SCHOOLCHILDREN AT THE SERVICE.

---

---

FELINE SAGACITY.

• • •

"A family I once knew in Callander," writes Lady Lyall, in the "Strand Magazine," "owned a tom-cat of striking character, to whom they gave, and not undeservedly, the name of Nap. I cannot recall, for they were so numerous, all the instances of Nap's extraordinary sagacity, but there is one which exhibits his generalship in a strong light. While the cook was off her guard the cat appropriated a piece of meat, and was just making off when cook saw him. Intending to catch and punish him she instantly followed on tip-toe. She saw him go to a corner of the yard where there was a rat-hole, and, instead of eating it himself, place the morsel of meat by the side of the hole. Nap then deliberately marched away a few steps and, hiding himself, awaited developments. These were not long coming, in the shape of a large rat. Nap was instantly on the *qui vivc.* The rat began to labour with the piece of meat, but not until the proper moment had arrived did Nap make a mighty spring and fix his talons unerringly in the rat's hide. He then moved the bait some distance away and left it, going off with the carcass of his prey."



## GLOUCESTERSHIRE SCHOOLS AND SCHOLARS:—

### TEWKESBURY SENIOR COUNCIL SCHOOL.

1.—Class I., with Headmaster (Mr. G. S. Railton) and Miss E. M. Wilson.

2.—Class II., with teacher (Mr. H. P. Cook).  
3.—Class III., with Mr. E. J. Quick (teacher).

4.—Class IV., with Miss J. A. Lewis (teacher).

This school, which was opened in 1906, is one of the best adapted and organised in Gloucestershire. It has an average of about 180 senior scholars, which are divided into four classes. Mr. G. S. Railton is the head-master. He was for many years master of the old British School, which is now used as an infants' school. A special feature of the school is its fine system of technical education. The girls are taught cookery under a qualified instructress (Miss M. Dingad Davies), also all other domestic duties, such as washing, mangling, and general housework, a sitting-room and bedroom being furnished for their use. The boys are taught practical carpentry in a fine workshop, under Mr. H. P. Cook, and also have a large garden, in which they learn gardening. A feature here is the aquarium and fernery, which, when it is developed, will be a charming spot.



TEWKESBURY COUNCIL SCHOOL. 1.—Carpentry Class (instructor, Mr. H. P. Cook).

2.—Cookery Class (instructress, Miss M. Dingad Davies).

**1st CIRENCESTER  
TROOP OF B.-P.'S  
BOY SCOUTS.**

**THE CIRENCESTER  
PATROLS.**

Seated in centre are:  
Inst. J. Parry;  
Capt. J. Gordon Dugdale,  
D.S.O.  
(new commanding officer);  
Lt.-Col. Hon. Ben Bathurst,  
M.P.  
(chairman);  
and Sergt. B. Lockey.

Photo by Capt. D. Mildred  
(adjutant).





**GYMNASTICS AT CHELTENHAM COLLEGE.**

ANNUAL COMPETITION HELD SATURDAY, MARCH 12, 1910.

Standing:—Sergt. Roberts, Latham, Brown, Conybeare, Martin, Harris-Jones, McKay, Sergt. White.

Sitting:—Savile, Massy-Westropp (first), Bourne, Ward (second).



REV. HORATIO PACK, A.T.S.,  
President of Cirencester and District Free  
Church Council, 1910-11.  
Appointed March 10th, 1910.



**LEDBURY HOUNDS AT THE KENNELS, SHARTPURY, NEAR GLOUCESTER.**

Mr. George O. Deane (Squire Deane), Capt. Peacocke, M.F.H., Lord Ribblesdale (late Master of Royal Buckhounds), Lady Bullough, Huntsman, Mr. W. Gordon Canning (M.F.H.), Sir George Bullough (Master of Ledbury Hounds), Huntsman.  
Photo by Tilley and Son, Ledbury.

**A BISHOP'S CONVERSION.**

The Bishop of London, speaking at the West London Band of Hope Union meeting at Fulham on Monday, said: "The longer I live, the more I believe the whole world is

coming round to our view. Thirty years ago I was made a teetotaler by having a brick thrown at my head outside a temperance meeting. I thought if that was the way the cause was persecuted, it was the right cause, and the cause for me."



### THE LAMBING SEASON.

The shepherd of Mr. Mills, Hartley Farm, Cubberley, near Cheltenham, with two abnormally fine lambs, each one day old. One hour after birth one weighed 14lbs., the other 13½lbs. They were singles.



### AN INTERESTING RELIC.

This mahogany sea-chest is a genuine relic of pathetic interest. It belonged to Mr. John Scott, Lord Nelson's private secretary, and was on the "Victory" at the Battle of Trafalgar. Mr. Scott was one of the first to fall during the battle, he being killed by a cannon ball while conversing with Hardy. An attempt was made to remove his body from Nelson's sight, but he anxiously asked "Is that poor Scott that's gone?" and being informed that it was so, exclaimed "Poor fellow!"

The sea-chest was left to the late Rev. Francis John Scott (grandson of Mr. John Scott) and afterwards to his widow, at the sale of whose effects Mr. A. Whitcombe, of Cheltenham, bought it. It has now been secured by a patriotic donor and presented to the "Victory," through the instrumentality of Mr. E. W. Matthews, secretary of the British and Foreign Sailors' Society.



### A TEWKESBURY GOLDEN WEDDING.

On March 6th, 1910, two inhabitants of Tewkesbury celebrated their golden wedding—Mr. and Mrs. Charles Morris, of Barnes's Almshouses, Chance-street. They were married at St. Peter's Church, Cheltenham, in 1860. Mr. Morris was born at Norton, near Gloucester, and his wife at Ashchurch.



### CHELTENHAM BLUEJACKET'S DEATH.

Arthur Hook, aged 27 years, 1st class stoker on board H.M.S. Jupiter, son of Mr. and Mrs. Jas. Hook, of the Railway Inn, New-street, Cheltenham; lost overboard in Torbay on March 12, 1910.

### IN MEMORY OF SHAKESPEARE.

A novel proposal to perpetuate the memory of Shakespeare in South London is being considered by Southwark Borough Council. Mr. Richard C. Jackson, chairman and warden pro tem. of London's national memorial to Shakespeare, has written offering to present and plant publicly in the borough, in memory of the poet, a red hawthorn tree raised from seeds gathered on the occasion of the visit of the Mayor and Corporation of Southwark to Stratford-on-Avon in 1903.

### GAMBLING IN THE ARMY.

To the King's Regulation which states that "all gambling in garrisons, camps, or cantonments is forbidden" has been added: "This includes bookmaking or acting as an agent for a bookmaker."

**Bill of Exchange**

*In Demand We promise to supply the bearer with a Guinea Gold 22 Carat Wedding Ring and a useful Wedding Gift for One Pound and upwards*

*A ring size card free on request*

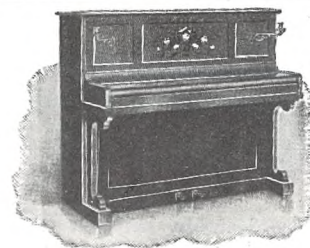
**One Pound** *Waite & Son*  
Goldsmiths & Jewellers,  
*34, High Street Cheltenham.*

**A SEASONABLE EXCHANGE.**



**MALVERN VIEW HOTEL,**  
CLEEVE HILL,  
**FOR EASTER GOLFING HOLIDAY.**

— MODERATE TARIFF. —  
Mr. & Mrs. H. G. Swift. 'Phone 17, Cleeve Hill.



For PIANOS,  
ORGANS,  
MUSIC,  
RECORDS,  
GRAMO-  
PHONES,  
and PIANO  
TUNING.

**ERNEST CRICHTON,**  
PROMENADE (Opposite Post Office),  
**CHELTENHAM.**

## LACTOBACILLINE MILK

is the actual Sour Milk as recommended by Professor Metchnikoff prepared ready for use.

The use of Lactobacilline Milk obviates the necessity for home preparation of sour milk, and enables everyone to obtain the advantages of the Lactic Ferment Treatment without trouble or difficulty of any kind.

**GLOUCESTERSHIRE DAIRY CO.,**  
— 2 PROMENADE, —  
15 Suffolk Parade, Cheltenham.



### LECHLADE DOUBLE TRAGEDY.

ERNEST VICTOR SPENCER, GROOM, AND ELSIE ALICE MOULDEN, DOMESTIC SERVANT, BOTH AGED 18 YEARS, OF SOUTHROP, WHO WERE DROWNED IN THE THAMES AT LECHLADE ON MARCH 2, 1910.

Professor Gerebotani, a Munich priest, gave a public exhibition in Berlin on Monday night of his remarkable invention—a pocket wireless telegraphy apparatus.

Motor-cars mounting the pavement were the cause of nine persons being killed and 109 injured in London during the year ended January 31. The Commissioner of Police suggests higher kerbs.

Mr. Herbert Railton, a well-known black-and-white artist and book illustrator, died in London on Tuesday from pneumonia.

At a meeting in support of Our Dumb Friends' League, held on Monday in London, Sir John Cockburn and Sir George Kekewich spoke strongly in favour of the total abolition of the export traffic in worn-out horses.



**BOODLES' TEETH.**  
We attend at North House, Cheltenham, Every Day; Mr. Collett's, High Street, Bourton-on-Water, Every Tuesday; and at Hartwell's (Iron monger), High Street, Chipping Norton, Every Wednesday.



# THE CHELTENHAM CHRONICLE AND GLO'SHIRE GRAPHIC

ART AND LITERARY SUPPLEMENT

Printed and Published as a Gratis Supplement by the Cheltenham Newspaper Co.

No. 482. Saturday, March 26, 1910.

OPERA HOUSE, CHELTENHAM.

RE-OPENS ON MONDAY NEXT WITH  
THE EVER-POPULAR PLAY,  
THE PRIVATE SECRETARY.

WINES.        ::        "        ALES.  
SPIRITS.     ::        "        STOUT.

**BARTHOLOMEW,**  
419-420 HIGH ST., CHELTENHAM.  
Telephone 135.

LAGER BEER.    "        "        TABLE  
CIDER.         "        "        WATERS

**ROBERTSON & CO.,**

Cigar & Cigarette Importers.

(T. E. FRITCHEARD, Proprietor).

8 Colonnade,  
Cheltenham.

Established 1825.

**W. Hall & Sons, Ltd.,**  
Fruiterers, . . Florists,  
Fishmongers, Game Dealers,  
92, 92a High Street, TEL. 85.  
16 Montpellier Walk, TEL. 235.  
CHELTENHAM.

Choicest Seasonable Fruits and Vegetables  
always in Stock.

Guinea Fowls, White Grouse, Black Game,  
Quail, and Salmon.



**TEWKESBURY II. ASSOCIATION FOOTBALL CLUB, 1909-10.**

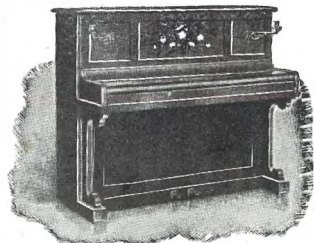
Standing:—H. Charles (hon. treasurer), J. Francis, E. Quick, T. Bourton, F. Price, R. Coleman, A. W. Williams (hon. secretary).

Sitting:—A. Crisp (linesman), H. Broadwell, H. Jordan, P. J. Moore (captain), F. Hemming, F. J. Cook (referee).

On ground:—F. Coombes, J. Hughes.

Photo by Mallett and Sons, Tewkesbury.

An enlargement of this group is being presented to Mr. Patrick Moore, of Kemerton (captain), who is leaving shortly for Vancouver.



For PIANOS,  
ORGANS,  
MUSIC,  
RECORDS,  
GRAM-  
PHONES,  
and PIANO  
TUNING.

**ERNEST CRICHTON,**  
PROMENADE (Opposite Post Office),  
CHELTENHAM.

There are in England and Wales 83,000  
married persons under the age of 21 years.

**EASTER.**

A FINE AND VARIED STOCK OF

**FANCY        \*        SHIRTS**

WITH STIFF OR SOFT DOUBLE CUFFS,

**2/11, 3/6, 3/11, 4/6.**

NOVELTIES IN ALL DEPARTMENTS.

**A. BECKINGSALE,**  
111 HIGH STREET,  
CHELTENHAM,  
Phone 406.



**GLOUCESTERSHIRE v. SOMERSET HOCKEY MATCH ON VICTORIA CRICKET GROUND, CHELTENHAM, MARCH 19, 1910.**

1 and 2. Spectators on the touch line.  
 3. Midfield play.  
 4. Somerset attacking in first half.



5. A good passing run by Gloucestershire forwards.  
 6. Somerset back (in white) saves well.



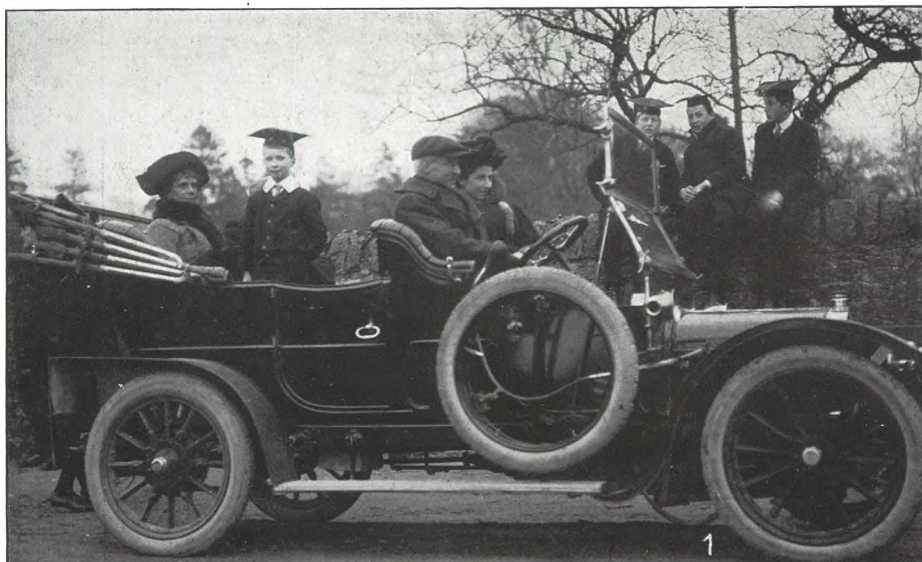
SOMERSETSHIRE TEAM.

Standing:—Mr. A. G. F. Pitch (referee), A. O. Ingram, S. W. Russell, H. Burford, P. H. Titley, E. J. J. Saunders, — Grubb.  
Sitting:—R. W. J. Saunders, Dr. Rutherford, Basil Hatch, L. F. Elwell, A. O. Major.



GLOUCESTERSHIRE TEAM.

Standing:—J. E. Garnett (East Gloucester), H. J. Symonds (East Gloucester), Parker (Redland Park), J. P. Winterbotham (East Gloucester), H. Muschamp (Northcote), T. R. Roberts (West Gloucester), J. O. Langdon (Old Redland Hillians).  
Sitting:—H. Howells (Lydney), W. J. Rogers (Northcote), H. D. Chester (Cheltenham), G. B. Nutt (Old Redland Hillians).

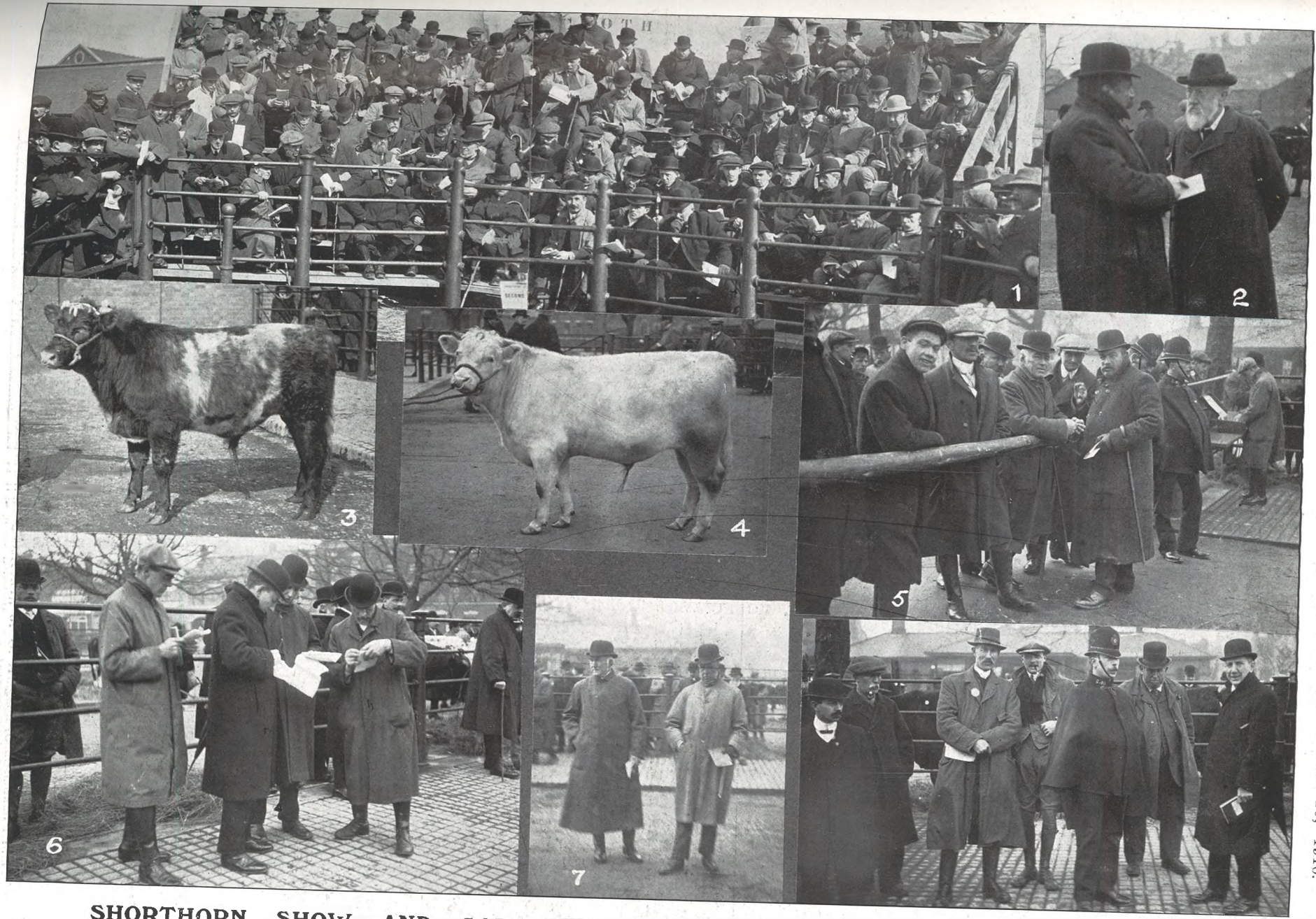


**CHELTENHAM COLLEGE CROSS-COUNTRY RUN, SATURDAY, MARCH 19, 1910.**

1. Mr. Baker with friends in his car at start.
2. The three runners—D. K. F. Matheson (3rd), A. J. S. Jackson (winner), and D. G. Wood (2nd)—at the start. Mr. Clauss (starter) can be seen with pistol.



3. Some of the boys waiting for the finish.
4. Jackson finishing a dozen yards in front of Wood.
5. The Principal of College (Rev. R. Waterfield), with Mr. P. Clauss, waiting for the boys at starting place.



**SHORTHORN SHOW AND SALE AT GLOUCESTER MARKET, MARCH 18, 1910.**

1. Crowd on stand round sale ring.
2. Mr. H. W. Bruton (Messrs. Bruton, Knowles, and Co.) chatting to a steward.
3. Champion bull of the show—Viscount Enfield's Pearl Knight, afterwards sold to Mr. Jas. Peter for 72 guineas.
4. Mr. T. Crewdson's (of Syde) bull, winner of 1st prize for bull not exceeding twelve months, and third for championship.
5. Well-known breeders watching judging.
6. Stewards entering up awards.
7. The two judges—Messrs. James Peter (Berkeley Castle) and Richard Stratton (The Duffryn, Newport).
8. In the judging enclosure, Mr. H. T. Bruton (the auctioneer) on right.



1. Serving out refreshments.



2. Some of the women having a rest. Inspector Wright is telling them to look at the camera.



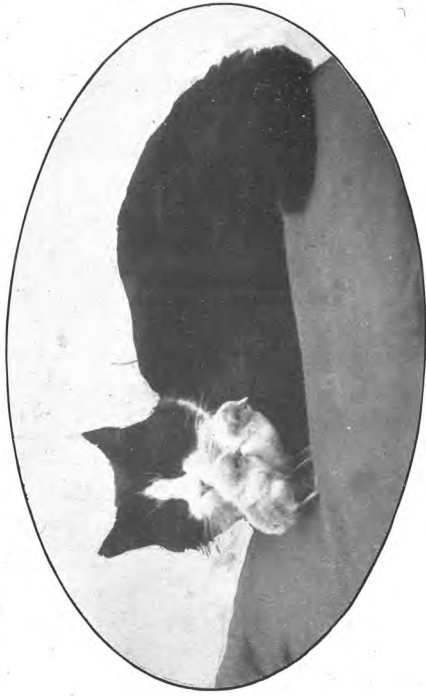
3. Types of emigrants.

**BIRDS OF PASSAGE.**

AUSTRIAN EMIGRANTS BEING FED AT CHELTENHAM M.R. STATION ON THEIR WAY TO AMERICA, MARCH 18, 1910.



ANNUAL EXHIBITION OF WORKS BY STUDENTS OF CHELTENHAM SCHOOL OF ART, AT THE ART SCHOOL, OXFORD PASSAGE, DURING THE PAST WEEK.  
Some life studies and cartoons by advanced students.



**AN ANIMAL CURIOSITY.**

CHICKENS BROUGHT UP BY A TOM-CAT.

This cat belongs to Mrs. Hill, 'The Leigh', near Cheltenham, and it is never happier than when it has a brood of young chickens to take care of. Curiously enough, this tendency is hereditary, as its old mother also used to nestle chickens, sleeping in the house on a chair with them at night. If a chicken fell off the chair the old cat roused the house by its noise until chicken was picked up.

**"WINTER FAIRIES."**

PLAY GIVEN TO PROVIDE TEA TO POOR CHILDREN, AND IN AID OF EYE, EAR, AND THROAT HOSPITAL.



Back row:—E. Clifford (North Wind), D. Cook (Autumn Leaf), M. Lewis (East Wind), K. Ricketts (Autumn Leaf), D. Lock (West Wind), E. Holtam (Autumn Leaf), K. Jones (South Wind).  
 Second row:—D. Clifford (Snow Fairy), B. Hill (Snow Fairy), H. Andrews (Snow Fairy), D. Hayman (Mistletoe Maid), D. Fieldhouse (Queen Winter), L. Newman (Mistletoe Maid), G. Dyer (Frost Fairy), D. Croft (Frost Fairy), D. Bradshaw (Frost Fairy), C. Fieldhouse (Fairy Spring).  
 Third row:—W. Bishop (Christmas Fairy), V. Hooper (Christmas Fairy), D. Vale (Holly Guard), I. Willis (Holly Guard), M. Pack (Christmas Fairy), E. Bishop (Christmas Fairy).  
 Front row:—E. Croft (Jack Frost), D. Robarts (Dancer), M. Vick (Hilda), N. Keen (Chris.), V. Gill (Robin Redbreast).



MRS. JARLEY'S WAXWORKS.

Back row:—A. Fieldhouse (Fisher Girl), K. Clark (Christmas Tree), C. Fieldhouse (Votes for Women).  
 Second row:—G. Dyer (The Election), L. Newman (Mrs. Caudle), M. Lewis (Father Christmas), E. Croft and D. Bradshaw (Jack and Gill), D. Fieldhouse (Post-office), M. Neale (Mrs. Jarley).  
 Front row:—D. Robarts and D. Hayman (Wounded Soldier and Florence Nightingale), D. Croft (Little Miss Muffet).

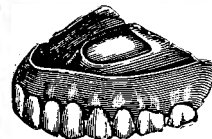


BOODLES' TEETH.

We attend at North House, Cheltenham, Every Day; Mr. Collett's, High Street, Bourton-on-Water, Every Tuesday; and at Hartwell's (Ironmonger), High Street, Chipping Norton Every Wednesday.

**THE IRONY OF INVENTION.**

A marked irony of life these days, says the "Toronto World," is the fact that many of the great new inventions and discoveries are used for the more effective bleeding of the public by monopolists and capitalists who get hold of them. Take the so-called blessing of cold storage, hailed with such applause some years ago. It has become a powerful instrument in the hands of the food trusts to do two things: first it lets them buy provisions and live stock in great quantities when they are cheap, freeze them in cold storage until the public can be charged the highest price; next, it lets them use it to depress prices to producers, as in the case of farmers who have live stock—that is, animals can be killed when they are easiest fattened, put into cold storage, and the meat kept, according to a New York statement, for months, if not for years. Eggs bought at ten cents are kept for years in cold storage, and the same is true of nearly everything that goes on the consumer's table; the net result to the public of "the boon" of cold storage being high prices and a deteriorated produce, because there is a time limit to the excellence of these frozen food fabrics. Furthermore, continues the "World," all kinds of inferior grades of goods, which would otherwise have to be used at once or even destroyed, can now be indefinitely prolonged by cold storage. There is coming probably the greatest invention in railways for many years, the single-rail gyroscope car, invented by Brennan. Chances are that it will pass into the hands of the railways and be used rather to exploit the public than to benefit them.



Estb. 1891.  
 Phone 32x1, Cheltenham

**Artificial TEETH.**

**MR. SU'N GARDNER,**  
**LAUREL HOUSE,**  
**CHELTENHAM**

HOURS 9 A.M. TILL 8 P.M. DAILY.  
 Branches at Stroud, Nailsworth, Winchcombe, Stow, Bourton, etc.

# GLOUCESTERSHIRE SCHOOLS AND SCHOLARS:—

## NORTH CERNEY CHURCH SCHOOL.



MR. W. HENSON (MASTER) AND MISS TEAL (INFANT TEACHER) ON LEFT, AND MISS GILBERT (ASSISTANT) AND MISS EVANS (MONITRESS) ON RIGHT.



This school was established in 1844 as a Church of England School, and continued as such until the present Education Act came into force. Rev. E. W. M. O. de la Hey (vicar of Cerney) is chairman of the Education Committee. There are 102 children on the books, with an average attendance of 93. Mr. W. Hanson, late of Summerhill School, Bristol, has recently been appointed headmaster, Mr. G. Loveday, who had been master for many years, retiring through age limit. Mr. Hanson makes a special feature of the gardening class, the boys working part of the allotments.

**NOW OPEN.**  
— A FIRST-CLASS —  
**GENTLEMEN'S HYGIENE  
HAIRDRESSING SALOON**  
AT 3 MONTELLIER AVENUE  
(3 doors from Queen's Hotel), CHELTENHAM.  
Proprietor — F. A. Barnfield.  
Special Terms for Gentlemen's Schools.

William Stockwell on Monday completed seventy years' service at the glove factory of Messrs. Silas Dyke and Sons, Milborne Port, Somerset.

Amusement was caused at Bow County Court on Monday when eight jurors all answering to the name of Jones filed one after the other into the box.

**PHOTOGRAPHS.** --- Copies of Photographs appearing in the Graphic can be obtained on application at the Office. Special Enlargements. Moderate prices.