

THE CHELTENHAM CHRONICLE AND GLO'SHIRE GRAPHIC

ART
AND
LITERARY SUPPLEMENT

No. 466

Saturday, December 4, 1909.

OPERA HOUSE, CHELTENHAM

This Afternoon (2.30) and Evening (7.45).

PETE.

NEXT WEEK:—

THE ENORMOUSLY SUCCESSFUL
MUSICAL COMEDY.

THE GAY GORDONS.

WINES.	::	::	ALES.
SPIRITS.	::	::	STOUT.

BARTHOLOMEW,

419-420 HIGH ST., CHELTENHAM.

Telephone 134

LAGER BEER.	#	TABLE
CIDER.	::	WATER.

Established 1825.

W. Hall & Sons, Ltd.,

Fruiterers, . . Florists,
Fishmongers, Game Dealers.

92, 92a High Street, Tel. 85.
16 Montpellier Walk, Tel. 285

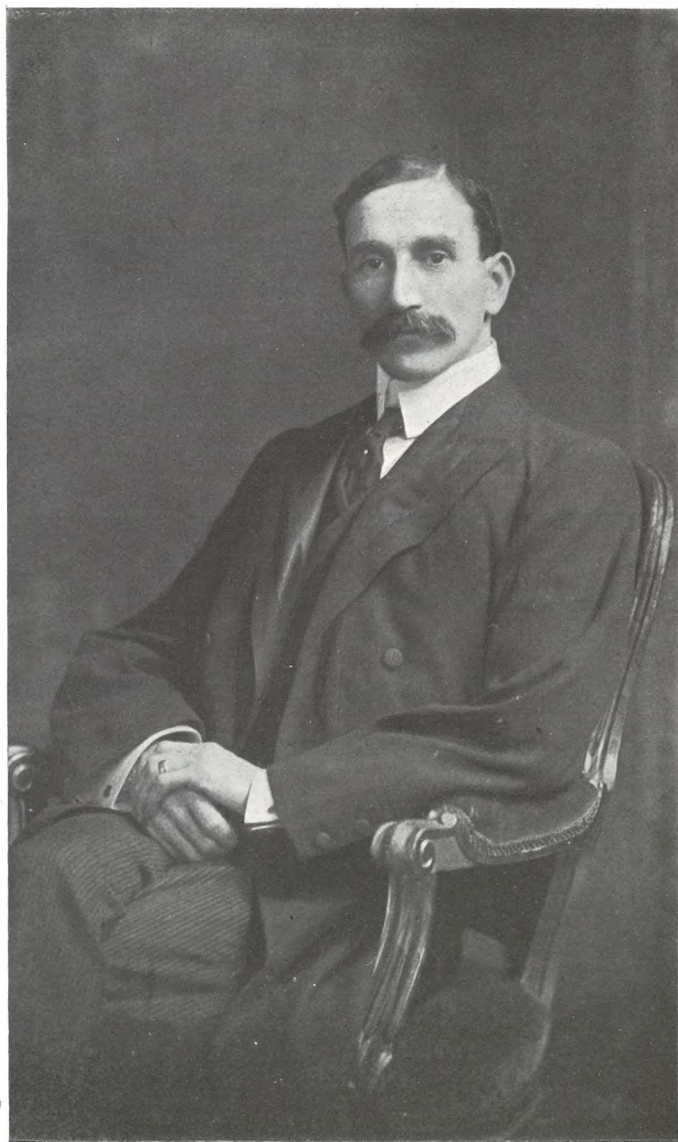
Choice Seasonable Fruits and Vegetables always
in Stock.

Grouse, Partridges, Leverets, White Grouse,
Quail, Native Oysters.

The Local Government Board report for October again exhibits a decline of pauperism both in England and Wales generally and in London alone.

"Better pay your debts than indulge in fads," Judge Bacon told a debtor who wished to be sworn in Scottish fashion at Bloomsbury County Court.

The King, who objects to certain recent volumes of reminiscences, has arranged for the compilation of an authoritative biography of himself in the future.



MR. RICHARD MATHIAS,
LIBERAL CANDIDATE FOR CHELTENHAM.

THE HISTORY AND ANTIQUITIES OF CHIPPING CAMPDEN.

BY PERCY C. RUSHEN—SEE MAIN SHEET.



THE PARISH CHURCH OF ST. JAMES, CHIPPING CAMPDEN.



MONUMENTS IN CAMPDEN CHURCH TO THE FIRST AND SECOND
VISCOUNTS CAMPDEN, 1629 AND 1642.



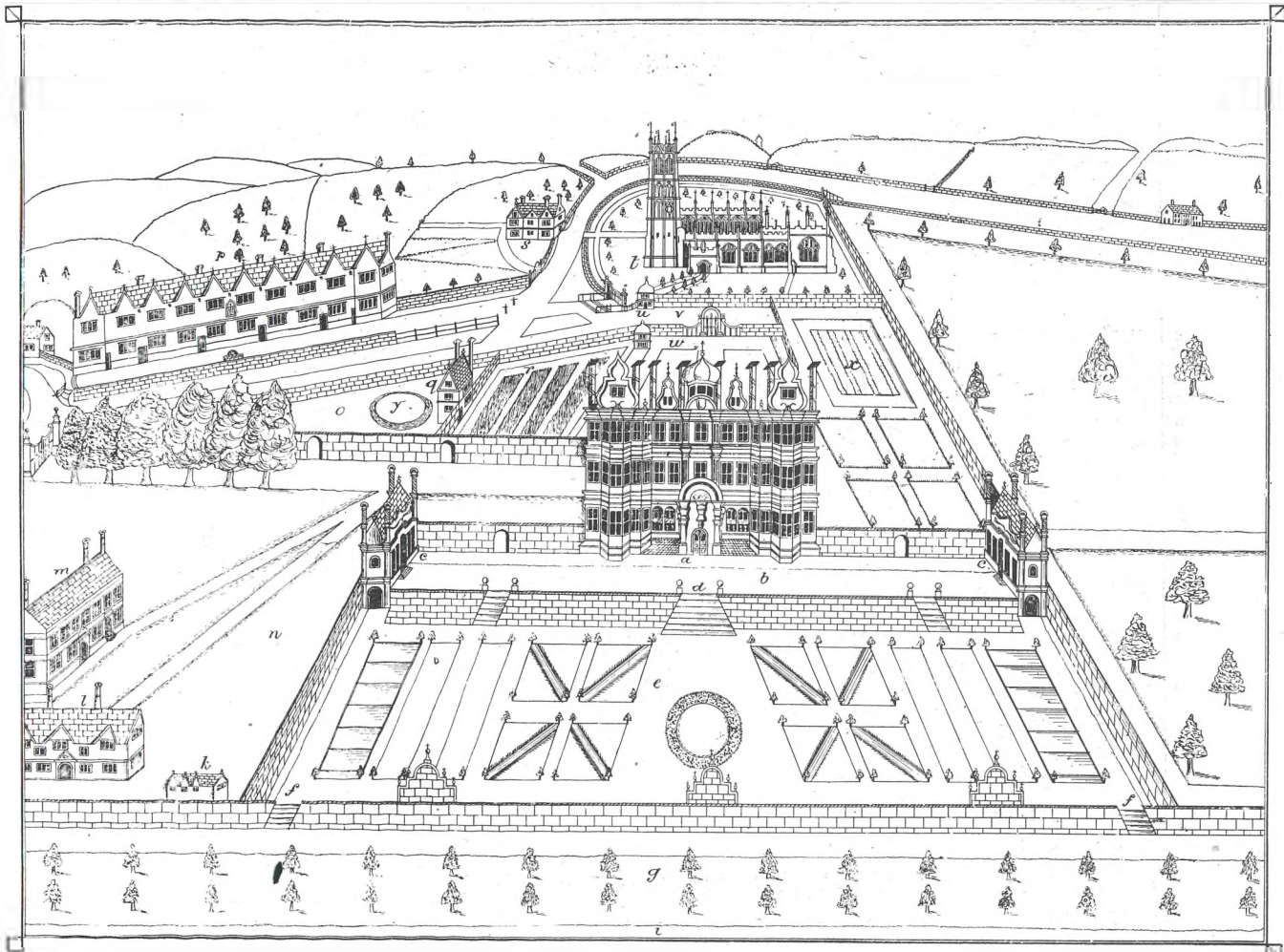
REV. CANON GRIFFITHS,
who will shortly celebrate his jubilee in connection with his appointment to St. Mark's Church, Cheltenham.



DR. WILLIAM POWELL,
of Cheltenham, who has just retired under the age limit from official position as Medical Officer to Post-office employees.



MR. CYRIL BAGHOT-DELABERE,
of The Cottage, Prestbury, who died in London on Sunday, Nov. 28, 1909.

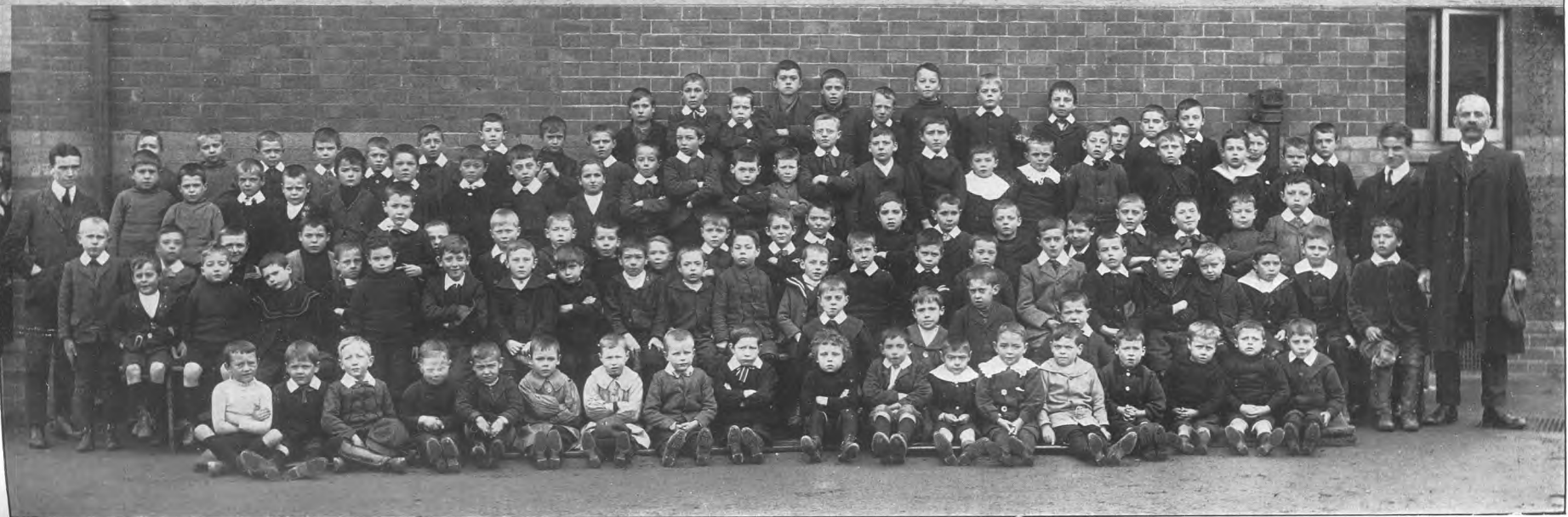


HISTORY & ANTIQUITIES OF CHIPPING CAMPDEN.—By Percy C. Rushen.—See Main Sheet.

BIRDSEYE VIEW OF CAMPDEN HOUSE, BURNT DOWN IN THE YEAR OF NASEBY, 1645. (From an old drawing).
References.—a. The house. b. The terrass walk. c. The banqueting house. d. The garden staires. e. The great garden. f. The orchart staires. g. The great orchart. i. The long canal. k. The coach-house. l. The brew-house. m. The stables. n. The stable court. o. The henn yard. p. The hospital. q. The laundry. r. The bleach garden. s. The parsonage house. t. The church. u. The porter's lodge. v. The outward court. w. The great court. x. The court garden. y. The pond.

SCHOOLS AND SCHOLARS OF GLOUCESTERSHIRE :—

CHARLTON KINGS BOYS' COUNCIL SCHOOL.



1. THE SENIOR BOYS.

2. THE JUNIOR BOYS.

COUNTY CONSERVATIVE DEMONSTRATION IN CHELTENHAM TOWN HALL, NOV. 29, 1909.

The Council and a few members of the Gloucestershire Division of the National Union of Conservative and Constitutional Associations.



Left to right—S. W. Tubbs (Wotton-under-Edge), J. H. Jones (Churchdown), B. St. John Ackers (Huntley), P. Haddock (Cheltenham), W. F. Hicks Beach (Witcombe), C. W. Wasbrough (Thornbury Division), Lord Duncannon, A. Selley, Lord Oranmore and Browne, J. R. Claridge (Cheltenham), W. H. Taylor (Conservative Agent, Gloucester), Geo. Scriven (Stroud Agent), J. L. Robertson, Alf. Hardman (Gloucester). Back row in doorway—H. S. Lemon (Cheltenham), Major Percy Shewell, Montague Lloyd (Newnham), J. T. Agg-Gardner, G. M. Currie (Cheltenham). Second row in doorway—Colonel Curtis Hayward (chairman, Quedgeley), Colonel Rogers, G. E. Lloyd-Baker (Hardwicke Court). Front row continued—F. Bottomley (Newnham-on-Severn, the Forest Conservative Agent), H. Harmer (Stroud), H. Stroud (Cheltenham), R. G. Hardy (C.S.I., Cheltenham), C. L. Grundy, C. J. Tinson (Cheltenham), S. S. Marling, G. B. Witts (agent for Tewkesbury Division), G. Moore (Cheltenham), A. V. Hatton (Gloucester), W. M. Colchester-Wemyss (Westbury), John Such, jun. (Cheltenham), a delegate from the Thornbury Division, Jas. Bruton (Gloucester), W. J. Moore (Cheltenham), Captain Sampson Way, H. Parker (Cheltenham).



BAZAAR AND FANCY FAIR AT UNITED METHODIST CHAPEL, ROYAL WELL, CHELTENHAM. Dec. 1 & 2.

OPENED BY THE MAYOR AND MAYORESS.
 In the centre are Mayor and Mayoress. Next to the Mayoress is Councillor Robert Steel, and next him is Rev. C. E. Penrose, pastor of the chapel.



POLICE-SERGT. NEVILLE,

For many years stationed at Cirencester, has just been promoted to vacancy at Gloucester, caused by Inspector Whyton's removal to Cheltenham.

A PLAN FOR THE LITTLE ONES.

Acorns have been shed in great numbers all over the country, and the little ones may have a pretty little ornament for their windows by trying this plan, says "Farm and Home." Get a well-ripened acorn, and suspend it by means of a string over a bottle containing a little water (or there are glasses, like very small hyacinth glasses, that can be obtained for the purpose). Let the pointed end, not the broad, be towards the water. Then wrap it up, and put it by in a dark place for a month or six weeks, by which time roots will have begun to form. Add a little more water, and bring the plant gradually to the light. Soon a tiny shoot will start upwards, and later you will have leaves, so that there is a miniature oak growing in the bottle. It is really very pretty, and its growth is interesting to watch.



BOODLES TEETH.

We attend at North House, Cheltenham, Every Day; Mr. Collett's, High Street, Bourton-on-the-Water, Every Tuesday; and at Hartwell's (Ironmonger), High Street, Chipping Norton, Every Wednesday.



POLICE-SERGT. BROOKS,
Well known in Cheltenham, who is generally on horseback at important functions, has been appointed to take Sergt. Neville's place at Cirencester.



FOUR CHELTONIANS,
Who on Friday, Nov. 26th, sailed for Freemantle, Western Australia, on ss. Orvieto. Standing: H. W. Giles, A. Purser (the well-known local runner), F. S. Hopkins. Sitting: A. S. Purnell.



**USEFUL GIFTS
IN A1 QUALITY
SILVER PLATE.**



Muffin or Chop Dish with lining for hot water, Post Free 10/9.



Six Spoons & Tongs, Shell pattern, in velvet-lined case, Post Free 7/9.



Shell Butter Dish with glass lining & knife complete, Post Free 5/3.



Fluted Hot-Water Kettle with Spirit Lamp, Post Free 21/9.



Hand-Chased and Pierced Fruit or Cake stand, Post Free 15/6.

Ask for Illustrated Booklet E. Sent to you post free.

WAITE & SON, JEWELLERS, 349 HIGH ST., CHELTENHAM.

**A SEWING MACHINE
FOR EVERY HOME!**

A Sewing Machine—a good one—is not a luxury, not something that should be done without or waited for till a more convenient season, it is one of the essentials of every household. A good sewing machine is a money-spinner that saves its cost in a few weeks and thereafter continually adds to the family banking account. It is not only useful for dressmaking—you may buy every dress you wear ready-made and yet find a sewing machine a most profitable investment because of its usefulness in the family needlework—the hundred and one jobs that turn up from week to week which without its aid, involve many hours of weary work. No more useful adjunct to the household, no more suitable present to the wife can be imagined than the marvellous machine that so quickly and effectively does the work that formerly spent hours of drudgery. **WE ARE NOW SHOWING a complete range of the various sizes and styles WHICH MEET ALL DEMANDS.**

FRISTER & ROSSMANN'S

HIGH-CLASS MACHINES.

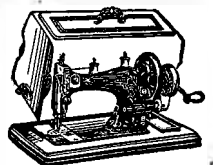
VIBRATING-SHUTTLE

Hand Treadle.

£3 7 6 | £4 14 6

Cam Action.

£2 16 0 | £4 4 0



YOU MAY PAY MORE BUT YOU CANNOT BUY BETTER.

OVER ONE MILLION SOLD.

F. & R.'S are sold at about **HALF THE PRICE** CHARGED by HIRE DEALERS. Finest Cash Value Machines on the Market.

LOCAL AGENTS:—

**JOHN LANCE & CO., LTD.,
CHELTENHAM.**



MR. F. FRY,

HEADMASTER OF CHARLTON KINGS BOYS' COUNCIL SCHOOL.

The school was built by the late School Board, and opened in September, 1898. The number of boys on the registers then was 140. As this number increased the school was enlarged in 1905, and will now accommodate 250 boys. At present there are 233 in actual attendance, so the school is not overcrowded. Should it be necessary to enlarge it, there is plenty of room to do so. In addition to the fine open playground, the recreation ground belonging to the Working Men's Club and Institute is rented for the three departments, who occupy it in turn for games and physical exercise. There are Cricket and Football Clubs in connection with the school, good school gardens, and it is hoped soon to introduce manual training. The staff consists of the headmaster (Mr. F. Fry), two certificated assistants, three uncertificated assistants, one student teacher, and one pupil teacher.

Group photographs of the scholars, etc., on page 4.

PHOTOGRAPHS. --- Copies of Photographs appearing in the Graphic can be obtained on application at the Office. Special Enlargements. Moderate prices.



Estb. 1891.
Phone 32x1, Cheltenham.

Artificial
TEETH,

MR. SUTTON GARDNER,
LAUREL HOUSE,
CHELTENHAM.

HOURS 9 A.M. TILL 5 P.M. DAILY.
Branches at Stroud, Nailsworth, Winchcombe, Stow, Bourton, etc.

Printed and Published as a Gratis Supplement by the Cheltenham Newspaper Co.

4th Cheltenham (St. Paul's) Company Boys' Brigade Football Team, 1909.



Back row:—Col.-Sergt. A. Turier, Lance-Sergt. T. Grinnell, Mr. F. Woolnough ("Lieutenant"), Rev. T. Cave-Moyle ("C.O."), Mr. B. Knight (referee), Sergt. J. Hiron, Staff-Sergt. R. Compton.

Centre row:—Bugler T. Pontin, Bugler L. Trotman, Band-Sergt. A. Morris, Lance-Sergt. J. Morrell, Lance-Sergt. W. Bishop, Corpl. A. Hill, Corpl. H. Pontin.

Front row:—Bugler C. Edwards, Corpl. E. Bishop, Lance-Corpl.-Bugler T. James.

Photographic
Dealers.

THOMAS BROS.

Photographic
Dealers.

ARE offering their complete stock of Albums at specially reduced prices, and have an immense variety to choose from, suitable for Birthday, Christmas, and New Year presents. All marked in plain figures and subject to **DISCOUNT FOR CASH.** Also a large selection of **CAMERAS** of all descriptions at **GREATLY REDUCED PRICES.** They invite all **AMATEUR PHOTOGRAPHERS** to call and inspect the bargains they are offering from the largest and most varied stock of Photographic supplies to be found in the Provinces.

COLLEGE PHARMACY, BATH ROAD,
CHELTENHAM. TEL. 30.

WARM UNDERCLOTHING
for the **COLD WEATHER.**

Large Variety of English
and Scotch makes.

A. BECKINGSALE,
111 HIGH STREET,
CHELTENHAM.

W. SAWYER & CO.,

AGENTS FOR
EARL OF SHREWSBURY'S
CELEBRATED BRERETON COALS

THE FINEST COAL RAISED.

10 CLARENCE STREET.
TRUCK LOADS TO ANY STATION.
TELEPHONE 373.

THE CHELTENHAM CHRONICLE AND GLO' SHIRE GRAPHIC

ART AND LITERARY SUPPLEMENT

No. 467.

Saturday, December 11, 1909.

NEW COUNTY MAGISTRATES.

OPERA HOUSE, CHELTENHAM.

This Afternoon (2.30) and Evening (7.45).

THE GAY GORDONS.

NEXT WEEK:—

MR. NORMAN V. NORMAN & CO. IN
The MARRIAGE OF KITTY.

WINES. :: ALES.
SPIRITS. :: STOUT.

BARTHOLOMEW,

419-420 HIGH ST., CHELTENHAM.

Telephone 135

LAGER BEER. :: TABLE
CIDER. :: WATER.

A Splendid Display of suitable

GIFTS

for the present season.

ROBERTSON & CO.,

CIGAR AND
CIGARETTE IMPORTERS,

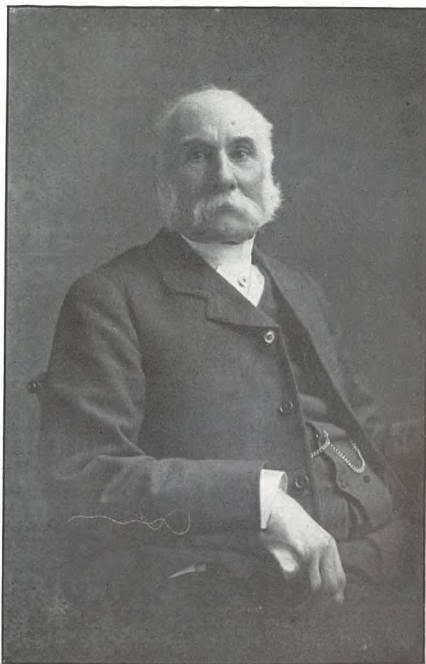
8 COLONNADE, CHELTENHAM.

Agents for "LOEWES"
CELEBRATED PIPES.

SPECIALITIES.

* *

Edinburgh Mixture.	Savory's Cigarettes.
Carreras Tobaccos.	Notaras do.
John Cotton's do.	Albany do.



ALD. JOHN HADDON,
Ex-Mayor of Cheltenham and head of the
well-known firm of Messrs. Shirer and
Haddon.
Photo by G. P. Woodward, Cheltenham.



MR. EDWARD BOURNE,
Grand Master of the Manchester Unity of
Oddfellows.

W. Hall & Sons, Ltd.

GREAT SELECTION OF

Finest English fed Turkeys, Geese, Capons,
Surrey fatted Chicken, Ducks, Fowls,
Pheasants, Hares, Wild Duck, and every
:: variety of Wild Fowl. ::

SHOW DAYS:— MONDAY, TUESDAY,
& WEDNESDAY, December 20, 21, & 22.

Pineapples, Hothouse Grapes, and other
Choice Fruits for Xmas Presents.
Asparagus, French Beans, Seakale,
Mushrooms, Etc.

HIGH ST. AND MONTPELLIER.

Established 1825.

EARL of SHREWSBURY'S

CELEBRATED.

BREKETON COALS.

DISTRICT AGENTS:—

W. SAWYER & CO.,

10 CLARENCE STREET,

CHELTENHAM. 'Phone 373

"This is one of the finest coals raised. It burns
beautifully clean, leaving a very small per-
centage of brown heavy ash, and is extremely
economical."

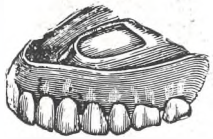
Thomas Fermour Parrington, who cele-
brated his 101st birthday last June, and had
lived in Norfolk since he was 18, died on
Monday. In his youth he was a chorister at
Canterbury Cathedral.

Printed and Published as a Gratis Supple-
ment by the Cheltenham Newspaper Co.

USEFUL ♦ GIFTS.



SILK HANDKERCHIEFS AND MUFFLERS.
A LARGE STOCK TO SELECT FROM.
A. BECKINGSALE, 111 HIGH ST.,
CHELTENHAM.



Estb. 1891.
Phone 32x1, Cheltenham

Artificial
TEETH.

MR. SUTTON GARDNER,
LAUREL HOUSE,
CHELTENHAM

HOURS 9 A.M. TILL 8 P.M. DAILY.
Branches at Stroud, Nailsworth, Winchcombe, Stow, Bourton, etc.



COUNTY LADIES' HOCKEY MATCH IN CHELTENHAM, Dec. 2, 1909.
GLOUCESTERSHIRE v. SOMERSET.—THE GLOUCESTERSHIRE TEAM.

Back row: Miss W. Gantlett, Miss Y. Newall, Miss V. Dodsworth, Miss R. Ellis, Miss Weller. Middle row: Miss N. Thompson, Miss K. Watkin Baker, Miss F. Thompson, Miss Lavington. Front row: Miss N. Walker, Miss Lidderdale.

SCHOOL GARDENS. By Walter P. Wright, F.R.H.S.—See Main Sheet.



GLOUCESTERSHIRE SCHOOL GARDENS.—CHALFORD HILL.

This garden, situated in the centre of the village, was little better than a waste area of ground a few years ago. The soil is typical Cotswold brash, shallow and stony, but by dint of hard work on the part of Mr. F. A. Webster and his pupils it is now a flourishing garden and an object lesson to the district.

[By permission of "Agricultural Economist and Horticultural Review."]



MR. G. H. HOLLINGWORTH,
Gloucestershire Horticultural Instructor.



COUNTY LADIES' HOCKEY MATCH IN CHELTENHAM, Dec. 2, 1909.
GLOUCESTERSHIRE v. SOMERSET.—THE SOMERSET TEAM.

Back row—Miss E. Barber, Miss E. Linnell, Miss D. White, Miss M. Napier, Miss K. Spittal.
Middle row—Miss A. Archer, Miss D. Henniker, Miss E. Coleridge Smith, Miss A. Ridge.
Front row: Miss M. Leacroft, Miss B. Needham.



MR. HENRY TEAGUE,
the oldest public man of Stow-on-the-Wold,
who died Dec. 3, 1909, aged 72 years.



BOODLES TEETH.

We attend at North House, Cheltenham, Every Day; Mr. Collett's, High Street, Bourton-on-the-Water, Every Tuesday; and at Hartwell's (Ironmonger), High Street, Chipping Norton, Every Wednesday.

Photographic
Dealers.

THOMAS BROS.

Photographic
Dealers.

ARE offering their complete stock of Albums at specially reduced prices, and have an immense variety to choose from, suitable for Birthday, Christmas, and New Year presents. All marked in plain figures and subject to **DISCOUNT FOR CASH.** Also a large selection of **CAMERAS** of all descriptions at **GREATLY REDUCED PRICES.** They invite all **AMATEUR PHOTOGRAPHERS** to call and inspect the bargains they are offering from the largest and most varied stock of Photographic supplies to be found in the Provinces.

**COLLEGE PHARMACY, BATH ROAD,
CHELTENHAM.**

TEL. 30.

At the sale of the Wakley collection of English coins at Sotheby's on Tuesday a rare old pattern half-crown of Mary and Phillip realised £110.

Dogfish, which were formerly regarded as a pest, are now being caught in large quantities by the Cornish fishermen and sold as food at remunerative prices.

A Local Government Board inspector held an inquiry at Bournemouth on Tuesday on the proposal to borrow £77,000 for the erection of a pavilion or kursaal near the pier.

An object lesson in thrift is to be found in the will of a Devonshire labourer named Philip Pinkham. Pinkham lived to 90. His wages never exceeded £1 a week.

A SEWING MACHINE FOR EVERY HOME!

A Sewing Machine—a good one—is not a luxury, not something that should be done without or waited for till a more convenient season, it is one of the essentials of every household. A good sewing machine is a money-spinner that saves its cost in a few weeks and thereafter continually adds to the family banking account. It is not only useful for dressmaking—you may buy every dress you wear ready-made and yet find a sewing machine a most profitable investment because of its usefulness in the family needlework—the hundred and one jobs that turn up from week to week which without its aid, involve many hours of weary work. No more useful adjunct to the household, no more suitable present to the Wife can be imagined than the marvellous machine that so quickly and effectively does the work that formerly spent hours of drudgery. **WE ARE NOW SHOWING a complete range of the various sizes and styles WHICH MEET ALL DEMANDS.**

FRISTER & ROSSMANN'S

HIGH-CLASS MACHINES.

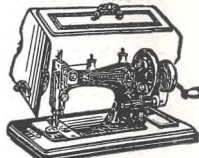
VIBRATING-SHUTTLE

Hand Treadle.

£3 7 6 | £4 14 6

Cam Action.

£2 16 0 | £4 4 0



YOU MAY PAY MORE BUT YOU CANNOT BUY BETTER.

OVER ONE MILLION SOLD.

F. & R.'S are sold at about HALF THE PRICE CHARGED by HIRE DEALERS. Finest Cash Value Machines on the Market.

LOCAL AGENTS:—

**JOHN LANCE & CO., LTD.,
CHELTENHAM.**

GLOUCESTERSHIRE SCHOOLS AND SCHOLARS:—

HOLY APOSTLES' SCHOOLS, CHELTENHAM.



THE BOYS.



THE GIRLS (Miss A. K. Folley, headmistress, on left).

CHELTENHAM CHRONICLE AND GLOUCESTERSHIRE GRAPHIC, DECEMBER 11, 1909.

FOOTBALL AND "PHOTOGRAPHY" IN A SNOWSTORM.

GLOUCESTER AND CHELTENHAM MUNICIPAL OFFICIALS AT FOOTBALL, AT OAKLANDS GROUND, CHELTENHAM, DEC. 4, 1909.



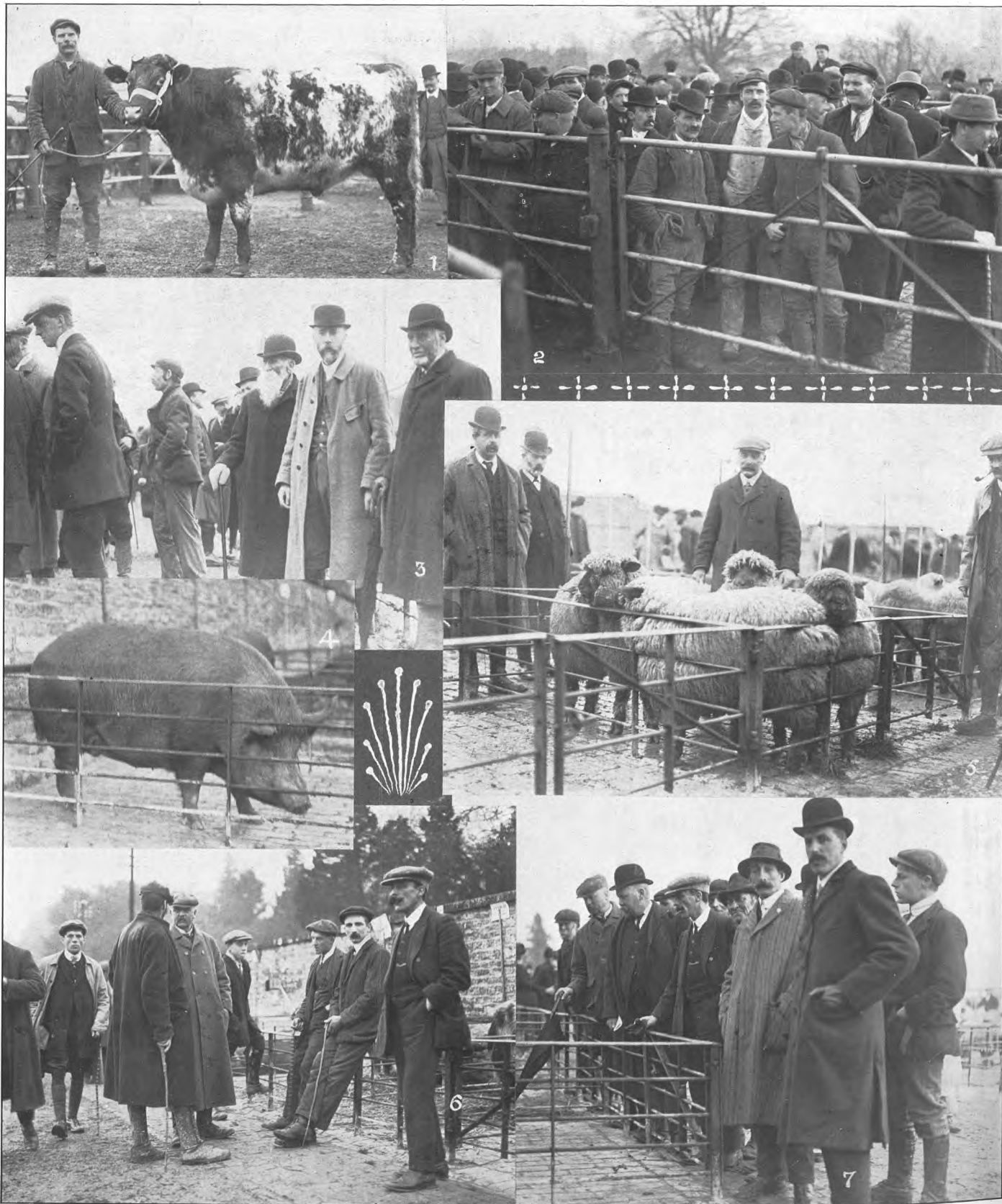
CHELTENHAM TEAM AND OFFICIALS.

Back row: Walter J. Mullins, A. Murray-Smith, M. C. Taylor, C. J. Emmerson, G. F. Webley, G. Stretton, F. H. Harris, H. D. Wilding (capt.), B. Nation, B. Parker, E. D. Ricketts (referee), A. E. Hudson.
Seated in front: J. Midwinter, F. R. Jefford.



THE GLOUCESTER TEAM.

Back row: C. M. Wiggin, A. H. Derrett, H. V. James, H. L. Norman (captain), H. G. Kingscott, C. Romans, G. Ross, C. J. Click.
Seated in front: C. Stevens, A. Morgan, W. B. Dix.



1. Mr. Gantlett's (Fairford) first prize fat steer, best beast in market and winner of challenge cup. It sold for £28.
2. Round the cattle sale ring; looking for bargains.
3. Well-known habitués of the market.

**FIRST CHRISTMAS MARKET OF THE YEAR
IN GLOUCESTERSHIRE.
Cirencester Fat Stock Market,
December 6, 1909.**

4. Lord Sherborne's first prize fat sow.
5. Mr. Rich, of Aldsworth, in his pen of first prize Oxford Down fat tegs, winners of challenge cup.
6. Waiting for pig sale to commence.
7. Looking at the fat pigs.



HOME ARTS AND INDUSTRIES EXHIBITION IN CHELTENHAM.

MONTPELLIER ROTUNDA, DECEMBER 6, 7, and 8.—SOME OF THE STALLS.

1. Newlyn and All Saints' (Cheltenham) Stalls.
2. Local Amateurs' and Five-Mile Town Stalls.
3. The Baby's House and Cheltenham Health Society's exhibits.
4. Cheltenham Ladies' College exhibits. The three panels over large seat took first prize in exhibition for carving.



HOLY APOSTLES' SCHOOLS, CHELTENHAM.



MR. WILLIAM WOODINGS,
NEW PARLIAMENTARY LIBERAL ELECTION AGENT
FOR CHELTENHAM.



MR. W. E. PALSER (The Headmaster).
The above picturesque schools, standing at the junction of London-road and the Cirencester-road, were built by the late Charles Cooke Higgs, Esq., the munificent donor of the beautiful church adjoining. For 36 years they have carried on vigorously and successfully the work of a Public Elementary School, many of its scholars having attained high positions in various parts of the world. There are two departments; the Boys', under Mr. W. E. Palsler (Headmaster); and the Girls', under Miss A. K. Folley, who attained her majority as Headmistress last August.

**USEFUL GIFTS
IN ALL QUALITY
SILVER PLATE.**



Muffin or Chop Dish with lining for hot water, Post Free 10/9.



Fluted Hot-Water Kettle with Spirit Lamp, Post Free 21/9.



Six Spoons & Tongs, Shell pattern, in velvet-lined case, Post Free 7/9.



Shell Butter Dish with glass lining & knife complete, Post Free 5/3.



Hand-Chased and Pierced Fruit or Cake stand, Post Free 15/6.

Ask for Illustrated Booklet E. Sent to you post free.

WAITE & SON, JEWELLERS, 349 HIGH ST., CHELTENHAM.

PHOTOGRAPHS. --- Copies of Photographs appearing in the Graphic can be obtained on application at the Office. Special Enlargements. Moderate prices.

Canada exported 1,629,400 barrels of apples, valued at £921,574, last year, almost all of which were received by Great Britain.

"The cycle season of 1909 has been a lamentable one," said Mr. J. R. Nisbet at the annual meeting of the Bowden Brake Company.

THE CHELTENHAM CHRONICLE
AND
GLO'SHIRE GRAPHIC
ART AND LITERARY SUPPLEMENT

No. 468.

Saturday, December 18, 1909.

OPERA HOUSE, CHELTENHAM.

This Afternoon (2.30) and Evening (7.45).

DAVID GARRICK.

DECEMBER 21:—

Mr. H. O. Redford's Benefit.

WINES.	::	::	ALES.
SPIRITS.	::	::	STOUT.

BARTHOLOMEW,
419-420 HIGH ST., CHELTENHAM.

Telephone 135

LAGER BEER.	::	TABLE
CIDER.	::	WATER.

A Splendid Display of suitable

GIFTS

for the present season.

ROBERTSON & CO.,
CIGAR AND
CIGARETTE IMPORTERS,
8 COLONNADE, CHELTENHAM.

Agents for "LOEWES"
CELEBRATED PIPES.

SPECIALITIES.

* *

Edinburgh Mixture.	Savory's Cigarettes.
Carreras Tobaccos.	Notaras do.
John Cotton's do.	Albany do.



DR. MACNAMARA IN CHELTENHAM.

THE RIGHT HON. DR. MACNAMARA, SECRETARY TO ADMIRALTY (ON RIGHT), WITH MR. J. E. SEARS, M.P. FOR CHELTENHAM, ON THE STEPS OF MRS. TALBOT'S RESIDENCE, "THORNCLIFFE."



FOOTBALL AT CHELTENHAM COLLEGE.

LONDON HARLEQUINS V. COLLEGE, DECEMBER 8, 1909, WHEN HARLEQUINS WON BY 18 POINTS TO 10.

1. Blagrove, the injured College half-back, holds a reception round his wheel-chair.
2. Spectators.
3. Three of the College team.
4. Well-known local followers of the game.
5. A scramble for the ball on the line.



GLOUCESTER CHRISTMAS MARKET, DECEMBER 13, 1909.

1. Crowd looking at biggest pig in market.
2. Mr. Chamberlayne's heifer, winner of 1st prize for best fat beast in market.
3. Mr. Pearce's 1st prize pen of best fat sheep in market.
4. Pig buyers round auctioneer.
5. Well-known faces in the market.
6. Mr. T. Need's enormous 1st prize fat sow, which weighed about 8cwt., and fetched £15 10s.
7. Well-known farmers, Messrs. E. Parry (of Churcham), Mr. Sidney Harvey (of the firm of horse dealers), and Messrs. Brewer (of Maisemore and Tibberton).
8. The 2nd prize fat sow, which many judges preferred to first. It fetched £15 10s.

GLOUCESTERSHIRE SCHOOLS AND SCHOLARS:—

LONDON ROAD NATIONAL SCHOOL, GLOUCESTER.



STANDARDS V., VI., & VII.



STANDARDS III. & IV.

GLOUCESTERSHIRE SCHOOLS AND SCHOLARS:—

LONDON ROAD NATIONAL SCHOOL, GLOUCESTER.



STANDARDS I. & II.



THE TEACHING STAFF.

Standing: Messrs. H. Wager, H. E. Corlett, F. F. Keene, C. W. Smith, and B. F. Little.
Sitting: Messrs. W. E. Nolder, Geo. Roberts (headmaster), and E. H. Palmer.

LONDON ROAD NATIONAL SCHOOL, GLOUCESTER.

The foundation stone of this school was laid by the Duke of Wellington in 1816. The average attendance for the year ending October 31 last was 291, and the percentage of attendance 97. Many scholarships have been won from the school, and old "National" boys may be found filling important positions. For some years past the school has had a reputation for good sound work. Mr. George Roberts has practically been connected with the school for a quarter of a century, his appointment dating from January, 1885. He has been Headmaster since 1897.



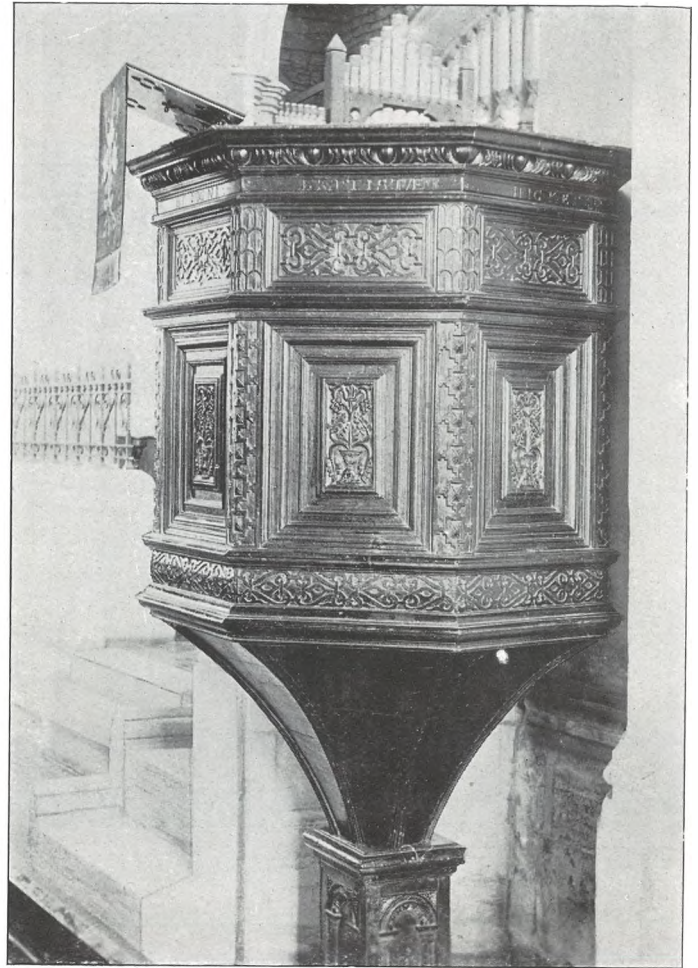
BOODLES TEETH.

We attend at North House, Cheltenham, Every Day; Mr. Collett's High Street, Bourton-on-the-Water, Every Tuesday; and at Hartwell's (Ironmonger), High Street, Chipping Norton, Every Wednesday.



POLITICAL PICTURES.

Liberal Central Committee Rooms (corner of Portland and Albion streets), with some of the staff.



THE HISTORY & ANTIQUITIES OF CHIPPING CAMPDEN.

BY PERCY C. RUSHEN.—SEE MAIN SHEET.

THE JACOBAN PULPIT IN CAMPDEN CHURCH, GIVEN BY SIR BAPTIST HICKS. Photo by J. Taylor, Campden.



POLITICAL PICTURES.

Cheltenham Conservative Central Committee Rooms (formerly old Conservative Club) covered with posters.

USEFUL * GIFTS.

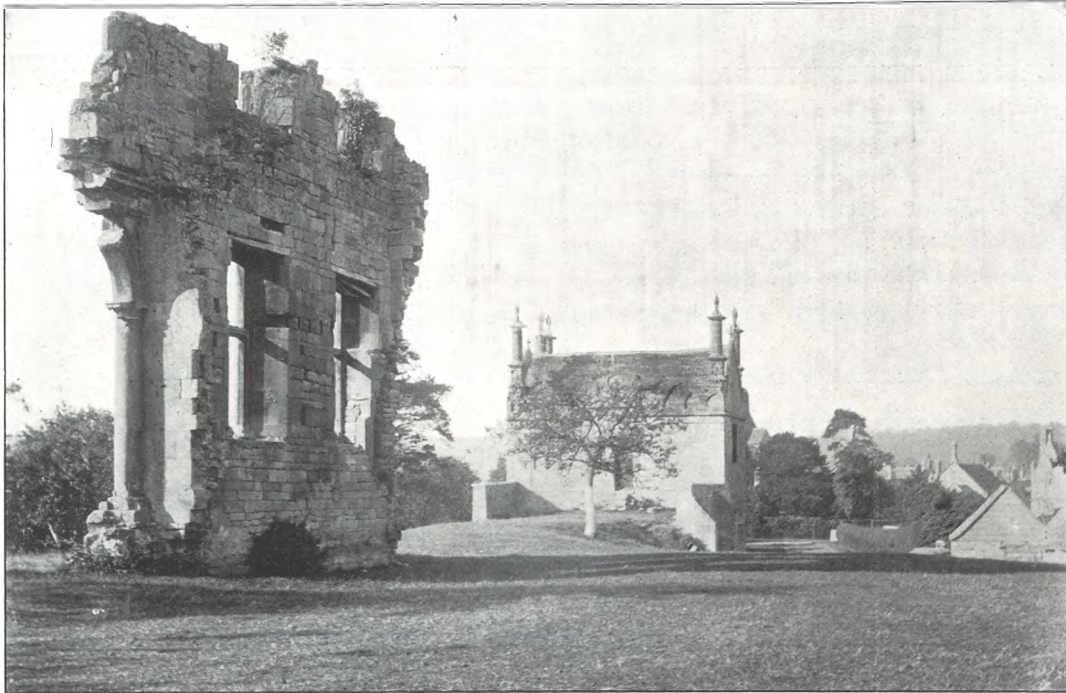


SILK HANDKERCHIEFS AND MUFFLERS, GLOVES, ETC., ETC. HOSIERY AND SHIRTS,

A LARGE STOCK TO SELECT FROM.

A. BECKINGSALE, 111 HIGH ST., CHELTENHAM.

THE HISTORY AND ANTIQUITIES OF CHIPPING CAMPDEN. By. Percy C. Rushen.—
See Main Sheet!



RUINS OF OLD CAMPDEN HOUSE, SHOWING THE W. PAVILION AND THE TERRACE.

THE NEW

ELECTRIC CLOCK,

Never Wants Winding.

£4 14s. 6d.

SEE WINDOW. * SEE WINDOW.

F. KILBEY,

F. C., F.I.O.

WATCH AND CLOCK MAKER,
JEWELLER, OPTICIAN, &c.

20 WINCHCOMBE STREET,

(Between Arcade & Albion Street),

CHELTENHAM.

LARGE STOCK OF OTHER
CLOCKS, ALSO WATCHES,
JEWELLERY, ELEC. RO-
PLATE.



MR. WILLIAM HANDS,

A well-known Cheltenham chemist. Died on Tuesday, December 14, 1909, aged 77 years. He was a member of Cheltenham Town Council from 1888 to 1894.

PHOTOGRAPHS.--- Copies of Photographs appearing in the Graphic can be obtained on application at the Office. Special Enlargements. Moderate prices.

W. Hall & Sons, Ltd.

GREAT SELECTION OF

Finest English fed Turkeys, Geese, Capons, Surrey fatted Chicken, Ducks, Fowls, Pheasants, Hares, Wild Duck, and every variety of Wild Fowl.

SHOW DAYS:— MONDAY, TUESDAY, & WEDNESDAY, December 20, 21, & 22.

Pineapples, Hothouse Grapes, and other Choice Fruits for Xmas Presents. Asparagus, French Beans, Seakale, Mushrooms, Etc.

HIGH ST. AND MONTPELLIER.
Established 1825.

EARL of SHREWSBURY'S
CELEBRATED

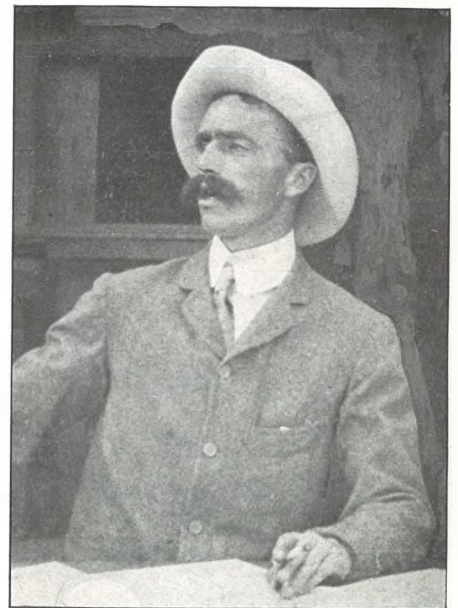
BREERETON COALS.

DISTRICT AGENTS:—

W. SAWYER & CO.,
10 CLARENCE STREET,
CHELTENHAM. 'Phone 373

This is one of the finest coals raised. It burns beautifully clean, leaving a very small percentage of brown heavy ash, and is extremely economical.

While a bellringer, aged 72, named Wells, was ringing the bells at St. Paul's, Walden Parish Church, Hertfordshire, he dropped dead in the belfry.



DR. RICHARD ARMITAGE,

Died at Stavely, near Chesterfield, on Thursday, December 9, 1909, from pneumonia, aged 37 years. Well known in Cheltenham, and for some time was Secretary of East Gloucestershire Tennis Club.

"The punctuation is ridiculous," said the Lambeth County Court judge on Monday, referring to a new Act of Parliament. "Here is a sentence occupying 37 lines, and it reads like an Act of George II."

Photographic
Dealers.

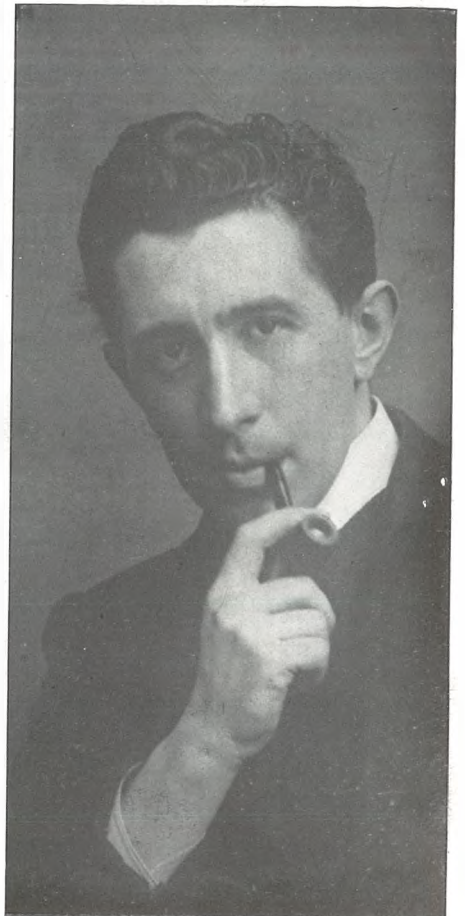
THOMAS BROS.

Photographic
Dealers.

ARE offering their complete stock of Albums at specially reduced prices, and have an immense variety to choose from, suitable for Birthday, Christmas, and New Year presents. All marked in plain figures and subject to **DISCOUNT FOR CASH**. Also a large selection of **CAMERAS** of all descriptions at **GREATLY REDUCED PRICES**. They invite all **AMATEUR PHOTOGRAPHERS** to call and inspect the bargains they are offering from the largest and most varied stock of Photographic supplies to be found in the Provinces.

COLLEGE PHARMACY, BATH ROAD,
CHELTENHAM. TEL. 30.

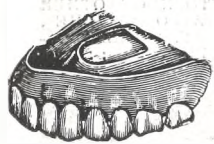
TO-DAY'S WEDDING.
CLARK BUCKLAND.
CHELTENHAM PARISH CHURCH.



MR. FORBES M. M. CLARK,
A.R.C.A. (Lon.), Headmaster of Cheltenham
School of Art.



MISS A. A. BUCKLAND,
of Weston Villa, Cheltenham.
Photos by Buckland, Whaley's Studio,
Cheltenham.



Estb. 1891.

Phone 32x1, Cheltenham

**Artificial
TEETH.**

**MR. SUTTON GARDNER,
LAUREL HOUSE,
CHELTENHAM**

HOURS 9 A.M. TILL 8 P.M. DAILY.
Branches at Stroud, Nailsworth, Winch-
combe, Stow, Bourton, etc.

A SEWING MACHINE FOR EVERY HOME!

A Sewing Machine—a good one—is not a luxury, not something that should be done without or waited for till a more convenient season, it is one of the essentials of every household. A good sewing machine is a money-spinner that saves its cost in a few weeks and thereafter continually adds to the family banking account. It is not only useful for dressmaking—you may buy every dress you wear ready-made and yet find a sewing machine a most profitable investment because of its usefulness in the family needlework—the hundred and one jobs that turn up from week to week which without its aid, involve many hours of weary work. No more useful adjunct to the household, no more suitable present to the Wife can be imagined than the marvellous machine that so quickly and effectively does the work that formerly spelt hours of drudgery. **WE ARE NOW SHOWING a complete range of the various sizes and styles WHICH MEET ALL DEMANDS.**

FRISTER & ROSSMANN'S

HIGH-CLASS MACHINES.

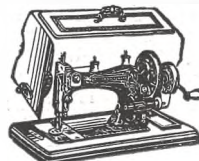
VIBRATING-SHUTTLE

Hand Treadle.

£3 7 6 | £4 14 6

Cam Action.

£2 16 0 | £4 4 0



YOU MAY PAY MORE BUT YOU CANNOT BUY BETTER.
OVER ONE MILLION SOLD.

F. & R'S are sold at about **HALF THE PRICE CHARGED** by
HIRE DEALERS. Finest Cash Value Machines on the Market.

LOCAL AGENTS:—

JOHN LANCE & CO., LTD.,
CHELTENHAM.



APPEARANCE BY NIGHT

The "Glow Worm" Clock tells time at night, its brilliant luminous compound of Radium being self-sustaining and lasts as long as the clock. It forms a unique Christmas gift and a real bedside companion, and can be thoroughly relied upon: Its cost with an alarm is only 10s. 9d., without alarm 8s. 9d., post free. Send now for one; if not approved of, your money will be refunded on receipt of clock in good condition.—Waite and Son, jewellers, 349 High-street, Cheltenham.

The "London Gazette" on Tuesday night notified a receiving order against Sir Robert Peel.

"Pea-Shooter Charlie," said a detective on Tuesday, was the name by which Henry Seaman, sentenced to three years' penal servitude at London Sessions, was known to his associates, owing to his habit of always carrying a revolver.

The King has been pleased to extend the scope of the Edward Medal, which was established in 1907 for rewarding acts of gallantry in saving or attempting to save life in mines and quarries, to similar acts in the course of industrial employment.

Herr Schiedemann, a Socialist member of the German Reichstag, caused a scene of wild disorder in the Chamber on Saturday by his remarks concerning promises contained in a recent Speech from the Throne. He said: "I cannot say that I have any particular confidence in the word of a King."

THE CHELTENHAM CHRONICLE AND GLO'SHIRE GRAPHIC

ART AND LITERARY SUPPLEMENT

No. 469.

Saturday, December 25, 1909.

THE SKATING "CLUB" FANCY DRESS CARNIVAL,

CHELTENHAM WINTER GARDEN, DEC. 15, 1909.

OPERA HOUSE, CHELTENHAM.

RE-OPENS ON MONDAY NEXT WITH
THE CHELTENHAM PANTOMIME,
ROBINSON CRUSOE.

WINES. :: ALES.
SPIRITS. :: STOUT.

BARTHOLOMEW,
419-420 HIGH ST., CHELTENHAM.

Telephone 135

LAGER BEER. :: TABLE
CIDER. :: WATER.

W. Hall & Sons, Ltd.

GREAT SELECTION OF
Finest English fed Turkeys, Geese, Capons,
Surrey fatted Chicken, Ducks, Fowls,
Pheasants, Hares, Wild Duck, and every
:: variety of Wild Fowl. ::

SHOW DAYS: — MONDAY, TUESDAY,
& WEDNESDAY, December 20, 21, & 22.

Pineapples, Hothouse Grapes, and other
Choice Fruits for Xmas Presents.
Asparagus, French Beans, Seakale,
Mushrooms, Etc.

HIGH ST. AND MONTPELLIER.
Established 1825.

ROBERTSON & CO.,

Cigar & Cigarette Importers.

(T. R. PRITCHARD, Proprietor).

8 Colonnade,
Cheltenham.

Printed and Published as a Gratis Supplement
by the Cheltenham Newspaper Company.



First prize team in Driving Competition. Popular winners for uniformity and grace both in skating and costumes. Miss Gordon Smith (driving), Miss V. Gordon Smith, Miss Walker, Miss N. Walker, Miss Barton Gardner (leading).

EARL of SHREWSBURY'S

CELEBRATED

BRERETON COALS.

DISTRICT AGENTS:—

W. SAWYER & CO.,
10 CLARENCE STREET,
CHELTENHAM. Phone 373

"This one of the finest coals raised. It burns beautifully clean, leaving a very small percentage of brown heavy ash, and is extremely economical."

PHOTOGRAPHS. --- Copies of Photographs appearing in the Graphic can be obtained on application at the Office. Special Enlargements. Moderate prices.



Estb. 1891.
Phone 32x1, Cheltenham

**Artificial
TEETH.**

MR. SUTTON GARDNER,
LAUREL HOUSE,
CHELTENHAM

HOURS 9 A.M. TILL 8 P.M. DAILY.
Branches at Stroud, Nailsworth, Winchcombe, Stow, Bourton, etc.

RECORD IN WILLS.

Probate was granted on Monday of wills disposing of property of the value of about £2,700,000, of which over £350,000 went to the Treasury in the form of death duty. No fewer than seven six-figure estates figured in the list, which is probably a record for one day.

Consuelo, Dowager Duchess of Manchester, left a ruby and diamond bracelet to Queen Alexandra, "as a token of my respectful affection and regard."



MR. H. OSWALD REDFORD'S ANNUAL BENEFIT, CHELTENHAM OPERA HOUSE, DEC. 21, 1909.

DICKENS'S "CHRISTMAS CAROL," PERFORMED BY LOCAL AMATEURS.

Back row:—Miss Aileen Whittaker (Martha Crachit), Mr. F. Holland Rea (Scrooge when young), Miss W. Power (a Guest), Mr. H. Oswald Redford (Beneficiare), Mr. E. H. Flood (Spirit of Christmas), Mr. Lloyd (the Corpse), Miss Jill Blyth (Scrooge's niece's sister), Miss D. Hodson (Peter Crachit).

Front row:—Mr. Leslie Rea (Fred, Scrooge's nephew), Mr. Leo Carroll (Bob Crachit), Mrs. Bartholomew (Mrs. Crachit), Mr. H. T. Rainger (Ebenezer Scrooge), Miss M. Elliot (Caroline, Scrooge's niece), Mr. Lyn Rainger (Topper), Mr. H. O. Barnett (Marley's Ghost).

In front:—Master John McClellan (Tiny Tim).



This handsome Chippendale mahogany clock (chiming the Westminster chimes) was presented to Mr. and Mrs. Waller, of Farmington, by the parishioners, on Dec. 16, 1909. A handsome case of silver flower vases was presented to Miss Winifred Waller.

Both were supplied by Messrs. Waite and Son, Jewellers, of 349 High-street, Cheltenham.



MR. J. A. STOCK,

The new headmaster of Twigworth Schools, near Gloucester. He has been headmaster of Deerhurst for three and a half years, and in his removal Apperley Cricket Club loses a popular hon. secretary.



MISS HILDA MOUAT-BIGGS, as Belle in Dickens's "Christmas Carol."



MR. H. OSWALD REDFORD'S ANNUAL BENEFIT, CHELTENHAM OPERA HOUSE, DEC. 21, 1909

"SATURDAY TO MONDAY," PERFORMED BY LOCAL AMATEURS.

Back row:—Miss E. Rathborne (Miss Skeet), Mr. E. H. Hody (Jarvis), Miss Eileen Growse (Miss Ursula Toop), Mr. P. R. Clauss (Stanley Pidding).

Front row:—Mr. J. H. S. Annesley (Probyn Dyke), Miss Leila Swinley (Angela Porchester), Captain H. S. Daubeny (the Rev. Lemuel Toop), Mrs. G. Ticehurst (Mrs. Wendover), Mr. Geo. Ticehurst (Lord Calvert (of Aleester), Miss S. Ker (Lady Porchester).



THE LATE MRS. HOLLAND.

Of Dumbleton Hall, and Kemerton, who was chiefly instrumental in founding the Holland Home of Industry at Kemerton in 1887.



CHELTENHAM CANINE SOCIETY.

FIRST SHOW AT HANOVER INN, ST. PAUL'S.

Dr. and Mrs. Davies, with their Yorkshire terrier, which took second prize.



GRAND FANCY DRESS SKATING CARNIVALS AT WINTER GARDEN RINK, DEC. 15 & 16, 1909.

SOME WINNERS AND NOTICEABLE COSTUMES.

1. Mr. A. Whitcombe, as a Human Aeroplane, a most ingenious costume, which easily secured 1st prize on popular night.
2. Mr. A. S. F. Pruen, as the Budget extinguisher.
3. Miss Mouat-Biggs, as a Cavalier lady.
4. Mr. Prescott-Roberts, first prize winner for costume on Club night, as a Pathan.
5. Miss Paterson, first prize winner for ladies' costume on Club night, as "L'Incrovable."
6. Mr. J. Gilmore, as Prince Danilo.



ST. PETER'S GIRLS' SCHOOL, CHELTENHAM. CONCERT BY THE CHILDREN, UNDER MISS WHITE, DECEMBER 17 & 18, 1909.

1. "The Spirit of the Wood," Schoolgirls.
2. Old English song and dance performers.
3. Golden Boat Song.
4. "The Spirit of the Wood," Fairies.

CHELTENHAM CHRONICLE AND GLOUCESTERSHIRE GRAPHIC, DECEMBER 25, 1909.

CHELTENHAM CANINE SOCIETY.

FIRST SHOW OF NEW SOCIETY, DEC. 18, 1909, AT HANOVER INN, HANOVER STREET.



GROUP OF COMPETITORS WITH THEIR DOGS ON LAWN WHILE JUDGING WAS IN PROGRESS.



COMMITTEE AND OFFICIALS.

H. Brown (hon. sec.), C. Probert (hon. treasurer), A. Bramley, J. Macey (vice-chairman), C. Brooks, O. Macey, T. Attwood, Giles Harris, C. Hawkins, C. Taylor, R. Marriott (judge), C. Craddock (chairman), T. Hacker, W. Payne, J. Connelly.



GRAND CHRISTMAS PANTOMIME, CHELTENHAM OPERA HOUSE. "ROBINSON CRUSOE."

THE ARTISTES, WITH MR. OSWALD REDFORD (THEATRE MANAGER) & MR. WALTERS (MANAGER PANTOMIME).



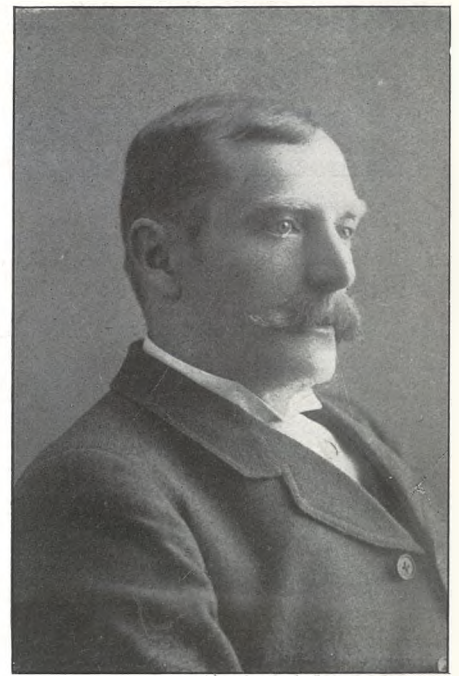
MR. FRANK CARPENTER,

Who has just been appointed Surveyor to Winchcombe Rural District Council.



A BARNSELY GOLDEN WEDDING.

MR. AND MRS. RICHARD POOLE.
On Wednesday last Mr. Richard and Mrs. Ann Poole celebrated their golden wedding, having been married at St. Mary's Church, Barnsley, Cirencester, by the Rev. G. E. Howman, on Dec. 22, 1859. They have lived in the village all their lives, and brought up a family of ten children—nine sons and a daughter—eight of whom are still living. There are forty grandchildren. Mr. and Mrs. Poole have lived in the same house for thirty-eight years, and the former has worked on the same estate for sixty-one years, and is still following his trade. Their united ages are 143 years.



MR. T. G. BARBER,

Solicitor, of Gloucester,
Died December 19, 1909, aged 63 years.

The funeral took place on Saturday at Banbury of William Hemmings, aged 85. Deceased had been a chorister for 60 years.

The Rev. M. R. Newbolt, vicar of Ifley, has been appointed to the post of Principal of Dorchester Missionary College, vacant through the resignation of the Rev. V. T. Kirby.

The turkey market has been very shortly supplied all through the Christmas season. Owing to the inclement summer a large number of the early brood died off, and very few of the birds which survived have done as well as usual.

**FANCY DRESS SKATING
CARNIVAL.**

CHEL TENHAM WINTER GARDEN,
DECEMBER 16, 1909.



MISS BURFORD,
as the North Pole, a very effective costume,
which was very much fancied as worthy of
first prize.



MISS SMITH,
Winner of first prize ladies' costume on
"popular" night as a Cowboy.



MINDING BABY.

A well-known local character, "Nigger" Churchill, snapped by our photographer, taking on a novel "job": minding a baby outside Gloucester Station while its mother and a lady friend took refreshment at a neighbouring hostelry. The incident caused great amusement to the numerous habitues of the G.W.R. Station.

**A SEWING MACHINE
FOR EVERY HOME!**

A Sewing Machine—a good one—is not a luxury, not something that should be done without or waited for till a more convenient season, it is one of the essentials of every household. A good sewing machine is a money-spinner that saves its cost in a few weeks and thereafter continually adds to the family banking account. It is not only useful for dressmaking—you may buy every dress you wear ready-made and yet find a sewing machine a most profitable investment because of its usefulness in the family needlework—the hundred and one jobs that turn up from week to week which without its aid, involve many hours of weary work. No more useful adjunct to the household, no more suitable present to the Wife can be imagined than the marvellous machine that so quickly and effectively does the work that formerly spent hours of drudgery. WE ARE NOW SHOWING a complete range of the various sizes and styles WHICH MEET ALL DEMANDS.

FRISTER & ROSSMANN'S

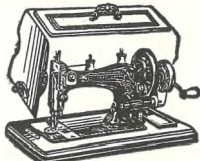
HIGH-CLASS MACHINES.

VIBRATING-SHUTTLE
Hand Treadle.

£3 7 6 | £4 14 6

Cam Action.

£2 16 0 | £4 4 0



YOU MAY PAY MORE BUT YOU CANNOT BUY BETTER.

OVER ONE MILLION SOLD.

F. & R.'S are sold at about HALF THE PRICE CHARGED by
HIRE DEALERS. Finest Cash Value Machines on the Market.

LOCAL AGENTS—

JOHN LANCE & CO., LTD.,
CHELTENHAM.

USEFUL * GIFTS.



**SILK HANDKERCHIEFS AND MUFFLERS,
GLOVES, ETC. ETC.**

HOSIERY AND SHIRTS,

A LARGE STOCK TO SELECT FROM.

**A. BECKINGSALE, 111 HIGH ST.,
CHELTENHAM.**



BOODLES TEETH.

We attend at North House, Cheltenham, Every Day; Mr. Collett's, High Street, Bourton-on-the-Water, Every Tuesday; and at Hartwell's (Ironmonger), High Street, Chipping Norton, Every Wednesday.

The Bishop of Bristol states, in reply to a correspondent, "It is not legal for a layman, whether licensed or not, to speak in church."