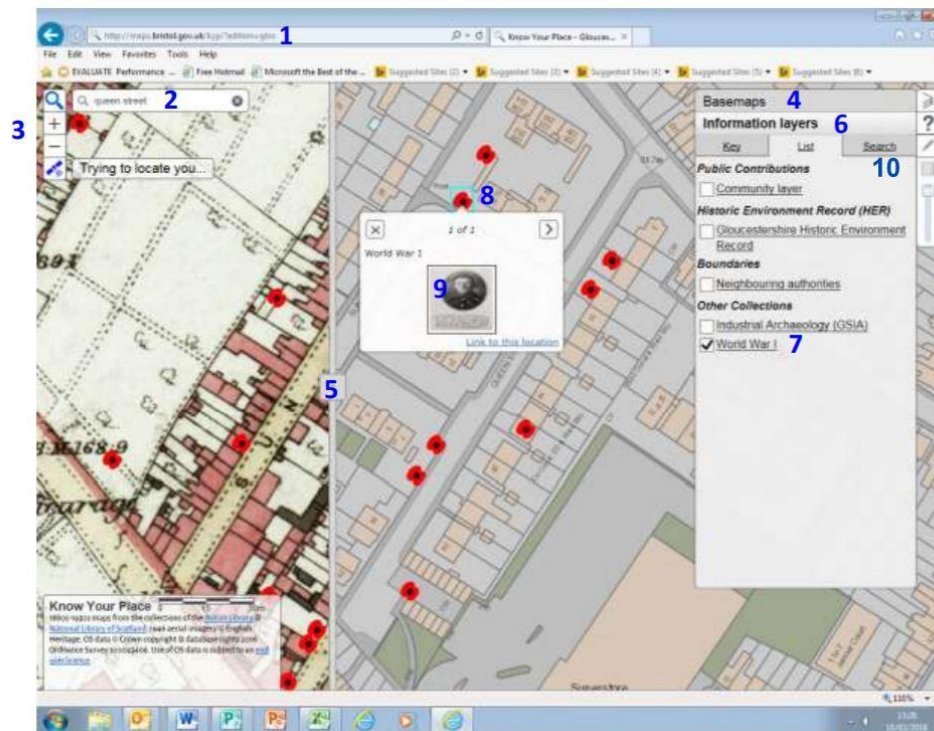


# Cheltenham WWI Photos Online

Fantastic new World War I layer added to the **Know Your Place** website plots the houses of WWI servicemen in Cheltenham. Discover their stories, where they lived and what they looked like. Hundreds of images now available.

The KYP World War 1 layer holds around 1600 entries relating to soldiers serving during the war from the Cheltenham area, linked to their home addresses. Some records also relate to women engaged in war work. Most entries are accompanied by images copied from a contemporary local illustrated newspaper. This collection was created by local historian David Drinkwater and the layer was added to KYP with the help of Gloucestershire Archives volunteers, all members of Cheltenham Local History Society, who carried out additional research to identify precise addresses.

## TO ACCESS THE DATA:



- 1) Go to <http://maps.bristol.gov.uk/kyp/?edition=glos>
- 2) Click on the magnifier box (top left) and enter a postcode or street name.
- 3) Zoom in/out using the +/- (top left). You can also click and hold the mouse to drag it across the screen to move the map.
- 4) Click on Basemaps (top right) to select date of the left (Comparison) and right (Main) maps.
- 5) You can move the slider bar to compare now and then.
- 6) Click Information Layers (lower right under the map thumbnails).
- 7) Untick all the boxes and select the World War I layer only.
- 8) Click on a poppy to view a photo and information.

9) Click on the thumbnail to view a larger image in a new tab.

Close the tab with the image to return to the main **Know Your Place** website.

10) Click [Search](#) to search by surname or any another keyword.

11) Click on [Map](#) to zoom to the location and see thumbnail image.

Basemaps

**Information layers**

[Key.](#)   [List](#)   [Search](#) **10**

     19 result(s).

*Submitter's name:*  
CLHS

*Description:*  
J T **Smith**, Lance-Corporal, Worcester Regiment ex Gloucesters. Resident of 234 High Street, Cheltenham. Missing since 27 May 1918 now a Prisoner of War in Germany. Image published in the Cheltenham Chronicle & Gloucestershire Graphic 27 July 1918

[Map](#) **11**